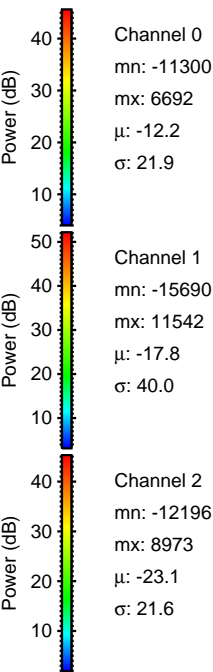
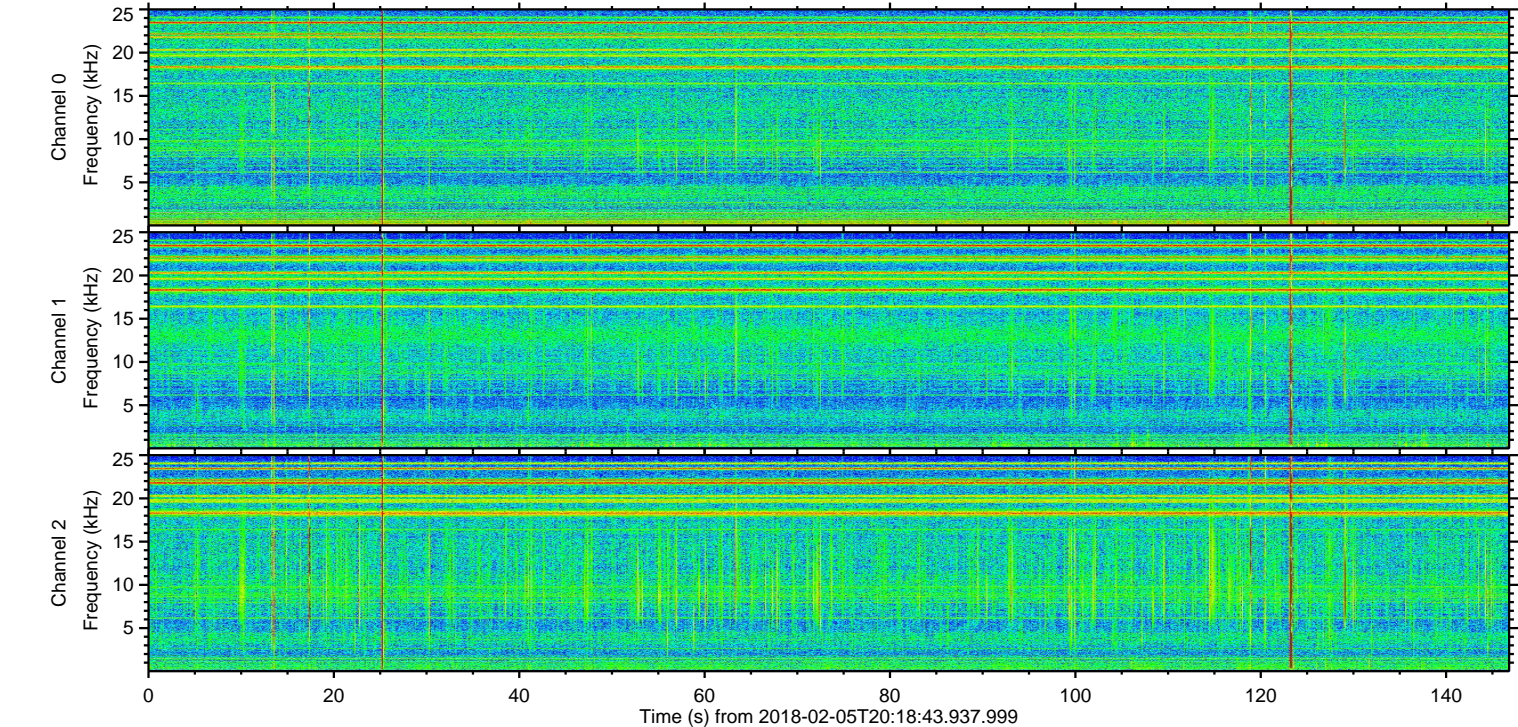
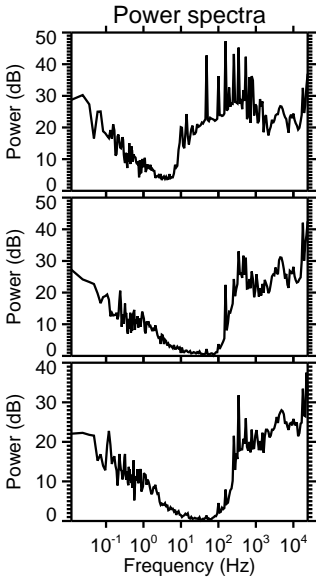
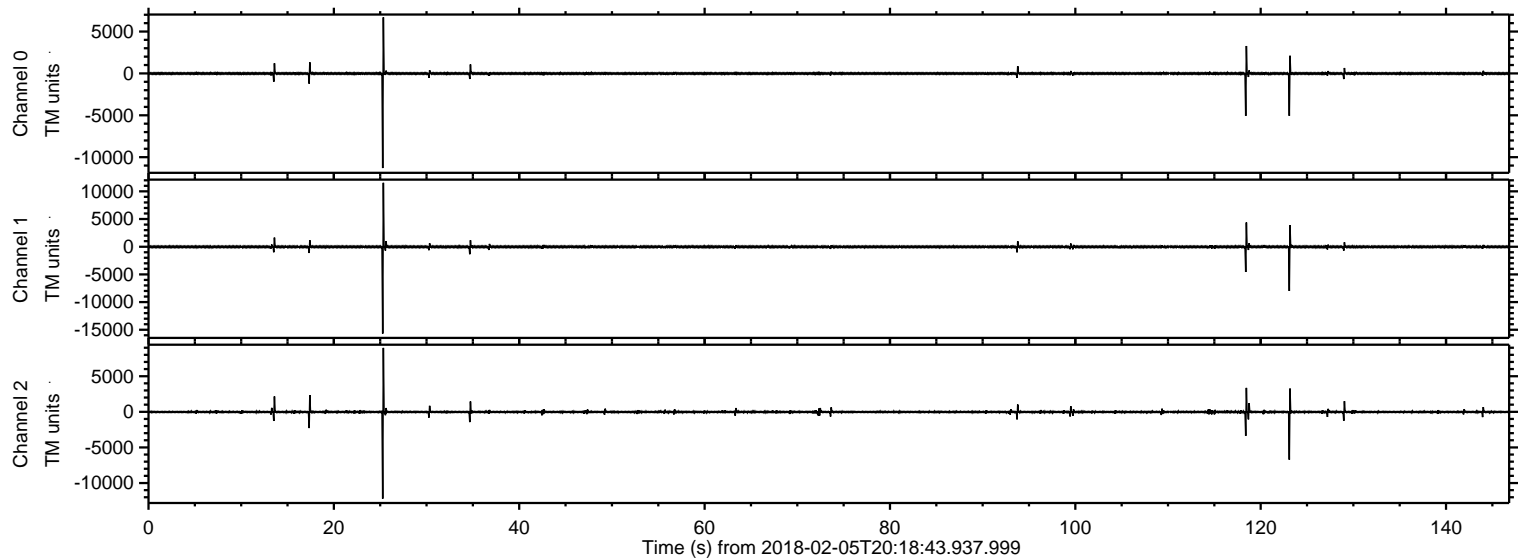


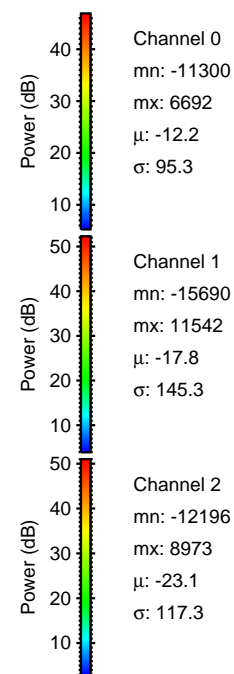
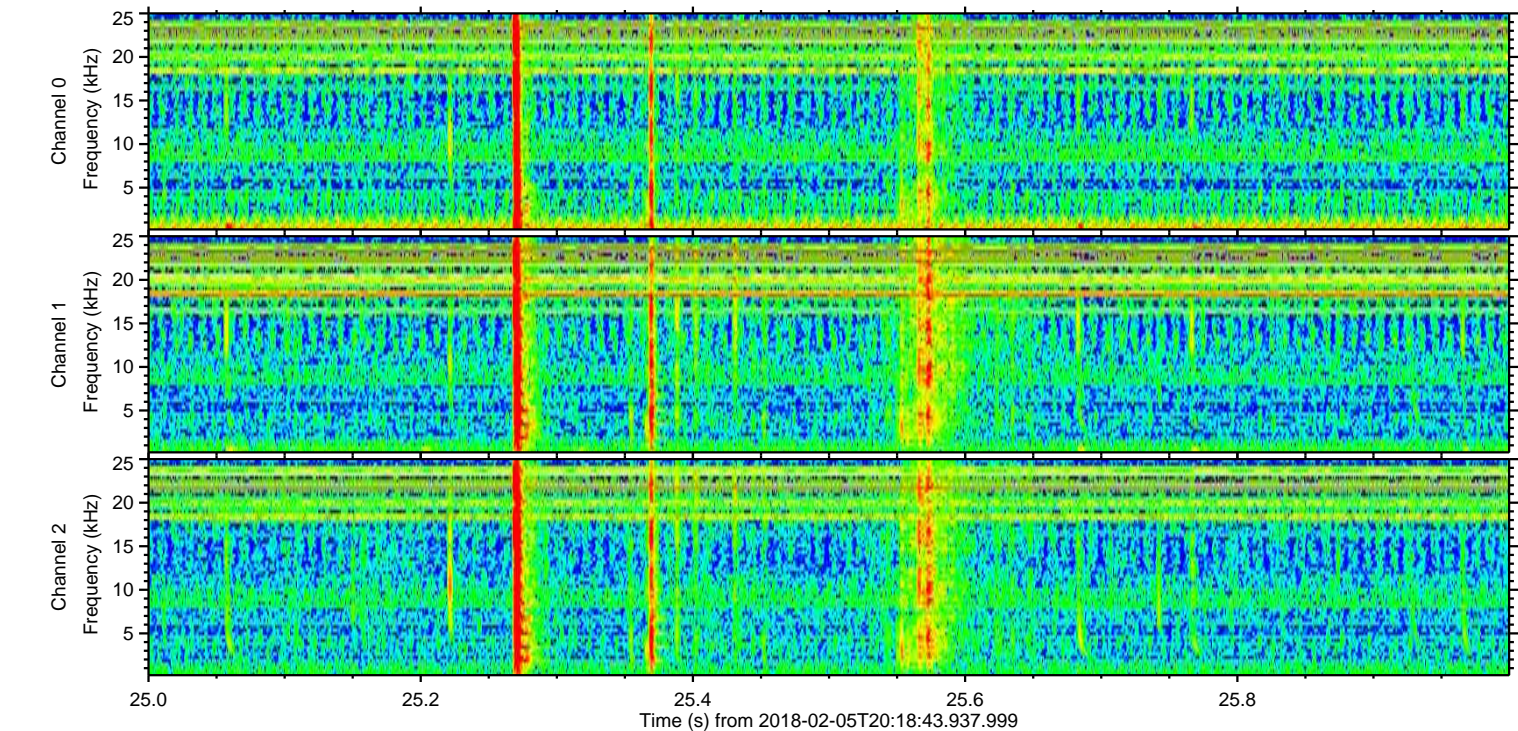
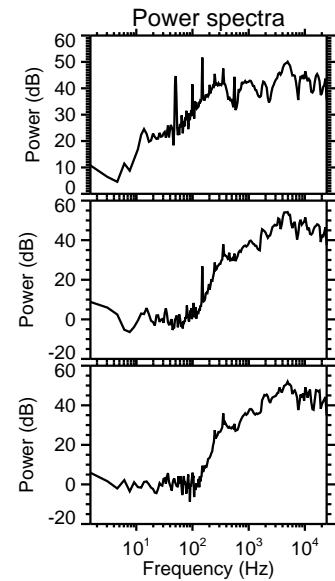
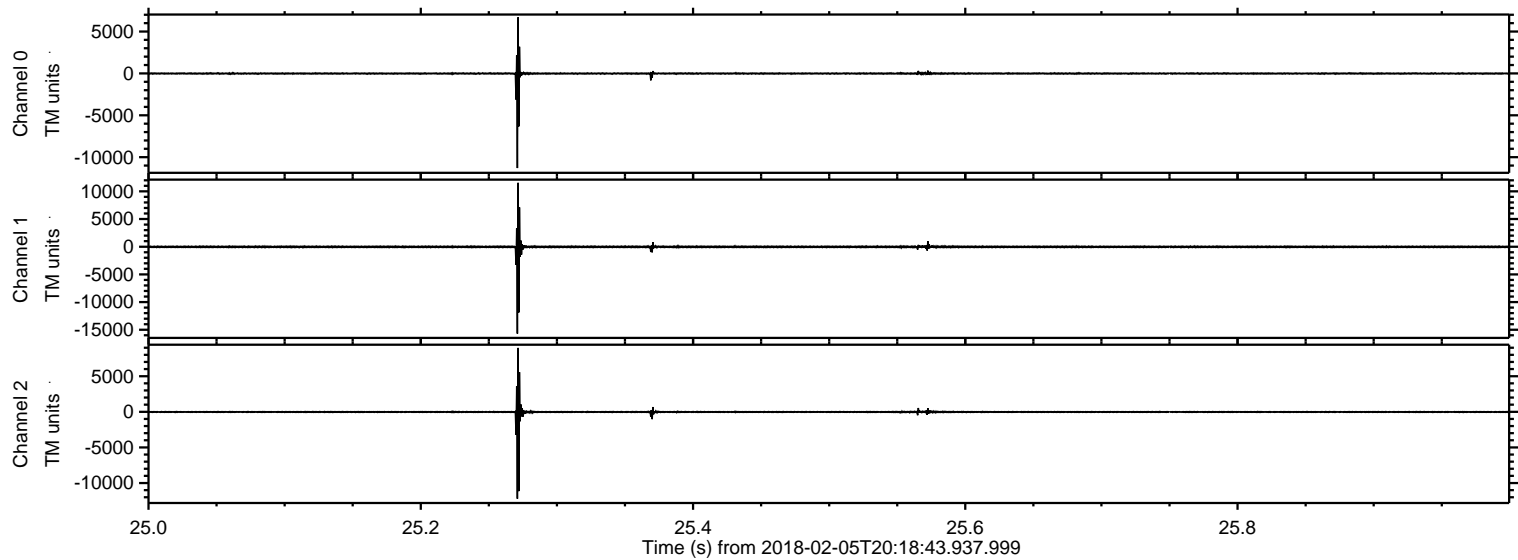
ELMAVAN 3D WAVEFORMS (Measured data sampled at 50 kHz) 51000 packets of 144 samples from 2018-02-05T20:18:43.937.999.

Processed Mon Feb 5 21:27:24 2018 by ELM ver.2012-10-06 from 001\_\_elm20180205\_201842\_\_dat00.bin



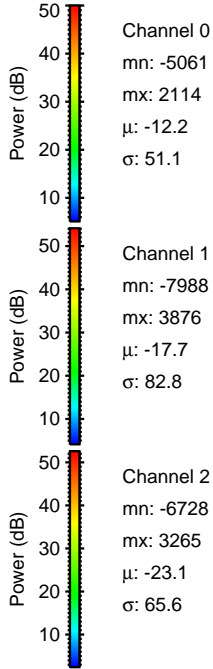
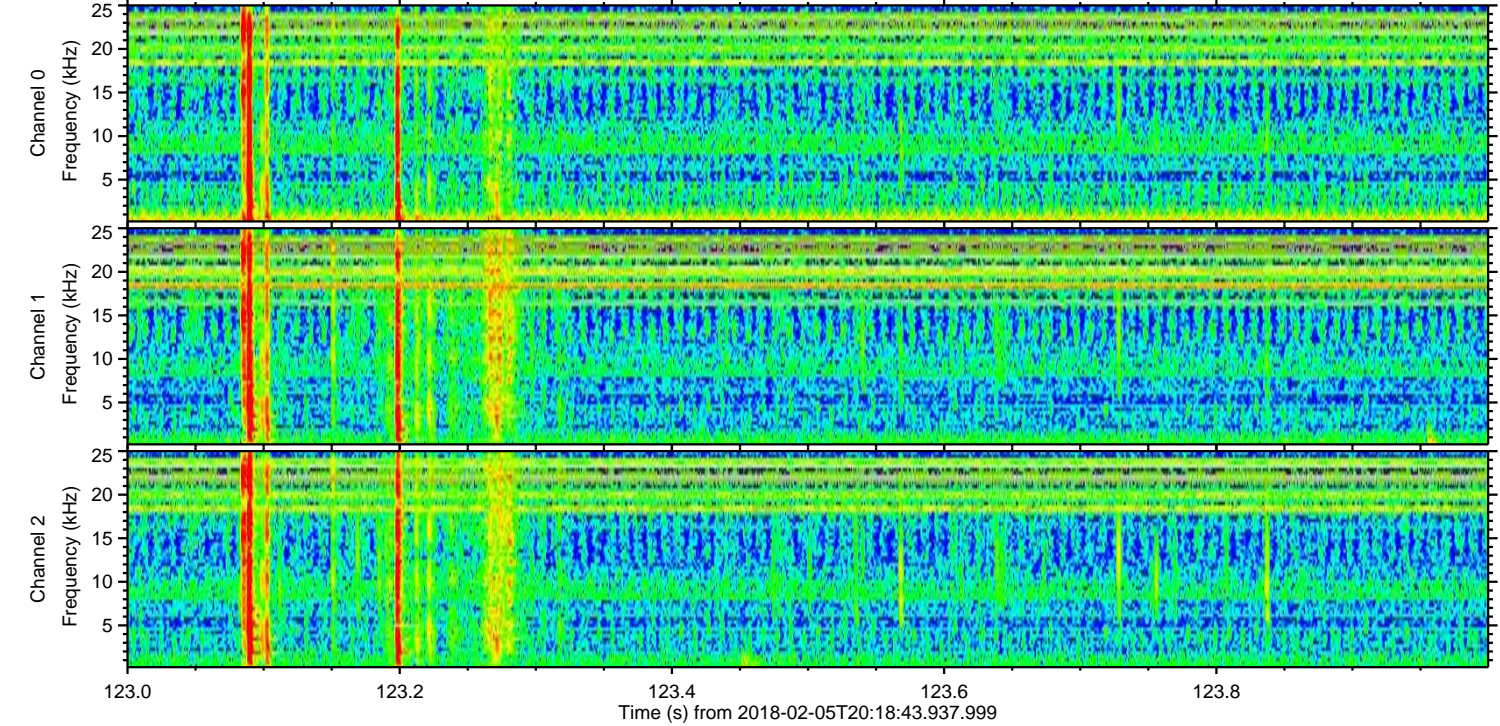
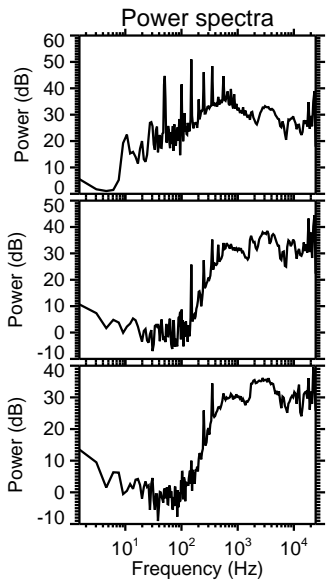
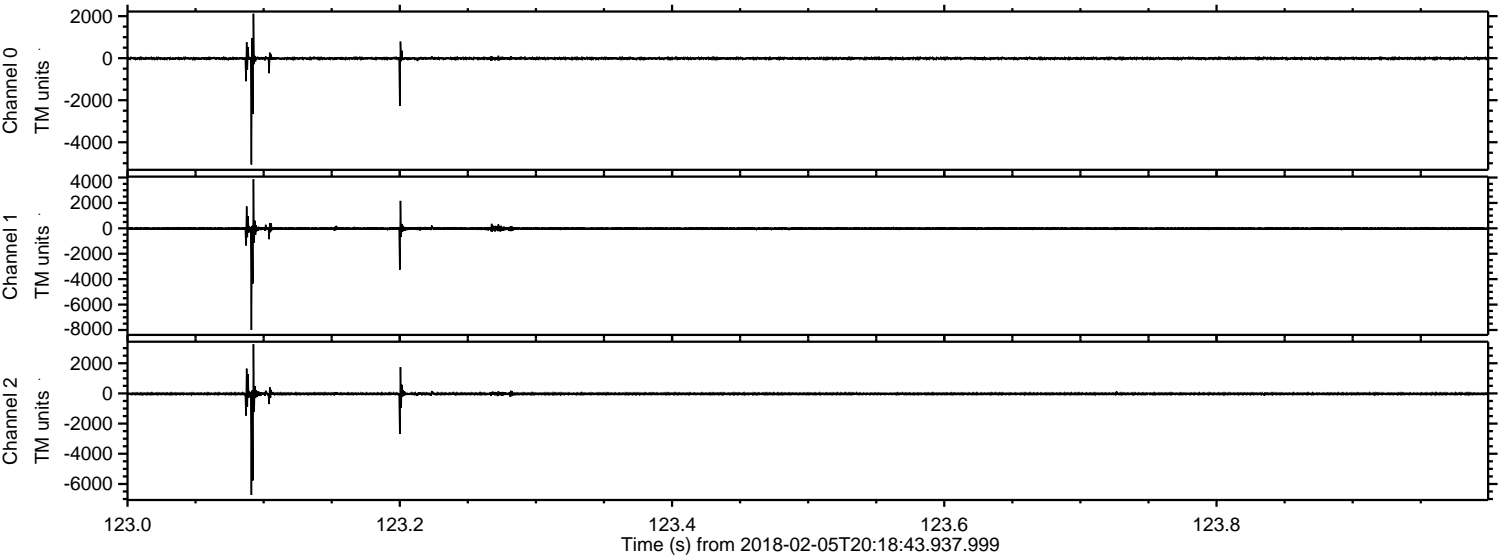
ELMAVAN 3D WAVEFORMS (Measured data sampled at 50 kHz) 51000 packets of 144 samples from 2018-02-05T20:18:43.937.999. Part 26/147

Processed Mon Feb 5 21:27:32 2018 by ELM ver.2012-10-06 from 001\_\_elm20180205\_201842\_\_dat00.bin



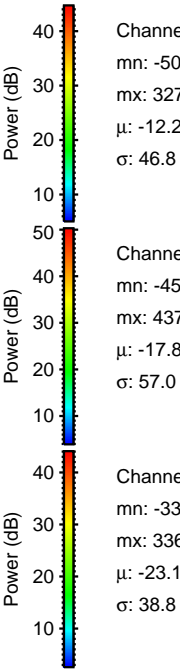
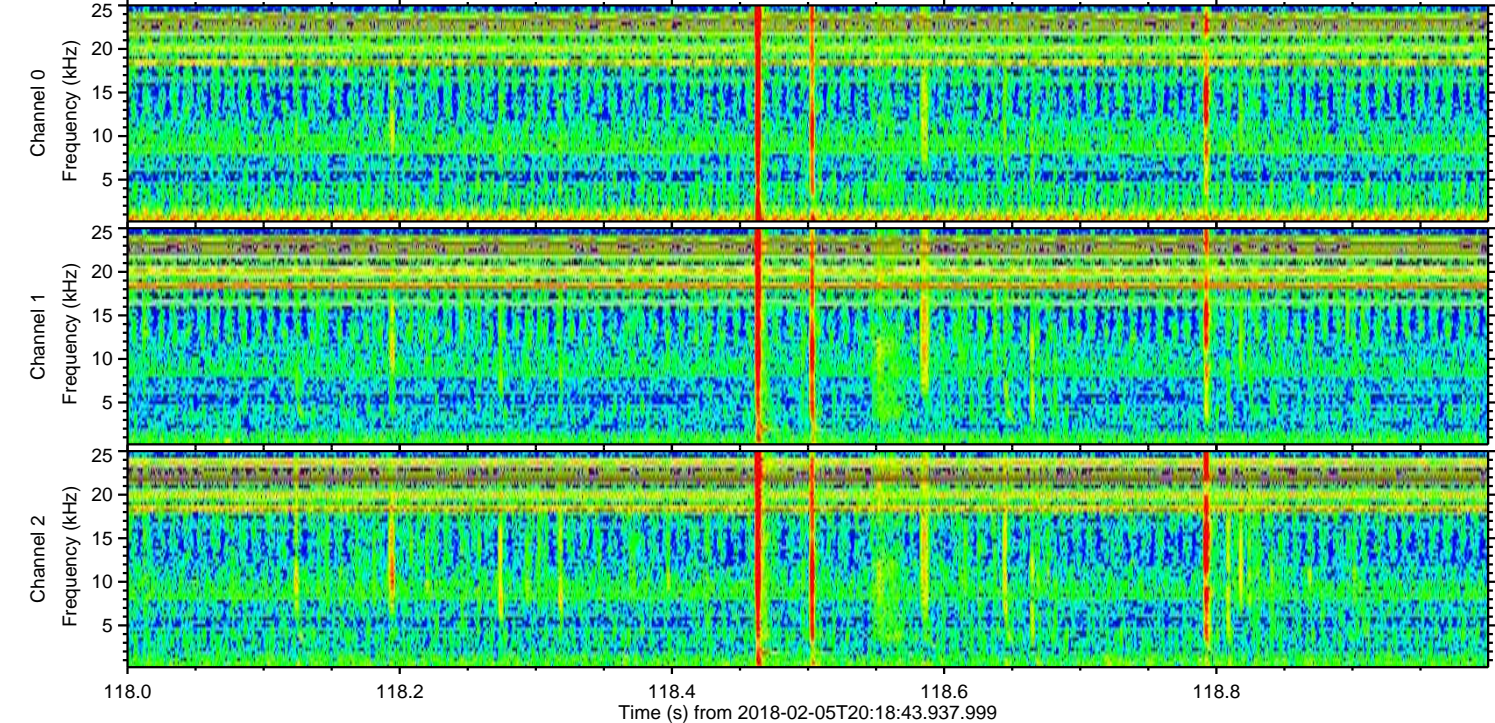
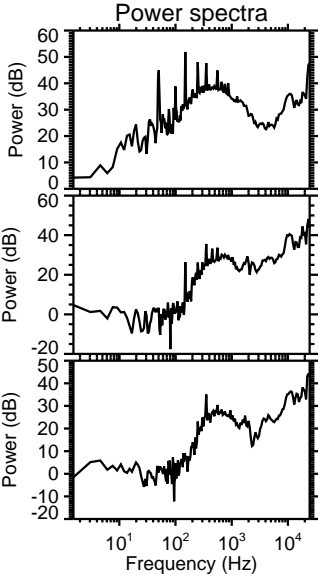
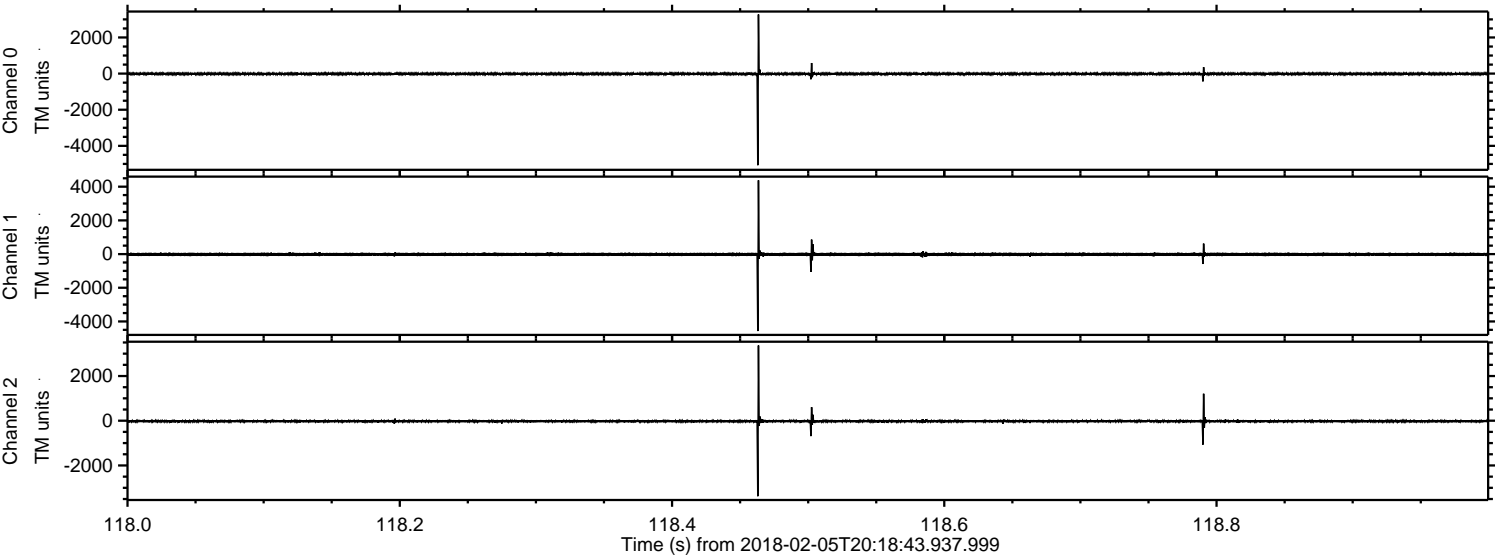
ELMAVAN 3D WAVEFORMS (Measured data sampled at 50 kHz) 51000 packets of 144 samples from 2018-02-05T20:18:43.937.999. Part 124/147

Processed Mon Feb 5 21:27:33 2018 by ELM ver.2012-10-06 from 001\_\_elm20180205\_201842\_\_dat00.bin

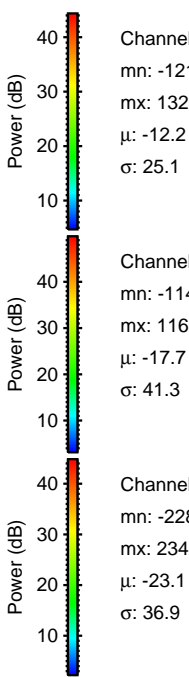
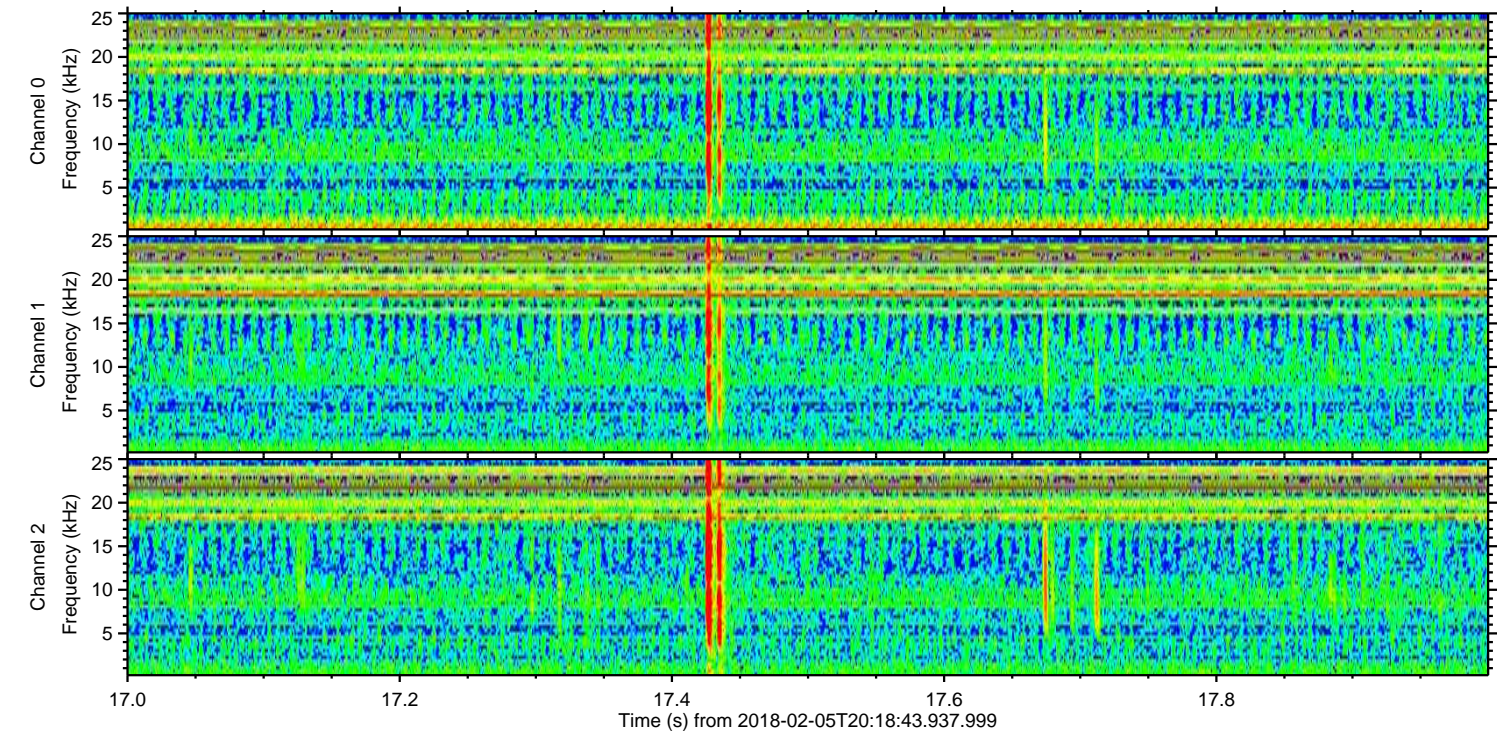
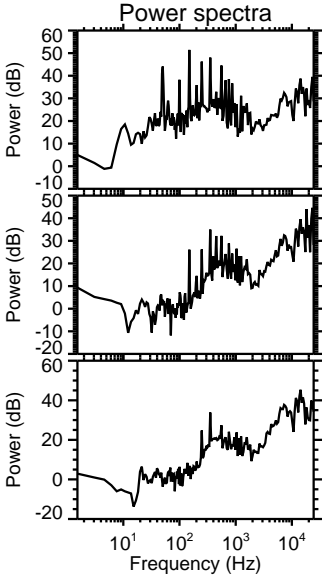
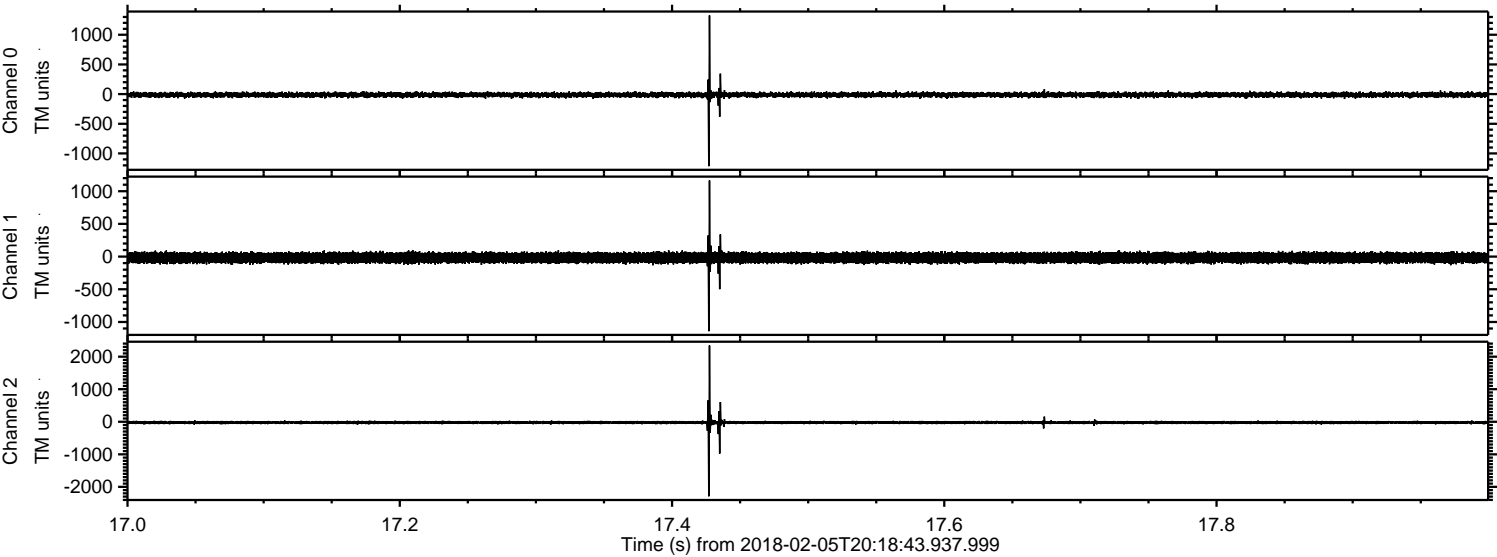


ELMAVAN 3D WAVEFORMS (Measured data sampled at 50 kHz) 51000 packets of 144 samples from 2018-02-05T20:18:43.937.999. Part 119/147

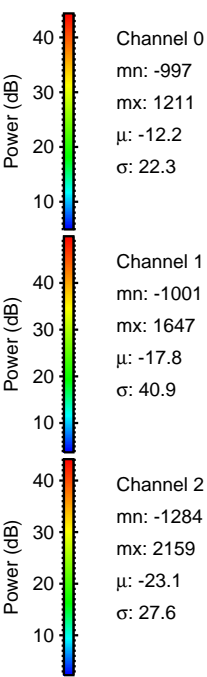
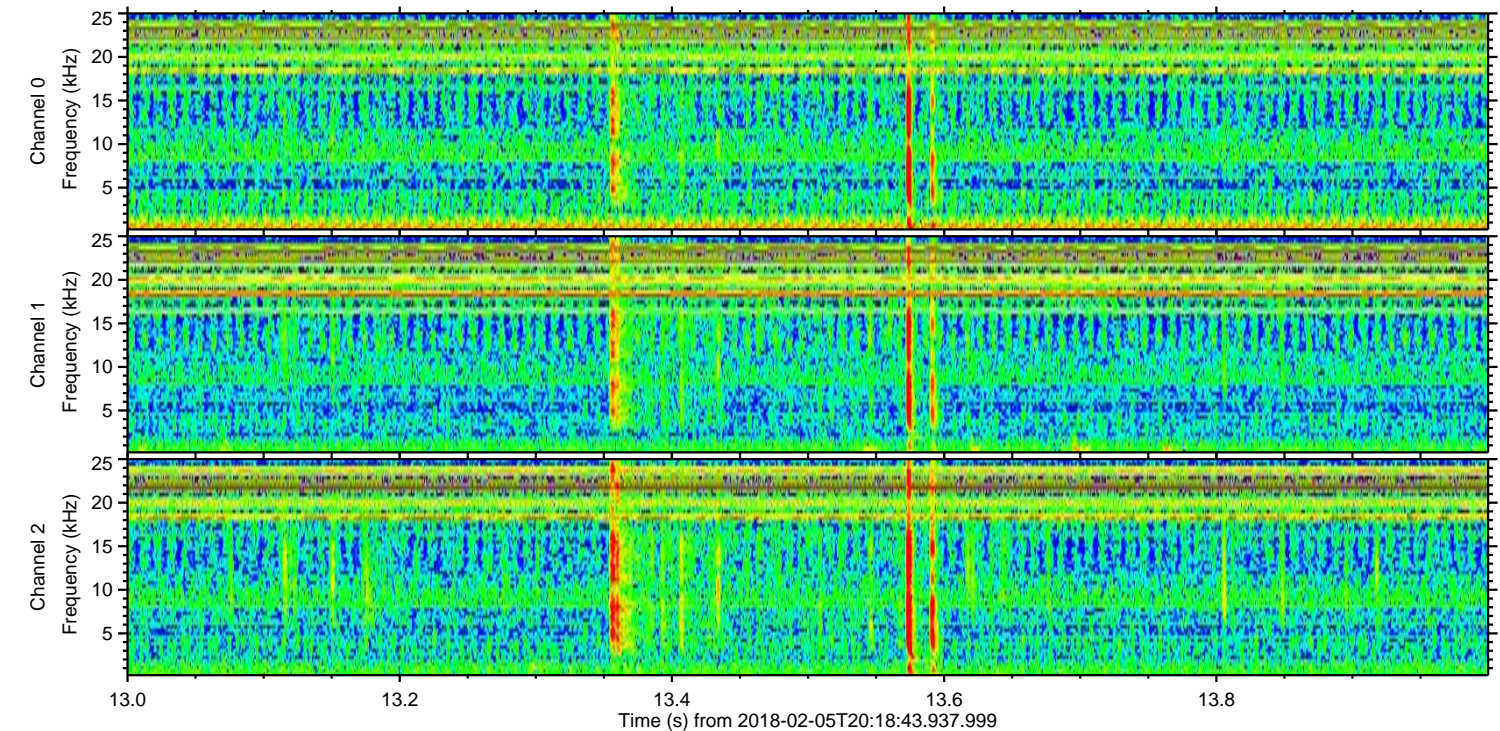
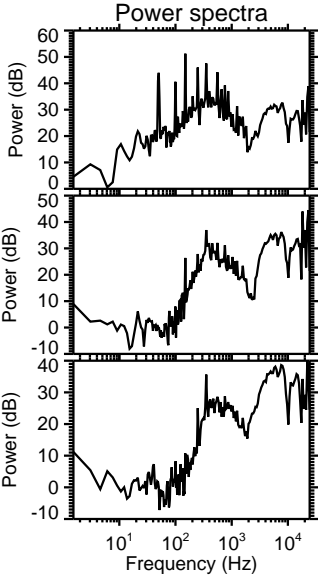
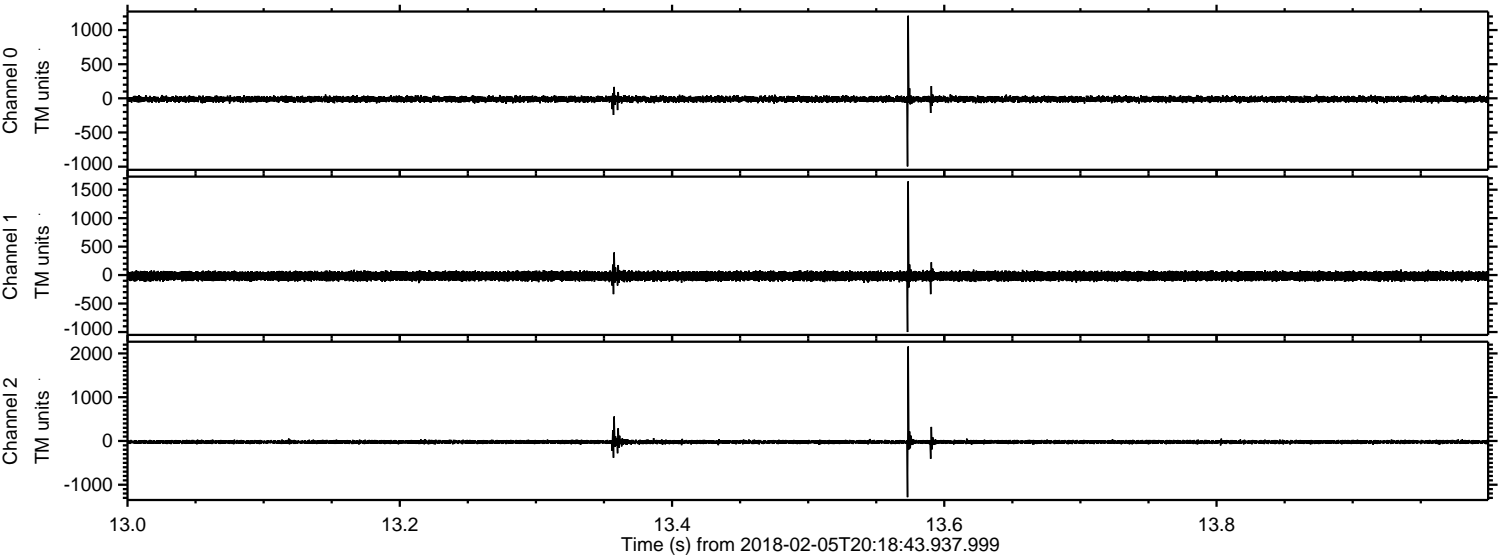
Processed Mon Feb 5 21:27:34 2018 by ELM ver.2012-10-06 from 001\_\_elm20180205\_201842\_\_dat00.bin



Processed Mon Feb 5 21:27:35 2018 by ELM ver.2012-10-06 from 001\_\_elm20180205\_201842\_\_dat00.bin

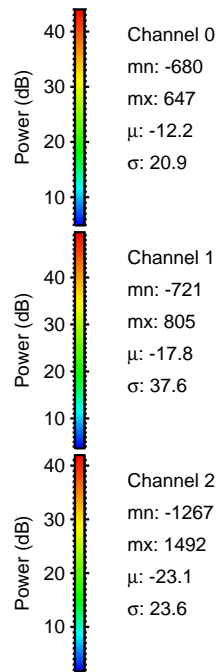
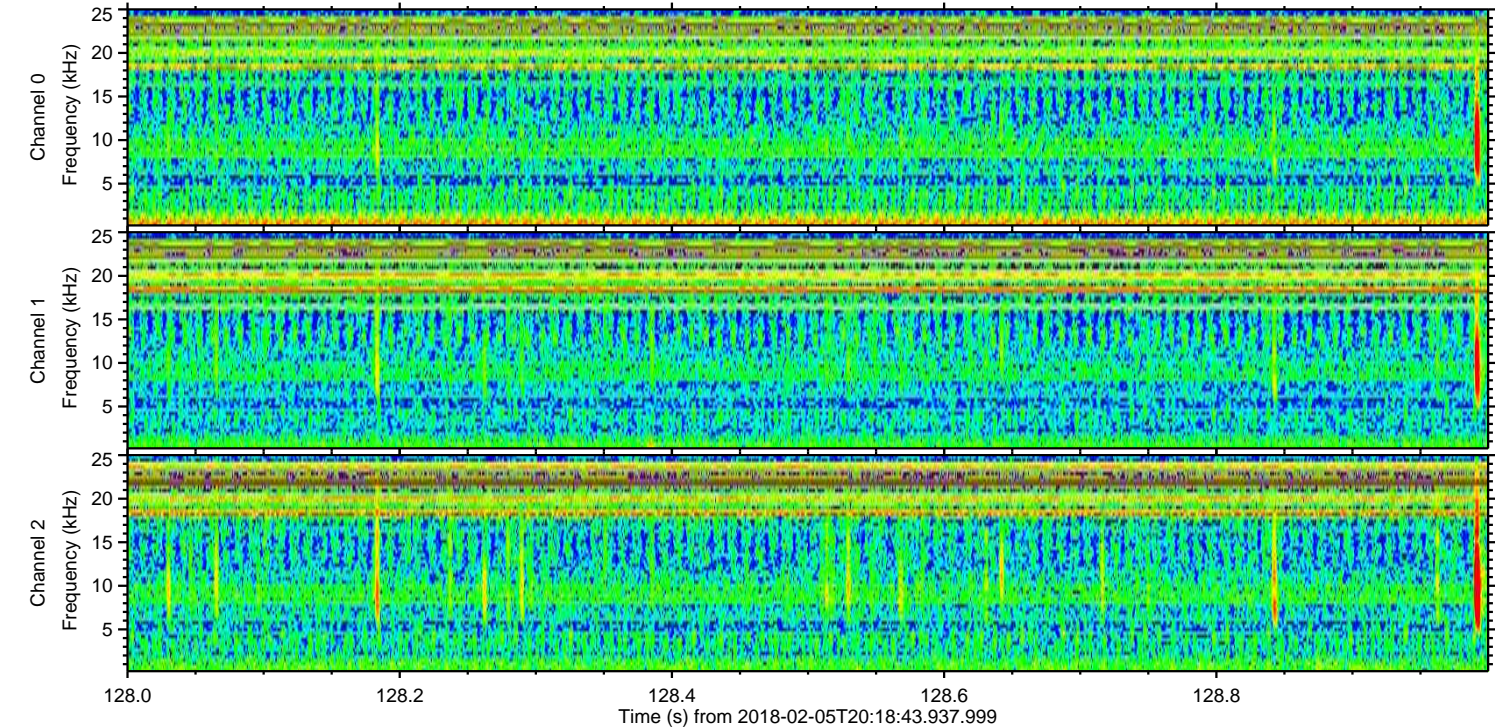
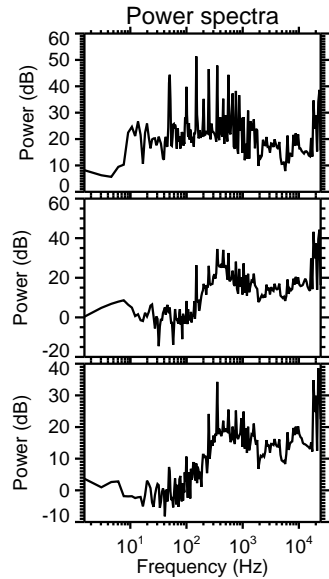
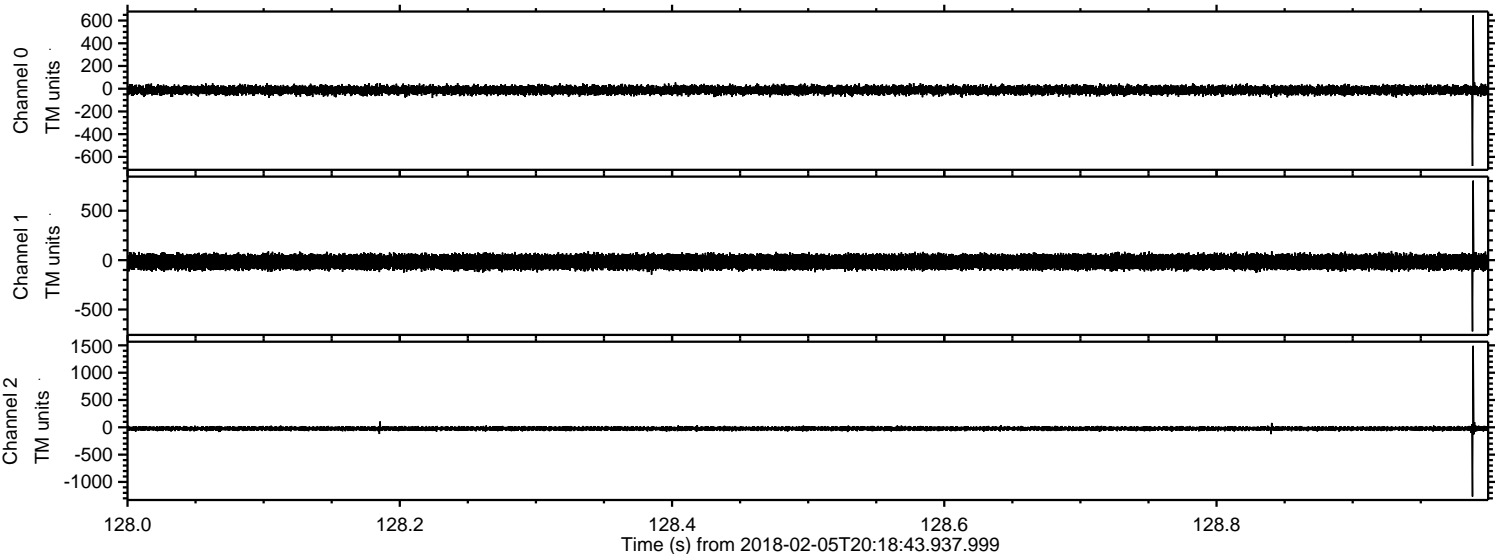


Processed Mon Feb 5 21:27:35 2018 by ELM ver.2012-10-06 from 001\_\_elm20180205\_201842\_\_dat00.bin

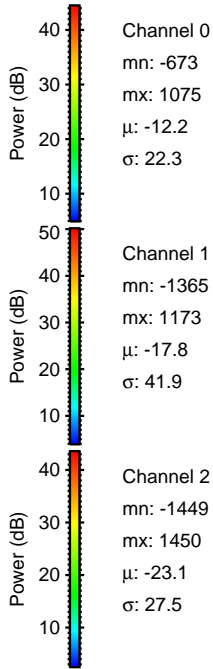
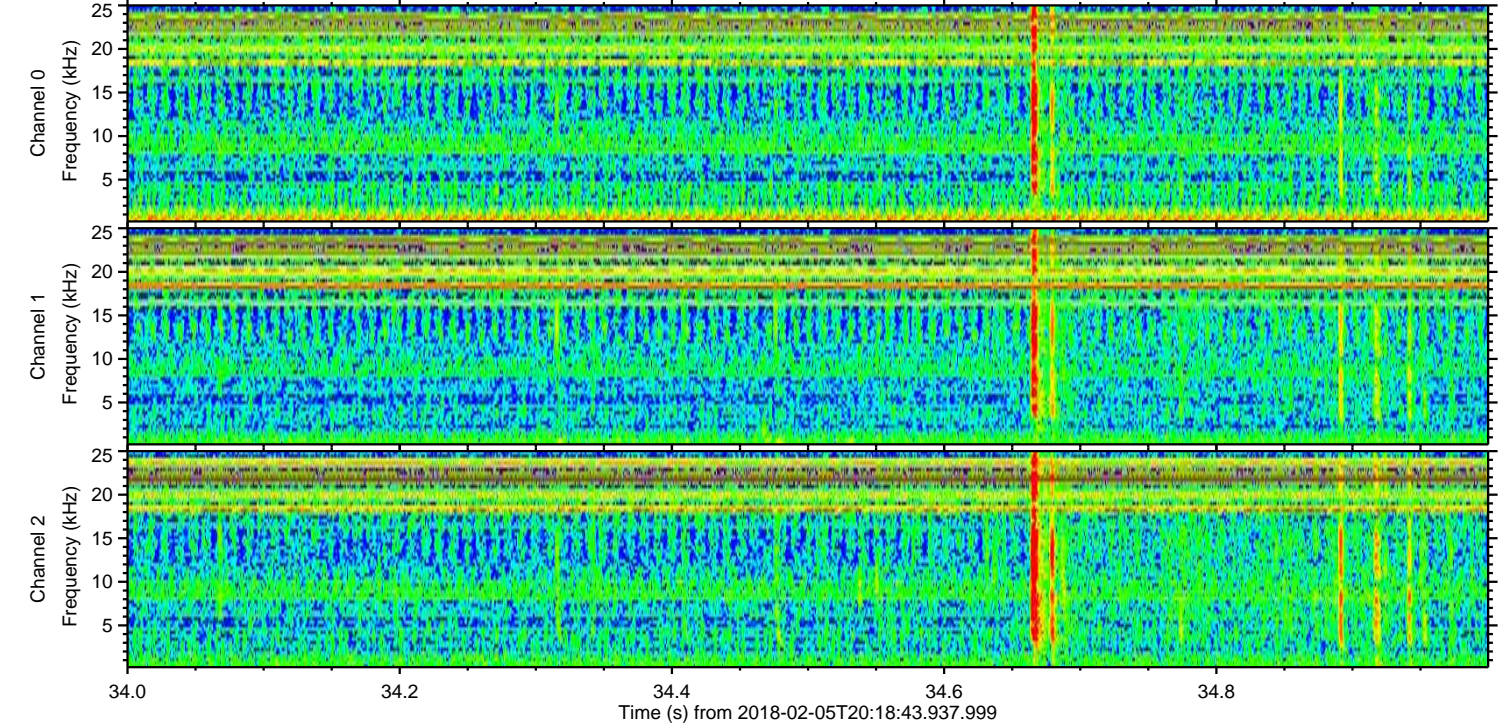
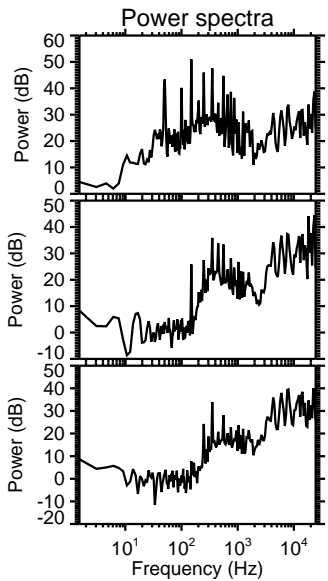
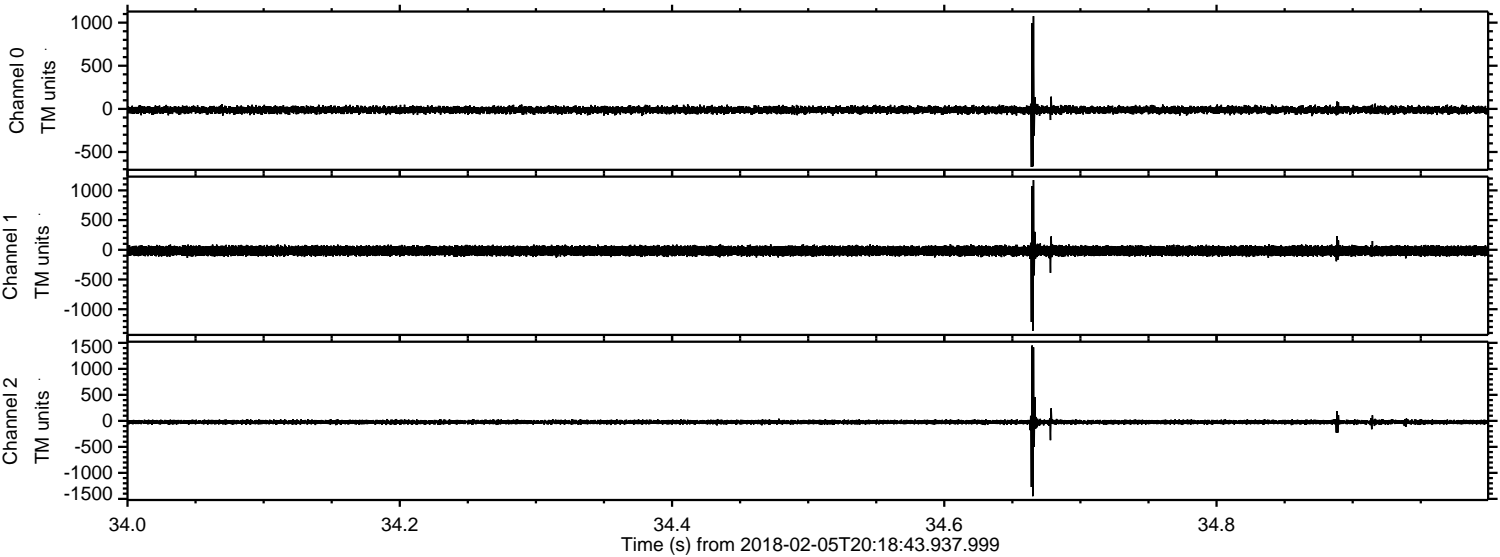


ELMAVAN 3D WAVEFORMS (Measured data sampled at 50 kHz) 51000 packets of 144 samples from 2018-02-05T20:18:43.937.999. Part 129/147

Processed Mon Feb 5 21:27:36 2018 by ELM ver.2012-10-06 from 001\_\_elm20180205\_201842\_\_dat00.bin



Processed Mon Feb 5 21:27:37 2018 by ELM ver.2012-10-06 from 001\_\_elm20180205\_201842\_\_dat00.bin

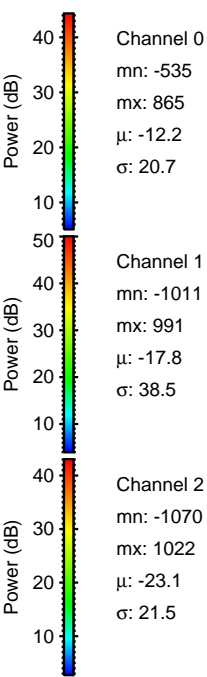
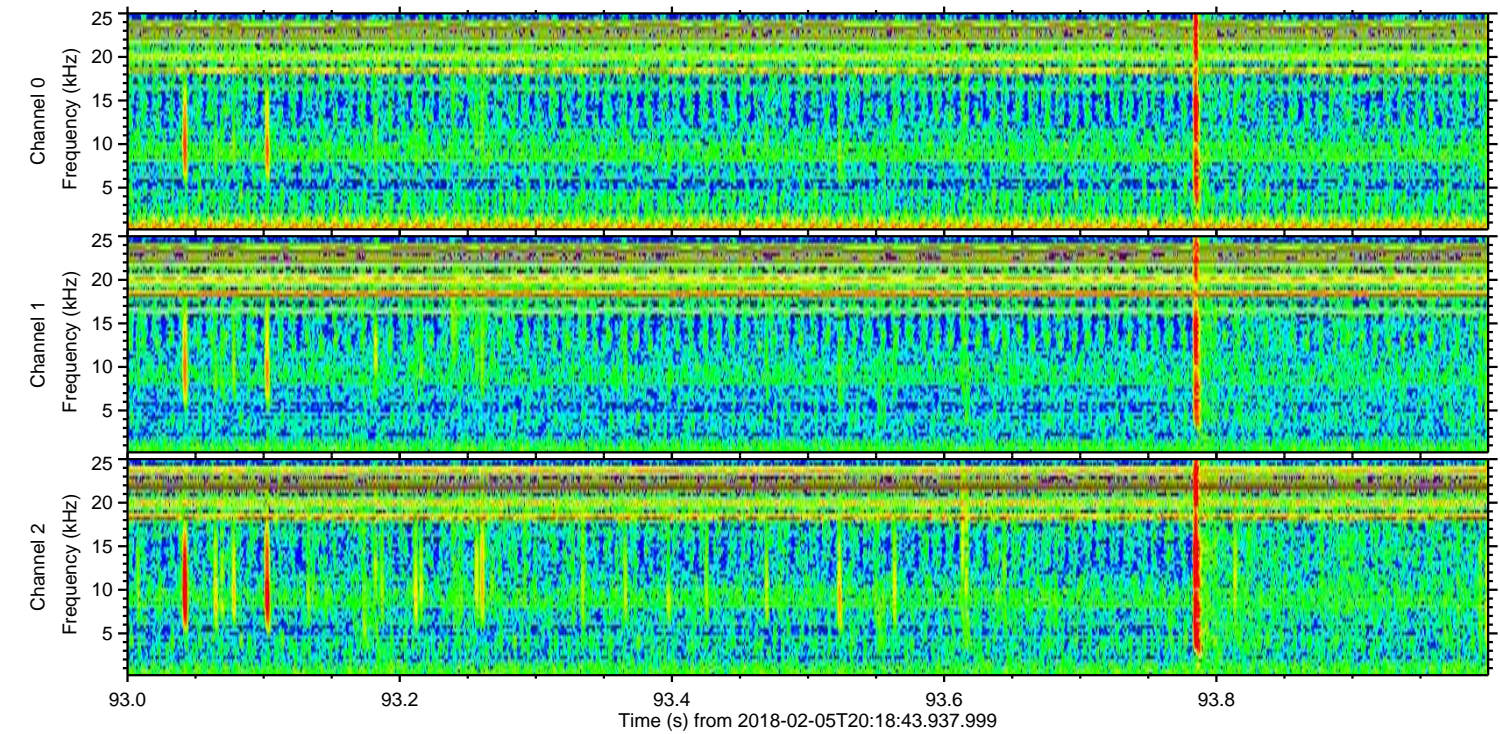
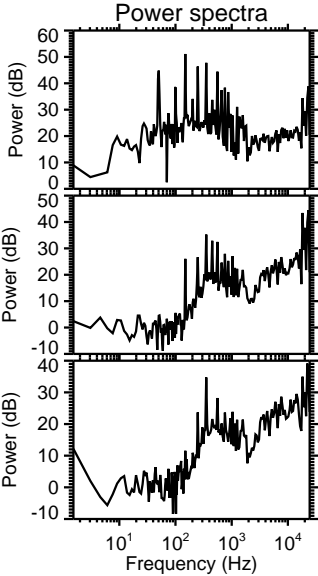
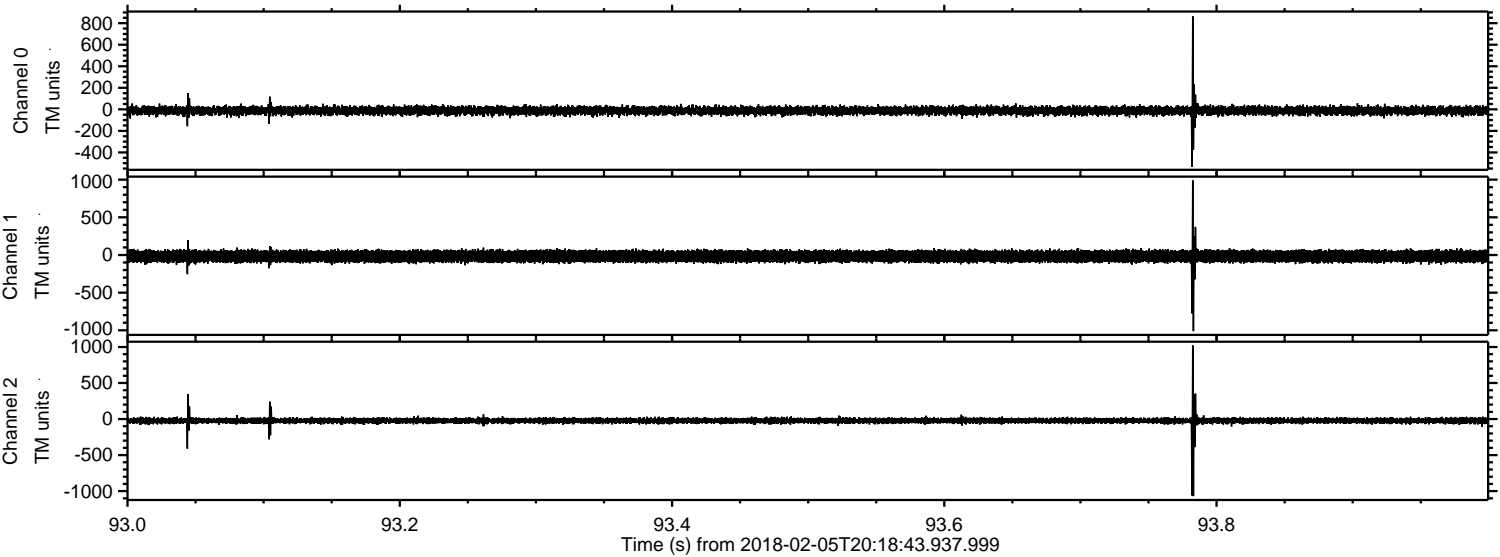


Channel 0  
mn: -673  
mx: 1075  
 $\mu$ : -12.2  
 $\sigma$ : 22.3

Channel 1  
mn: -1365  
mx: 1173  
 $\mu$ : -17.8  
 $\sigma$ : 41.9

Channel 2  
mn: -1449  
mx: 1450  
 $\mu$ : -23.1  
 $\sigma$ : 27.5

Processed Mon Feb 5 21:27:38 2018 by ELM ver.2012-10-06 from 001\_\_elm20180205\_201842\_\_dat00.bin

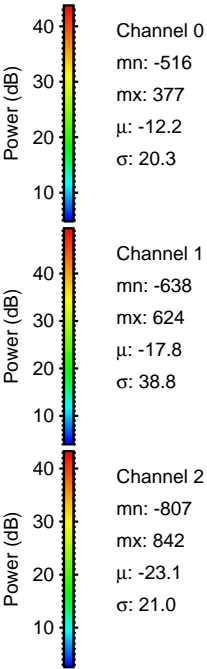
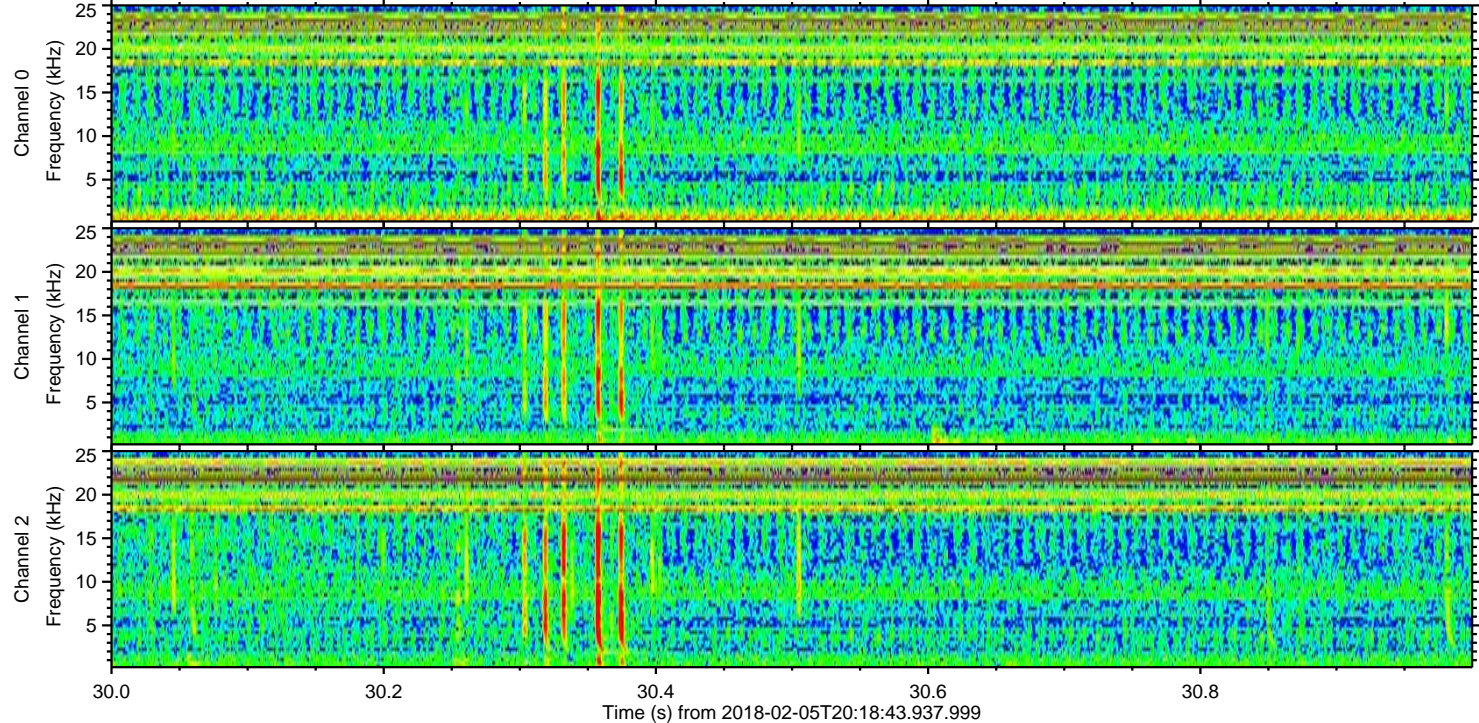
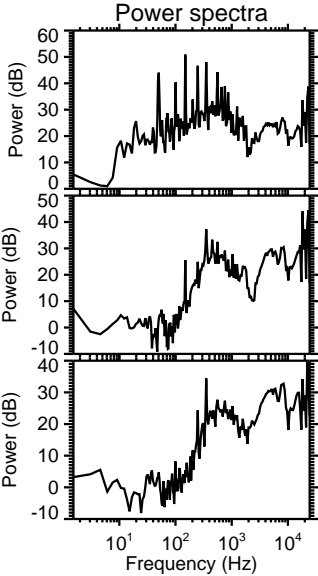
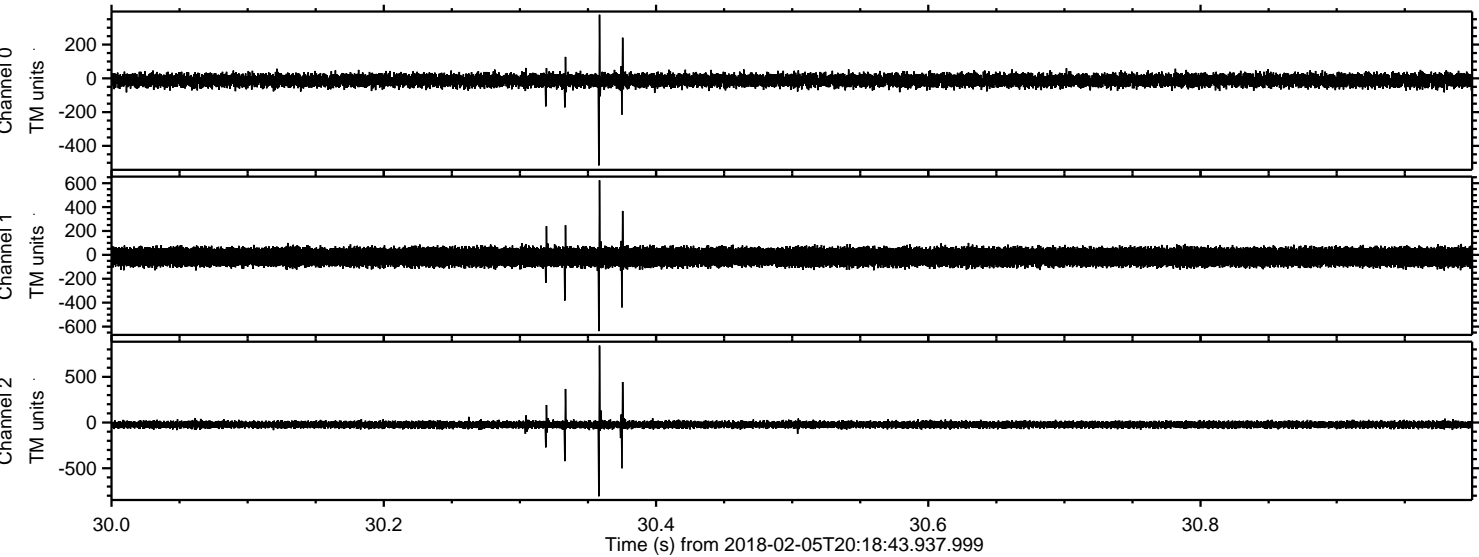


Channel 0  
mn: -535  
mx: 865  
 $\mu$ : -12.2  
 $\sigma$ : 20.7

Channel 1  
mn: -1011  
mx: 991  
 $\mu$ : -17.8  
 $\sigma$ : 38.5

Channel 2  
mn: -1070  
mx: 1022  
 $\mu$ : -23.1  
 $\sigma$ : 21.5

Processed Mon Feb 5 21:27:38 2018 by ELM ver.2012-10-06 from 001\_\_elm20180205\_201842\_\_dat00.bin



Processed Mon Feb 5 21:27:39 2018 by ELM ver.2012-10-06 from 001\_\_elm20180205\_201842\_\_dat00.bin

