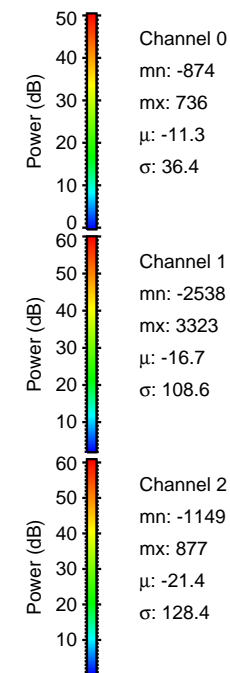
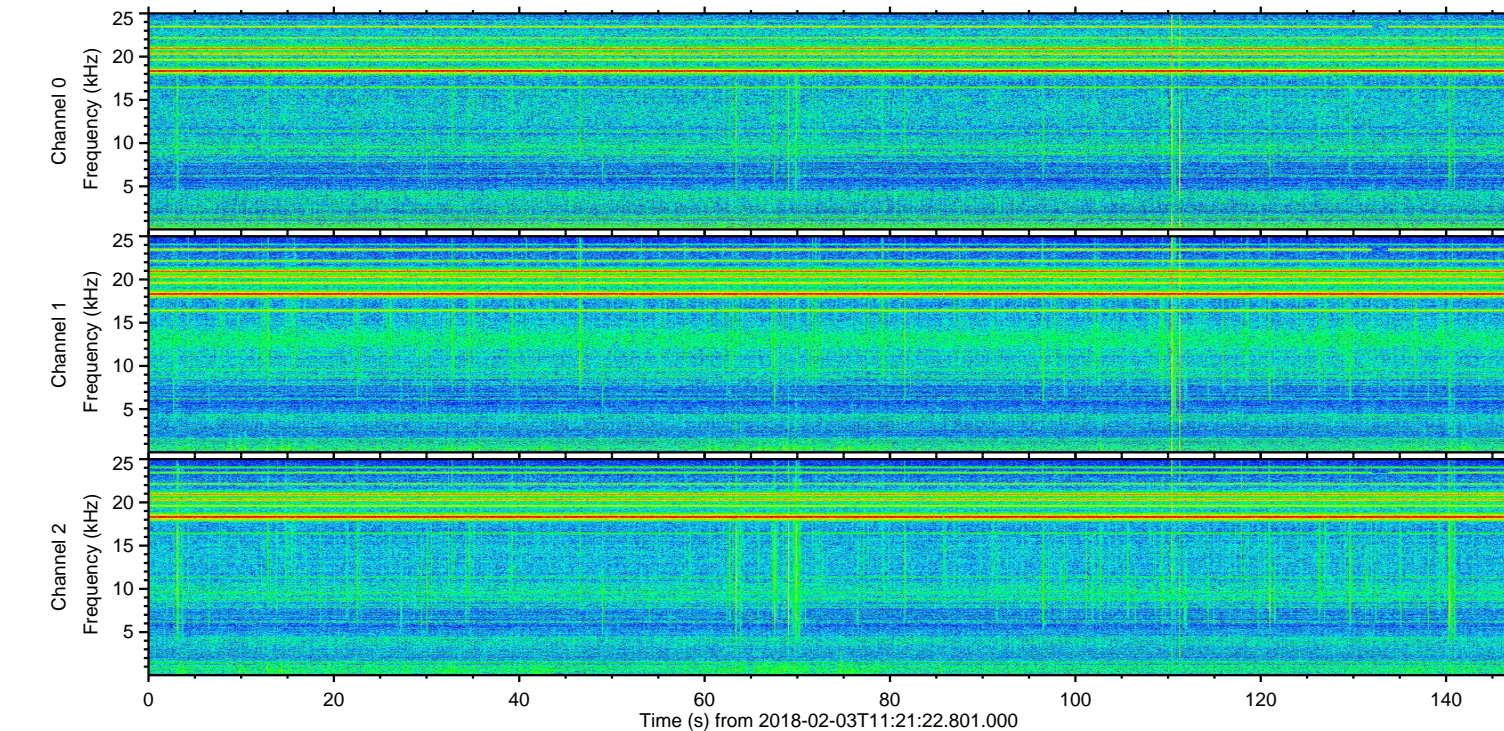
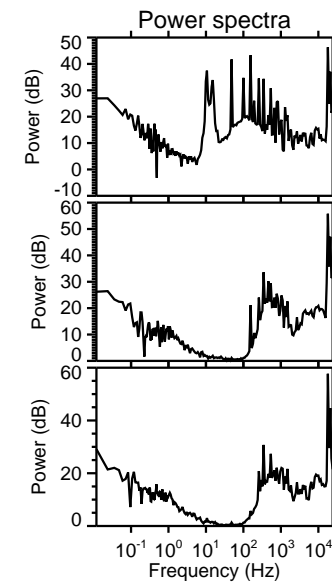
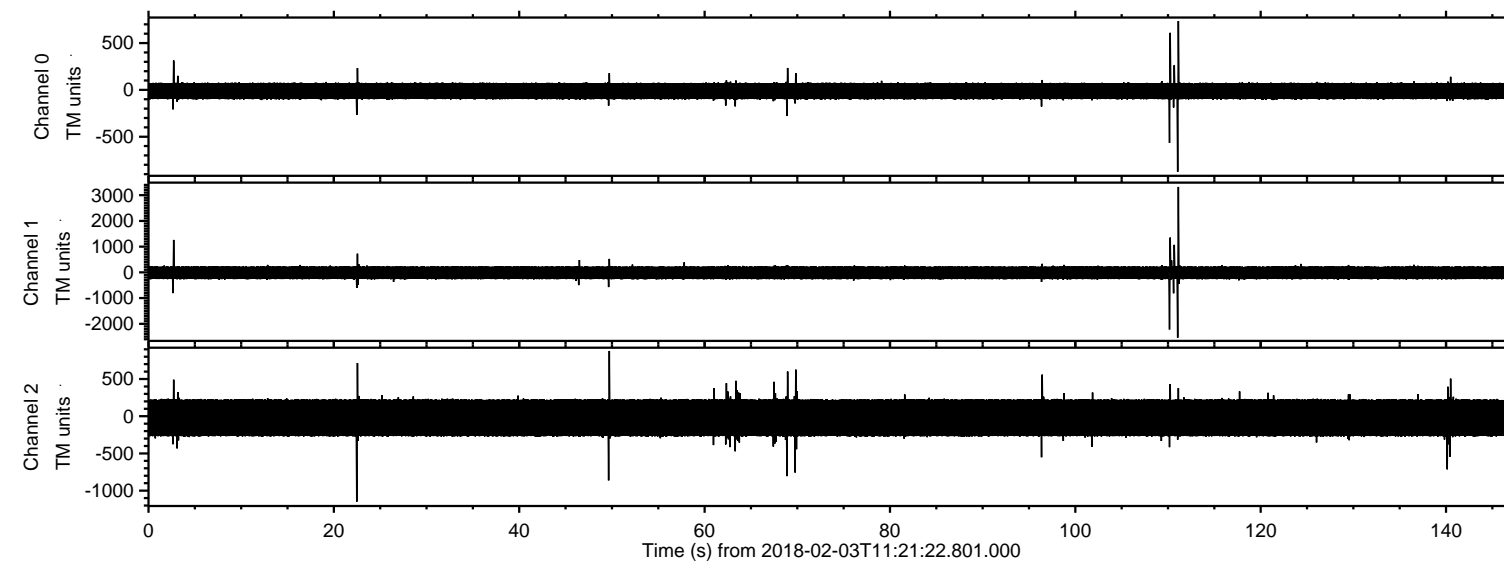


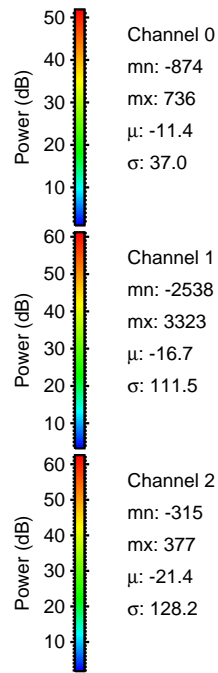
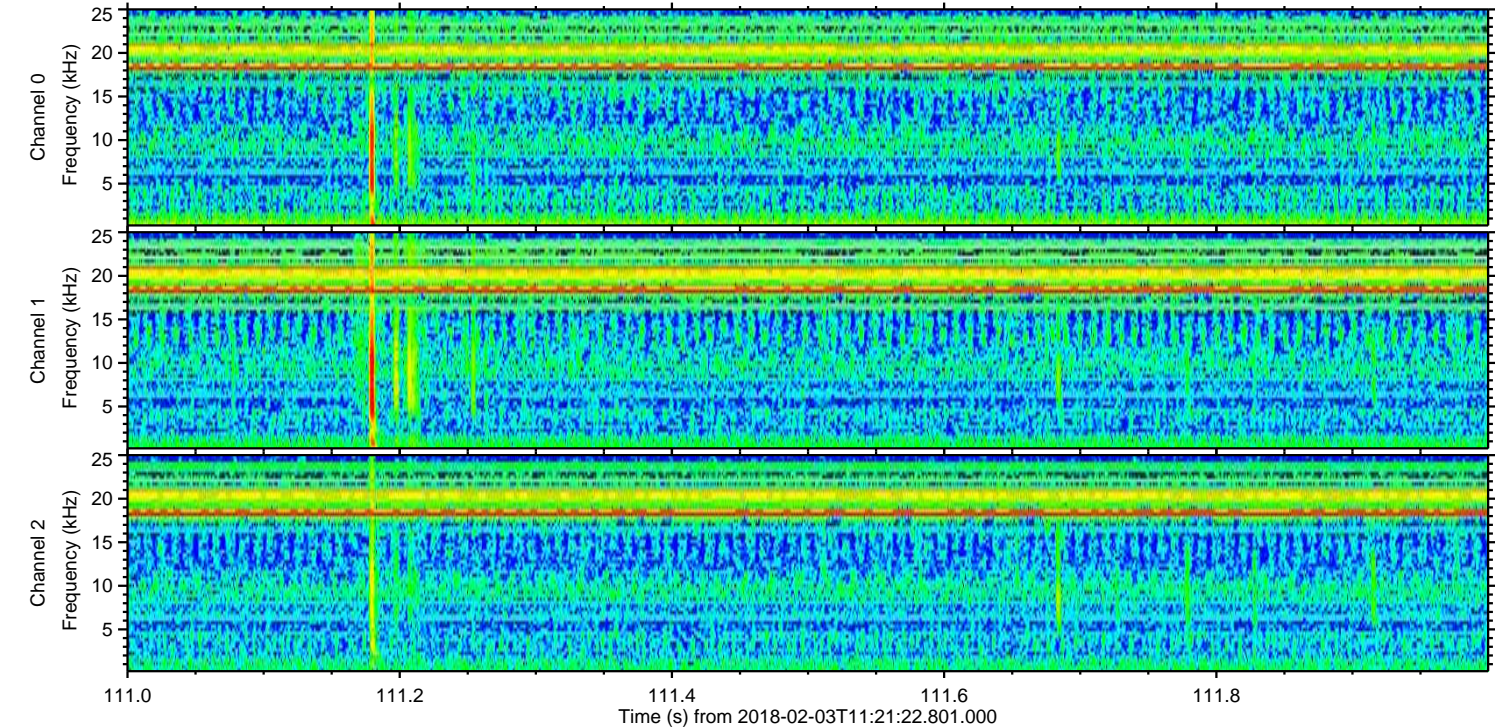
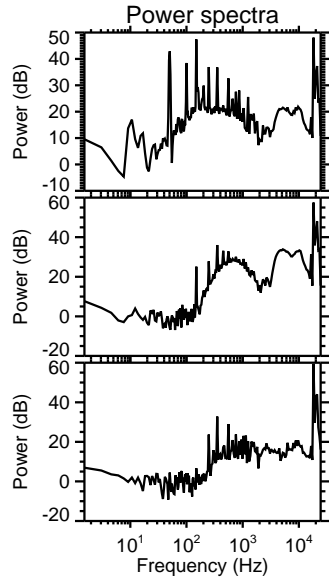
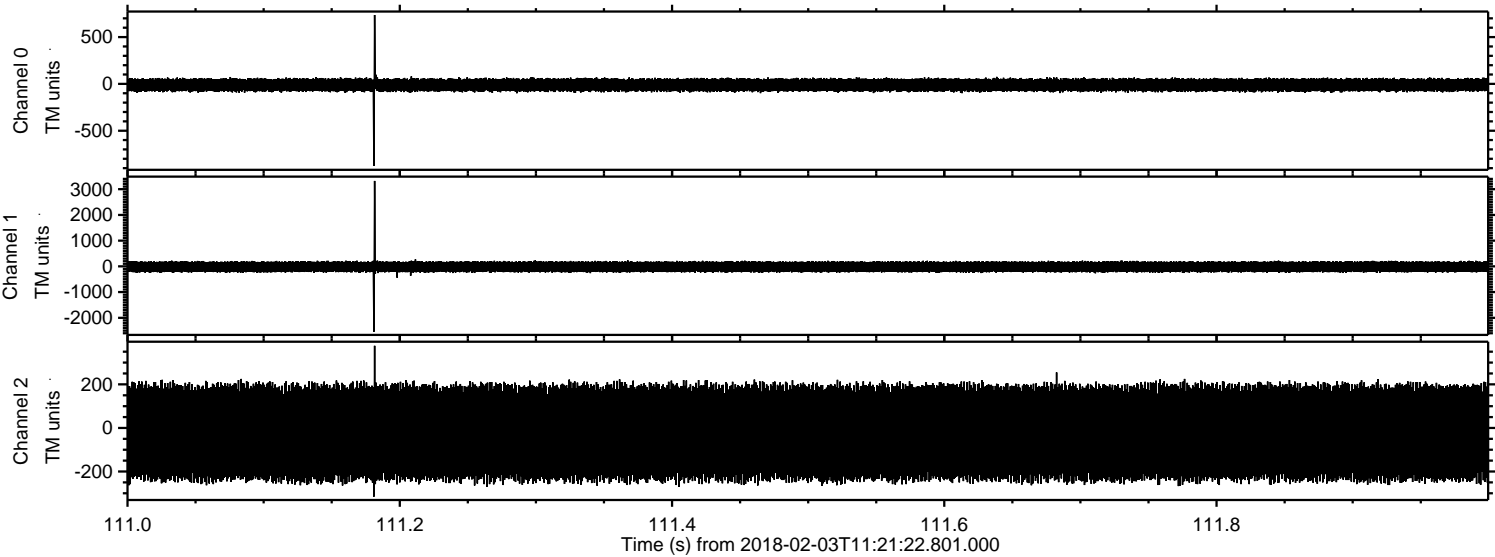
ELMAVAN 3D WAVEFORMS (Measured data sampled at 50 kHz) 51000 packets of 144 samples from 2018-02-03T11:21:22.801.000.

Processed Sat Feb 3 12:29:27 2018 by ELM ver.2012-10-06 from 001__elm20180203_112121__dat00.bin



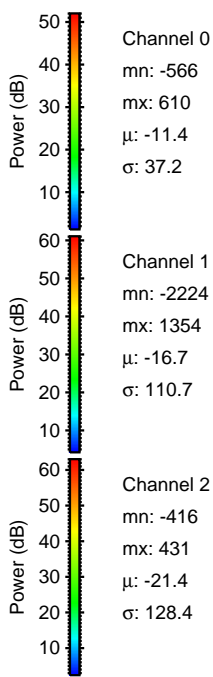
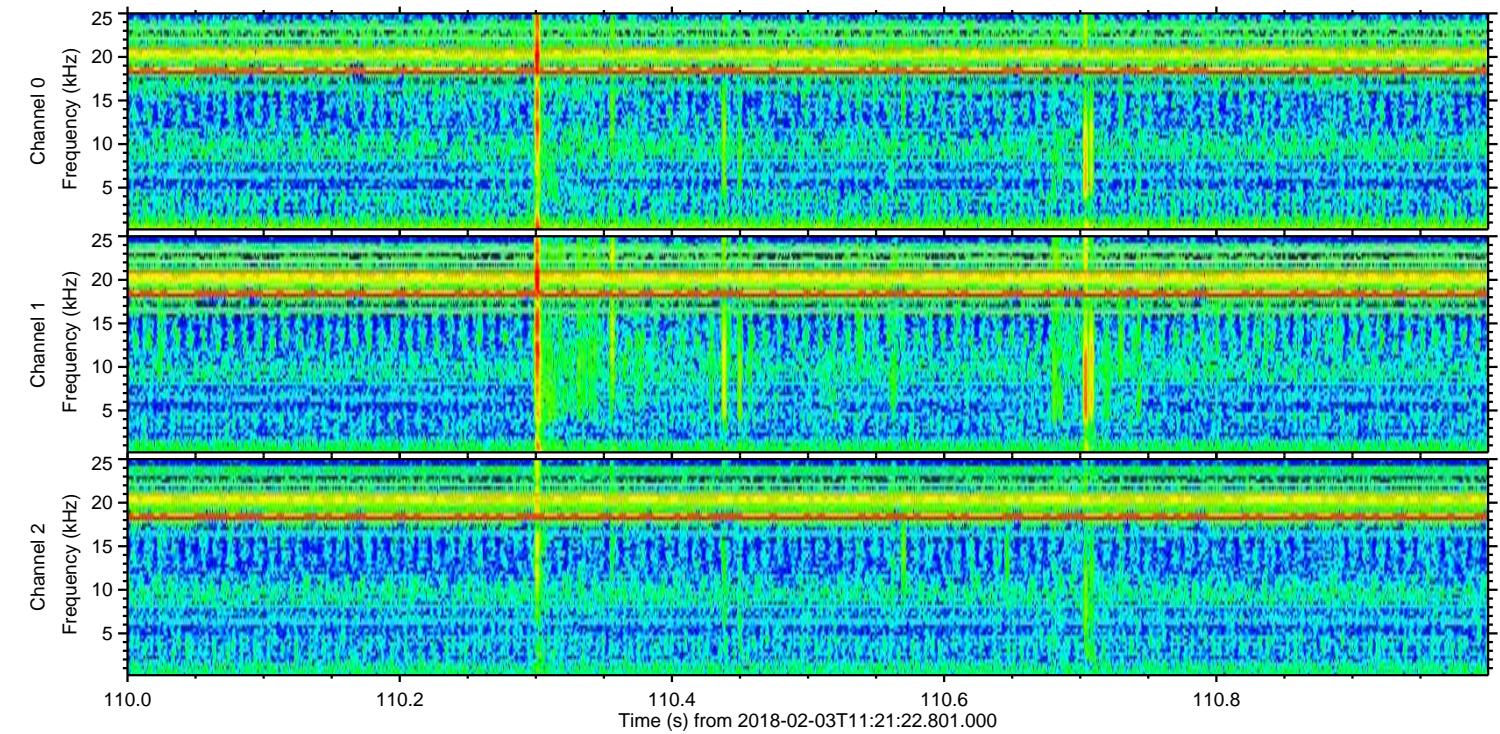
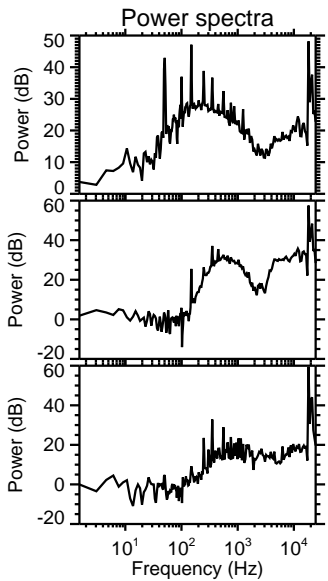
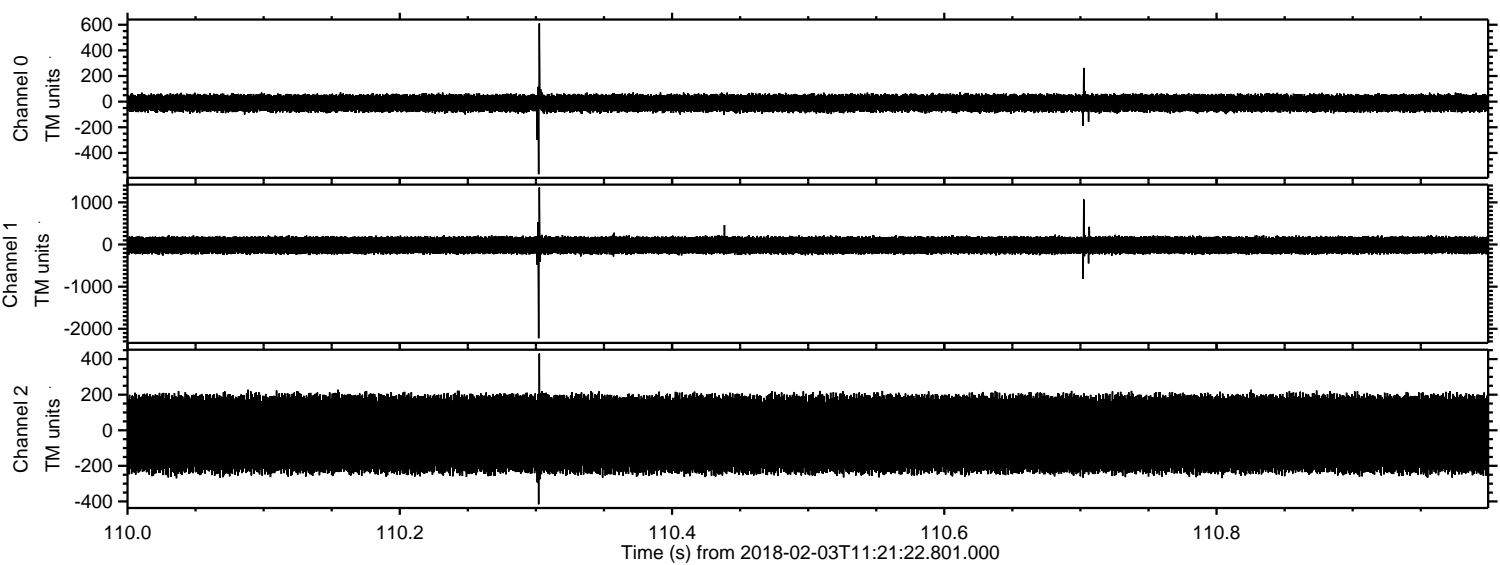
ELMAVAN 3D WAVEFORMS (Measured data sampled at 50 kHz) 51000 packets of 144 samples from 2018-02-03T11:21:22.801.000. Part 112/147

Processed Sat Feb 3 12:29:36 2018 by ELM ver.2012-10-06 from 001__elm20180203_112121__dat00.bin

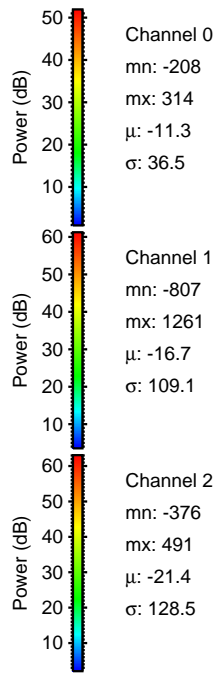
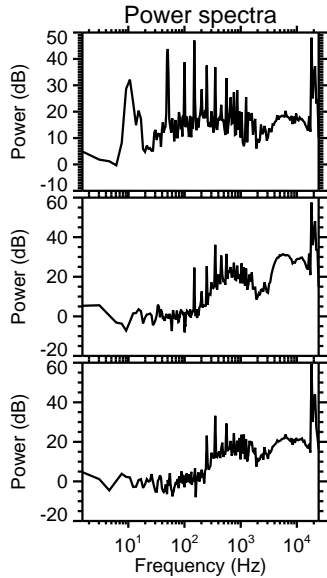
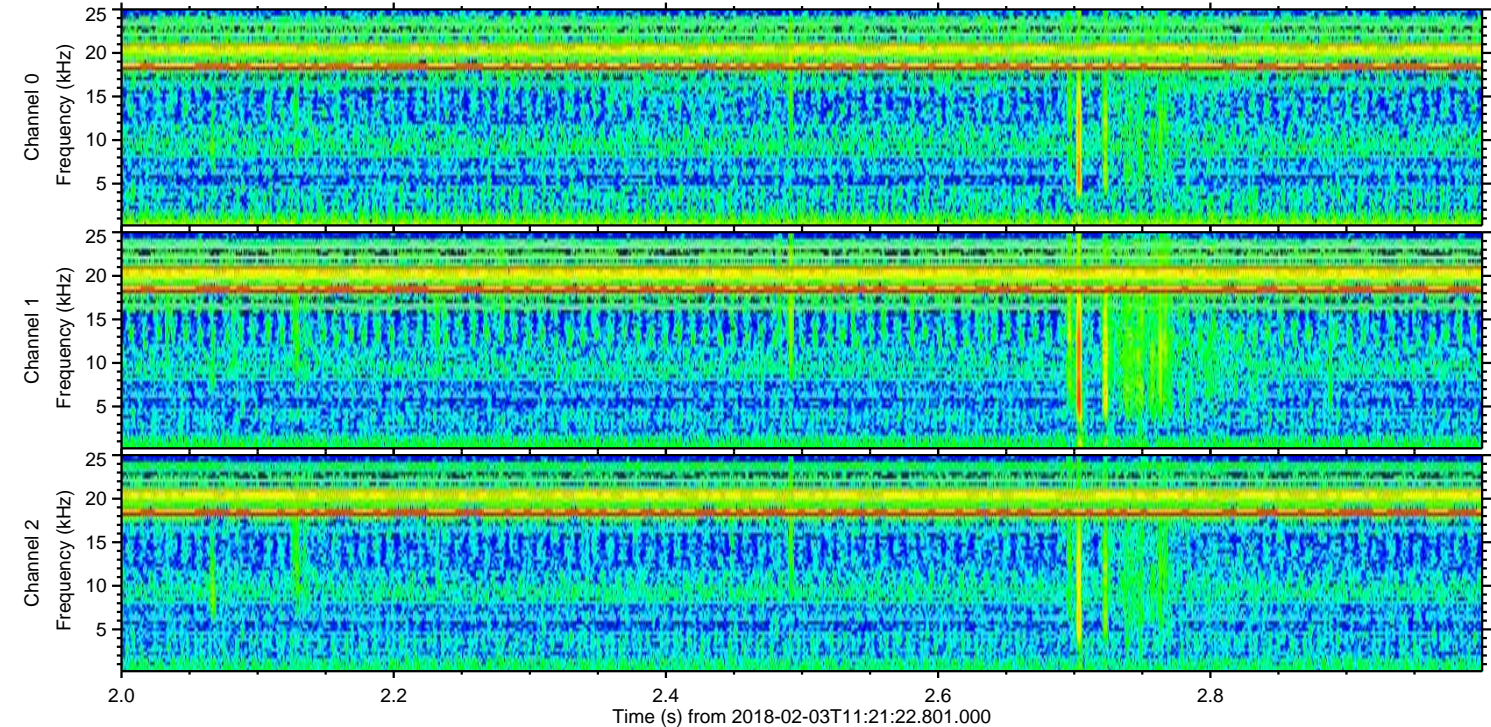
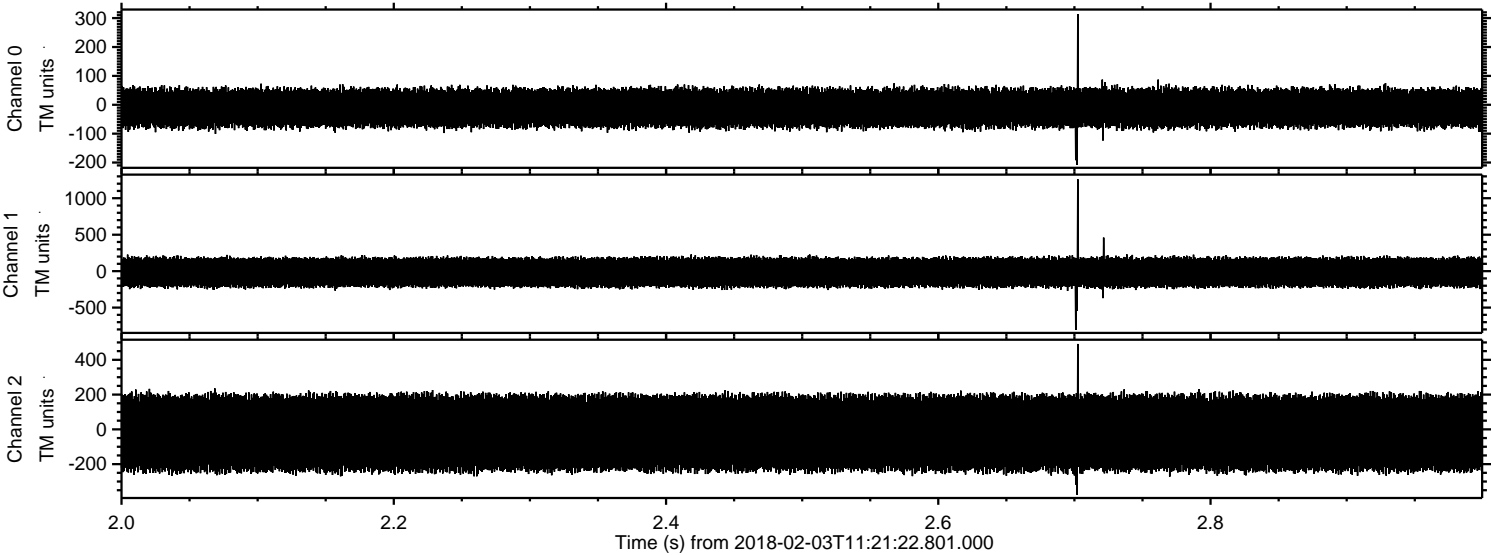


ELMAVAN 3D WAVEFORMS (Measured data sampled at 50 kHz) 51000 packets of 144 samples from 2018-02-03T11:21:22.801.000. Part 111/147

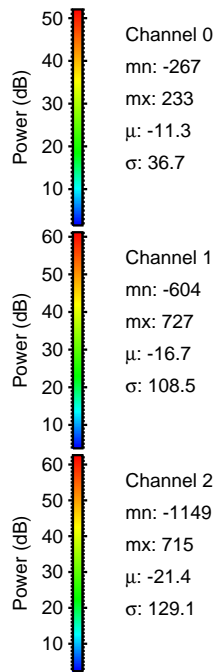
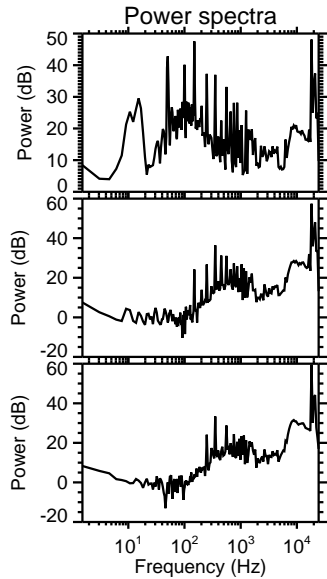
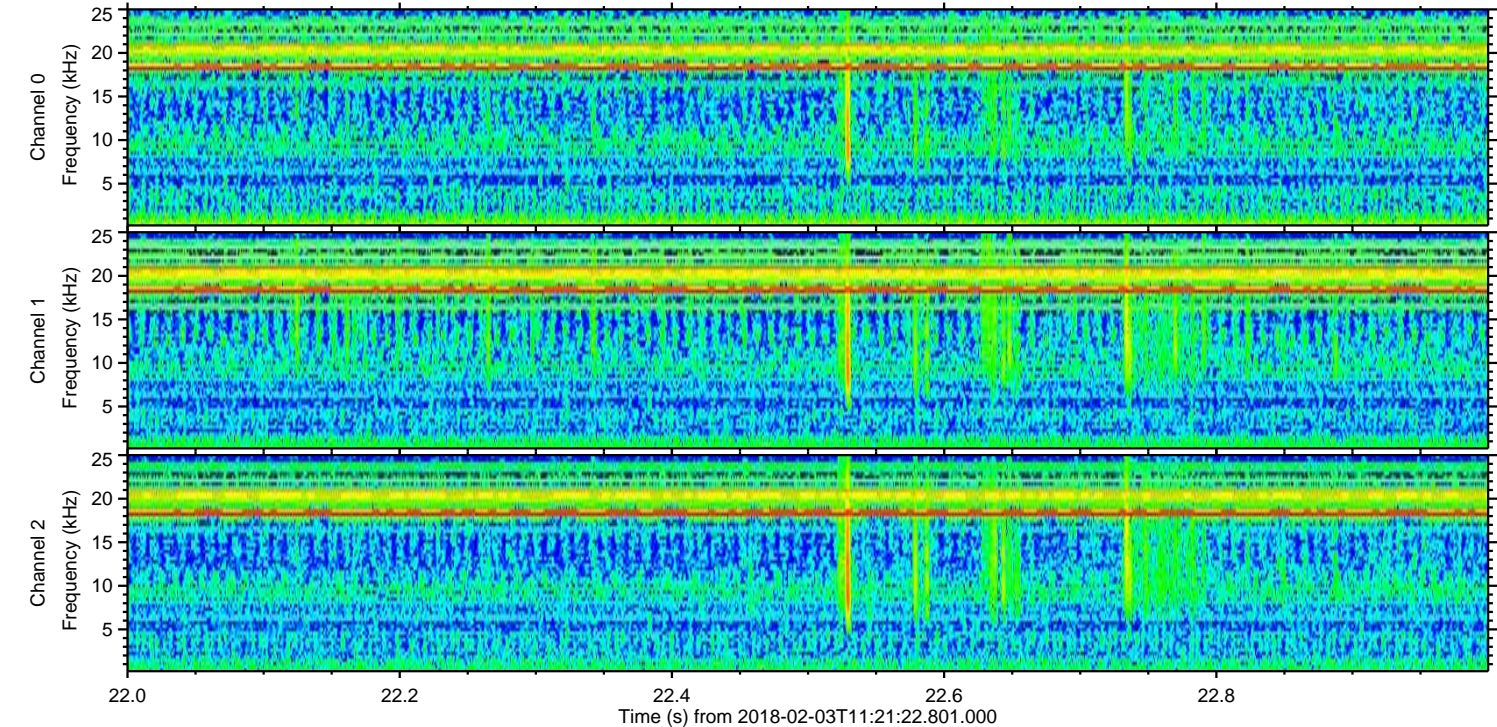
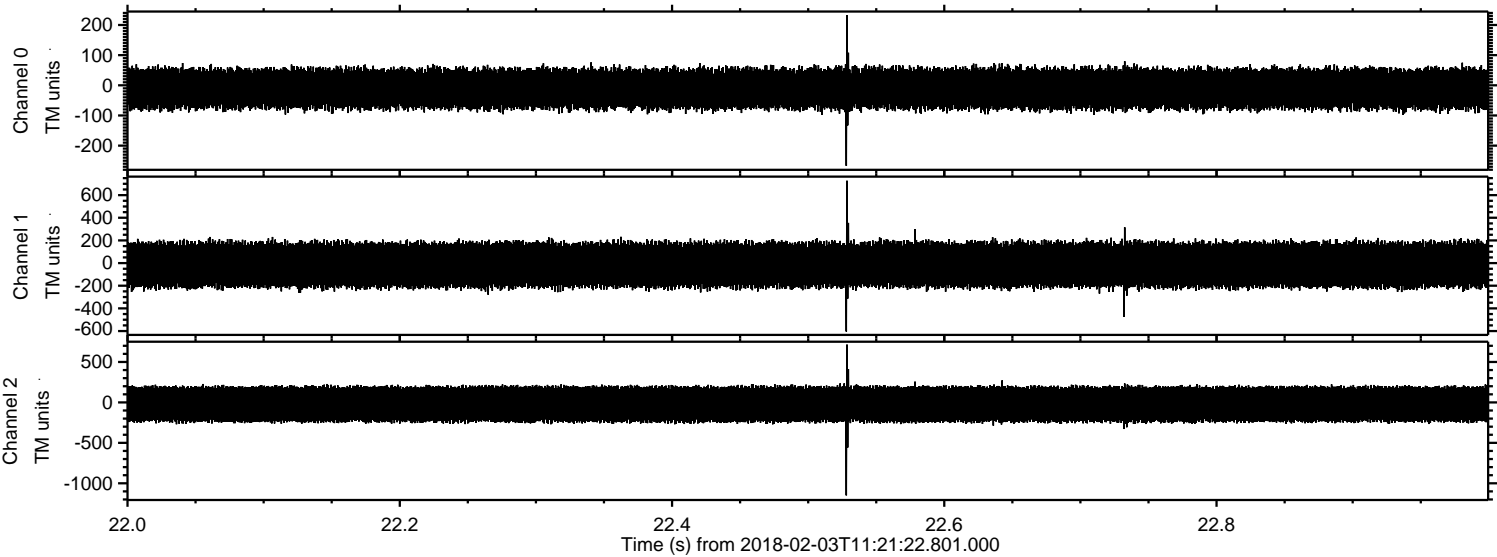
Processed Sat Feb 3 12:29:37 2018 by ELM ver.2012-10-06 from 001__elm20180203_112121__dat00.bin



Processed Sat Feb 3 12:29:37 2018 by ELM ver.2012-10-06 from 001__elm20180203_112121__dat00.bin



Processed Sat Feb 3 12:29:38 2018 by ELM ver.2012-10-06 from 001__elm20180203_112121__dat00.bin

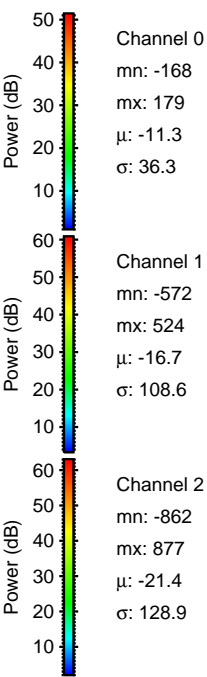
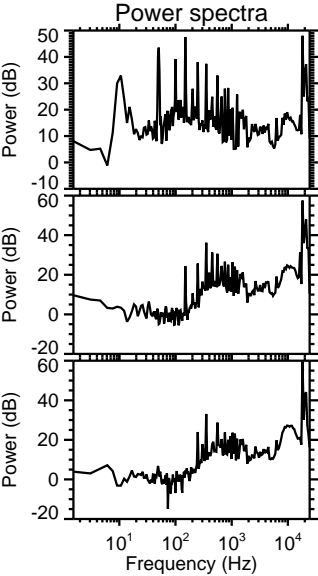
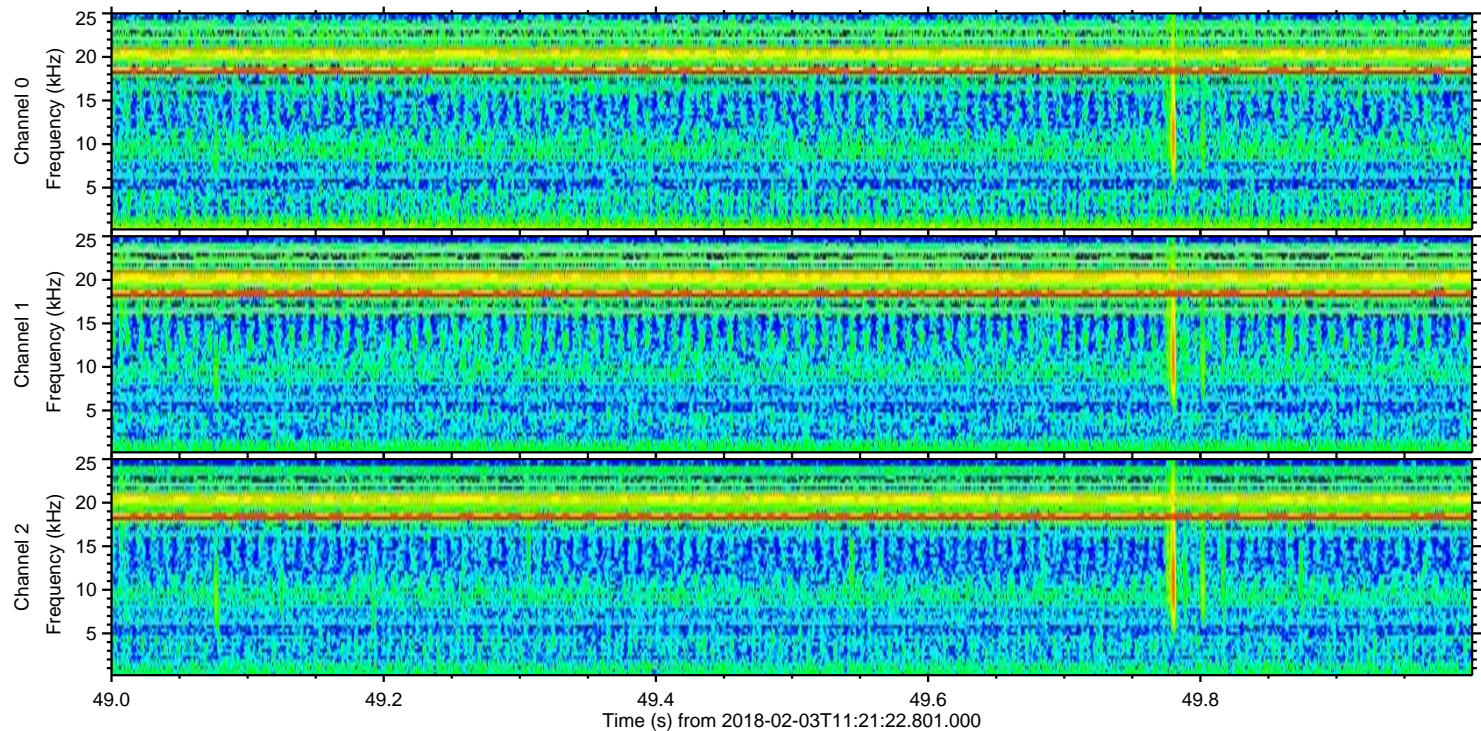
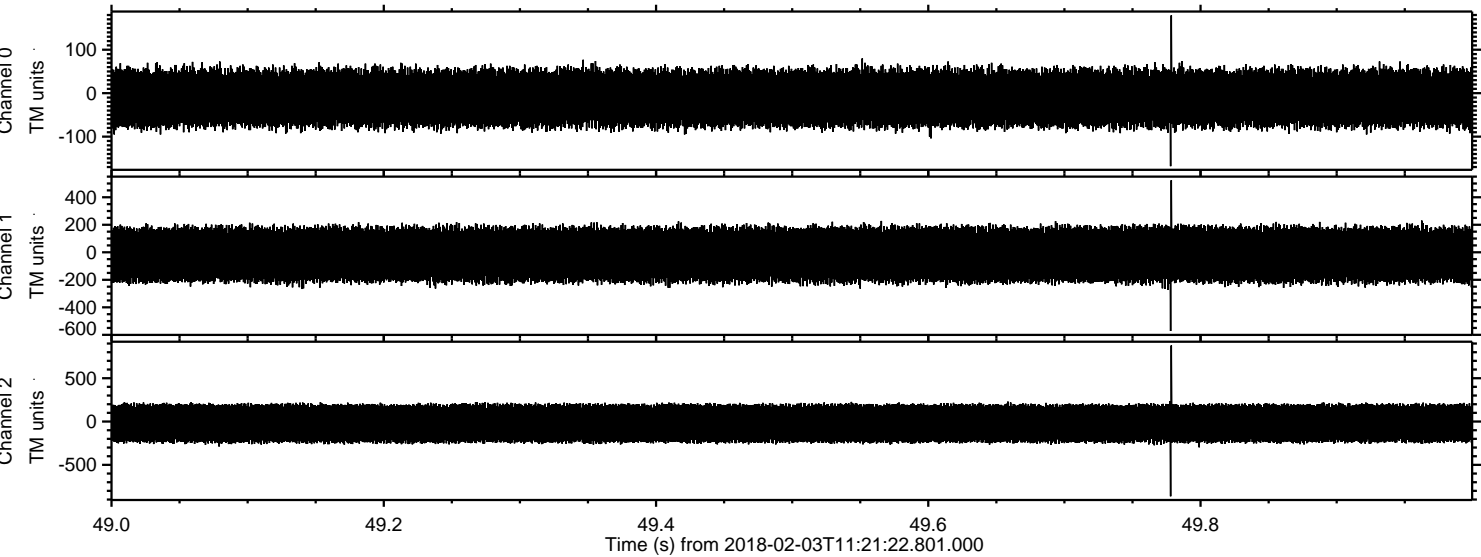


Channel 0
mn: -267
mx: 233
 μ : -11.3
 σ : 36.7

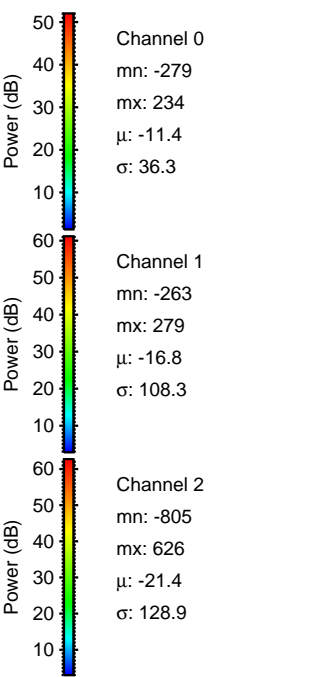
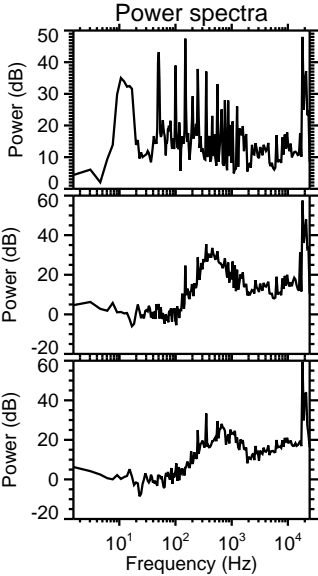
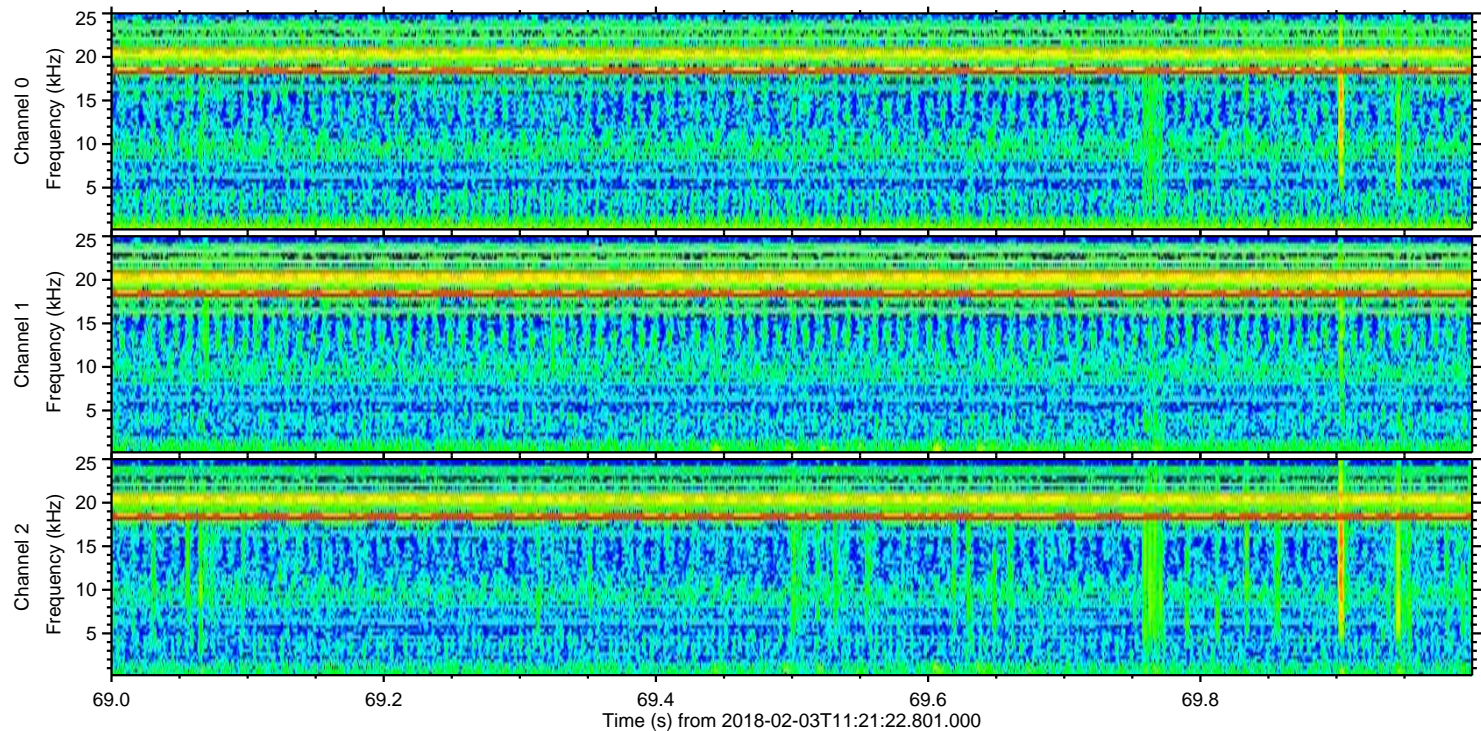
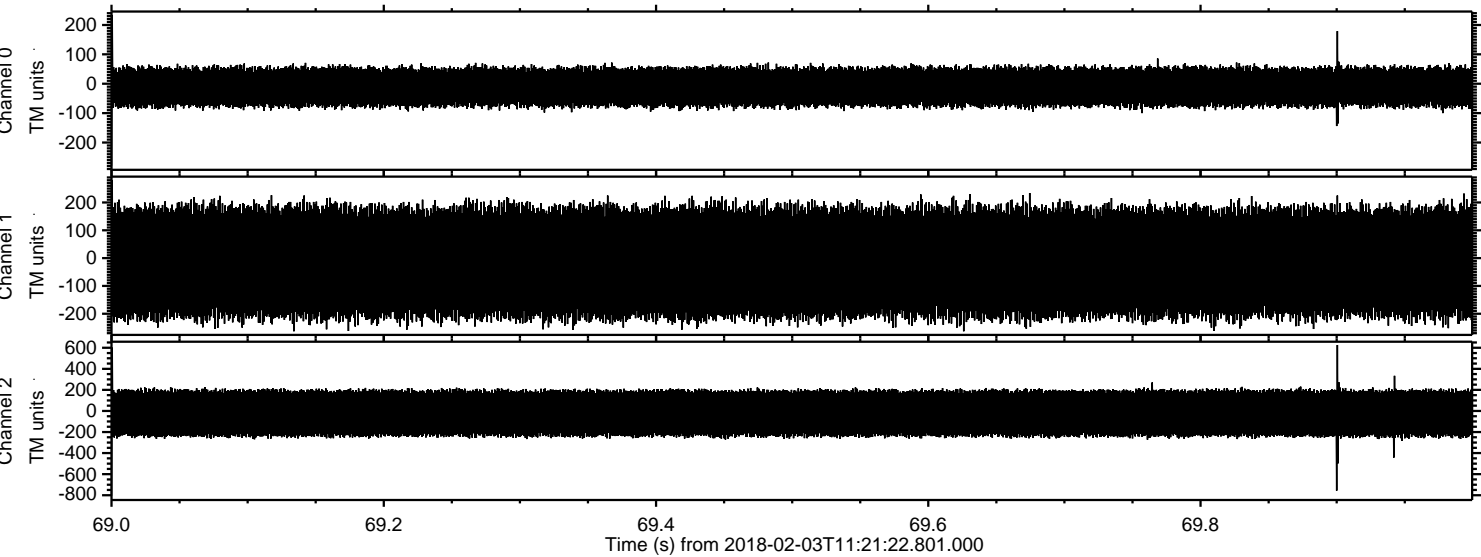
Channel 1
mn: -604
mx: 727
 μ : -16.7
 σ : 108.5

Channel 2
mn: -1149
mx: 715
 μ : -21.4
 σ : 129.1

Processed Sat Feb 3 12:29:39 2018 by ELM ver.2012-10-06 from 001__elm20180203_112121__dat00.bin

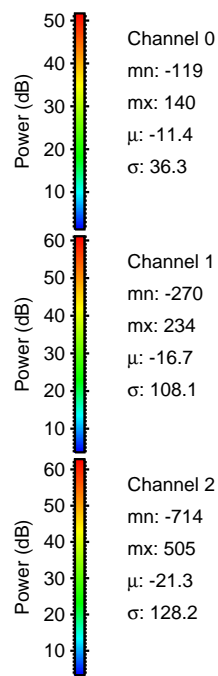
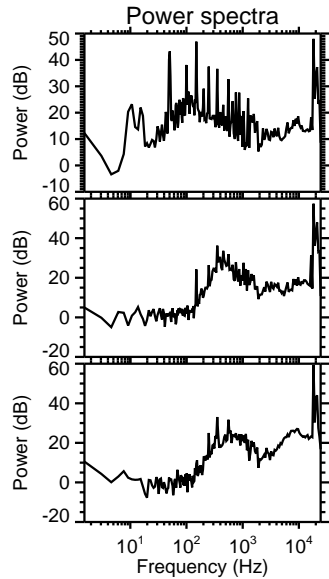
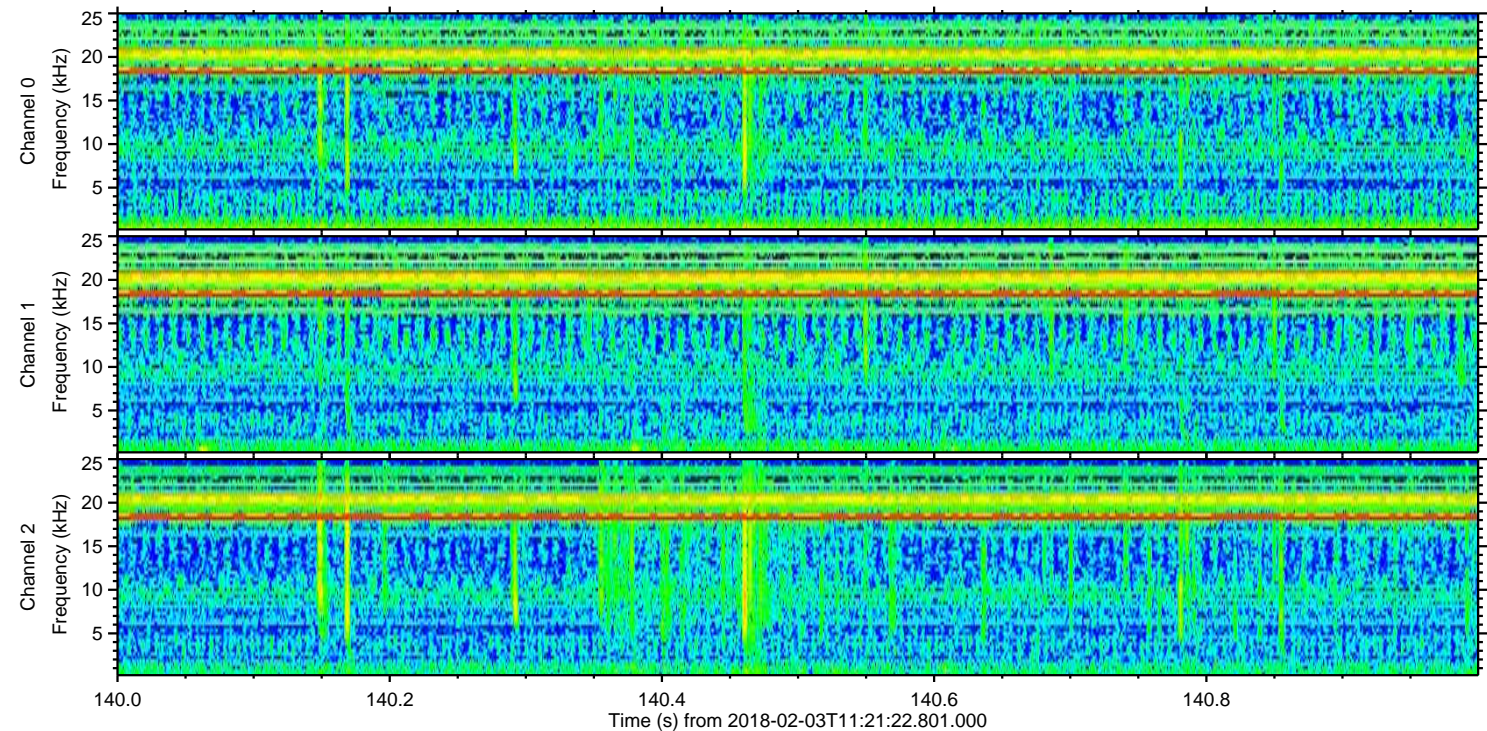
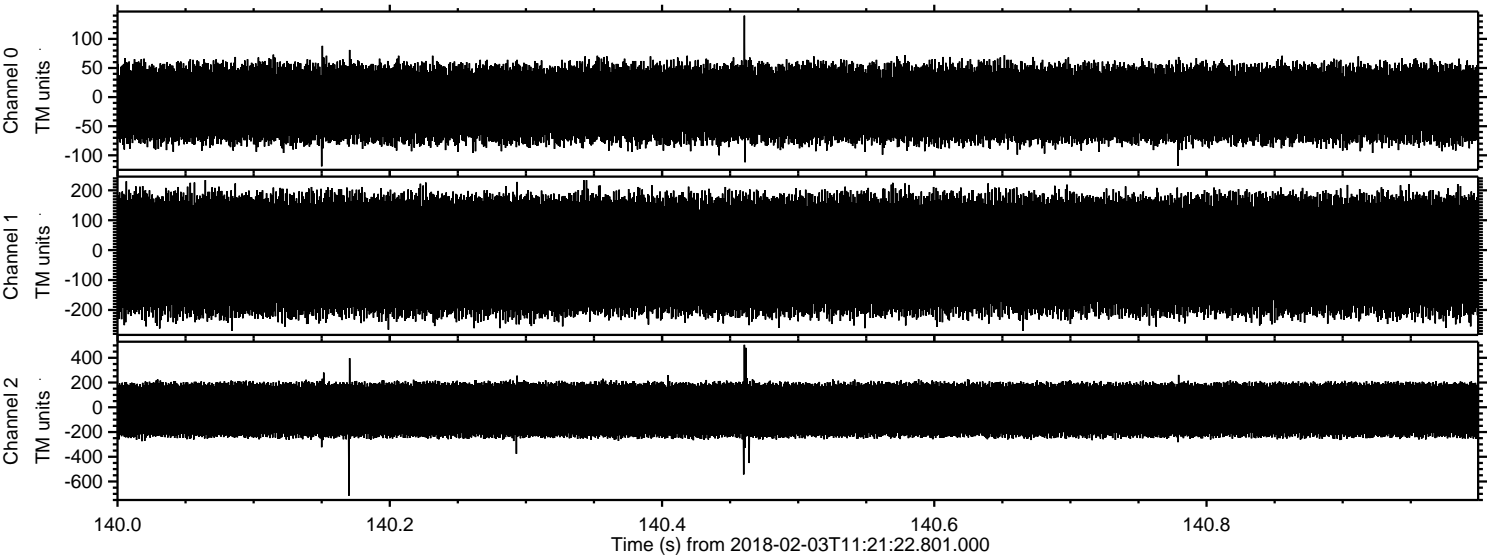


Processed Sat Feb 3 12:29:40 2018 by ELM ver.2012-10-06 from 001__elm20180203_112121__dat00.bin



ELMAVAN 3D WAVEFORMS (Measured data sampled at 50 kHz) 51000 packets of 144 samples from 2018-02-03T11:21:22.801.000. Part 141/147

Processed Sat Feb 3 12:29:41 2018 by ELM ver.2012-10-06 from 001__elm20180203_112121__dat00.bin

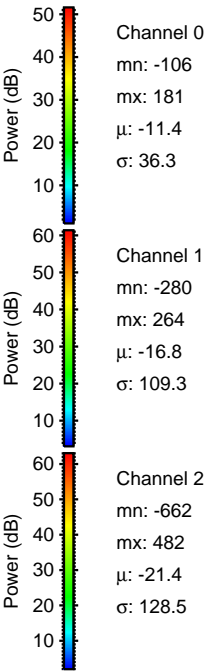
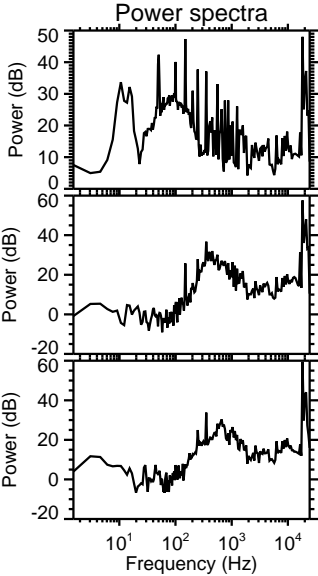
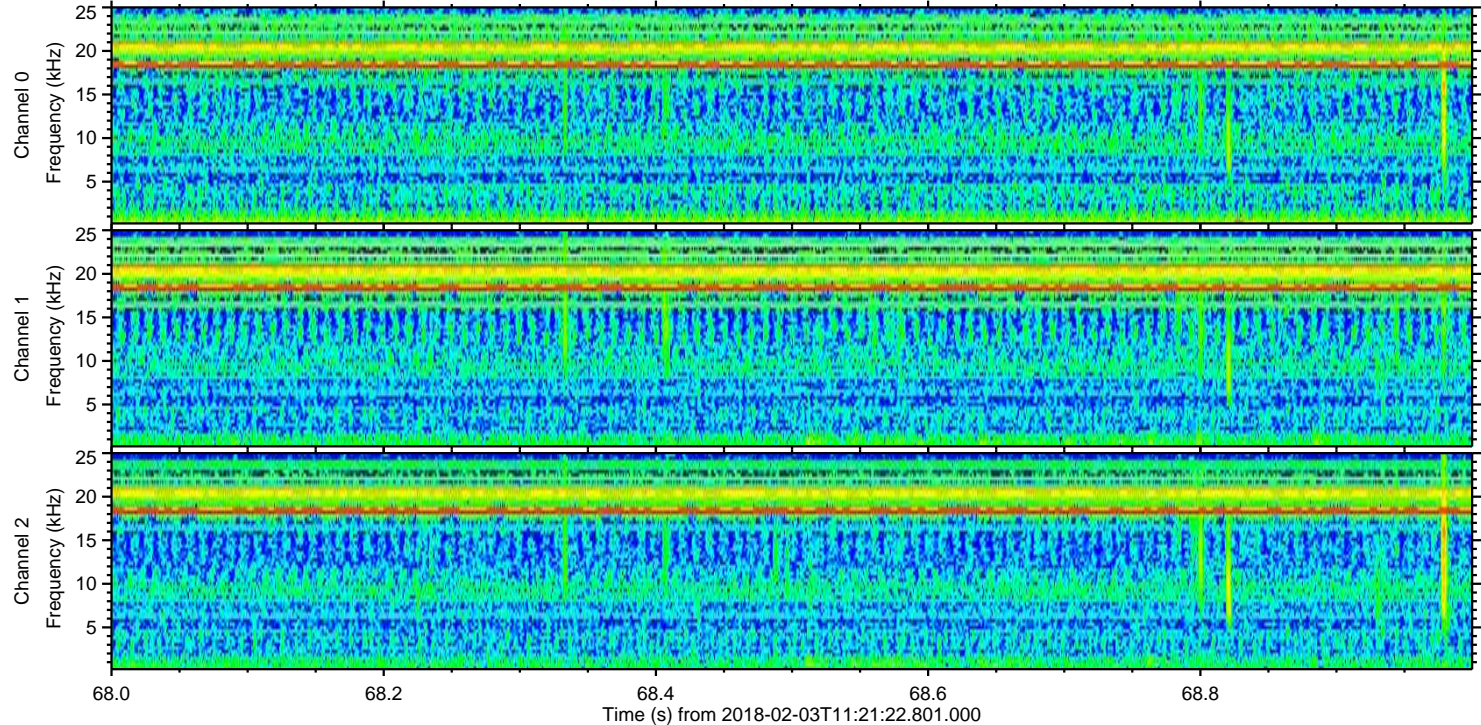
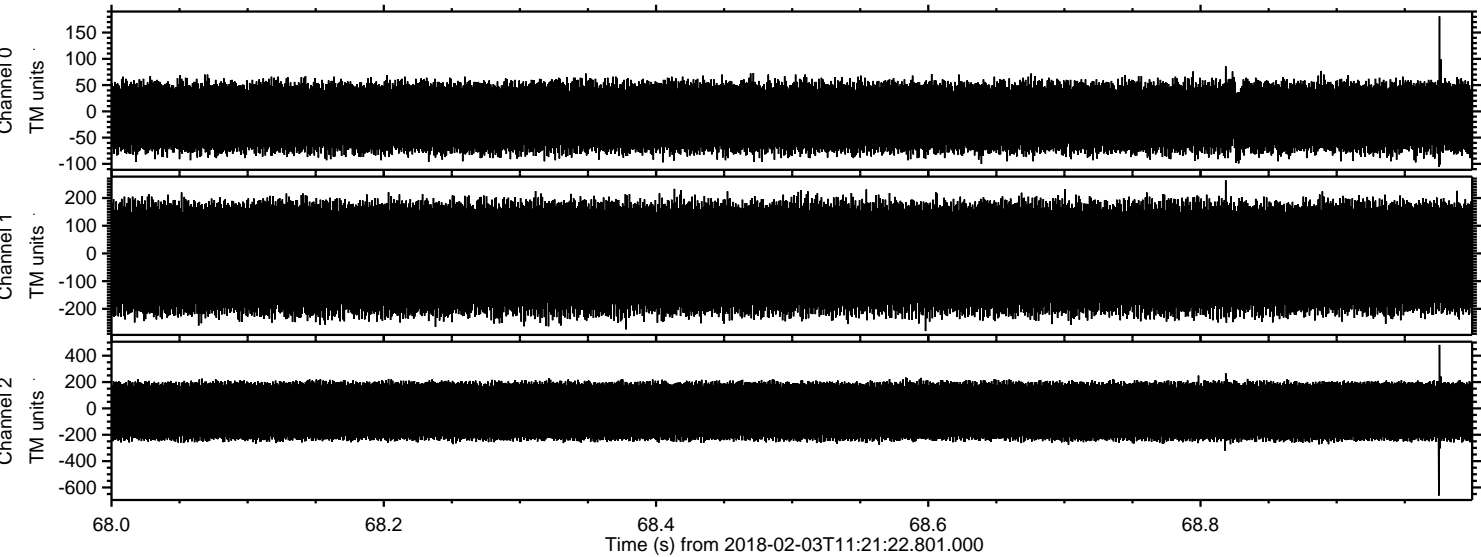


Channel 0
mn: -119
mx: 140
 μ : -11.4
 σ : 36.3

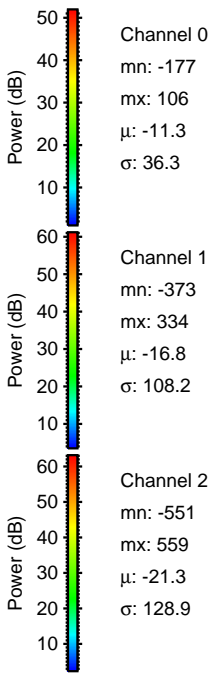
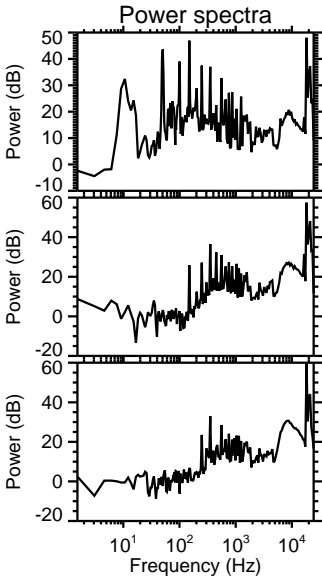
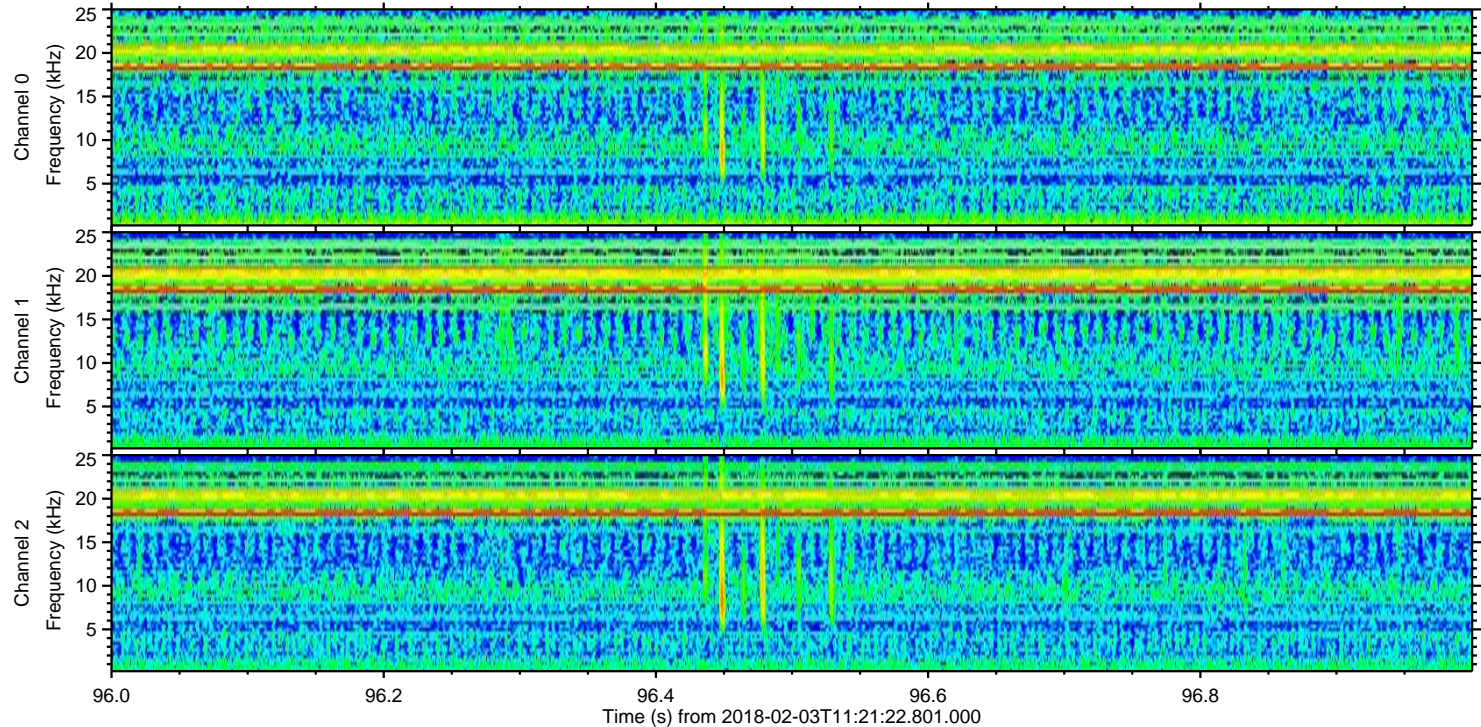
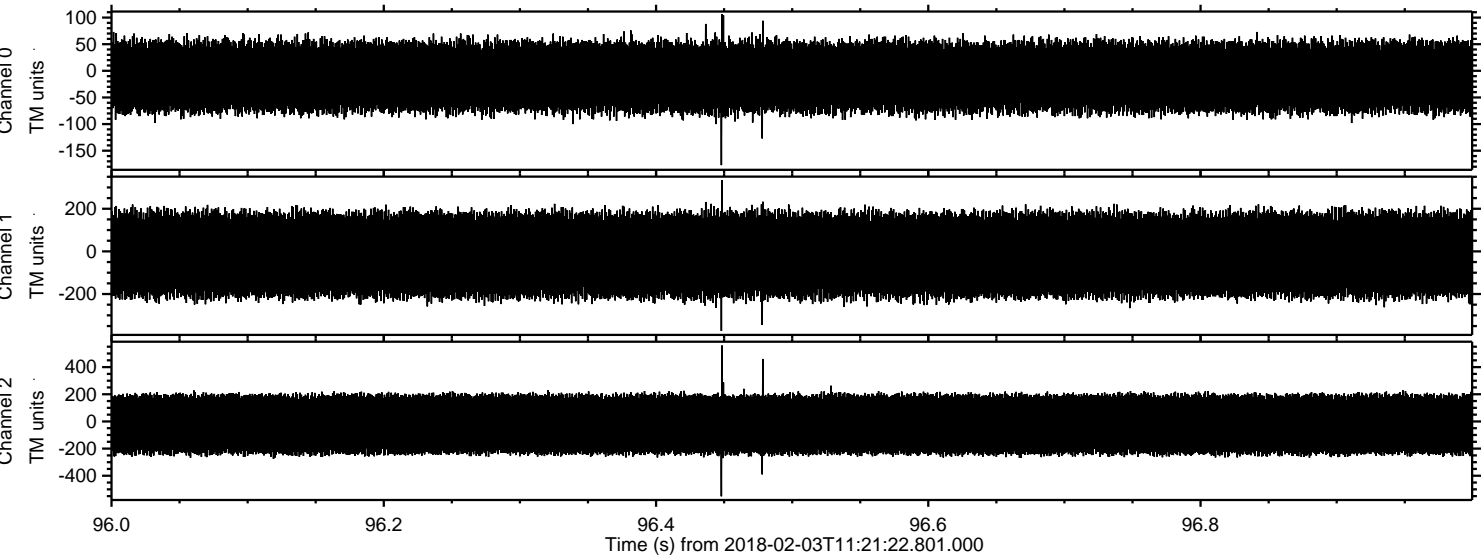
Channel 1
mn: -270
mx: 234
 μ : -16.7
 σ : 108.1

Channel 2
mn: -714
mx: 505
 μ : -21.3
 σ : 128.2

Processed Sat Feb 3 12:29:42 2018 by ELM ver.2012-10-06 from 001__elm20180203_112121__dat00.bin



Processed Sat Feb 3 12:29:43 2018 by ELM ver.2012-10-06 from 001__elm20180203_112121__dat00.bin



Processed Sat Feb 3 12:29:44 2018 by ELM ver.2012-10-06 from 001__elm20180203_112121__dat00.bin

