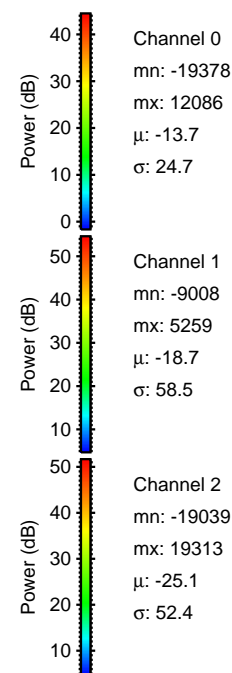
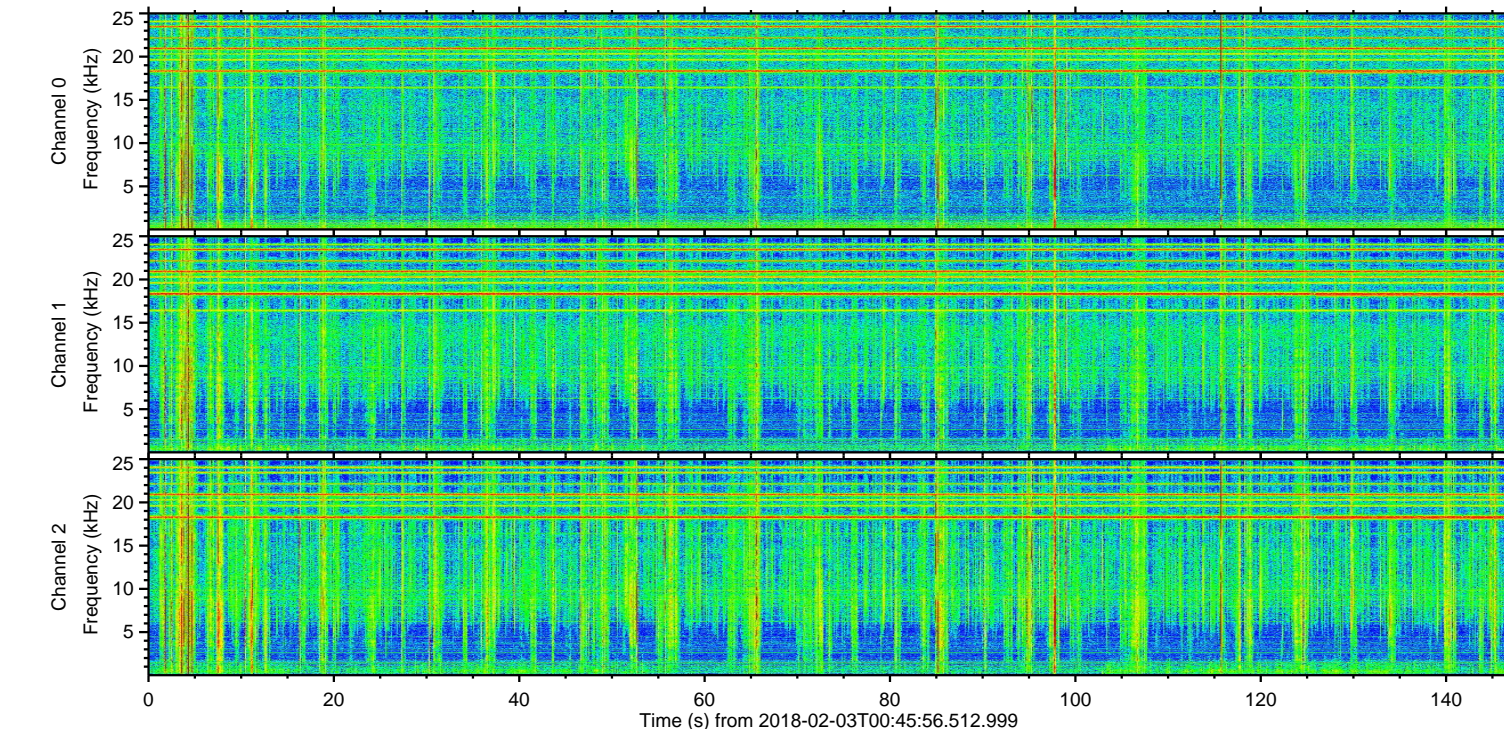
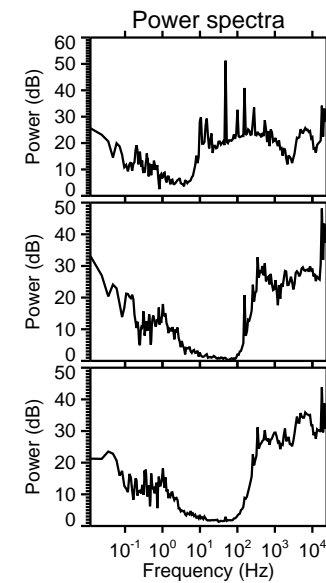
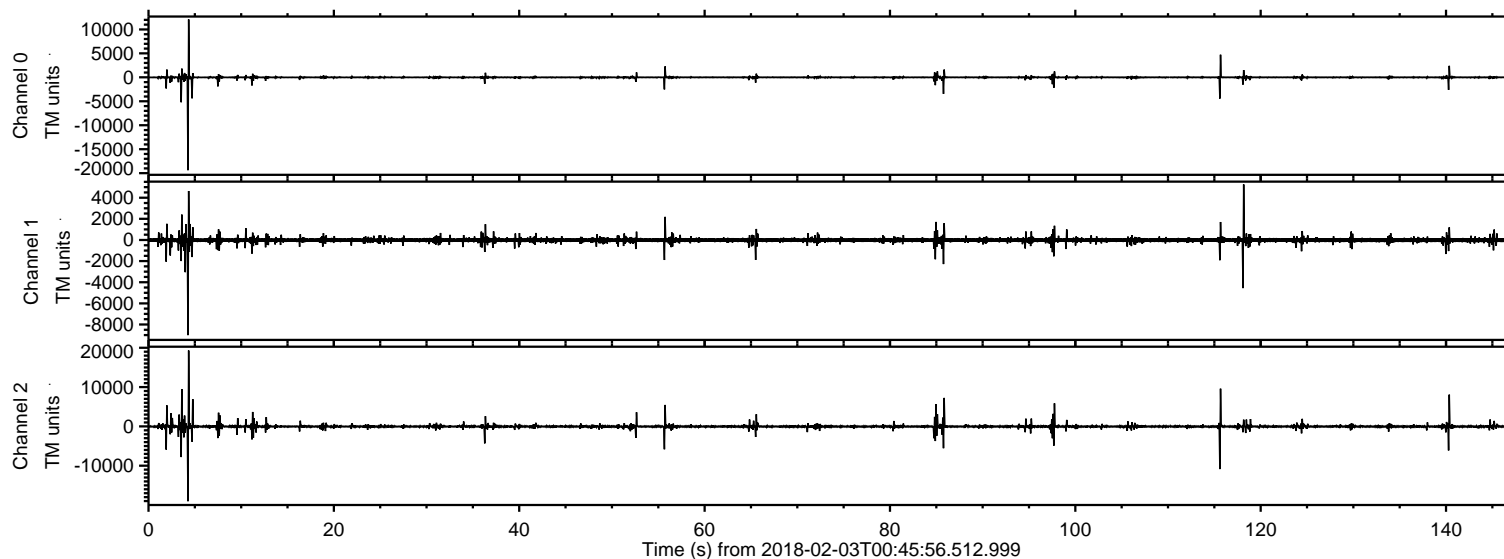


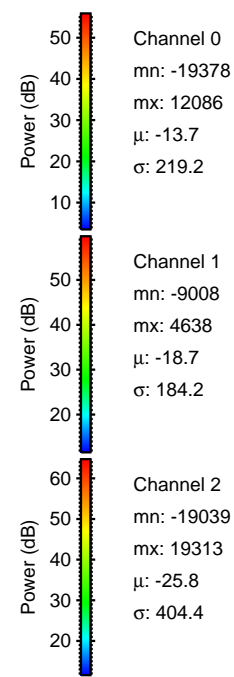
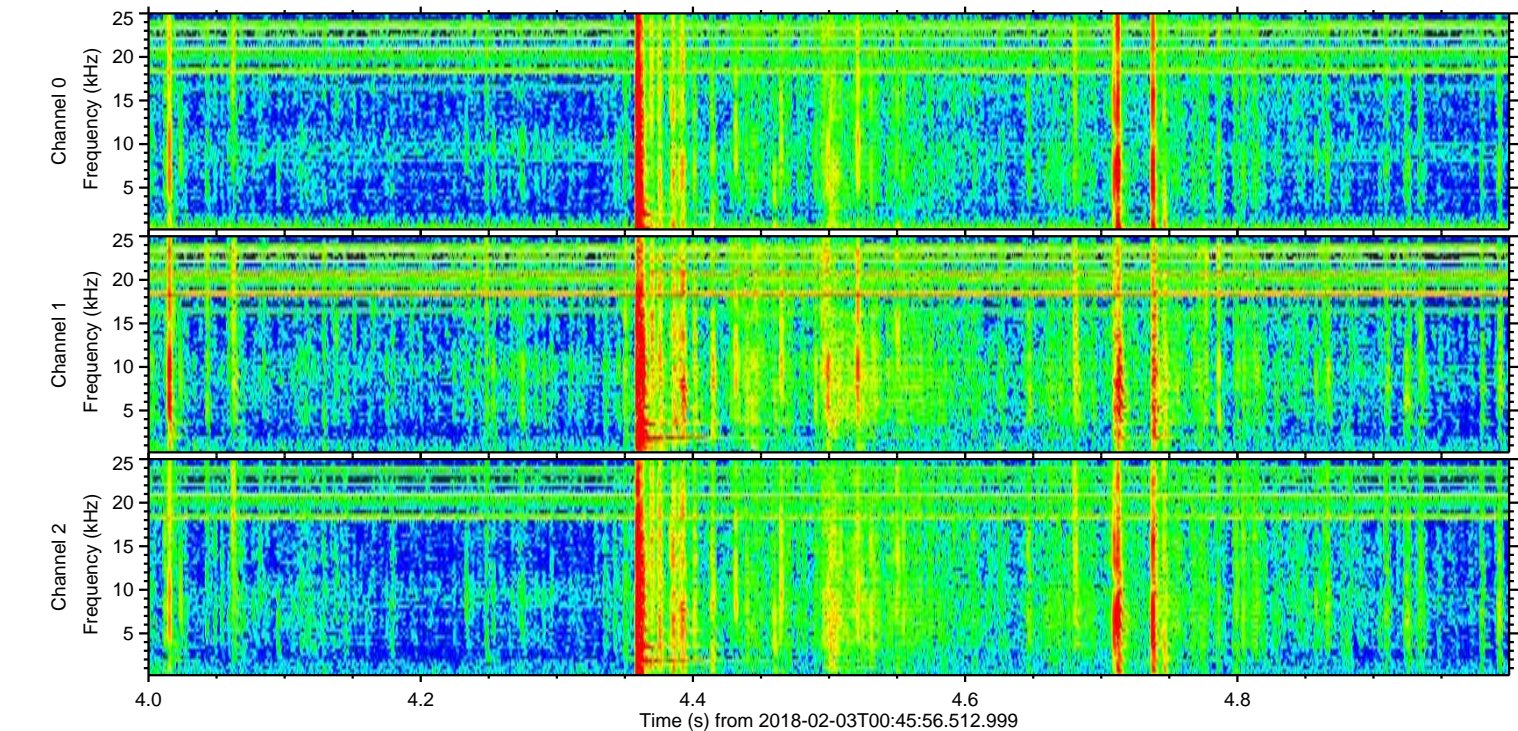
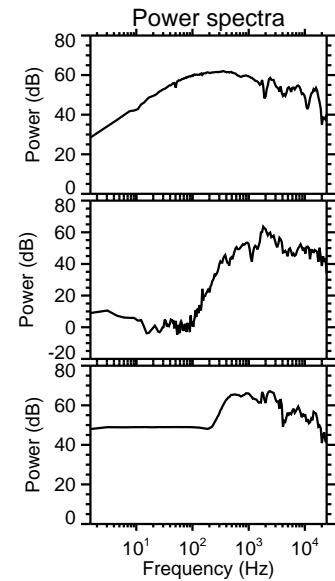
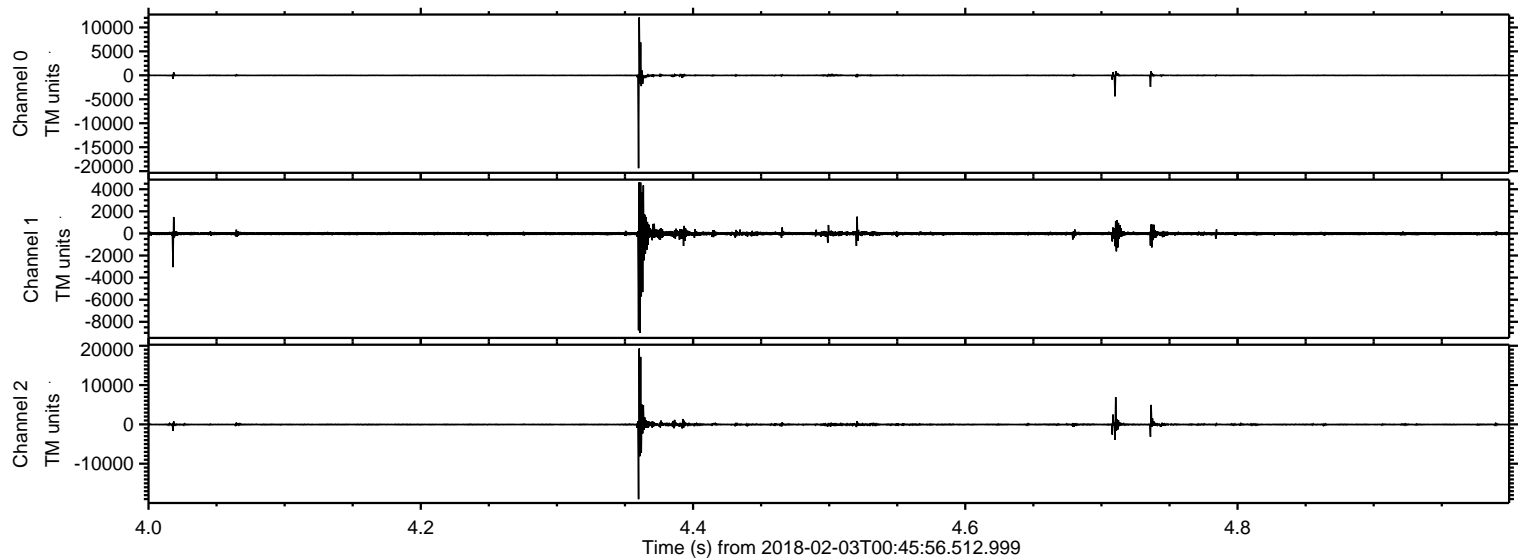
ELMAVAN 3D WAVEFORMS (Measured data sampled at 50 kHz) 51000 packets of 144 samples from 2018-02-03T00:45:56.512.999.

Processed Sat Feb 3 01:53:52 2018 by ELM ver.2012-10-06 from 001__elm20180203_004555__dat00.bin



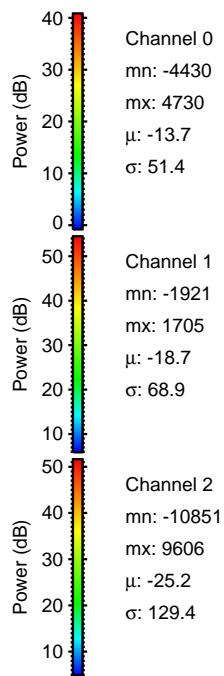
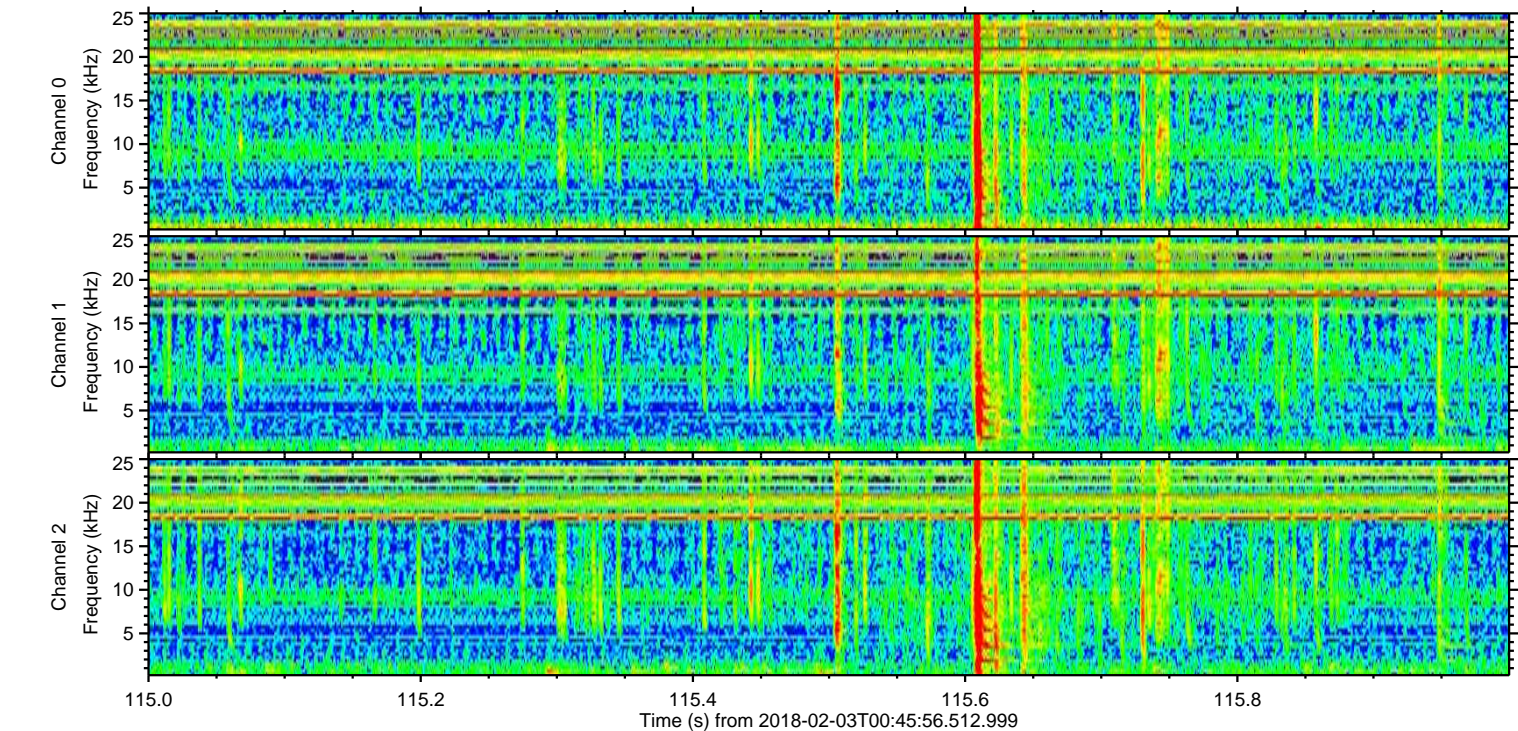
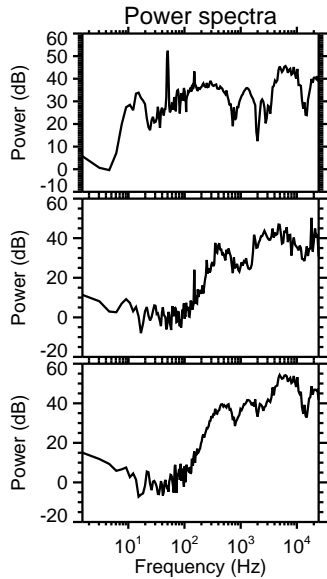
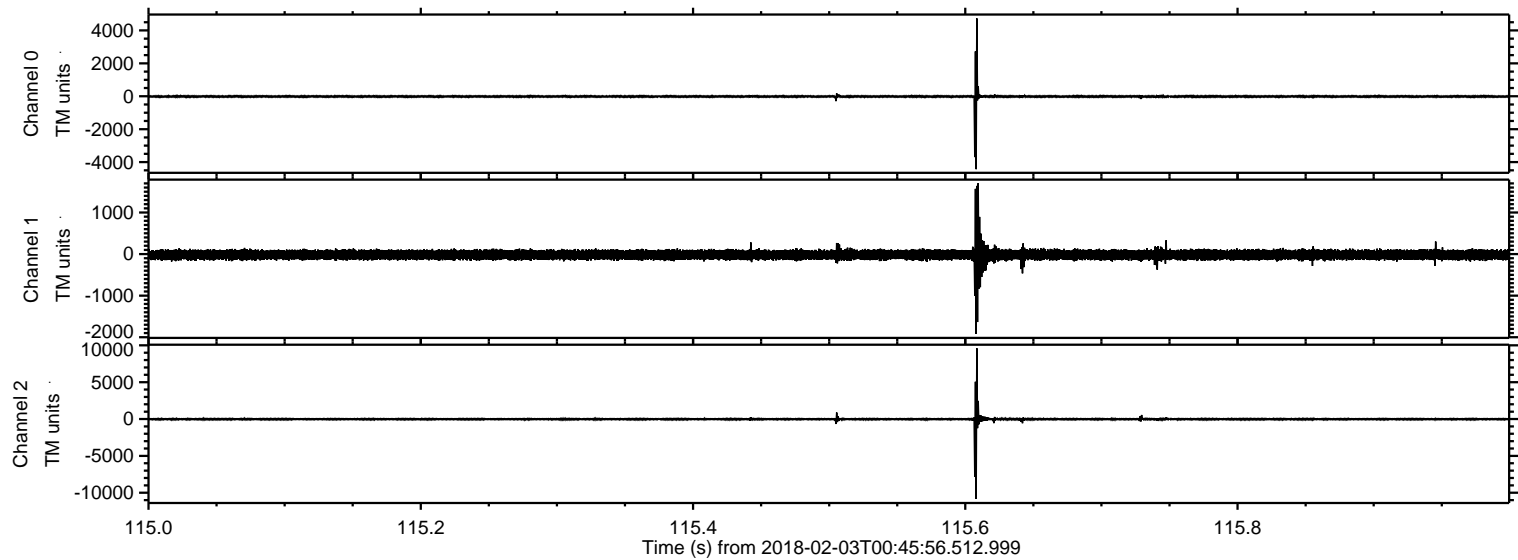
ELMAVAN 3D WAVEFORMS (Measured data sampled at 50 kHz) 51000 packets of 144 samples from 2018-02-03T00:45:56.512.999. Part 5/147

Processed Sat Feb 3 01:53:59 2018 by ELM ver.2012-10-06 from 001__elm20180203_004555__dat00.bin

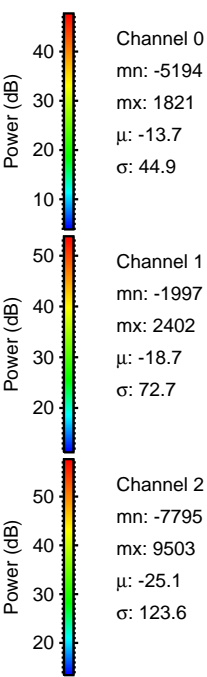
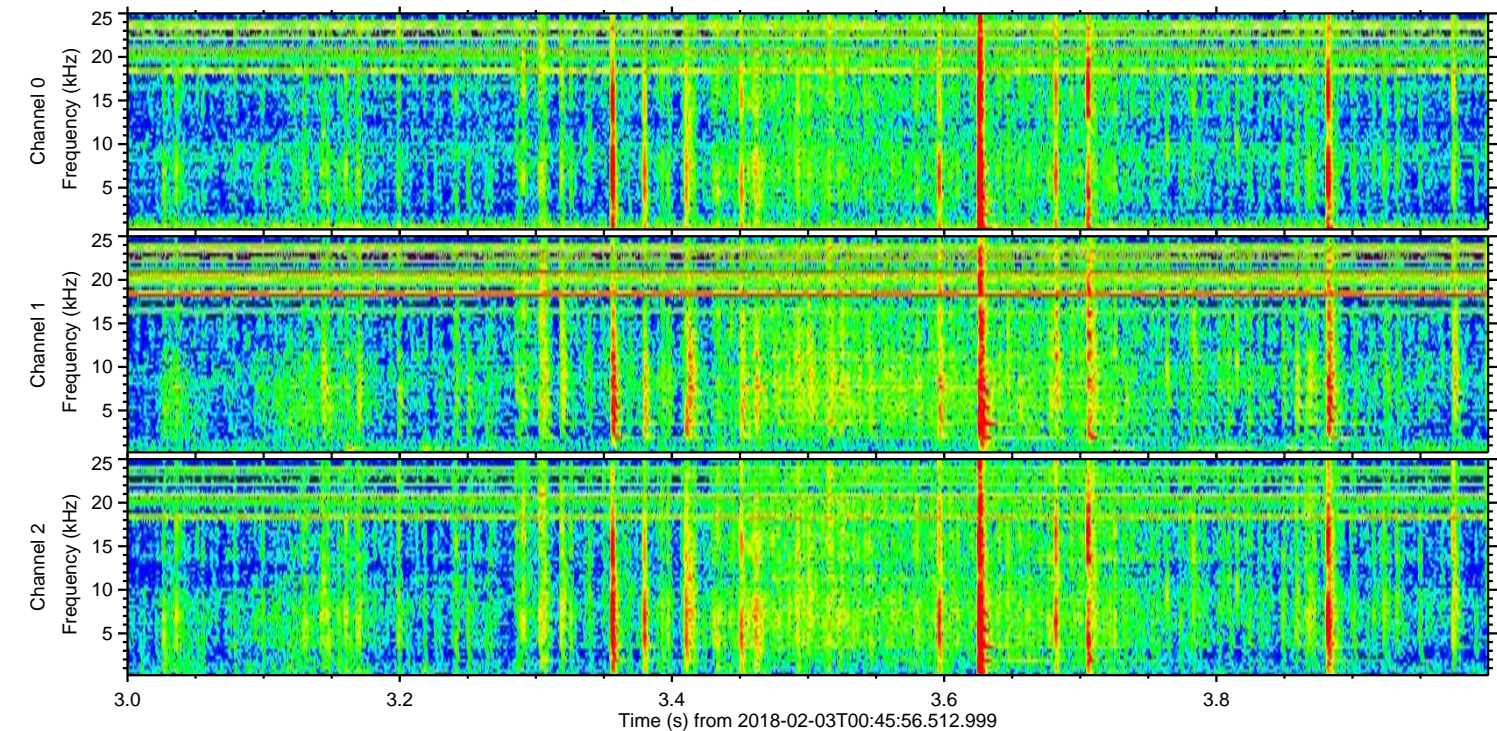
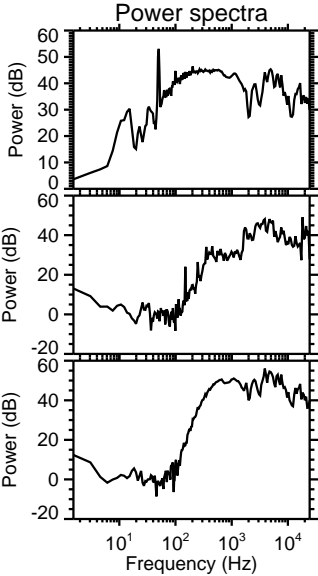
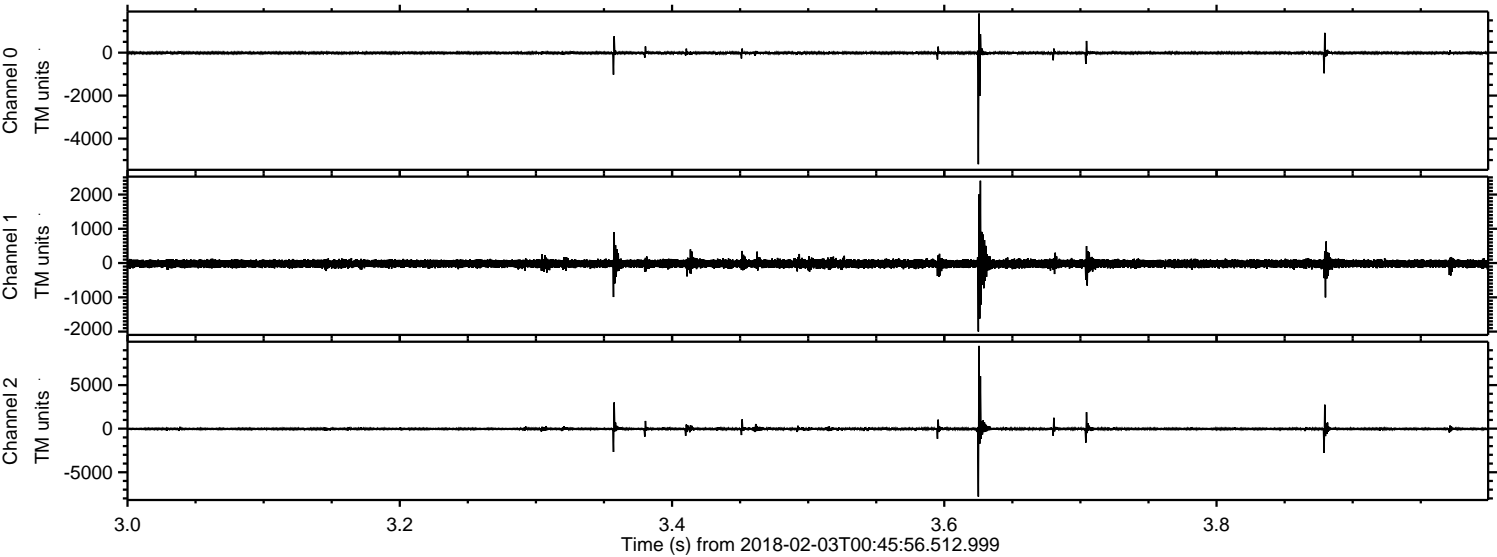


ELMAVAN 3D WAVEFORMS (Measured data sampled at 50 kHz) 51000 packets of 144 samples from 2018-02-03T00:45:56.512.999. Part 116/147

Processed Sat Feb 3 01:54:00 2018 by ELM ver.2012-10-06 from 001__elm20180203_004555__dat00.bin

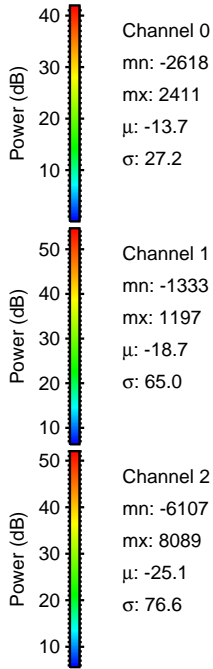
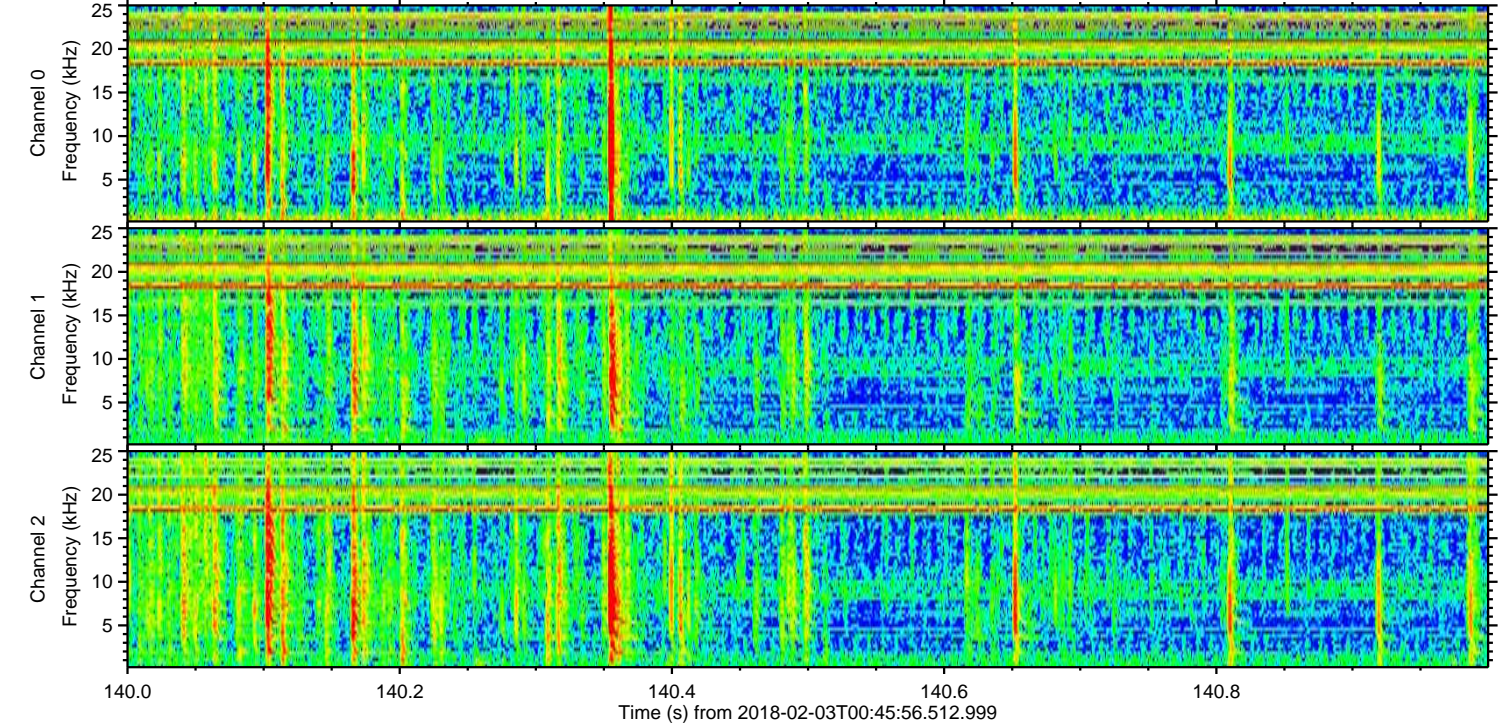
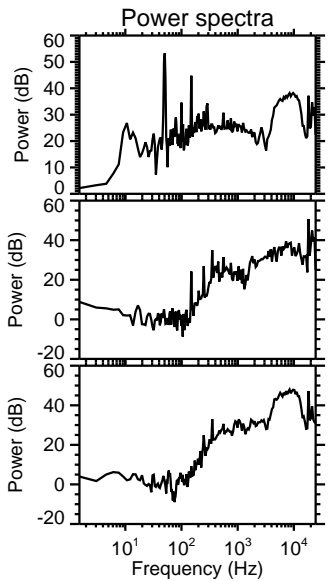
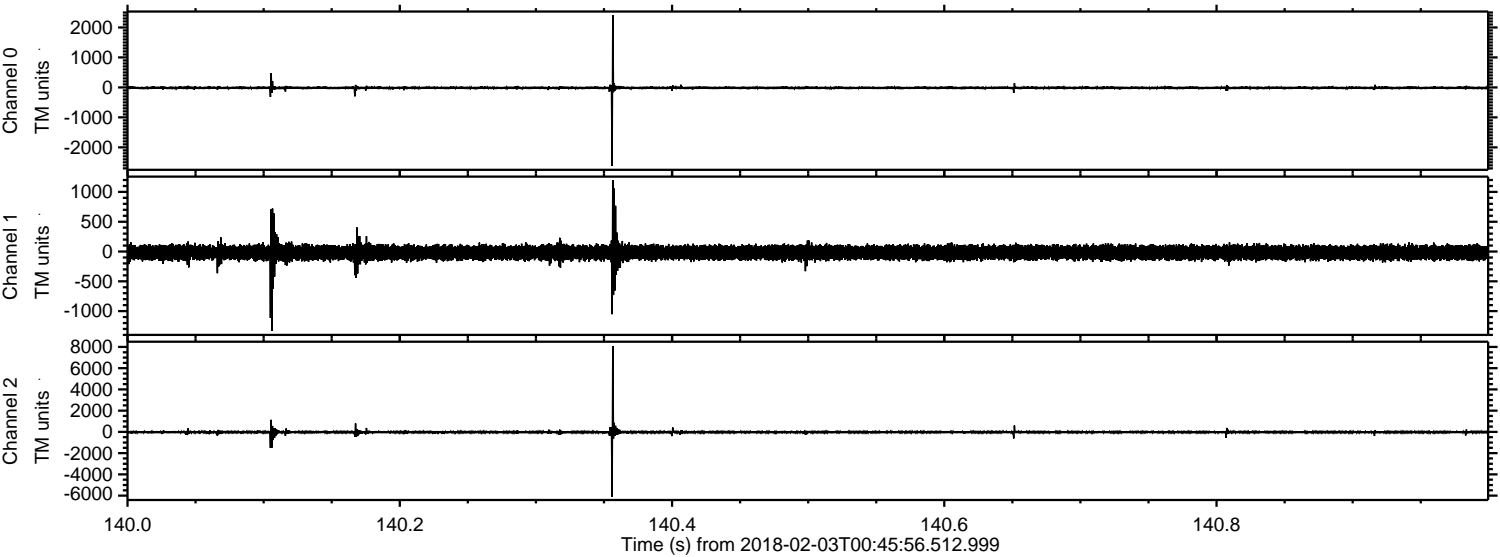


Processed Sat Feb 3 01:54:01 2018 by ELM ver.2012-10-06 from 001__elm20180203_004555__dat00.bin

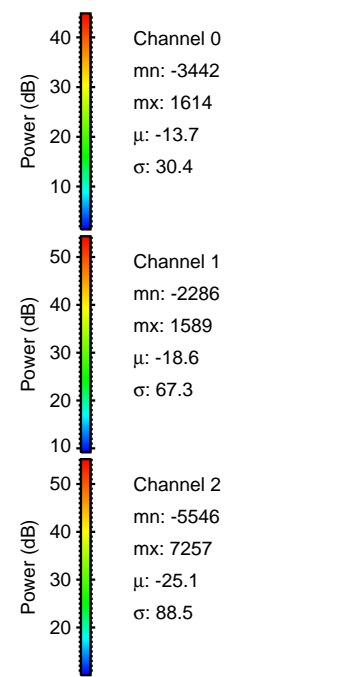
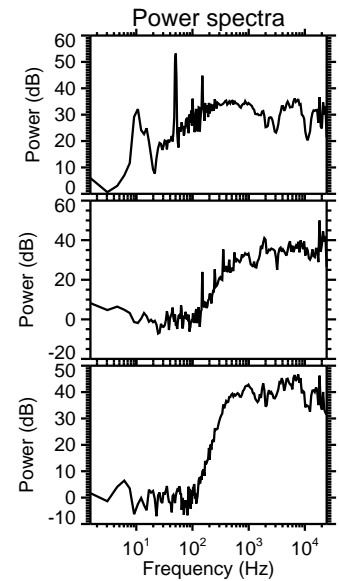
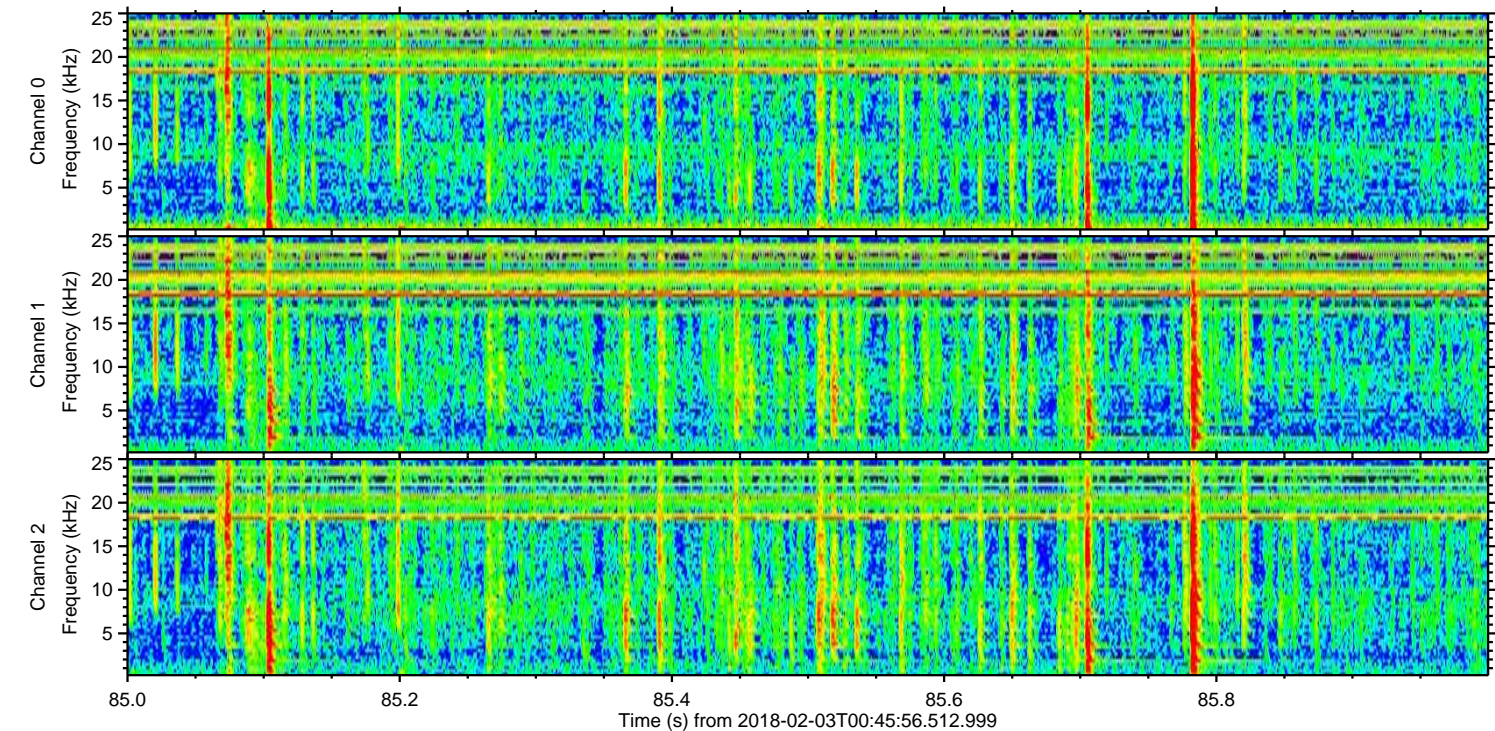
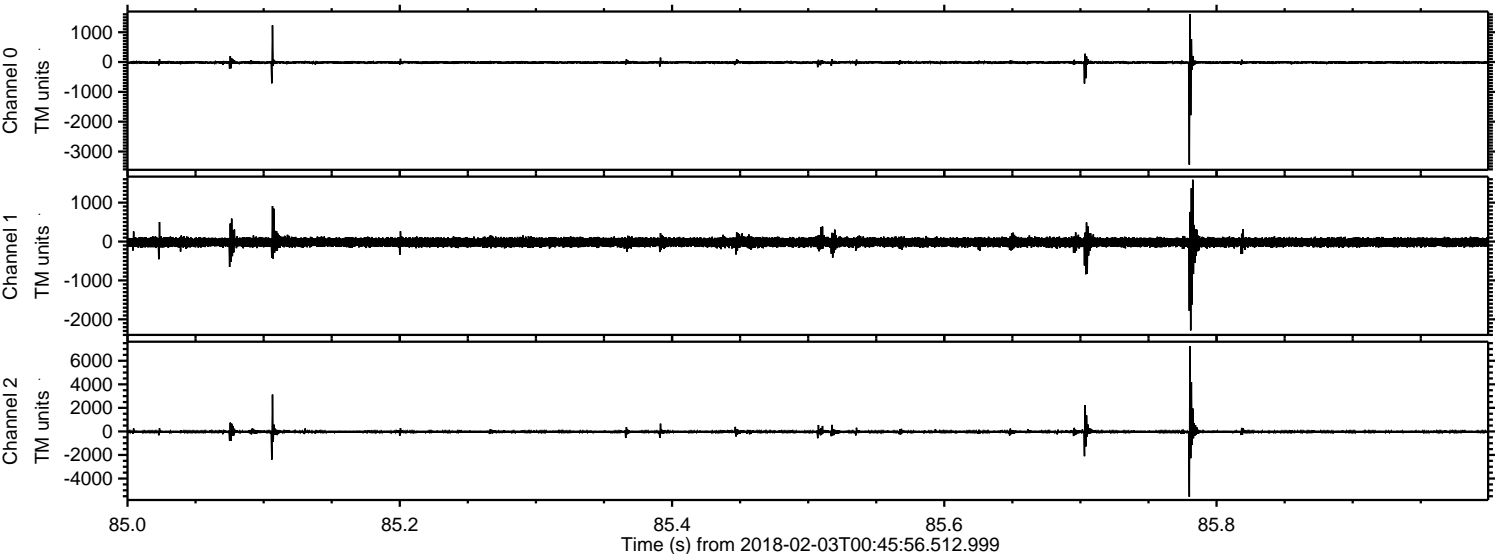


ELMAVAN 3D WAVEFORMS (Measured data sampled at 50 kHz) 51000 packets of 144 samples from 2018-02-03T00:45:56.512.999. Part 141/147

Processed Sat Feb 3 01:54:02 2018 by ELM ver.2012-10-06 from 001__elm20180203_004555__dat00.bin

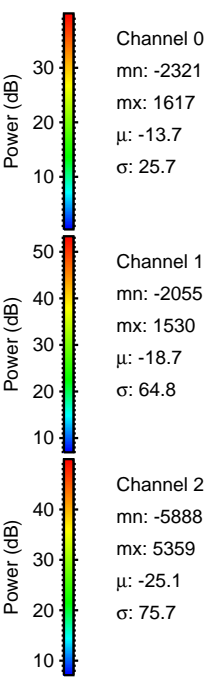
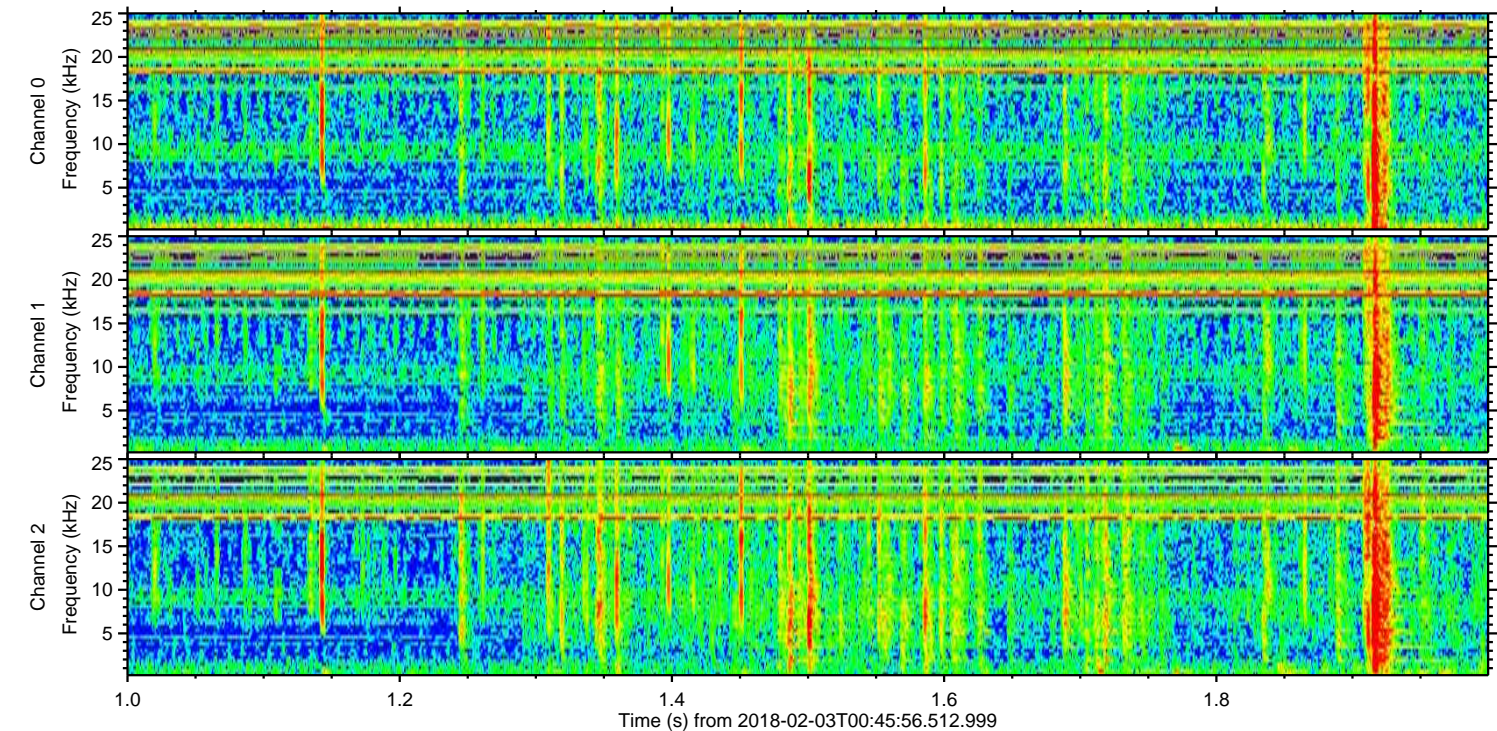
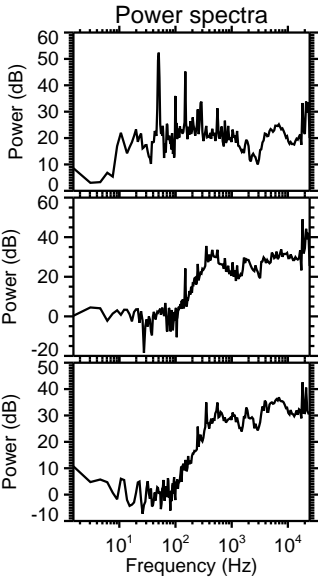
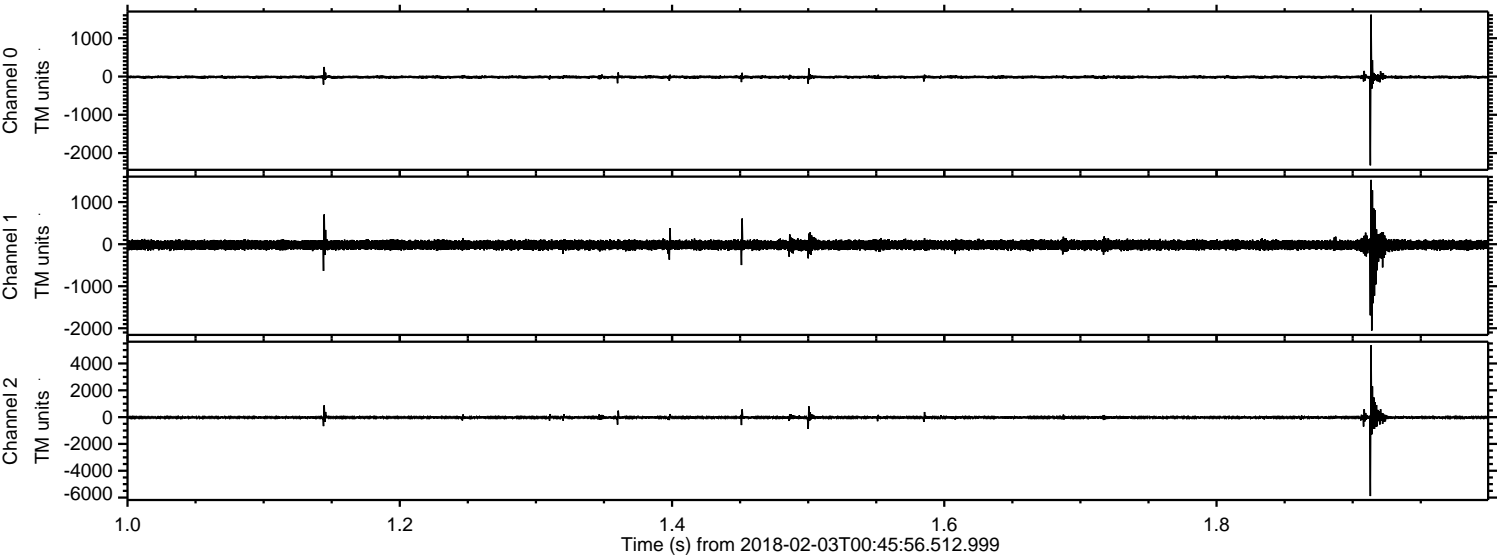


Processed Sat Feb 3 01:54:03 2018 by ELM ver.2012-10-06 from 001__elm20180203_004555__dat00.bin

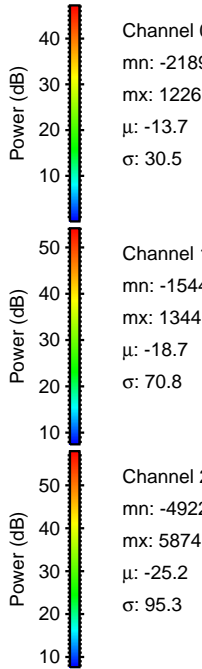
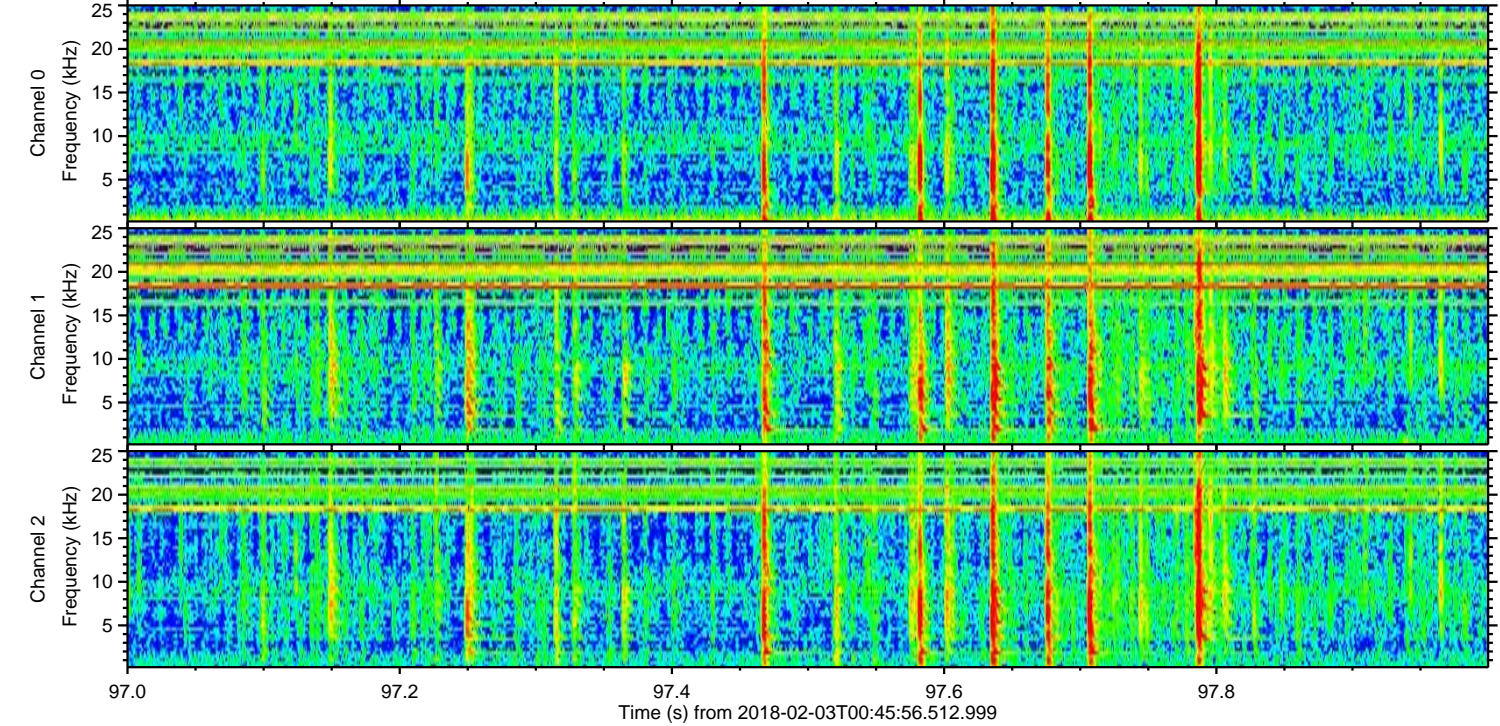
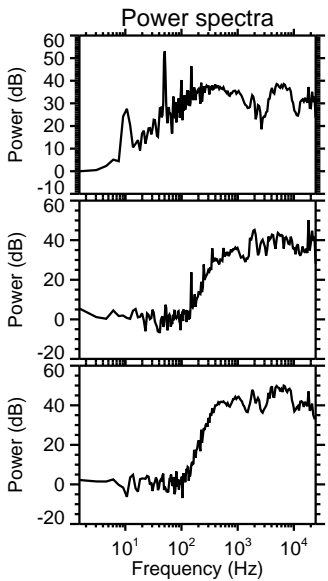
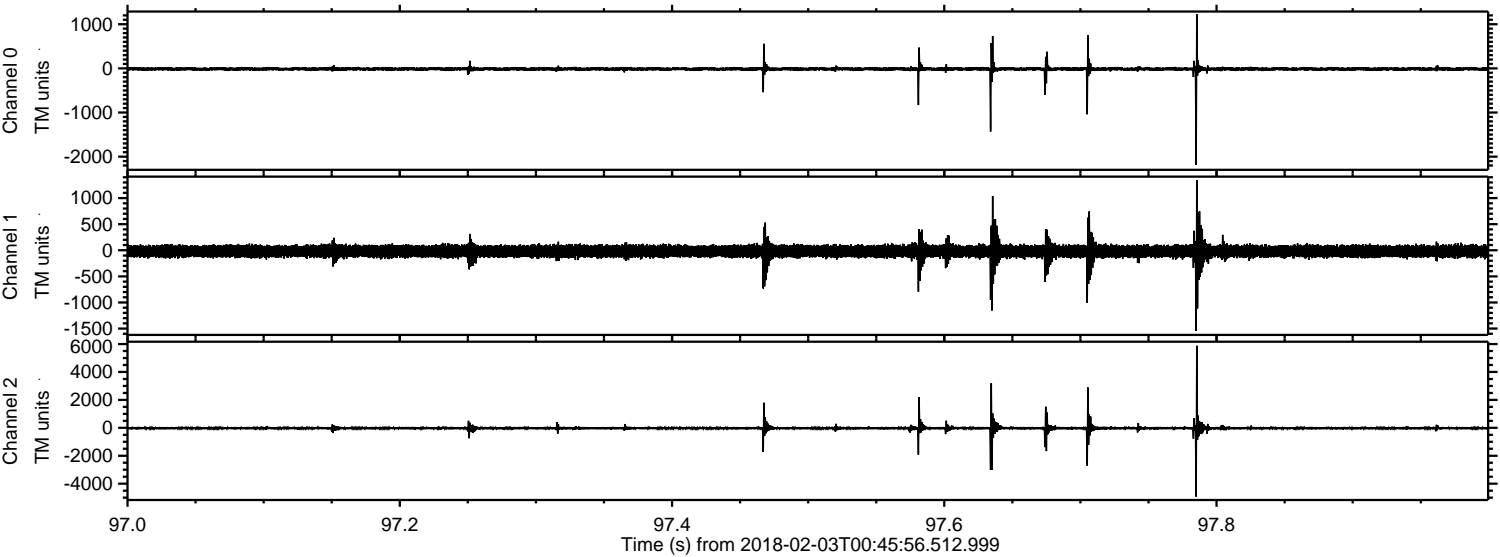


ELMAVAN 3D WAVEFORMS (Measured data sampled at 50 kHz) 51000 packets of 144 samples from 2018-02-03T00:45:56.512.999. Part 2/147

Processed Sat Feb 3 01:54:03 2018 by ELM ver.2012-10-06 from 001__elm20180203_004555__dat00.bin



Processed Sat Feb 3 01:54:04 2018 by ELM ver.2012-10-06 from 001__elm20180203_004555__dat00.bin

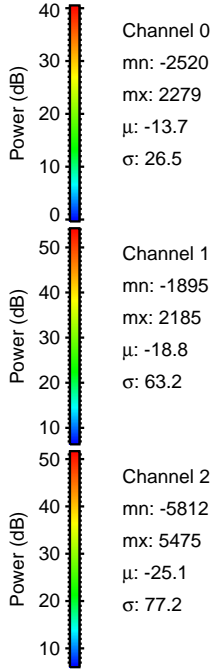
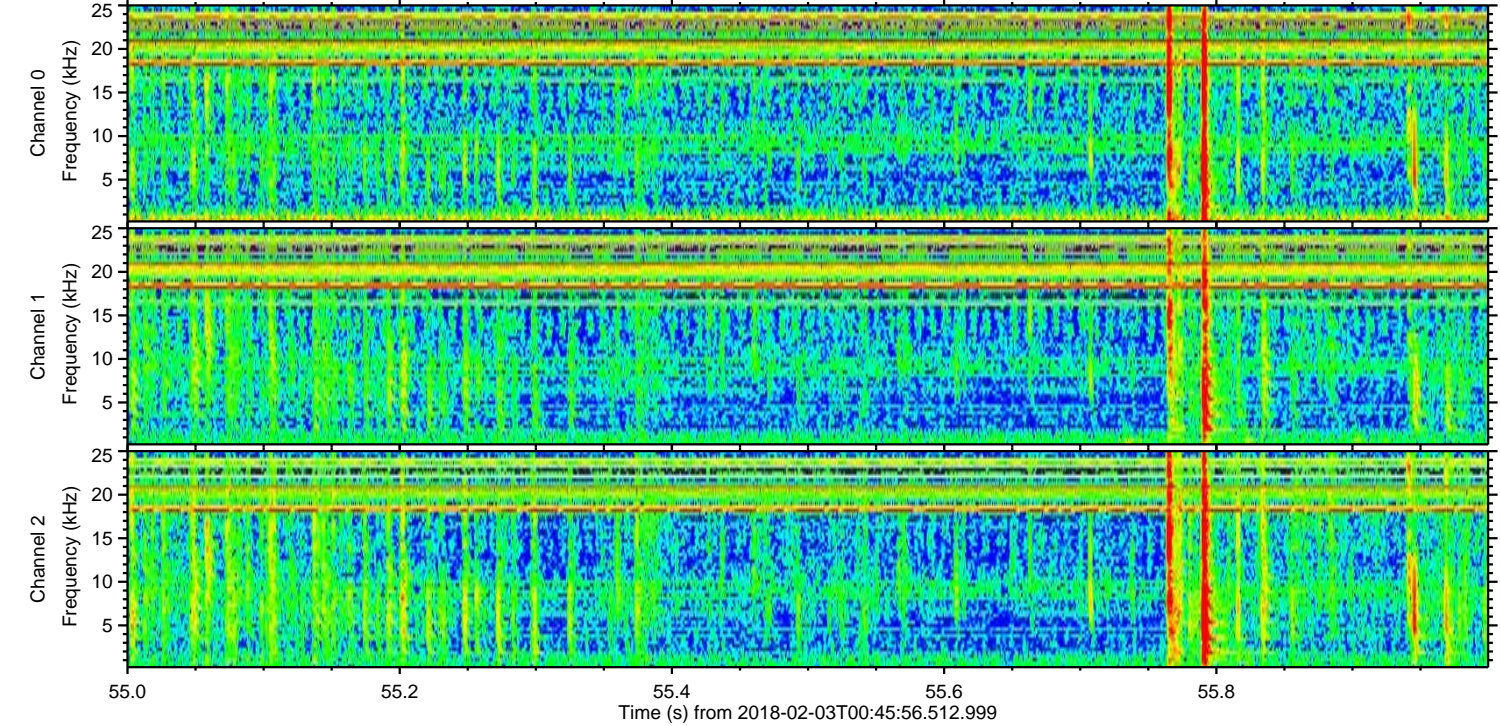
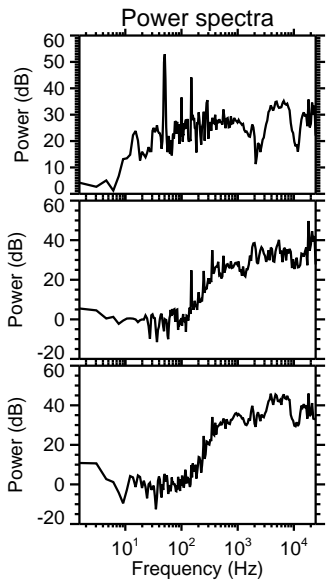
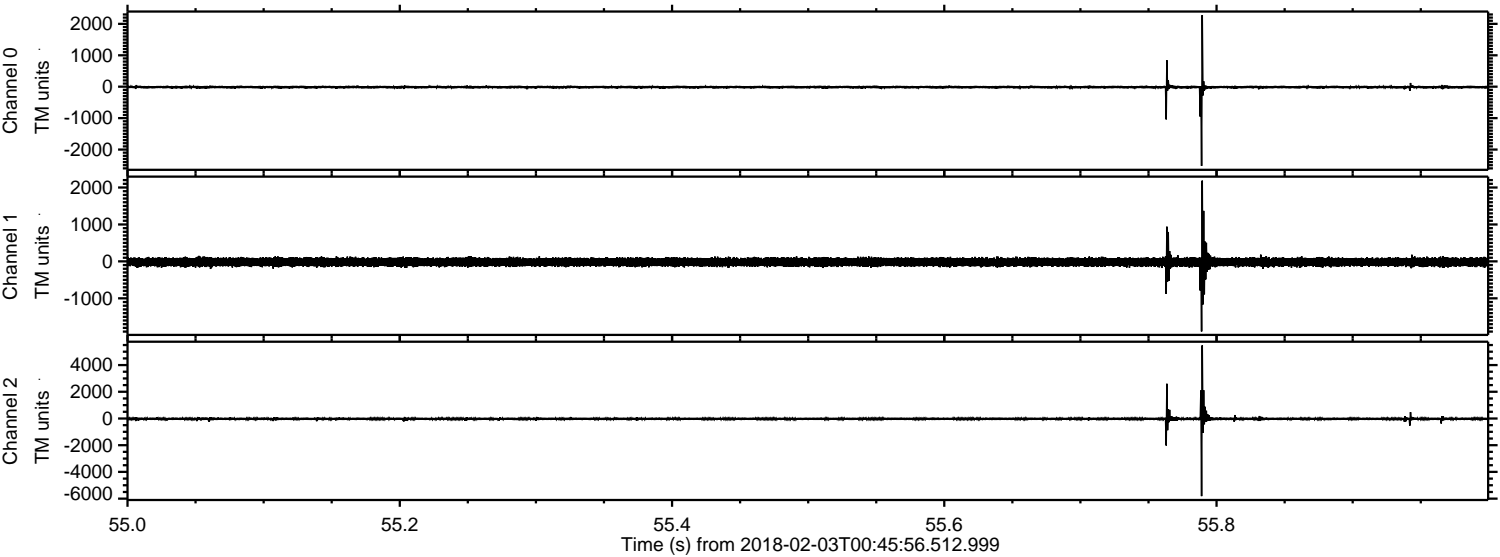


Channel 0
mn: -2189
mx: 1226
 μ : -13.7
 σ : 30.5

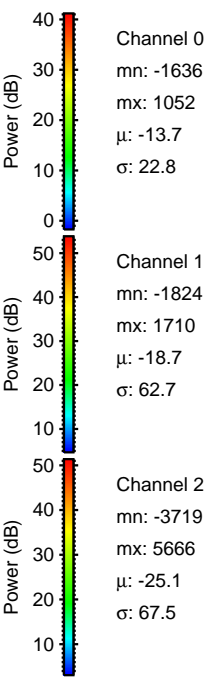
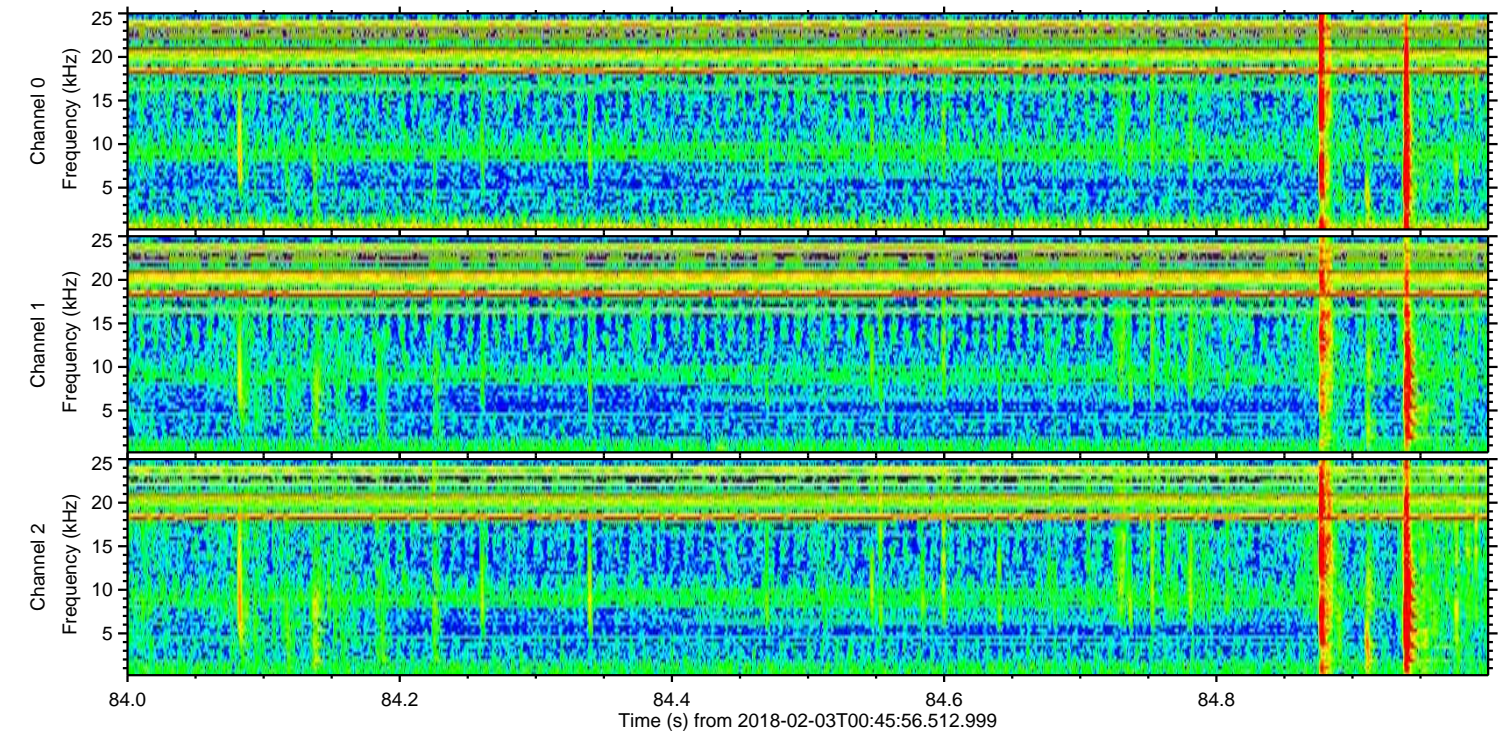
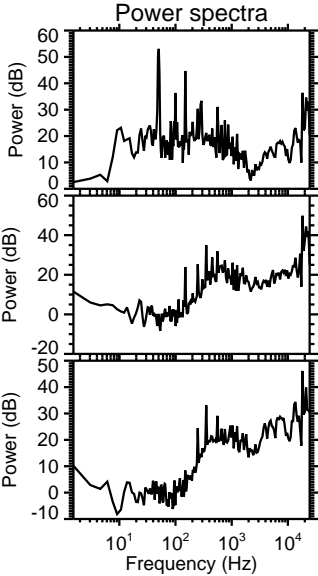
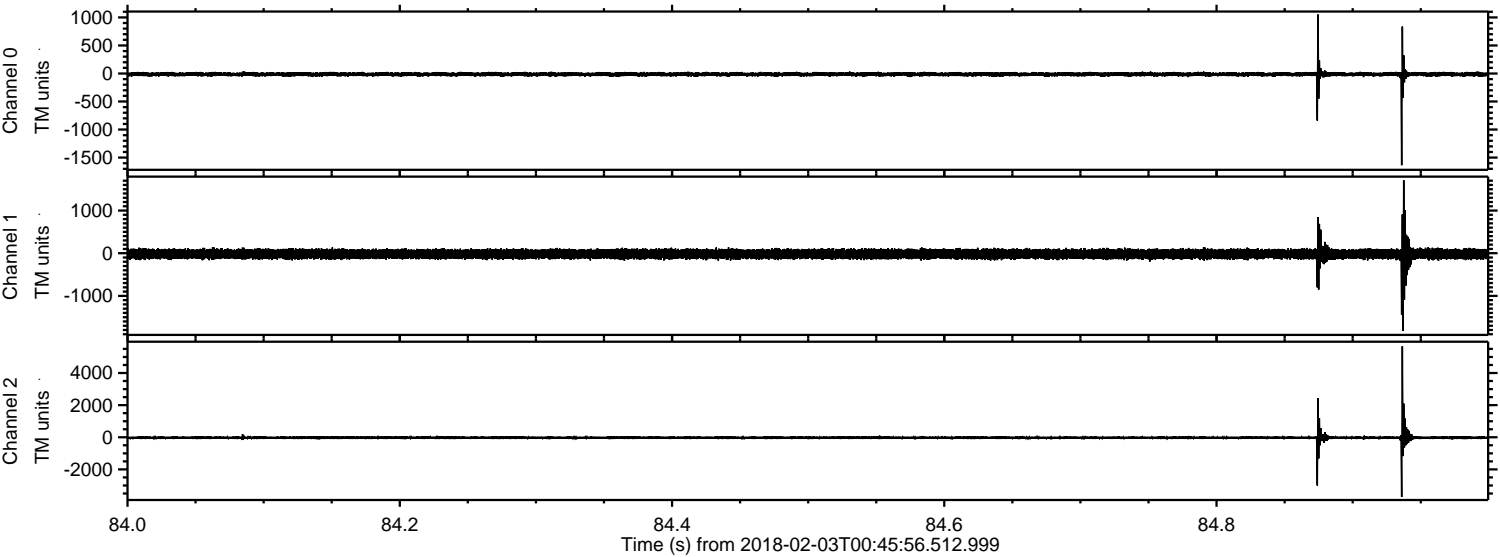
Channel 1
mn: -1544
mx: 1344
 μ : -18.7
 σ : 70.8

Channel 2
mn: -4922
mx: 5874
 μ : -25.2
 σ : 95.3

Processed Sat Feb 3 01:54:05 2018 by ELM ver.2012-10-06 from 001__elm20180203_004555__dat00.bin



Processed Sat Feb 3 01:54:06 2018 by ELM ver.2012-10-06 from 001__elm20180203_004555__dat00.bin



Processed Sat Feb 3 01:54:06 2018 by ELM ver.2012-10-06 from 001__elm20180203_004555__dat00.bin

