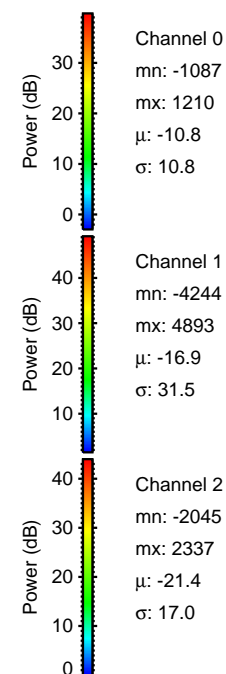
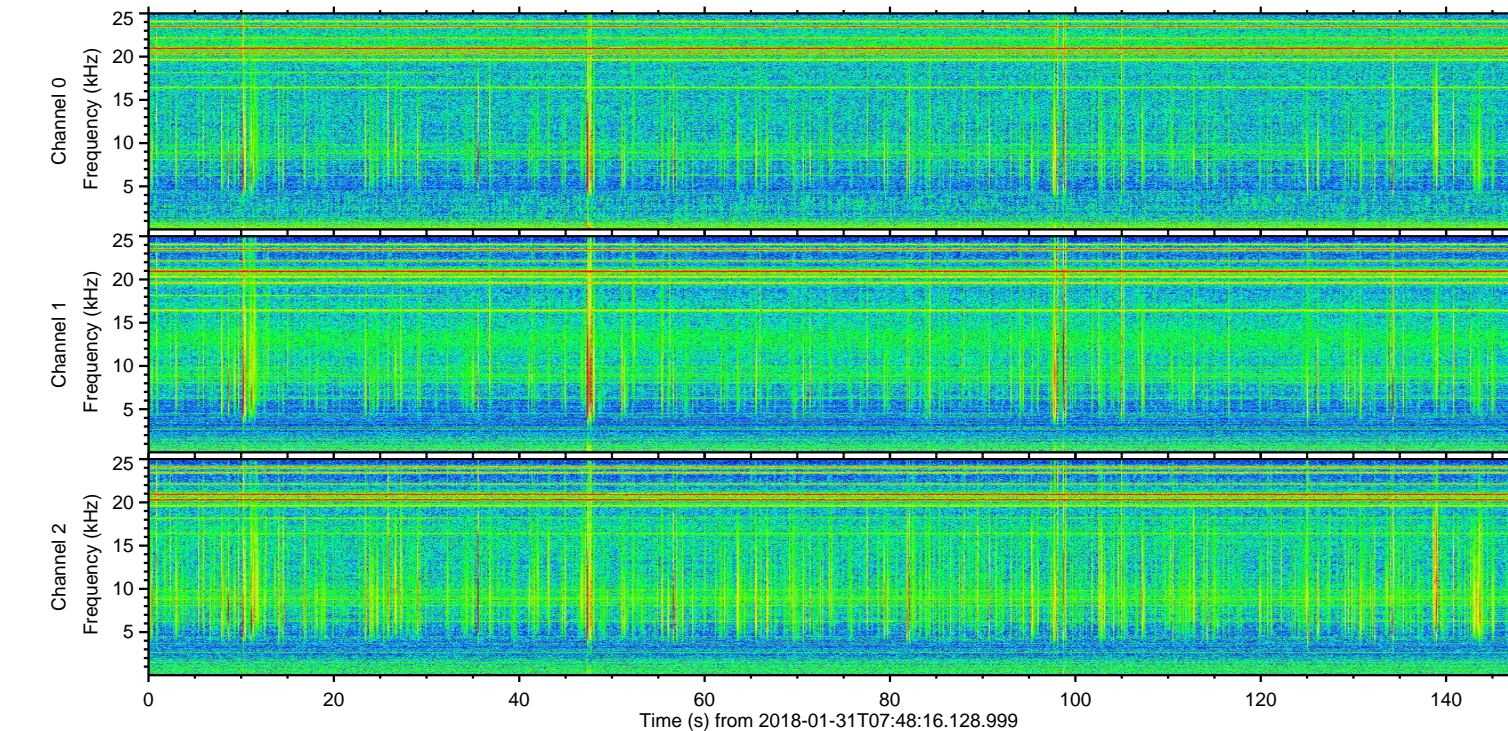
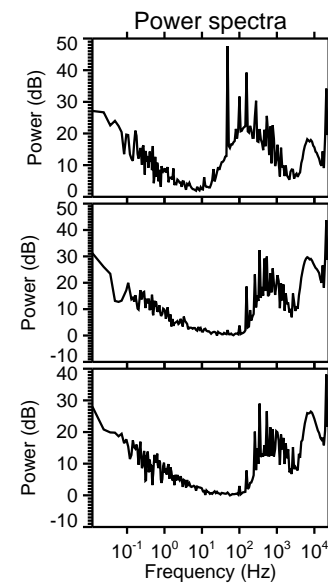
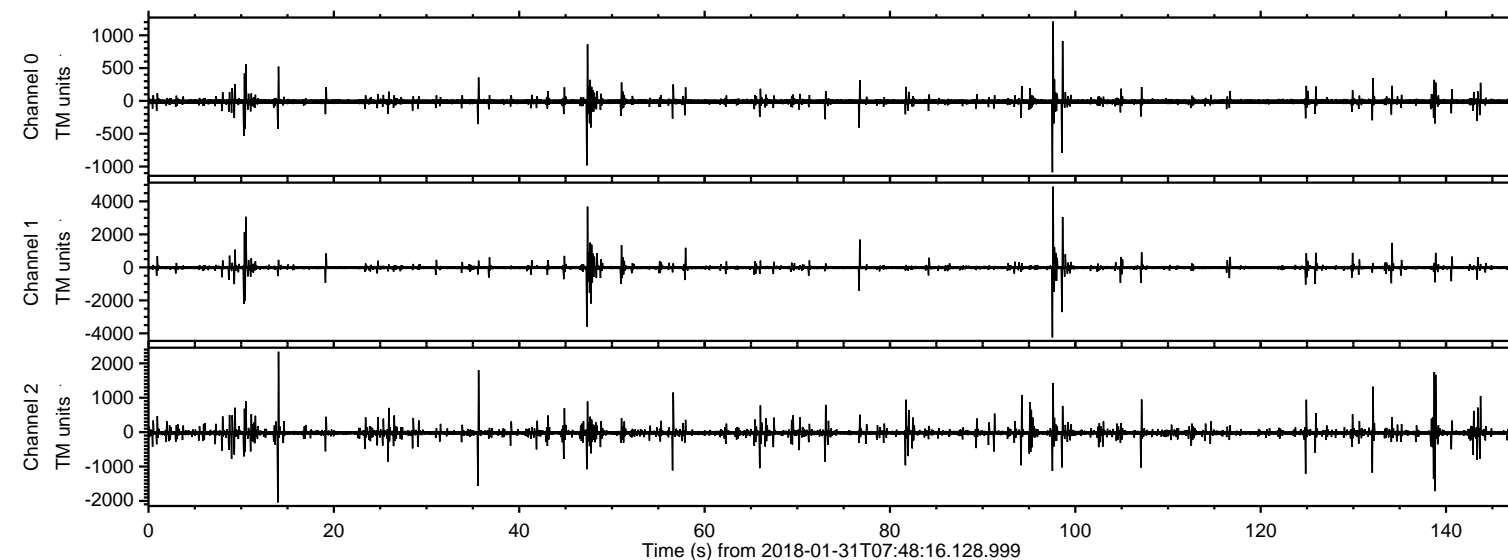
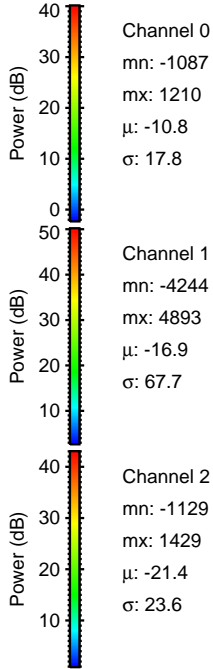
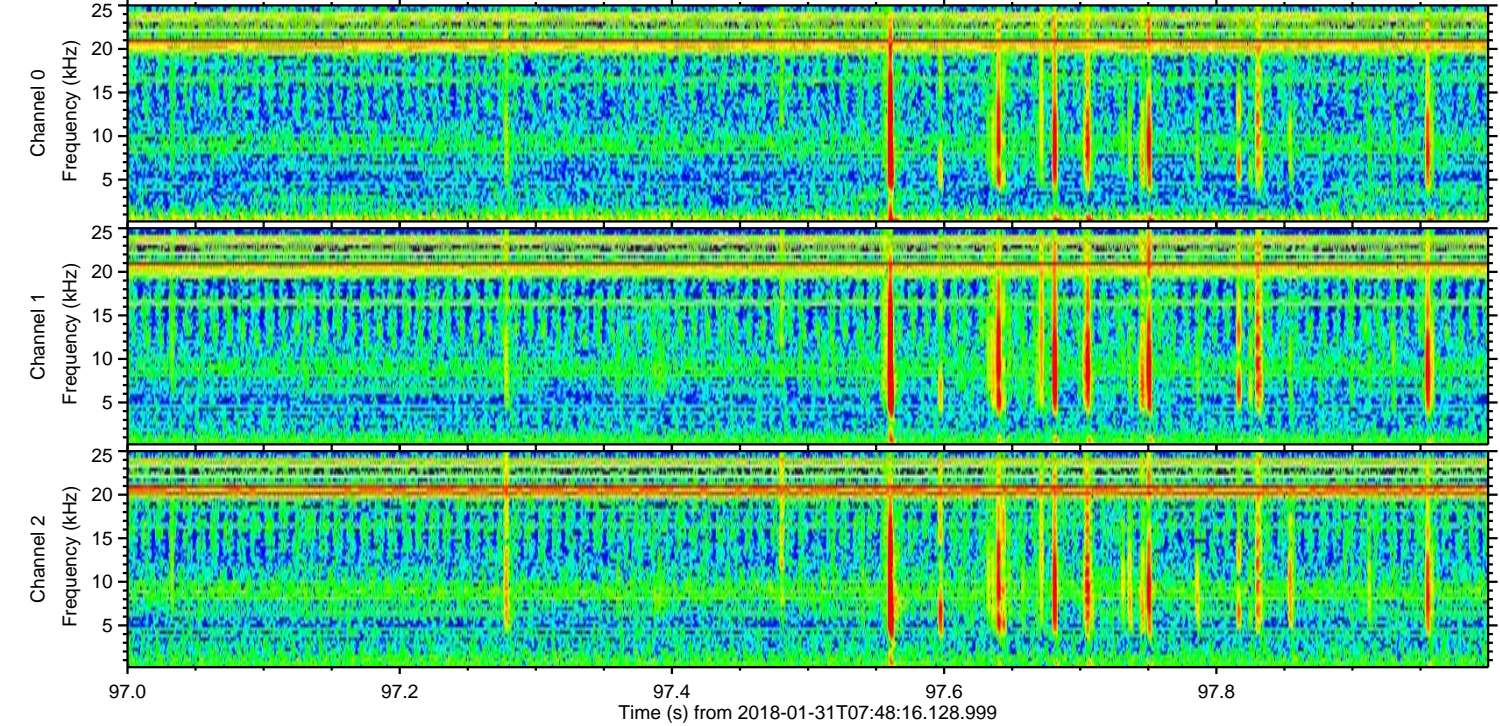
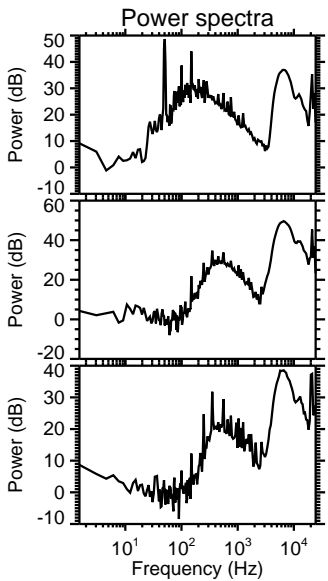
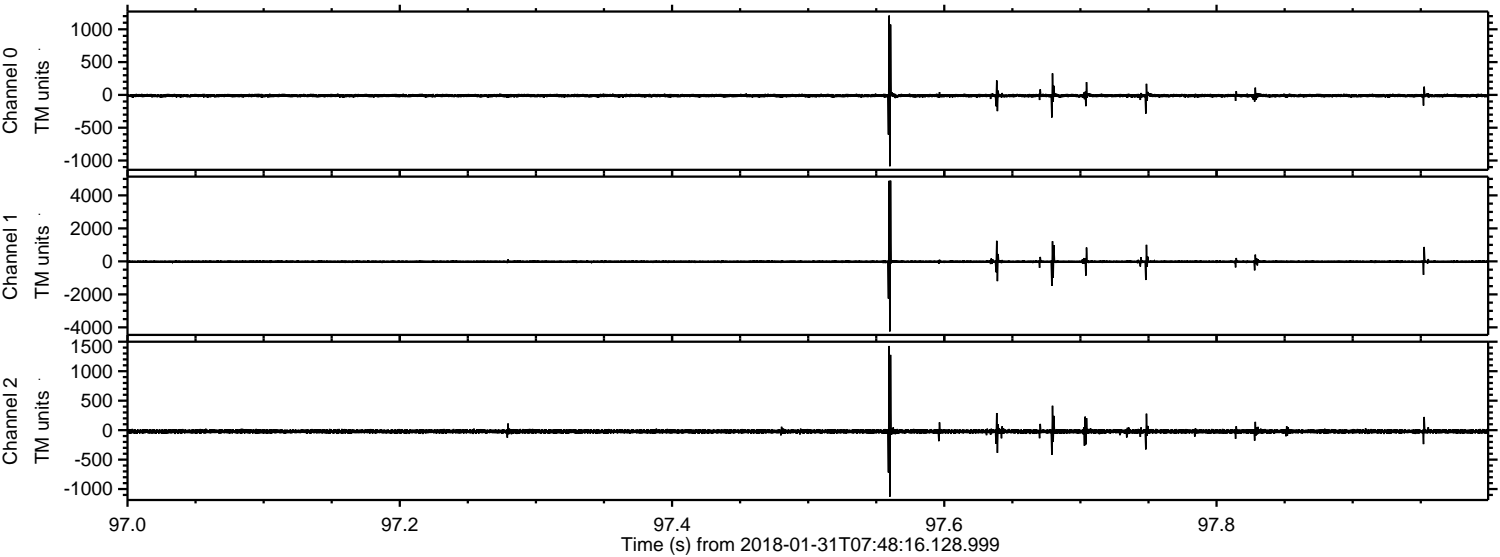


ELMAVAN 3D WAVEFORMS (Measured data sampled at 50 kHz) 51000 packets of 144 samples from 2018-01-31T07:48:16.128.999.

Processed Wed Jan 31 08:56:14 2018 by ELM ver.2012-10-06 from 001__elm20180131_074815__dat00.bin



Processed Wed Jan 31 08:56:22 2018 by ELM ver.2012-10-06 from 001__elm20180131_074815__dat00.bin

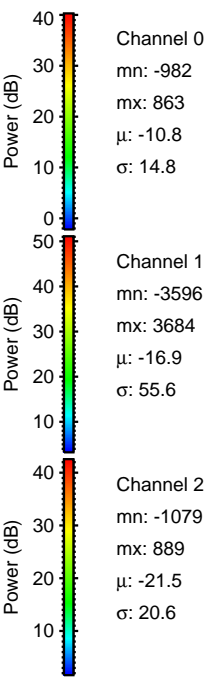
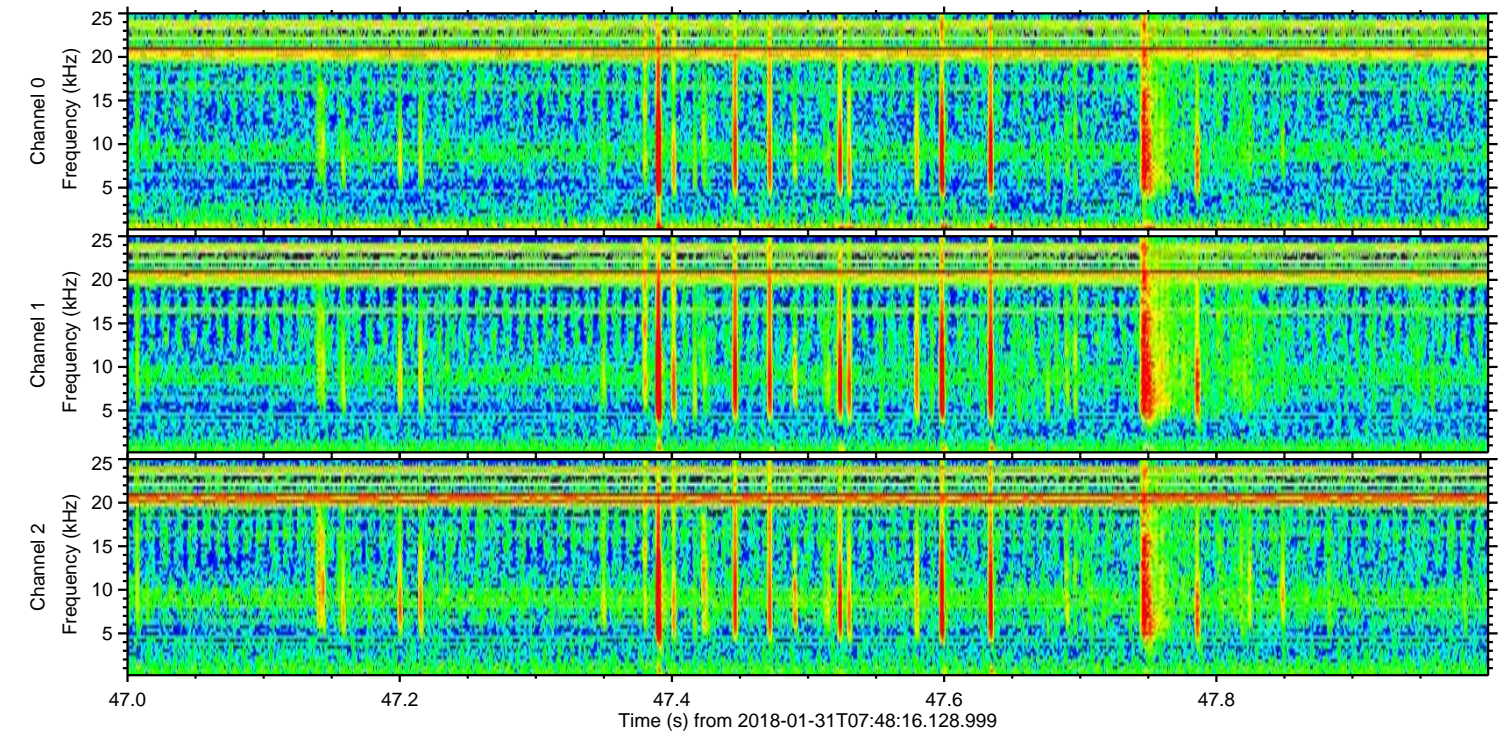
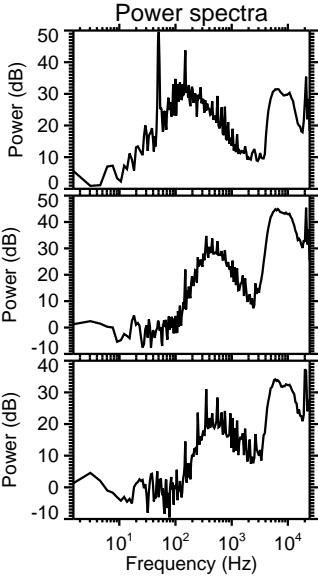
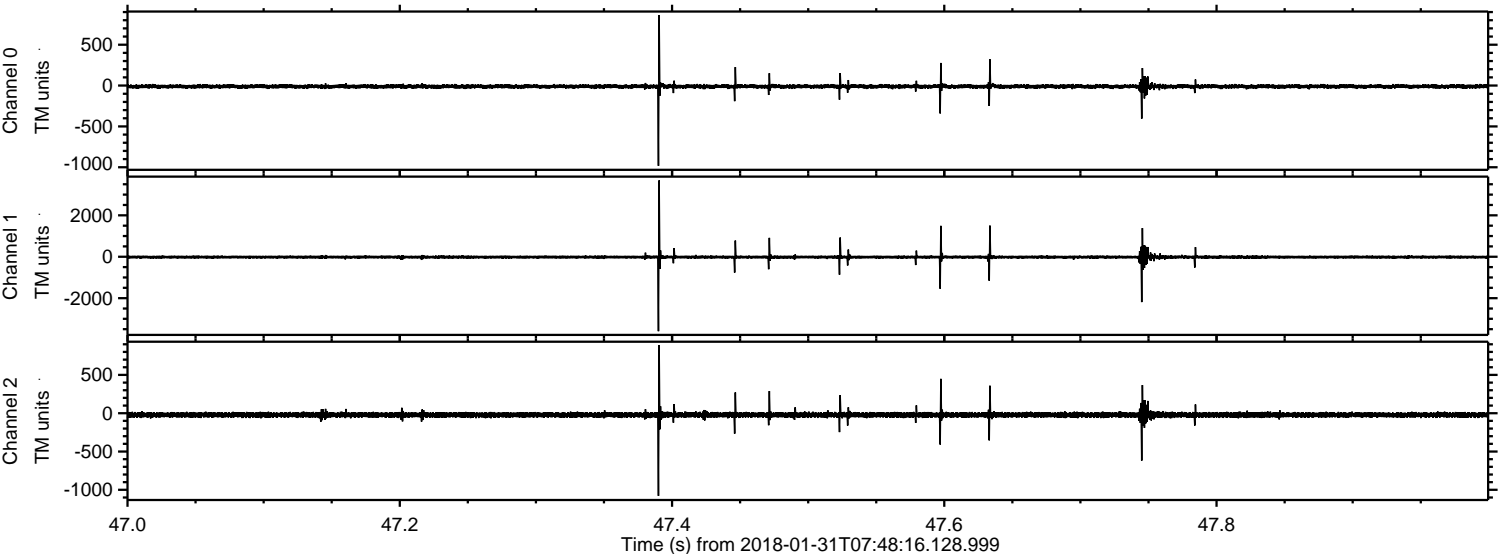


Channel 0
mn: -1087
mx: 1210
 μ : -10.8
 σ : 17.8

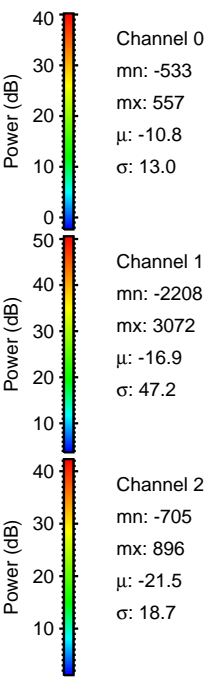
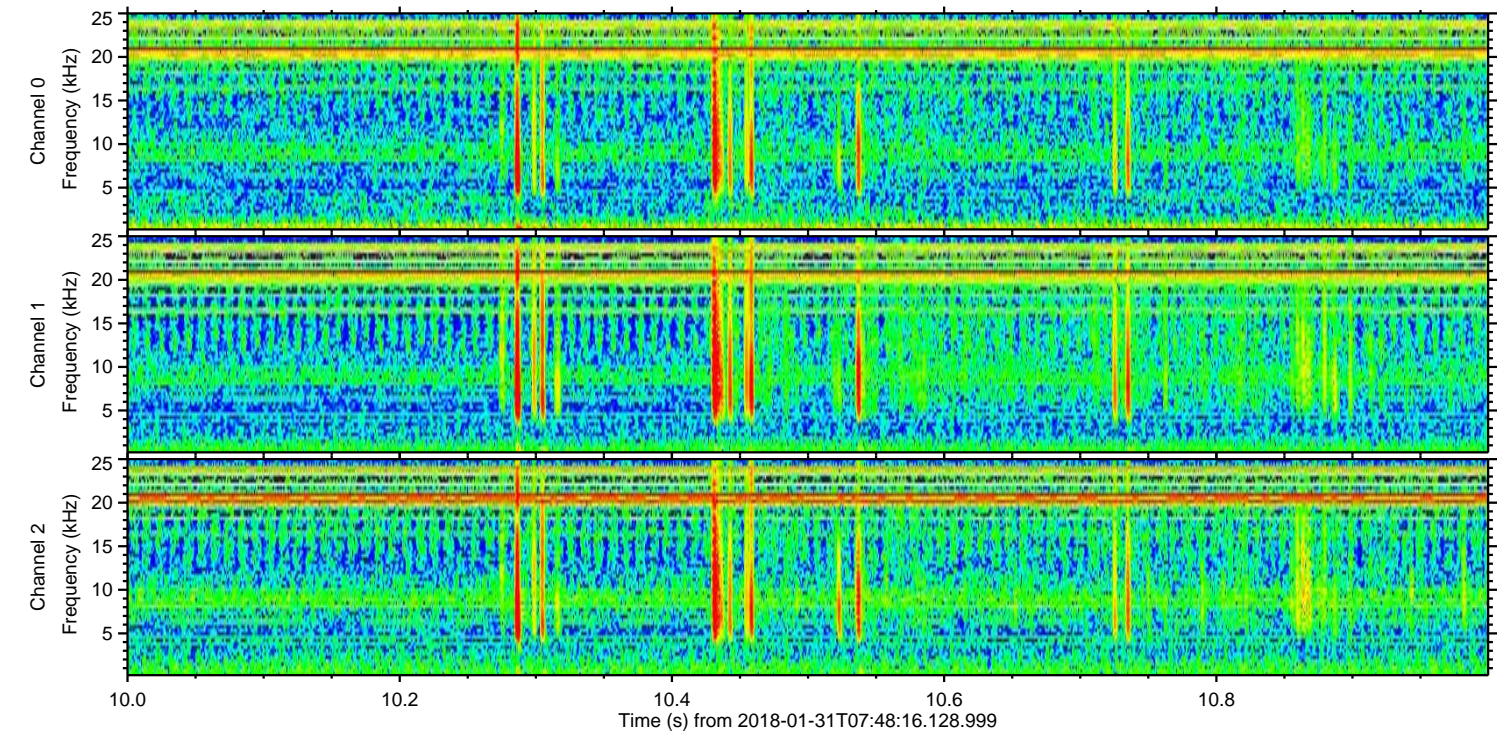
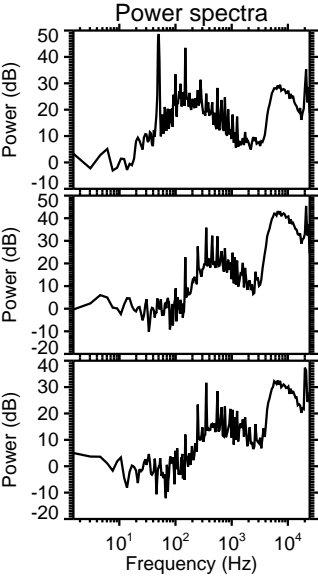
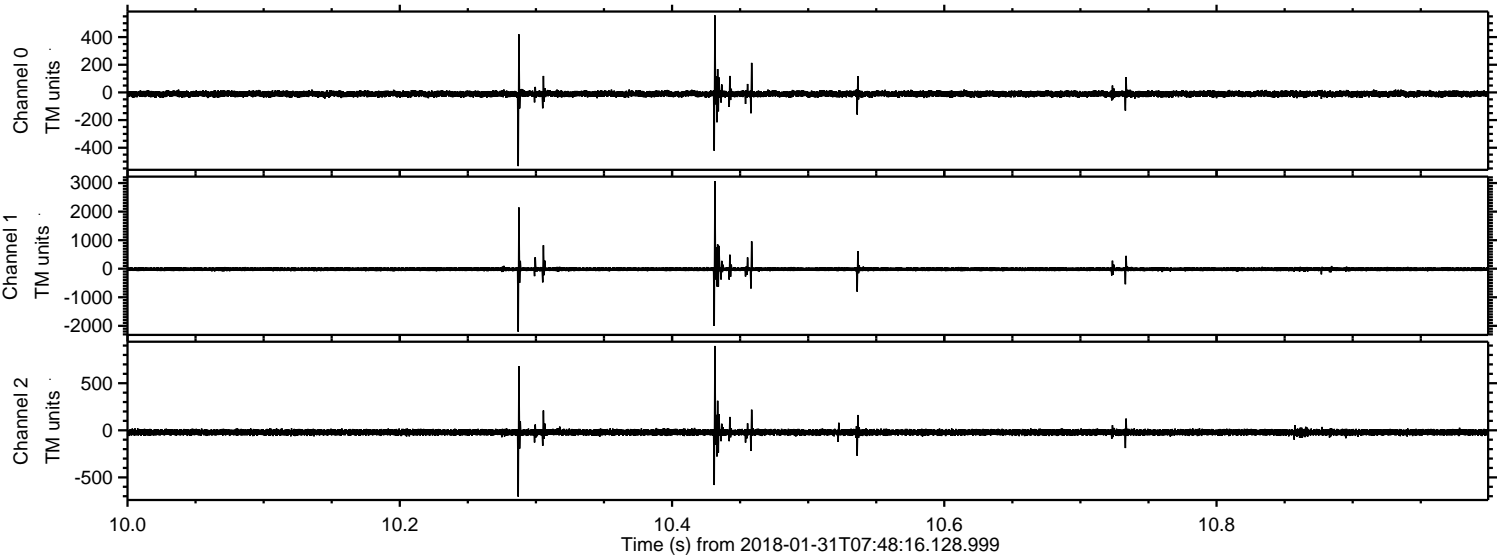
Channel 1
mn: -4244
mx: 4893
 μ : -16.9
 σ : 67.7

Channel 2
mn: -1129
mx: 1429
 μ : -21.4
 σ : 23.6

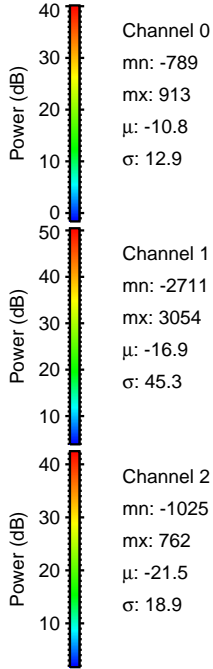
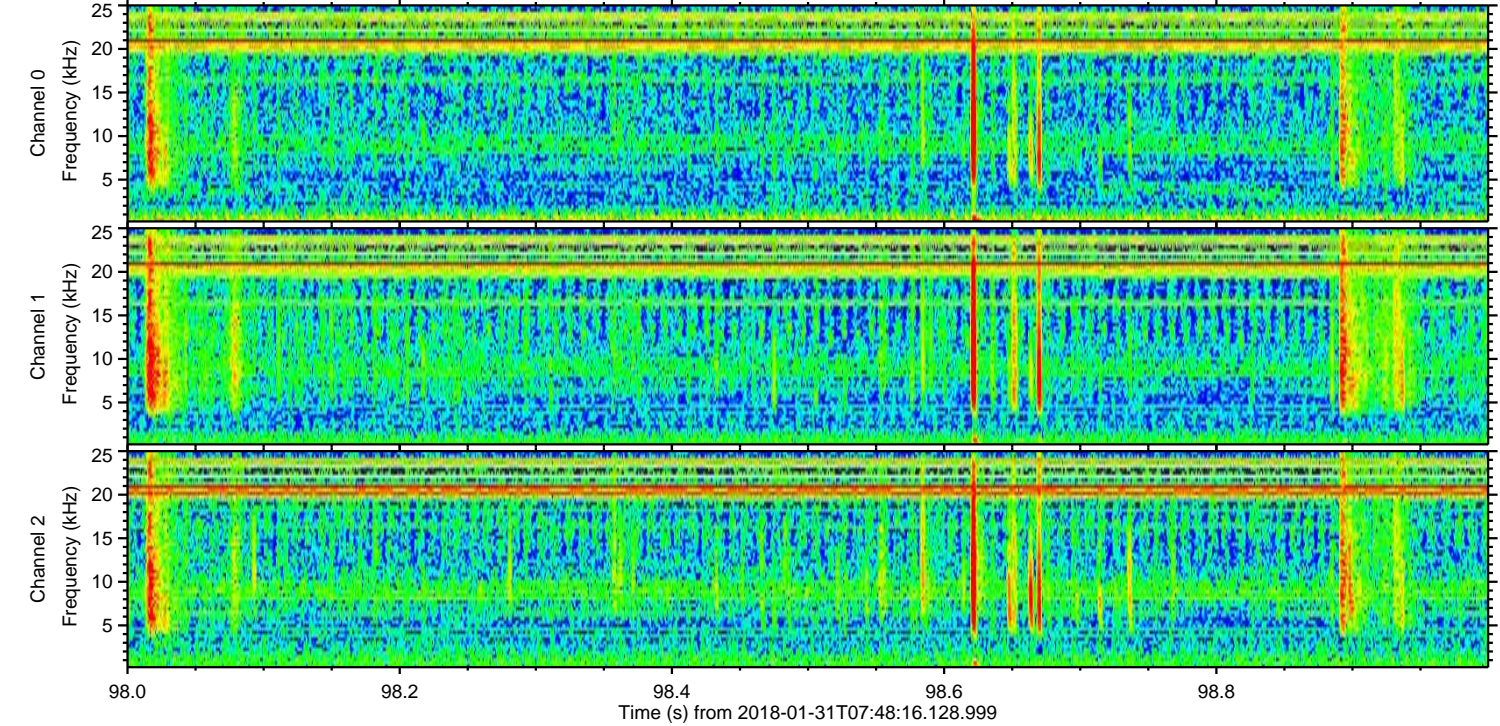
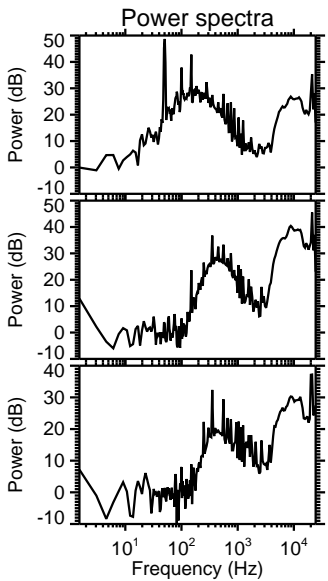
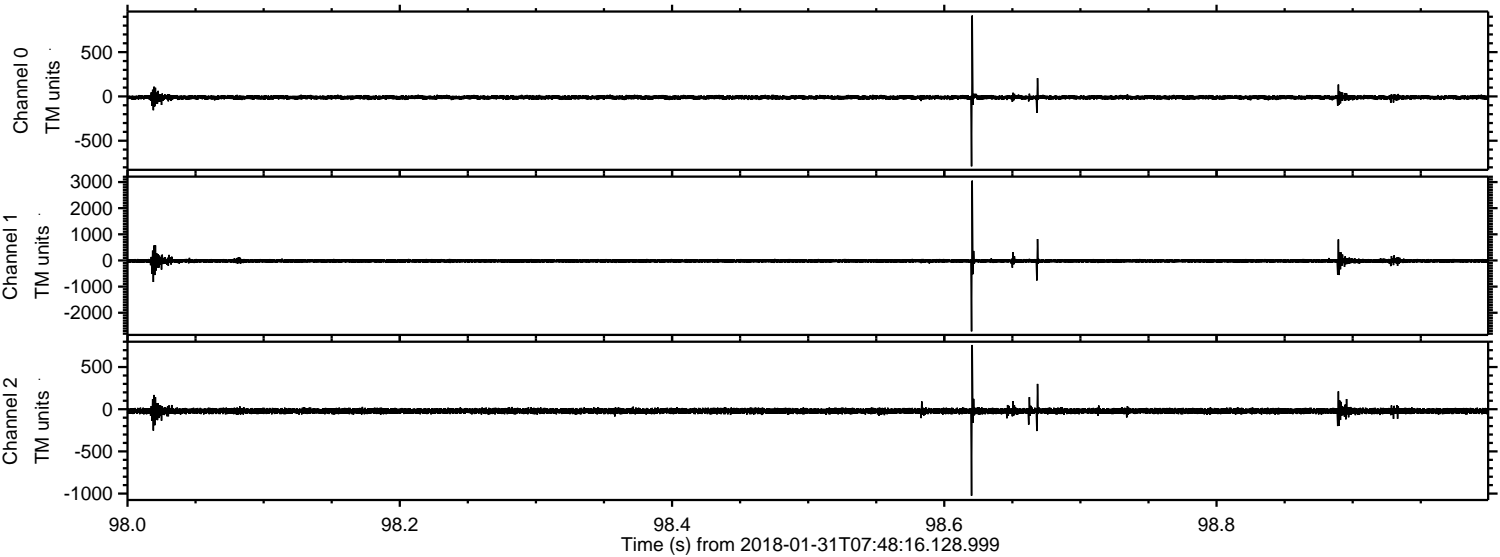
Processed Wed Jan 31 08:56:23 2018 by ELM ver.2012-10-06 from 001__elm20180131_074815__dat00.bin



Processed Wed Jan 31 08:56:24 2018 by ELM ver.2012-10-06 from 001__elm20180131_074815__dat00.bin

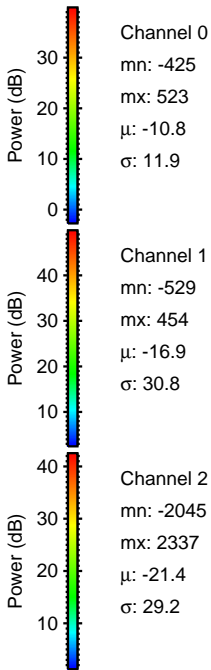
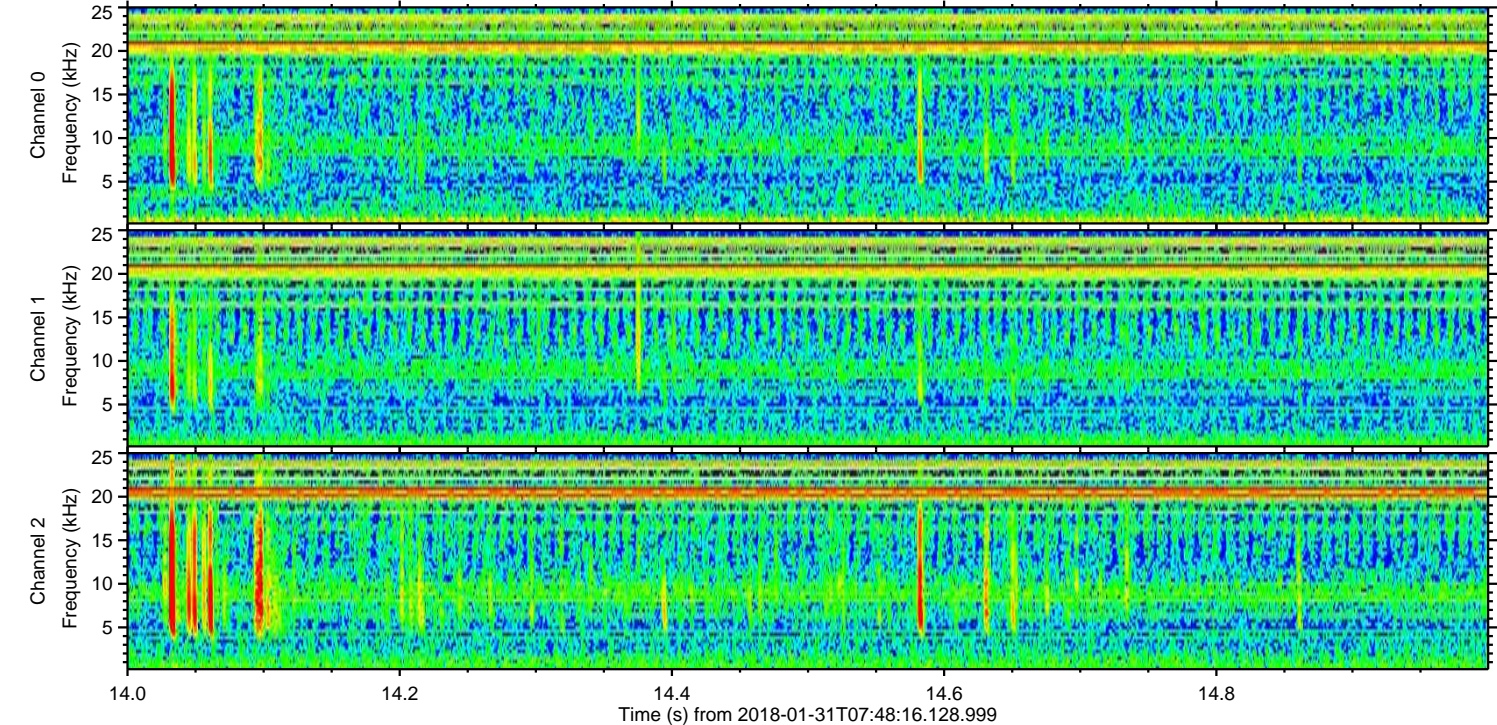
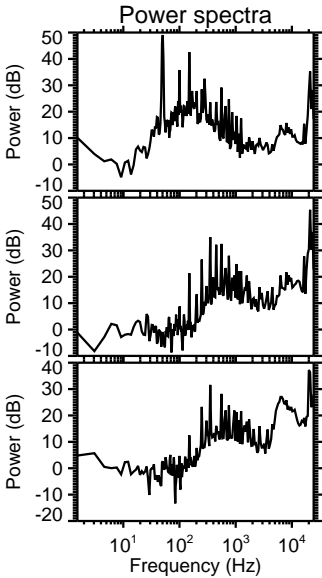
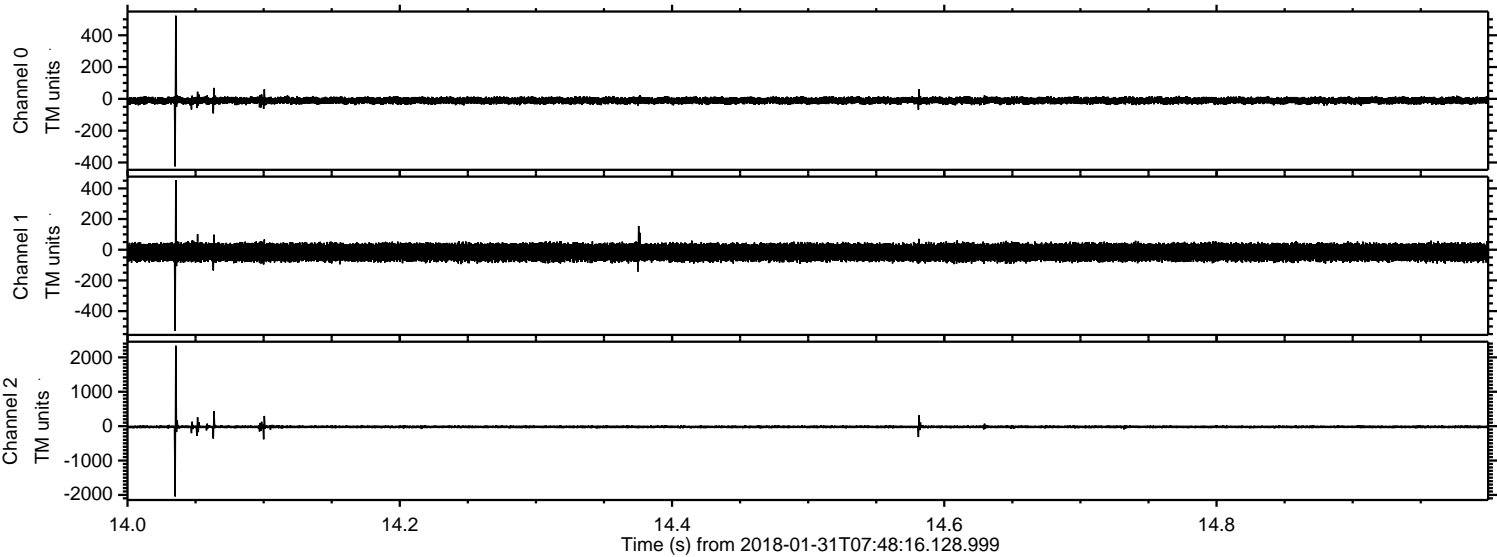


Processed Wed Jan 31 08:56:24 2018 by ELM ver.2012-10-06 from 001__elm20180131_074815__dat00.bin

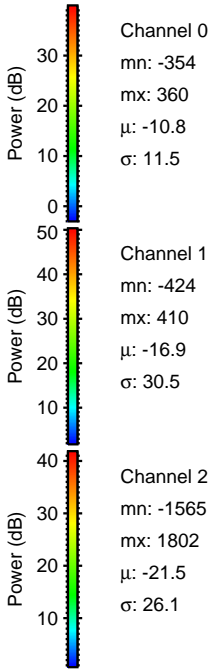
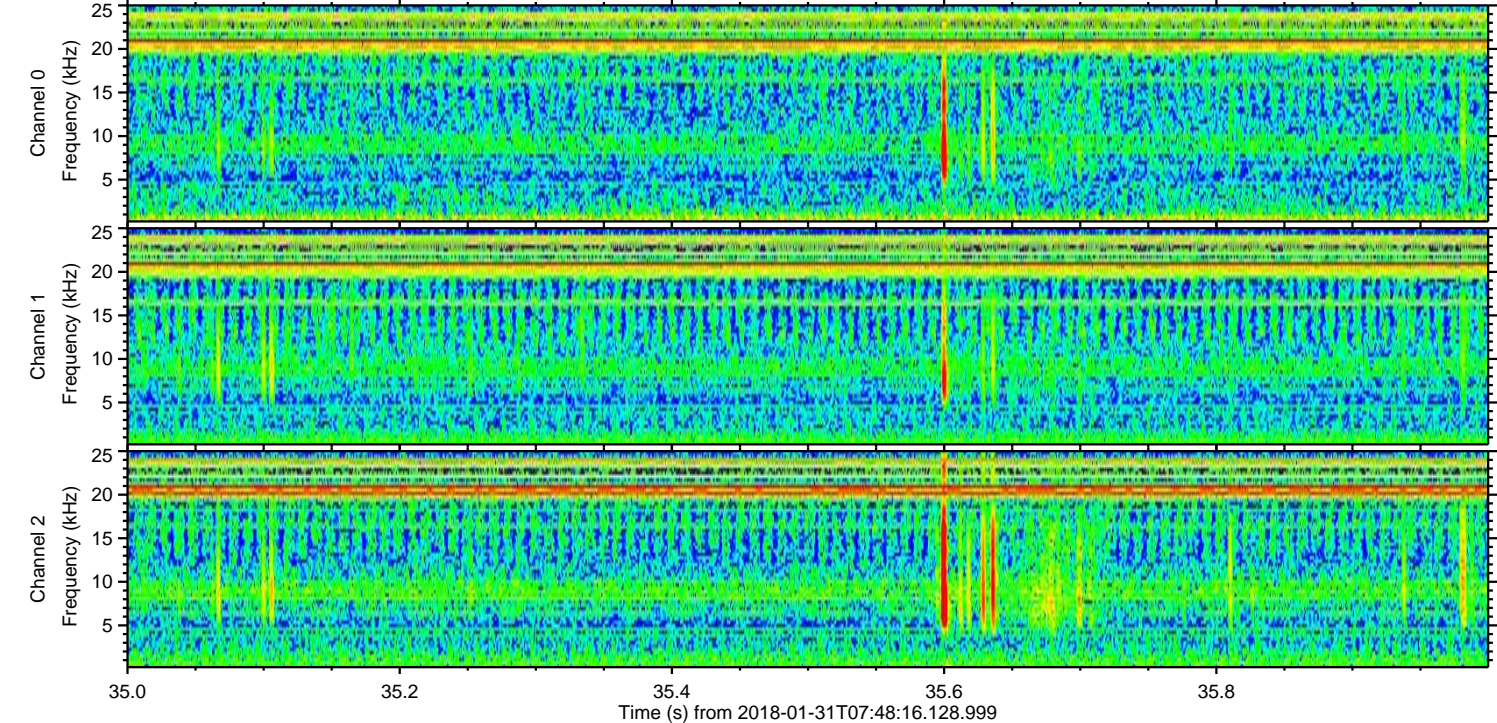
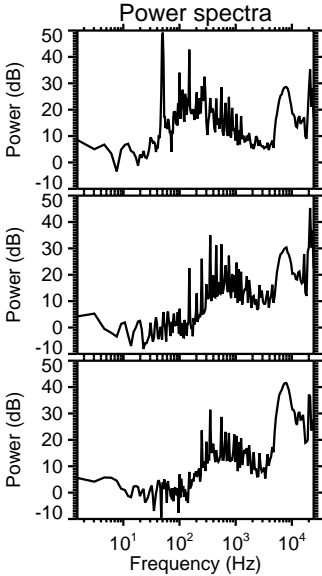
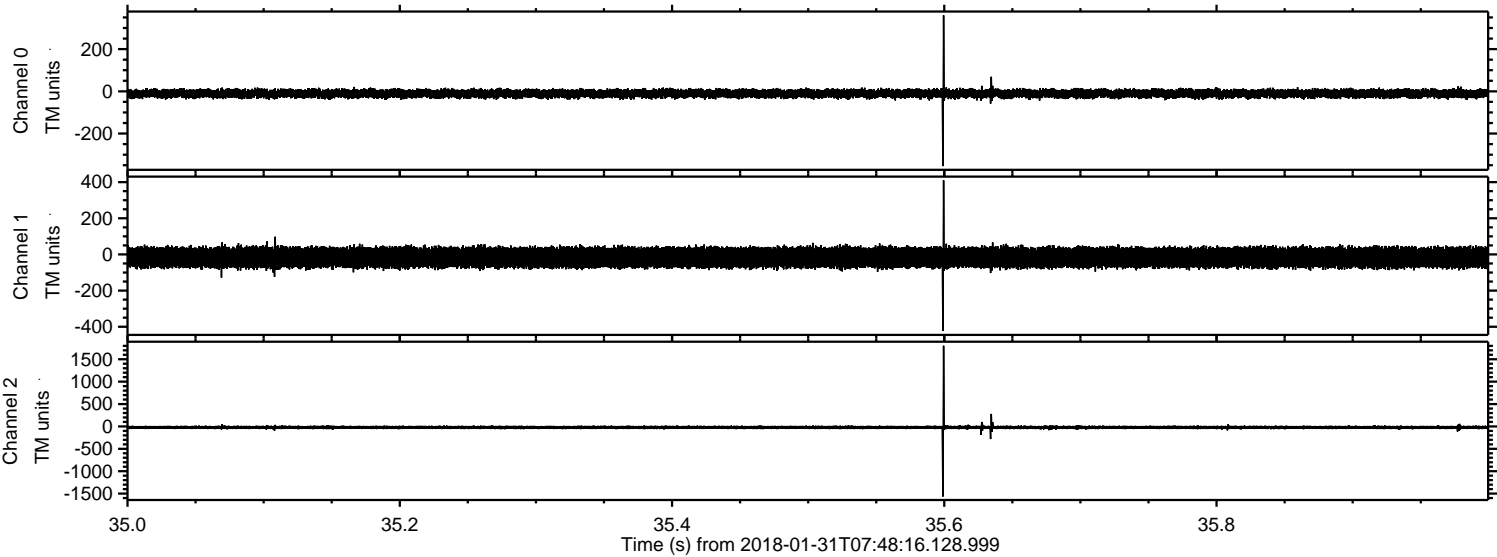


ELMAVAN 3D WAVEFORMS (Measured data sampled at 50 kHz) 51000 packets of 144 samples from 2018-01-31T07:48:16.128.999. Part 15/147

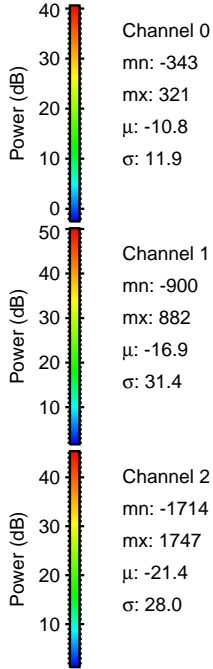
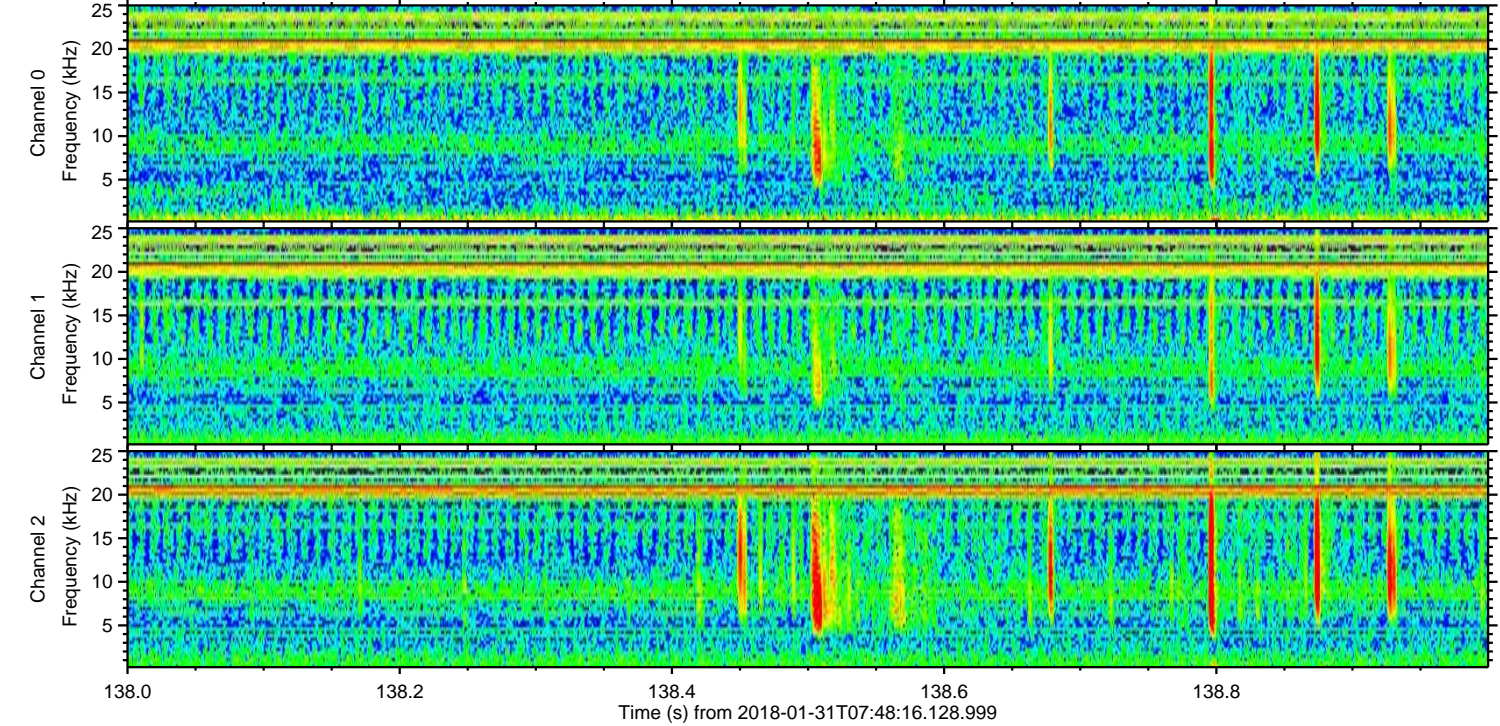
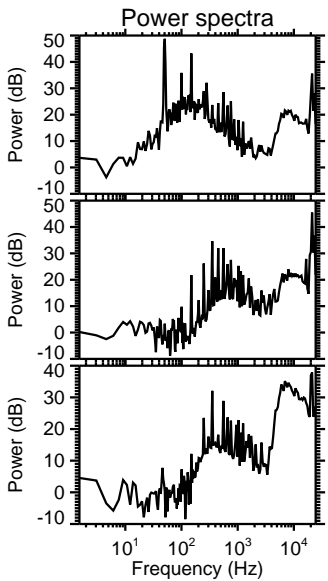
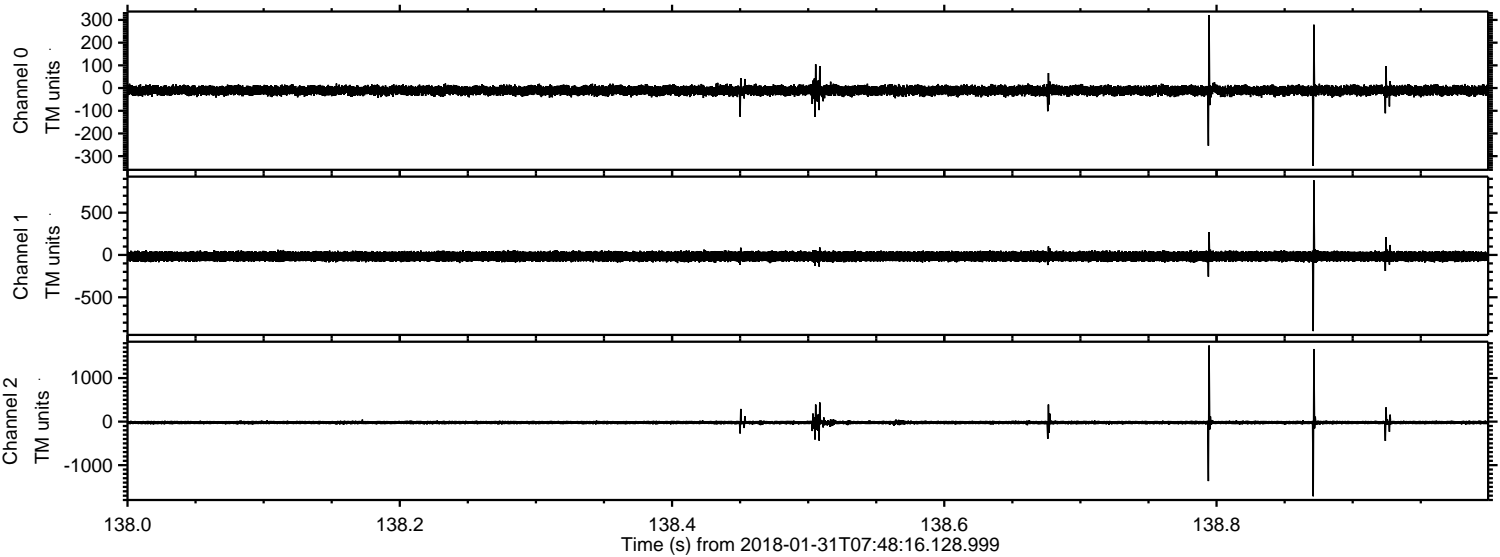
Processed Wed Jan 31 08:56:25 2018 by ELM ver.2012-10-06 from 001__elm20180131_074815__dat00.bin



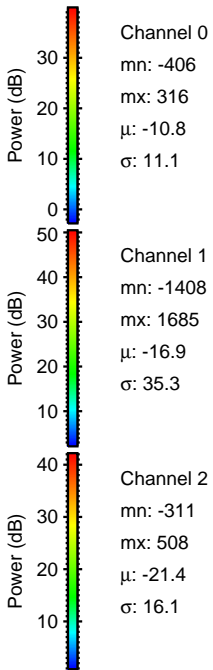
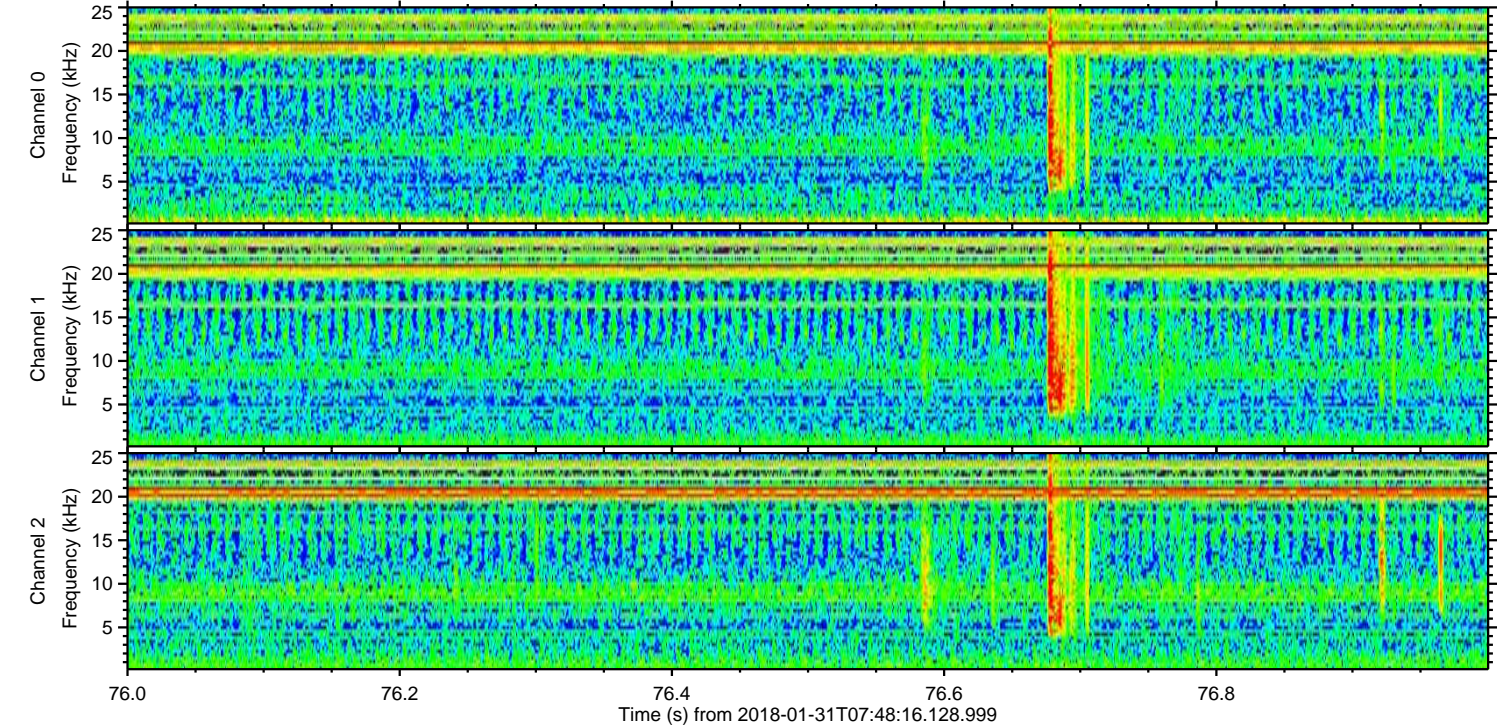
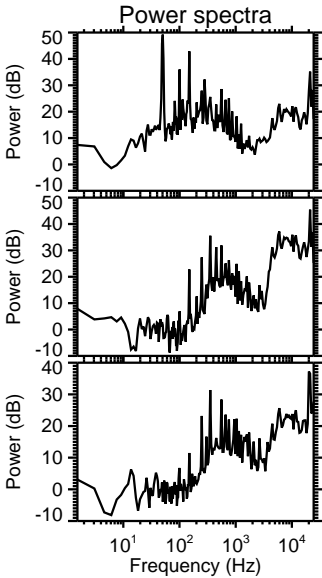
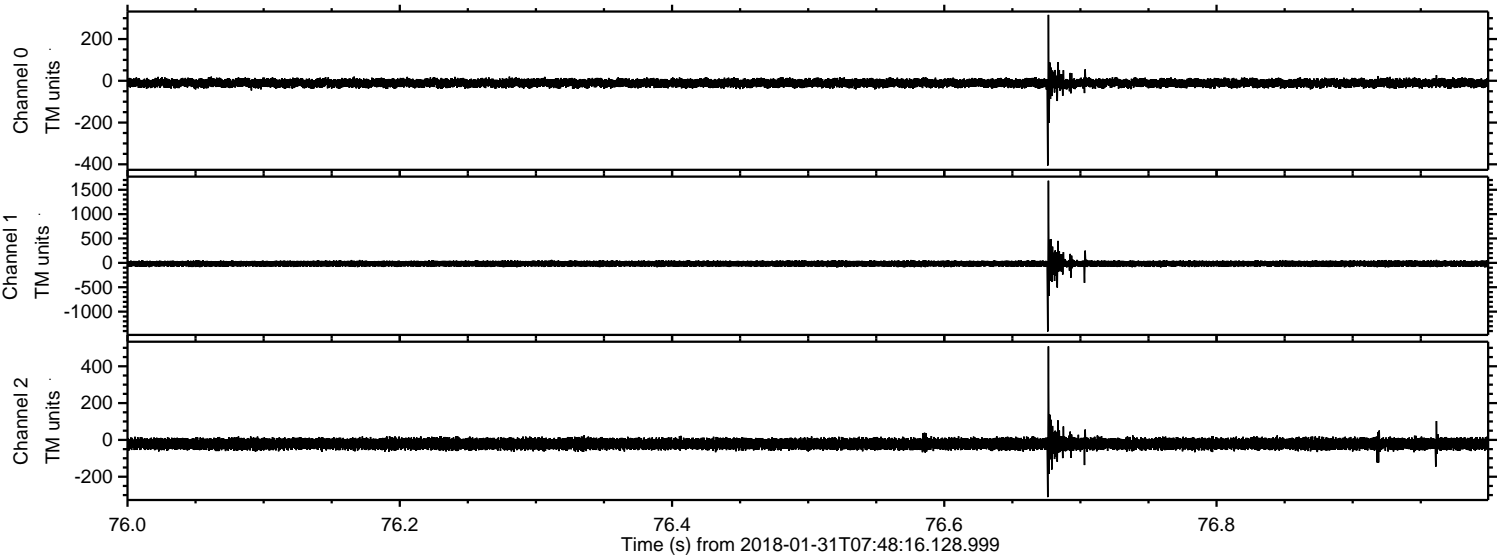
Processed Wed Jan 31 08:56:26 2018 by ELM ver.2012-10-06 from 001__elm20180131_074815__dat00.bin



Processed Wed Jan 31 08:56:27 2018 by ELM ver.2012-10-06 from 001__elm20180131_074815__dat00.bin

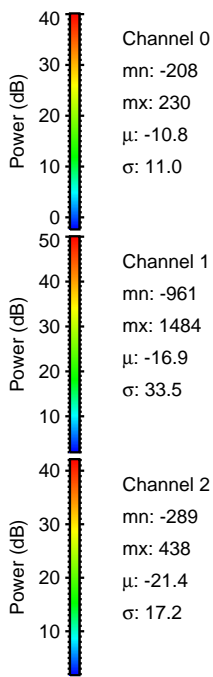
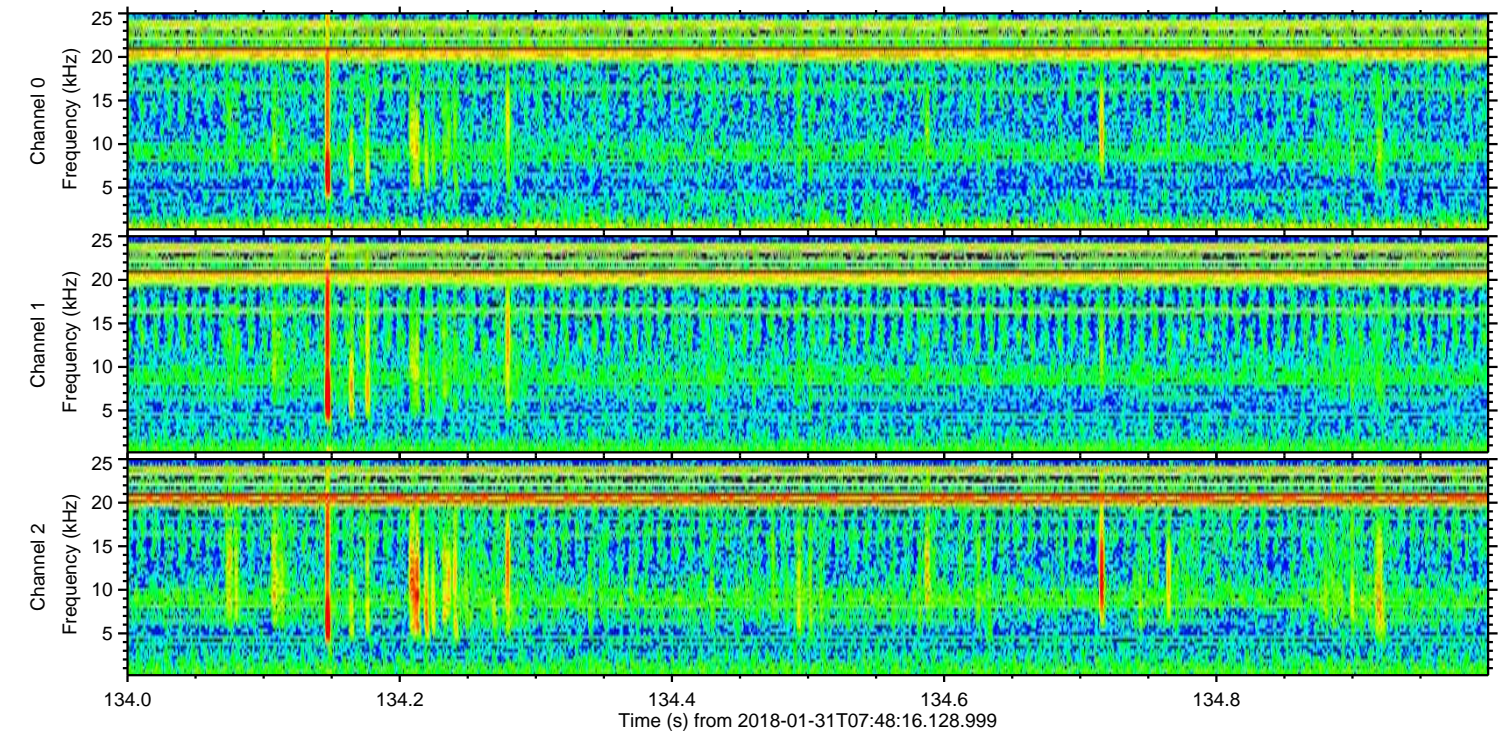
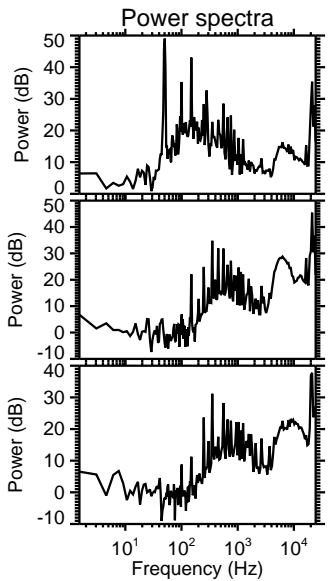
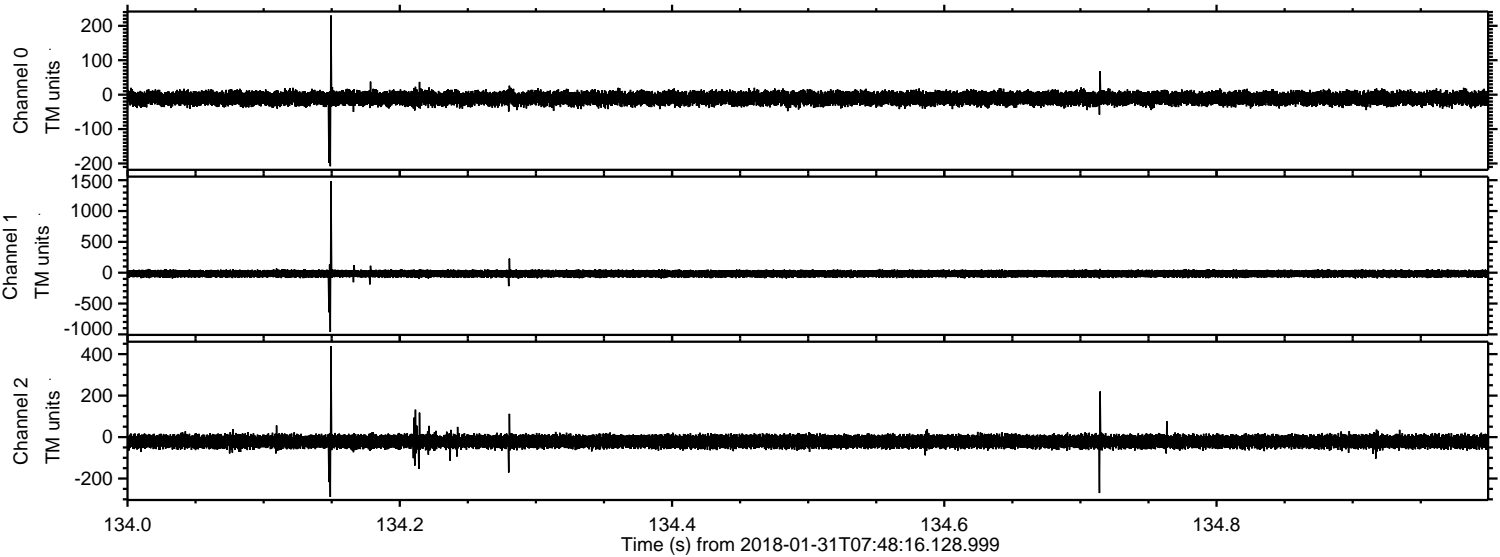


Processed Wed Jan 31 08:56:28 2018 by ELM ver.2012-10-06 from 001__elm20180131_074815__dat00.bin



ELMAVAN 3D WAVEFORMS (Measured data sampled at 50 kHz) 51000 packets of 144 samples from 2018-01-31T07:48:16.128.999. Part 135/147

Processed Wed Jan 31 08:56:28 2018 by ELM ver.2012-10-06 from 001__elm20180131_074815__dat00.bin



Channel 0
mn: -208
mx: 230
 μ : -10.8
 σ : 11.0

Channel 1
mn: -961
mx: 1484
 μ : -16.9
 σ : 33.5

Channel 2
mn: -289
mx: 438
 μ : -21.4
 σ : 17.2

Processed Wed Jan 31 08:56:29 2018 by ELM ver.2012-10-06 from 001__elm20180131_074815__dat00.bin

