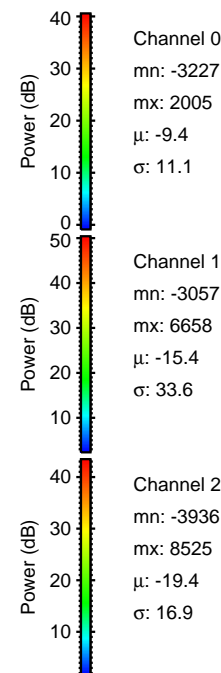
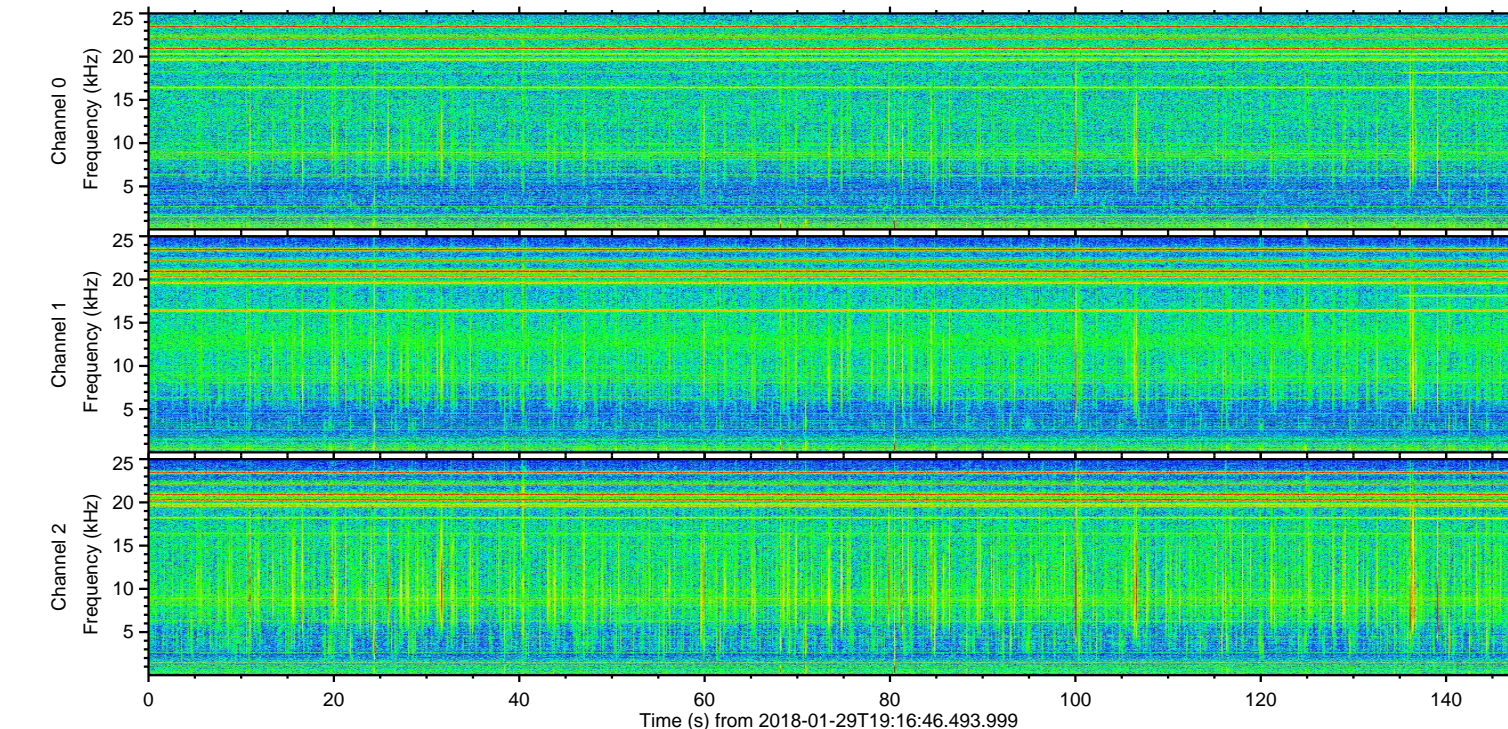
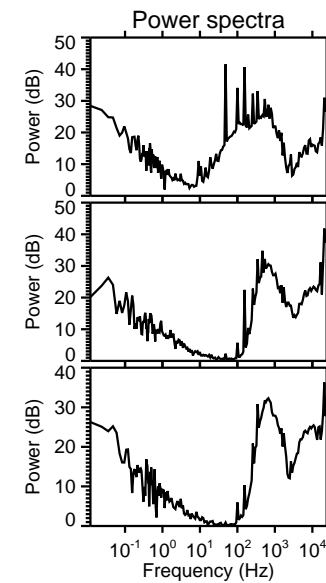
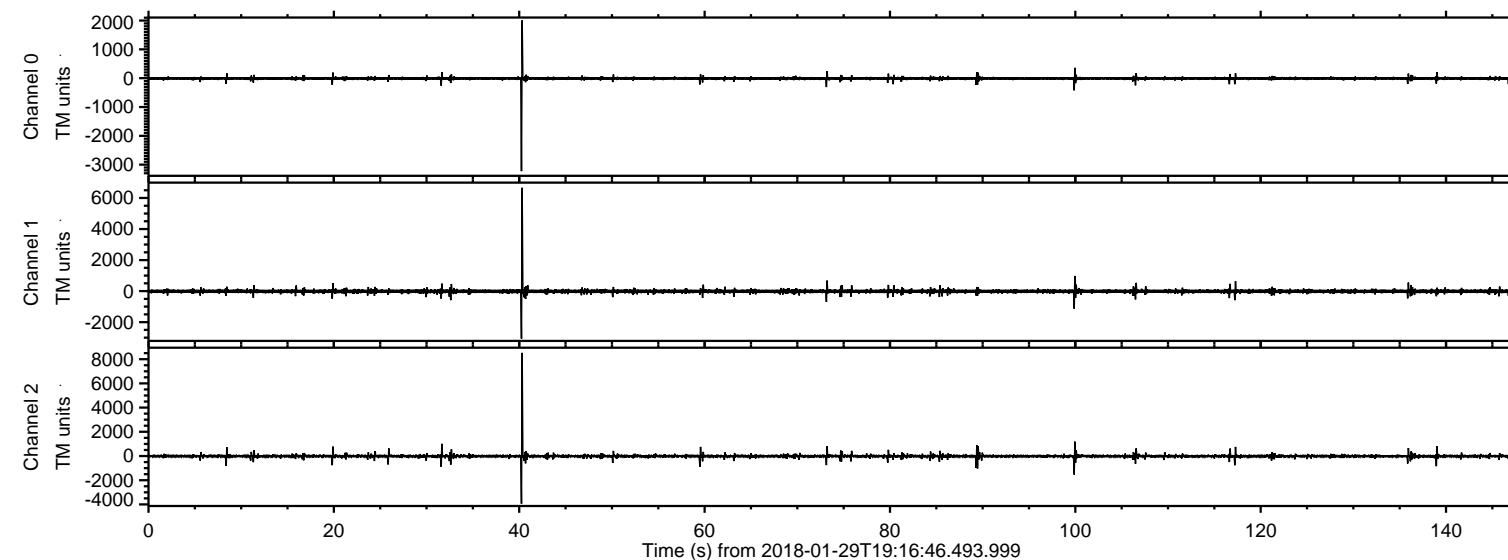


# ELMAVAN 3D WAVEFORMS (Measured data sampled at 50 kHz) 51000 packets of 144 samples from 2018-01-29T19:16:46.493.999.

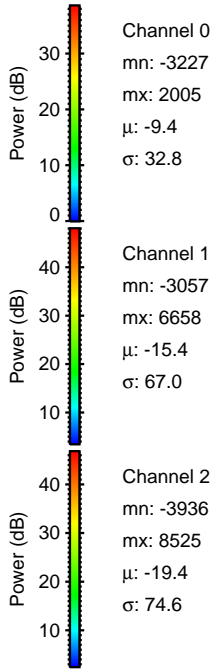
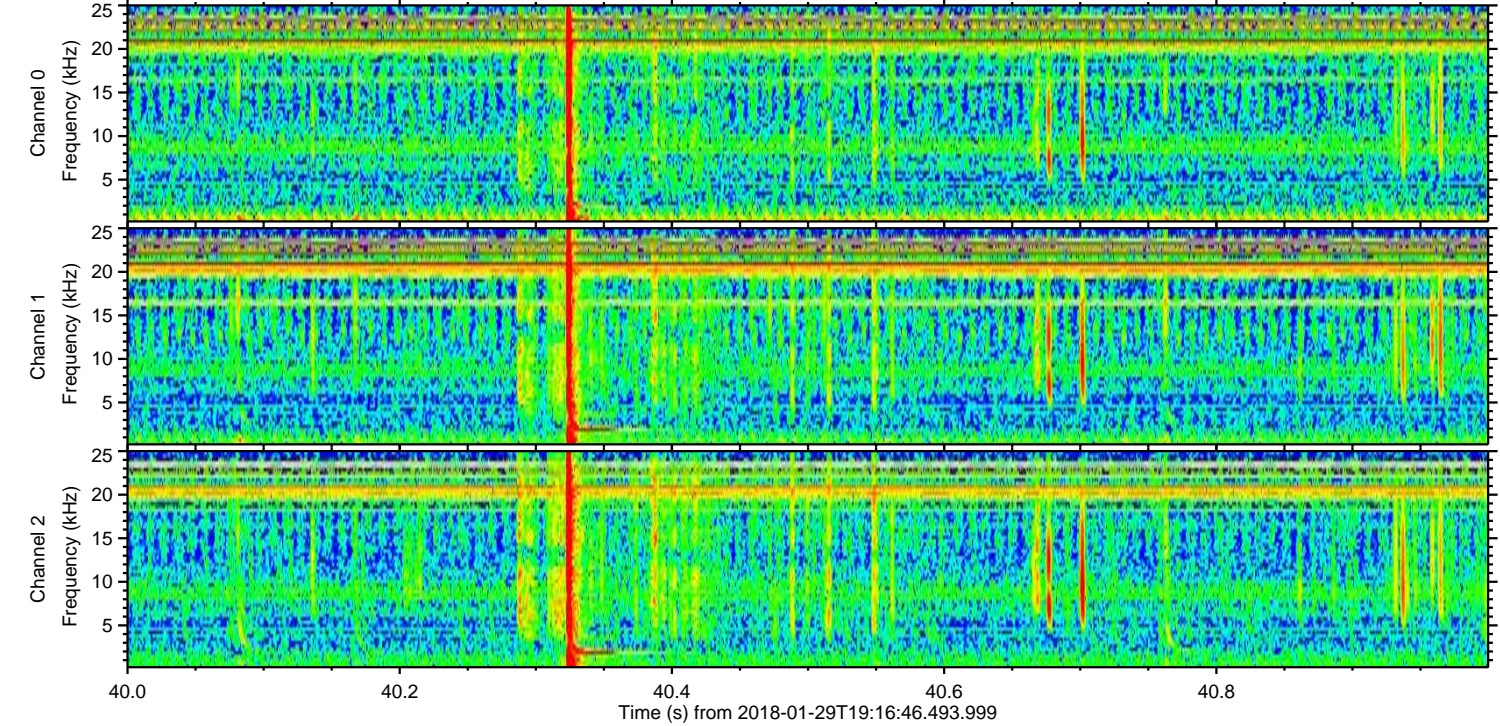
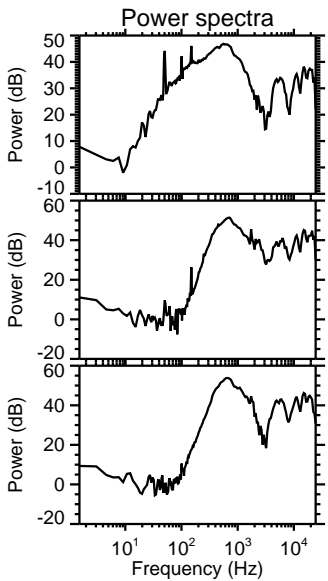
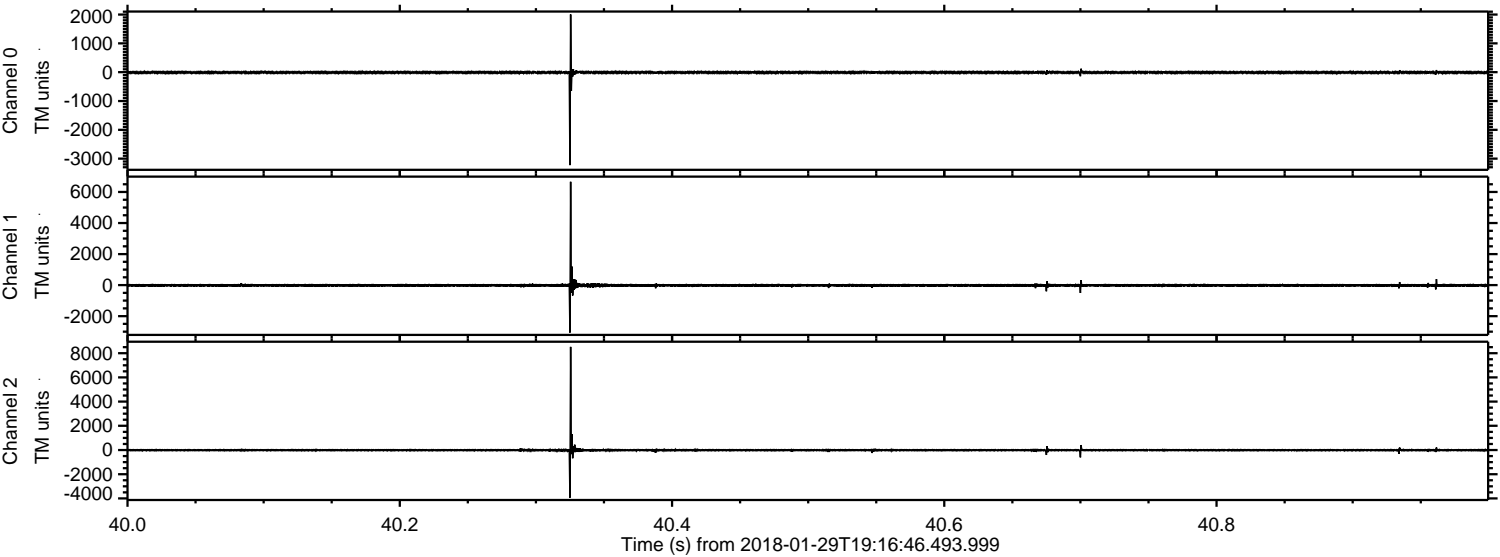
Processed Mon Jan 29 20:24:10 2018 by ELM ver.2012-10-06 from 001\_\_elm20180129\_191645\_\_dat00.bin





ELMAVAN 3D WAVEFORMS (Measured data sampled at 50 kHz) 51000 packets of 144 samples from 2018-01-29T19:16:46.493.999. Part 41/147

Processed Mon Jan 29 20:24:18 2018 by ELM ver.2012-10-06 from 001\_\_elm20180129\_191645\_\_dat00.bin



Channel 0  
mn: -3227  
mx: 2005  
 $\mu$ : -9.4  
 $\sigma$ : 32.8

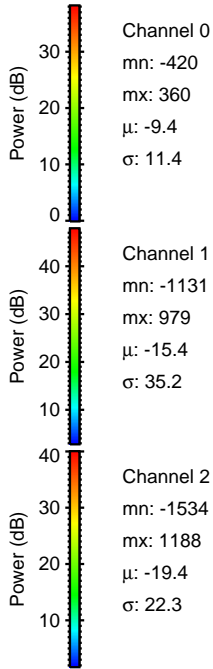
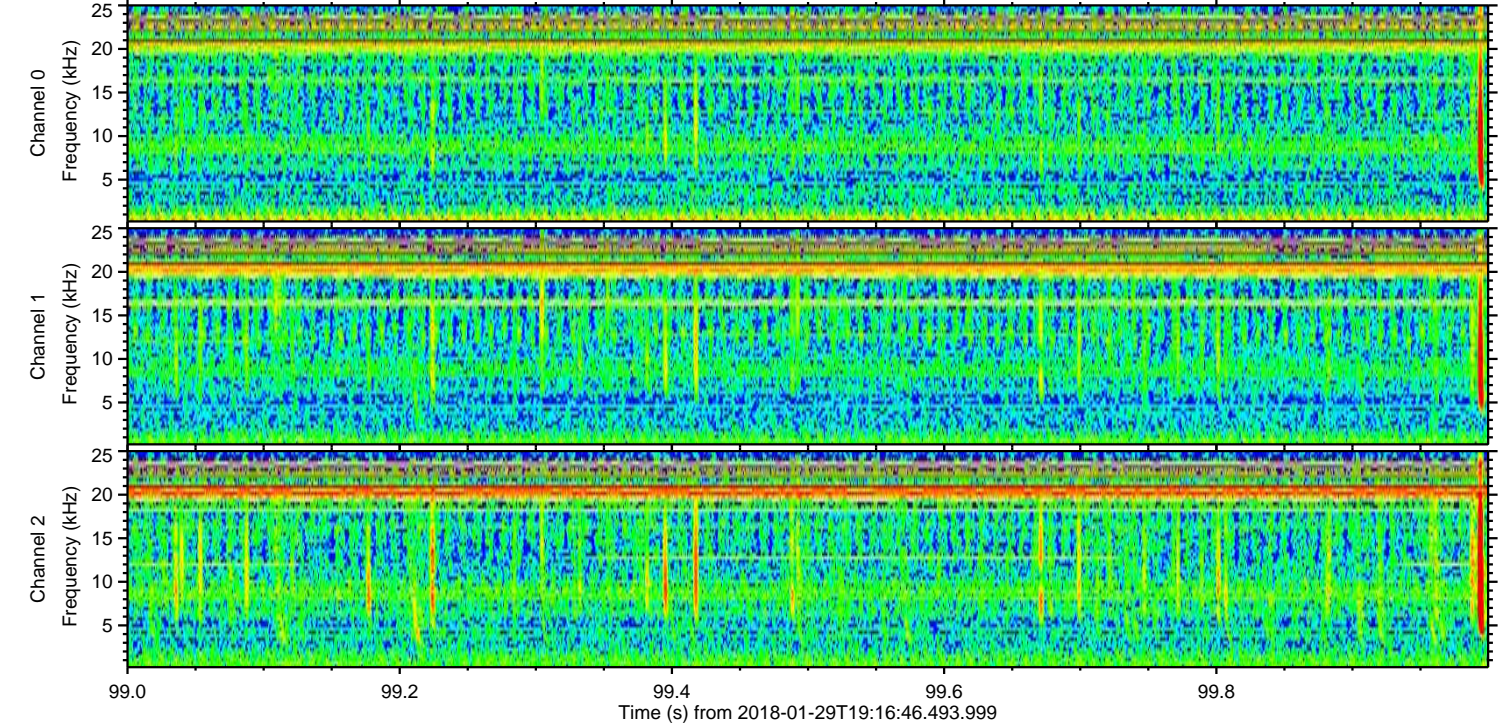
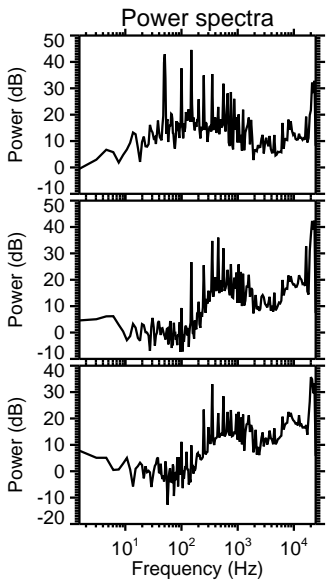
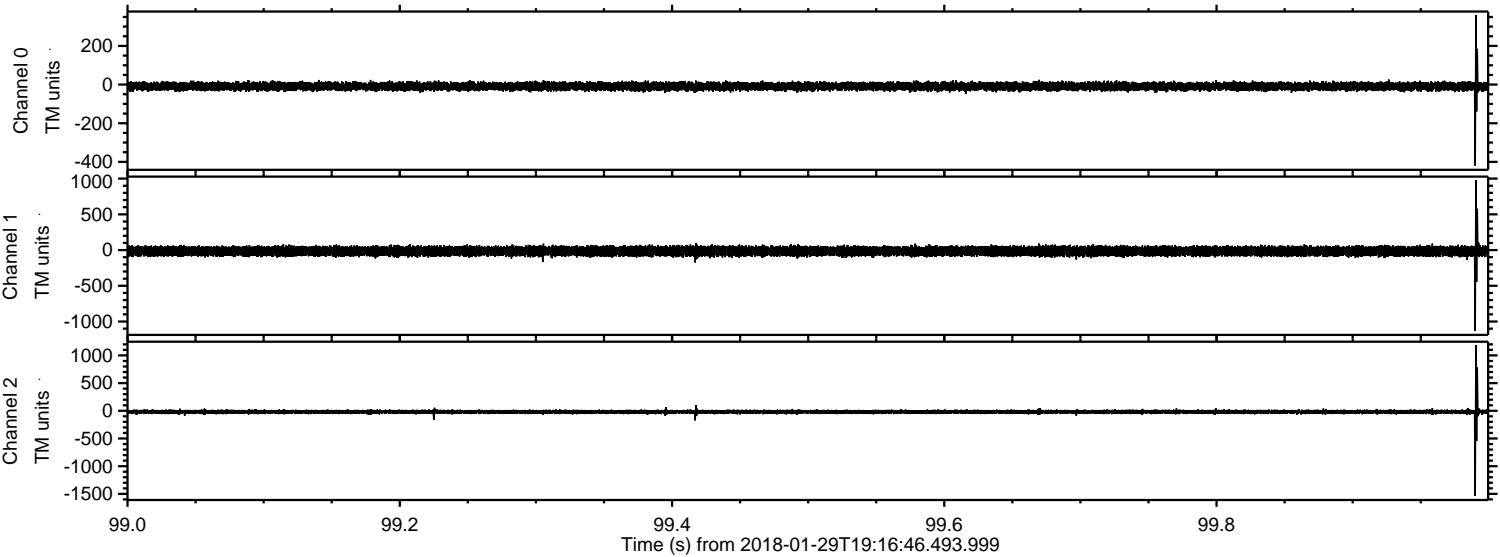
Channel 1  
mn: -3057  
mx: 6658  
 $\mu$ : -15.4  
 $\sigma$ : 67.0

Channel 2  
mn: -3936  
mx: 8525  
 $\mu$ : -19.4  
 $\sigma$ : 74.6



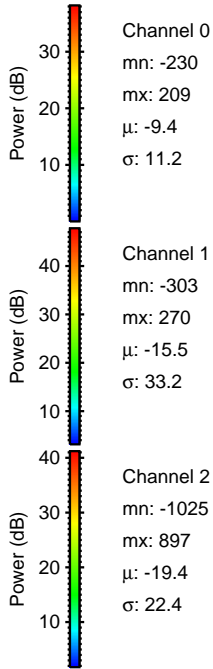
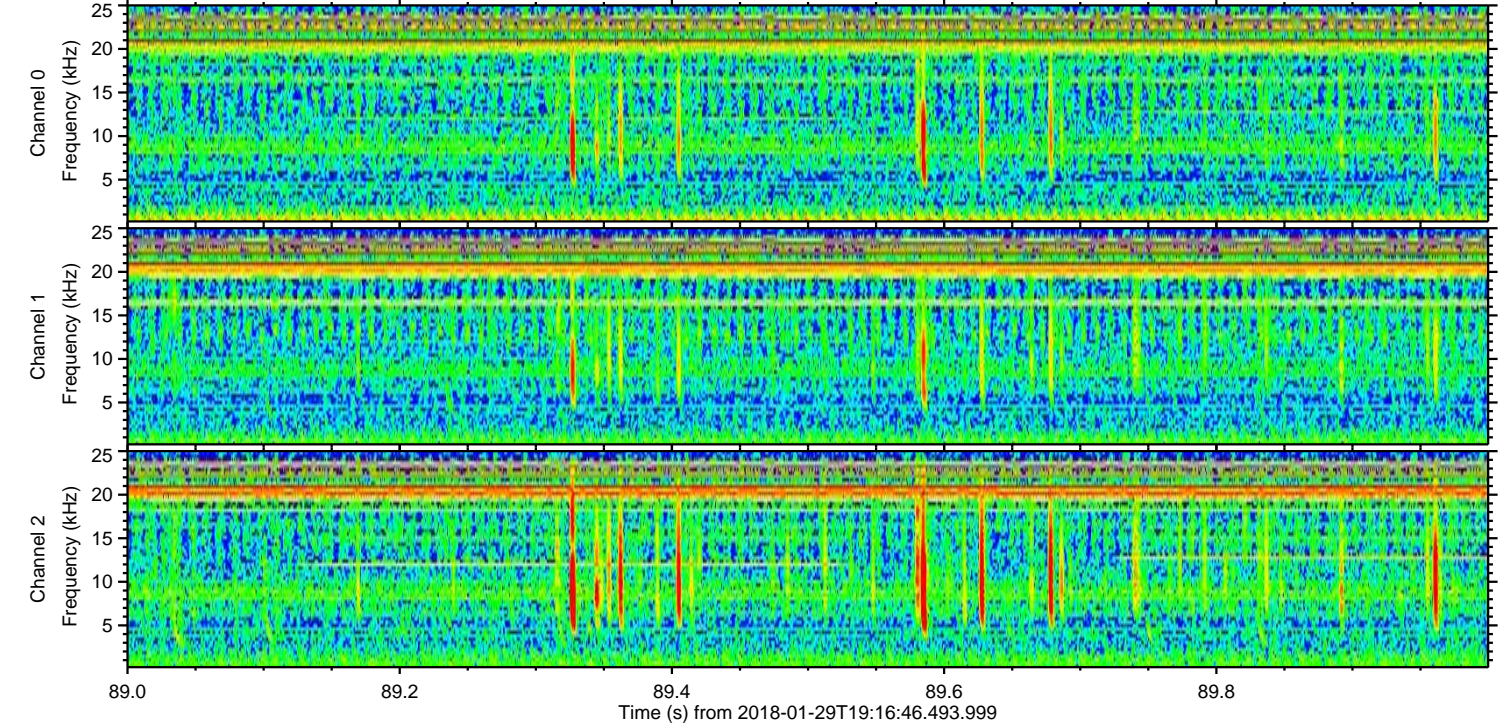
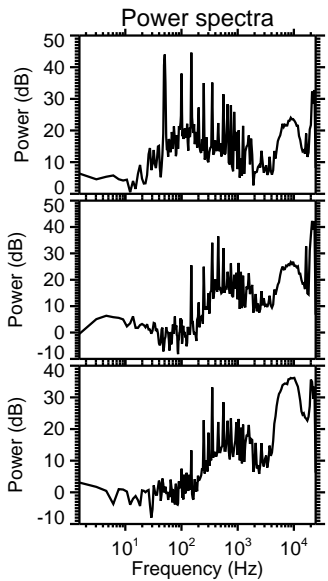
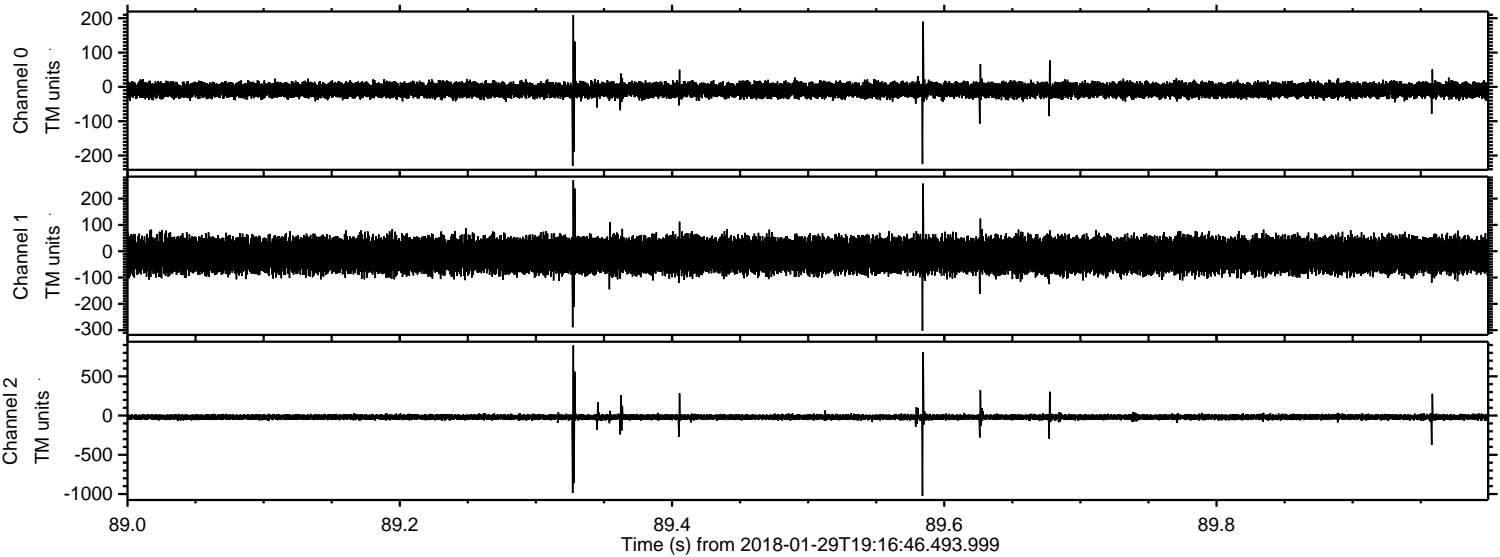
ELMAVAN 3D WAVEFORMS (Measured data sampled at 50 kHz) 51000 packets of 144 samples from 2018-01-29T19:16:46.493.999. Part 100/147

Processed Mon Jan 29 20:24:19 2018 by ELM ver.2012-10-06 from 001\_\_elm20180129\_191645\_\_dat00.bin



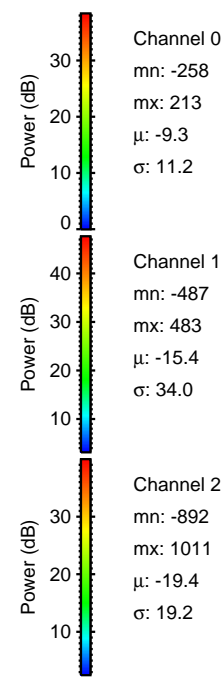
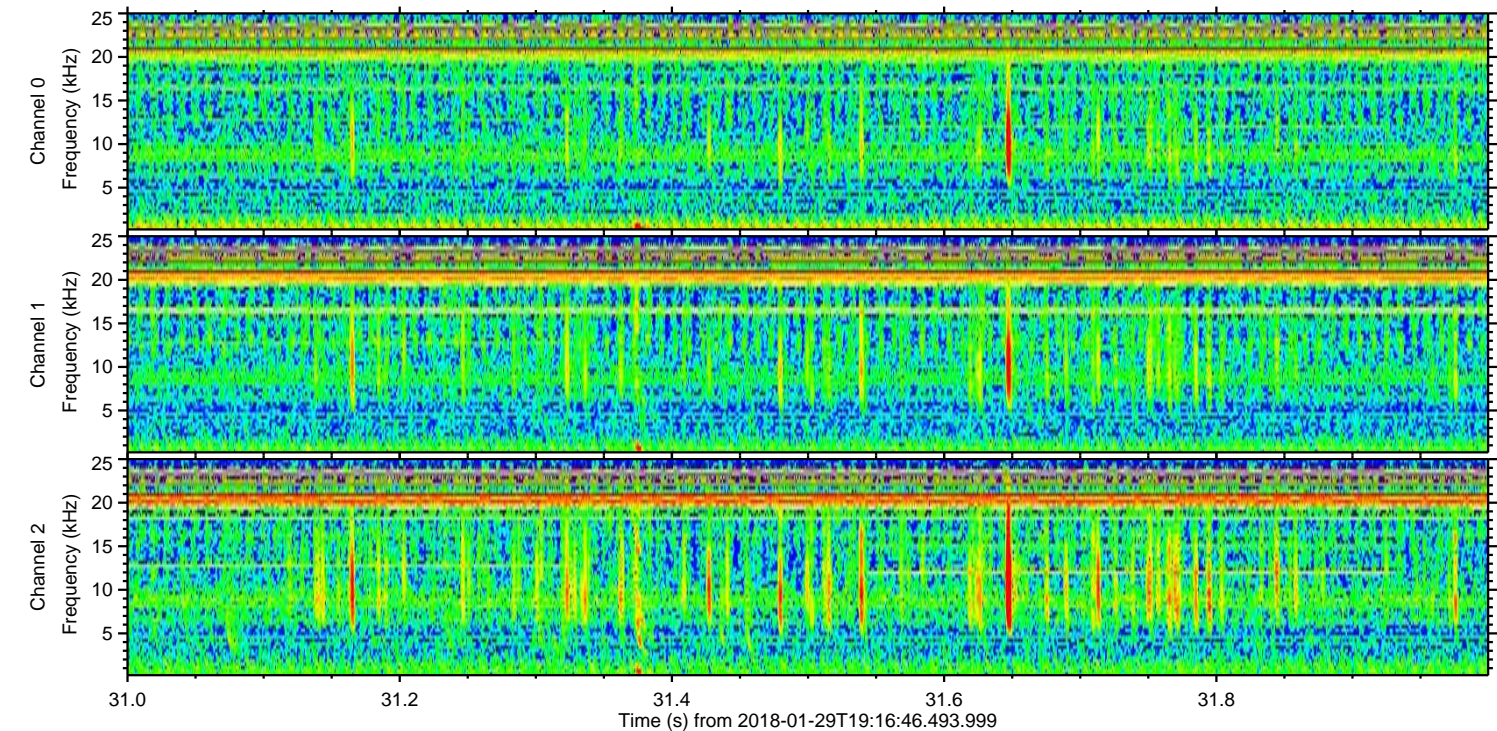
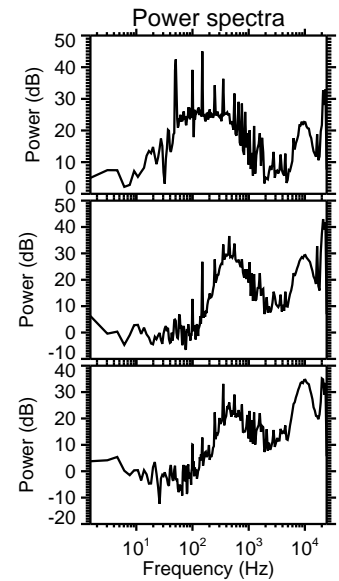
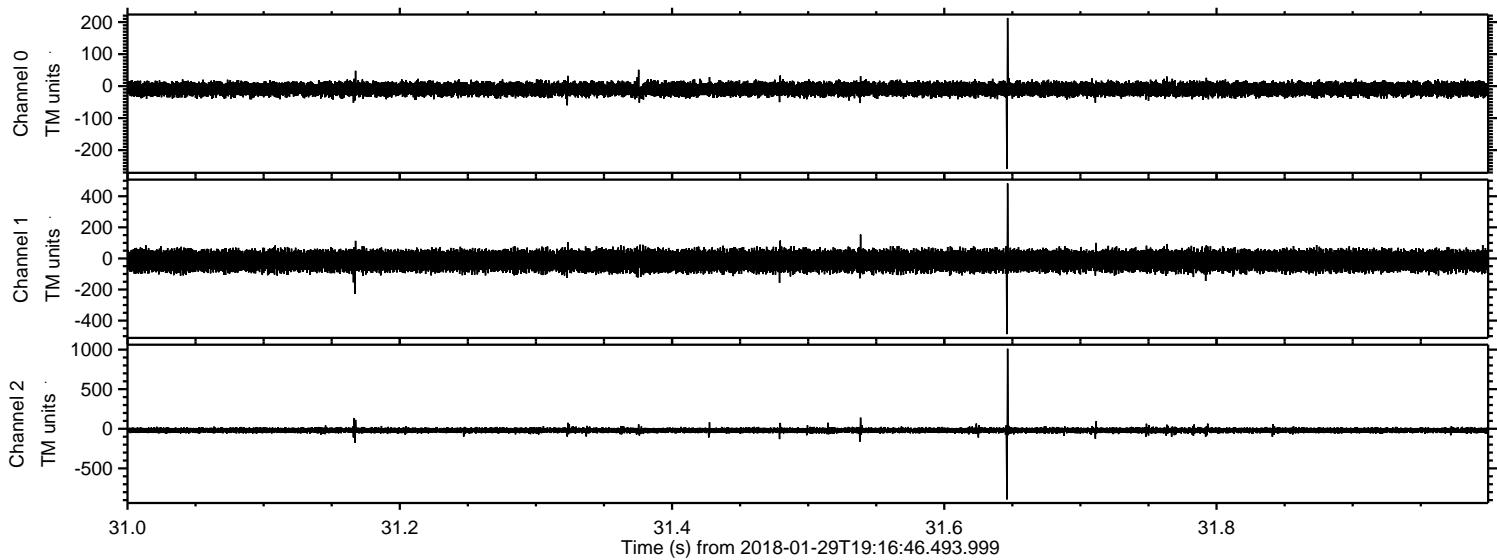


Processed Mon Jan 29 20:24:20 2018 by ELM ver.2012-10-06 from 001\_\_elm20180129\_191645\_\_dat00.bin



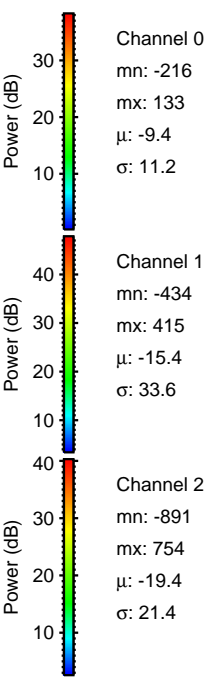
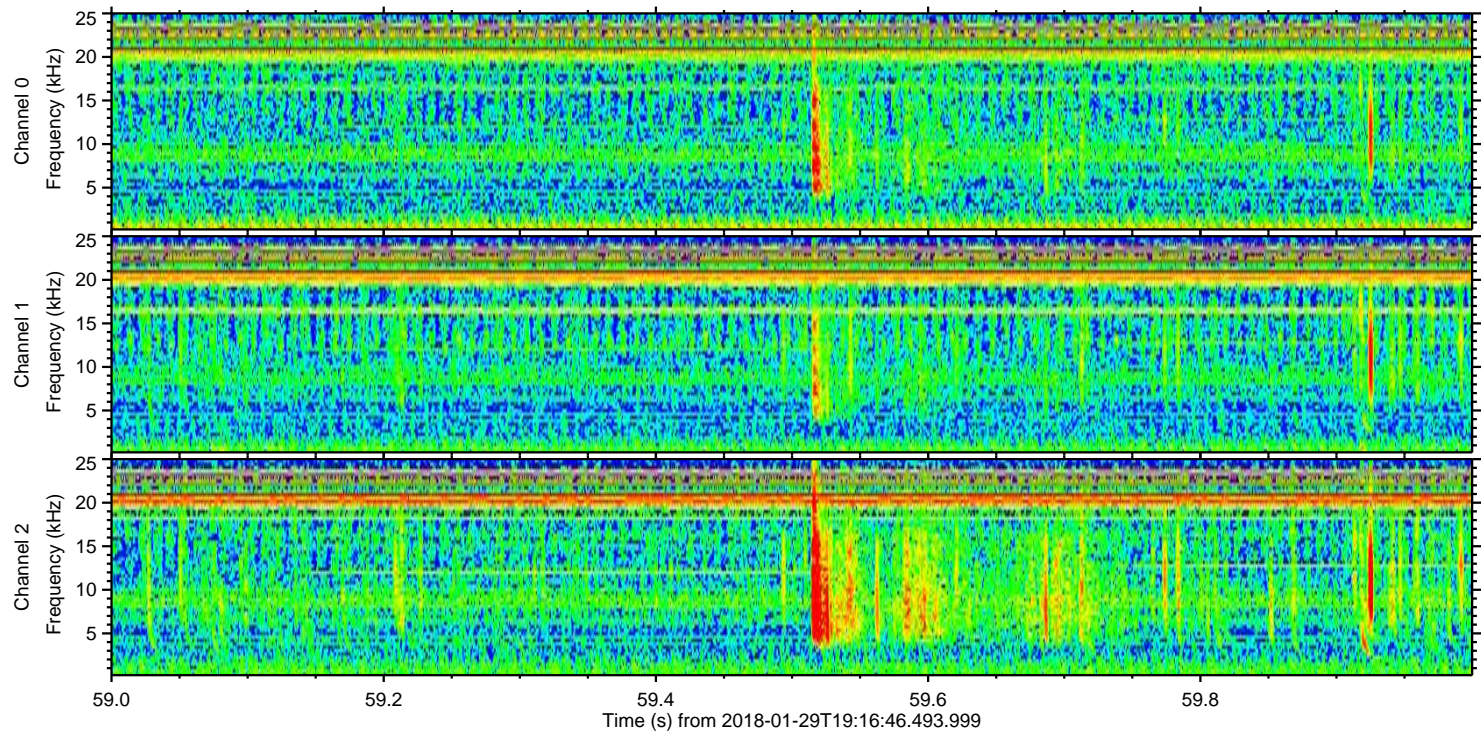
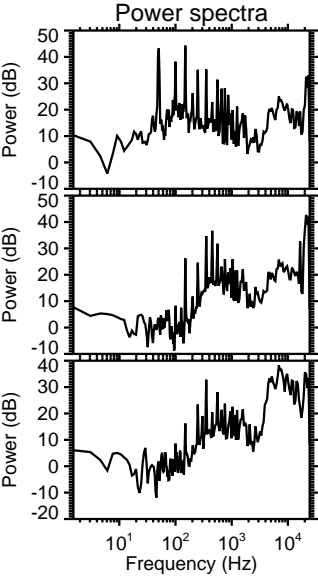
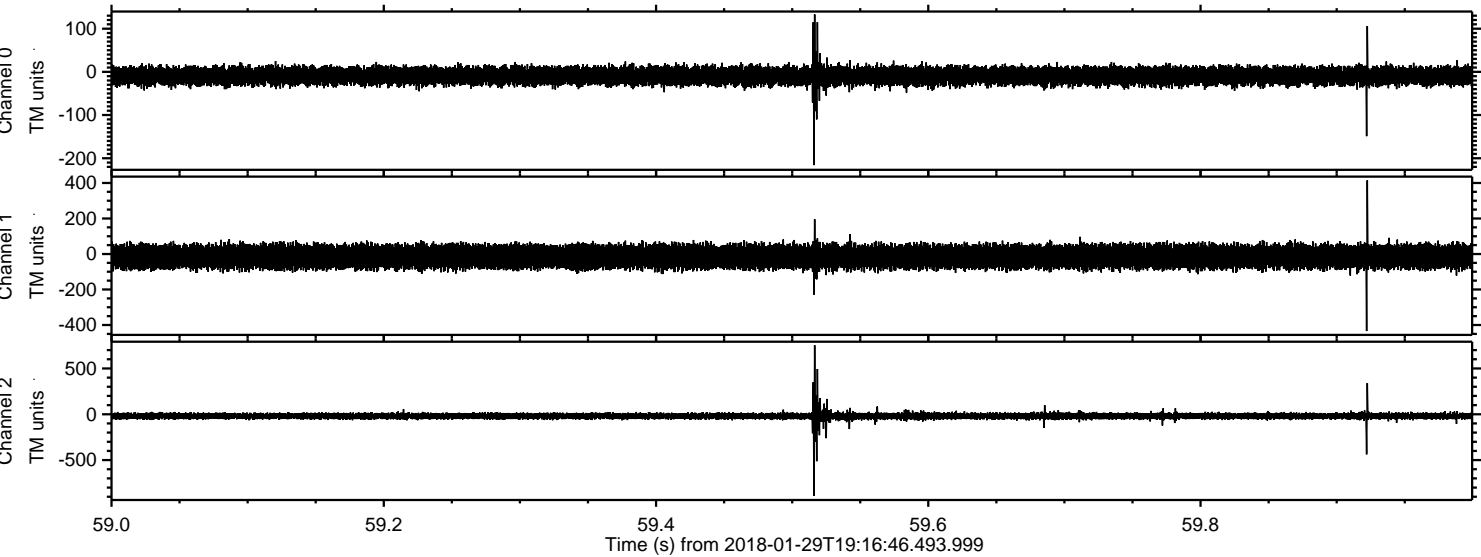


Processed Mon Jan 29 20:24:21 2018 by ELM ver.2012-10-06 from 001\_\_elm20180129\_191645\_\_dat00.bin





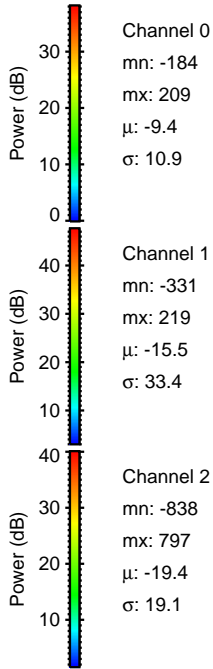
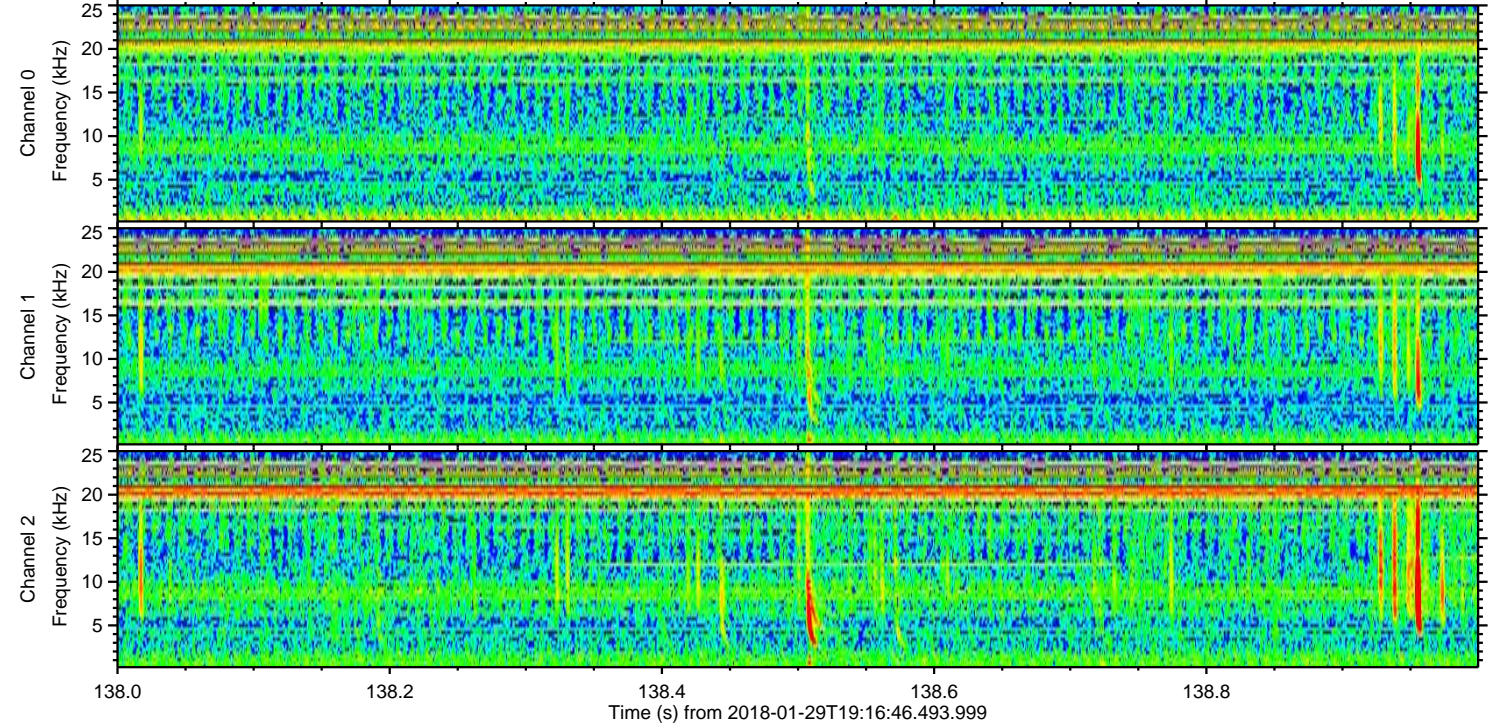
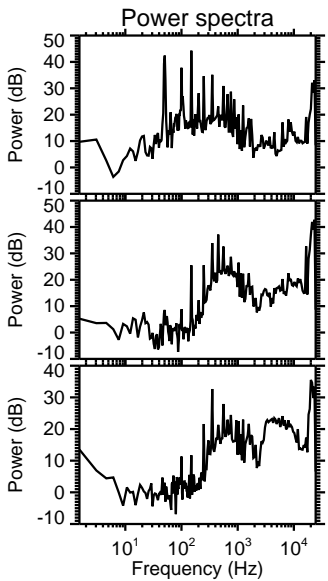
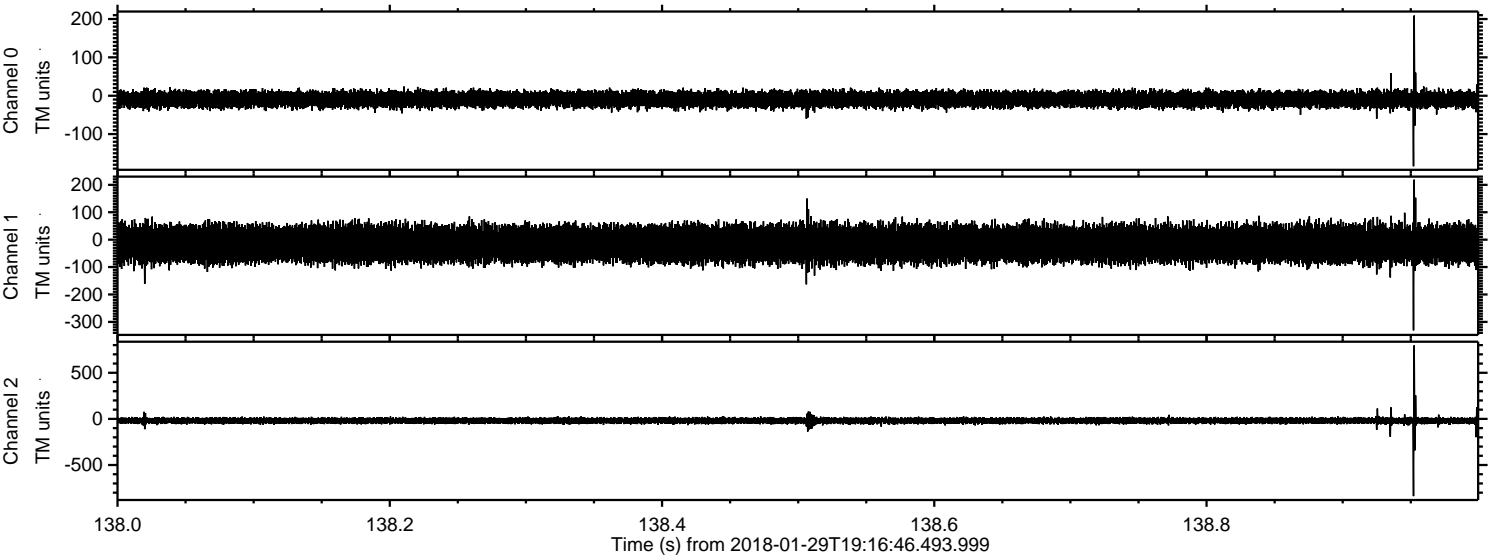
Processed Mon Jan 29 20:24:23 2018 by ELM ver.2012-10-06 from 001\_\_elm20180129\_191645\_\_dat00.bin





ELMAVAN 3D WAVEFORMS (Measured data sampled at 50 kHz) 51000 packets of 144 samples from 2018-01-29T19:16:46.493.999. Part 139/147

Processed Mon Jan 29 20:24:24 2018 by ELM ver.2012-10-06 from 001\_\_elm20180129\_191645\_\_dat00.bin



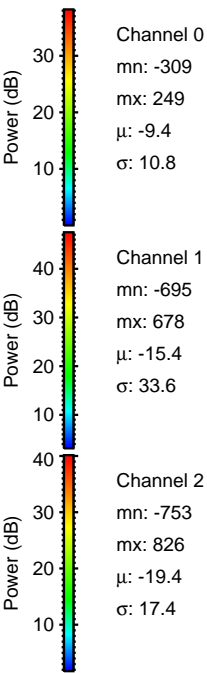
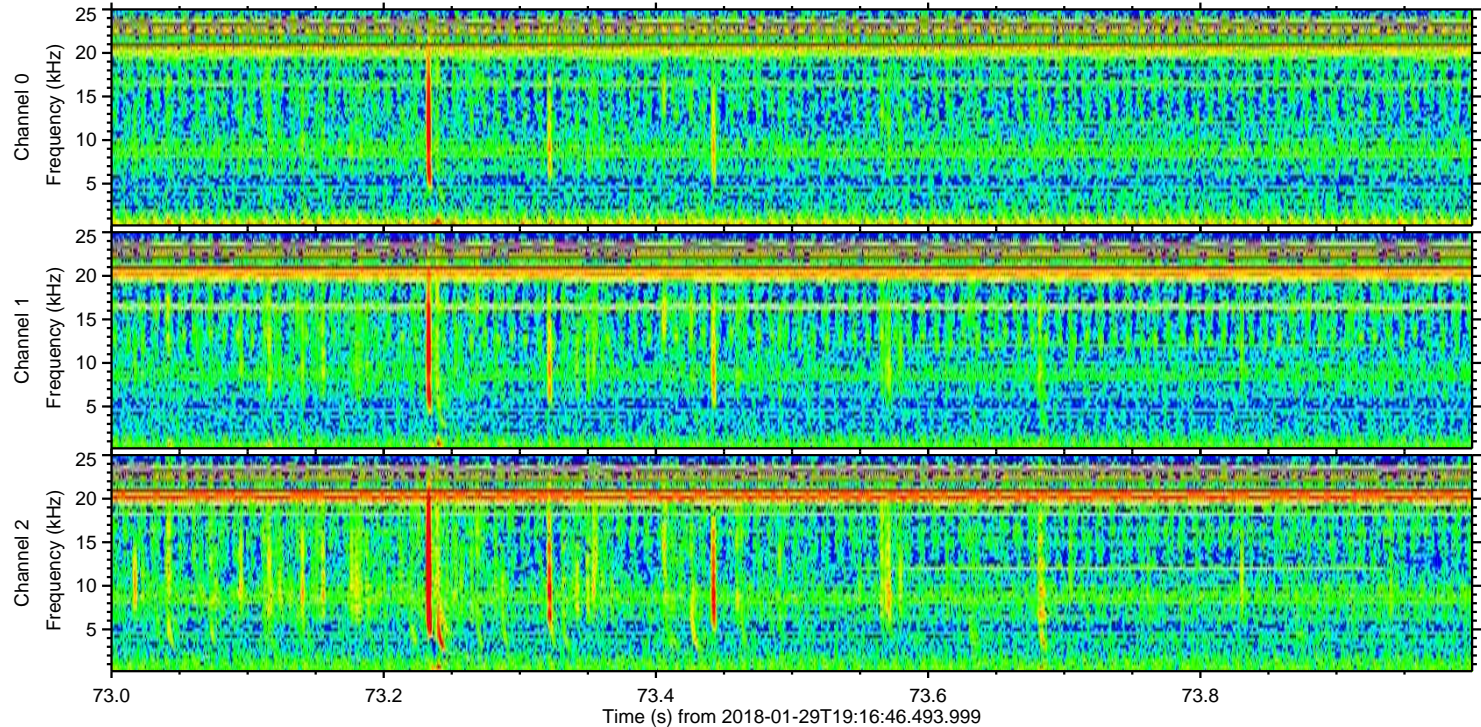
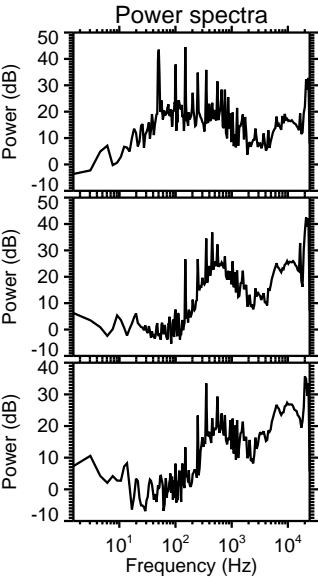
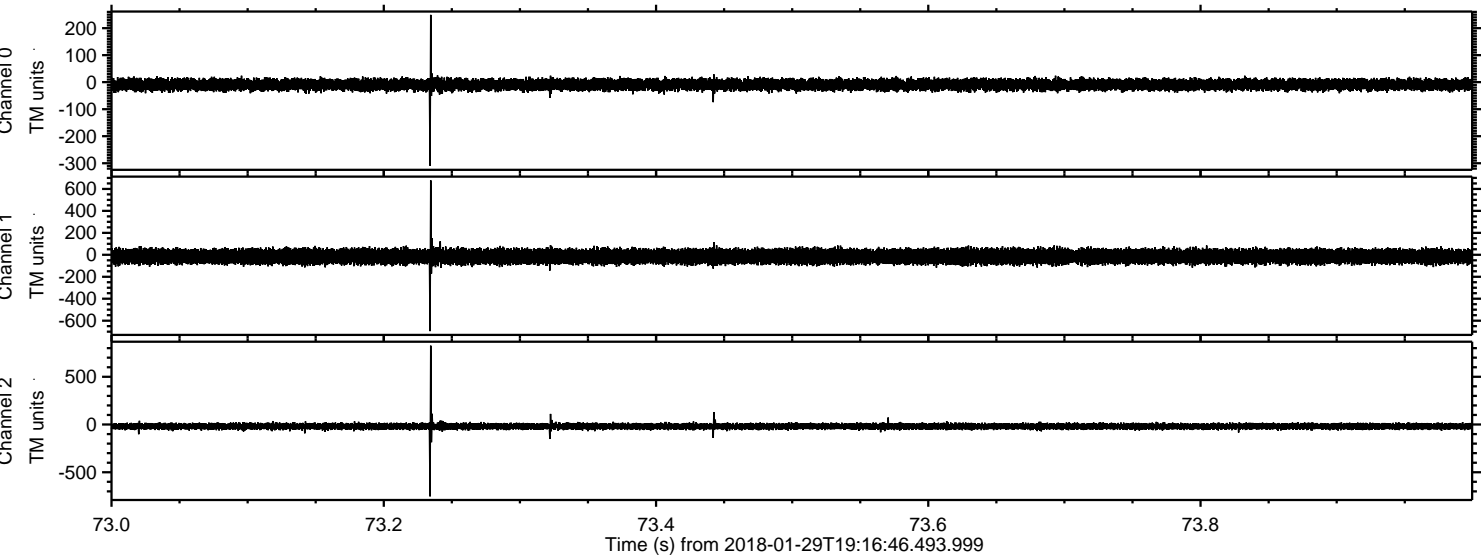
Channel 0  
mn: -184  
mx: 209  
 $\mu$ : -9.4  
 $\sigma$ : 10.9

Channel 1  
mn: -331  
mx: 219  
 $\mu$ : -15.5  
 $\sigma$ : 33.4

Channel 2  
mn: -838  
mx: 797  
 $\mu$ : -19.4  
 $\sigma$ : 19.1

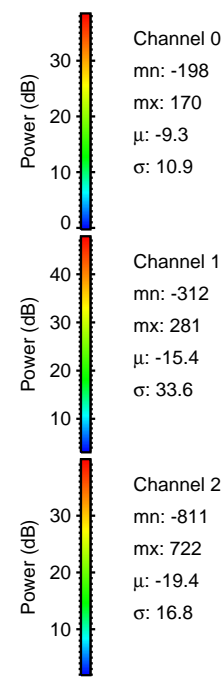
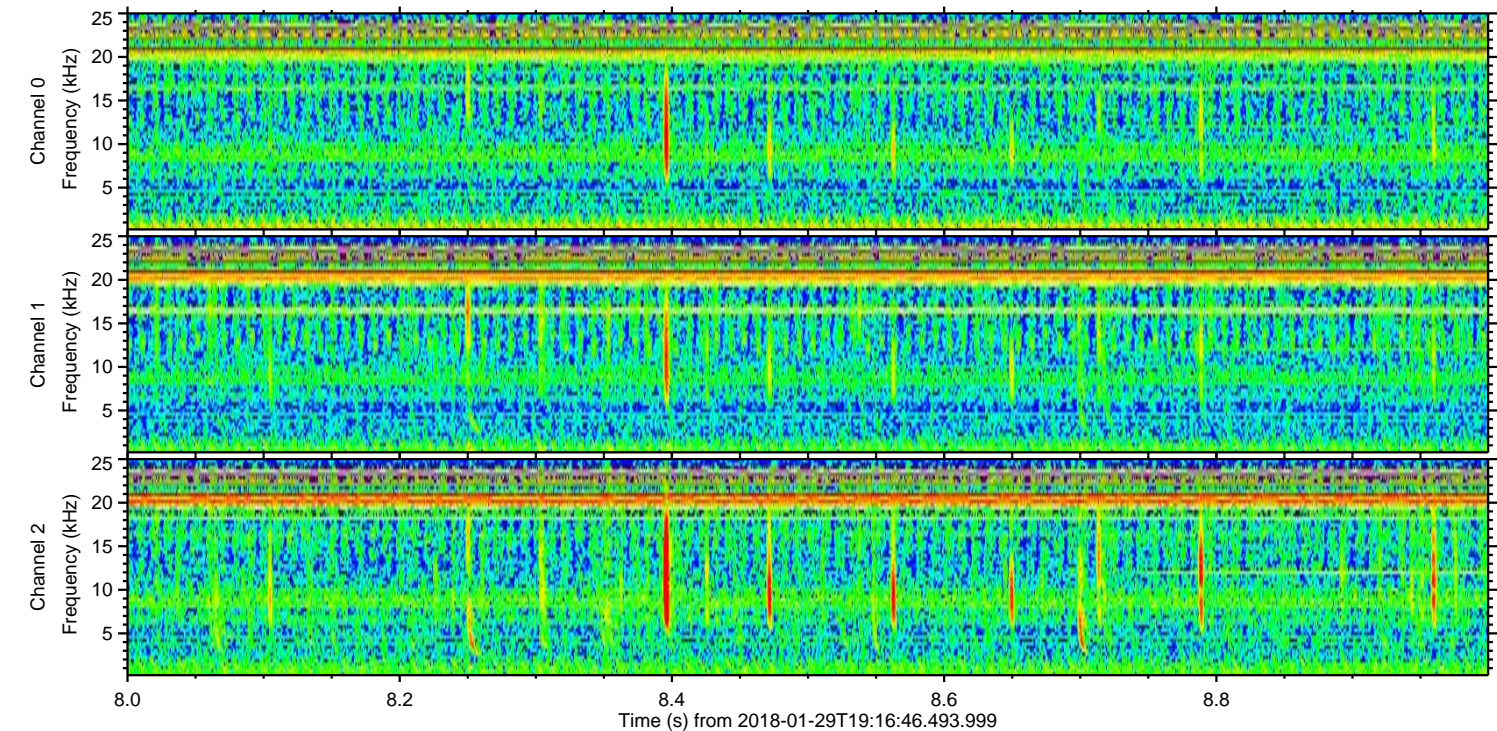
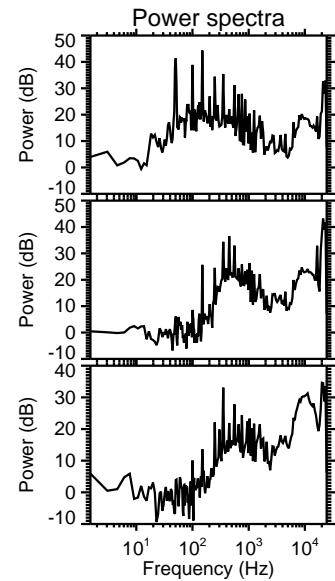
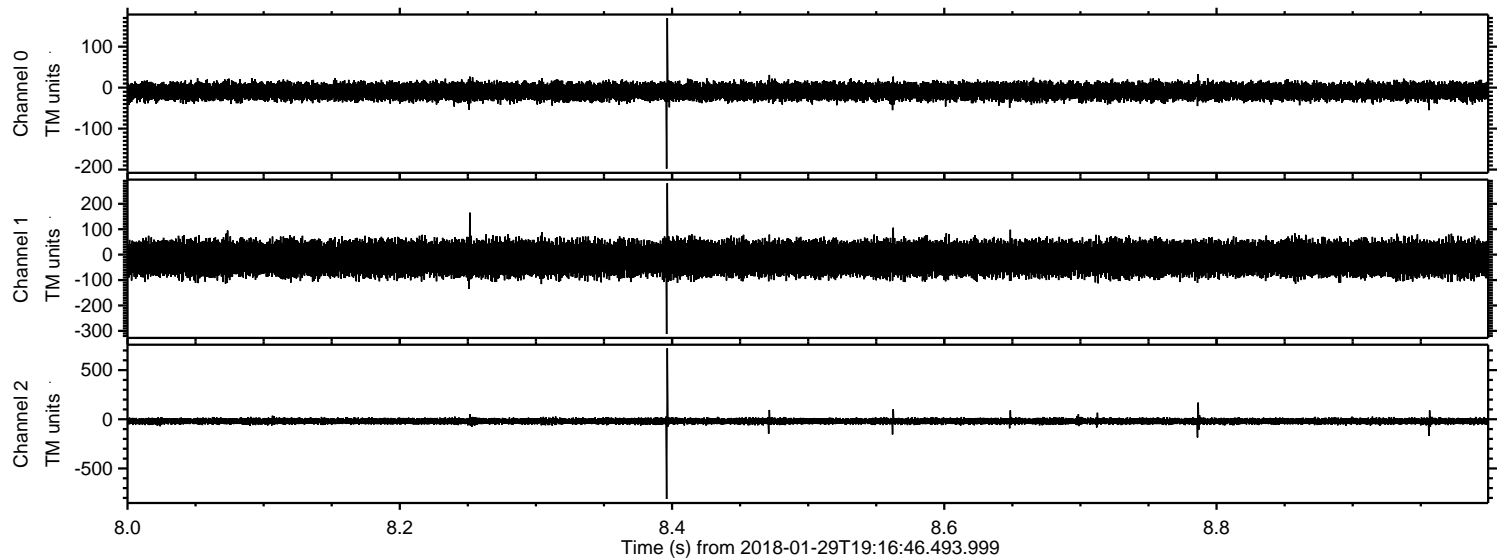


Processed Mon Jan 29 20:24:25 2018 by ELM ver.2012-10-06 from 001\_\_elm20180129\_191645\_\_dat00.bin





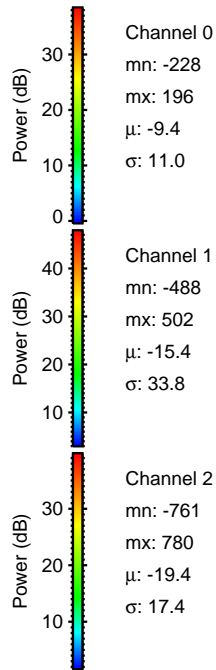
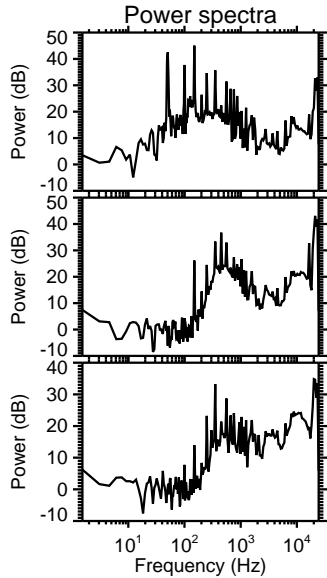
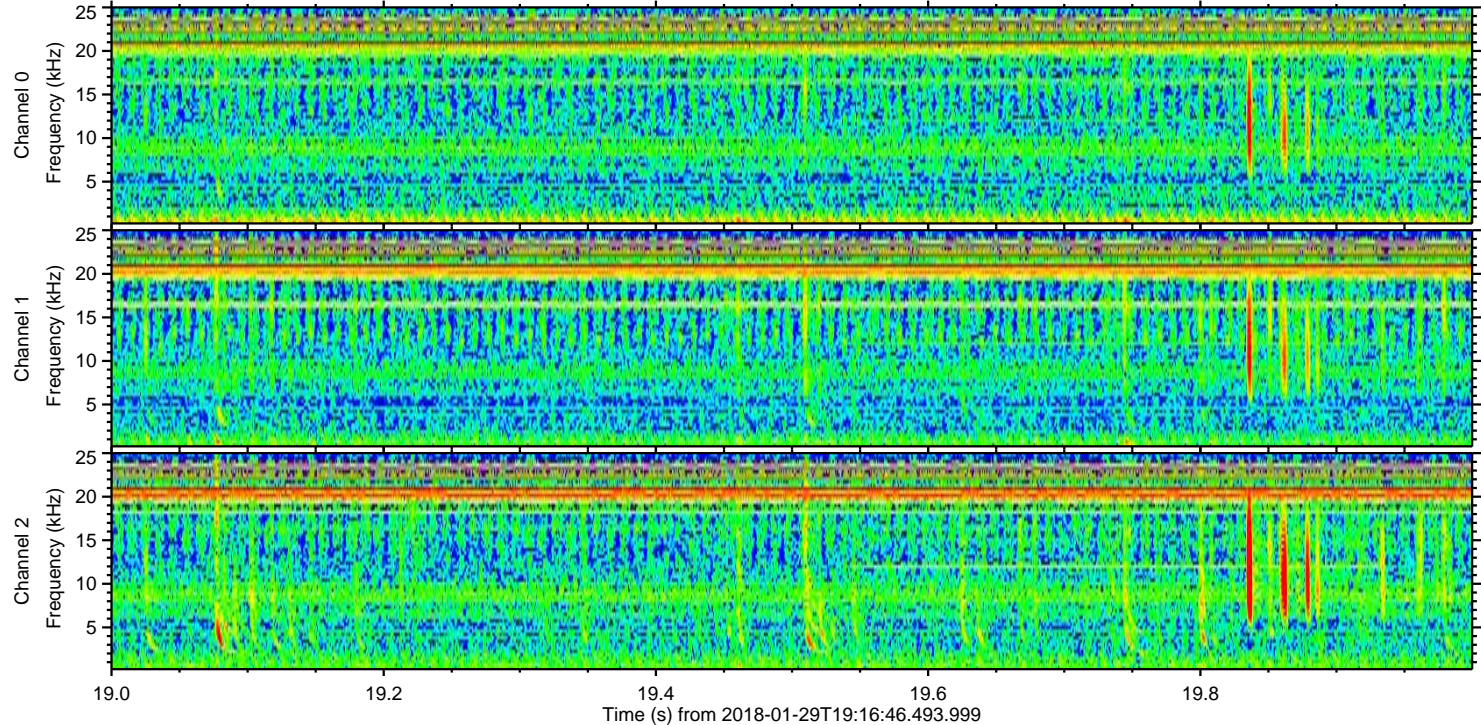
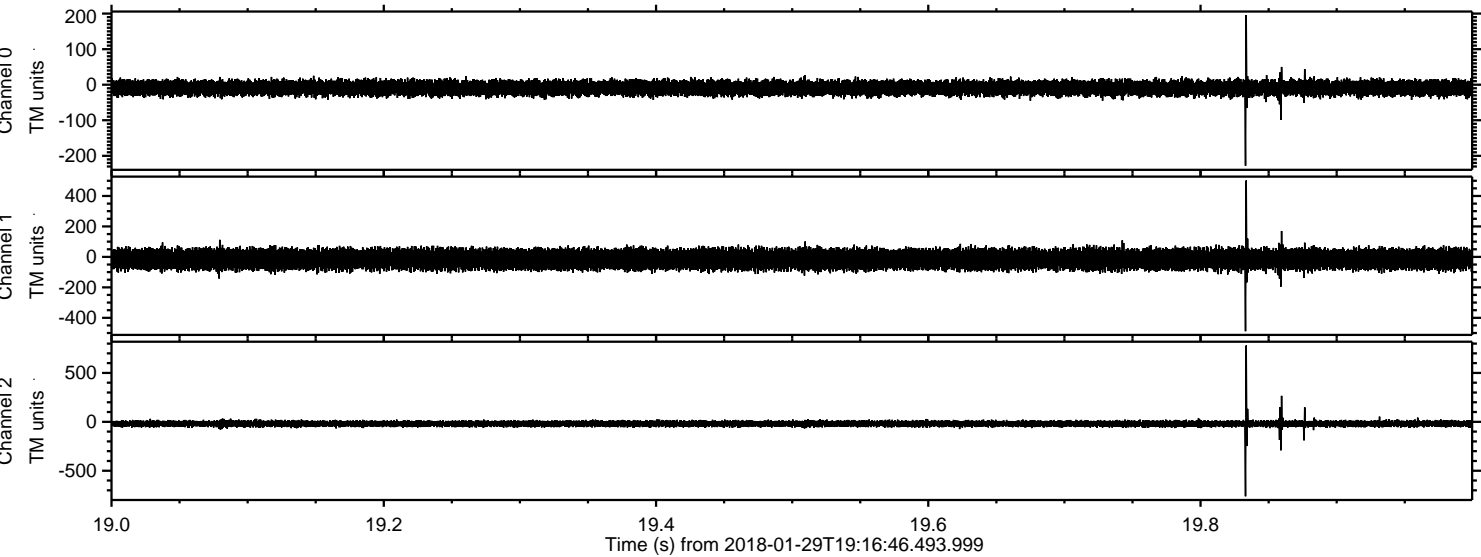
Processed Mon Jan 29 20:24:26 2018 by ELM ver.2012-10-06 from 001\_\_elm20180129\_191645\_\_dat00.bin





ELMAVAN 3D WAVEFORMS (Measured data sampled at 50 kHz) 51000 packets of 144 samples from 2018-01-29T19:16:46.493.999. Part 20/147

Processed Mon Jan 29 20:24:27 2018 by ELM ver.2012-10-06 from 001\_\_elm20180129\_191645\_\_dat00.bin





ELMAVAN 3D WAVEFORMS (Measured data sampled at 50 kHz) 51000 packets of 144 samples from 2018-01-29T19:16:46.493.999. Part 105/147

