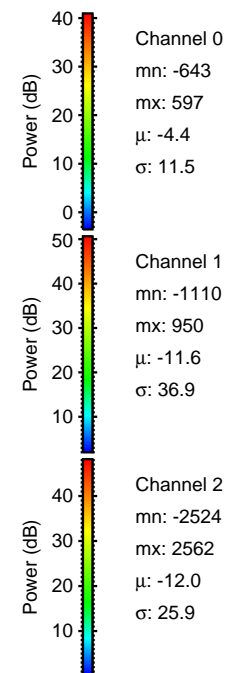
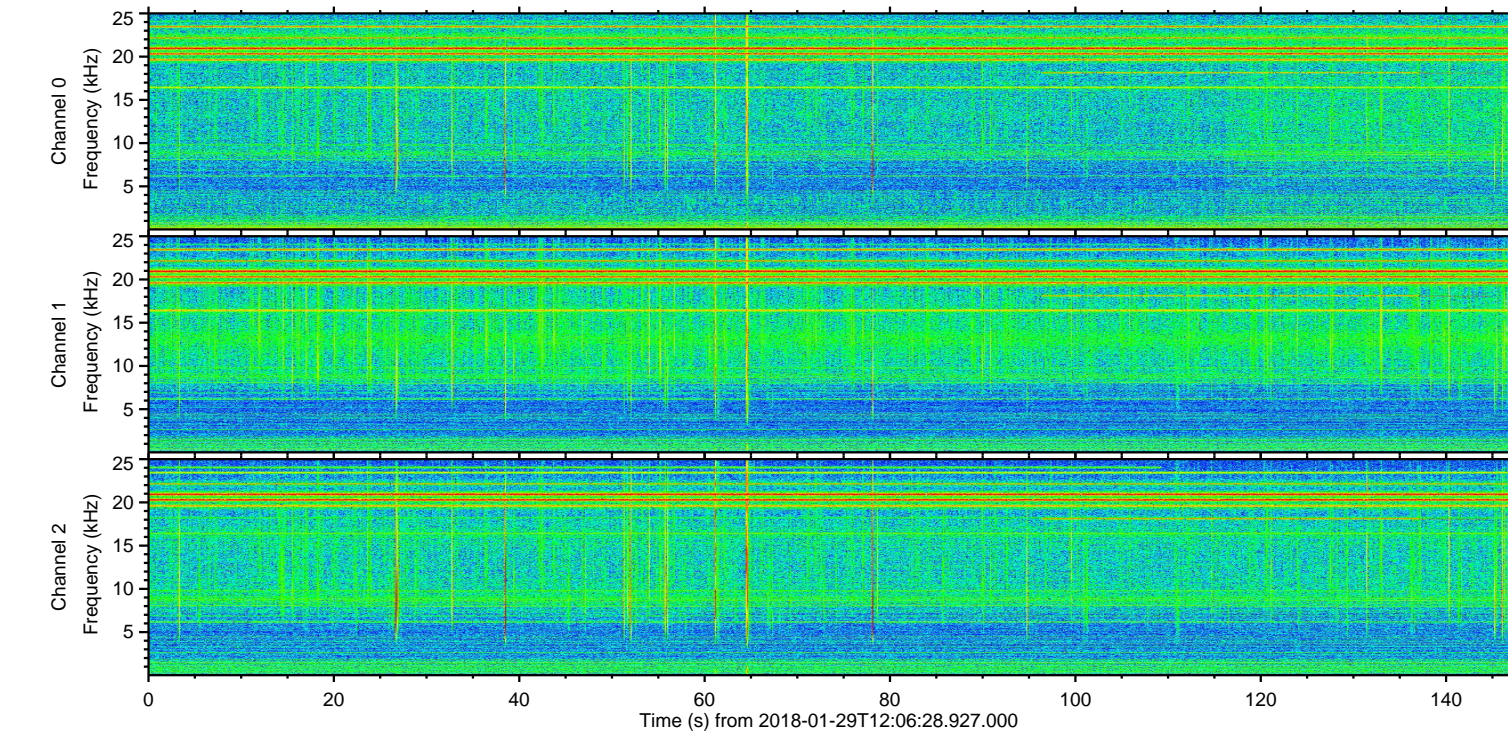
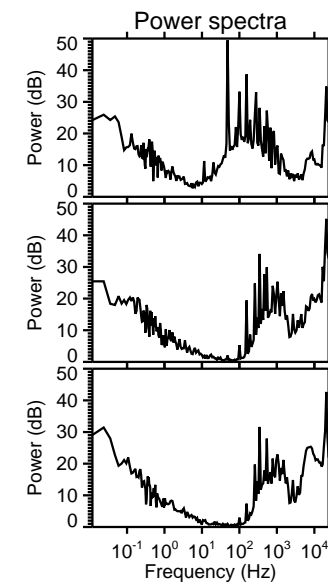
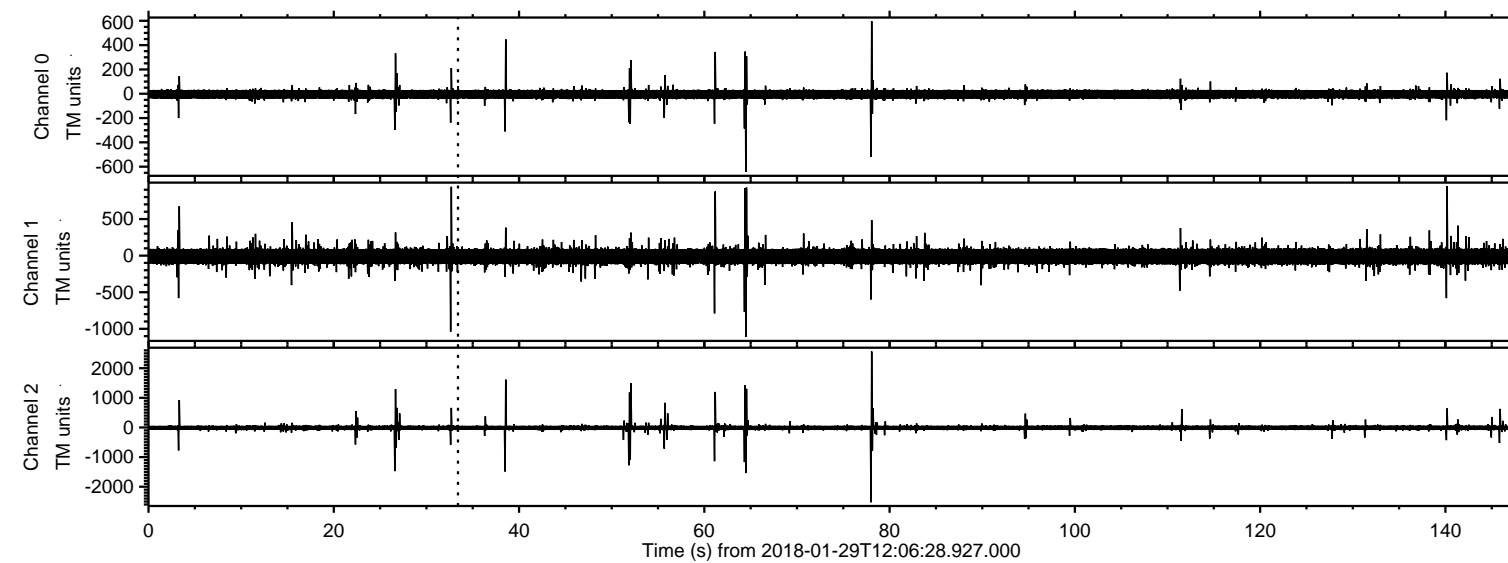
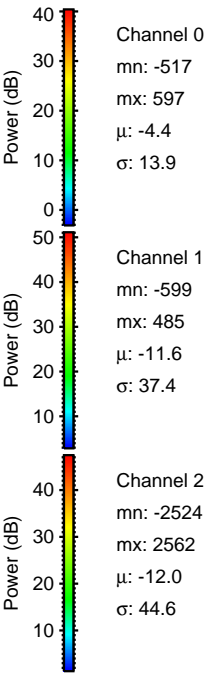
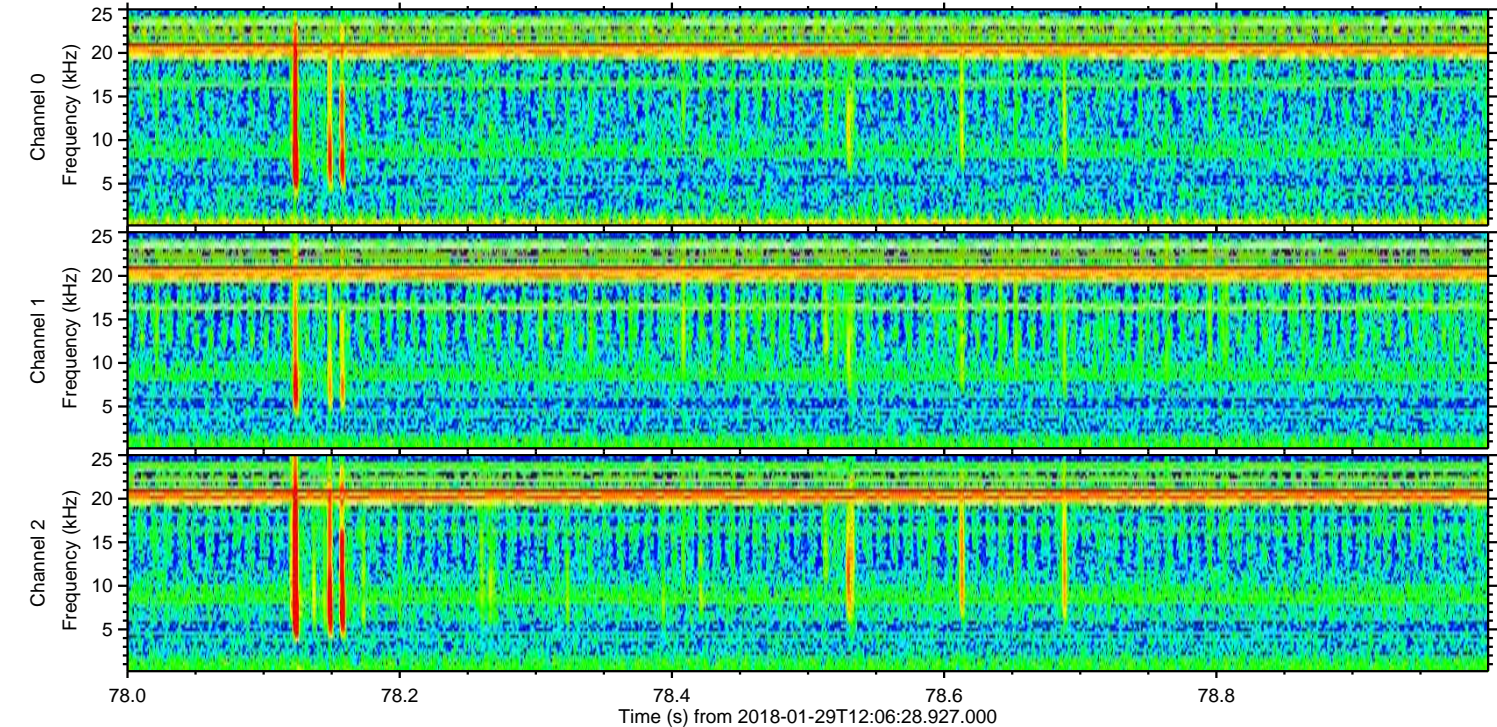
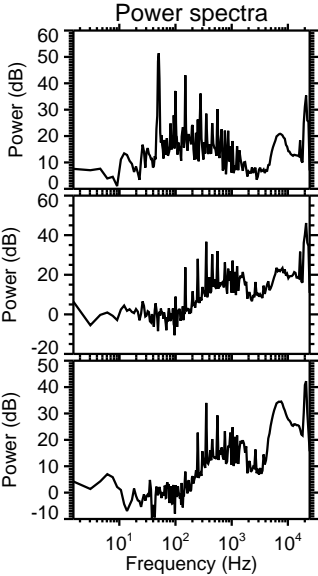
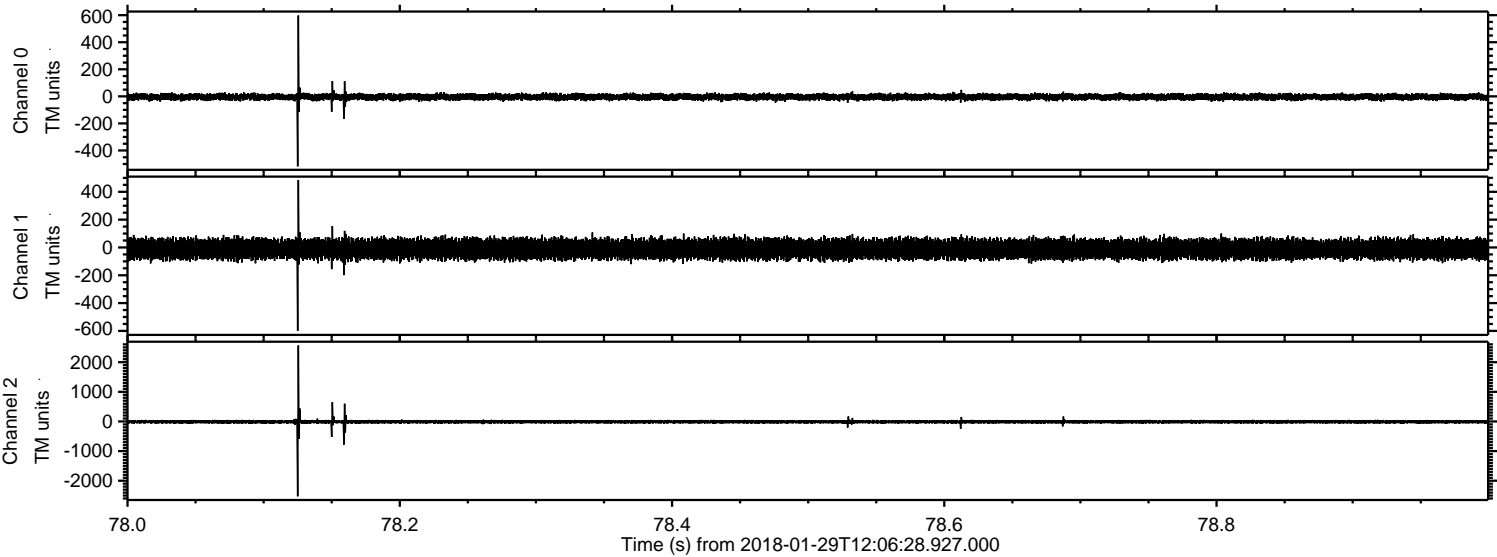


ELMAVAN 3D WAVEFORMS (Measured data sampled at 50 kHz) 50999 packets of 144 samples from 2018-01-29T12:06:28.927.000.

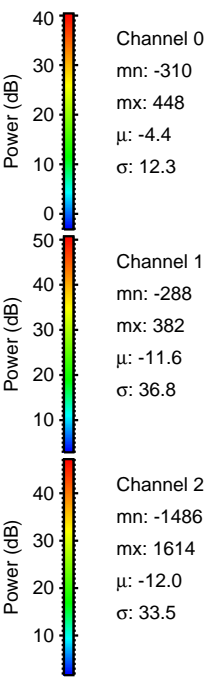
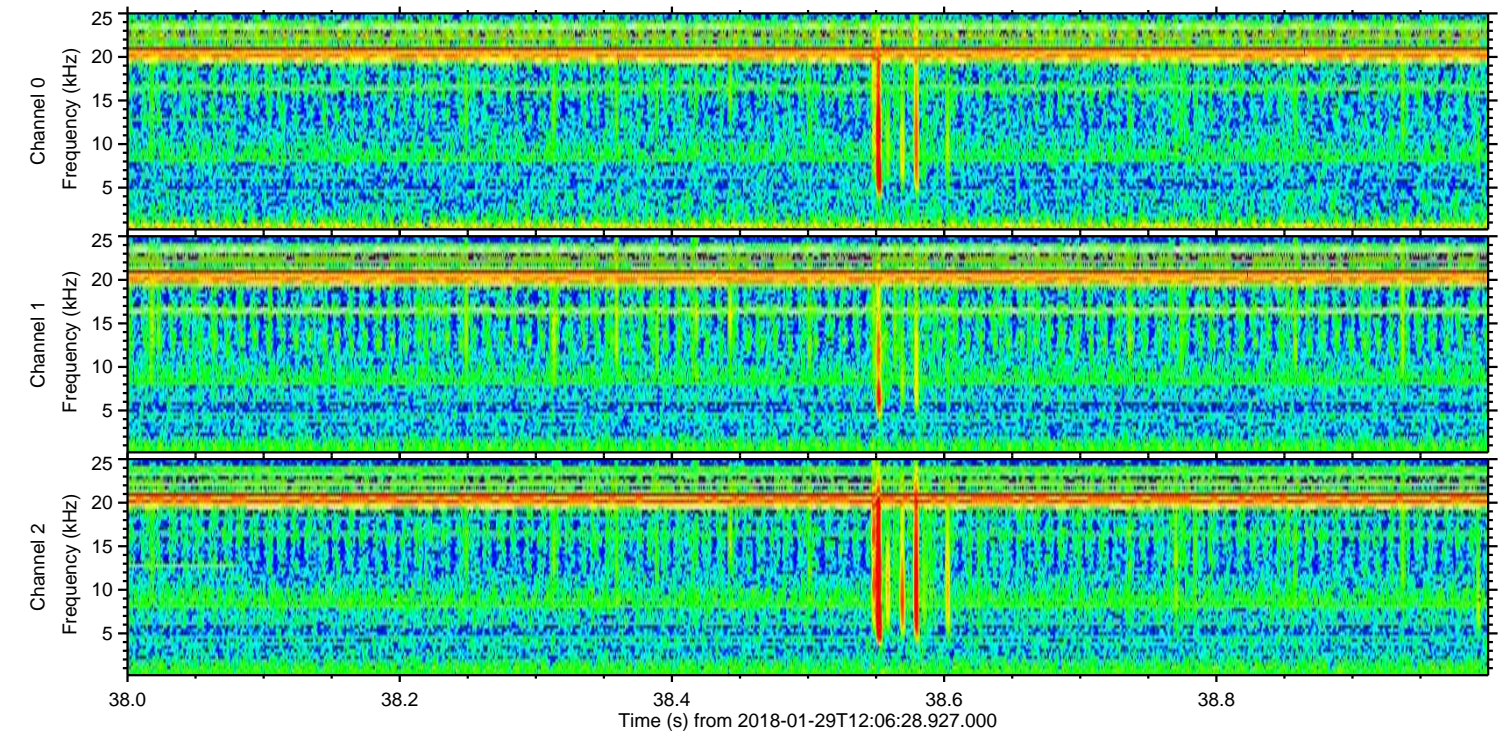
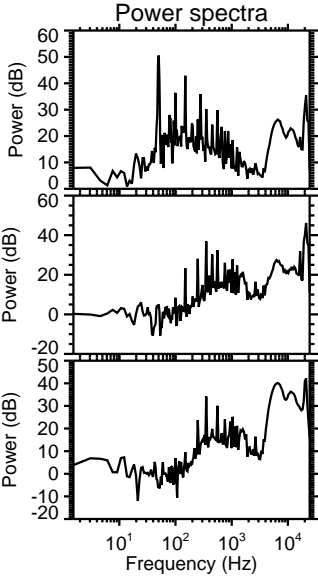
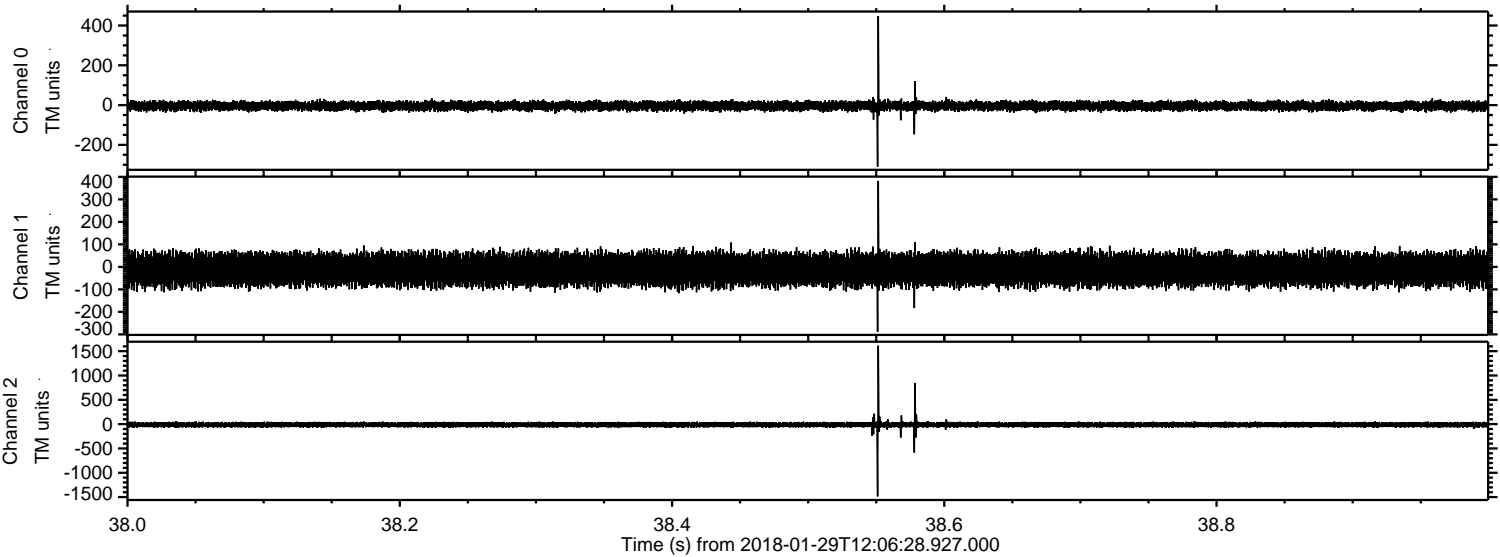
Processed Mon Jan 29 13:14:22 2018 by ELM ver.2012-10-06 from 001__elm20180129_120627__dat00.bin



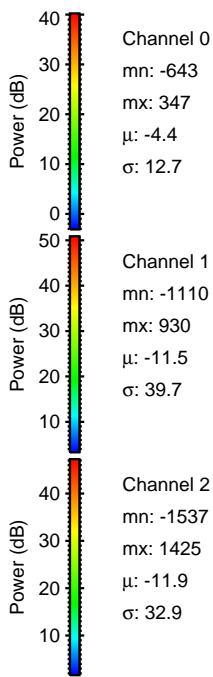
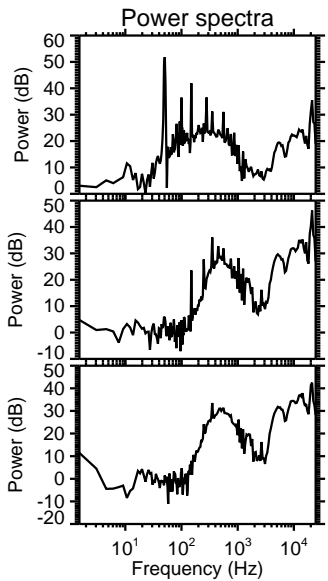
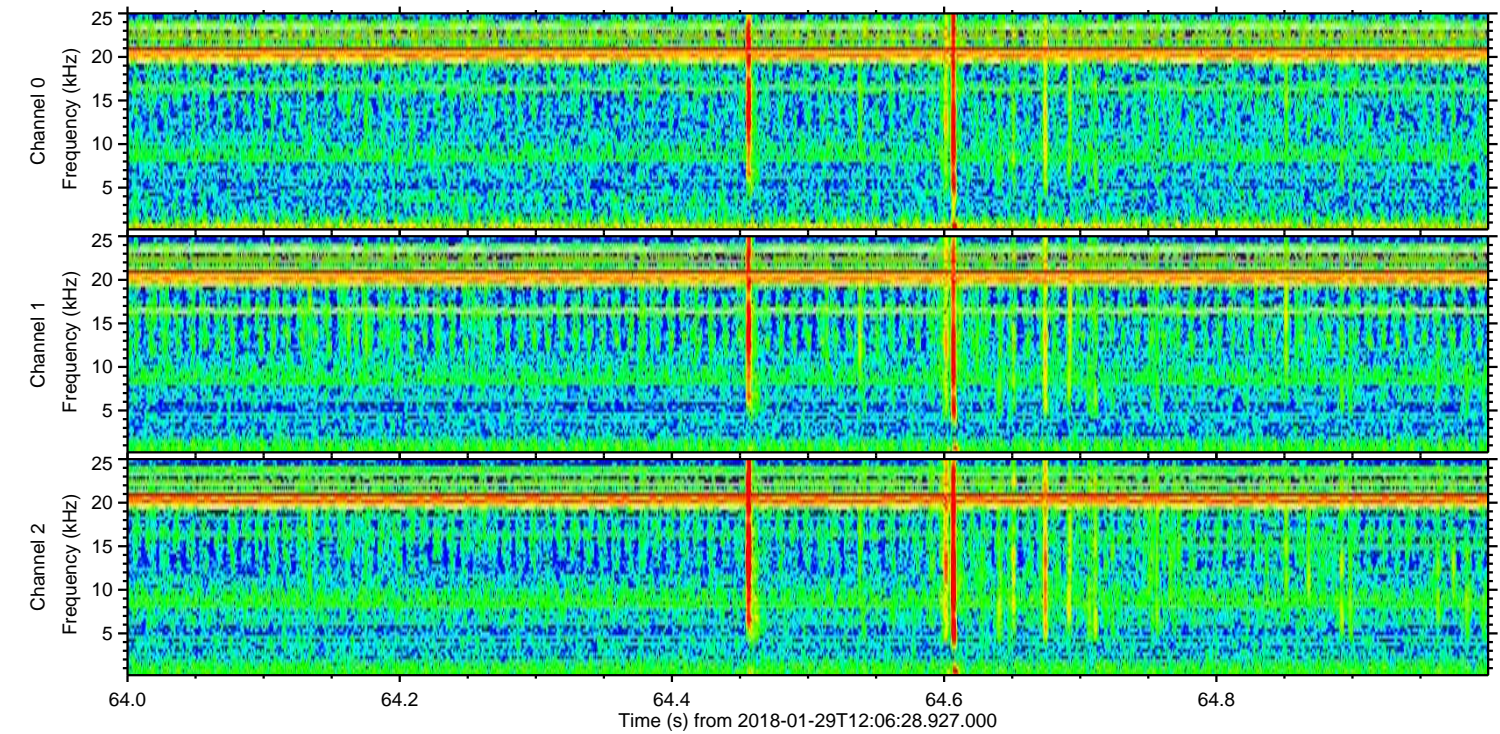
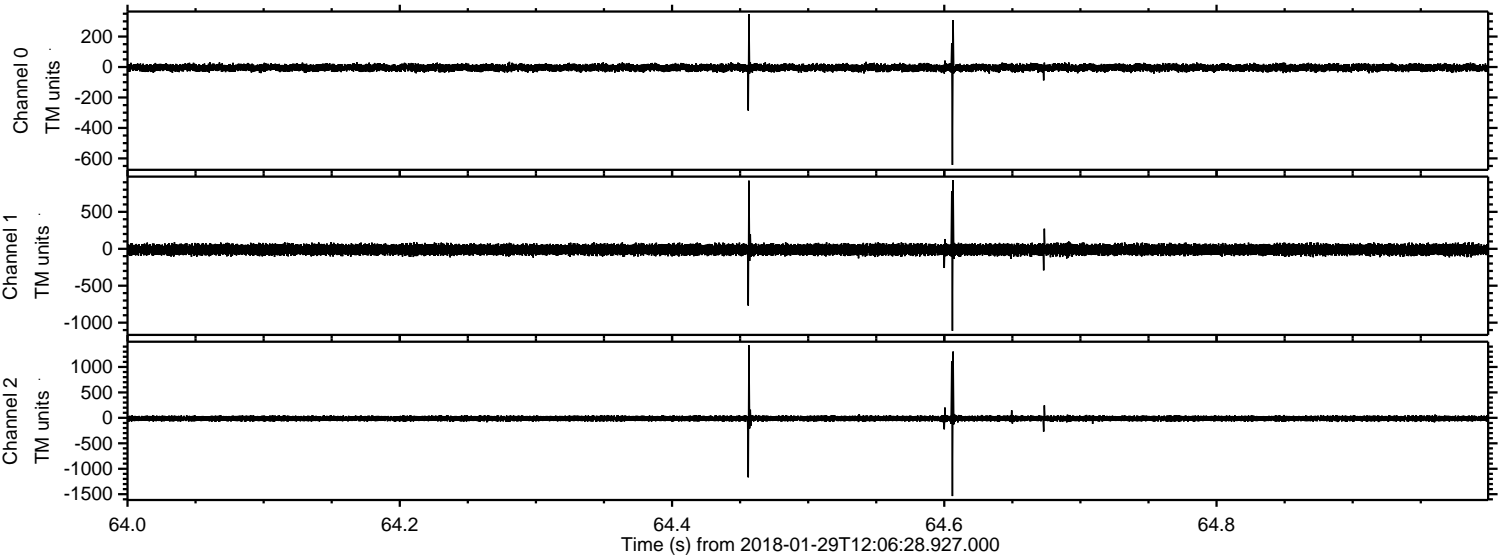
Processed Mon Jan 29 13:14:30 2018 by ELM ver.2012-10-06 from 001__elm20180129_120627__dat00.bin



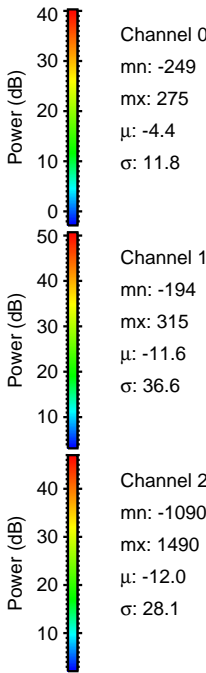
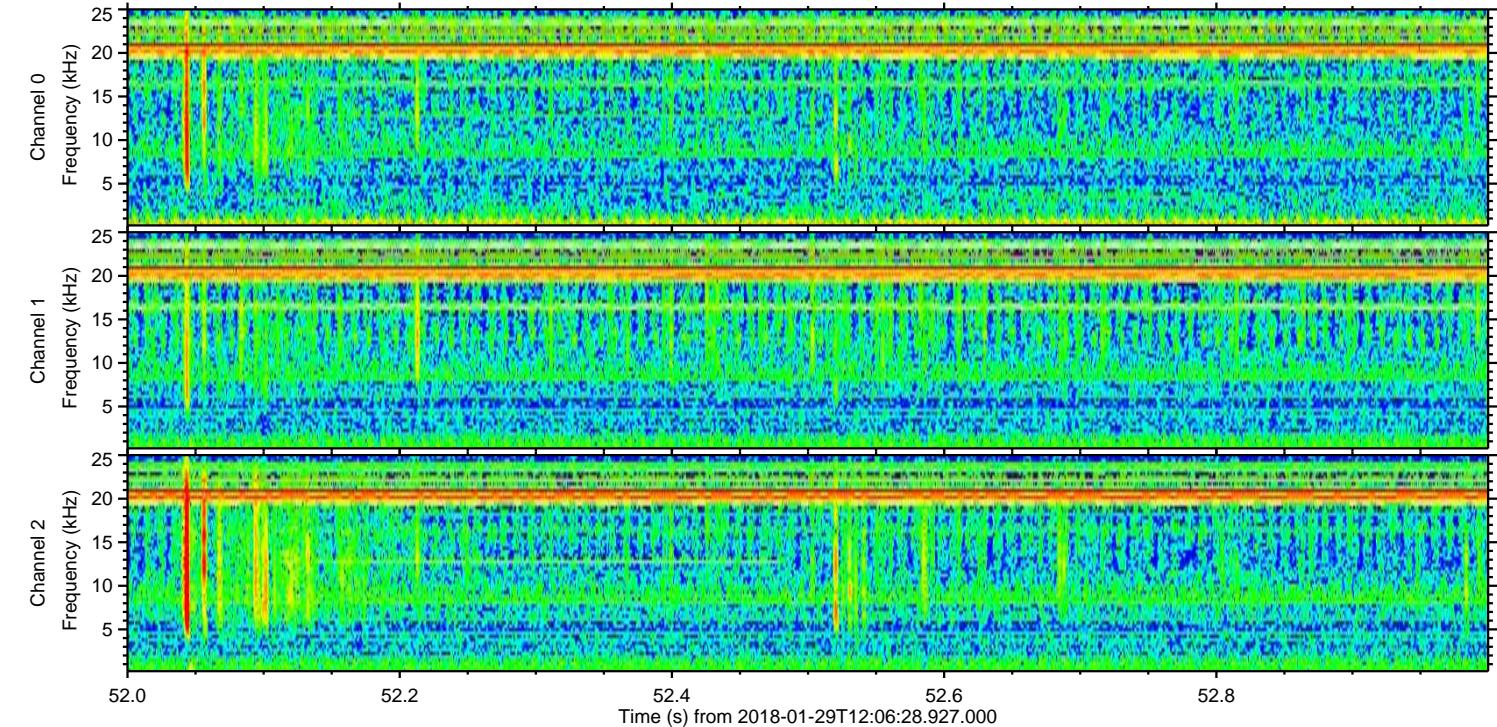
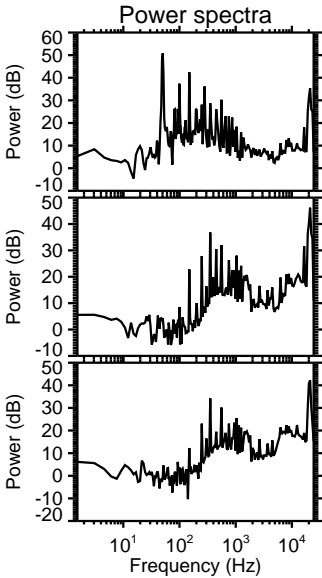
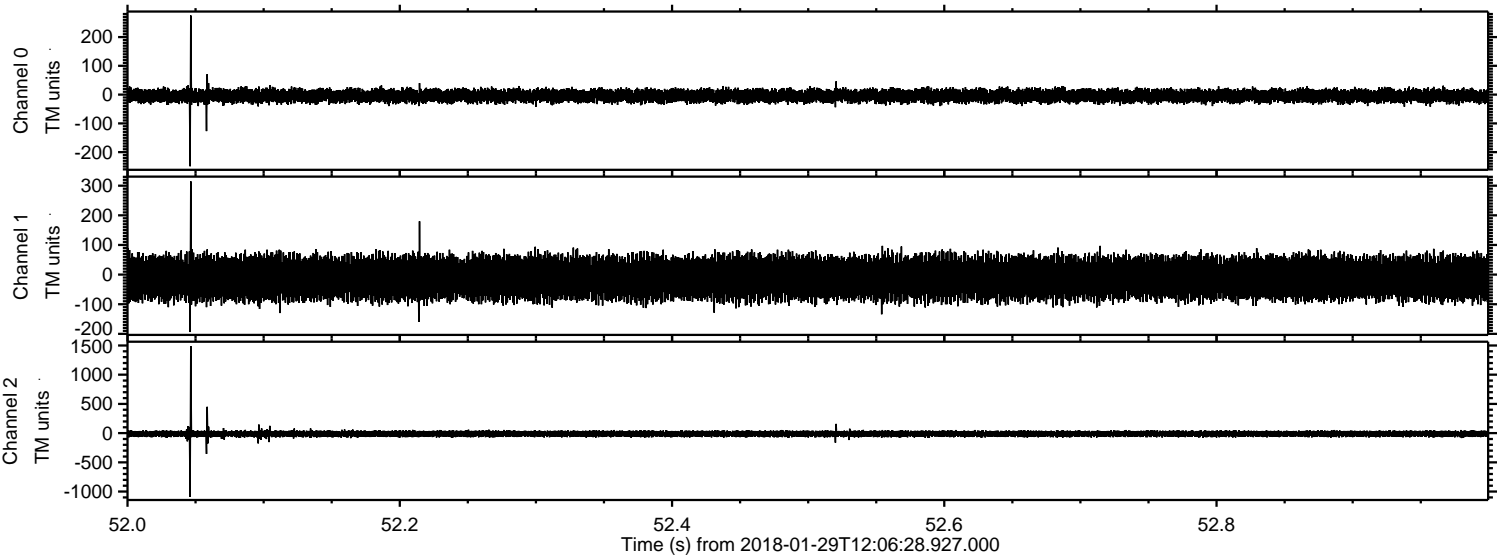
Processed Mon Jan 29 13:14:31 2018 by ELM ver.2012-10-06 from 001__elm20180129_120627__dat00.bin



Processed Mon Jan 29 13:14:32 2018 by ELM ver.2012-10-06 from 001__elm20180129_120627__dat00.bin

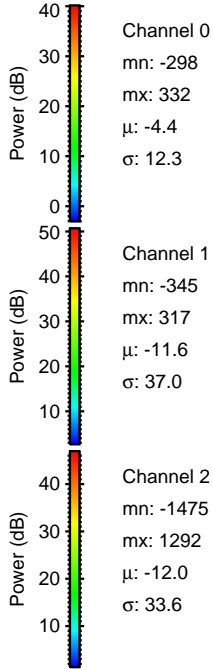
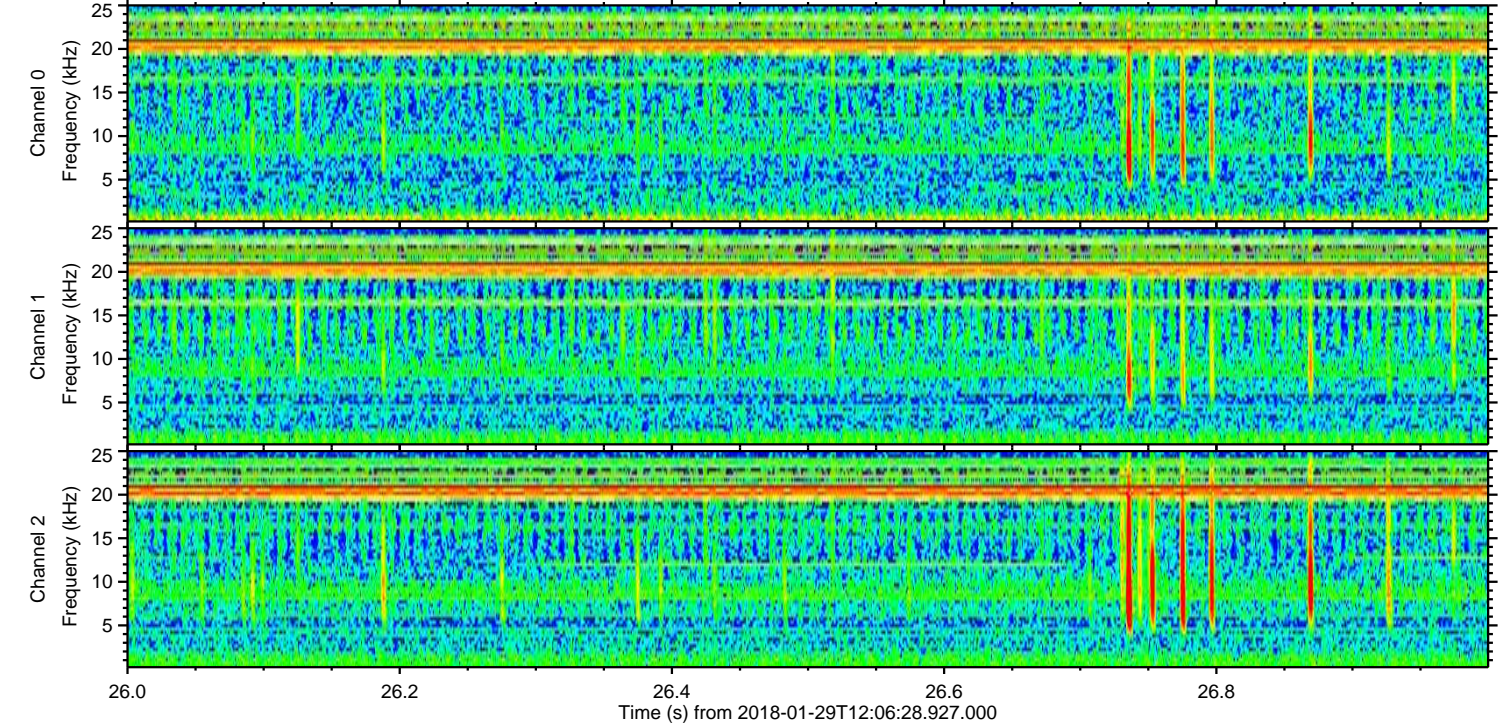
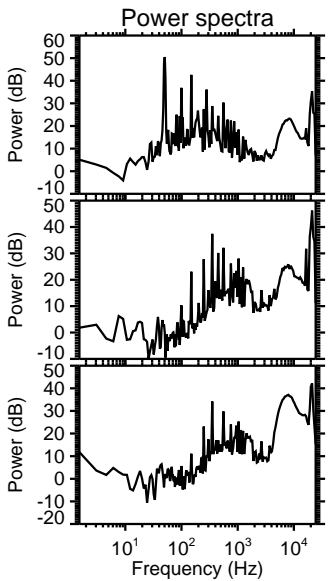
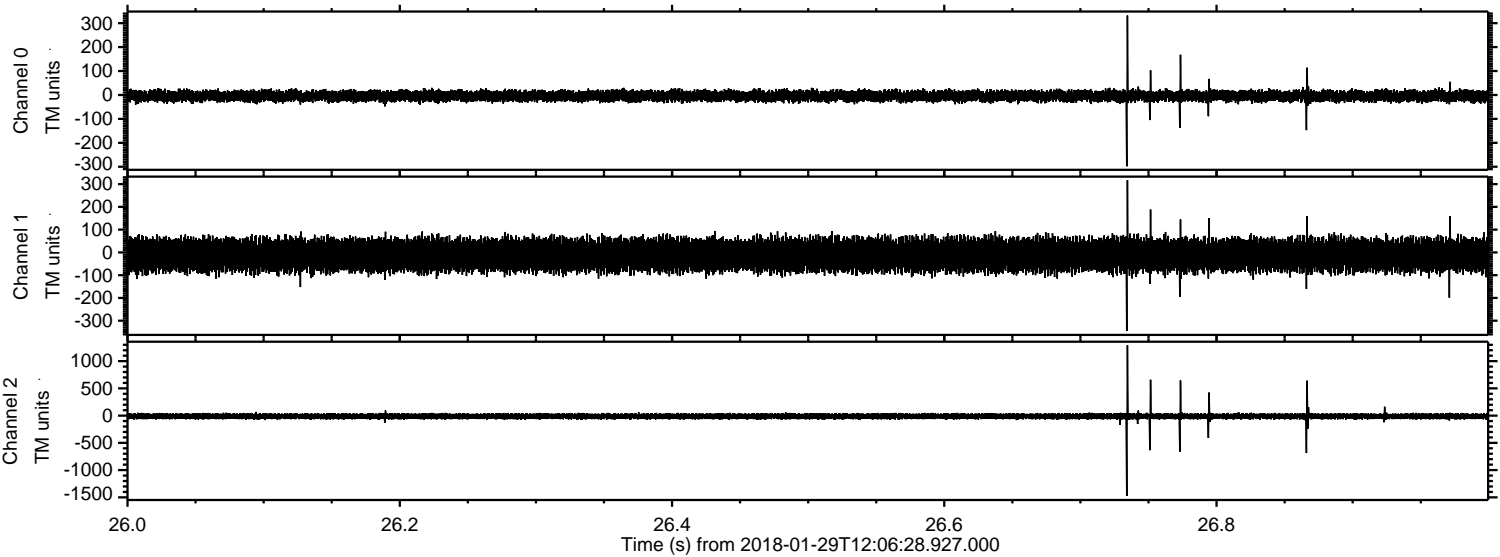


Processed Mon Jan 29 13:14:32 2018 by ELM ver.2012-10-06 from 001__elm20180129_120627__dat00.bin

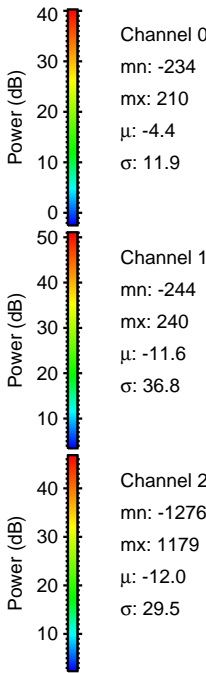
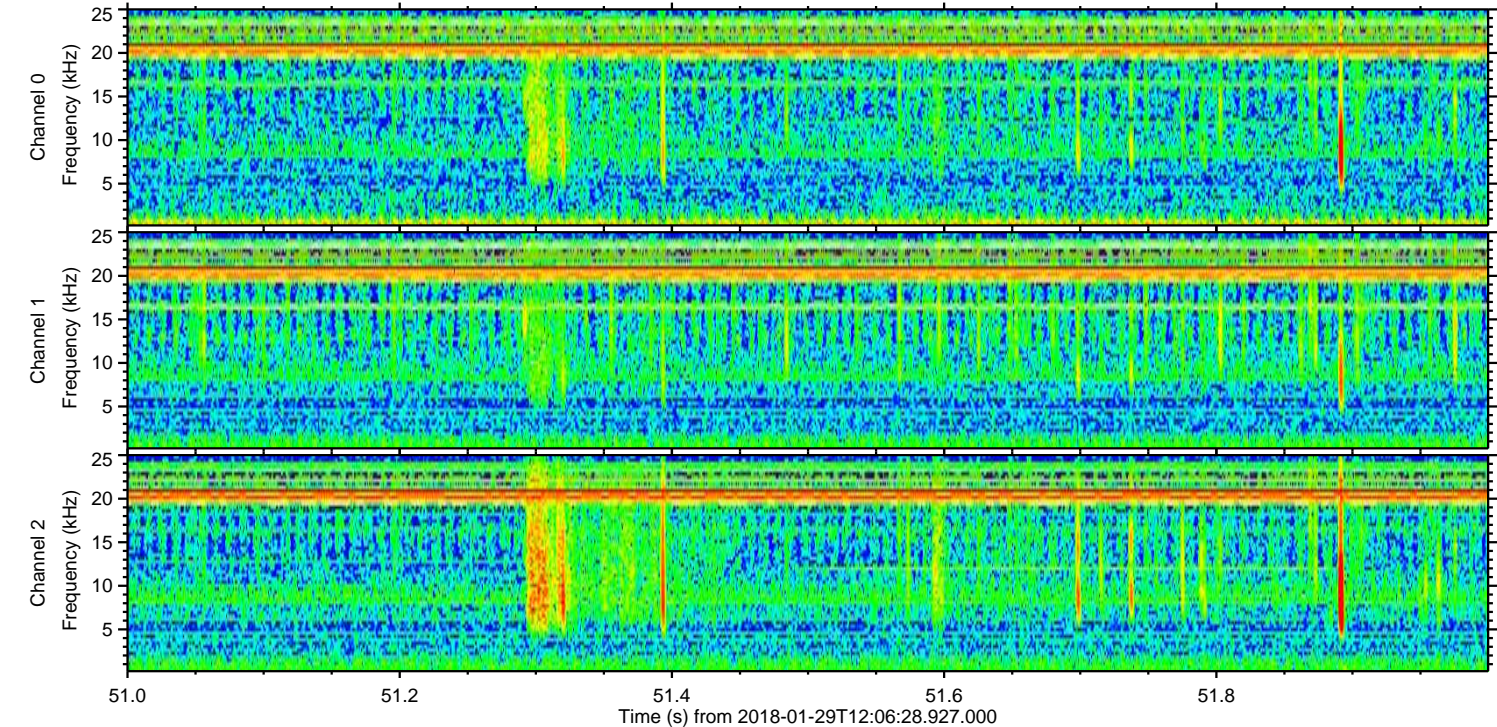
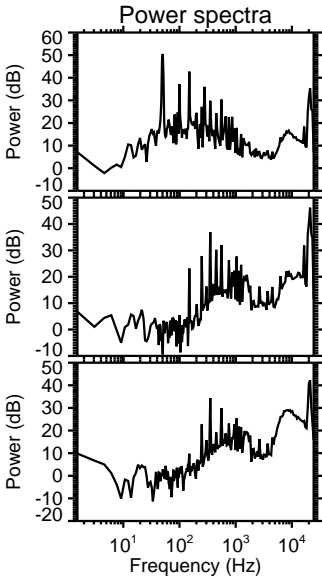
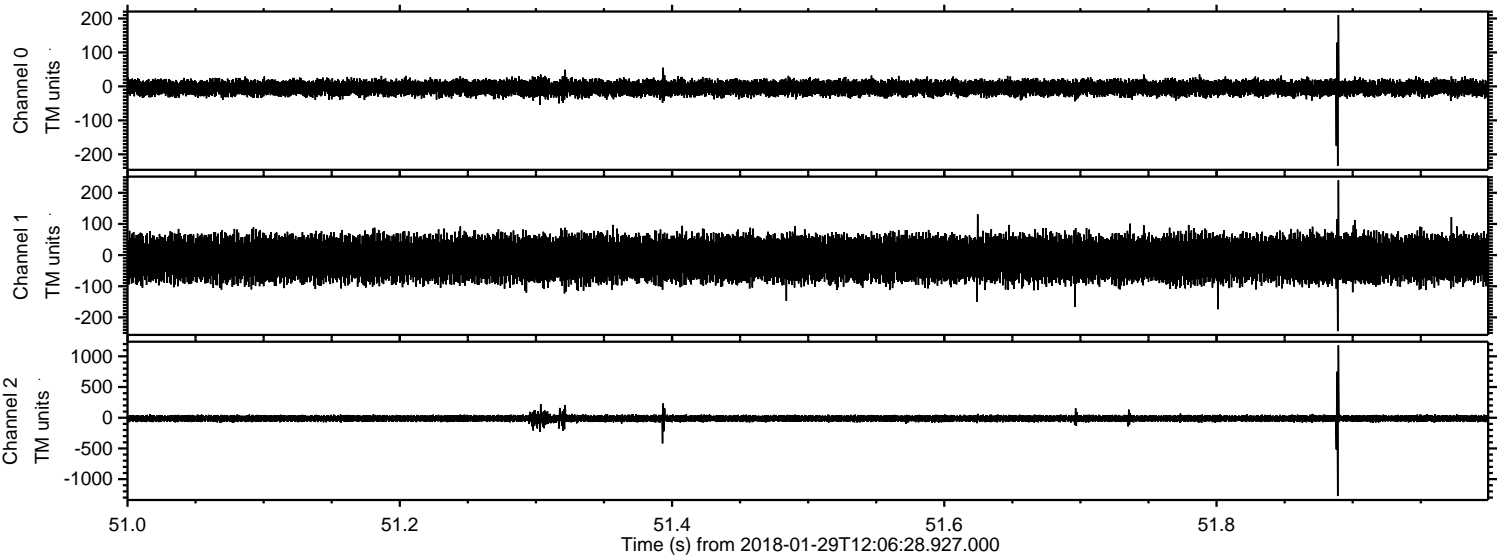


ELMAVAN 3D WAVEFORMS (Measured data sampled at 50 kHz) 50999 packets of 144 samples from 2018-01-29T12:06:28.927.000. Part 27/147

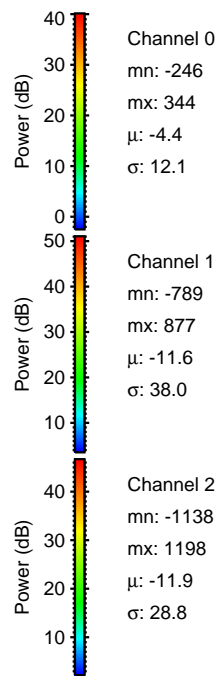
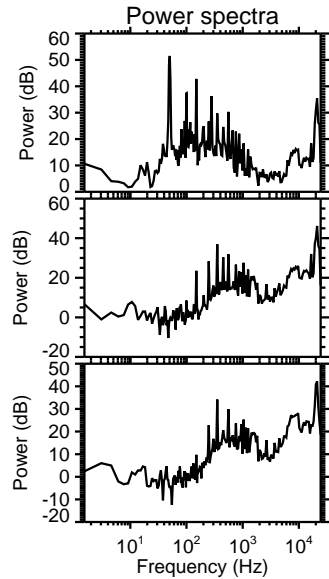
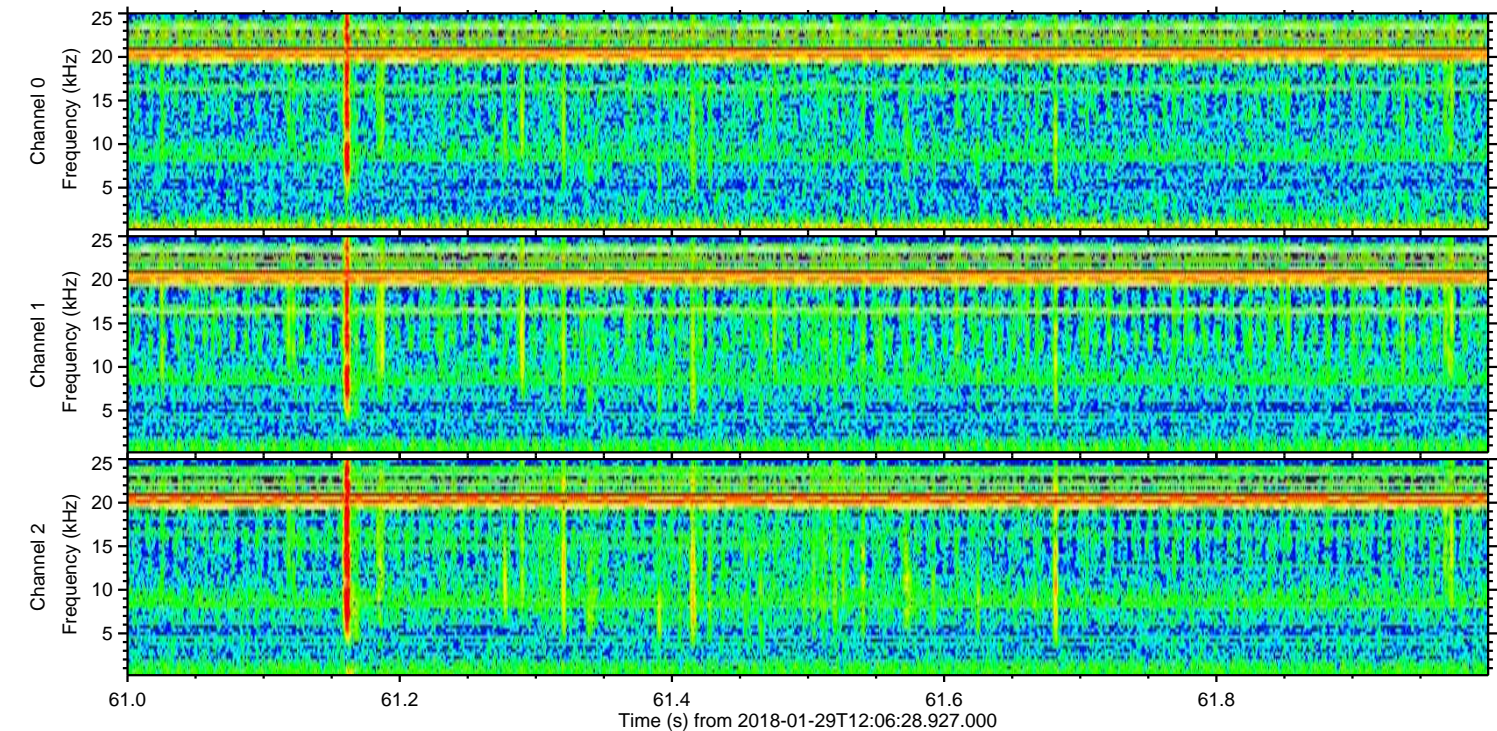
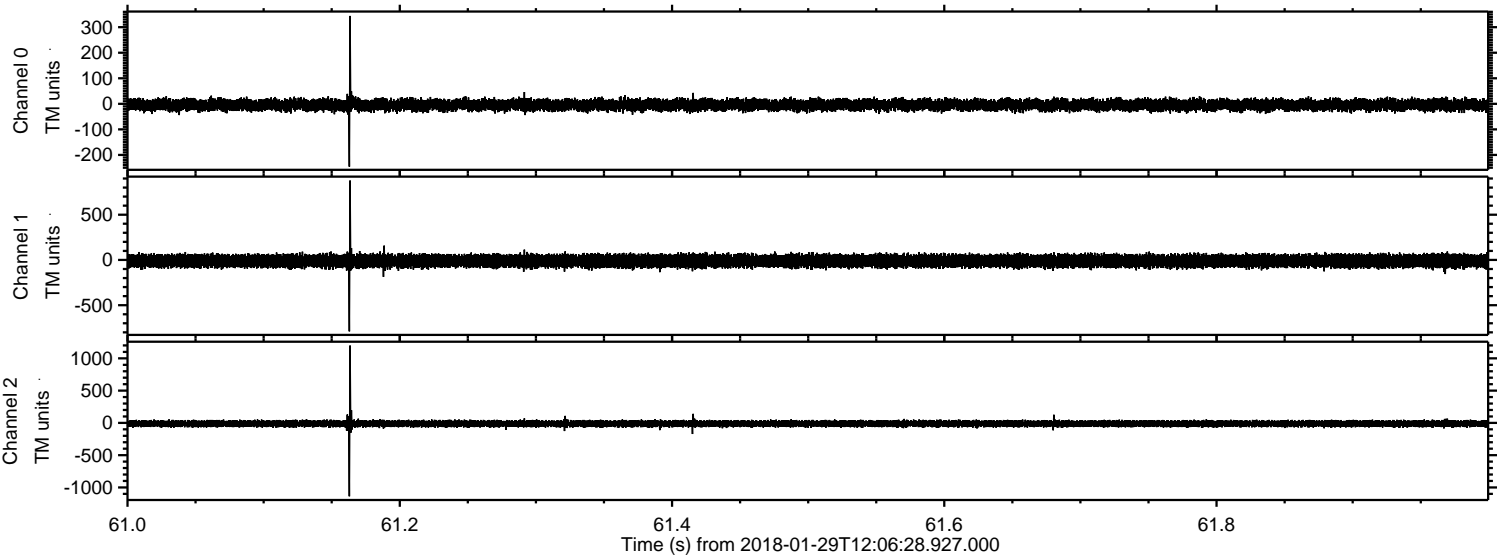
Processed Mon Jan 29 13:14:33 2018 by ELM ver.2012-10-06 from 001__elm20180129_120627__dat00.bin



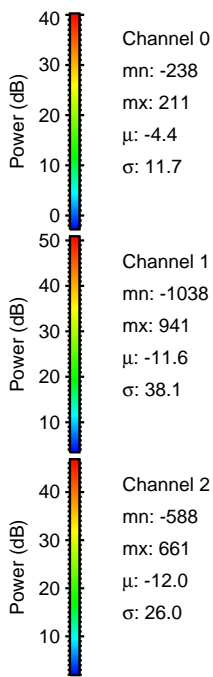
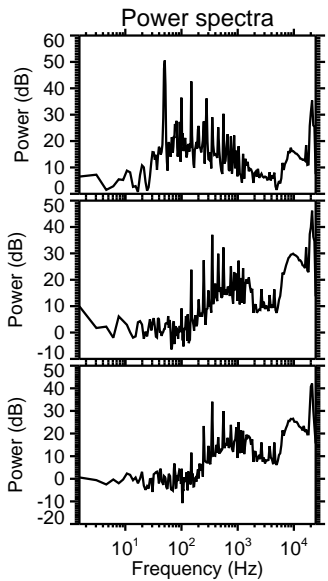
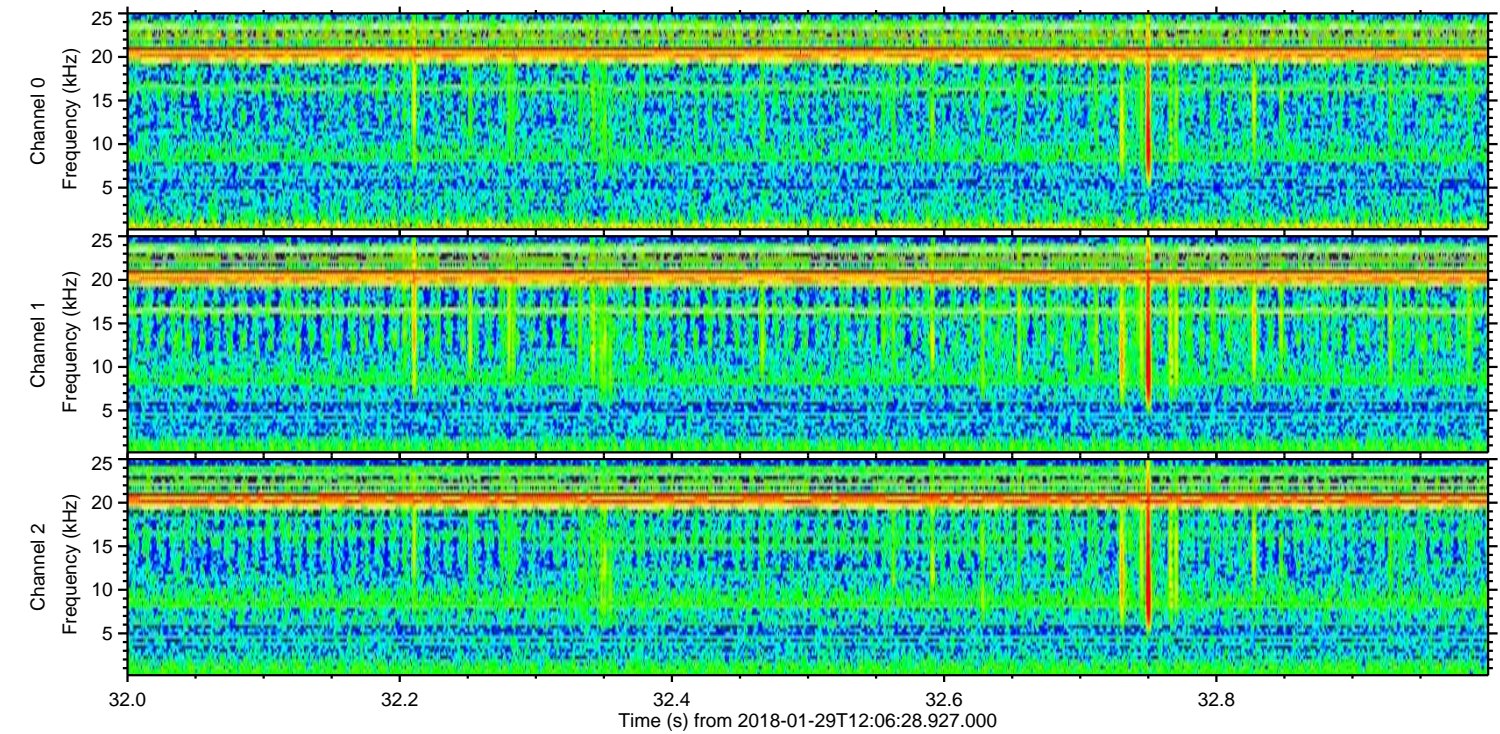
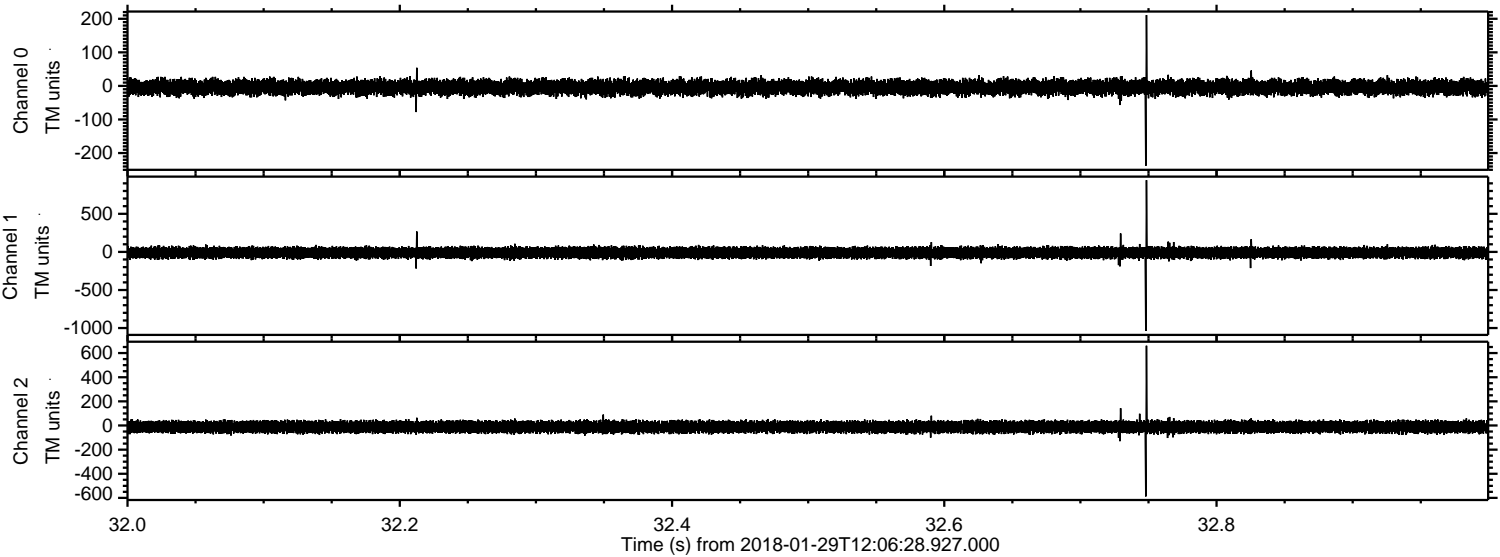
Processed Mon Jan 29 13:14:34 2018 by ELM ver.2012-10-06 from 001__elm20180129_120627__dat00.bin



Processed Mon Jan 29 13:14:35 2018 by ELM ver.2012-10-06 from 001__elm20180129_120627__dat00.bin



Processed Mon Jan 29 13:14:36 2018 by ELM ver.2012-10-06 from 001__elm20180129_120627__dat00.bin



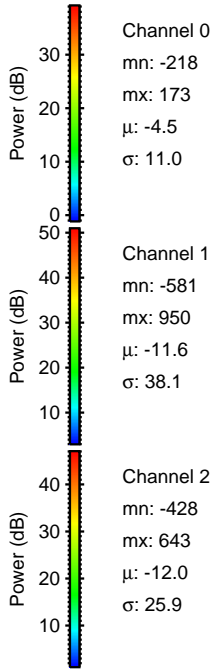
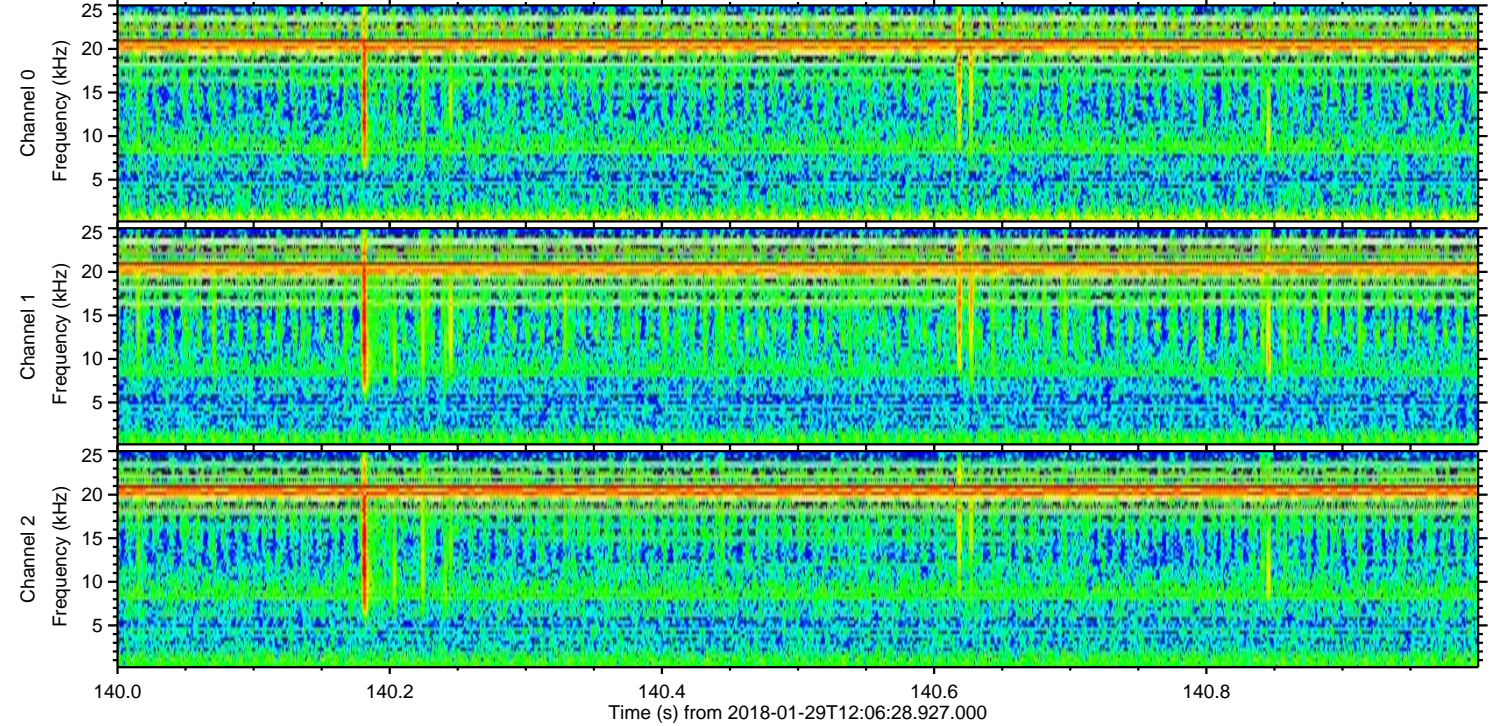
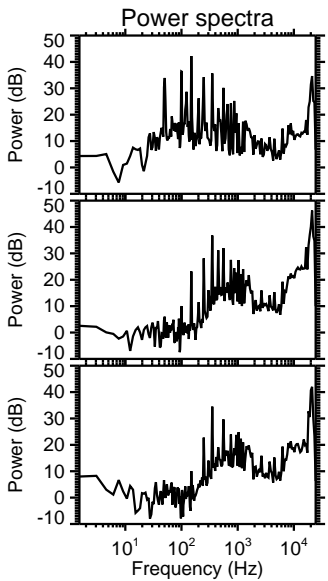
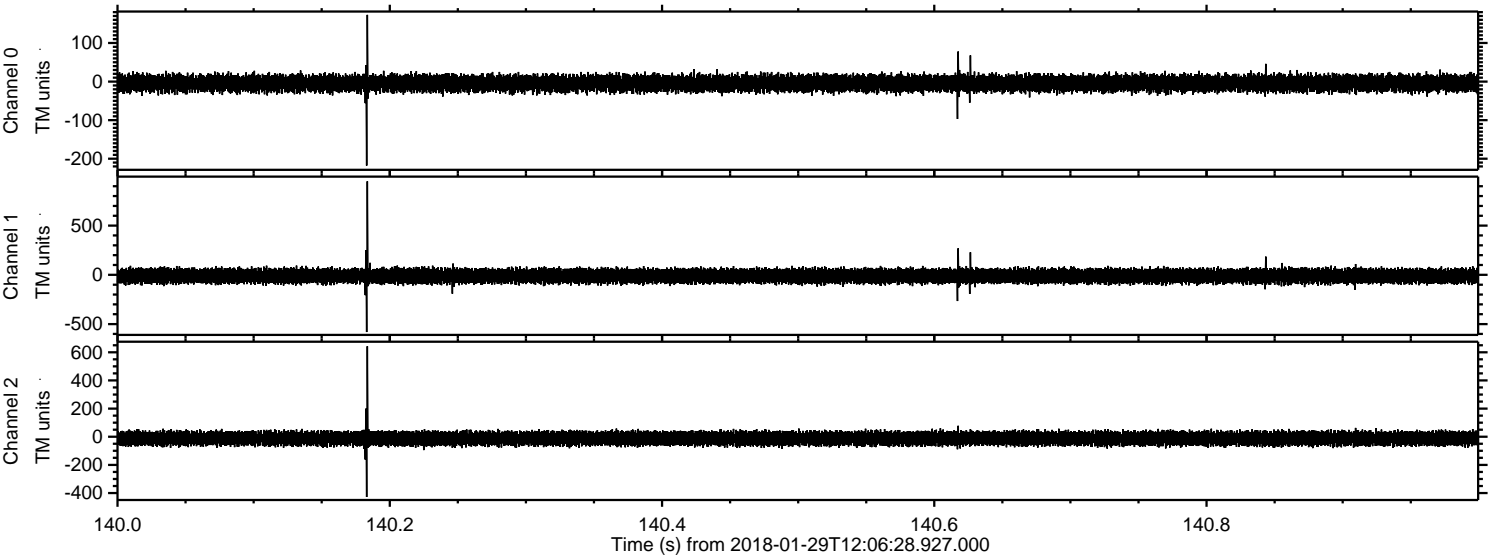
Channel 0
mn: -238
mx: 211
 μ : -4.4
 σ : 11.7

Channel 1
mn: -1038
mx: 941
 μ : -11.6
 σ : 38.1

Channel 2
mn: -588
mx: 661
 μ : -12.0
 σ : 26.0

ELMAVAN 3D WAVEFORMS (Measured data sampled at 50 kHz) 50999 packets of 144 samples from 2018-01-29T12:06:28.927.000. Part 141/147

Processed Mon Jan 29 13:14:36 2018 by ELM ver.2012-10-06 from 001_elm20180129_120627__dat00.bin



Channel 0
mn: -218
mx: 173
 μ : -4.5
 σ : 11.0

Channel 1
mn: -581
mx: 950
 μ : -11.6
 σ : 38.1

Channel 2
mn: -428
mx: 643
 μ : -12.0
 σ : 25.9

Processed Mon Jan 29 13:14:37 2018 by ELM ver.2012-10-06 from 001__elm20180129_120627__dat00.bin

