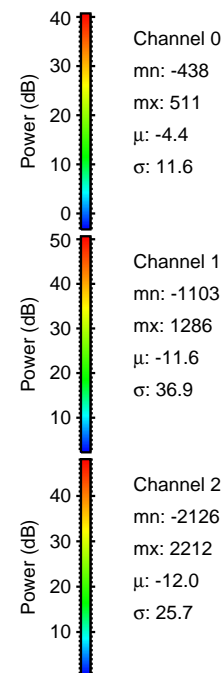
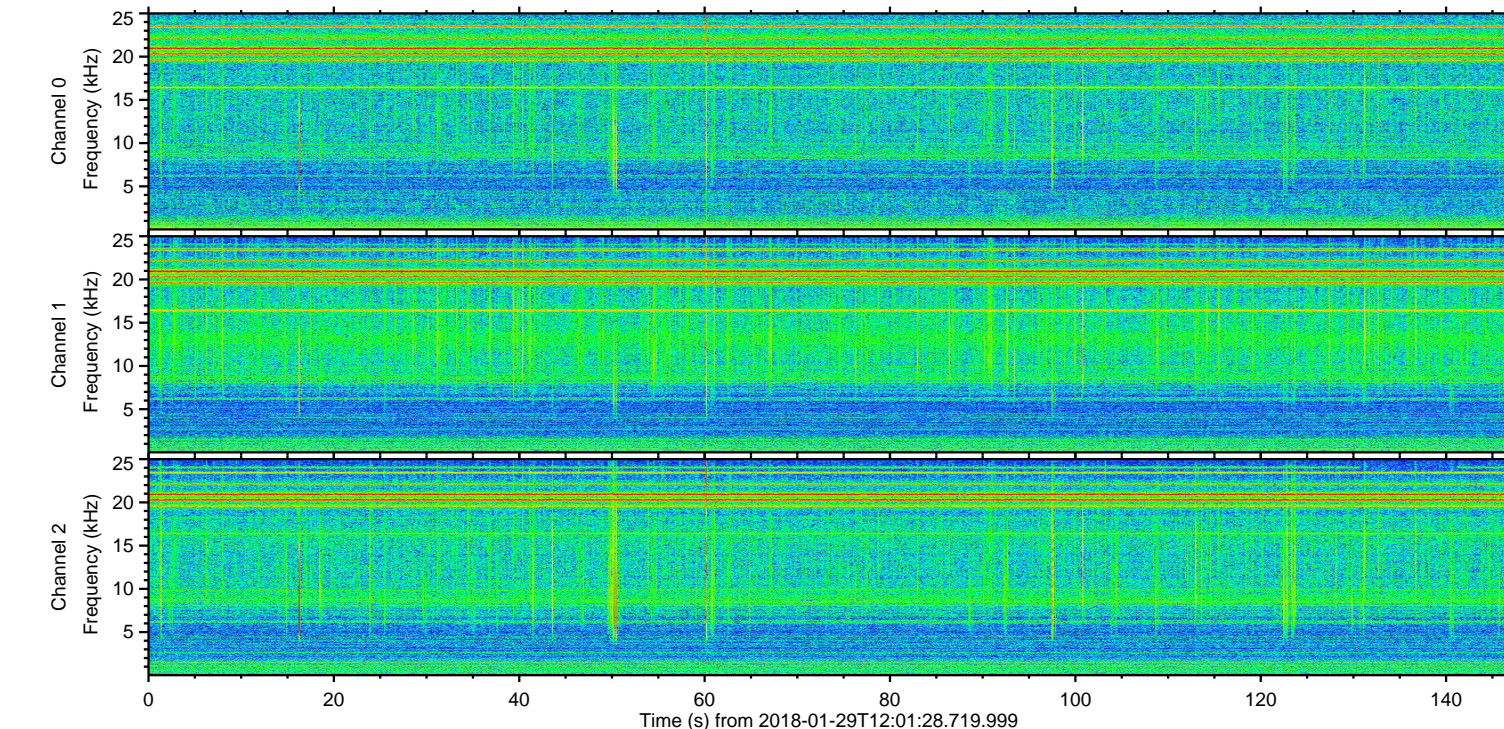
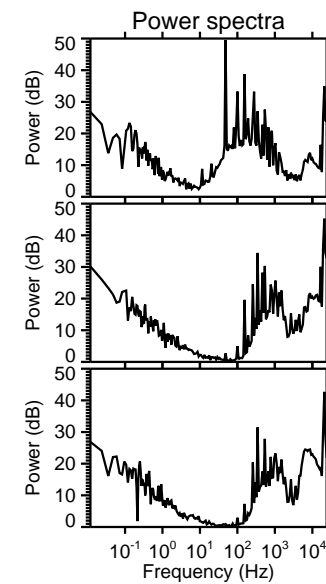
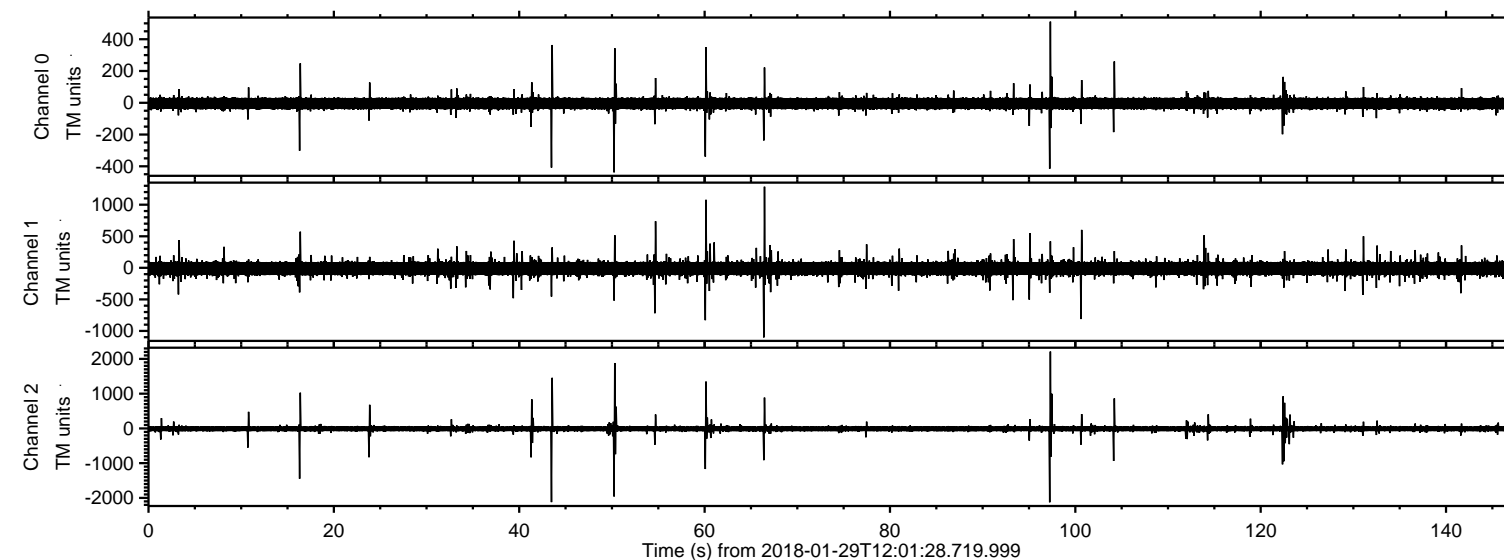
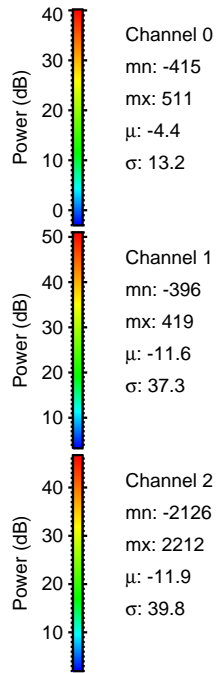
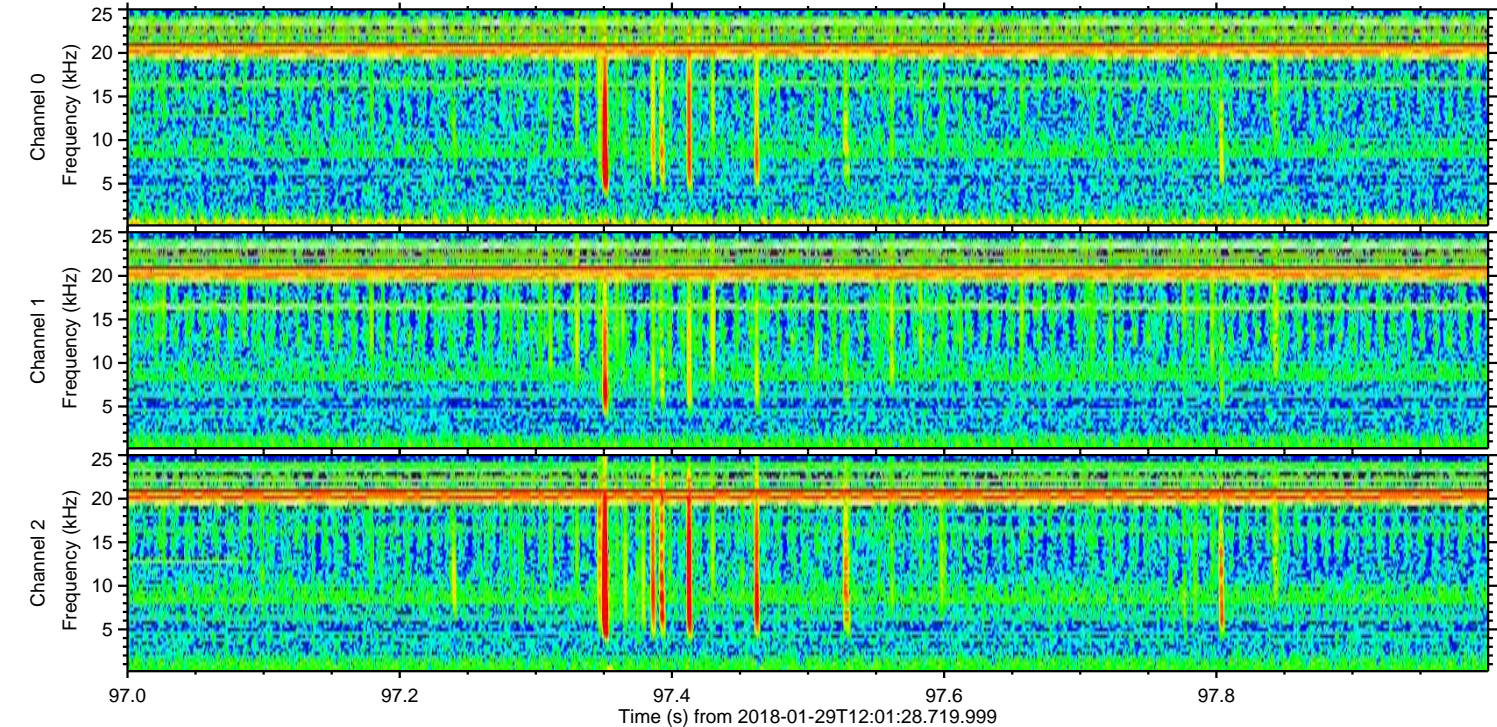
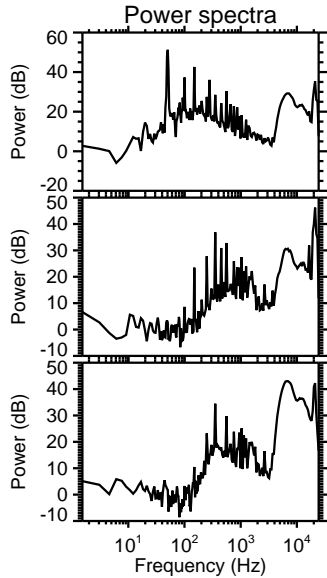
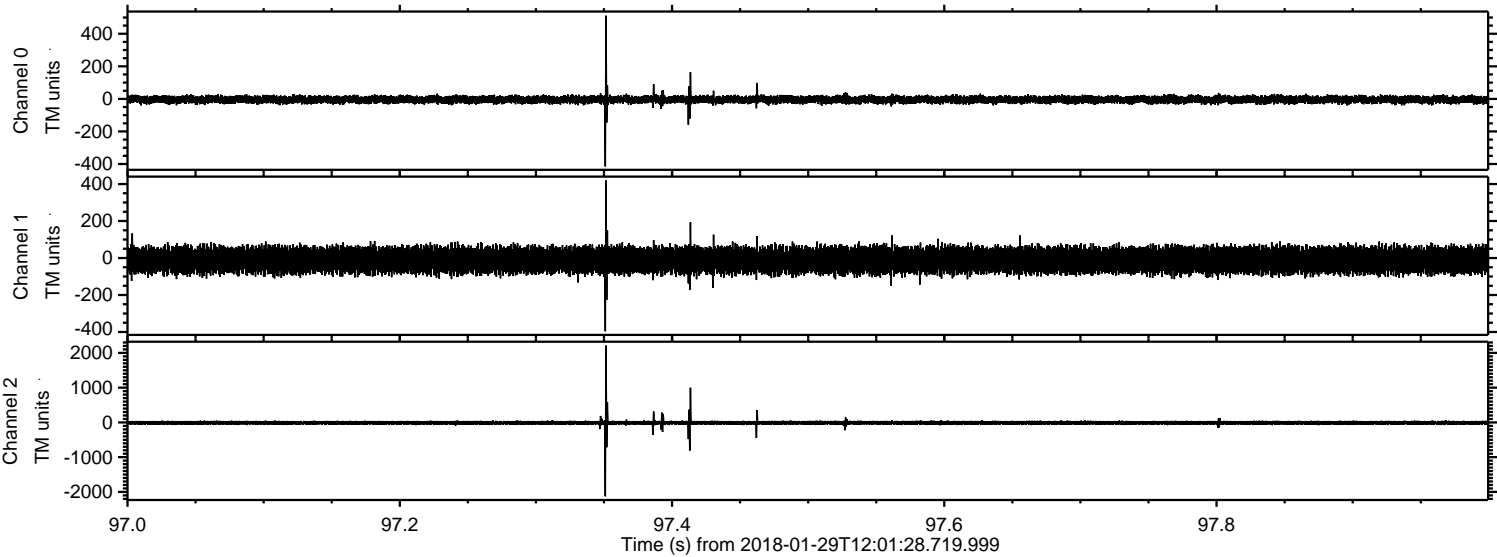


ELMAVAN 3D WAVEFORMS (Measured data sampled at 50 kHz) 51000 packets of 144 samples from 2018-01-29T12:01:28.719.999.

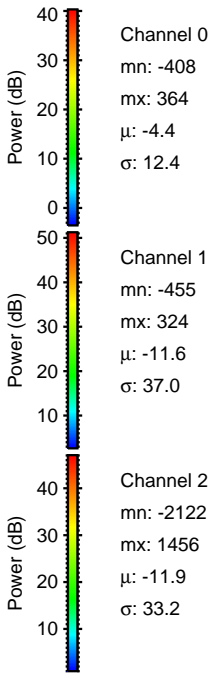
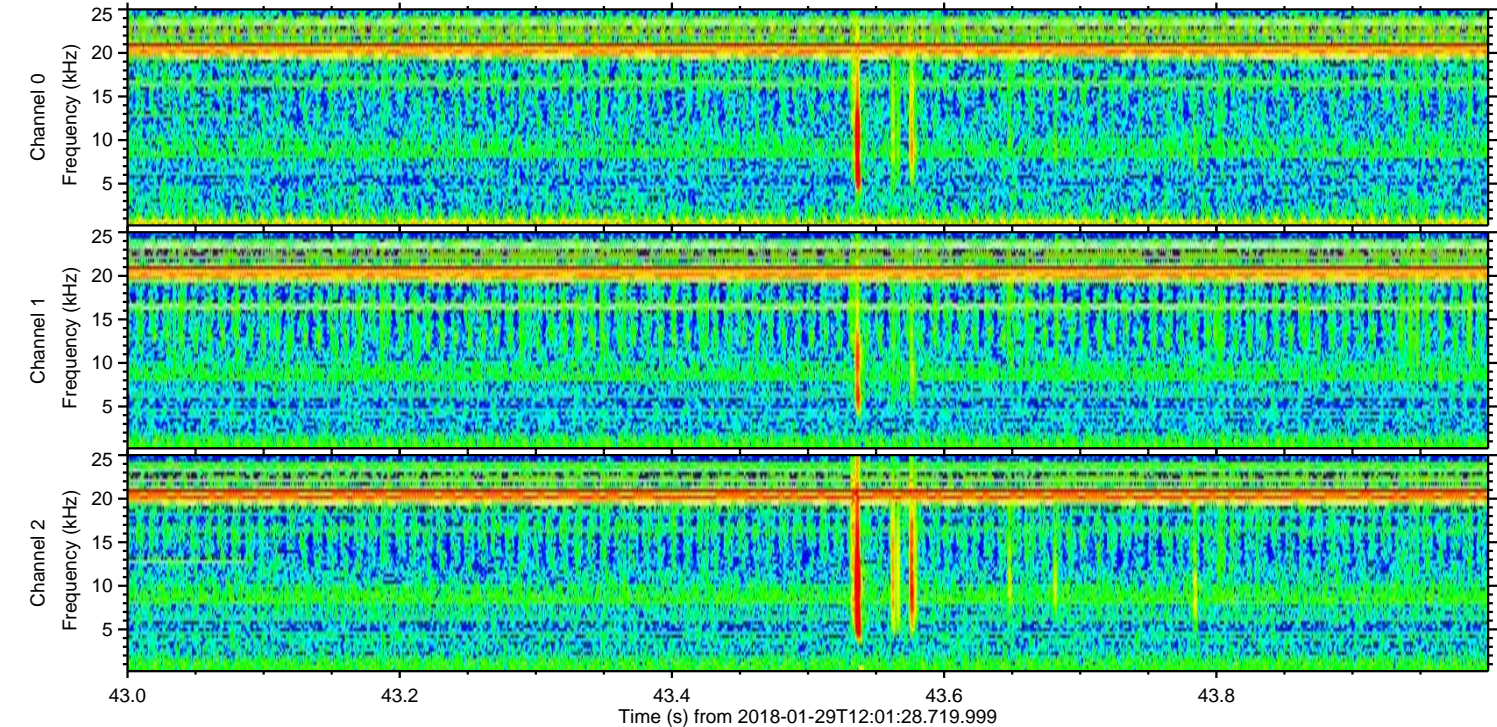
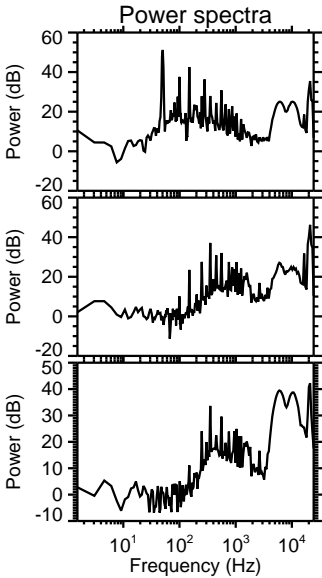
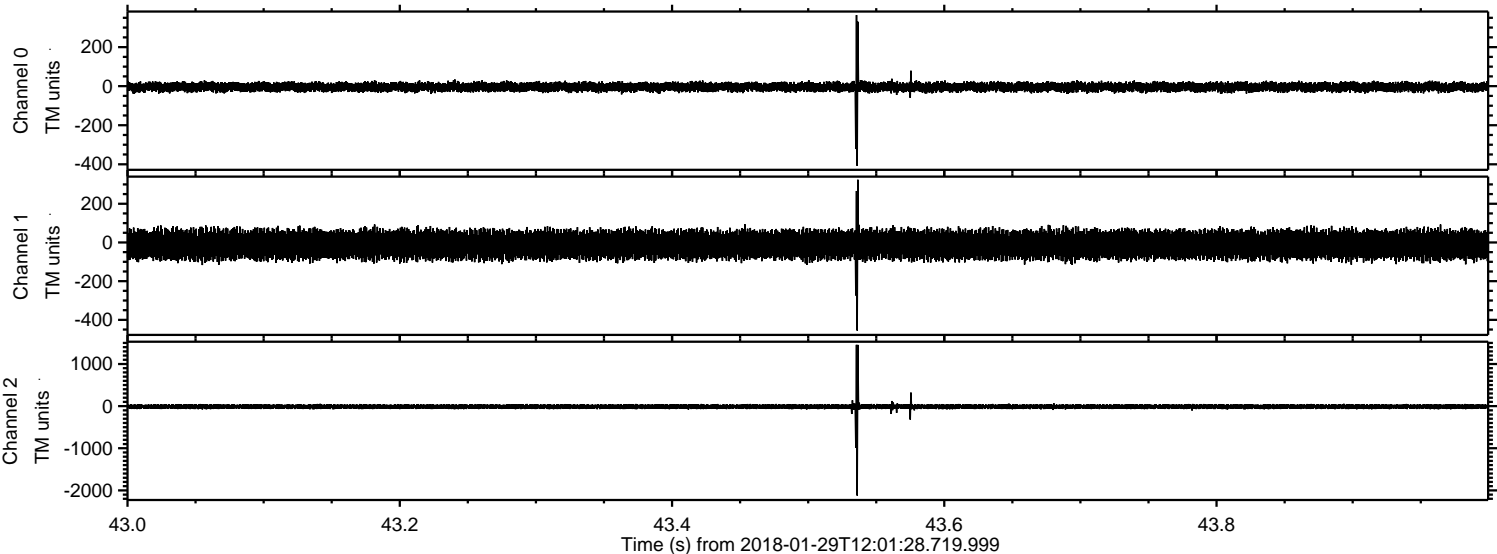
Processed Mon Jan 29 13:09:03 2018 by ELM ver.2012-10-06 from 001__elm20180129_120127__dat00.bin



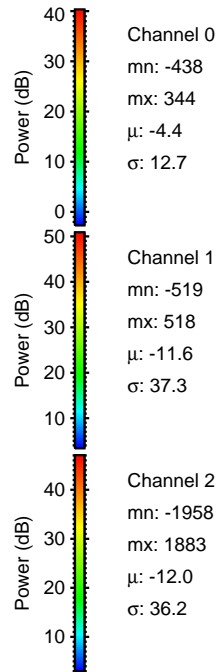
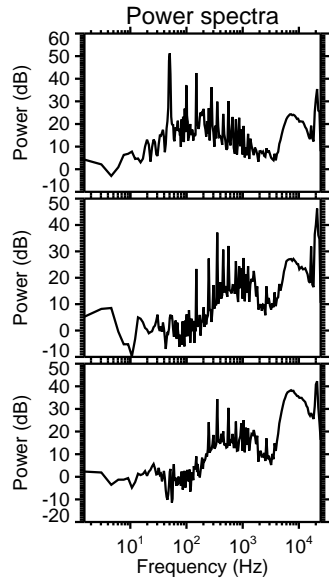
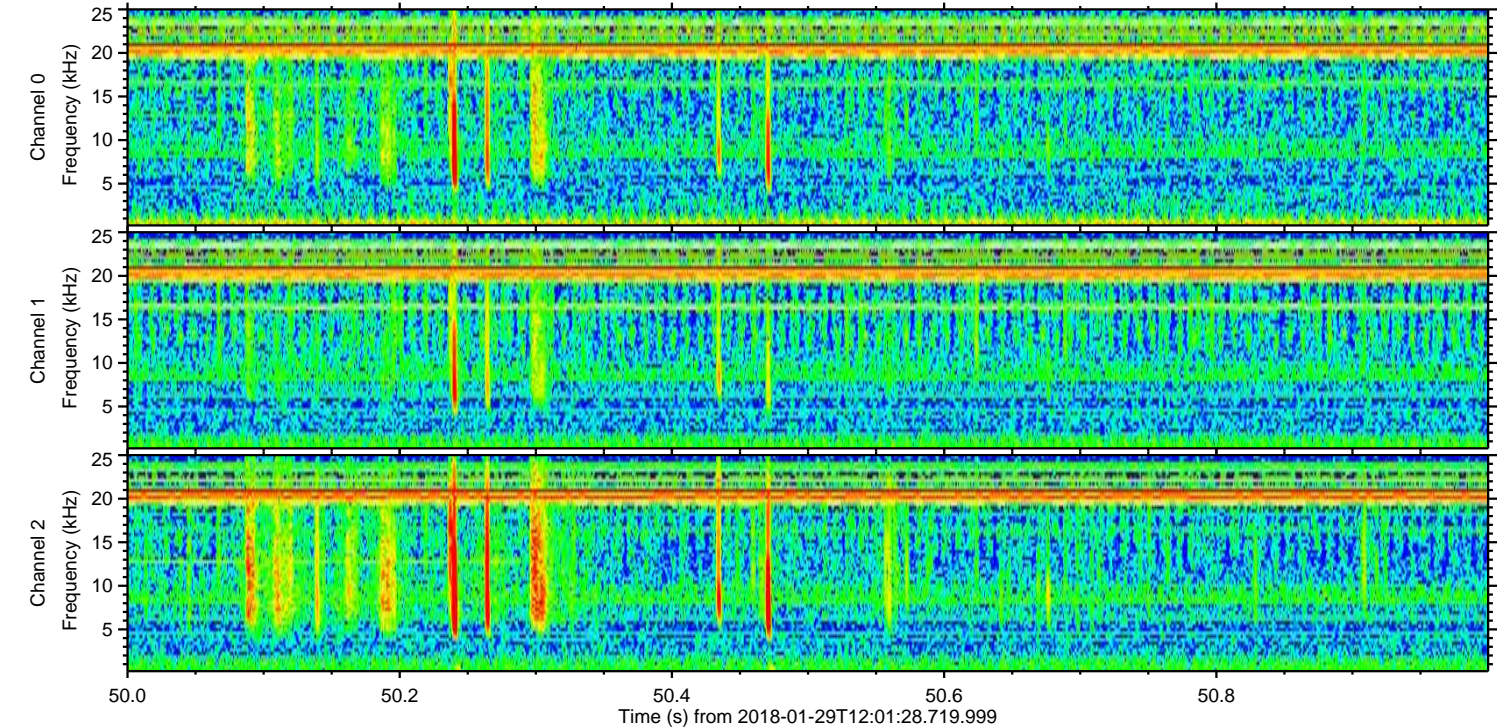
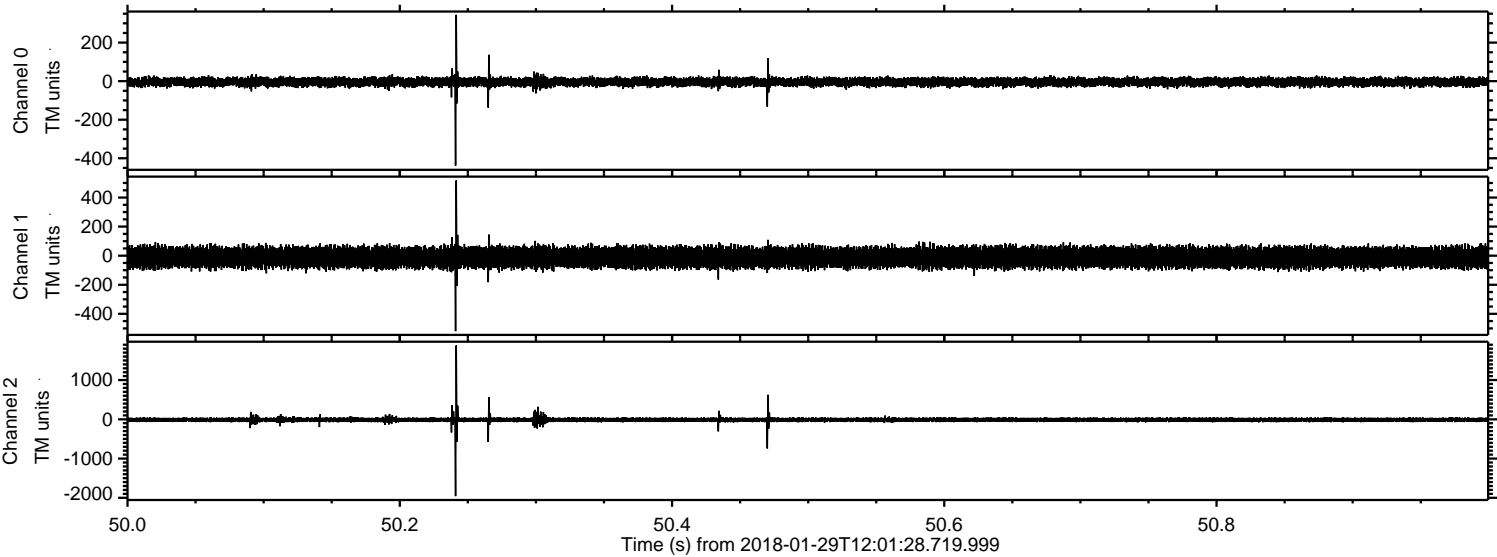
Processed Mon Jan 29 13:09:10 2018 by ELM ver.2012-10-06 from 001__elm20180129_120127__dat00.bin



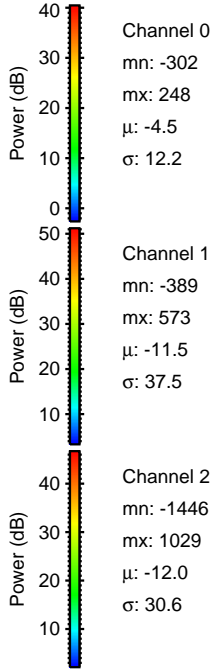
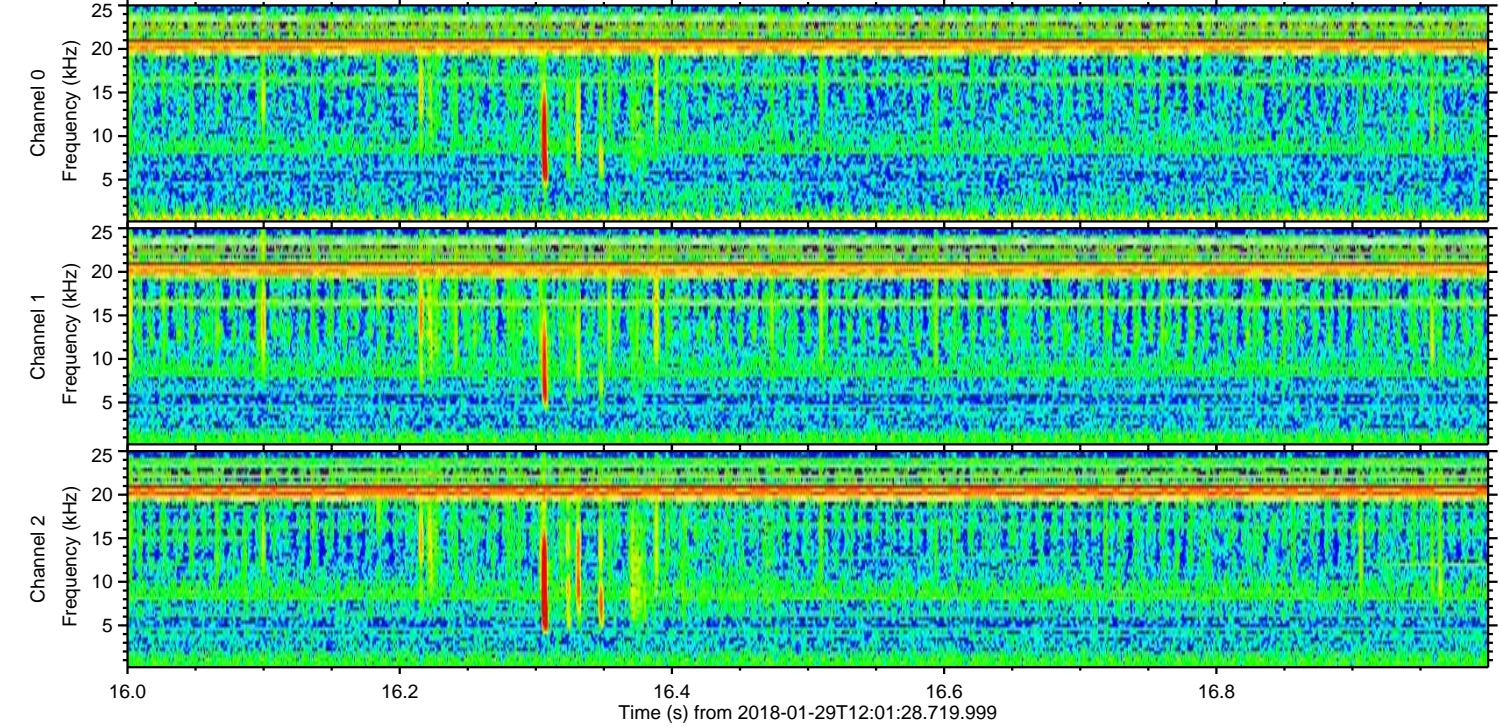
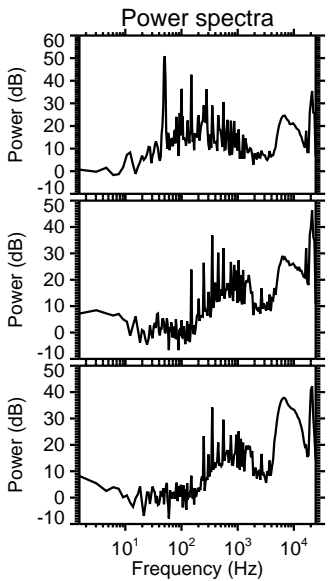
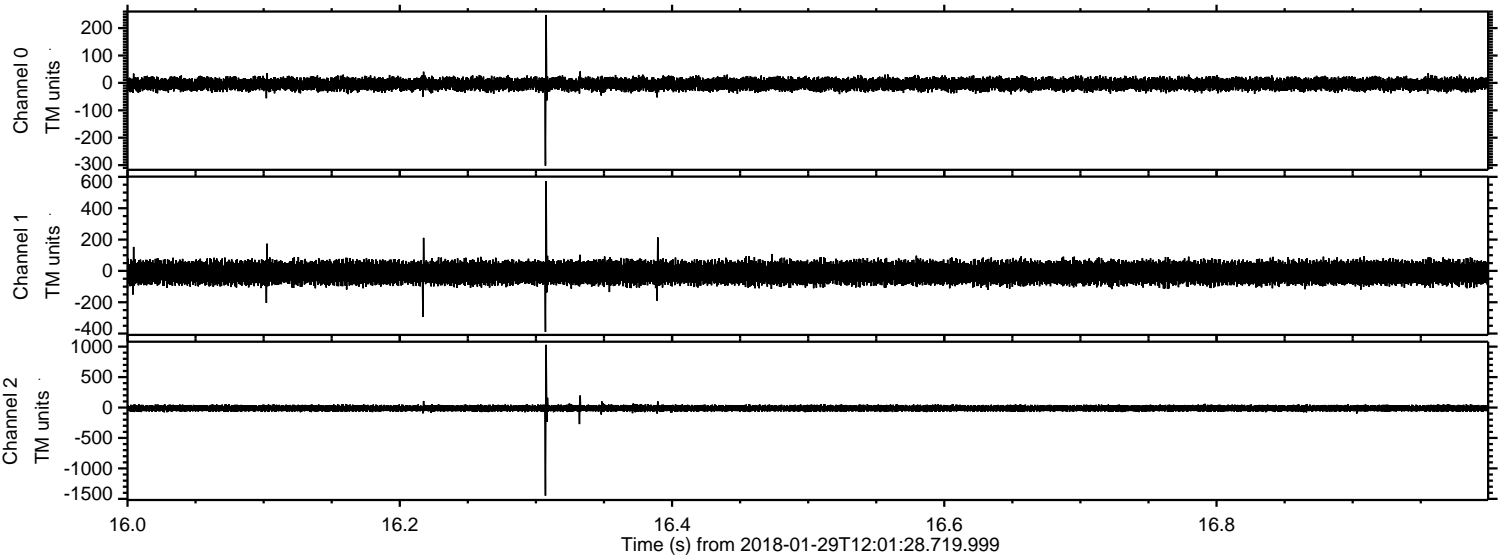
Processed Mon Jan 29 13:09:11 2018 by ELM ver.2012-10-06 from 001_elm20180129_120127__dat00.bin



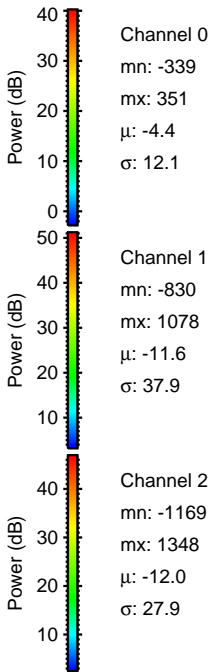
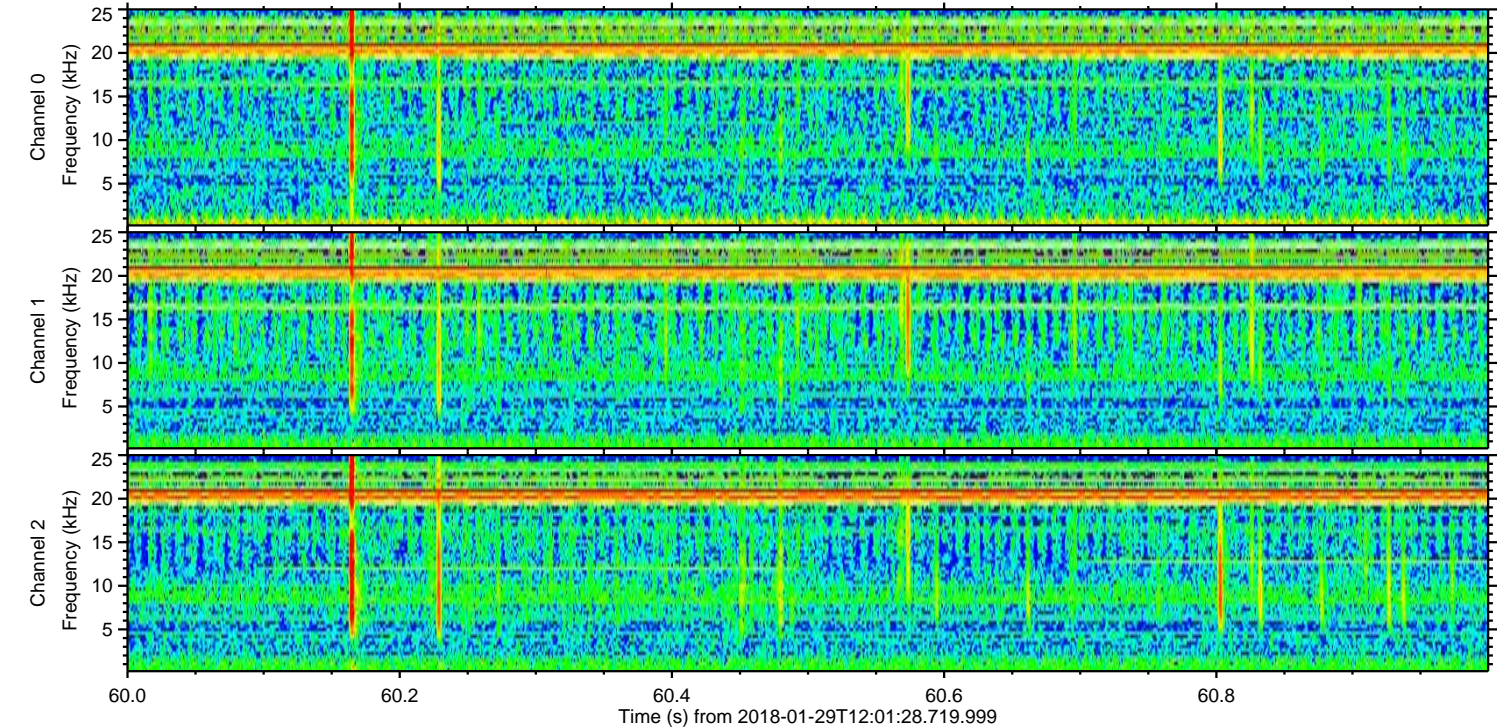
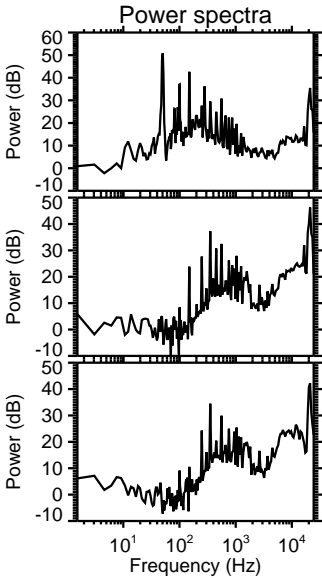
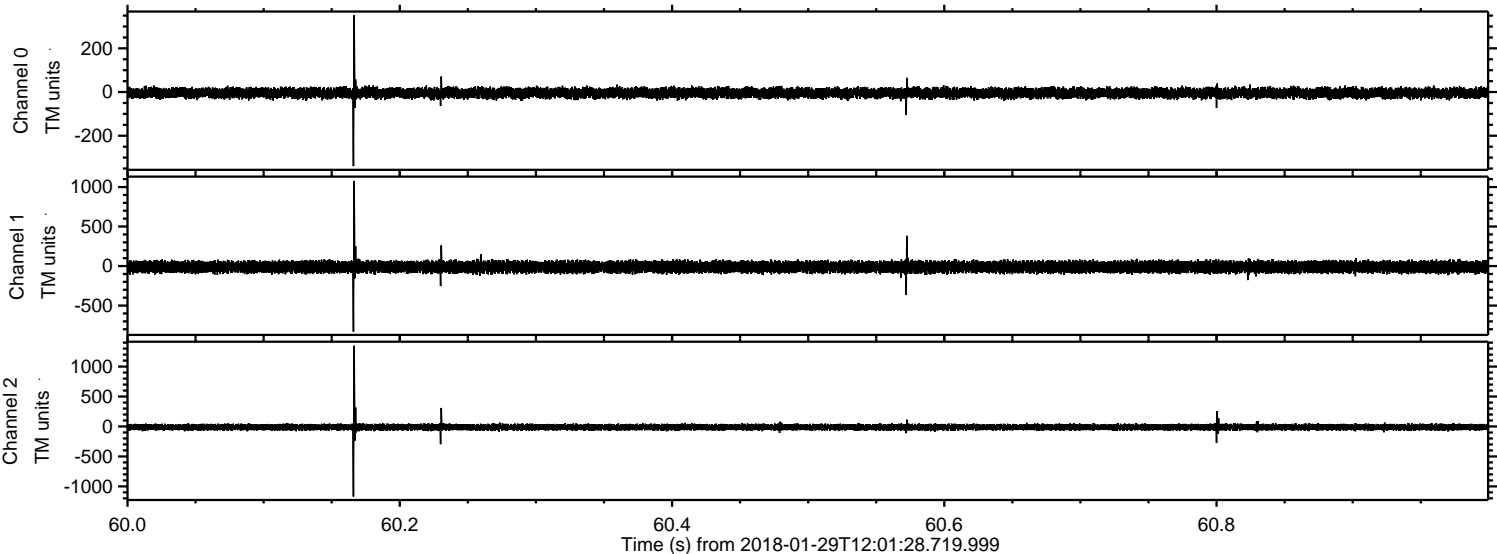
Processed Mon Jan 29 13:09:12 2018 by ELM ver.2012-10-06 from 001__elm20180129_120127__dat00.bin



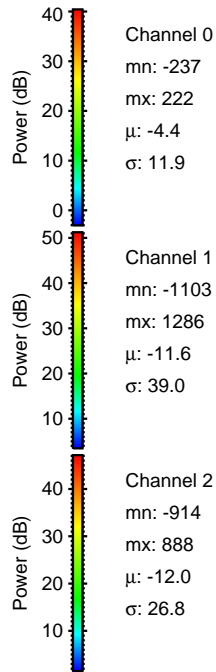
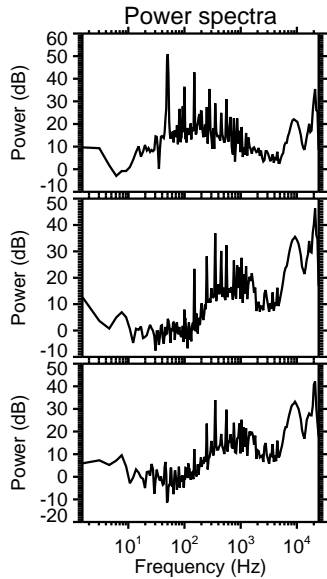
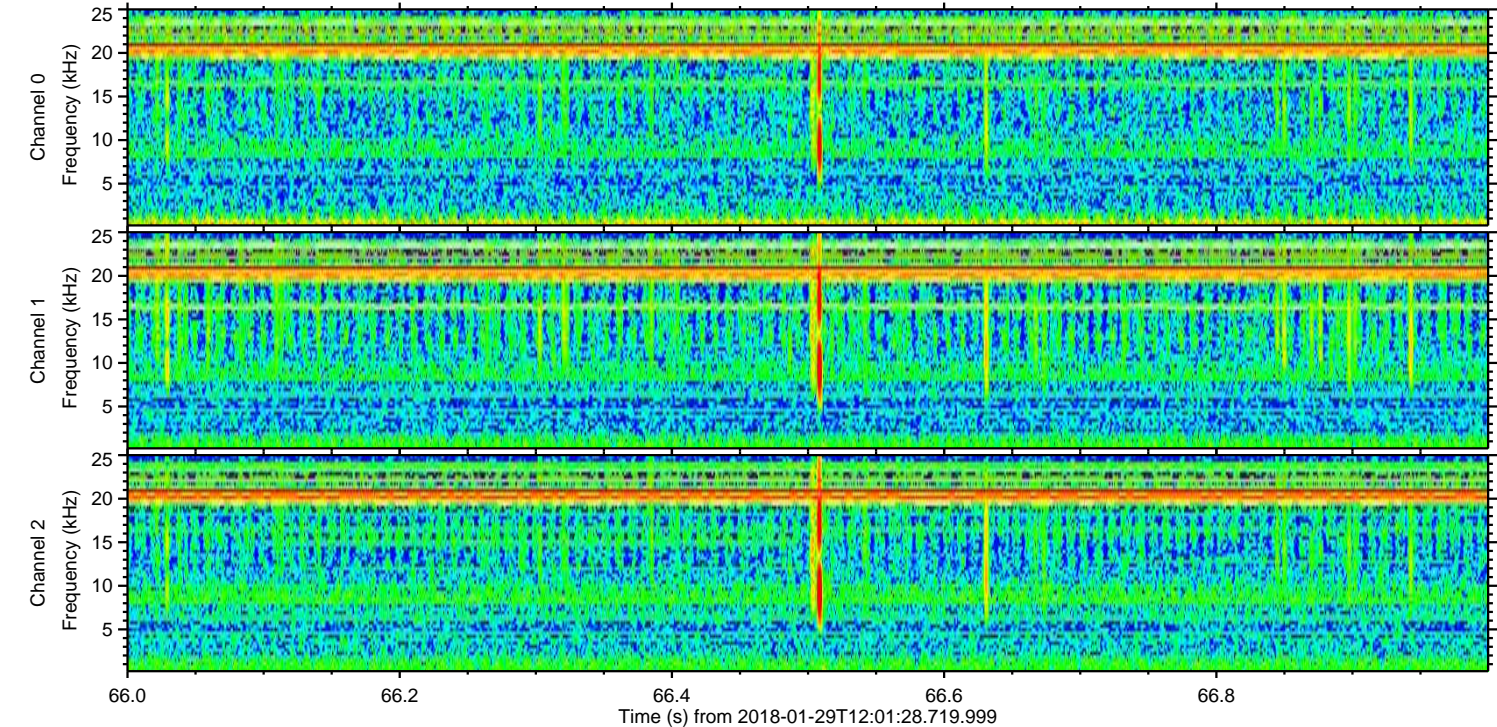
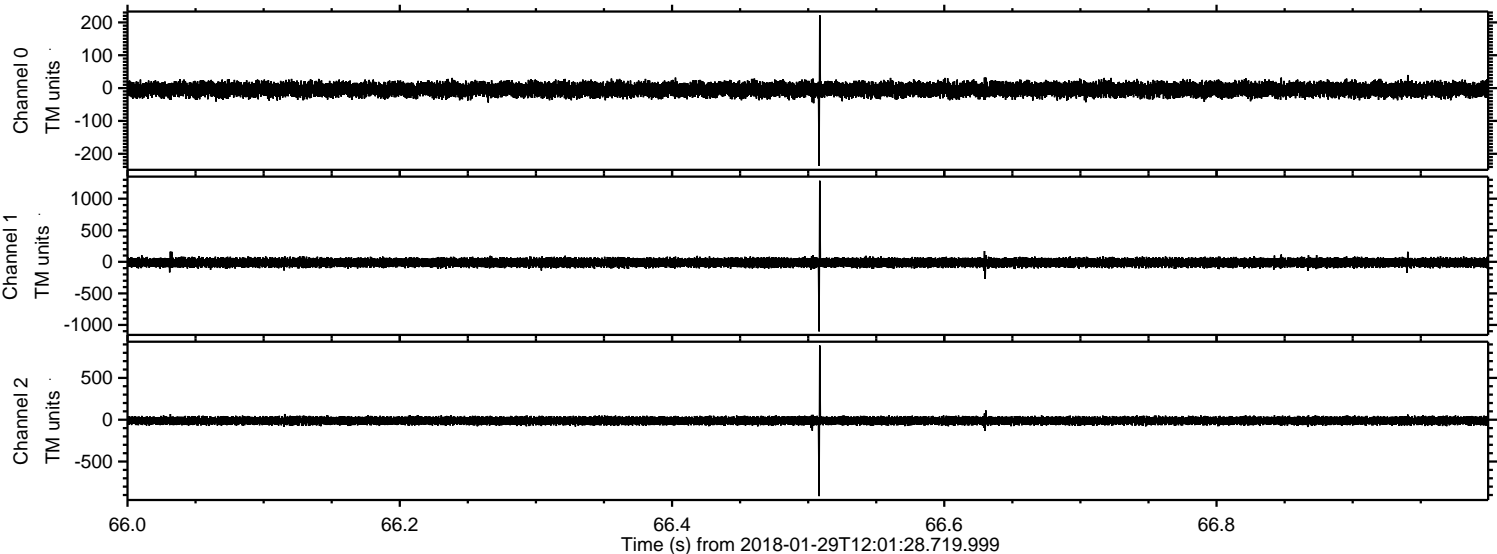
Processed Mon Jan 29 13:09:13 2018 by ELM ver.2012-10-06 from 001__elm20180129_120127__dat00.bin



Processed Mon Jan 29 13:09:14 2018 by ELM ver.2012-10-06 from 001__elm20180129_120127__dat00.bin

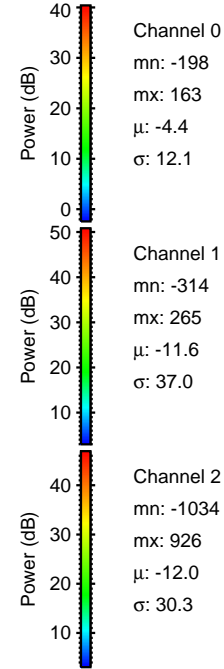
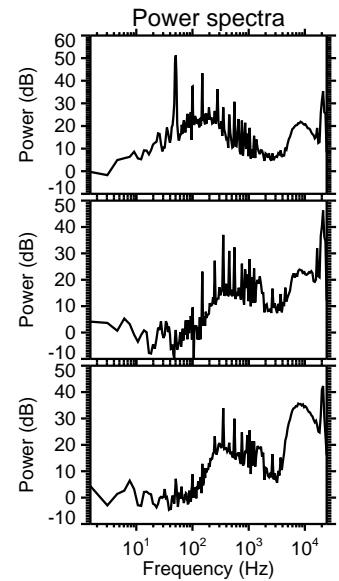
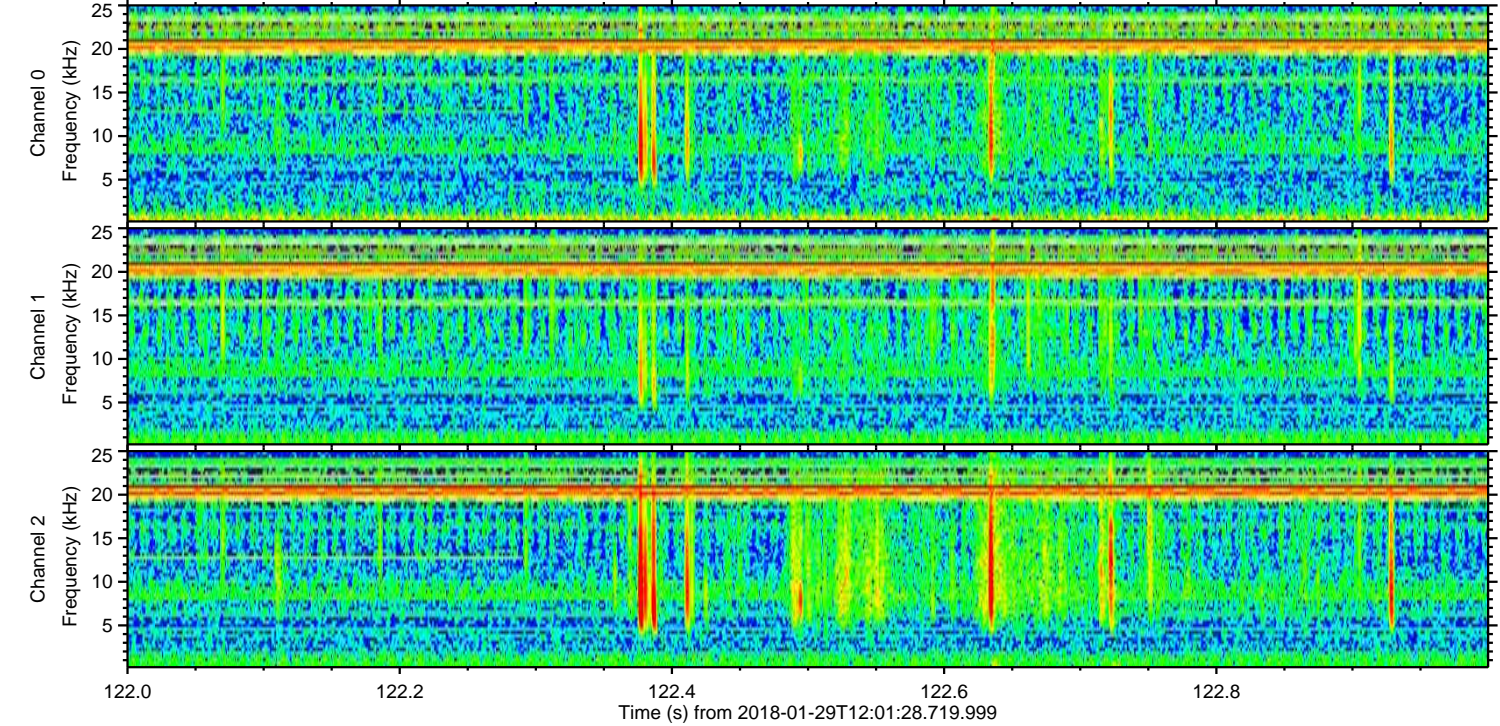
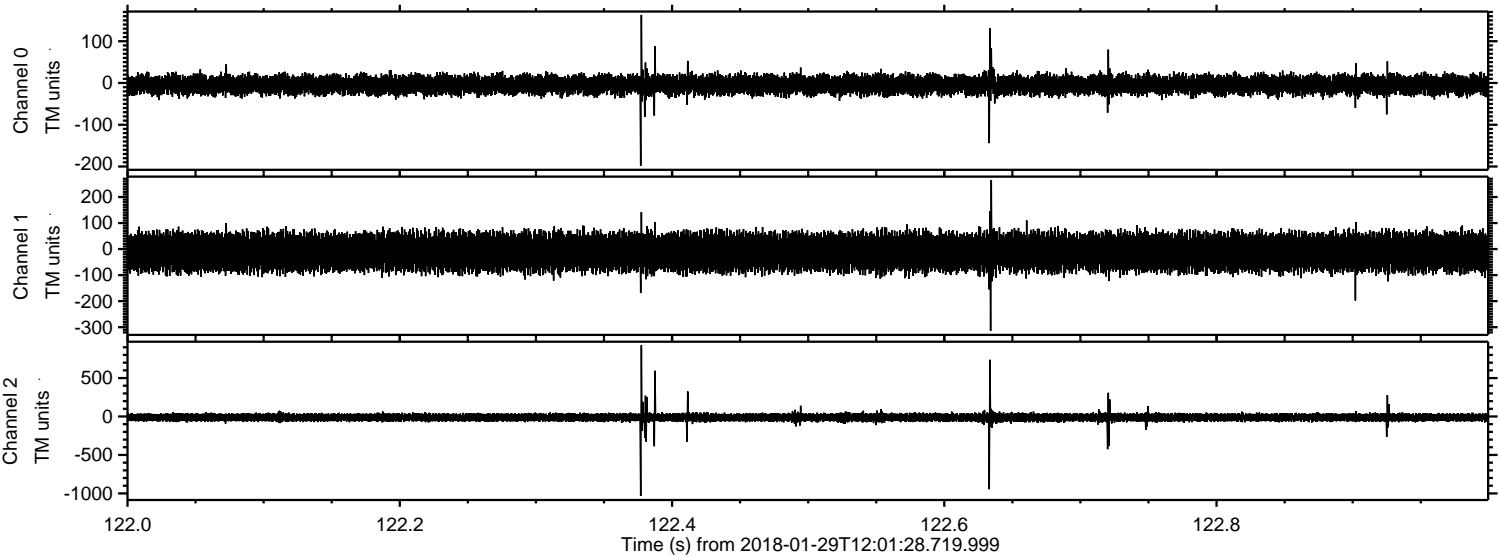


Processed Mon Jan 29 13:09:14 2018 by ELM ver.2012-10-06 from 001__elm20180129_120127__dat00.bin



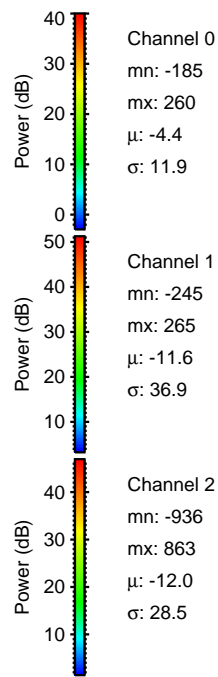
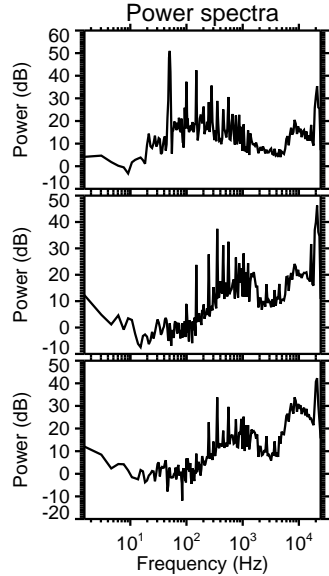
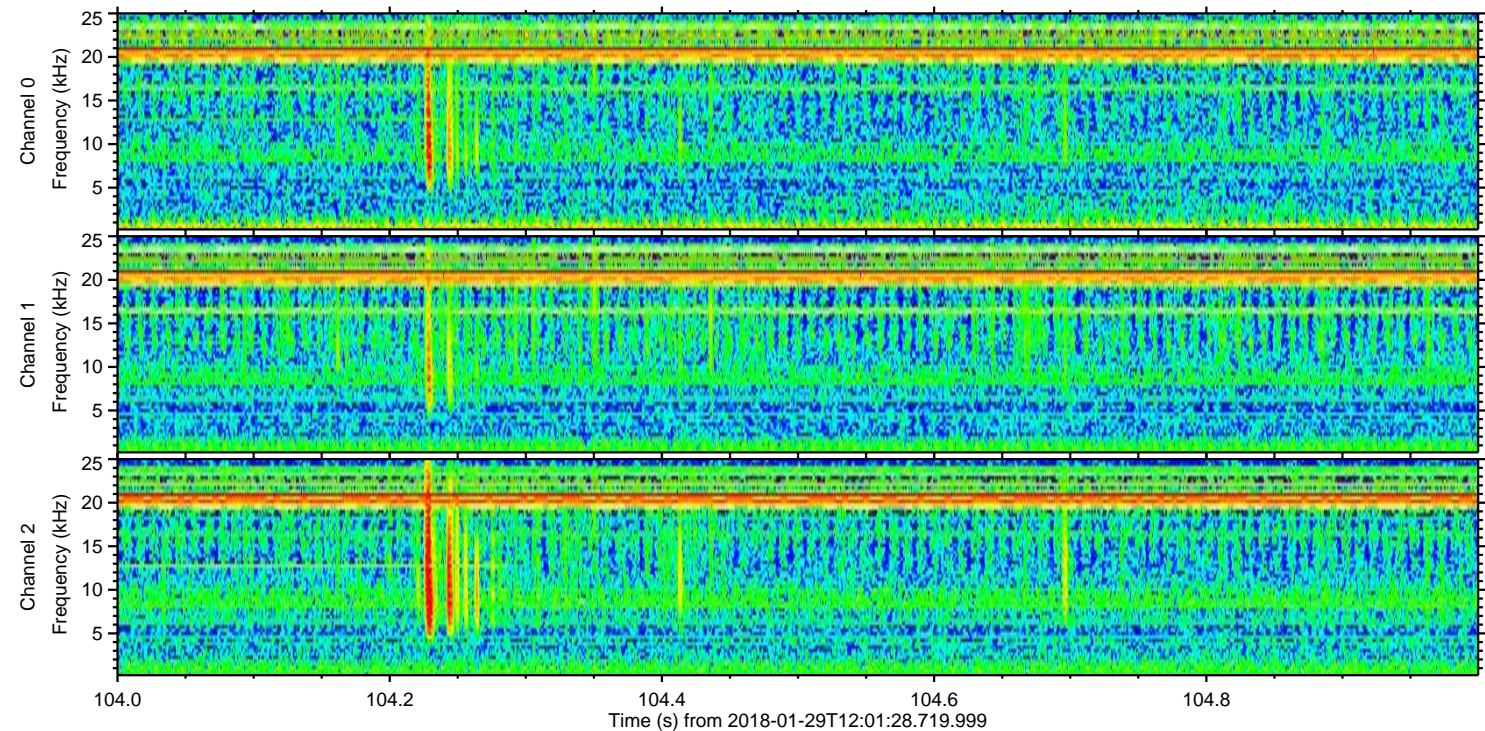
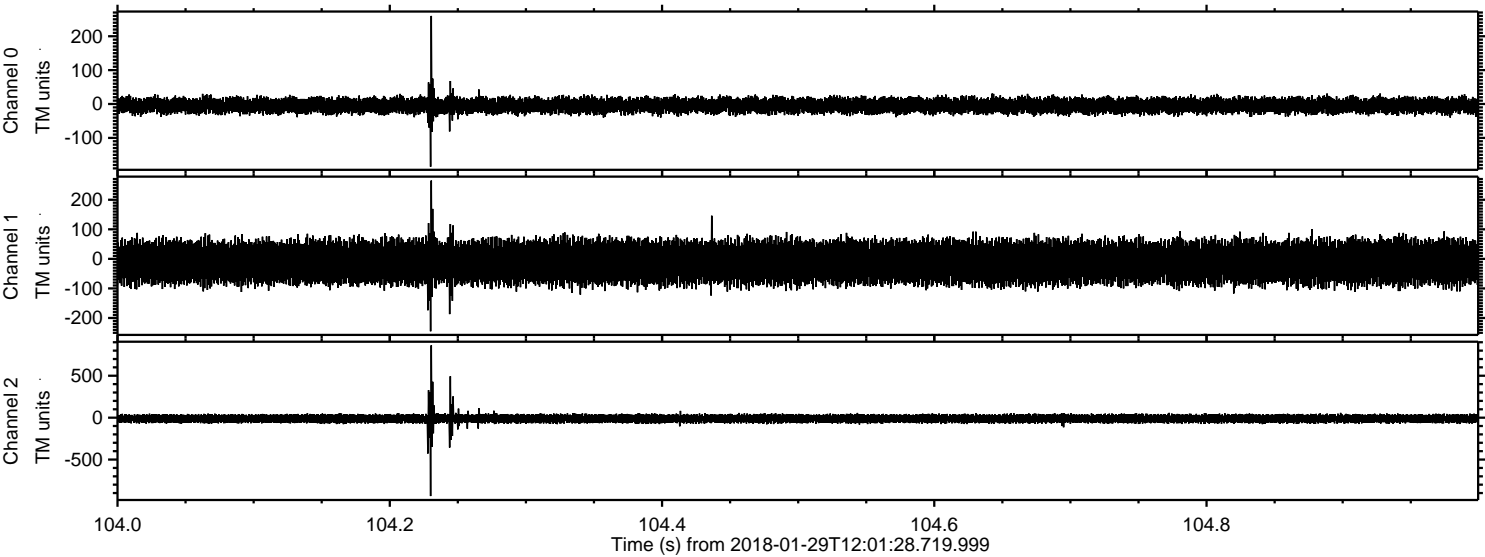
ELMAVAN 3D WAVEFORMS (Measured data sampled at 50 kHz) 51000 packets of 144 samples from 2018-01-29T12:01:28.719.999. Part 123/147

Processed Mon Jan 29 13:09:15 2018 by ELM ver.2012-10-06 from 001__elm20180129_120127__dat00.bin



ELMAVAN 3D WAVEFORMS (Measured data sampled at 50 kHz) 51000 packets of 144 samples from 2018-01-29T12:01:28.719.999. Part 105/147

Processed Mon Jan 29 13:09:16 2018 by ELM ver.2012-10-06 from 001__elm20180129_120127__dat00.bin

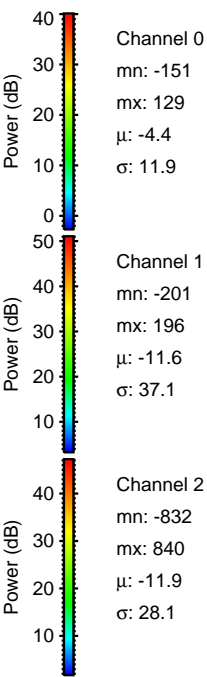
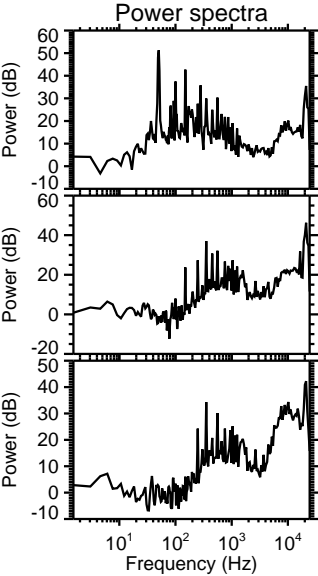
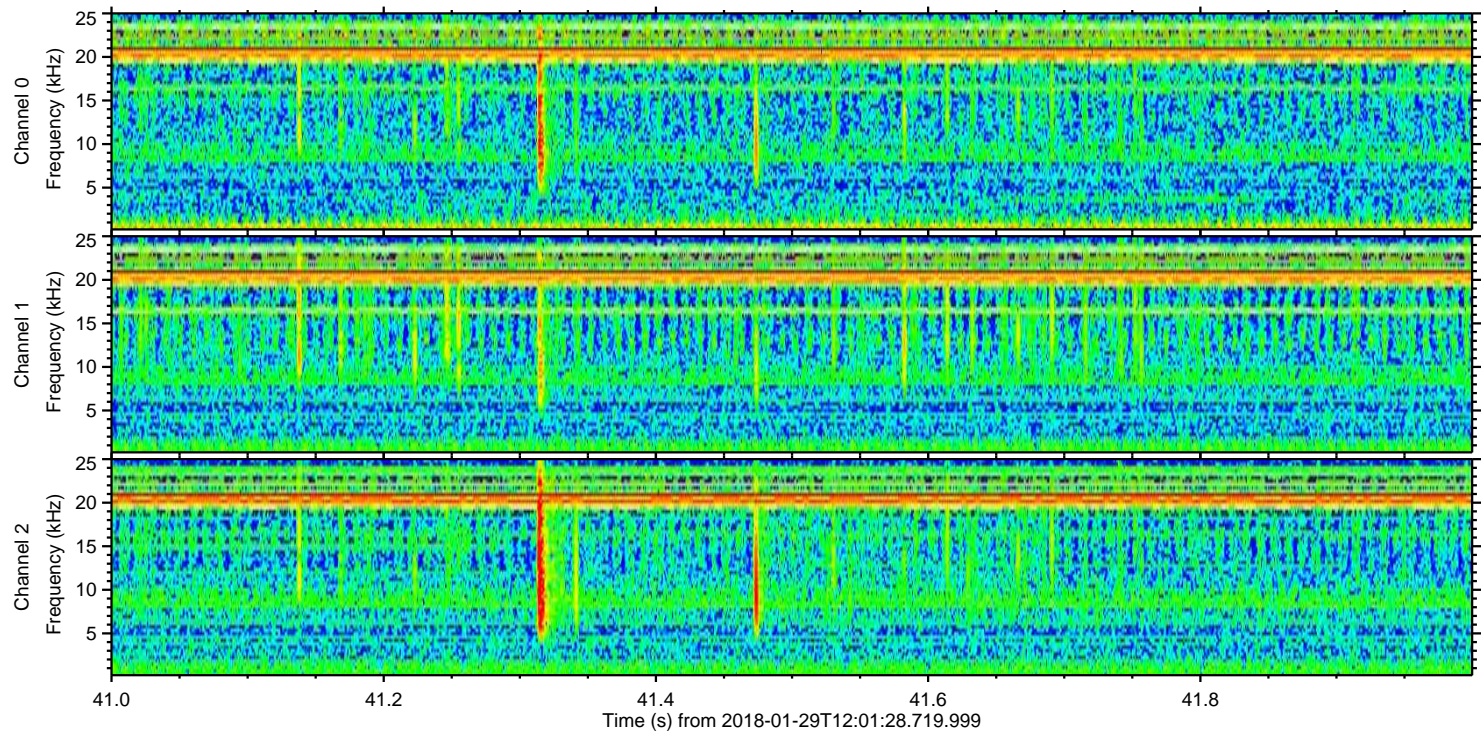
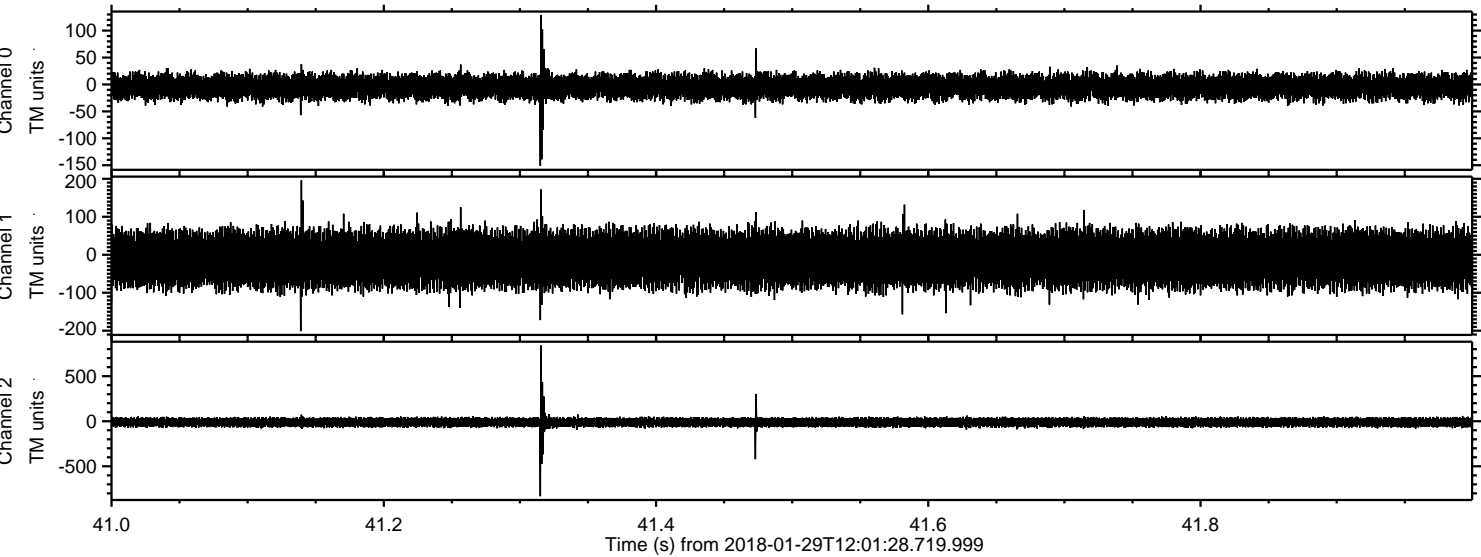


Channel 0
mn: -185
mx: 260
 μ : -4.4
 σ : 11.9

Channel 1
mn: -245
mx: 265
 μ : -11.6
 σ : 36.9

Channel 2
mn: -936
mx: 863
 μ : -12.0
 σ : 28.5

Processed Mon Jan 29 13:09:17 2018 by ELM ver.2012-10-06 from 001__elm20180129_120127__dat00.bin



Processed Mon Jan 29 13:09:17 2018 by ELM ver.2012-10-06 from 001__elm20180129_120127__dat00.bin

