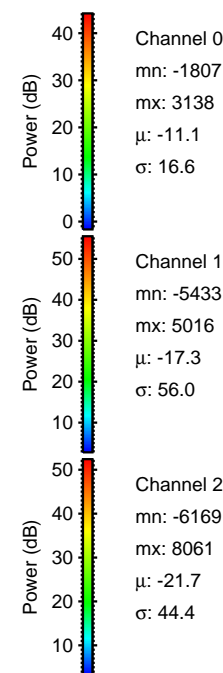
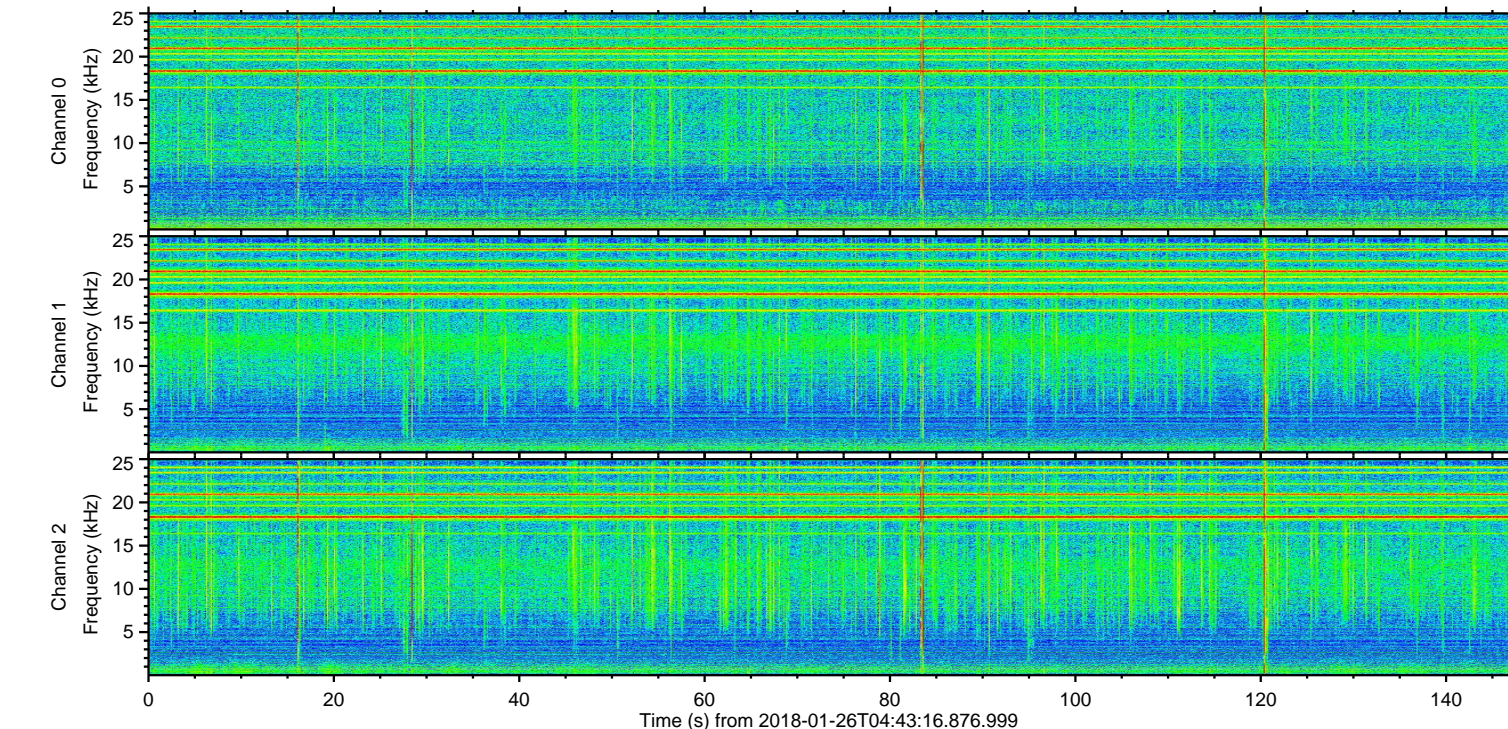
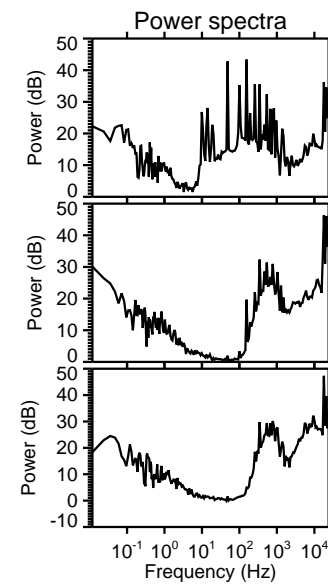
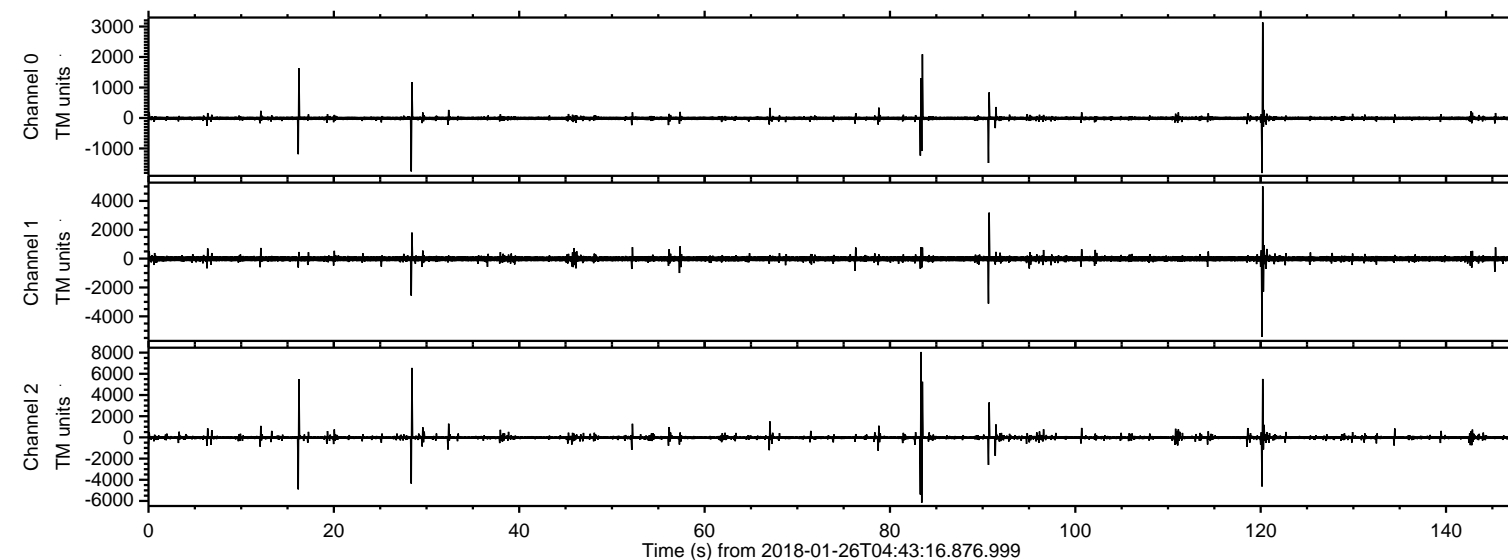
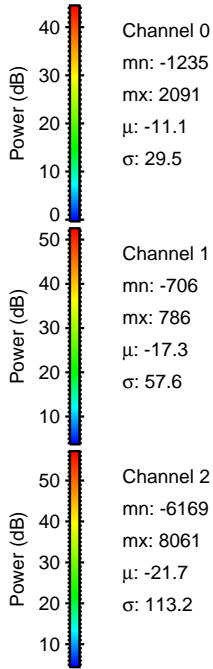
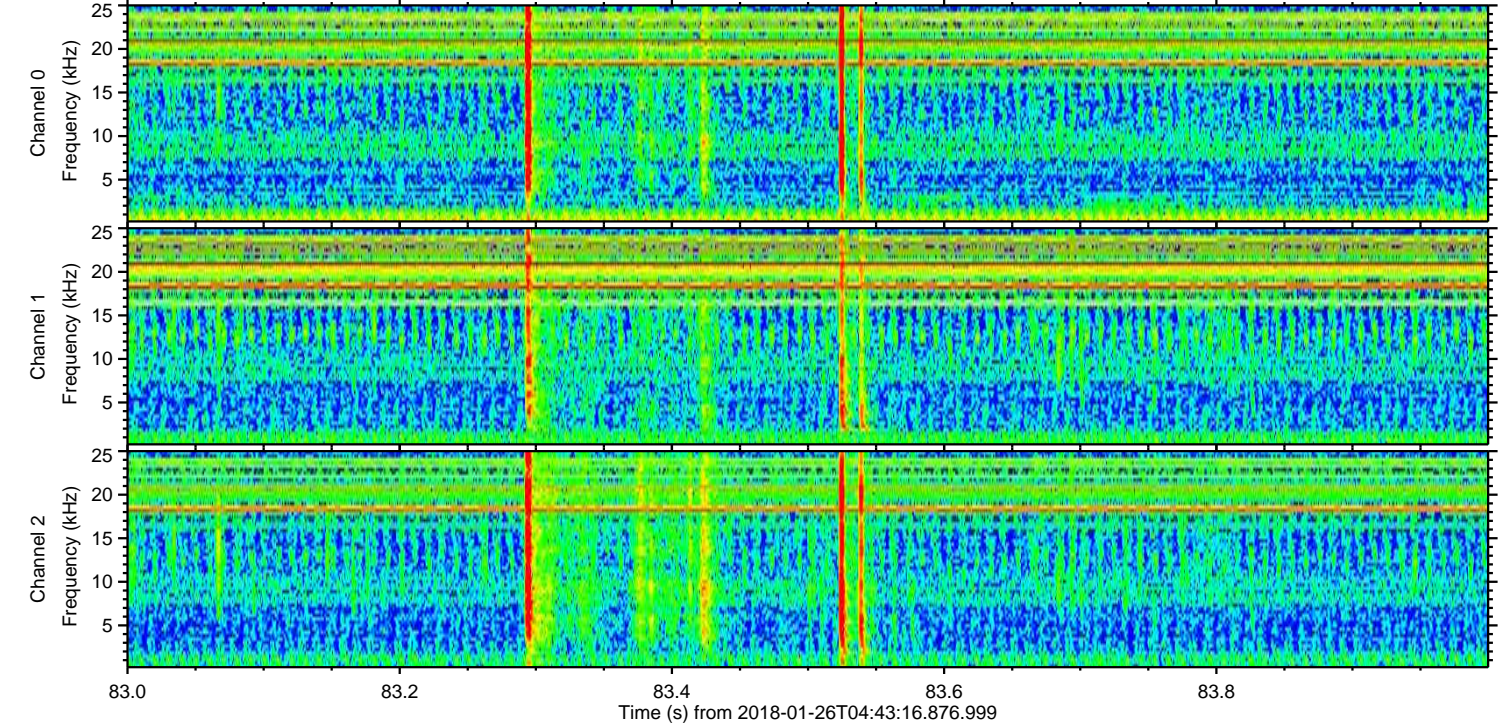
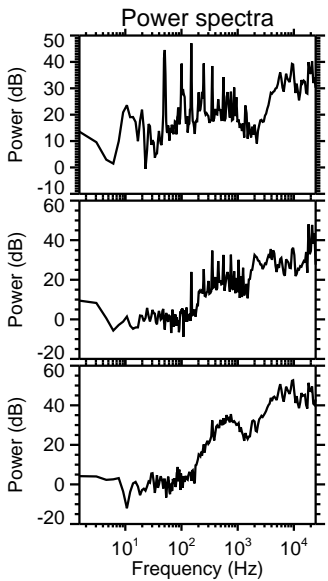
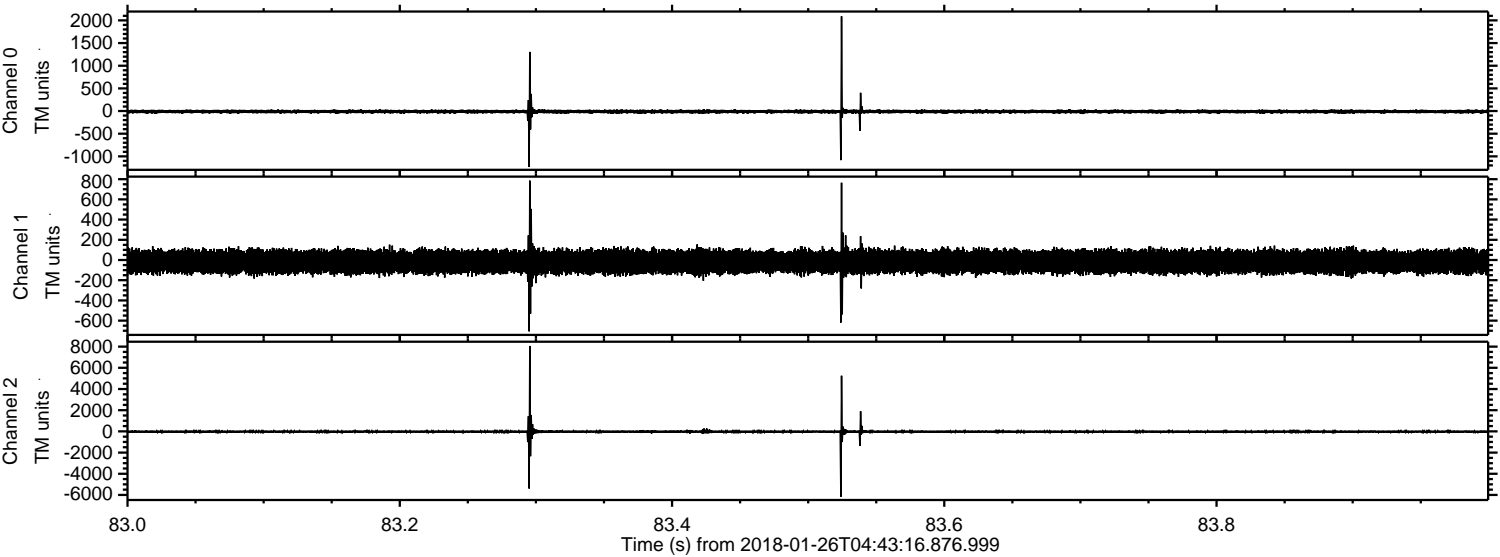


ELMAVAN 3D WAVEFORMS (Measured data sampled at 50 kHz) 51000 packets of 144 samples from 2018-01-26T04:43:16.876.999.

Processed Fri Jan 26 05:50:53 2018 by ELM ver.2012-10-06 from 001__elm20180126_044315__dat00.bin



Processed Fri Jan 26 05:51:01 2018 by ELM ver.2012-10-06 from 001__elm20180126_044315__dat00.bin

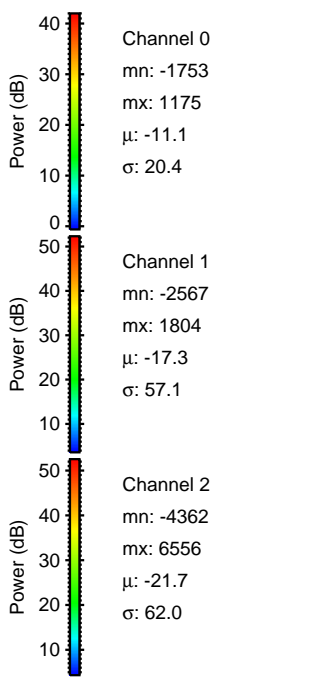
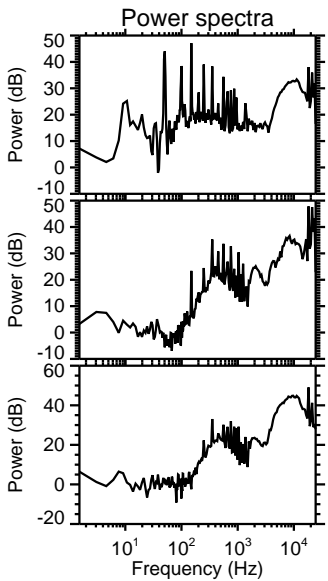
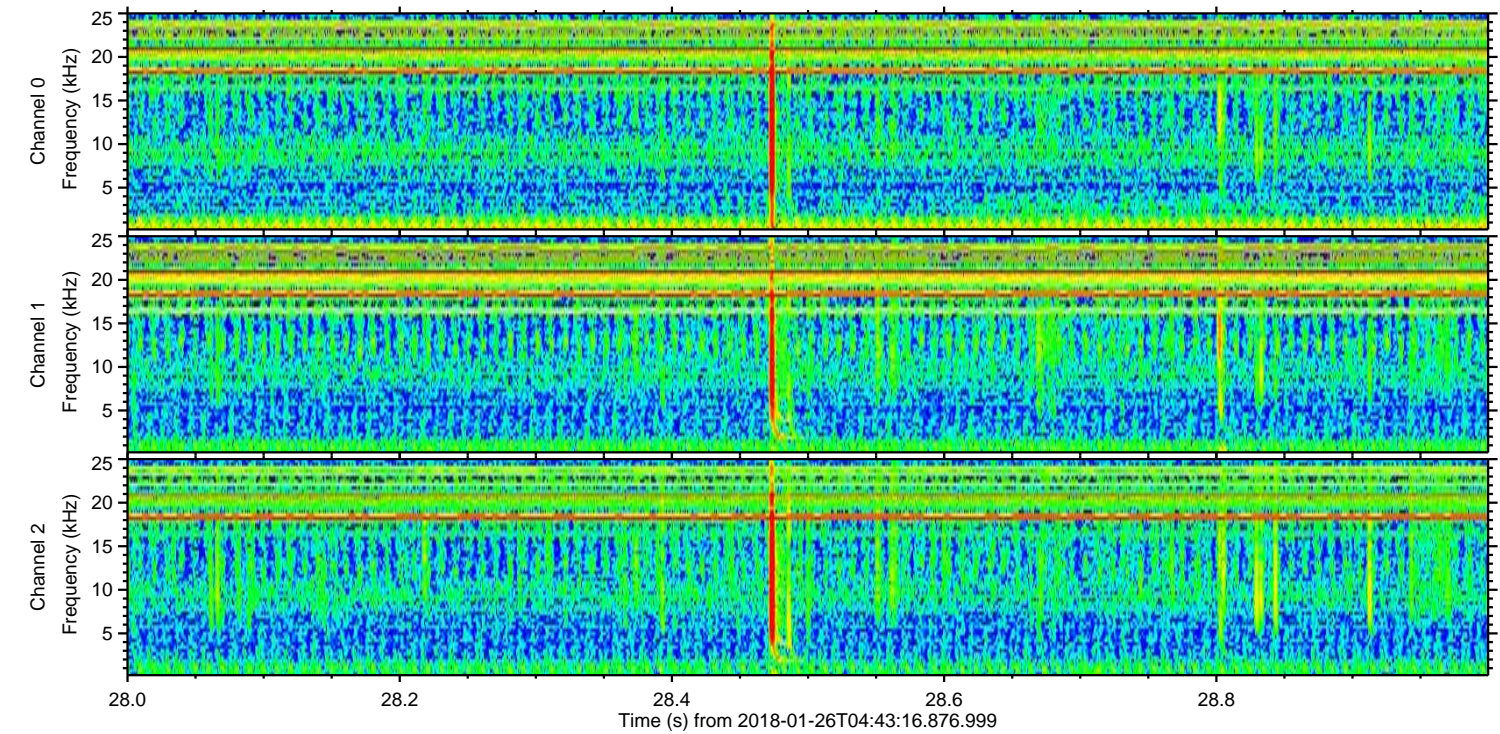
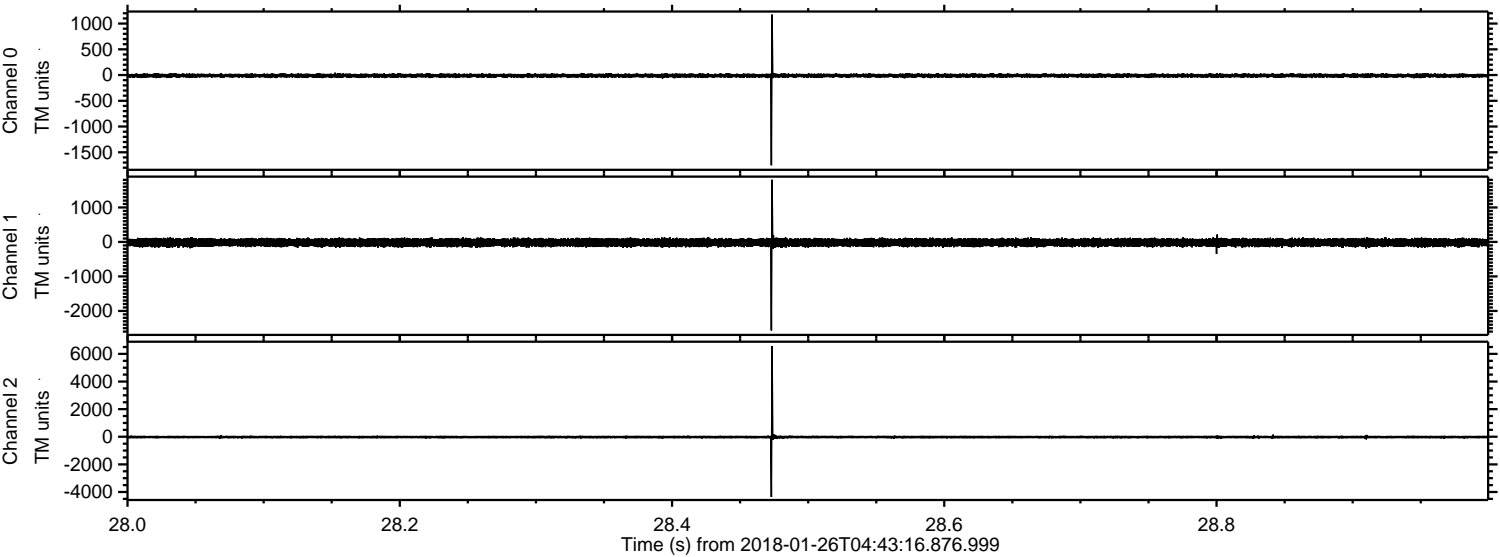


Channel 0
mn: -1235
mx: 2091
 μ : -11.1
 σ : 29.5

Channel 1
mn: -706
mx: 786
 μ : -17.3
 σ : 57.6

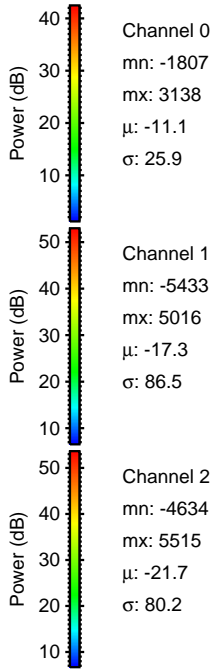
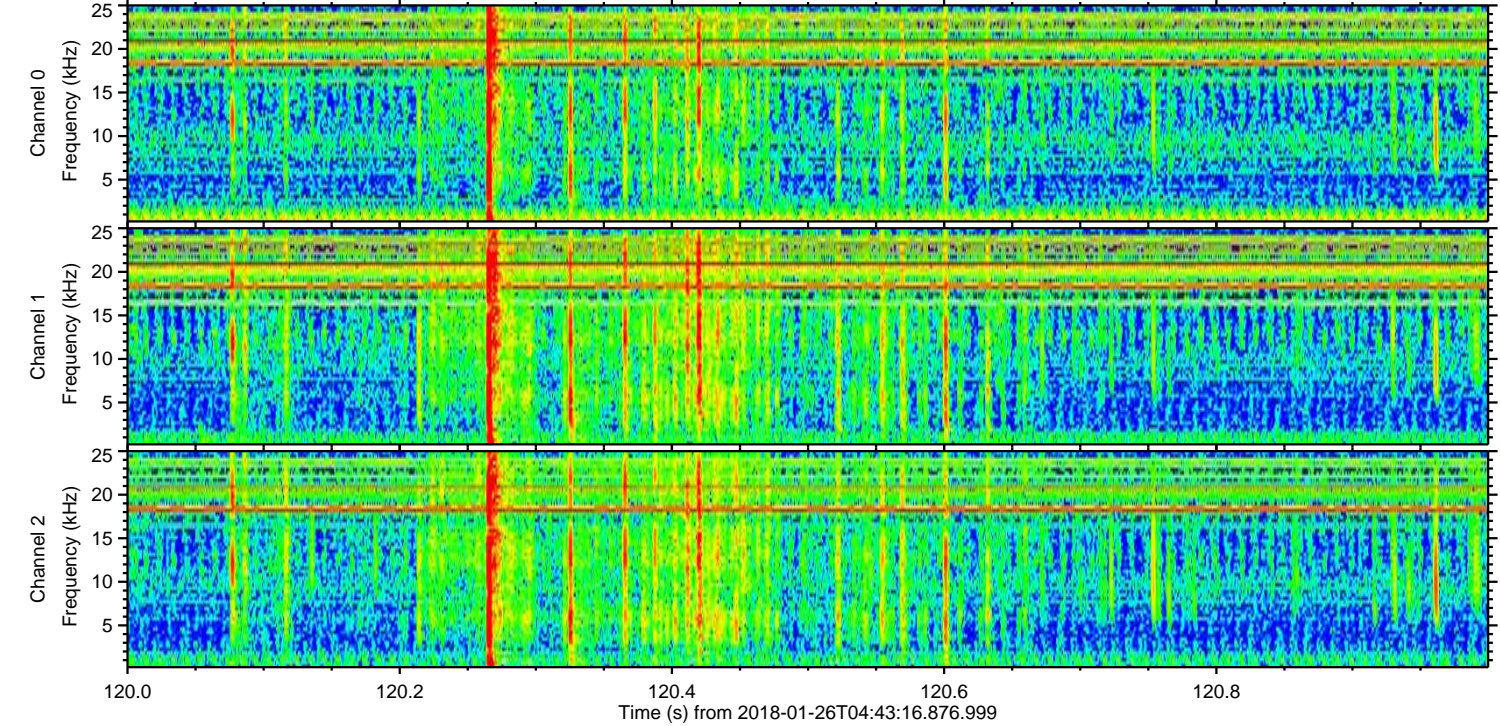
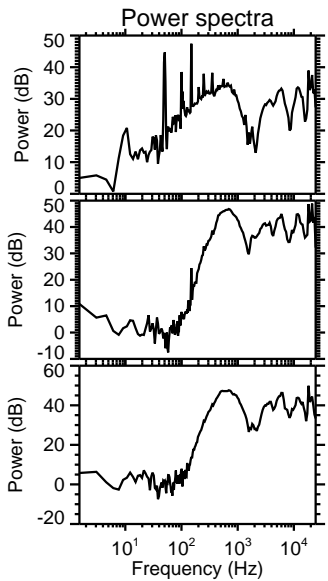
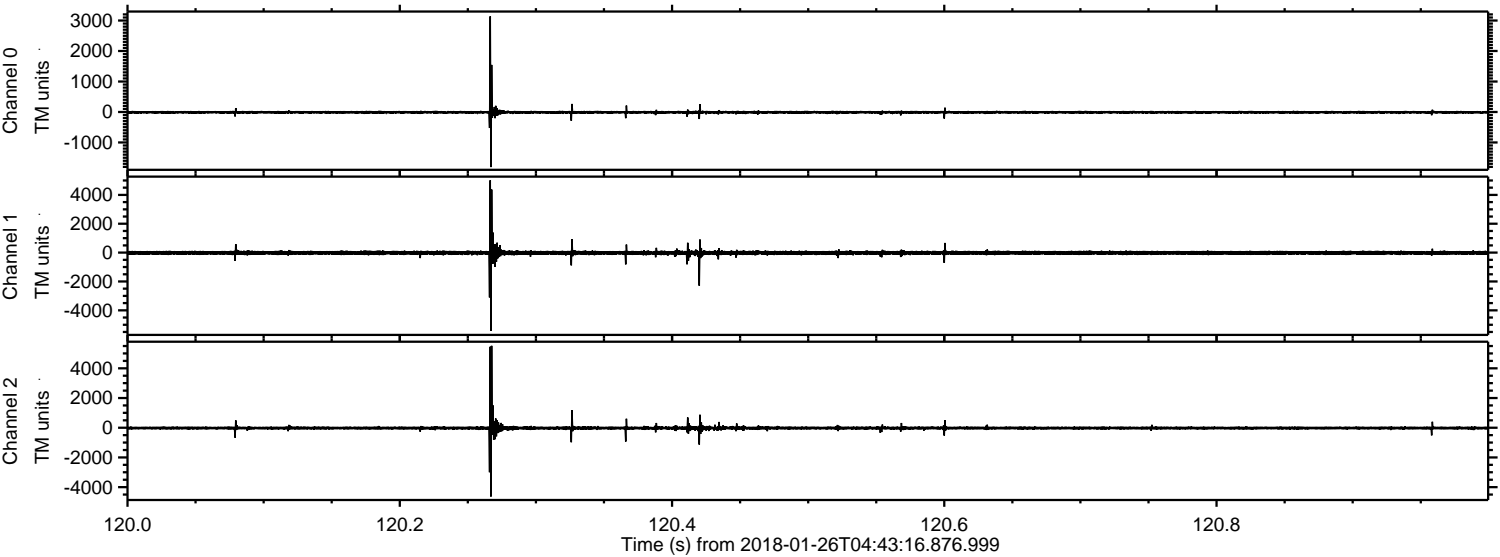
Channel 2
mn: -6169
mx: 8061
 μ : -21.7
 σ : 113.2

Processed Fri Jan 26 05:51:01 2018 by ELM ver.2012-10-06 from 001__elm20180126_044315__dat00.bin



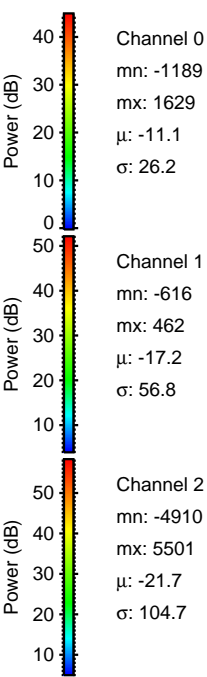
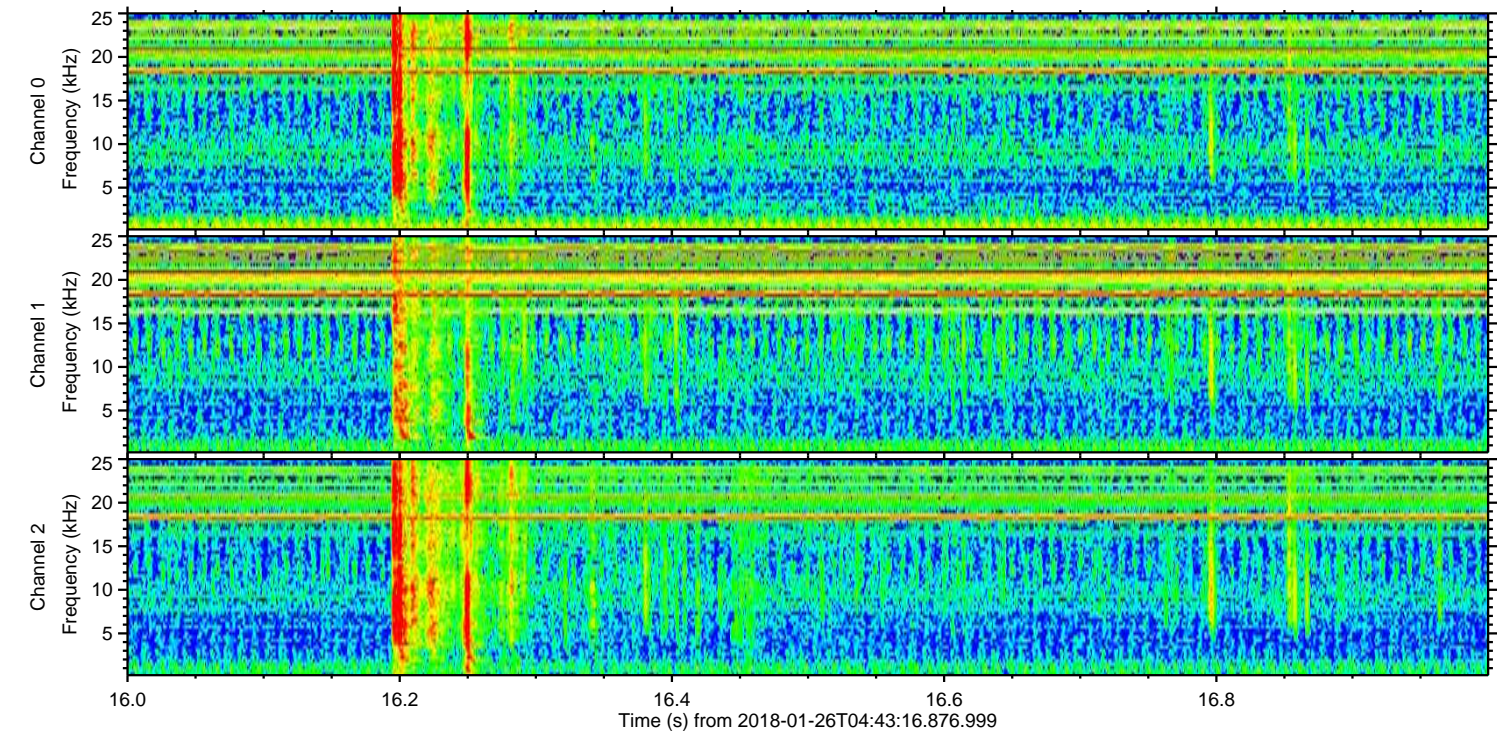
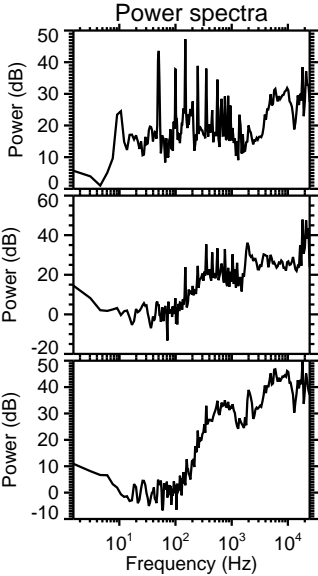
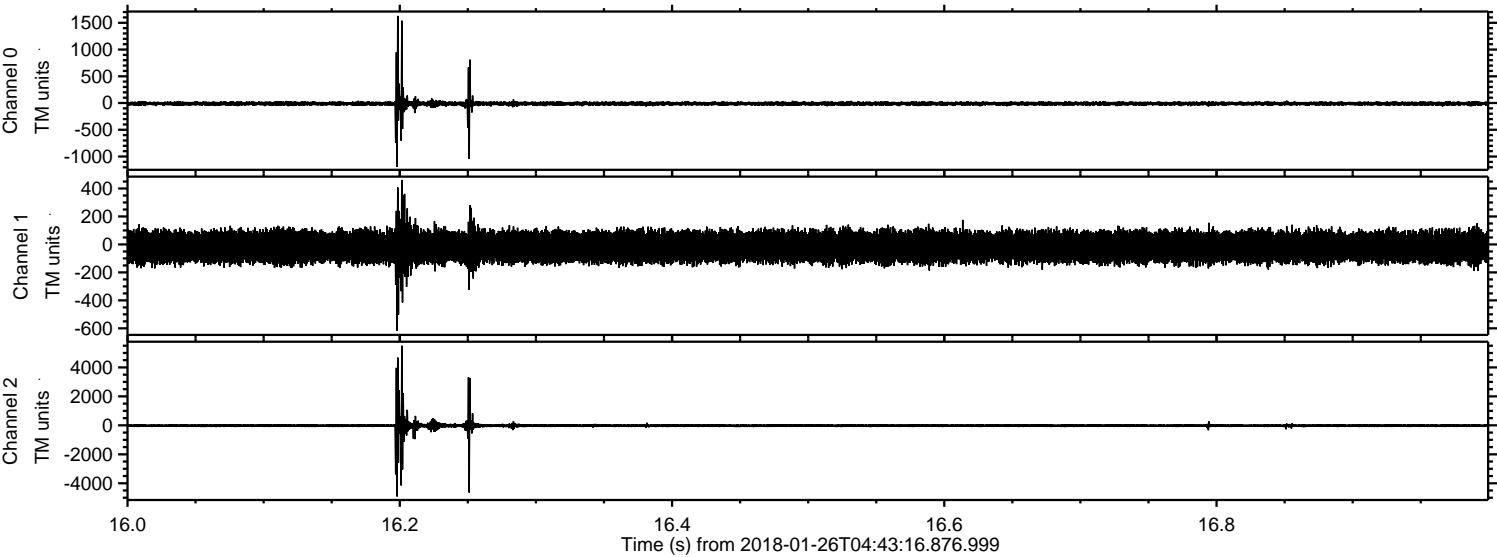
ELMAVAN 3D WAVEFORMS (Measured data sampled at 50 kHz) 51000 packets of 144 samples from 2018-01-26T04:43:16.876.999. Part 121/147

Processed Fri Jan 26 05:51:02 2018 by ELM ver.2012-10-06 from 001__elm20180126_044315__dat00.bin

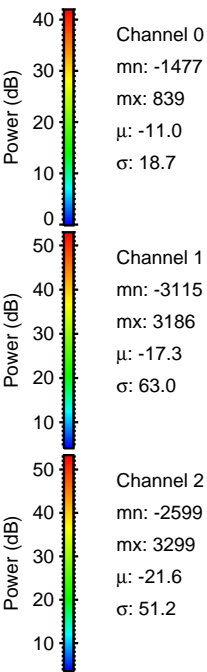
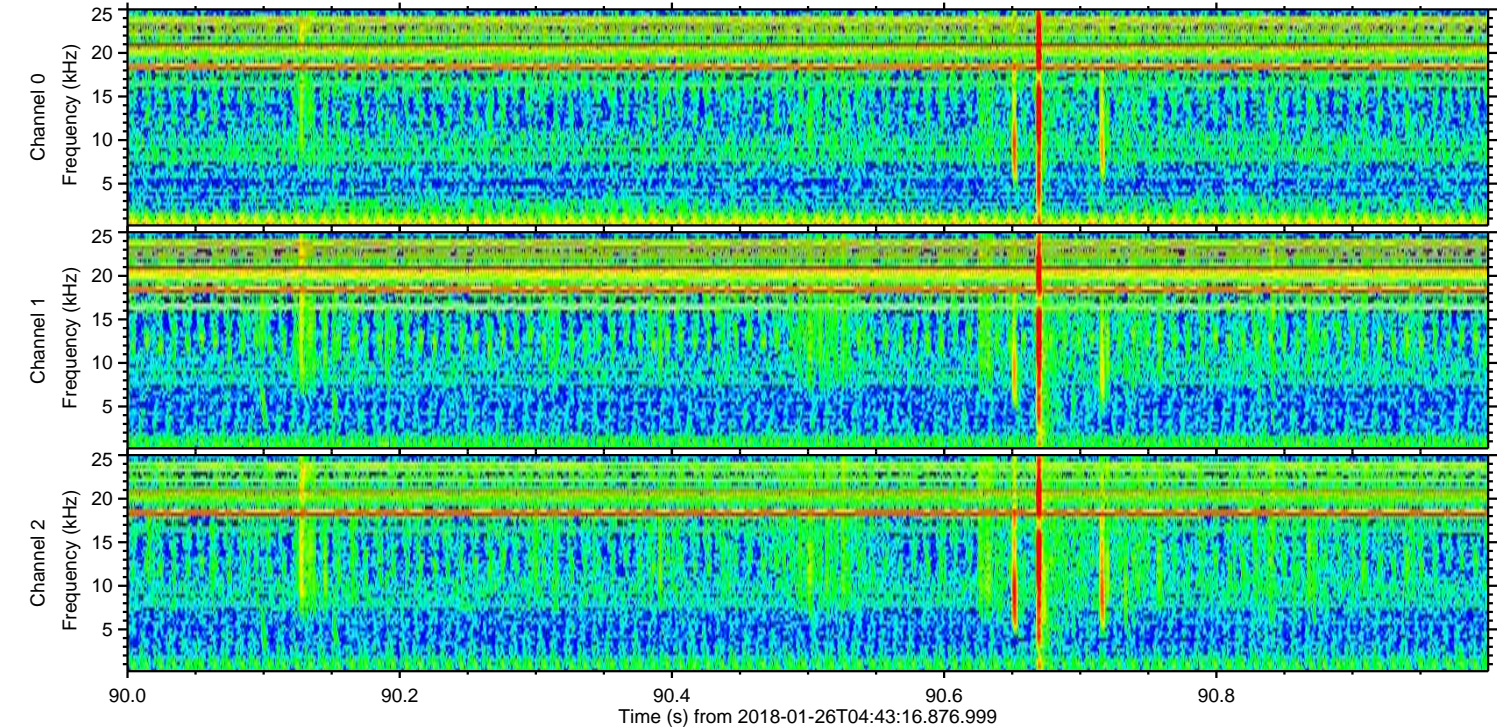
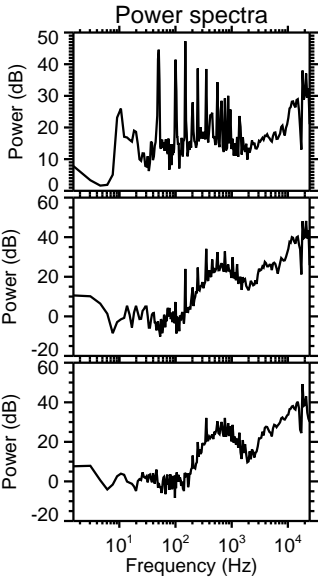
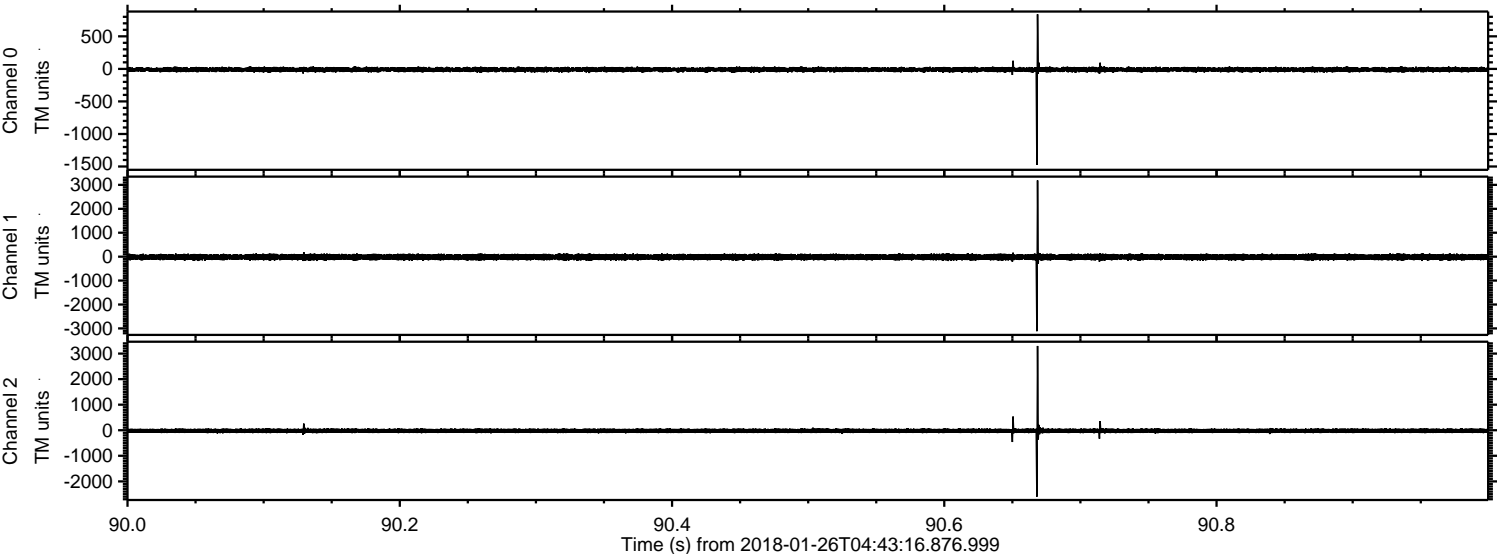


ELMAVAN 3D WAVEFORMS (Measured data sampled at 50 kHz) 51000 packets of 144 samples from 2018-01-26T04:43:16.876.999. Part 17/147

Processed Fri Jan 26 05:51:03 2018 by ELM ver.2012-10-06 from 001__elm20180126_044315__dat00.bin



Processed Fri Jan 26 05:51:04 2018 by ELM ver.2012-10-06 from 001__elm20180126_044315__dat00.bin

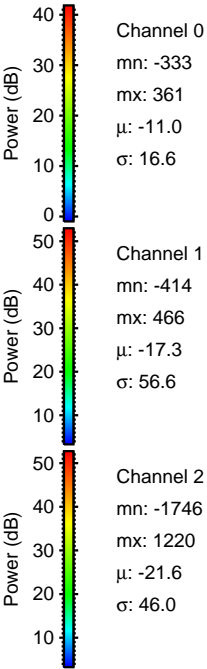
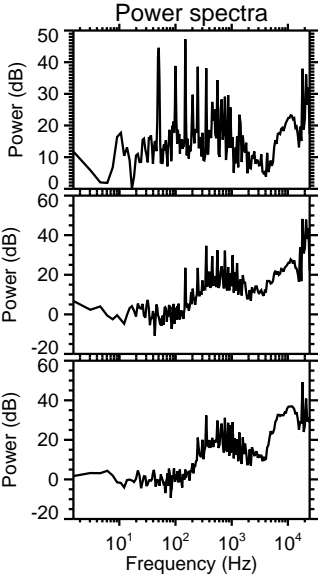
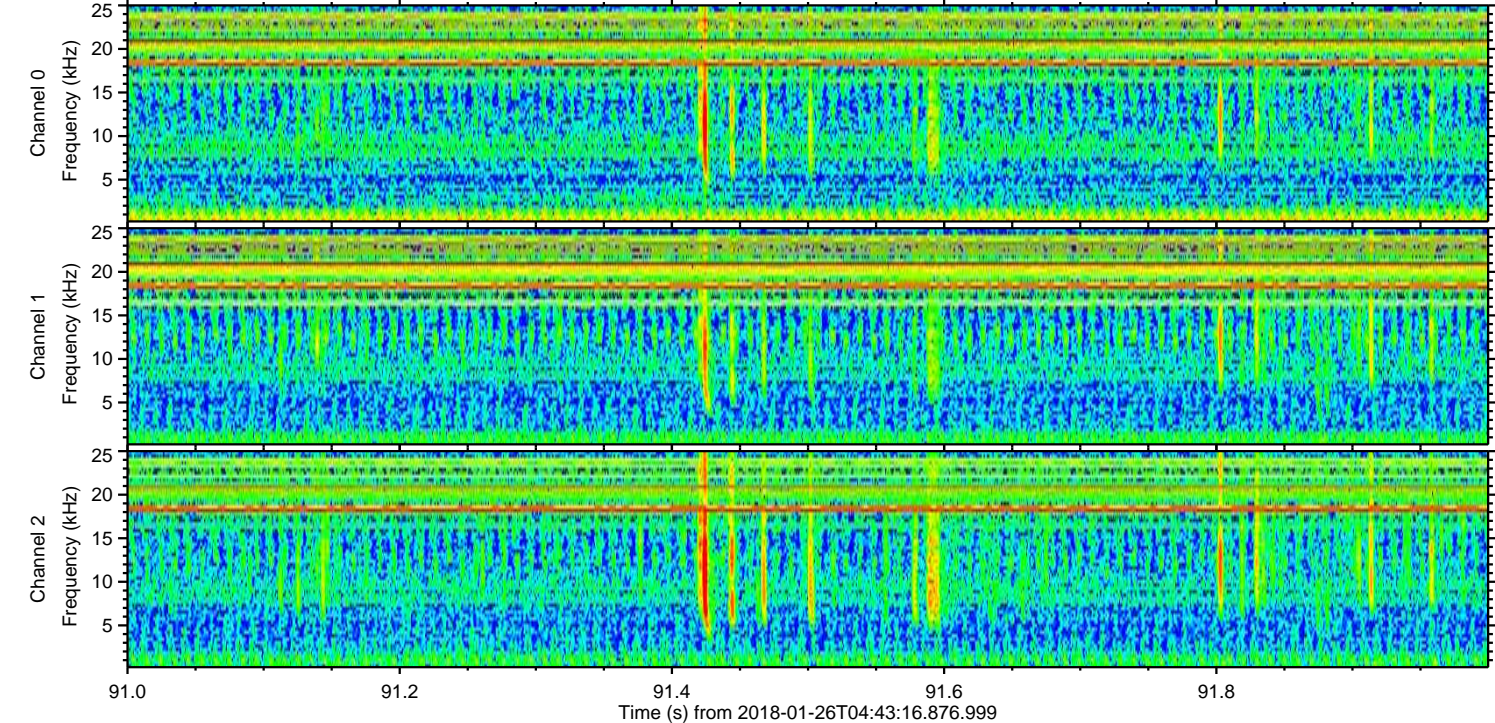
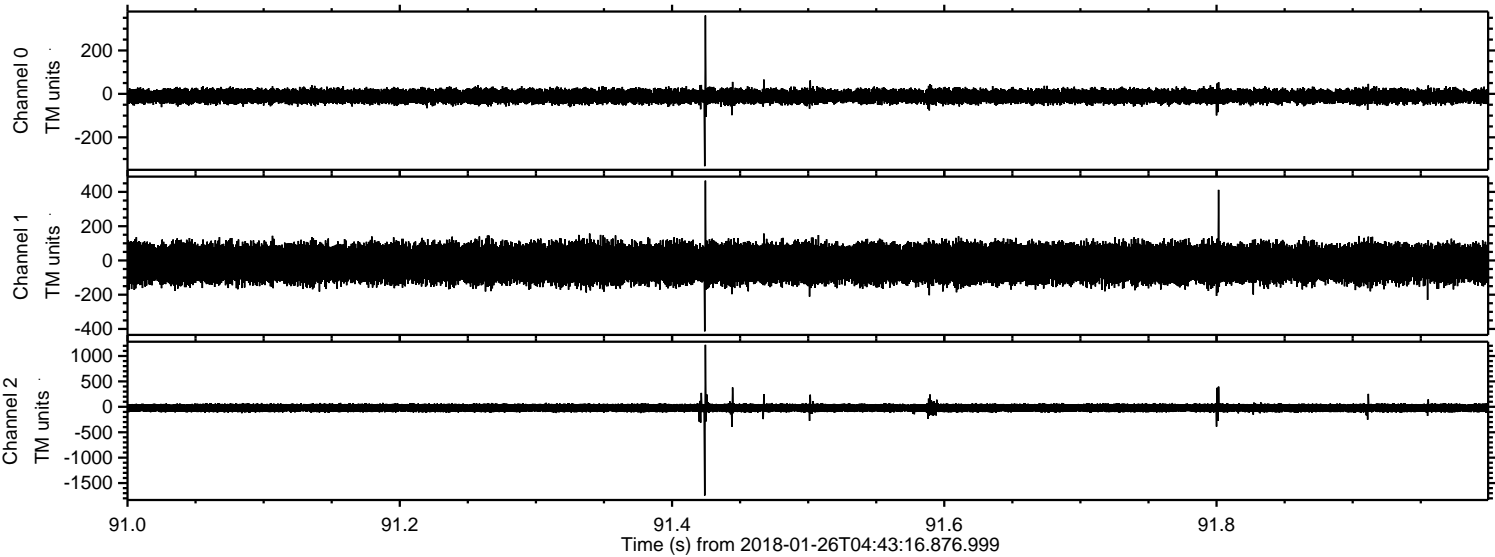


Channel 0
mn: -1477
mx: 839
 μ : -11.0
 σ : 18.7

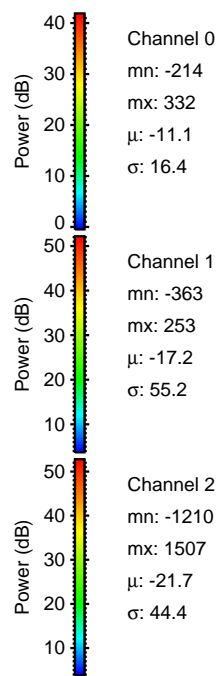
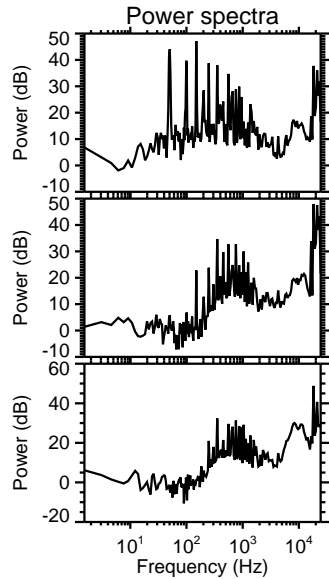
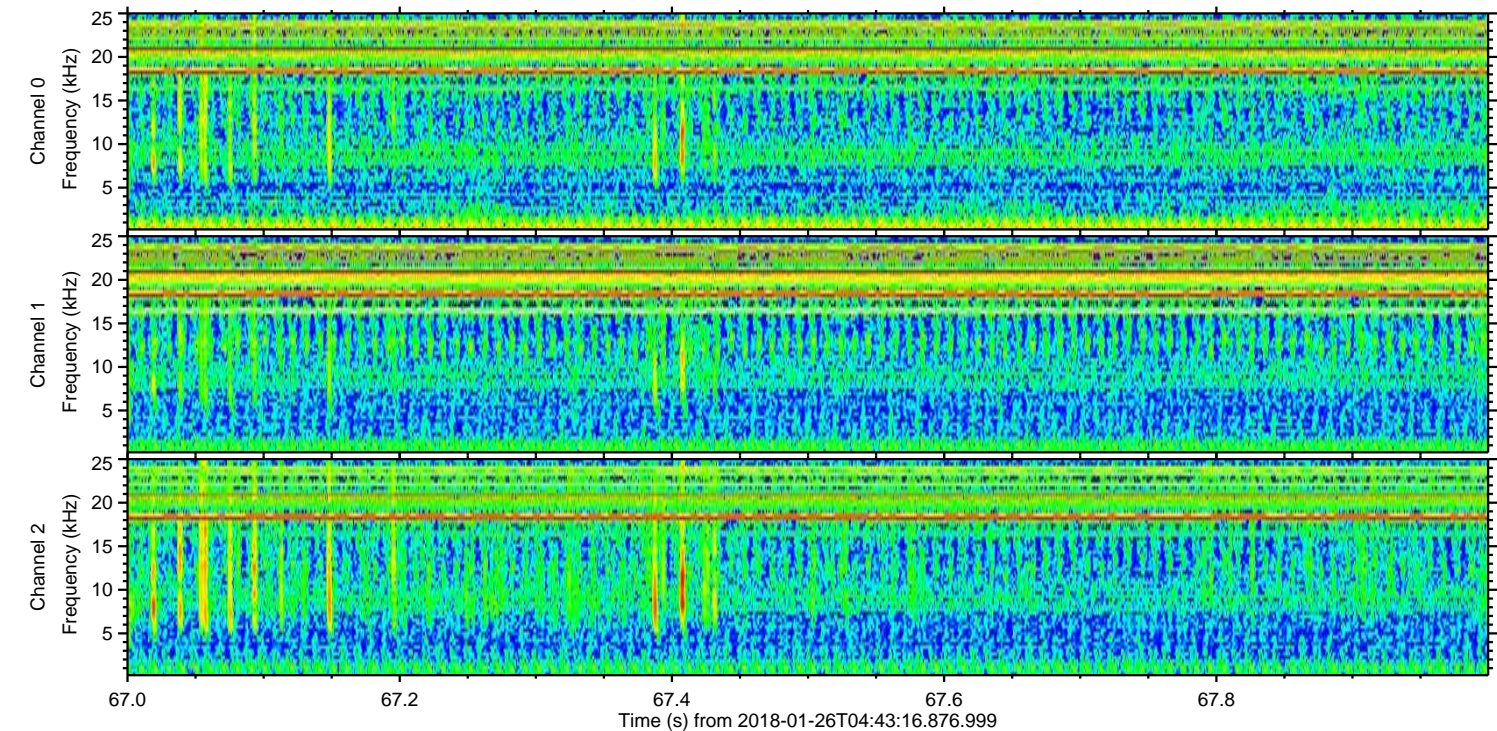
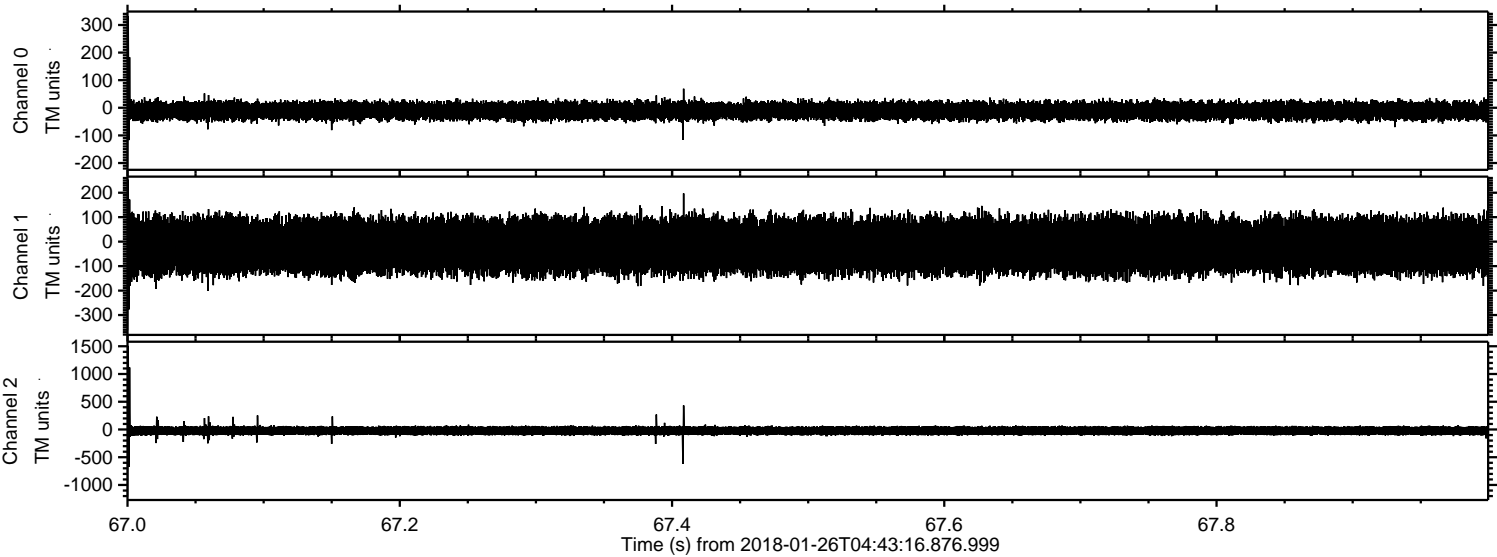
Channel 1
mn: -3115
mx: 3186
 μ : -17.3
 σ : 63.0

Channel 2
mn: -2599
mx: 3299
 μ : -21.6
 σ : 51.2

Processed Fri Jan 26 05:51:04 2018 by ELM ver.2012-10-06 from 001__elm20180126_044315__dat00.bin



Processed Fri Jan 26 05:51:05 2018 by ELM ver.2012-10-06 from 001__elm20180126_044315__dat00.bin

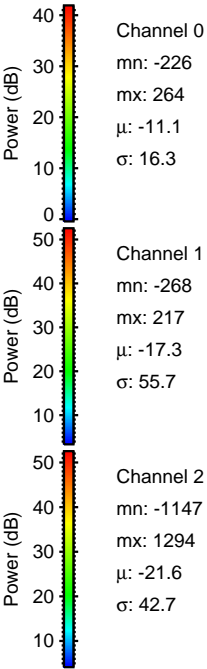
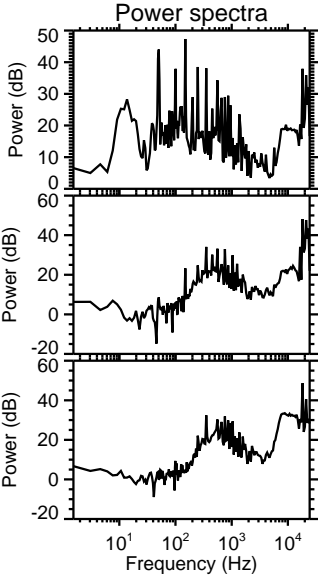
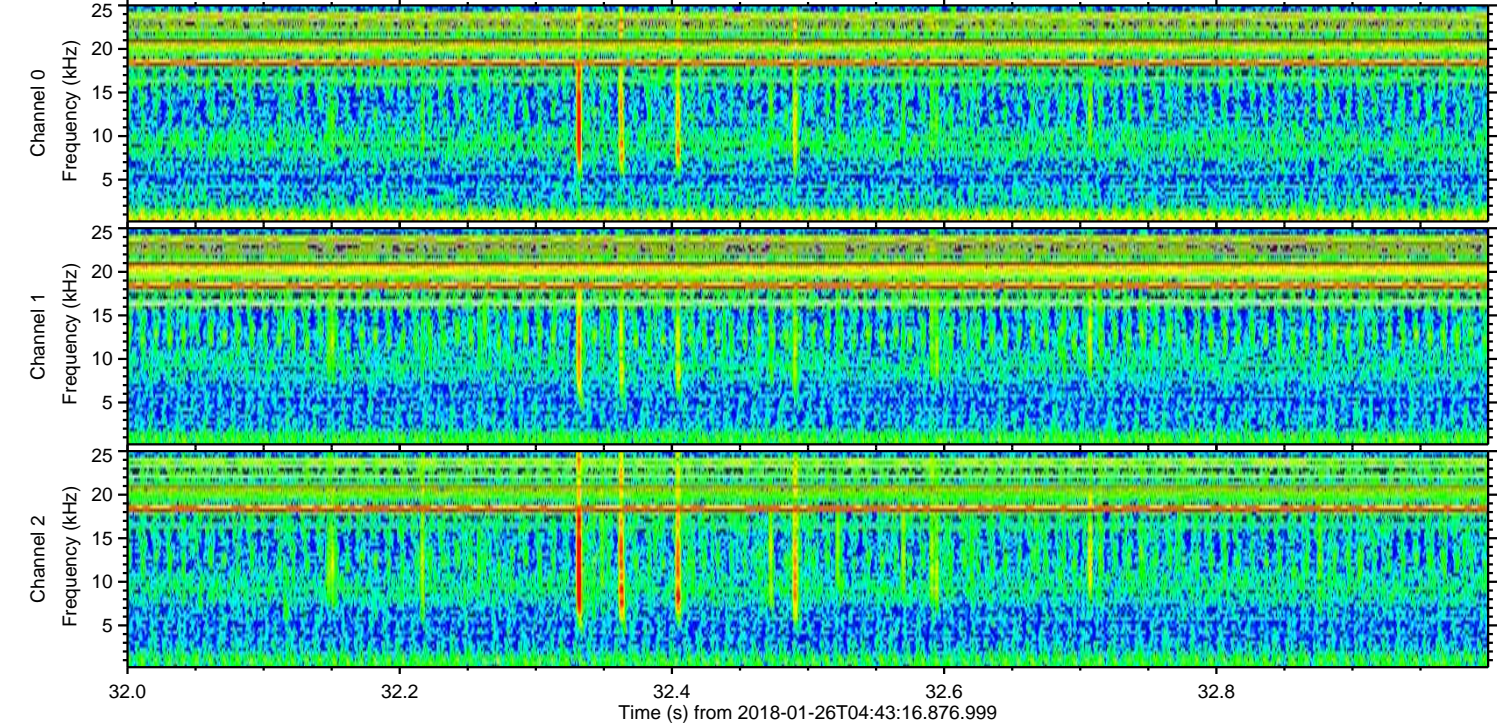
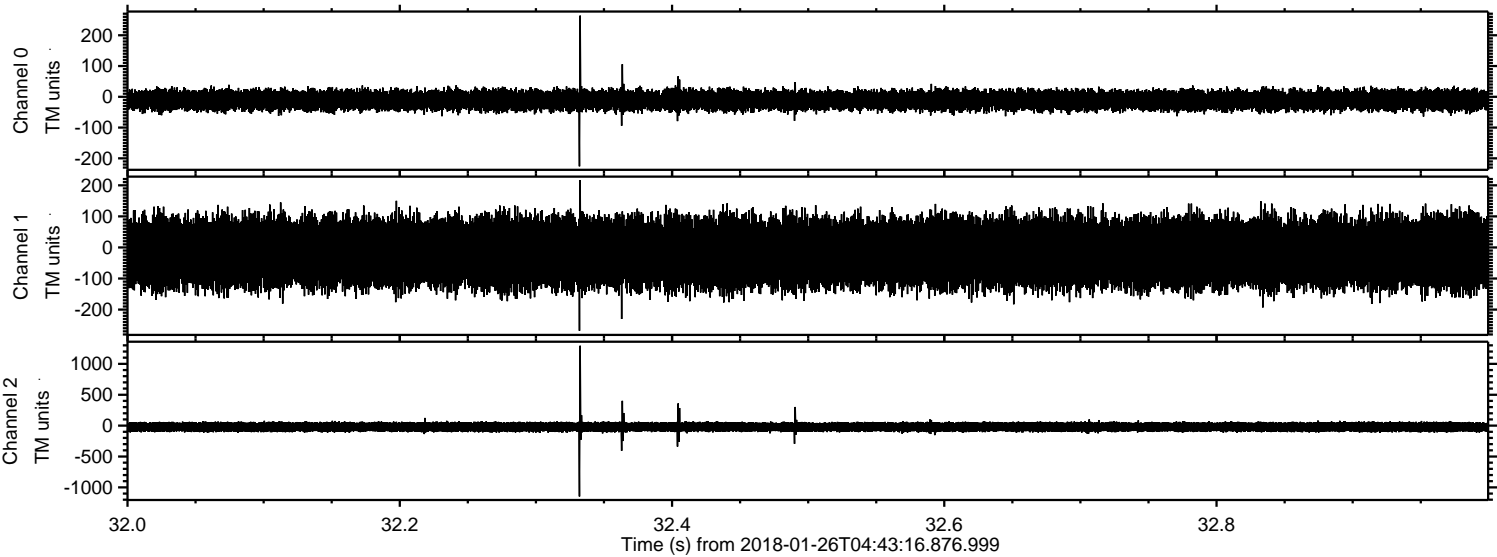


Channel 0
mn: -214
mx: 332
 μ : -11.1
 σ : 16.4

Channel 1
mn: -363
mx: 253
 μ : -17.2
 σ : 55.2

Channel 2
mn: -1210
mx: 1507
 μ : -21.7
 σ : 44.4

Processed Fri Jan 26 05:51:06 2018 by ELM ver.2012-10-06 from 001__elm20180126_044315__dat00.bin



Processed Fri Jan 26 05:51:07 2018 by ELM ver.2012-10-06 from 001__elm20180126_044315__dat00.bin

