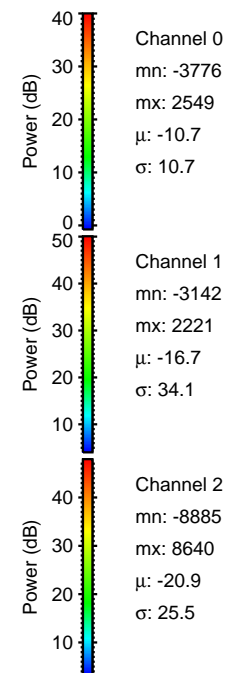
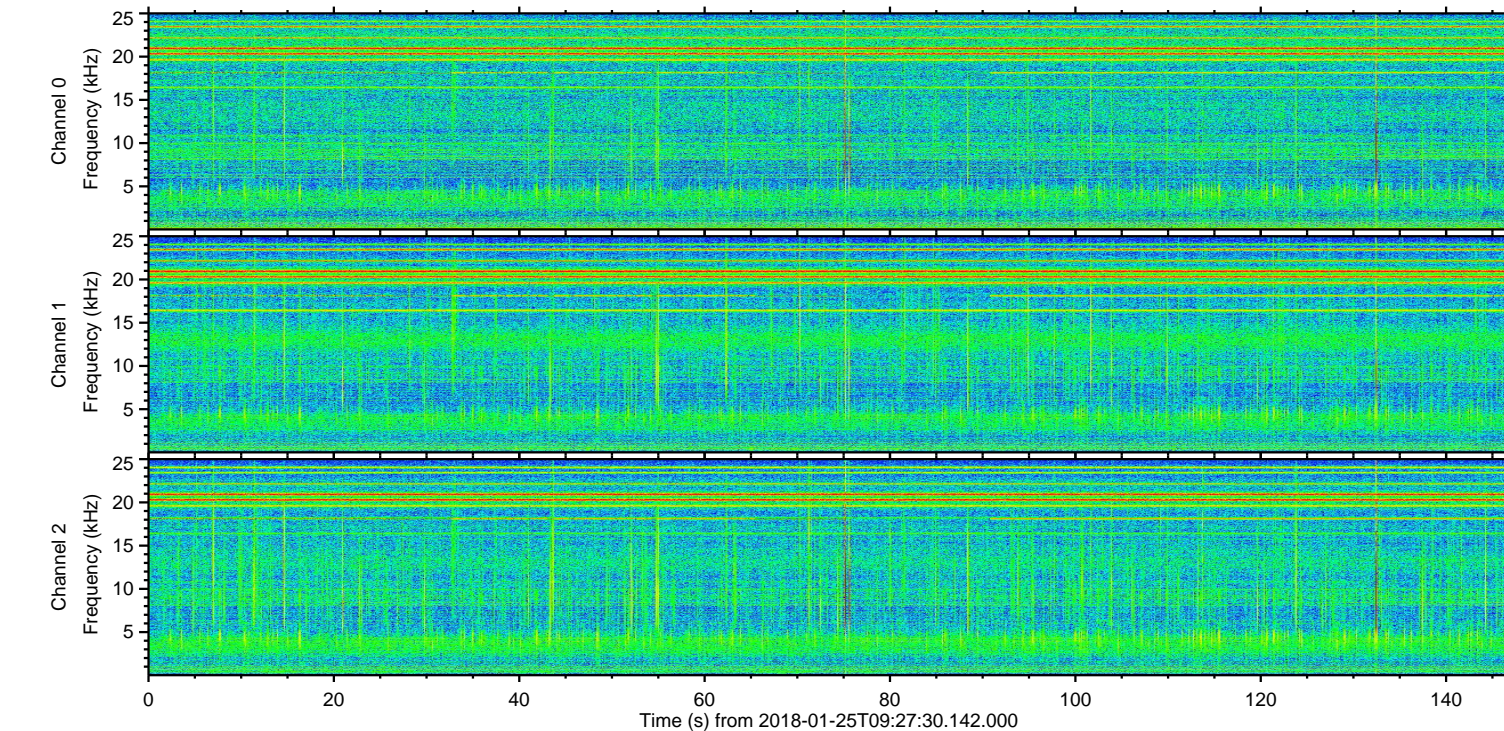
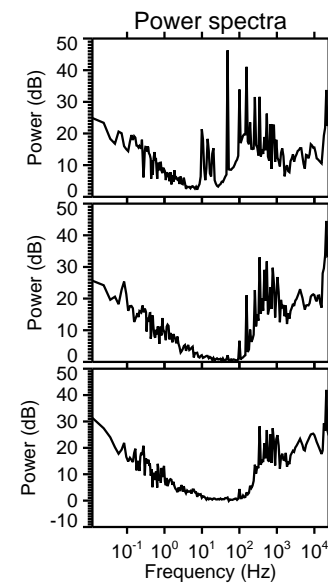
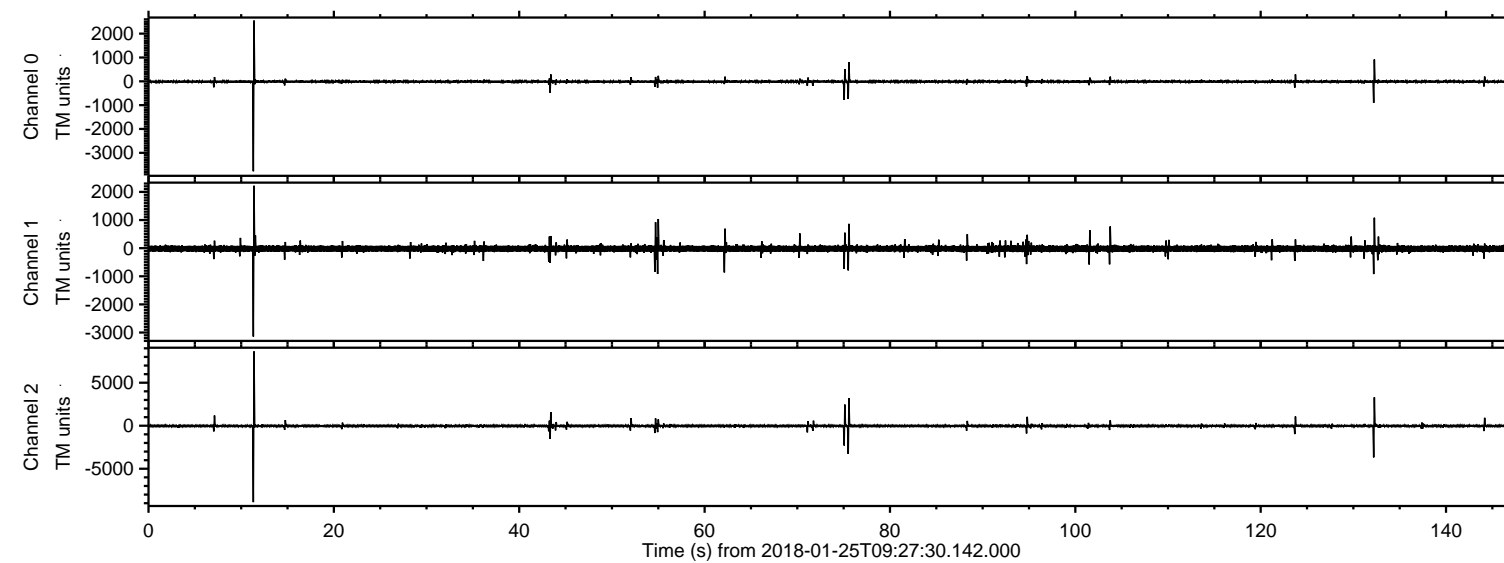


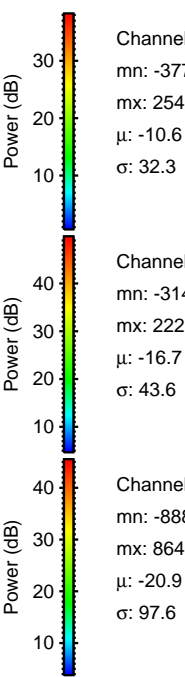
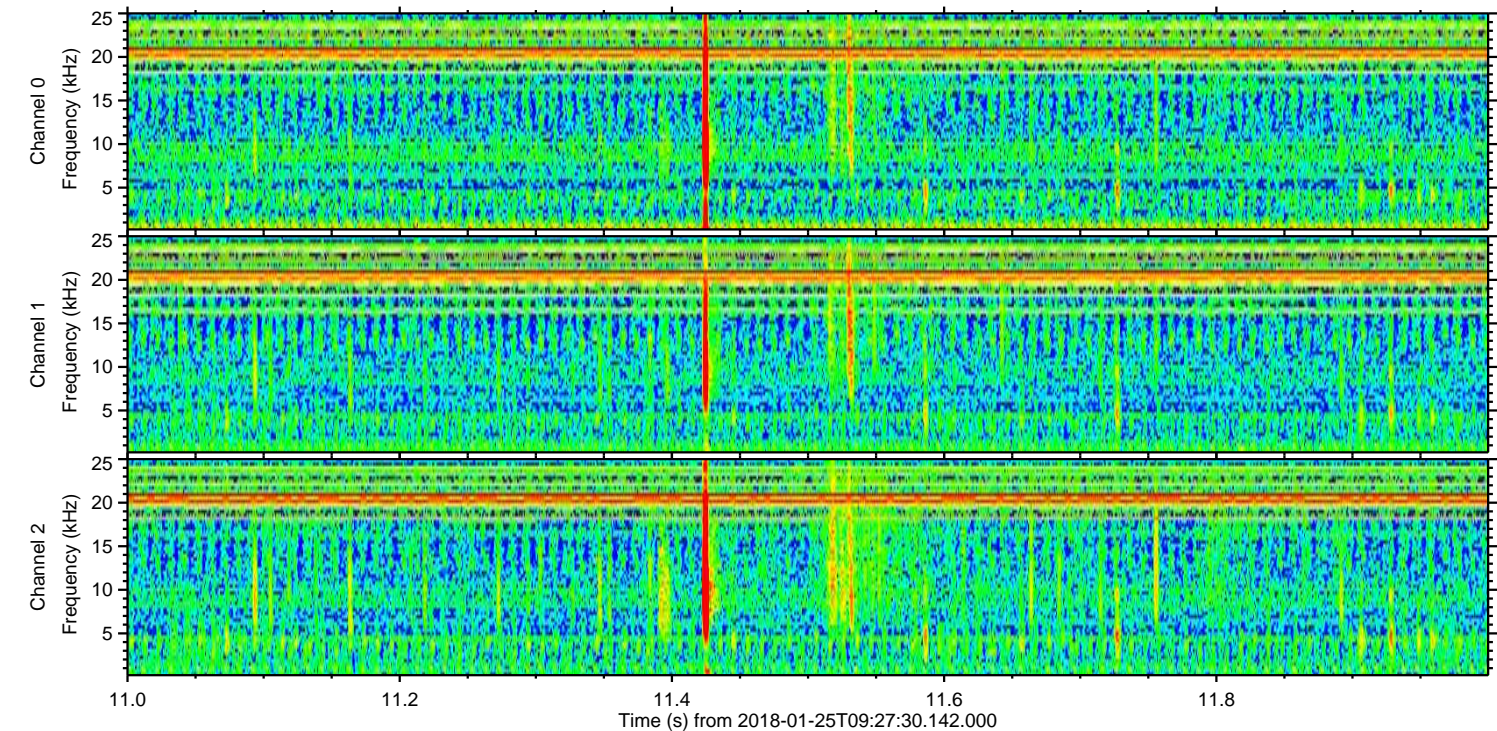
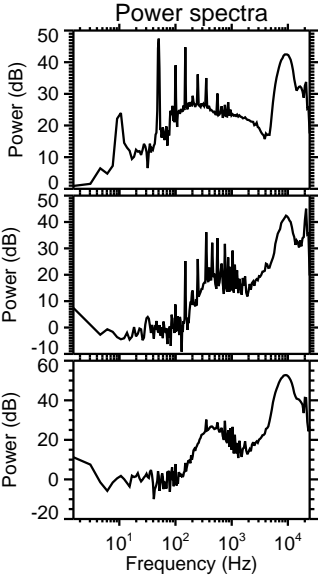
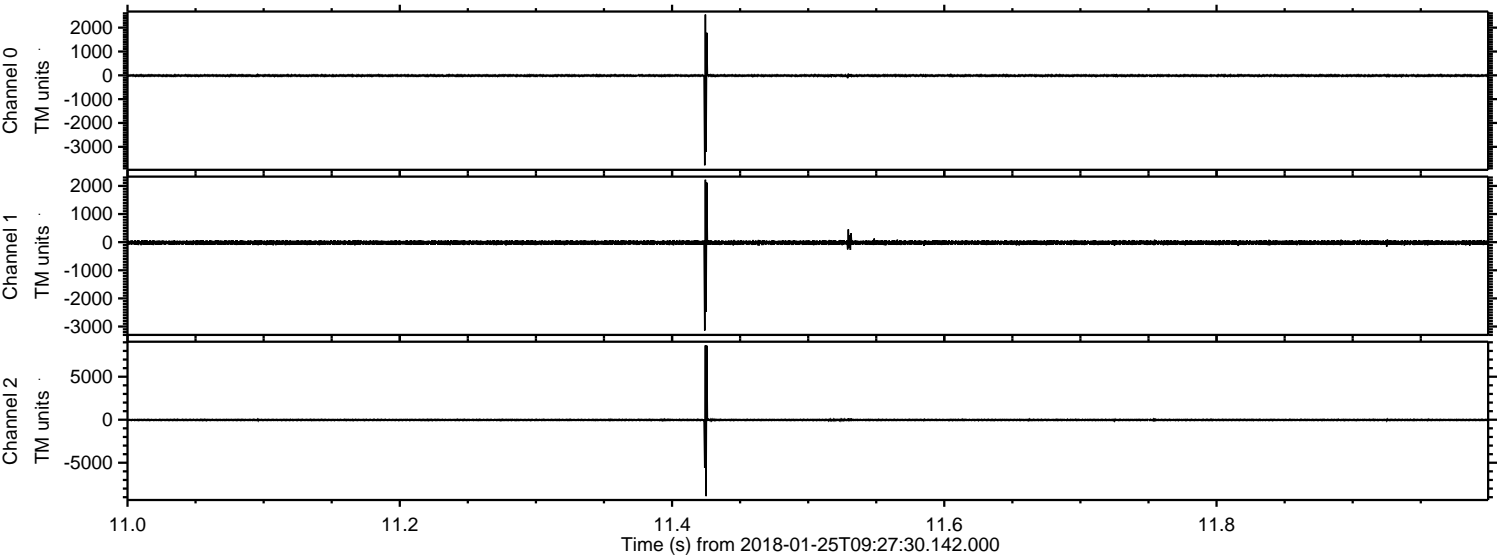
ELMAVAN 3D WAVEFORMS (Measured data sampled at 50 kHz) 51000 packets of 144 samples from 2018-01-25T09:27:30.142.000.

Processed Thu Jan 25 10:35:24 2018 by ELM ver.2012-10-06 from 001__elm20180125_092729__dat00.bin



ELMAVAN 3D WAVEFORMS (Measured data sampled at 50 kHz) 51000 packets of 144 samples from 2018-01-25T09:27:30.142.000. Part 12/147

Processed Thu Jan 25 10:35:33 2018 by ELM ver.2012-10-06 from 001__elm20180125_092729__dat00.bin



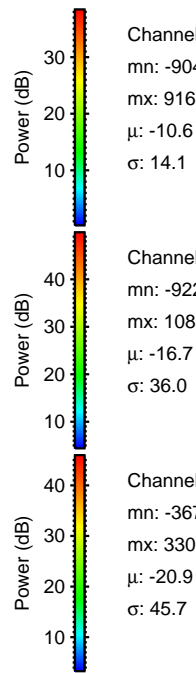
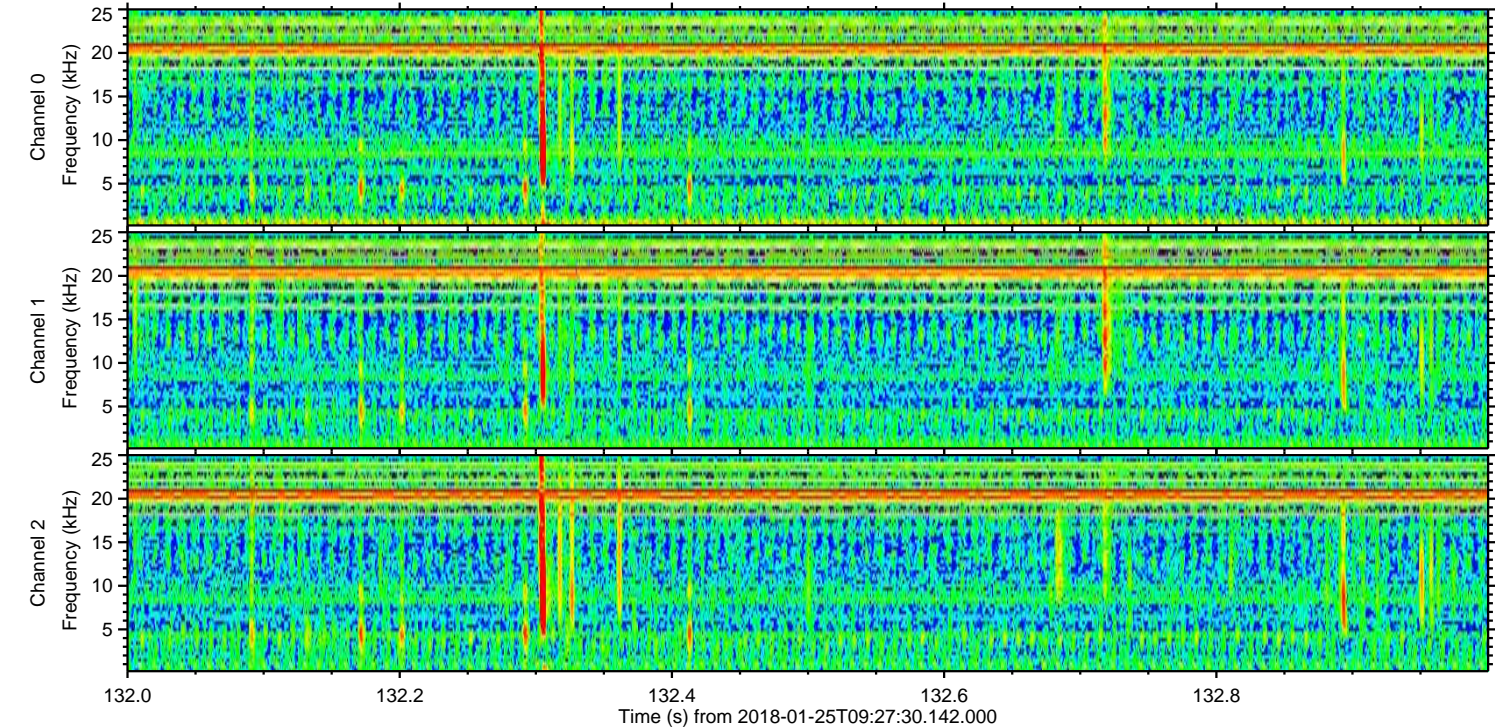
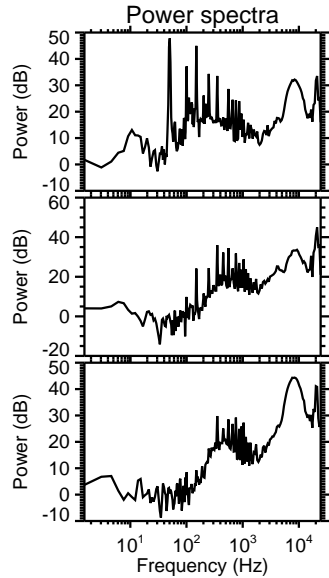
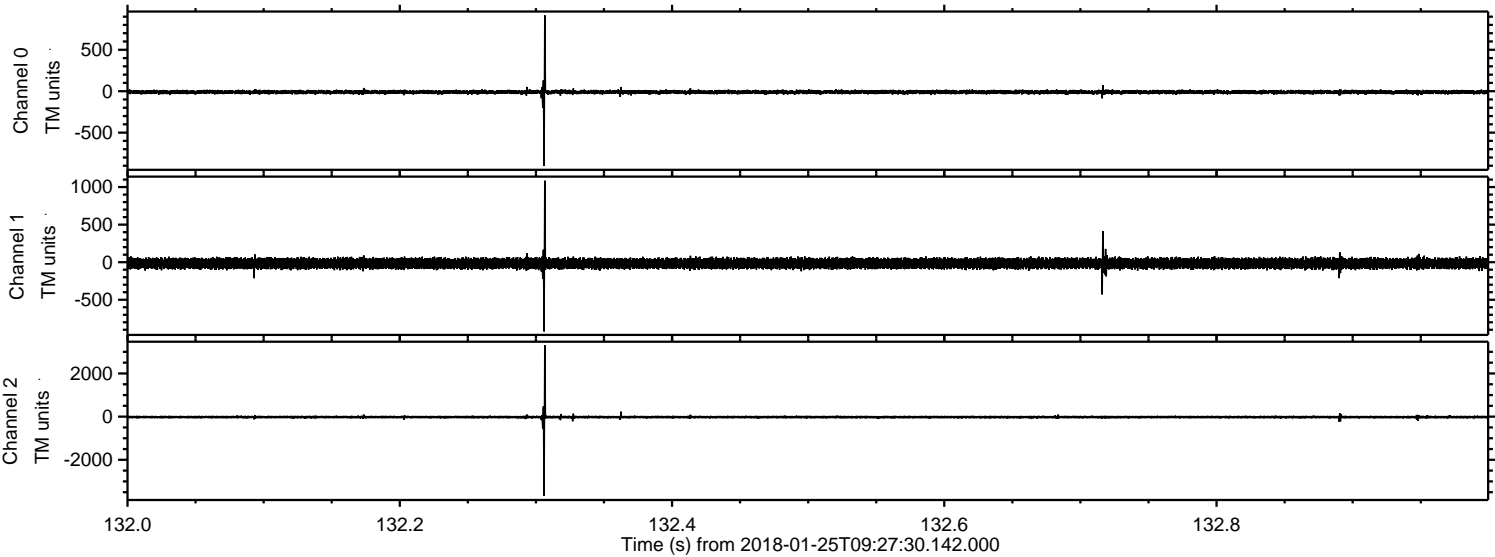
Channel 0
mn: -3776
mx: 2549
 μ : -10.6
 σ : 32.3

Channel 1
mn: -3142
mx: 2221
 μ : -16.7
 σ : 43.6

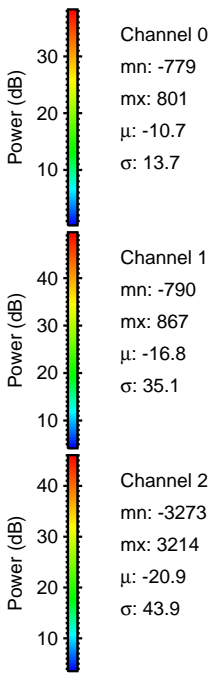
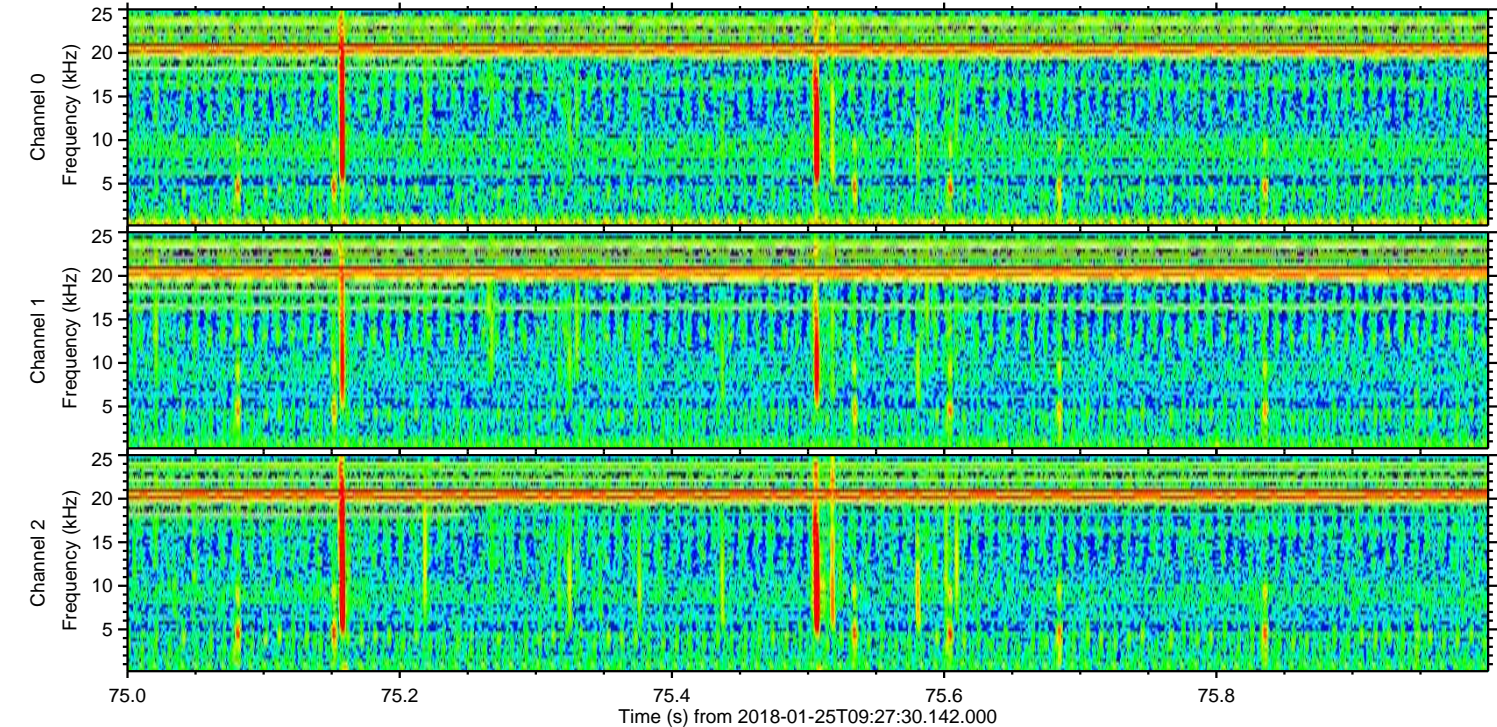
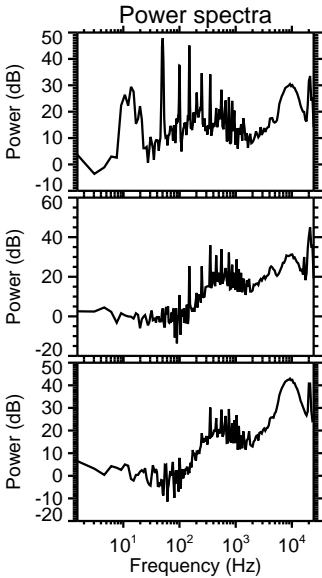
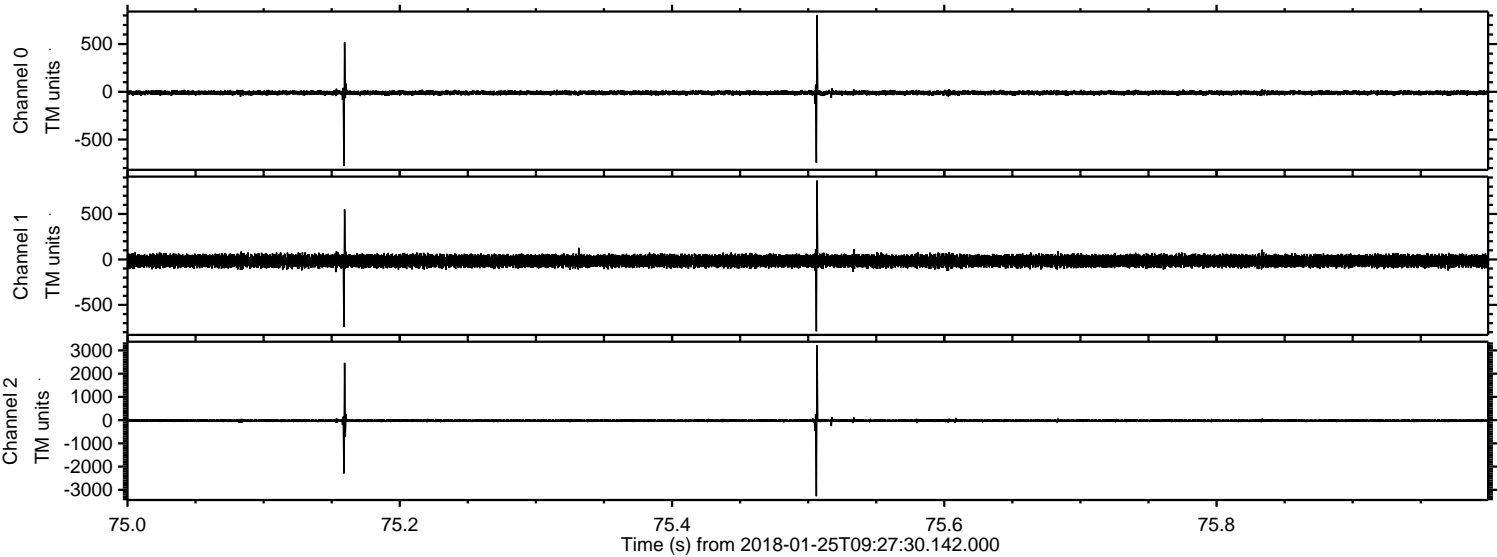
Channel 2
mn: -8885
mx: 8640
 μ : -20.9
 σ : 97.6

ELMAVAN 3D WAVEFORMS (Measured data sampled at 50 kHz) 51000 packets of 144 samples from 2018-01-25T09:27:30.142.000. Part 133/147

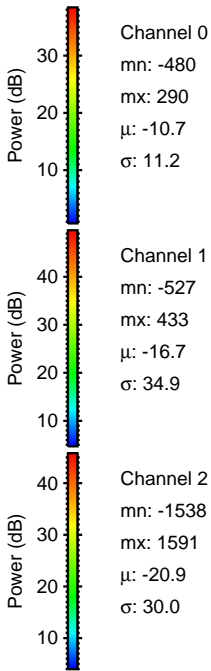
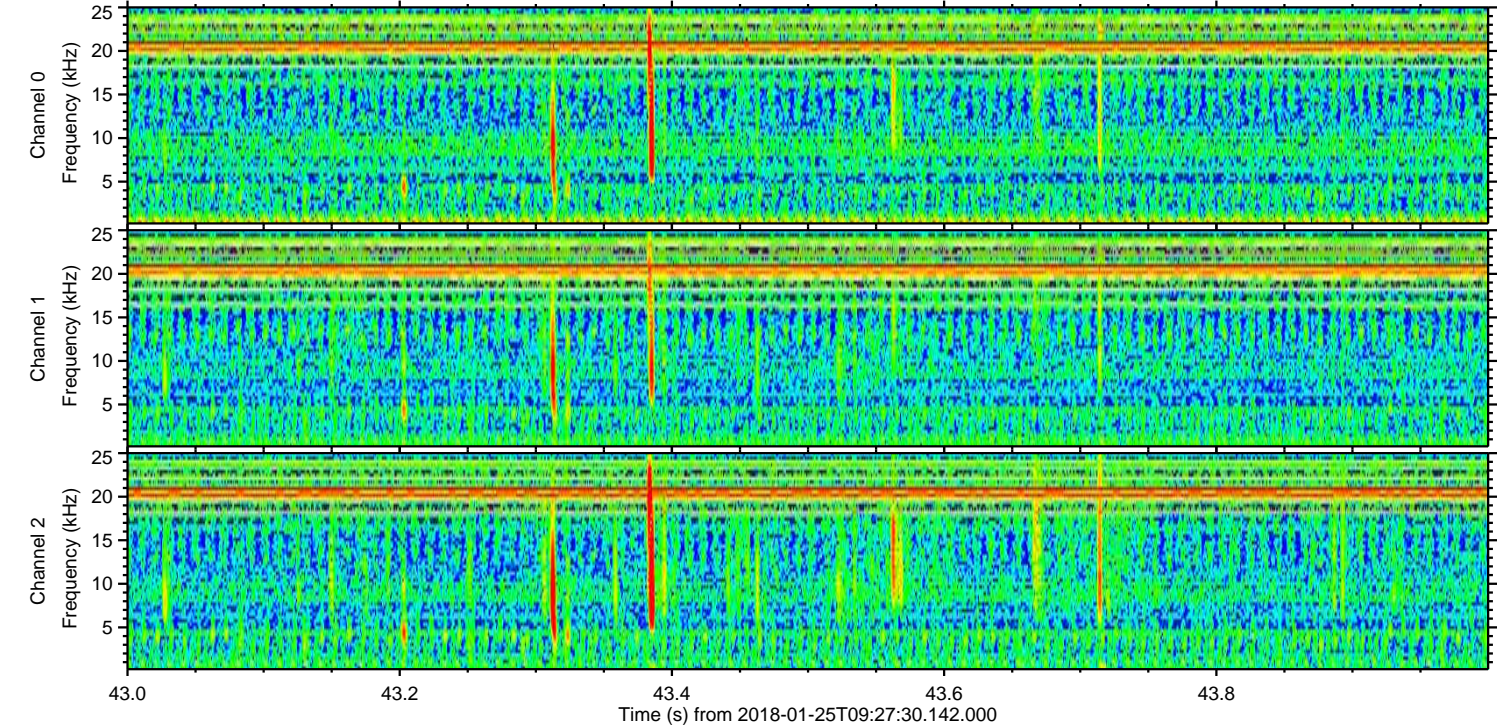
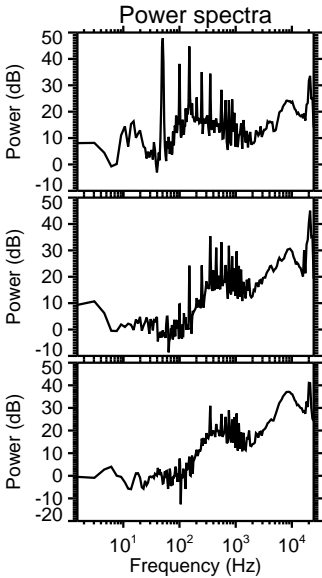
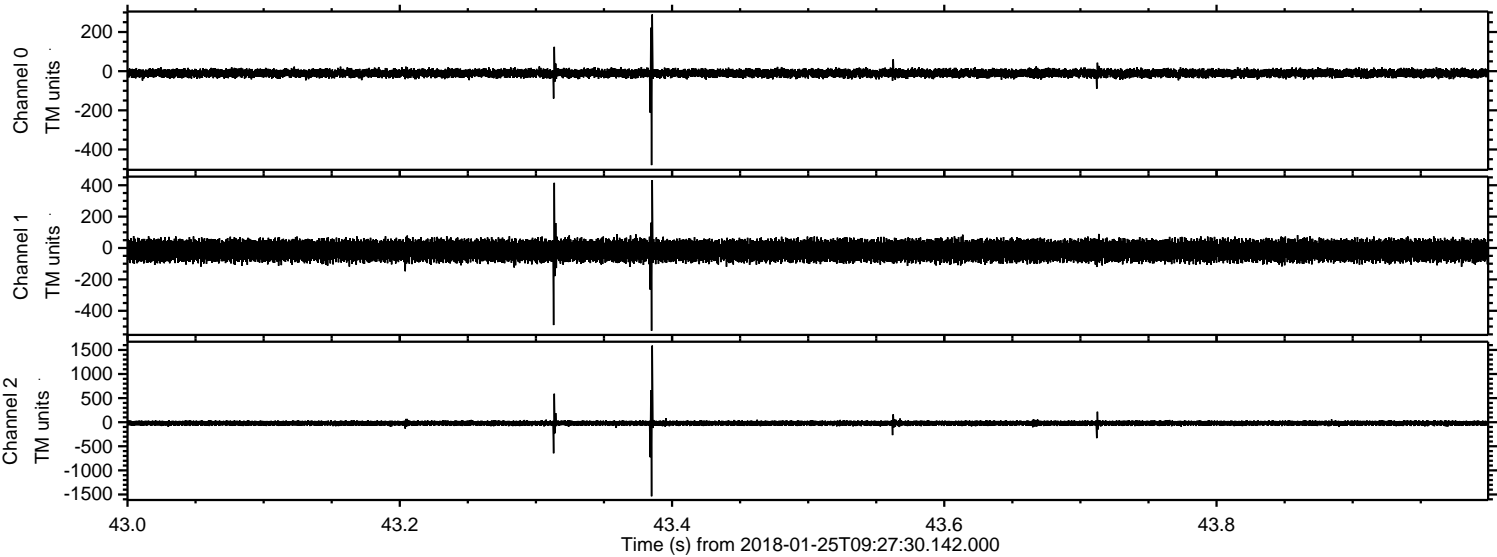
Processed Thu Jan 25 10:35:34 2018 by ELM ver.2012-10-06 from 001__elm20180125_092729__dat00.bin



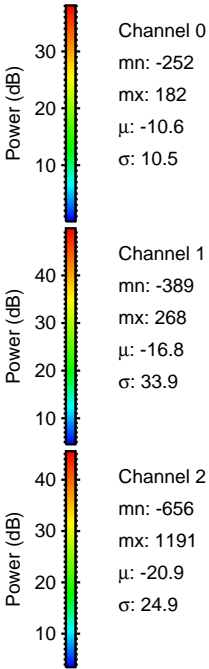
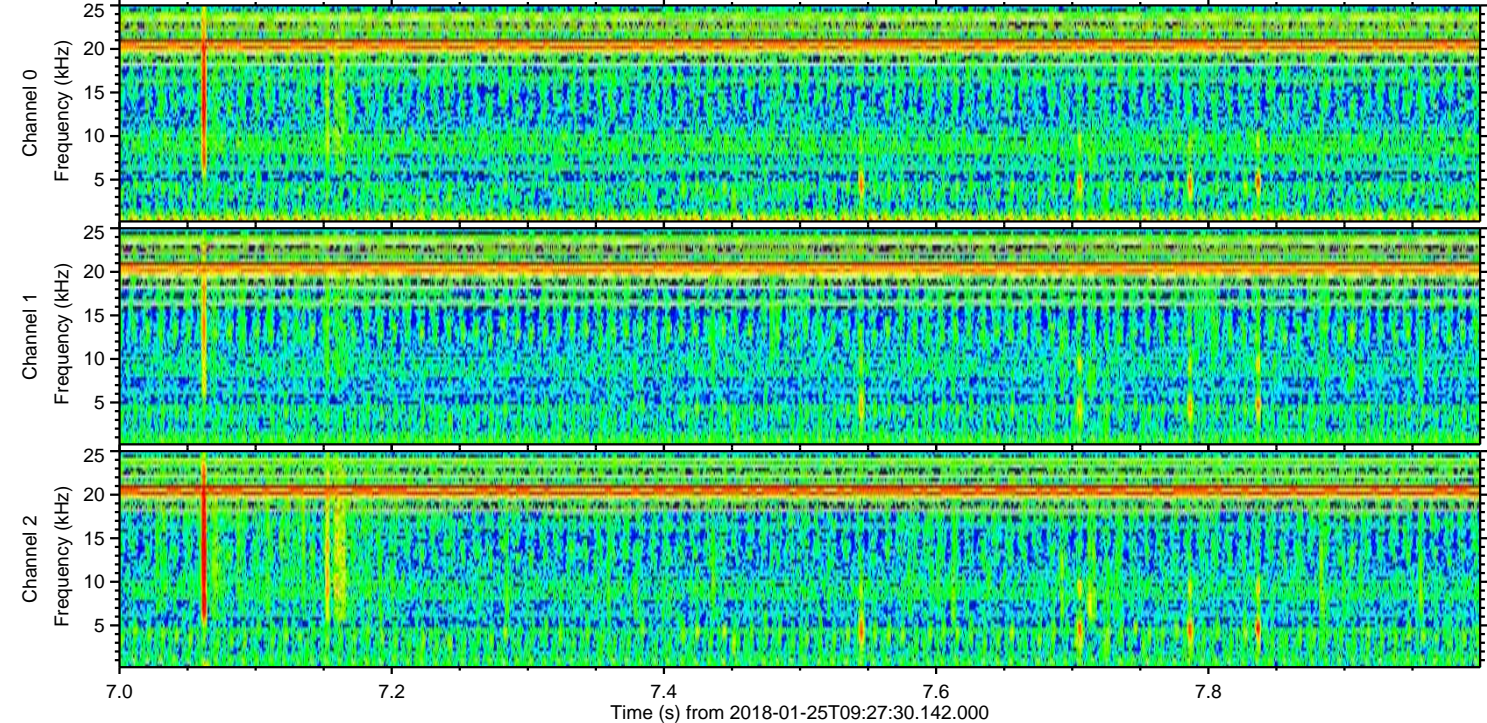
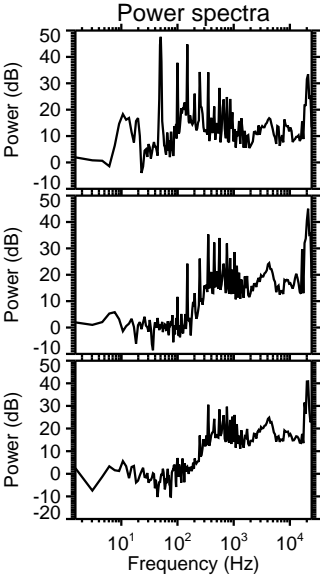
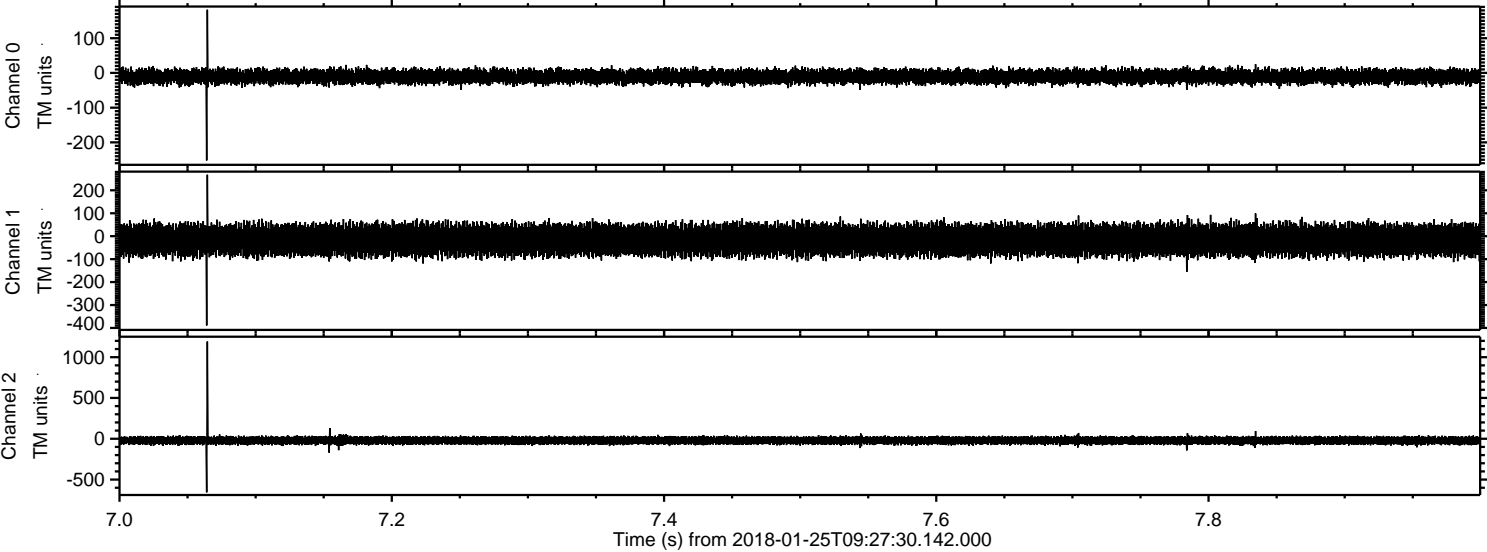
Processed Thu Jan 25 10:35:34 2018 by ELM ver.2012-10-06 from 001__elm20180125_092729__dat00.bin



Processed Thu Jan 25 10:35:35 2018 by ELM ver.2012-10-06 from 001__elm20180125_092729__dat00.bin

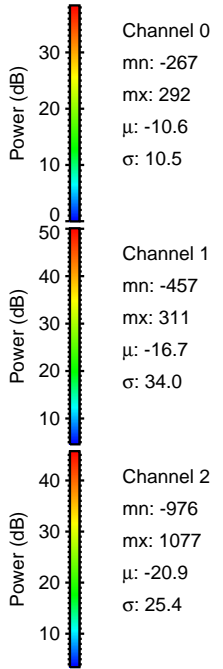
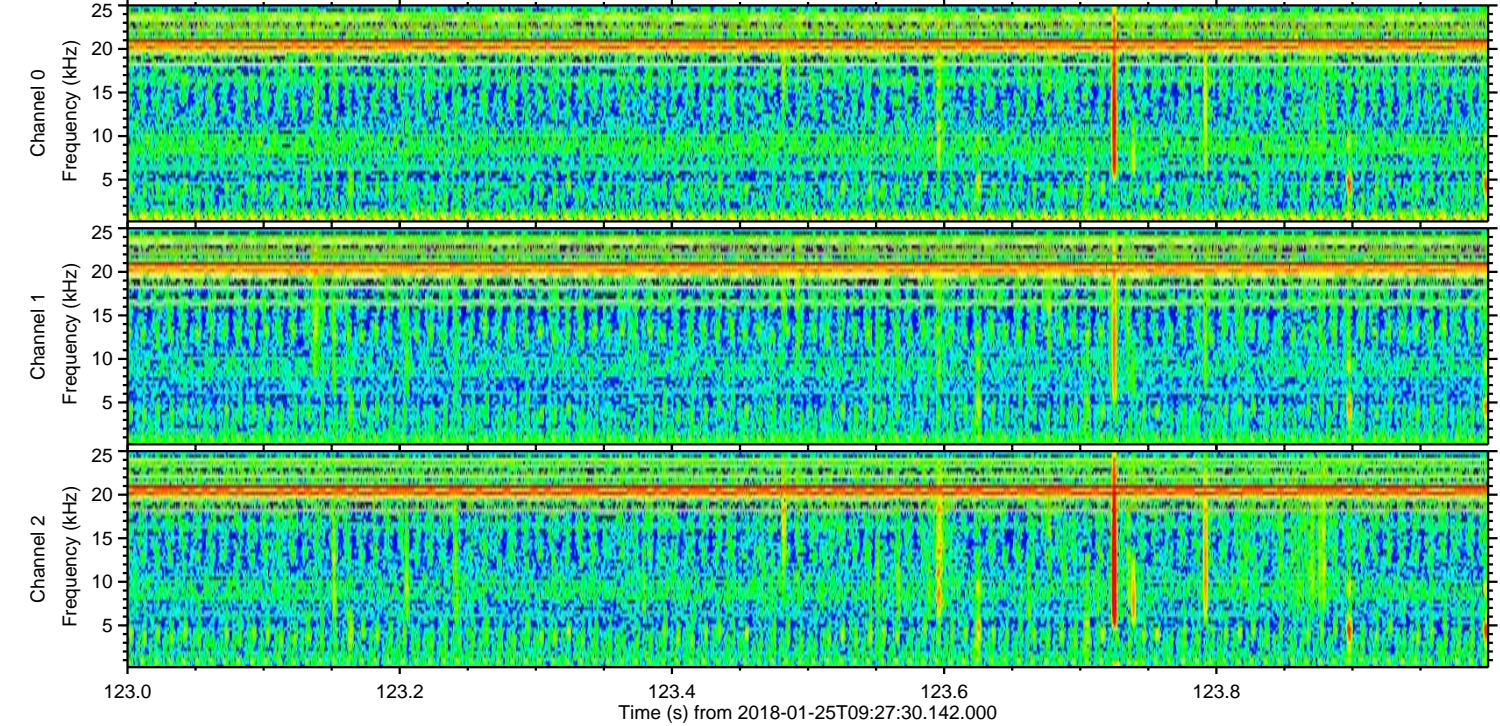
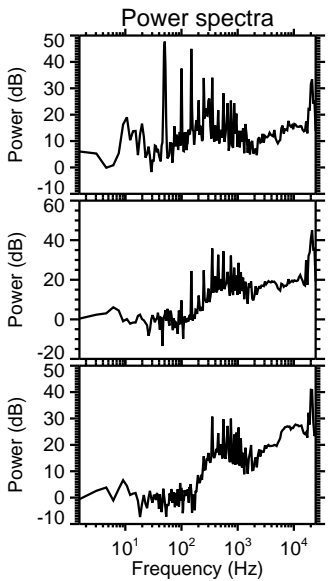
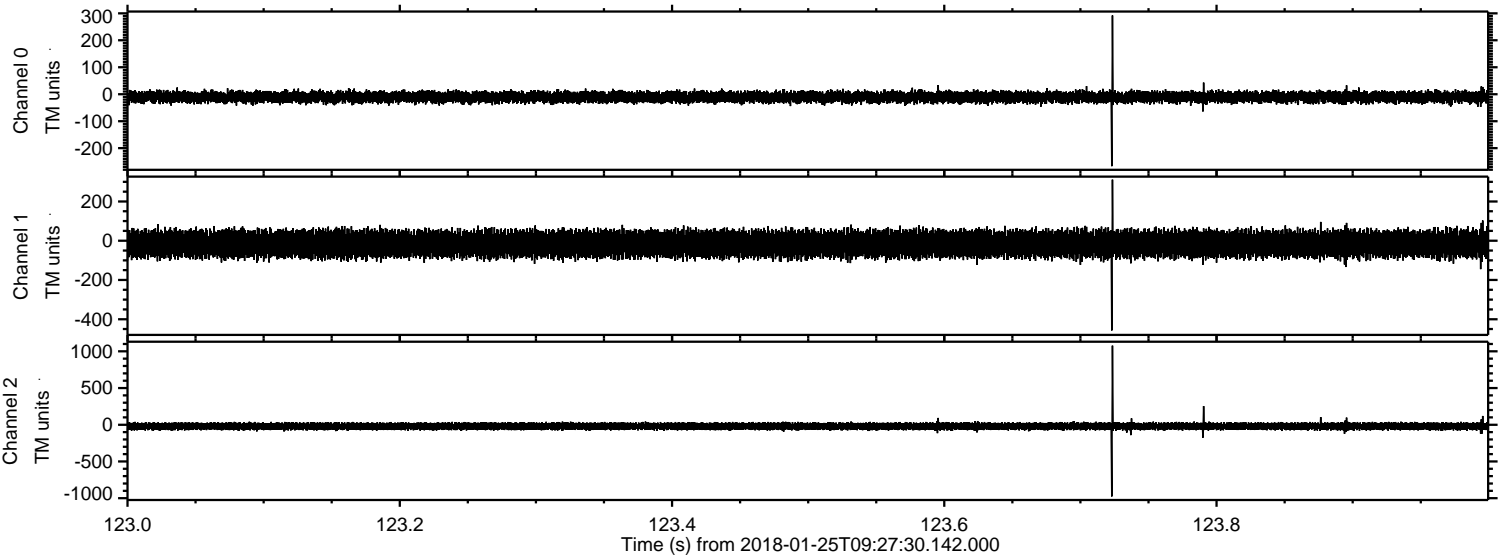


Processed Thu Jan 25 10:35:36 2018 by ELM ver.2012-10-06 from 001__elm20180125_092729__dat00.bin



ELMAVAN 3D WAVEFORMS (Measured data sampled at 50 kHz) 51000 packets of 144 samples from 2018-01-25T09:27:30.142.000. Part 124/147

Processed Thu Jan 25 10:35:37 2018 by ELM ver.2012-10-06 from 001__elm20180125_092729__dat00.bin

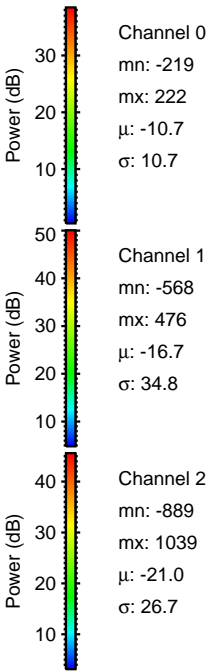
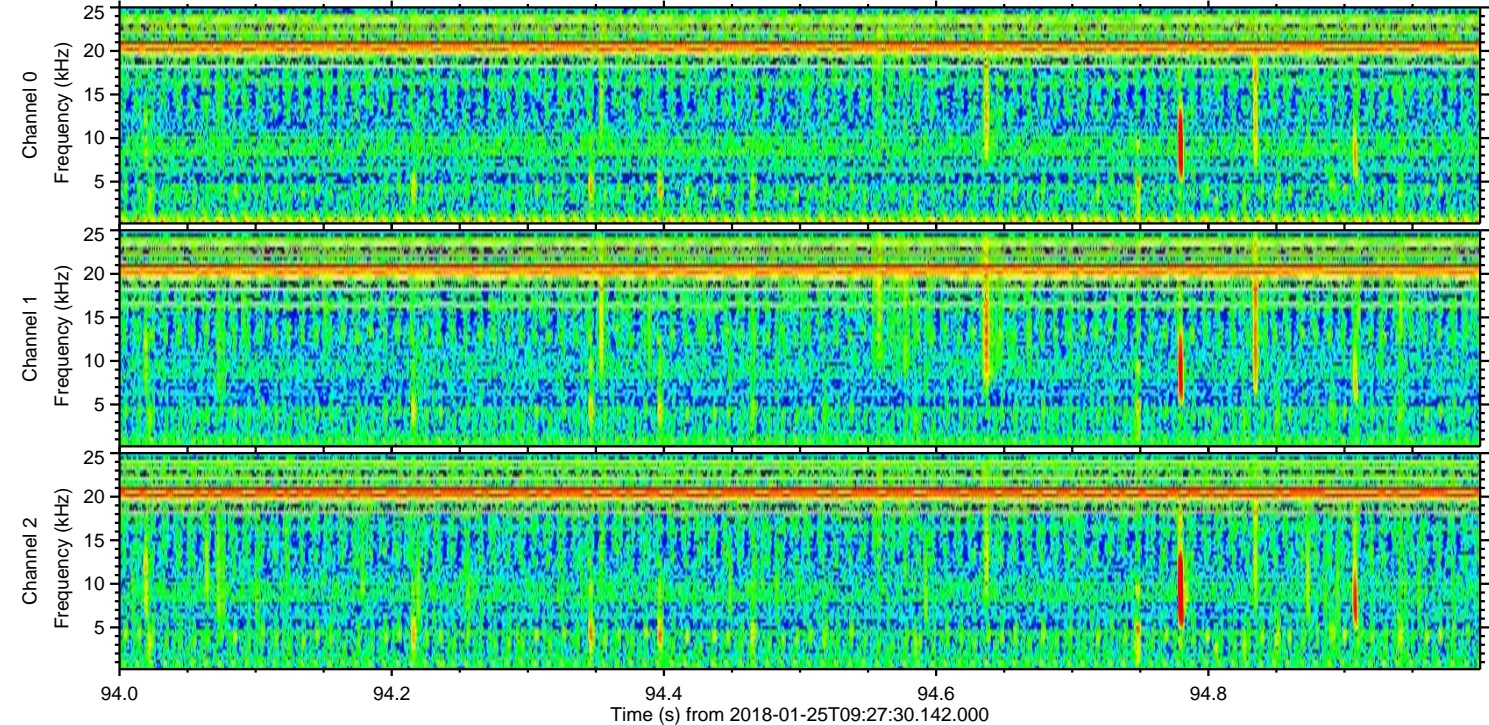
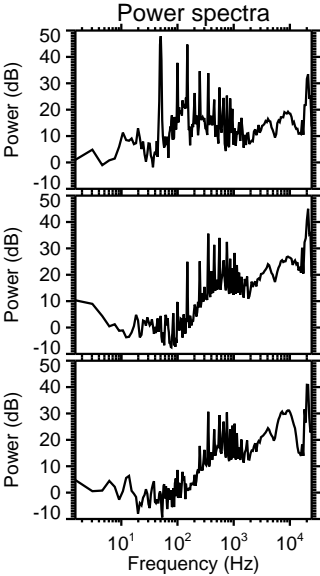
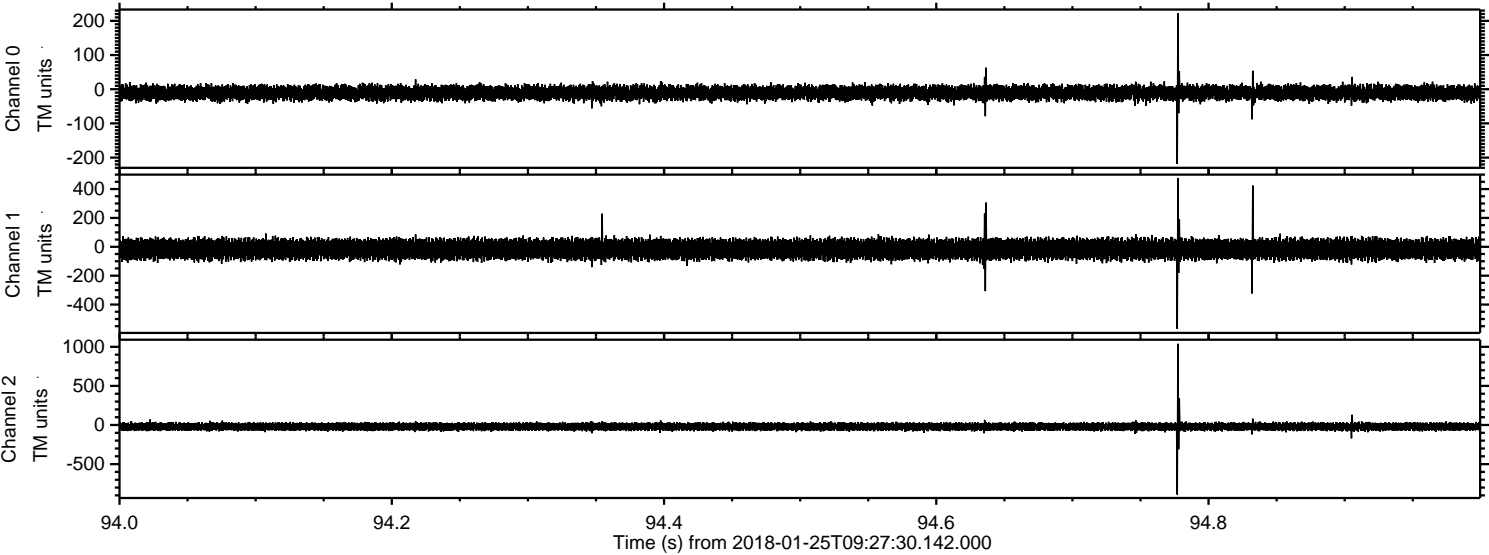


Channel 0
mn: -267
mx: 292
 μ : -10.6
 σ : 10.5

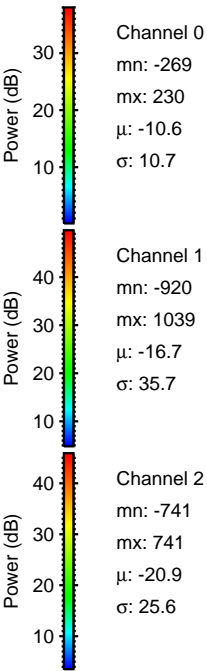
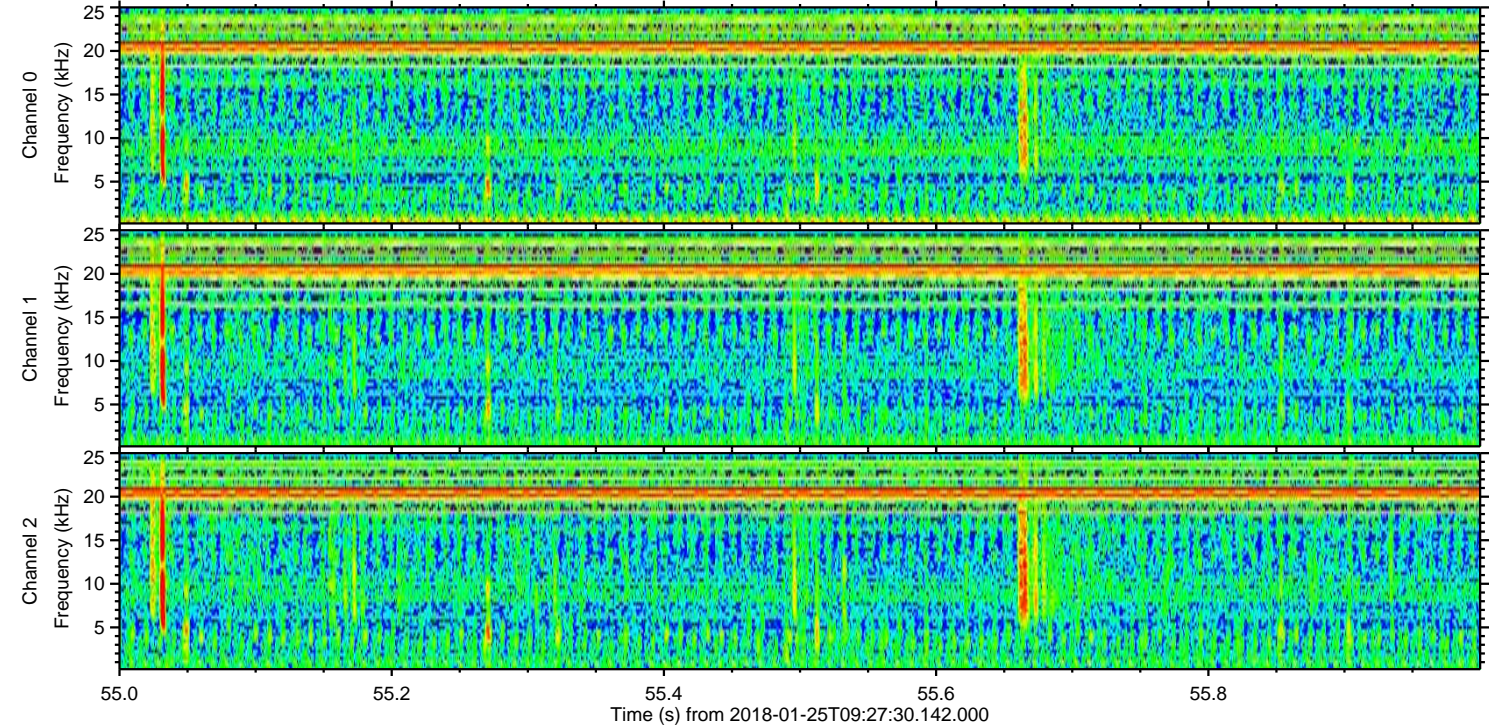
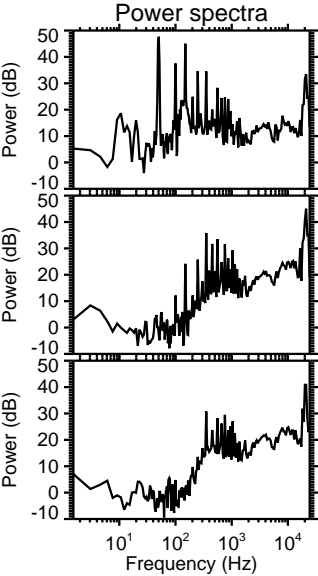
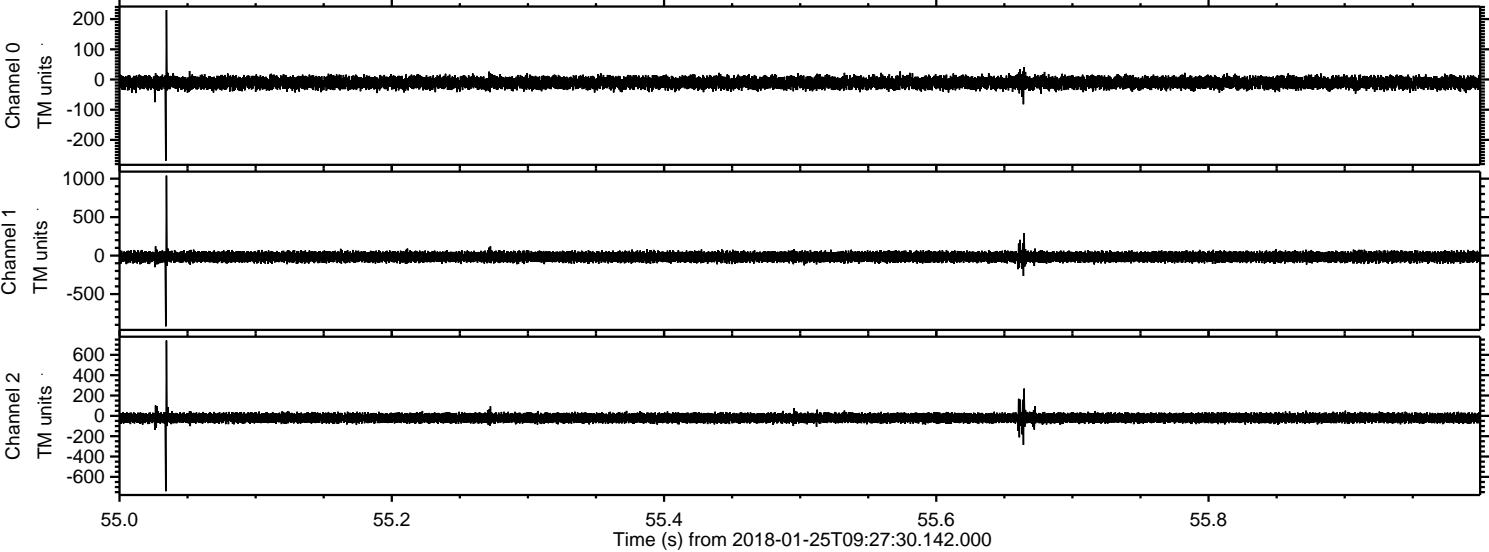
Channel 1
mn: -457
mx: 311
 μ : -16.7
 σ : 34.0

Channel 2
mn: -976
mx: 1077
 μ : -20.9
 σ : 25.4

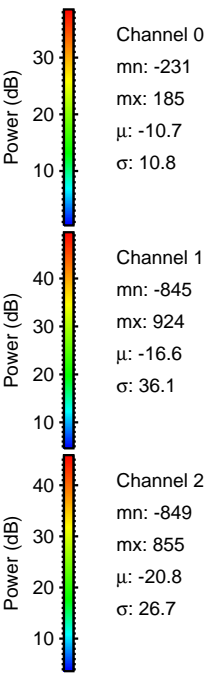
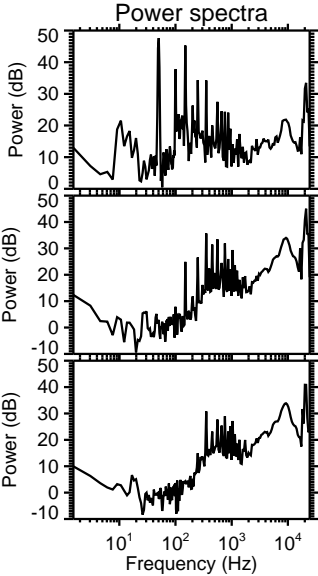
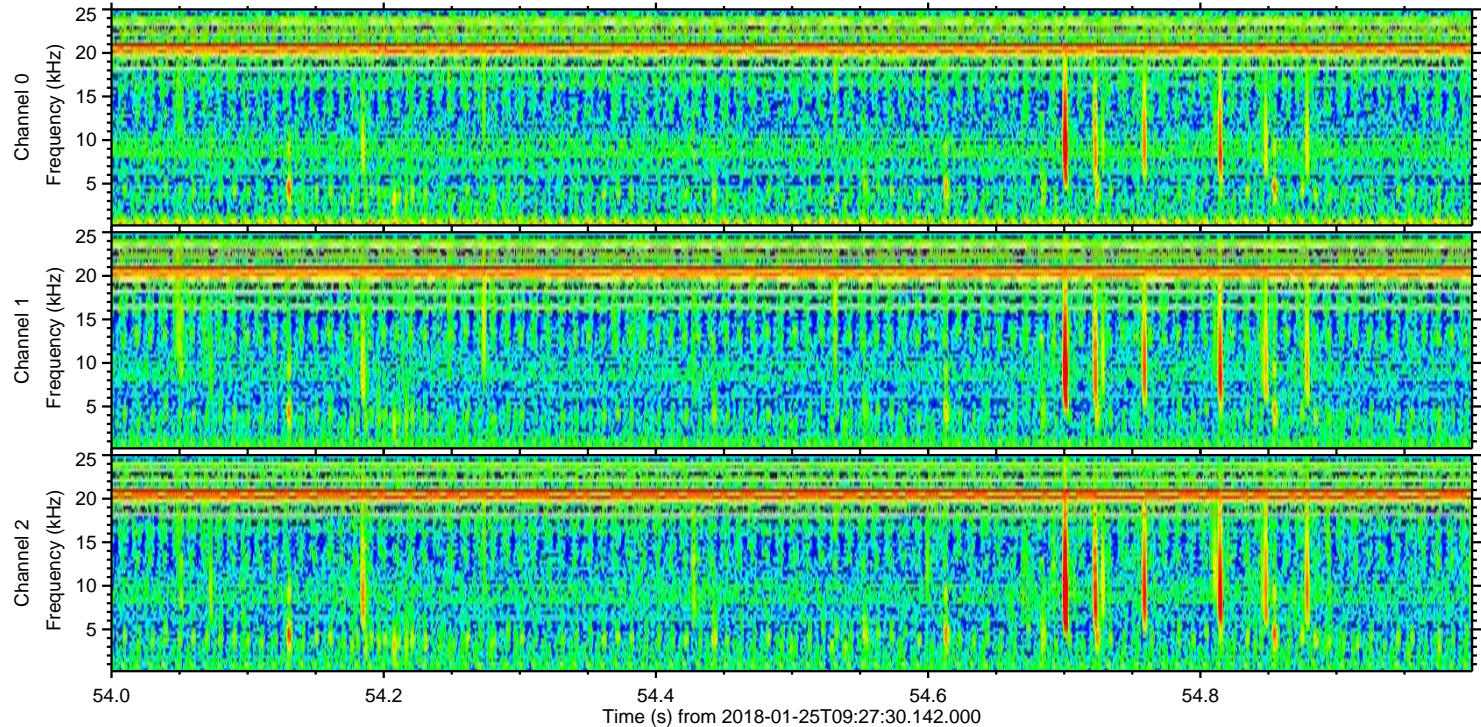
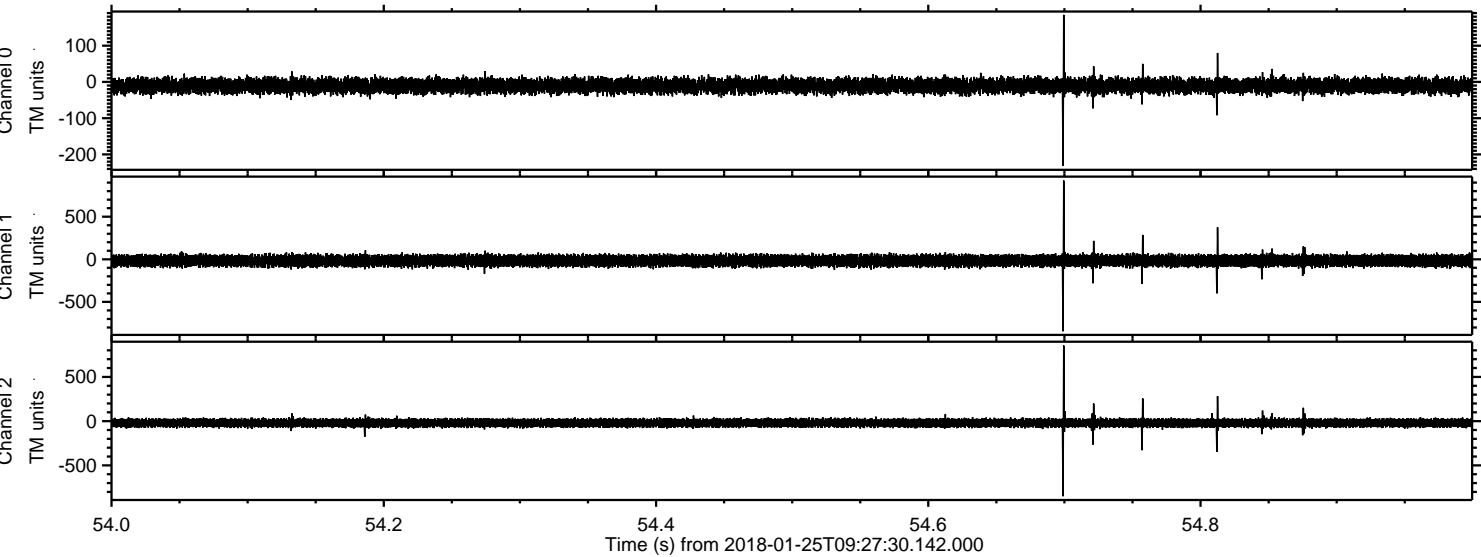
Processed Thu Jan 25 10:35:37 2018 by ELM ver.2012-10-06 from 001__elm20180125_092729__dat00.bin



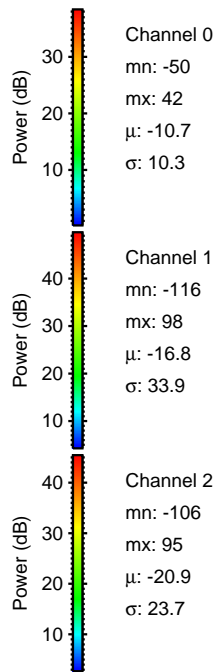
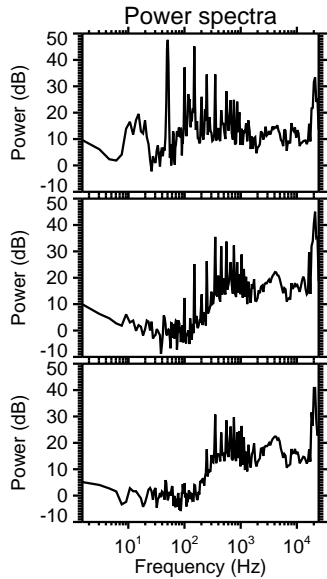
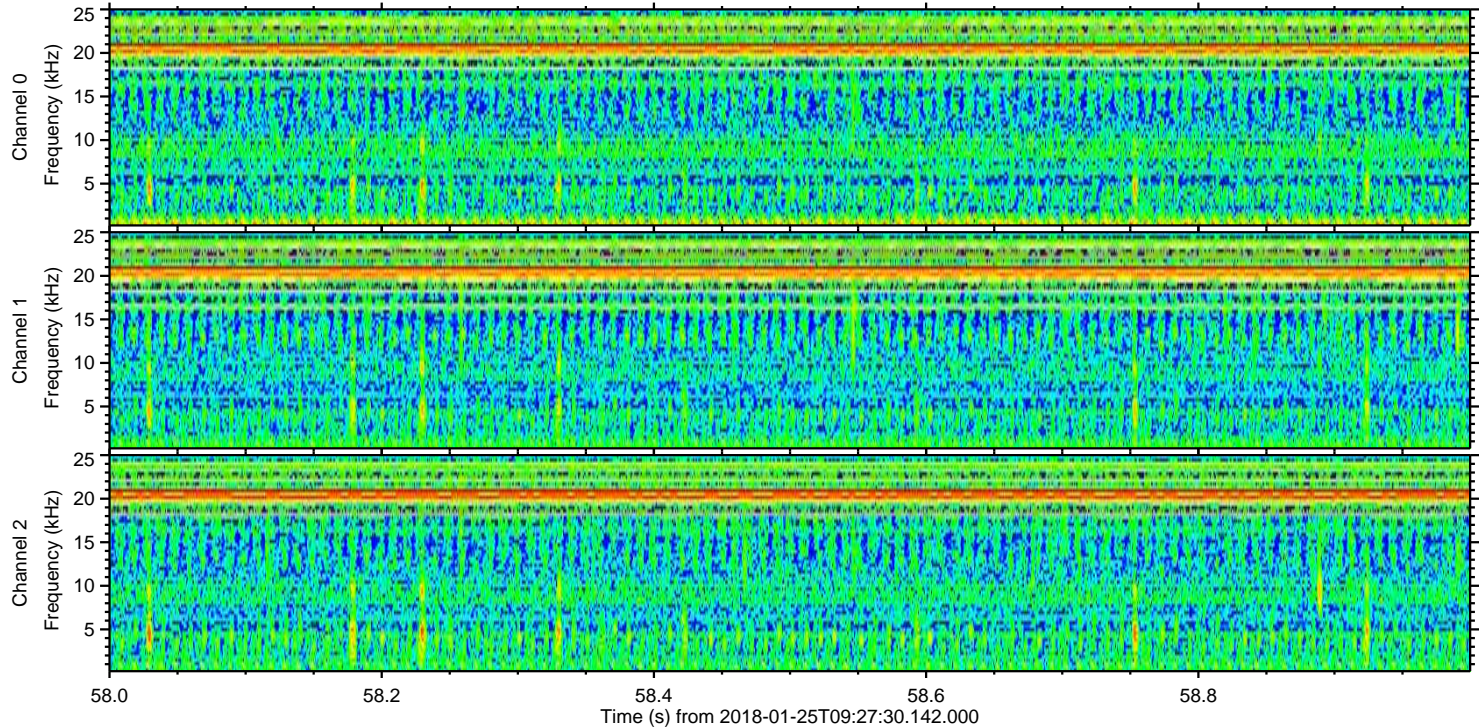
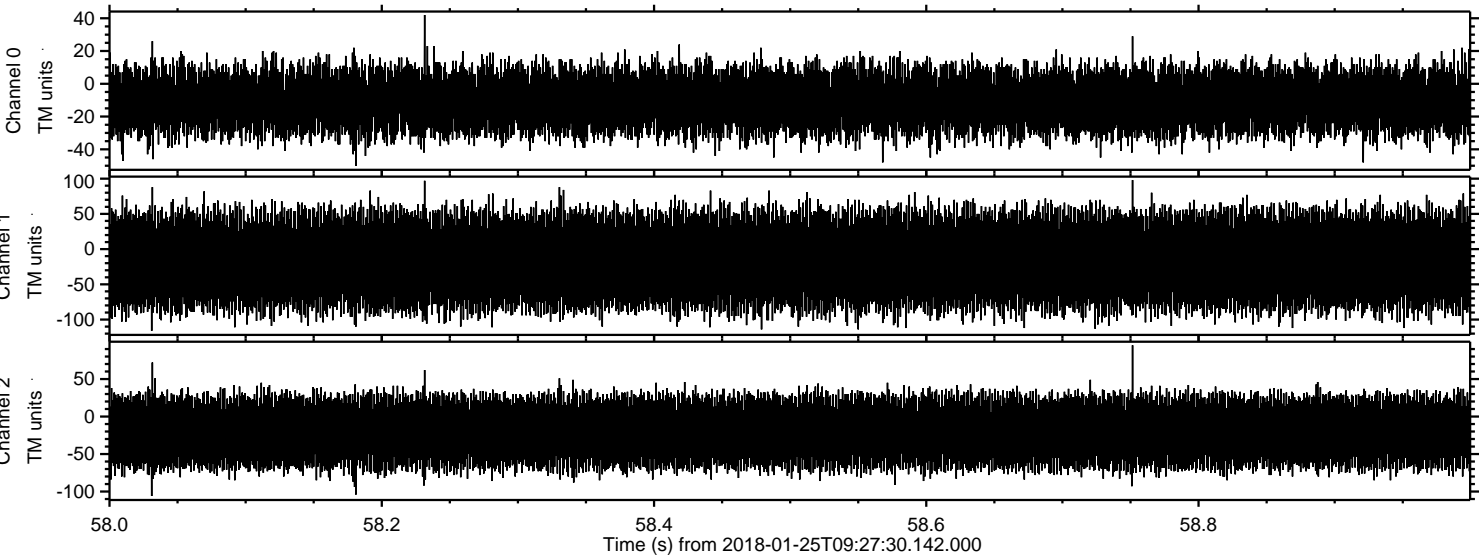
Processed Thu Jan 25 10:35:38 2018 by ELM ver.2012-10-06 from 001__elm20180125_092729__dat00.bin



Processed Thu Jan 25 10:35:39 2018 by ELM ver.2012-10-06 from 001__elm20180125_092729__dat00.bin



Processed Thu Jan 25 10:35:40 2018 by ELM ver.2012-10-06 from 001__elm20180125_092729__dat00.bin



Channel 0
mn: -50
mx: 42
 μ : -10.7
 σ : 10.3

Channel 1
mn: -116
mx: 98
 μ : -16.8
 σ : 33.9

Channel 2
mn: -106
mx: 95
 μ : -20.9
 σ : 23.7