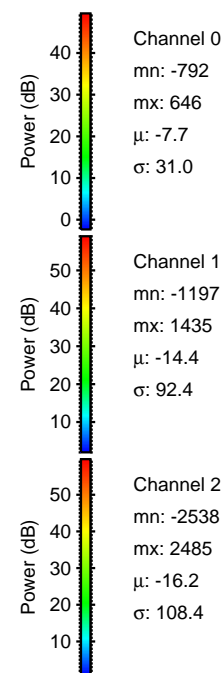
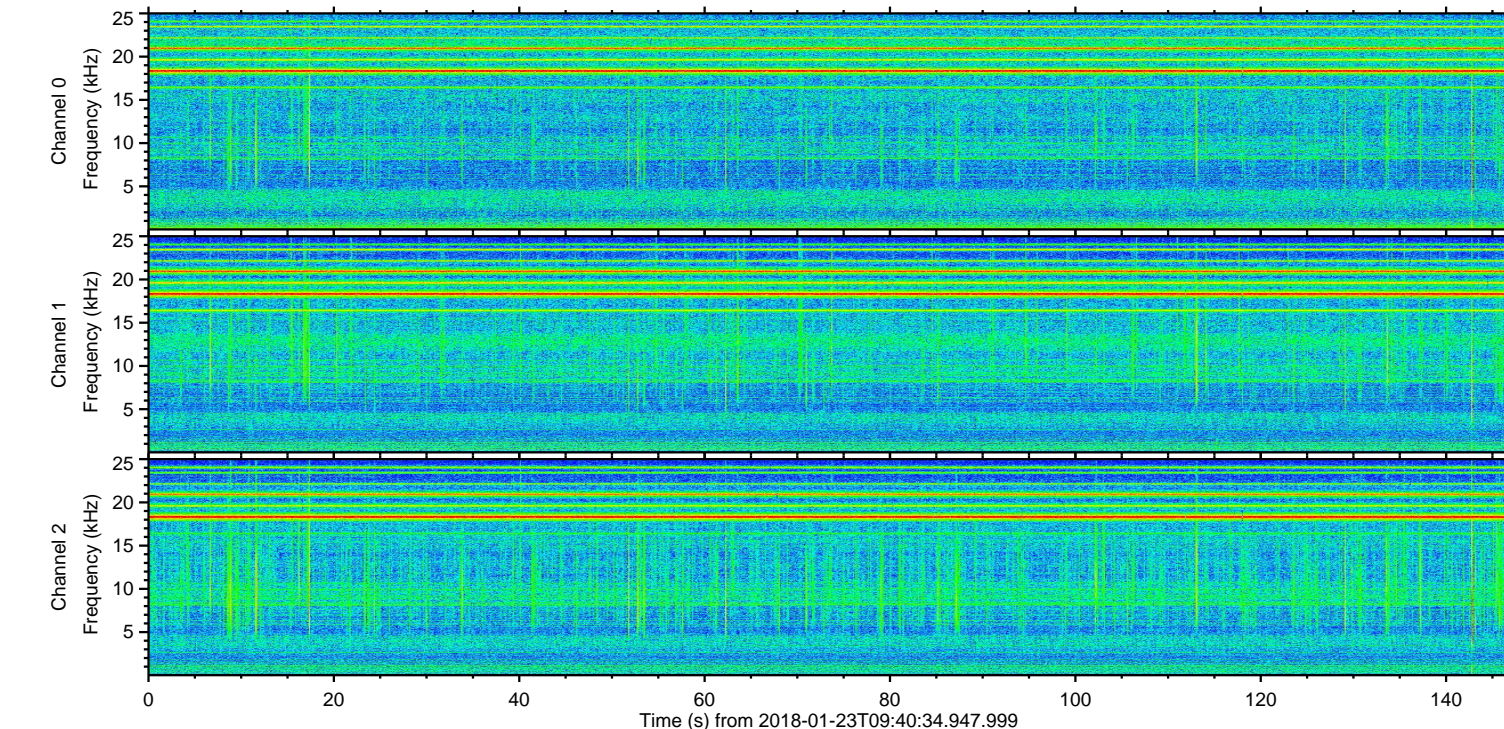
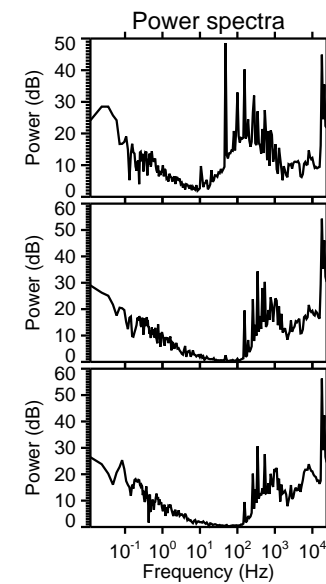
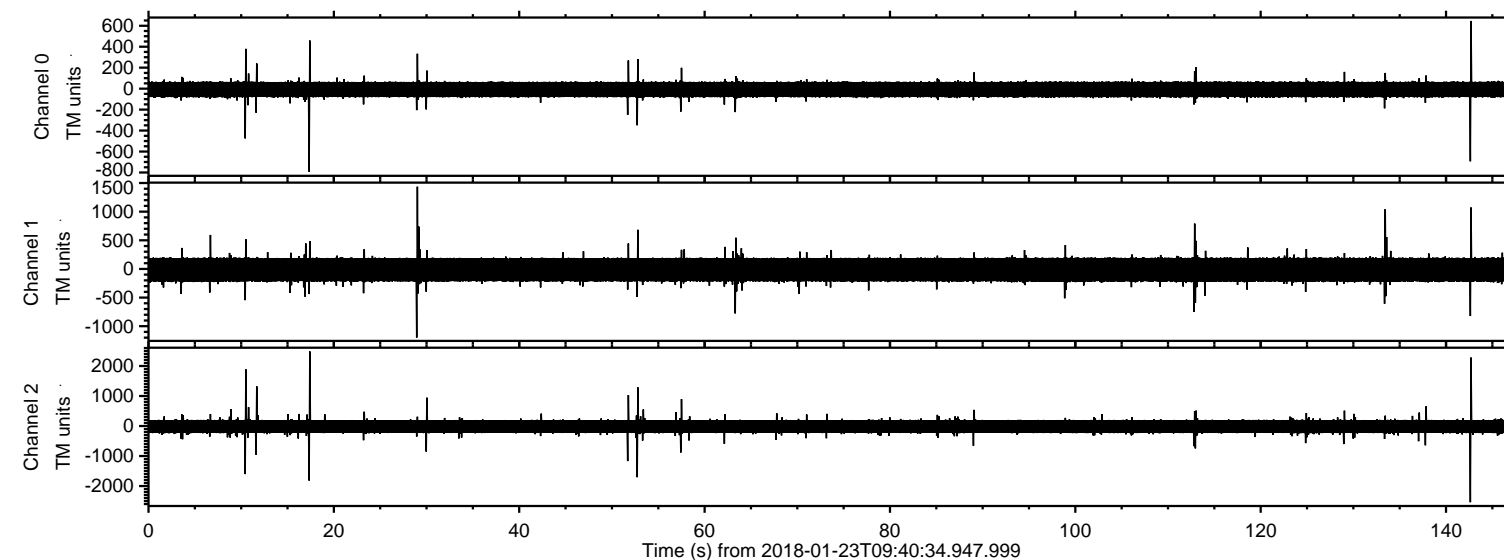


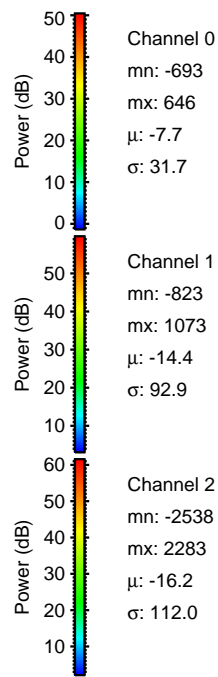
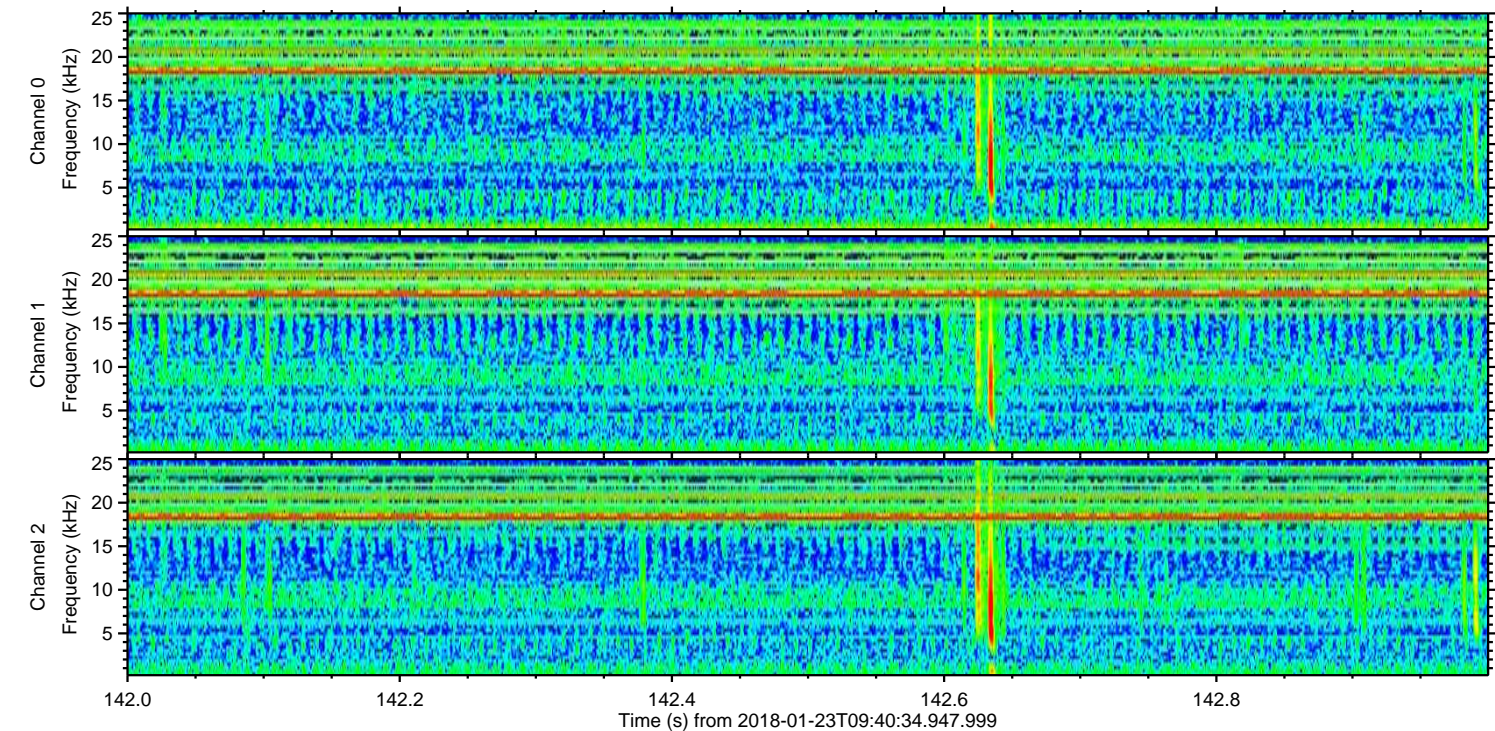
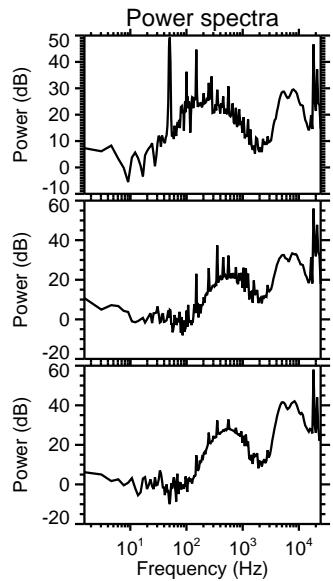
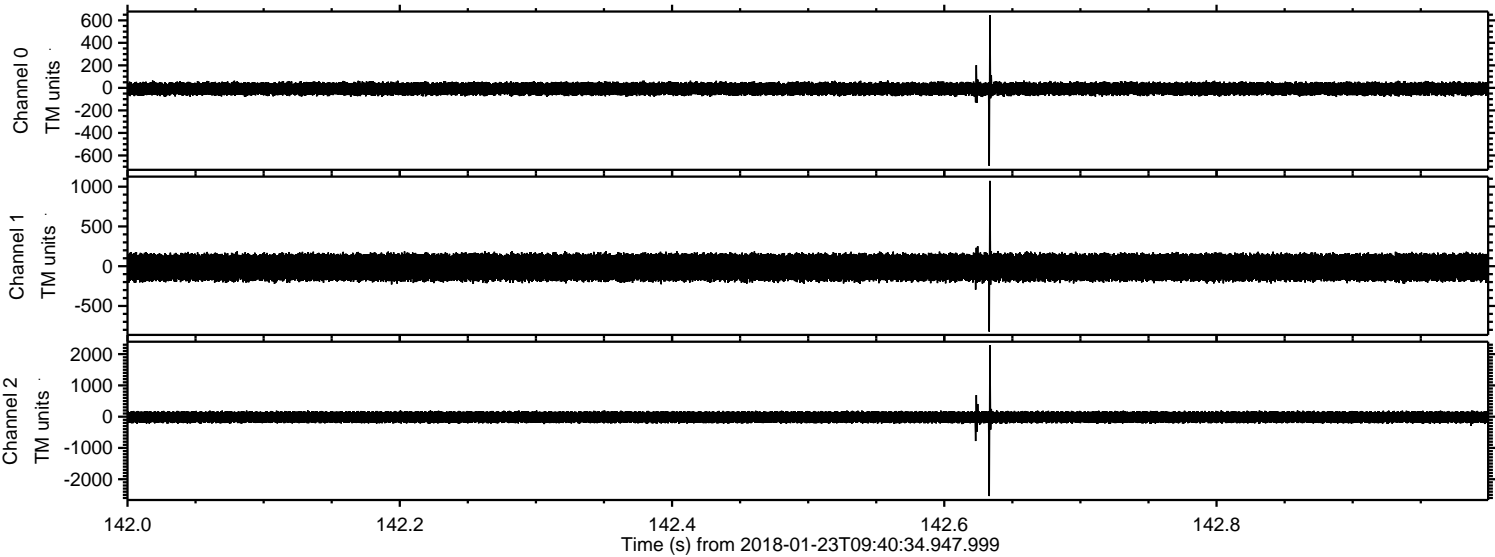
ELMAVAN 3D WAVEFORMS (Measured data sampled at 50 kHz) 51000 packets of 144 samples from 2018-01-23T09:40:34.947.999.

Processed Tue Jan 23 10:47:54 2018 by ELM ver.2012-10-06 from 001__elm20180123_094033__dat00.bin

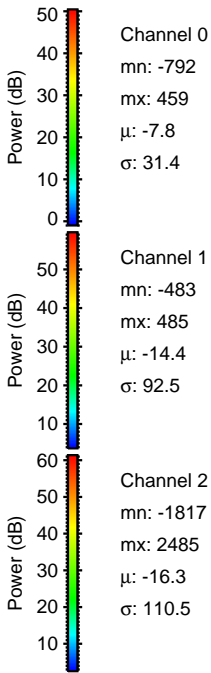
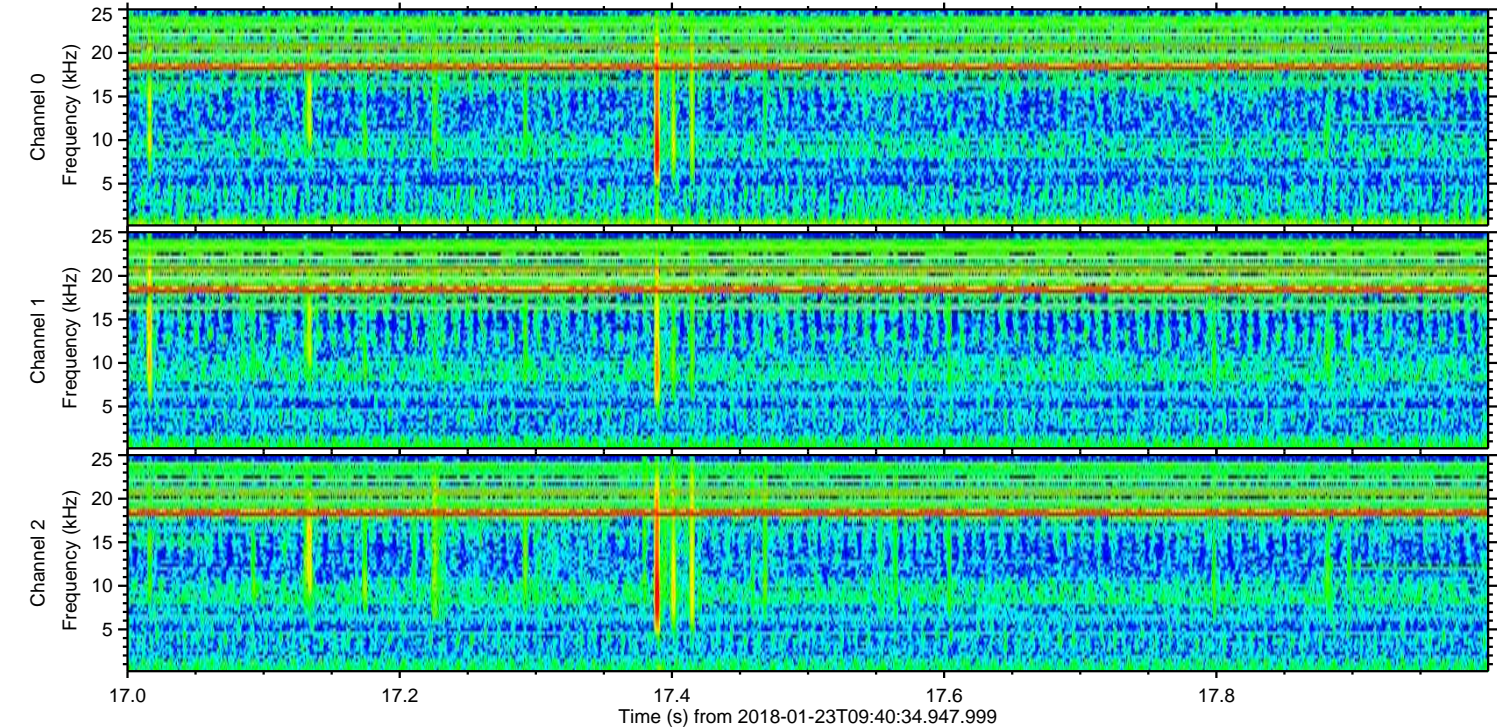
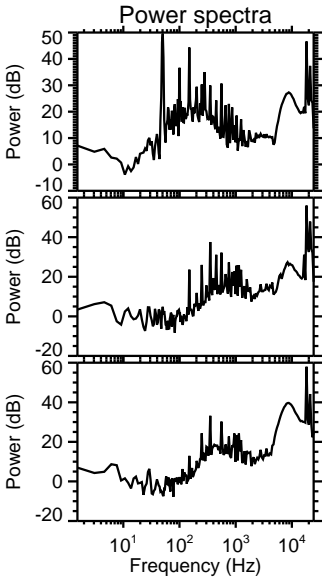
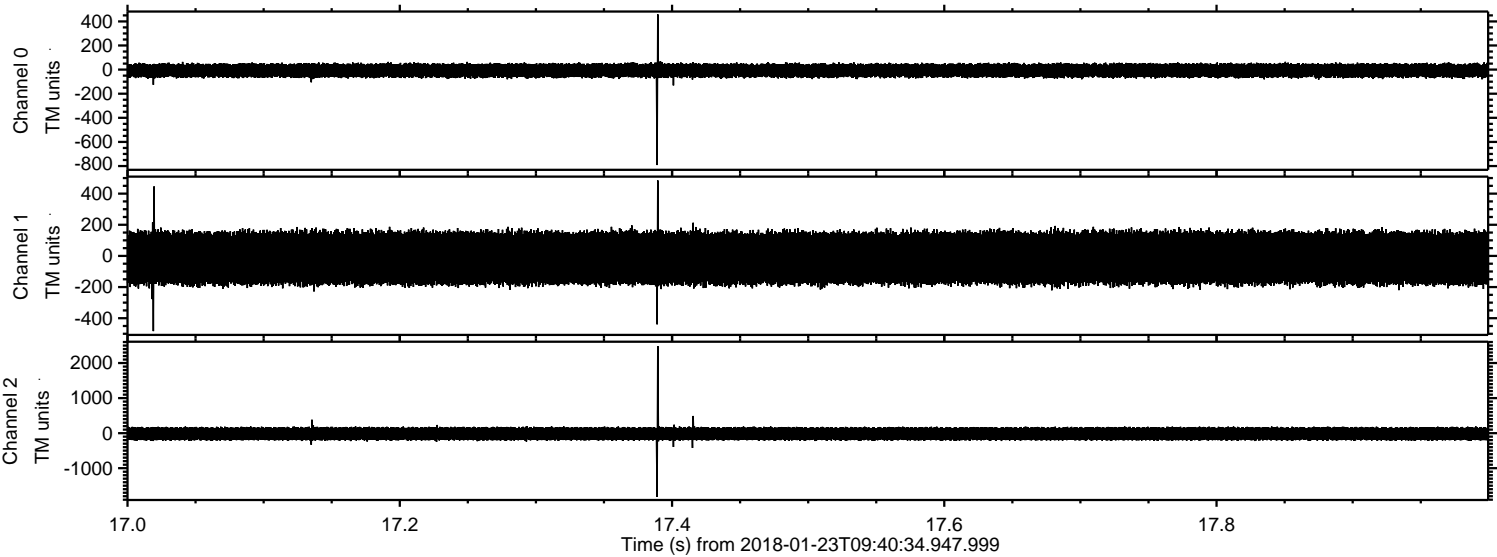


ELMAVAN 3D WAVEFORMS (Measured data sampled at 50 kHz) 51000 packets of 144 samples from 2018-01-23T09:40:34.947.999. Part 143/147

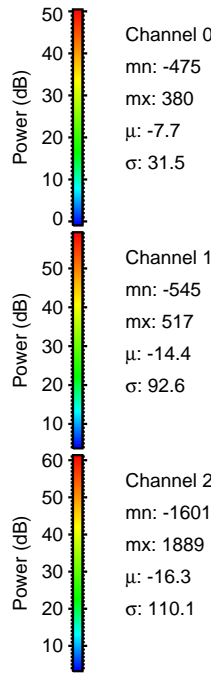
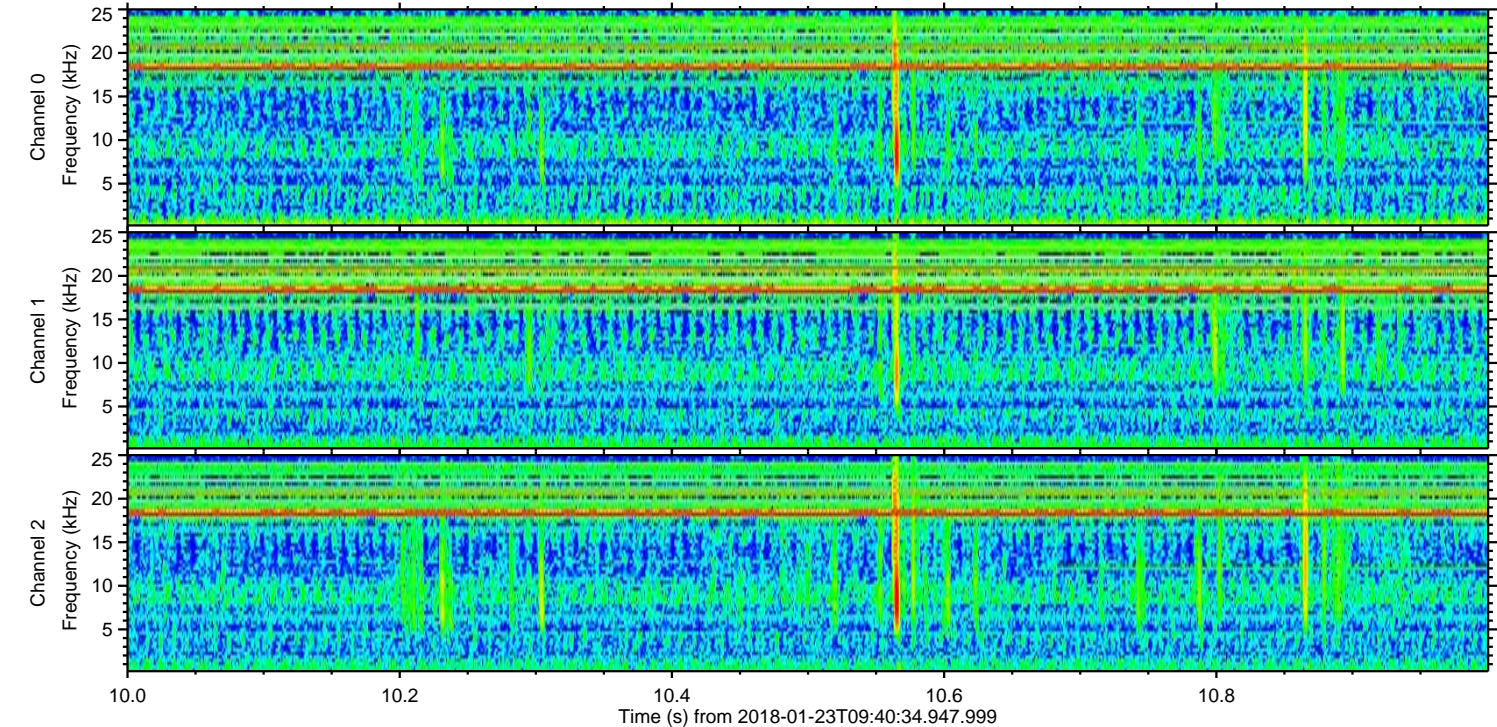
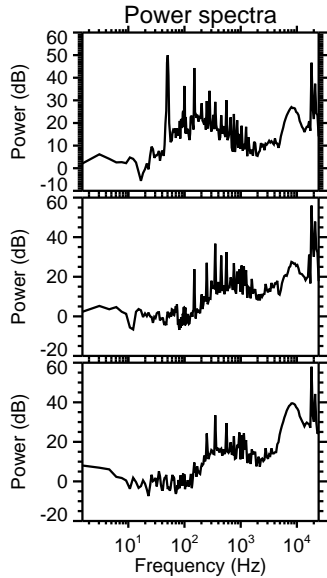
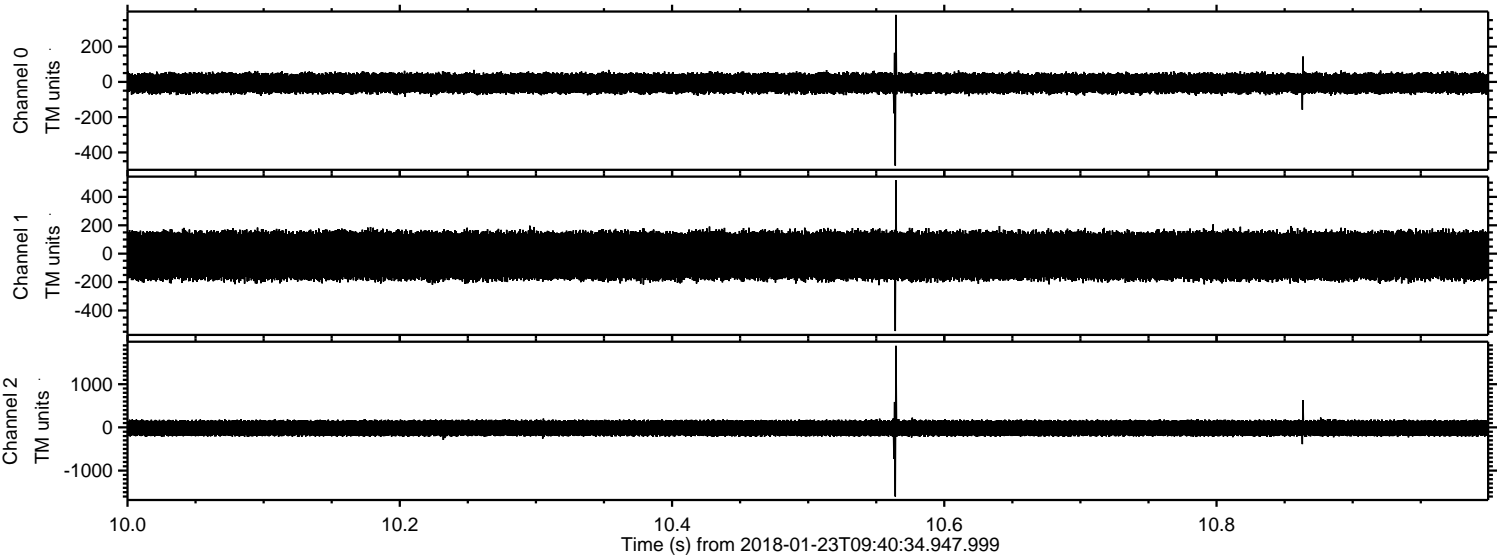
Processed Tue Jan 23 10:48:04 2018 by ELM ver.2012-10-06 from 001__elm20180123_094033__dat00.bin



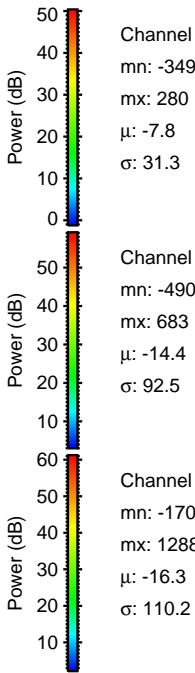
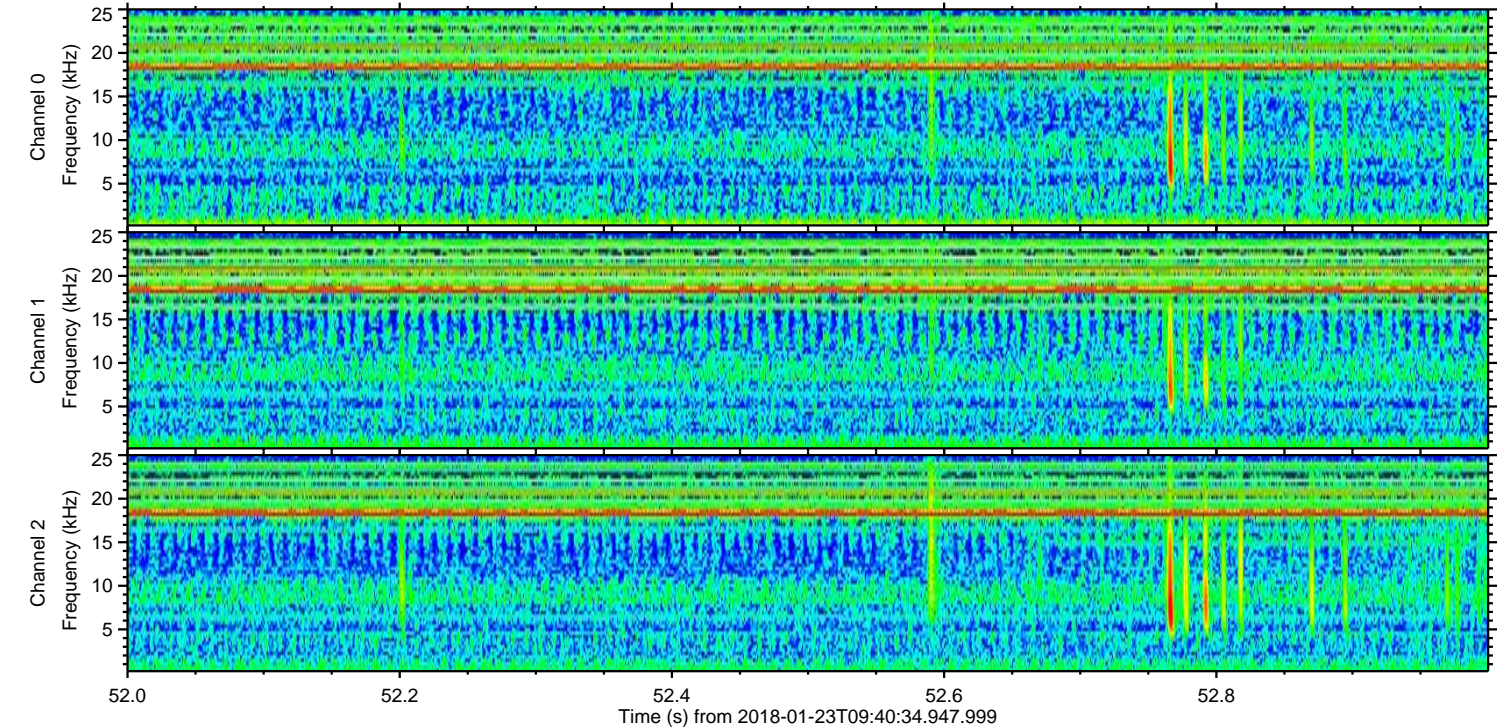
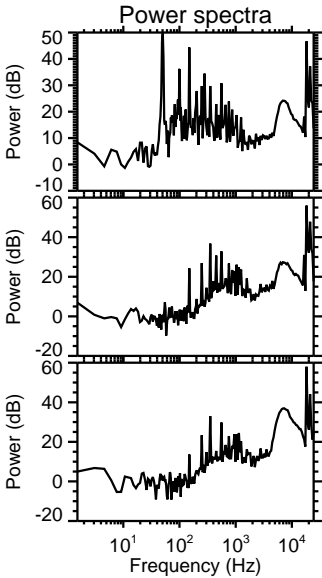
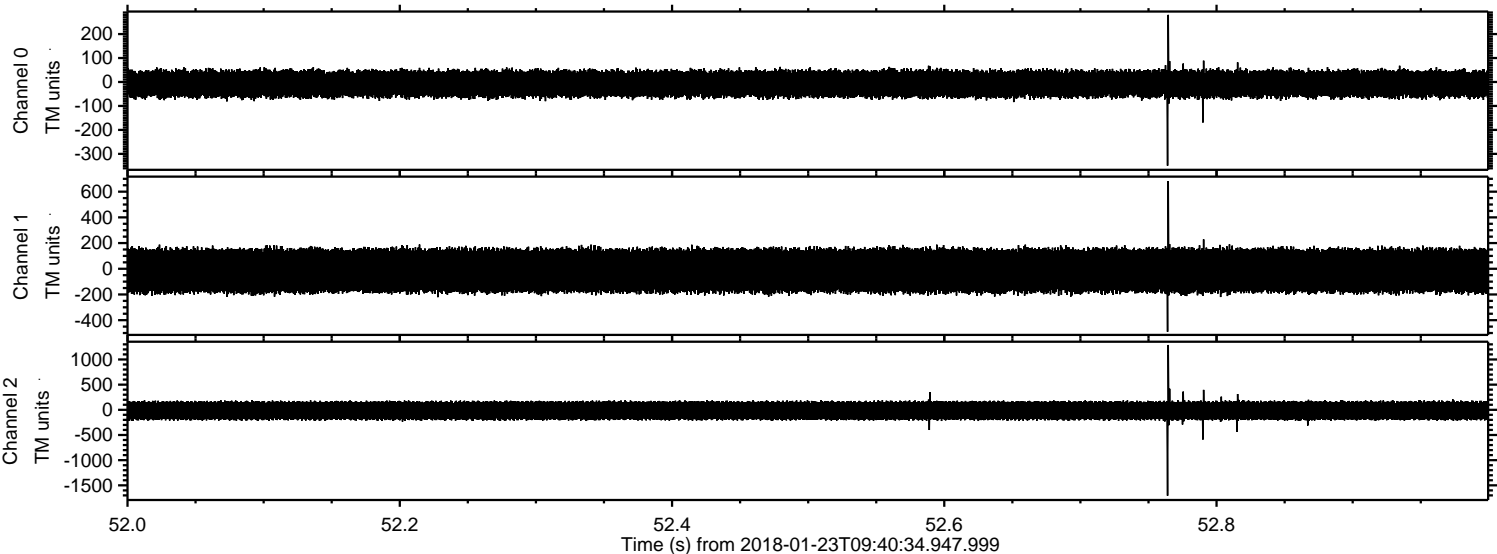
Processed Tue Jan 23 10:48:04 2018 by ELM ver.2012-10-06 from 001__elm20180123_094033__dat00.bin



Processed Tue Jan 23 10:48:05 2018 by ELM ver.2012-10-06 from 001__elm20180123_094033__dat00.bin

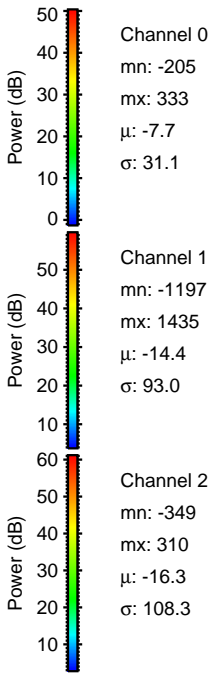
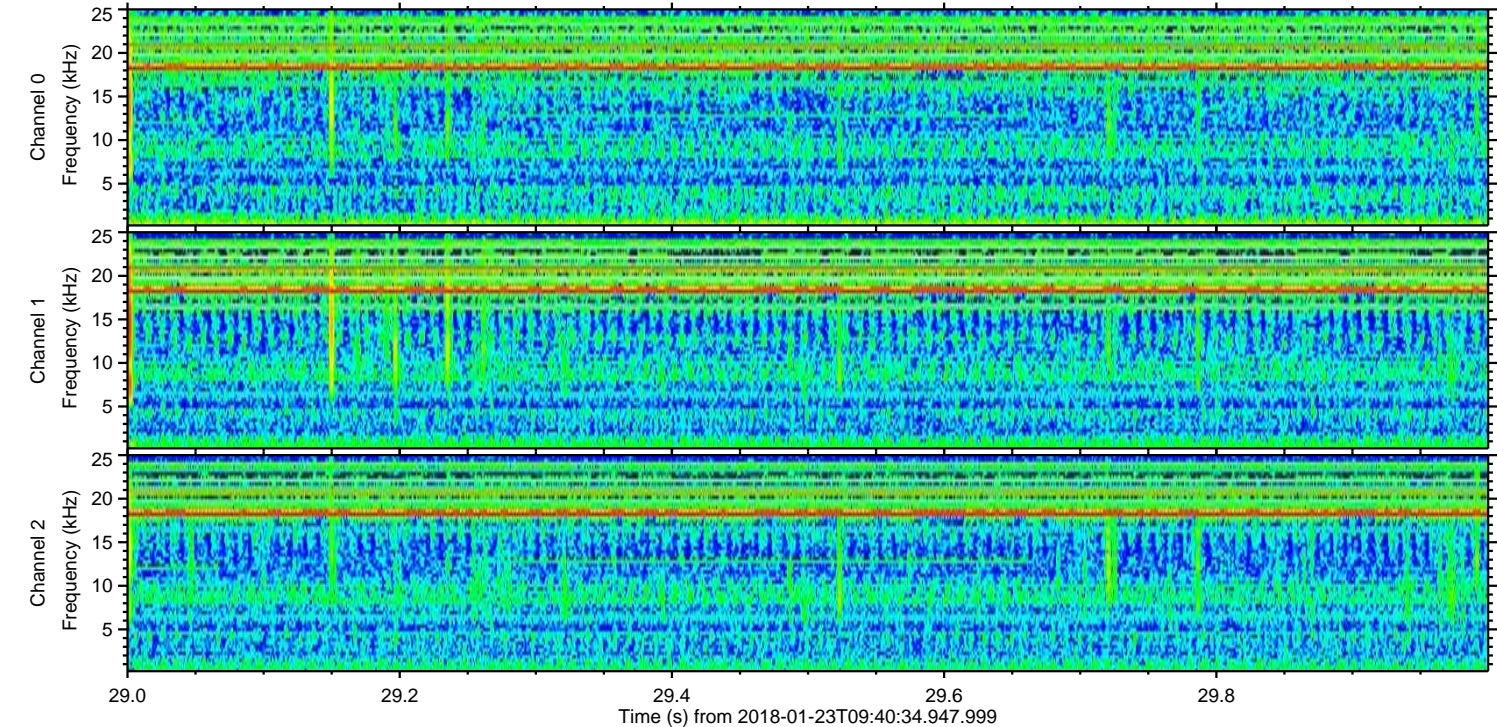
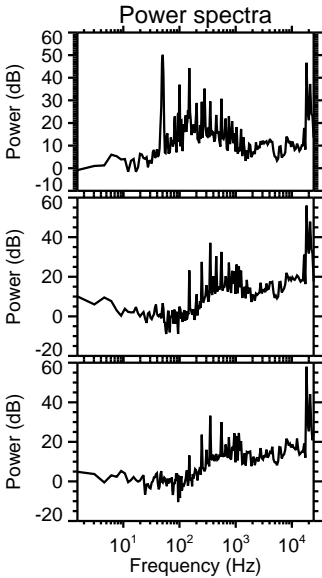
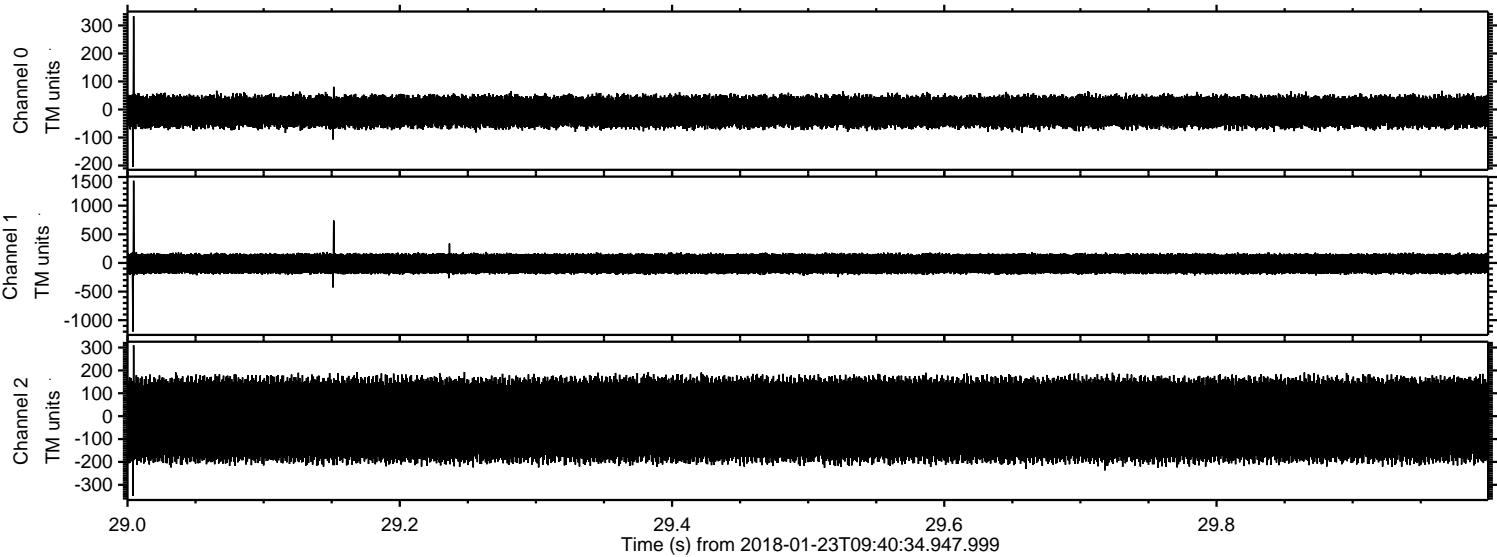


Processed Tue Jan 23 10:48:06 2018 by ELM ver.2012-10-06 from 001__elm20180123_094033__dat00.bin

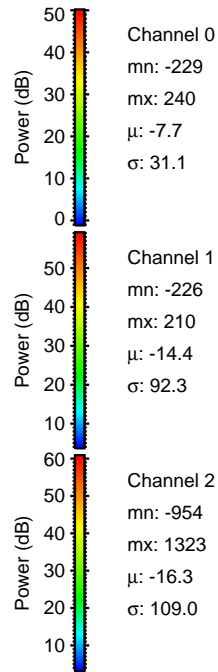
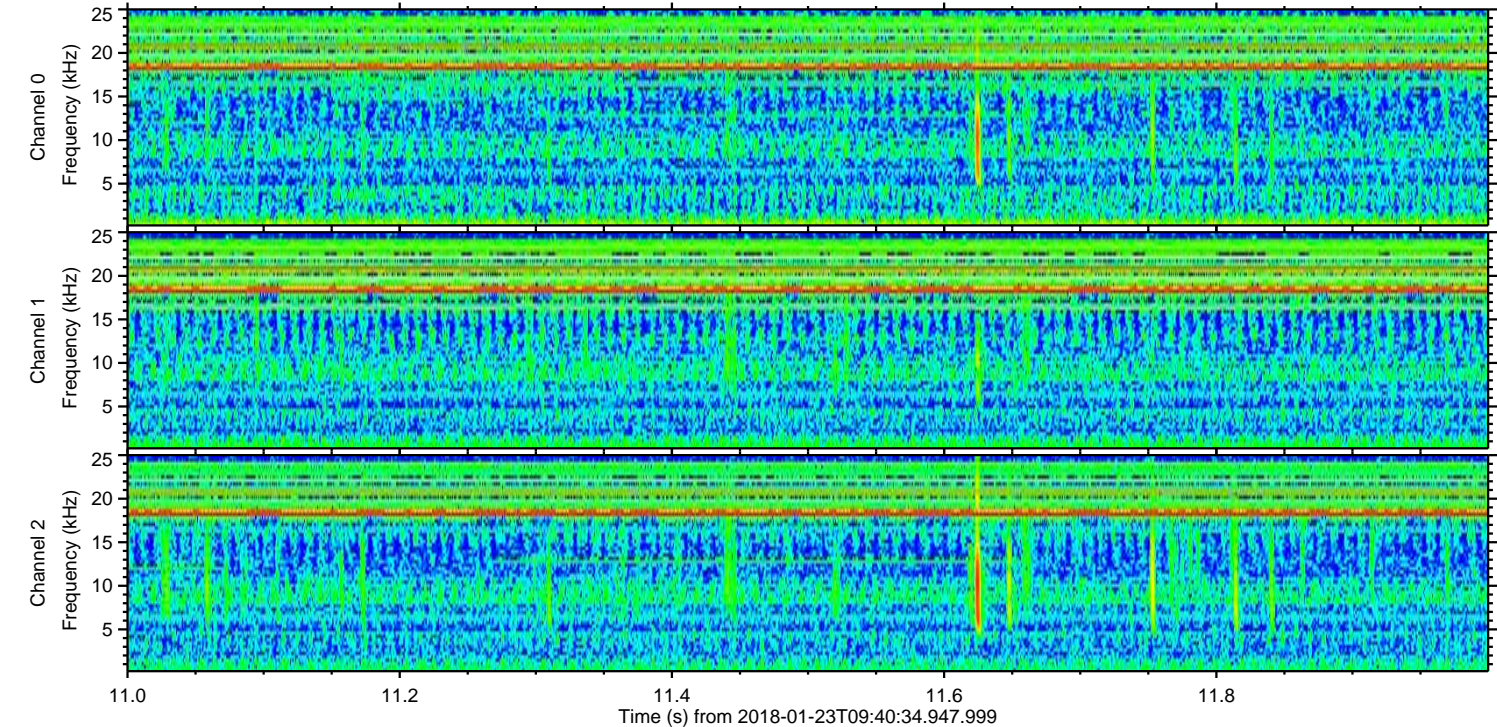
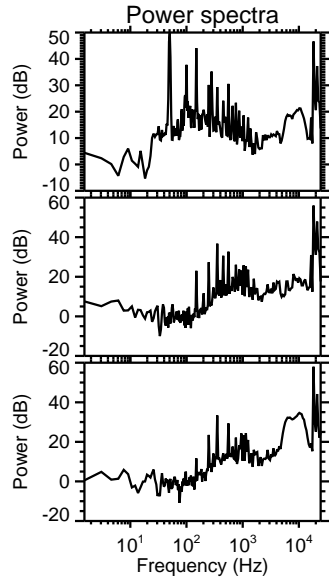
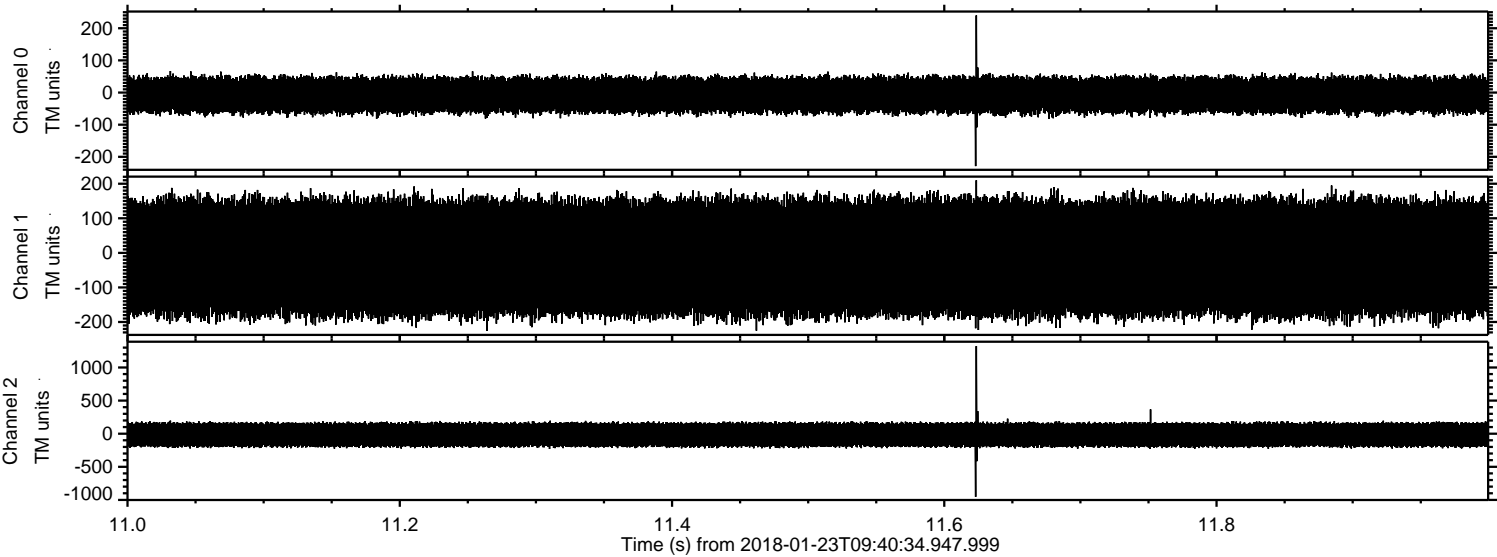


ELMAVAN 3D WAVEFORMS (Measured data sampled at 50 kHz) 51000 packets of 144 samples from 2018-01-23T09:40:34.947.999. Part 30/147

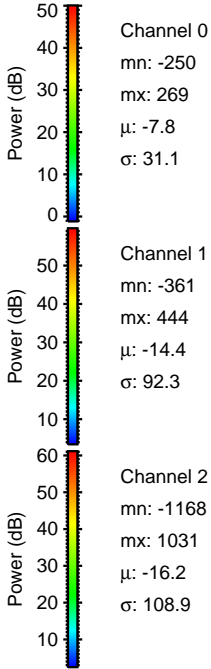
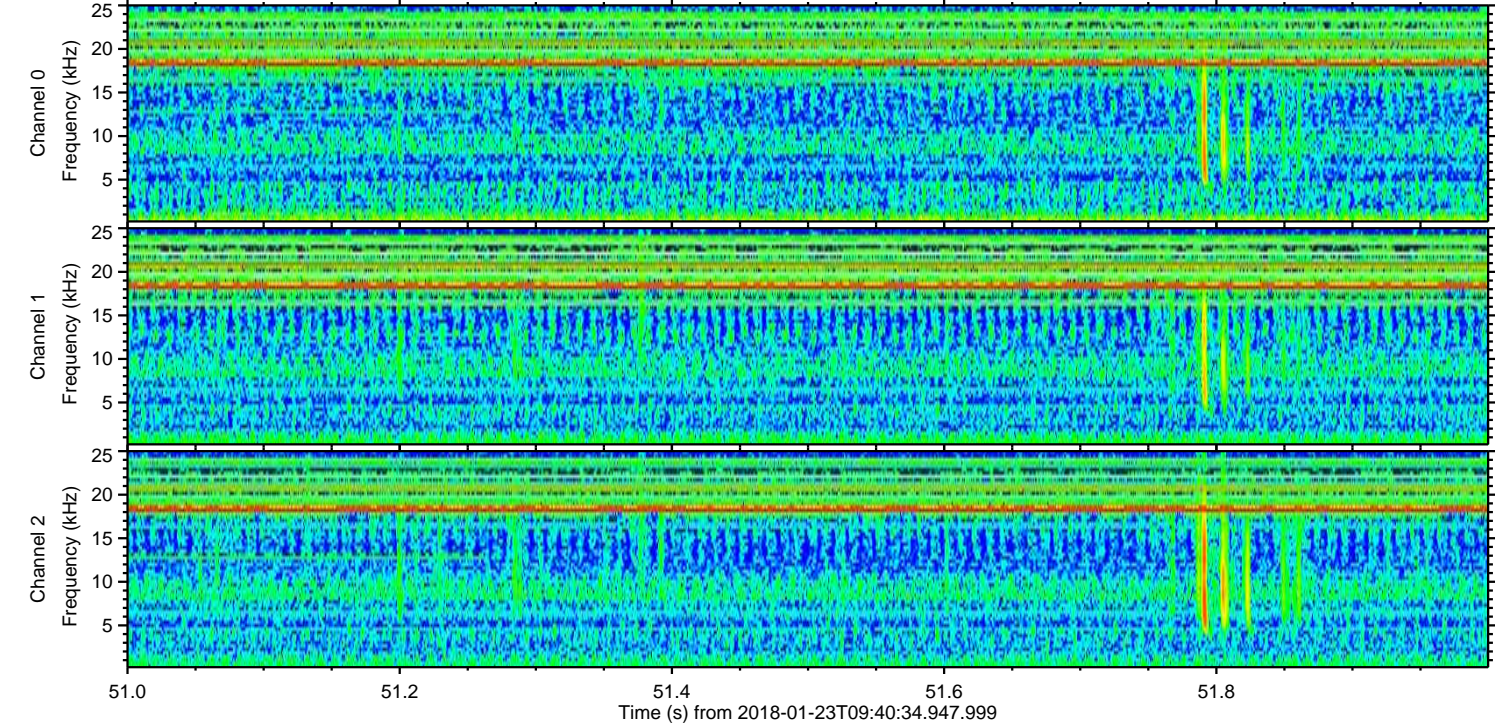
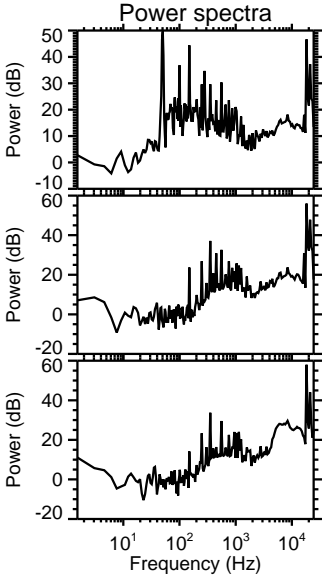
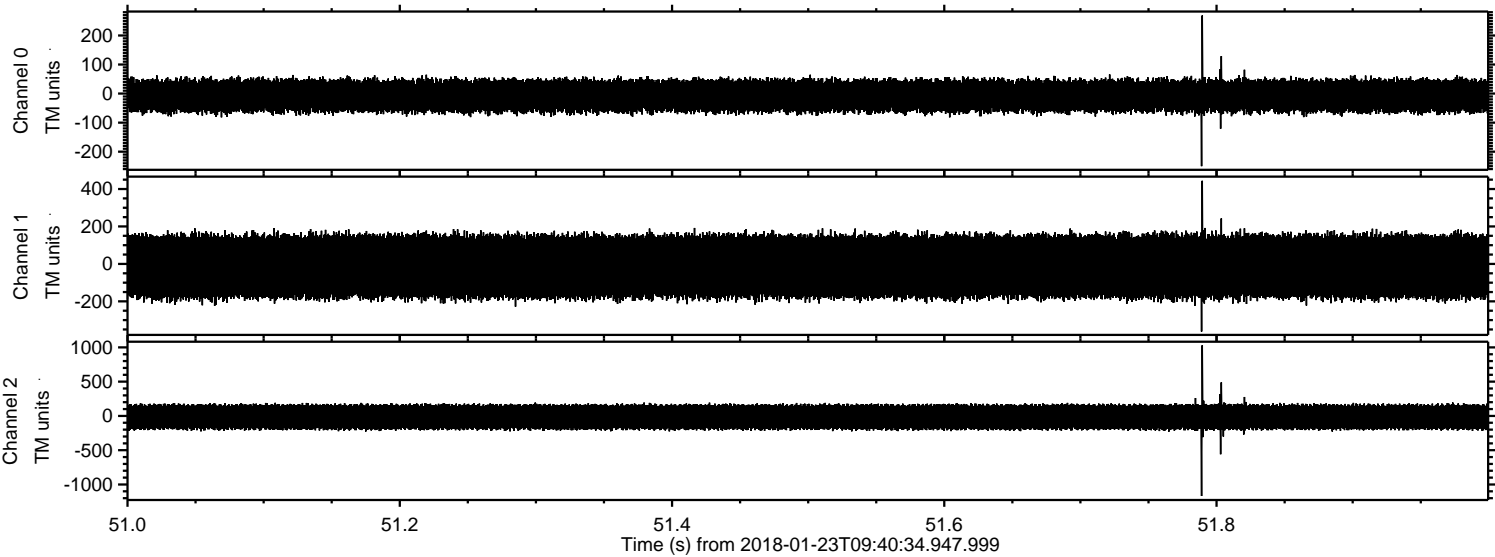
Processed Tue Jan 23 10:48:07 2018 by ELM ver.2012-10-06 from 001__elm20180123_094033__dat00.bin



Processed Tue Jan 23 10:48:08 2018 by ELM ver.2012-10-06 from 001__elm20180123_094033__dat00.bin

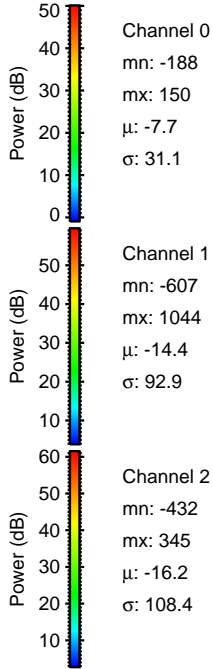
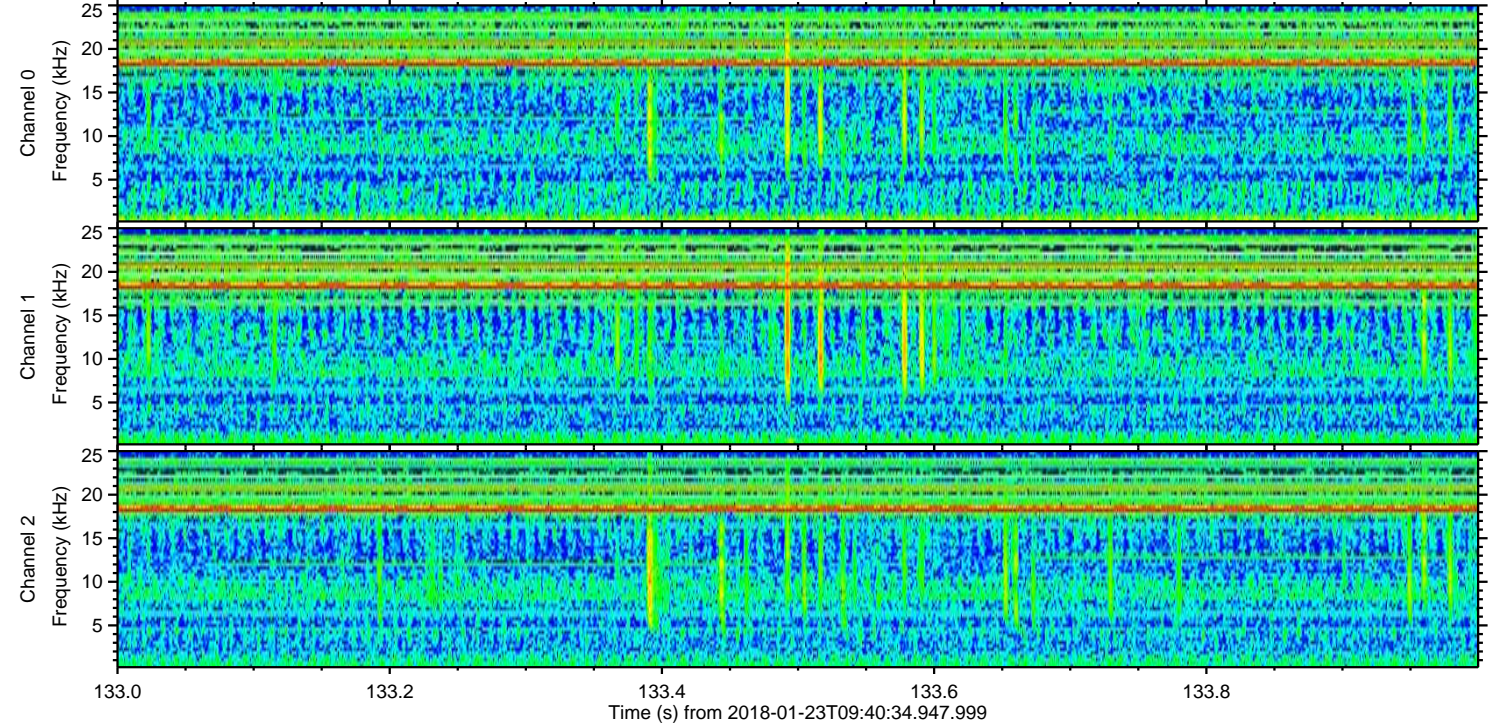
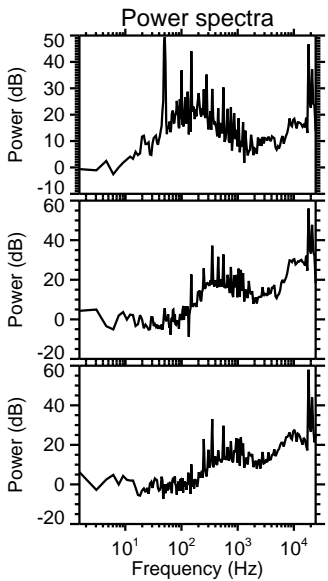
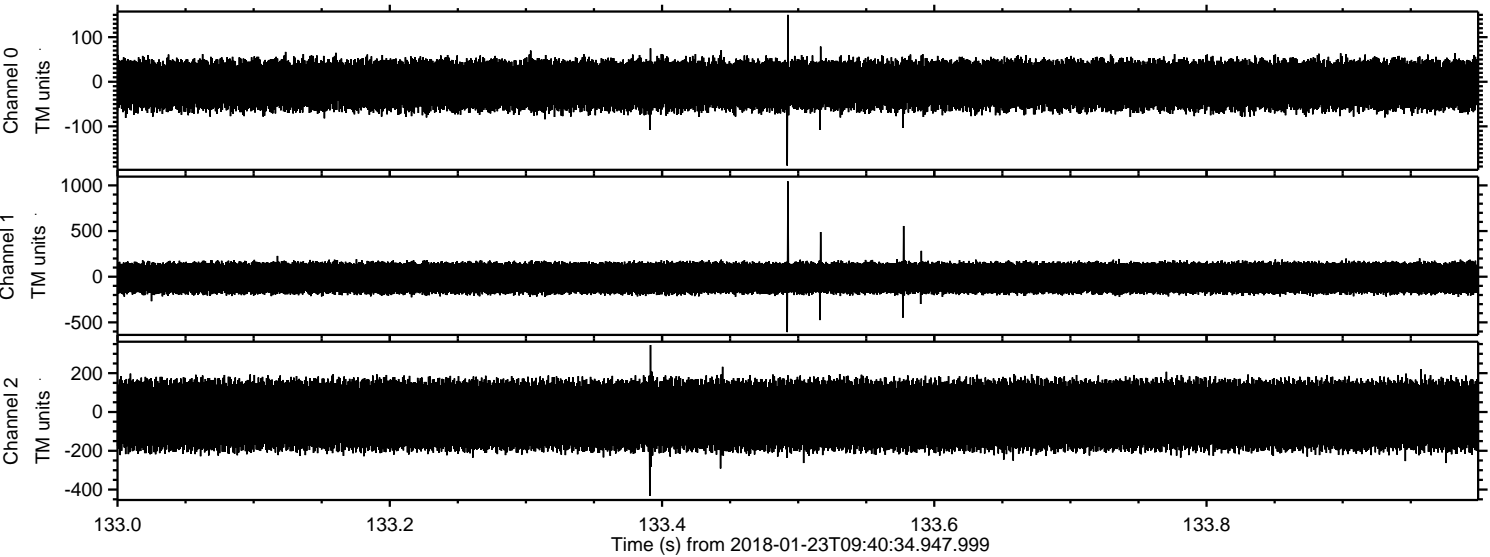


Processed Tue Jan 23 10:48:09 2018 by ELM ver.2012-10-06 from 001__elm20180123_094033__dat00.bin

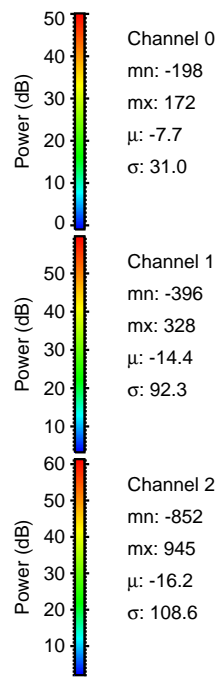
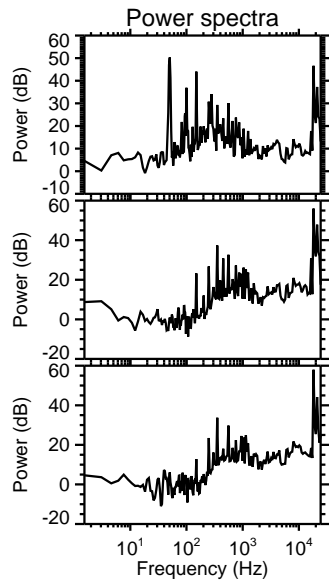
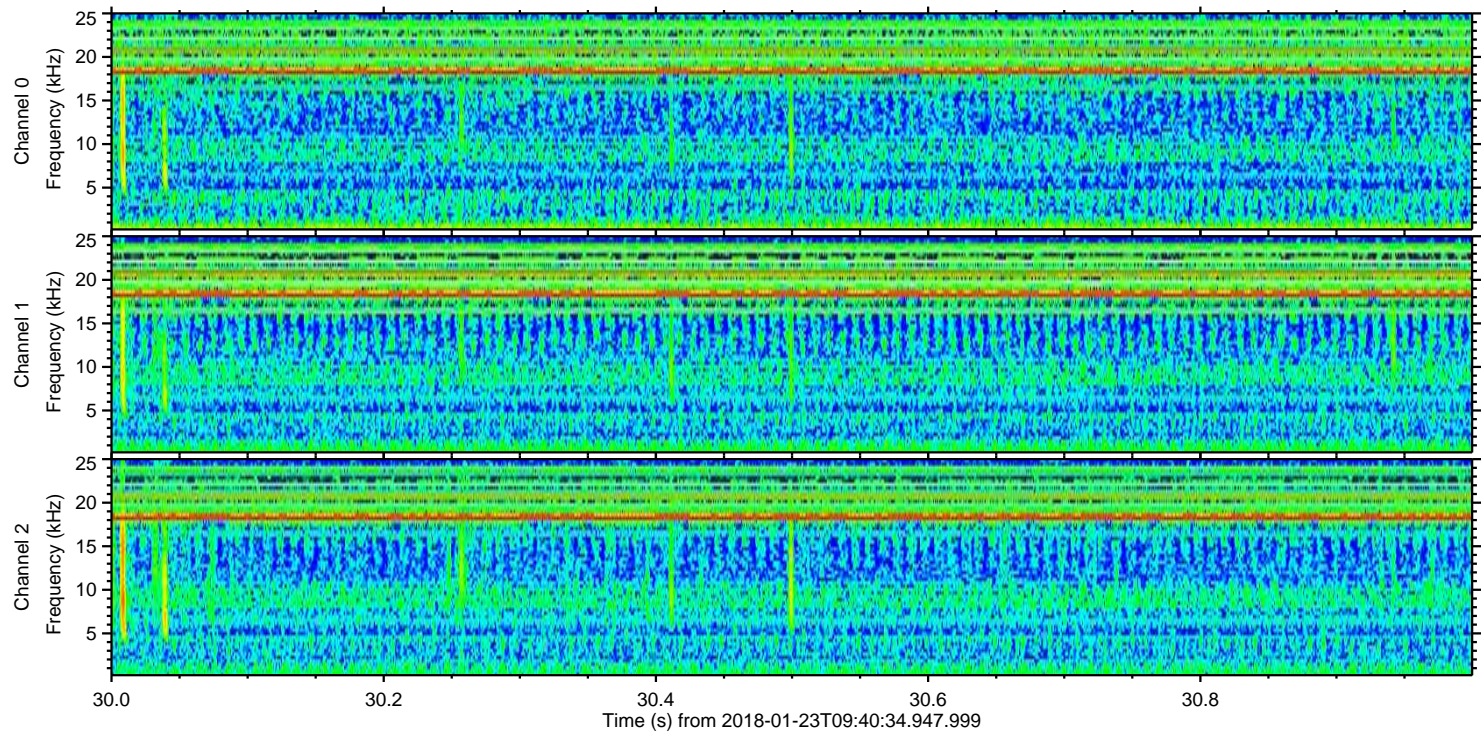
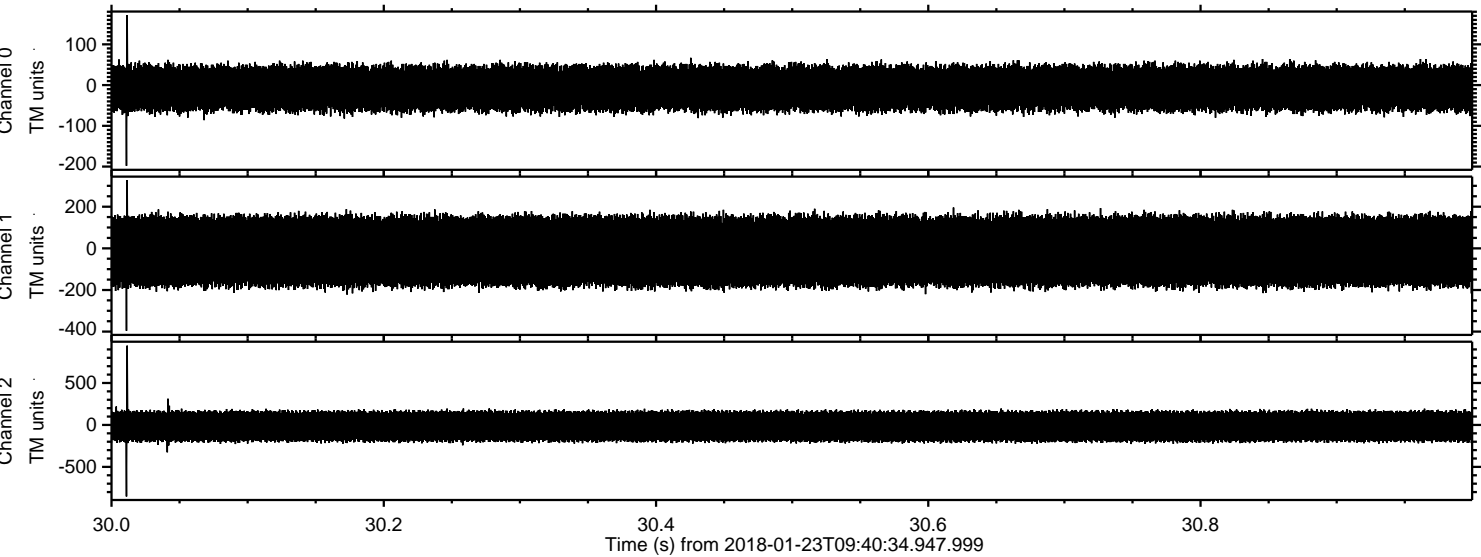


ELMAVAN 3D WAVEFORMS (Measured data sampled at 50 kHz) 51000 packets of 144 samples from 2018-01-23T09:40:34.947.999. Part 134/147

Processed Tue Jan 23 10:48:10 2018 by ELM ver.2012-10-06 from 001__elm20180123_094033__dat00.bin



Processed Tue Jan 23 10:48:11 2018 by ELM ver.2012-10-06 from 001__elm20180123_094033__dat00.bin



Channel 0
mn: -198
mx: 172
 μ : -7.7
 σ : 31.0

Channel 1
mn: -396
mx: 328
 μ : -14.4
 σ : 92.3

Channel 2
mn: -852
mx: 945
 μ : -16.2
 σ : 108.6

Processed Tue Jan 23 10:48:11 2018 by ELM ver.2012-10-06 from 001__elm20180123_094033__dat00.bin

