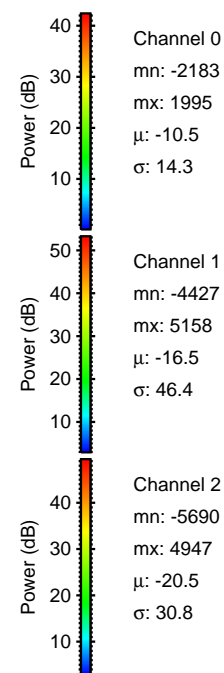
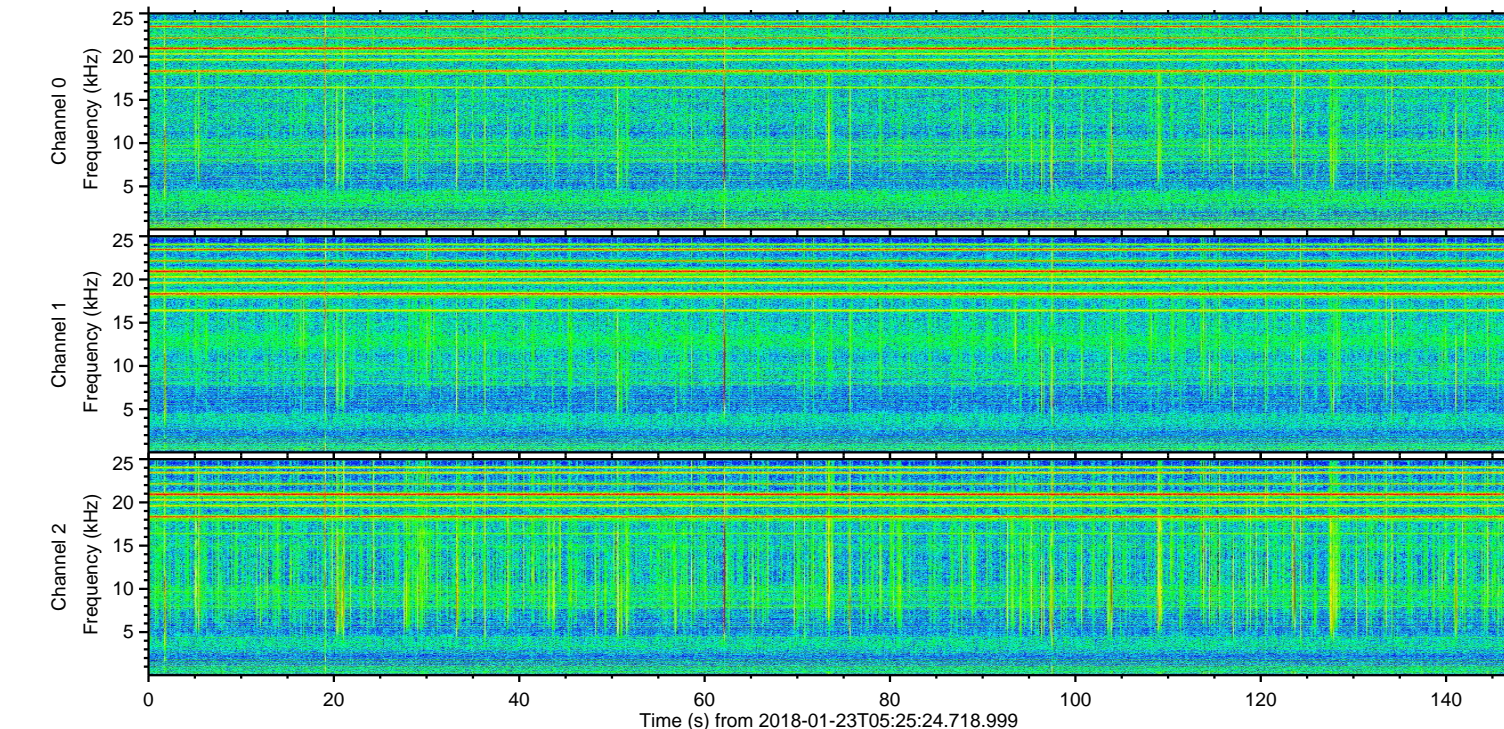
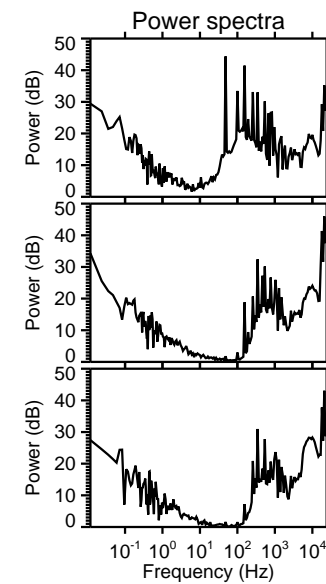
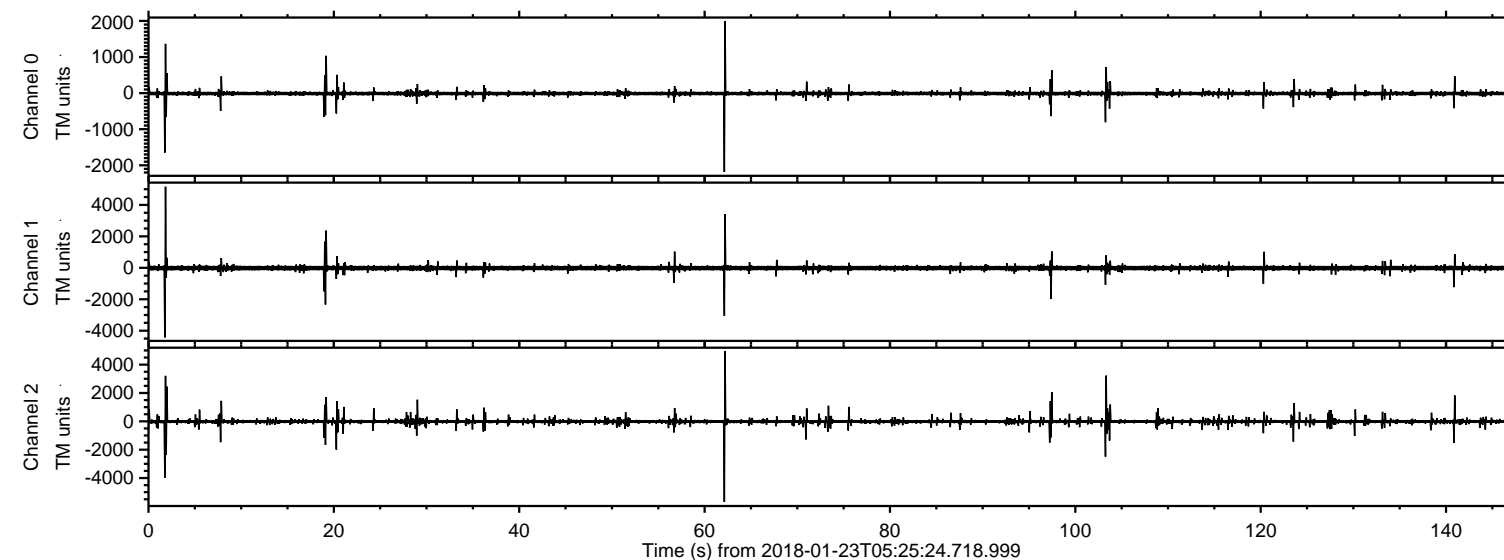
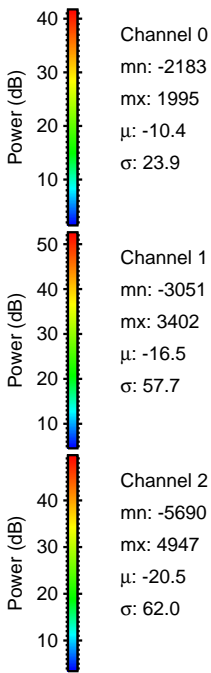
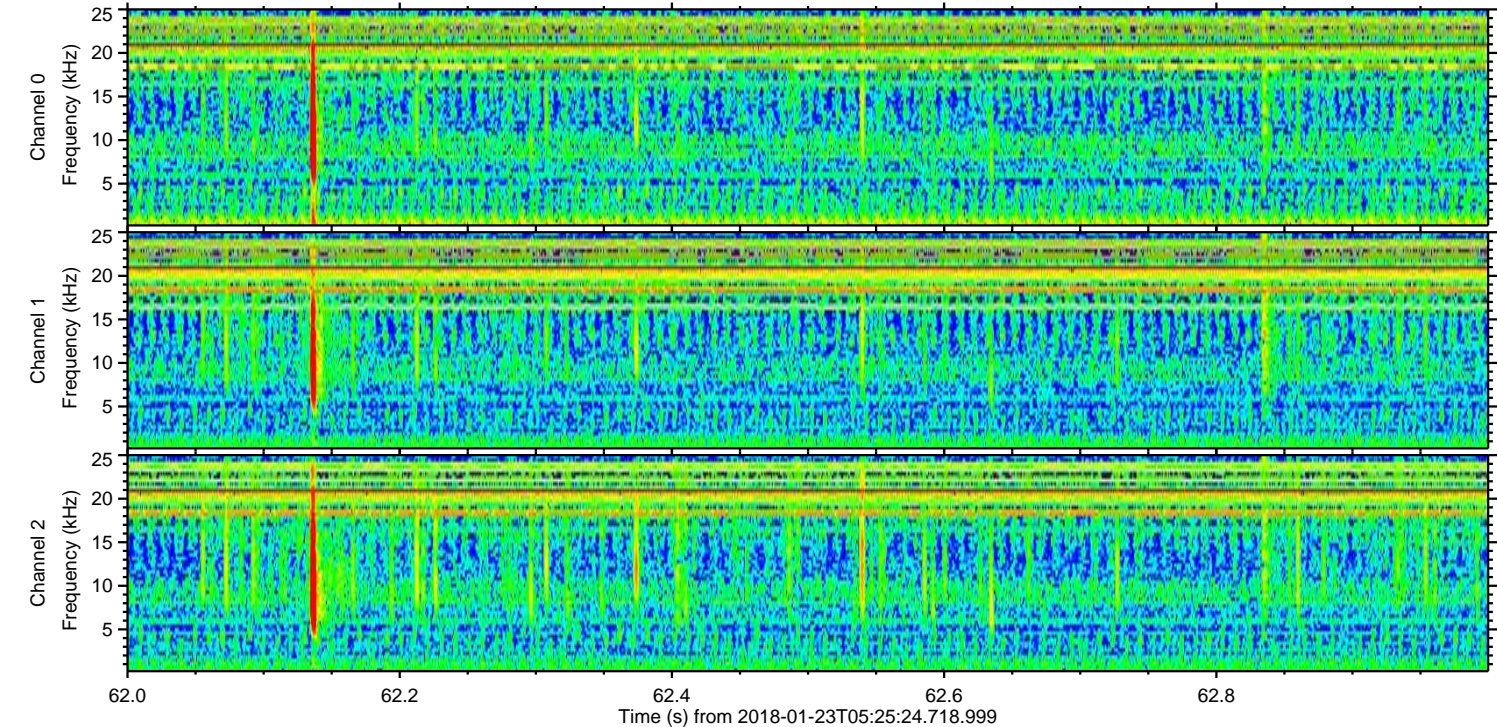
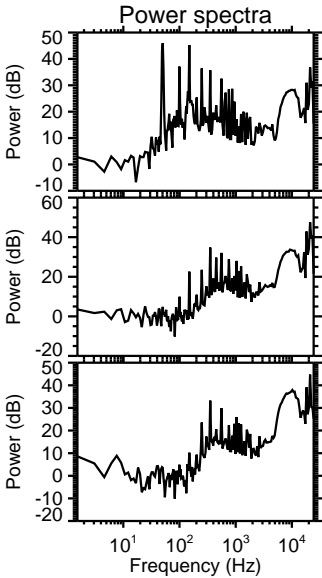
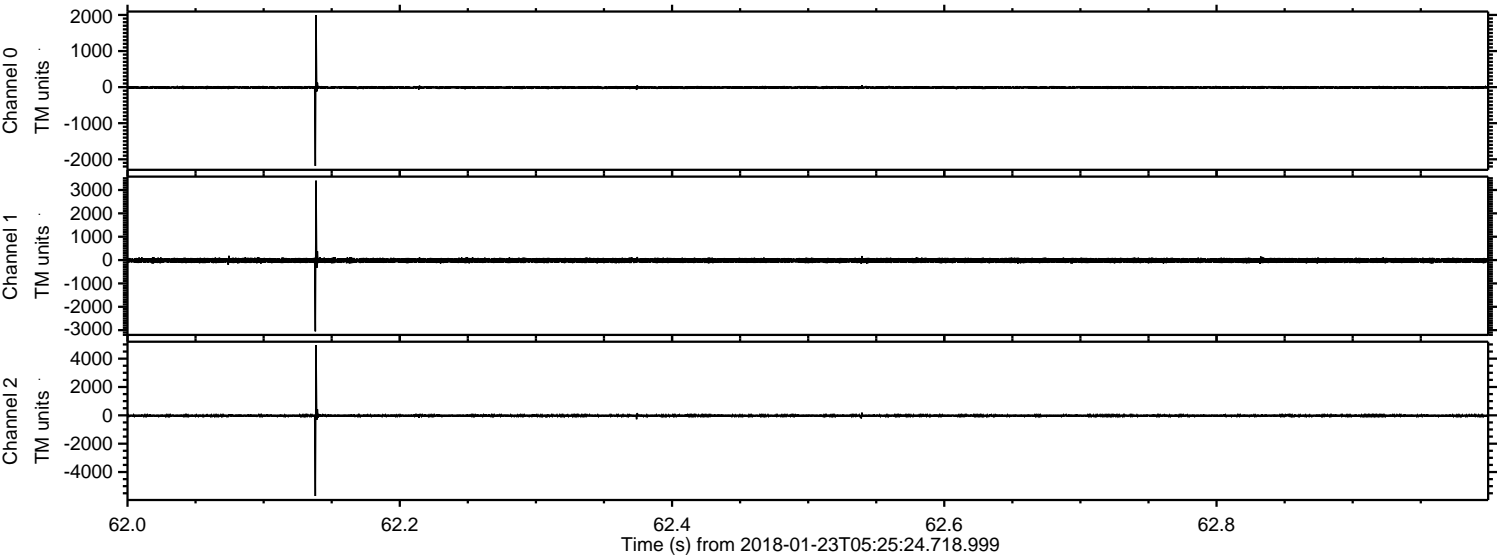


ELMAVAN 3D WAVEFORMS (Measured data sampled at 50 kHz) 51000 packets of 144 samples from 2018-01-23T05:25:24.718.999.

Processed Tue Jan 23 06:33:15 2018 by ELM ver.2012-10-06 from 001__elm20180123_052523__dat00.bin

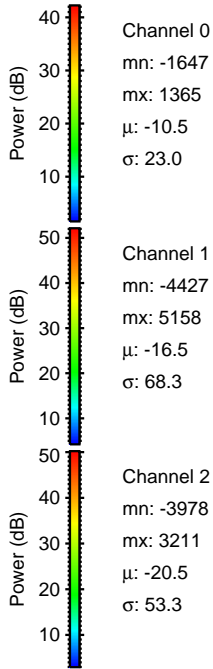
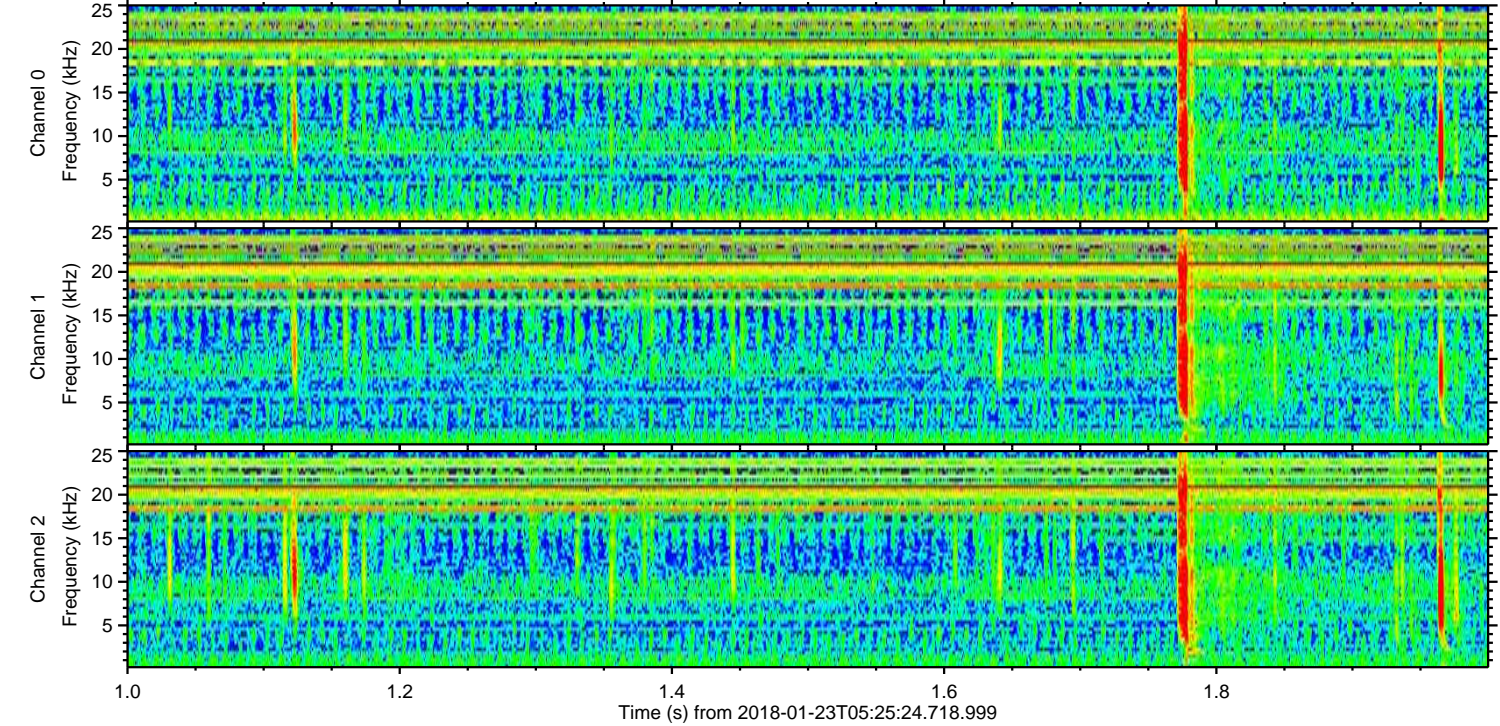
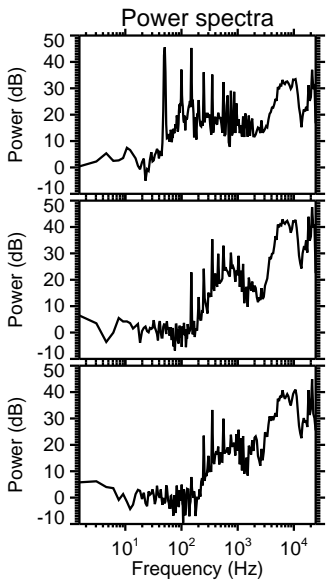
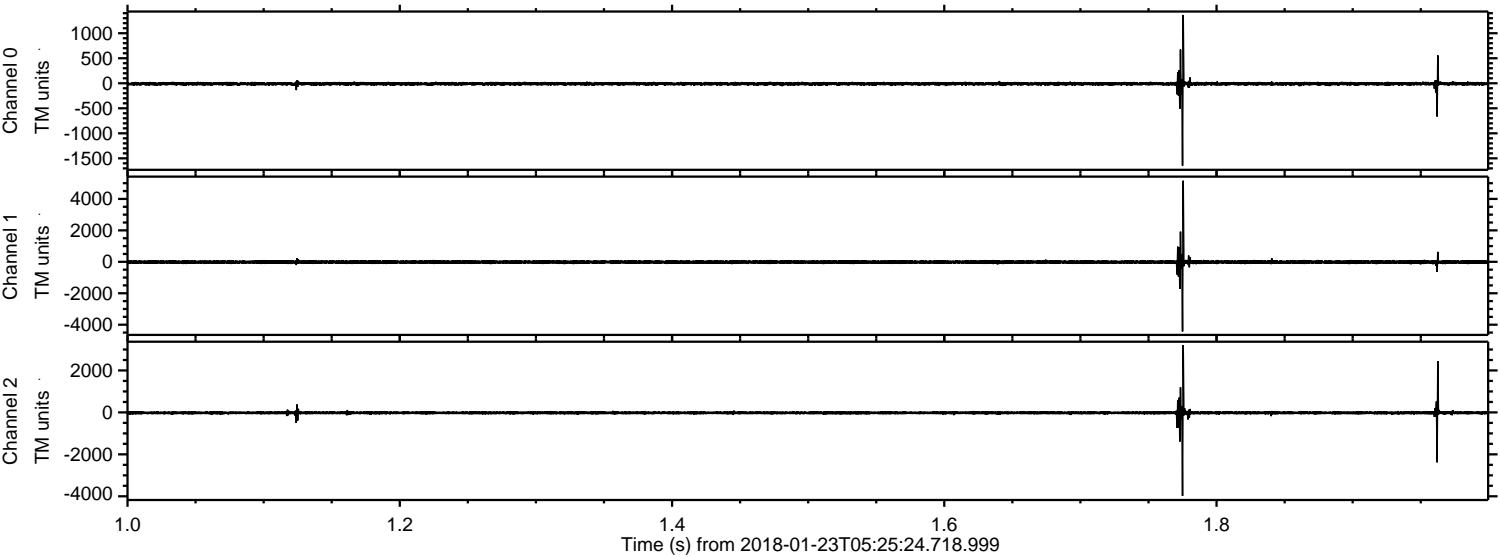


Processed Tue Jan 23 06:33:23 2018 by ELM ver.2012-10-06 from 001__elm20180123_052523__dat00.bin



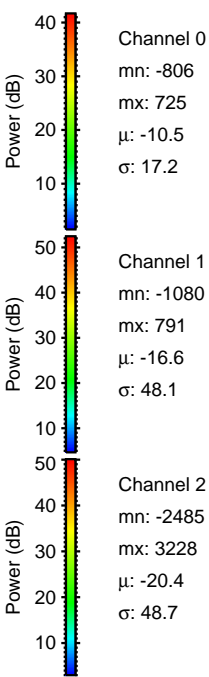
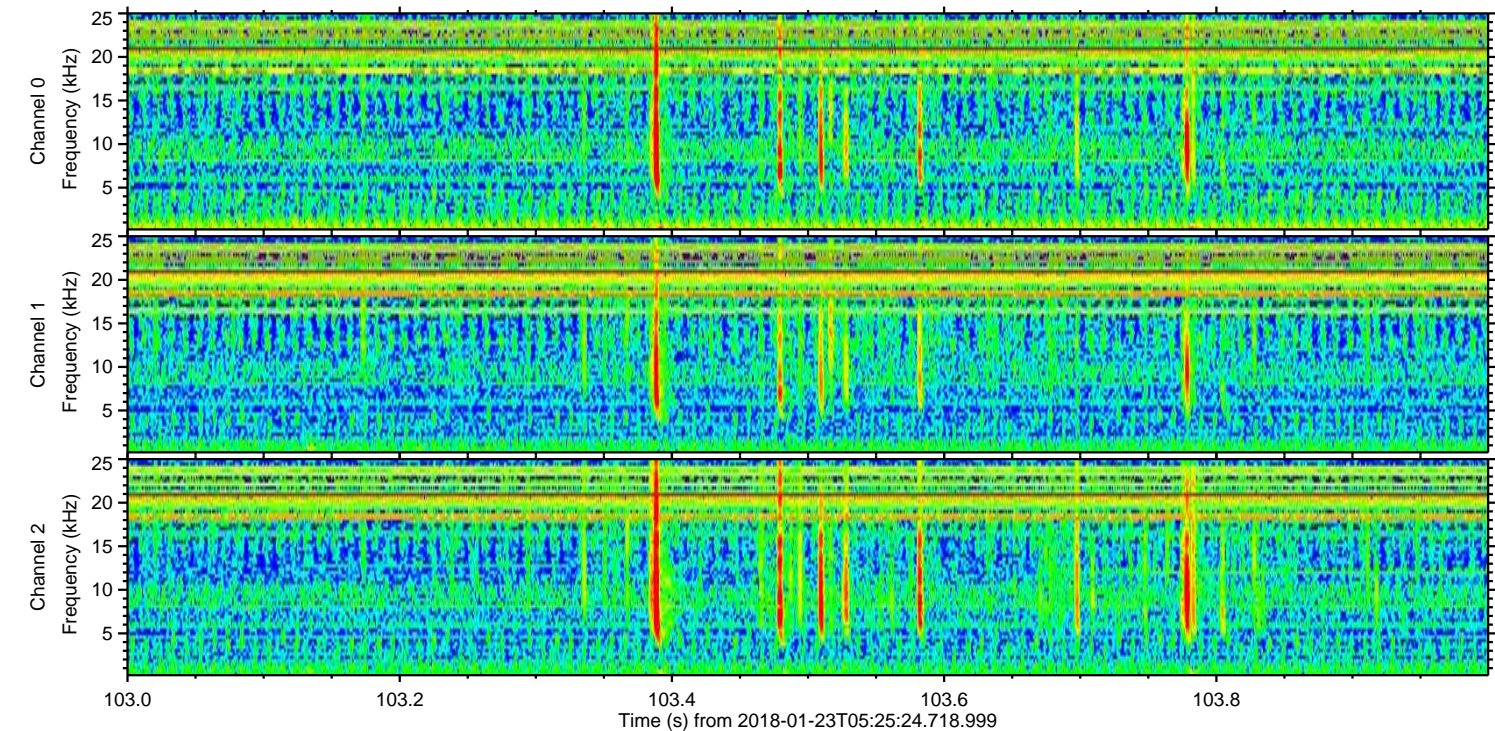
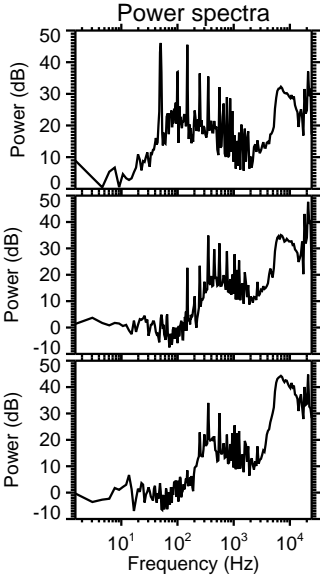
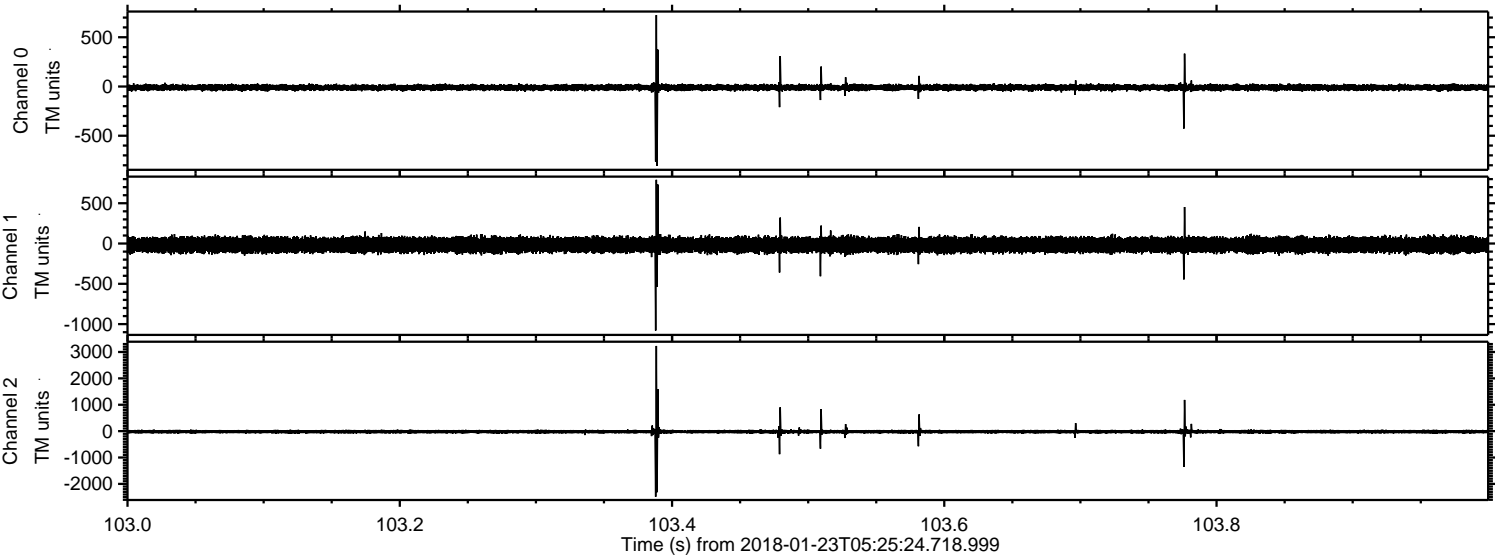
ELMAVAN 3D WAVEFORMS (Measured data sampled at 50 kHz) 51000 packets of 144 samples from 2018-01-23T05:25:24.718.999. Part 2/147

Processed Tue Jan 23 06:33:24 2018 by ELM ver.2012-10-06 from 001__elm20180123_052523__dat00.bin

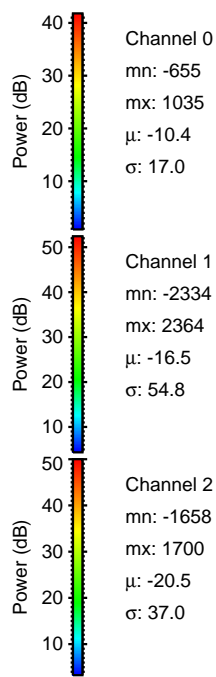
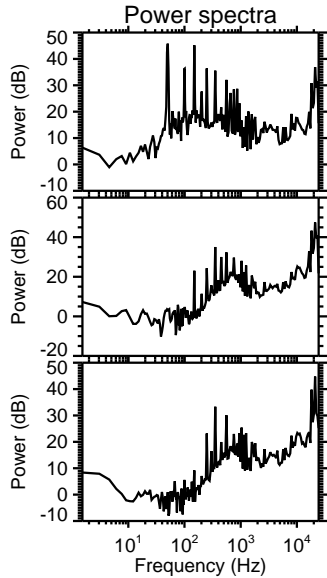
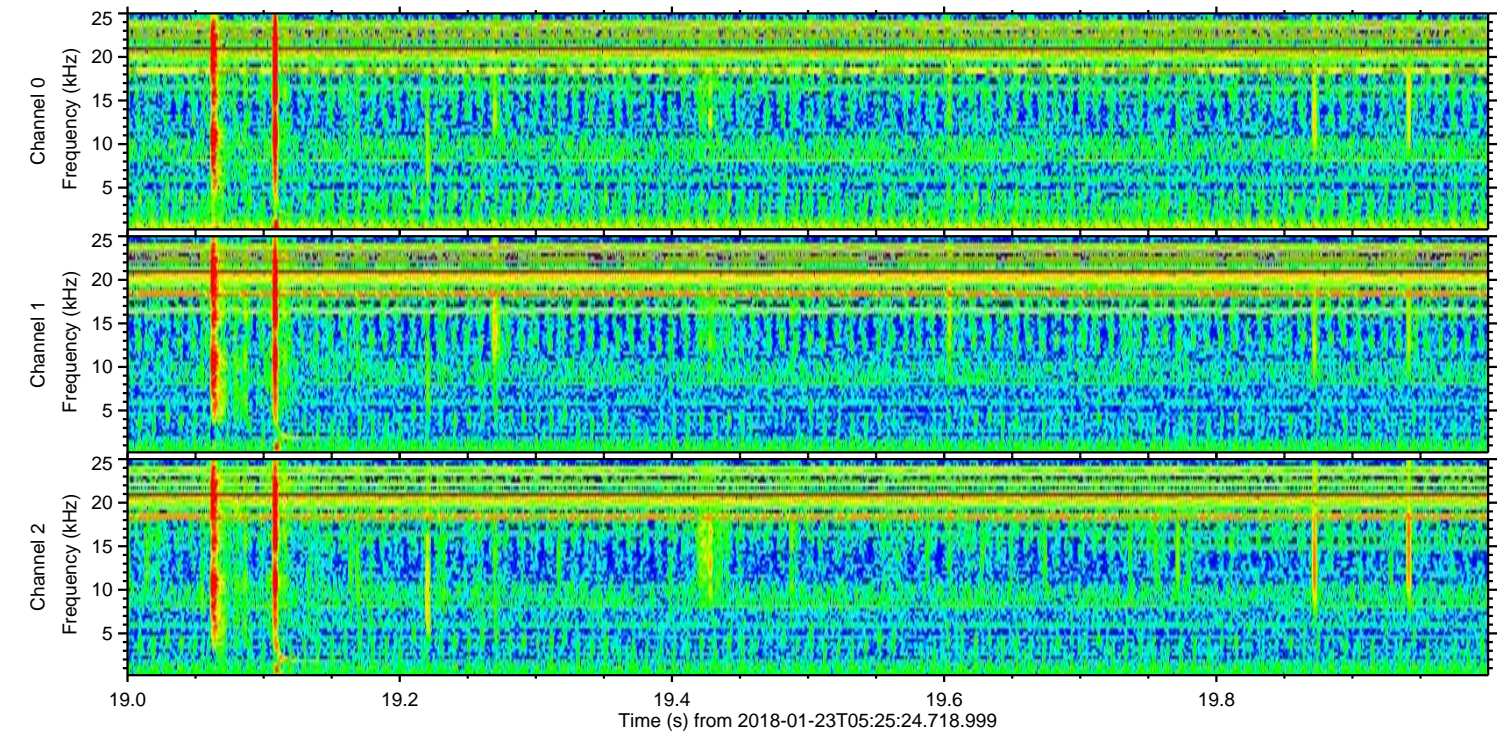
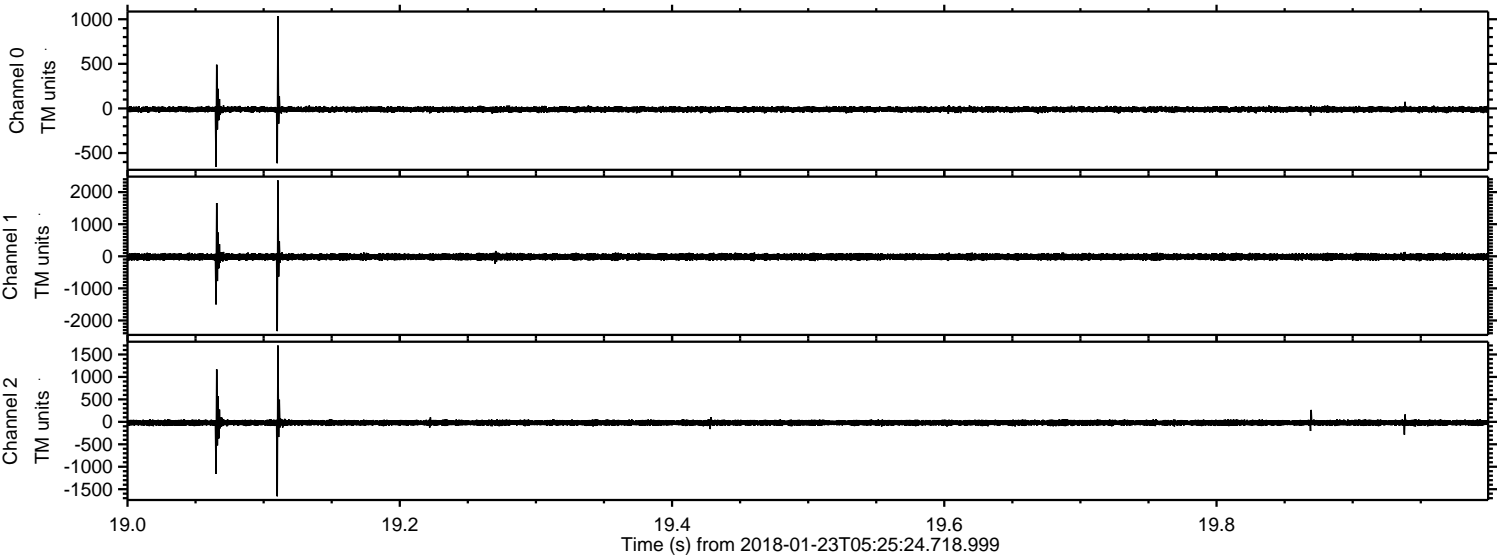


ELMAVAN 3D WAVEFORMS (Measured data sampled at 50 kHz) 51000 packets of 144 samples from 2018-01-23T05:25:24.718.999. Part 104/147

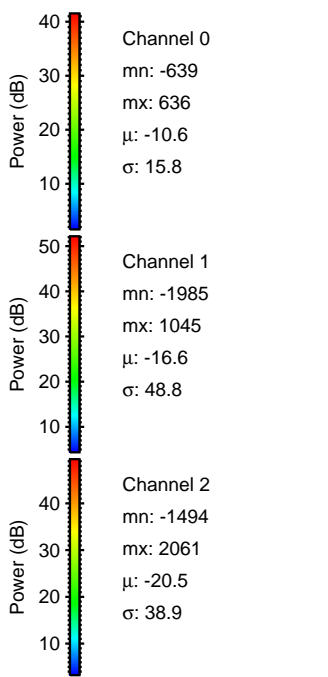
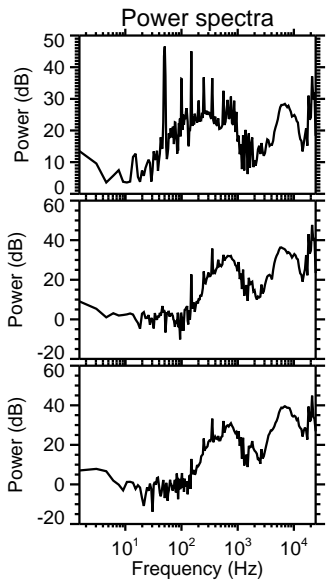
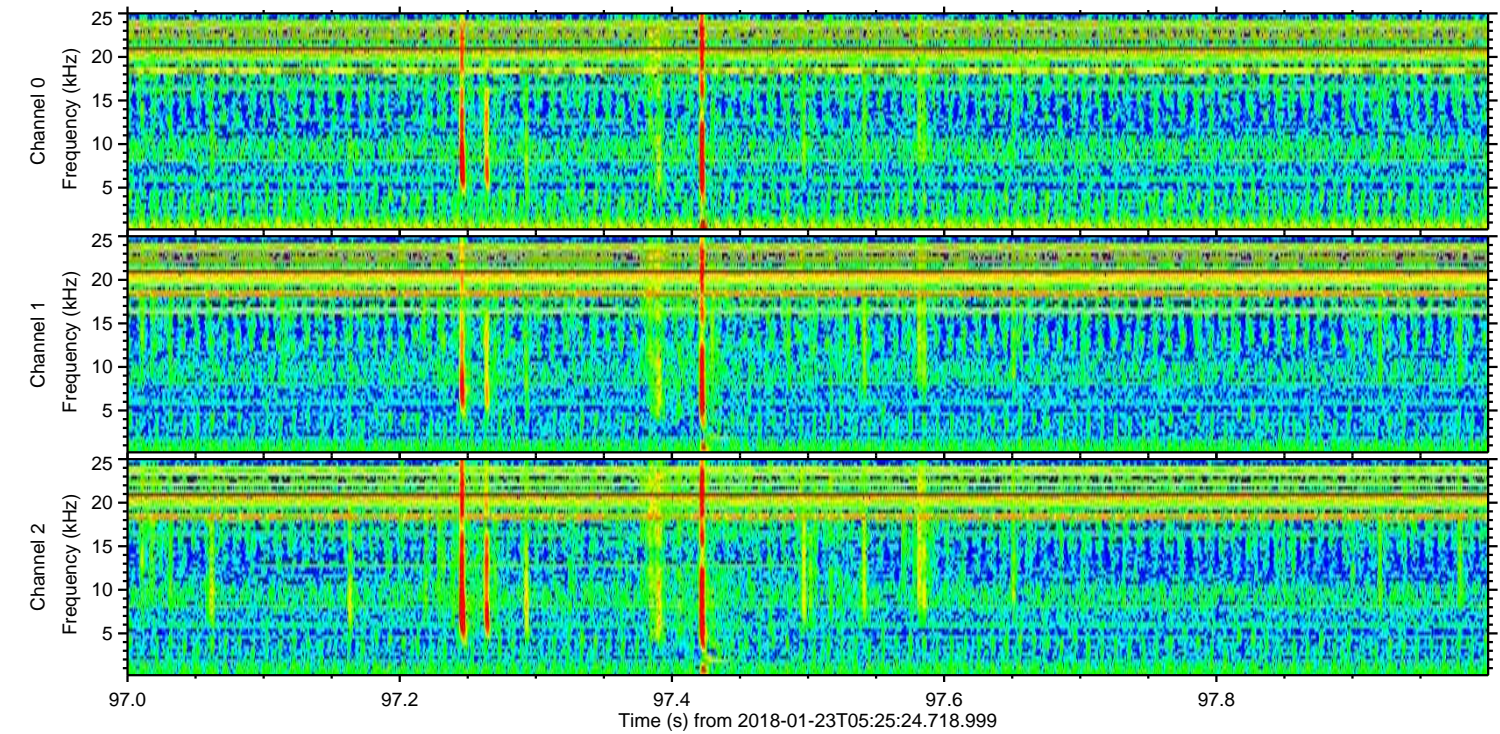
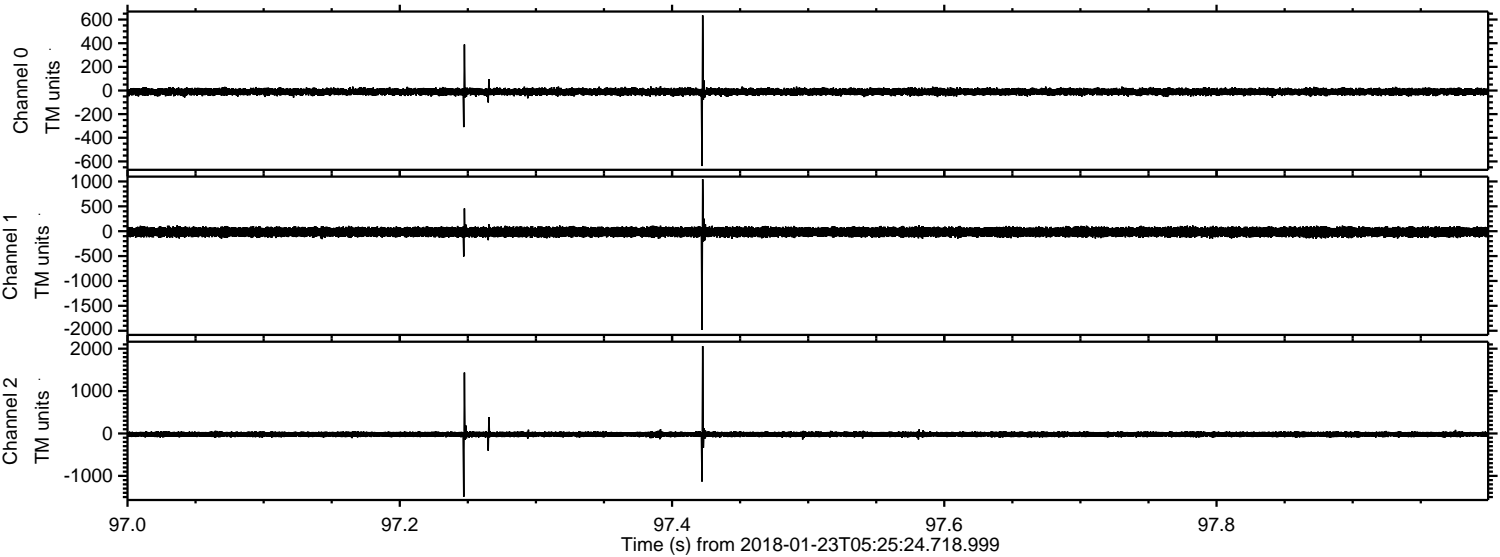
Processed Tue Jan 23 06:33:25 2018 by ELM ver.2012-10-06 from 001__elm20180123_052523__dat00.bin



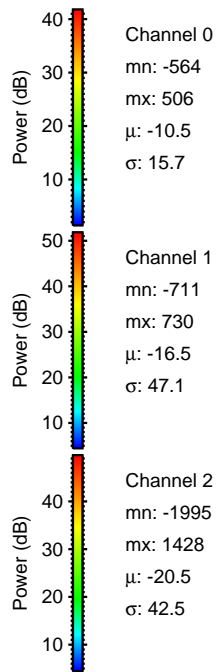
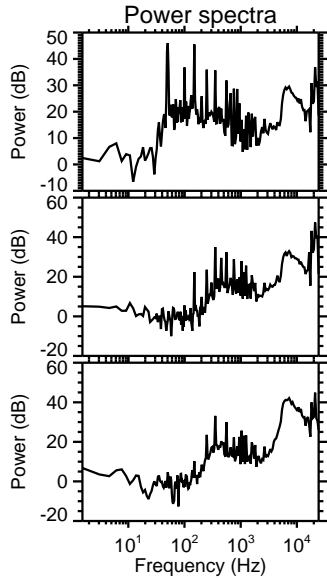
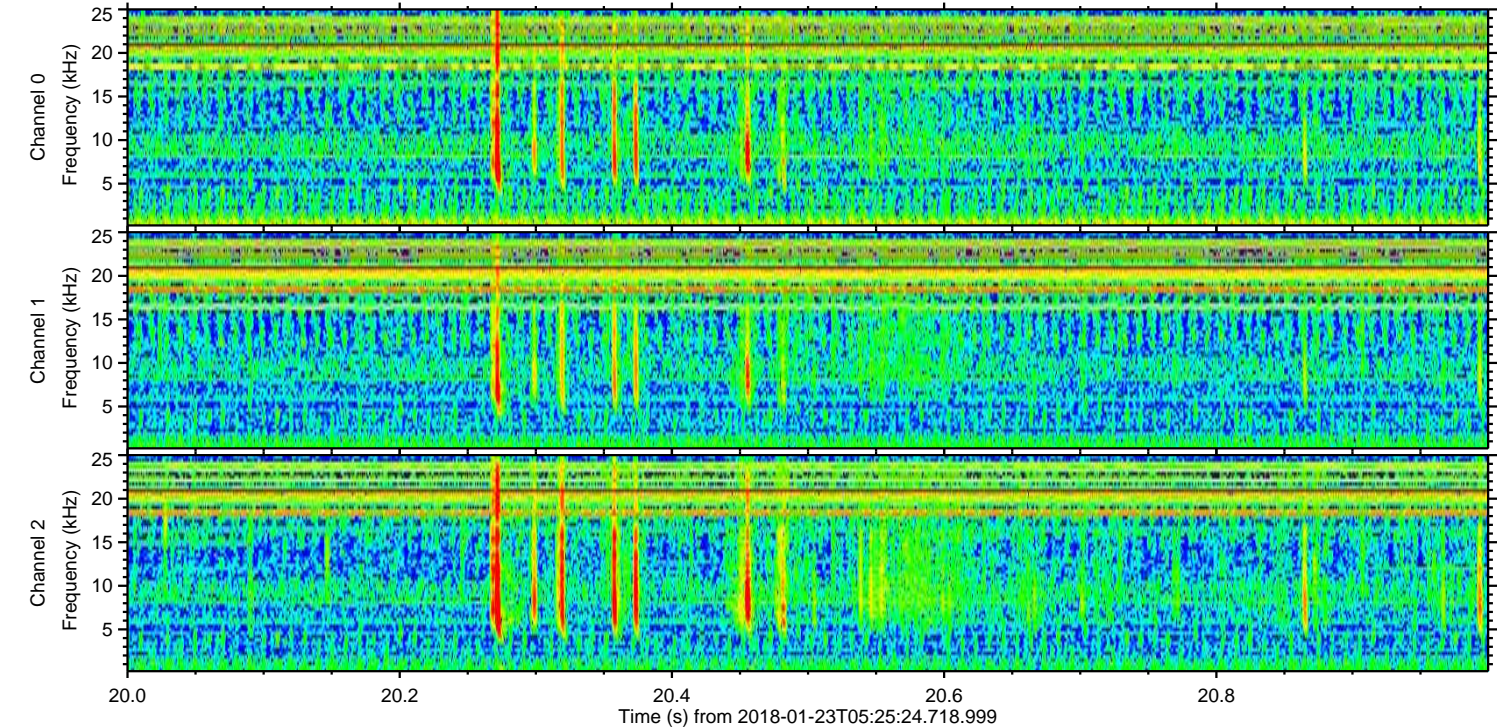
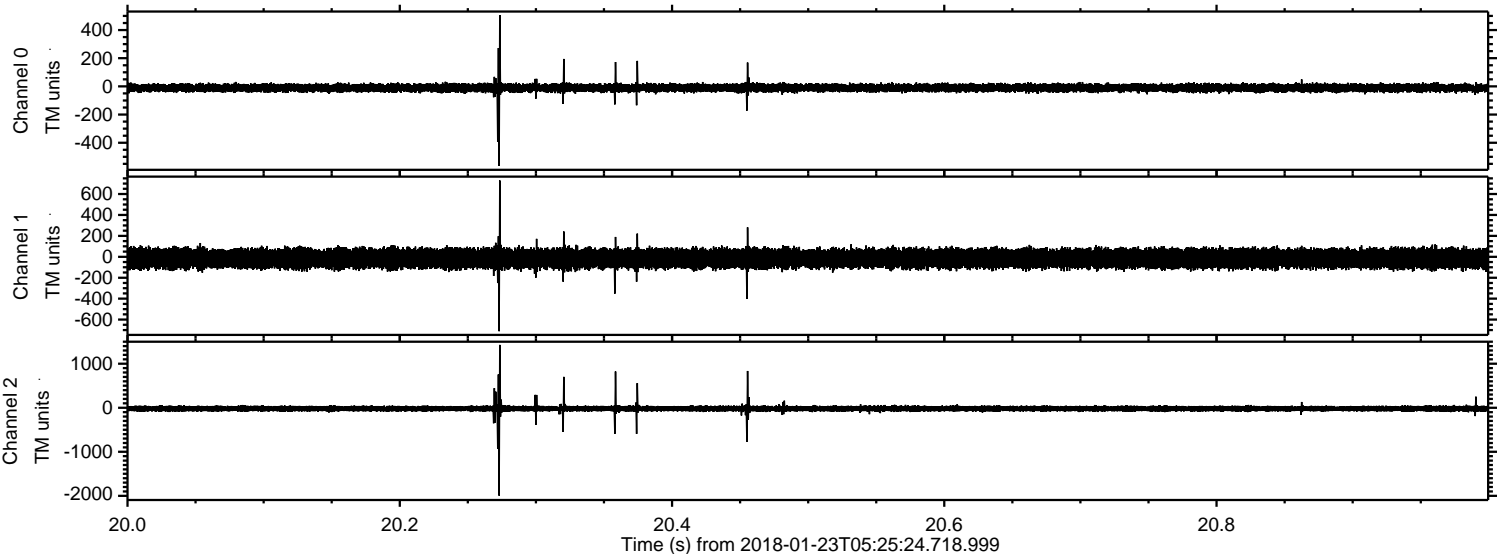
Processed Tue Jan 23 06:33:26 2018 by ELM ver.2012-10-06 from 001__elm20180123_052523__dat00.bin



Processed Tue Jan 23 06:33:27 2018 by ELM ver.2012-10-06 from 001__elm20180123_052523__dat00.bin

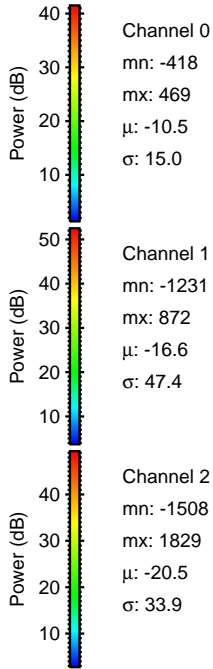
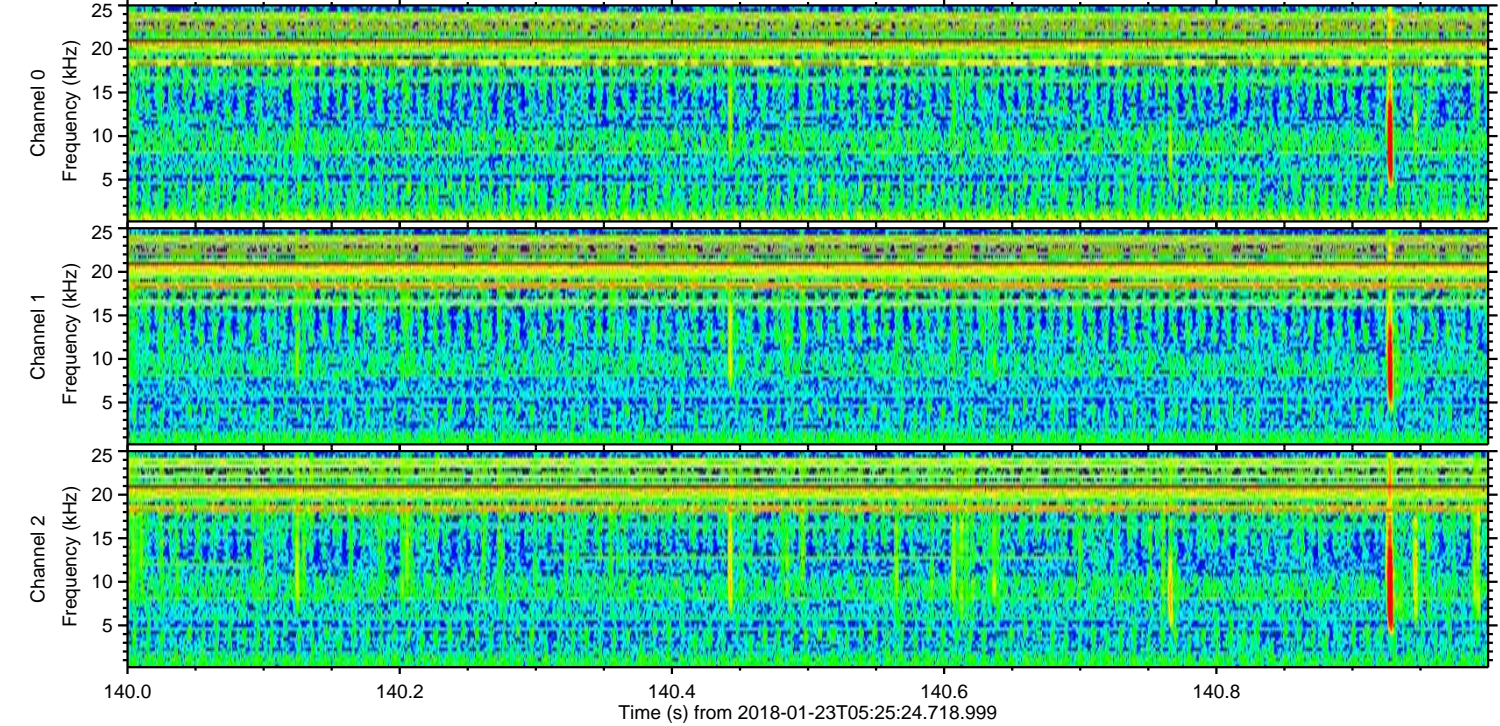
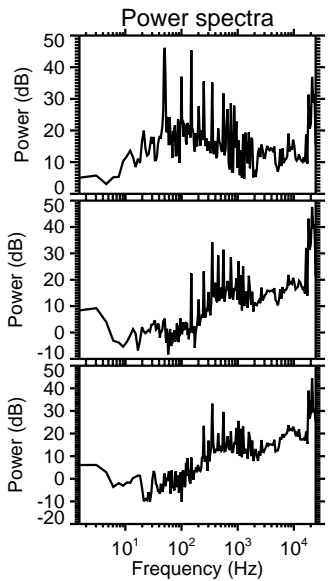
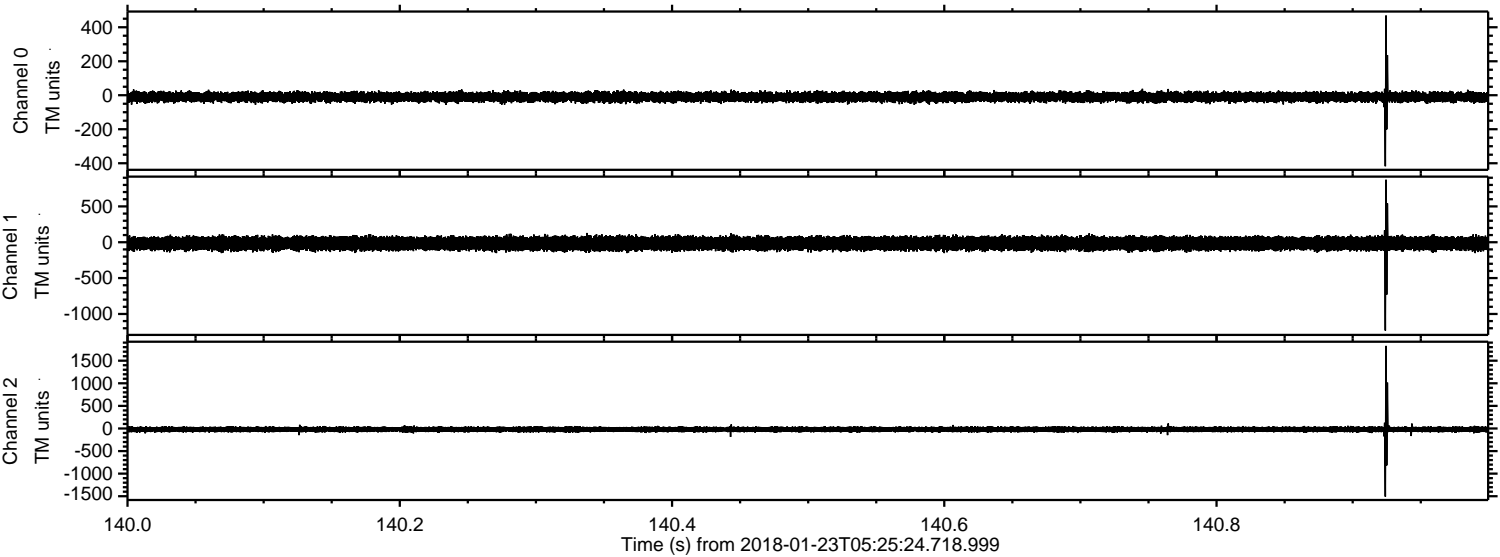


Processed Tue Jan 23 06:33:27 2018 by ELM ver.2012-10-06 from 001__elm20180123_052523__dat00.bin



ELMAVAN 3D WAVEFORMS (Measured data sampled at 50 kHz) 51000 packets of 144 samples from 2018-01-23T05:25:24.718.999. Part 141/147

Processed Tue Jan 23 06:33:28 2018 by ELM ver.2012-10-06 from 001__elm20180123_052523__dat00.bin

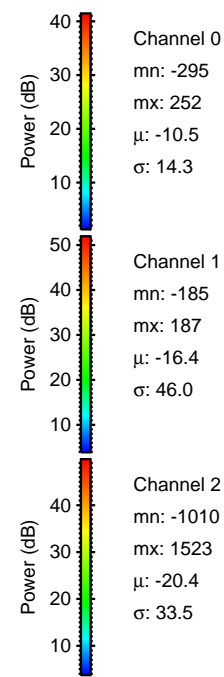
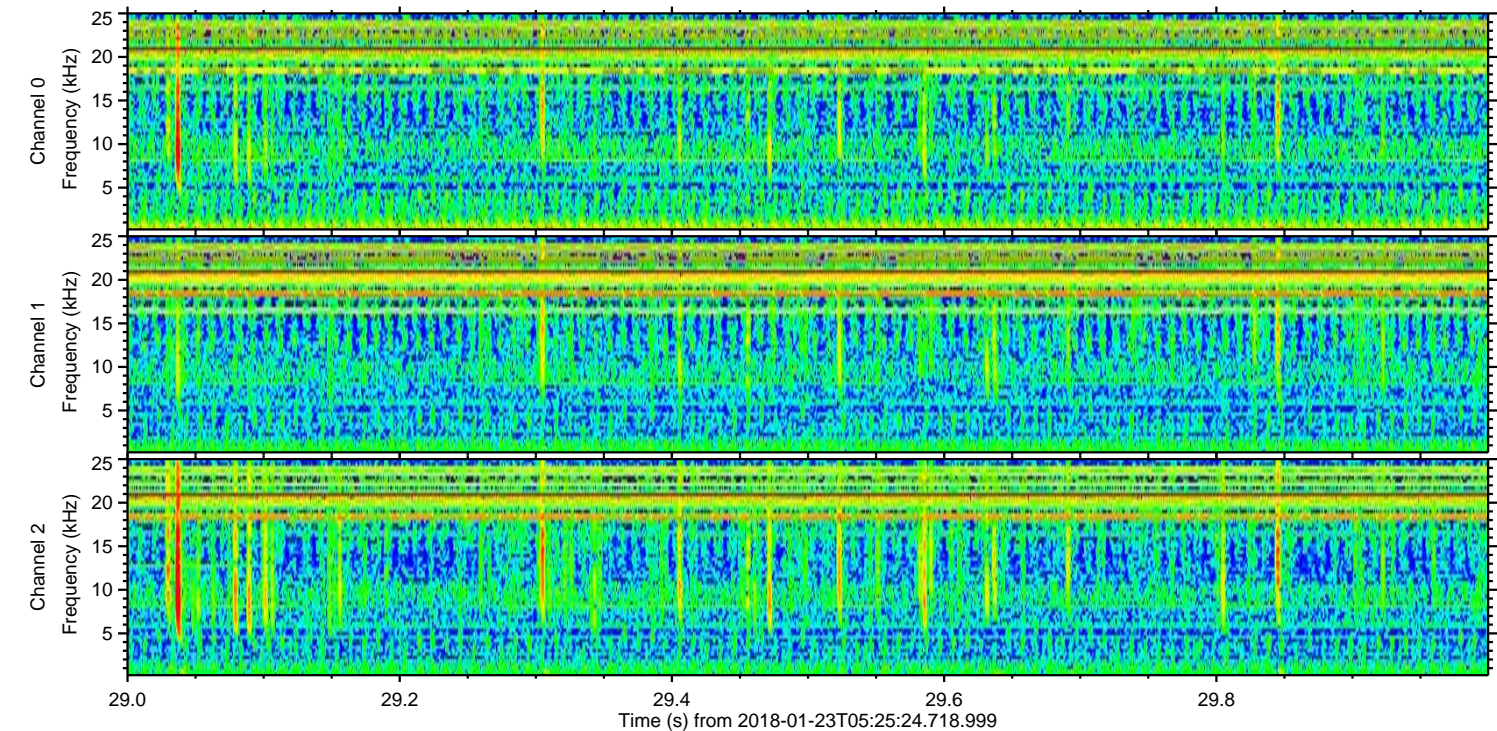
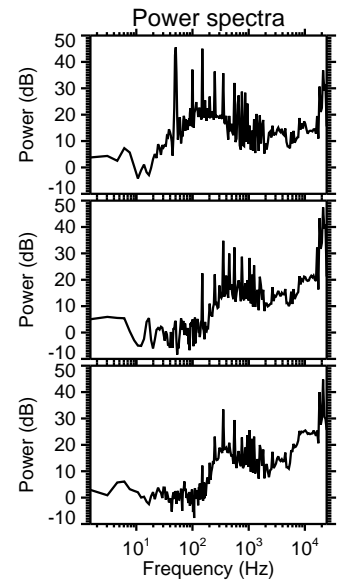
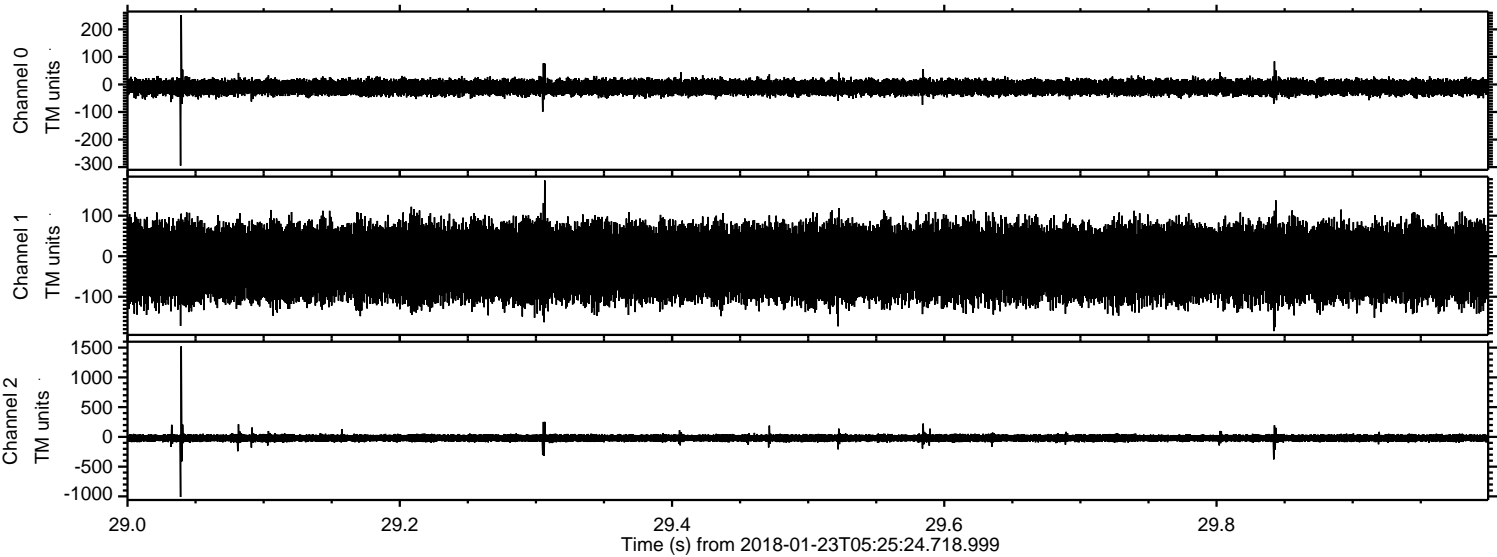


Channel 0
mn: -418
mx: 469
 μ : -10.5
 σ : 15.0

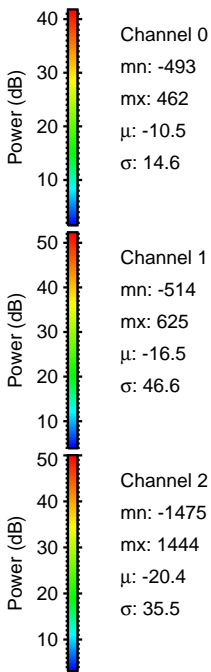
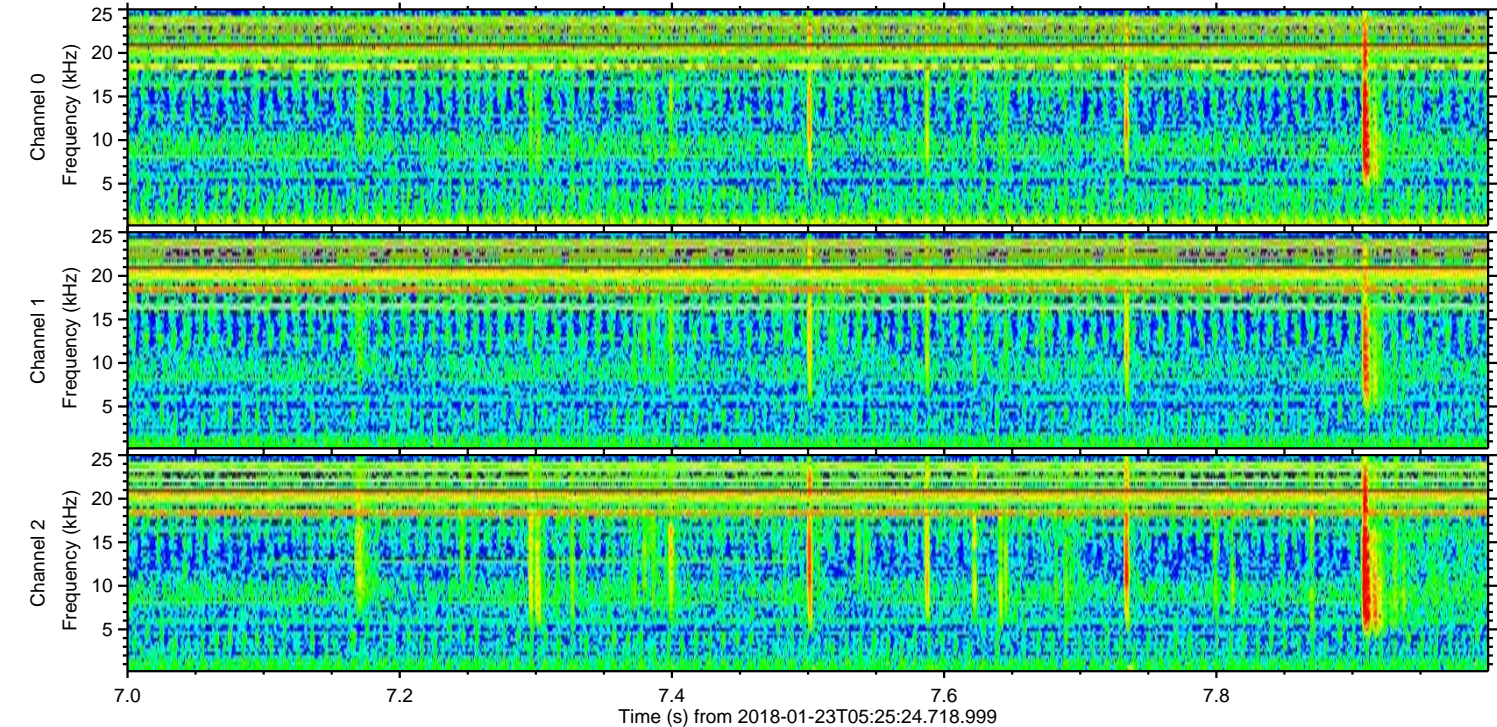
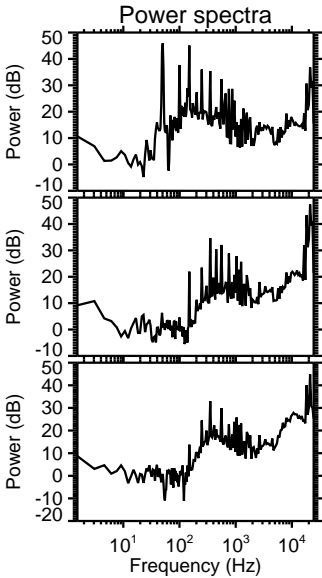
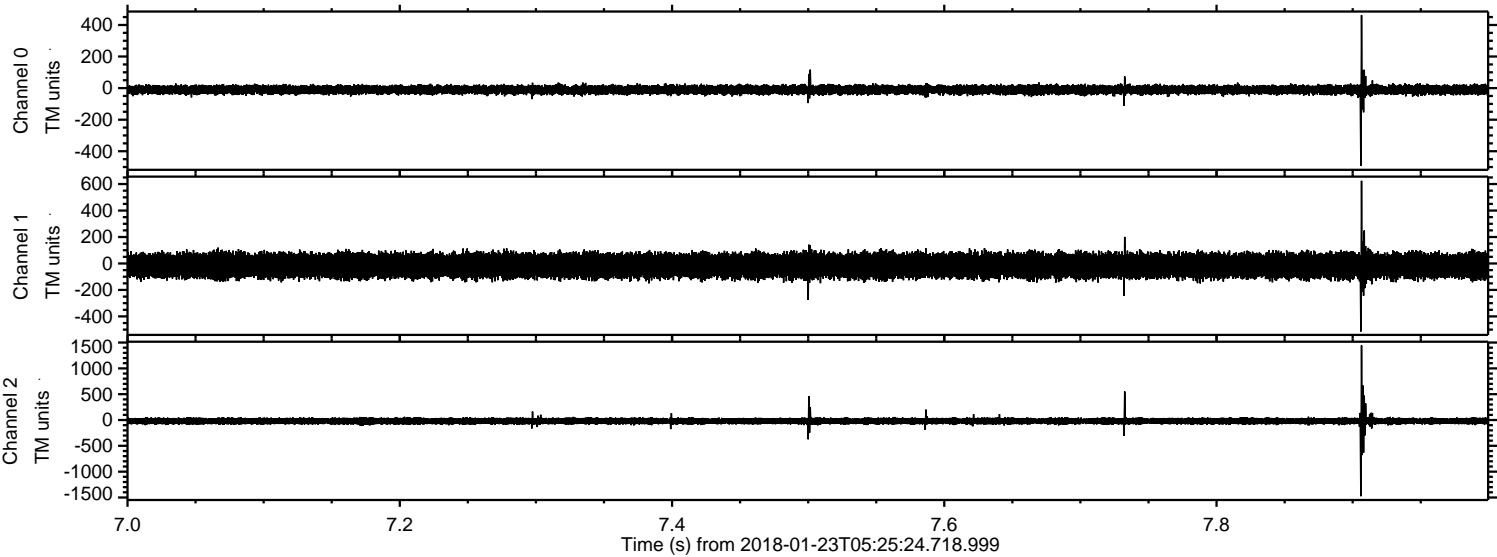
Channel 1
mn: -1231
mx: 872
 μ : -16.6
 σ : 47.4

Channel 2
mn: -1508
mx: 1829
 μ : -20.5
 σ : 33.9

Processed Tue Jan 23 06:33:29 2018 by ELM ver.2012-10-06 from 001__elm20180123_052523__dat00.bin



Processed Tue Jan 23 06:33:30 2018 by ELM ver.2012-10-06 from 001__elm20180123_052523__dat00.bin



Processed Tue Jan 23 06:33:30 2018 by ELM ver.2012-10-06 from 001__elm20180123_052523__dat00.bin

