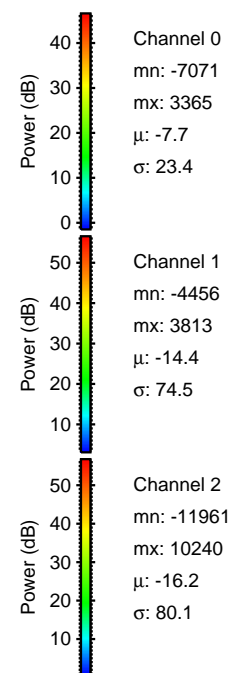
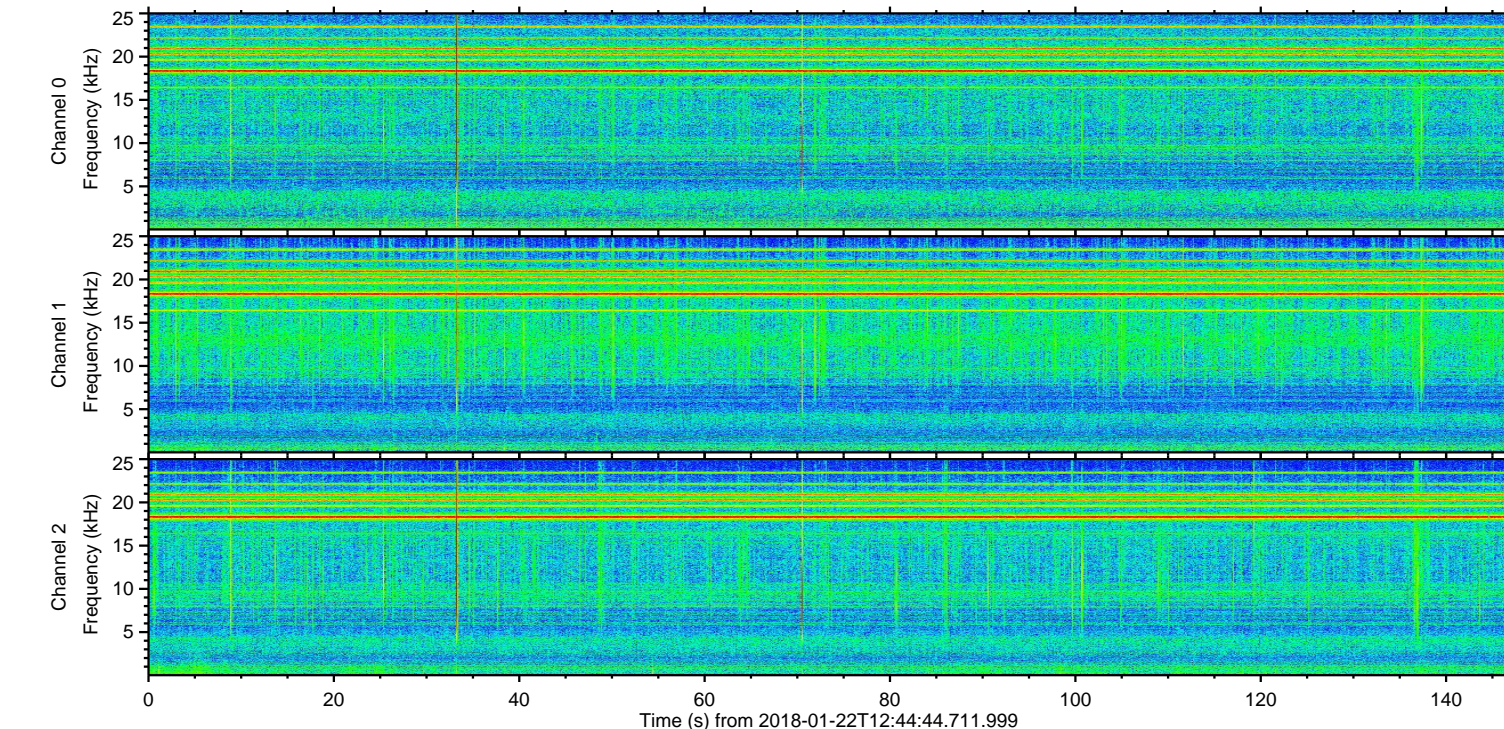
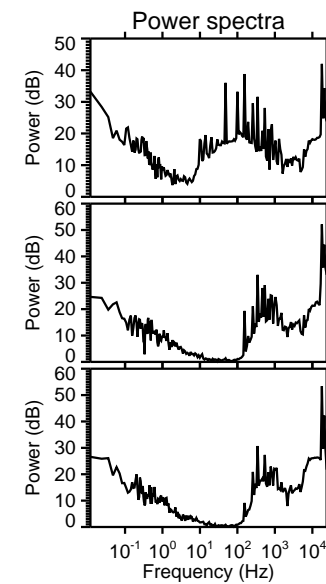
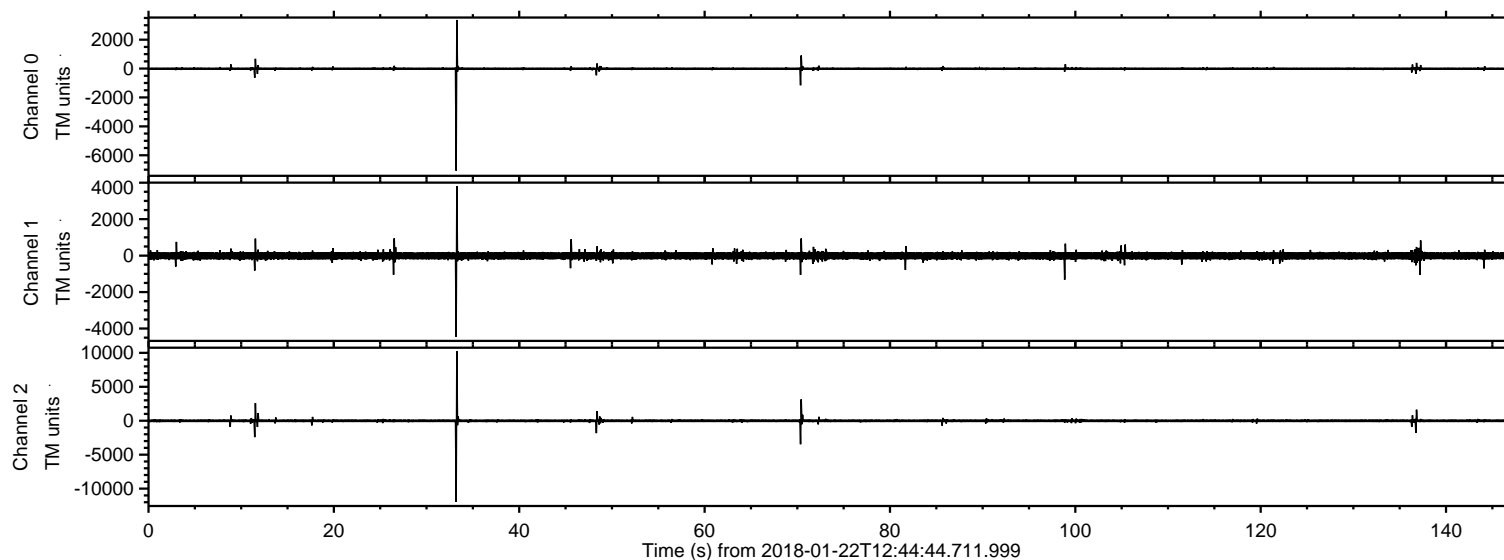
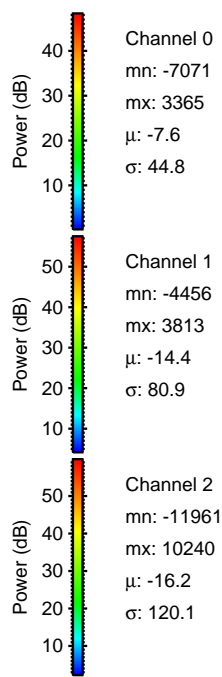
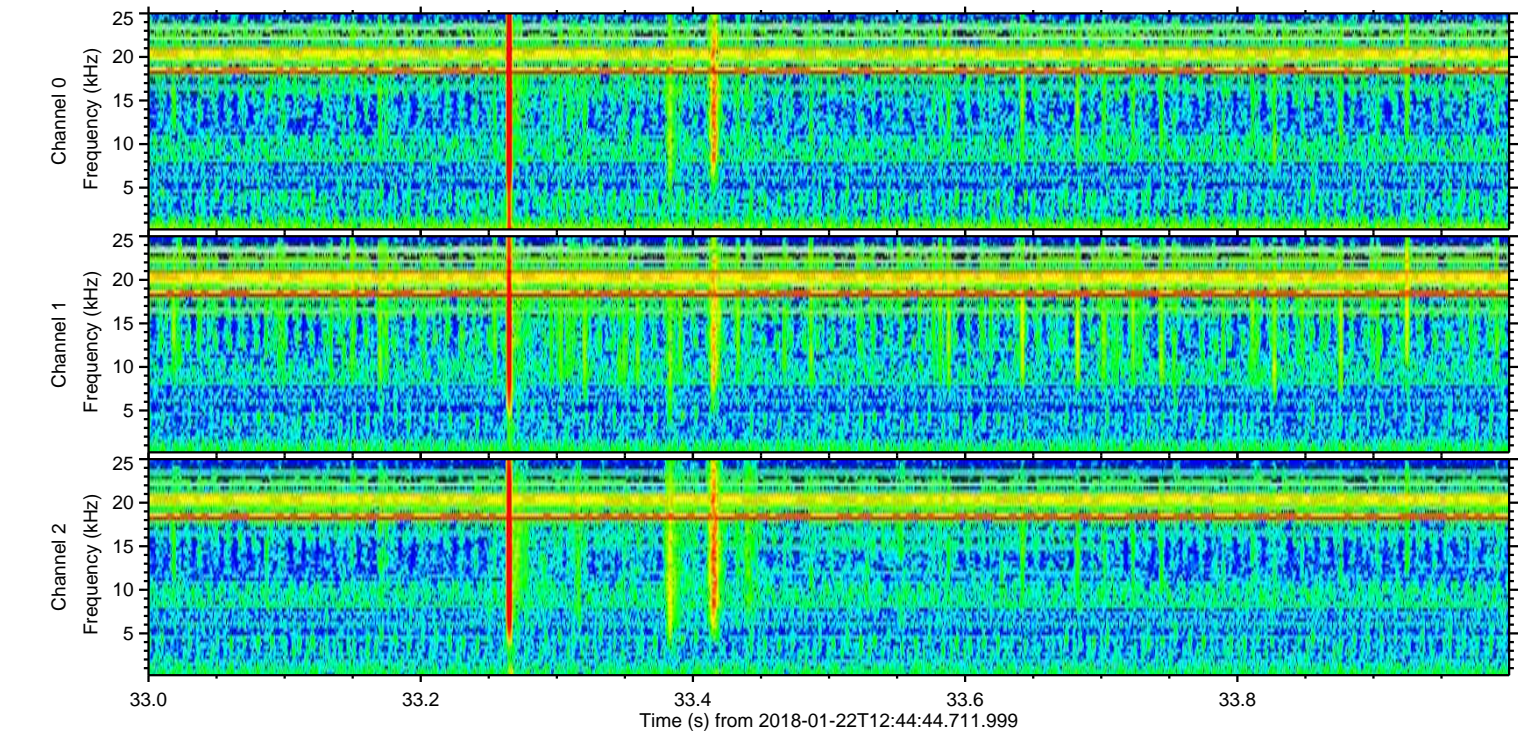
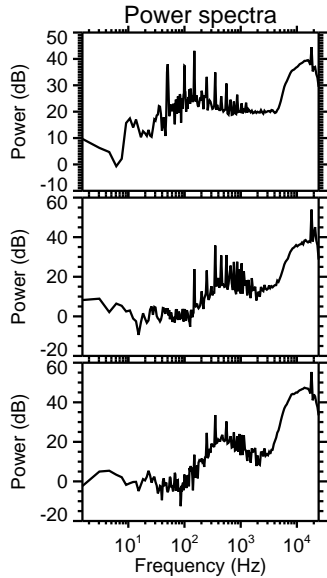
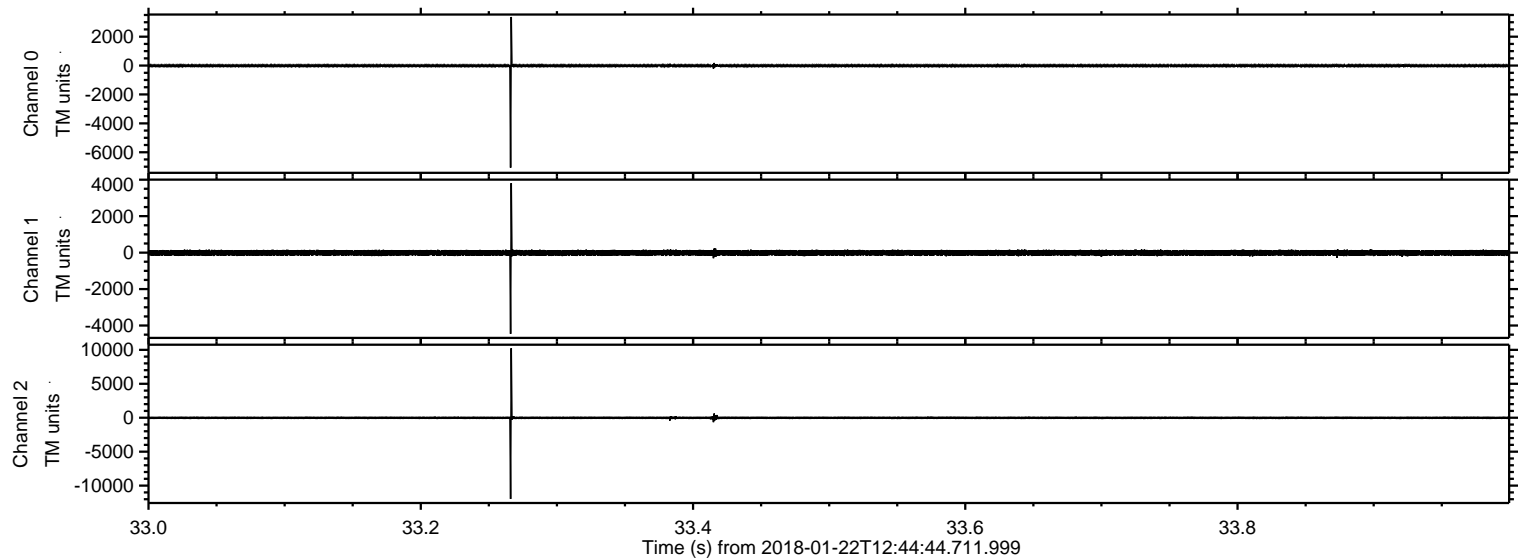


ELMAVAN 3D WAVEFORMS (Measured data sampled at 50 kHz) 51000 packets of 144 samples from 2018-01-22T12:44:44.711.999.

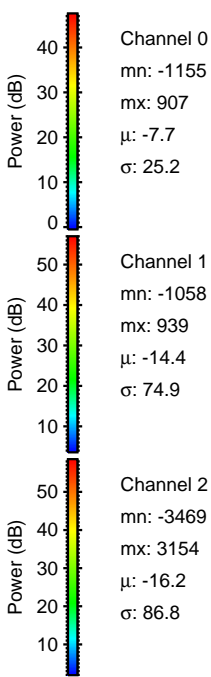
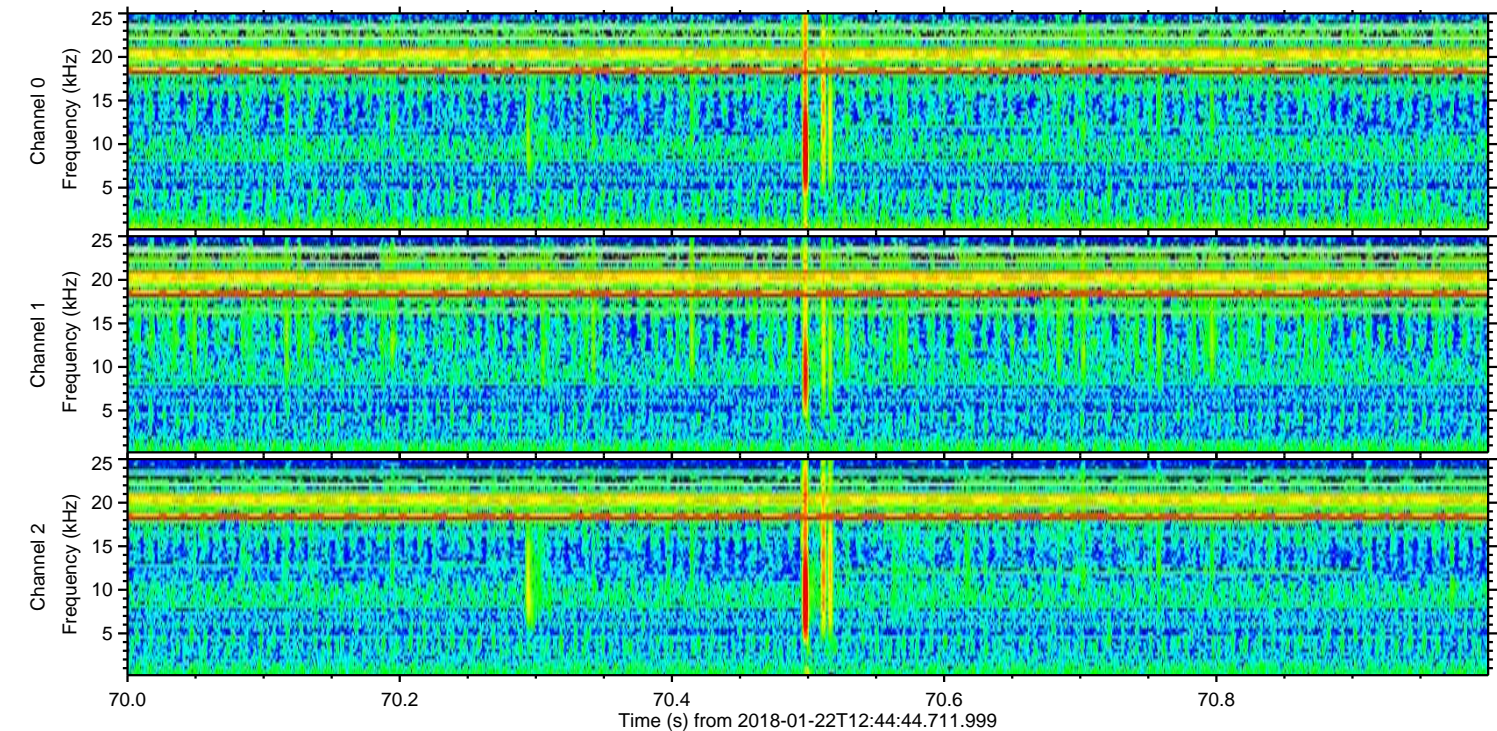
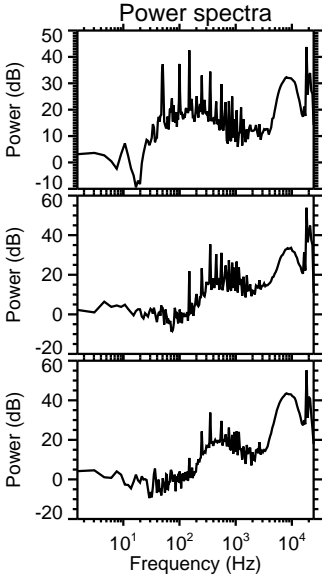
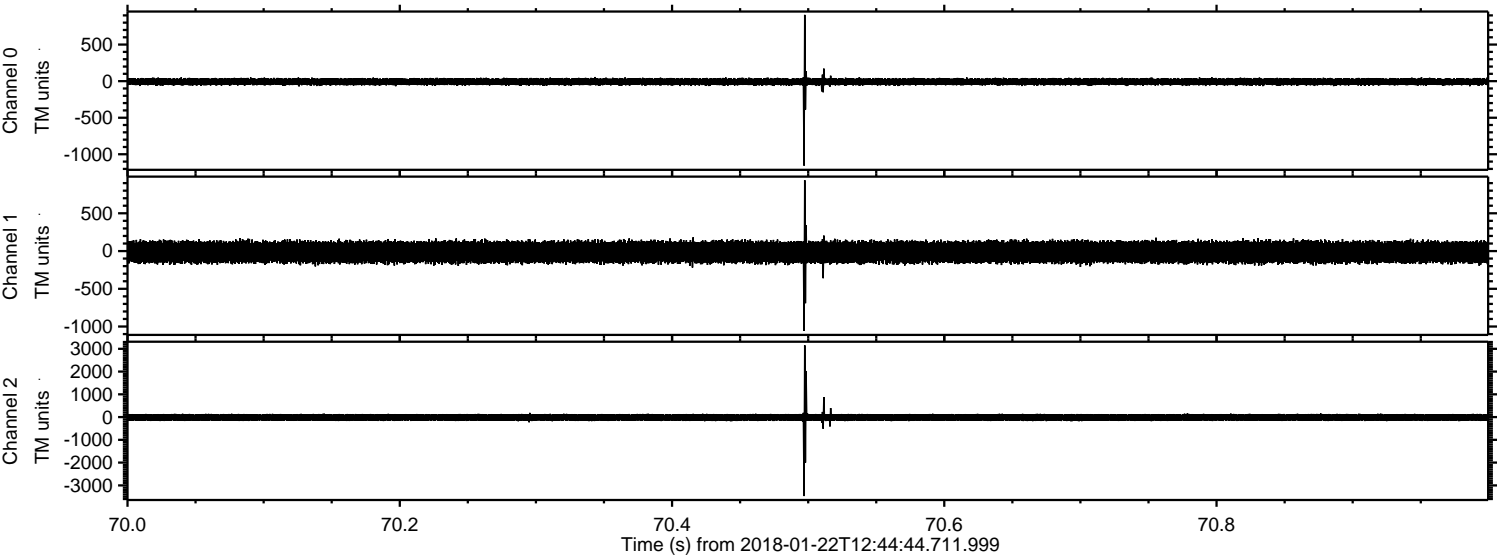
Processed Mon Jan 22 13:53:09 2018 by ELM ver.2012-10-06 from 001__elm20180122_124443__dat00.bin



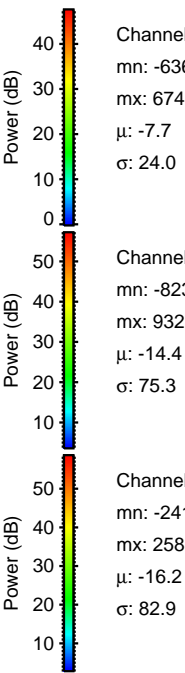
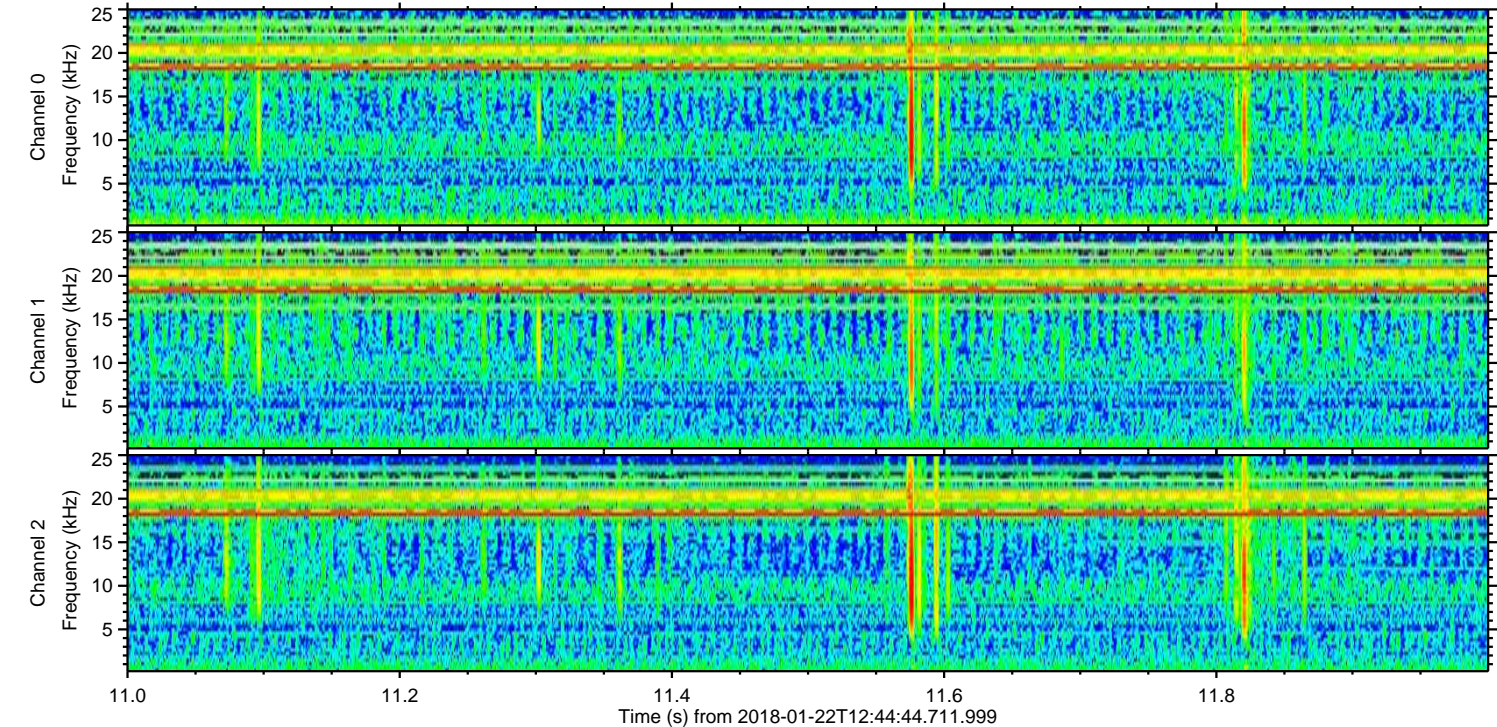
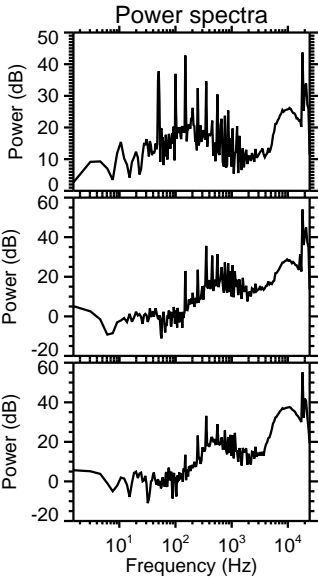
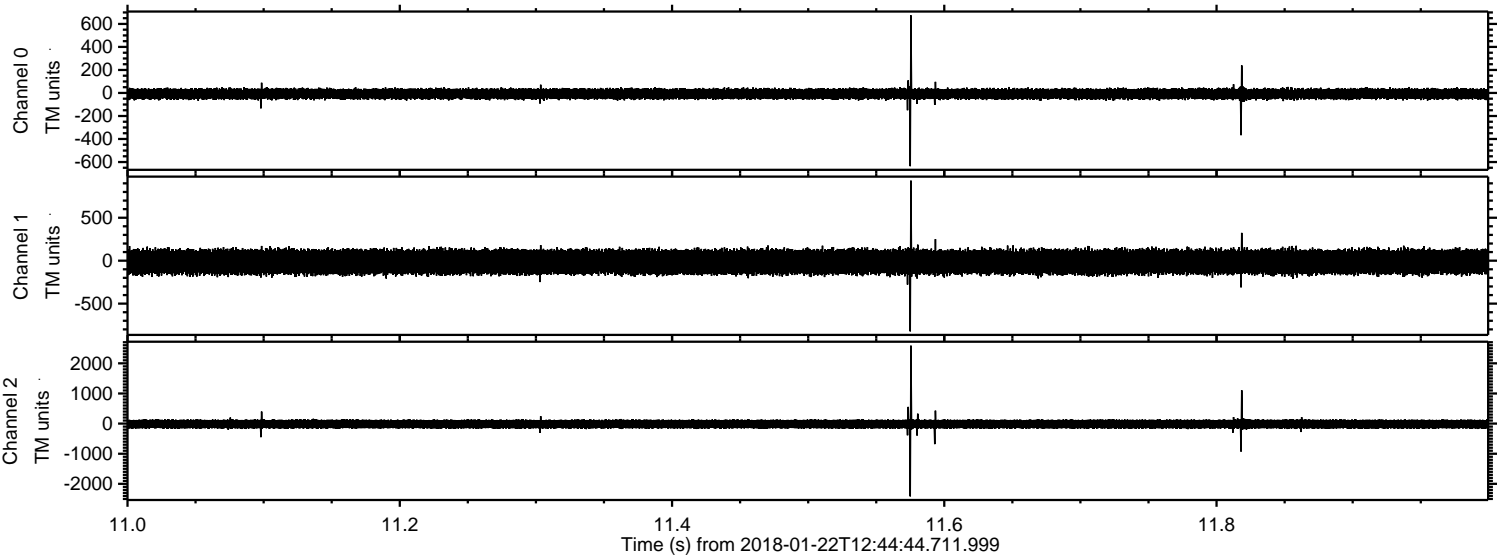
Processed Mon Jan 22 13:53:17 2018 by ELM ver.2012-10-06 from 001__elm20180122_124443__dat00.bin



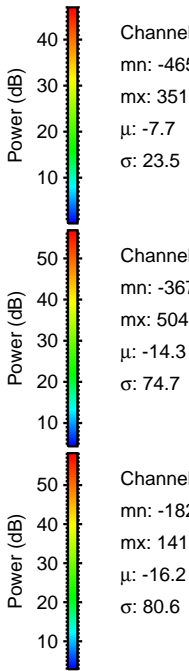
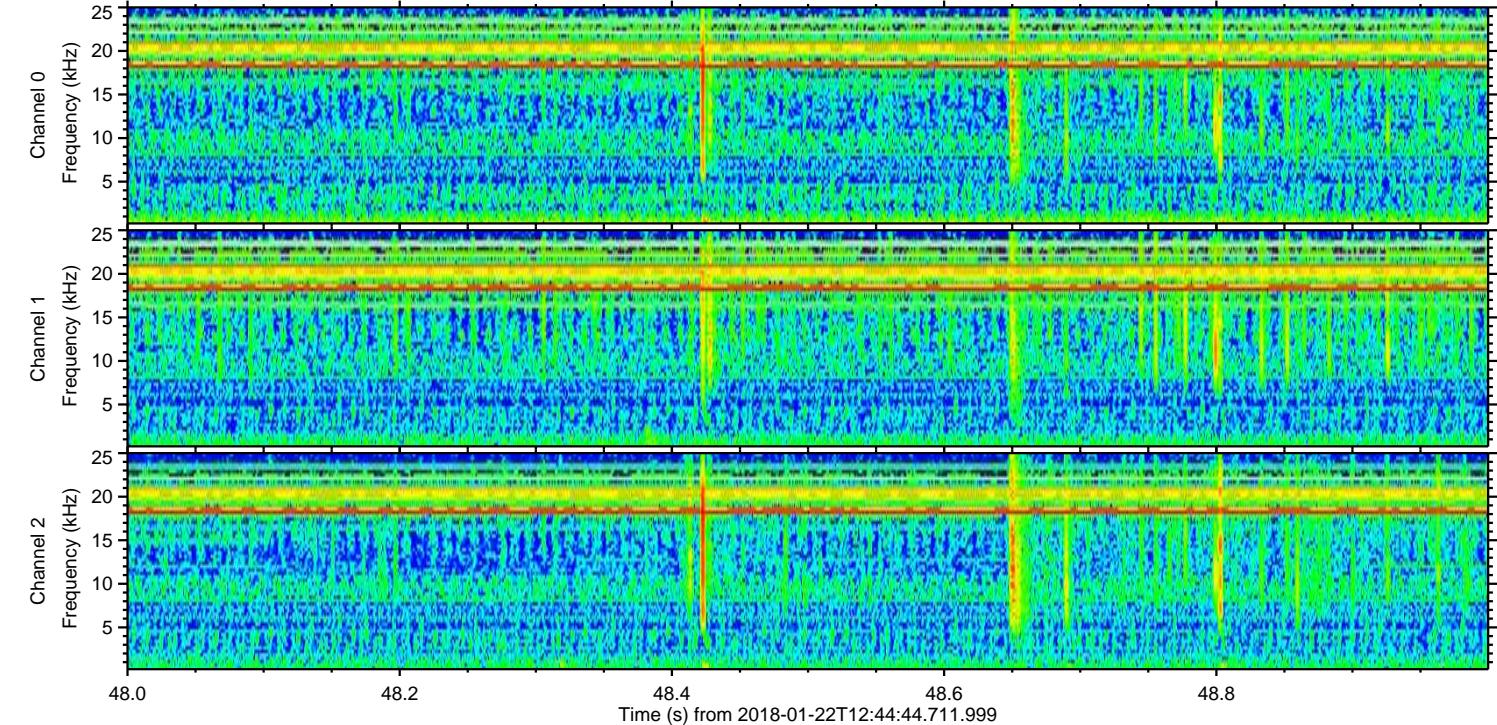
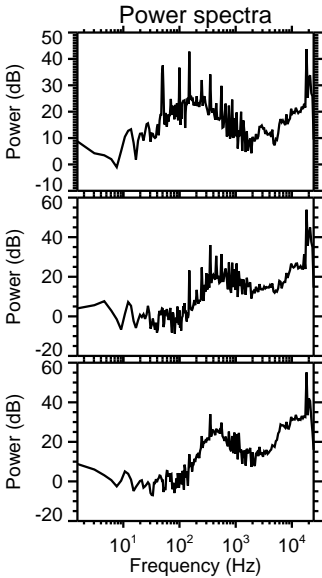
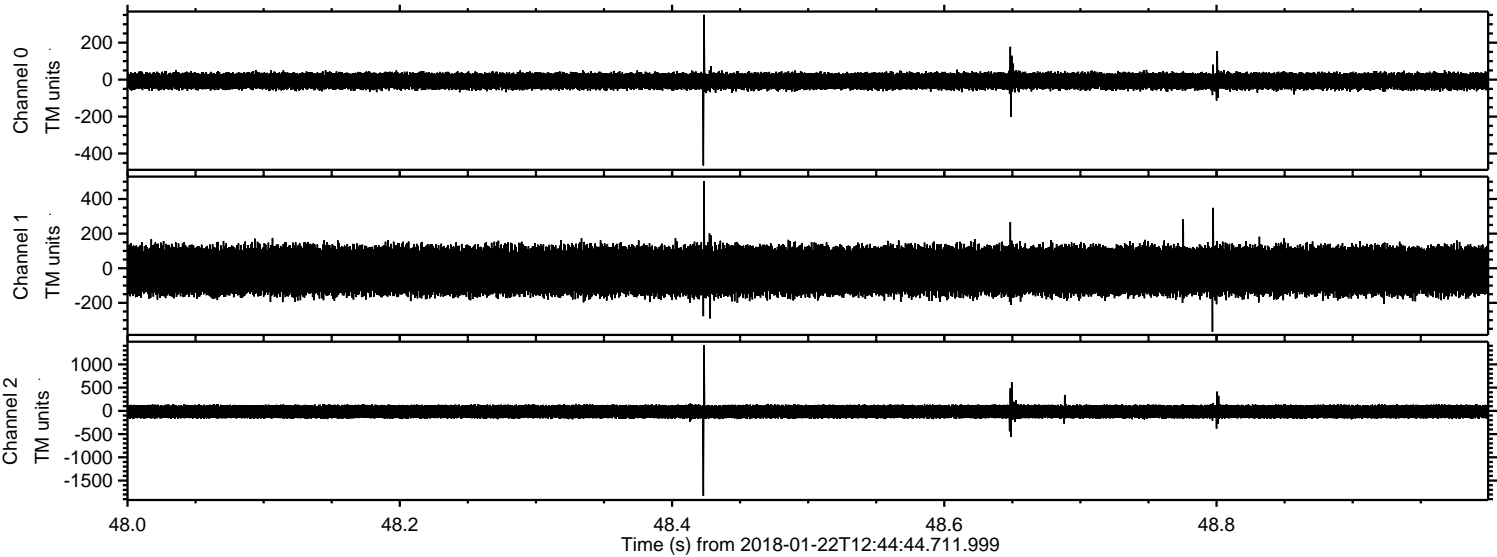
Processed Mon Jan 22 13:53:17 2018 by ELM ver.2012-10-06 from 001__elm20180122_124443__dat00.bin



Processed Mon Jan 22 13:53:18 2018 by ELM ver.2012-10-06 from 001__elm20180122_124443__dat00.bin

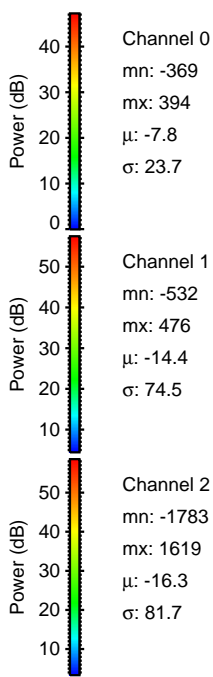
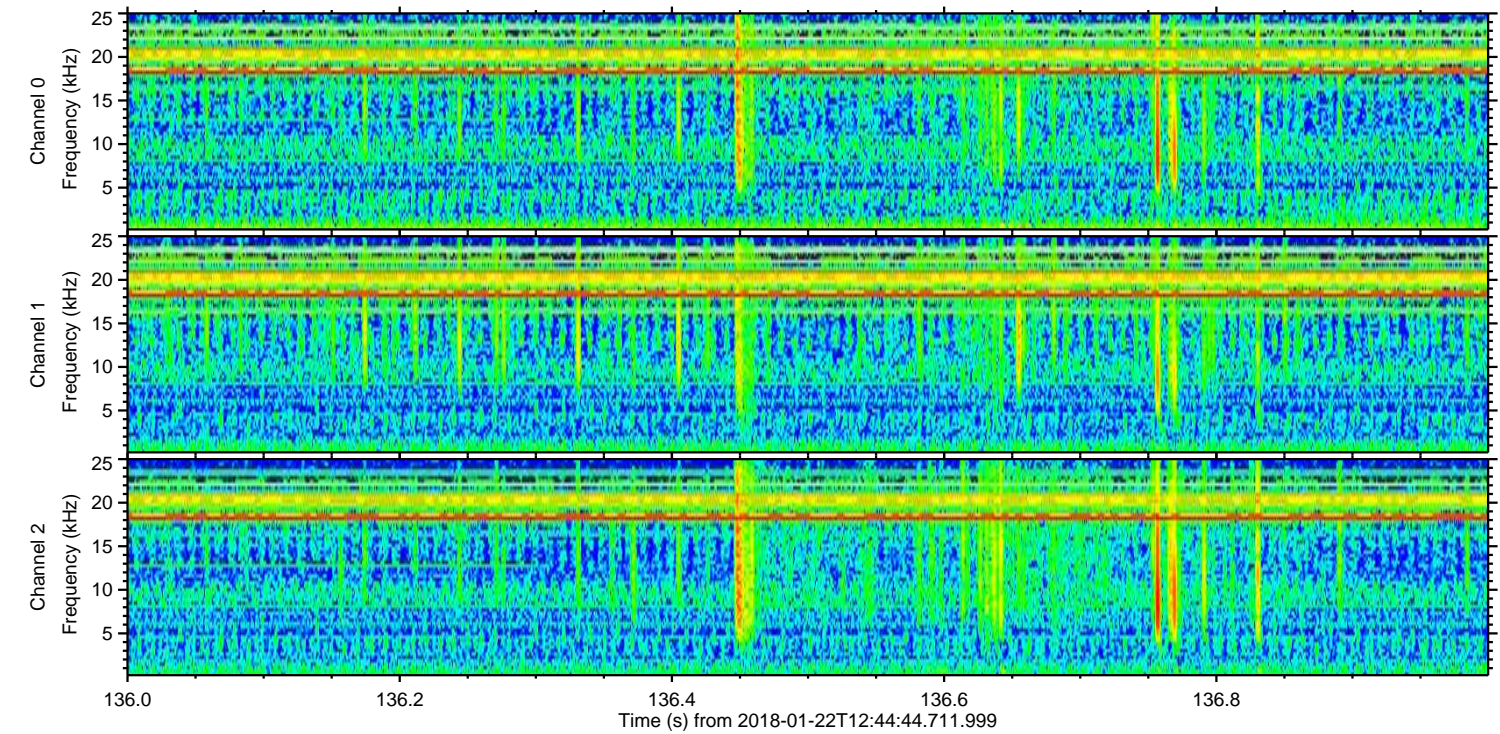
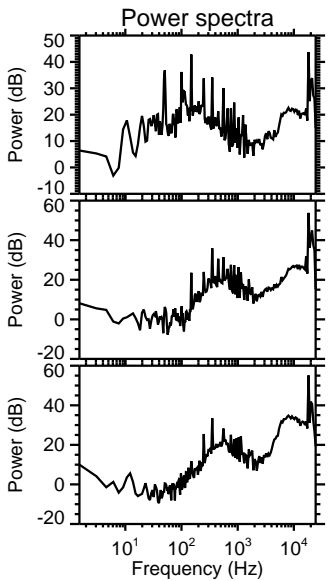
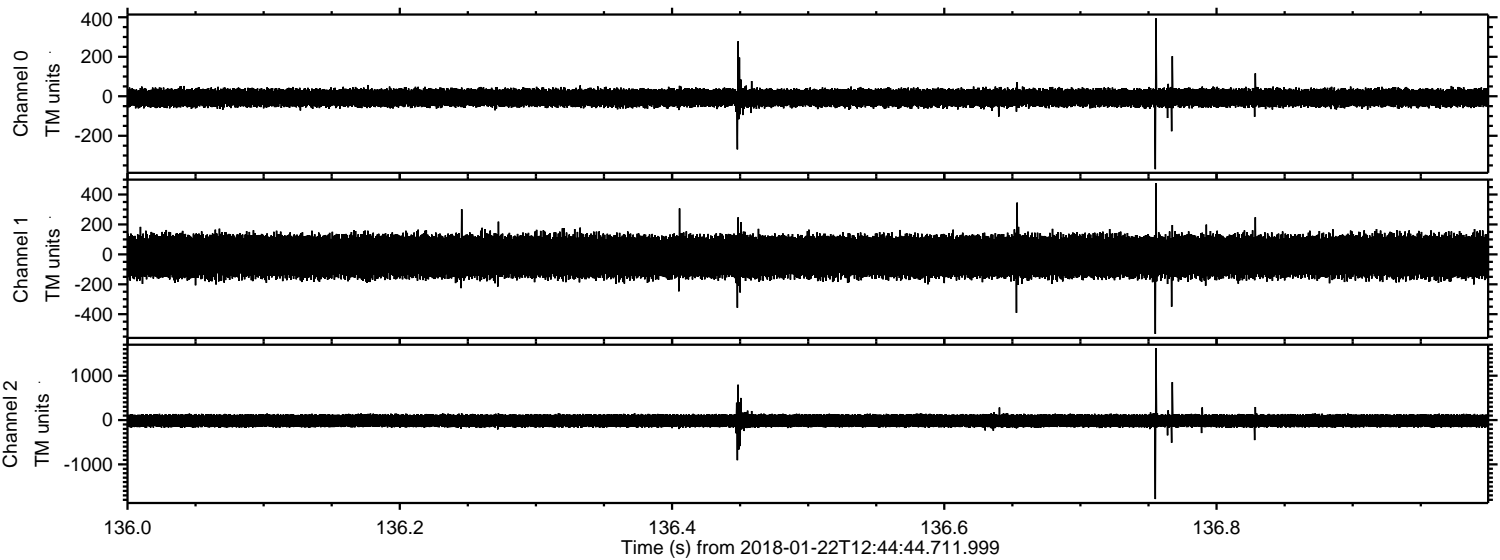


Processed Mon Jan 22 13:53:19 2018 by ELM ver.2012-10-06 from 001__elm20180122_124443__dat00.bin

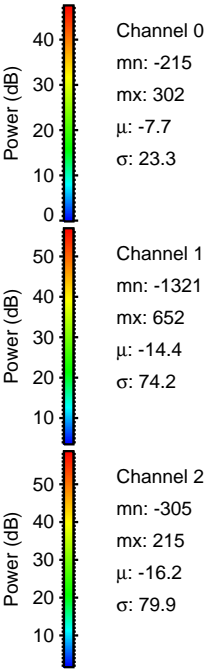
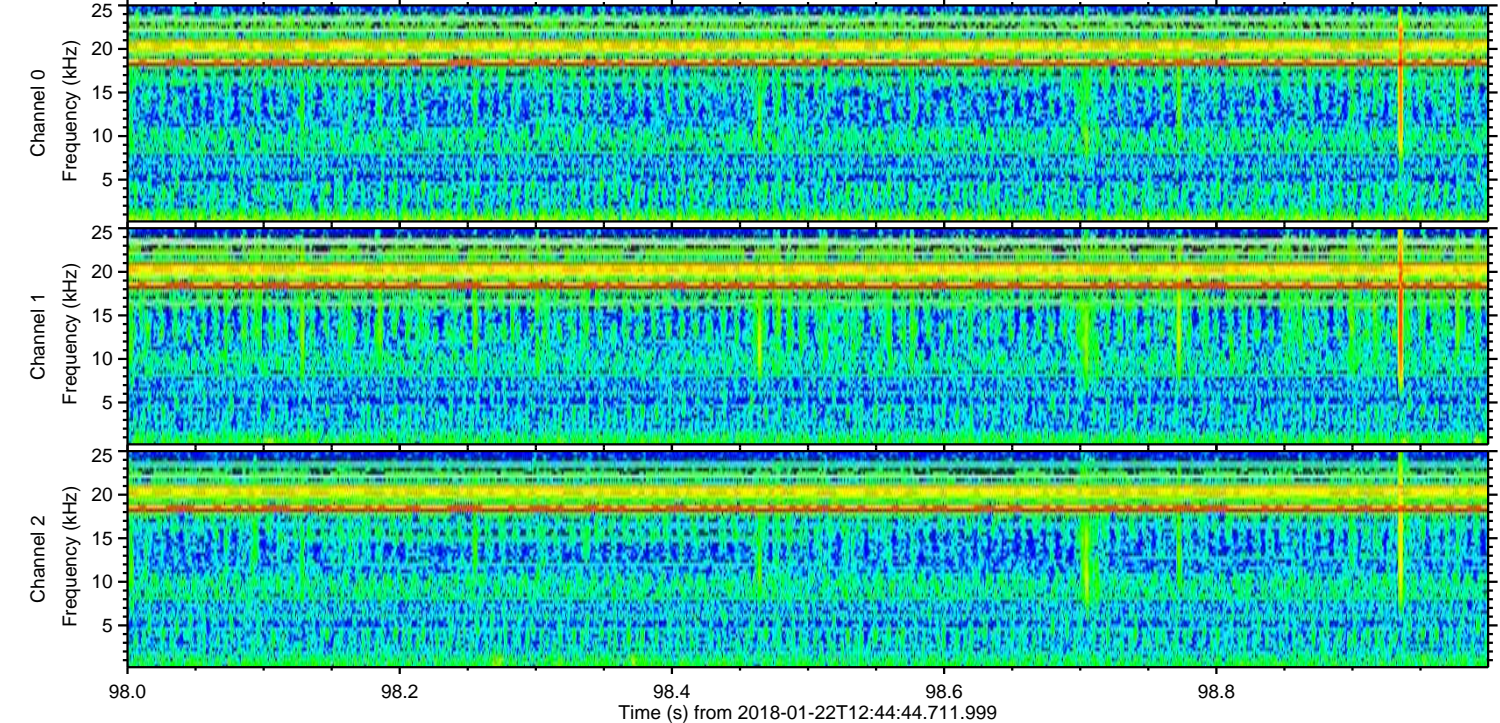
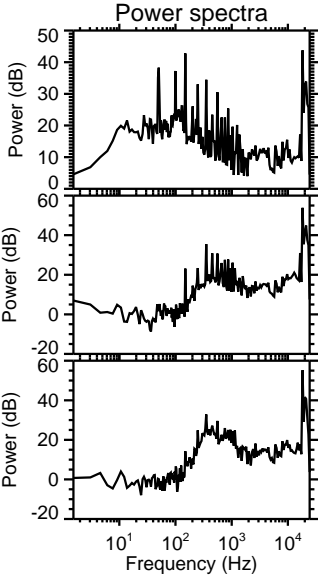
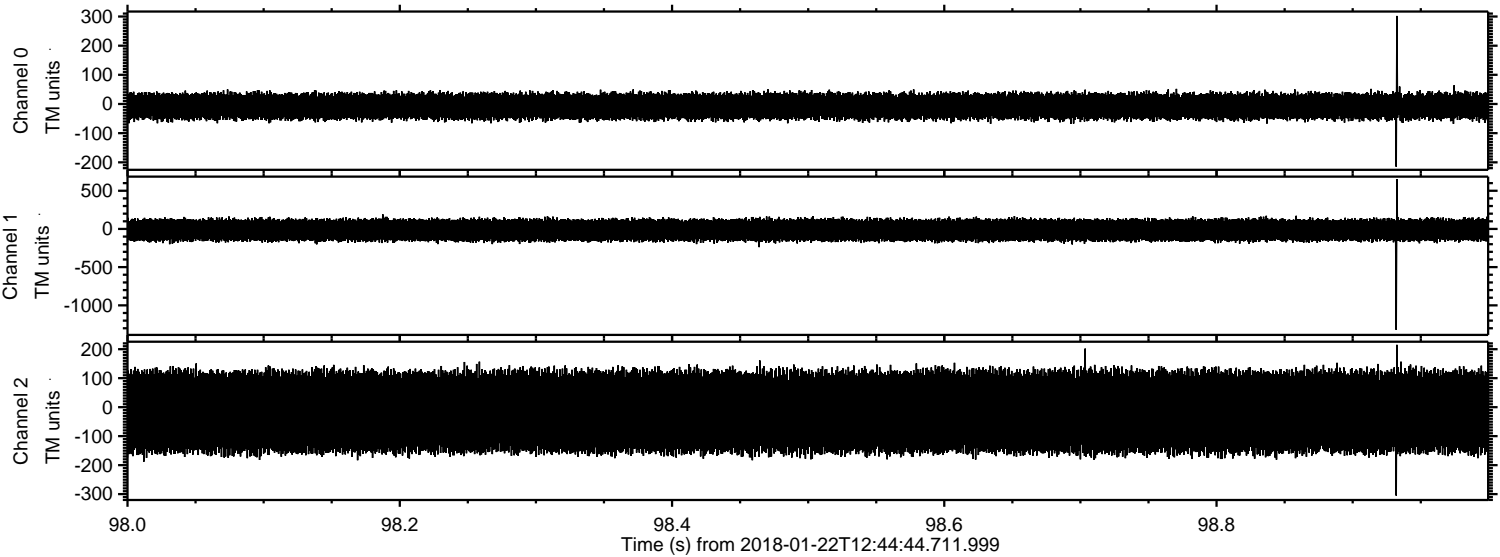


ELMAVAN 3D WAVEFORMS (Measured data sampled at 50 kHz) 51000 packets of 144 samples from 2018-01-22T12:44:44.711.999. Part 137/147

Processed Mon Jan 22 13:53:20 2018 by ELM ver.2012-10-06 from 001__elm20180122_124443__dat00.bin

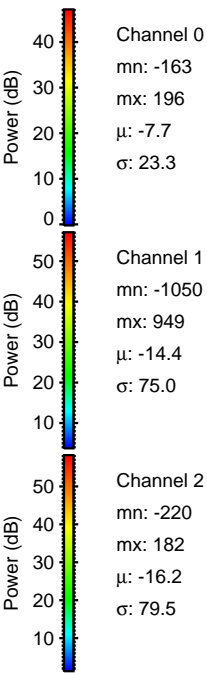
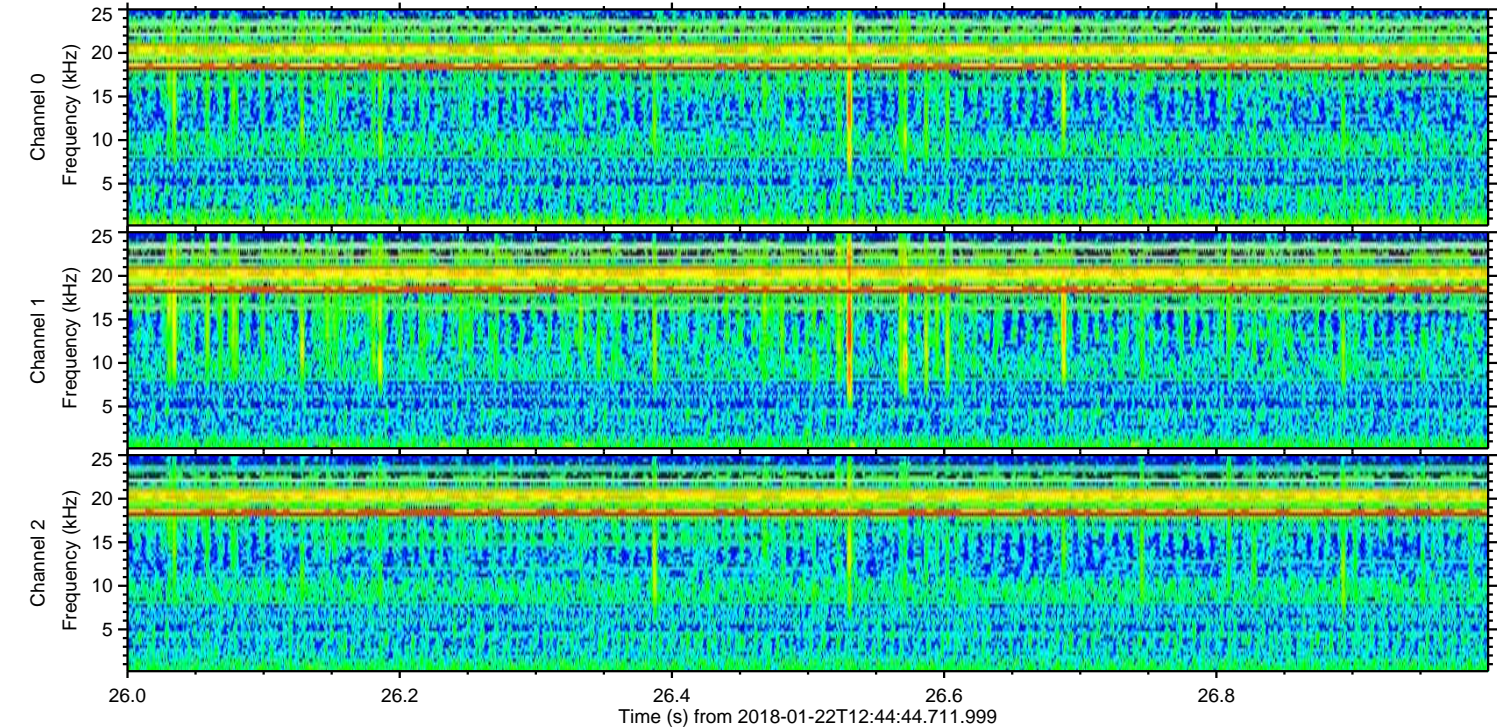
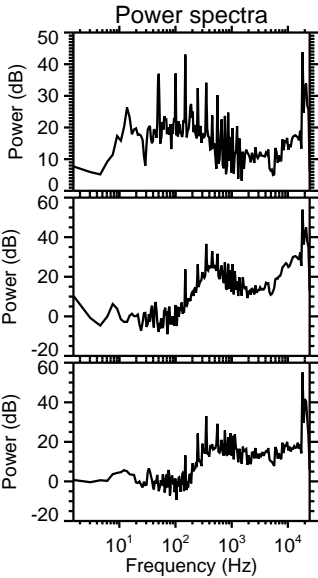
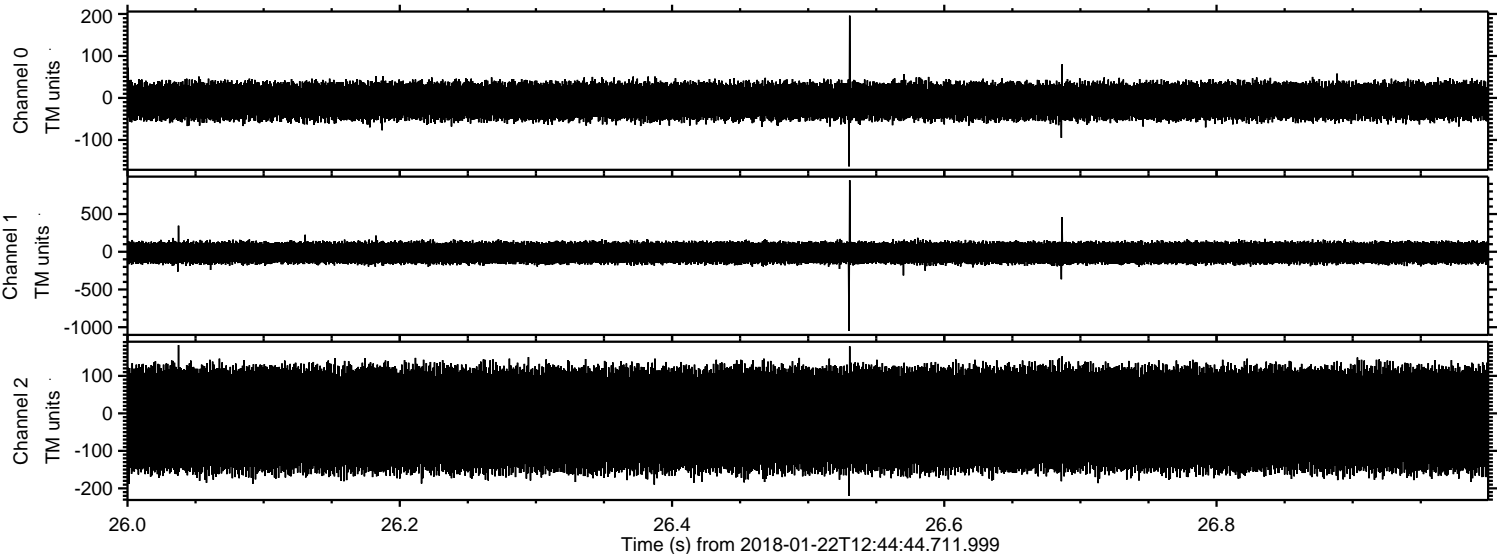


Processed Mon Jan 22 13:53:21 2018 by ELM ver.2012-10-06 from 001__elm20180122_124443__dat00.bin



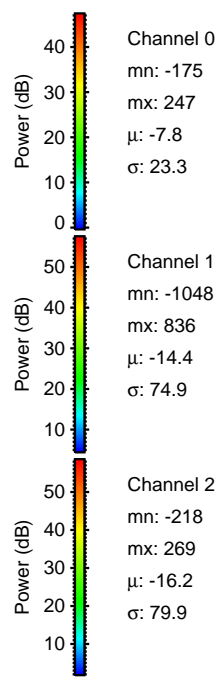
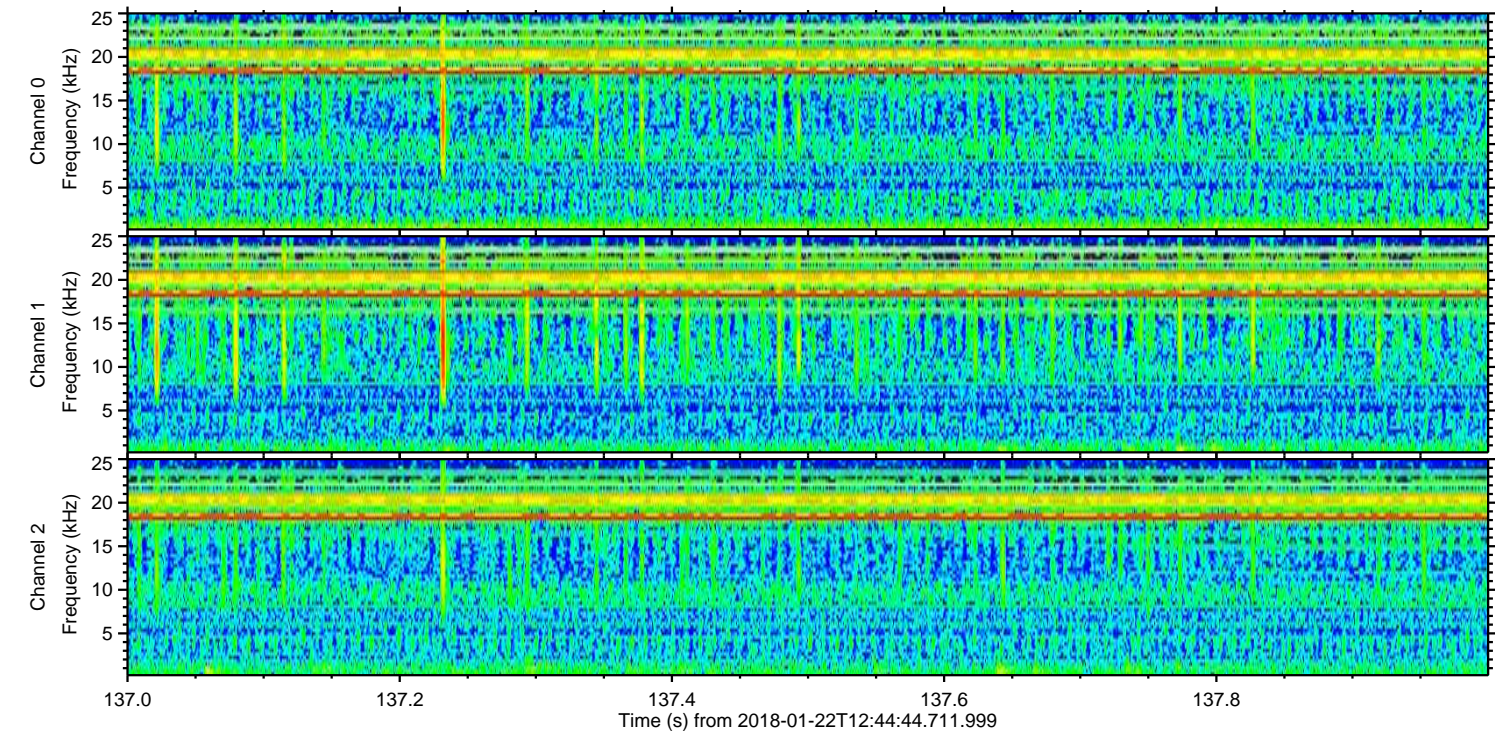
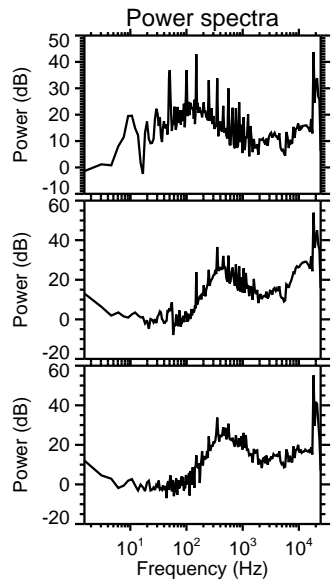
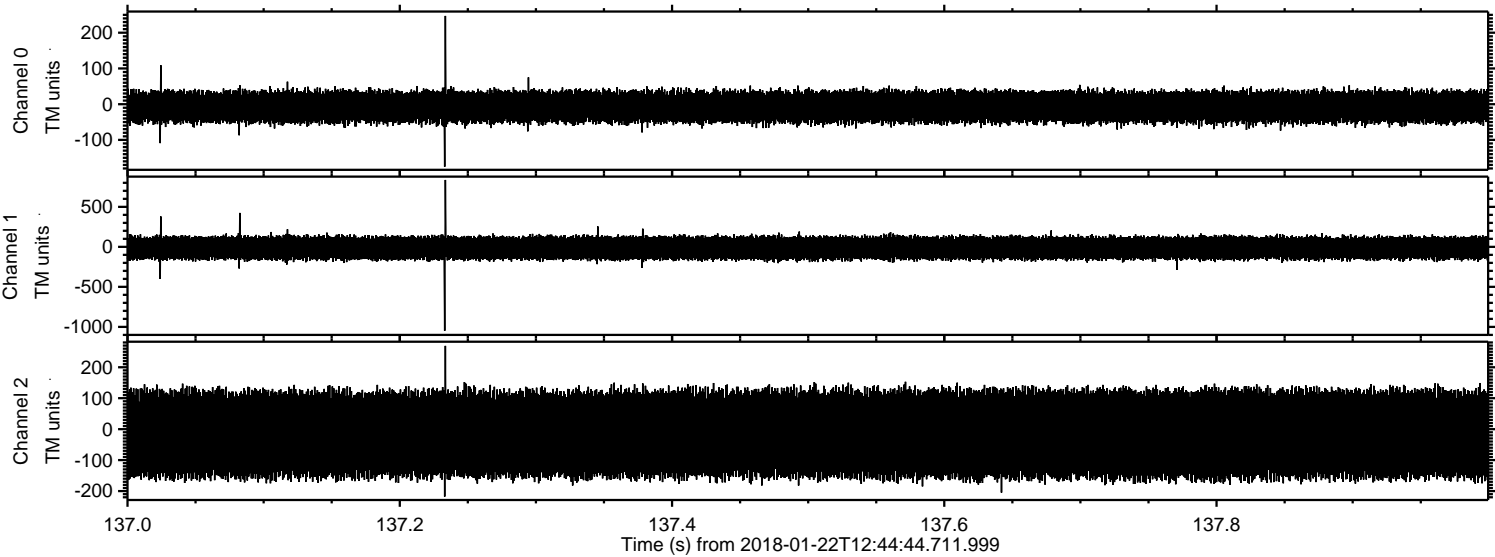
ELMAVAN 3D WAVEFORMS (Measured data sampled at 50 kHz) 51000 packets of 144 samples from 2018-01-22T12:44:44.711.999. Part 27/147

Processed Mon Jan 22 13:53:21 2018 by ELM ver.2012-10-06 from 001__elm20180122_124443__dat00.bin

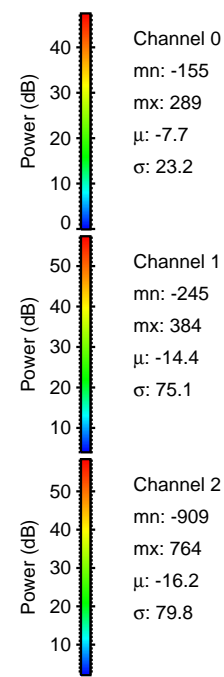
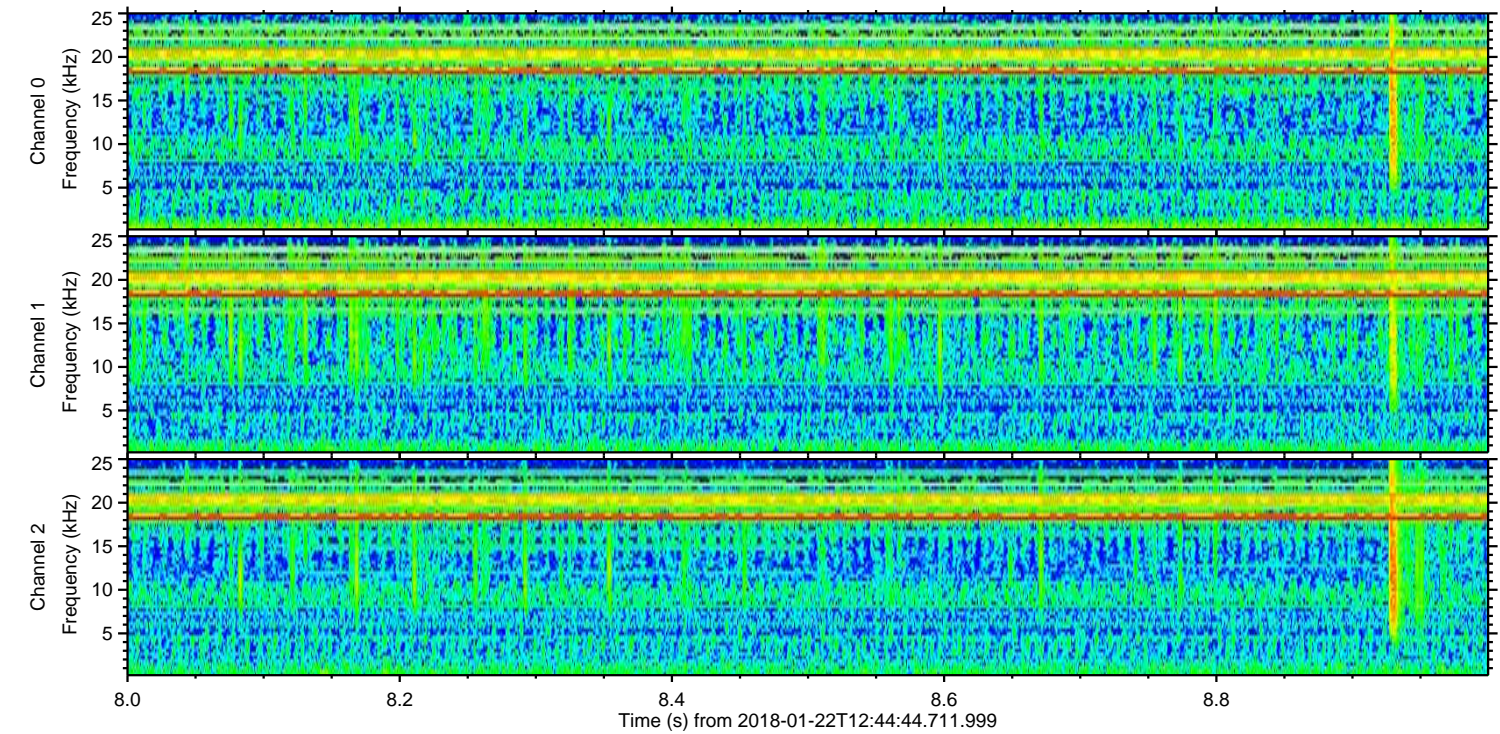
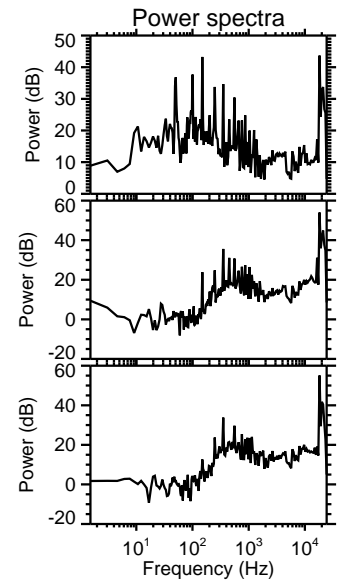
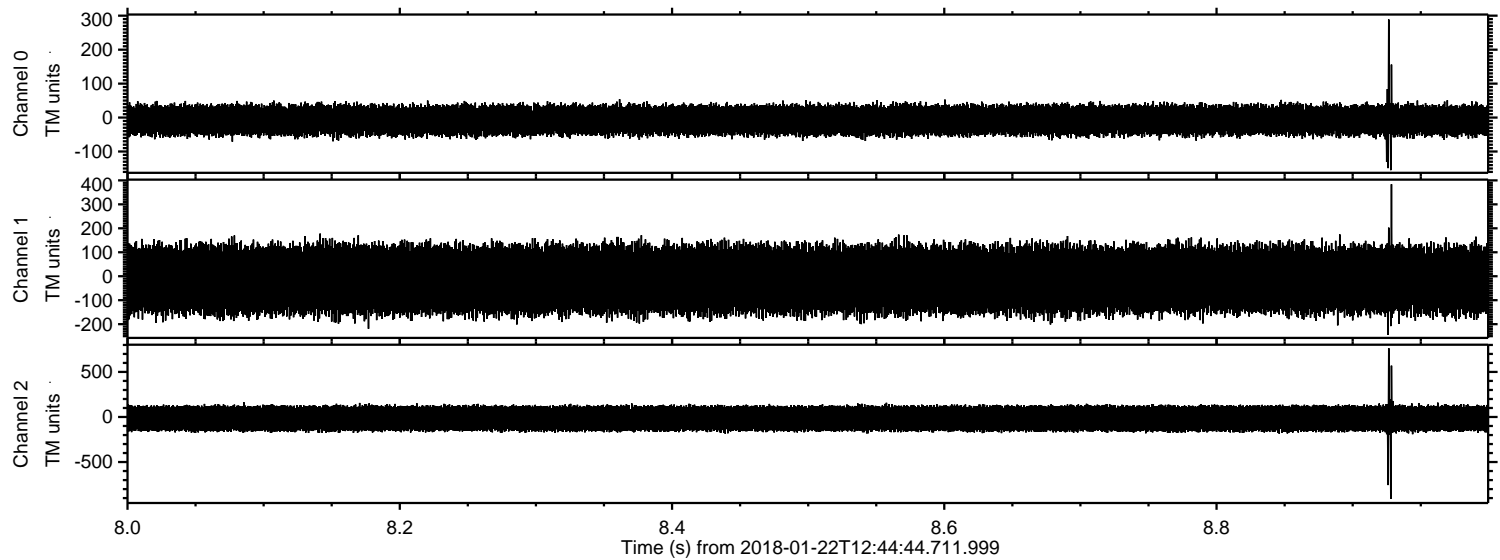


ELMAVAN 3D WAVEFORMS (Measured data sampled at 50 kHz) 51000 packets of 144 samples from 2018-01-22T12:44:44.711.999. Part 138/147

Processed Mon Jan 22 13:53:22 2018 by ELM ver.2012-10-06 from 001__elm20180122_124443__dat00.bin



Processed Mon Jan 22 13:53:23 2018 by ELM ver.2012-10-06 from 001__elm20180122_124443__dat00.bin



Channel 0
mn: -155
mx: 289
 μ : -7.7
 σ : 23.2

Channel 1
mn: -245
mx: 384
 μ : -14.4
 σ : 75.1

Channel 2
mn: -909
mx: 764
 μ : -16.2
 σ : 79.8

Processed Mon Jan 22 13:53:24 2018 by ELM ver.2012-10-06 from 001__elm20180122_124443__dat00.bin

