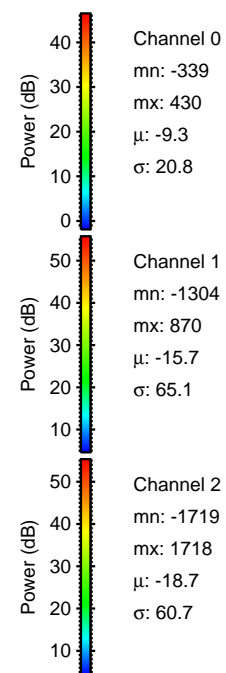
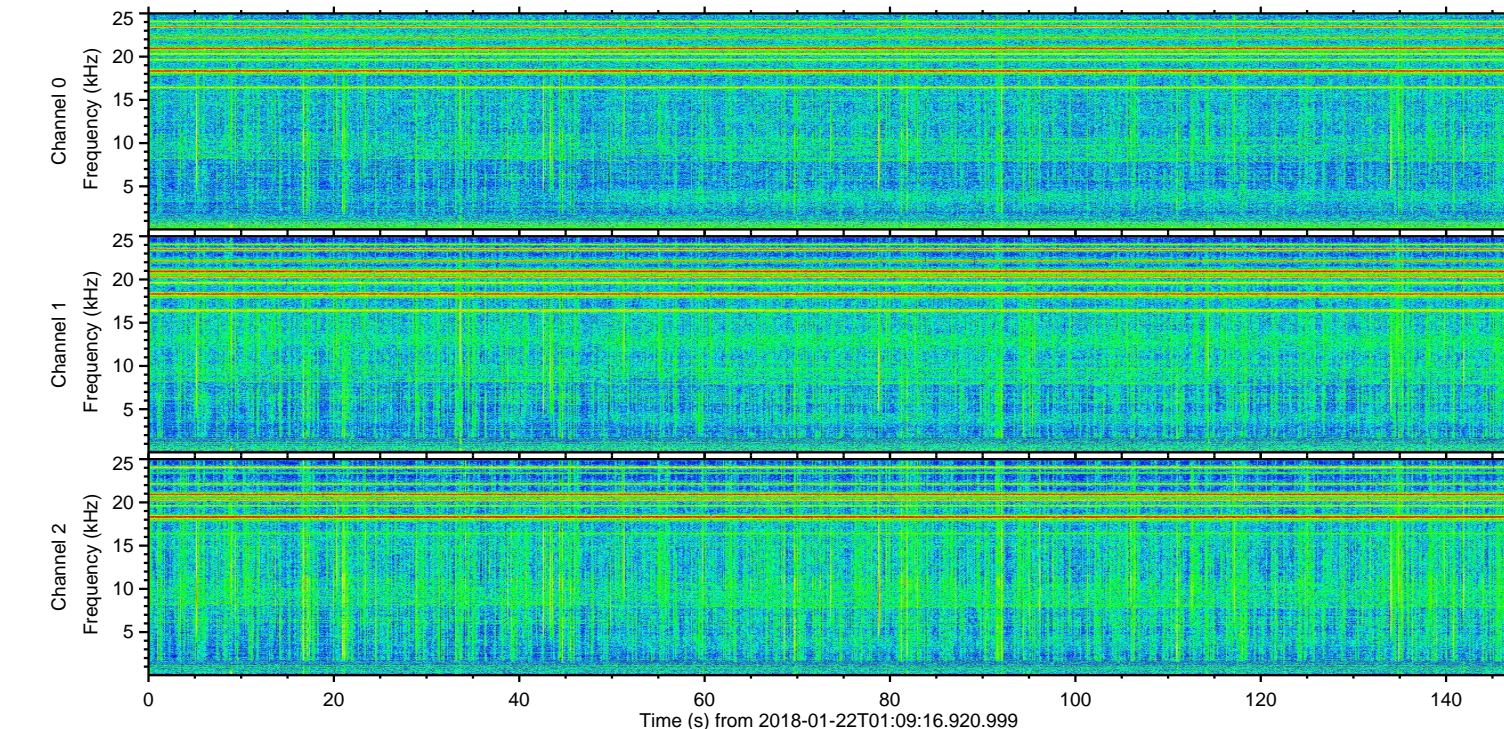
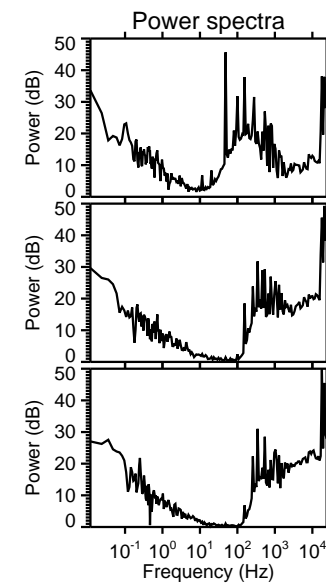
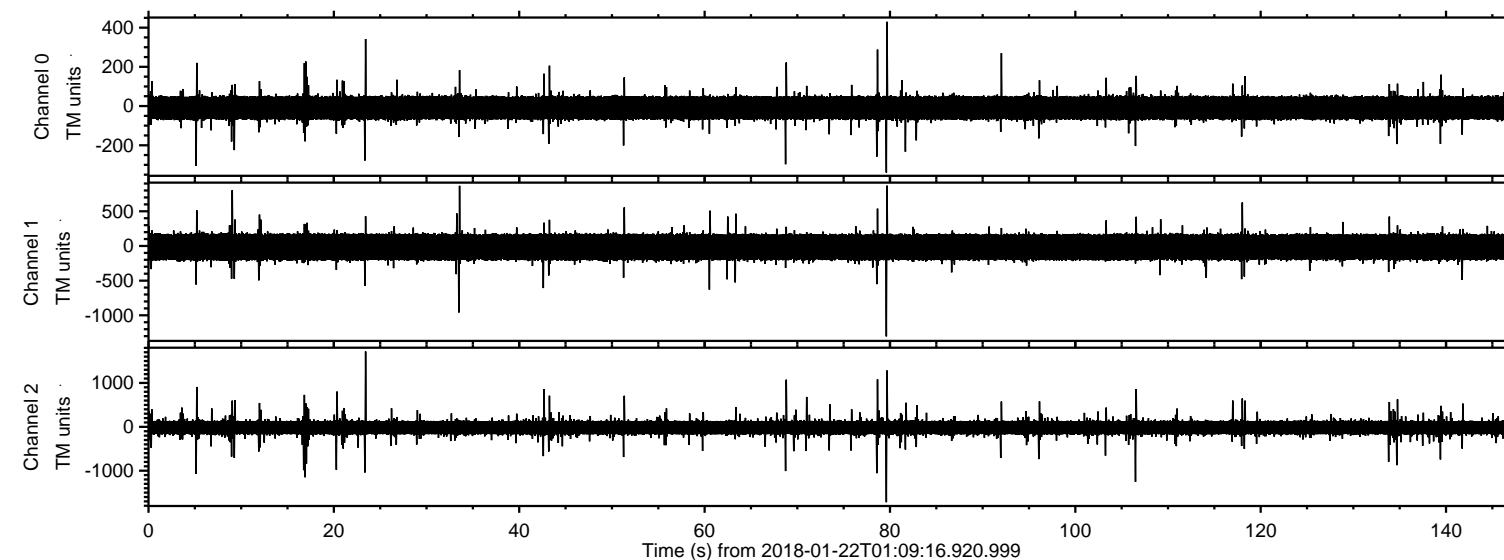
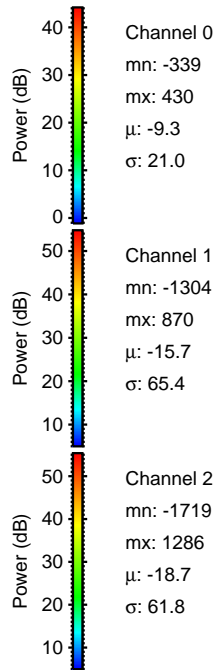
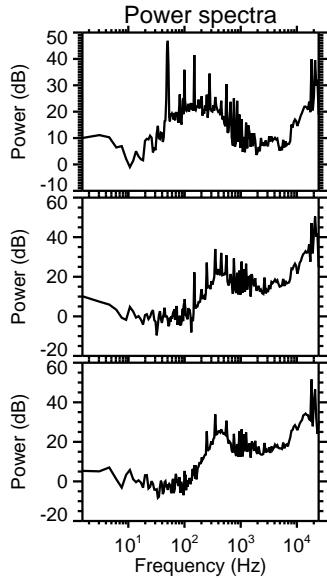
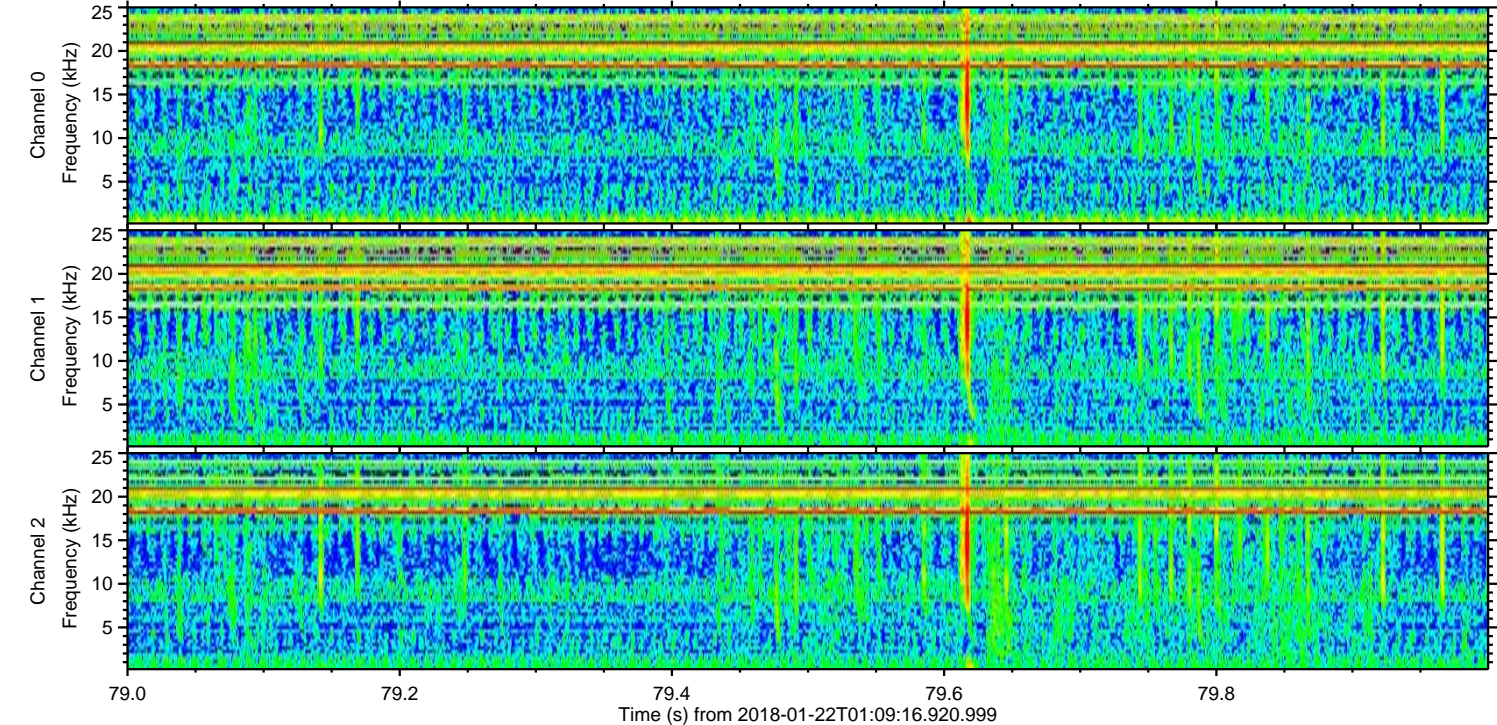
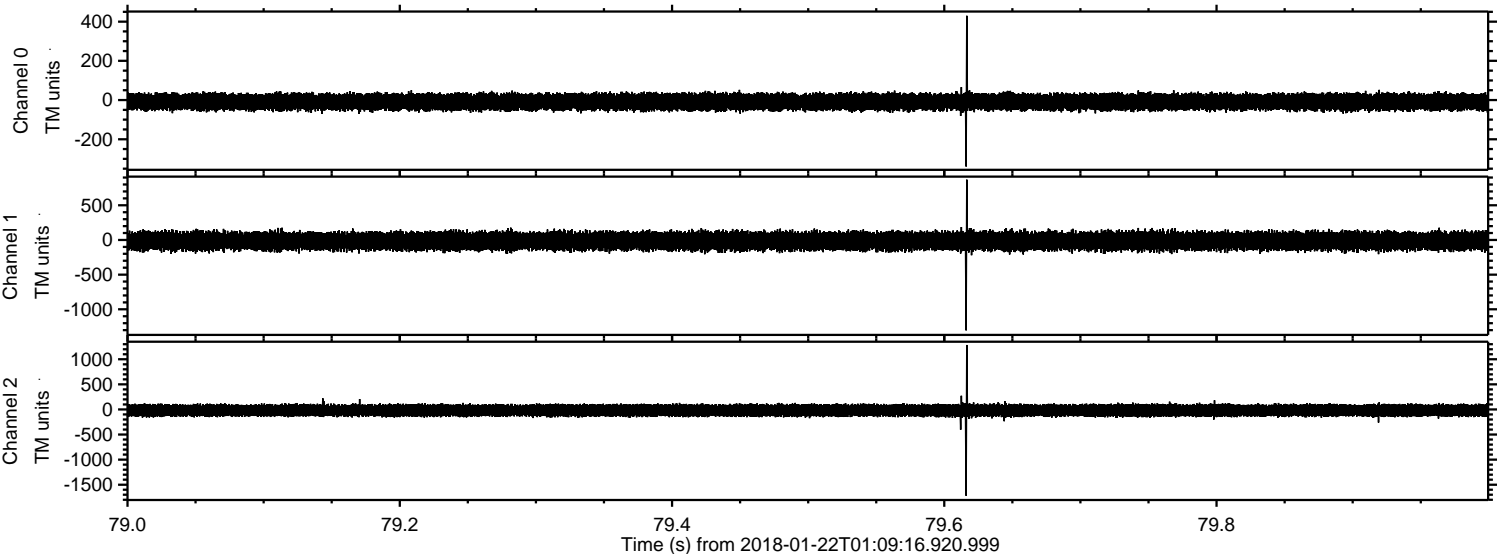


ELMAVAN 3D WAVEFORMS (Measured data sampled at 50 kHz) 51000 packets of 144 samples from 2018-01-22T01:09:16.920.999.

Processed Mon Jan 22 02:19:43 2018 by ELM ver.2012-10-06 from 001__elm20180122_010915__dat00.bin



Processed Mon Jan 22 02:19:52 2018 by ELM ver.2012-10-06 from 001__elm20180122_010915__dat00.bin



Power spectra

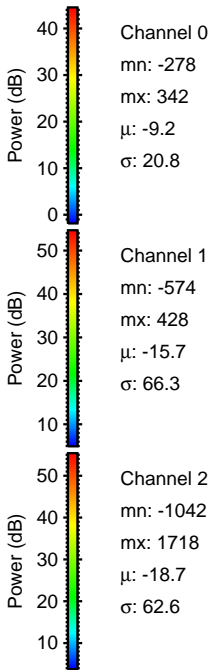
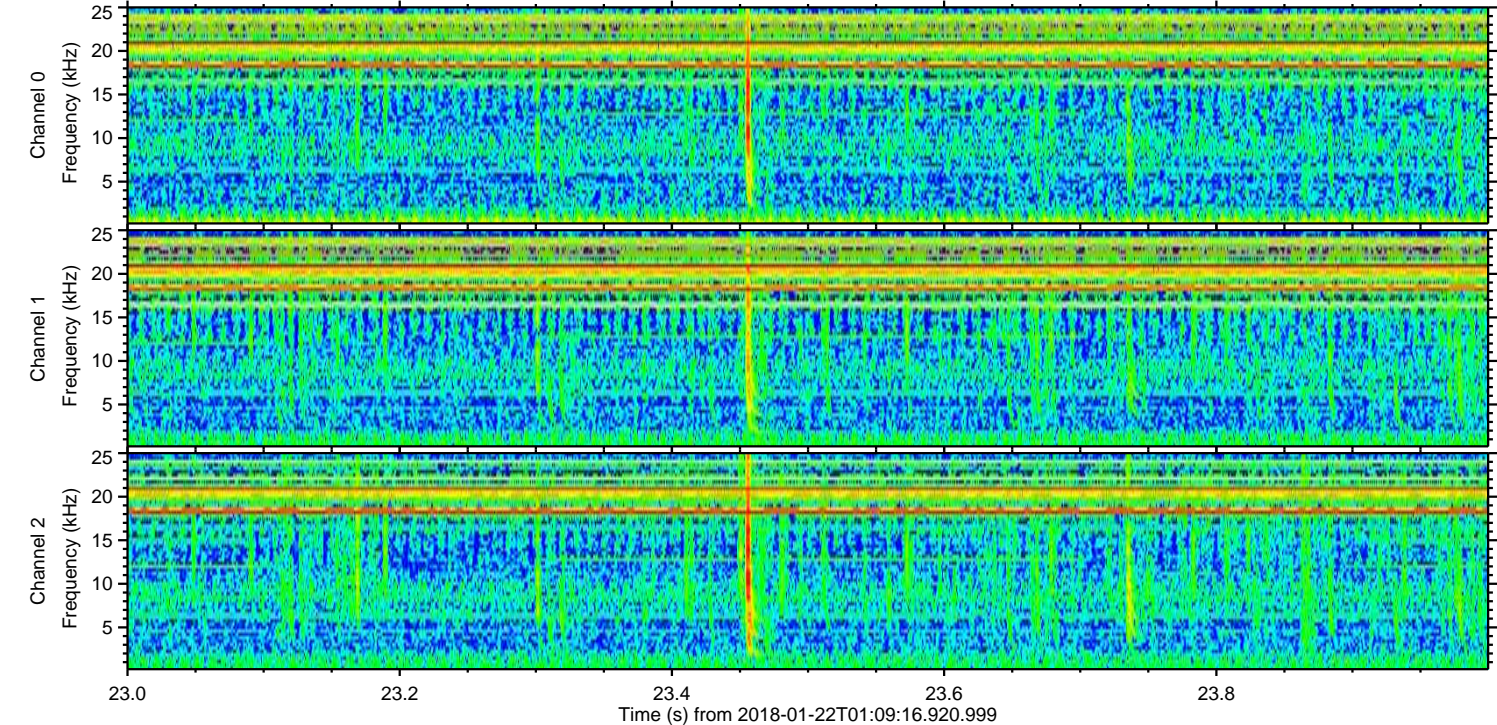
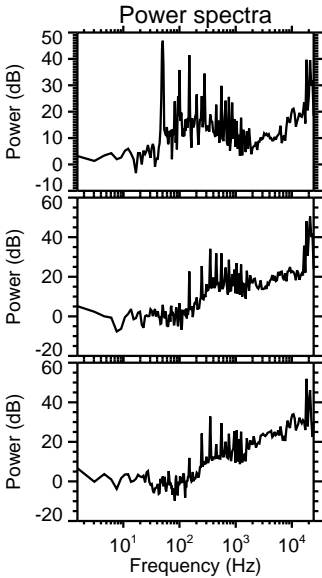
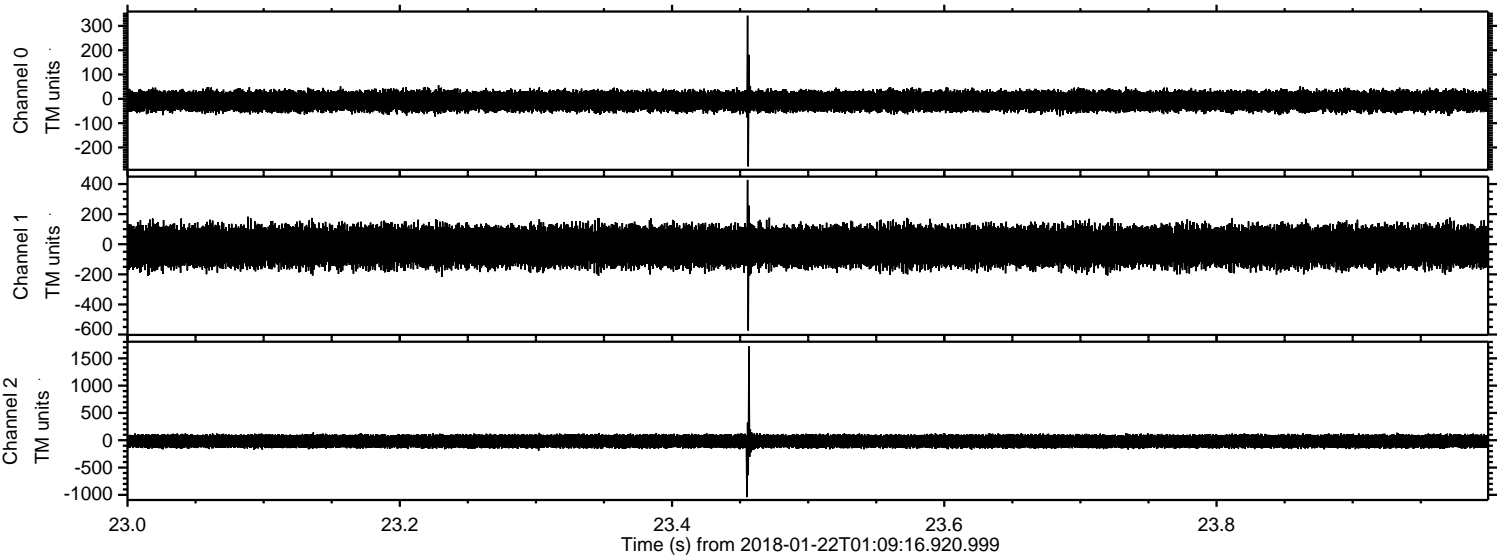
Channel 0
mn: -339
mx: 430
 μ : -9.3
 σ : 21.0

Channel 1
mn: -1304
mx: 870
 μ : -15.7
 σ : 65.4

Channel 2
mn: -1719
mx: 1286
 μ : -18.7
 σ : 61.8

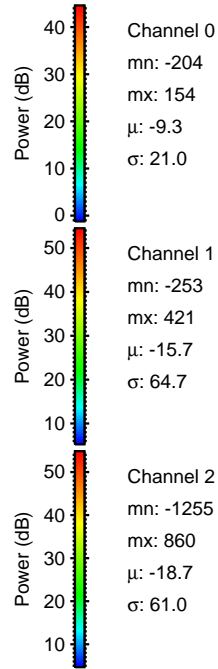
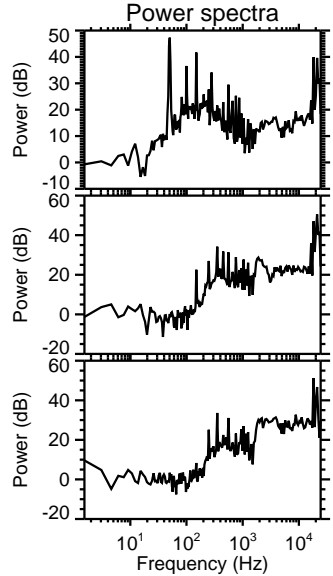
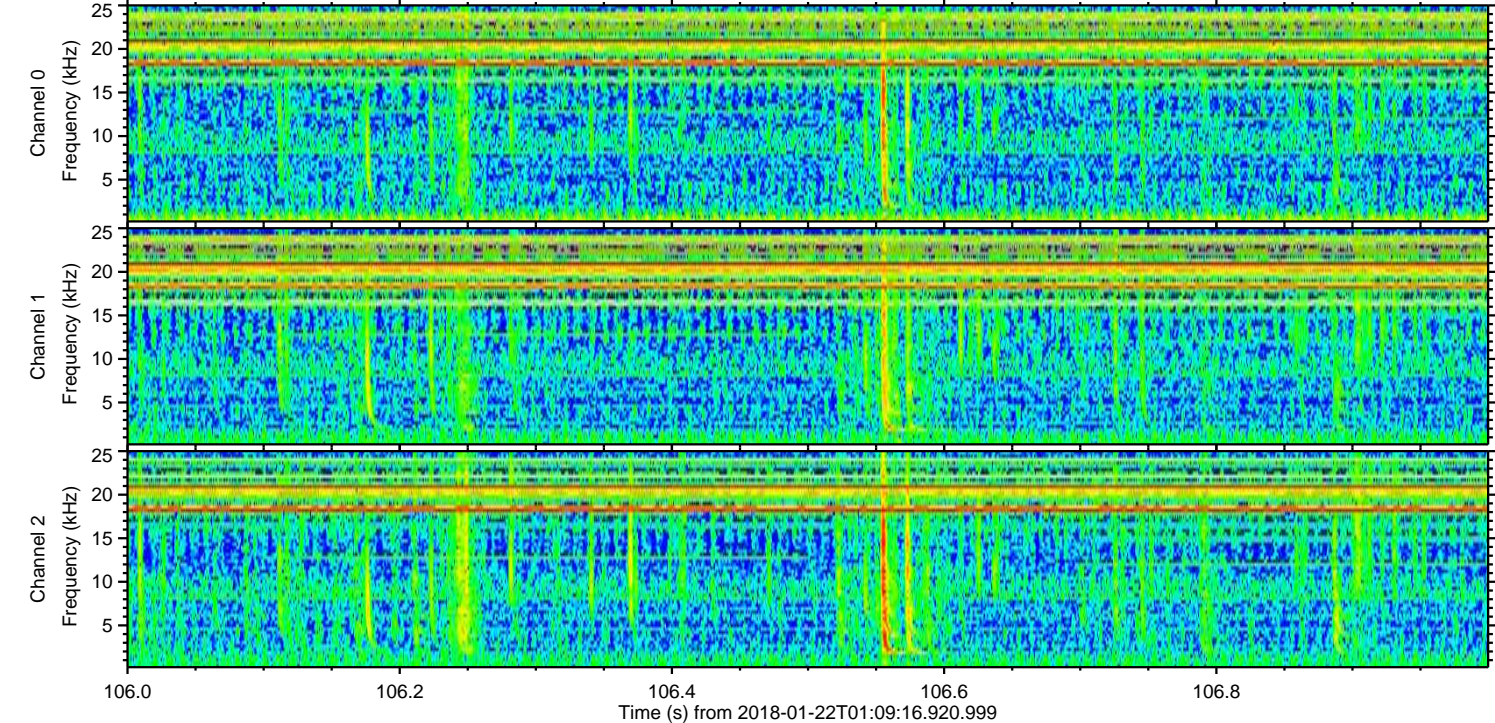
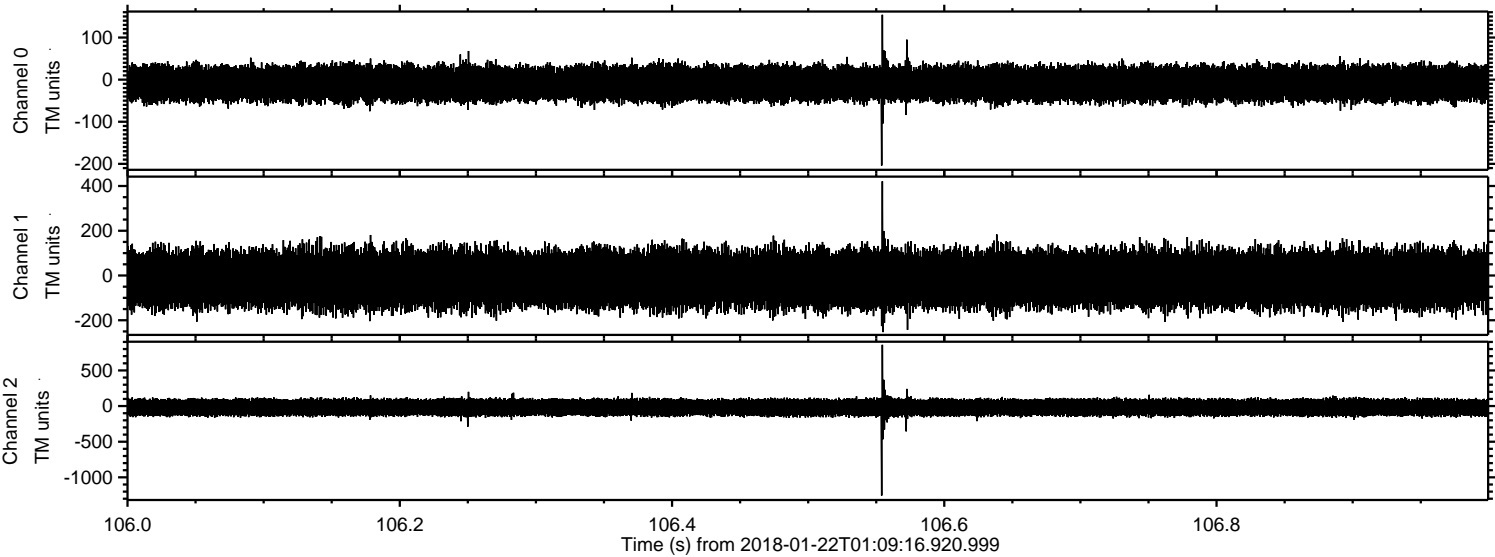
ELMAVAN 3D WAVEFORMS (Measured data sampled at 50 kHz) 51000 packets of 144 samples from 2018-01-22T01:09:16.920.999. Part 24/147

Processed Mon Jan 22 02:19:53 2018 by ELM ver.2012-10-06 from 001__elm20180122_010915__dat00.bin



ELMAVAN 3D WAVEFORMS (Measured data sampled at 50 kHz) 51000 packets of 144 samples from 2018-01-22T01:09:16.920.999. Part 107/147

Processed Mon Jan 22 02:19:54 2018 by ELM ver.2012-10-06 from 001__elm20180122_010915__dat00.bin



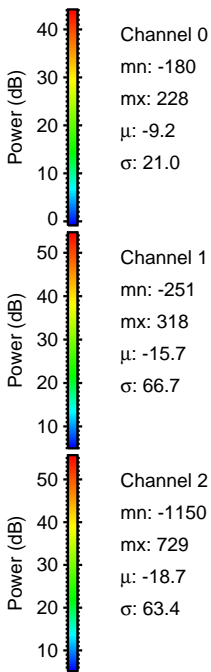
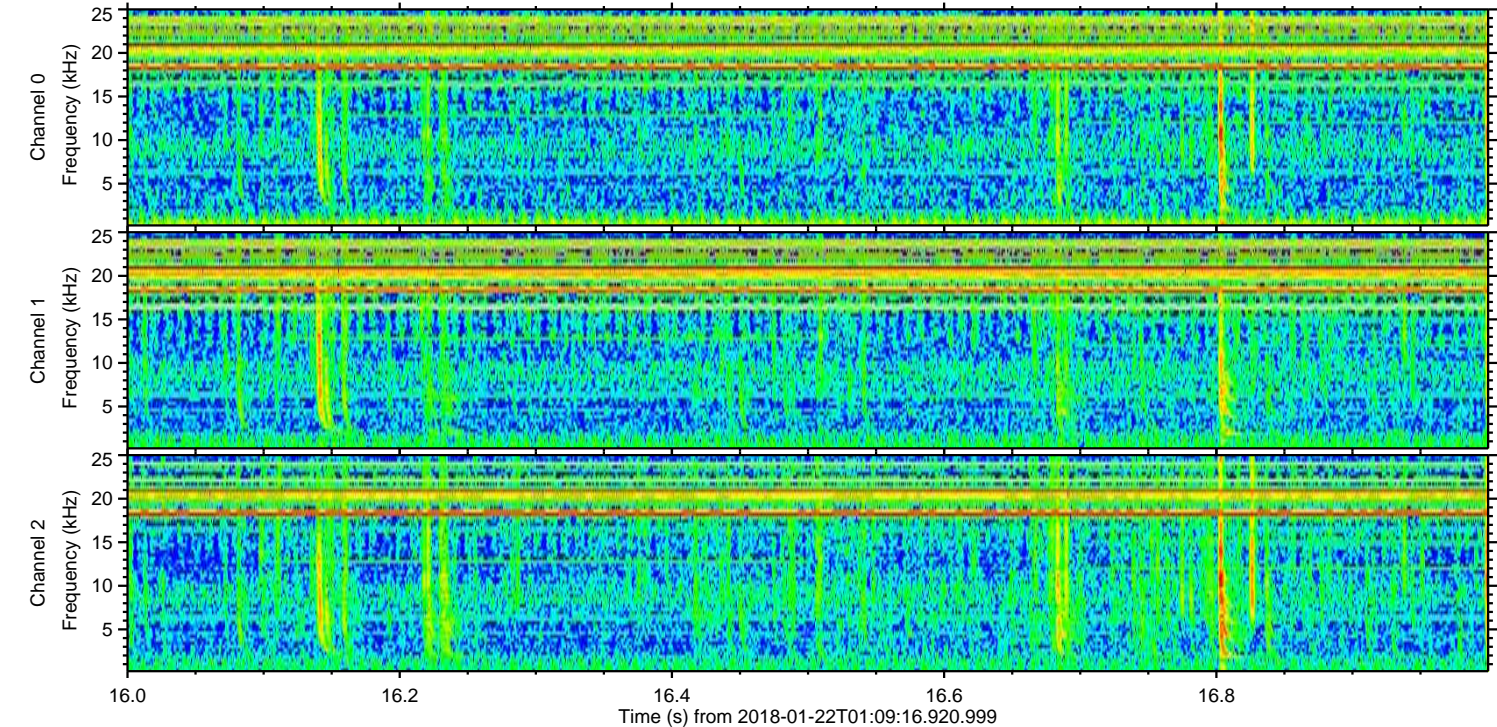
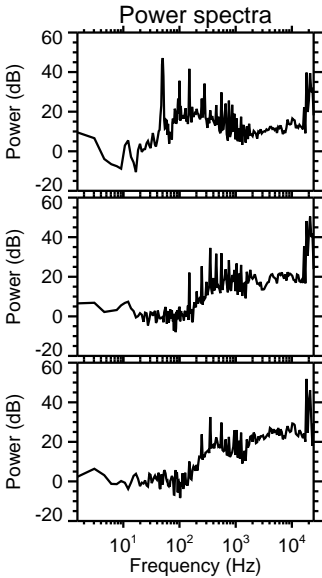
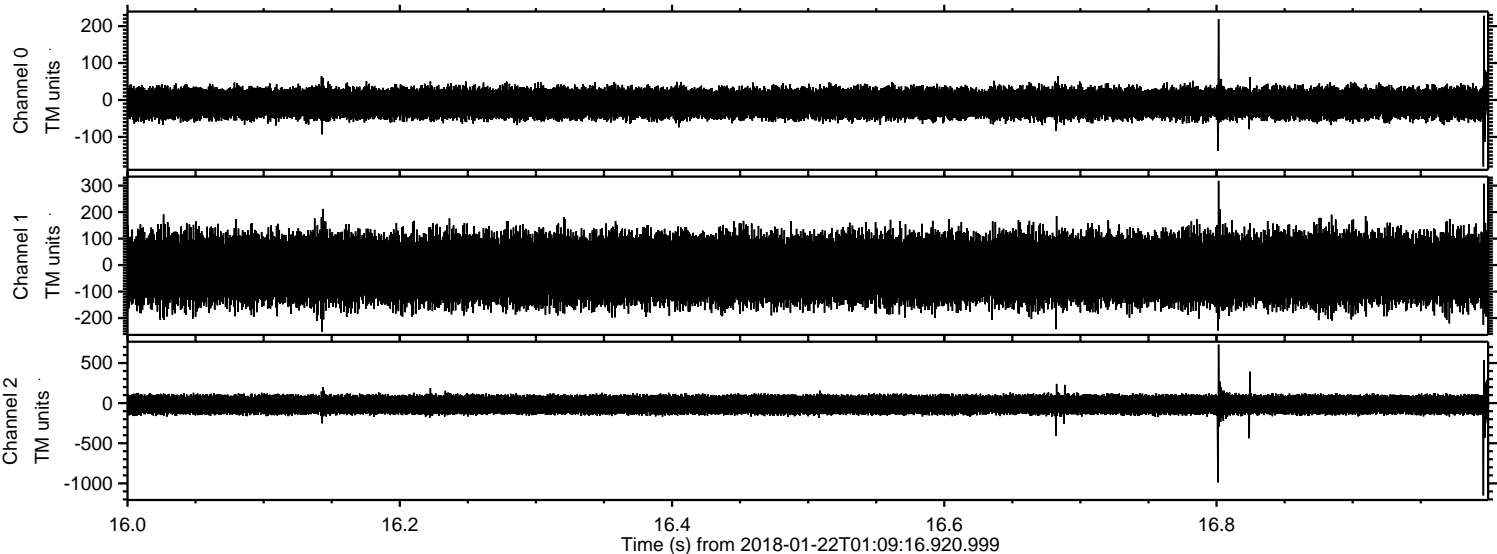
Channel 0
mn: -204
mx: 154
 μ : -9.3
 σ : 21.0

Channel 1
mn: -253
mx: 421
 μ : -15.7
 σ : 64.7

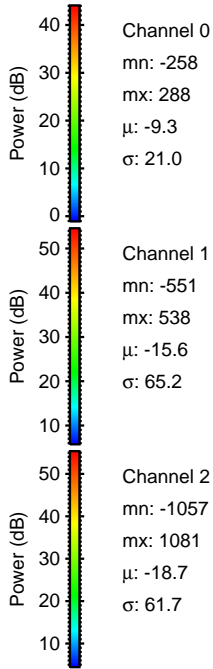
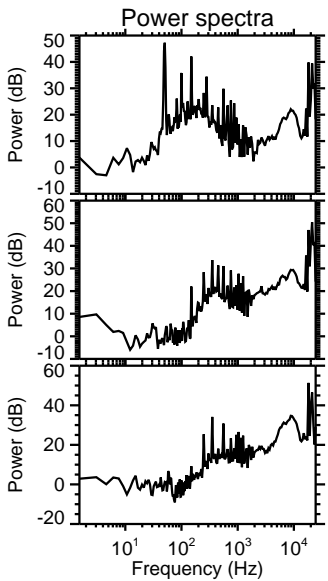
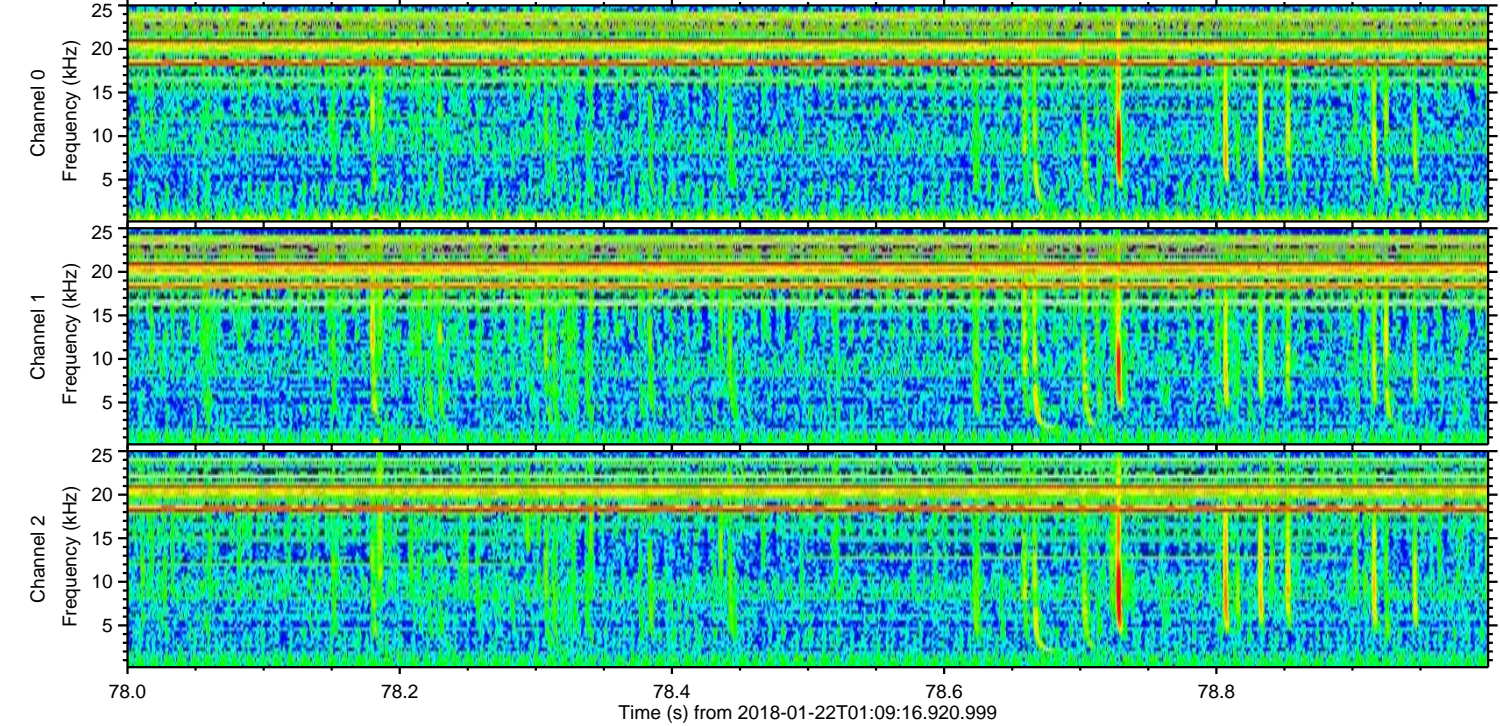
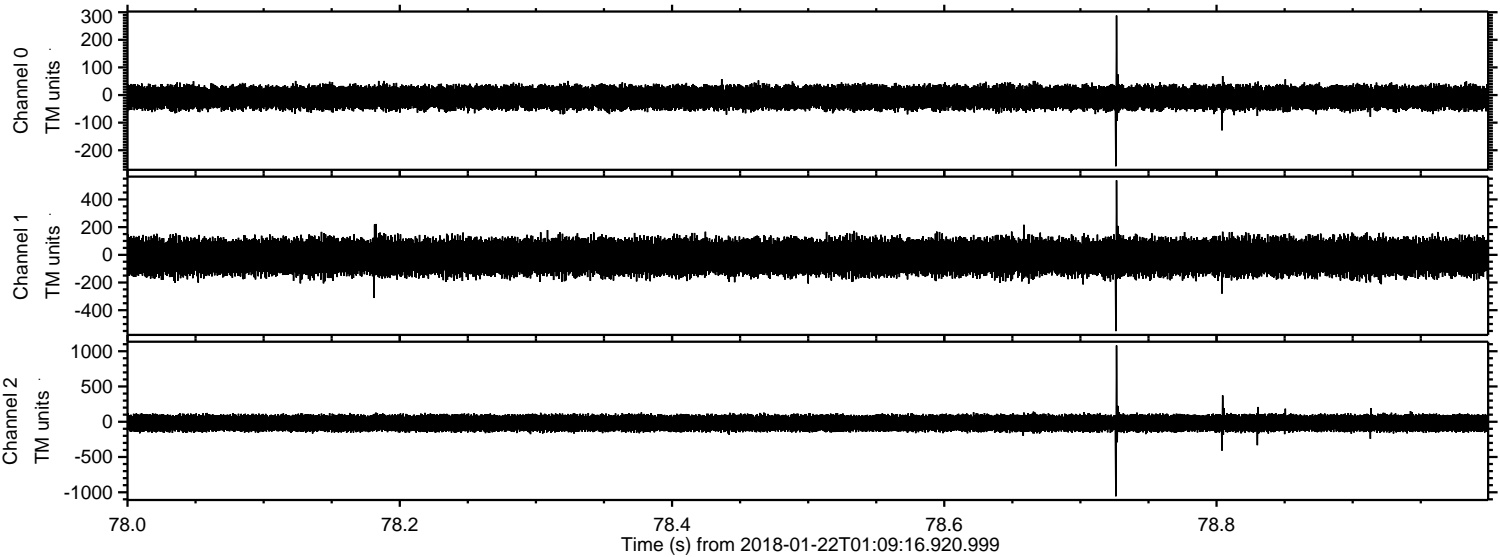
Channel 2
mn: -1255
mx: 860
 μ : -18.7
 σ : 61.0

ELMAVAN 3D WAVEFORMS (Measured data sampled at 50 kHz) 51000 packets of 144 samples from 2018-01-22T01:09:16.920.999. Part 17/147

Processed Mon Jan 22 02:19:55 2018 by ELM ver.2012-10-06 from 001__elm20180122_010915__dat00.bin

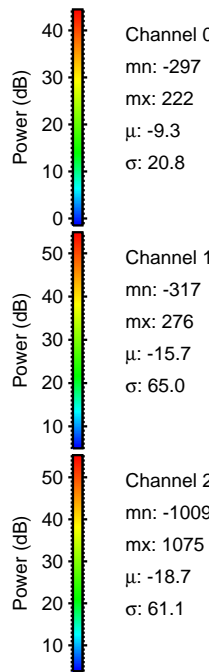
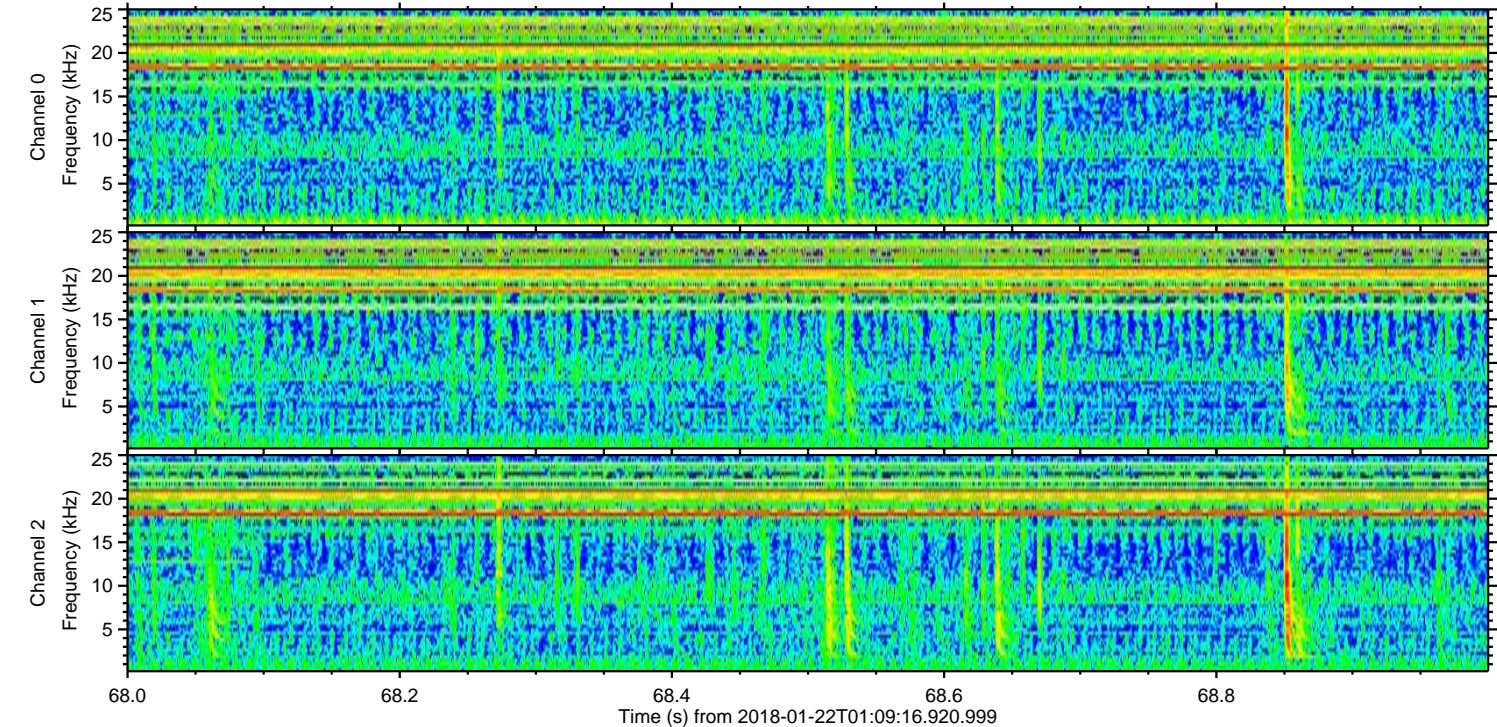
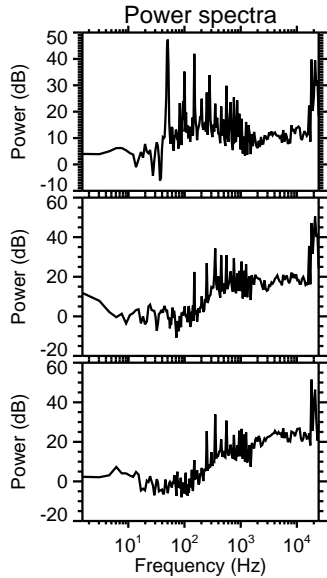
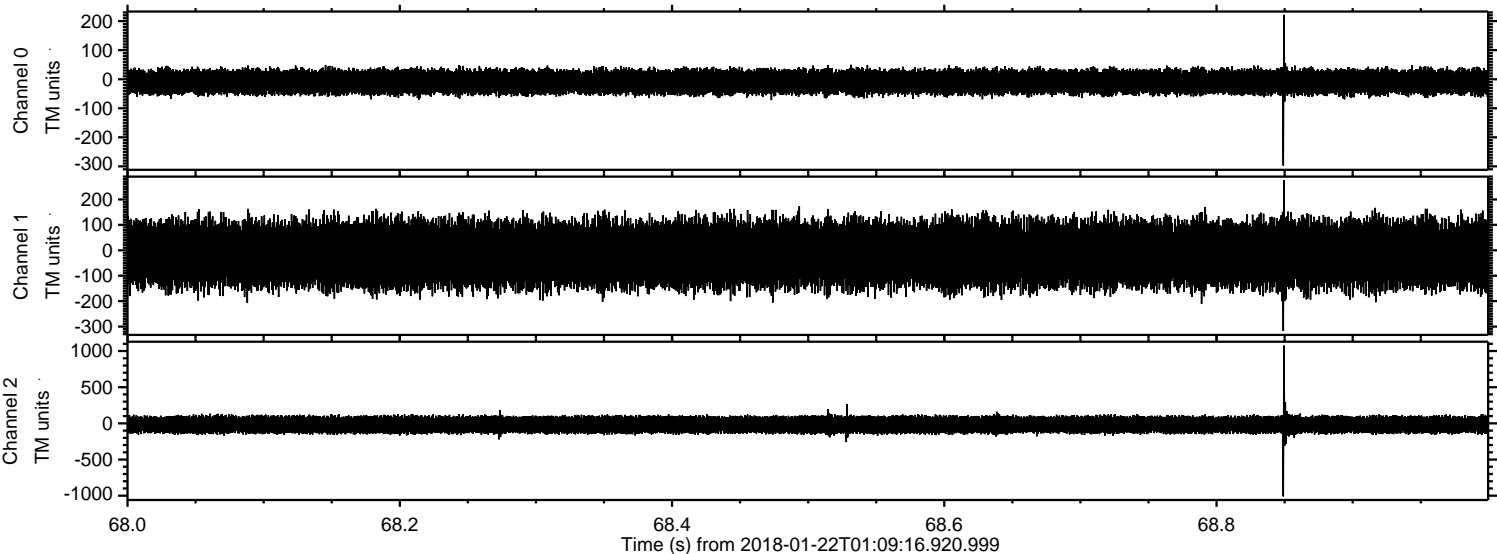


Processed Mon Jan 22 02:19:56 2018 by ELM ver.2012-10-06 from 001__elm20180122_010915__dat00.bin

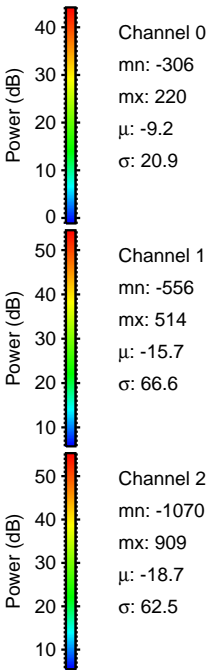
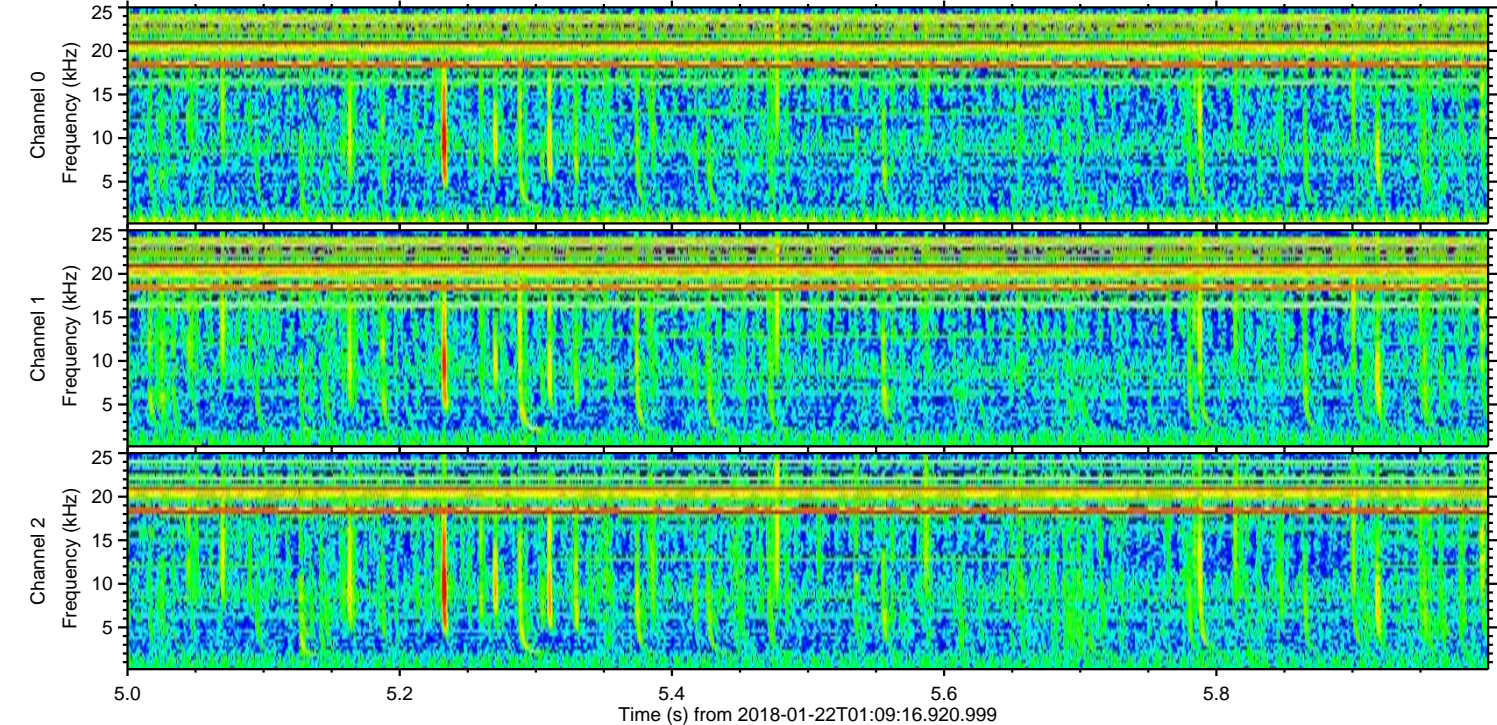
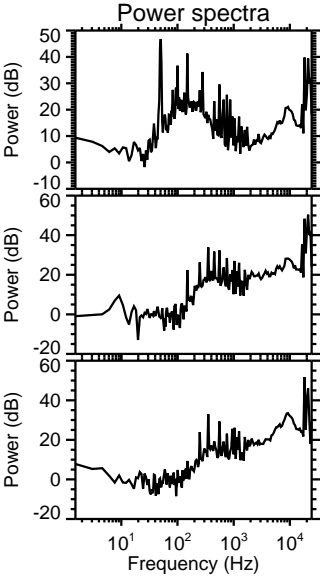
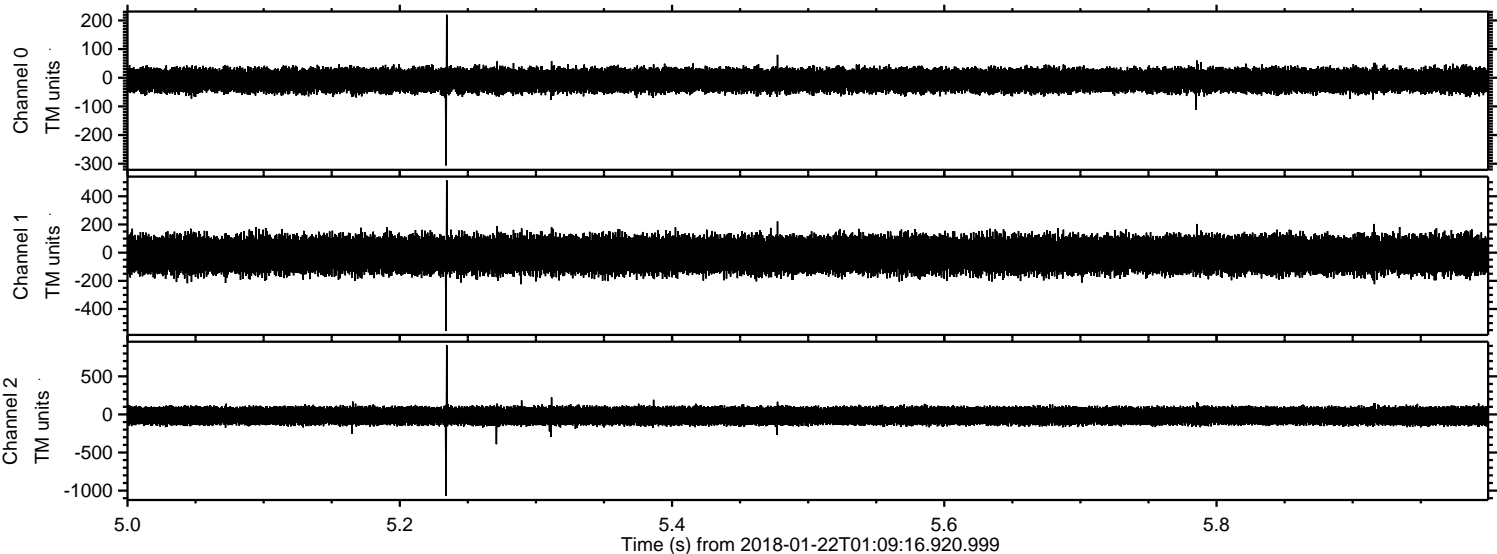


ELMAVAN 3D WAVEFORMS (Measured data sampled at 50 kHz) 51000 packets of 144 samples from 2018-01-22T01:09:16.920.999. Part 69/147

Processed Mon Jan 22 02:19:57 2018 by ELM ver.2012-10-06 from 001__elm20180122_010915__dat00.bin



Processed Mon Jan 22 02:19:57 2018 by ELM ver.2012-10-06 from 001__elm20180122_010915__dat00.bin



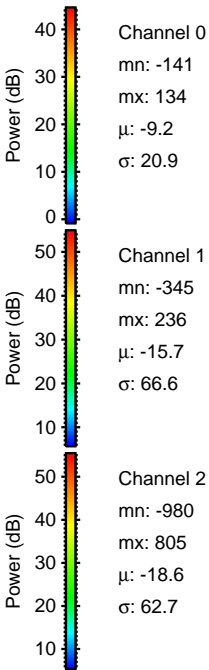
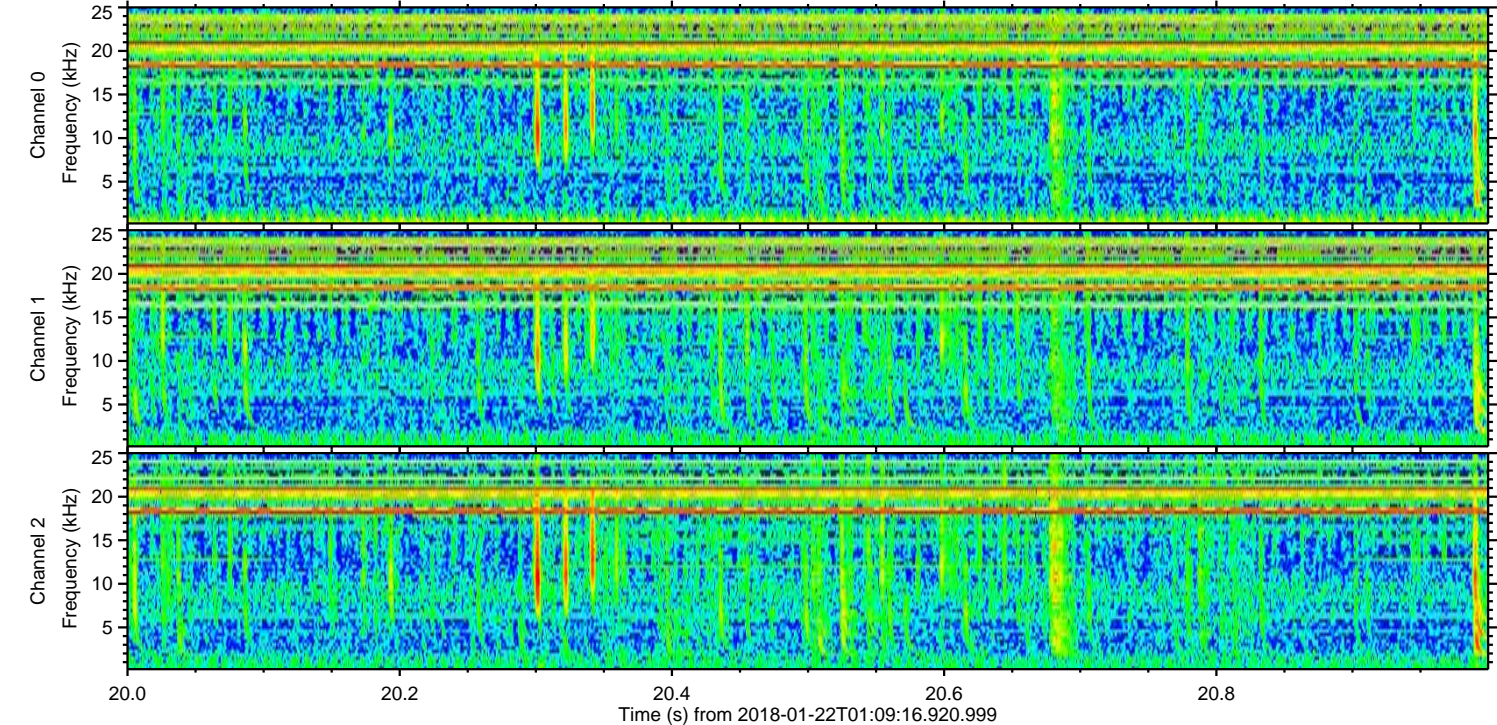
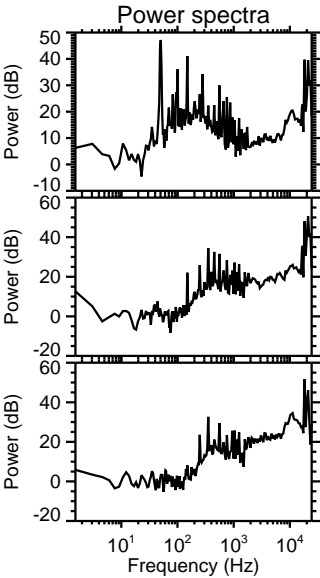
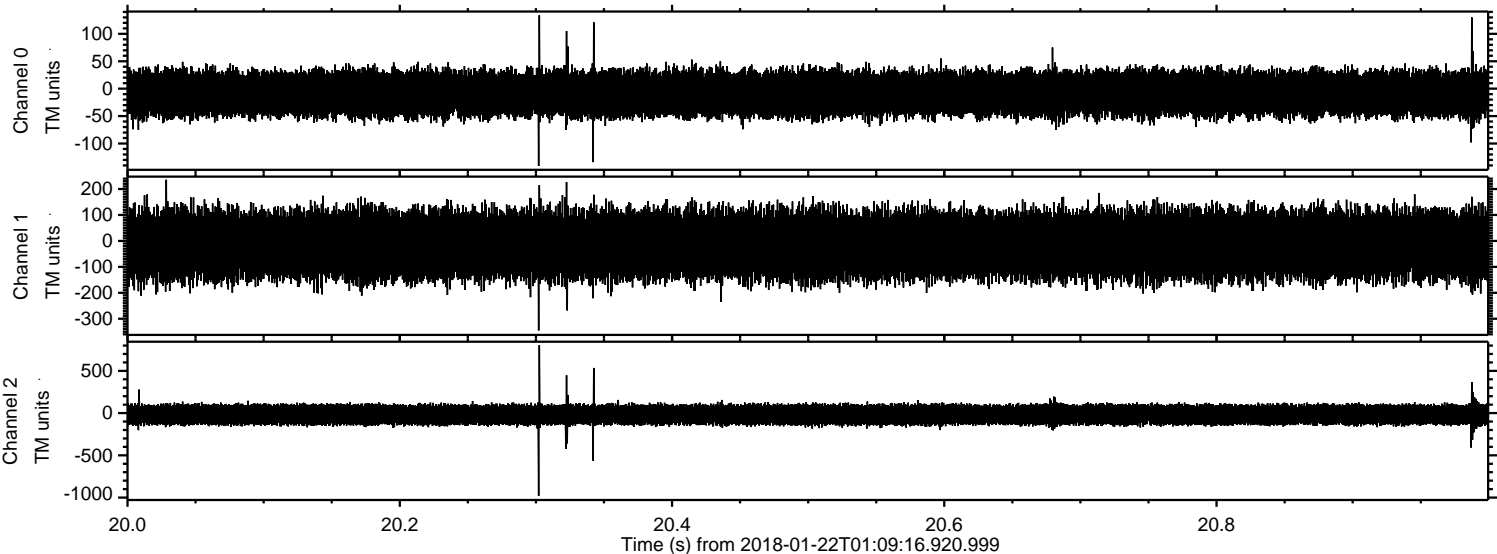
Channel 0
mn: -306
mx: 220
 μ : -9.2
 σ : 20.9

Channel 1
mn: -556
mx: 514
 μ : -15.7
 σ : 66.6

Channel 2
mn: -1070
mx: 909
 μ : -18.7
 σ : 62.5

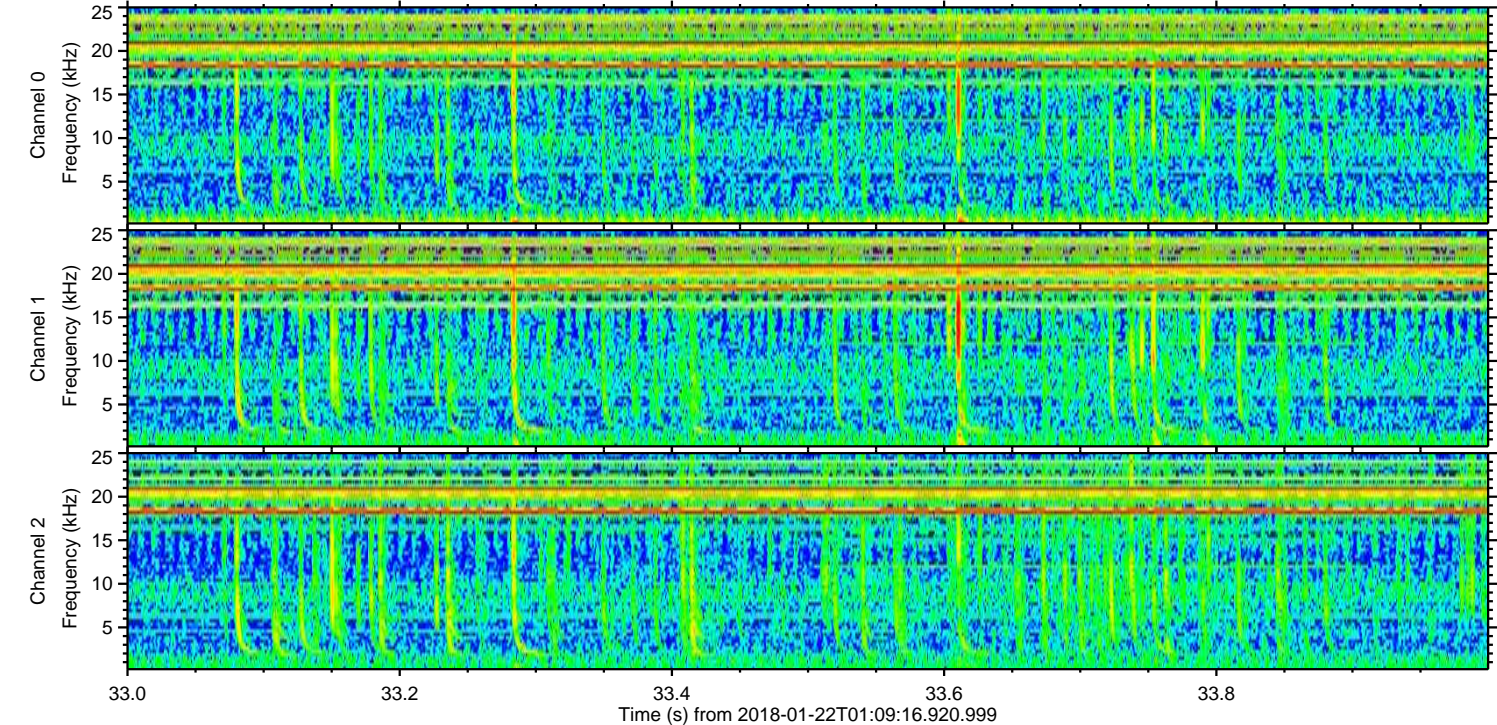
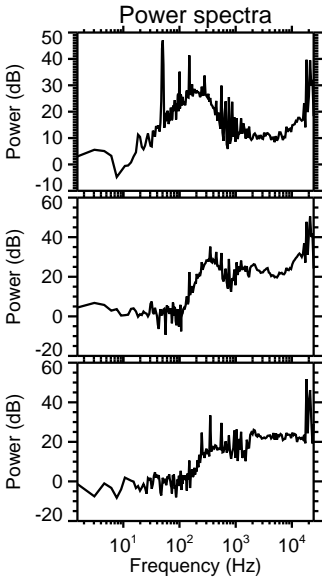
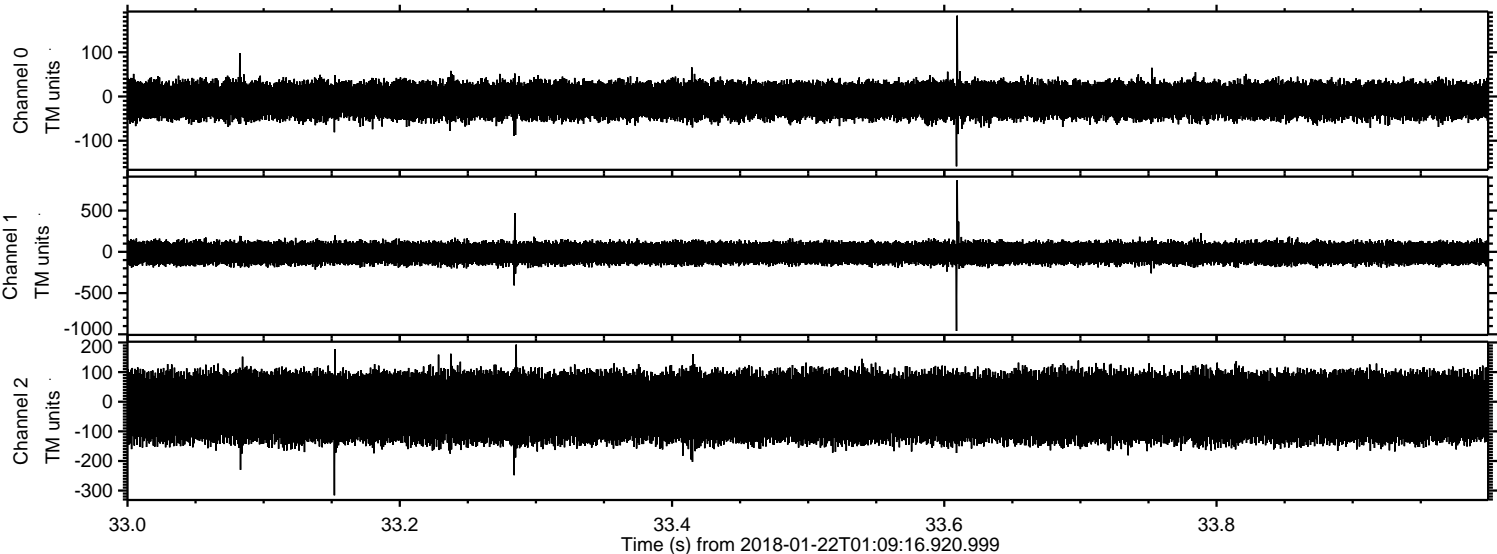
ELMAVAN 3D WAVEFORMS (Measured data sampled at 50 kHz) 51000 packets of 144 samples from 2018-01-22T01:09:16.920.999. Part 21/147

Processed Mon Jan 22 02:19:58 2018 by ELM ver.2012-10-06 from 001__elm20180122_010915__dat00.bin



ELMAVAN 3D WAVEFORMS (Measured data sampled at 50 kHz) 51000 packets of 144 samples from 2018-01-22T01:09:16.920.999. Part 34/147

Processed Mon Jan 22 02:19:59 2018 by ELM ver.2012-10-06 from 001__elm20180122_010915__dat00.bin



ELMAVAN 3D WAVEFORMS (Measured data sampled at 50 kHz) 51000 packets of 144 samples from 2018-01-22T01:09:16.920.999. Part 41/147

Processed Mon Jan 22 02:20:00 2018 by ELM ver.2012-10-06 from 001__elm20180122_010915__dat00.bin

