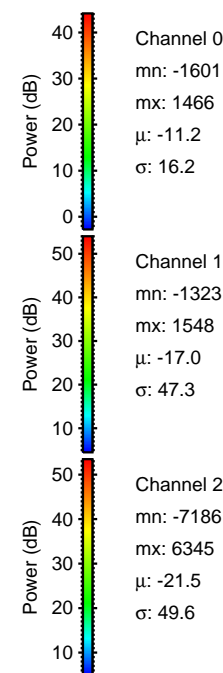
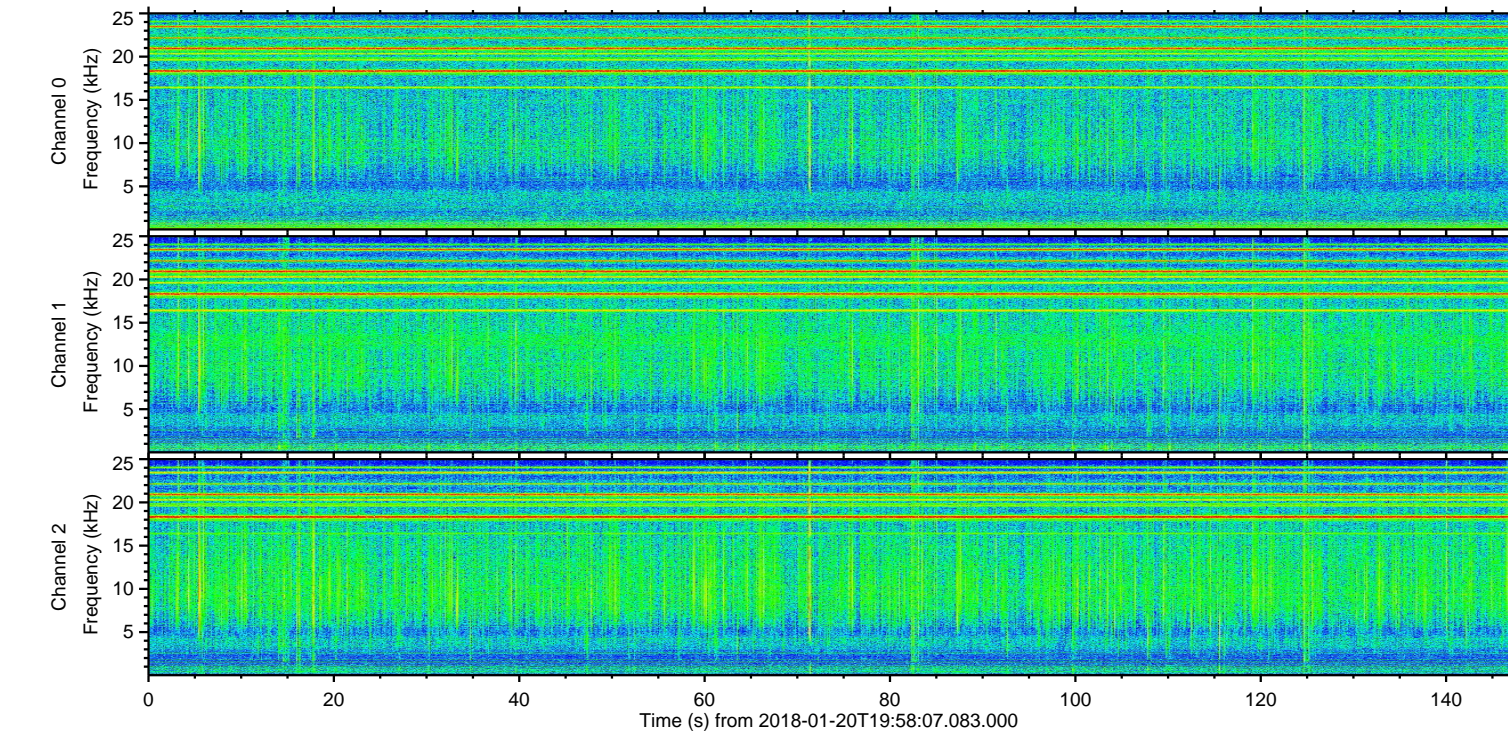
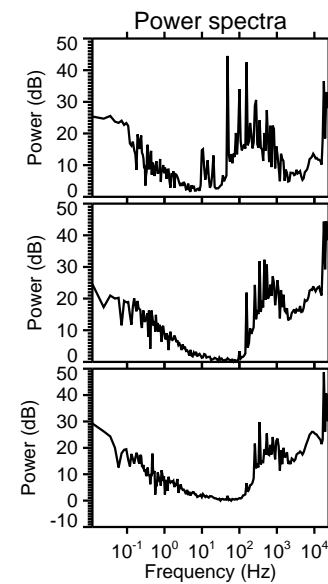
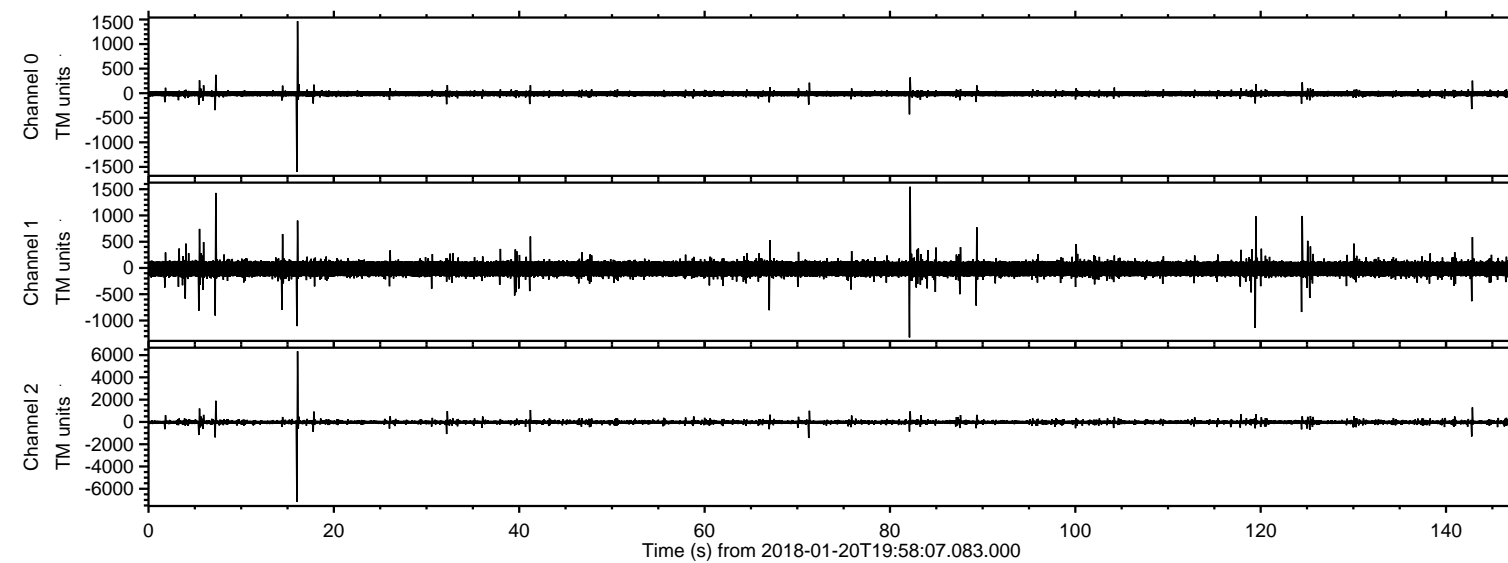


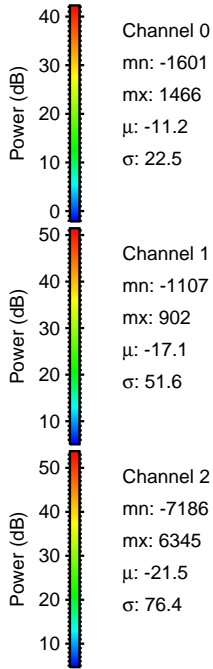
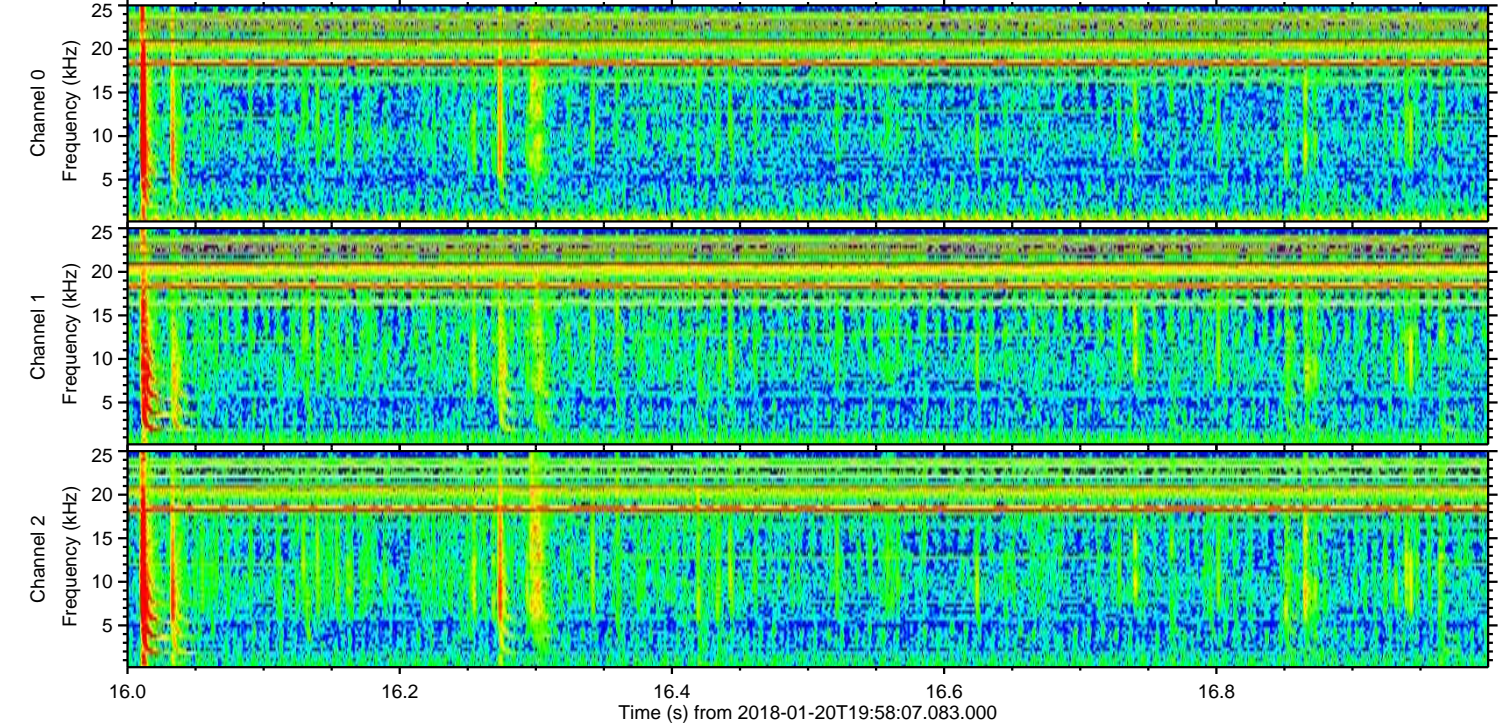
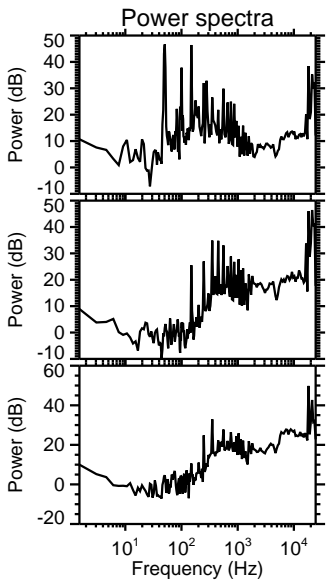
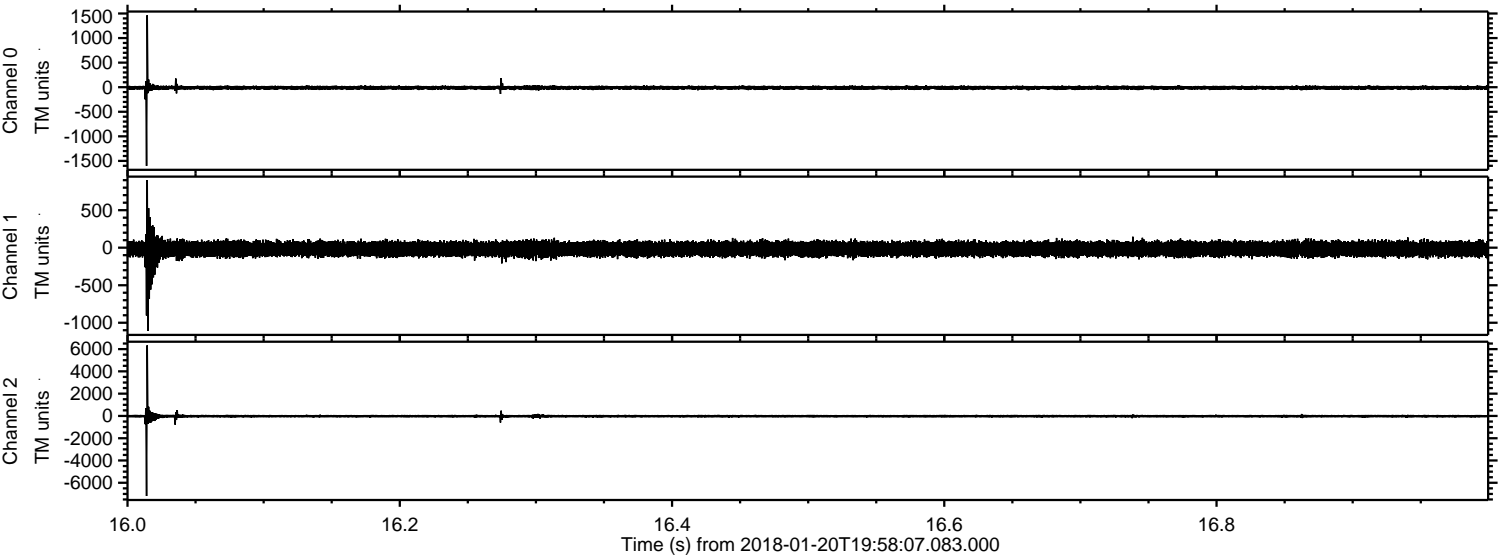
ELMAVAN 3D WAVEFORMS (Measured data sampled at 50 kHz) 51000 packets of 144 samples from 2018-01-20T19:58:07.083.000.

Processed Sat Jan 20 21:06:24 2018 by ELM ver.2012-10-06 from 001__elm20180120_195806__dat00.bin



ELMAVAN 3D WAVEFORMS (Measured data sampled at 50 kHz) 51000 packets of 144 samples from 2018-01-20T19:58:07.083.000. Part 17/147

Processed Sat Jan 20 21:06:32 2018 by ELM ver.2012-10-06 from 001__elm20180120_195806__dat00.bin

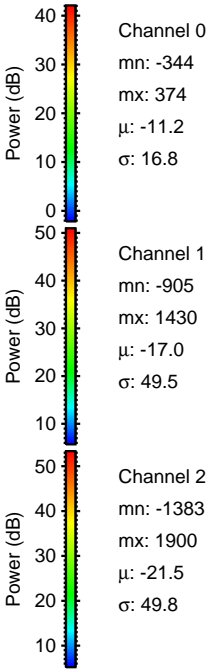
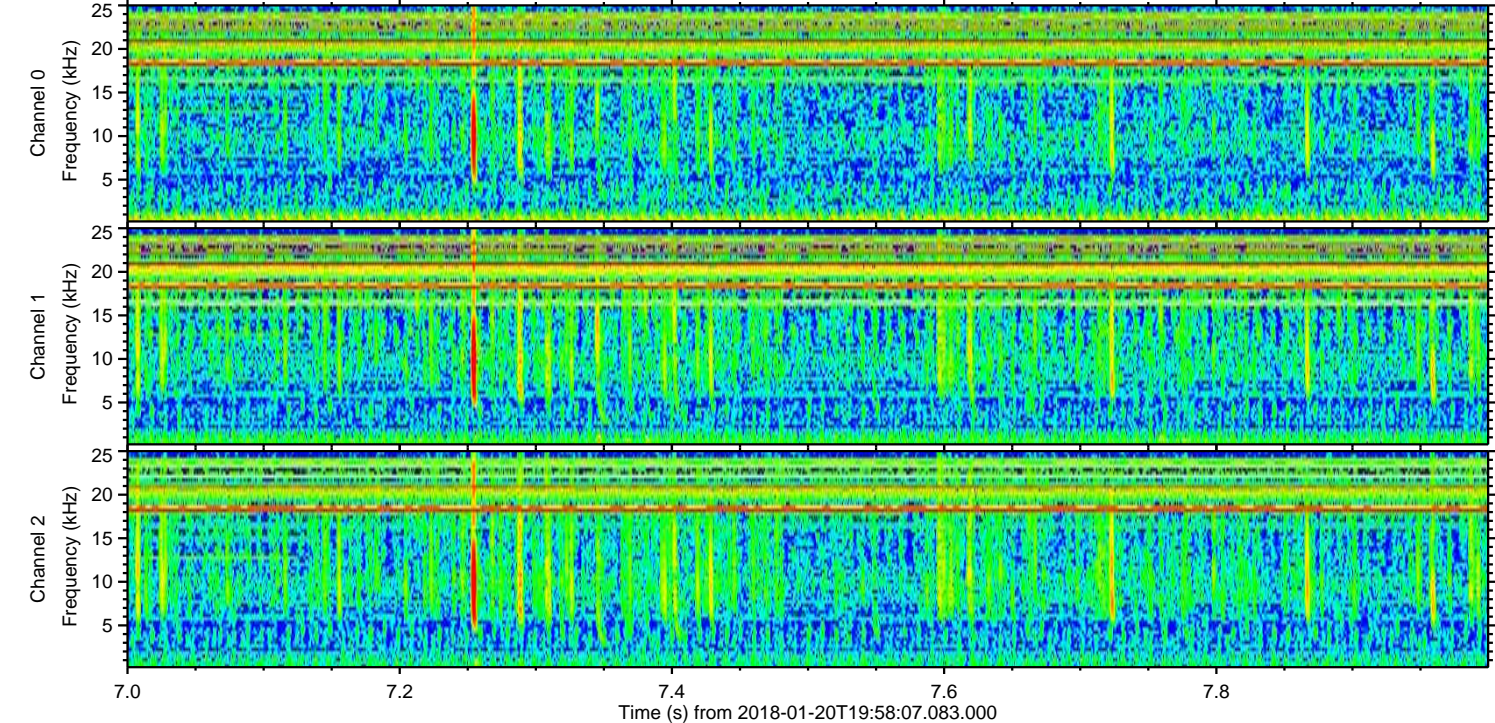
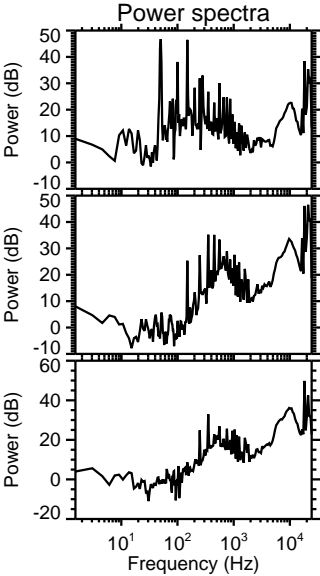
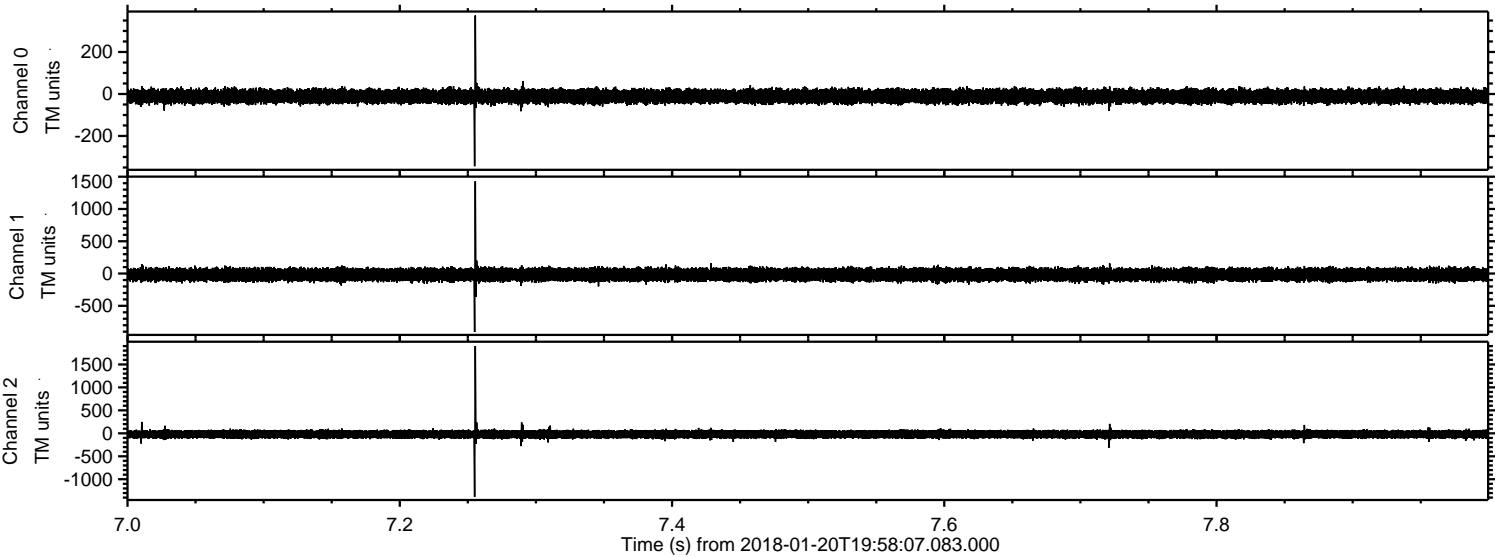


Channel 0
mn: -1601
mx: 1466
 μ : -11.2
 σ : 22.5

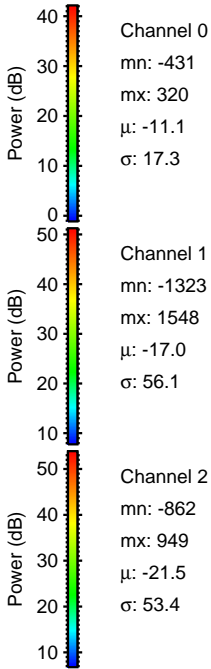
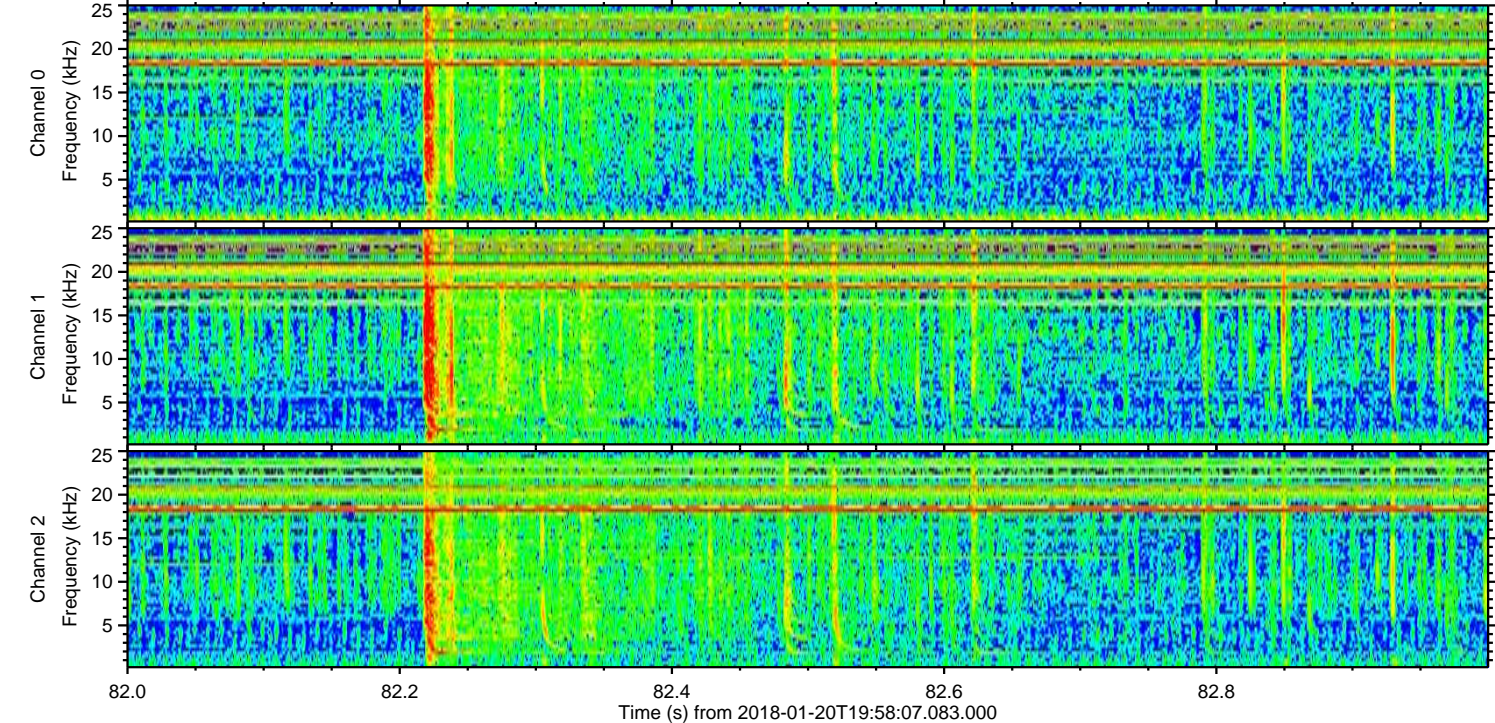
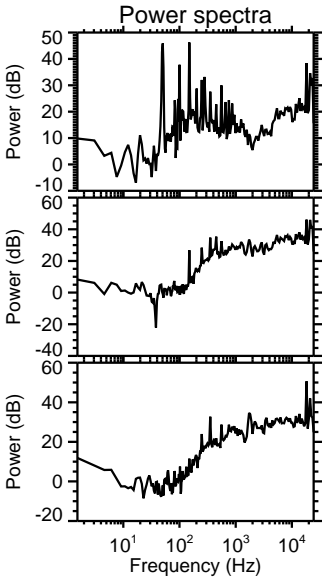
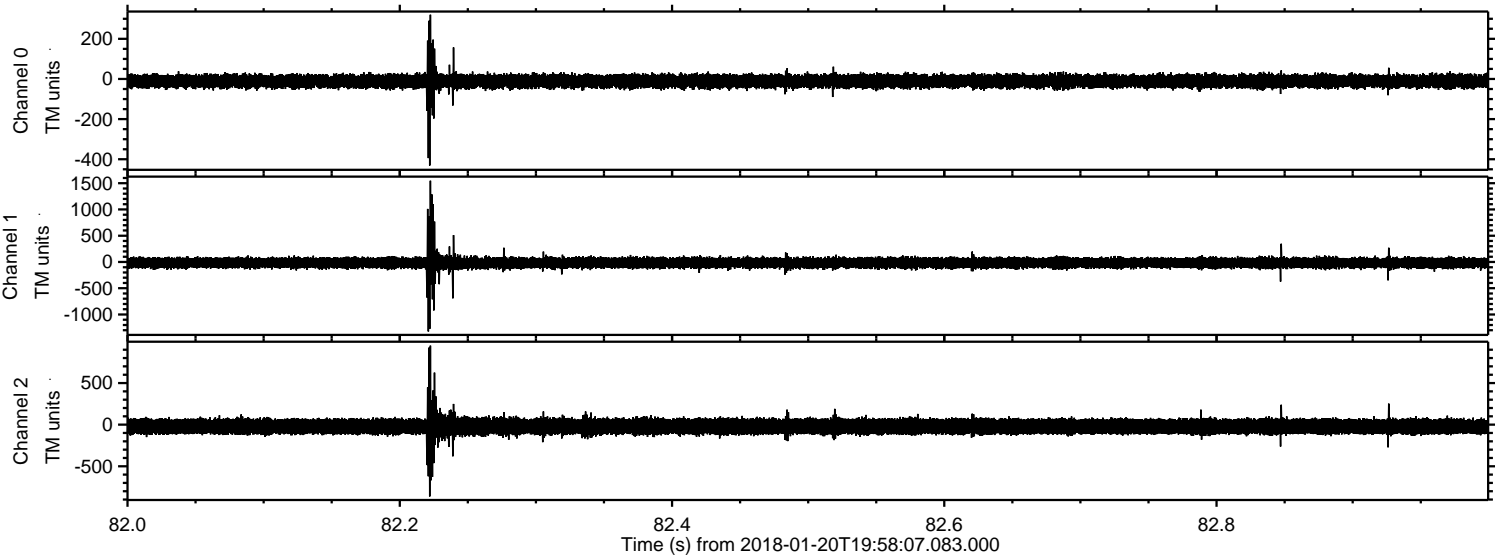
Channel 1
mn: -1107
mx: 902
 μ : -17.1
 σ : 51.6

Channel 2
mn: -7186
mx: 6345
 μ : -21.5
 σ : 76.4

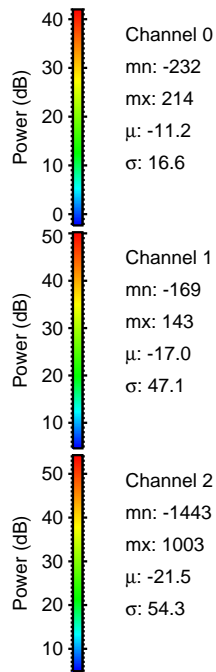
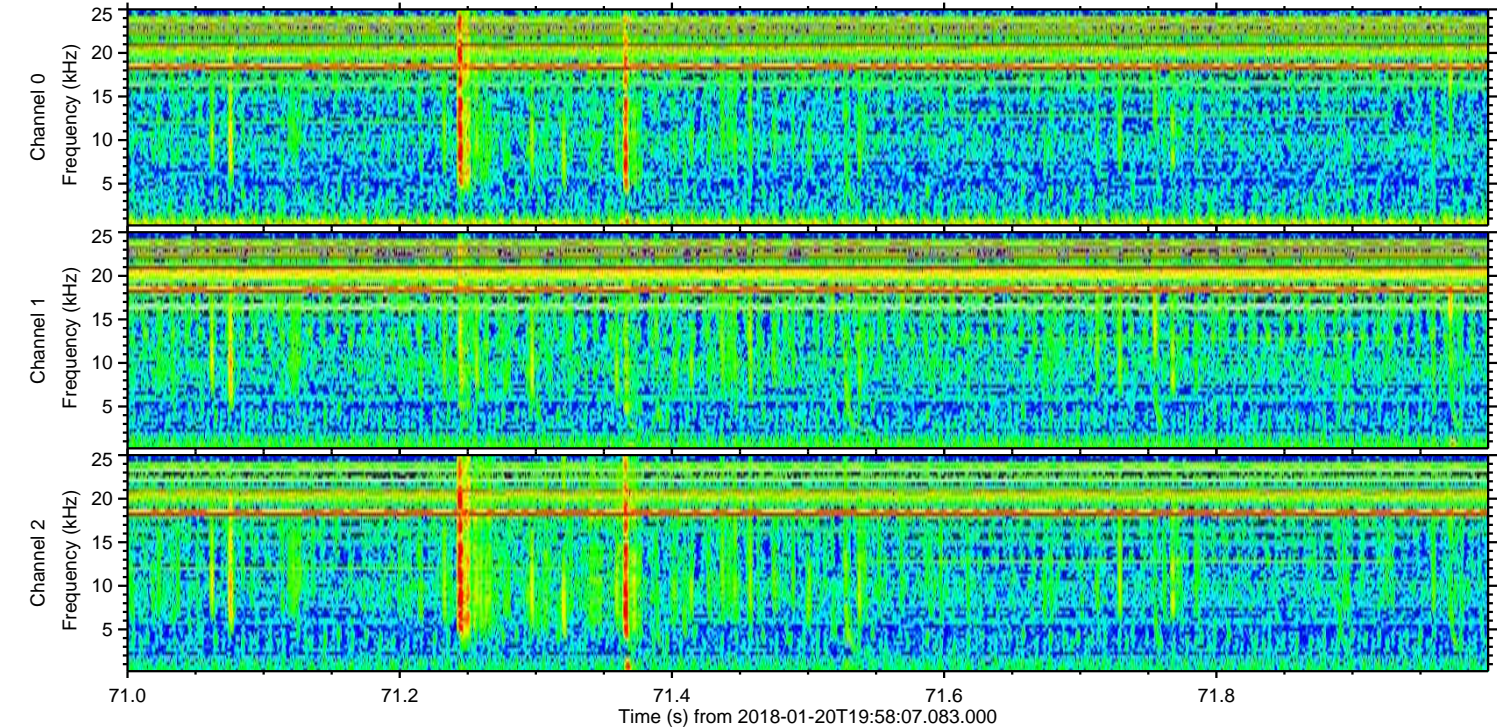
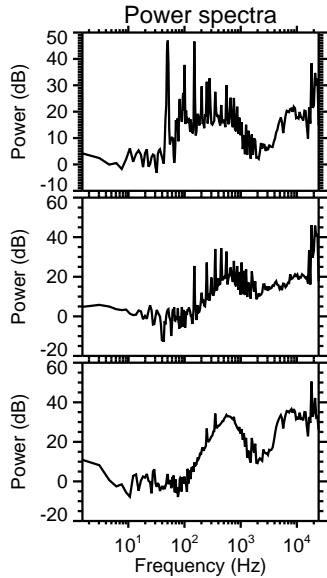
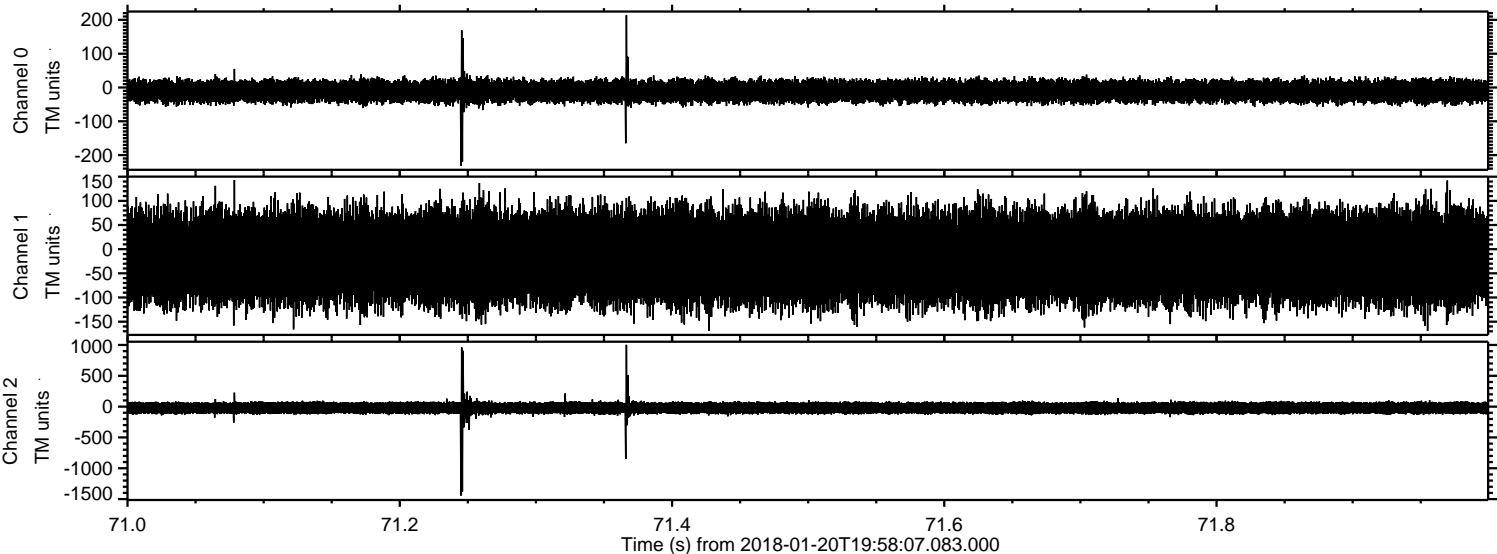
Processed Sat Jan 20 21:06:32 2018 by ELM ver.2012-10-06 from 001__elm20180120_195806__dat00.bin



Processed Sat Jan 20 21:06:33 2018 by ELM ver.2012-10-06 from 001__elm20180120_195806__dat00.bin

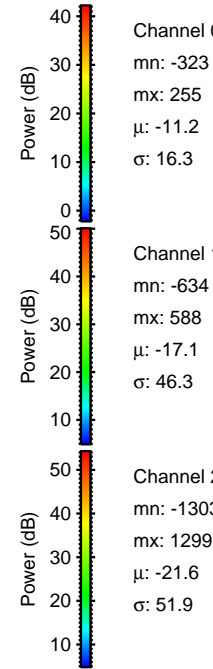
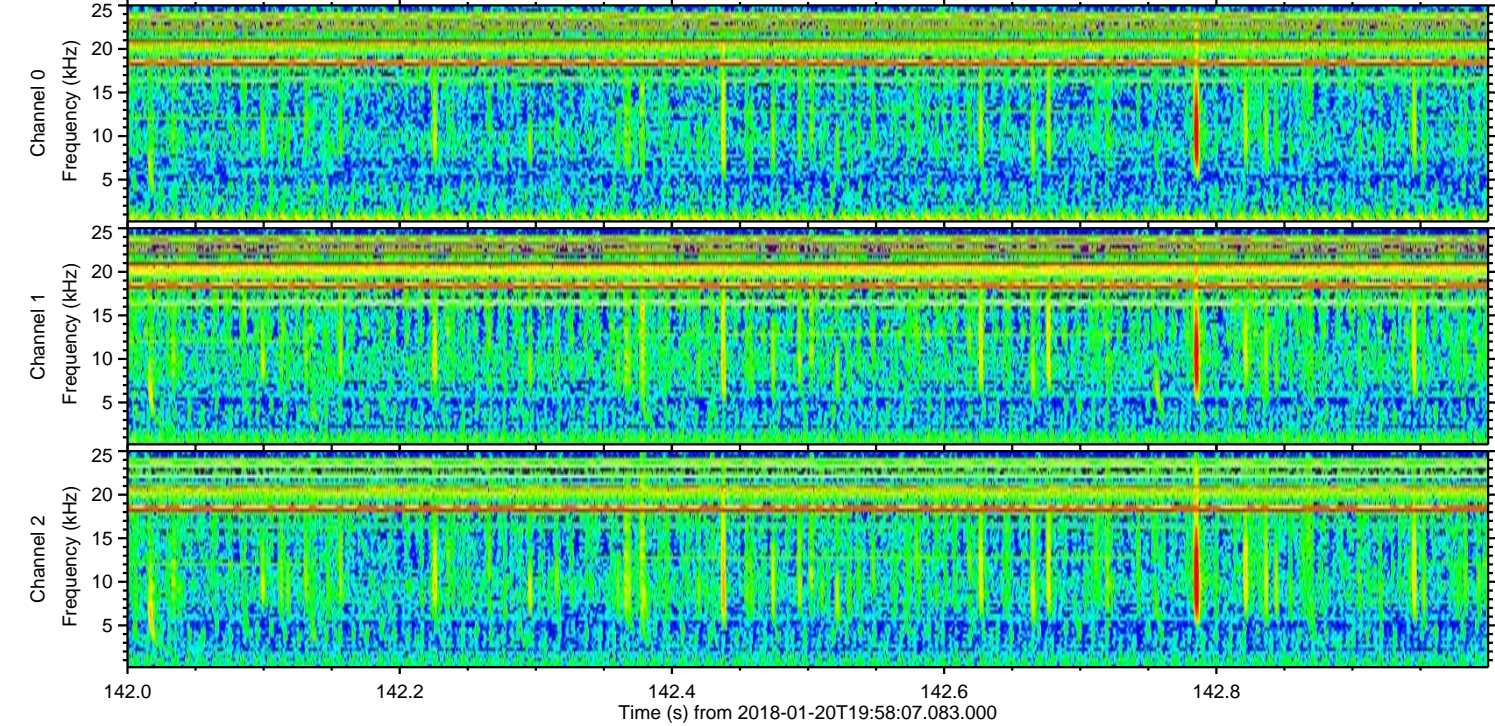
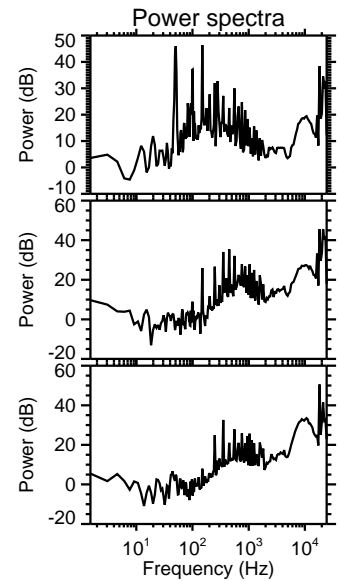
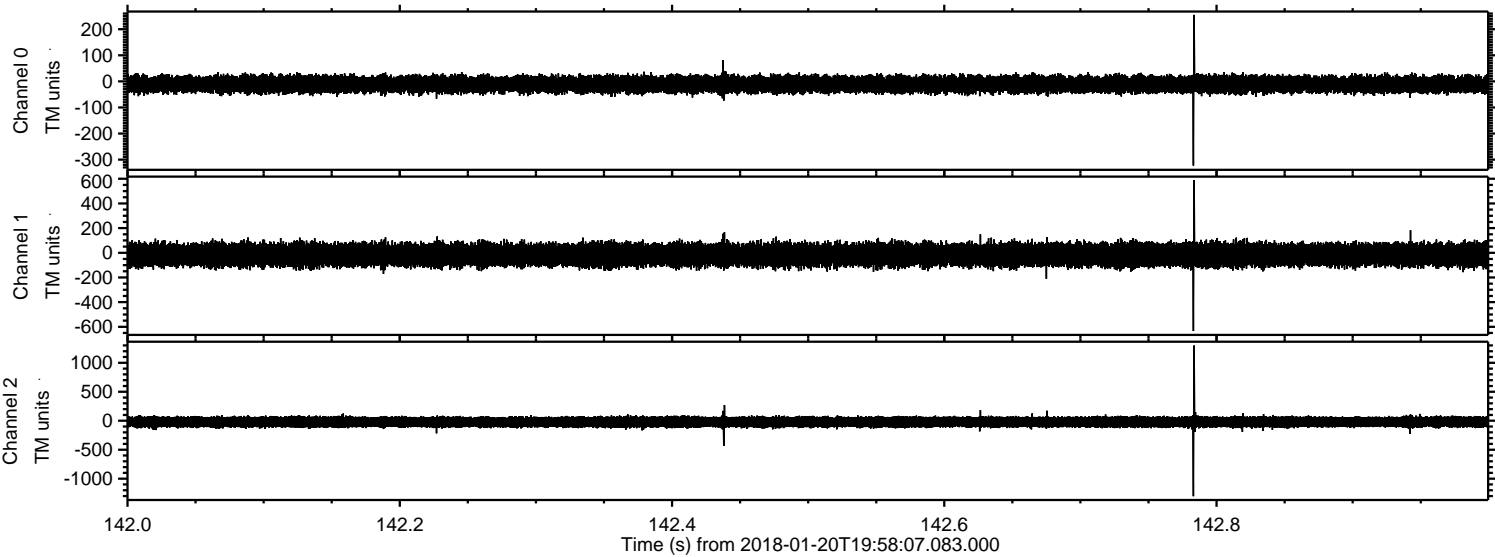


Processed Sat Jan 20 21:06:34 2018 by ELM ver.2012-10-06 from 001__elm20180120_195806__dat00.bin

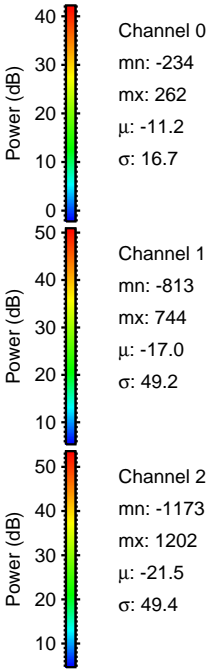
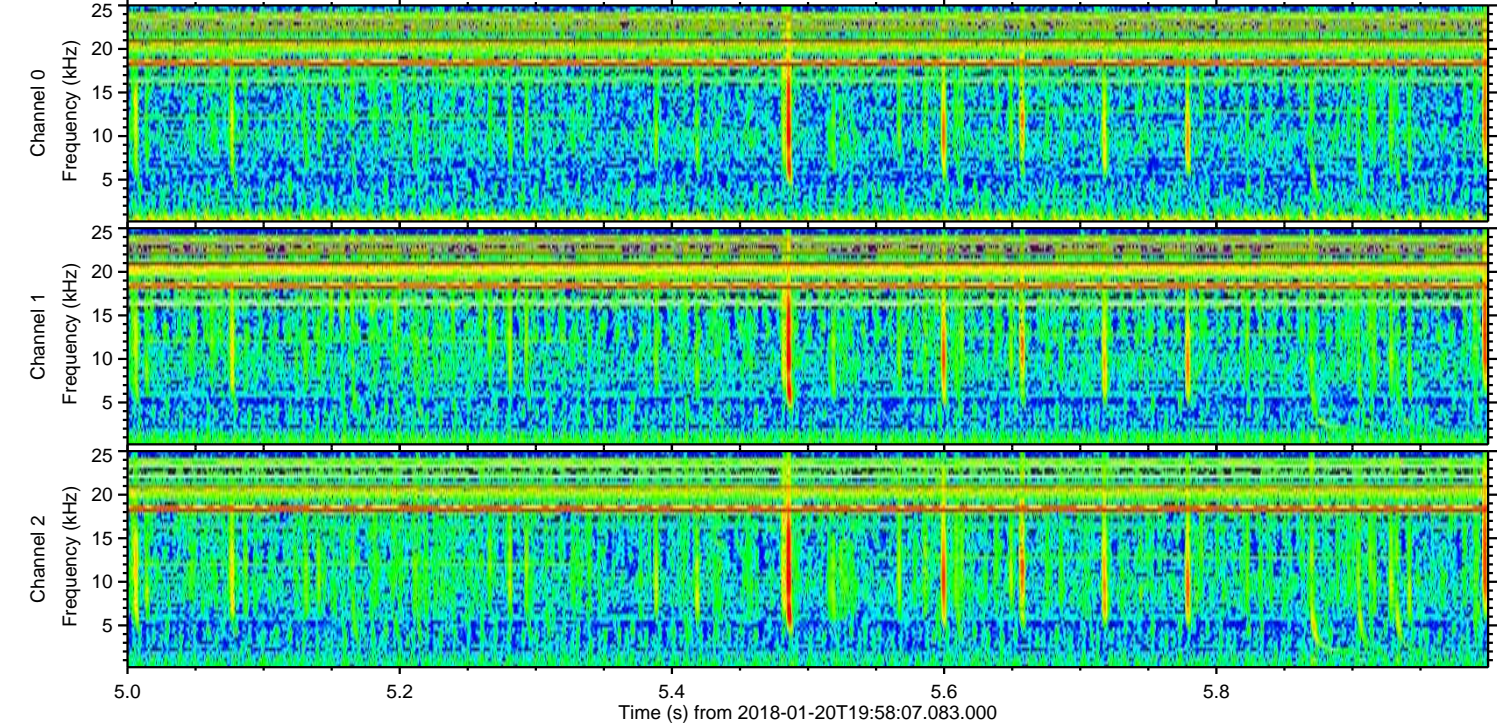
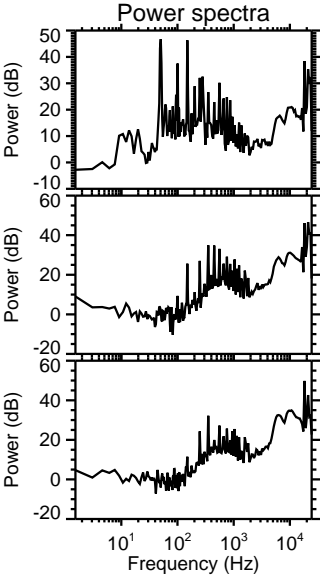
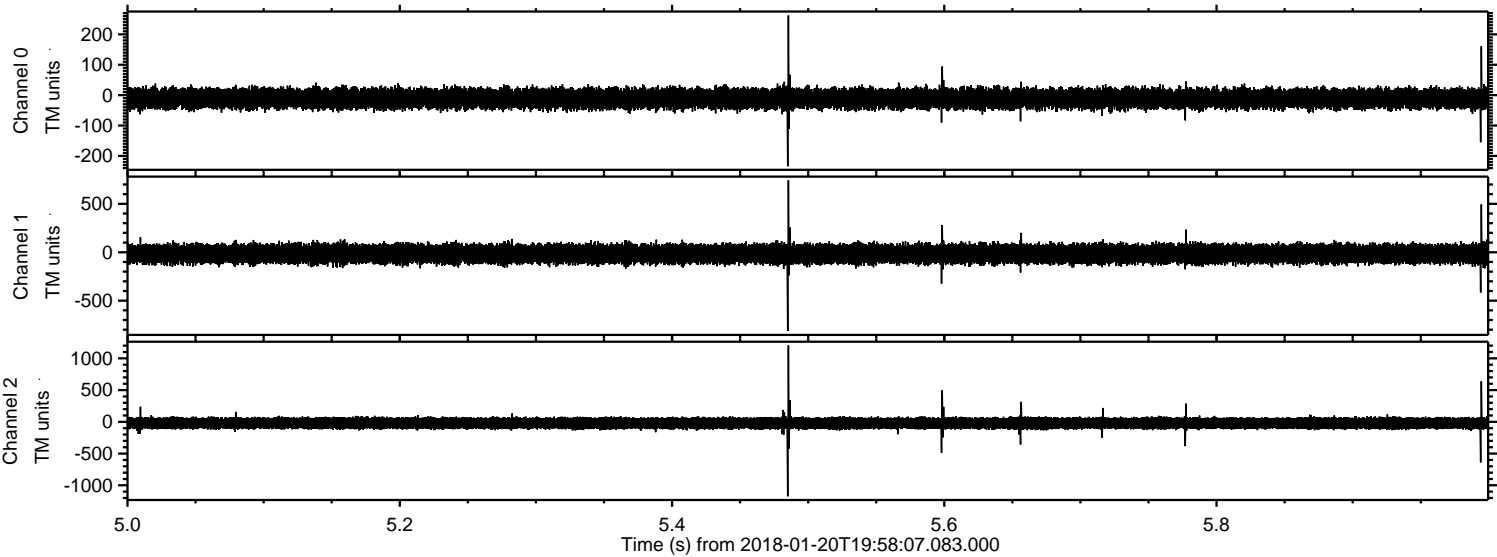


ELMAVAN 3D WAVEFORMS (Measured data sampled at 50 kHz) 51000 packets of 144 samples from 2018-01-20T19:58:07.083.000. Part 143/147

Processed Sat Jan 20 21:06:35 2018 by ELM ver.2012-10-06 from 001__elm20180120_195806__dat00.bin

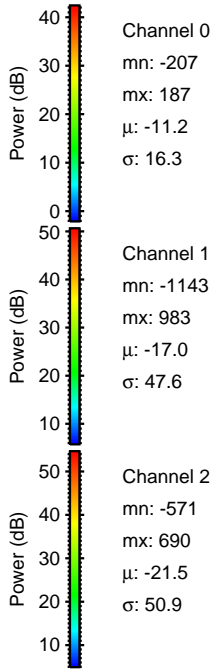
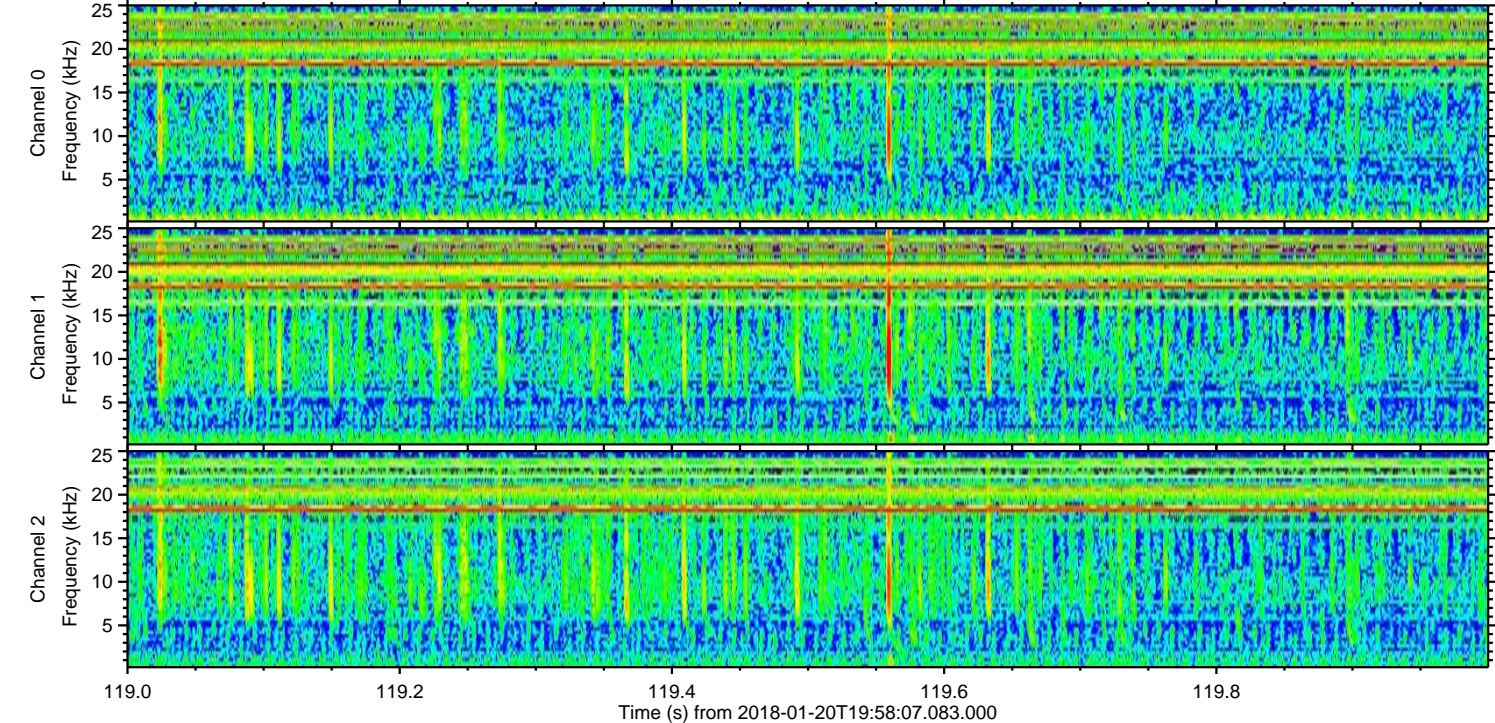
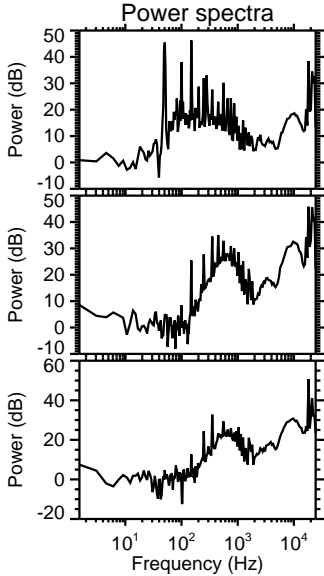
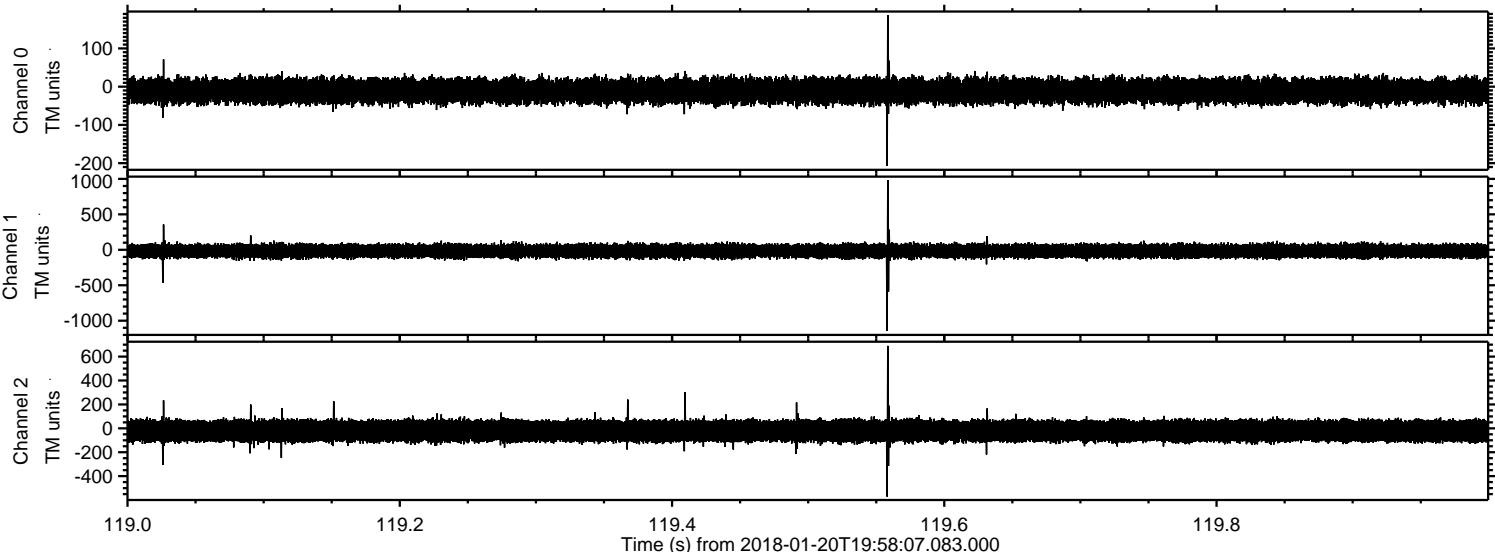


Processed Sat Jan 20 21:06:36 2018 by ELM ver.2012-10-06 from 001__elm20180120_195806__dat00.bin

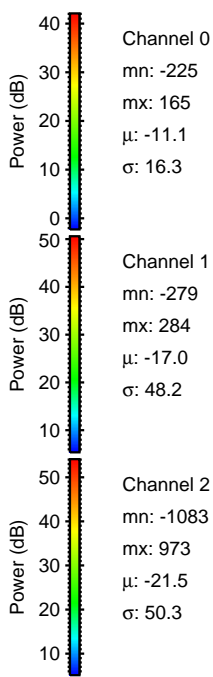
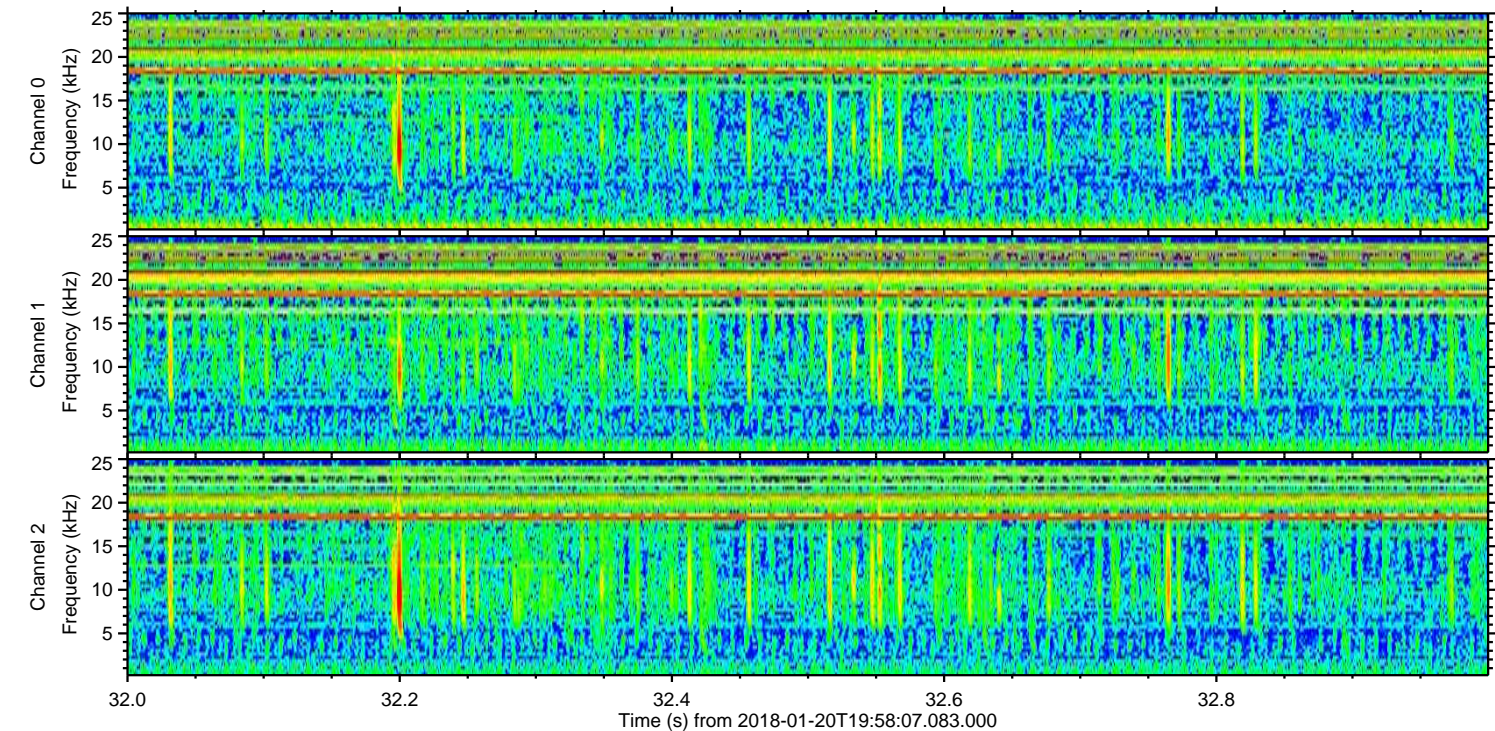
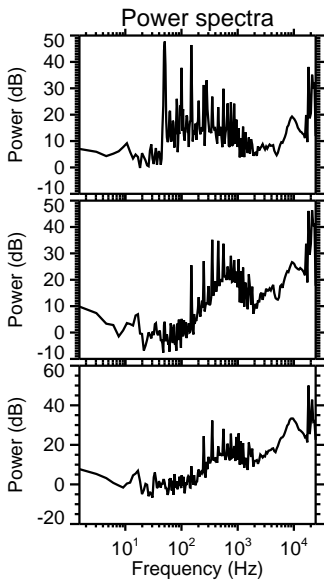
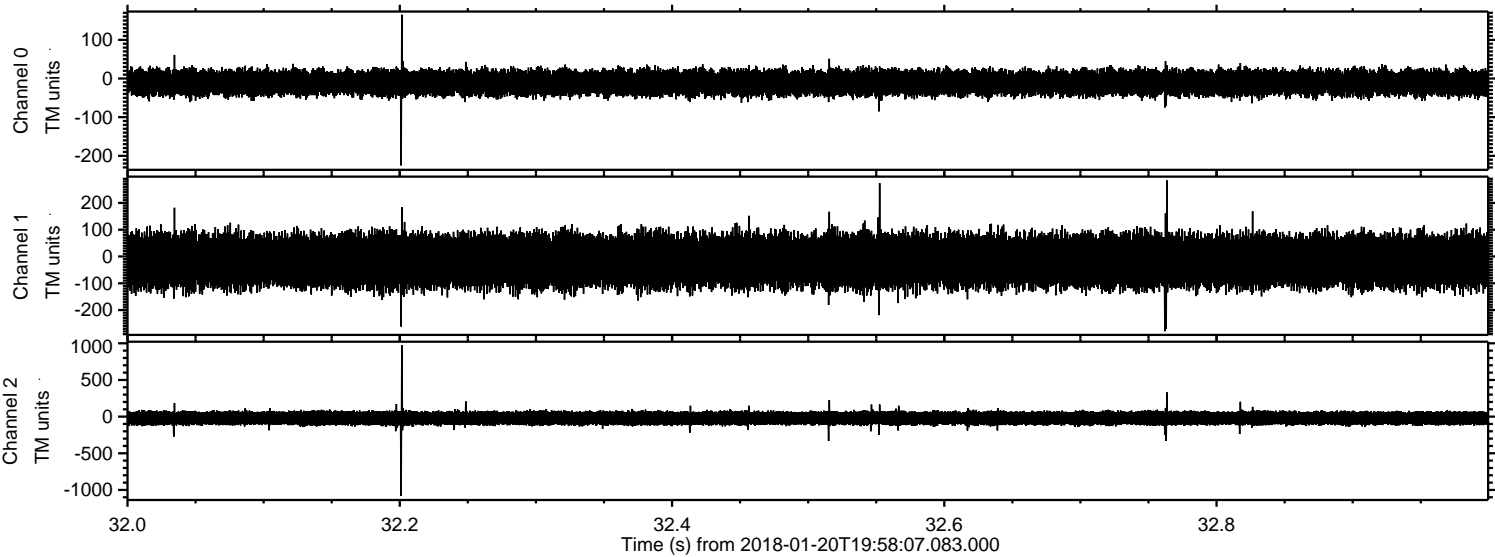


ELMAVAN 3D WAVEFORMS (Measured data sampled at 50 kHz) 51000 packets of 144 samples from 2018-01-20T19:58:07.083.000. Part 120/147

Processed Sat Jan 20 21:06:36 2018 by ELM ver.2012-10-06 from 001__elm20180120_195806__dat00.bin



Processed Sat Jan 20 21:06:37 2018 by ELM ver.2012-10-06 from 001__elm20180120_195806__dat00.bin

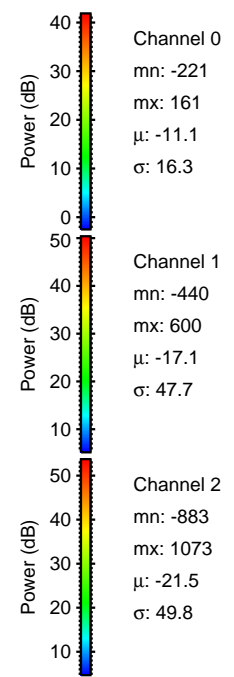
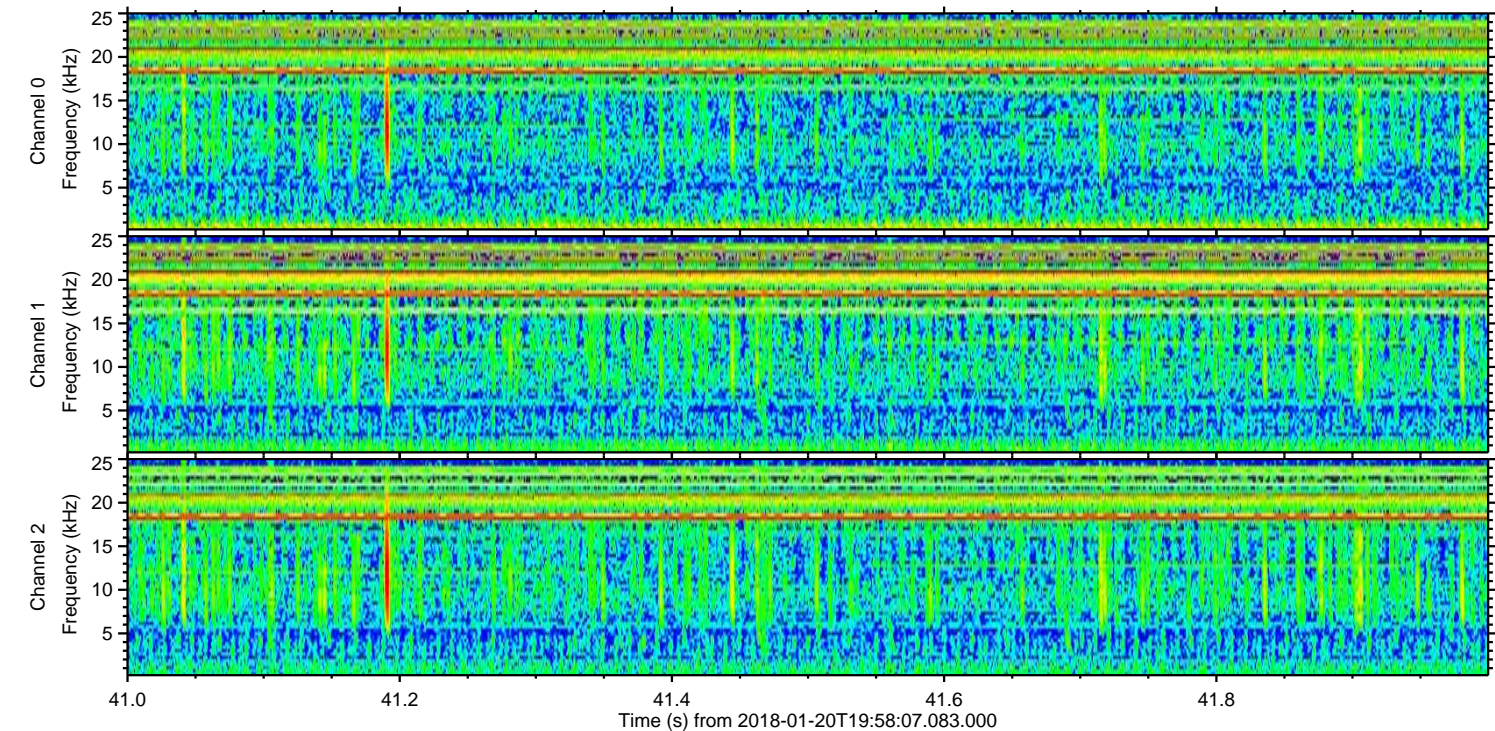
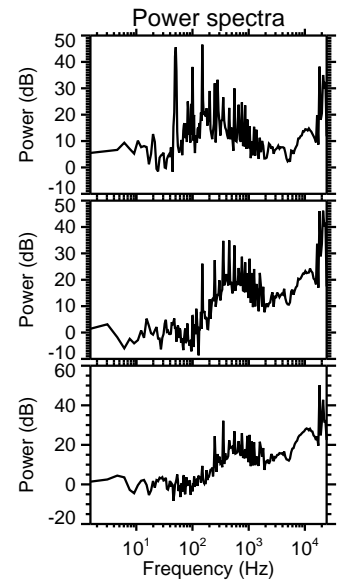
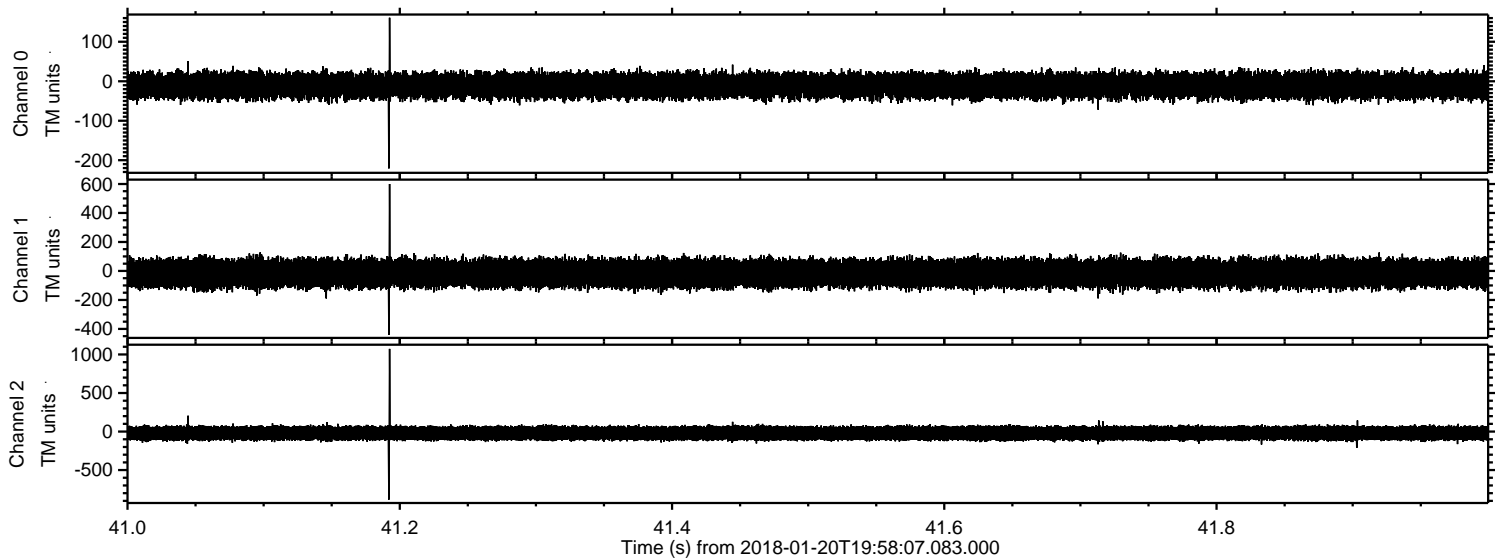


Channel 0
mn: -225
mx: 165
 μ : -11.1
 σ : 16.3

Channel 1
mn: -279
mx: 284
 μ : -17.0
 σ : 48.2

Channel 2
mn: -1083
mx: 973
 μ : -21.5
 σ : 50.3

Processed Sat Jan 20 21:06:38 2018 by ELM ver.2012-10-06 from 001__elm20180120_195806__dat00.bin



Channel 0
mn: -221
mx: 161
 μ : -11.1
 σ : 16.3

Channel 1
mn: -440
mx: 600
 μ : -17.1
 σ : 47.7

Channel 2
mn: -883
mx: 1073
 μ : -21.5
 σ : 49.8

Processed Sat Jan 20 21:06:39 2018 by ELM ver.2012-10-06 from 001__elm20180120_195806__dat00.bin

