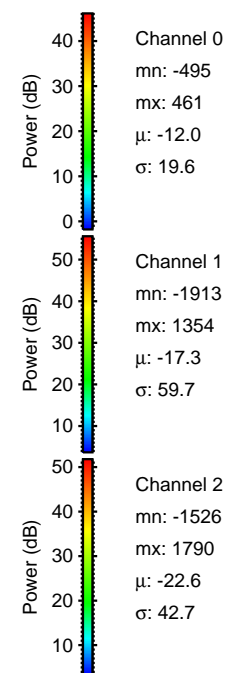
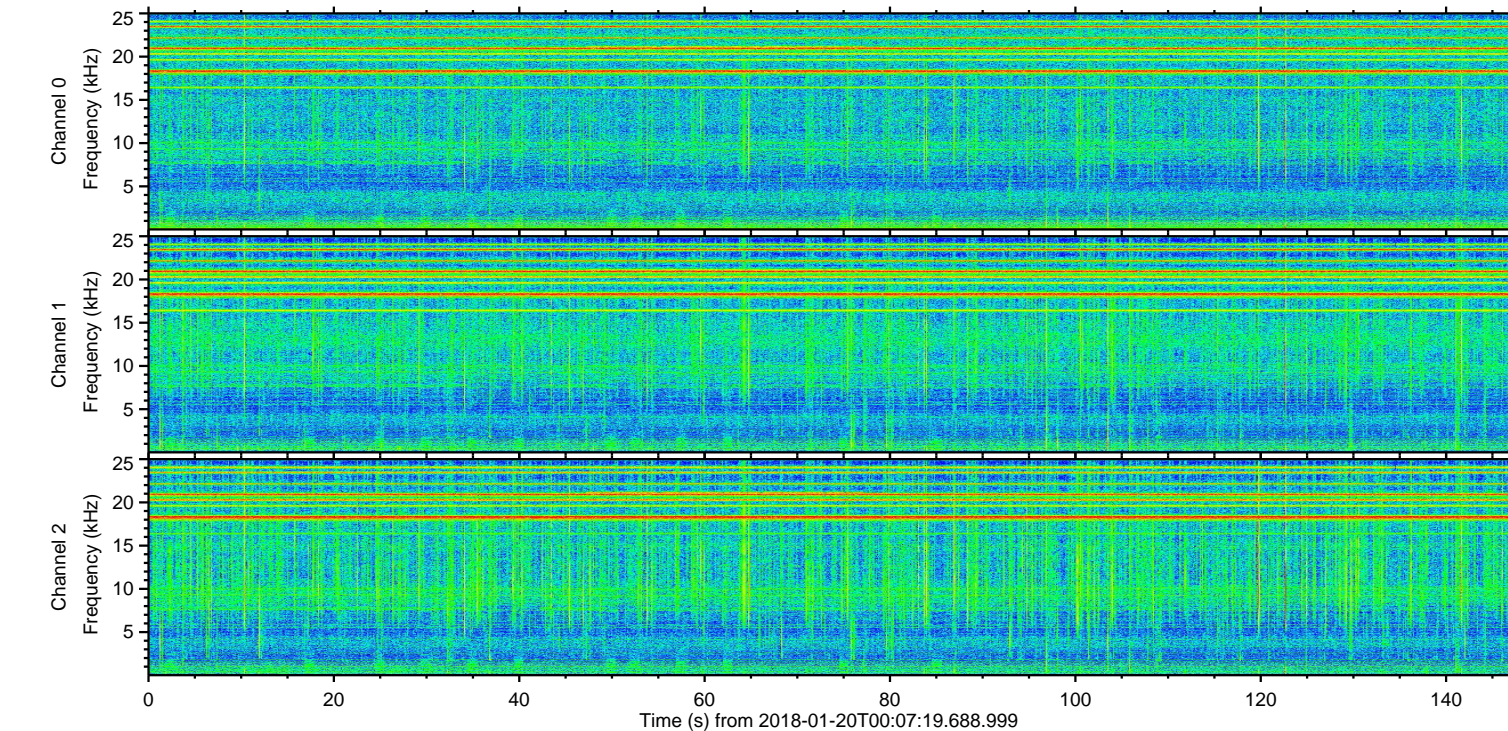
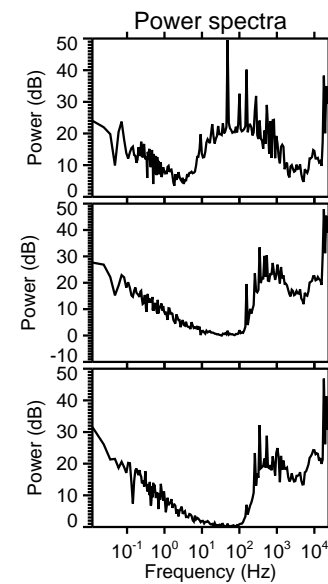
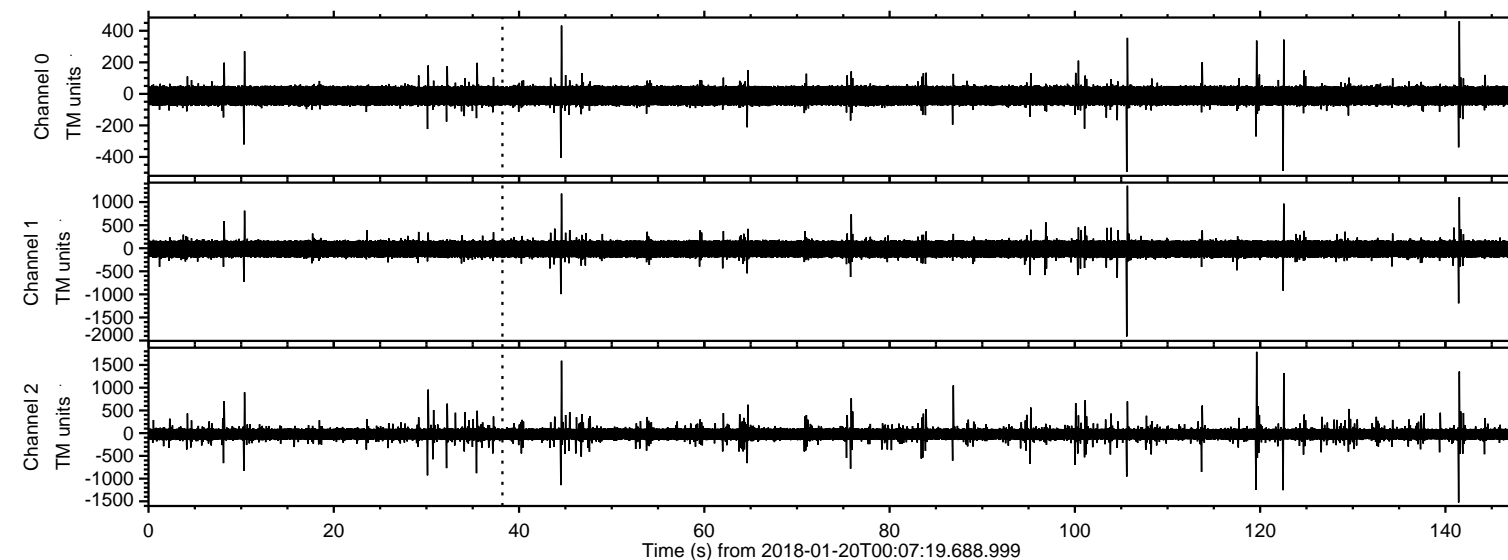


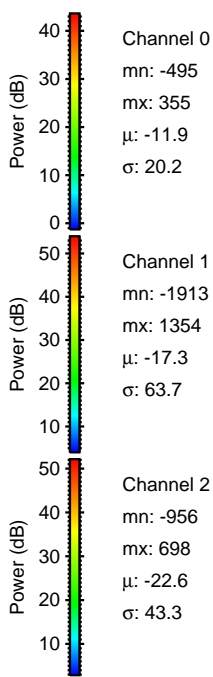
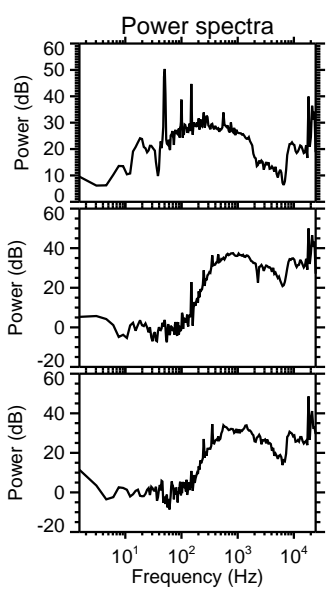
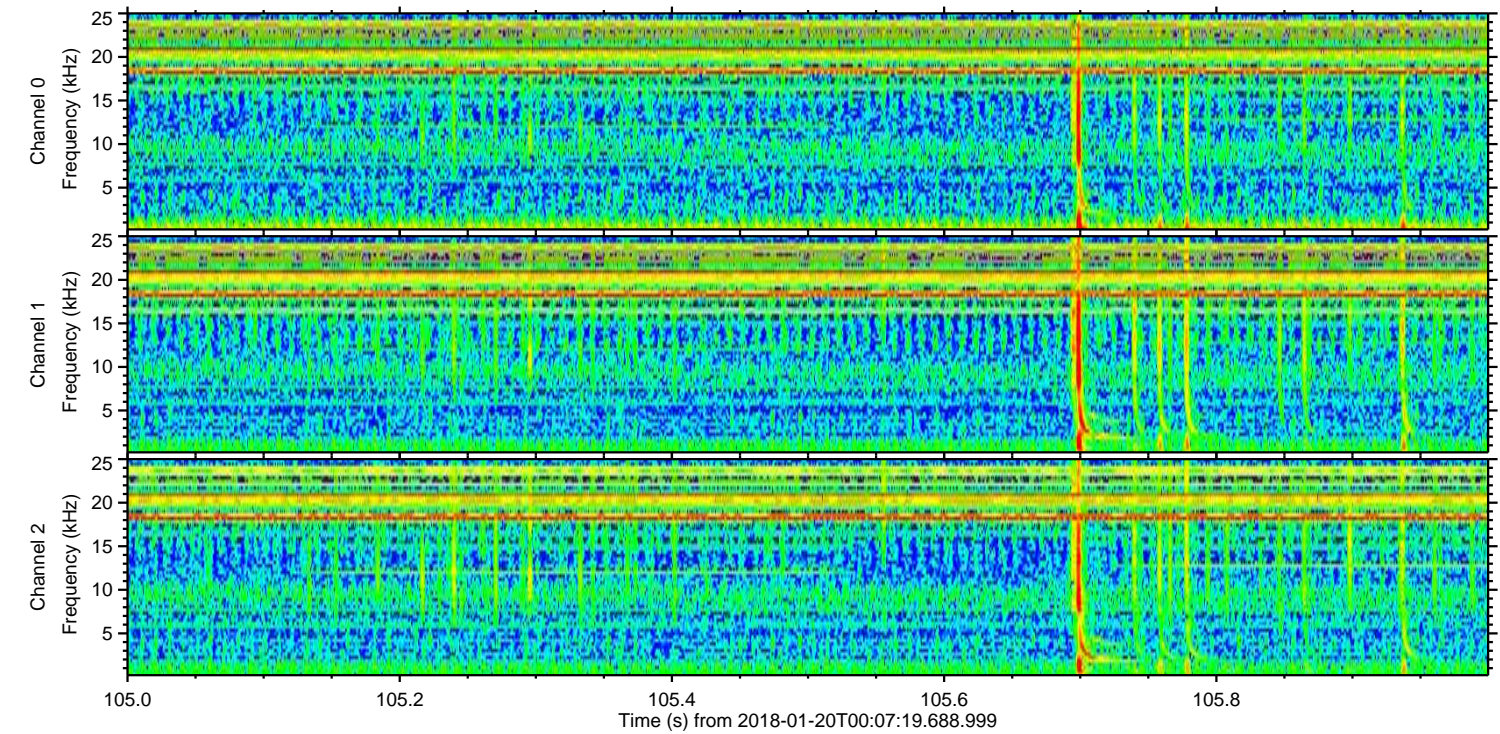
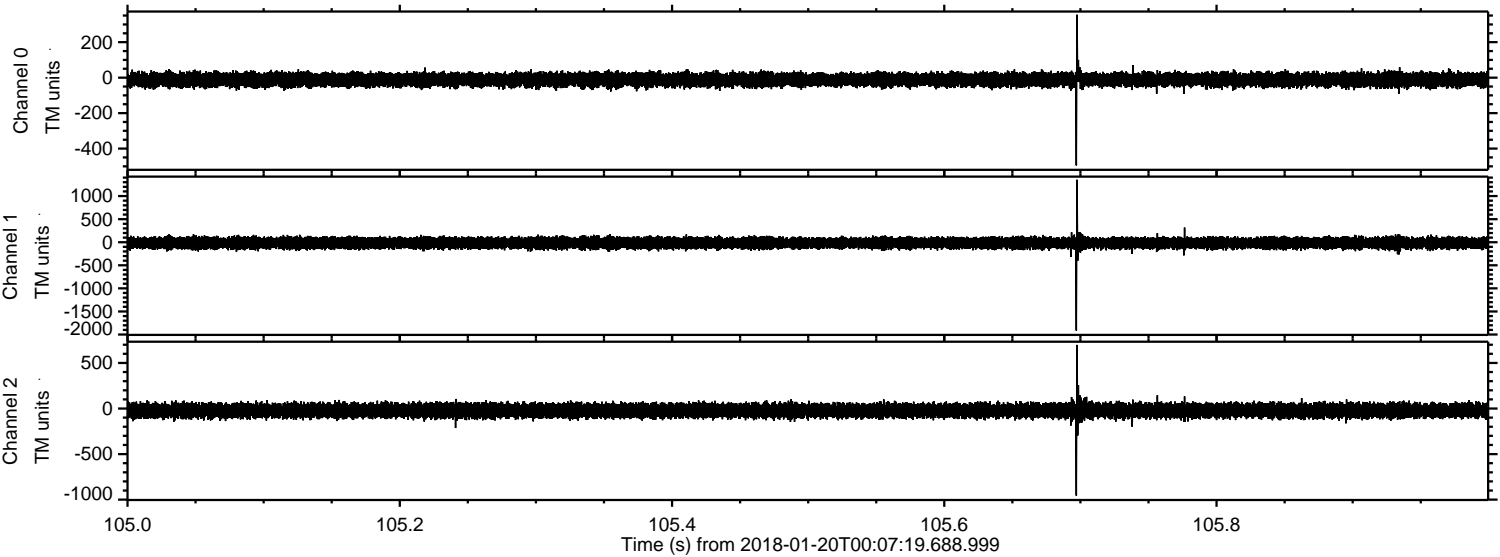
ELMAVAN 3D WAVEFORMS (Measured data sampled at 50 kHz) 50999 packets of 144 samples from 2018-01-20T00:07:19.688.999.

Processed Sat Jan 20 01:15:59 2018 by ELM ver.2012-10-06 from 001__elm20180120_000718__dat00.bin



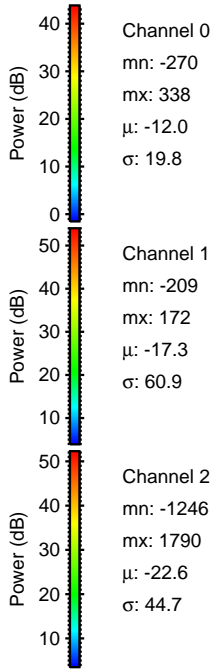
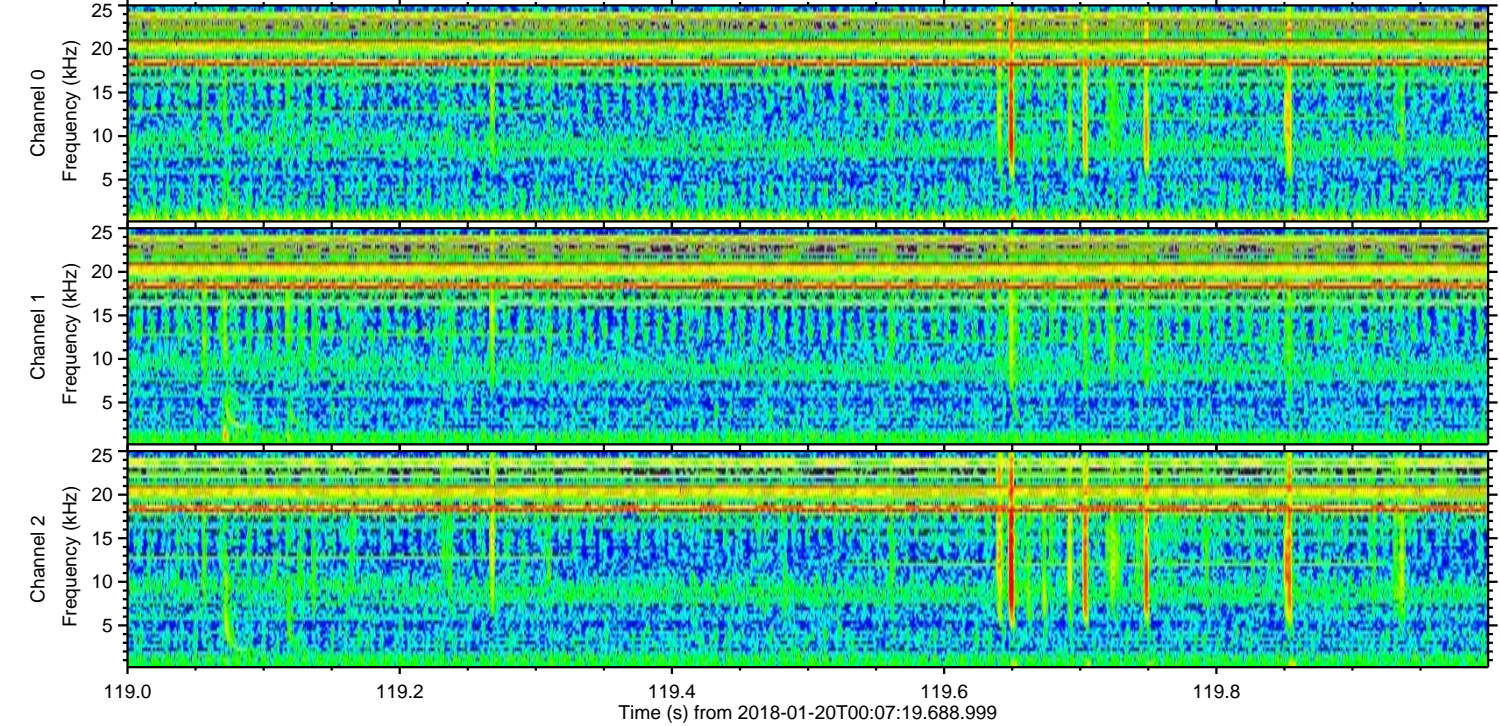
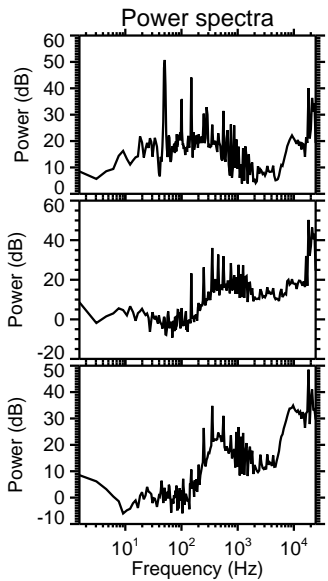
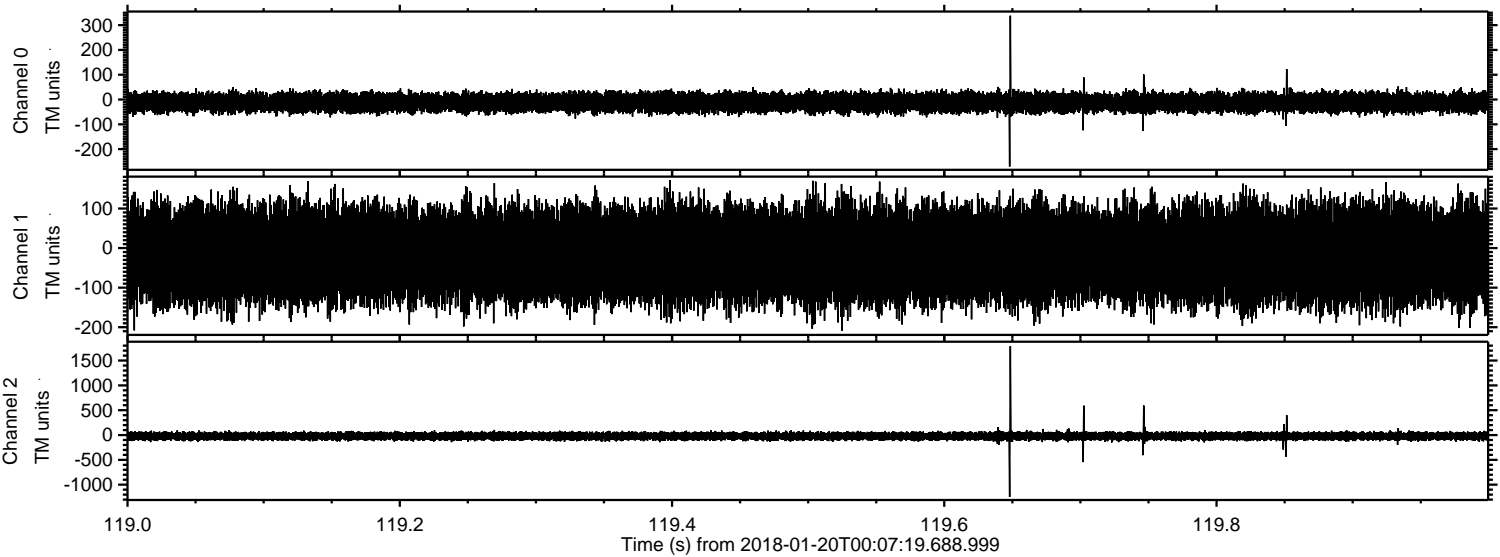
ELMAVAN 3D WAVEFORMS (Measured data sampled at 50 kHz) 50999 packets of 144 samples from 2018-01-20T00:07:19.688.999. Part 106/147

Processed Sat Jan 20 01:16:07 2018 by ELM ver.2012-10-06 from 001__elm20180120_000718__dat00.bin

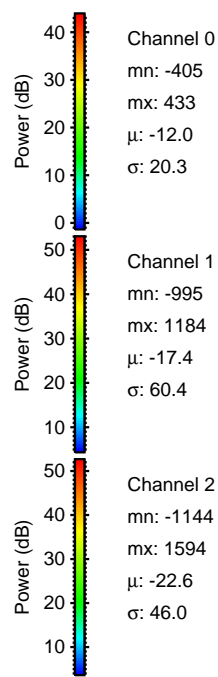
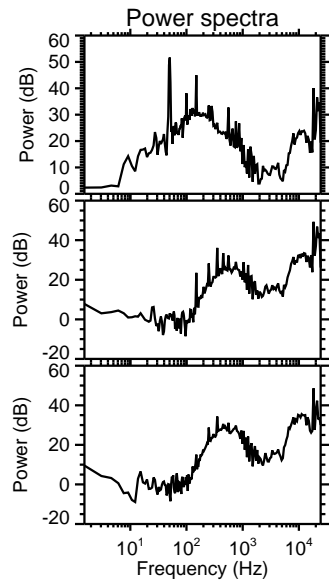
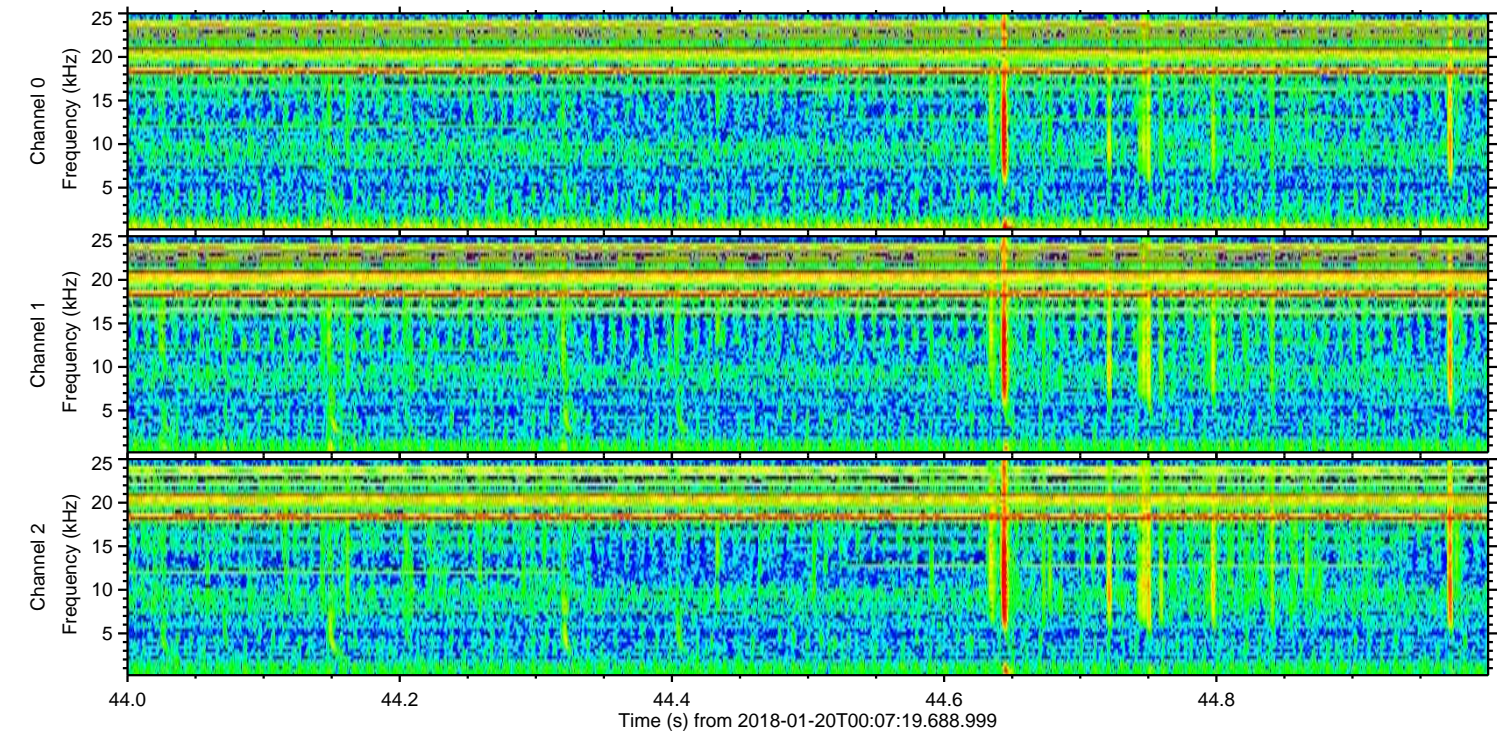
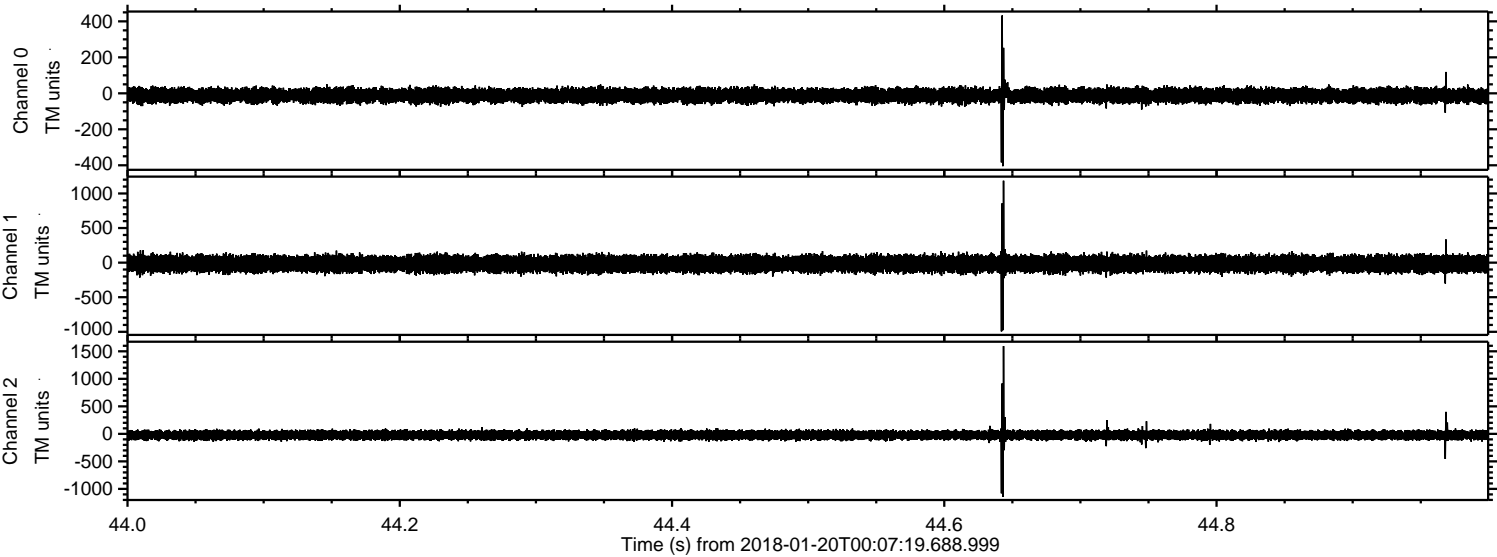


ELMAVAN 3D WAVEFORMS (Measured data sampled at 50 kHz) 50999 packets of 144 samples from 2018-01-20T00:07:19.688.999. Part 120/147

Processed Sat Jan 20 01:16:08 2018 by ELM ver.2012-10-06 from 001__elm20180120_000718__dat00.bin



Processed Sat Jan 20 01:16:08 2018 by ELM ver.2012-10-06 from 001__elm20180120_000718__dat00.bin



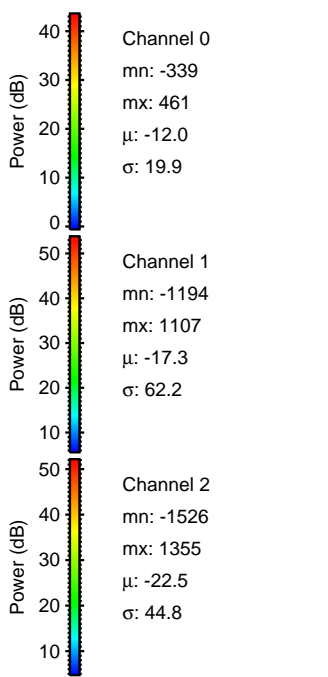
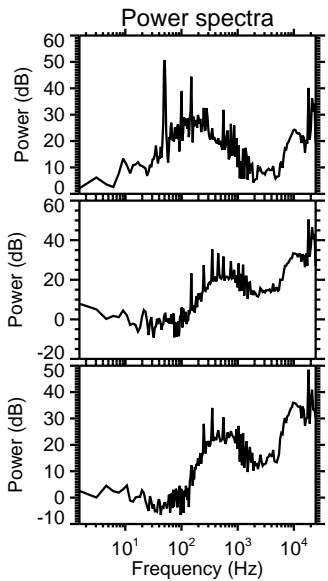
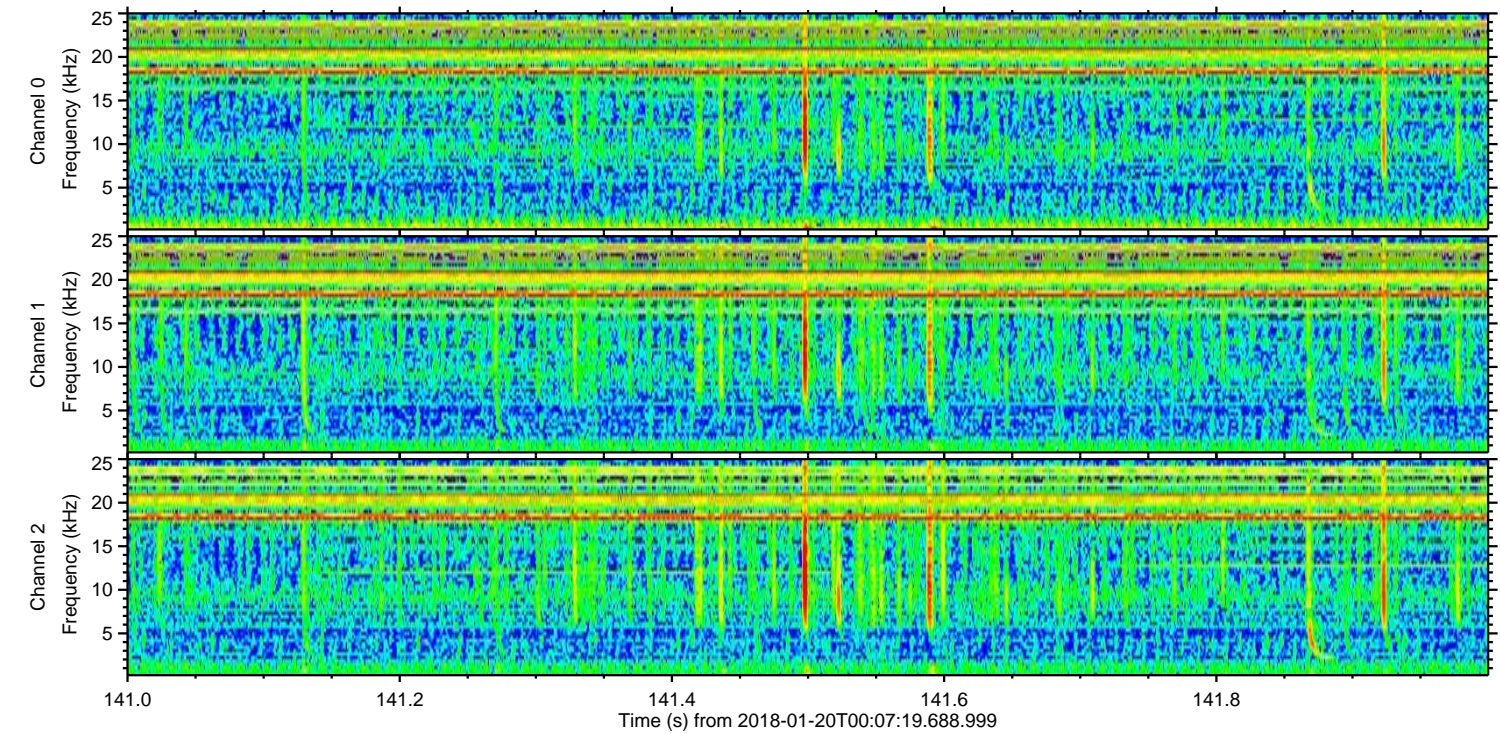
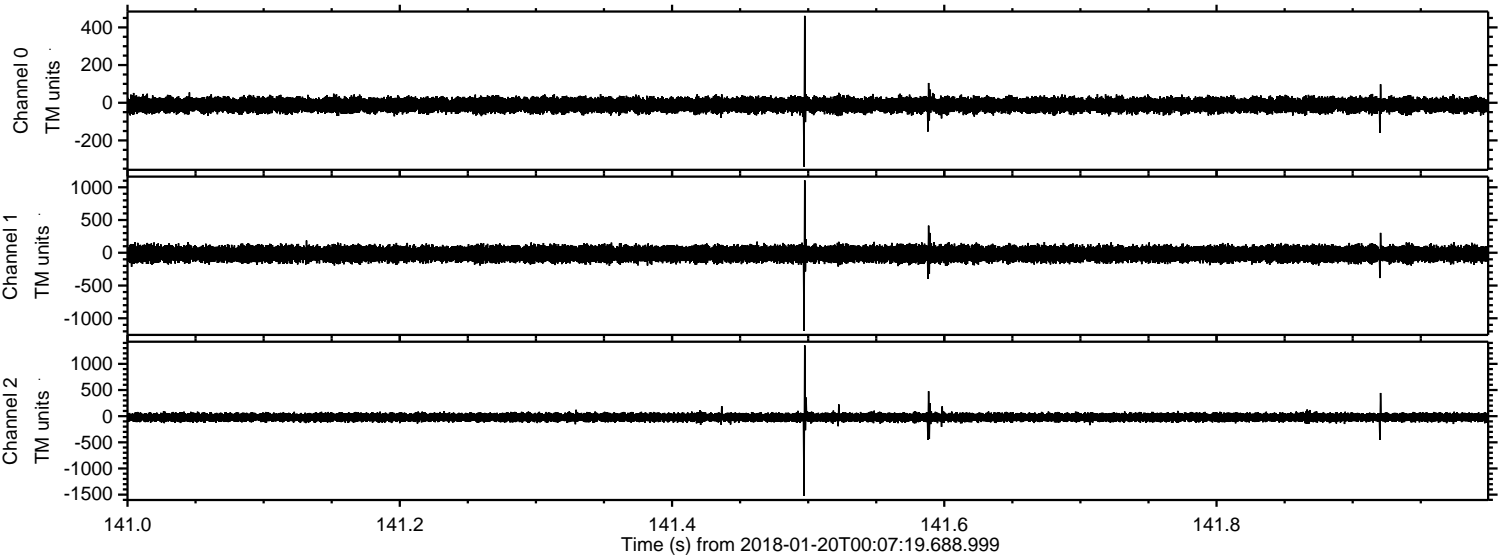
Channel 0
mn: -405
mx: 433
 μ : -12.0
 σ : 20.3

Channel 1
mn: -995
mx: 1184
 μ : -17.4
 σ : 60.4

Channel 2
mn: -1144
mx: 1594
 μ : -22.6
 σ : 46.0

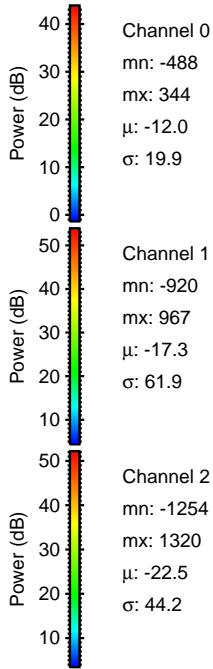
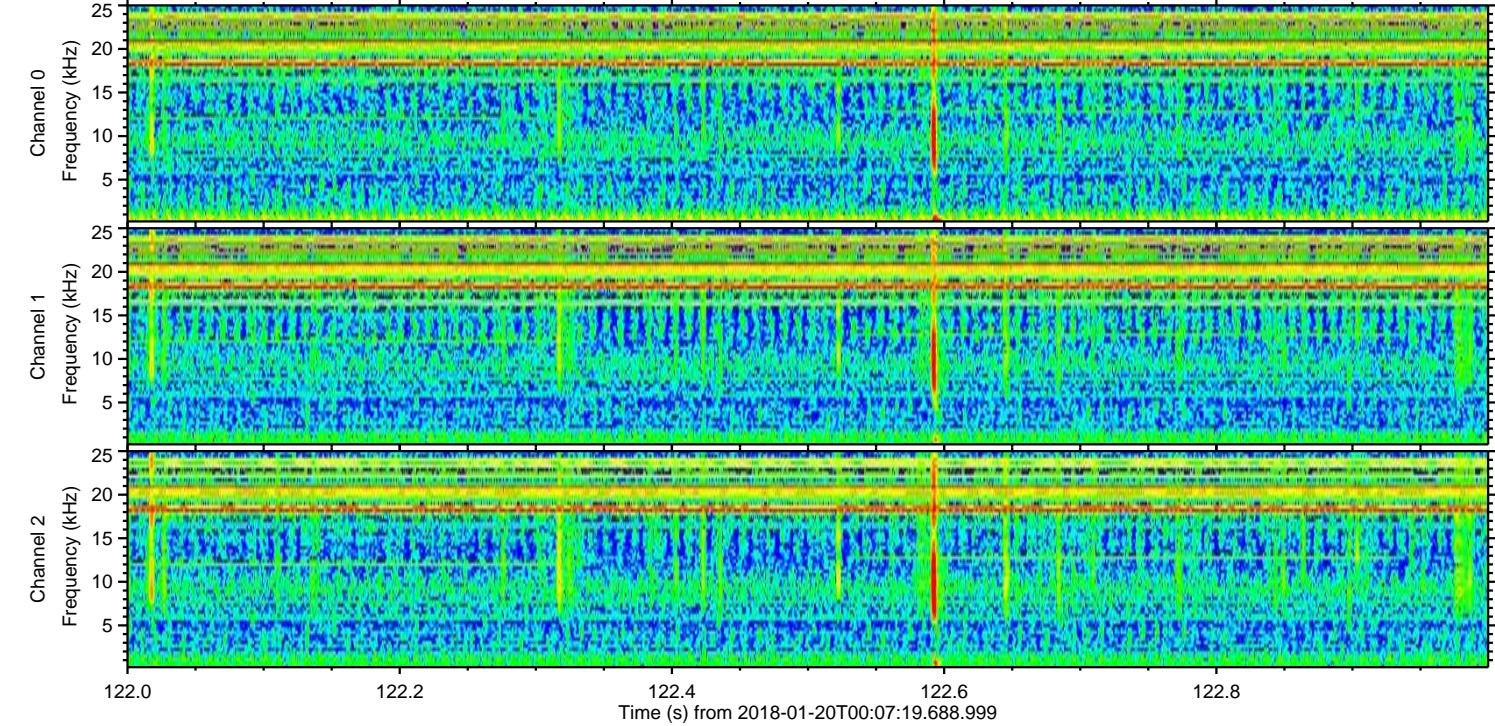
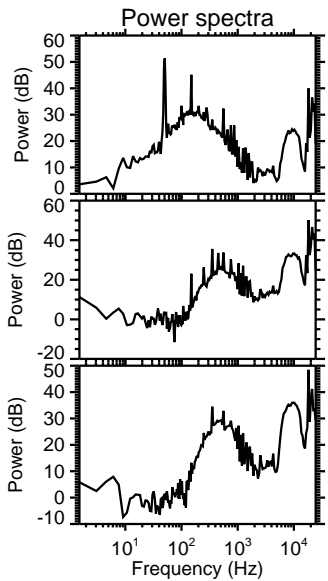
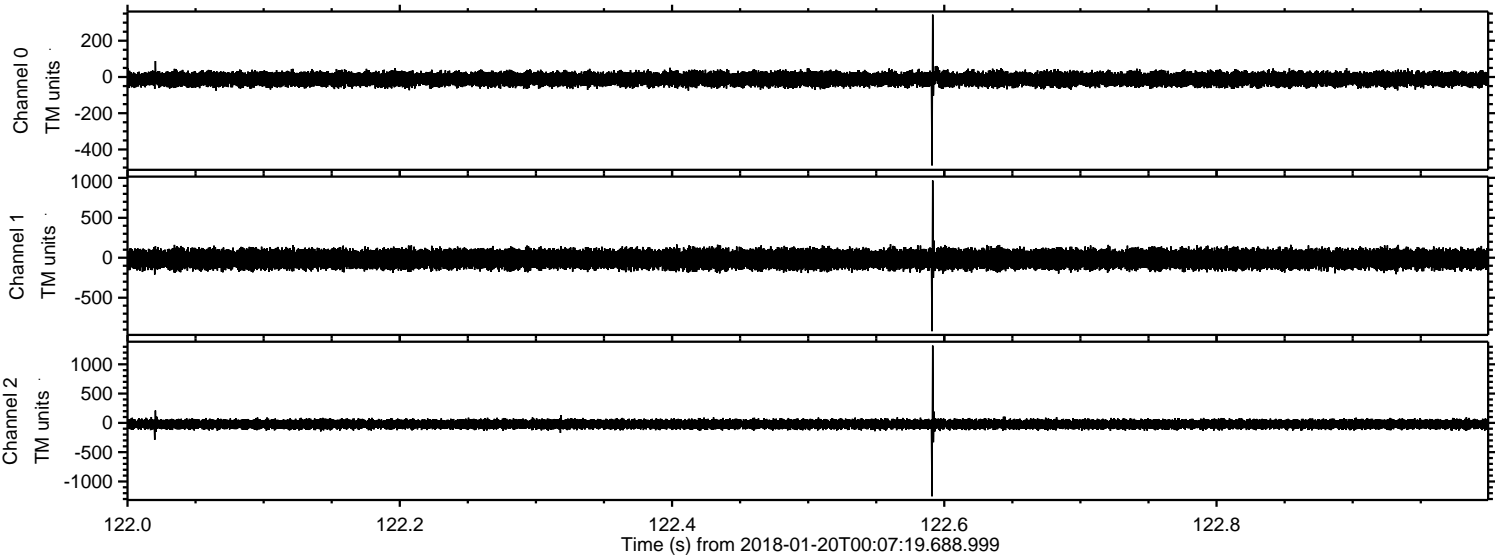
ELMAVAN 3D WAVEFORMS (Measured data sampled at 50 kHz) 50999 packets of 144 samples from 2018-01-20T00:07:19.688.999. Part 142/147

Processed Sat Jan 20 01:16:09 2018 by ELM ver.2012-10-06 from 001__elm20180120_000718__dat00.bin



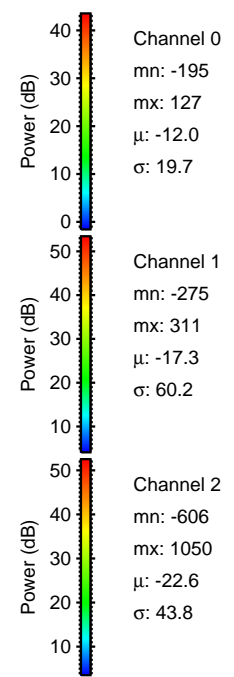
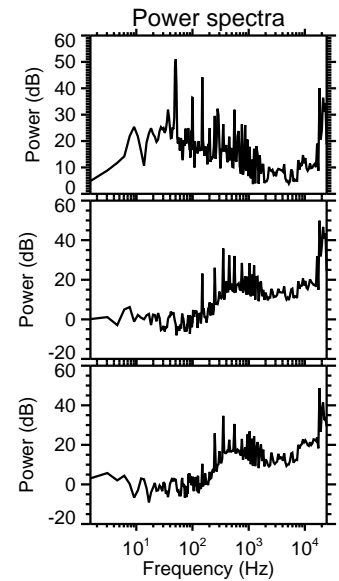
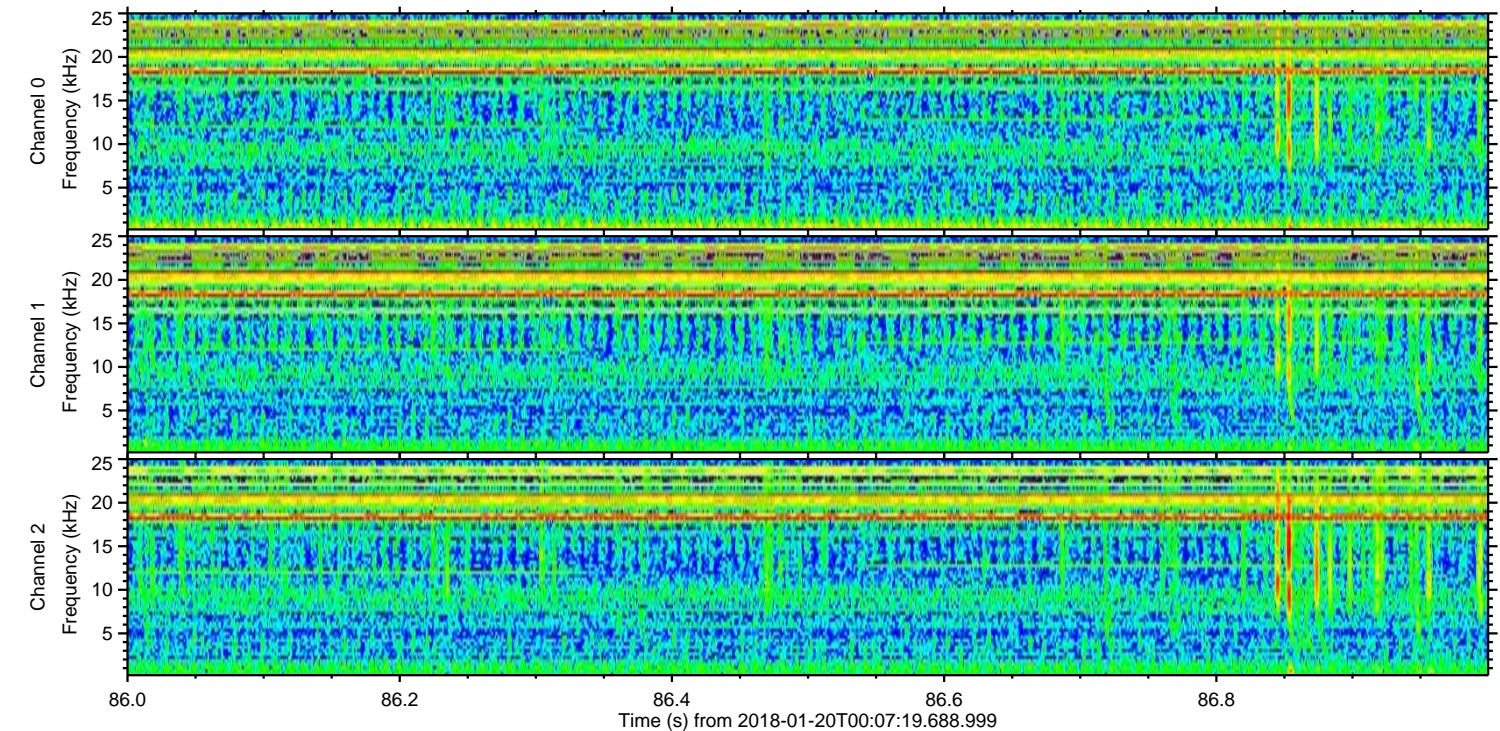
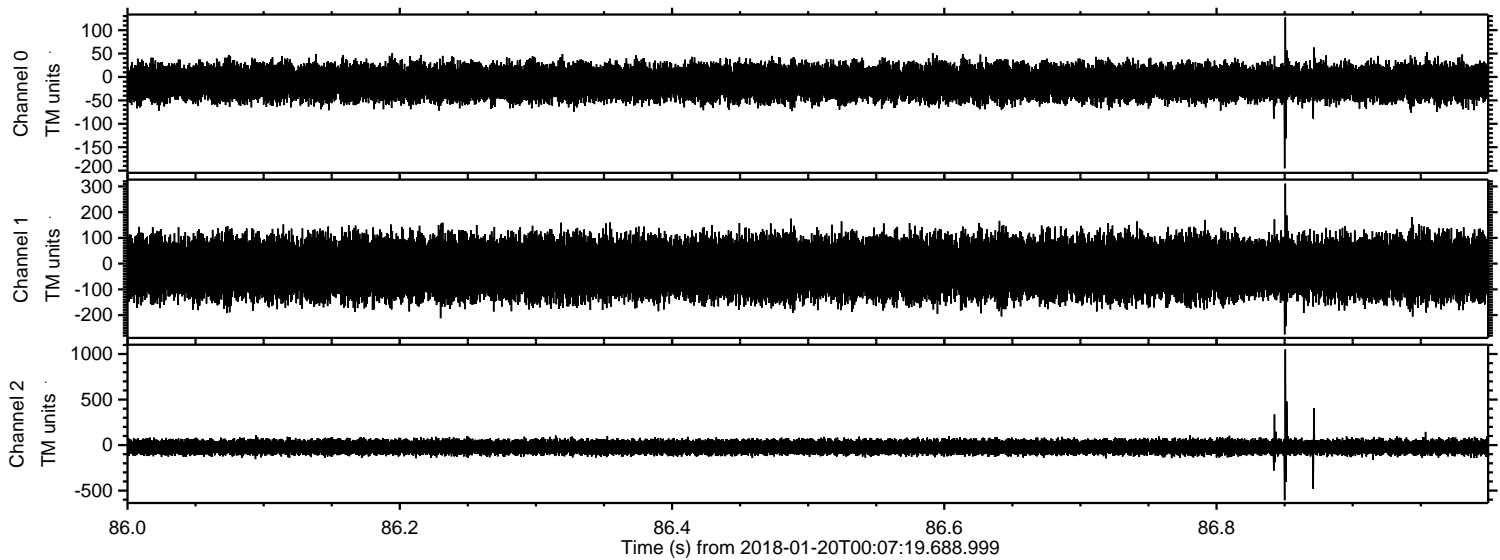
ELMAVAN 3D WAVEFORMS (Measured data sampled at 50 kHz) 50999 packets of 144 samples from 2018-01-20T00:07:19.688.999. Part 123/147

Processed Sat Jan 20 01:16:10 2018 by ELM ver.2012-10-06 from 001__elm20180120_000718__dat00.bin



ELMAVAN 3D WAVEFORMS (Measured data sampled at 50 kHz) 50999 packets of 144 samples from 2018-01-20T00:07:19.688.999. Part 87/147

Processed Sat Jan 20 01:16:11 2018 by ELM ver.2012-10-06 from 001__elm20180120_000718__dat00.bin

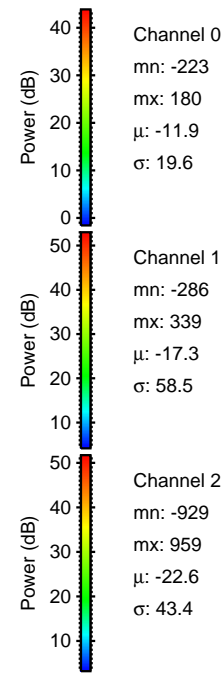
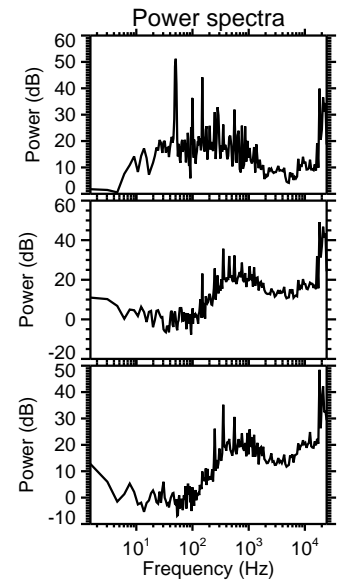
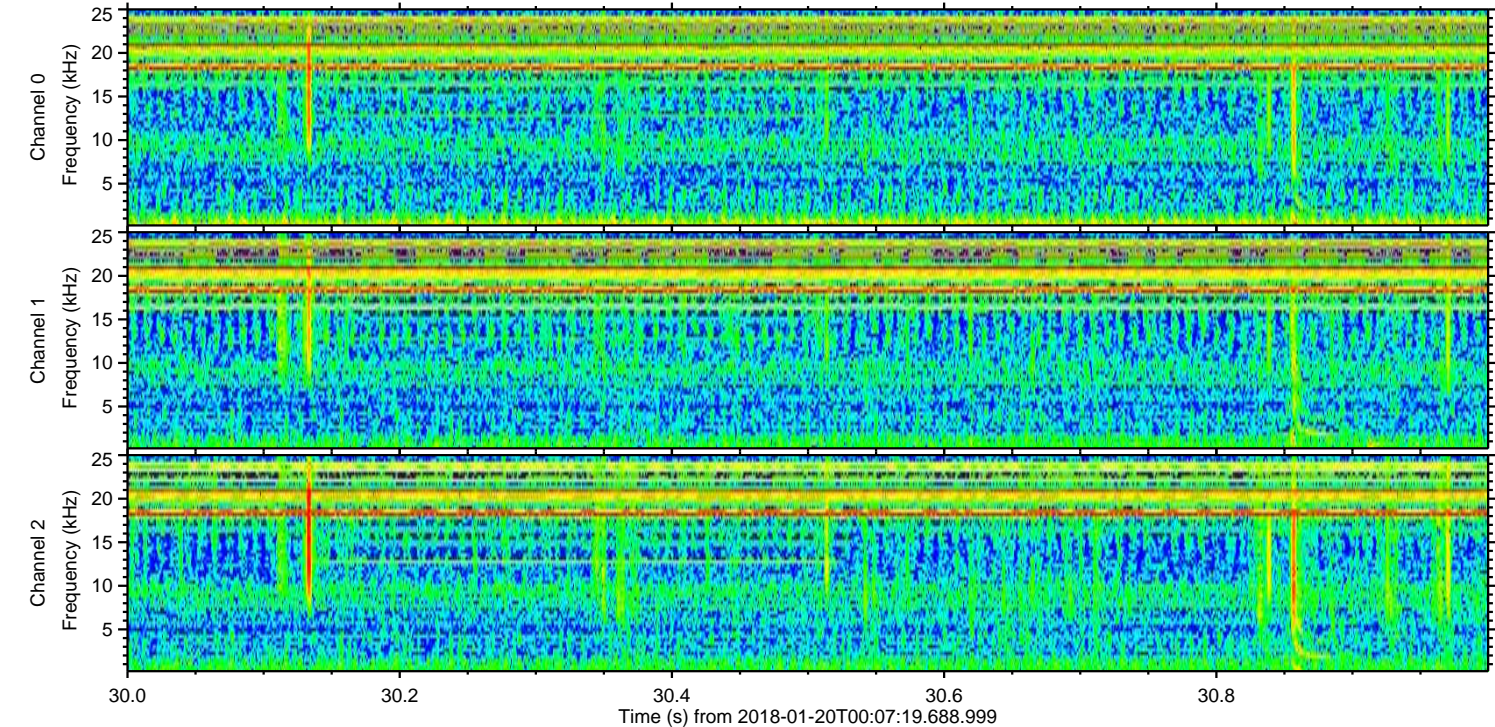
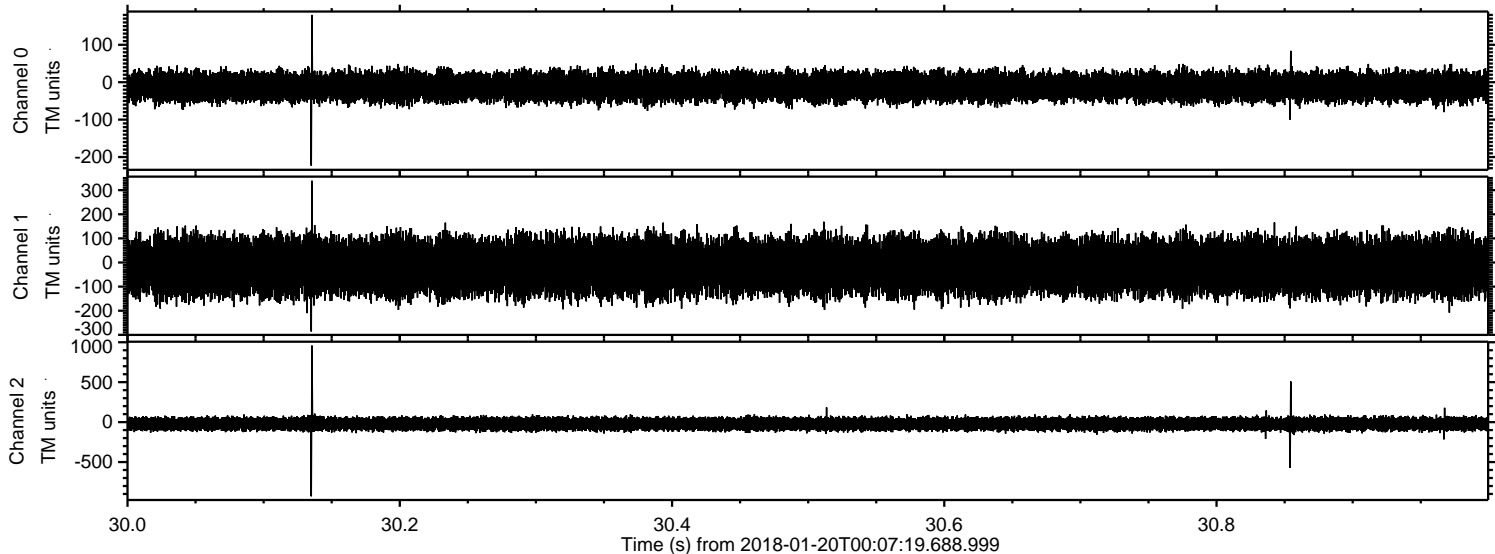


Channel 0
mn: -195
mx: 127
 μ : -12.0
 σ : 19.7

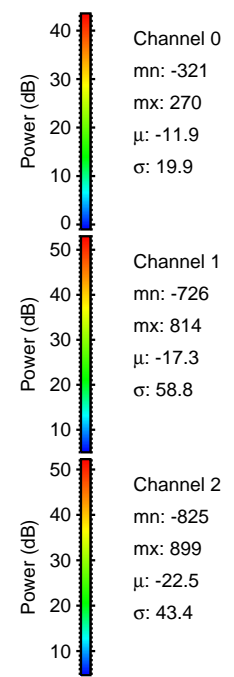
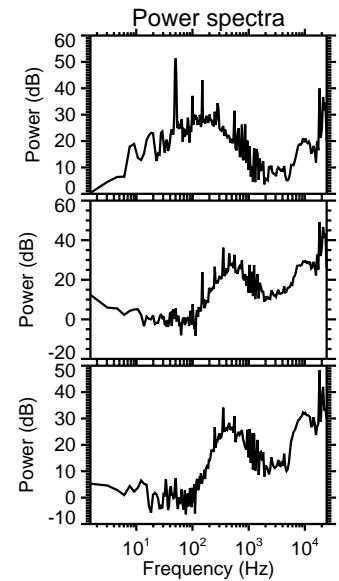
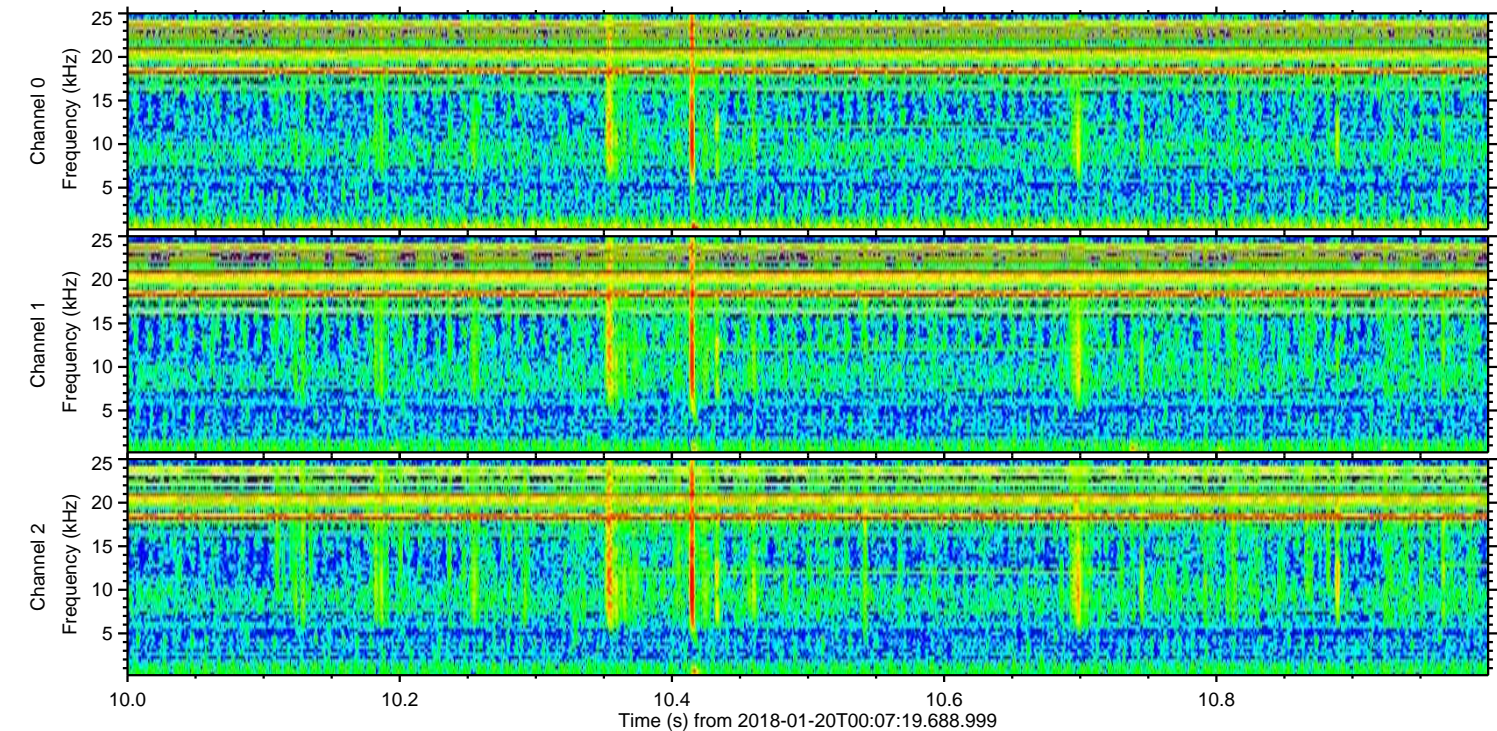
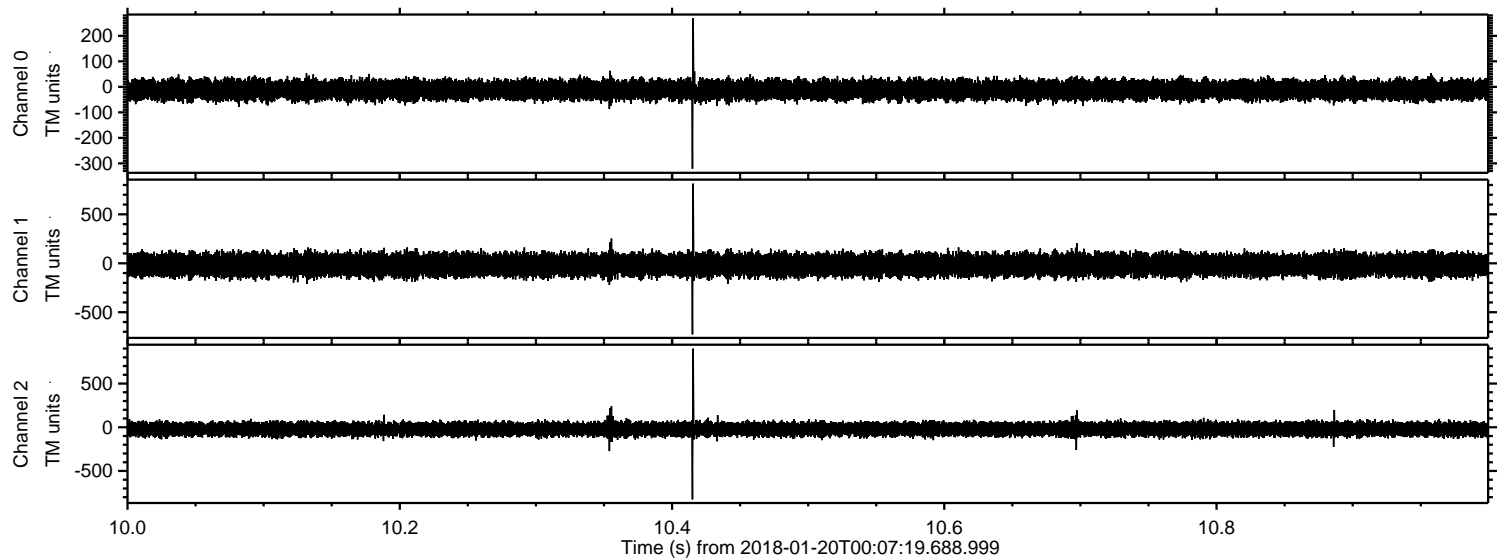
Channel 1
mn: -275
mx: 311
 μ : -17.3
 σ : 60.2

Channel 2
mn: -606
mx: 1050
 μ : -22.6
 σ : 43.8

Processed Sat Jan 20 01:16:12 2018 by ELM ver.2012-10-06 from 001__elm20180120_000718__dat00.bin



Processed Sat Jan 20 01:16:12 2018 by ELM ver.2012-10-06 from 001__elm20180120_000718__dat00.bin



Power spectra

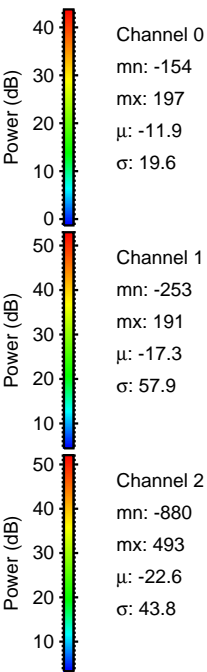
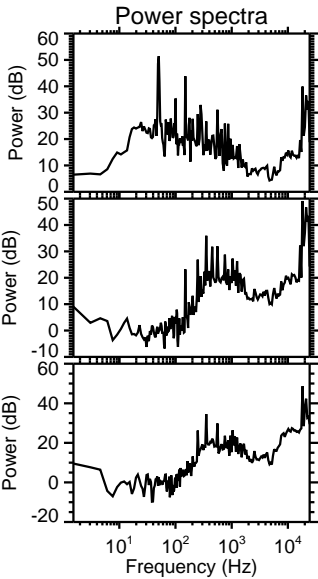
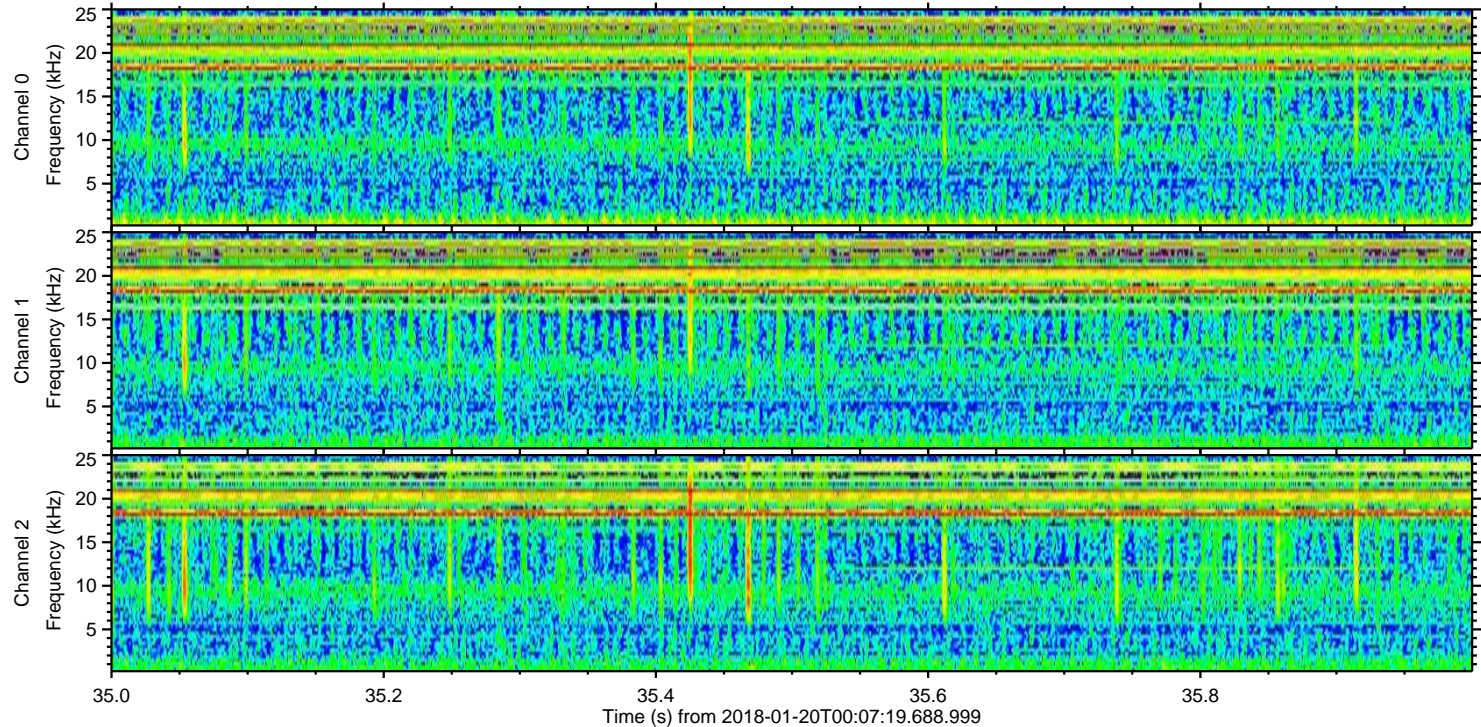
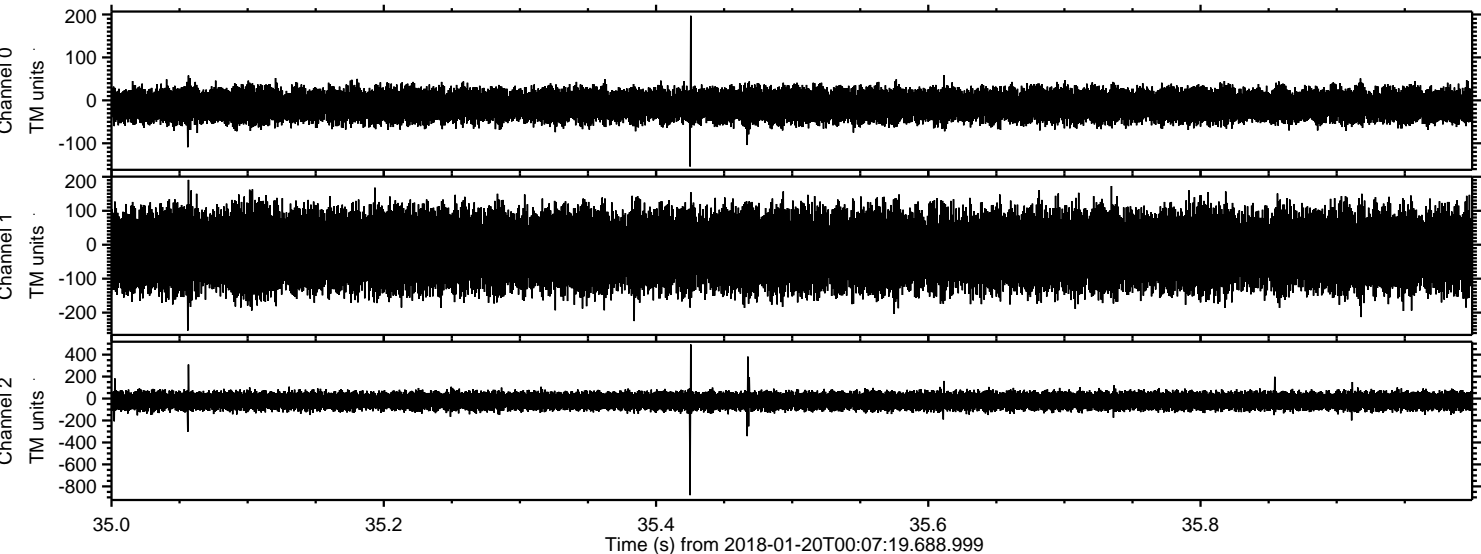
Channel 0
mn: -321
mx: 270
 μ : -11.9
 σ : 19.9

Channel 1
mn: -726
mx: 814
 μ : -17.3
 σ : 58.8

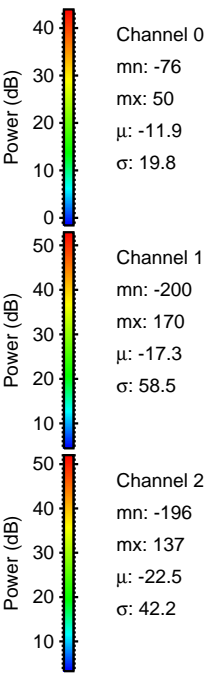
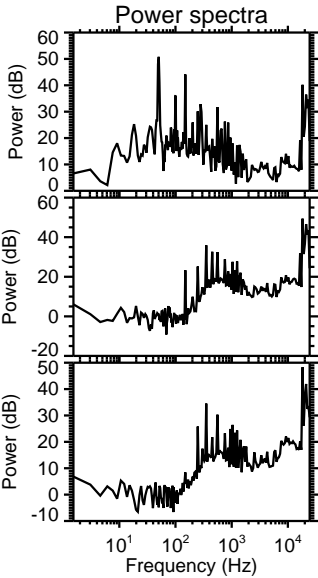
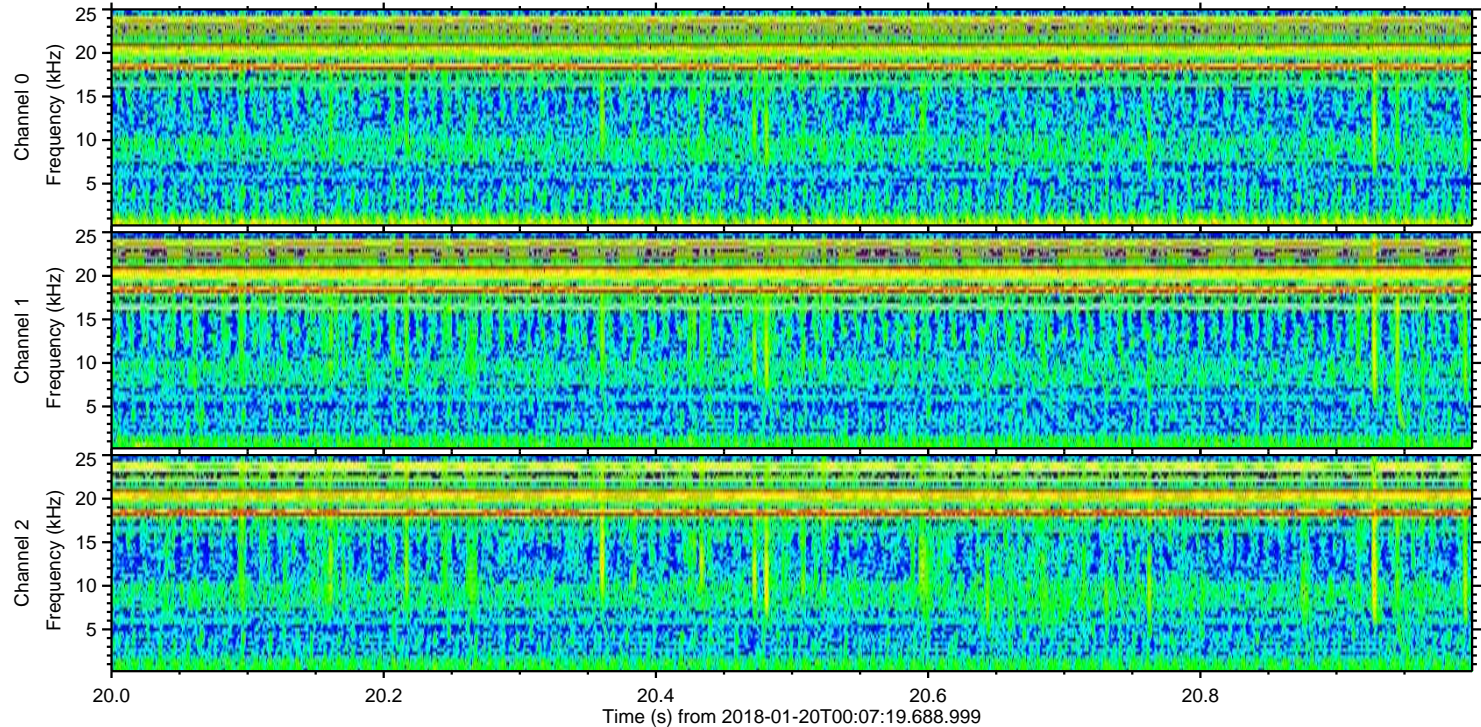
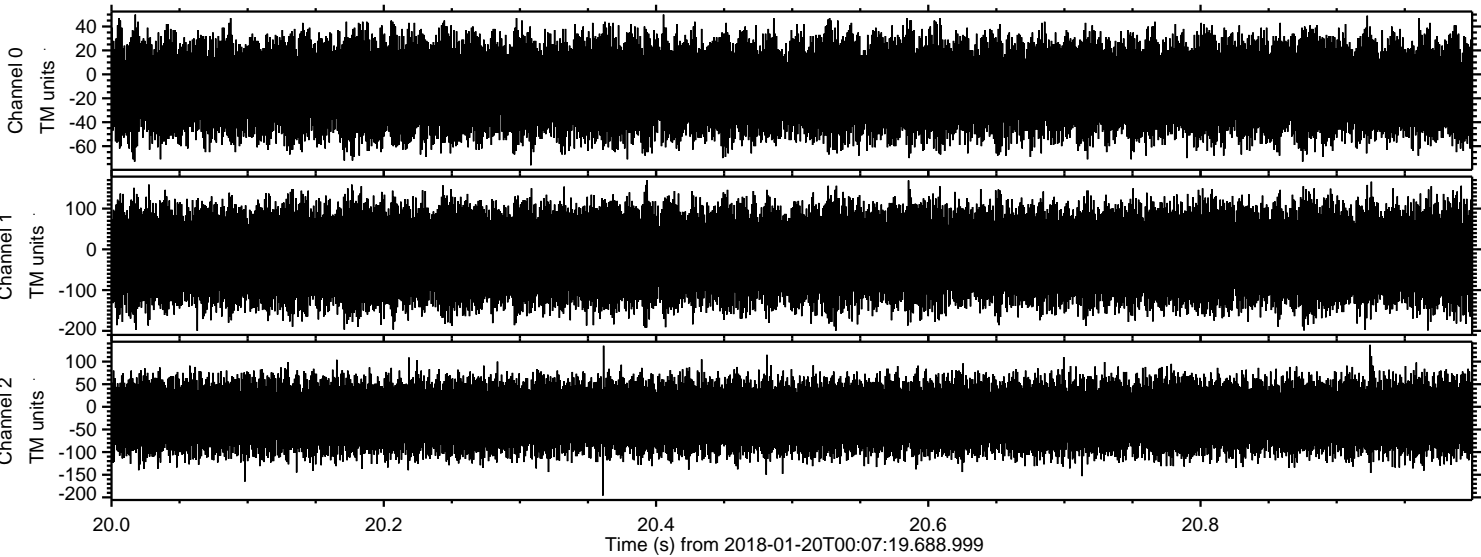
Channel 2
mn: -825
mx: 899
 μ : -22.5
 σ : 43.4

ELMAVAN 3D WAVEFORMS (Measured data sampled at 50 kHz) 50999 packets of 144 samples from 2018-01-20T00:07:19.688.999. Part 36/147

Processed Sat Jan 20 01:16:13 2018 by ELM ver.2012-10-06 from 001__elm20180120_000718__dat00.bin



Processed Sat Jan 20 01:16:15 2018 by ELM ver.2012-10-06 from 001__elm20180120_000718__dat00.bin



Channel 0
mn: -76
mx: 50
 μ : -11.9
 σ : 19.8

Channel 1
mn: -200
mx: 170
 μ : -17.3
 σ : 58.5

Channel 2
mn: -196
mx: 137
 μ : -22.5
 σ : 42.2