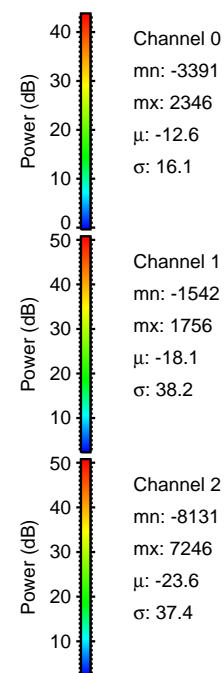
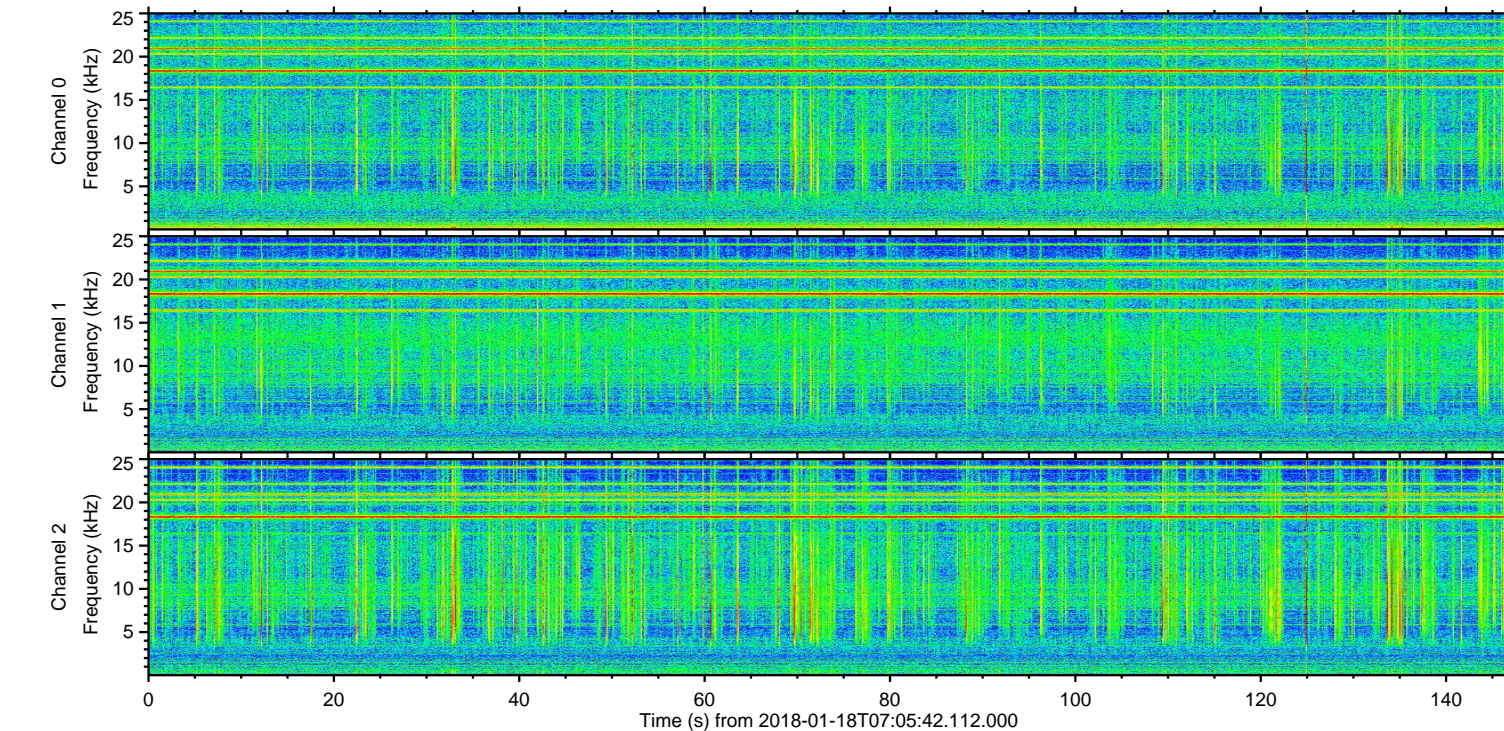
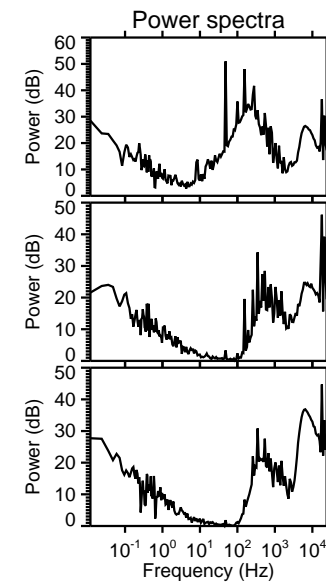
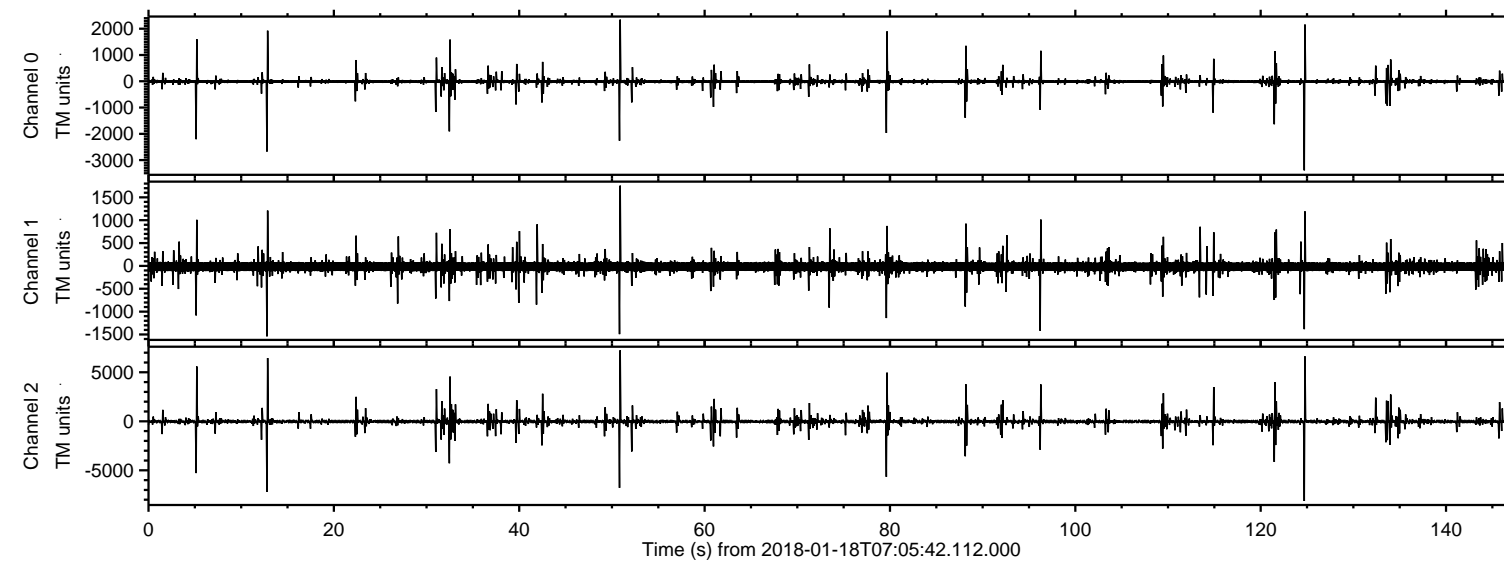


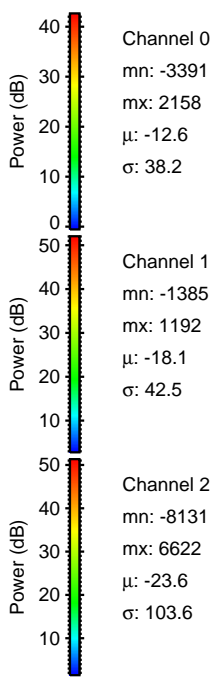
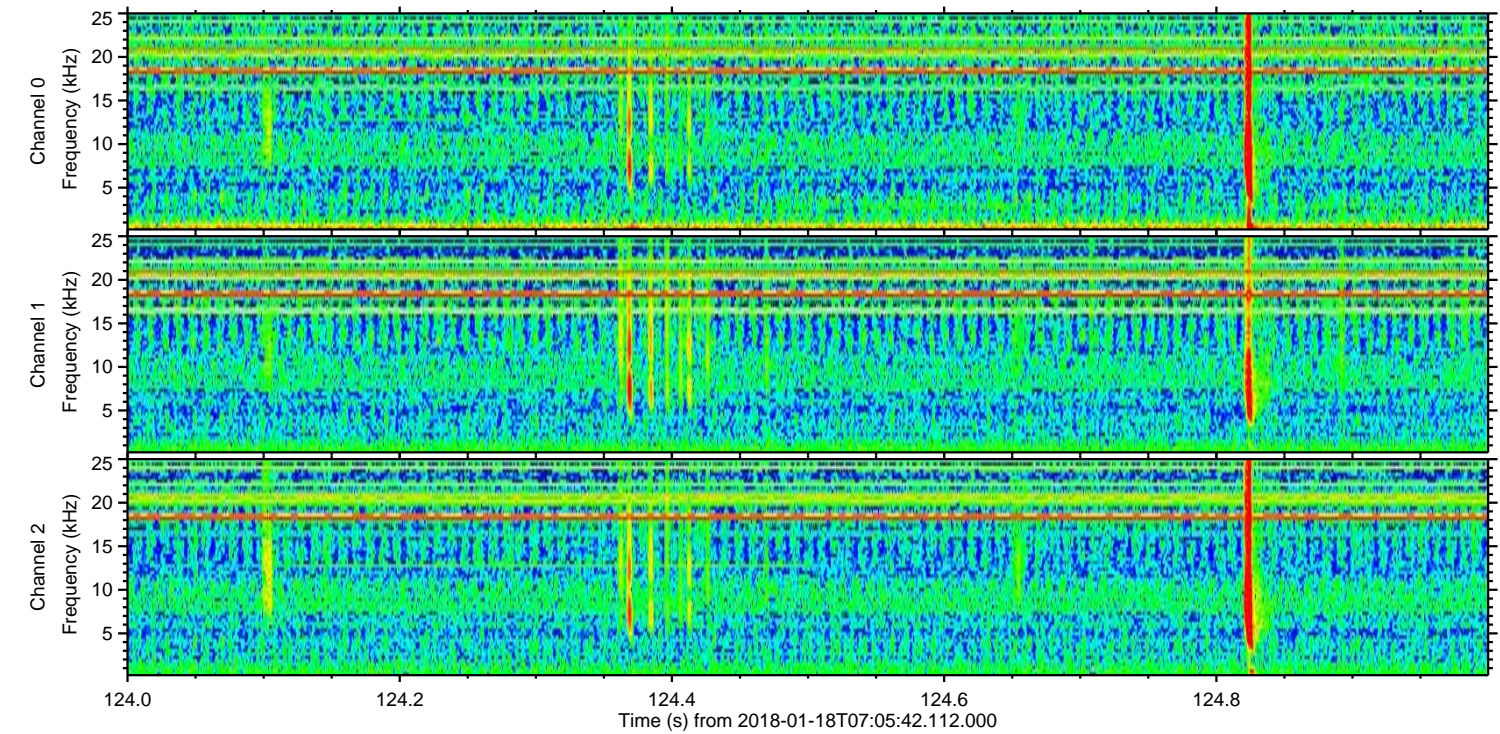
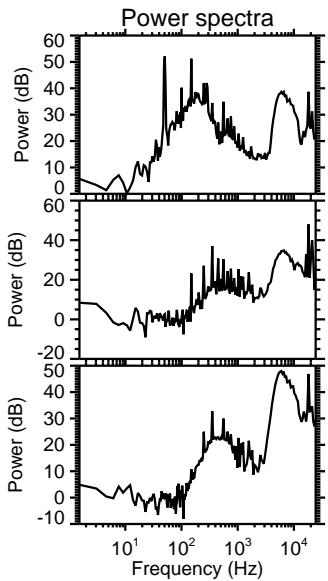
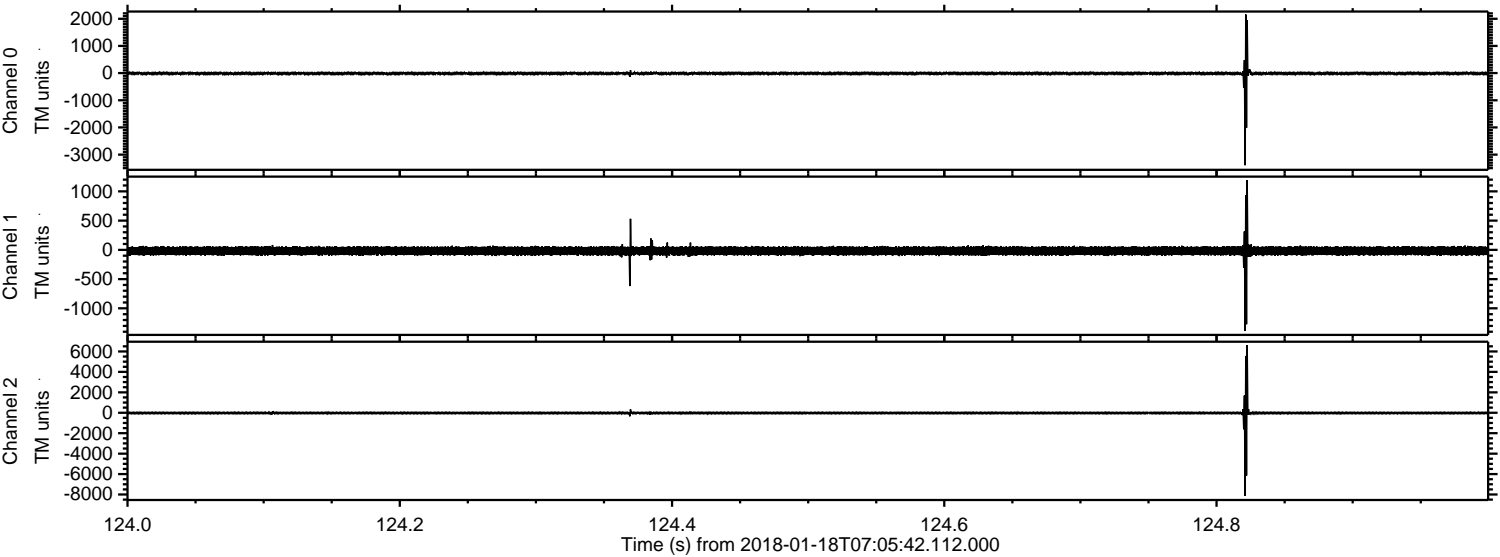
ELMAVAN 3D WAVEFORMS (Measured data sampled at 50 kHz) 51000 packets of 144 samples from 2018-01-18T07:05:42.112.000.

Processed Thu Jan 18 08:13:22 2018 by ELM ver.2012-10-06 from 001__elm20180118_070541__dat00.bin

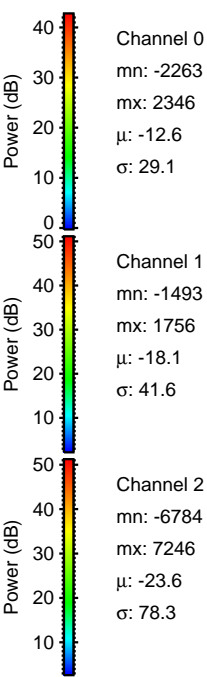
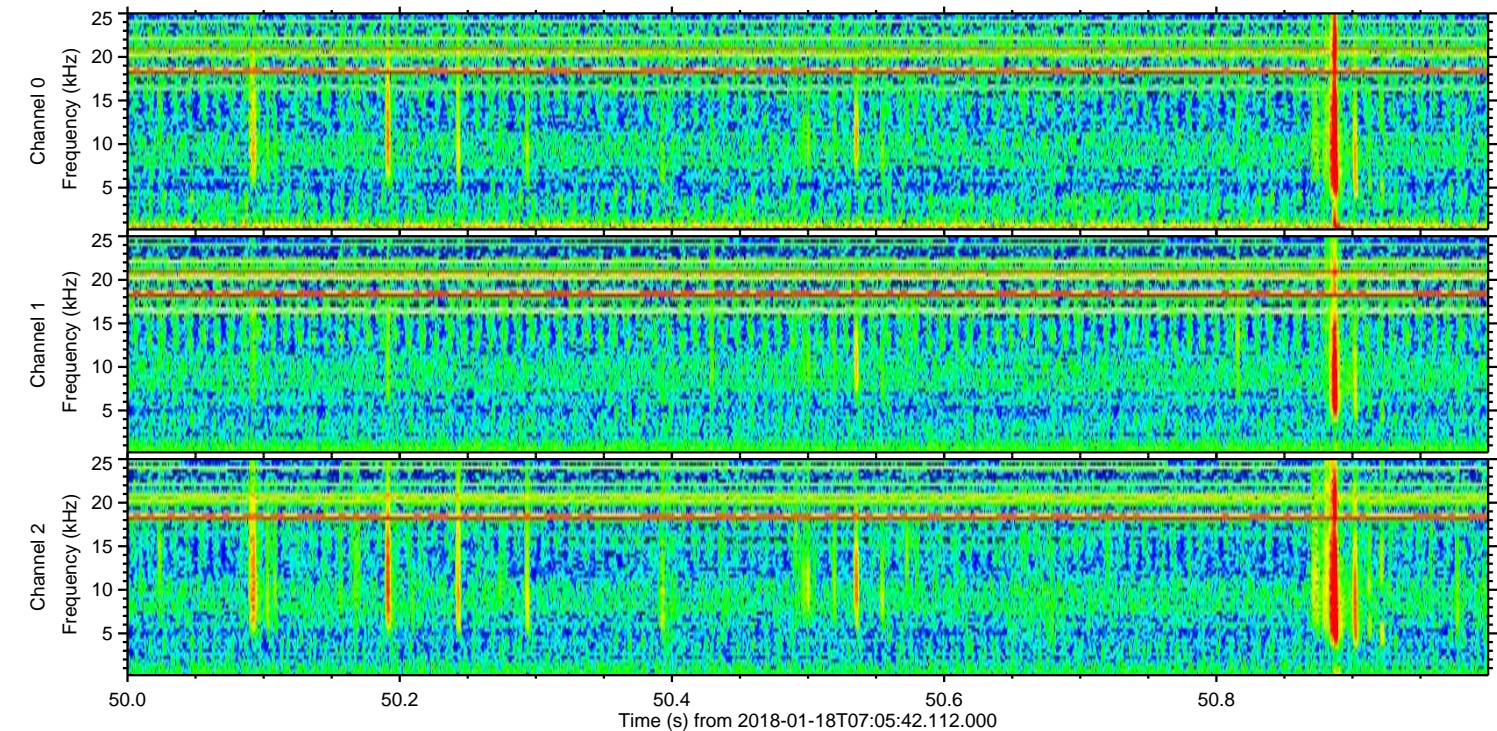
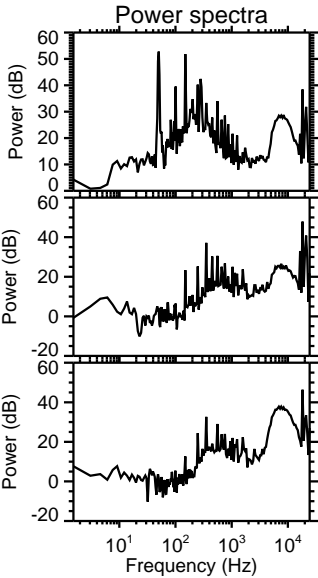
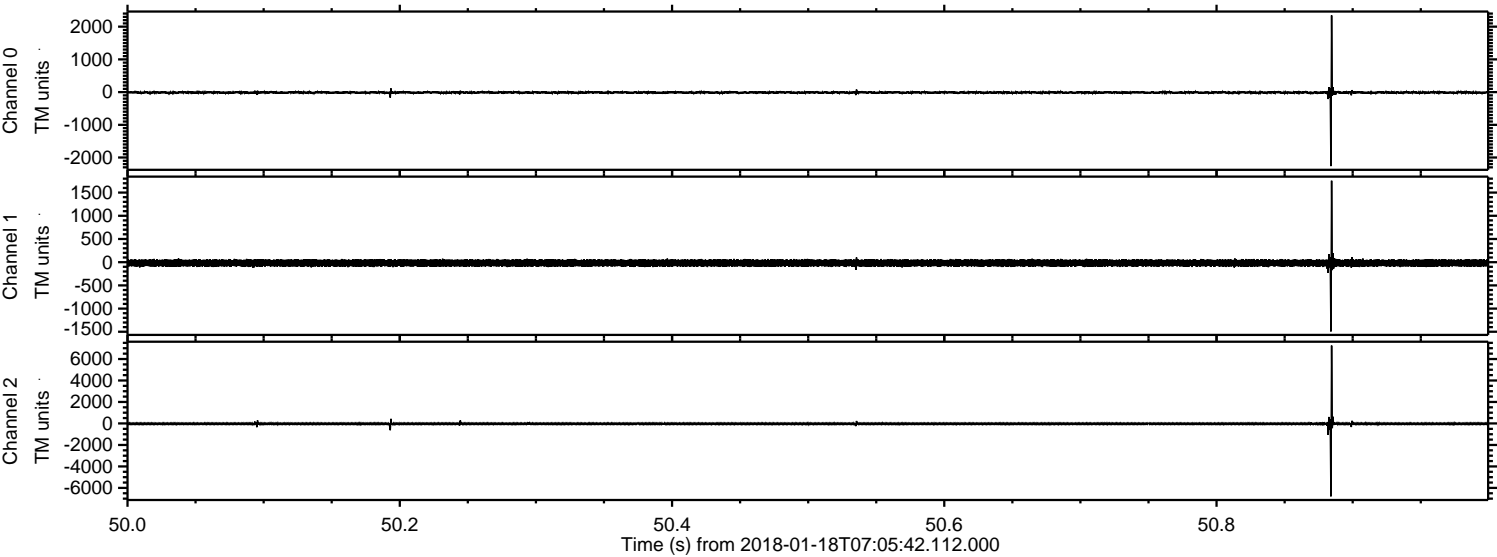


ELMAVAN 3D WAVEFORMS (Measured data sampled at 50 kHz) 51000 packets of 144 samples from 2018-01-18T07:05:42.112.000. Part 125/147

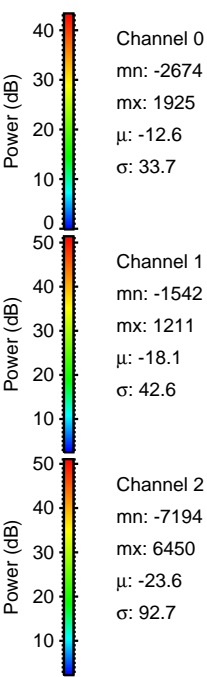
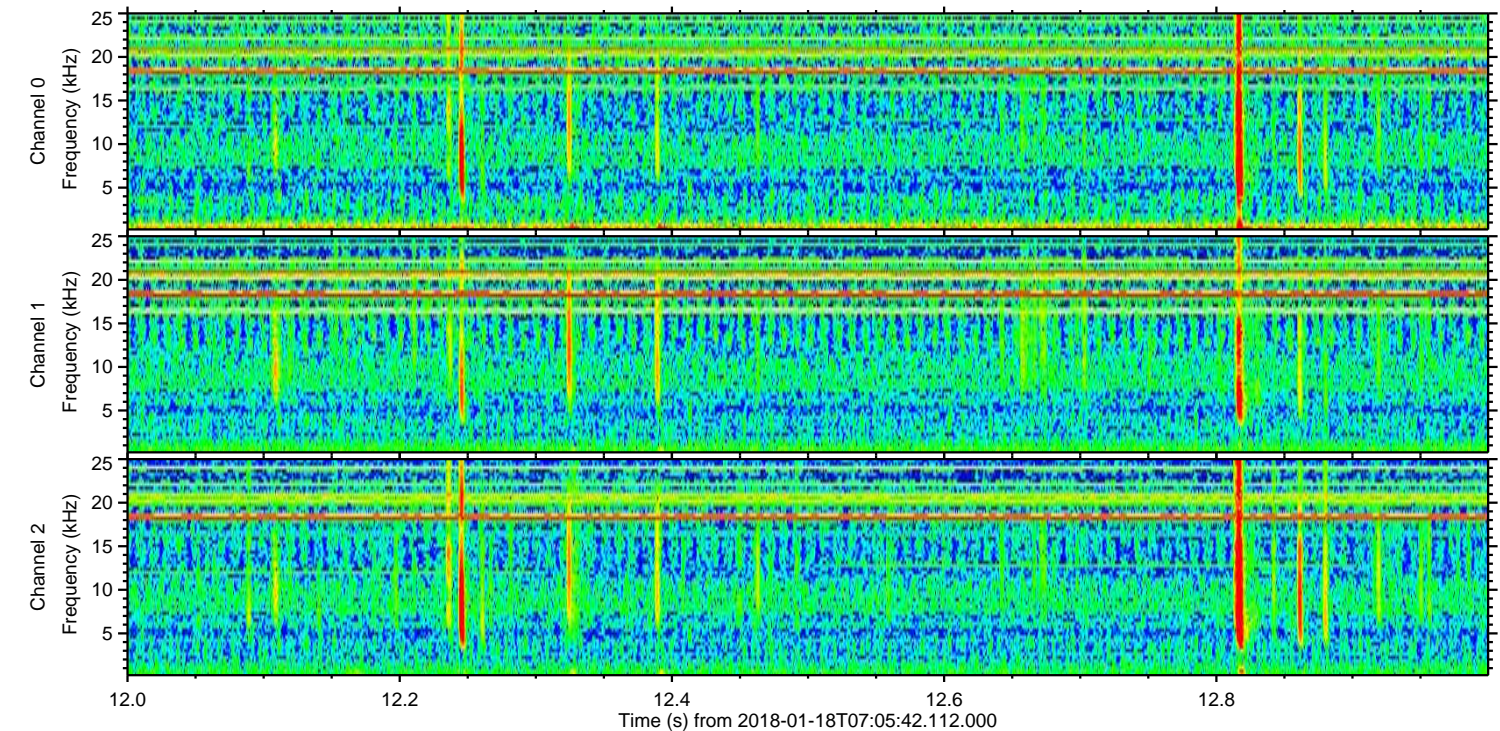
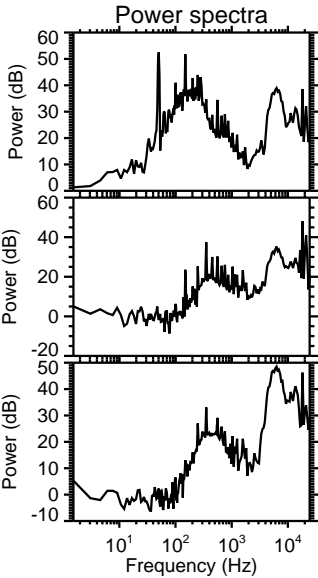
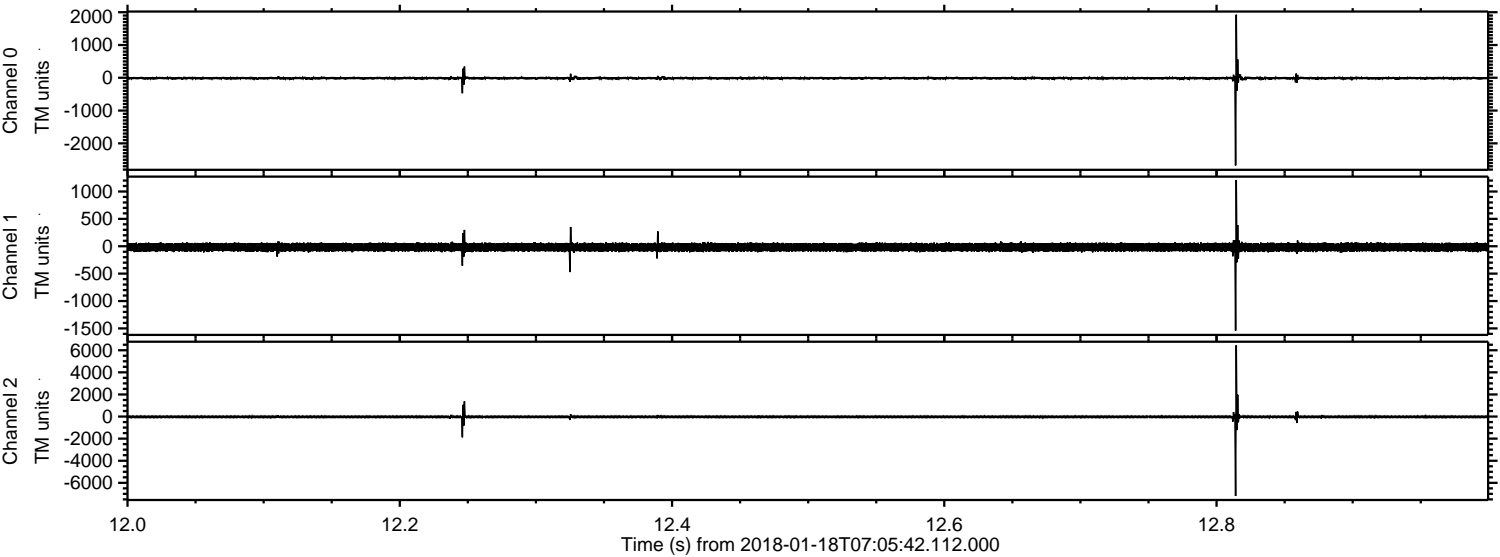
Processed Thu Jan 18 08:13:30 2018 by ELM ver.2012-10-06 from 001__elm20180118_070541__dat00.bin



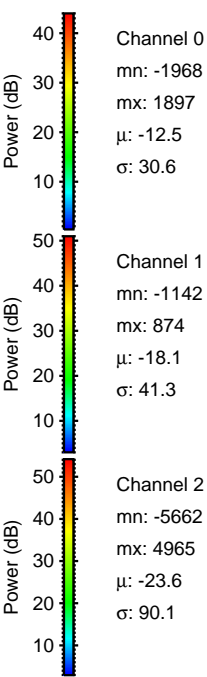
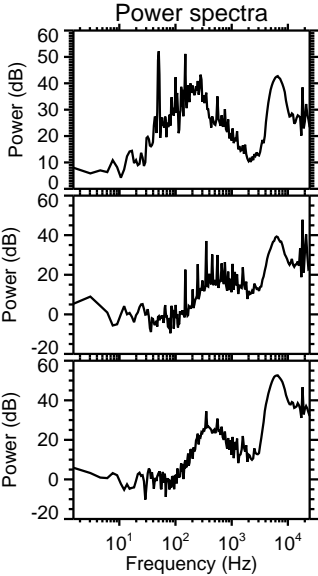
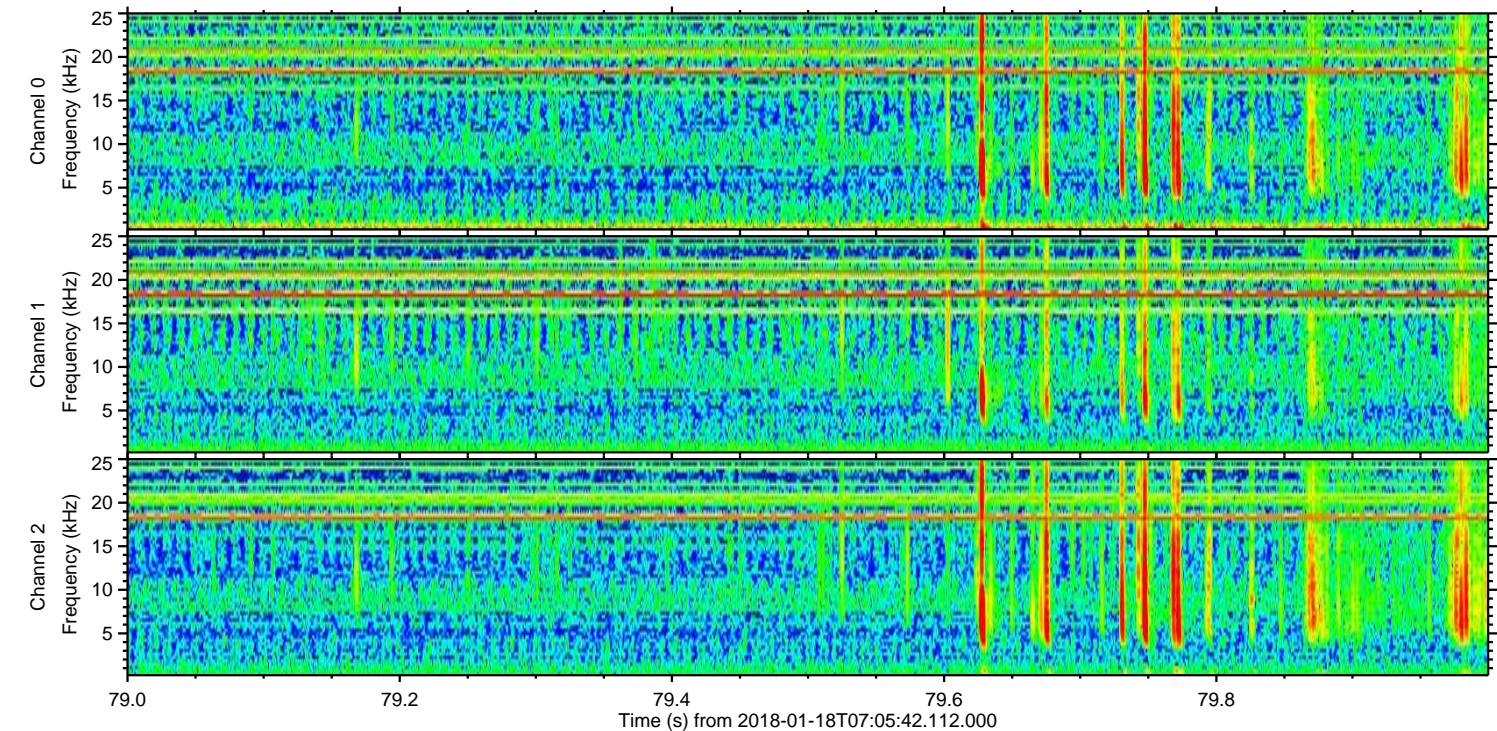
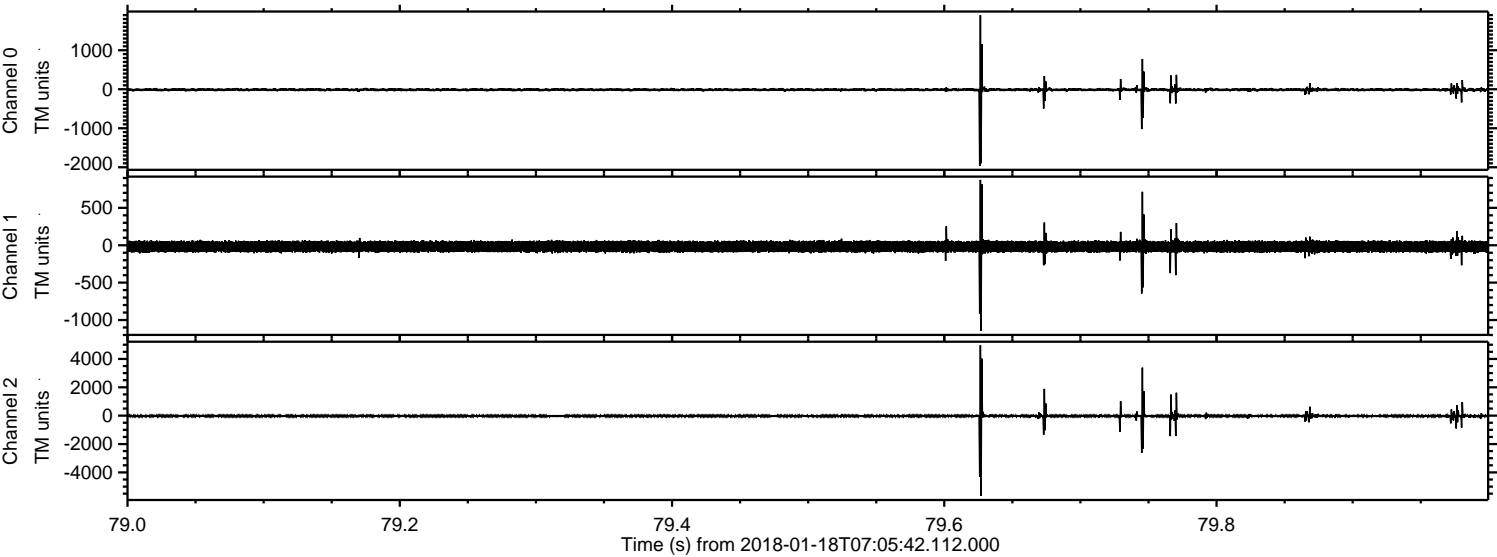
Processed Thu Jan 18 08:13:31 2018 by ELM ver.2012-10-06 from 001__elm20180118_070541__dat00.bin



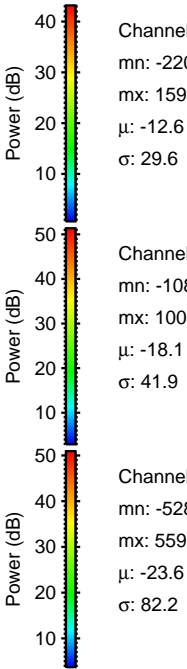
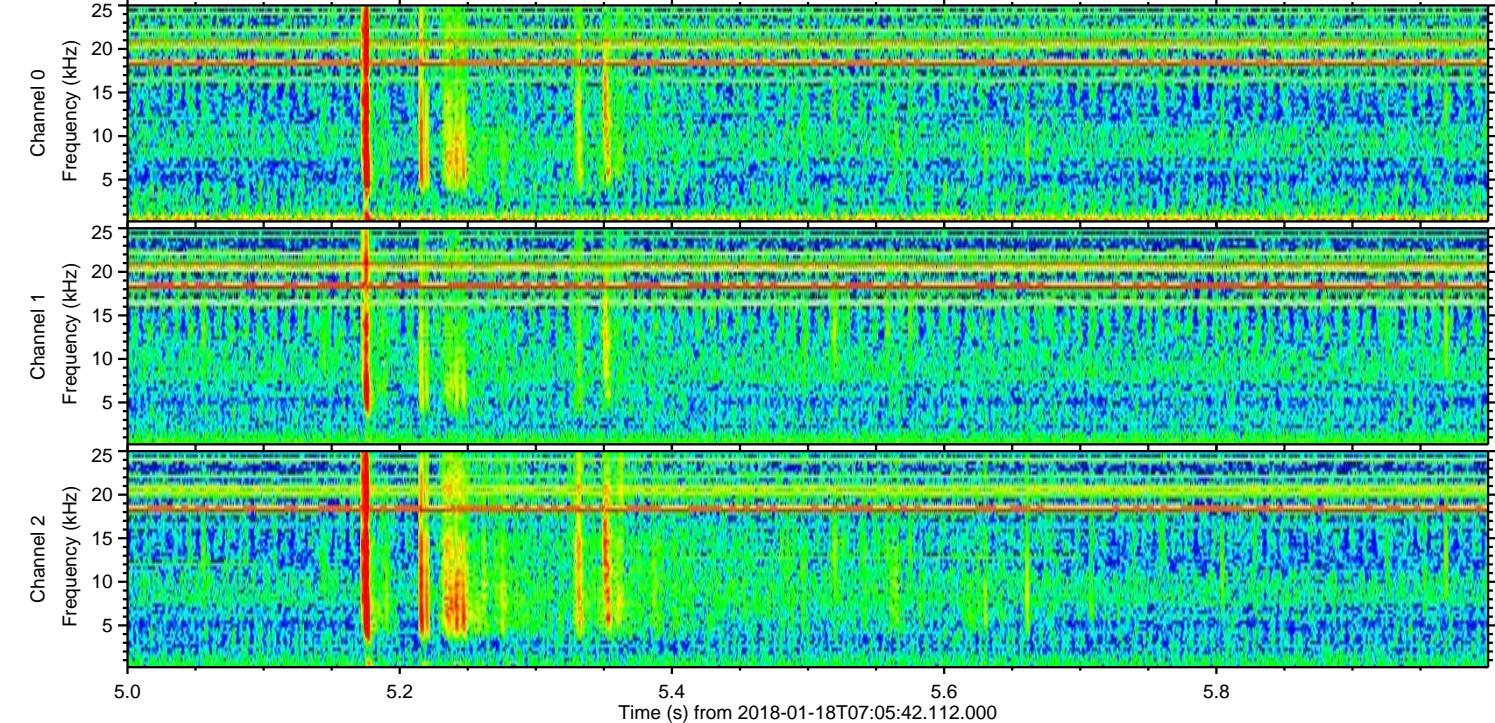
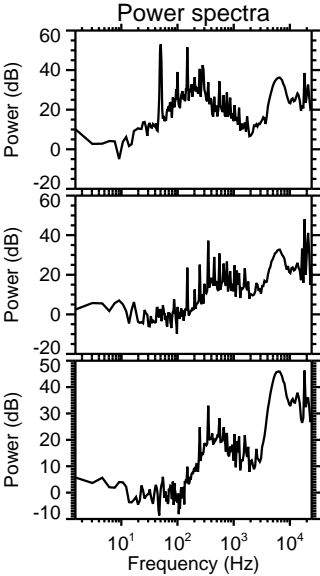
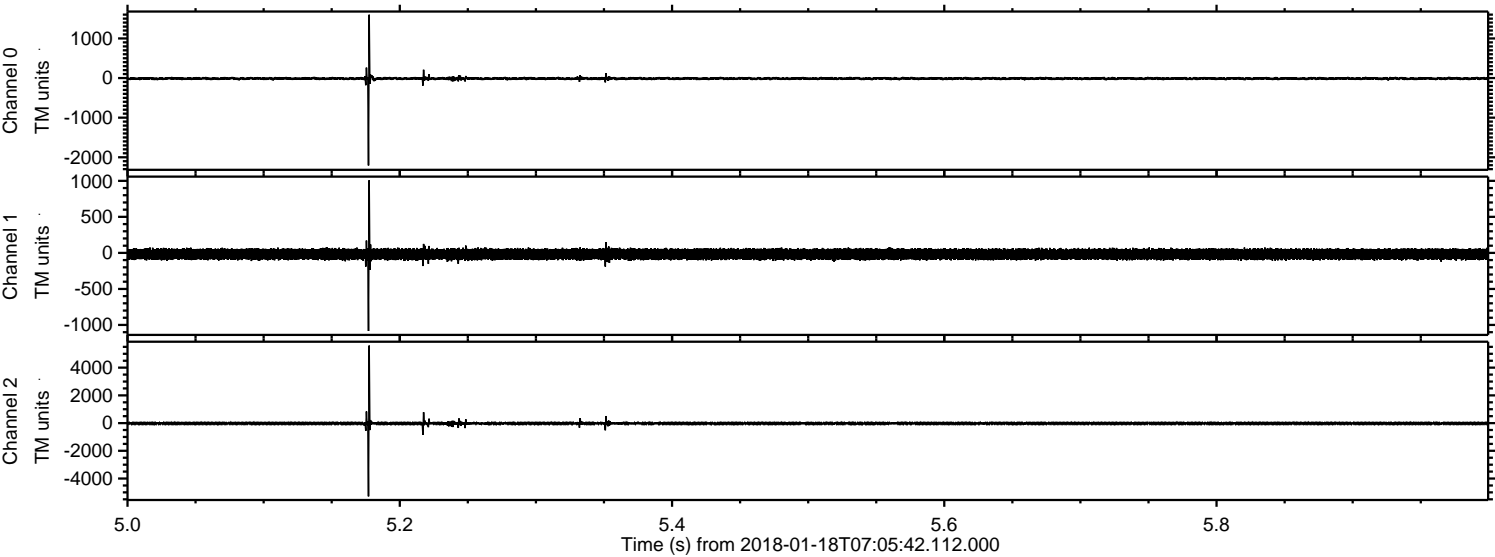
Processed Thu Jan 18 08:13:32 2018 by ELM ver.2012-10-06 from 001__elm20180118_070541__dat00.bin



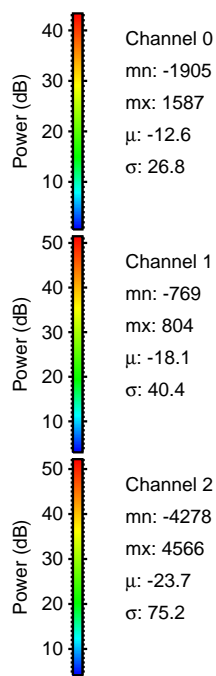
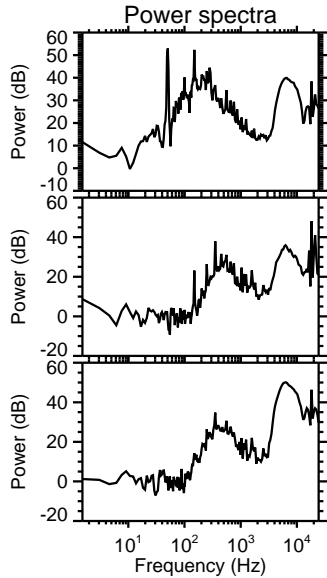
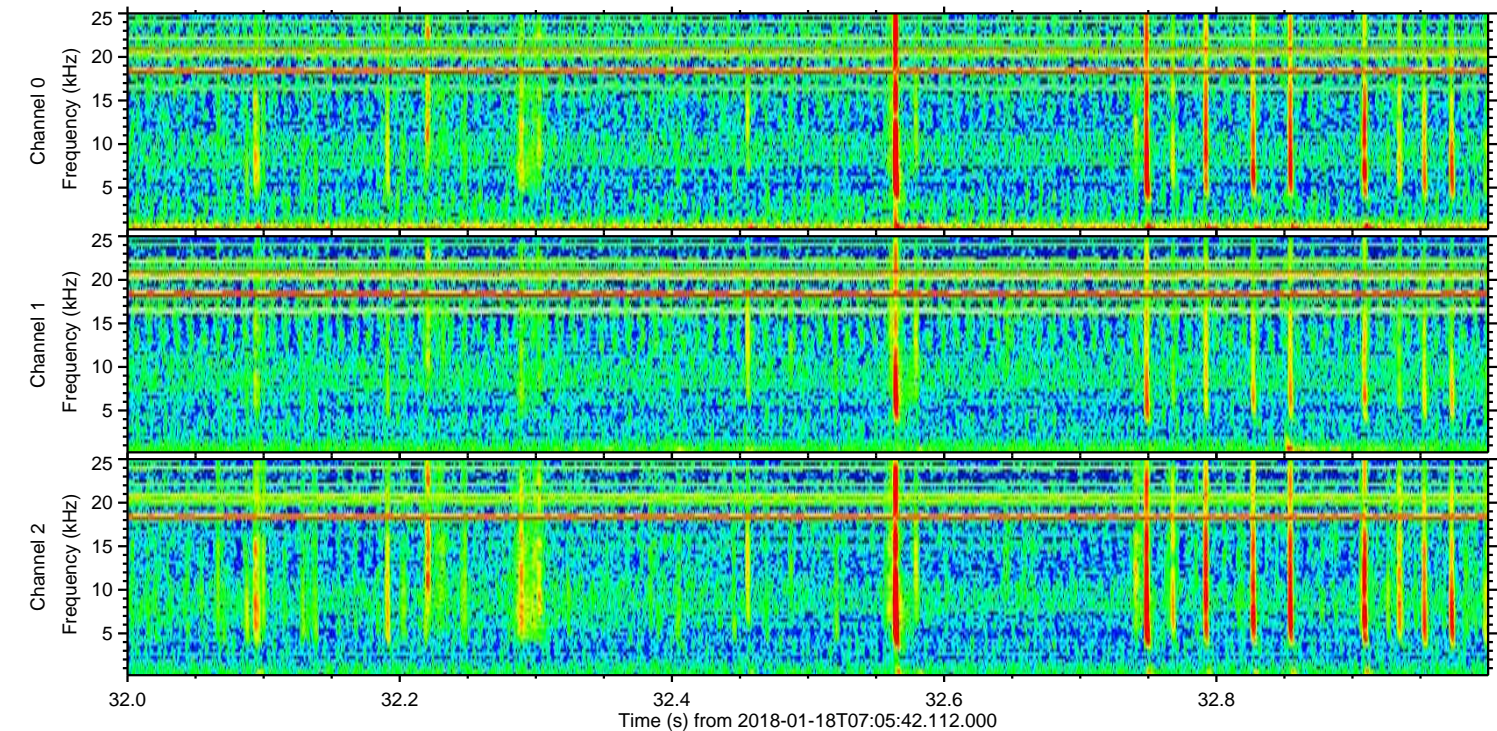
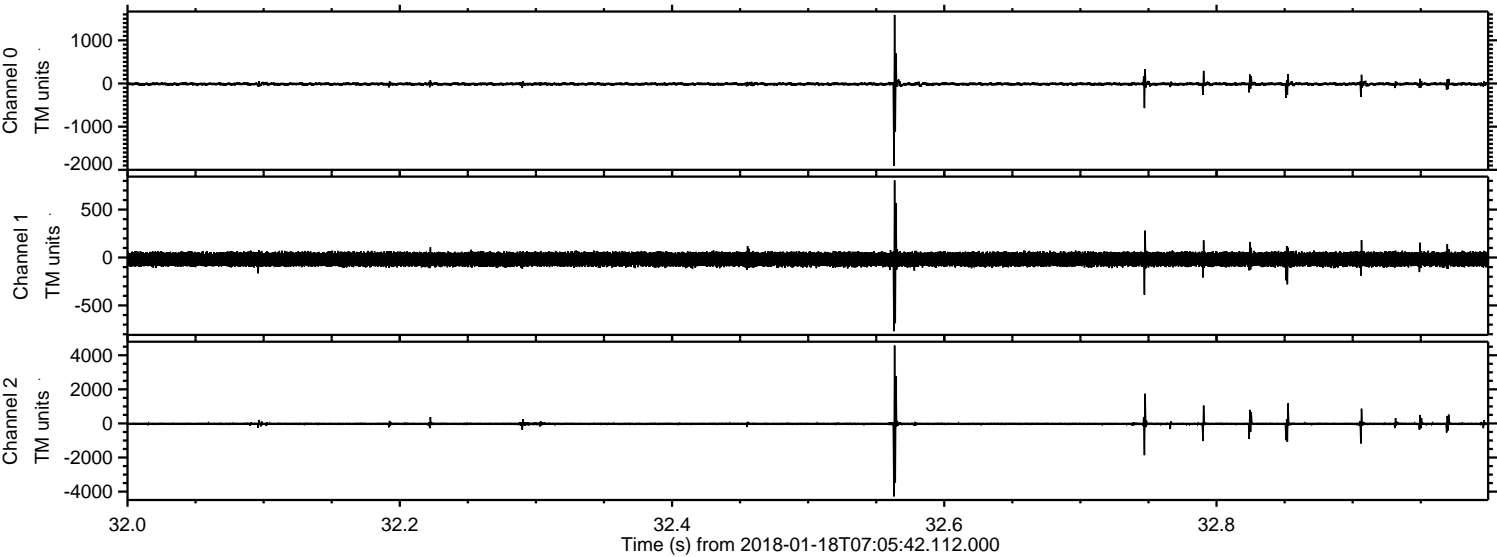
Processed Thu Jan 18 08:13:32 2018 by ELM ver.2012-10-06 from 001__elm20180118_070541__dat00.bin



Processed Thu Jan 18 08:13:33 2018 by ELM ver.2012-10-06 from 001__elm20180118_070541__dat00.bin

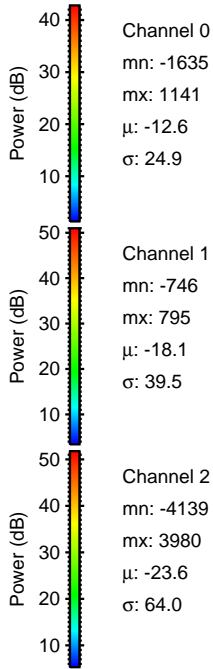
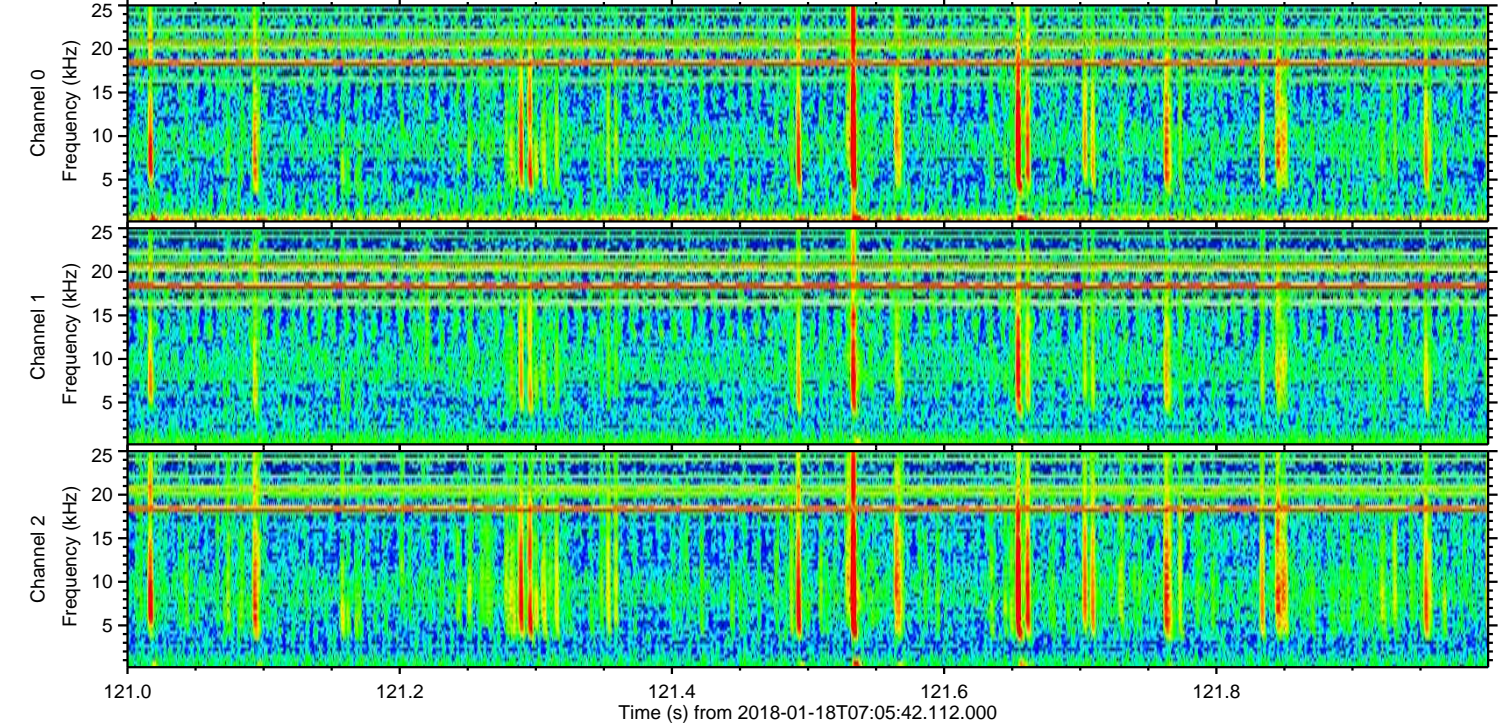
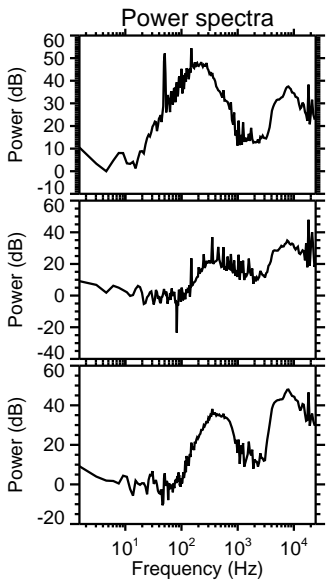
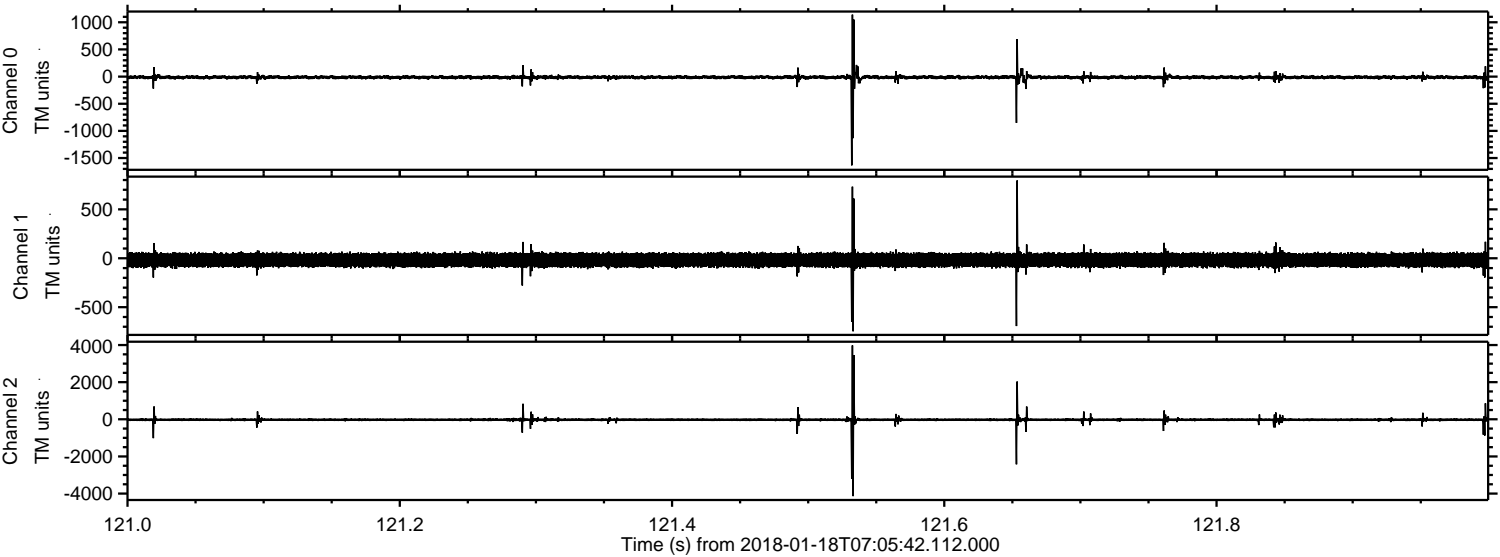


Processed Thu Jan 18 08:13:34 2018 by ELM ver.2012-10-06 from 001__elm20180118_070541__dat00.bin

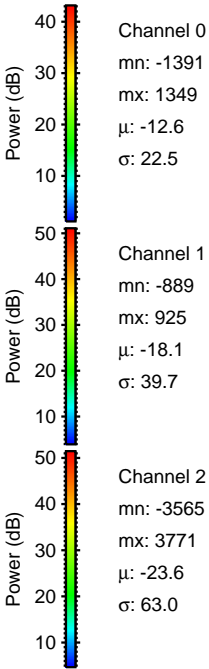
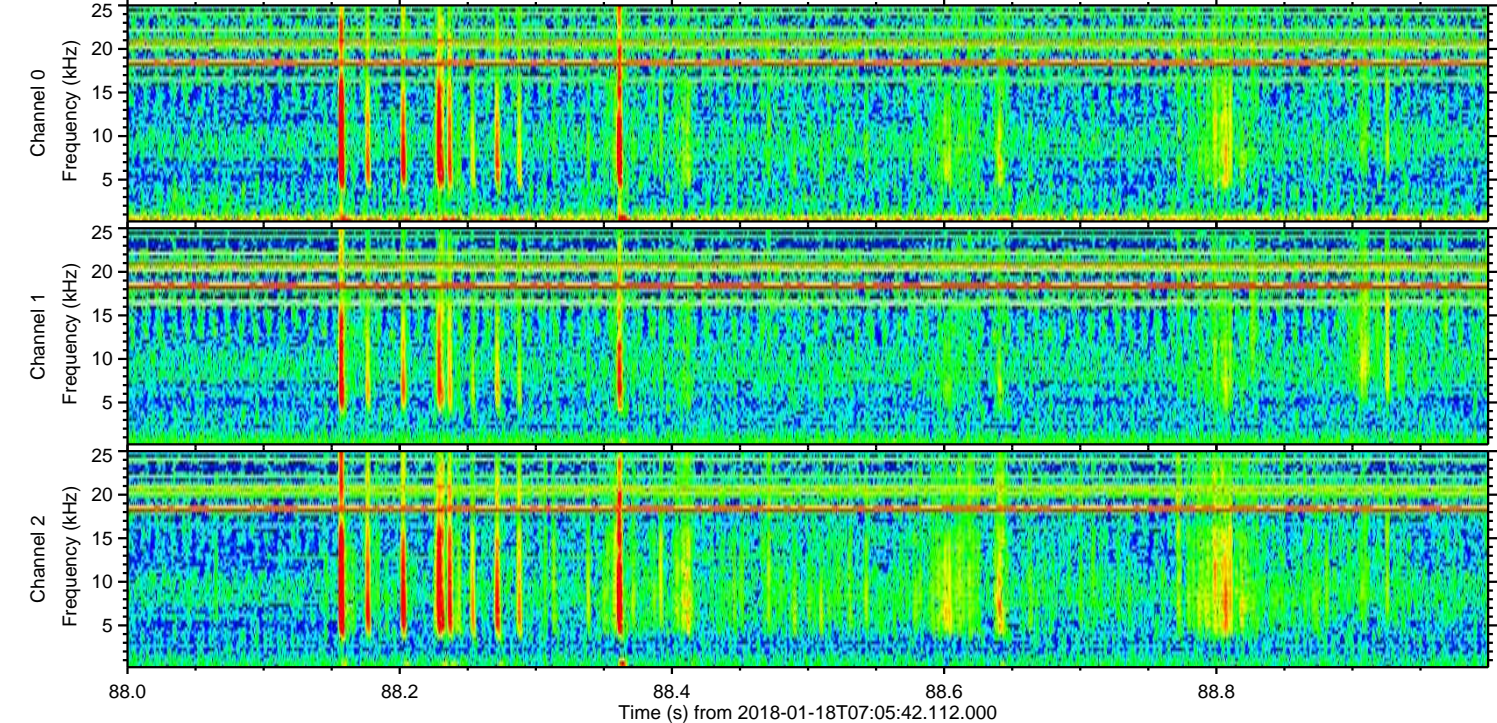
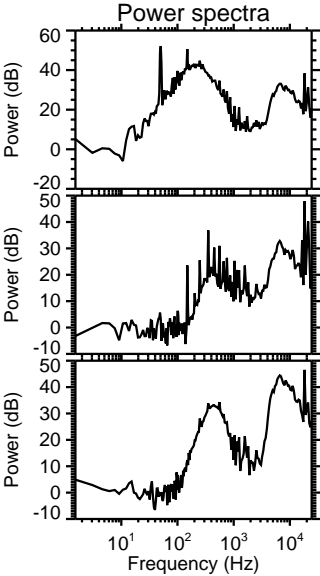
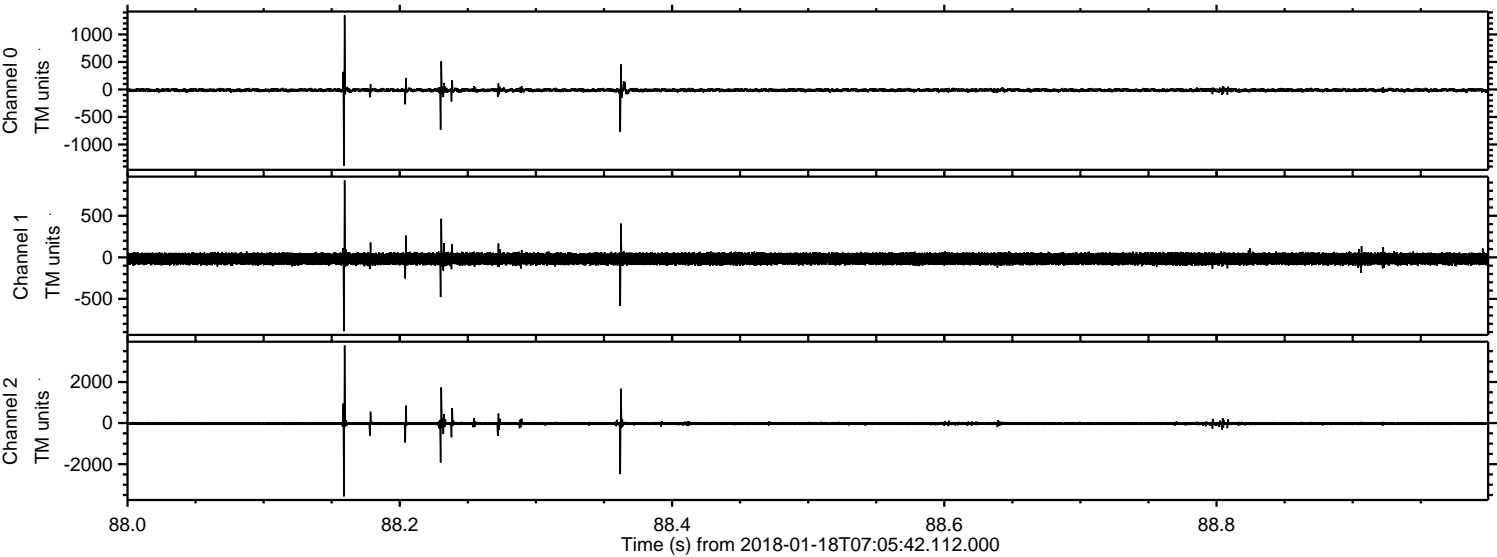


ELMAVAN 3D WAVEFORMS (Measured data sampled at 50 kHz) 51000 packets of 144 samples from 2018-01-18T07:05:42.112.000. Part 122/147

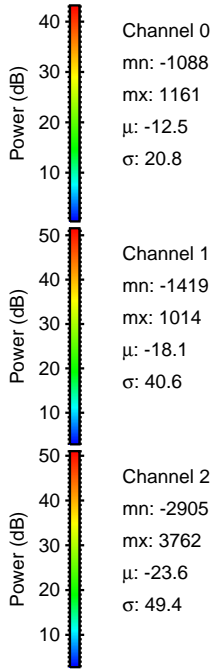
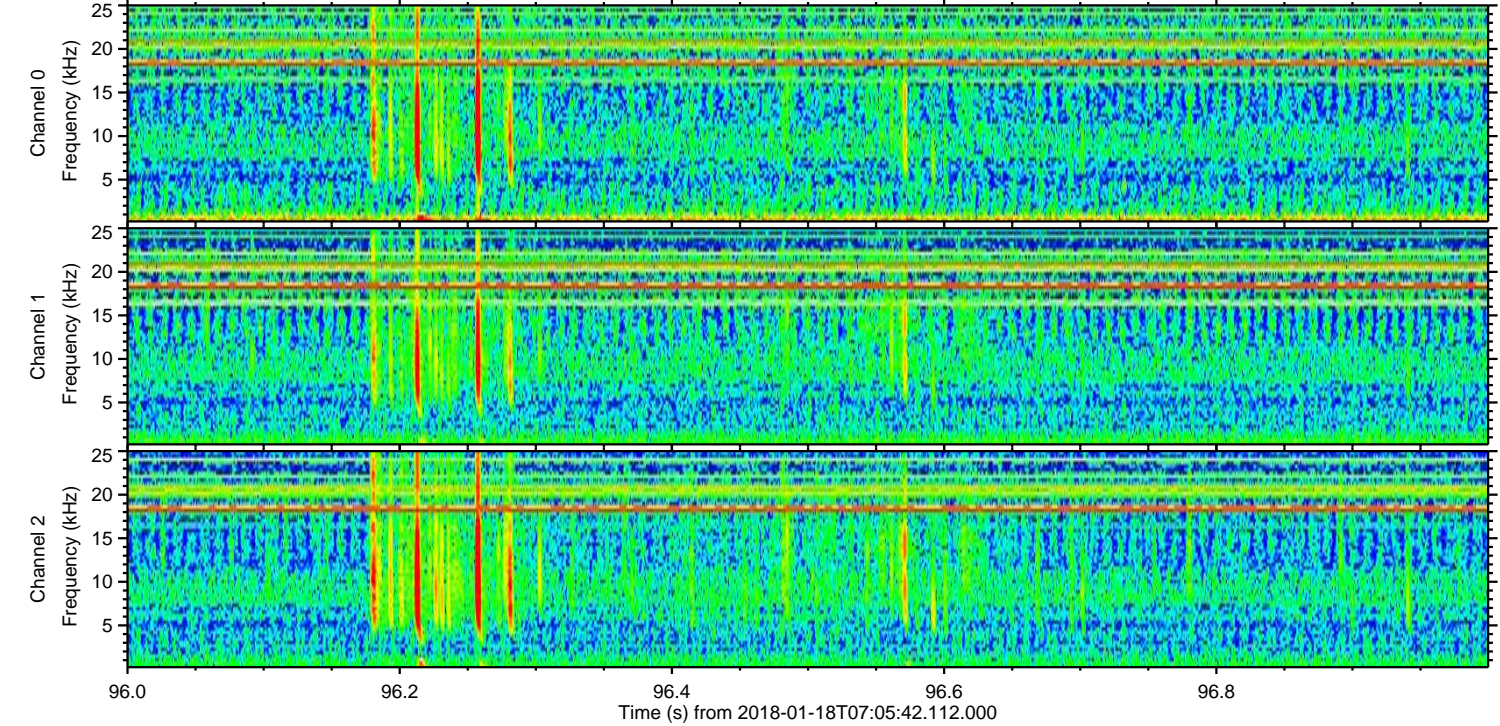
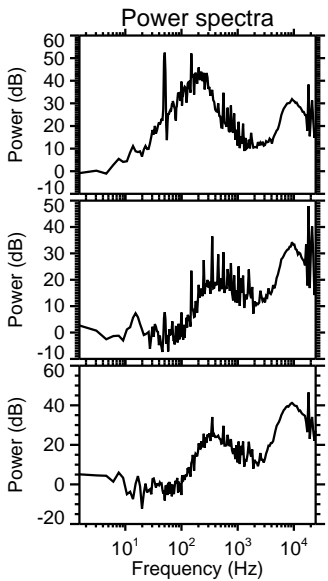
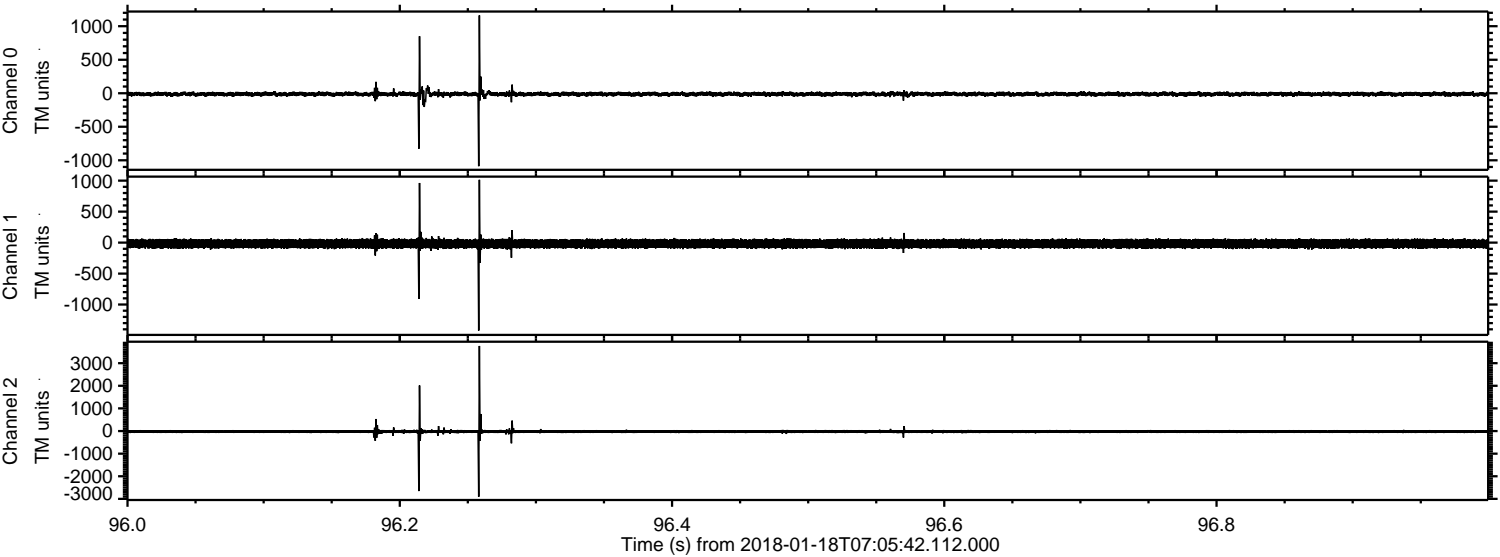
Processed Thu Jan 18 08:13:35 2018 by ELM ver.2012-10-06 from 001__elm20180118_070541__dat00.bin



Processed Thu Jan 18 08:13:36 2018 by ELM ver.2012-10-06 from 001__elm20180118_070541__dat00.bin



Processed Thu Jan 18 08:13:36 2018 by ELM ver.2012-10-06 from 001__elm20180118_070541__dat00.bin



Channel 0
mn: -1088
mx: 1161
 μ : -12.5
 σ : 20.8

Channel 1
mn: -1419
mx: 1014
 μ : -18.1
 σ : 40.6

Channel 2
mn: -2905
mx: 3762
 μ : -23.6
 σ : 49.4

Processed Thu Jan 18 08:13:37 2018 by ELM ver.2012-10-06 from 001__elm20180118_070541__dat00.bin

