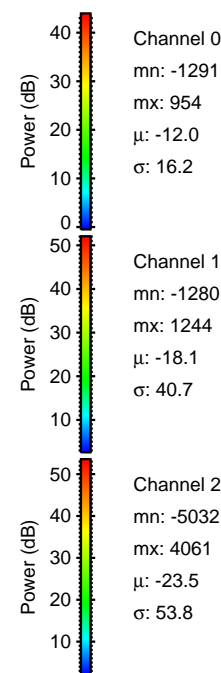
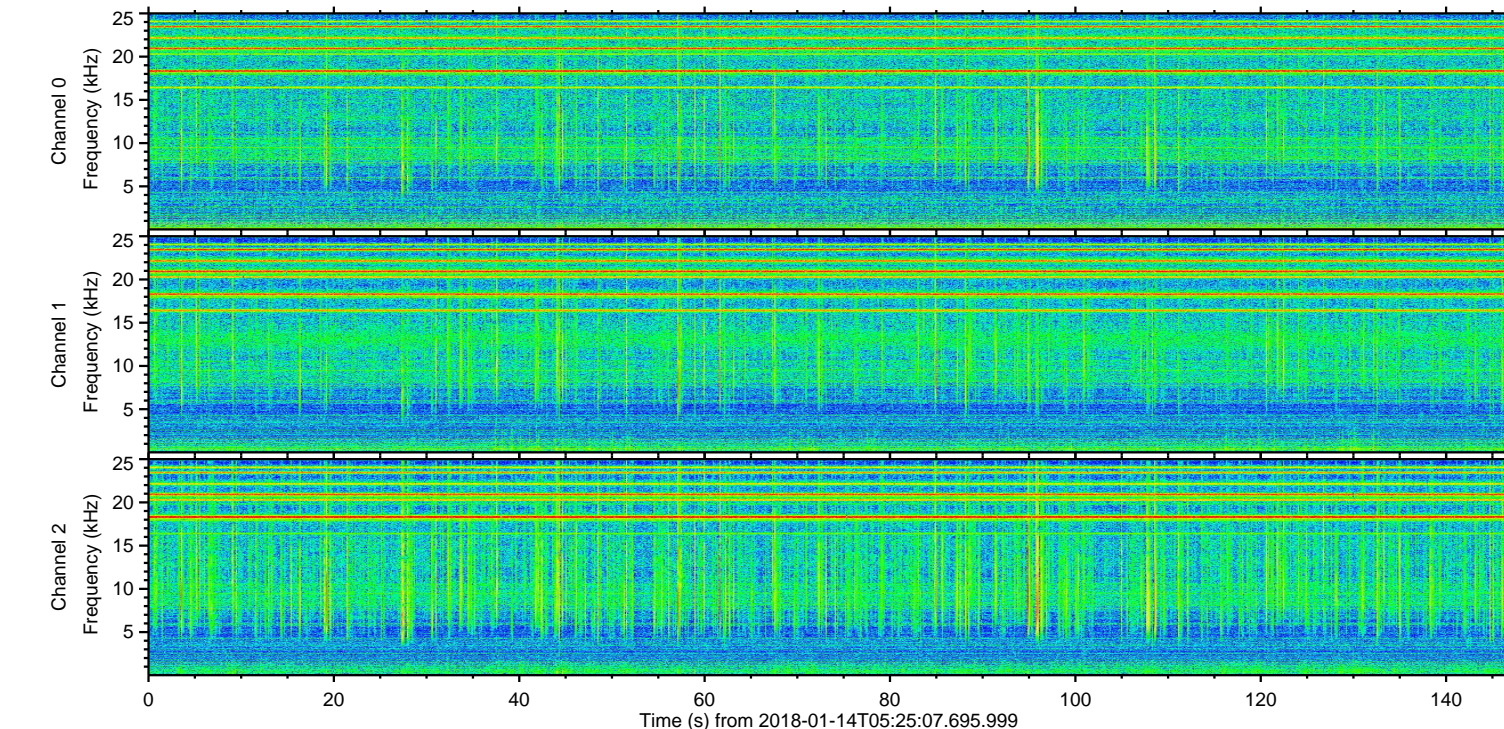
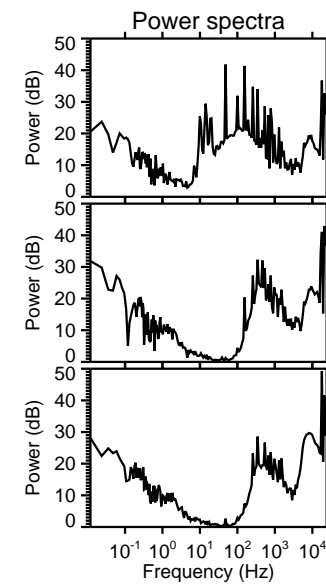
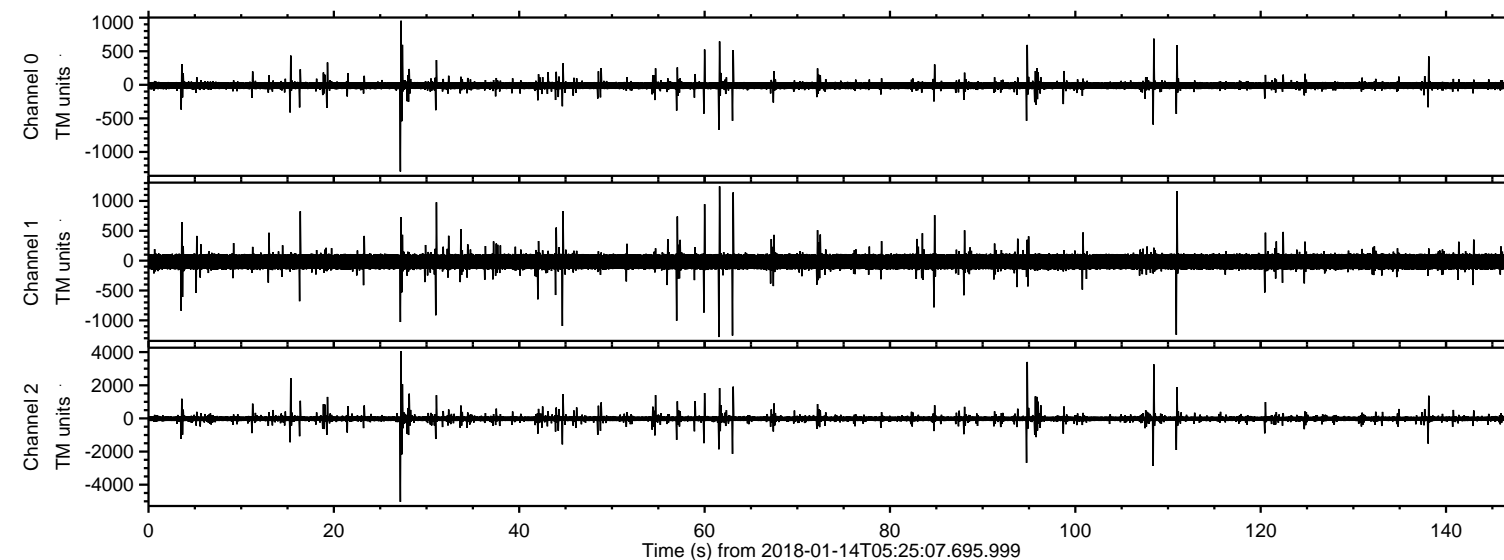


# ELMAVAN 3D WAVEFORMS (Measured data sampled at 50 kHz) 51000 packets of 144 samples from 2018-01-14T05:25:07.695.999.

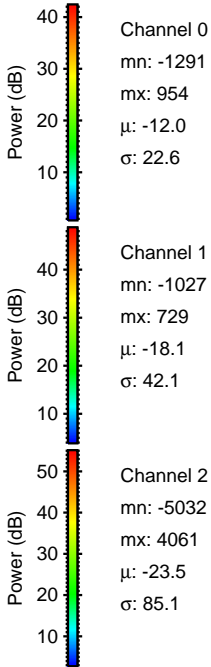
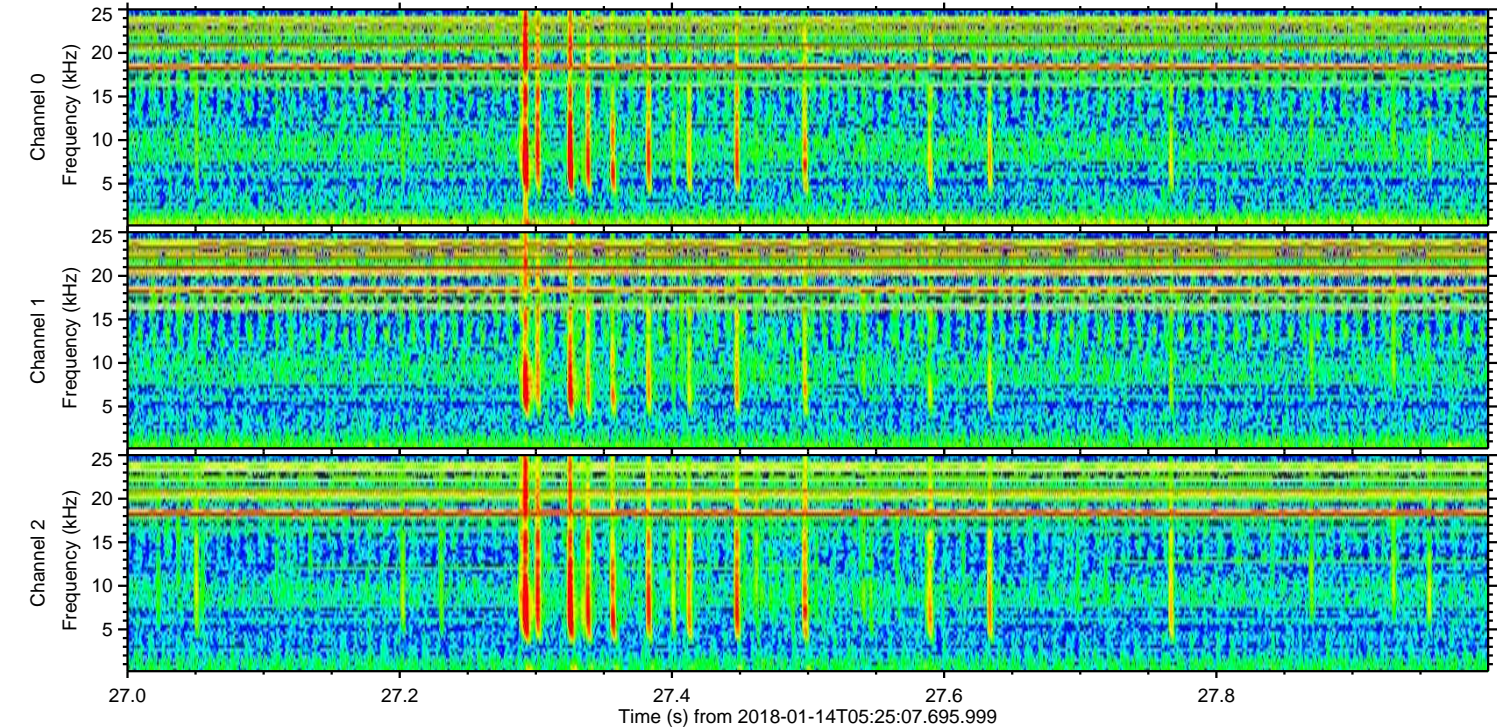
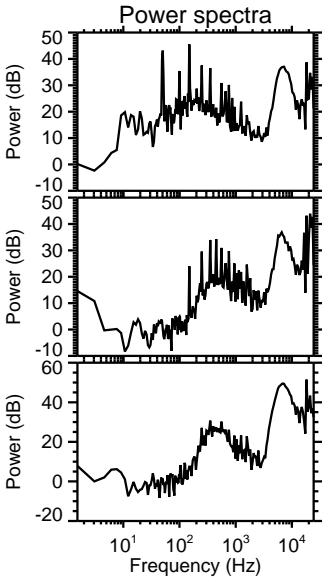
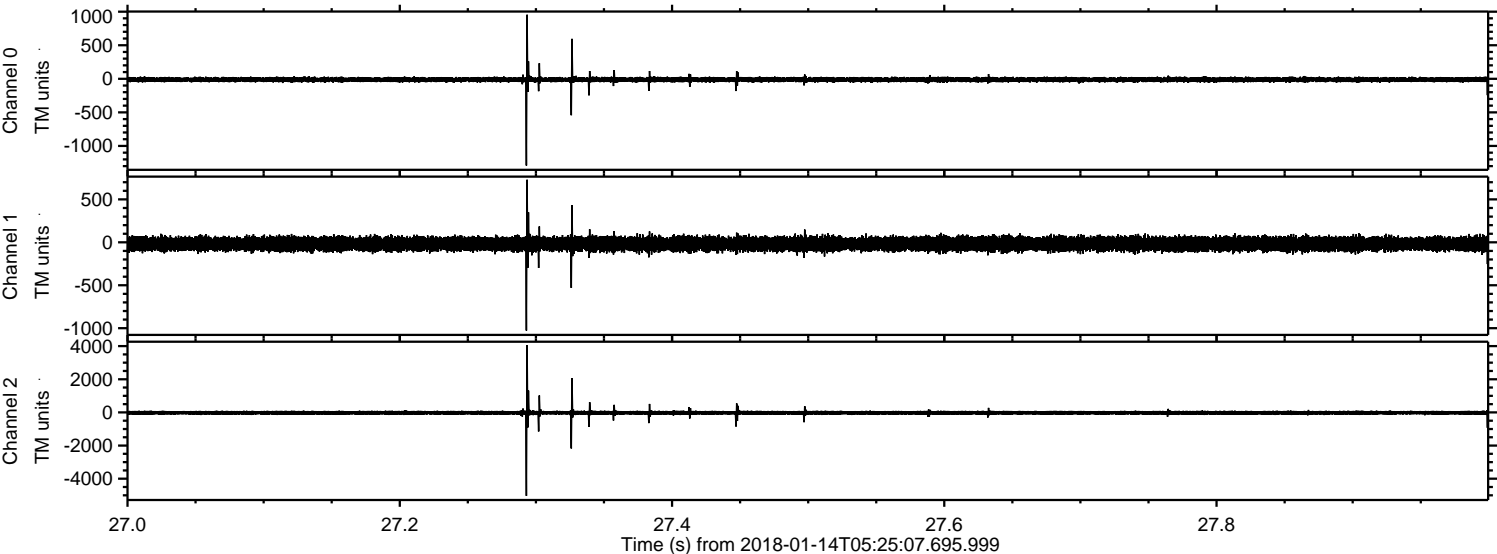
Processed Sun Jan 14 06:33:40 2018 by ELM ver.2012-10-06 from 001\_\_elm20180114\_052506\_\_dat00.bin





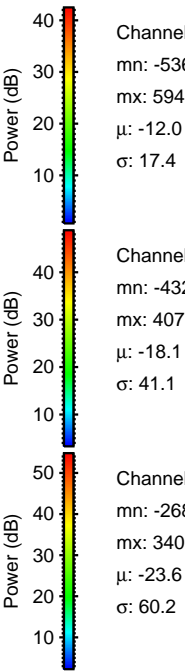
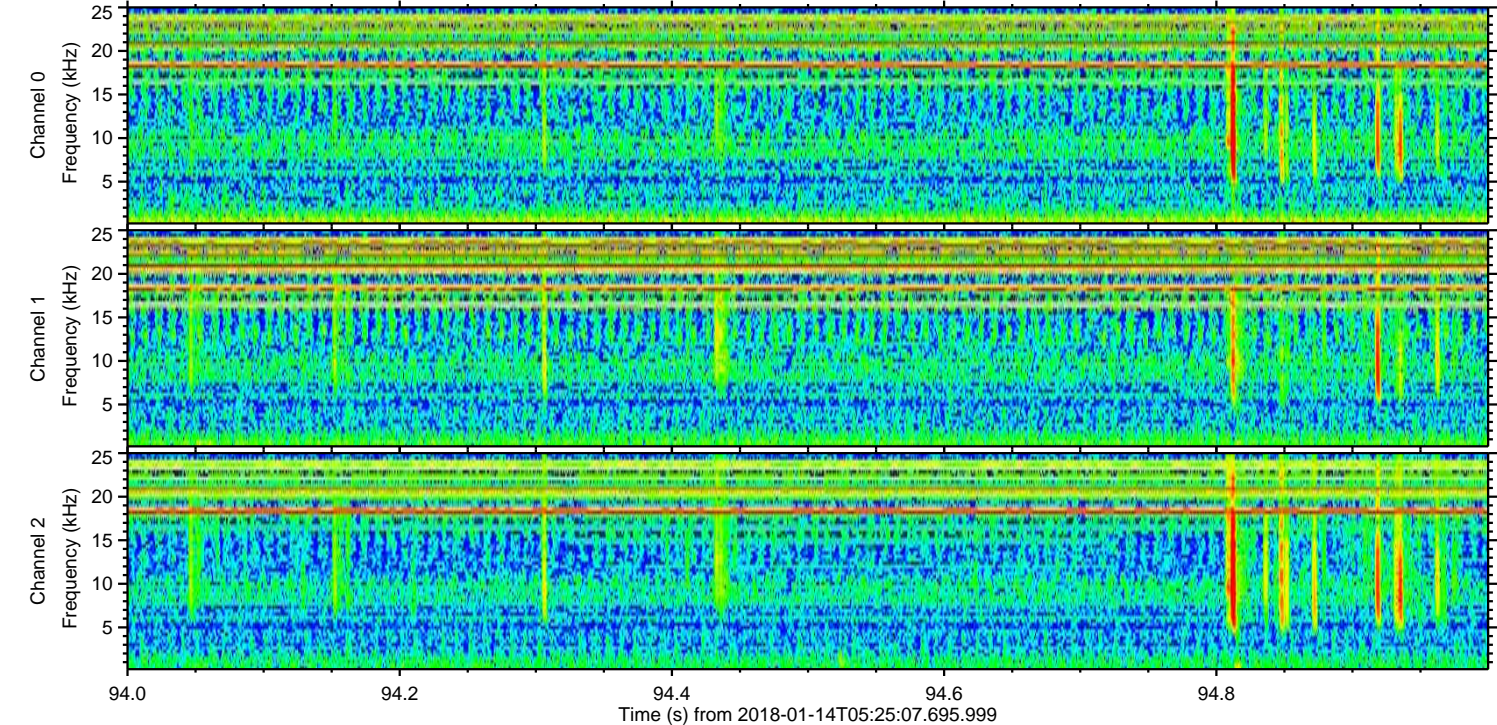
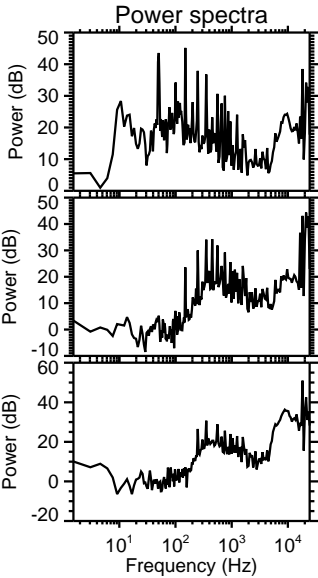
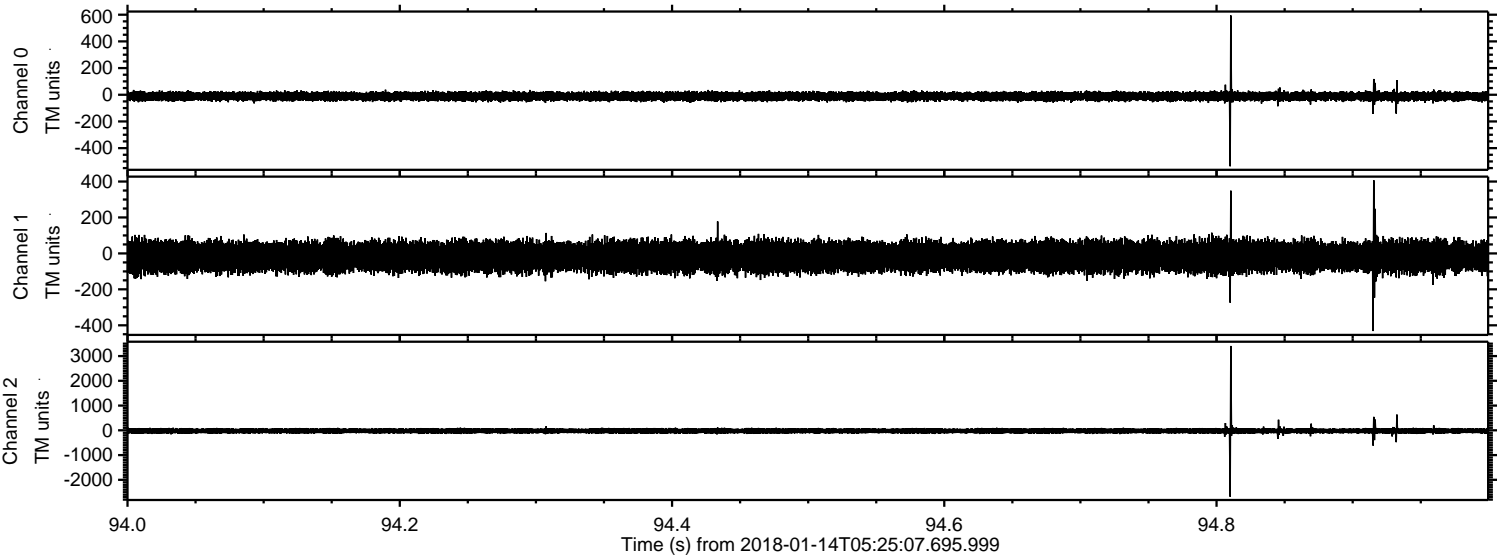
ELMAVAN 3D WAVEFORMS (Measured data sampled at 50 kHz) 51000 packets of 144 samples from 2018-01-14T05:25:07.695.999. Part 28/147

Processed Sun Jan 14 06:33:48 2018 by ELM ver.2012-10-06 from 001\_\_elm20180114\_052506\_\_dat00.bin





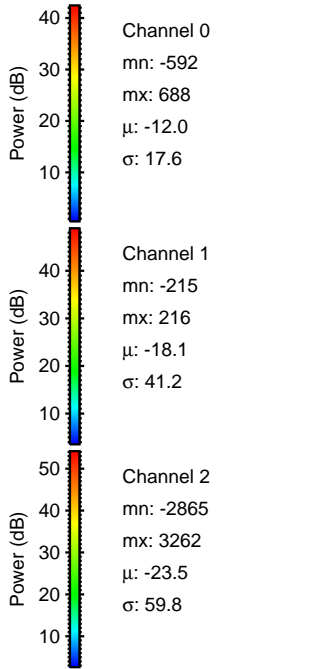
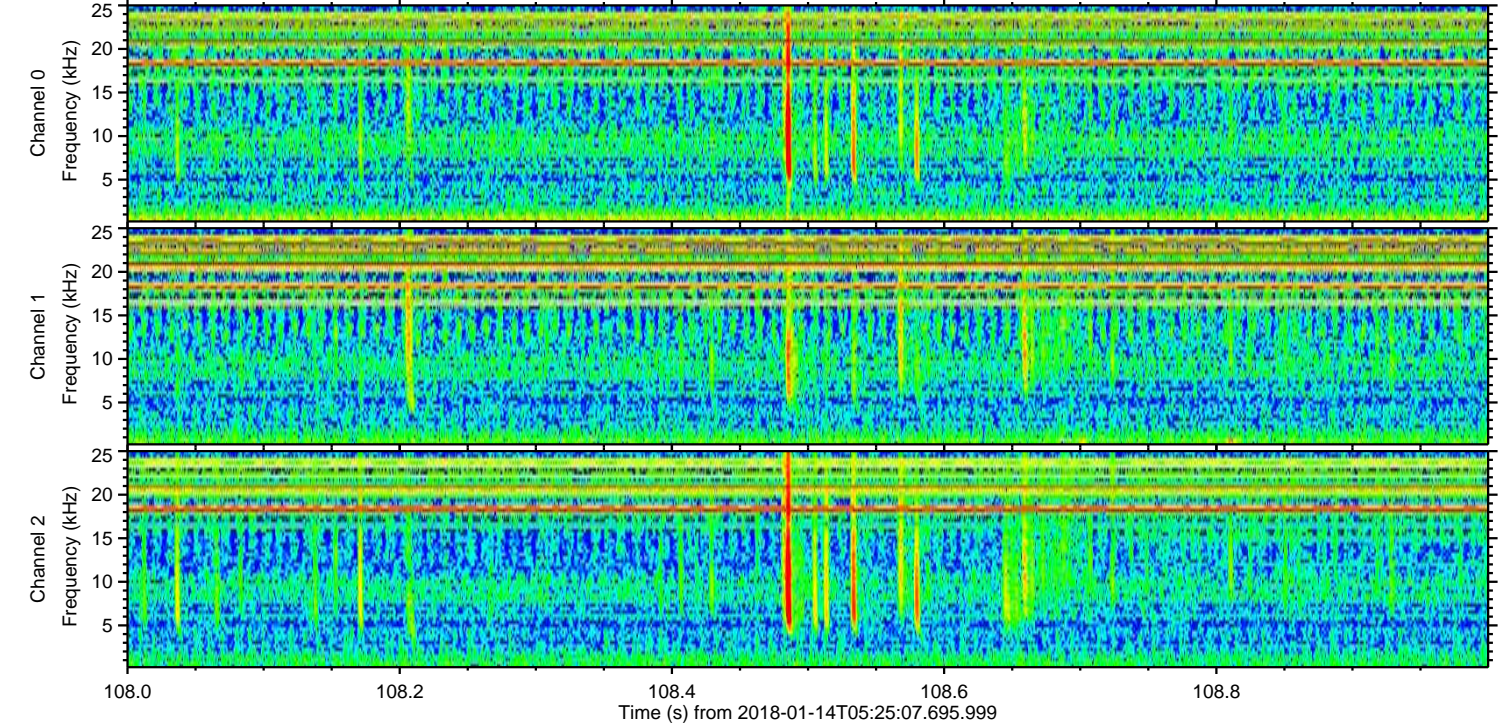
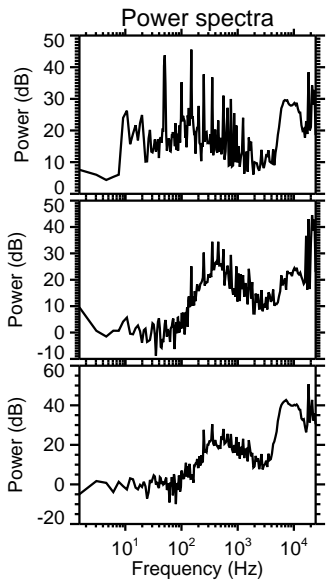
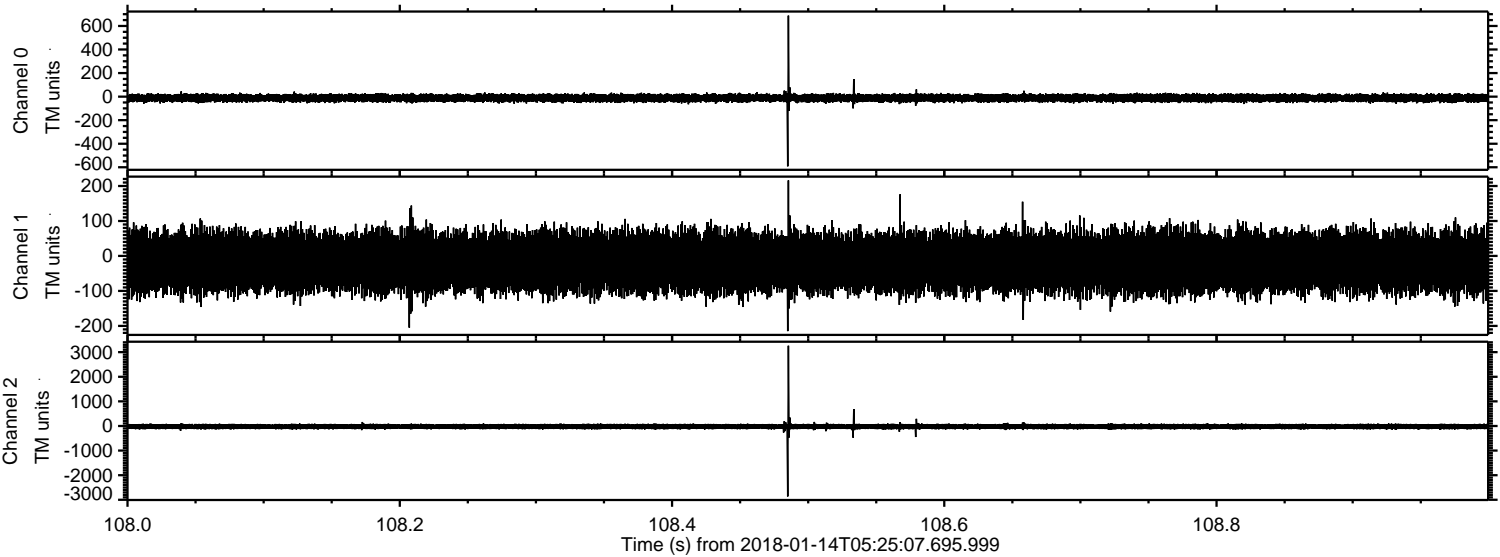
Processed Sun Jan 14 06:33:49 2018 by ELM ver.2012-10-06 from 001\_\_elm20180114\_052506\_\_dat00.bin





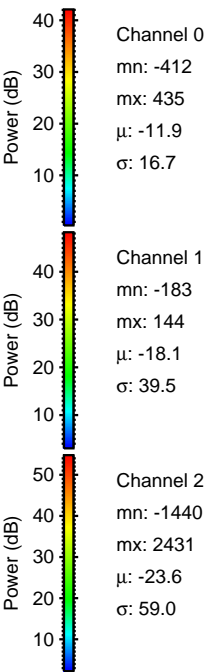
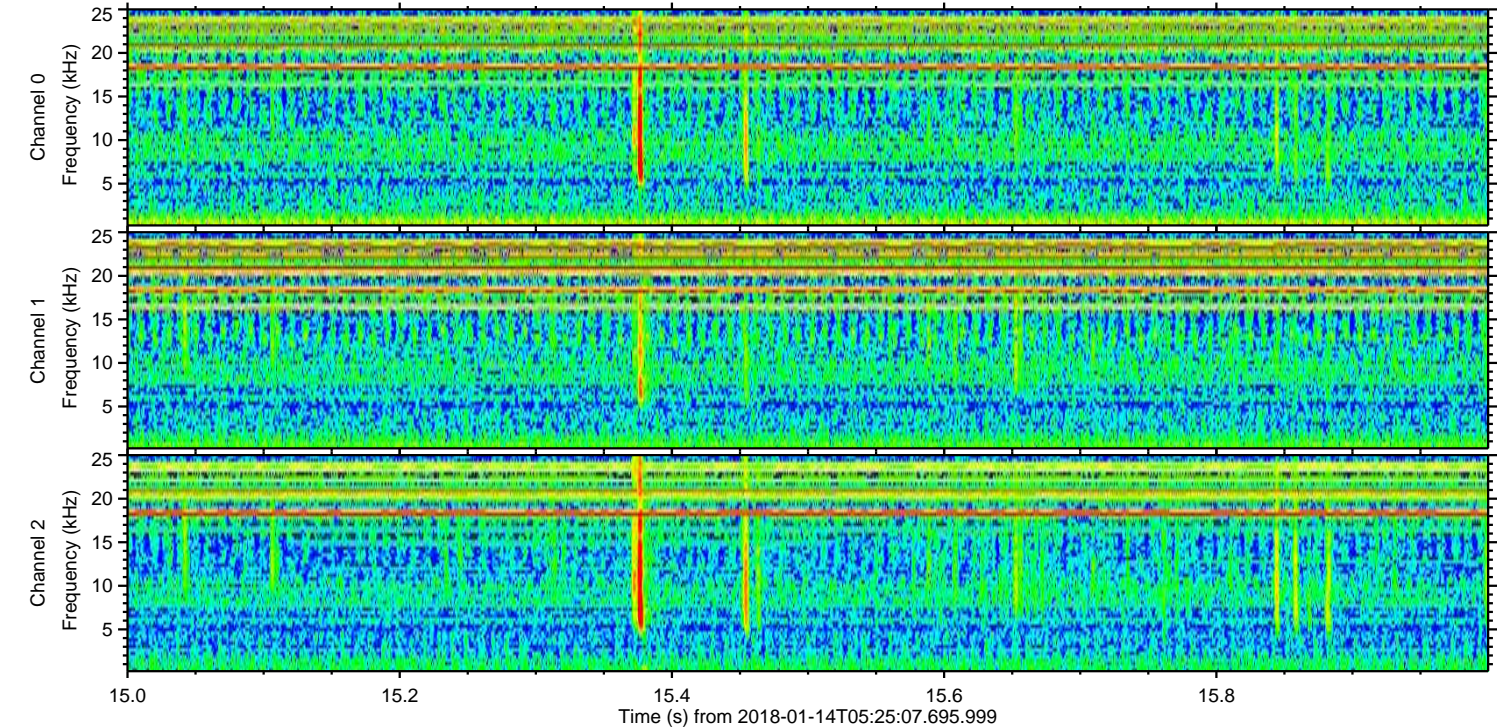
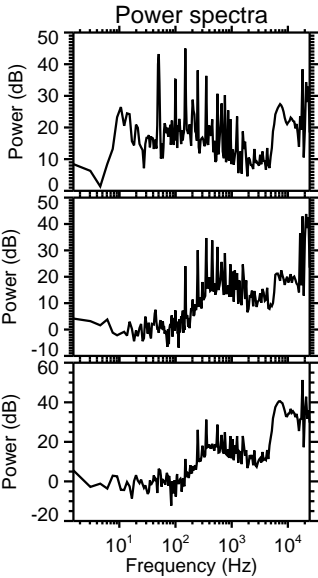
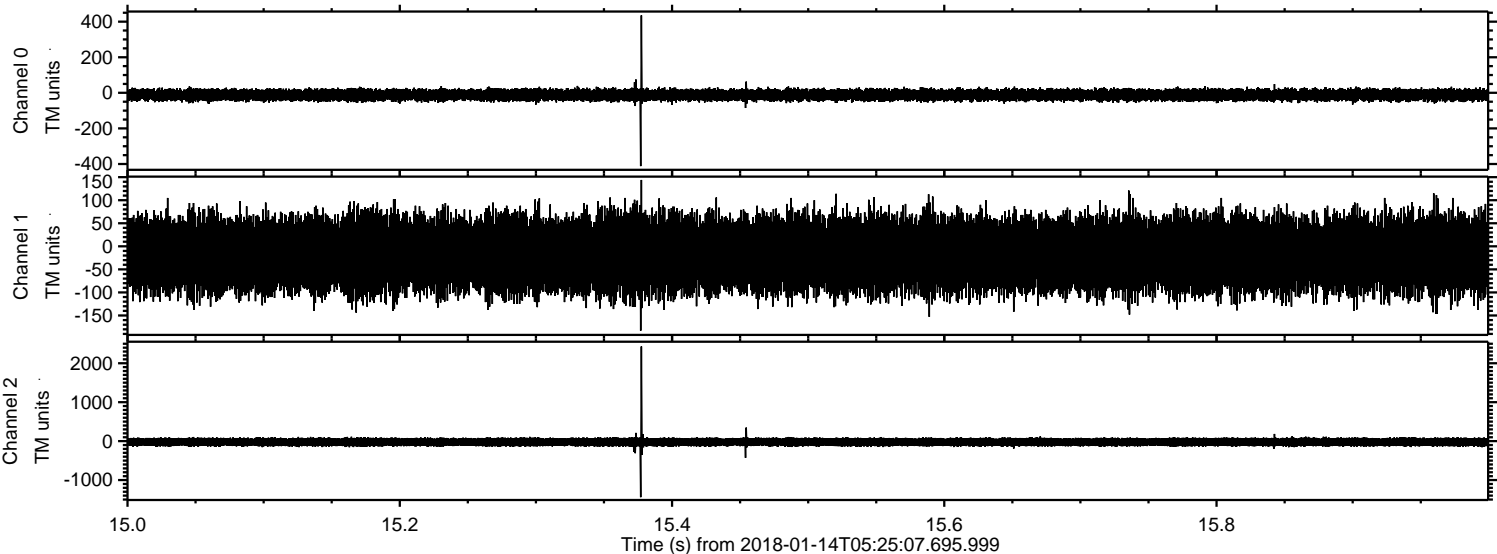
ELMAVAN 3D WAVEFORMS (Measured data sampled at 50 kHz) 51000 packets of 144 samples from 2018-01-14T05:25:07.695.999. Part 109/147

Processed Sun Jan 14 06:33:50 2018 by ELM ver.2012-10-06 from 001\_\_elm20180114\_052506\_\_dat00.bin





Processed Sun Jan 14 06:33:51 2018 by ELM ver.2012-10-06 from 001\_\_elm20180114\_052506\_\_dat00.bin



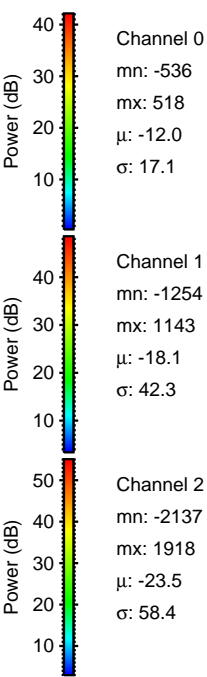
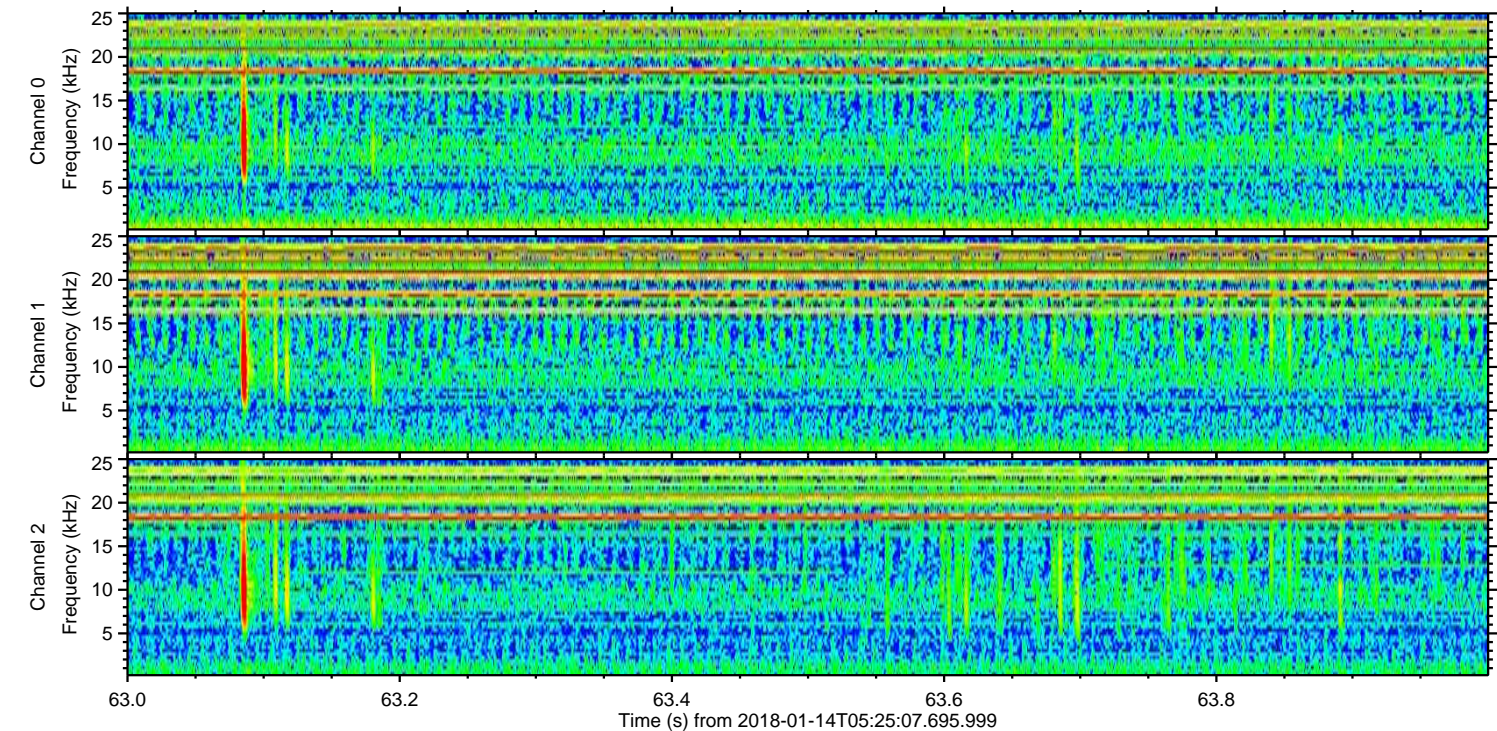
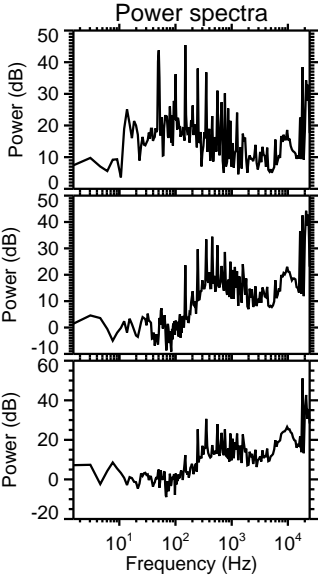
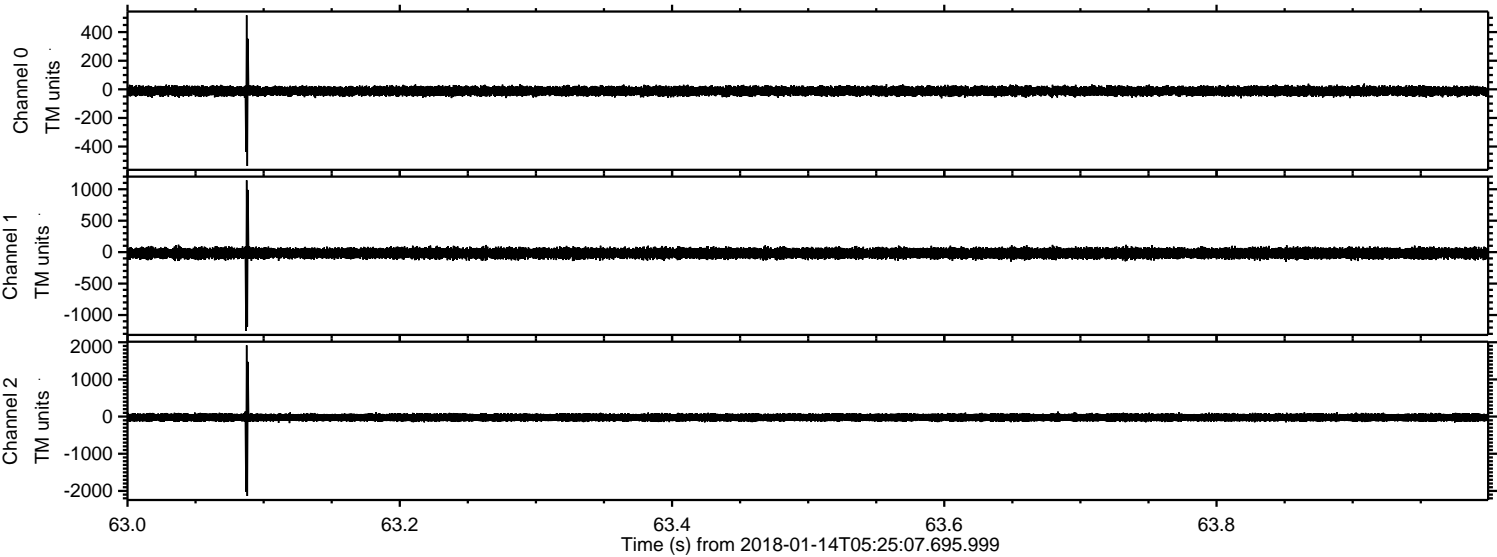
Channel 0  
mn: -412  
mx: 435  
 $\mu$ : -11.9  
 $\sigma$ : 16.7

Channel 1  
mn: -183  
mx: 144  
 $\mu$ : -18.1  
 $\sigma$ : 39.5

Channel 2  
mn: -1440  
mx: 2431  
 $\mu$ : -23.6  
 $\sigma$ : 59.0



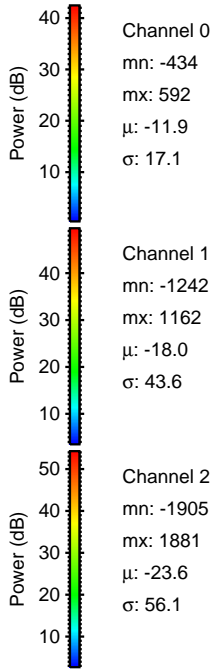
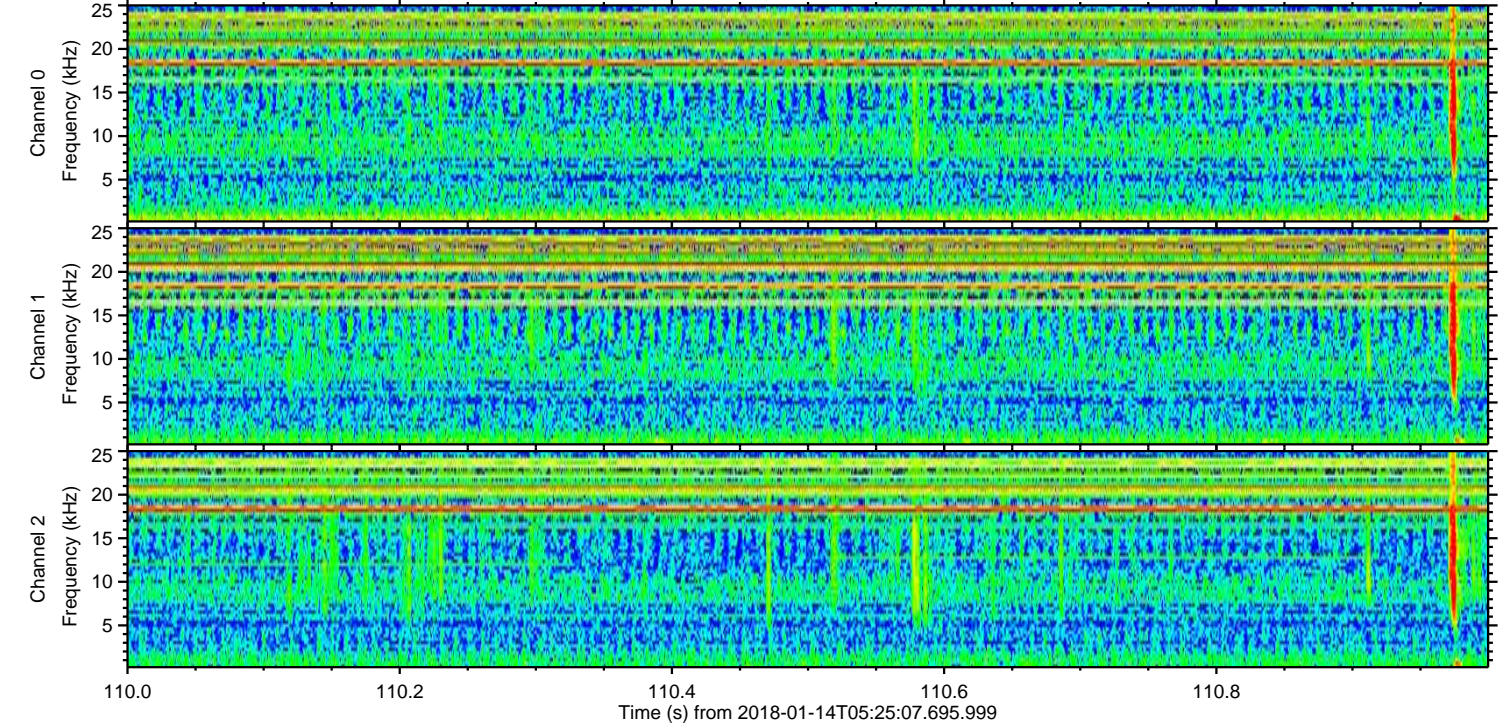
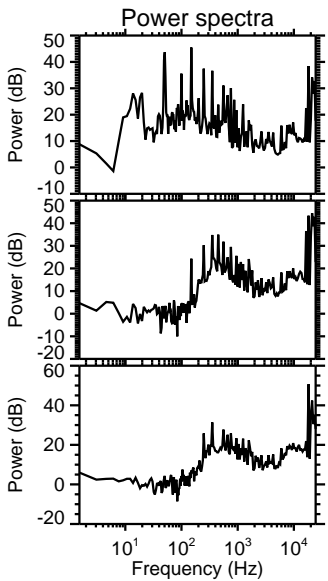
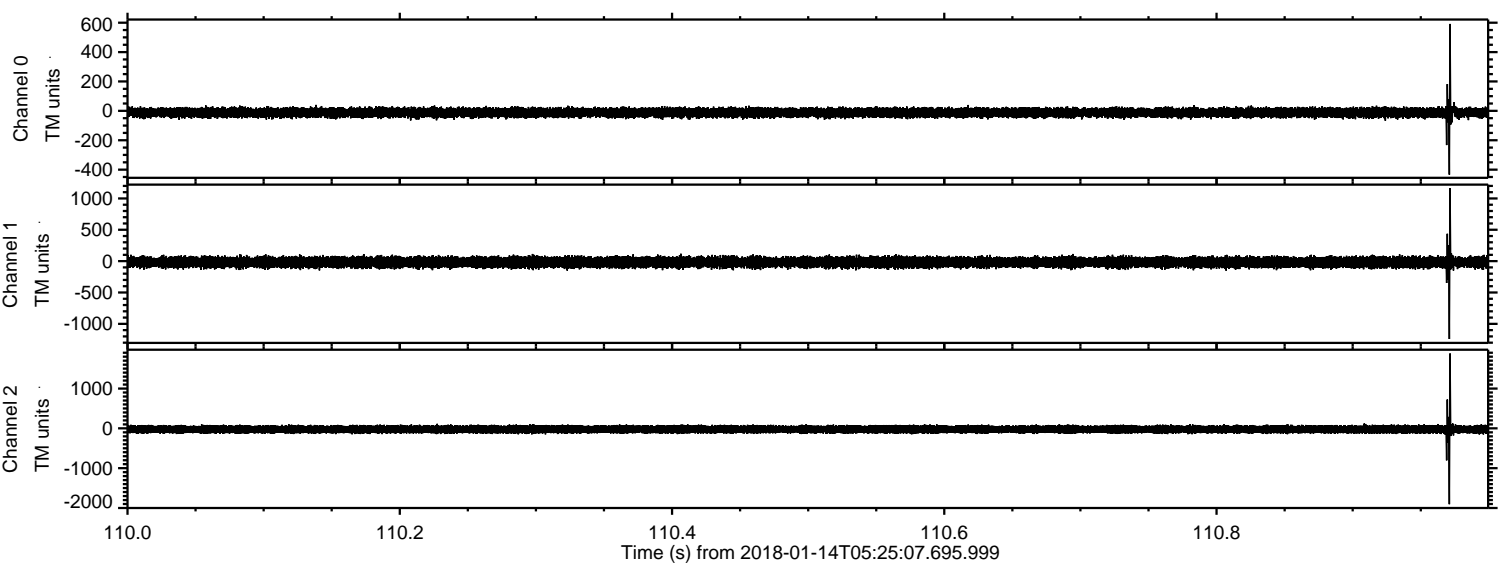
Processed Sun Jan 14 06:33:51 2018 by ELM ver.2012-10-06 from 001\_\_elm20180114\_052506\_\_dat00.bin





ELMAVAN 3D WAVEFORMS (Measured data sampled at 50 kHz) 51000 packets of 144 samples from 2018-01-14T05:25:07.695.999. Part 111/147

Processed Sun Jan 14 06:33:52 2018 by ELM ver.2012-10-06 from 001\_\_elm20180114\_052506\_\_dat00.bin



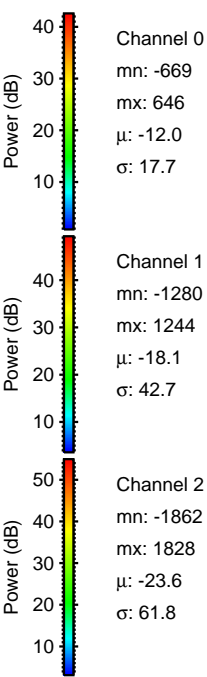
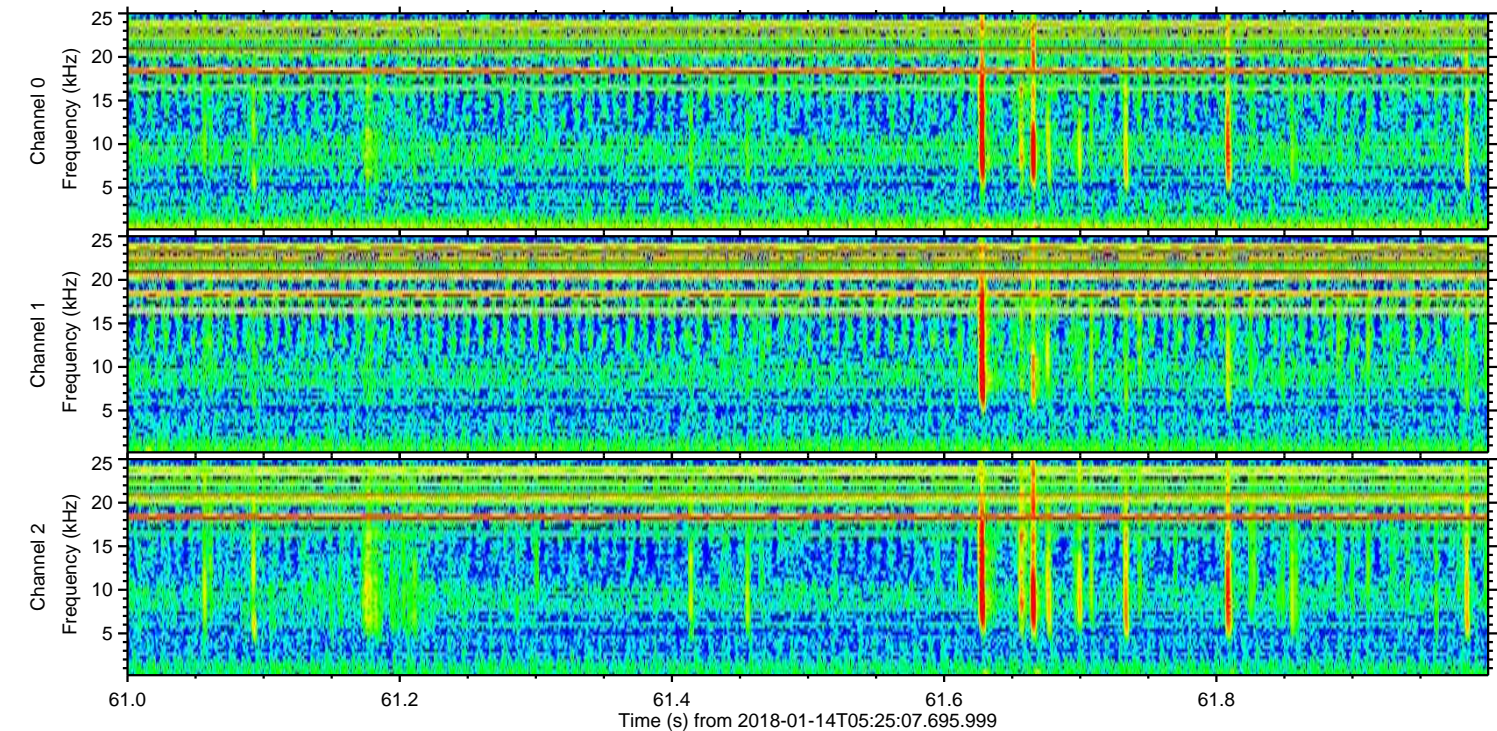
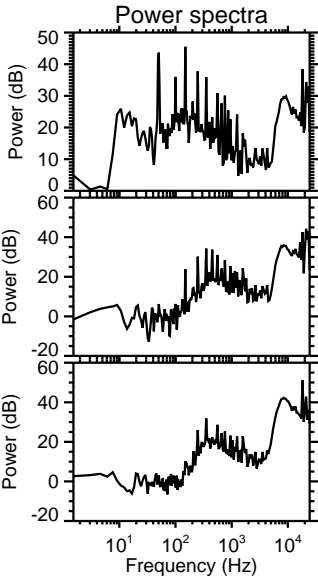
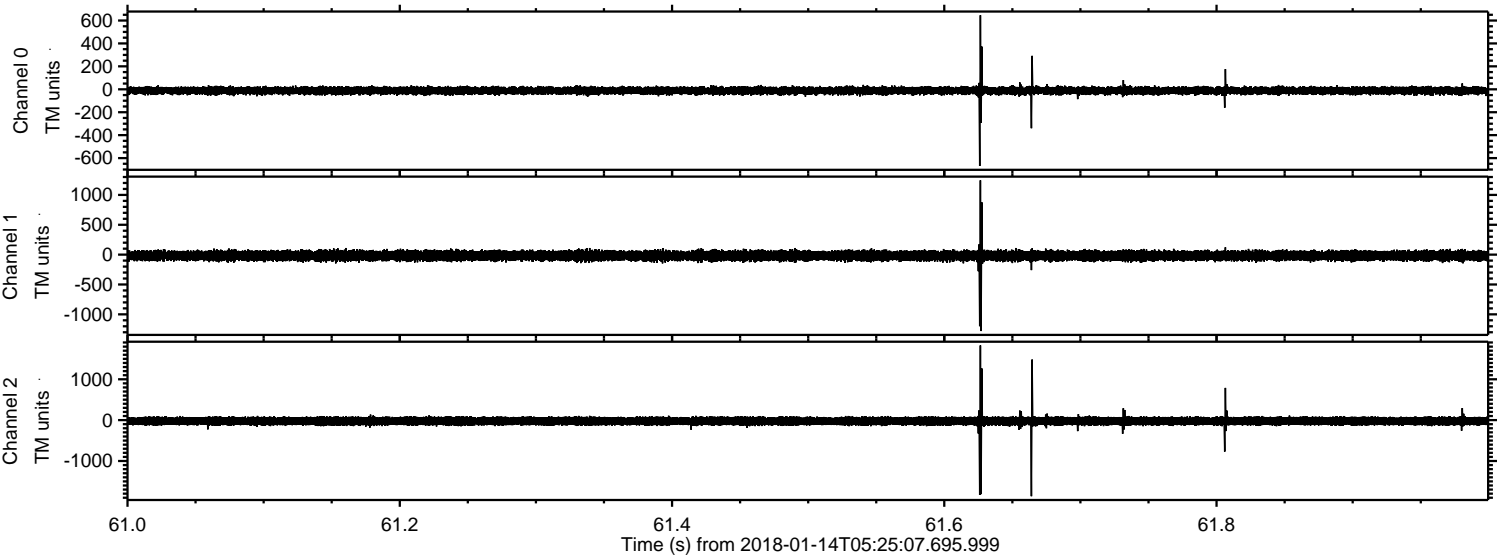
Channel 0  
mn: -434  
mx: 592  
 $\mu$ : -11.9  
 $\sigma$ : 17.1

Channel 1  
mn: -1242  
mx: 1162  
 $\mu$ : -18.0  
 $\sigma$ : 43.6

Channel 2  
mn: -1905  
mx: 1881  
 $\mu$ : -23.6  
 $\sigma$ : 56.1



Processed Sun Jan 14 06:33:53 2018 by ELM ver.2012-10-06 from 001\_\_elm20180114\_052506\_\_dat00.bin



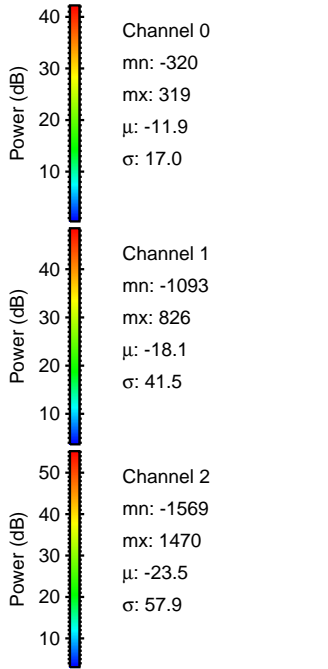
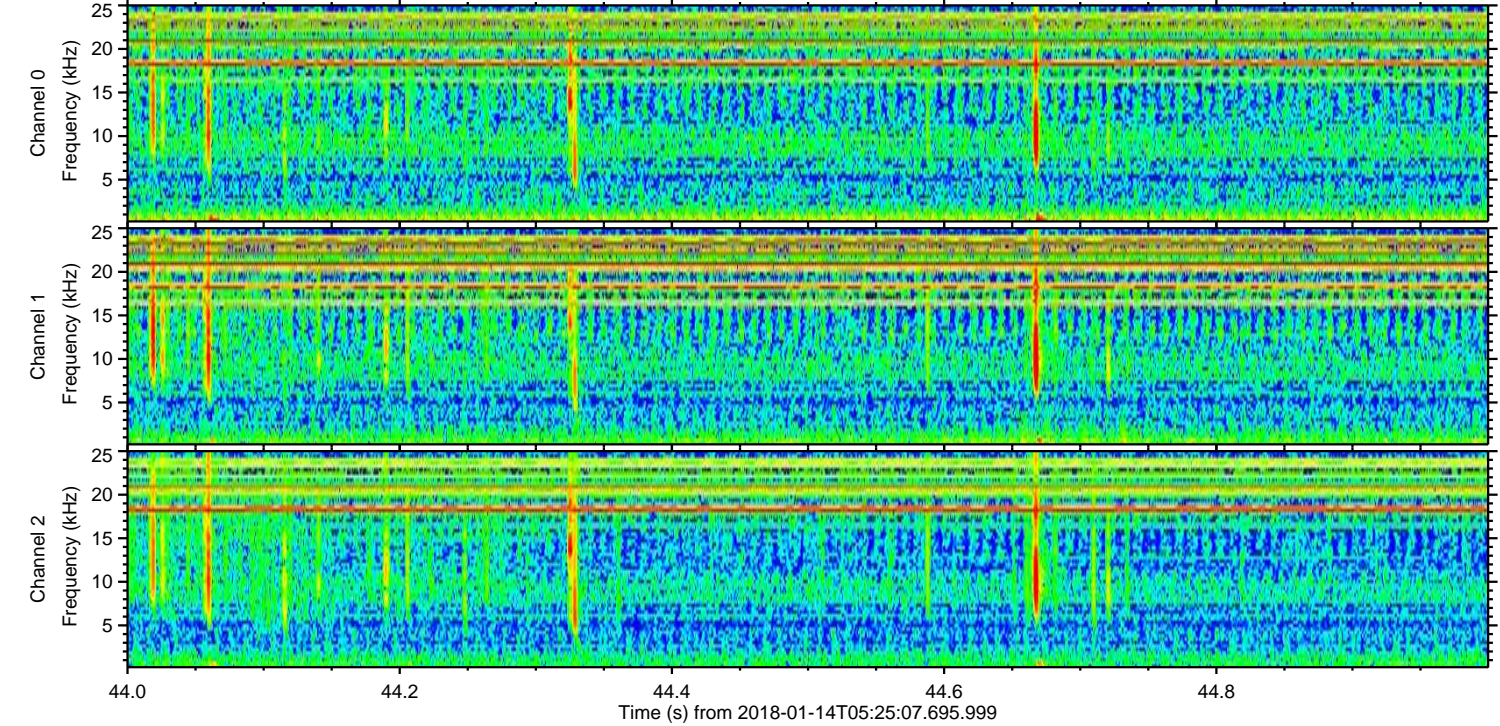
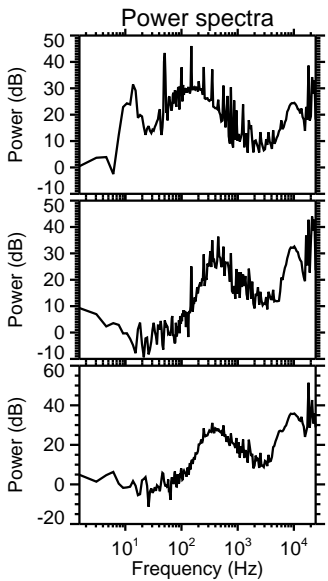
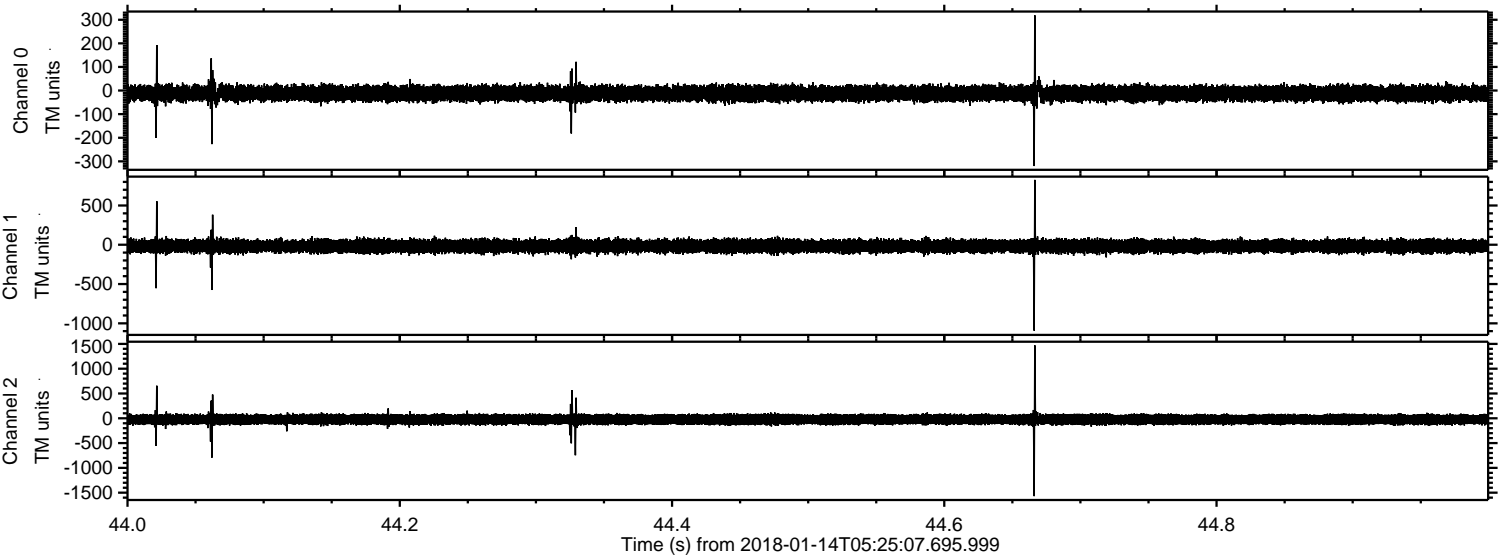
Channel 0  
mn: -669  
mx: 646  
 $\mu$ : -12.0  
 $\sigma$ : 17.7

Channel 1  
mn: -1280  
mx: 1244  
 $\mu$ : -18.1  
 $\sigma$ : 42.7

Channel 2  
mn: -1862  
mx: 1828  
 $\mu$ : -23.6  
 $\sigma$ : 61.8

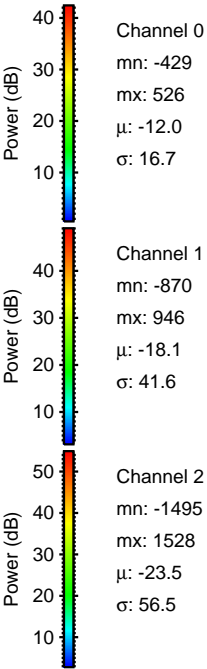
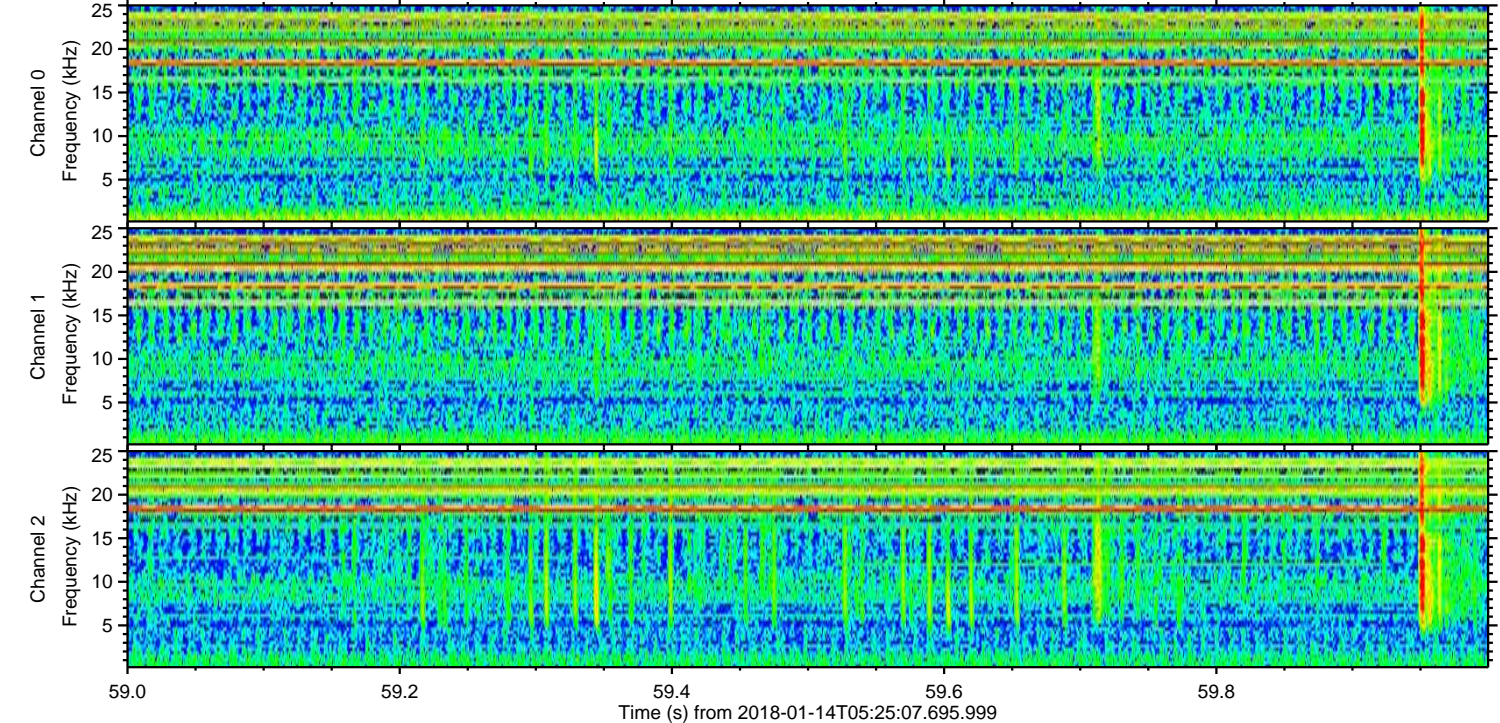
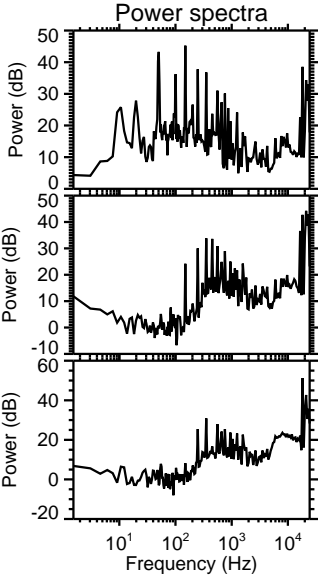
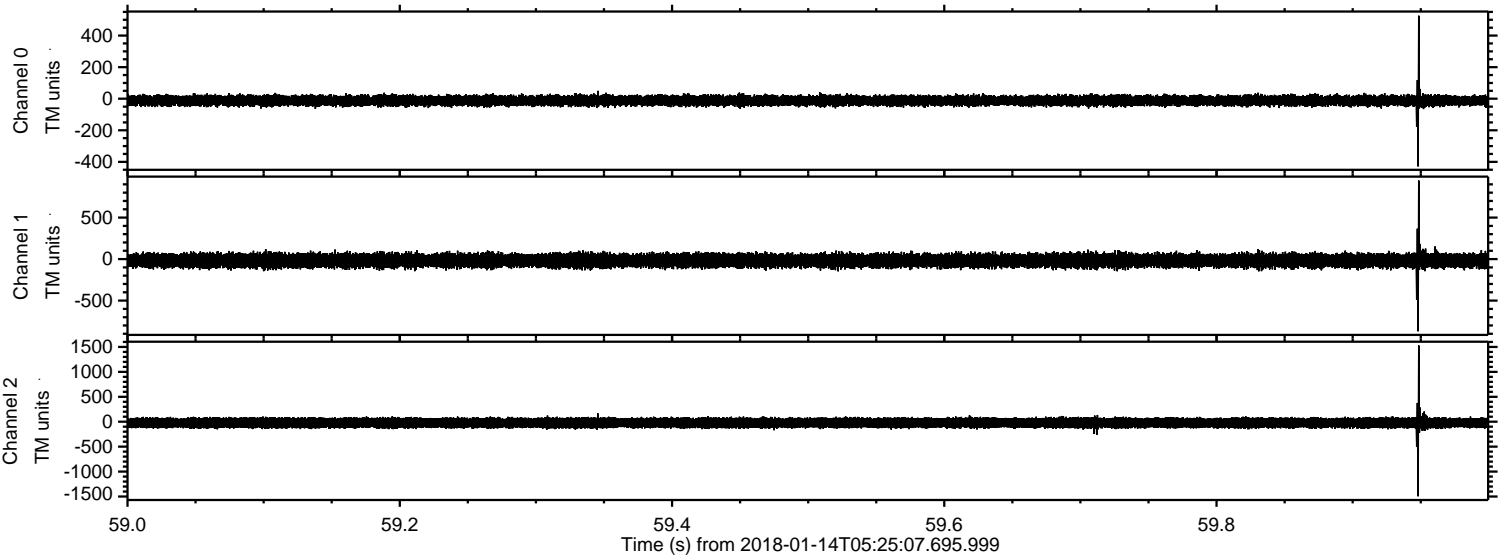


Processed Sun Jan 14 06:33:54 2018 by ELM ver.2012-10-06 from 001\_\_elm20180114\_052506\_\_dat00.bin





Processed Sun Jan 14 06:33:55 2018 by ELM ver.2012-10-06 from 001\_\_elm20180114\_052506\_\_dat00.bin



Channel 0  
mn: -429  
mx: 526  
 $\mu$ : -12.0  
 $\sigma$ : 16.7

Channel 1  
mn: -870  
mx: 946  
 $\mu$ : -18.1  
 $\sigma$ : 41.6

Channel 2  
mn: -1495  
mx: 1528  
 $\mu$ : -23.5  
 $\sigma$ : 56.5



Processed Sun Jan 14 06:33:55 2018 by ELM ver.2012-10-06 from 001\_\_elm20180114\_052506\_\_dat00.bin

