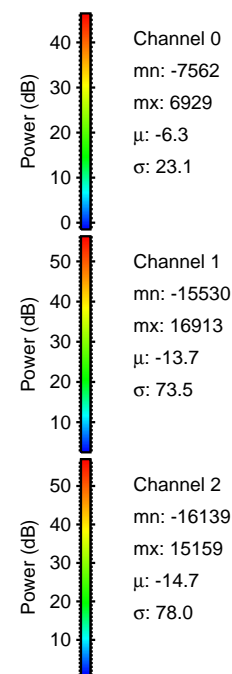
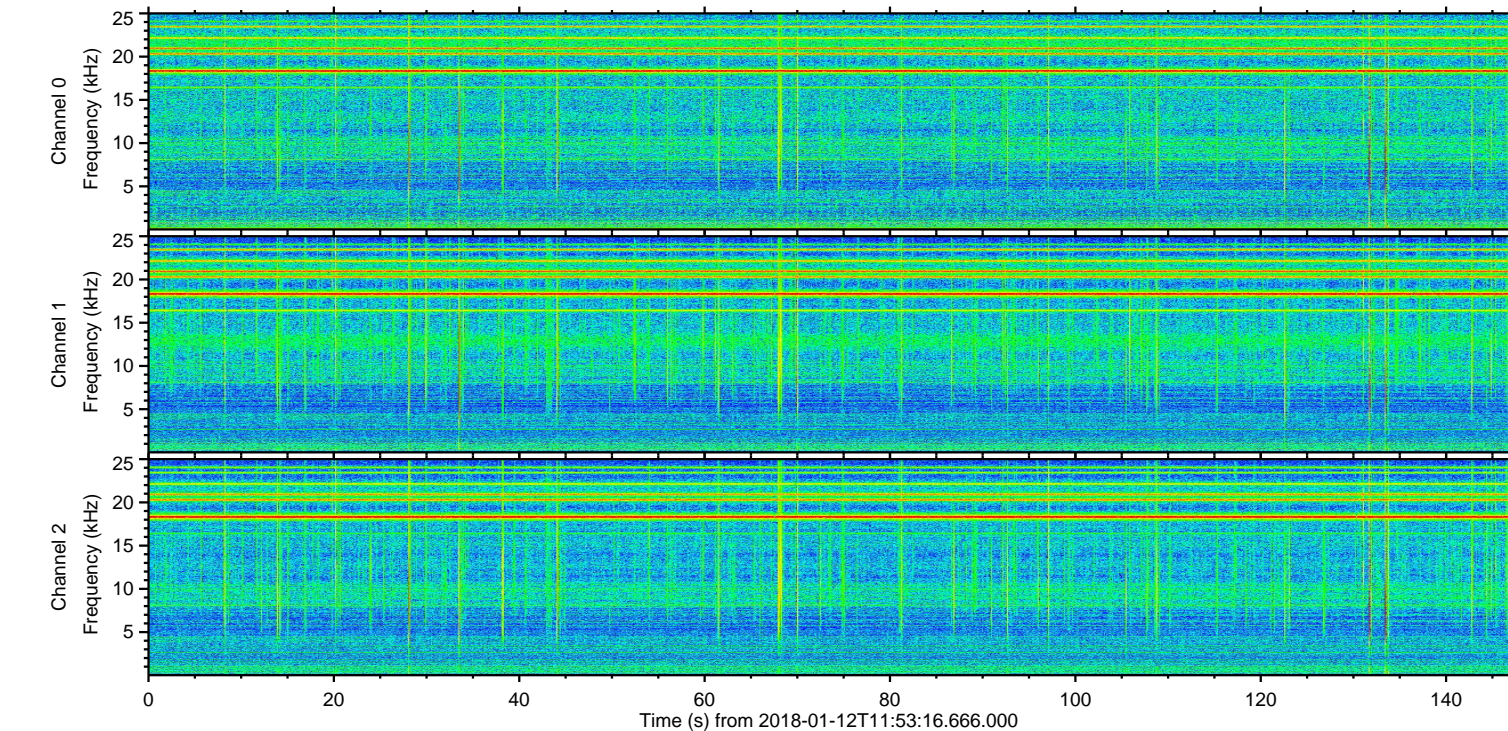
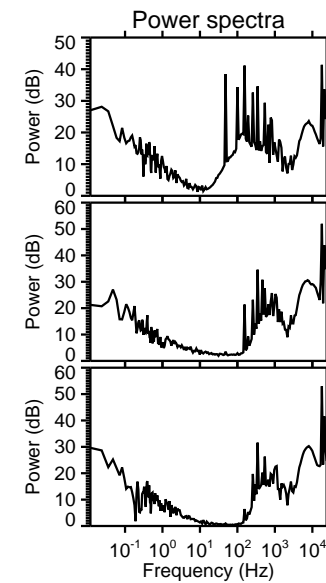
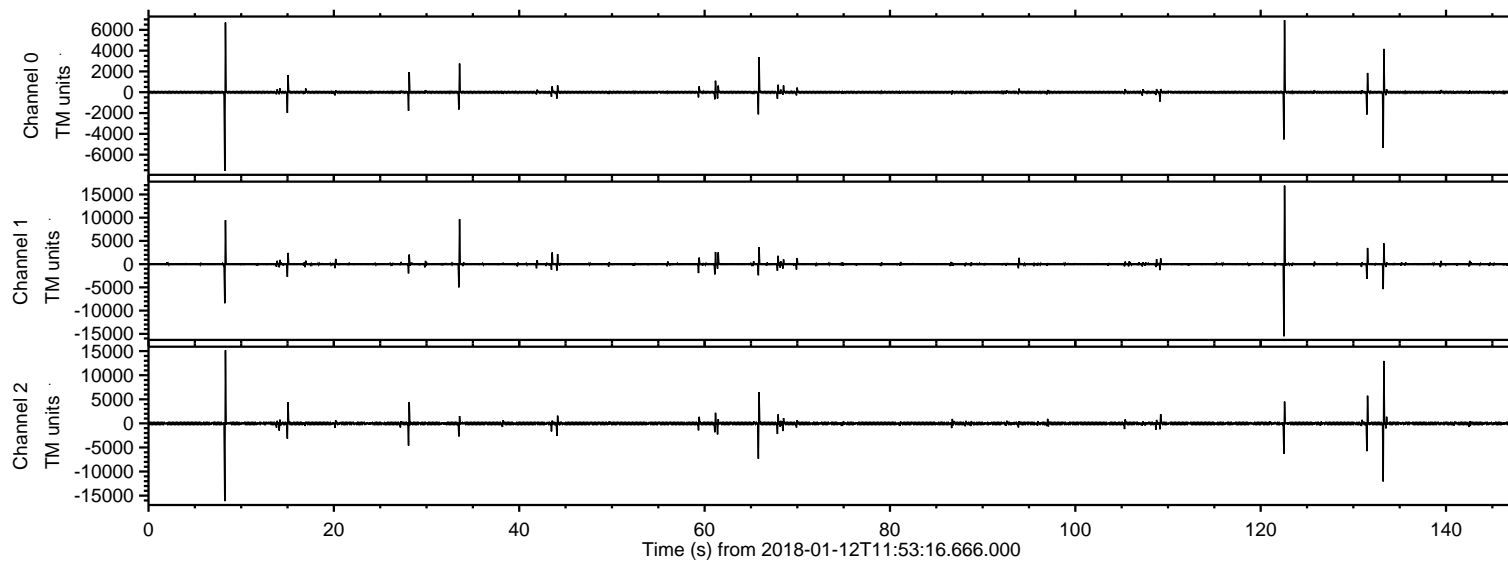


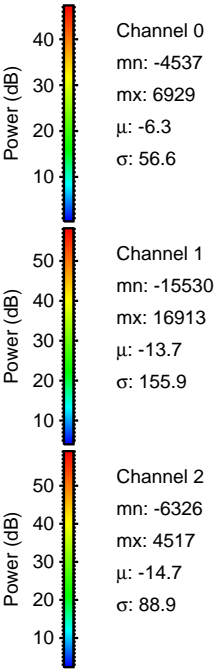
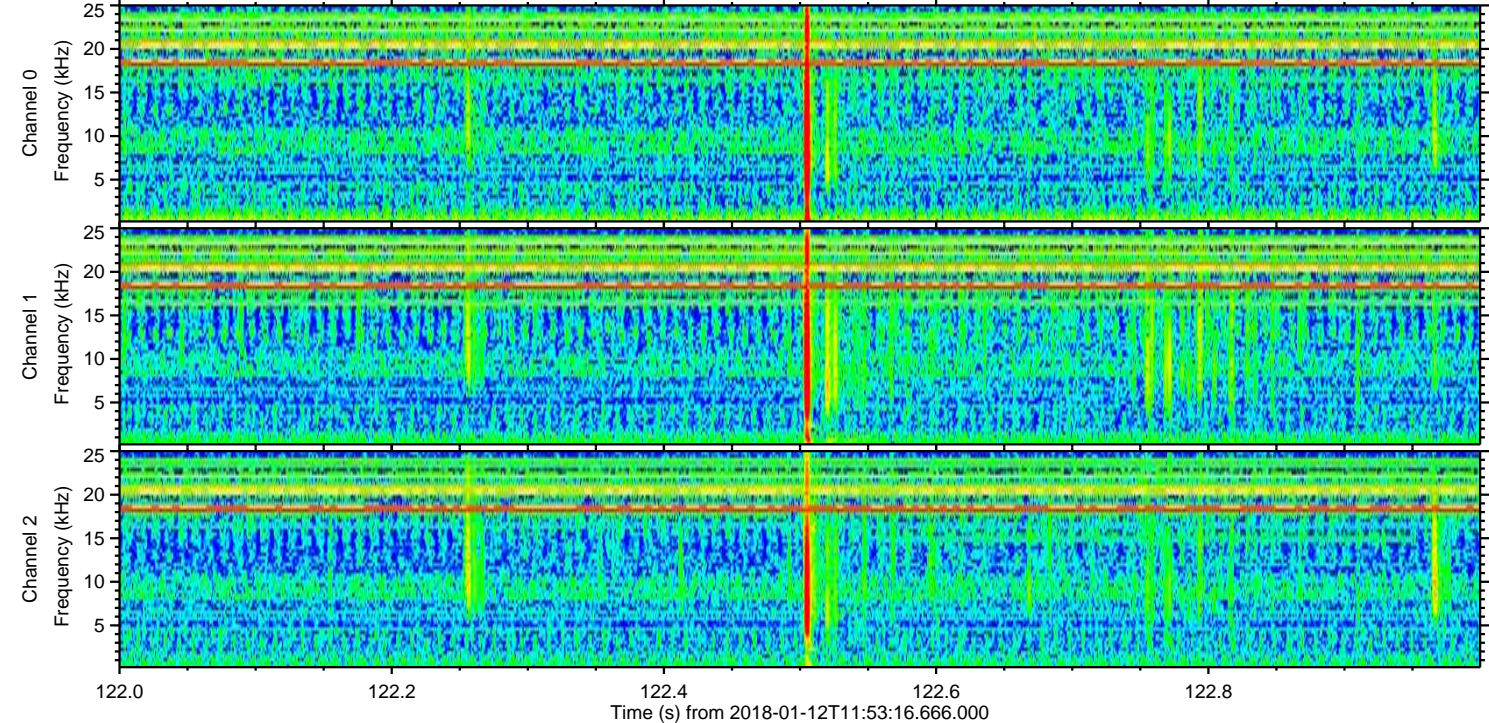
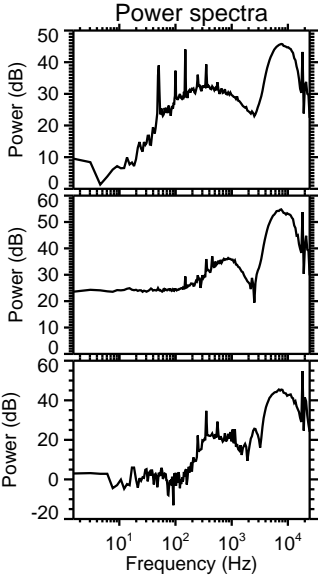
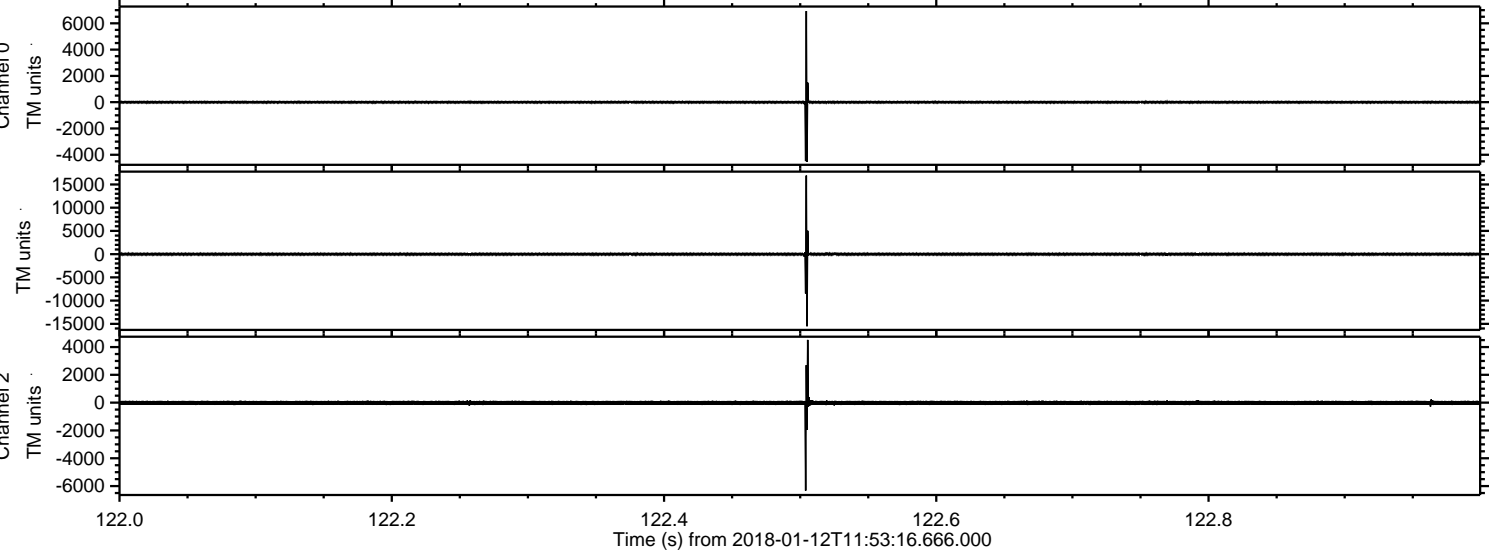
ELMAVAN 3D WAVEFORMS (Measured data sampled at 50 kHz) 51000 packets of 144 samples from 2018-01-12T11:53:16.666.000.

Processed Fri Jan 12 13:01:06 2018 by ELM ver.2012-10-06 from 001__elm20180112_115315__dat00.bin

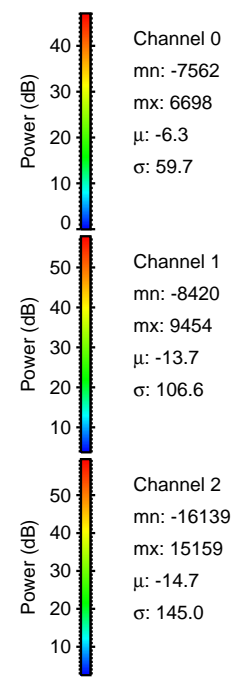
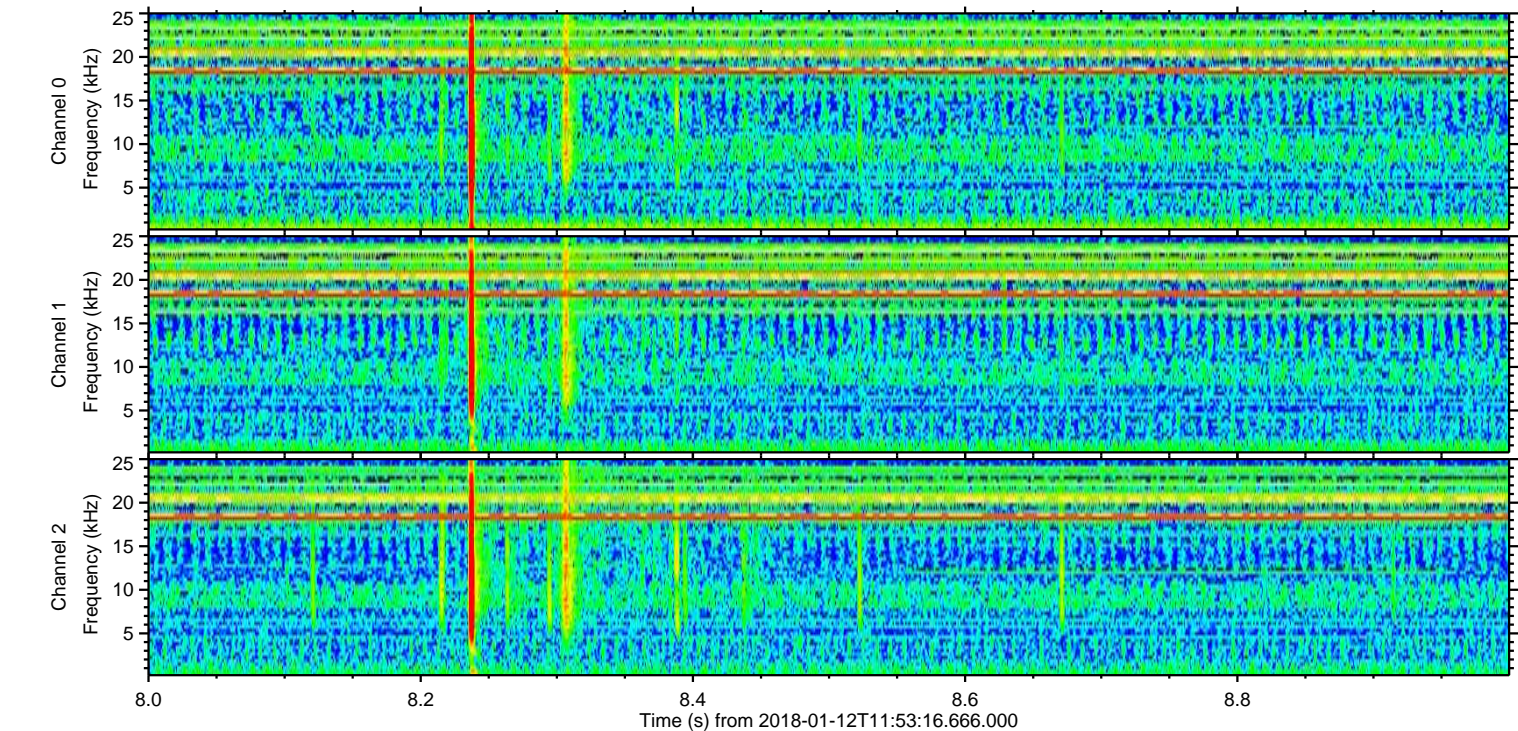
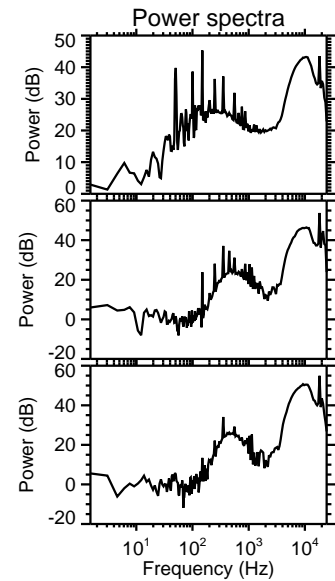
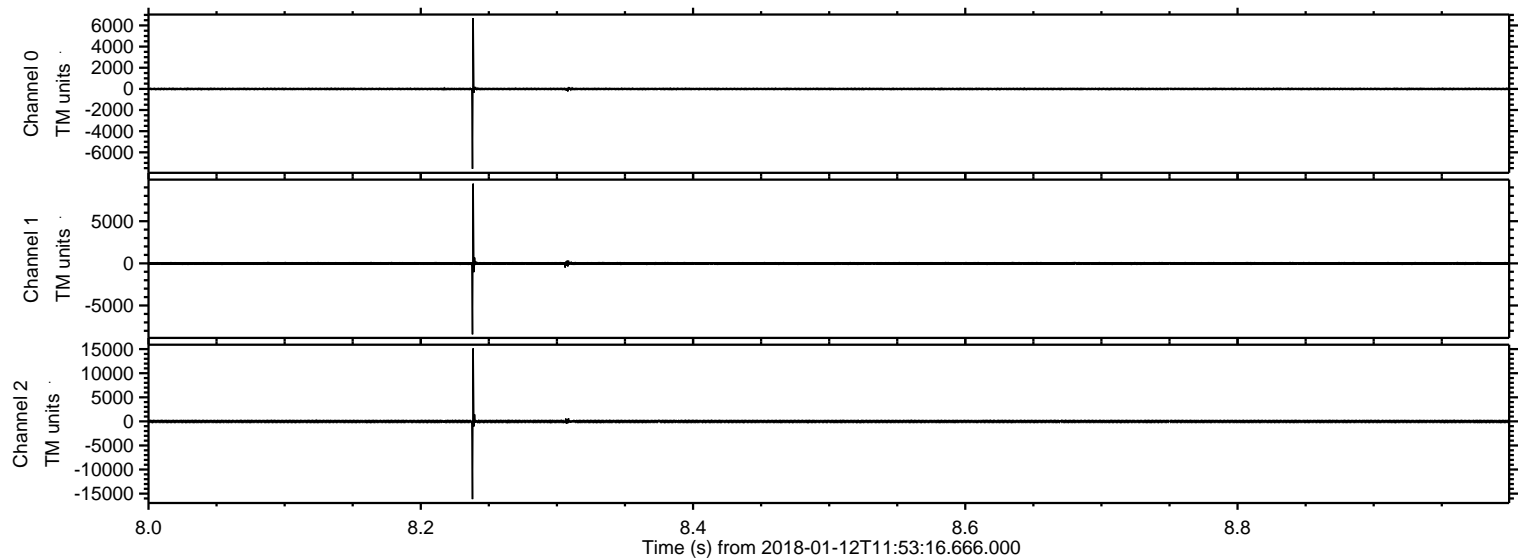


ELMAVAN 3D WAVEFORMS (Measured data sampled at 50 kHz) 51000 packets of 144 samples from 2018-01-12T11:53:16.666.000. Part 123/147

Processed Fri Jan 12 13:01:15 2018 by ELM ver.2012-10-06 from 001__elm20180112_115315__dat00.bin

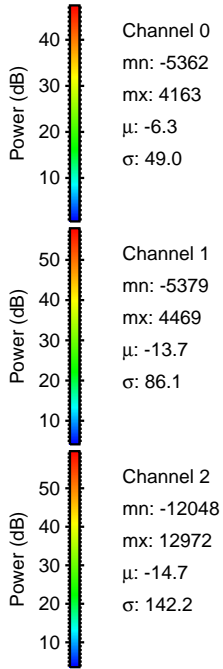
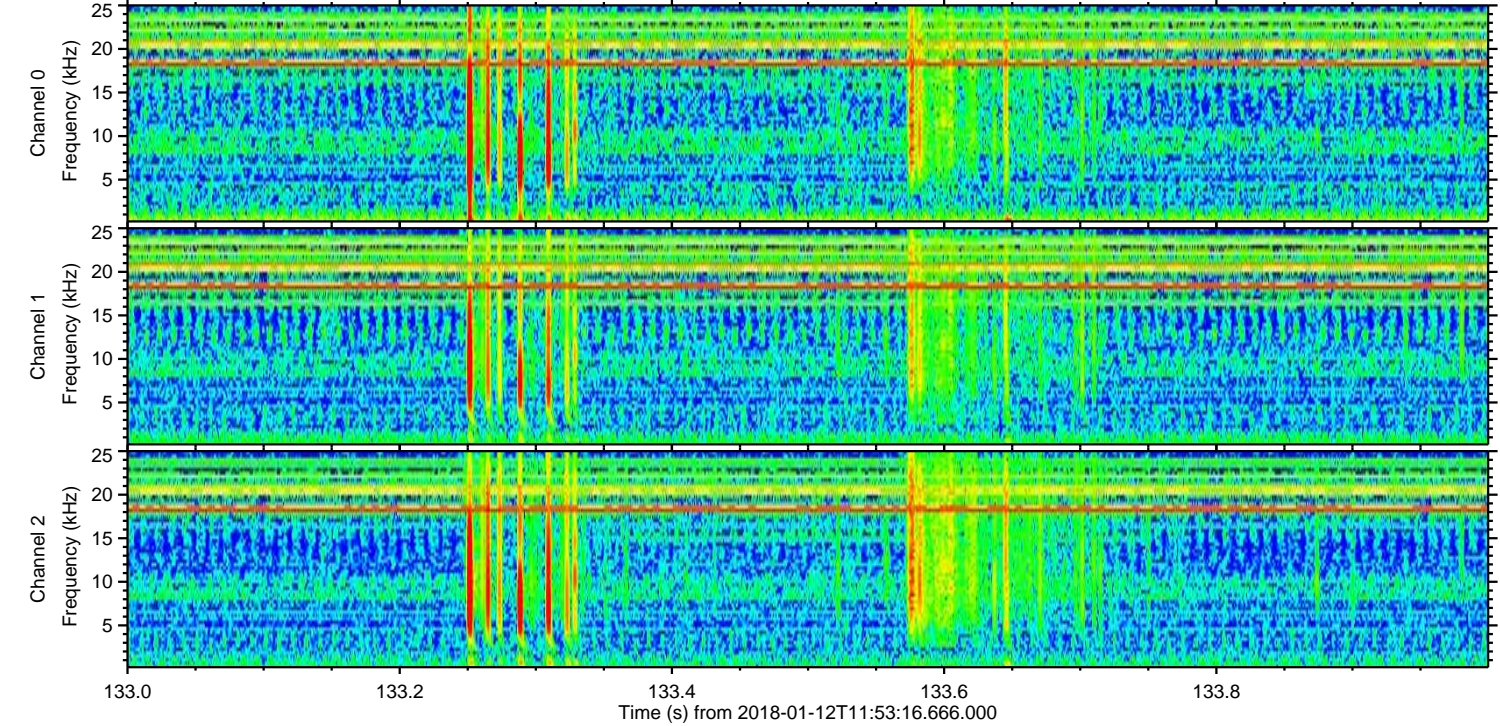
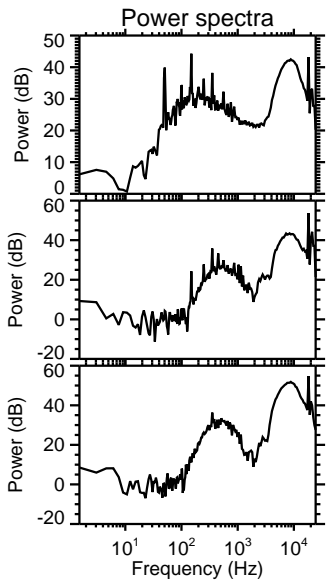
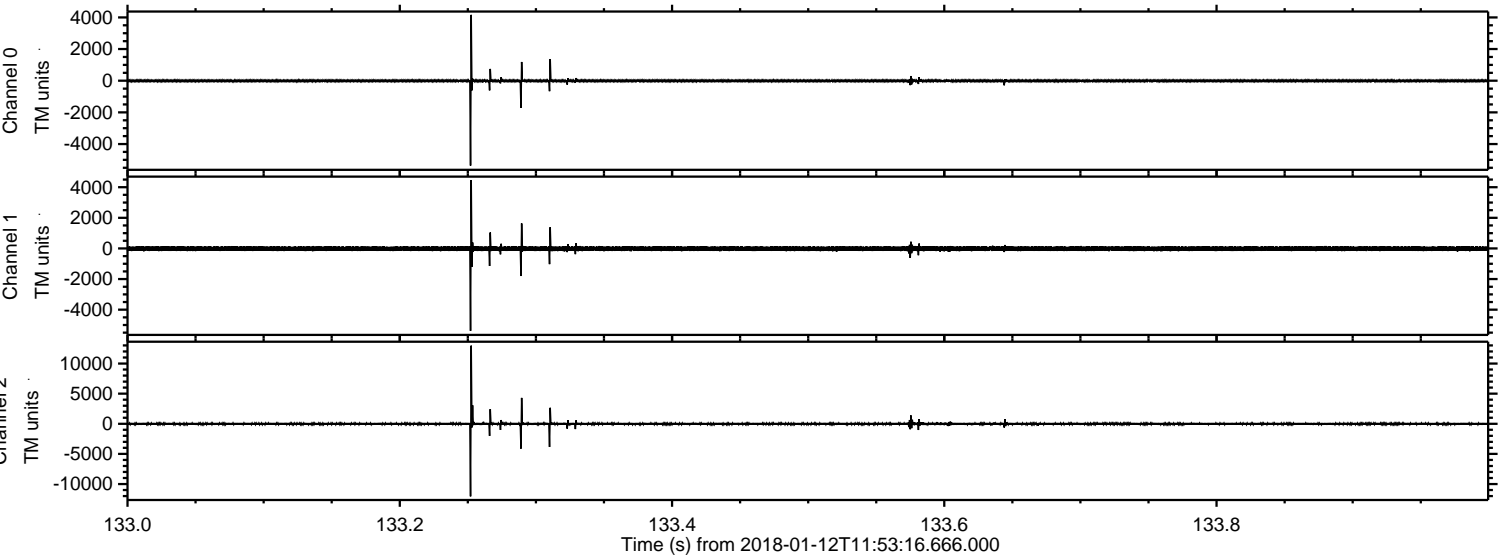


Processed Fri Jan 12 13:01:16 2018 by ELM ver.2012-10-06 from 001__elm20180112_115315__dat00.bin

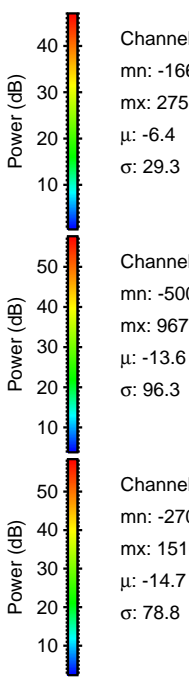
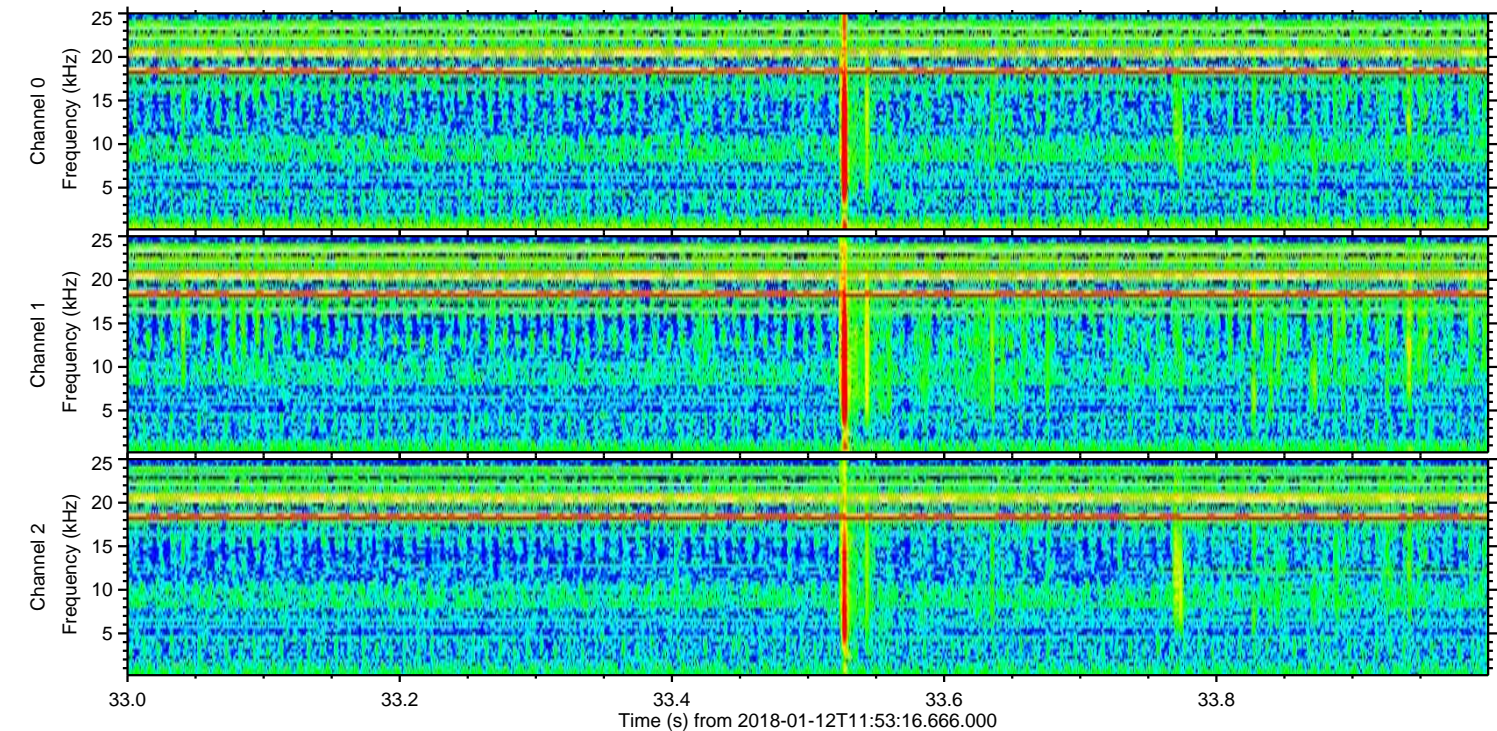
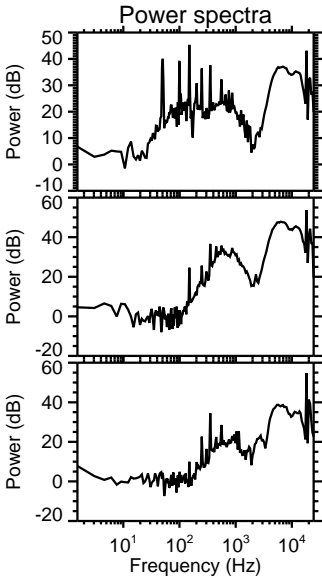
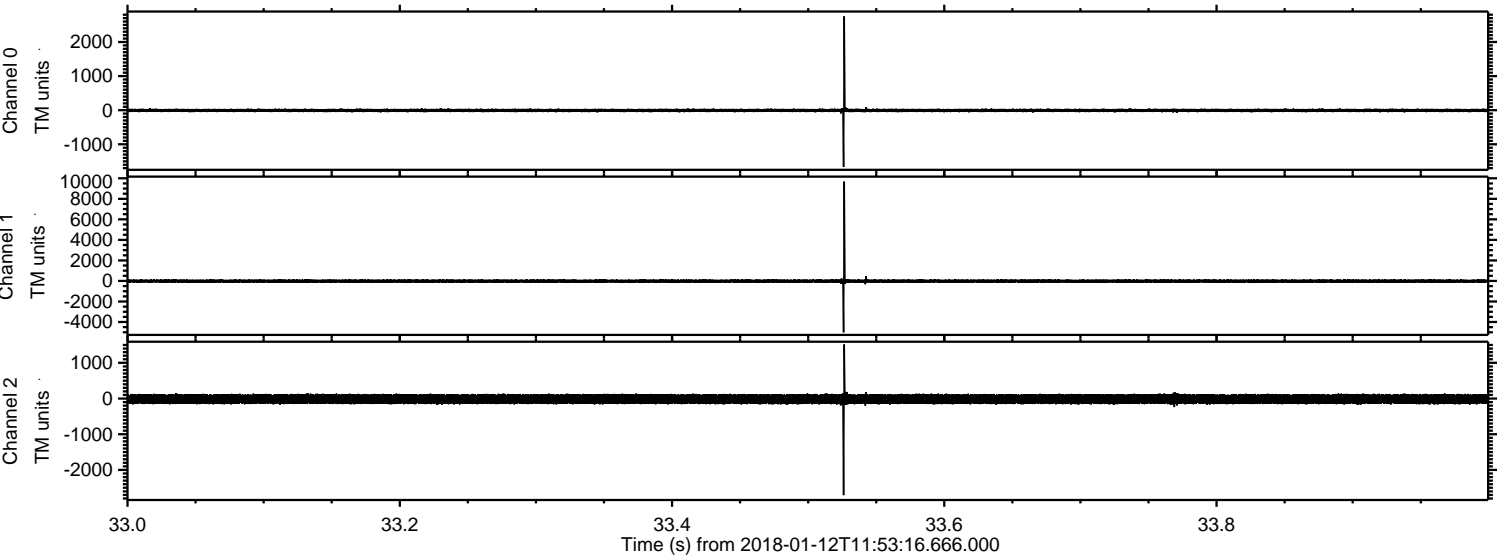


ELMAVAN 3D WAVEFORMS (Measured data sampled at 50 kHz) 51000 packets of 144 samples from 2018-01-12T11:53:16.666.000. Part 134/147

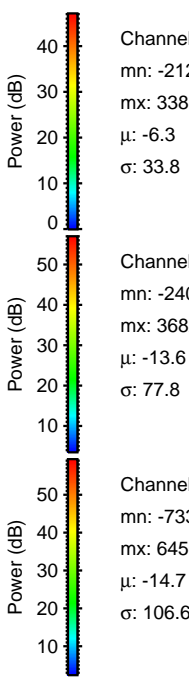
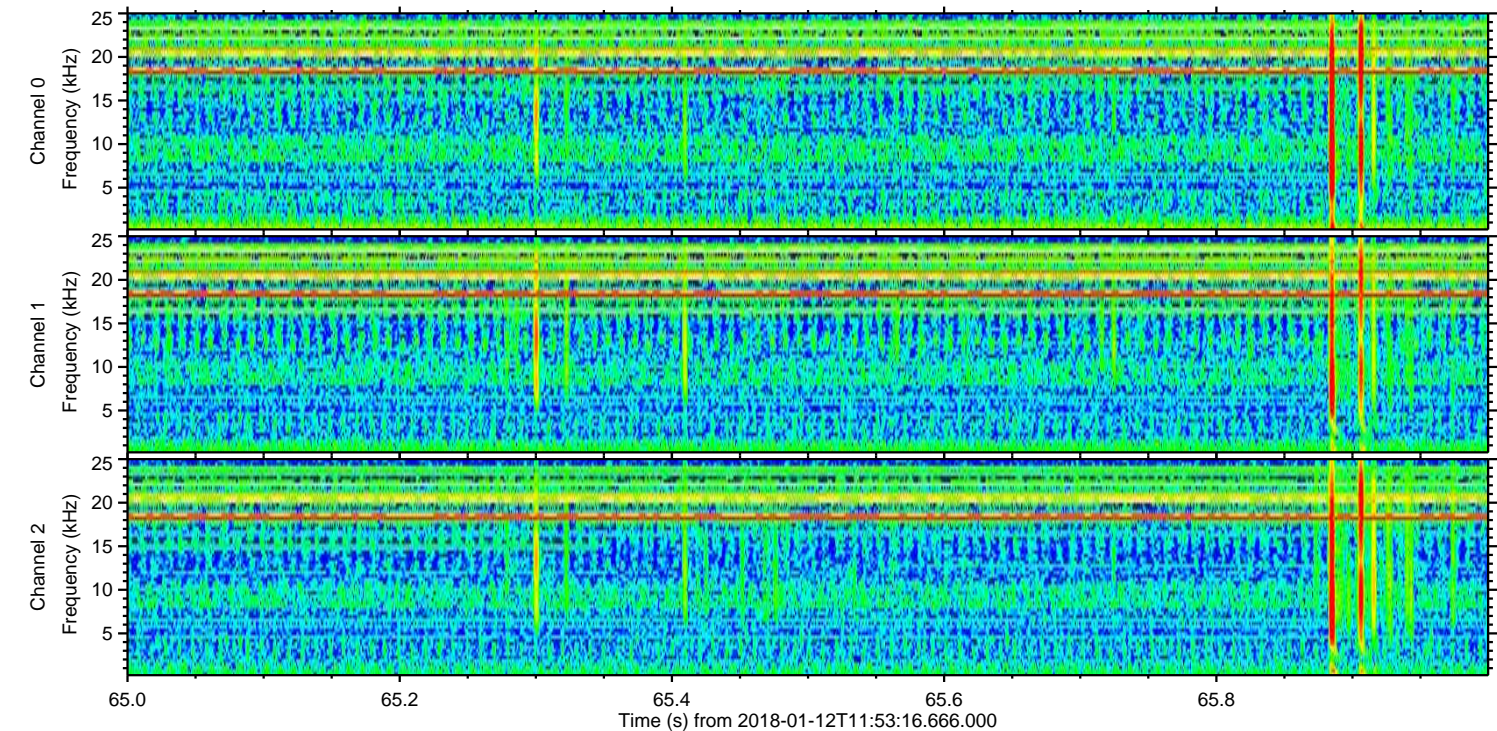
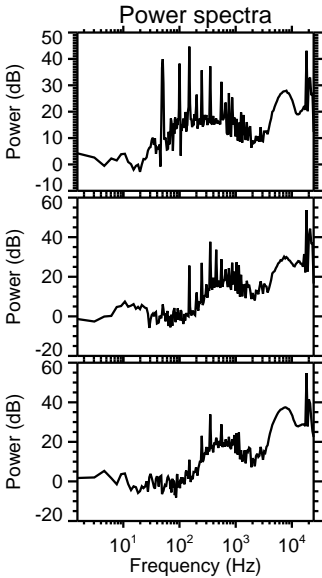
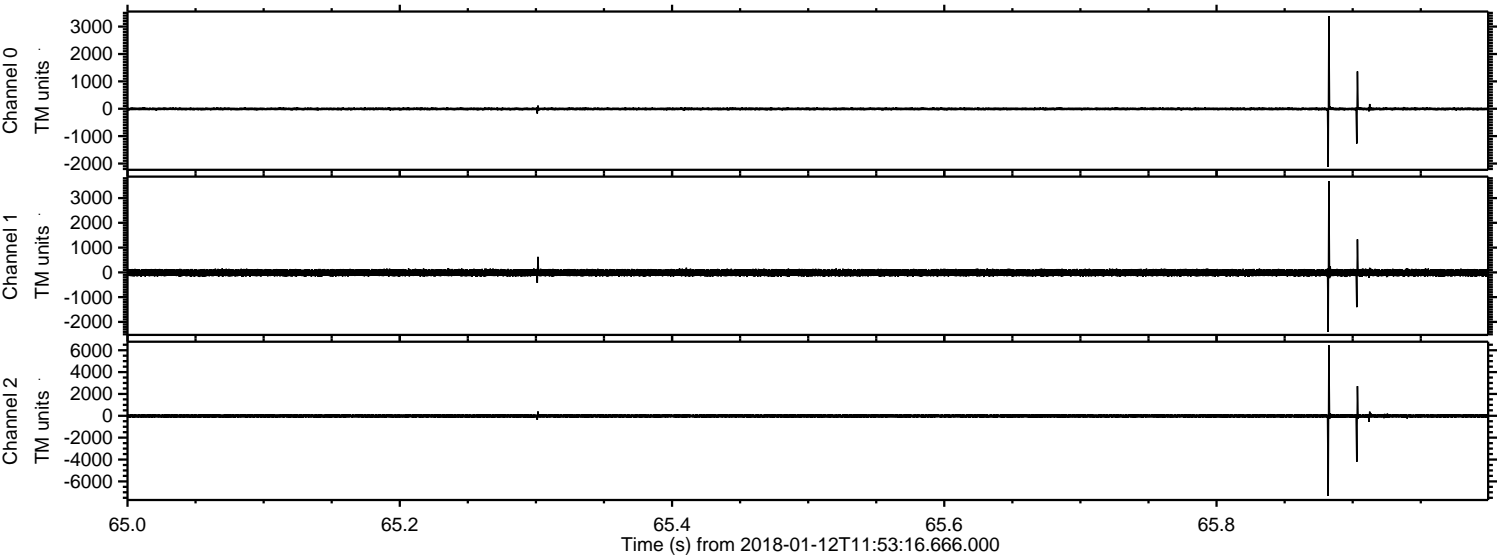
Processed Fri Jan 12 13:01:16 2018 by ELM ver.2012-10-06 from 001__elm20180112_115315__dat00.bin



Processed Fri Jan 12 13:01:17 2018 by ELM ver.2012-10-06 from 001__elm20180112_115315__dat00.bin



Processed Fri Jan 12 13:01:18 2018 by ELM ver.2012-10-06 from 001__elm20180112_115315__dat00.bin



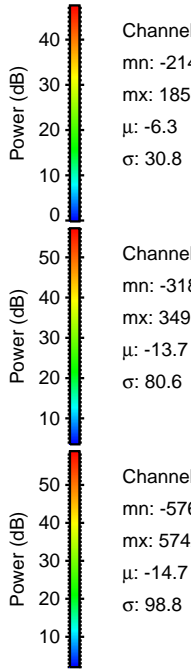
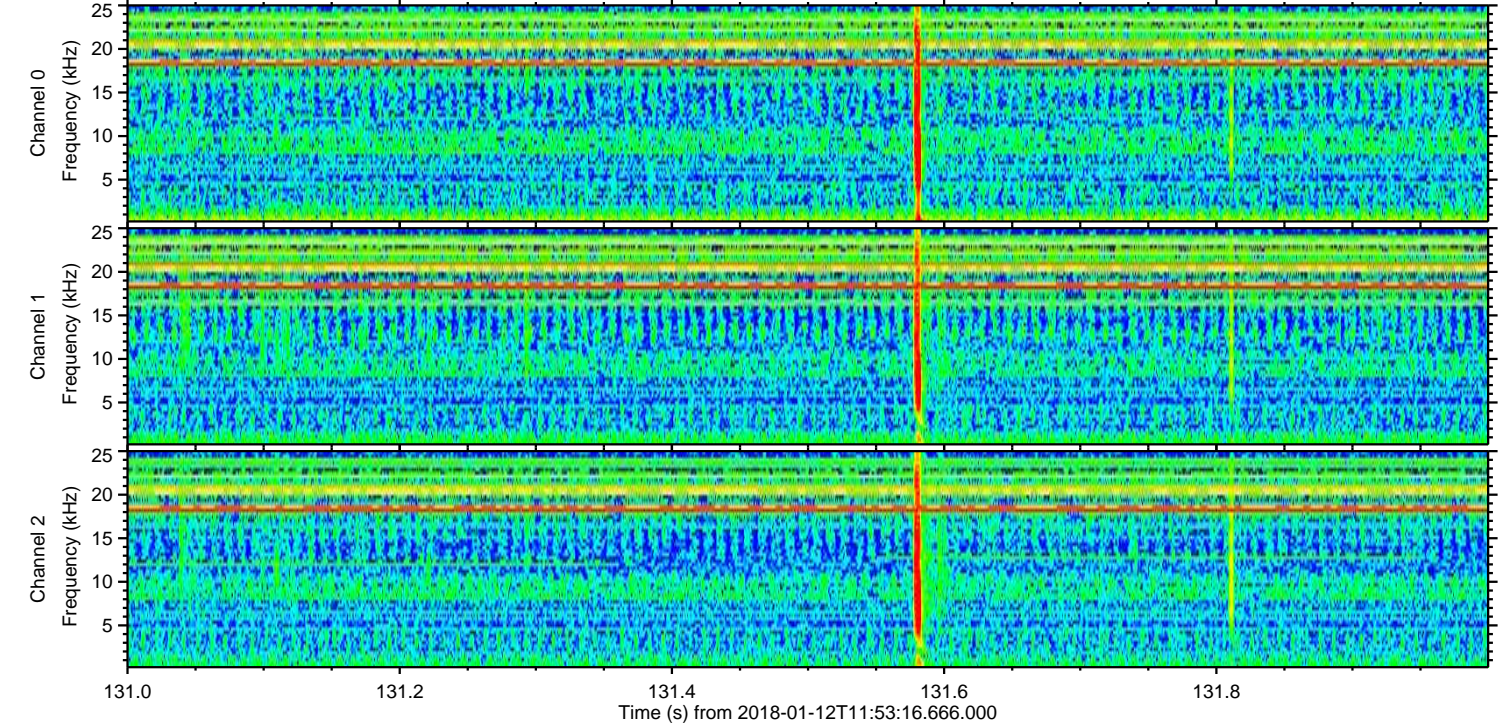
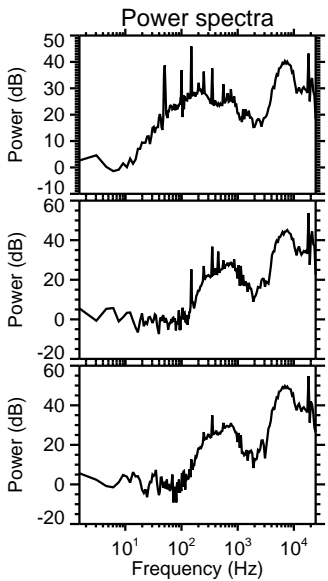
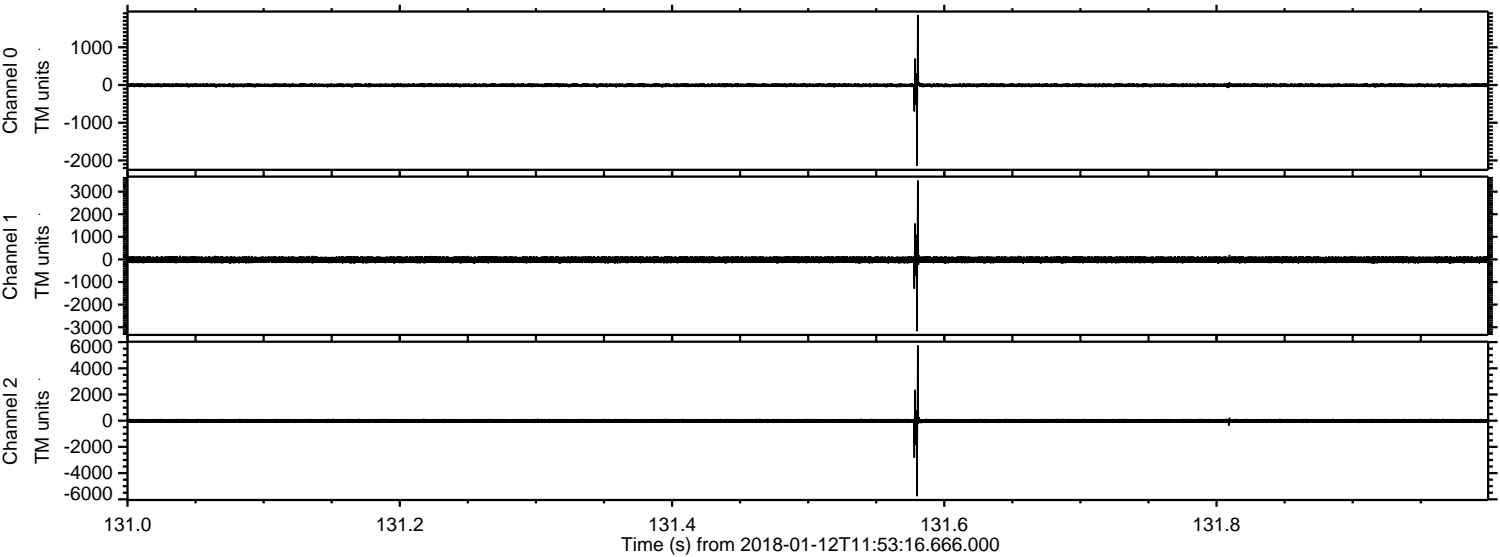
Channel 0
mn: -2124
mx: 3381
 μ : -6.3
 σ : 33.8

Channel 1
mn: -2405
mx: 3682
 μ : -13.6
 σ : 77.8

Channel 2
mn: -7336
mx: 6456
 μ : -14.7
 σ : 106.6

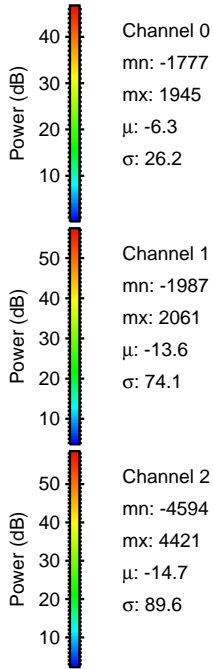
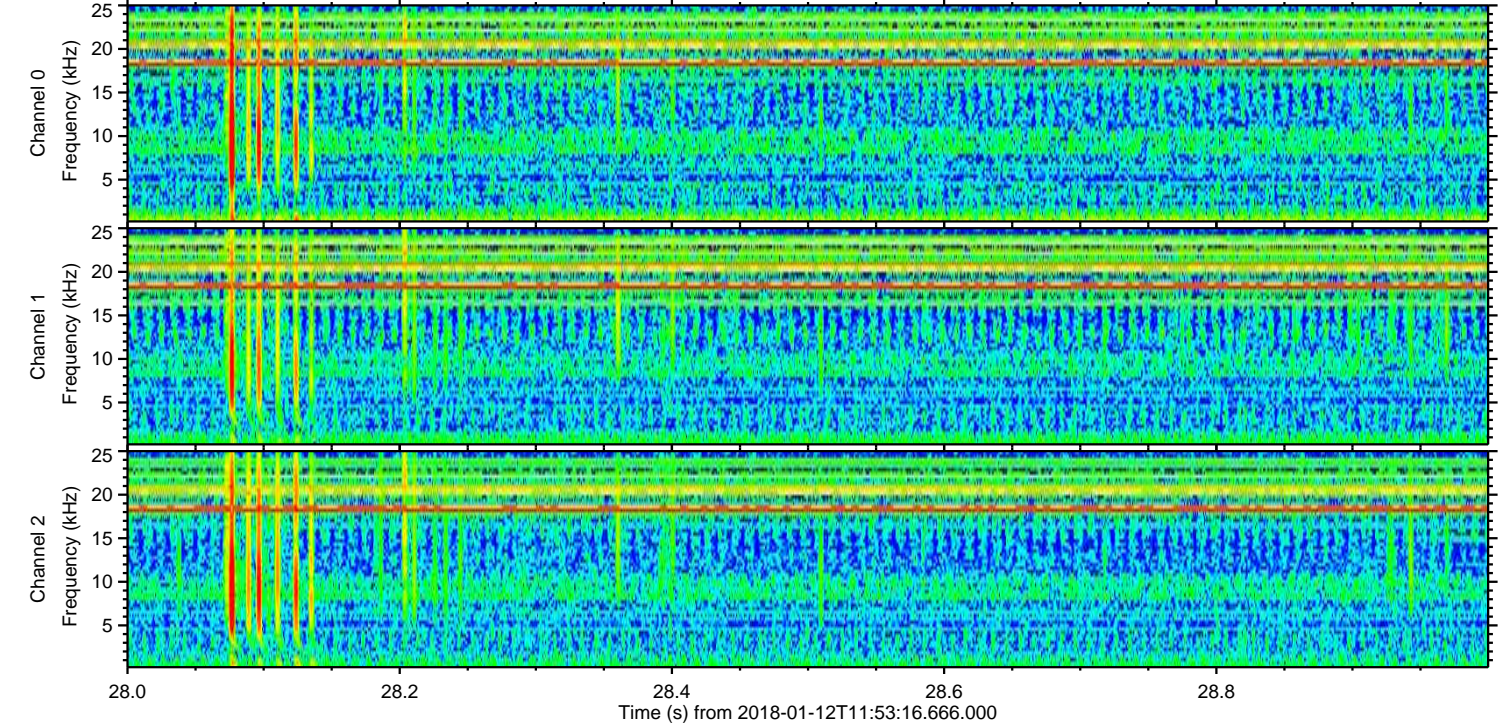
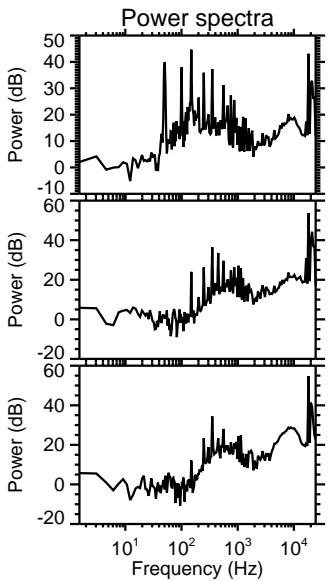
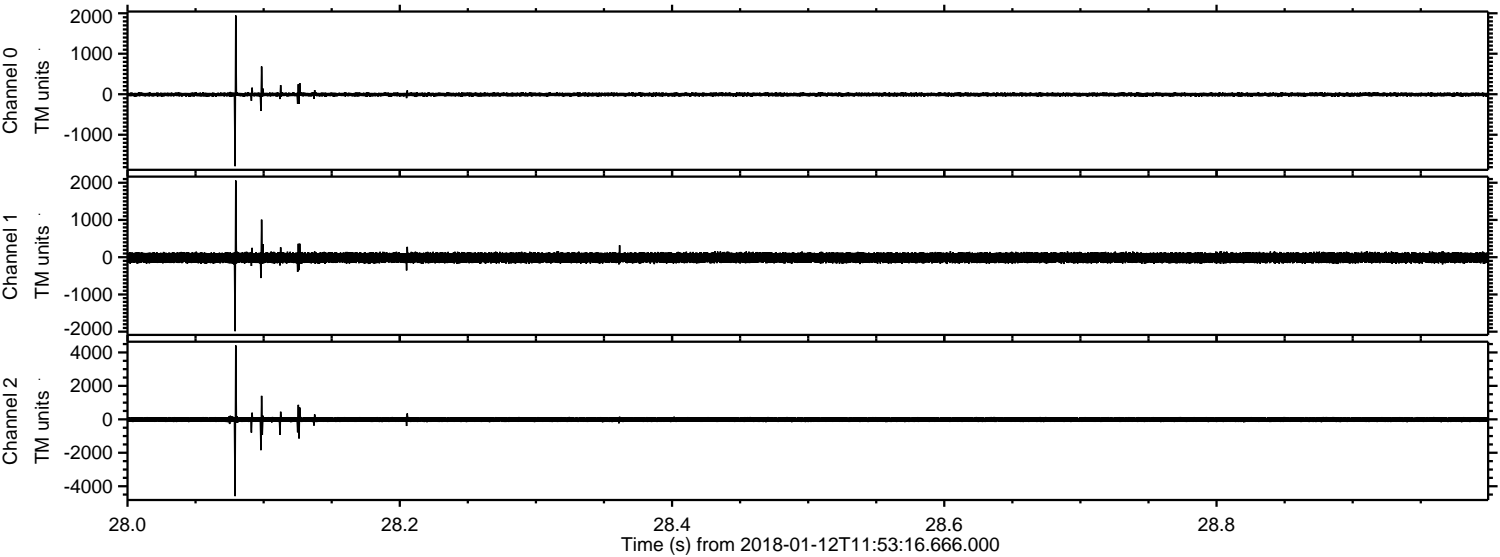
ELMAVAN 3D WAVEFORMS (Measured data sampled at 50 kHz) 51000 packets of 144 samples from 2018-01-12T11:53:16.666.000. Part 132/147

Processed Fri Jan 12 13:01:20 2018 by ELM ver.2012-10-06 from 001__elm20180112_115315__dat00.bin



ELMAVAN 3D WAVEFORMS (Measured data sampled at 50 kHz) 51000 packets of 144 samples from 2018-01-12T11:53:16.666.000. Part 29/147

Processed Fri Jan 12 13:01:21 2018 by ELM ver.2012-10-06 from 001__elm20180112_115315__dat00.bin

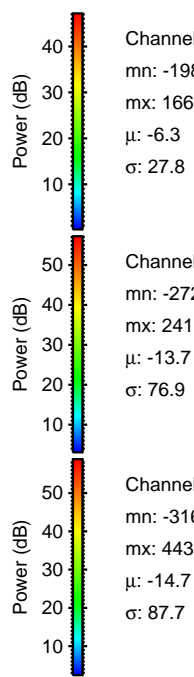
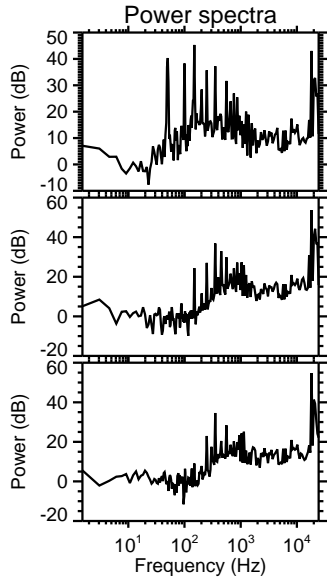
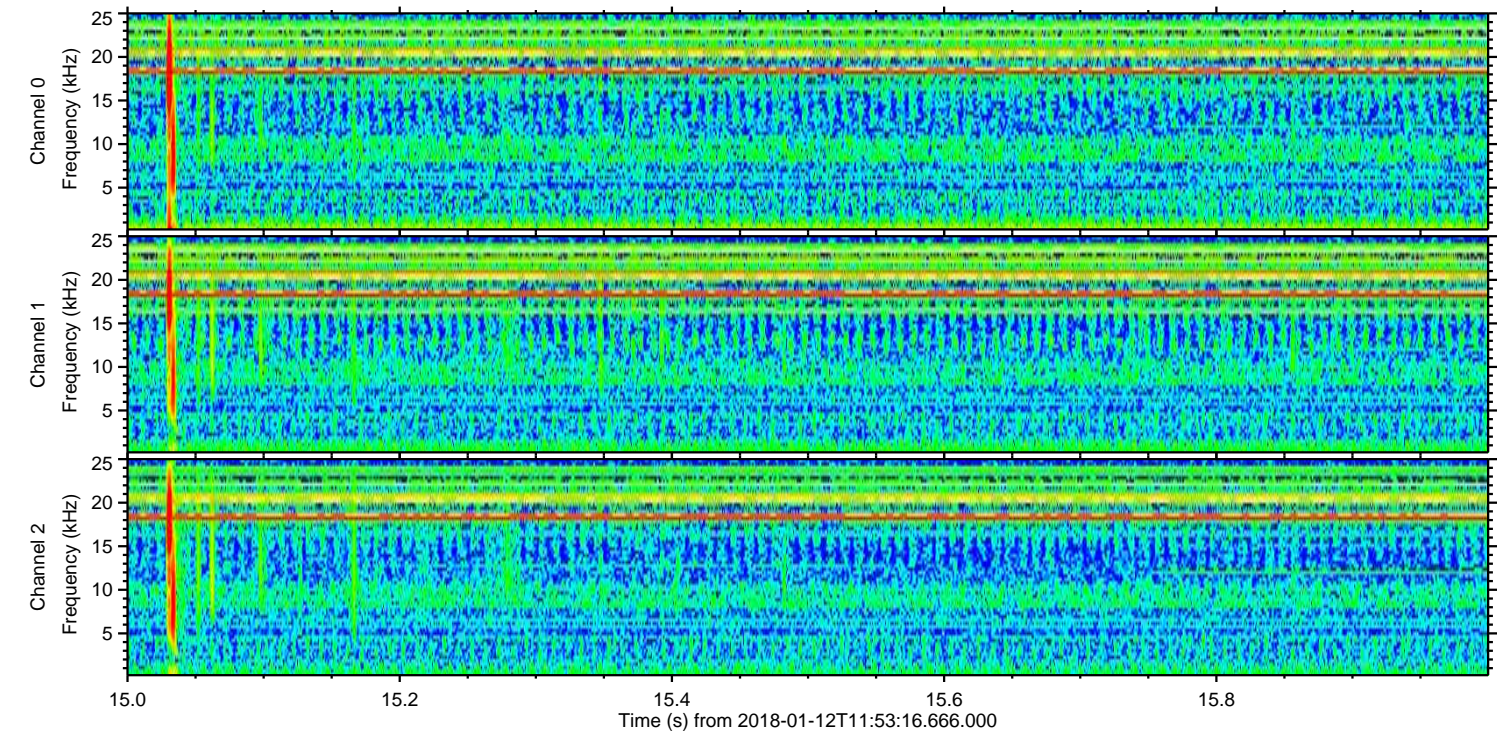
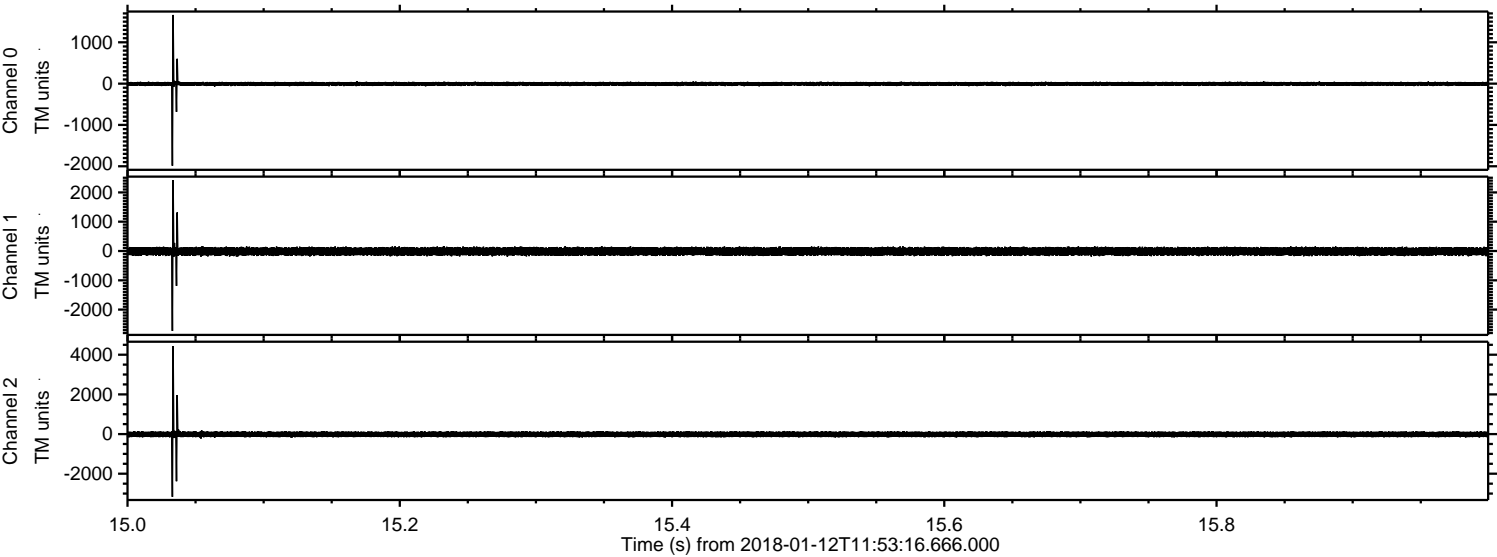


Channel 0
mn: -1777
mx: 1945
 μ : -6.3
 σ : 26.2

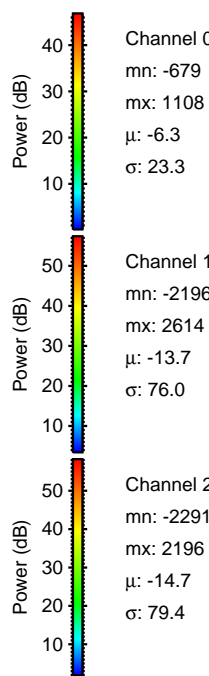
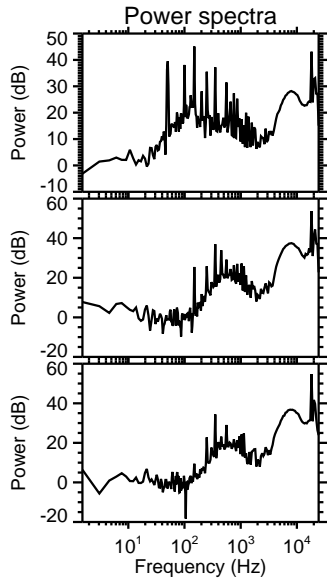
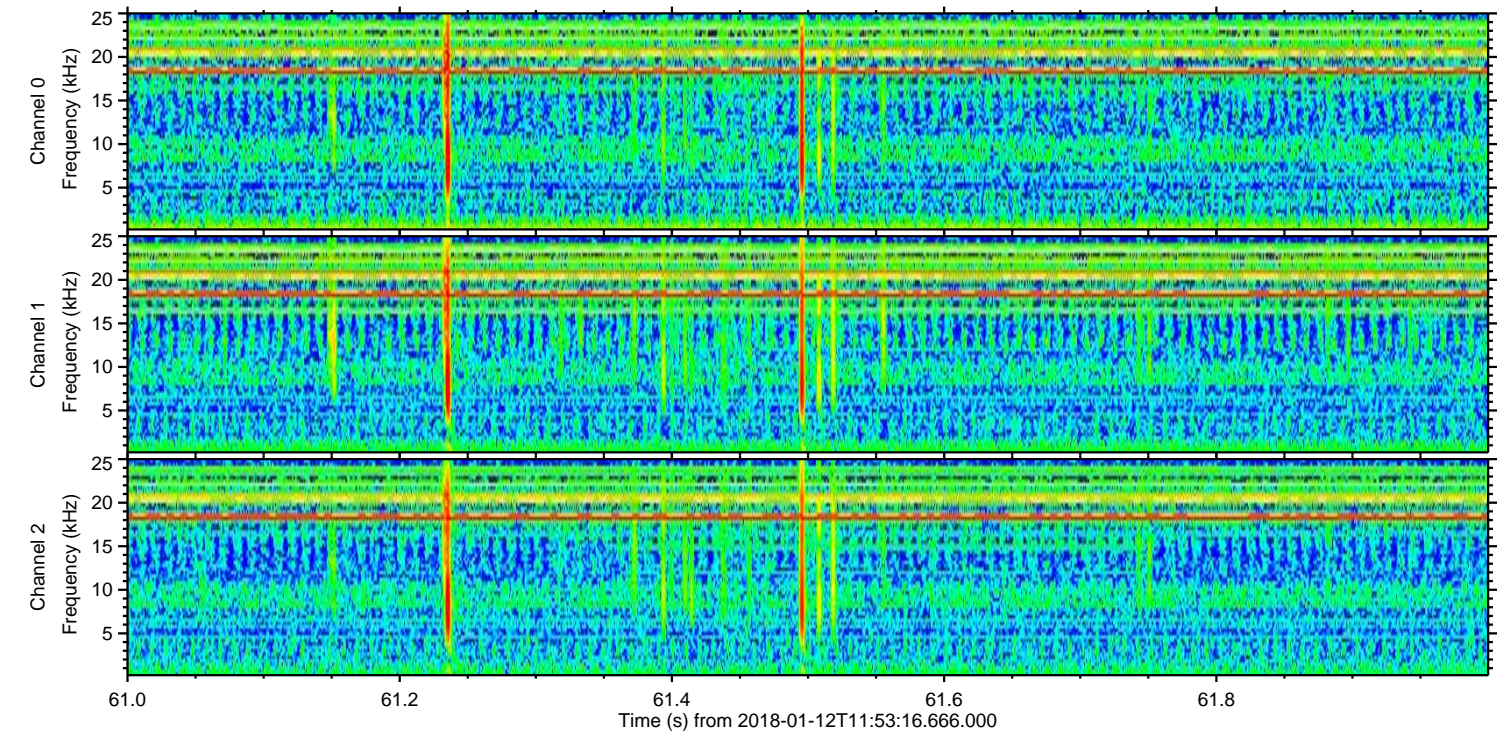
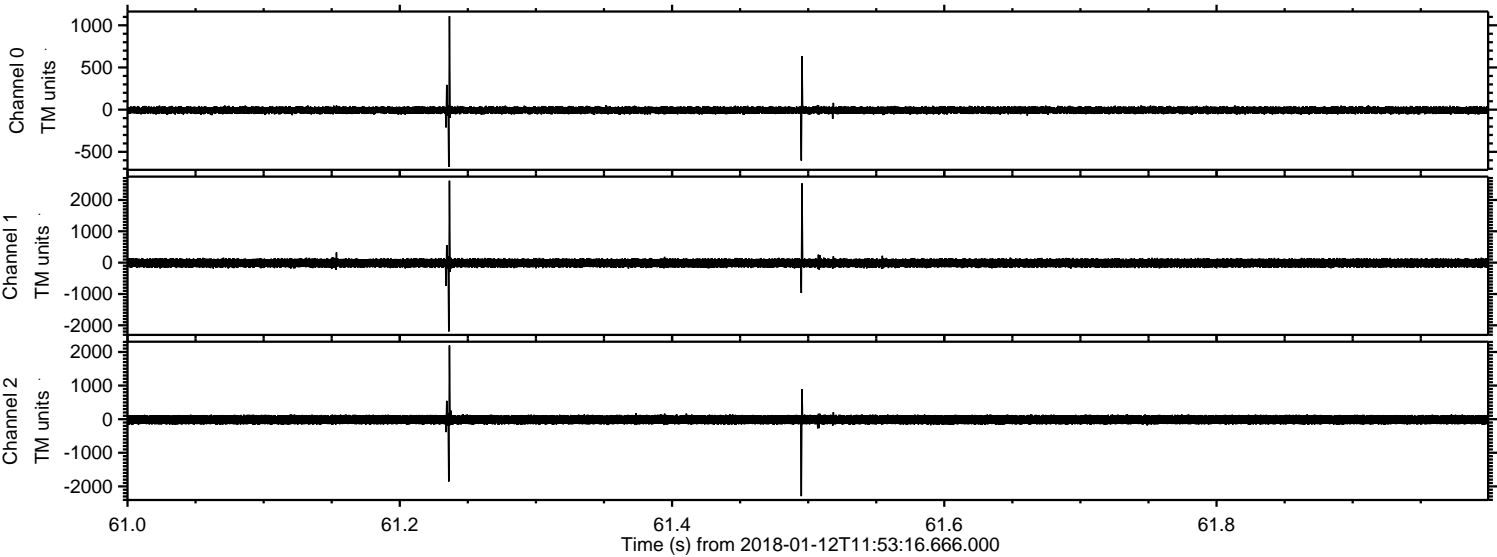
Channel 1
mn: -1987
mx: 2061
 μ : -13.6
 σ : 74.1

Channel 2
mn: -4594
mx: 4421
 μ : -14.7
 σ : 89.6

Processed Fri Jan 12 13:01:22 2018 by ELM ver.2012-10-06 from 001__elm20180112_115315__dat00.bin



Processed Fri Jan 12 13:01:22 2018 by ELM ver.2012-10-06 from 001__elm20180112_115315__dat00.bin



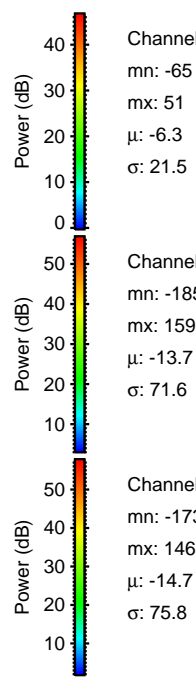
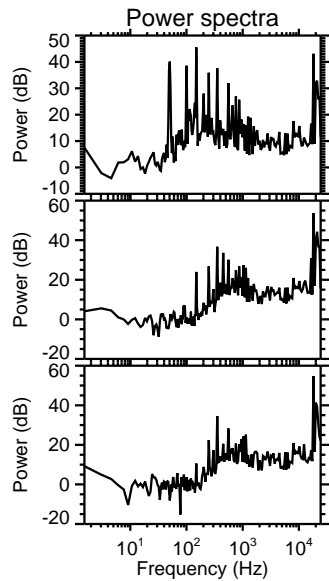
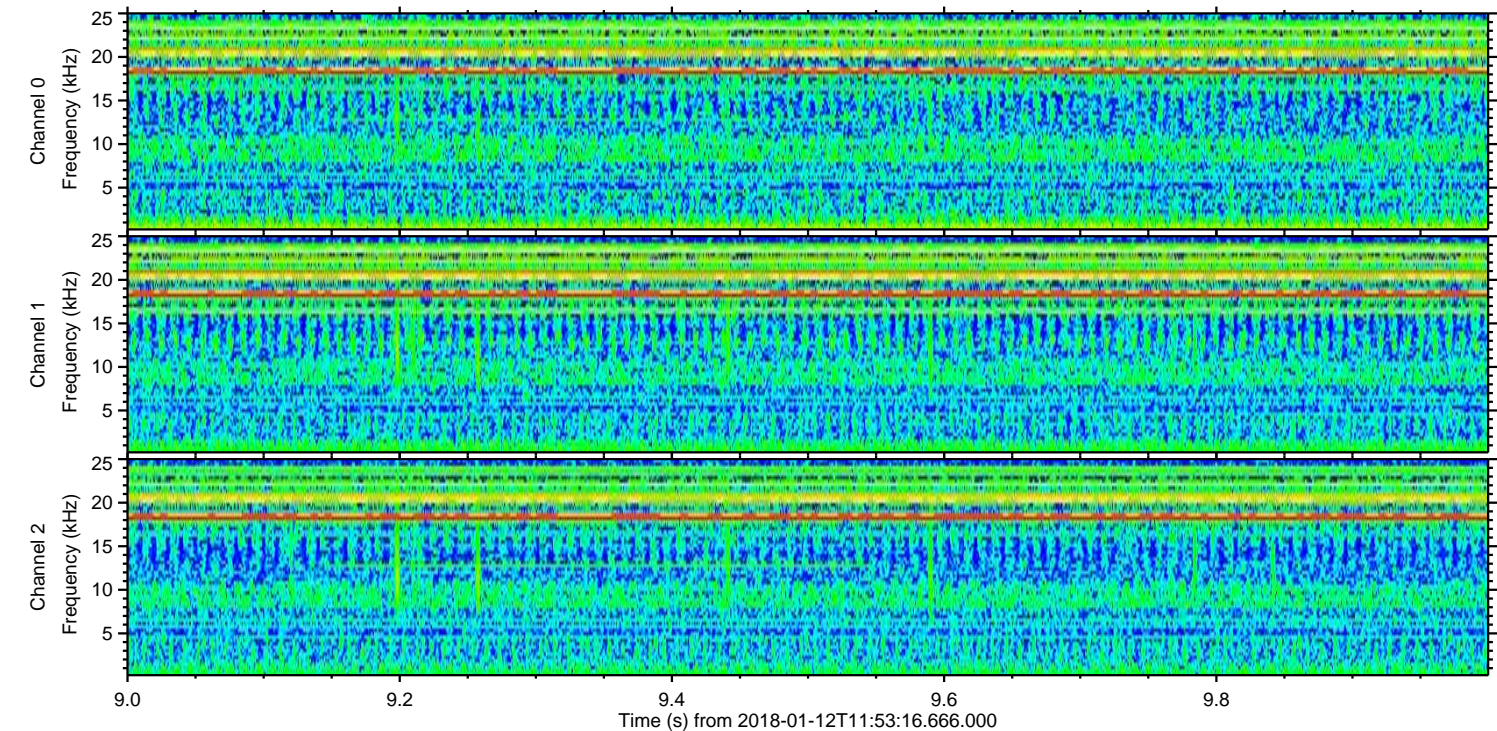
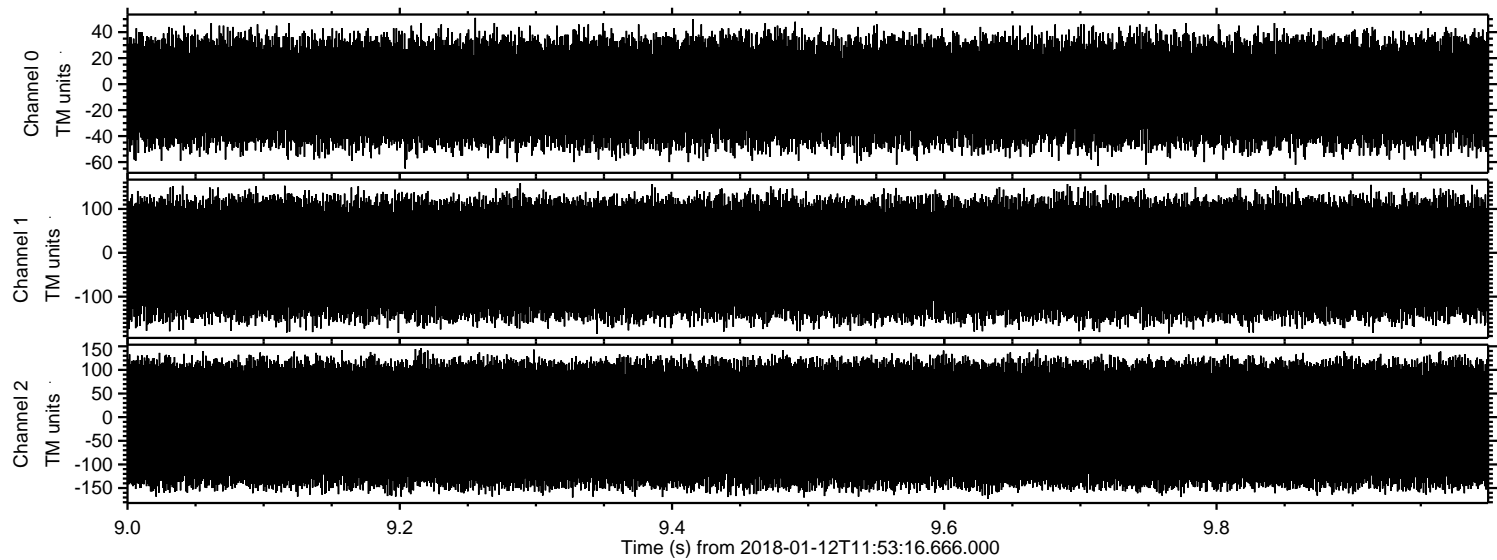
Power spectra

Channel 0
mn: -679
mx: 1108
 μ : -6.3
 σ : 23.3

Channel 1
mn: -2196
mx: 2614
 μ : -13.7
 σ : 76.0

Channel 2
mn: -2291
mx: 2196
 μ : -14.7
 σ : 79.4

Processed Fri Jan 12 13:01:23 2018 by ELM ver.2012-10-06 from 001__elm20180112_115315__dat00.bin



Channel 0
mn: -65
mx: 51
 μ : -6.3
 σ : 21.5

Channel 1
mn: -185
mx: 159
 μ : -13.7
 σ : 71.6

Channel 2
mn: -173
mx: 146
 μ : -14.7
 σ : 75.8