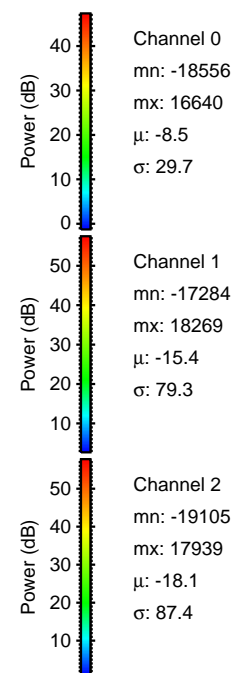
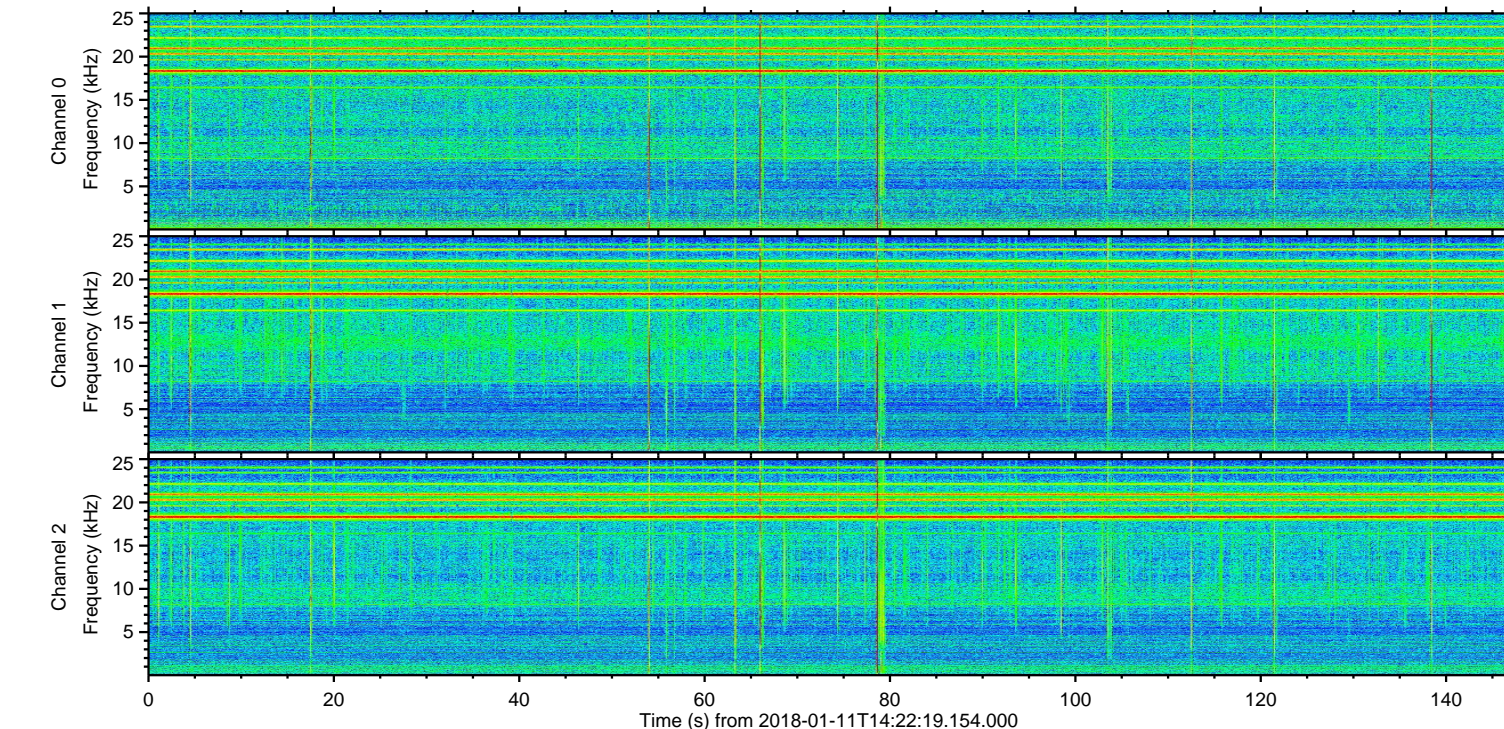
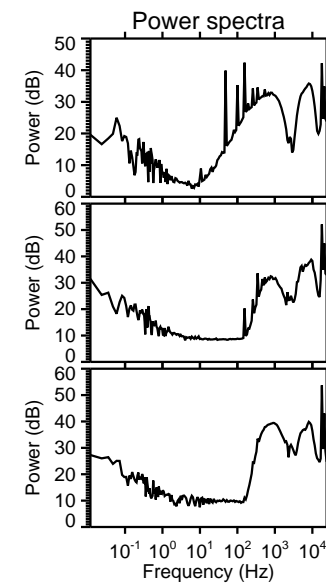
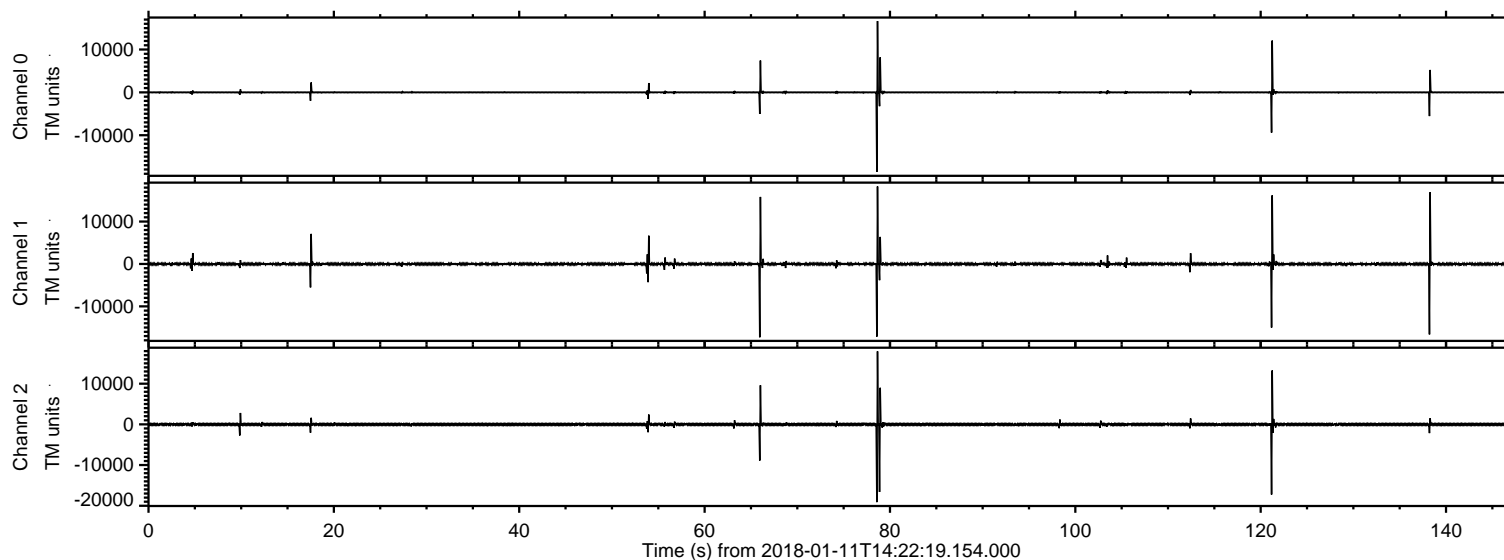


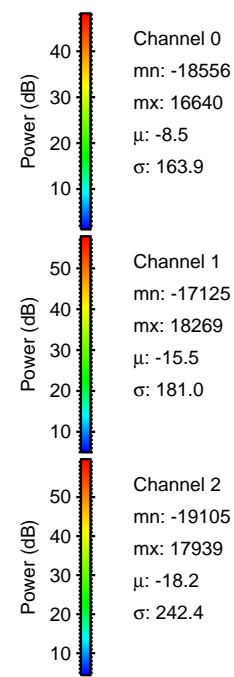
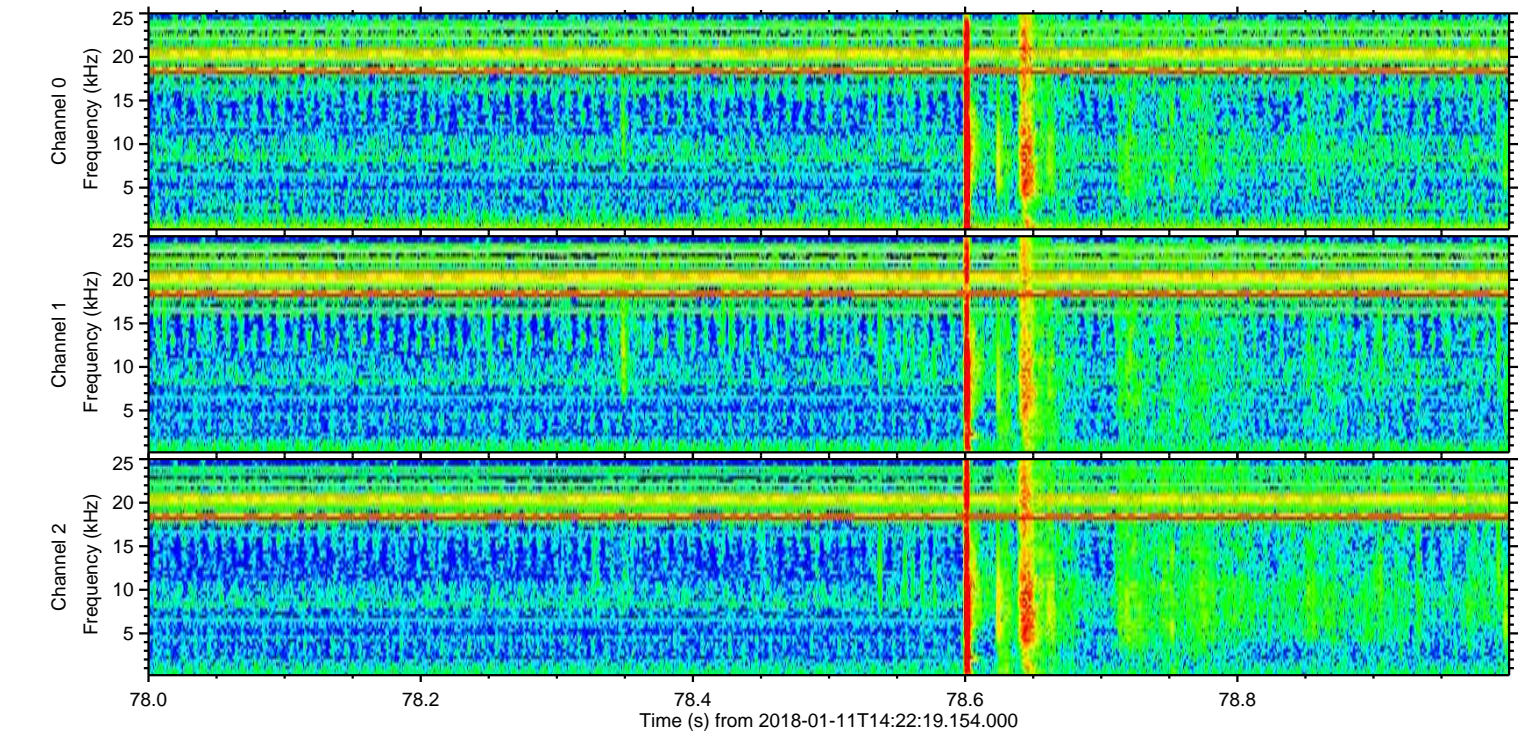
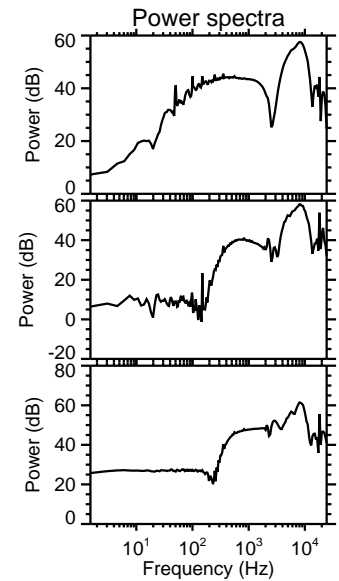
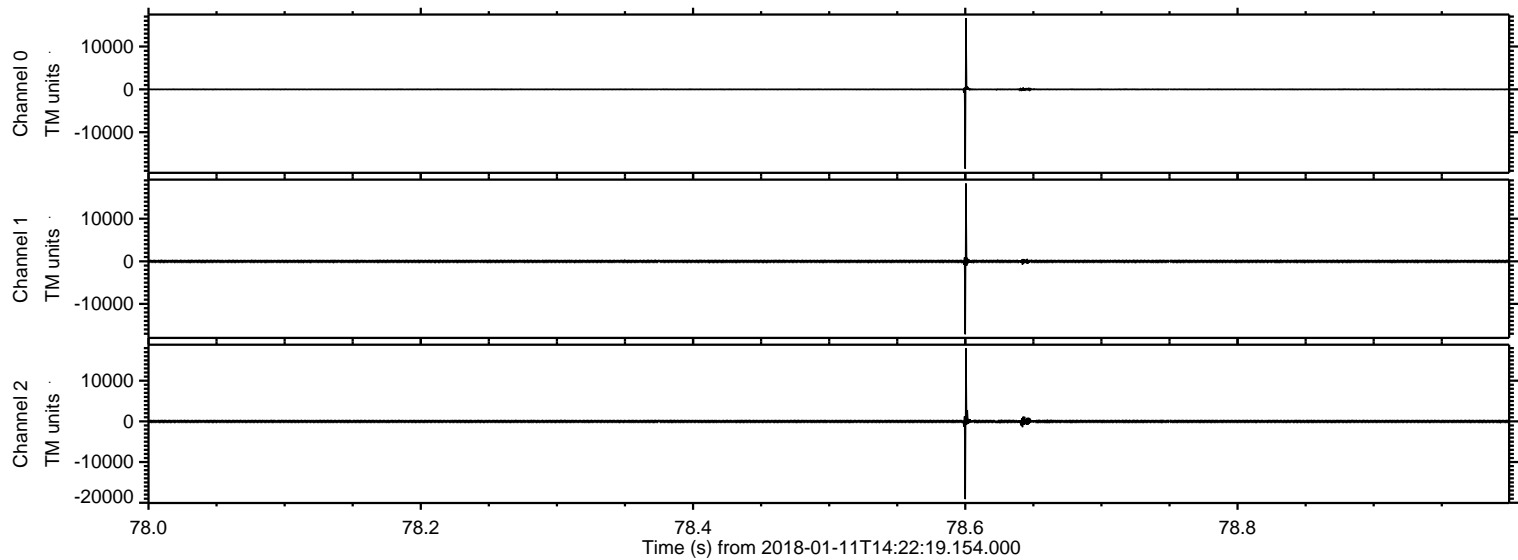
ELMAVAN 3D WAVEFORMS (Measured data sampled at 50 kHz) 51000 packets of 144 samples from 2018-01-11T14:22:19.154.000.

Processed Thu Jan 11 15:30:39 2018 by ELM ver.2012-10-06 from 001__elm20180111_142218__dat00.bin

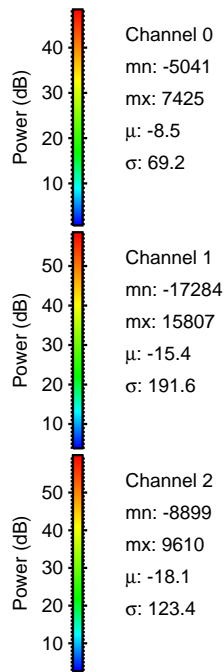
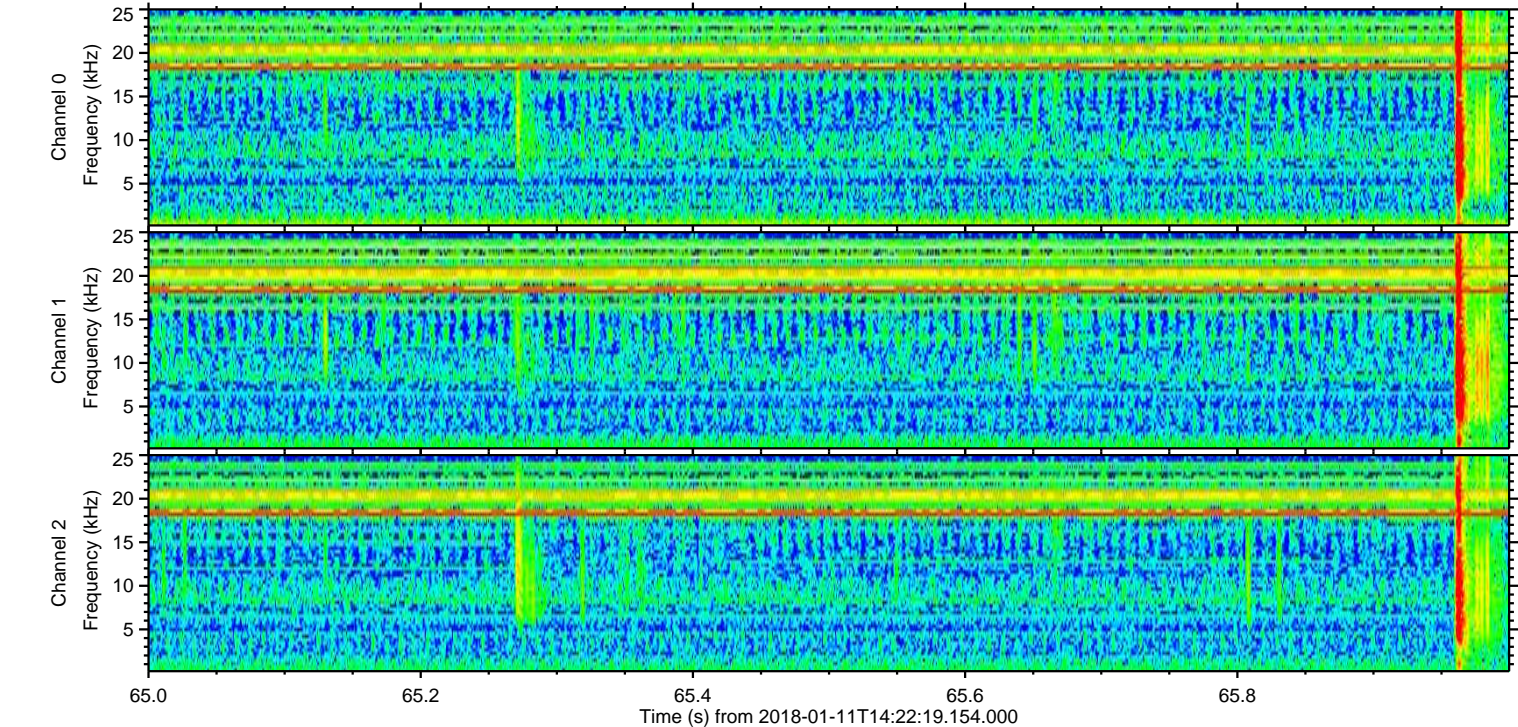
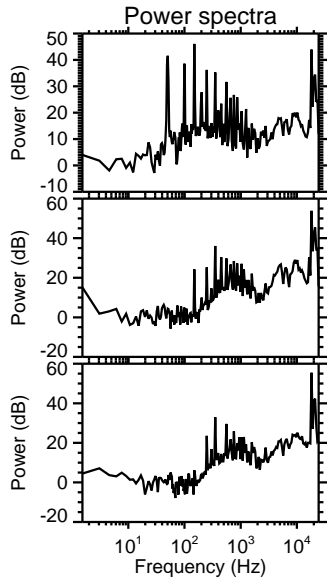
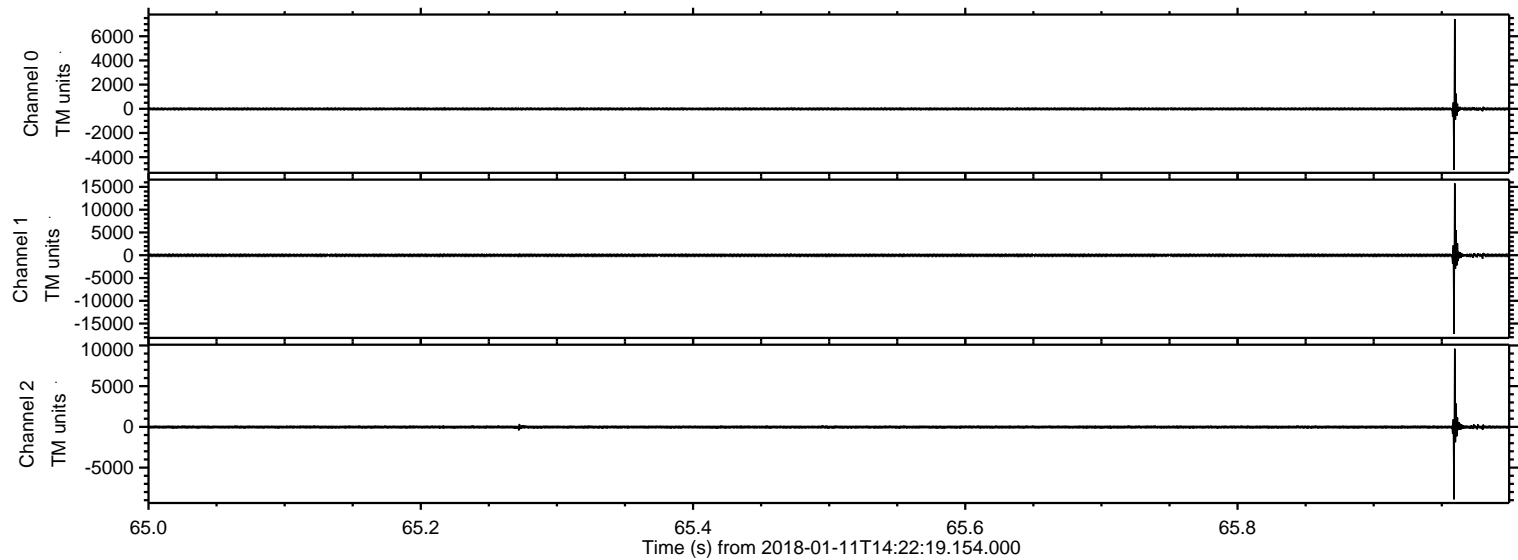


ELMAVAN 3D WAVEFORMS (Measured data sampled at 50 kHz) 51000 packets of 144 samples from 2018-01-11T14:22:19.154.000. Part 79/147

Processed Thu Jan 11 15:30:47 2018 by ELM ver.2012-10-06 from 001__elm20180111_142218__dat00.bin

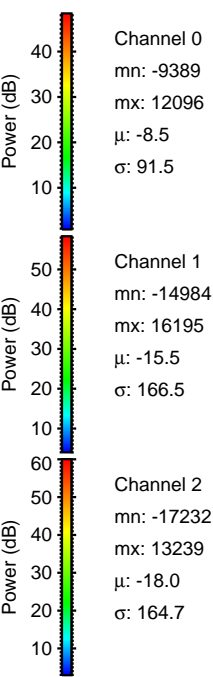
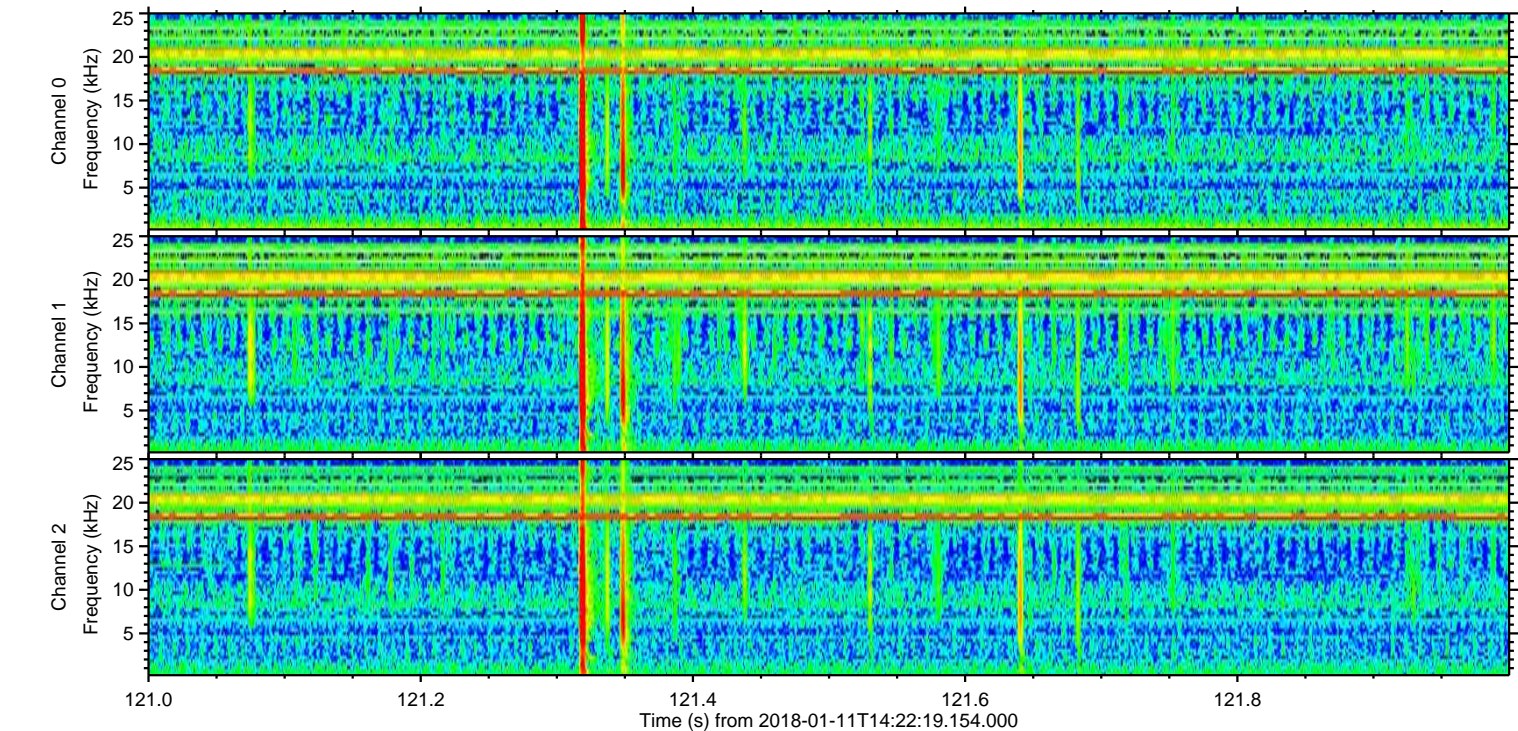
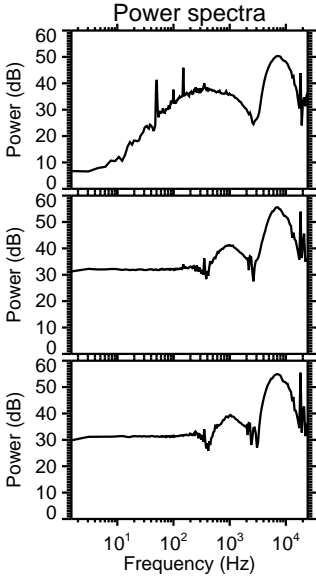
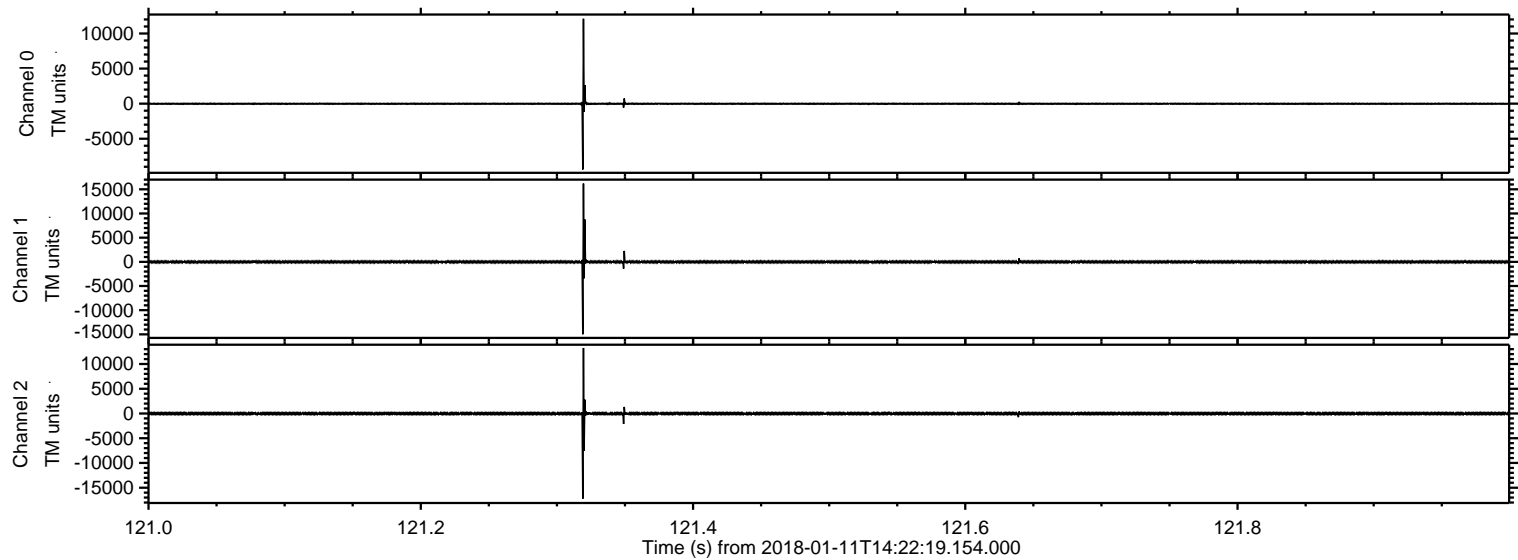


Processed Thu Jan 11 15:30:48 2018 by ELM ver.2012-10-06 from 001__elm20180111_142218__dat00.bin



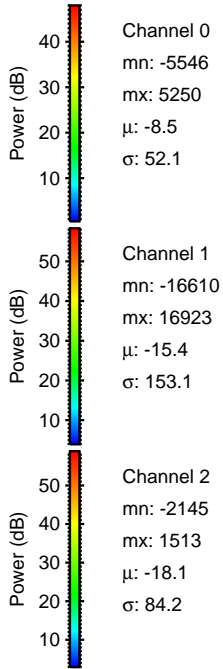
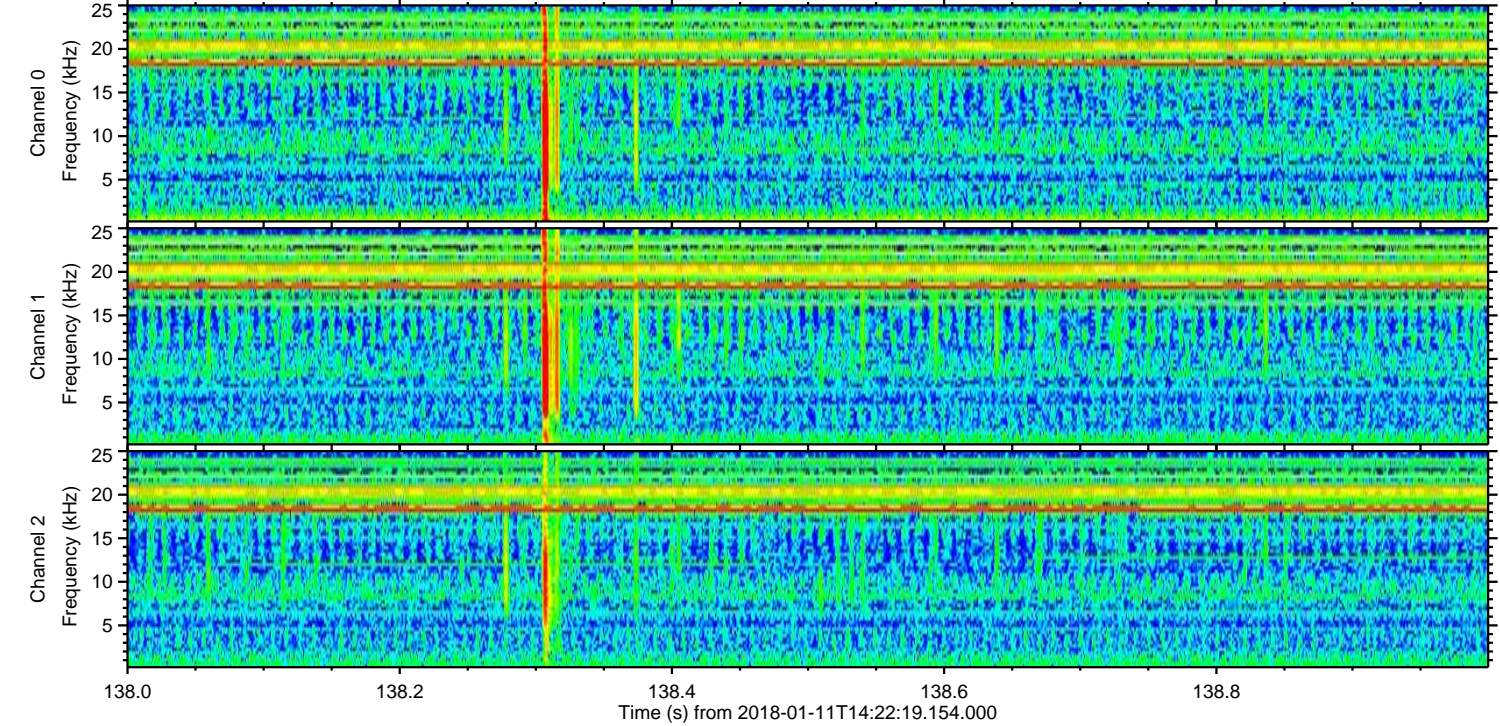
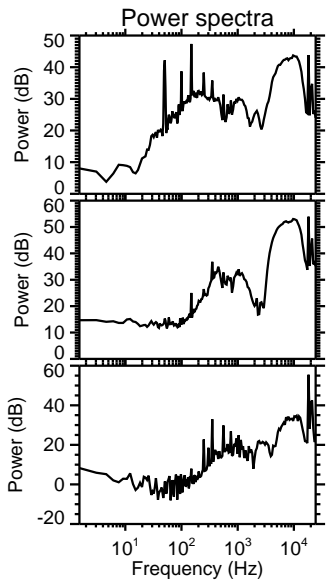
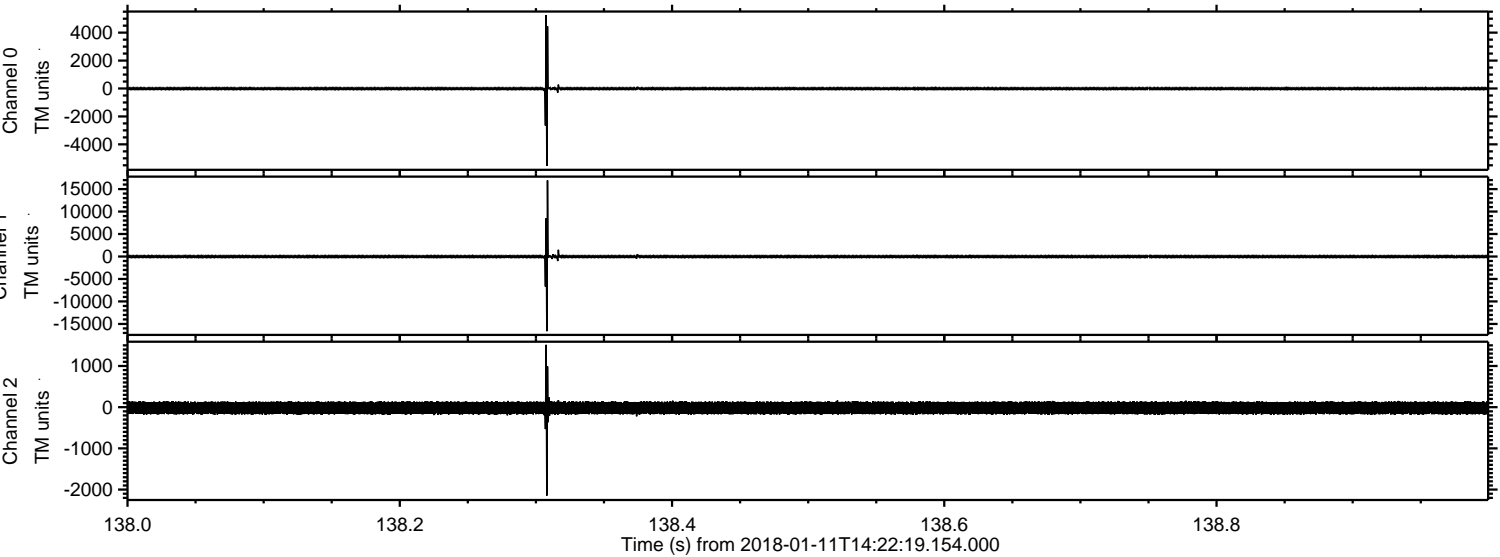
ELMAVAN 3D WAVEFORMS (Measured data sampled at 50 kHz) 51000 packets of 144 samples from 2018-01-11T14:22:19.154.000. Part 122/147

Processed Thu Jan 11 15:30:49 2018 by ELM ver.2012-10-06 from 001__elm20180111_142218__dat00.bin

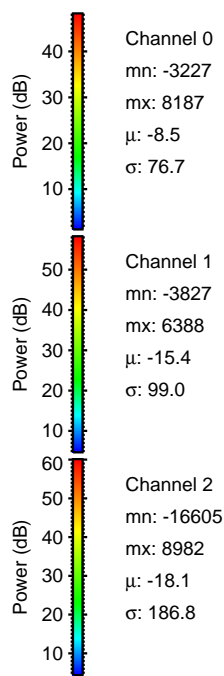
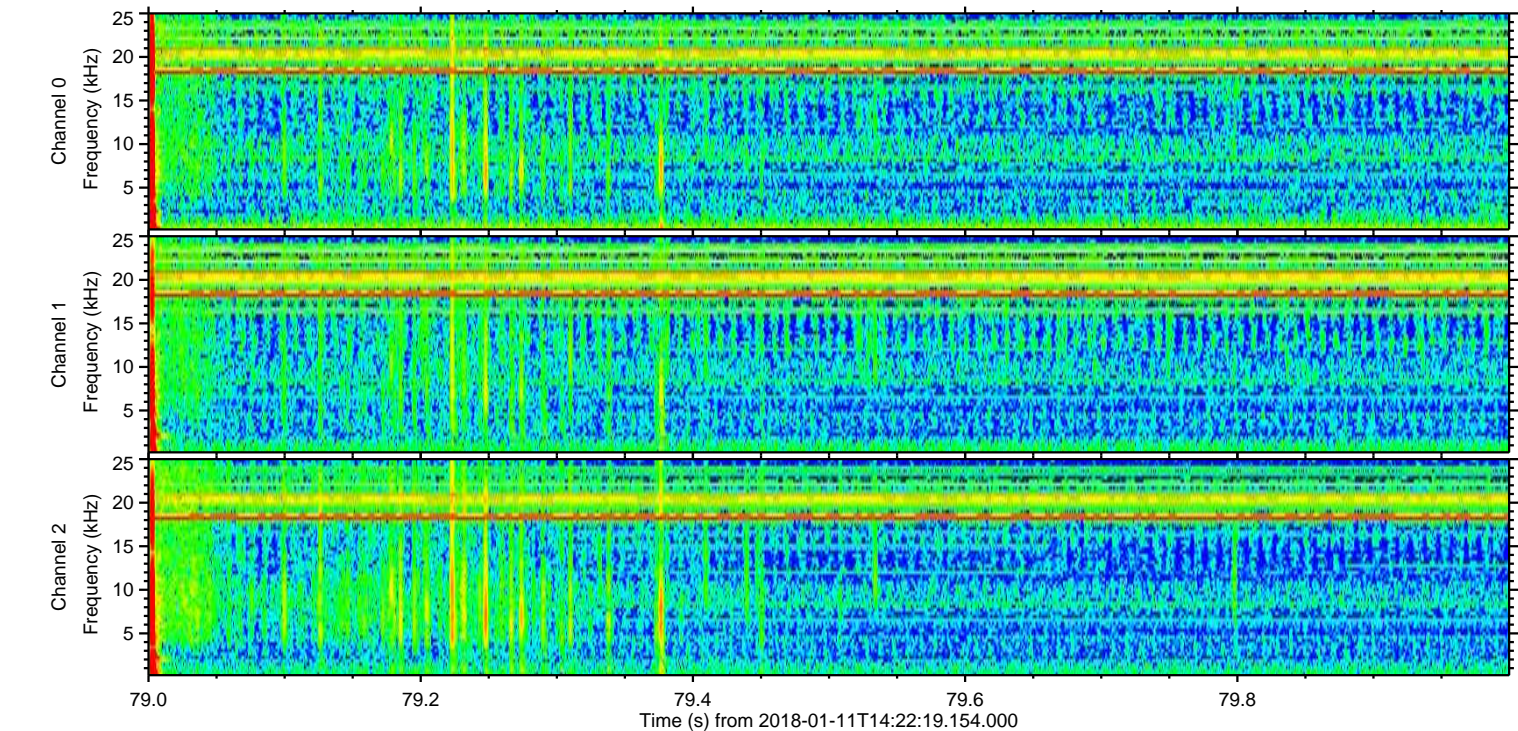
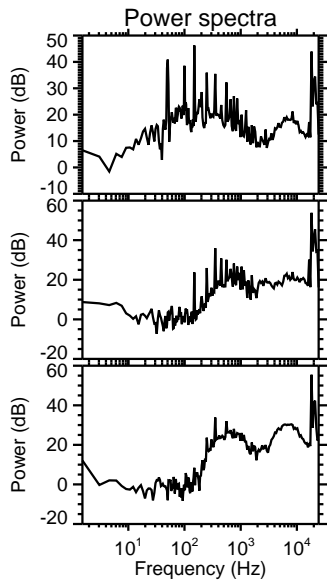
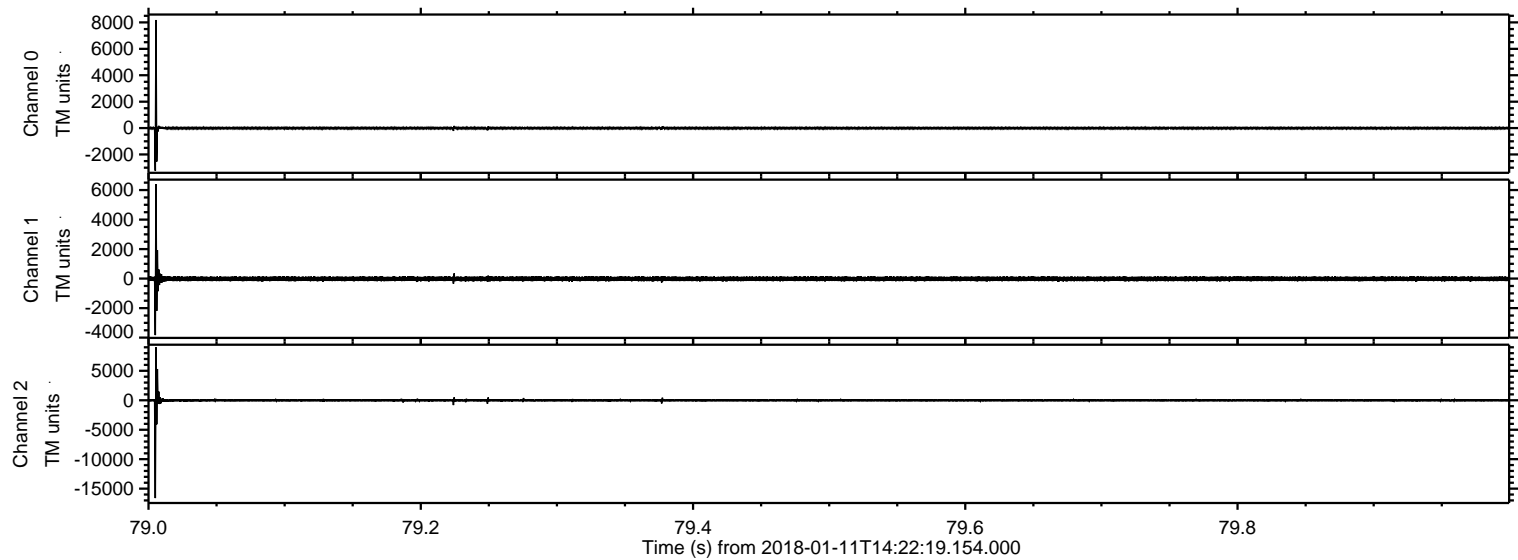


ELMAVAN 3D WAVEFORMS (Measured data sampled at 50 kHz) 51000 packets of 144 samples from 2018-01-11T14:22:19.154.000. Part 139/147

Processed Thu Jan 11 15:30:49 2018 by ELM ver.2012-10-06 from 001__elm20180111_142218__dat00.bin

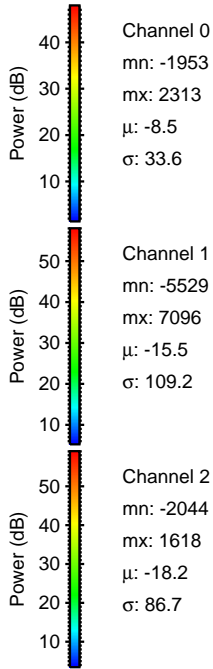
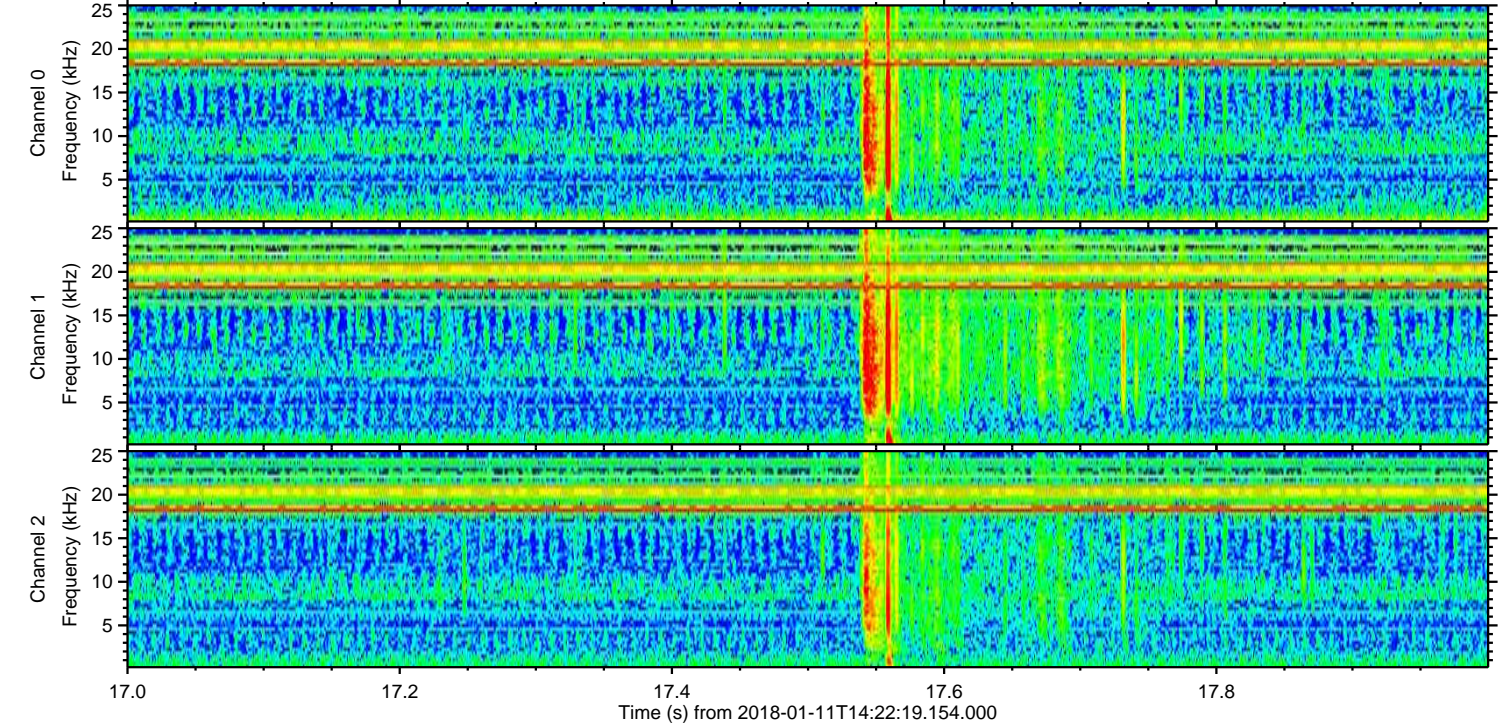
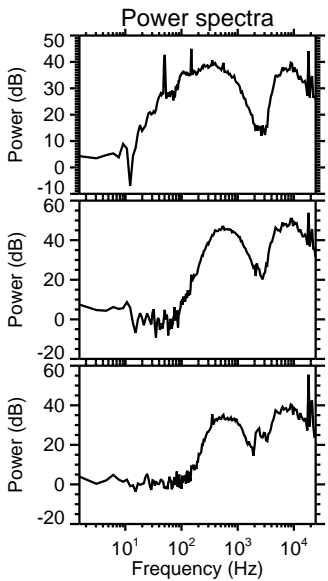
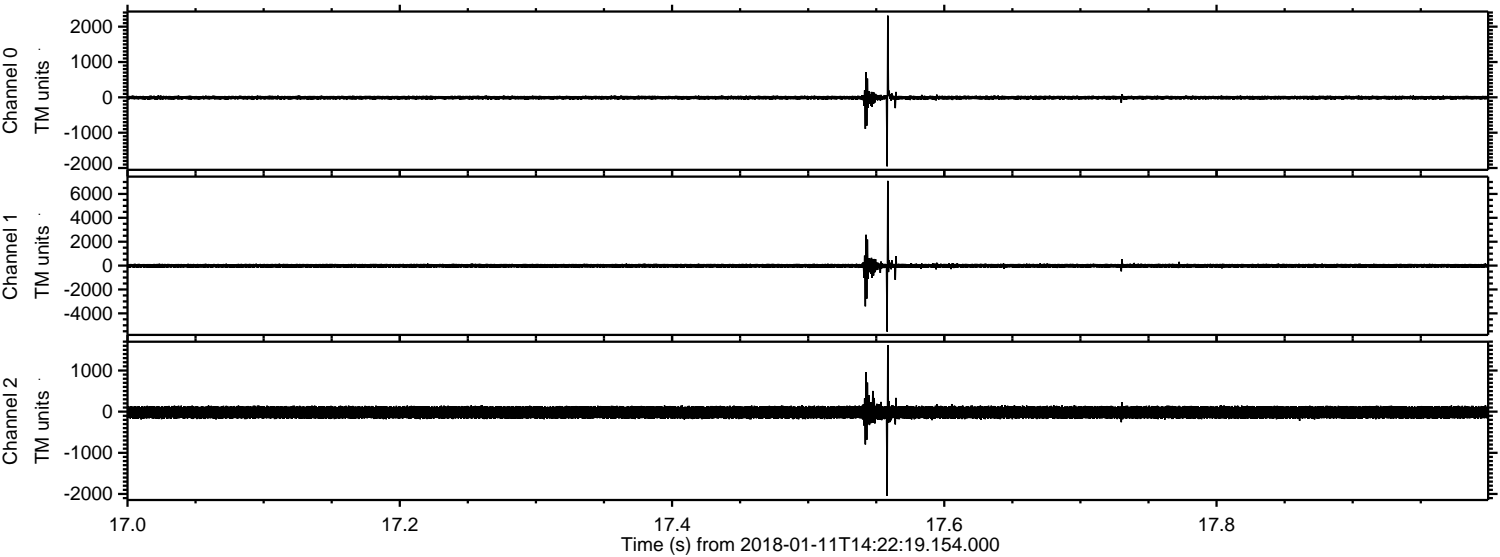


Processed Thu Jan 11 15:30:50 2018 by ELM ver.2012-10-06 from 001__elm20180111_142218__dat00.bin

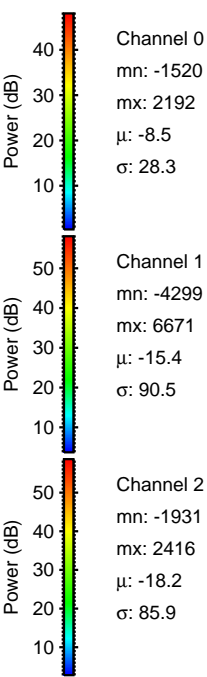
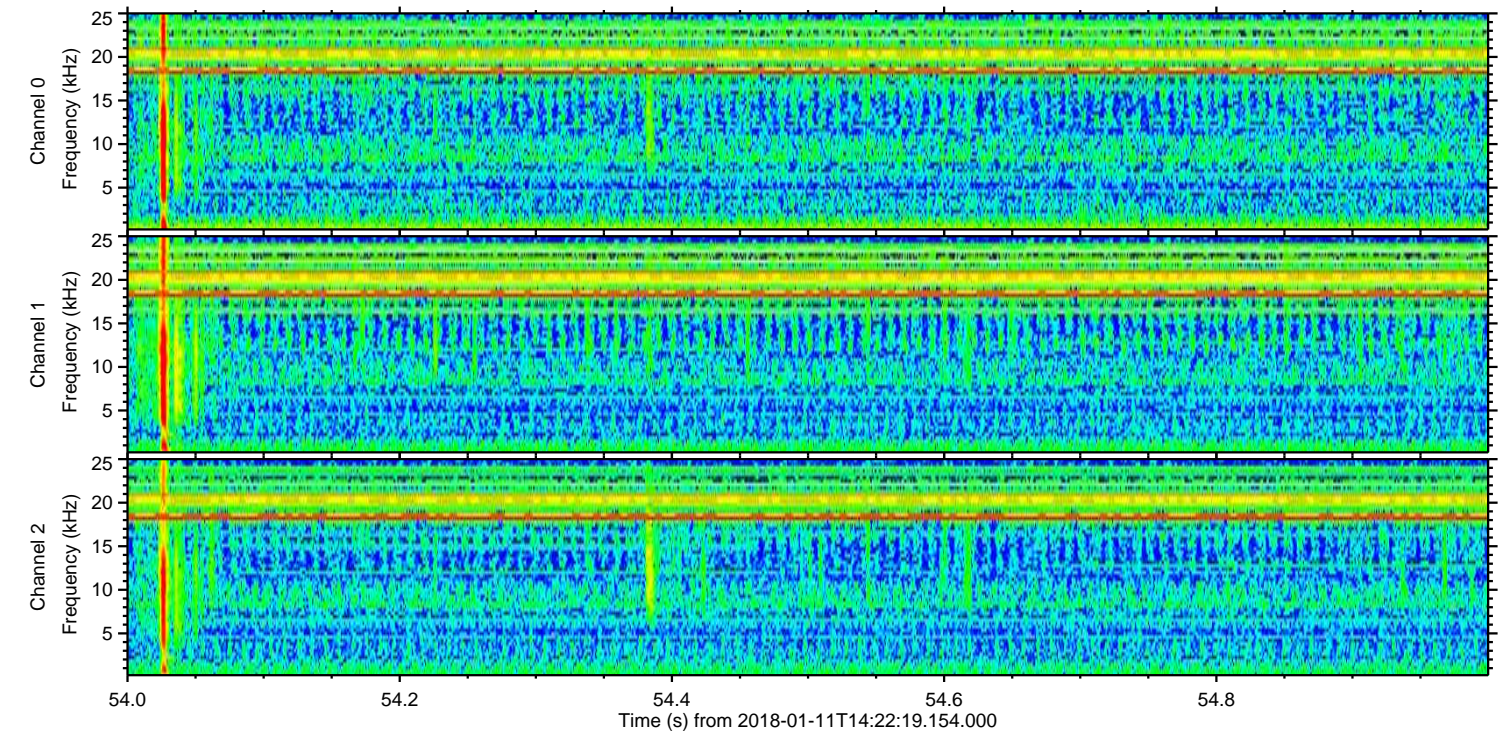
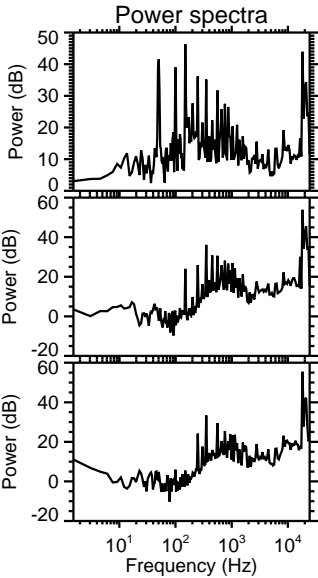
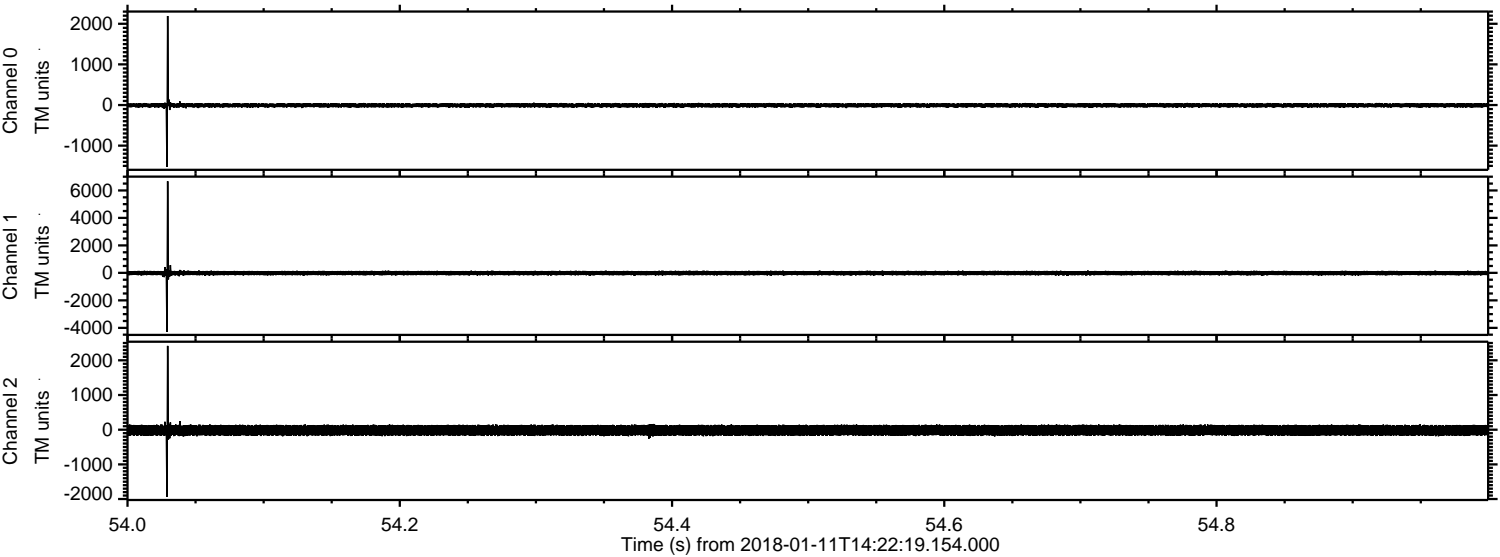


ELMAVAN 3D WAVEFORMS (Measured data sampled at 50 kHz) 51000 packets of 144 samples from 2018-01-11T14:22:19.154.000. Part 18/147

Processed Thu Jan 11 15:30:51 2018 by ELM ver.2012-10-06 from 001__elm20180111_142218__dat00.bin



Processed Thu Jan 11 15:30:52 2018 by ELM ver.2012-10-06 from 001__elm20180111_142218__dat00.bin

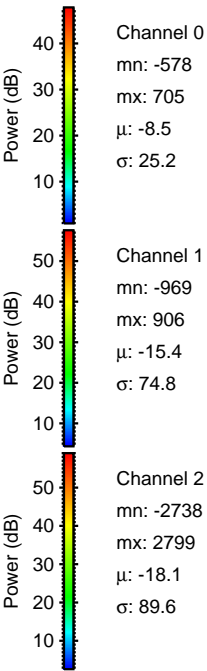
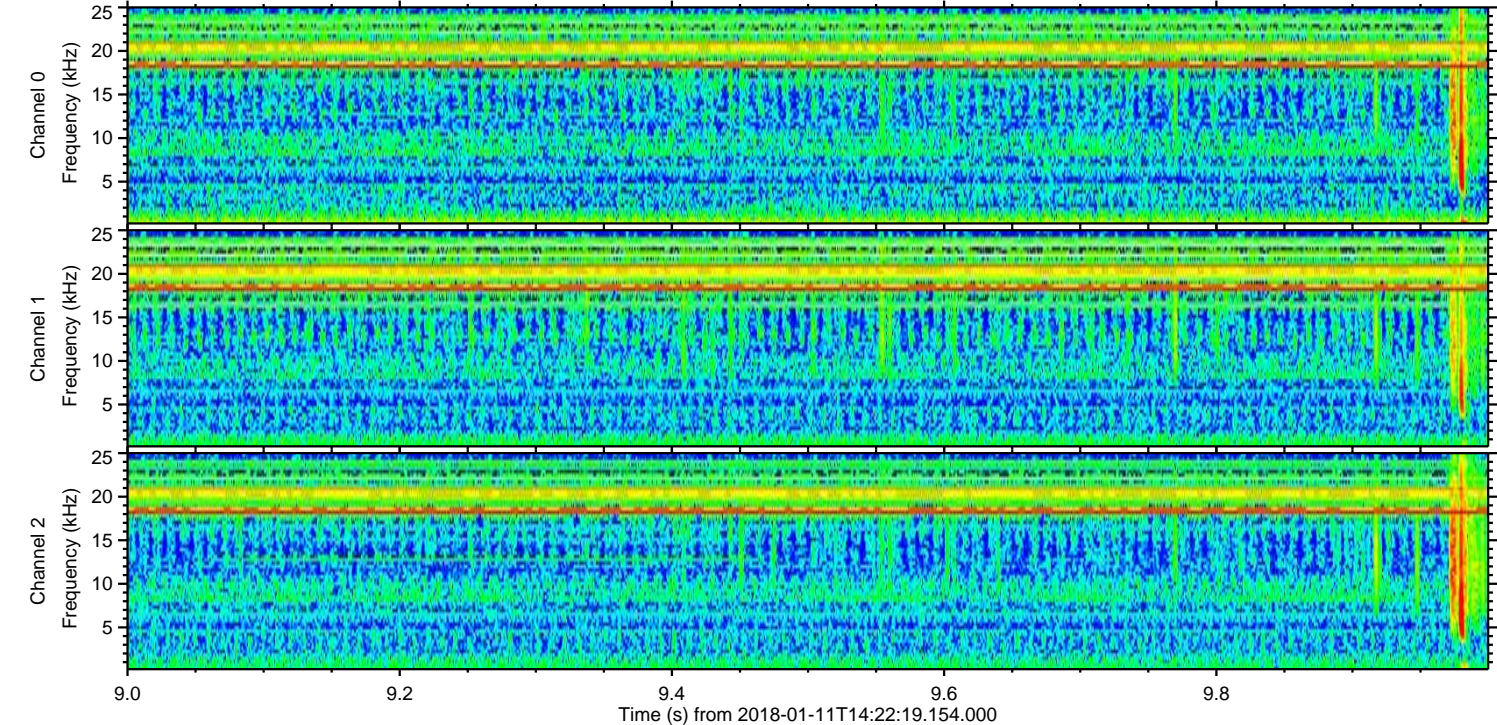
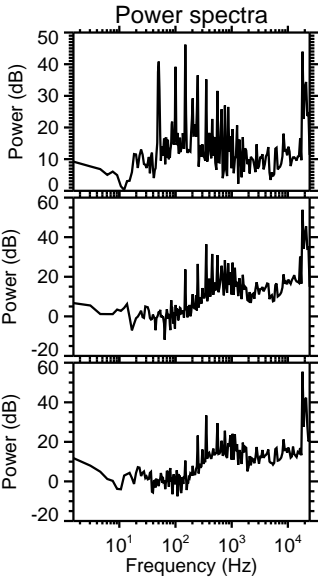
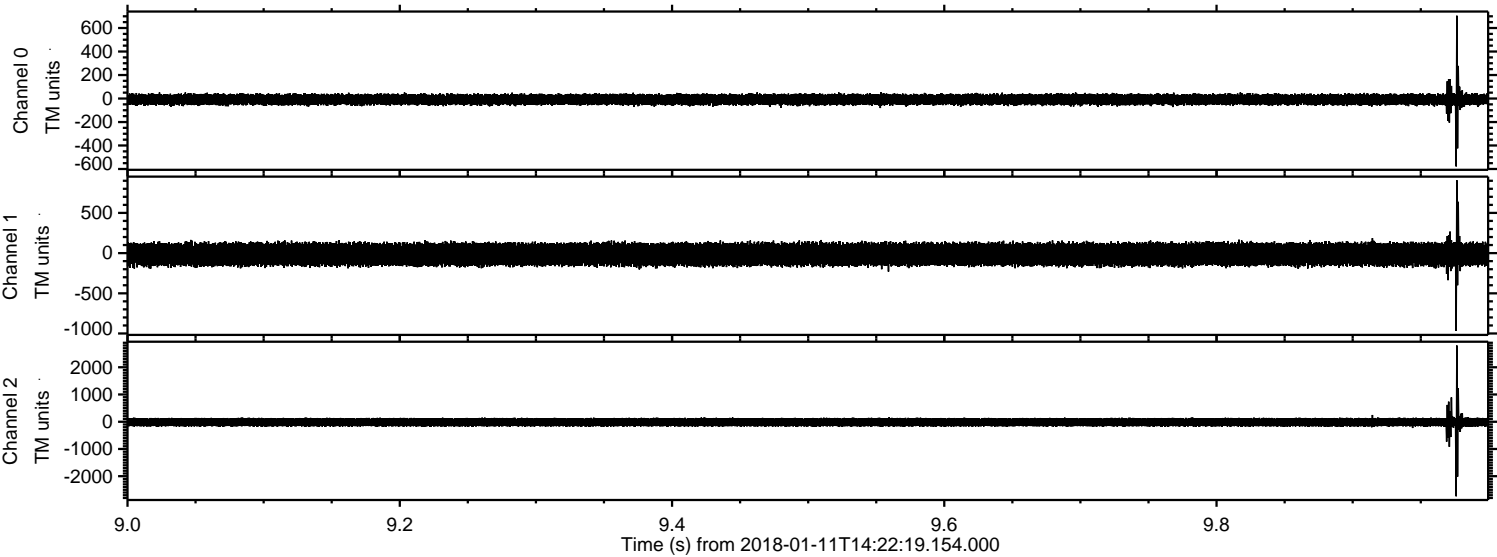


Channel 0
mn: -1520
mx: 2192
 μ : -8.5
 σ : 28.3

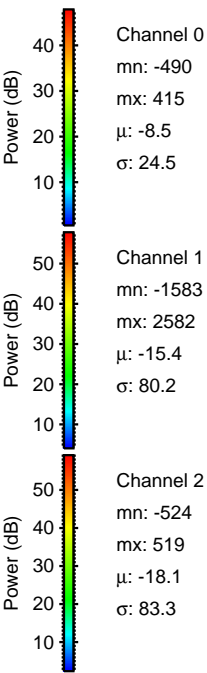
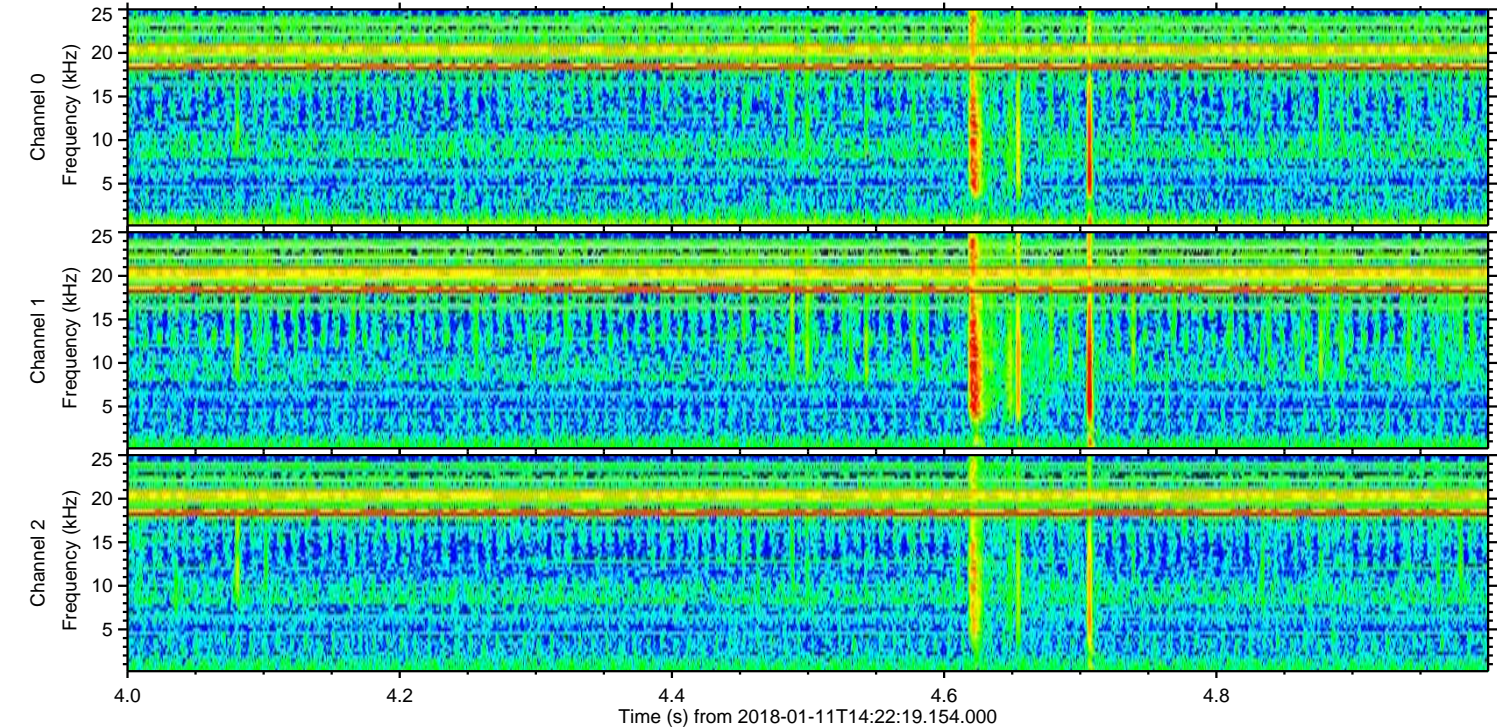
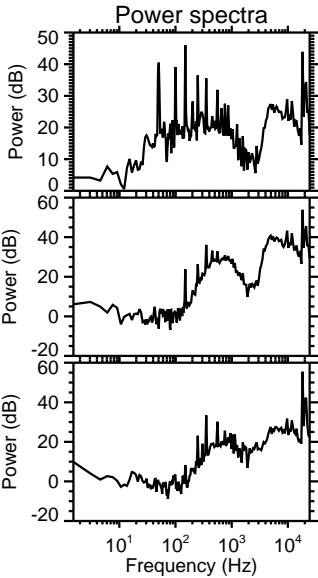
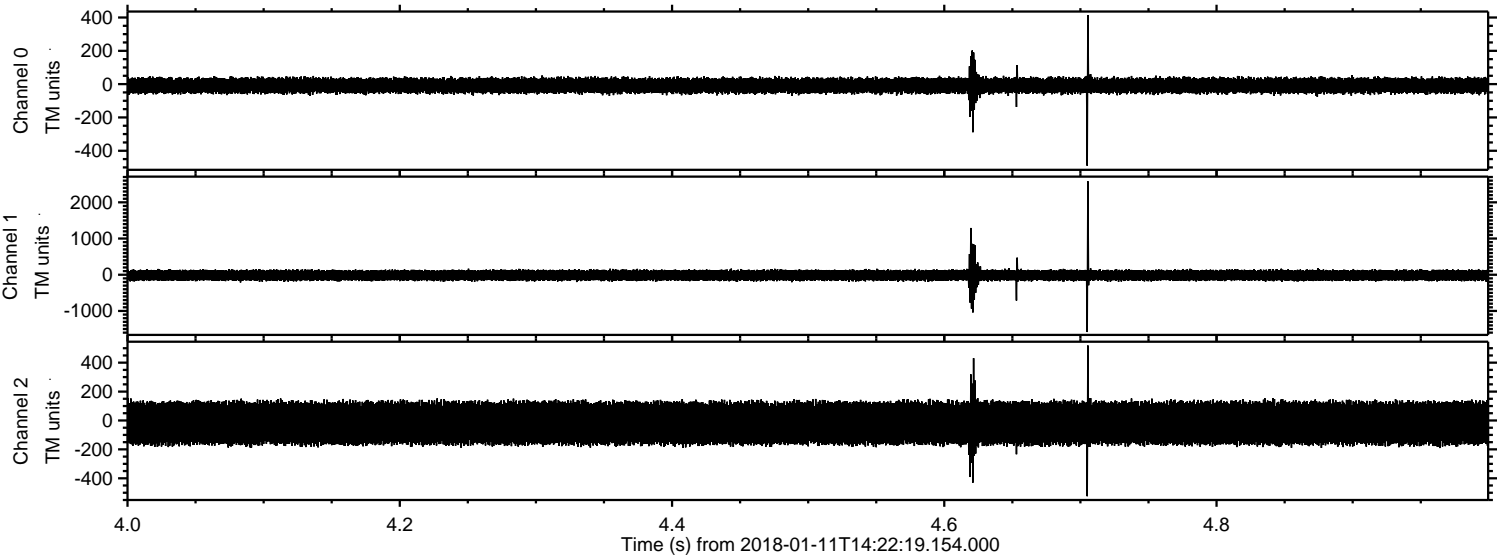
Channel 1
mn: -4299
mx: 6671
 μ : -15.4
 σ : 90.5

Channel 2
mn: -1931
mx: 2416
 μ : -18.2
 σ : 85.9

Processed Thu Jan 11 15:30:53 2018 by ELM ver.2012-10-06 from 001__elm20180111_142218__dat00.bin



Processed Thu Jan 11 15:30:53 2018 by ELM ver.2012-10-06 from 001__elm20180111_142218__dat00.bin



Processed Thu Jan 11 15:30:54 2018 by ELM ver.2012-10-06 from 001__elm20180111_142218__dat00.bin

