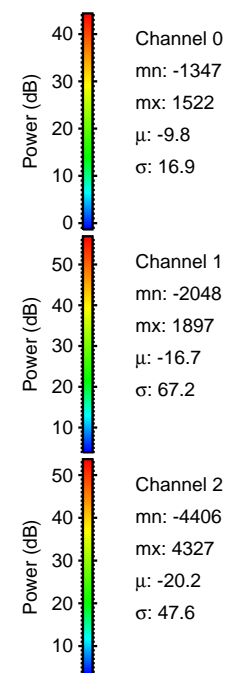
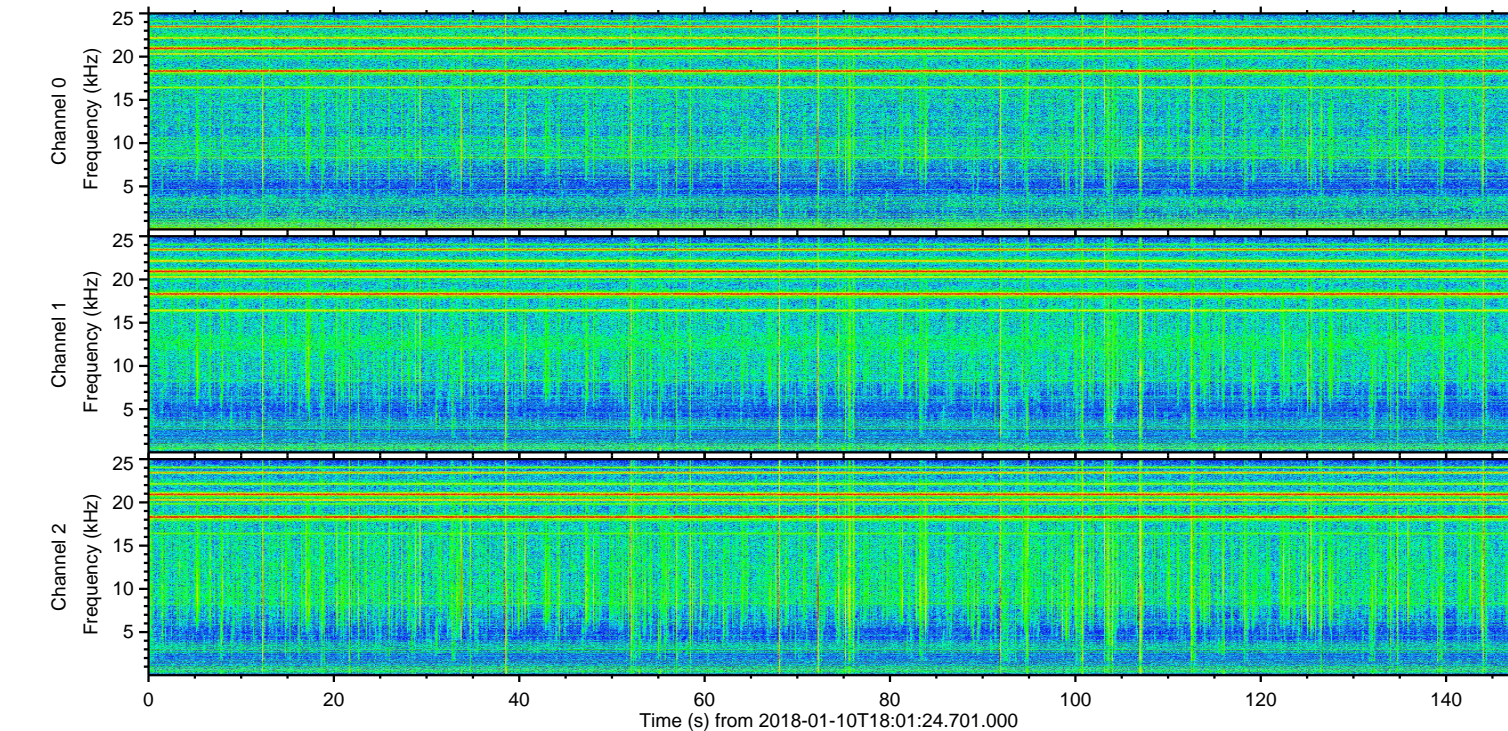
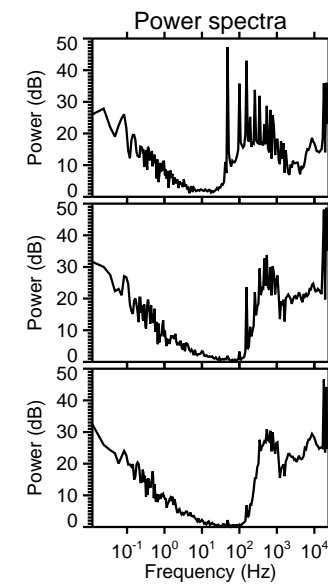
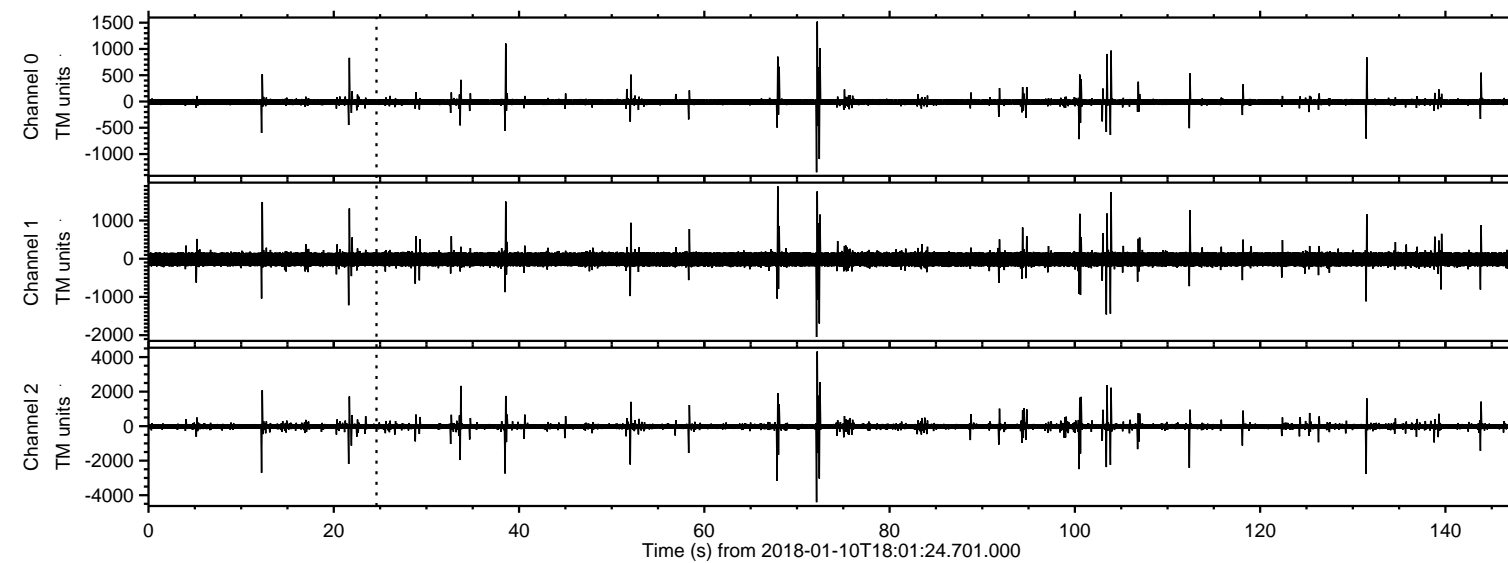
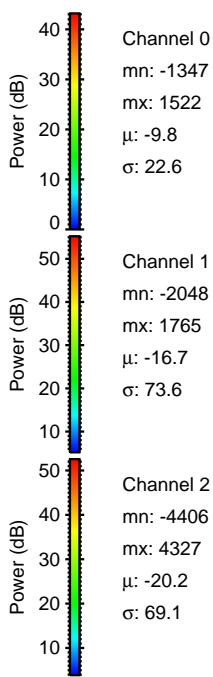
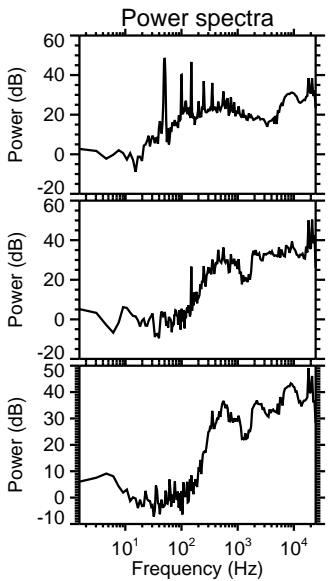
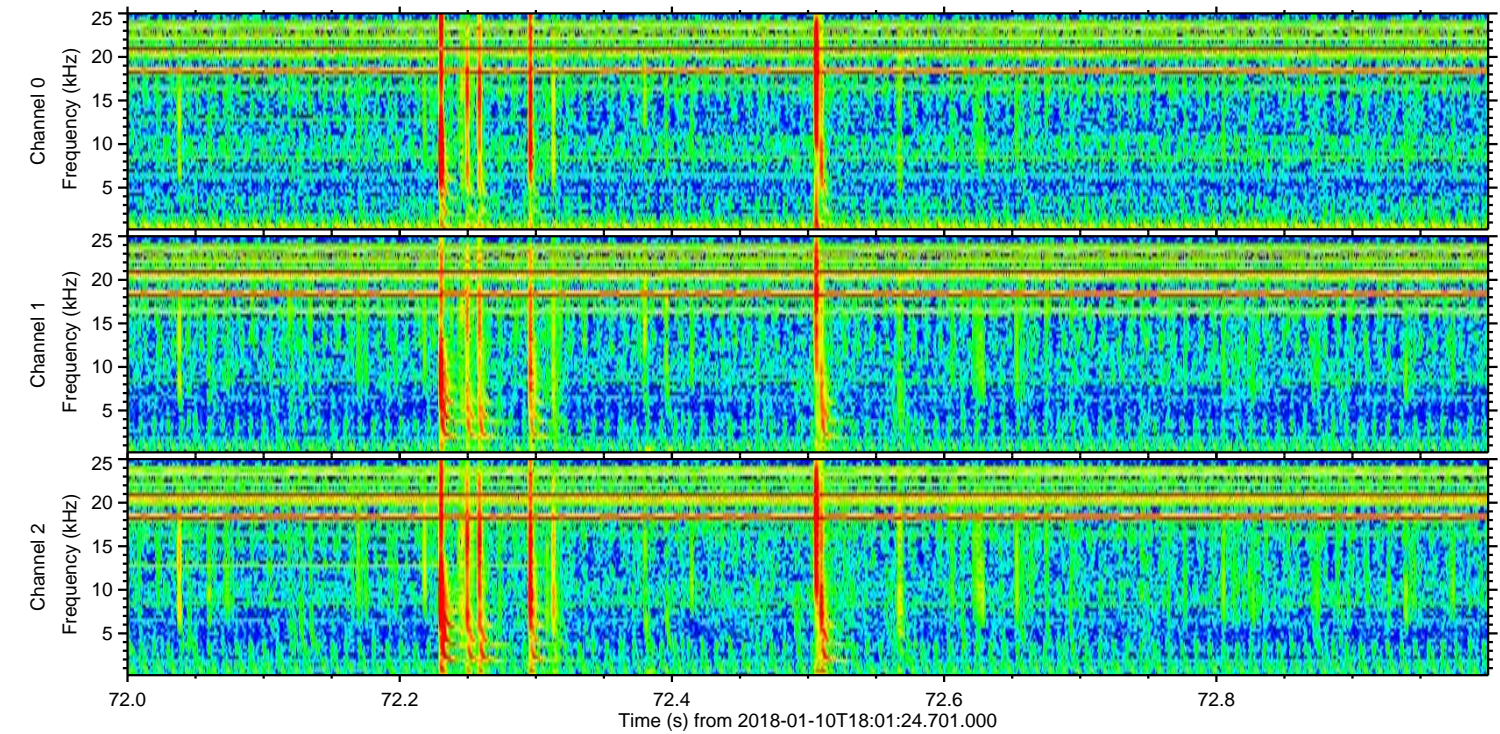
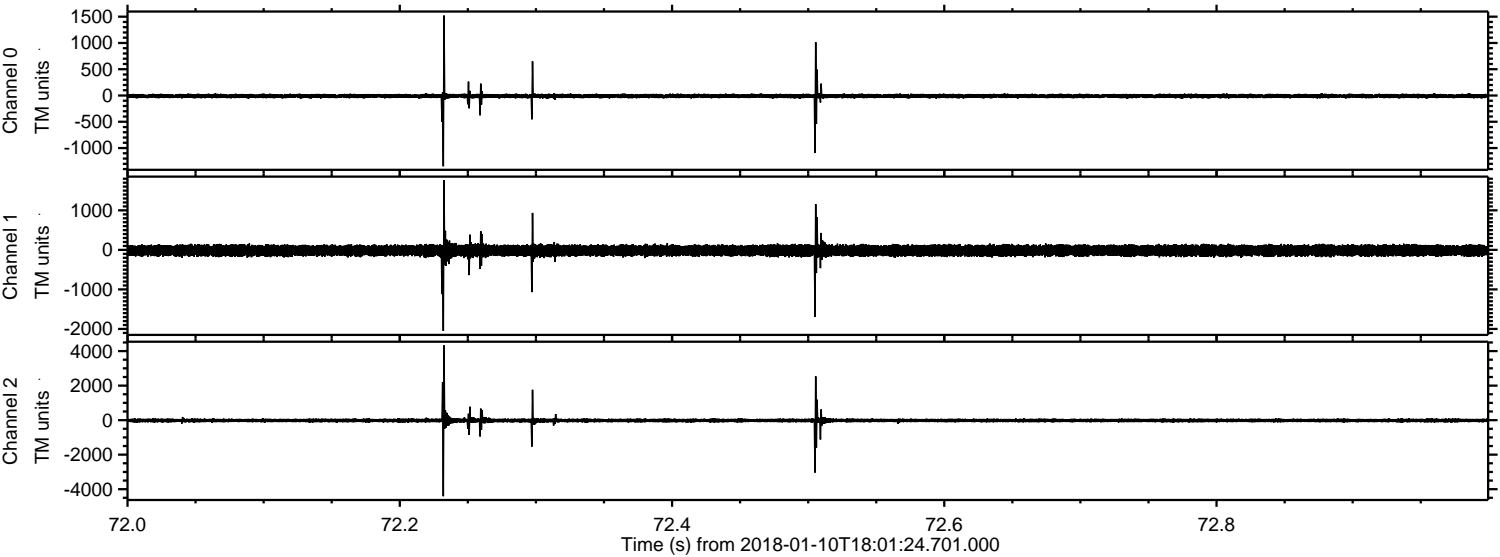


ELMAVAN 3D WAVEFORMS (Measured data sampled at 50 kHz) 50999 packets of 144 samples from 2018-01-10T18:01:24.701.000.

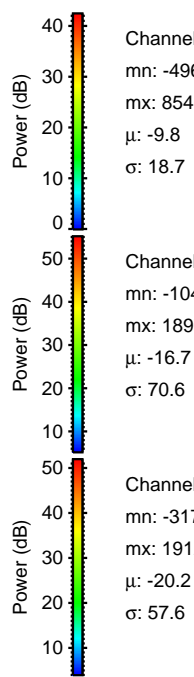
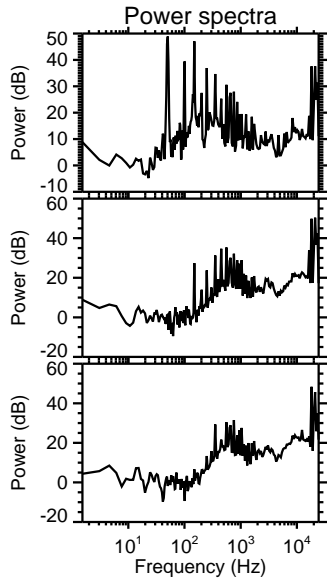
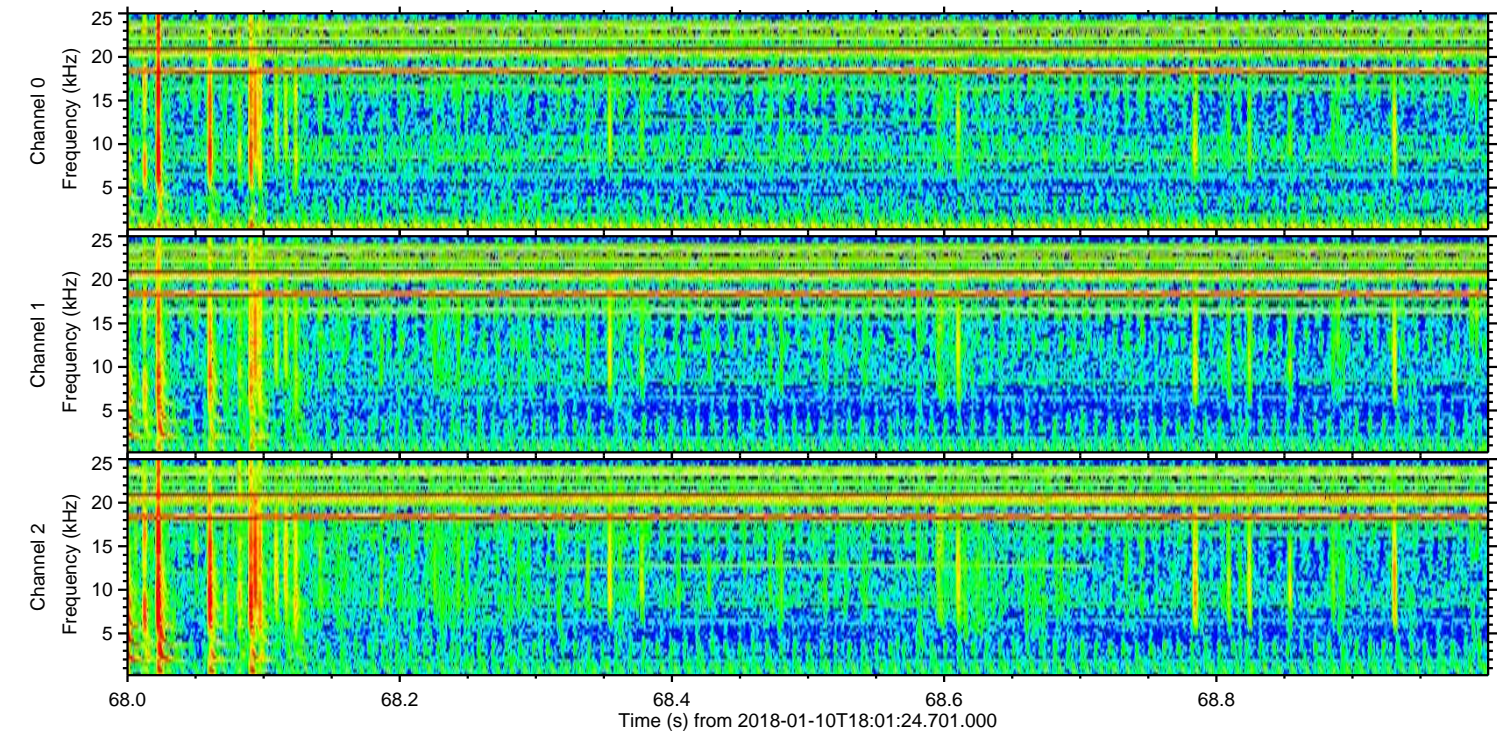
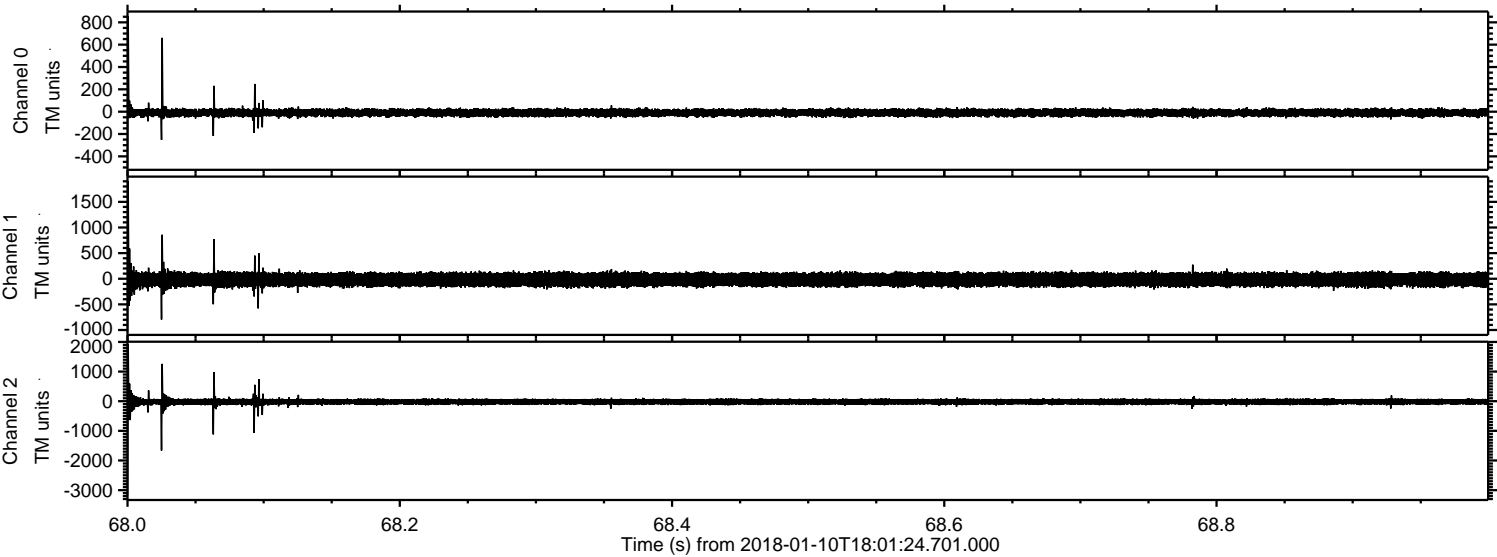
Processed Wed Jan 10 19:09:17 2018 by ELM ver.2012-10-06 from 001__elm20180110_180123__dat00.bin



Processed Wed Jan 10 19:09:25 2018 by ELM ver.2012-10-06 from 001__elm20180110_180123__dat00.bin

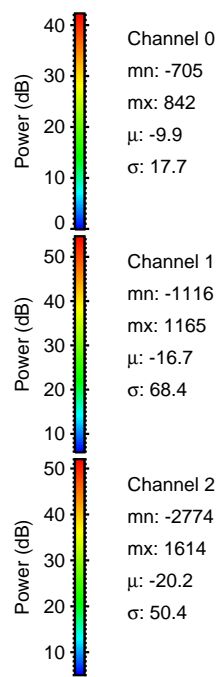
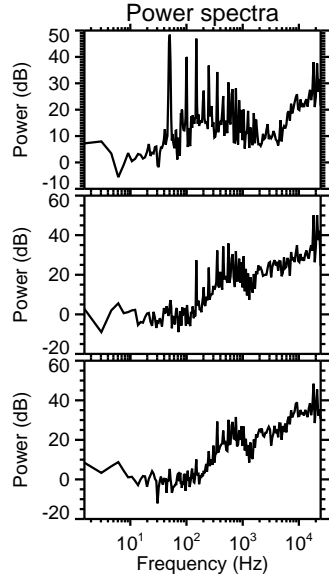
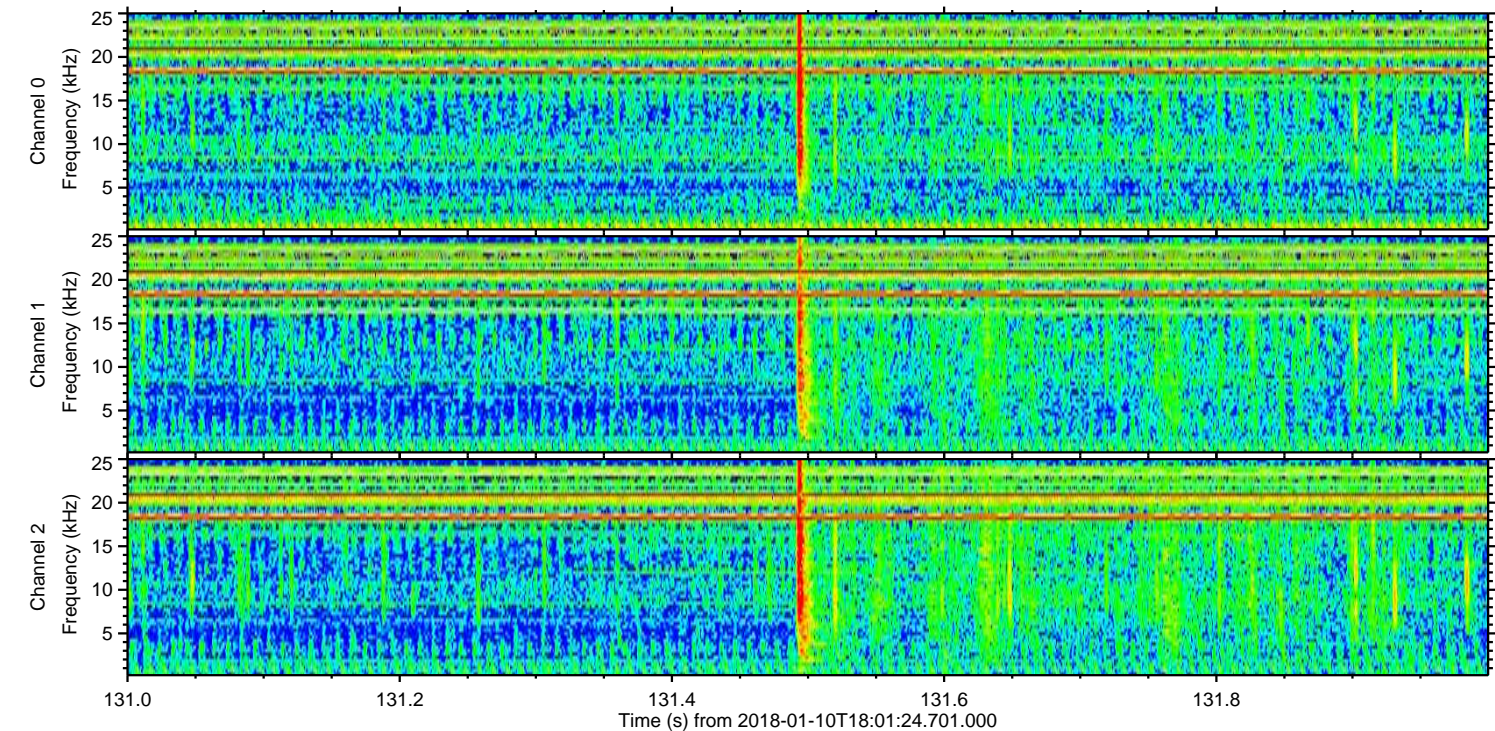
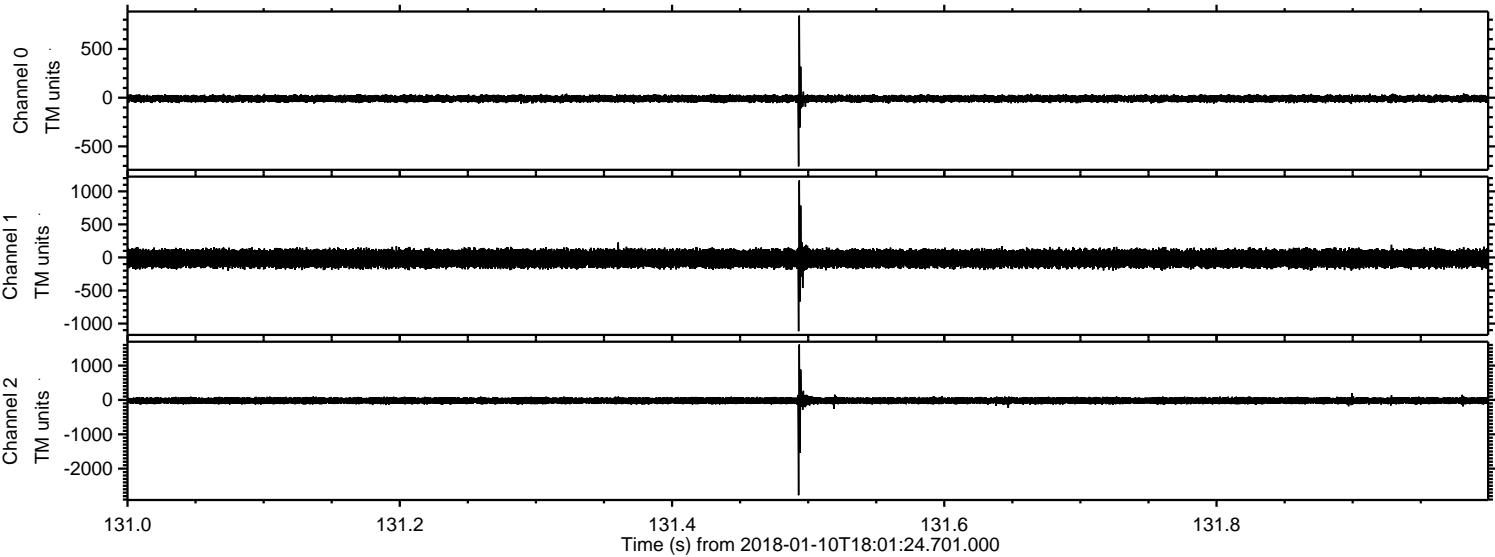


Processed Wed Jan 10 19:09:26 2018 by ELM ver.2012-10-06 from 001__elm20180110_180123__dat00.bin

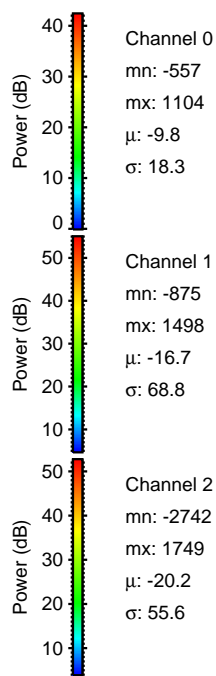
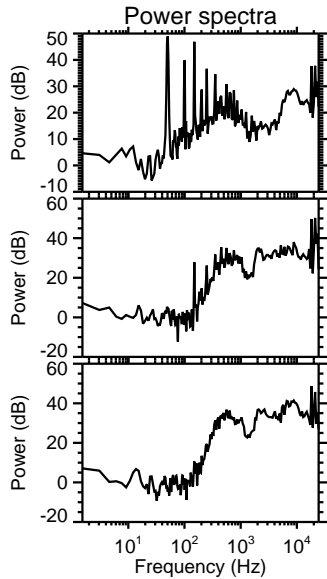
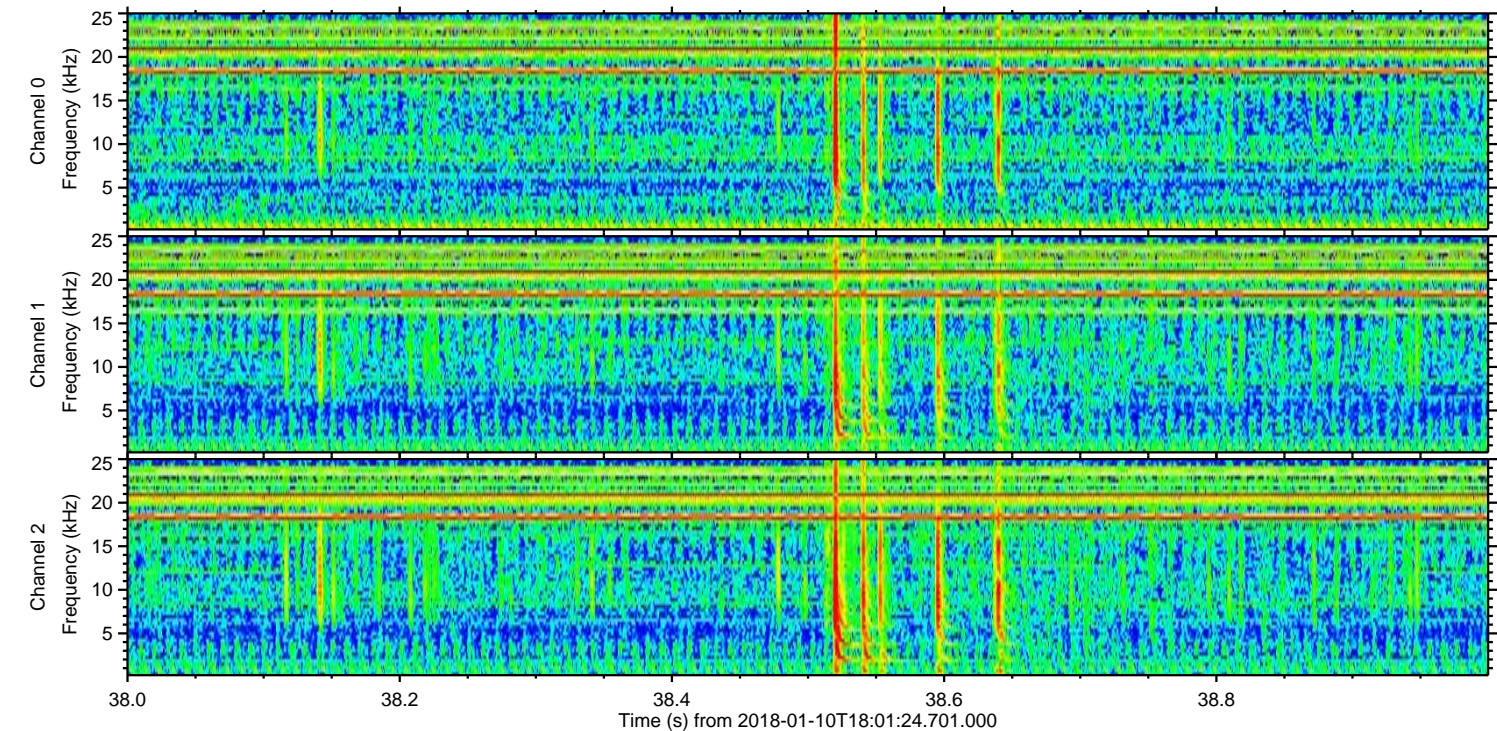
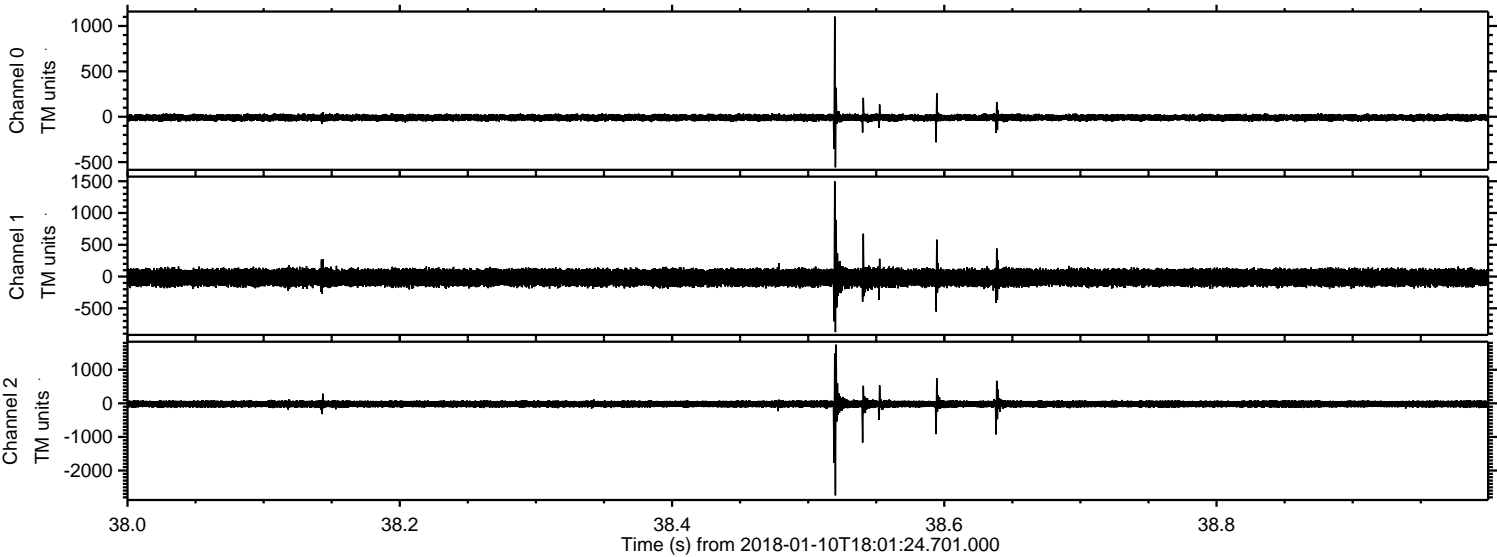


ELMAVAN 3D WAVEFORMS (Measured data sampled at 50 kHz) 50999 packets of 144 samples from 2018-01-10T18:01:24.701.000. Part 132/147

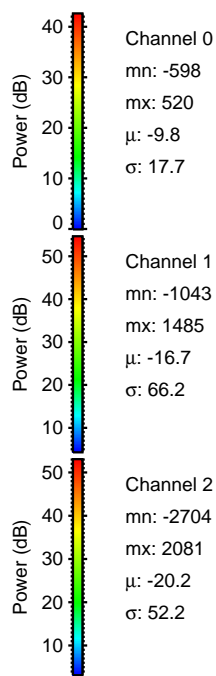
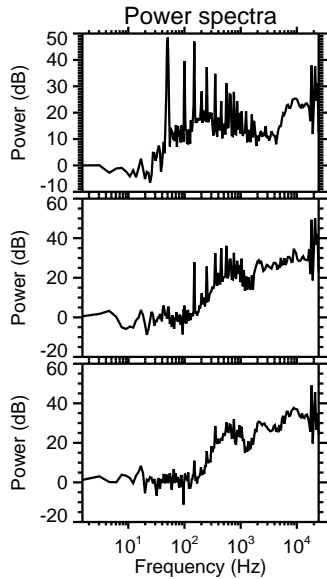
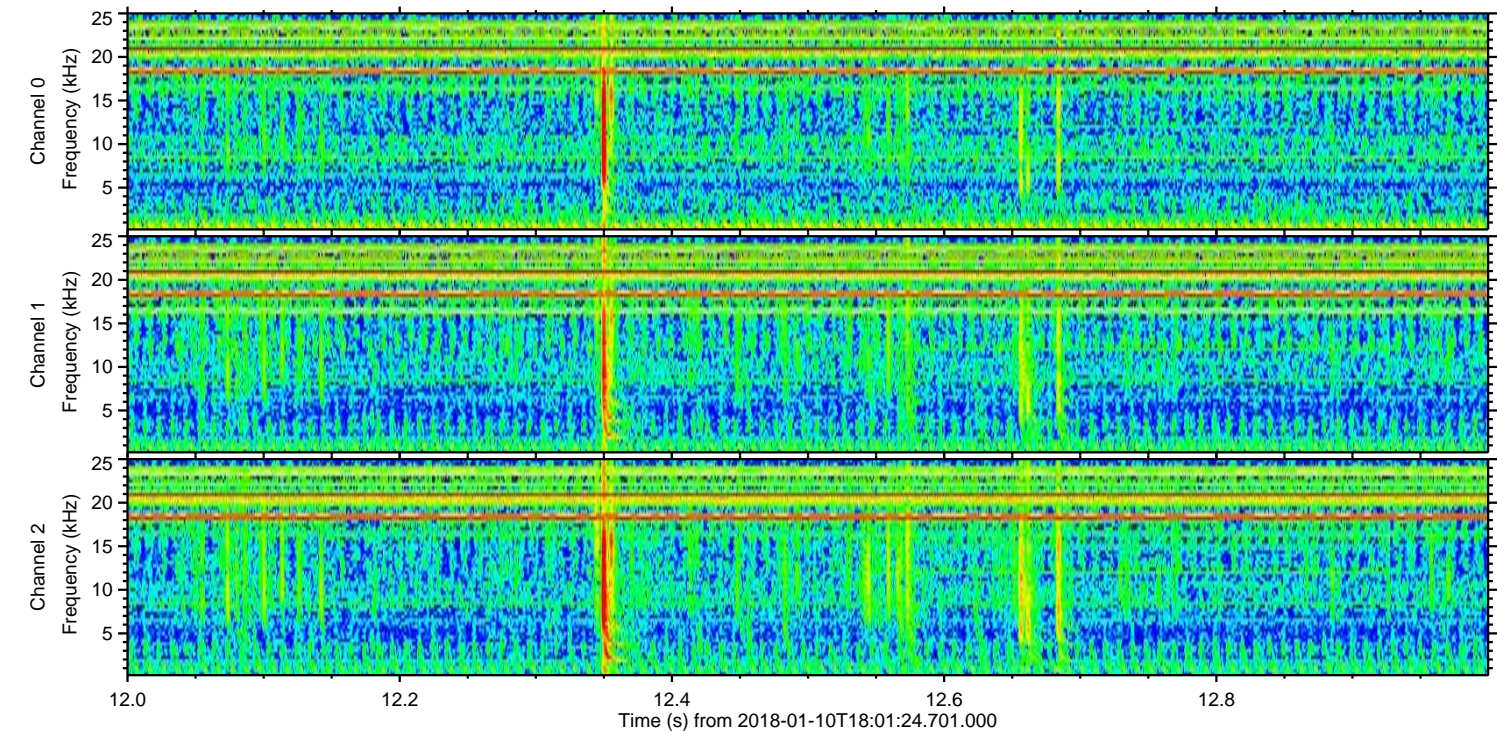
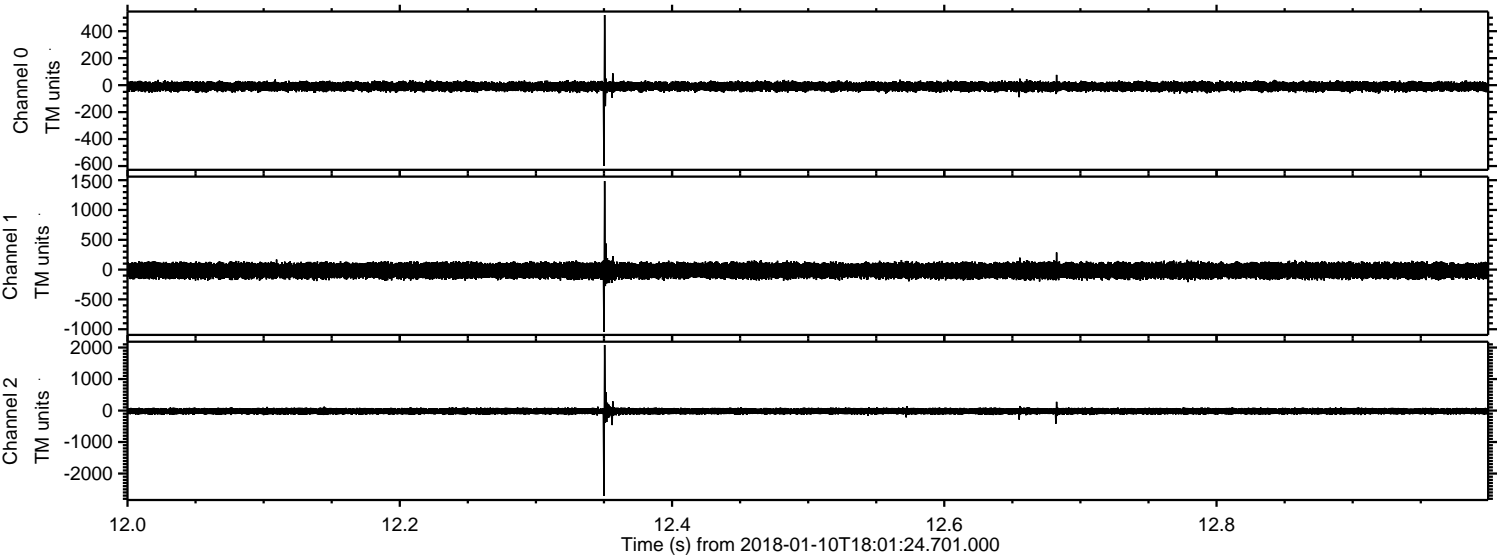
Processed Wed Jan 10 19:09:27 2018 by ELM ver.2012-10-06 from 001__elm20180110_180123__dat00.bin



Processed Wed Jan 10 19:09:27 2018 by ELM ver.2012-10-06 from 001__elm20180110_180123__dat00.bin

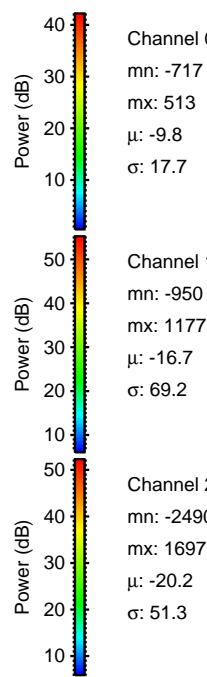
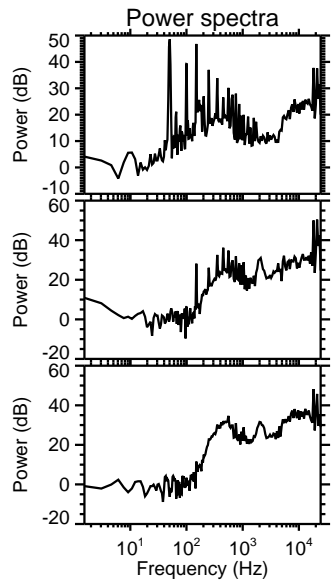
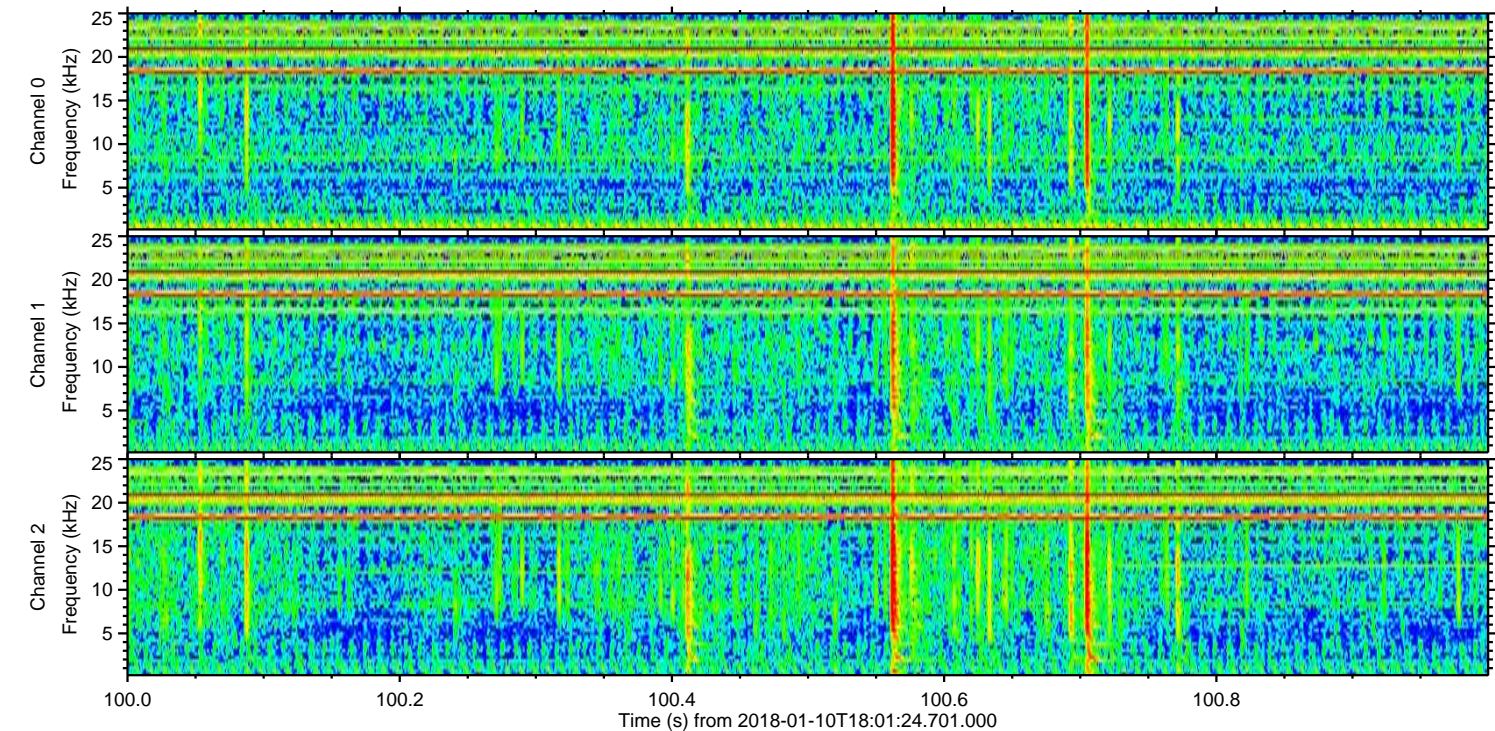
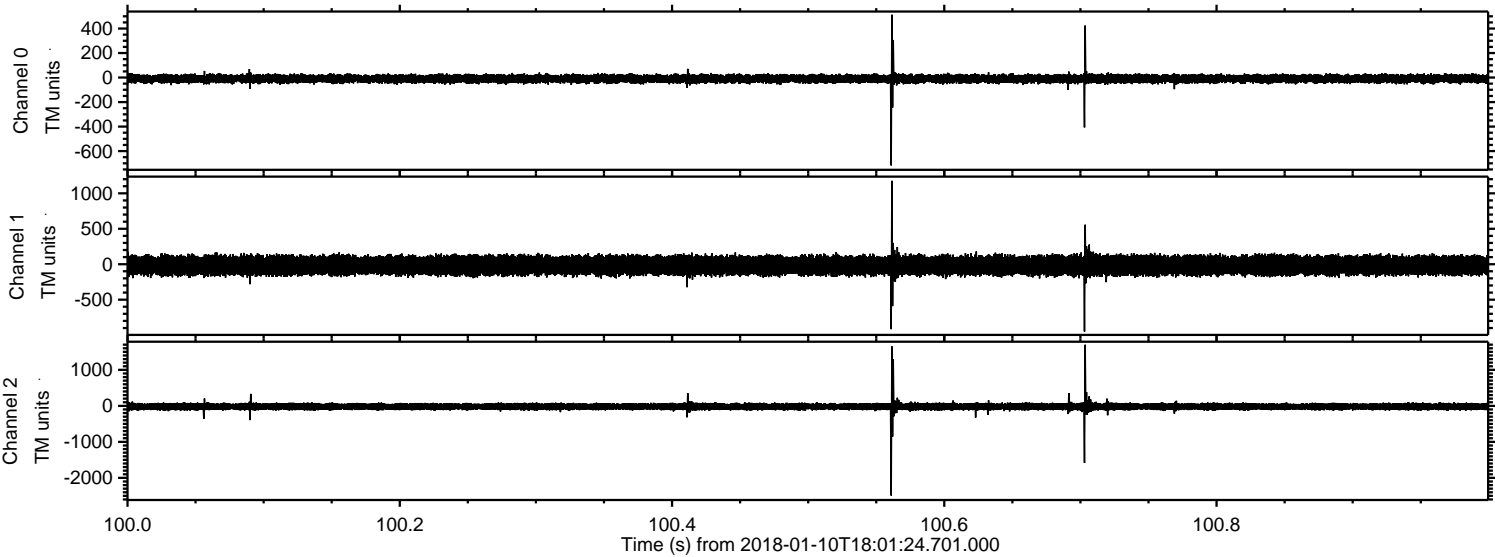


Processed Wed Jan 10 19:09:28 2018 by ELM ver.2012-10-06 from 001__elm20180110_180123__dat00.bin



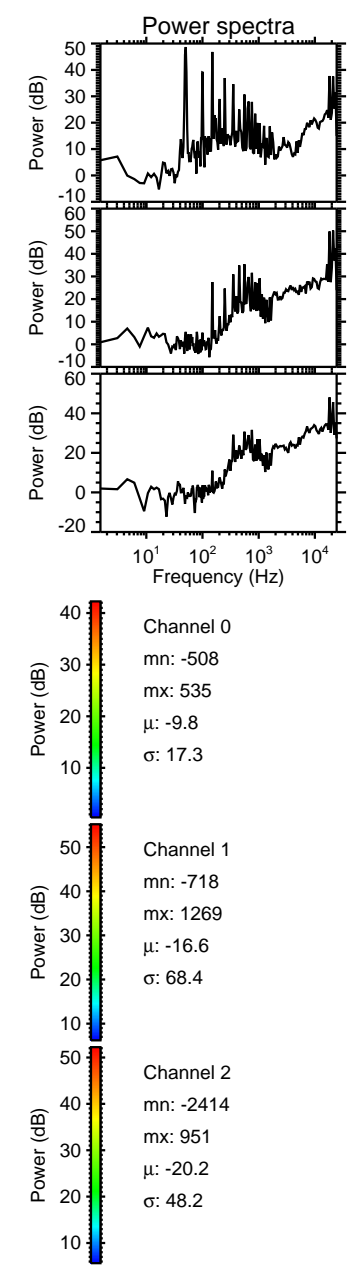
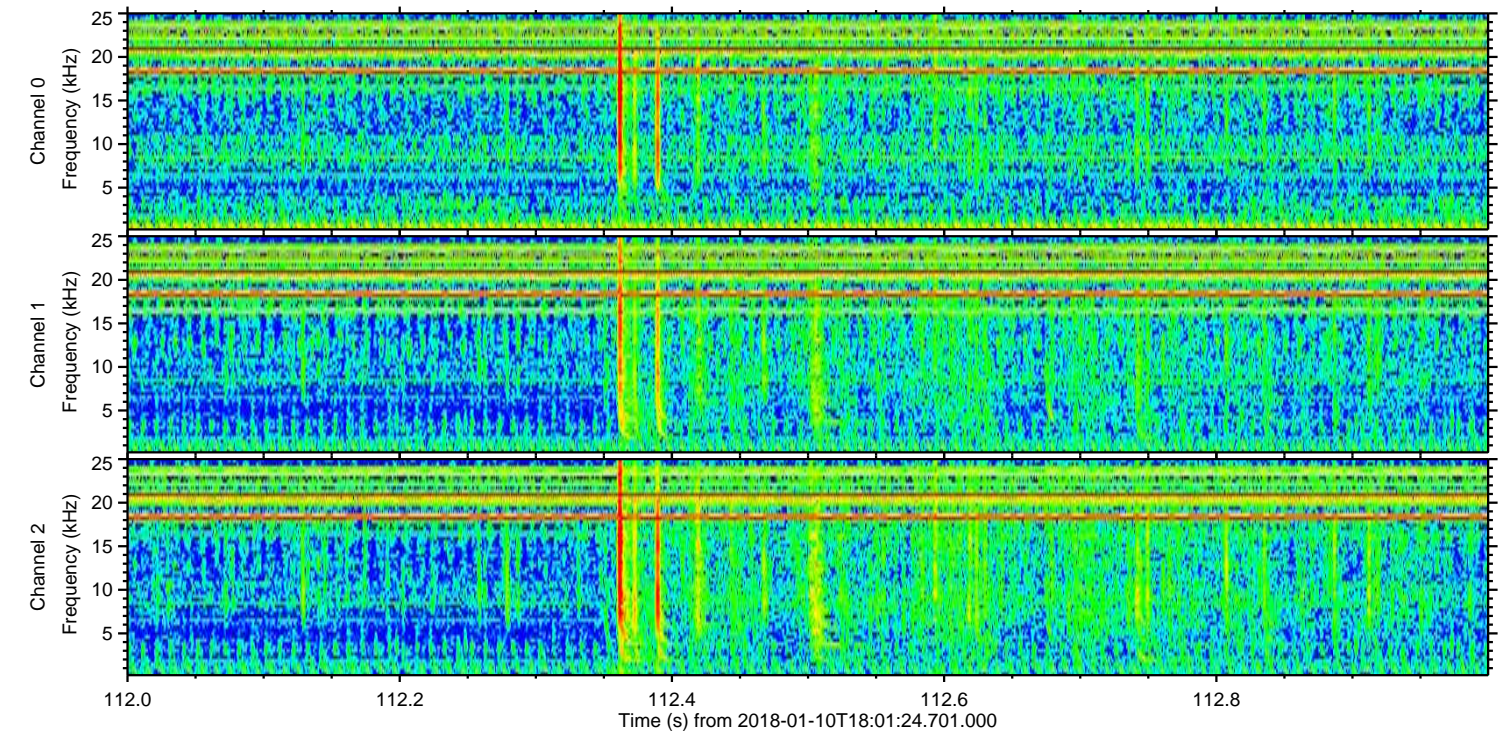
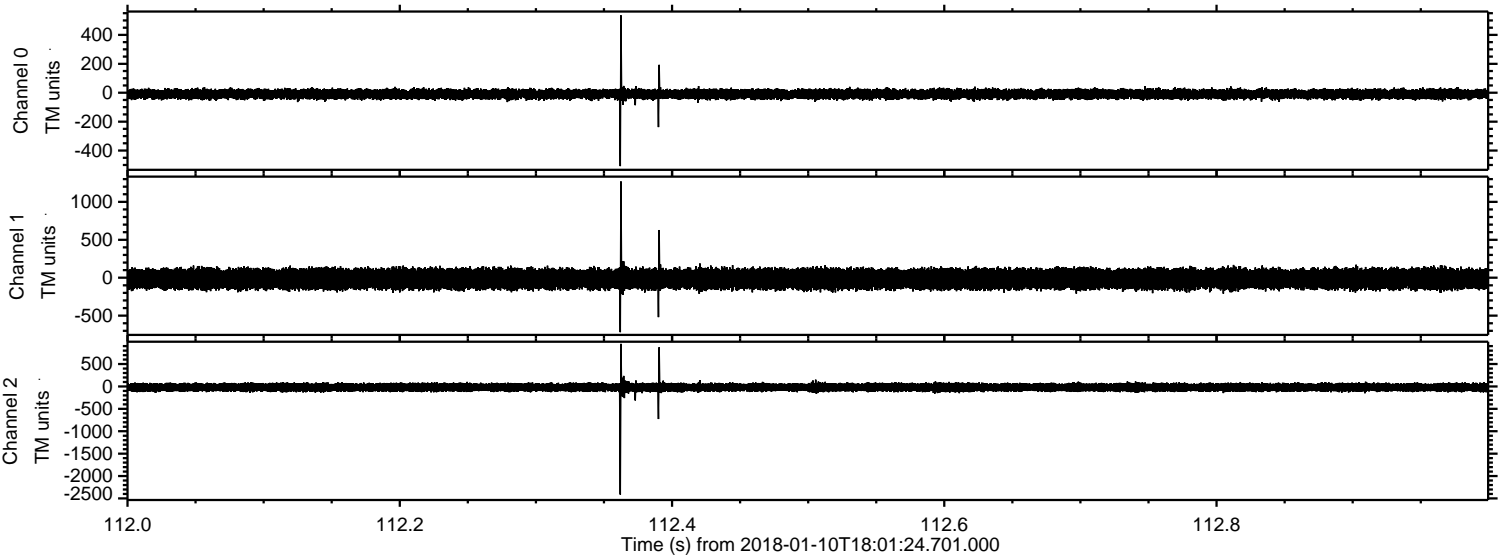
ELMAVAN 3D WAVEFORMS (Measured data sampled at 50 kHz) 50999 packets of 144 samples from 2018-01-10T18:01:24.701.000. Part 101/147

Processed Wed Jan 10 19:09:29 2018 by ELM ver.2012-10-06 from 001__elm20180110_180123__dat00.bin



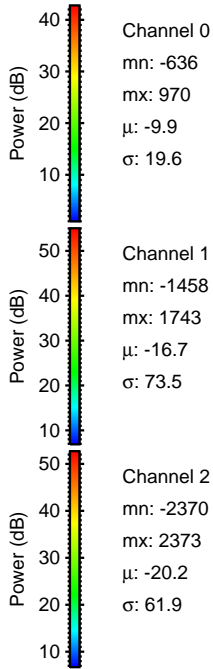
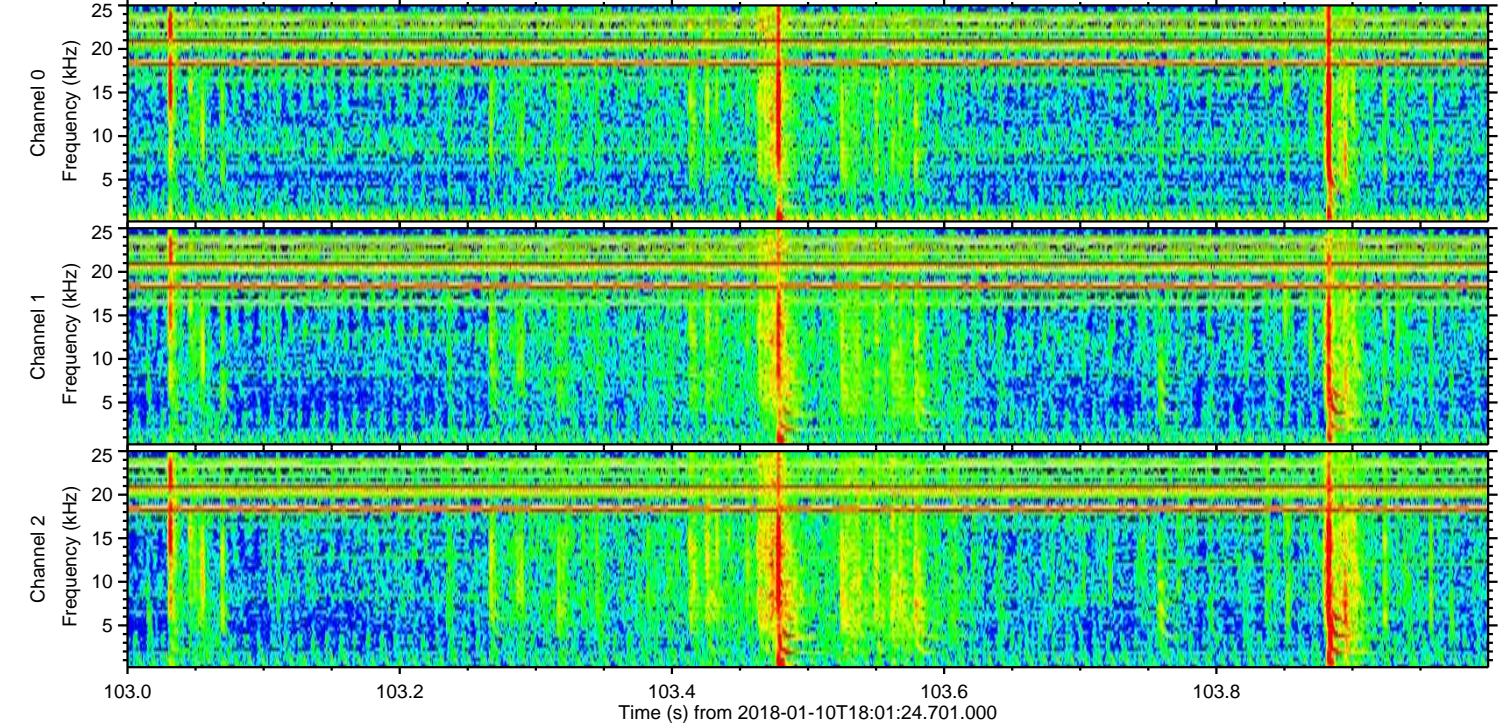
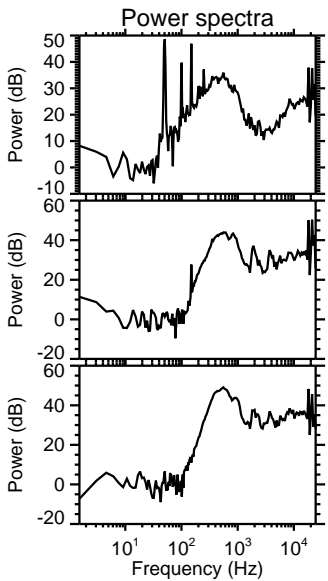
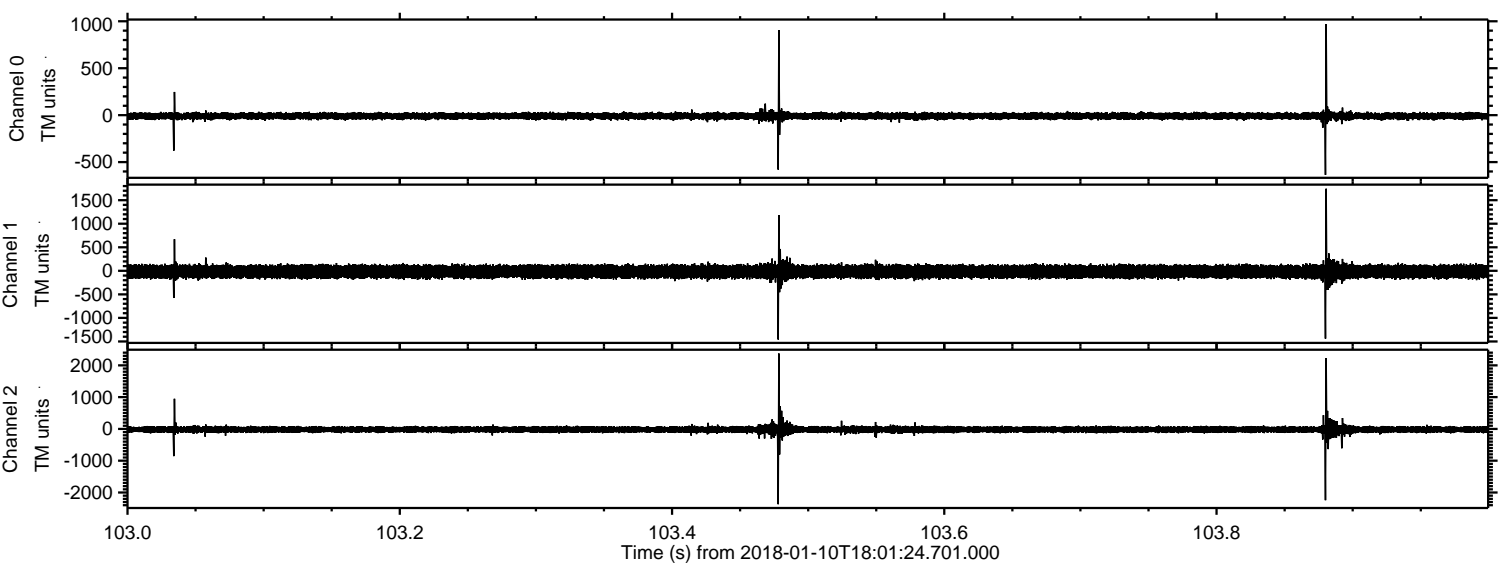
ELMAVAN 3D WAVEFORMS (Measured data sampled at 50 kHz) 50999 packets of 144 samples from 2018-01-10T18:01:24.701.000. Part 113/147

Processed Wed Jan 10 19:09:30 2018 by ELM ver.2012-10-06 from 001__elm20180110_180123__dat00.bin

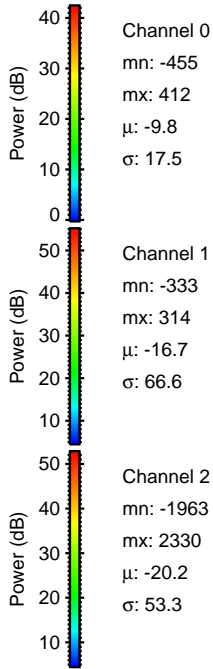
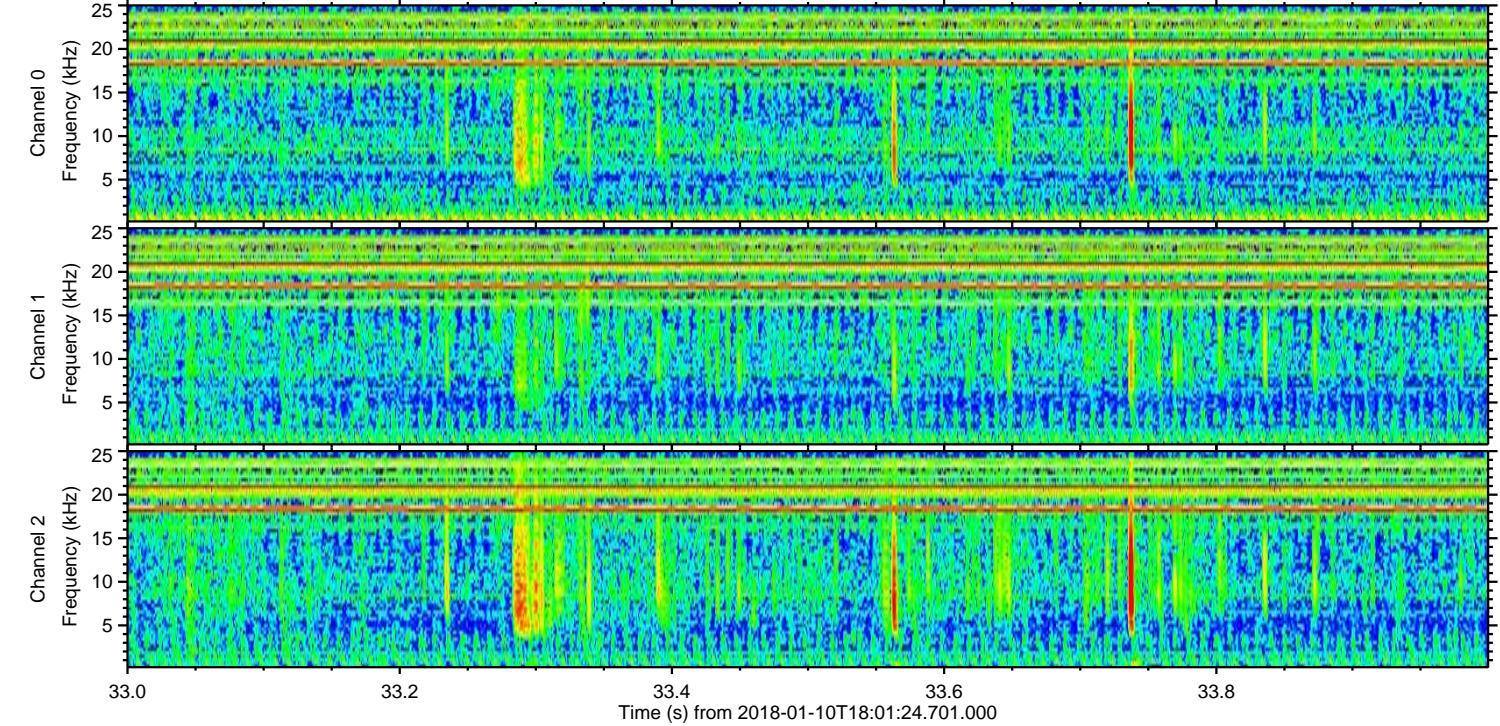
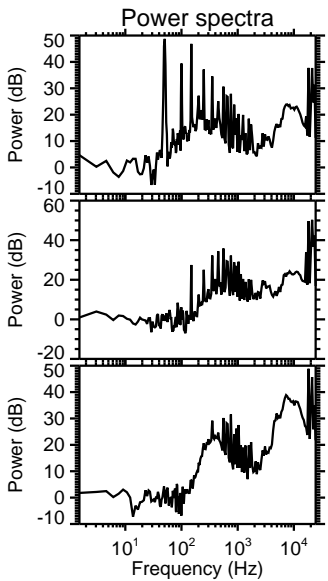
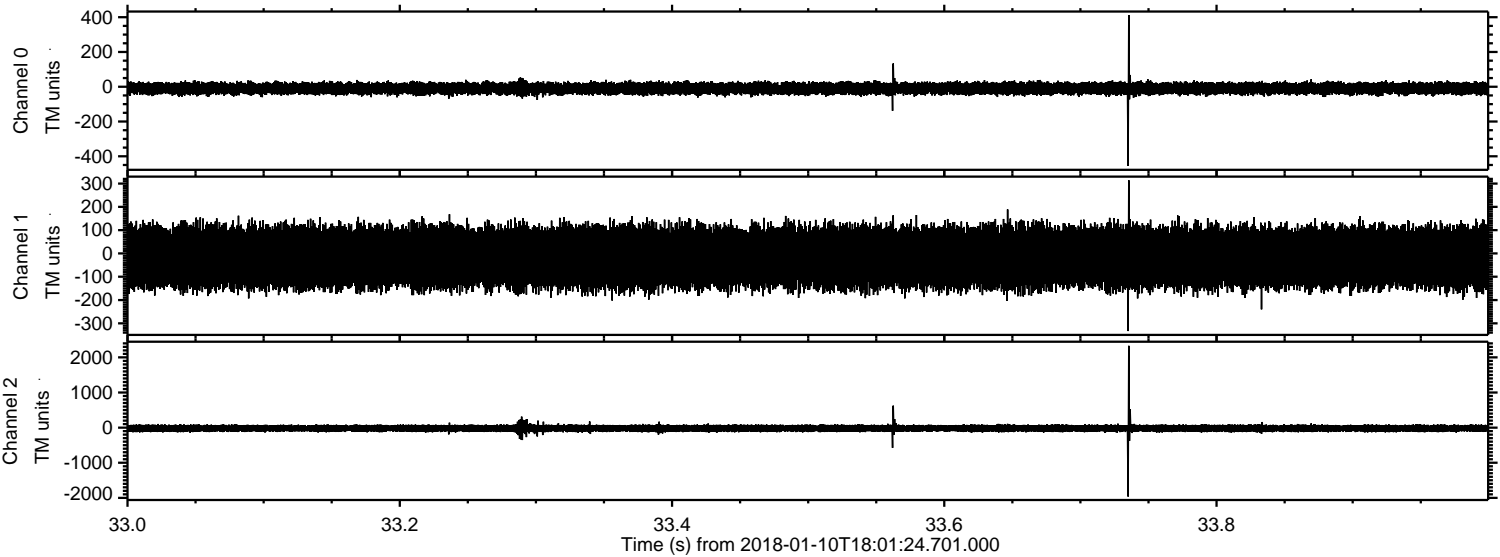


ELMAVAN 3D WAVEFORMS (Measured data sampled at 50 kHz) 50999 packets of 144 samples from 2018-01-10T18:01:24.701.000. Part 104/147

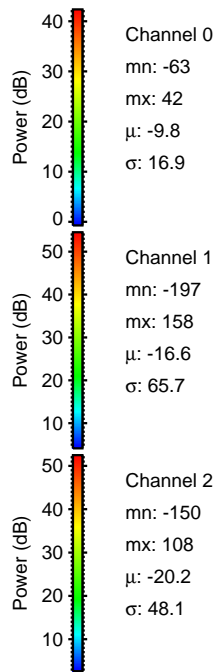
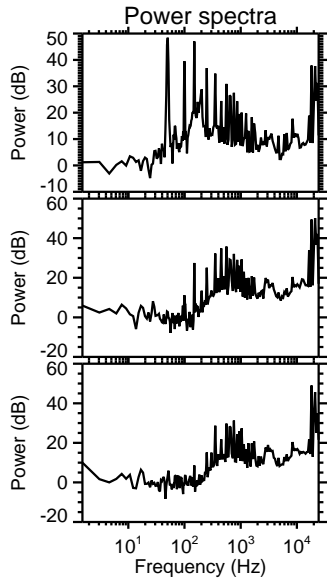
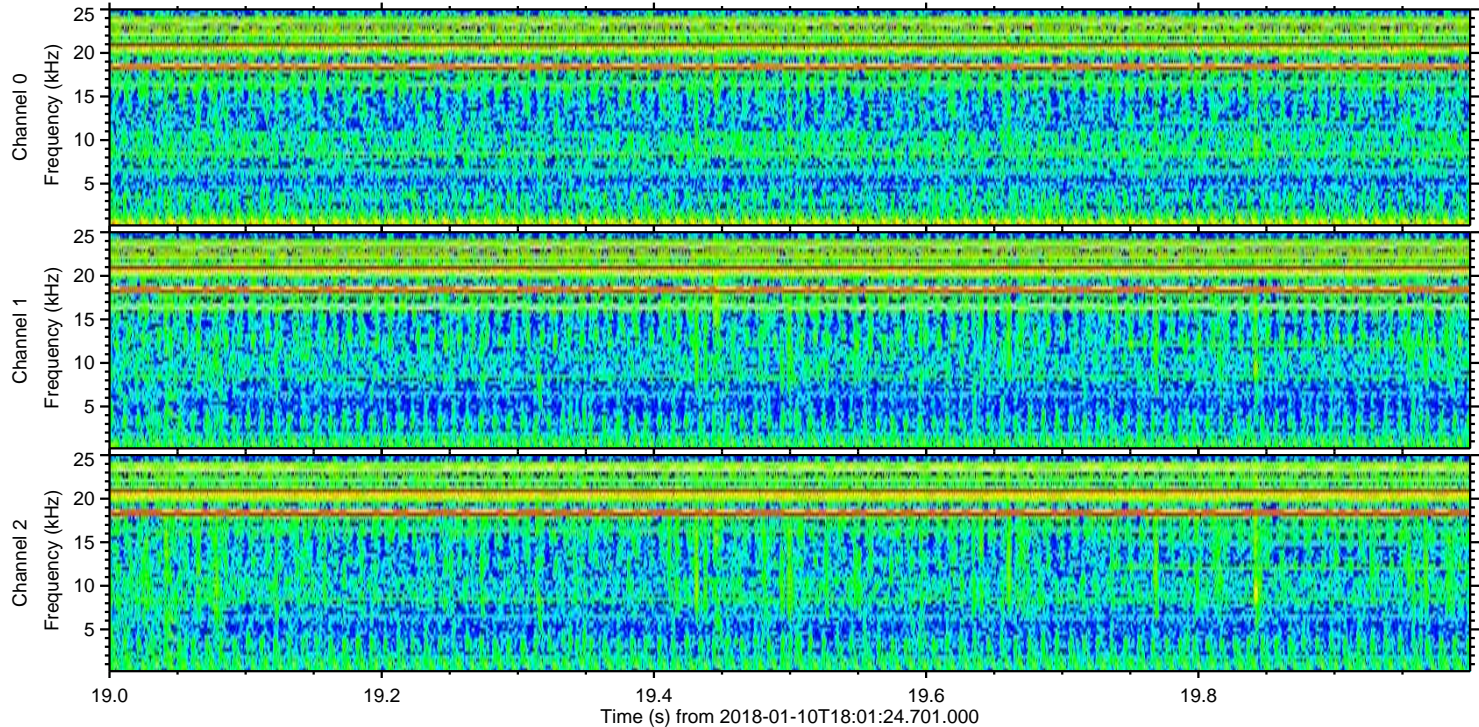
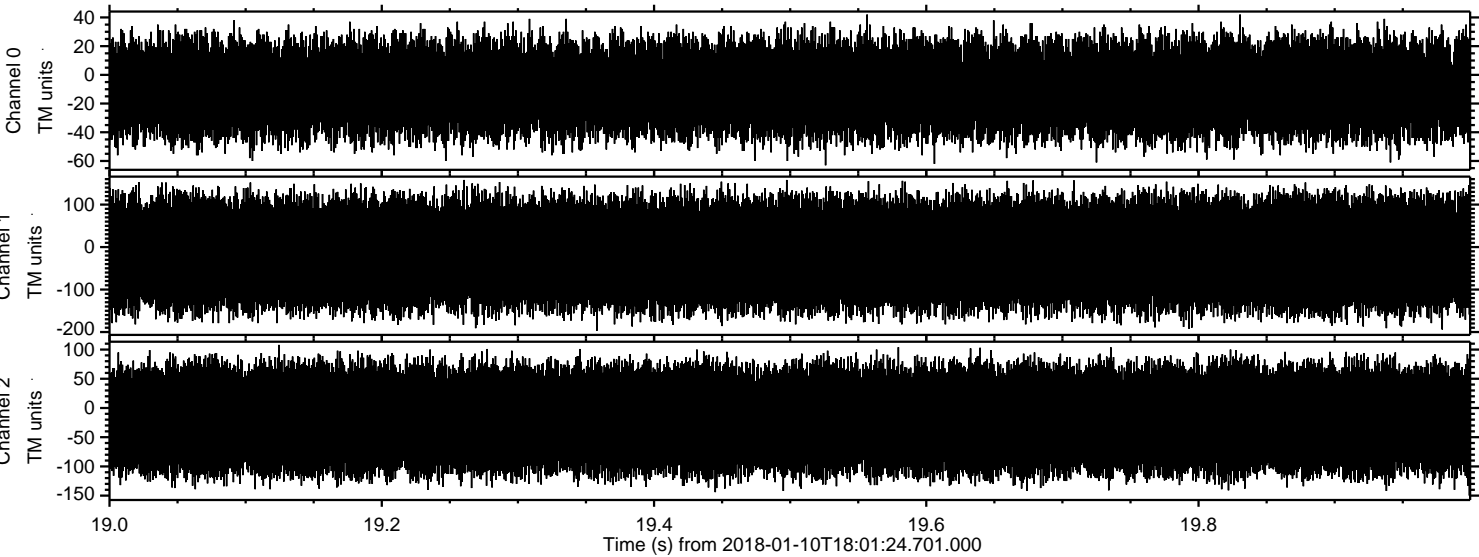
Processed Wed Jan 10 19:09:30 2018 by ELM ver.2012-10-06 from 001__elm20180110_180123__dat00.bin



Processed Wed Jan 10 19:09:31 2018 by ELM ver.2012-10-06 from 001__elm20180110_180123__dat00.bin



Processed Wed Jan 10 19:09:32 2018 by ELM ver.2012-10-06 from 001__elm20180110_180123__dat00.bin



Channel 0
mn: -63
mx: 42
 μ : -9.8
 σ : 16.9

Channel 1
mn: -197
mx: 158
 μ : -16.6
 σ : 65.7

Channel 2
mn: -150
mx: 108
 μ : -20.2
 σ : 48.1