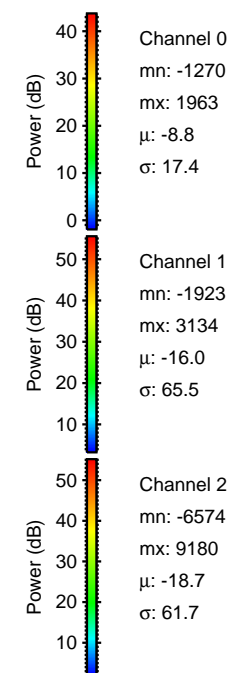
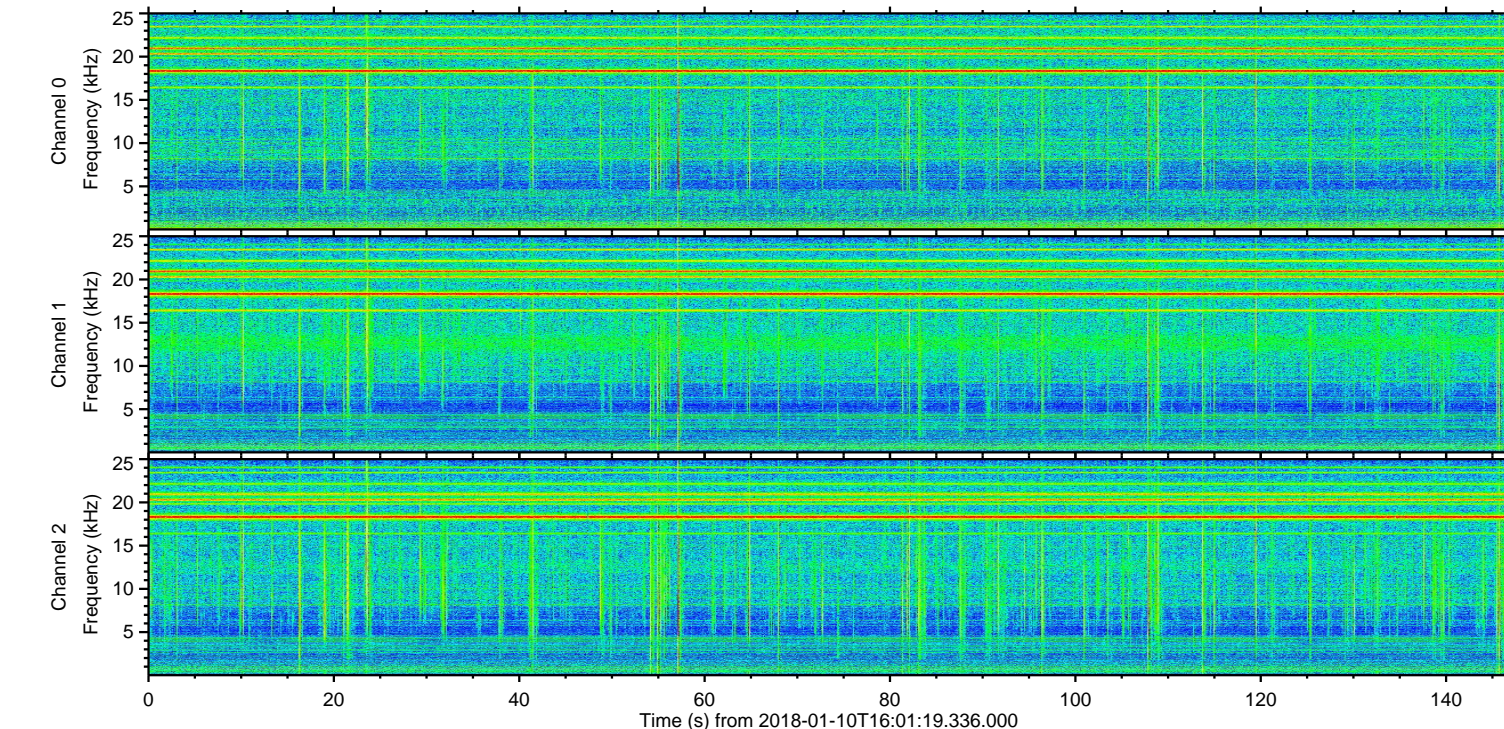
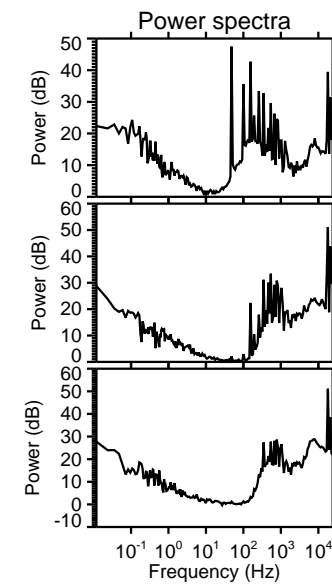
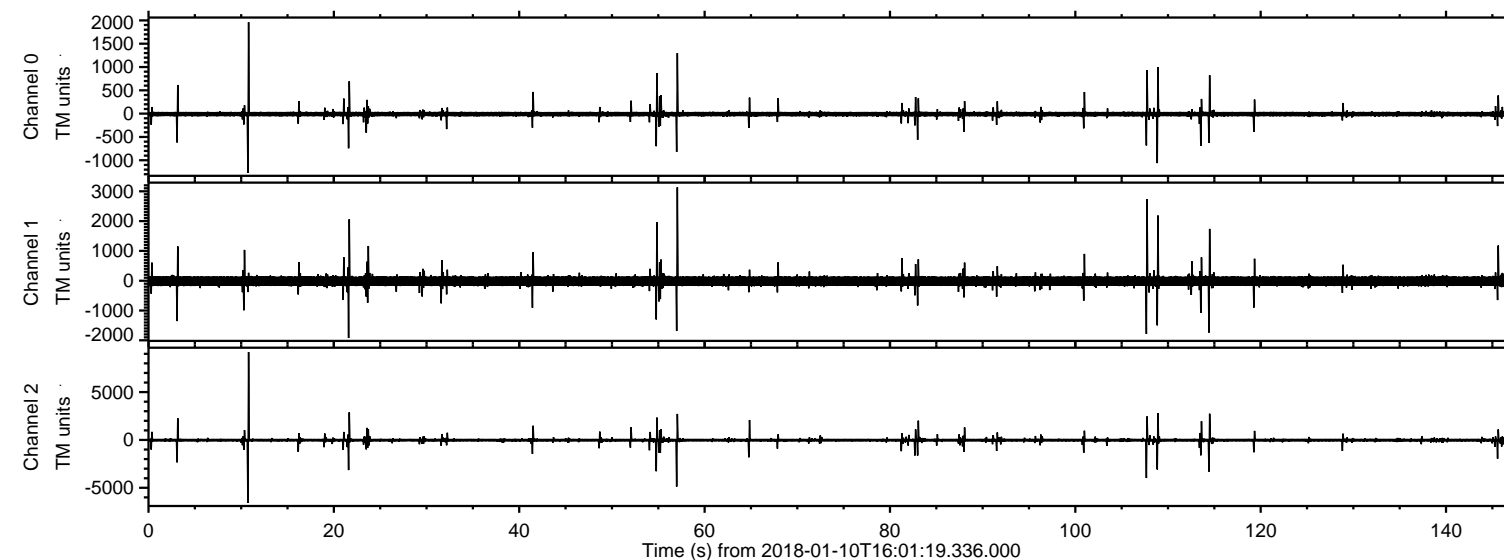


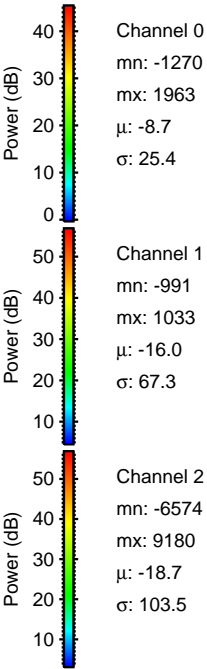
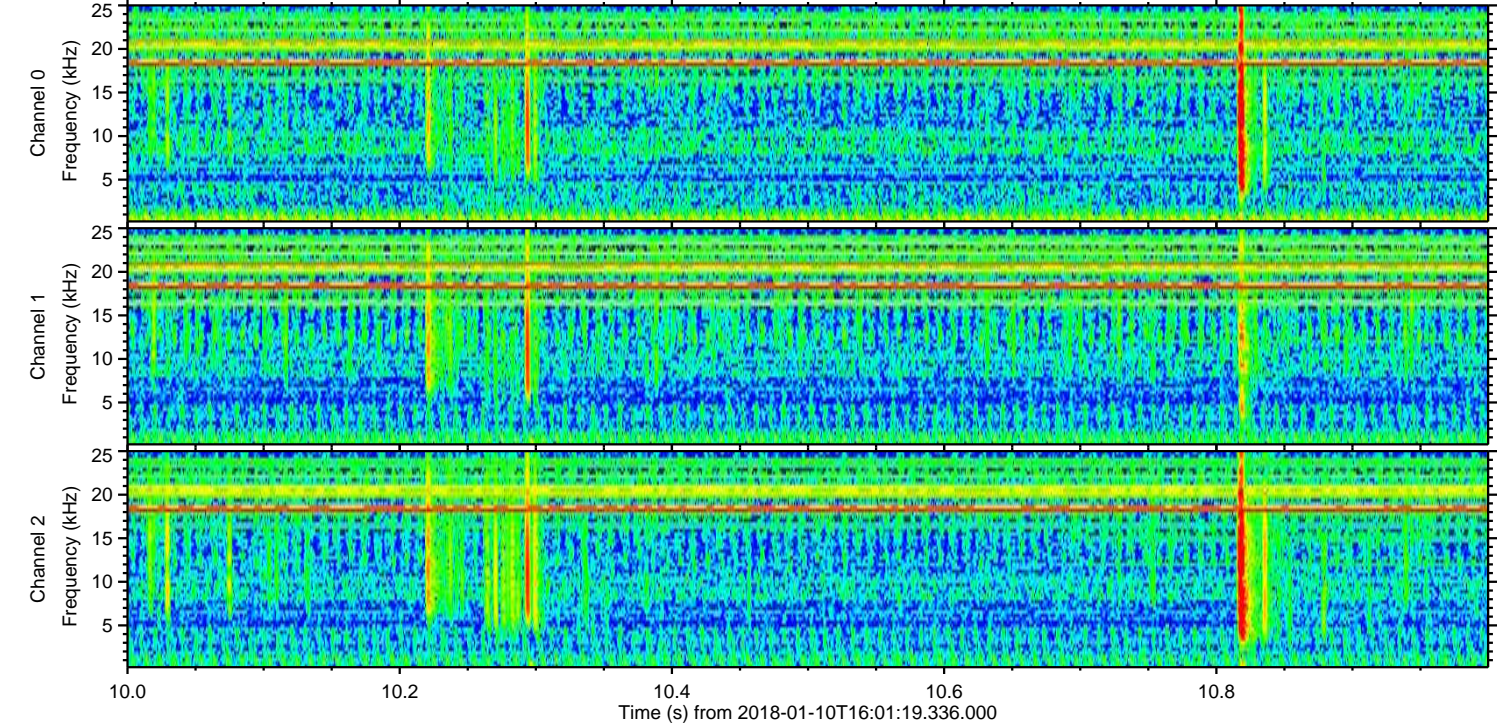
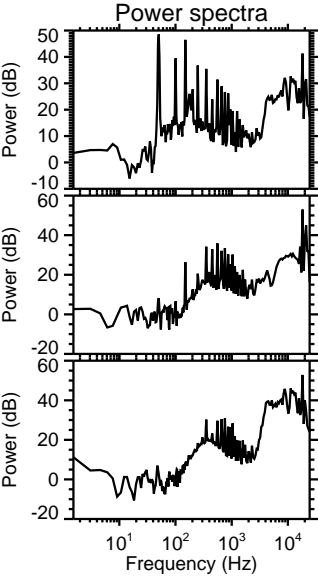
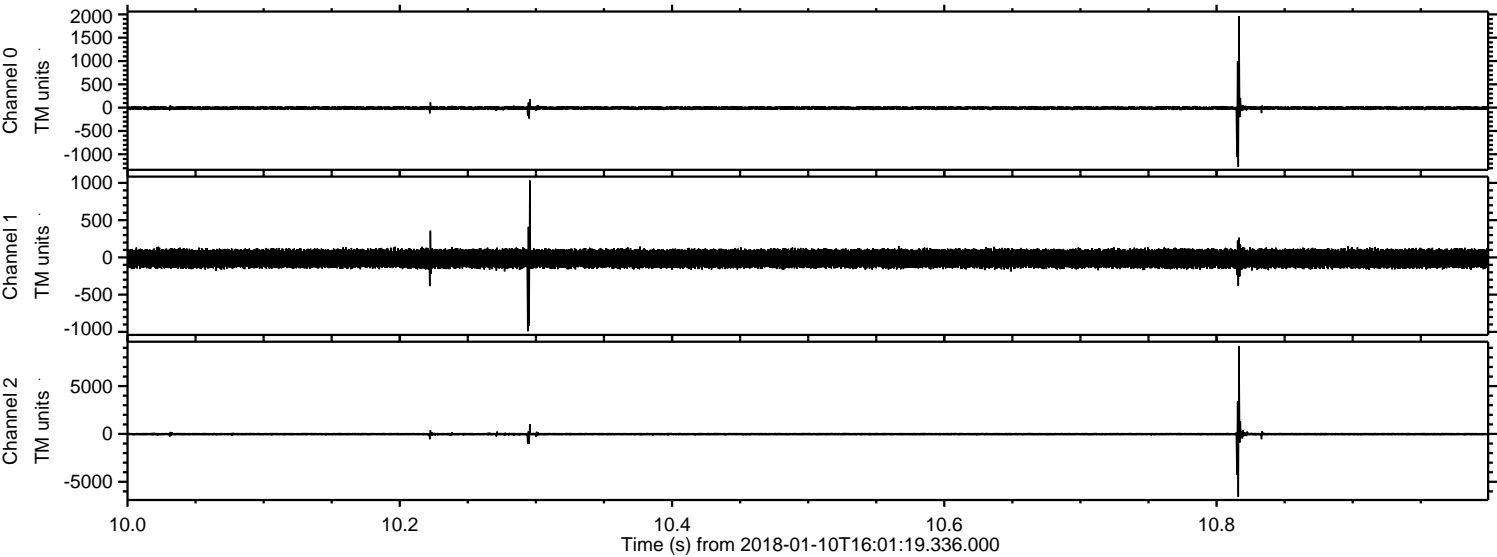
ELMAVAN 3D WAVEFORMS (Measured data sampled at 50 kHz) 51000 packets of 144 samples from 2018-01-10T16:01:19.336.000.

Processed Wed Jan 10 17:09:23 2018 by ELM ver.2012-10-06 from 001__elm20180110_160118__dat00.bin

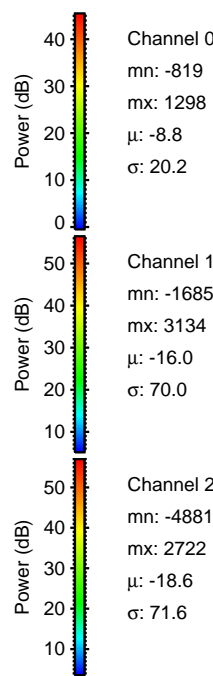
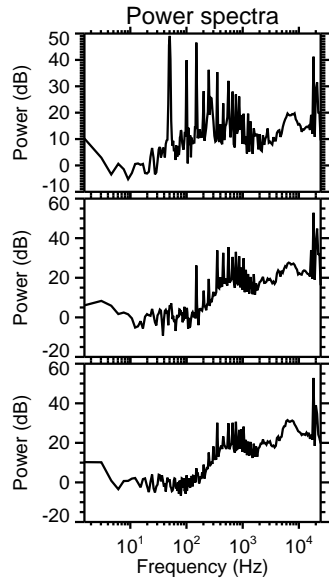
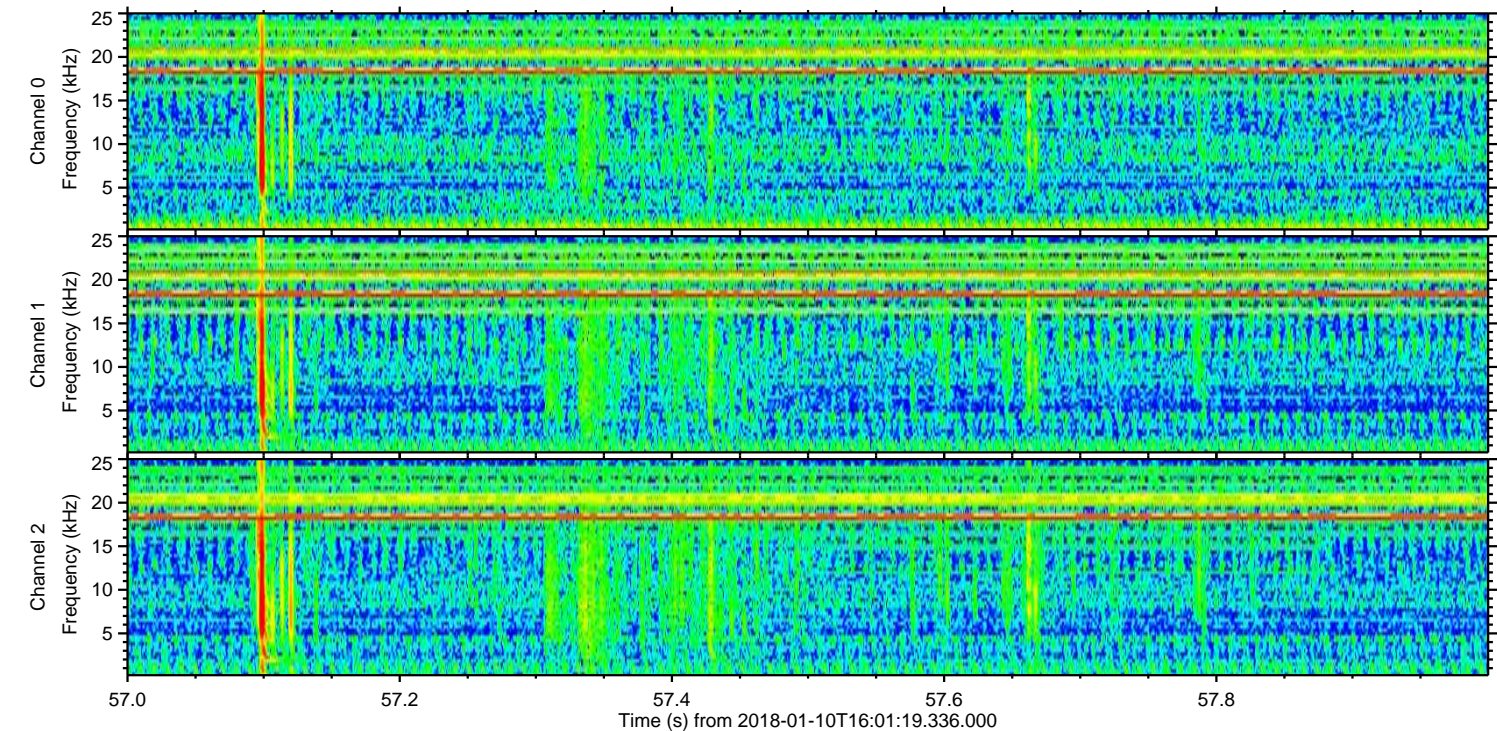
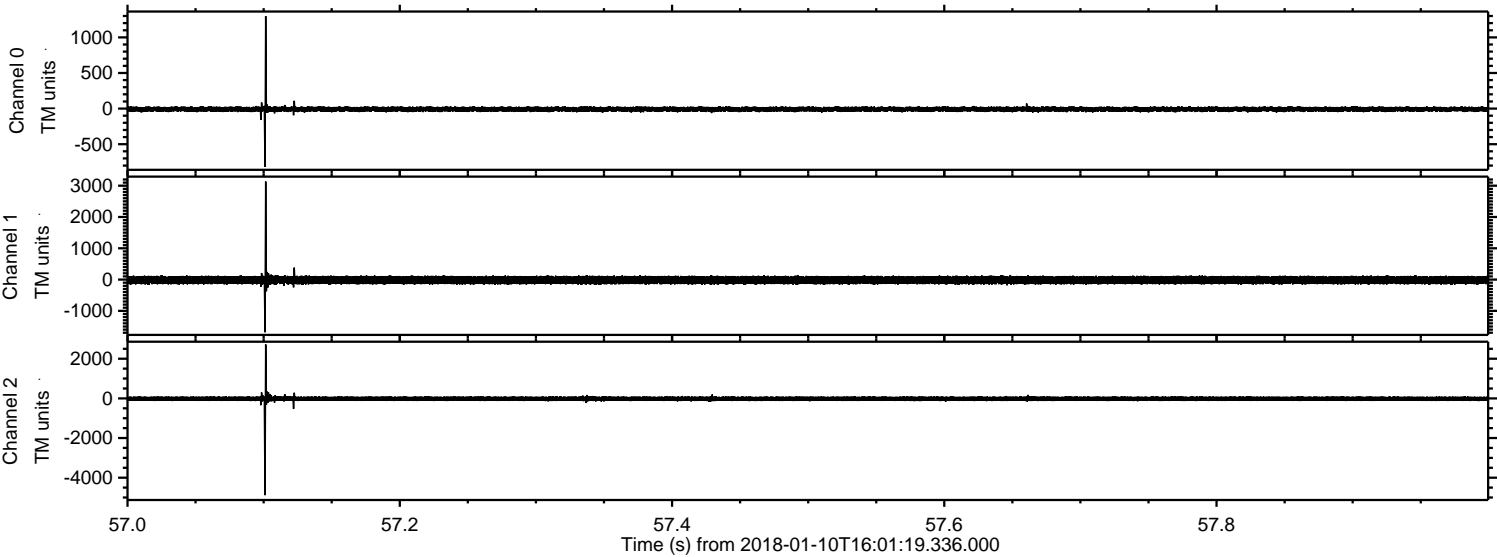


ELMAVAN 3D WAVEFORMS (Measured data sampled at 50 kHz) 51000 packets of 144 samples from 2018-01-10T16:01:19.336.000. Part 11/147

Processed Wed Jan 10 17:09:32 2018 by ELM ver.2012-10-06 from 001__elm20180110_160118__dat00.bin



Processed Wed Jan 10 17:09:33 2018 by ELM ver.2012-10-06 from 001__elm20180110_160118__dat00.bin



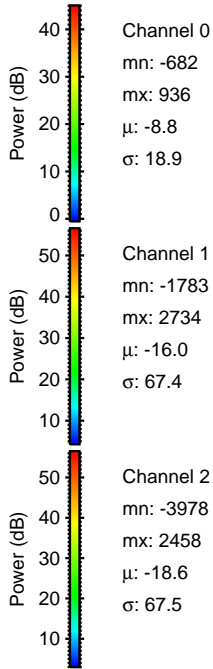
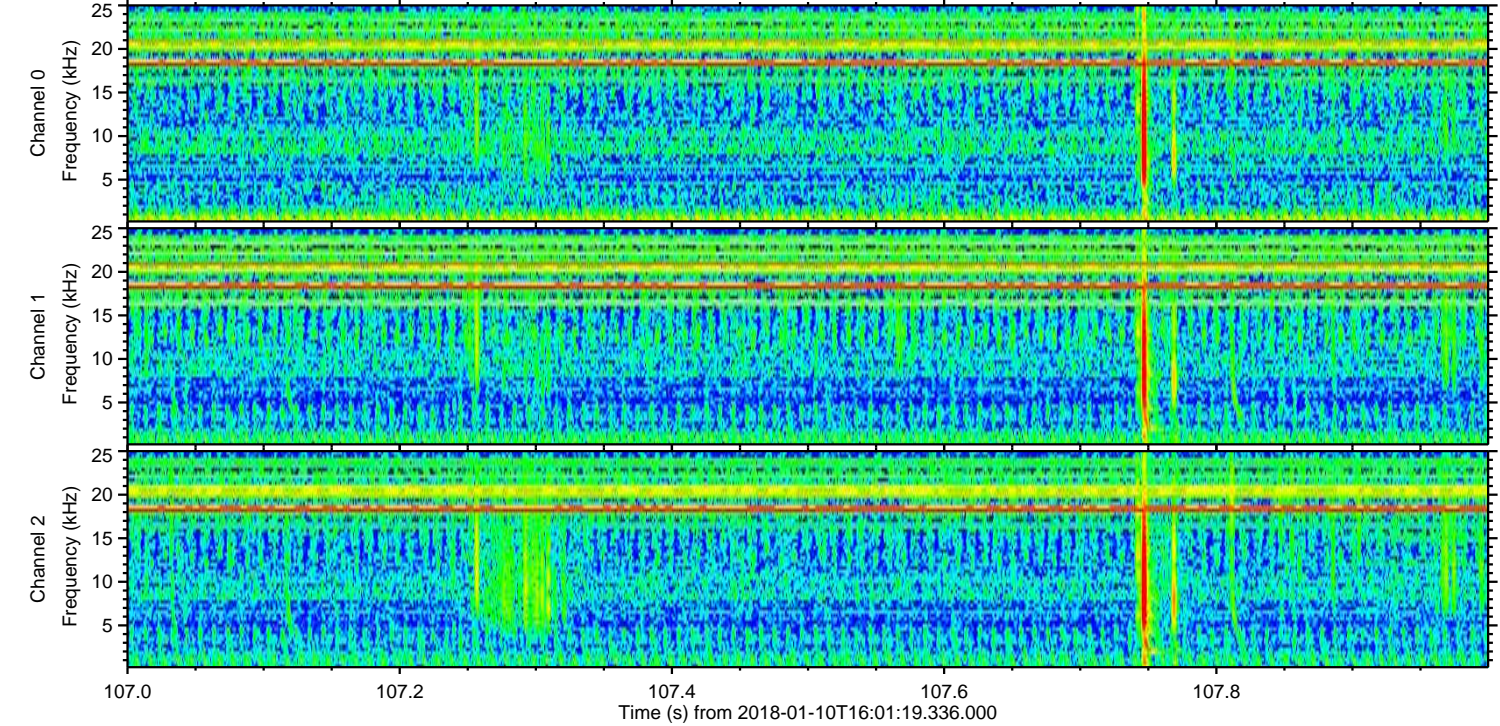
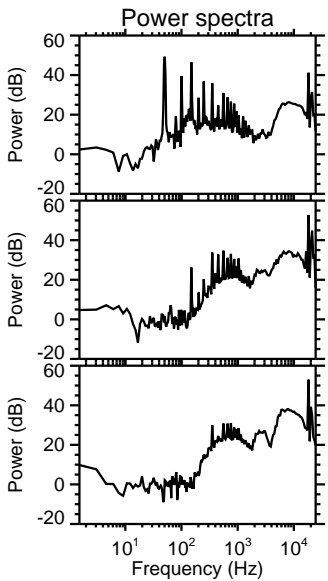
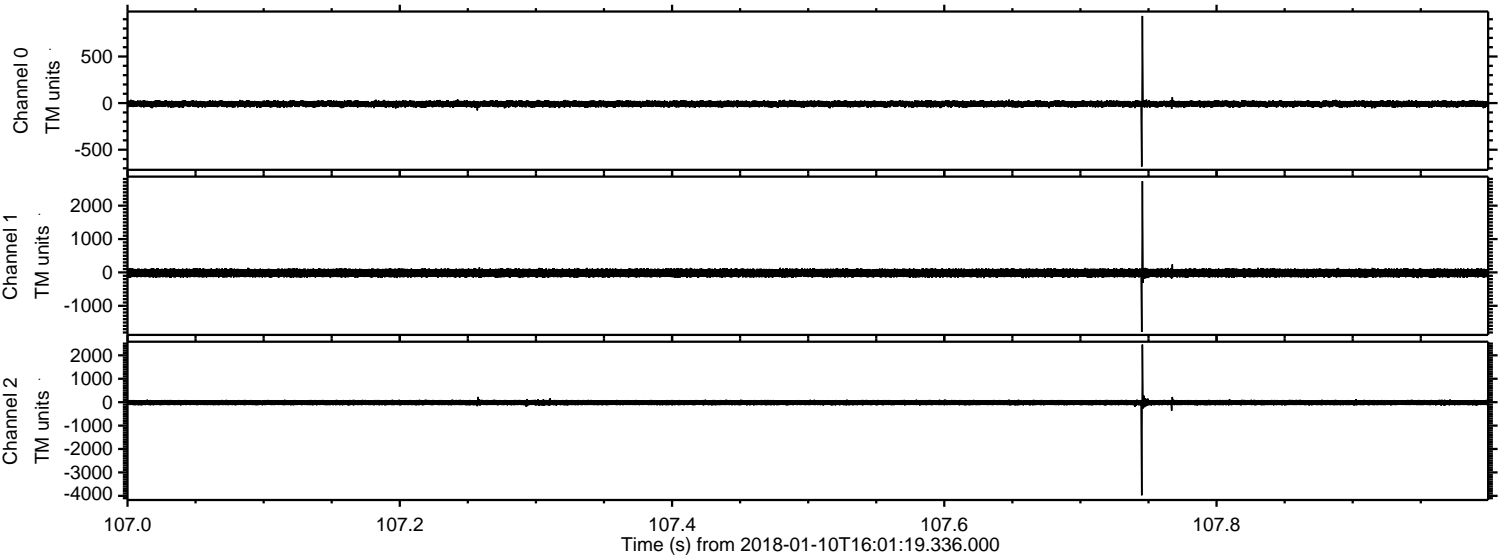
Channel 0
mn: -819
mx: 1298
 μ : -8.8
 σ : 20.2

Channel 1
mn: -1685
mx: 3134
 μ : -16.0
 σ : 70.0

Channel 2
mn: -4881
mx: 2722
 μ : -18.6
 σ : 71.6

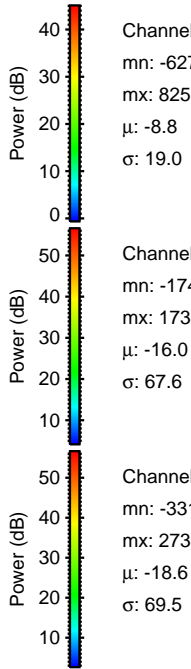
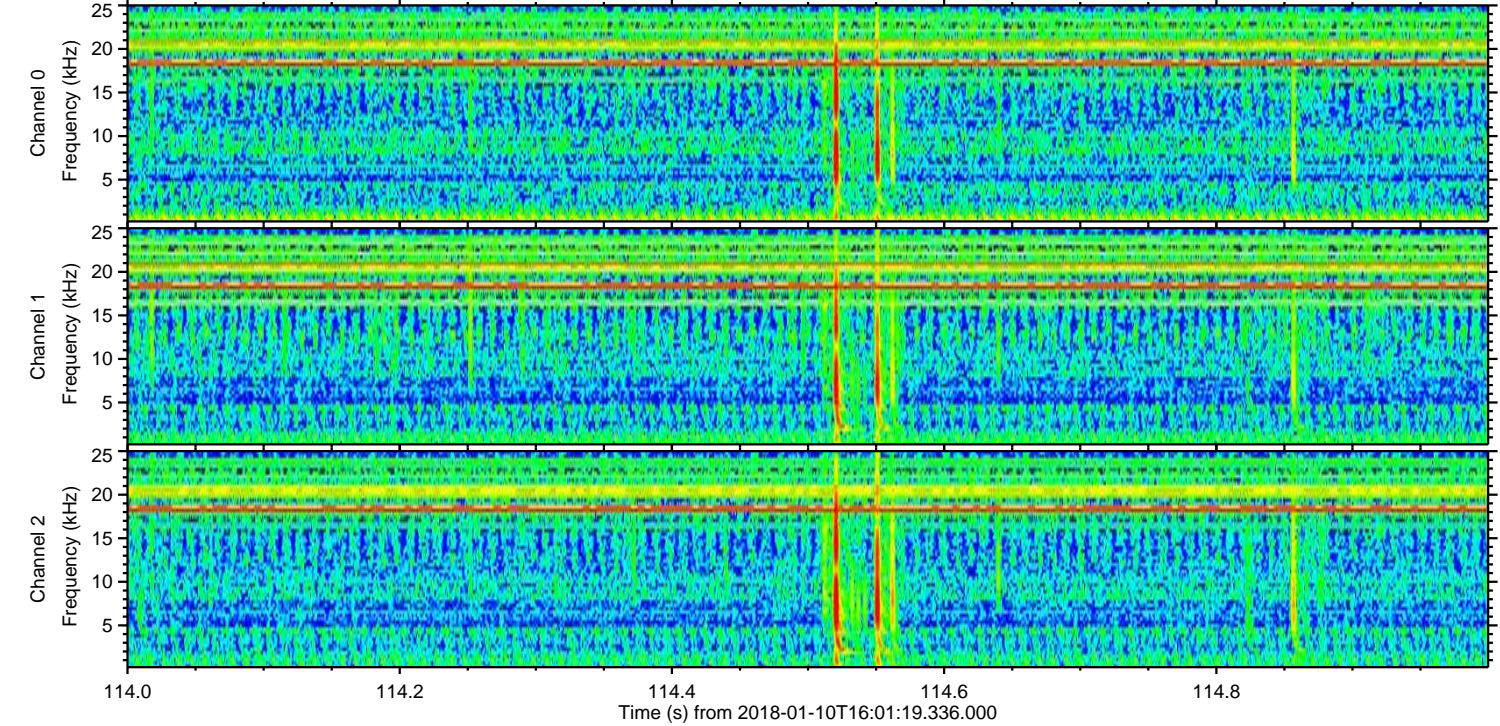
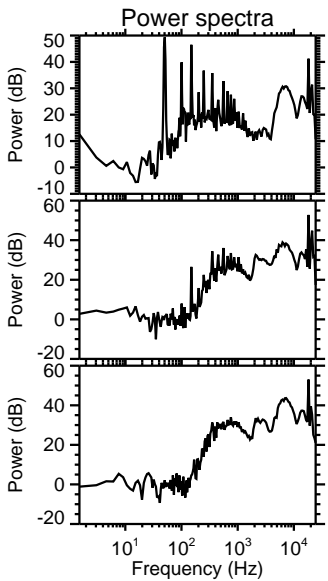
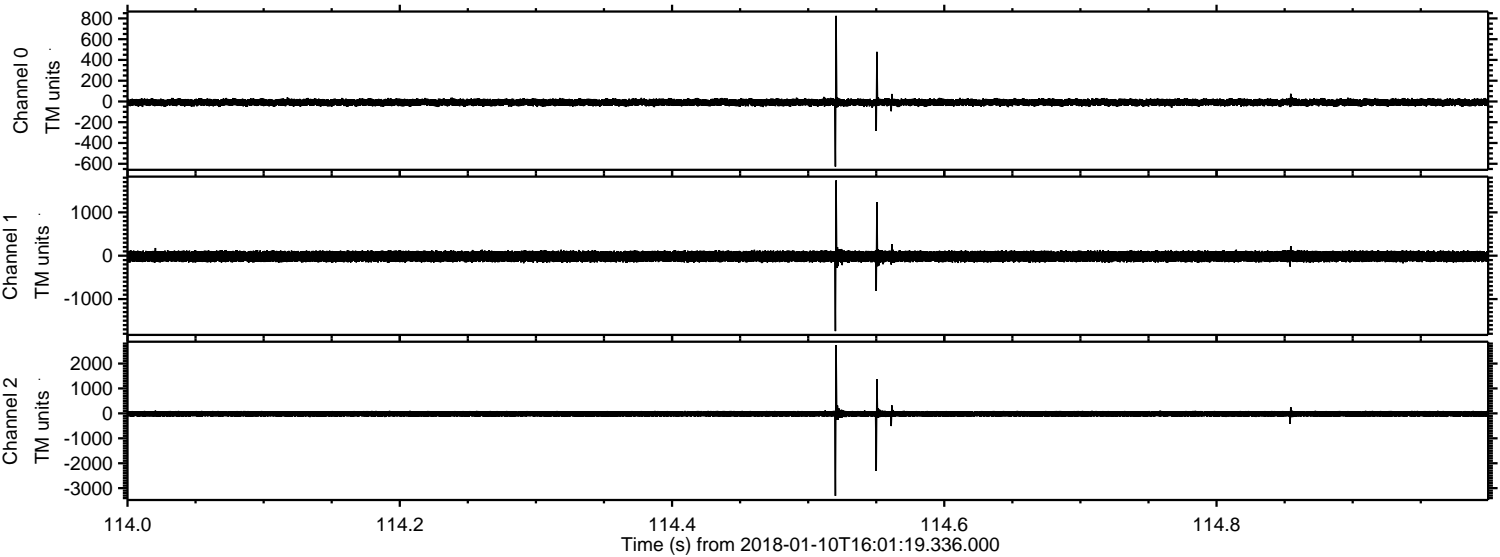
ELMAVAN 3D WAVEFORMS (Measured data sampled at 50 kHz) 51000 packets of 144 samples from 2018-01-10T16:01:19.336.000. Part 108/147

Processed Wed Jan 10 17:09:33 2018 by ELM ver.2012-10-06 from 001__elm20180110_160118__dat00.bin

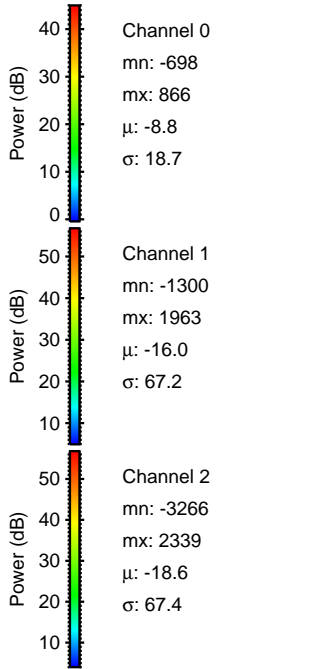
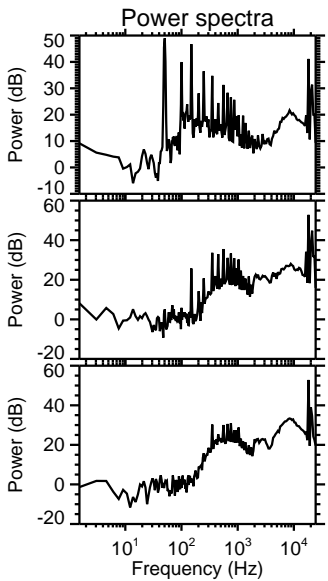
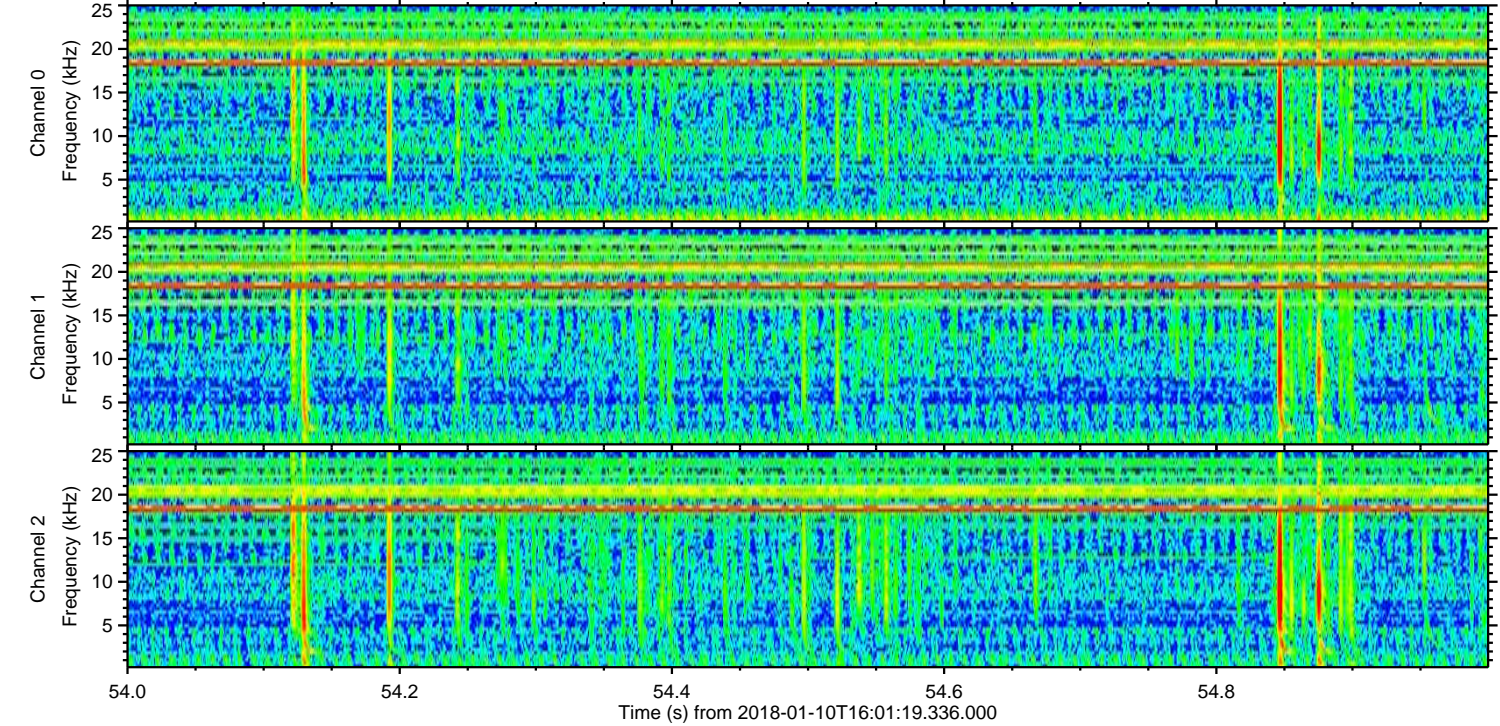
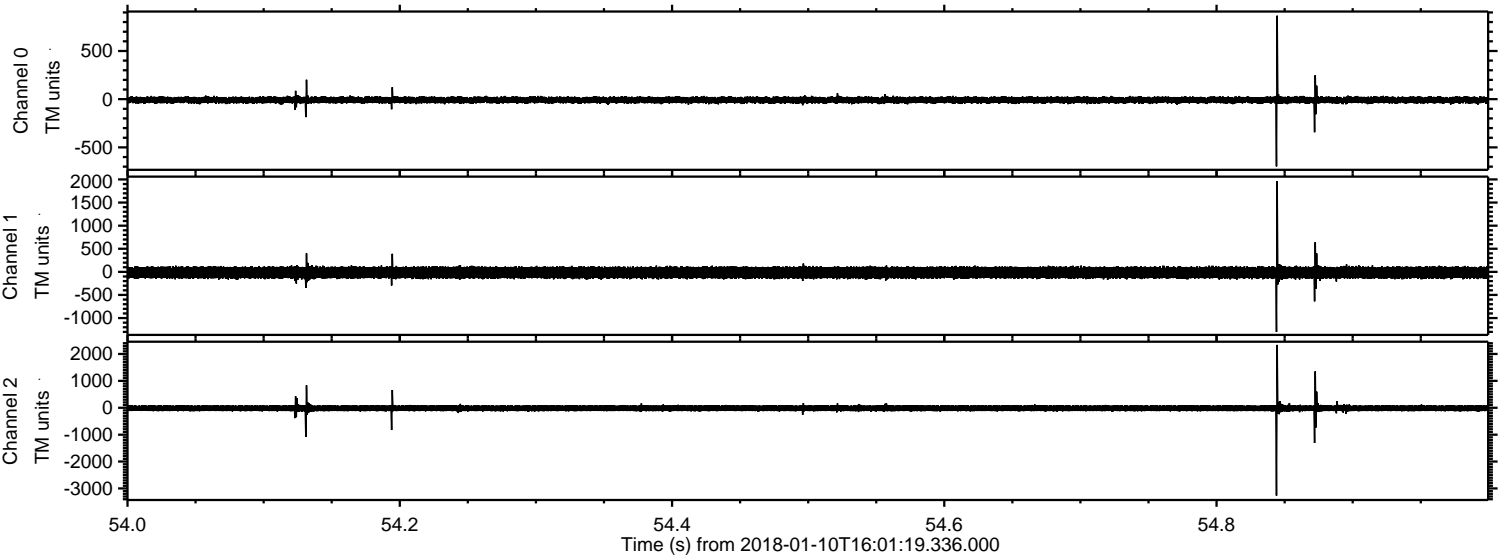


ELMAVAN 3D WAVEFORMS (Measured data sampled at 50 kHz) 51000 packets of 144 samples from 2018-01-10T16:01:19.336.000. Part 115/147

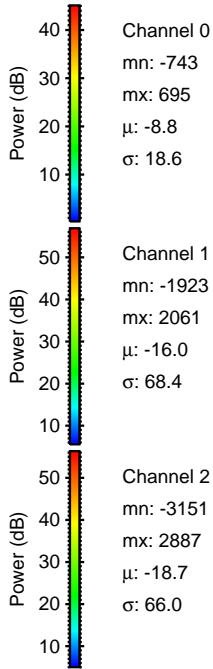
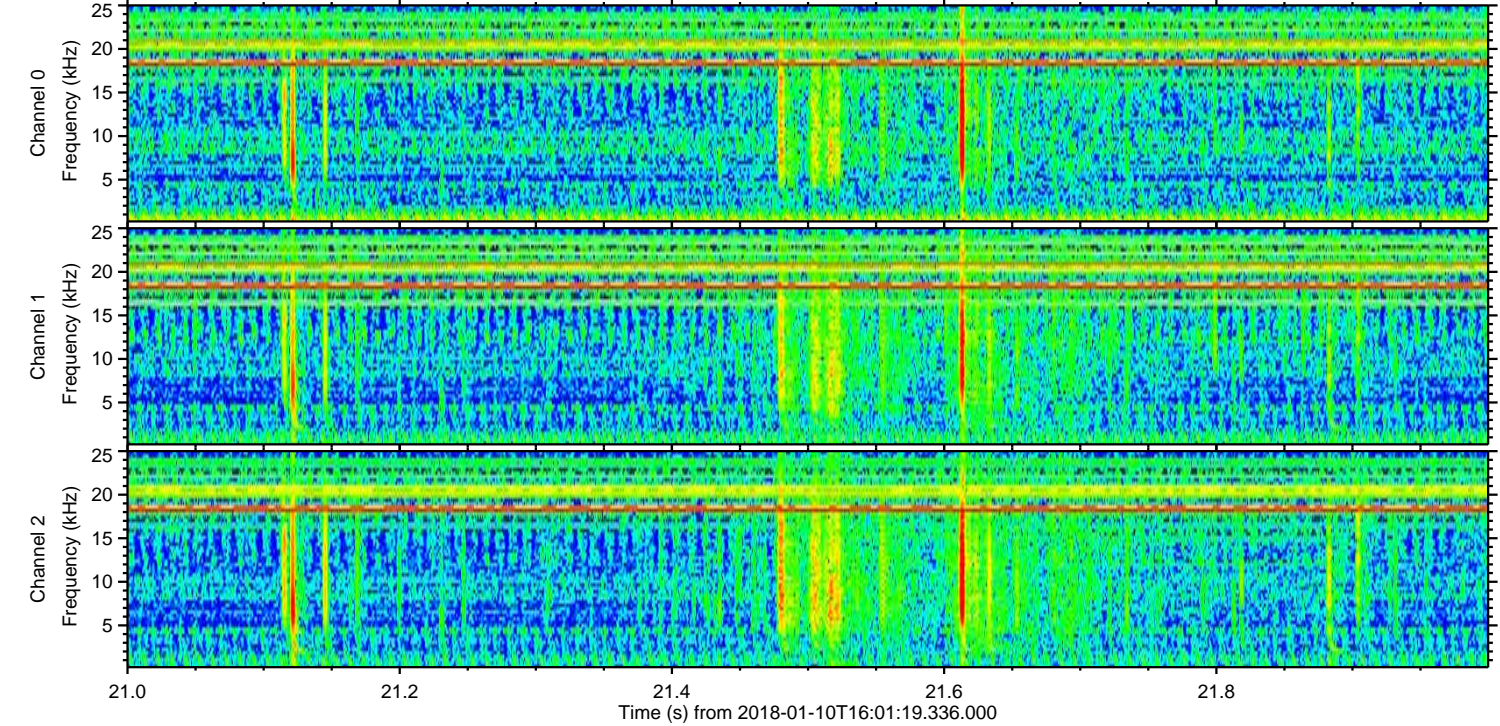
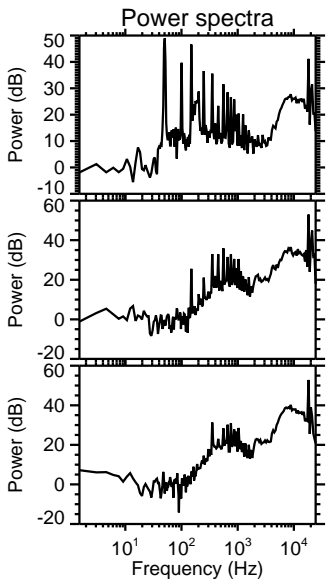
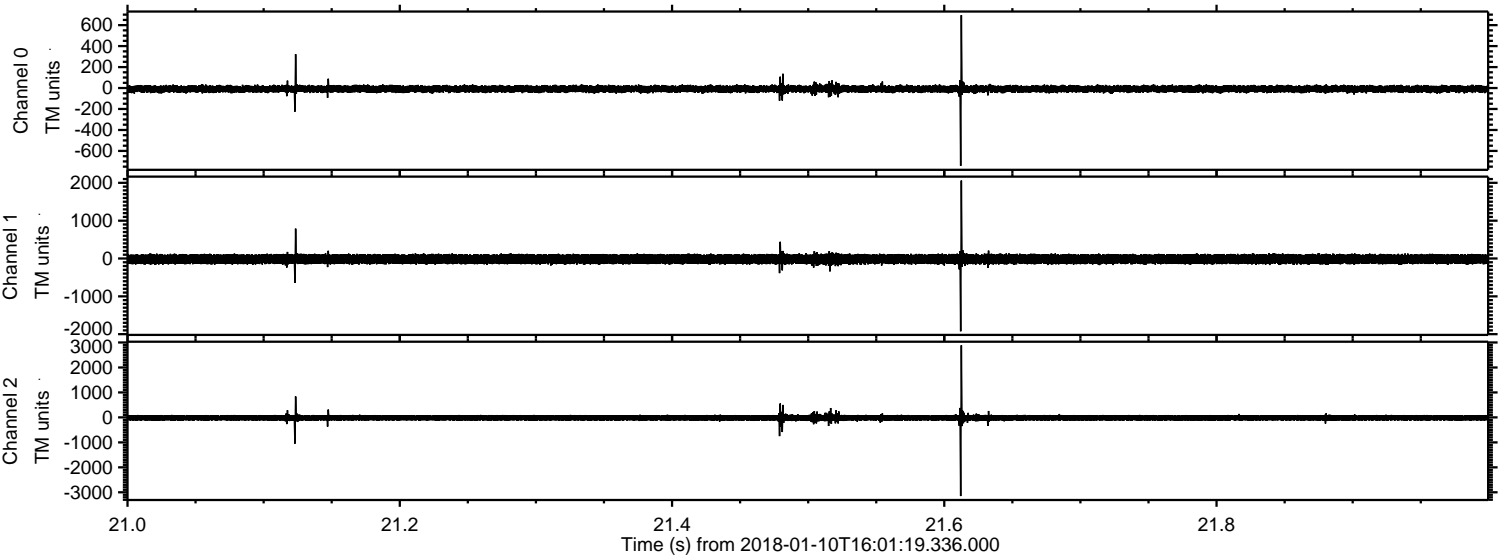
Processed Wed Jan 10 17:09:34 2018 by ELM ver.2012-10-06 from 001__elm20180110_160118__dat00.bin



Processed Wed Jan 10 17:09:35 2018 by ELM ver.2012-10-06 from 001__elm20180110_160118__dat00.bin

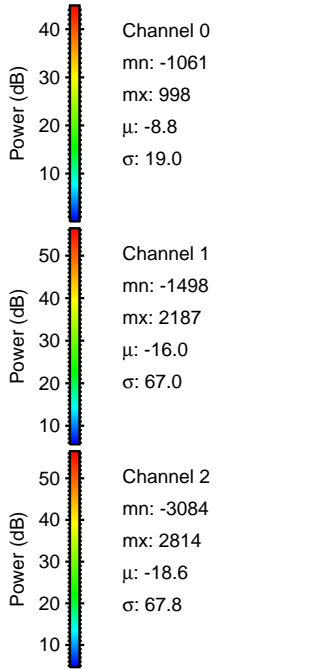
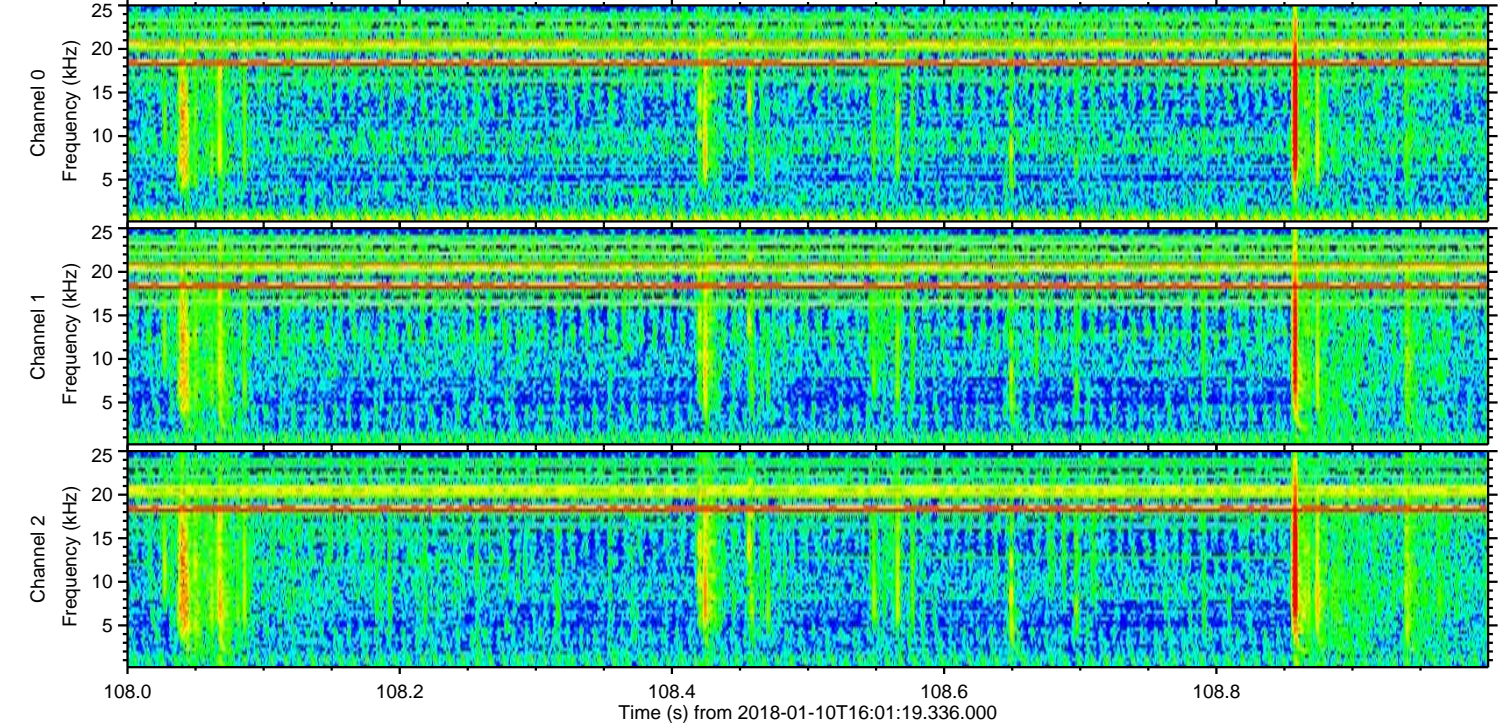
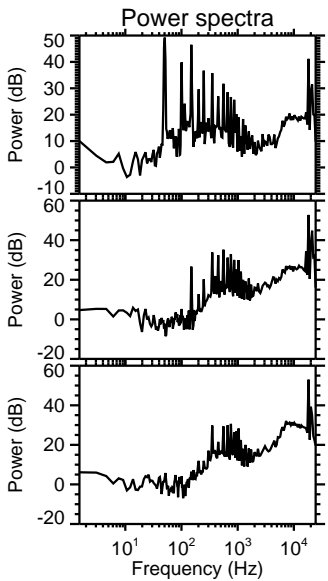
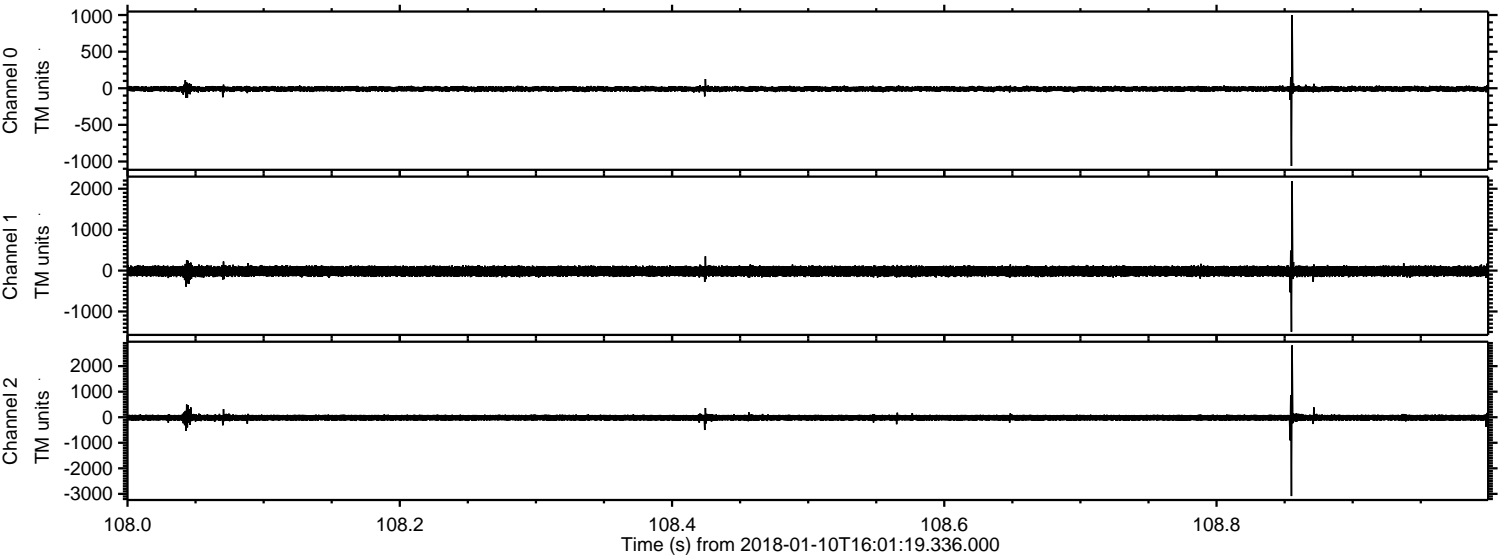


Processed Wed Jan 10 17:09:36 2018 by ELM ver.2012-10-06 from 001__elm20180110_160118__dat00.bin

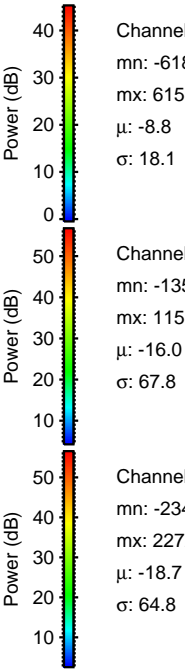
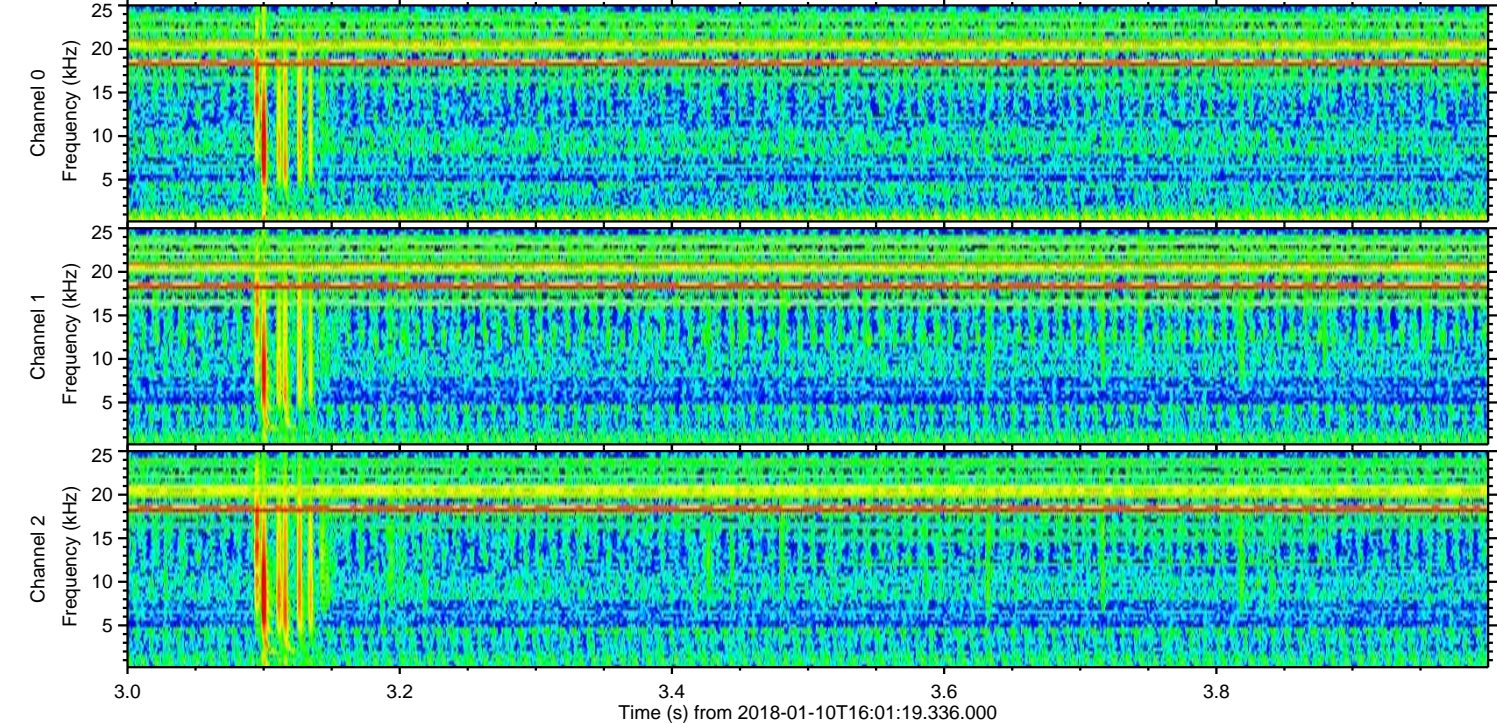
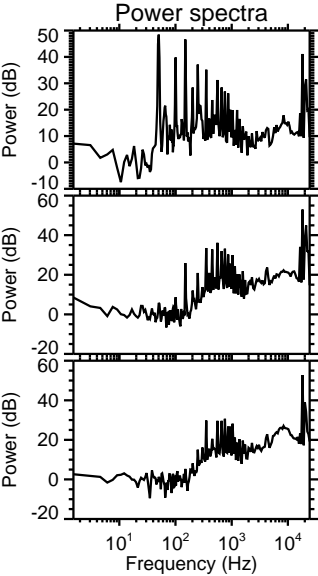
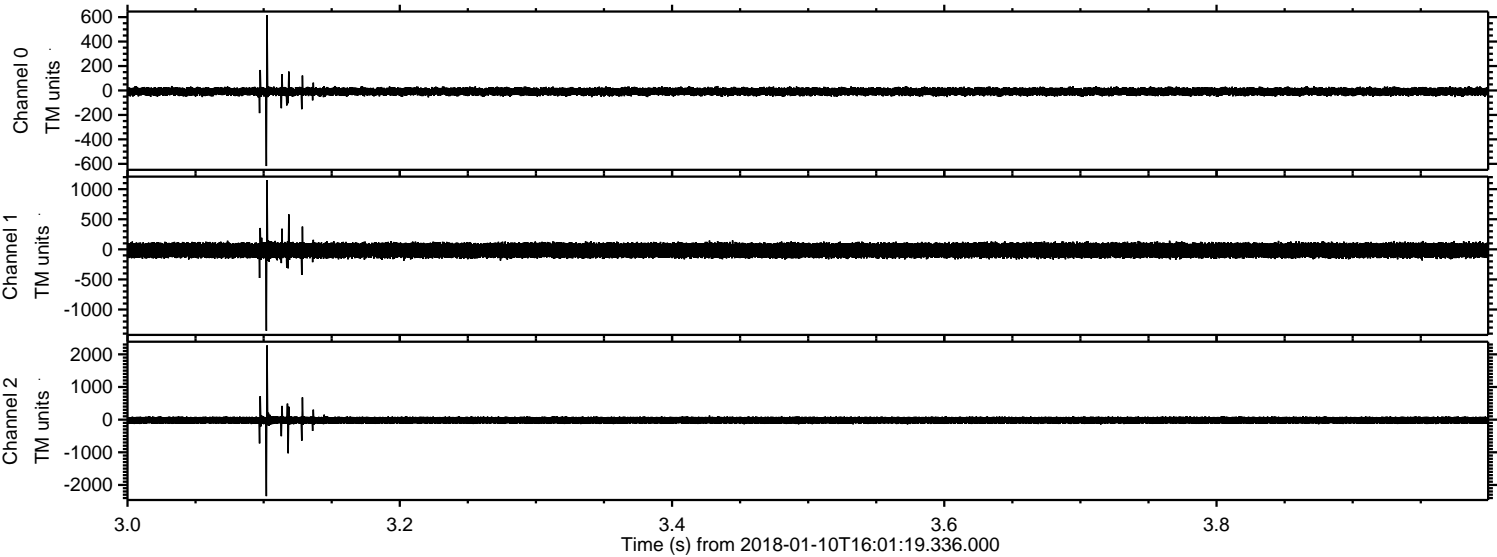


ELMAVAN 3D WAVEFORMS (Measured data sampled at 50 kHz) 51000 packets of 144 samples from 2018-01-10T16:01:19.336.000. Part 109/147

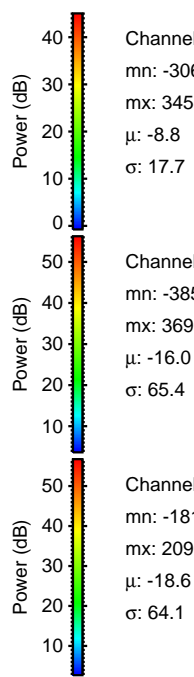
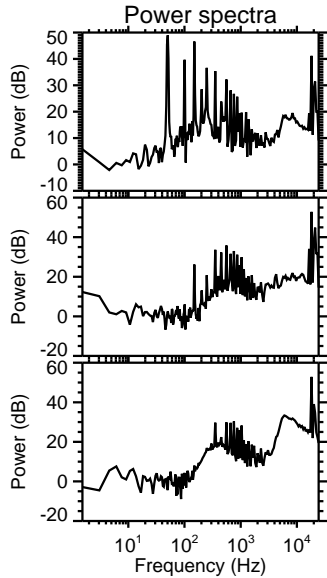
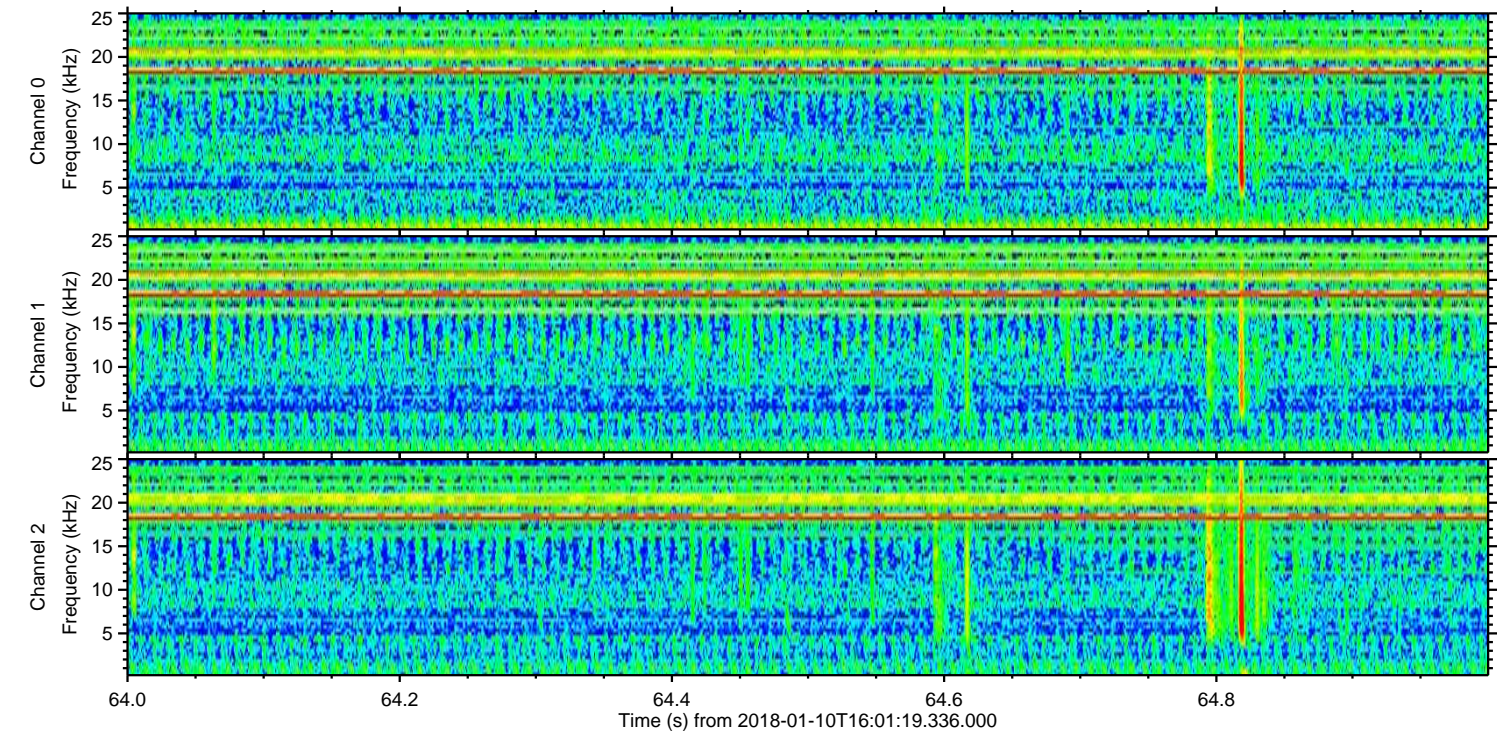
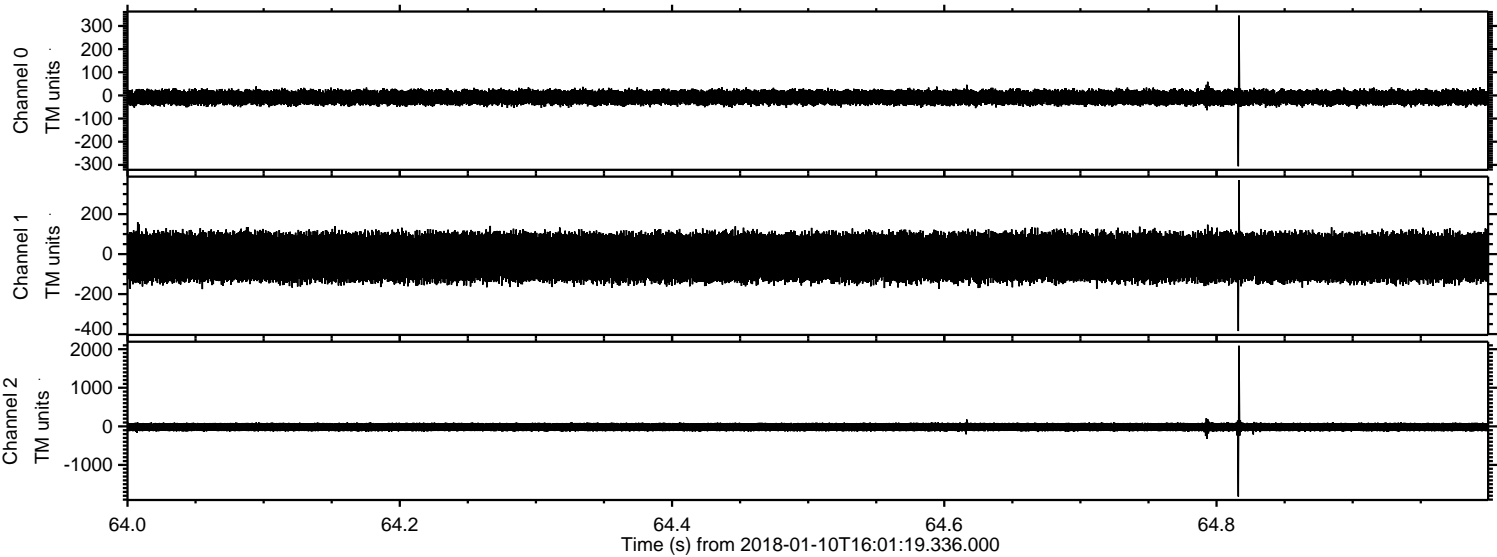
Processed Wed Jan 10 17:09:37 2018 by ELM ver.2012-10-06 from 001__elm20180110_160118__dat00.bin



Processed Wed Jan 10 17:09:38 2018 by ELM ver.2012-10-06 from 001__elm20180110_160118__dat00.bin



Processed Wed Jan 10 17:09:39 2018 by ELM ver.2012-10-06 from 001__elm20180110_160118__dat00.bin



Channel 0
mn: -306
mx: 345
 μ : -8.8
 σ : 17.7

Channel 1
mn: -385
mx: 369
 μ : -16.0
 σ : 65.4

Channel 2
mn: -1819
mx: 2090
 μ : -18.6
 σ : 64.1

Processed Wed Jan 10 17:09:40 2018 by ELM ver.2012-10-06 from 001__elm20180110_160118__dat00.bin

