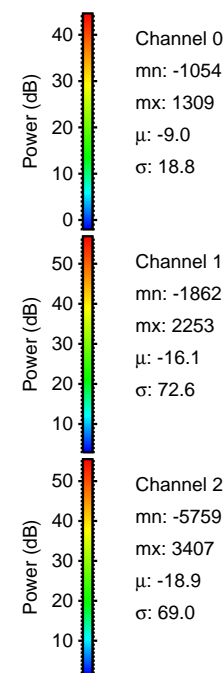
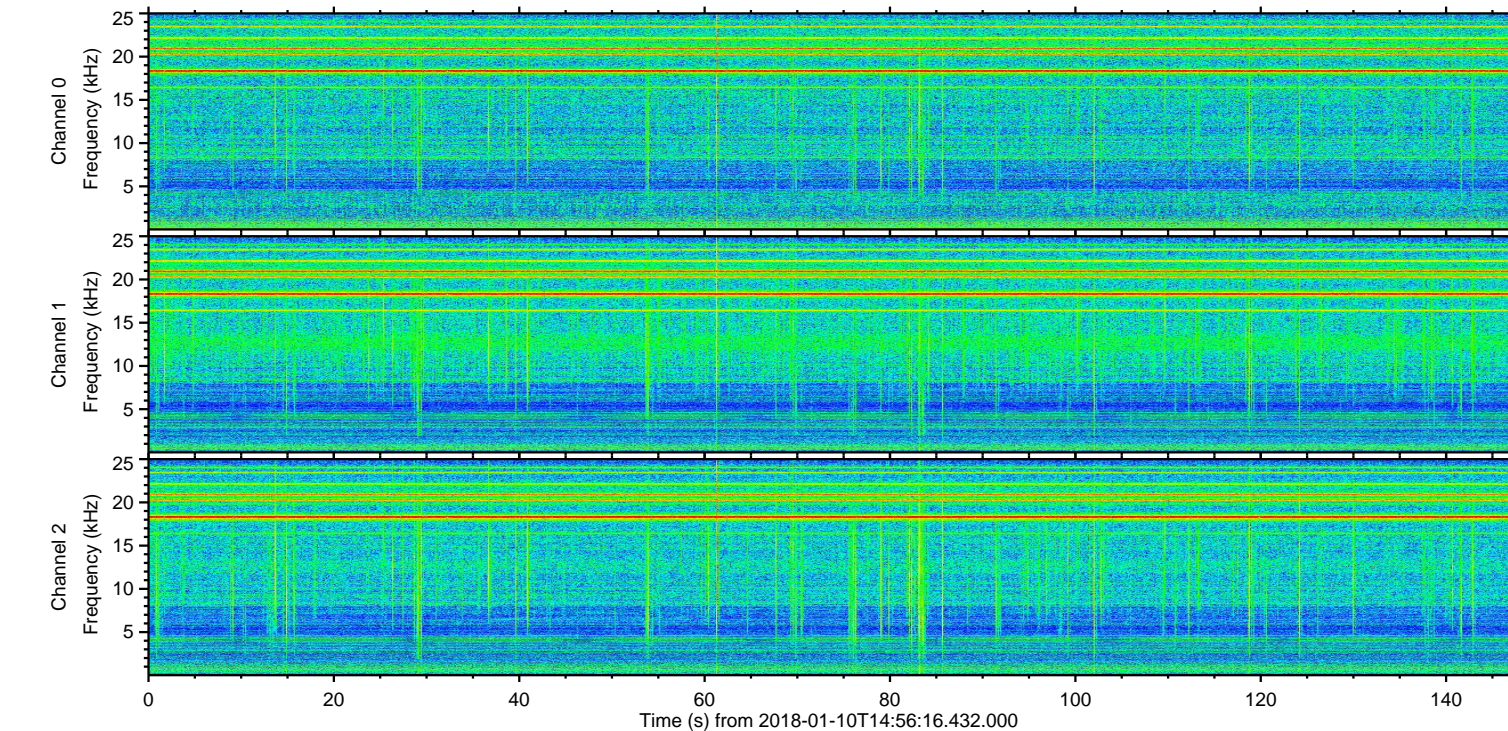
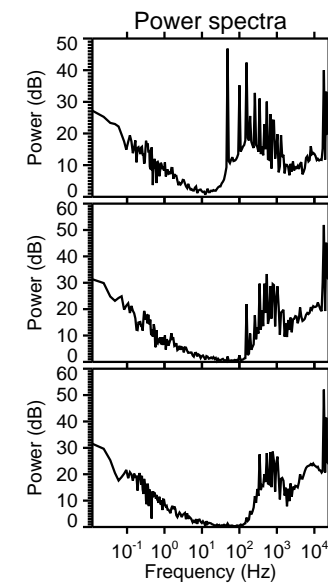
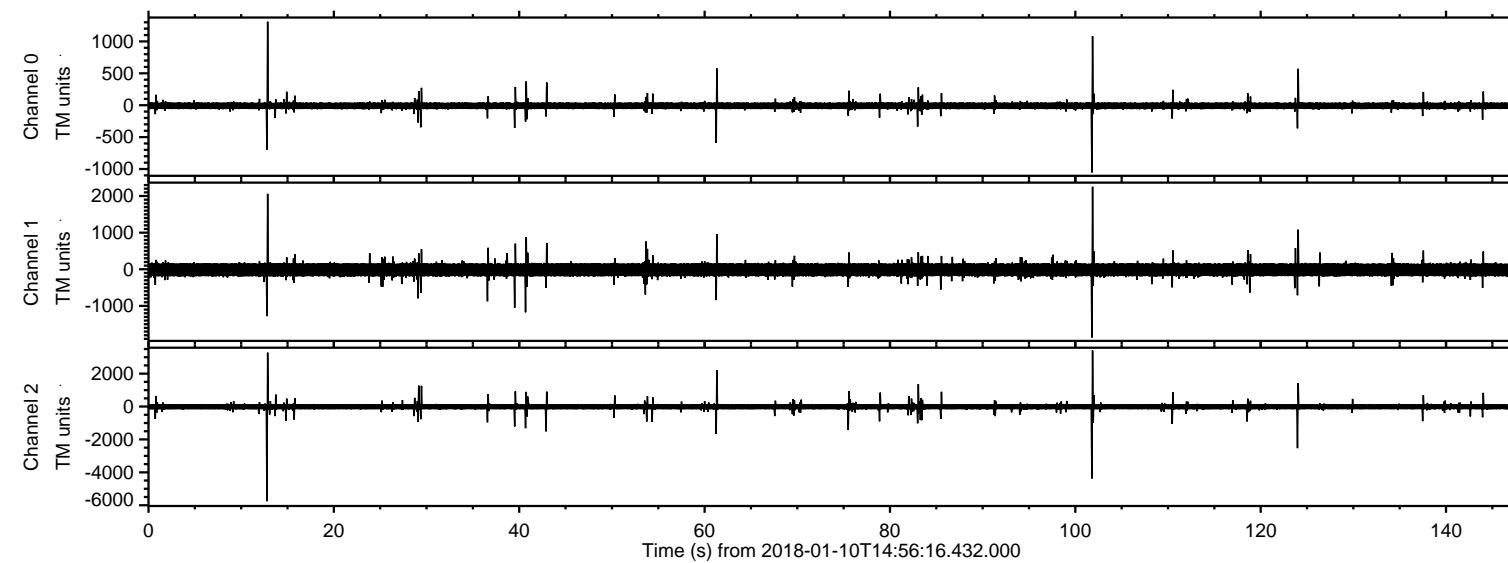
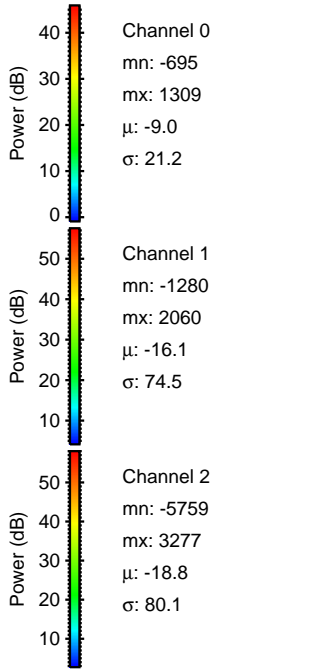
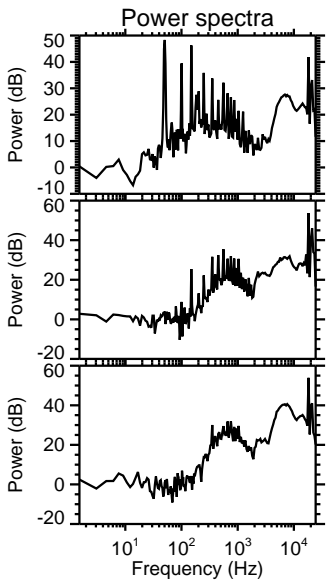
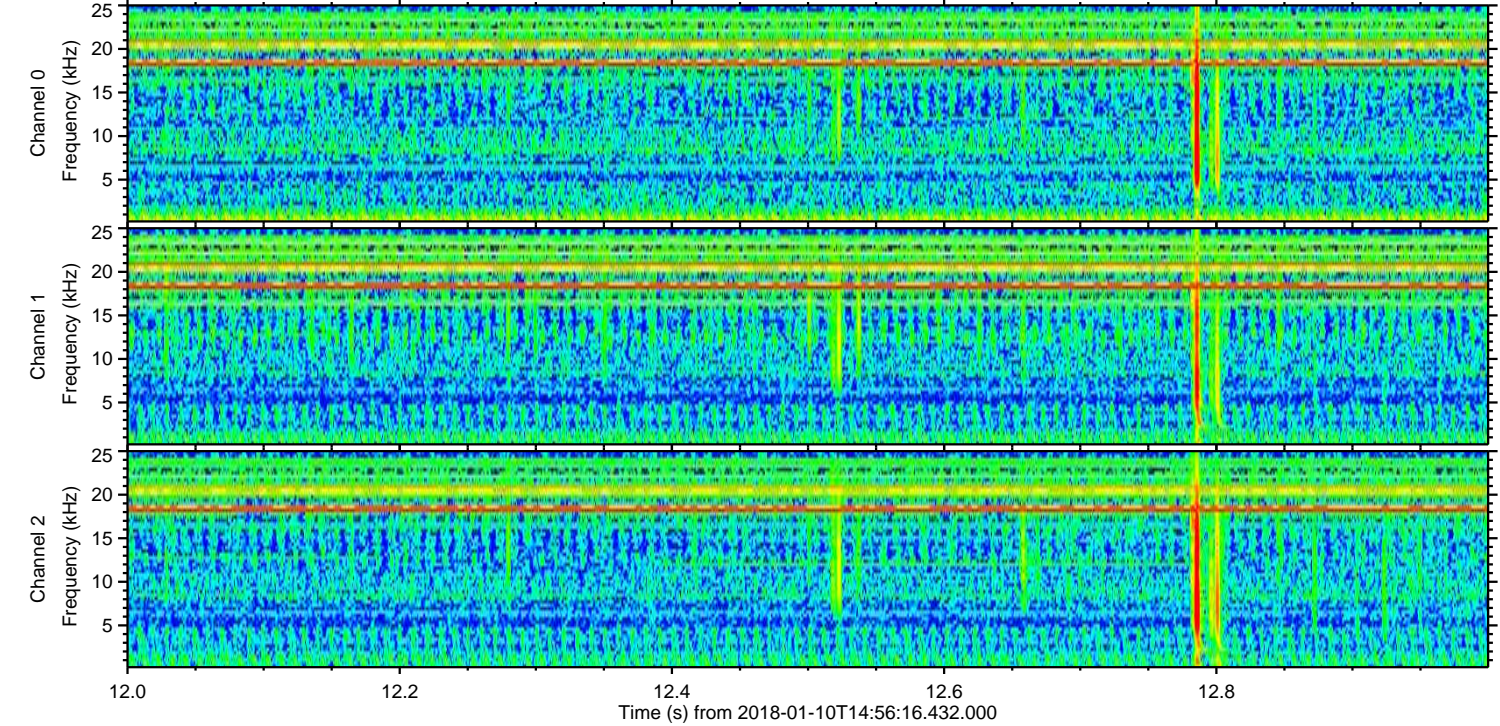
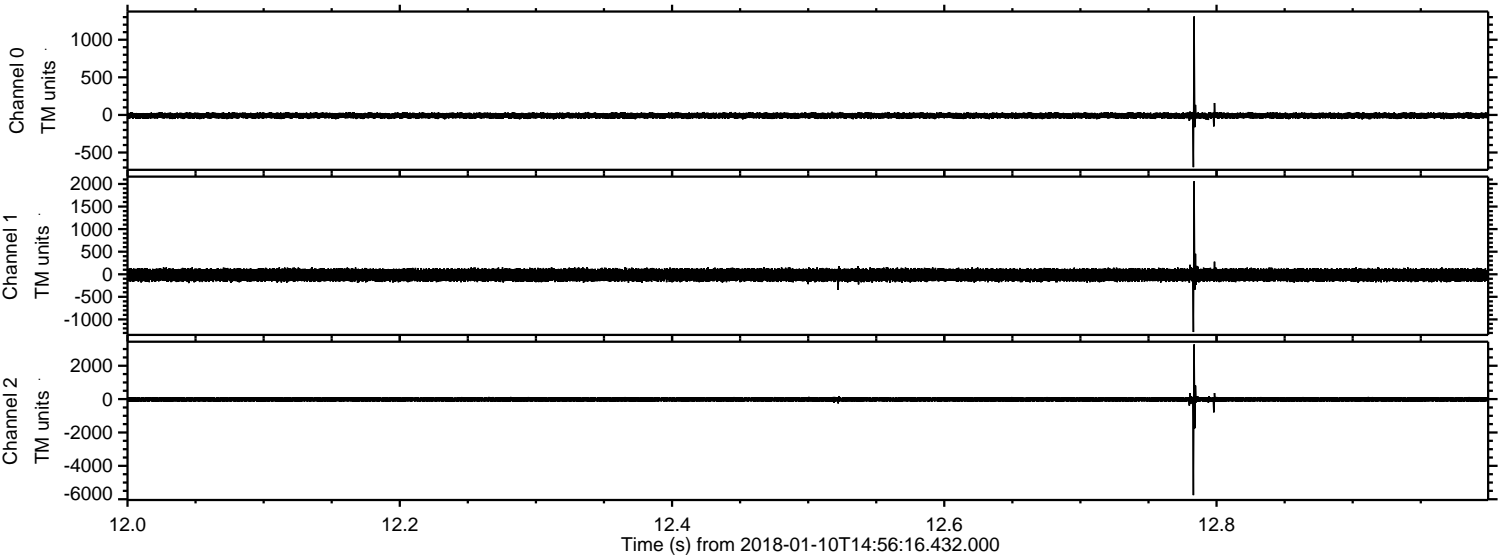


ELMAVAN 3D WAVEFORMS (Measured data sampled at 50 kHz) 51000 packets of 144 samples from 2018-01-10T14:56:16.432.000.

Processed Wed Jan 10 16:04:40 2018 by ELM ver.2012-10-06 from 001__elm20180110_145615__dat00.bin

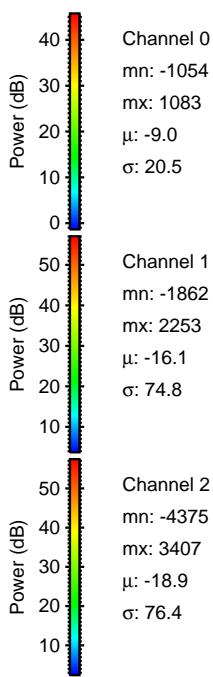
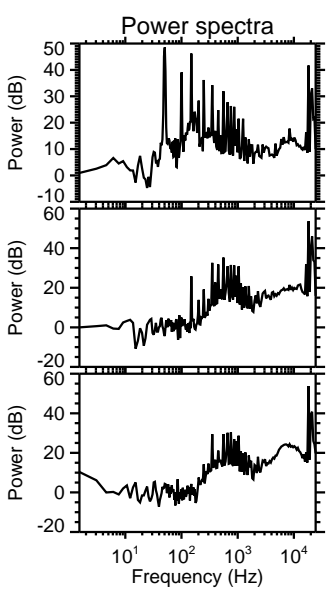
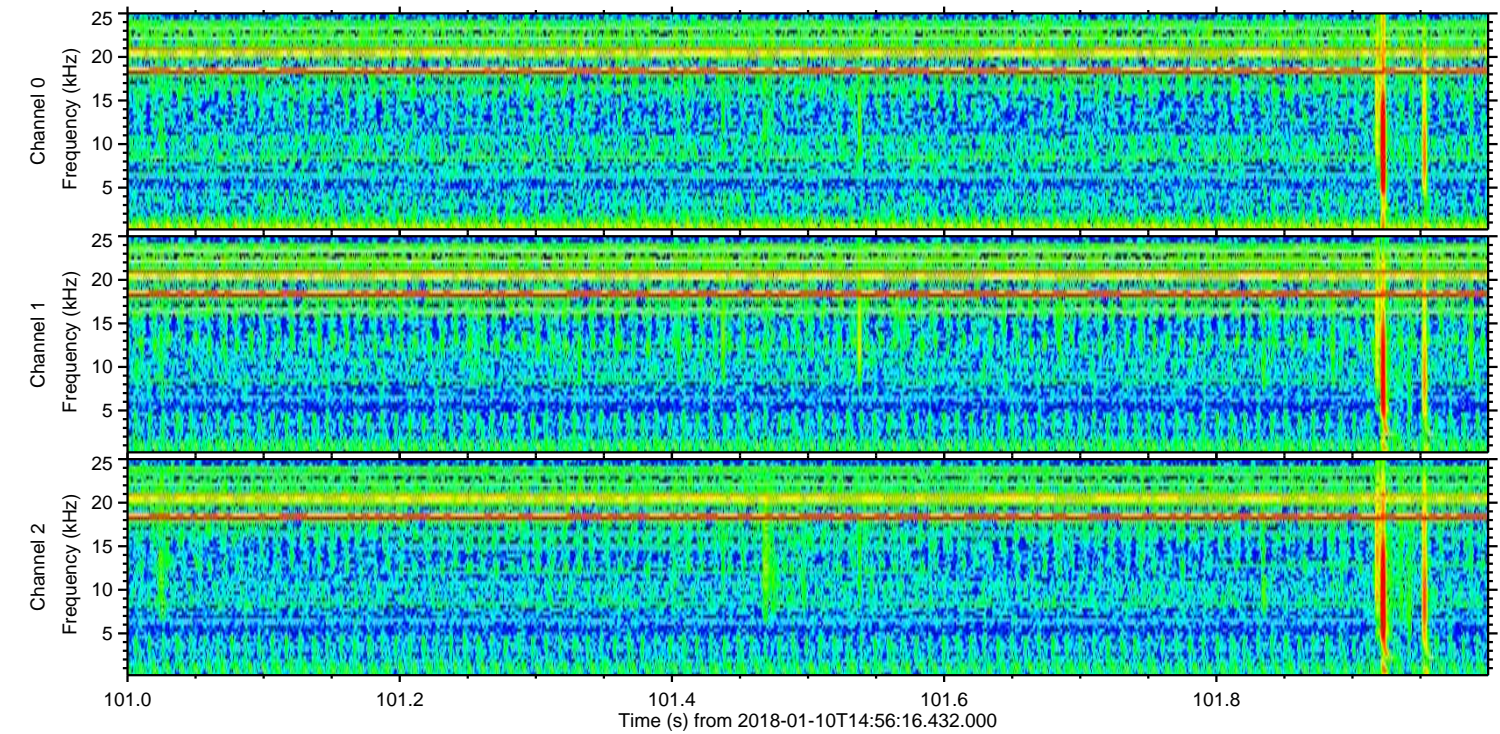
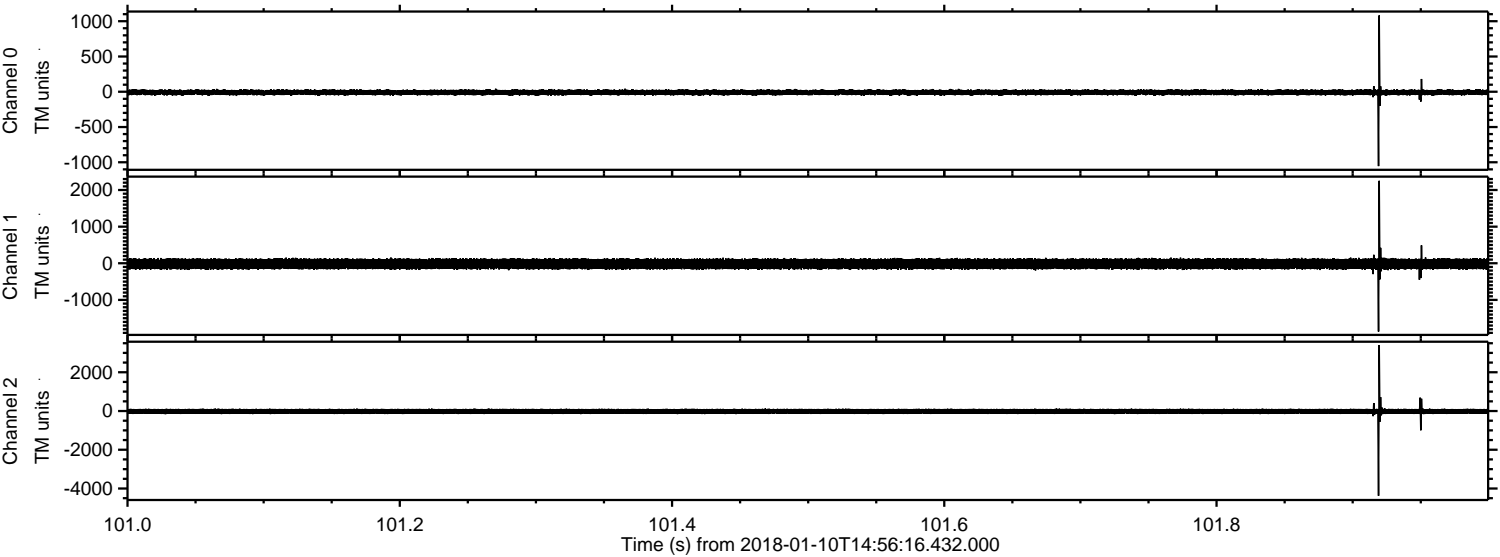


Processed Wed Jan 10 16:04:48 2018 by ELM ver.2012-10-06 from 001__elm20180110_145615__dat00.bin



ELMAVAN 3D WAVEFORMS (Measured data sampled at 50 kHz) 51000 packets of 144 samples from 2018-01-10T14:56:16.432.000. Part 102/147

Processed Wed Jan 10 16:04:49 2018 by ELM ver.2012-10-06 from 001__elm20180110_145615__dat00.bin



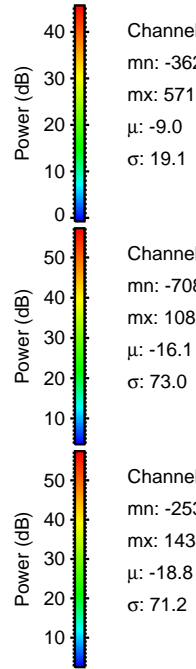
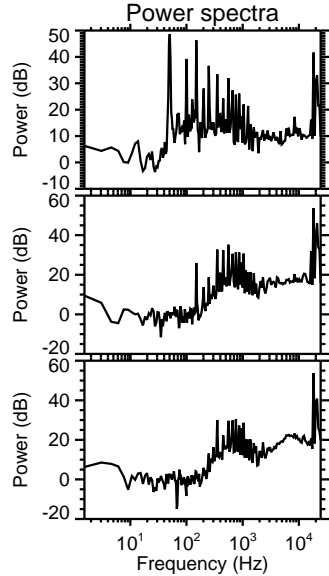
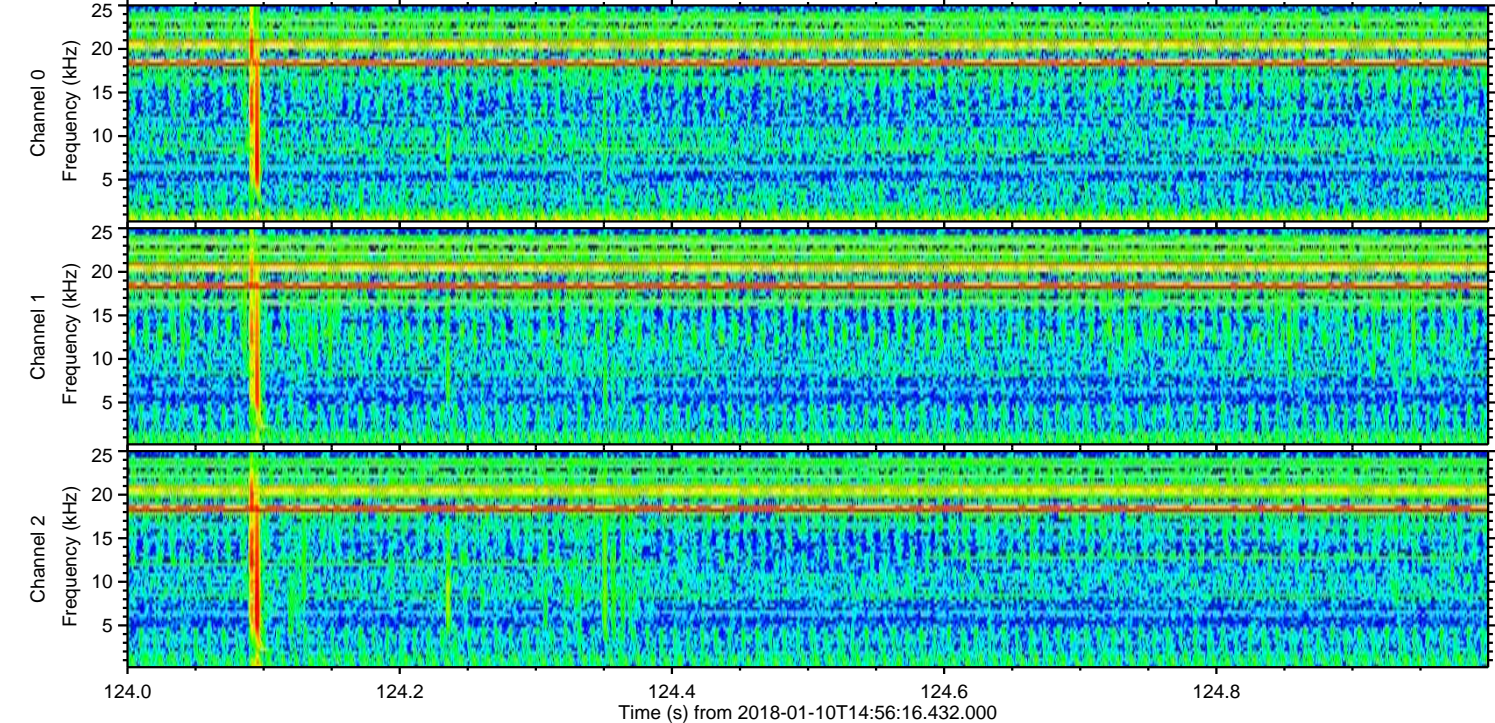
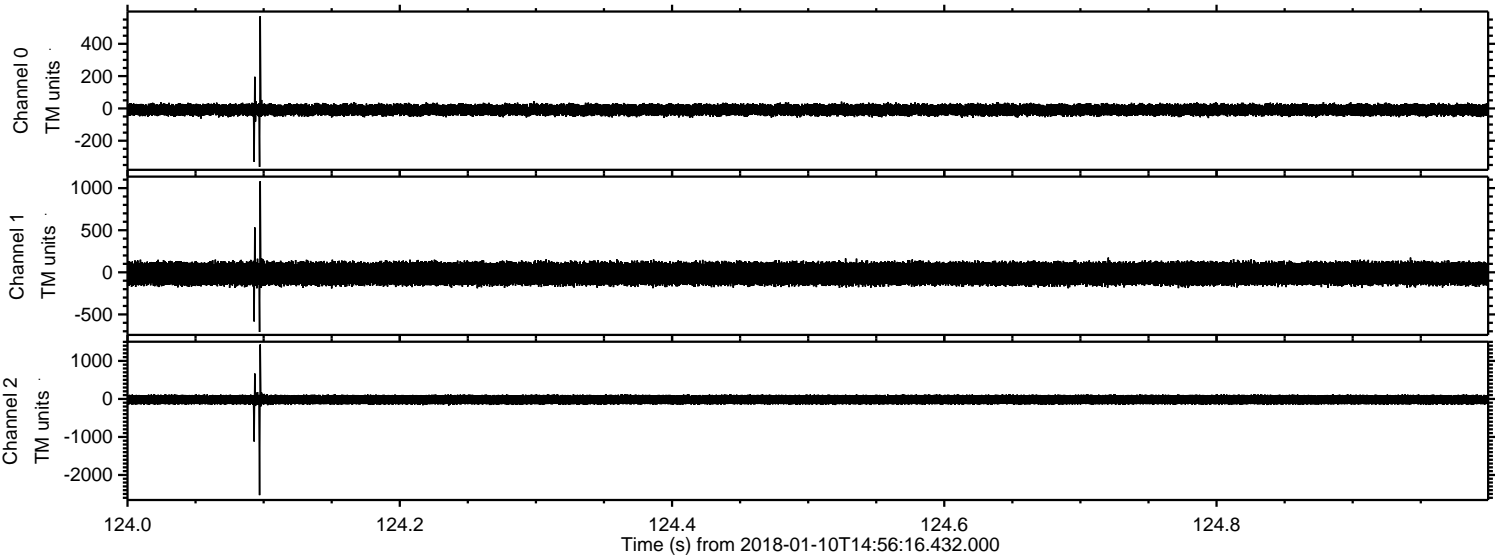
Channel 0
mn: -1054
mx: 1083
 μ : -9.0
 σ : 20.5

Channel 1
mn: -1862
mx: 2253
 μ : -16.1
 σ : 74.8

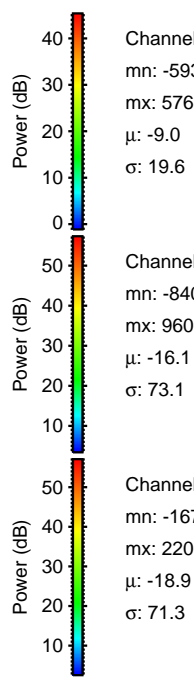
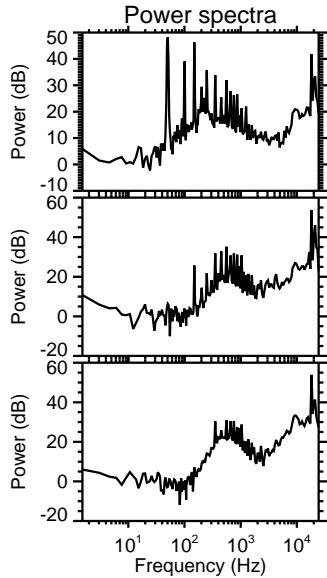
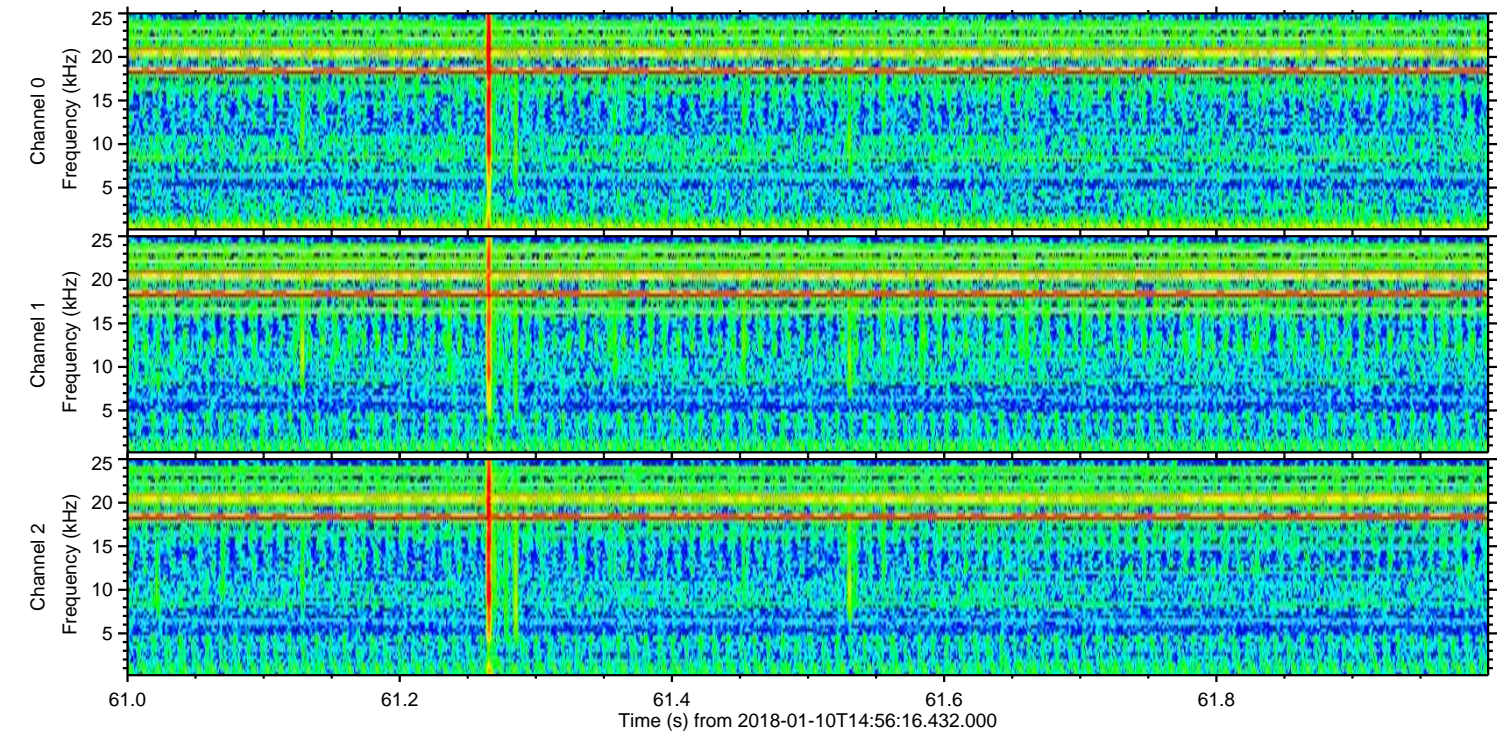
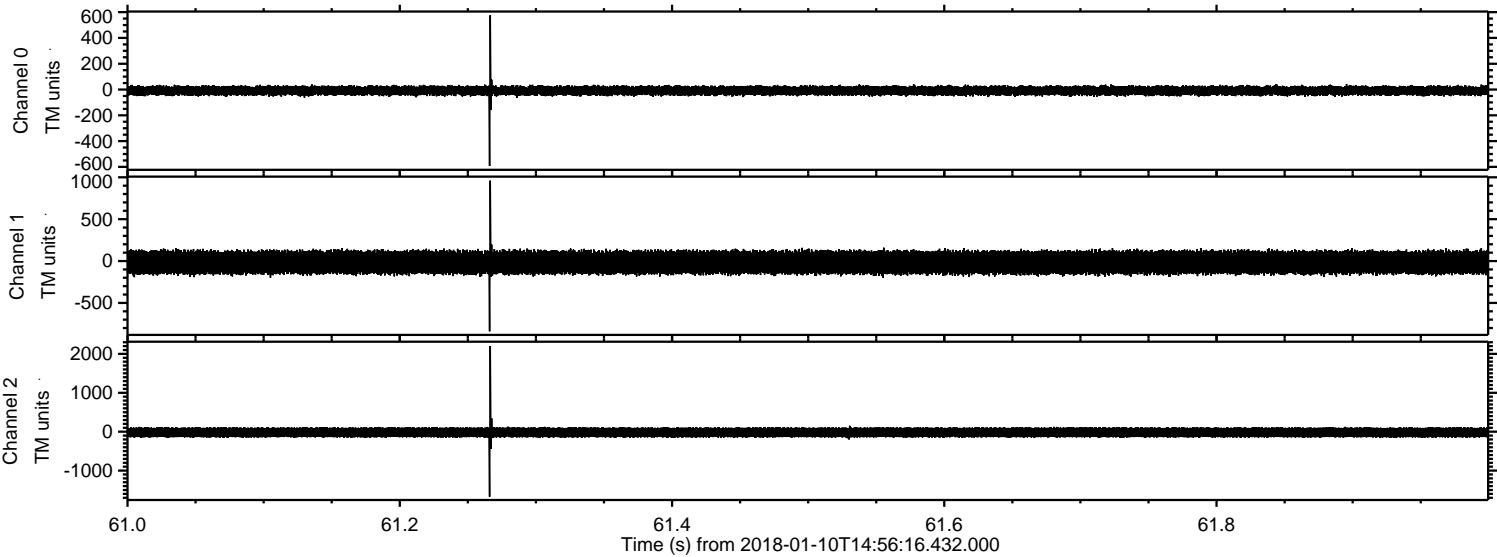
Channel 2
mn: -4375
mx: 3407
 μ : -18.9
 σ : 76.4

ELMAVAN 3D WAVEFORMS (Measured data sampled at 50 kHz) 51000 packets of 144 samples from 2018-01-10T14:56:16.432.000. Part 125/147

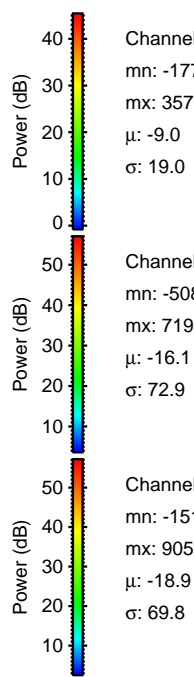
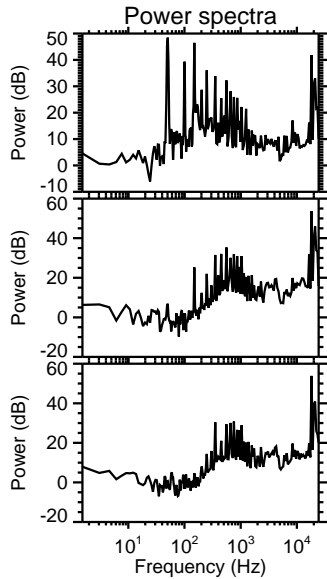
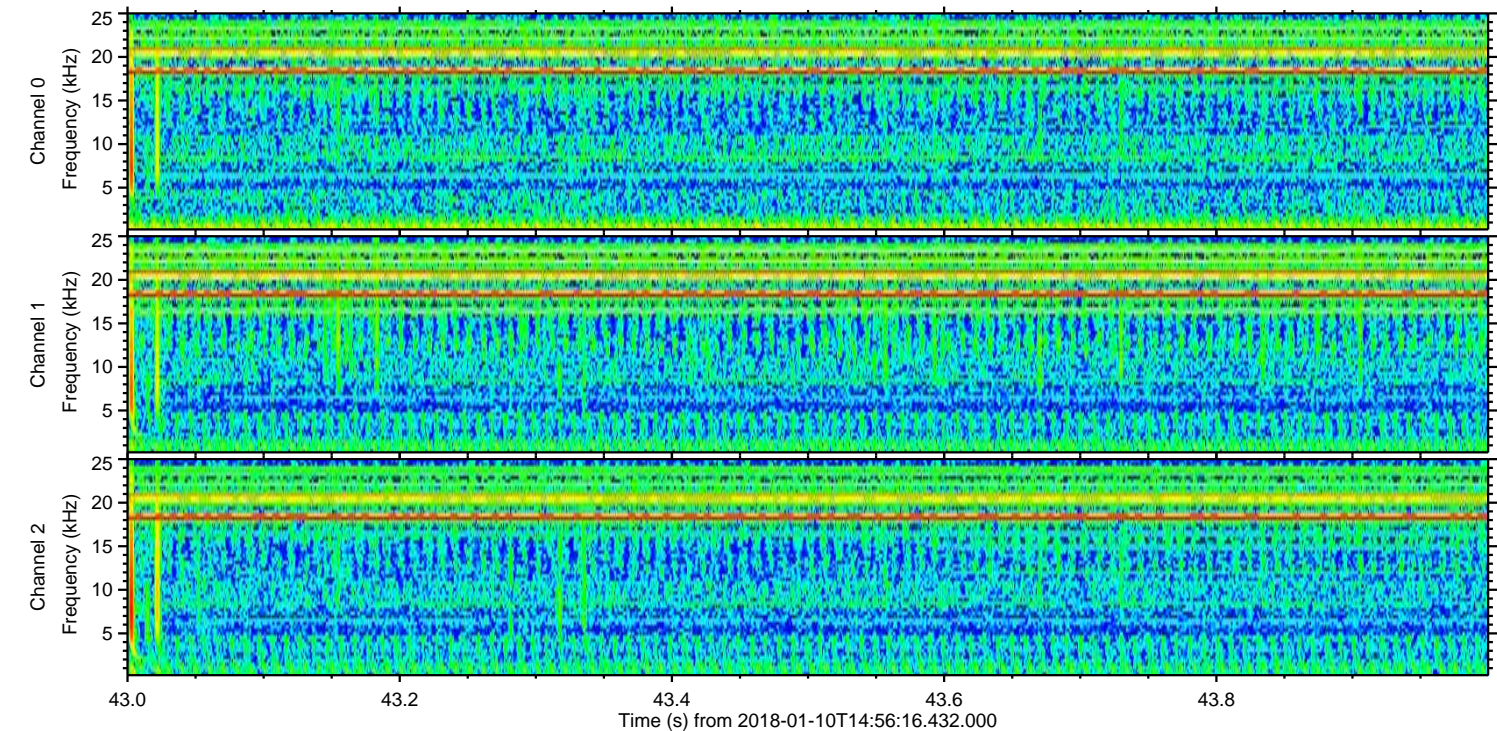
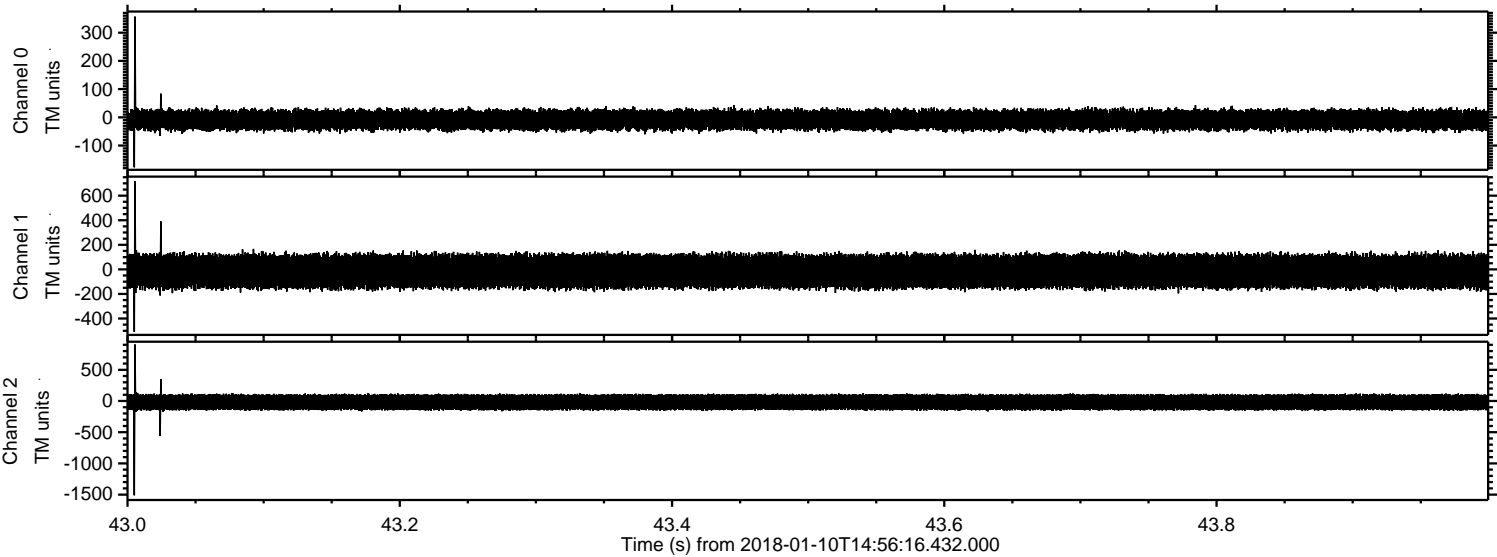
Processed Wed Jan 10 16:04:50 2018 by ELM ver.2012-10-06 from 001__elm20180110_145615__dat00.bin



Processed Wed Jan 10 16:04:51 2018 by ELM ver.2012-10-06 from 001__elm20180110_145615__dat00.bin



Processed Wed Jan 10 16:04:51 2018 by ELM ver.2012-10-06 from 001__elm20180110_145615__dat00.bin

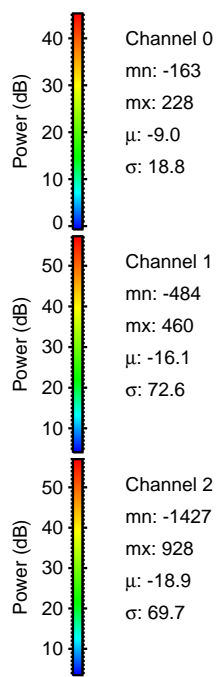
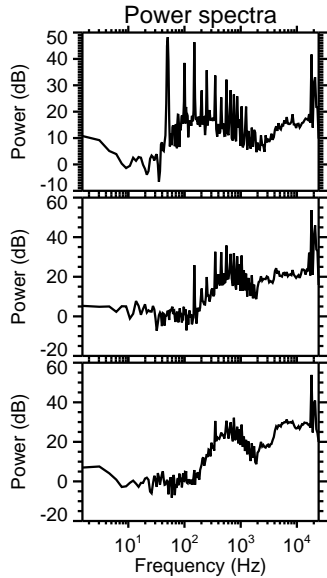
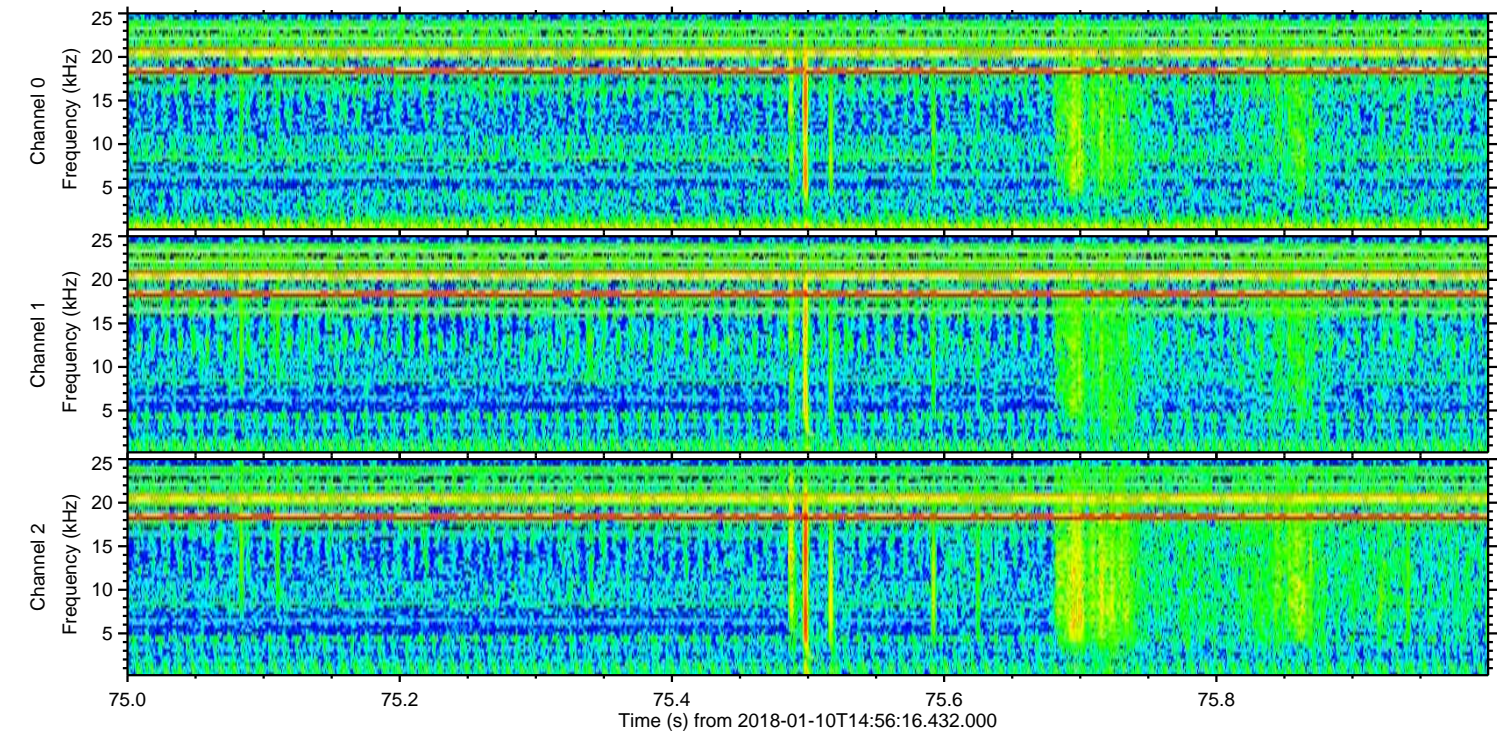
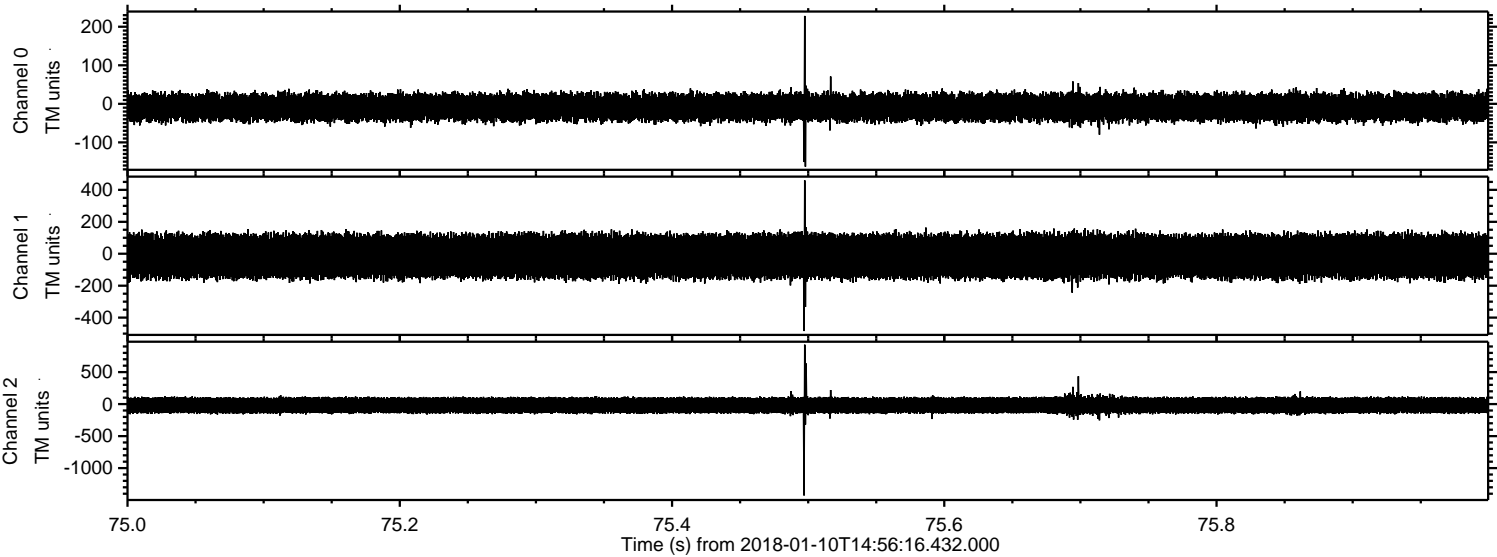


Channel 0
mn: -177
mx: 357
 μ : -9.0
 σ : 19.0

Channel 1
mn: -508
mx: 719
 μ : -16.1
 σ : 72.9

Channel 2
mn: -1511
mx: 905
 μ : -18.9
 σ : 69.8

Processed Wed Jan 10 16:04:52 2018 by ELM ver.2012-10-06 from 001__elm20180110_145615__dat00.bin

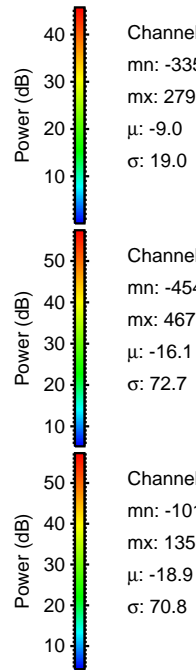
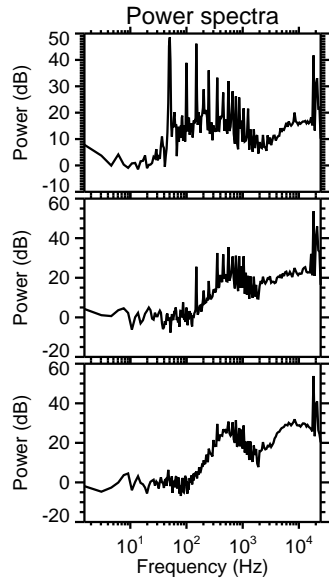
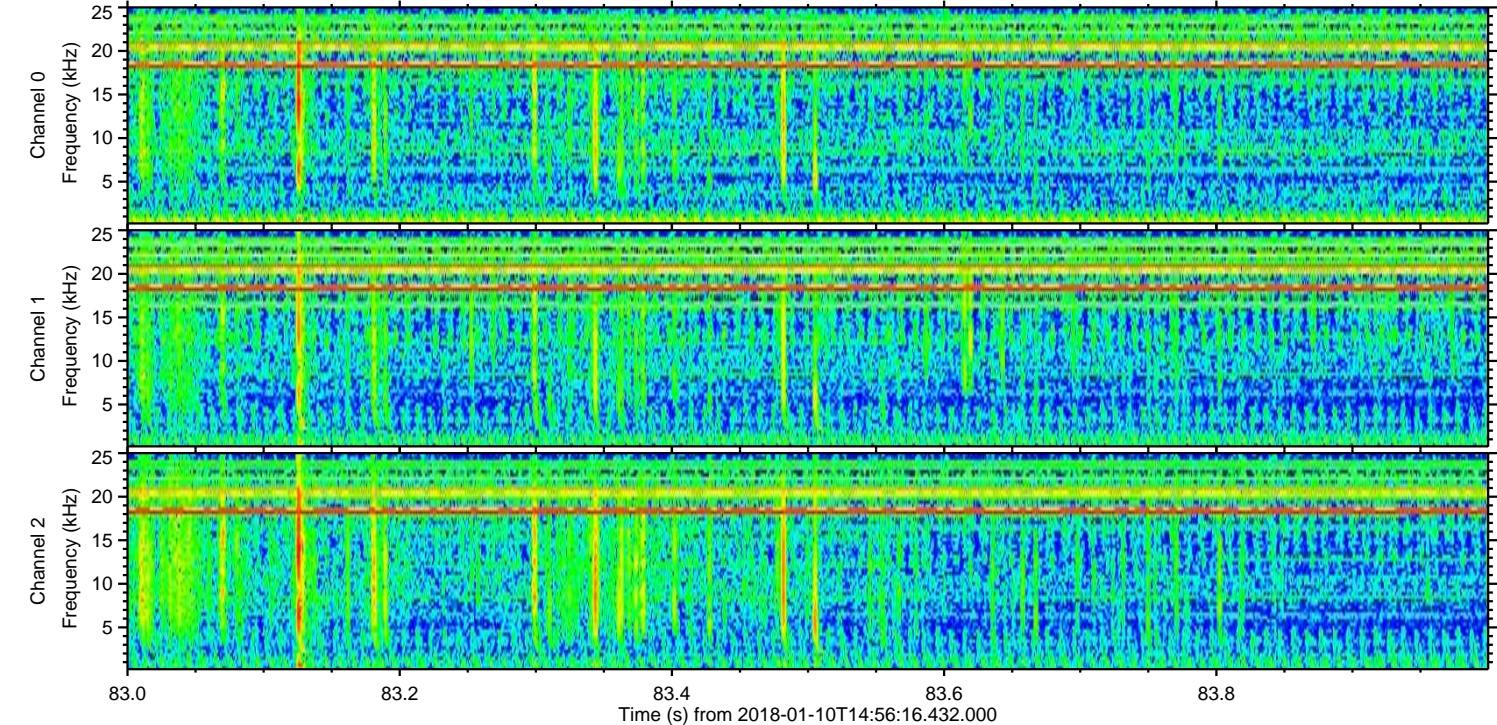
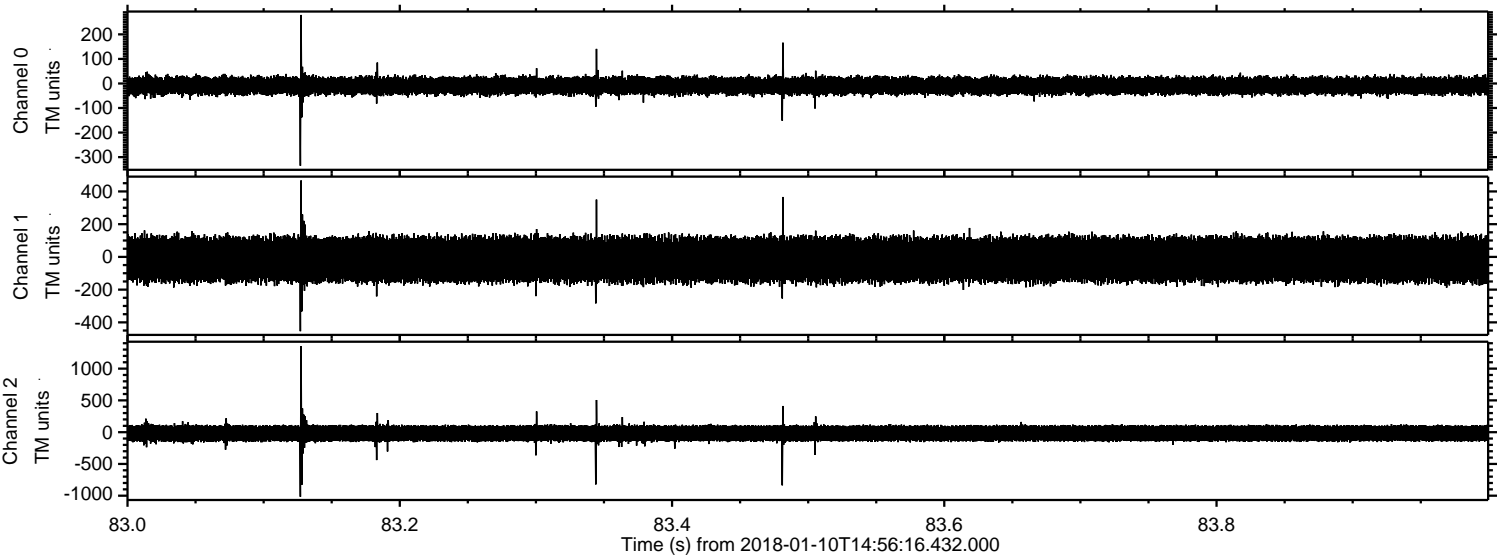


Channel 0
mn: -163
mx: 228
 μ : -9.0
 σ : 18.8

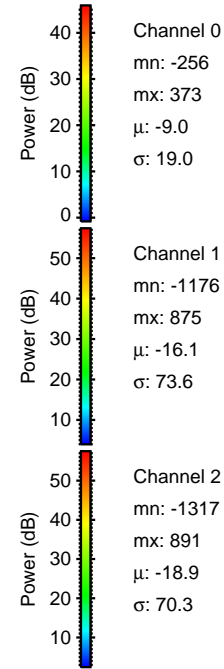
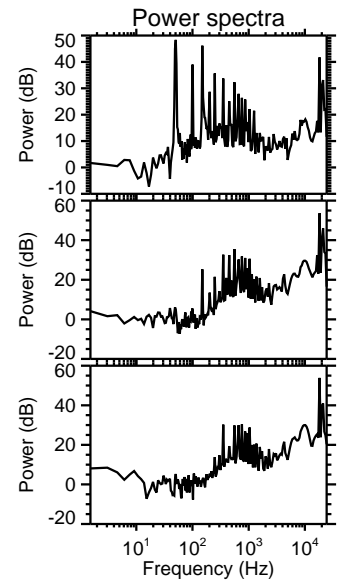
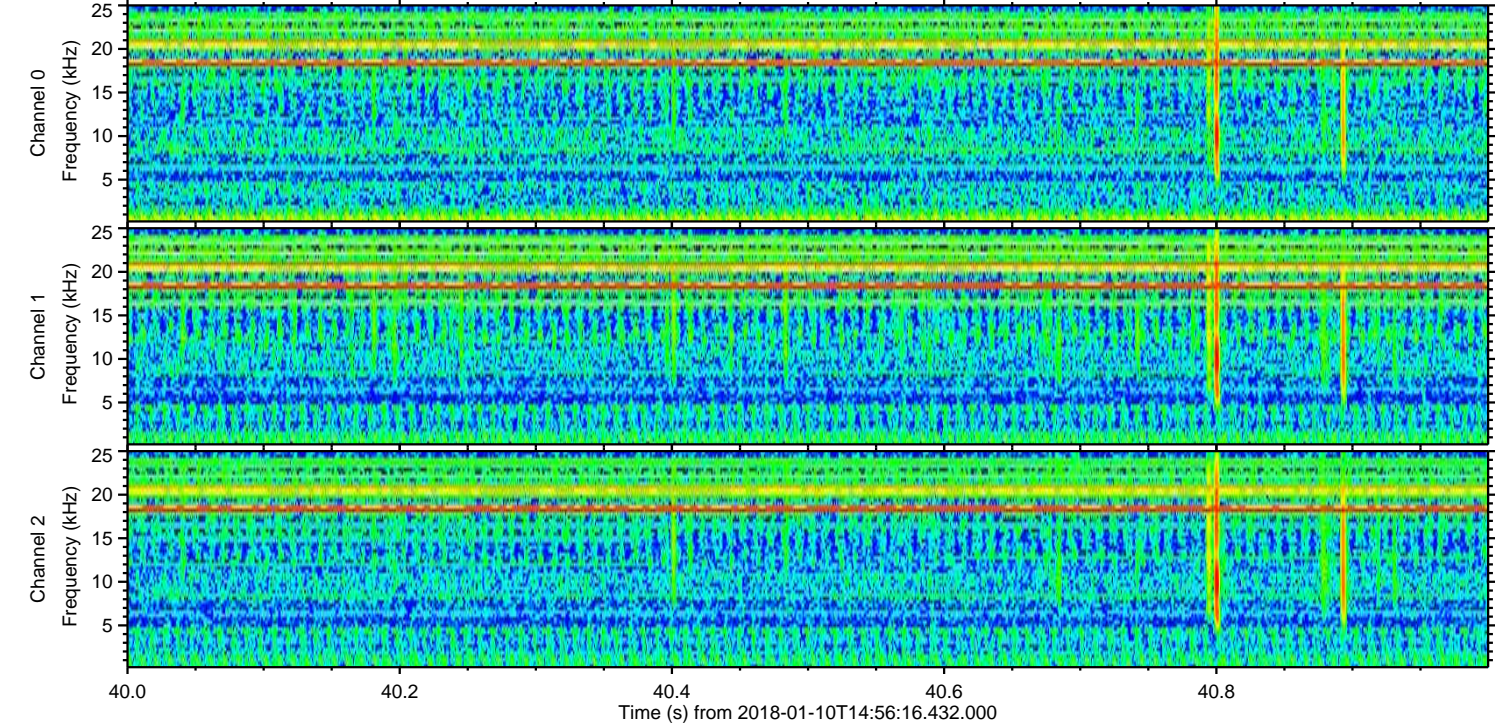
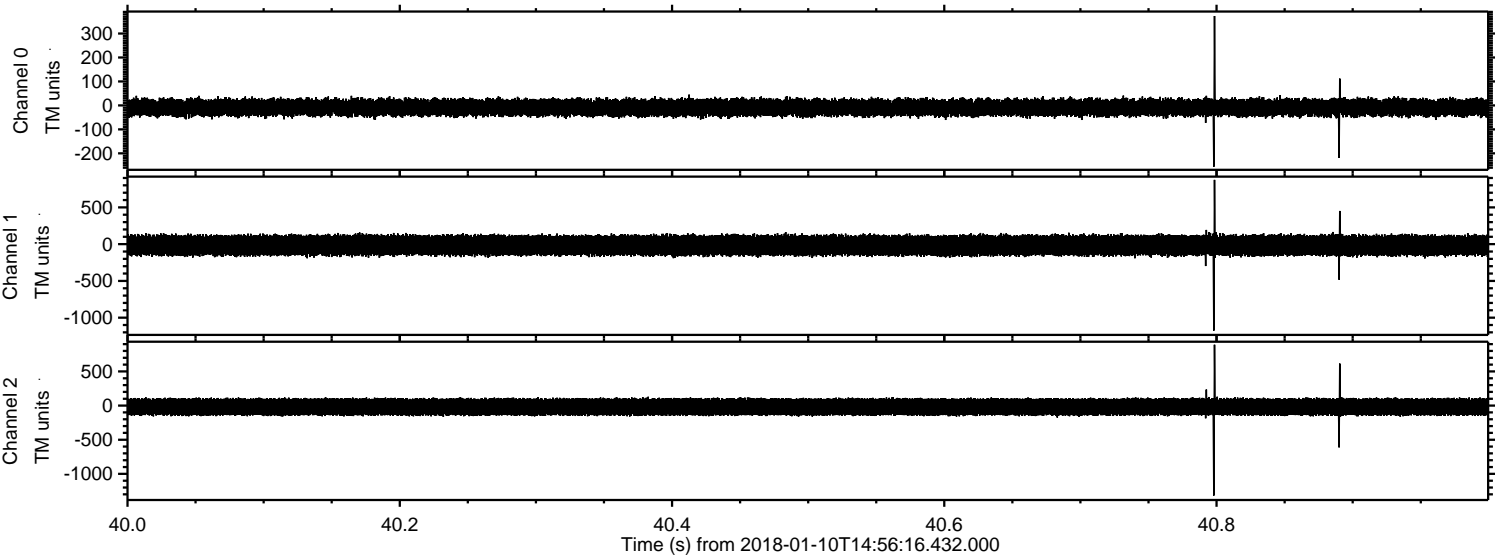
Channel 1
mn: -484
mx: 460
 μ : -16.1
 σ : 72.6

Channel 2
mn: -1427
mx: 928
 μ : -18.9
 σ : 69.7

Processed Wed Jan 10 16:04:53 2018 by ELM ver.2012-10-06 from 001__elm20180110_145615__dat00.bin



Processed Wed Jan 10 16:04:54 2018 by ELM ver.2012-10-06 from 001__elm20180110_145615__dat00.bin

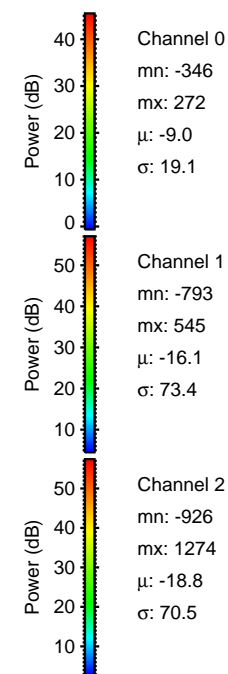
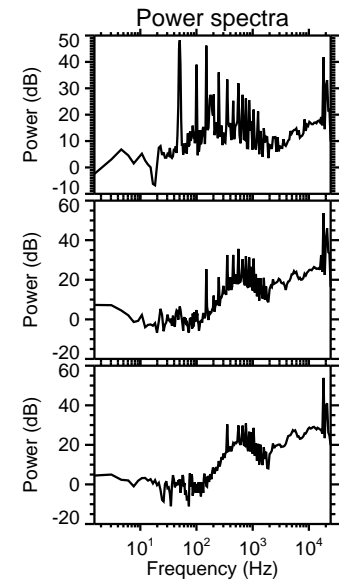
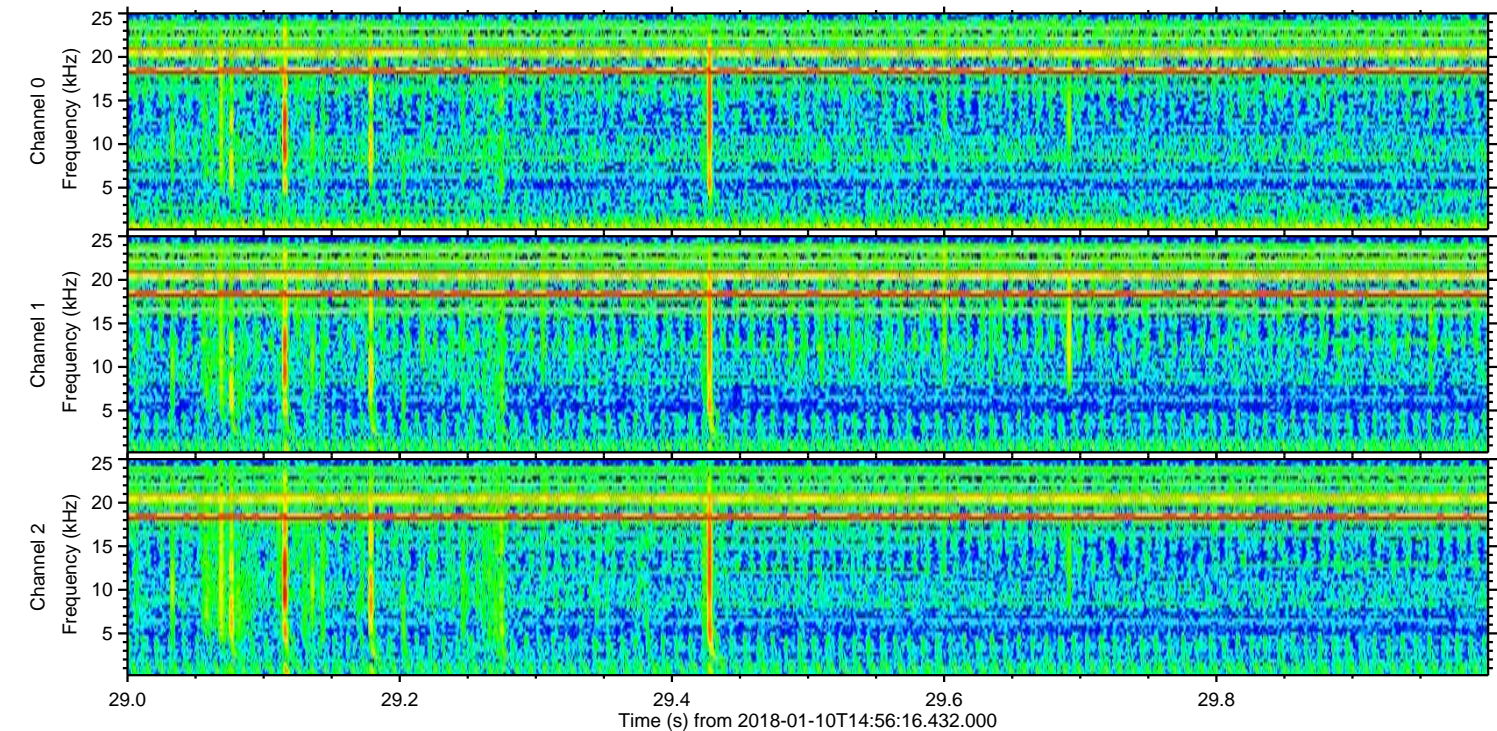
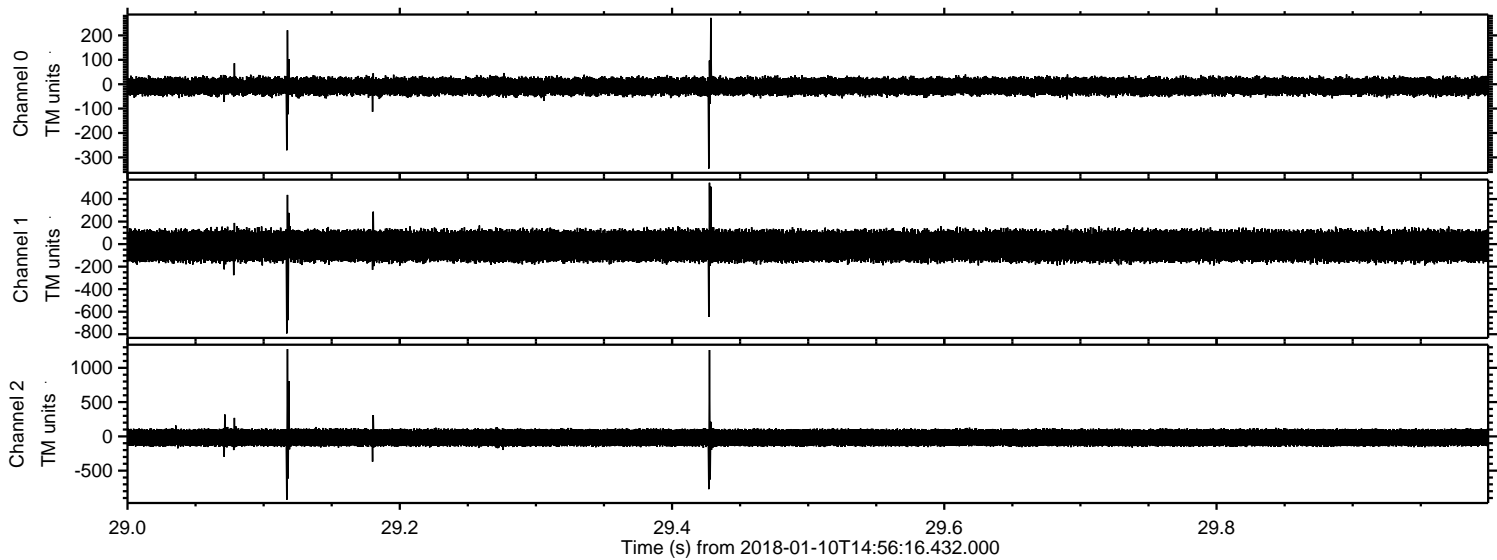


Channel 0
mn: -256
mx: 373
 μ : -9.0
 σ : 19.0

Channel 1
mn: -1176
mx: 875
 μ : -16.1
 σ : 73.6

Channel 2
mn: -1317
mx: 891
 μ : -18.9
 σ : 70.3

Processed Wed Jan 10 16:04:55 2018 by ELM ver.2012-10-06 from 001__elm20180110_145615__dat00.bin



Power spectra

Channel 0
mn: -346
mx: 272
 μ : -9.0
 σ : 19.1

Channel 1
mn: -793
mx: 545
 μ : -16.1
 σ : 73.4

Channel 2
mn: -926
mx: 1274
 μ : -18.8
 σ : 70.5

ELMAVAN 3D WAVEFORMS (Measured data sampled at 50 kHz) 51000 packets of 144 samples from 2018-01-10T14:56:16.432.000. Part 136/147

