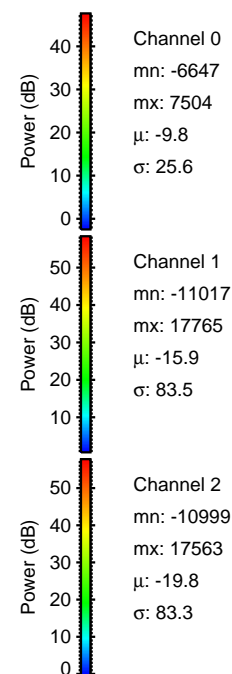
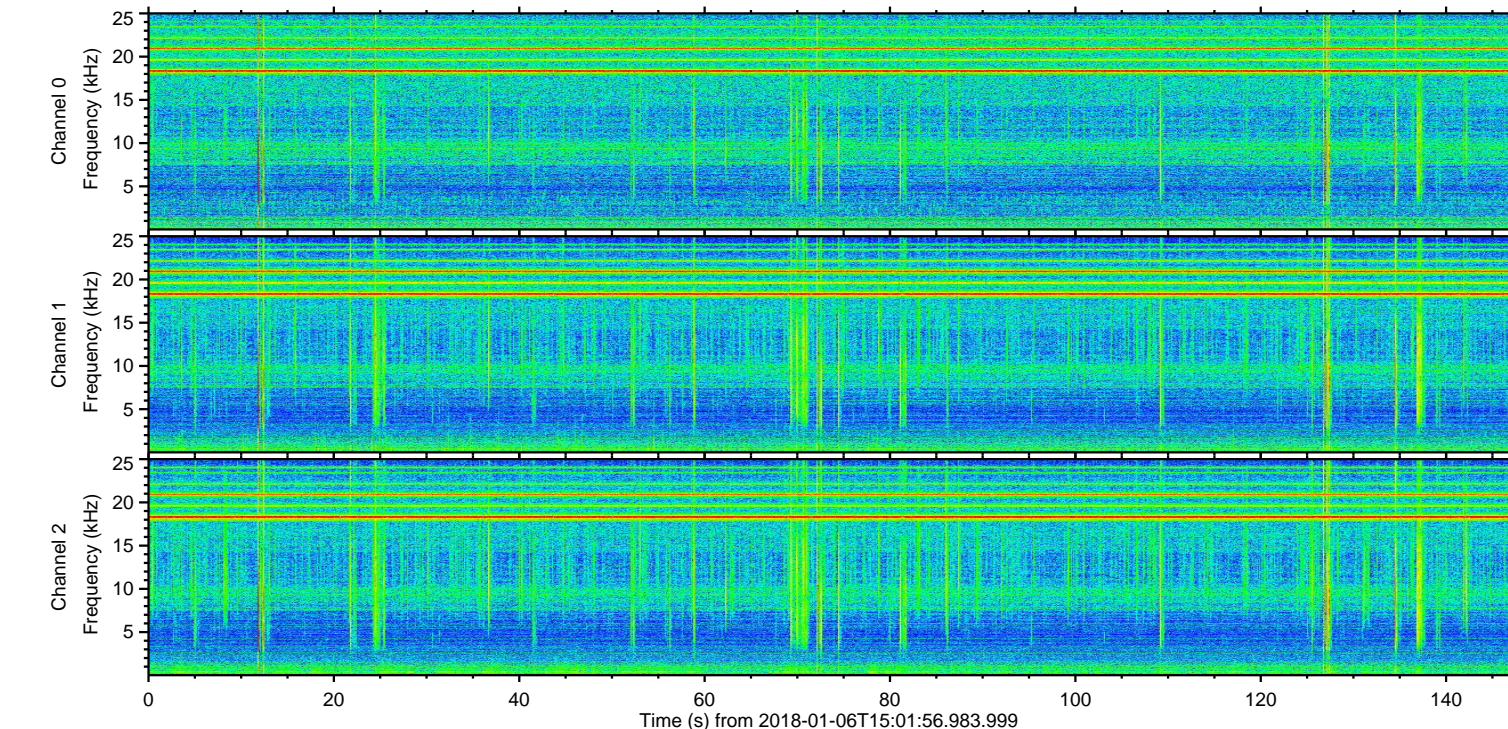
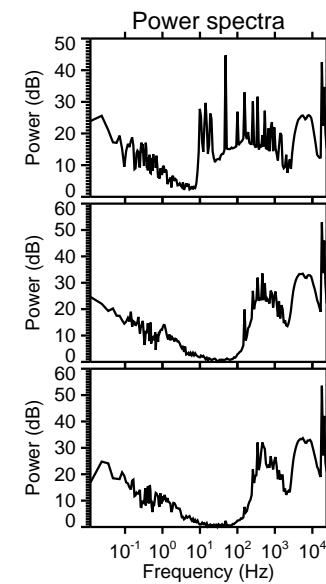
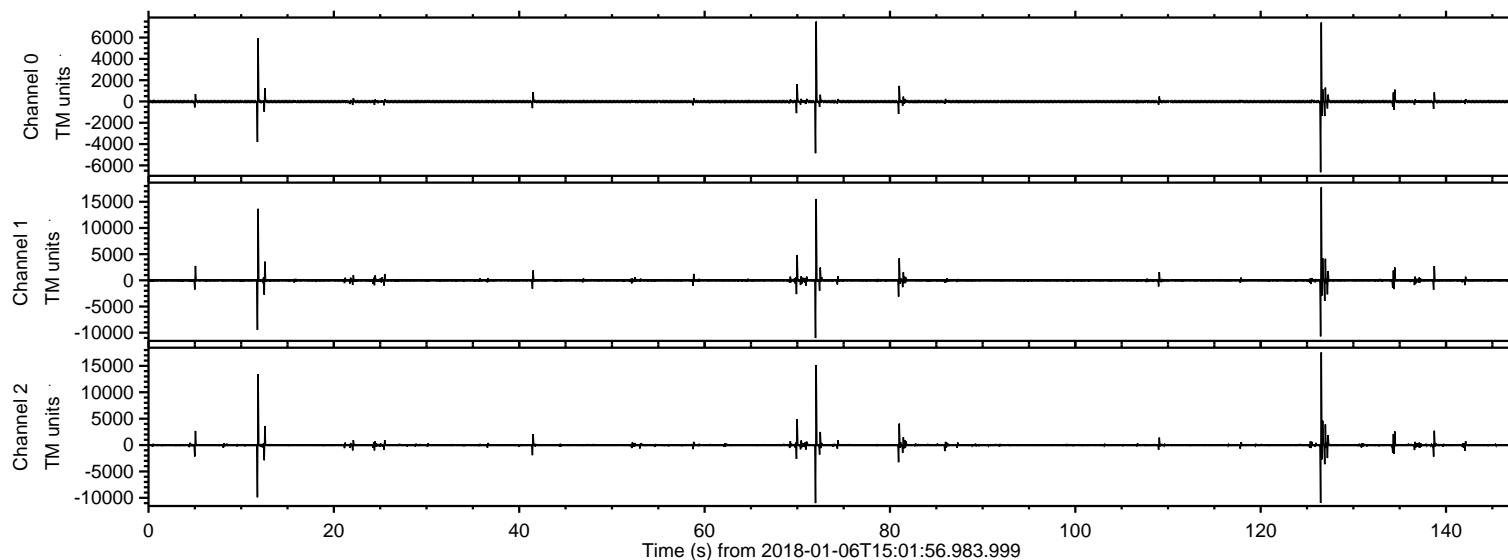


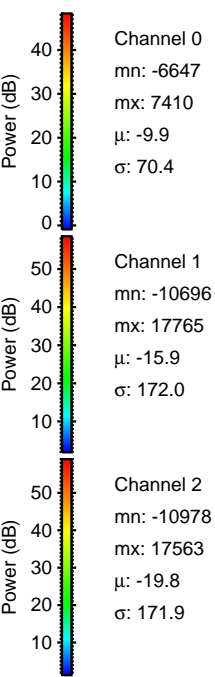
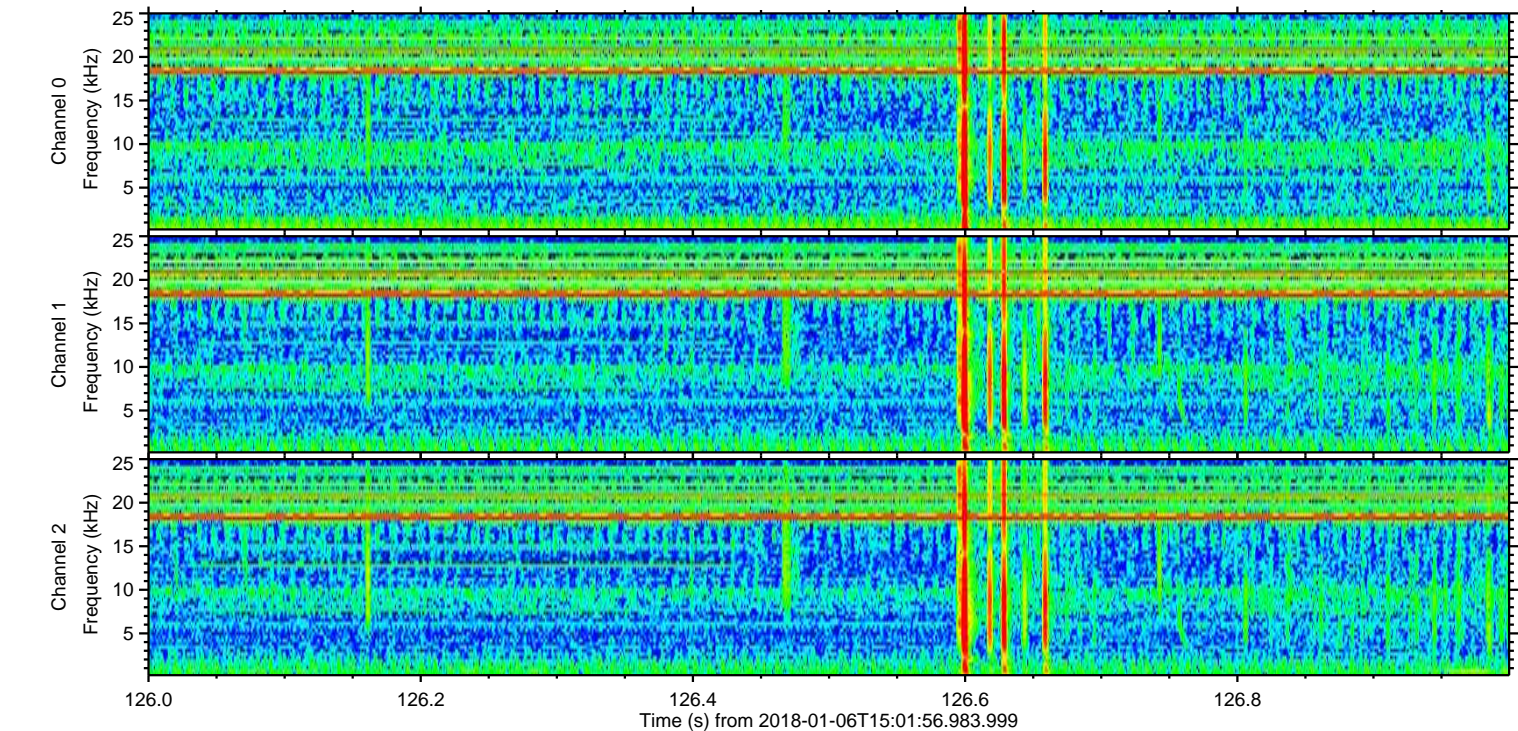
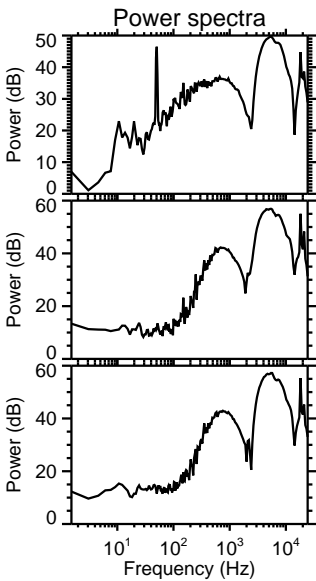
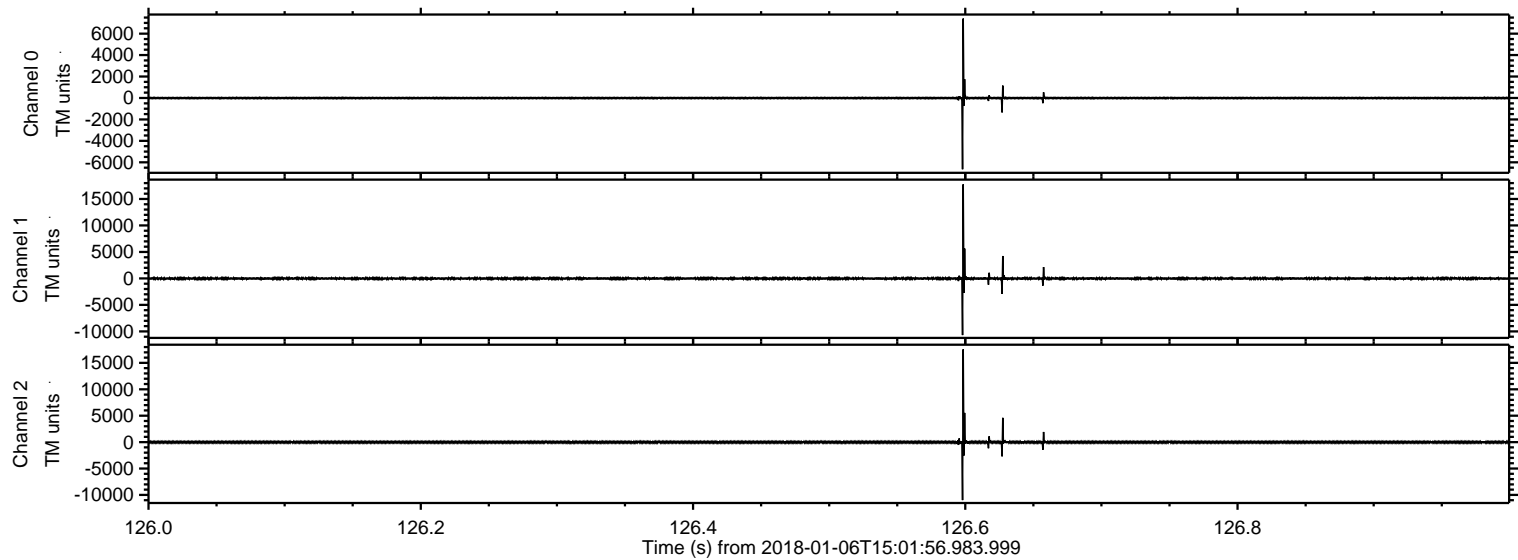
ELMAVAN 3D WAVEFORMS (Measured data sampled at 50 kHz) 51000 packets of 144 samples from 2018-01-06T15:01:56.983.999.

Processed Sat Jan 6 16:10:07 2018 by ELM ver.2012-10-06 from 001__elm20180106_150155__dat00.bin

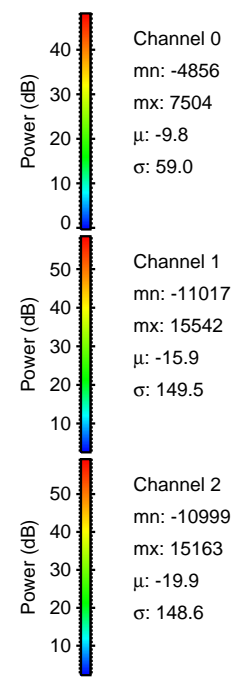
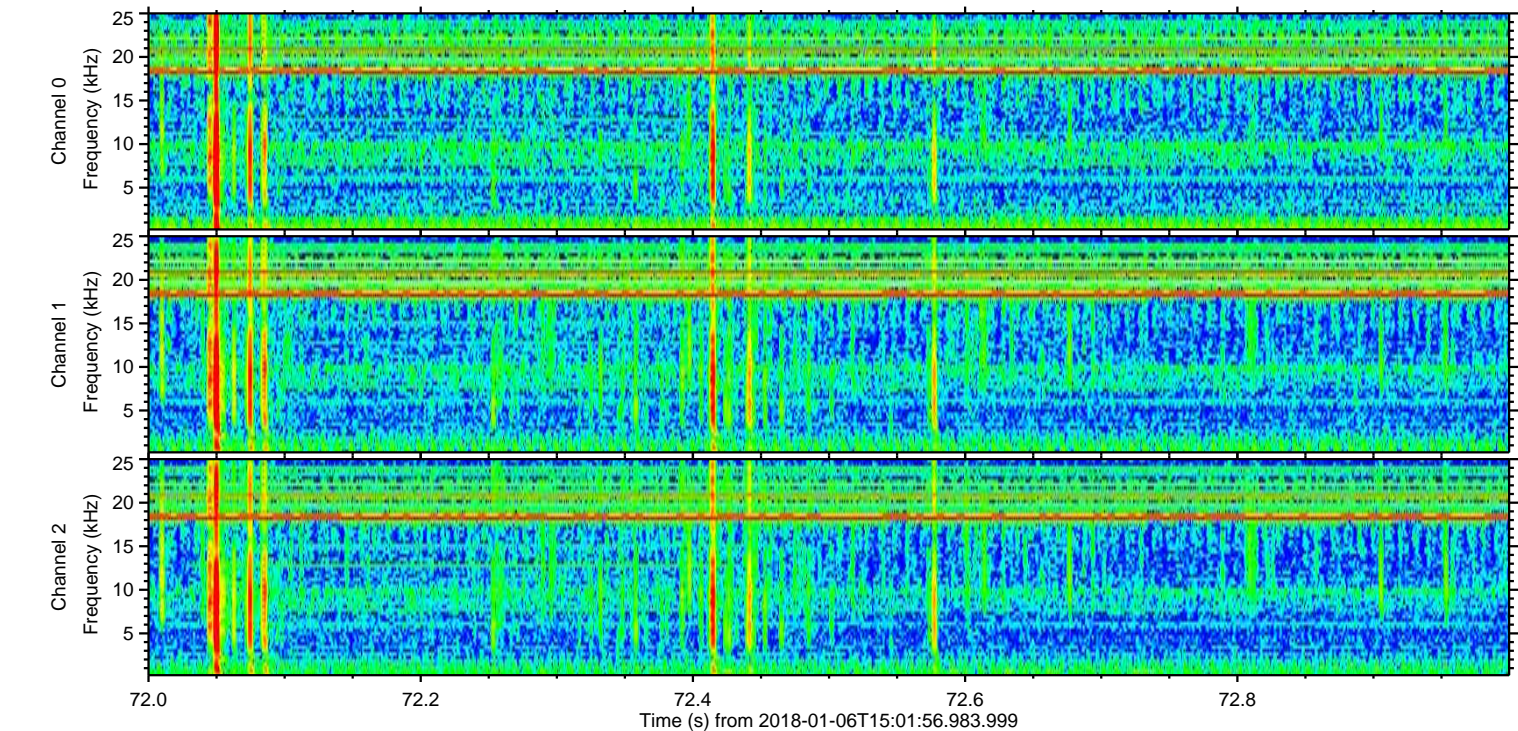
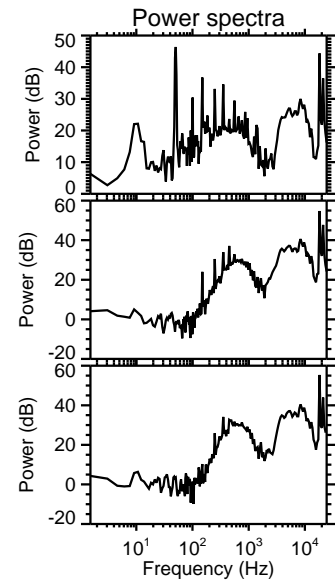
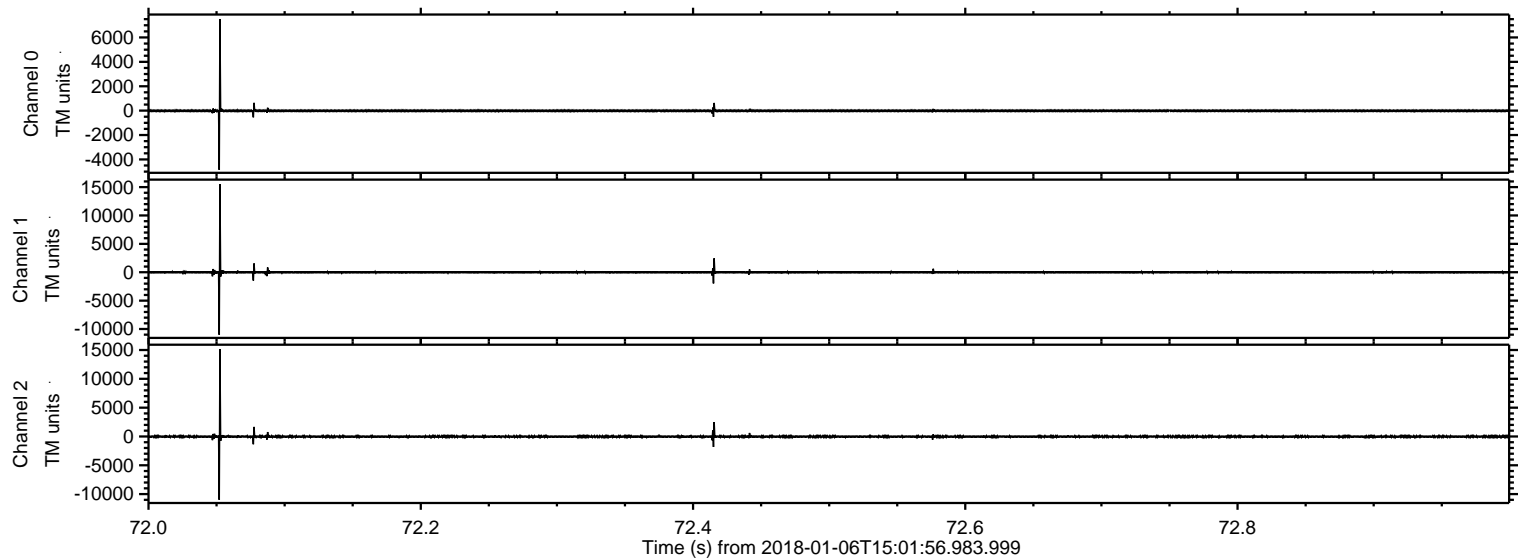


ELMAVAN 3D WAVEFORMS (Measured data sampled at 50 kHz) 51000 packets of 144 samples from 2018-01-06T15:01:56.983.999. Part 127/147

Processed Sat Jan 6 16:10:15 2018 by ELM ver.2012-10-06 from 001__elm20180106_150155__dat00.bin

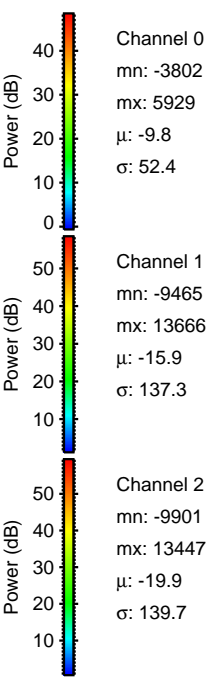
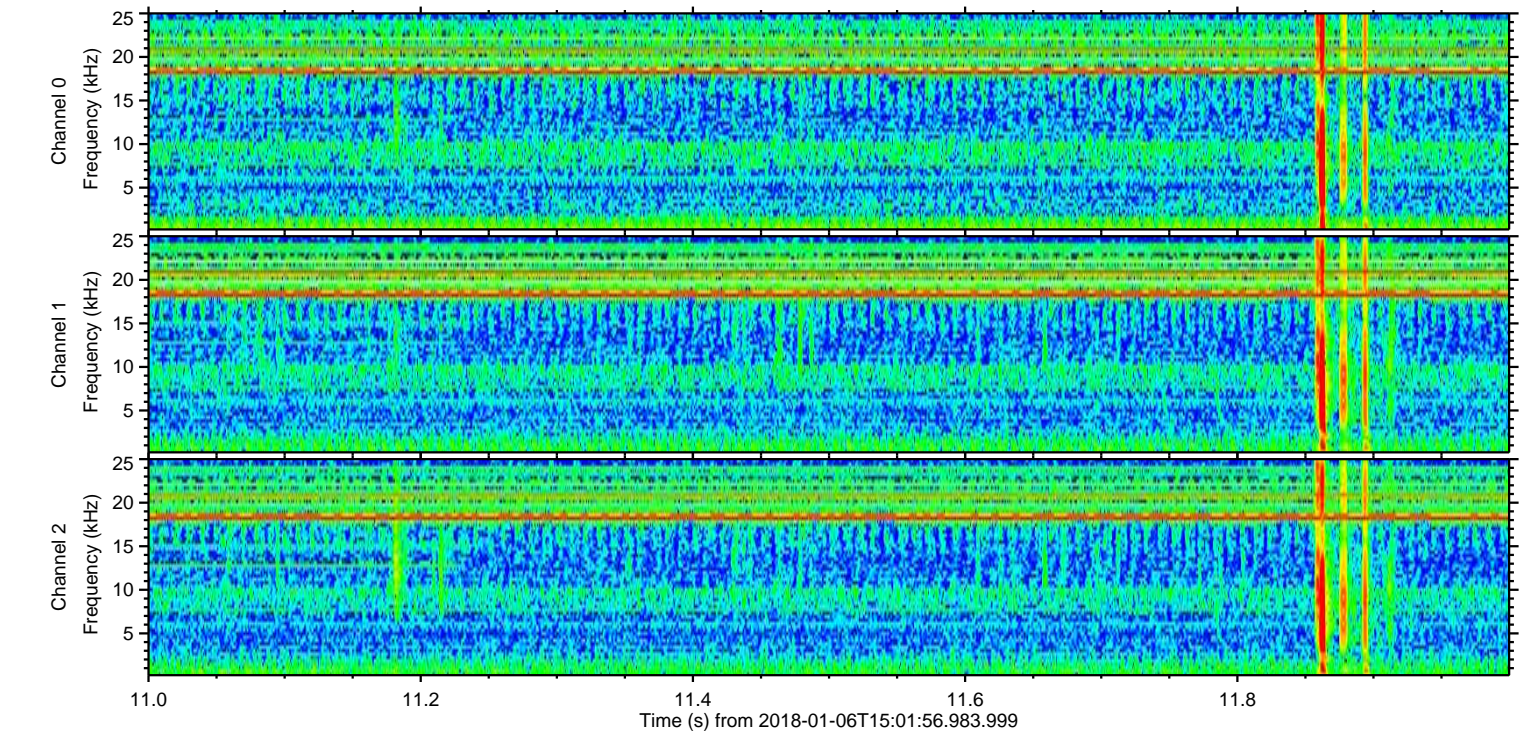
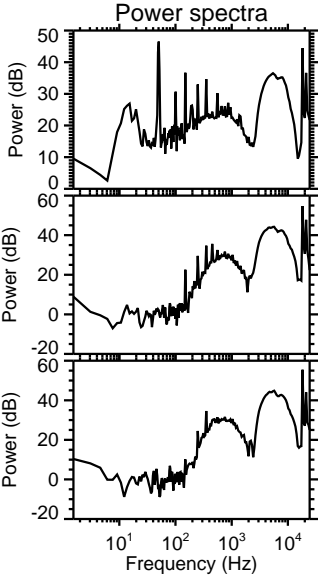
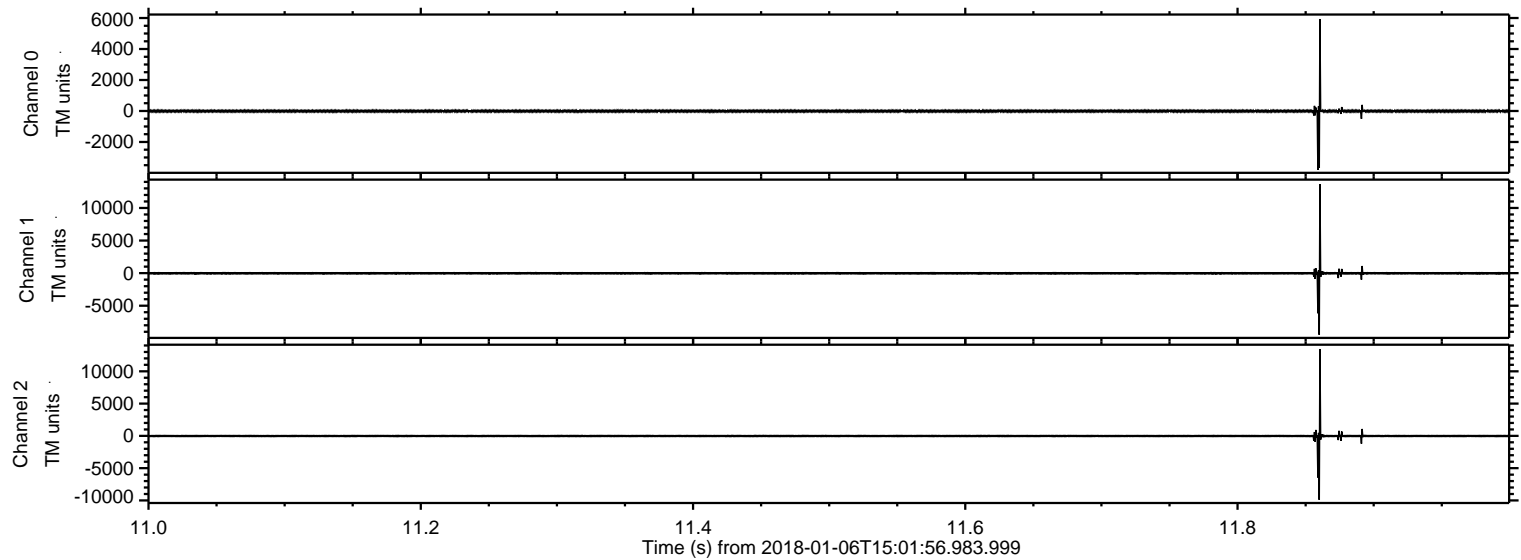


Processed Sat Jan 6 16:10:16 2018 by ELM ver.2012-10-06 from 001__elm20180106_150155__dat00.bin



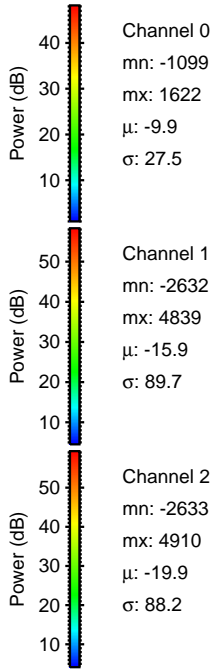
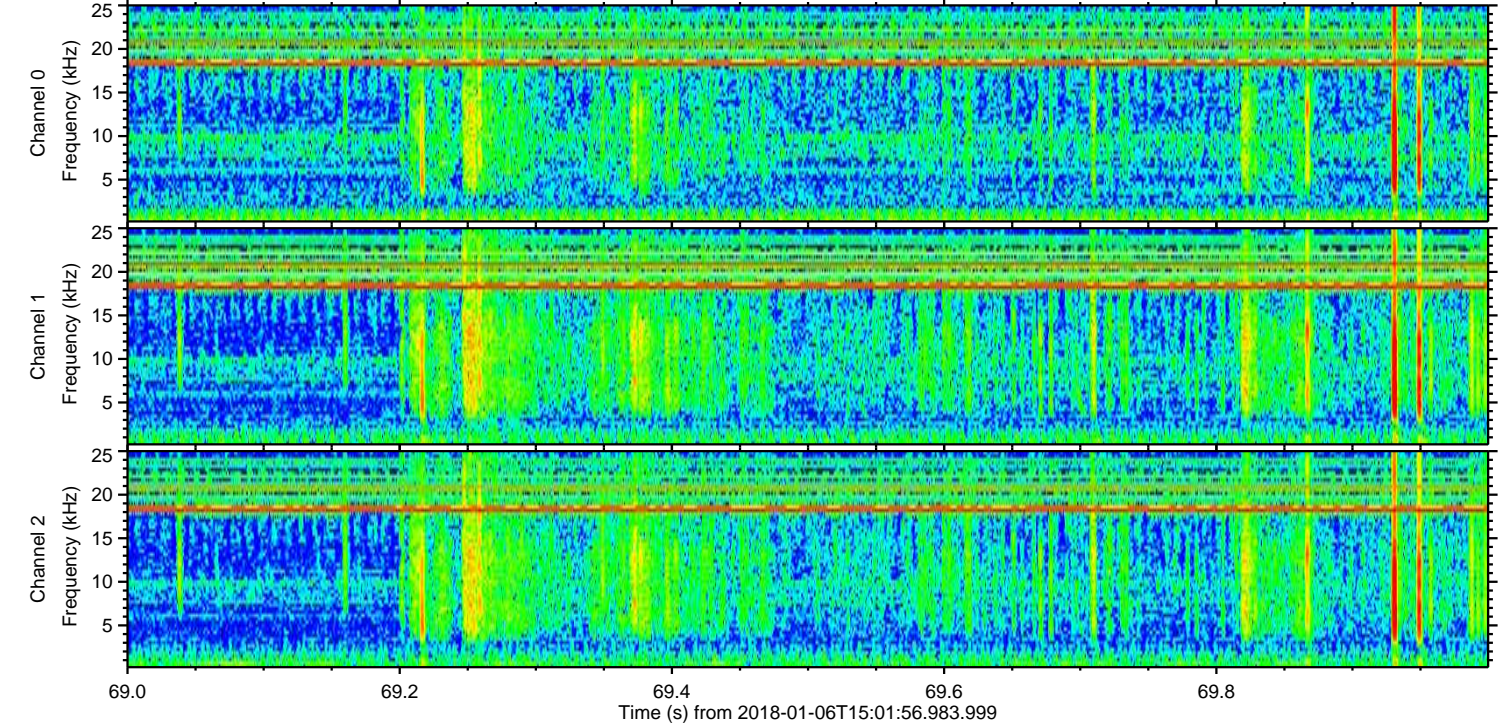
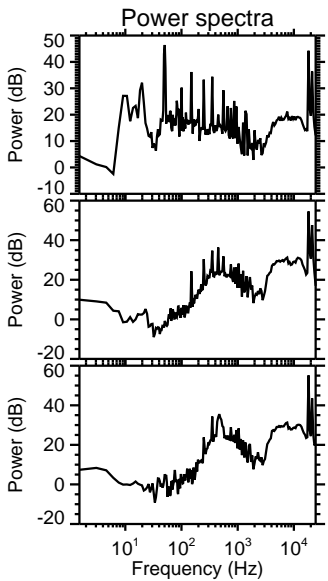
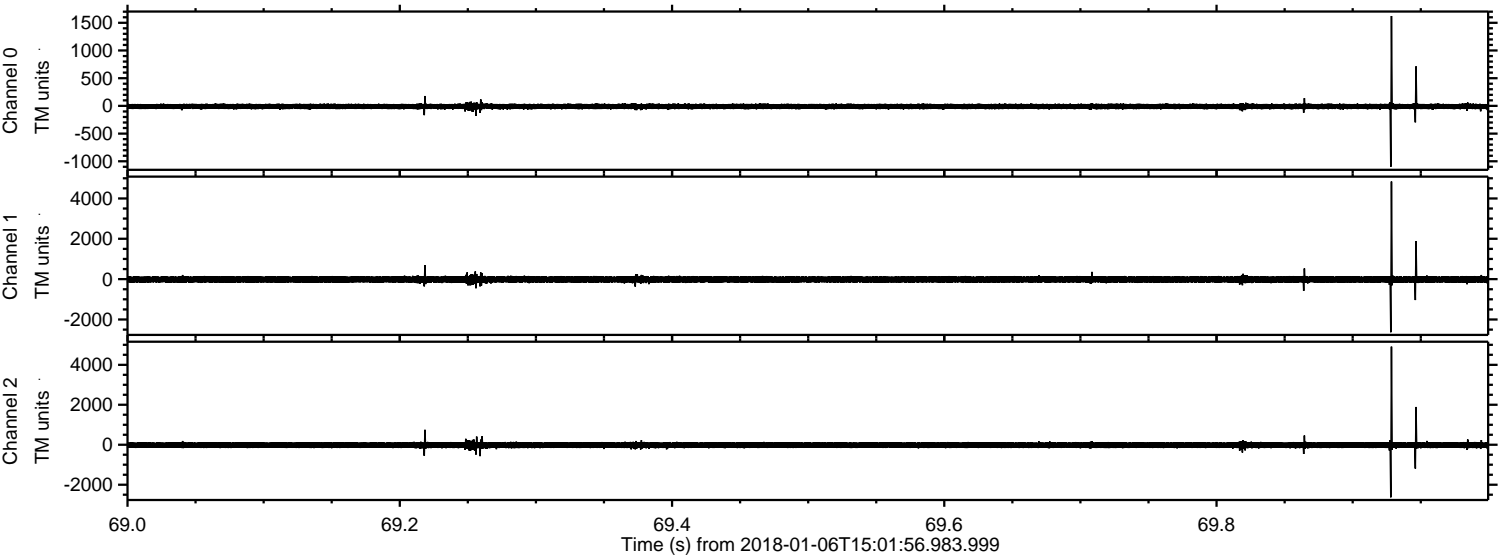
ELMAVAN 3D WAVEFORMS (Measured data sampled at 50 kHz) 51000 packets of 144 samples from 2018-01-06T15:01:56.983.999. Part 12/147

Processed Sat Jan 6 16:10:16 2018 by ELM ver.2012-10-06 from 001__elm20180106_150155__dat00.bin

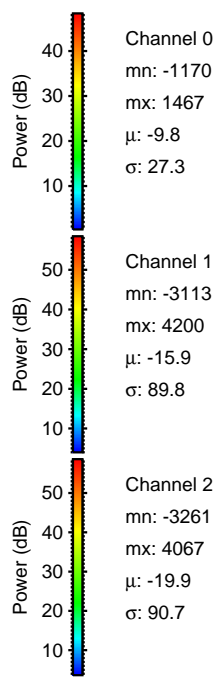
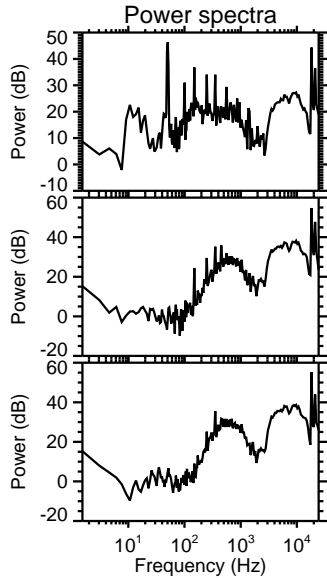
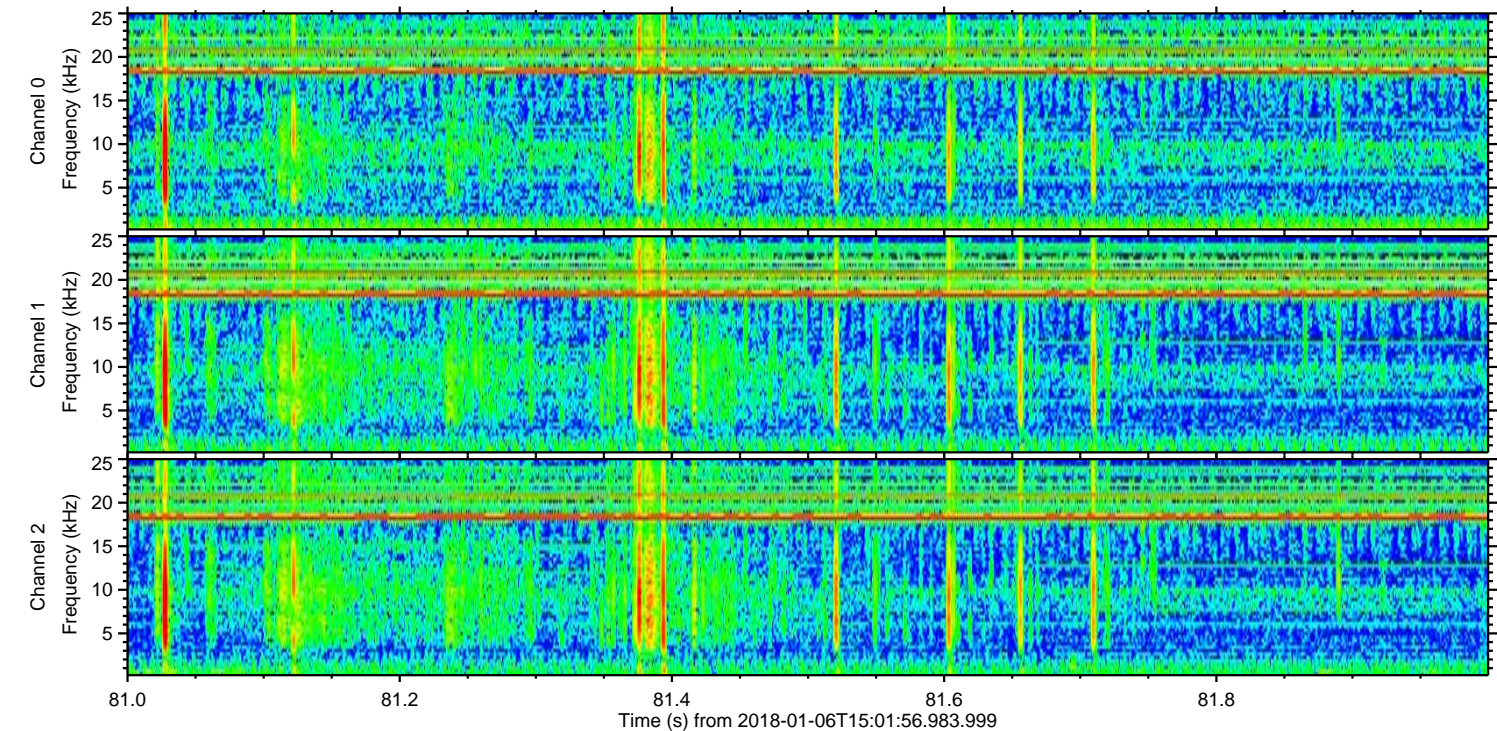
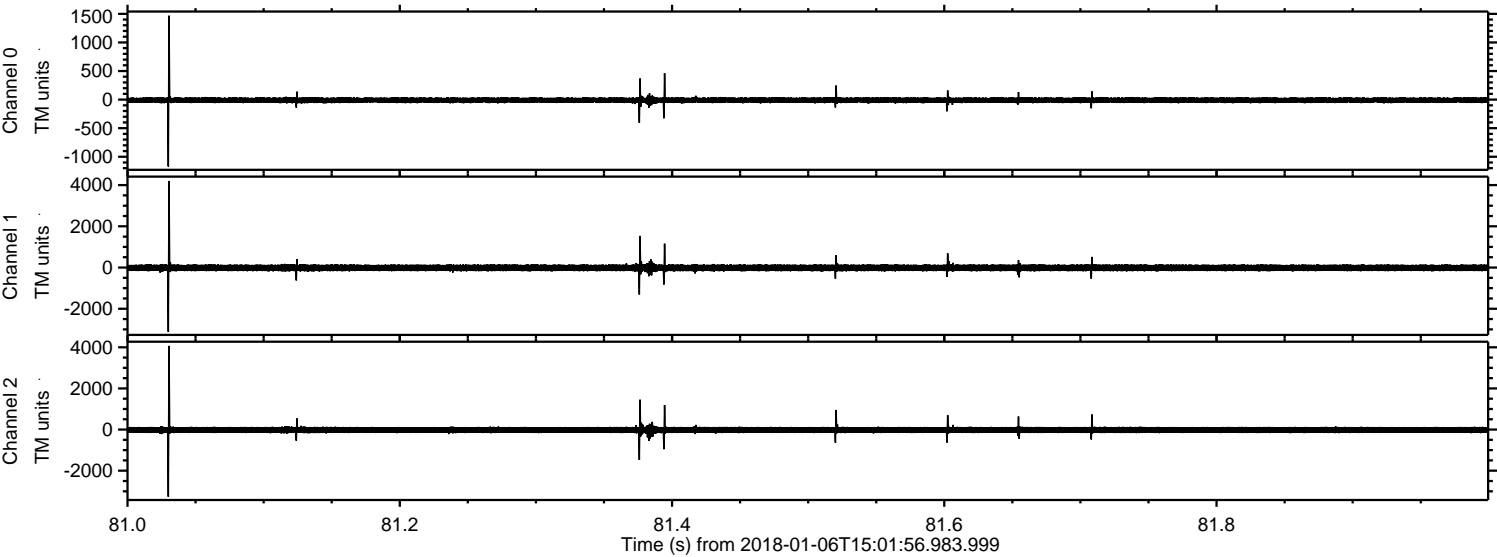


ELMAVAN 3D WAVEFORMS (Measured data sampled at 50 kHz) 51000 packets of 144 samples from 2018-01-06T15:01:56.983.999. Part 70/147

Processed Sat Jan 6 16:10:17 2018 by ELM ver.2012-10-06 from 001__elm20180106_150155__dat00.bin

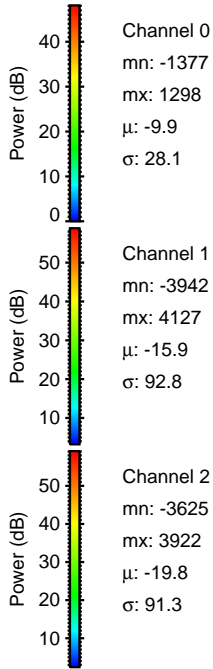
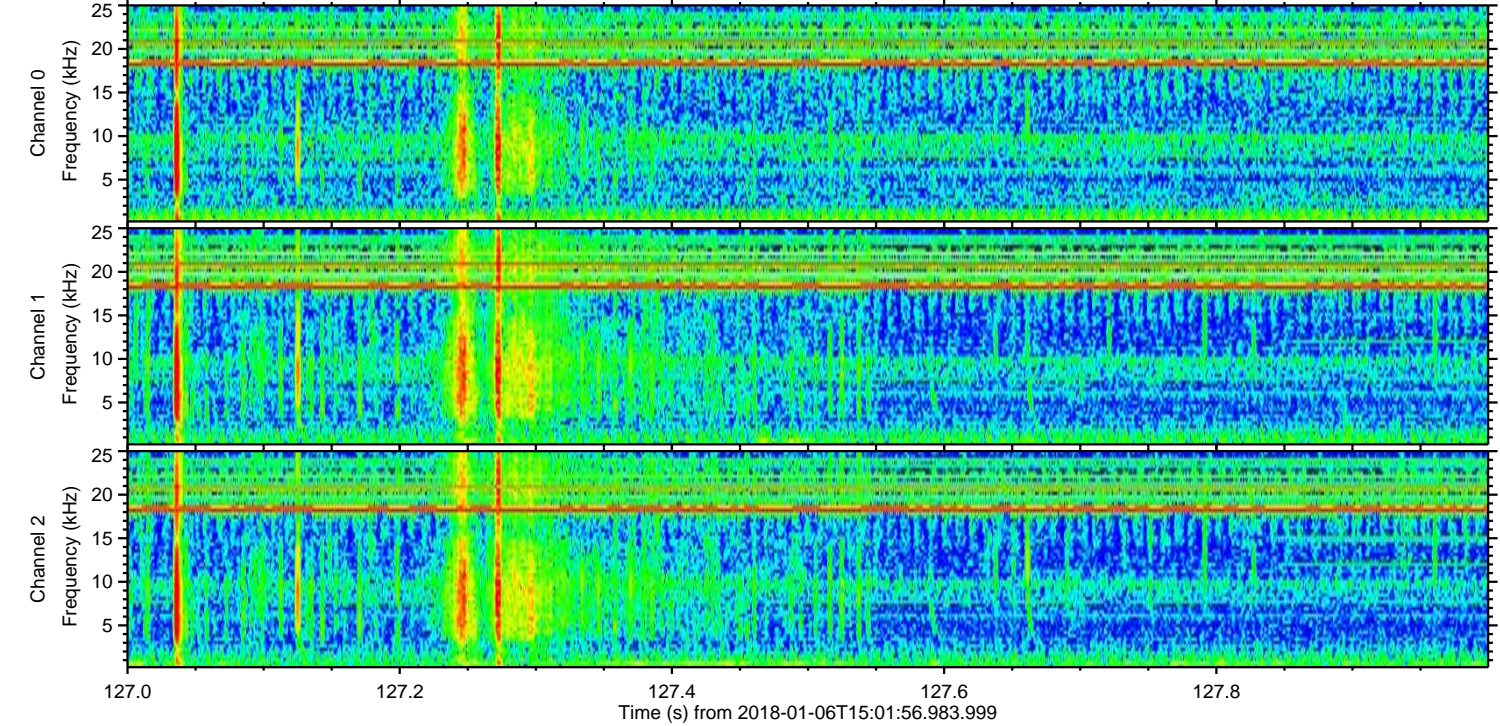
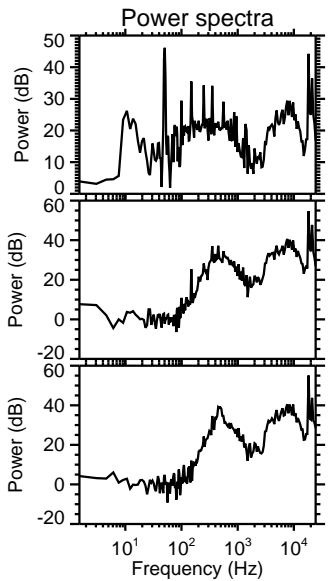
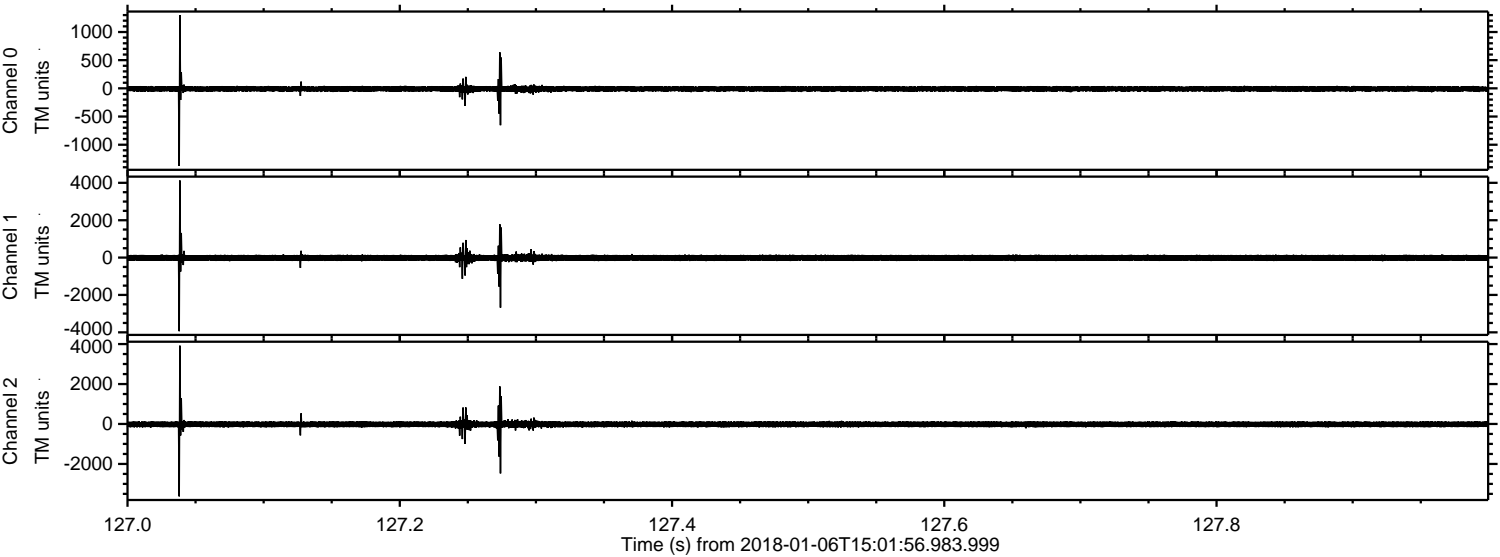


Processed Sat Jan 6 16:10:18 2018 by ELM ver.2012-10-06 from 001__elm20180106_150155__dat00.bin



ELMAVAN 3D WAVEFORMS (Measured data sampled at 50 kHz) 51000 packets of 144 samples from 2018-01-06T15:01:56.983.999. Part 128/147

Processed Sat Jan 6 16:10:19 2018 by ELM ver.2012-10-06 from 001__elm20180106_150155__dat00.bin

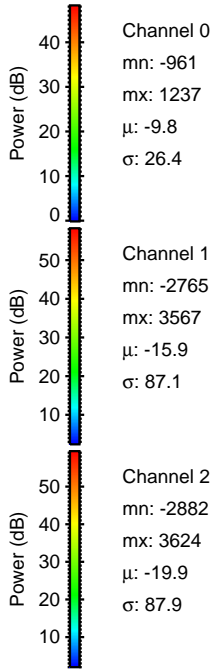
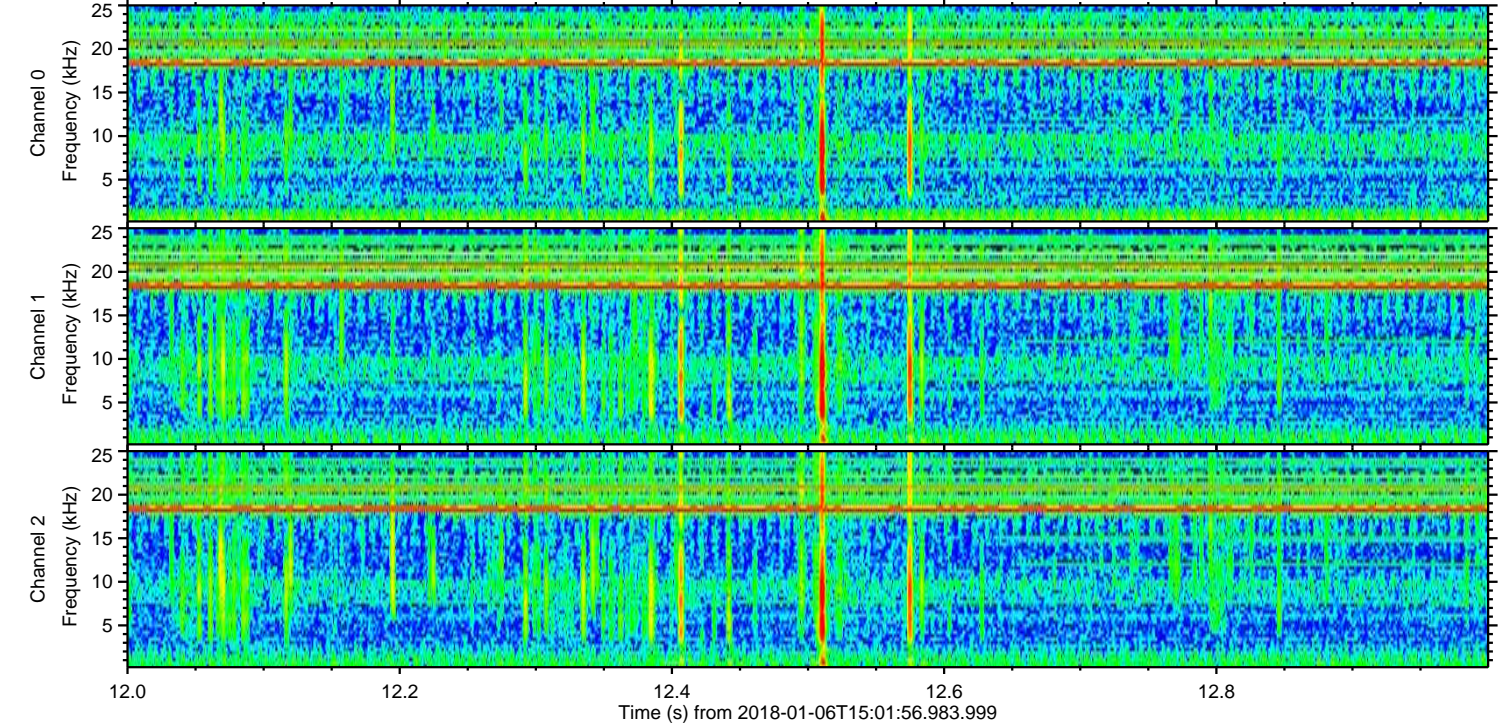
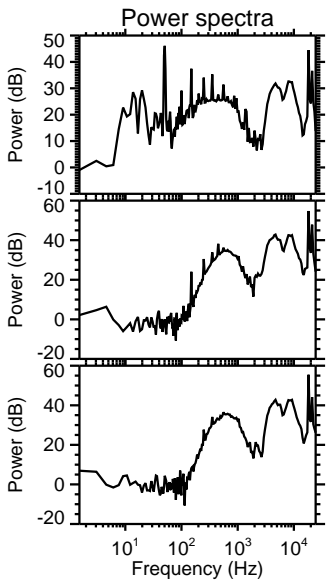
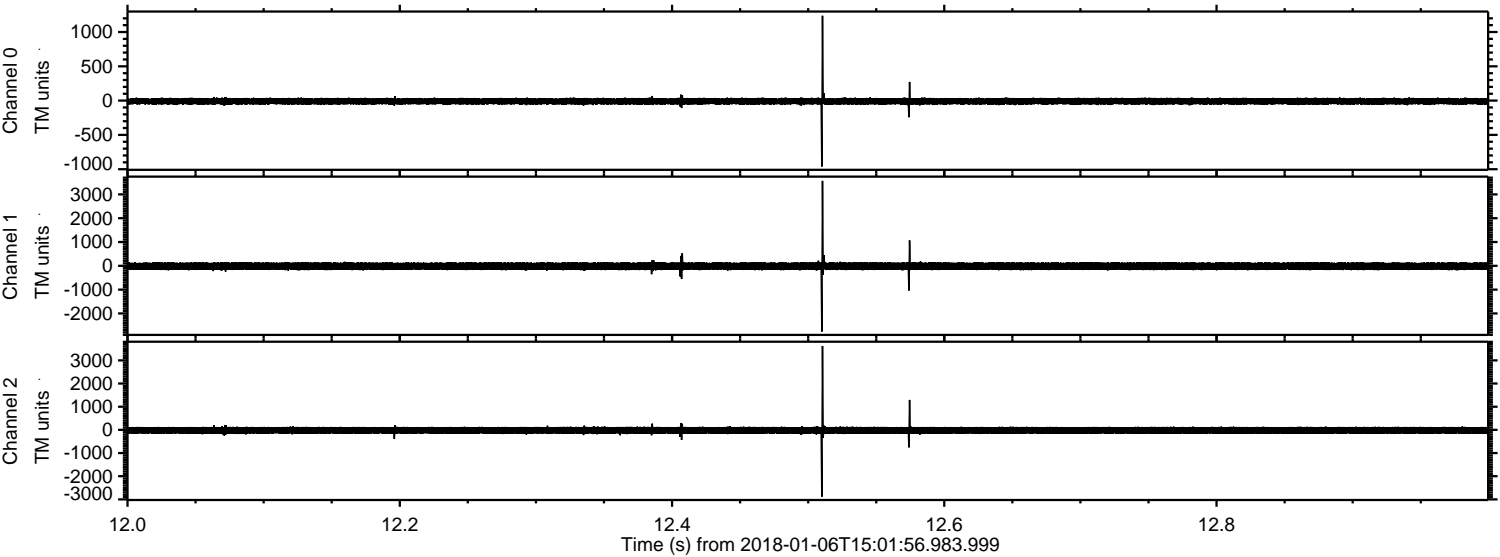


Channel 0
mn: -1377
mx: 1298
 μ : -9.9
 σ : 28.1

Channel 1
mn: -3942
mx: 4127
 μ : -15.9
 σ : 92.8

Channel 2
mn: -3625
mx: 3922
 μ : -19.8
 σ : 91.3

Processed Sat Jan 6 16:10:20 2018 by ELM ver.2012-10-06 from 001__elm20180106_150155__dat00.bin

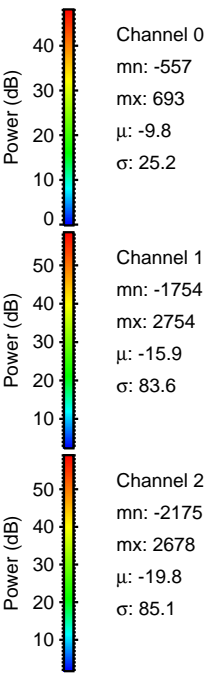
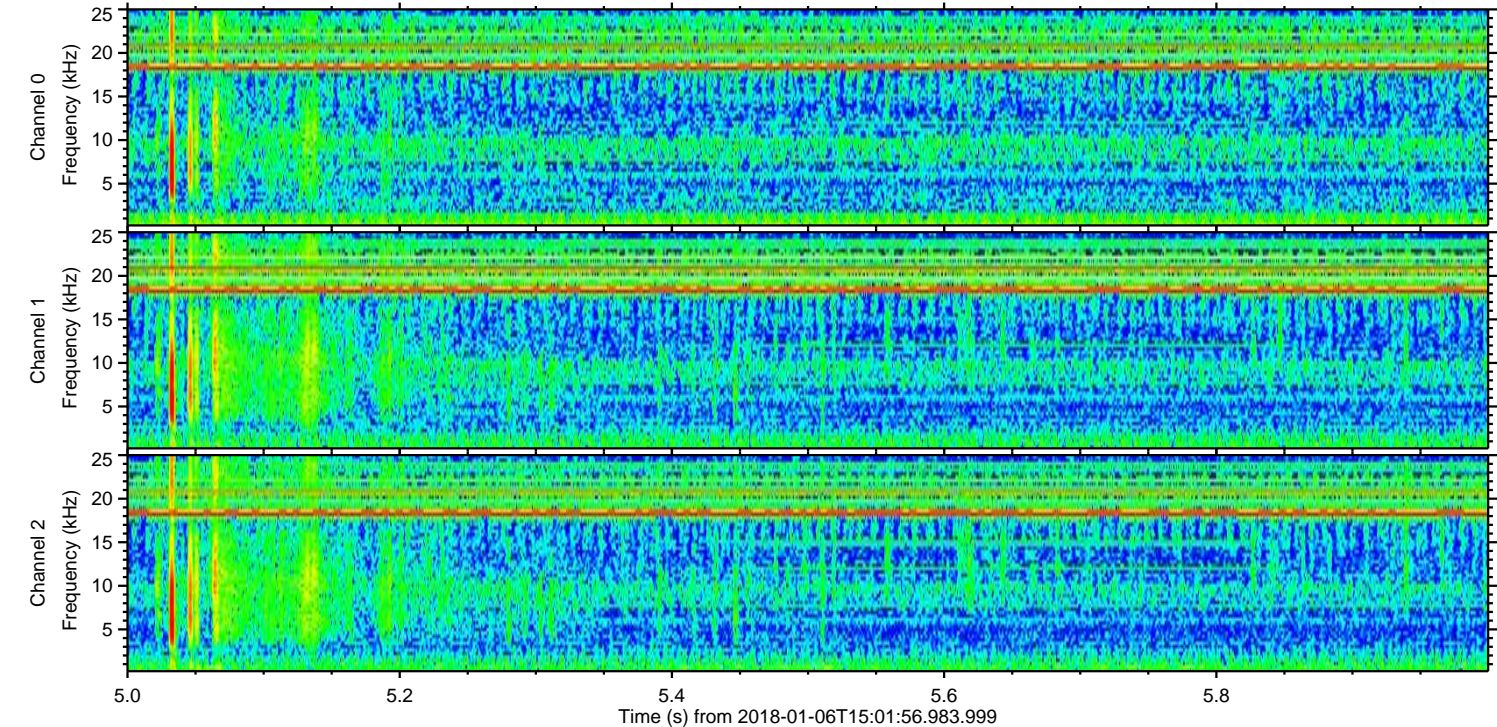
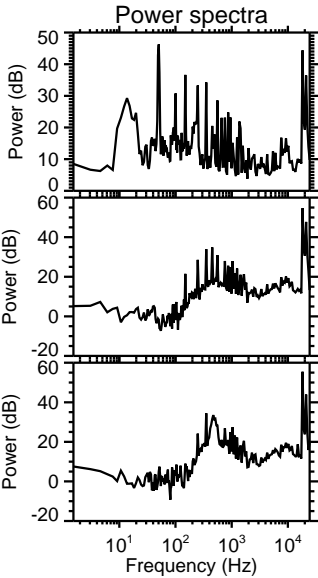
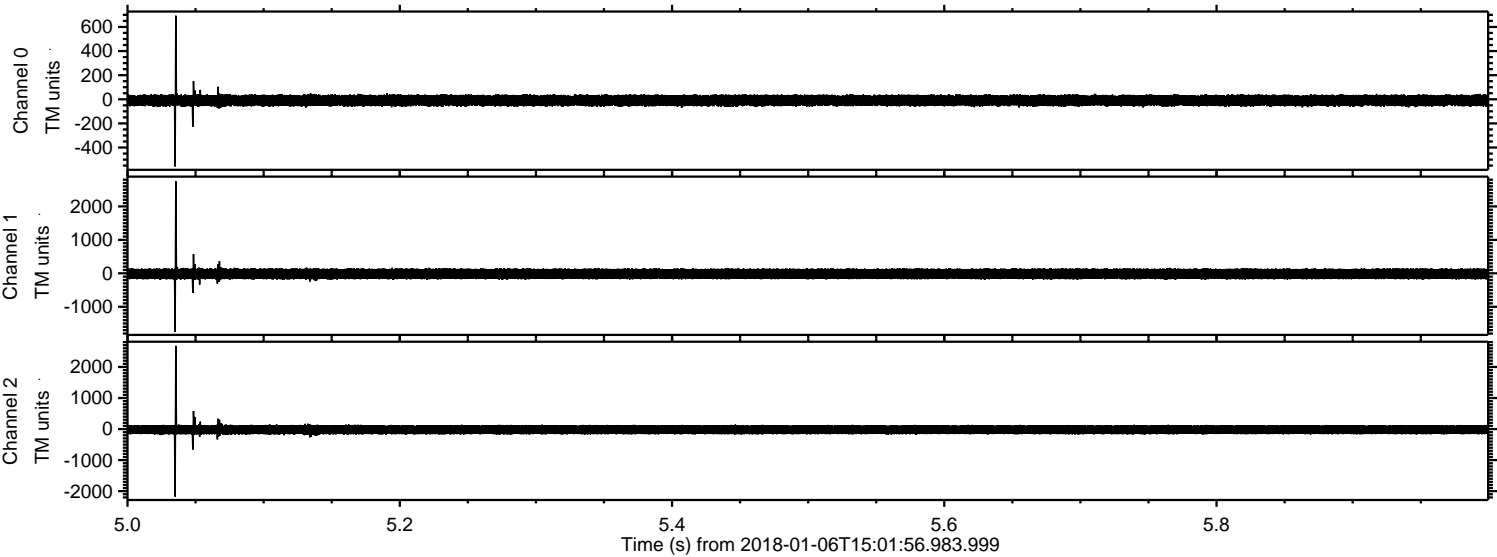


Channel 0
mn: -961
mx: 1237
 μ : -9.8
 σ : 26.4

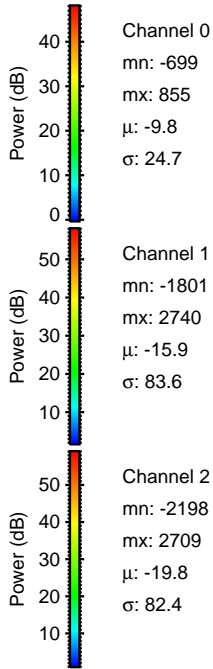
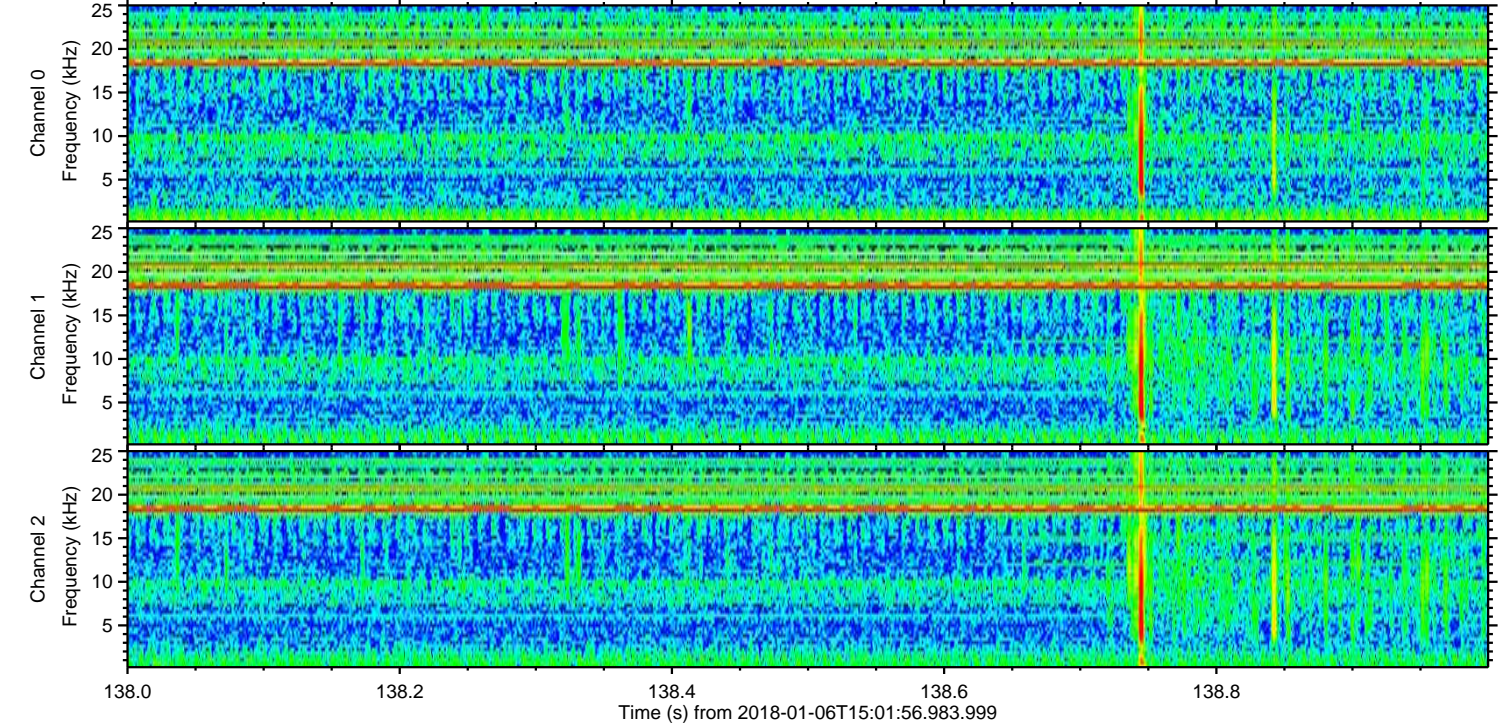
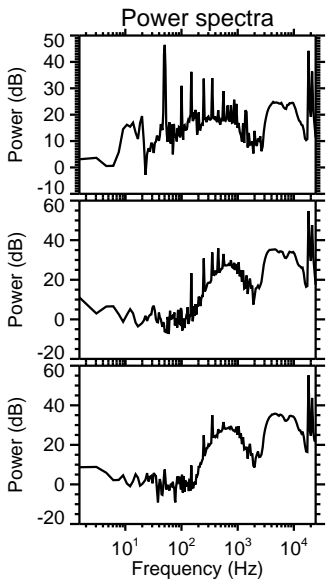
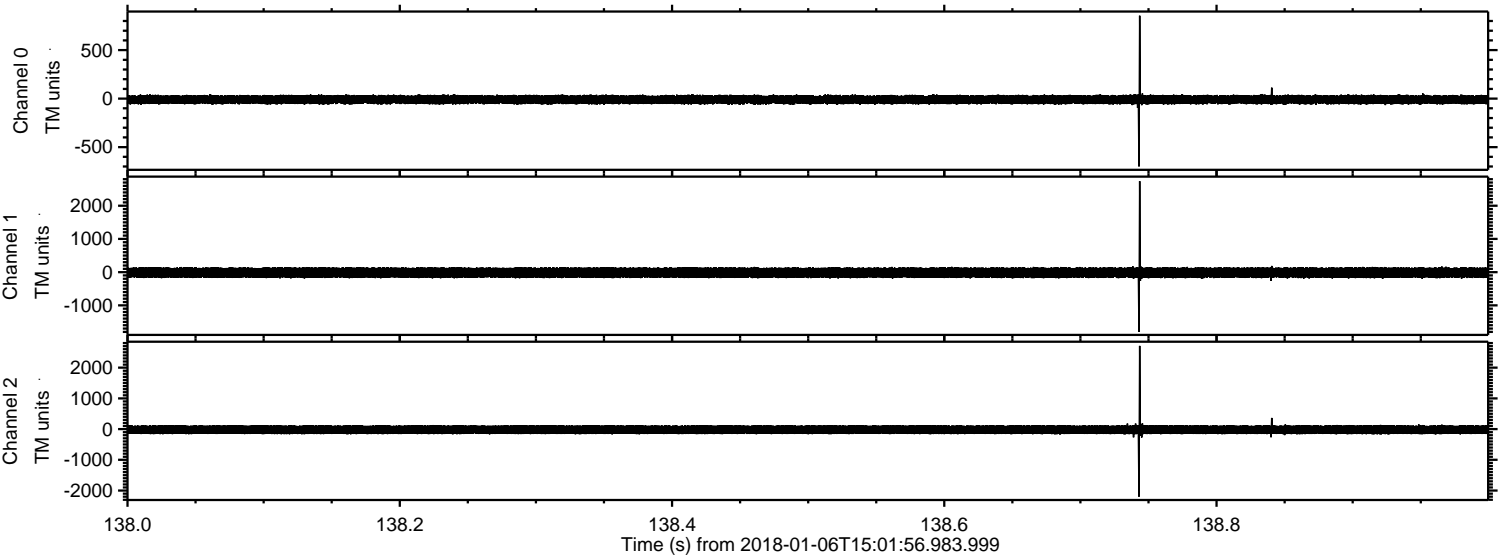
Channel 1
mn: -2765
mx: 3567
 μ : -15.9
 σ : 87.1

Channel 2
mn: -2882
mx: 3624
 μ : -19.9
 σ : 87.9

Processed Sat Jan 6 16:10:20 2018 by ELM ver.2012-10-06 from 001__elm20180106_150155__dat00.bin



Processed Sat Jan 6 16:10:21 2018 by ELM ver.2012-10-06 from 001__elm20180106_150155__dat00.bin



Processed Sat Jan 6 16:10:22 2018 by ELM ver.2012-10-06 from 001__elm20180106_150155__dat00.bin

