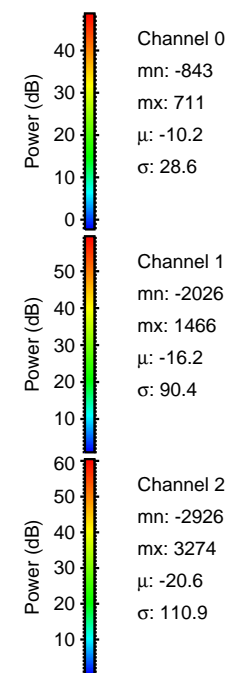
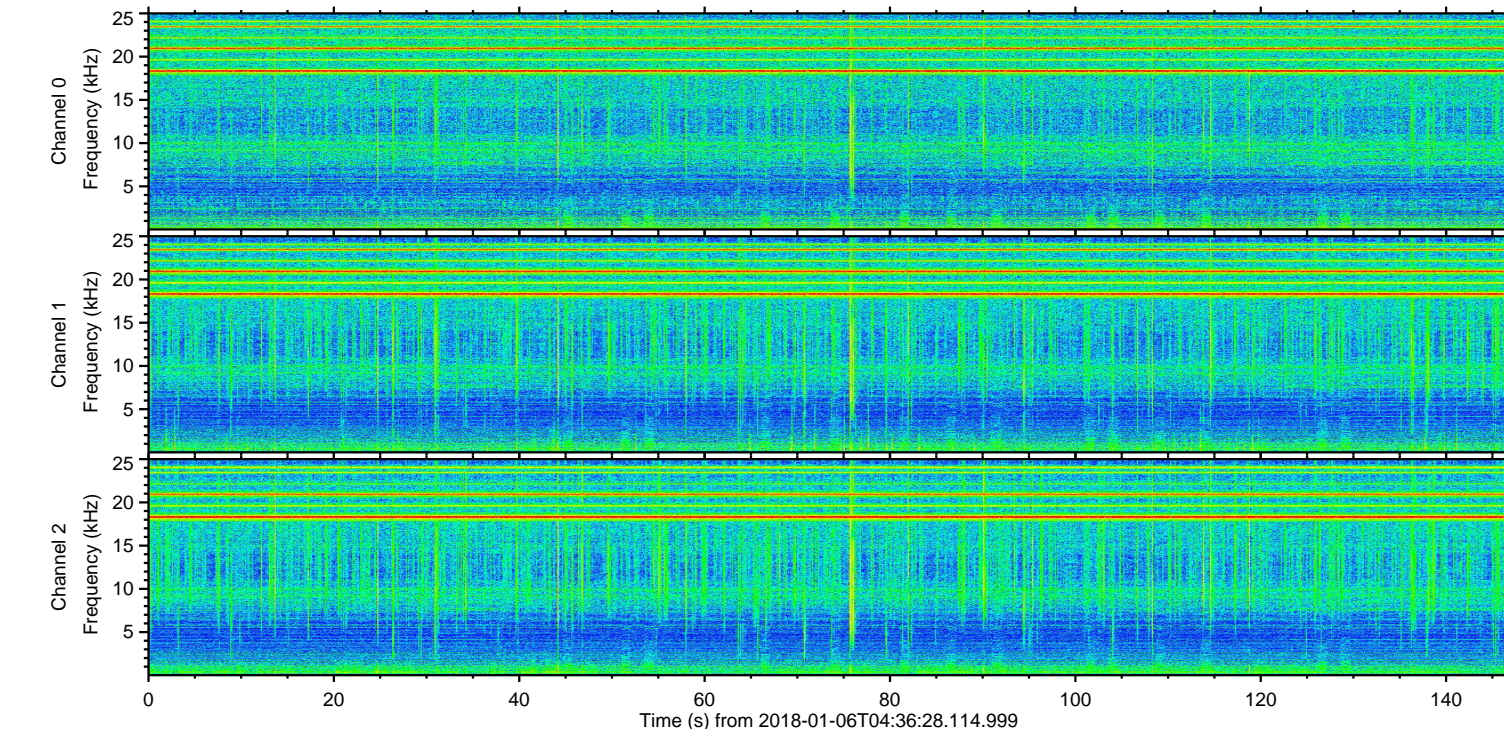
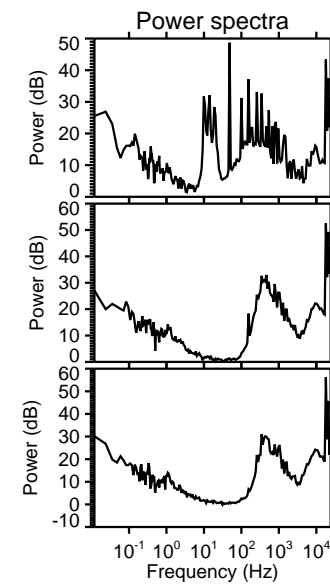
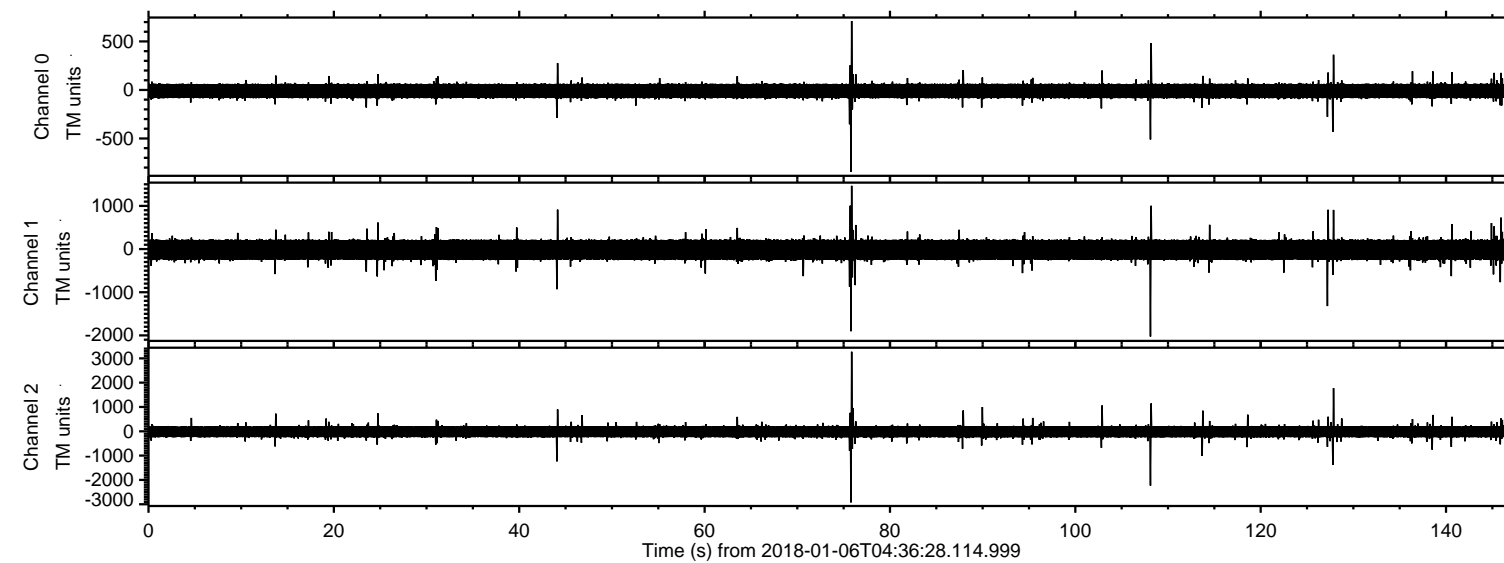
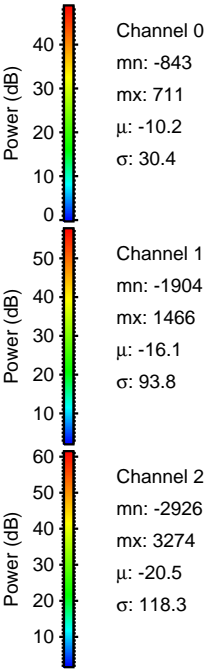
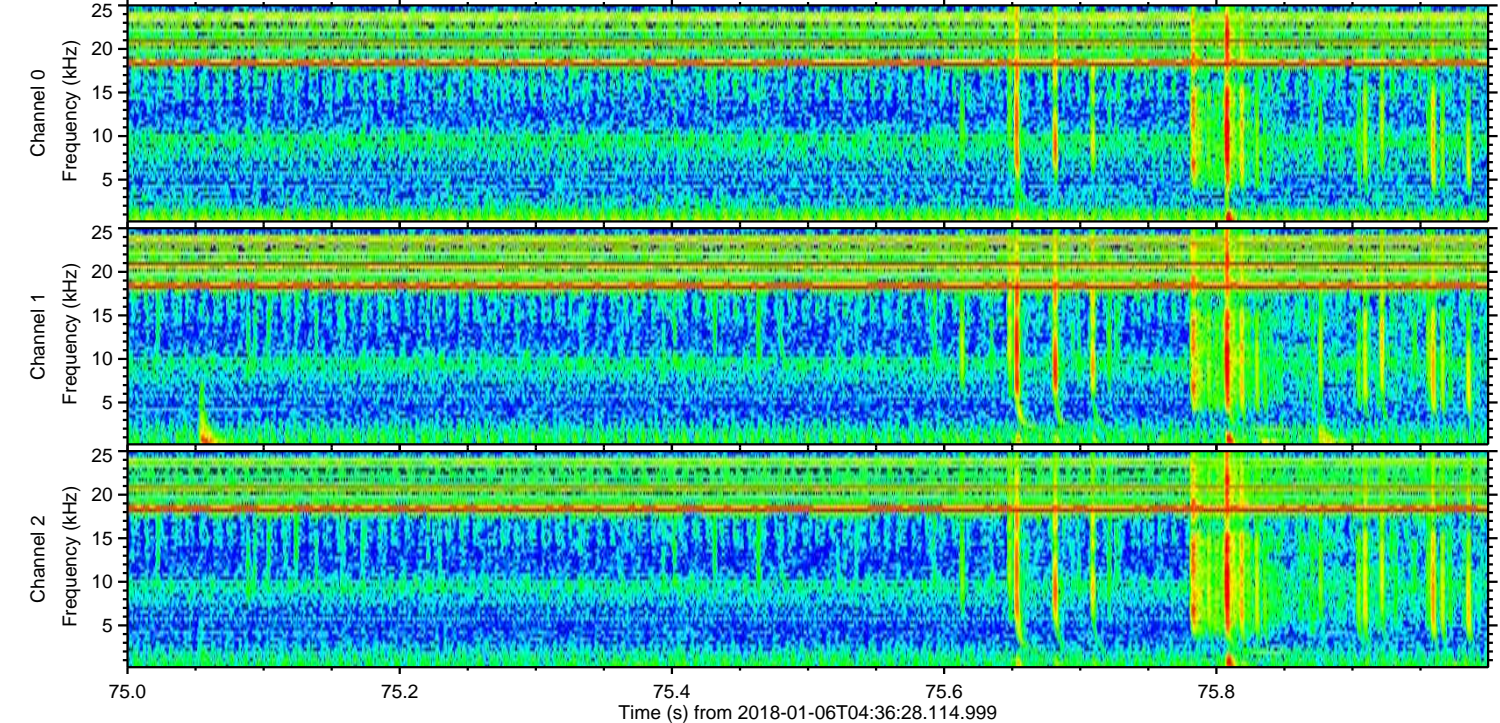
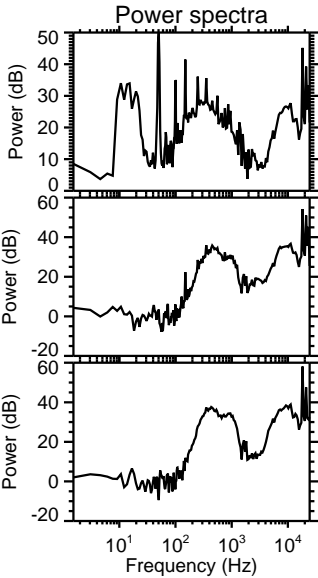
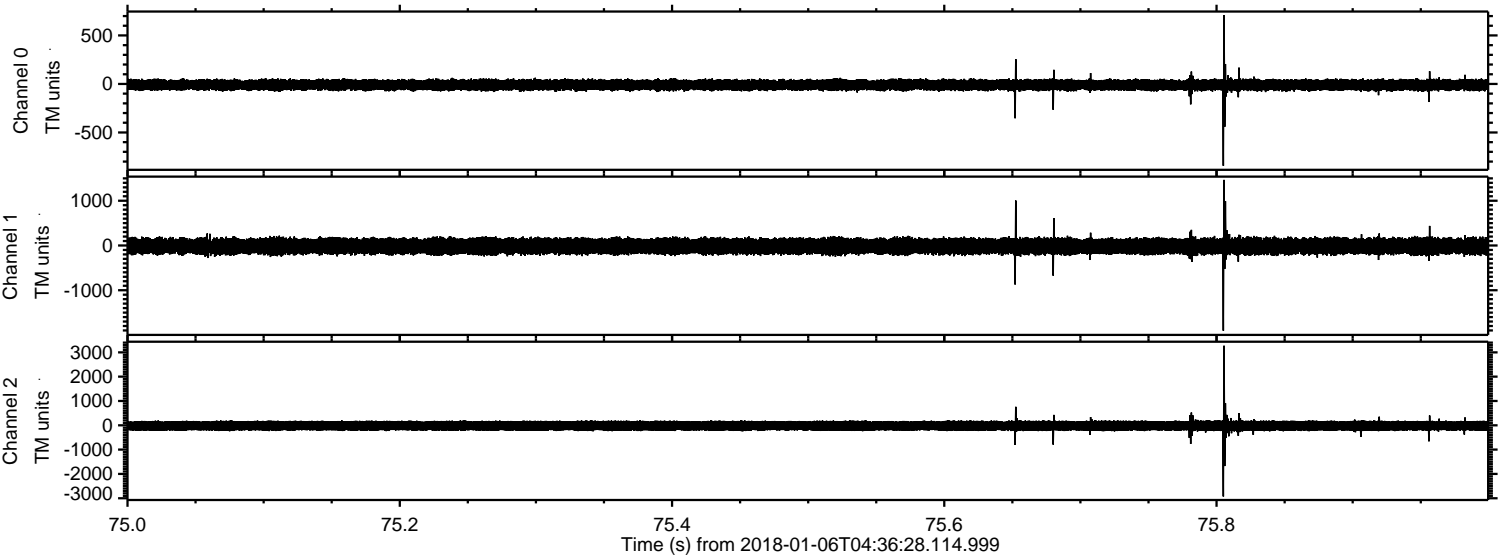


ELMAVAN 3D WAVEFORMS (Measured data sampled at 50 kHz) 51000 packets of 144 samples from 2018-01-06T04:36:28.114.999.

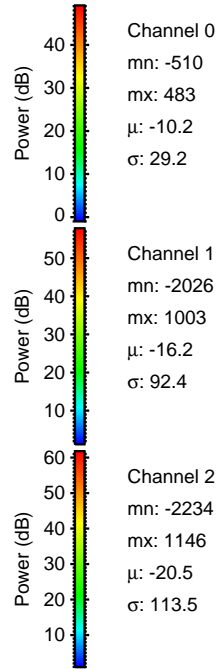
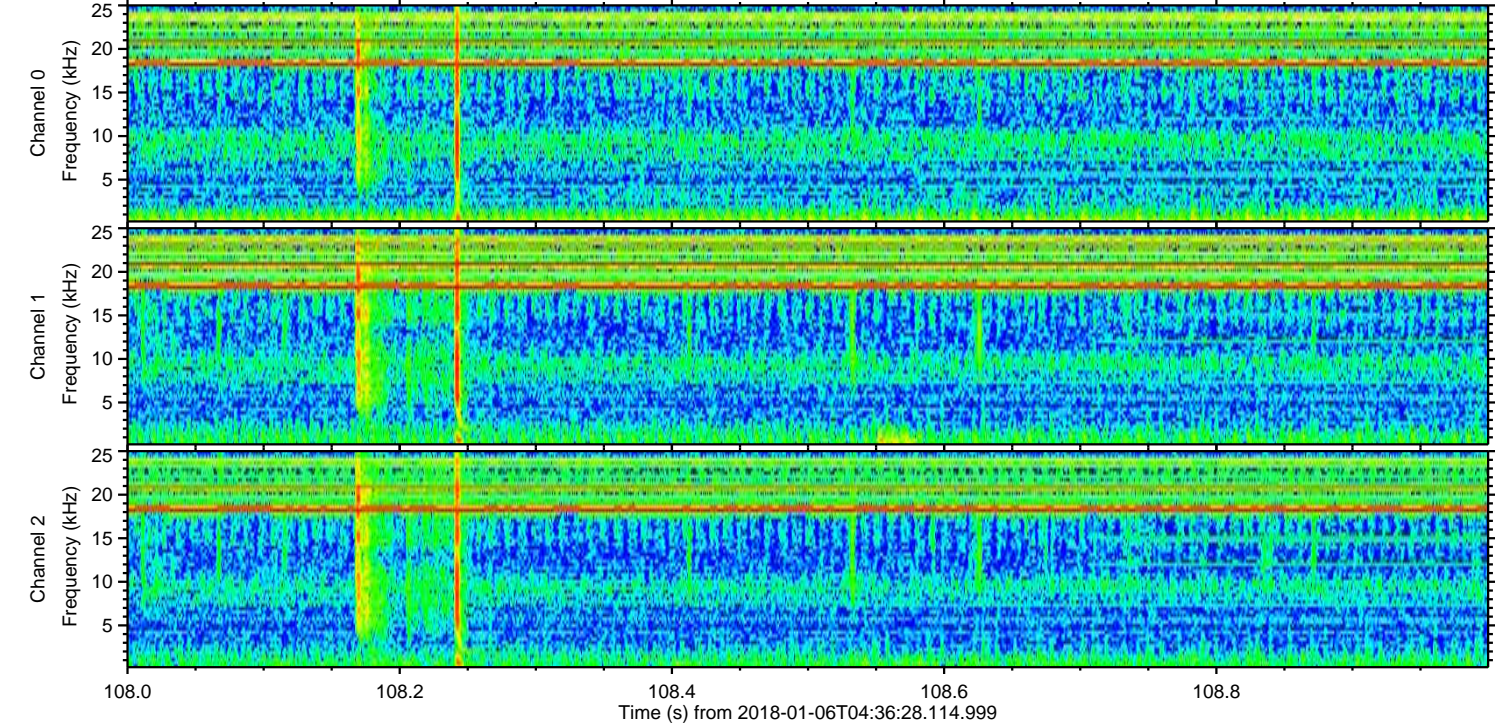
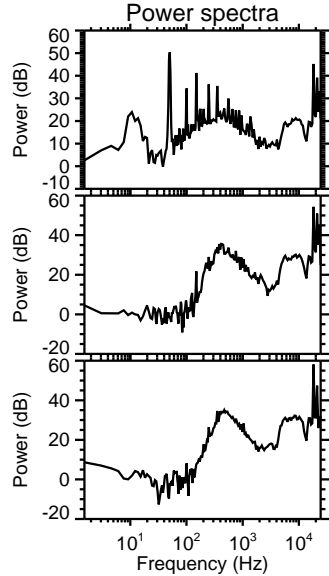
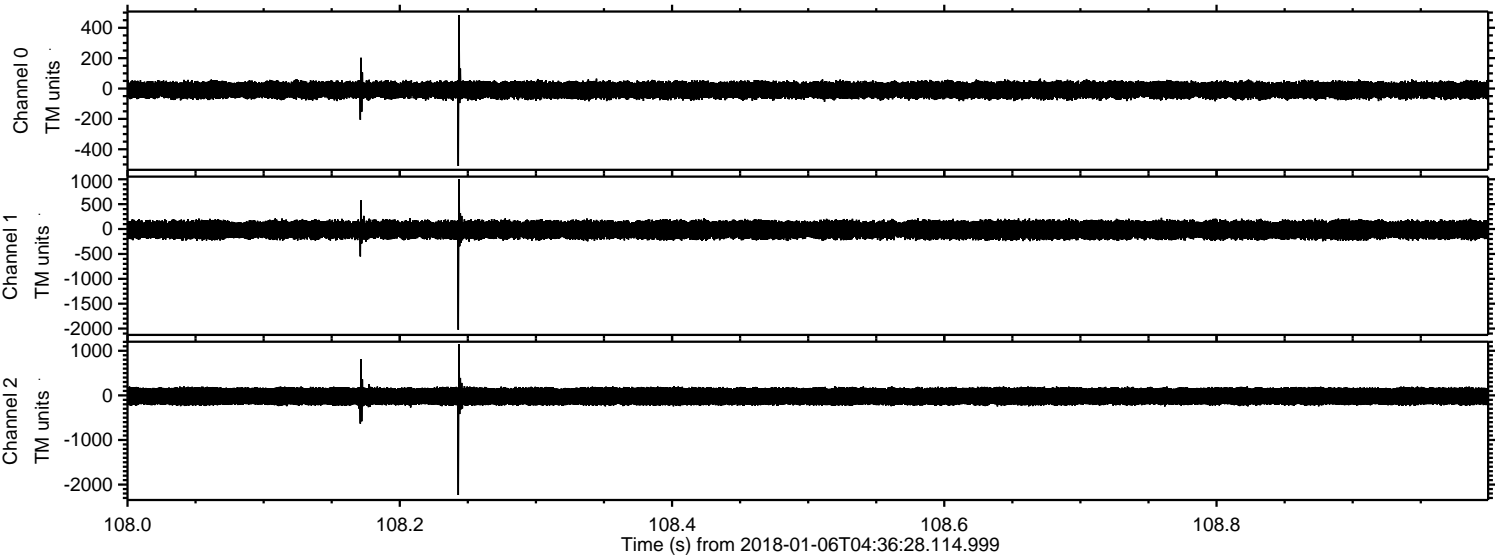
Processed Sat Jan 6 05:43:55 2018 by ELM ver.2012-10-06 from 001__elm20180106_043627__dat00.bin



Processed Sat Jan 6 05:44:03 2018 by ELM ver.2012-10-06 from 001__elm20180106_043627__dat00.bin

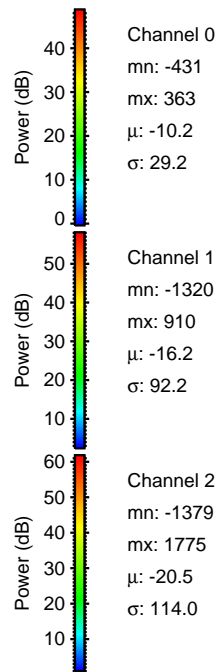
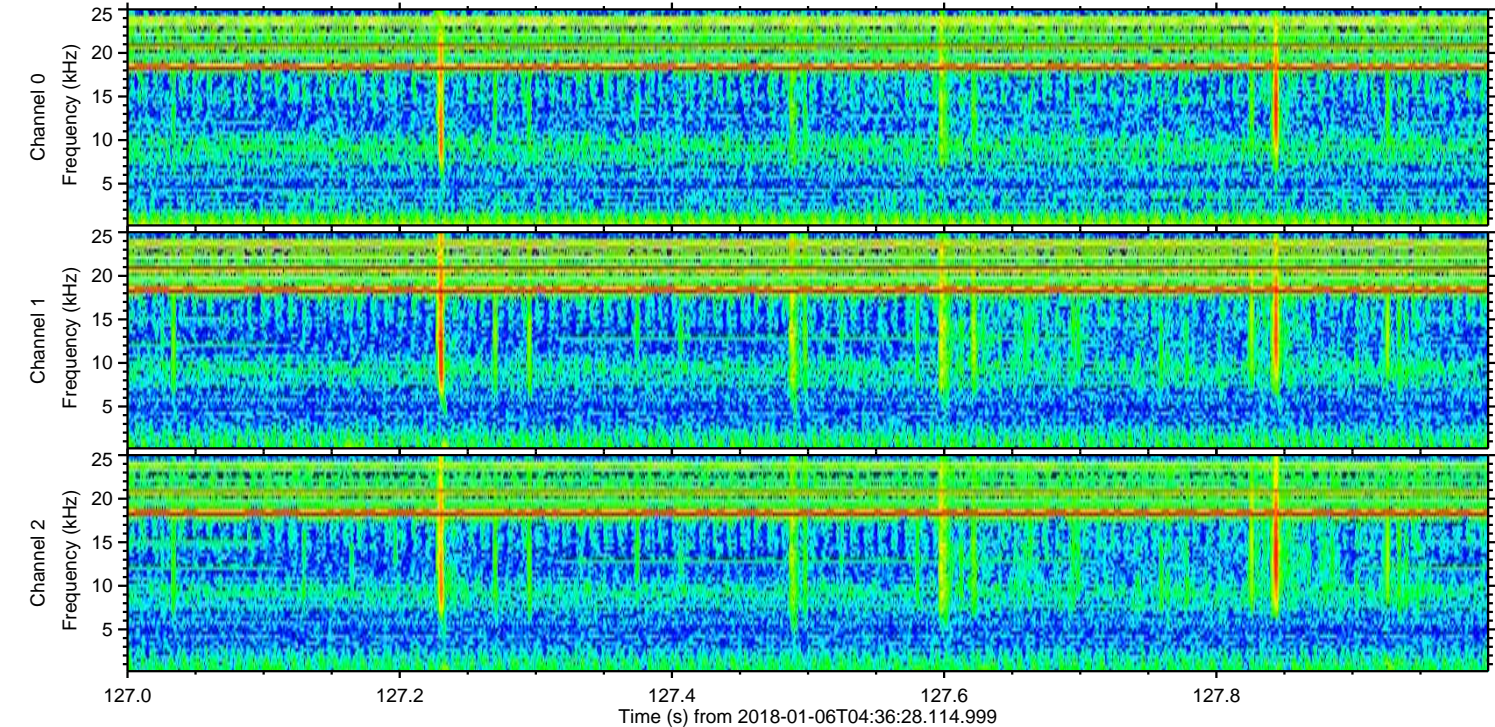
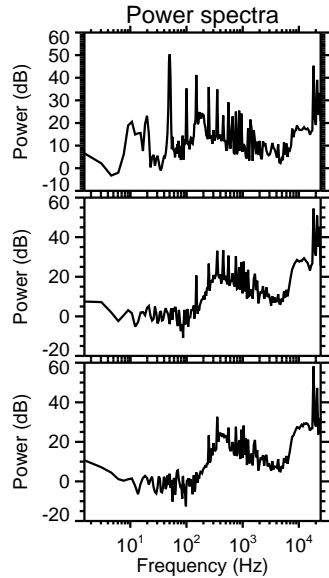
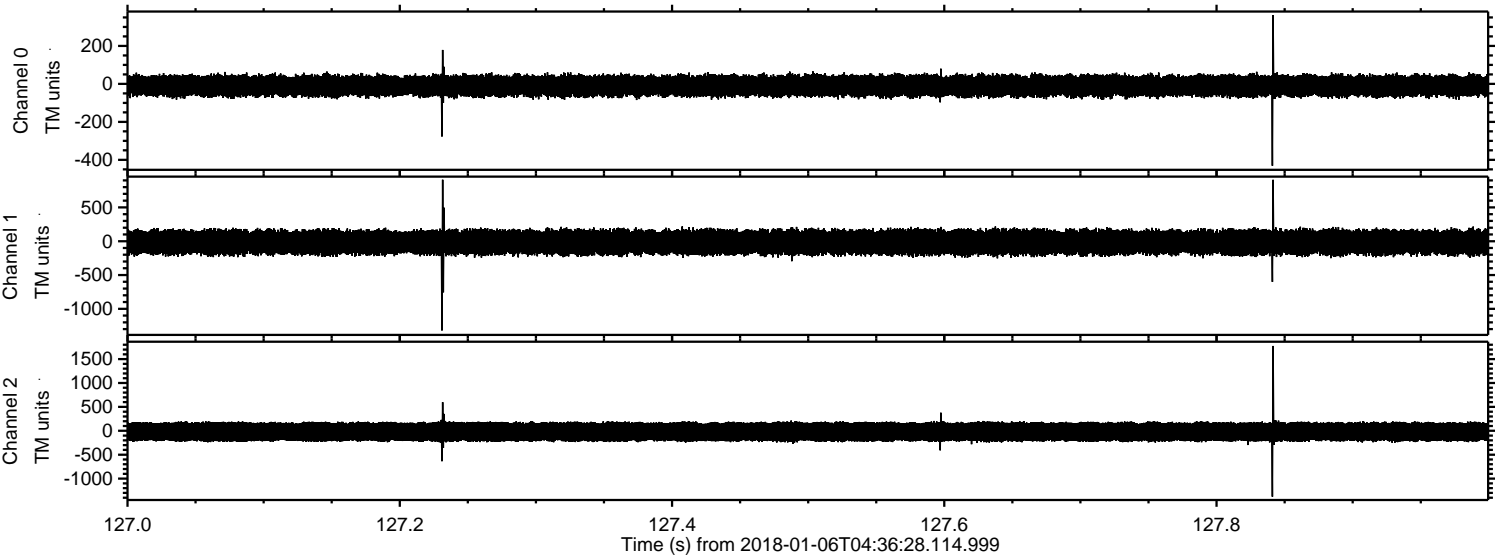


Processed Sat Jan 6 05:44:03 2018 by ELM ver.2012-10-06 from 001__elm20180106_043627__dat00.bin

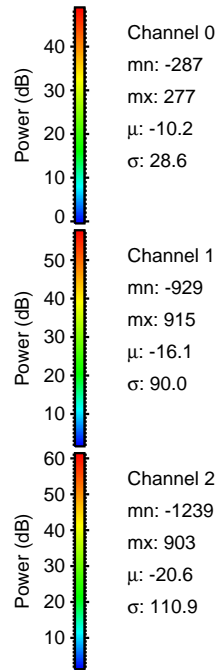
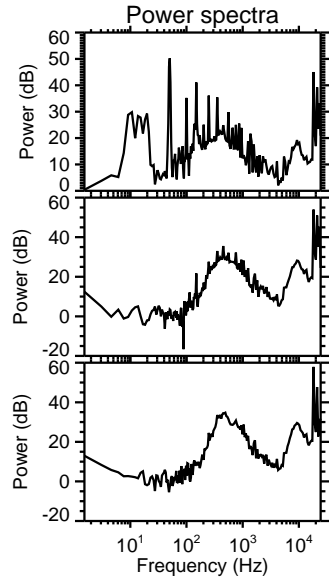
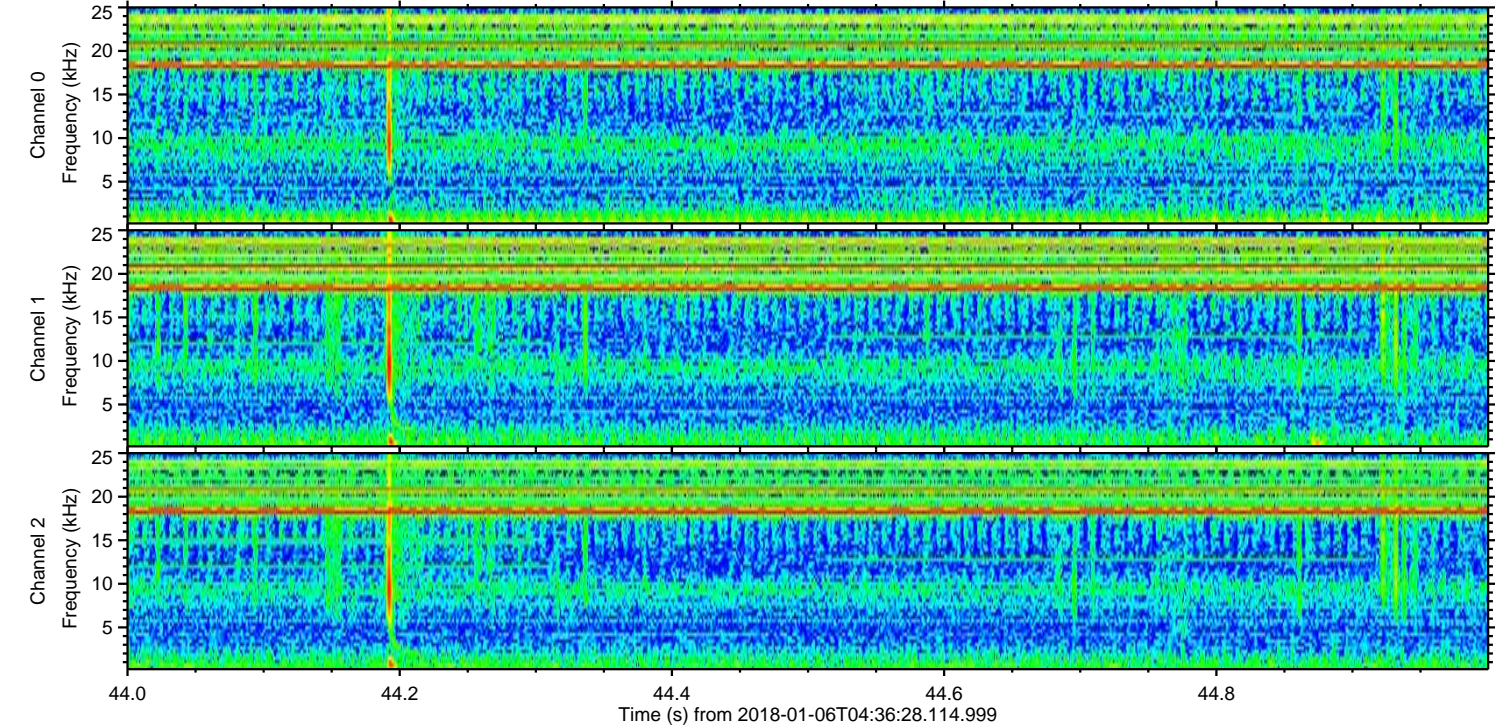
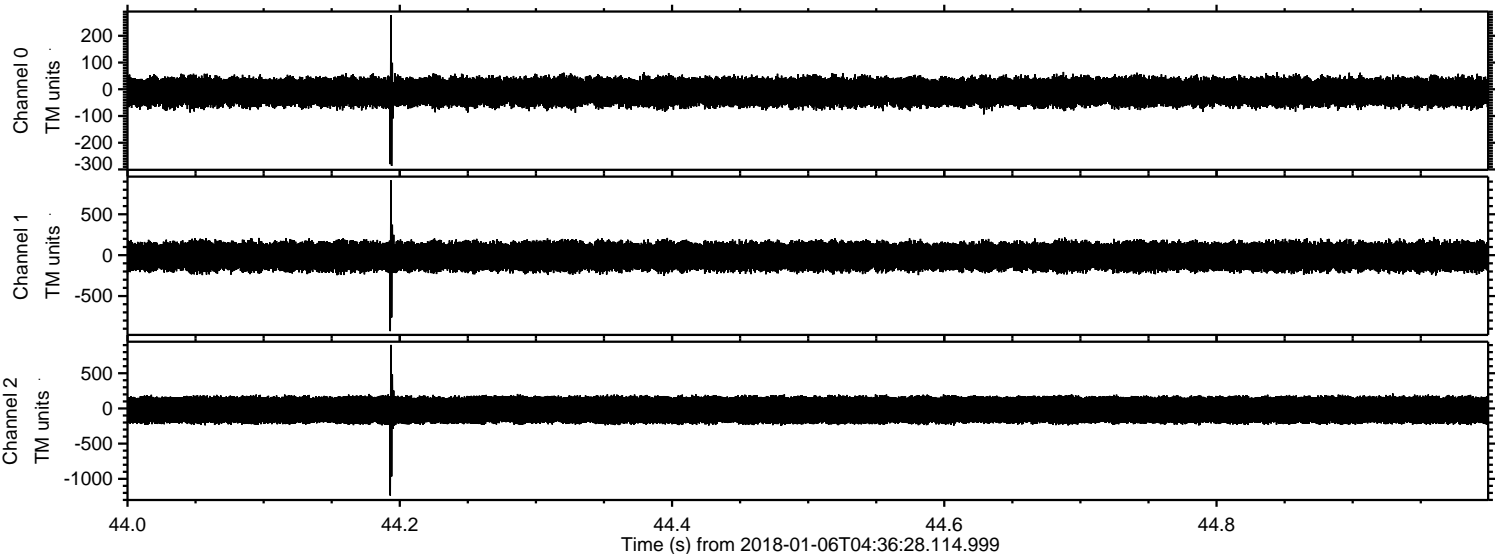


ELMAVAN 3D WAVEFORMS (Measured data sampled at 50 kHz) 51000 packets of 144 samples from 2018-01-06T04:36:28.114.999. Part 128/147

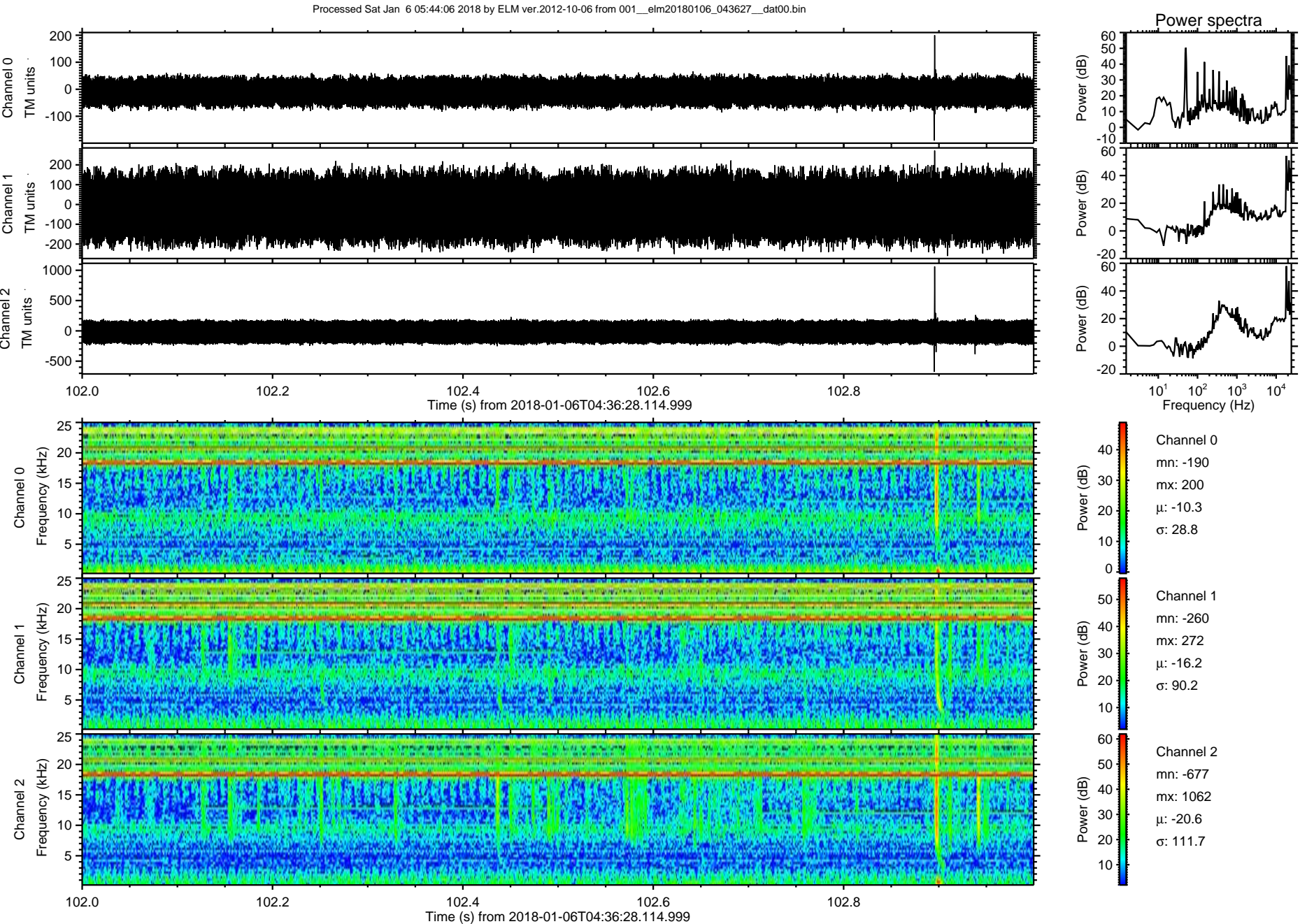
Processed Sat Jan 6 05:44:04 2018 by ELM ver.2012-10-06 from 001__elm20180106_043627__dat00.bin



Processed Sat Jan 6 05:44:05 2018 by ELM ver.2012-10-06 from 001__elm20180106_043627__dat00.bin

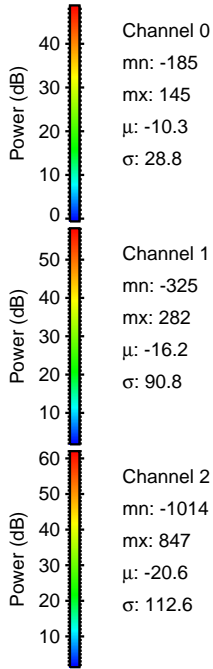
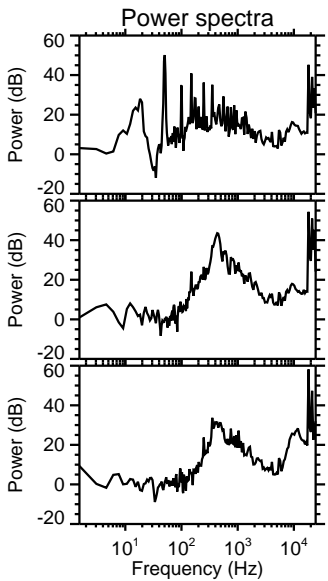
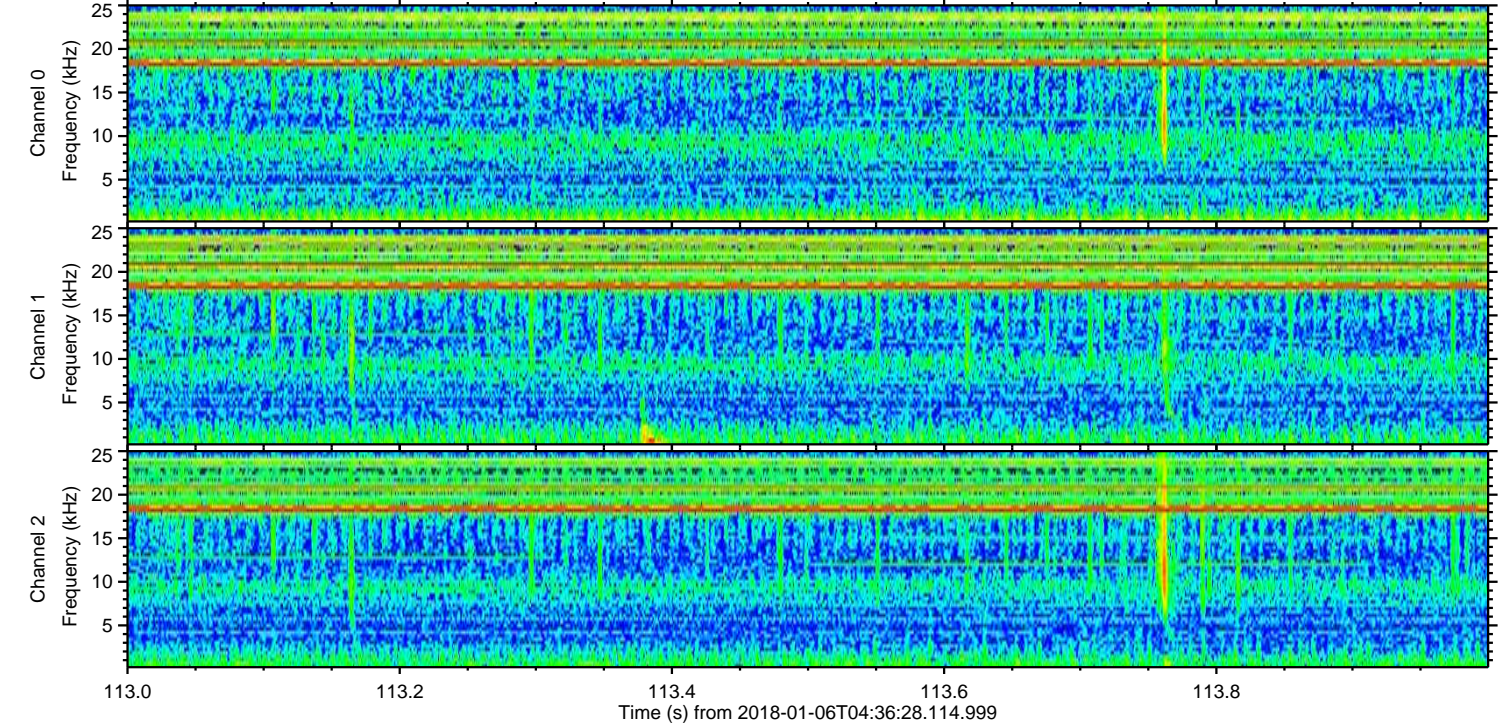
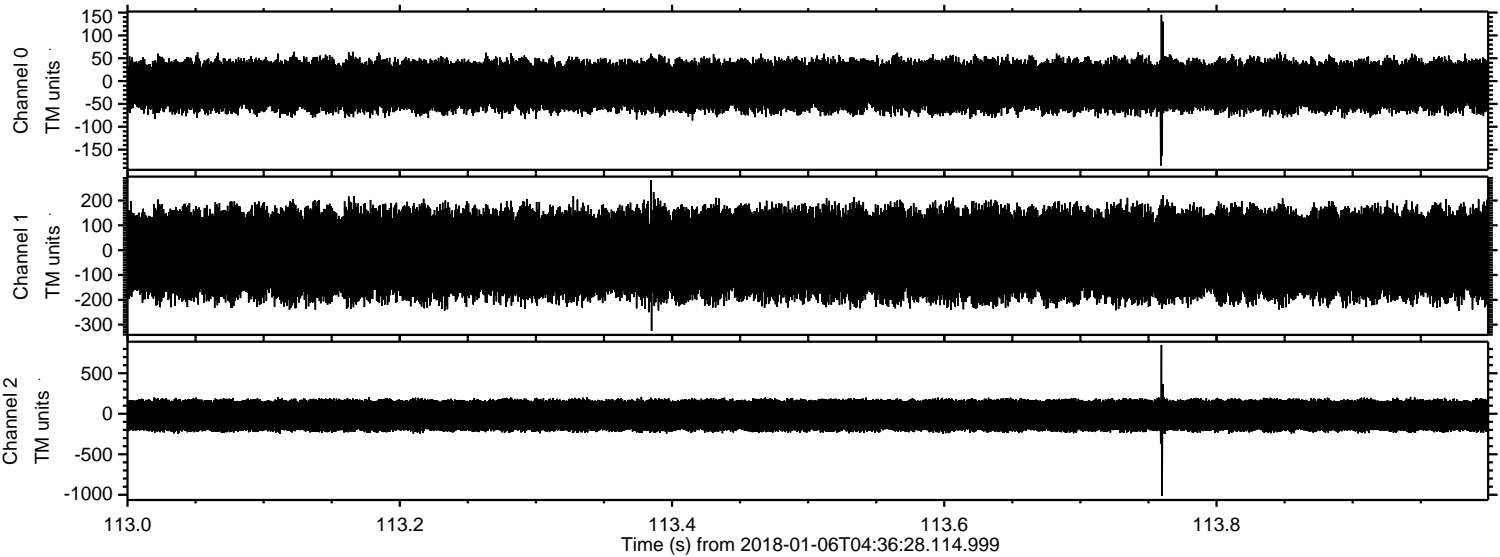


ELMAVAN 3D WAVEFORMS (Measured data sampled at 50 kHz) 51000 packets of 144 samples from 2018-01-06T04:36:28.114.999. Part 103/147

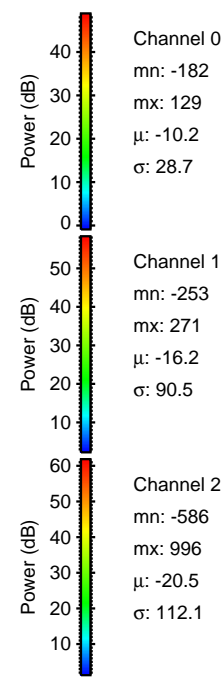
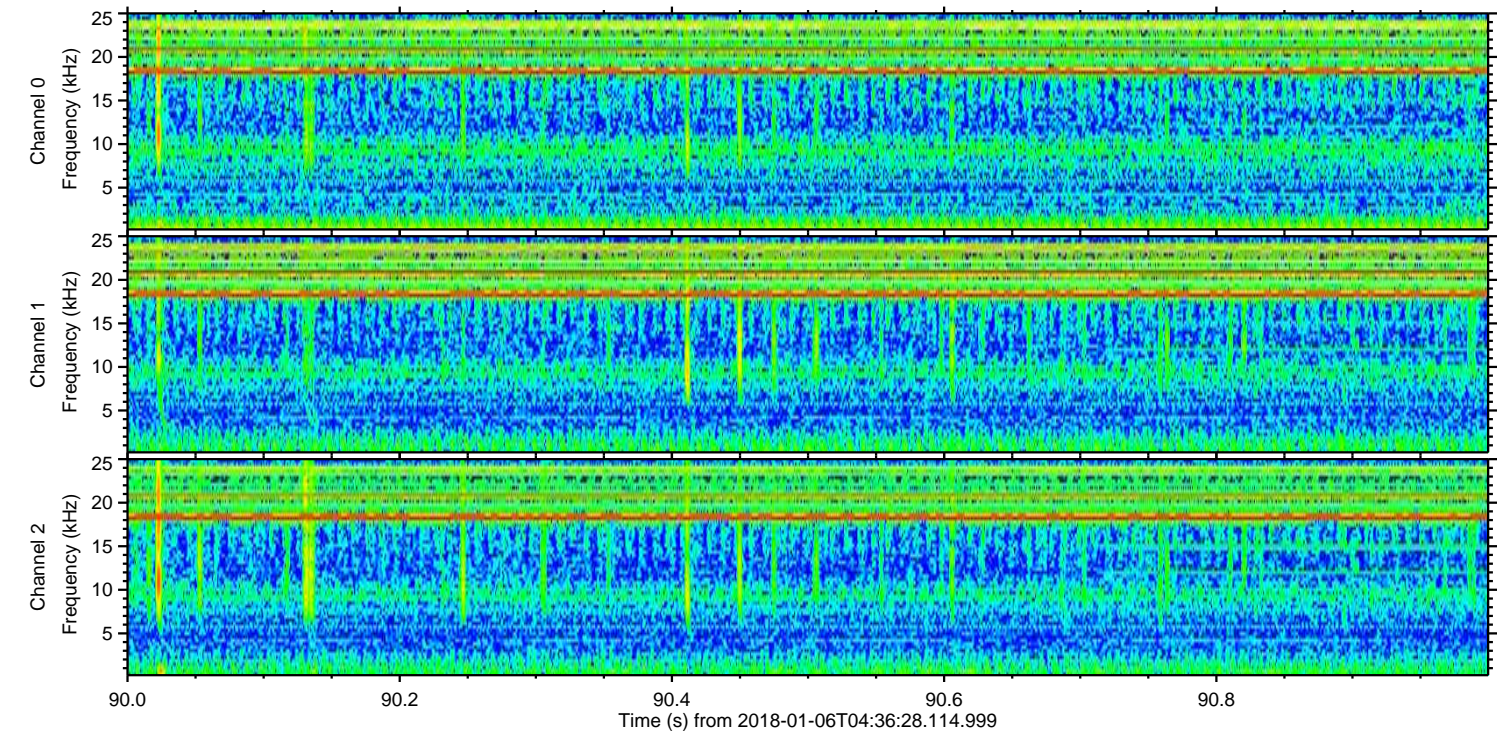
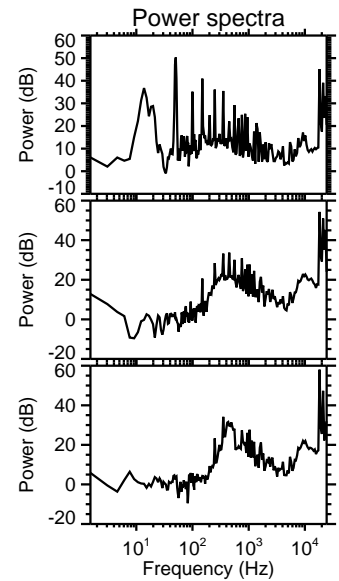
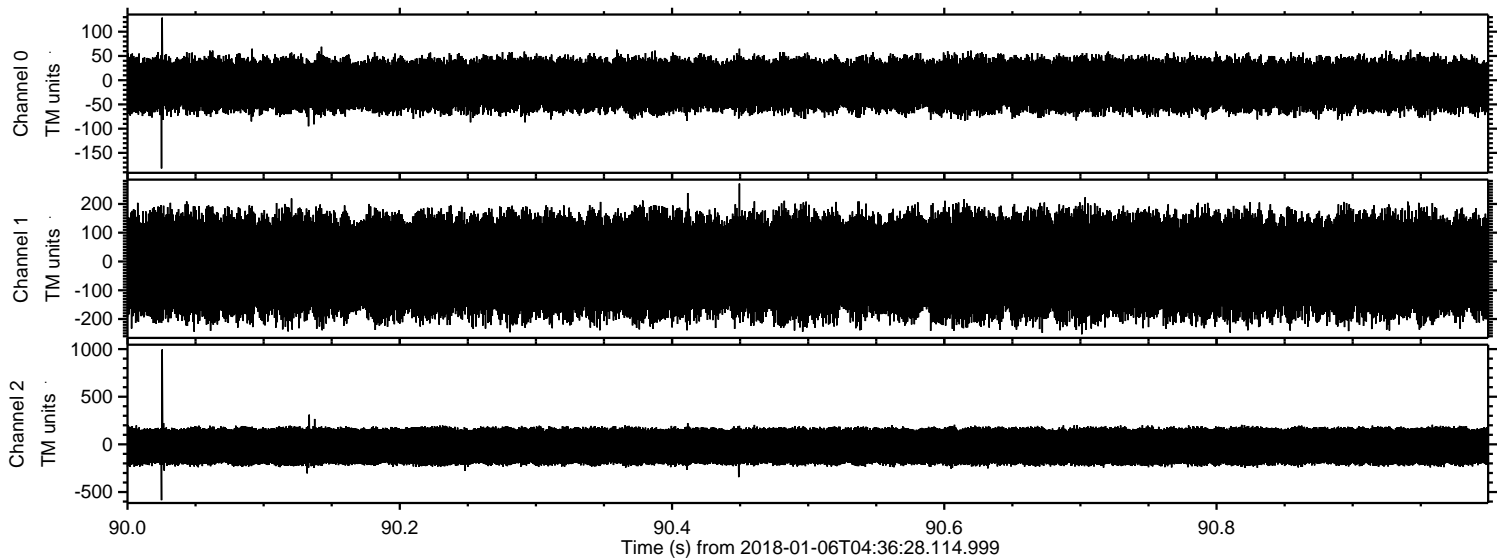


ELMAVAN 3D WAVEFORMS (Measured data sampled at 50 kHz) 51000 packets of 144 samples from 2018-01-06T04:36:28.114.999. Part 114/147

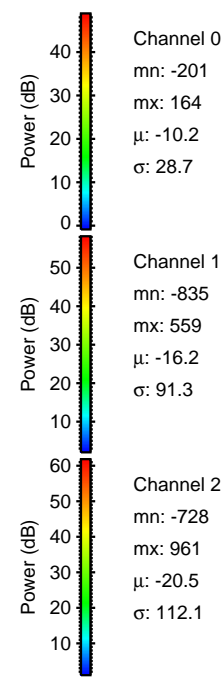
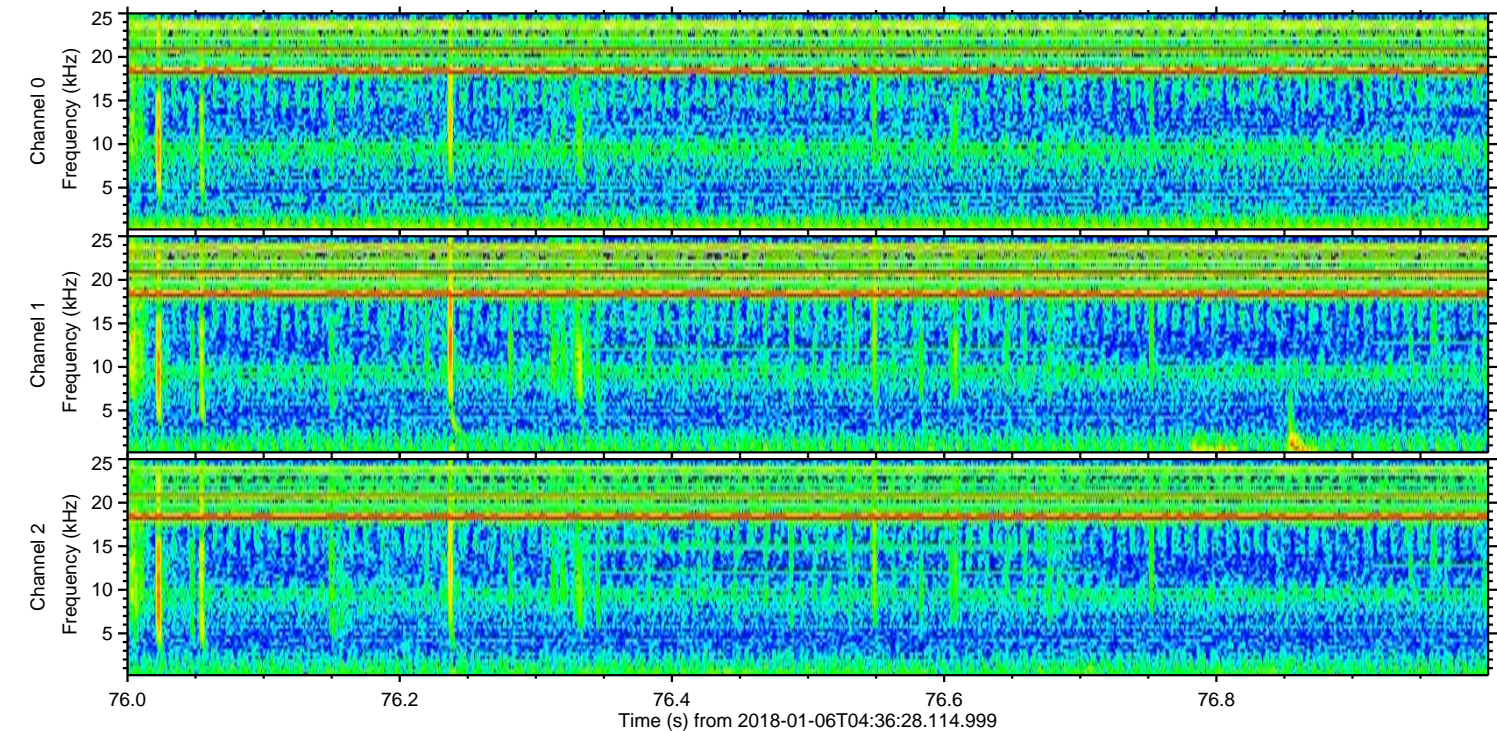
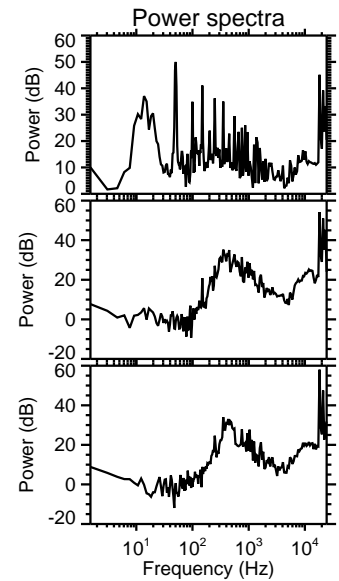
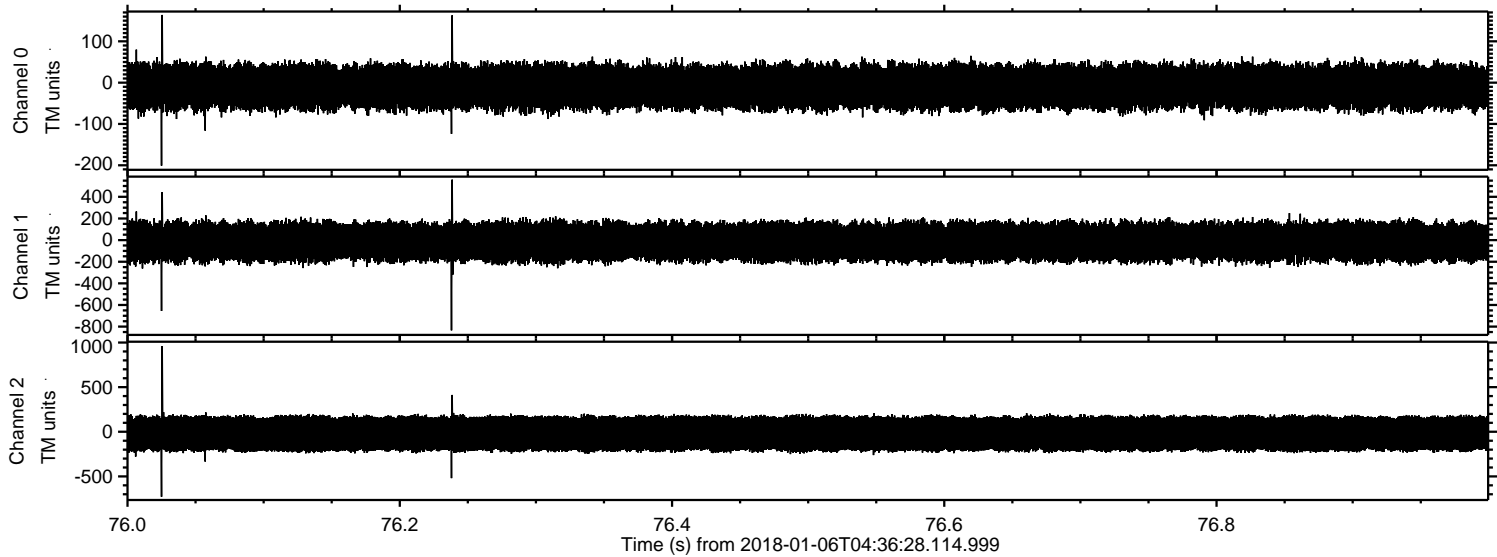
Processed Sat Jan 6 05:44:06 2018 by ELM ver.2012-10-06 from 001__elm20180106_043627__dat00.bin



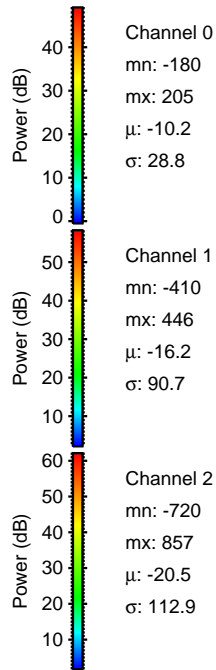
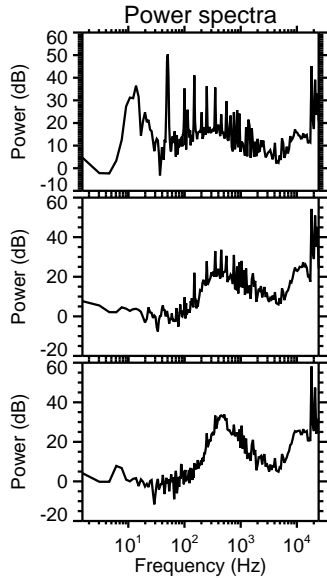
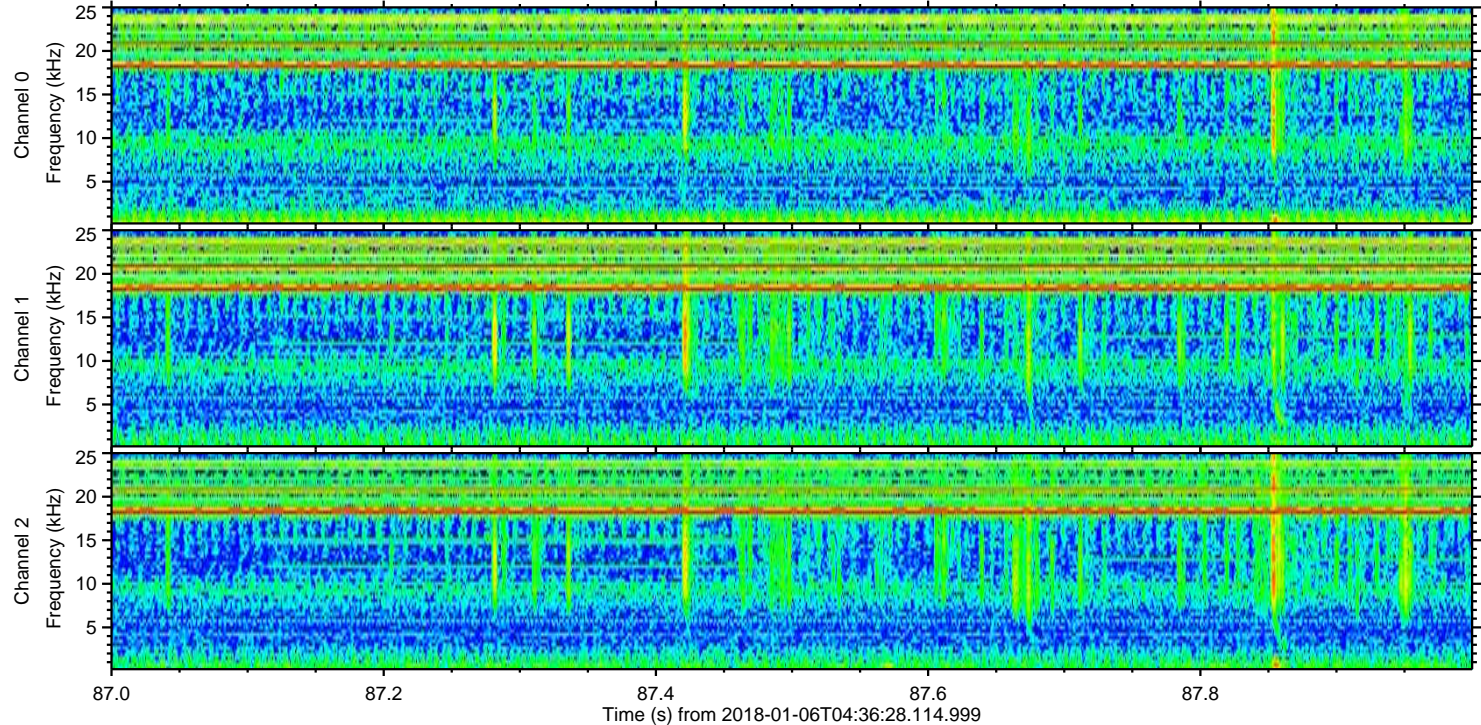
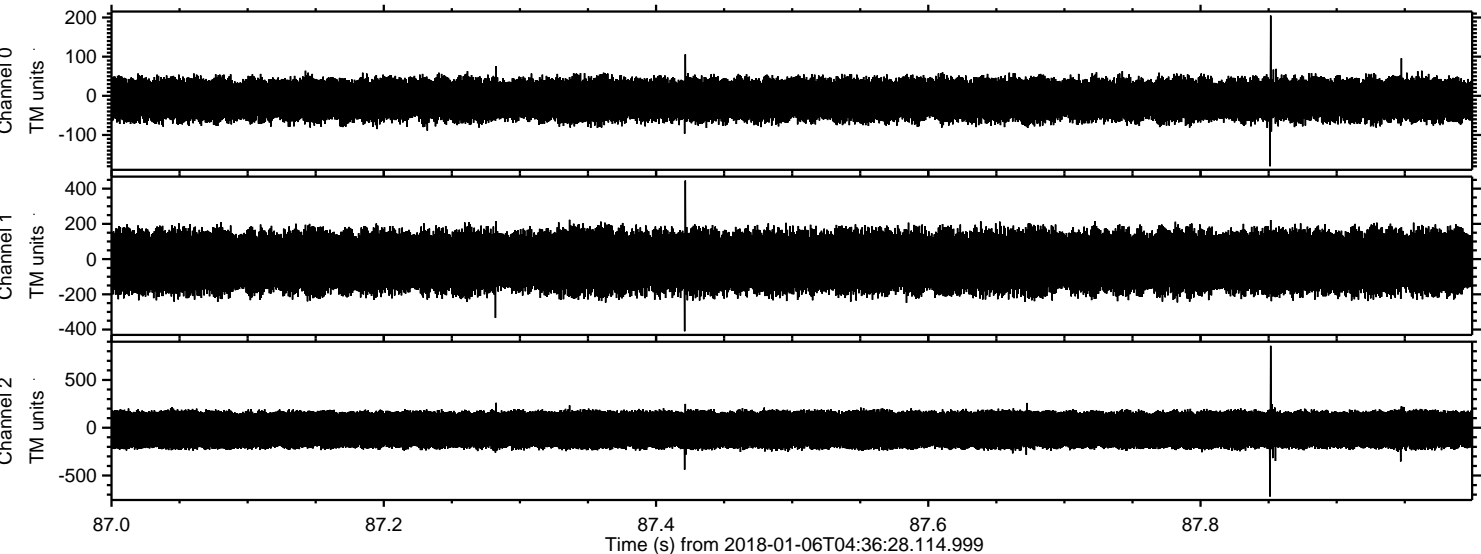
Processed Sat Jan 6 05:44:07 2018 by ELM ver.2012-10-06 from 001__elm20180106_043627__dat00.bin



Processed Sat Jan 6 05:44:08 2018 by ELM ver.2012-10-06 from 001__elm20180106_043627__dat00.bin



Processed Sat Jan 6 05:44:09 2018 by ELM ver.2012-10-06 from 001__elm20180106_043627__dat00.bin



Power spectra

Channel 0

mn: -180
mx: 205
 μ : -10.2
 σ : 28.8

Channel 1

mn: -410
mx: 446
 μ : -16.2
 σ : 90.7

Channel 2

mn: -720
mx: 857
 μ : -20.5
 σ : 112.9

Processed Sat Jan 6 05:44:10 2018 by ELM ver.2012-10-06 from 001__elm20180106_043627__dat00.bin

