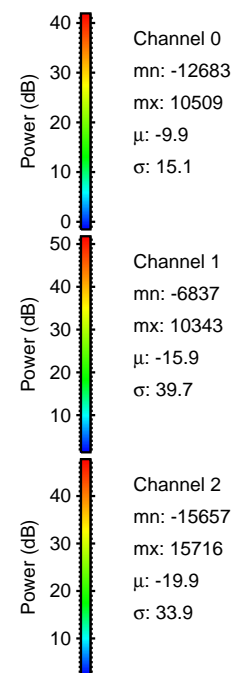
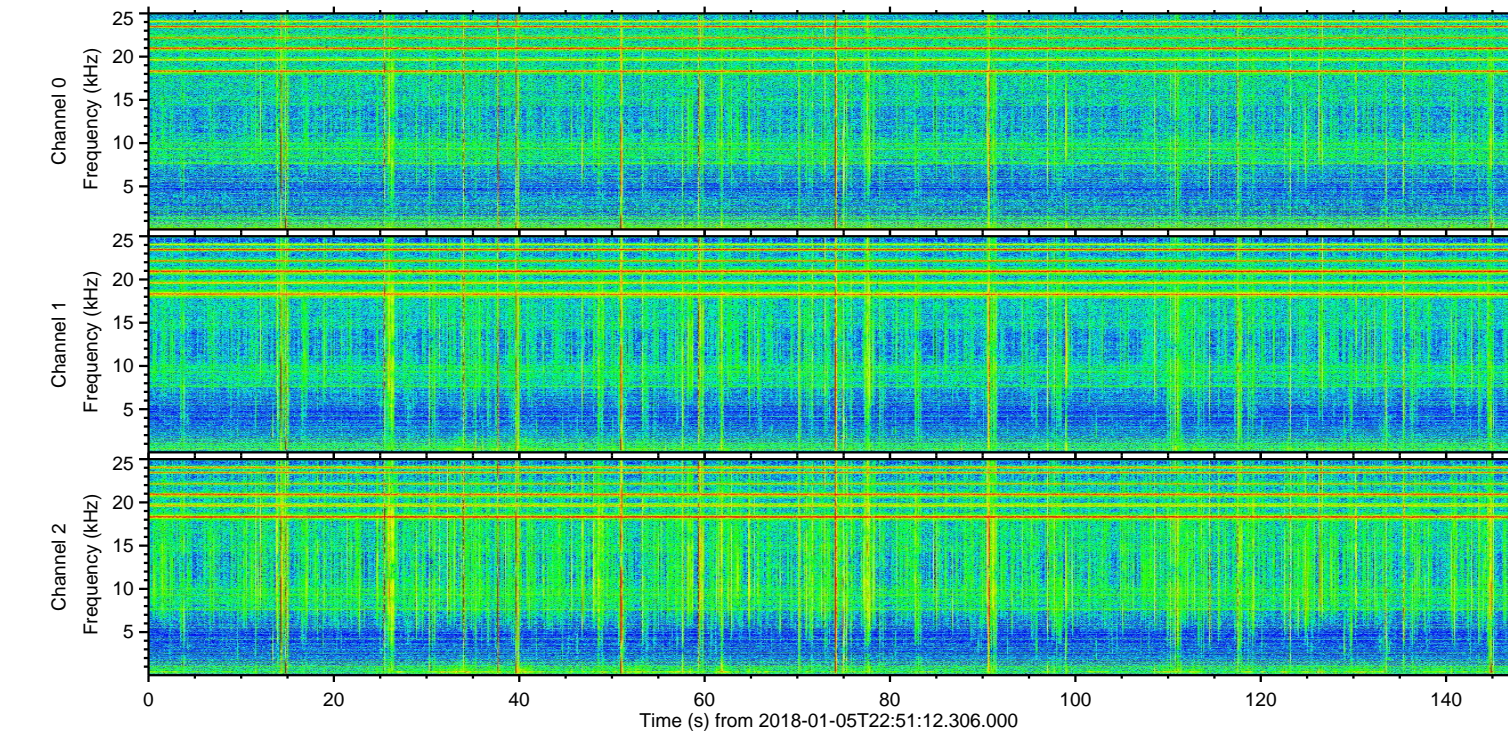
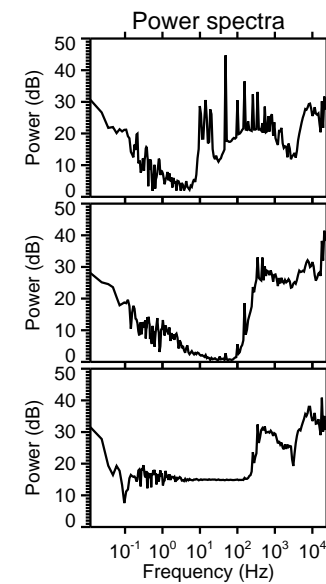
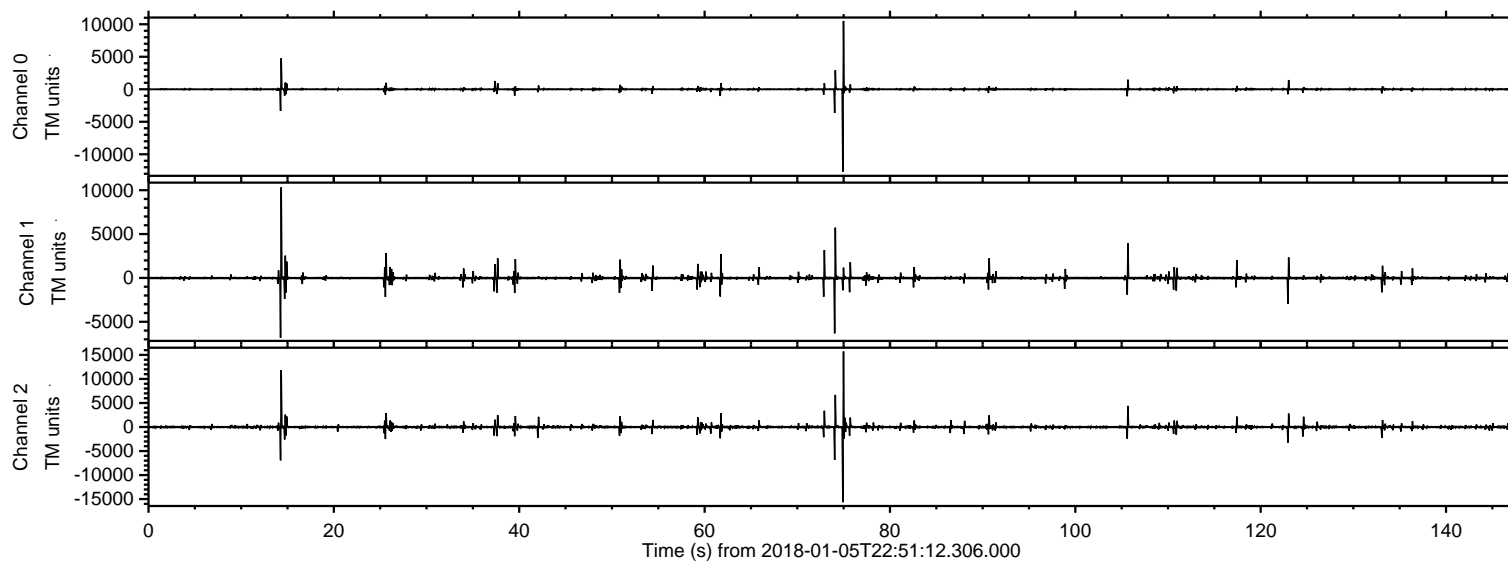
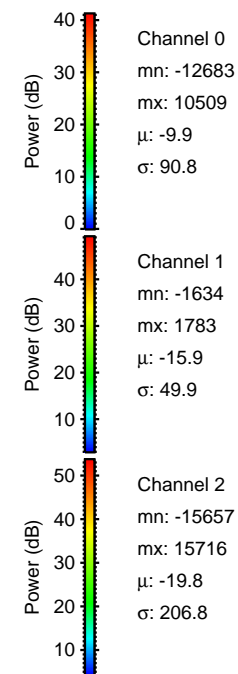
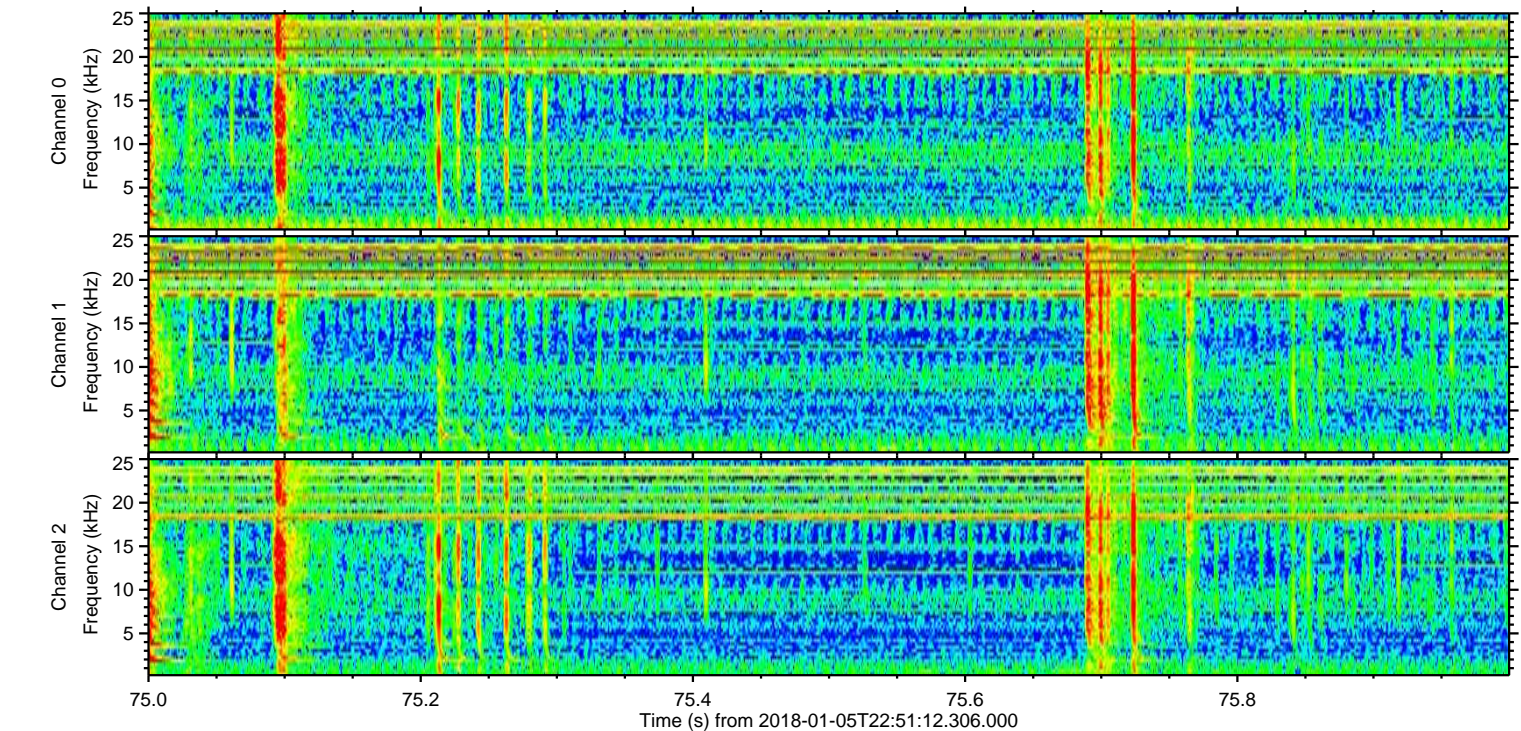
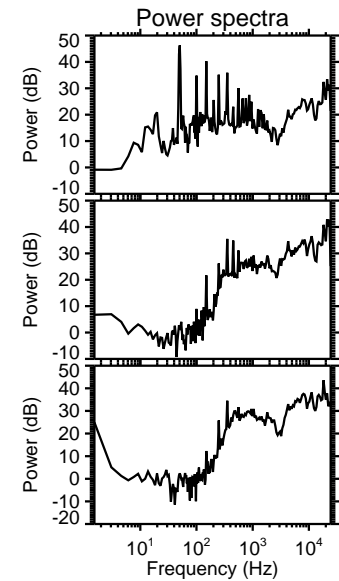
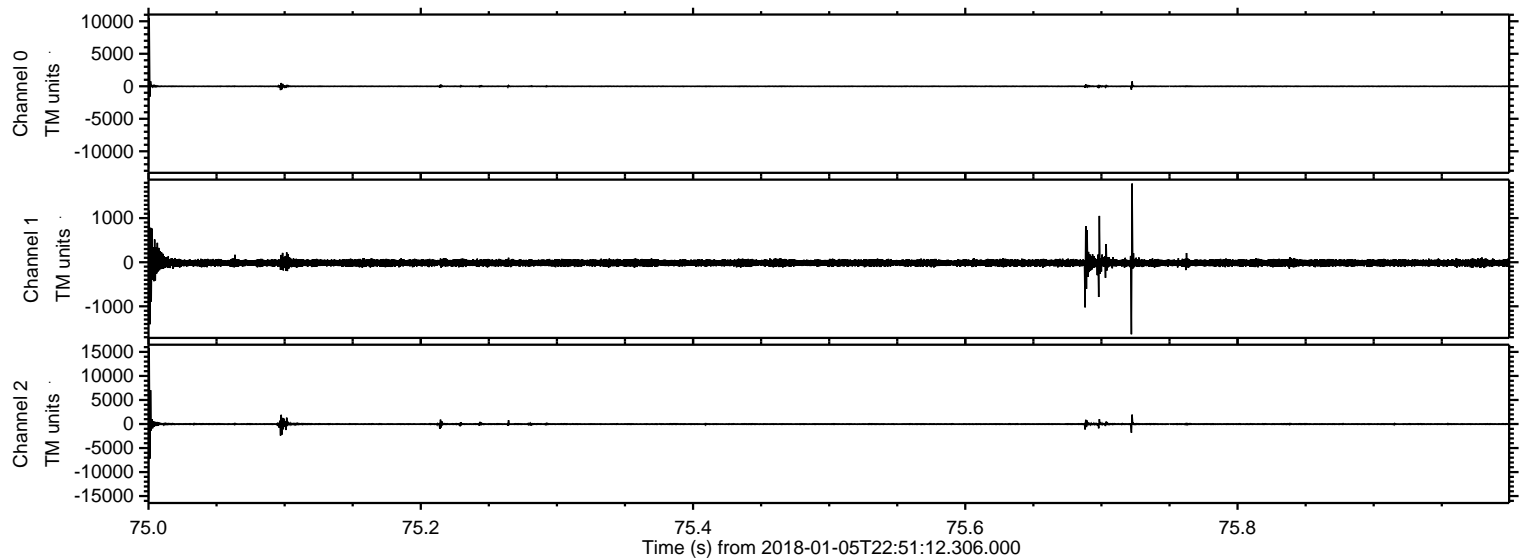


ELMAVAN 3D WAVEFORMS (Measured data sampled at 50 kHz) 51000 packets of 144 samples from 2018-01-05T22:51:12.306.000.

Processed Fri Jan 5 23:58:45 2018 by ELM ver.2012-10-06 from 001__elm20180105_225111__dat00.bin



Processed Fri Jan 5 23:58:53 2018 by ELM ver.2012-10-06 from 001__elm20180105_225111__dat00.bin

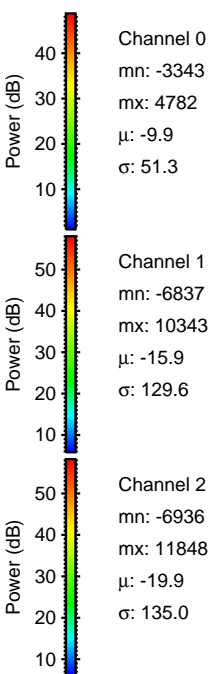
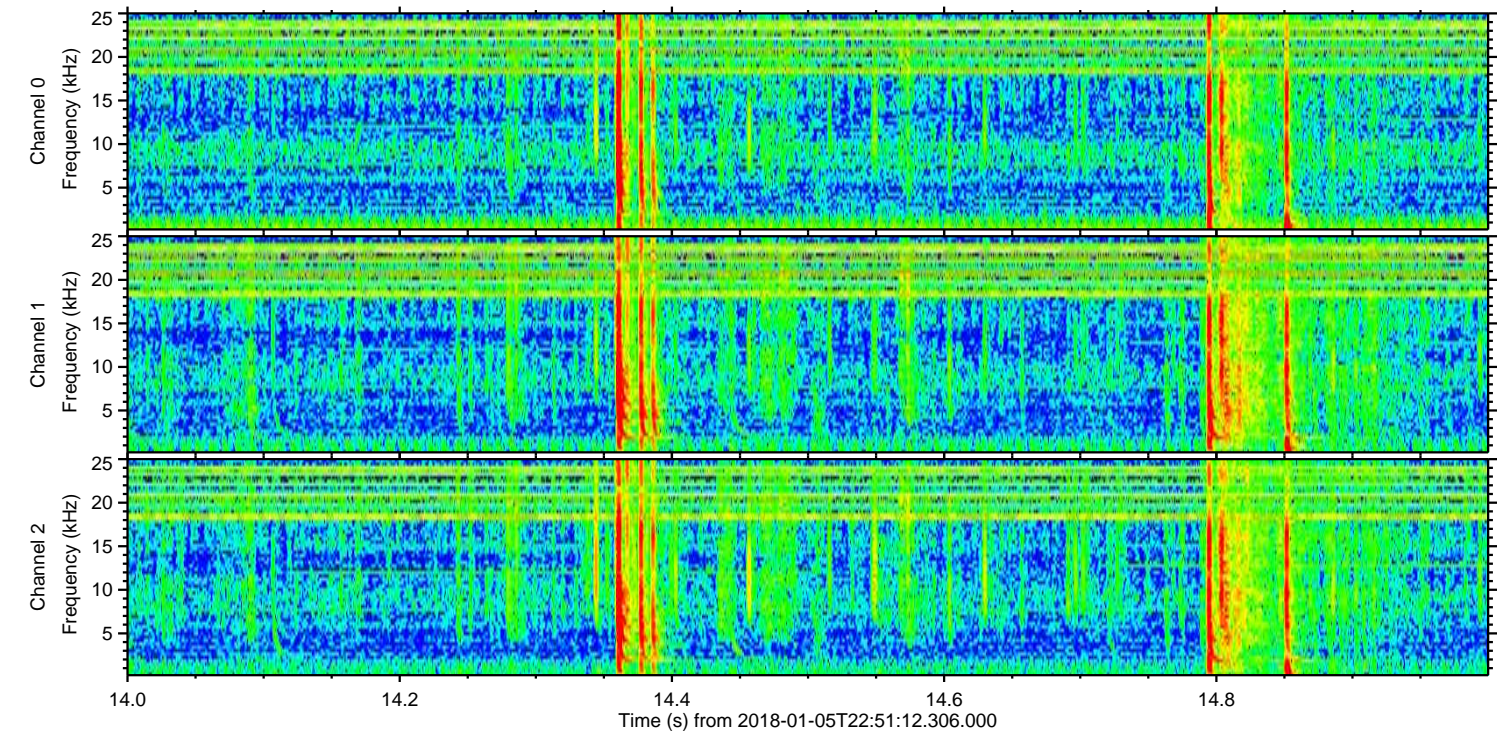
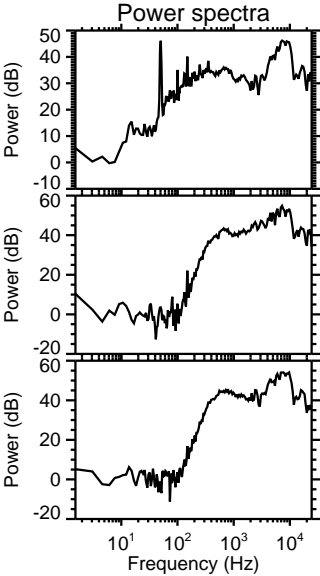
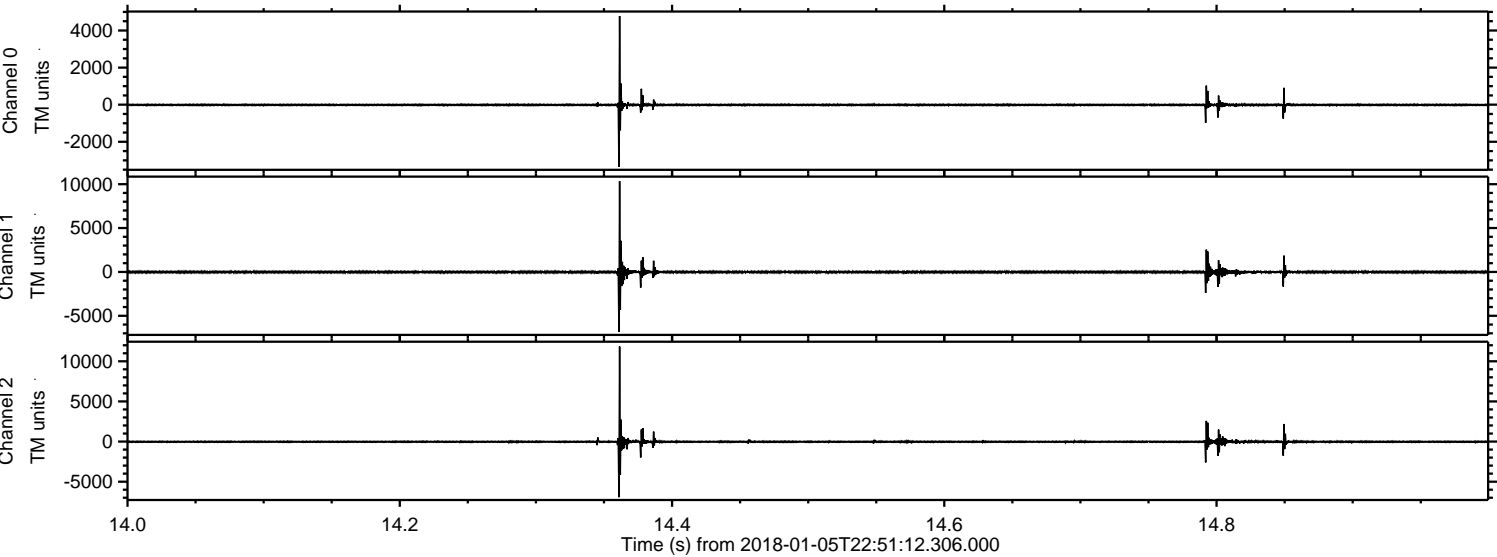


Channel 0
mn: -12683
mx: 10509
 μ : -9.9
 σ : 90.8

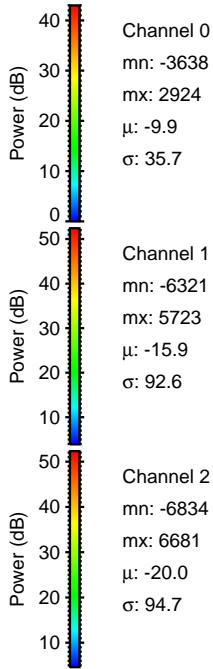
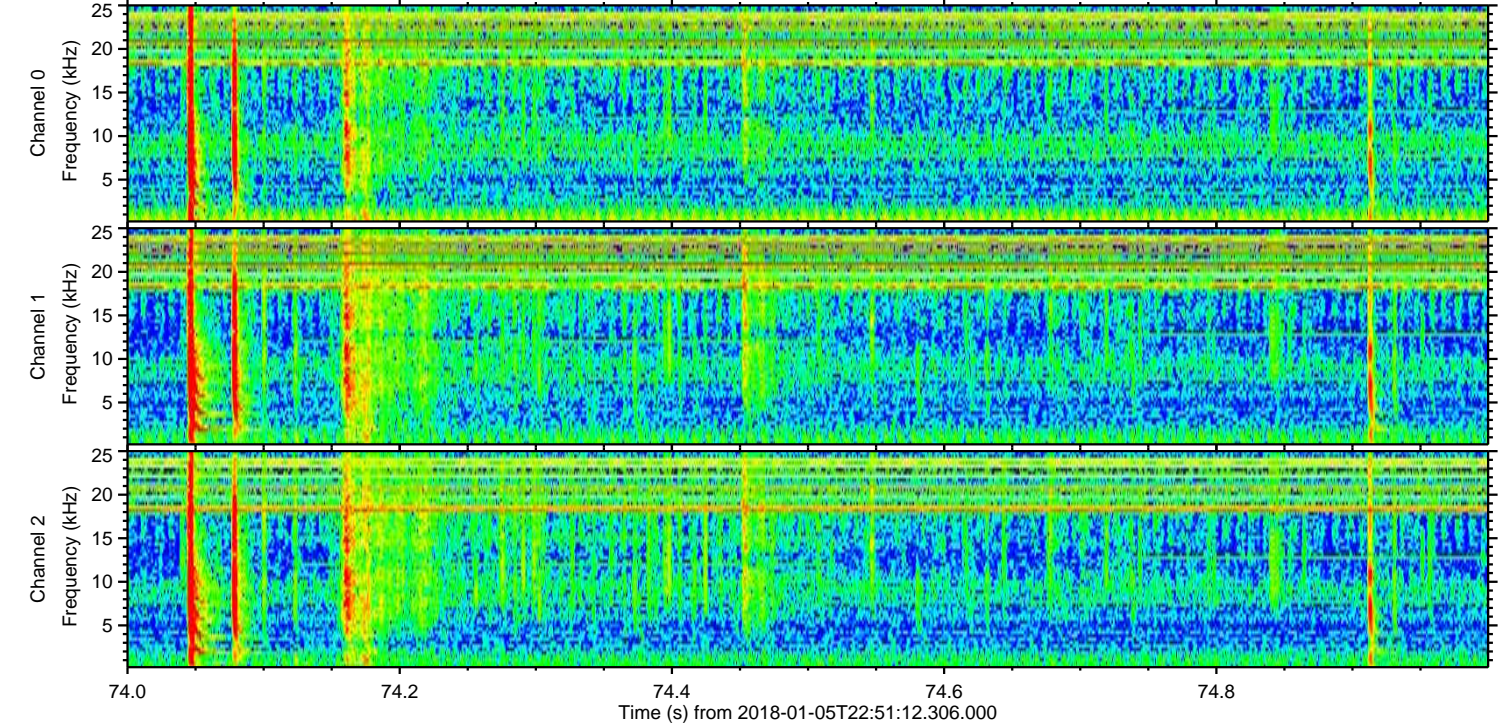
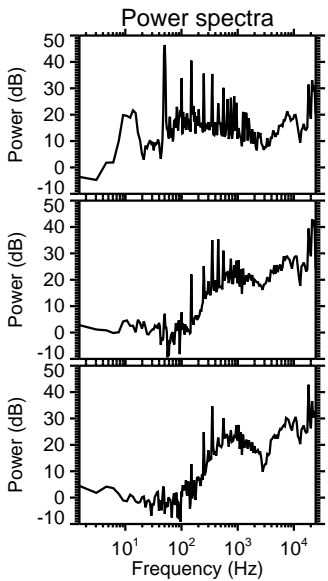
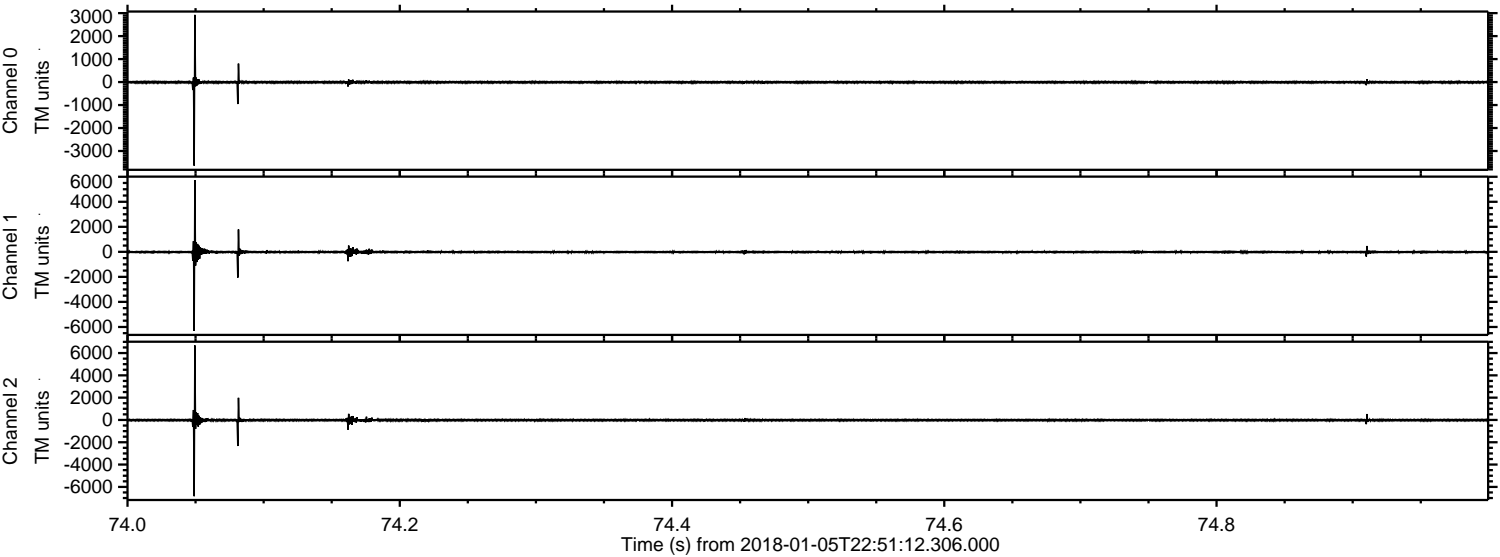
Channel 1
mn: -1634
mx: 1783
 μ : -15.9
 σ : 49.9

Channel 2
mn: -15657
mx: 15716
 μ : -19.8
 σ : 206.8

Processed Fri Jan 5 23:58:54 2018 by ELM ver.2012-10-06 from 001__elm20180105_225111__dat00.bin

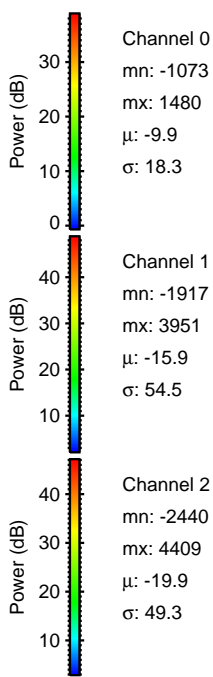
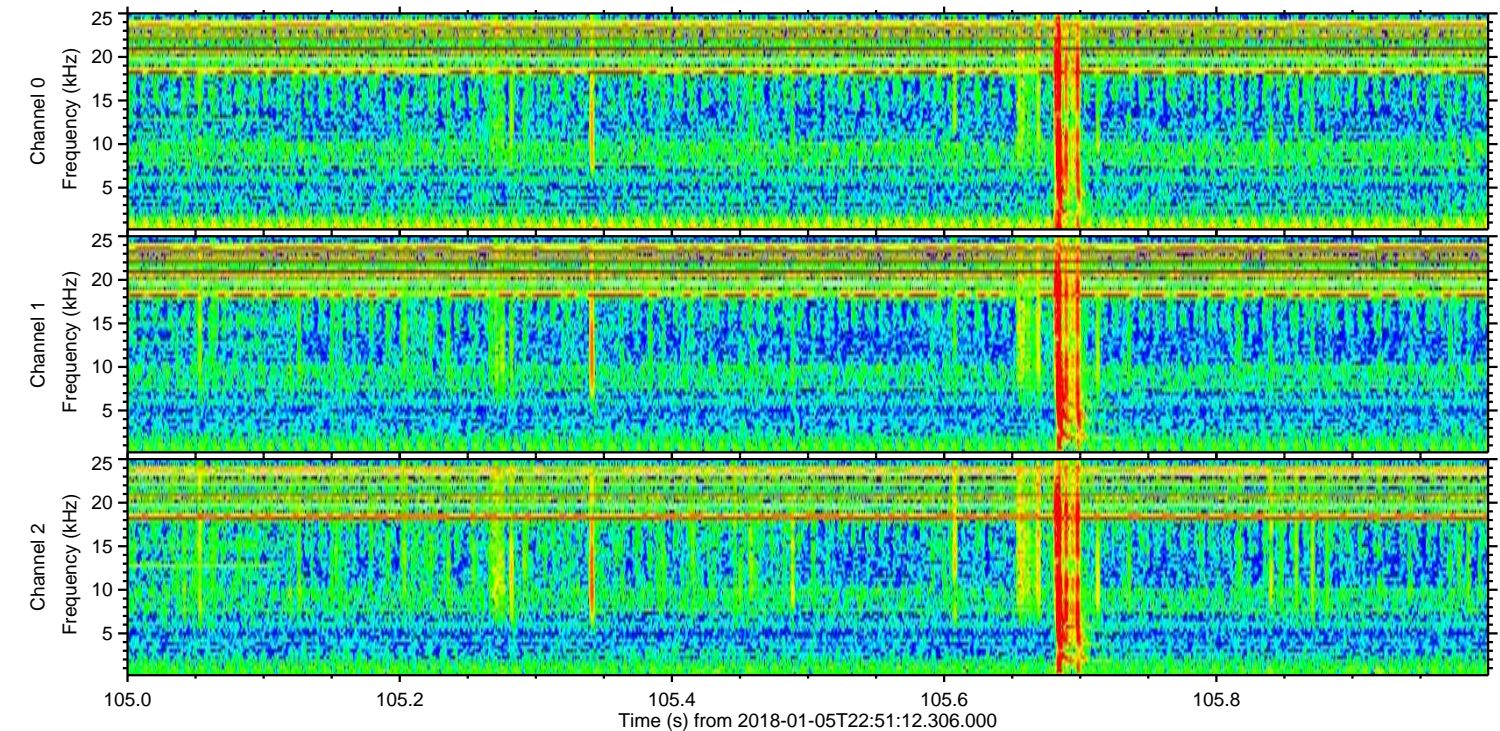
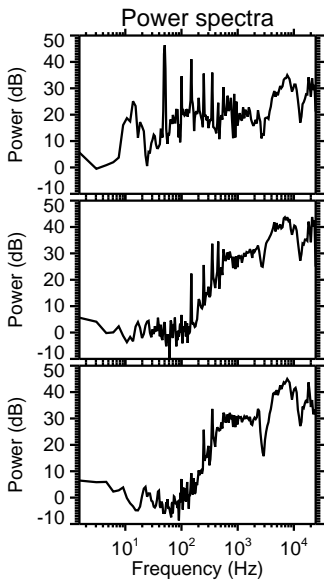
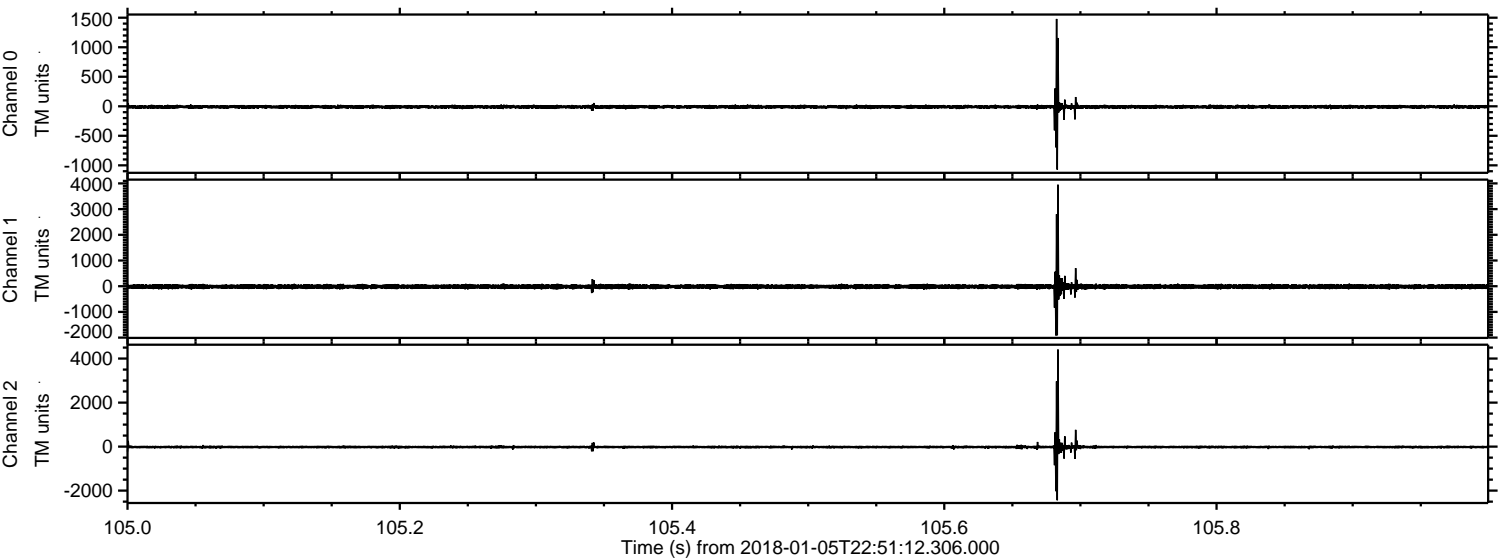


Processed Fri Jan 5 23:58:54 2018 by ELM ver.2012-10-06 from 001__elm20180105_225111__dat00.bin

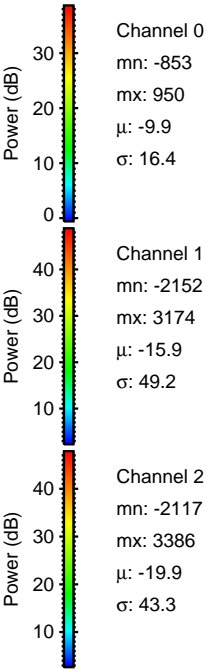
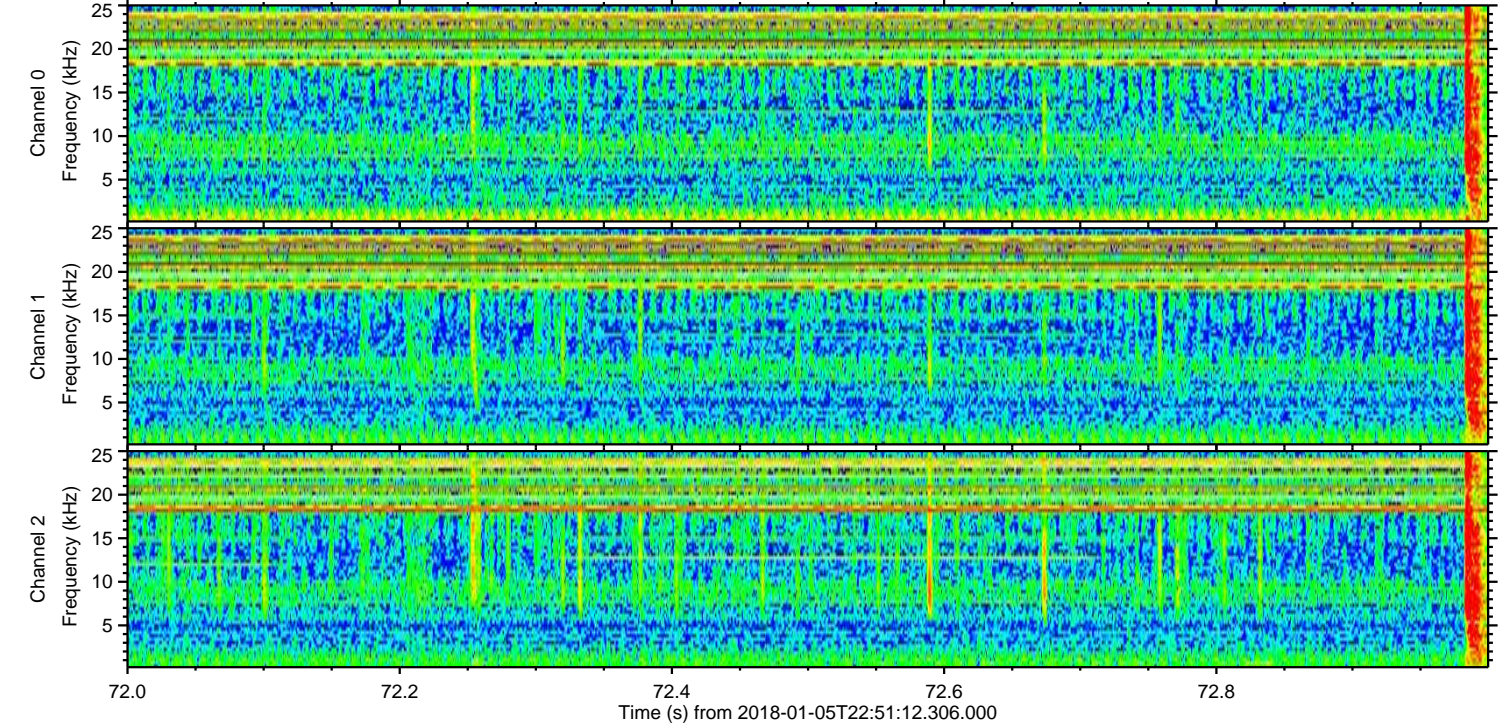
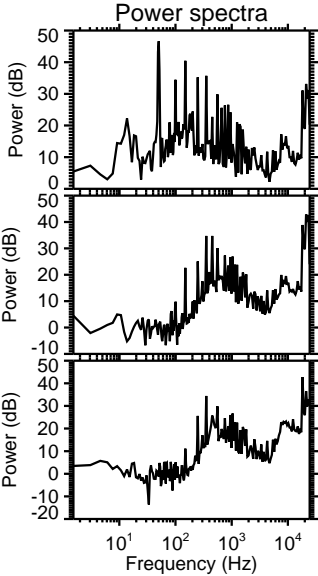
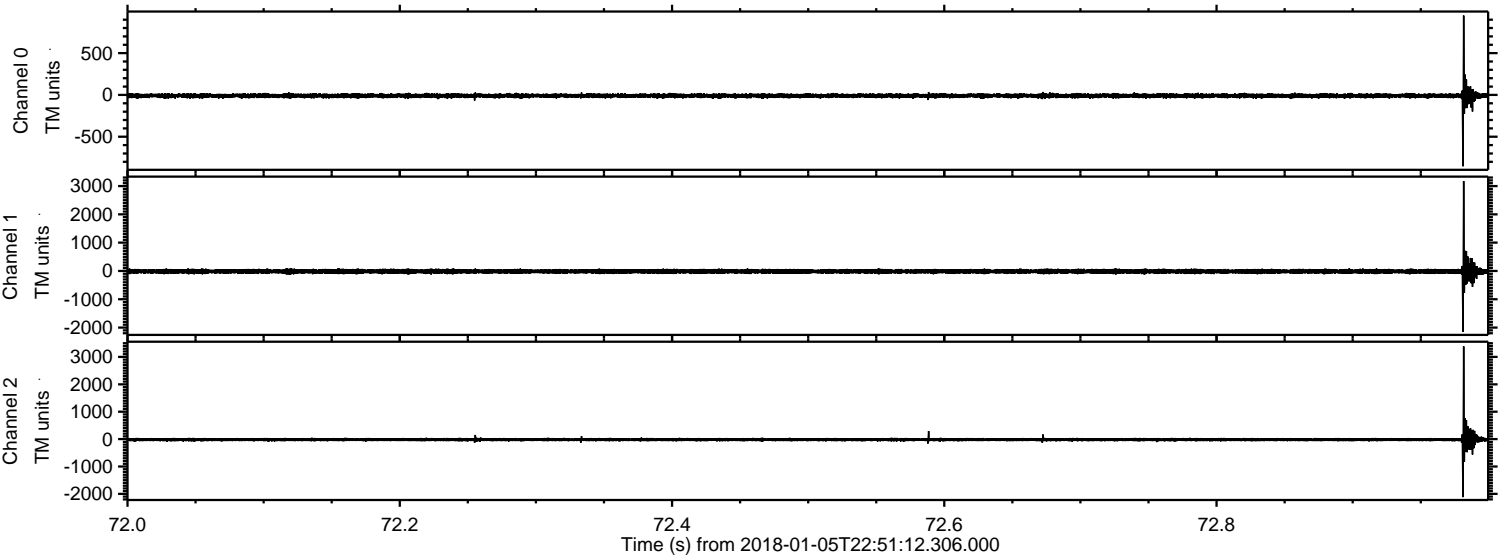


ELMAVAN 3D WAVEFORMS (Measured data sampled at 50 kHz) 51000 packets of 144 samples from 2018-01-05T22:51:12.306.000. Part 106/147

Processed Fri Jan 5 23:58:55 2018 by ELM ver.2012-10-06 from 001__elm20180105_225111__dat00.bin

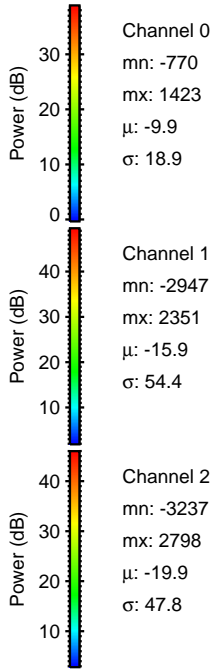
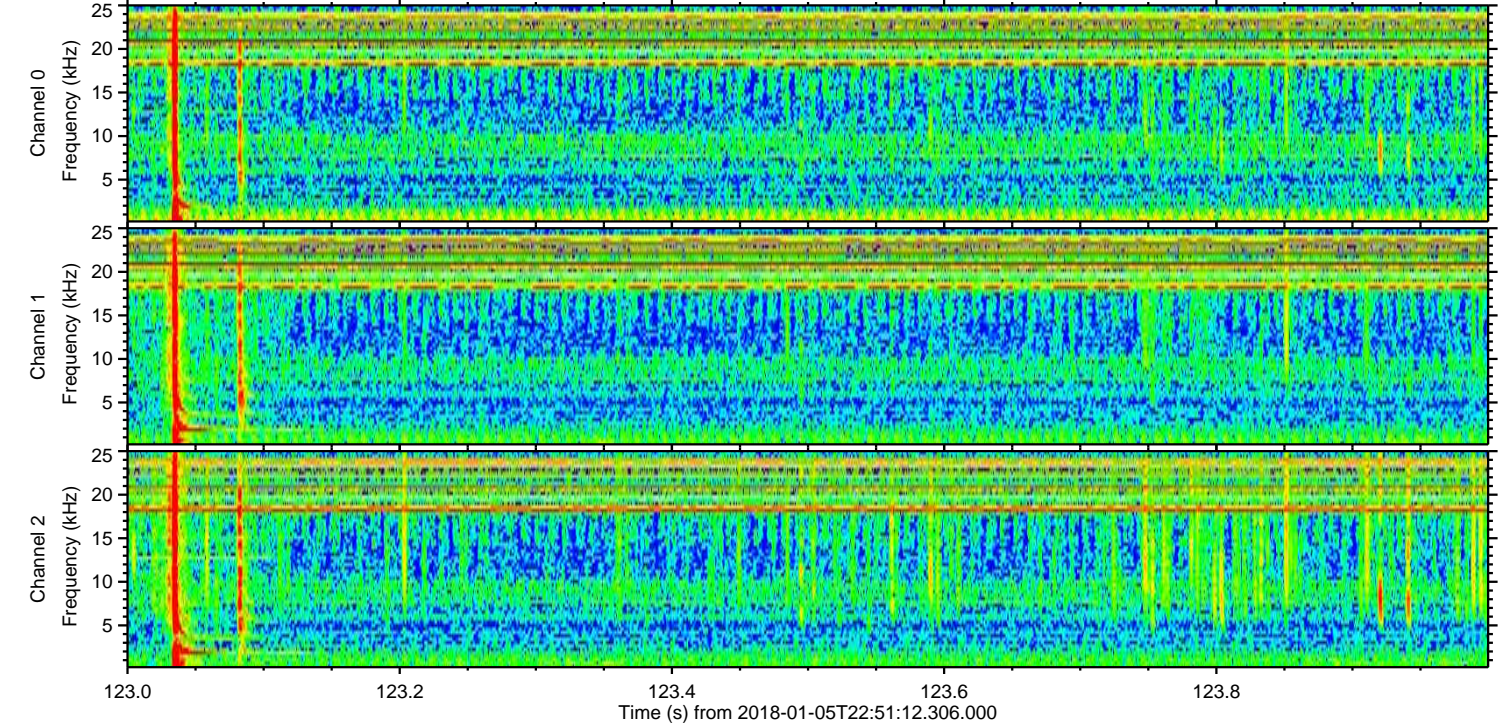
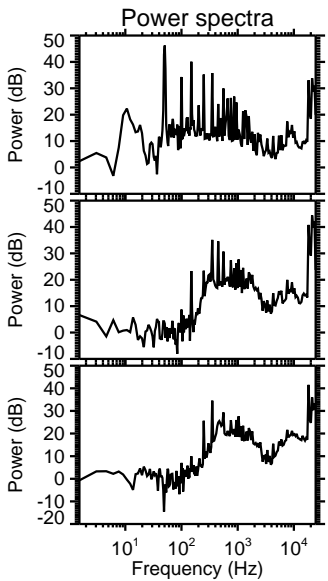
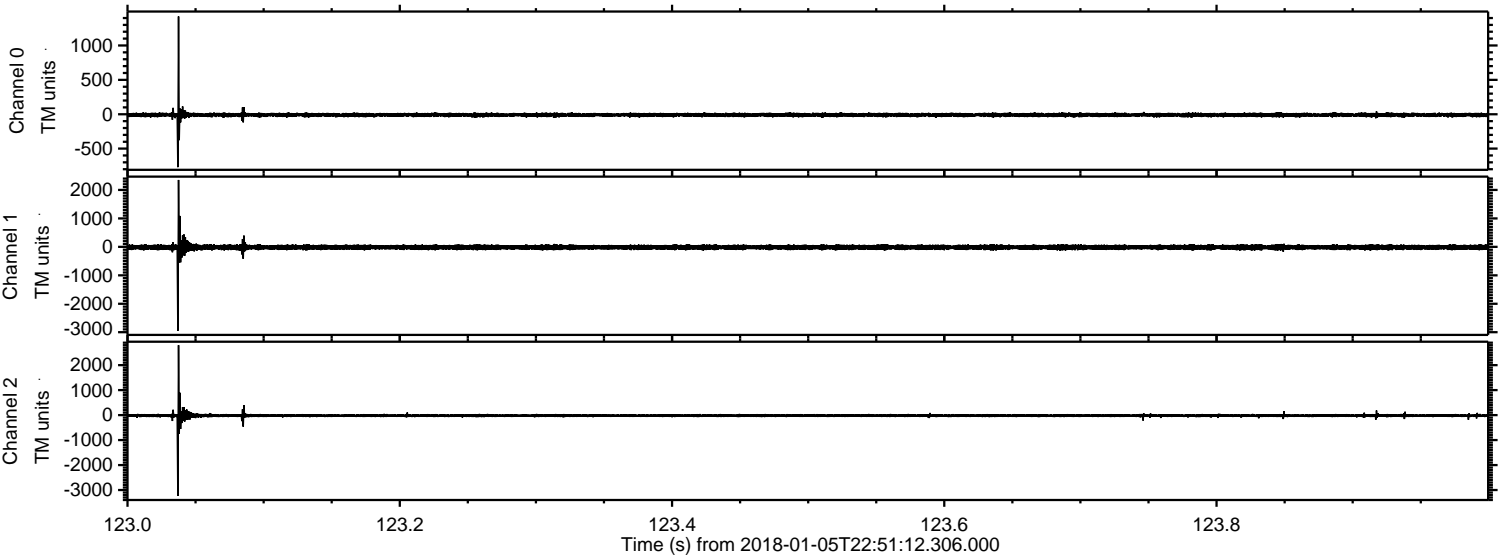


Processed Fri Jan 5 23:58:56 2018 by ELM ver.2012-10-06 from 001__elm20180105_225111__dat00.bin

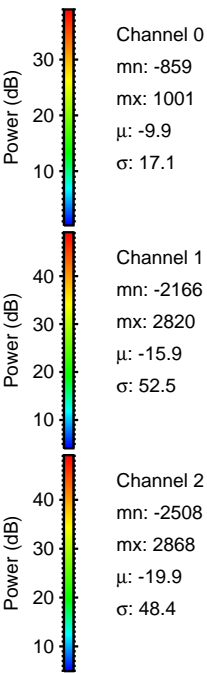
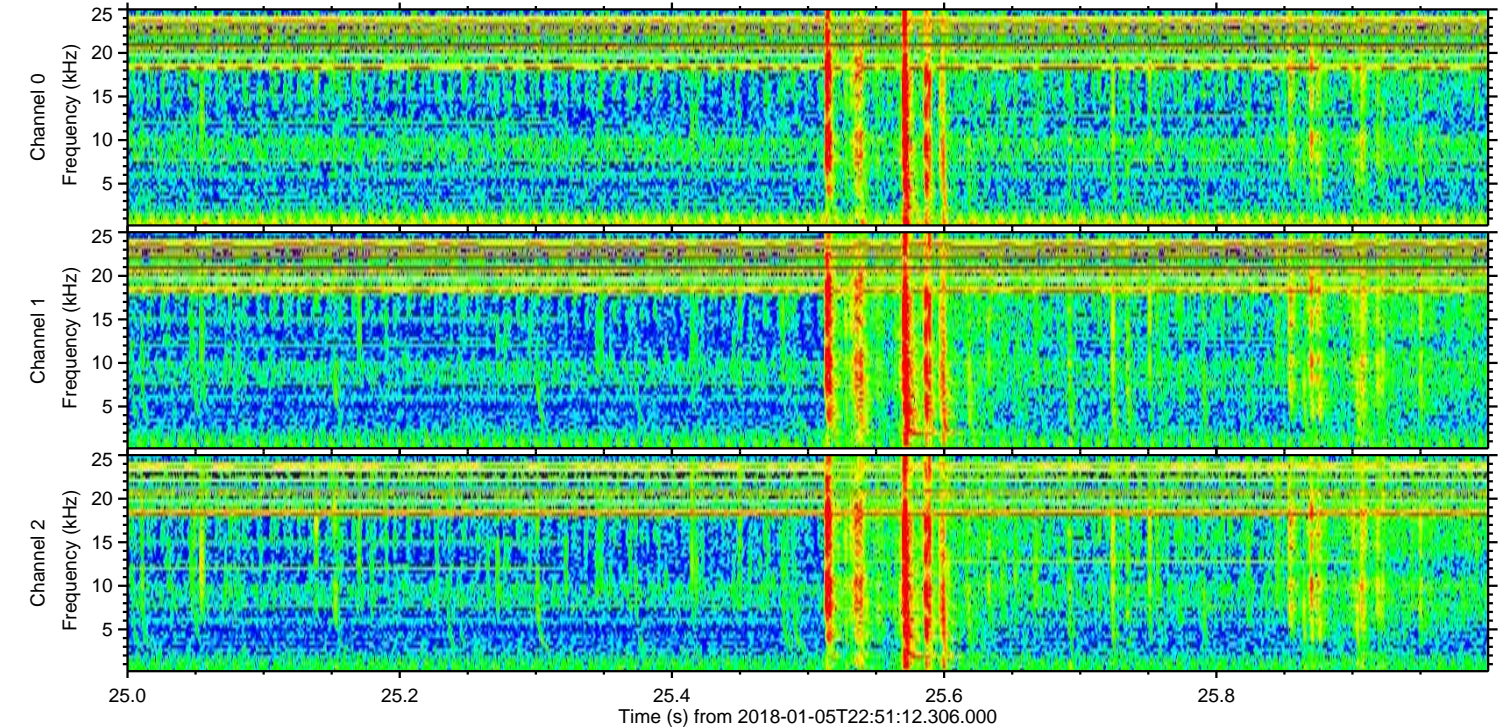
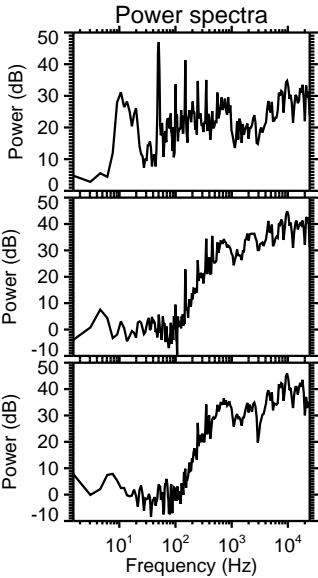
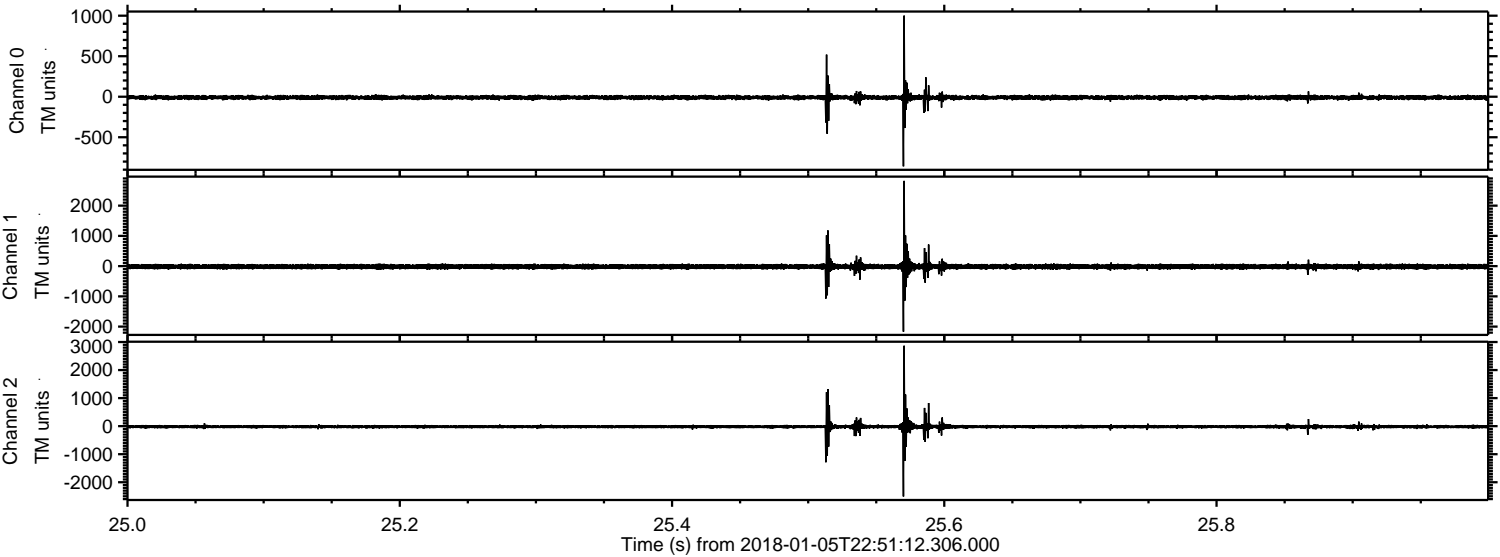


ELMAVAN 3D WAVEFORMS (Measured data sampled at 50 kHz) 51000 packets of 144 samples from 2018-01-05T22:51:12.306.000. Part 124/147

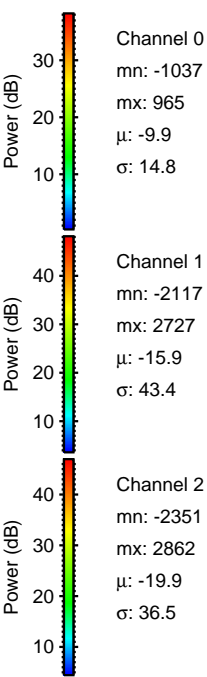
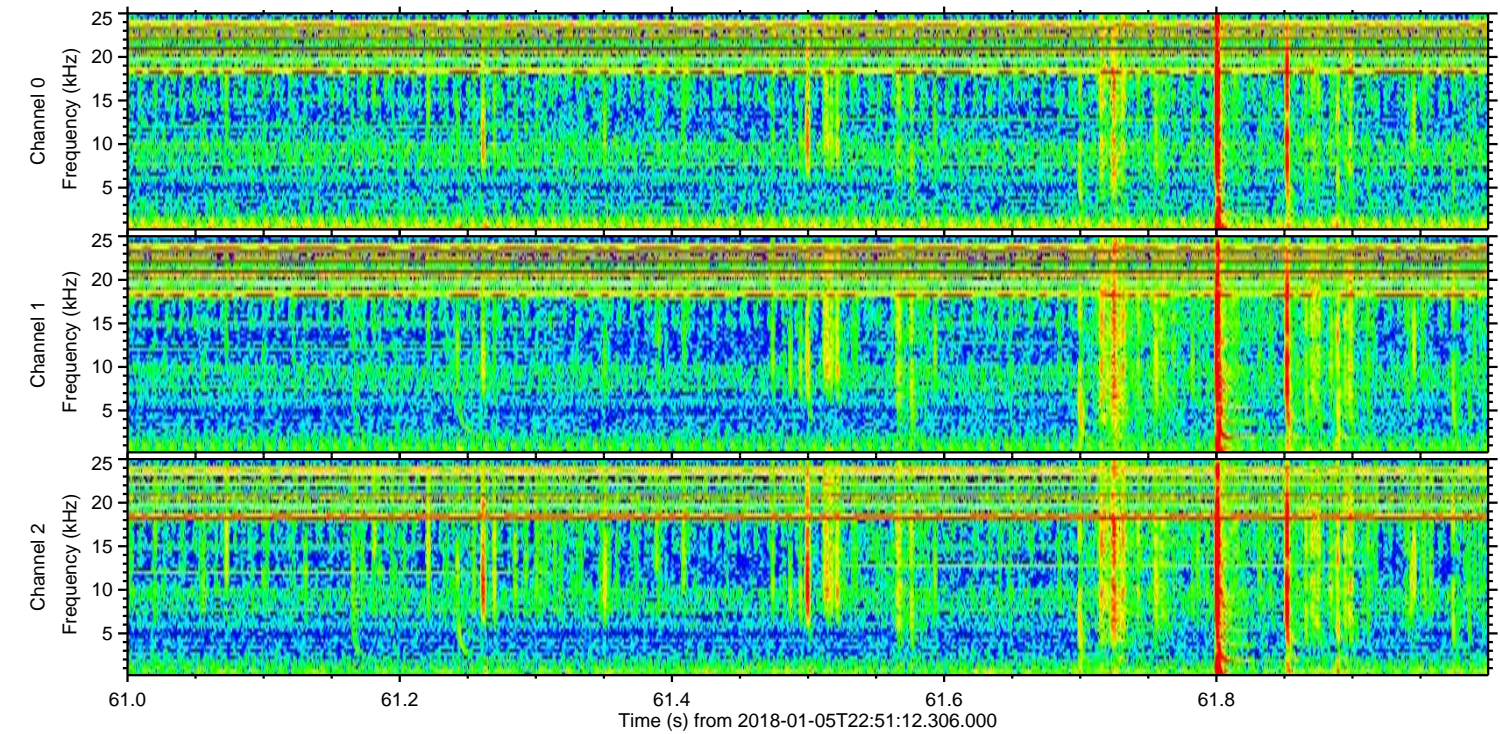
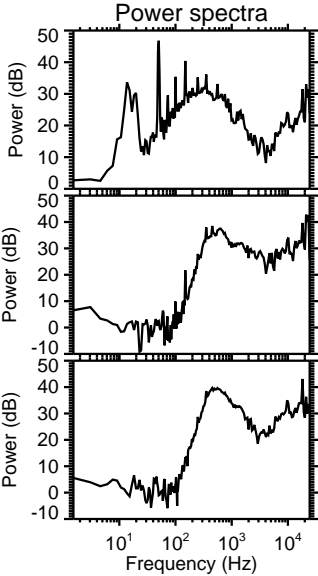
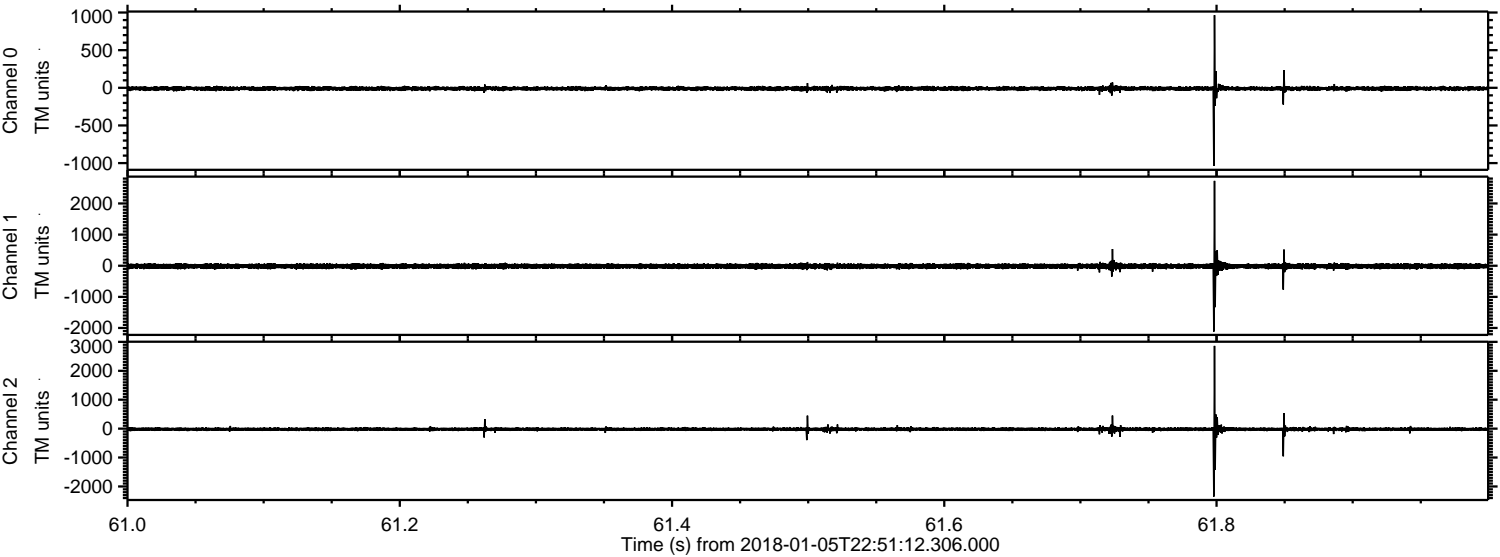
Processed Fri Jan 5 23:58:57 2018 by ELM ver.2012-10-06 from 001__elm20180105_225111__dat00.bin



Processed Fri Jan 5 23:58:58 2018 by ELM ver.2012-10-06 from 001__elm20180105_225111__dat00.bin



Processed Fri Jan 5 23:58:58 2018 by ELM ver.2012-10-06 from 001__elm20180105_225111__dat00.bin



Channel 0
mn: -1037
mx: 965
 μ : -9.9
 σ : 14.8

Channel 1
mn: -2117
mx: 2727
 μ : -15.9
 σ : 43.4

Channel 2
mn: -2351
mx: 2862
 μ : -19.9
 σ : 36.5

Processed Fri Jan 5 23:58:59 2018 by ELM ver.2012-10-06 from 001__elm20180105_225111__dat00.bin

