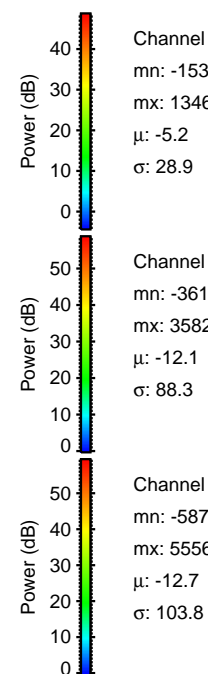
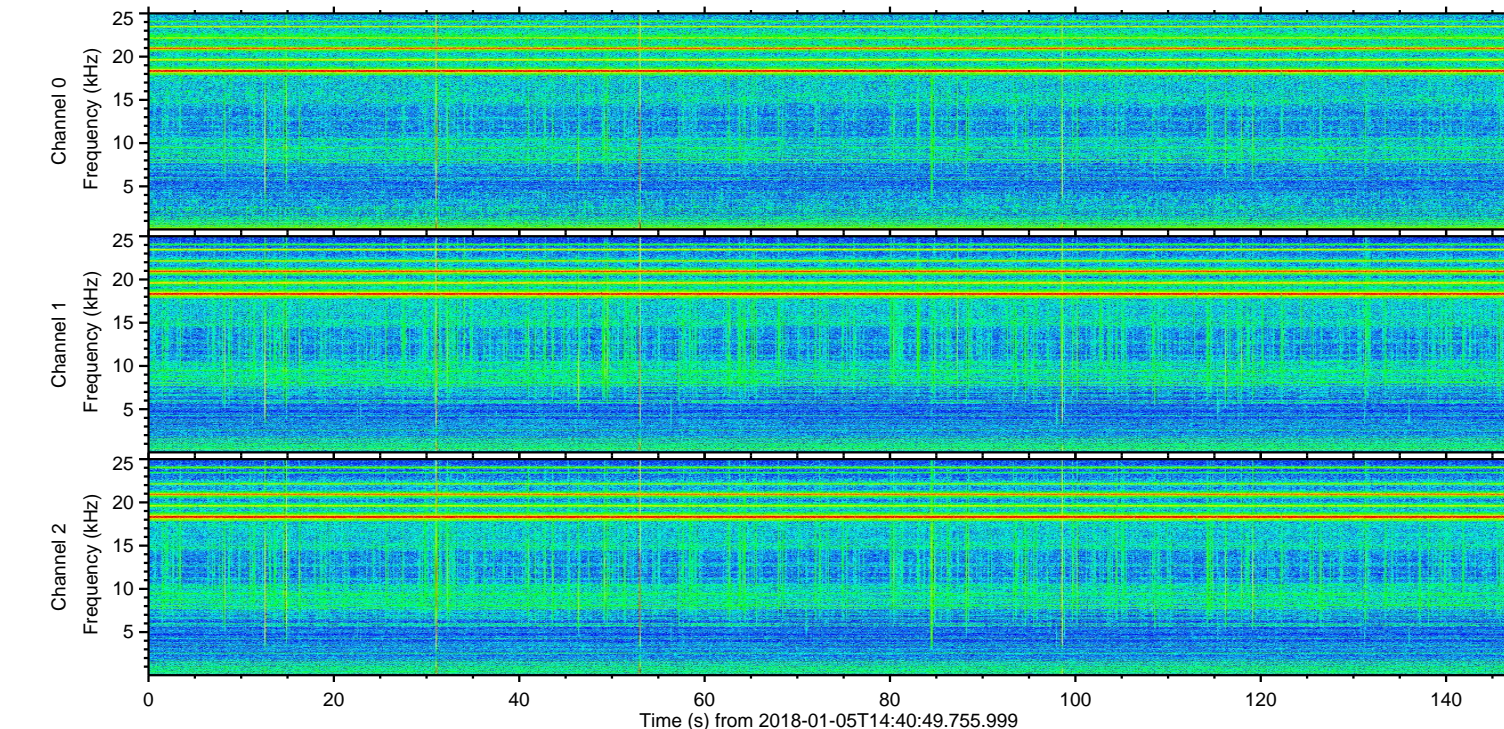
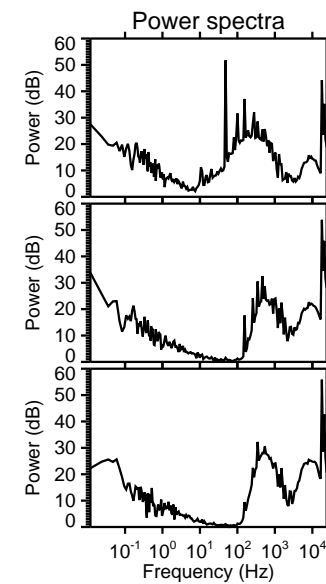
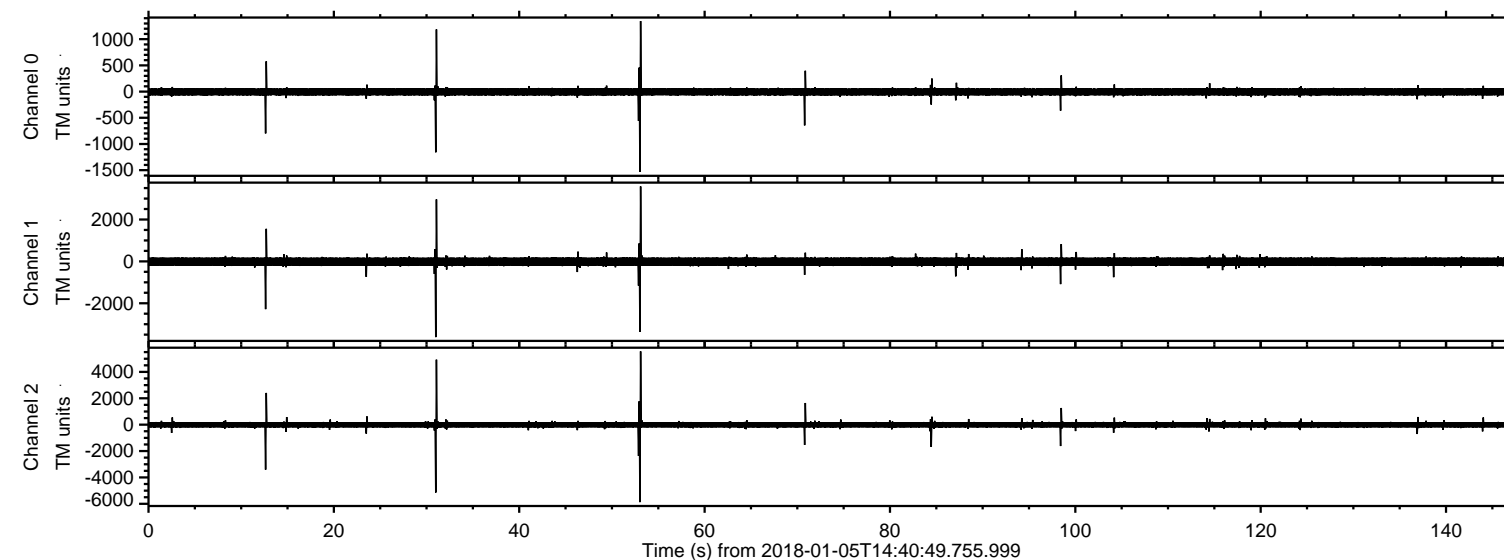
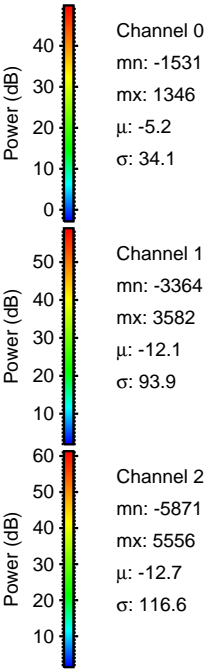
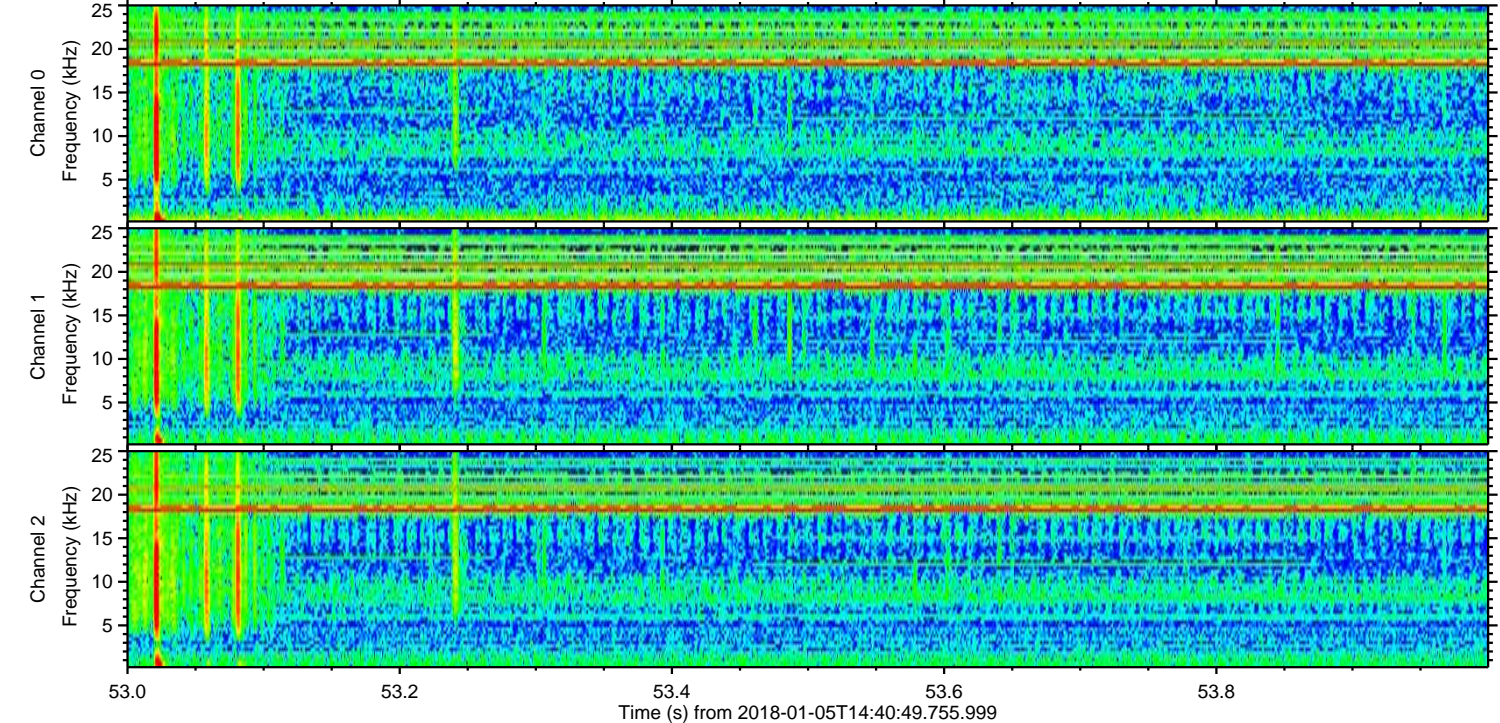
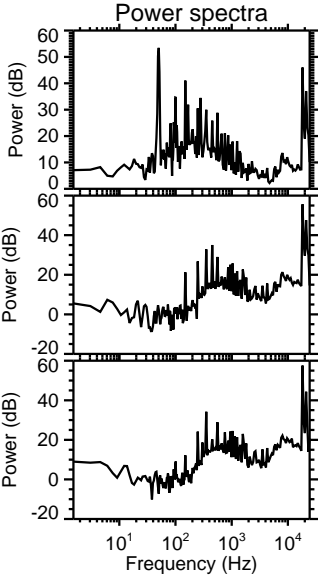
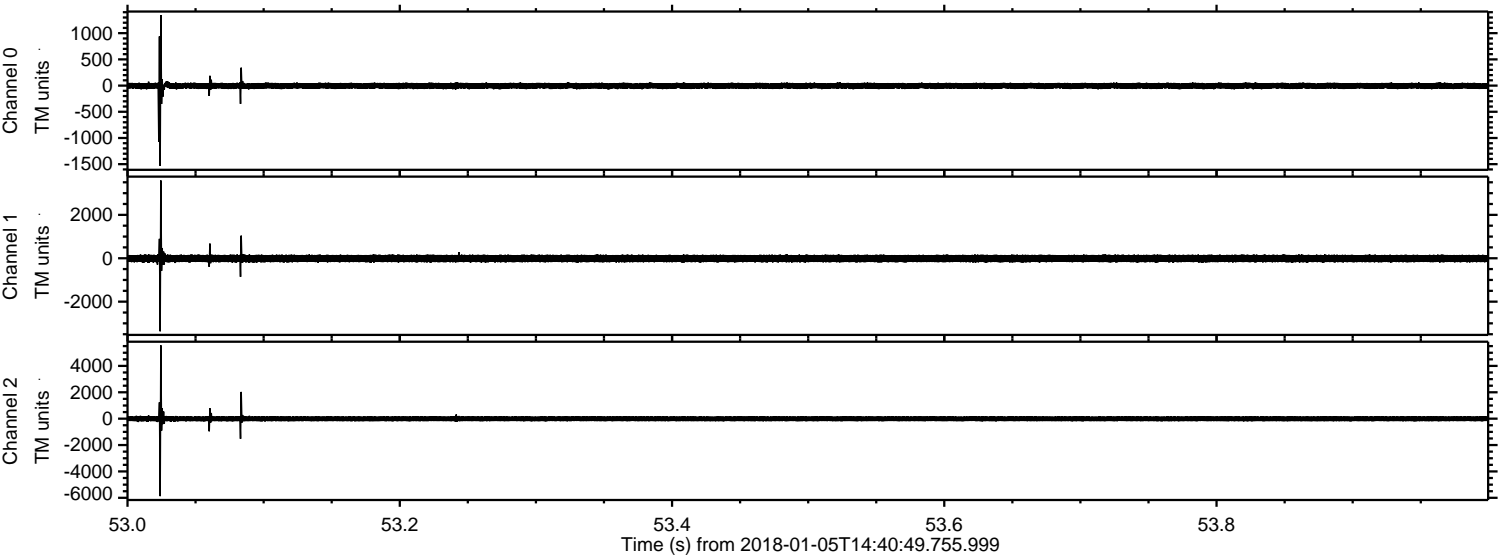


ELMAVAN 3D WAVEFORMS (Measured data sampled at 50 kHz) 51000 packets of 144 samples from 2018-01-05T14:40:49.755.999.

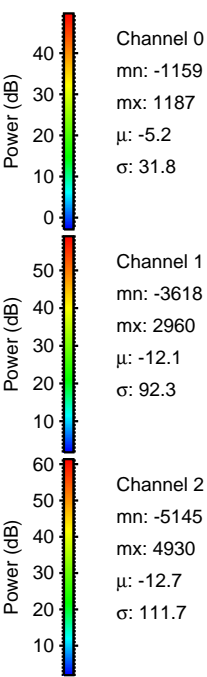
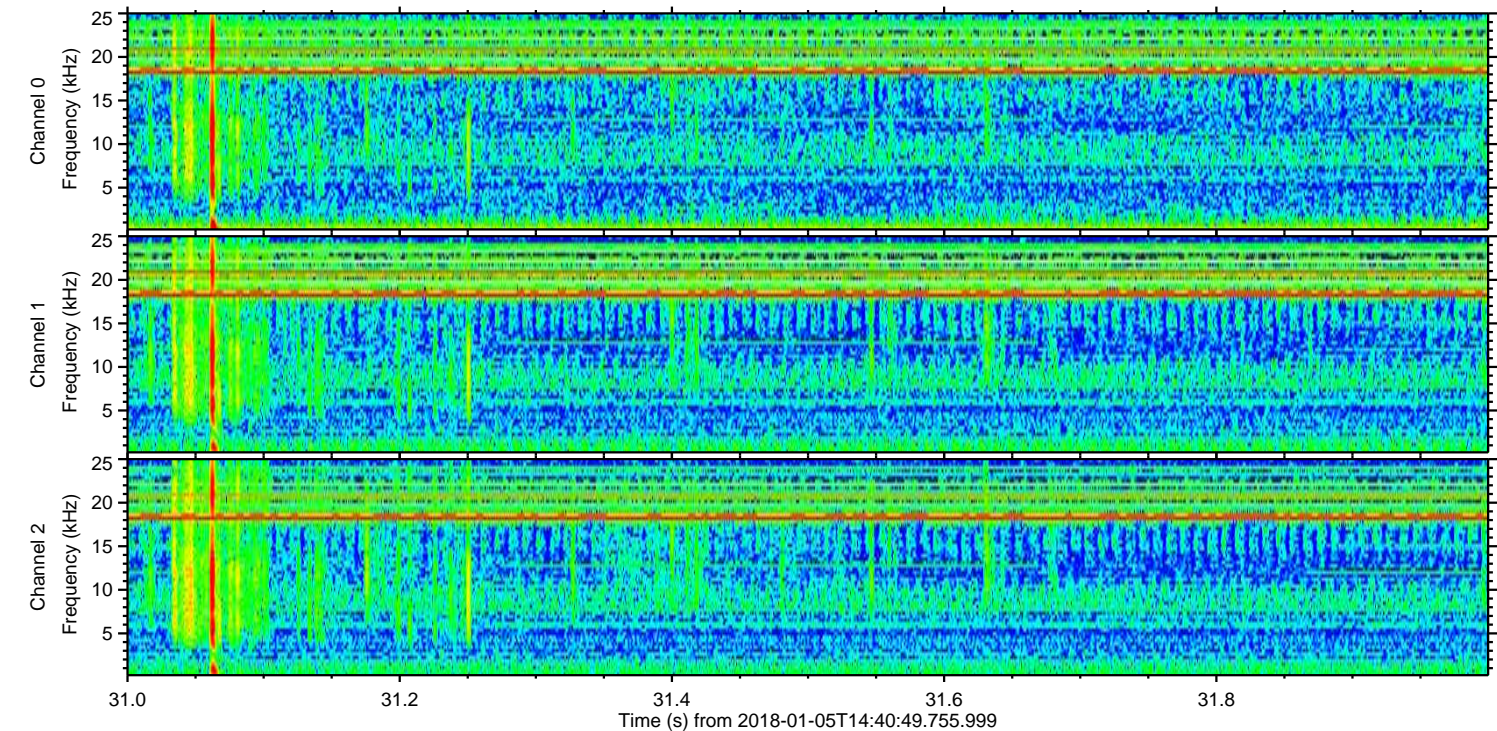
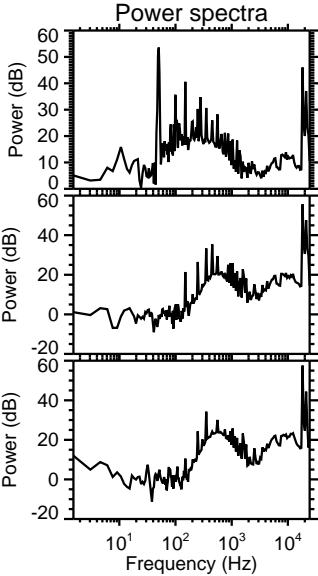
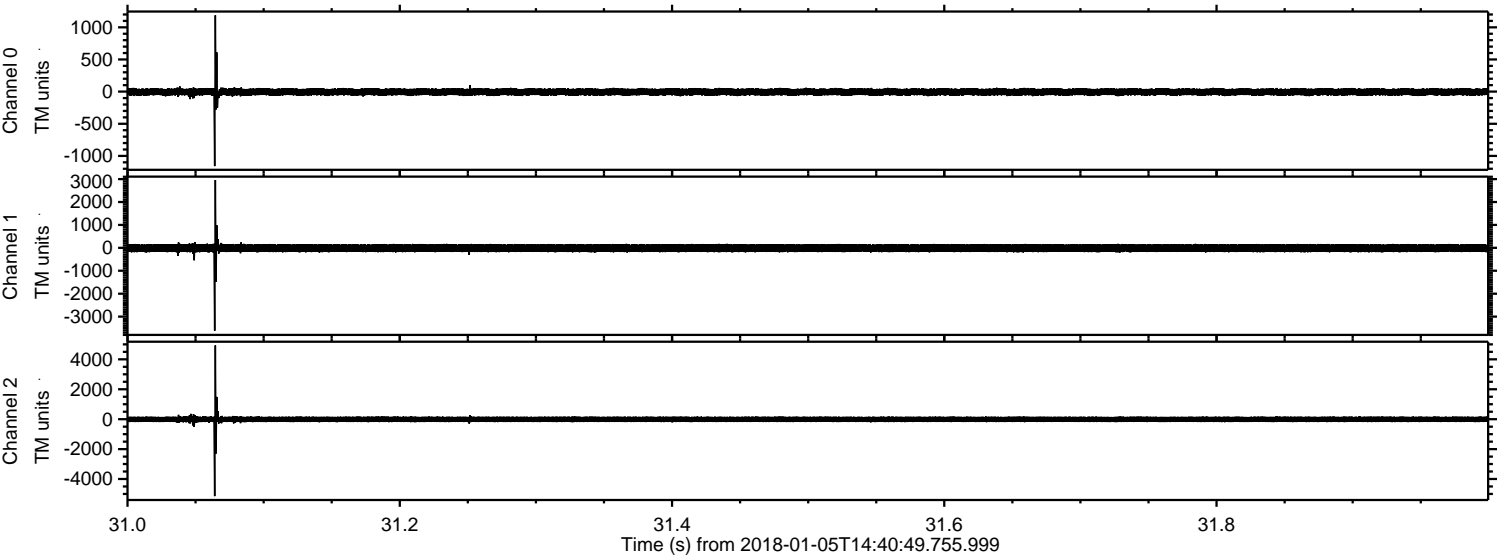
Processed Fri Jan 5 15:48:47 2018 by ELM ver.2012-10-06 from 001__elm20180105_144048__dat00.bin



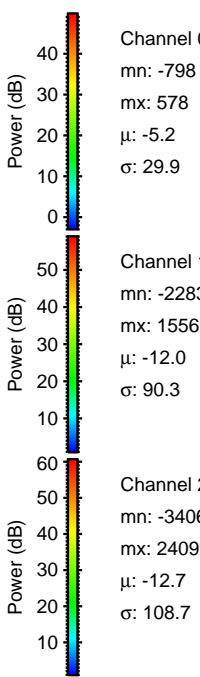
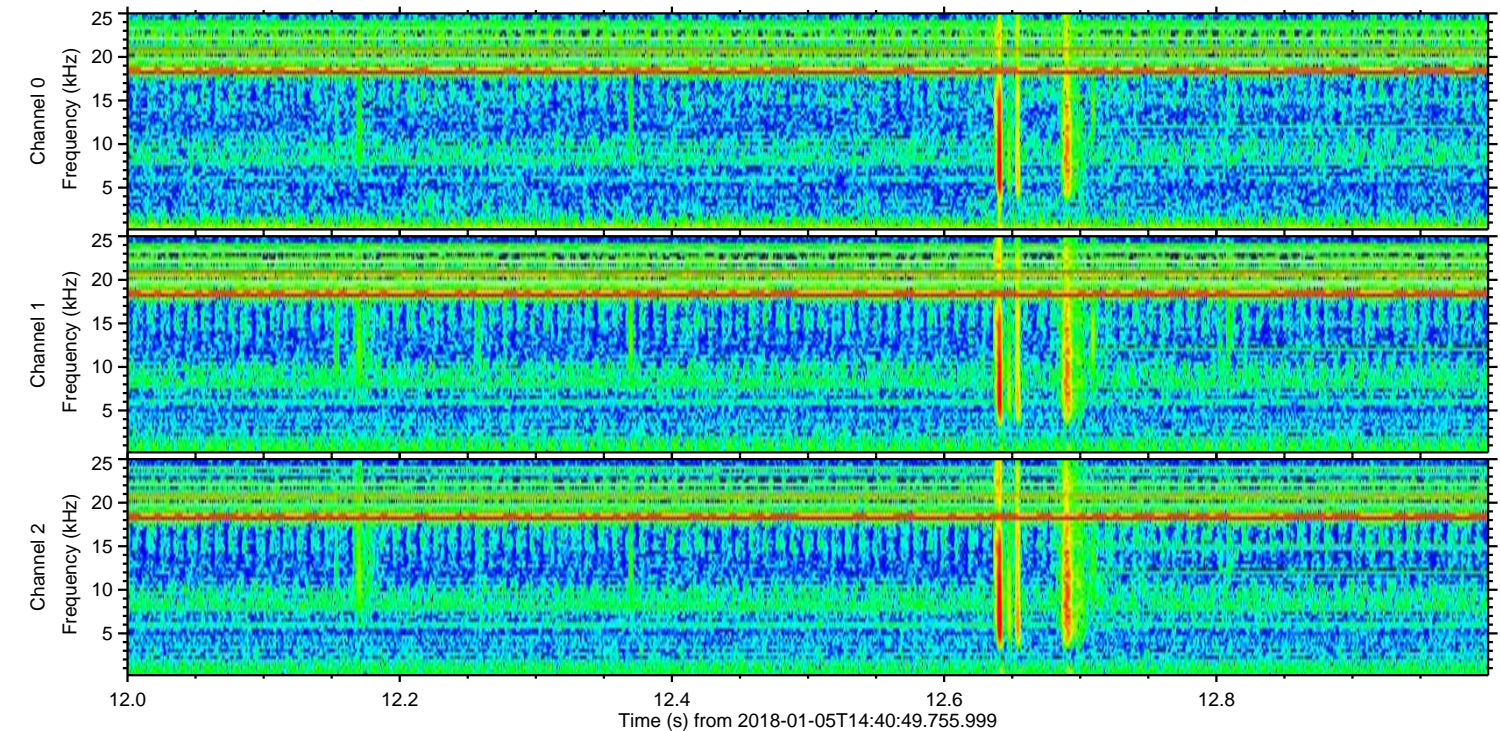
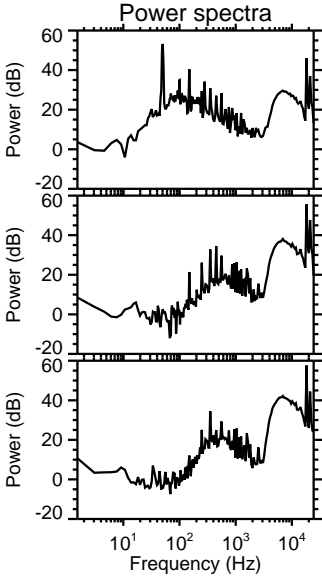
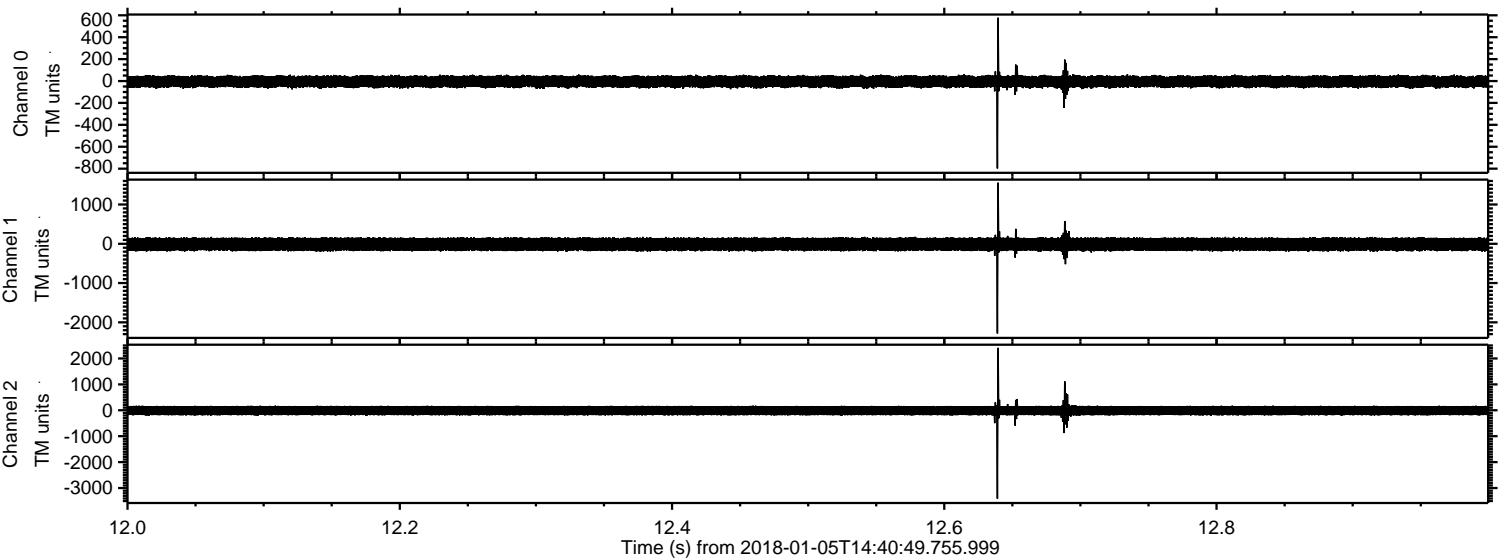
Processed Fri Jan 5 15:48:55 2018 by ELM ver.2012-10-06 from 001__elm20180105_144048__dat00.bin



Processed Fri Jan 5 15:48:55 2018 by ELM ver.2012-10-06 from 001__elm20180105_144048__dat00.bin

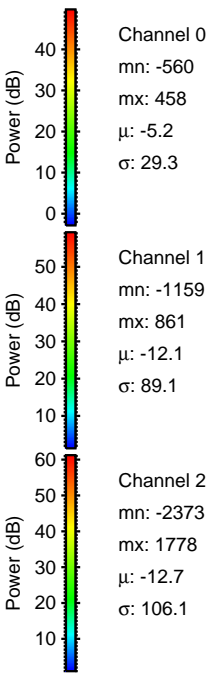
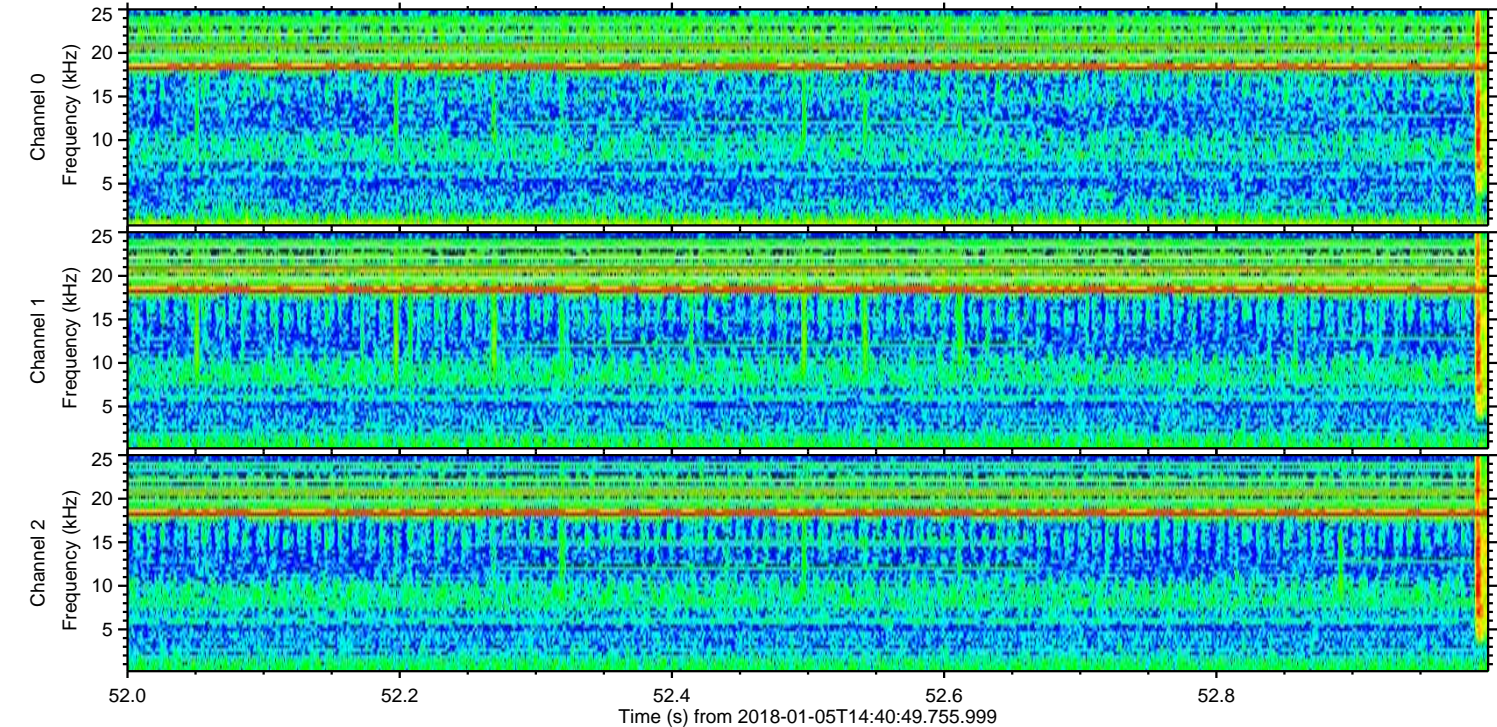
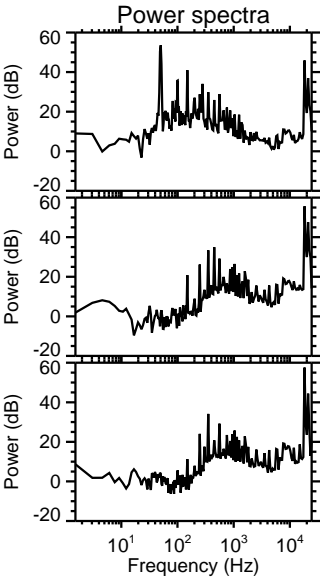
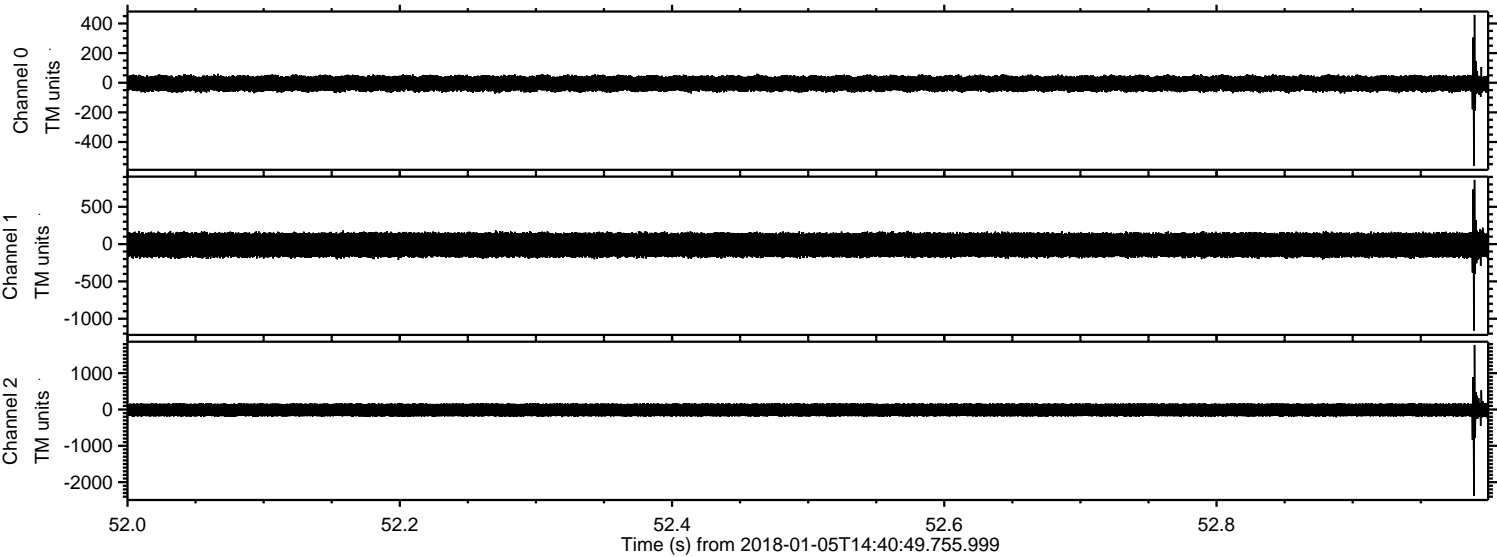


Processed Fri Jan 5 15:48:57 2018 by ELM ver.2012-10-06 from 001__elm20180105_144048__dat00.bin

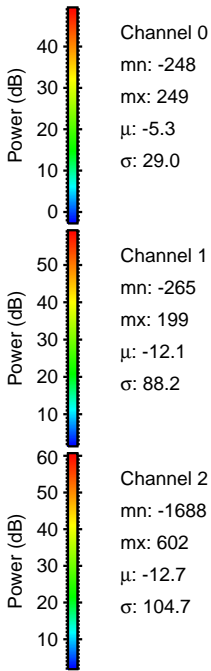
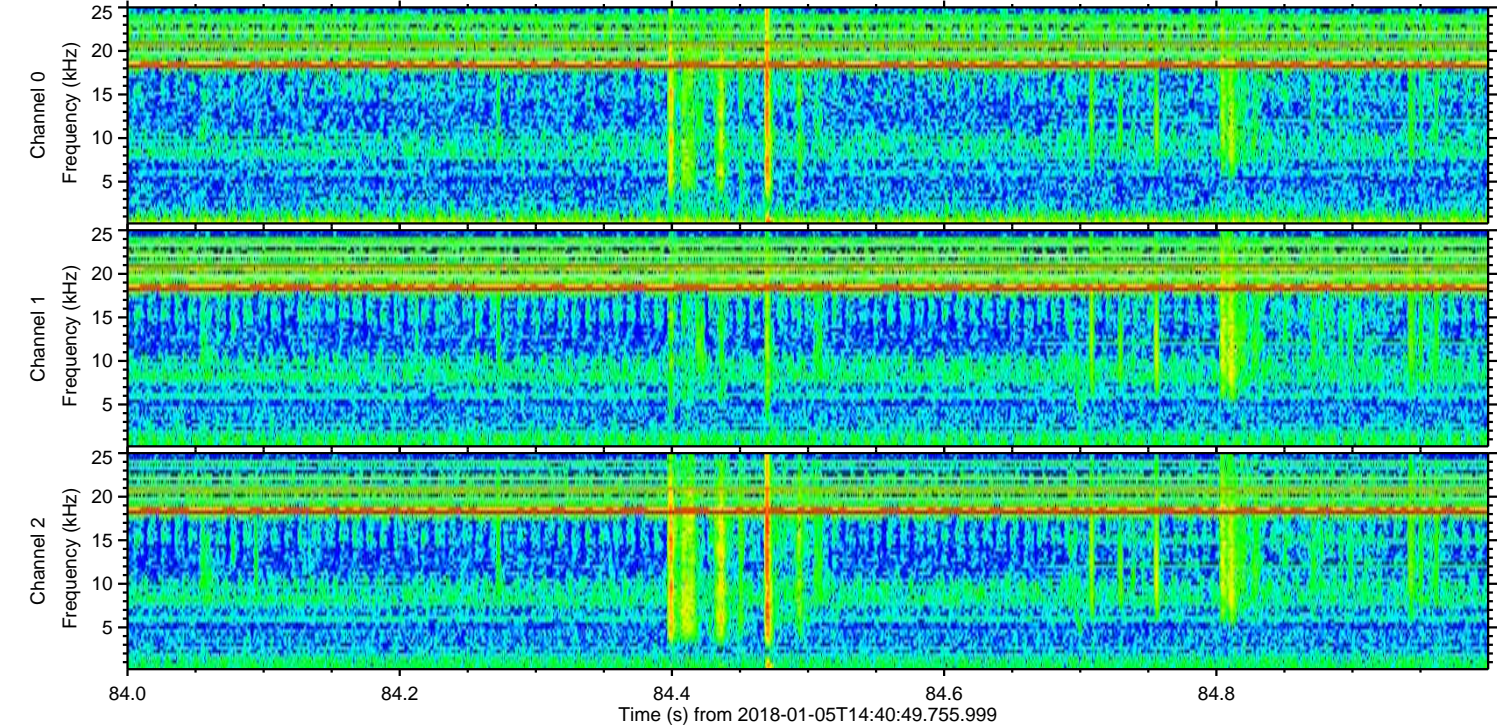
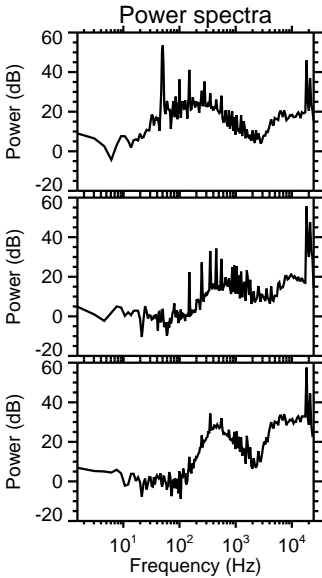
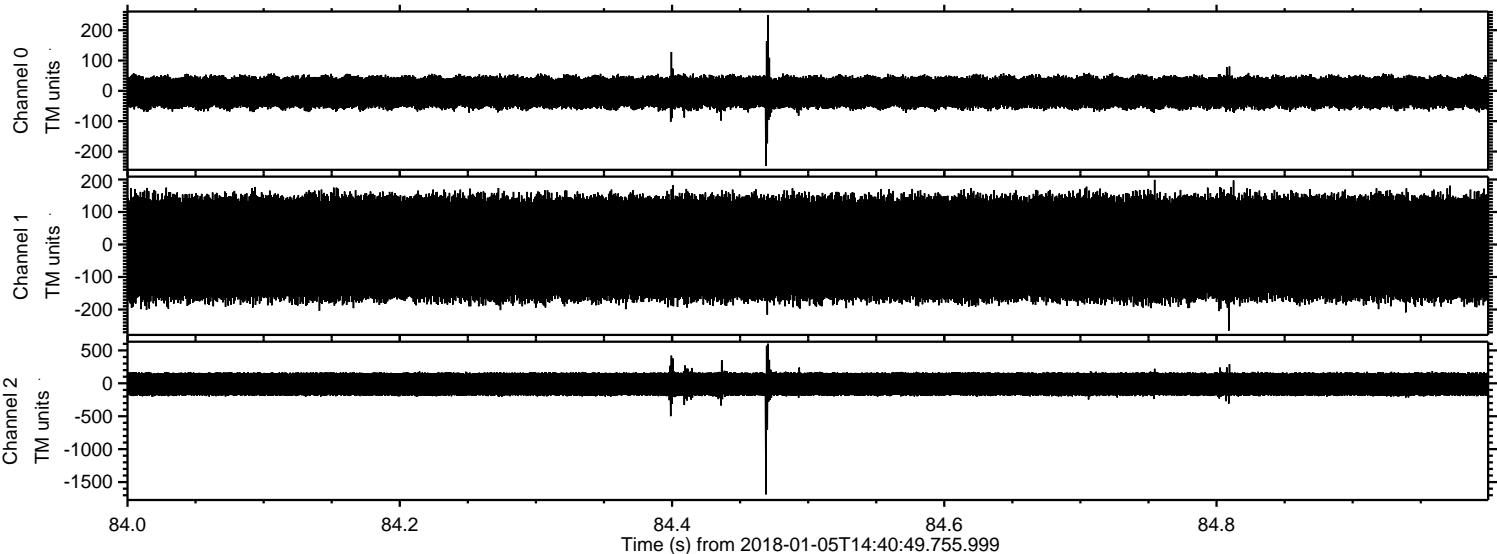


ELMAVAN 3D WAVEFORMS (Measured data sampled at 50 kHz) 51000 packets of 144 samples from 2018-01-05T14:40:49.755.999. Part 53/147

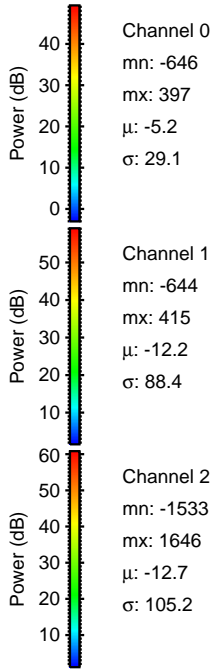
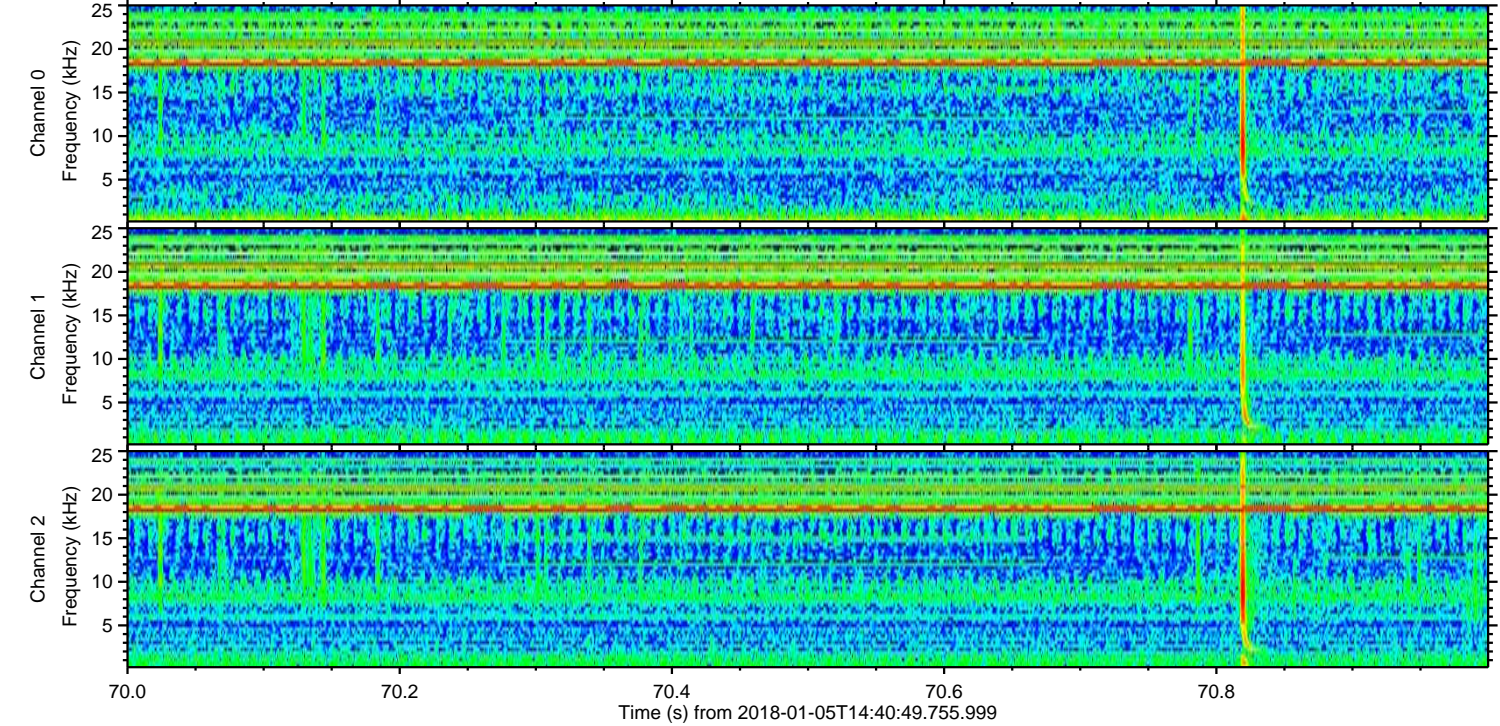
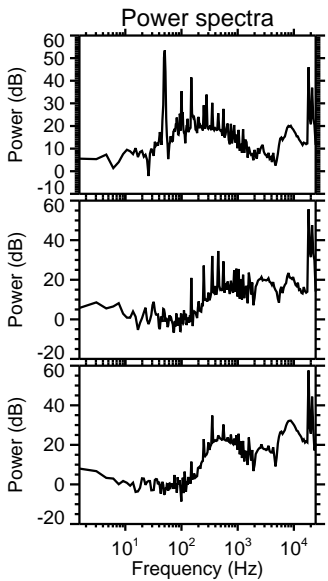
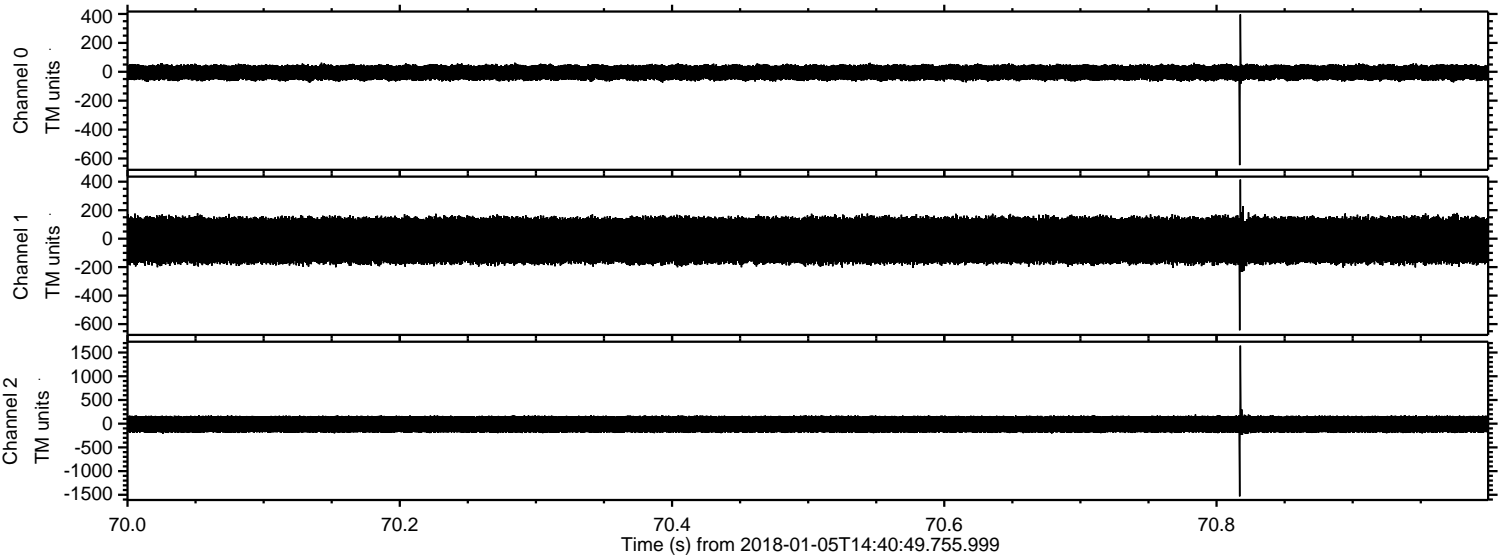
Processed Fri Jan 5 15:48:58 2018 by ELM ver.2012-10-06 from 001__elm20180105_144048__dat00.bin



Processed Fri Jan 5 15:48:58 2018 by ELM ver.2012-10-06 from 001__elm20180105_144048__dat00.bin



Processed Fri Jan 5 15:48:59 2018 by ELM ver.2012-10-06 from 001__elm20180105_144048__dat00.bin

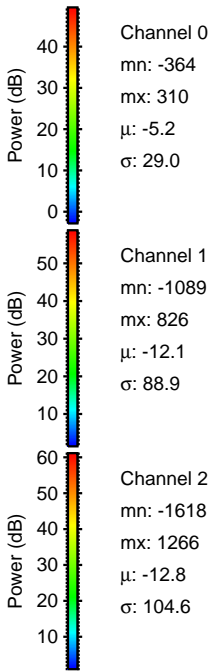
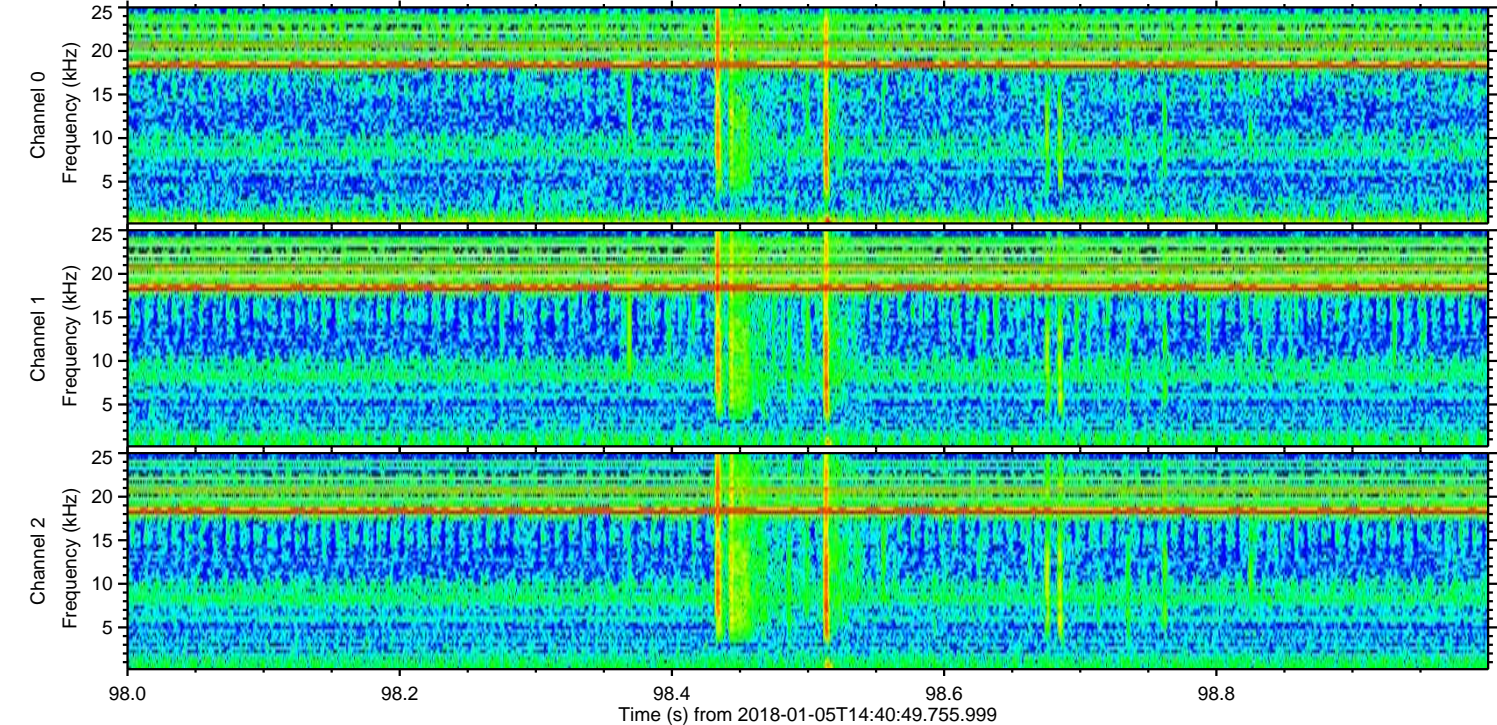
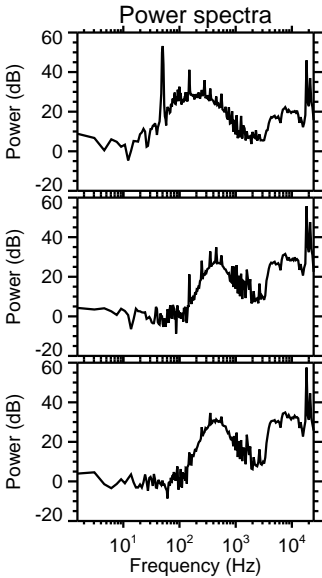
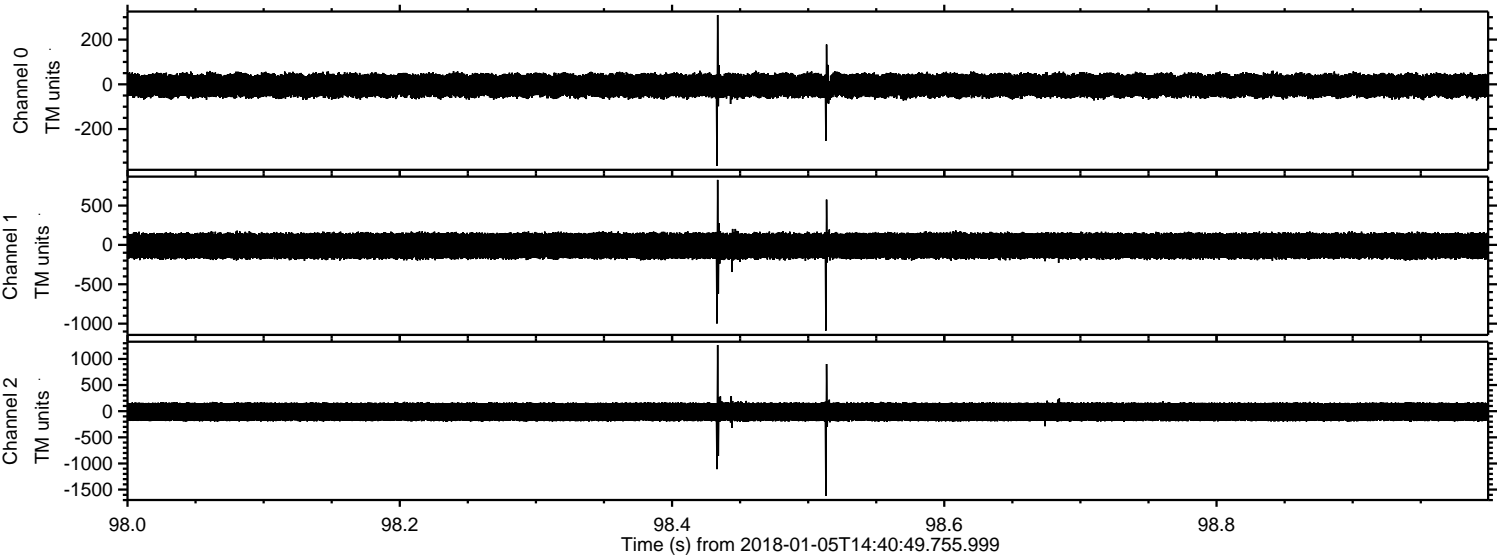


Channel 0
mn: -646
mx: 397
 μ : -5.2
 σ : 29.1

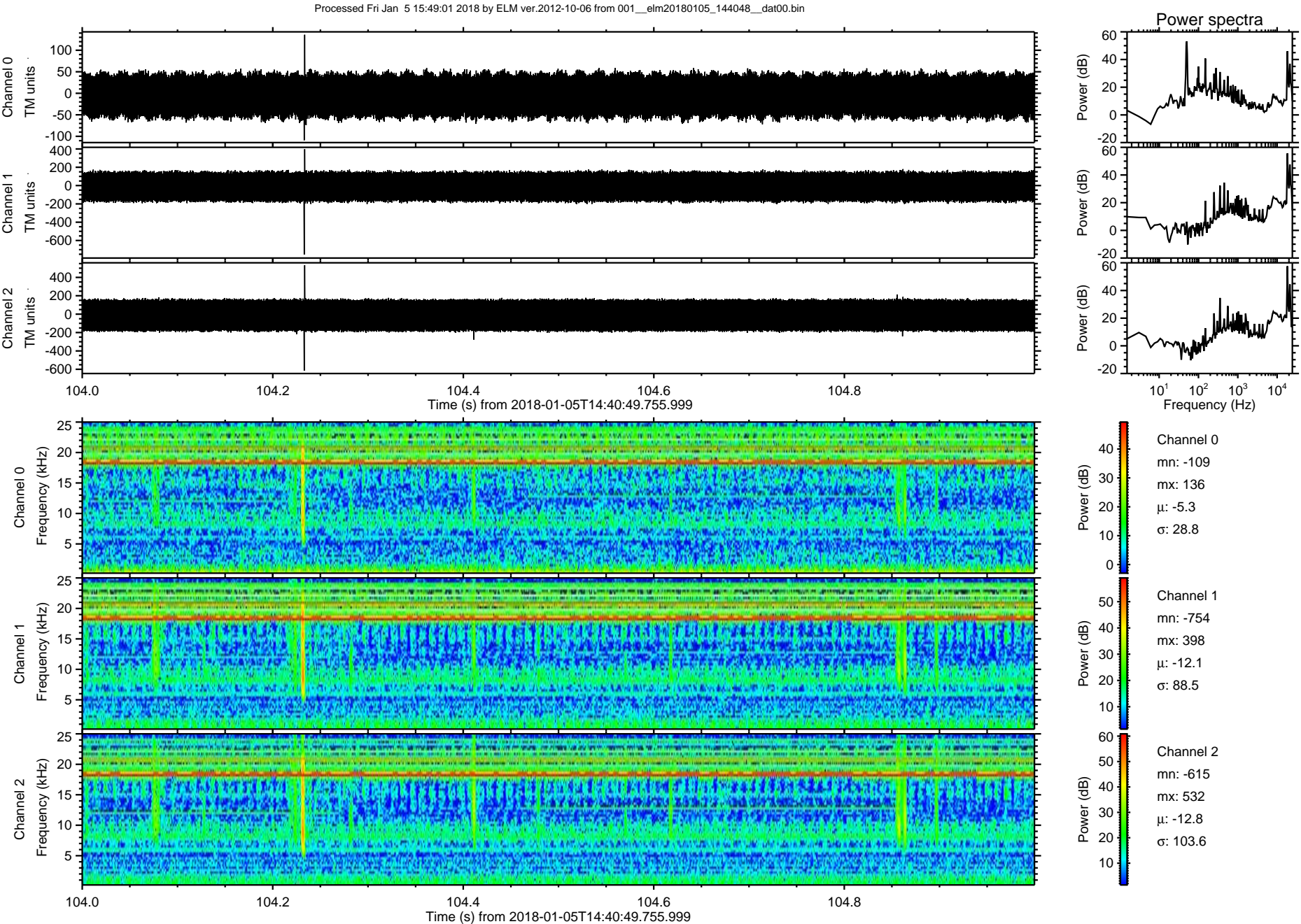
Channel 1
mn: -644
mx: 415
 μ : -12.2
 σ : 88.4

Channel 2
mn: -1533
mx: 1646
 μ : -12.7
 σ : 105.2

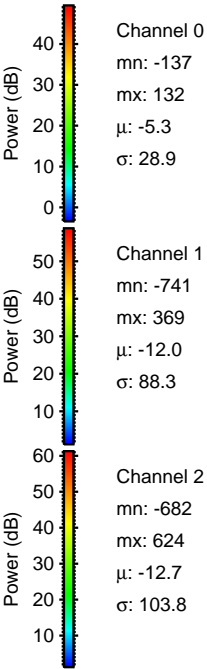
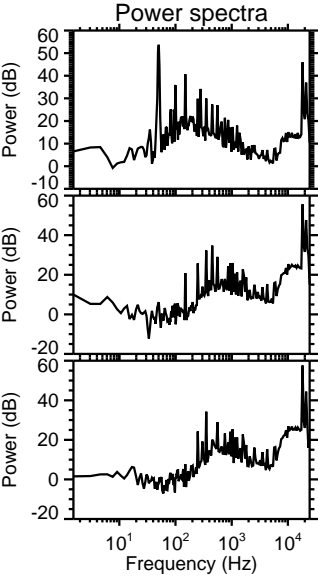
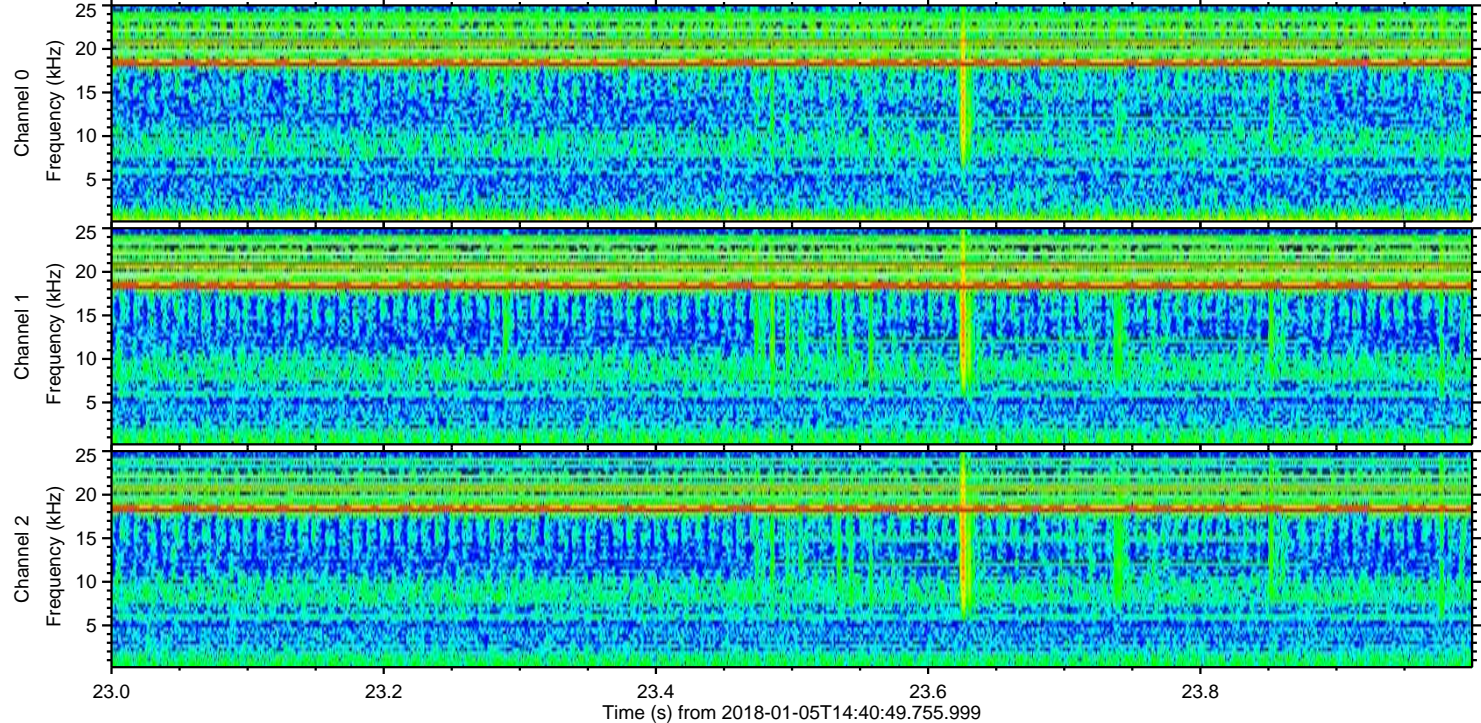
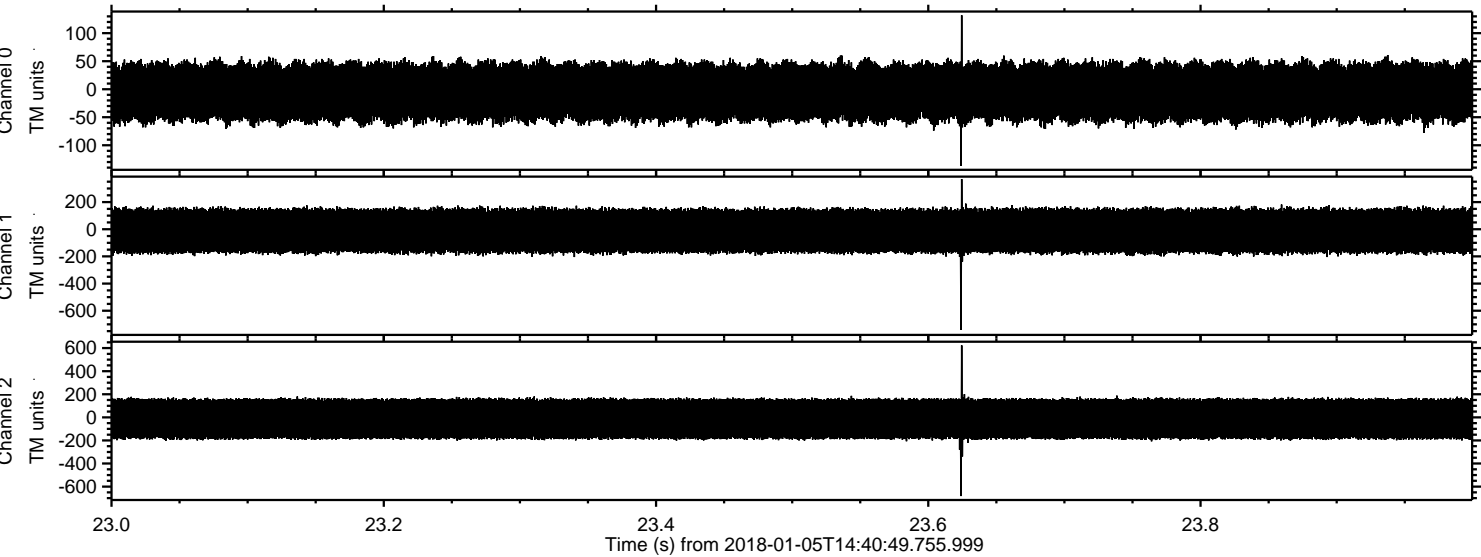
Processed Fri Jan 5 15:49:00 2018 by ELM ver.2012-10-06 from 001__elm20180105_144048__dat00.bin



ELMAVAN 3D WAVEFORMS (Measured data sampled at 50 kHz) 51000 packets of 144 samples from 2018-01-05T14:40:49.755.999. Part 105/147



Processed Fri Jan 5 15:49:02 2018 by ELM ver.2012-10-06 from 001__elm20180105_144048__dat00.bin



Channel 0
mn: -137
mx: 132
 μ : -5.3
 σ : 28.9

Channel 1
mn: -741
mx: 369
 μ : -12.0
 σ : 88.3

Channel 2
mn: -682
mx: 624
 μ : -12.7
 σ : 103.8

Processed Fri Jan 5 15:49:02 2018 by ELM ver.2012-10-06 from 001__elm20180105_144048__dat00.bin

