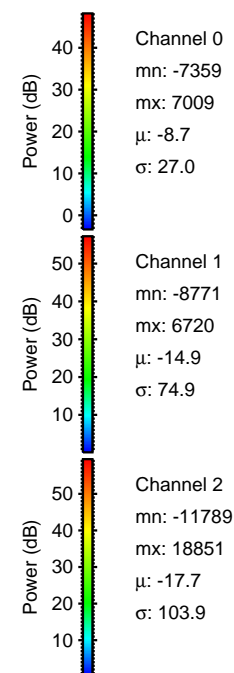
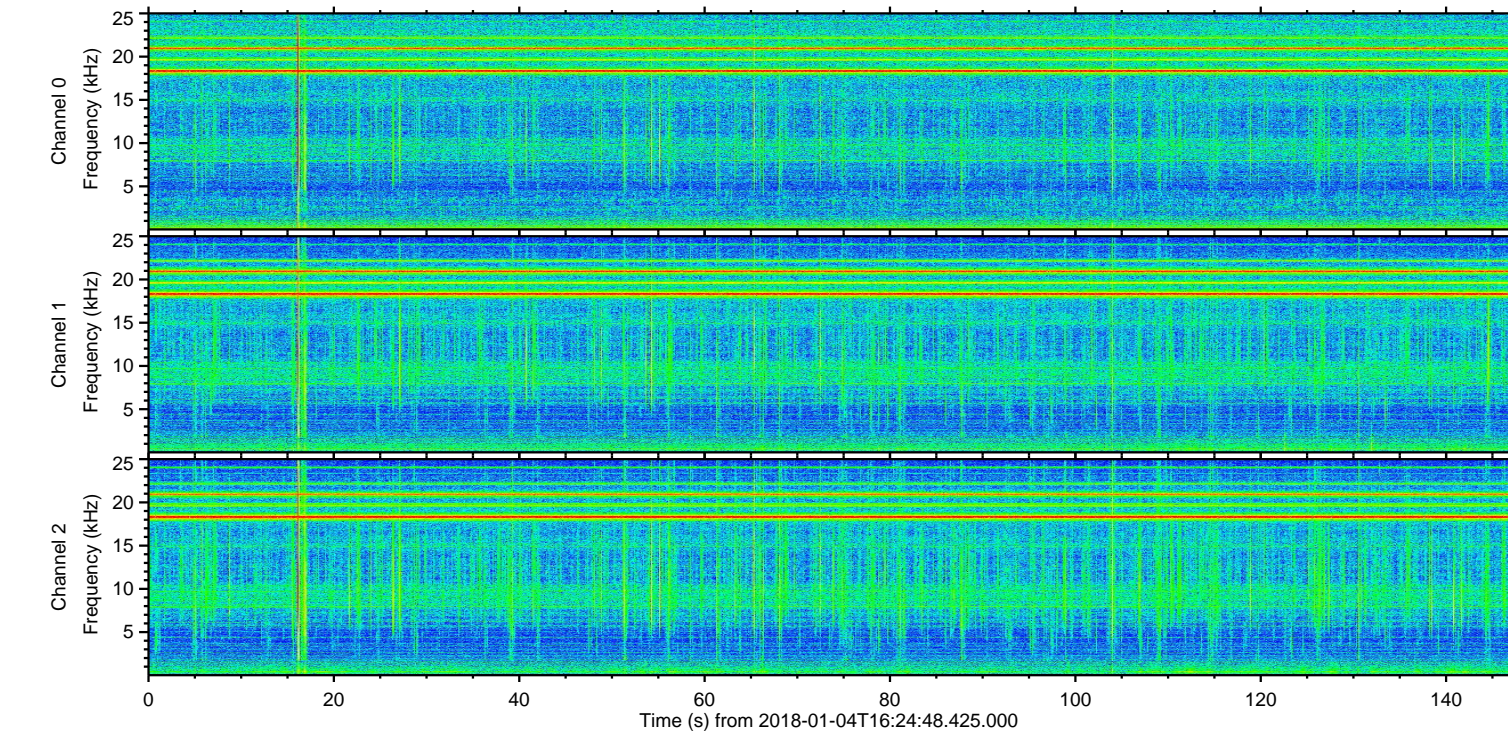
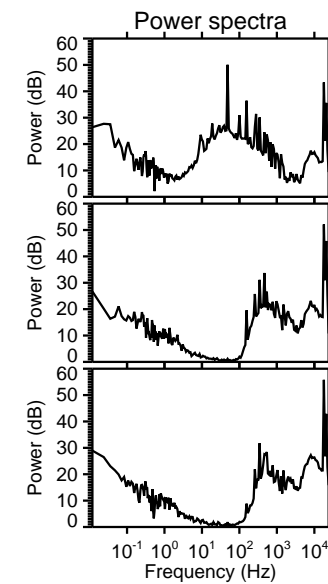
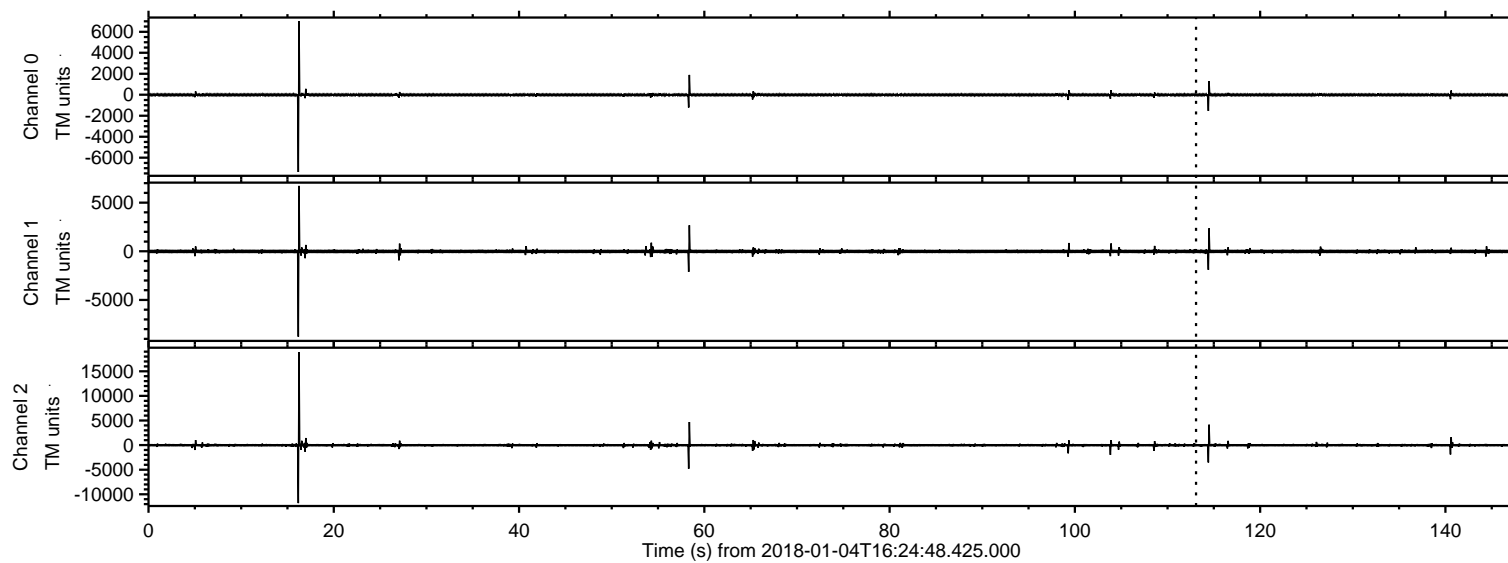
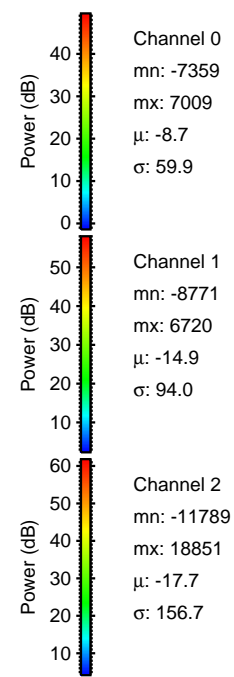
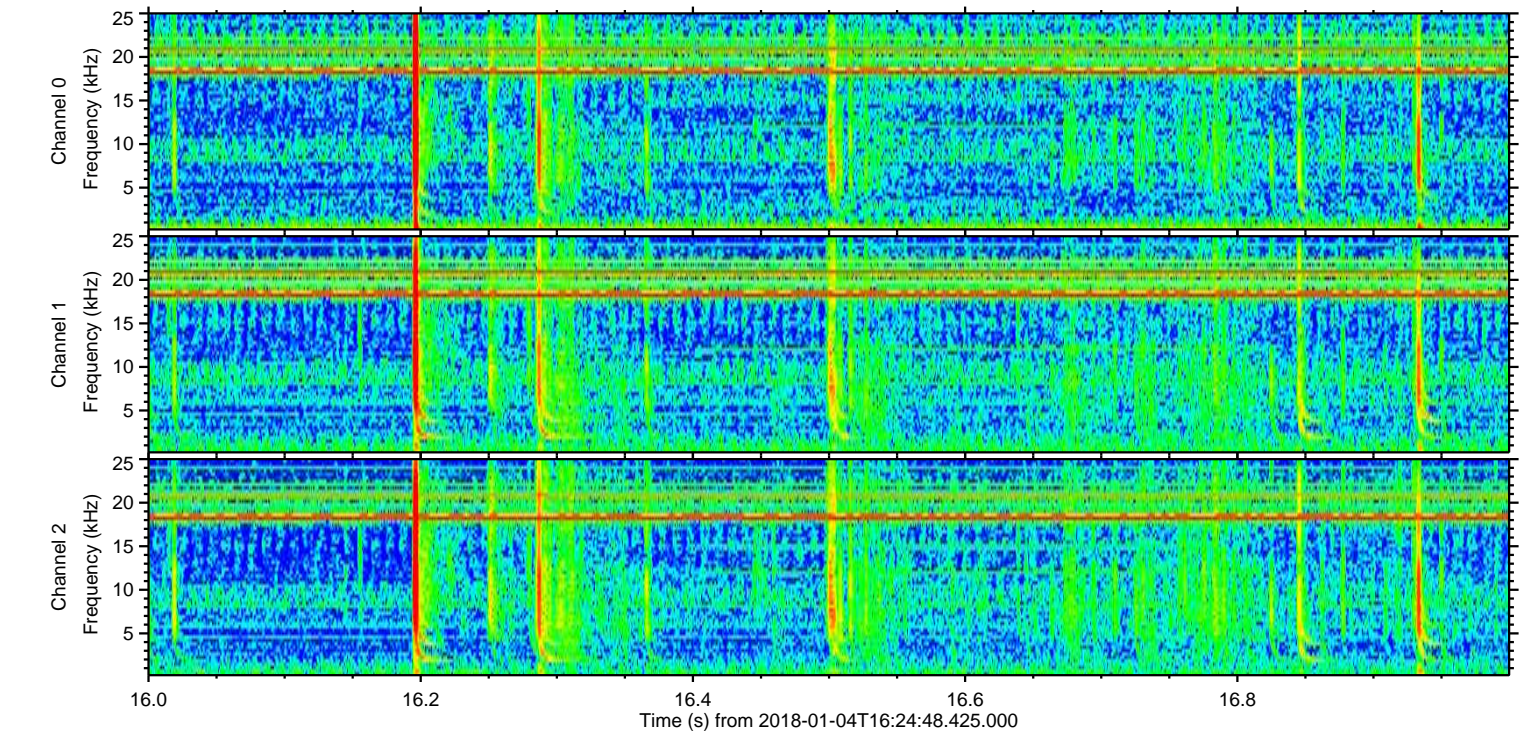
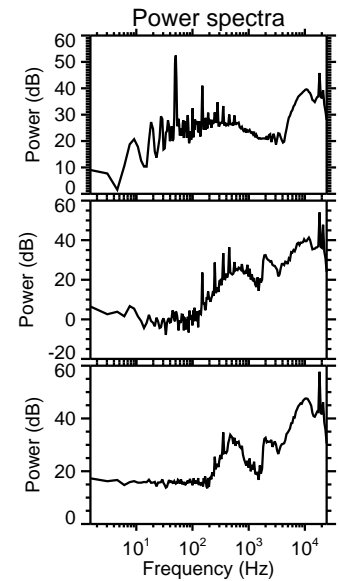
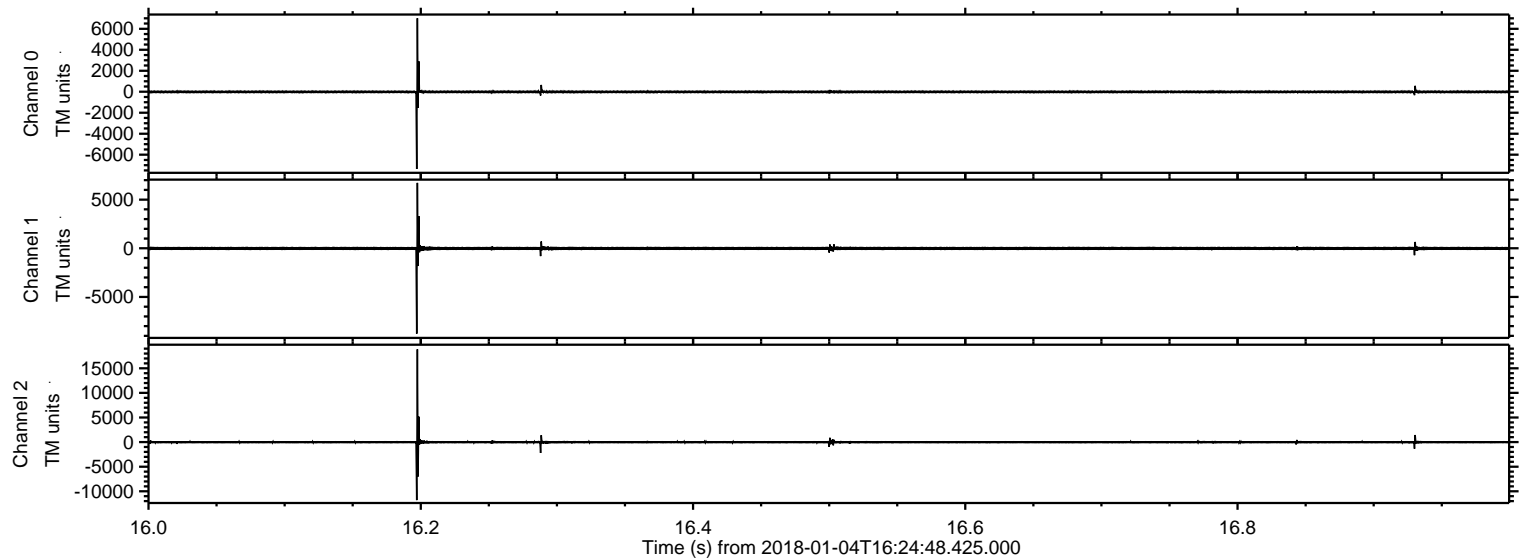


ELMAVAN 3D WAVEFORMS (Measured data sampled at 50 kHz) 50999 packets of 144 samples from 2018-01-04T16:24:48.425.000.

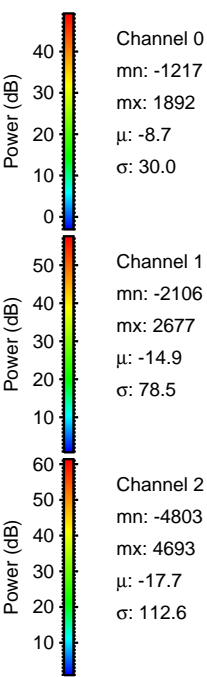
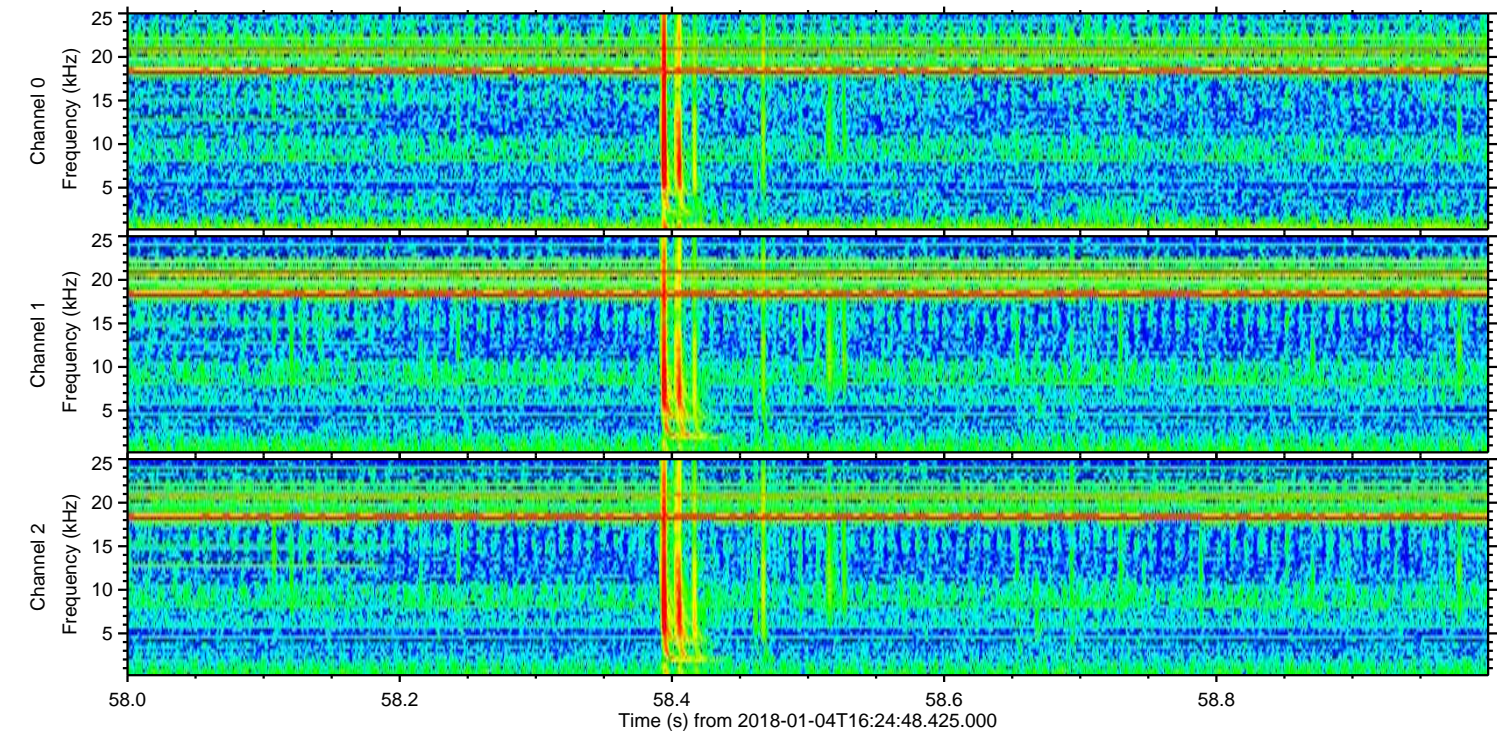
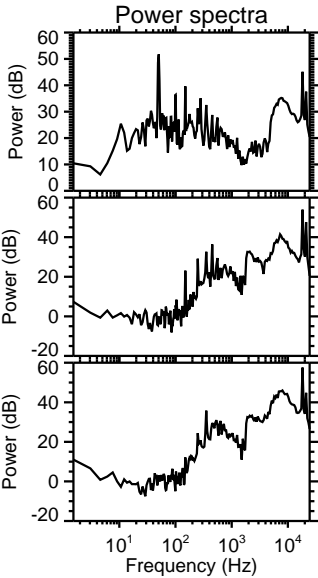
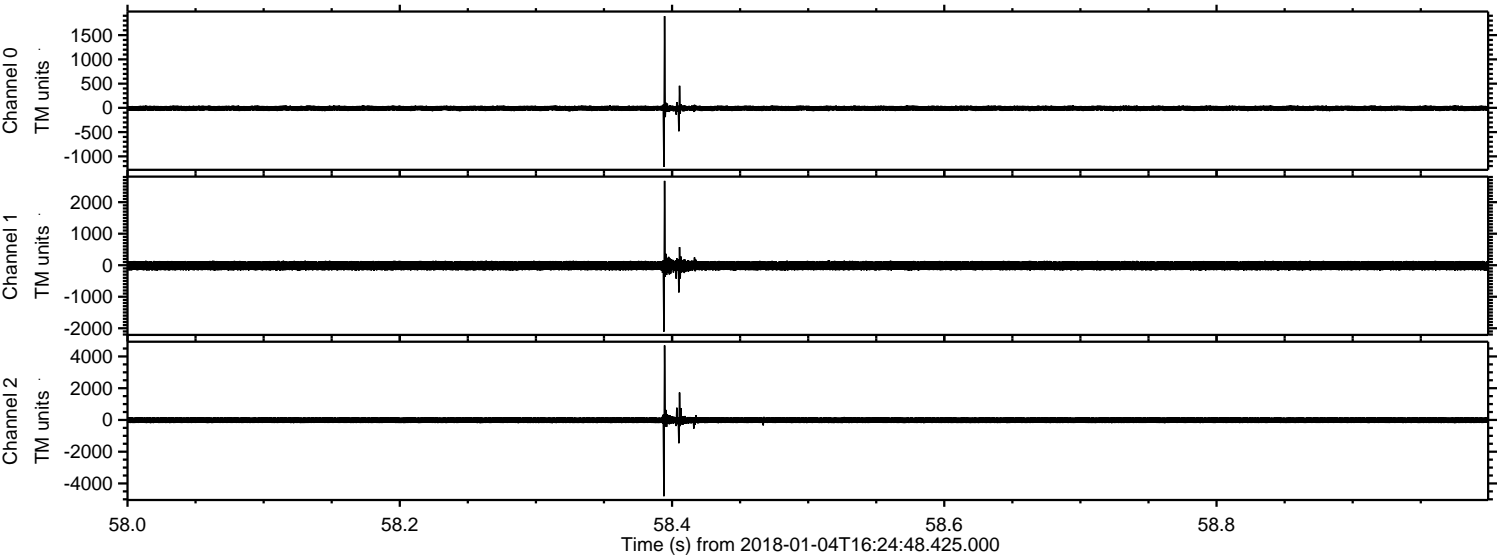
Processed Thu Jan 4 17:32:47 2018 by ELM ver.2012-10-06 from 001__elm20180104_162447__dat00.bin



Processed Thu Jan 4 17:32:55 2018 by ELM ver.2012-10-06 from 001__elm20180104_162447__dat00.bin

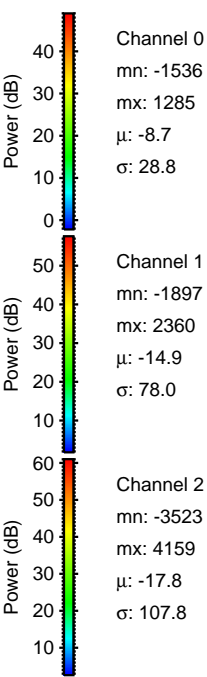
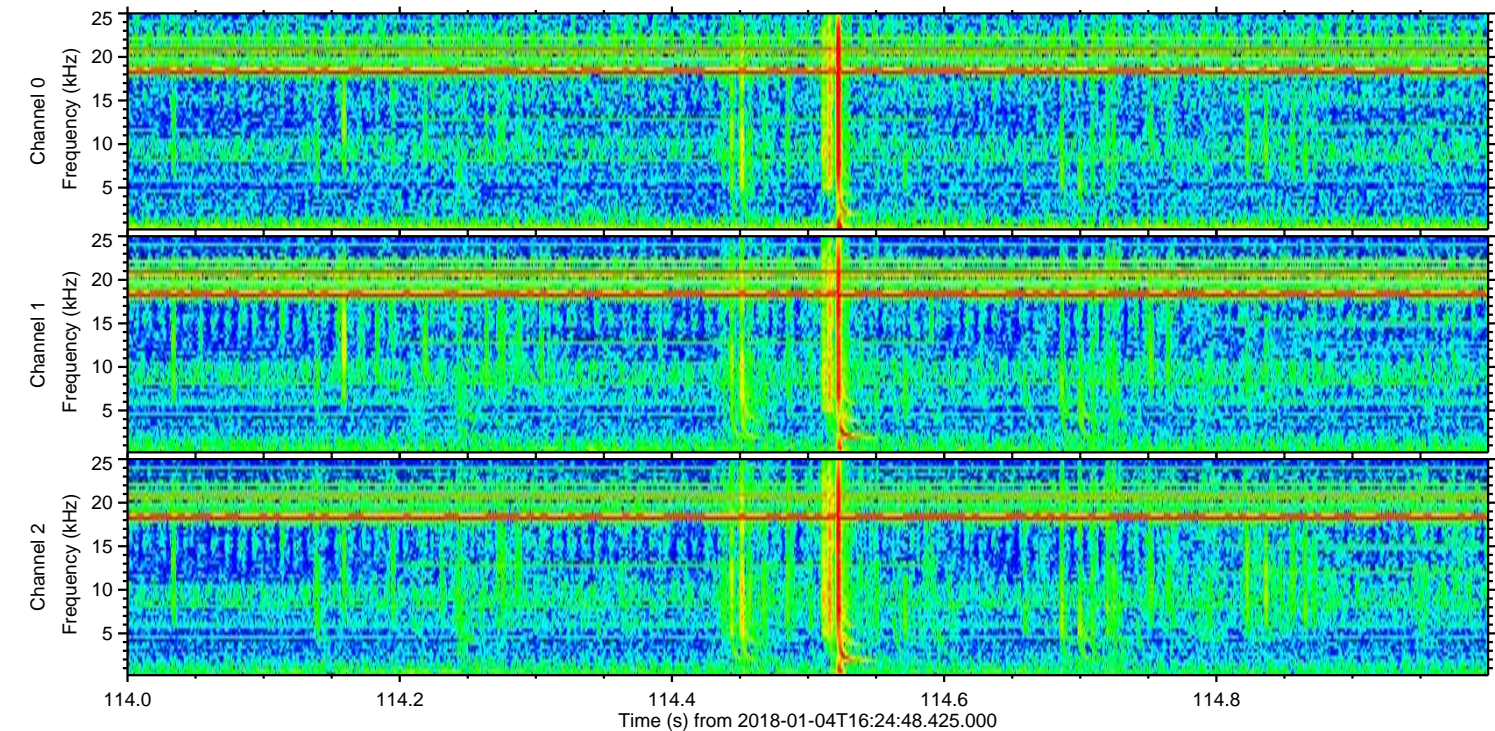
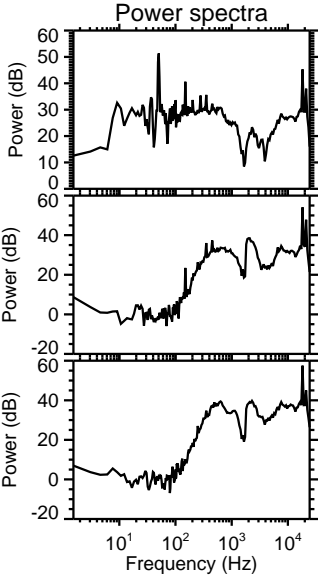
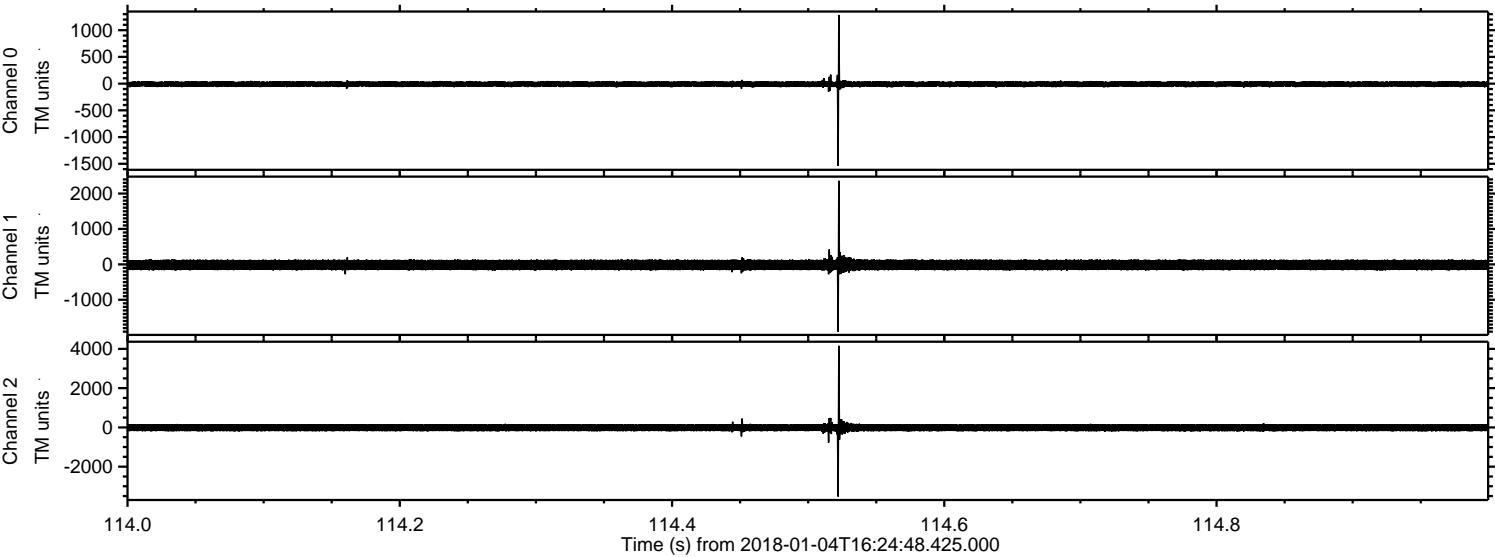


Processed Thu Jan 4 17:32:55 2018 by ELM ver.2012-10-06 from 001__elm20180104_162447__dat00.bin



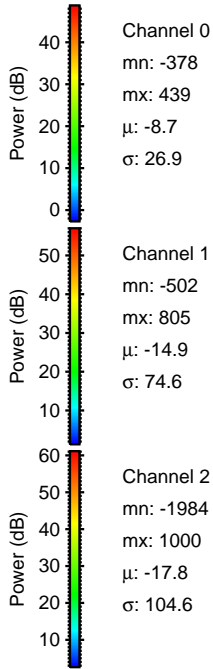
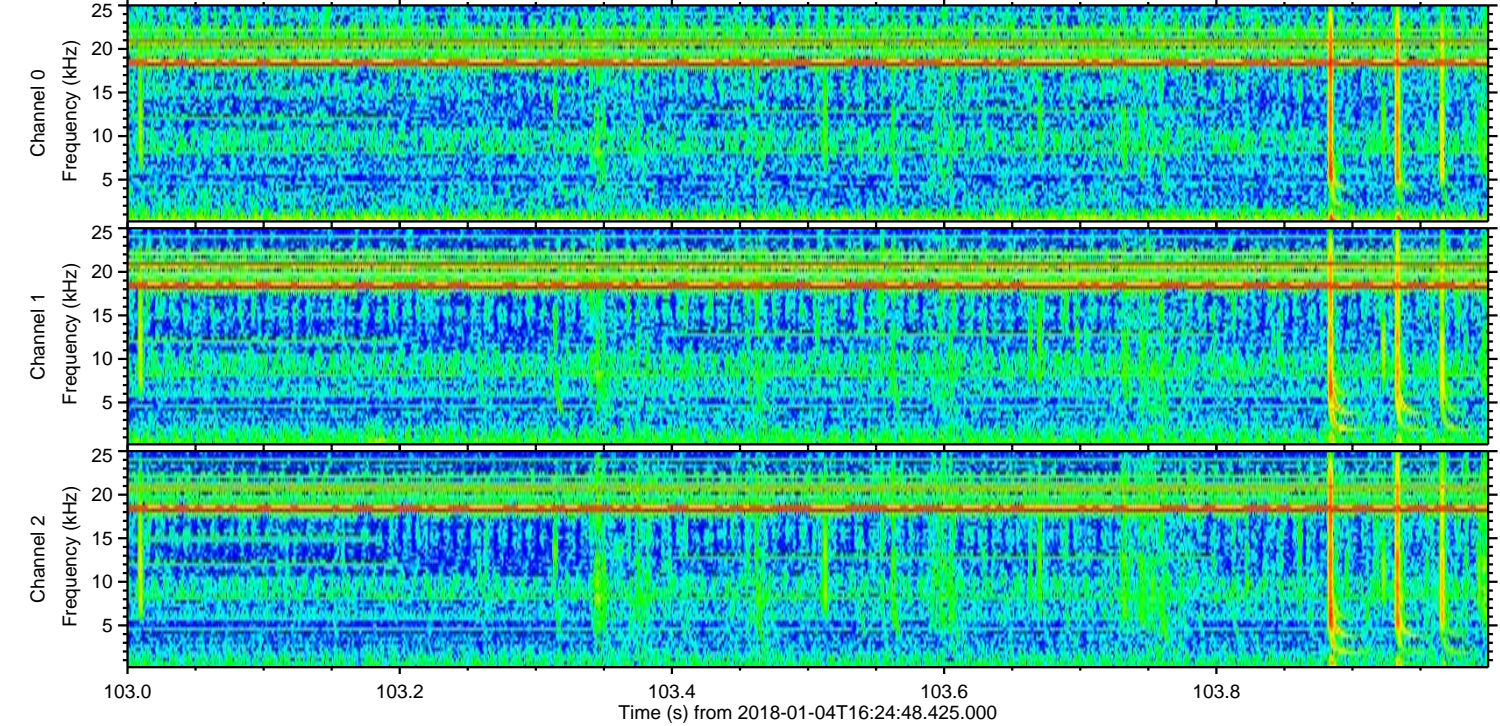
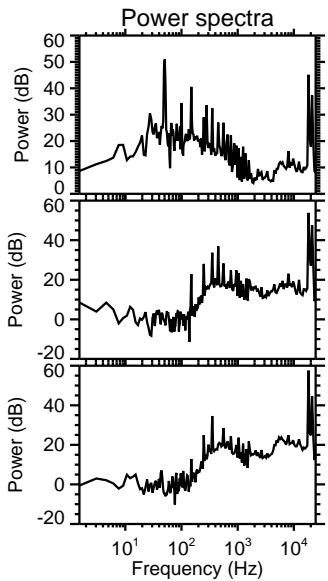
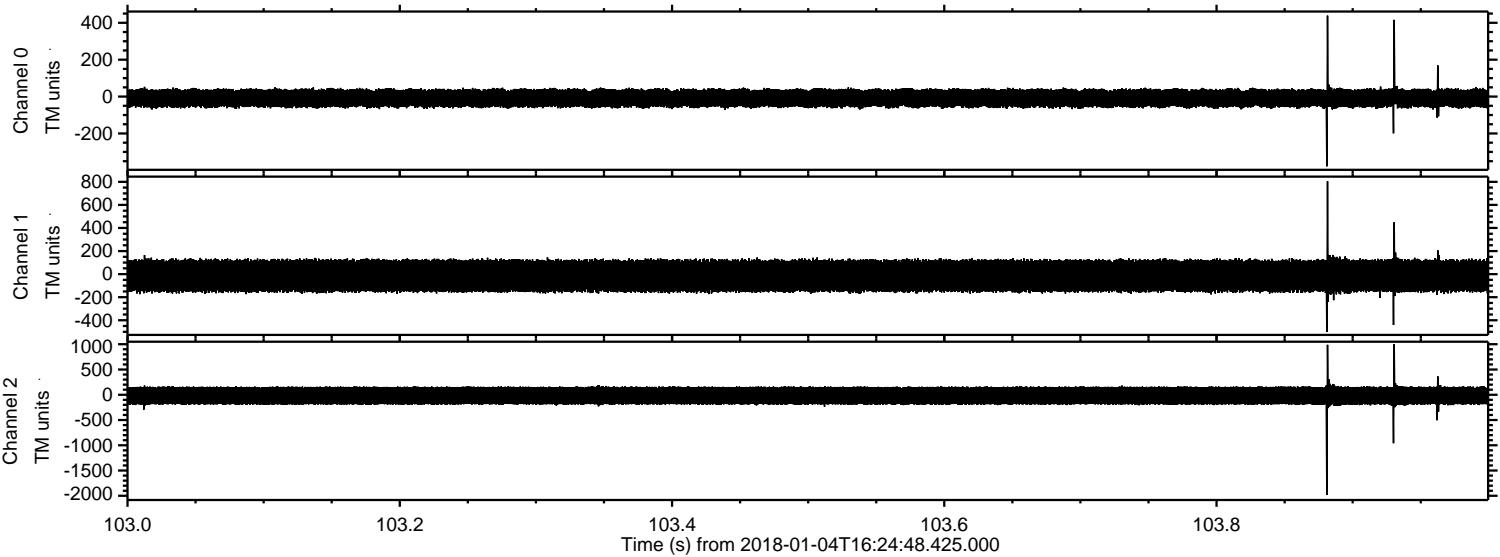
ELMAVAN 3D WAVEFORMS (Measured data sampled at 50 kHz) 50999 packets of 144 samples from 2018-01-04T16:24:48.425.000. Part 115/147

Processed Thu Jan 4 17:32:56 2018 by ELM ver.2012-10-06 from 001__elm20180104_162447__dat00.bin

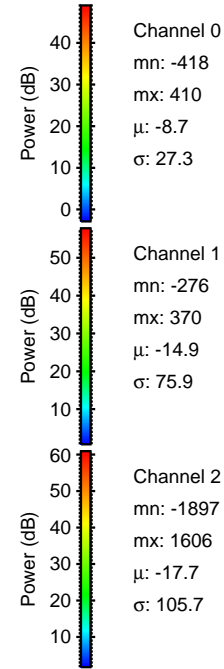
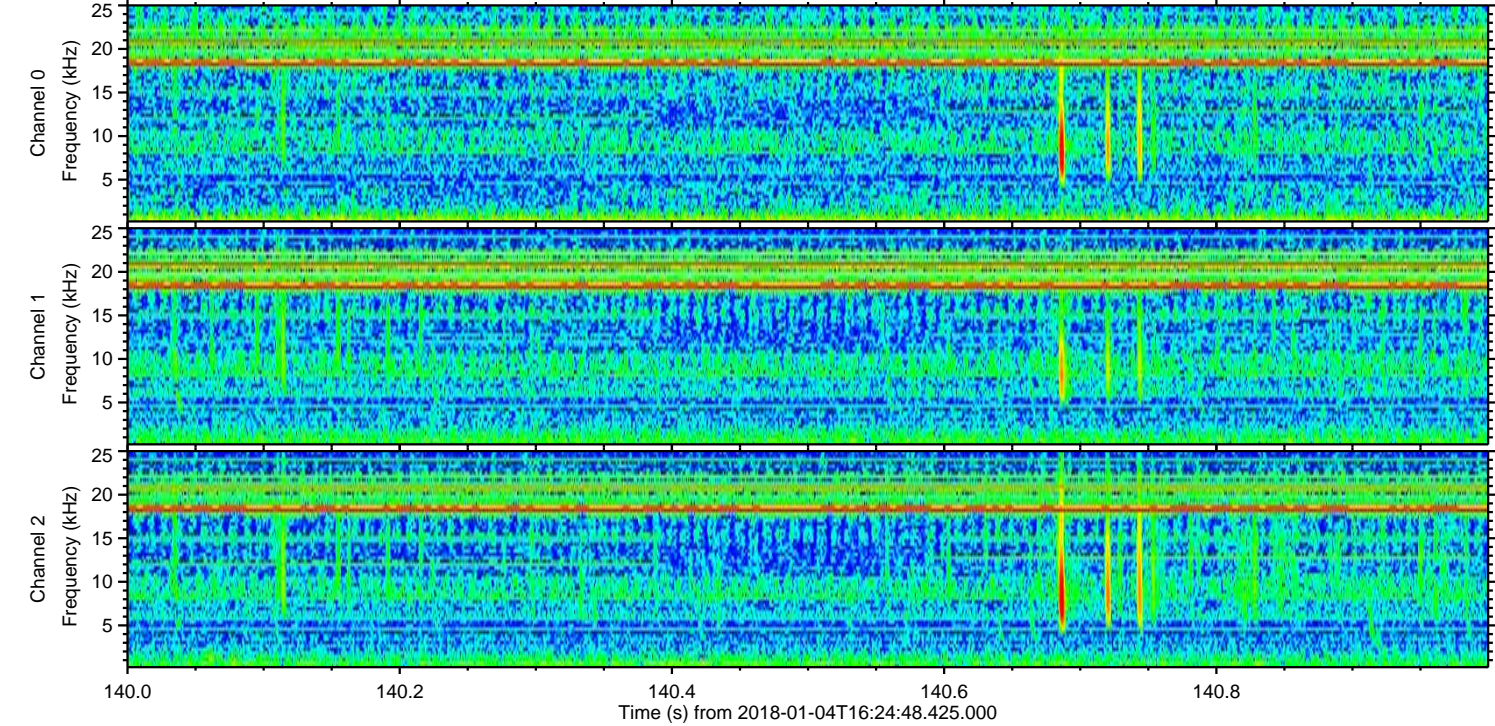
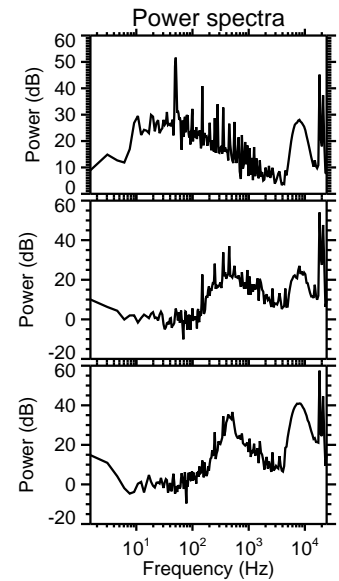
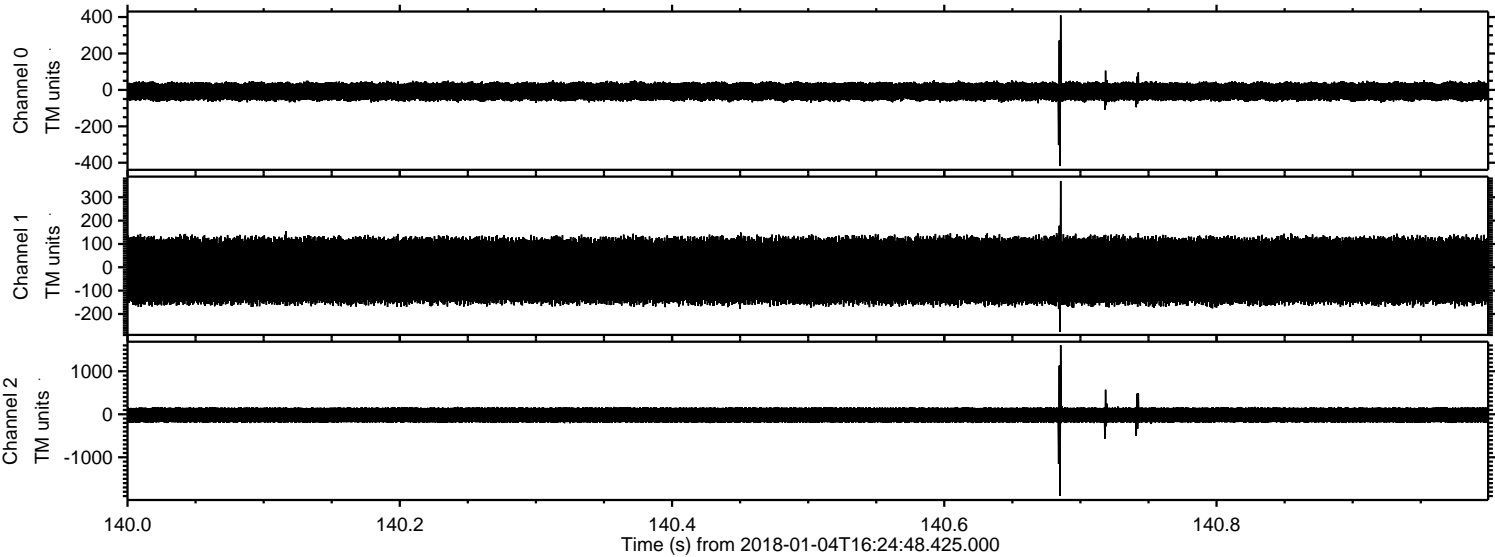


ELMAVAN 3D WAVEFORMS (Measured data sampled at 50 kHz) 50999 packets of 144 samples from 2018-01-04T16:24:48.425.000. Part 104/147

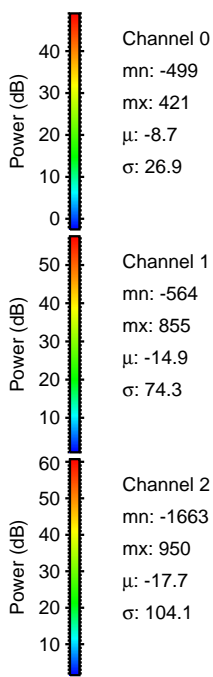
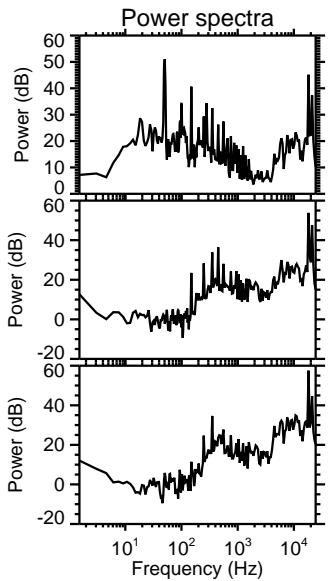
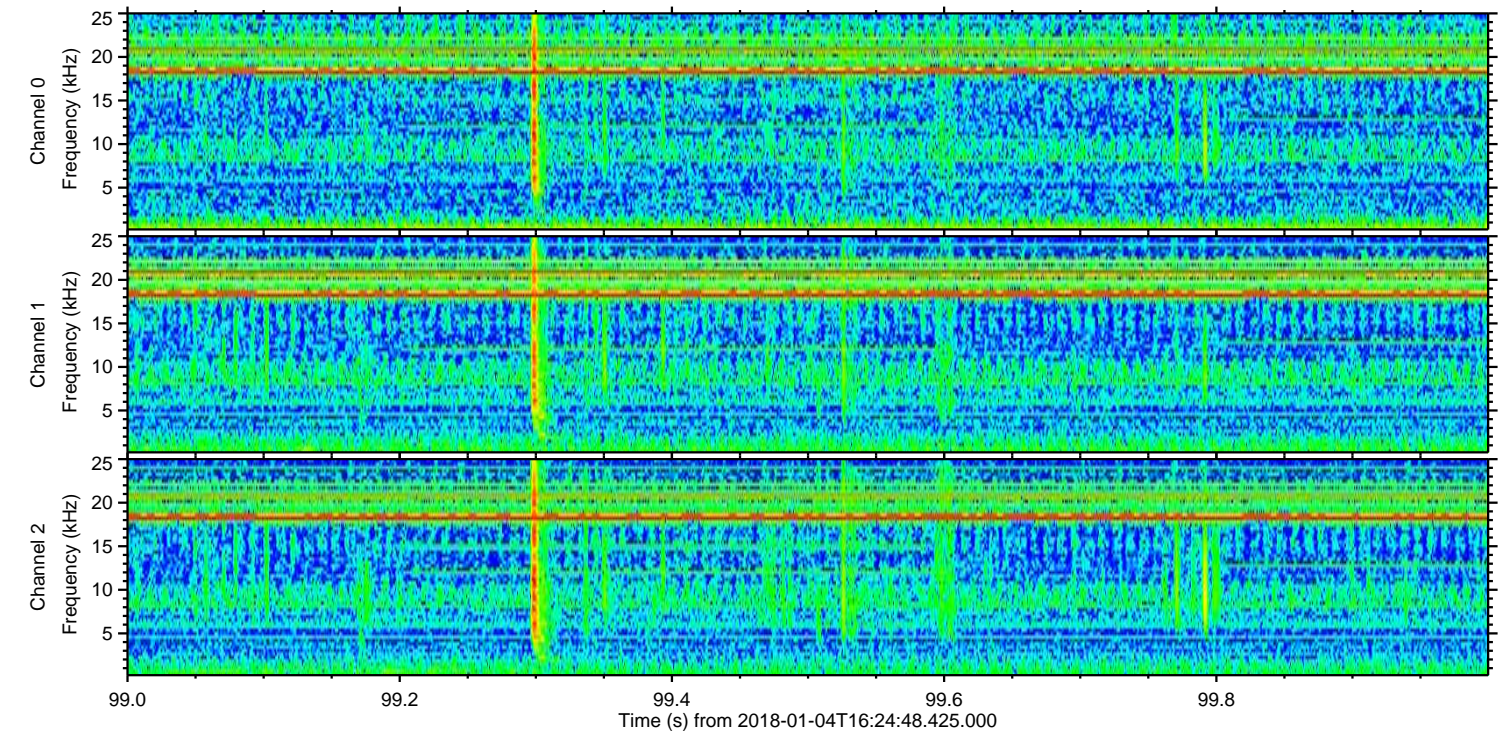
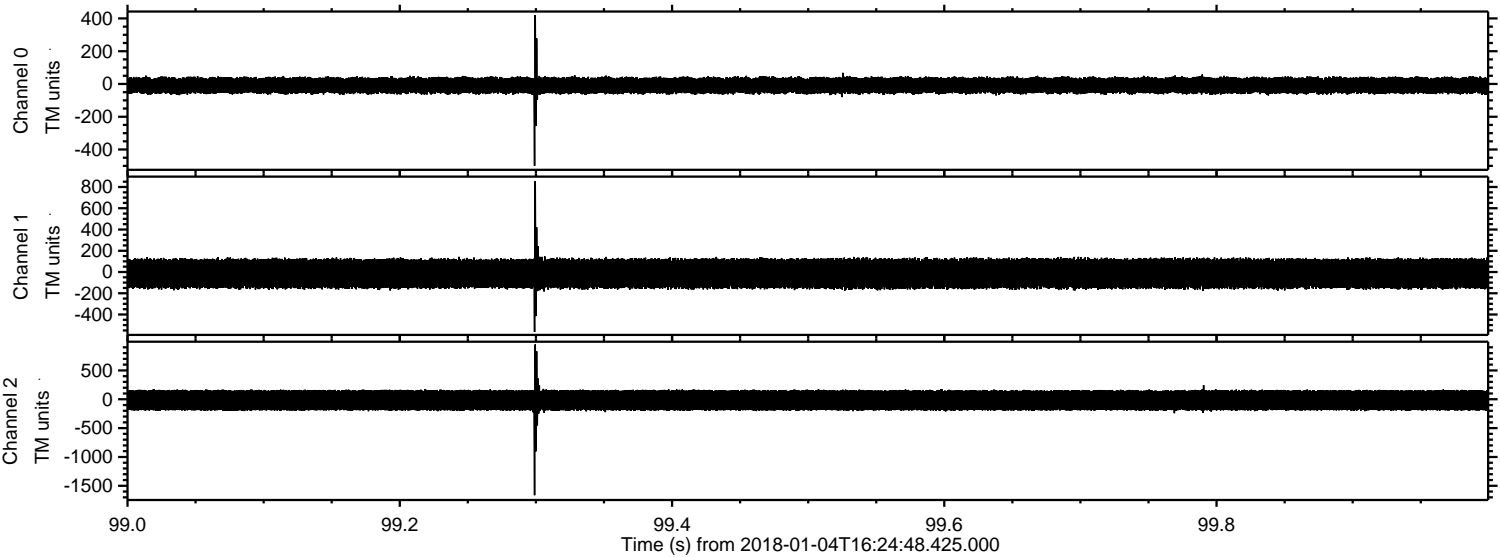
Processed Thu Jan 4 17:32:57 2018 by ELM ver.2012-10-06 from 001__elm20180104_162447__dat00.bin



Processed Thu Jan 4 17:32:58 2018 by ELM ver.2012-10-06 from 001__elm20180104_162447__dat00.bin

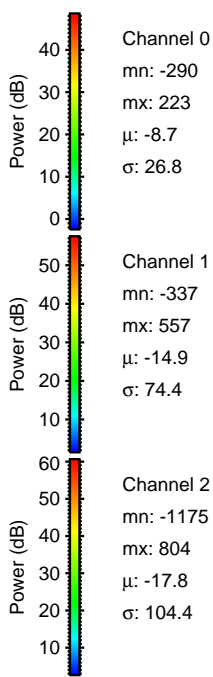
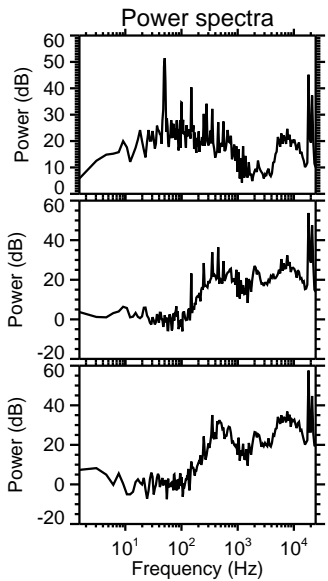
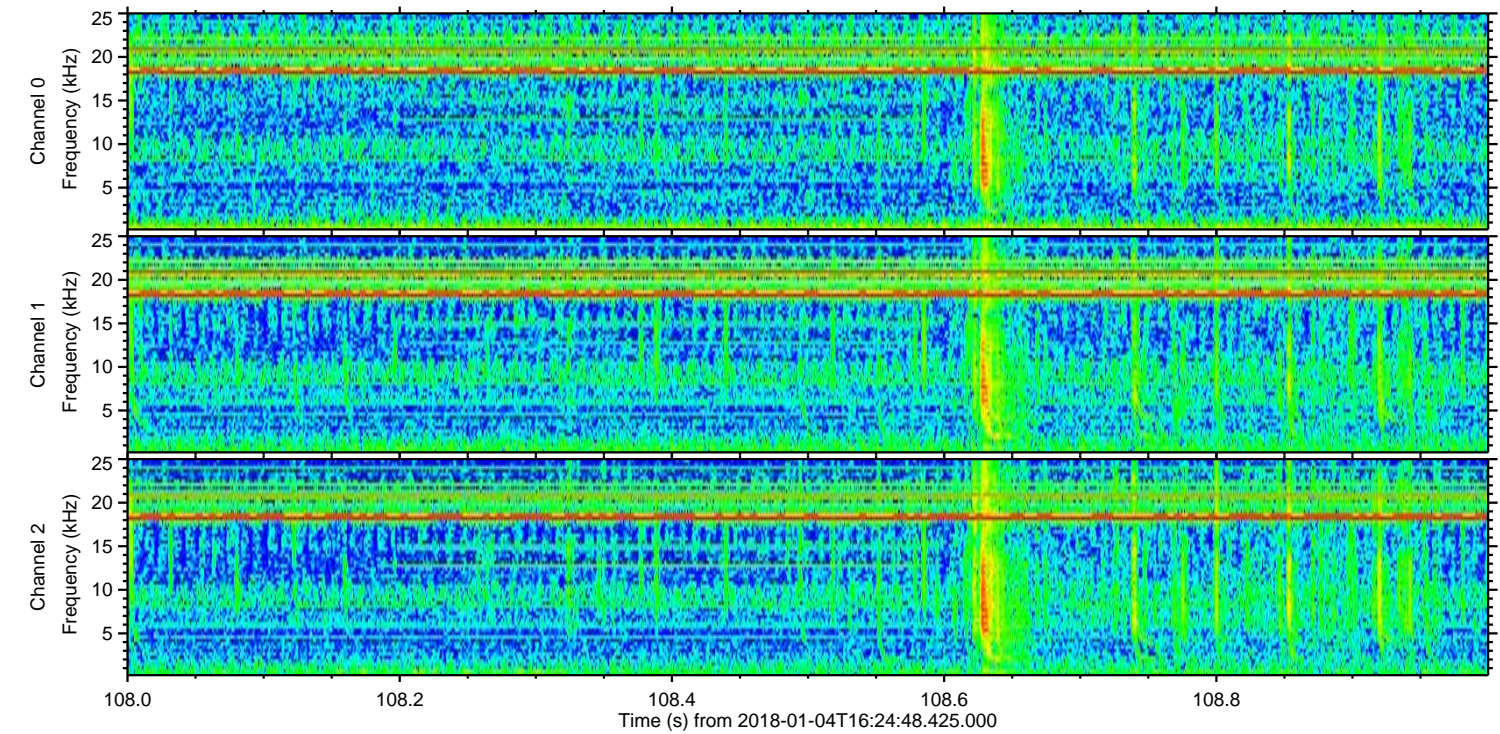
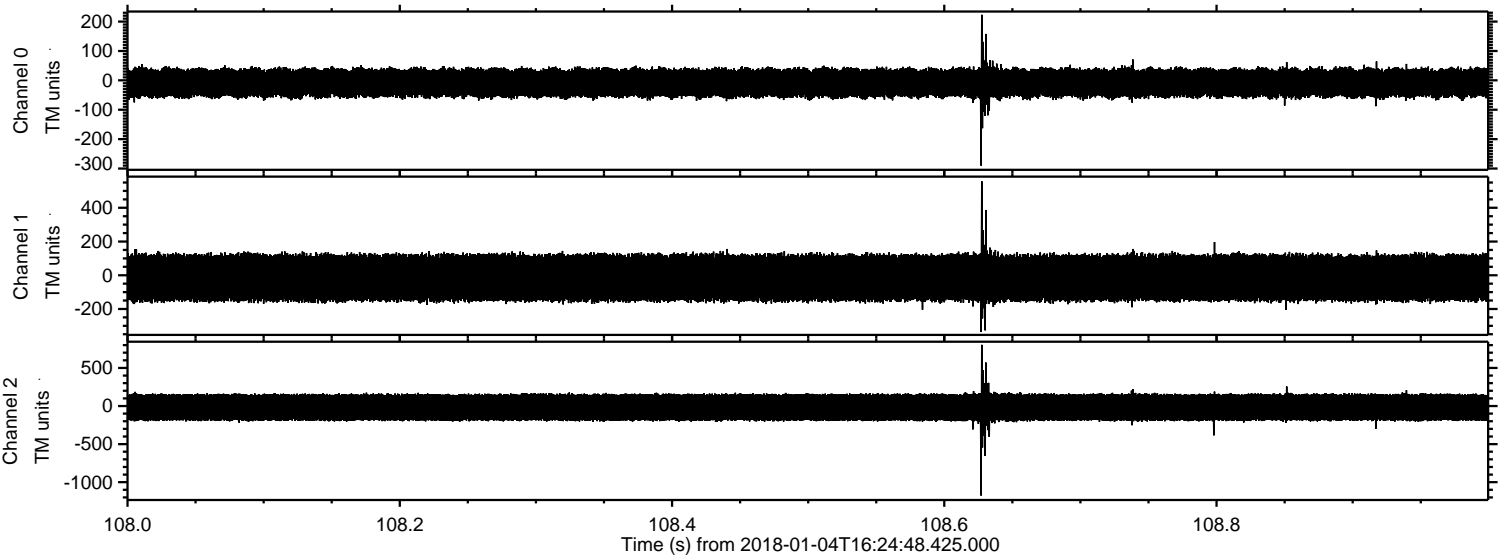


Processed Thu Jan 4 17:32:58 2018 by ELM ver.2012-10-06 from 001__elm20180104_162447__dat00.bin

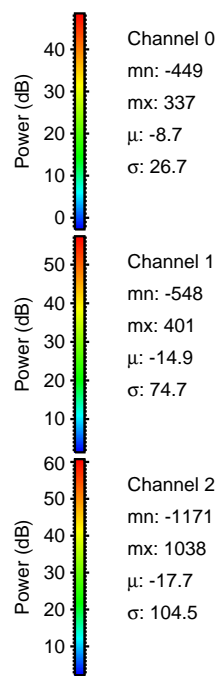
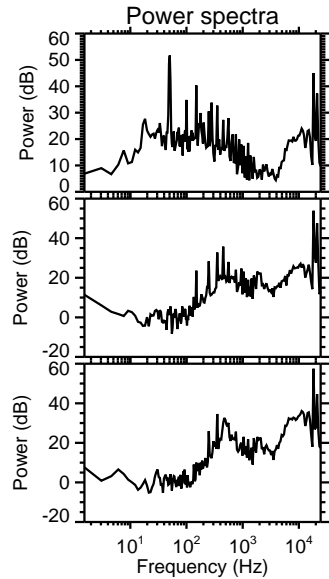
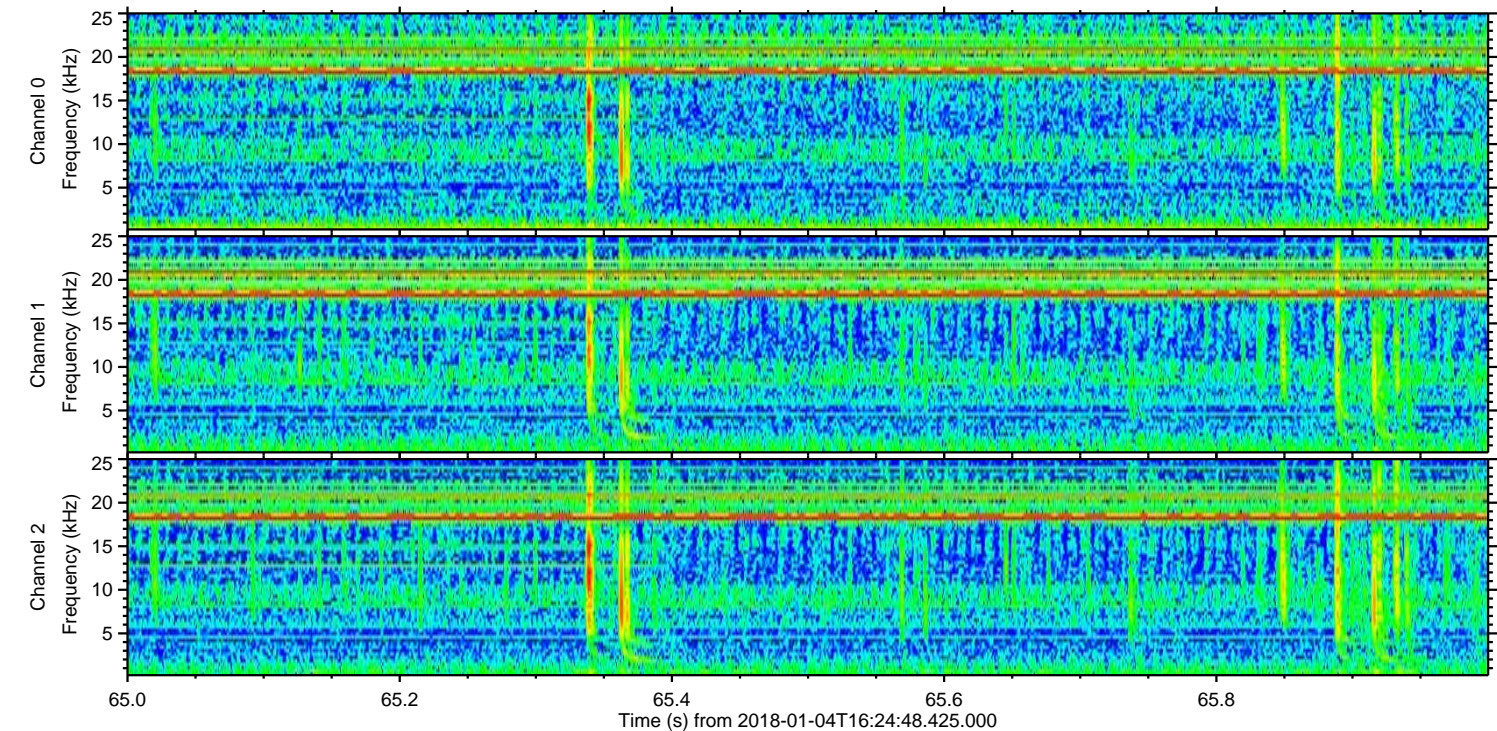
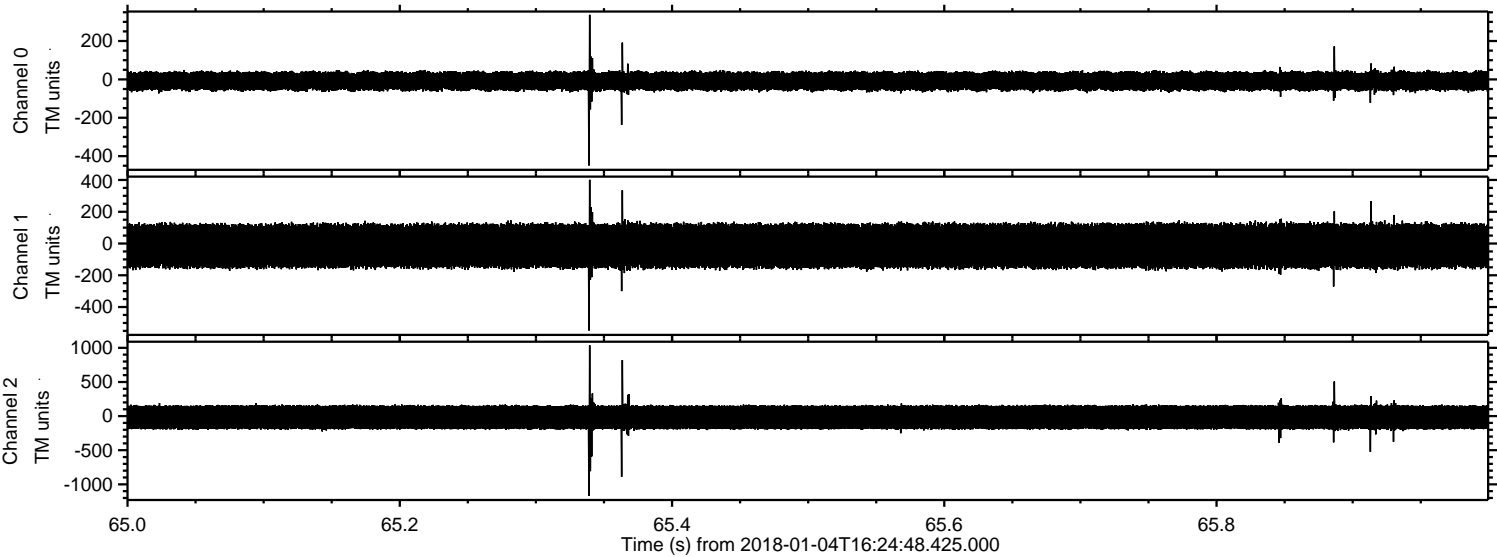


ELMAVAN 3D WAVEFORMS (Measured data sampled at 50 kHz) 50999 packets of 144 samples from 2018-01-04T16:24:48.425.000. Part 109/147

Processed Thu Jan 4 17:32:59 2018 by ELM ver.2012-10-06 from 001__elm20180104_162447__dat00.bin



Processed Thu Jan 4 17:33:00 2018 by ELM ver.2012-10-06 from 001__elm20180104_162447__dat00.bin

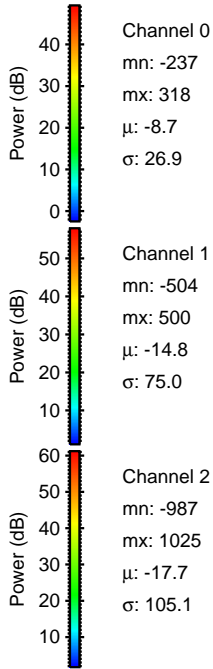
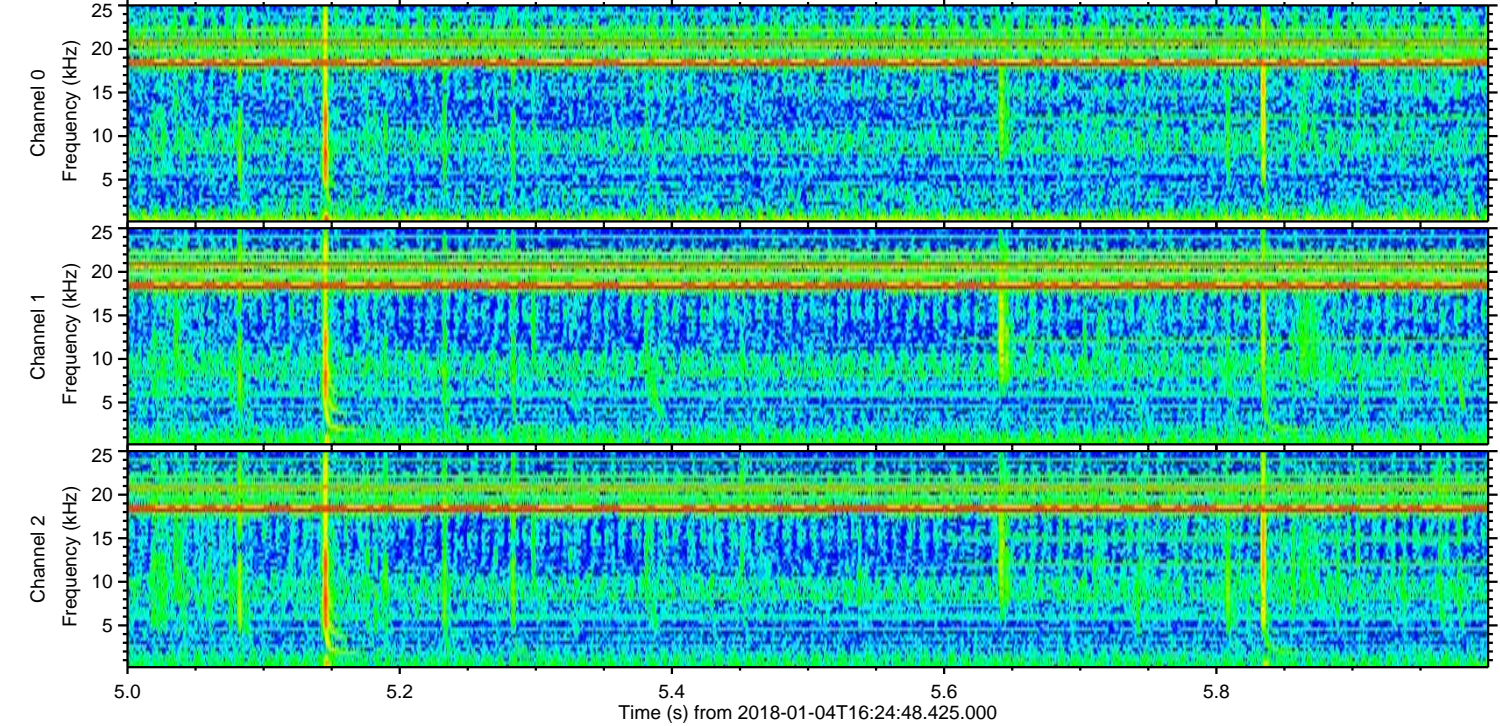
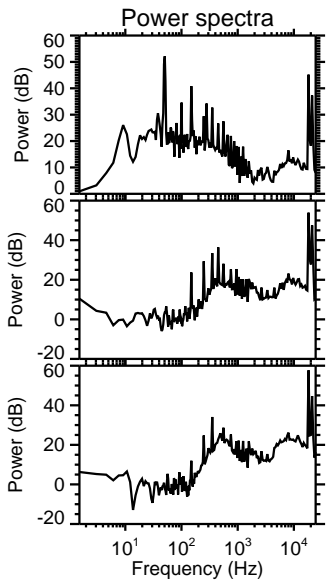
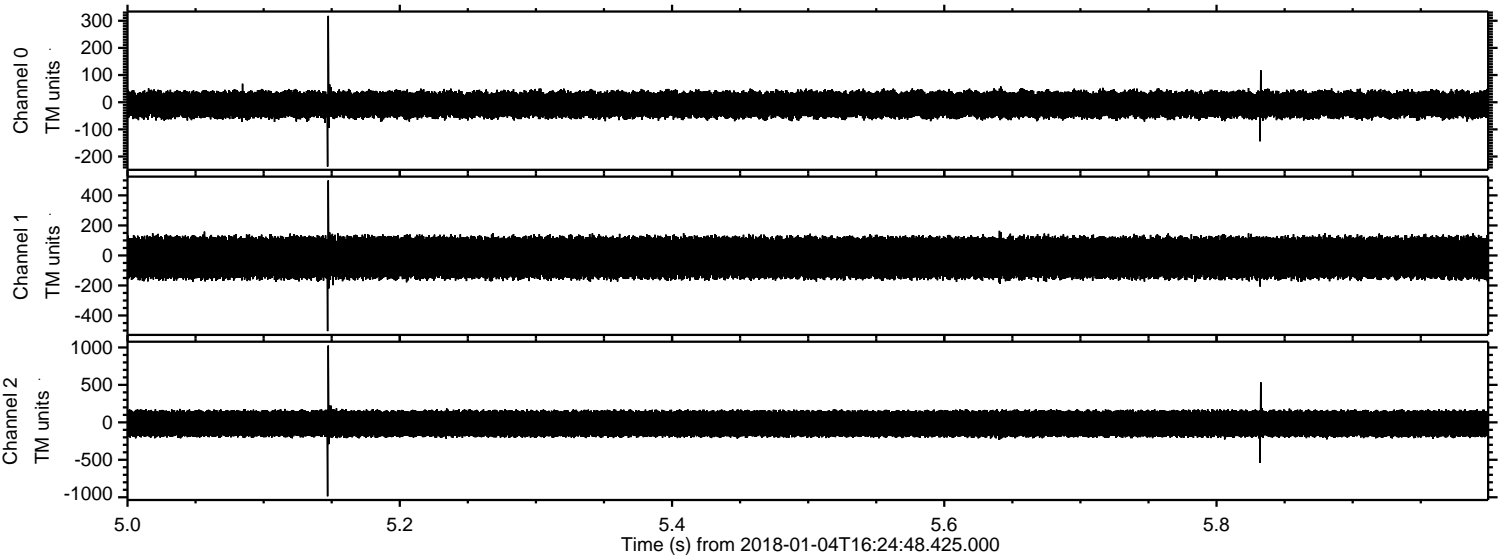


Channel 0
mn: -449
mx: 337
 μ : -8.7
 σ : 26.7

Channel 1
mn: -548
mx: 401
 μ : -14.9
 σ : 74.7

Channel 2
mn: -1171
mx: 1038
 μ : -17.7
 σ : 104.5

Processed Thu Jan 4 17:33:01 2018 by ELM ver.2012-10-06 from 001__elm20180104_162447__dat00.bin



Processed Thu Jan 4 17:33:02 2018 by ELM ver.2012-10-06 from 001__elm20180104_162447__dat00.bin

