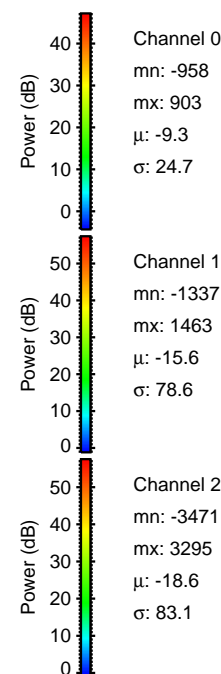
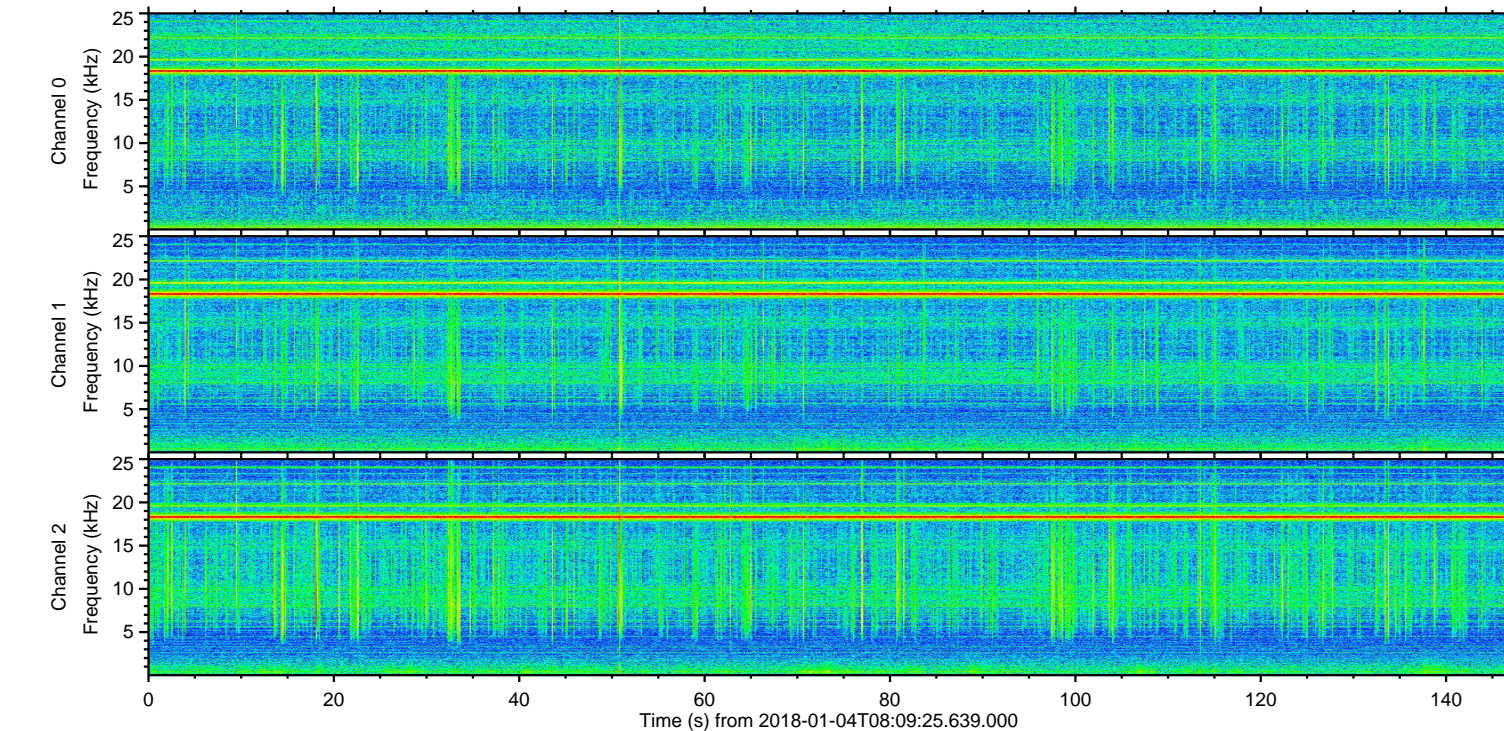
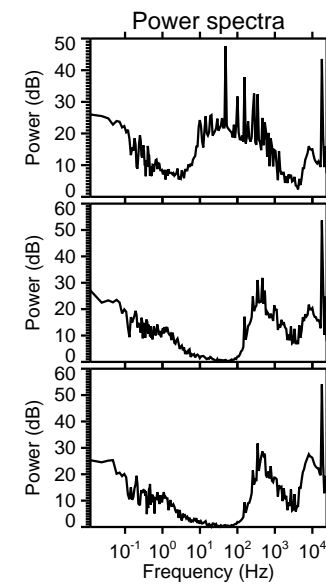
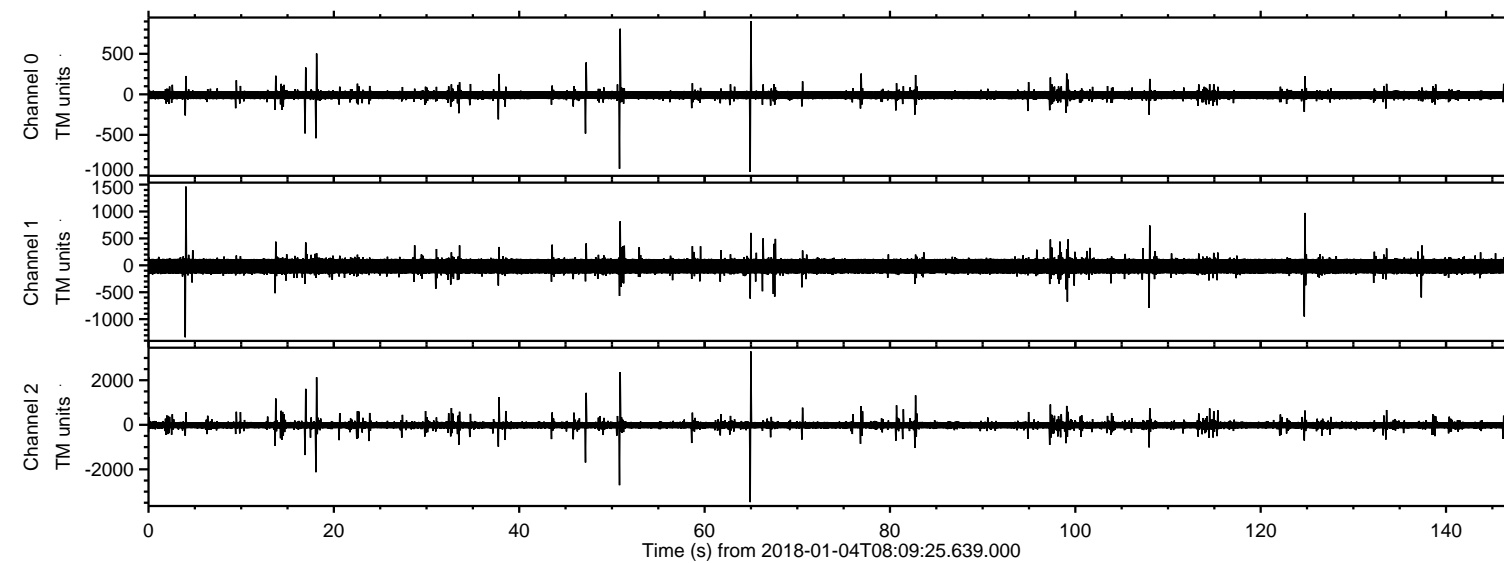
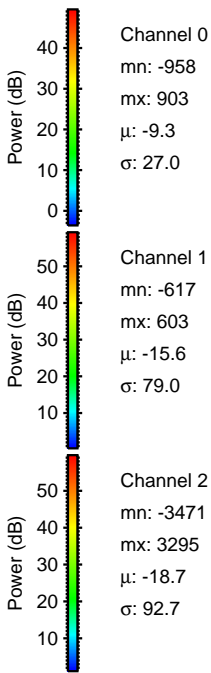
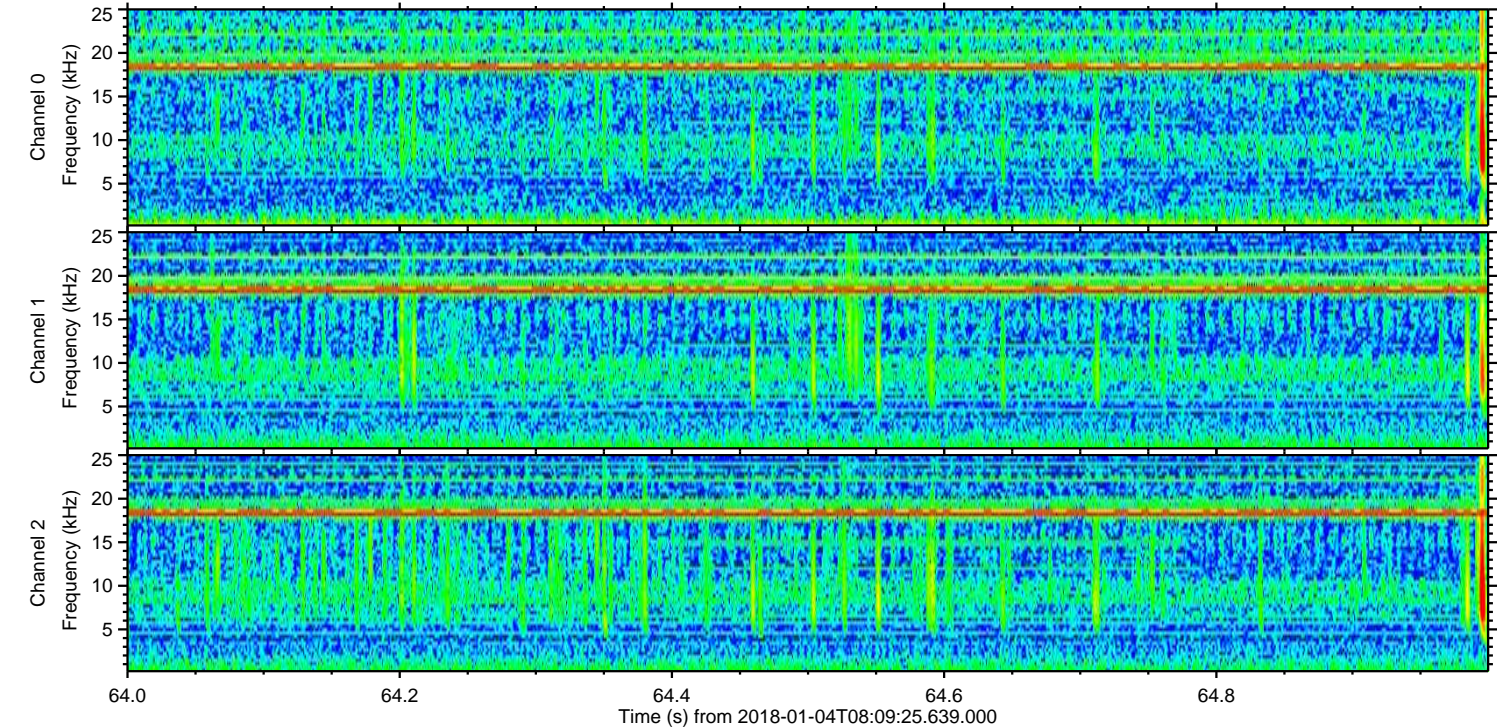
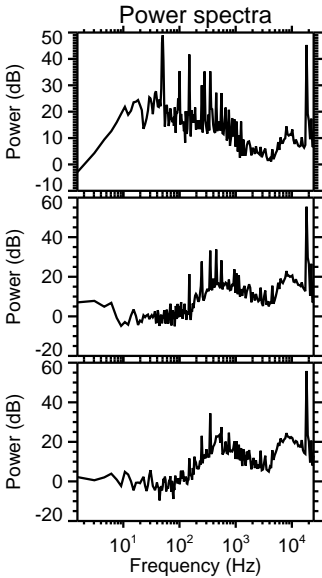
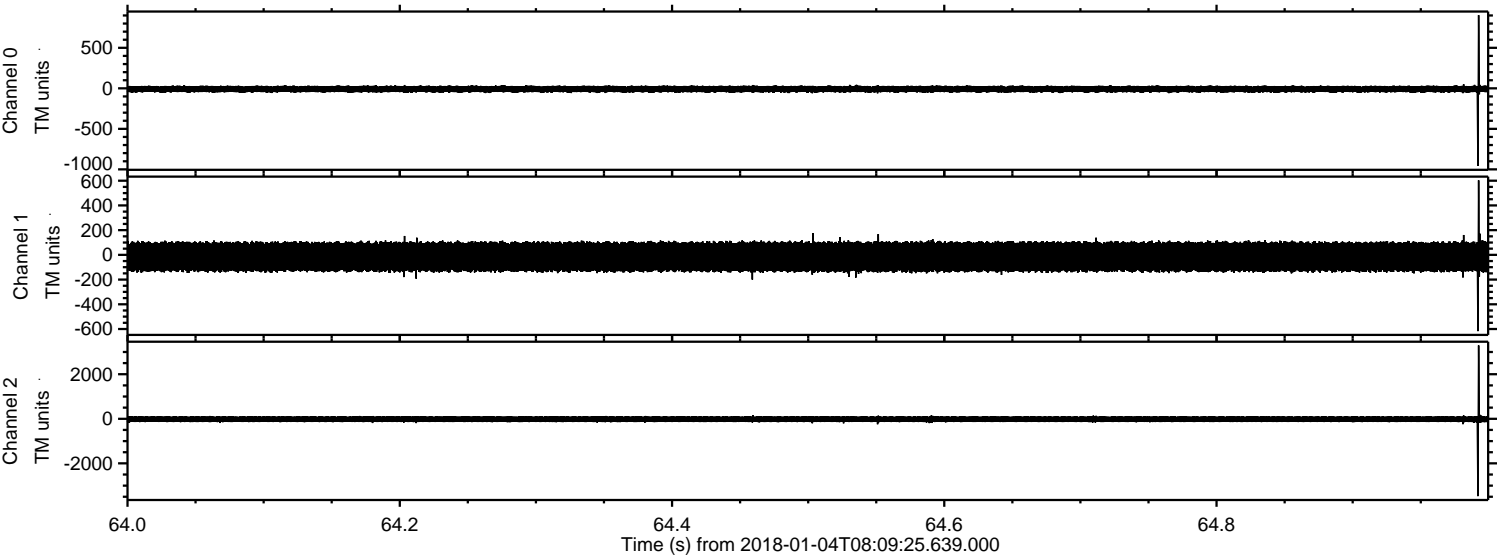


ELMAVAN 3D WAVEFORMS (Measured data sampled at 50 kHz) 51000 packets of 144 samples from 2018-01-04T08:09:25.639.000.

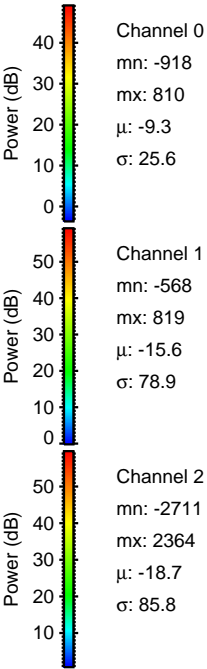
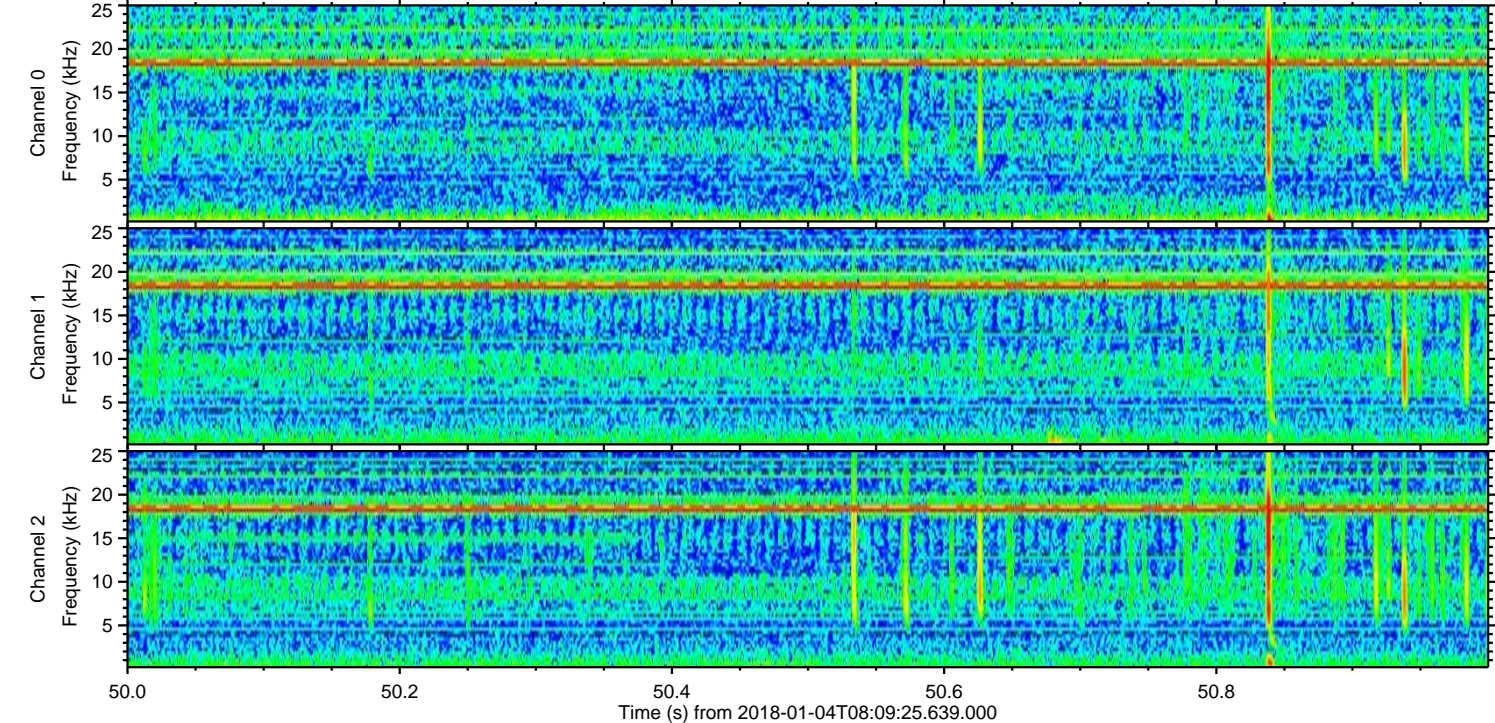
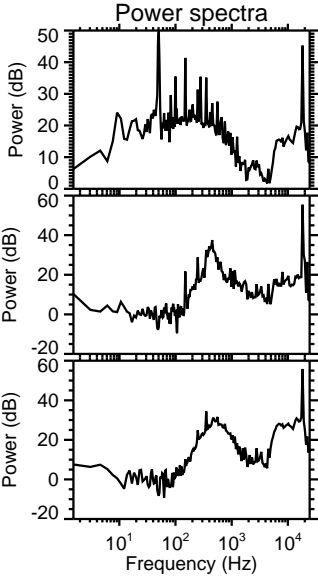
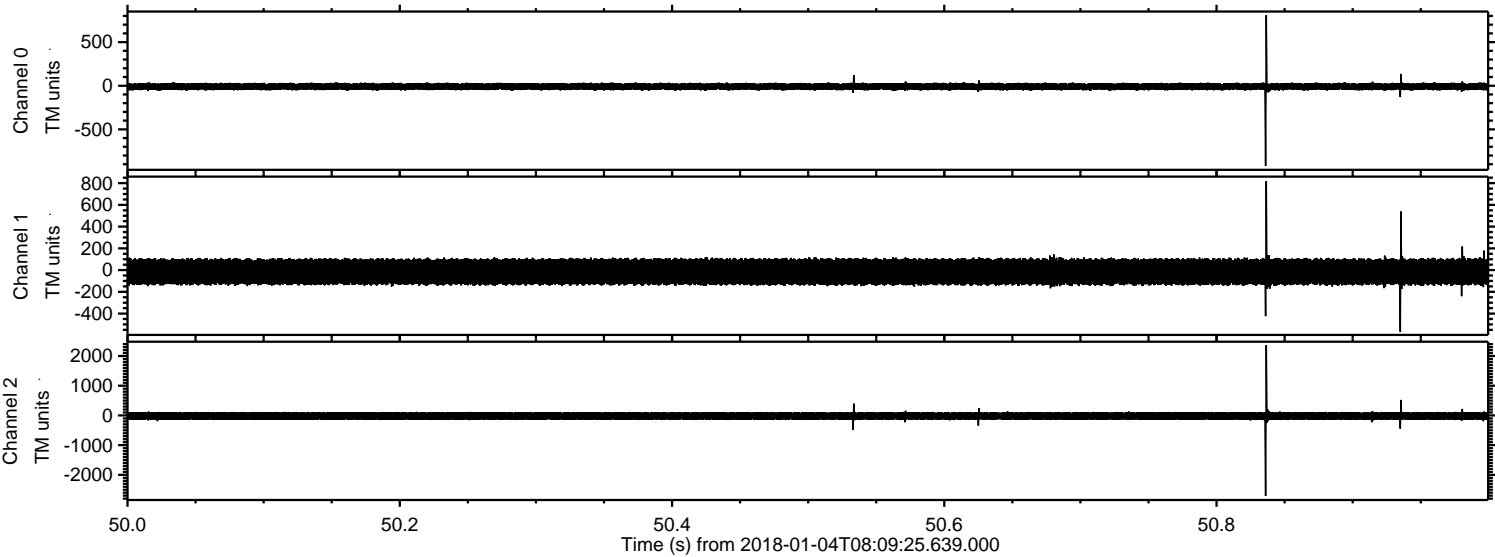
Processed Thu Jan 4 09:16:48 2018 by ELM ver.2012-10-06 from 001__elm20180104_080924__dat00.bin



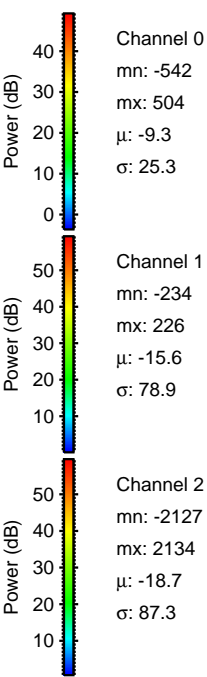
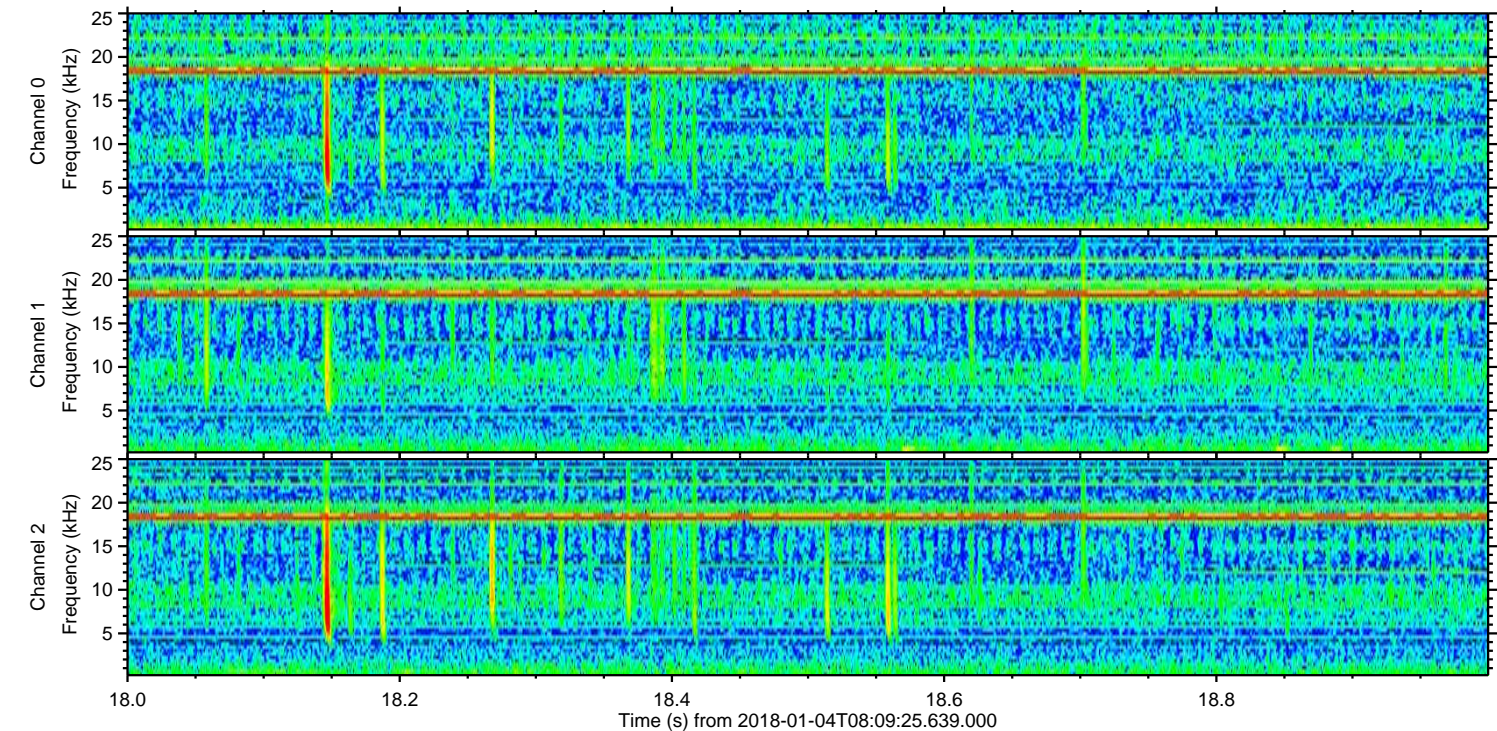
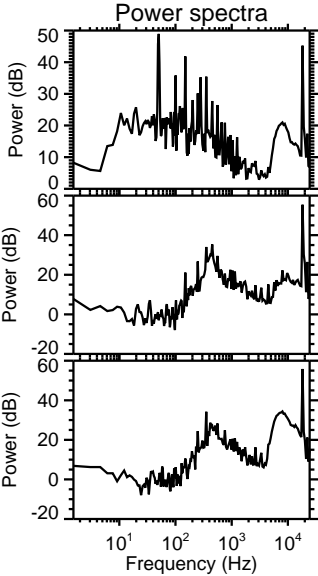
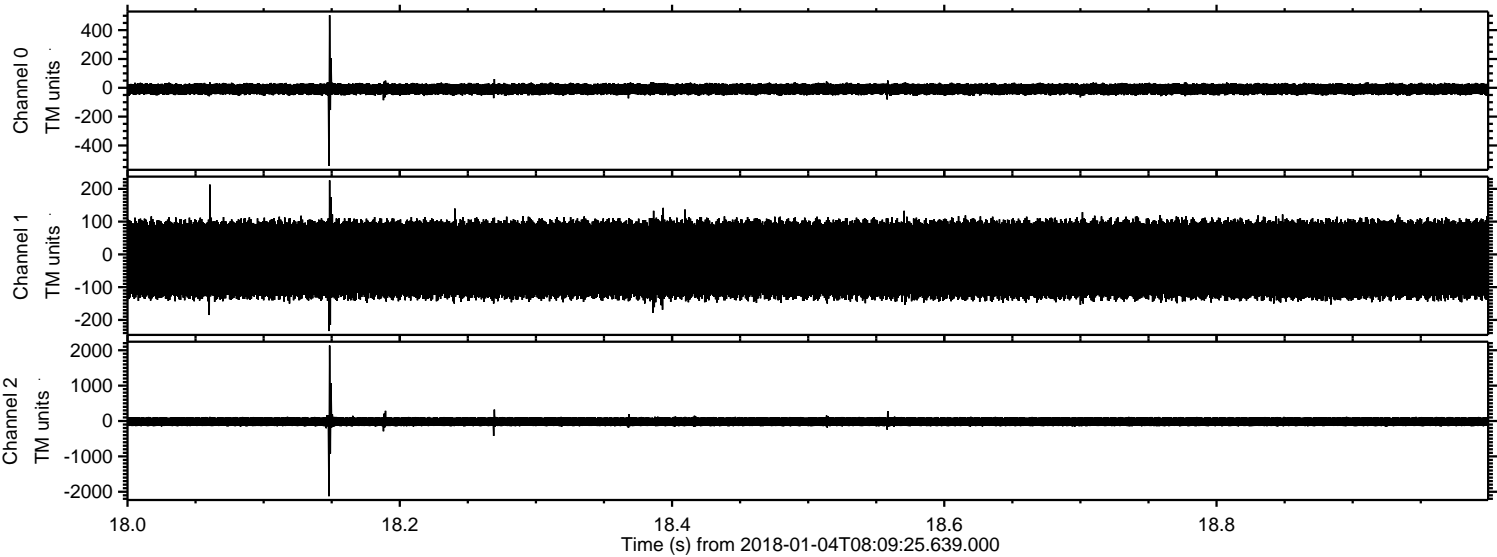
Processed Thu Jan 4 09:16:56 2018 by ELM ver.2012-10-06 from 001__elm20180104_080924__dat00.bin



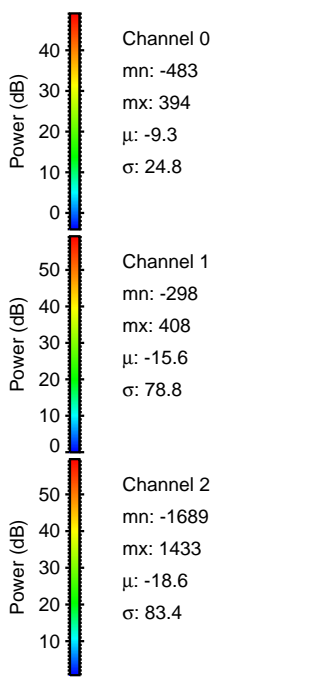
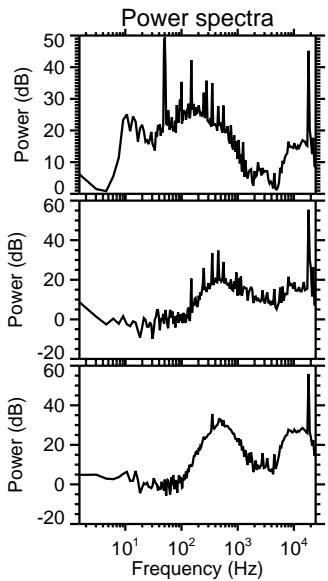
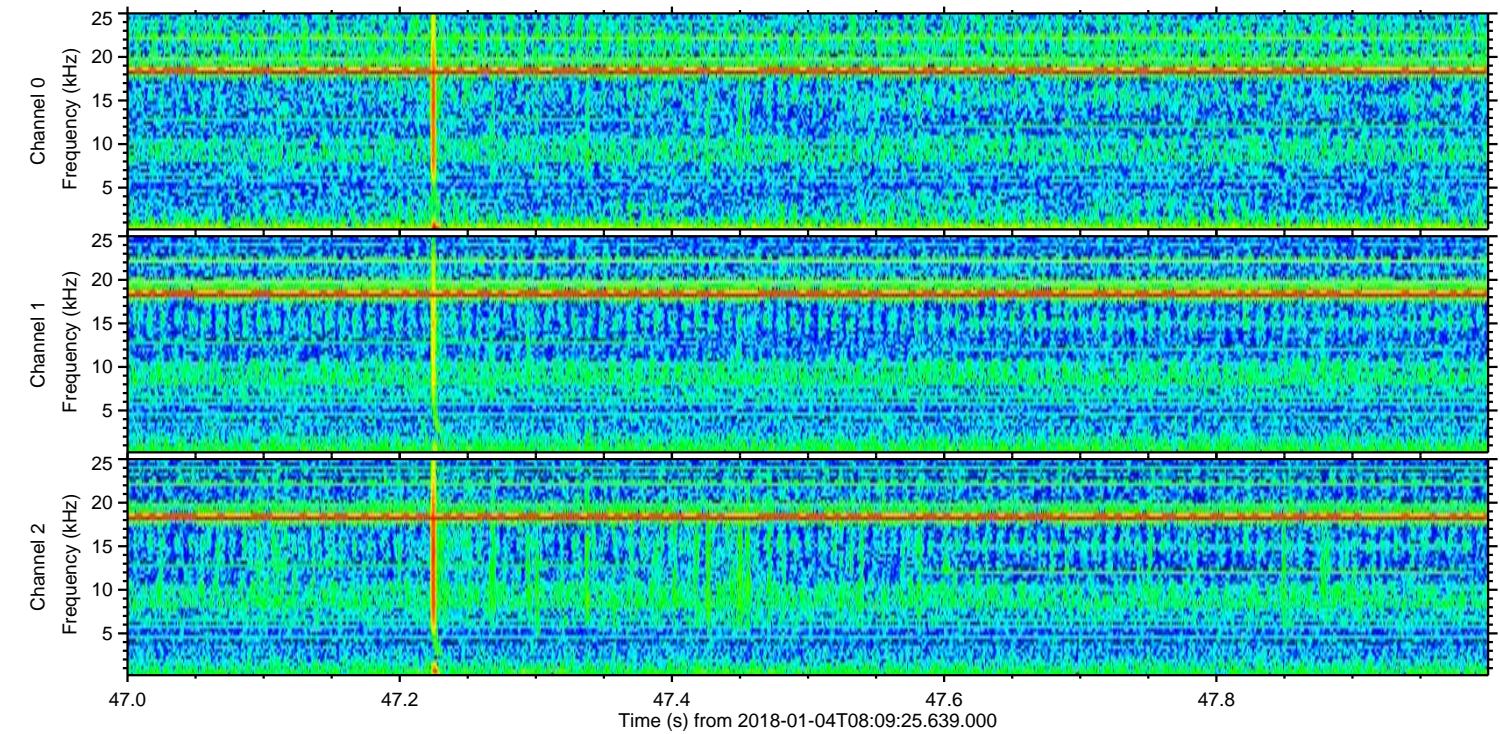
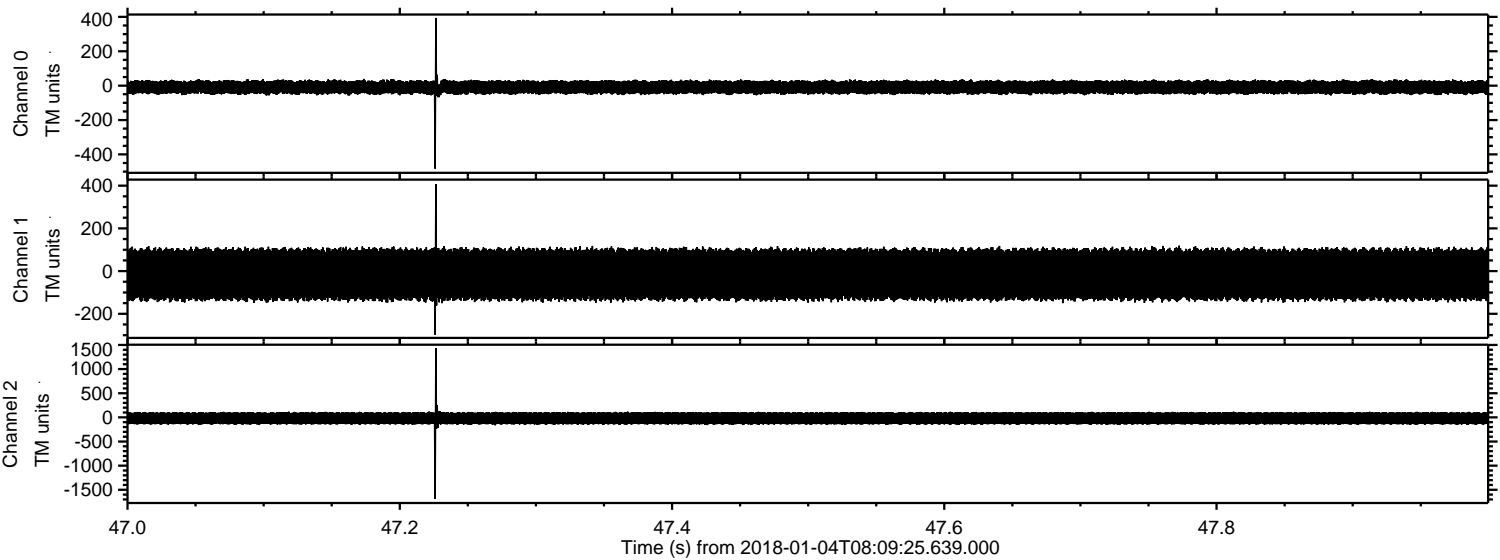
Processed Thu Jan 4 09:16:57 2018 by ELM ver.2012-10-06 from 001__elm20180104_080924__dat00.bin



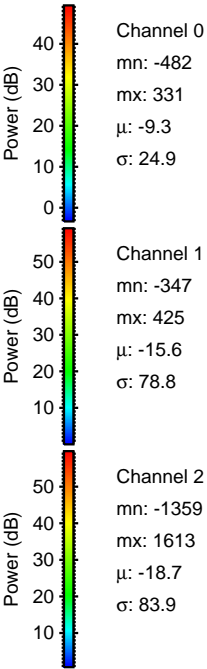
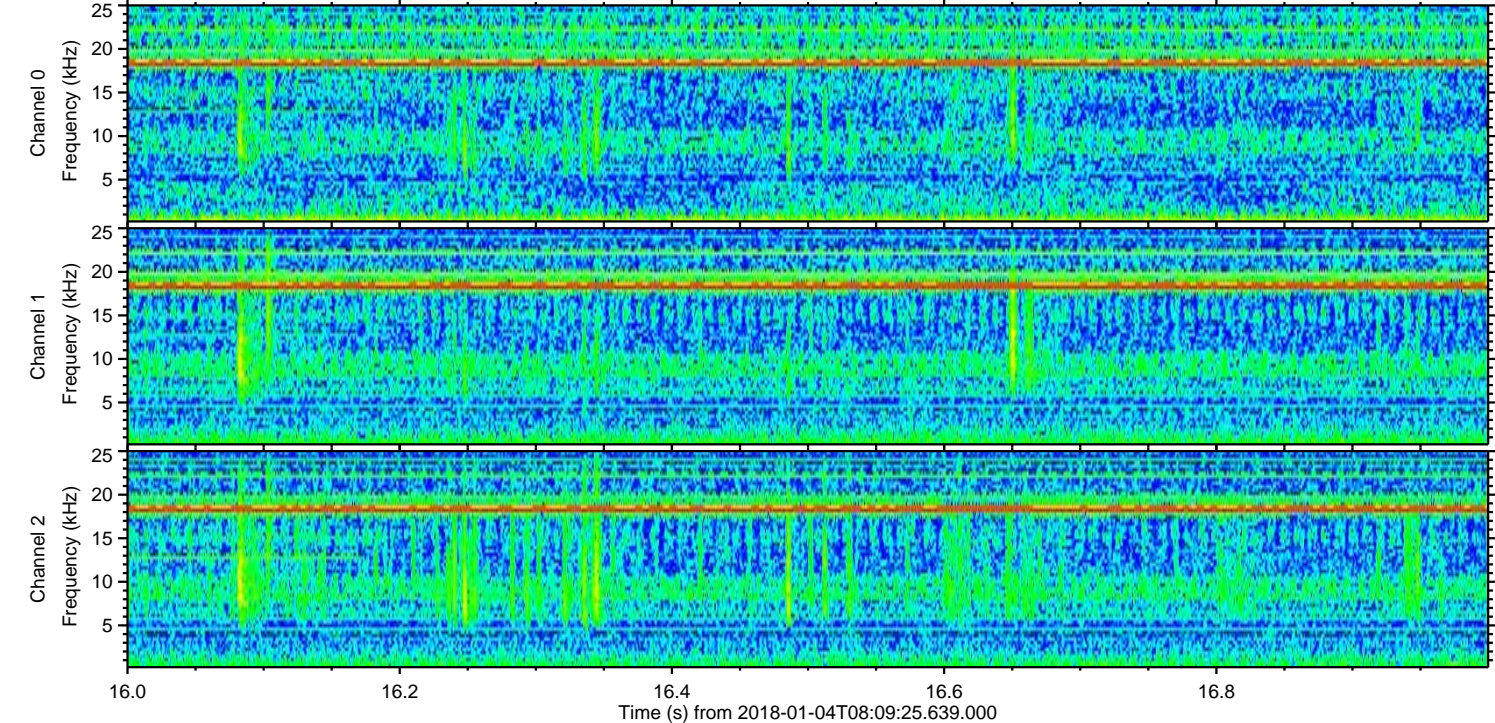
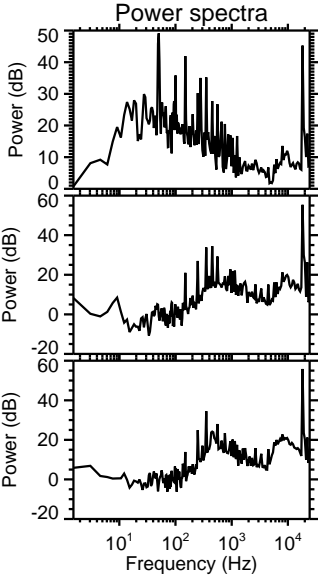
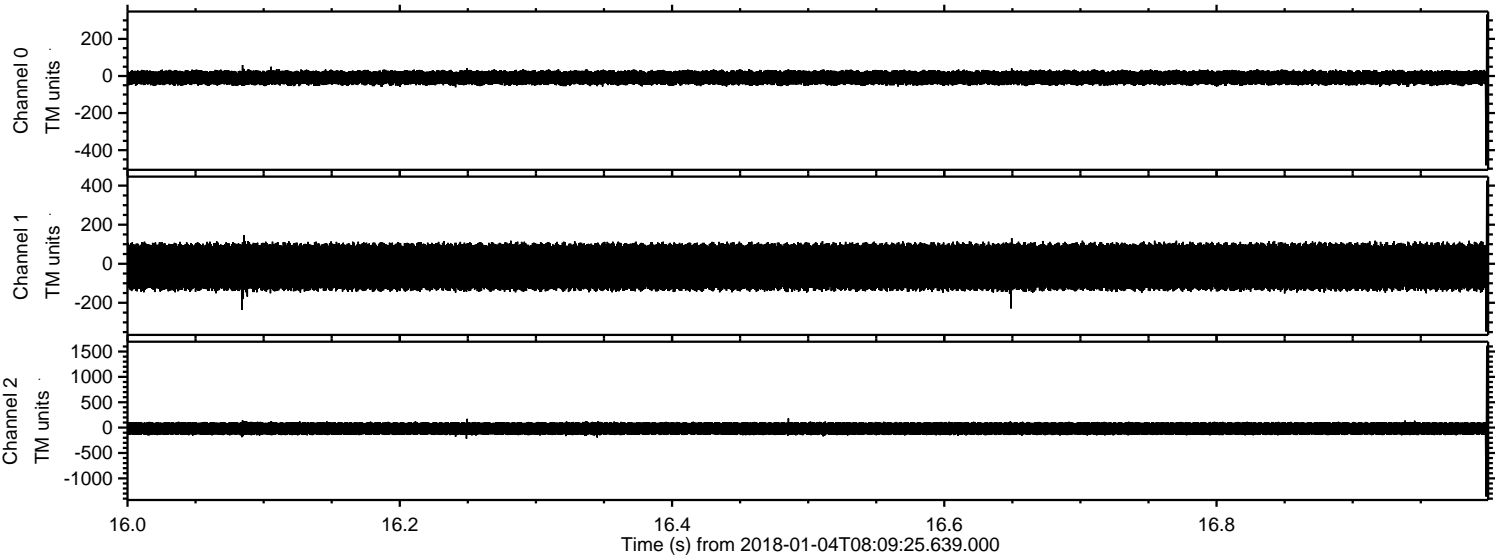
Processed Thu Jan 4 09:16:58 2018 by ELM ver.2012-10-06 from 001__elm20180104_080924__dat00.bin



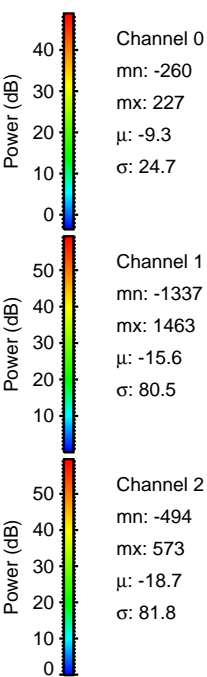
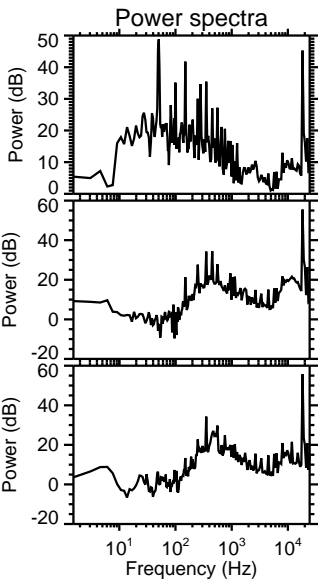
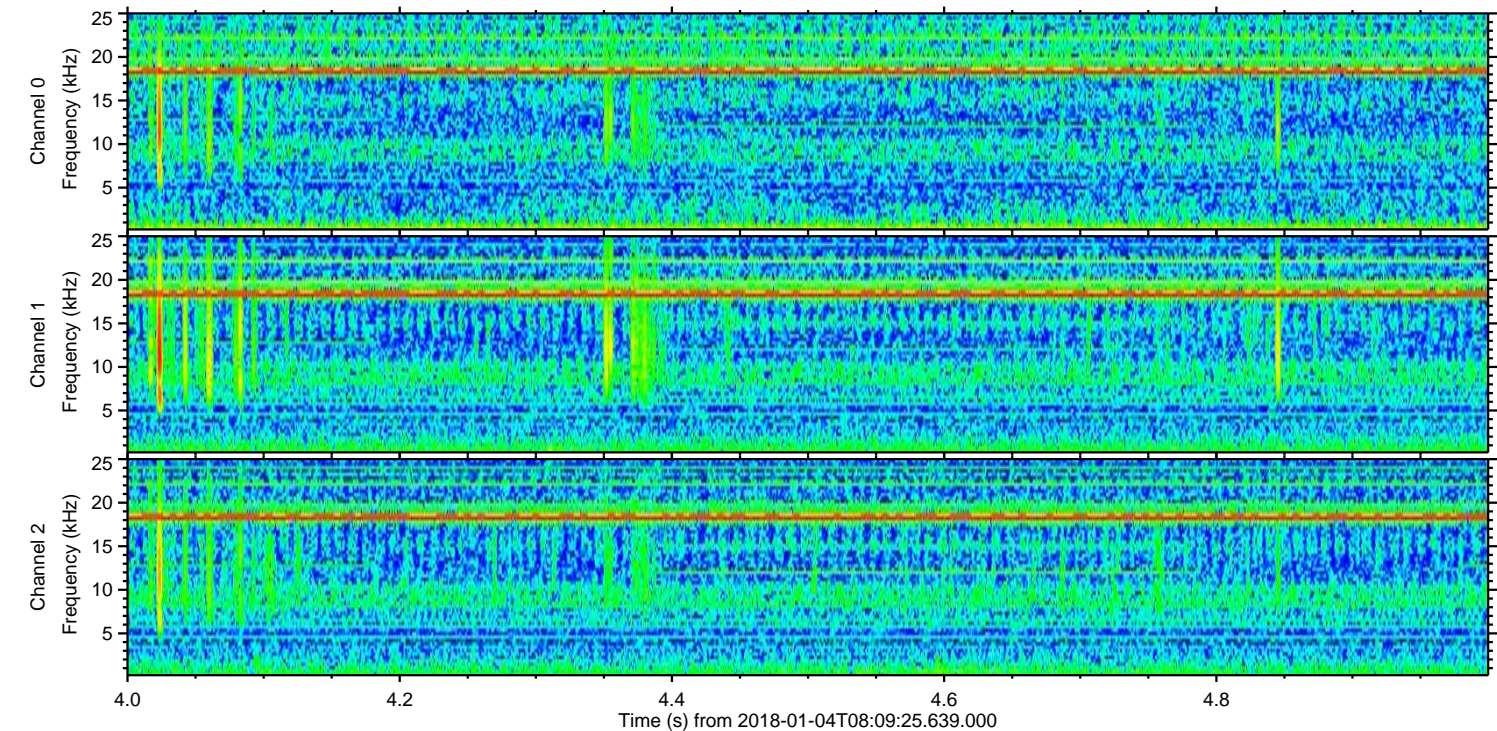
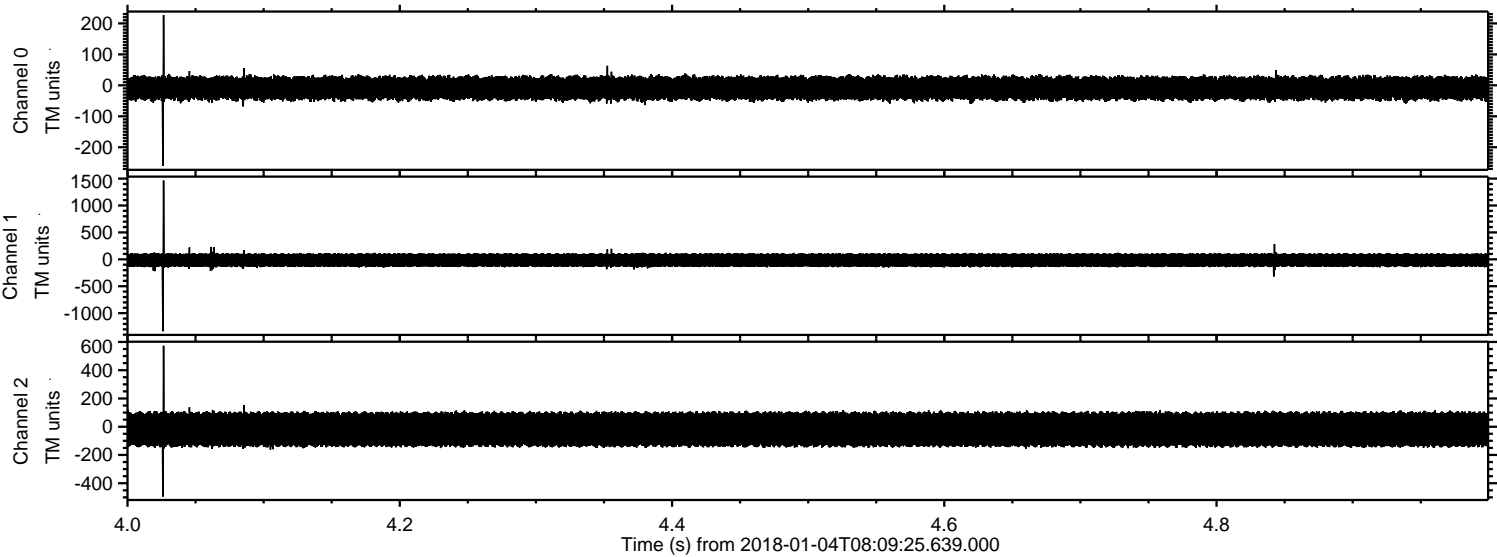
Processed Thu Jan 4 09:16:58 2018 by ELM ver.2012-10-06 from 001__elm20180104_080924__dat00.bin



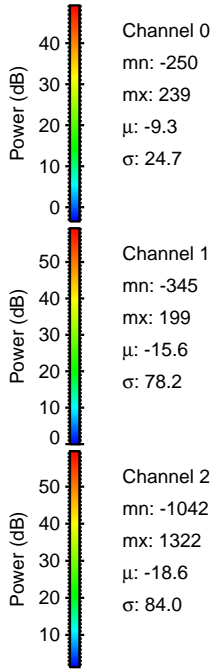
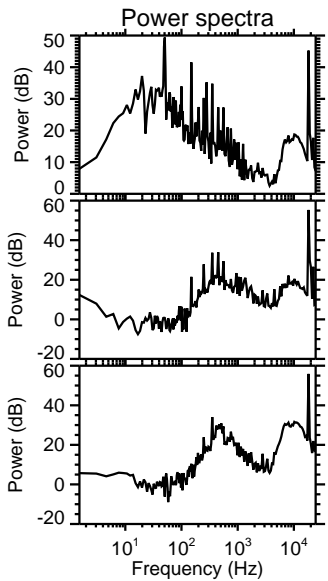
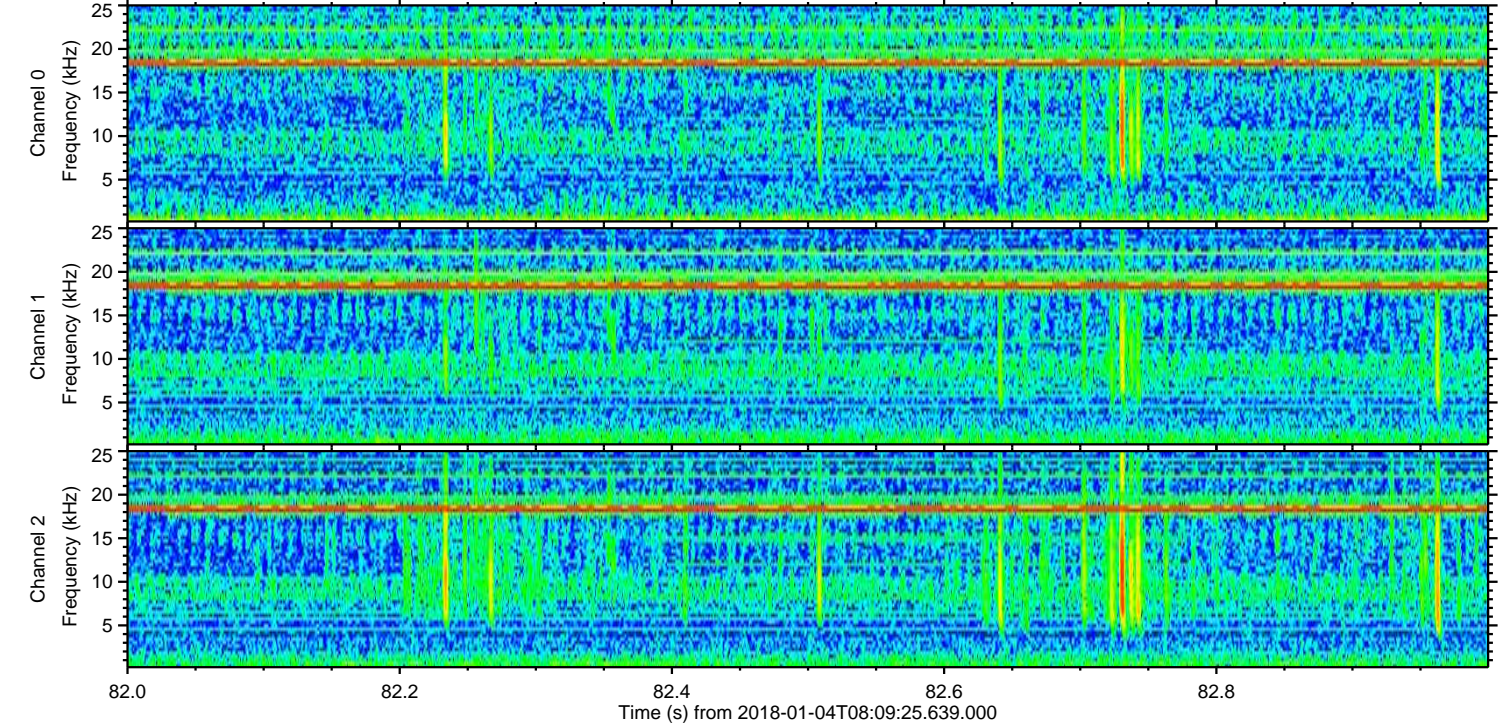
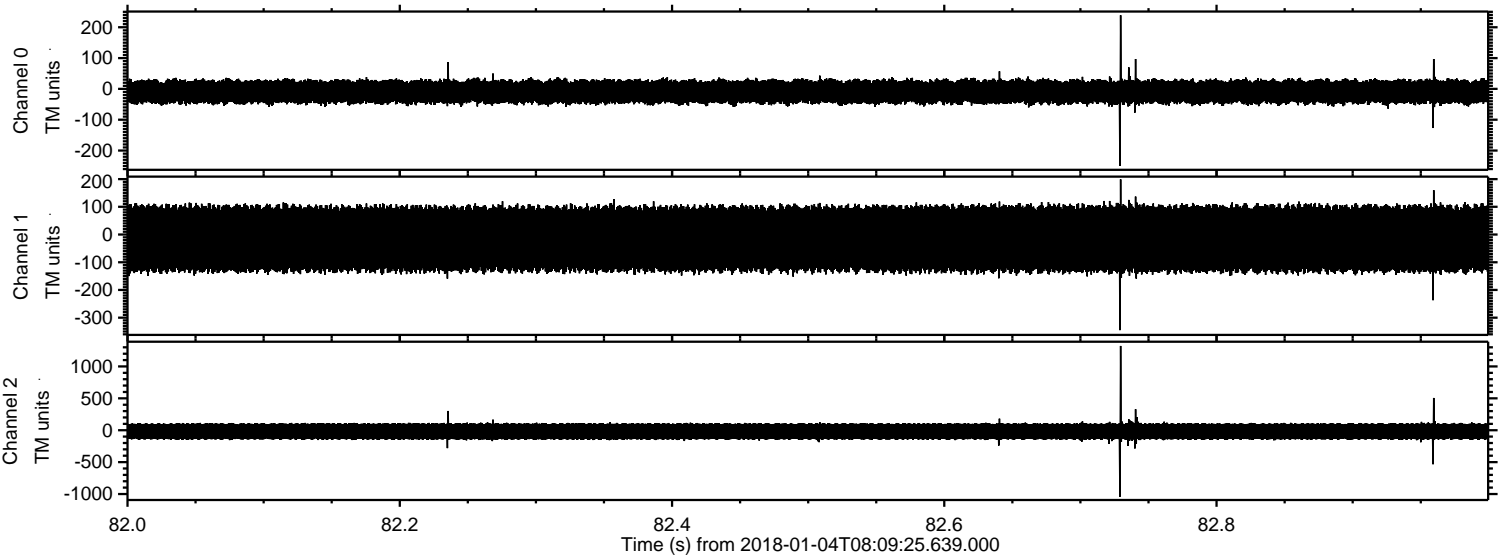
Processed Thu Jan 4 09:16:59 2018 by ELM ver.2012-10-06 from 001__elm20180104_080924__dat00.bin



Processed Thu Jan 4 09:17:00 2018 by ELM ver.2012-10-06 from 001__elm20180104_080924__dat00.bin



Processed Thu Jan 4 09:17:01 2018 by ELM ver.2012-10-06 from 001__elm20180104_080924__dat00.bin

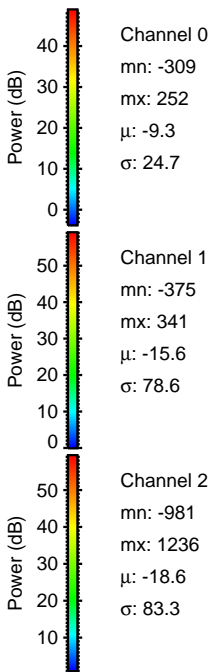
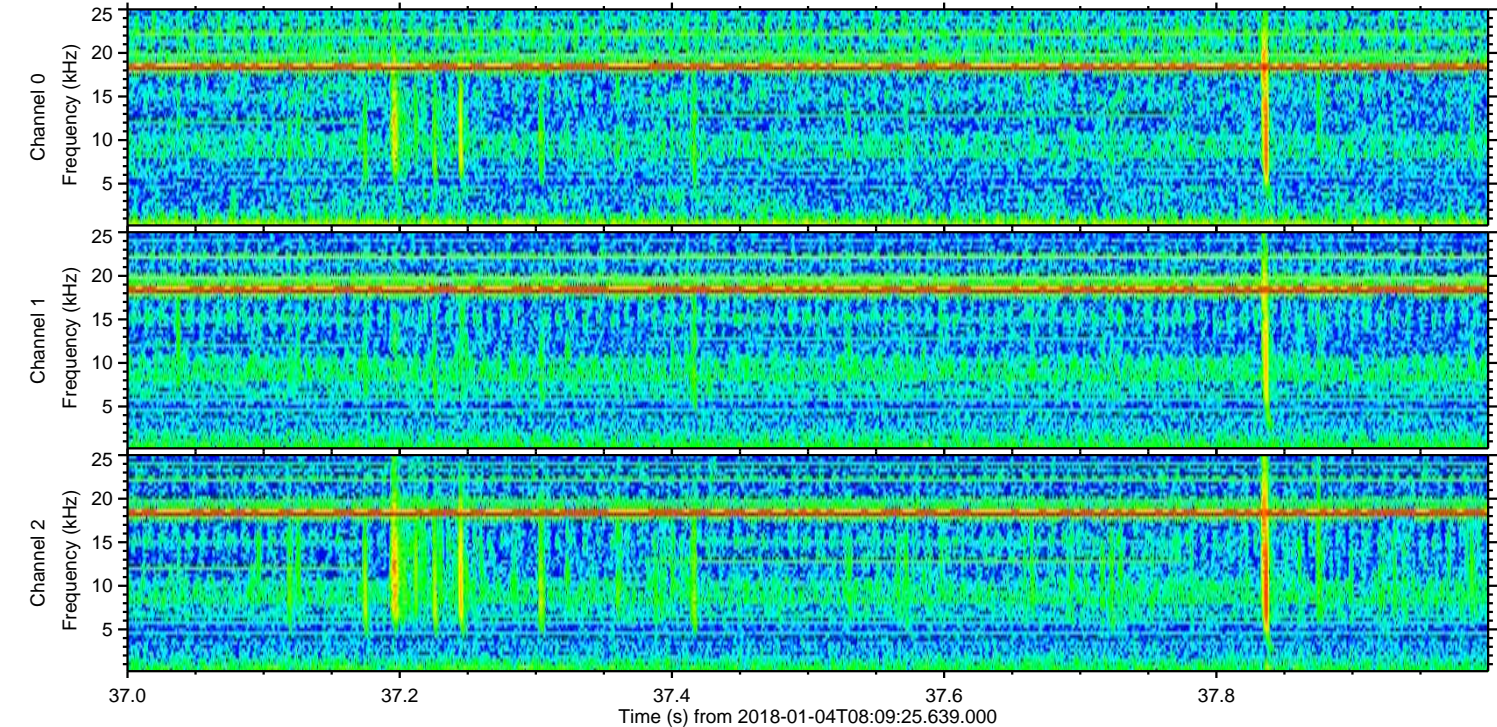
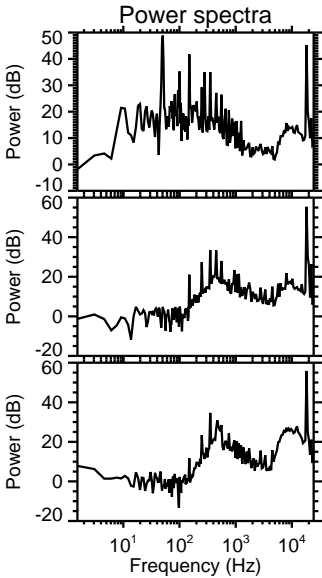
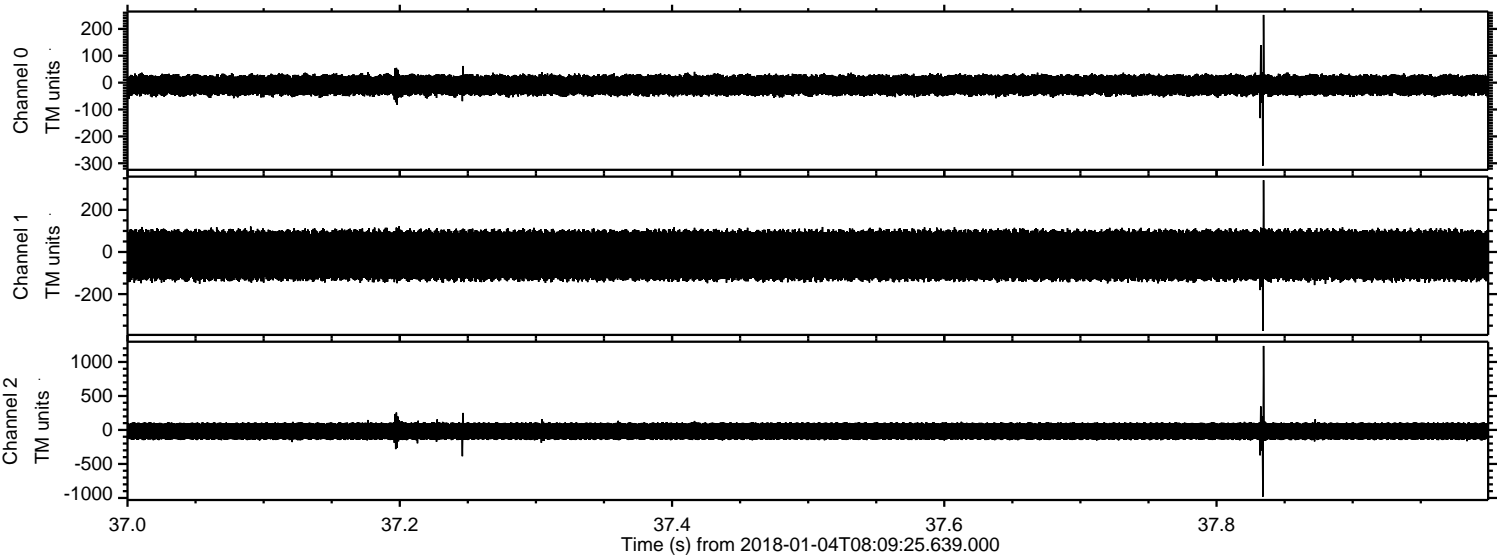


Channel 0
mn: -250
mx: 239
 μ : -9.3
 σ : 24.7

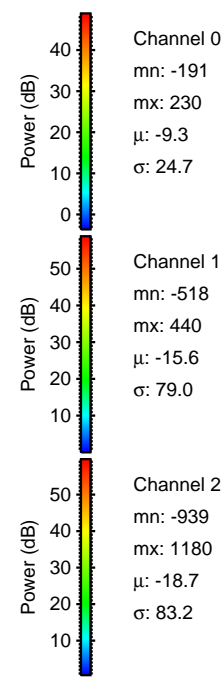
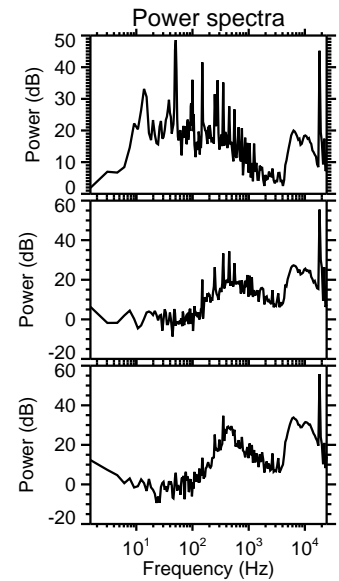
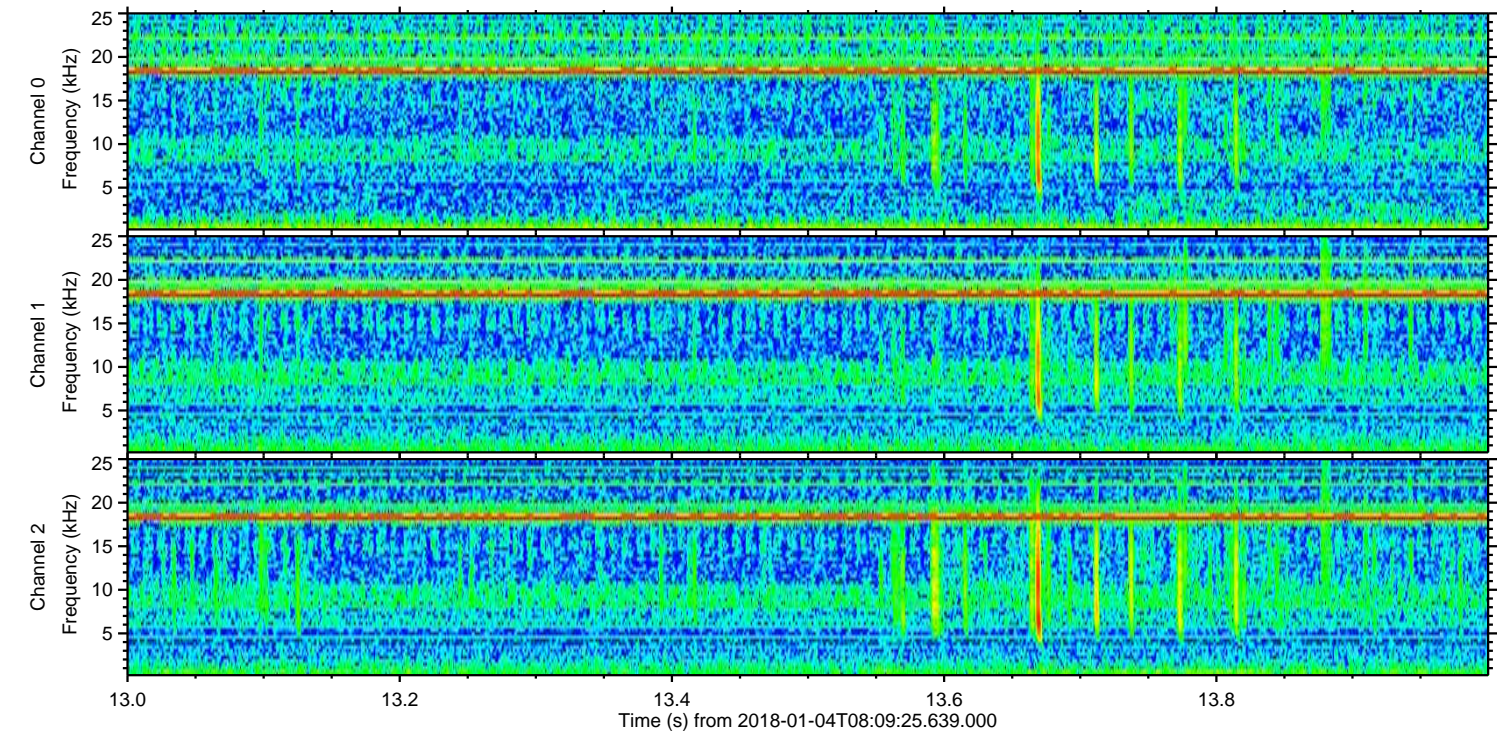
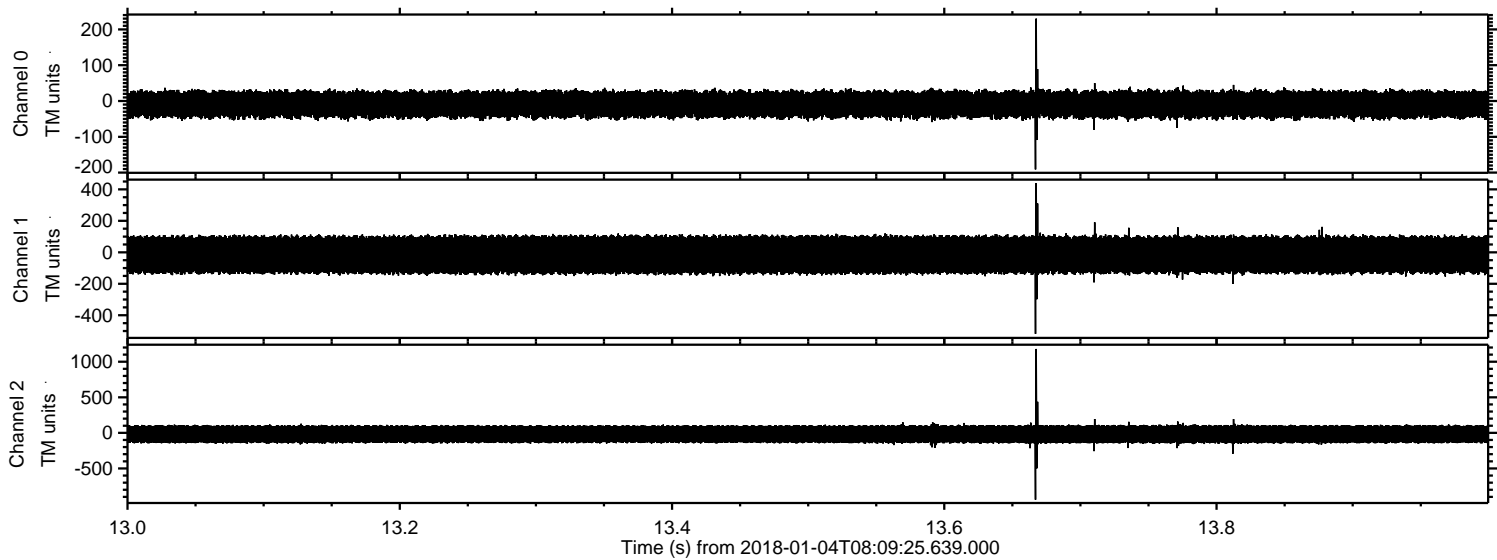
Channel 1
mn: -345
mx: 199
 μ : -15.6
 σ : 78.2

Channel 2
mn: -1042
mx: 1322
 μ : -18.6
 σ : 84.0

Processed Thu Jan 4 09:17:01 2018 by ELM ver.2012-10-06 from 001__elm20180104_080924__dat00.bin



Processed Thu Jan 4 09:17:02 2018 by ELM ver.2012-10-06 from 001__elm20180104_080924__dat00.bin



ELMAVAN 3D WAVEFORMS (Measured data sampled at 50 kHz) 51000 packets of 144 samples from 2018-01-04T08:09:25.639.000. Part 113/147

