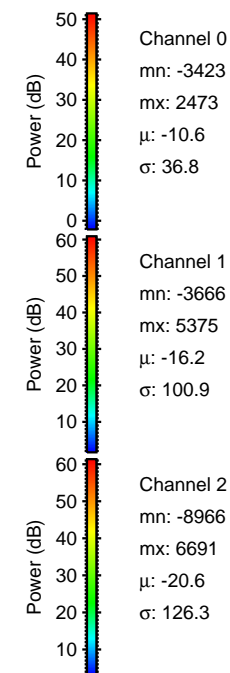
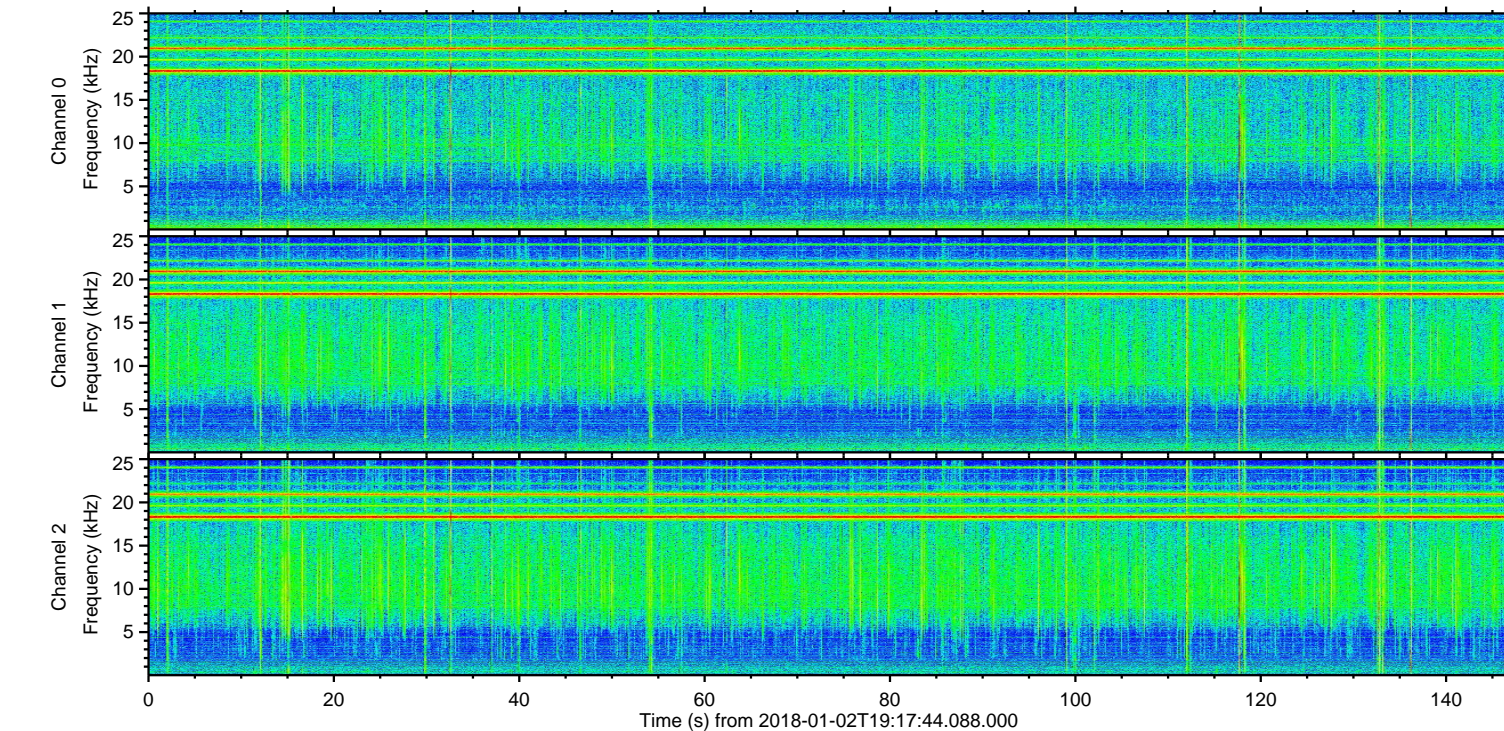
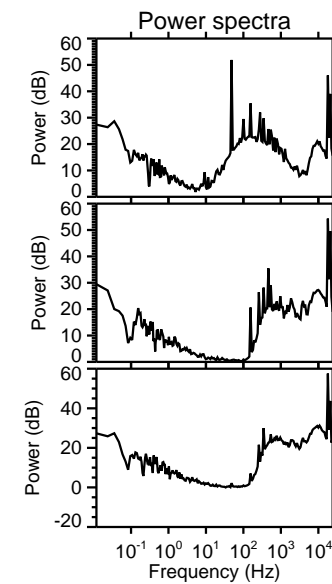
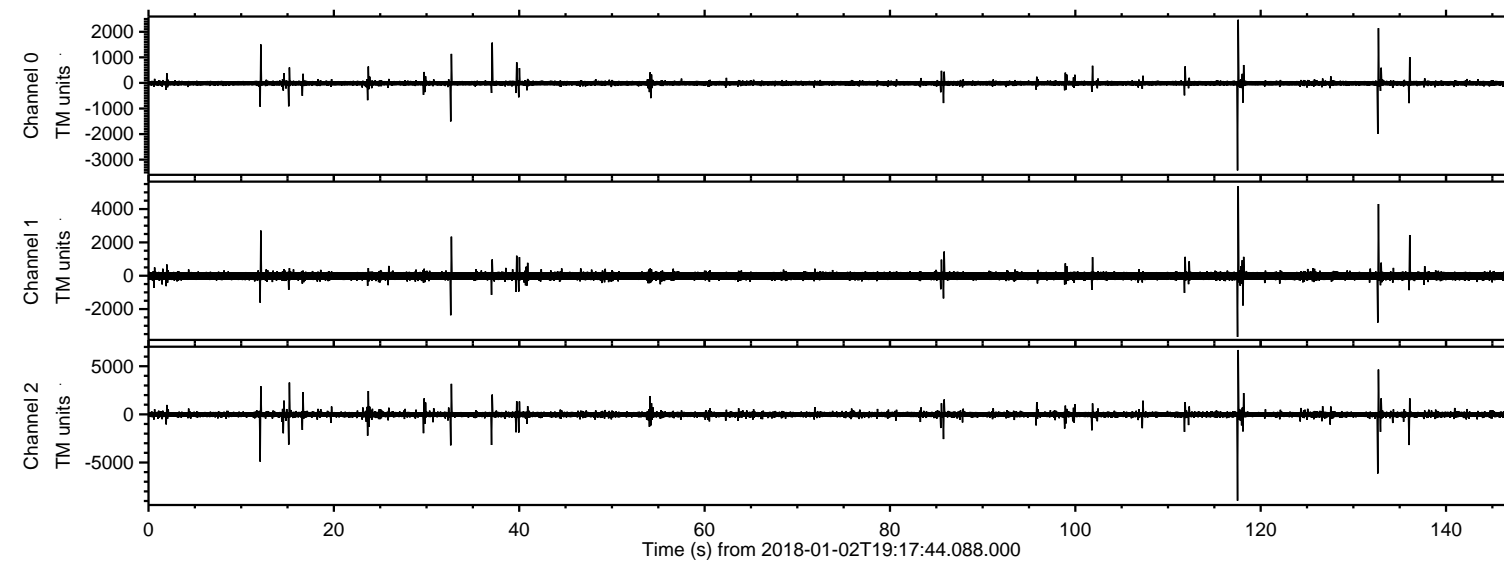


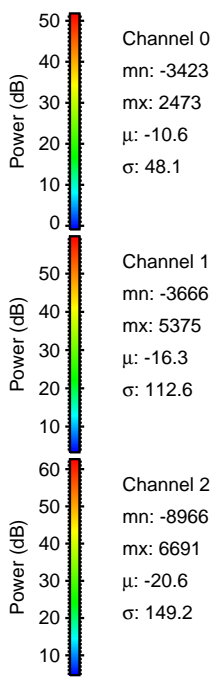
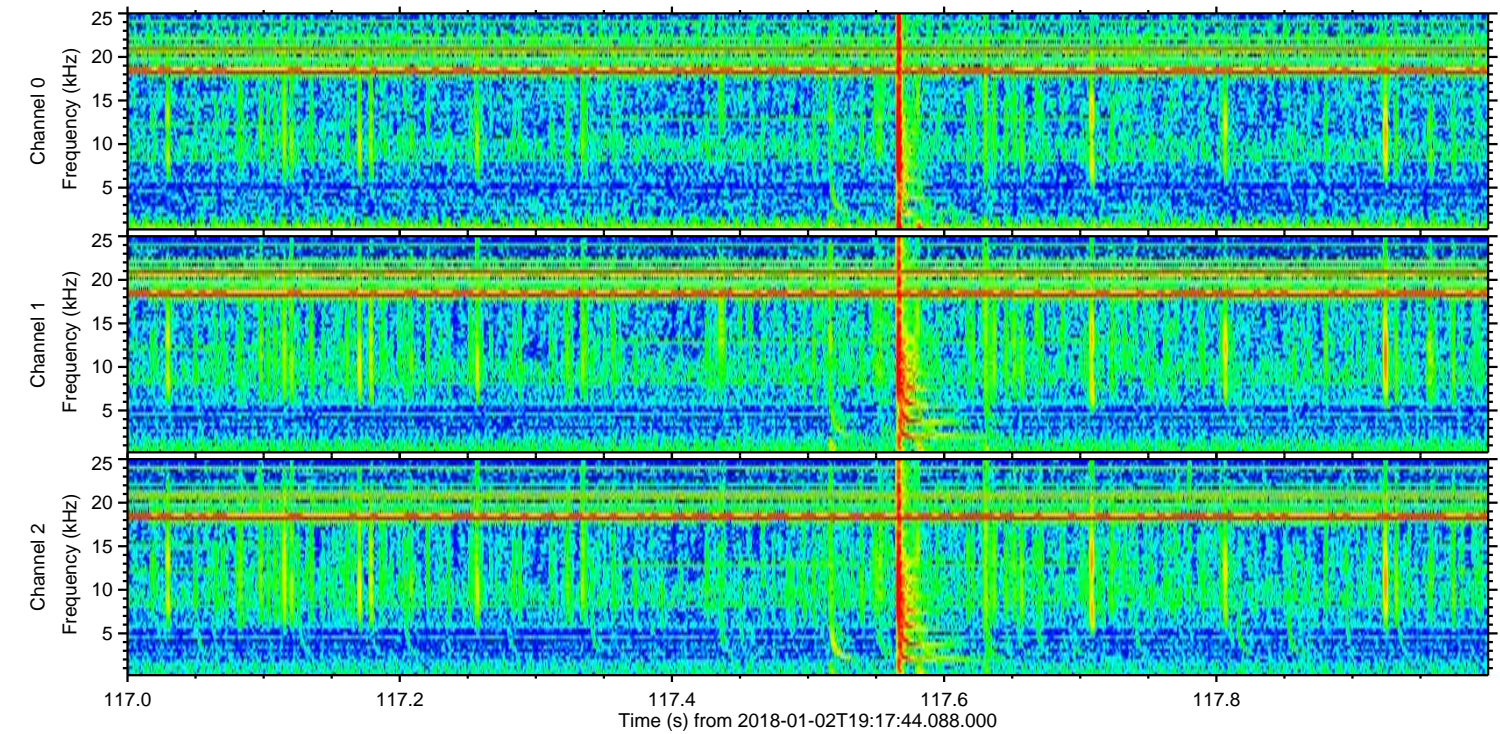
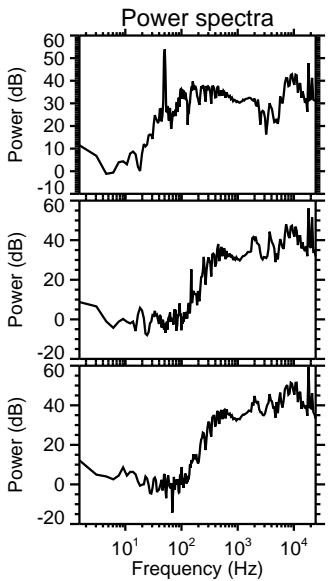
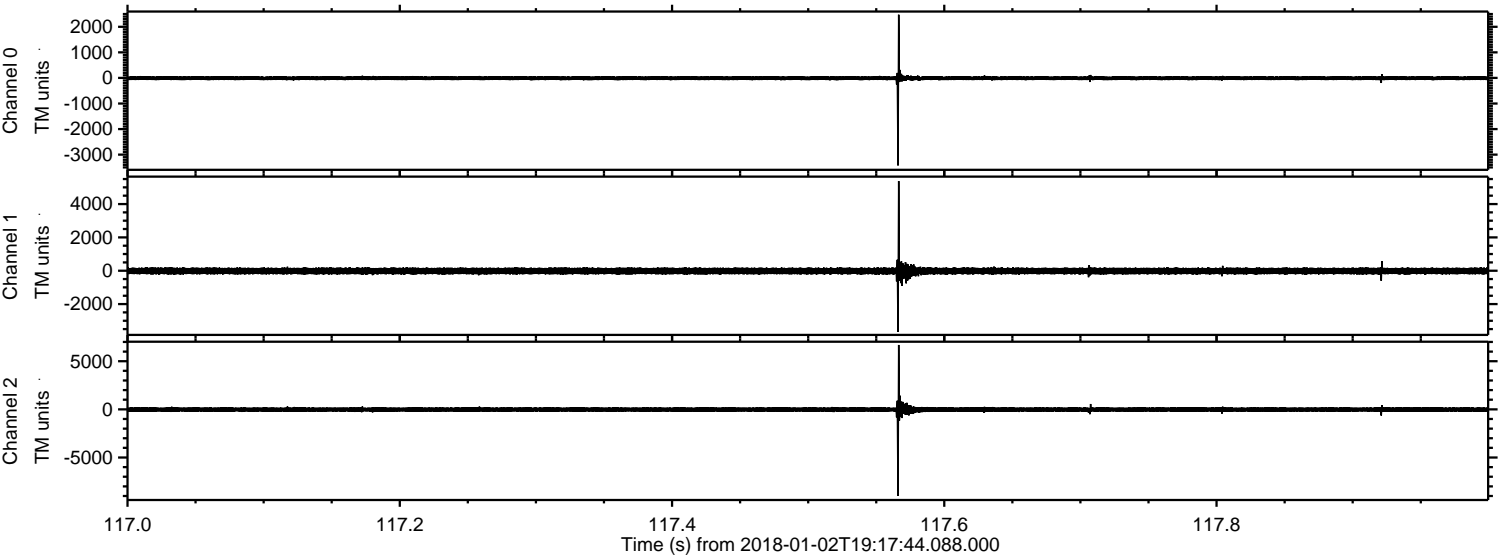
ELMAVAN 3D WAVEFORMS (Measured data sampled at 50 kHz) 51000 packets of 144 samples from 2018-01-02T19:17:44.088.000.

Processed Tue Jan 2 20:25:02 2018 by ELM ver.2012-10-06 from 001__elm20180102_191743__dat00.bin



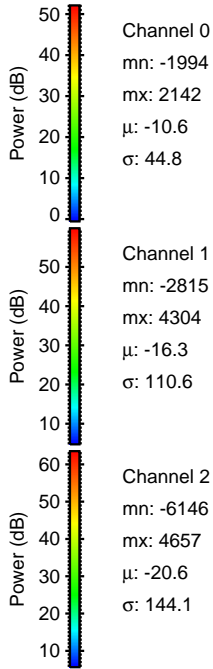
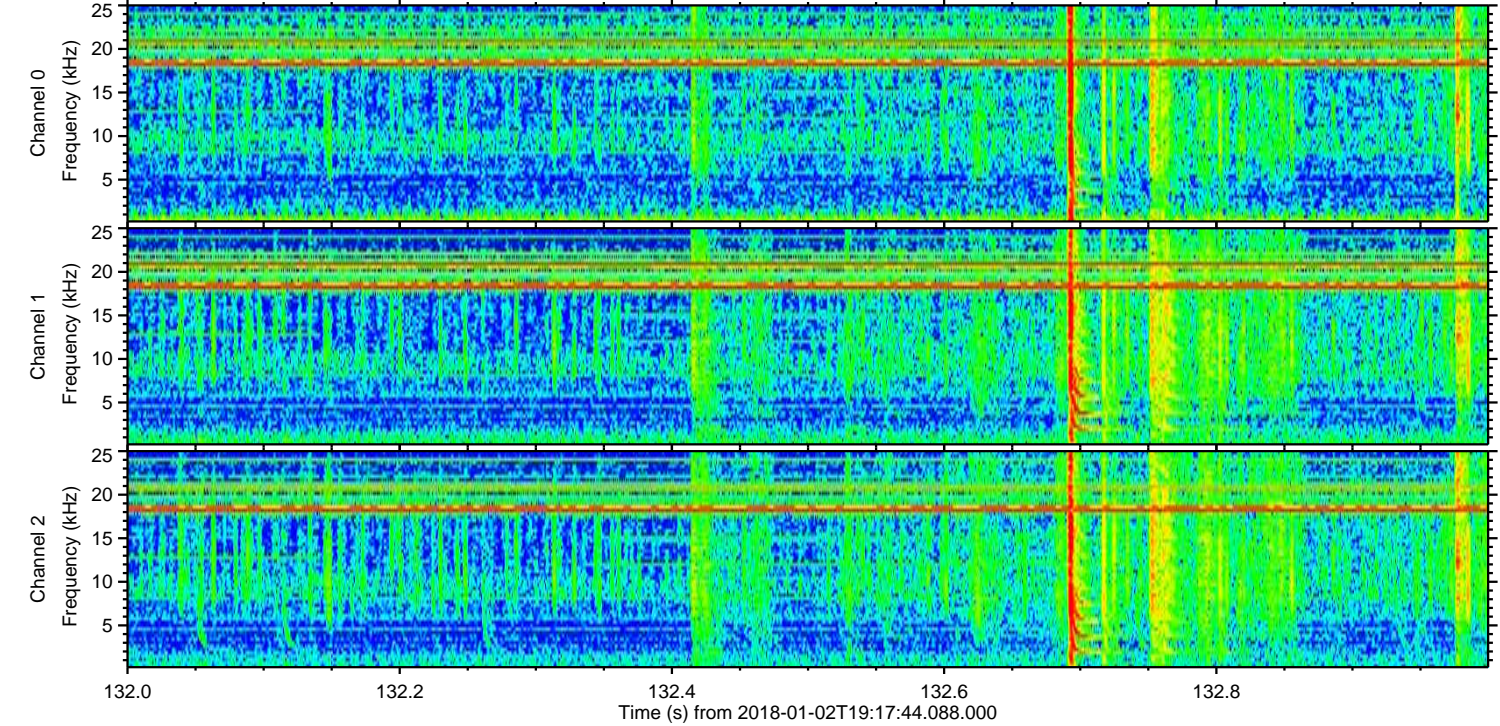
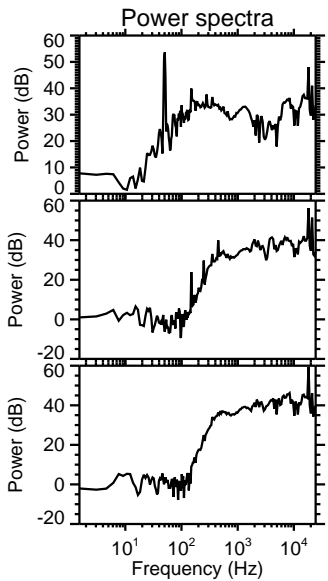
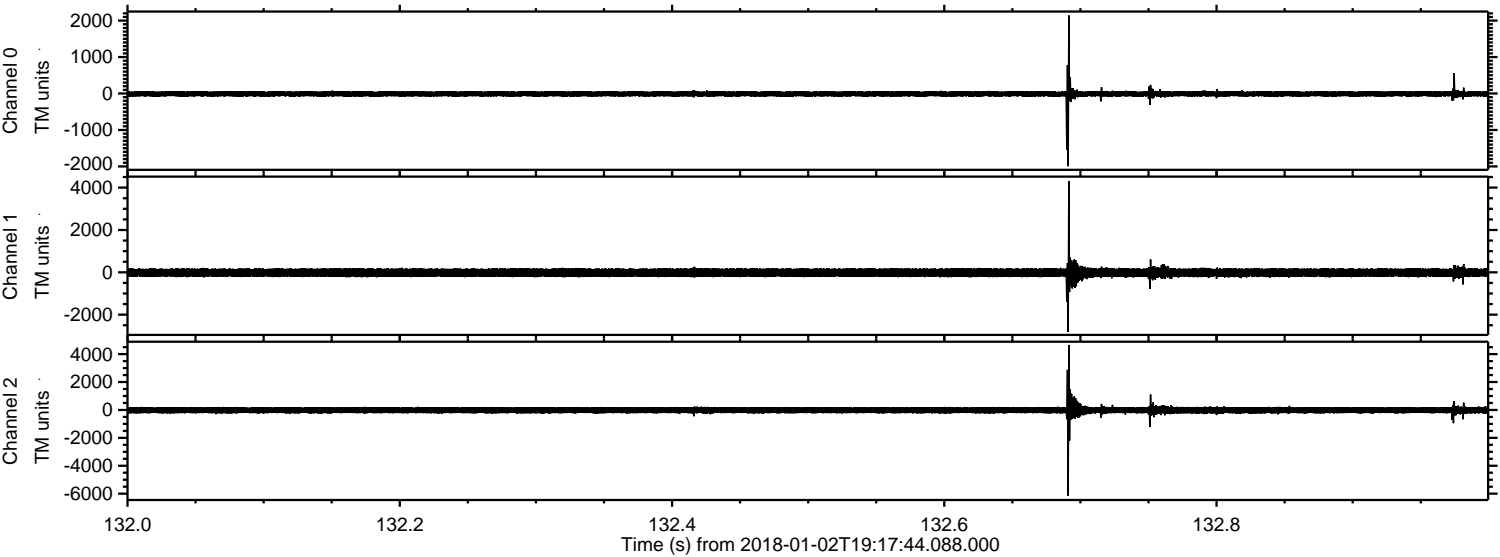
ELMAVAN 3D WAVEFORMS (Measured data sampled at 50 kHz) 51000 packets of 144 samples from 2018-01-02T19:17:44.088.000. Part 118/147

Processed Tue Jan 2 20:25:10 2018 by ELM ver.2012-10-06 from 001__elm20180102_191743__dat00.bin



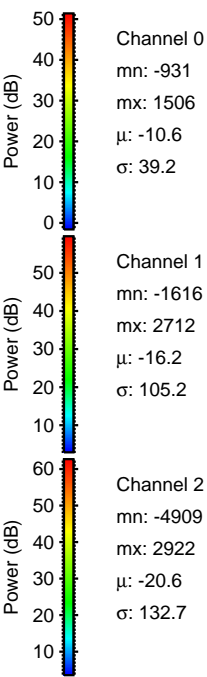
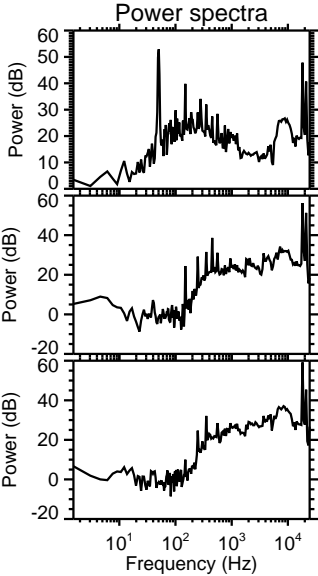
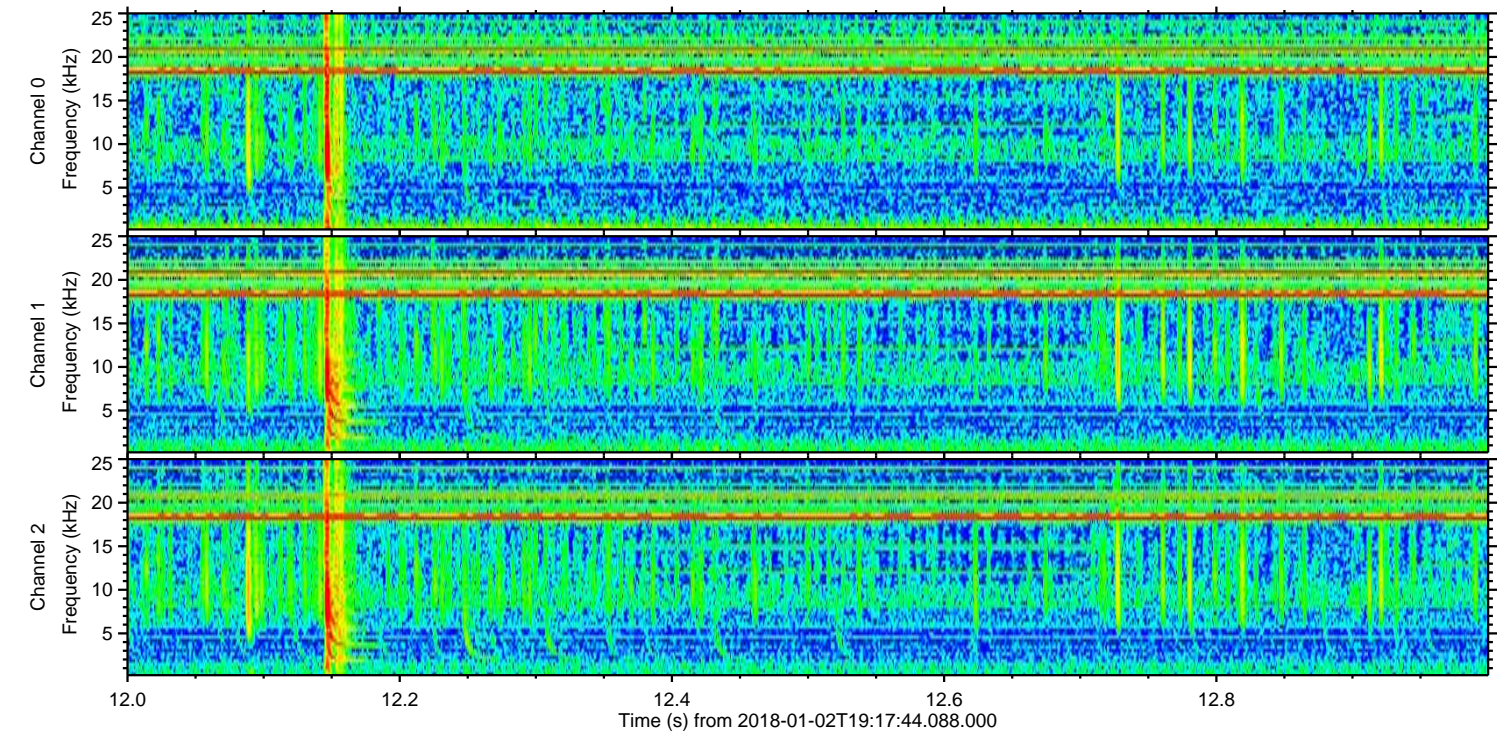
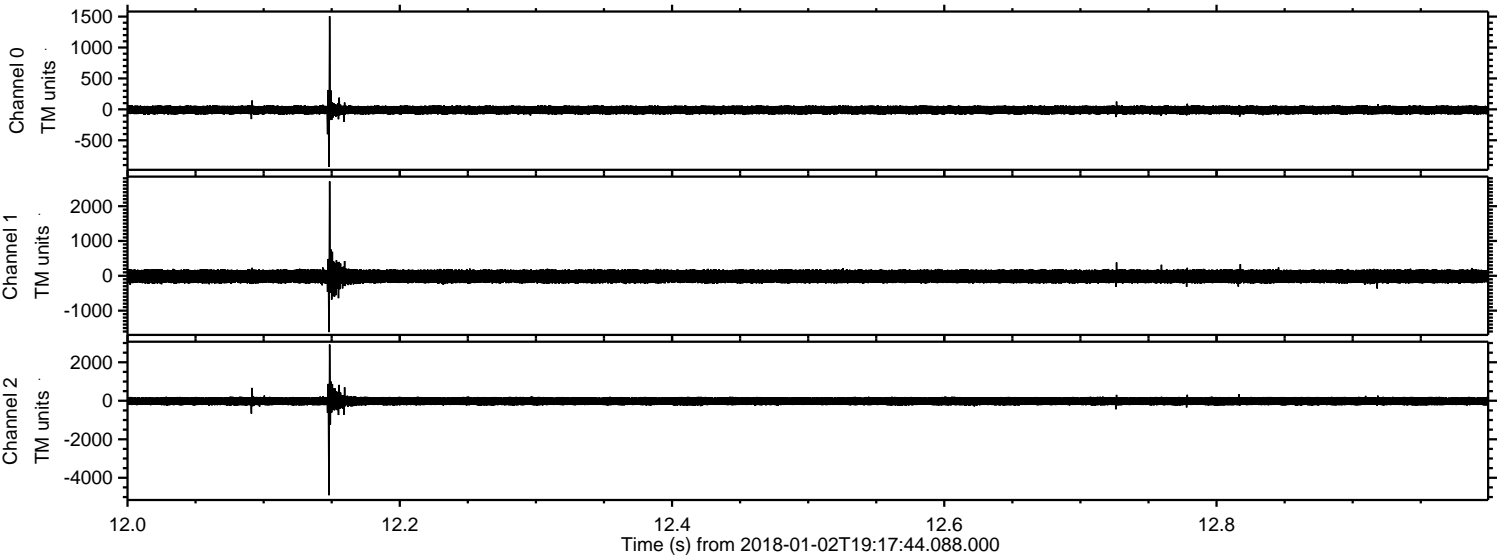
ELMAVAN 3D WAVEFORMS (Measured data sampled at 50 kHz) 51000 packets of 144 samples from 2018-01-02T19:17:44.088.000. Part 133/147

Processed Tue Jan 2 20:25:10 2018 by ELM ver.2012-10-06 from 001__elm20180102_191743__dat00.bin

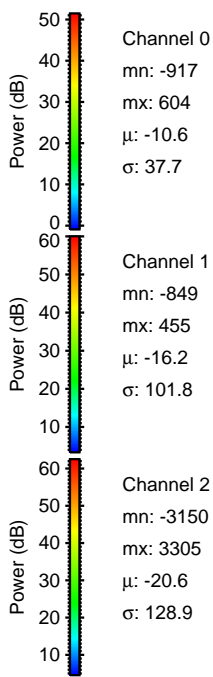
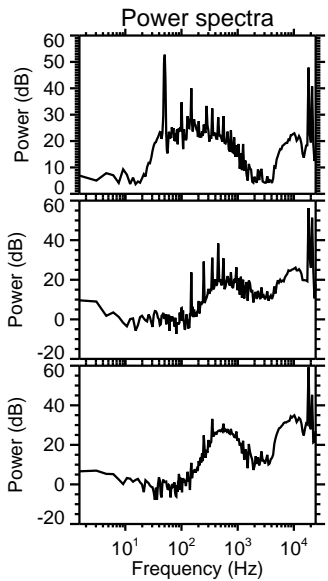
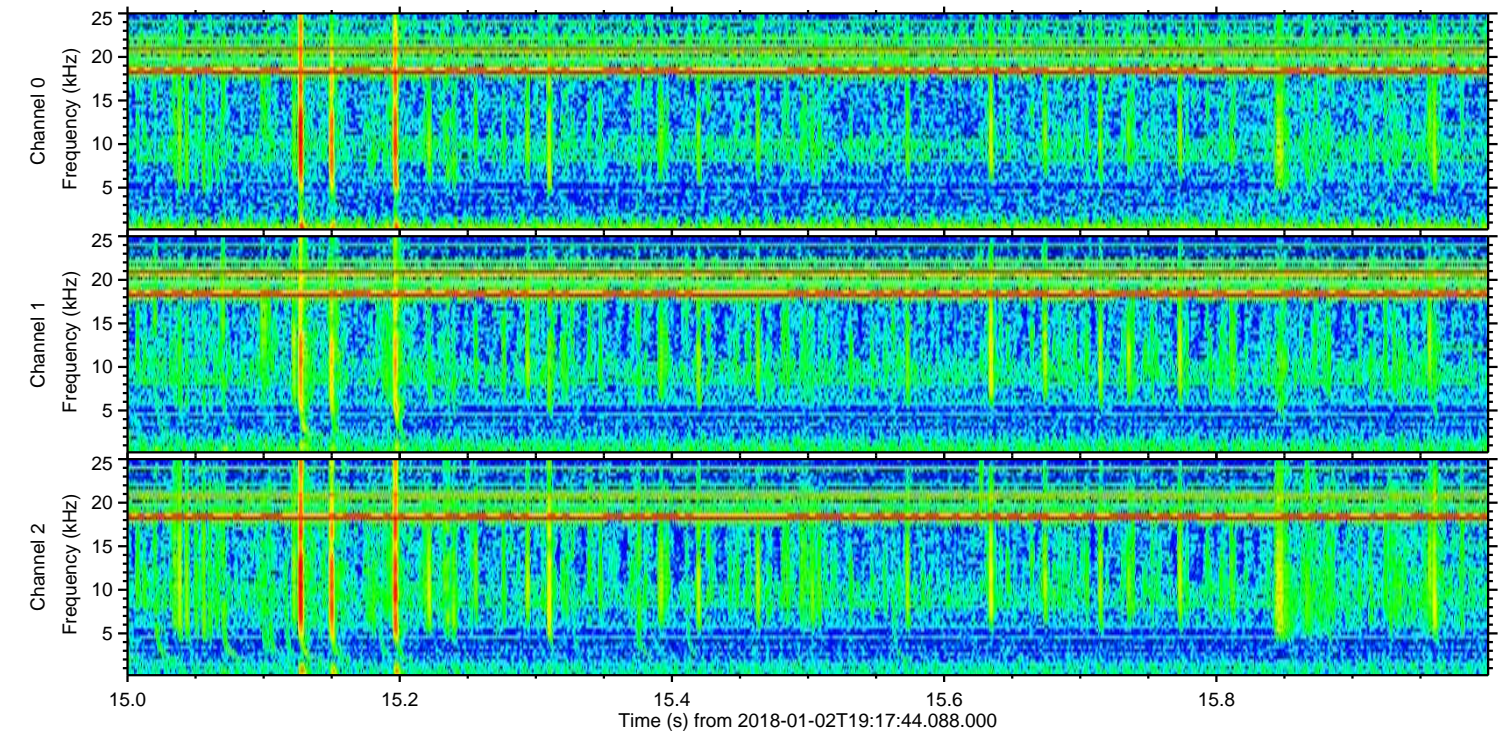
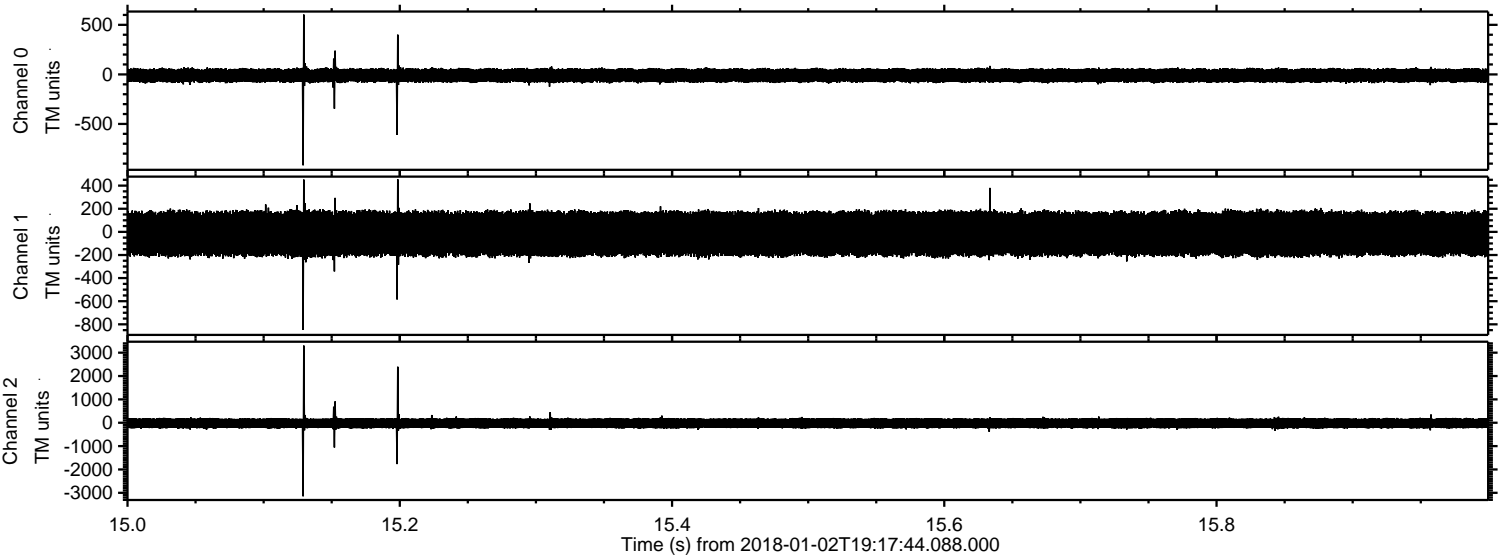


ELMAVAN 3D WAVEFORMS (Measured data sampled at 50 kHz) 51000 packets of 144 samples from 2018-01-02T19:17:44.088.000. Part 13/147

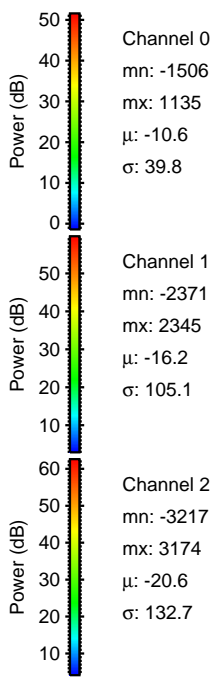
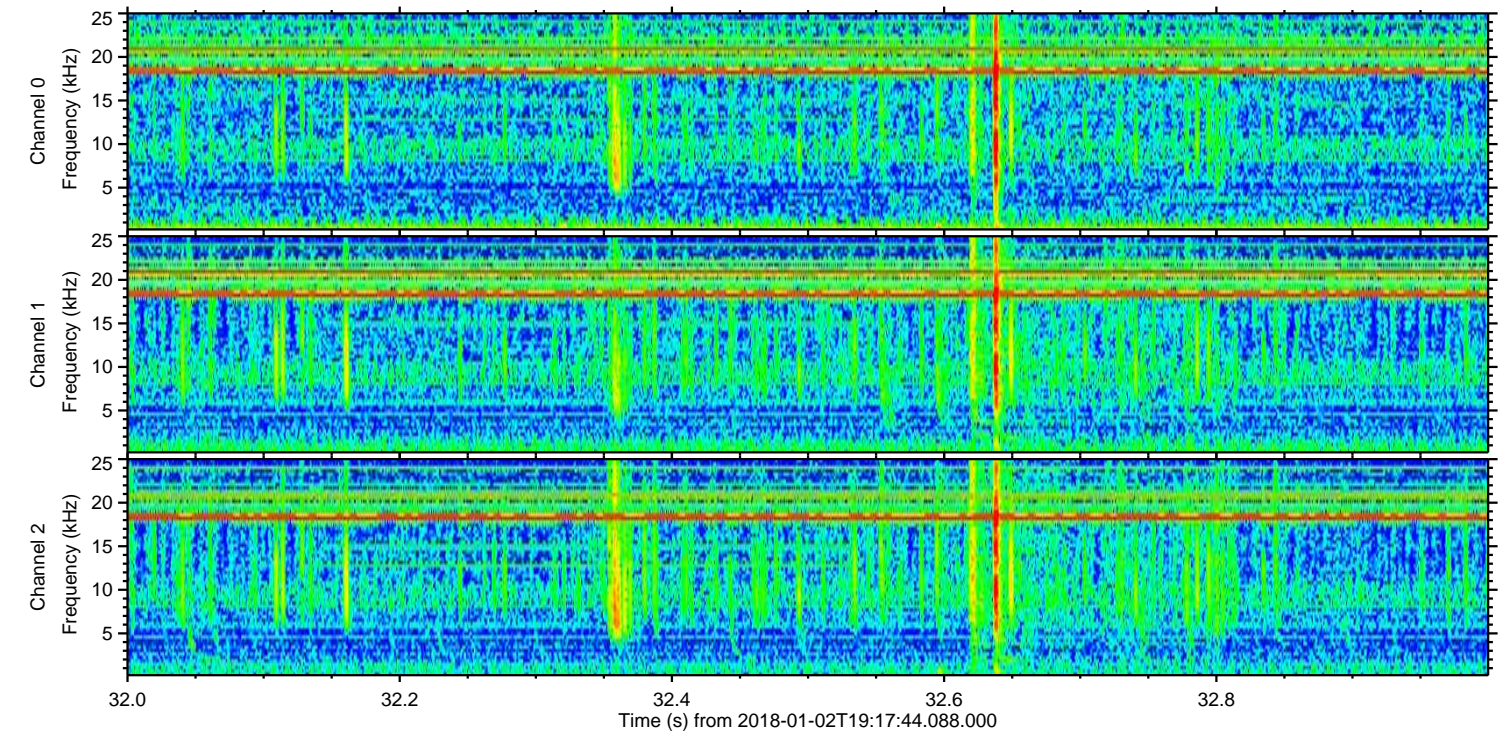
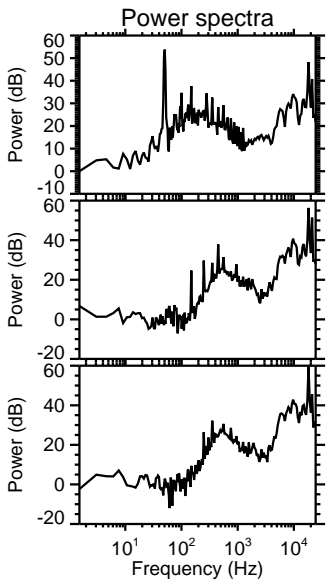
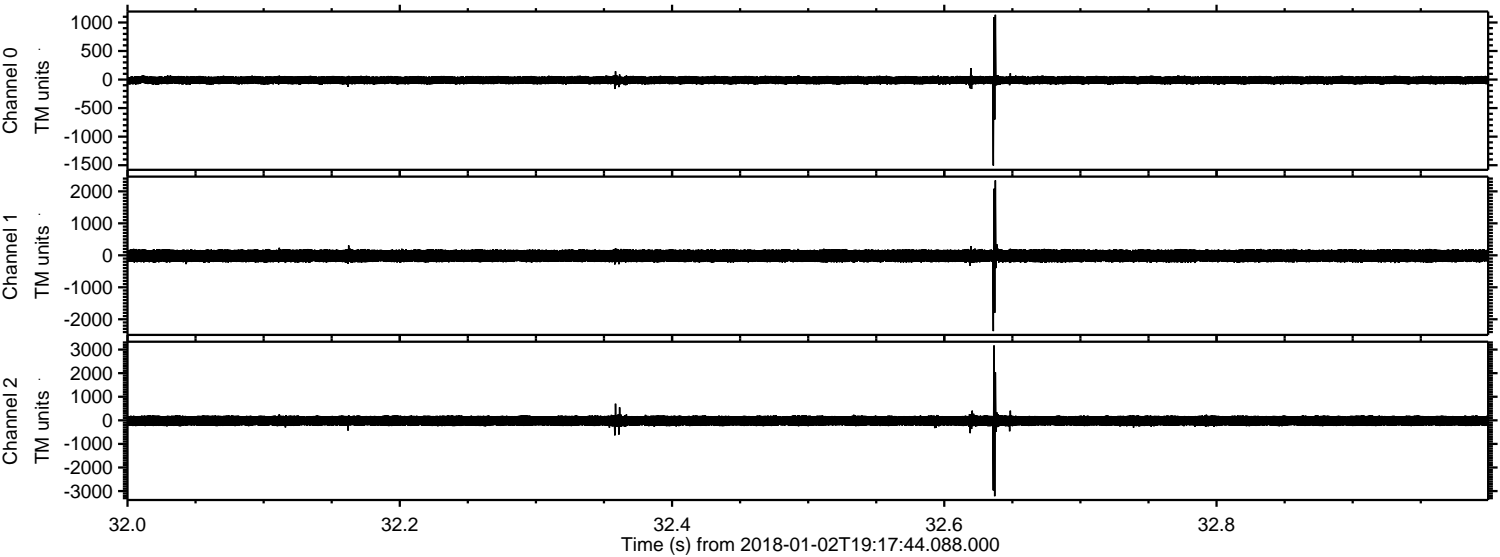
Processed Tue Jan 2 20:25:11 2018 by ELM ver.2012-10-06 from 001__elm20180102_191743__dat00.bin



Processed Tue Jan 2 20:25:12 2018 by ELM ver.2012-10-06 from 001__elm20180102_191743__dat00.bin



Processed Tue Jan 2 20:25:14 2018 by ELM ver.2012-10-06 from 001__elm20180102_191743__dat00.bin



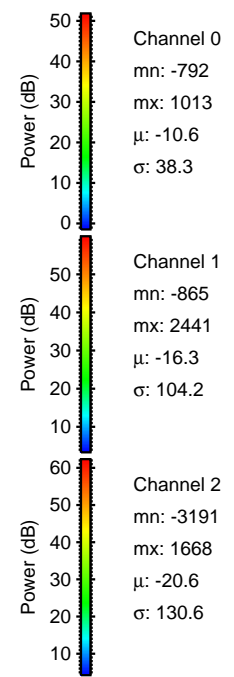
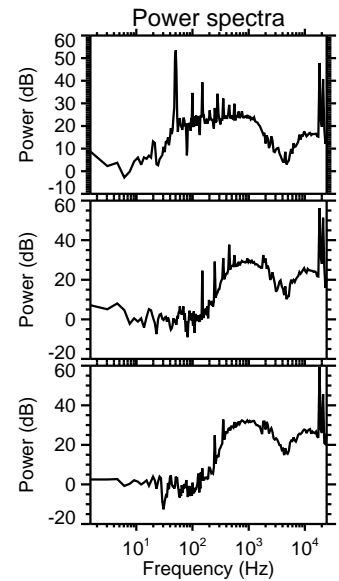
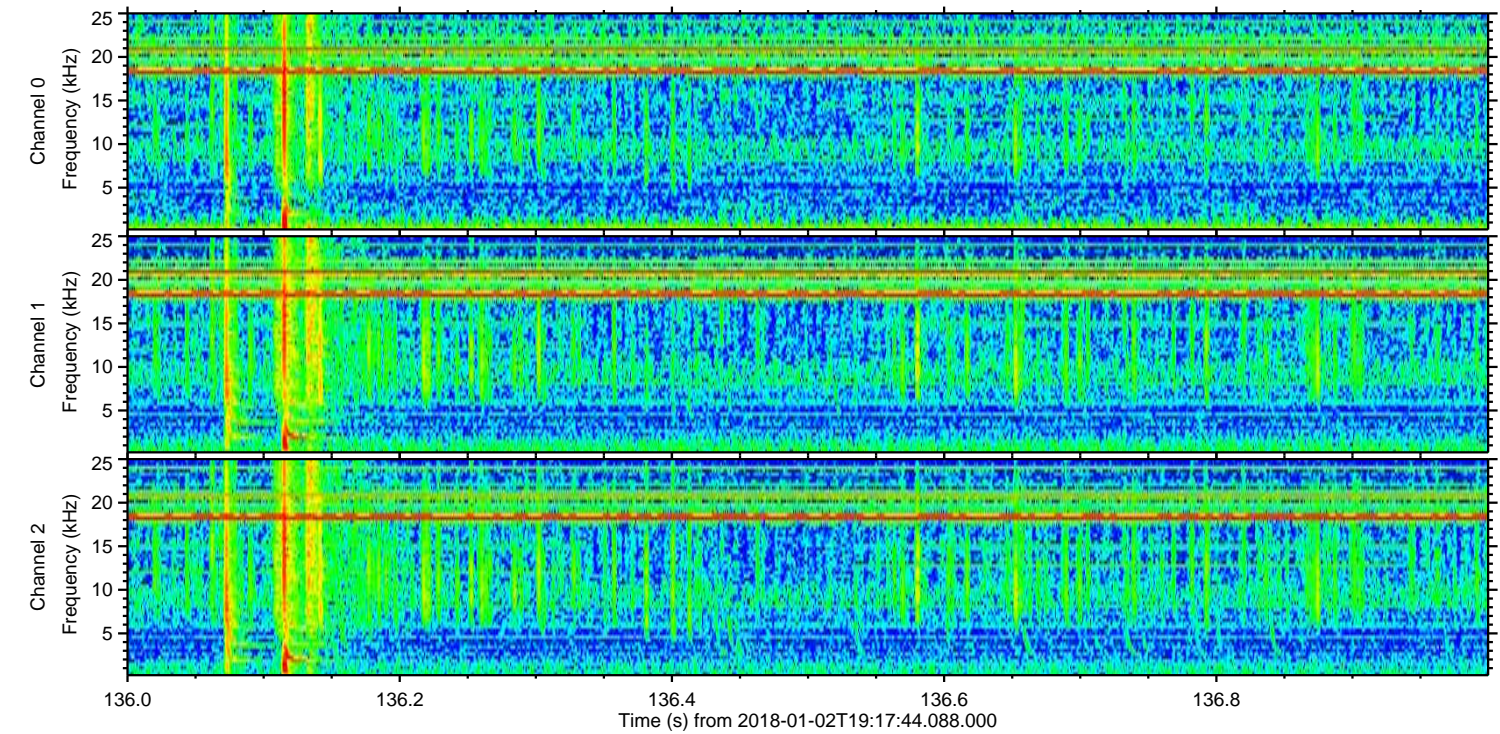
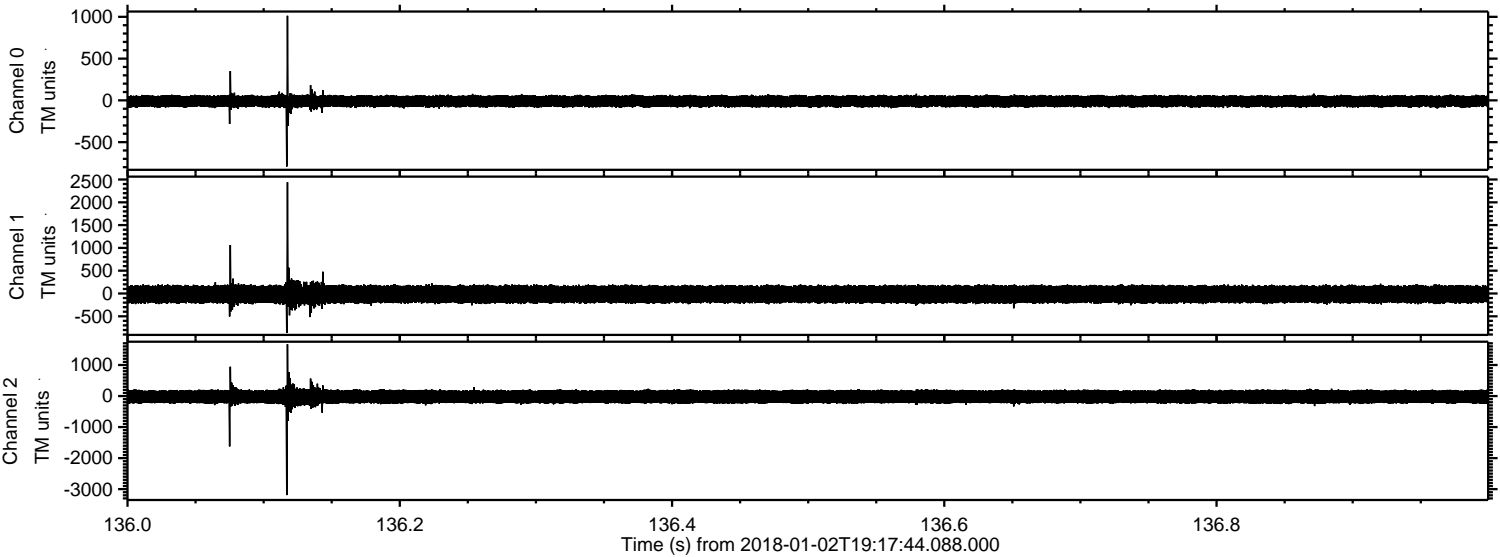
Channel 0
mn: -1506
mx: 1135
 μ : -10.6
 σ : 39.8

Channel 1
mn: -2371
mx: 2345
 μ : -16.2
 σ : 105.1

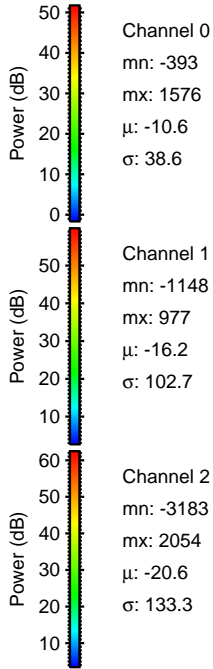
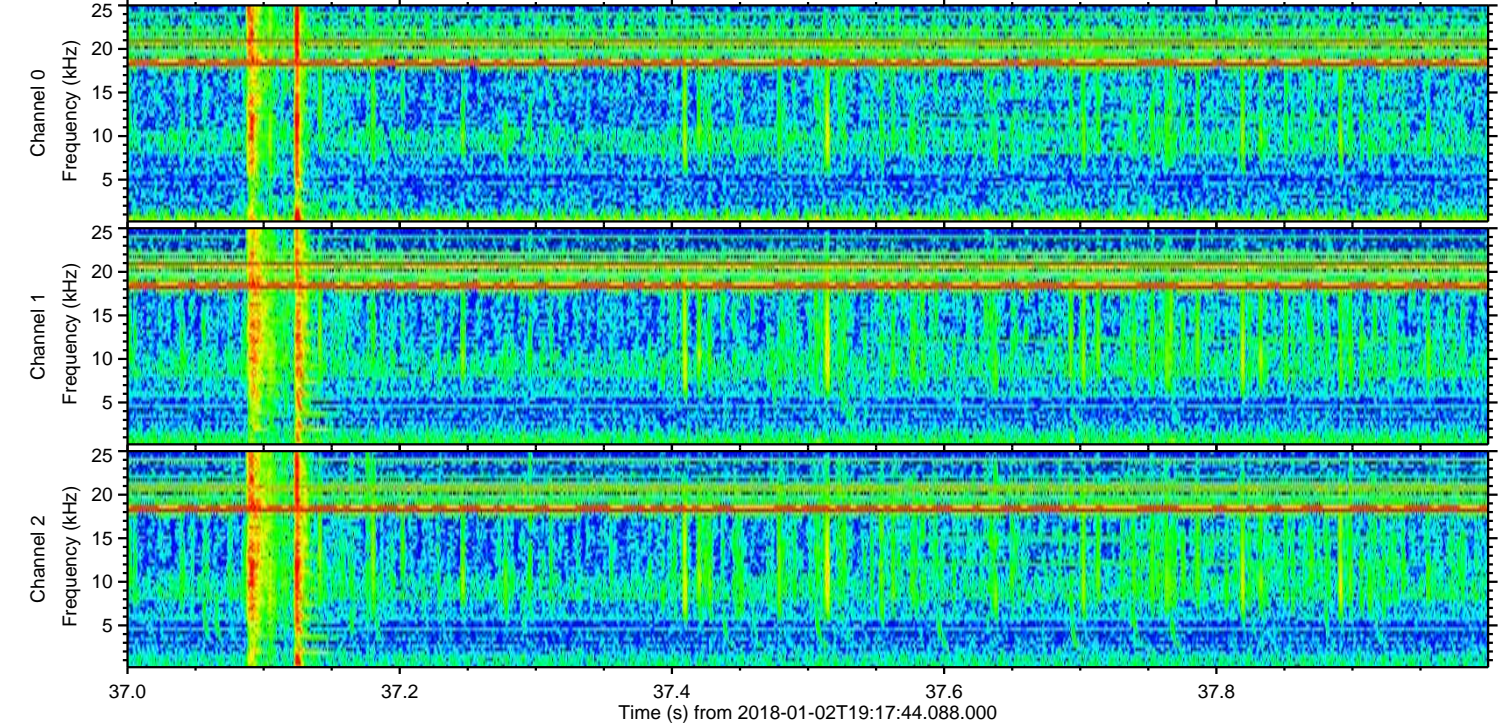
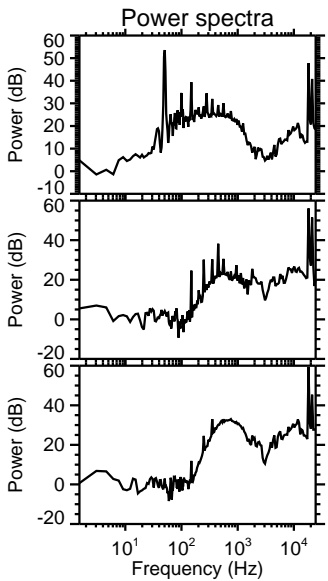
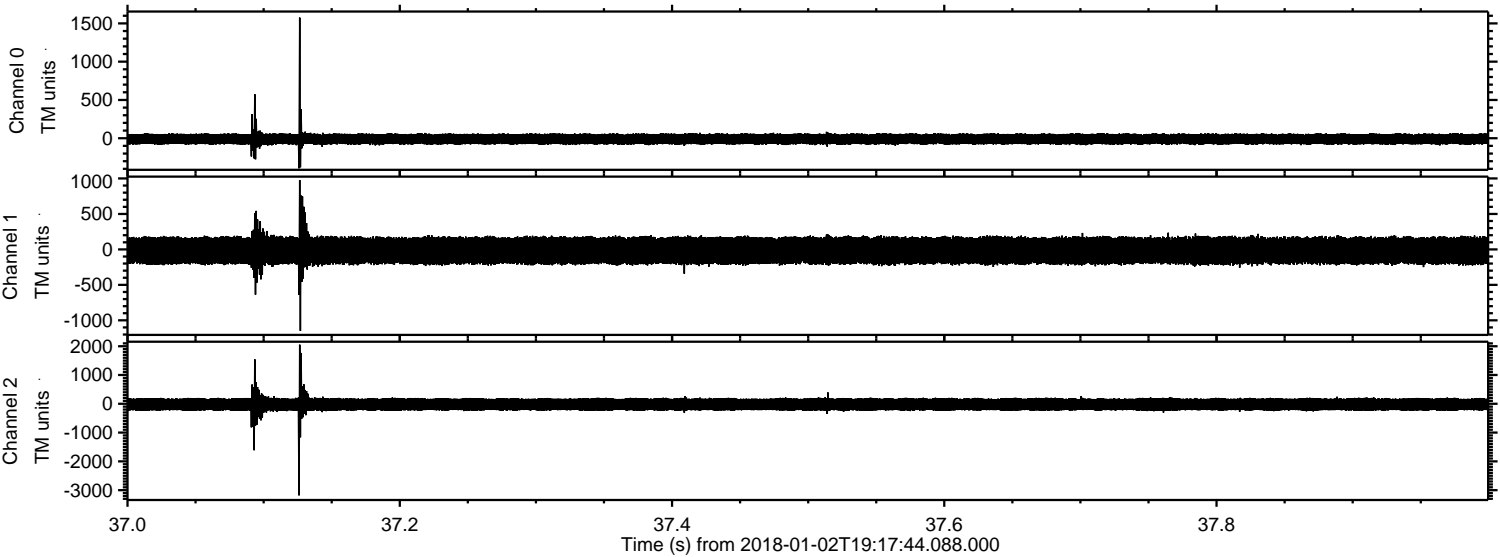
Channel 2
mn: -3217
mx: 3174
 μ : -20.6
 σ : 132.7

ELMAVAN 3D WAVEFORMS (Measured data sampled at 50 kHz) 51000 packets of 144 samples from 2018-01-02T19:17:44.088.000. Part 137/147

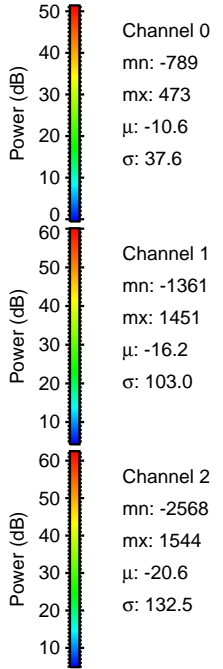
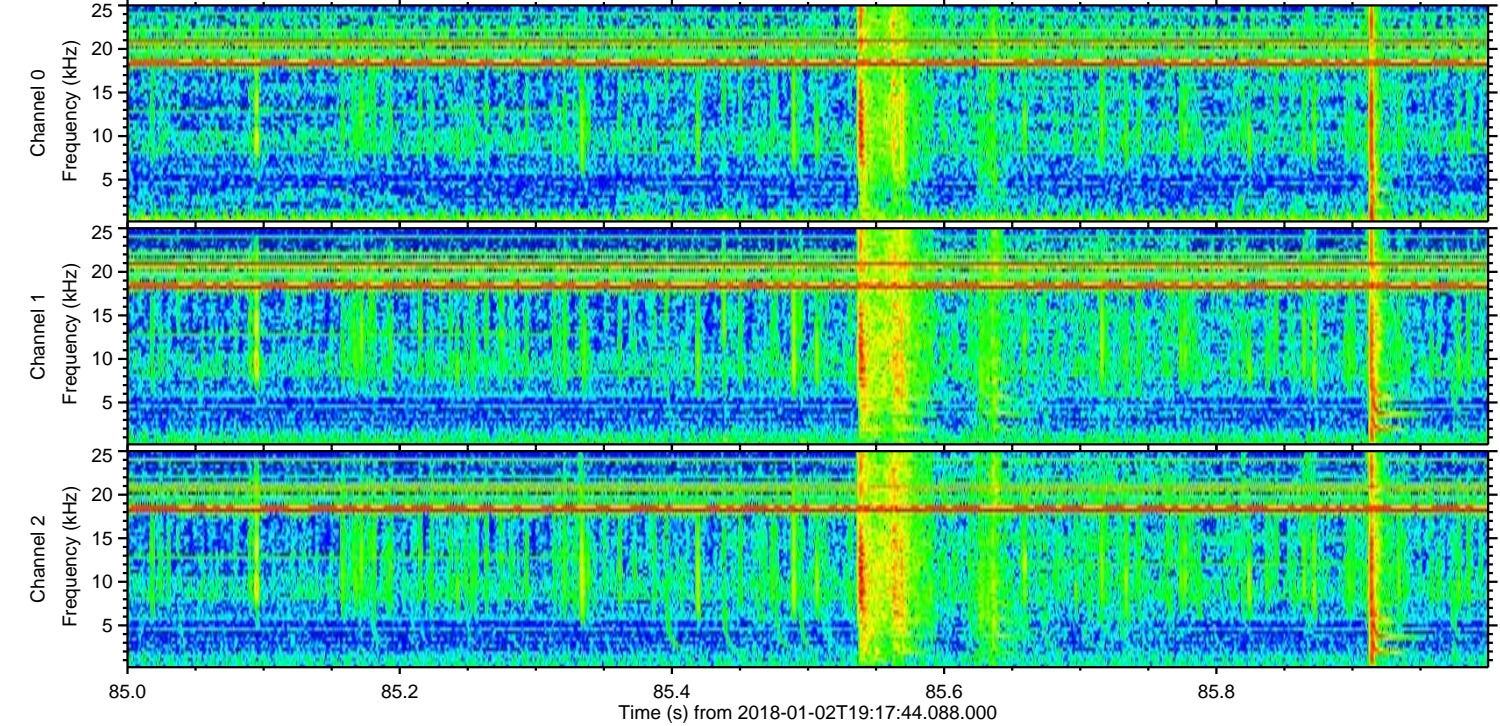
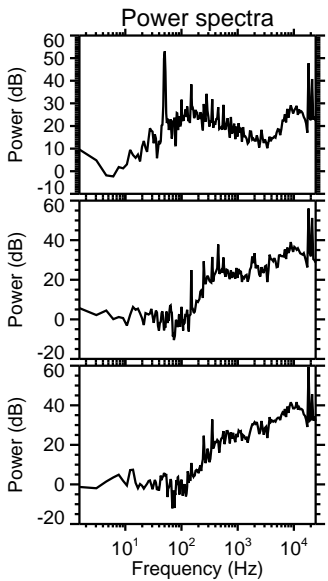
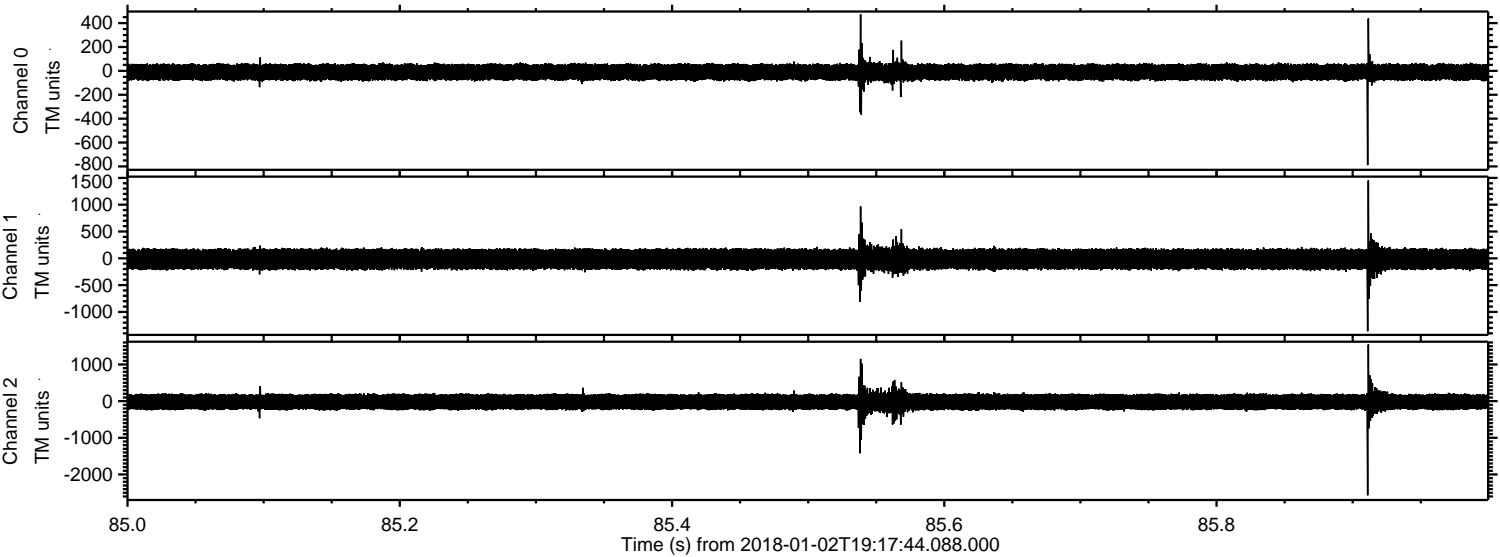
Processed Tue Jan 2 20:25:14 2018 by ELM ver.2012-10-06 from 001__elm20180102_191743__dat00.bin



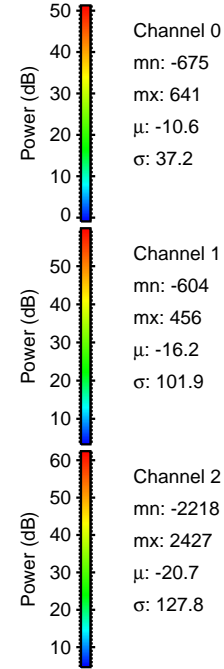
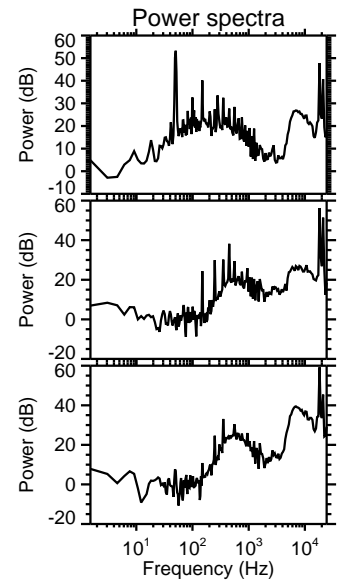
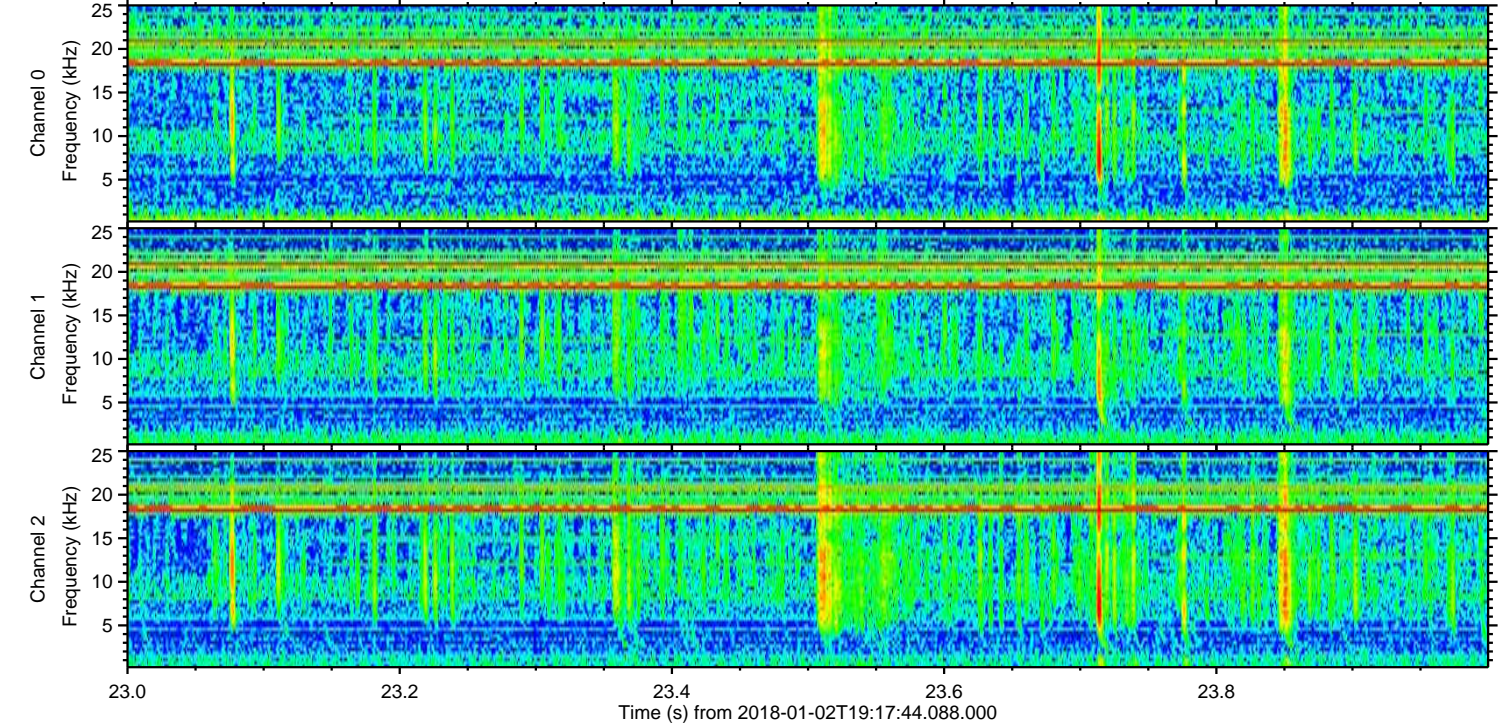
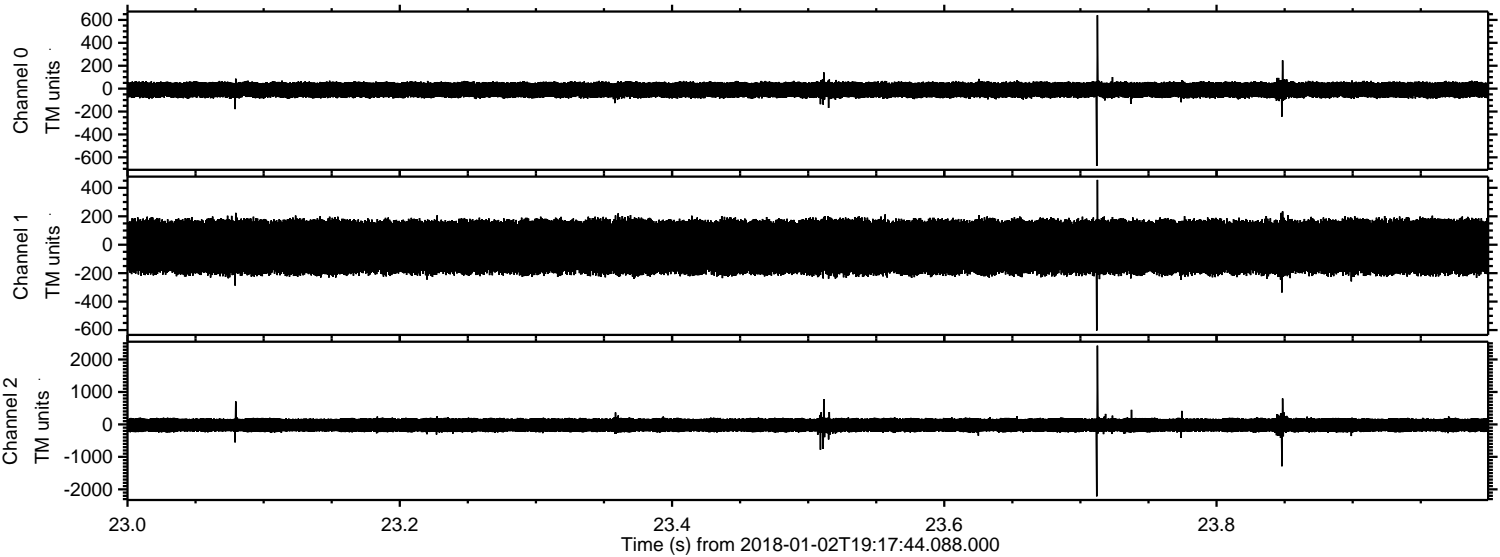
Processed Tue Jan 2 20:25:15 2018 by ELM ver.2012-10-06 from 001__elm20180102_191743__dat00.bin



Processed Tue Jan 2 20:25:16 2018 by ELM ver.2012-10-06 from 001__elm20180102_191743__dat00.bin



Processed Tue Jan 2 20:25:17 2018 by ELM ver.2012-10-06 from 001__elm20180102_191743__dat00.bin



Channel 0
mn: -675
mx: 641
 μ : -10.6
 σ : 37.2

Channel 1
mn: -604
mx: 456
 μ : -16.2
 σ : 101.9

Channel 2
mn: -2218
mx: 2427
 μ : -20.7
 σ : 127.8

Processed Tue Jan 2 20:25:17 2018 by ELM ver.2012-10-06 from 001__elm20180102_191743__dat00.bin

