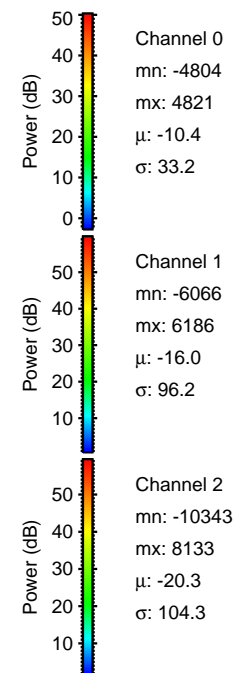
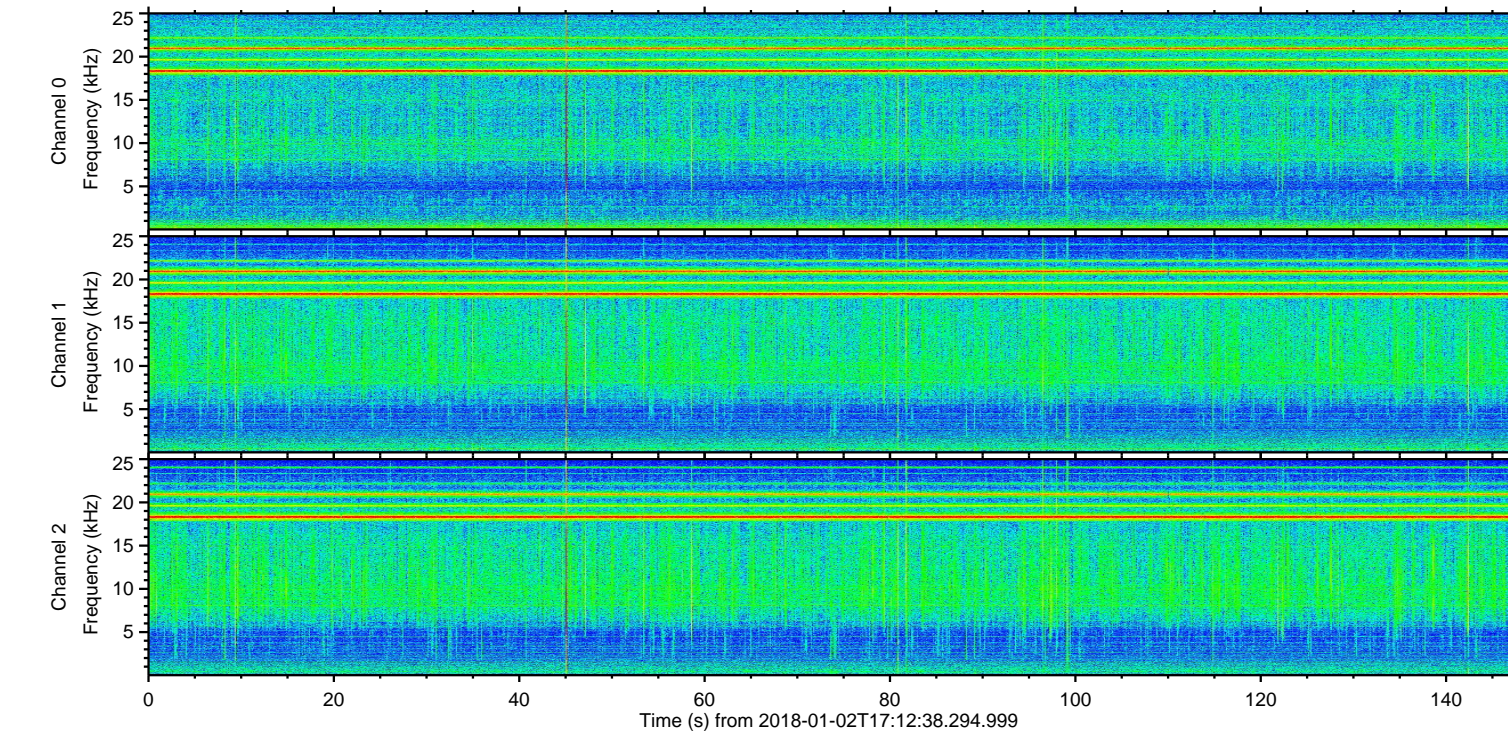
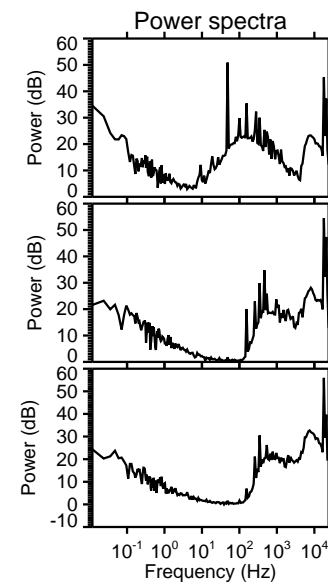
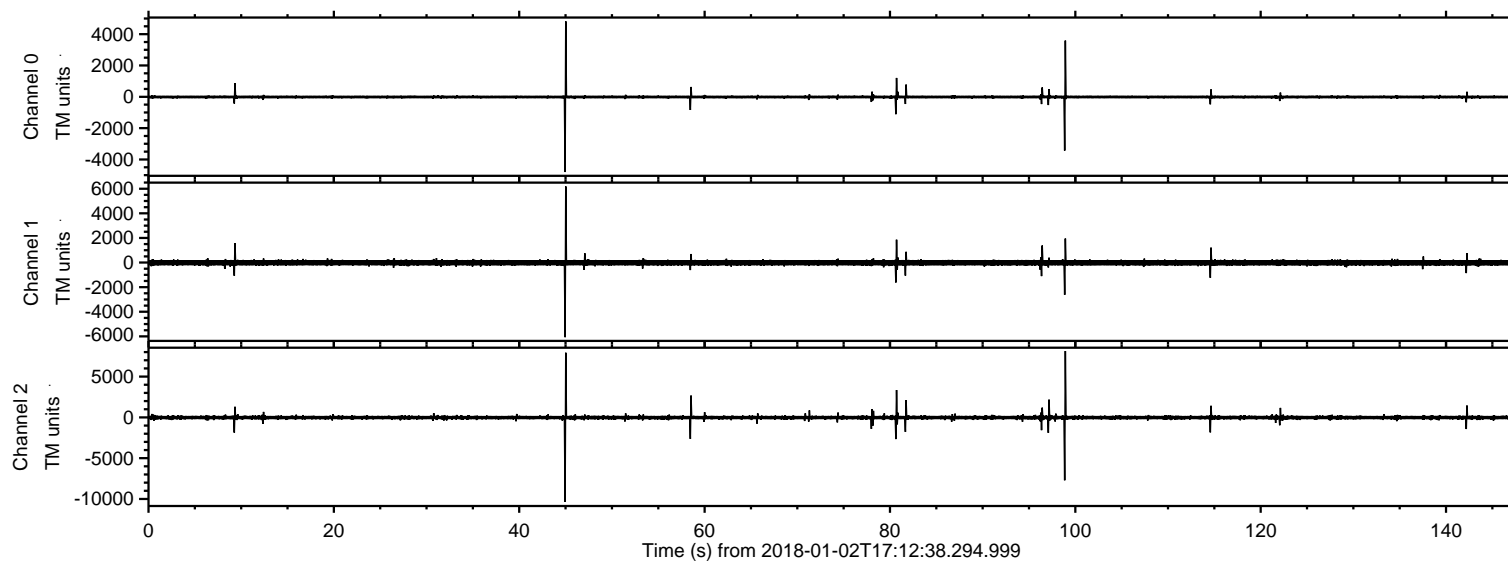
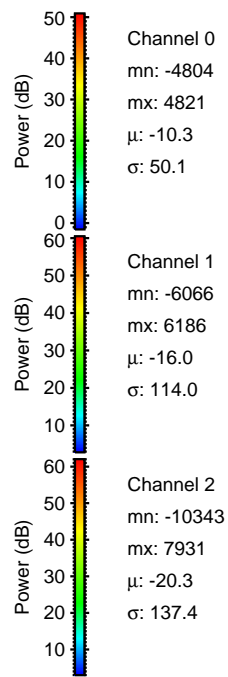
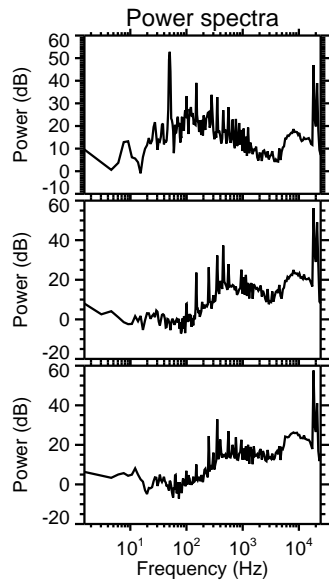
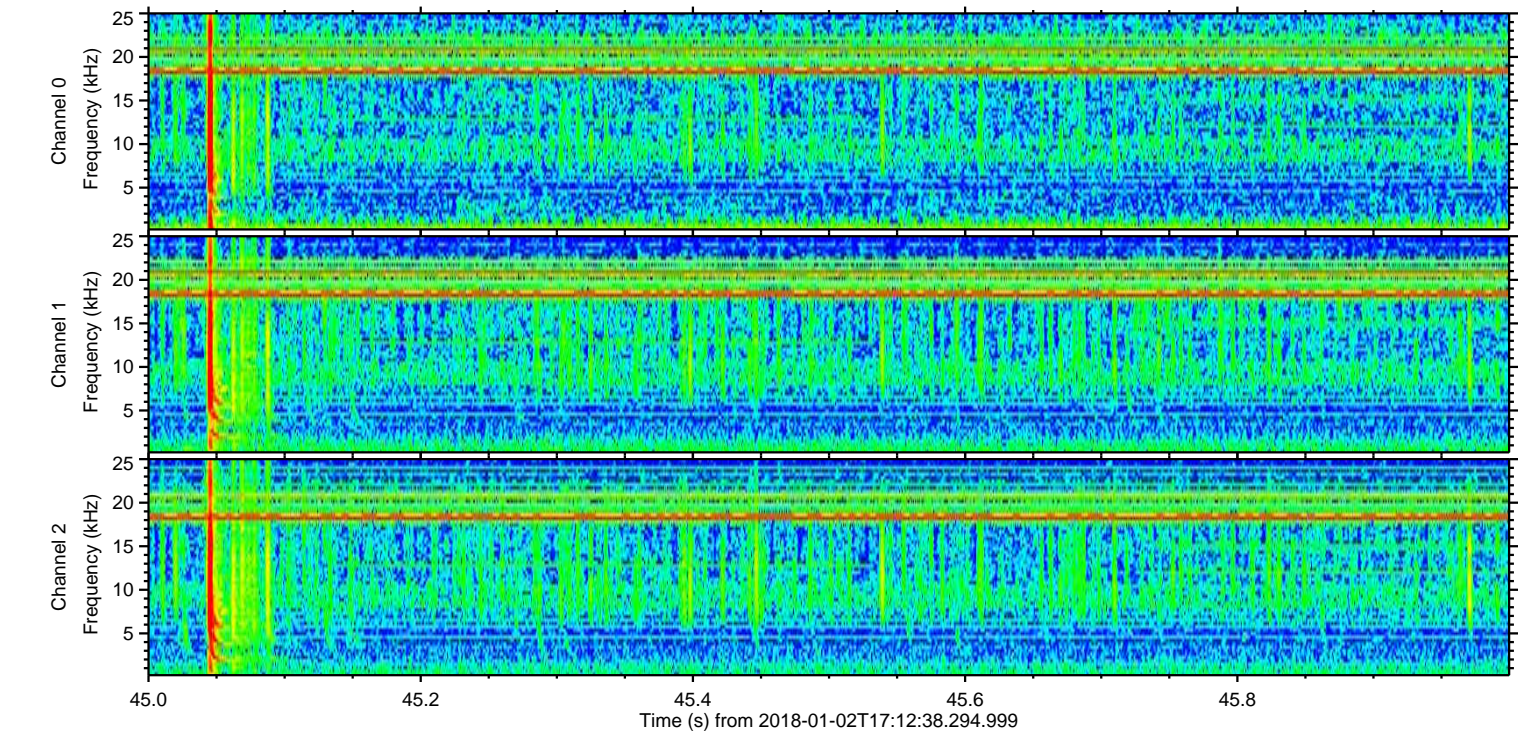
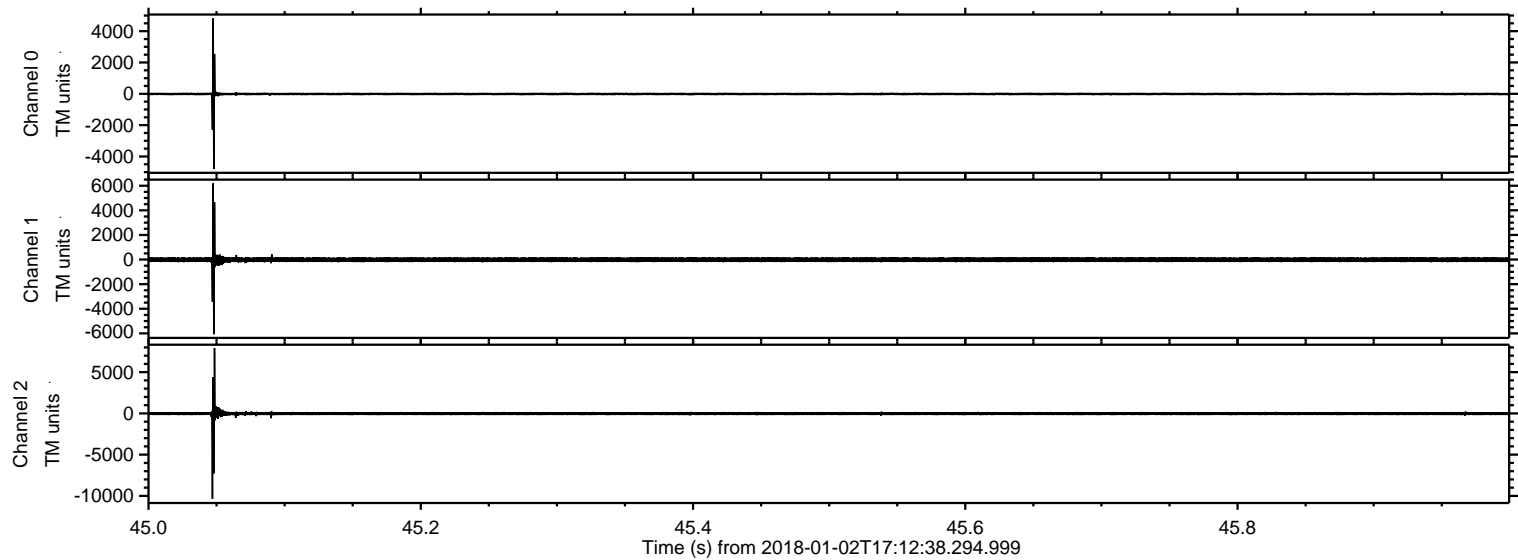


ELMAVAN 3D WAVEFORMS (Measured data sampled at 50 kHz) 51000 packets of 144 samples from 2018-01-02T17:12:38.294.999.

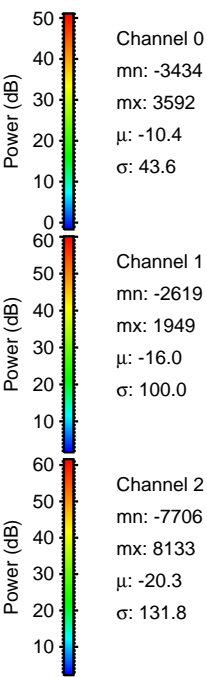
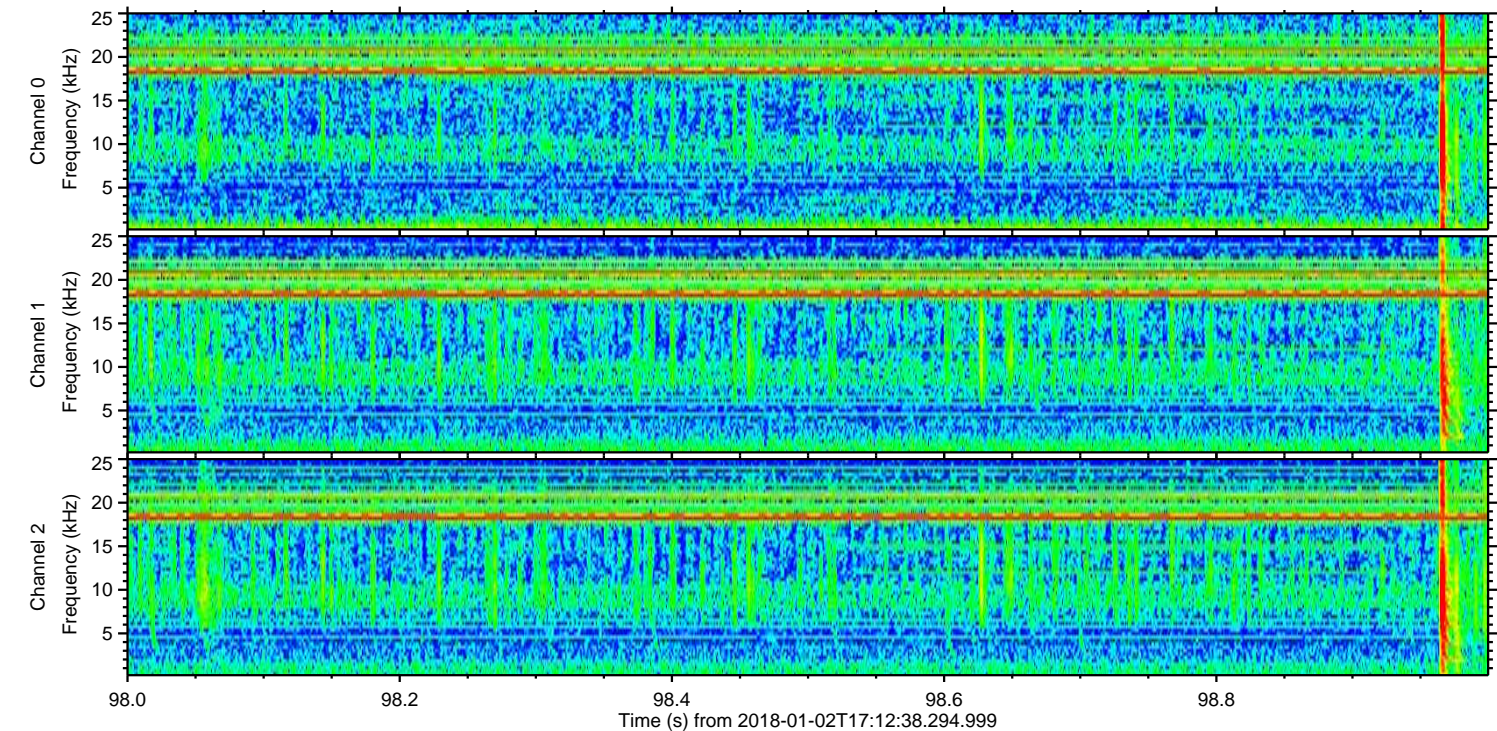
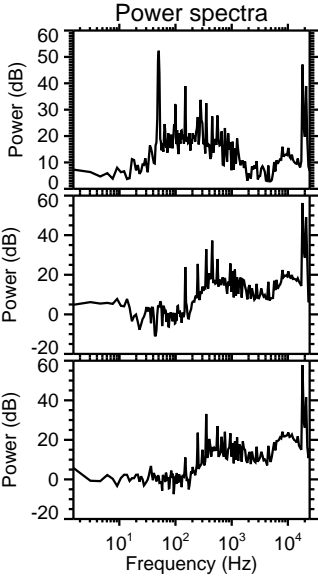
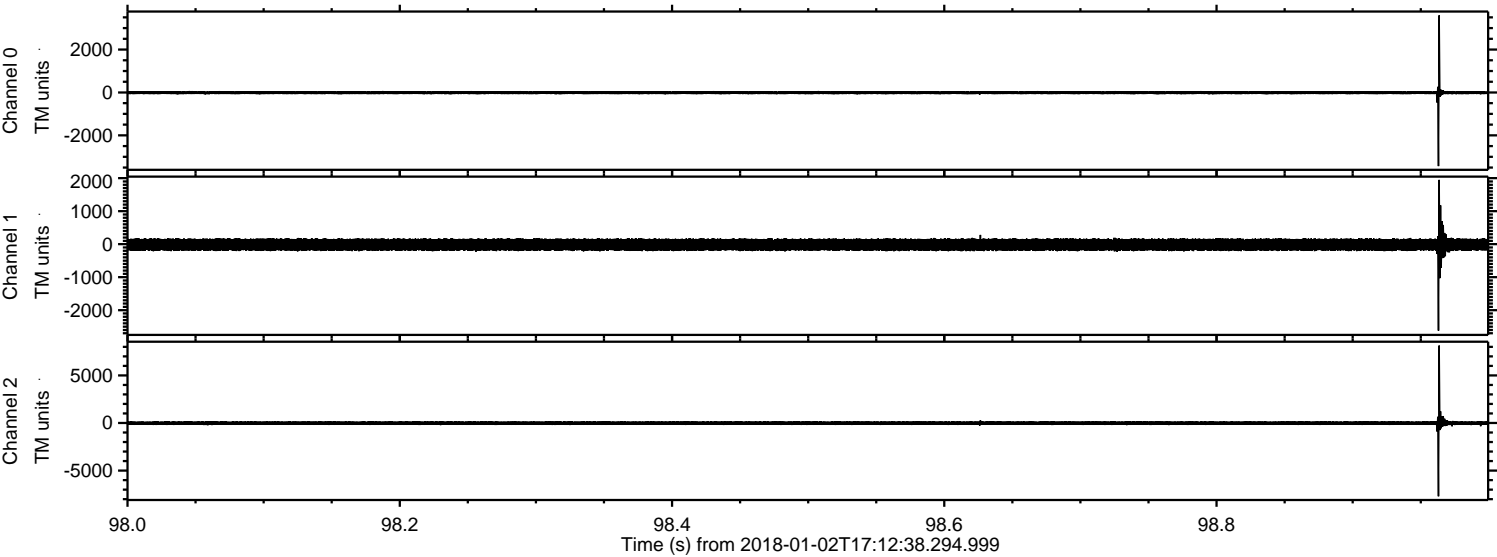
Processed Tue Jan 2 18:20:04 2018 by ELM ver.2012-10-06 from 001__elm20180102_171237__dat00.bin



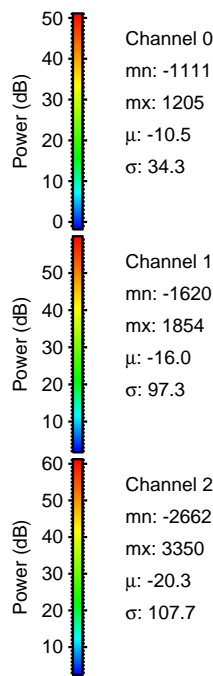
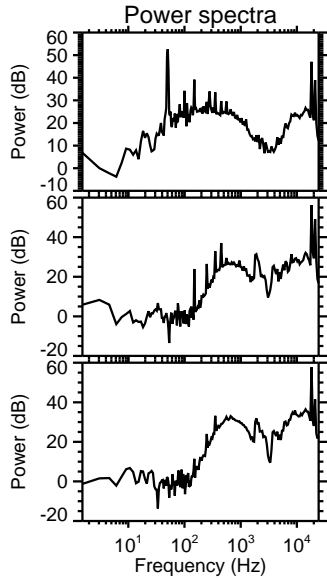
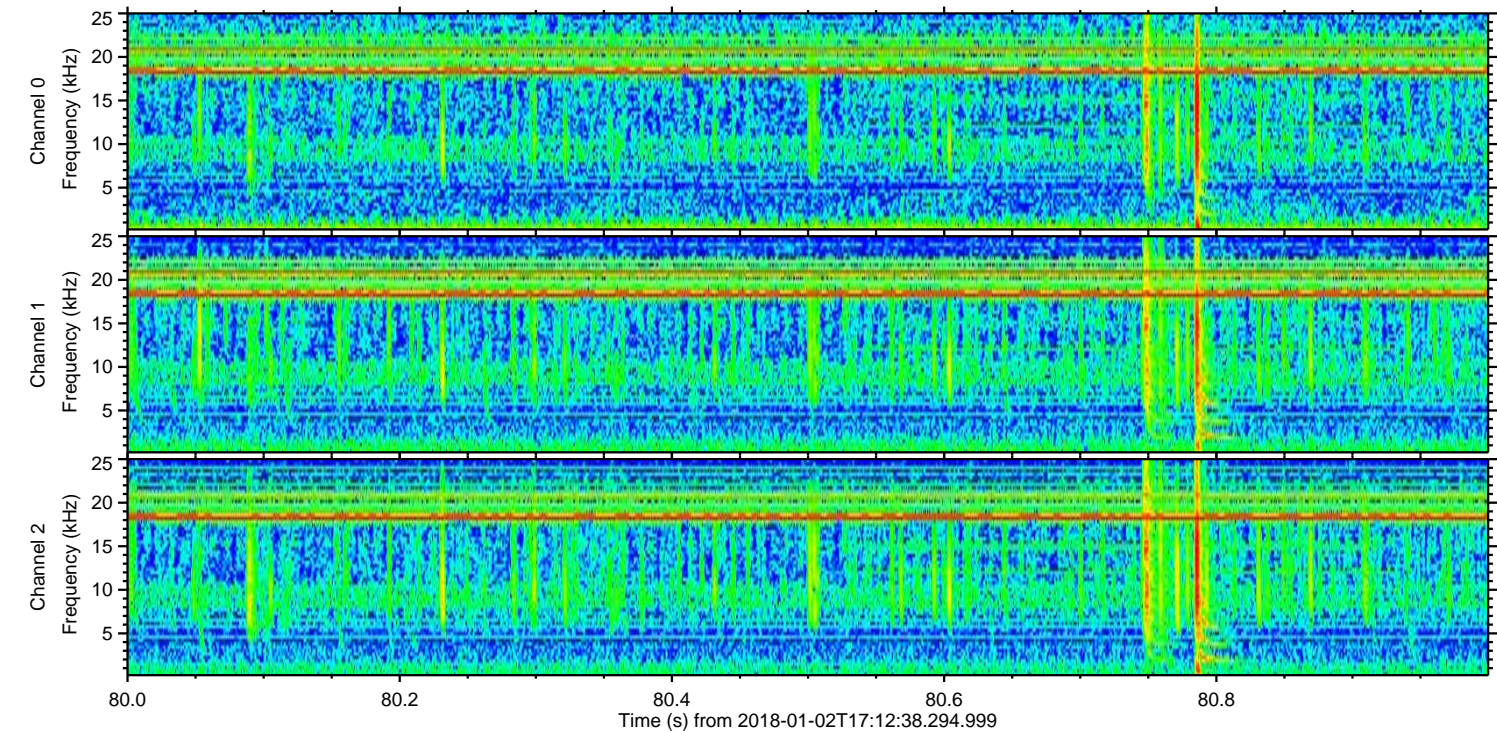
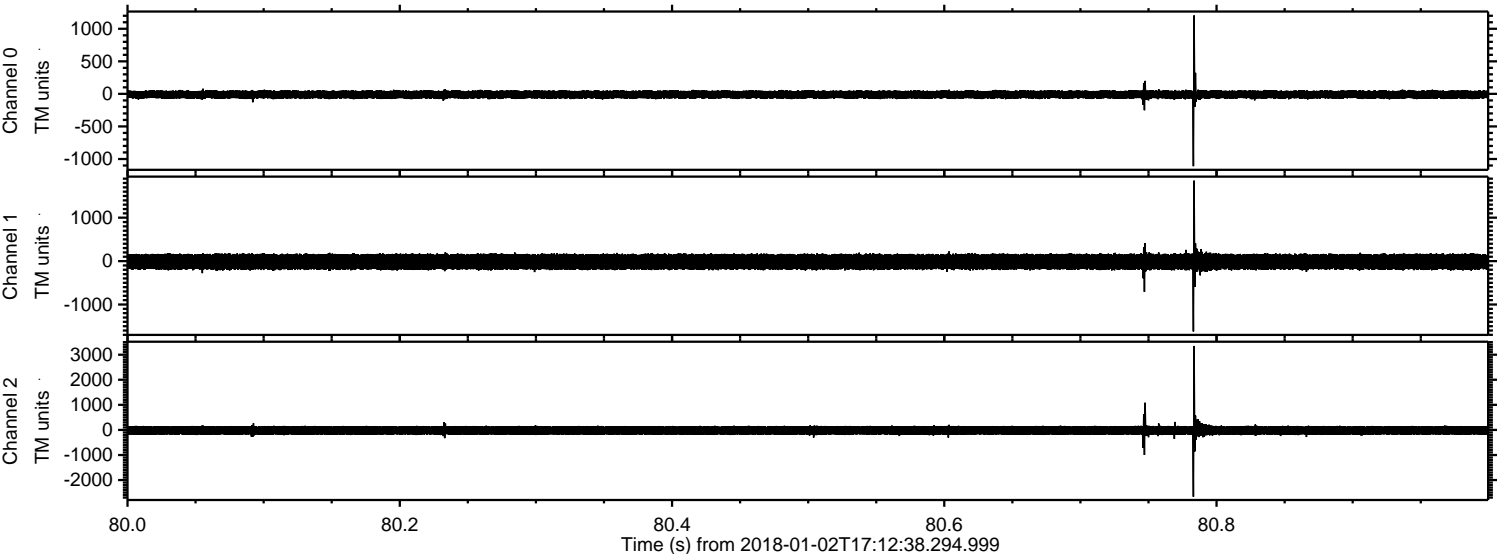
Processed Tue Jan 2 18:20:12 2018 by ELM ver.2012-10-06 from 001__elm20180102_171237__dat00.bin



Processed Tue Jan 2 18:20:13 2018 by ELM ver.2012-10-06 from 001__elm20180102_171237__dat00.bin

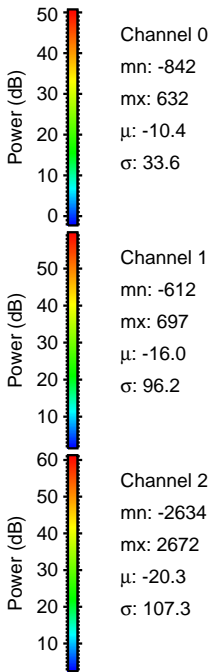
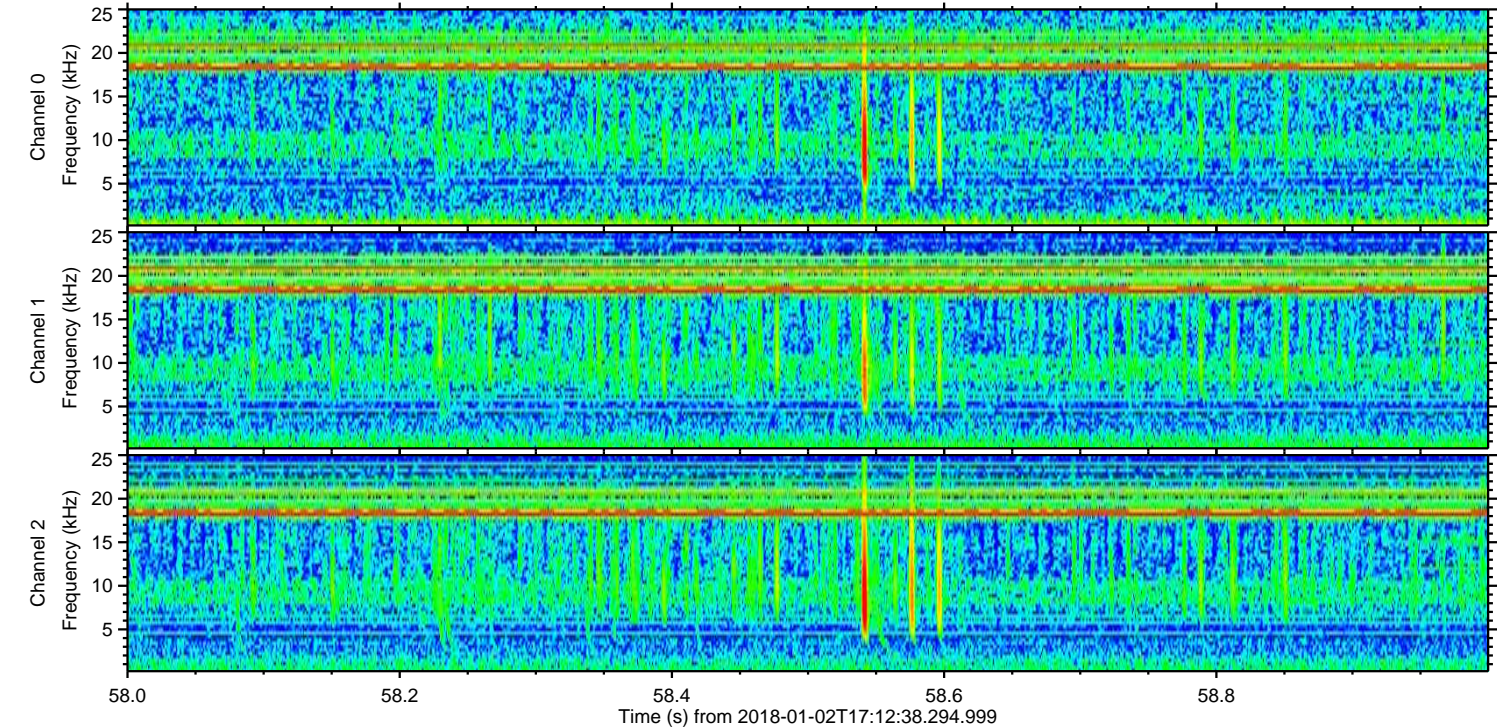
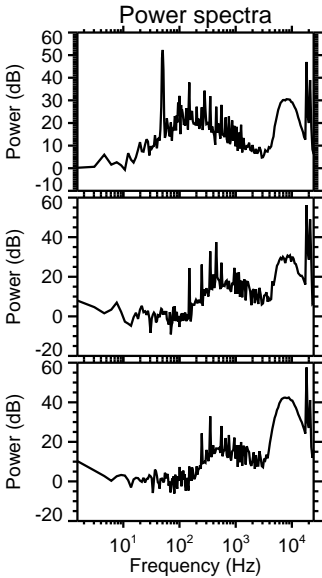
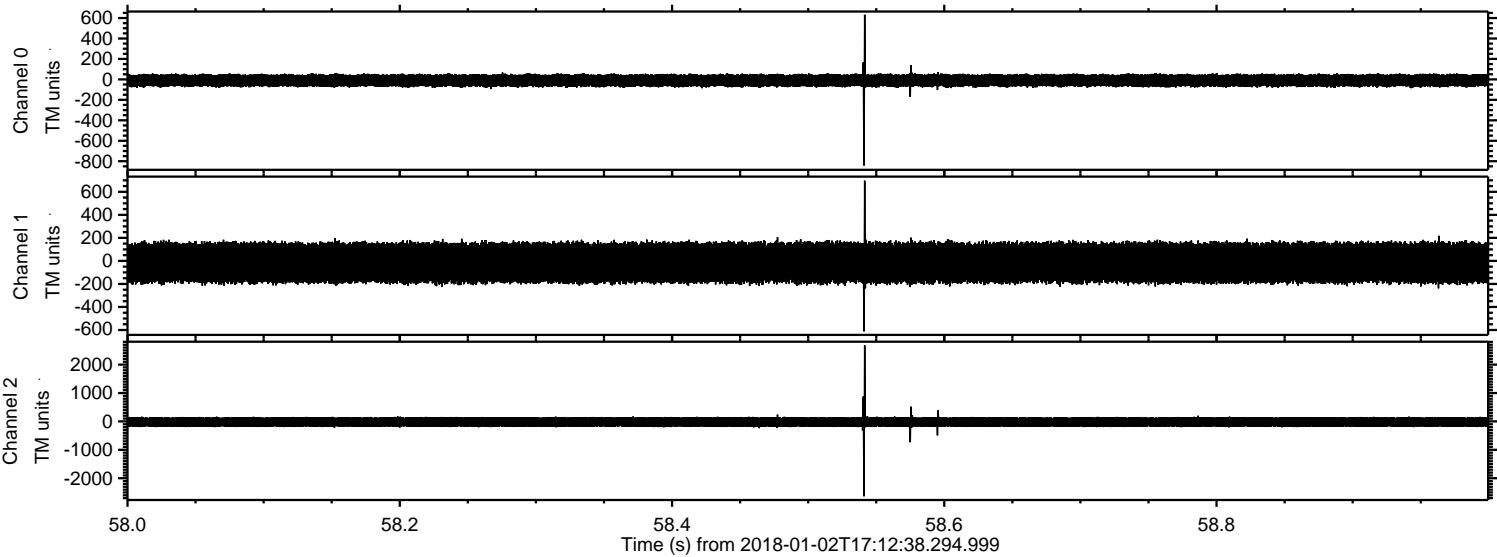


Processed Tue Jan 2 18:20:13 2018 by ELM ver.2012-10-06 from 001__elm20180102_171237__dat00.bin

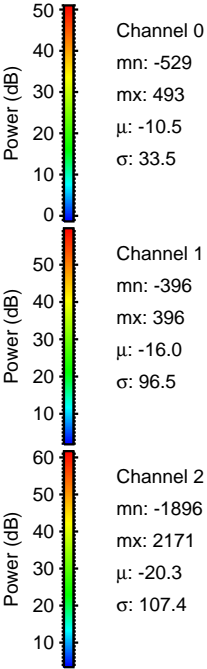
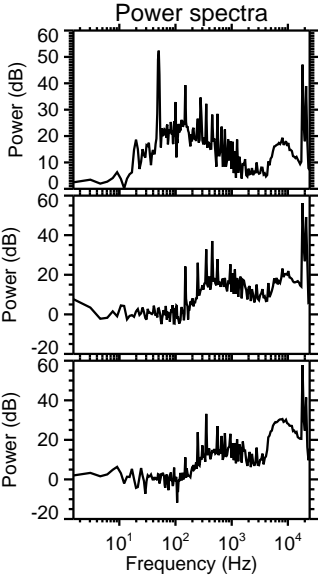
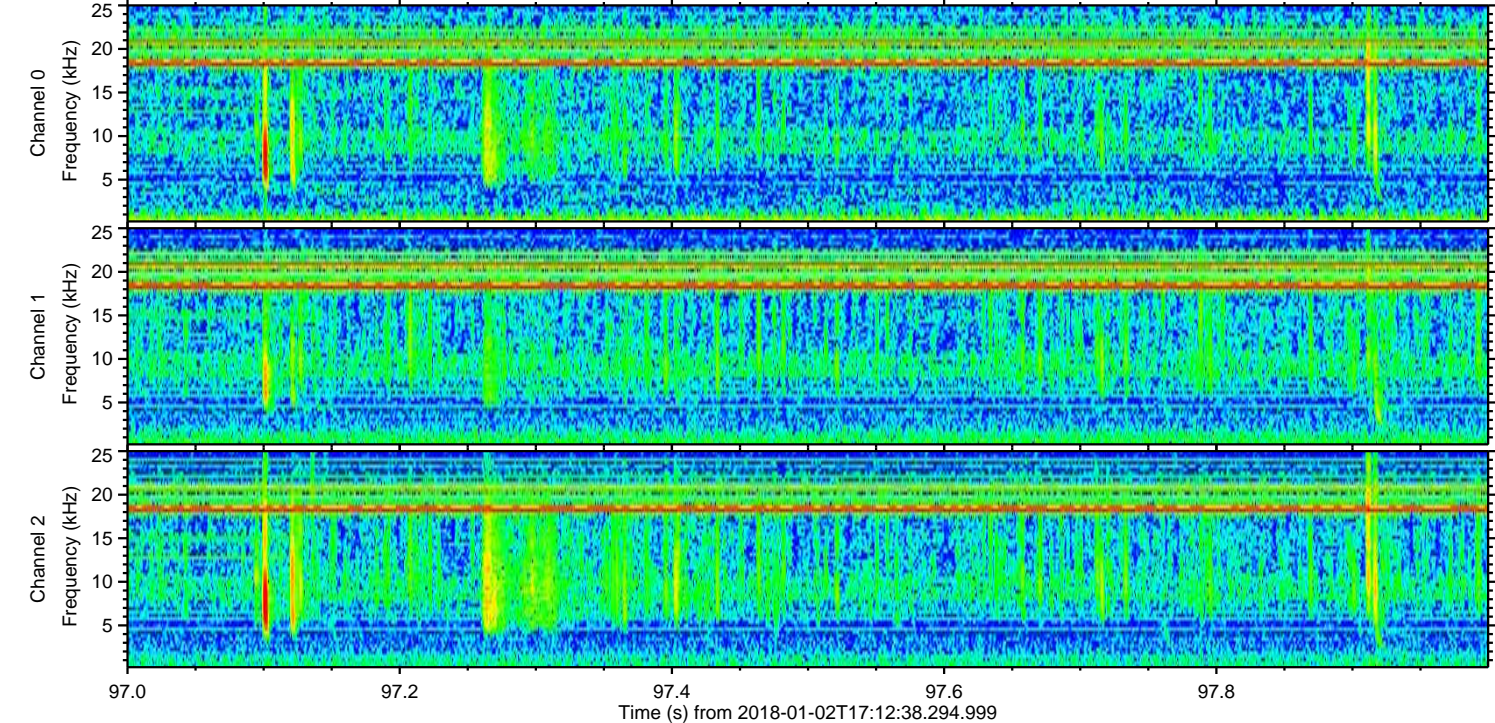
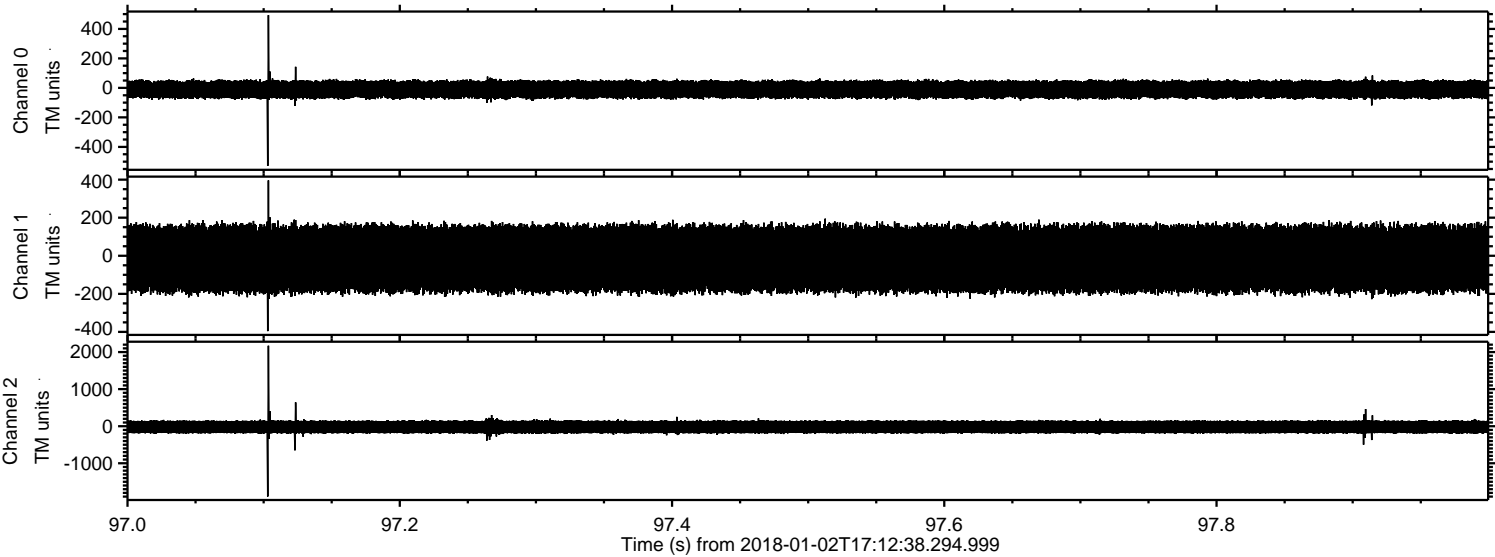


ELMAVAN 3D WAVEFORMS (Measured data sampled at 50 kHz) 51000 packets of 144 samples from 2018-01-02T17:12:38.294.999. Part 59/147

Processed Tue Jan 2 18:20:14 2018 by ELM ver.2012-10-06 from 001__elm20180102_171237__dat00.bin

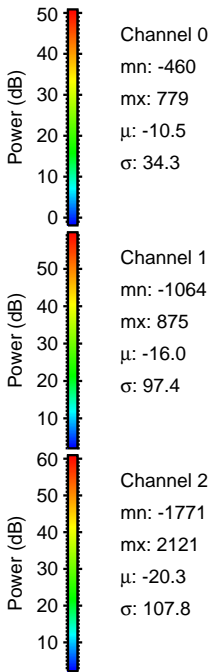
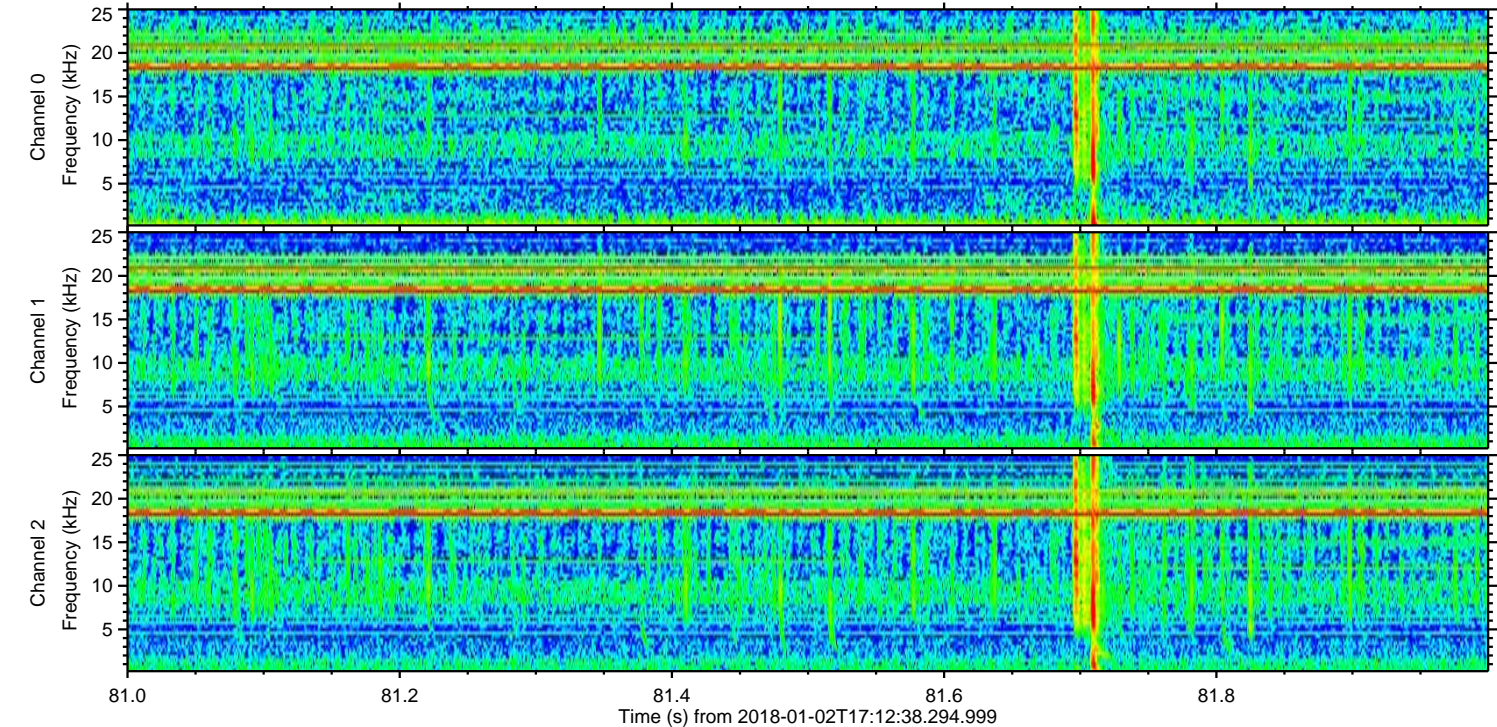
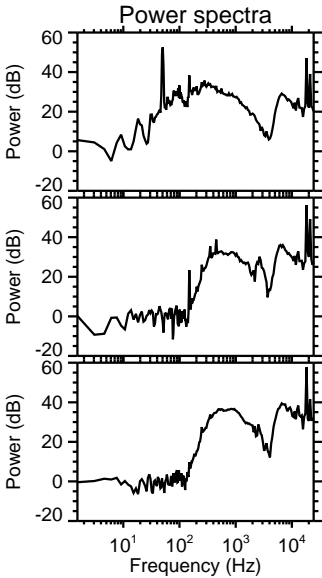
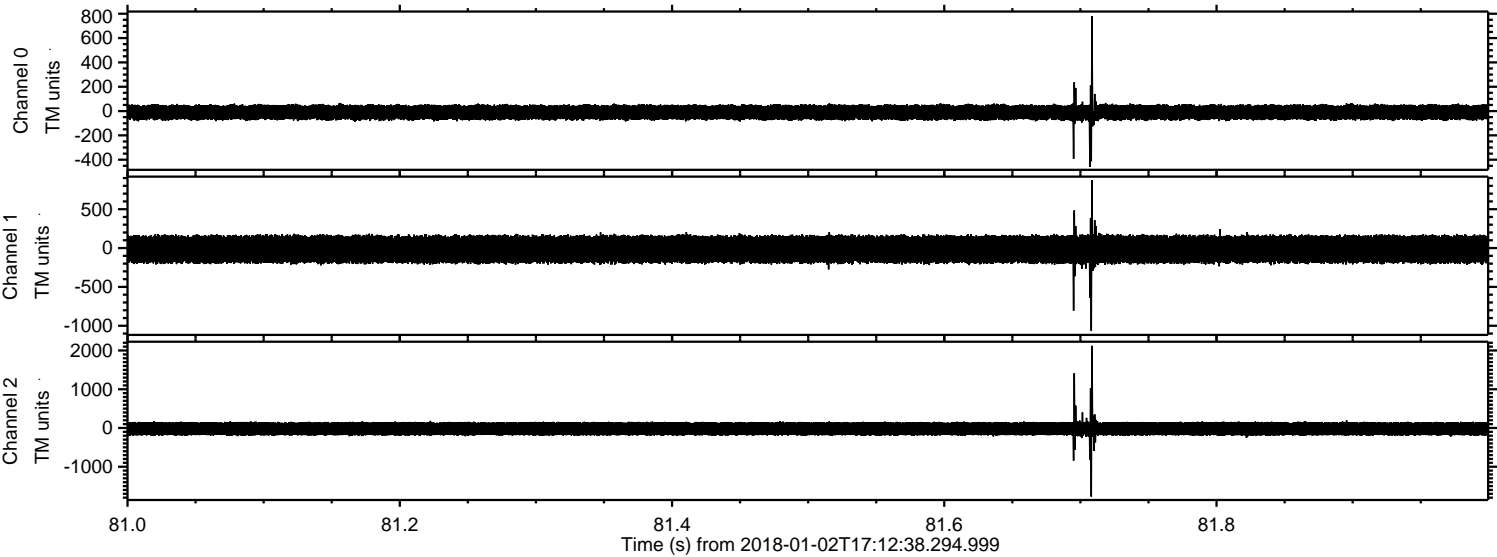


Processed Tue Jan 2 18:20:15 2018 by ELM ver.2012-10-06 from 001__elm20180102_171237__dat00.bin

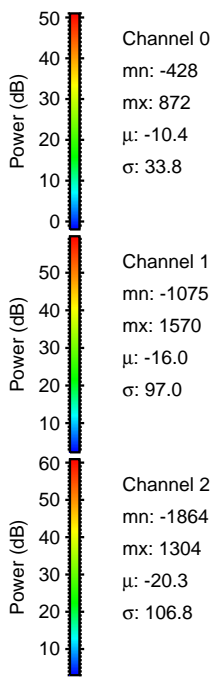
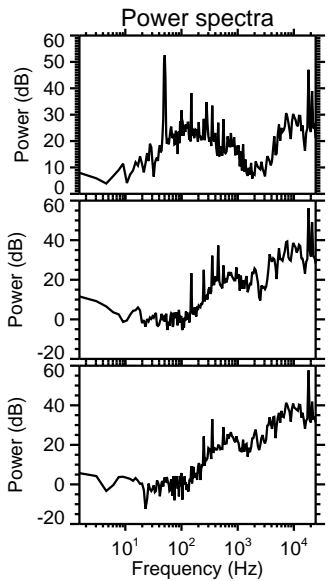
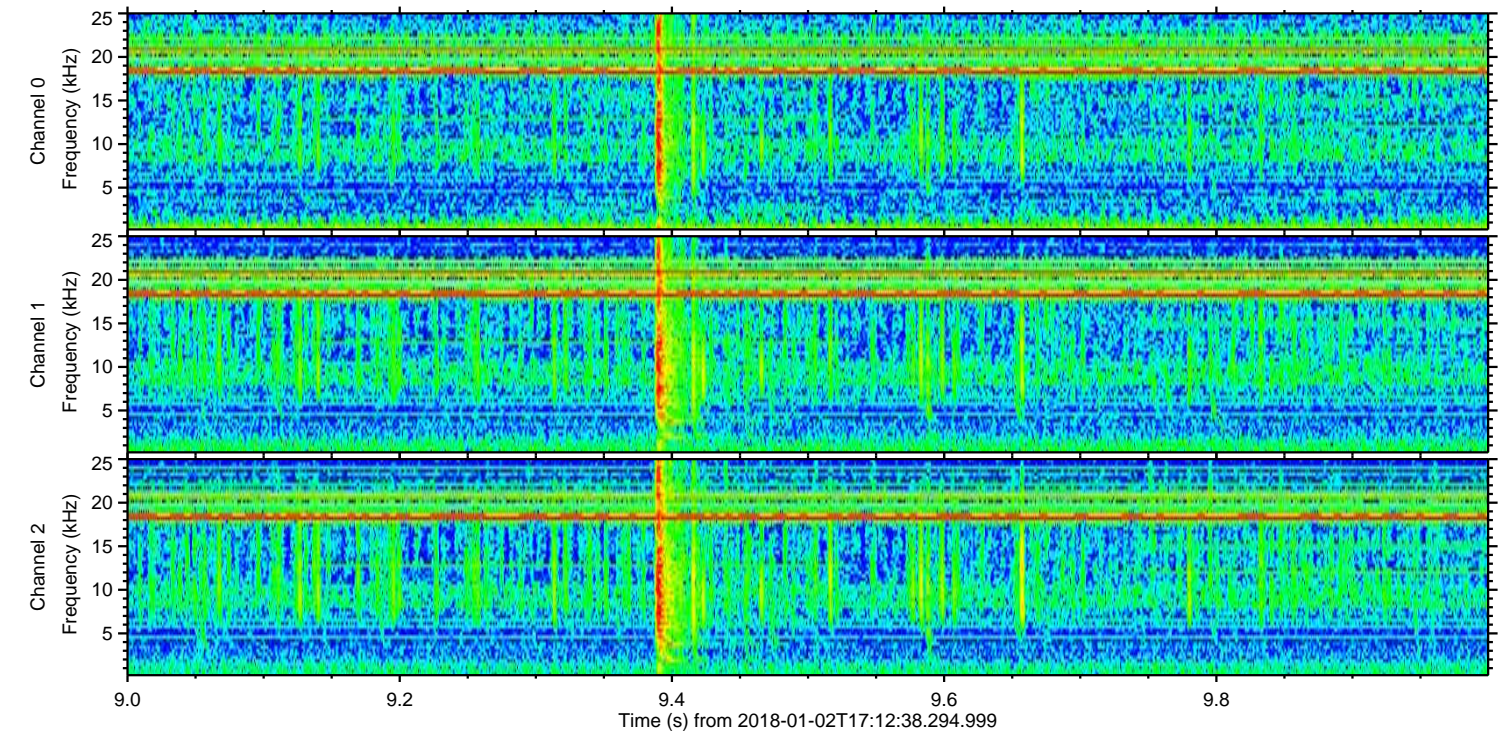
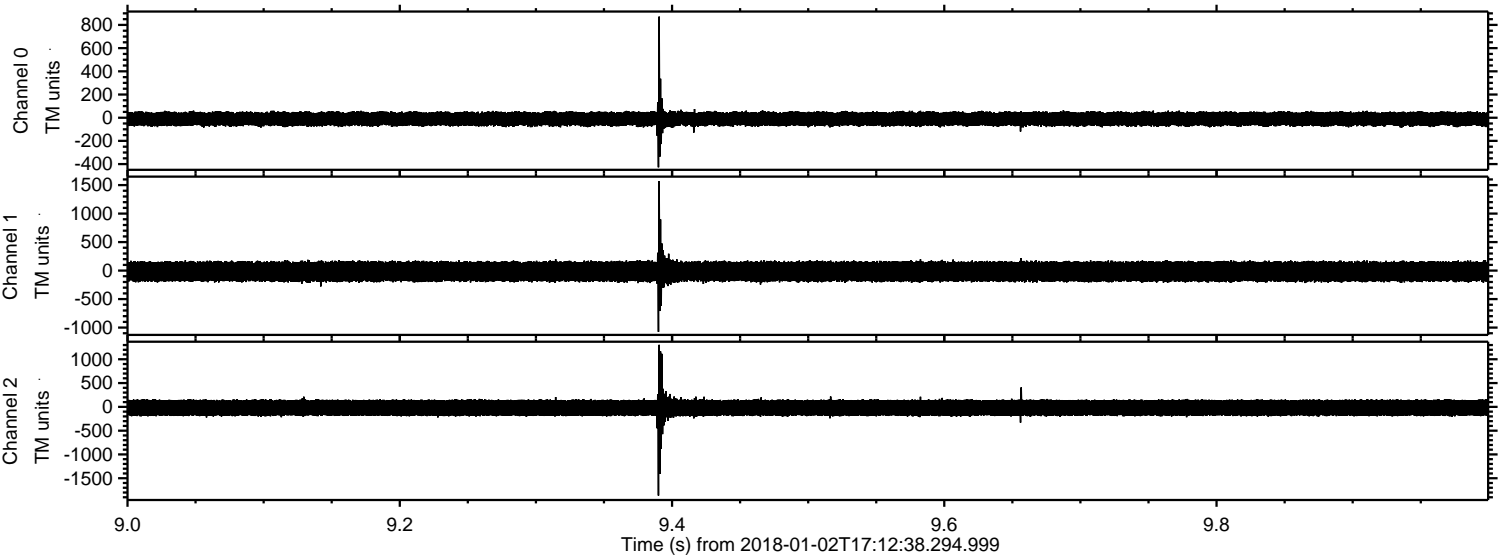


ELMAVAN 3D WAVEFORMS (Measured data sampled at 50 kHz) 51000 packets of 144 samples from 2018-01-02T17:12:38.294.999. Part 82/147

Processed Tue Jan 2 18:20:16 2018 by ELM ver.2012-10-06 from 001__elm20180102_171237__dat00.bin

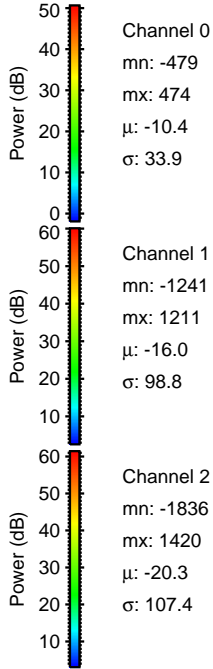
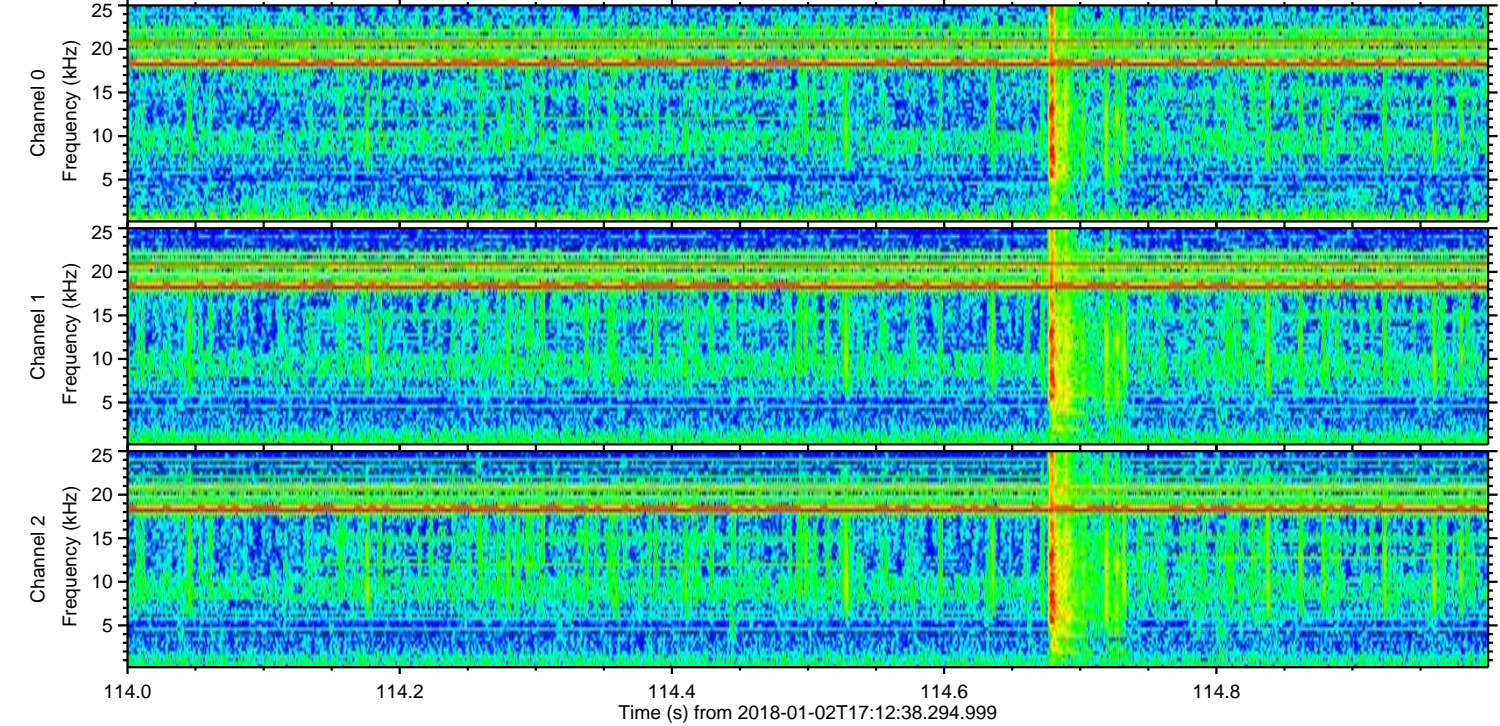
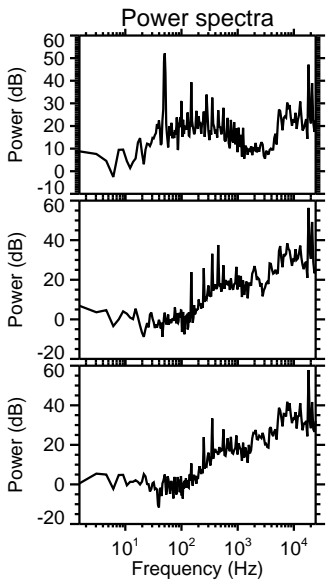
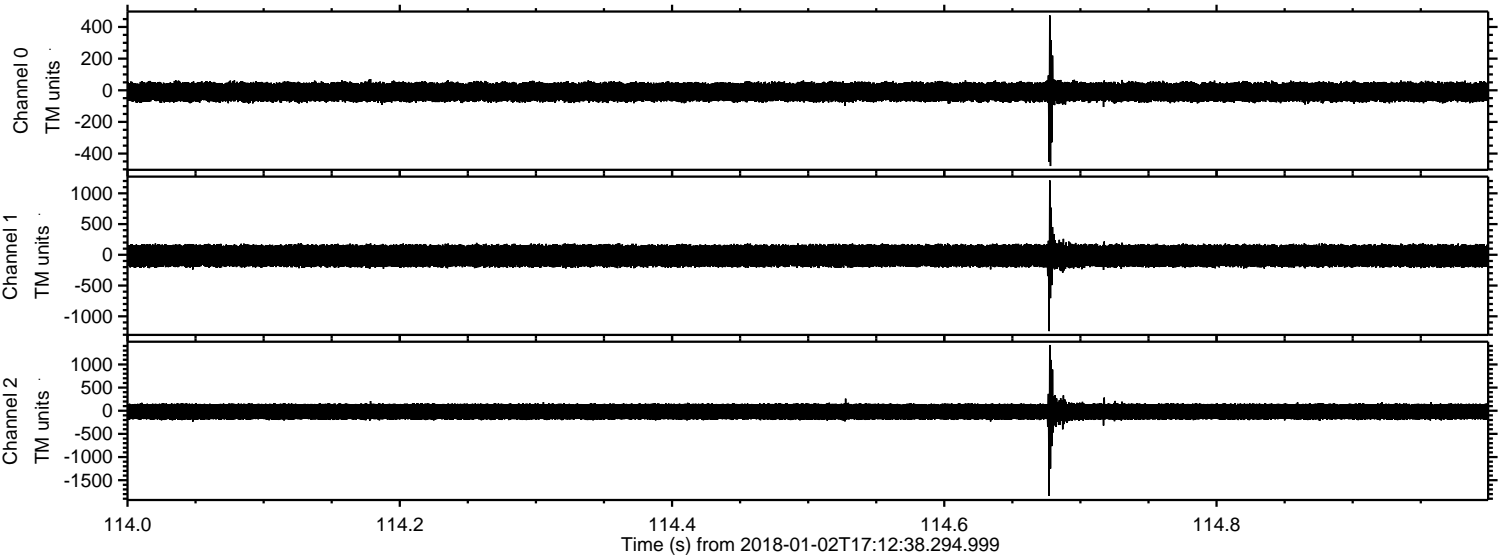


Processed Tue Jan 2 18:20:17 2018 by ELM ver.2012-10-06 from 001__elm20180102_171237__dat00.bin



ELMAVAN 3D WAVEFORMS (Measured data sampled at 50 kHz) 51000 packets of 144 samples from 2018-01-02T17:12:38.294.999. Part 115/147

Processed Tue Jan 2 18:20:18 2018 by ELM ver.2012-10-06 from 001__elm20180102_171237__dat00.bin

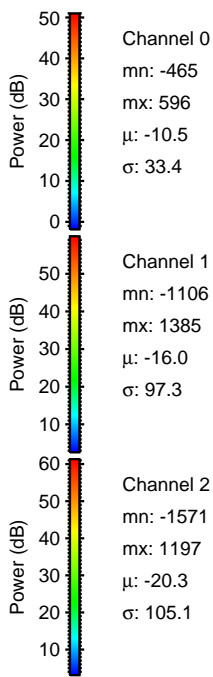
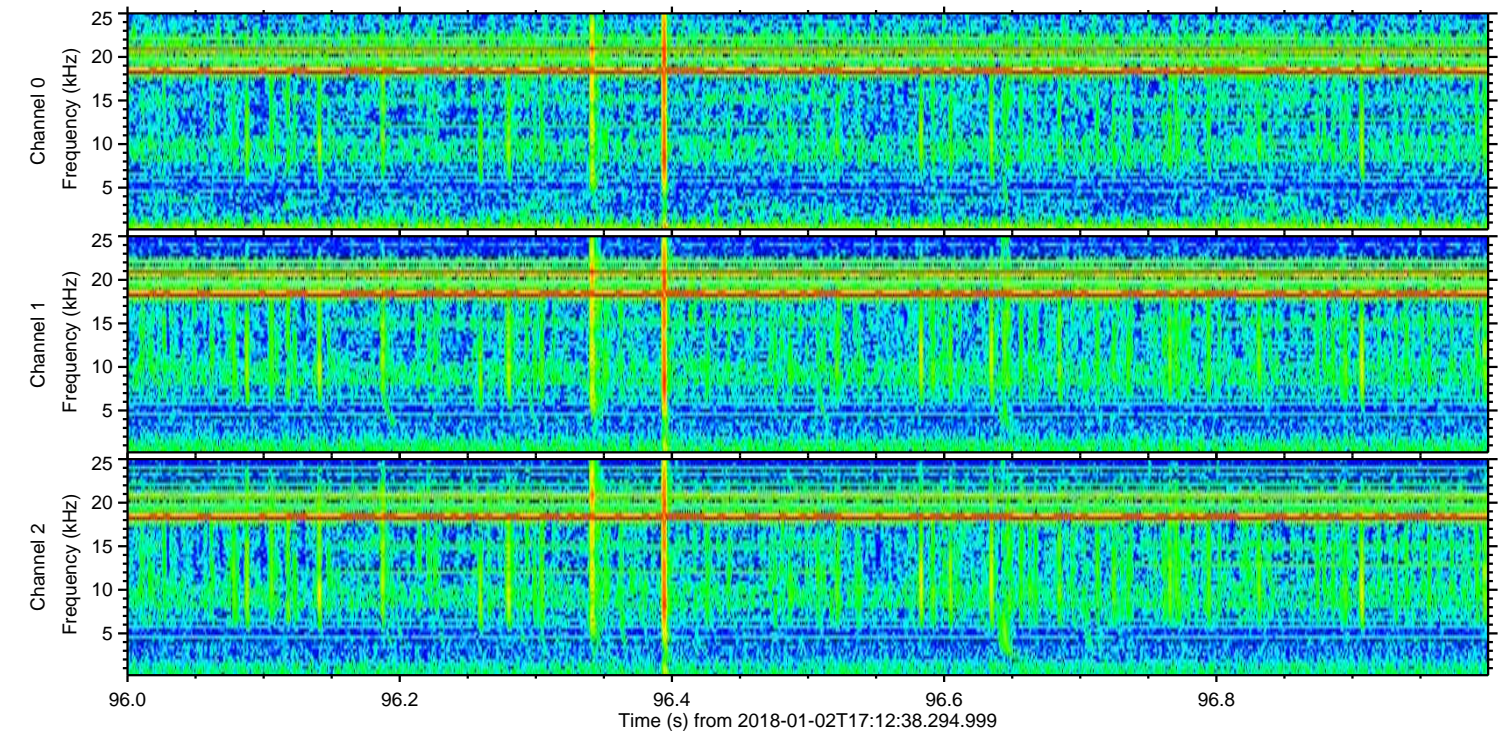
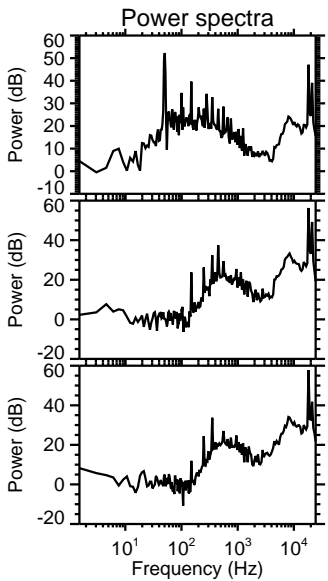
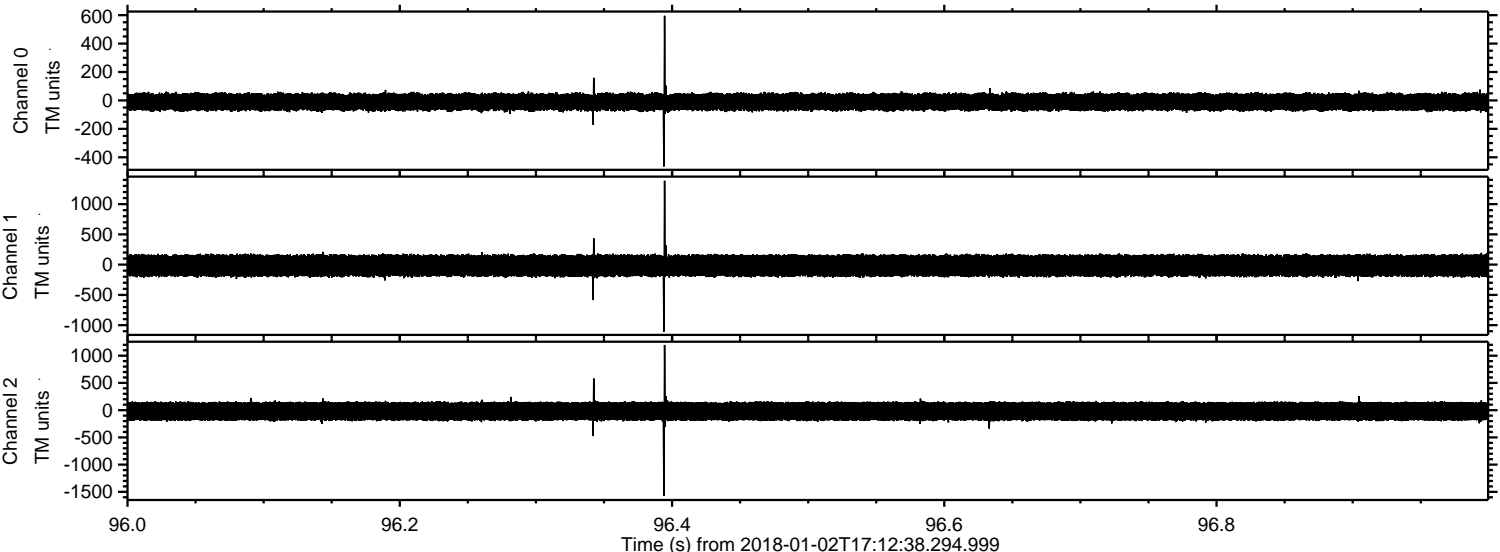


Channel 0
mn: -479
mx: 474
 μ : -10.4
 σ : 33.9

Channel 1
mn: -1241
mx: 1211
 μ : -16.0
 σ : 98.8

Channel 2
mn: -1836
mx: 1420
 μ : -20.3
 σ : 107.4

Processed Tue Jan 2 18:20:18 2018 by ELM ver.2012-10-06 from 001__elm20180102_171237__dat00.bin



Processed Tue Jan 2 18:20:19 2018 by ELM ver.2012-10-06 from 001__elm20180102_171237__dat00.bin

