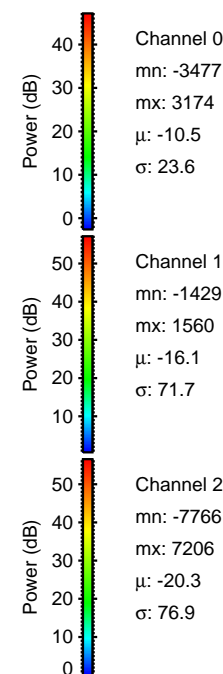
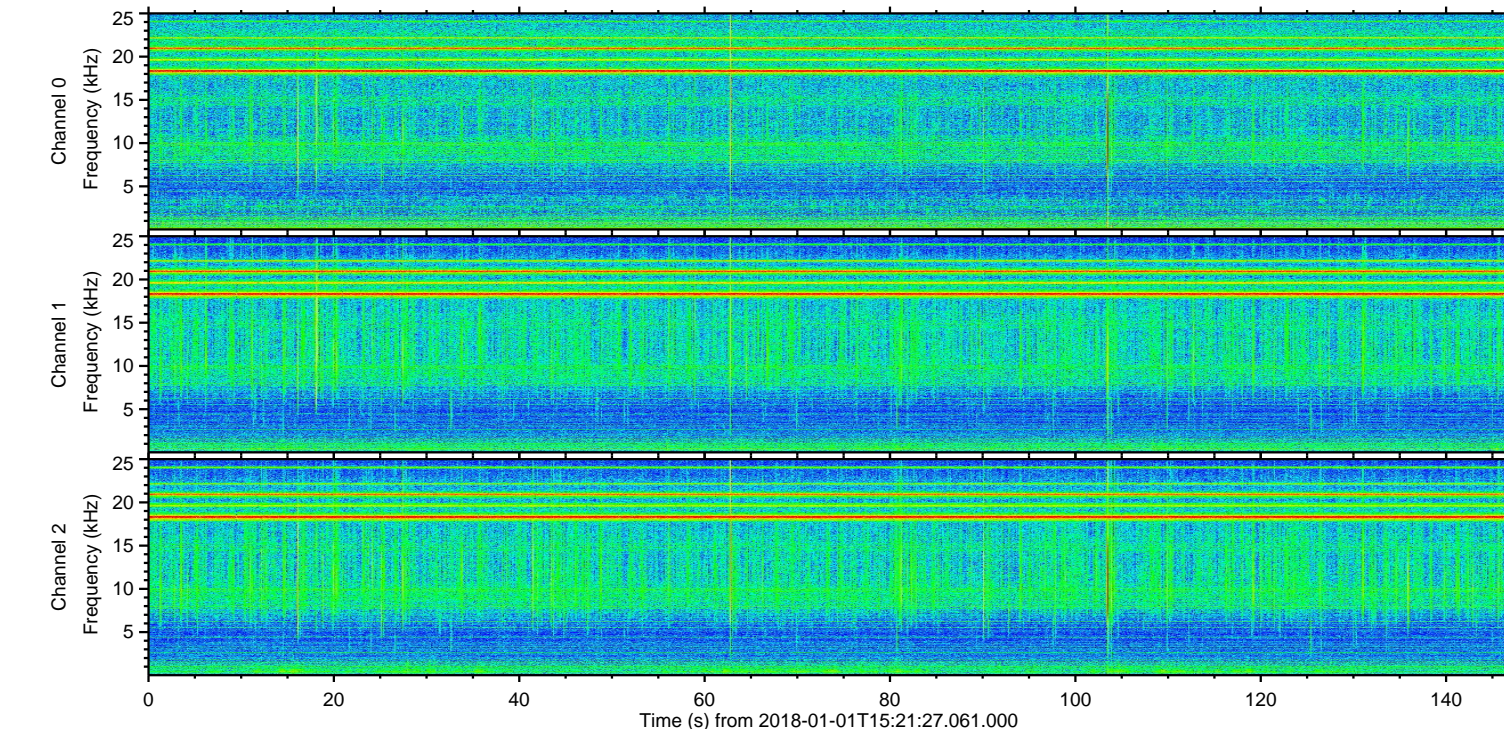
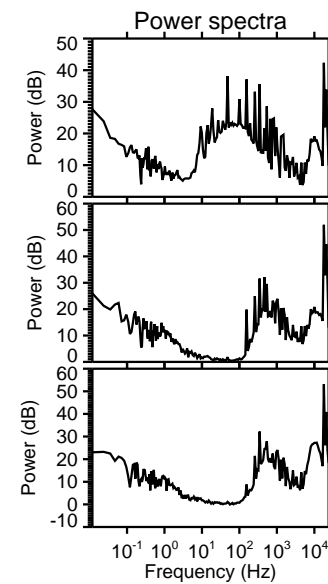
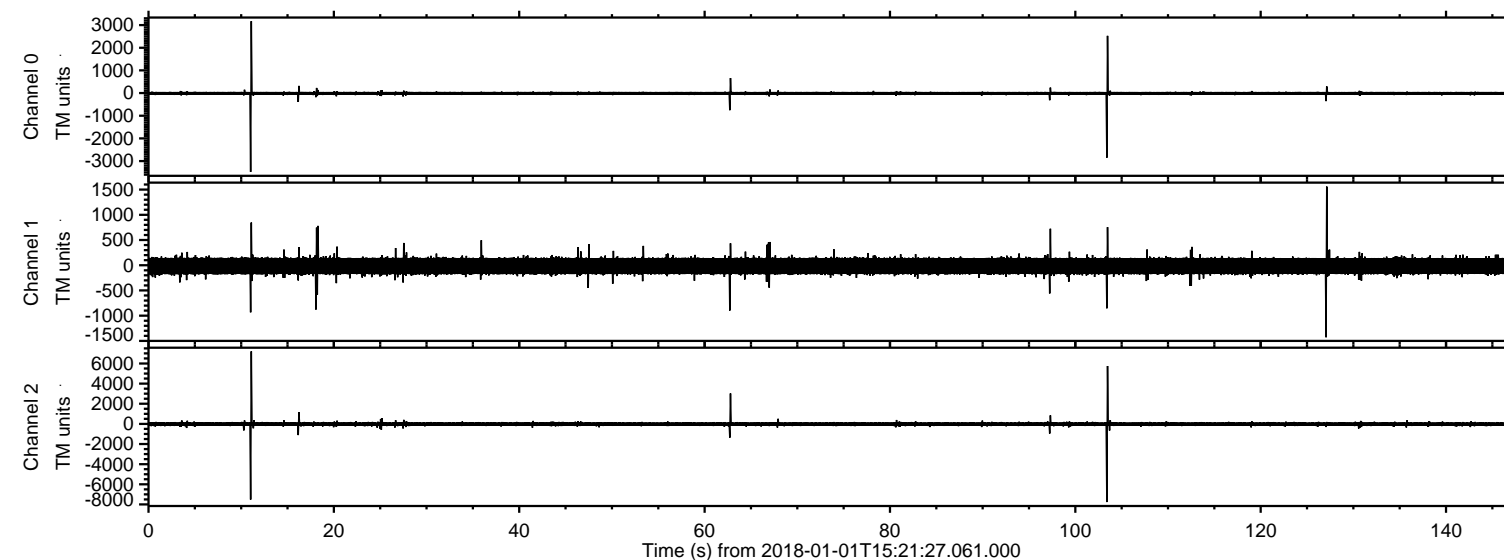


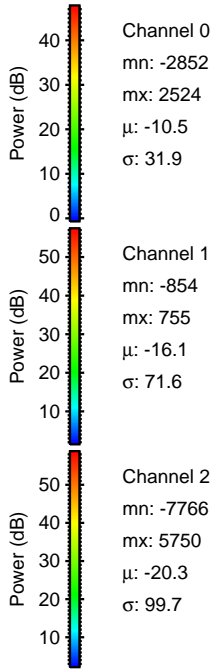
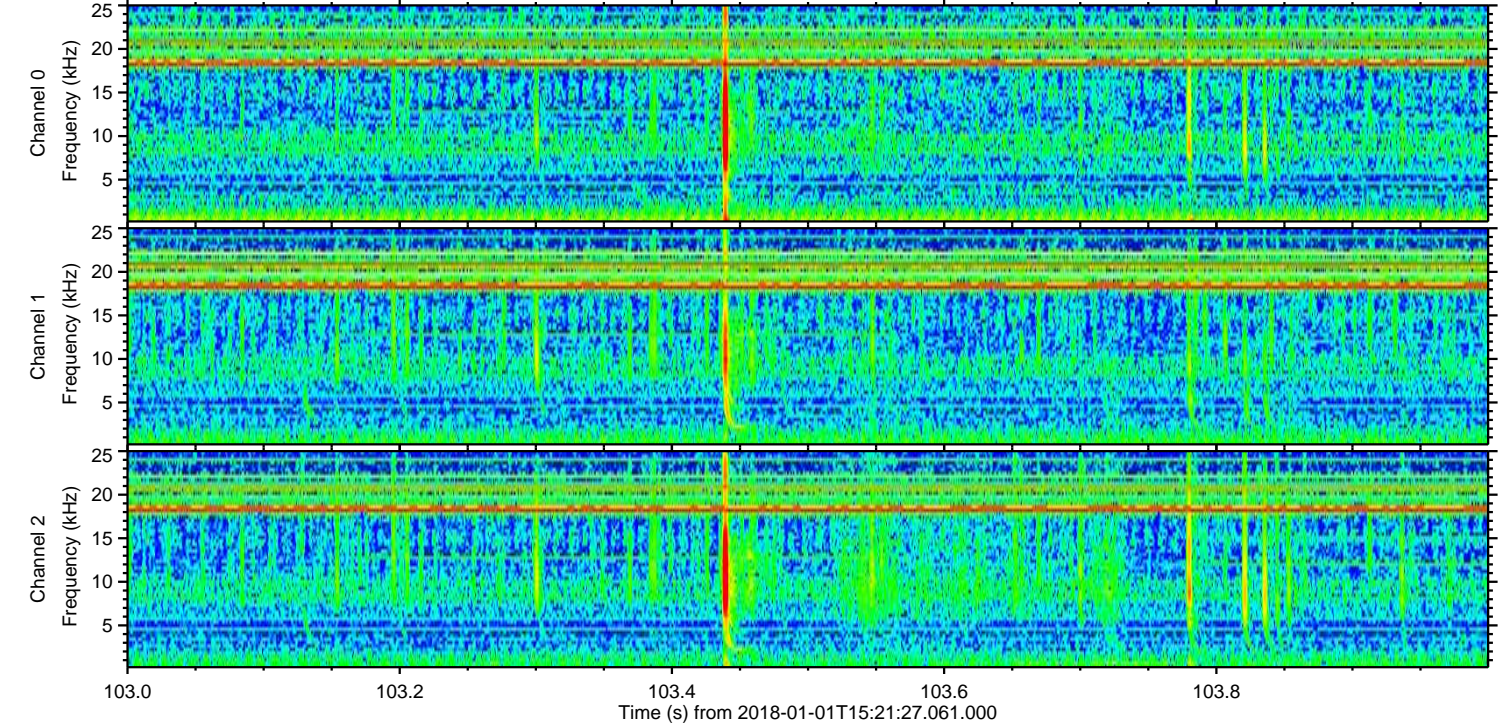
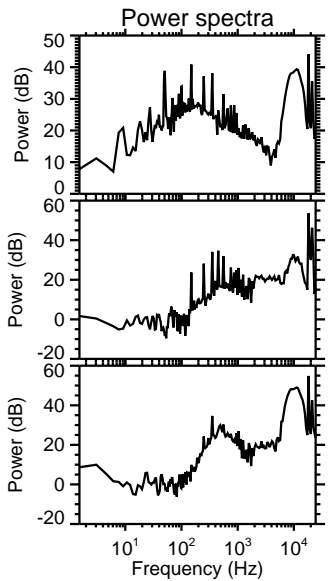
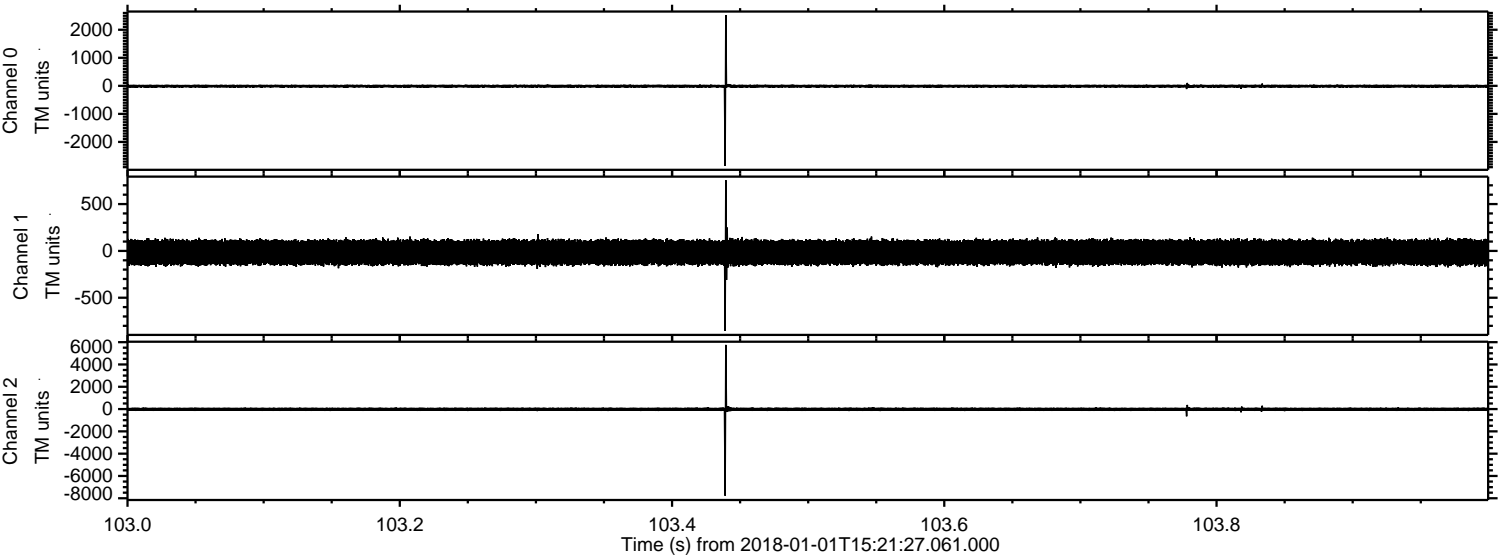
ELMAVAN 3D WAVEFORMS (Measured data sampled at 50 kHz) 51000 packets of 144 samples from 2018-01-01T15:21:27.061.000.

Processed Mon Jan 1 16:29:47 2018 by ELM ver.2012-10-06 from 001__elm20180101_152126__dat00.bin



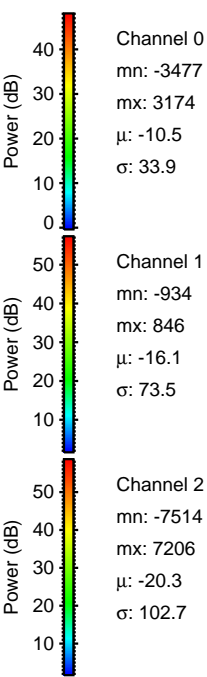
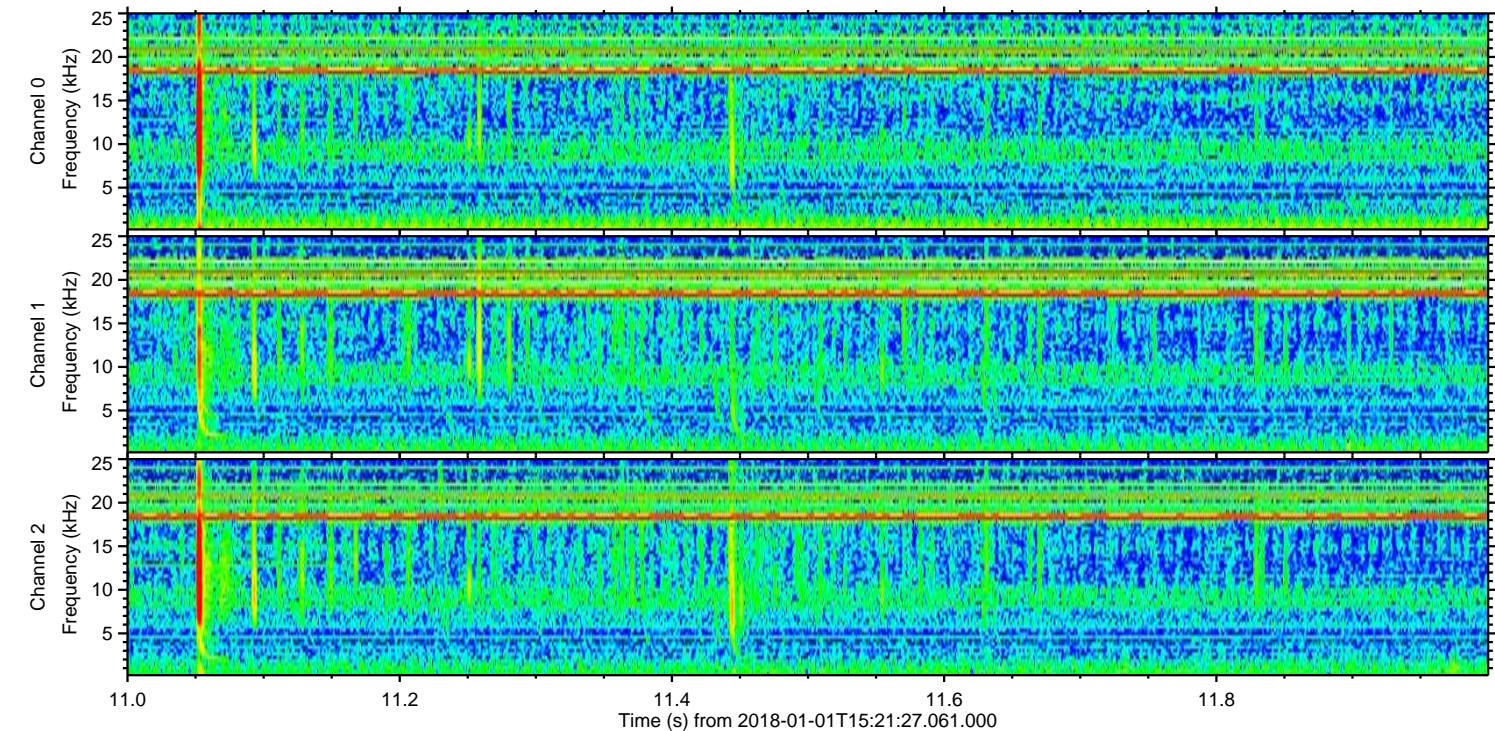
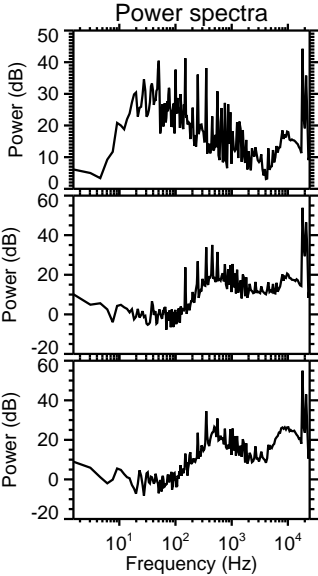
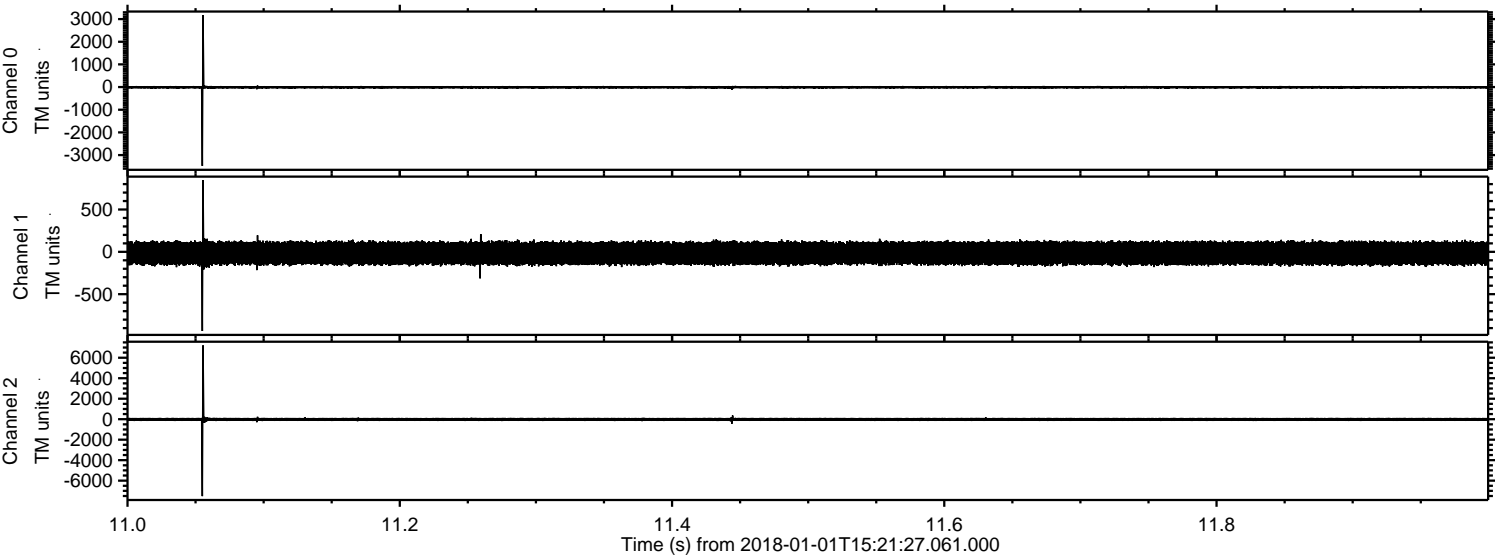
ELMAVAN 3D WAVEFORMS (Measured data sampled at 50 kHz) 51000 packets of 144 samples from 2018-01-01T15:21:27.061.000. Part 104/147

Processed Mon Jan 1 16:29:55 2018 by ELM ver.2012-10-06 from 001__elm20180101_152126__dat00.bin

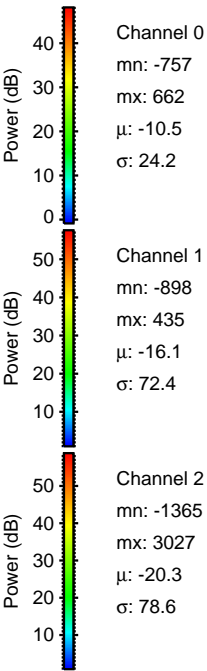
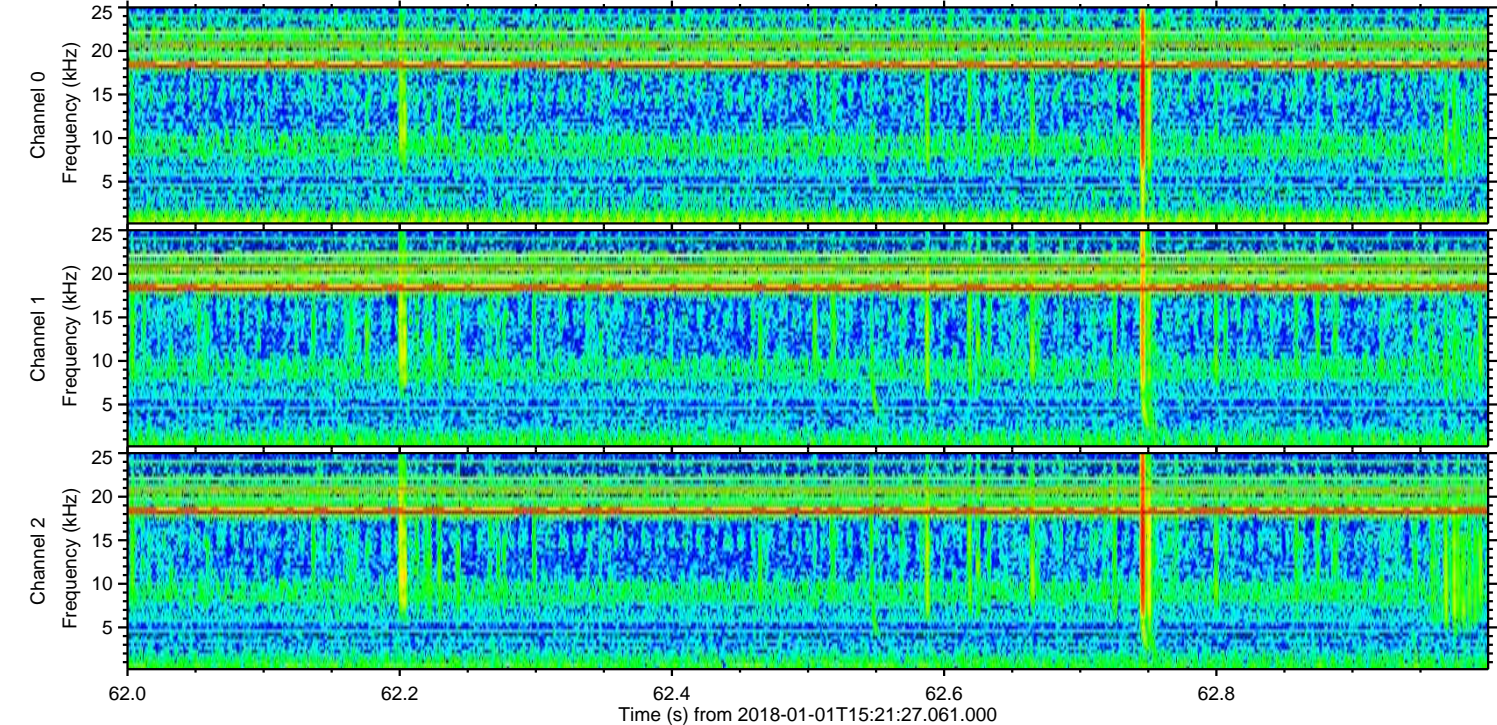
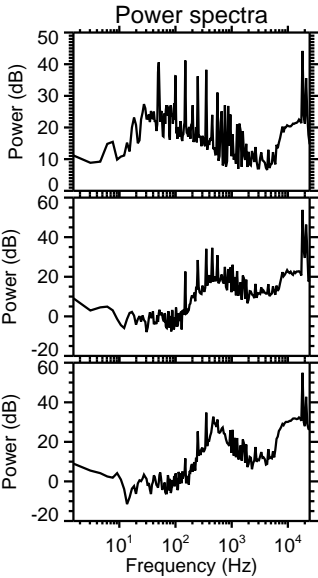
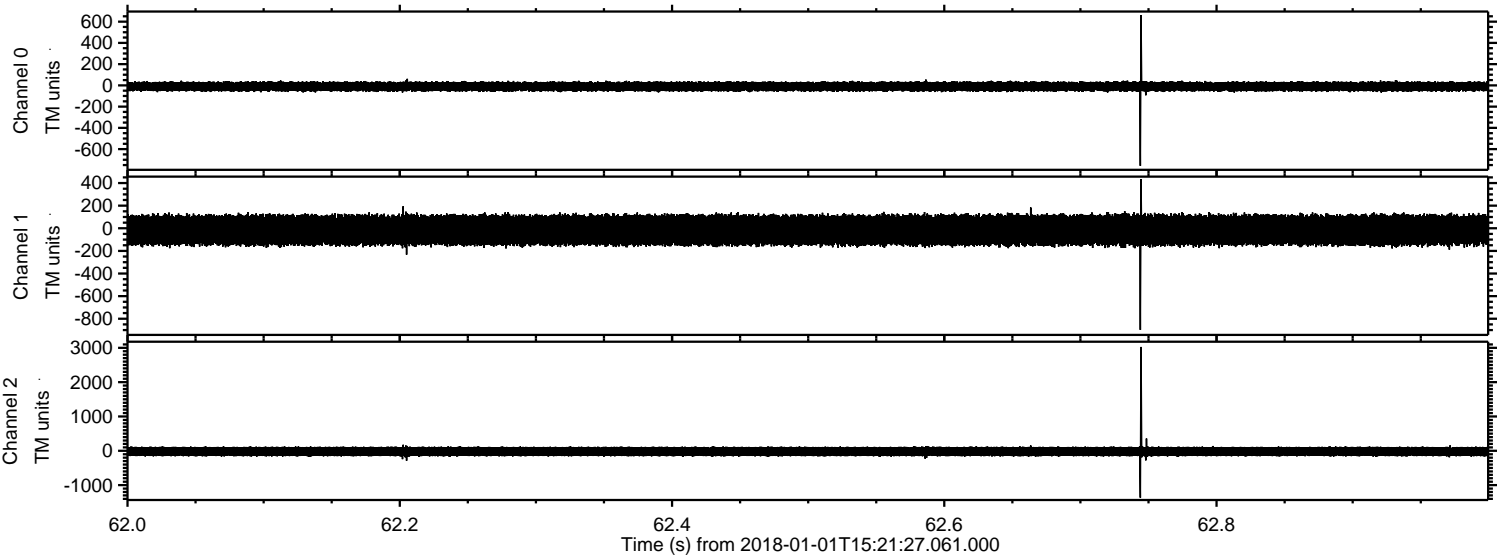


ELMAVAN 3D WAVEFORMS (Measured data sampled at 50 kHz) 51000 packets of 144 samples from 2018-01-01T15:21:27.061.000. Part 12/147

Processed Mon Jan 1 16:29:56 2018 by ELM ver.2012-10-06 from 001__elm20180101_152126__dat00.bin

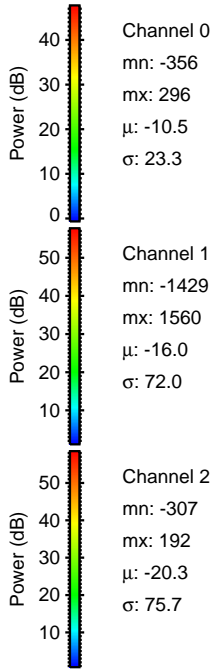
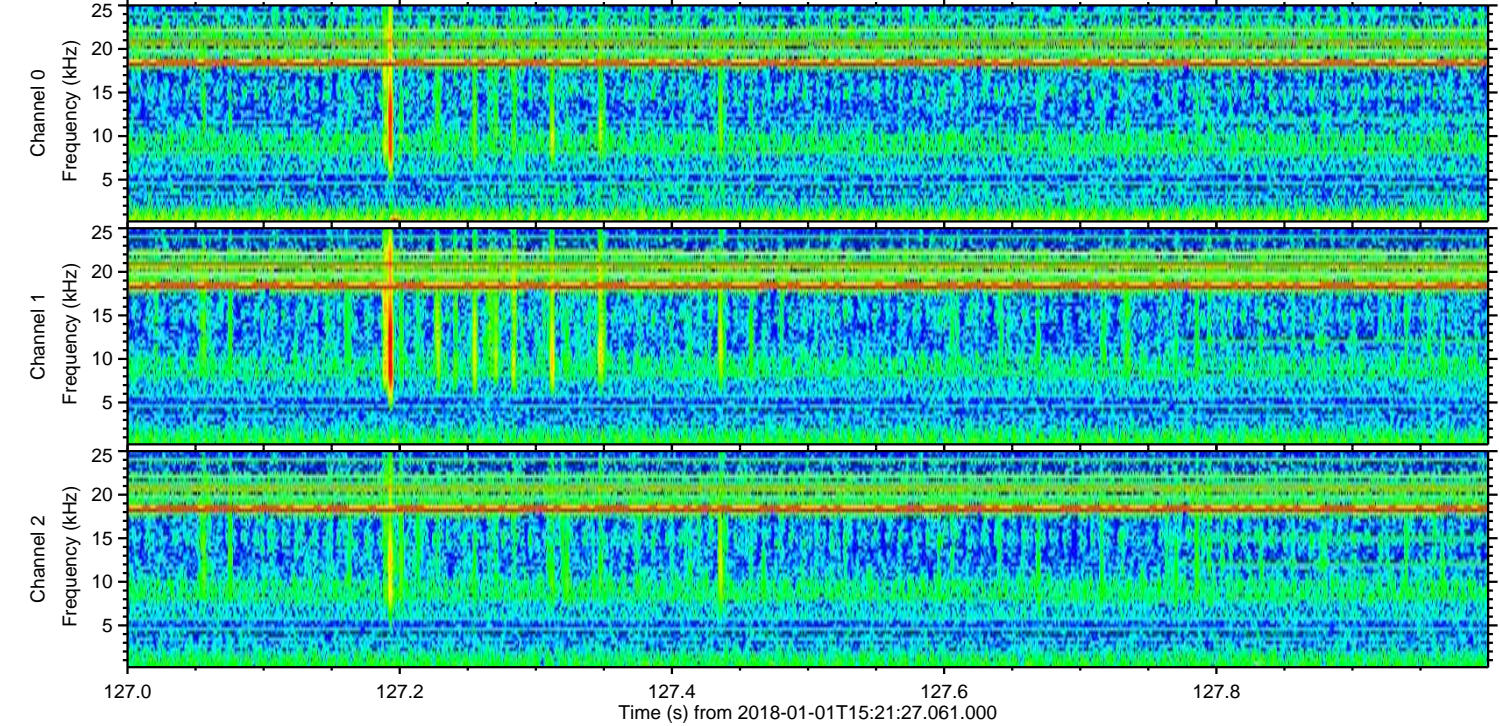
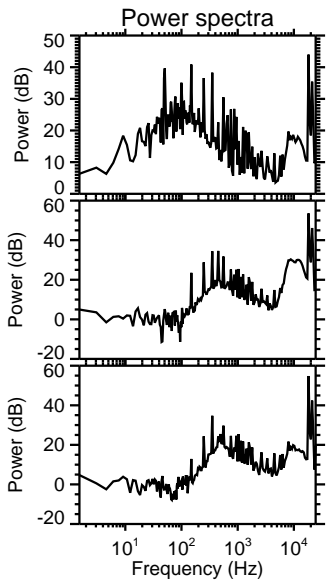
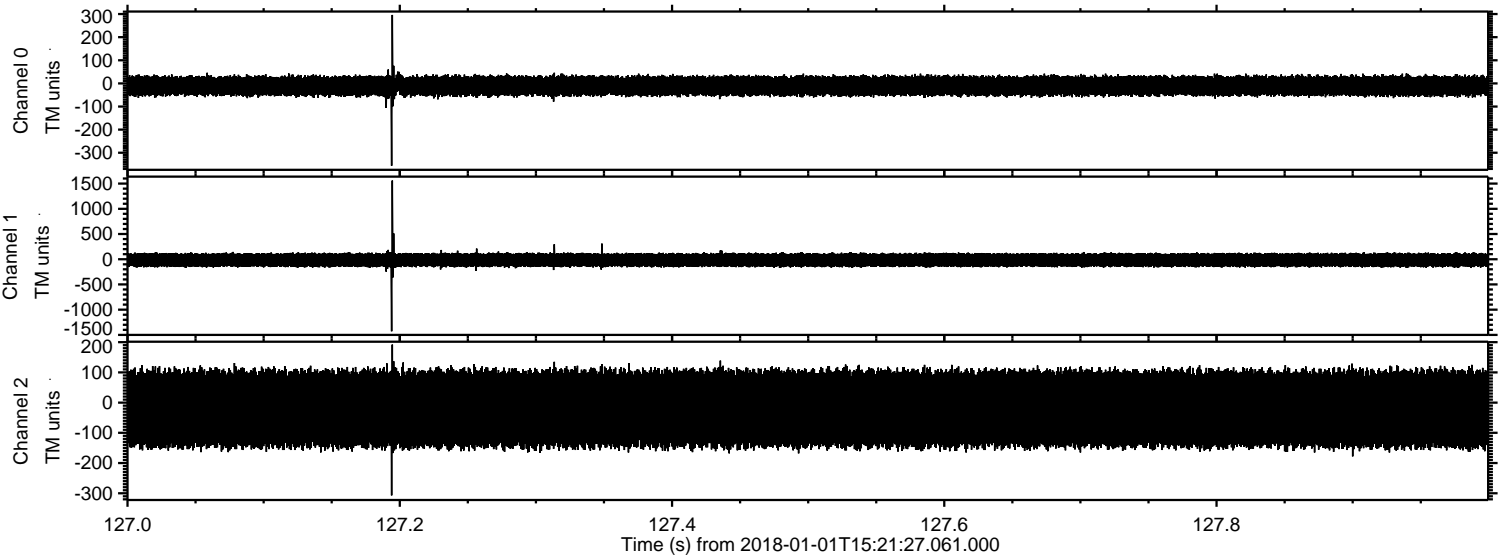


Processed Mon Jan 1 16:29:57 2018 by ELM ver.2012-10-06 from 001__elm20180101_152126__dat00.bin



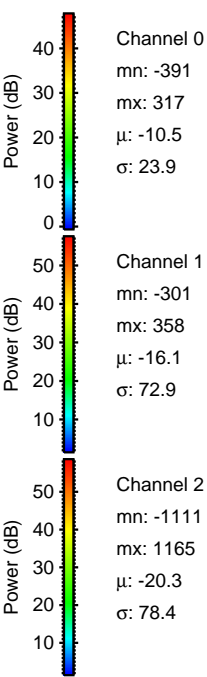
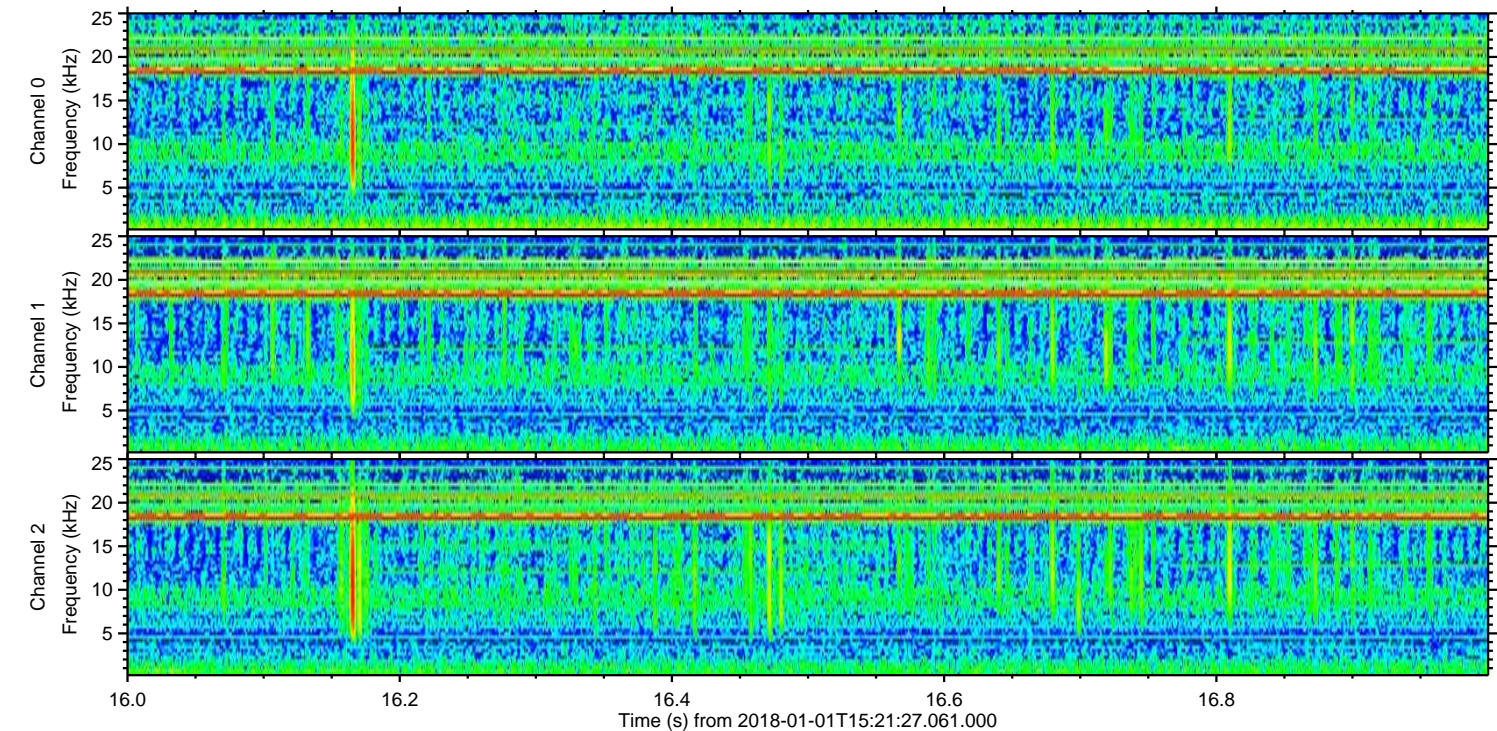
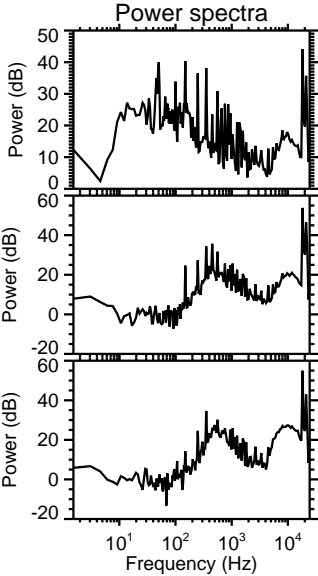
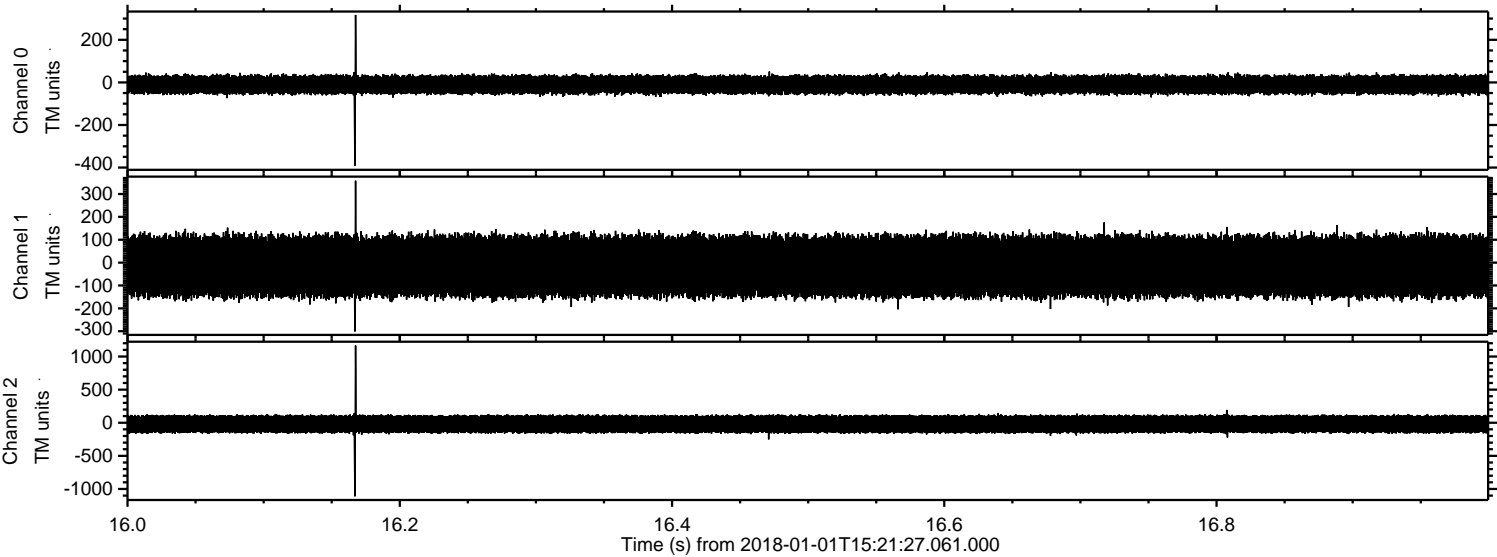
ELMAVAN 3D WAVEFORMS (Measured data sampled at 50 kHz) 51000 packets of 144 samples from 2018-01-01T15:21:27.061.000. Part 128/147

Processed Mon Jan 1 16:29:58 2018 by ELM ver.2012-10-06 from 001__elm20180101_152126__dat00.bin

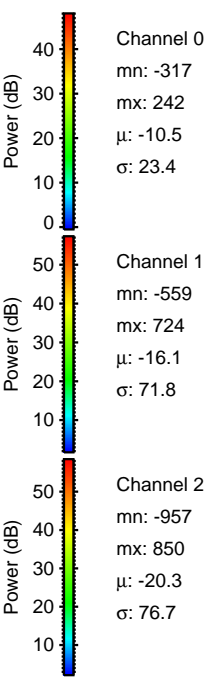
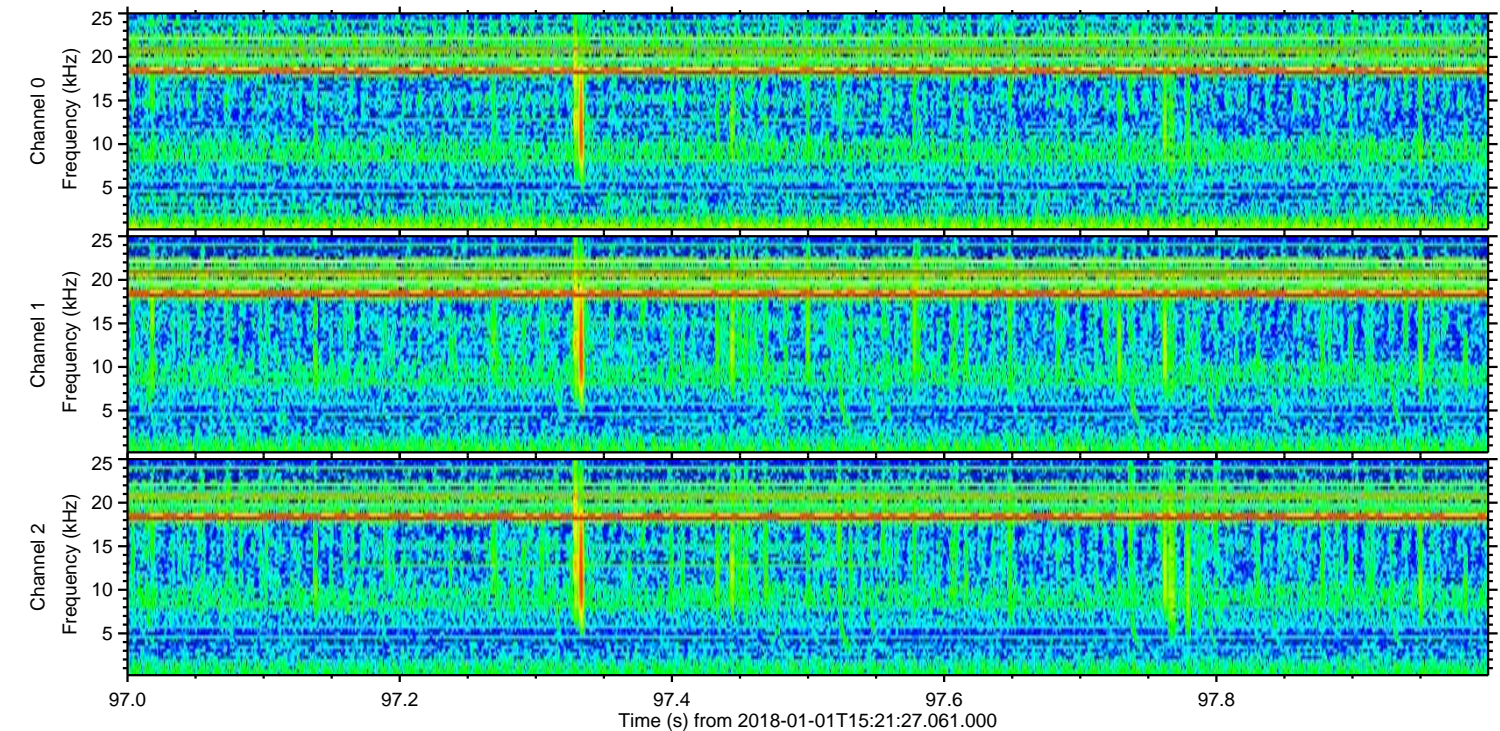
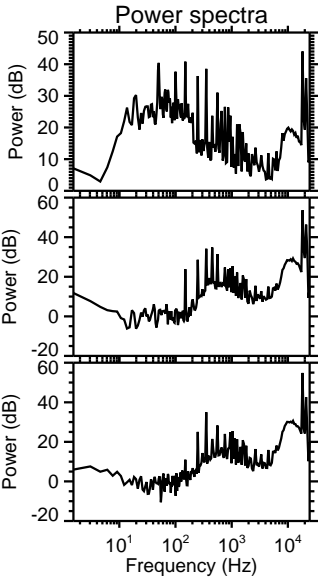
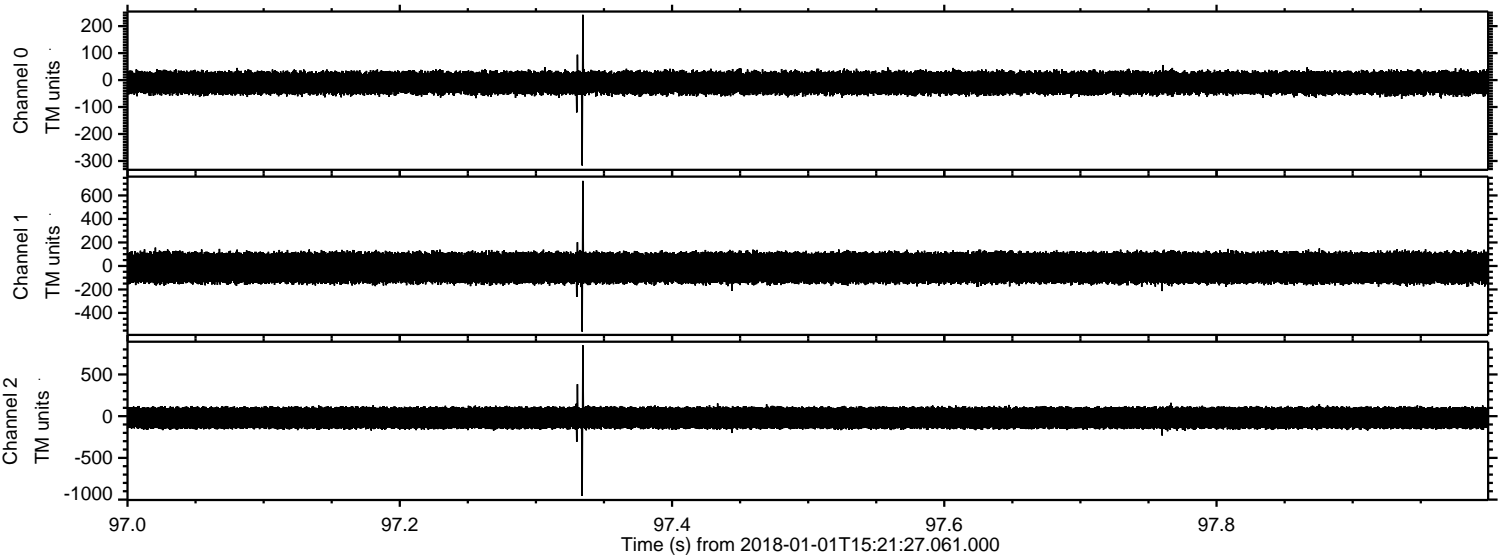


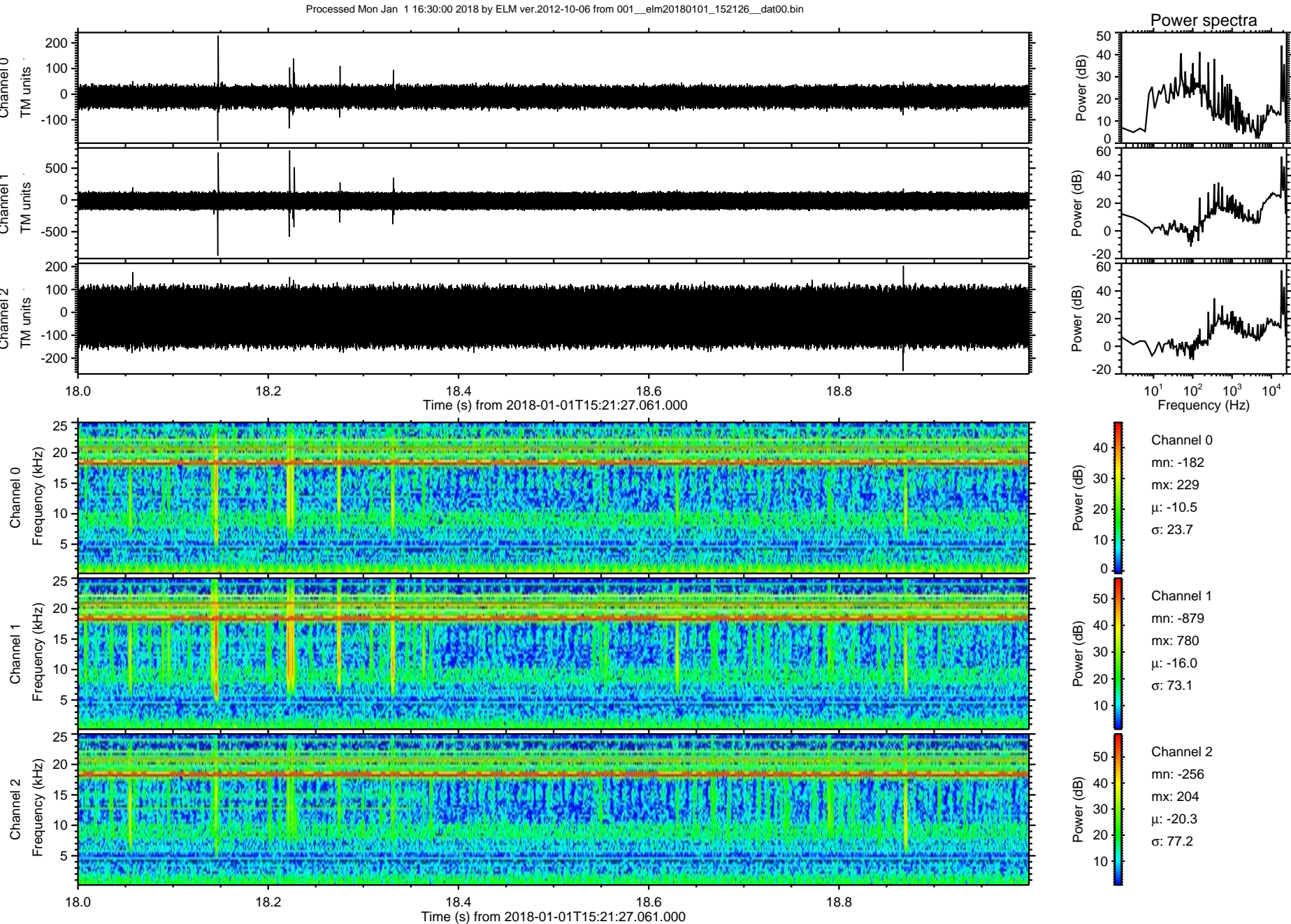
ELMAVAN 3D WAVEFORMS (Measured data sampled at 50 kHz) 51000 packets of 144 samples from 2018-01-01T15:21:27.061.000. Part 17/147

Processed Mon Jan 1 16:29:58 2018 by ELM ver.2012-10-06 from 001__elm20180101_152126__dat00.bin

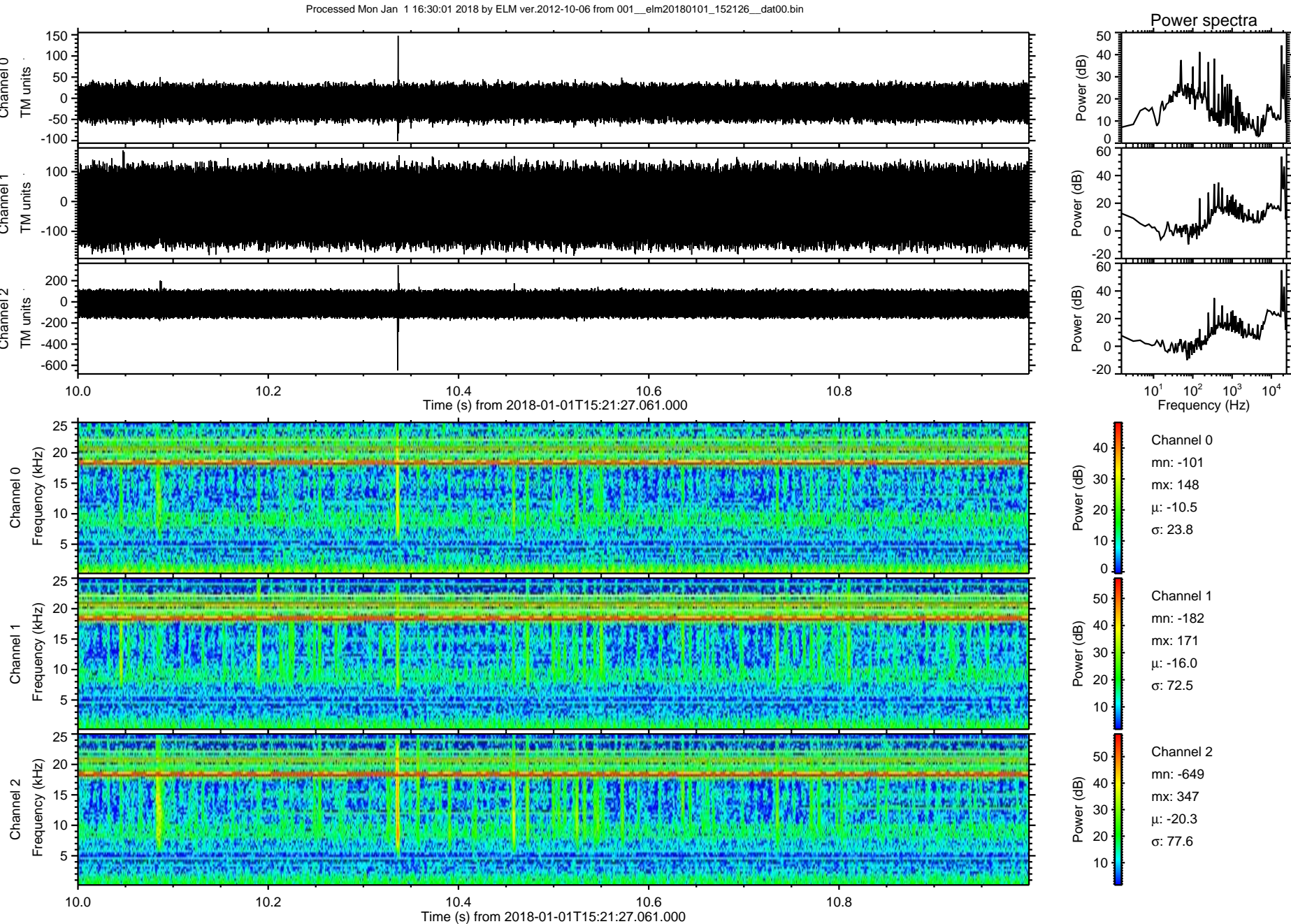


Processed Mon Jan 1 16:29:59 2018 by ELM ver.2012-10-06 from 001__elm20180101_152126__dat00.bin

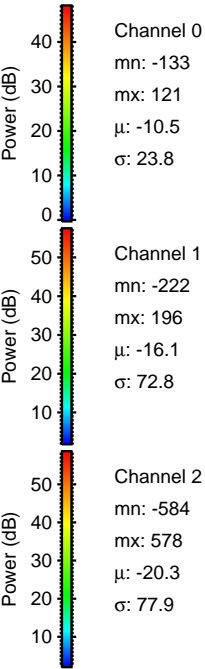
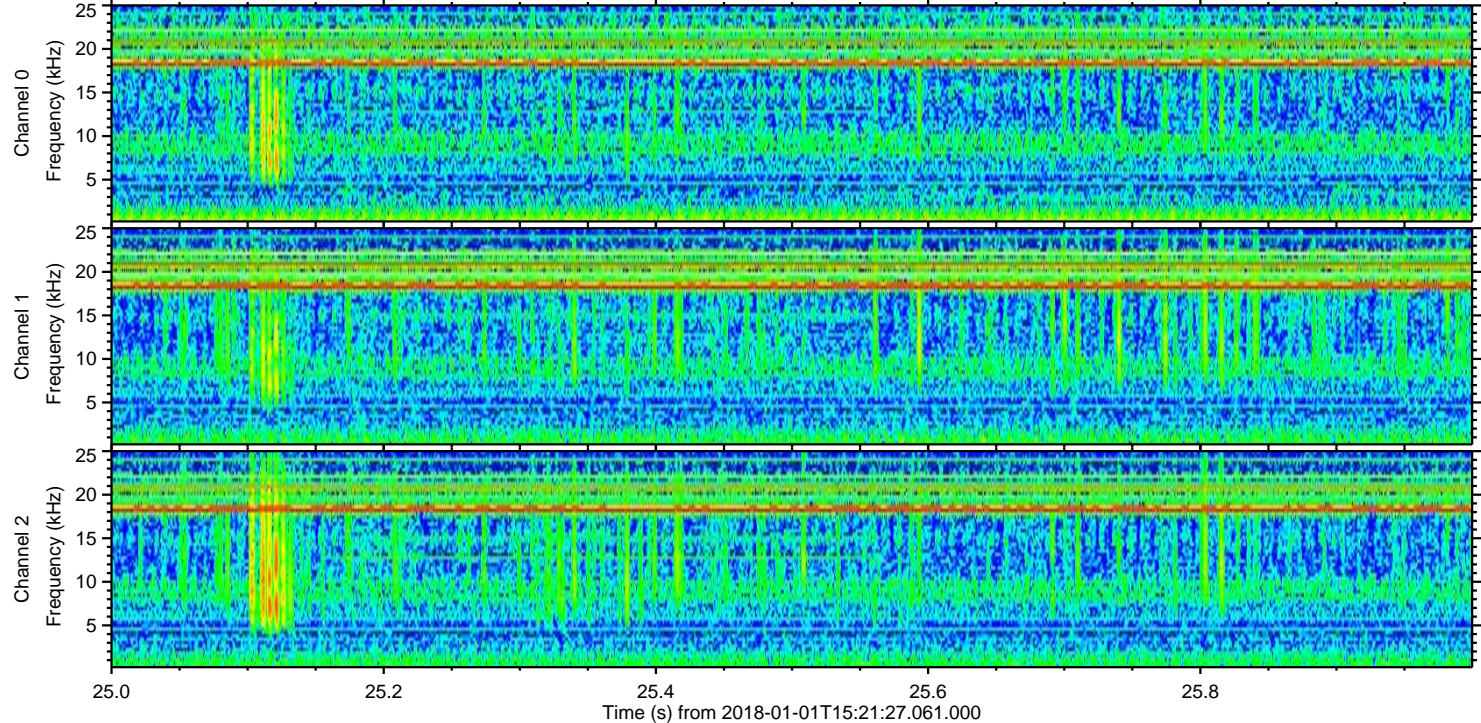
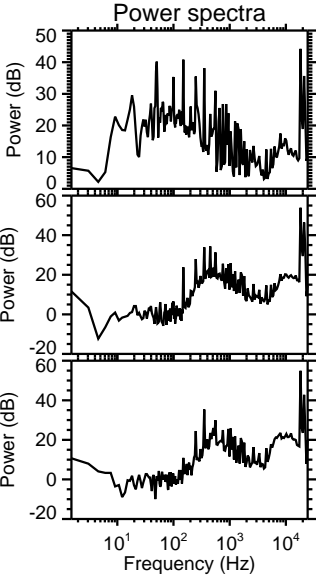
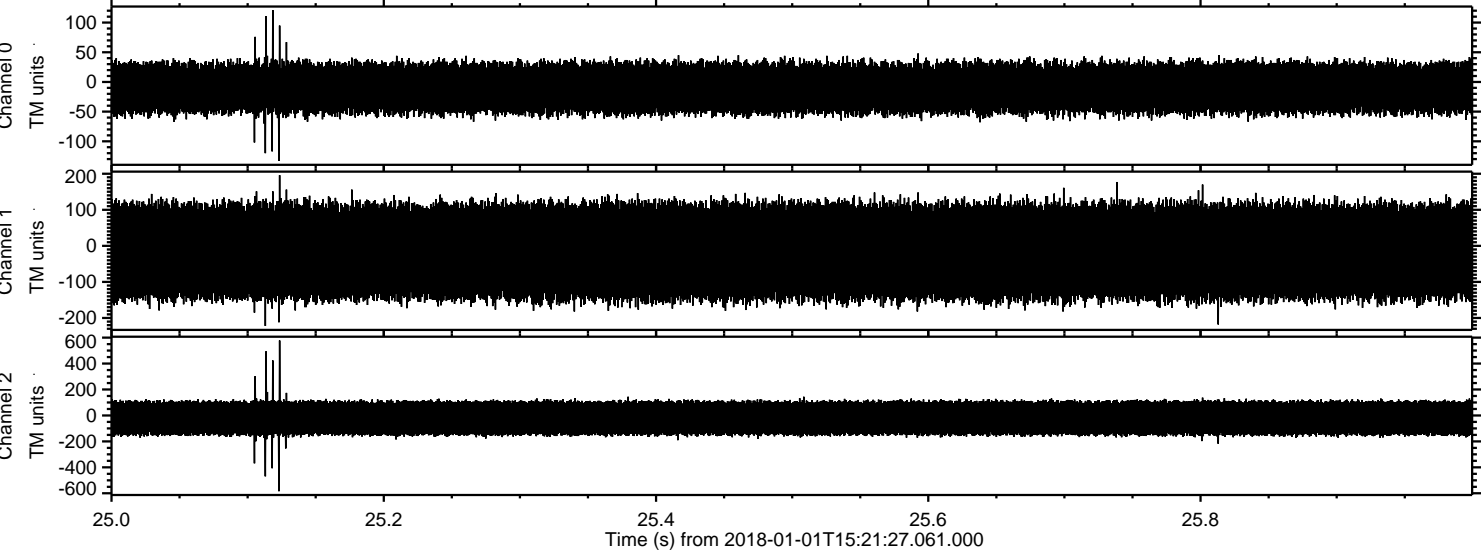




ELMAVAN 3D WAVEFORMS (Measured data sampled at 50 kHz) 51000 packets of 144 samples from 2018-01-01T15:21:27.061.000. Part 11/147



Processed Mon Jan 1 16:30:02 2018 by ELM ver.2012-10-06 from 001__elm20180101_152126__dat00.bin



Channel 0
mn: -133
mx: 121
 μ : -10.5
 σ : 23.8

Channel 1
mn: -222
mx: 196
 μ : -16.1
 σ : 72.8

Channel 2
mn: -584
mx: 578
 μ : -20.3
 σ : 77.9

