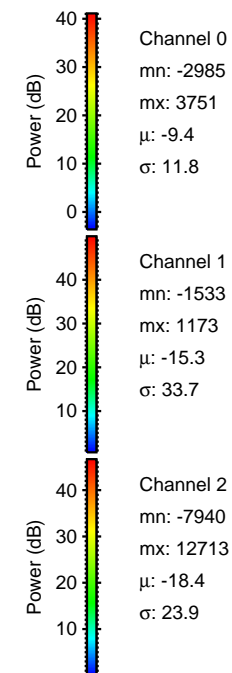
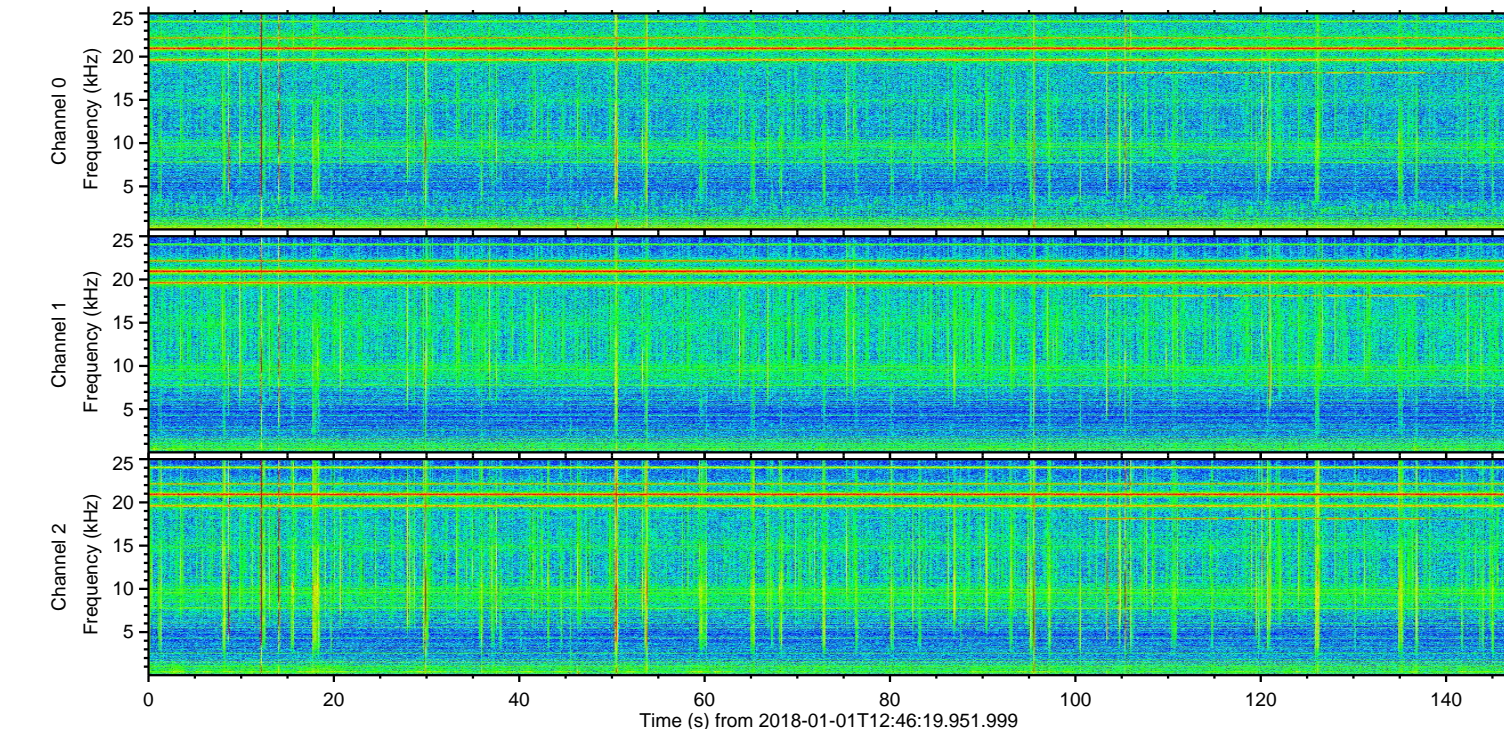
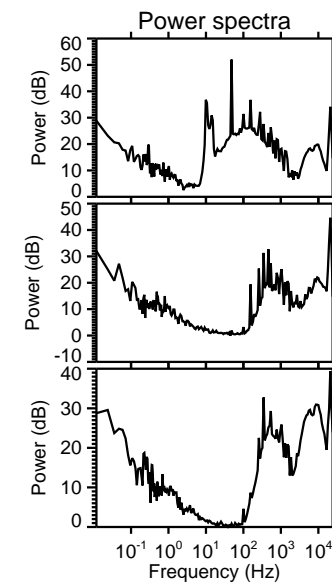
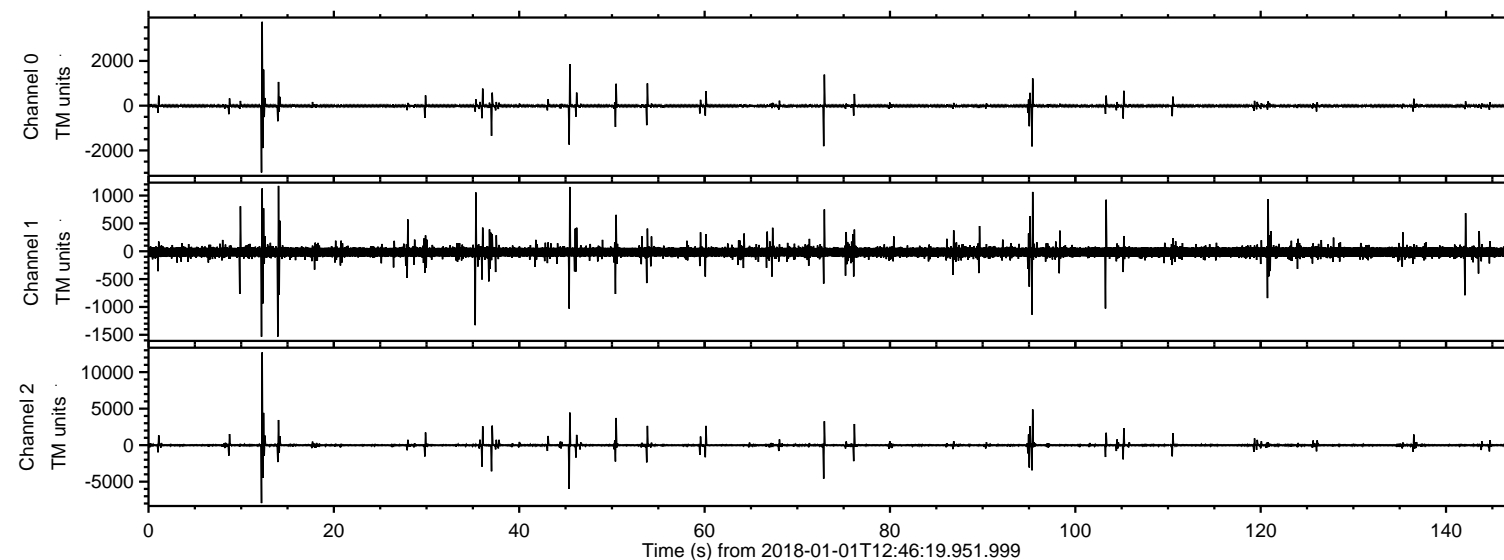
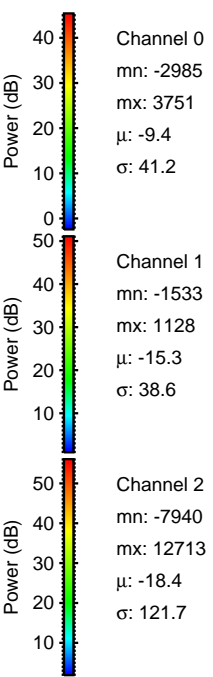
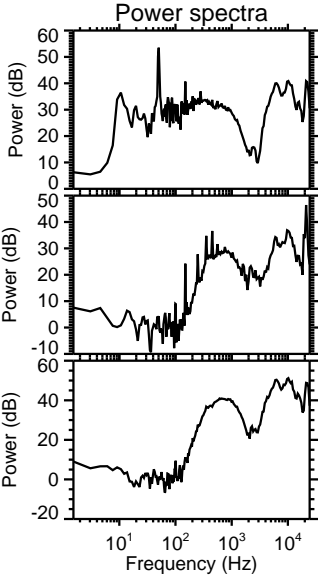
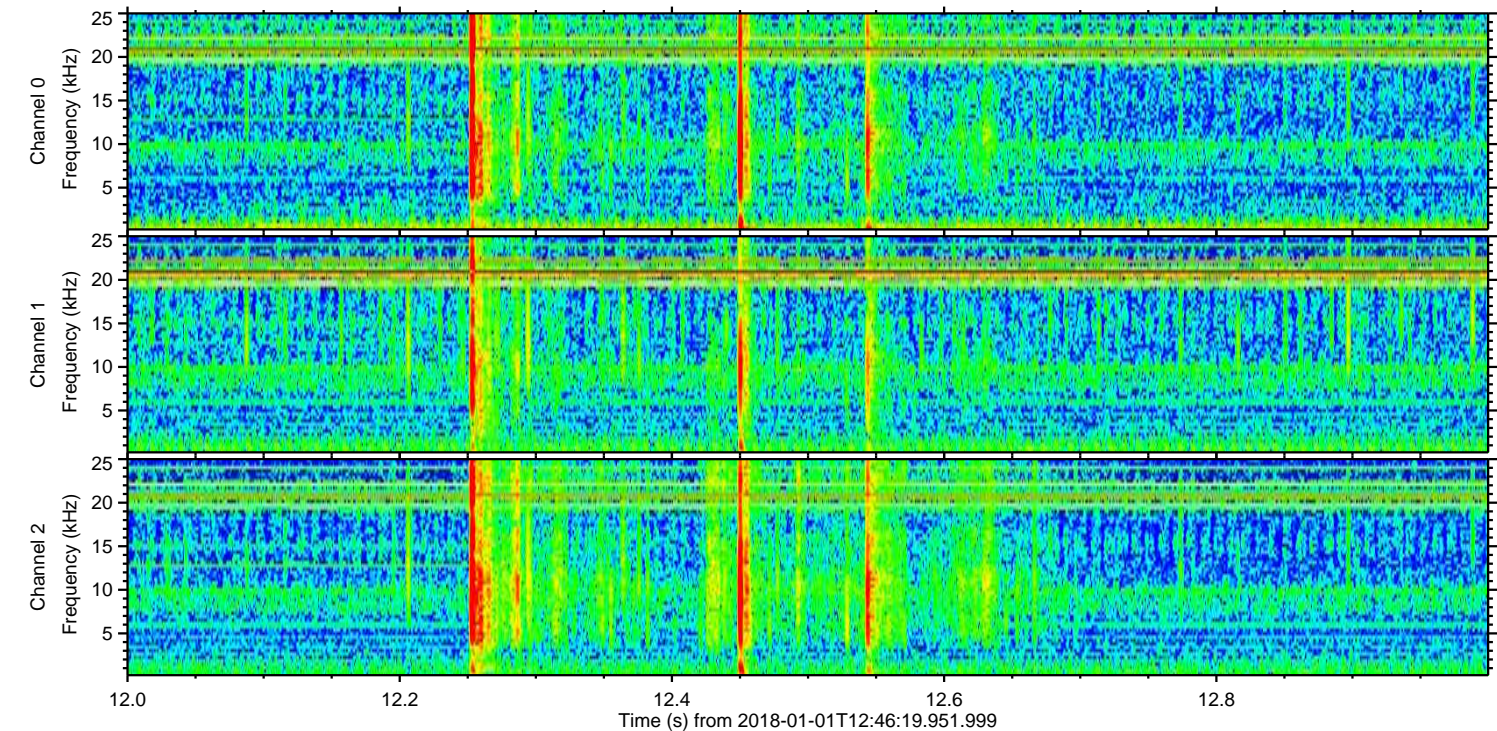
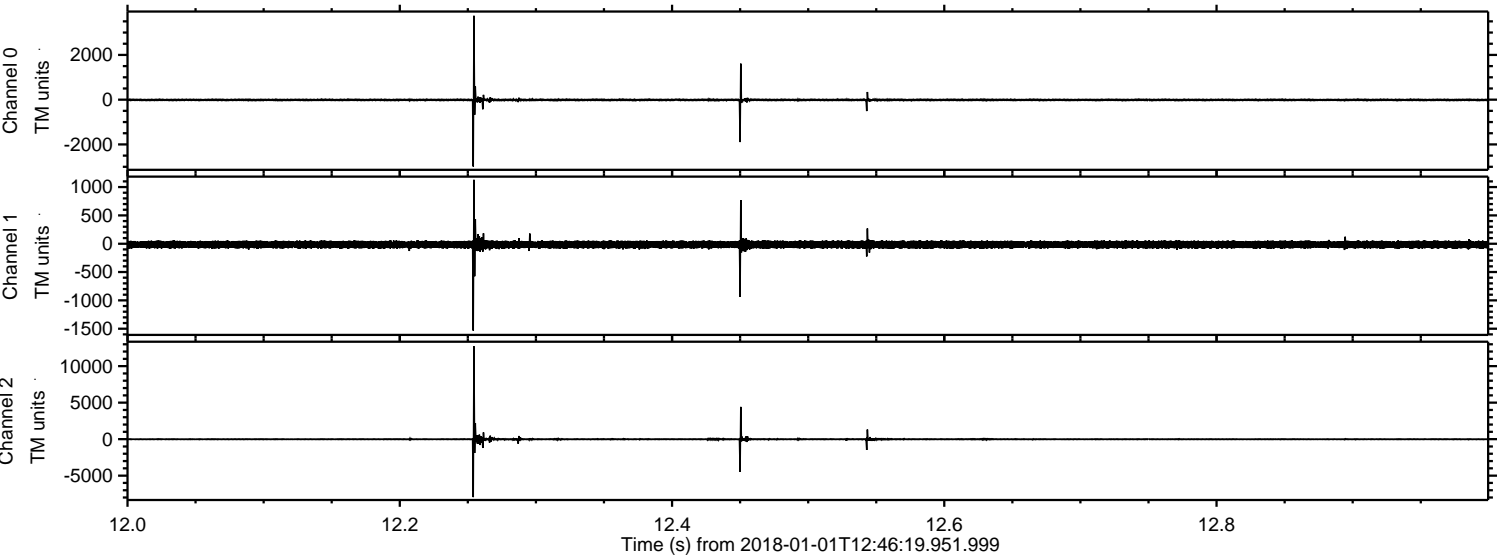


ELMAVAN 3D WAVEFORMS (Measured data sampled at 50 kHz) 51000 packets of 144 samples from 2018-01-01T12:46:19.951.999.

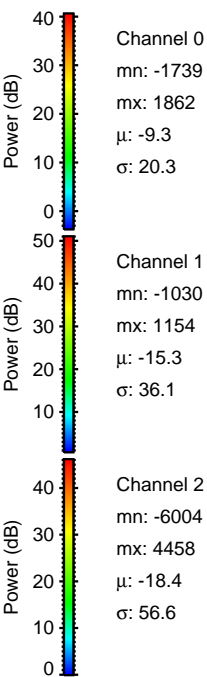
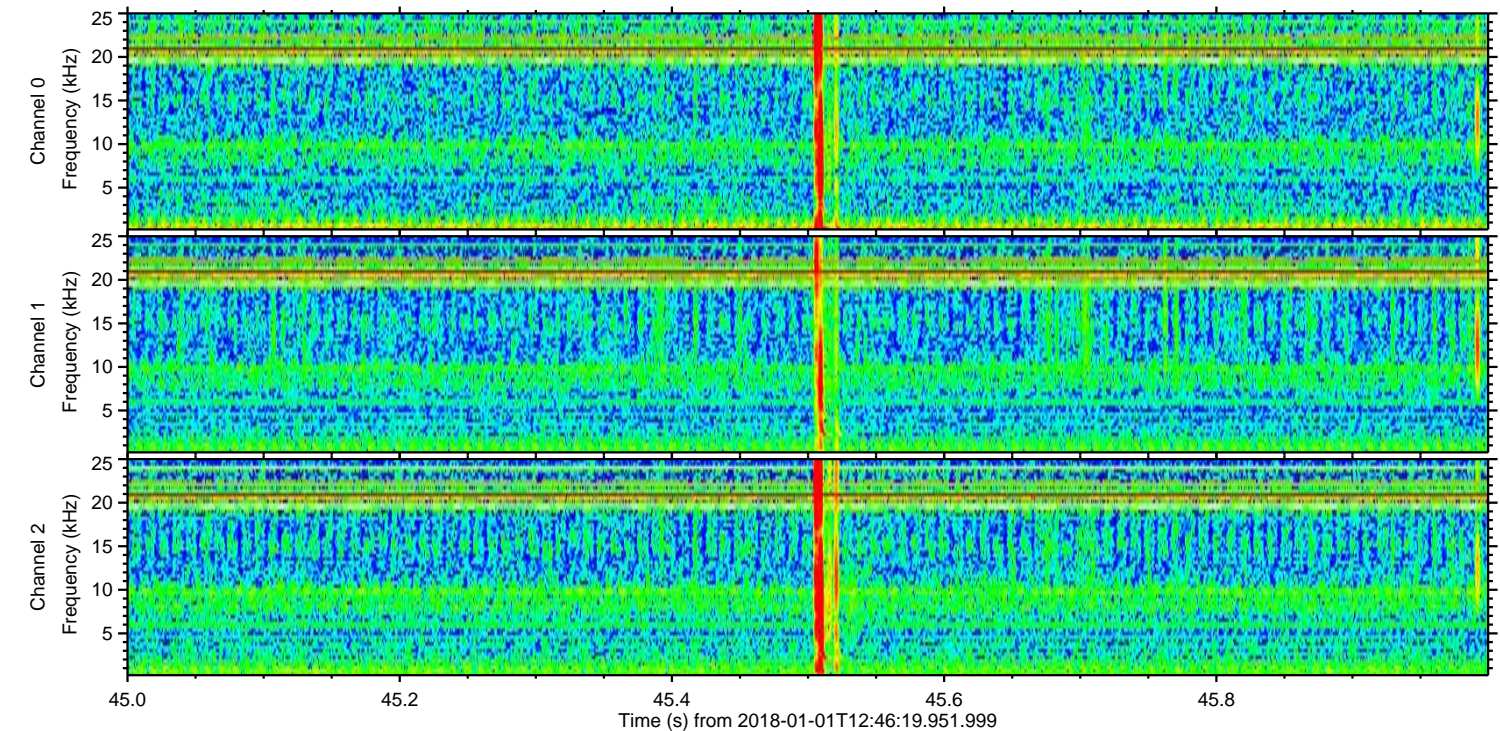
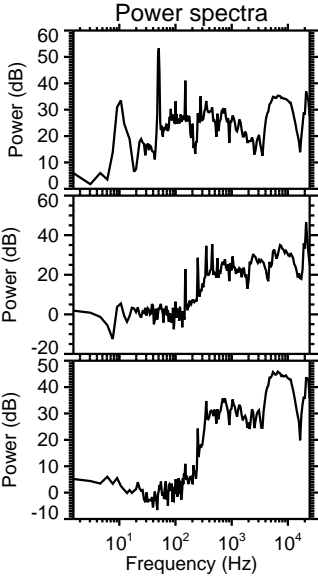
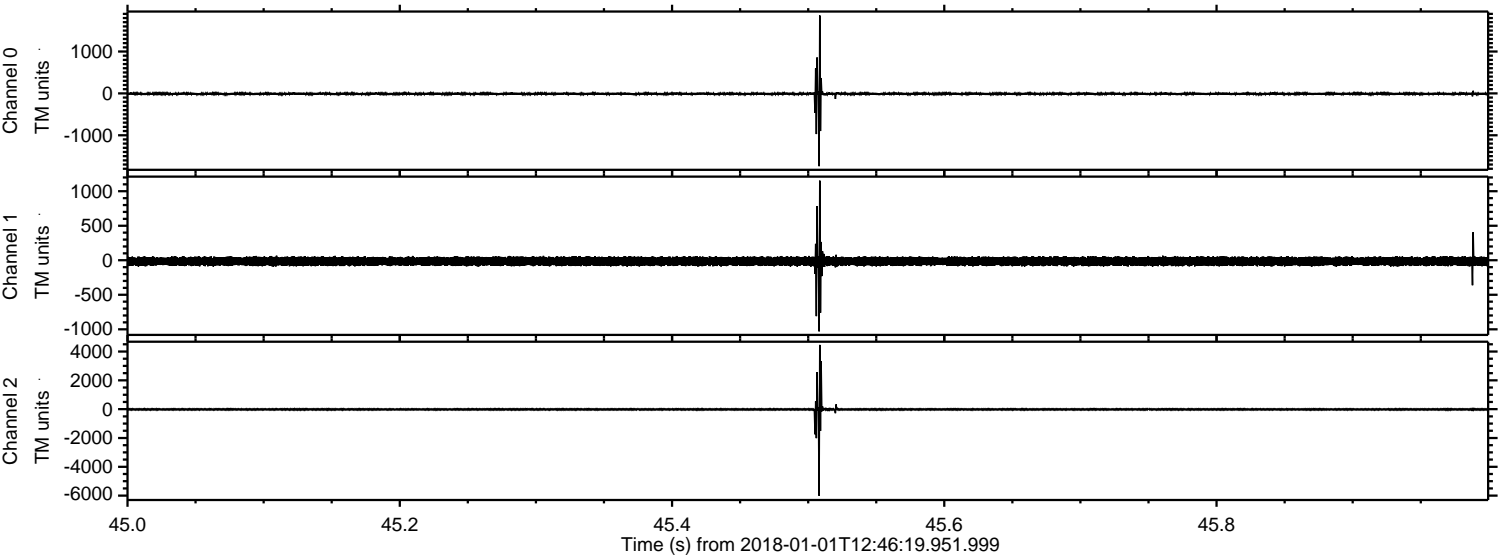
Processed Mon Jan 1 13:54:37 2018 by ELM ver.2012-10-06 from 001__elm20180101_124618__dat00.bin



Processed Mon Jan 1 13:54:45 2018 by ELM ver.2012-10-06 from 001__elm20180101_124618__dat00.bin



Processed Mon Jan 1 13:54:46 2018 by ELM ver.2012-10-06 from 001__elm20180101_124618__dat00.bin

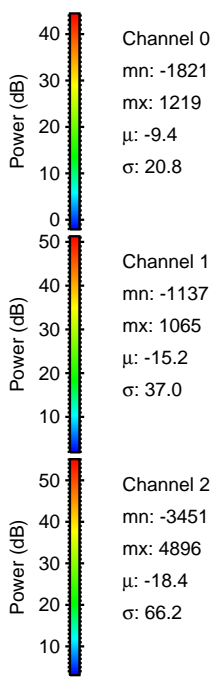
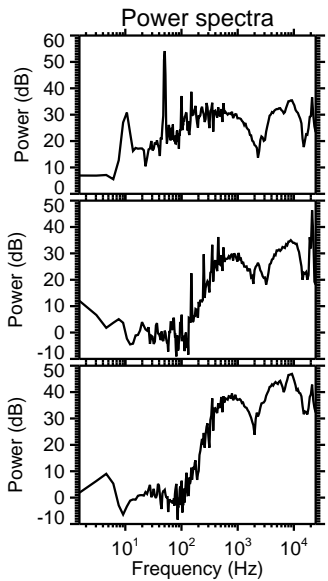
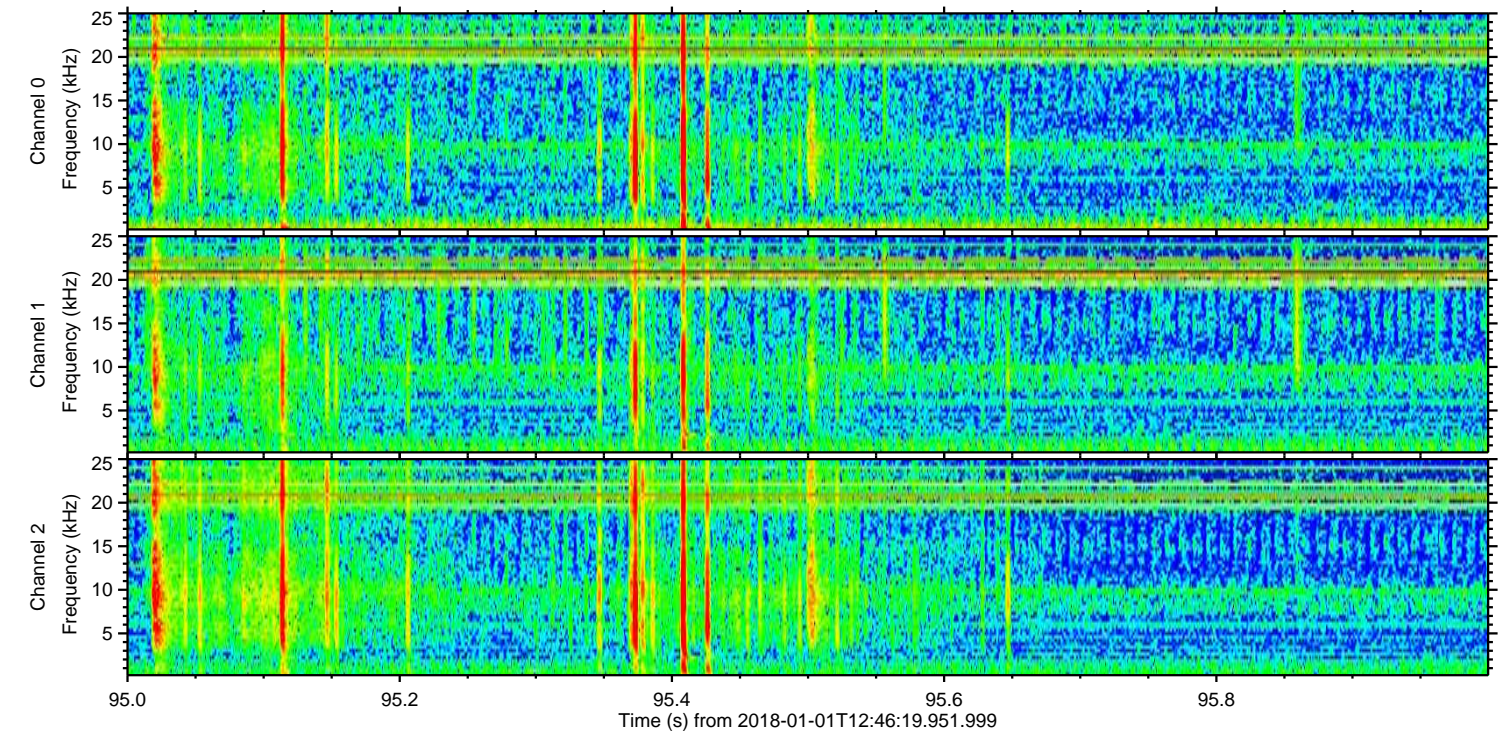
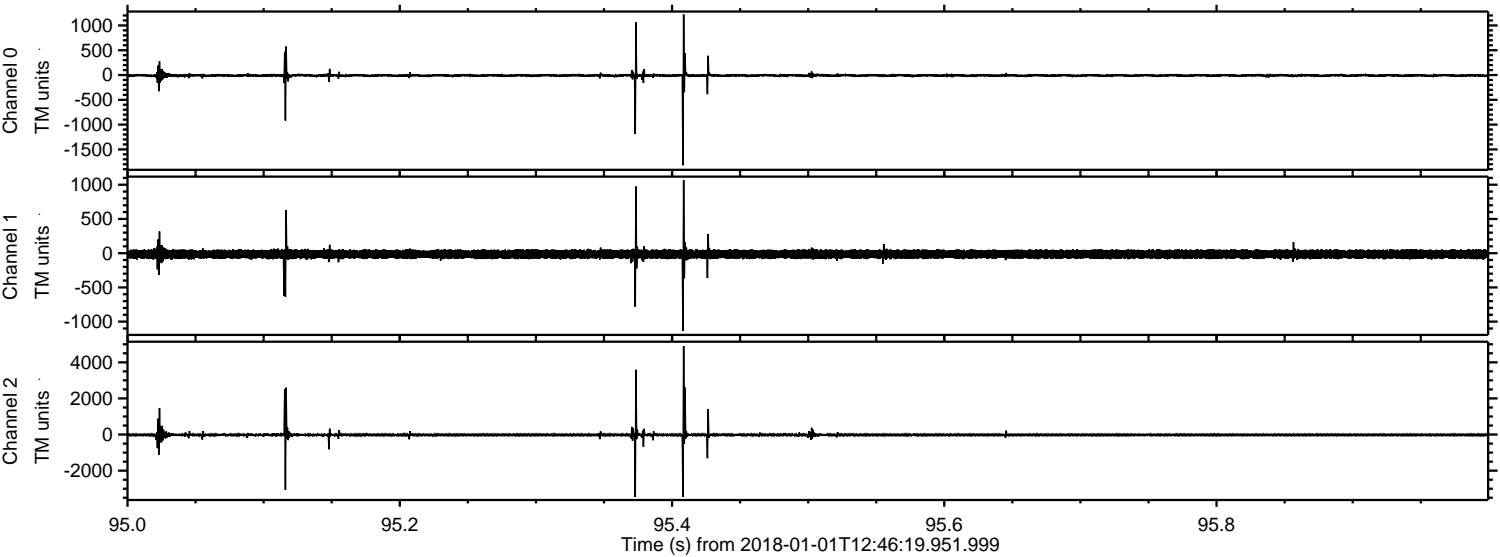


Channel 0
mn: -1739
mx: 1862
 μ : -9.3
 σ : 20.3

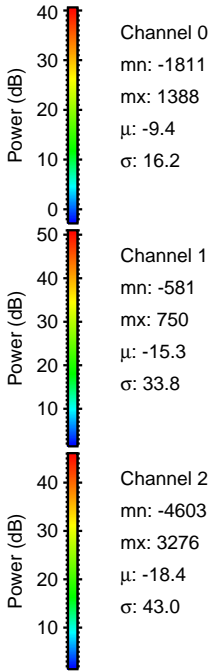
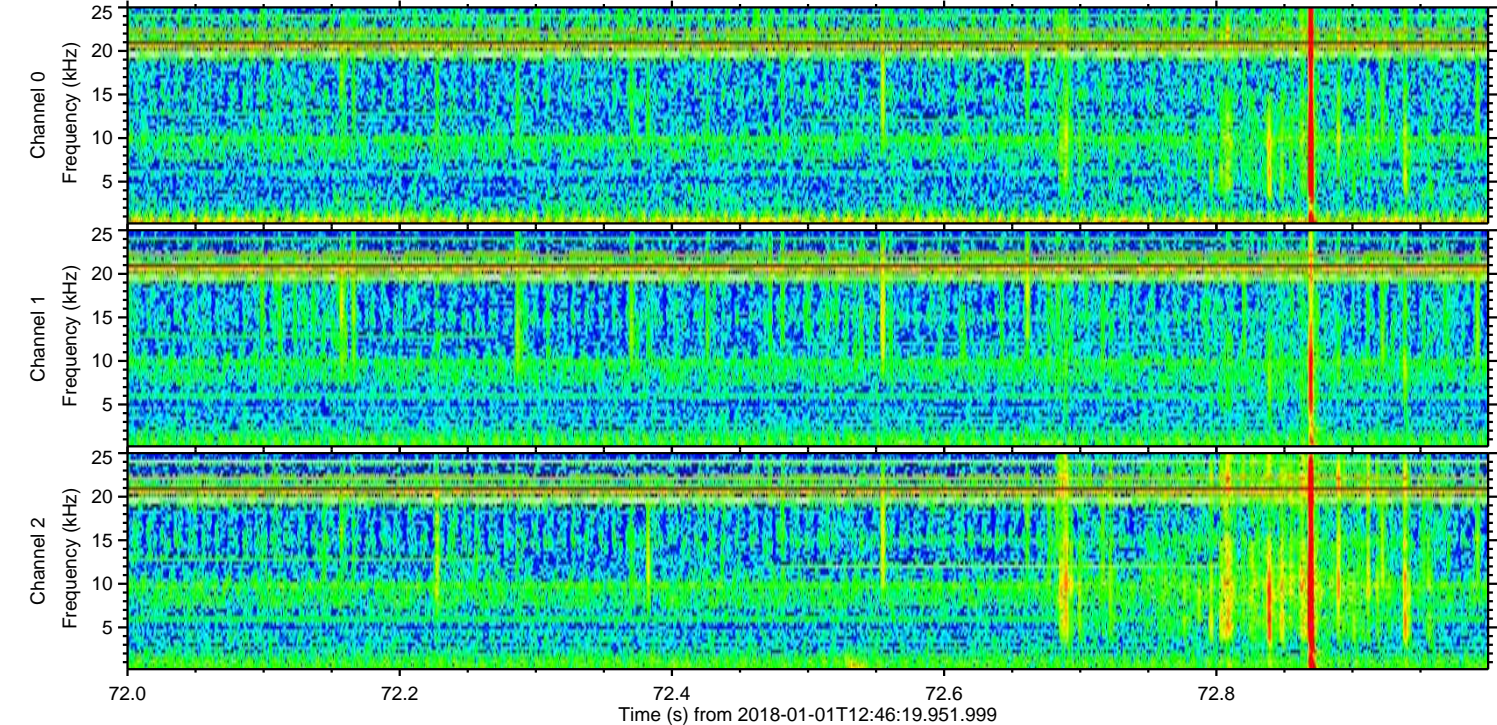
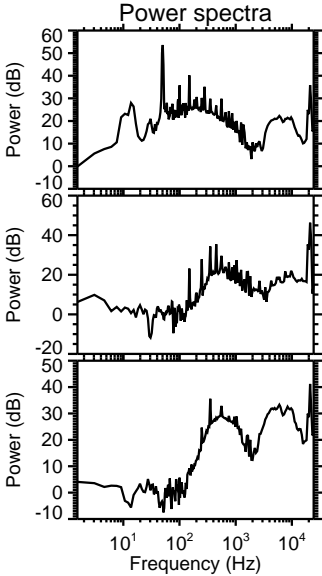
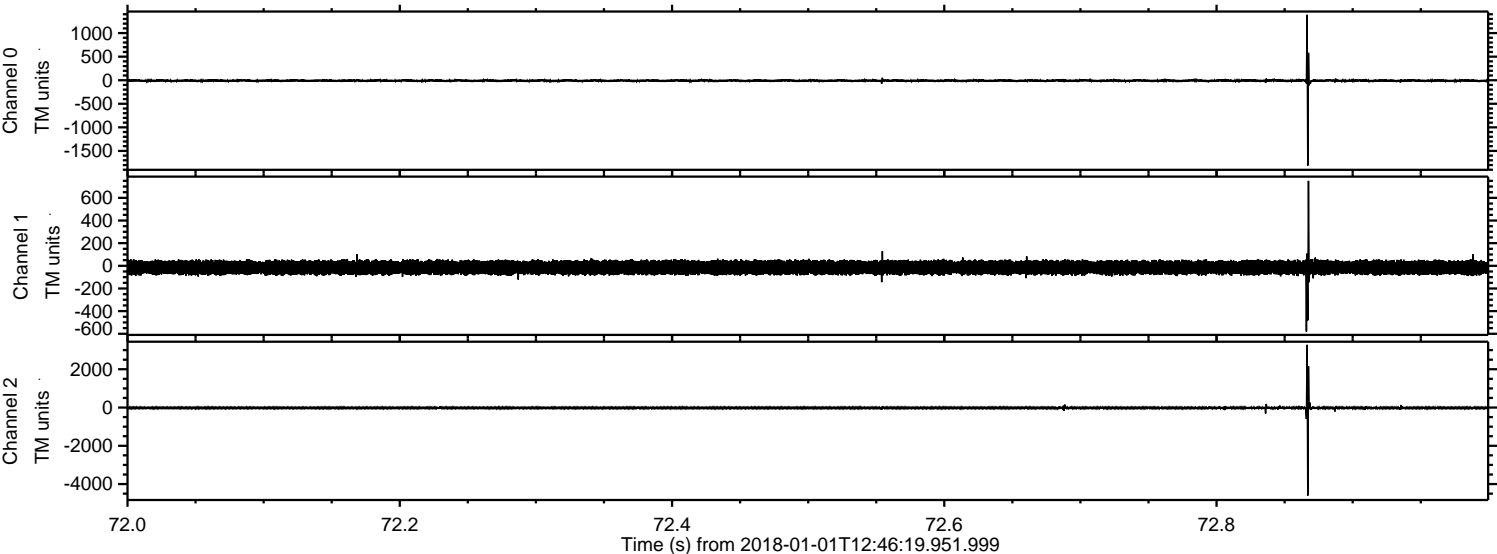
Channel 1
mn: -1030
mx: 1154
 μ : -15.3
 σ : 36.1

Channel 2
mn: -6004
mx: 4458
 μ : -18.4
 σ : 56.6

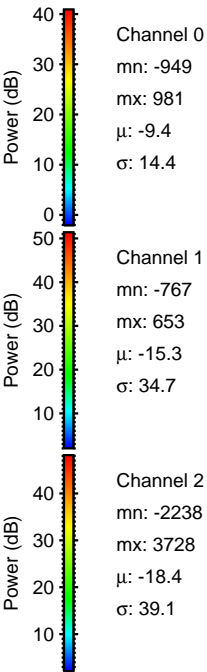
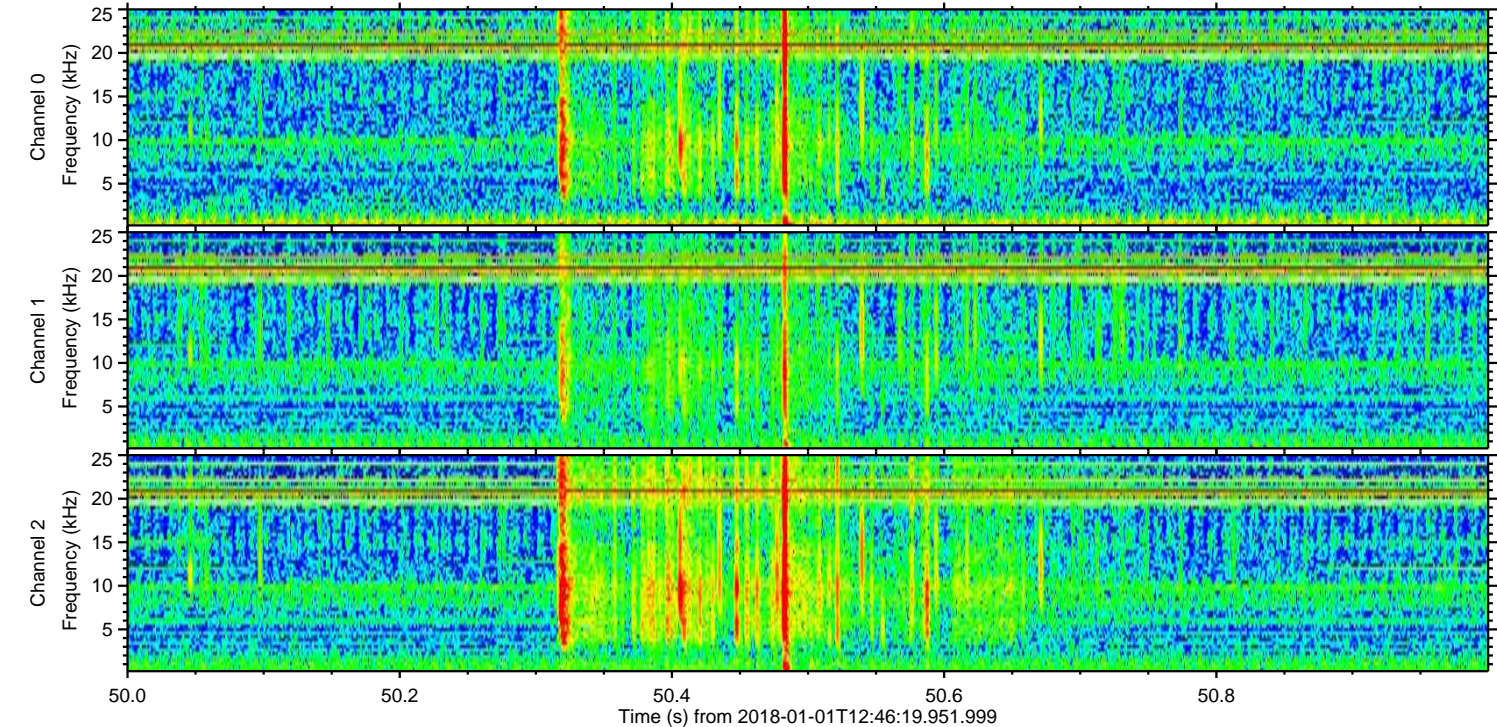
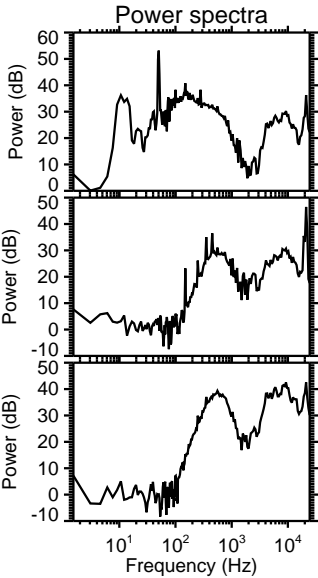
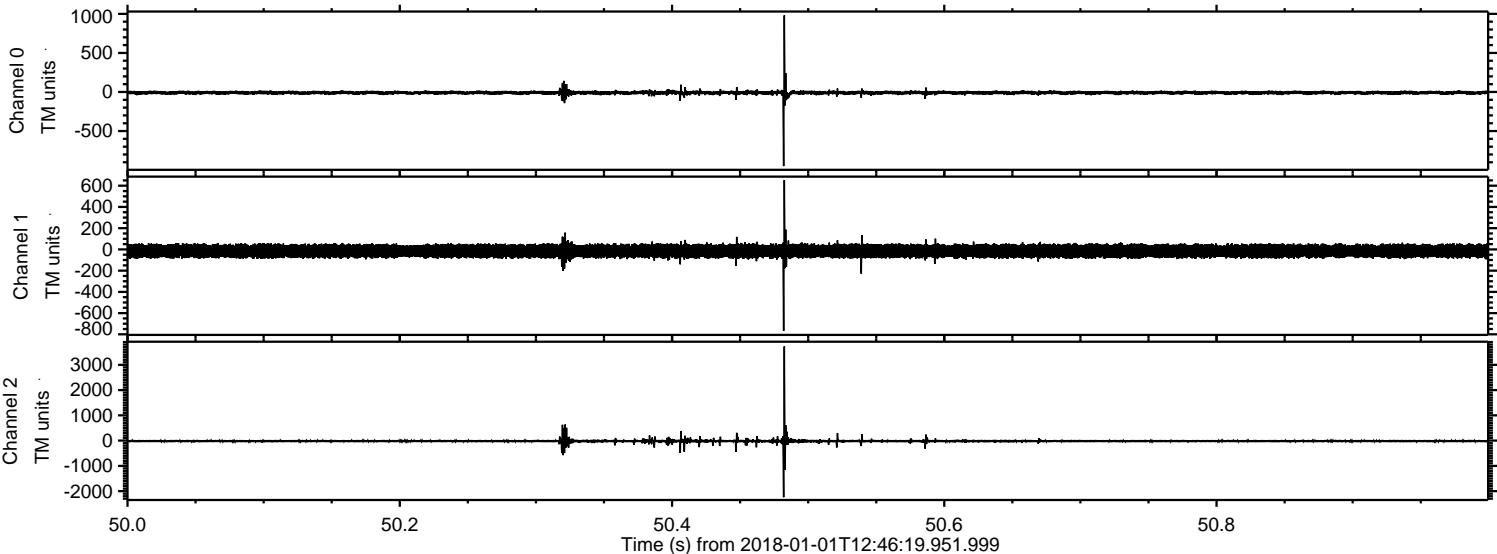
Processed Mon Jan 1 13:54:47 2018 by ELM ver.2012-10-06 from 001__elm20180101_124618__dat00.bin



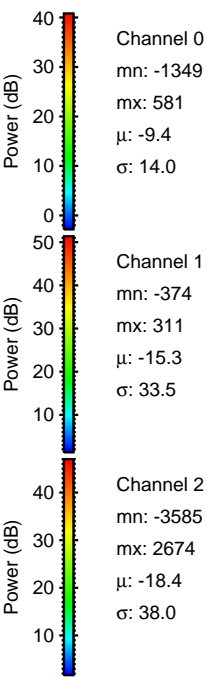
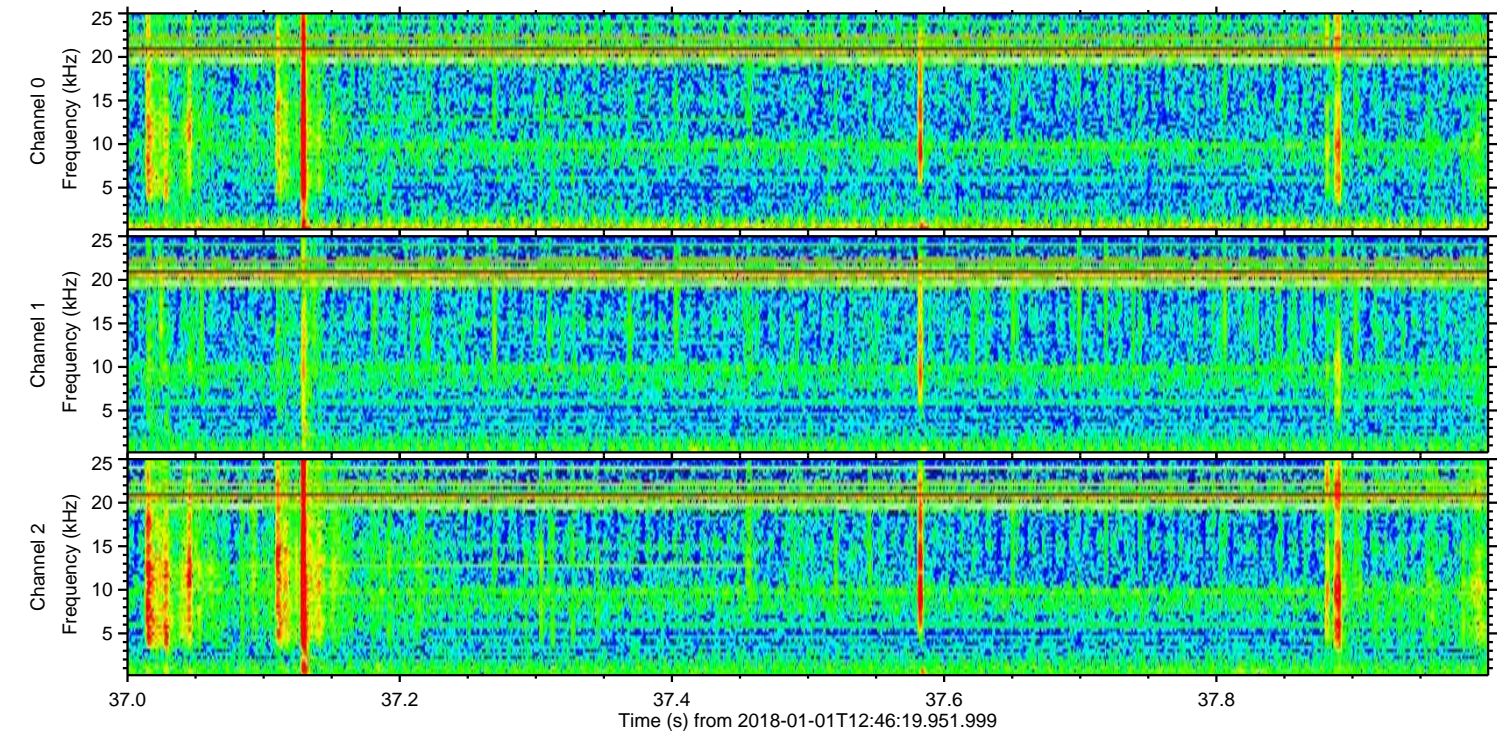
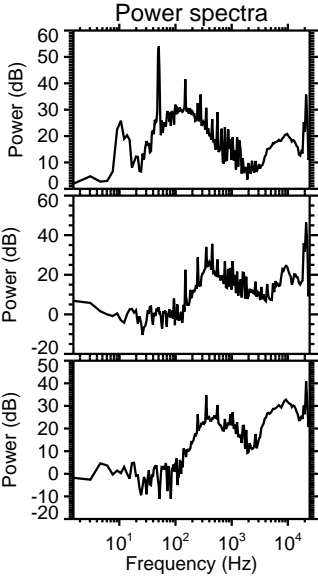
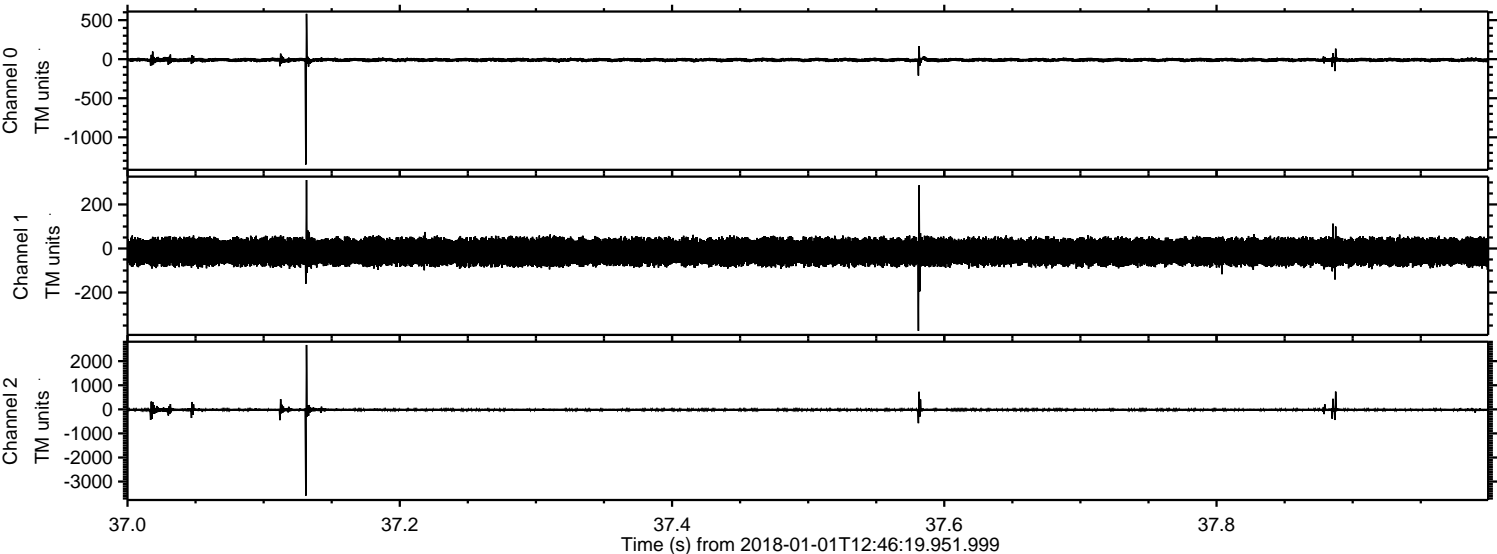
Processed Mon Jan 1 13:54:48 2018 by ELM ver.2012-10-06 from 001__elm20180101_124618__dat00.bin



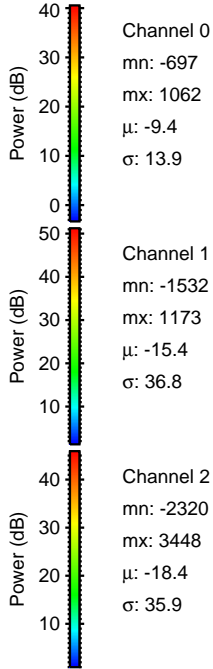
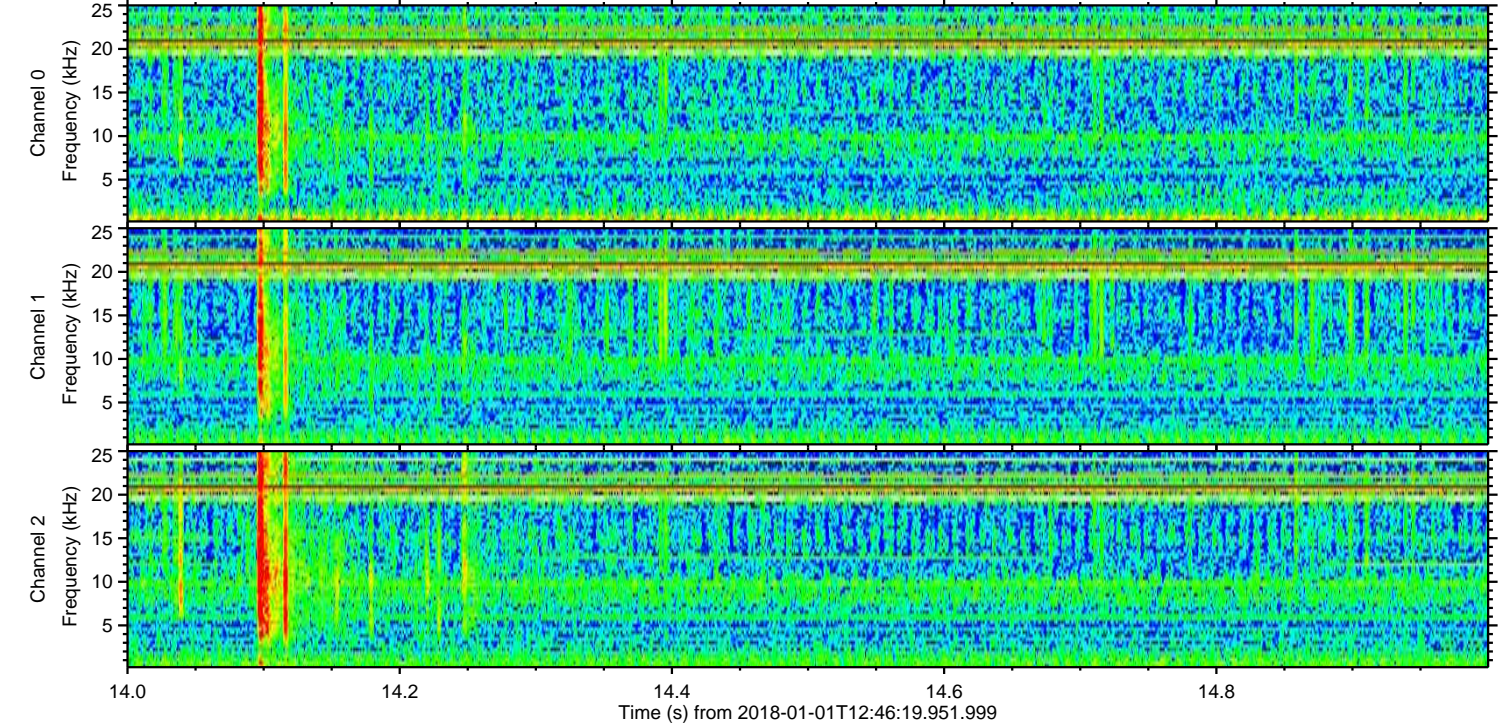
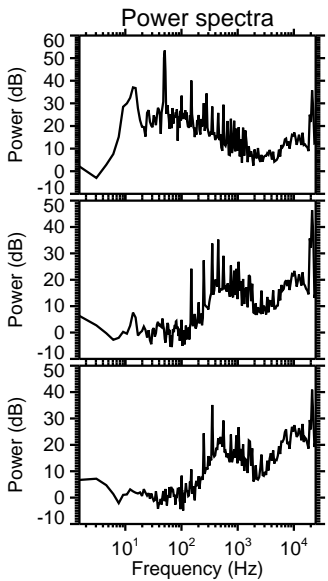
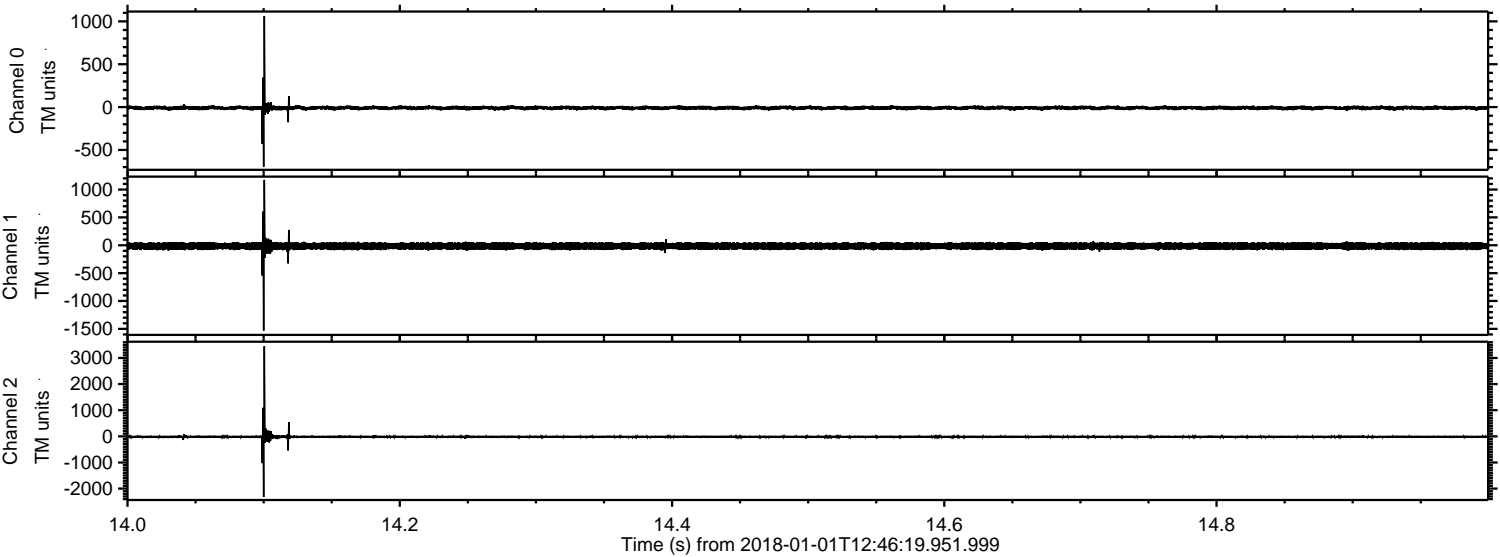
Processed Mon Jan 1 13:54:49 2018 by ELM ver.2012-10-06 from 001__elm20180101_124618__dat00.bin



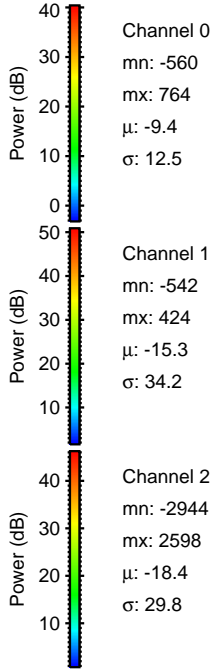
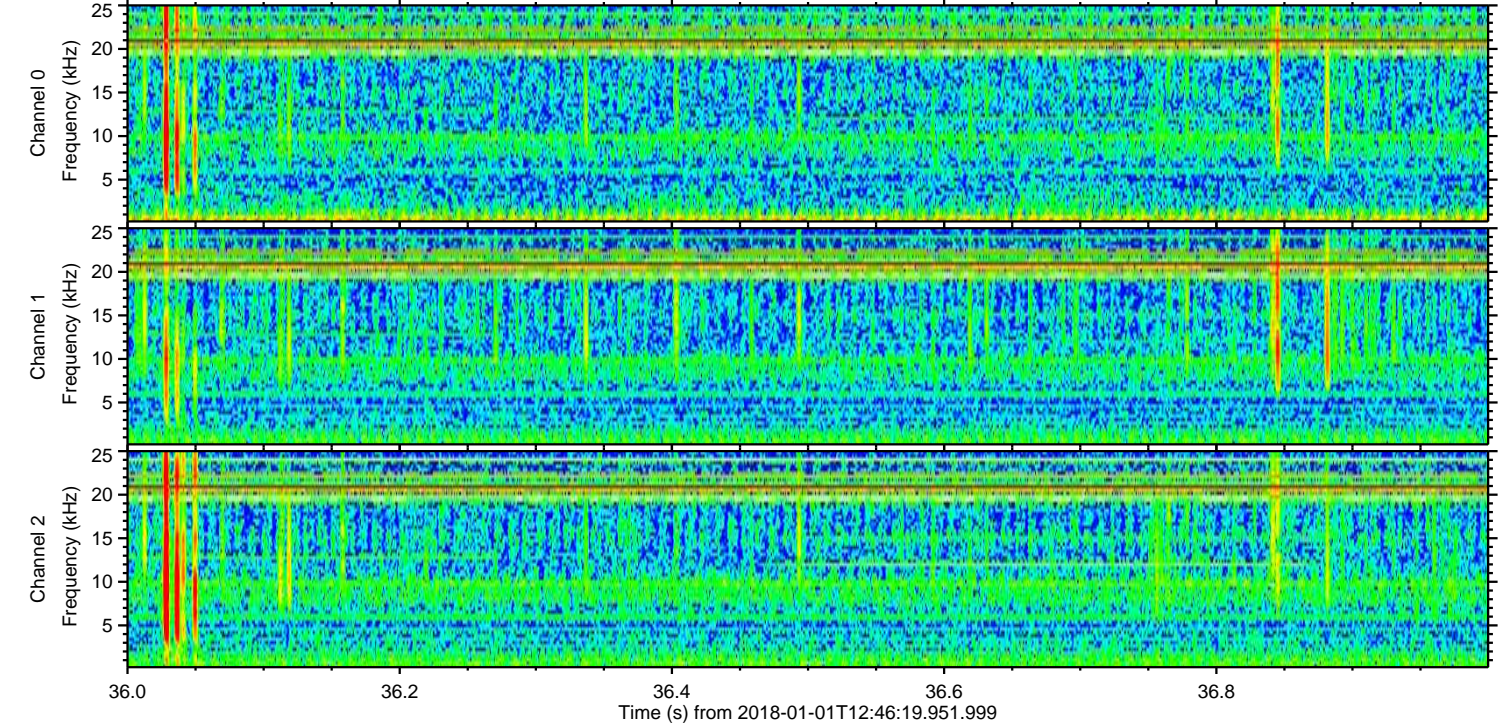
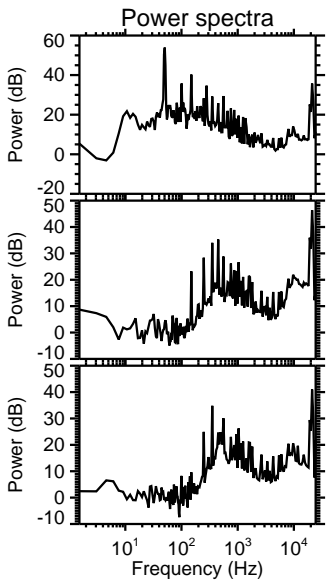
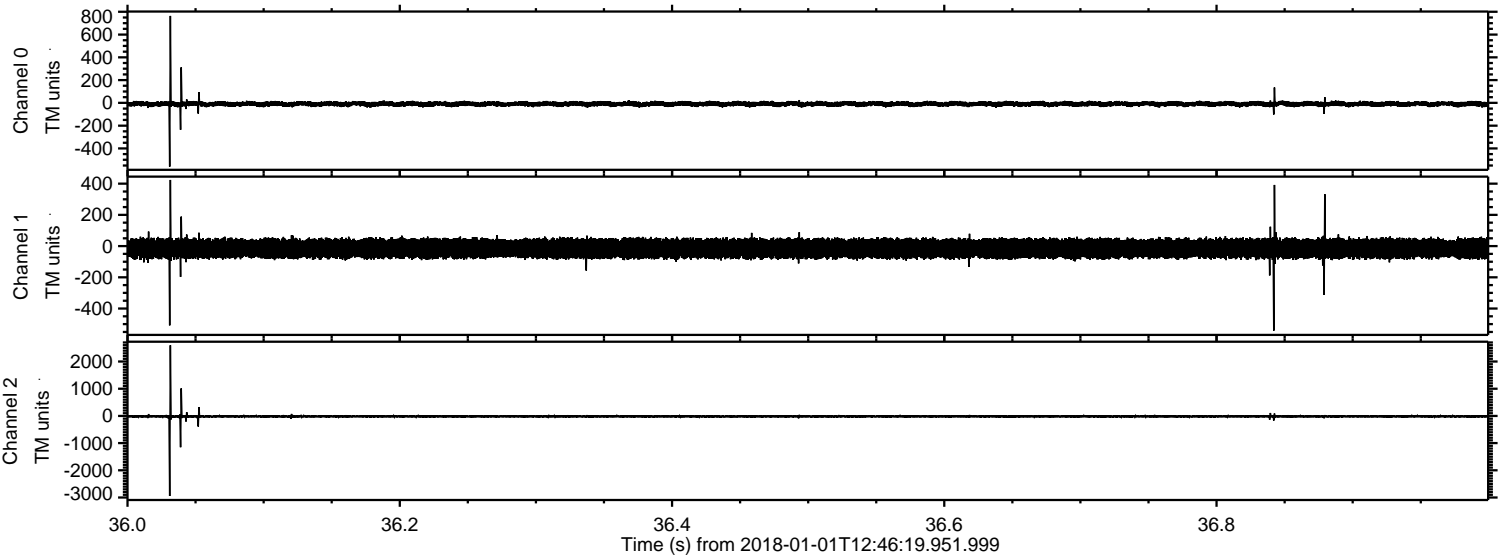
Processed Mon Jan 1 13:54:49 2018 by ELM ver.2012-10-06 from 001__elm20180101_124618__dat00.bin



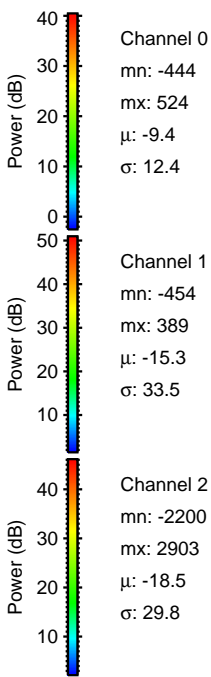
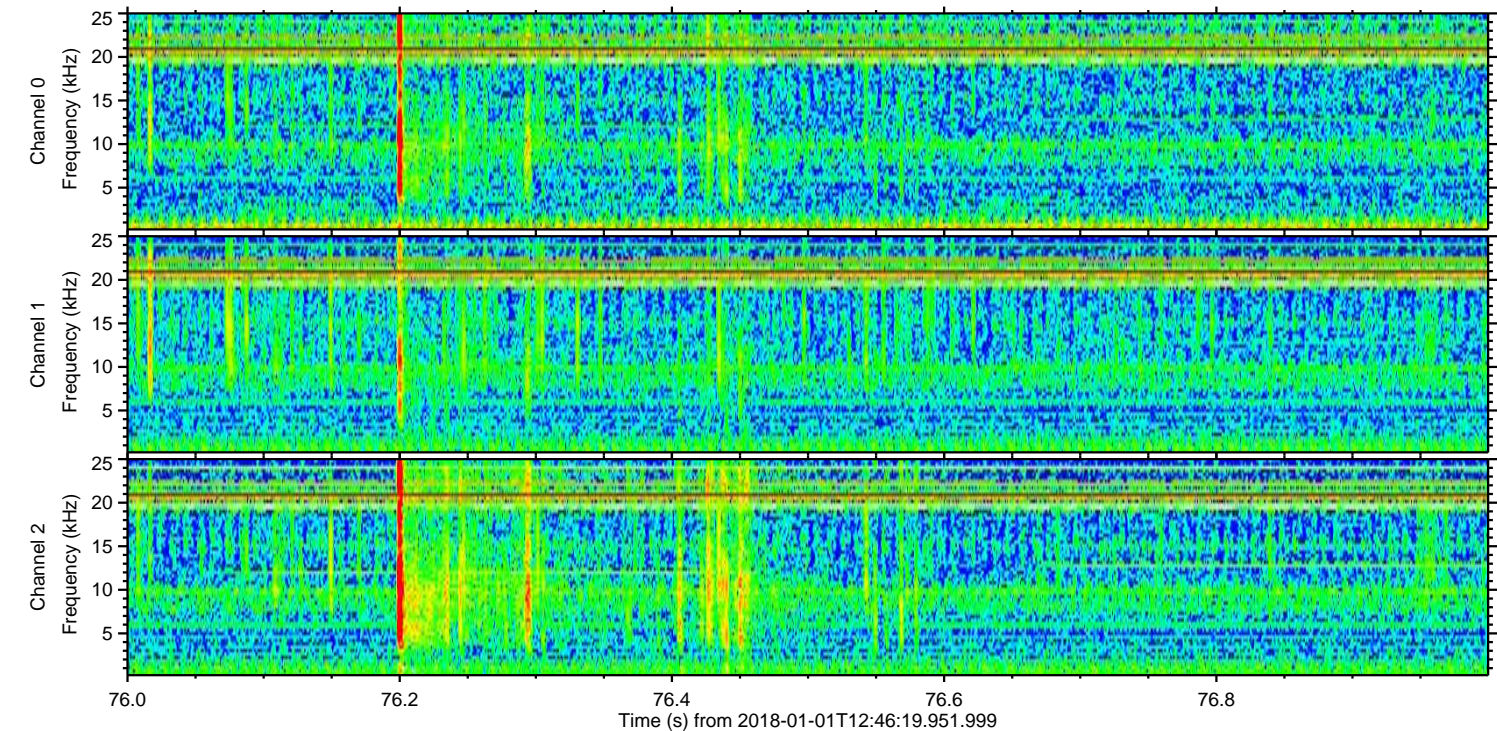
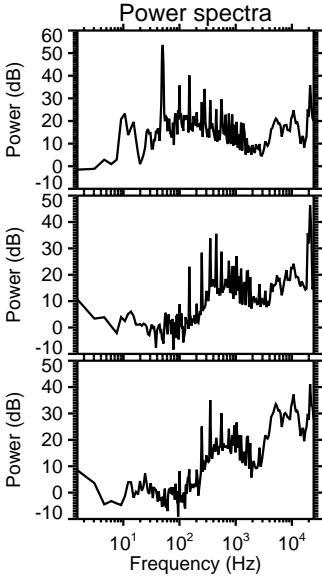
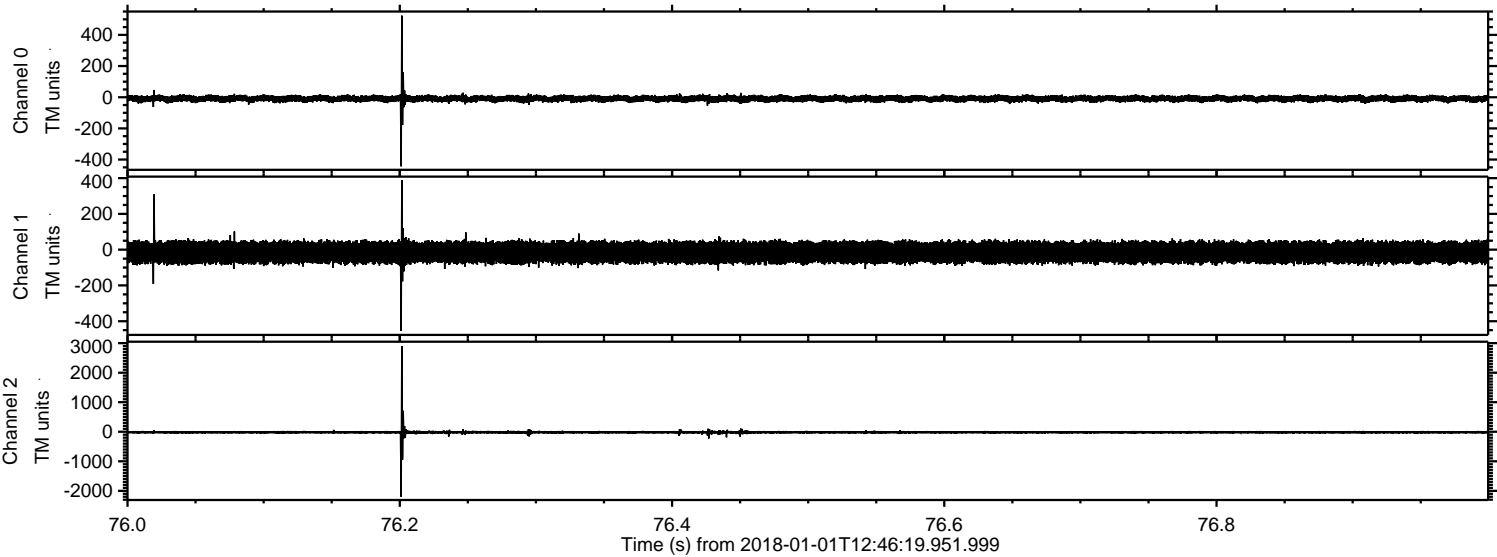
Processed Mon Jan 1 13:54:50 2018 by ELM ver.2012-10-06 from 001__elm20180101_124618__dat00.bin



Processed Mon Jan 1 13:54:51 2018 by ELM ver.2012-10-06 from 001__elm20180101_124618__dat00.bin



Processed Mon Jan 1 13:54:52 2018 by ELM ver.2012-10-06 from 001__elm20180101_124618__dat00.bin



Processed Mon Jan 1 13:54:53 2018 by ELM ver.2012-10-06 from 001__elm20180101_124618__dat00.bin

