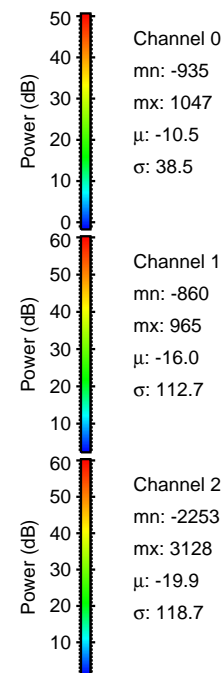
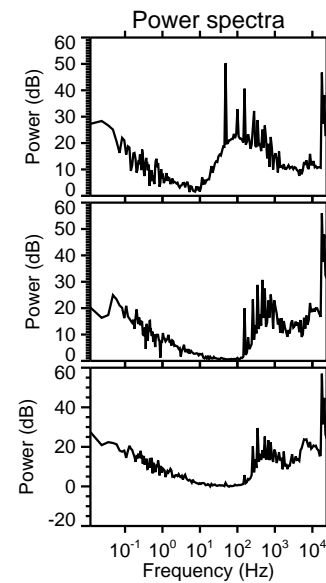
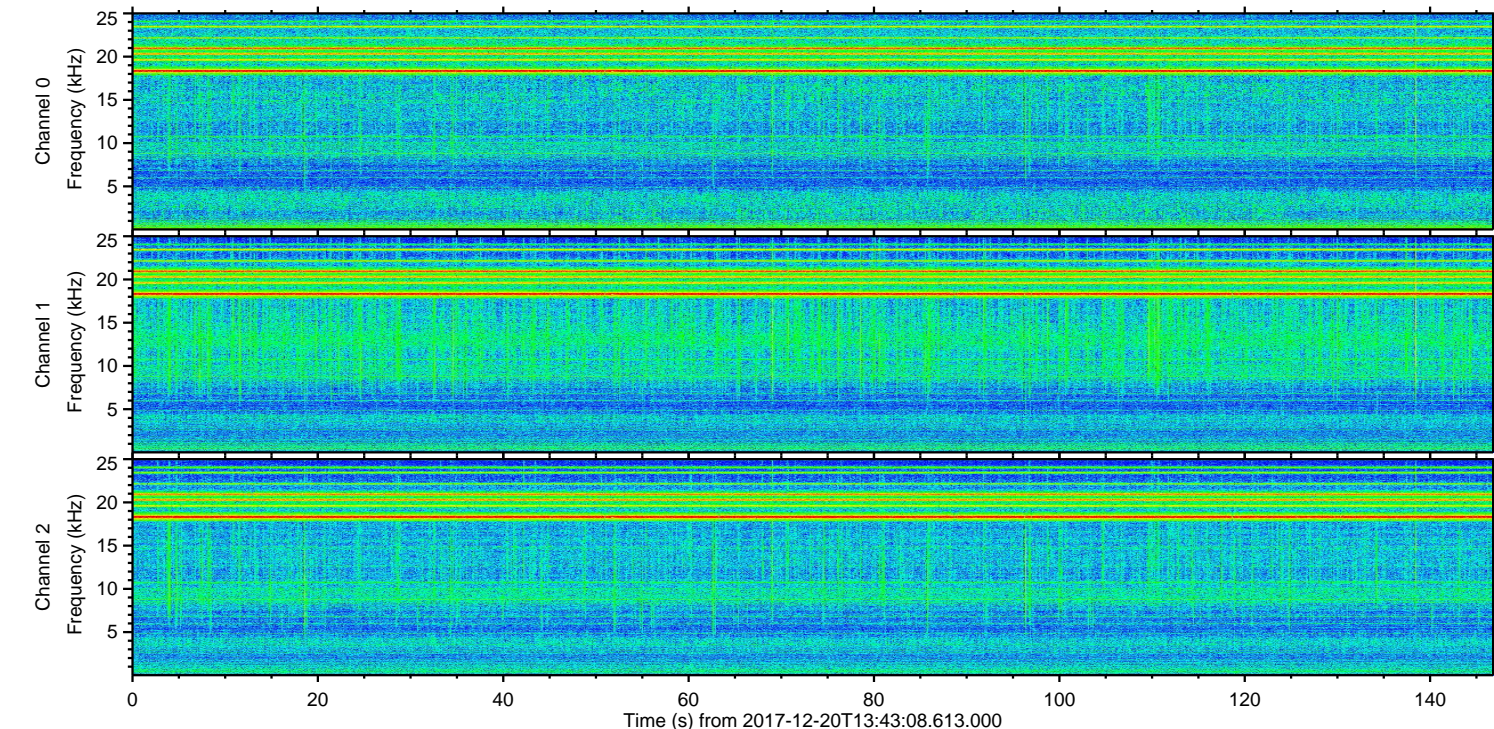
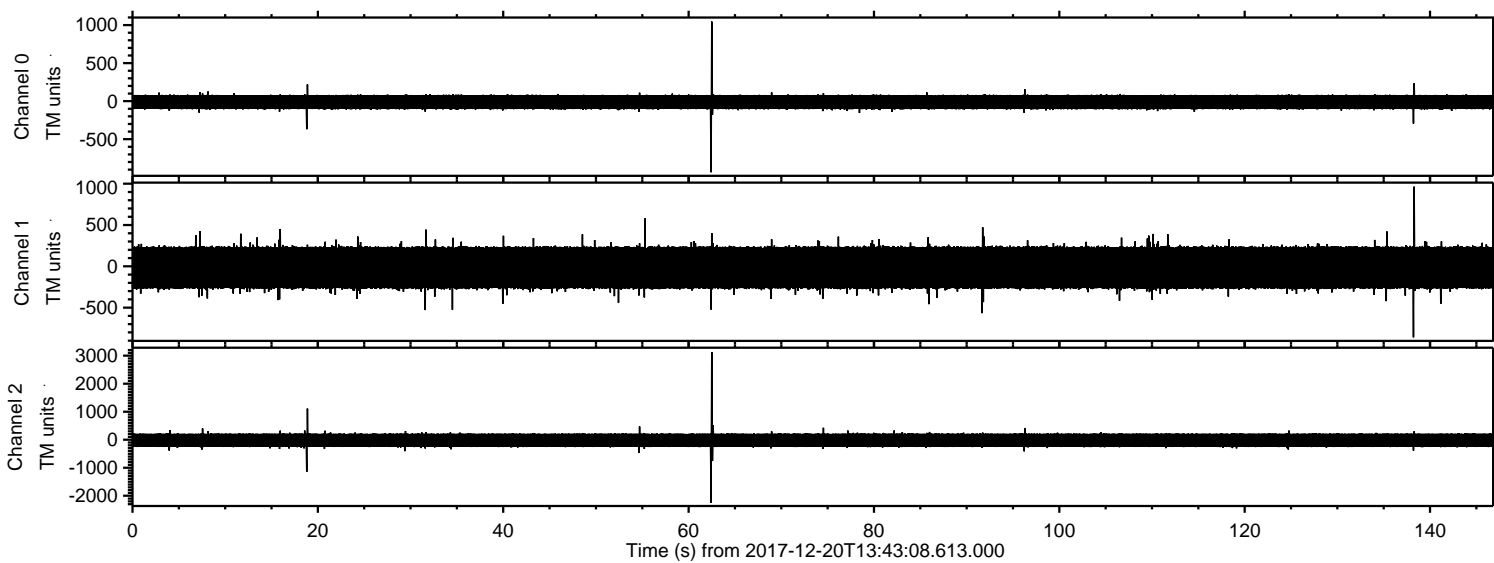


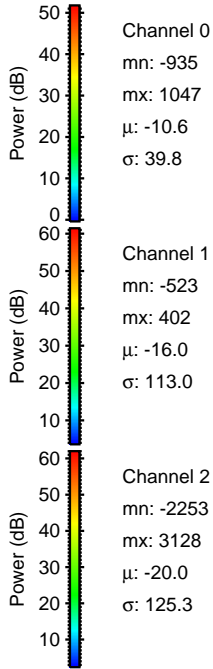
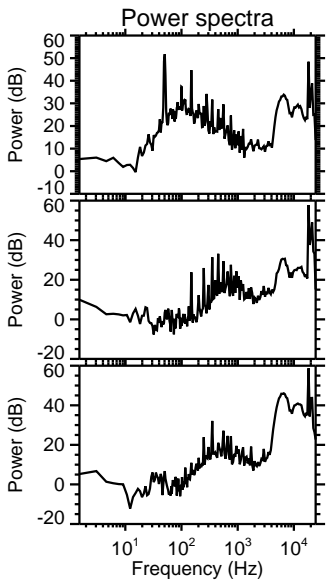
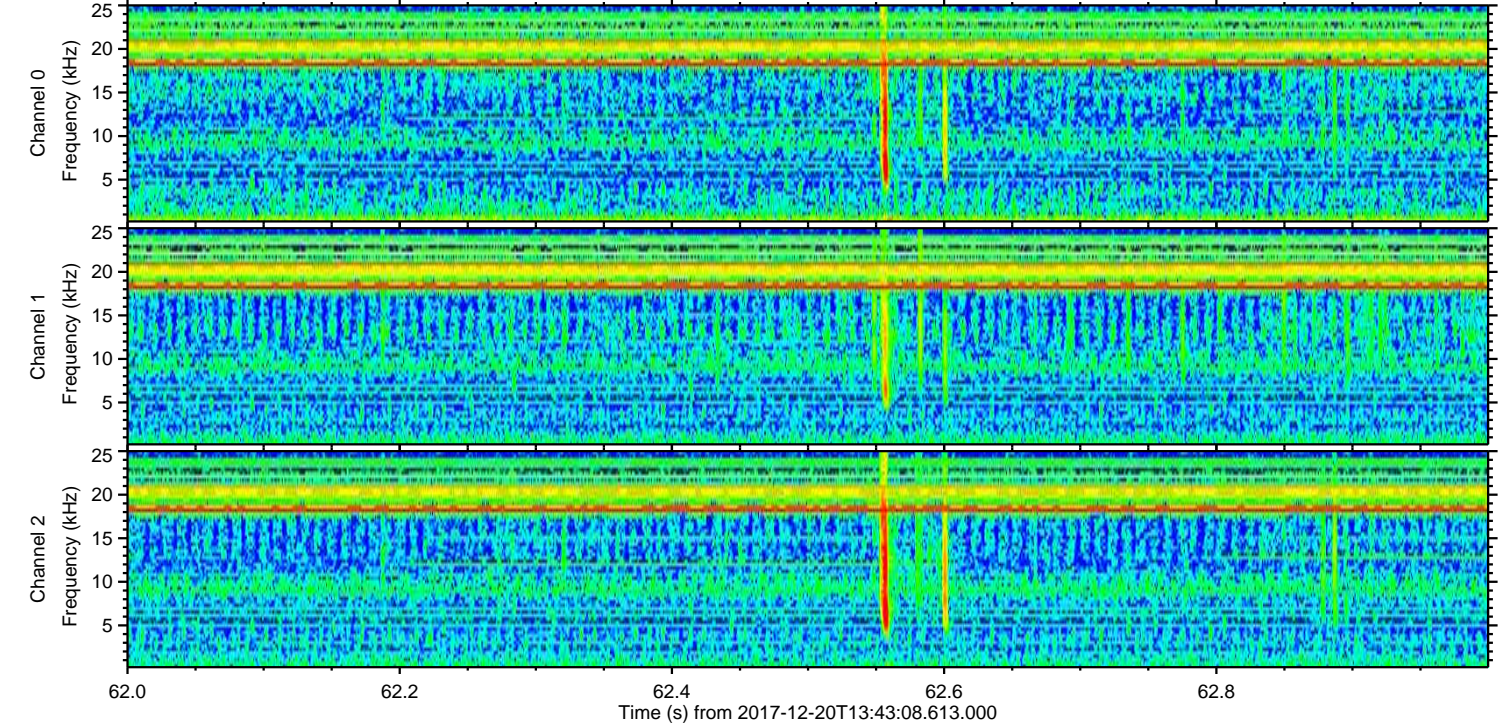
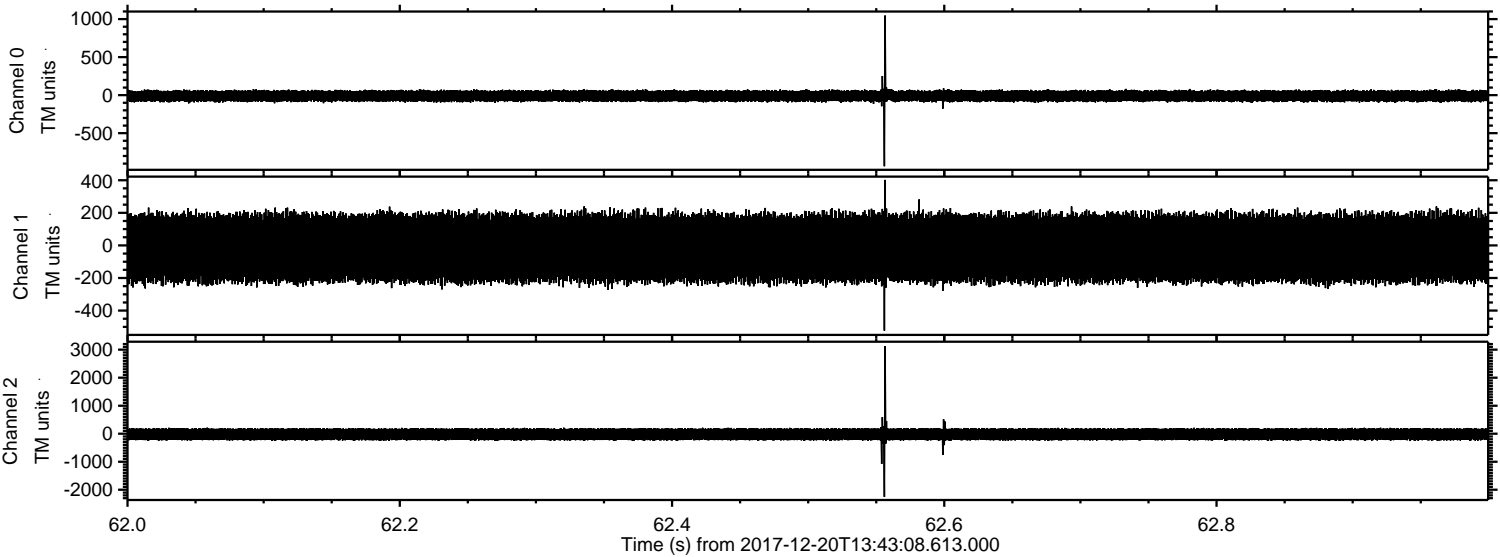
ELMAVAN 3D WAVEFORMS (Measured data sampled at 50 kHz) 51000 packets of 144 samples from 2017-12-20T13:43:08.613.000.

Processed Wed Dec 20 14:50:58 2017 by ELM ver.2012-10-06 from 001__elm20171220_134307__dat00.bin



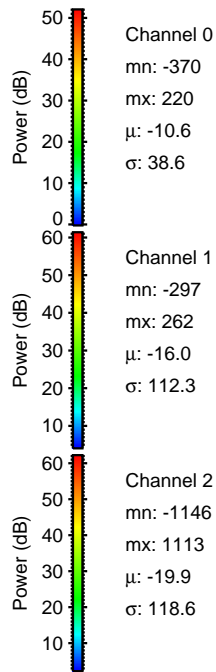
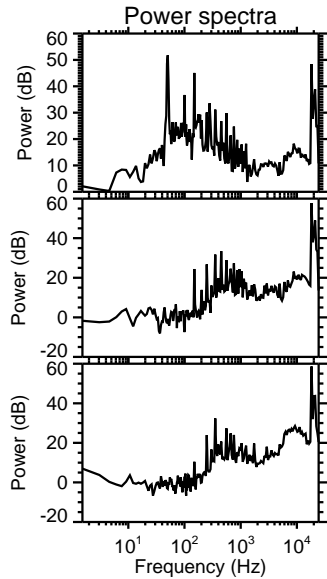
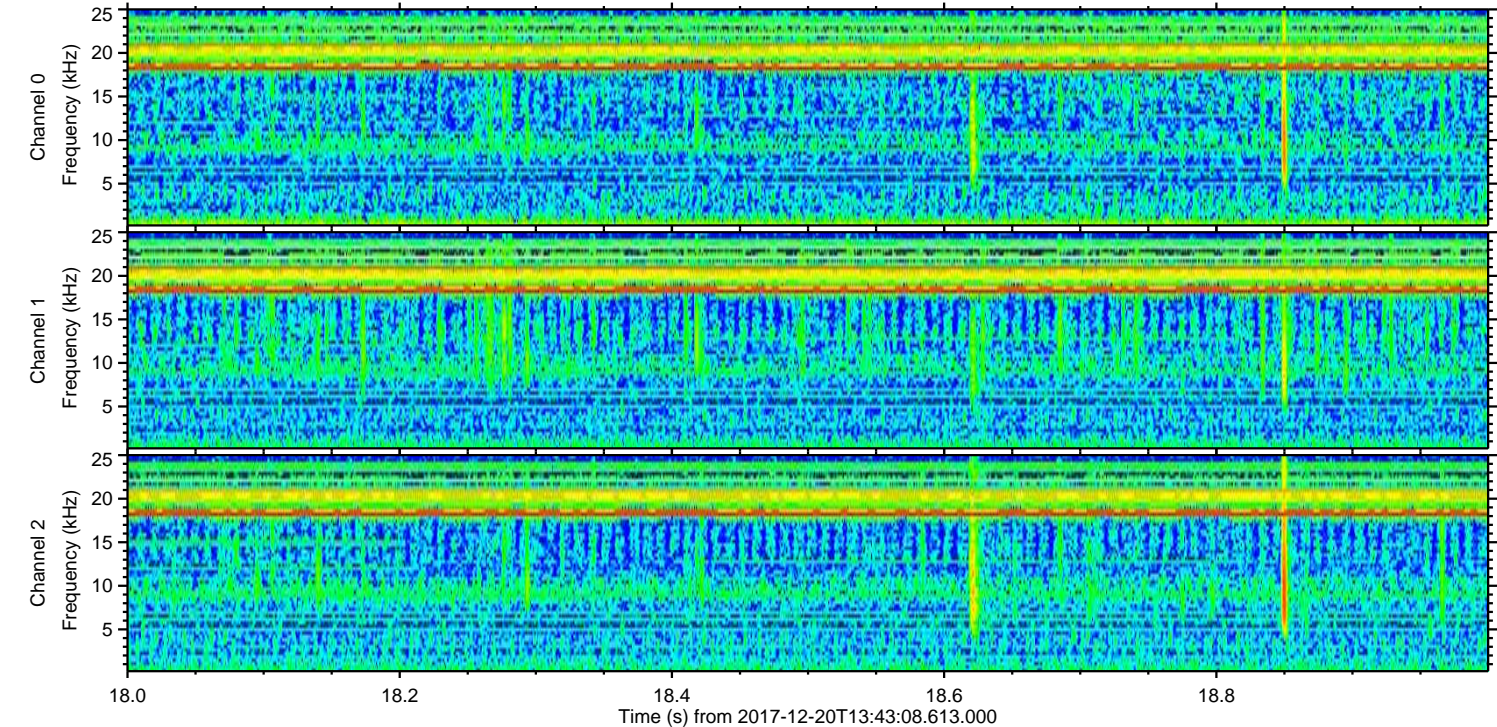
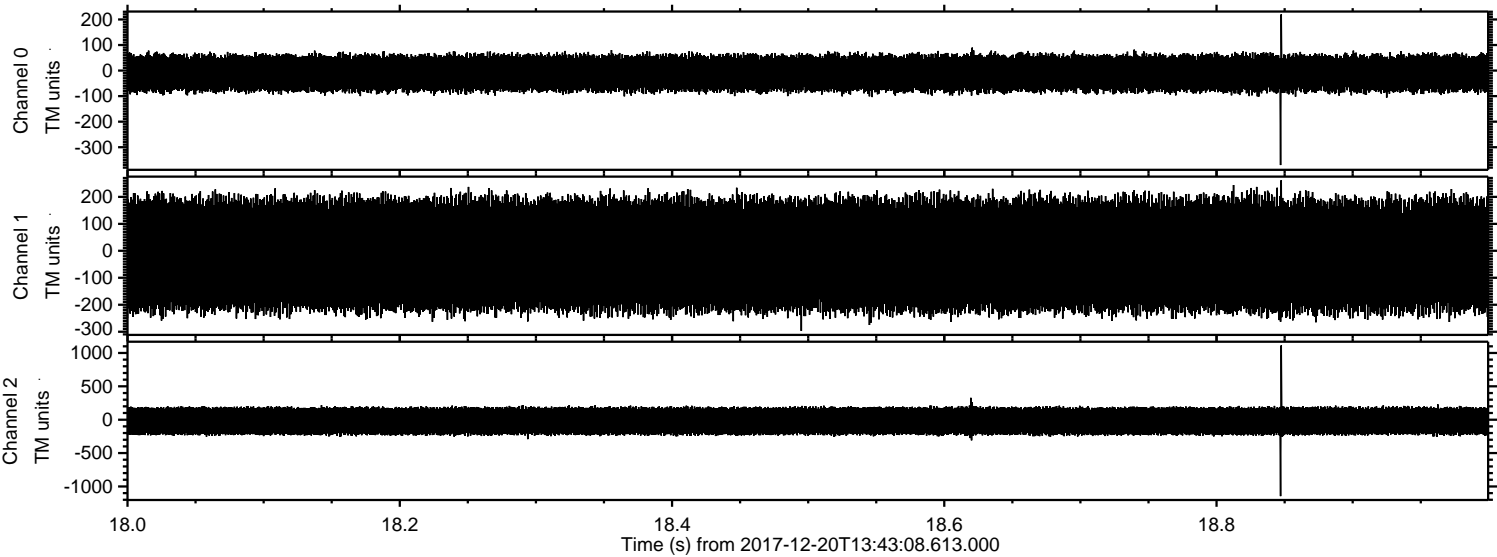
ELMAVAN 3D WAVEFORMS (Measured data sampled at 50 kHz) 51000 packets of 144 samples from 2017-12-20T13:43:08.613.000. Part 63/147

Processed Wed Dec 20 14:51:06 2017 by ELM ver.2012-10-06 from 001__elm20171220_134307__dat00.bin



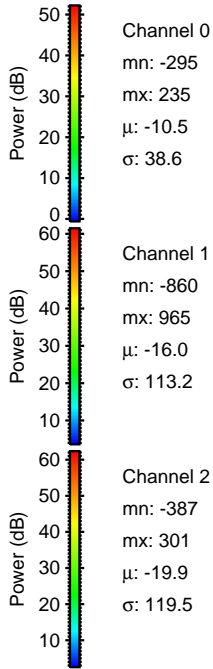
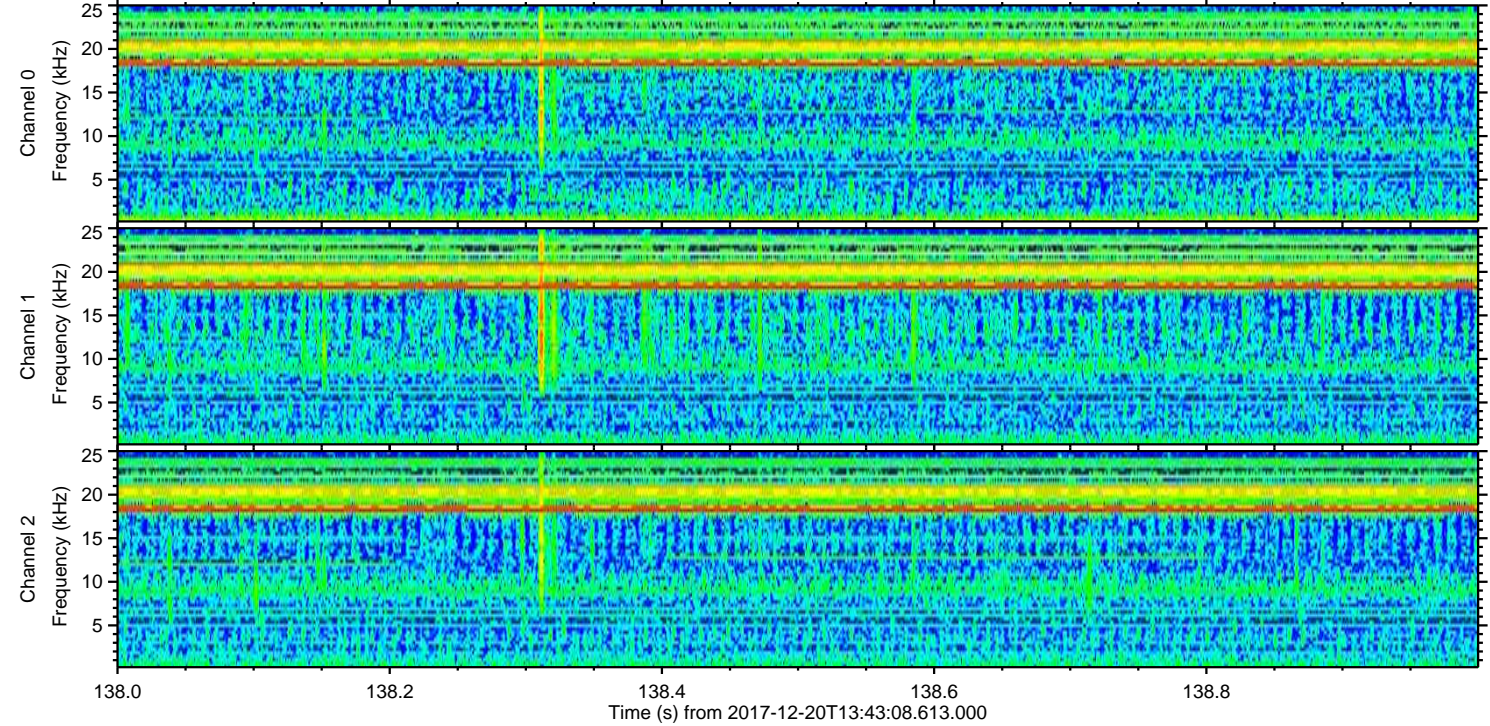
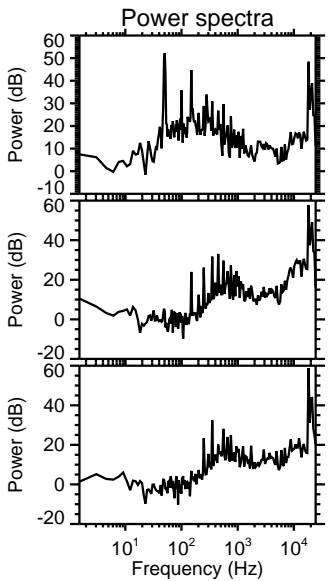
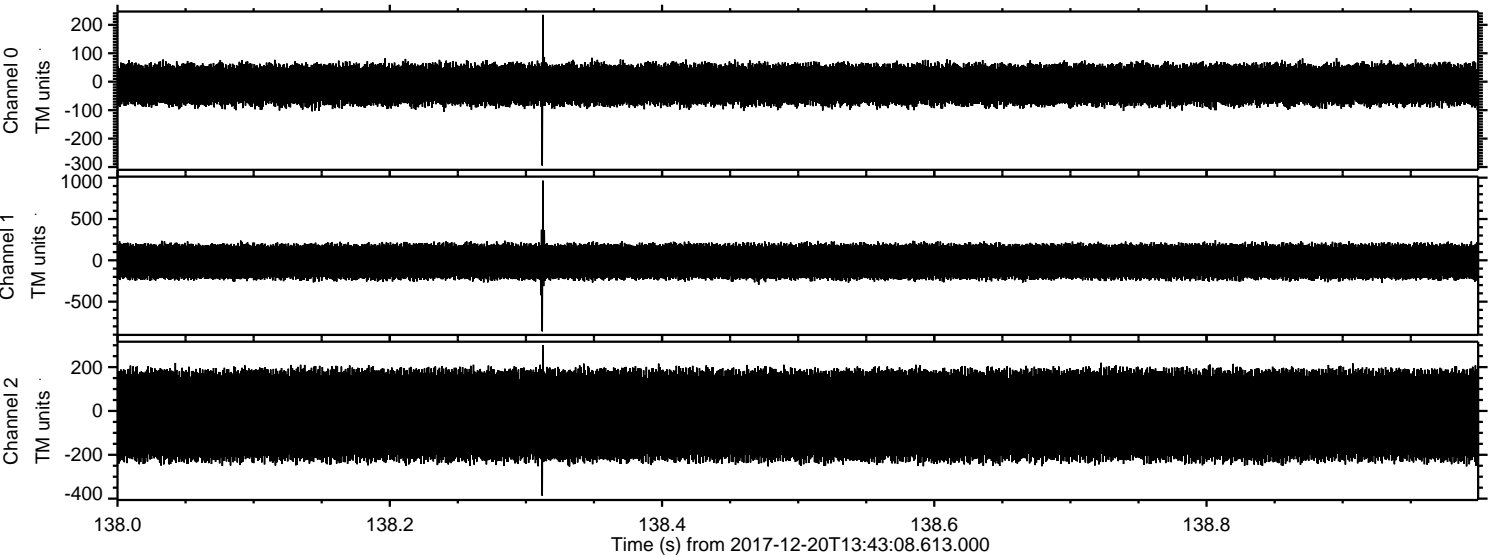
ELMAVAN 3D WAVEFORMS (Measured data sampled at 50 kHz) 51000 packets of 144 samples from 2017-12-20T13:43:08.613.000. Part 19/147

Processed Wed Dec 20 14:51:06 2017 by ELM ver.2012-10-06 from 001__elm20171220_134307__dat00.bin

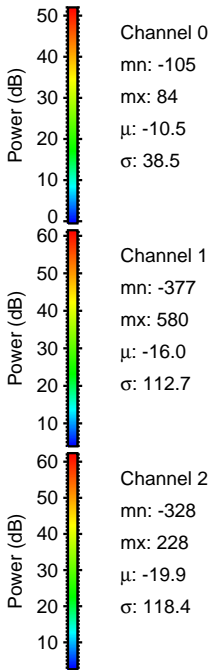
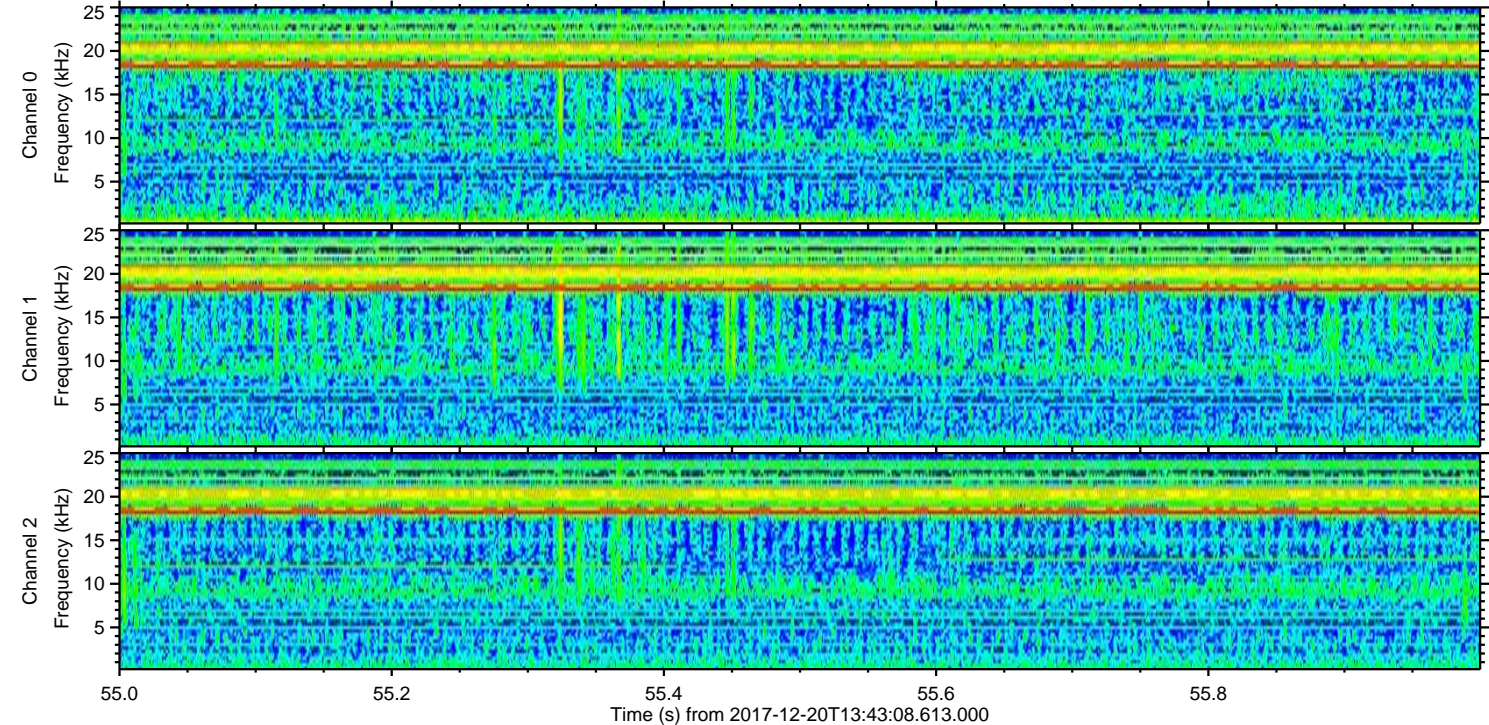
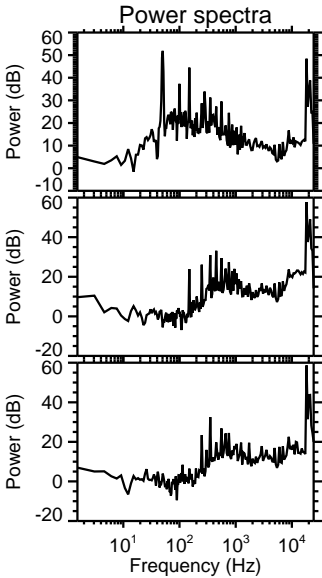
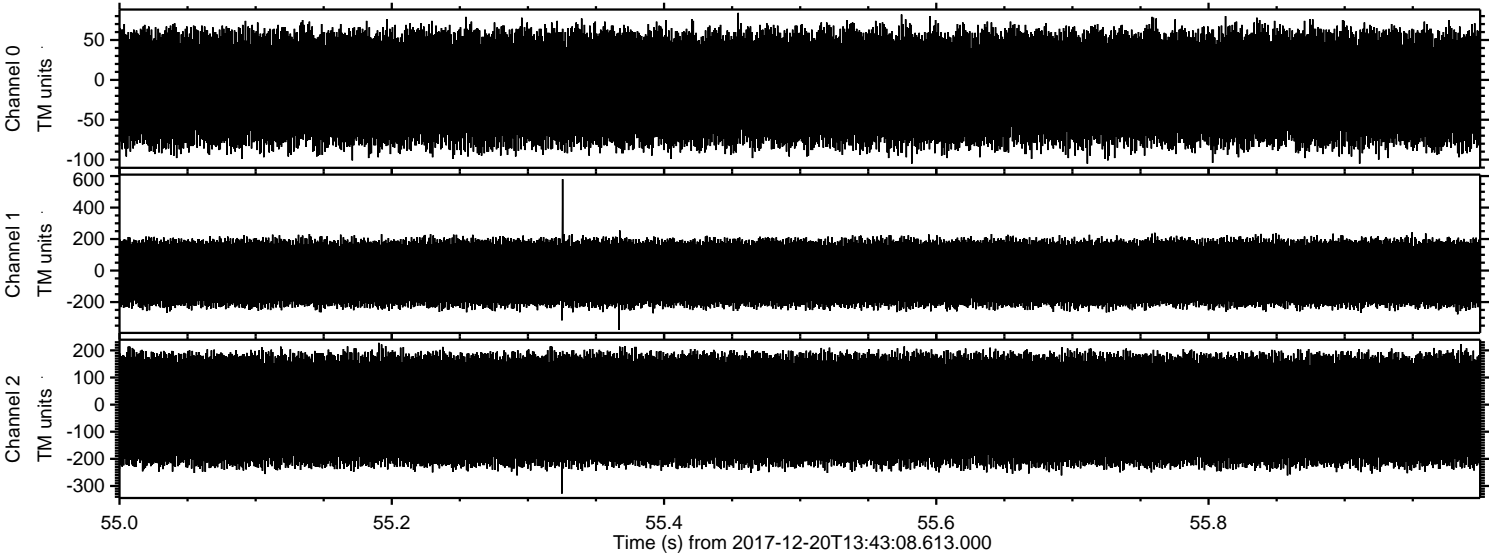


ELMAVAN 3D WAVEFORMS (Measured data sampled at 50 kHz) 51000 packets of 144 samples from 2017-12-20T13:43:08.613.000. Part 139/147

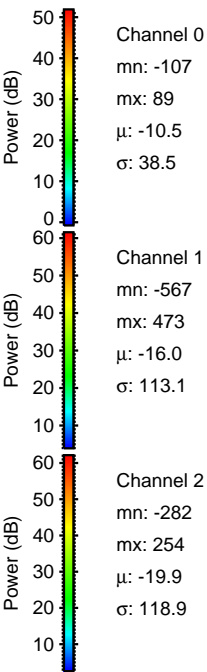
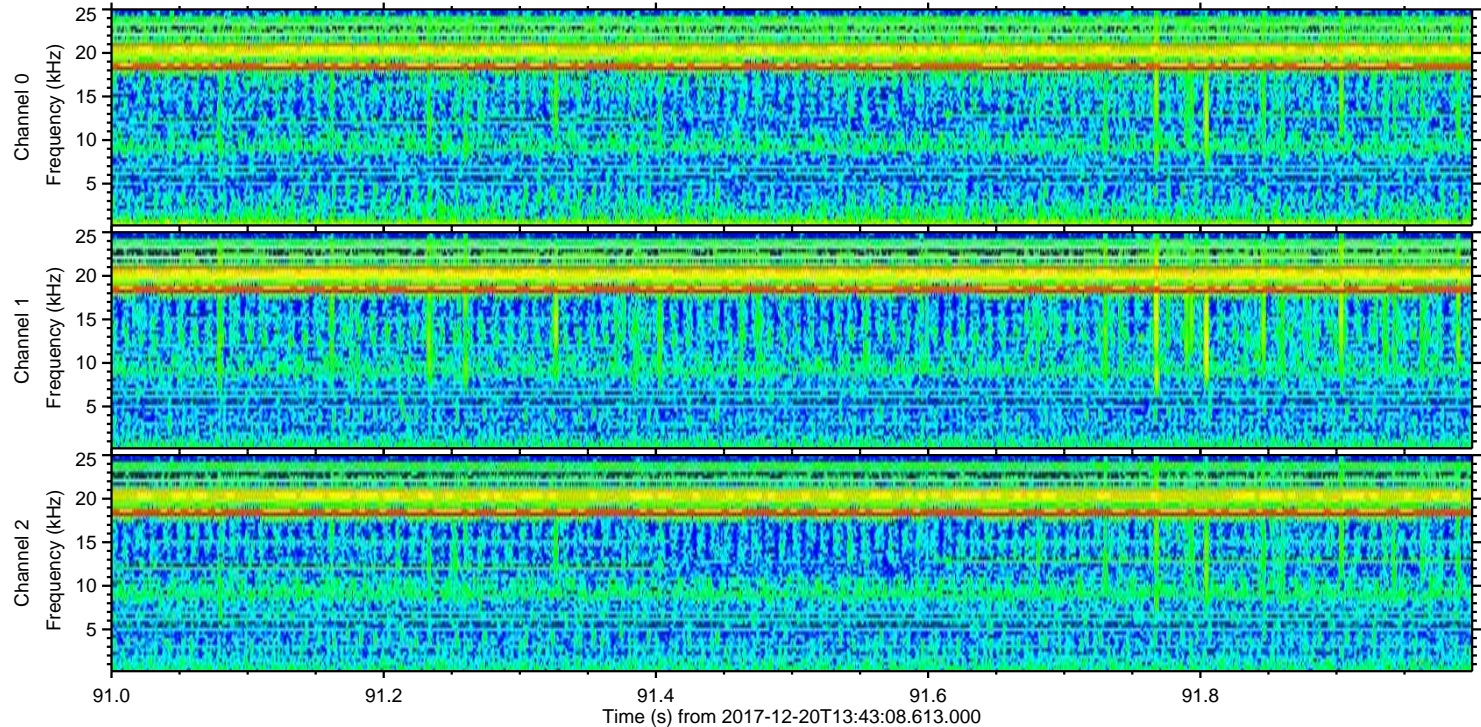
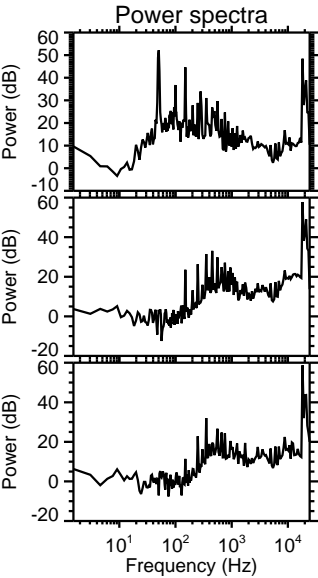
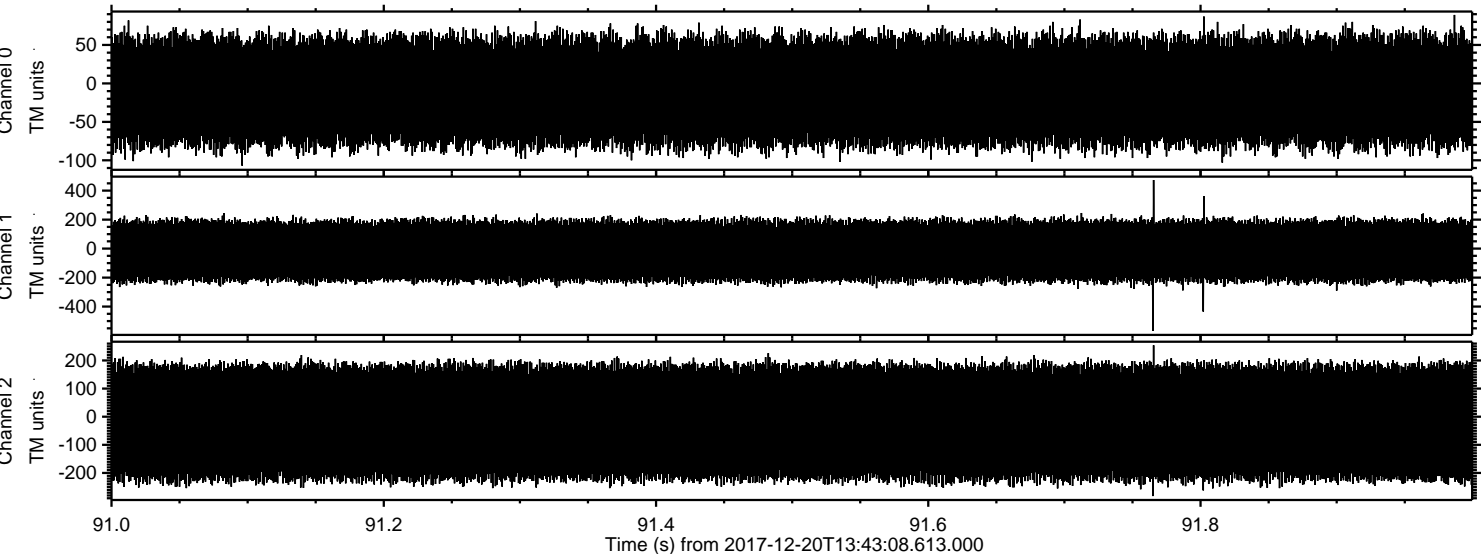
Processed Wed Dec 20 14:51:07 2017 by ELM ver.2012-10-06 from 001__elm20171220_134307__dat00.bin



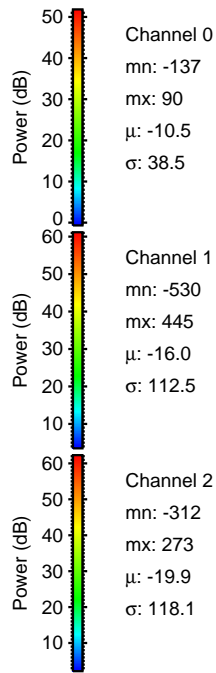
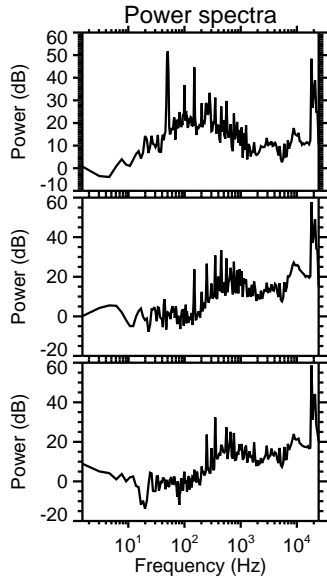
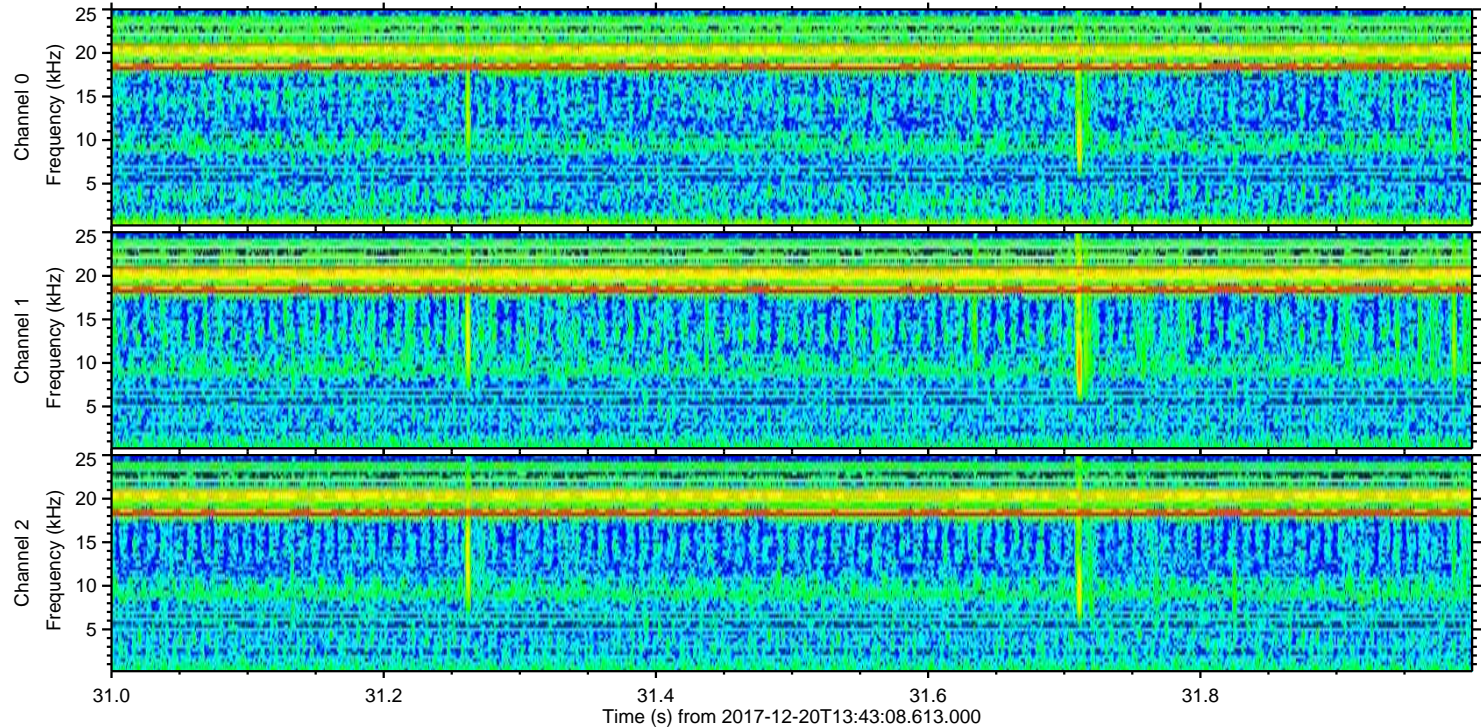
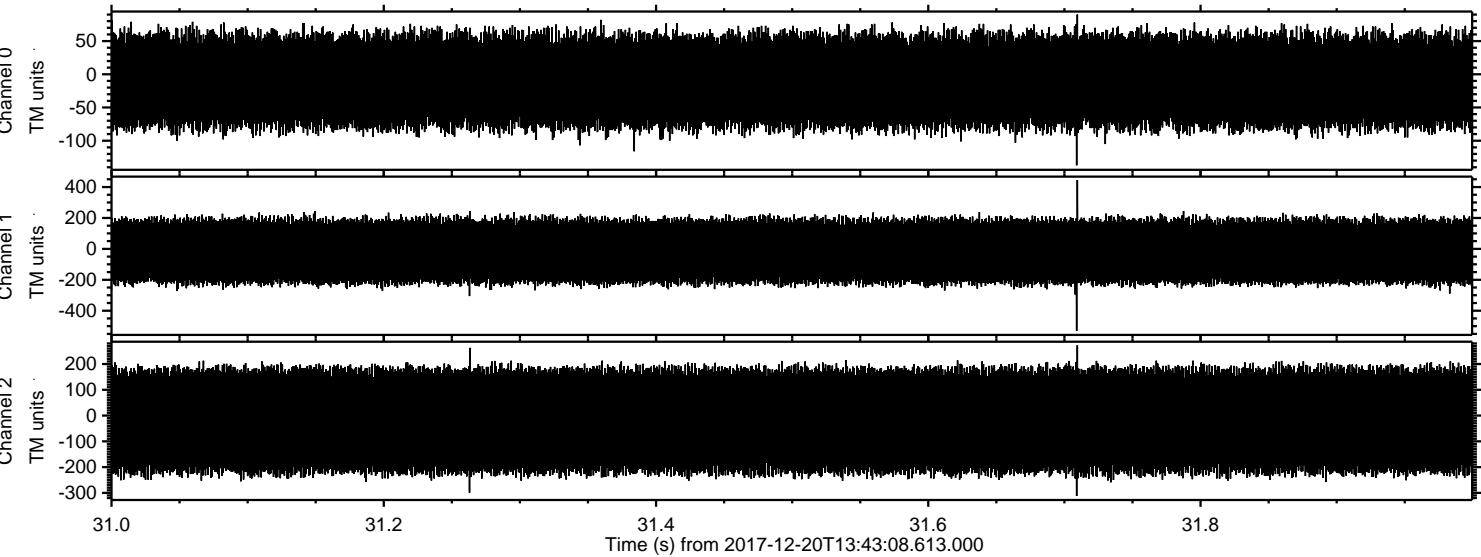
Processed Wed Dec 20 14:51:09 2017 by ELM ver.2012-10-06 from 001__elm20171220_134307__dat00.bin



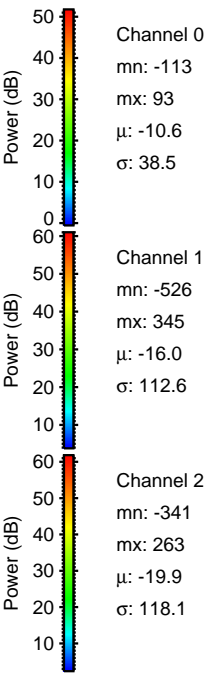
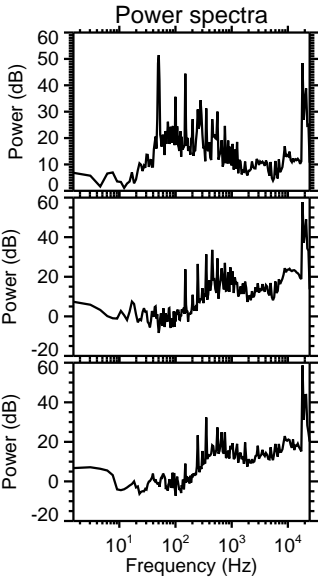
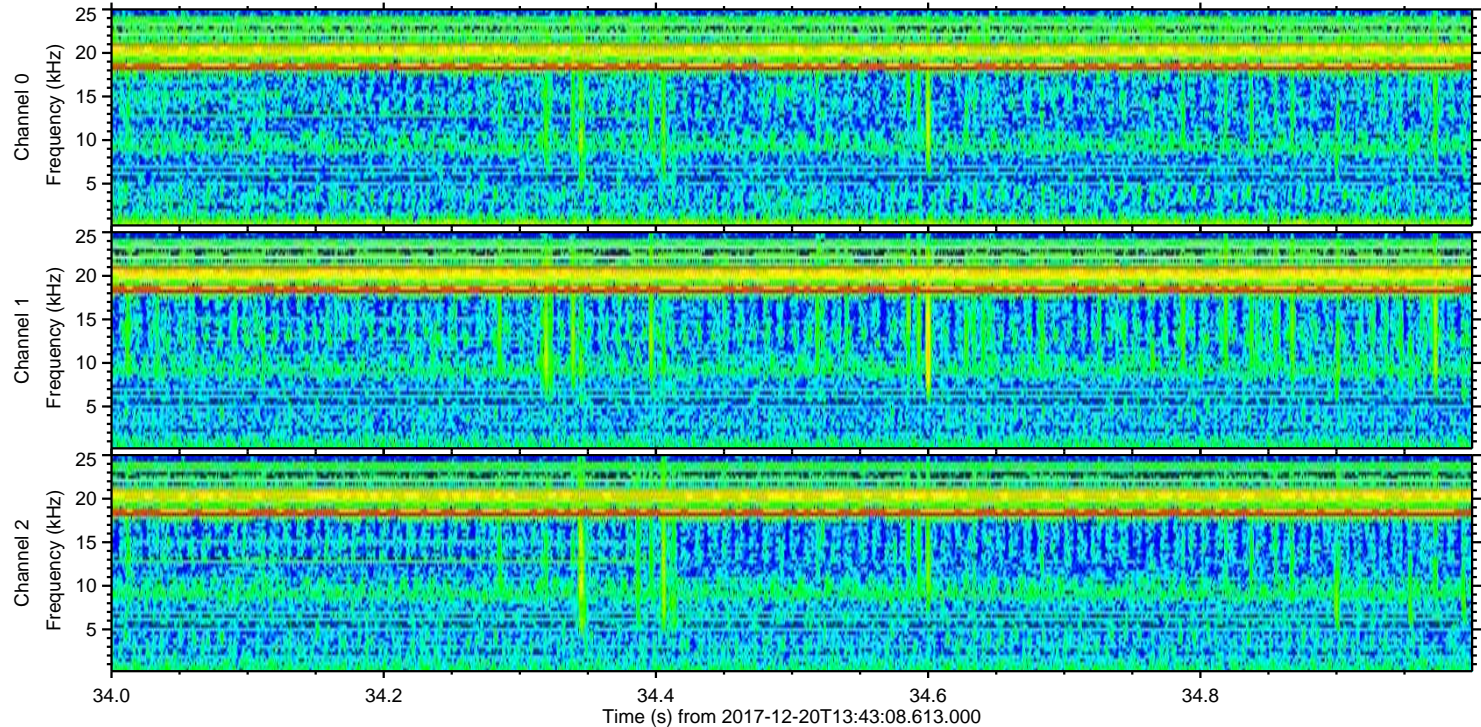
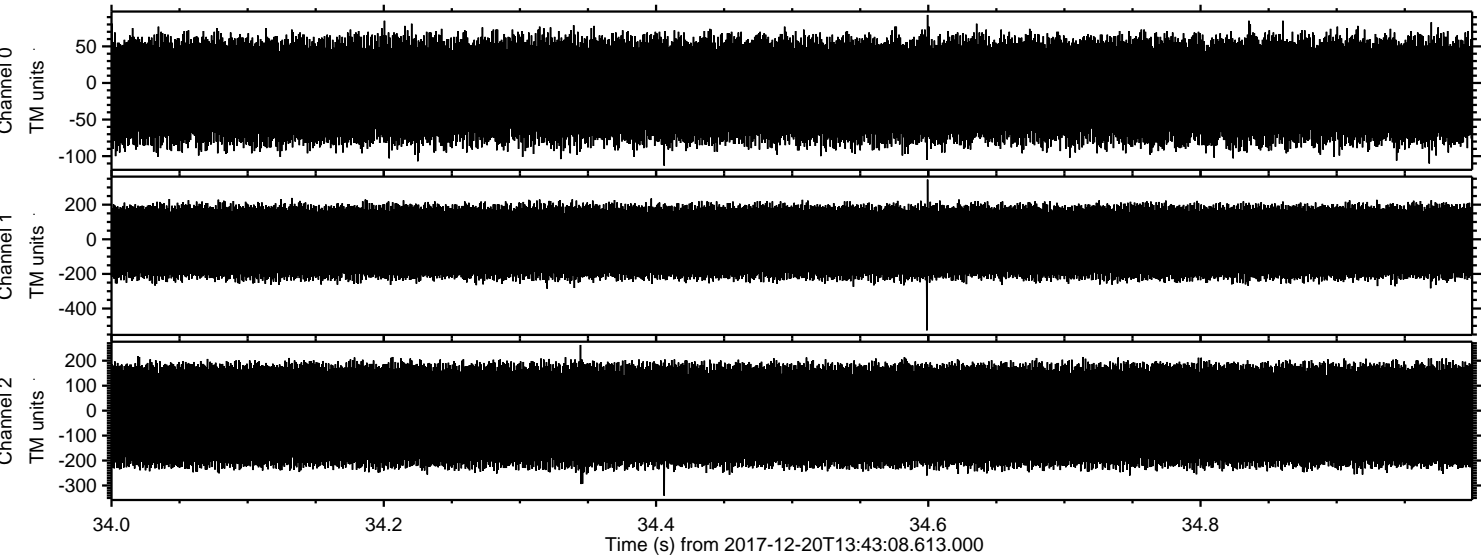
Processed Wed Dec 20 14:51:10 2017 by ELM ver.2012-10-06 from 001__elm20171220_134307__dat00.bin



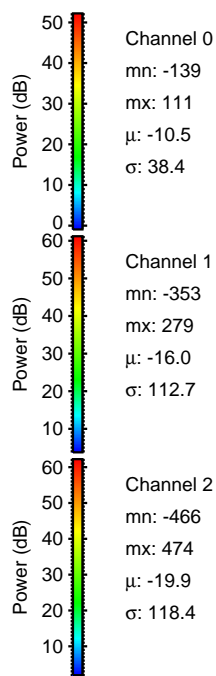
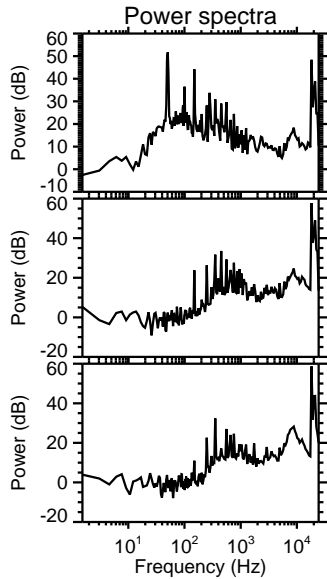
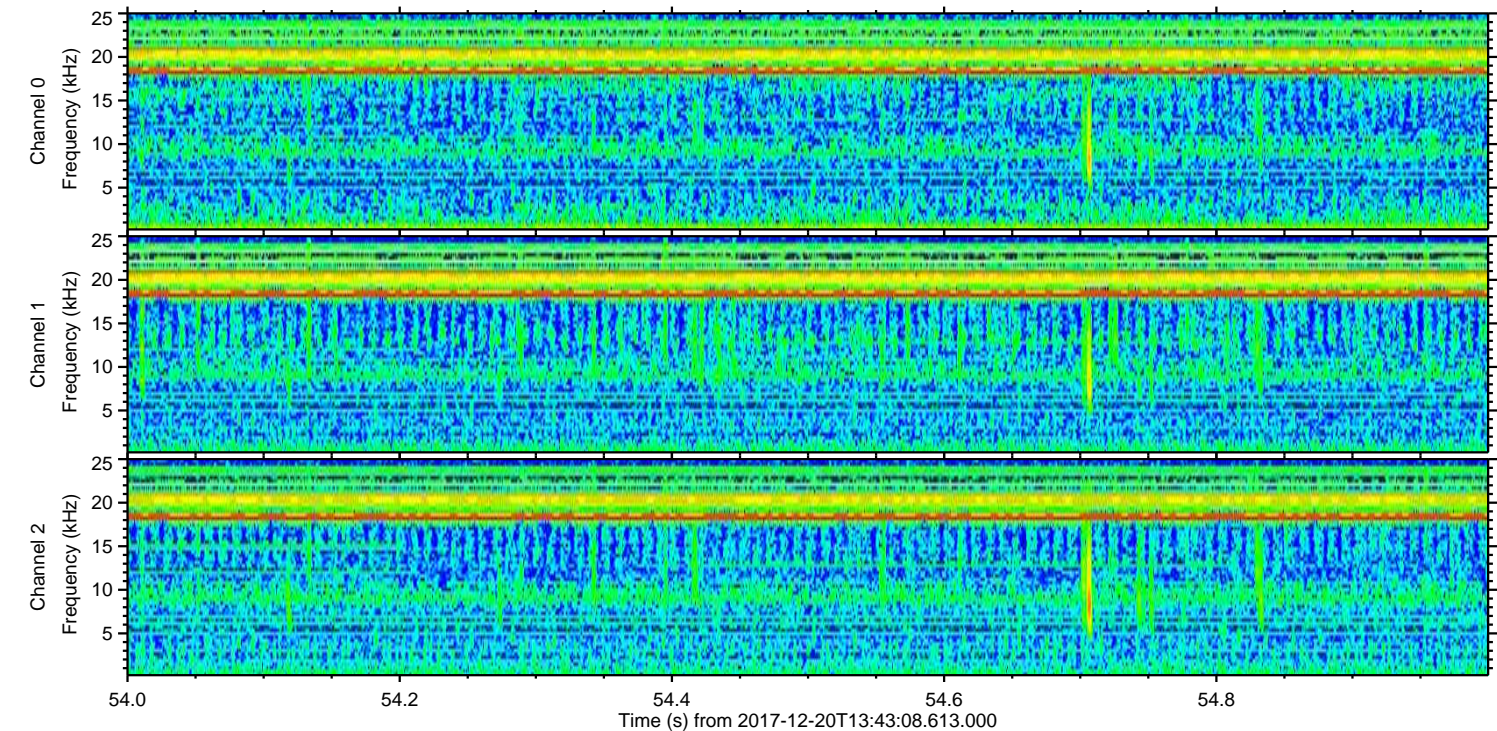
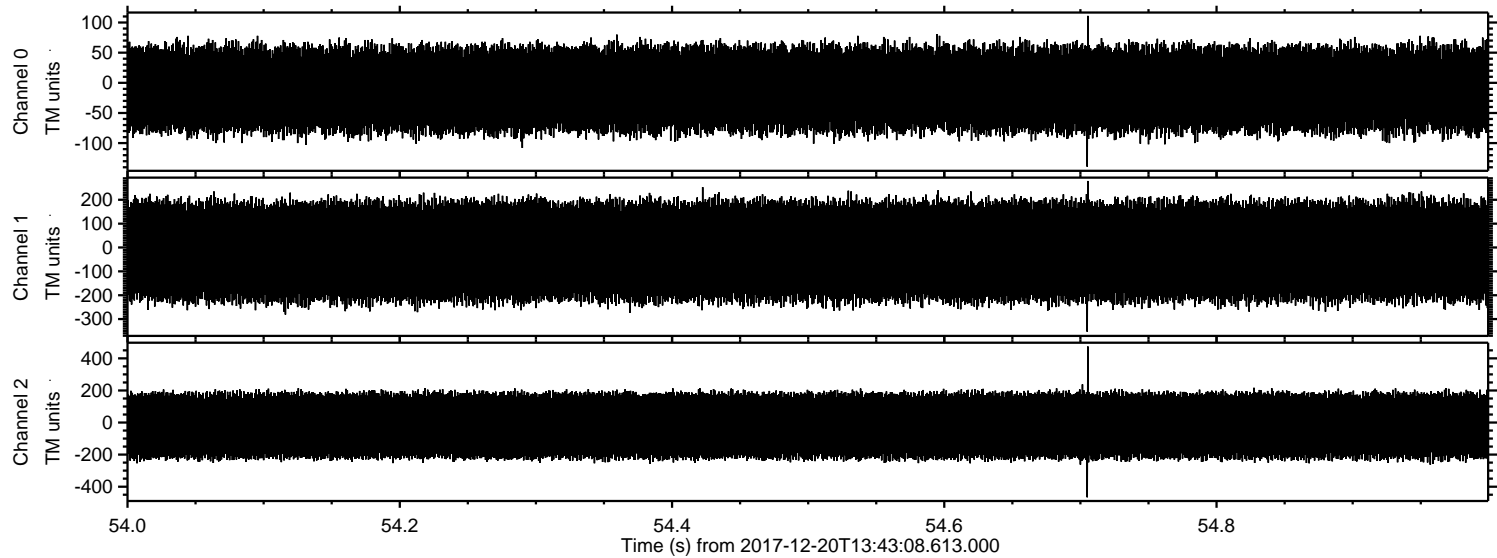
Processed Wed Dec 20 14:51:10 2017 by ELM ver.2012-10-06 from 001__elm20171220_134307__dat00.bin



Processed Wed Dec 20 14:51:11 2017 by ELM ver.2012-10-06 from 001_elm20171220_134307__dat00.bin



Processed Wed Dec 20 14:51:12 2017 by ELM ver.2012-10-06 from 001__elm20171220_134307__dat00.bin

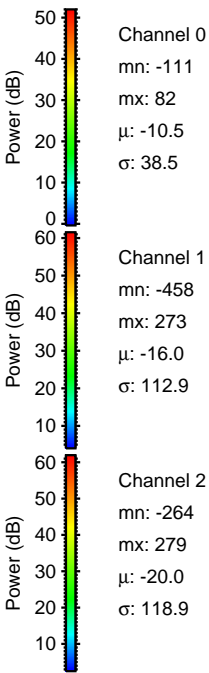
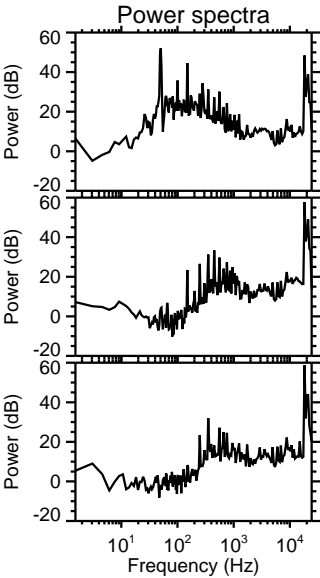
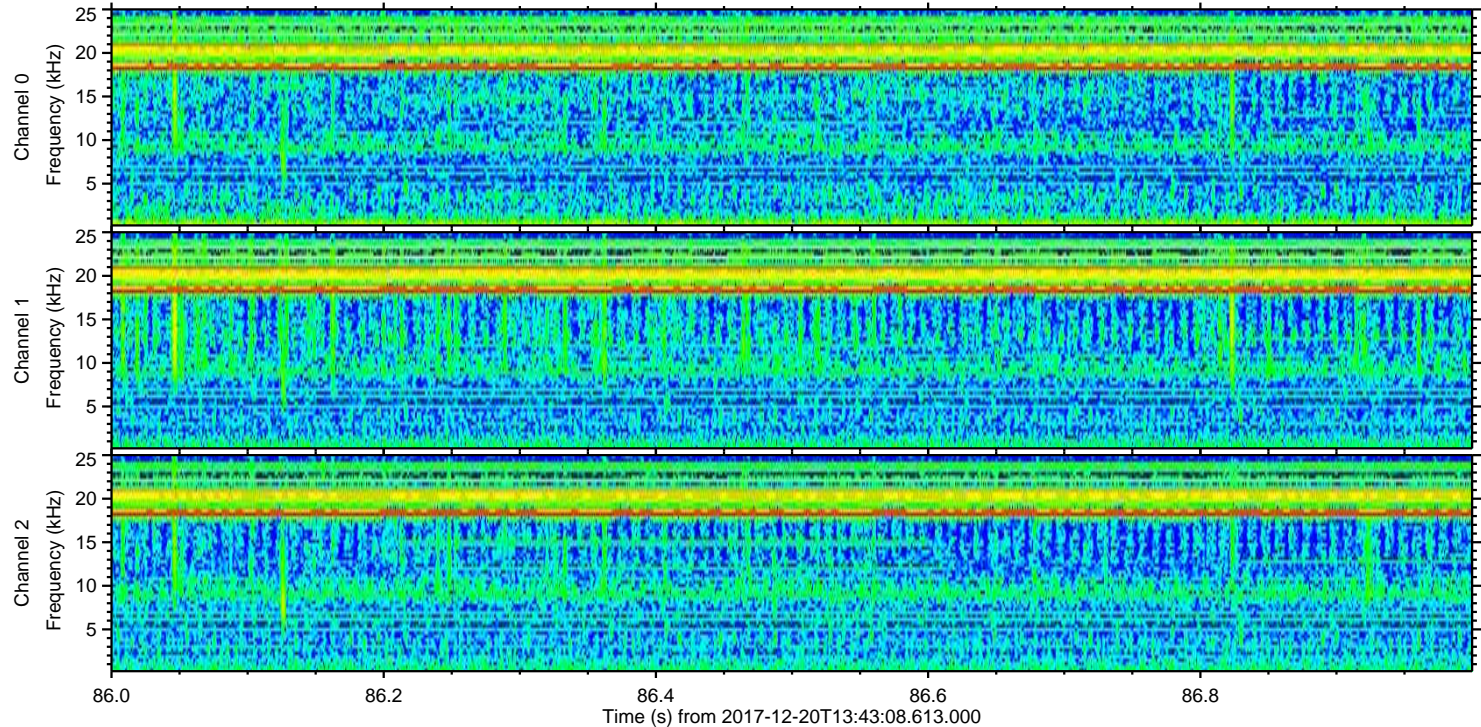
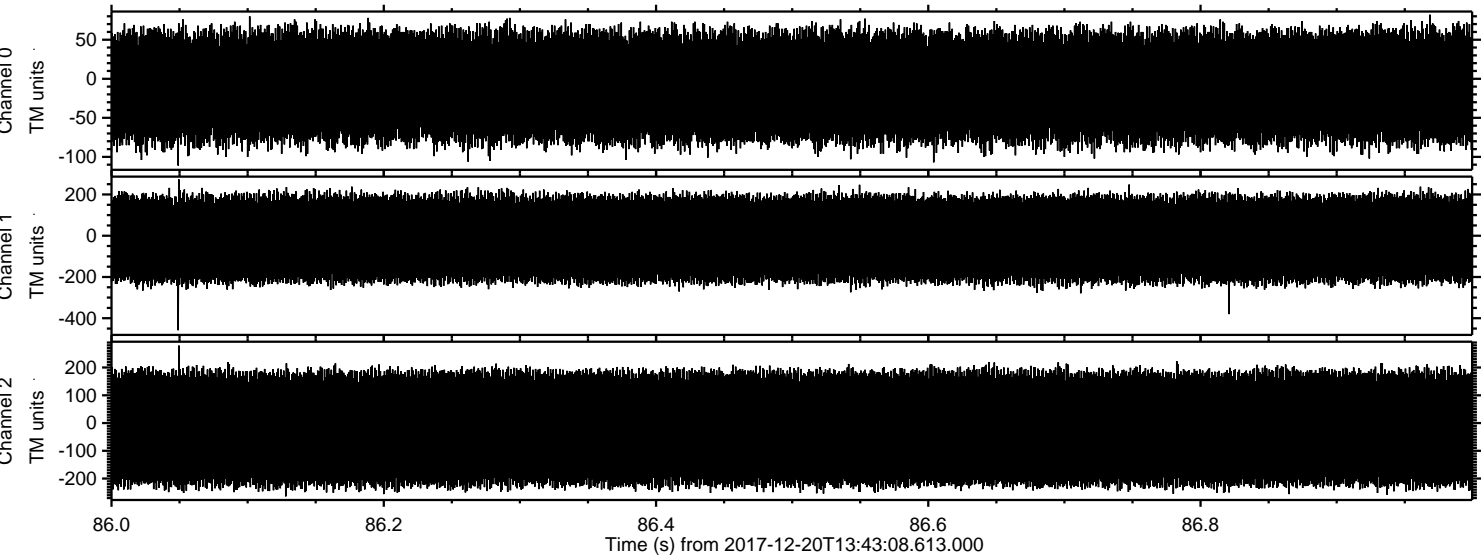


Channel 0
mn: -139
mx: 111
 μ : -10.5
 σ : 38.4

Channel 1
mn: -353
mx: 279
 μ : -16.0
 σ : 112.7

Channel 2
mn: -466
mx: 474
 μ : -19.9
 σ : 118.4

Processed Wed Dec 20 14:51:13 2017 by ELM ver.2012-10-06 from 001__elm20171220_134307__dat000.bin



Processed Wed Dec 20 14:51:14 2017 by ELM ver.2012-10-06 from 001__elm20171220_134307__dat00.bin

