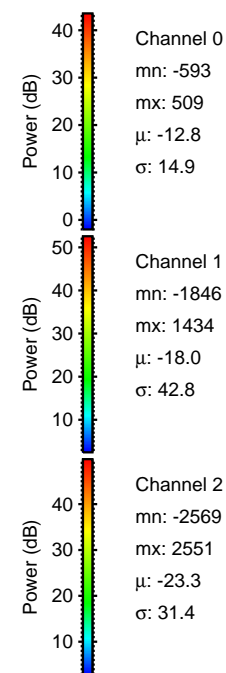
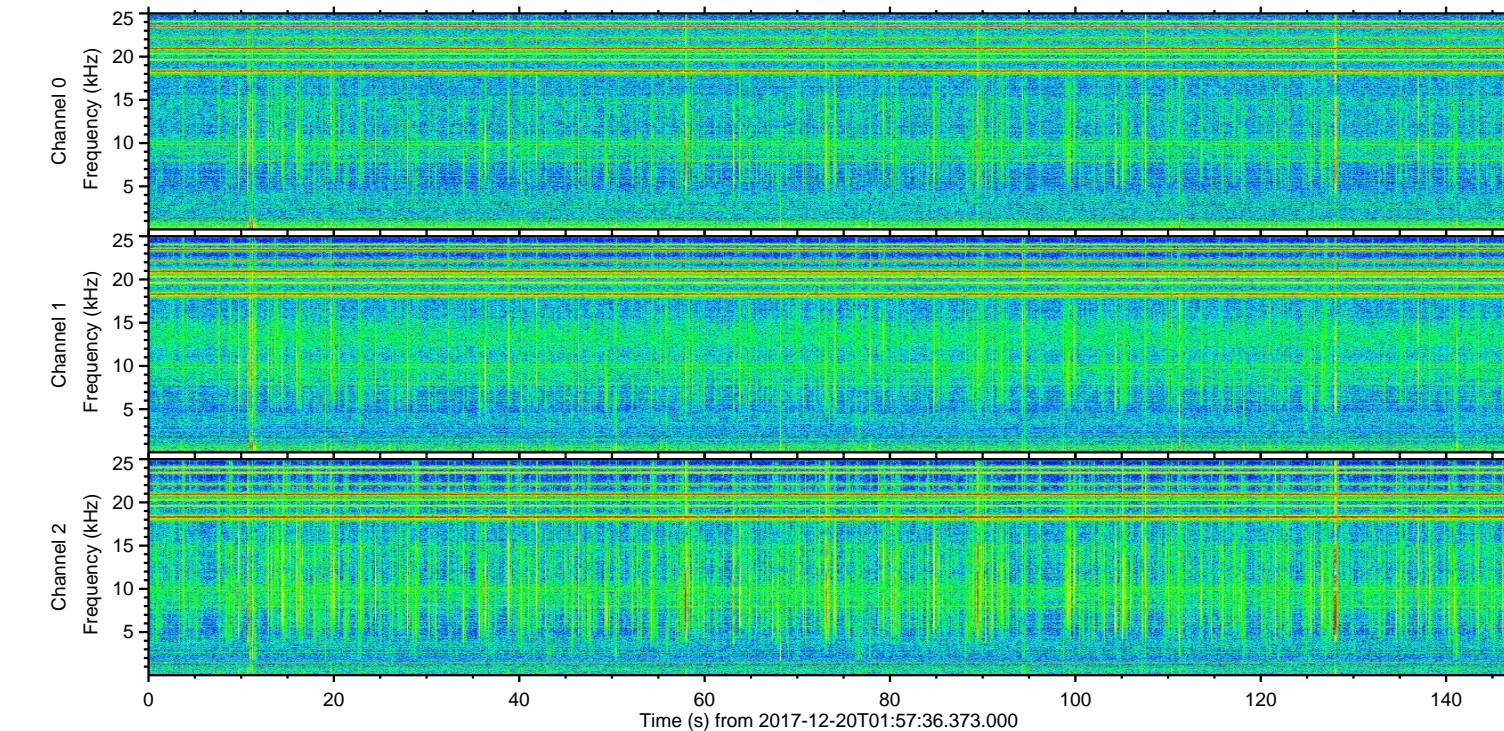
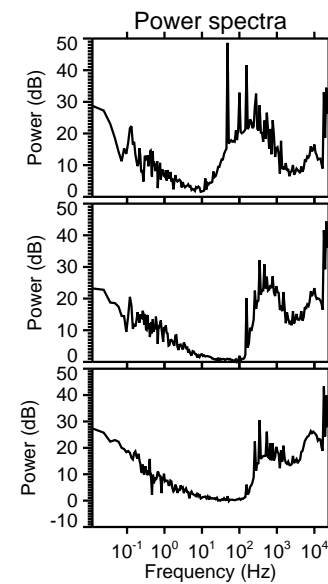
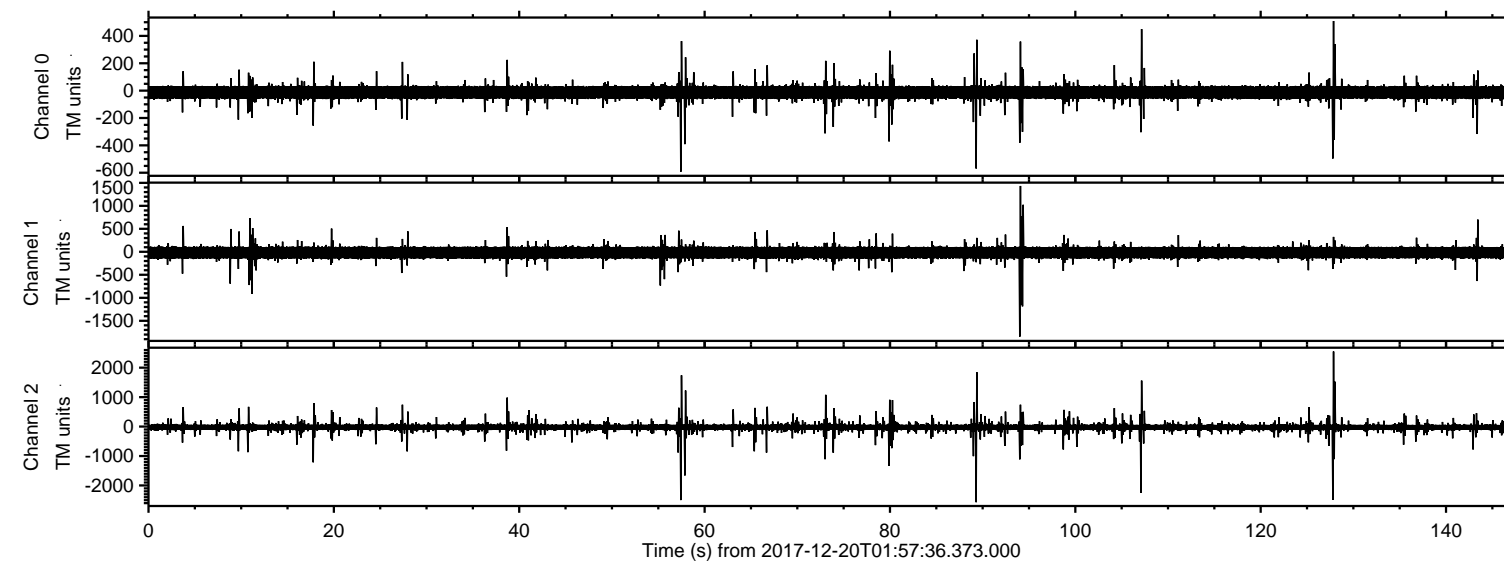
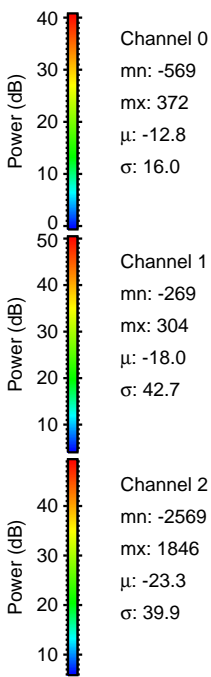
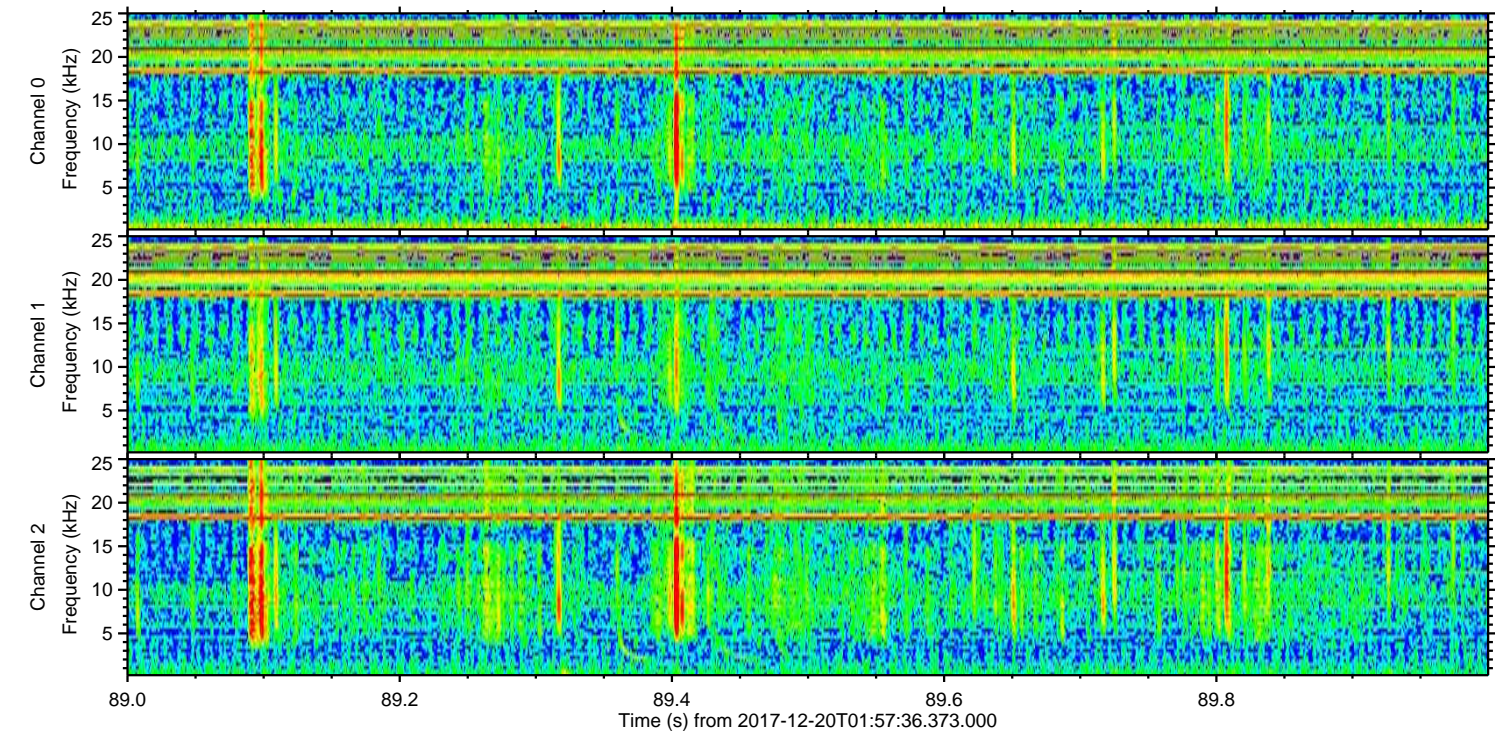
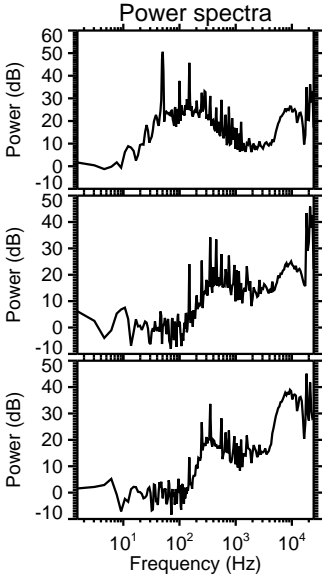
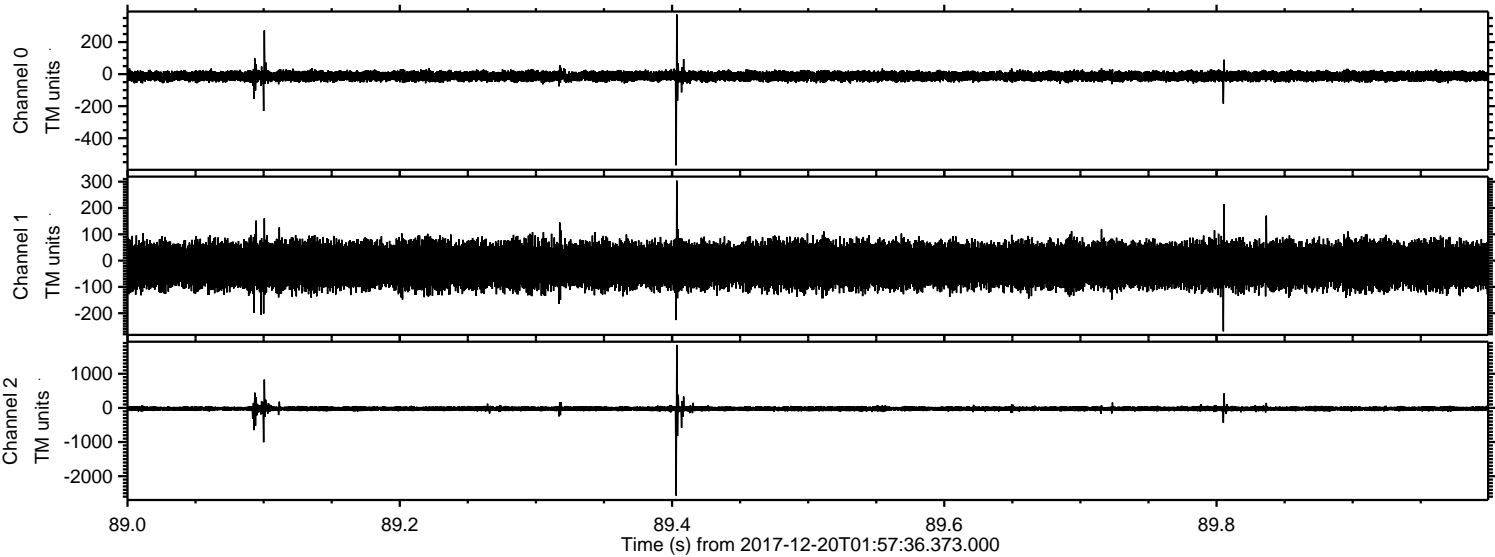


ELMAVAN 3D WAVEFORMS (Measured data sampled at 50 kHz) 51000 packets of 144 samples from 2017-12-20T01:57:36.373.000.

Processed Wed Dec 20 03:06:11 2017 by ELM ver.2012-10-06 from 001__elm20171220_015735__dat00.bin

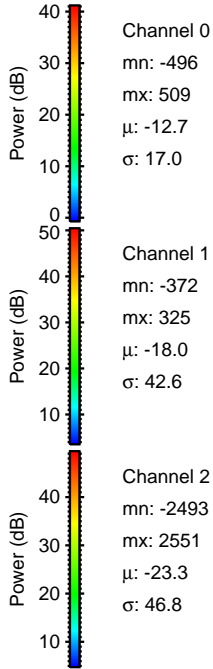
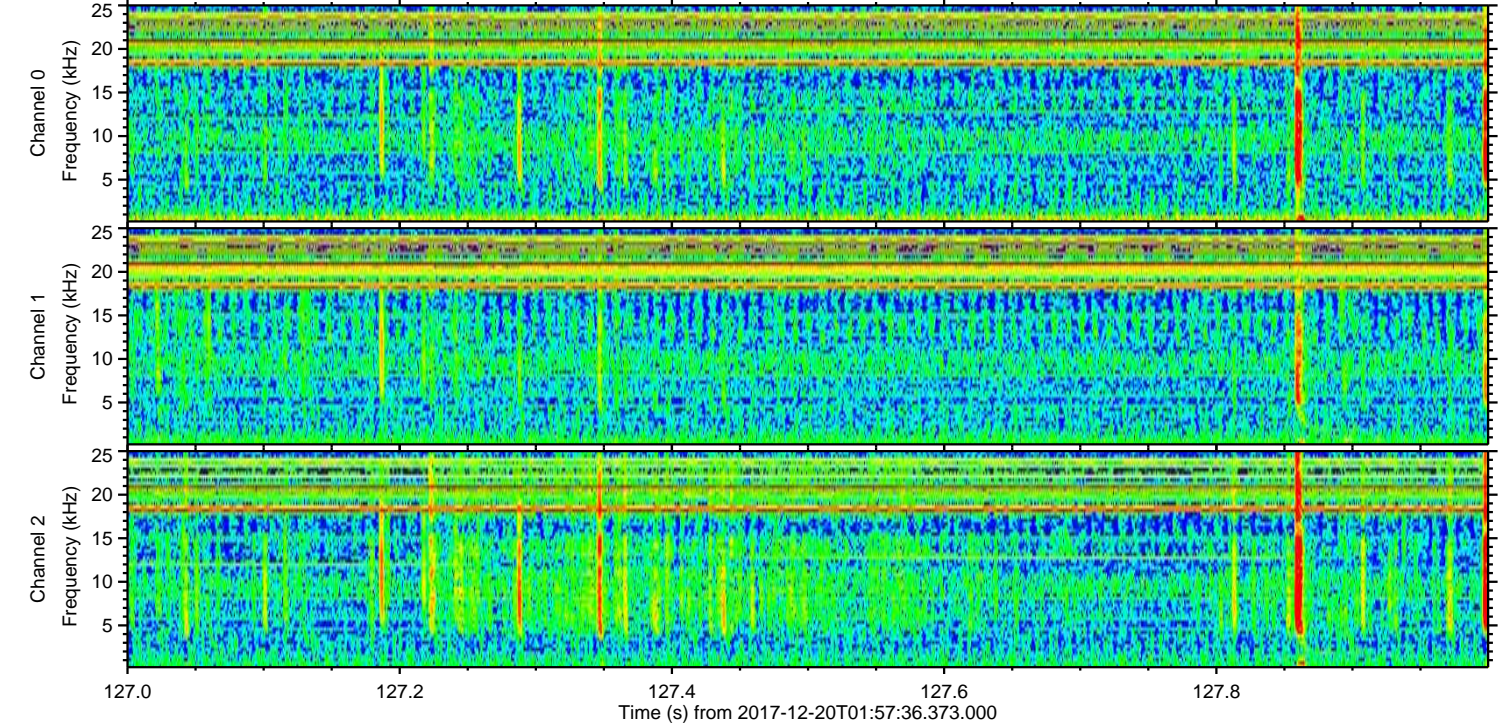
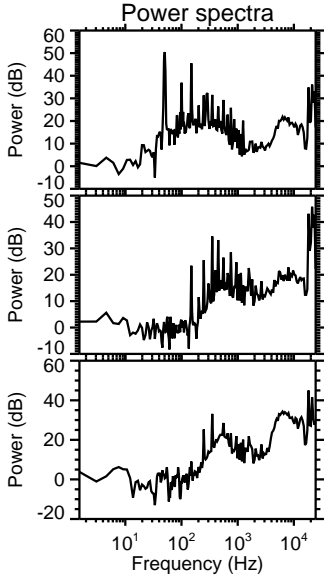
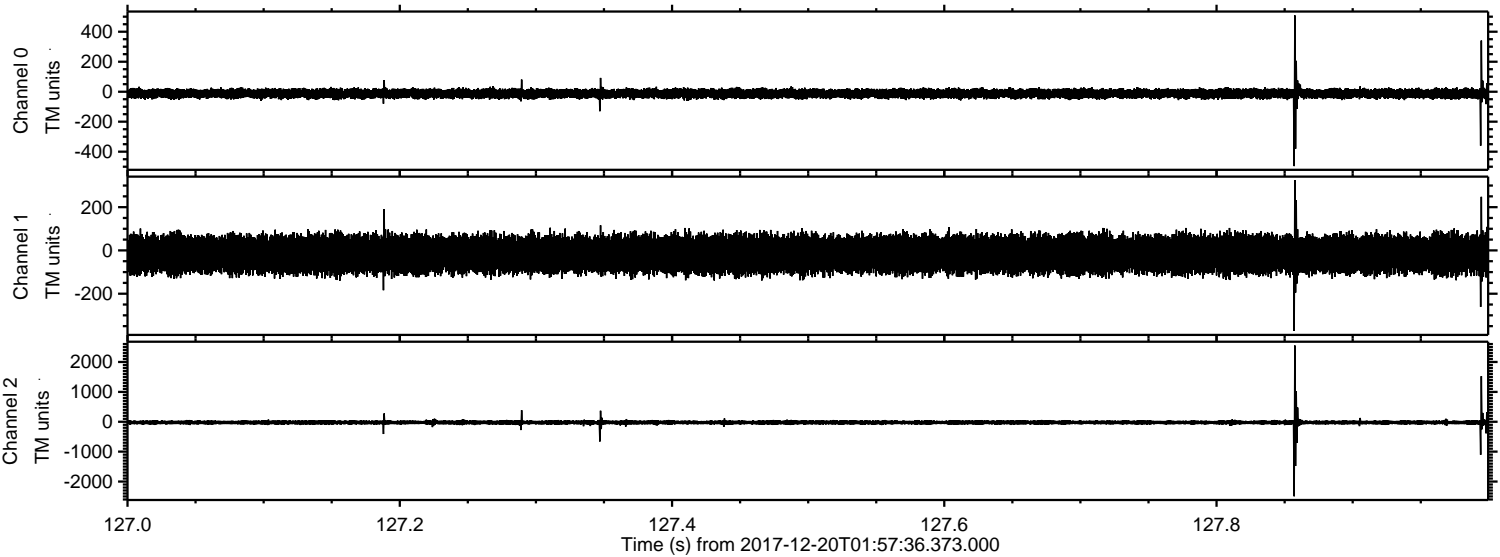


Processed Wed Dec 20 03:06:19 2017 by ELM ver.2012-10-06 from 001__elm20171220_015735__dat00.bin

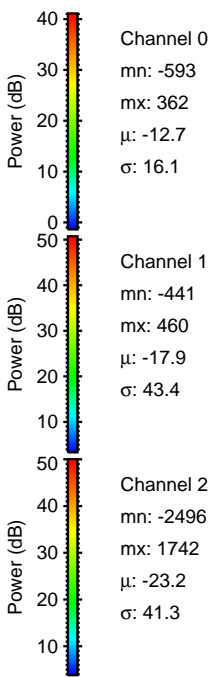
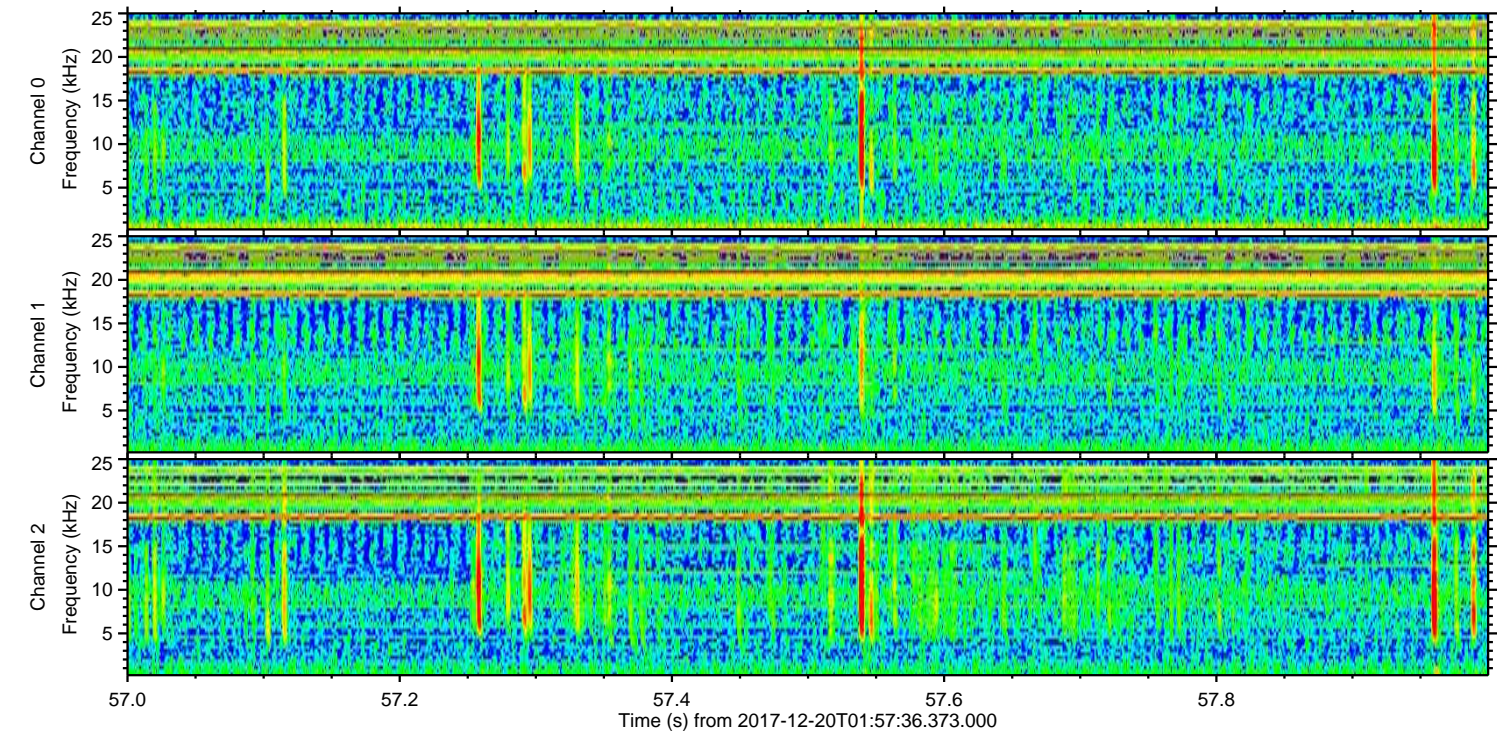
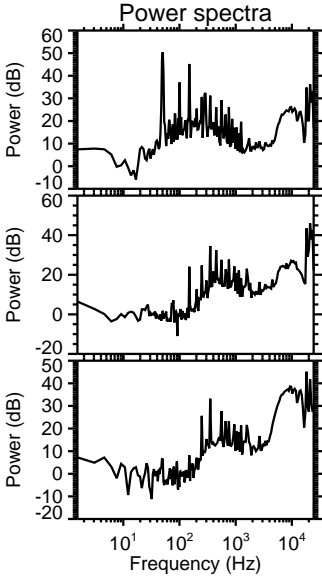
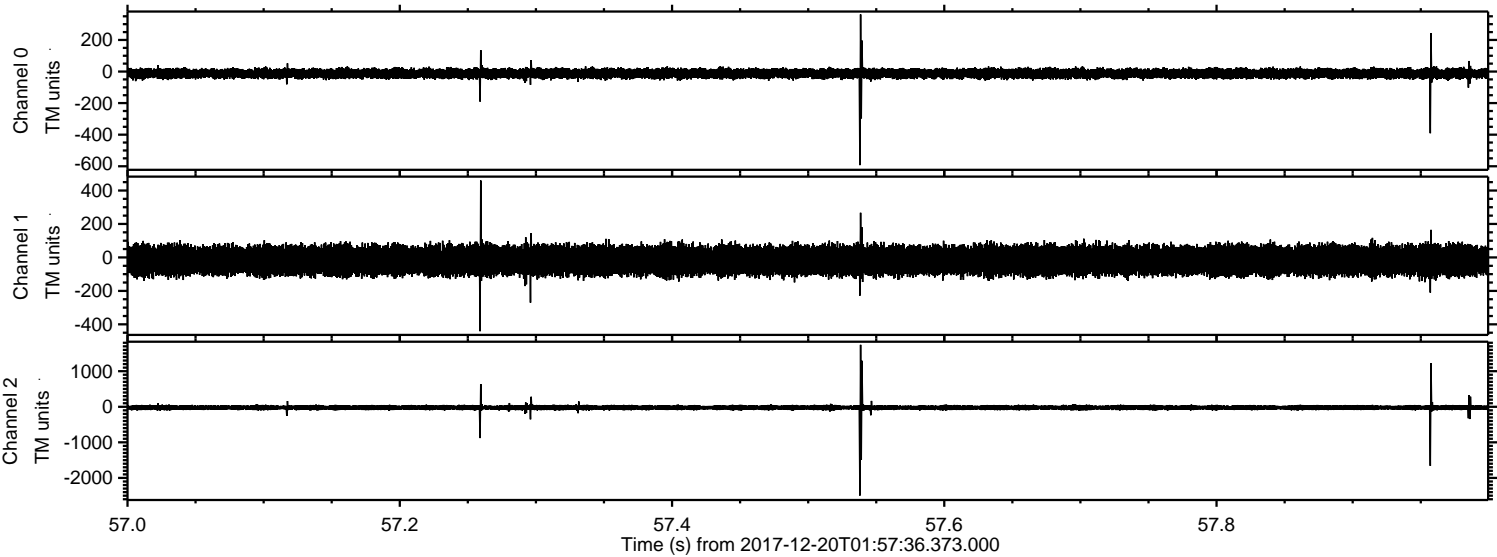


ELMAVAN 3D WAVEFORMS (Measured data sampled at 50 kHz) 51000 packets of 144 samples from 2017-12-20T01:57:36.373.000. Part 128/147

Processed Wed Dec 20 03:06:20 2017 by ELM ver.2012-10-06 from 001__elm20171220_015735__dat00.bin

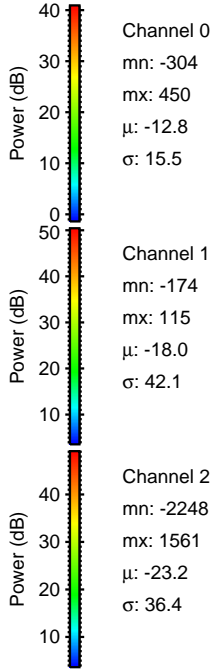
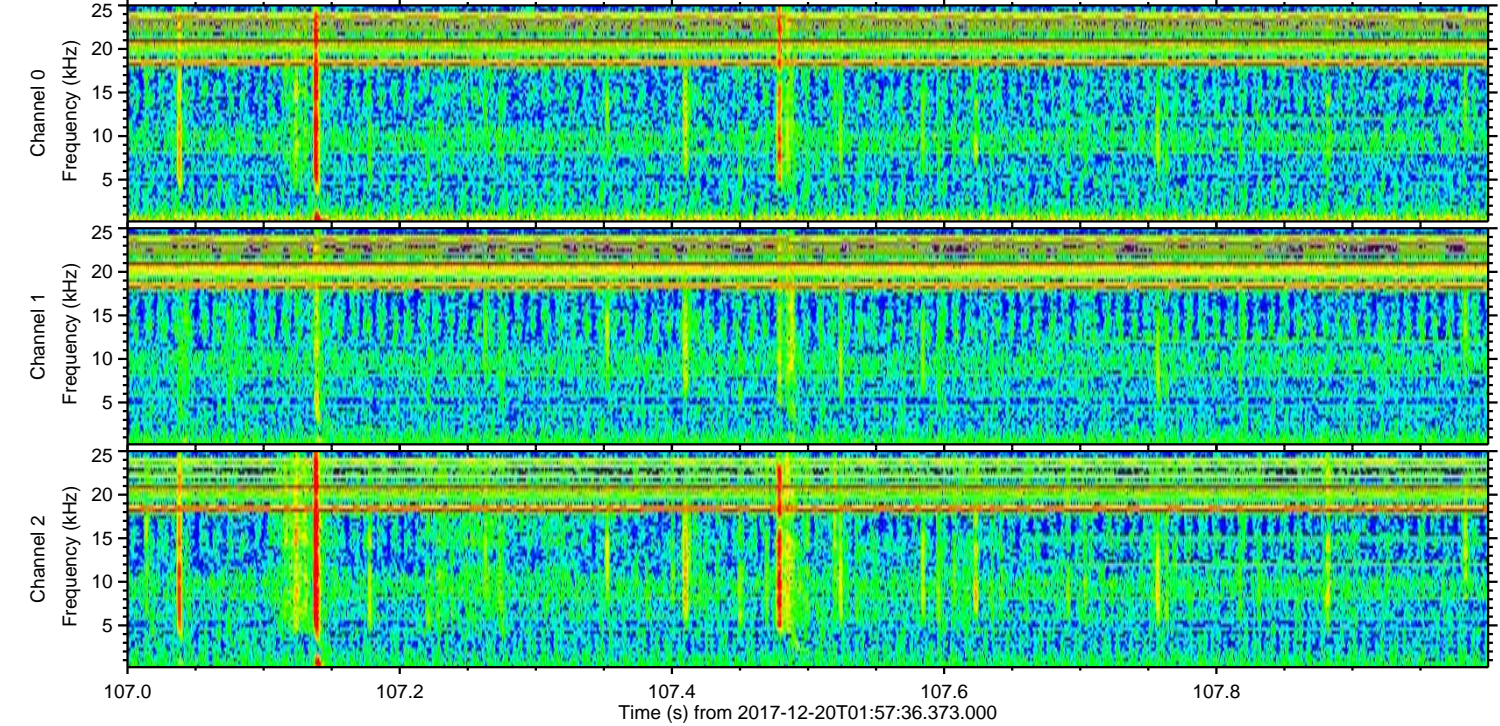
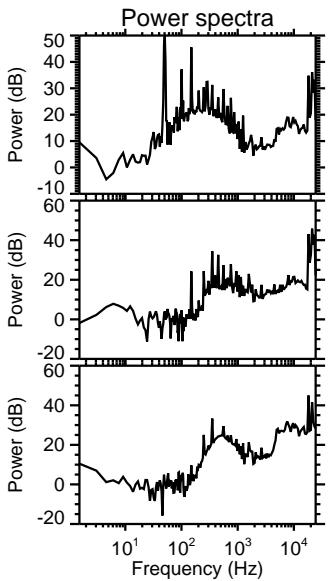
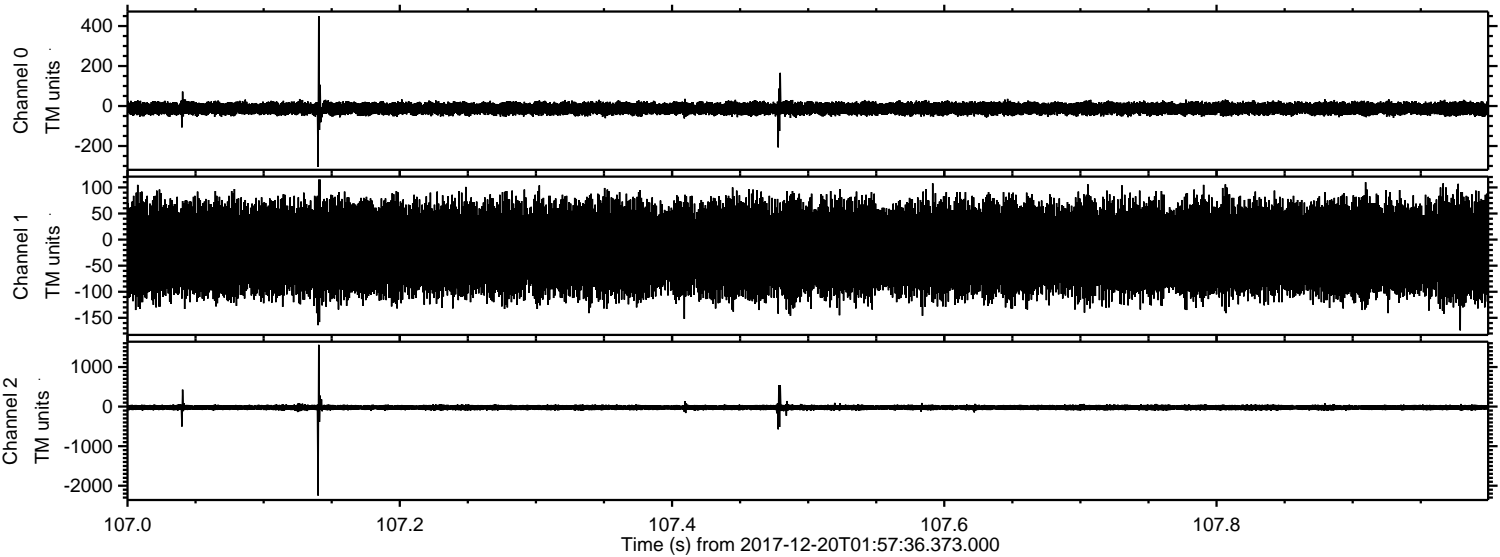


Processed Wed Dec 20 03:06:20 2017 by ELM ver.2012-10-06 from 001__elm20171220_015735__dat00.bin

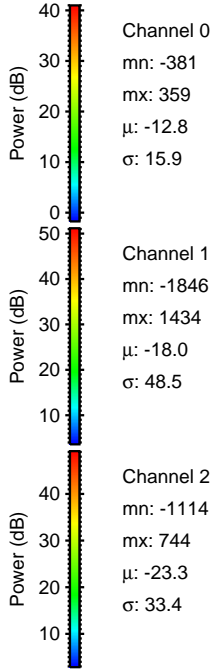
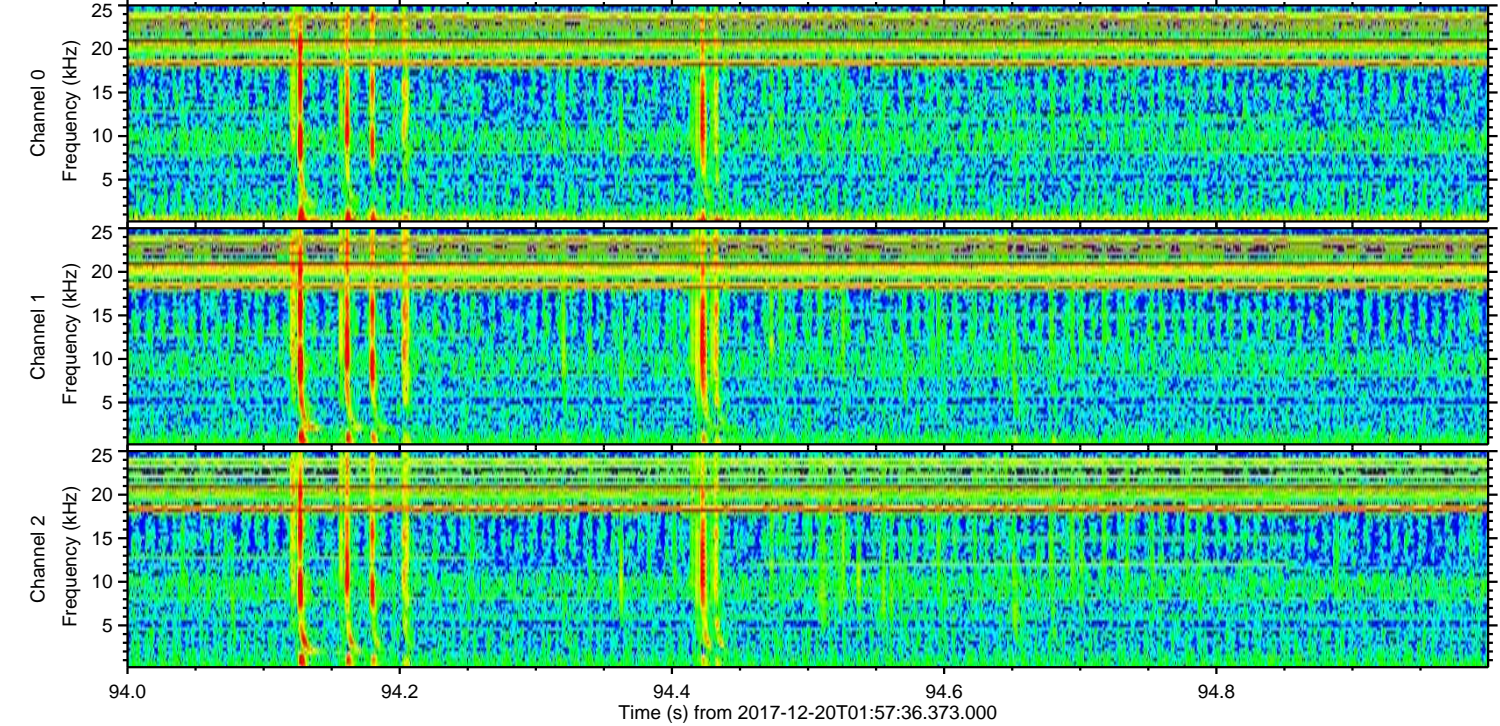
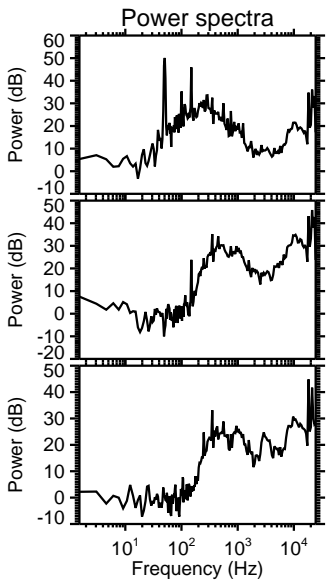
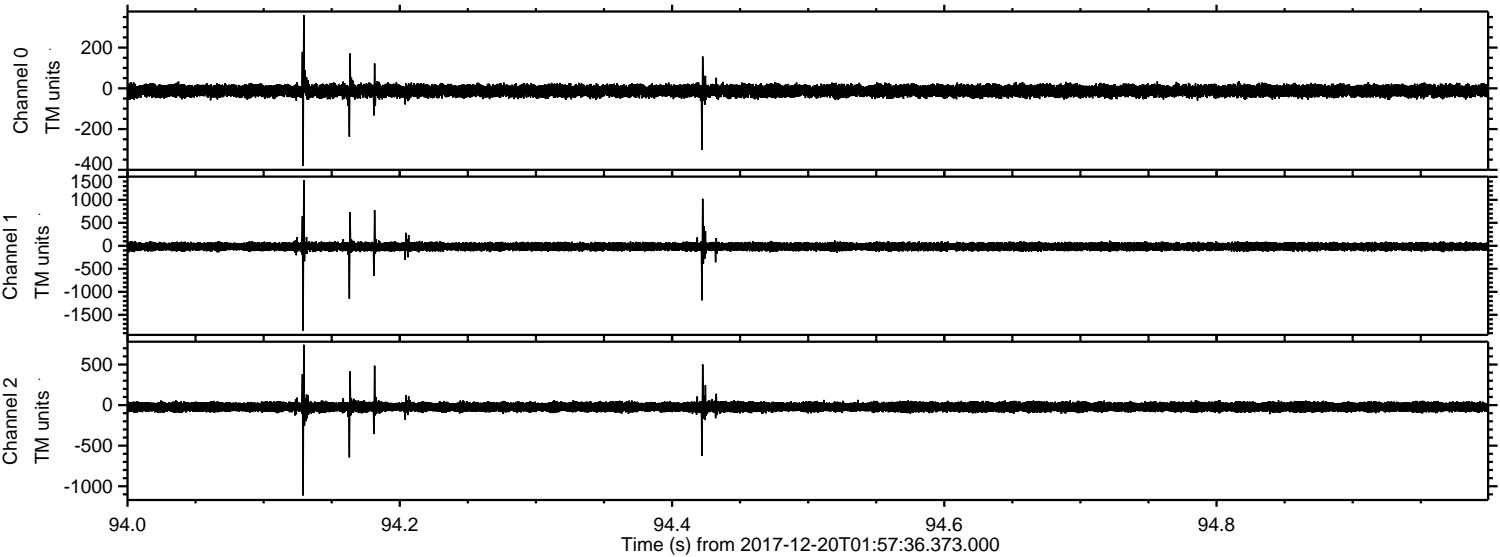


ELMAVAN 3D WAVEFORMS (Measured data sampled at 50 kHz) 51000 packets of 144 samples from 2017-12-20T01:57:36.373.000. Part 108/147

Processed Wed Dec 20 03:06:21 2017 by ELM ver.2012-10-06 from 001__elm20171220_015735__dat00.bin

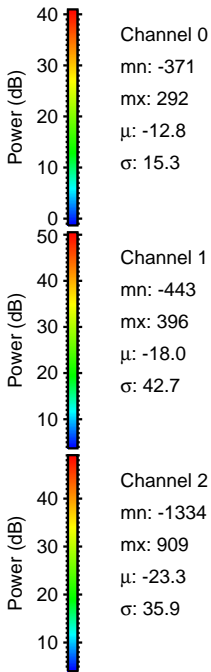
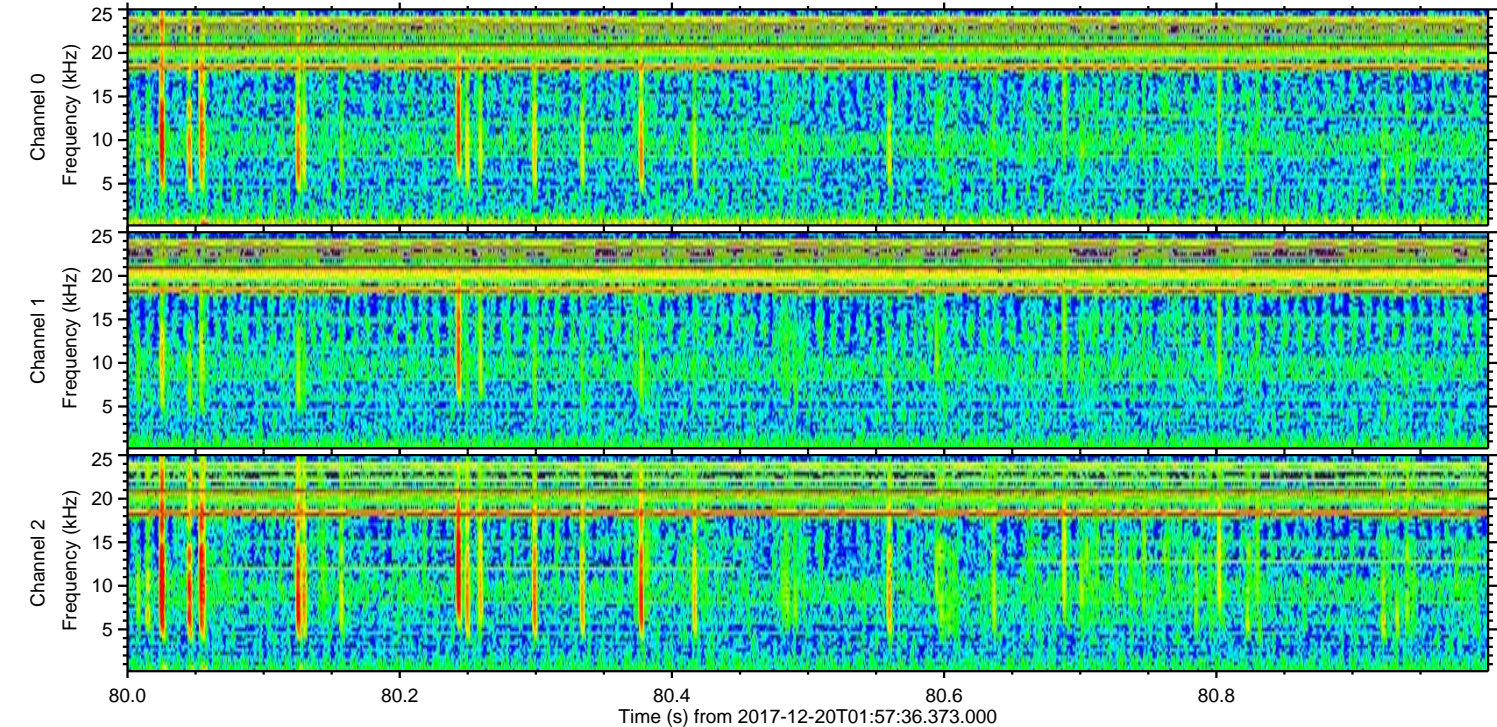
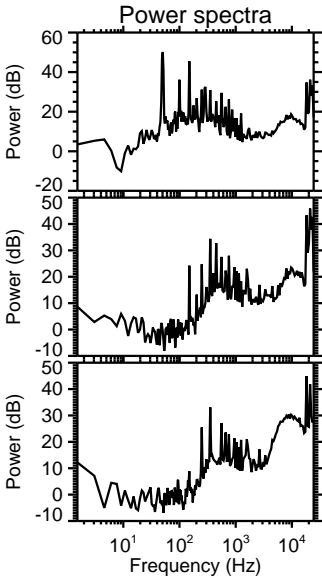
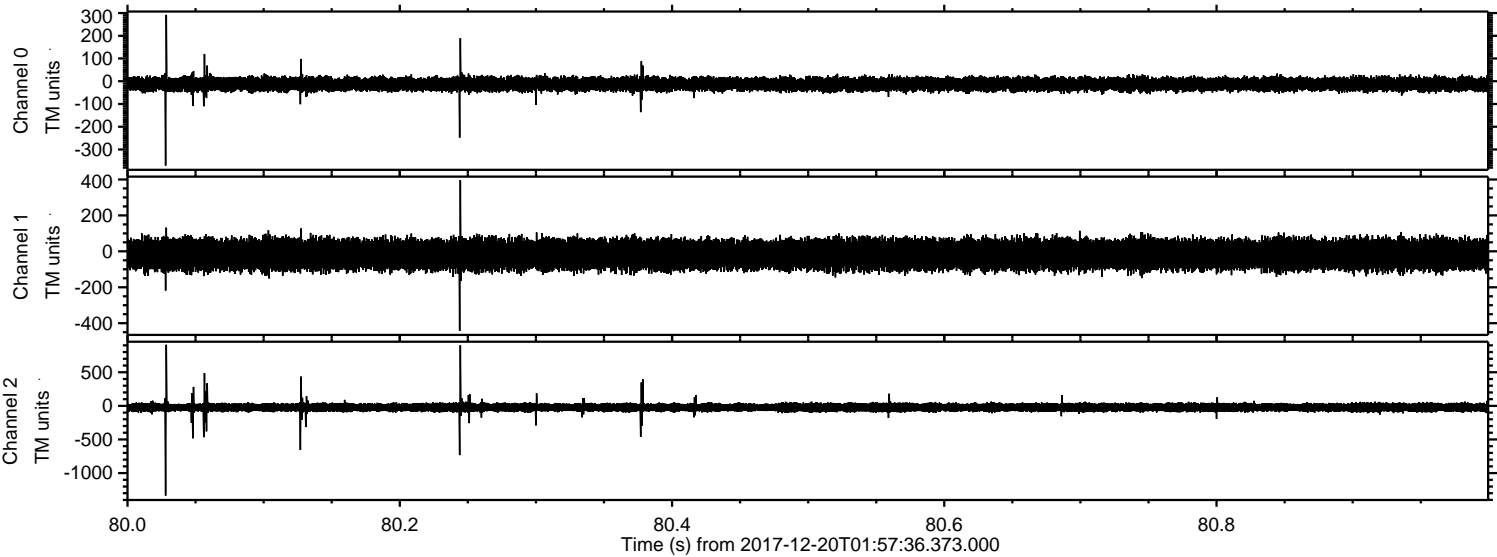


Processed Wed Dec 20 03:06:22 2017 by ELM ver.2012-10-06 from 001__elm20171220_015735__dat00.bin



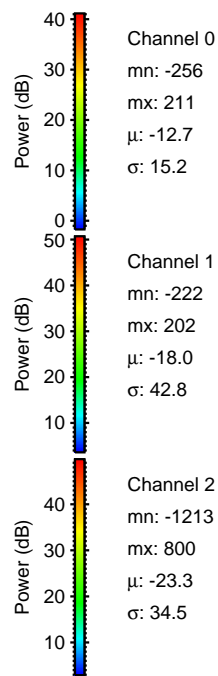
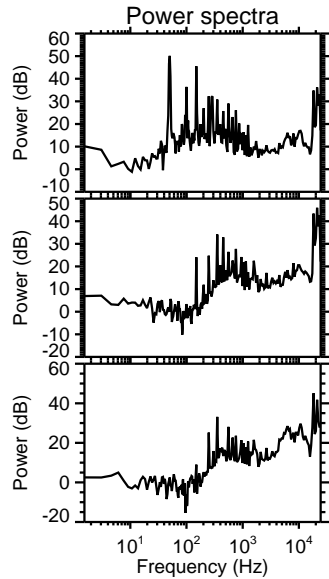
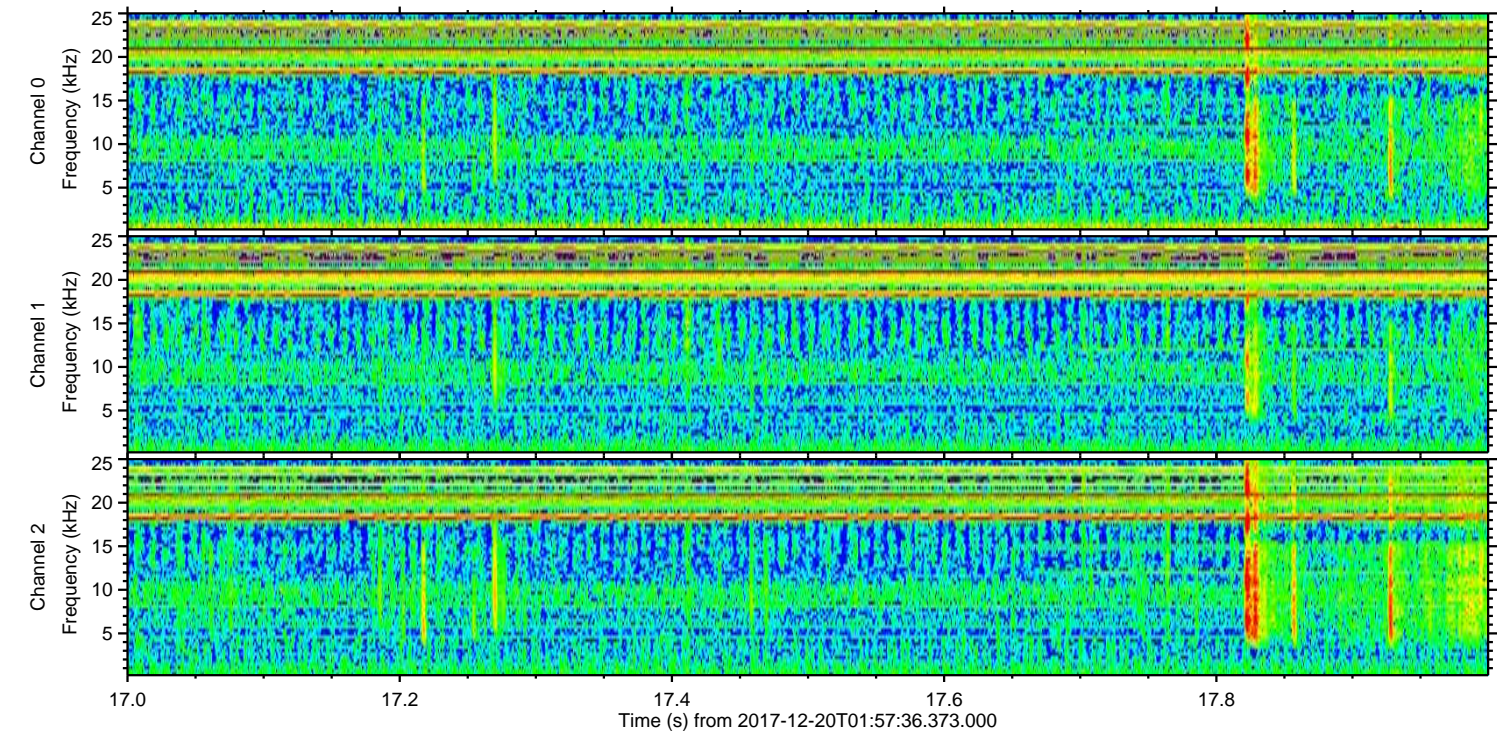
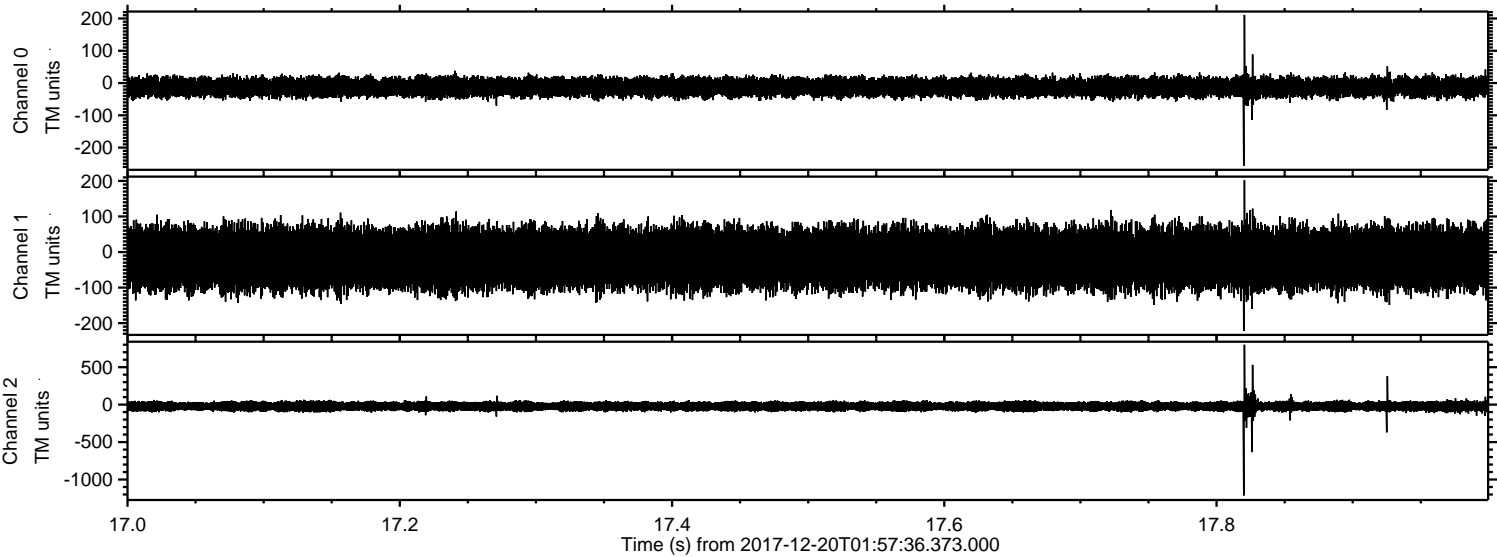
ELMAVAN 3D WAVEFORMS (Measured data sampled at 50 kHz) 51000 packets of 144 samples from 2017-12-20T01:57:36.373.000. Part 81/147

Processed Wed Dec 20 03:06:23 2017 by ELM ver.2012-10-06 from 001__elm20171220_015735__dat00.bin

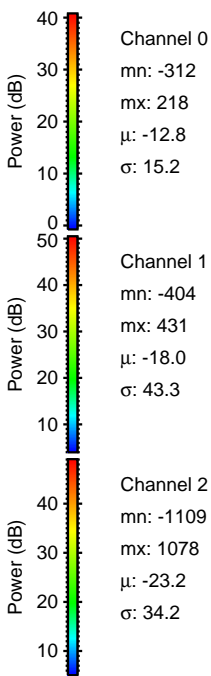
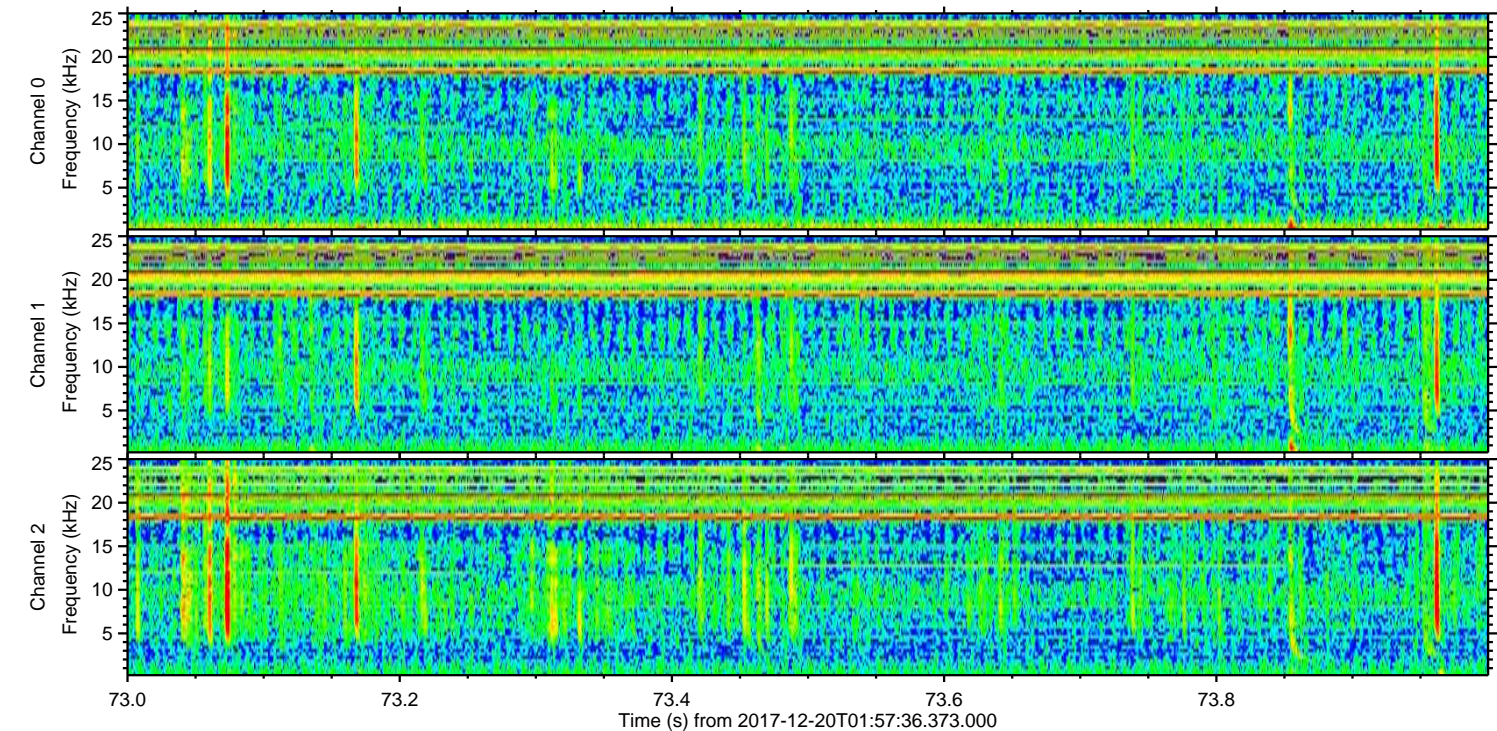
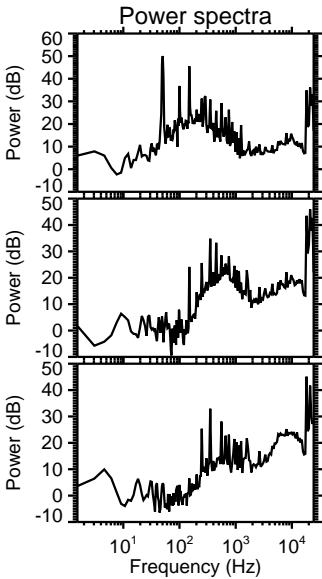
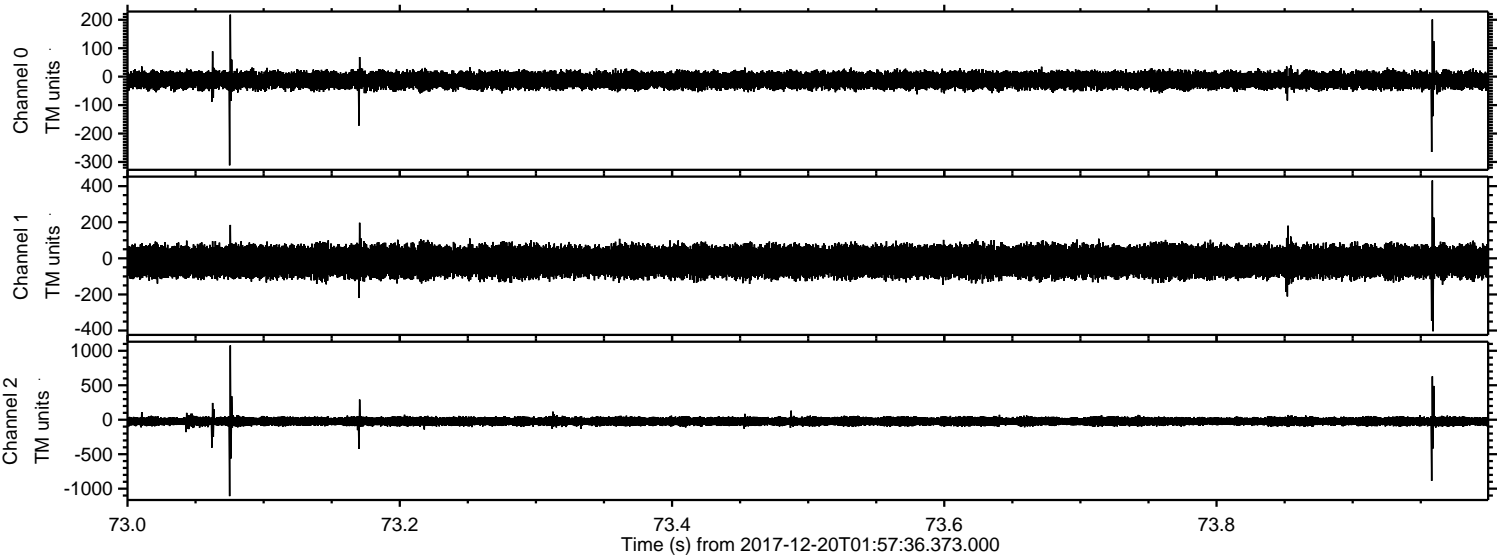


ELMAVAN 3D WAVEFORMS (Measured data sampled at 50 kHz) 51000 packets of 144 samples from 2017-12-20T01:57:36.373.000. Part 18/147

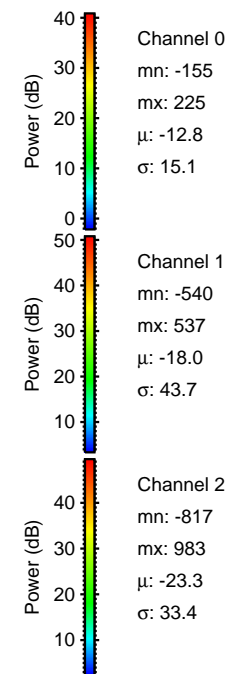
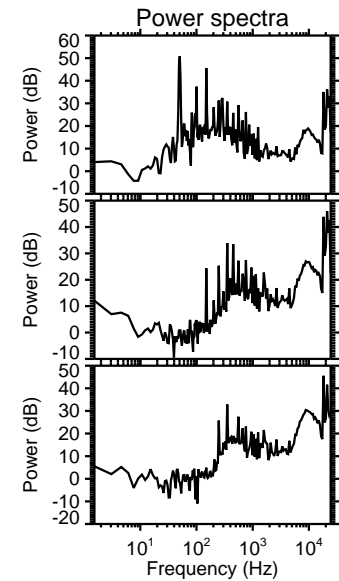
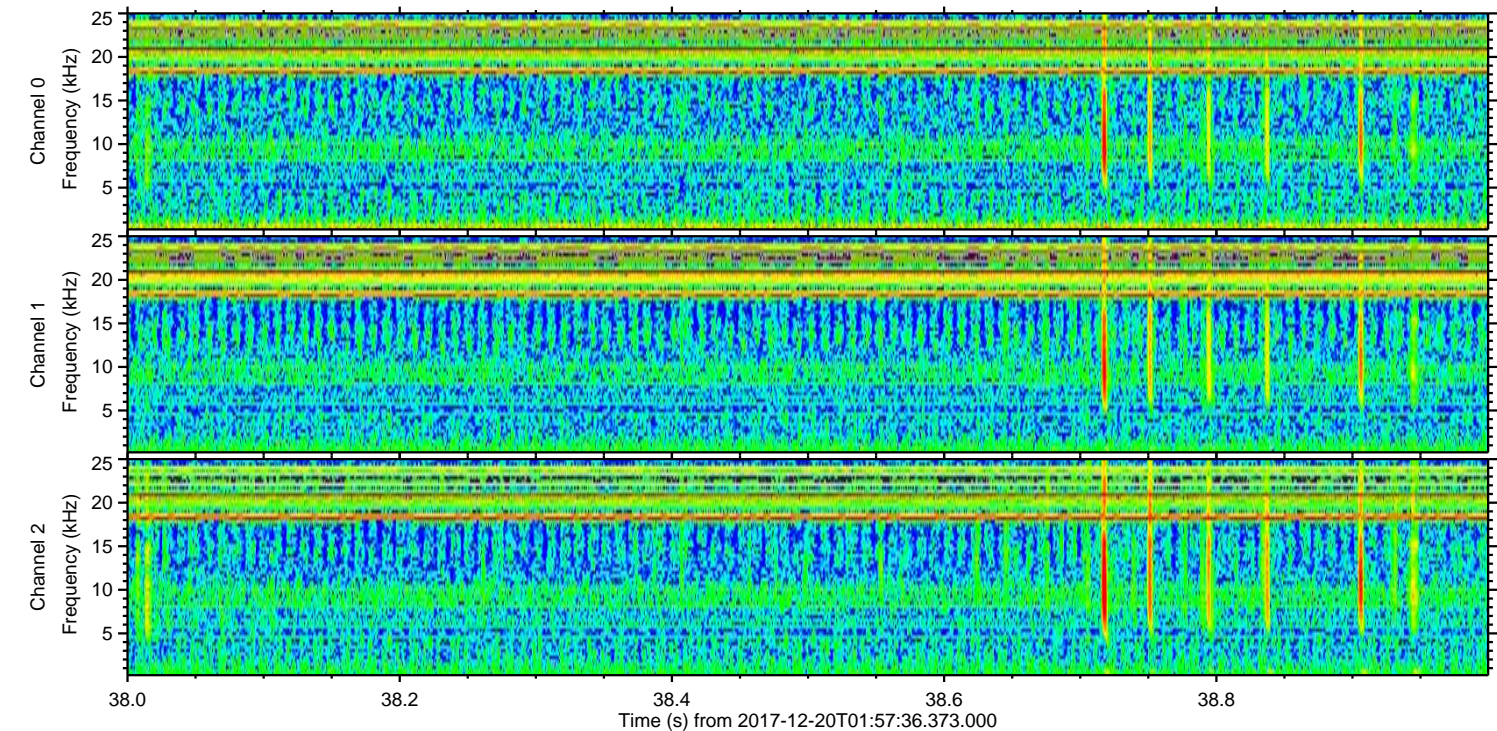
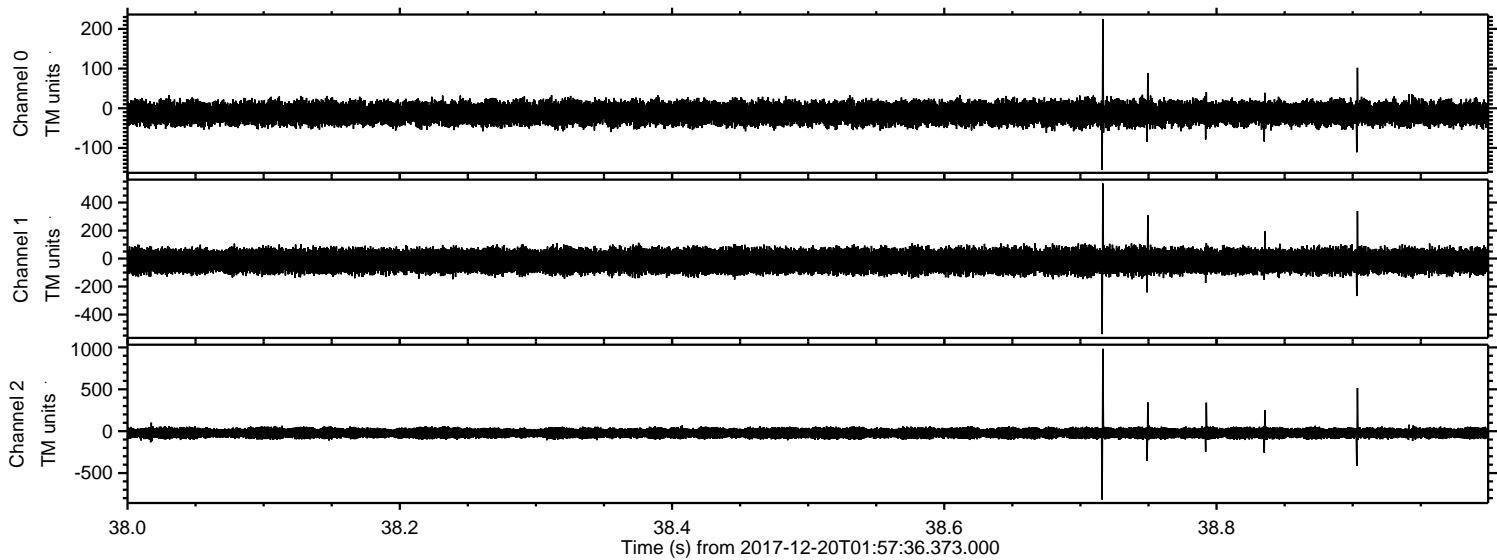
Processed Wed Dec 20 03:06:23 2017 by ELM ver.2012-10-06 from 001__elm20171220_015735__dat00.bin



Processed Wed Dec 20 03:06:24 2017 by ELM ver.2012-10-06 from 001__elm20171220_015735__dat00.bin



Processed Wed Dec 20 03:06:25 2017 by ELM ver.2012-10-06 from 001__elm20171220_015735__dat00.bin



Power spectra

Channel 0
mn: -155
mx: 225
 μ : -12.8
 σ : 15.1

Channel 1
mn: -540
mx: 537
 μ : -18.0
 σ : 43.7

Channel 2
mn: -817
mx: 983
 μ : -23.3
 σ : 33.4

