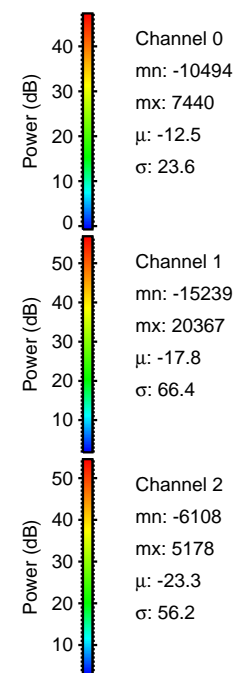
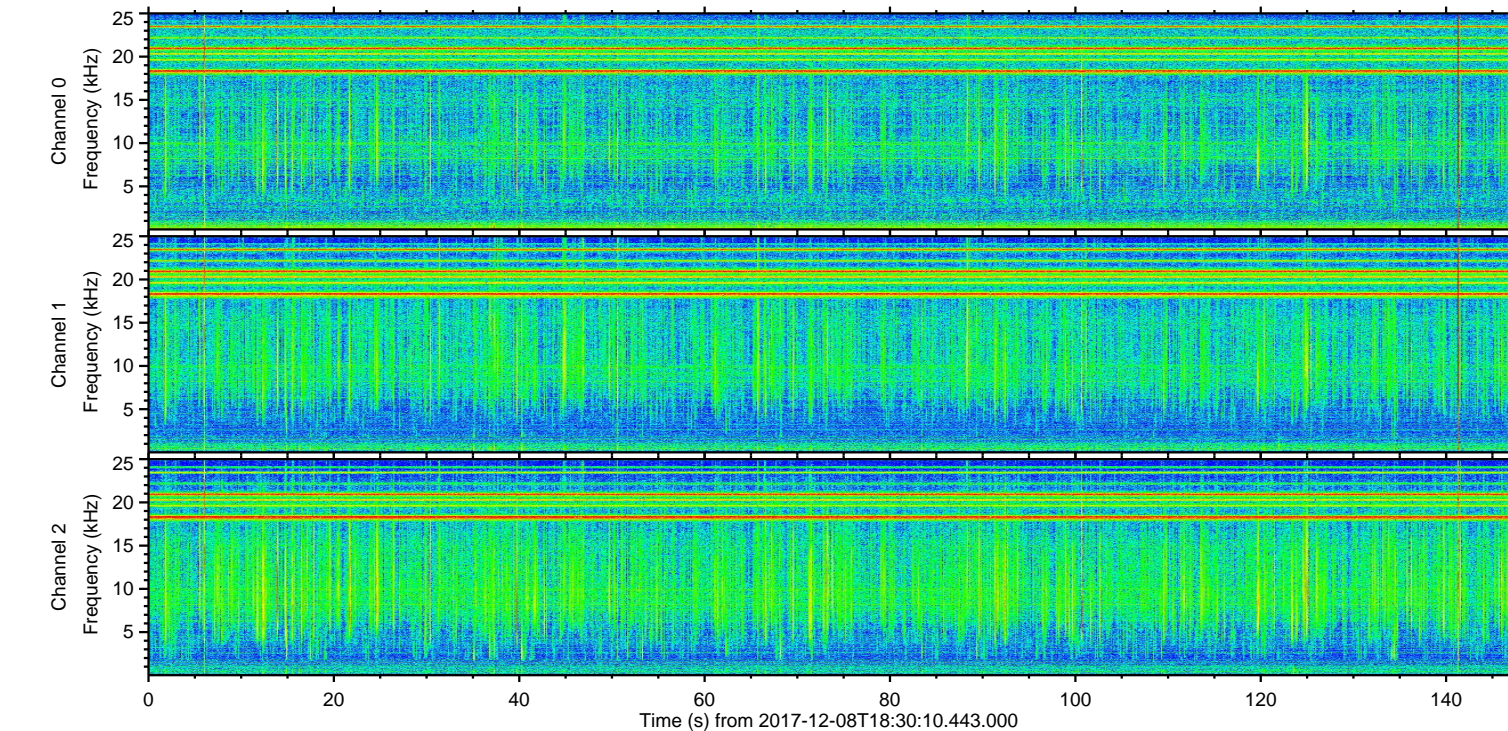
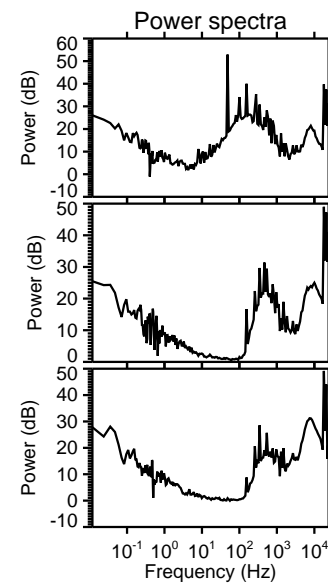
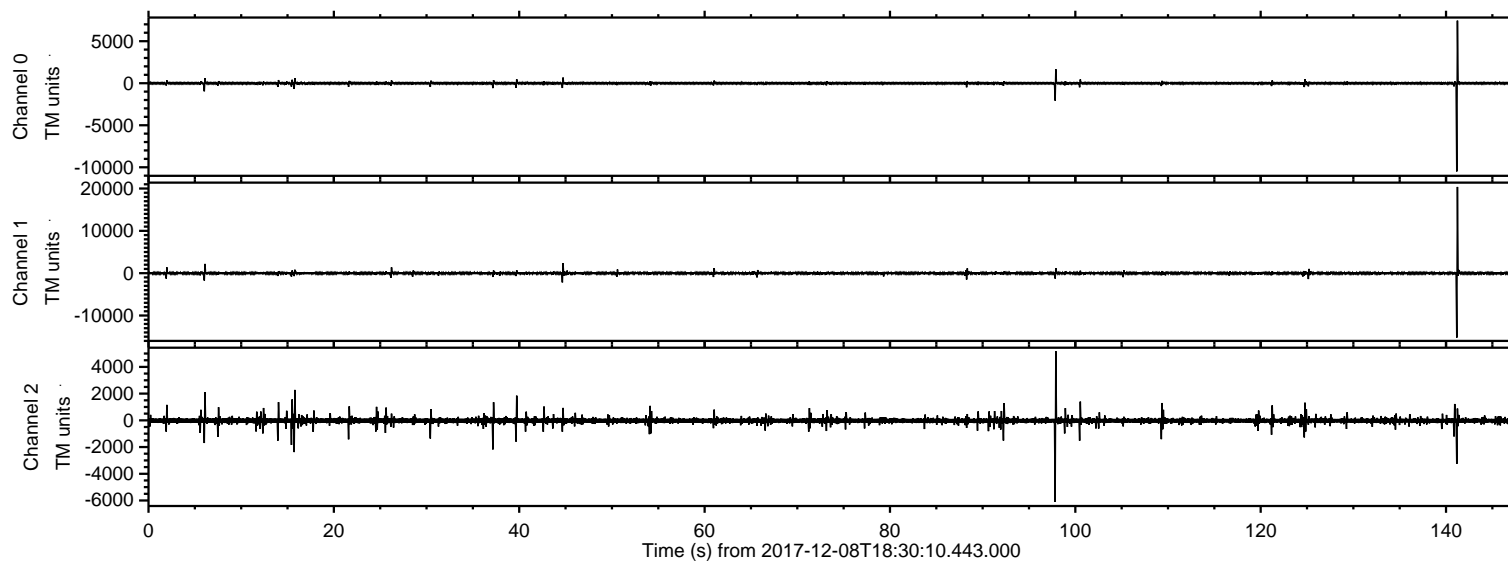


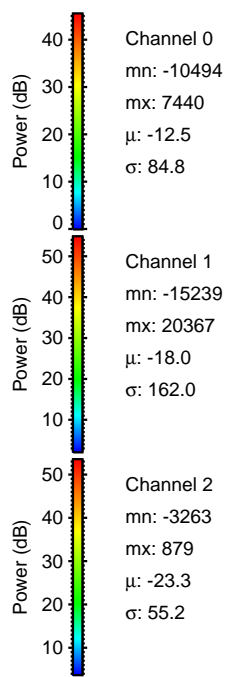
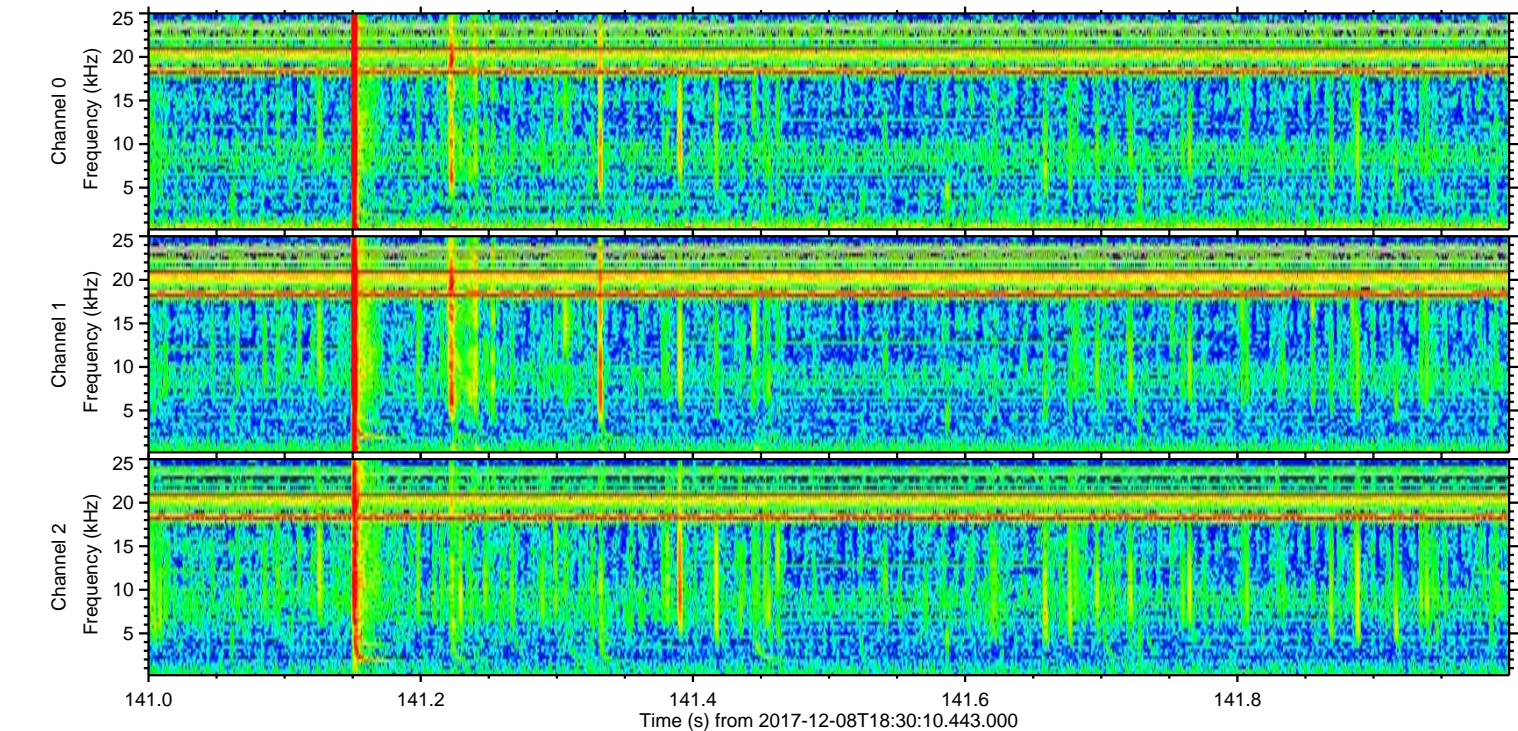
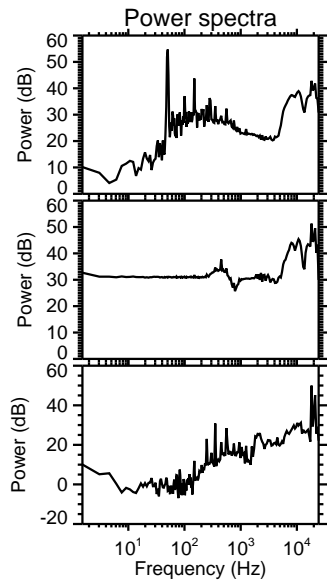
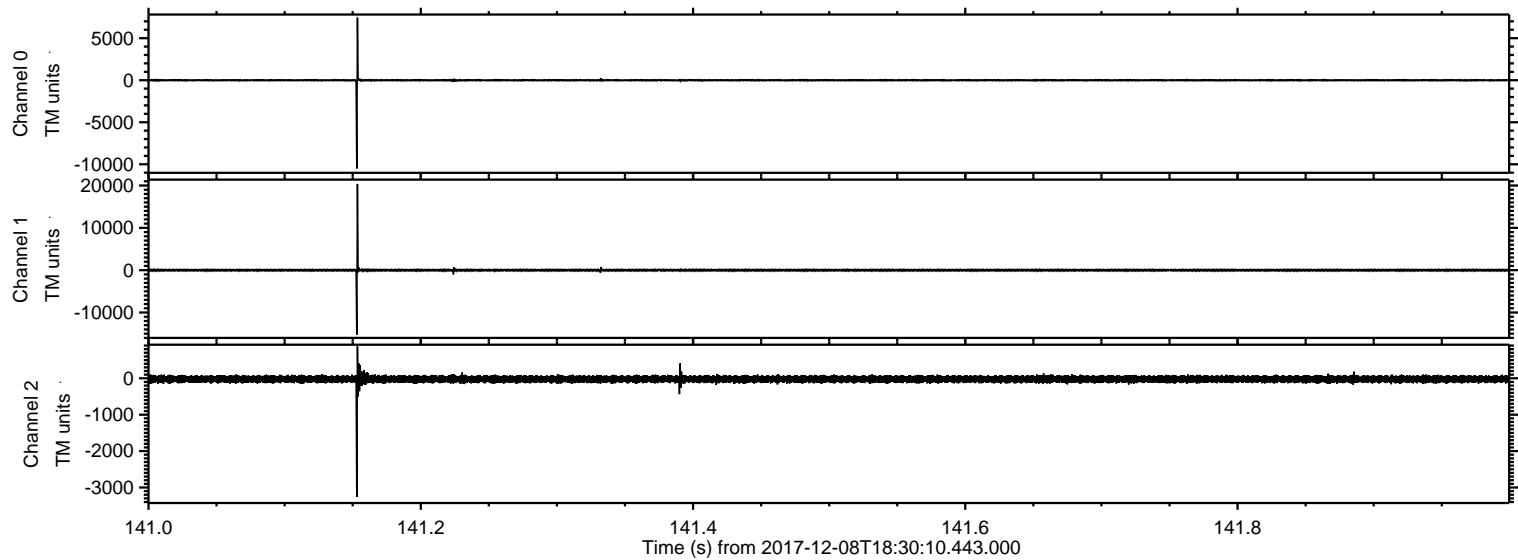
ELMAVAN 3D WAVEFORMS (Measured data sampled at 50 kHz) 51000 packets of 144 samples from 2017-12-08T18:30:10.443.000.

Processed Fri Dec 8 19:37:49 2017 by ELM ver.2012-10-06 from 001__elm20171208_183009__dat00.bin

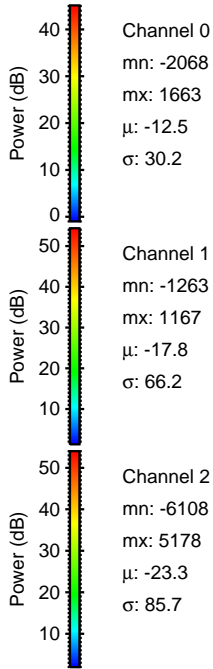
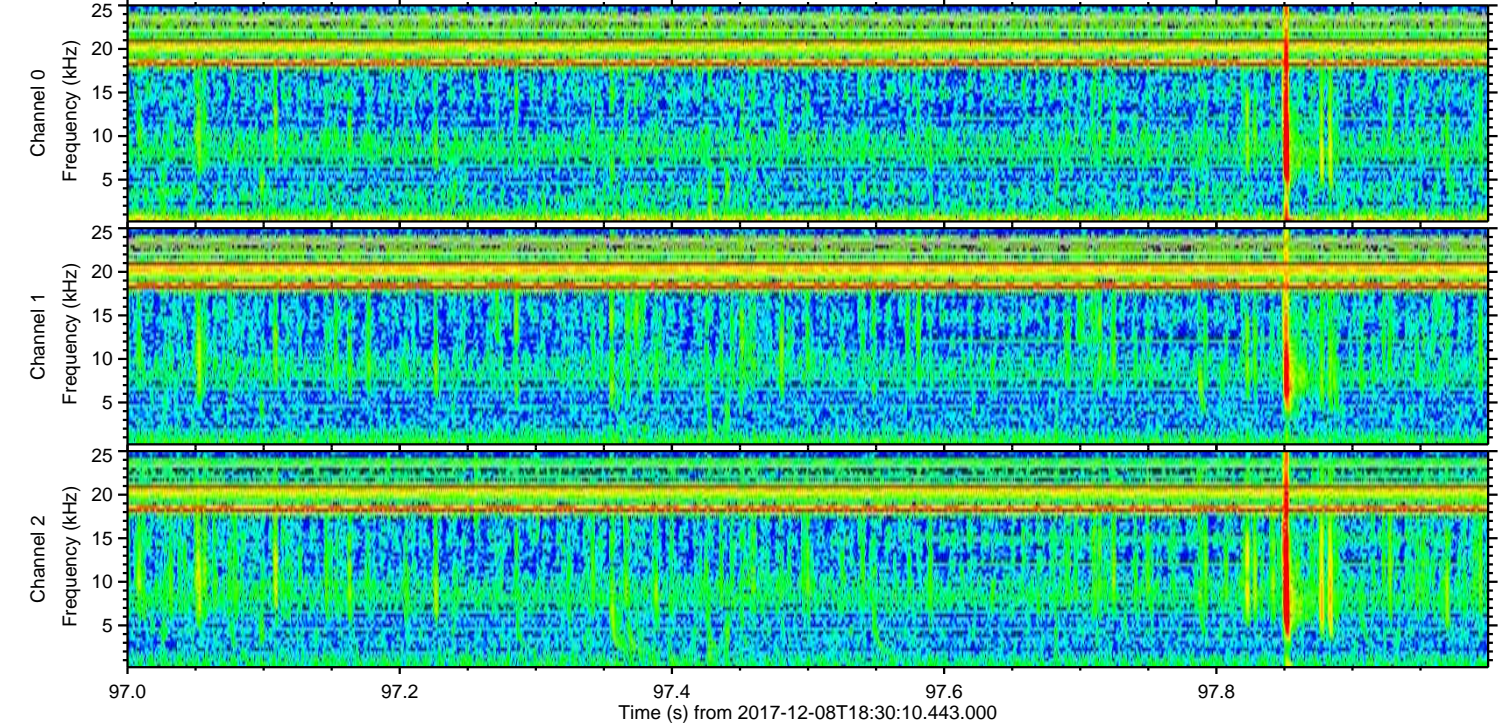
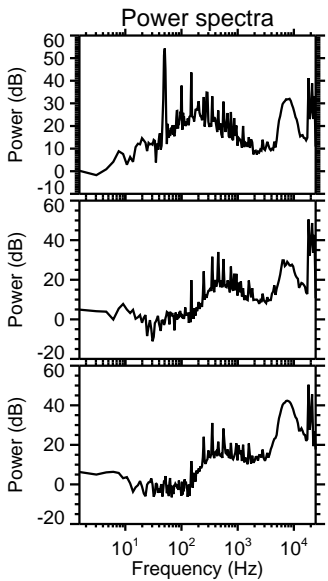
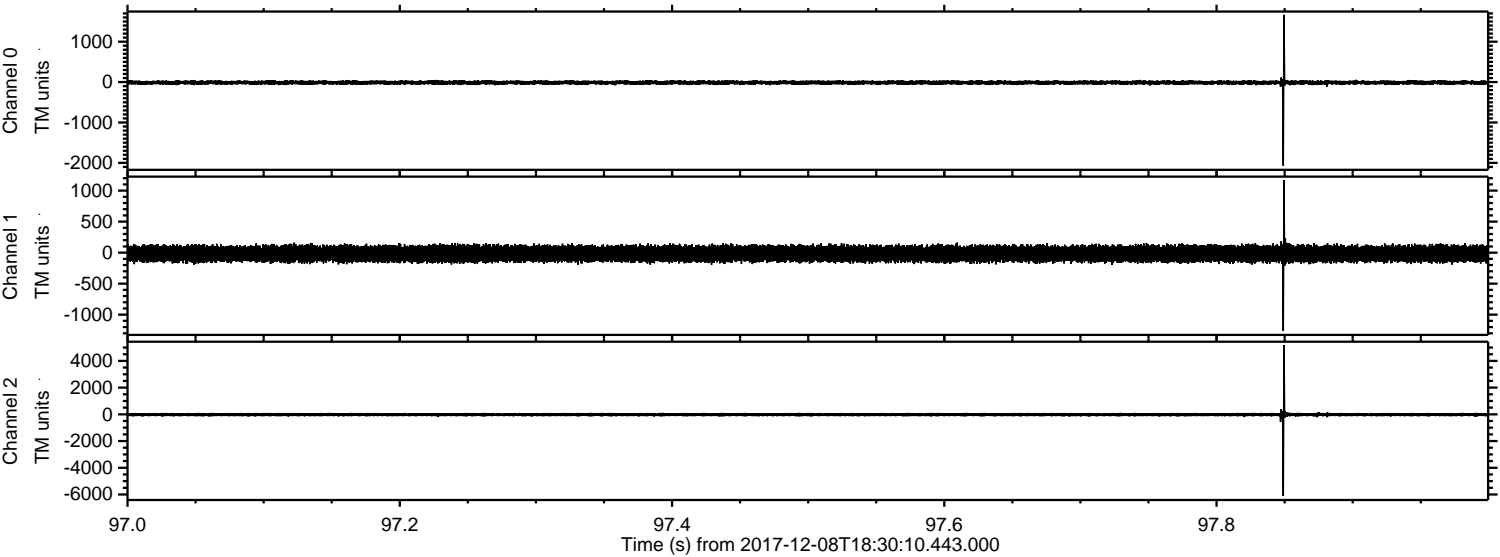


ELMAVAN 3D WAVEFORMS (Measured data sampled at 50 kHz) 51000 packets of 144 samples from 2017-12-08T18:30:10.443.000. Part 142/147

Processed Fri Dec 8 19:37:57 2017 by ELM ver.2012-10-06 from 001__elm20171208_183009__dat00.bin



Processed Fri Dec 8 19:37:57 2017 by ELM ver.2012-10-06 from 001__elm20171208_183009__dat00.bin

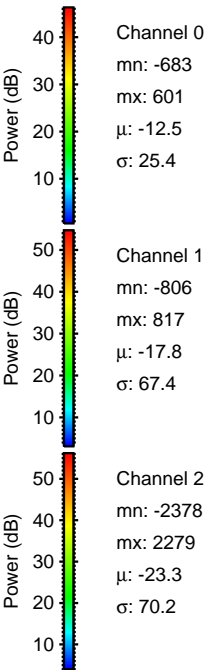
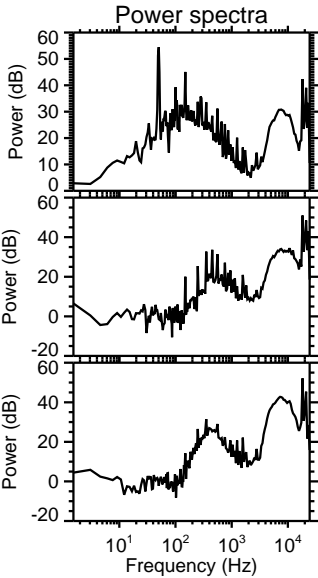
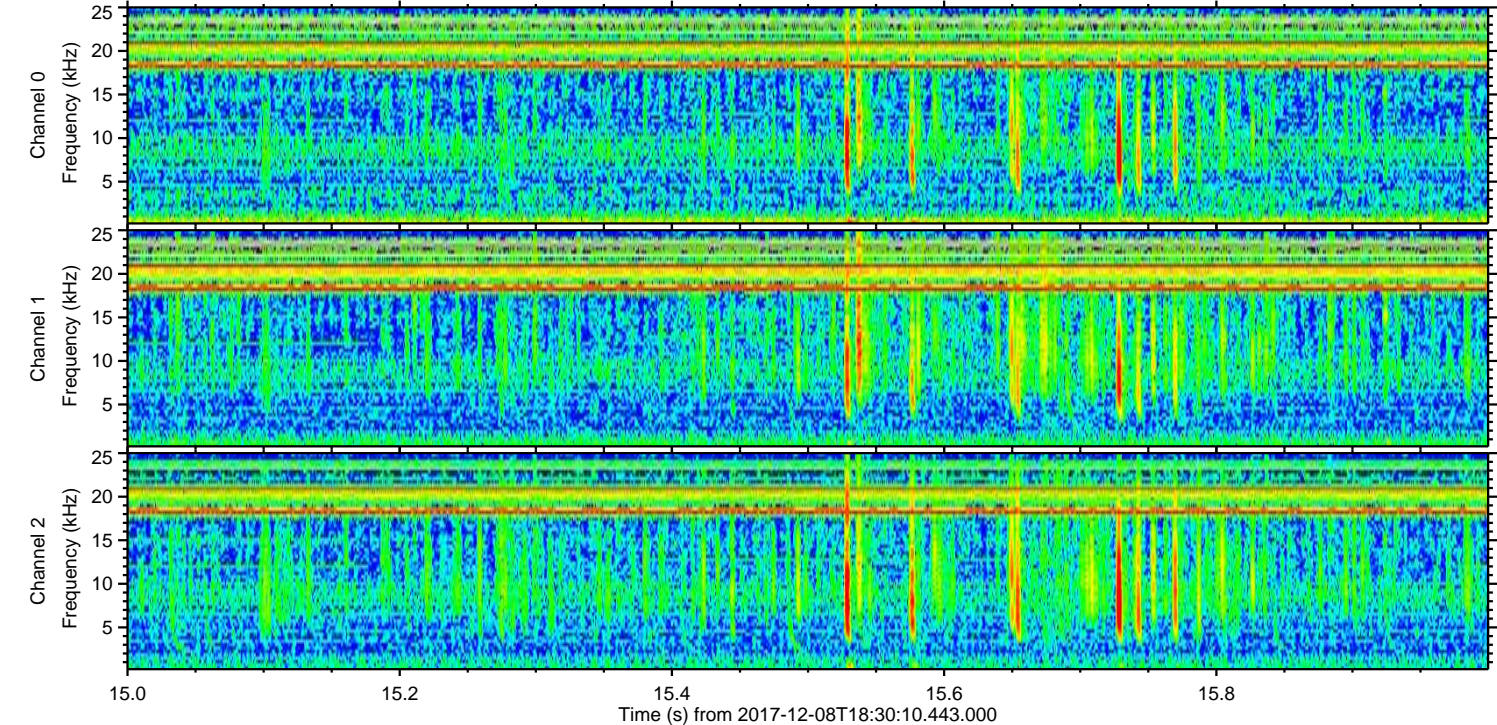
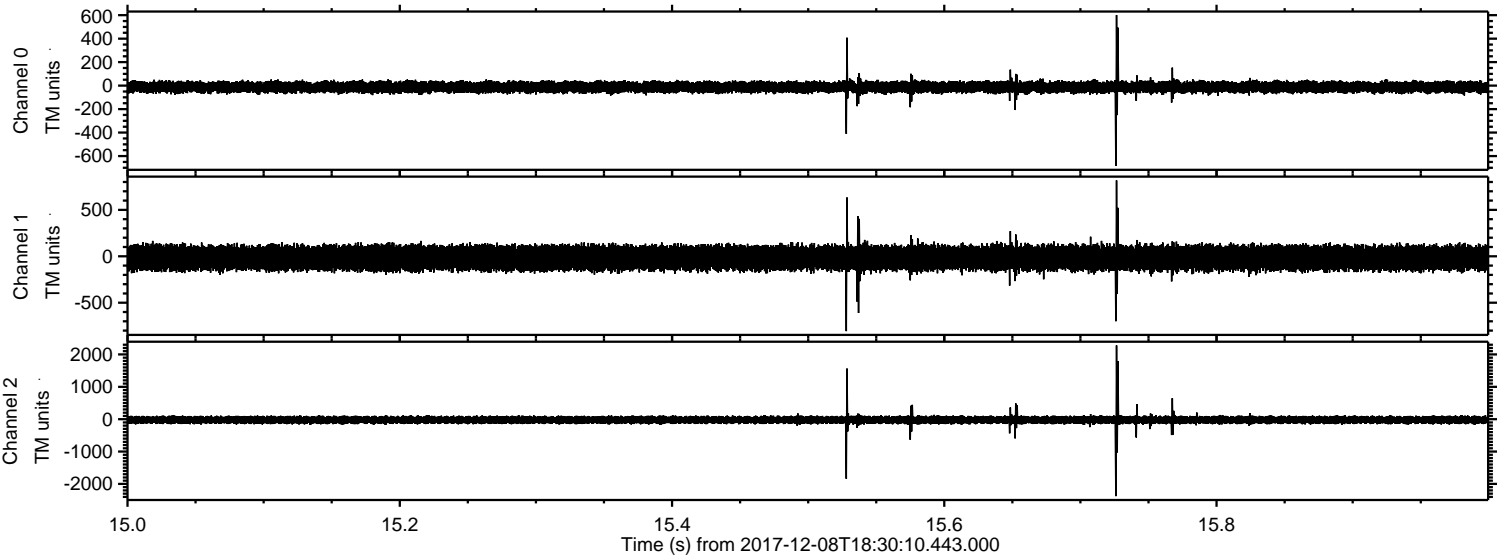


Channel 0
mn: -2068
mx: 1663
 μ : -12.5
 σ : 30.2

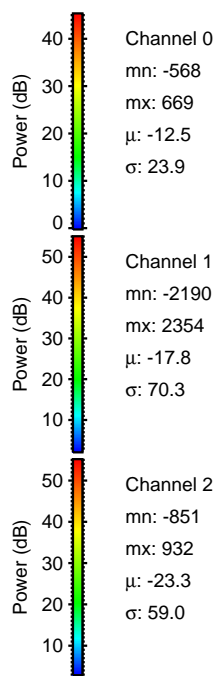
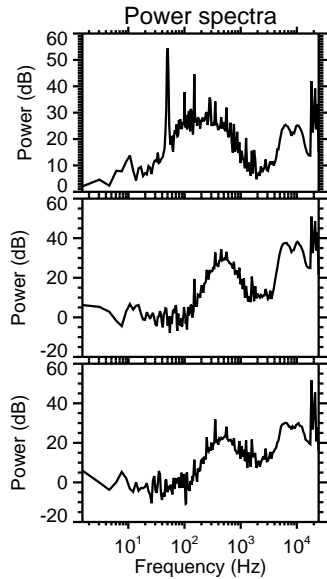
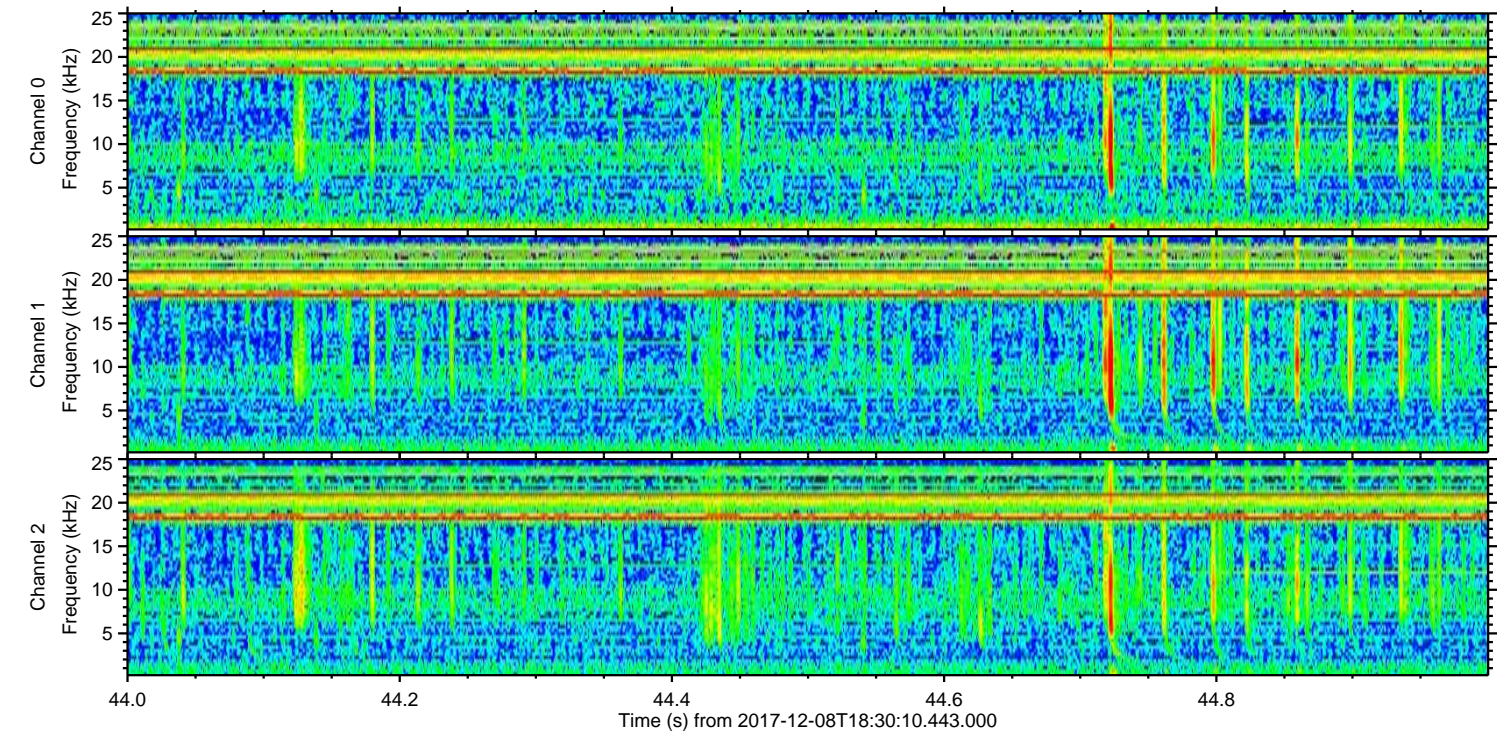
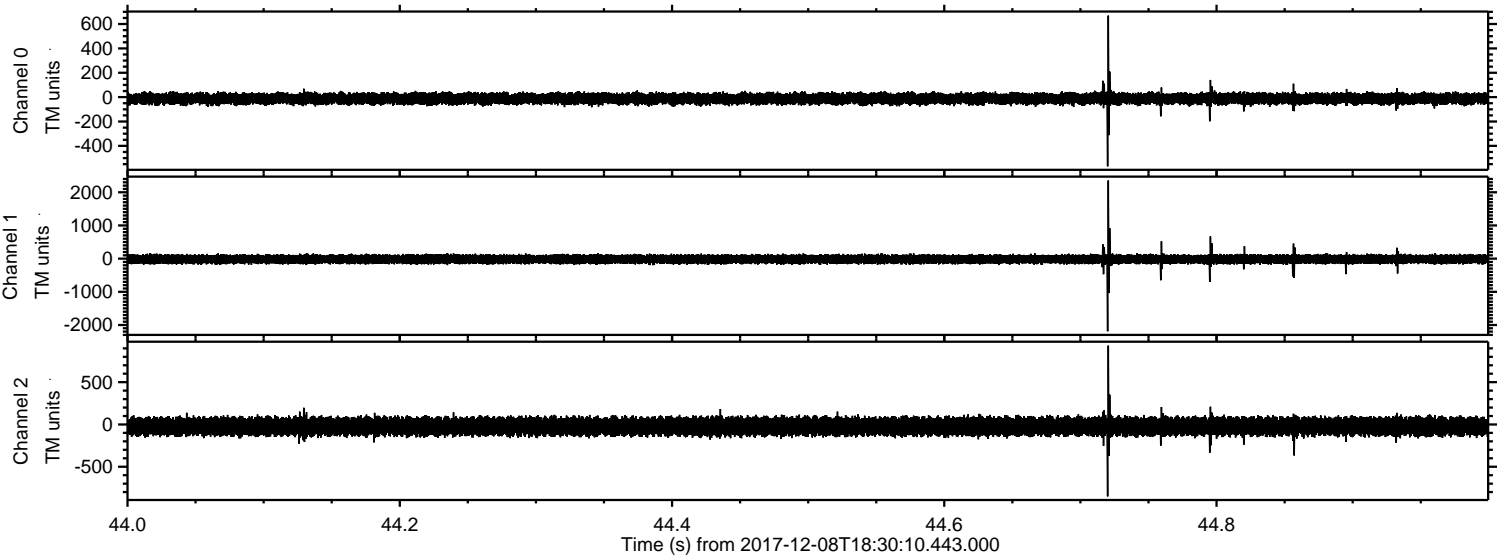
Channel 1
mn: -1263
mx: 1167
 μ : -17.8
 σ : 66.2

Channel 2
mn: -6108
mx: 5178
 μ : -23.3
 σ : 85.7

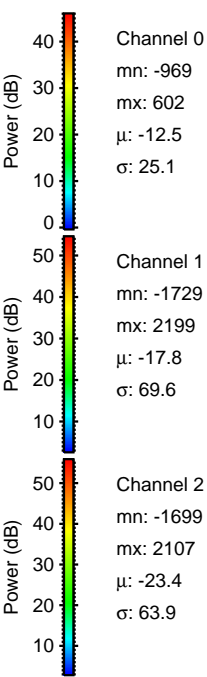
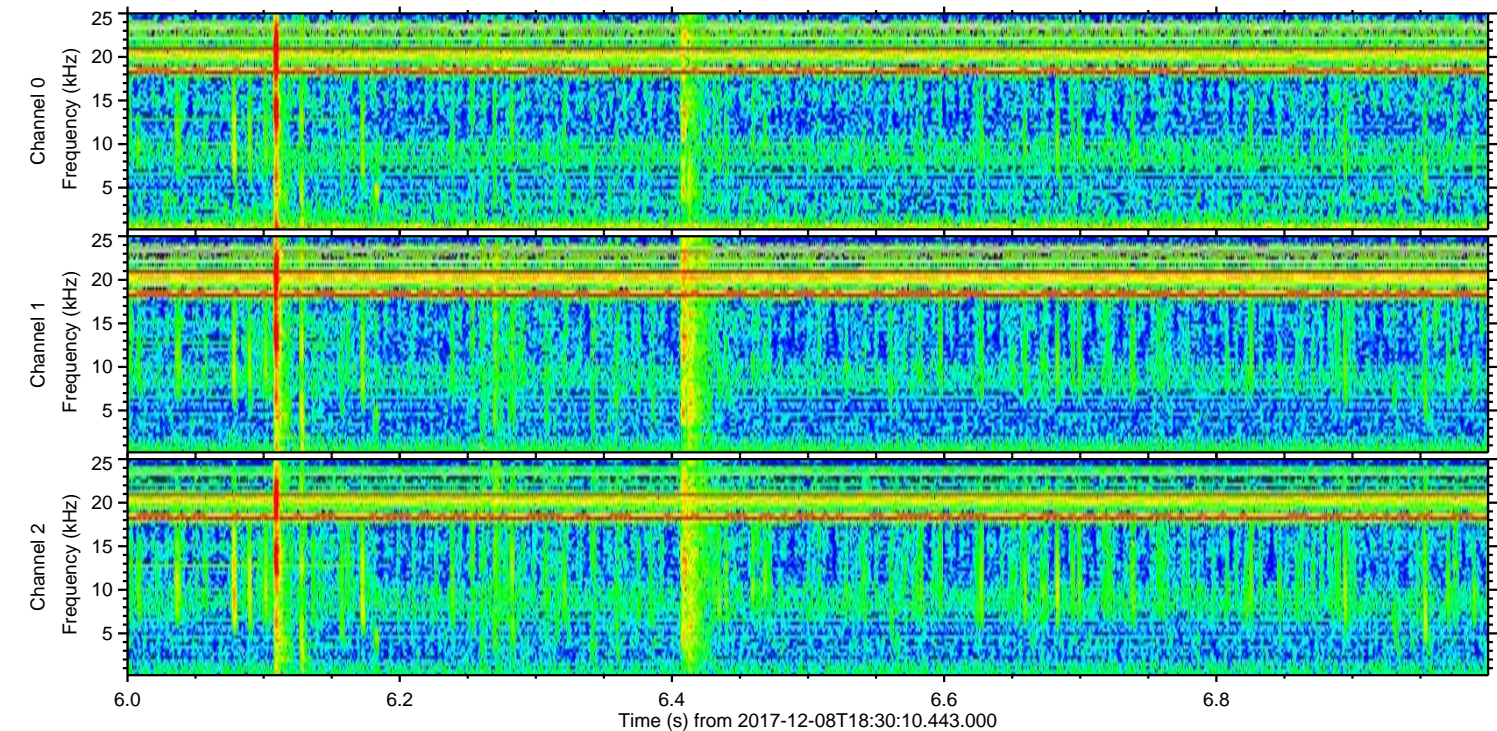
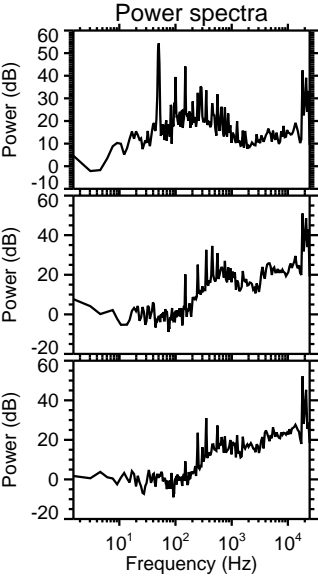
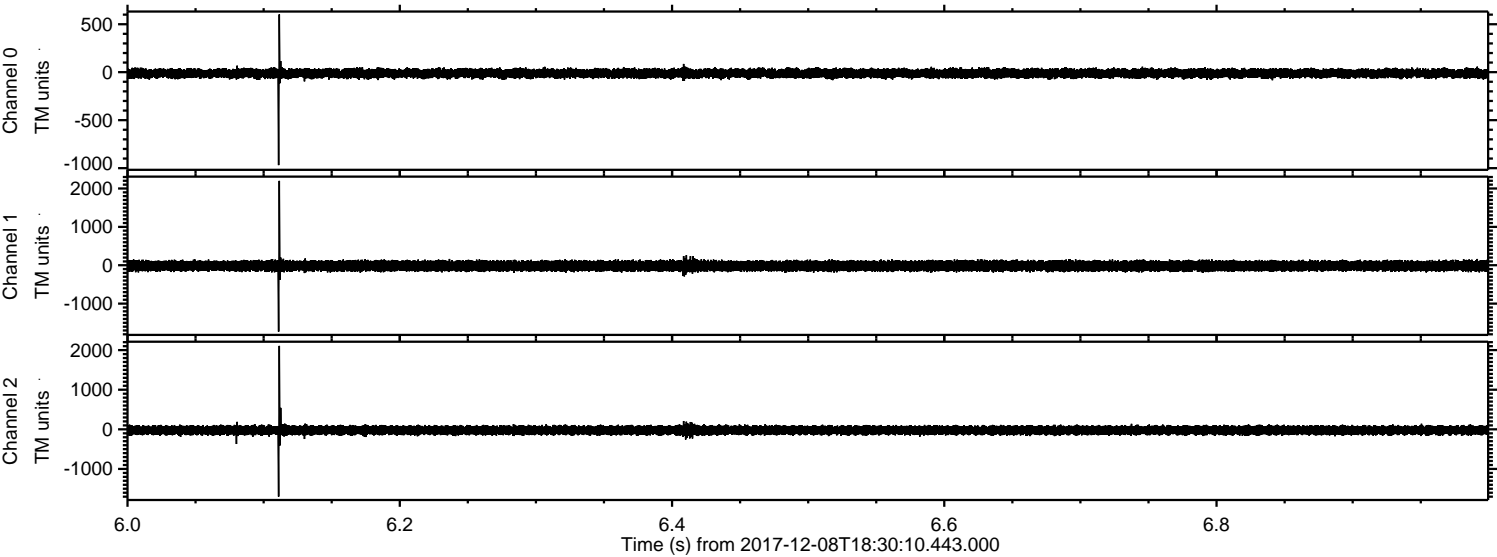
Processed Fri Dec 8 19:37:58 2017 by ELM ver.2012-10-06 from 001__elm20171208_183009__dat00.bin



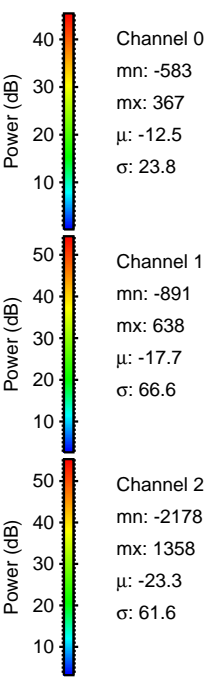
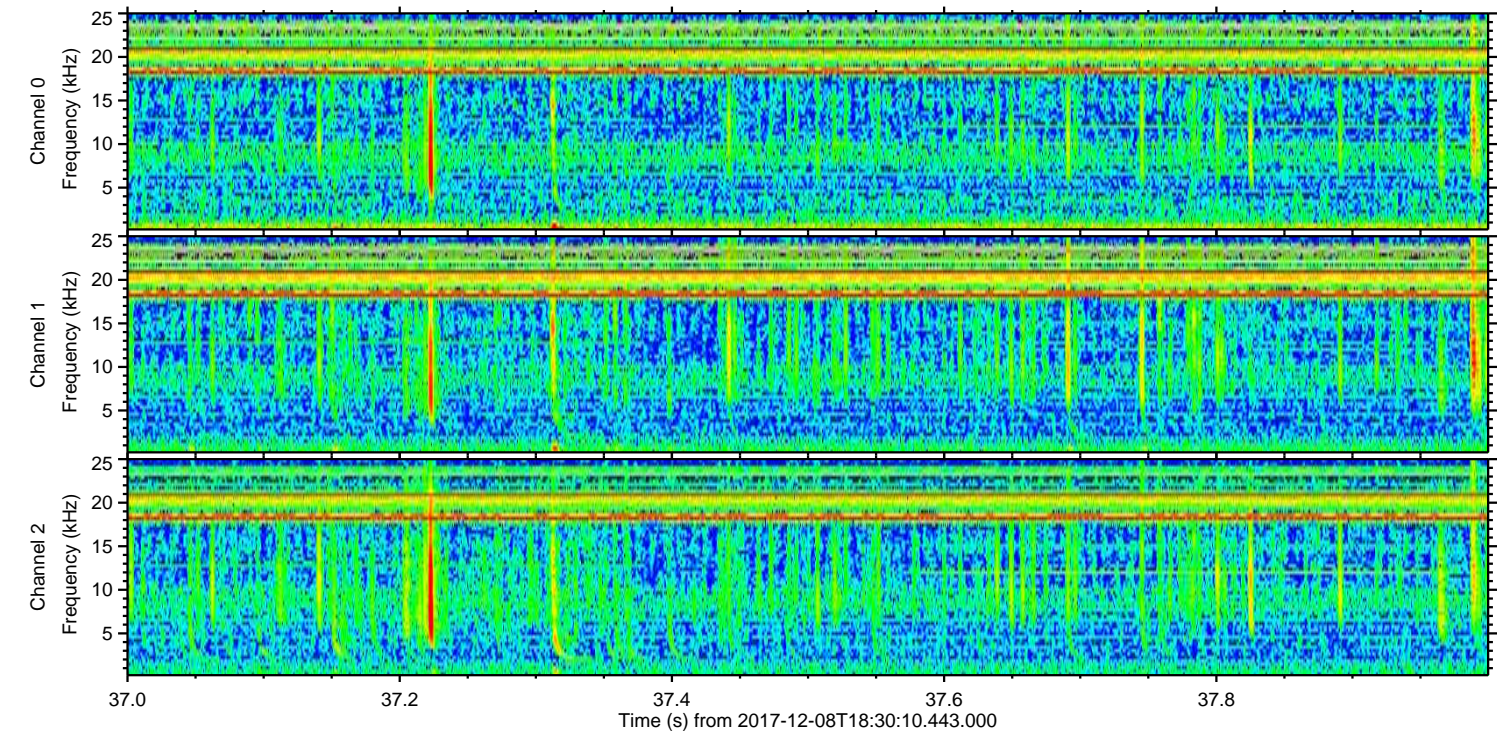
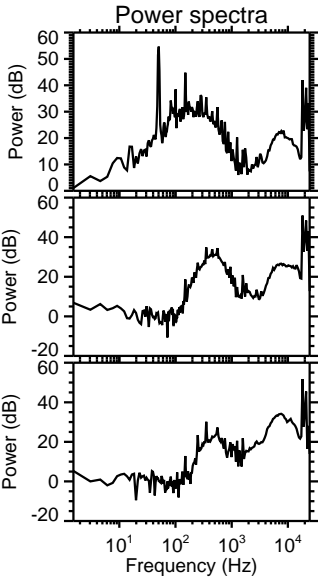
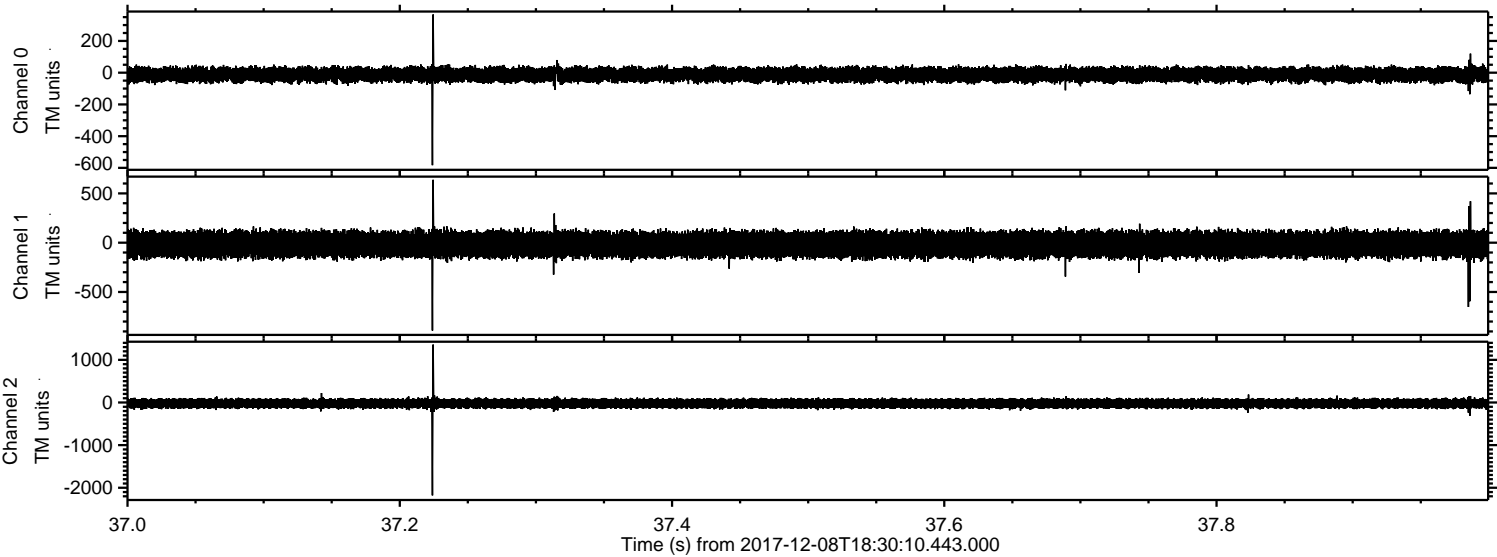
Processed Fri Dec 8 19:37:59 2017 by ELM ver.2012-10-06 from 001__elm20171208_183009__dat00.bin



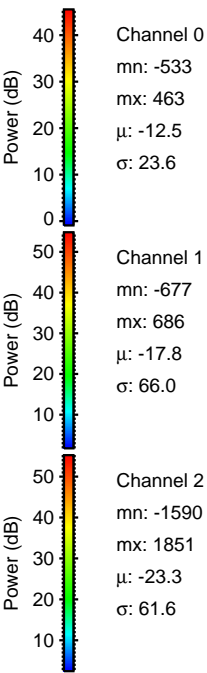
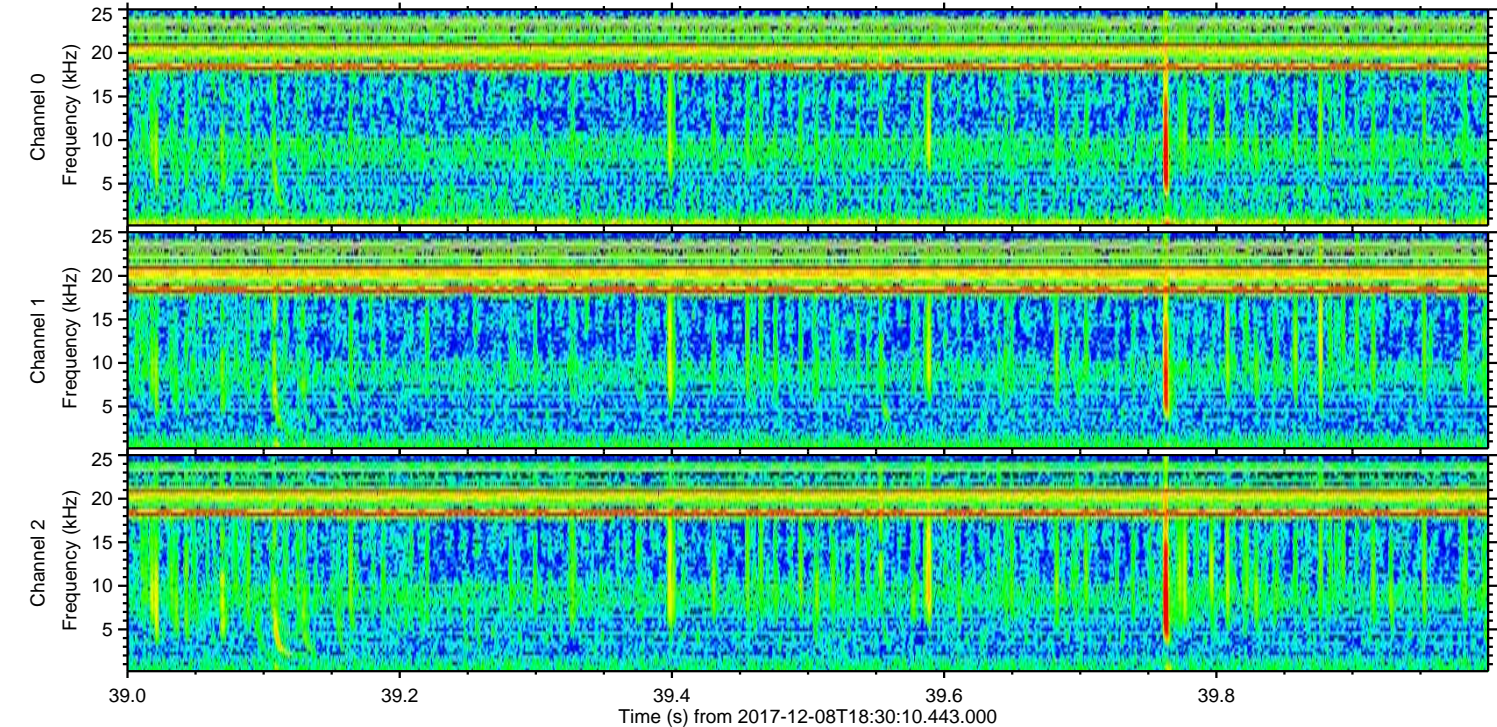
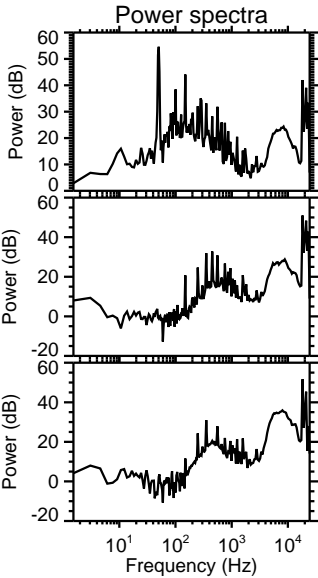
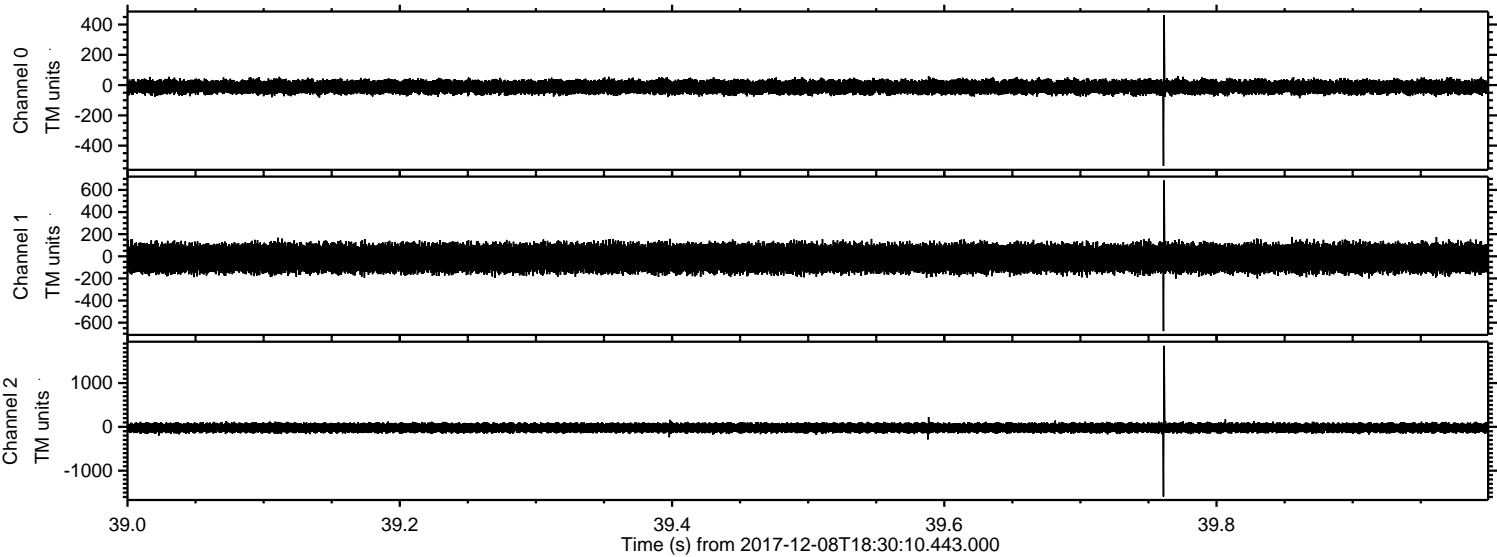
Processed Fri Dec 8 19:38:00 2017 by ELM ver.2012-10-06 from 001__elm20171208_183009__dat00.bin



Processed Fri Dec 8 19:38:01 2017 by ELM ver.2012-10-06 from 001__elm20171208_183009__dat00.bin

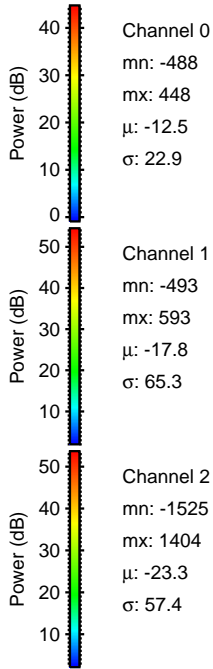
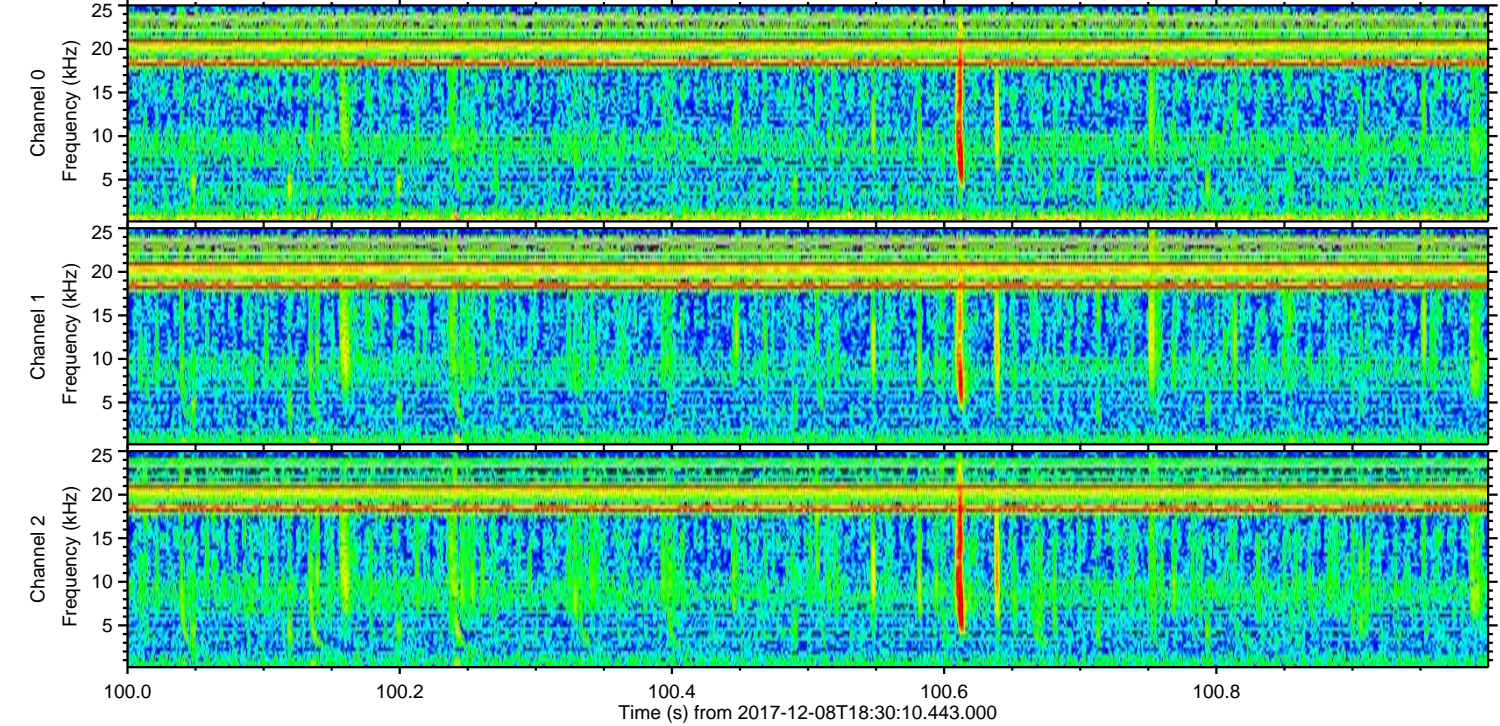
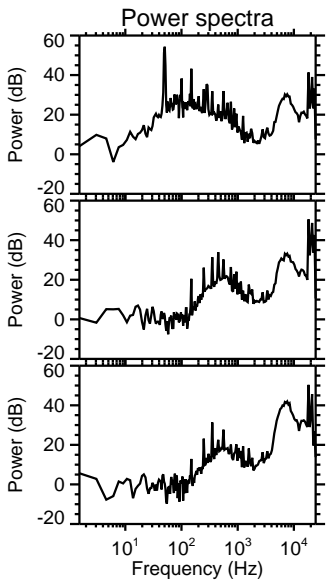
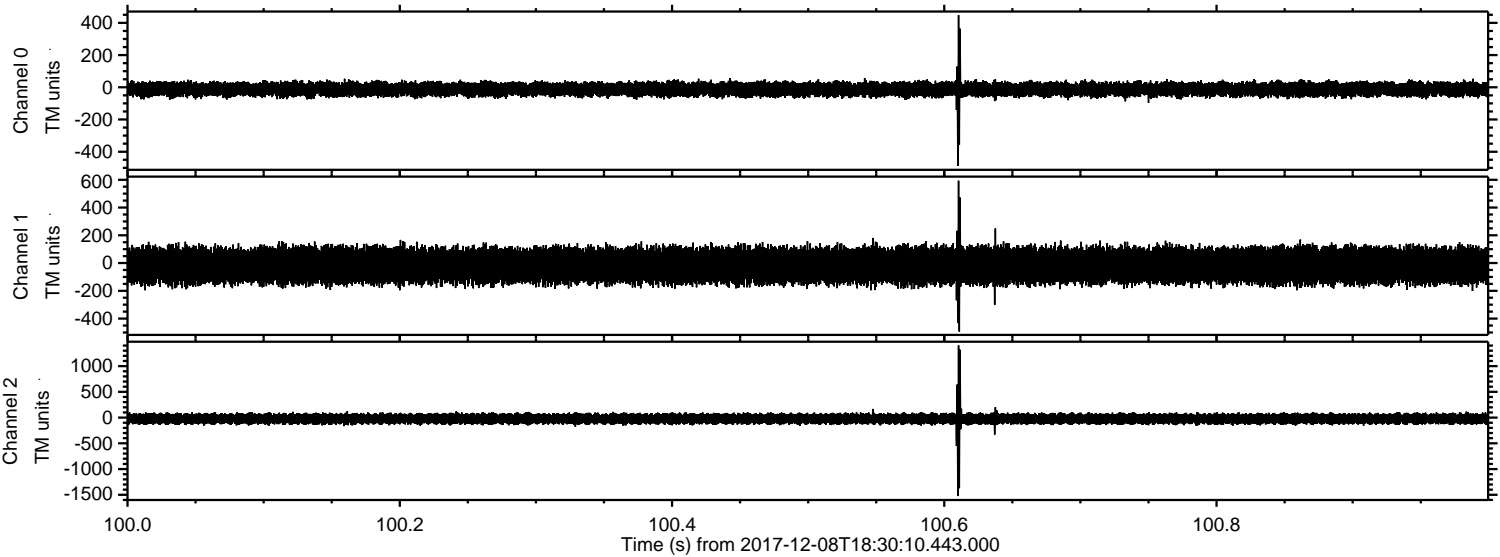


Processed Fri Dec 8 19:38:01 2017 by ELM ver.2012-10-06 from 001__elm20171208_183009__dat00.bin



ELMAVAN 3D WAVEFORMS (Measured data sampled at 50 kHz) 51000 packets of 144 samples from 2017-12-08T18:30:10.443.000. Part 101/147

Processed Fri Dec 8 19:38:02 2017 by ELM ver.2012-10-06 from 001__elm20171208_183009__dat00.bin



Channel 0
mn: -488
mx: 448
 μ : -12.5
 σ : 22.9

Channel 1
mn: -493
mx: 593
 μ : -17.8
 σ : 65.3

Channel 2
mn: -1525
mx: 1404
 μ : -23.3
 σ : 57.4

Processed Fri Dec 8 19:38:03 2017 by ELM ver.2012-10-06 from 001__elm20171208_183009__dat00.bin

