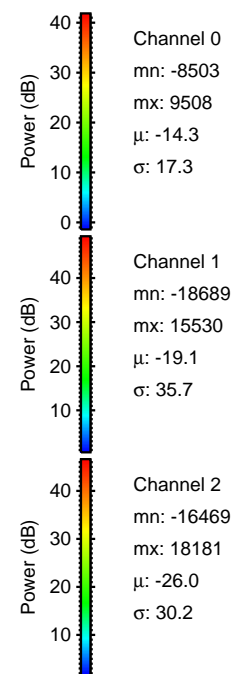
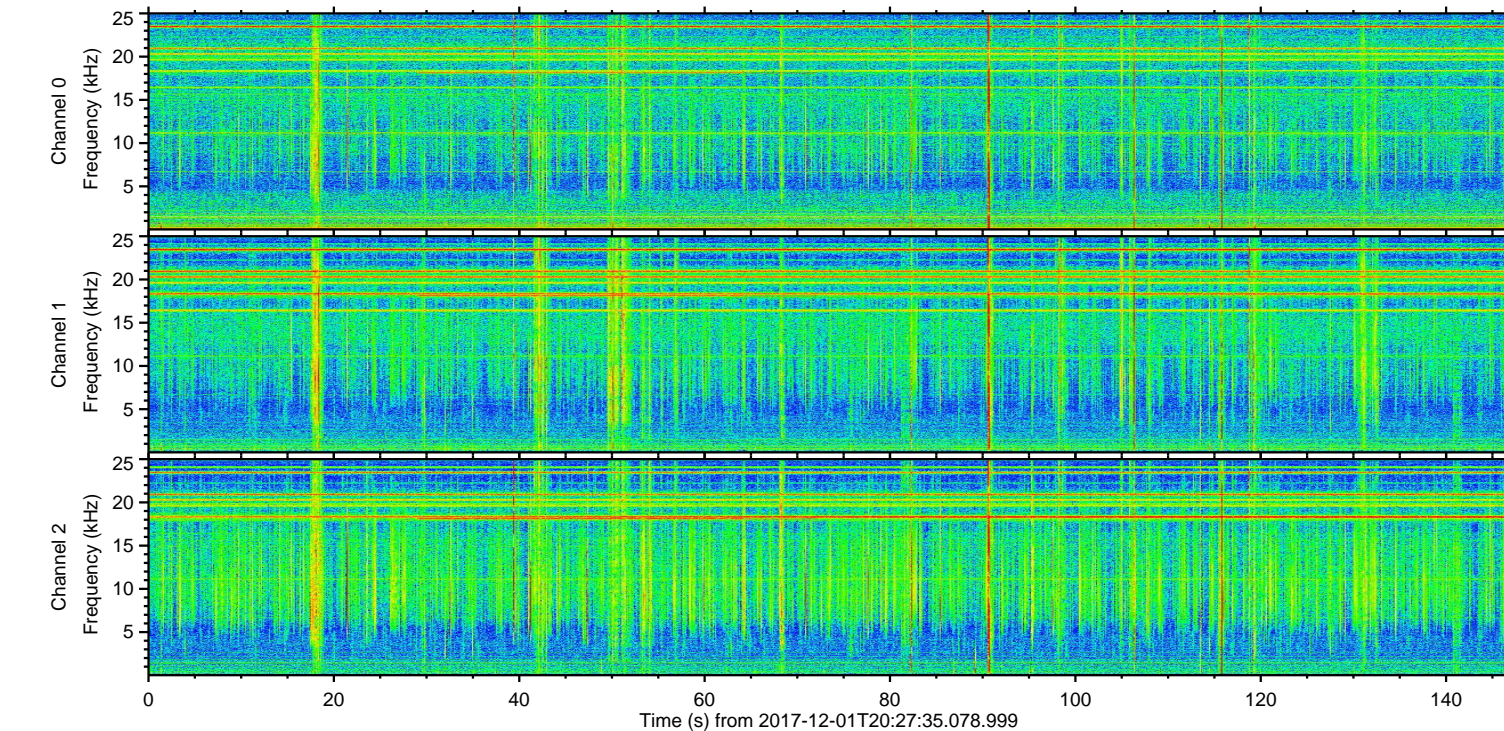
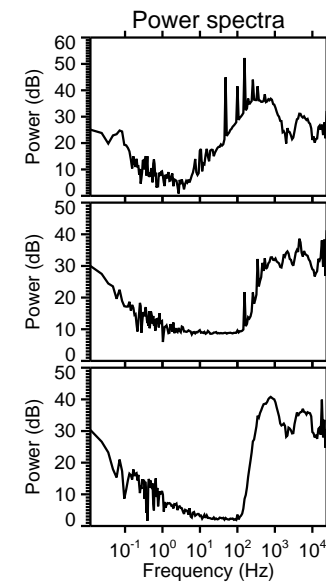
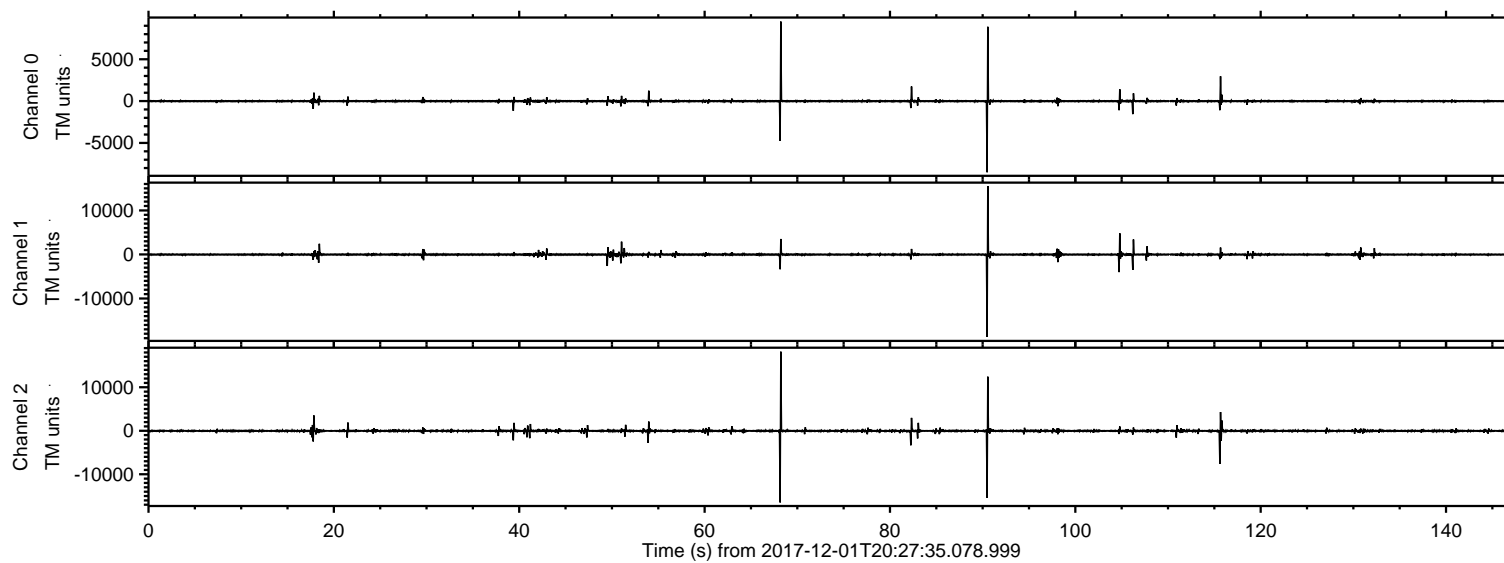
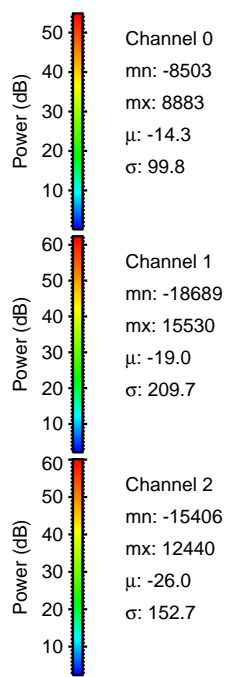
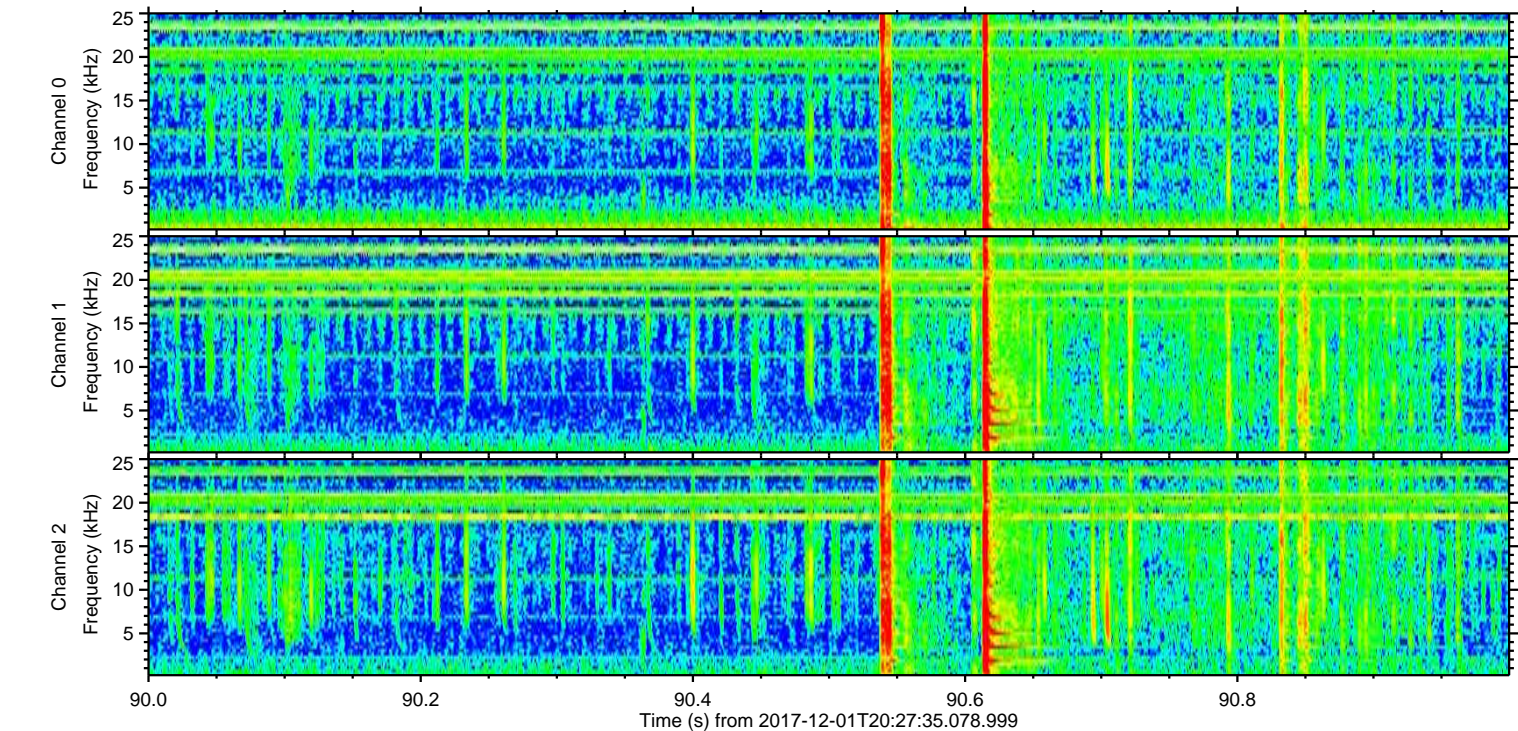
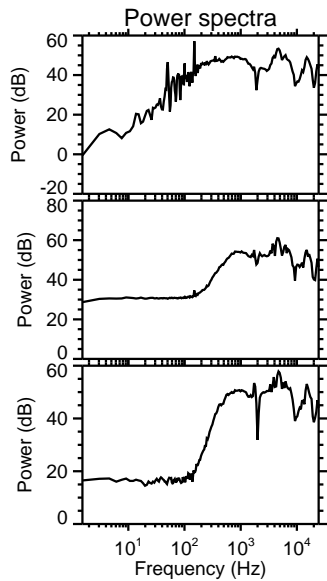
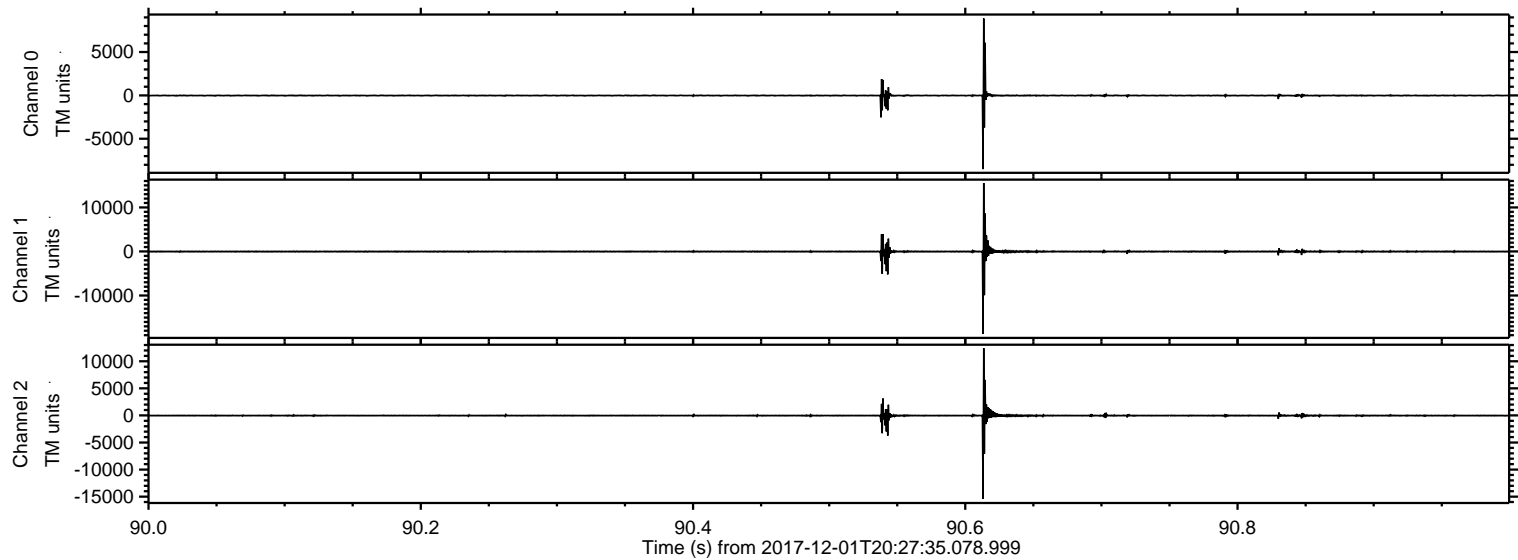


ELMAVAN 3D WAVEFORMS (Measured data sampled at 50 kHz) 51000 packets of 144 samples from 2017-12-01T20:27:35.078.999.

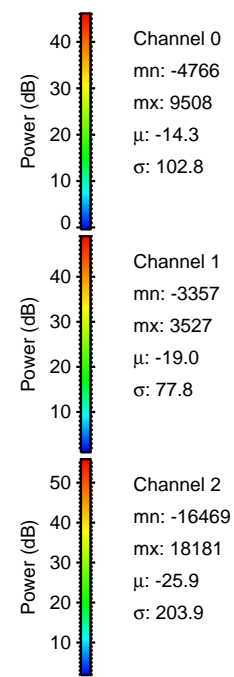
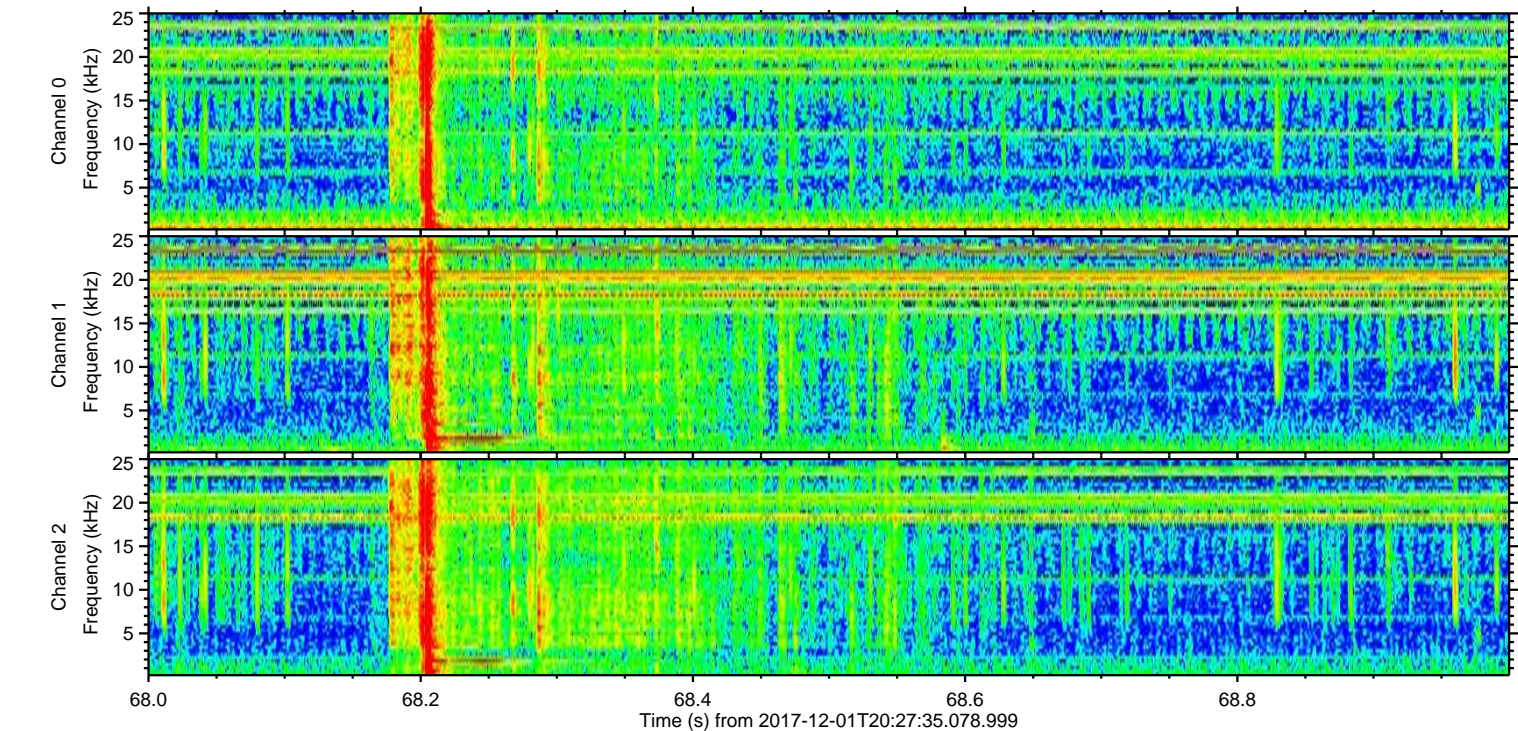
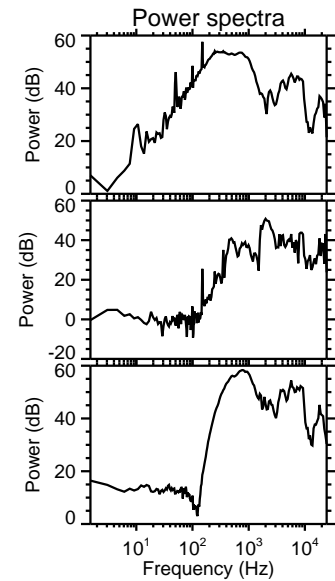
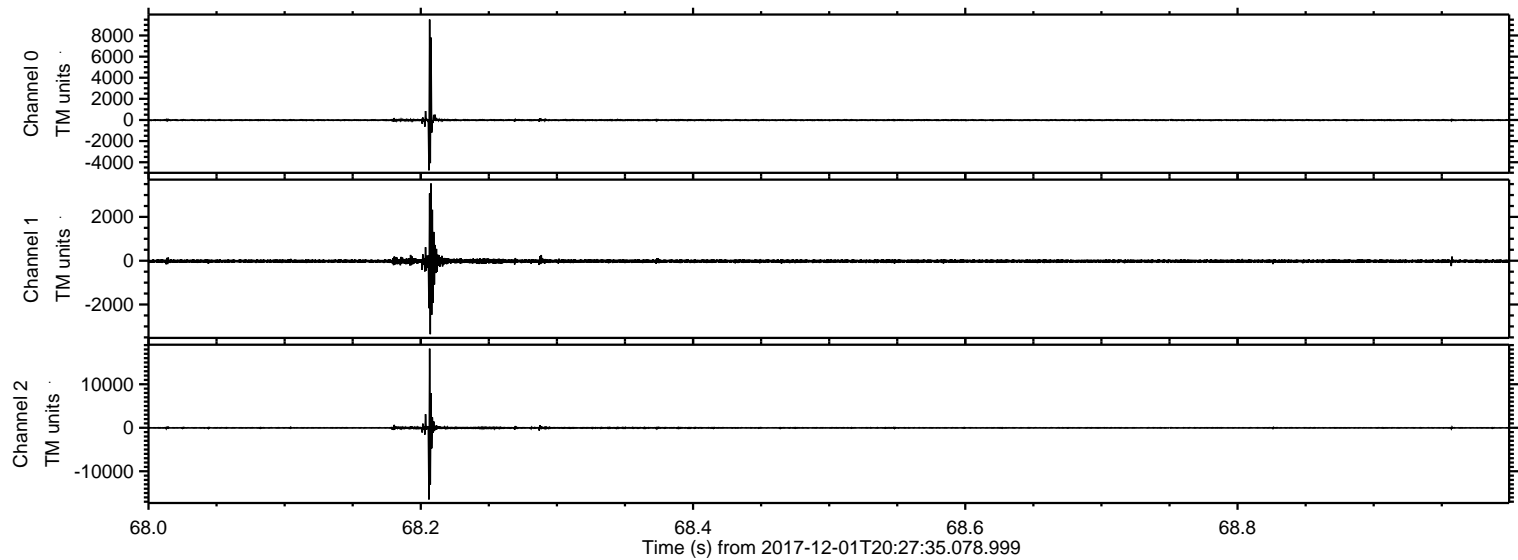
Processed Fri Dec 1 21:36:20 2017 by ELM ver.2012-10-06 from 001__elm20171201_202734__dat00.bin



Processed Fri Dec 1 21:36:25 2017 by ELM ver.2012-10-06 from 001__elm20171201_202734__dat00.bin

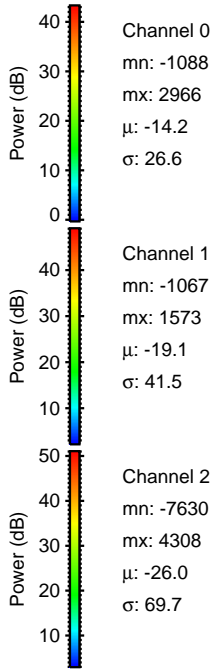
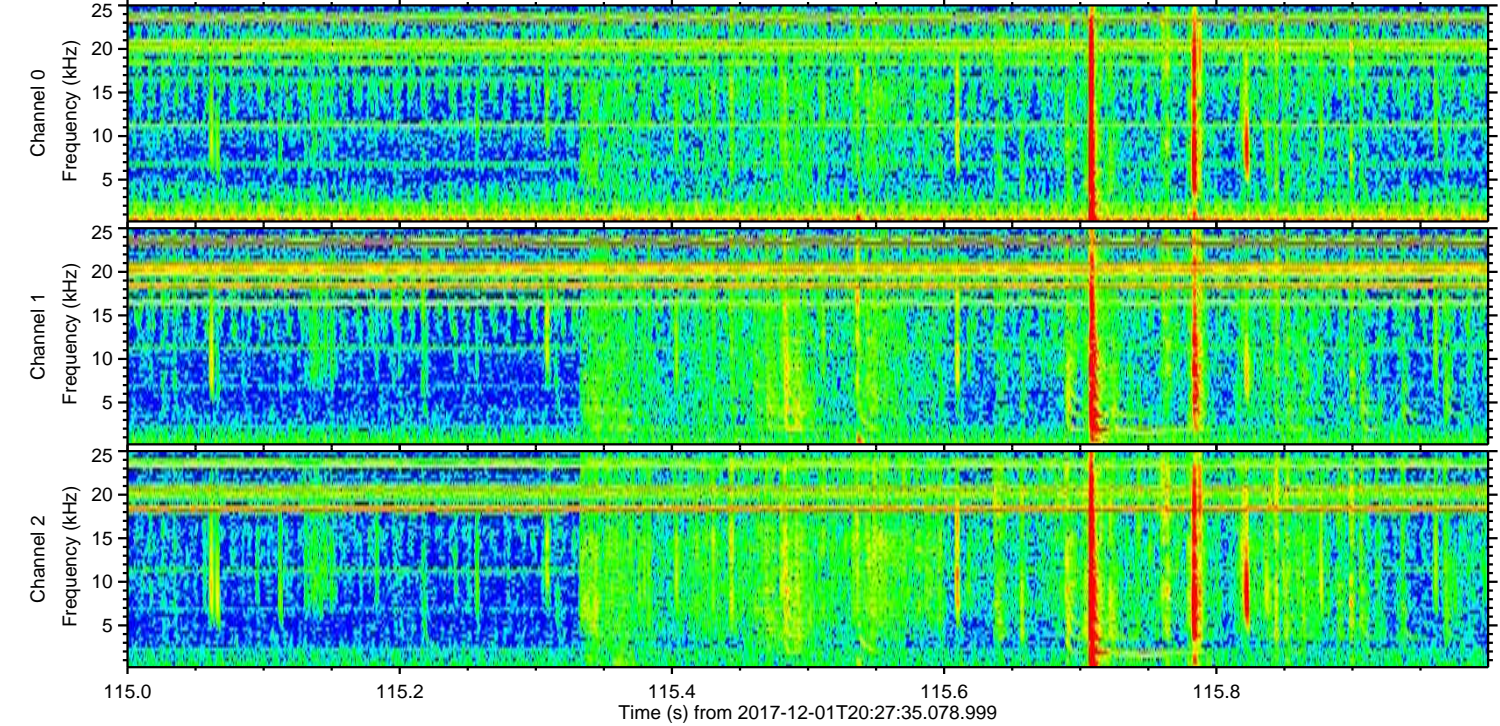
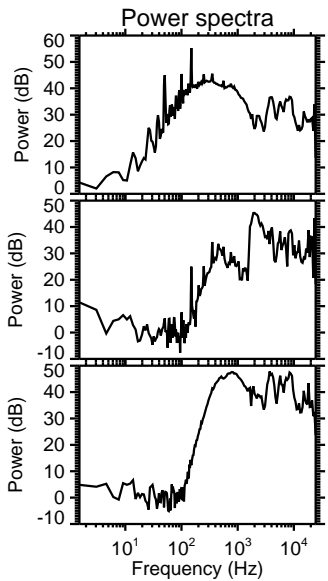
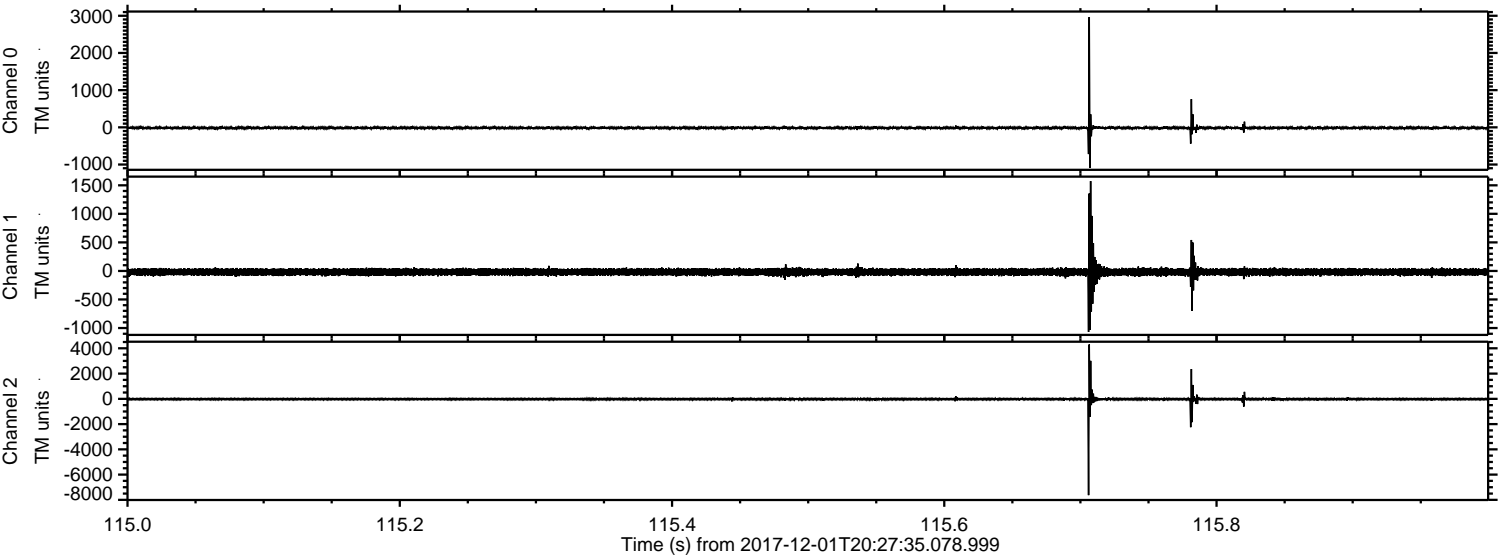


Processed Fri Dec 1 21:36:26 2017 by ELM ver.2012-10-06 from 001__elm20171201_202734__dat00.bin



ELMAVAN 3D WAVEFORMS (Measured data sampled at 50 kHz) 51000 packets of 144 samples from 2017-12-01T20:27:35.078.999. Part 116/147

Processed Fri Dec 1 21:36:27 2017 by ELM ver.2012-10-06 from 001__elm20171201_202734__dat00.bin



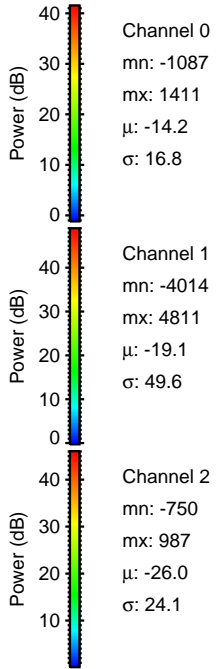
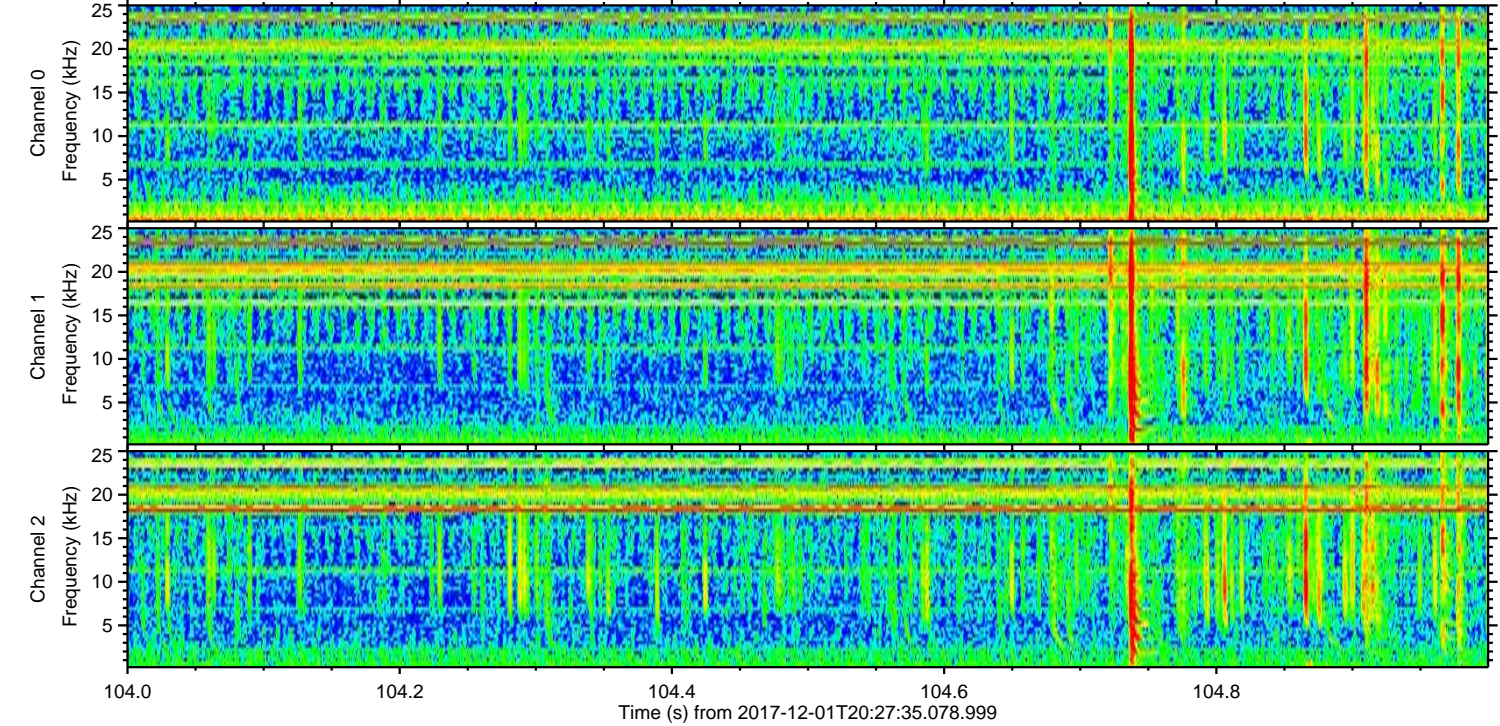
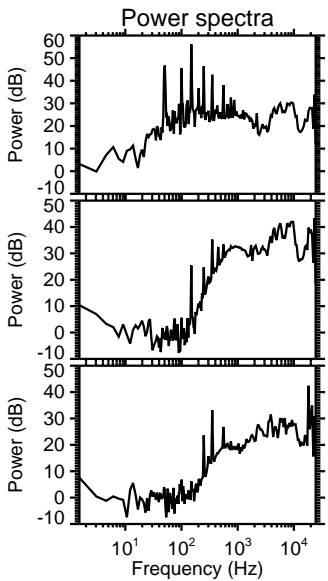
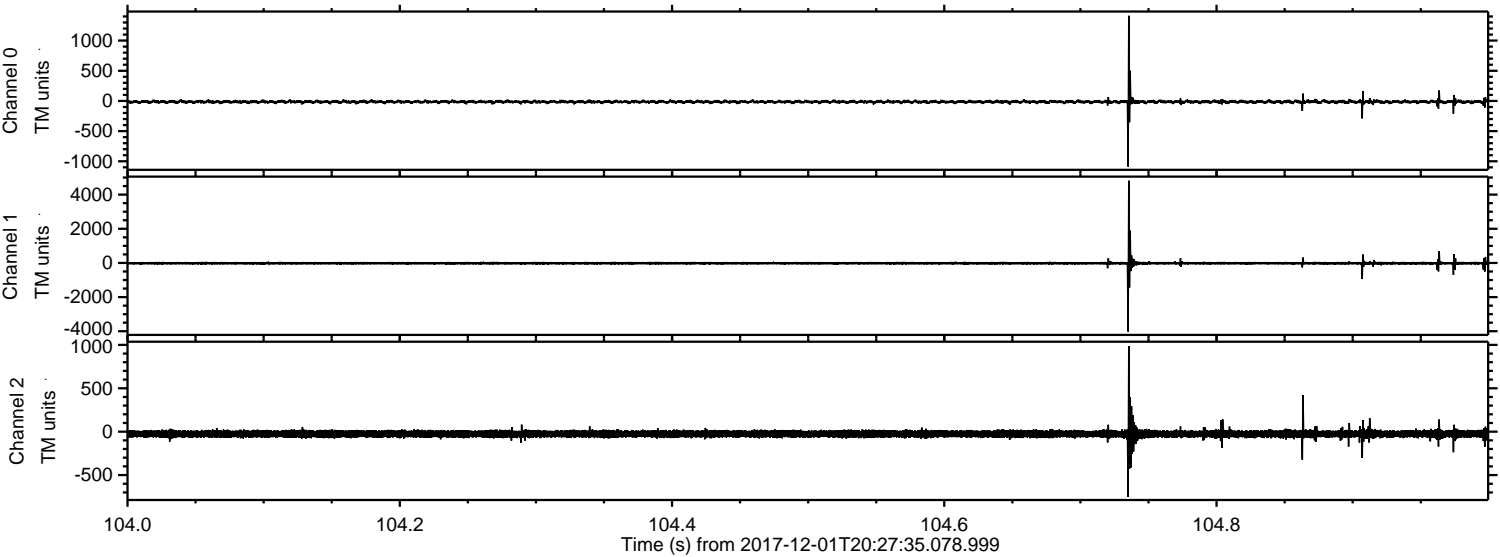
Channel 0
mn: -1088
mx: 2966
 μ : -14.2
 σ : 26.6

Channel 1
mn: -1067
mx: 1573
 μ : -19.1
 σ : 41.5

Channel 2
mn: -7630
mx: 4308
 μ : -26.0
 σ : 69.7

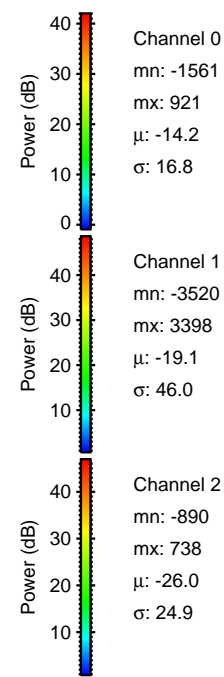
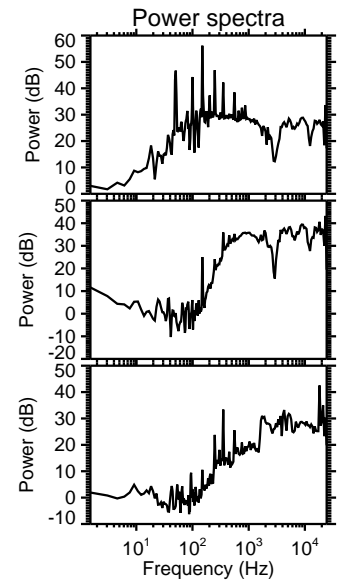
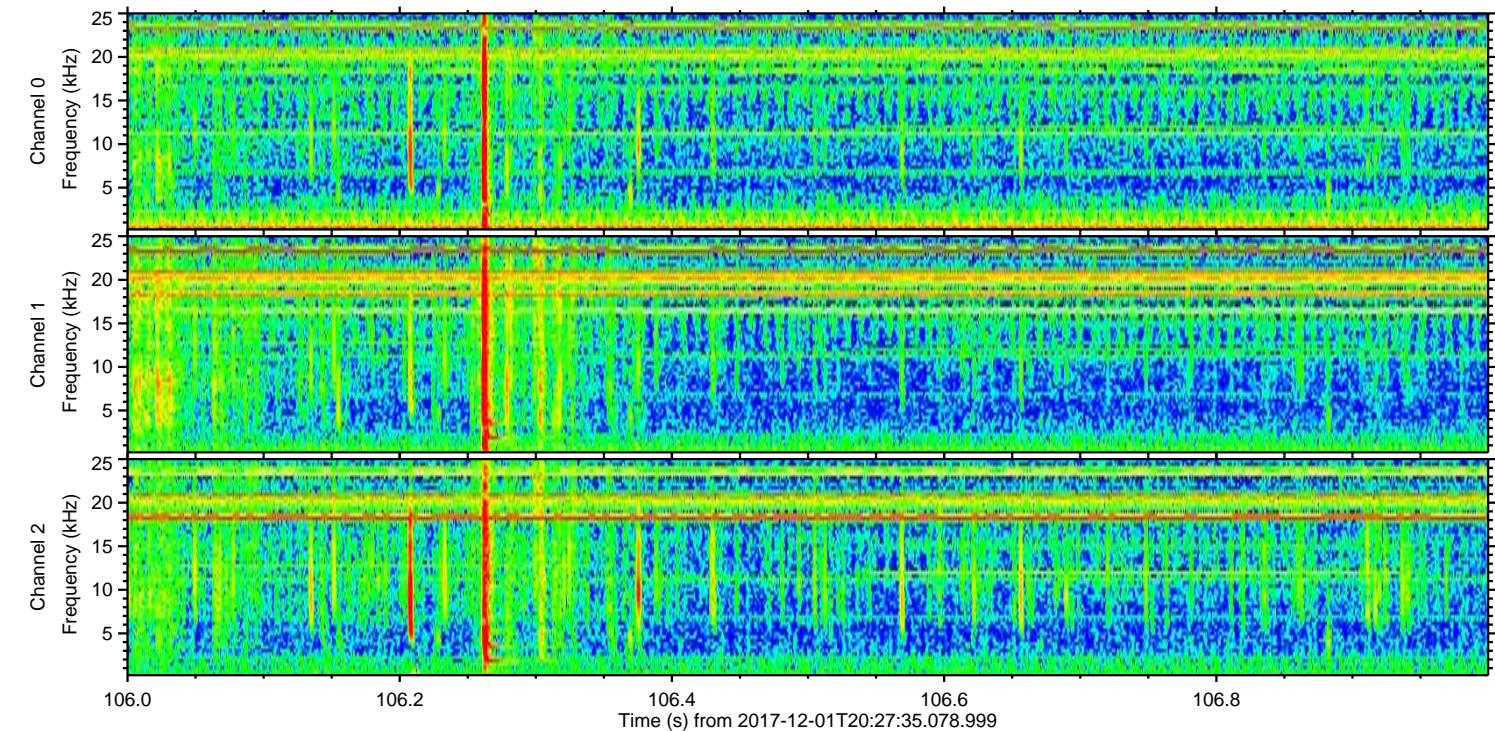
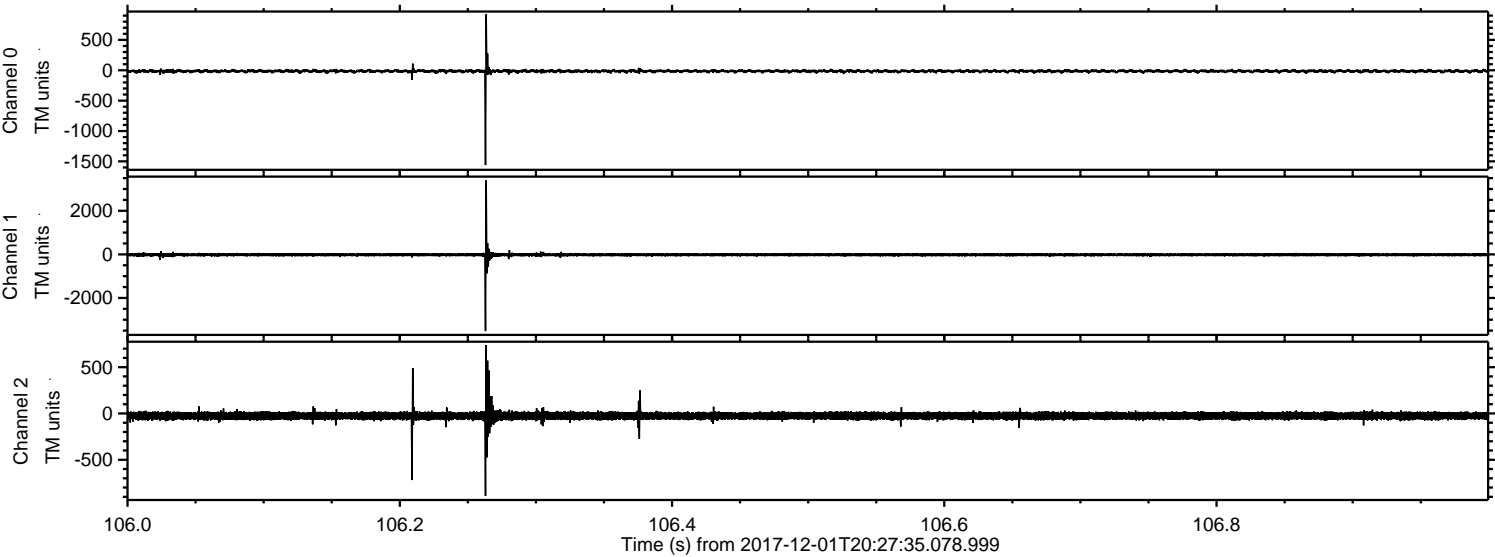
ELMAVAN 3D WAVEFORMS (Measured data sampled at 50 kHz) 51000 packets of 144 samples from 2017-12-01T20:27:35.078.999. Part 105/147

Processed Fri Dec 1 21:36:27 2017 by ELM ver.2012-10-06 from 001__elm20171201_202734__dat00.bin

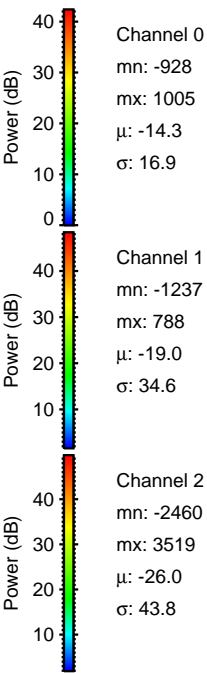
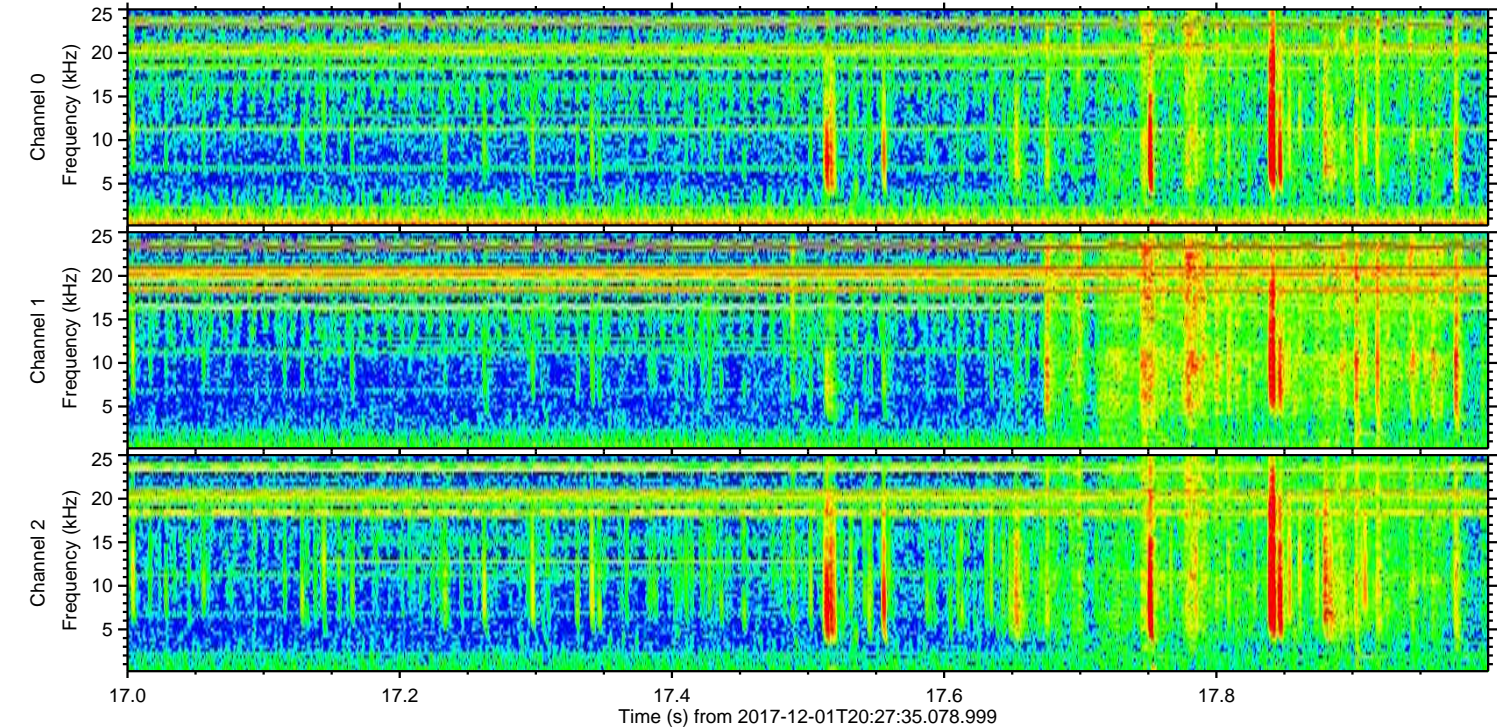
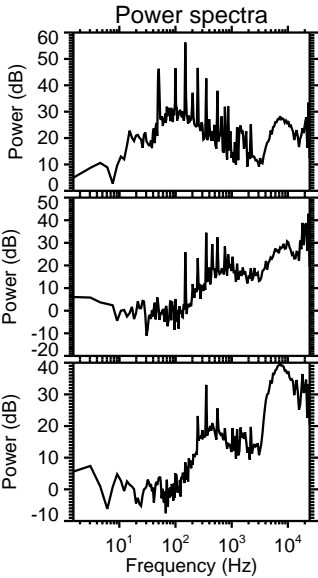
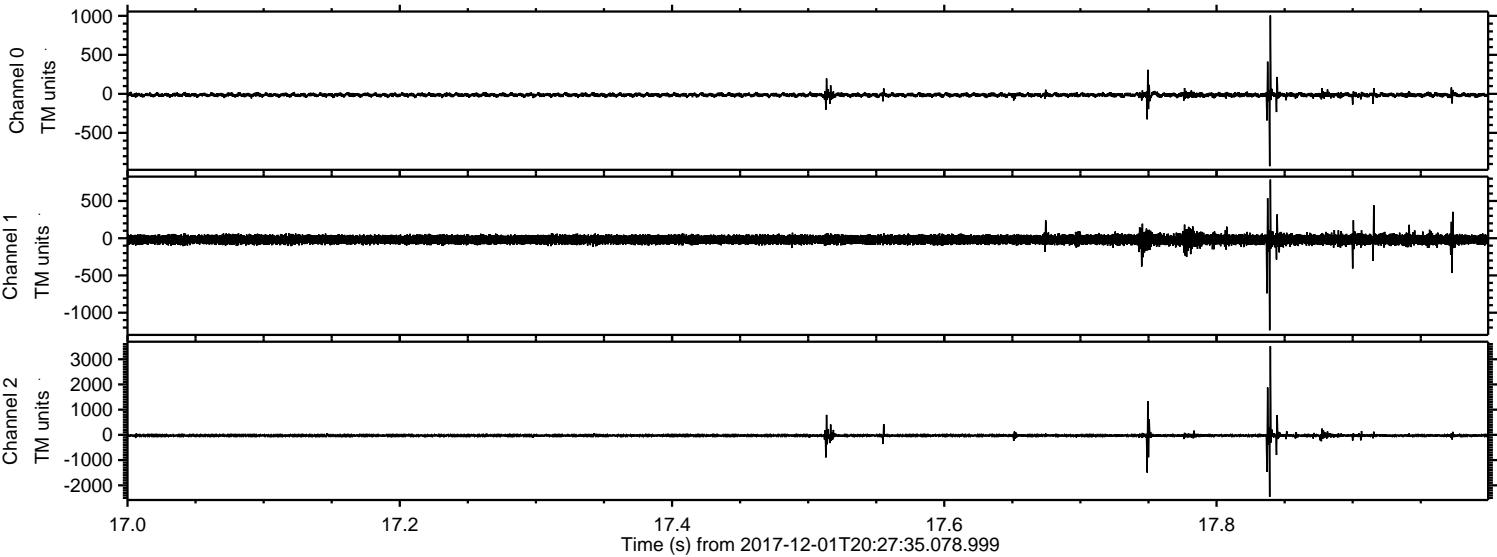


ELMAVAN 3D WAVEFORMS (Measured data sampled at 50 kHz) 51000 packets of 144 samples from 2017-12-01T20:27:35.078.999. Part 107/147

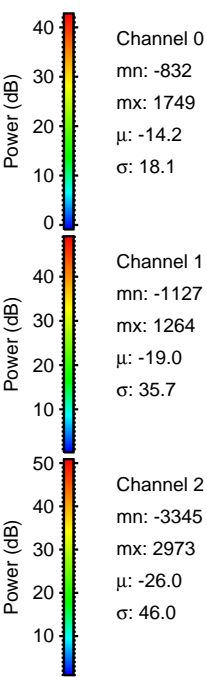
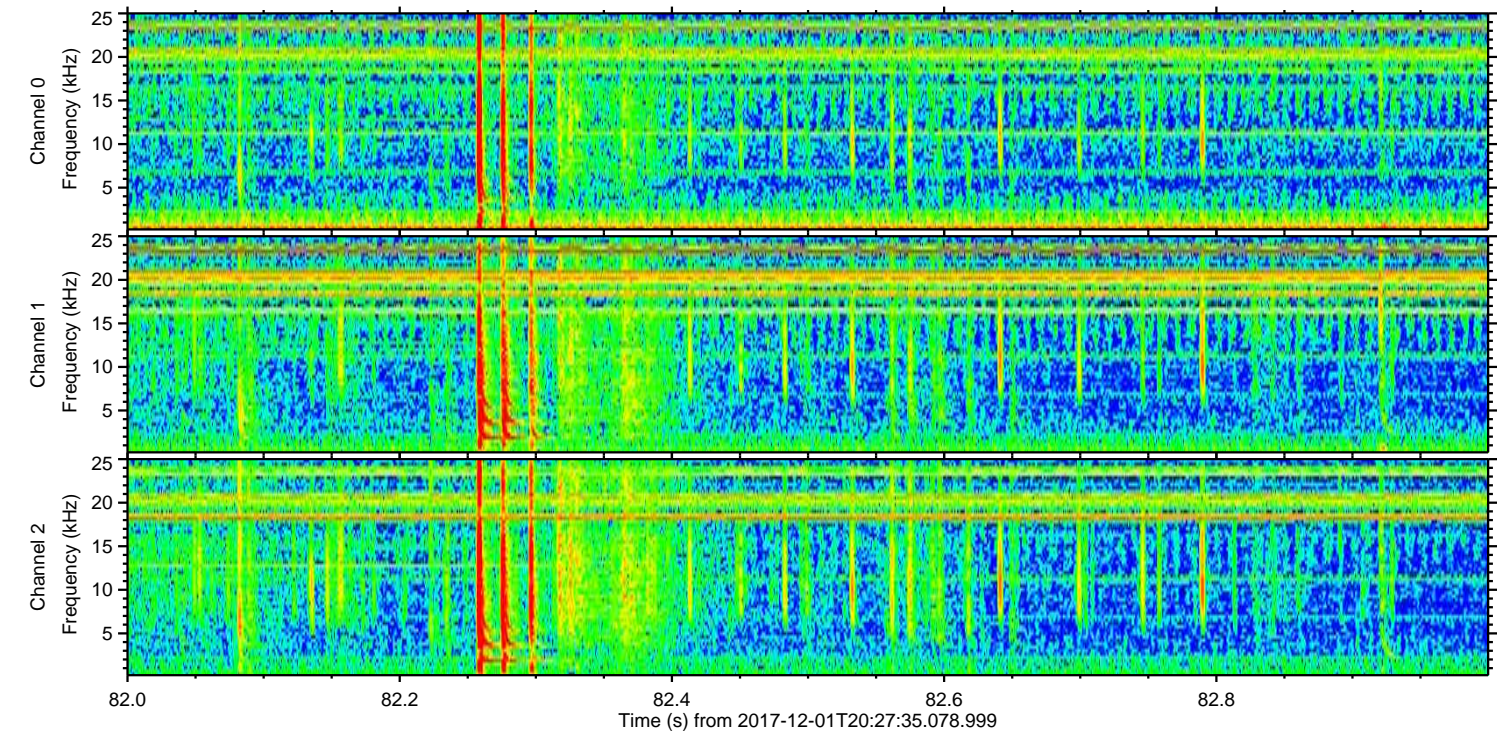
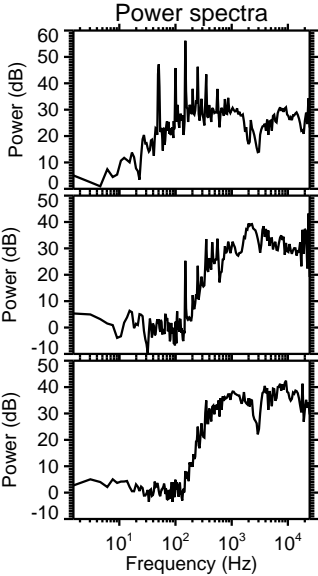
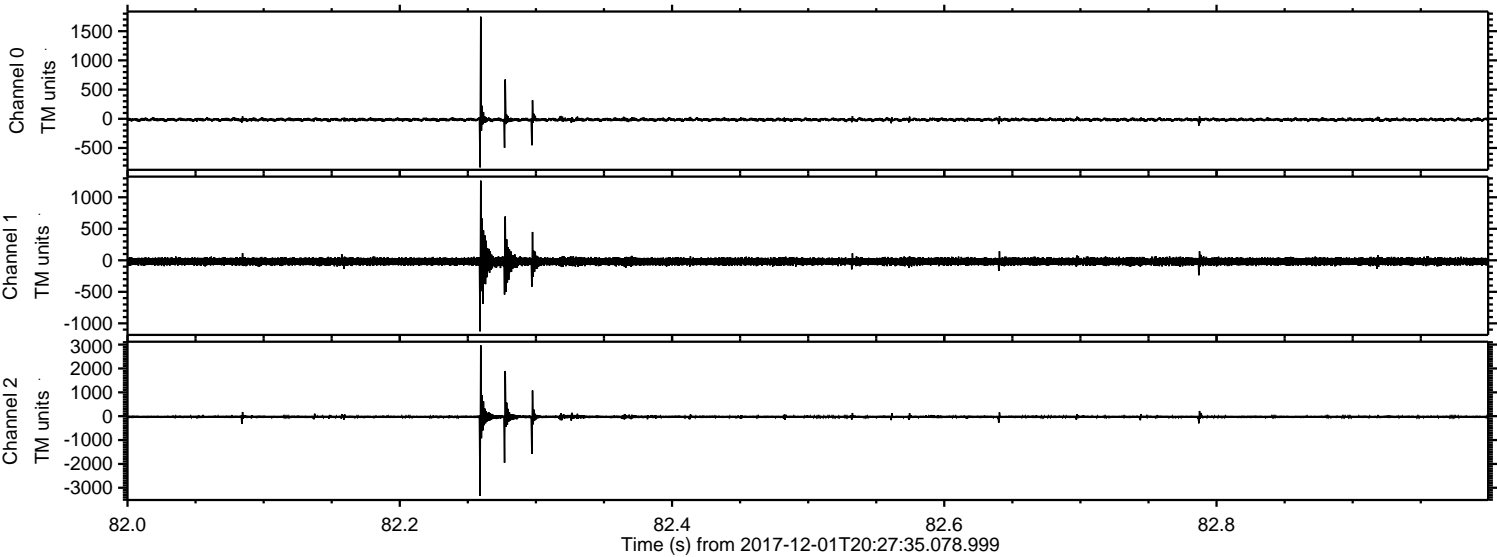
Processed Fri Dec 1 21:36:28 2017 by ELM ver.2012-10-06 from 001__elm20171201_202734__dat00.bin



Processed Fri Dec 1 21:36:29 2017 by ELM ver.2012-10-06 from 001__elm20171201_202734__dat00.bin



Processed Fri Dec 1 21:36:30 2017 by ELM ver.2012-10-06 from 001__elm20171201_202734__dat00.bin

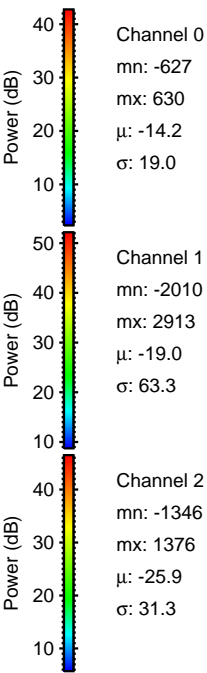
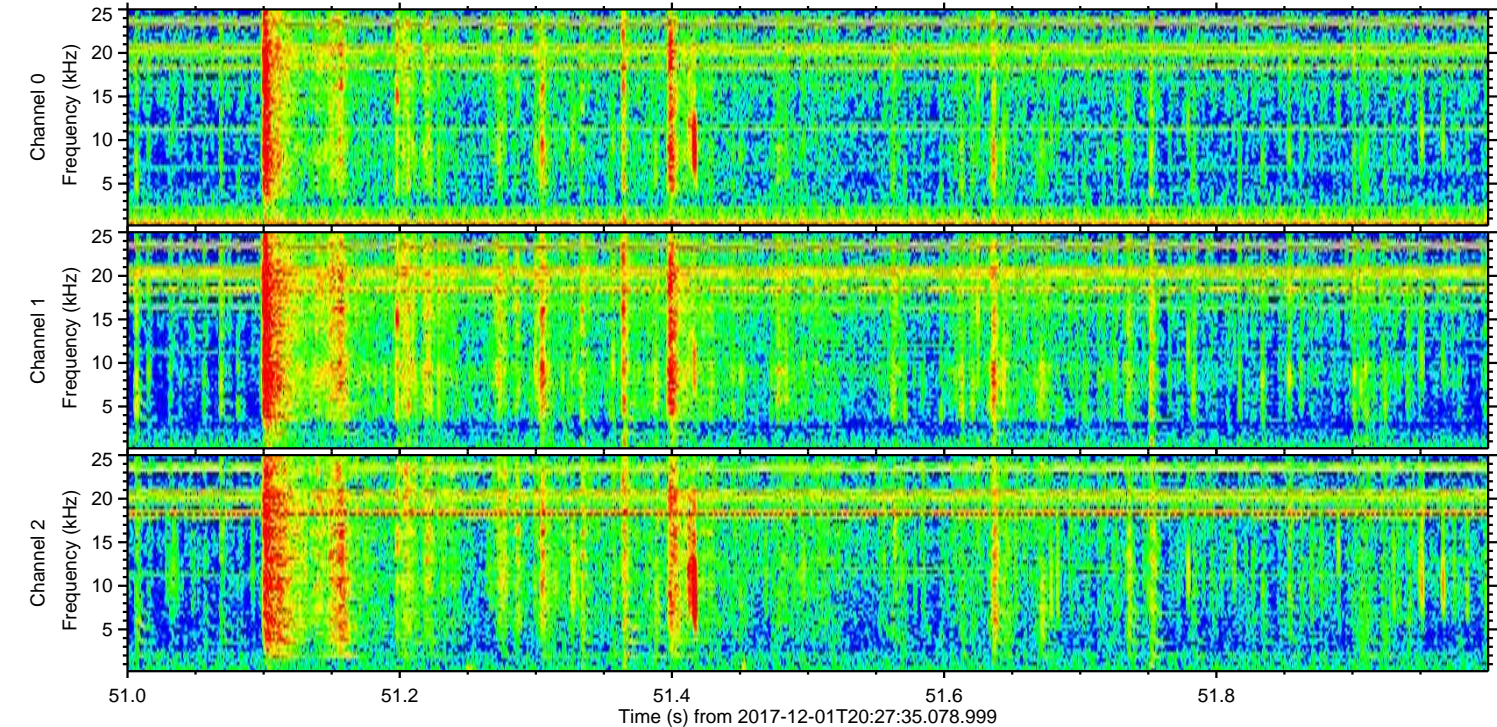
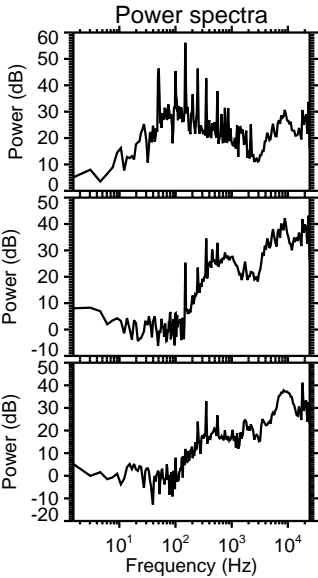
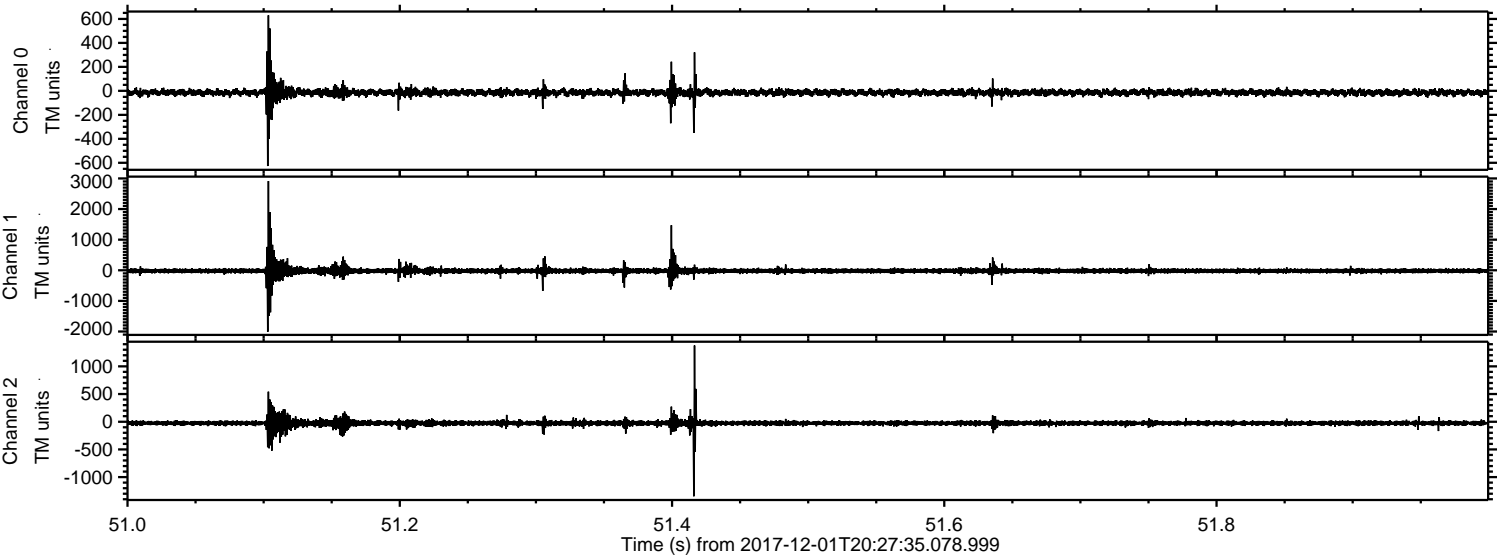


Channel 0
mn: -832
mx: 1749
 μ : -14.2
 σ : 18.1

Channel 1
mn: -1127
mx: 1264
 μ : -19.0
 σ : 35.7

Channel 2
mn: -3345
mx: 2973
 μ : -26.0
 σ : 46.0

Processed Fri Dec 1 21:36:30 2017 by ELM ver.2012-10-06 from 001__elm20171201_202734__dat00.bin



Channel 0
mn: -627
mx: 630
 μ : -14.2
 σ : 19.0

Channel 1
mn: -2010
mx: 2913
 μ : -19.0
 σ : 63.3

Channel 2
mn: -1346
mx: 1376
 μ : -25.9
 σ : 31.3

Processed Fri Dec 1 21:36:31 2017 by ELM ver.2012-10-06 from 001__elm20171201_202734__dat00.bin

