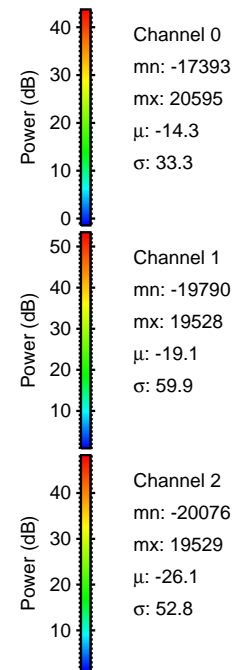
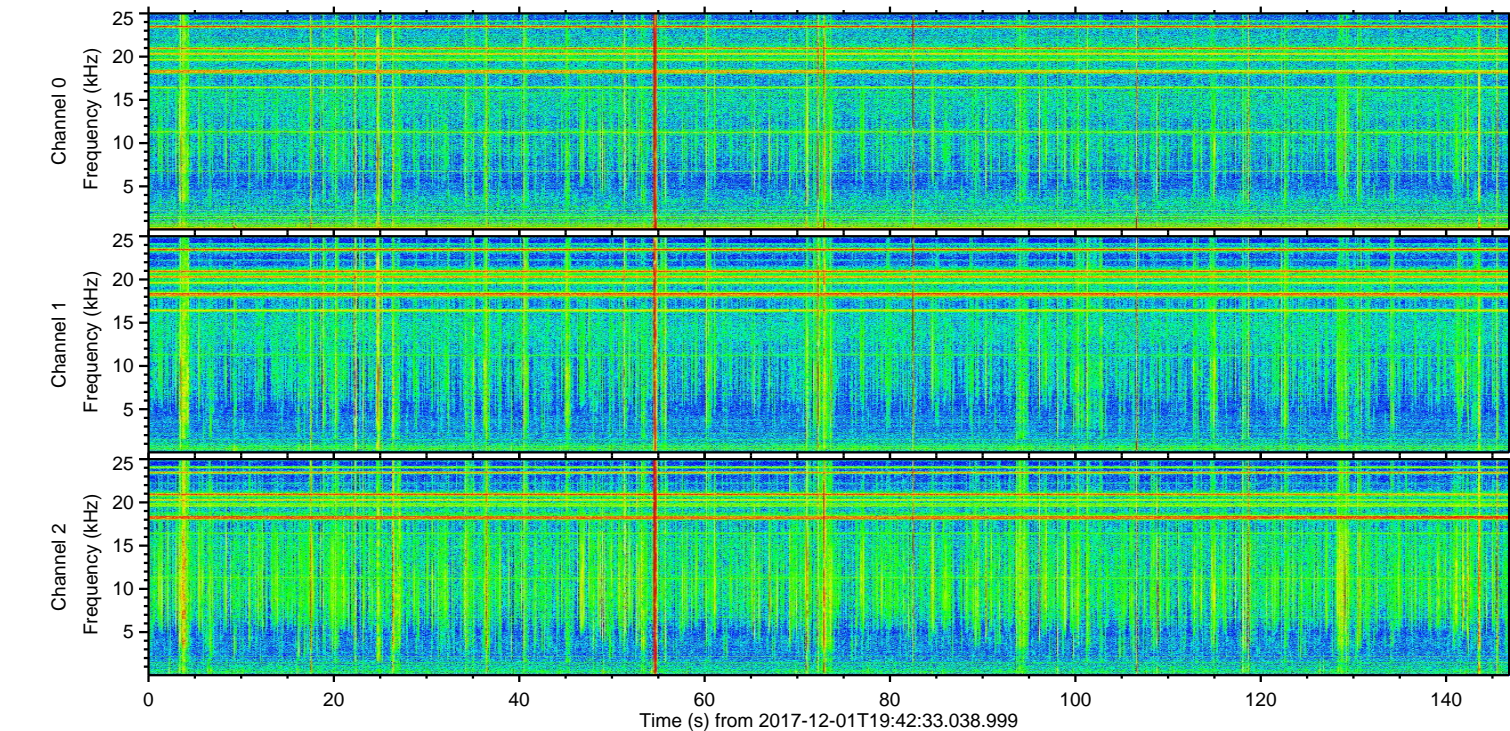
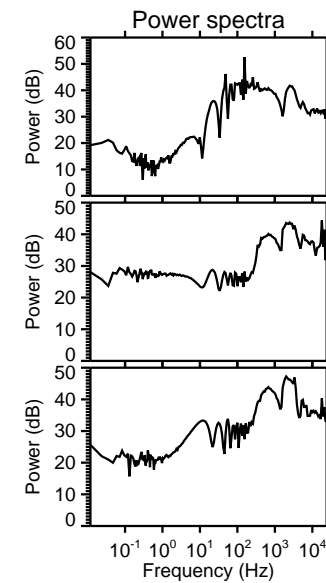
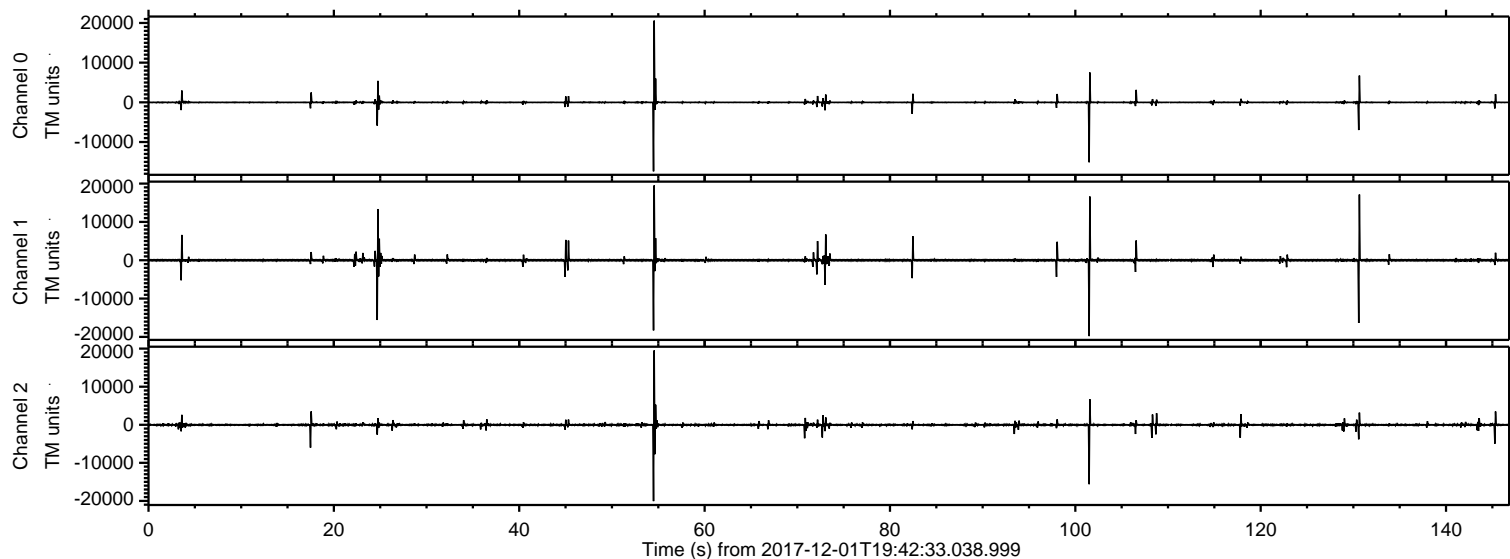
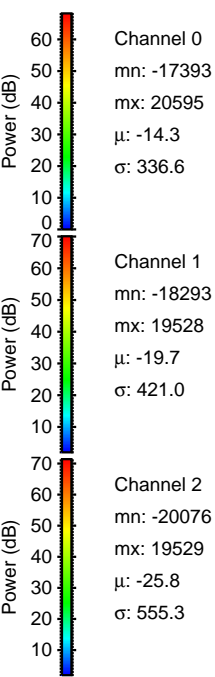
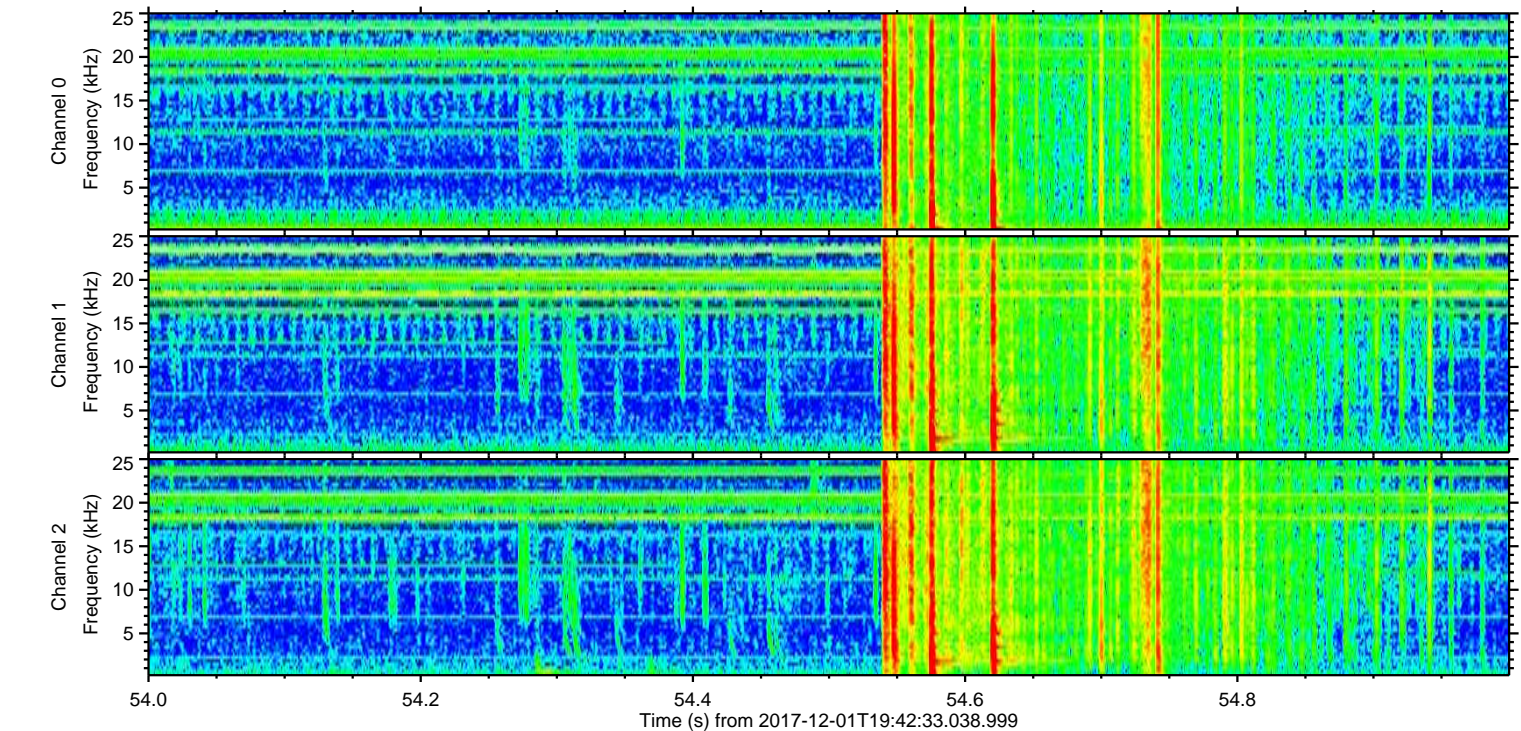
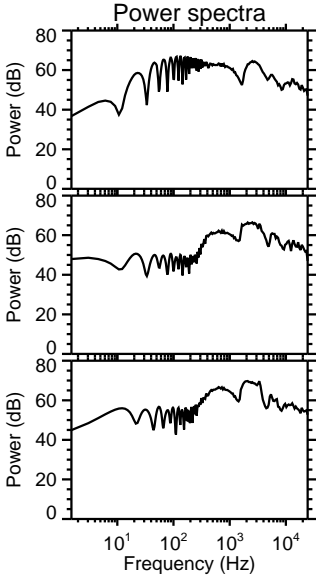
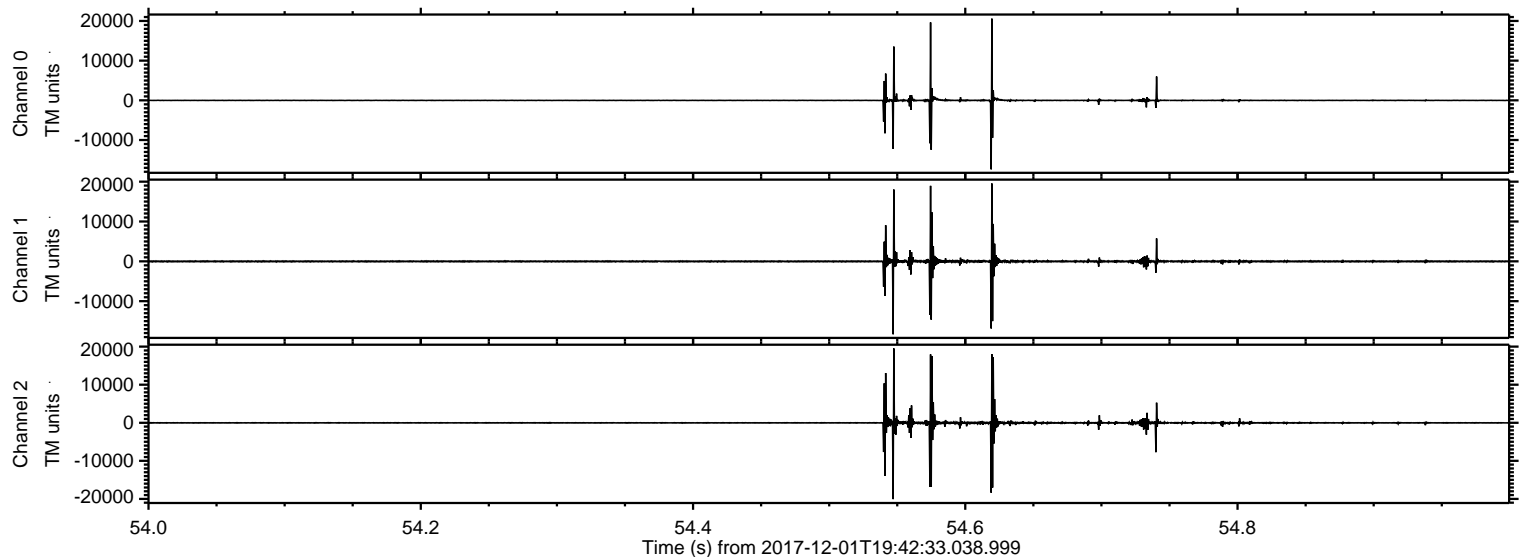


ELMAVAN 3D WAVEFORMS (Measured data sampled at 50 kHz) 51000 packets of 144 samples from 2017-12-01T19:42:33.038.999.

Processed Fri Dec 1 20:50:49 2017 by ELM ver.2012-10-06 from 001__elm20171201_194232_dat00.bin

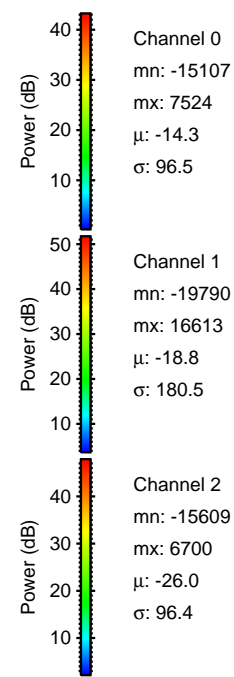
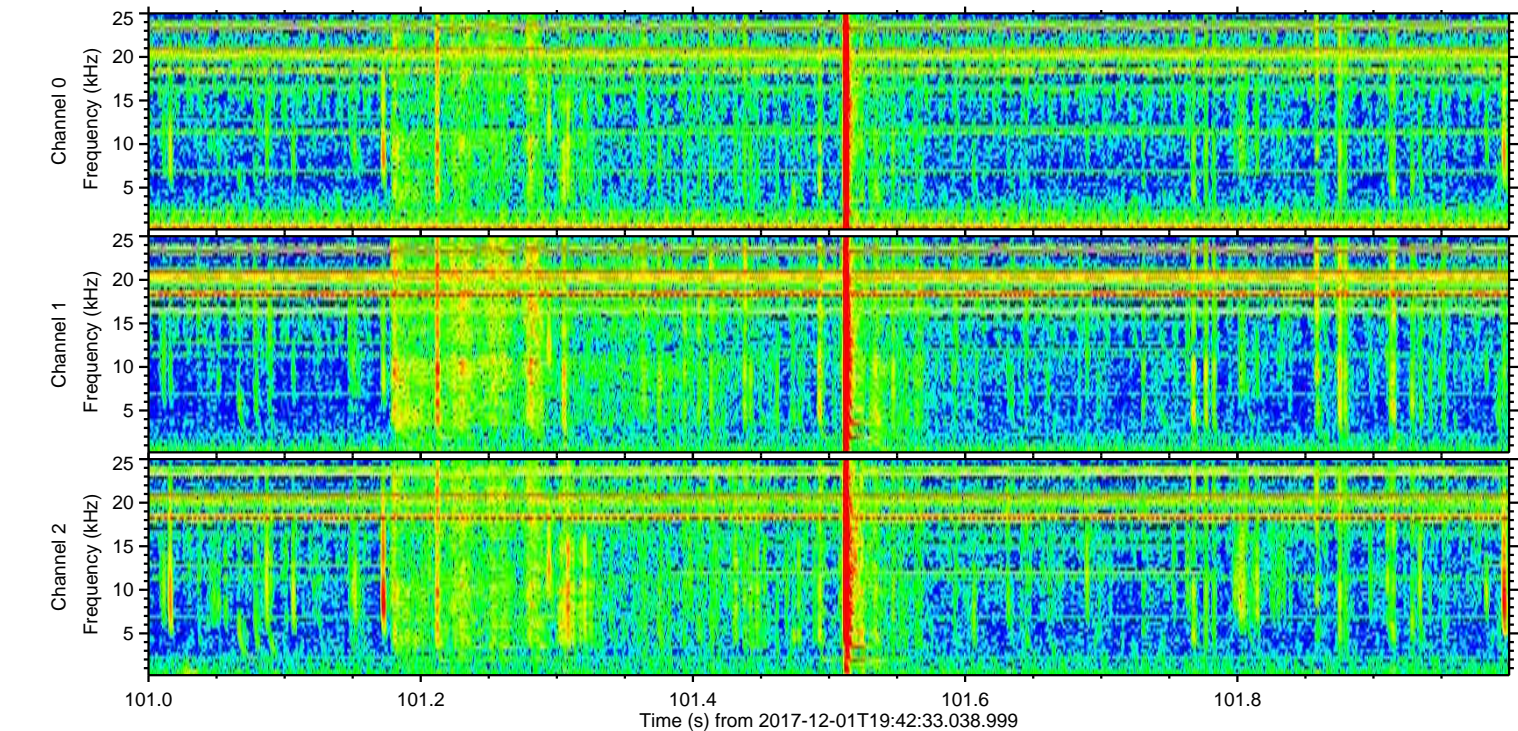
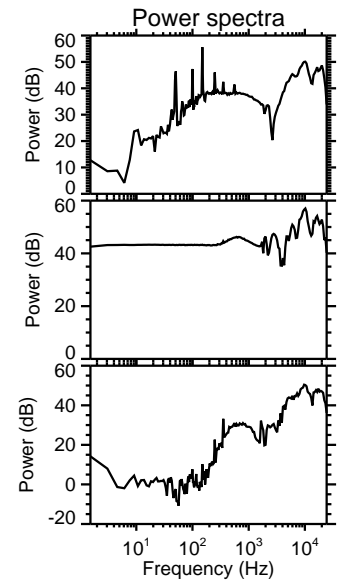
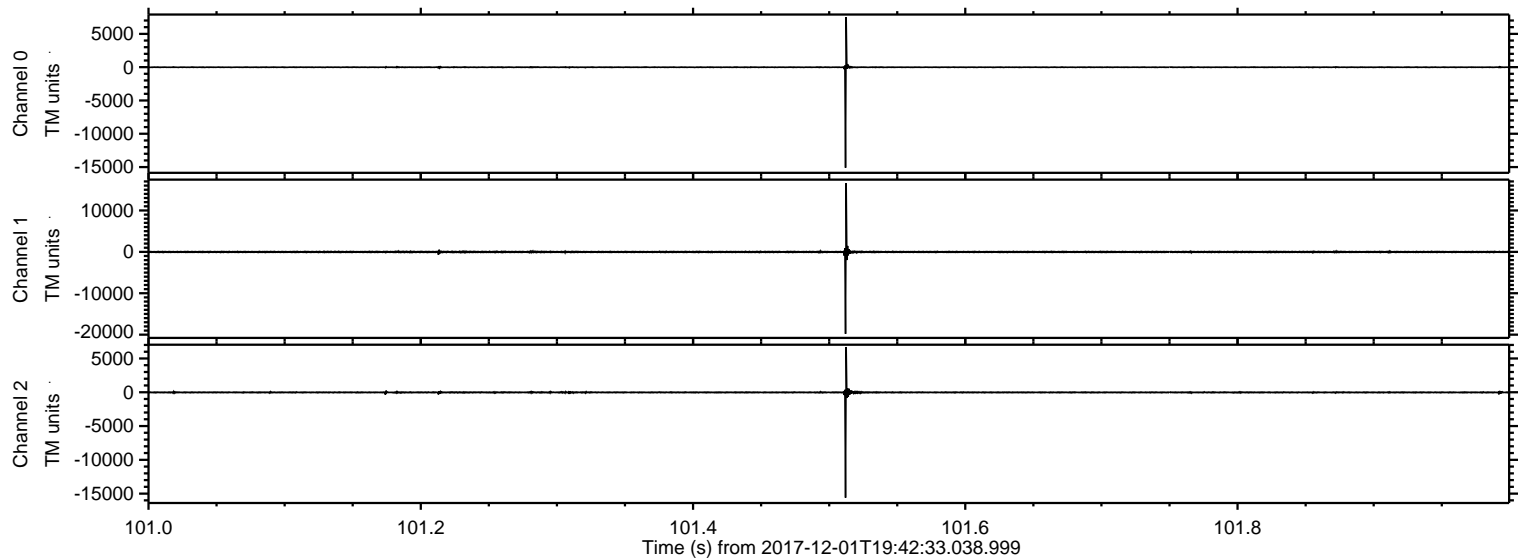


Processed Fri Dec 1 20:50:56 2017 by ELM ver.2012-10-06 from 001__elm20171201_194232__dat00.bin



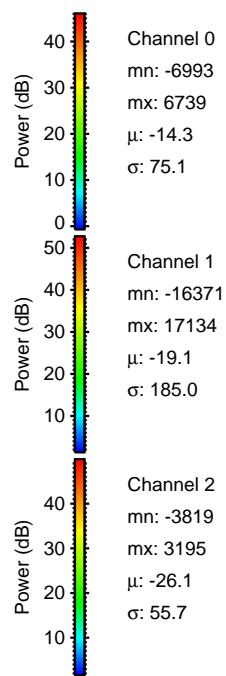
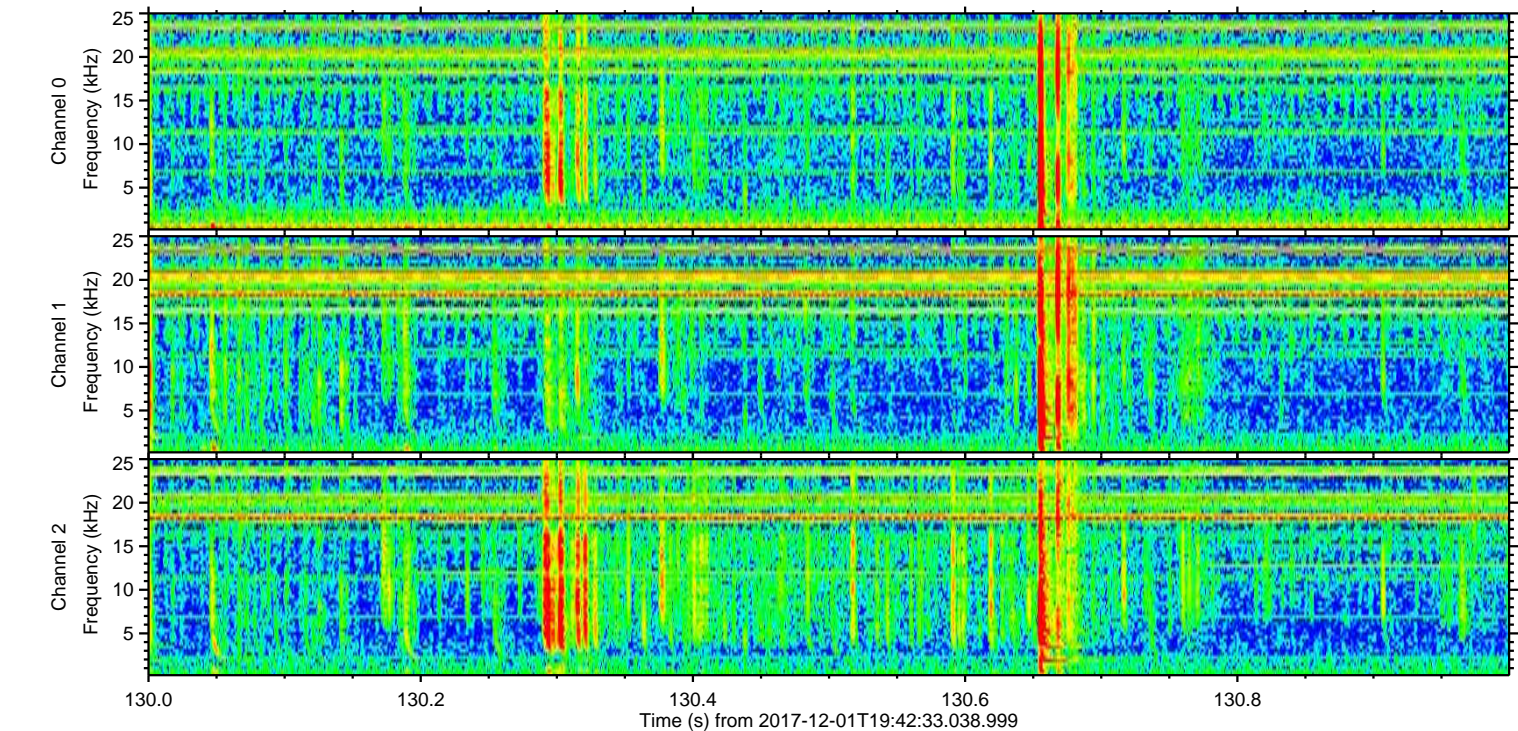
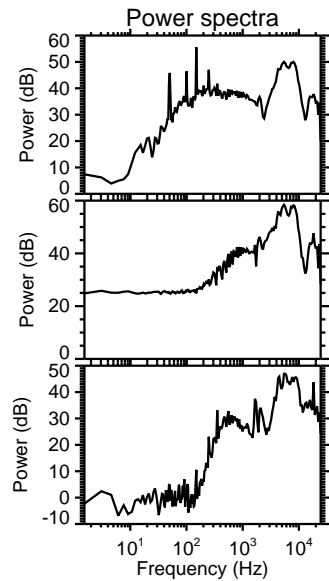
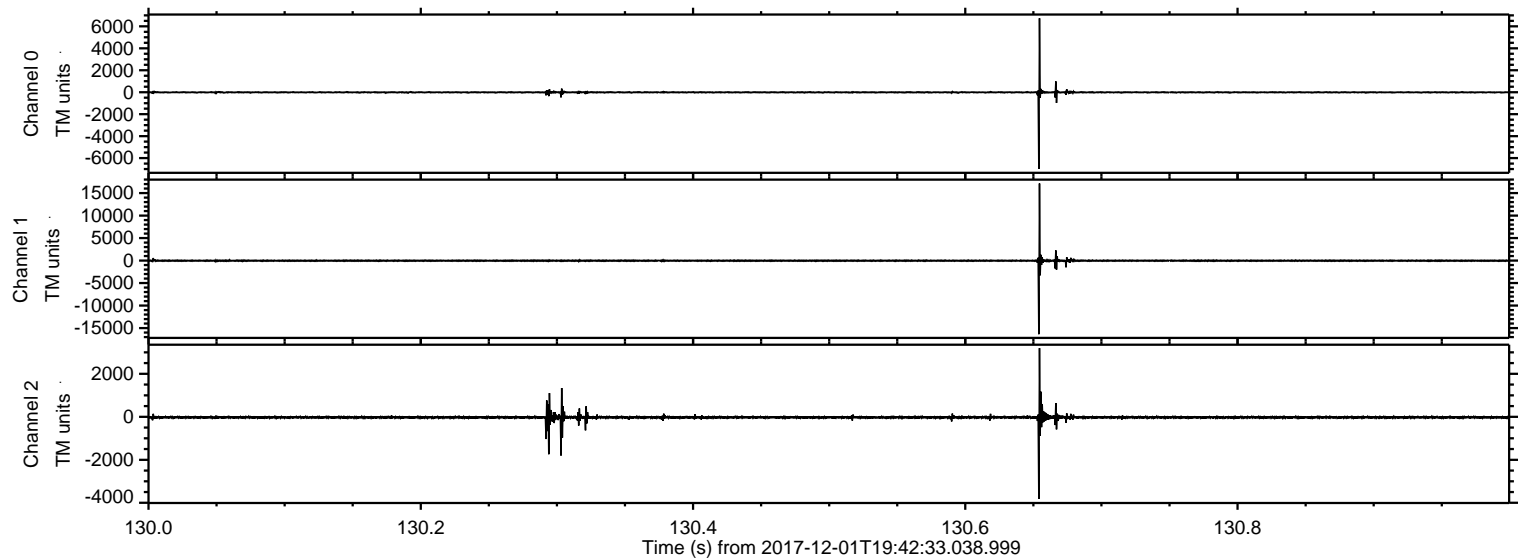
ELMAVAN 3D WAVEFORMS (Measured data sampled at 50 kHz) 51000 packets of 144 samples from 2017-12-01T19:42:33.038.999. Part 102/147

Processed Fri Dec 1 20:50:57 2017 by ELM ver.2012-10-06 from 001__elm20171201_194232__dat00.bin

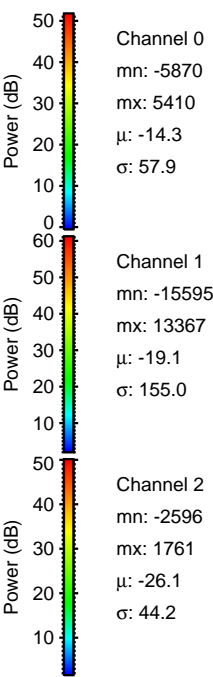
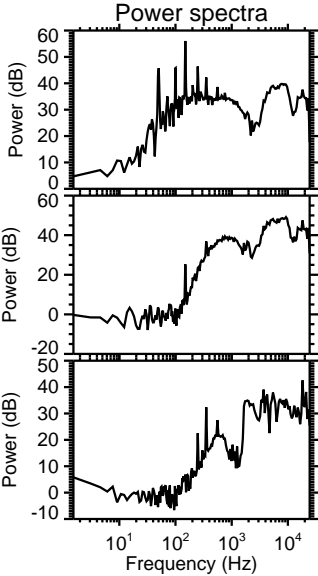
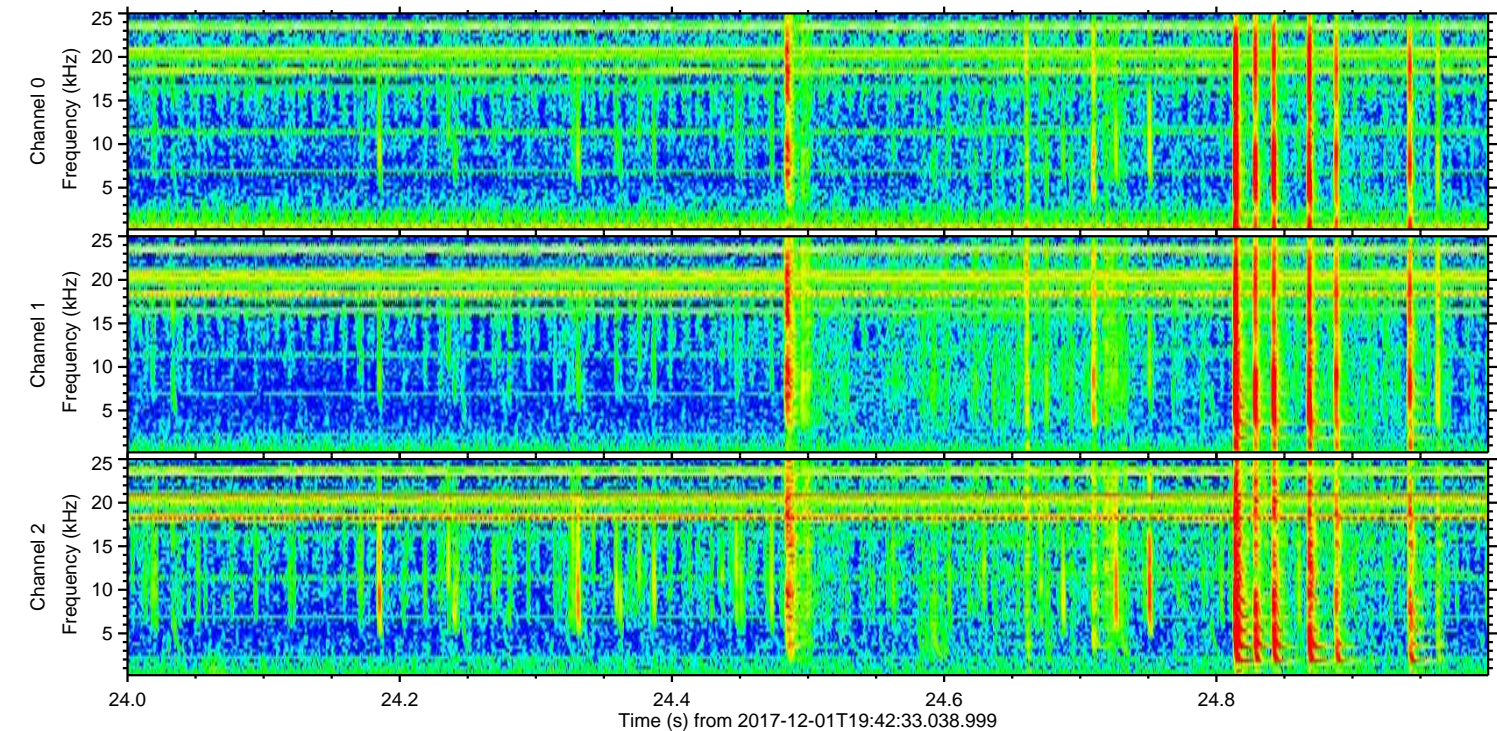
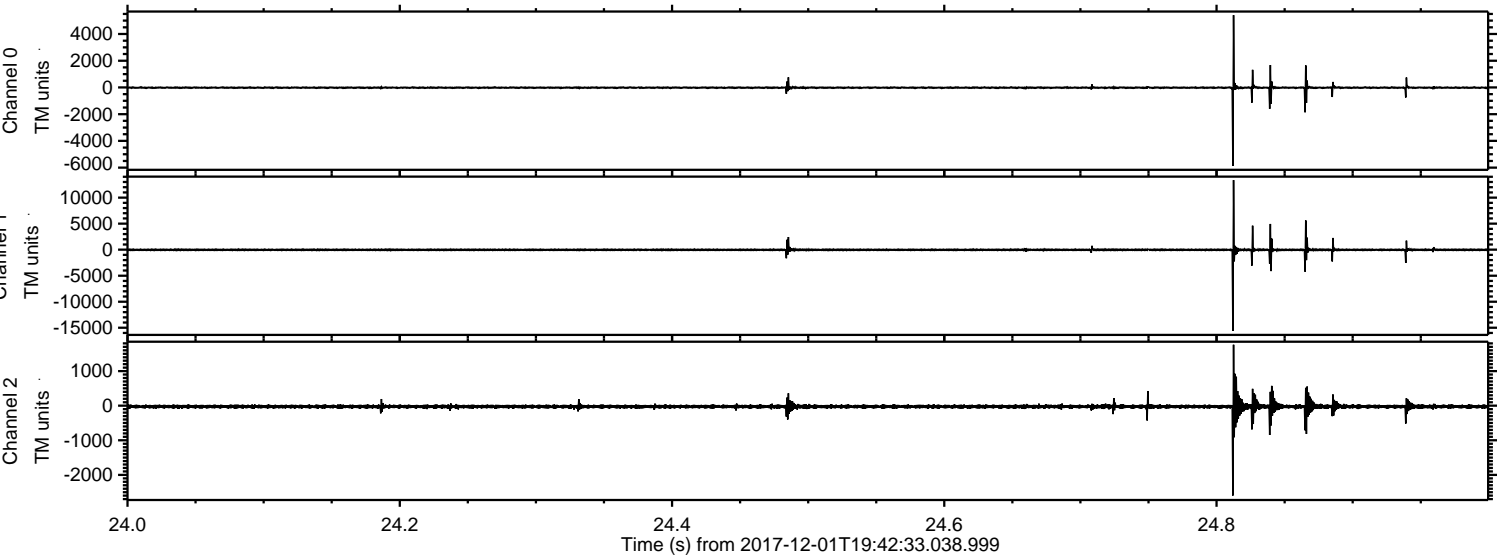


ELMAVAN 3D WAVEFORMS (Measured data sampled at 50 kHz) 51000 packets of 144 samples from 2017-12-01T19:42:33.038.999. Part 131/147

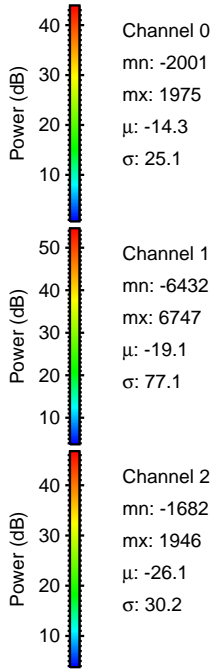
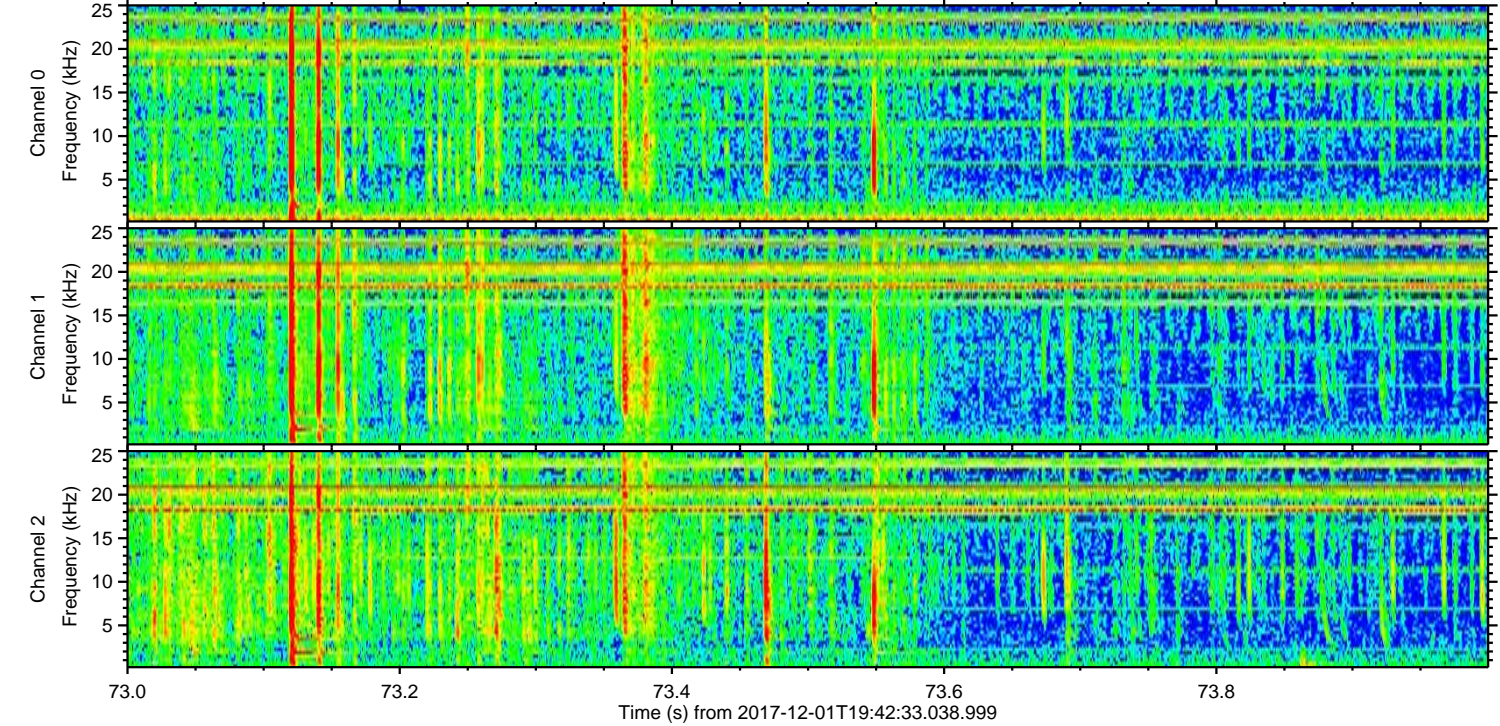
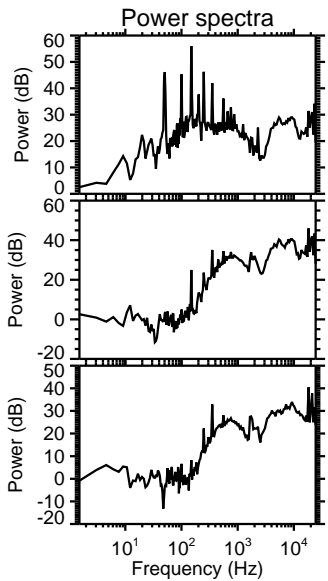
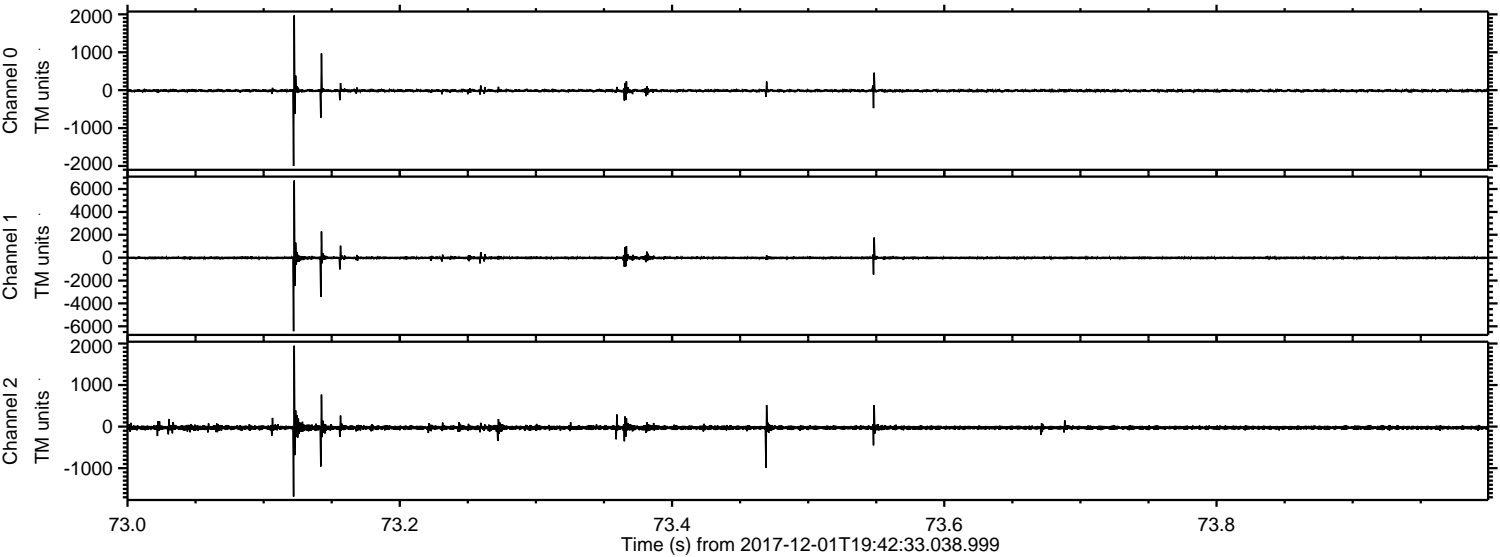
Processed Fri Dec 1 20:50:57 2017 by ELM ver.2012-10-06 from 001__elm20171201_194232__dat00.bin



Processed Fri Dec 1 20:50:58 2017 by ELM ver.2012-10-06 from 001__elm20171201_194232__dat00.bin

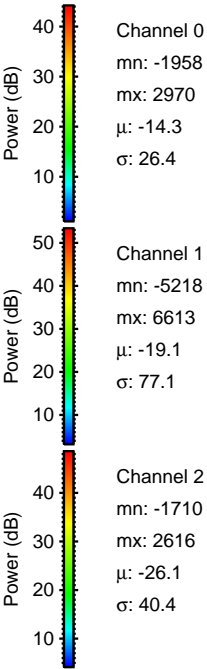
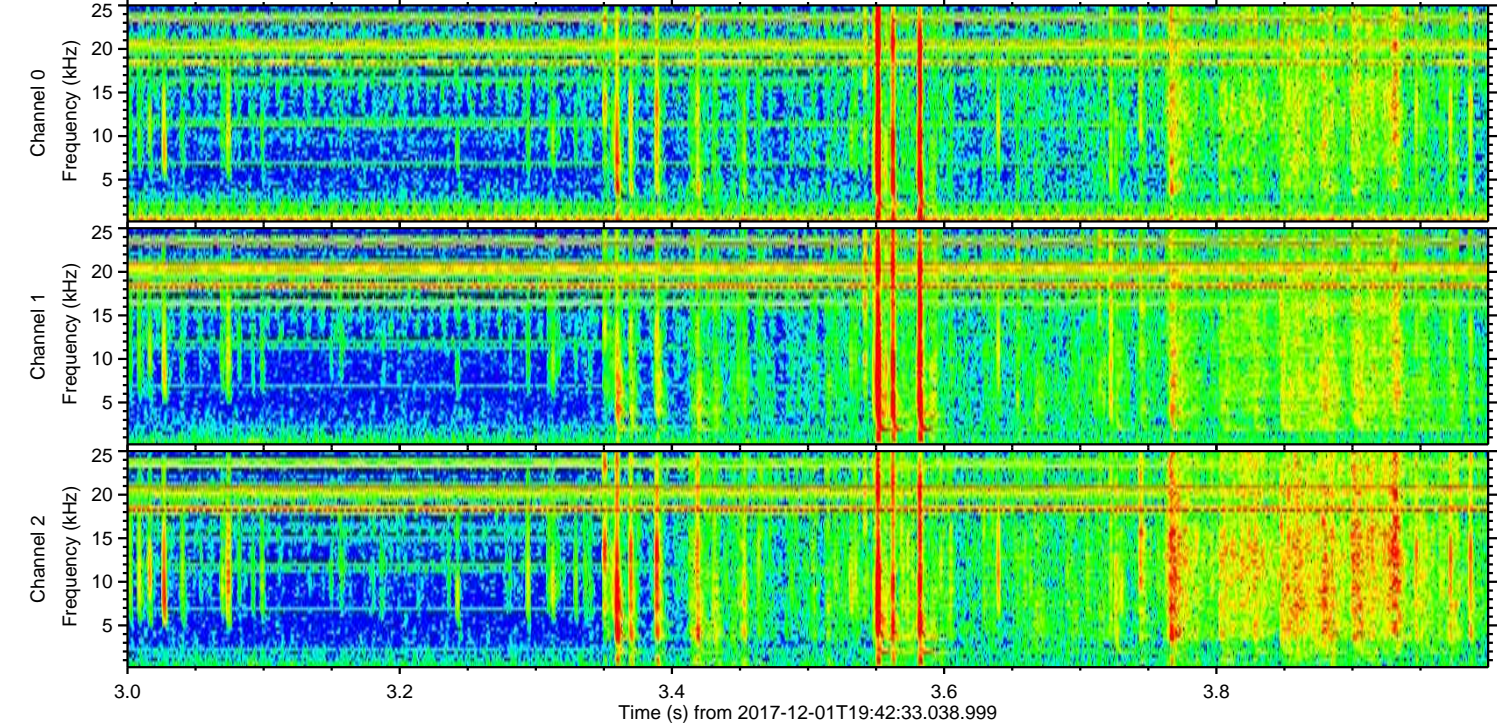
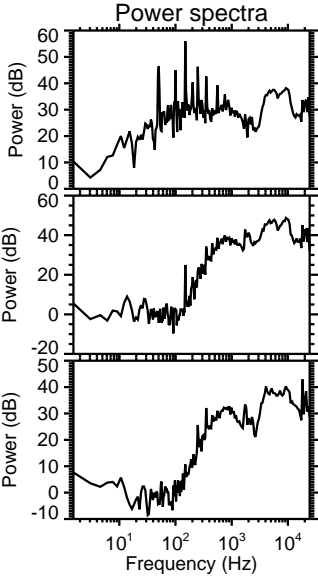
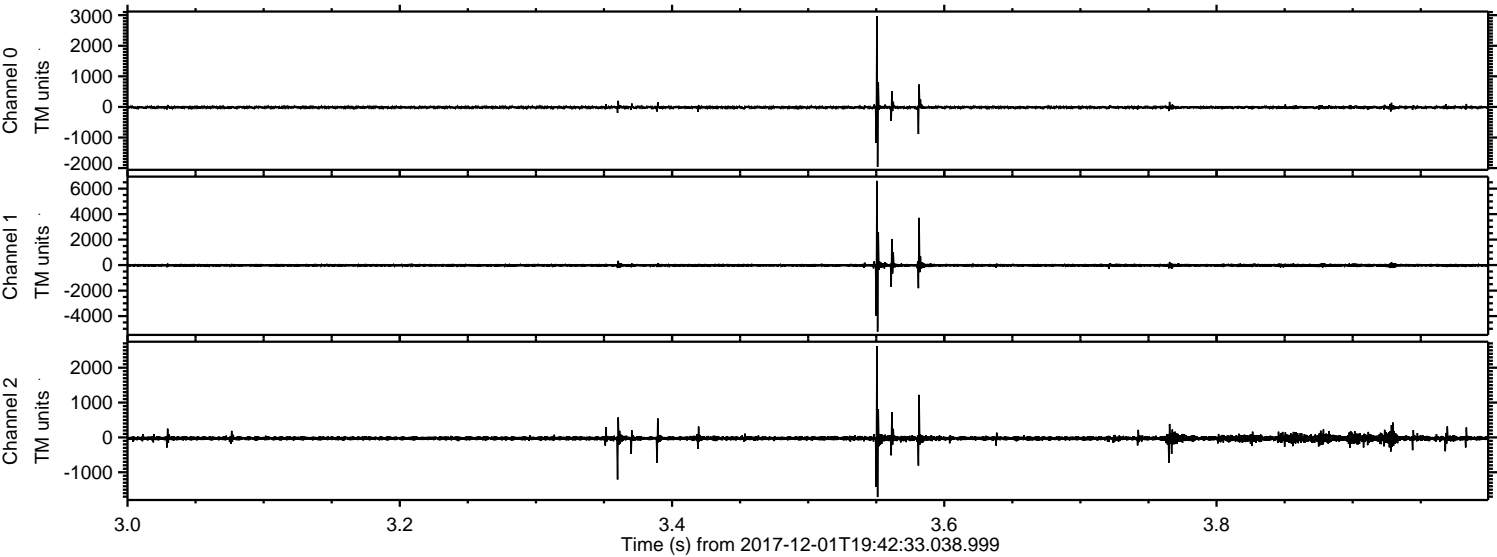


Processed Fri Dec 1 20:50:59 2017 by ELM ver.2012-10-06 from 001__elm20171201_194232__dat00.bin

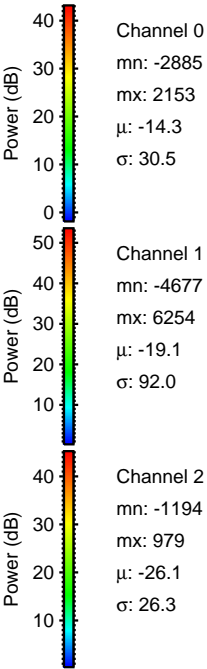
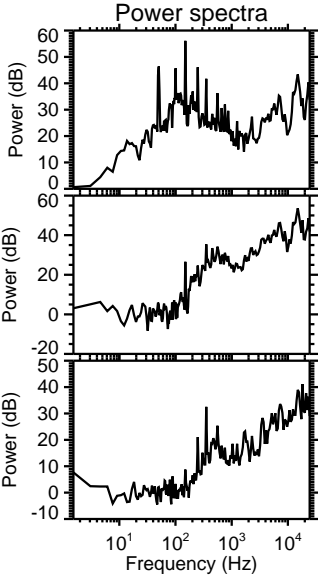
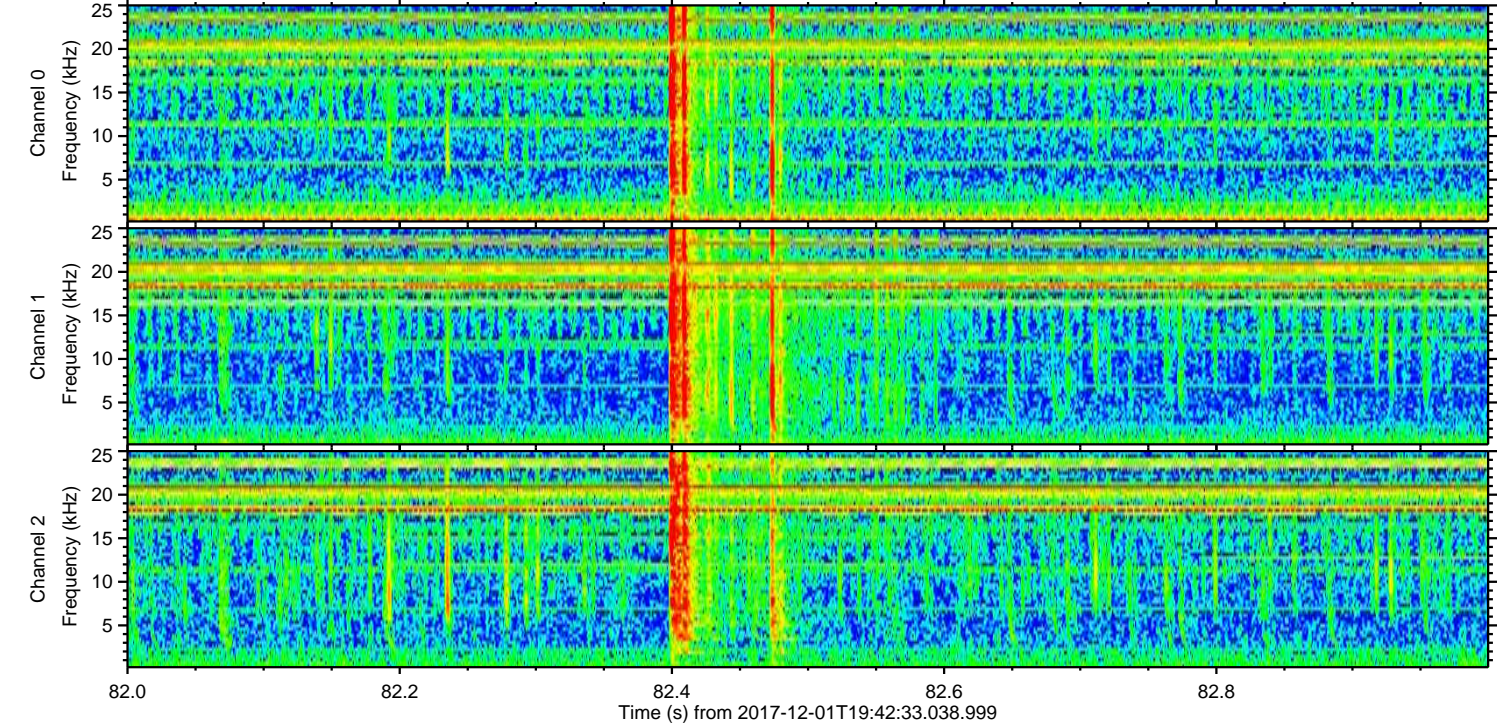
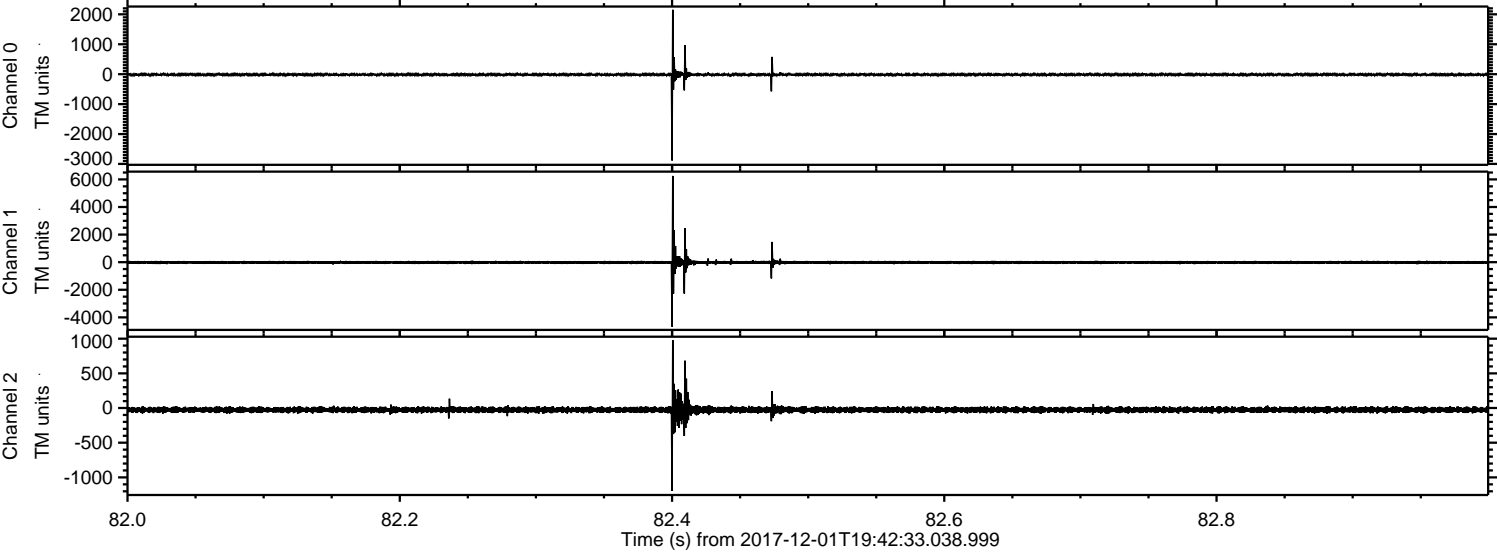


ELMAVAN 3D WAVEFORMS (Measured data sampled at 50 kHz) 51000 packets of 144 samples from 2017-12-01T19:42:33.038.999. Part 4/147

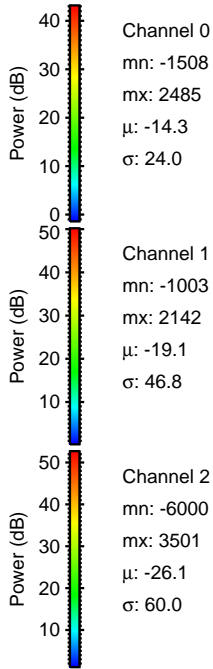
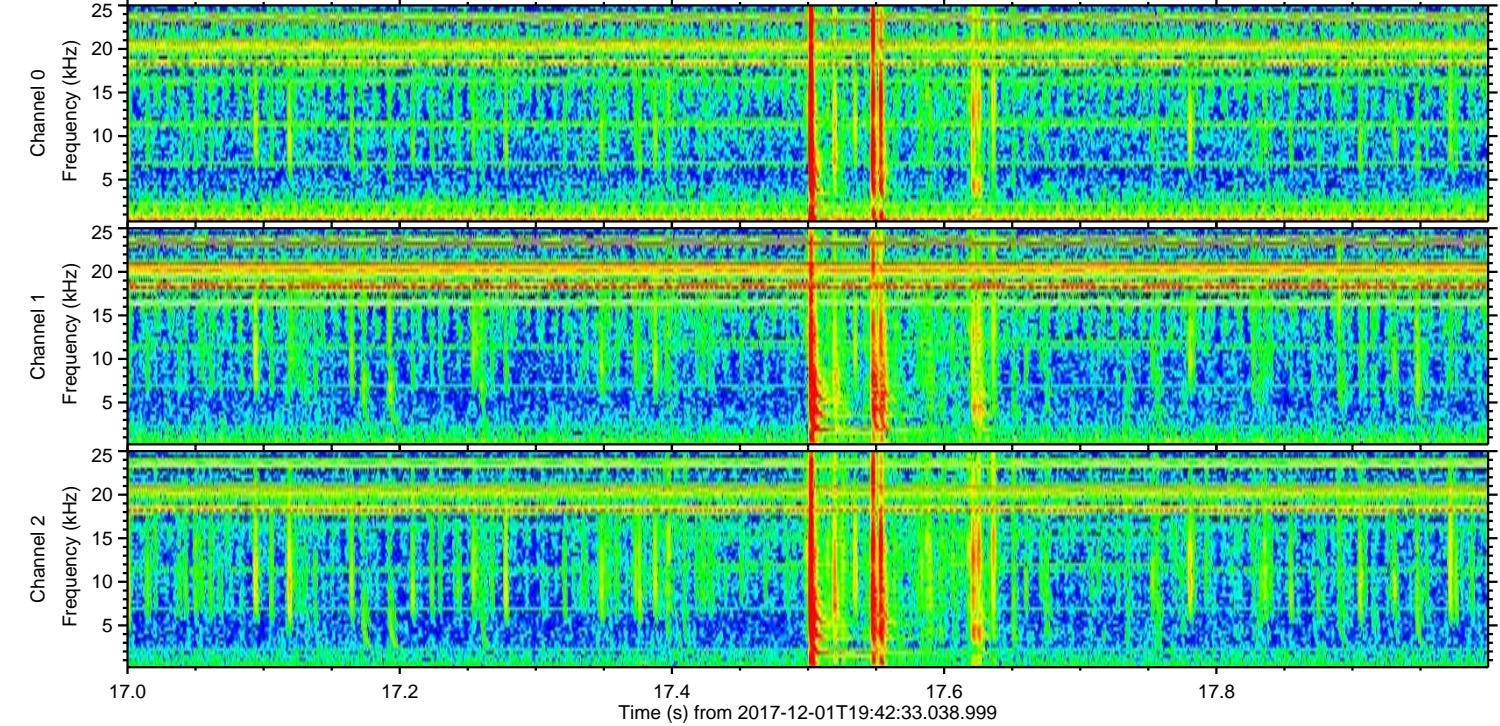
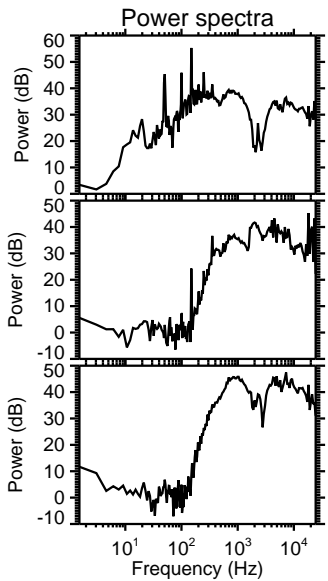
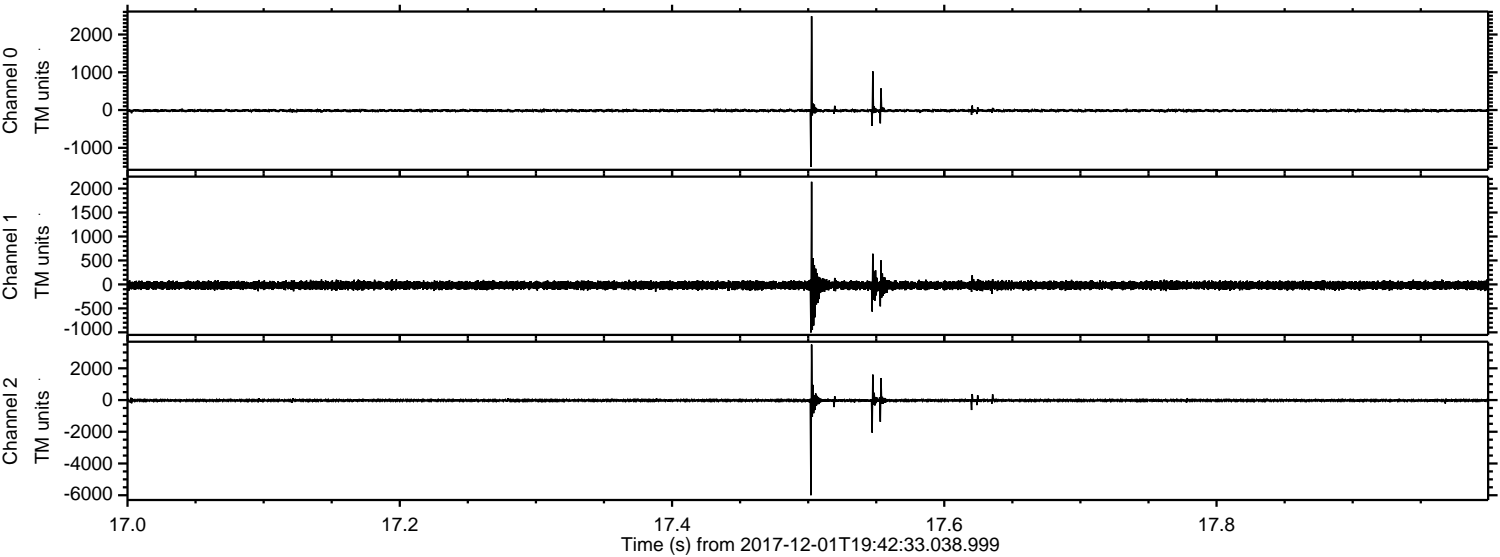
Processed Fri Dec 1 20:50:59 2017 by ELM ver.2012-10-06 from 001__elm20171201_194232__dat00.bin



Processed Fri Dec 1 20:51:00 2017 by ELM ver.2012-10-06 from 001__elm20171201_194232__dat00.bin



Processed Fri Dec 1 20:51:00 2017 by ELM ver.2012-10-06 from 001__elm20171201_194232__dat00.bin



Channel 0
mn: -1508
mx: 2485
 μ : -14.3
 σ : 24.0

Channel 1
mn: -1003
mx: 2142
 μ : -19.1
 σ : 46.8

Channel 2
mn: -6000
mx: 3501
 μ : -26.1
 σ : 60.0

Processed Fri Dec 1 20:51:01 2017 by ELM ver.2012-10-06 from 001__elm20171201_194232__dat00.bin

