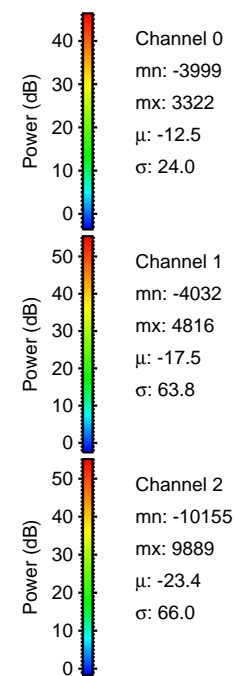
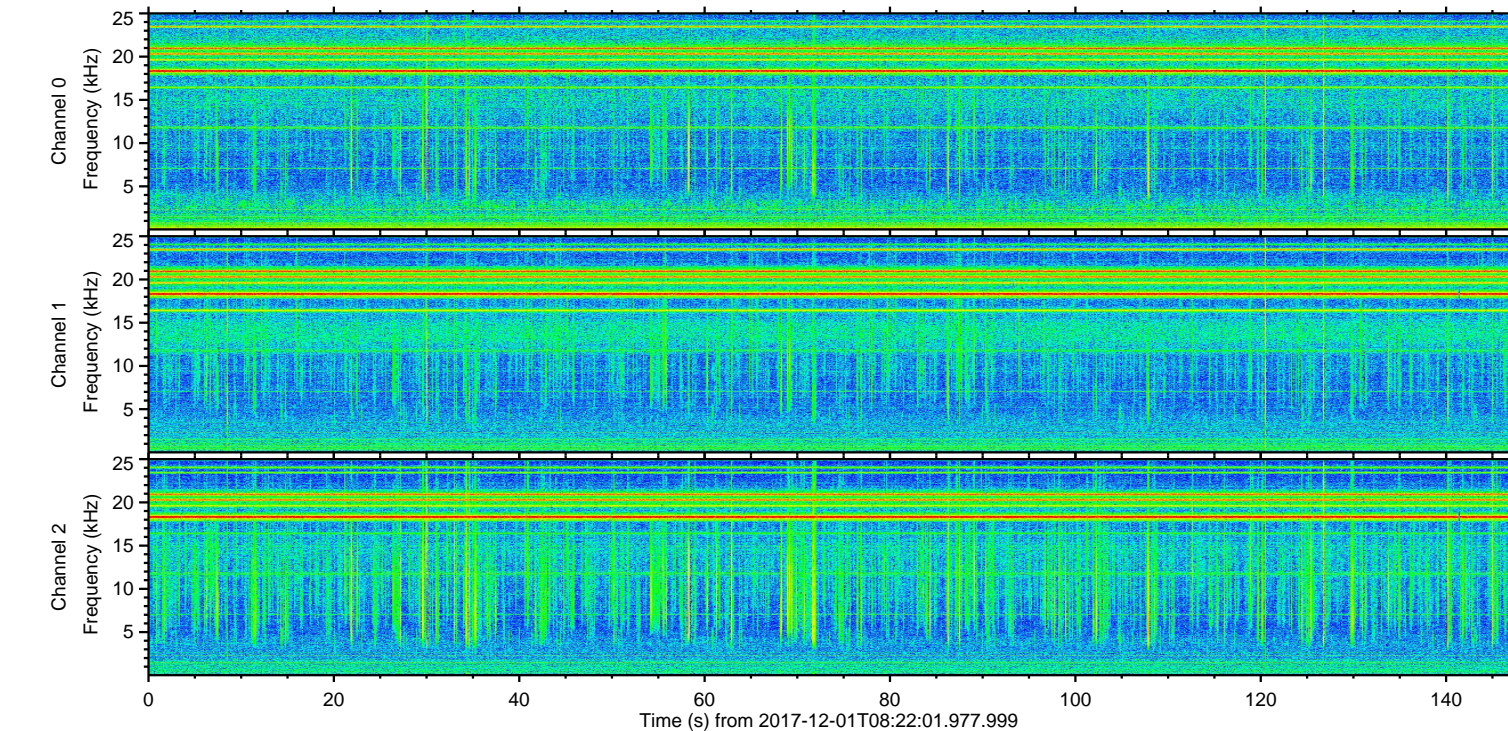
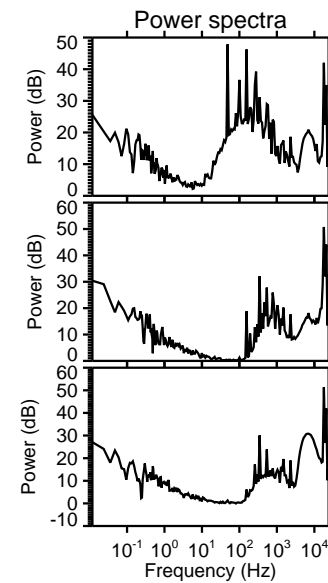
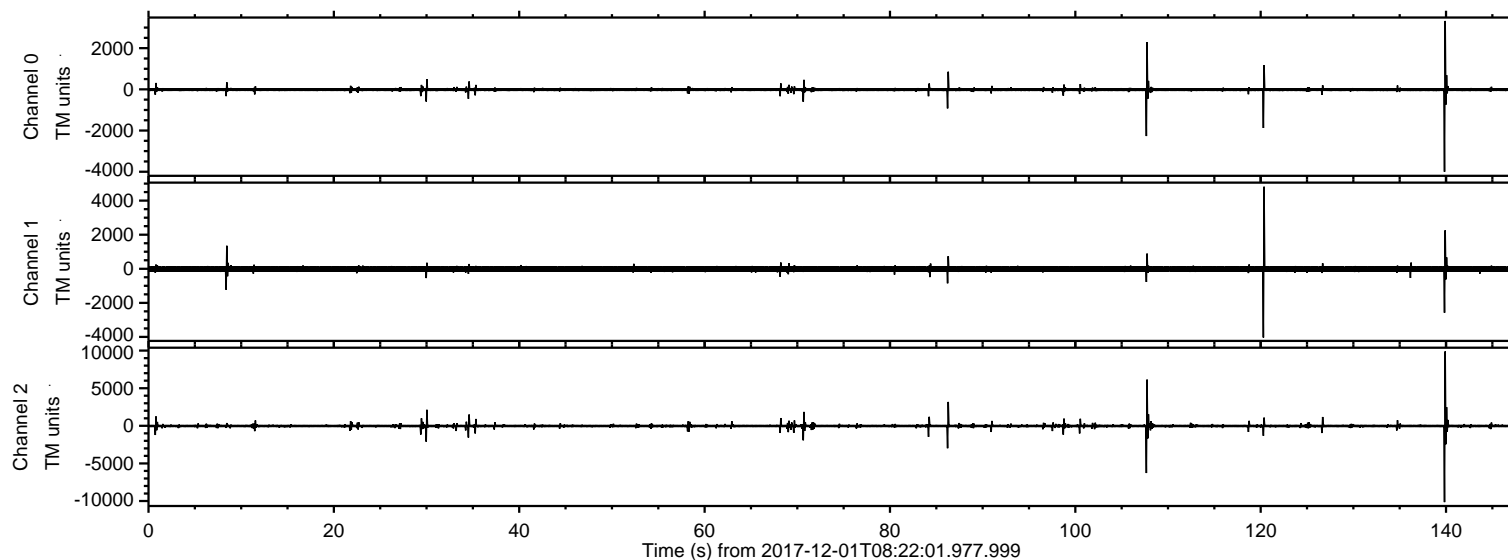


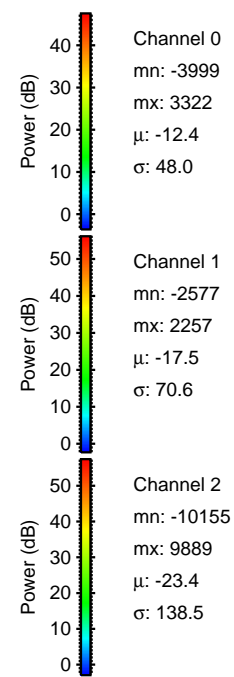
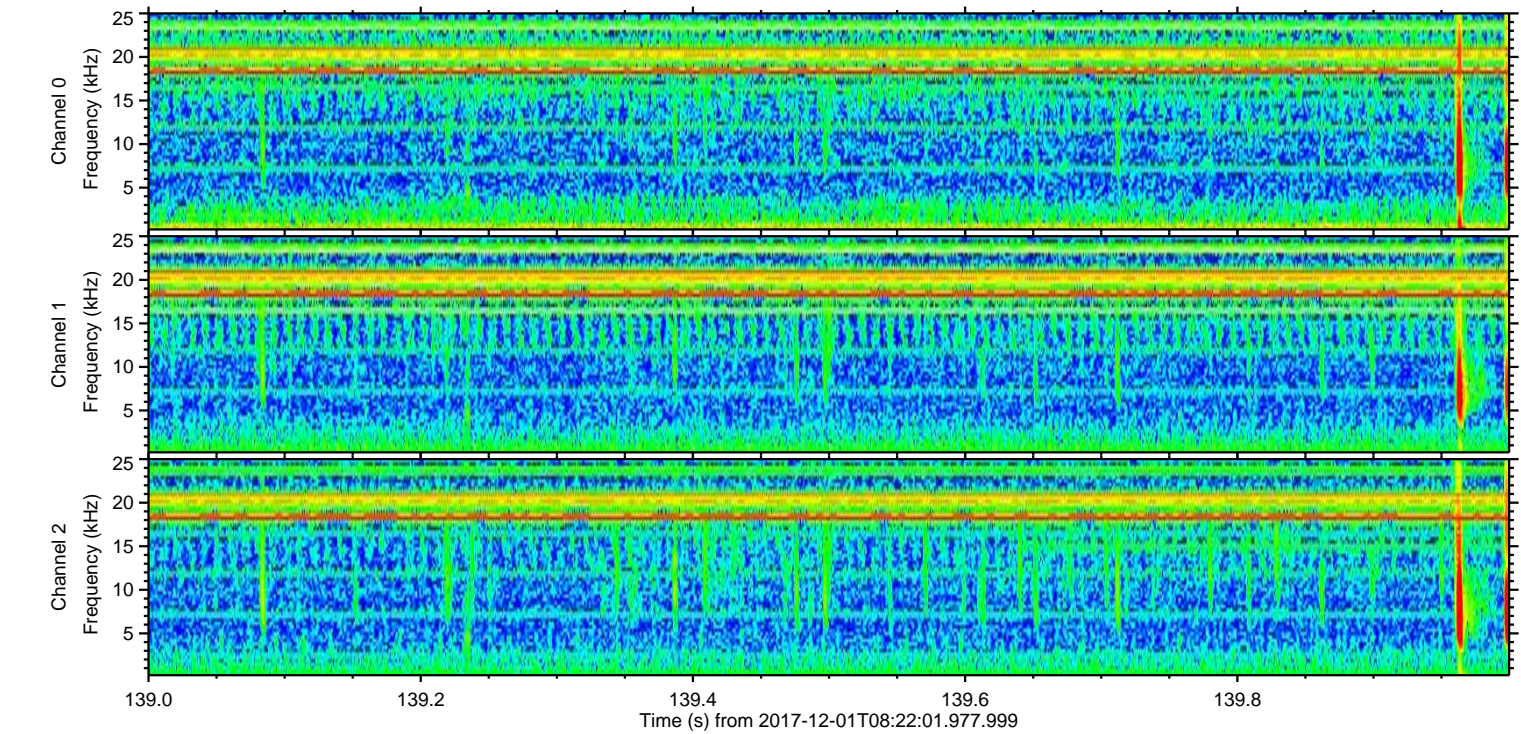
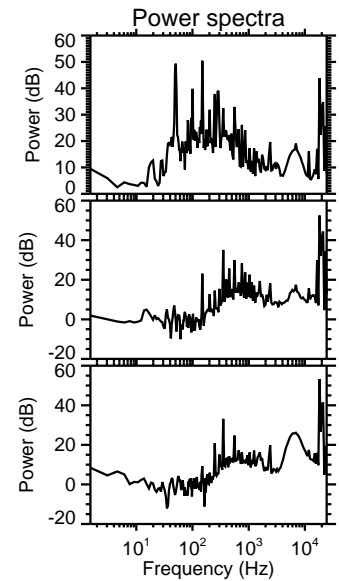
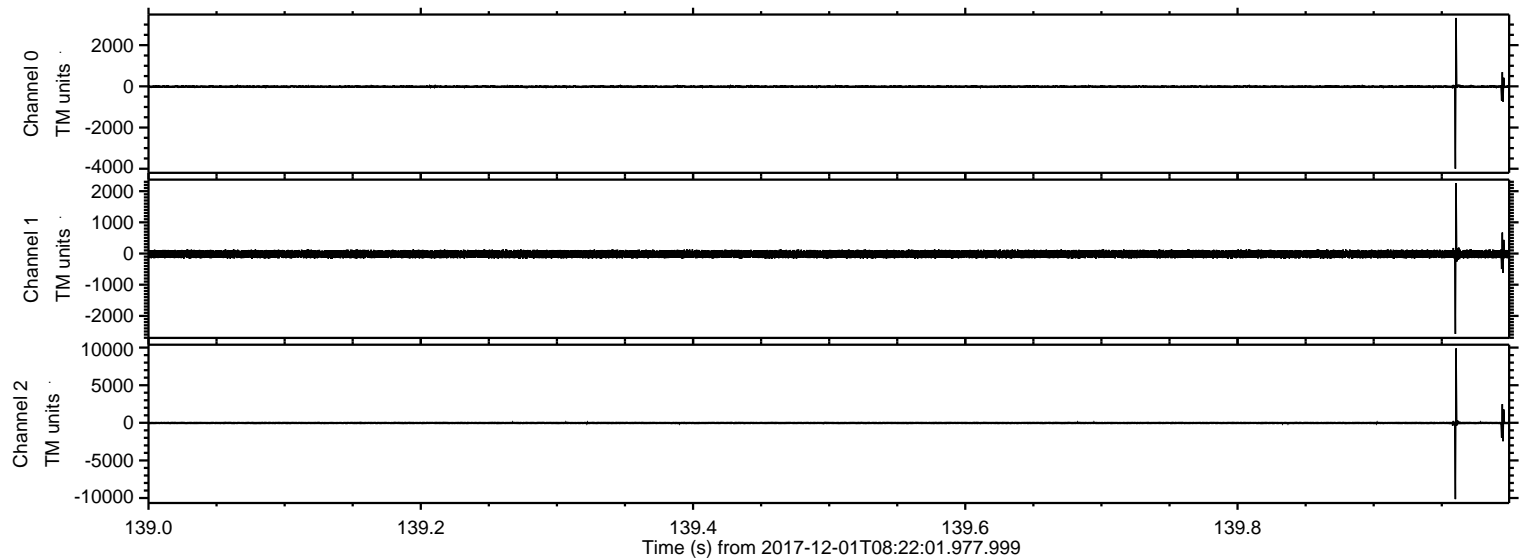
ELMAVAN 3D WAVEFORMS (Measured data sampled at 50 kHz) 51000 packets of 144 samples from 2017-12-01T08:22:01.977.999.

Processed Fri Dec 1 09:30:25 2017 by ELM ver.2012-10-06 from 001__elm20171201_082200__dat00.bin



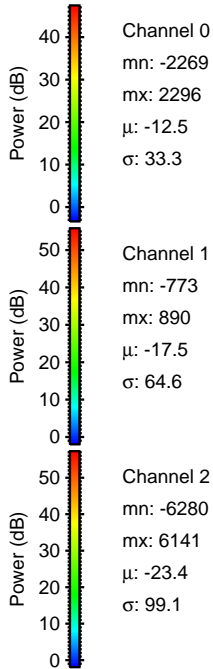
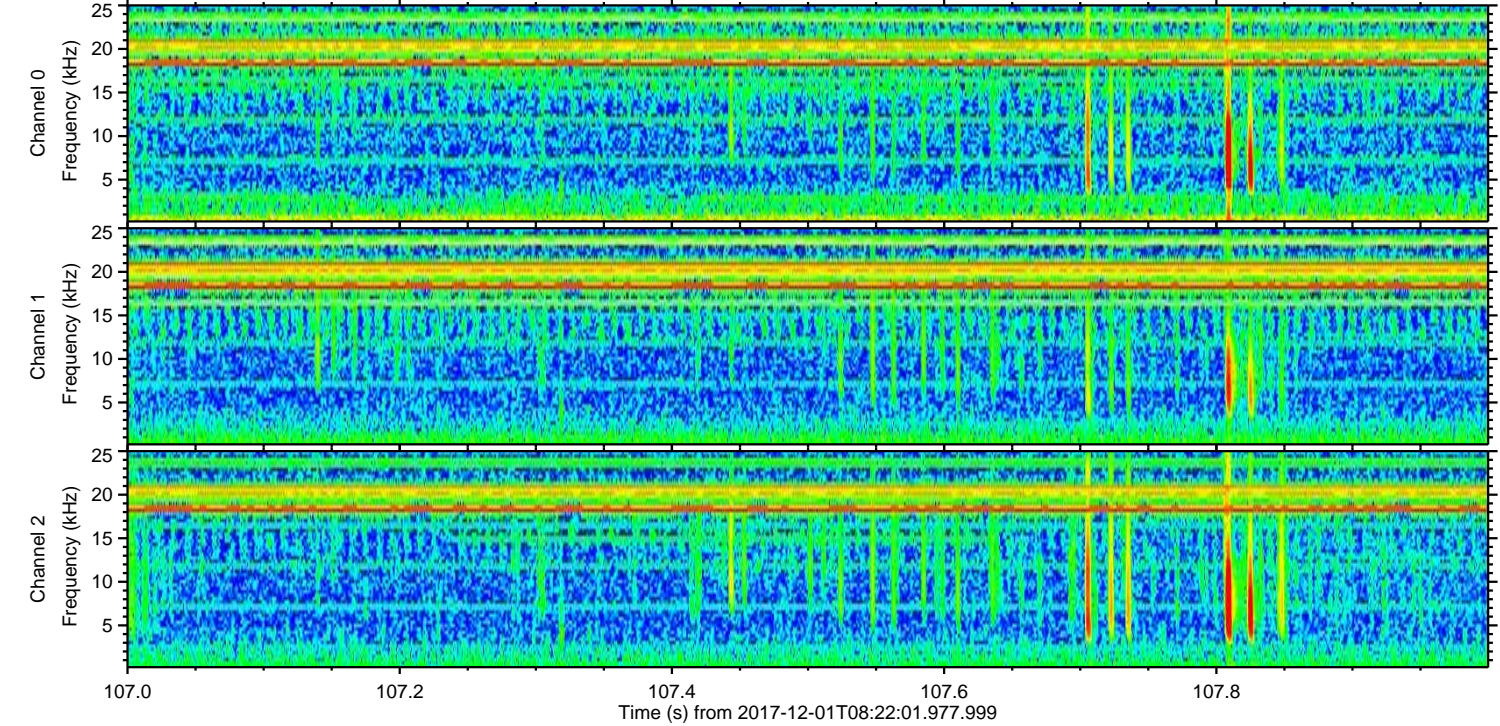
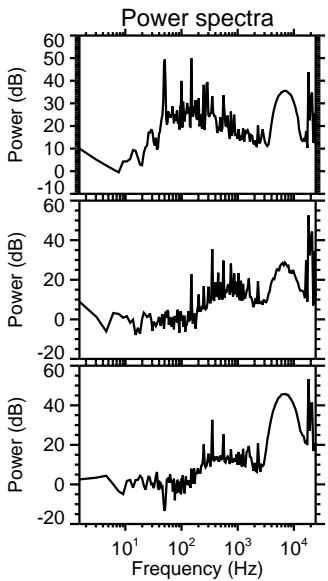
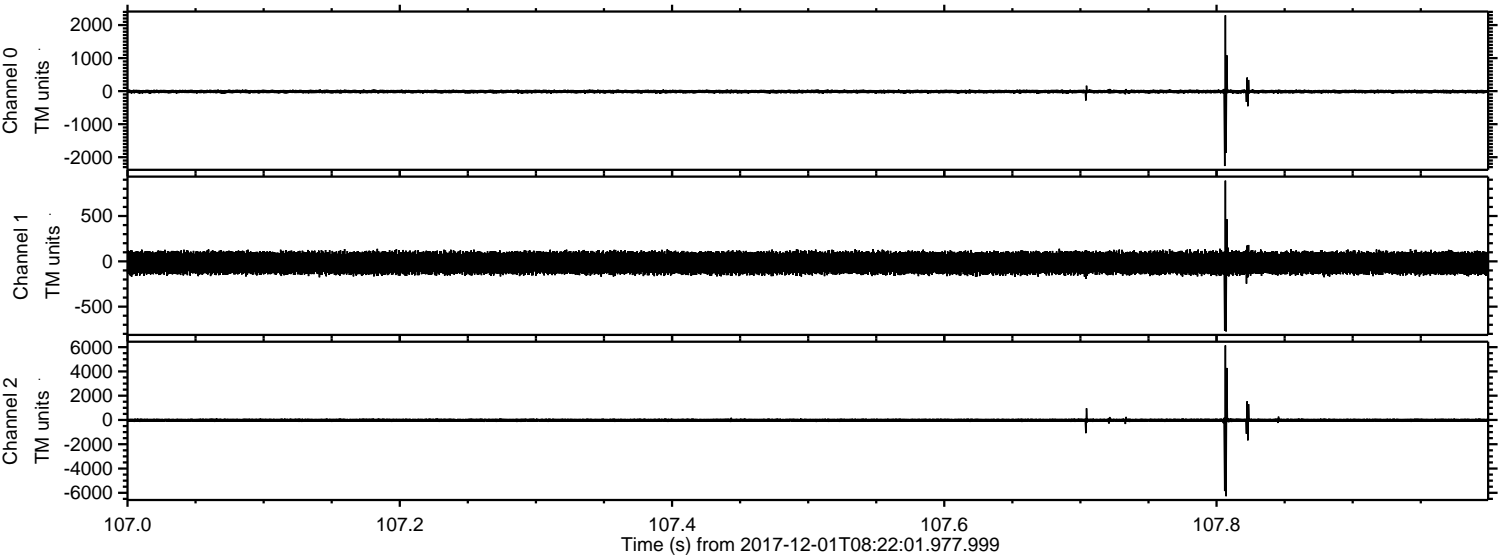
ELMAVAN 3D WAVEFORMS (Measured data sampled at 50 kHz) 51000 packets of 144 samples from 2017-12-01T08:22:01.977.999. Part 140/147

Processed Fri Dec 1 09:30:30 2017 by ELM ver.2012-10-06 from 001__elm20171201_082200__dat00.bin



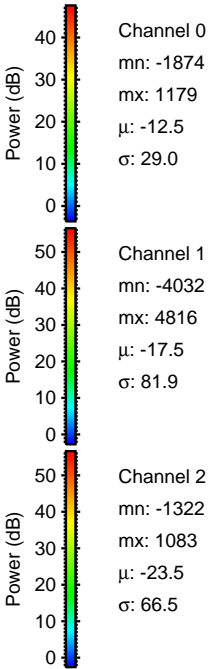
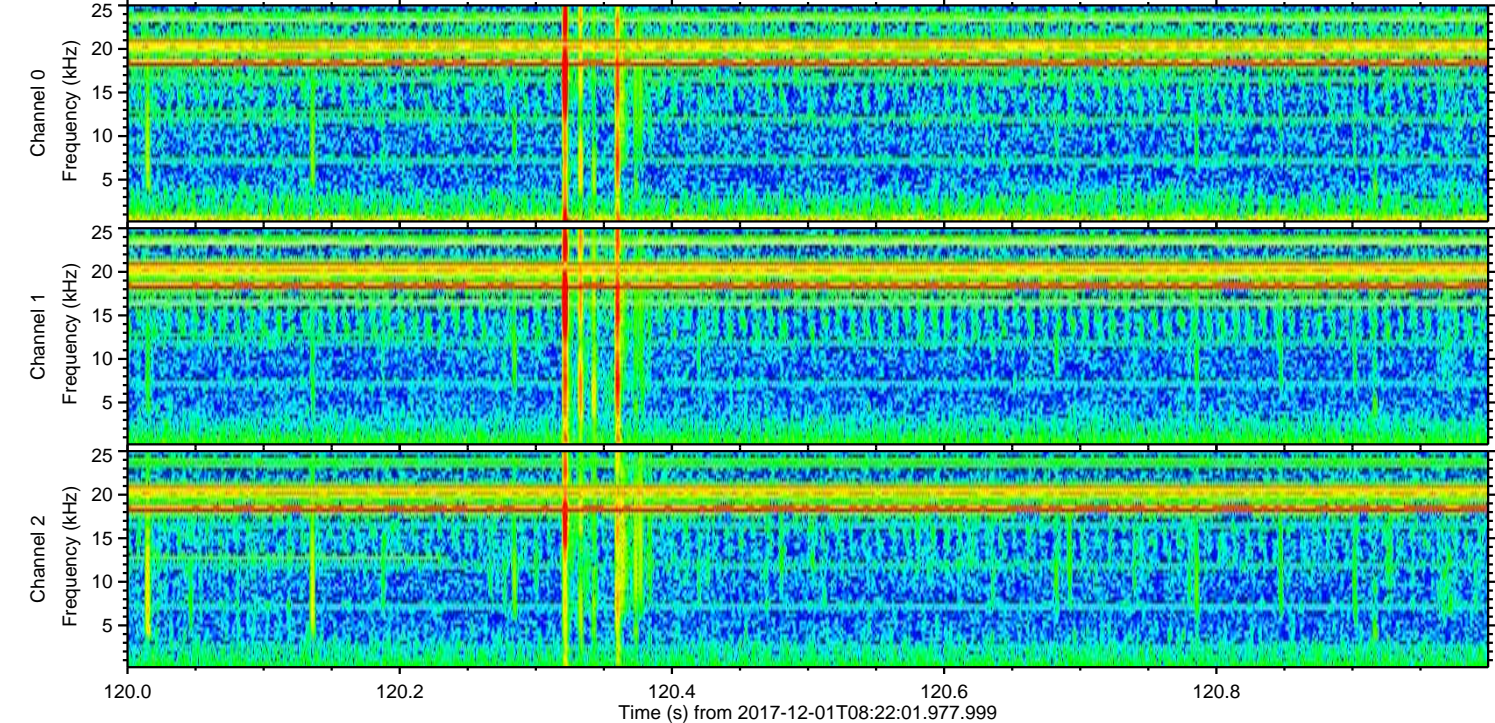
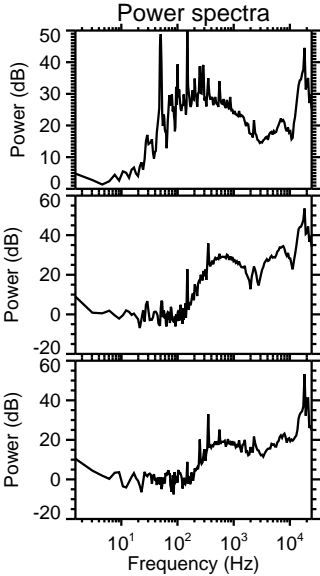
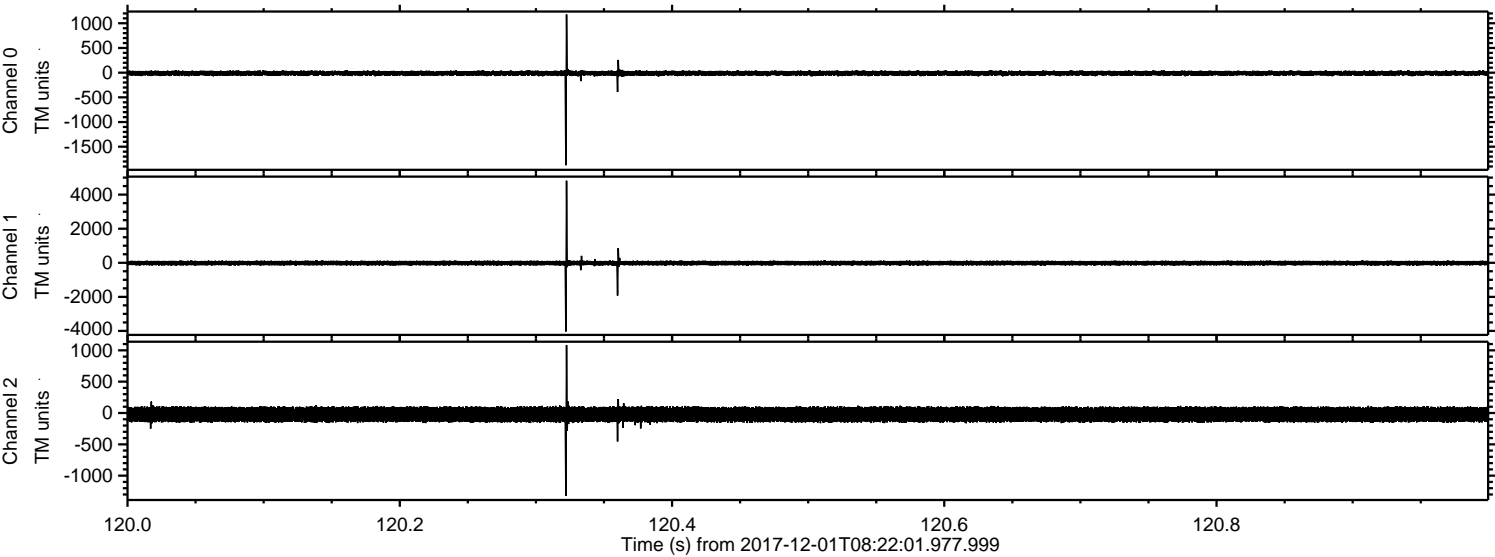
ELMAVAN 3D WAVEFORMS (Measured data sampled at 50 kHz) 51000 packets of 144 samples from 2017-12-01T08:22:01.977.999. Part 108/147

Processed Fri Dec 1 09:30:31 2017 by ELM ver.2012-10-06 from 001__elm20171201_082200__dat00.bin

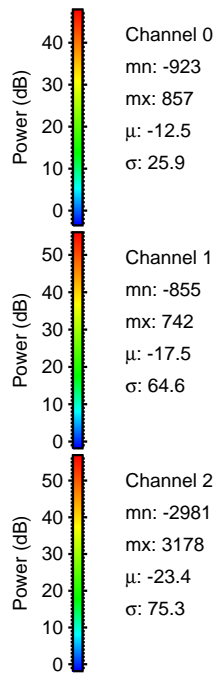
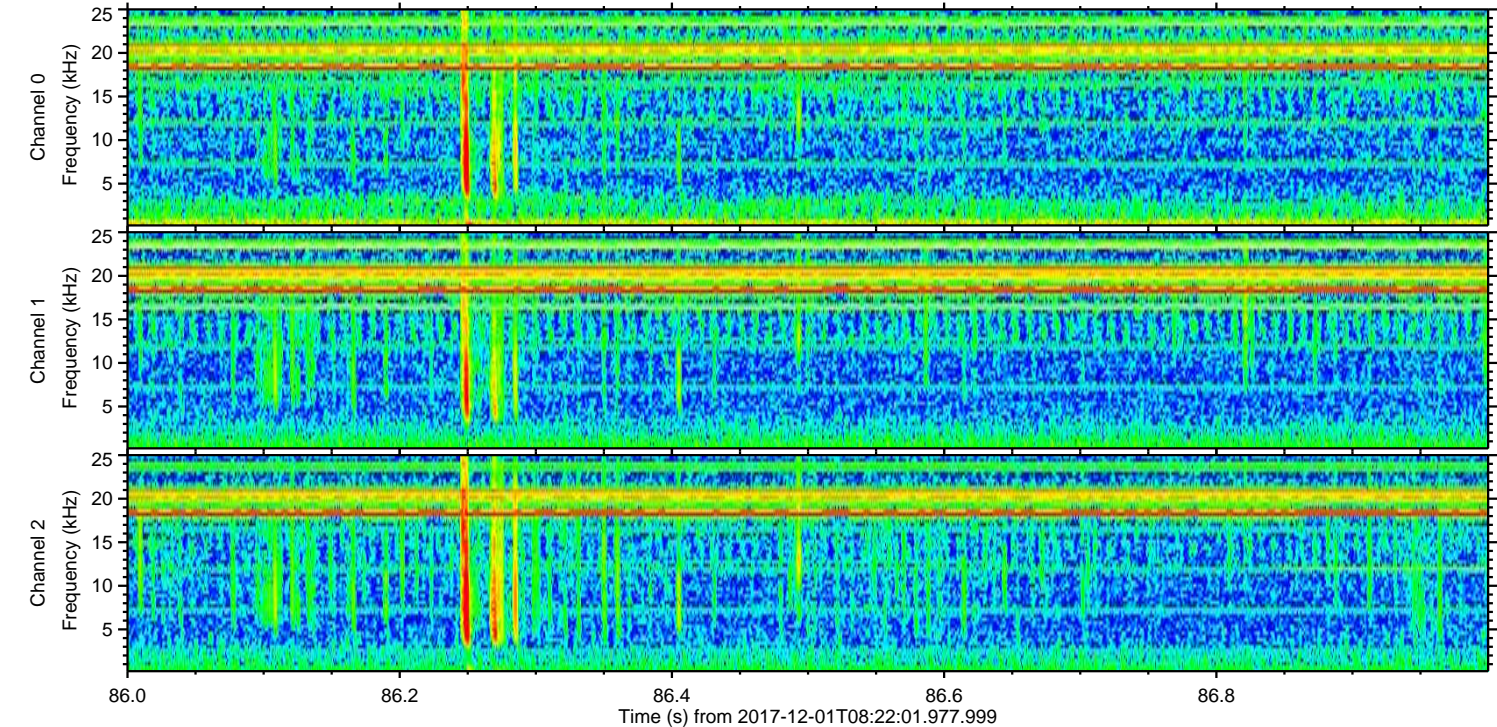
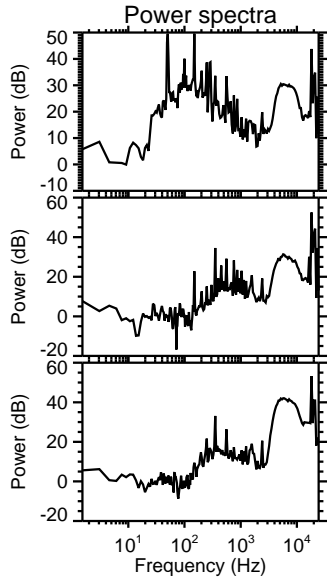
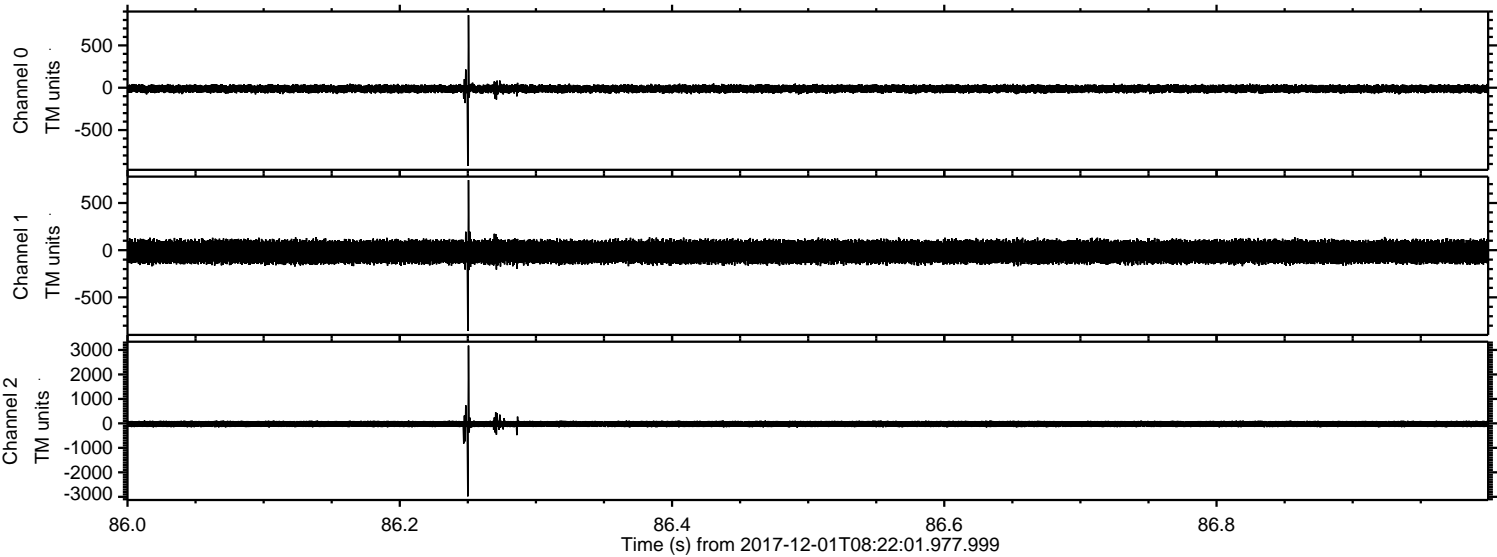


ELMAVAN 3D WAVEFORMS (Measured data sampled at 50 kHz) 51000 packets of 144 samples from 2017-12-01T08:22:01.977.999. Part 121/147

Processed Fri Dec 1 09:30:32 2017 by ELM ver.2012-10-06 from 001__elm20171201_082200__dat00.bin

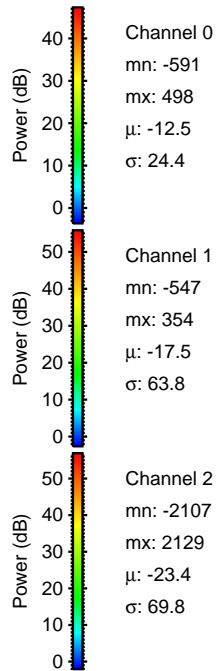
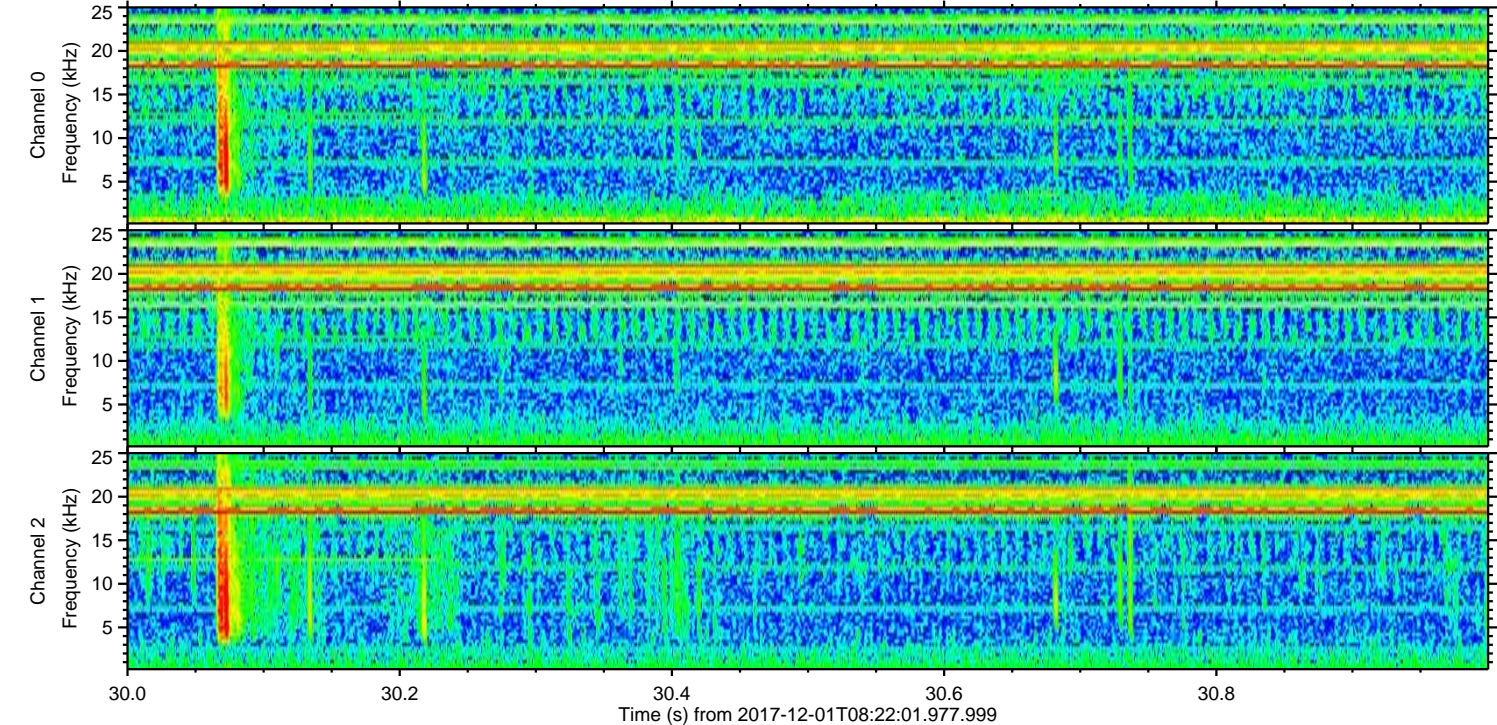
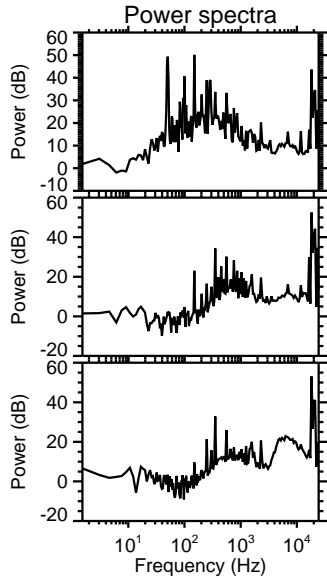
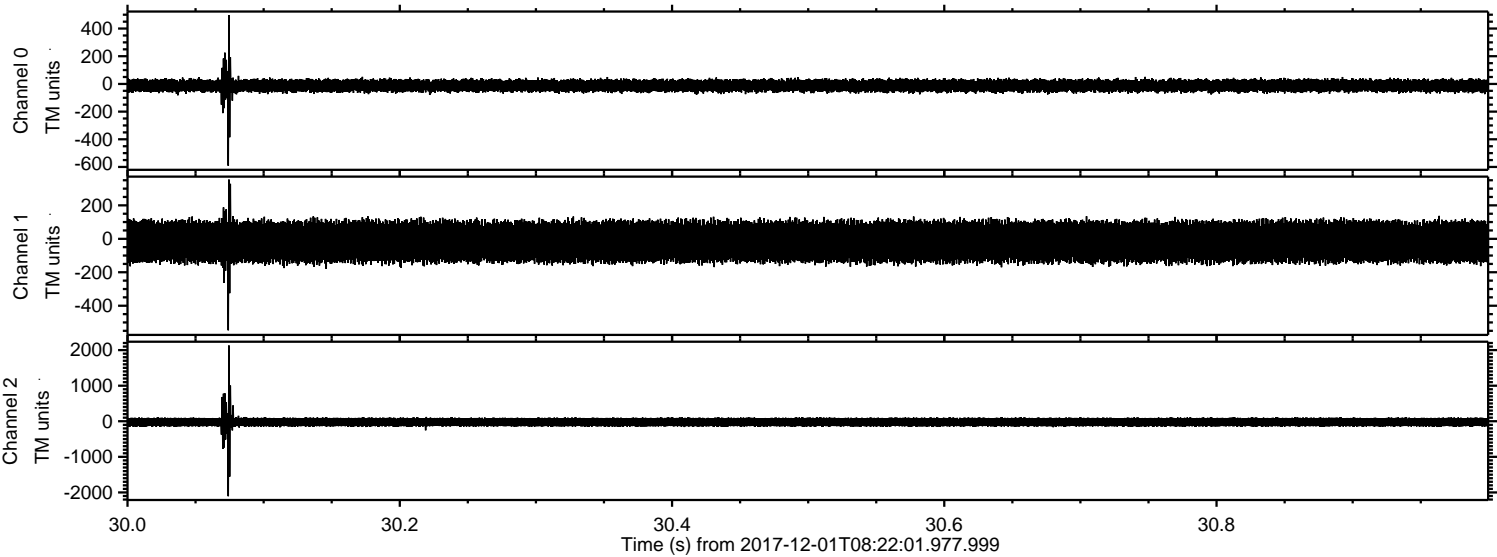


Processed Fri Dec 1 09:30:32 2017 by ELM ver.2012-10-06 from 001__elm20171201_082200__dat00.bin

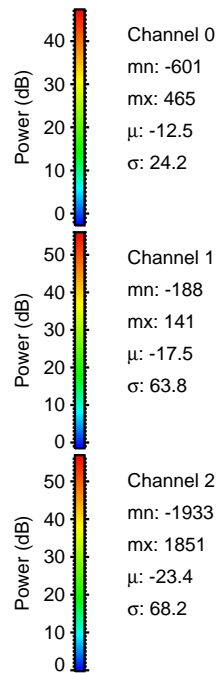
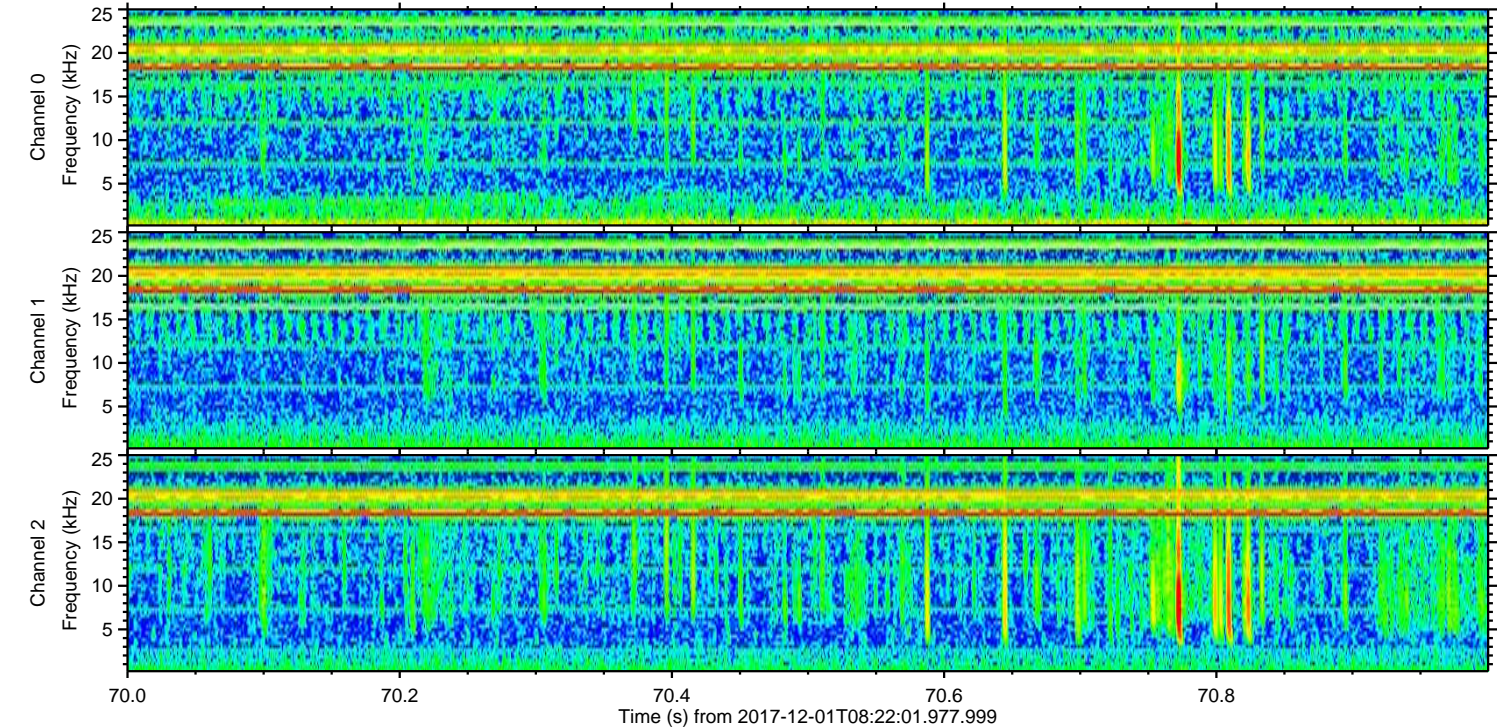
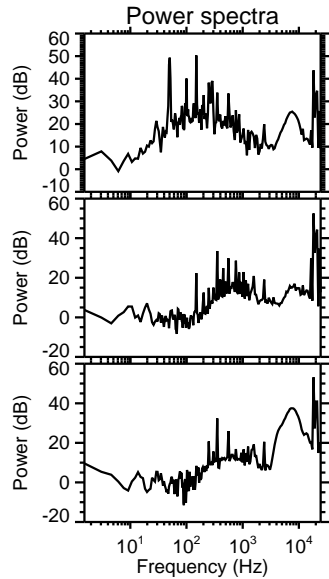
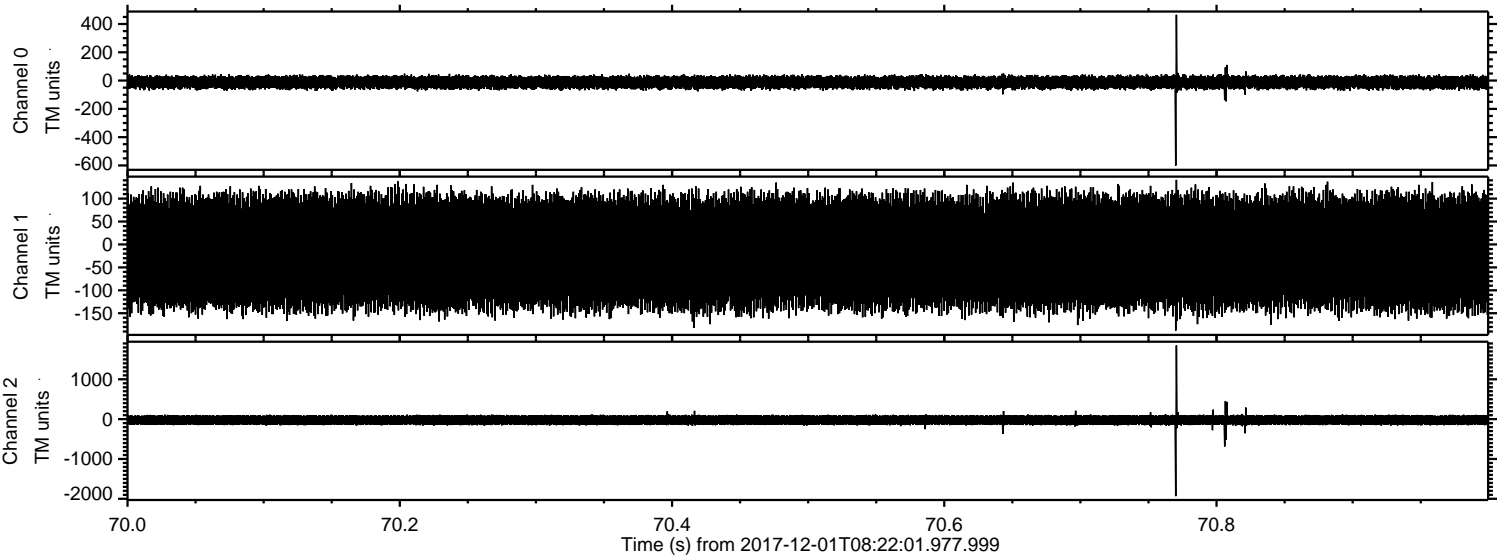


ELMAVAN 3D WAVEFORMS (Measured data sampled at 50 kHz) 51000 packets of 144 samples from 2017-12-01T08:22:01.977.999. Part 31/147

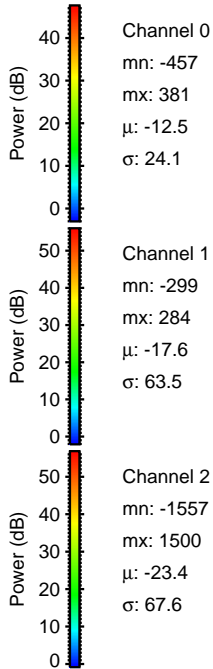
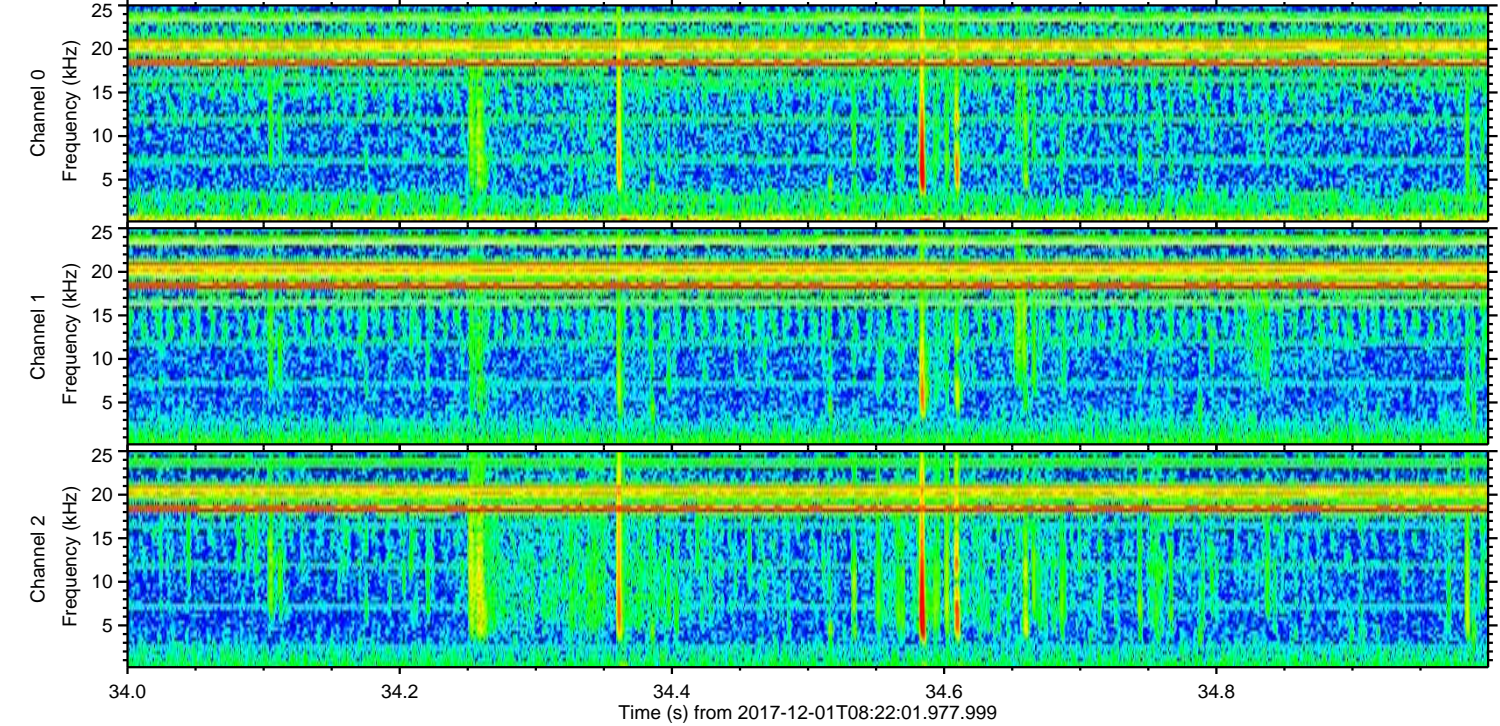
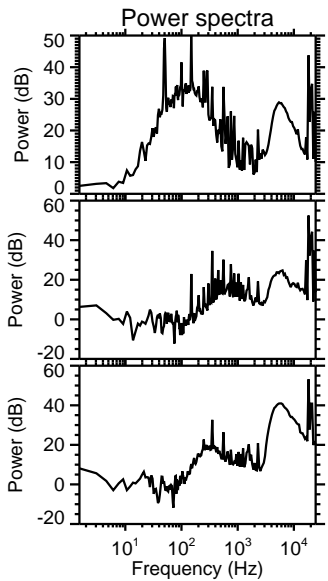
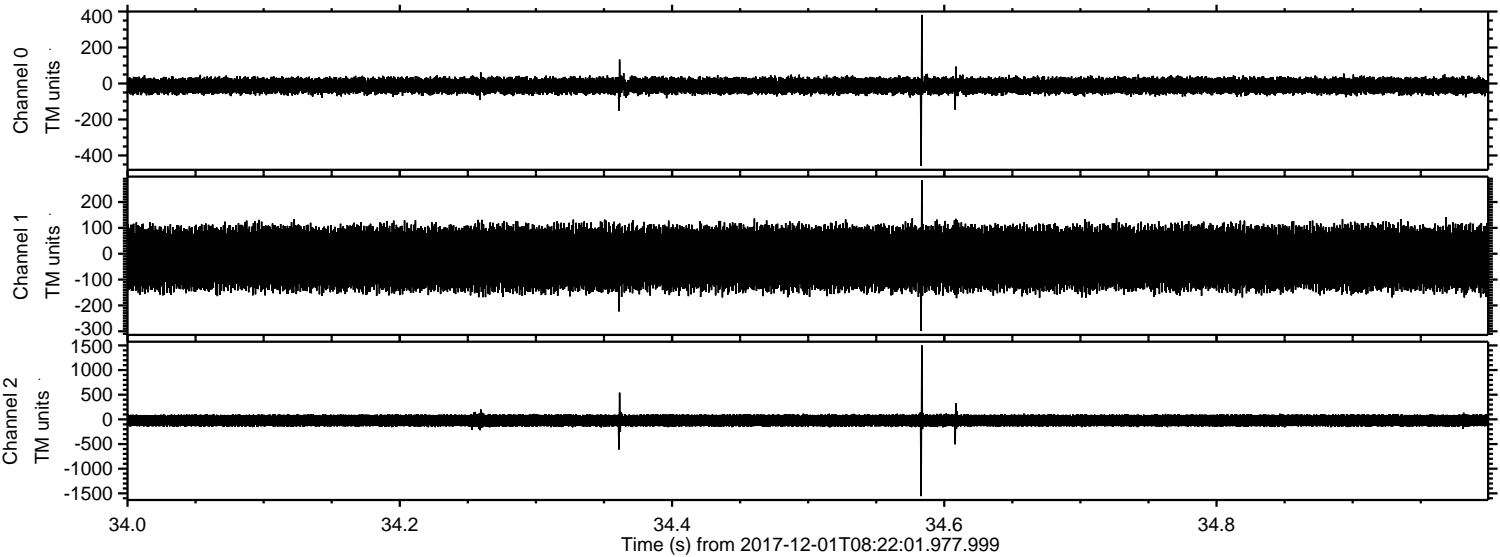
Processed Fri Dec 1 09:30:33 2017 by ELM ver.2012-10-06 from 001__elm20171201_082200__dat00.bin



Processed Fri Dec 1 09:30:34 2017 by ELM ver.2012-10-06 from 001__elm20171201_082200__dat00.bin



Processed Fri Dec 1 09:30:34 2017 by ELM ver.2012-10-06 from 001__elm20171201_082200__dat00.bin

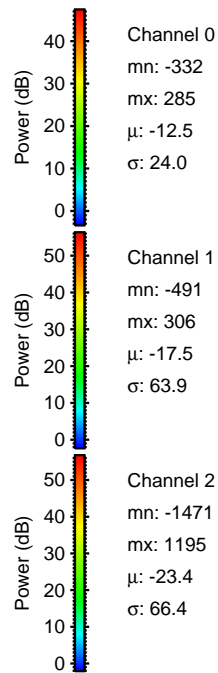
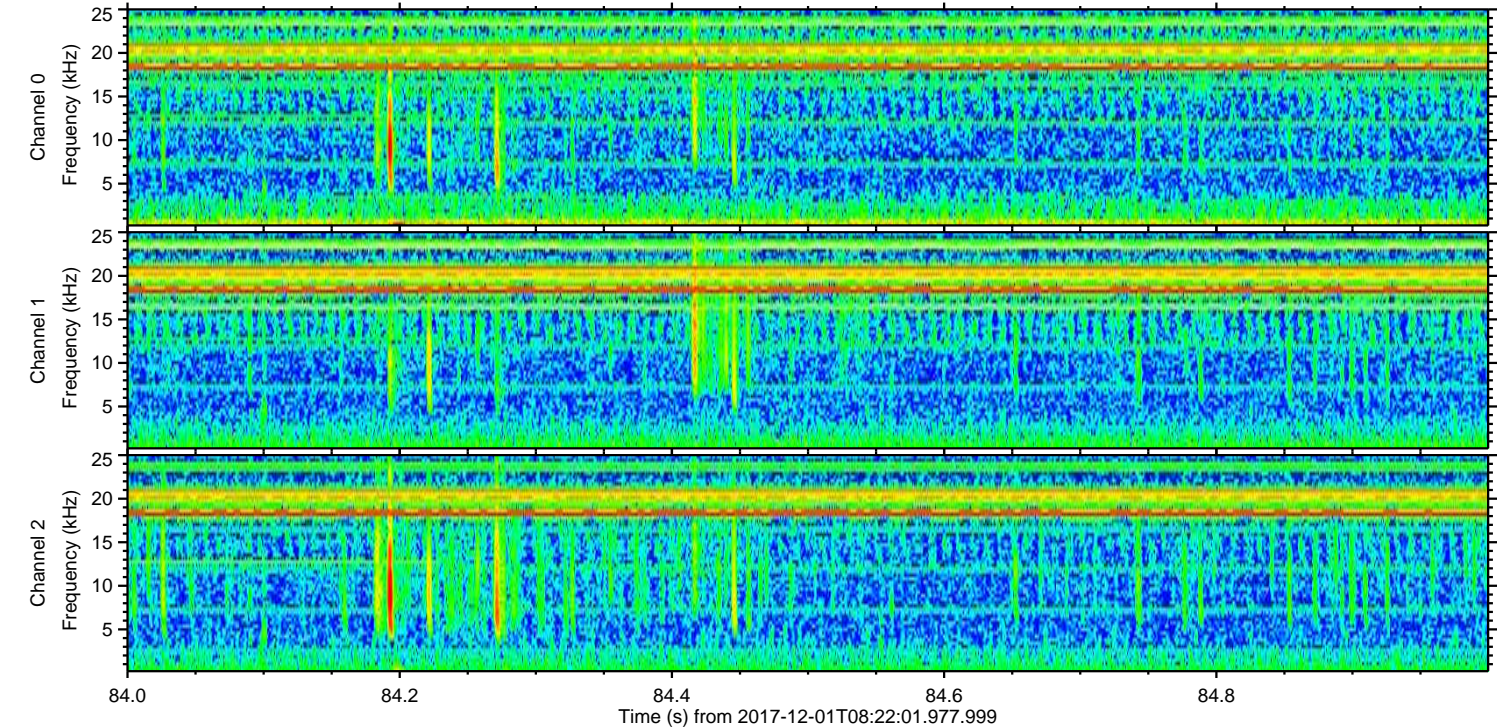
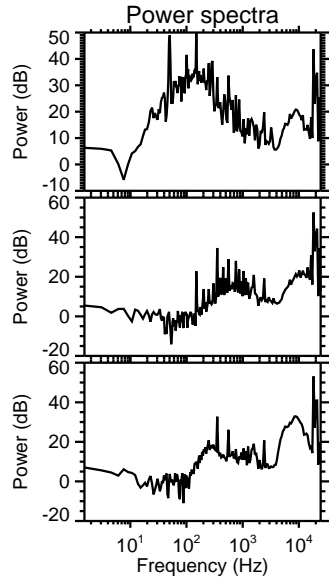
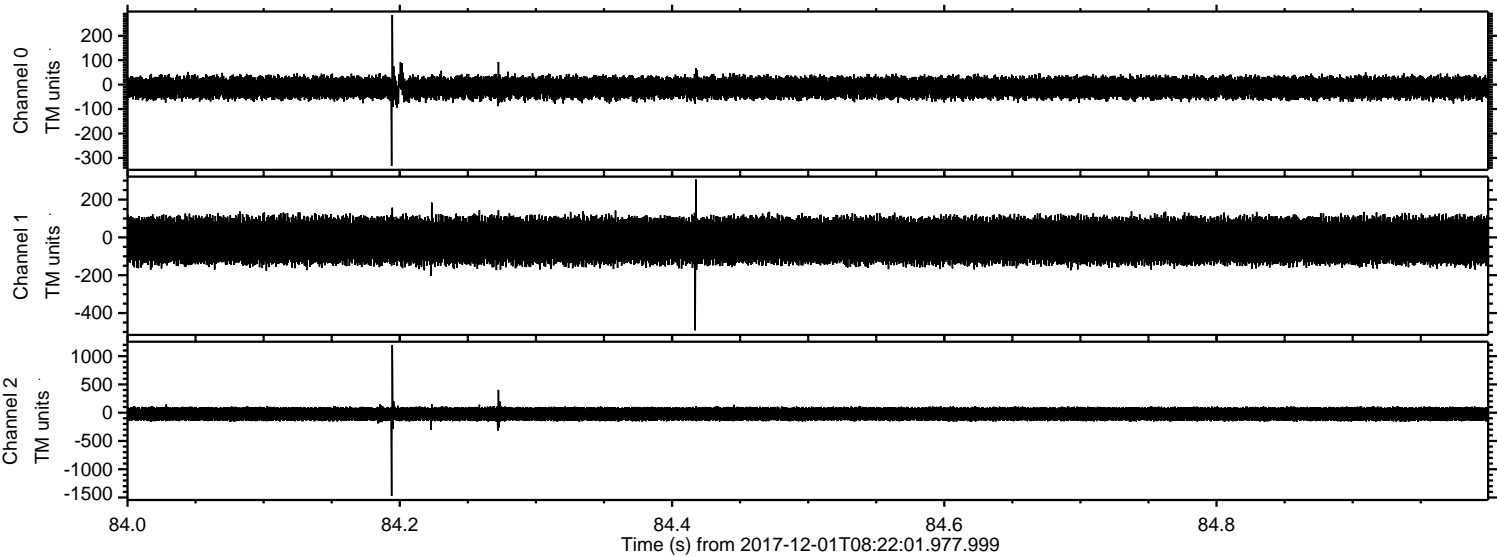


Channel 0
mn: -457
mx: 381
 μ : -12.5
 σ : 24.1

Channel 1
mn: -299
mx: 284
 μ : -17.6
 σ : 63.5

Channel 2
mn: -1557
mx: 1500
 μ : -23.4
 σ : 67.6

Processed Fri Dec 1 09:30:35 2017 by ELM ver.2012-10-06 from 001__elm20171201_082200__dat00.bin



Processed Fri Dec 1 09:30:35 2017 by ELM ver.2012-10-06 from 001__elm20171201_082200__dat00.bin

