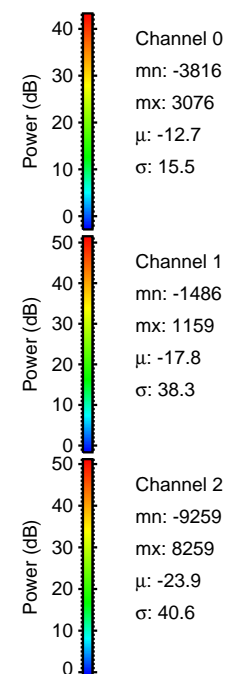
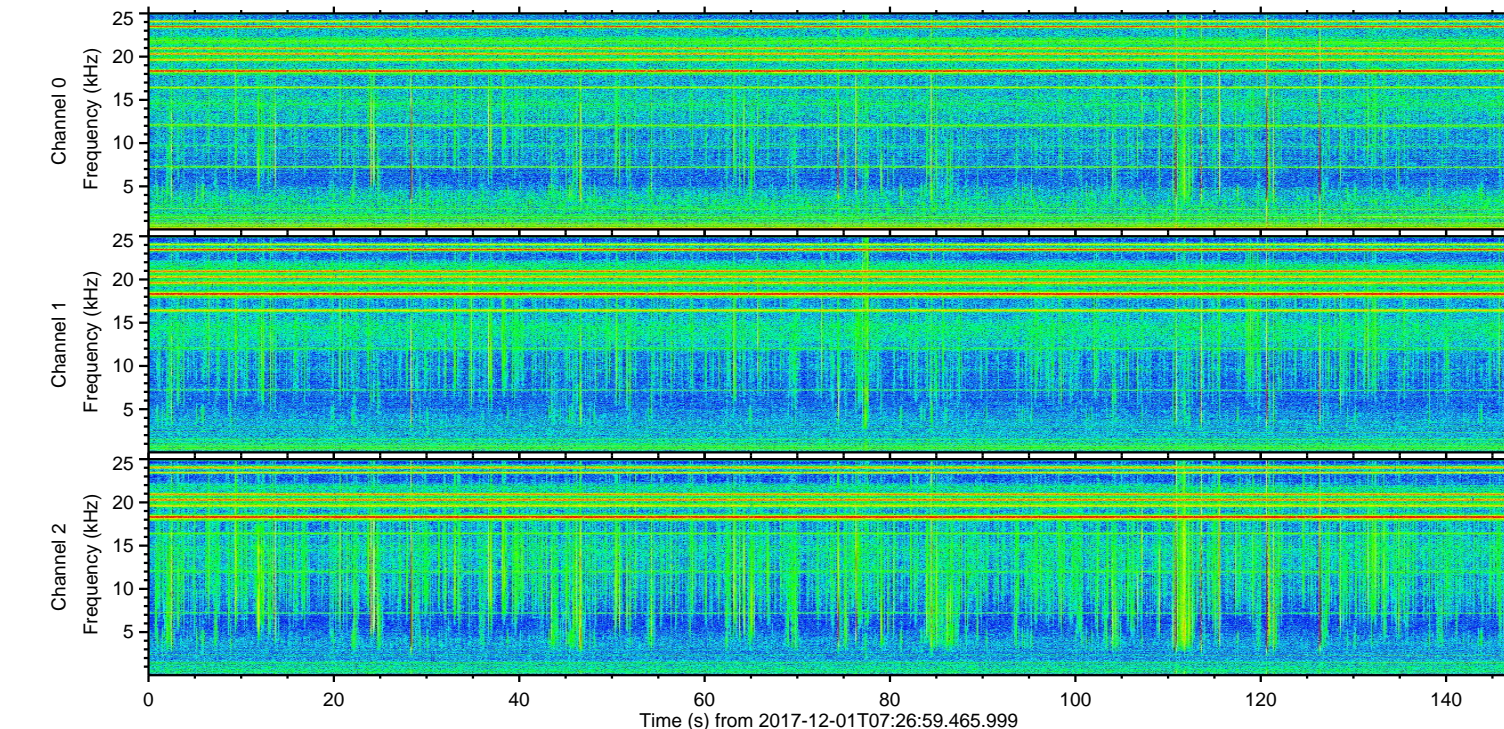
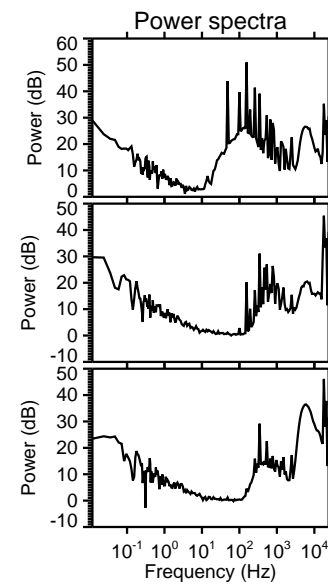
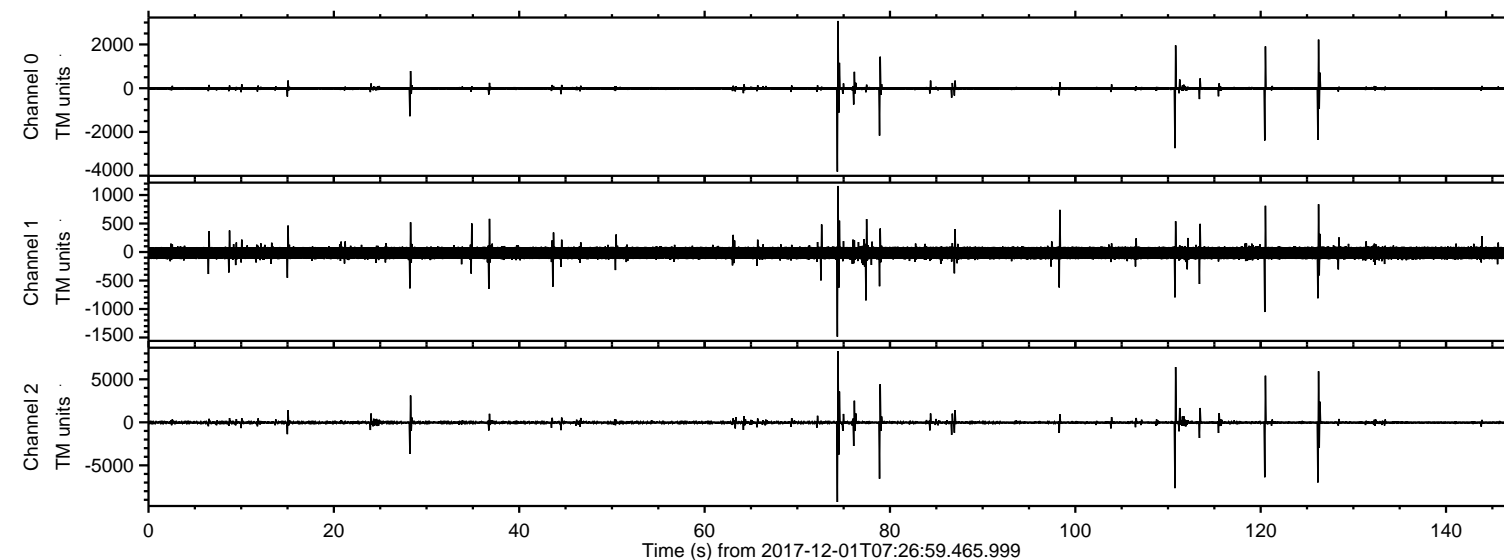


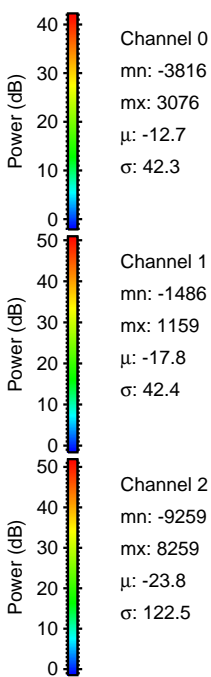
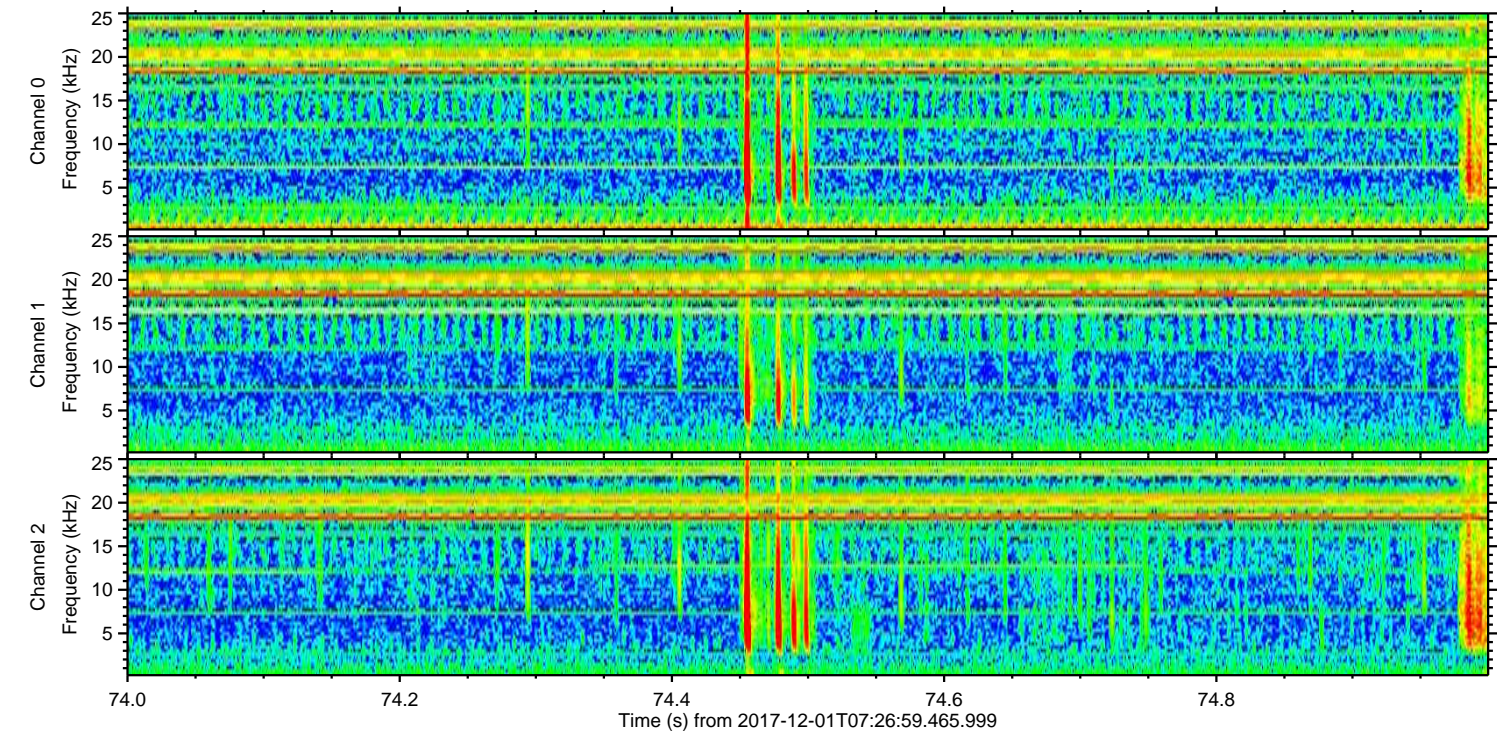
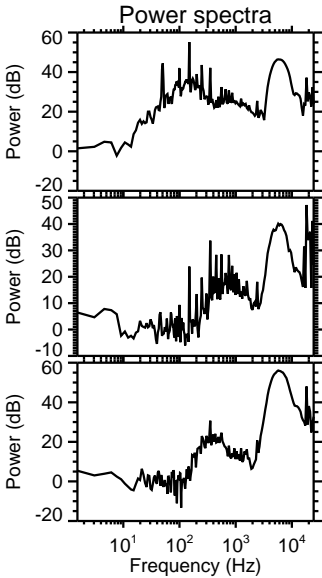
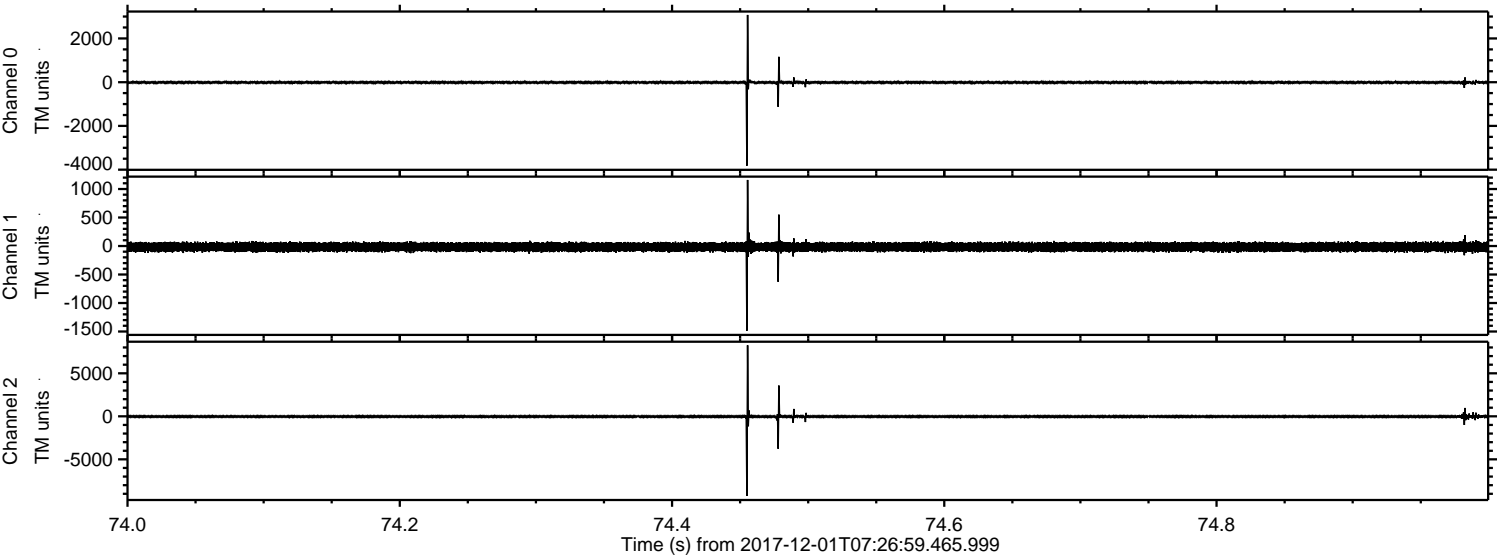
ELMAVAN 3D WAVEFORMS (Measured data sampled at 50 kHz) 51000 packets of 144 samples from 2017-12-01T07:26:59.465.999.

Processed Fri Dec 1 08:34:49 2017 by ELM ver.2012-10-06 from 001__elm20171201_072658__dat00.bin



ELMAVAN 3D WAVEFORMS (Measured data sampled at 50 kHz) 51000 packets of 144 samples from 2017-12-01T07:26:59.465.999. Part 75/147

Processed Fri Dec 1 08:34:55 2017 by ELM ver.2012-10-06 from 001__elm20171201_072658__dat00.bin



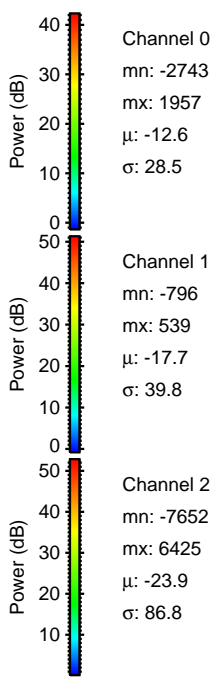
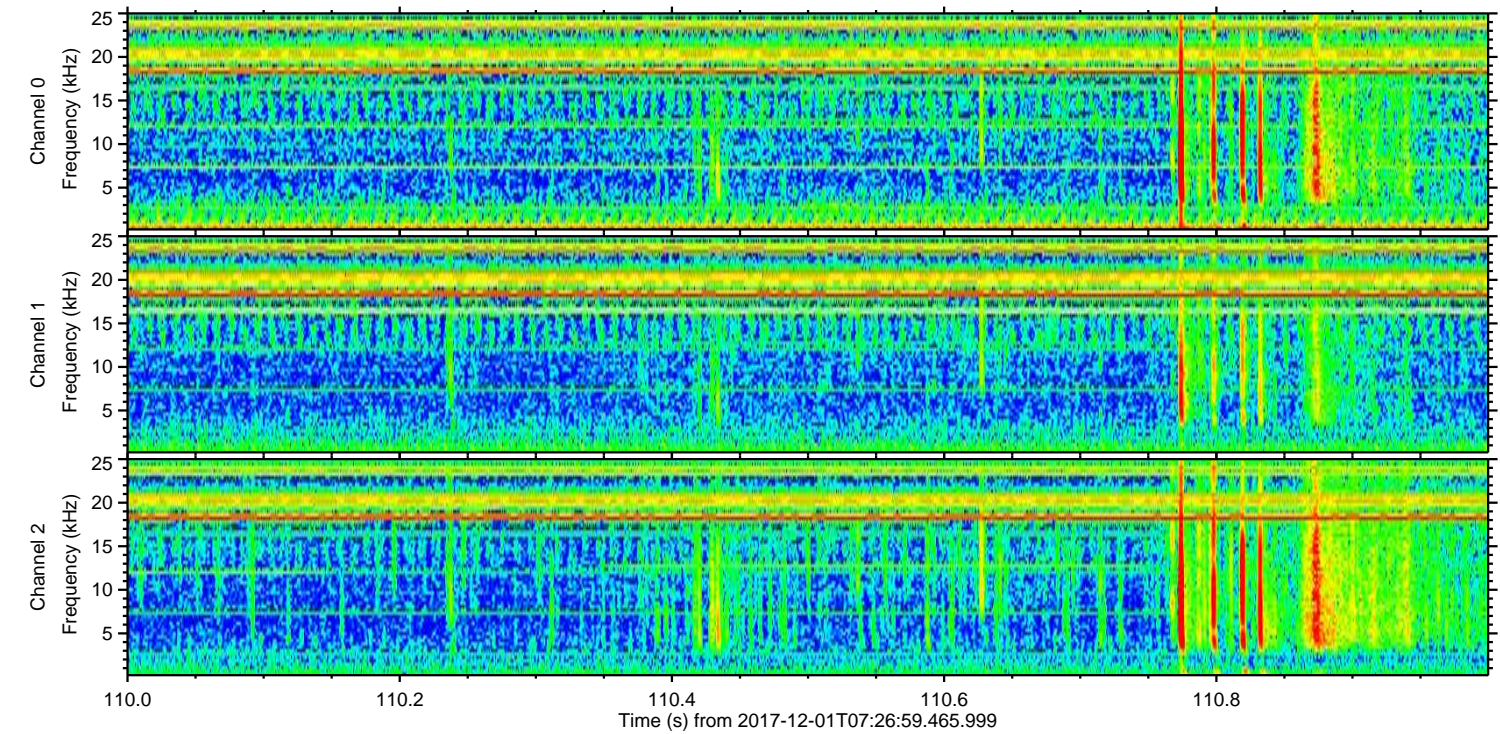
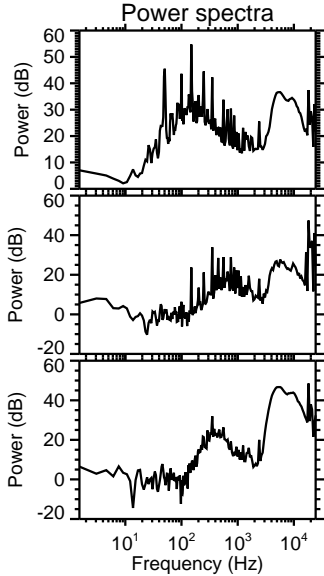
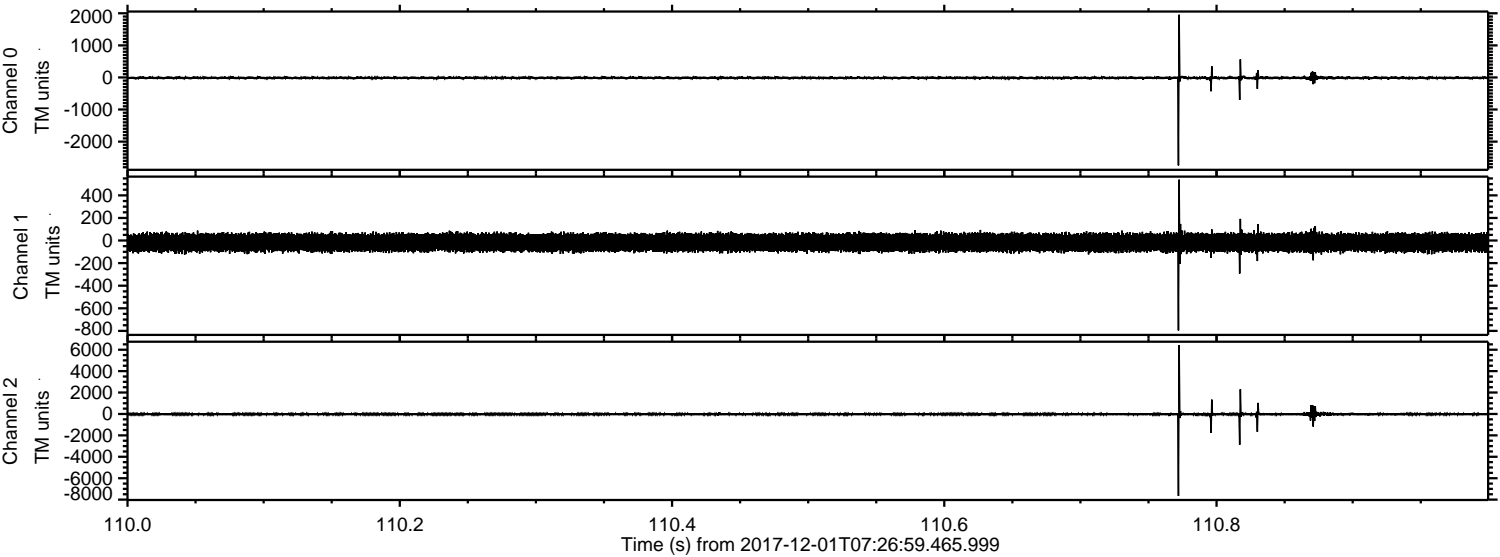
Channel 0
mn: -3816
mx: 3076
 μ : -12.7
 σ : 42.3

Channel 1
mn: -1486
mx: 1159
 μ : -17.8
 σ : 42.4

Channel 2
mn: -9259
mx: 8259
 μ : -23.8
 σ : 122.5

ELMAVAN 3D WAVEFORMS (Measured data sampled at 50 kHz) 51000 packets of 144 samples from 2017-12-01T07:26:59.465.999. Part 111/147

Processed Fri Dec 1 08:34:56 2017 by ELM ver.2012-10-06 from 001__elm20171201_072658__dat00.bin



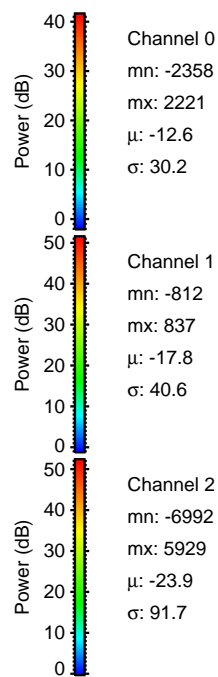
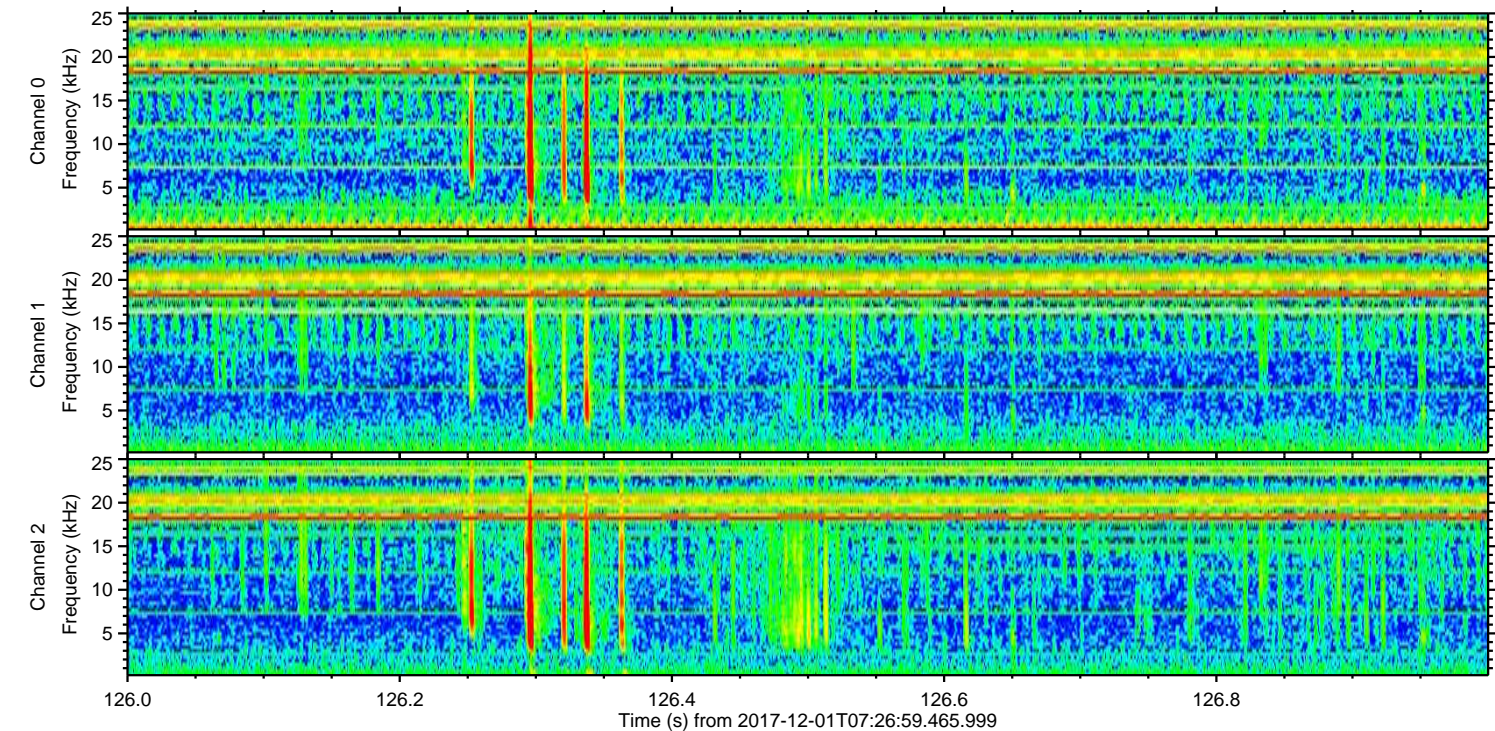
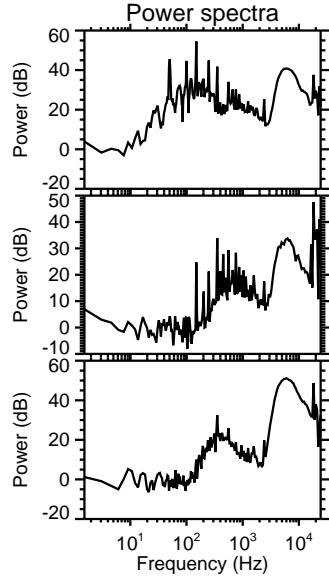
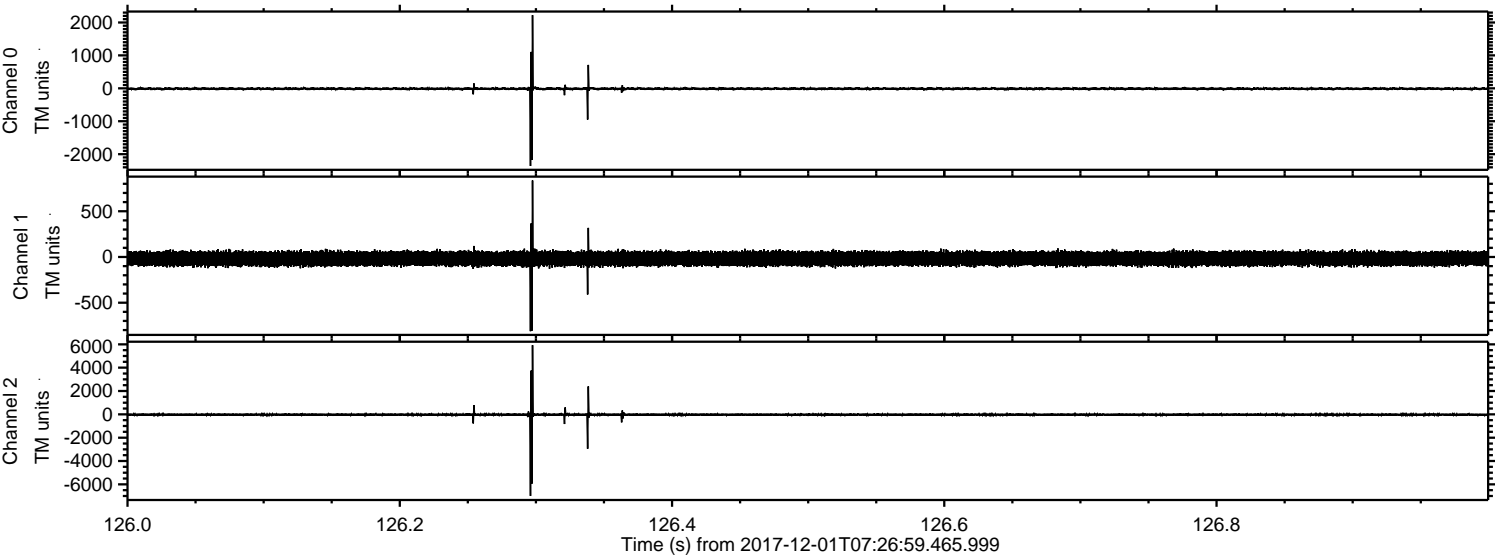
Channel 0
mn: -2743
mx: 1957
 μ : -12.6
 σ : 28.5

Channel 1
mn: -796
mx: 539
 μ : -17.7
 σ : 39.8

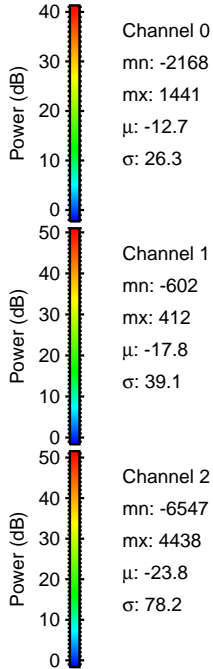
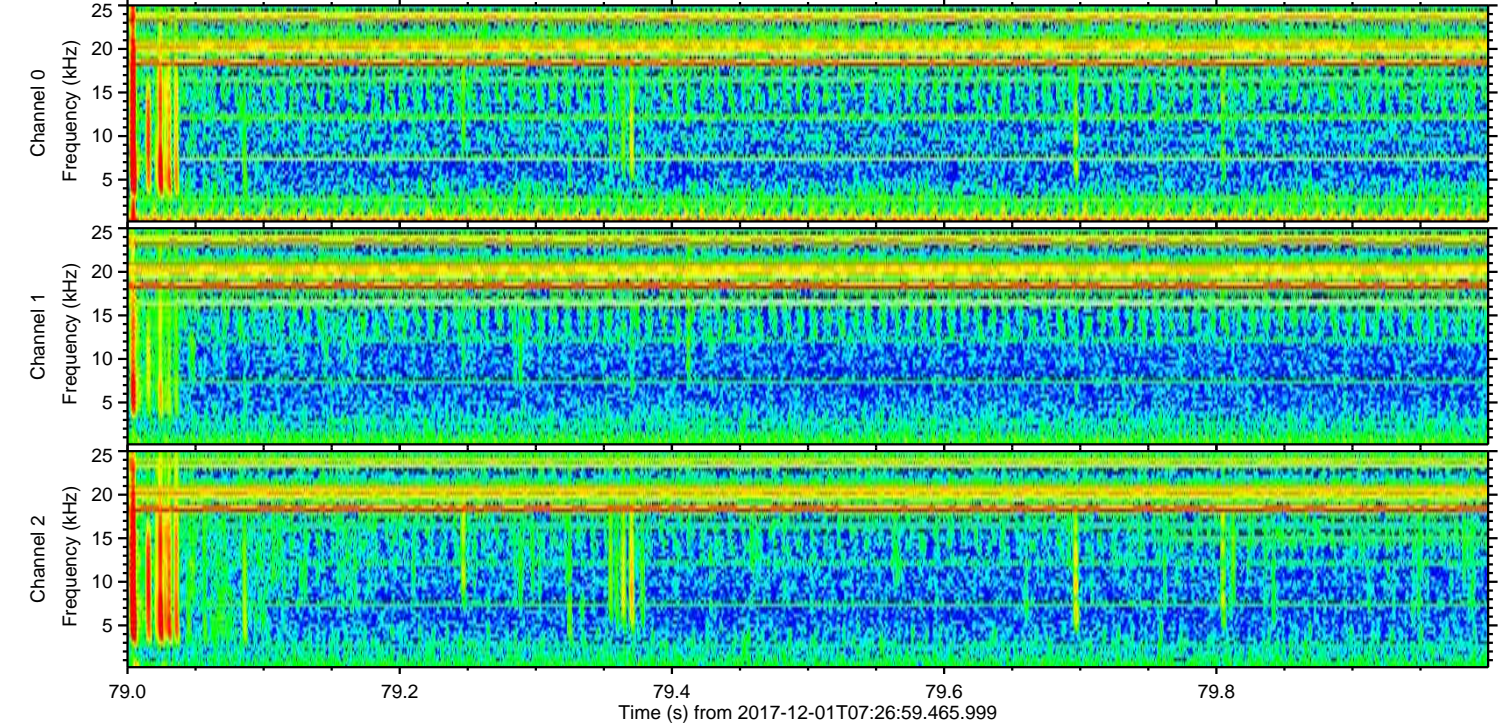
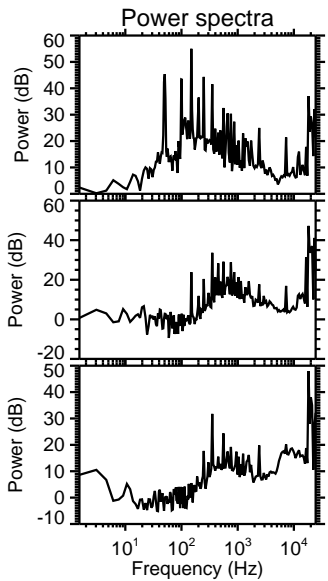
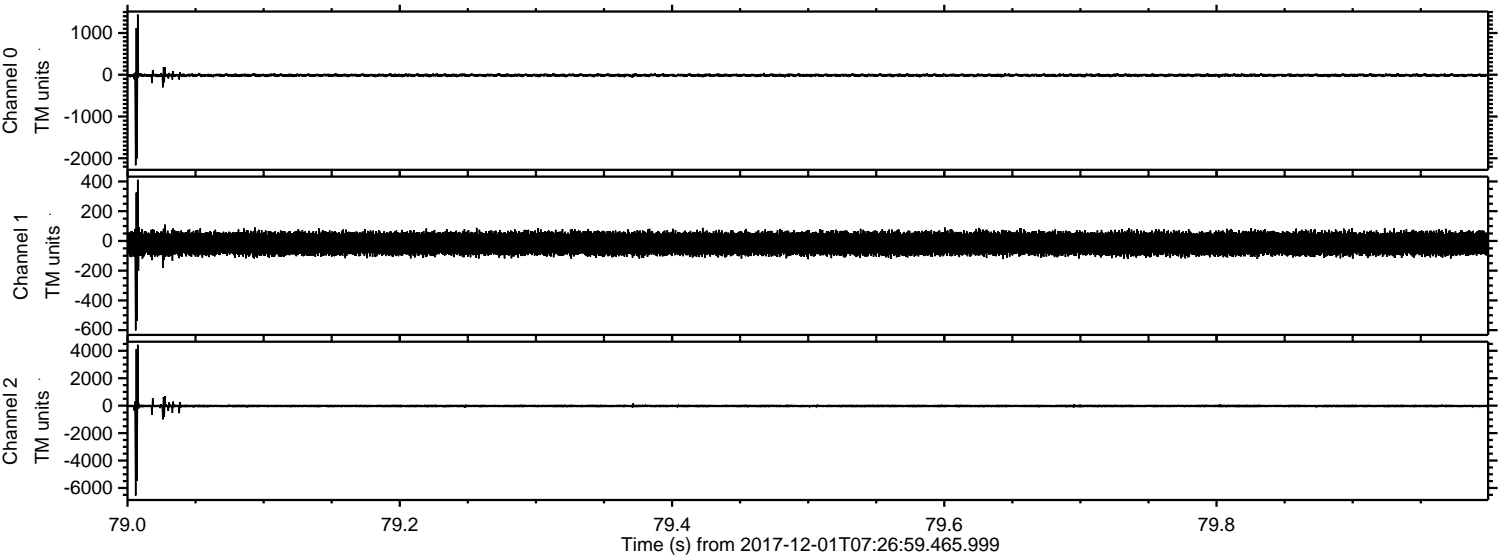
Channel 2
mn: -7652
mx: 6425
 μ : -23.9
 σ : 86.8

ELMAVAN 3D WAVEFORMS (Measured data sampled at 50 kHz) 51000 packets of 144 samples from 2017-12-01T07:26:59.465.999. Part 127/147

Processed Fri Dec 1 08:34:56 2017 by ELM ver.2012-10-06 from 001__elm20171201_072658__dat00.bin



Processed Fri Dec 1 08:34:57 2017 by ELM ver.2012-10-06 from 001__elm20171201_072658__dat00.bin



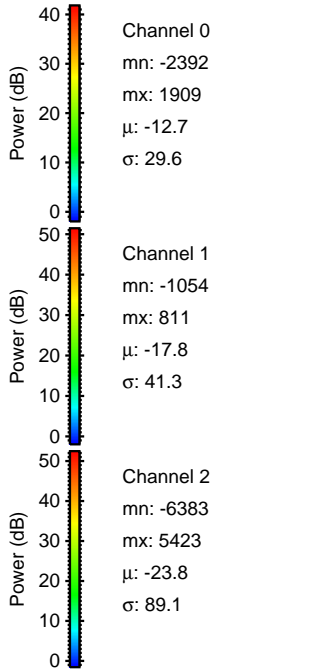
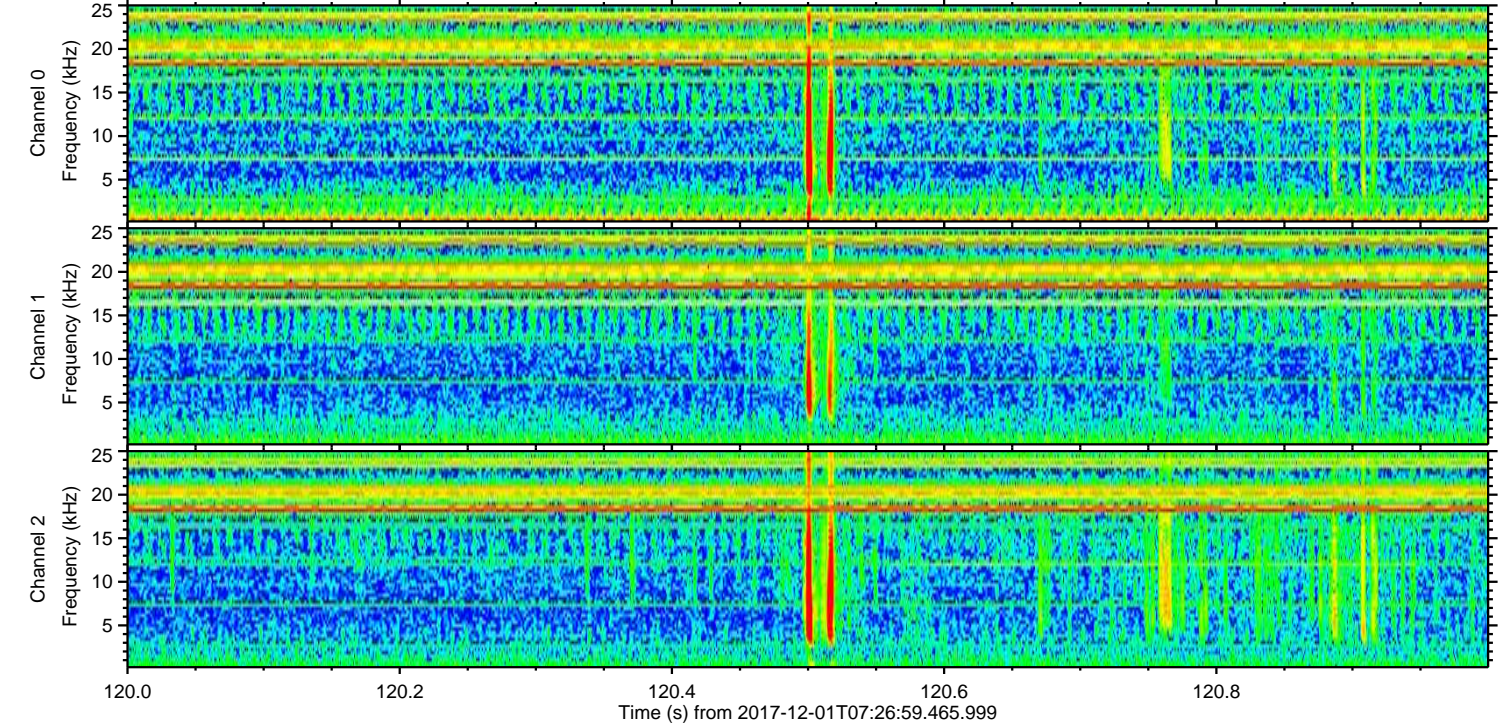
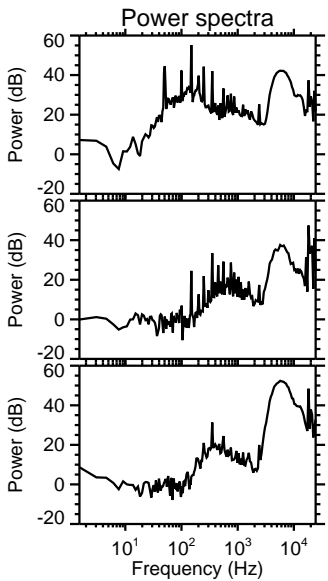
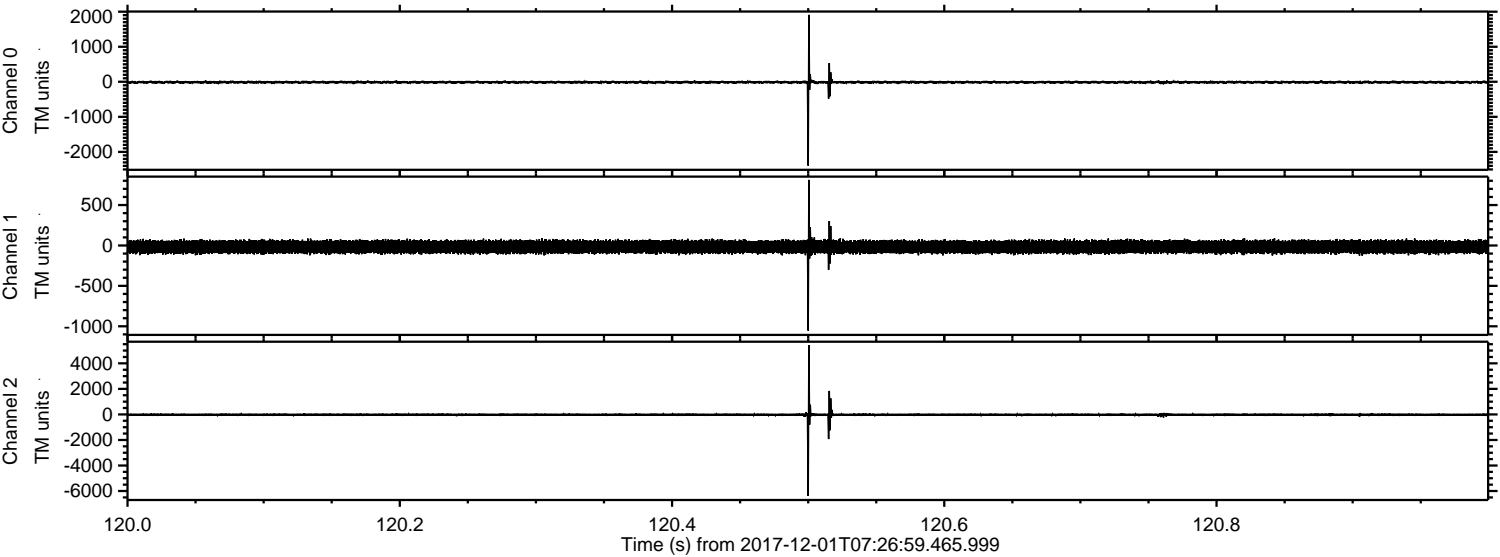
Channel 0
mn: -2168
mx: 1441
μ: -12.7
σ: 26.3

Channel 1
mn: -602
mx: 412
μ: -17.8
σ: 39.1

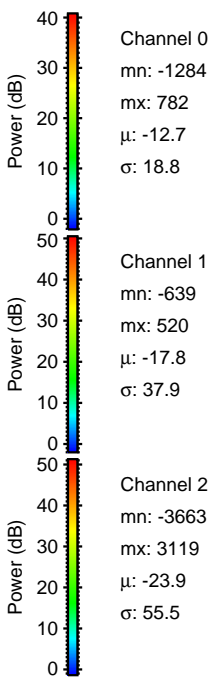
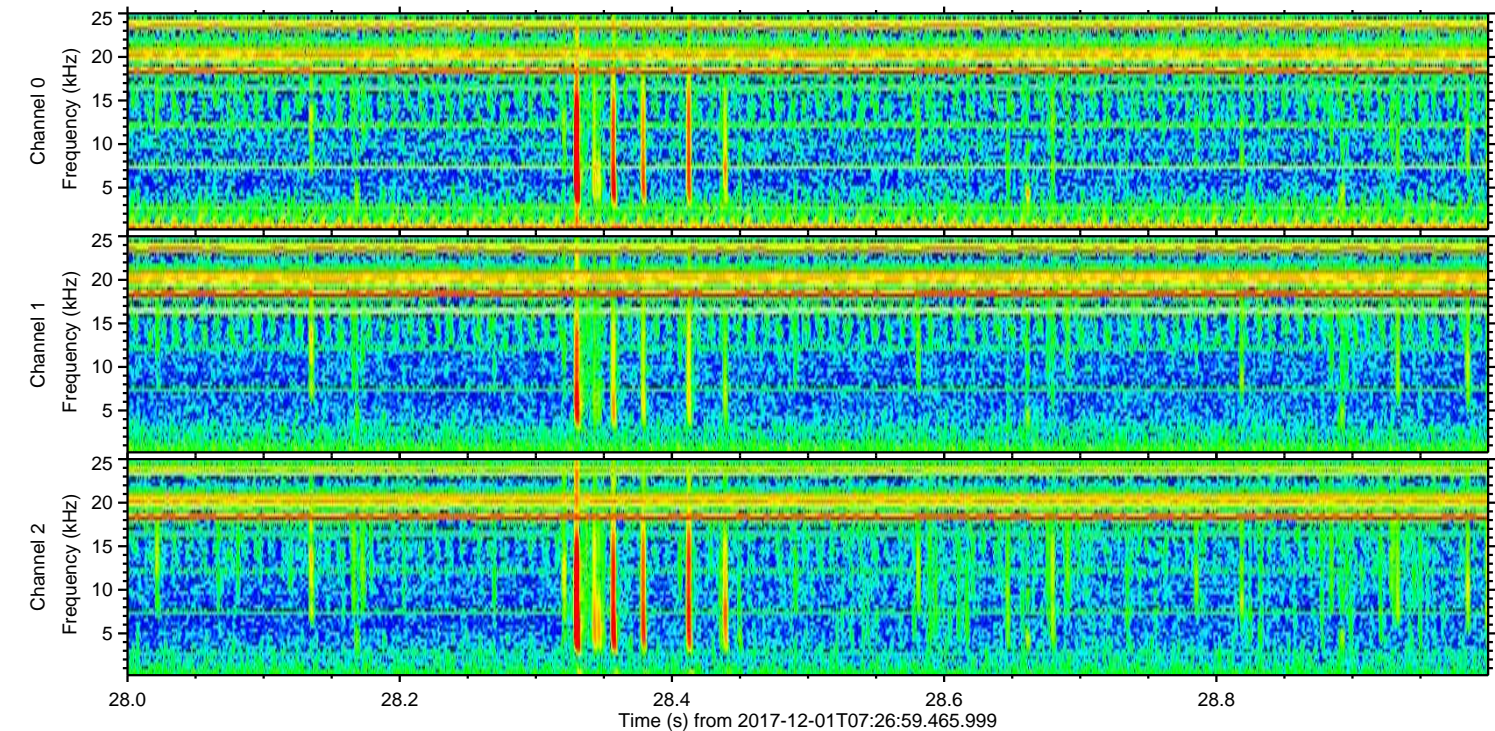
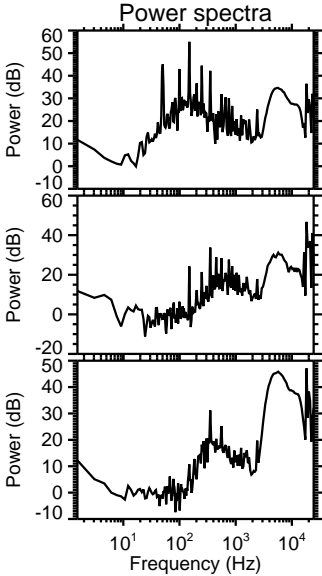
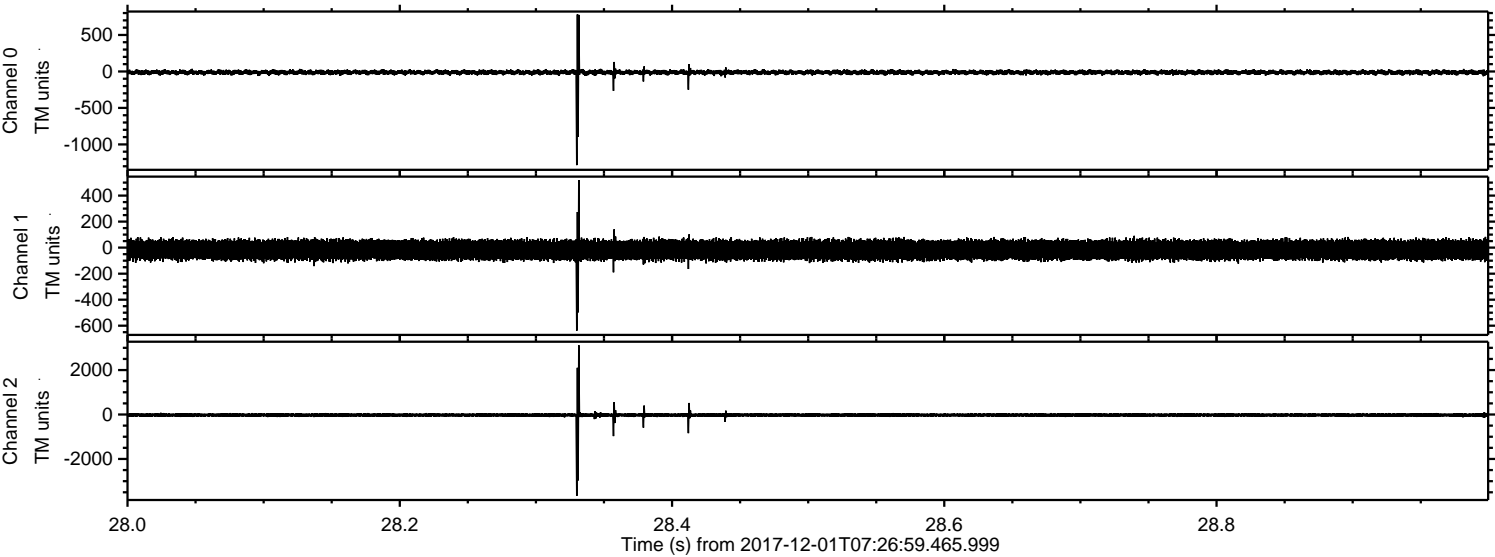
Channel 2
mn: -6547
mx: 4438
μ: -23.8
σ: 78.2

ELMAVAN 3D WAVEFORMS (Measured data sampled at 50 kHz) 51000 packets of 144 samples from 2017-12-01T07:26:59.465.999. Part 121/147

Processed Fri Dec 1 08:34:58 2017 by ELM ver.2012-10-06 from 001__elm20171201_072658__dat00.bin

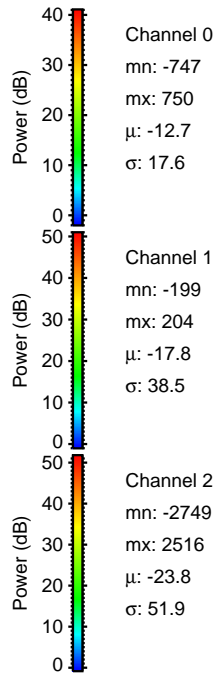
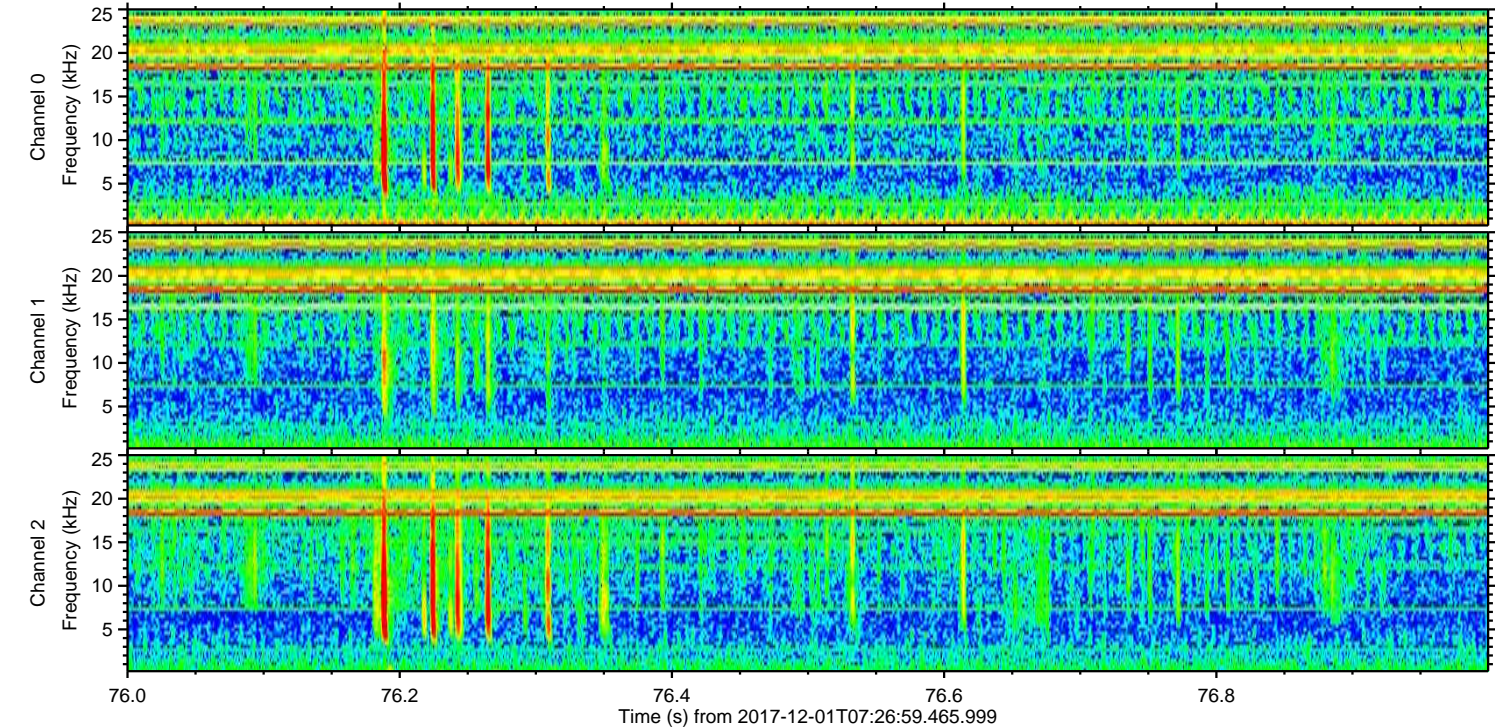
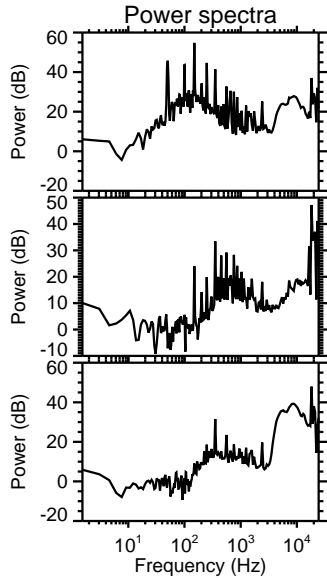
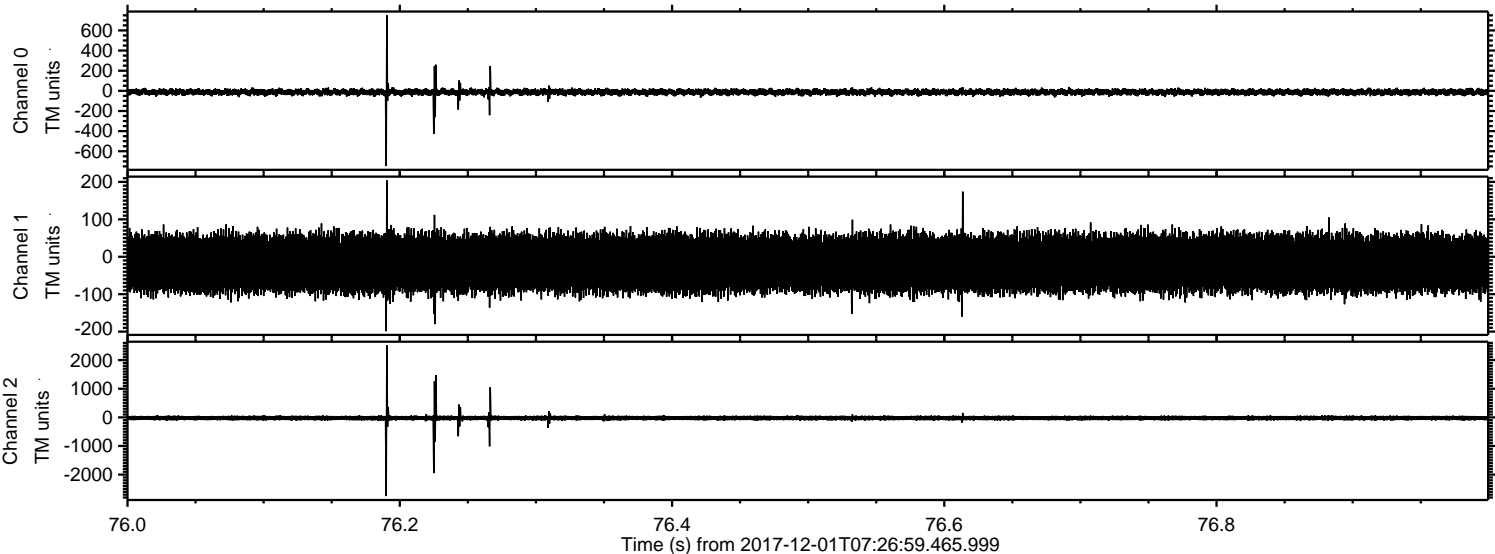


Processed Fri Dec 1 08:34:58 2017 by ELM ver.2012-10-06 from 001__elm20171201_072658__dat00.bin



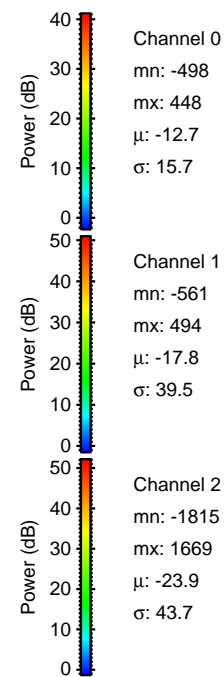
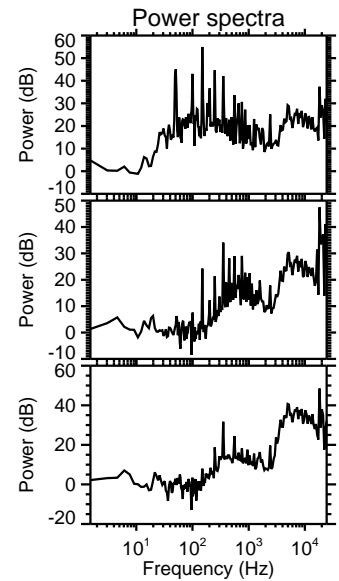
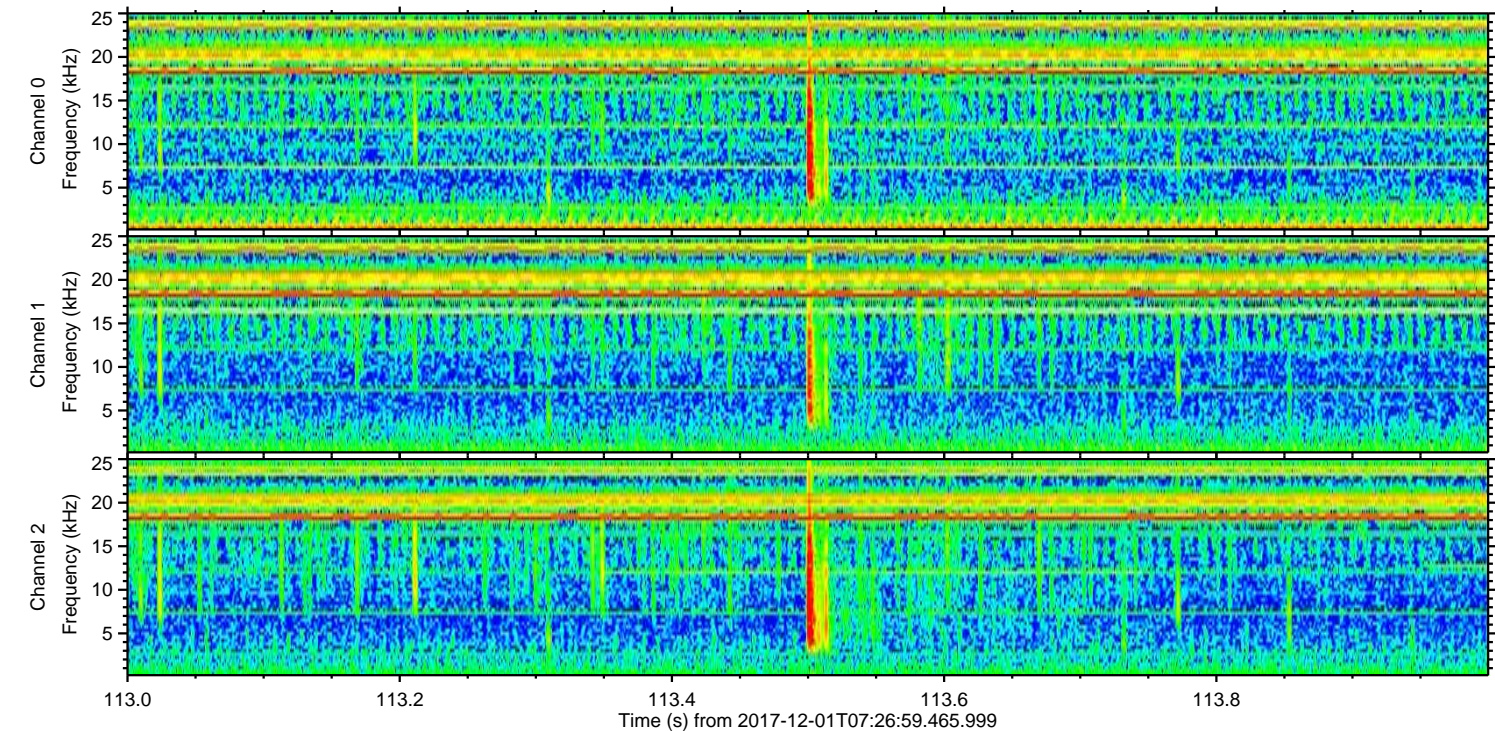
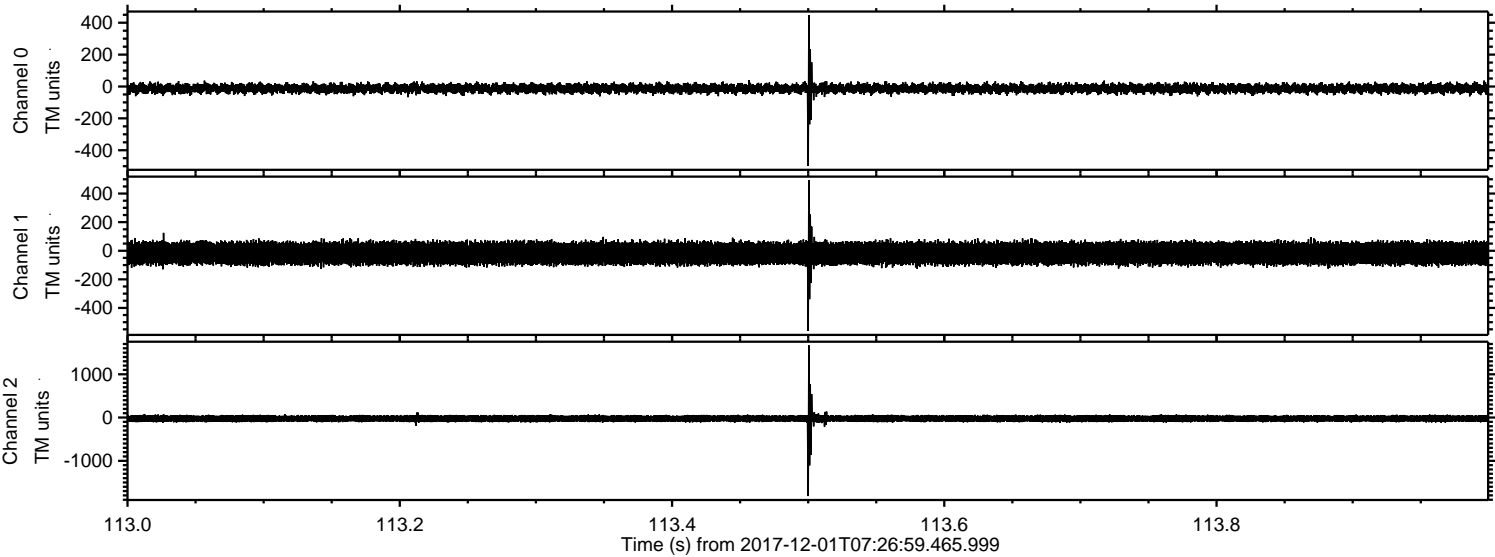
ELMAVAN 3D WAVEFORMS (Measured data sampled at 50 kHz) 51000 packets of 144 samples from 2017-12-01T07:26:59.465.999. Part 77/147

Processed Fri Dec 1 08:34:59 2017 by ELM ver.2012-10-06 from 001__elm20171201_072658__dat00.bin



ELMAVAN 3D WAVEFORMS (Measured data sampled at 50 kHz) 51000 packets of 144 samples from 2017-12-01T07:26:59.465.999. Part 114/147

Processed Fri Dec 1 08:35:00 2017 by ELM ver.2012-10-06 from 001__elm20171201_072658__dat00.bin



ELMAVAN 3D WAVEFORMS (Measured data sampled at 50 kHz) 51000 packets of 144 samples from 2017-12-01T07:26:59.465.999. Part 112/147

Processed Fri Dec 1 08:35:00 2017 by ELM ver.2012-10-06 from 001__elm20171201_072658__dat00.bin

