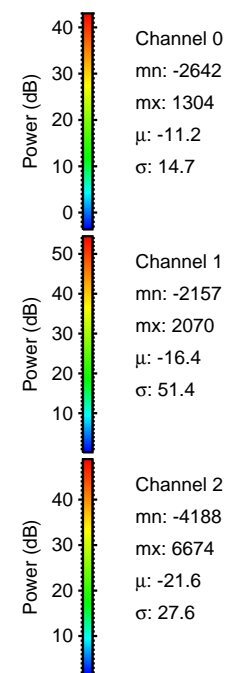
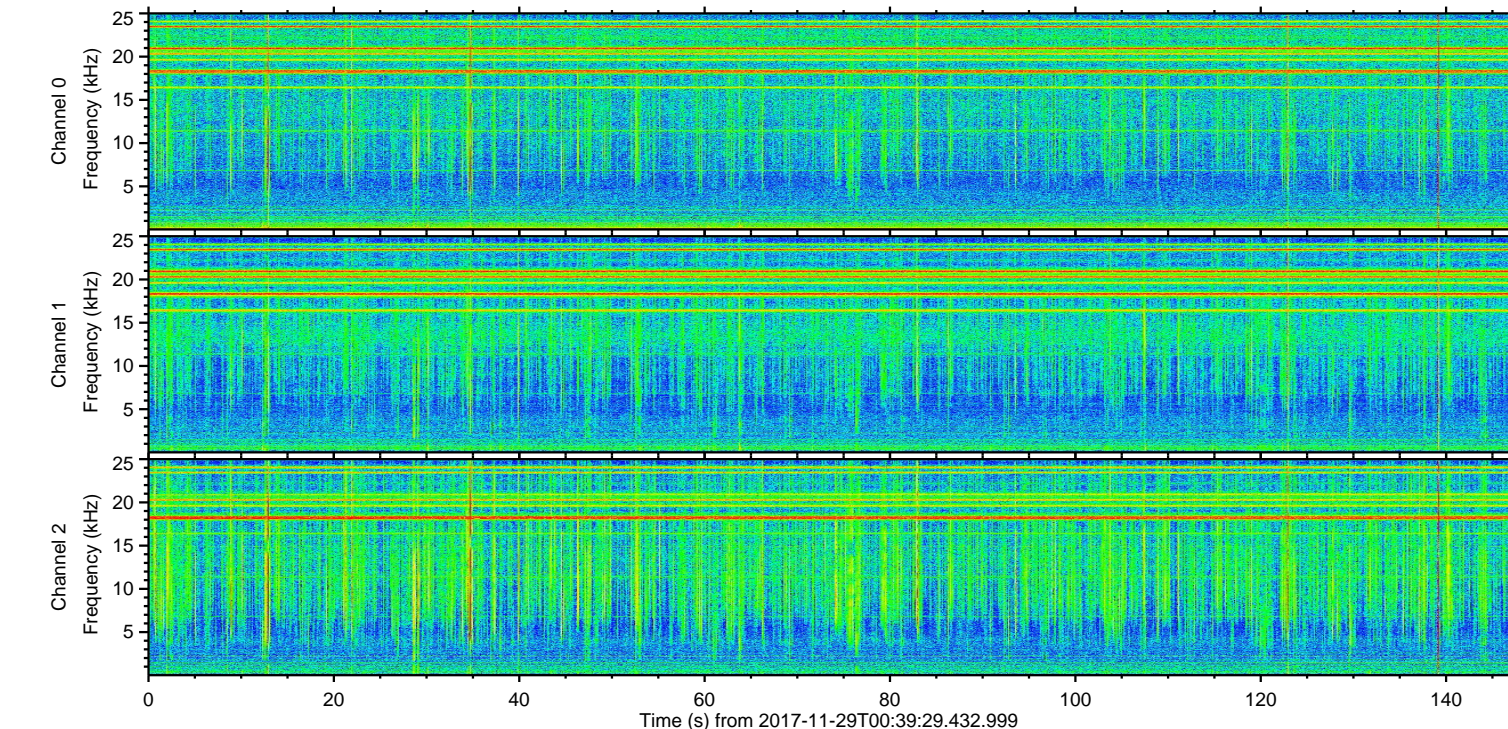
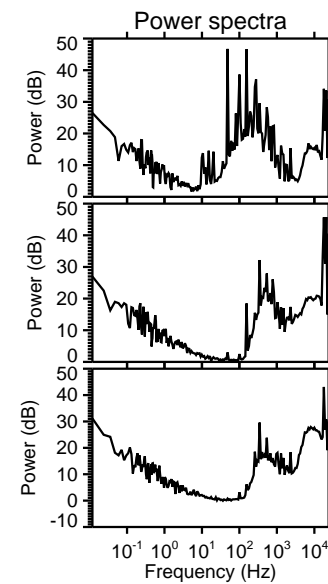
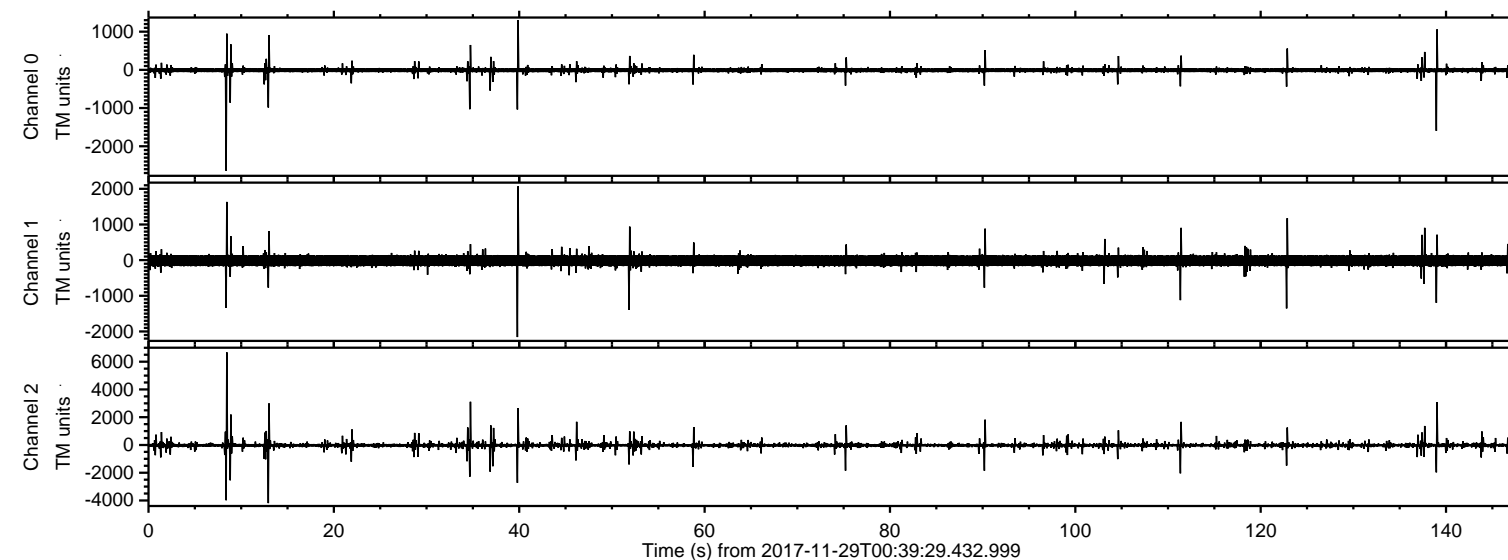
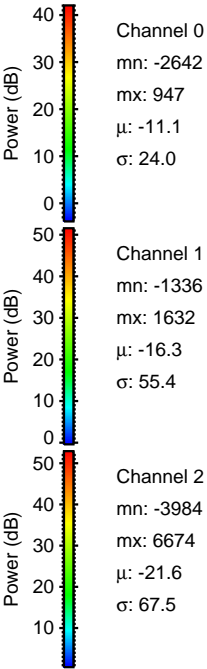
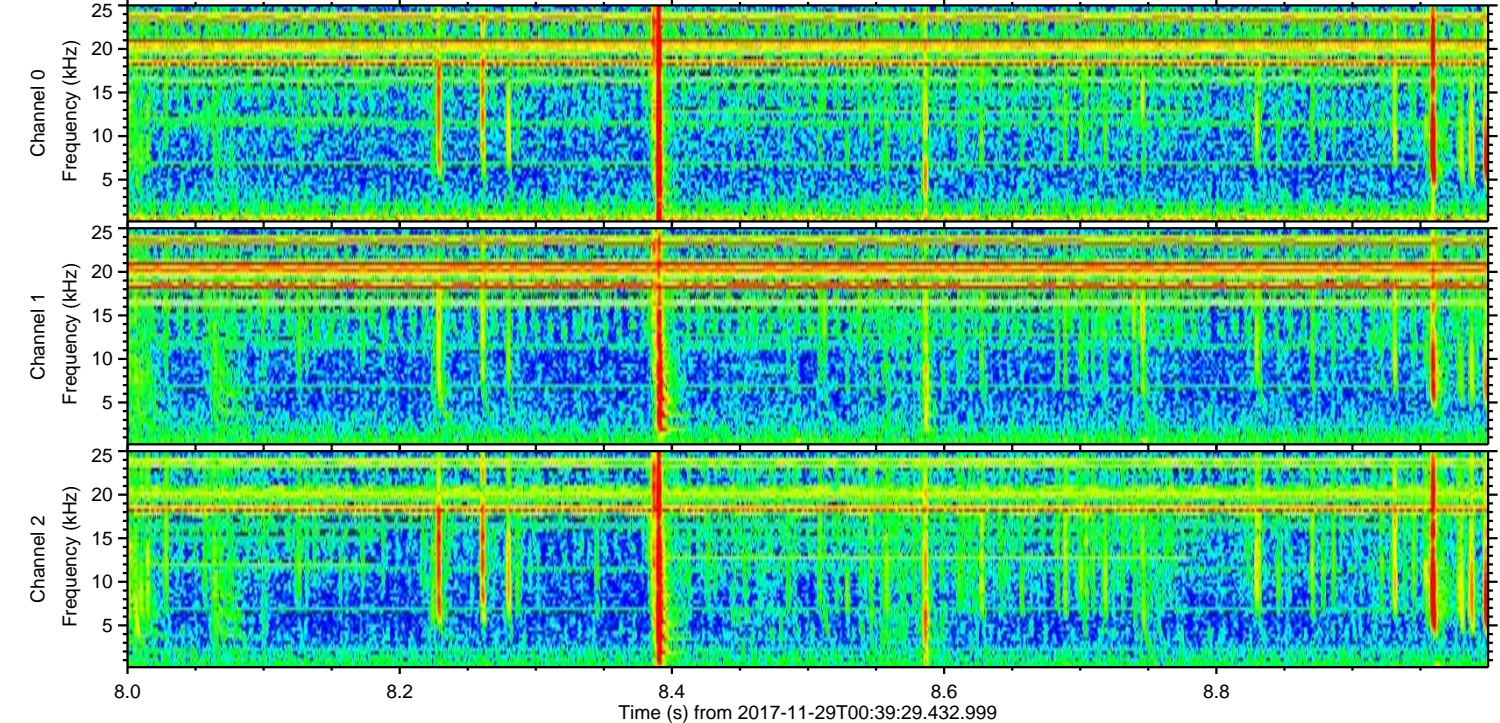
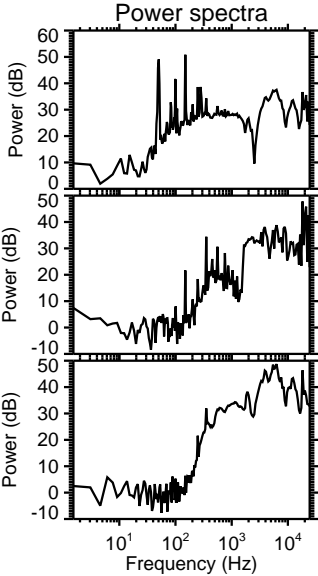
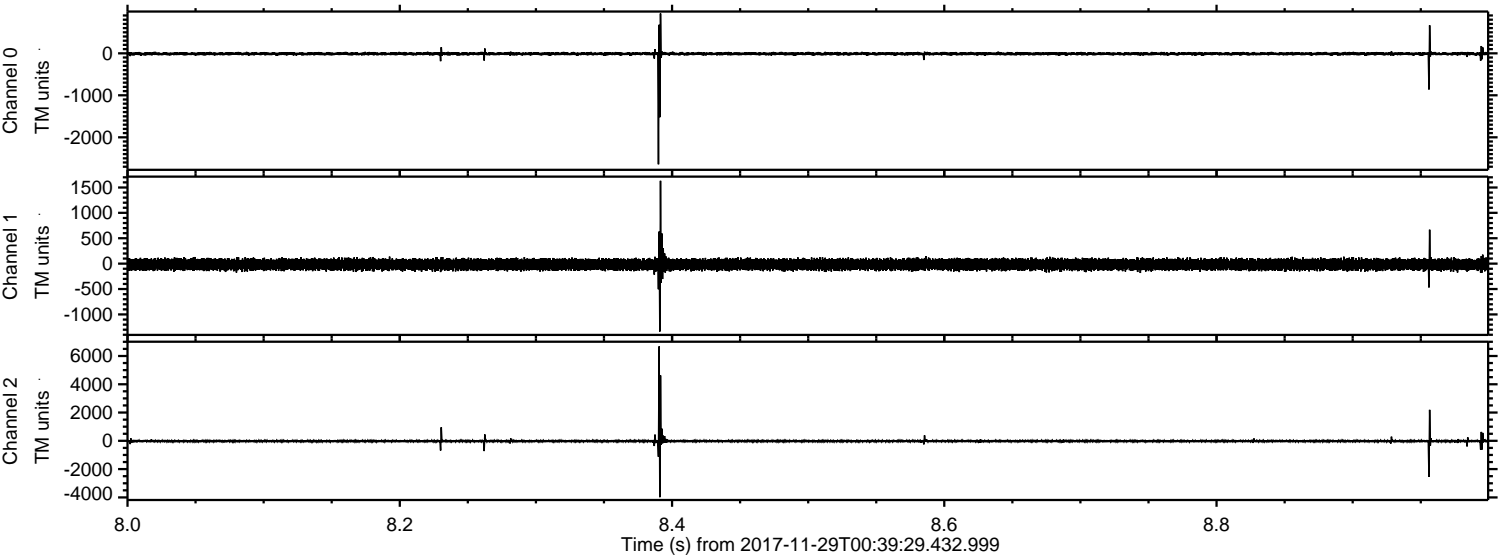


ELMAVAN 3D WAVEFORMS (Measured data sampled at 50 kHz) 51000 packets of 144 samples from 2017-11-29T00:39:29.432.999.

Processed Wed Nov 29 01:47:04 2017 by ELM ver.2012-10-06 from 001__elm20171129_003928__dat00.bin

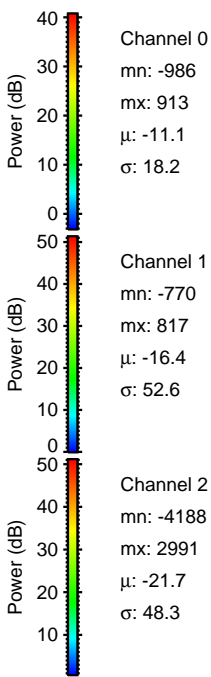
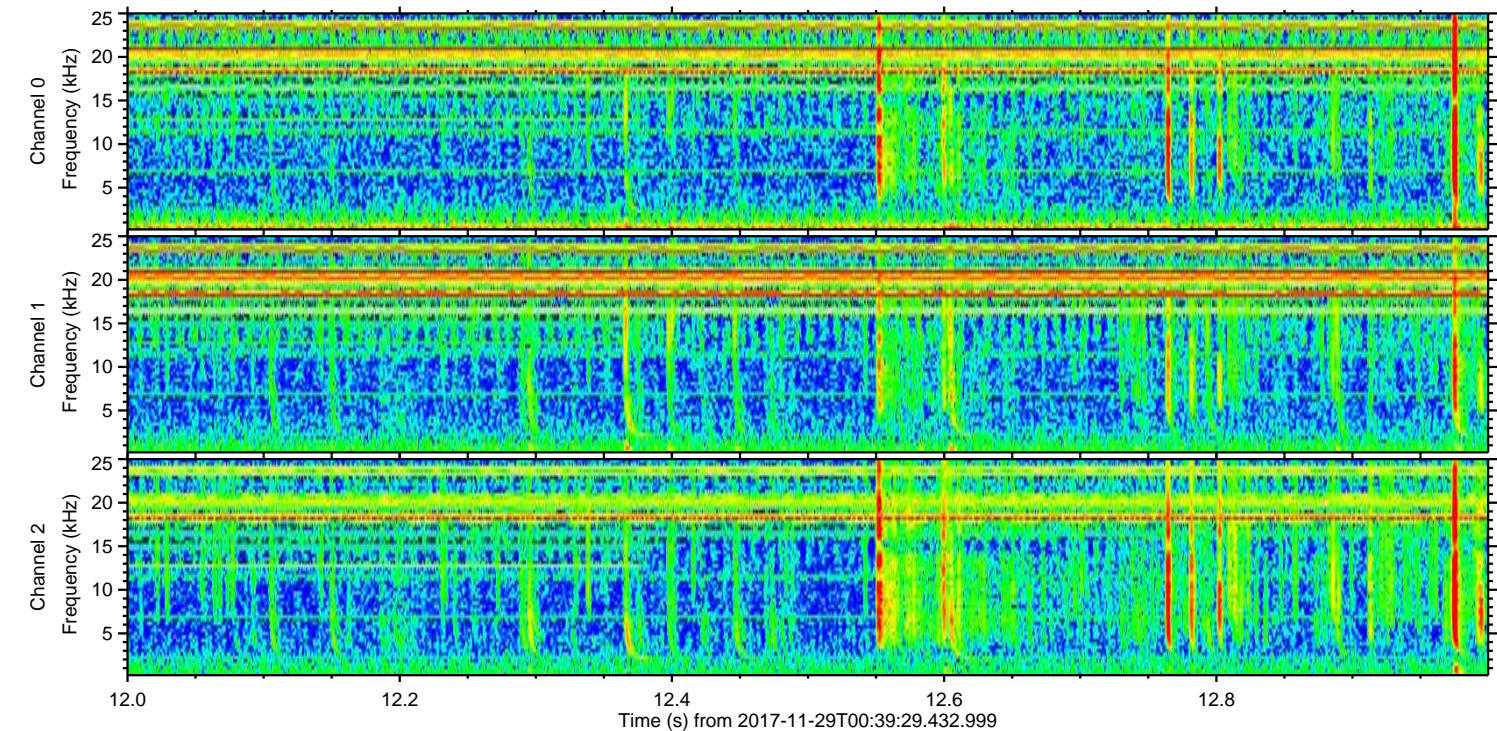
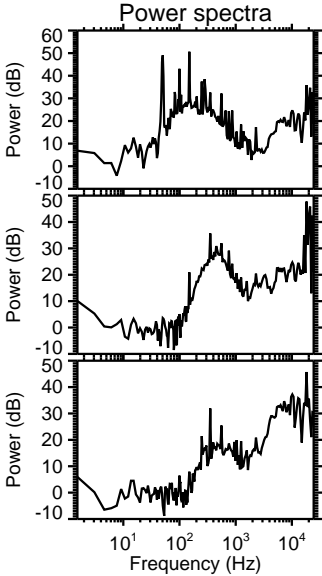
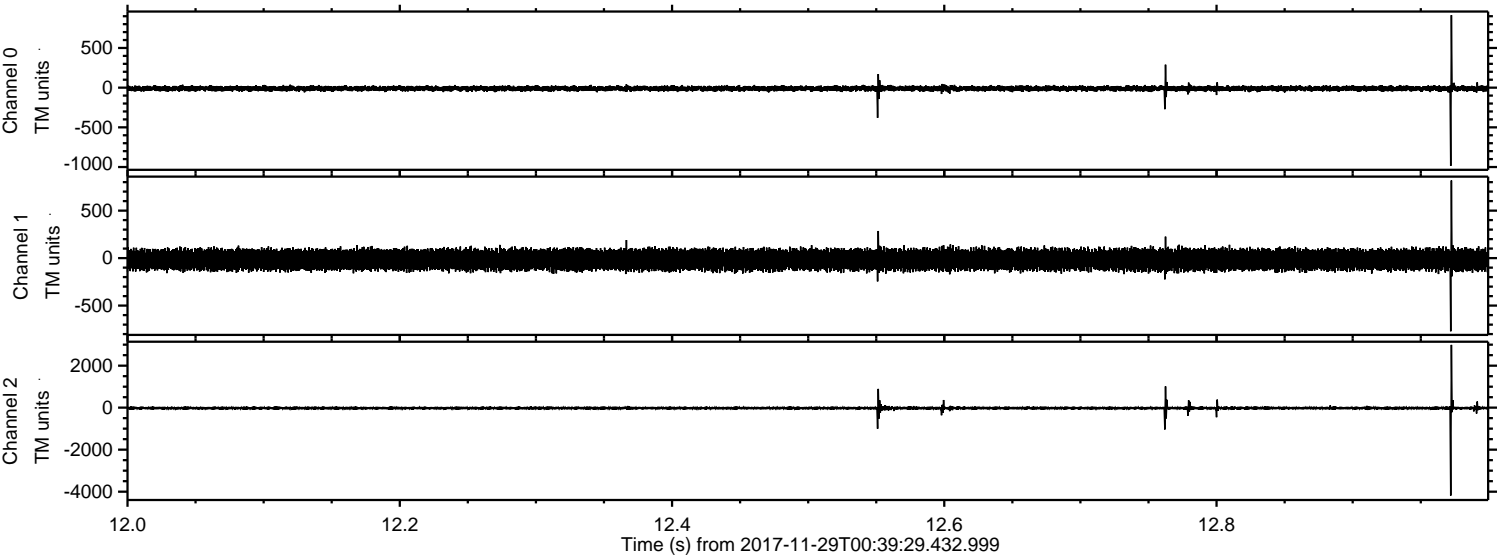


Processed Wed Nov 29 01:47:11 2017 by ELM ver.2012-10-06 from 001__elm20171129_003928__dat00.bin

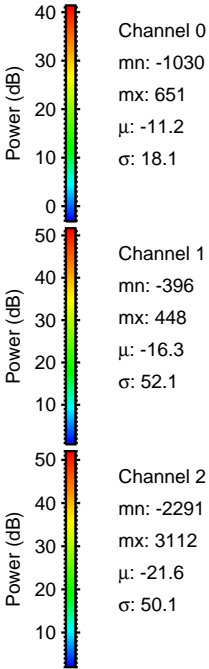
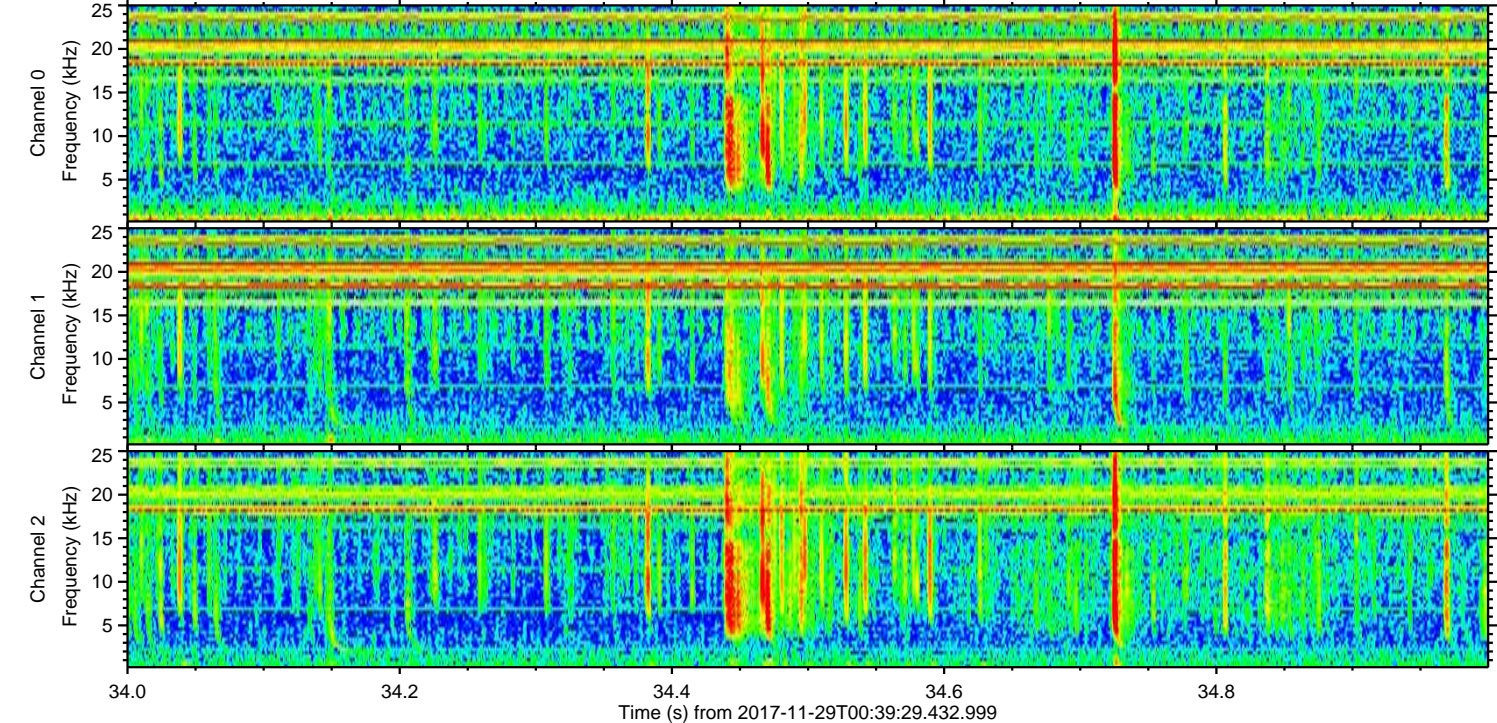
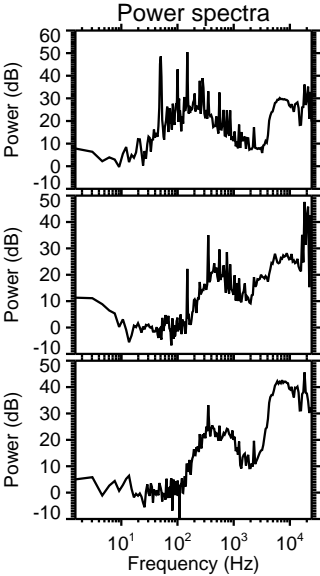
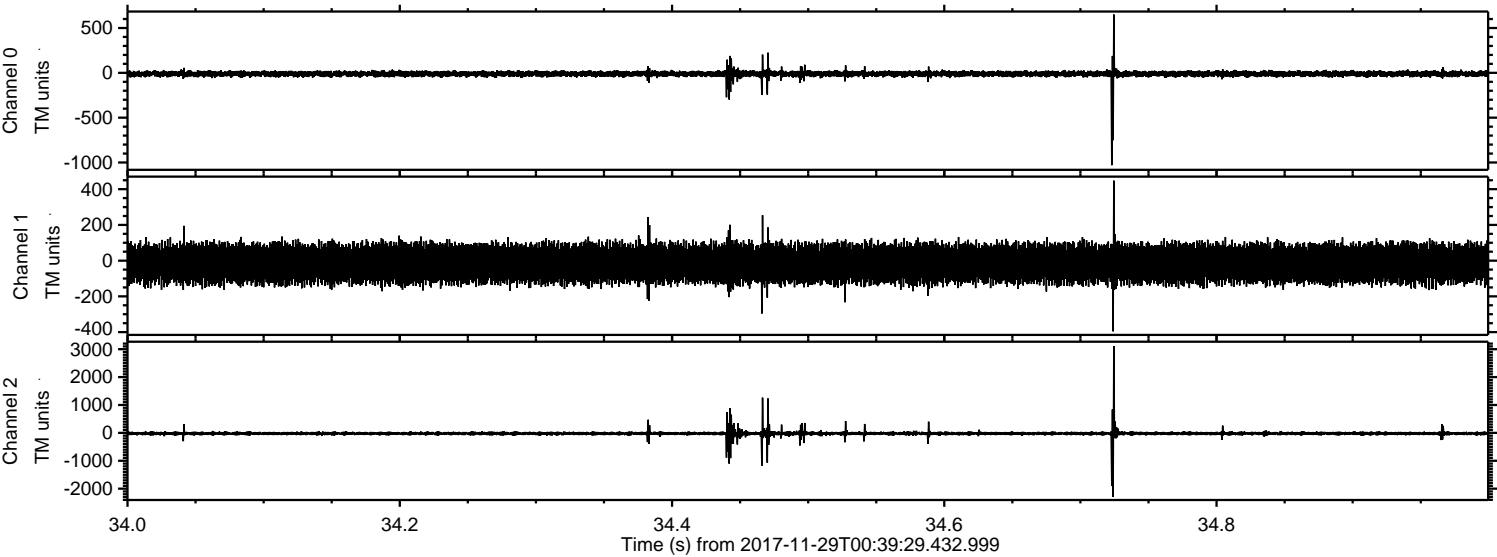


ELMAVAN 3D WAVEFORMS (Measured data sampled at 50 kHz) 51000 packets of 144 samples from 2017-11-29T00:39:29.432.999. Part 13/147

Processed Wed Nov 29 01:47:11 2017 by ELM ver.2012-10-06 from 001__elm20171129_003928__dat00.bin

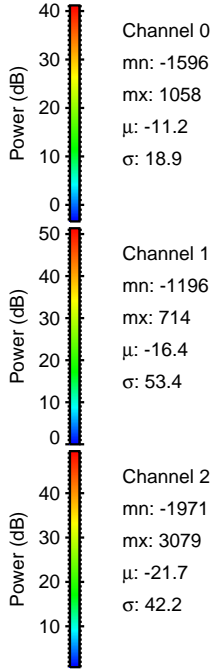
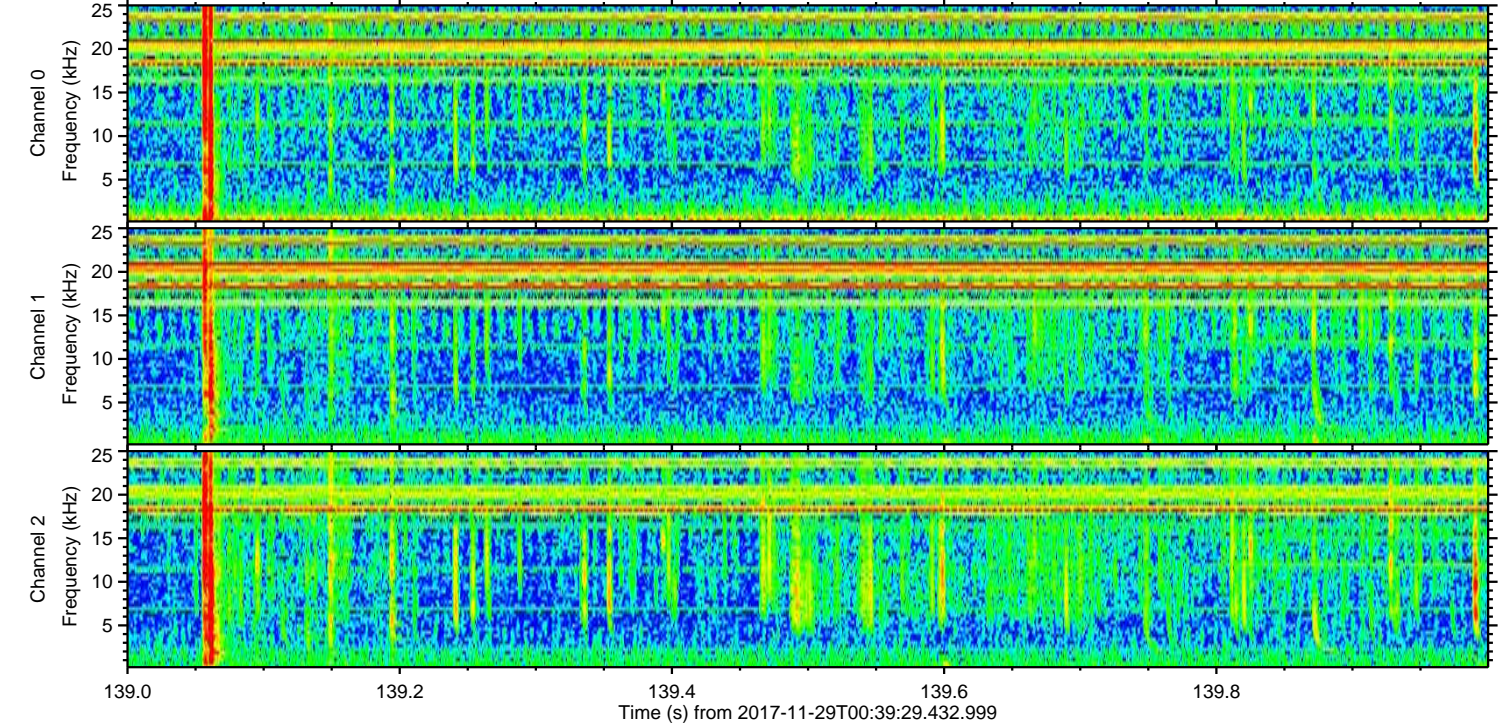
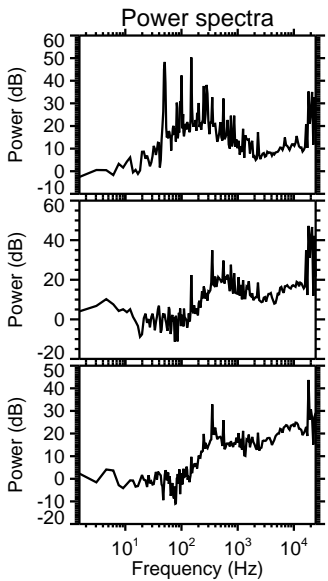
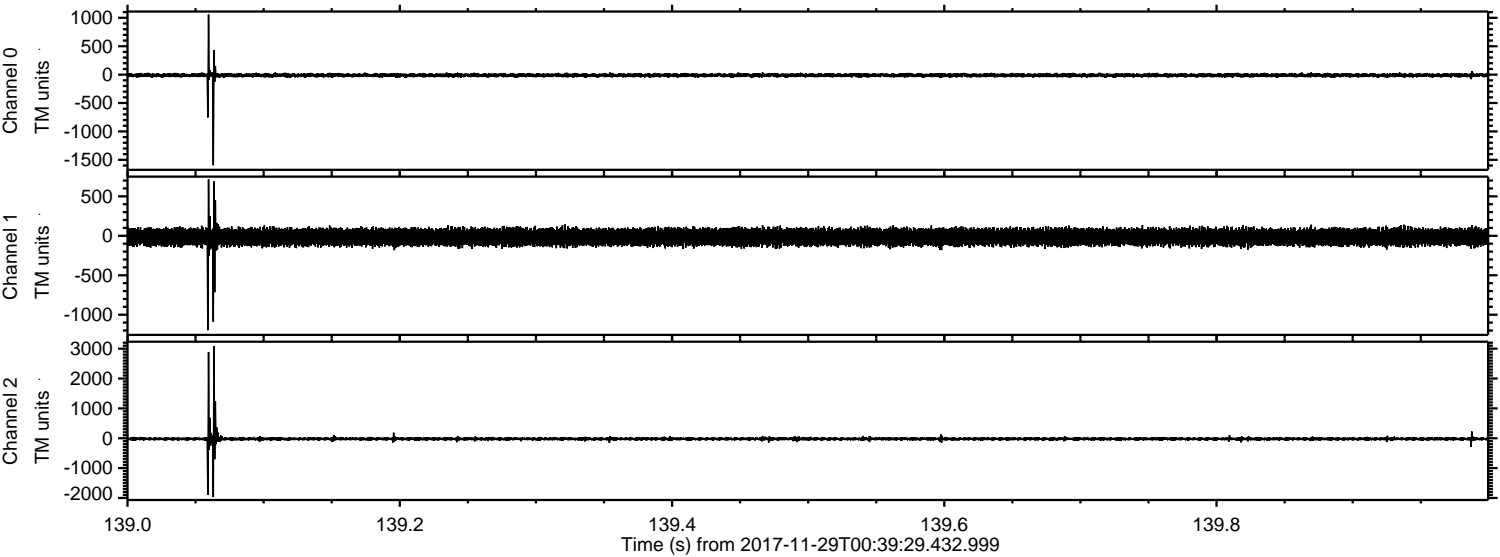


Processed Wed Nov 29 01:47:12 2017 by ELM ver.2012-10-06 from 001__elm20171129_003928__dat00.bin



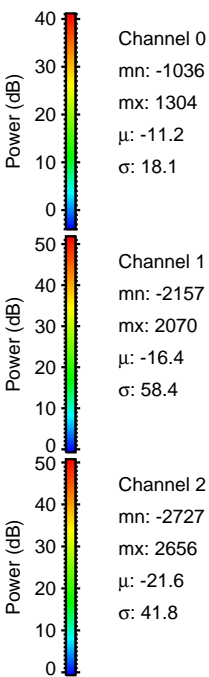
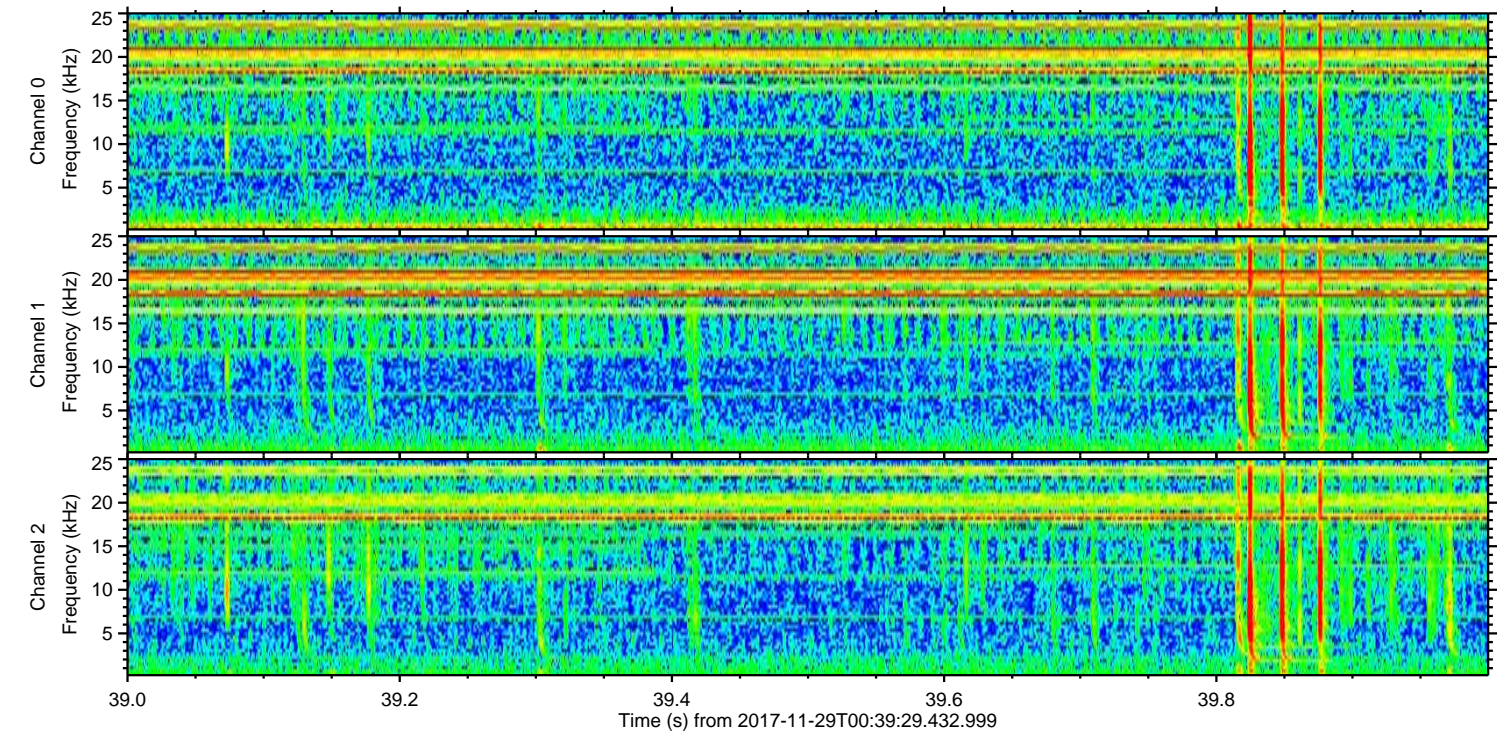
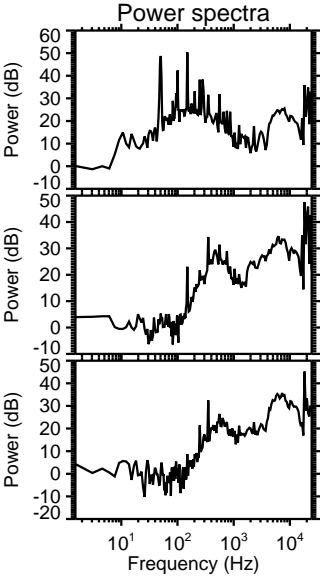
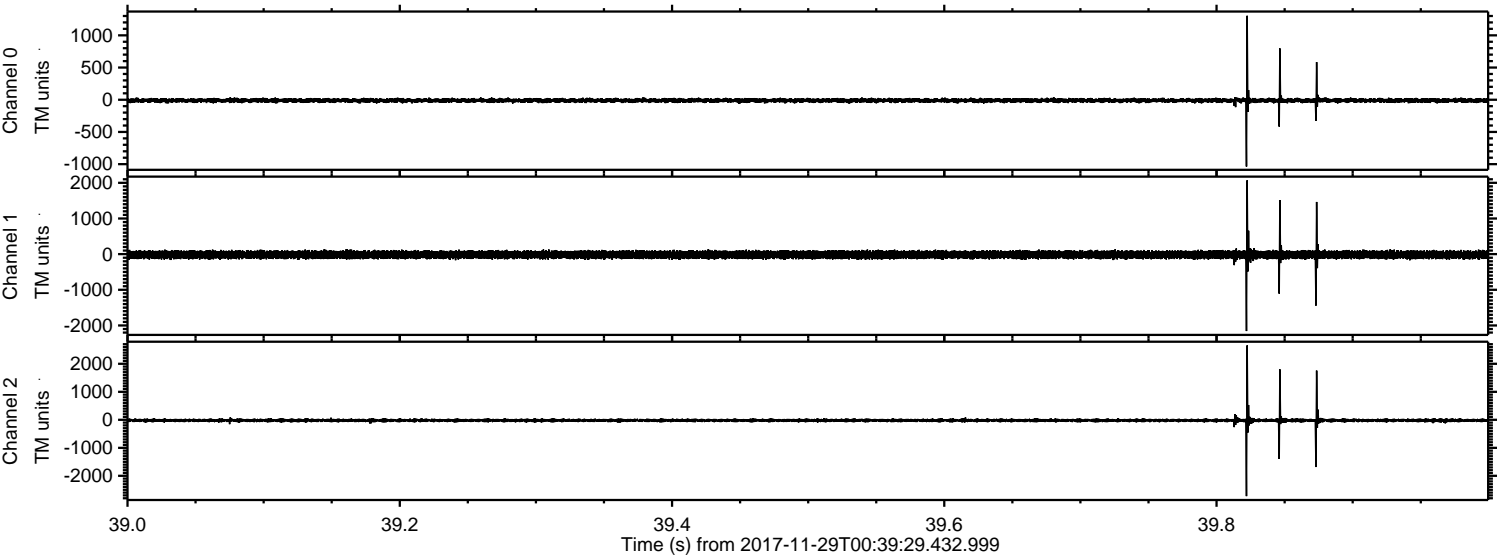
ELMAVAN 3D WAVEFORMS (Measured data sampled at 50 kHz) 51000 packets of 144 samples from 2017-11-29T00:39:29.432.999. Part 140/147

Processed Wed Nov 29 01:47:13 2017 by ELM ver.2012-10-06 from 001__elm20171129_003928__dat00.bin



ELMAVAN 3D WAVEFORMS (Measured data sampled at 50 kHz) 51000 packets of 144 samples from 2017-11-29T00:39:29.432.999. Part 40/147

Processed Wed Nov 29 01:47:13 2017 by ELM ver.2012-10-06 from 001__elm20171129_003928__dat00.bin



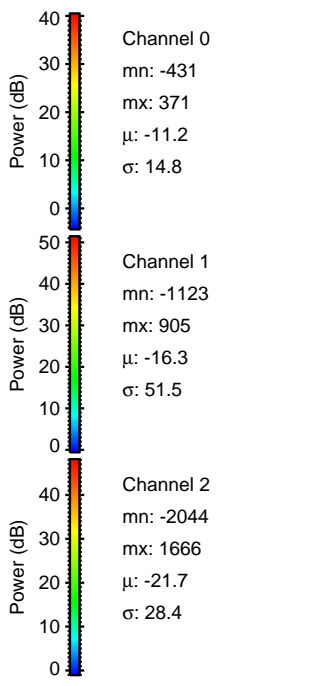
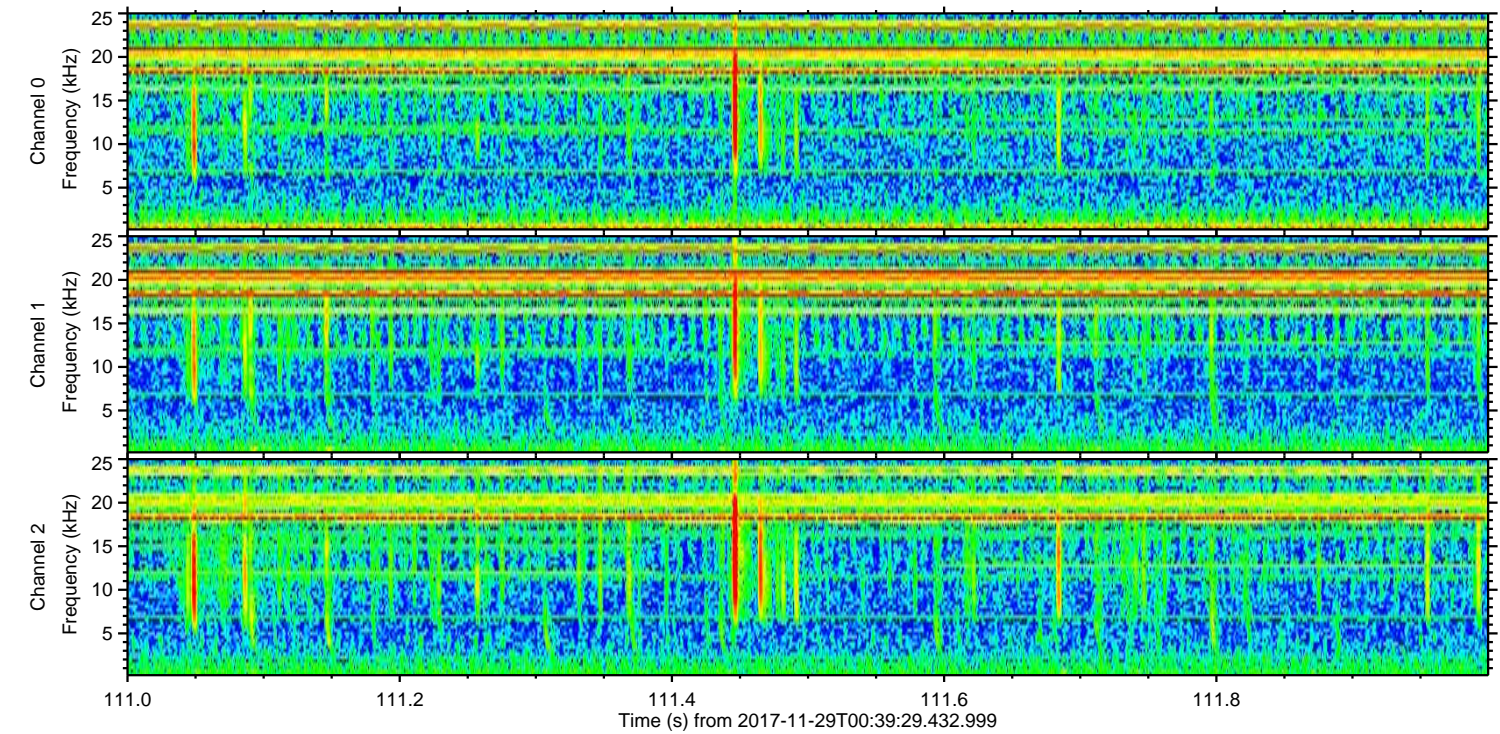
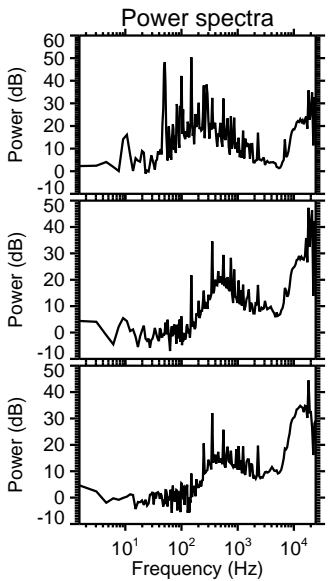
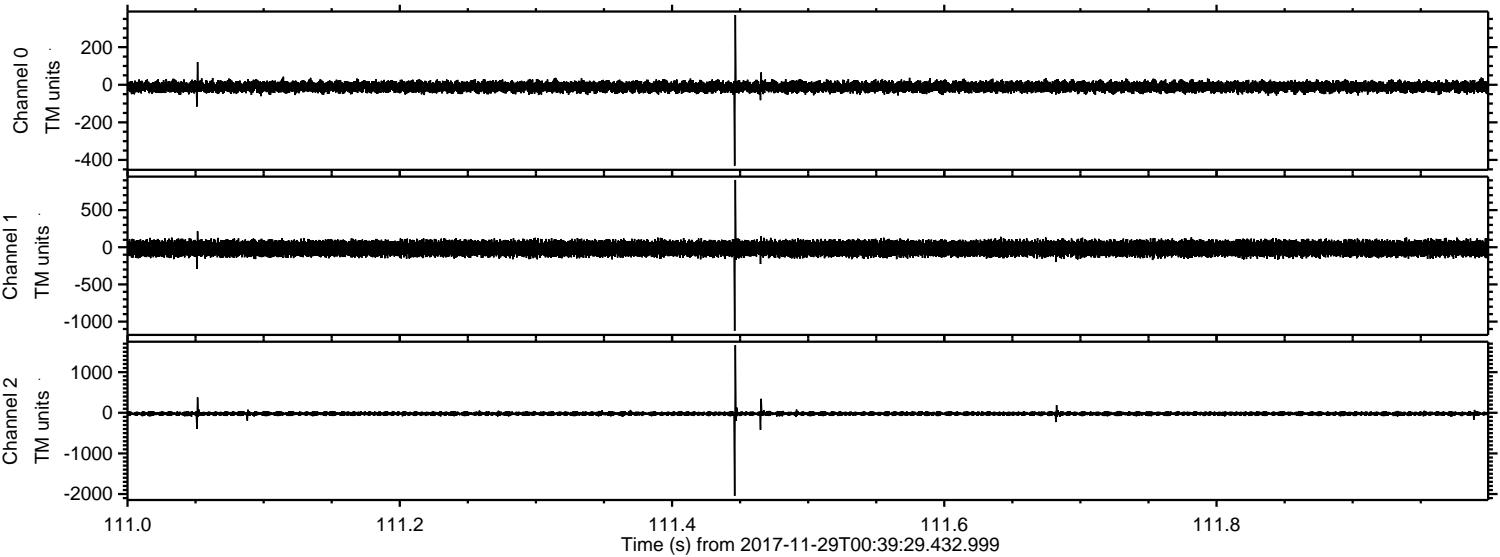
Channel 0
mn: -1036
mx: 1304
 μ : -11.2
 σ : 18.1

Channel 1
mn: -2157
mx: 2070
 μ : -16.4
 σ : 58.4

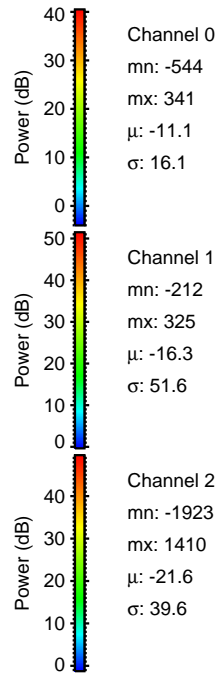
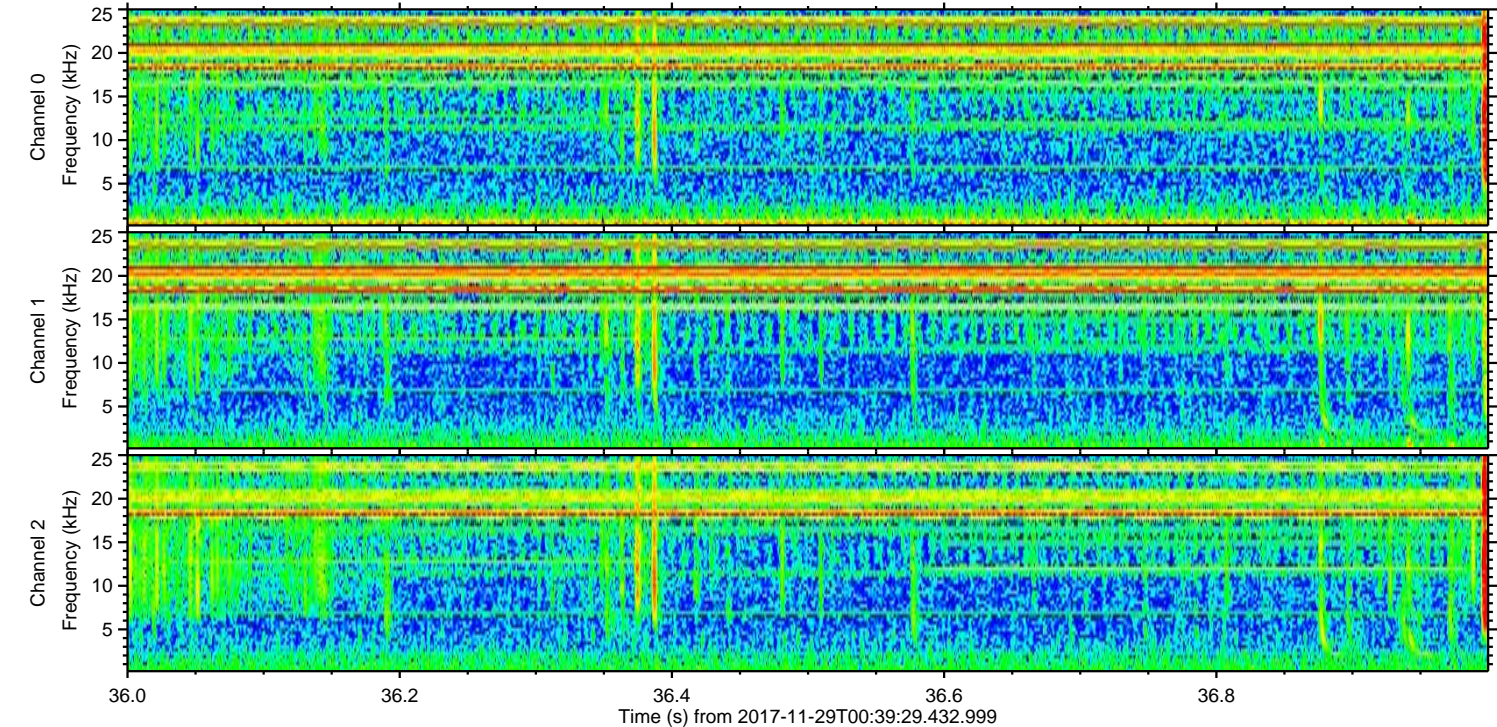
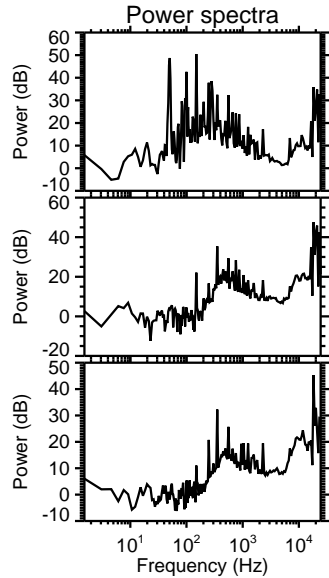
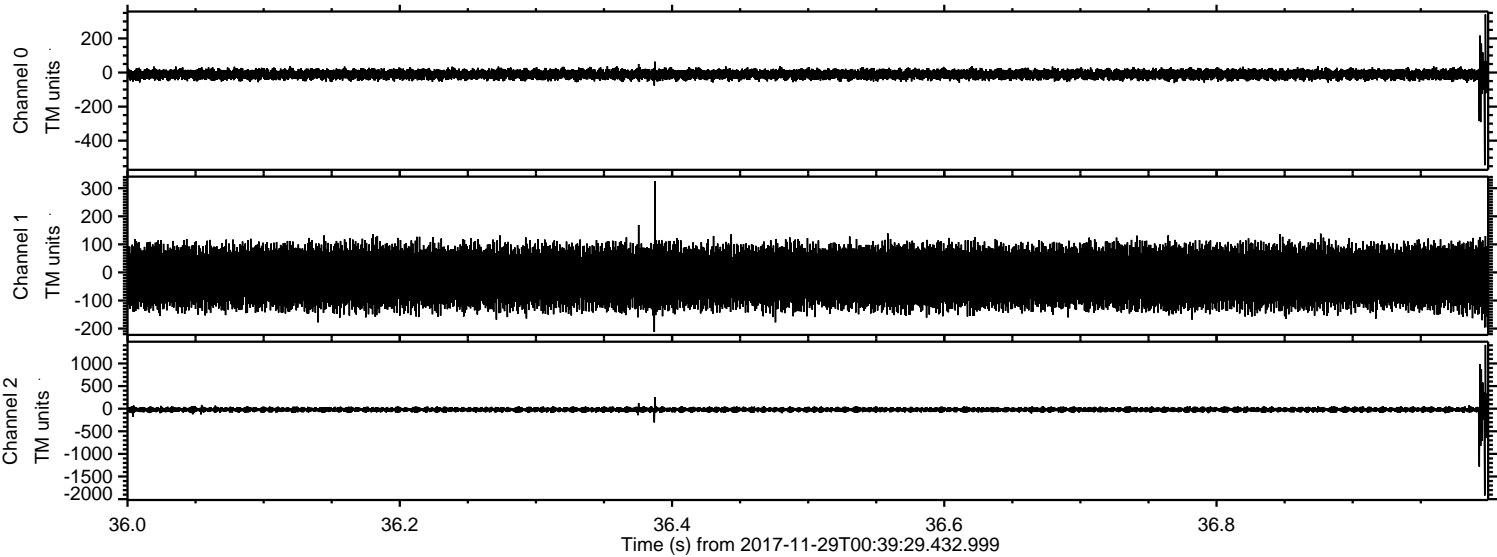
Channel 2
mn: -2727
mx: 2656
 μ : -21.6
 σ : 41.8

ELMAVAN 3D WAVEFORMS (Measured data sampled at 50 kHz) 51000 packets of 144 samples from 2017-11-29T00:39:29.432.999. Part 112/147

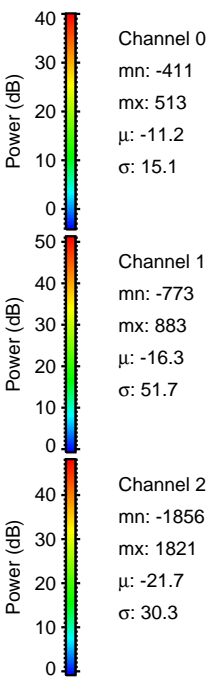
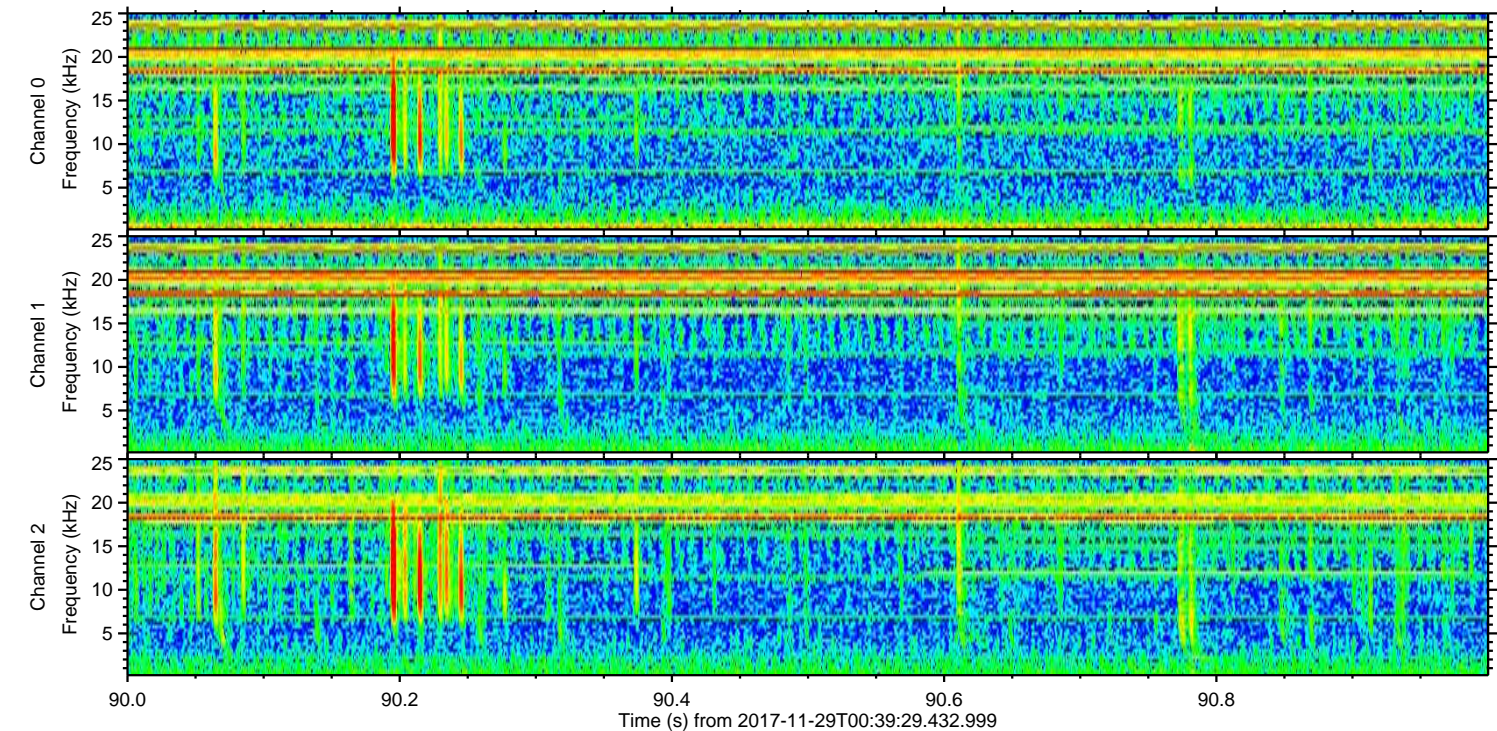
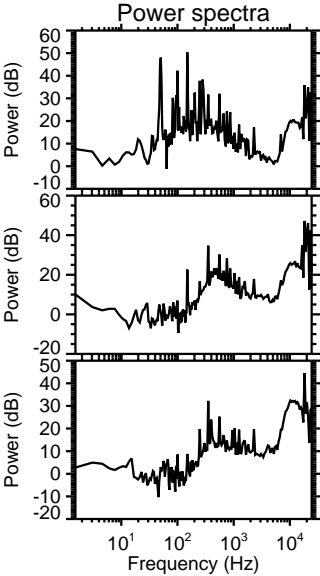
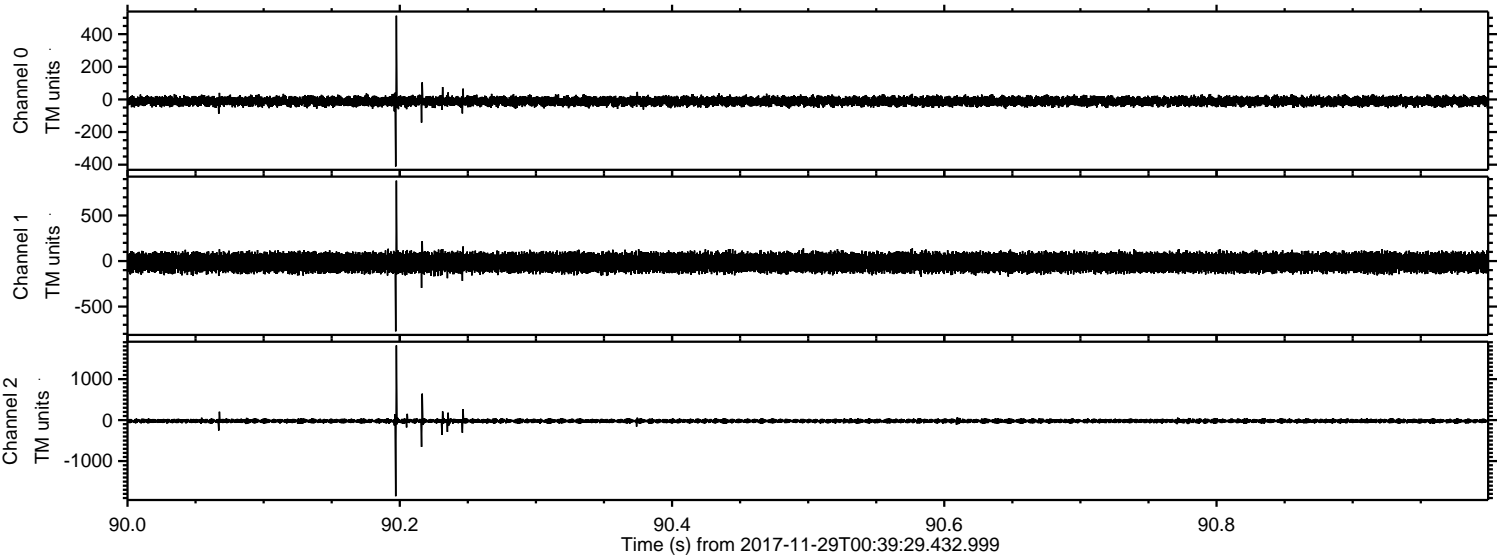
Processed Wed Nov 29 01:47:14 2017 by ELM ver.2012-10-06 from 001__elm20171129_003928__dat00.bin



Processed Wed Nov 29 01:47:14 2017 by ELM ver.2012-10-06 from 001__elm20171129_003928__dat00.bin



Processed Wed Nov 29 01:47:15 2017 by ELM ver.2012-10-06 from 001__elm20171129_003928__dat00.bin



Channel 0
mn: -411
mx: 513
 μ : -11.2
 σ : 15.1

Channel 1
mn: -773
mx: 883
 μ : -16.3
 σ : 51.7

Channel 2
mn: -1856
mx: 1821
 μ : -21.7
 σ : 30.3

Processed Wed Nov 29 01:47:16 2017 by ELM ver.2012-10-06 from 001__elm20171129_003928__dat00.bin

