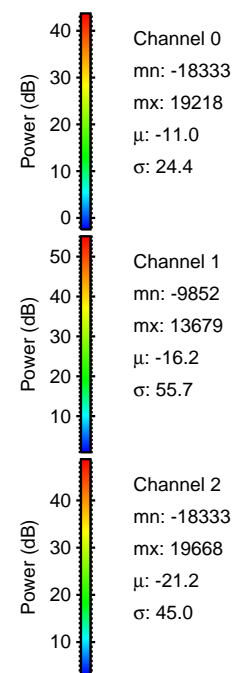
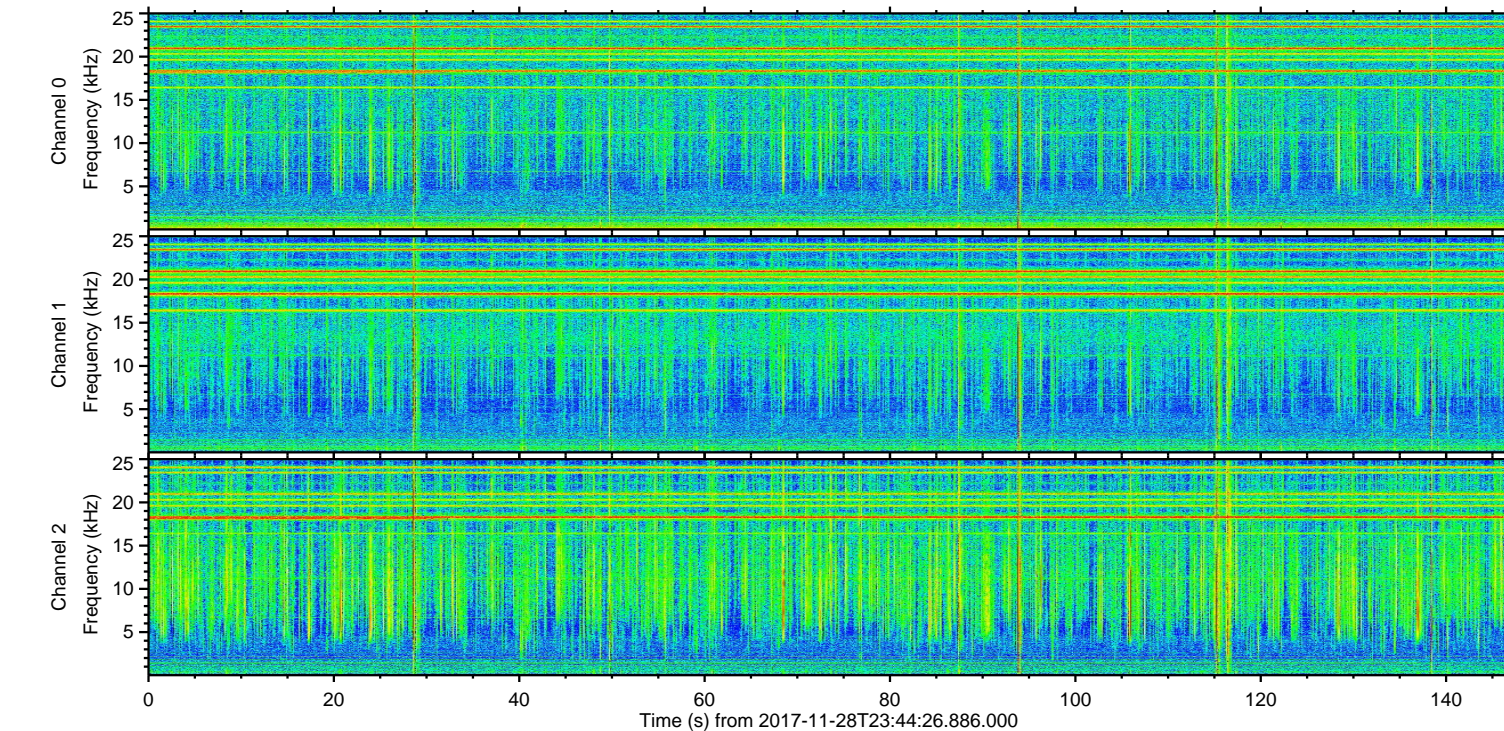
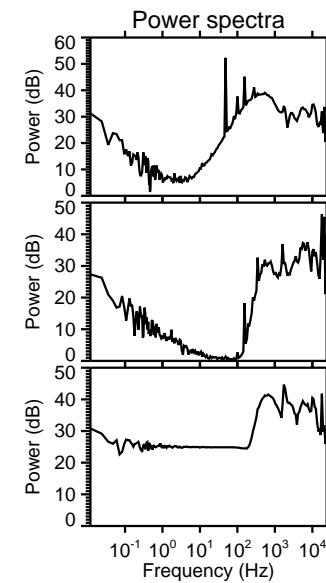
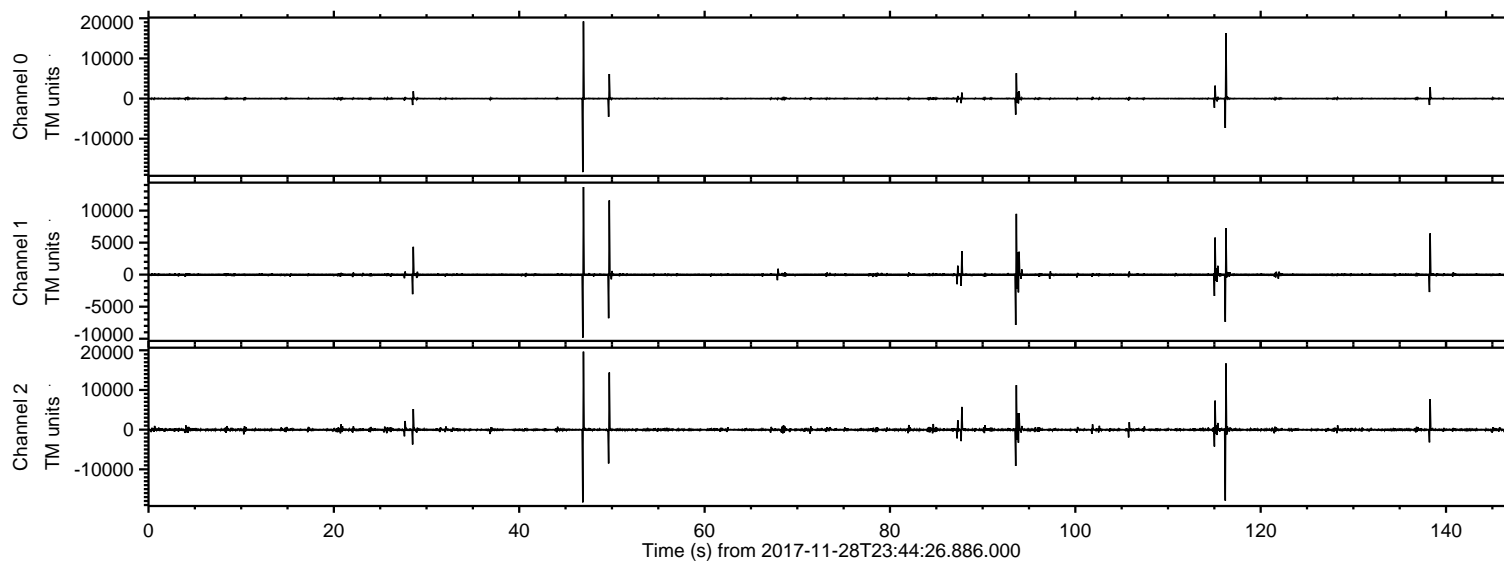


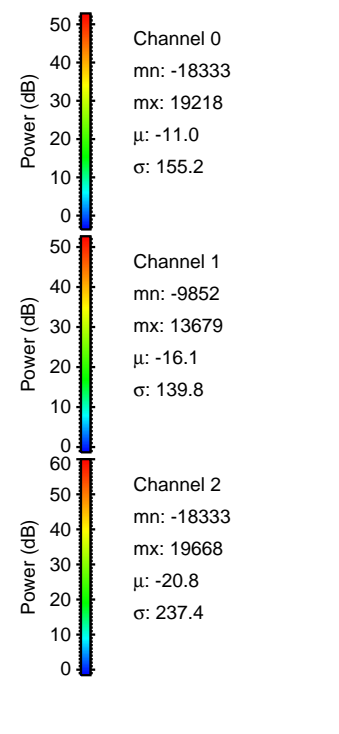
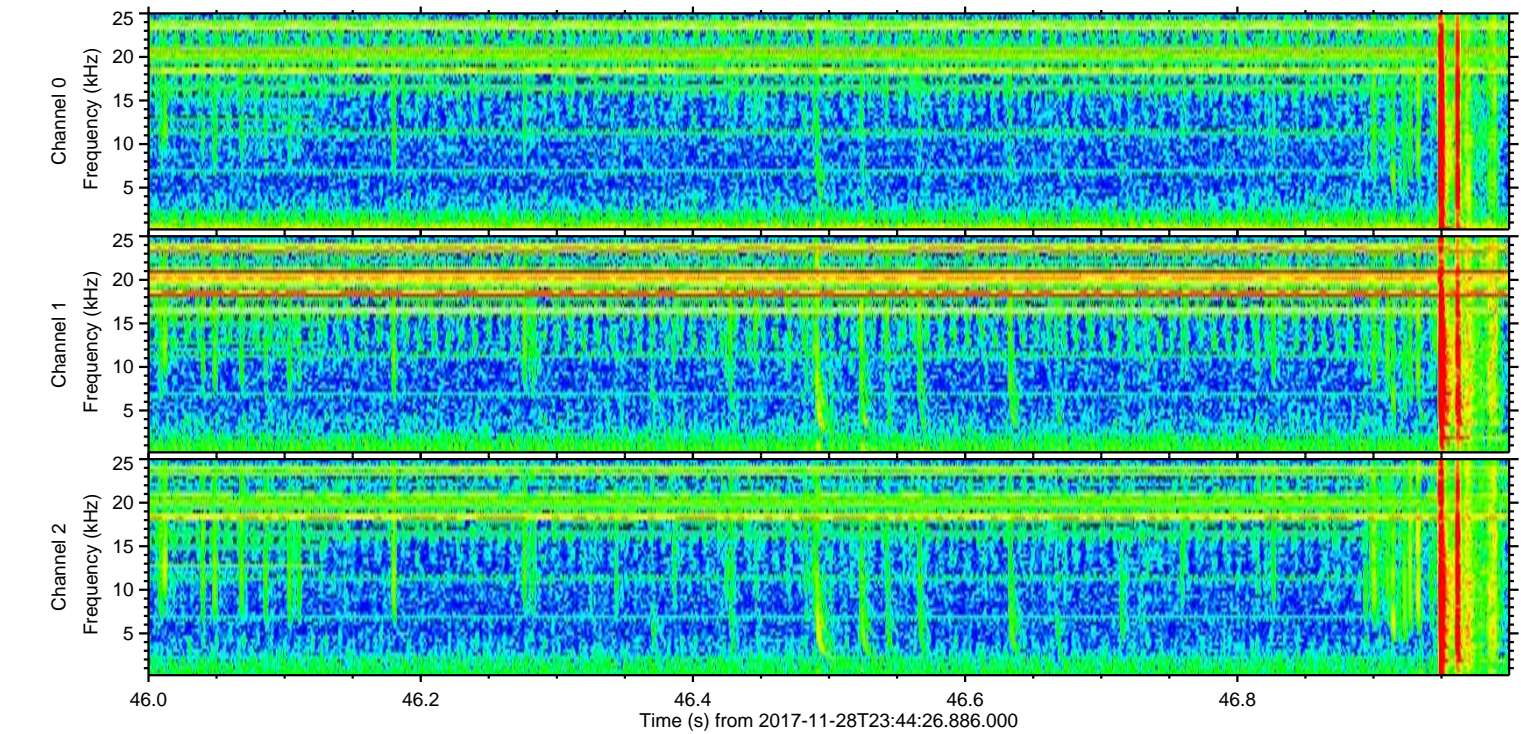
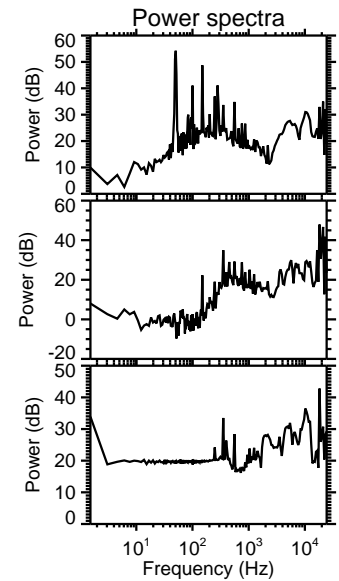
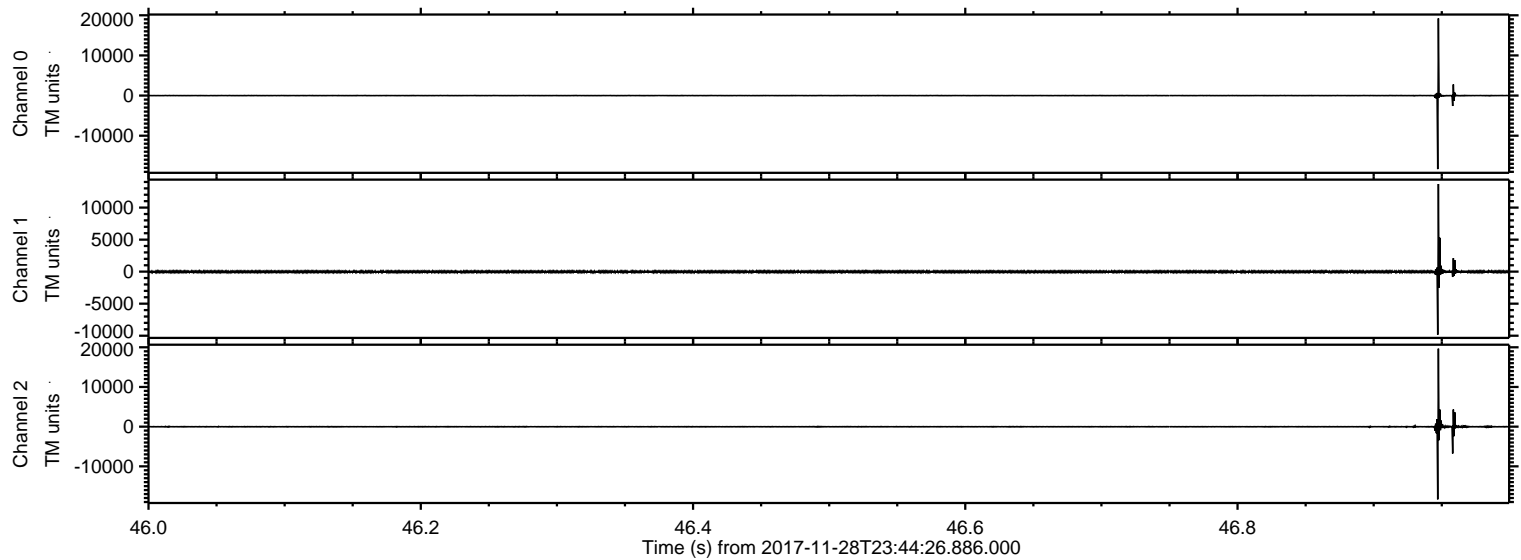
ELMAVAN 3D WAVEFORMS (Measured data sampled at 50 kHz) 51000 packets of 144 samples from 2017-11-28T23:44:26.886.000.

Processed Wed Nov 29 00:52:51 2017 by ELM ver.2012-10-06 from 001__elm20171128_234425__dat00.bin



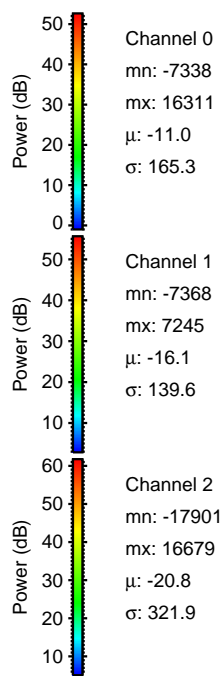
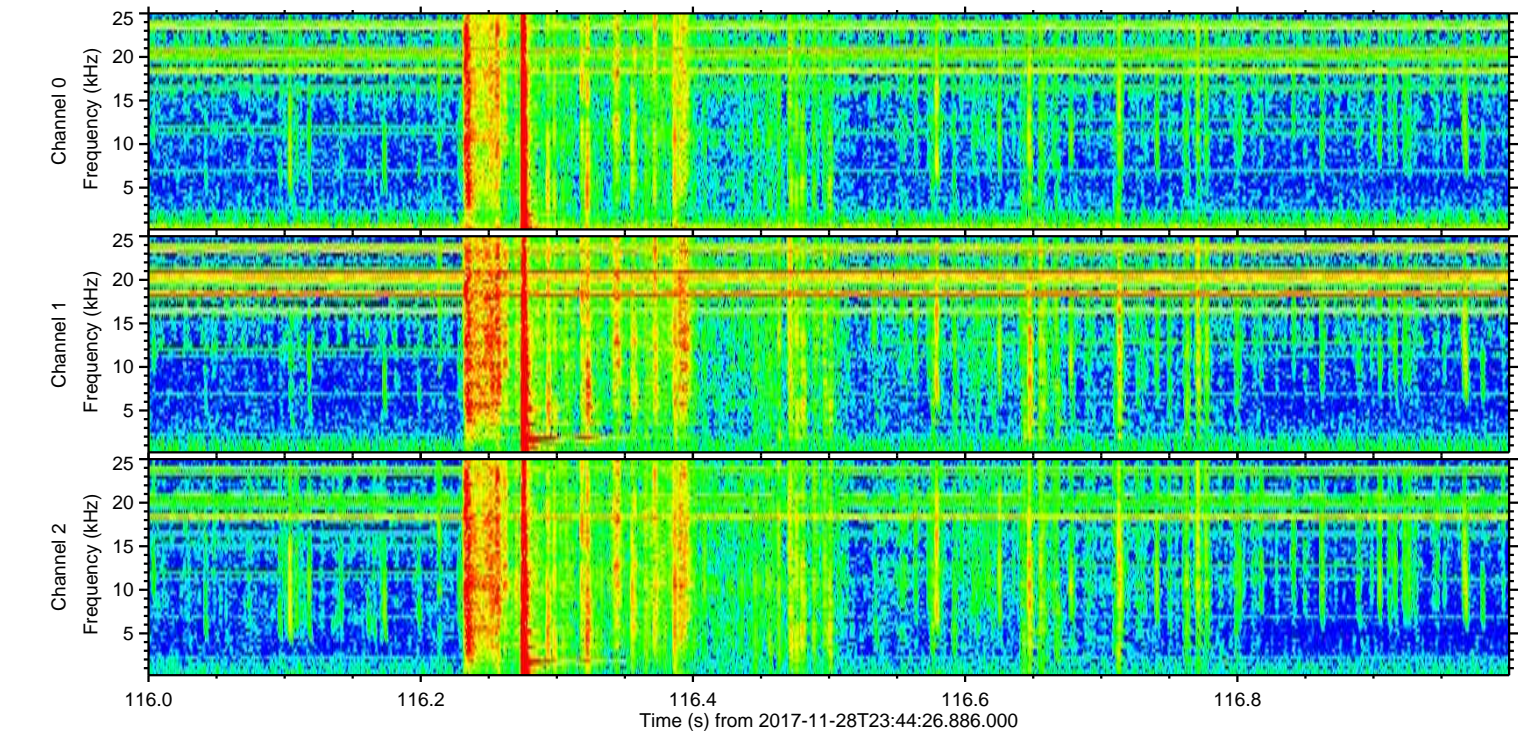
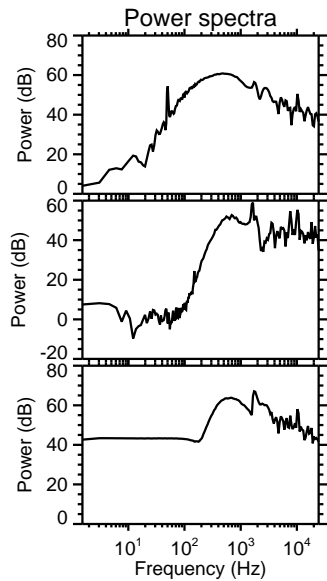
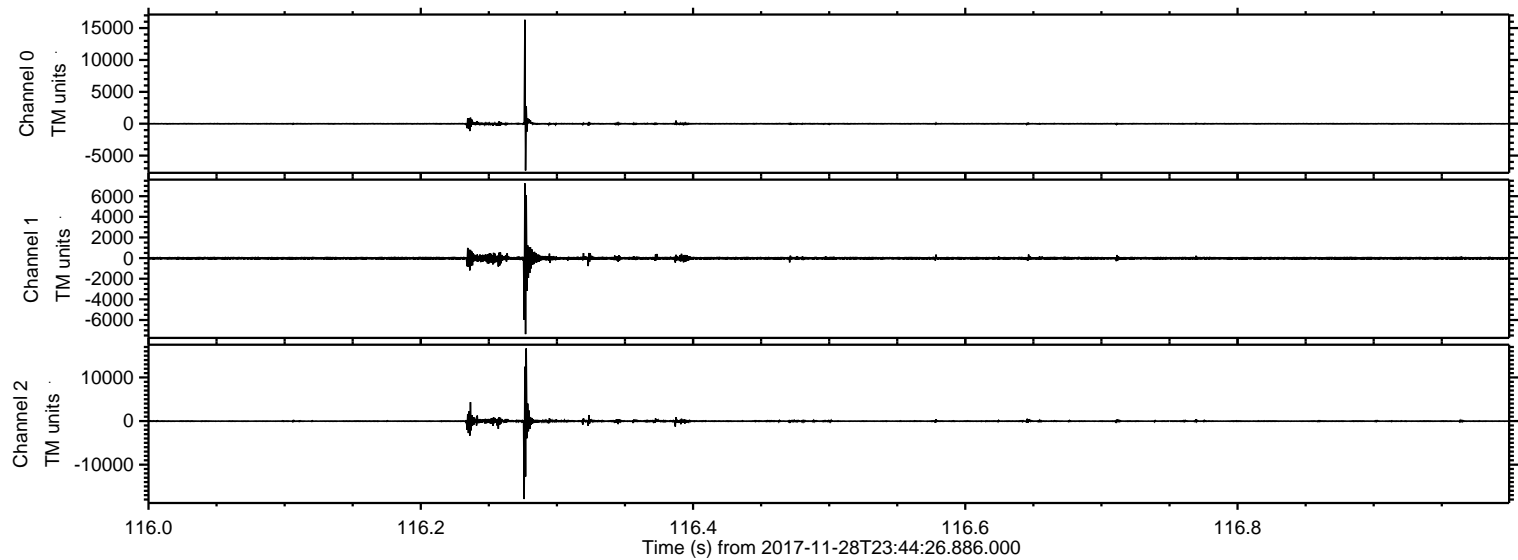
ELMAVAN 3D WAVEFORMS (Measured data sampled at 50 kHz) 51000 packets of 144 samples from 2017-11-28T23:44:26.886.000. Part 47/147

Processed Wed Nov 29 00:52:58 2017 by ELM ver.2012-10-06 from 001__elm20171128_234425__dat00.bin



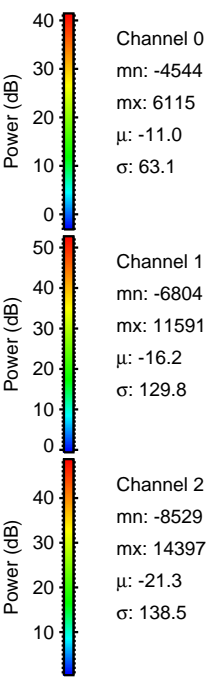
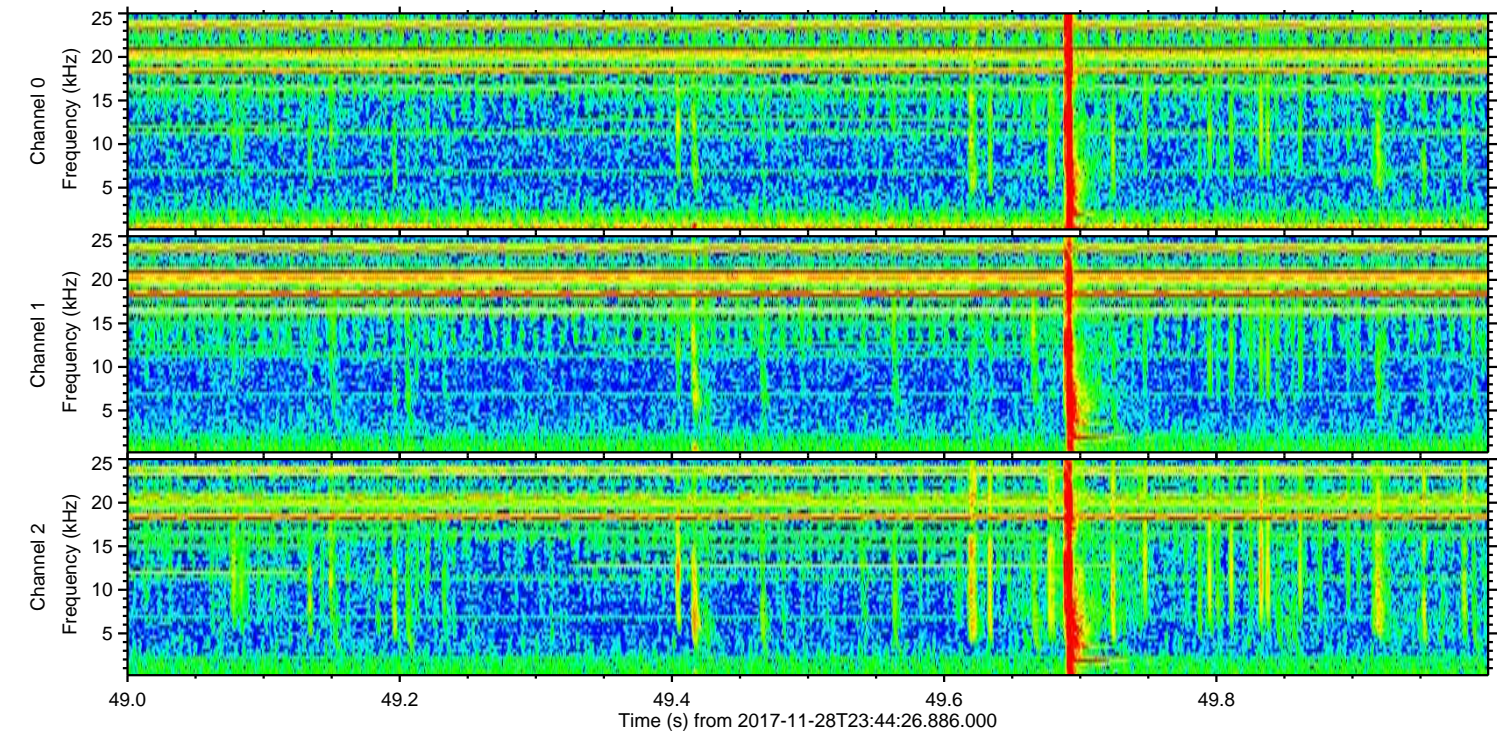
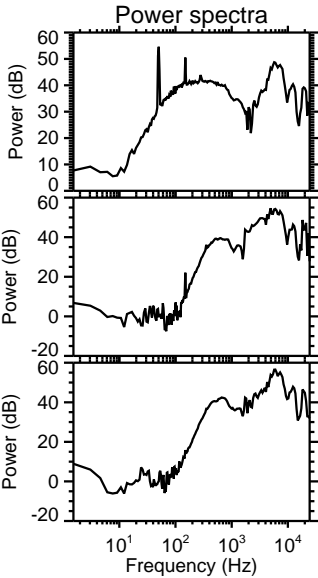
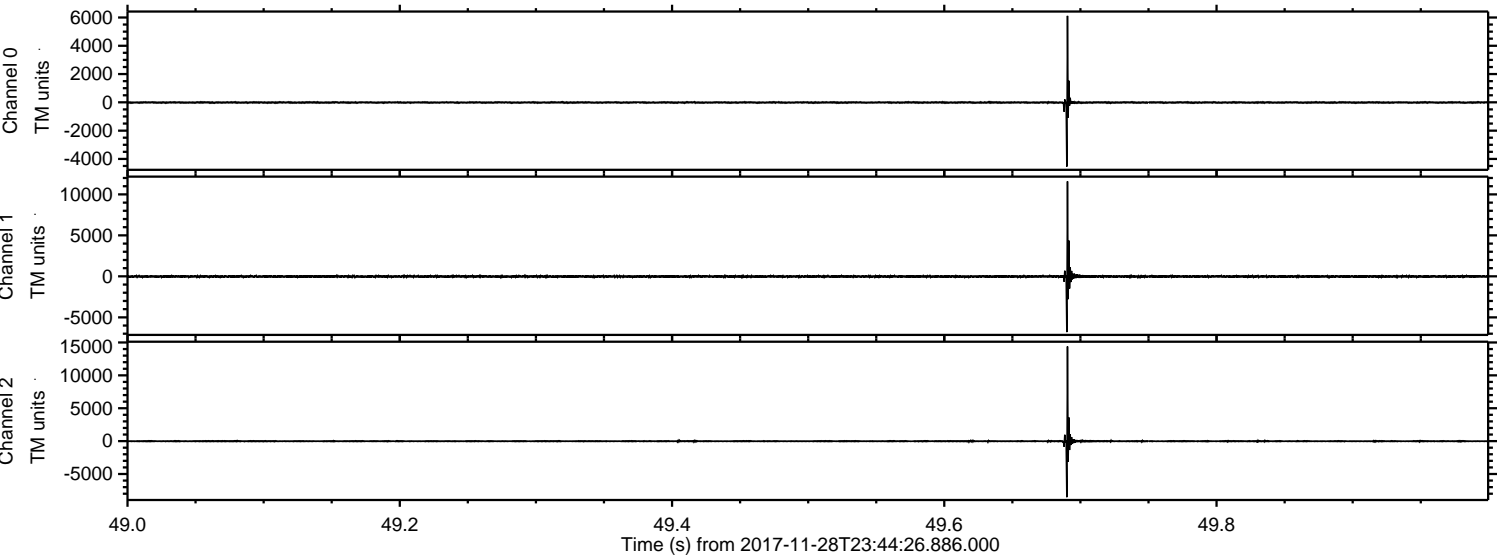
ELMAVAN 3D WAVEFORMS (Measured data sampled at 50 kHz) 51000 packets of 144 samples from 2017-11-28T23:44:26.886.000. Part 117/147

Processed Wed Nov 29 00:52:59 2017 by ELM ver.2012-10-06 from 001__elm20171128_234425__dat00.bin

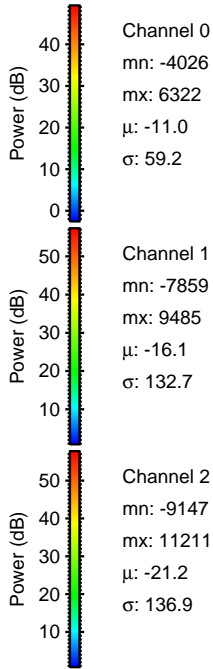
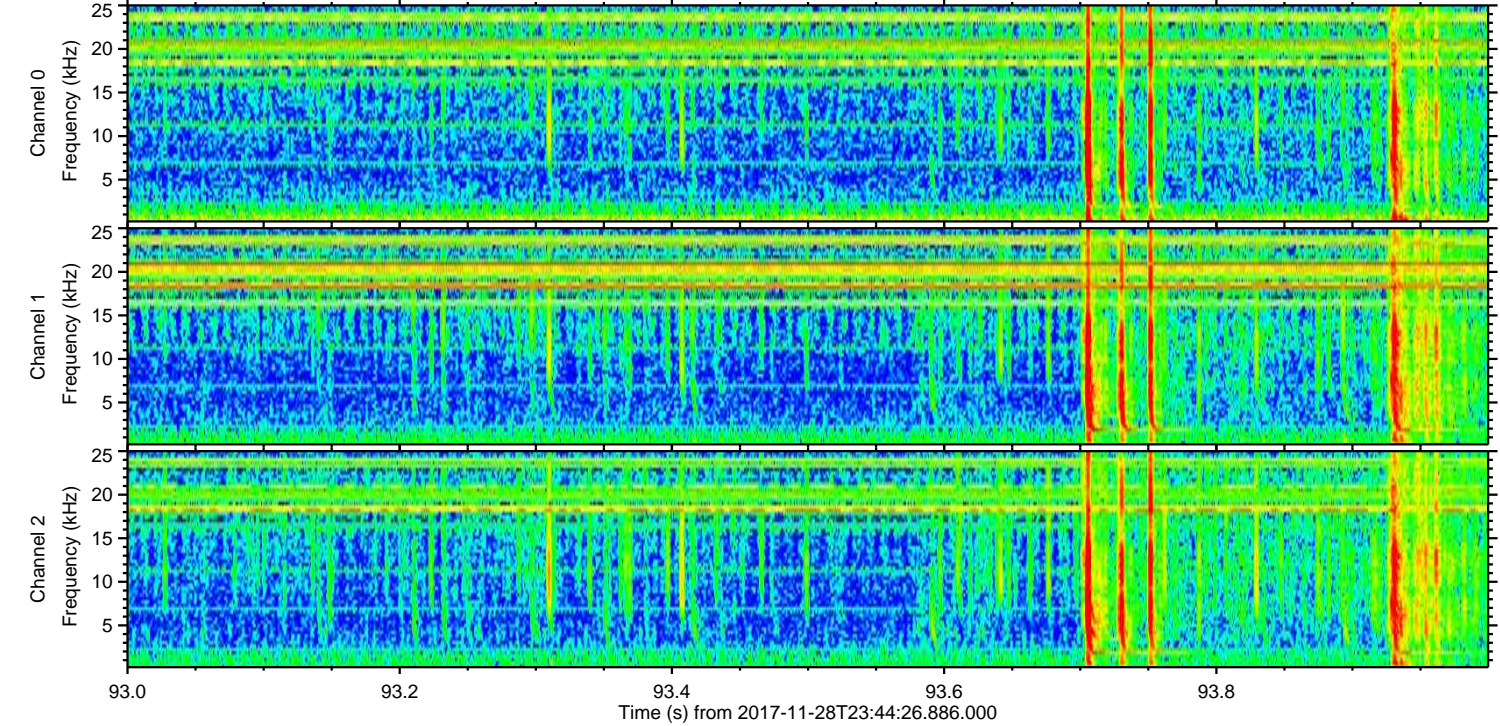
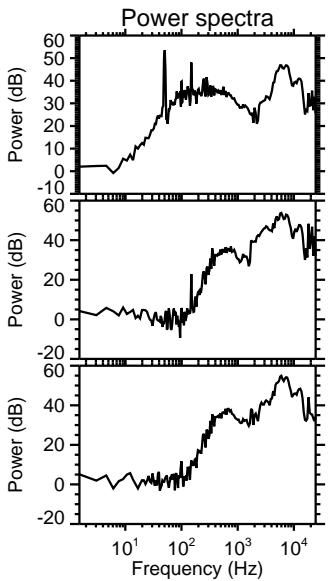
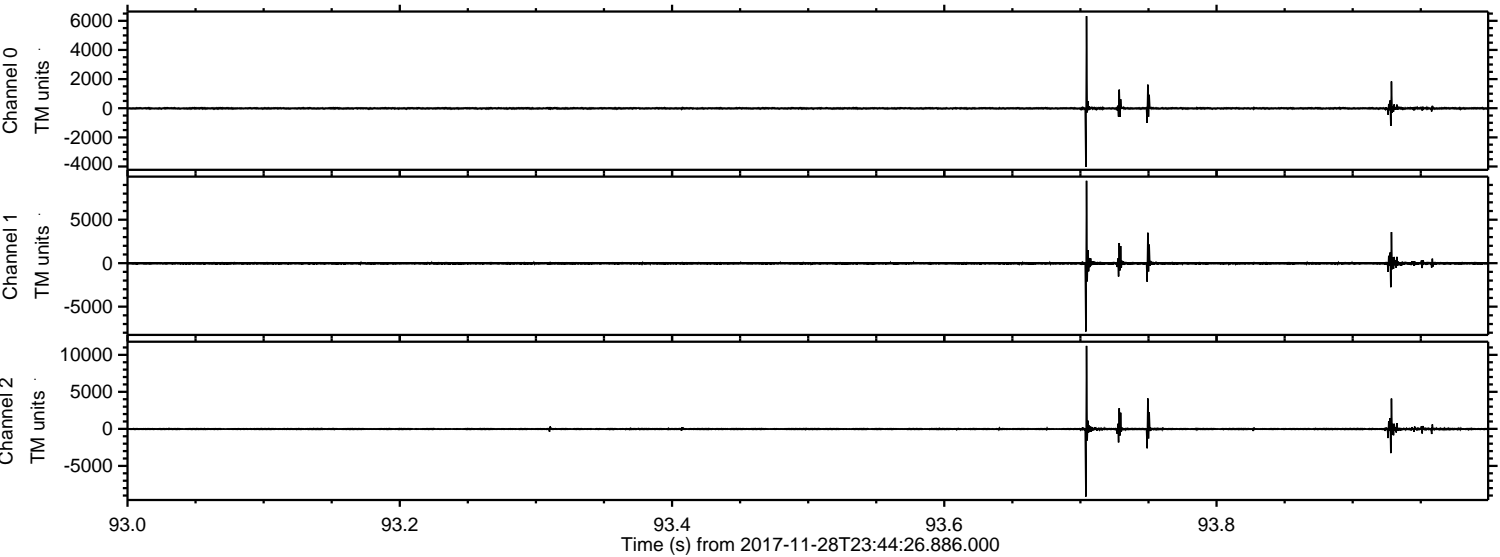


ELMAVAN 3D WAVEFORMS (Measured data sampled at 50 kHz) 51000 packets of 144 samples from 2017-11-28T23:44:26.886.000. Part 50/147

Processed Wed Nov 29 00:53:00 2017 by ELM ver.2012-10-06 from 001__elm20171128_234425__dat00.bin

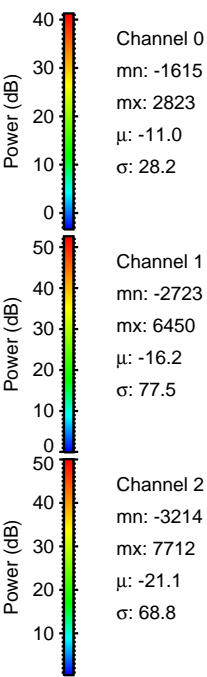
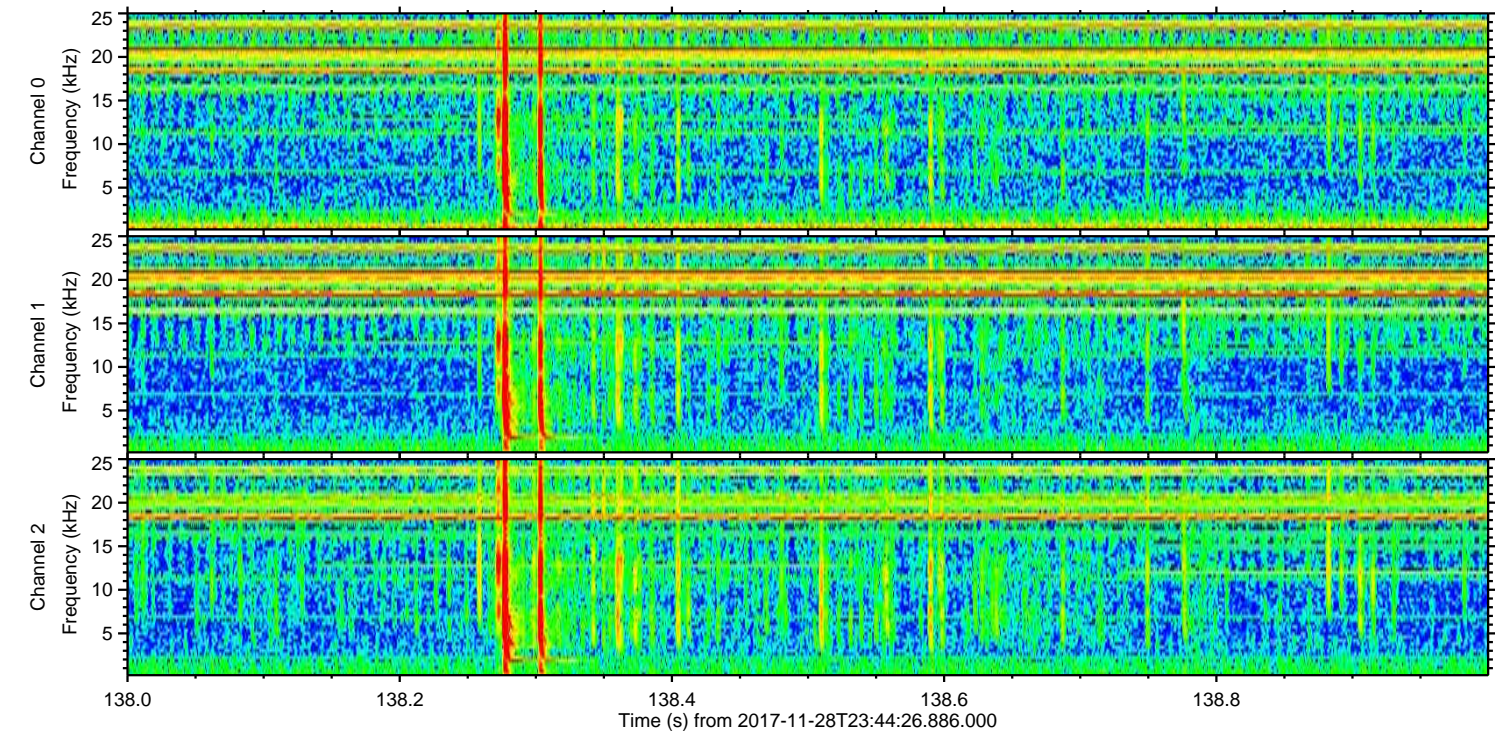
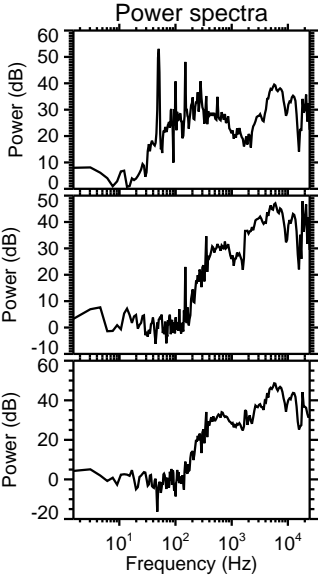
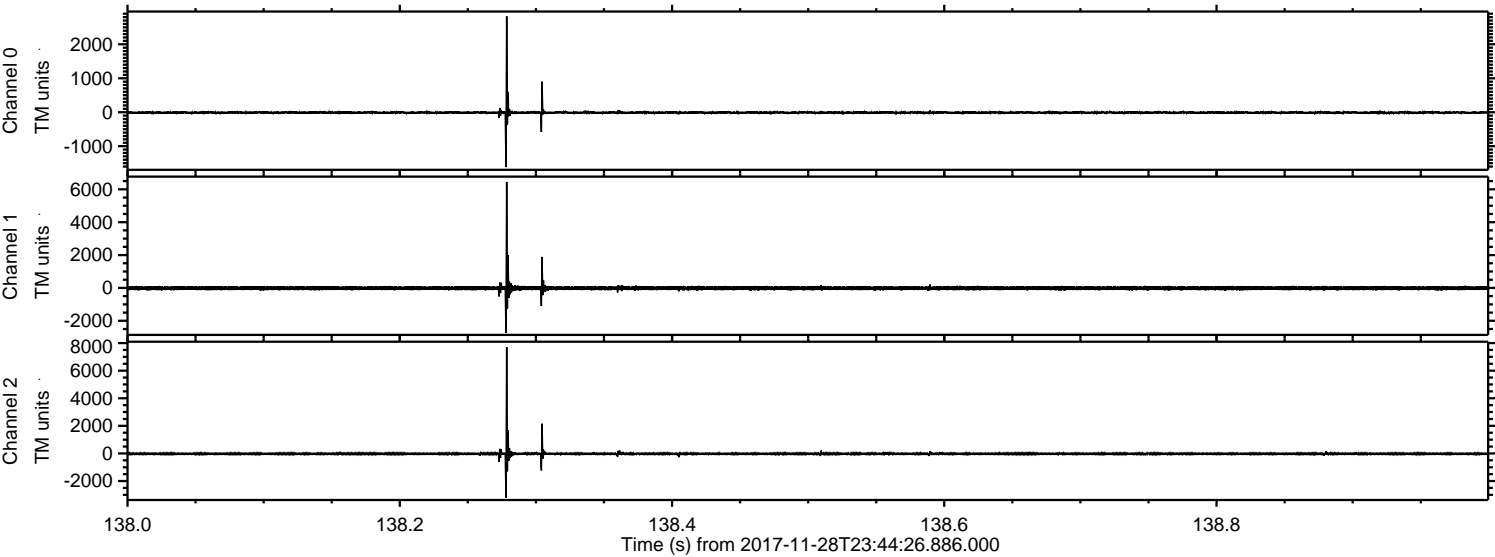


Processed Wed Nov 29 00:53:01 2017 by ELM ver.2012-10-06 from 001__elm20171128_234425__dat00.bin



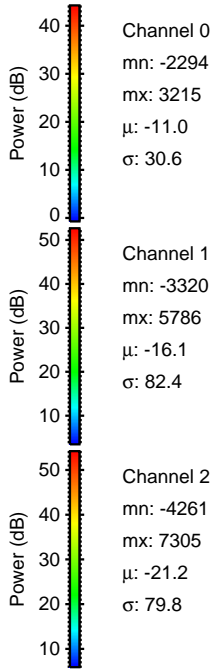
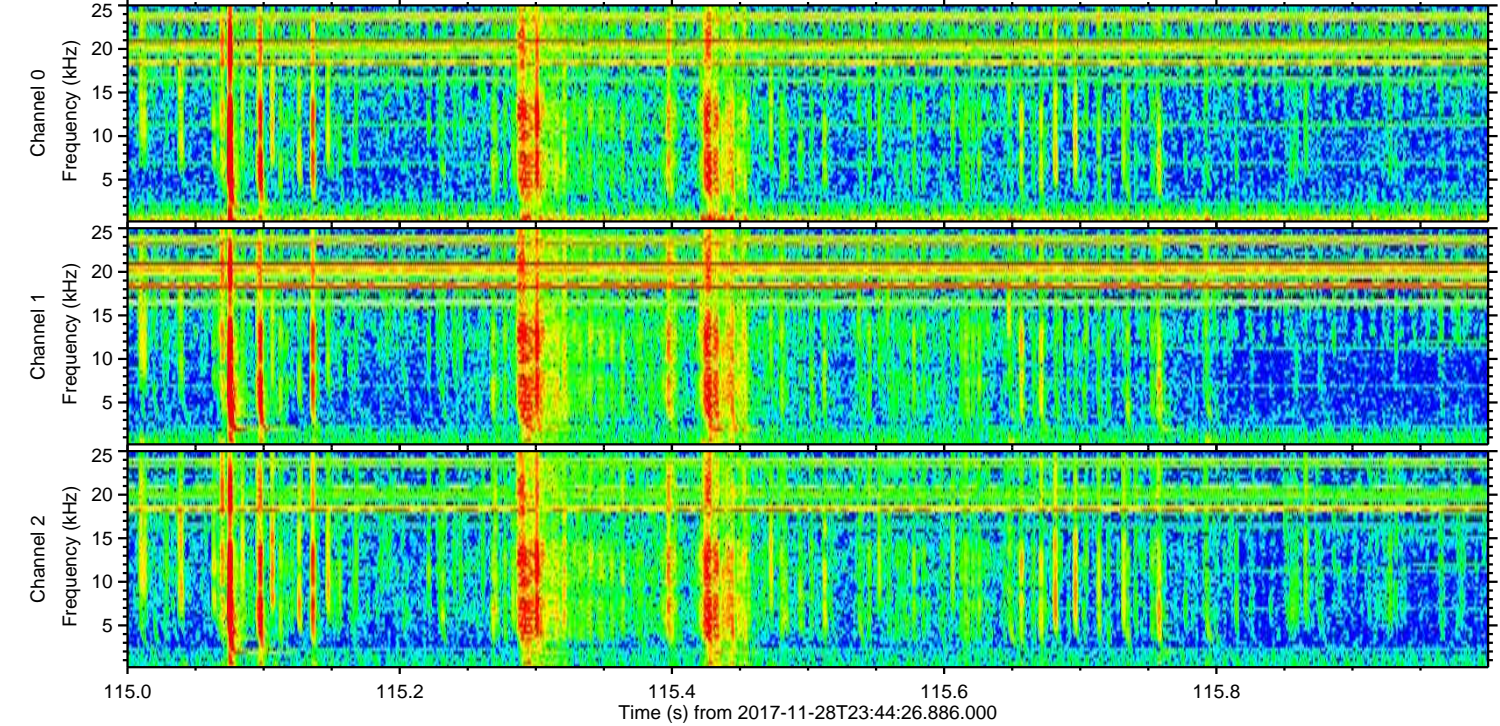
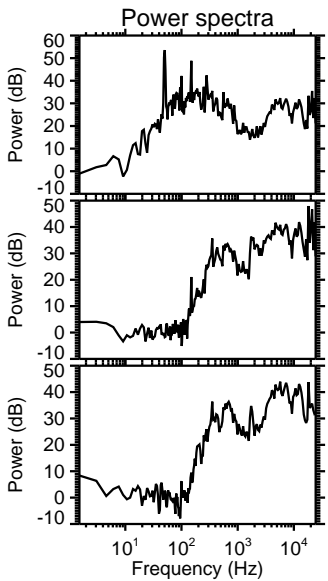
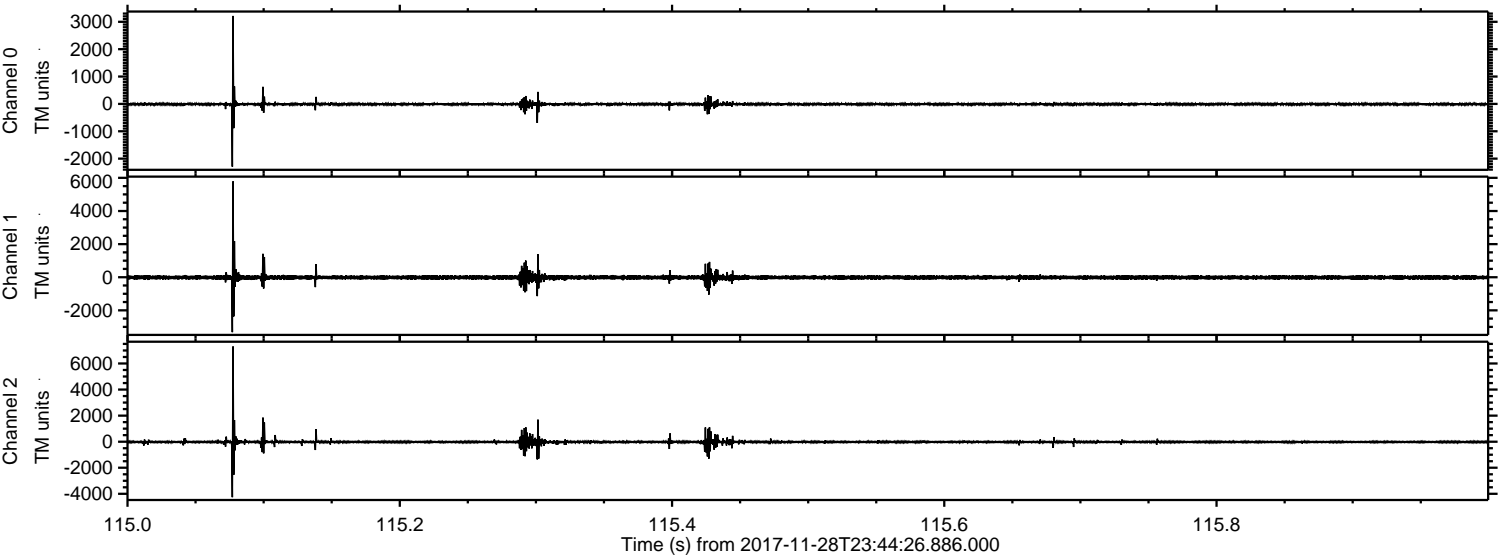
ELMAVAN 3D WAVEFORMS (Measured data sampled at 50 kHz) 51000 packets of 144 samples from 2017-11-28T23:44:26.886.000. Part 139/147

Processed Wed Nov 29 00:53:01 2017 by ELM ver.2012-10-06 from 001__elm20171128_234425__dat00.bin



ELMAVAN 3D WAVEFORMS (Measured data sampled at 50 kHz) 51000 packets of 144 samples from 2017-11-28T23:44:26.886.000. Part 116/147

Processed Wed Nov 29 00:53:02 2017 by ELM ver.2012-10-06 from 001__elm20171128_234425__dat00.bin

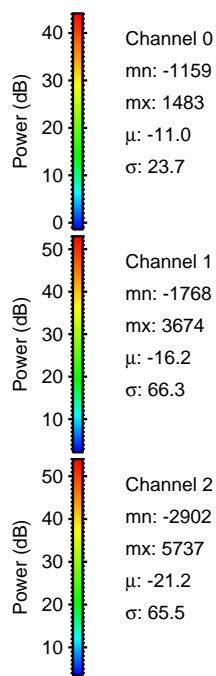
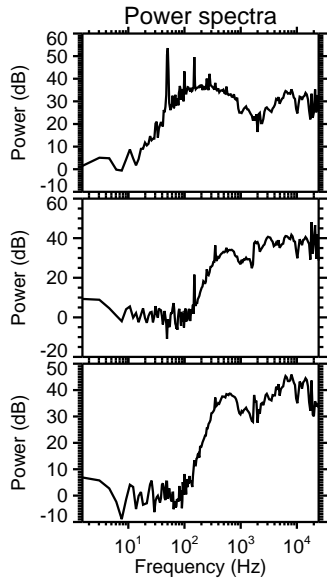
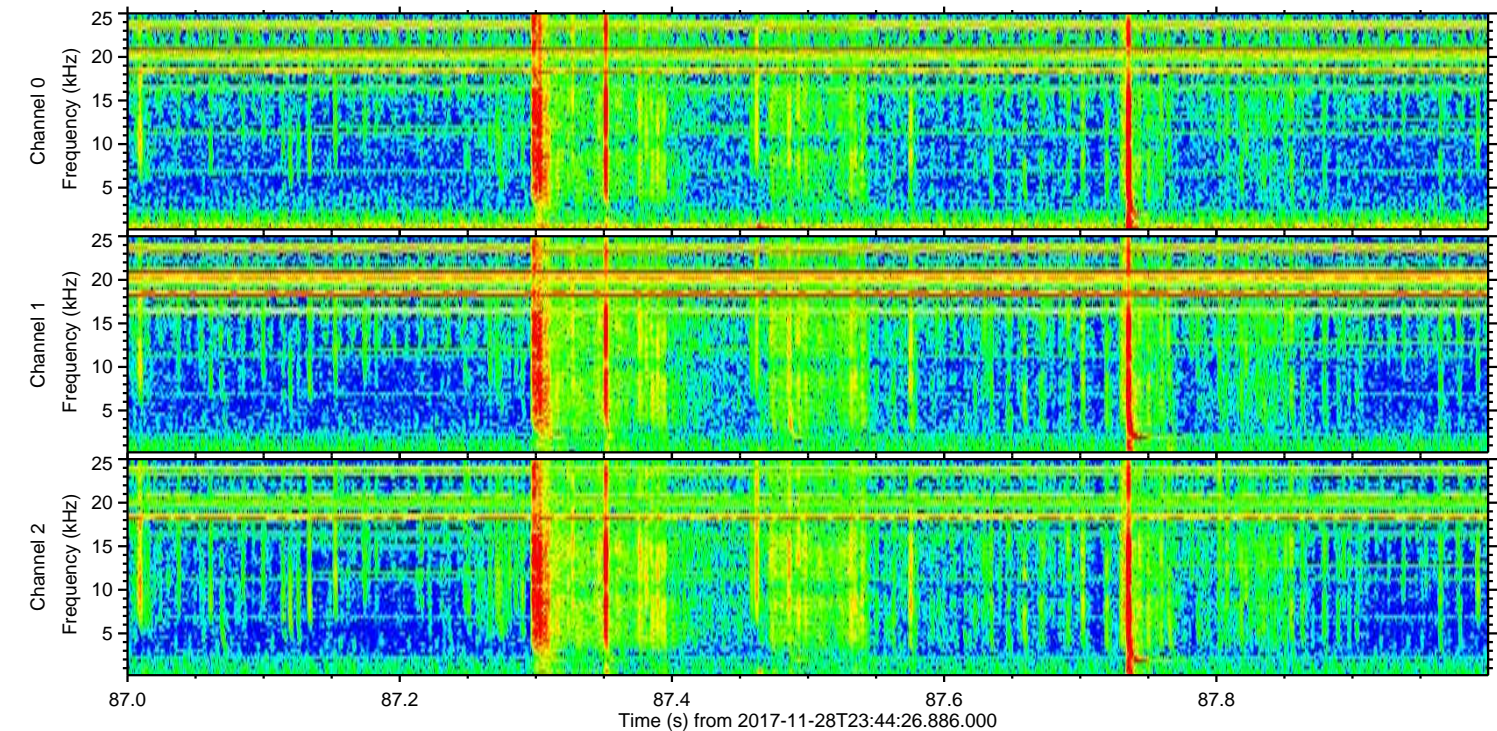
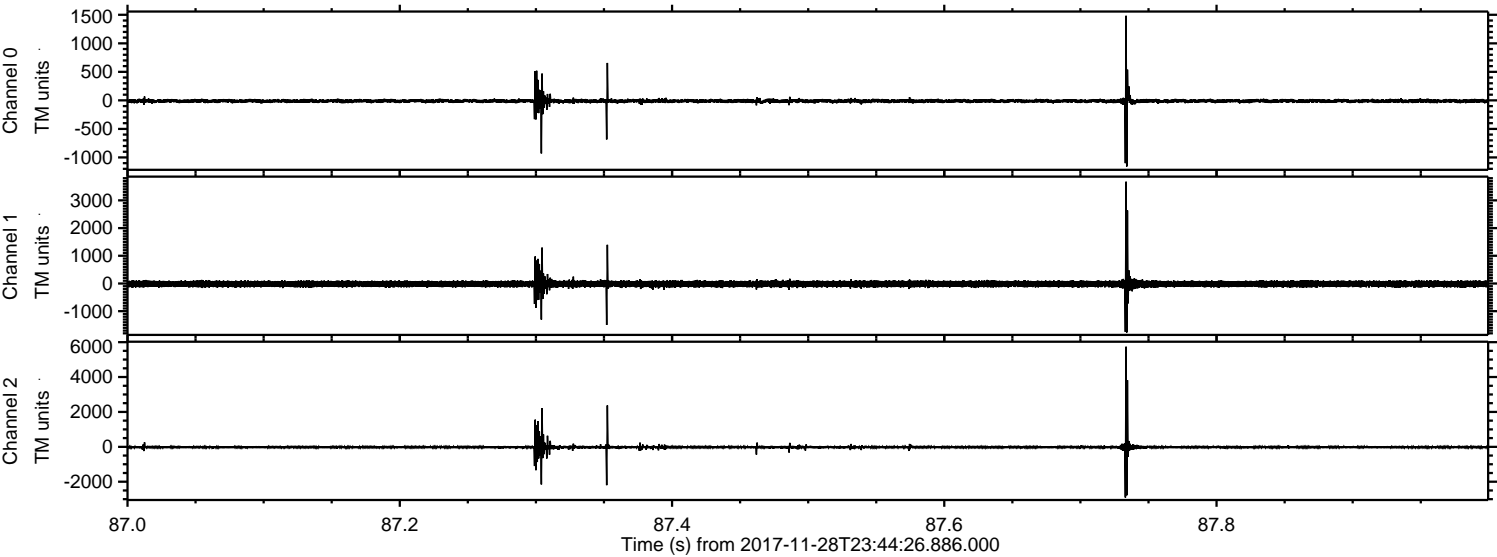


Channel 0
mn: -2294
mx: 3215
 μ : -11.0
 σ : 30.6

Channel 1
mn: -3320
mx: 5786
 μ : -16.1
 σ : 82.4

Channel 2
mn: -4261
mx: 7305
 μ : -21.2
 σ : 79.8

Processed Wed Nov 29 00:53:03 2017 by ELM ver.2012-10-06 from 001__elm20171128_234425__dat00.bin

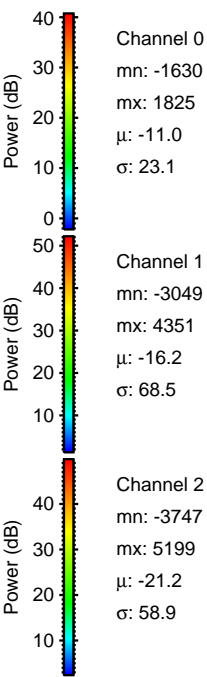
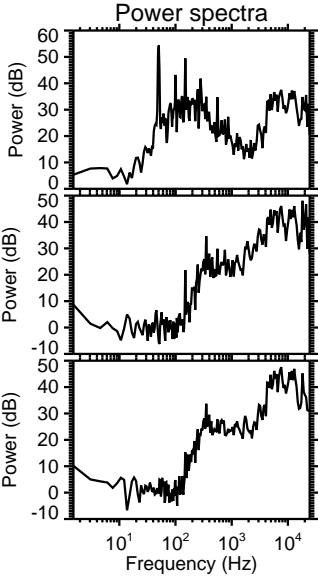
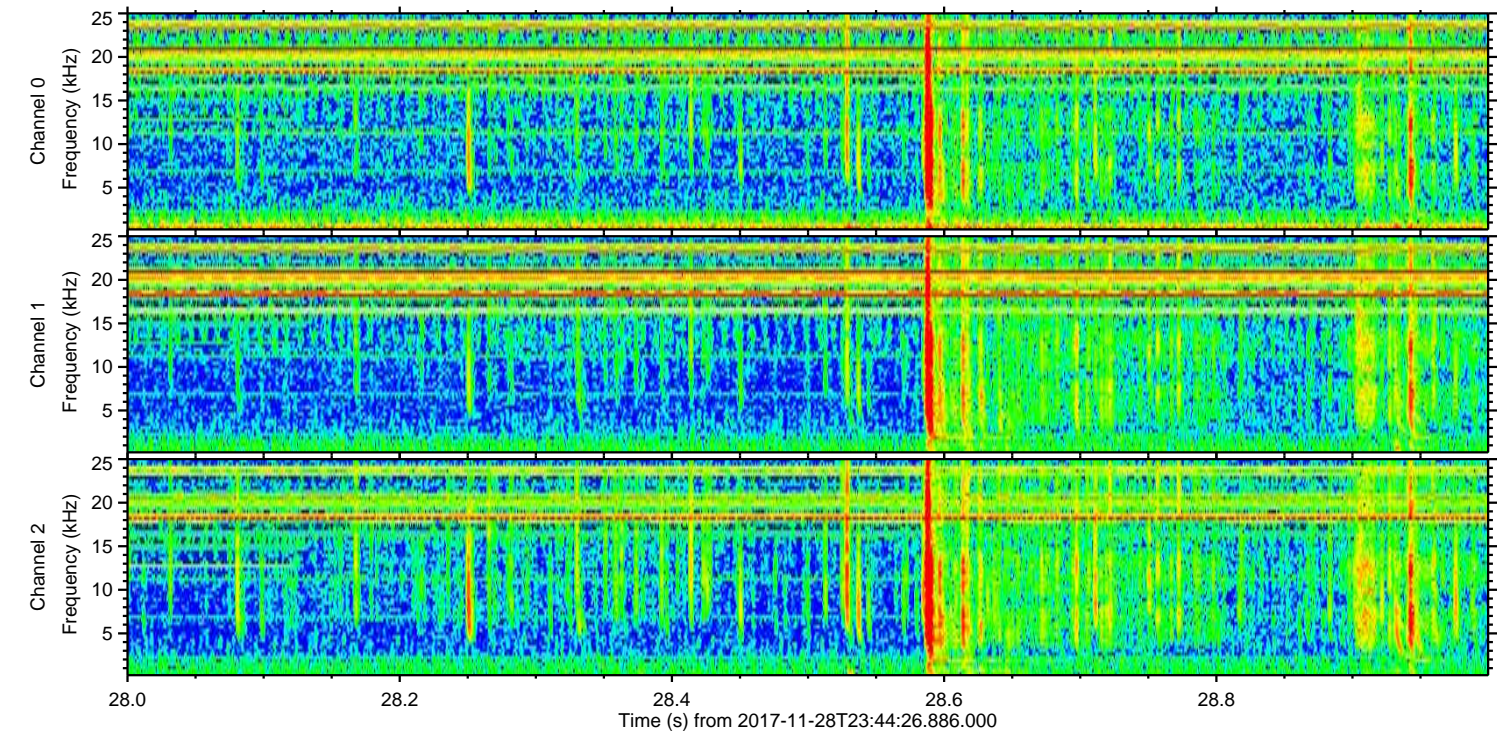
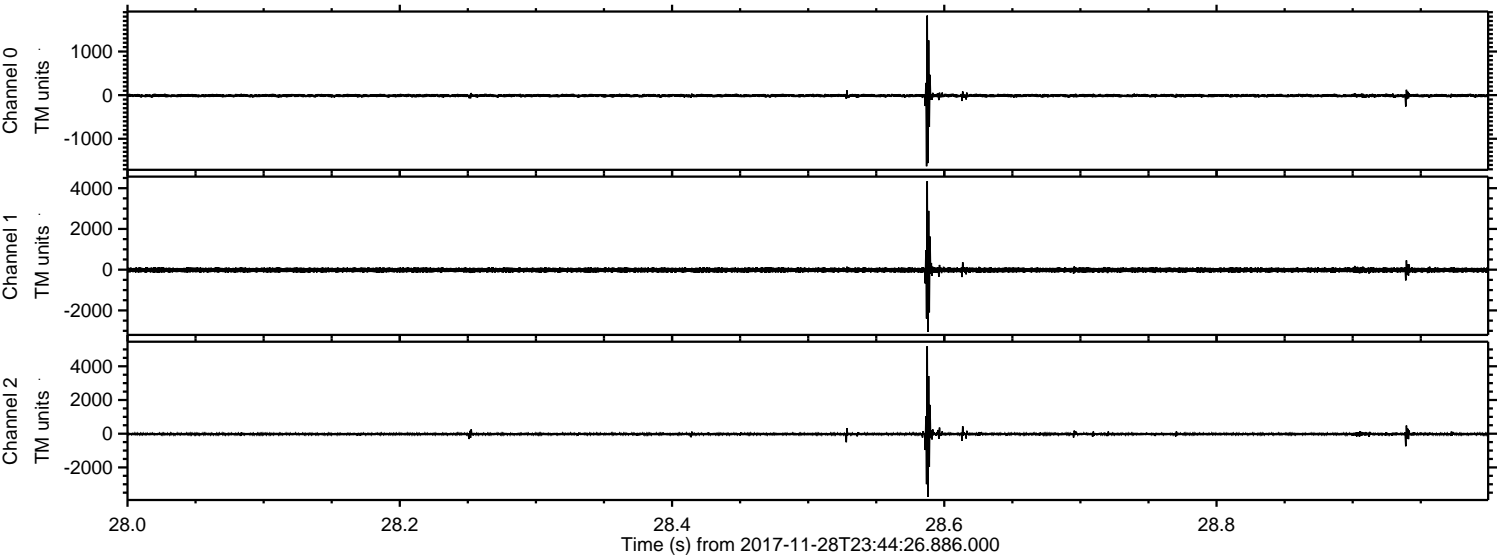


Channel 0
mn: -1159
mx: 1483
 μ : -11.0
 σ : 23.7

Channel 1
mn: -1768
mx: 3674
 μ : -16.2
 σ : 66.3

Channel 2
mn: -2902
mx: 5737
 μ : -21.2
 σ : 65.5

Processed Wed Nov 29 00:53:03 2017 by ELM ver.2012-10-06 from 001__elm20171128_234425__dat00.bin

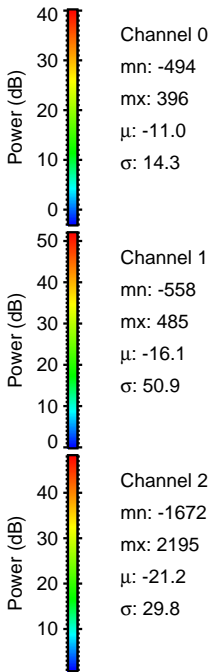
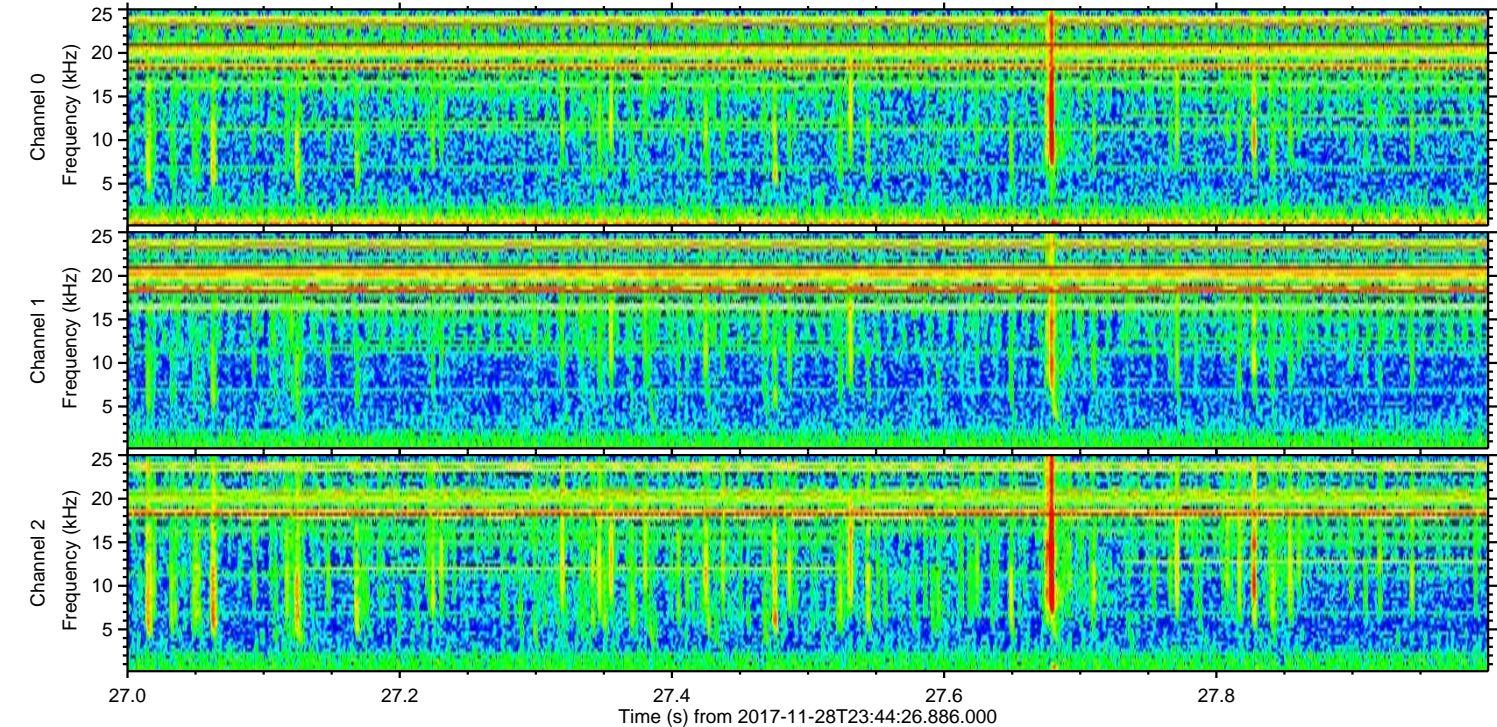
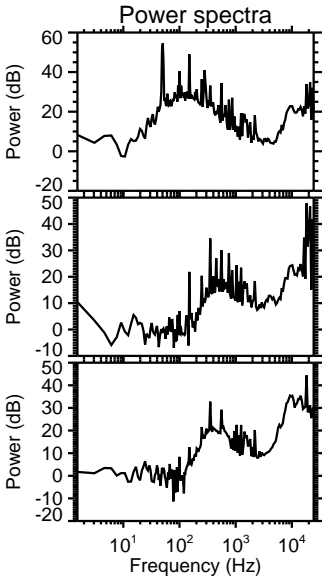
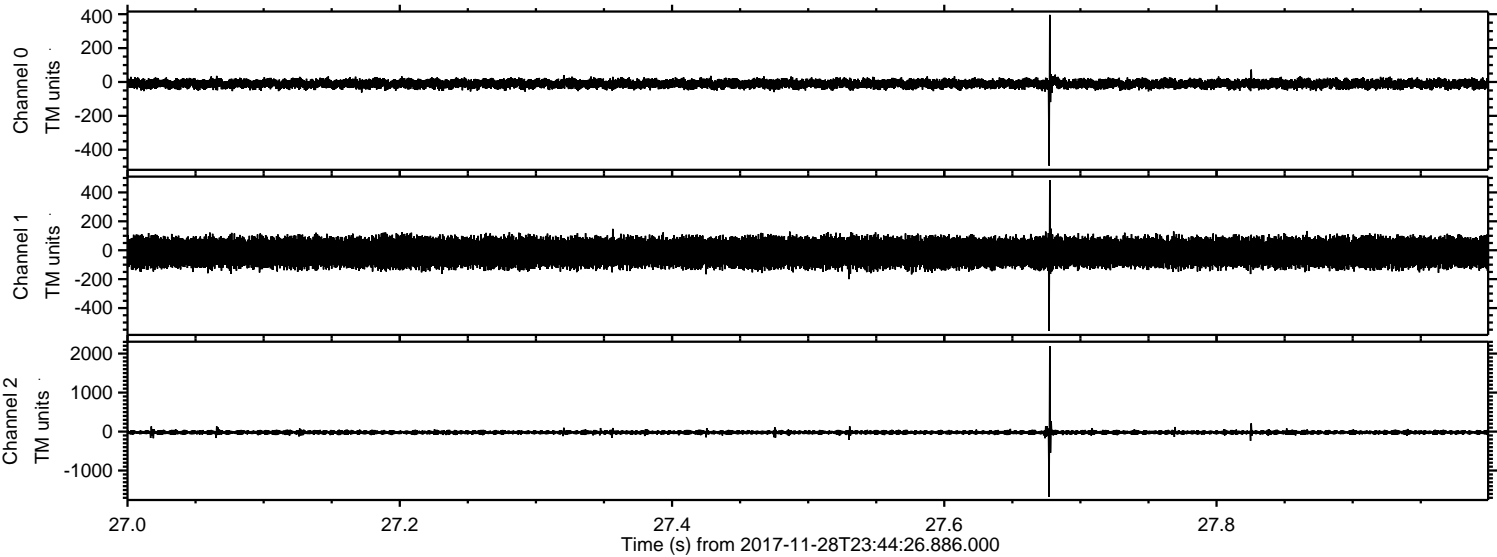


Channel 0
mn: -1630
mx: 1825
μ: -11.0
σ: 23.1

Channel 1
mn: -3049
mx: 4351
μ: -16.2
σ: 68.5

Channel 2
mn: -3747
mx: 5199
μ: -21.2
σ: 58.9

Processed Wed Nov 29 00:53:04 2017 by ELM ver.2012-10-06 from 001__elm20171128_234425__dat00.bin



Processed Wed Nov 29 00:53:05 2017 by ELM ver.2012-10-06 from 001__elm20171128_234425__dat00.bin

