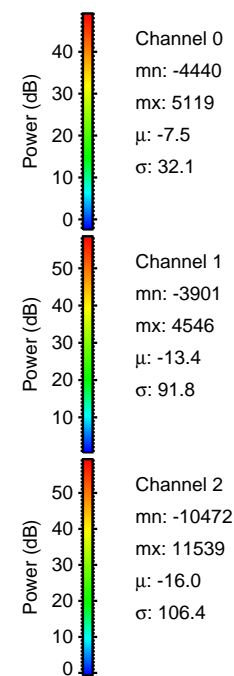
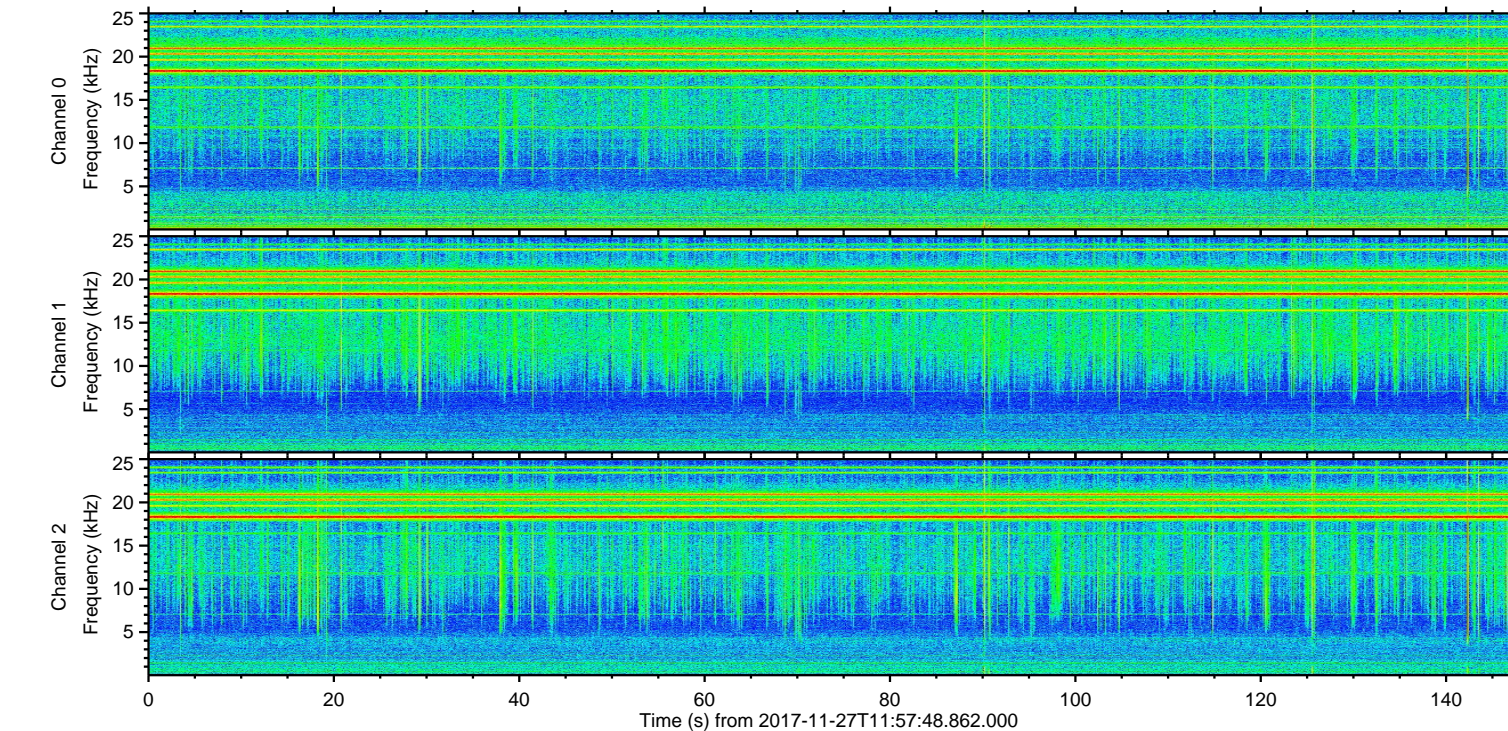
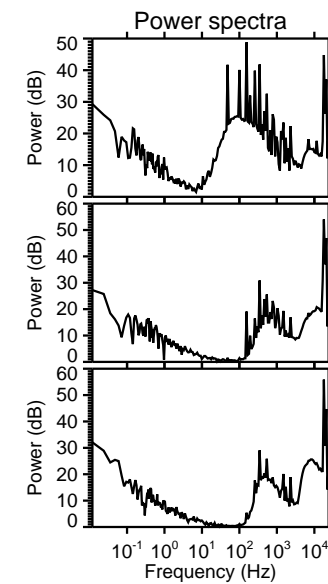
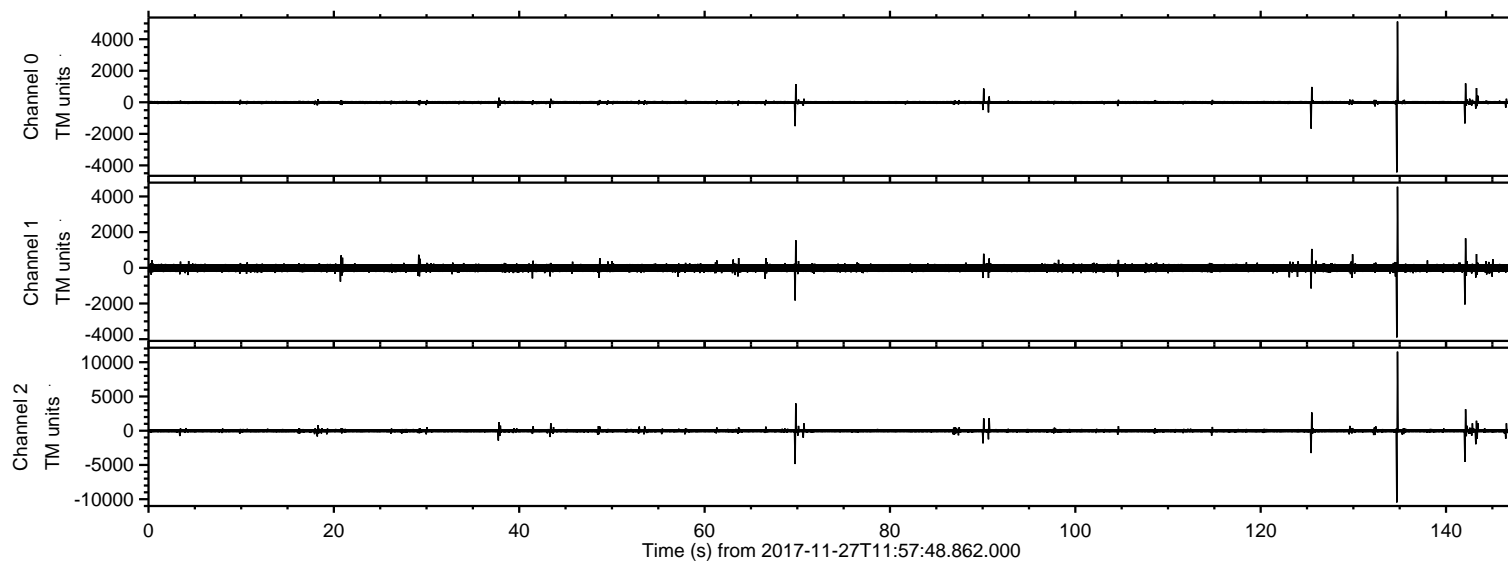


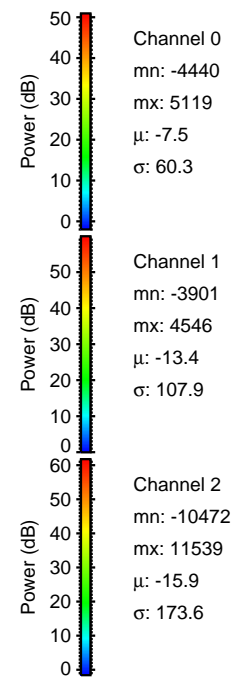
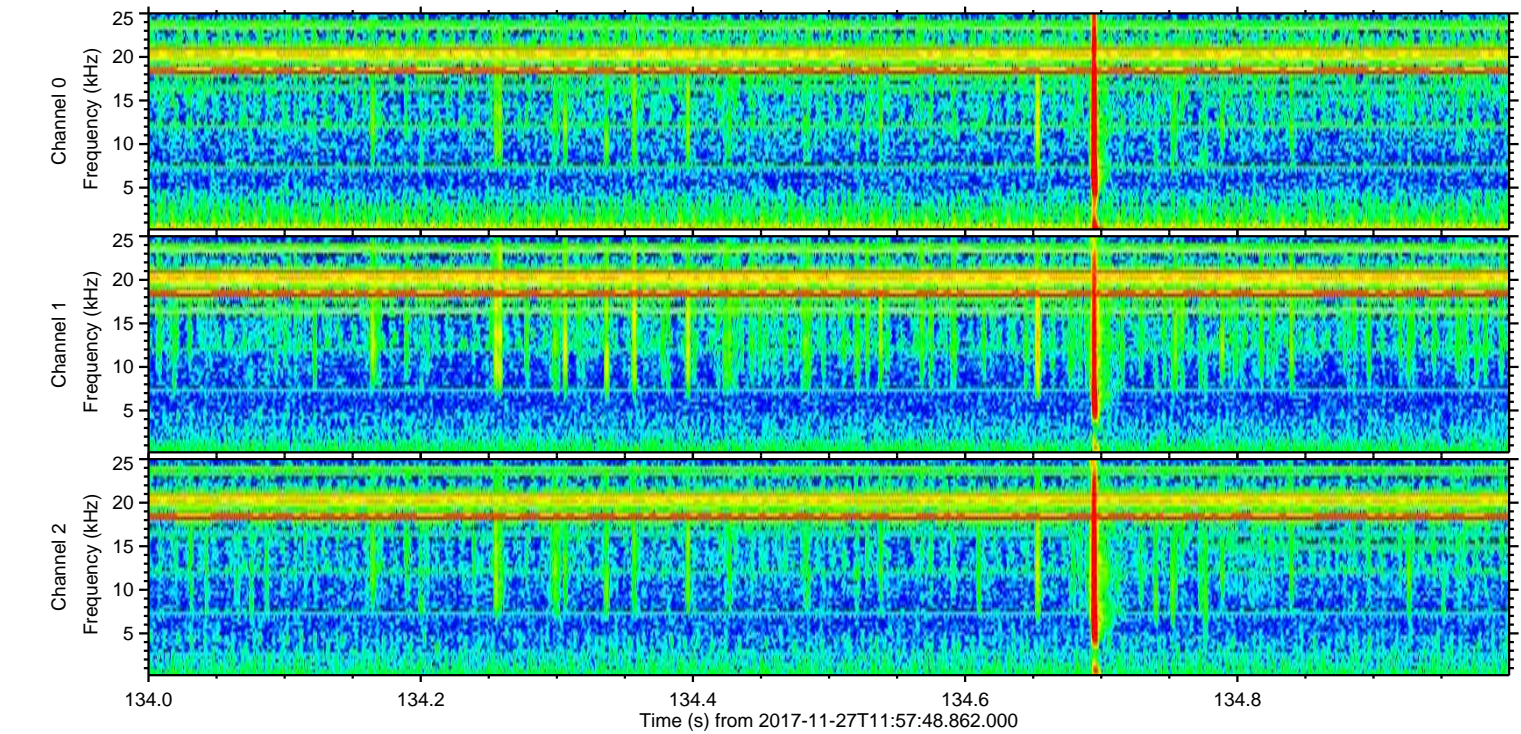
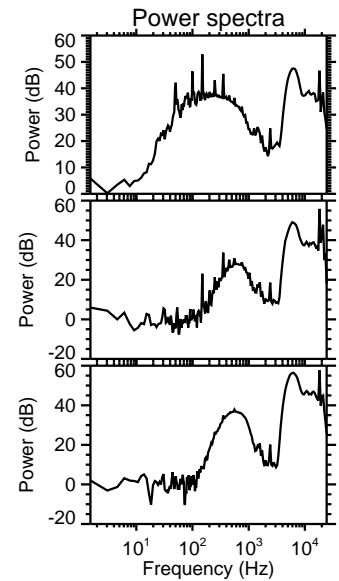
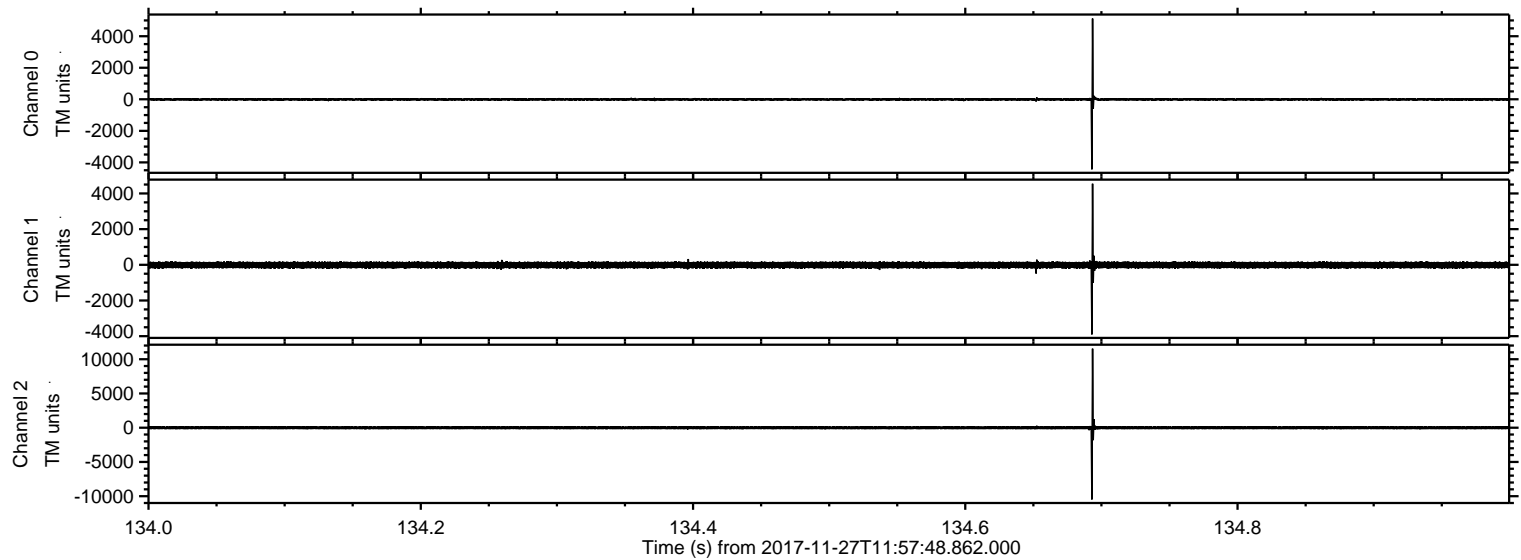
ELMAVAN 3D WAVEFORMS (Measured data sampled at 50 kHz) 51000 packets of 144 samples from 2017-11-27T11:57:48.862.000.

Processed Mon Nov 27 13:05:32 2017 by ELM ver.2012-10-06 from 001__elm20171127_115747__dat00.bin

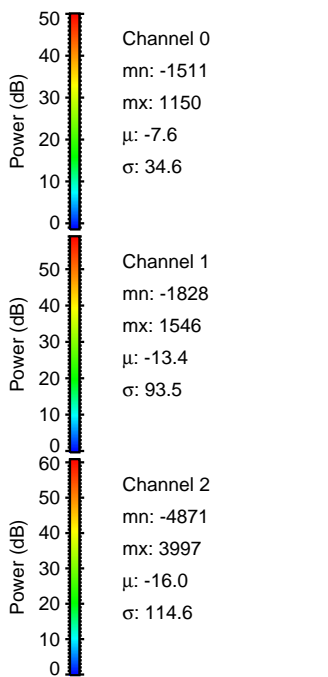
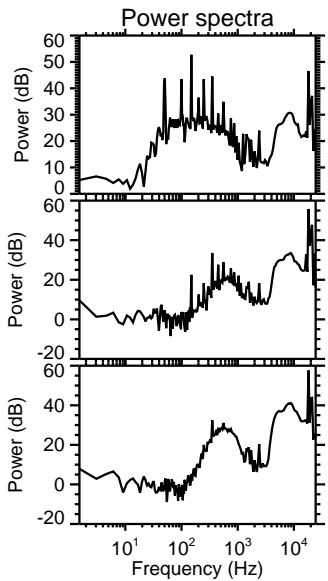
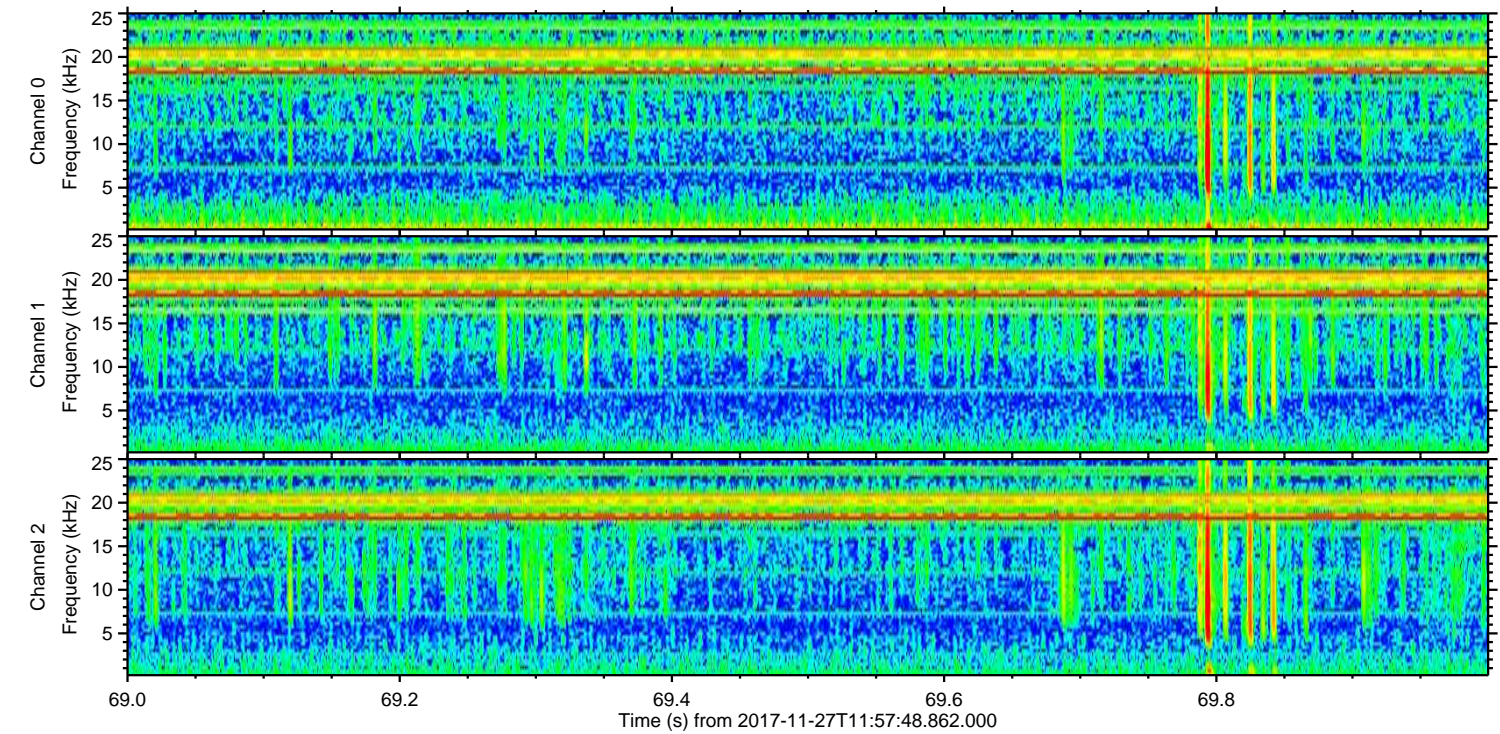
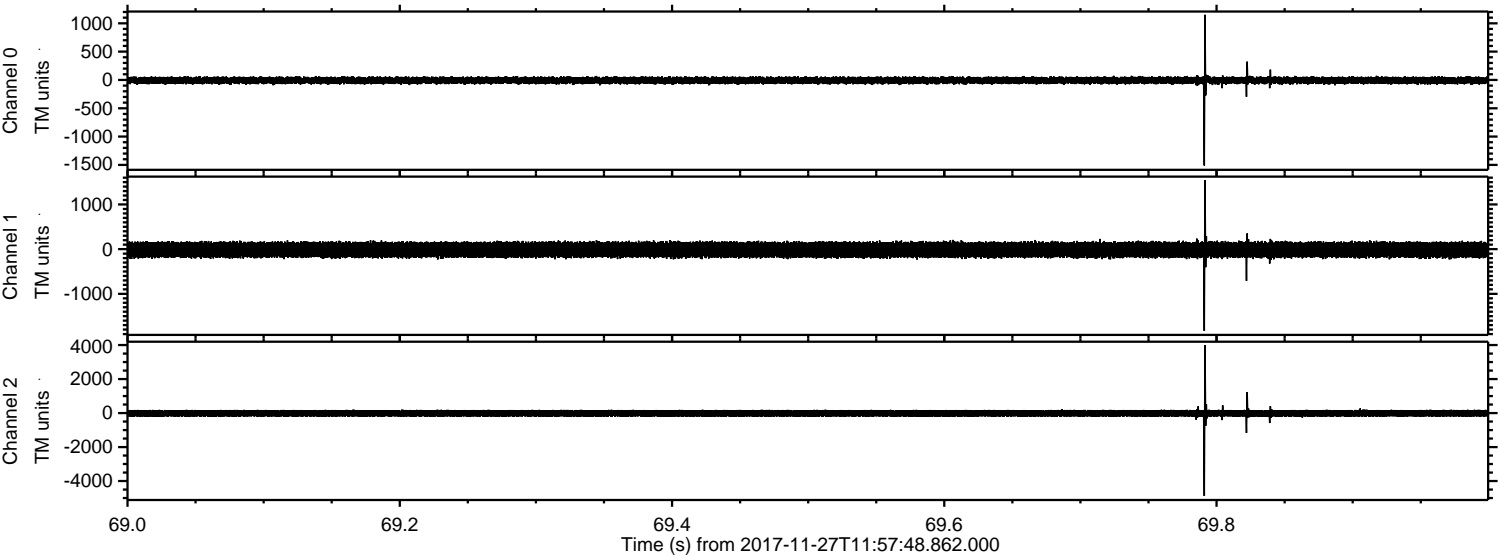


ELMAVAN 3D WAVEFORMS (Measured data sampled at 50 kHz) 51000 packets of 144 samples from 2017-11-27T11:57:48.862.000. Part 135/147

Processed Mon Nov 27 13:05:38 2017 by ELM ver.2012-10-06 from 001__elm20171127_115747__dat00.bin

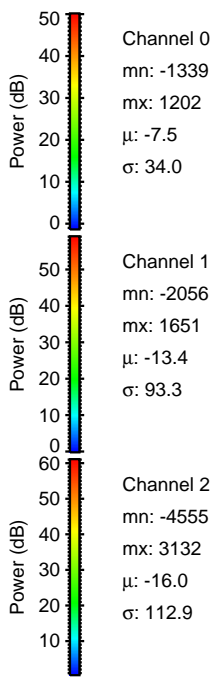
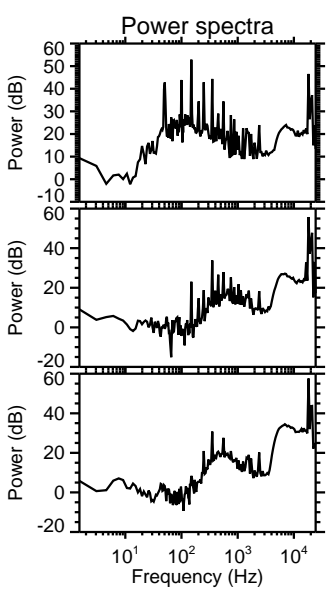
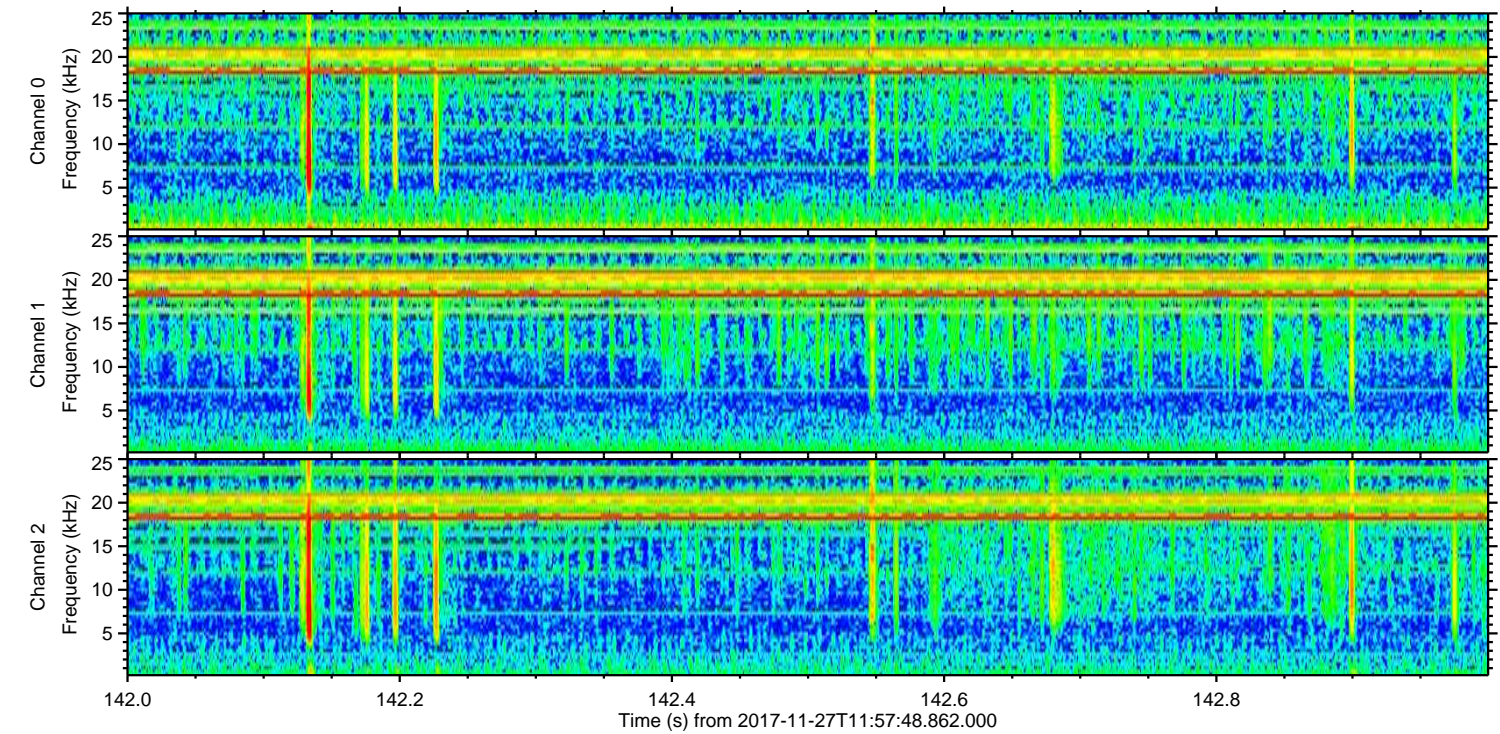
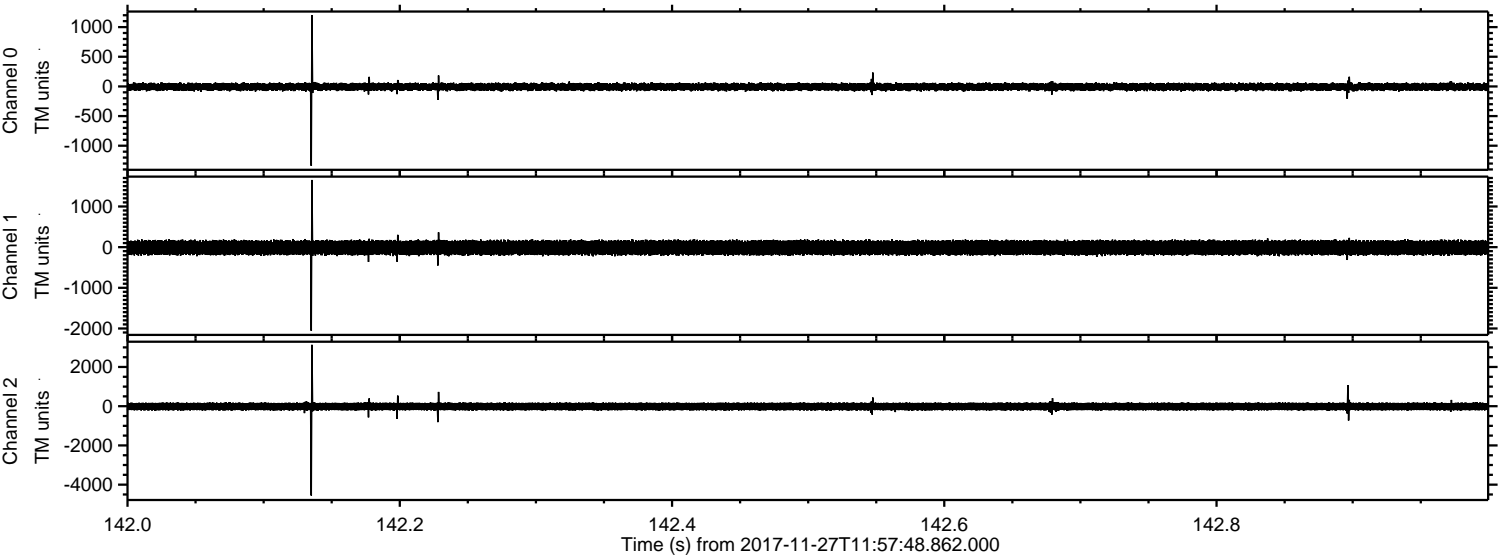


Processed Mon Nov 27 13:05:39 2017 by ELM ver.2012-10-06 from 001__elm20171127_115747__dat00.bin



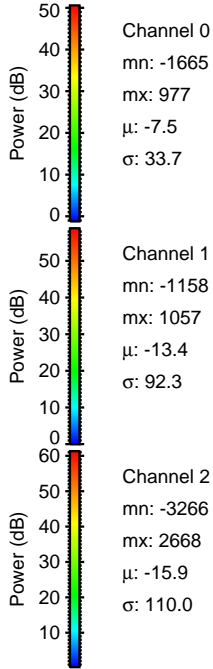
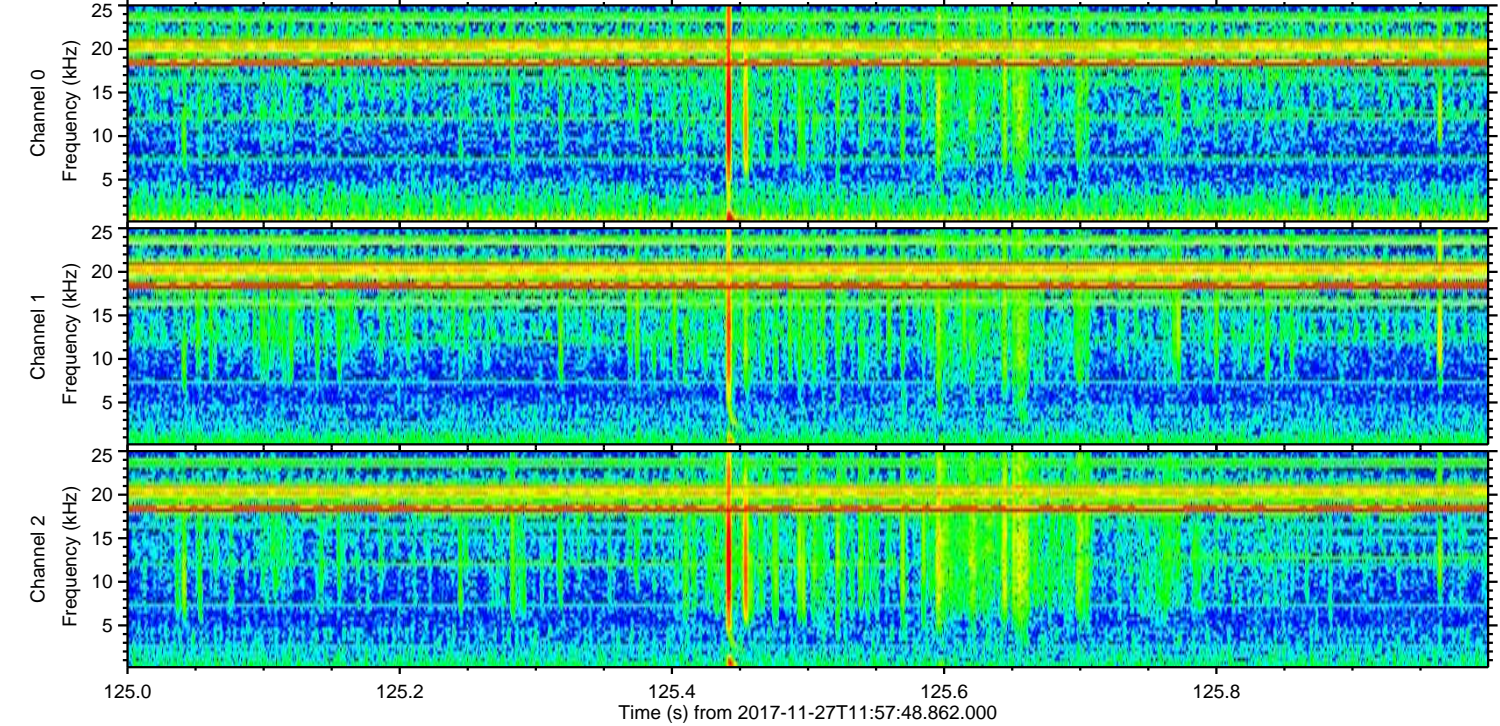
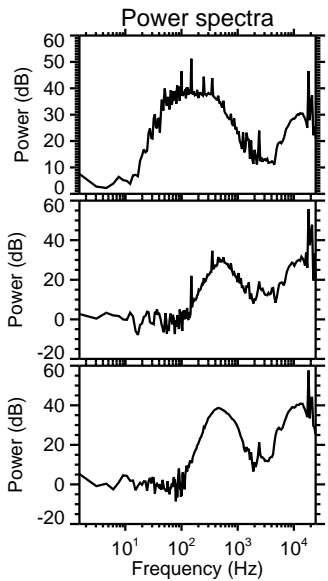
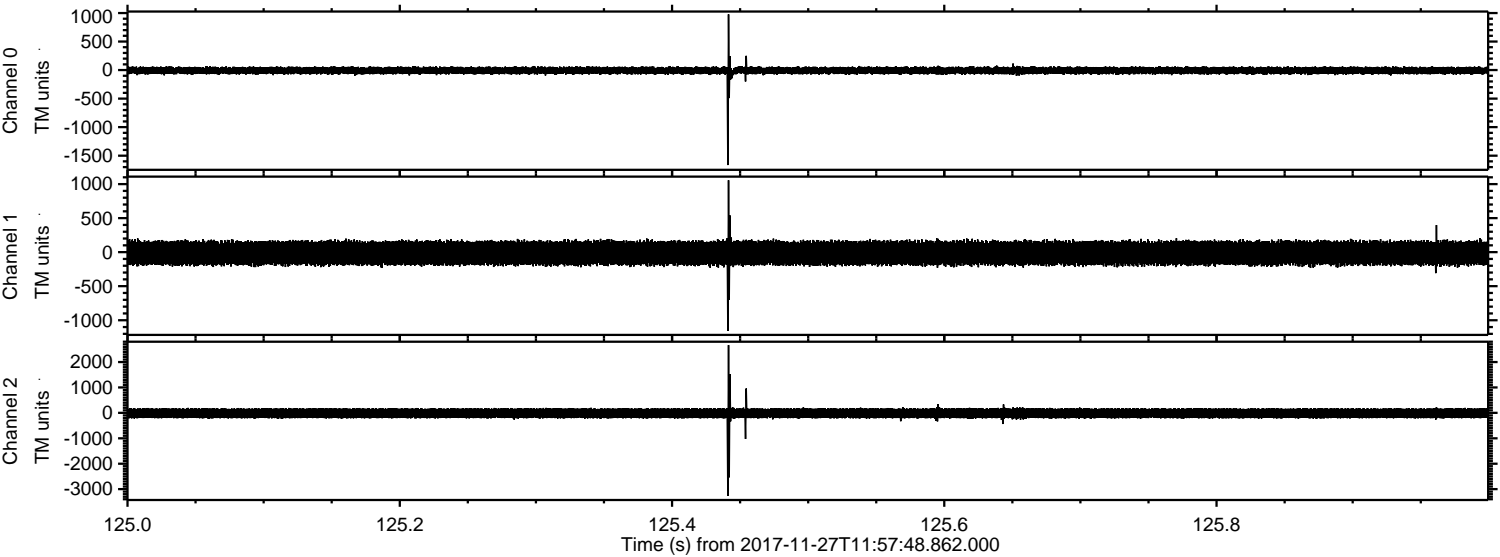
ELMAVAN 3D WAVEFORMS (Measured data sampled at 50 kHz) 51000 packets of 144 samples from 2017-11-27T11:57:48.862.000. Part 143/147

Processed Mon Nov 27 13:05:40 2017 by ELM ver.2012-10-06 from 001__elm20171127_115747__dat00.bin



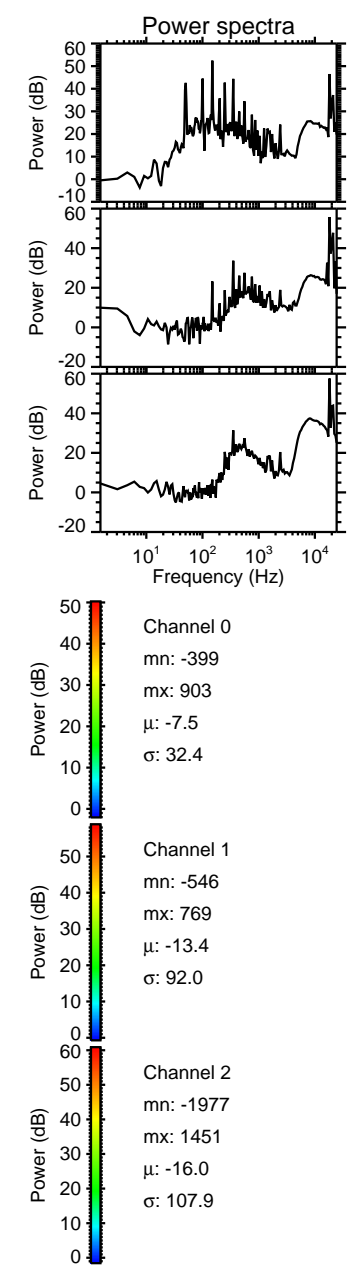
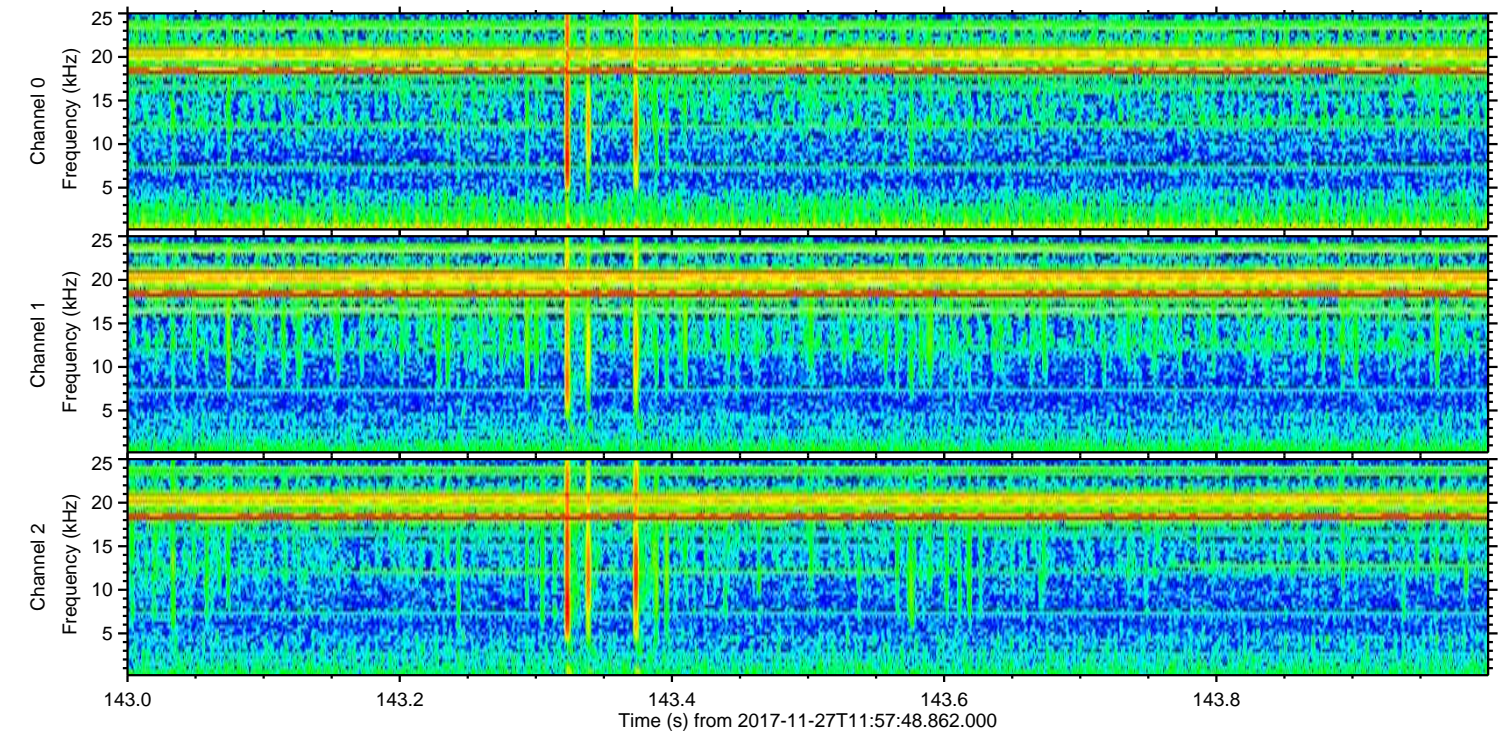
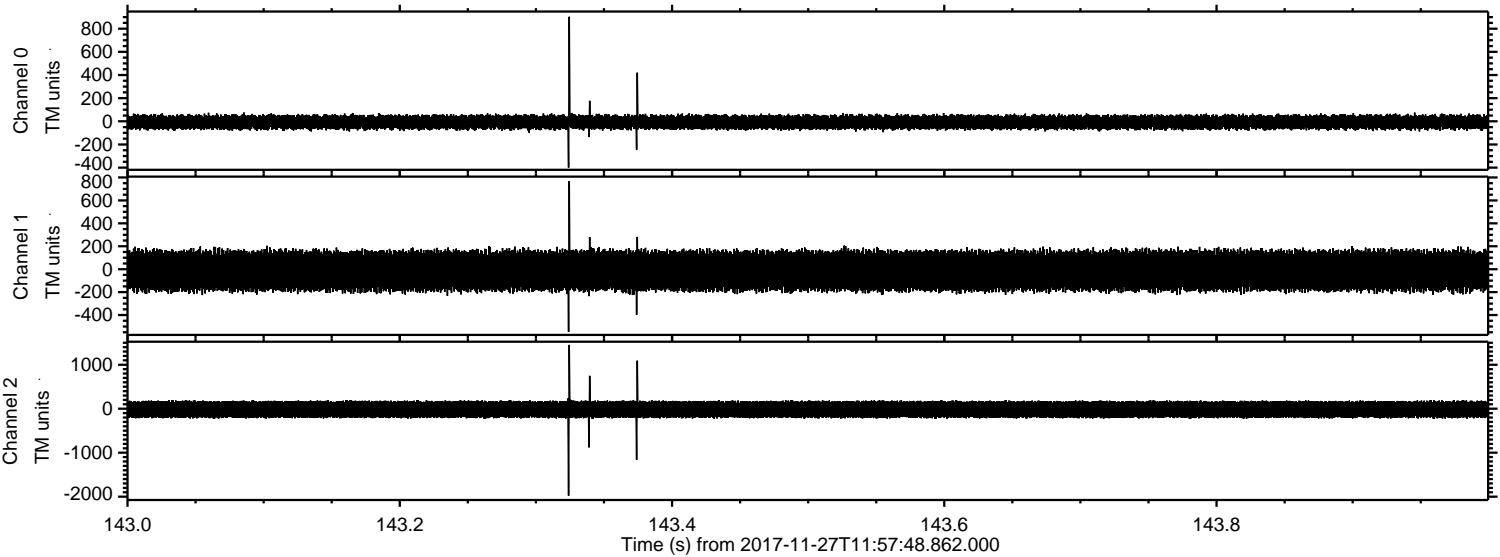
ELMAVAN 3D WAVEFORMS (Measured data sampled at 50 kHz) 51000 packets of 144 samples from 2017-11-27T11:57:48.862.000. Part 126/147

Processed Mon Nov 27 13:05:40 2017 by ELM ver.2012-10-06 from 001__elm20171127_115747__dat00.bin

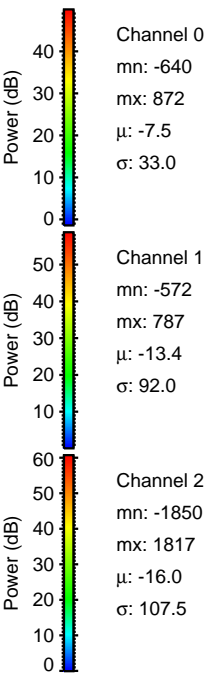
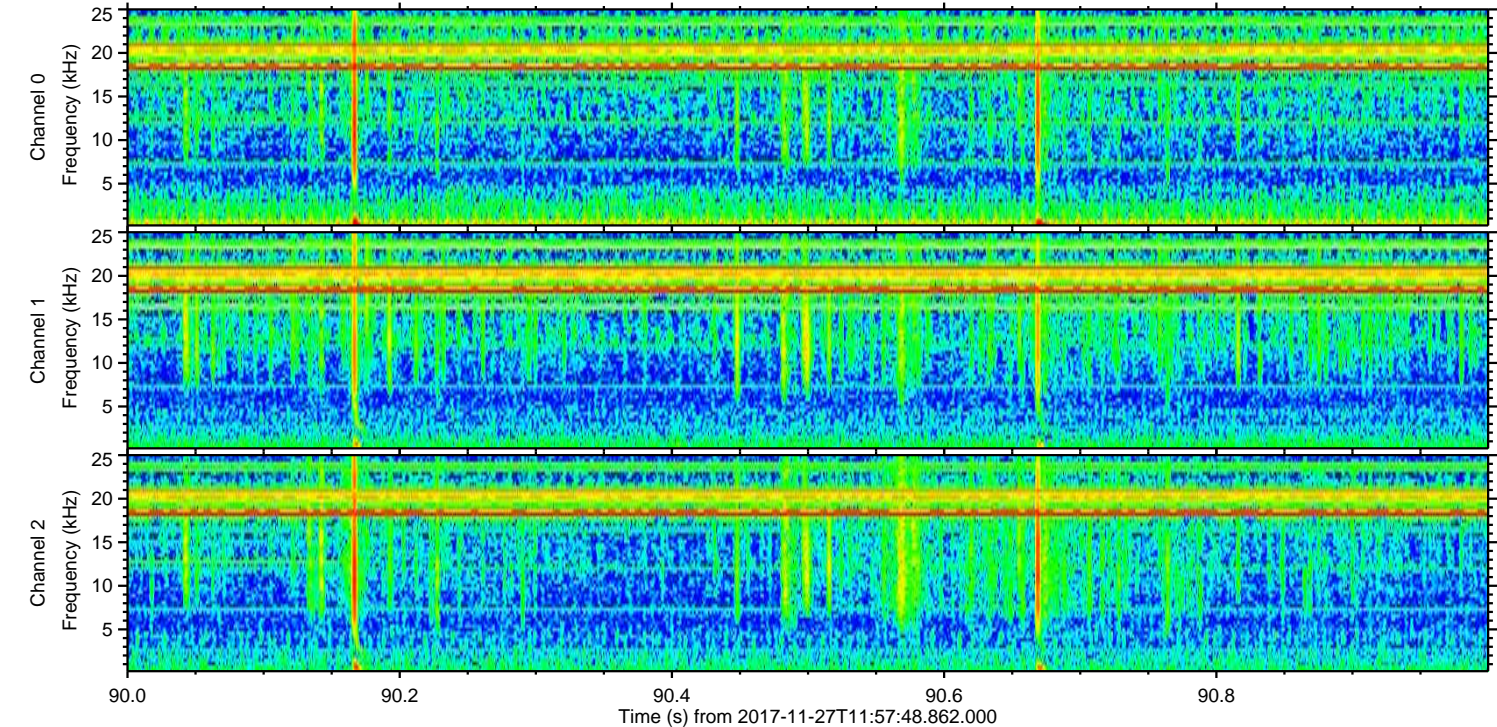
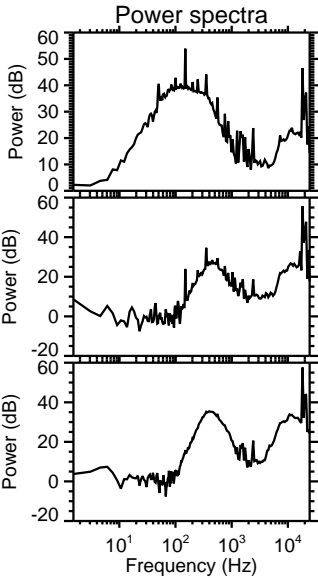
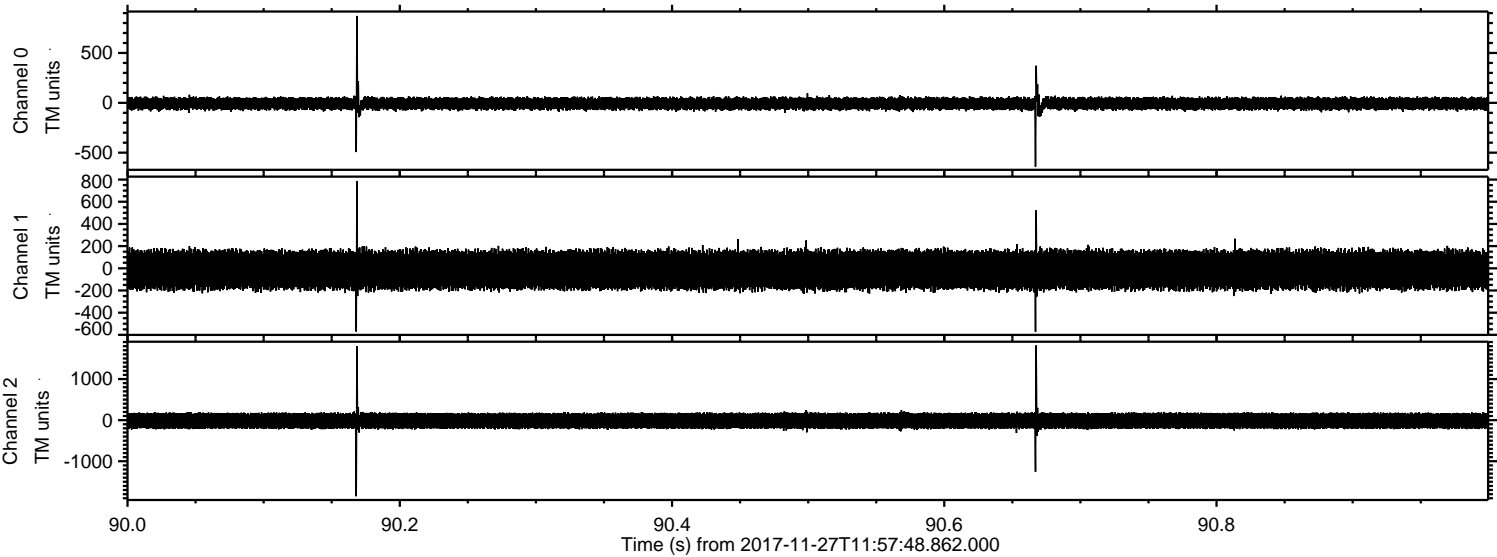


ELMAVAN 3D WAVEFORMS (Measured data sampled at 50 kHz) 51000 packets of 144 samples from 2017-11-27T11:57:48.862.000. Part 144/147

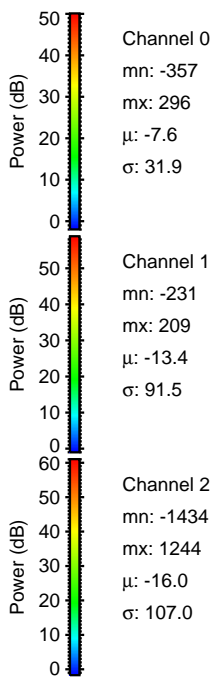
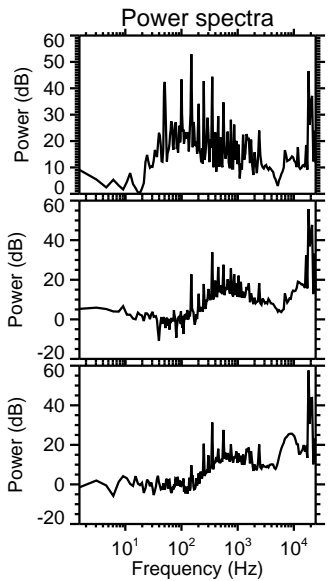
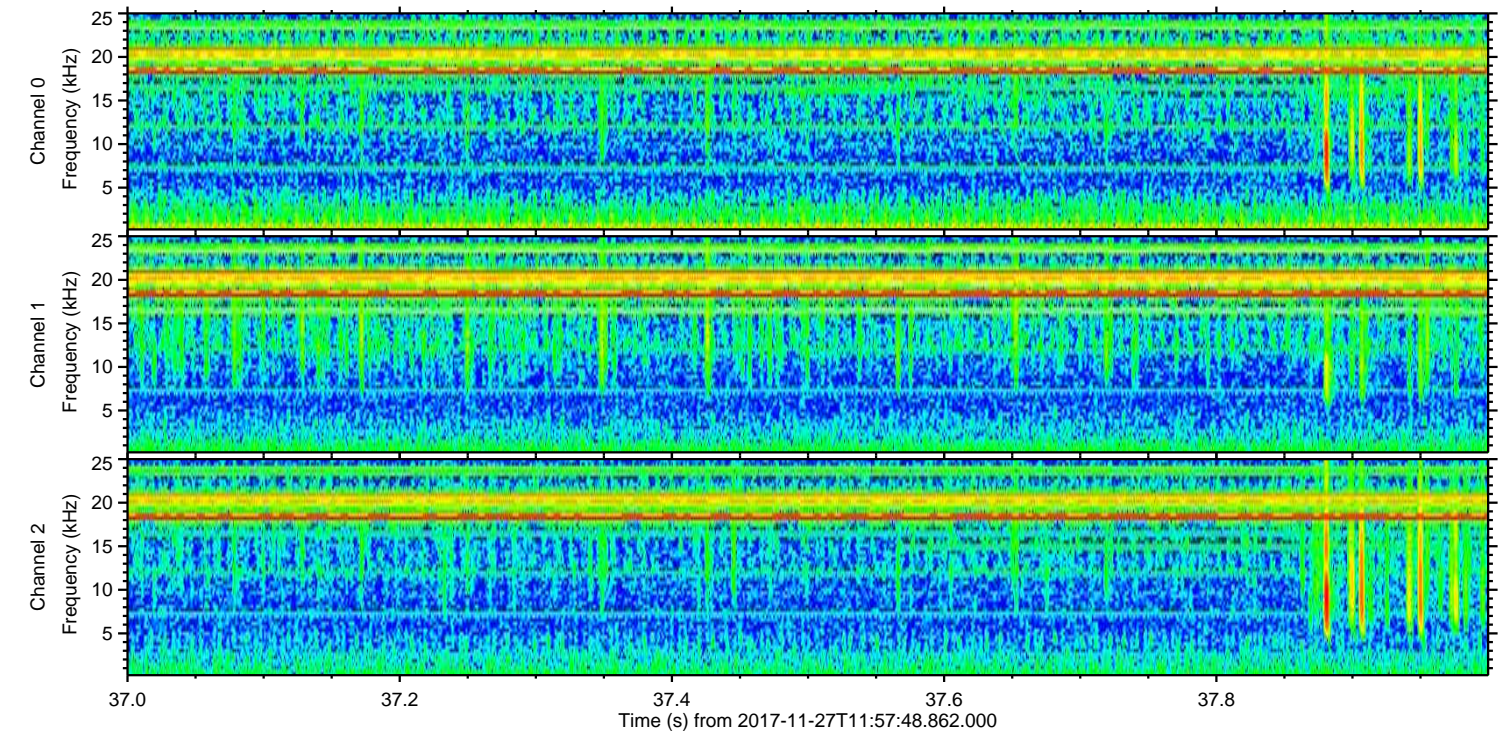
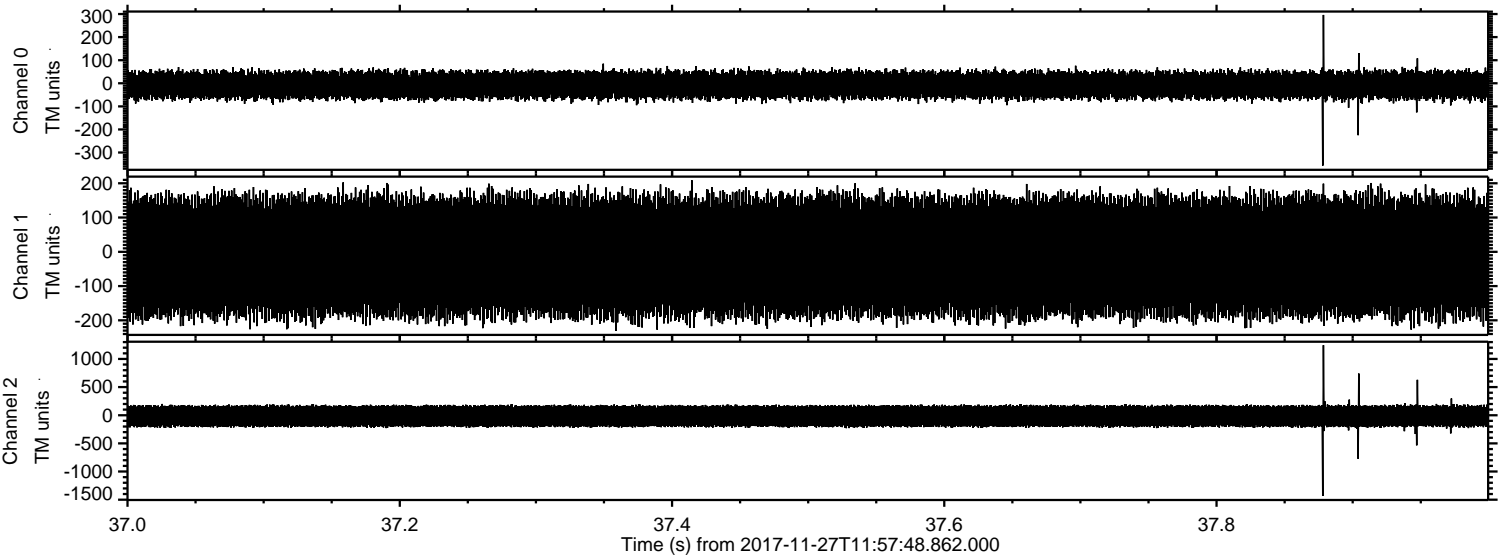
Processed Mon Nov 27 13:05:41 2017 by ELM ver.2012-10-06 from 001__elm20171127_115747__dat00.bin



Processed Mon Nov 27 13:05:42 2017 by ELM ver.2012-10-06 from 001__elm20171127_115747__dat00.bin



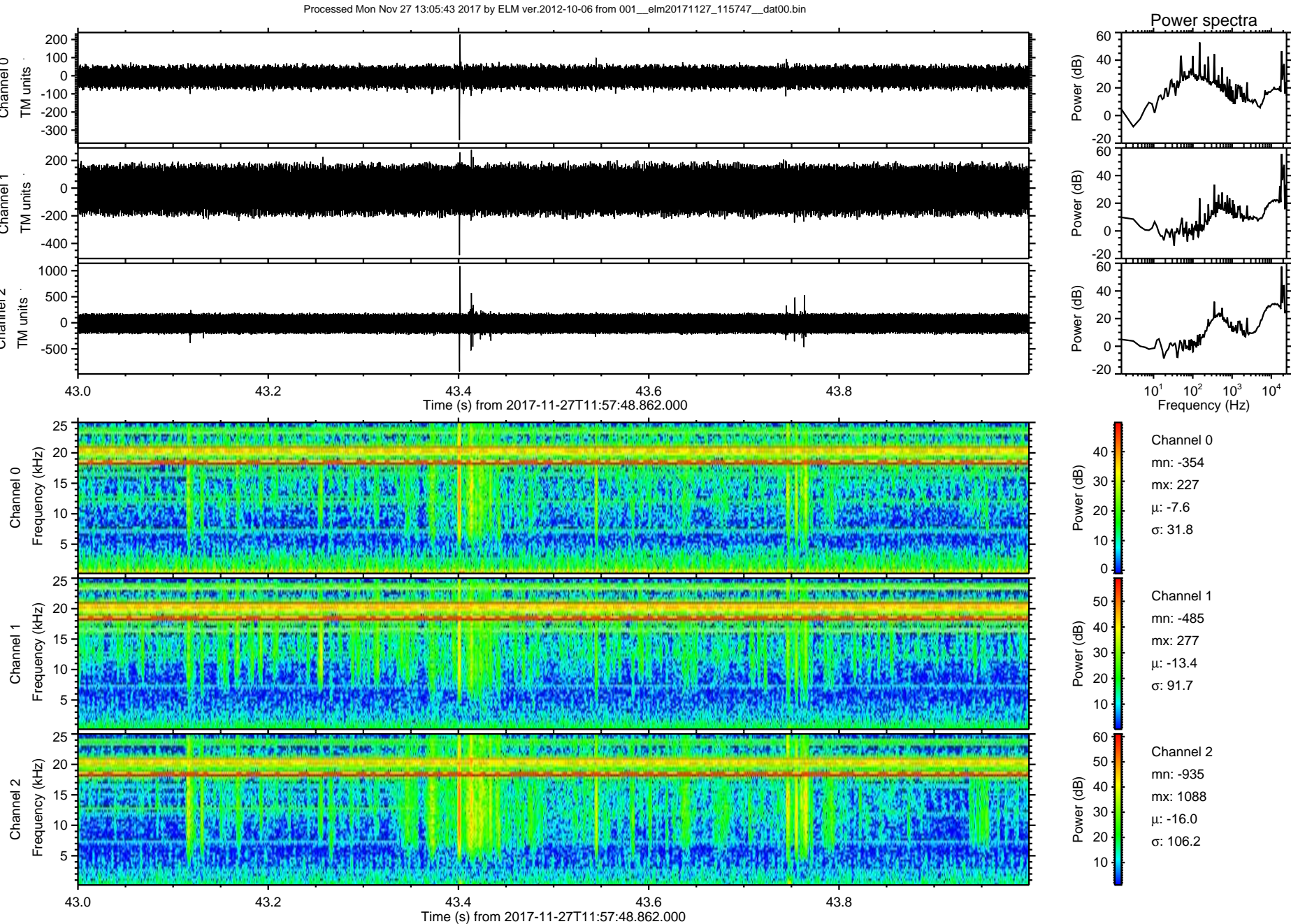
Processed Mon Nov 27 13:05:42 2017 by ELM ver.2012-10-06 from 001__elm20171127_115747__dat00.bin



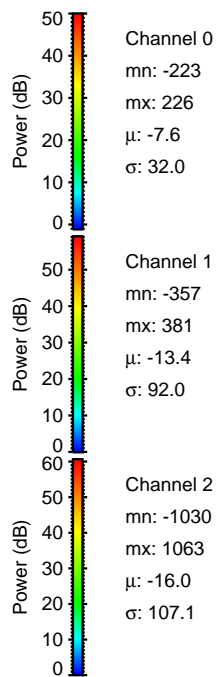
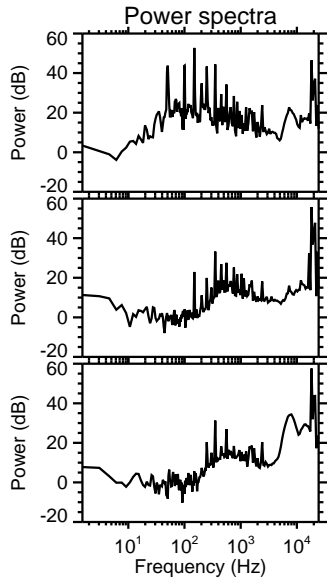
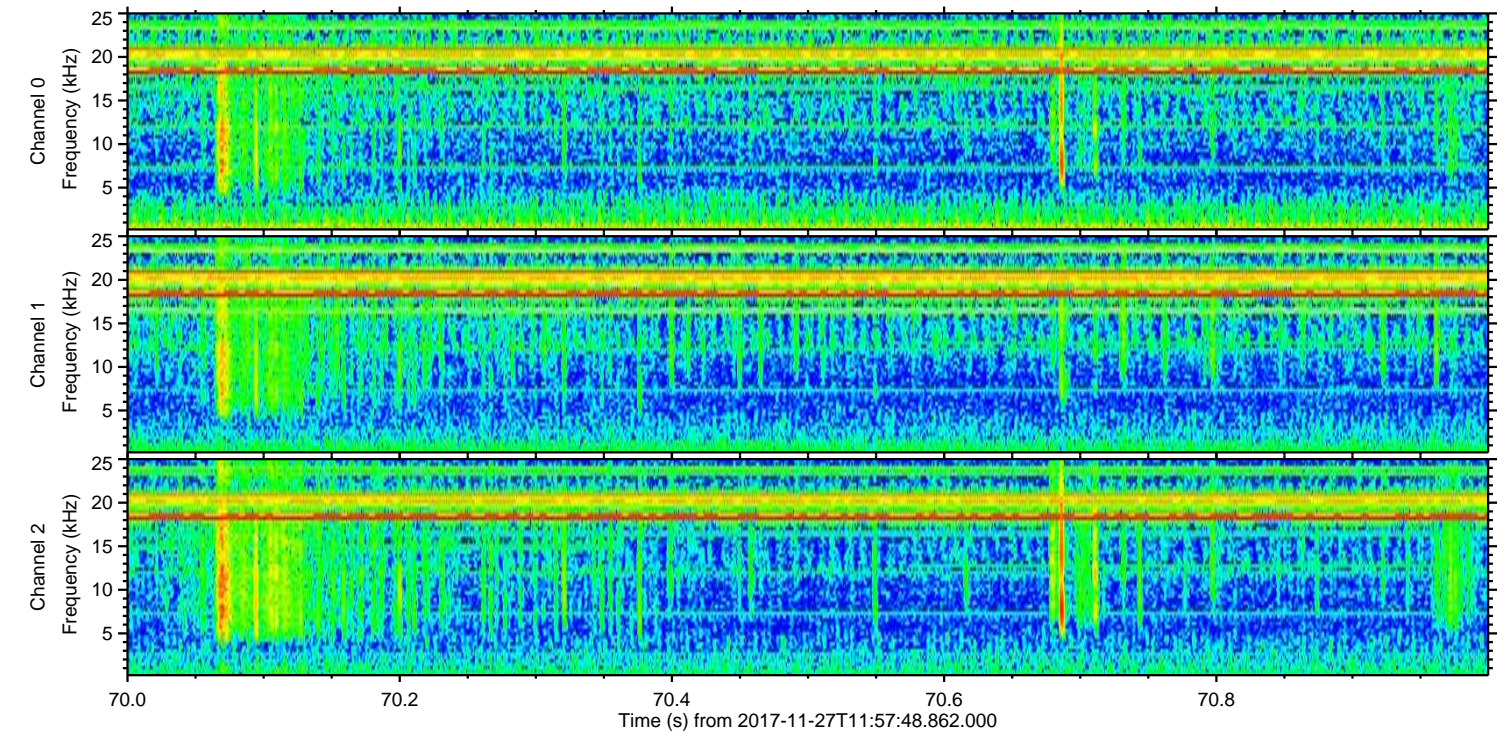
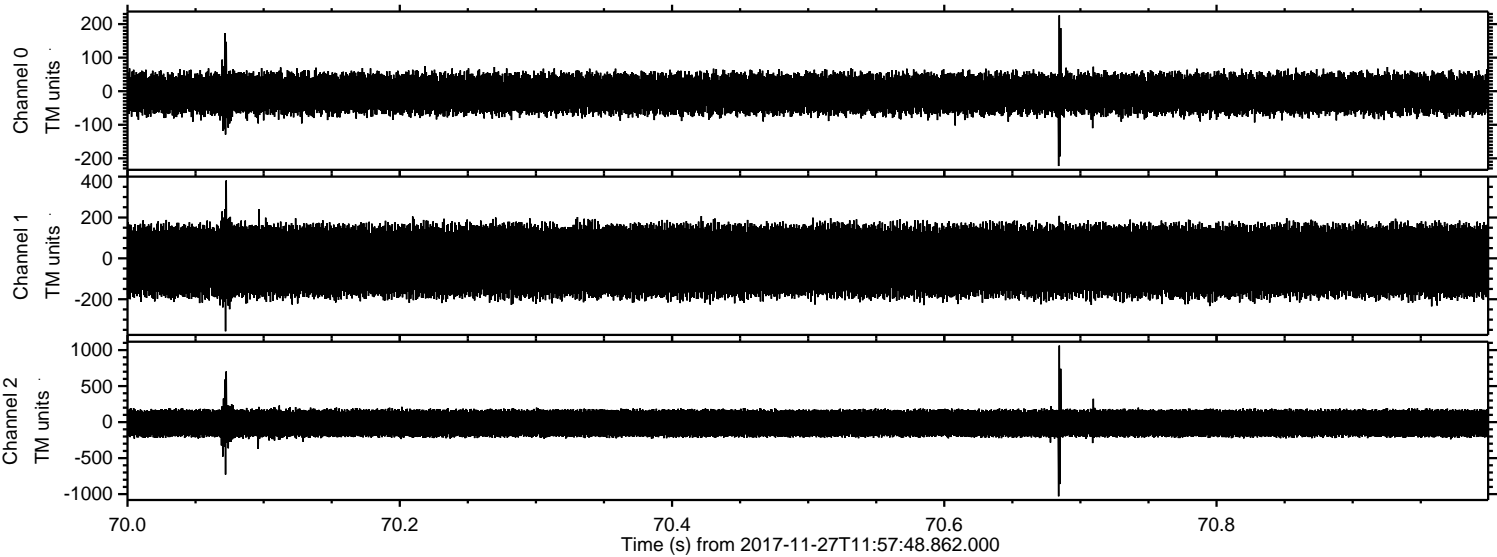
Channel 0
mn: -357
mx: 296
 μ : -7.6
 σ : 31.9

Channel 1
mn: -231
mx: 209
 μ : -13.4
 σ : 91.5

Channel 2
mn: -1434
mx: 1244
 μ : -16.0
 σ : 107.0



Processed Mon Nov 27 13:05:43 2017 by ELM ver.2012-10-06 from 001__elm20171127_115747__dat00.bin



Processed Mon Nov 27 13:05:44 2017 by ELM ver.2012-10-06 from 001__elm20171127_115747__dat00.bin

