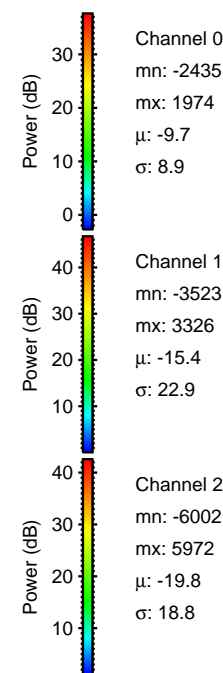
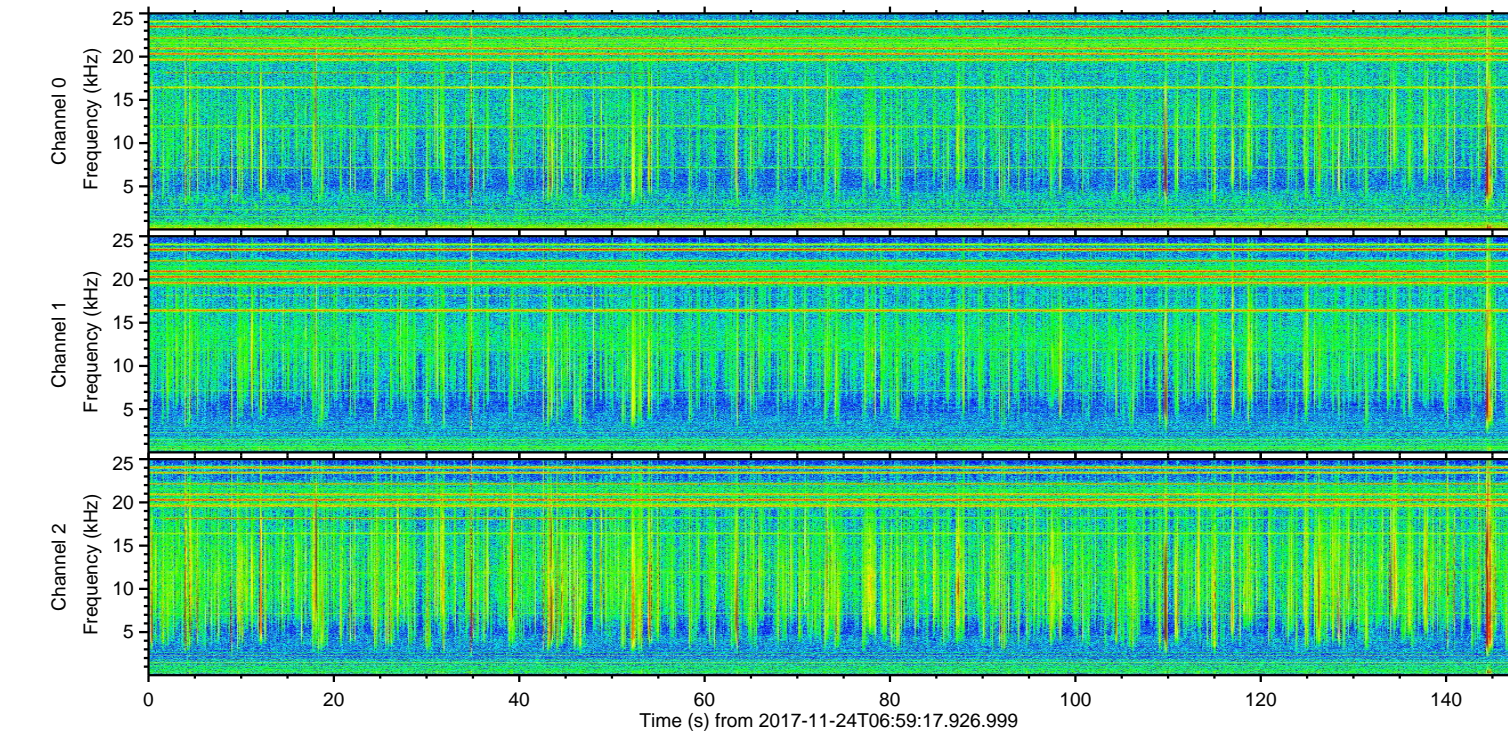
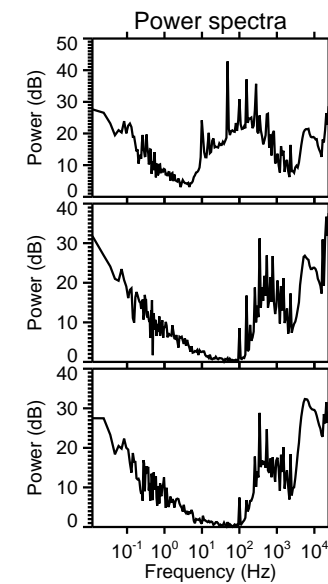
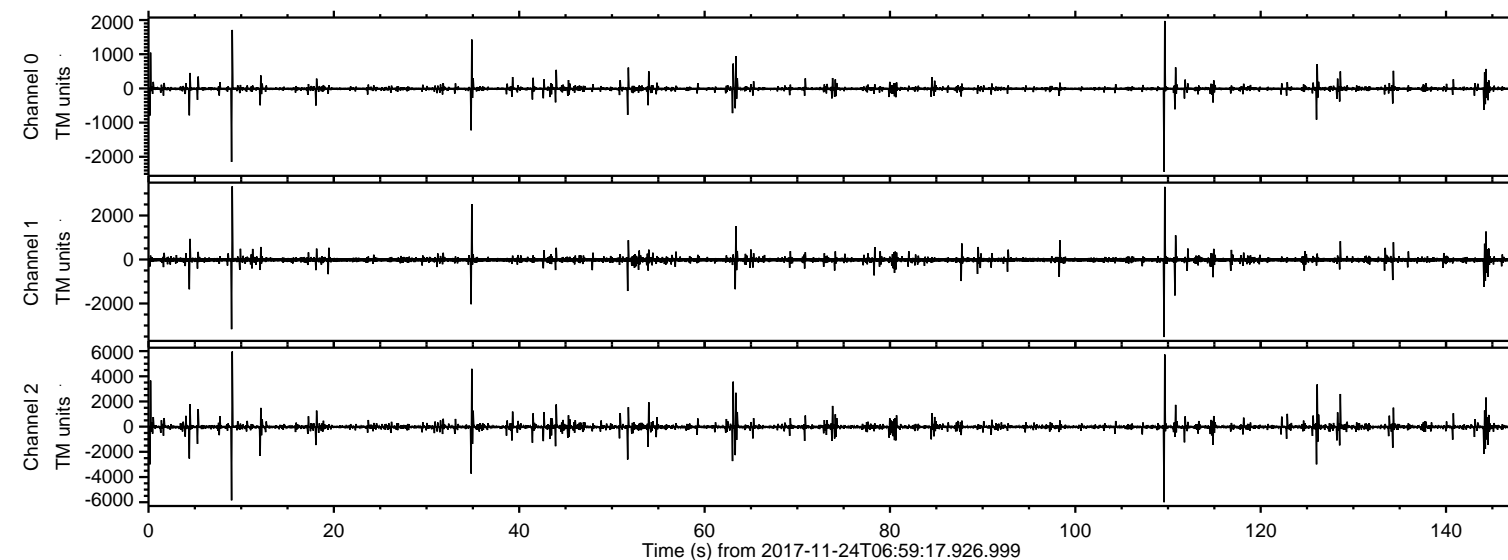


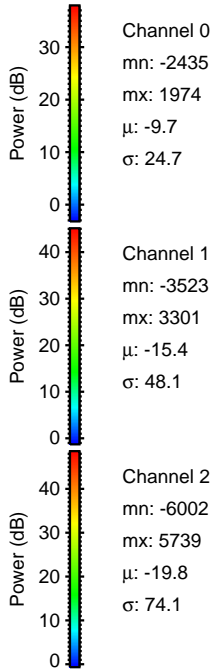
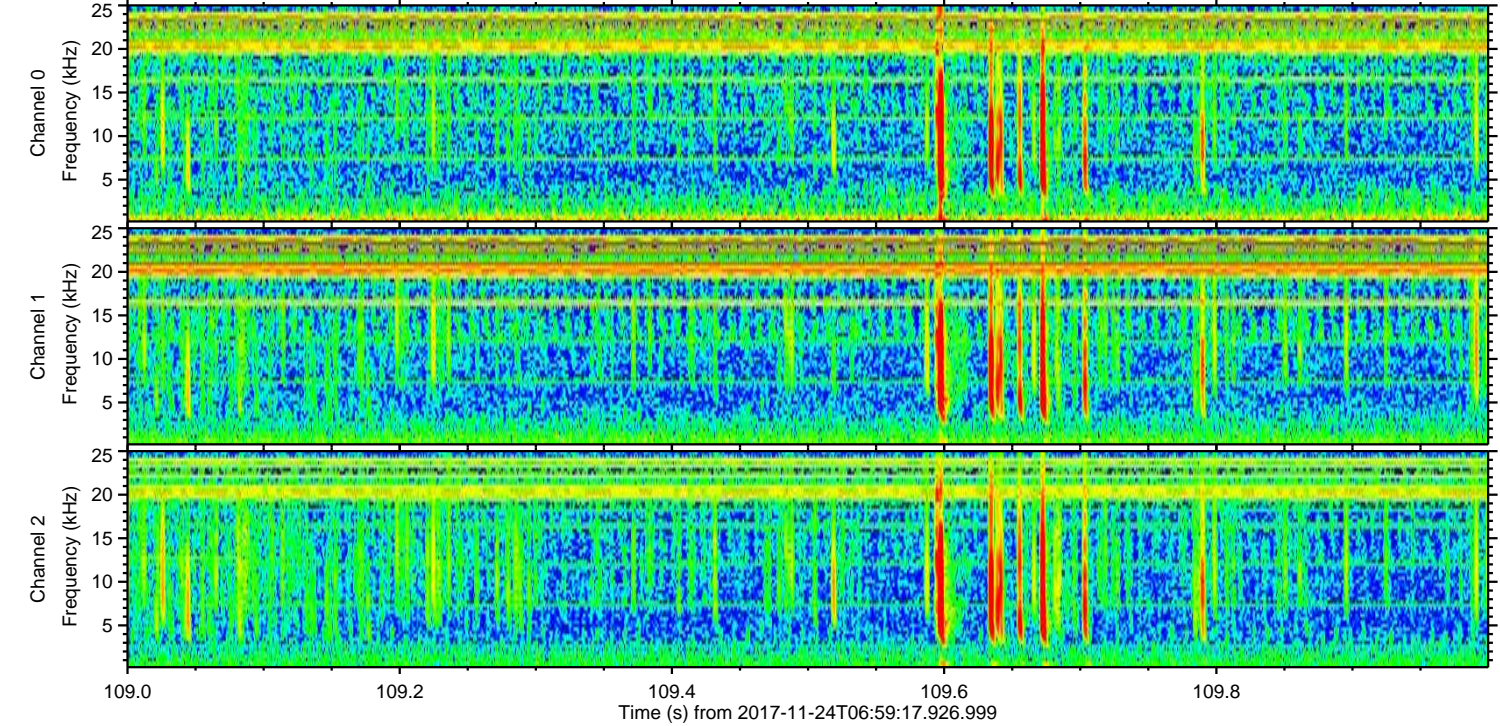
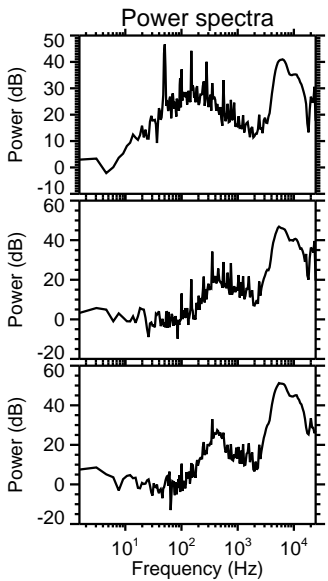
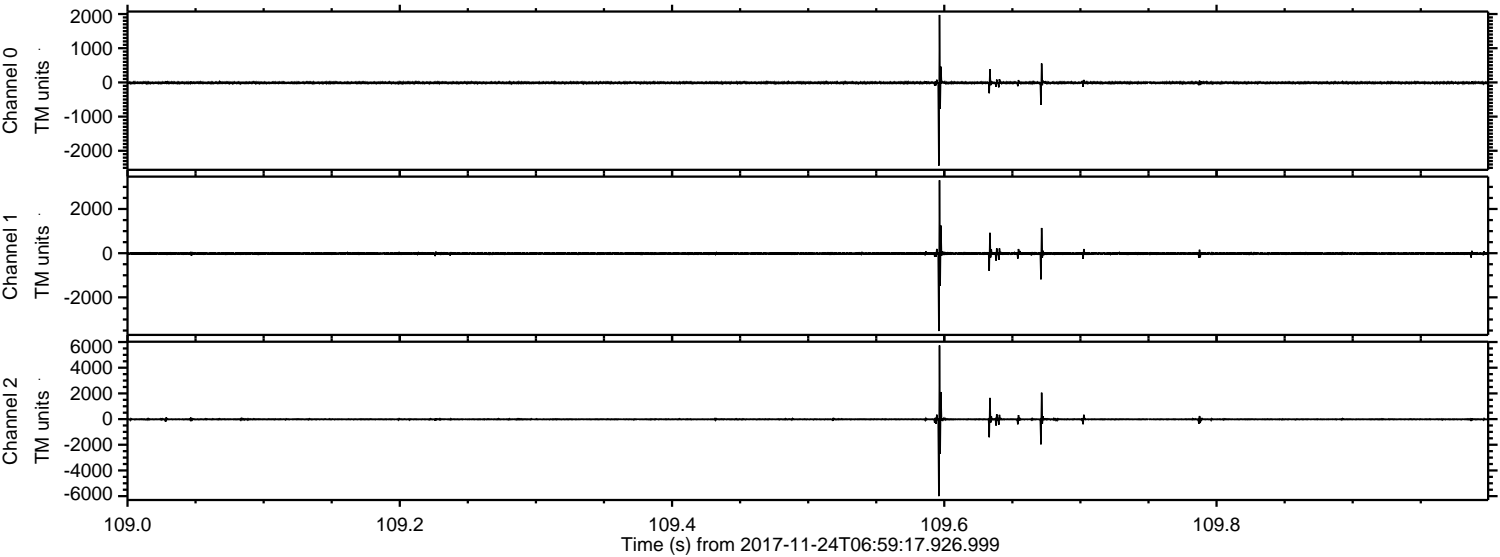
ELMAVAN 3D WAVEFORMS (Measured data sampled at 50 kHz) 51000 packets of 144 samples from 2017-11-24T06:59:17.926.999.

Processed Fri Nov 24 08:07:39 2017 by ELM ver.2012-10-06 from 001__elm20171124_065916__dat00.bin



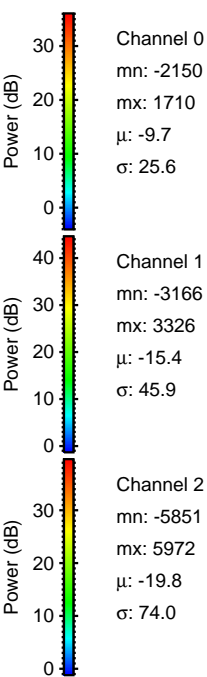
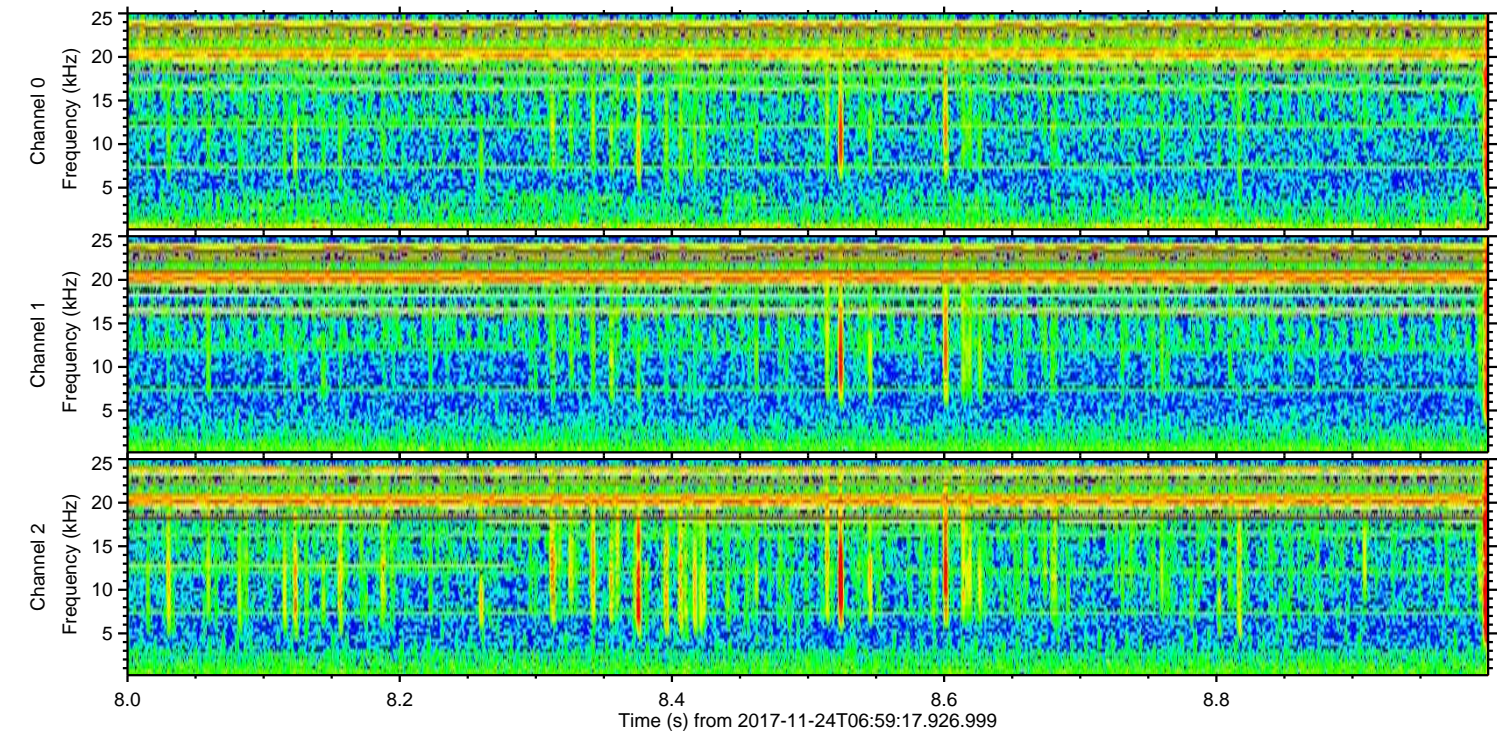
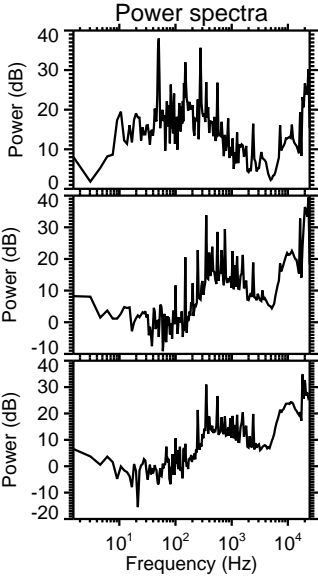
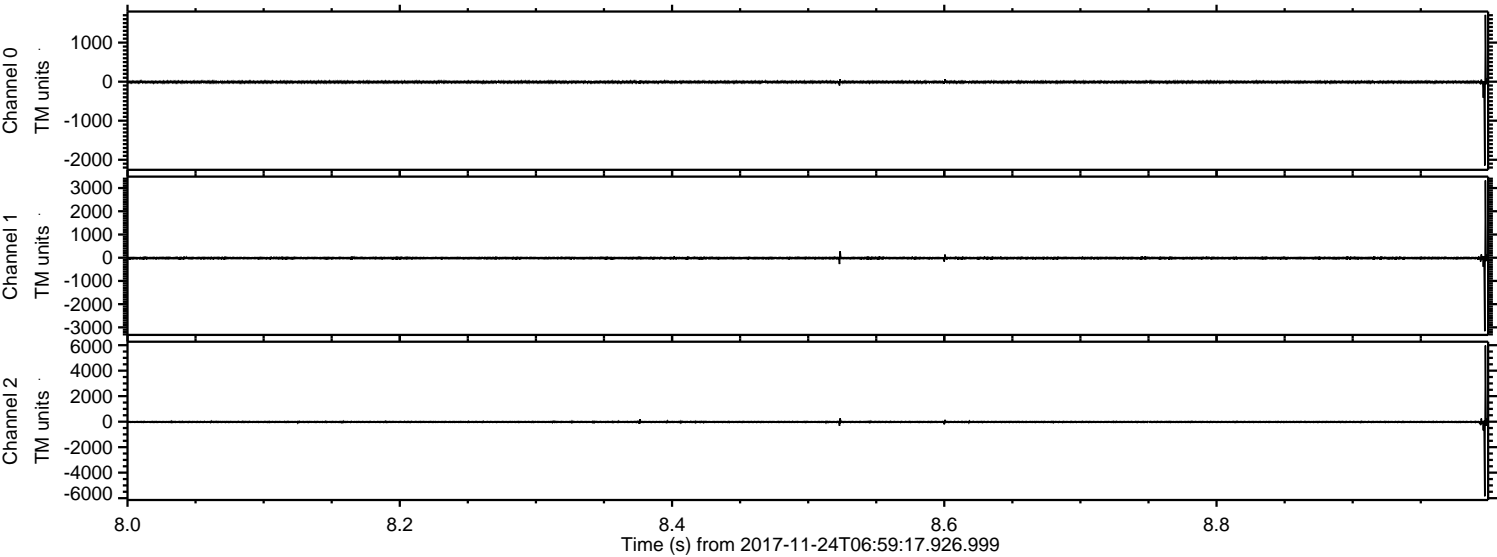
ELMAVAN 3D WAVEFORMS (Measured data sampled at 50 kHz) 51000 packets of 144 samples from 2017-11-24T06:59:17.926.999. Part 110/147

Processed Fri Nov 24 08:07:46 2017 by ELM ver.2012-10-06 from 001__elm20171124_065916__dat00.bin



ELMAVAN 3D WAVEFORMS (Measured data sampled at 50 kHz) 51000 packets of 144 samples from 2017-11-24T06:59:17.926.999. Part 9/147

Processed Fri Nov 24 08:07:46 2017 by ELM ver.2012-10-06 from 001__elm20171124_065916__dat00.bin



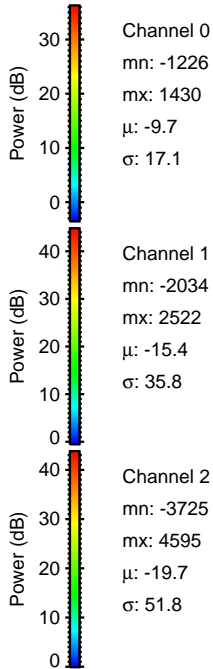
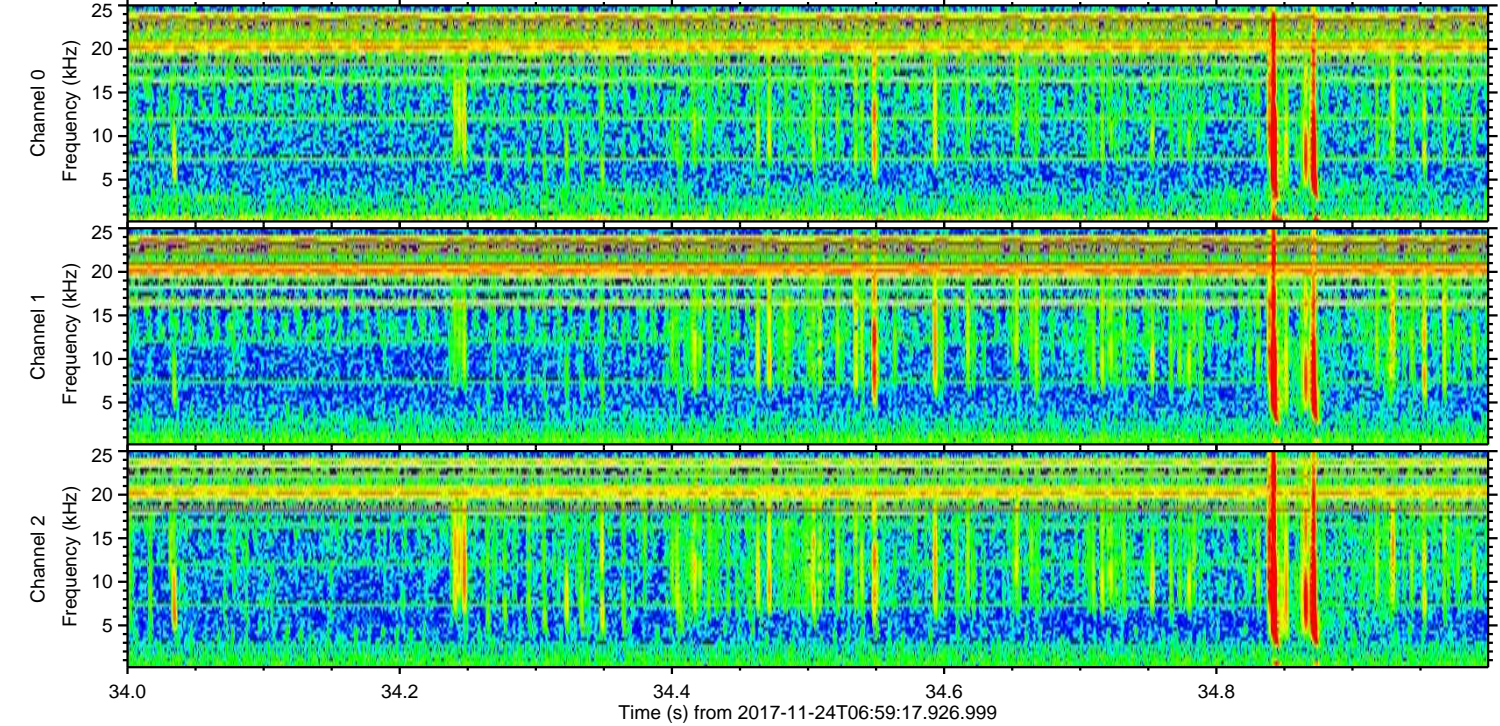
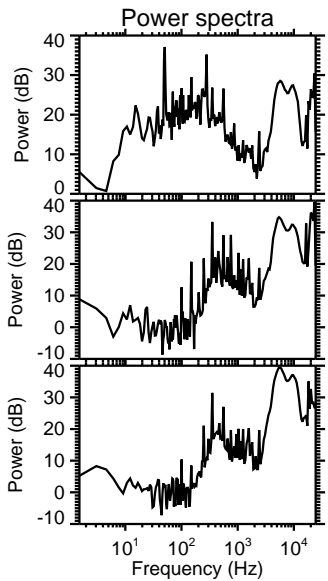
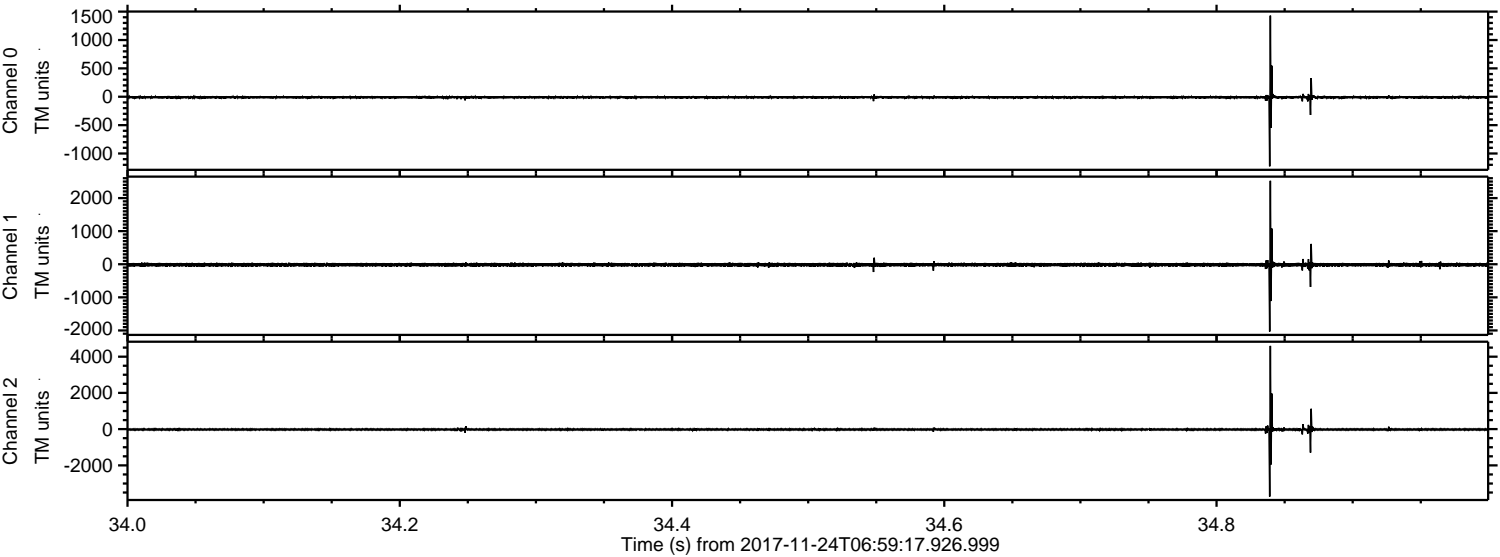
Channel 0
mn: -2150
mx: 1710
 μ : -9.7
 σ : 25.6

Channel 1
mn: -3166
mx: 3326
 μ : -15.4
 σ : 45.9

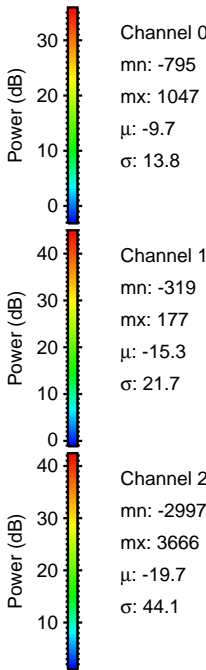
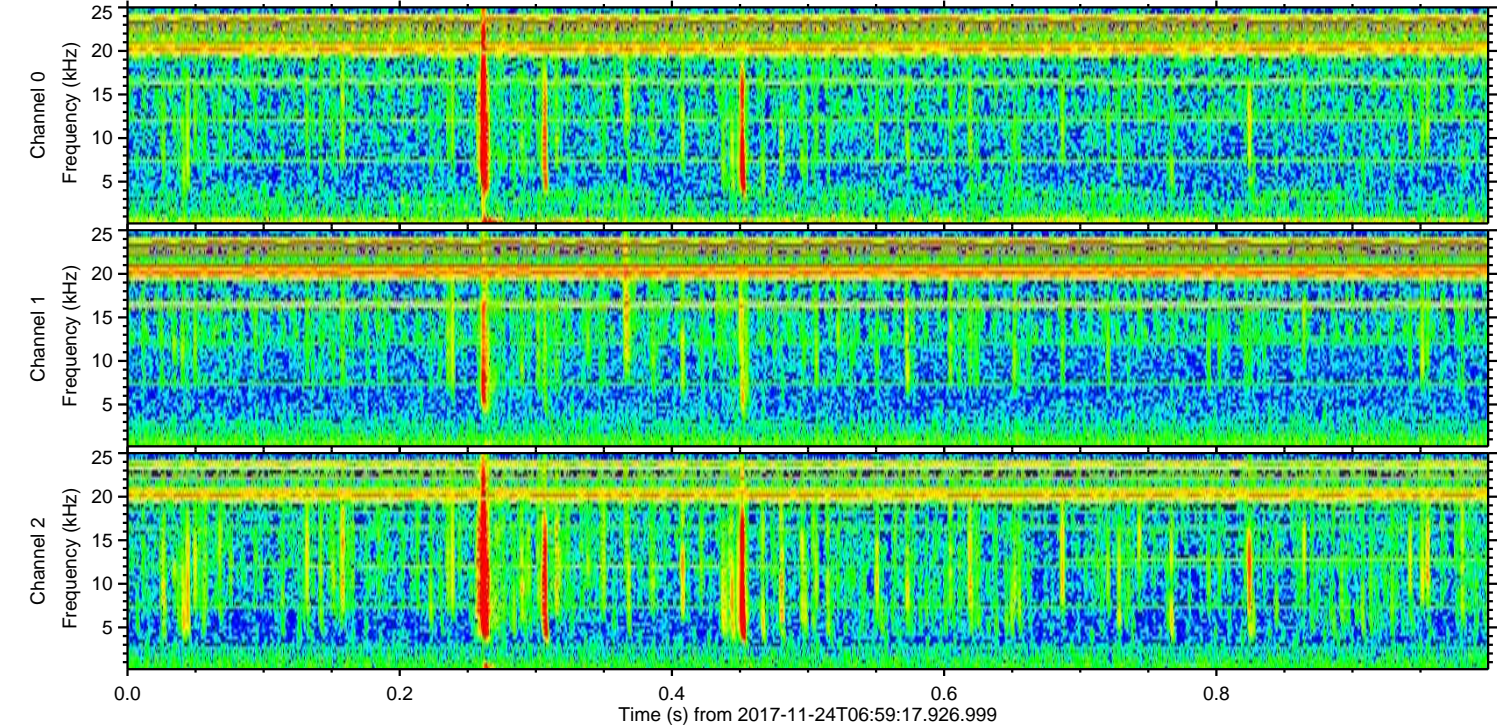
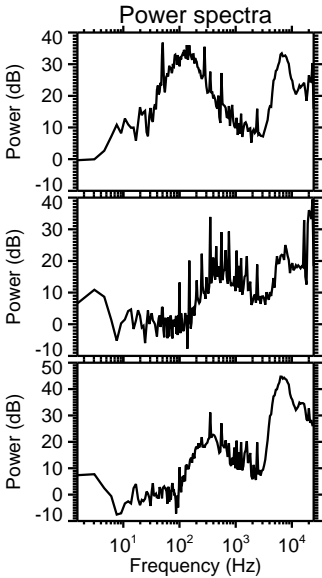
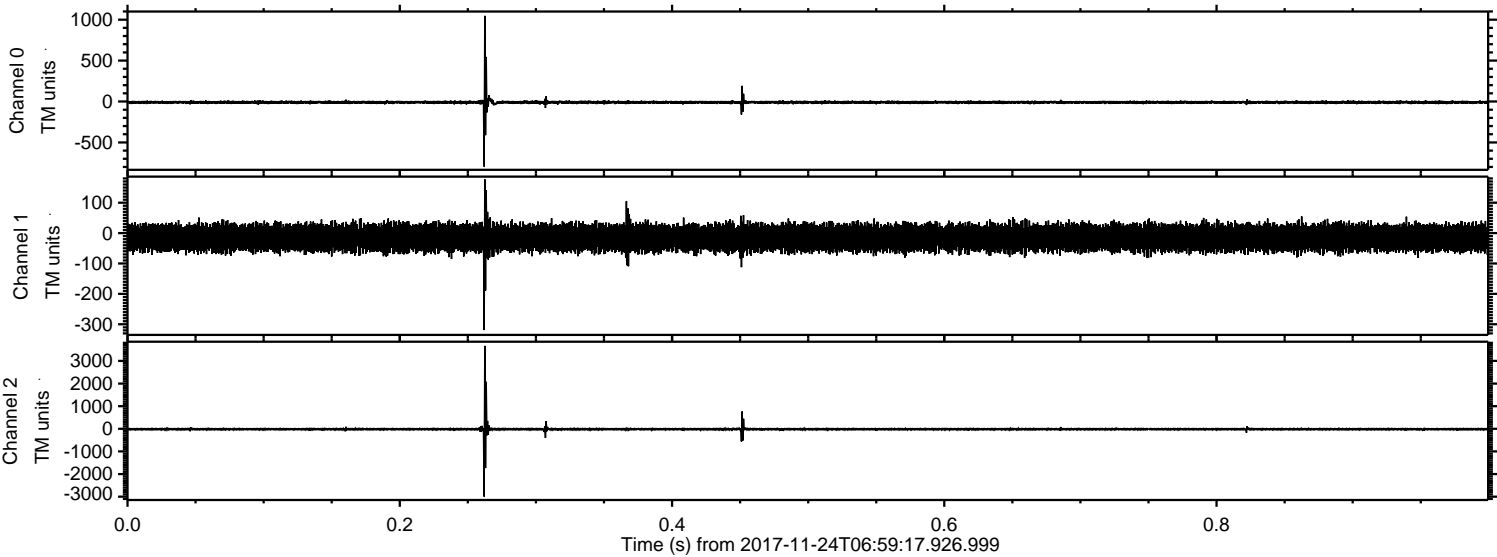
Channel 2
mn: -5851
mx: 5972
 μ : -19.8
 σ : 74.0

ELMAVAN 3D WAVEFORMS (Measured data sampled at 50 kHz) 51000 packets of 144 samples from 2017-11-24T06:59:17.926.999. Part 35/147

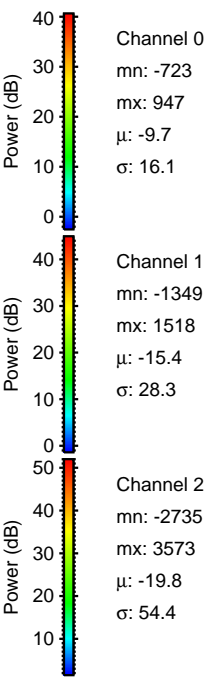
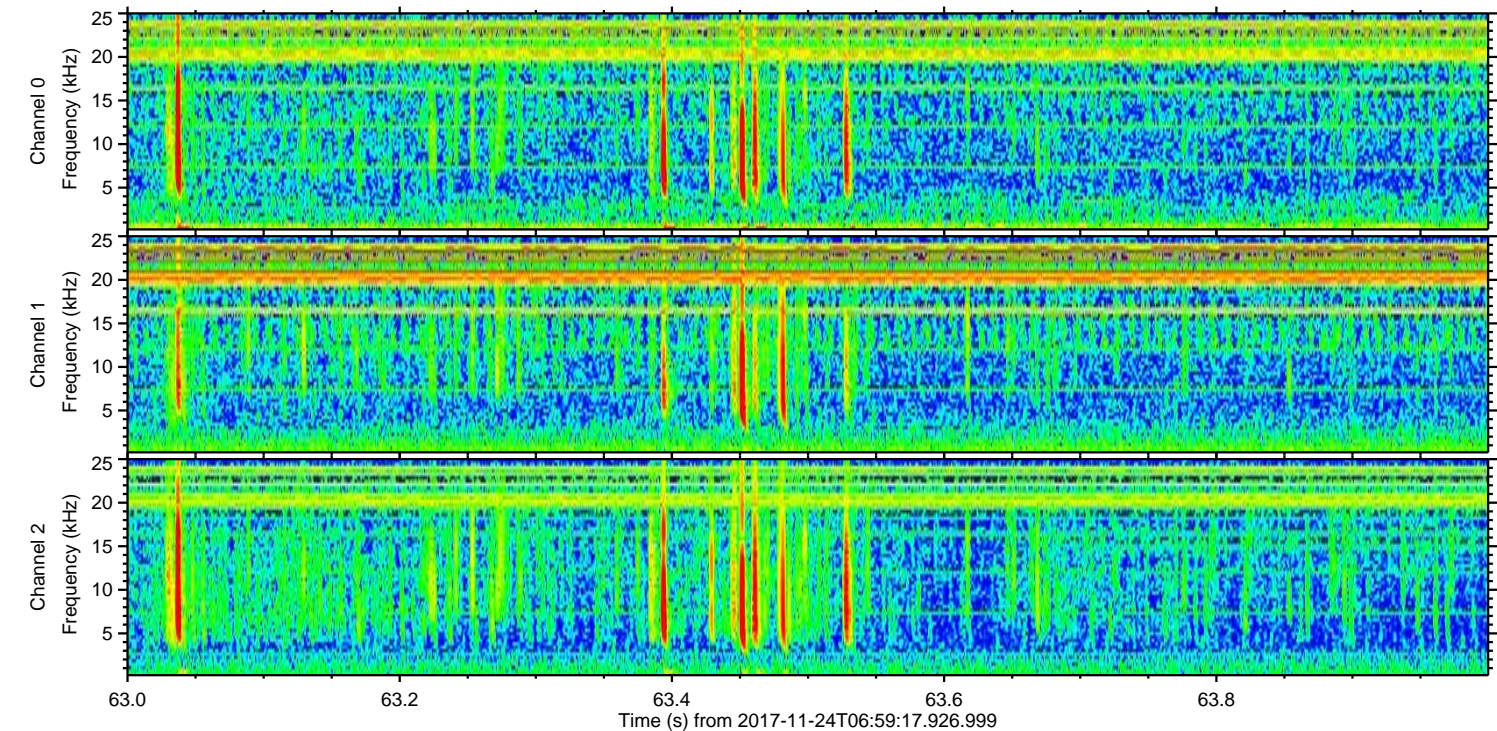
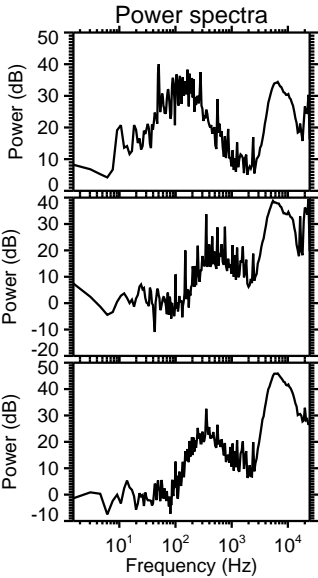
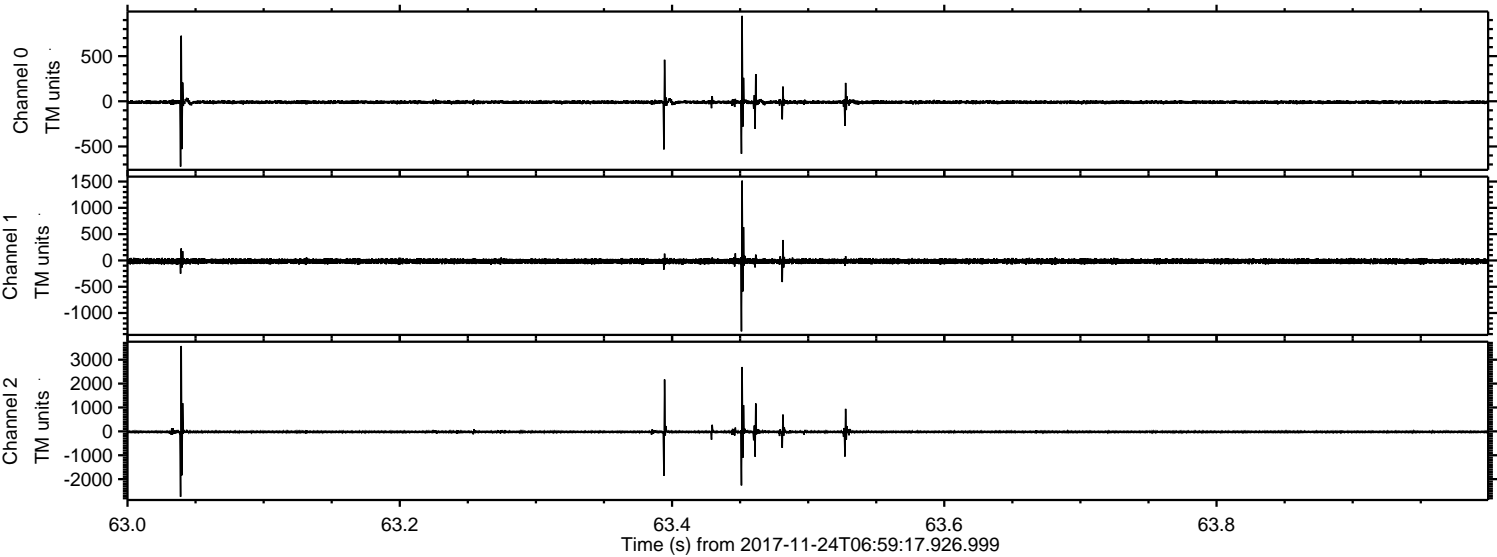
Processed Fri Nov 24 08:07:47 2017 by ELM ver.2012-10-06 from 001__elm20171124_065916__dat00.bin



Processed Fri Nov 24 08:07:48 2017 by ELM ver.2012-10-06 from 001__elm20171124_065916__dat00.bin



Processed Fri Nov 24 08:07:49 2017 by ELM ver.2012-10-06 from 001__elm20171124_065916__dat00.bin



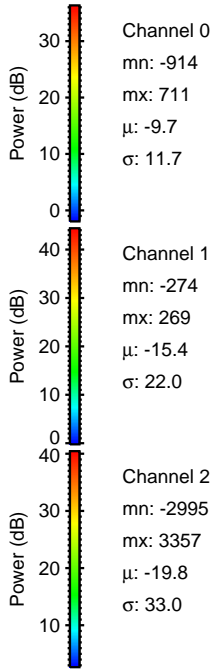
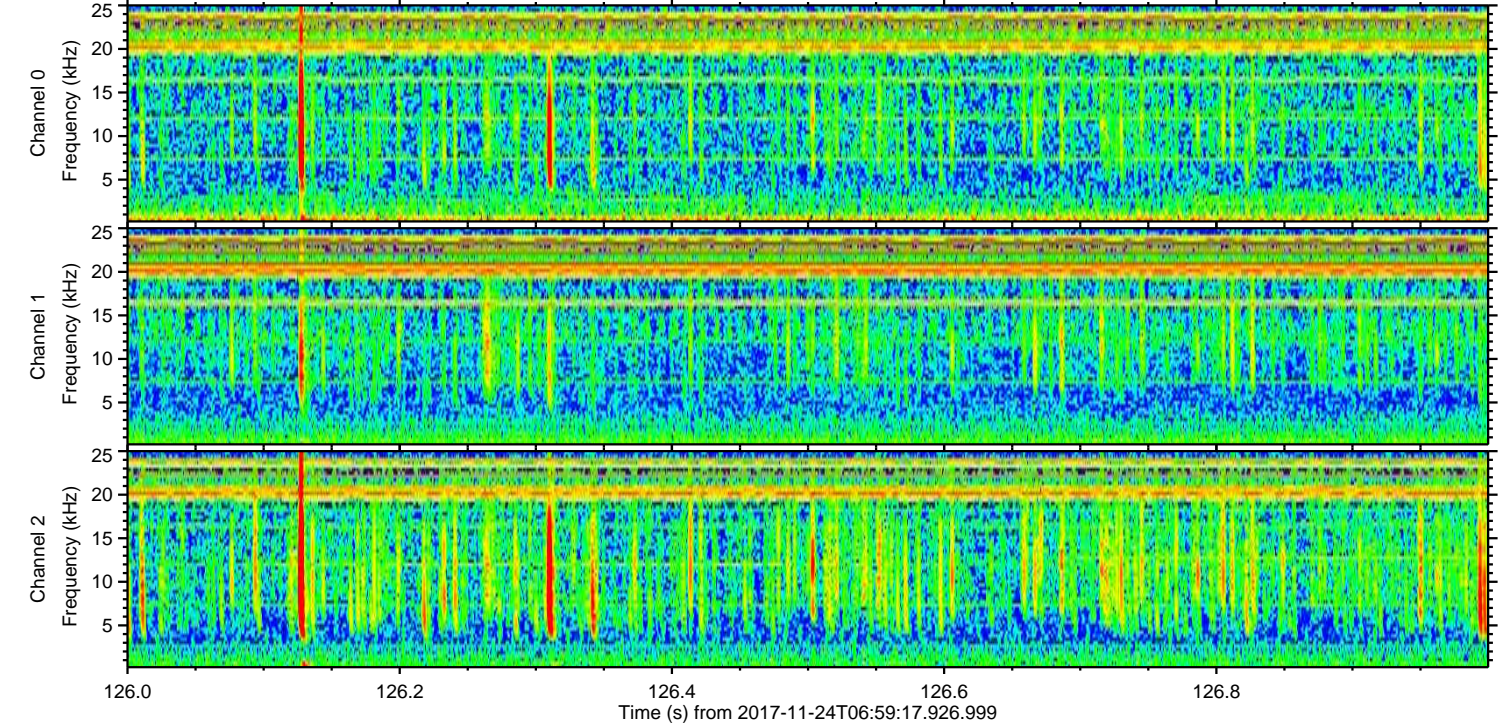
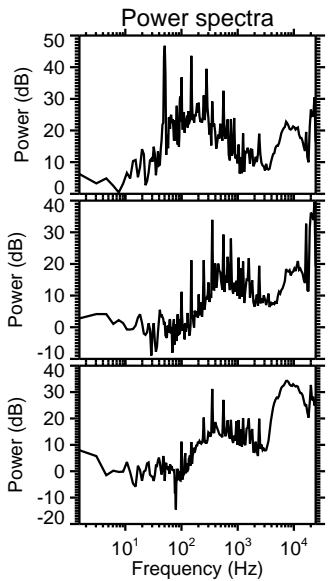
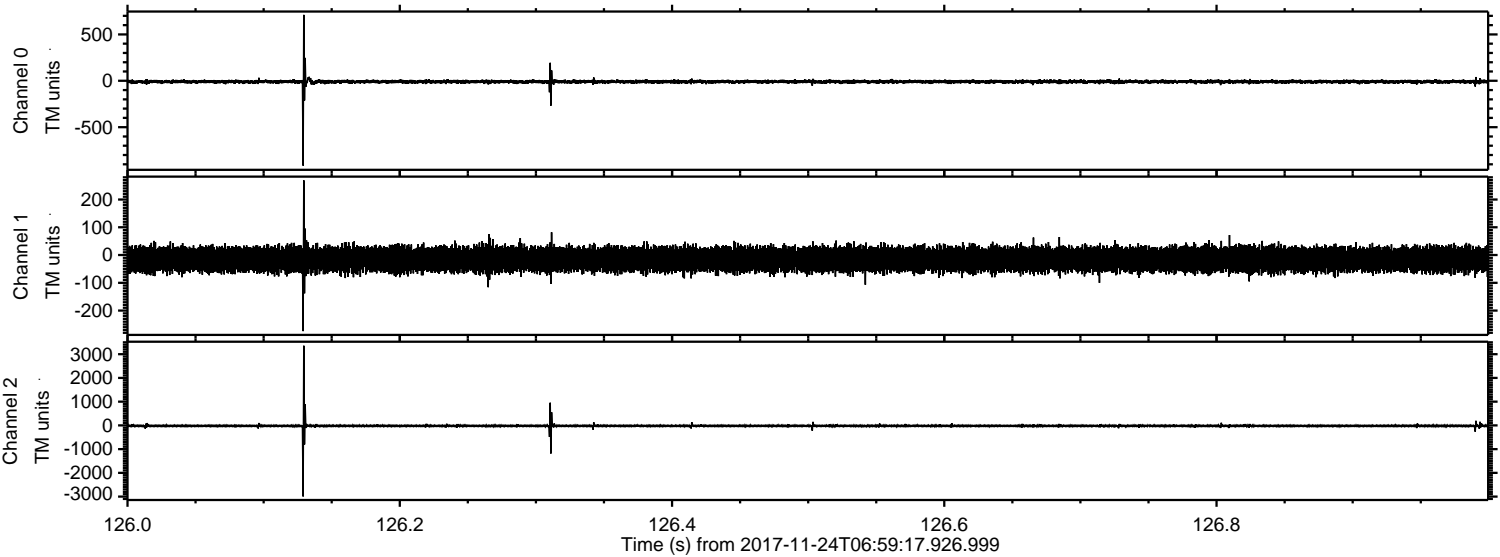
Channel 0
mn: -723
mx: 947
 μ : -9.7
 σ : 16.1

Channel 1
mn: -1349
mx: 1518
 μ : -15.4
 σ : 28.3

Channel 2
mn: -2735
mx: 3573
 μ : -19.8
 σ : 54.4

ELMAVAN 3D WAVEFORMS (Measured data sampled at 50 kHz) 51000 packets of 144 samples from 2017-11-24T06:59:17.926.999. Part 127/147

Processed Fri Nov 24 08:07:49 2017 by ELM ver.2012-10-06 from 001__elm20171124_065916__dat00.bin

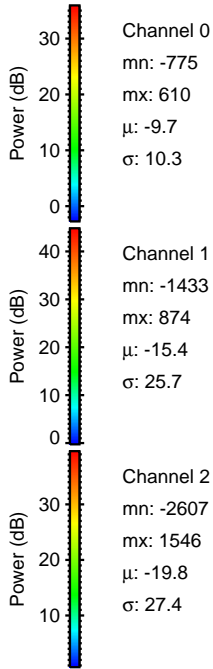
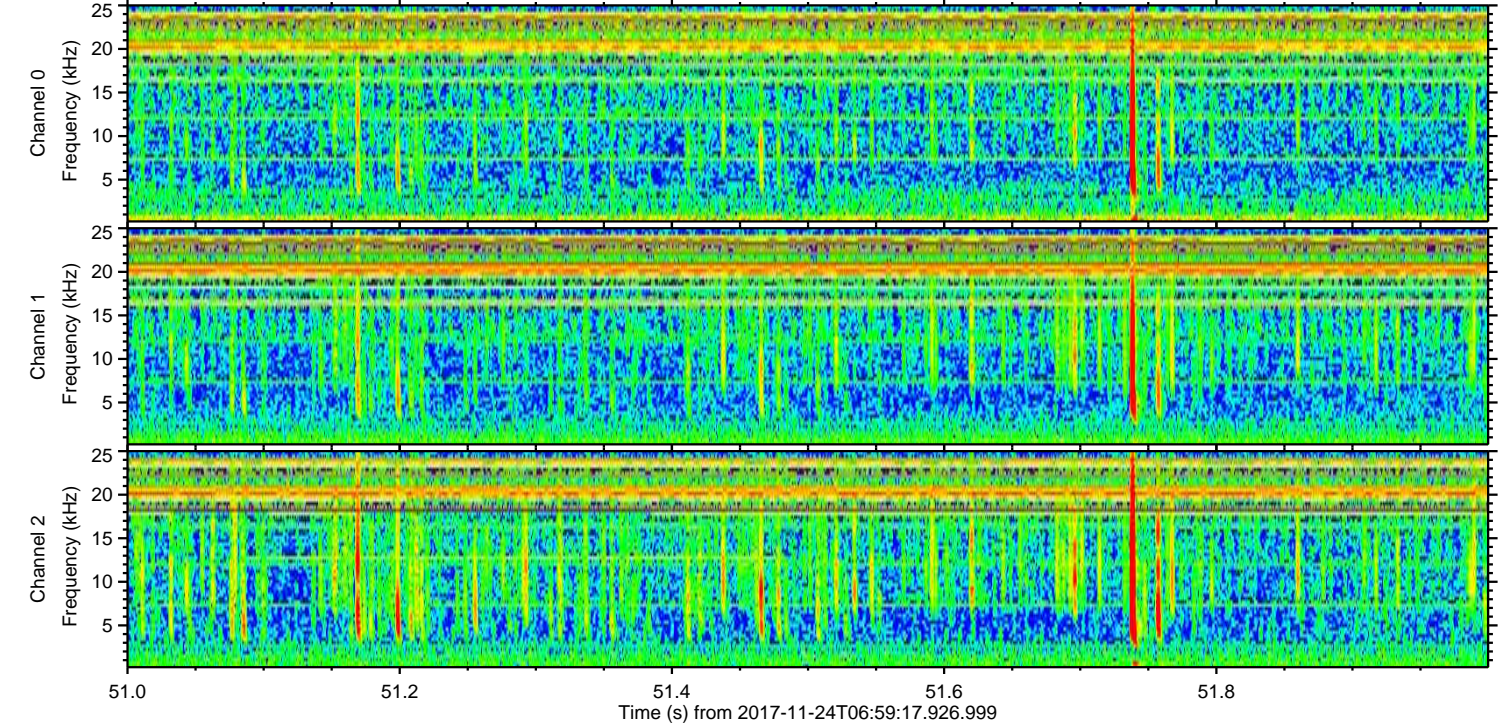
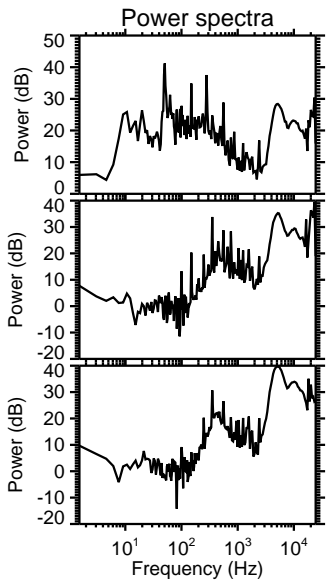
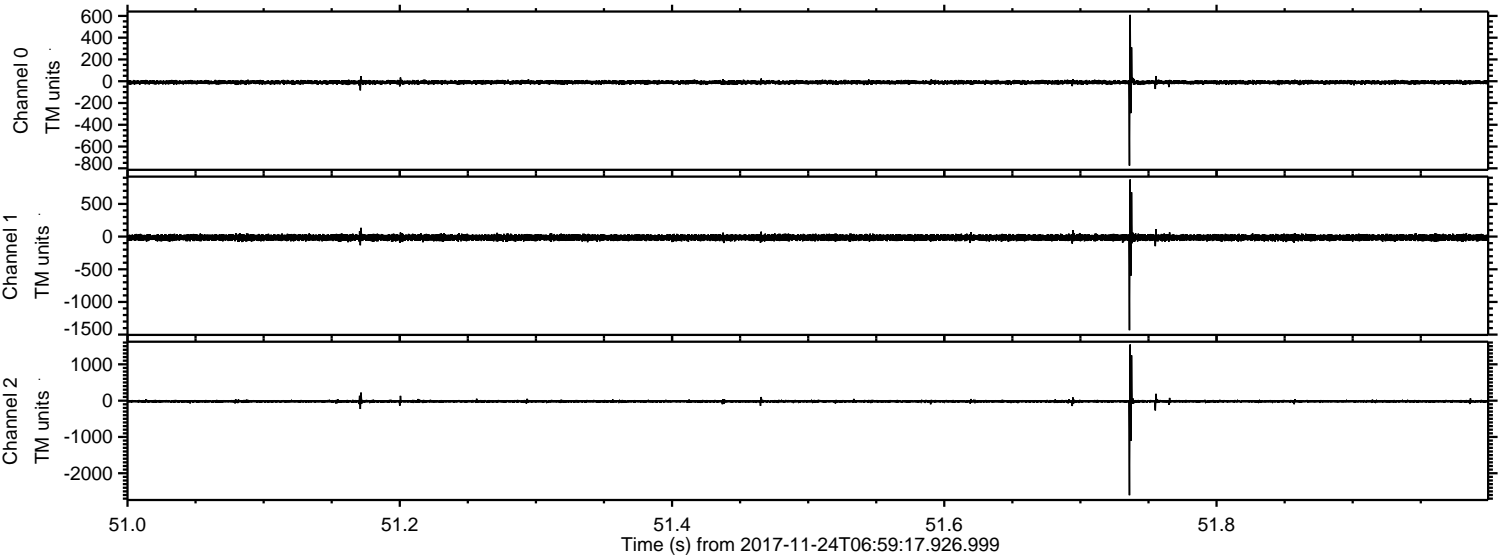


Channel 0
mn: -914
mx: 711
 μ : -9.7
 σ : 11.7

Channel 1
mn: -274
mx: 269
 μ : -15.4
 σ : 22.0

Channel 2
mn: -2995
mx: 3357
 μ : -19.8
 σ : 33.0

Processed Fri Nov 24 08:07:50 2017 by ELM ver.2012-10-06 from 001__elm20171124_065916__dat00.bin



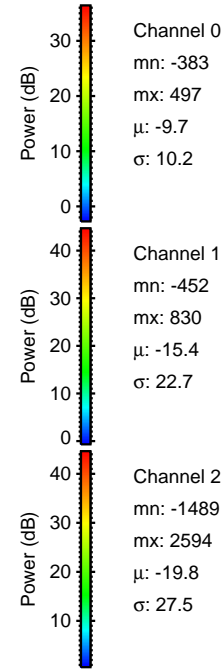
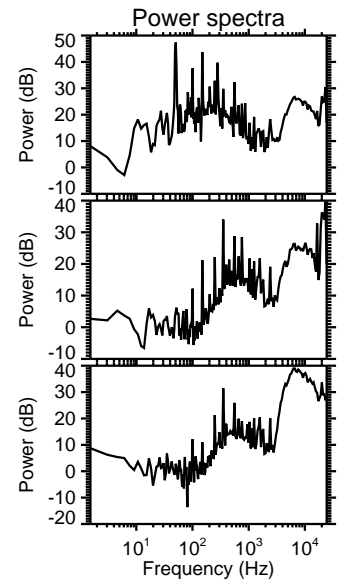
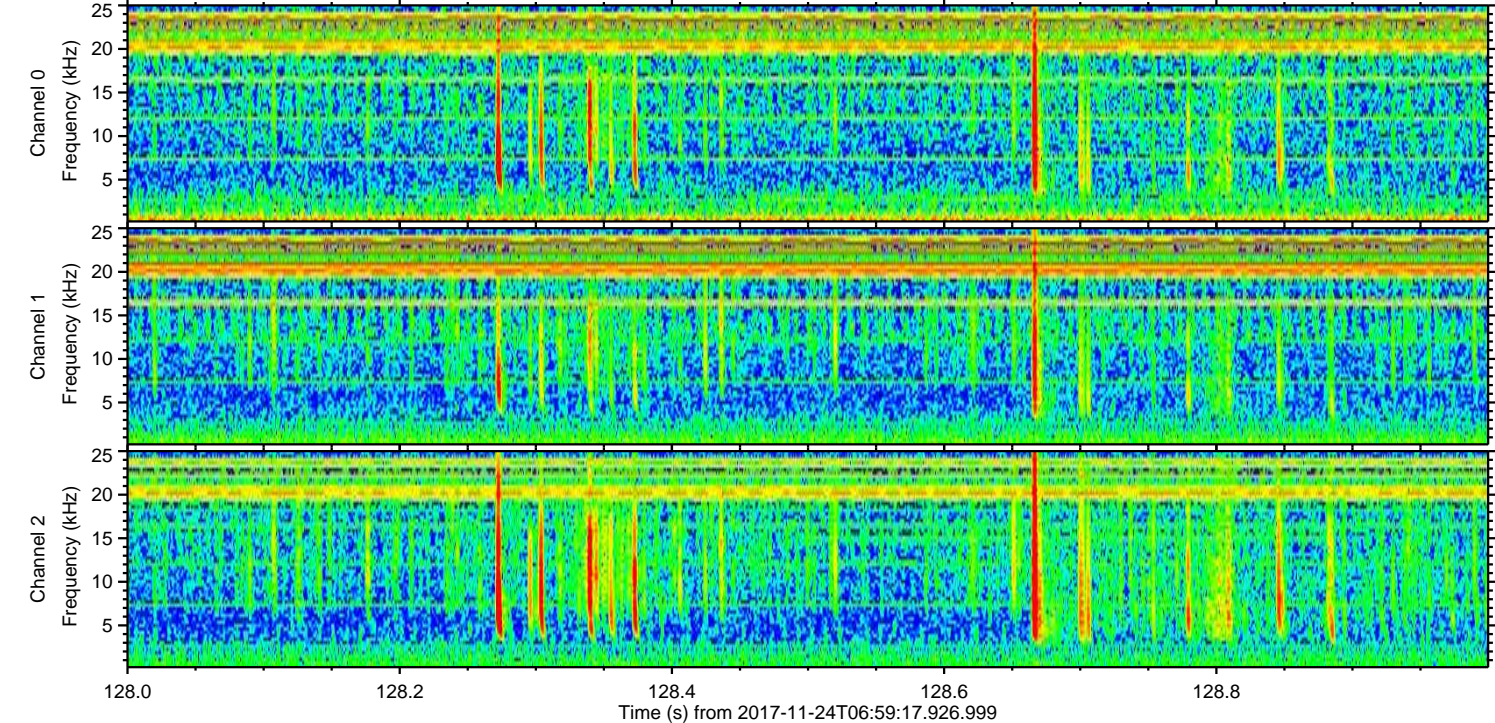
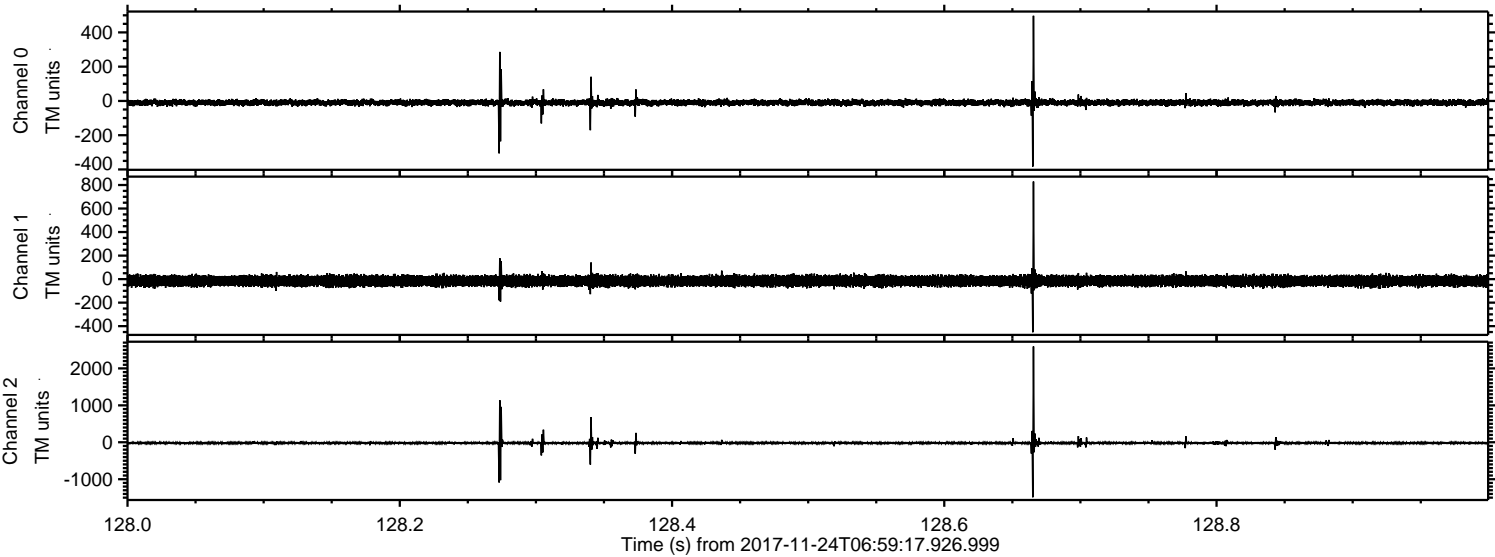
Channel 0
mn: -775
mx: 610
 μ : -9.7
 σ : 10.3

Channel 1
mn: -1433
mx: 874
 μ : -15.4
 σ : 25.7

Channel 2
mn: -2607
mx: 1546
 μ : -19.8
 σ : 27.4

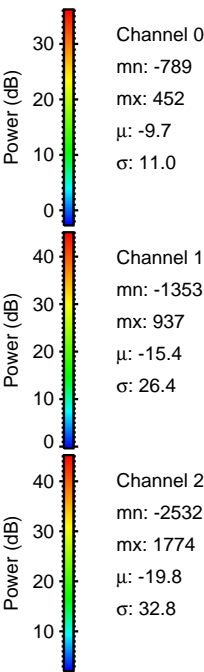
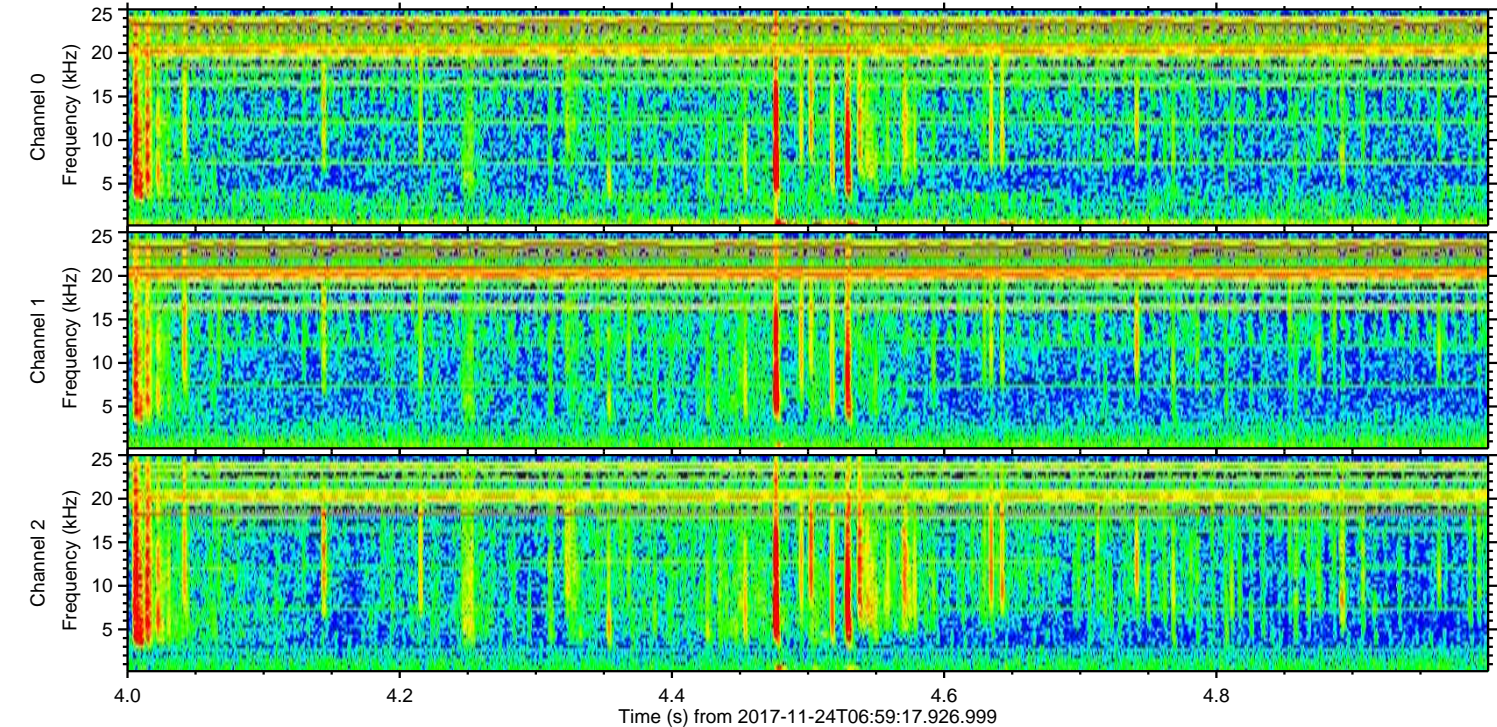
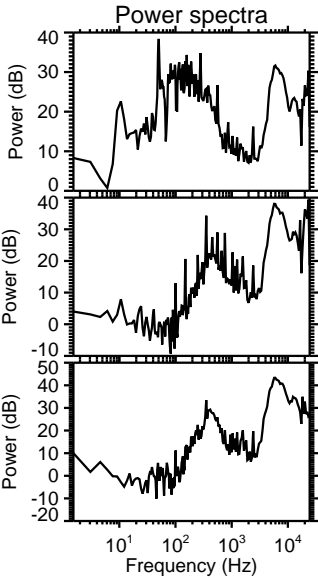
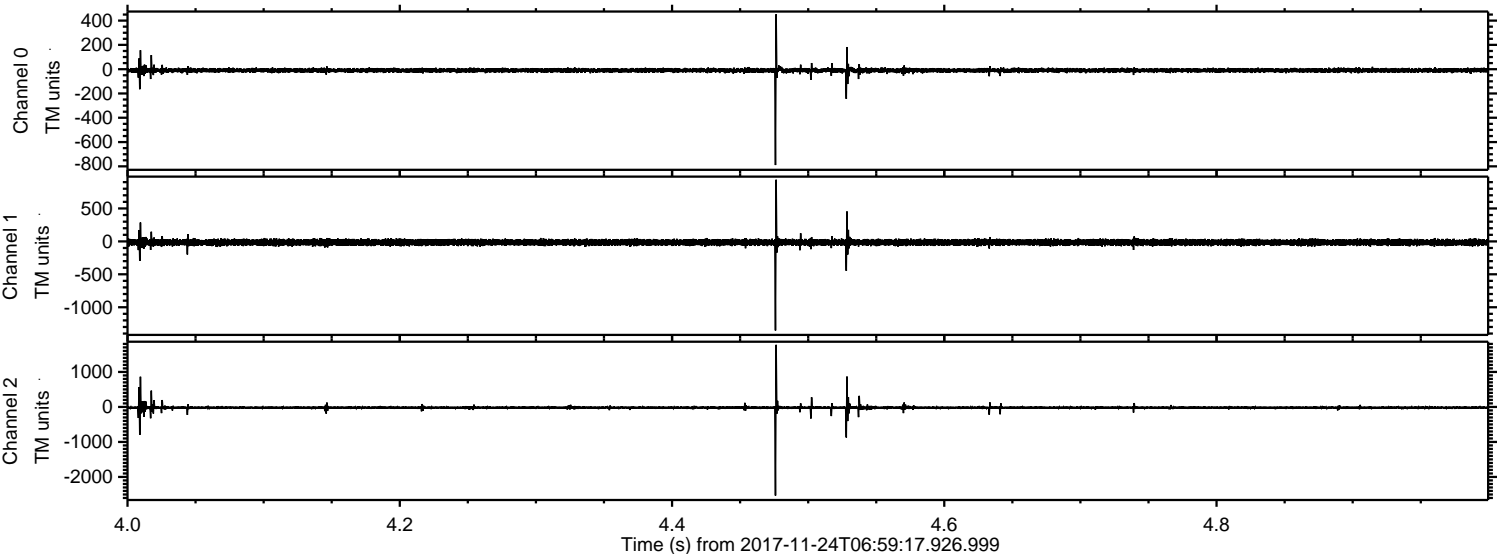
ELMAVAN 3D WAVEFORMS (Measured data sampled at 50 kHz) 51000 packets of 144 samples from 2017-11-24T06:59:17.926.999. Part 129/147

Processed Fri Nov 24 08:07:51 2017 by ELM ver.2012-10-06 from 001__elm20171124_065916__dat00.bin



ELMAVAN 3D WAVEFORMS (Measured data sampled at 50 kHz) 51000 packets of 144 samples from 2017-11-24T06:59:17.926.999. Part 5/147

Processed Fri Nov 24 08:07:52 2017 by ELM ver.2012-10-06 from 001__elm20171124_065916__dat00.bin



Channel 0
mn: -789
mx: 452
 μ : -9.7
 σ : 11.0

Channel 1
mn: -1353
mx: 937
 μ : -15.4
 σ : 26.4

Channel 2
mn: -2532
mx: 1774
 μ : -19.8
 σ : 32.8

Processed Fri Nov 24 08:07:52 2017 by ELM ver.2012-10-06 from 001__elm20171124_065916__dat00.bin

