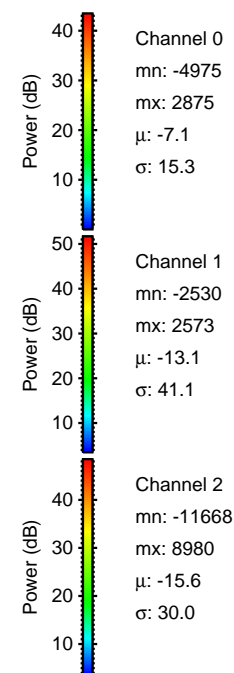
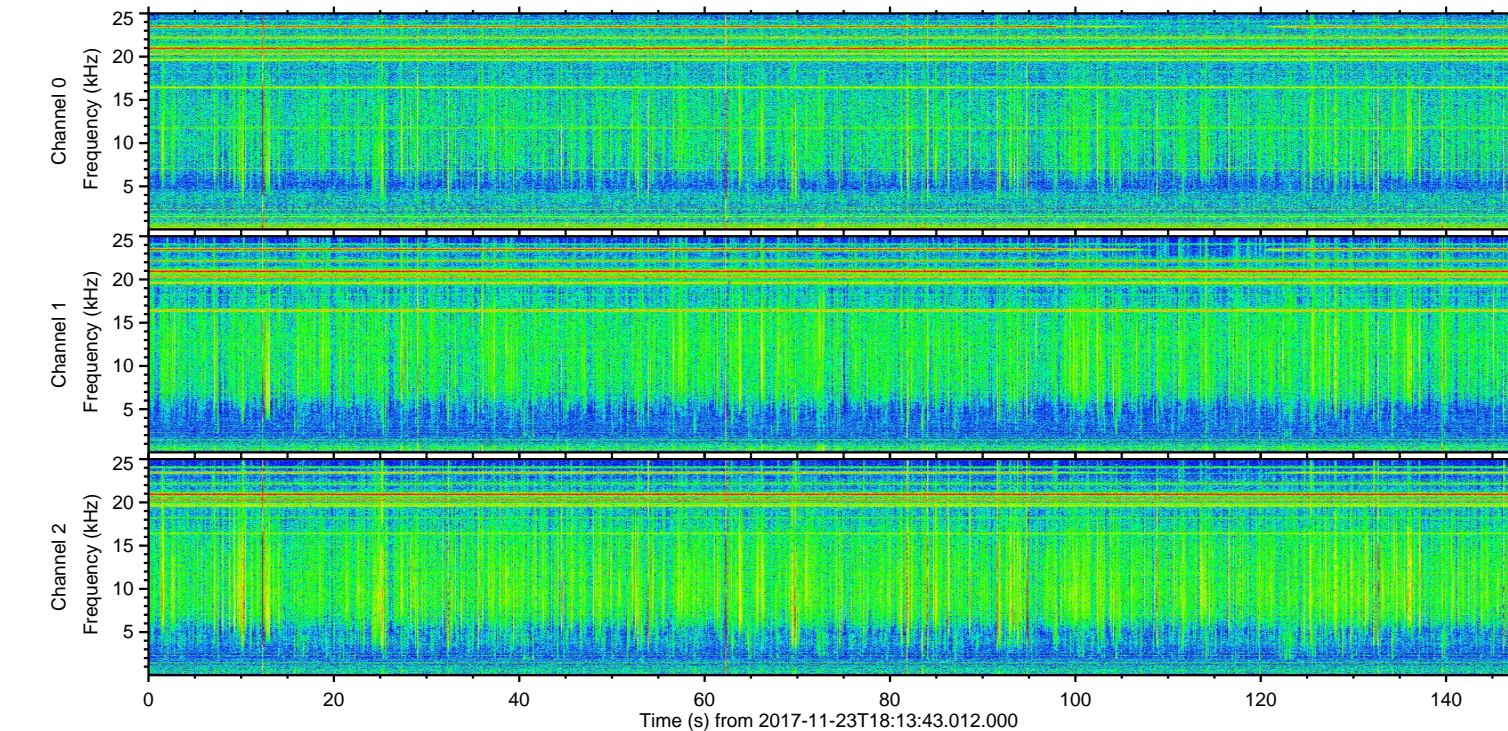
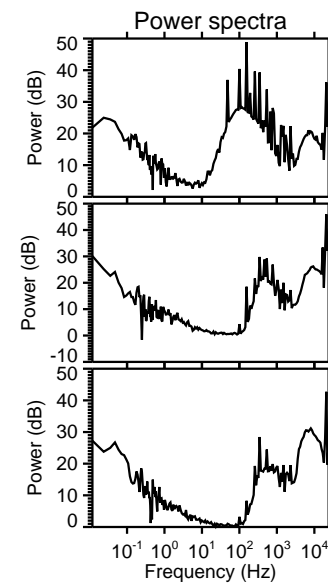
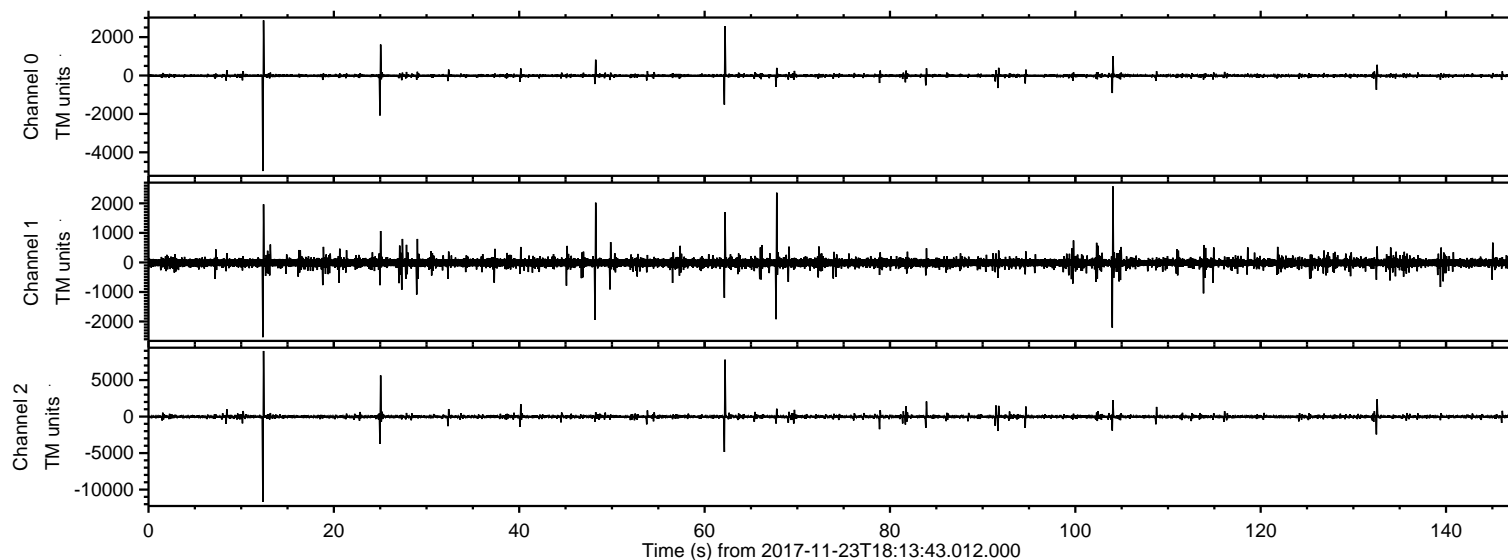
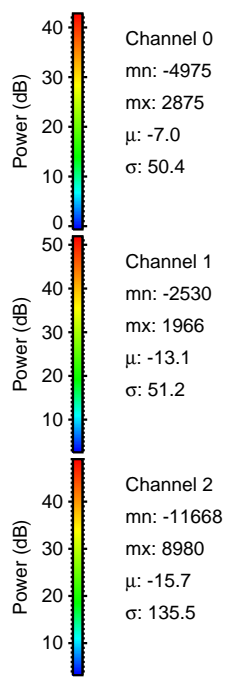
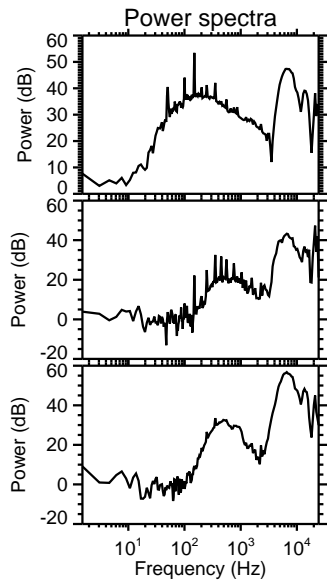
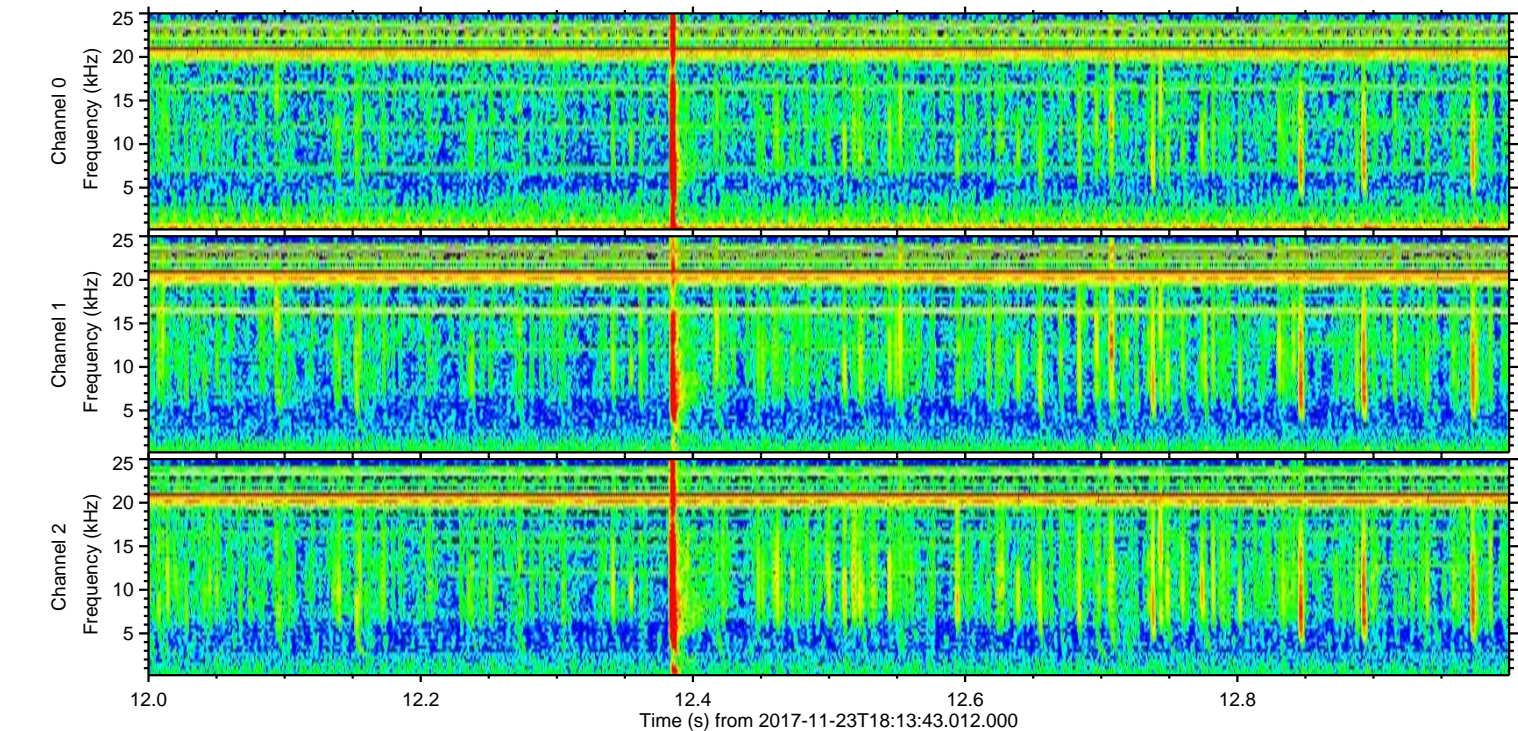
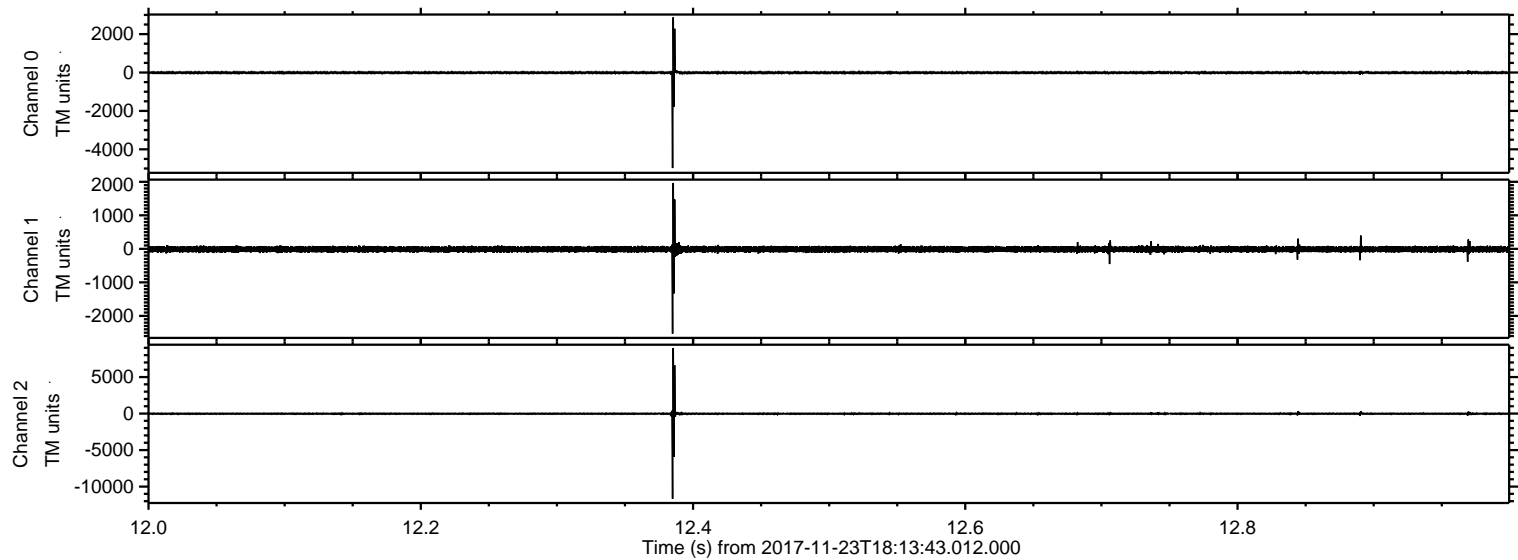


ELMAVAN 3D WAVEFORMS (Measured data sampled at 50 kHz) 51000 packets of 144 samples from 2017-11-23T18:13:43.012.000.

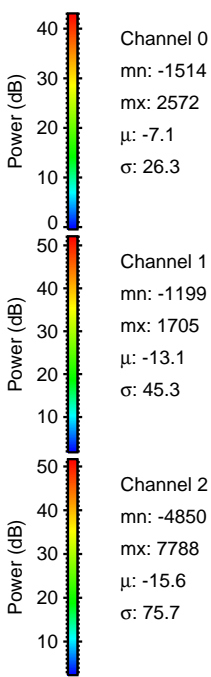
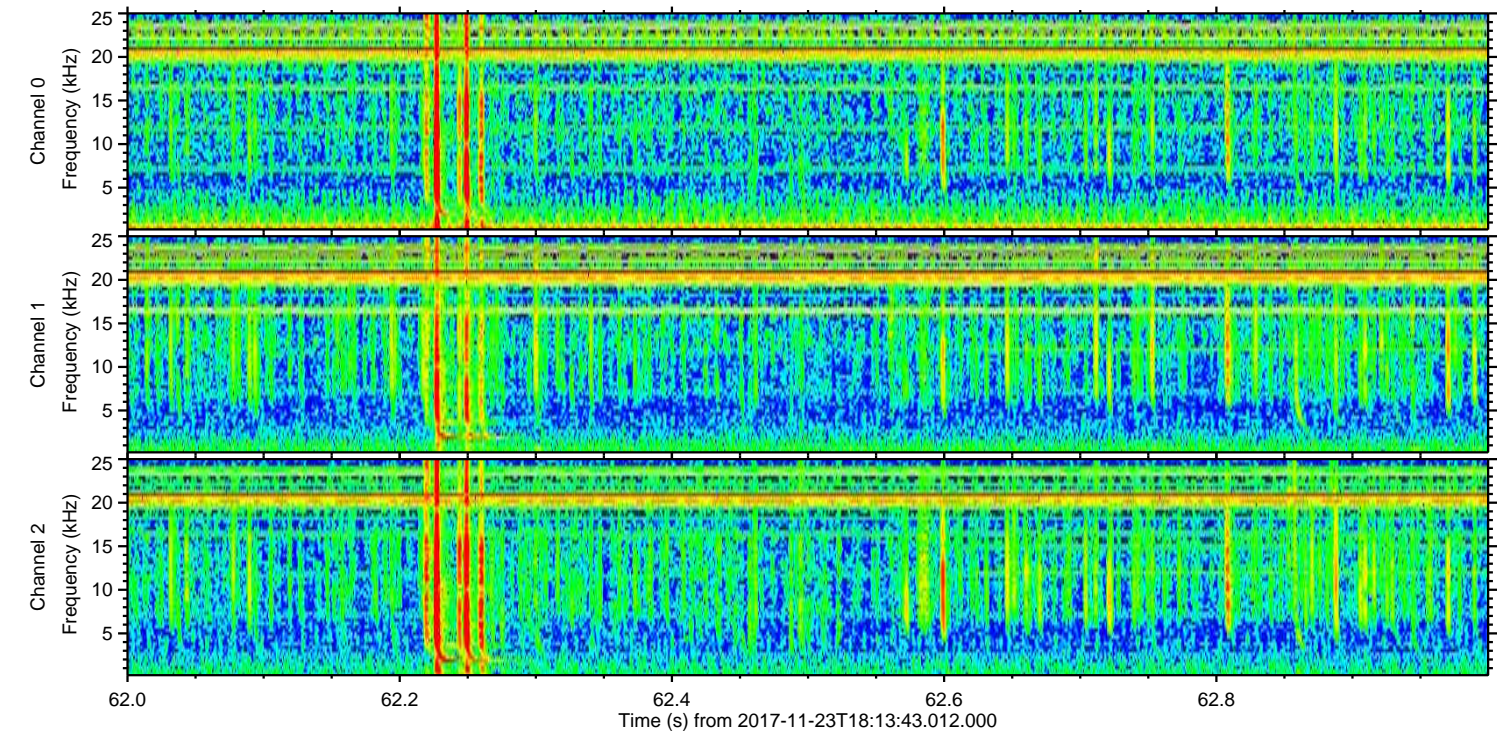
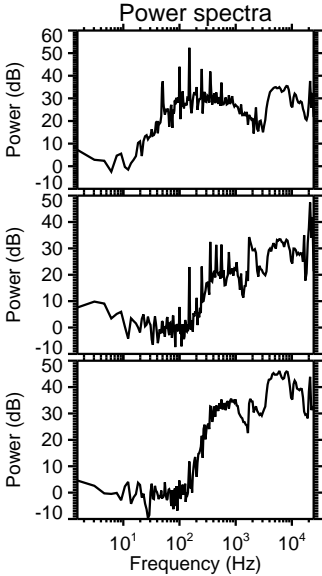
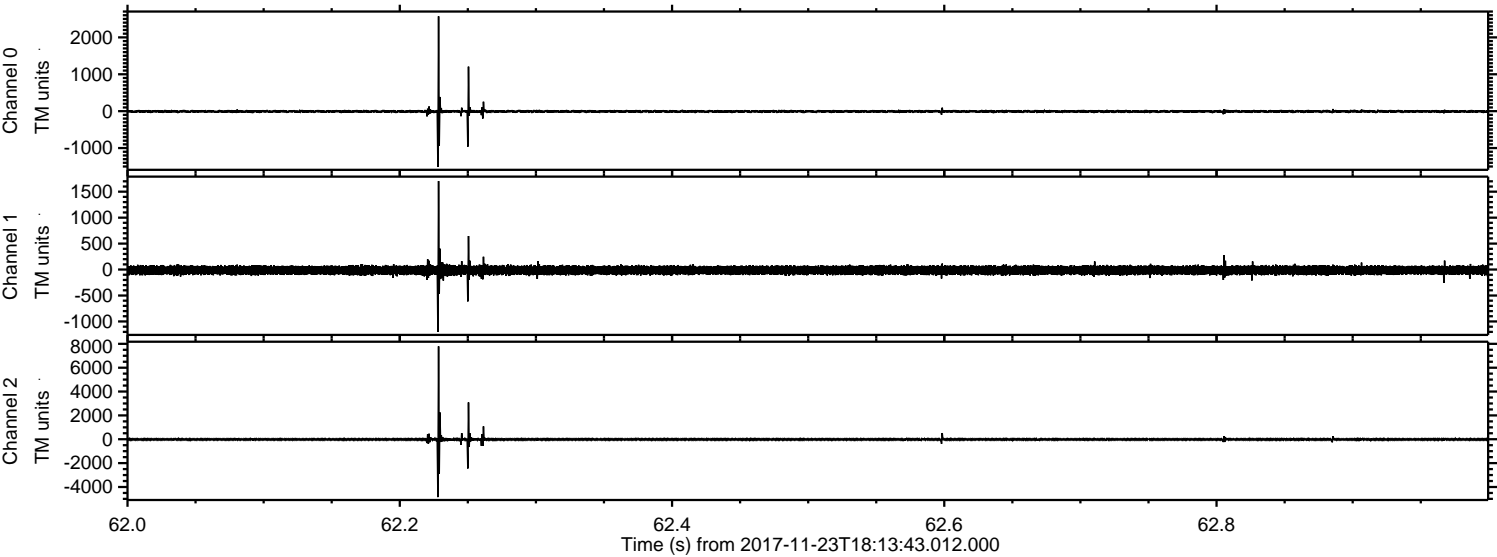
Processed Thu Nov 23 19:21:58 2017 by ELM ver.2012-10-06 from 001__elm20171123_181342__dat00.bin



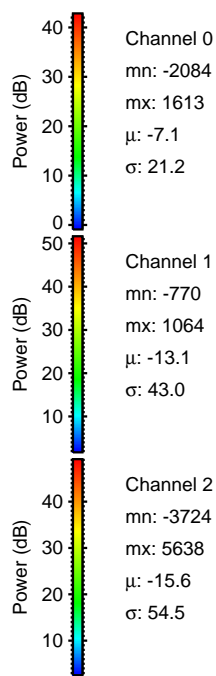
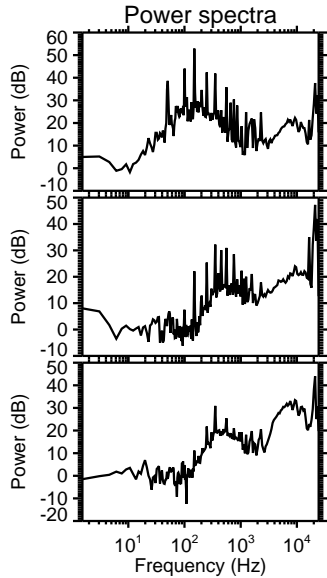
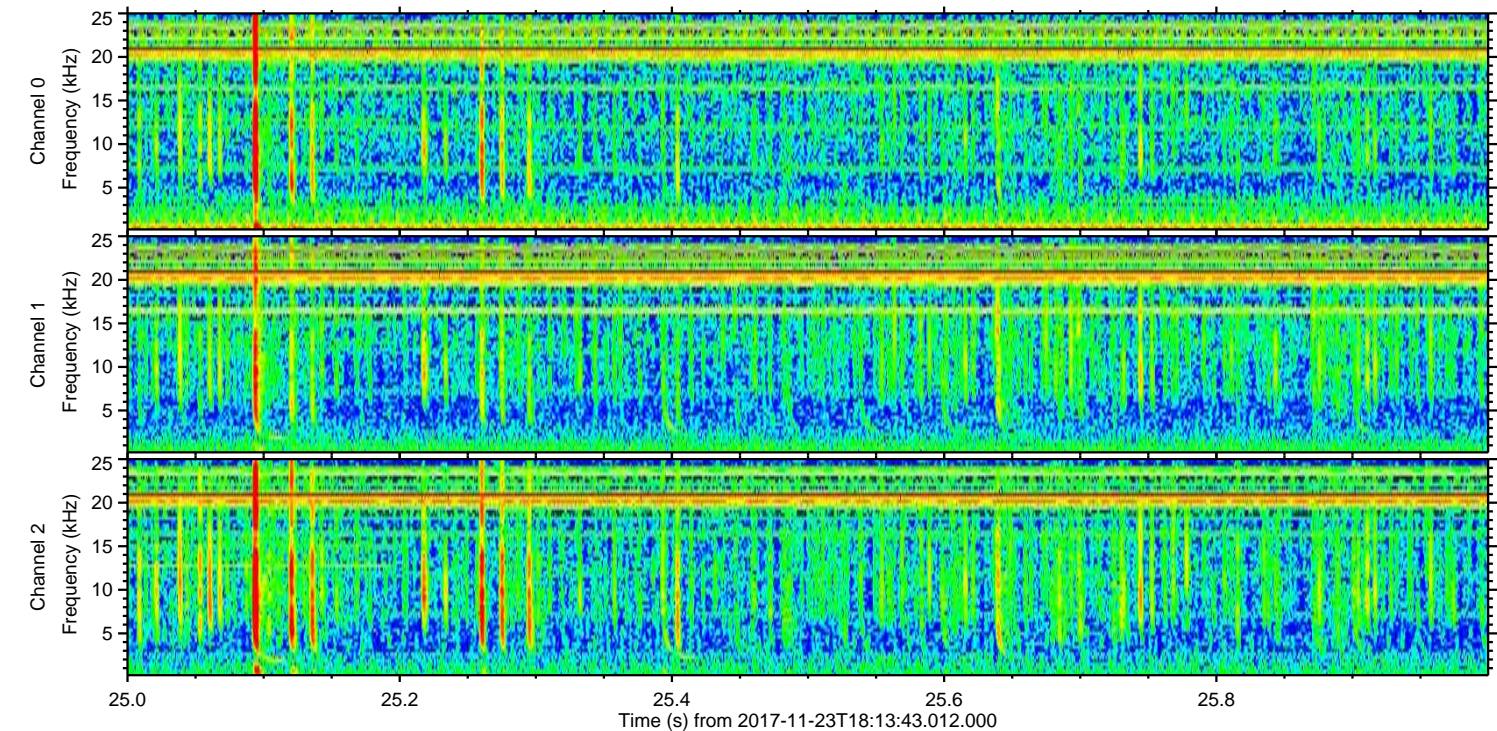
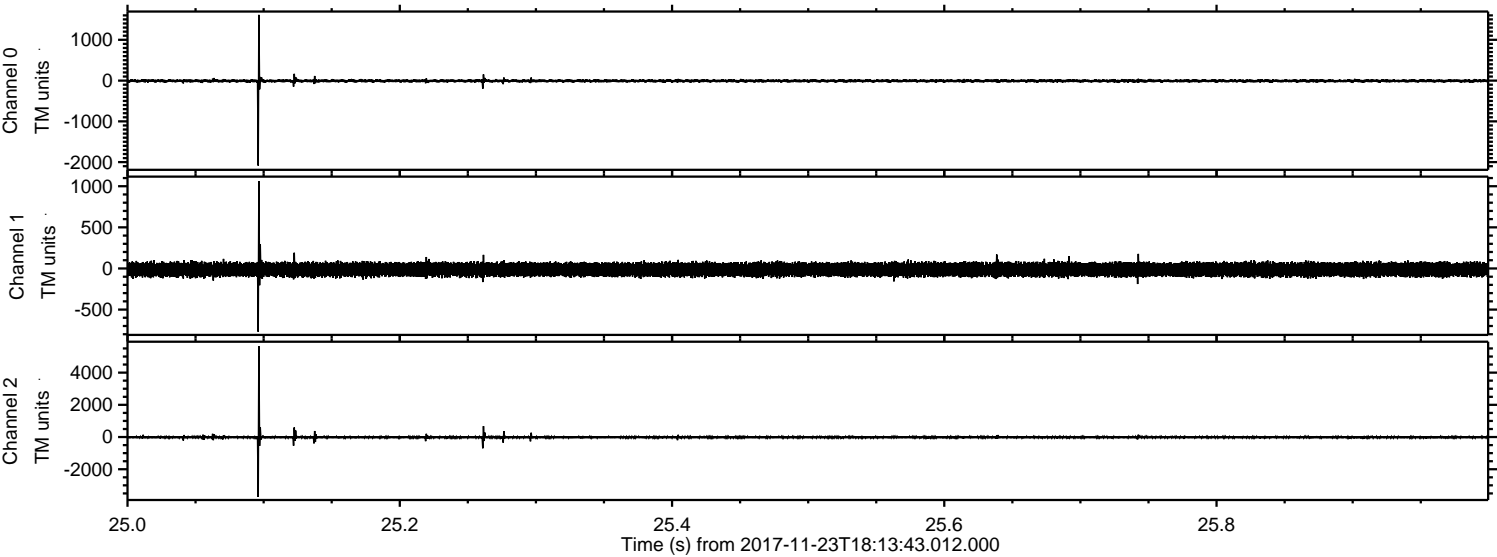
Processed Thu Nov 23 19:22:04 2017 by ELM ver.2012-10-06 from 001__elm20171123_181342__dat00.bin



Processed Thu Nov 23 19:22:05 2017 by ELM ver.2012-10-06 from 001__elm20171123_181342__dat00.bin

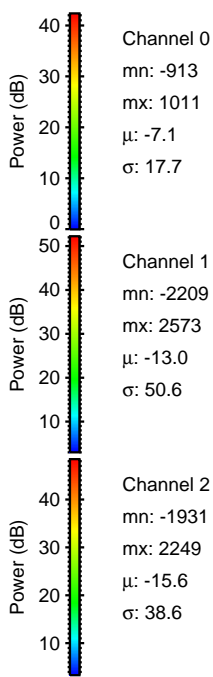
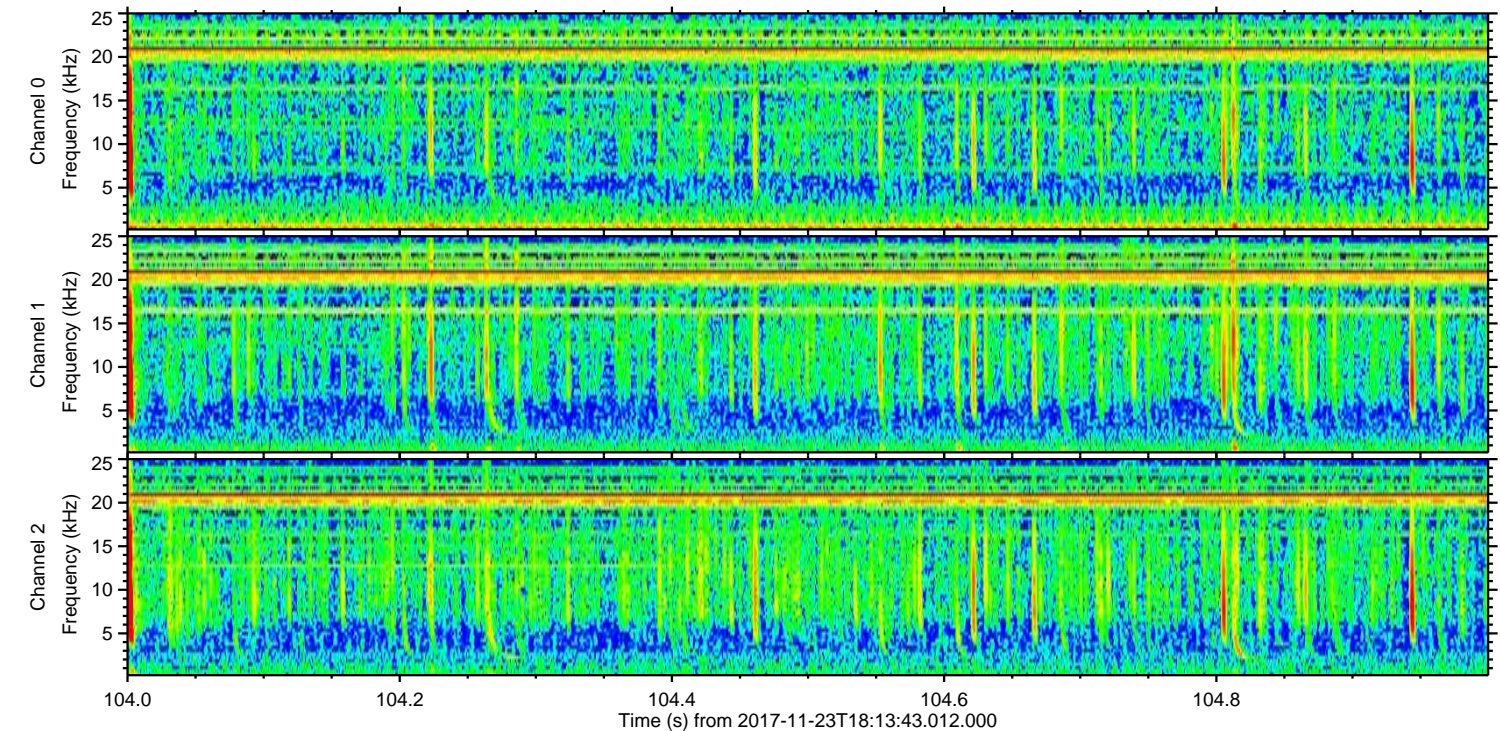
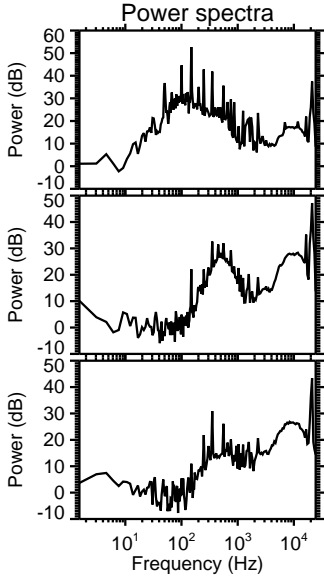
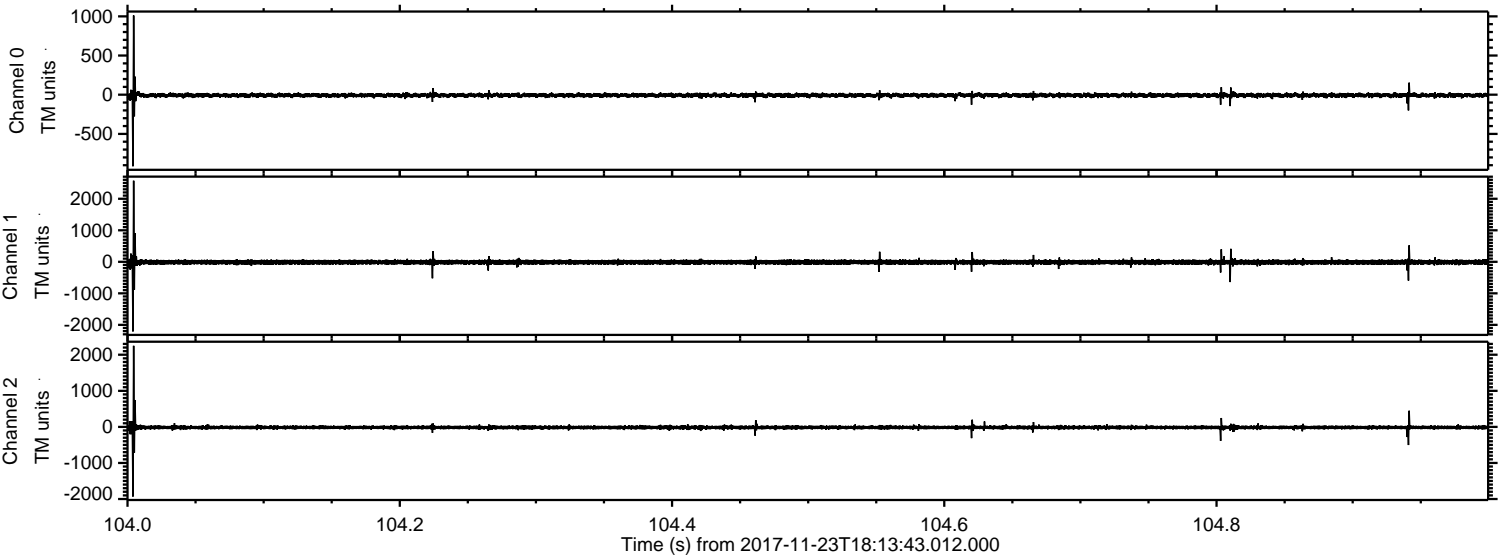


Processed Thu Nov 23 19:22:05 2017 by ELM ver.2012-10-06 from 001__elm20171123_181342__dat00.bin



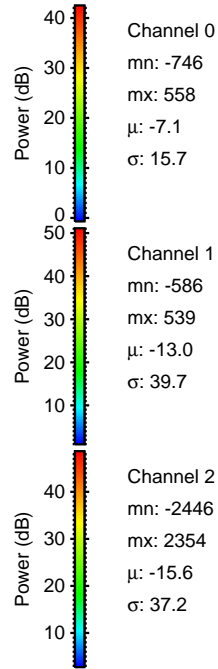
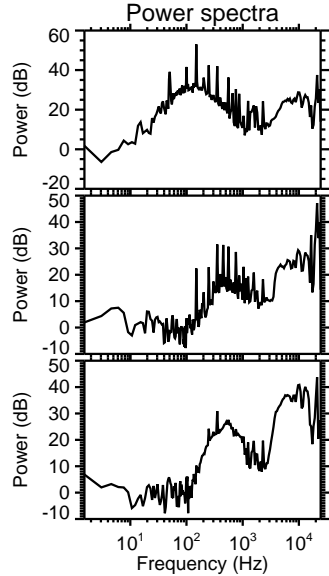
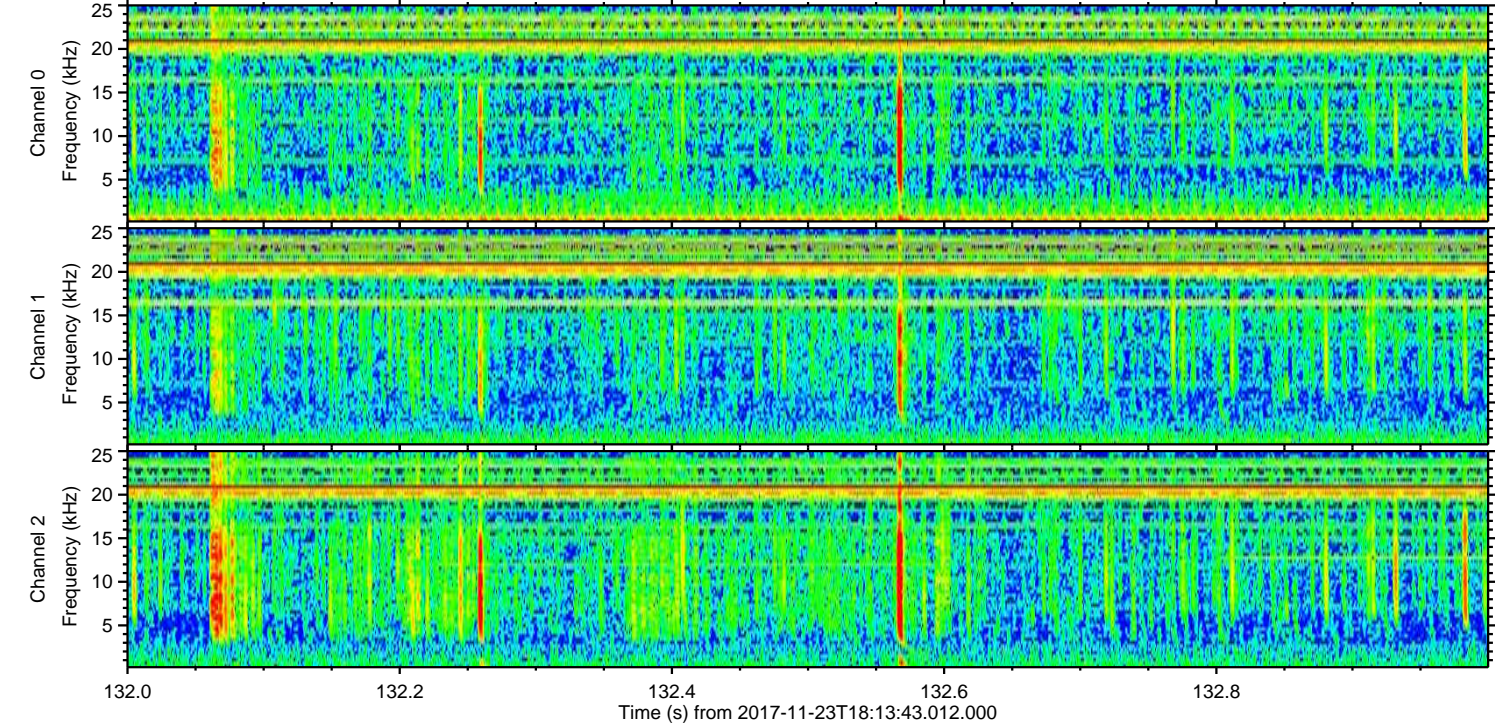
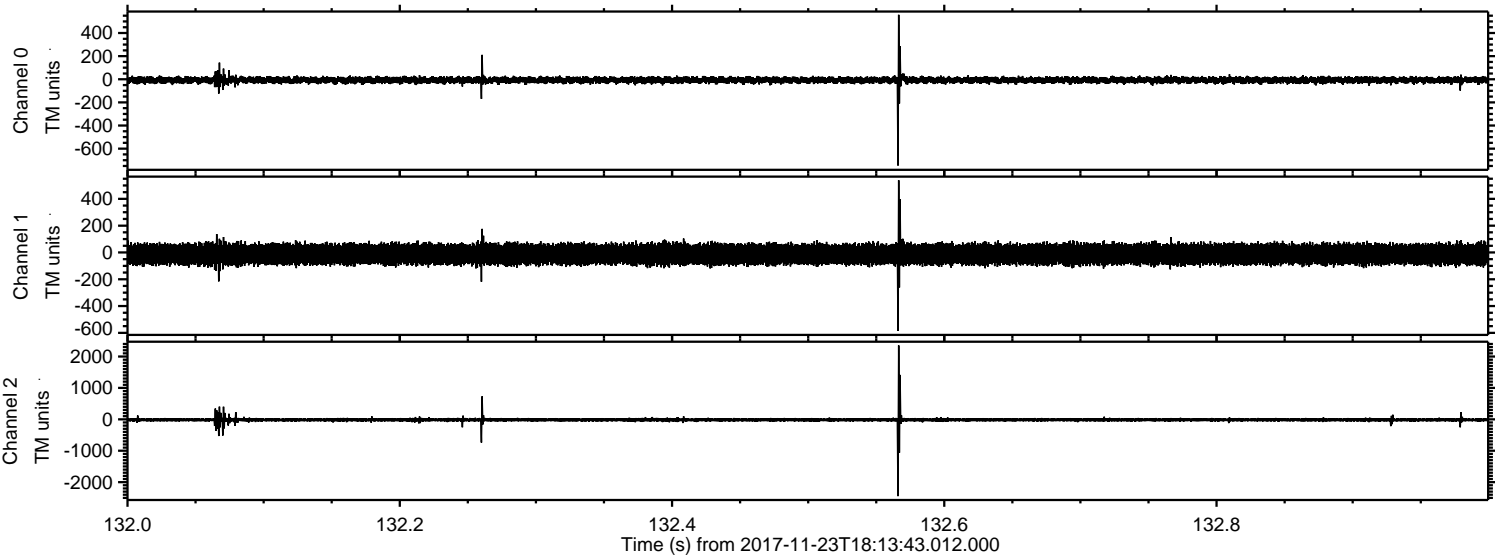
ELMAVAN 3D WAVEFORMS (Measured data sampled at 50 kHz) 51000 packets of 144 samples from 2017-11-23T18:13:43.012.000. Part 105/147

Processed Thu Nov 23 19:22:06 2017 by ELM ver.2012-10-06 from 001__elm20171123_181342__dat00.bin

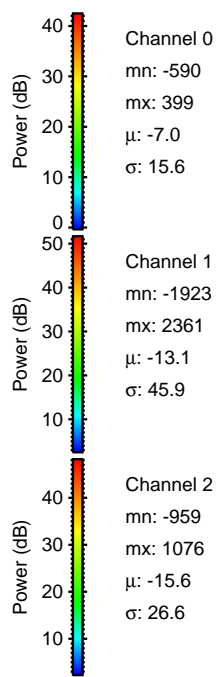
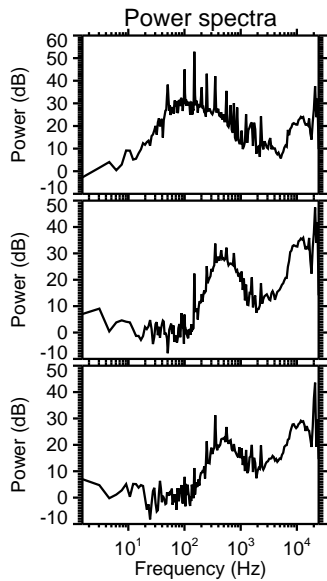
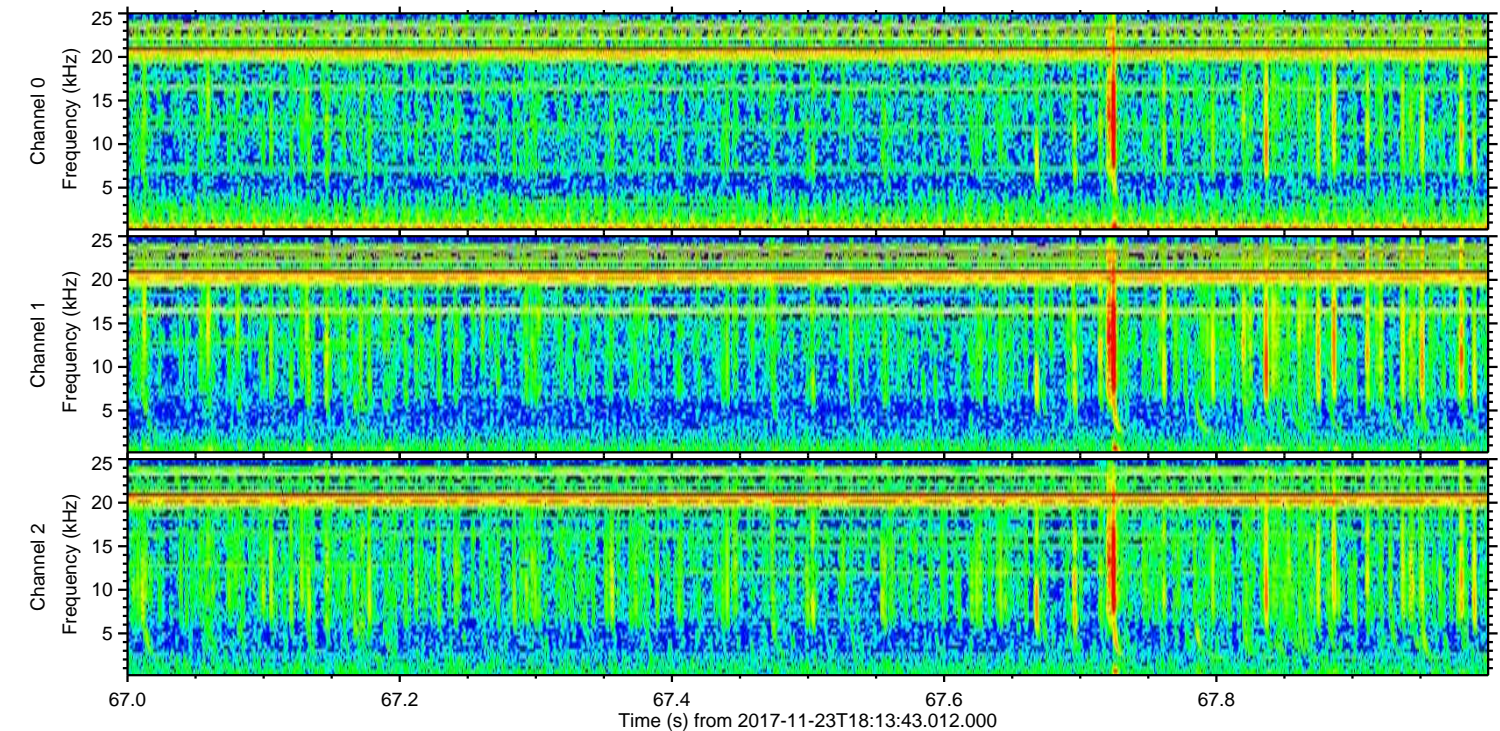
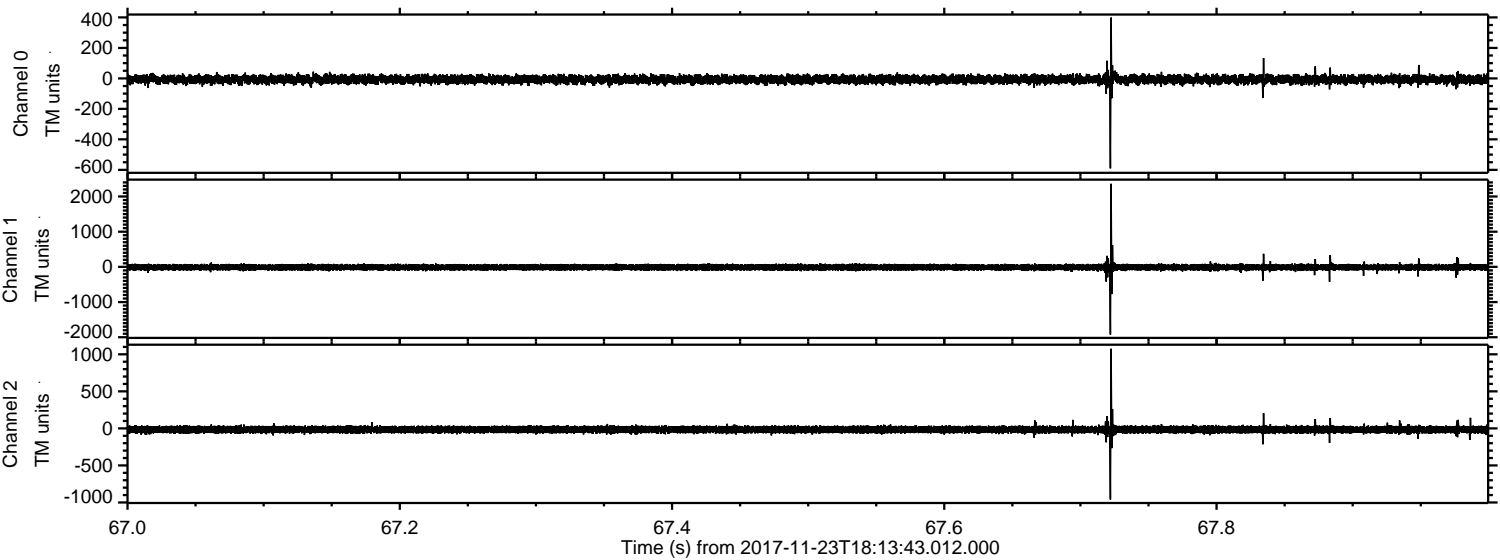


ELMAVAN 3D WAVEFORMS (Measured data sampled at 50 kHz) 51000 packets of 144 samples from 2017-11-23T18:13:43.012.000. Part 133/147

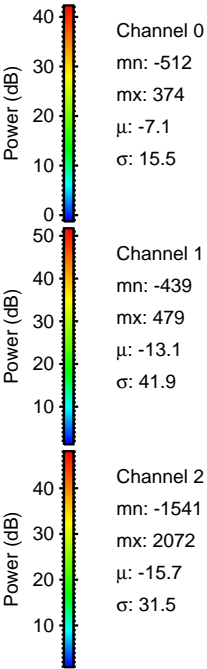
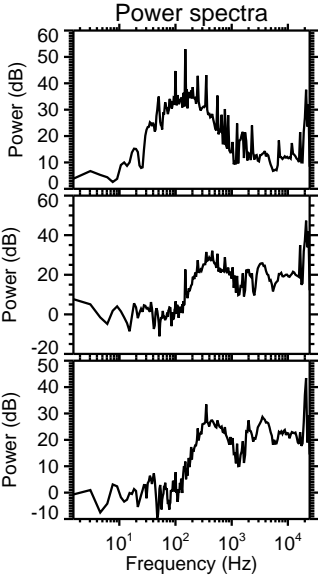
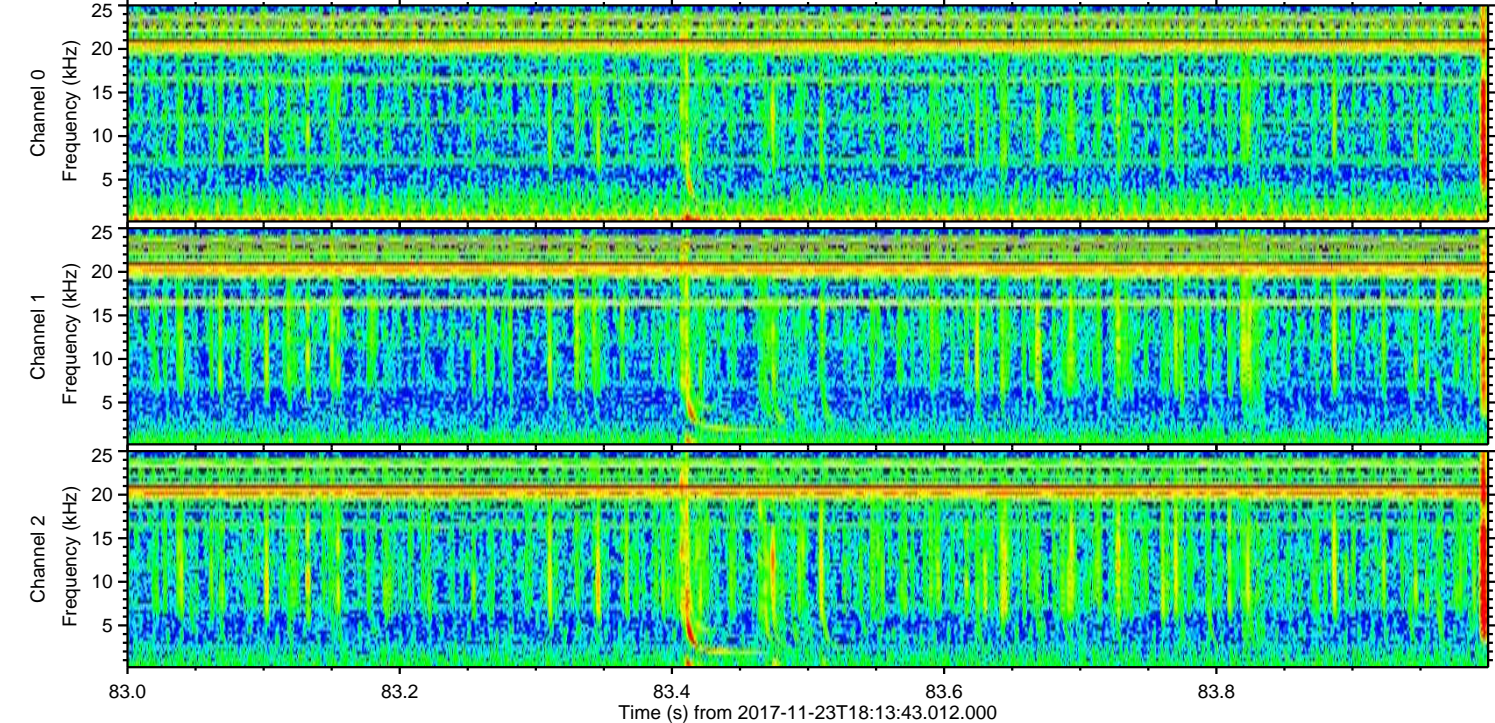
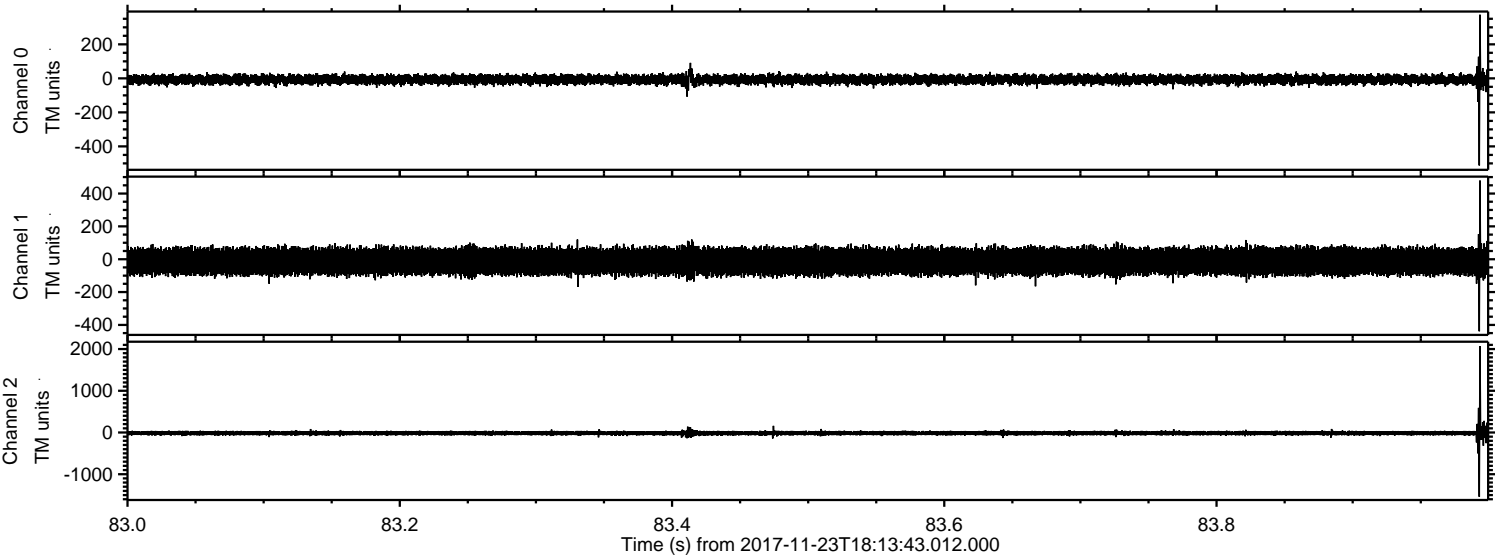
Processed Thu Nov 23 19:22:07 2017 by ELM ver.2012-10-06 from 001__elm20171123_181342__dat00.bin



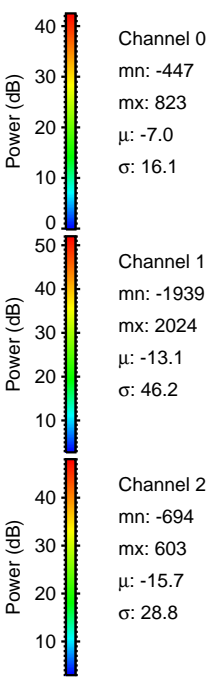
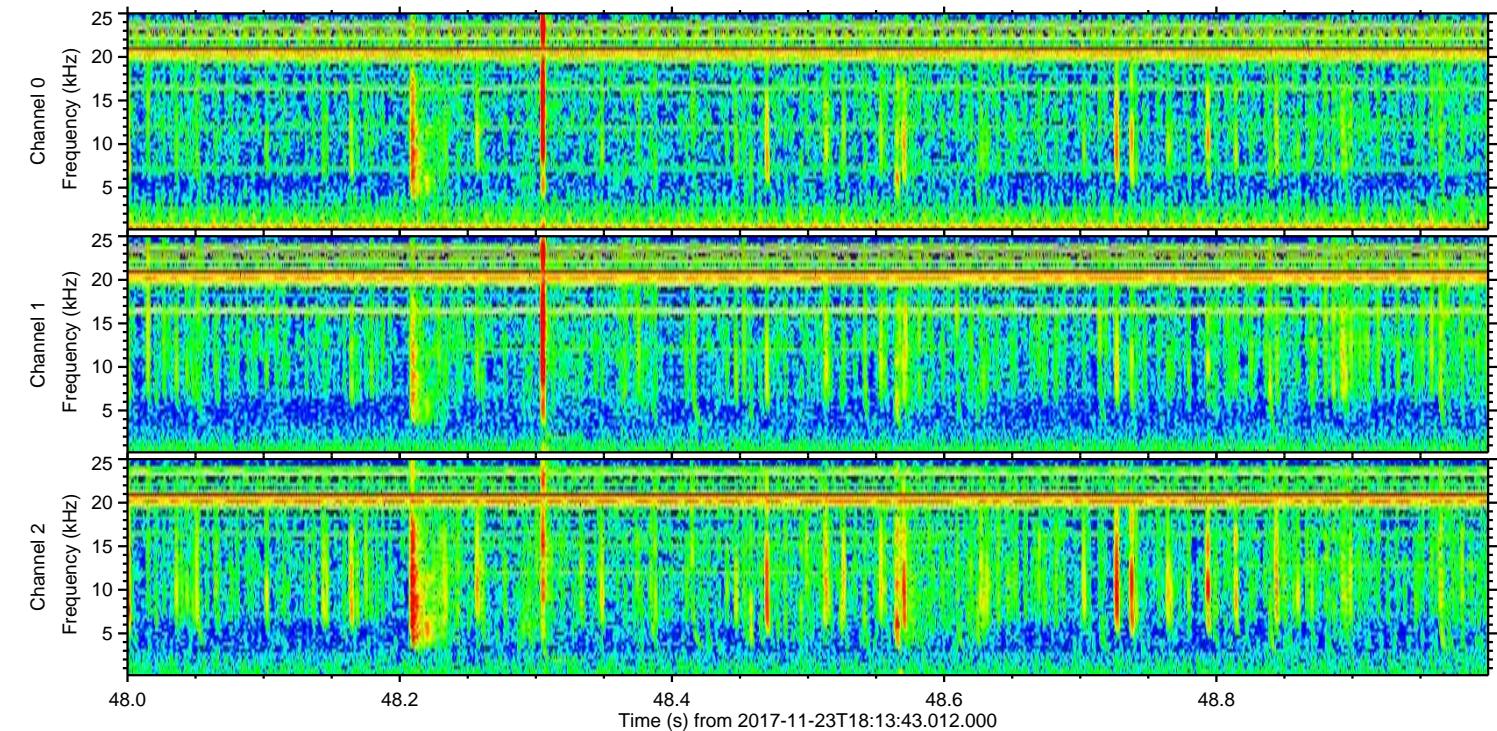
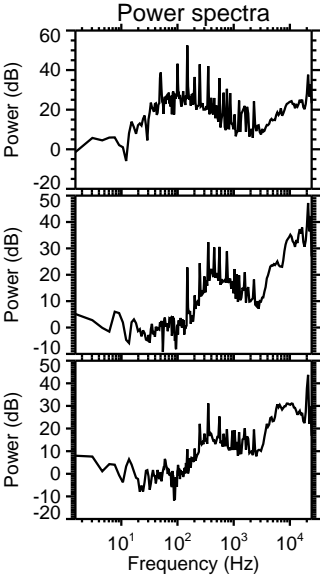
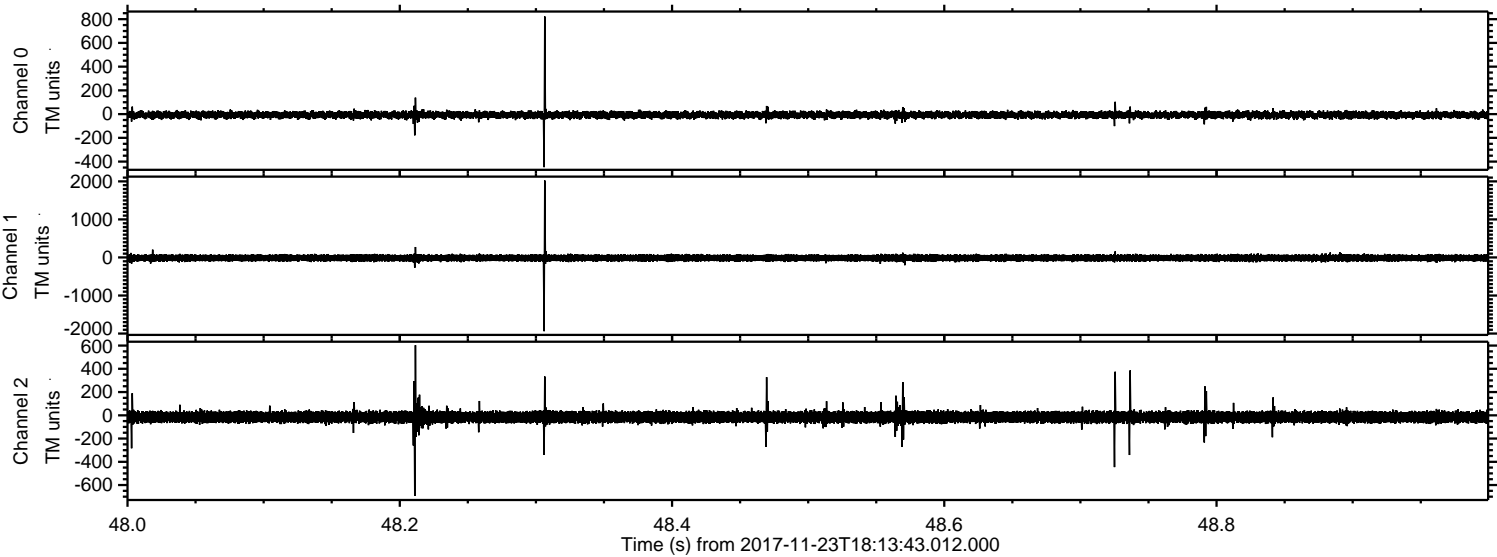
Processed Thu Nov 23 19:22:07 2017 by ELM ver.2012-10-06 from 001__elm20171123_181342__dat00.bin



Processed Thu Nov 23 19:22:08 2017 by ELM ver.2012-10-06 from 001__elm20171123_181342__dat00.bin



Processed Thu Nov 23 19:22:09 2017 by ELM ver.2012-10-06 from 001__elm20171123_181342__dat00.bin

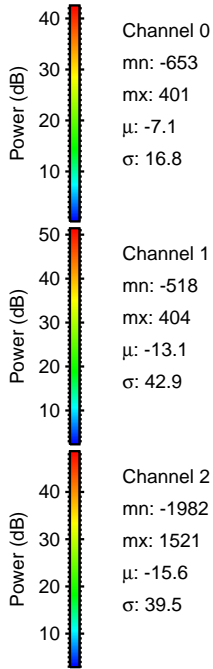
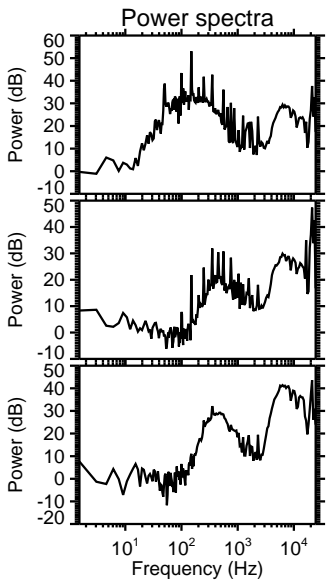
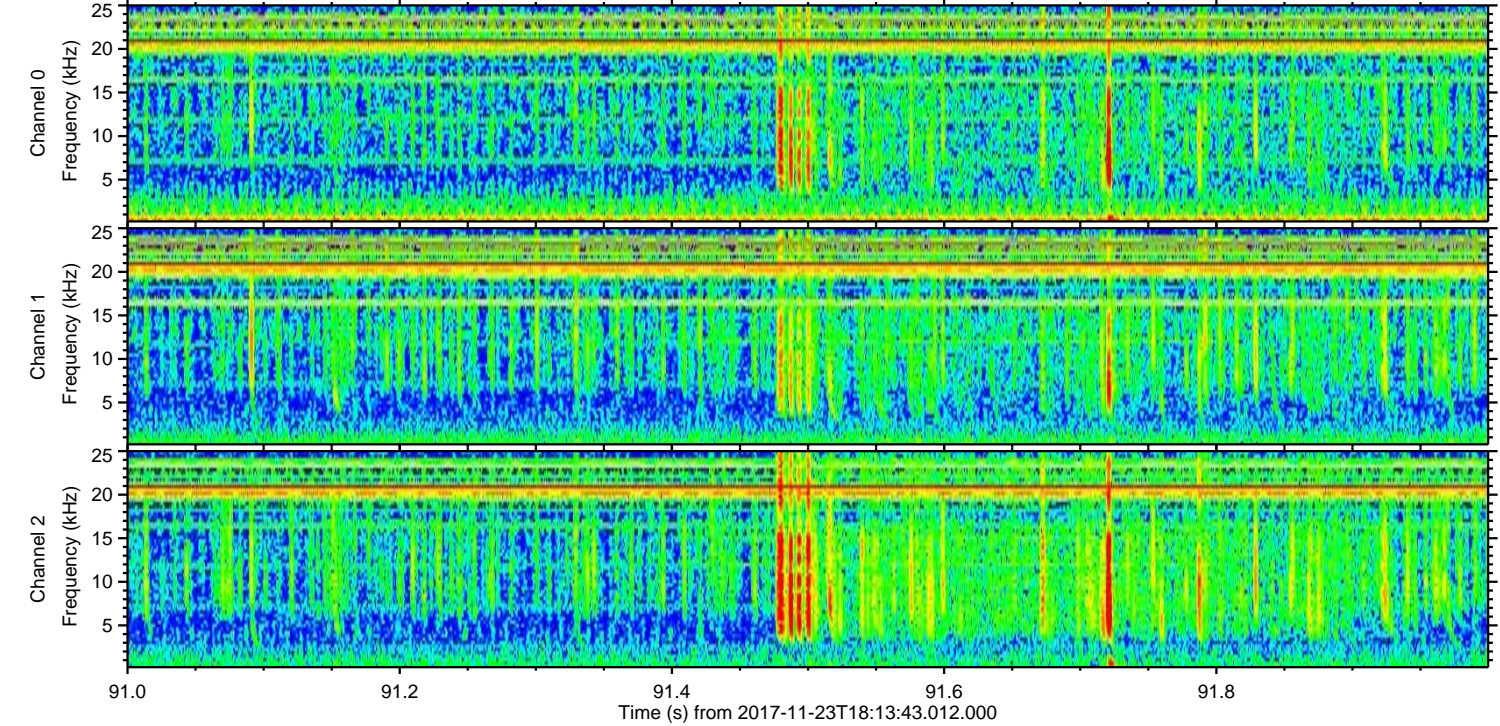
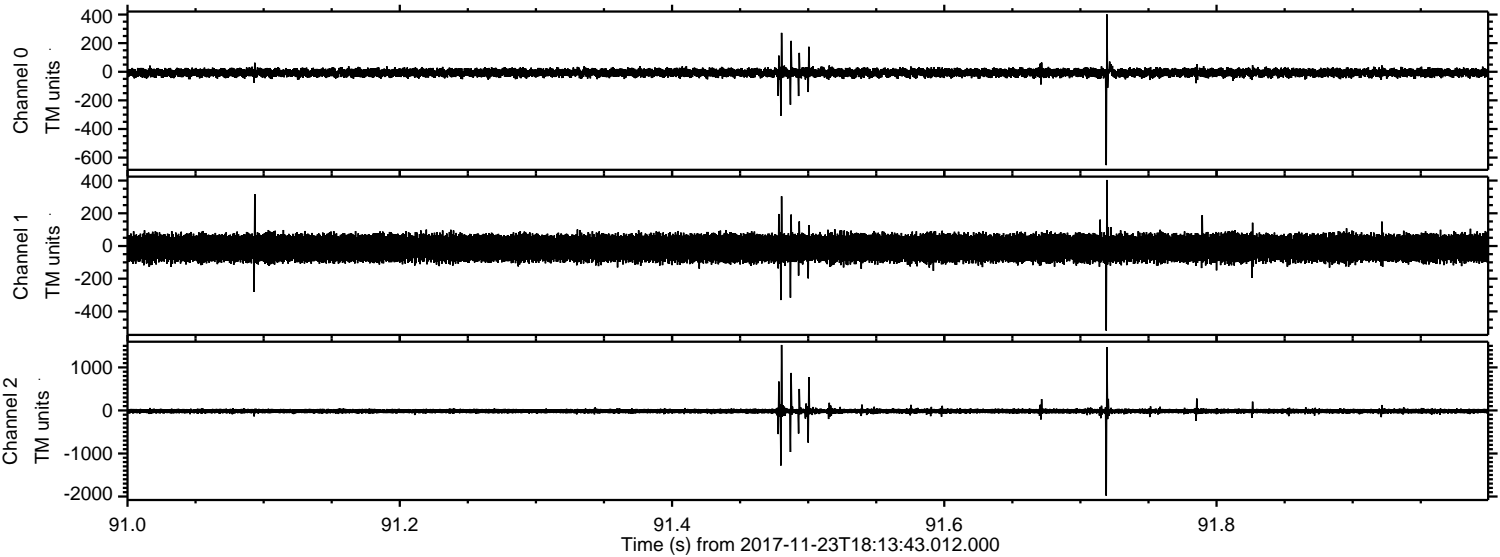


Channel 0
mn: -447
mx: 823
 μ : -7.0
 σ : 16.1

Channel 1
mn: -1939
mx: 2024
 μ : -13.1
 σ : 46.2

Channel 2
mn: -694
mx: 603
 μ : -15.7
 σ : 28.8

Processed Thu Nov 23 19:22:09 2017 by ELM ver.2012-10-06 from 001__elm20171123_181342__dat00.bin



Channel 0
mn: -653
mx: 401
 μ : -7.1
 σ : 16.8

Channel 1
mn: -518
mx: 404
 μ : -13.1
 σ : 42.9

Channel 2
mn: -1982
mx: 1521
 μ : -15.6
 σ : 39.5

Processed Thu Nov 23 19:22:10 2017 by ELM ver.2012-10-06 from 001__elm20171123_181342__dat00.bin

