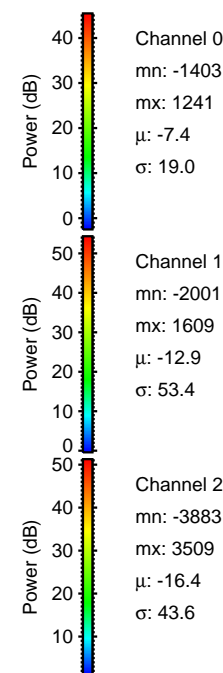
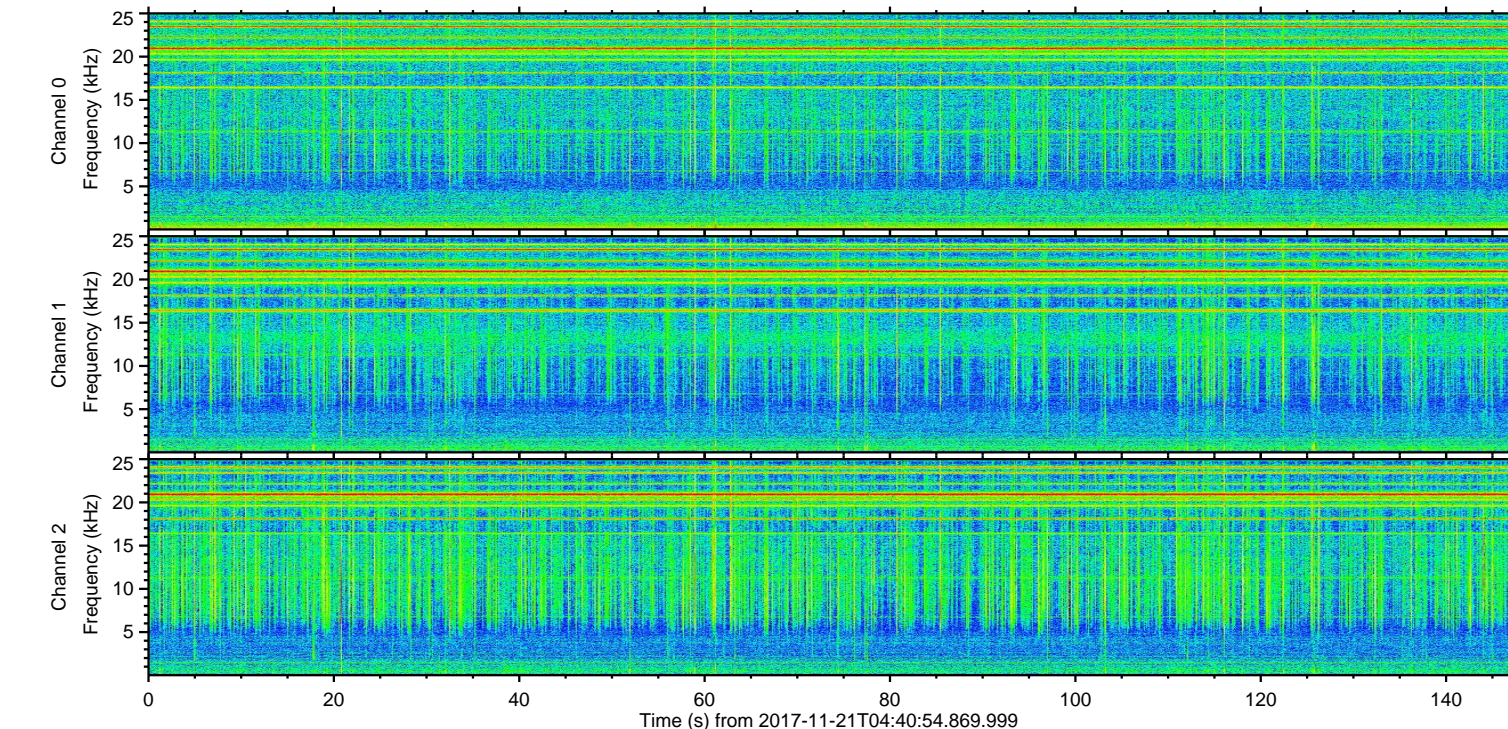
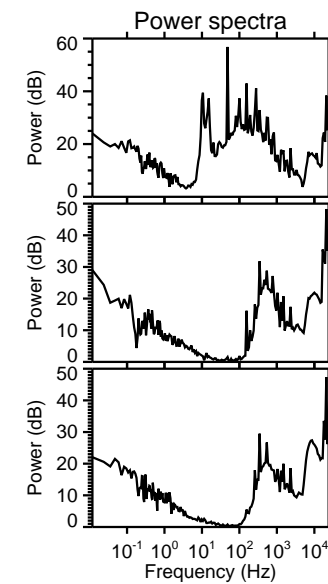
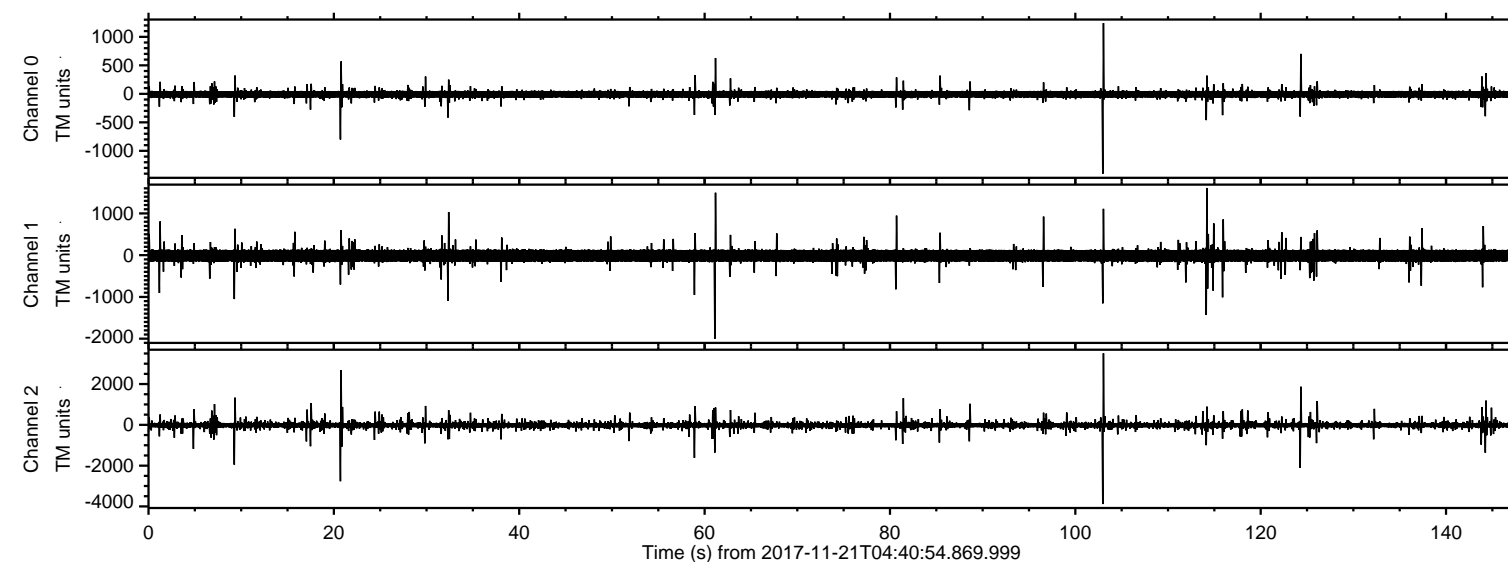


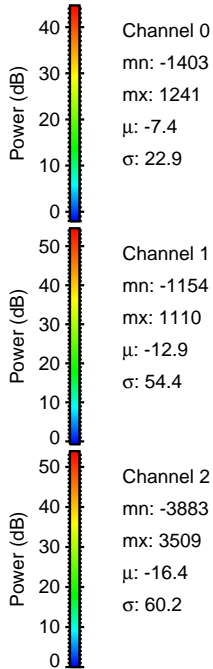
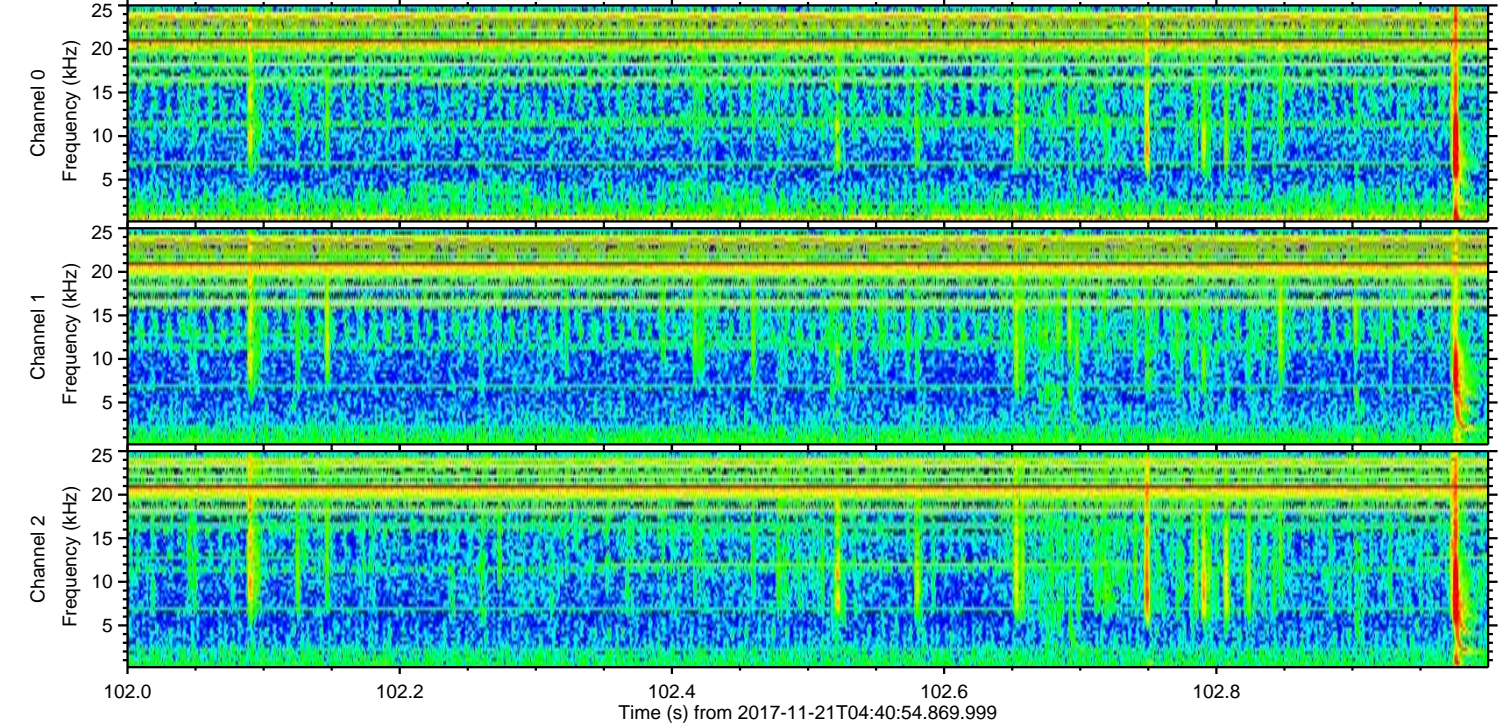
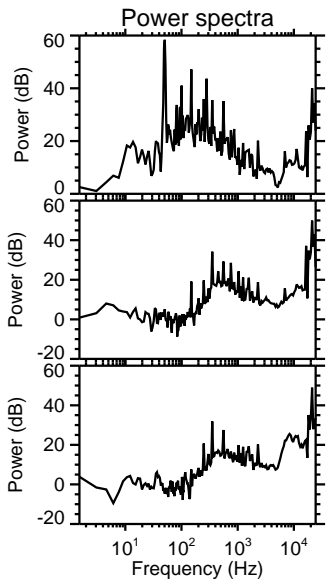
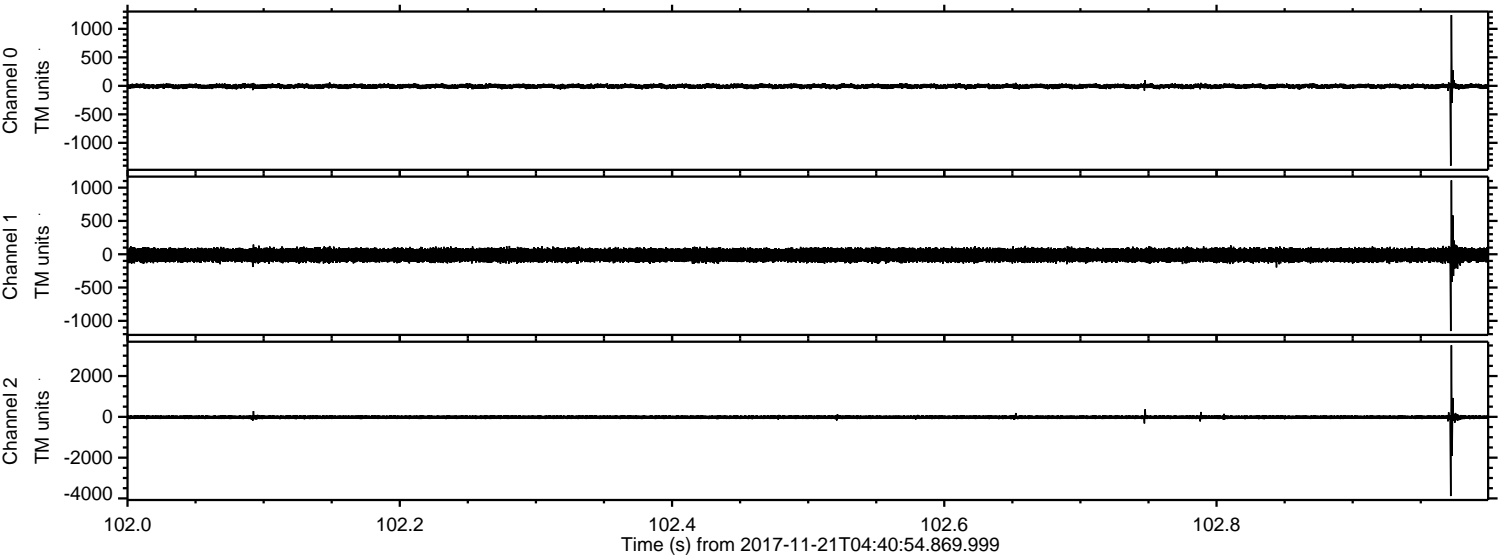
ELMAVAN 3D WAVEFORMS (Measured data sampled at 50 kHz) 51000 packets of 144 samples from 2017-11-21T04:40:54.869.999.

Processed Tue Nov 21 05:49:08 2017 by ELM ver.2012-10-06 from 001__elm20171121_044053__dat00.bin



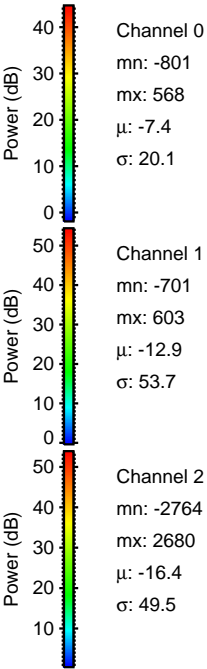
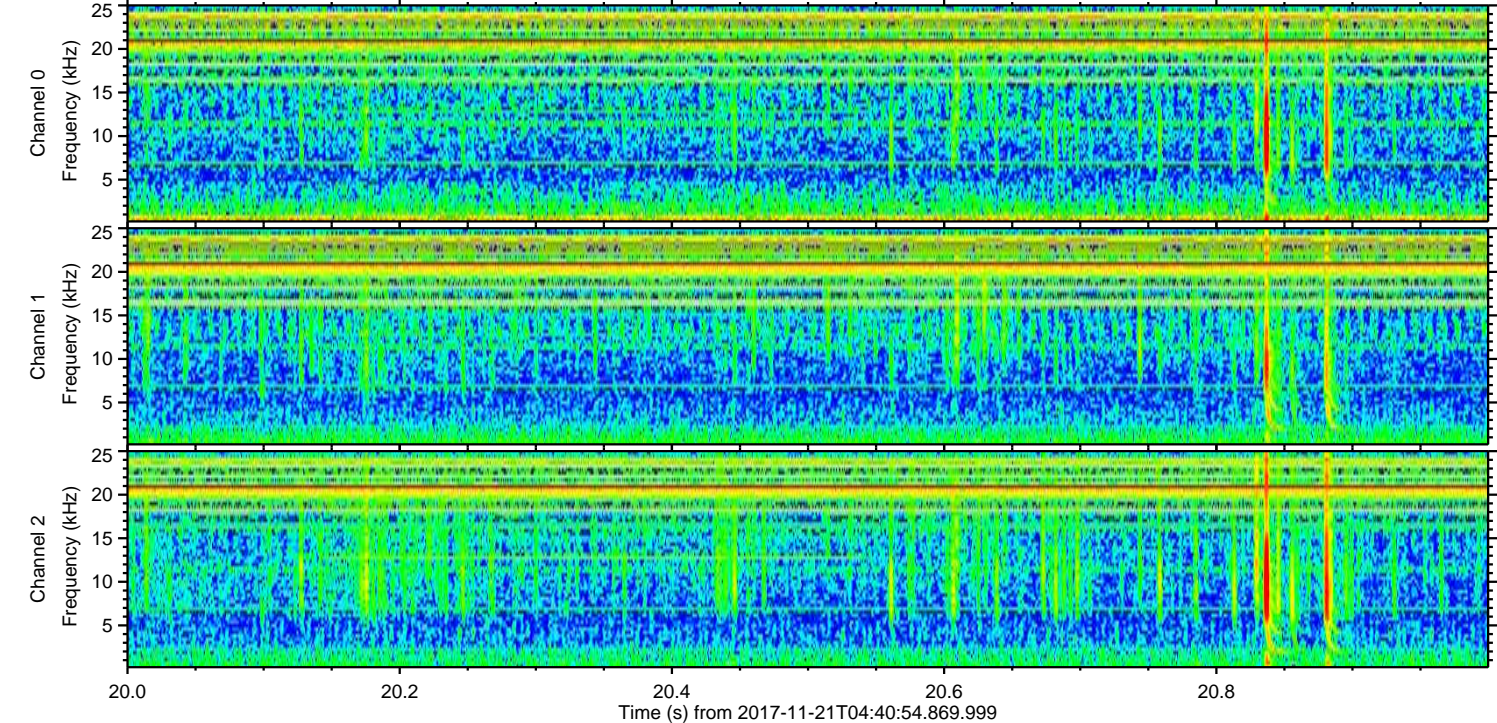
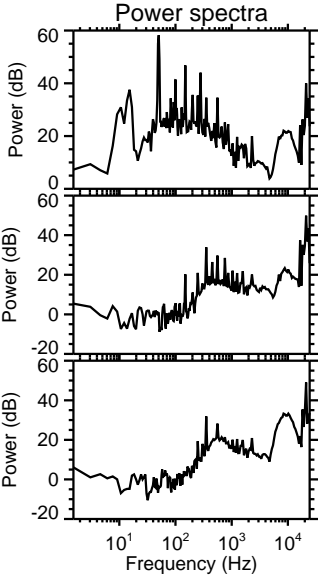
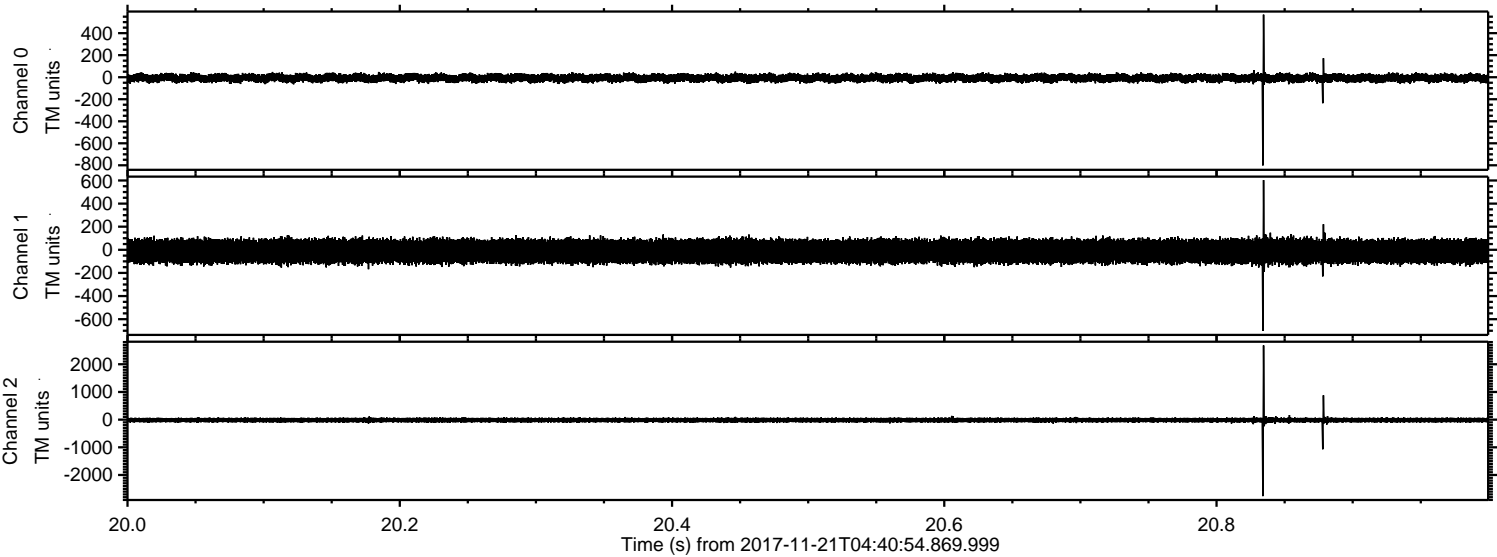
ELMAVAN 3D WAVEFORMS (Measured data sampled at 50 kHz) 51000 packets of 144 samples from 2017-11-21T04:40:54.869.999. Part 103/147

Processed Tue Nov 21 05:49:14 2017 by ELM ver.2012-10-06 from 001__elm20171121_044053__dat00.bin



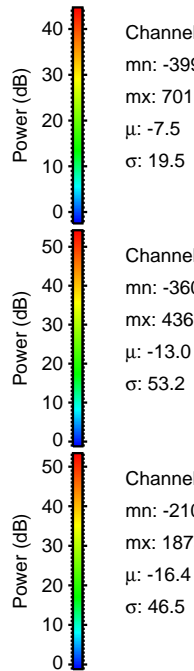
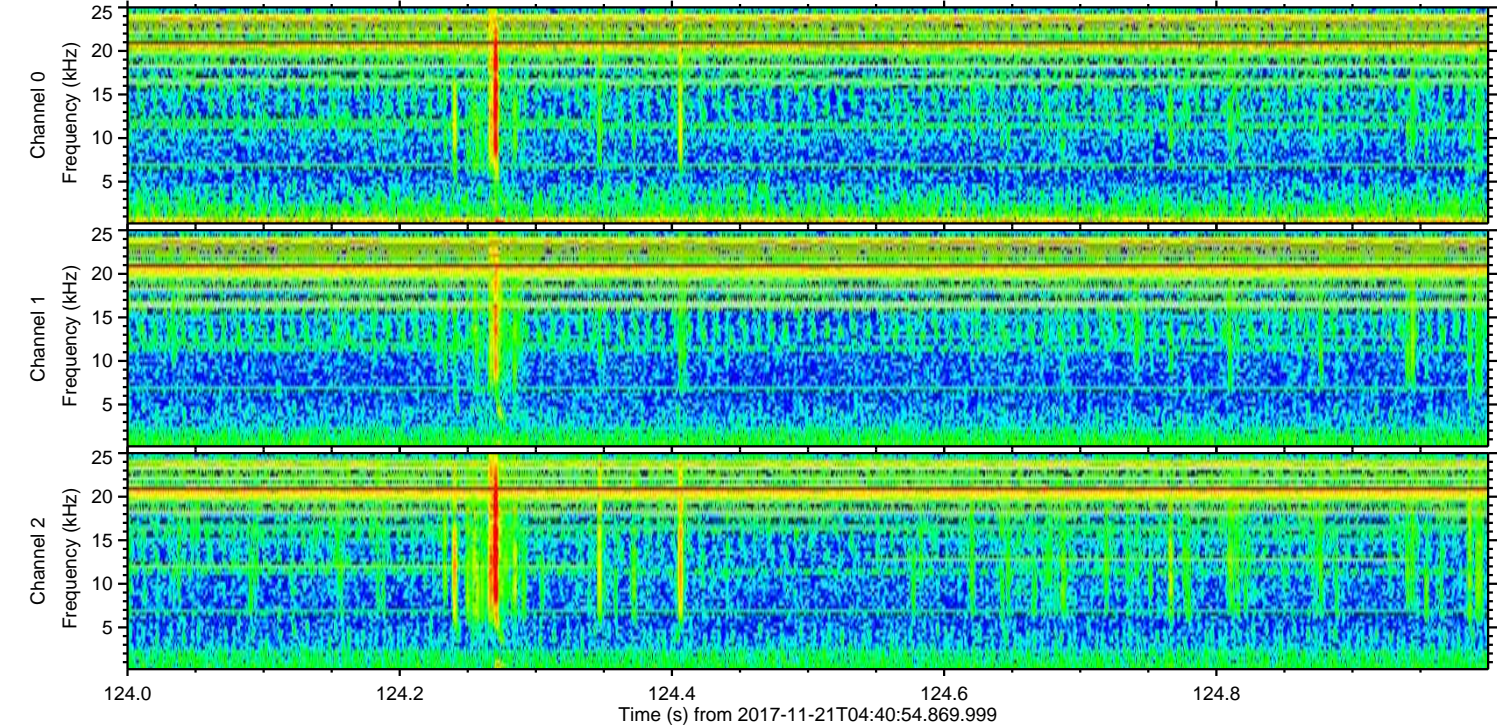
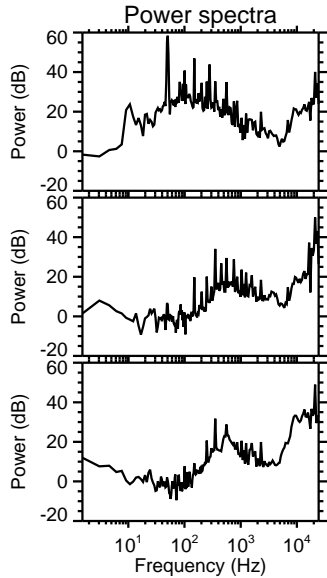
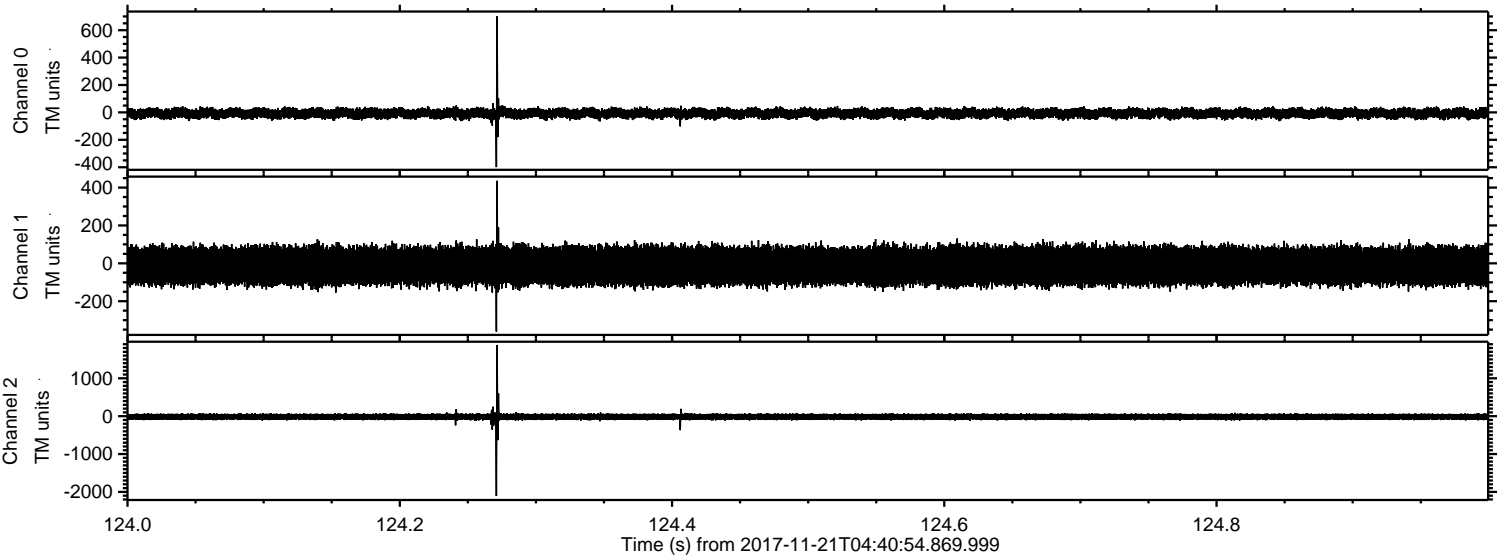
ELMAVAN 3D WAVEFORMS (Measured data sampled at 50 kHz) 51000 packets of 144 samples from 2017-11-21T04:40:54.869.999. Part 21/147

Processed Tue Nov 21 05:49:15 2017 by ELM ver.2012-10-06 from 001__elm20171121_044053__dat00.bin



ELMAVAN 3D WAVEFORMS (Measured data sampled at 50 kHz) 51000 packets of 144 samples from 2017-11-21T04:40:54.869.999. Part 125/147

Processed Tue Nov 21 05:49:15 2017 by ELM ver.2012-10-06 from 001__elm20171121_044053__dat00.bin

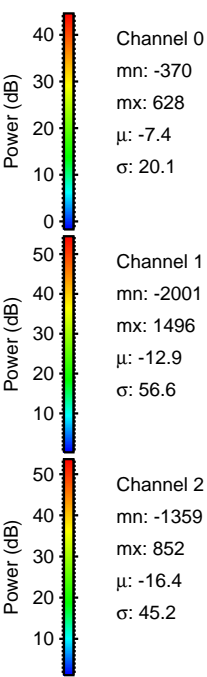
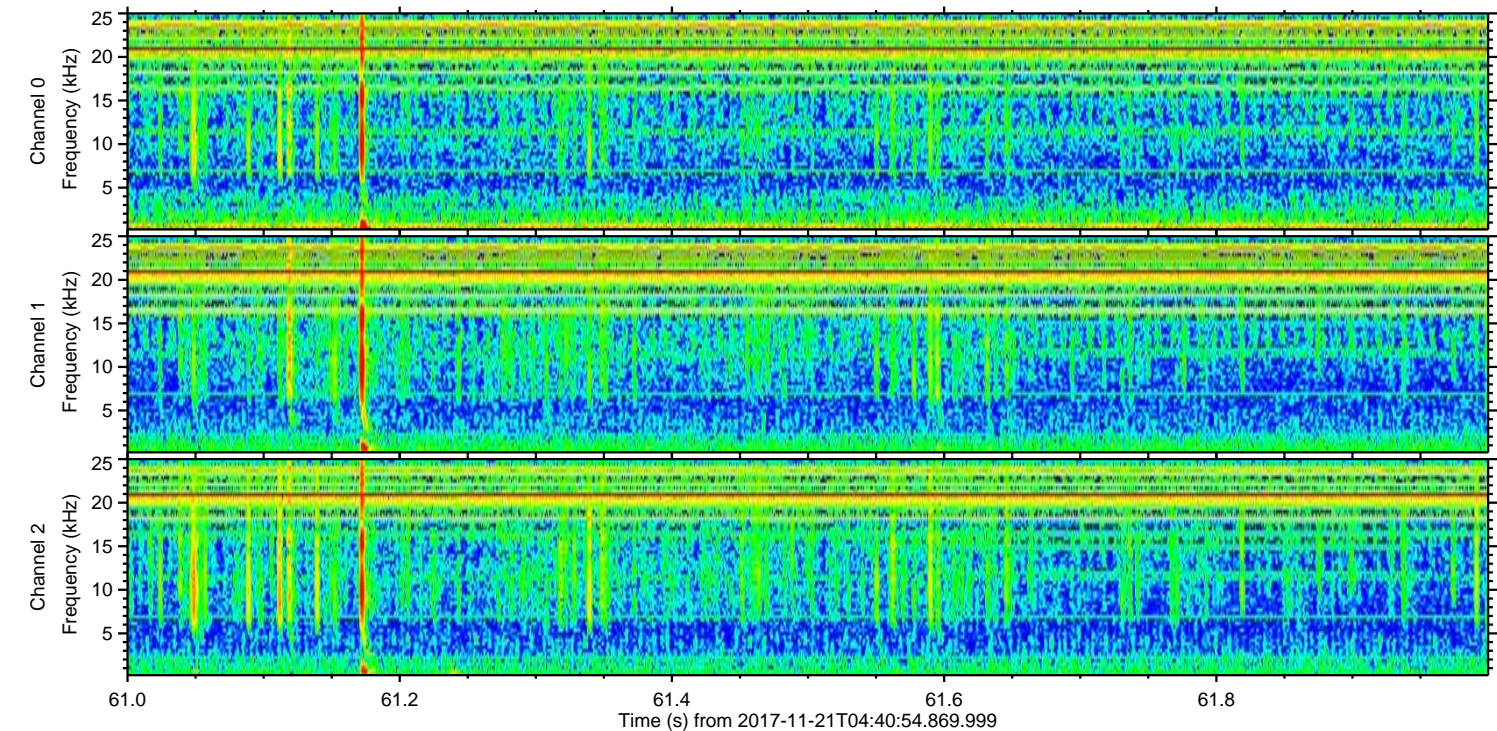
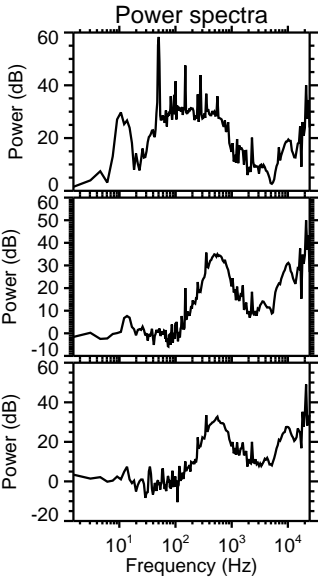
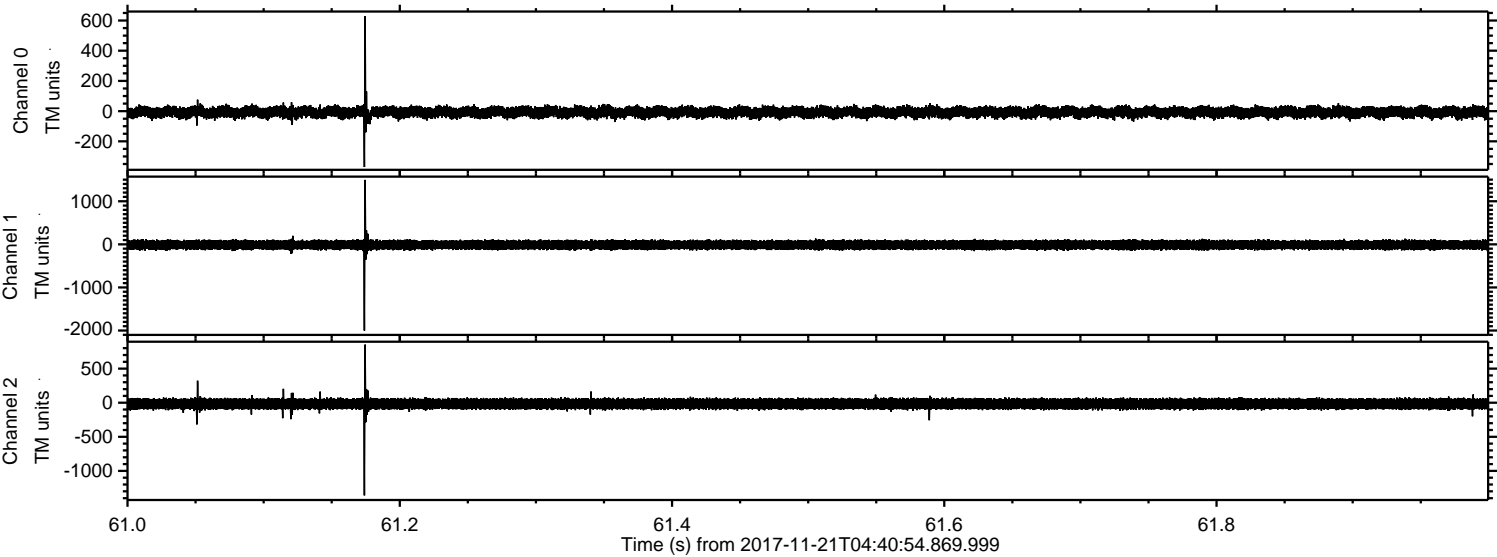


Channel 0
mn: -399
mx: 701
 μ : -7.5
 σ : 19.5

Channel 1
mn: -360
mx: 436
 μ : -13.0
 σ : 53.2

Channel 2
mn: -2109
mx: 1873
 μ : -16.4
 σ : 46.5

Processed Tue Nov 21 05:49:16 2017 by ELM ver.2012-10-06 from 001__elm20171121_044053__dat00.bin



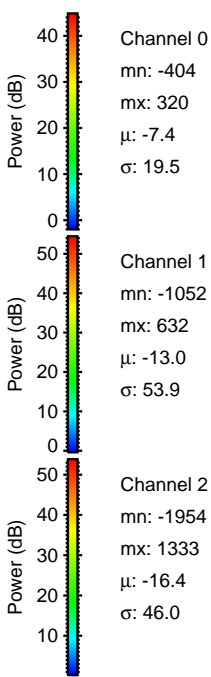
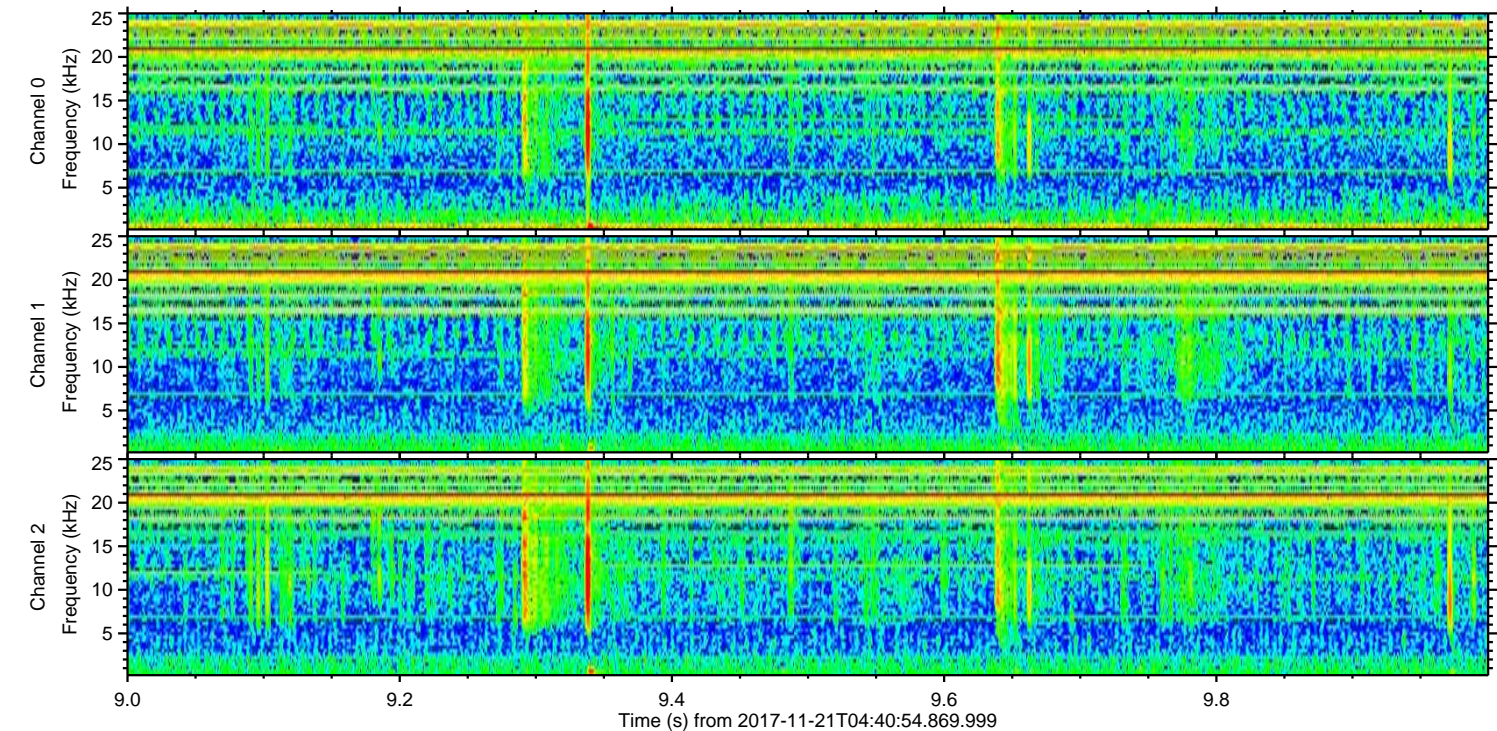
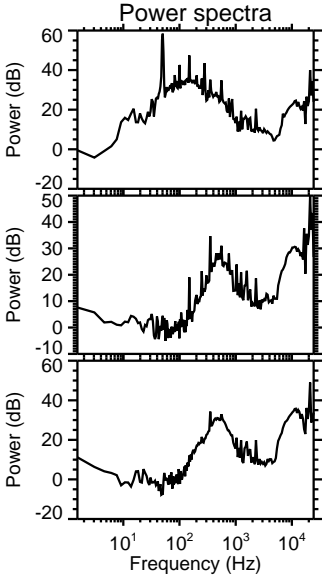
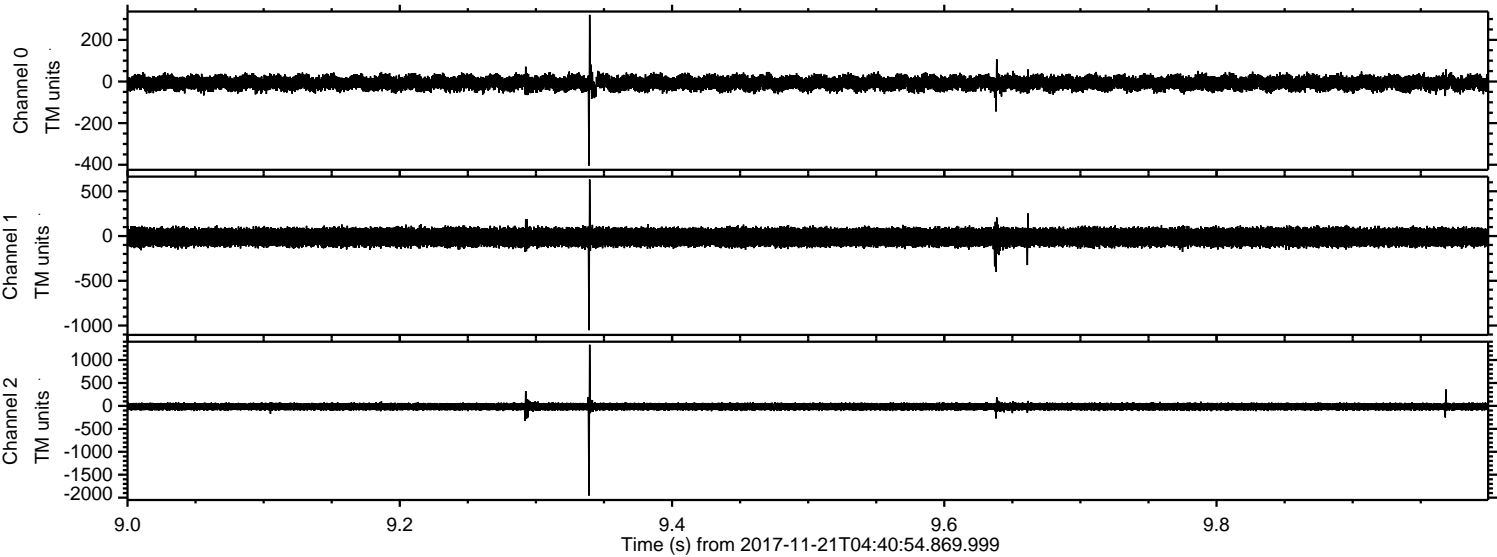
Channel 0
mn: -370
mx: 628
 μ : -7.4
 σ : 20.1

Channel 1
mn: -2001
mx: 1496
 μ : -12.9
 σ : 56.6

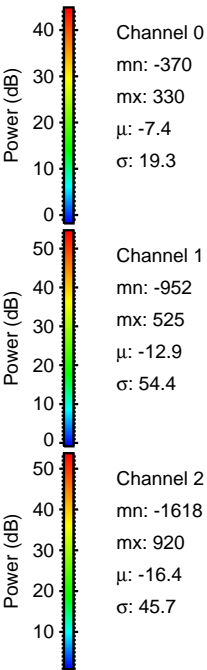
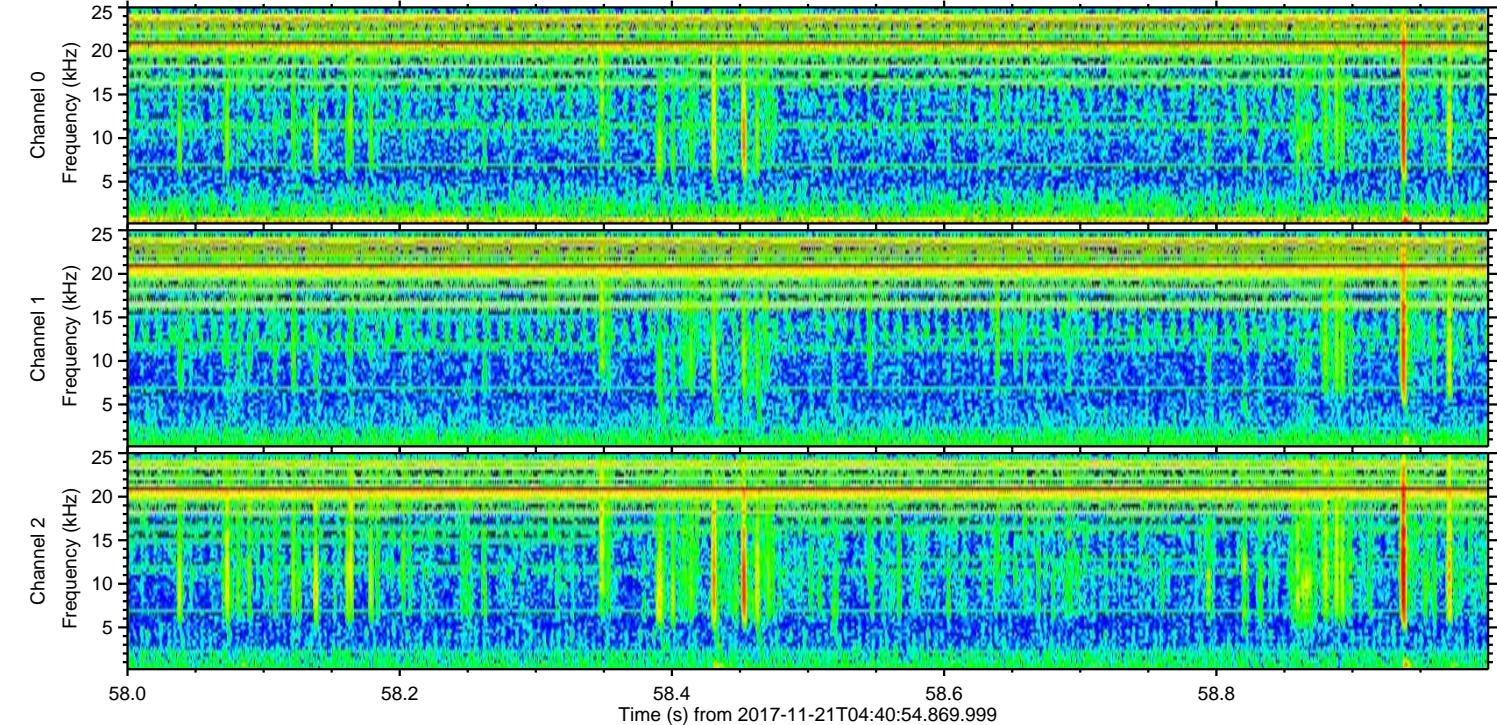
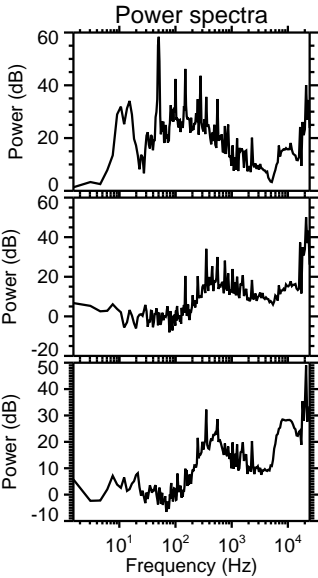
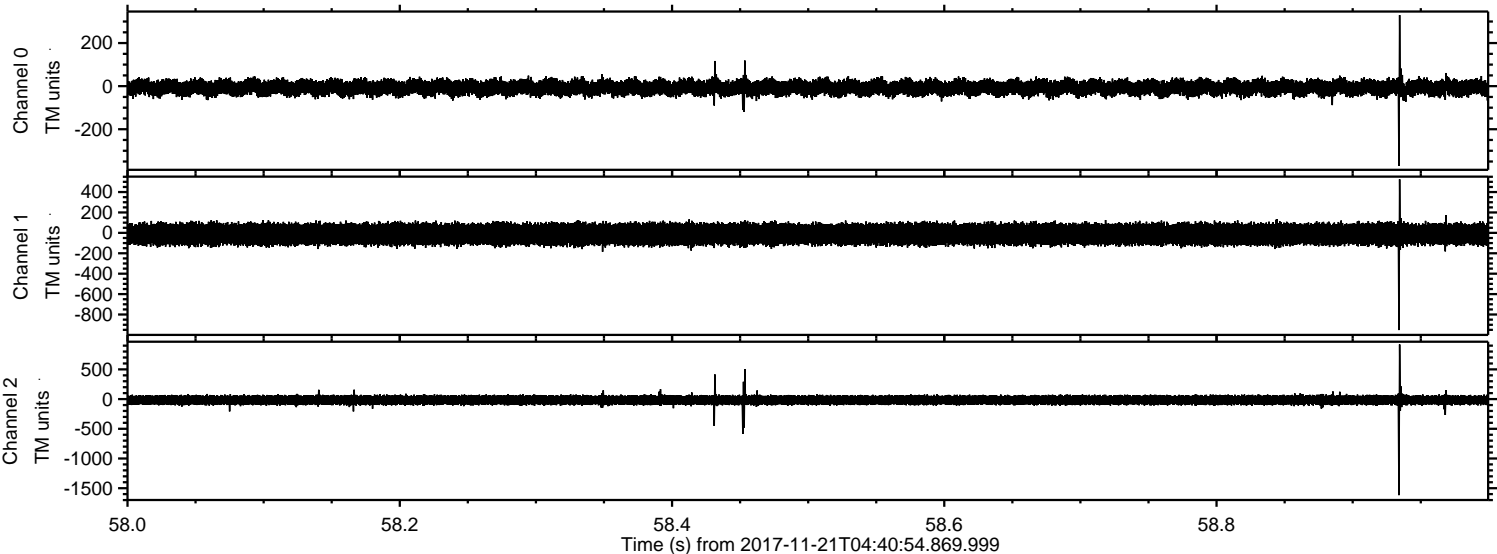
Channel 2
mn: -1359
mx: 852
 μ : -16.4
 σ : 45.2

ELMAVAN 3D WAVEFORMS (Measured data sampled at 50 kHz) 51000 packets of 144 samples from 2017-11-21T04:40:54.869.999. Part 10/147

Processed Tue Nov 21 05:49:17 2017 by ELM ver.2012-10-06 from 001__elm20171121_044053__dat00.bin

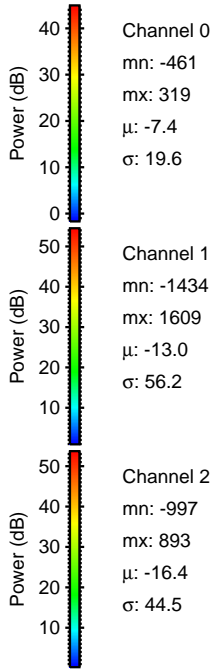
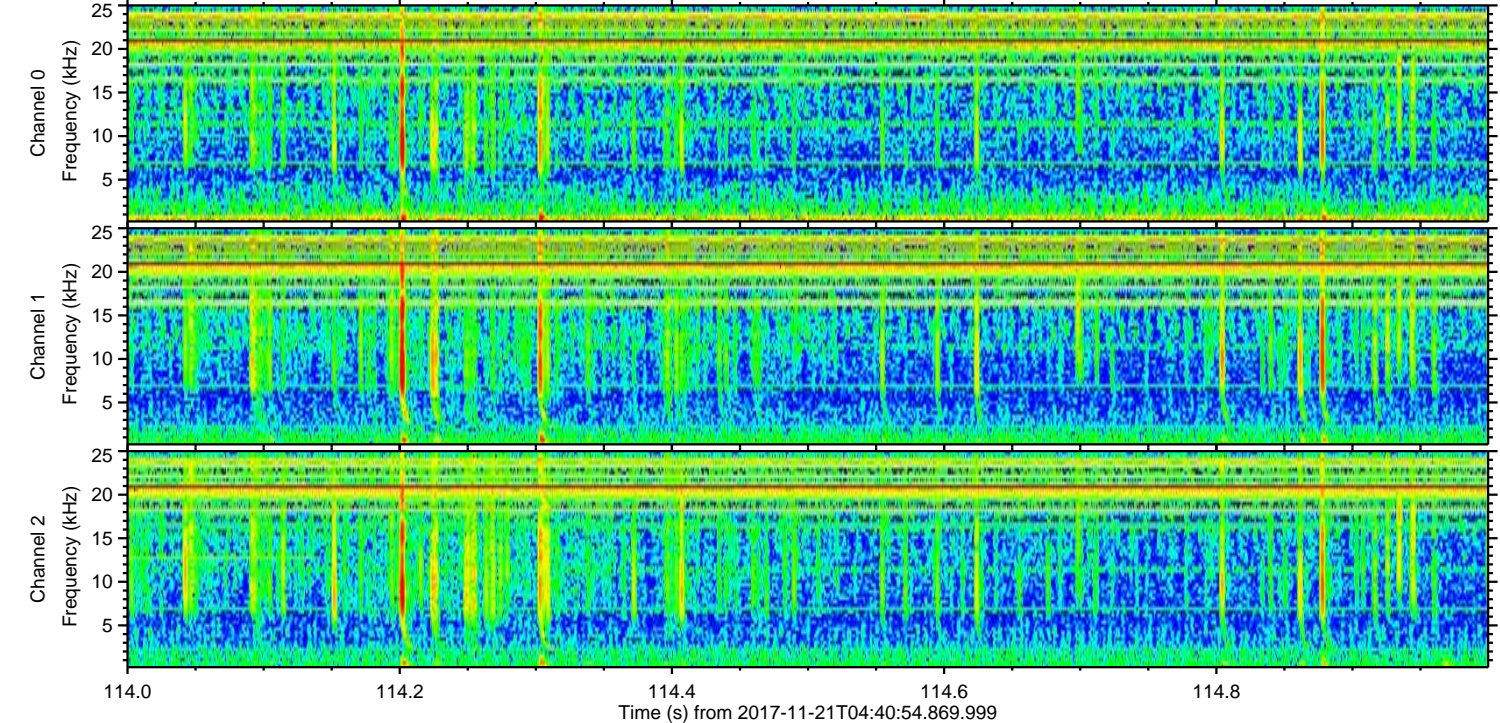
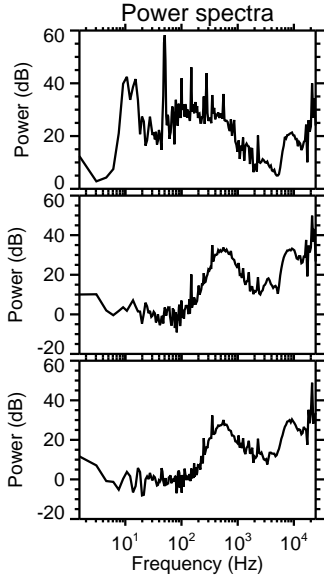
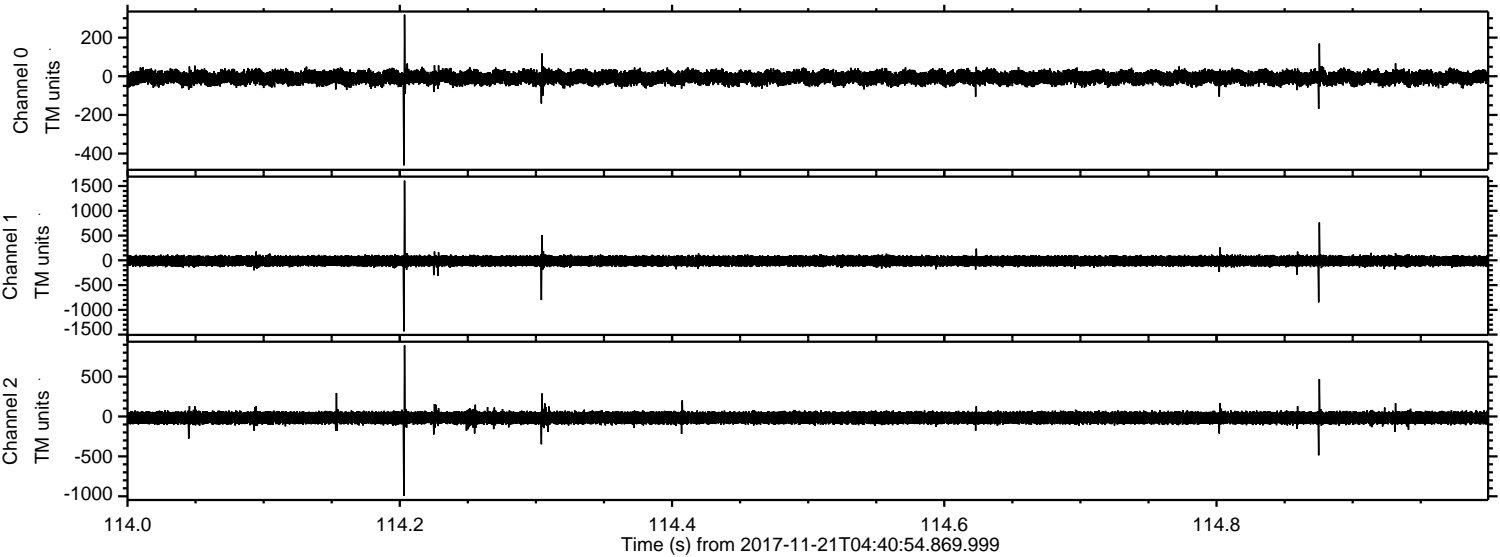


Processed Tue Nov 21 05:49:17 2017 by ELM ver.2012-10-06 from 001__elm20171121_044053__dat00.bin



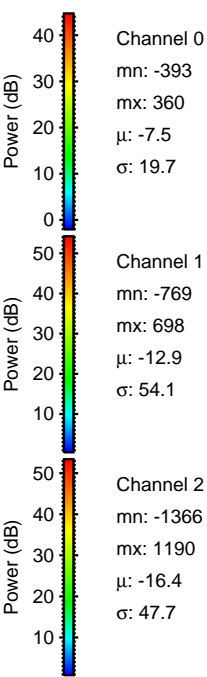
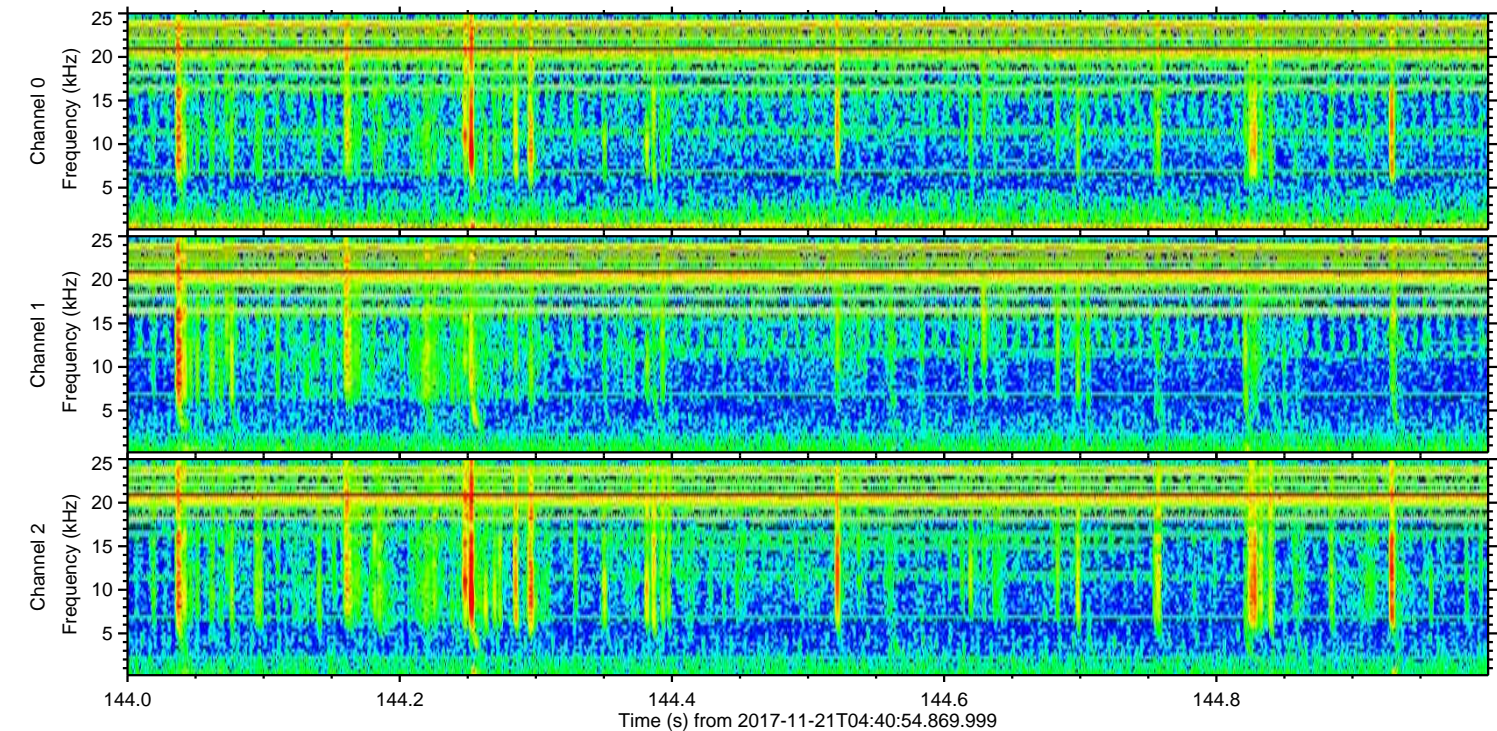
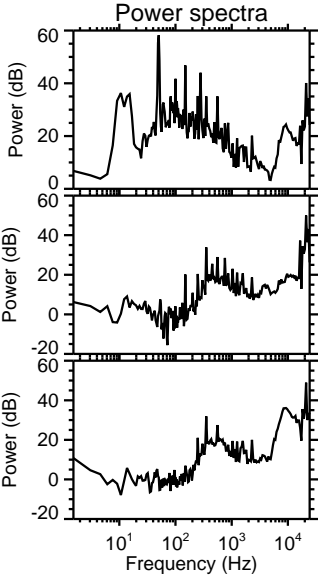
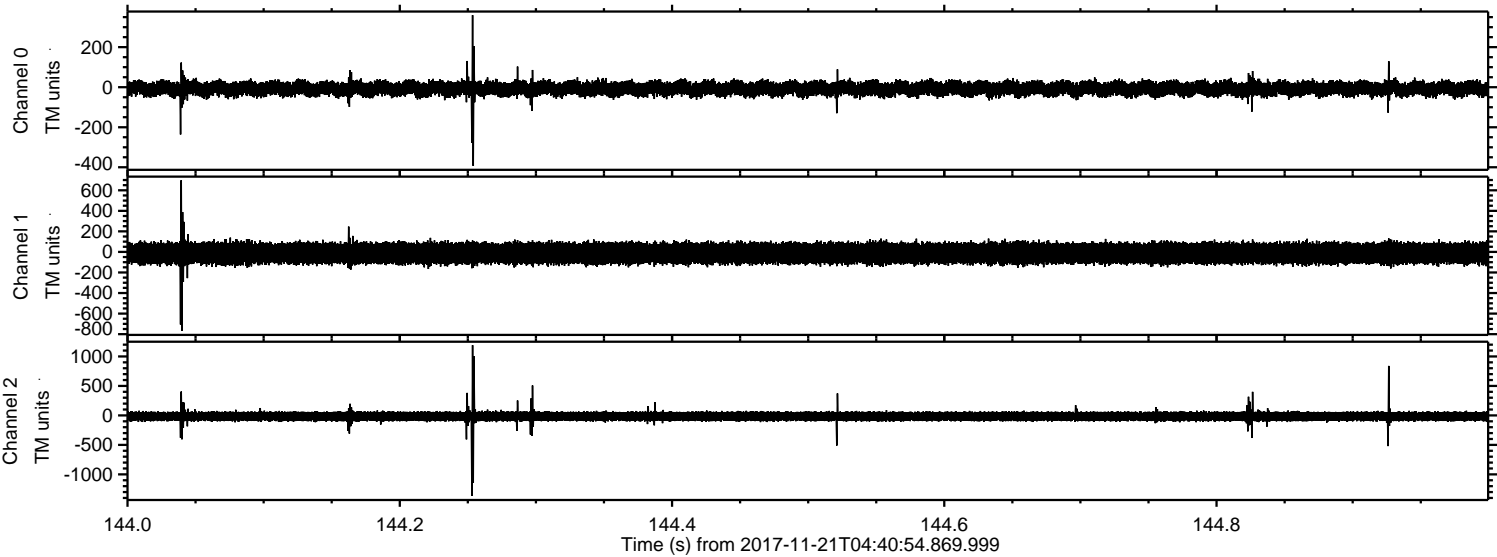
ELMAVAN 3D WAVEFORMS (Measured data sampled at 50 kHz) 51000 packets of 144 samples from 2017-11-21T04:40:54.869.999. Part 115/147

Processed Tue Nov 21 05:49:18 2017 by ELM ver.2012-10-06 from 001__elm20171121_044053__dat00.bin



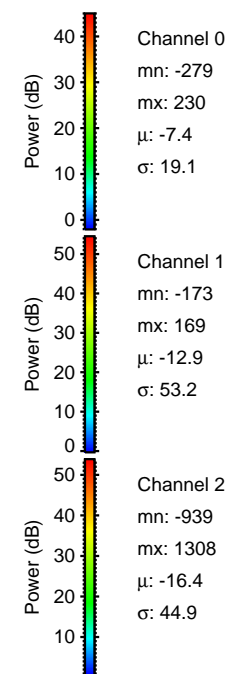
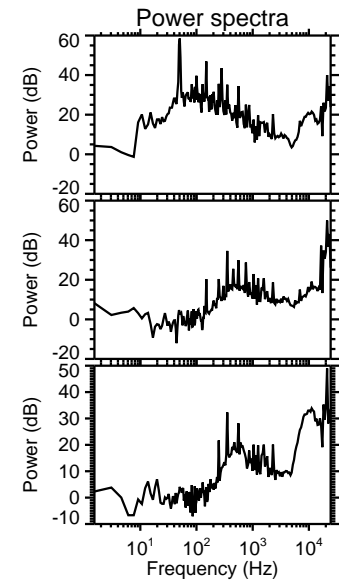
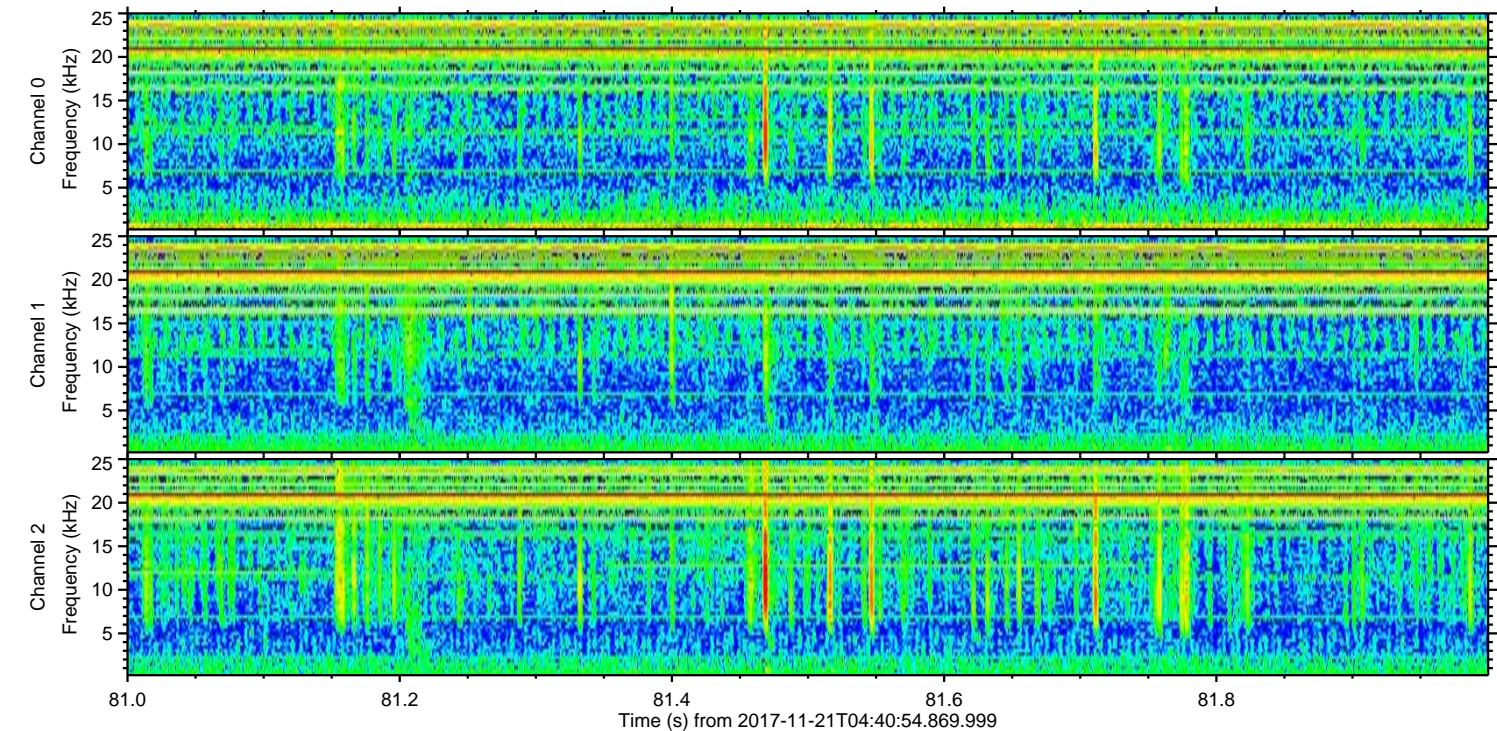
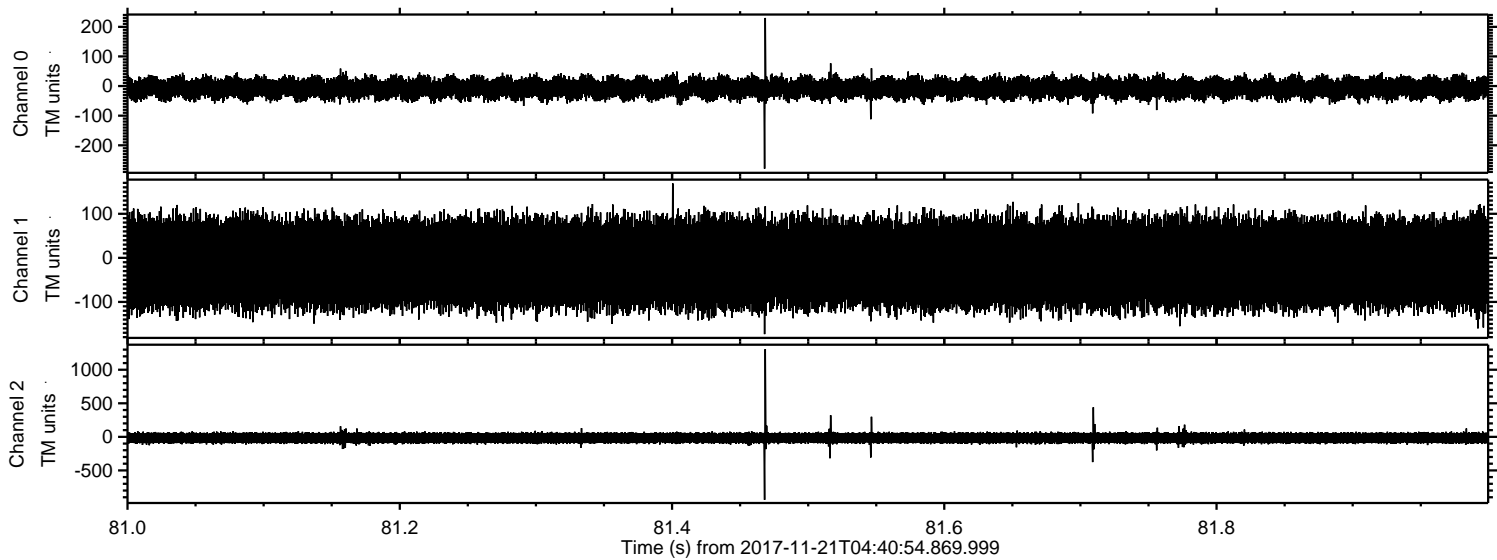
ELMAVAN 3D WAVEFORMS (Measured data sampled at 50 kHz) 51000 packets of 144 samples from 2017-11-21T04:40:54.869.999. Part 145/147

Processed Tue Nov 21 05:49:18 2017 by ELM ver.2012-10-06 from 001__elm20171121_044053__dat00.bin



ELMAVAN 3D WAVEFORMS (Measured data sampled at 50 kHz) 51000 packets of 144 samples from 2017-11-21T04:40:54.869.999. Part 82/147

Processed Tue Nov 21 05:49:19 2017 by ELM ver.2012-10-06 from 001__elm20171121_044053__dat00.bin



Channel 0
mn: -279
mx: 230
 μ : -7.4
 σ : 19.1

Channel 1
mn: -173
mx: 169
 μ : -12.9
 σ : 53.2

Channel 2
mn: -939
mx: 1308
 μ : -16.4
 σ : 44.9

Processed Tue Nov 21 05:49:20 2017 by ELM ver.2012-10-06 from 001__elm20171121_044053__dat00.bin

