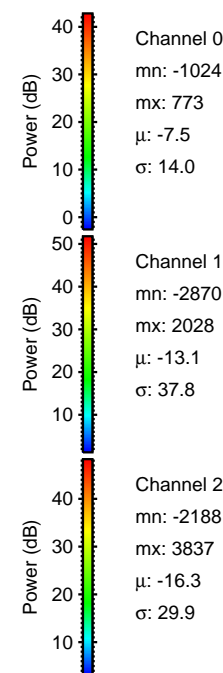
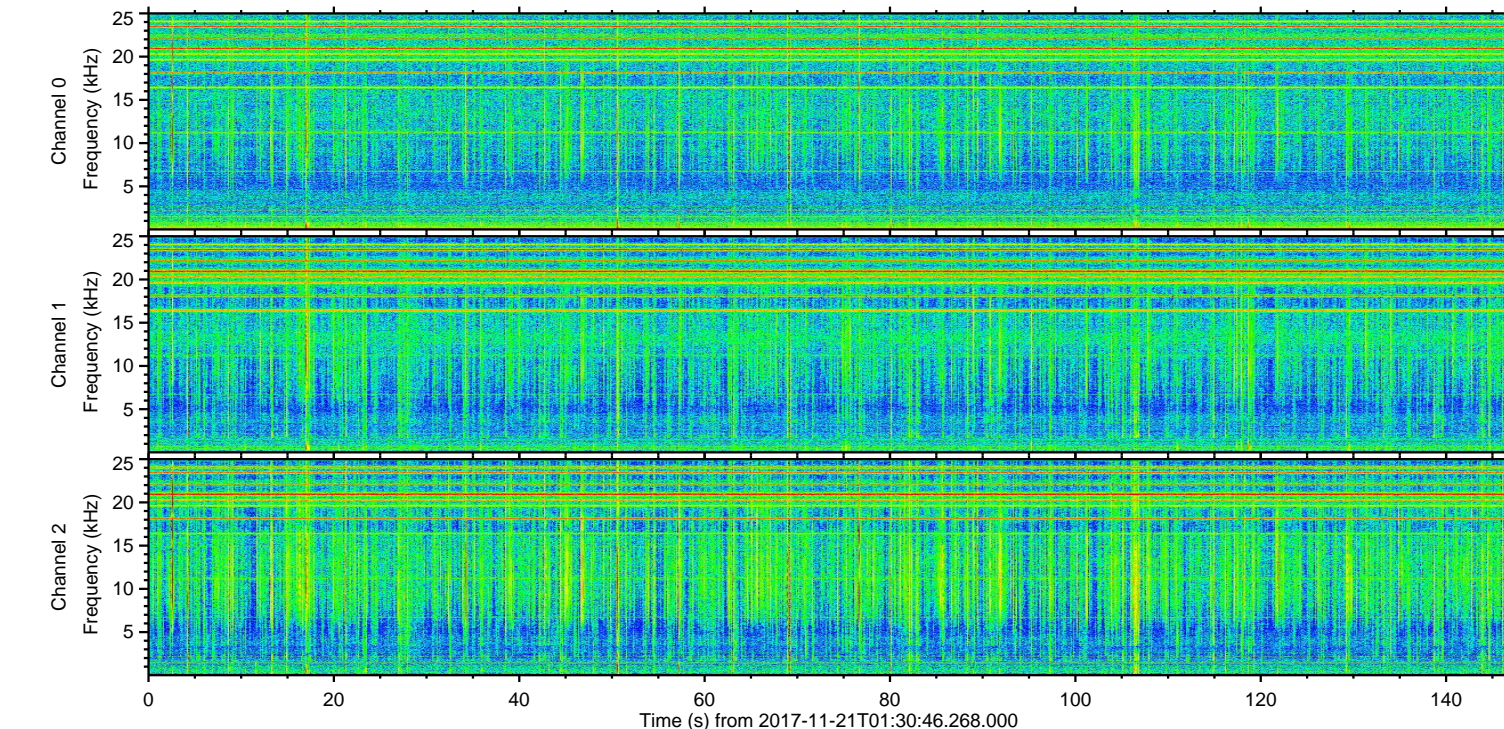
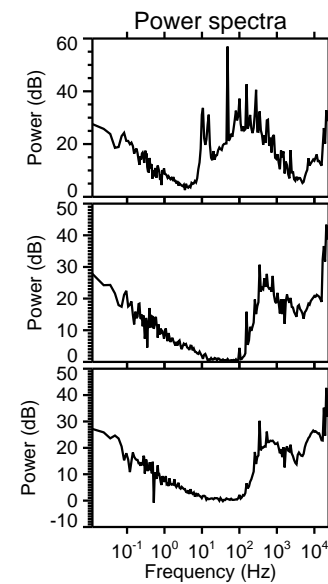
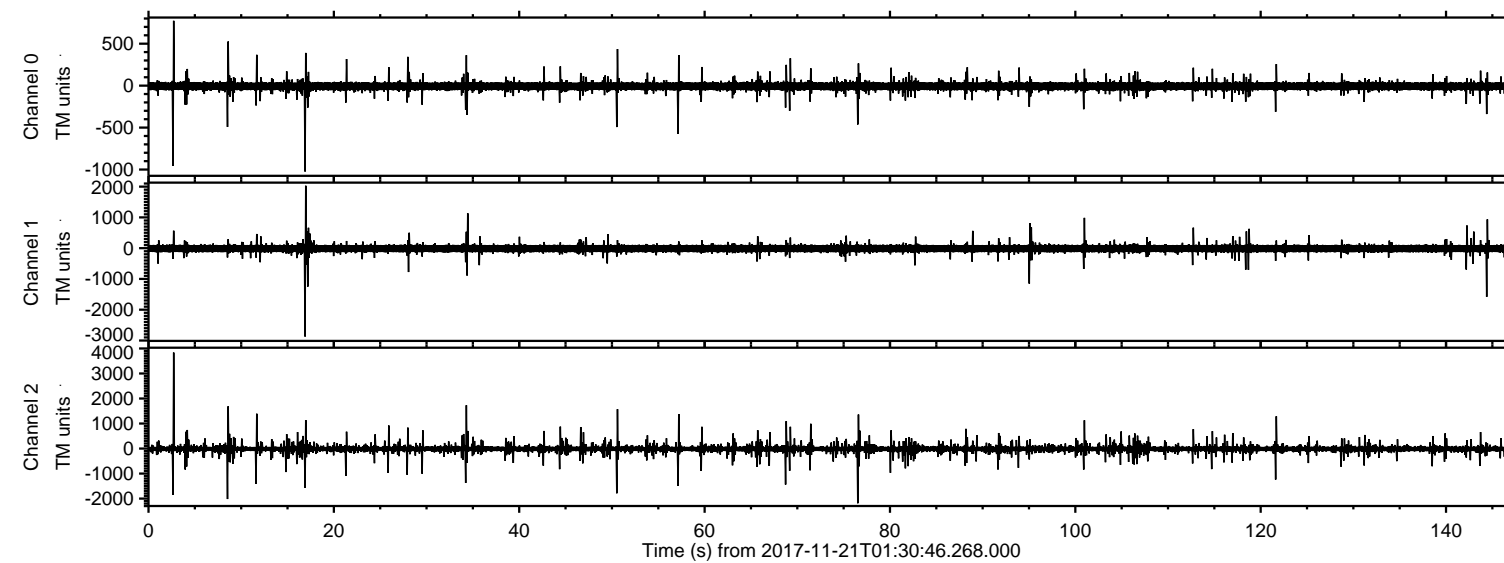


# ELMAVAN 3D WAVEFORMS (Measured data sampled at 50 kHz) 51000 packets of 144 samples from 2017-11-21T01:30:46.268.000.

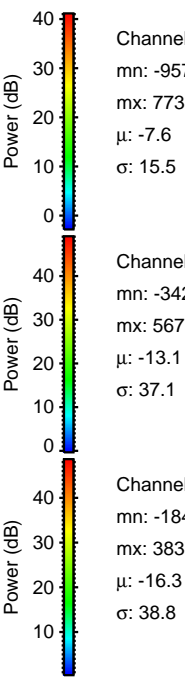
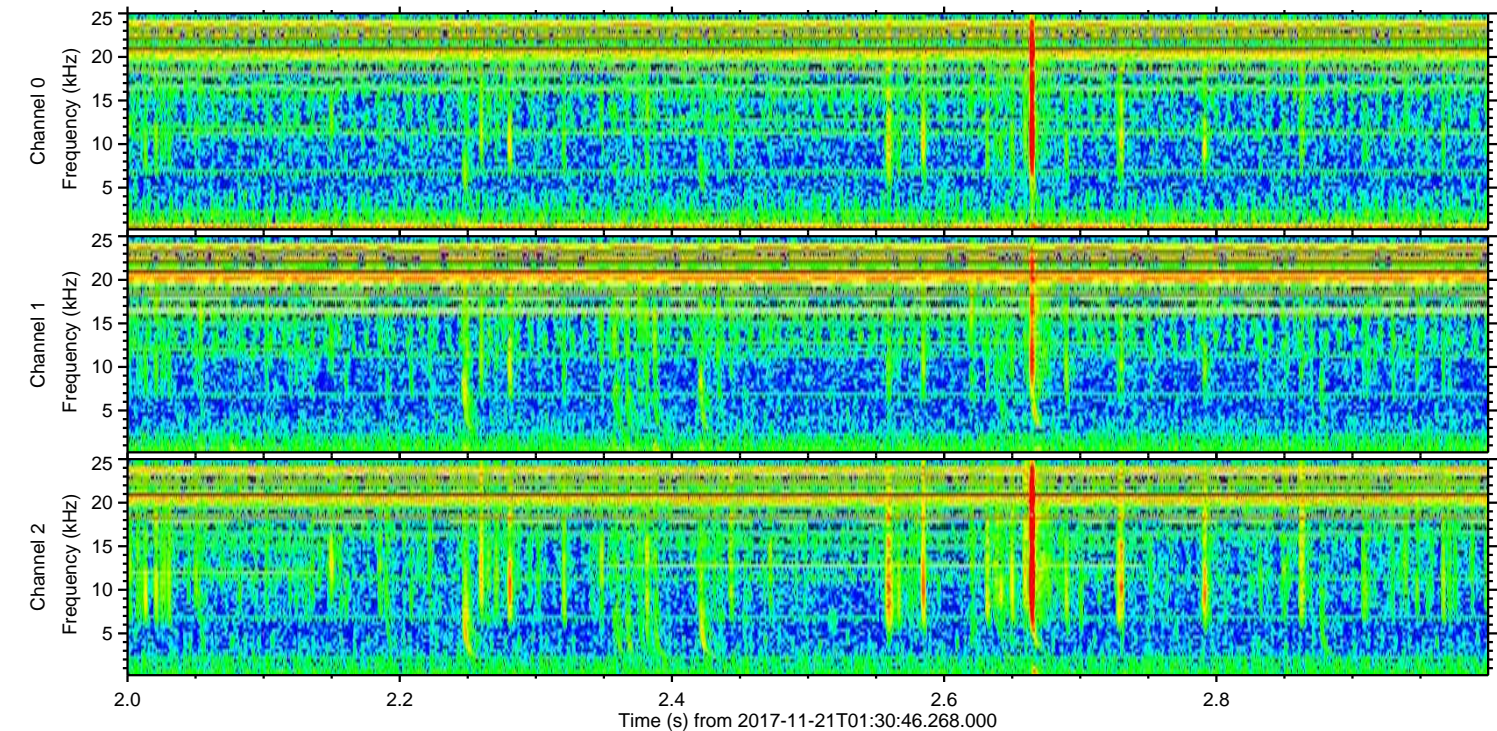
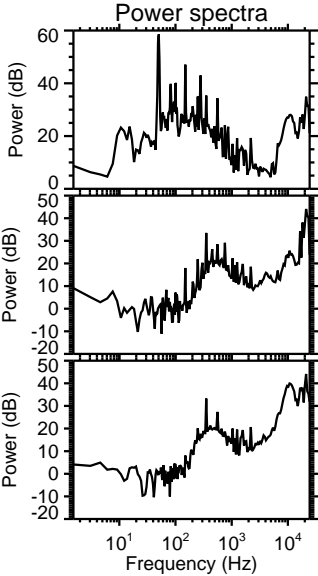
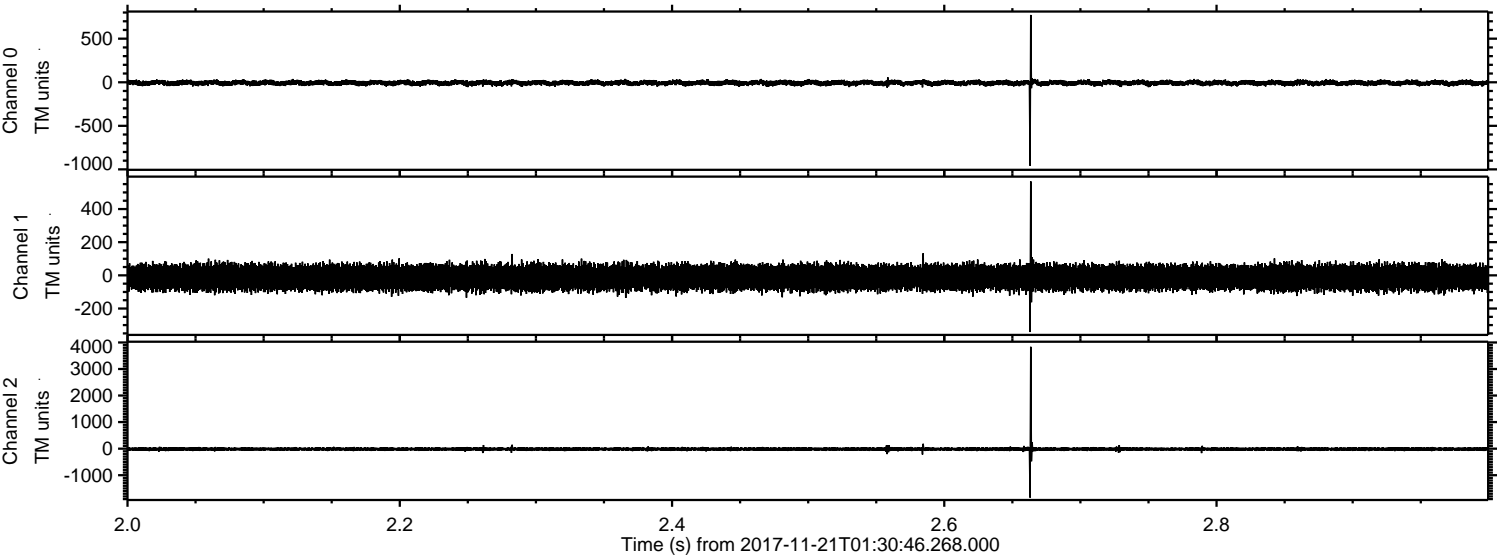
Processed Tue Nov 21 02:39:29 2017 by ELM ver.2012-10-06 from 001\_\_elm20171121\_013045\_\_dat00.bin





ELMAVAN 3D WAVEFORMS (Measured data sampled at 50 kHz) 51000 packets of 144 samples from 2017-11-21T01:30:46.268.000. Part 3/147

Processed Tue Nov 21 02:39:34 2017 by ELM ver.2012-10-06 from 001\_\_elm20171121\_013045\_\_dat00.bin



Channel 0  
mn: -957  
mx: 773  
 $\mu$ : -7.6  
 $\sigma$ : 15.5

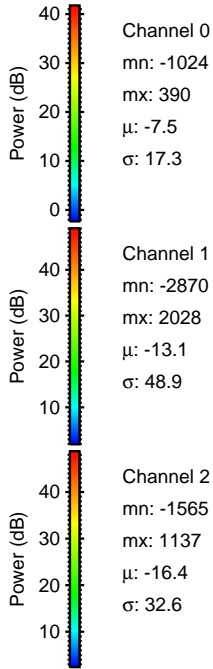
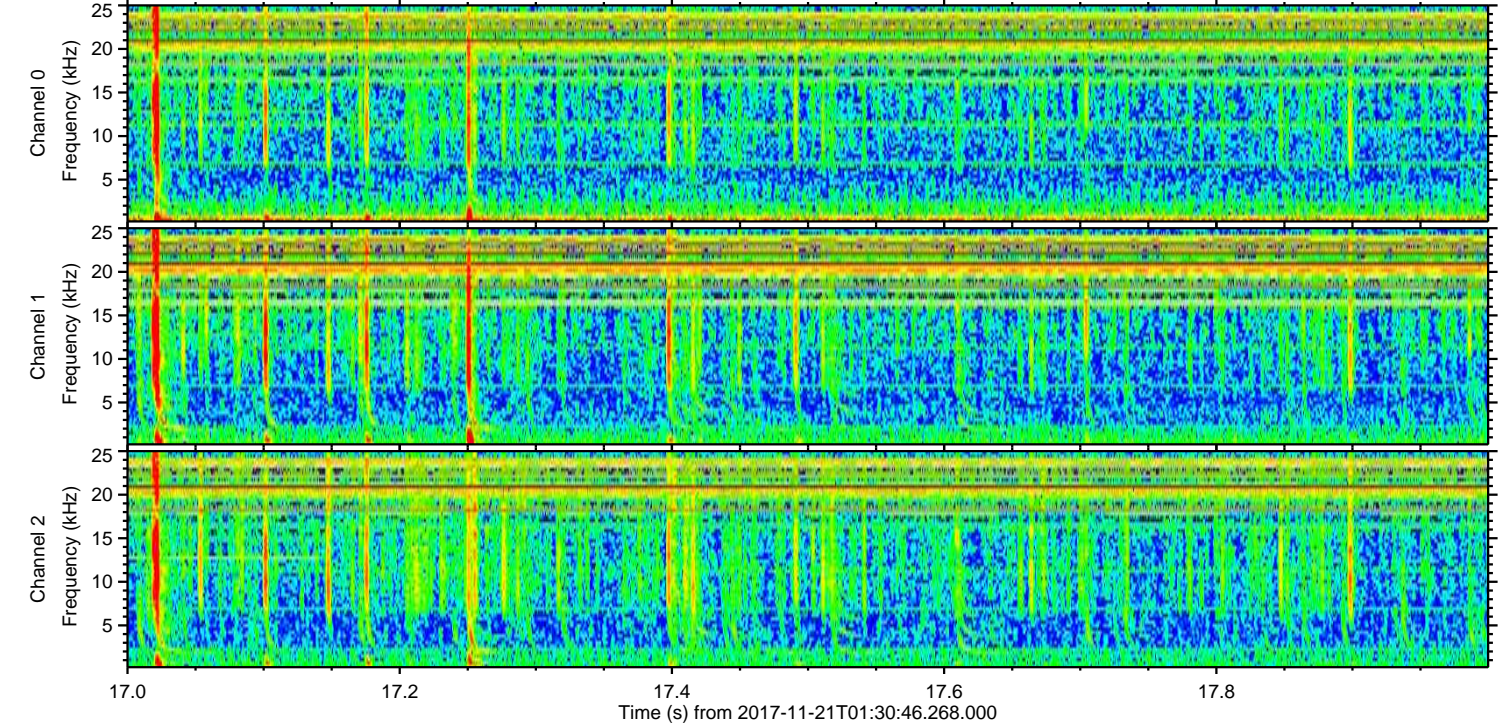
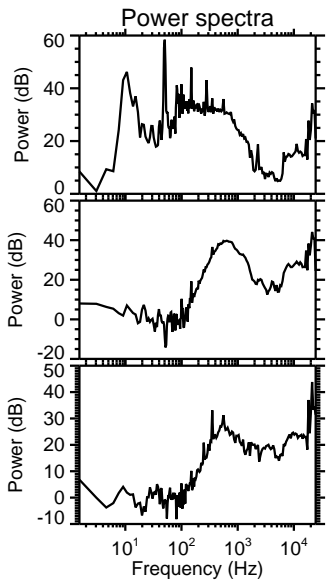
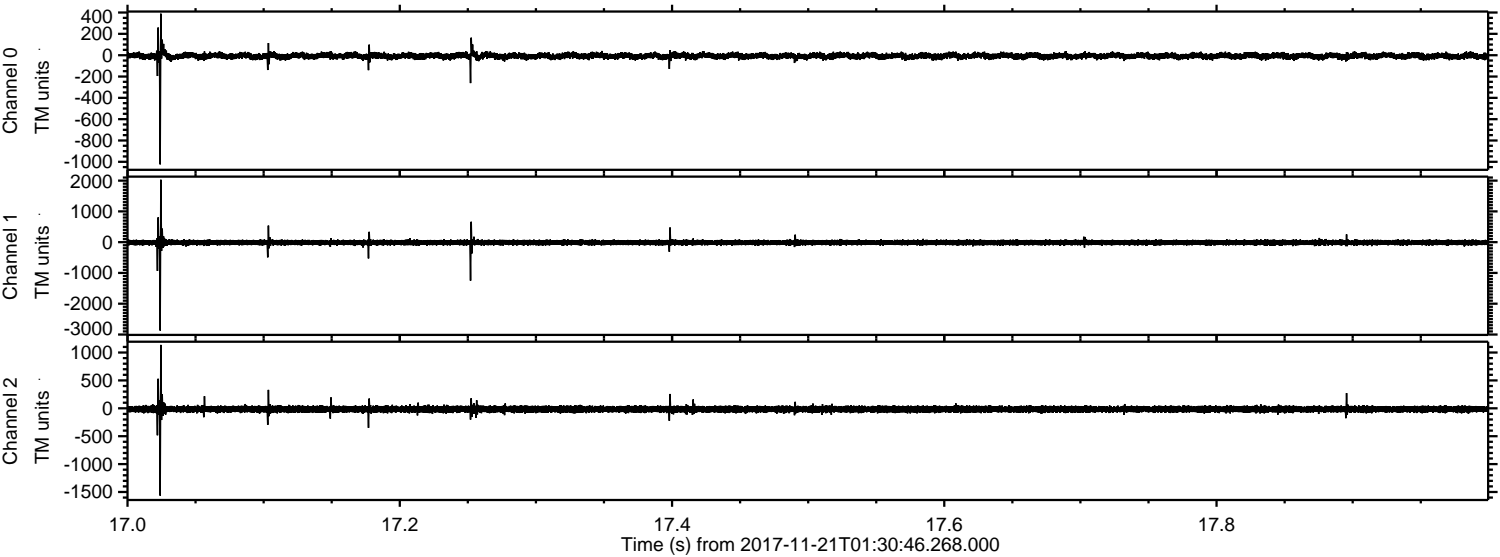
Channel 1  
mn: -342  
mx: 567  
 $\mu$ : -13.1  
 $\sigma$ : 37.1

Channel 2  
mn: -1843  
mx: 3837  
 $\mu$ : -16.3  
 $\sigma$ : 38.8



ELMAVAN 3D WAVEFORMS (Measured data sampled at 50 kHz) 51000 packets of 144 samples from 2017-11-21T01:30:46.268.000. Part 18/147

Processed Tue Nov 21 02:39:35 2017 by ELM ver.2012-10-06 from 001\_\_elm20171121\_013045\_\_dat00.bin



Channel 0  
mn: -1024  
mx: 390  
 $\mu$ : -7.5  
 $\sigma$ : 17.3

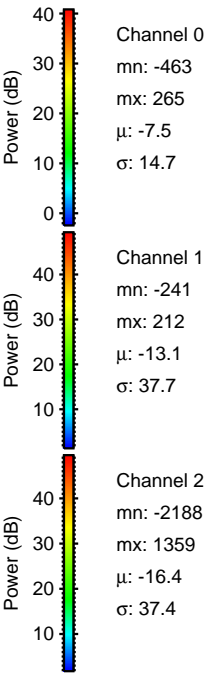
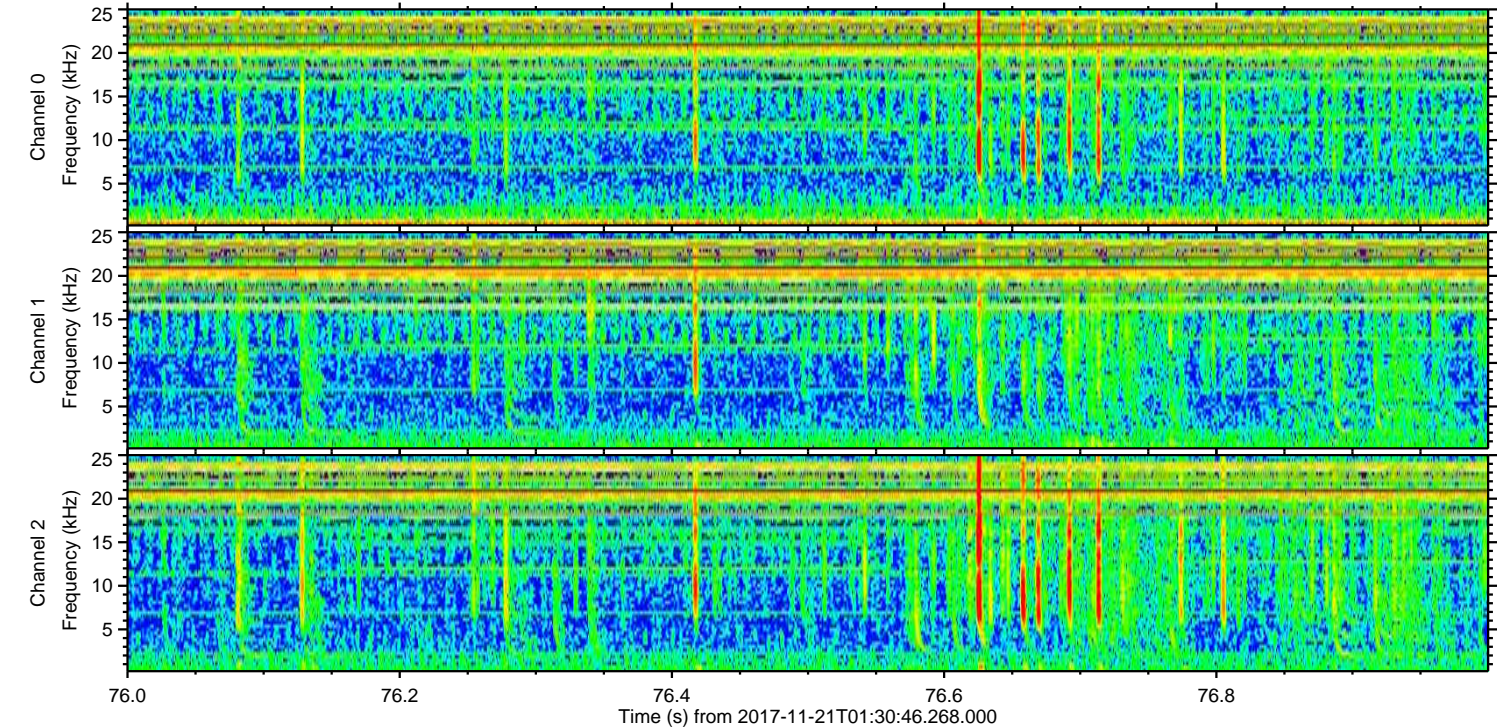
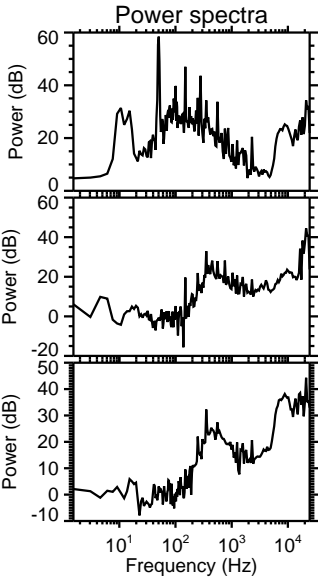
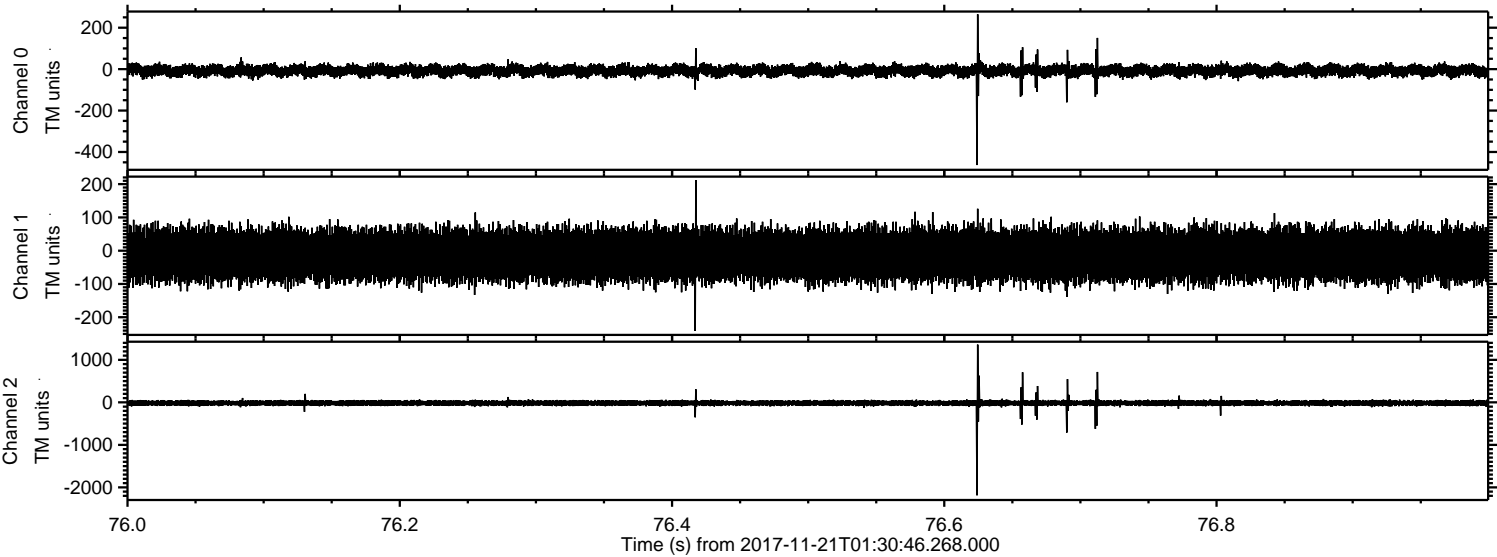
Channel 1  
mn: -2870  
mx: 2028  
 $\mu$ : -13.1  
 $\sigma$ : 48.9

Channel 2  
mn: -1565  
mx: 1137  
 $\mu$ : -16.4  
 $\sigma$ : 32.6



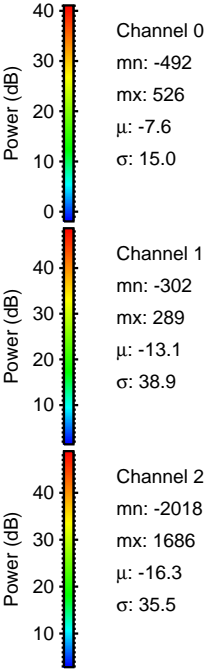
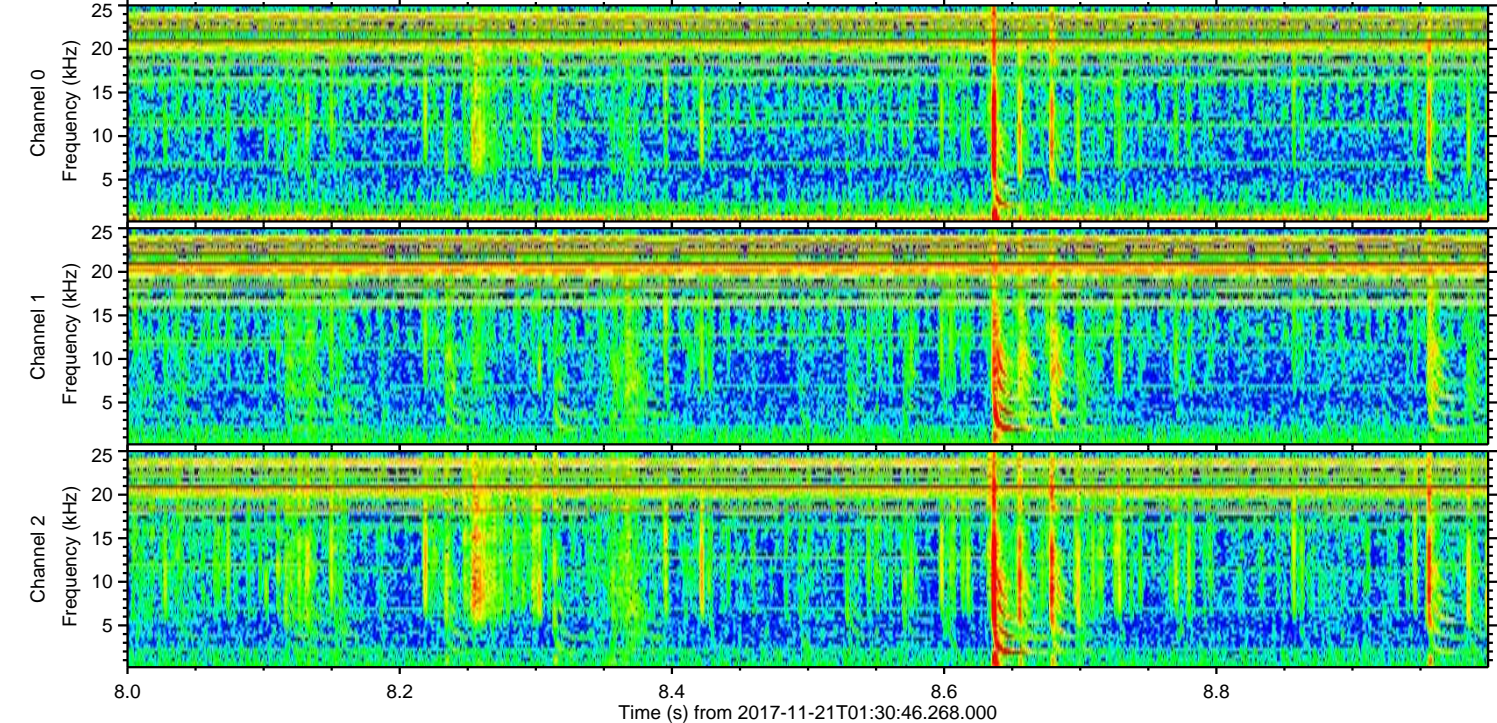
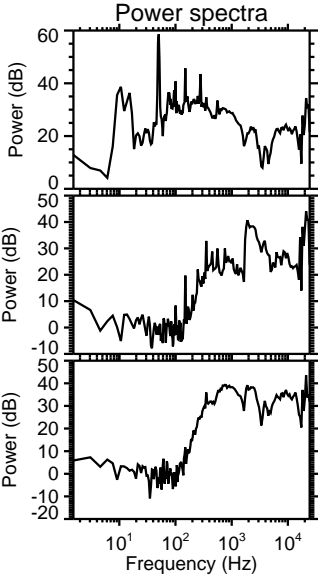
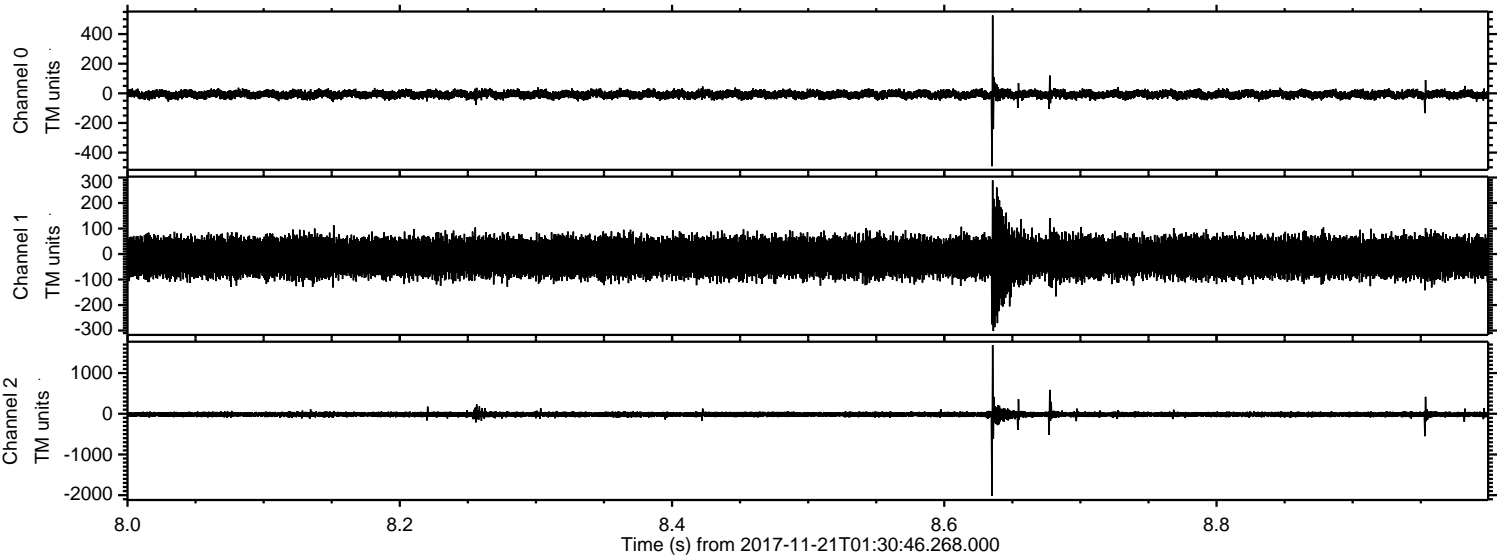
ELMAVAN 3D WAVEFORMS (Measured data sampled at 50 kHz) 51000 packets of 144 samples from 2017-11-21T01:30:46.268.000. Part 77/147

Processed Tue Nov 21 02:39:36 2017 by ELM ver.2012-10-06 from 001\_\_elm20171121\_013045\_\_dat00.bin





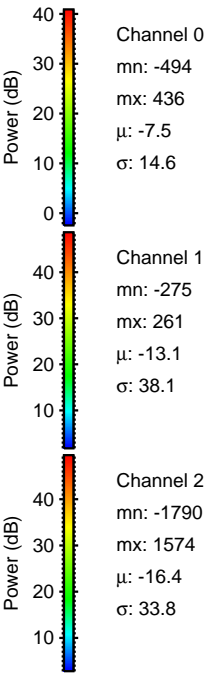
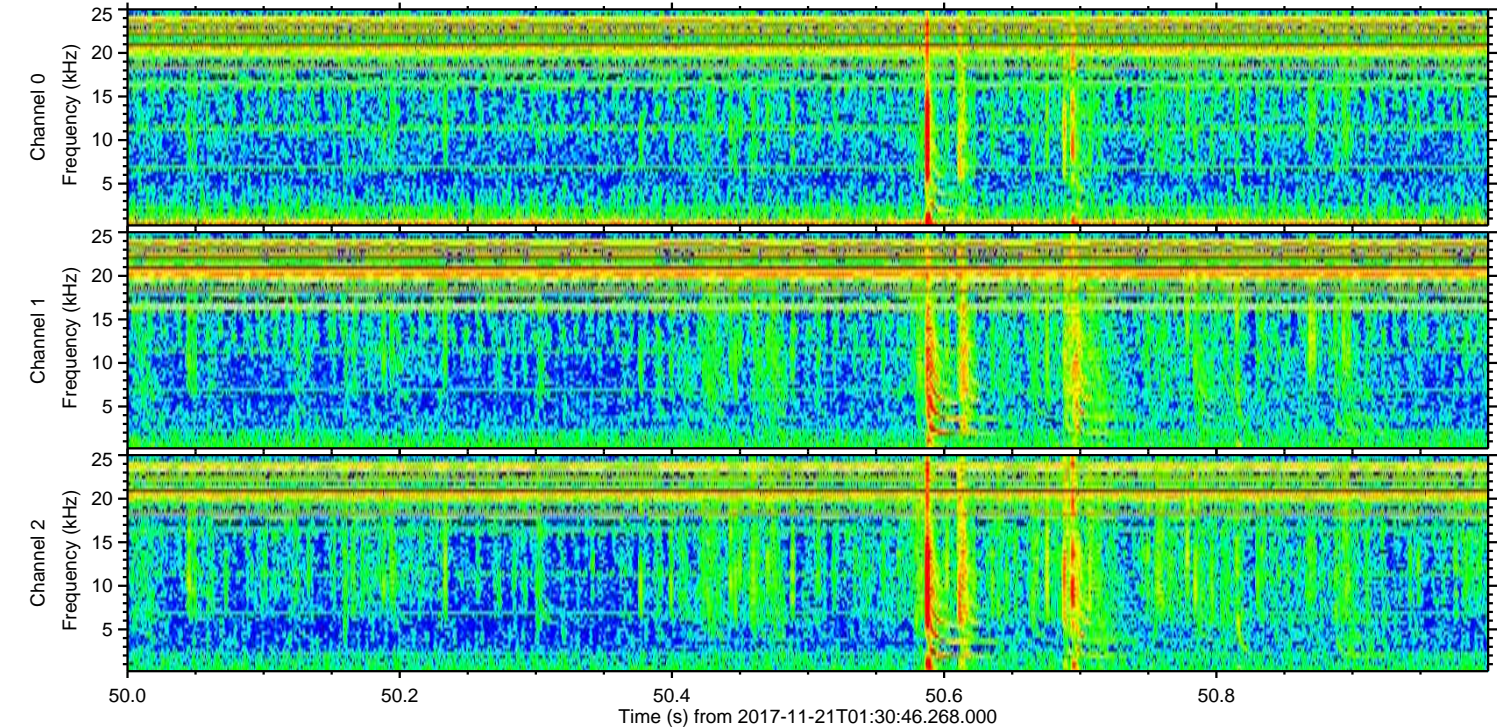
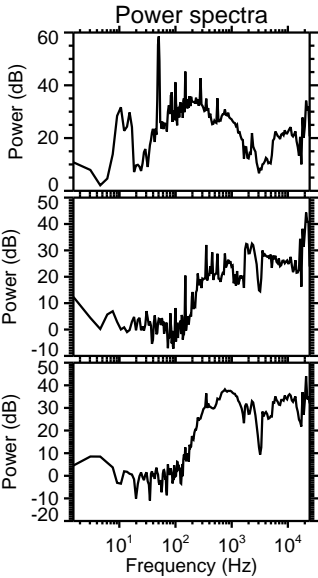
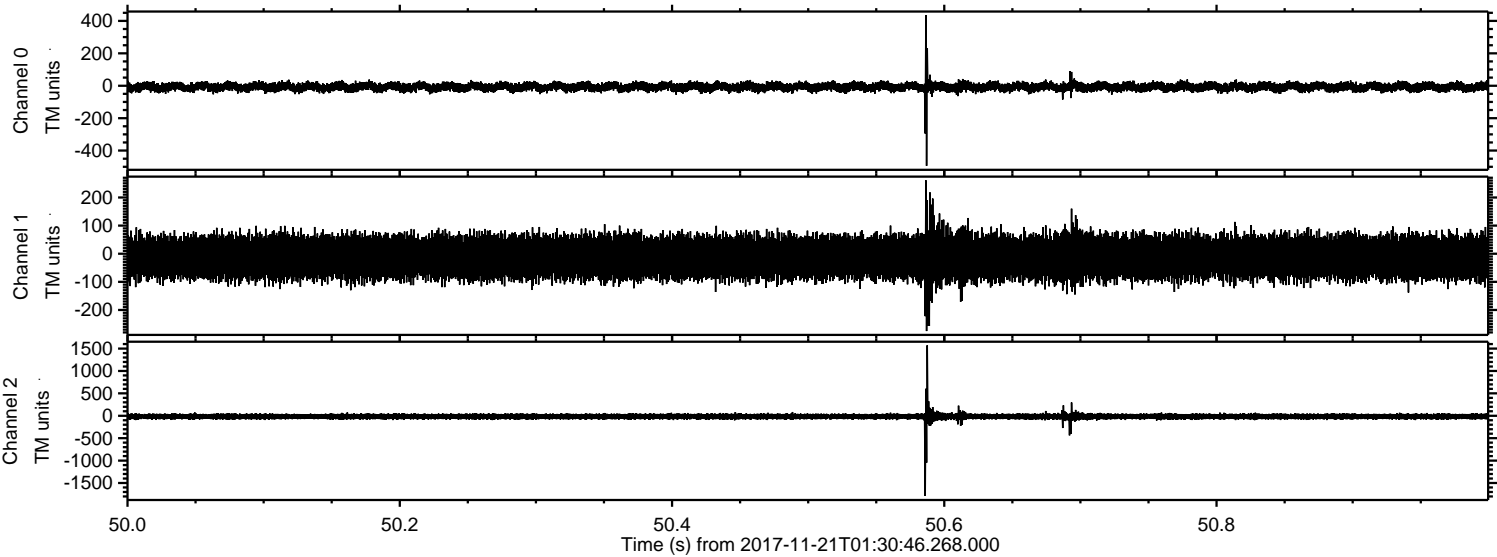
Processed Tue Nov 21 02:39:36 2017 by ELM ver.2012-10-06 from 001\_\_elm20171121\_013045\_\_dat00.bin





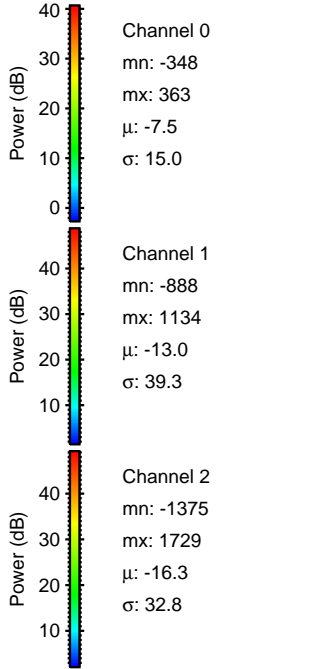
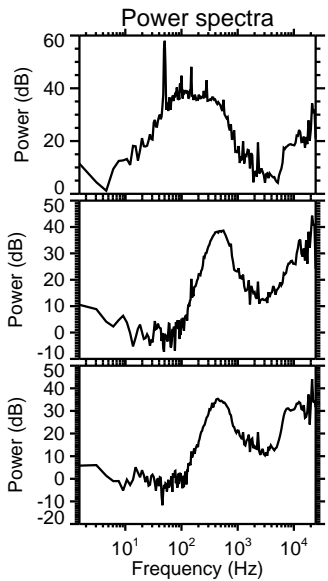
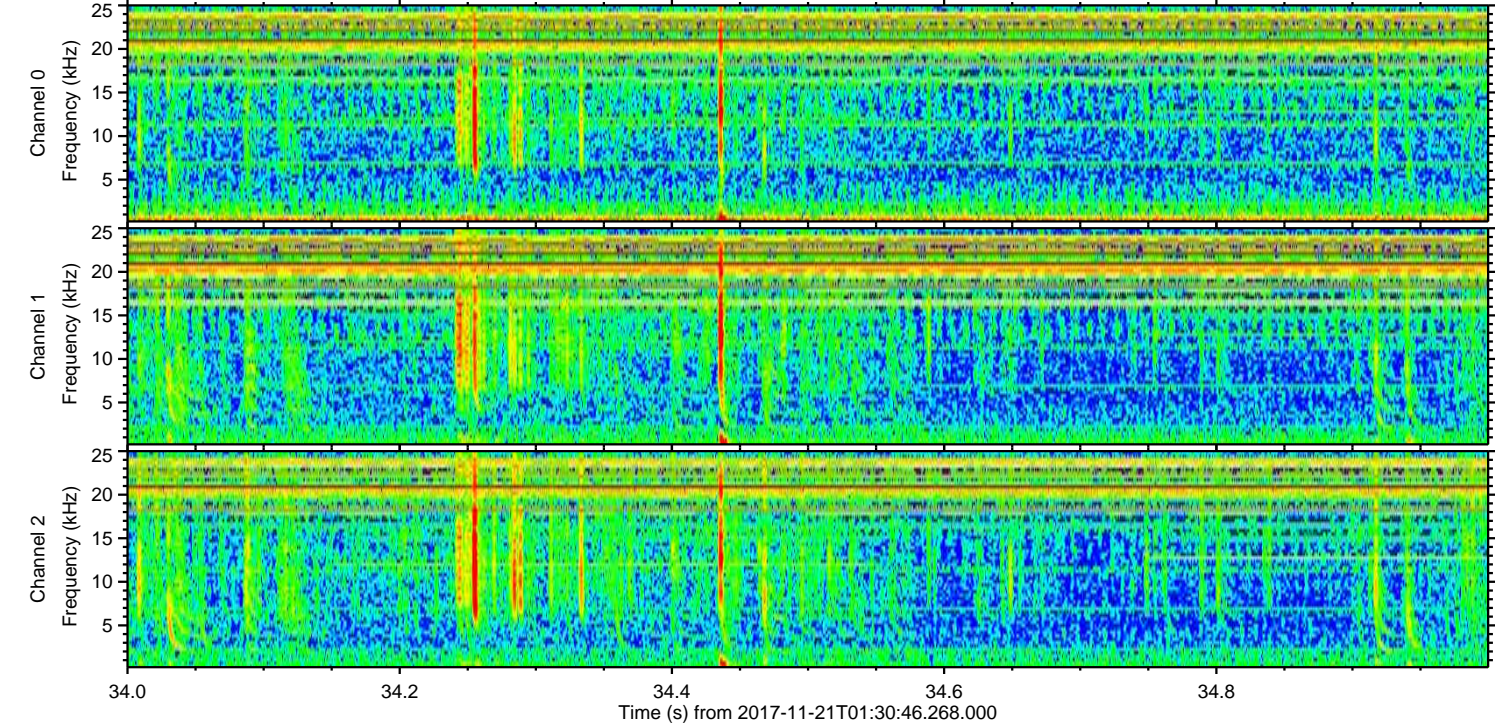
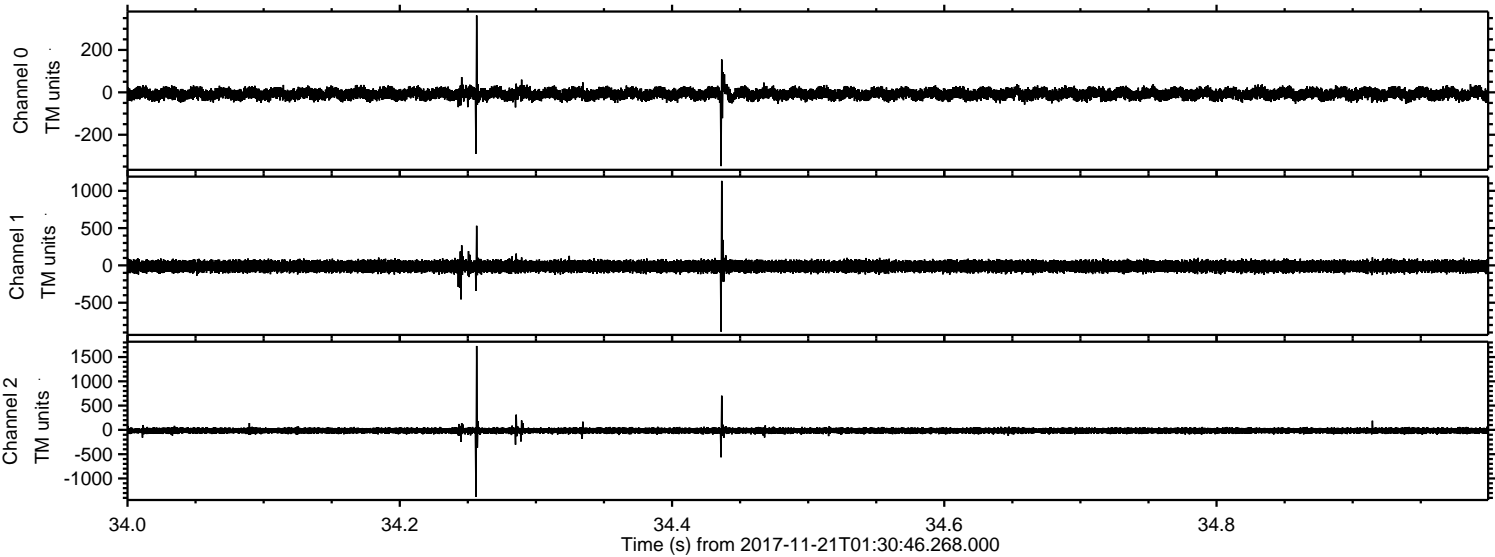
ELMAVAN 3D WAVEFORMS (Measured data sampled at 50 kHz) 51000 packets of 144 samples from 2017-11-21T01:30:46.268.000. Part 51/147

Processed Tue Nov 21 02:39:37 2017 by ELM ver.2012-10-06 from 001\_\_elm20171121\_013045\_\_dat00.bin



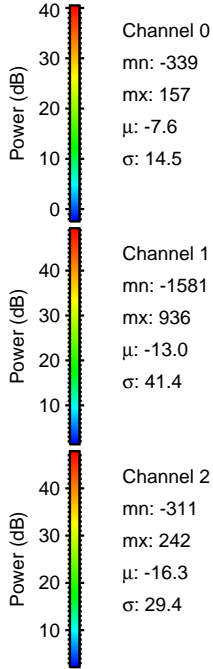
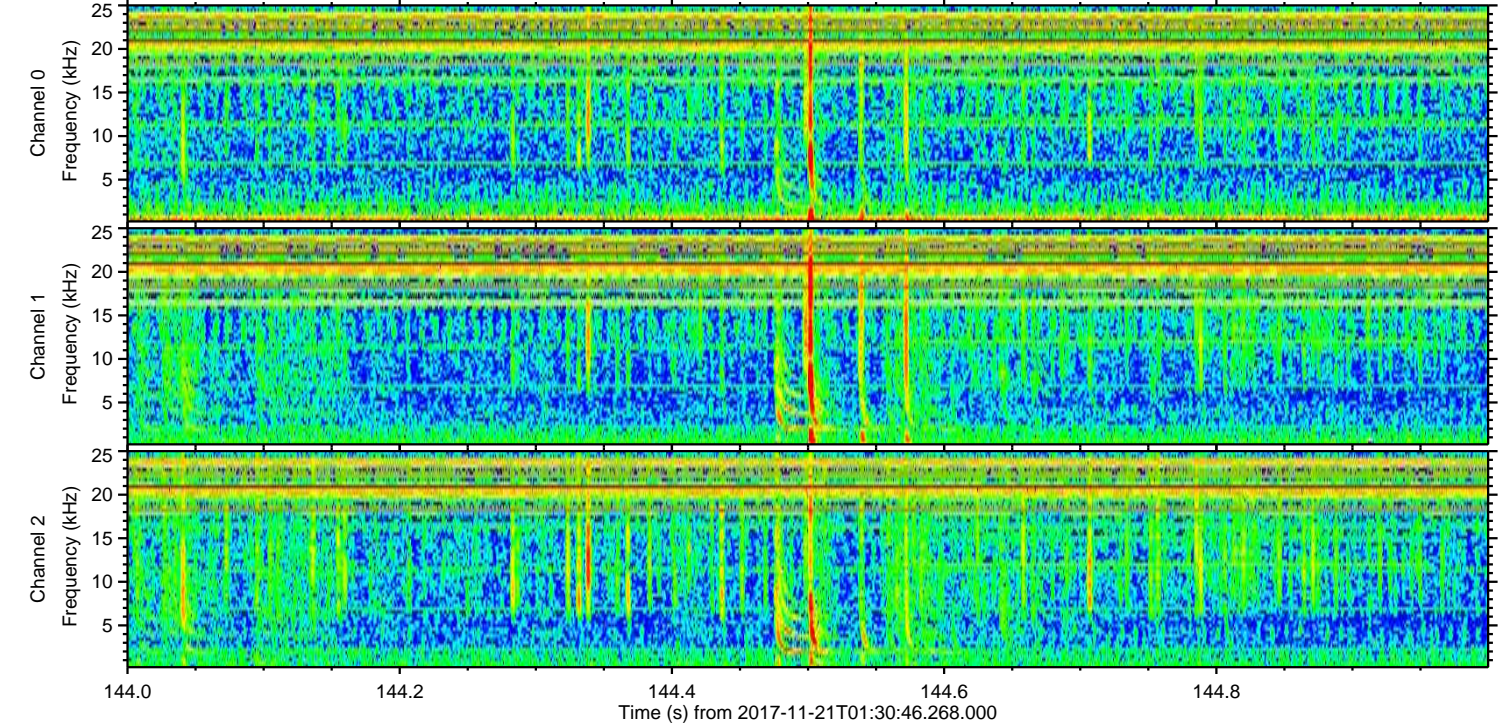
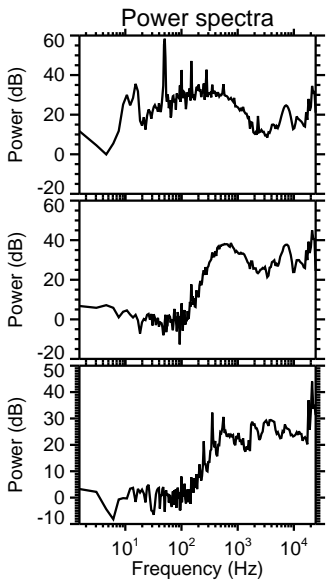
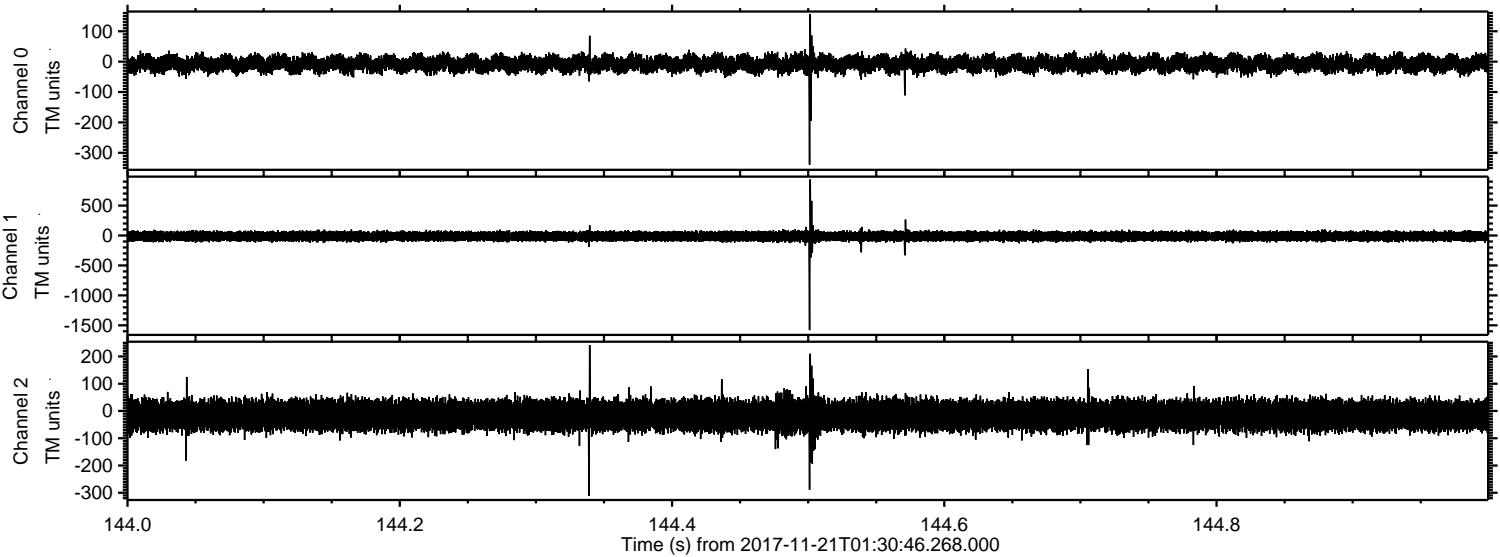


Processed Tue Nov 21 02:39:38 2017 by ELM ver.2012-10-06 from 001\_\_elm20171121\_013045\_\_dat00.bin



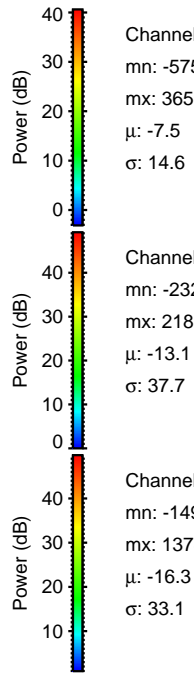
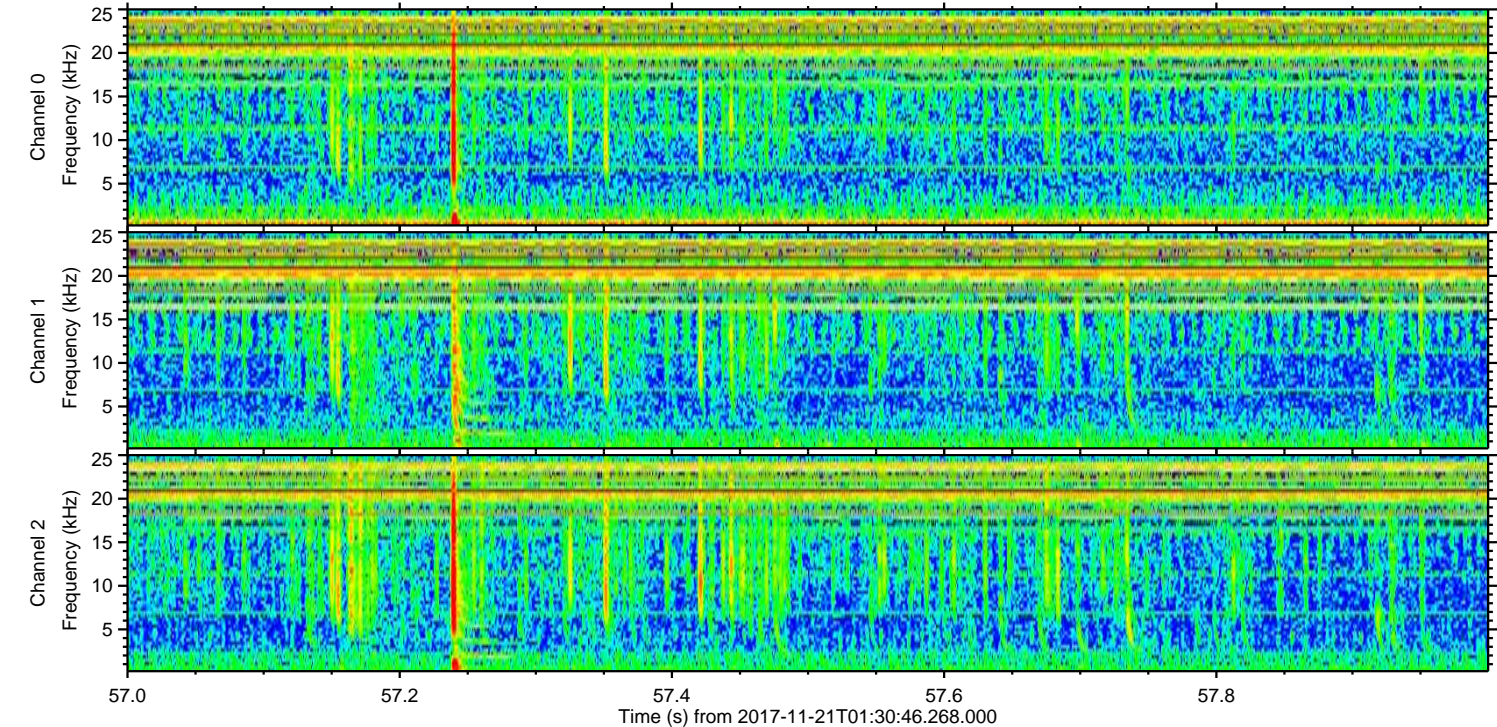
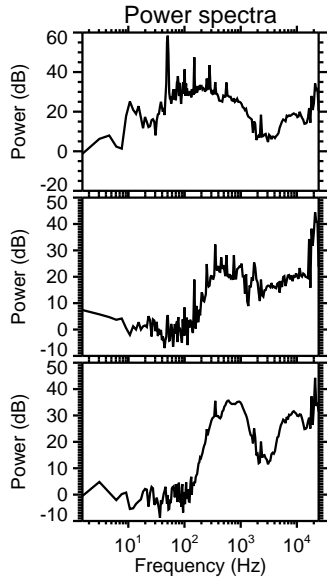
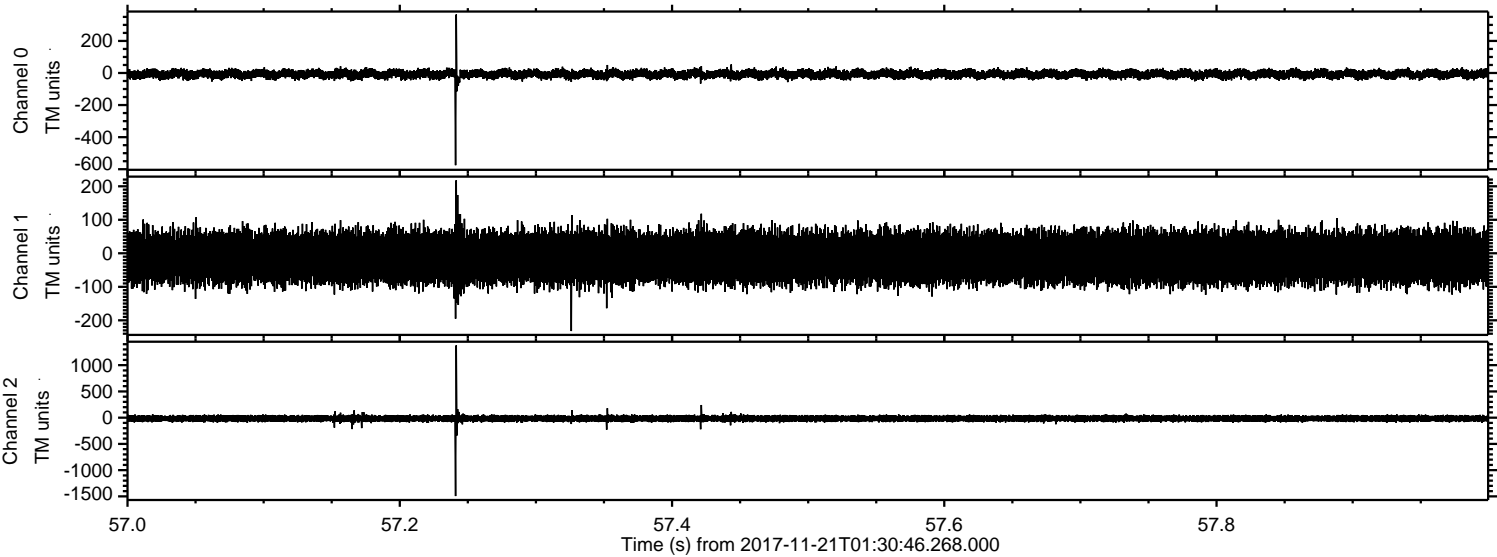


Processed Tue Nov 21 02:39:38 2017 by ELM ver.2012-10-06 from 001\_\_elm20171121\_013045\_\_dat00.bin





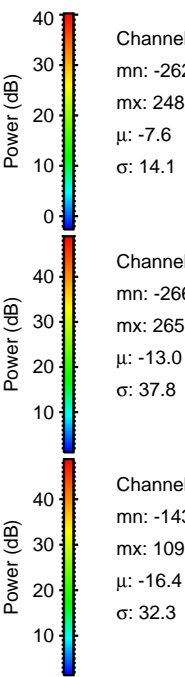
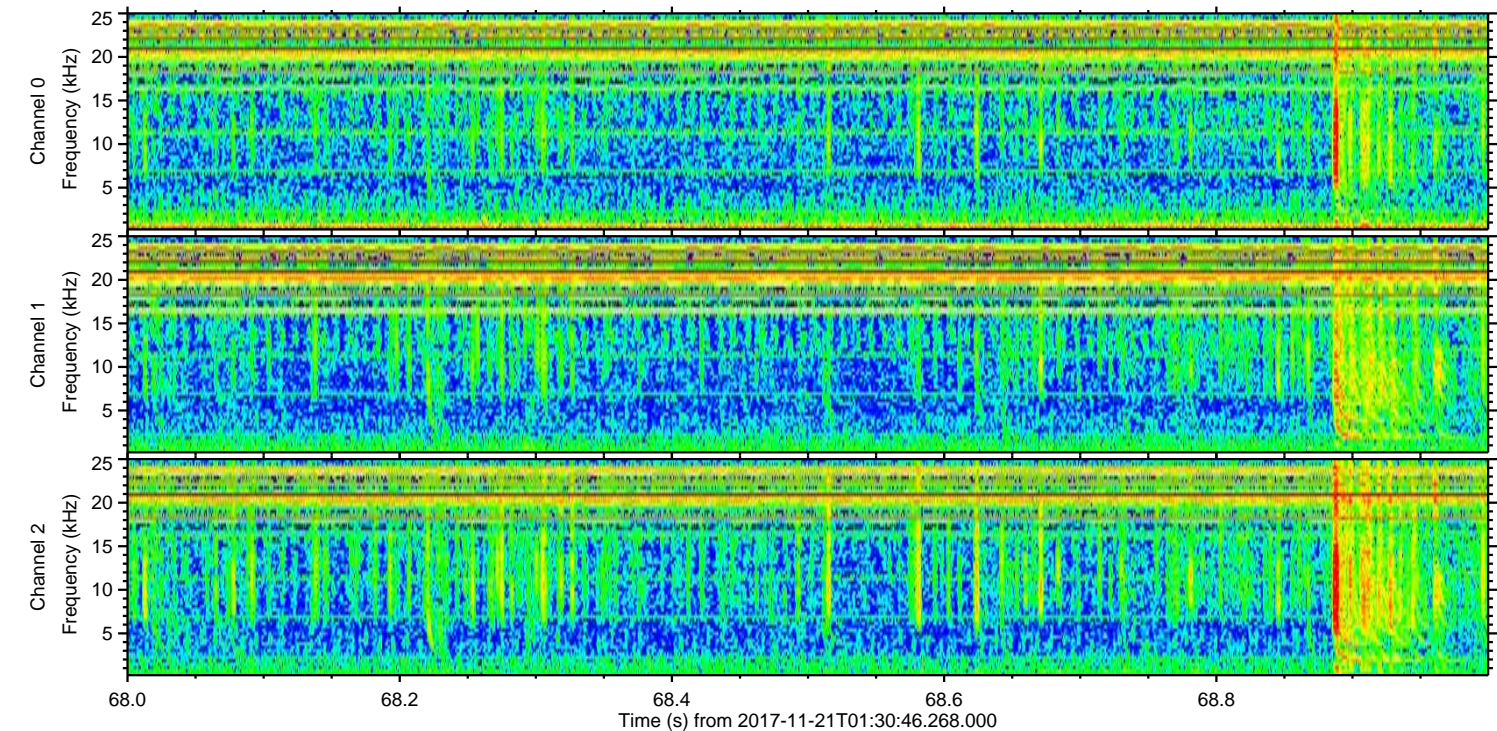
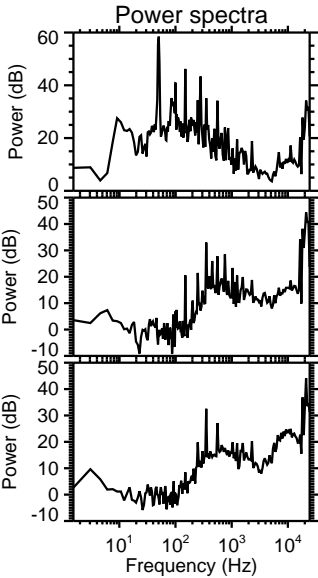
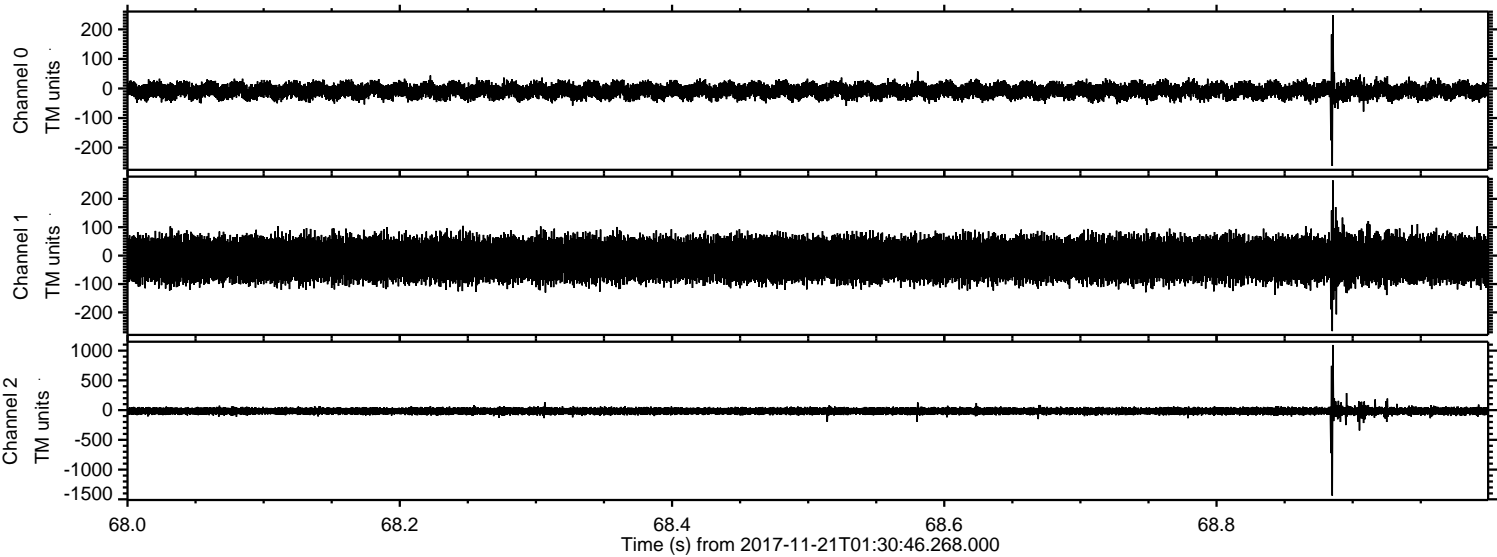
Processed Tue Nov 21 02:39:39 2017 by ELM ver.2012-10-06 from 001\_\_elm20171121\_013045\_\_dat00.bin





ELMAVAN 3D WAVEFORMS (Measured data sampled at 50 kHz) 51000 packets of 144 samples from 2017-11-21T01:30:46.268.000. Part 69/147

Processed Tue Nov 21 02:39:39 2017 by ELM ver.2012-10-06 from 001\_\_elm20171121\_013045\_\_dat00.bin





Processed Tue Nov 21 02:39:40 2017 by ELM ver.2012-10-06 from 001\_\_elm20171121\_013045\_\_dat00.bin

