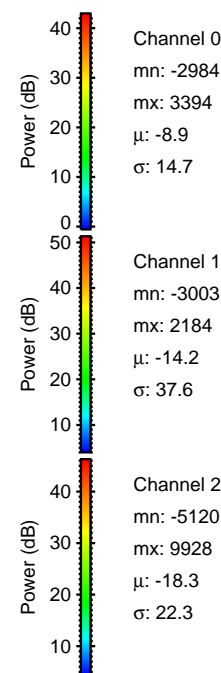
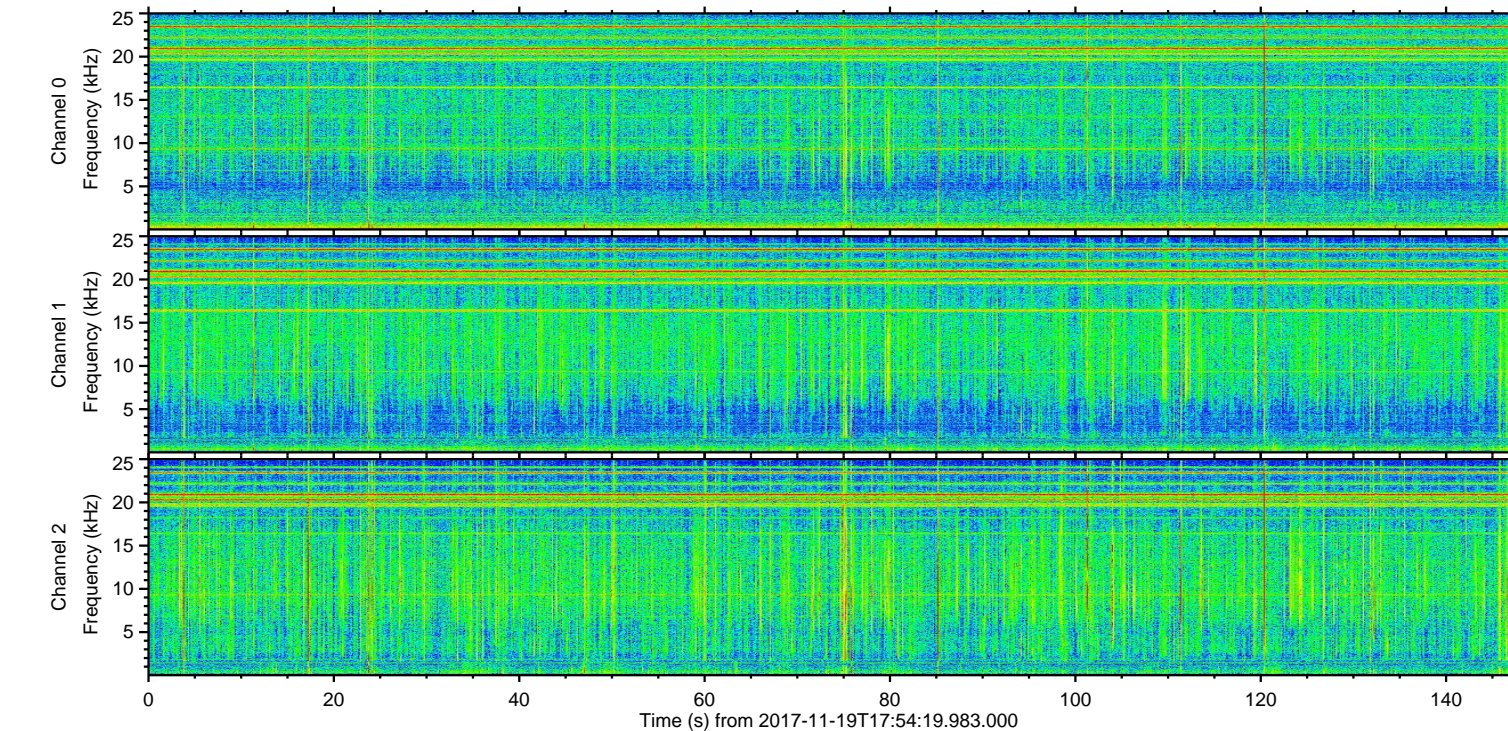
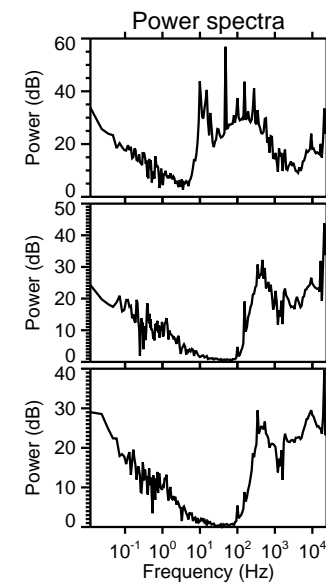
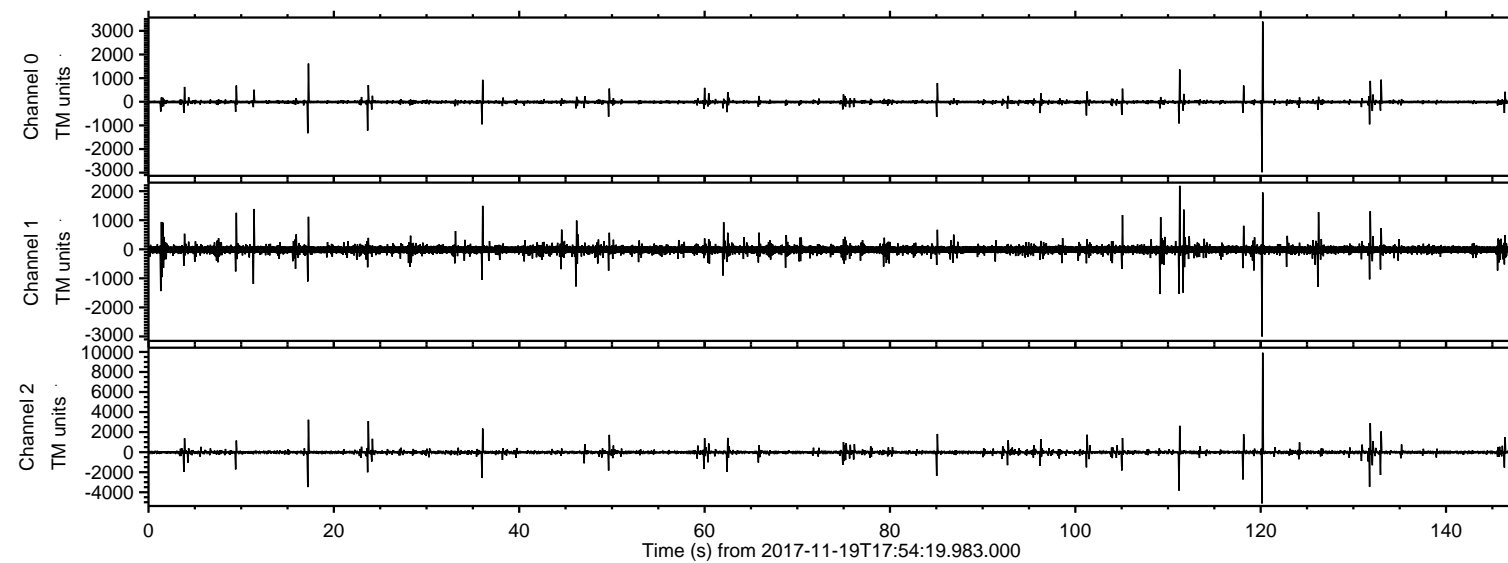


ELMAVAN 3D WAVEFORMS (Measured data sampled at 50 kHz) 51000 packets of 144 samples from 2017-11-19T17:54:19.983.000.

Processed Sun Nov 19 19:02:31 2017 by ELM ver.2012-10-06 from 001__elm20171119_175418__dat00.bin



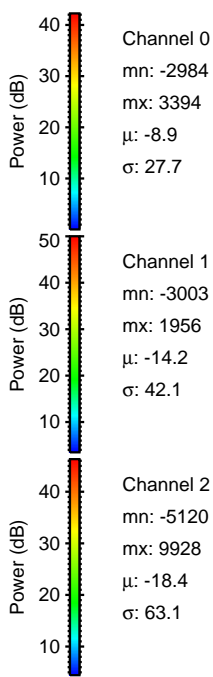
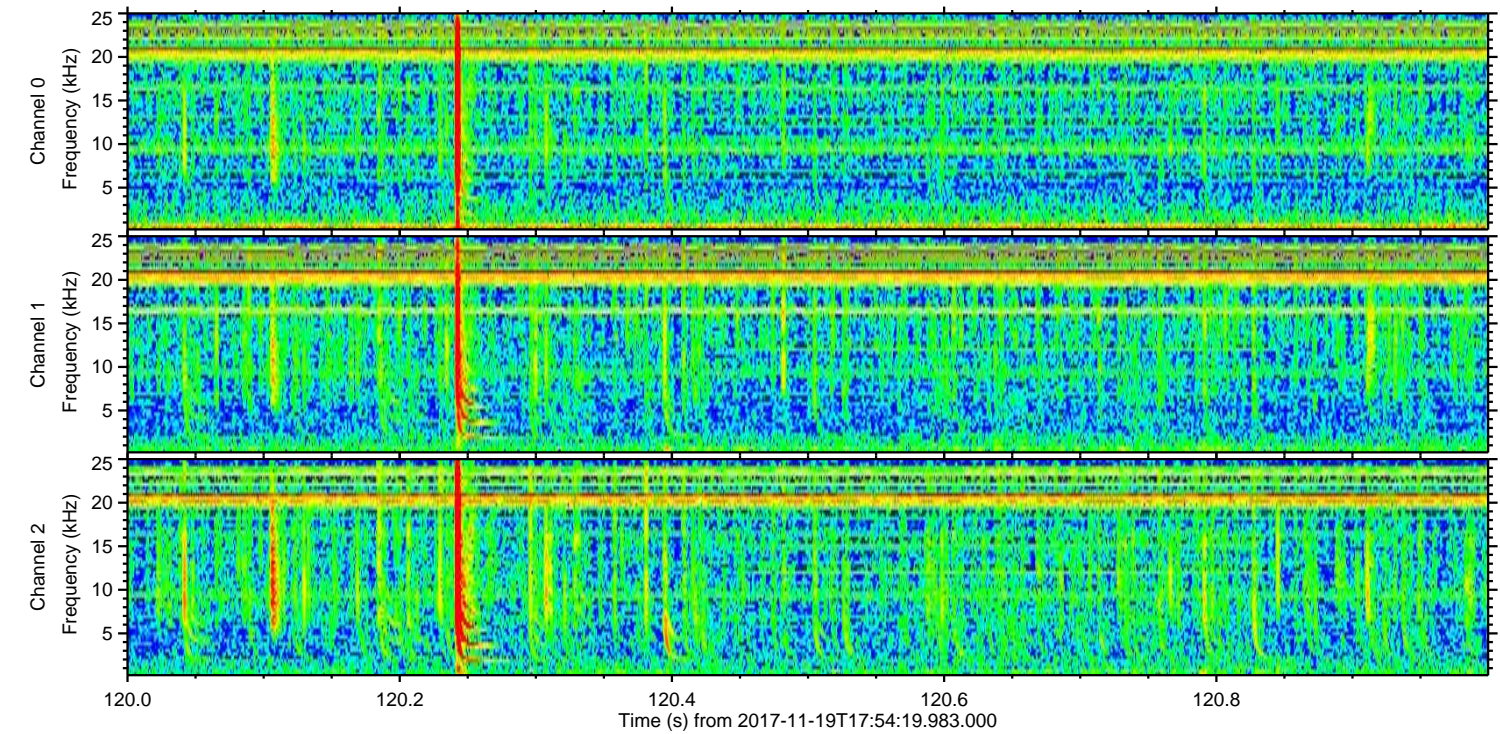
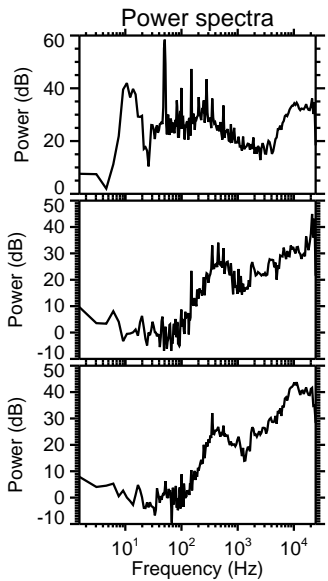
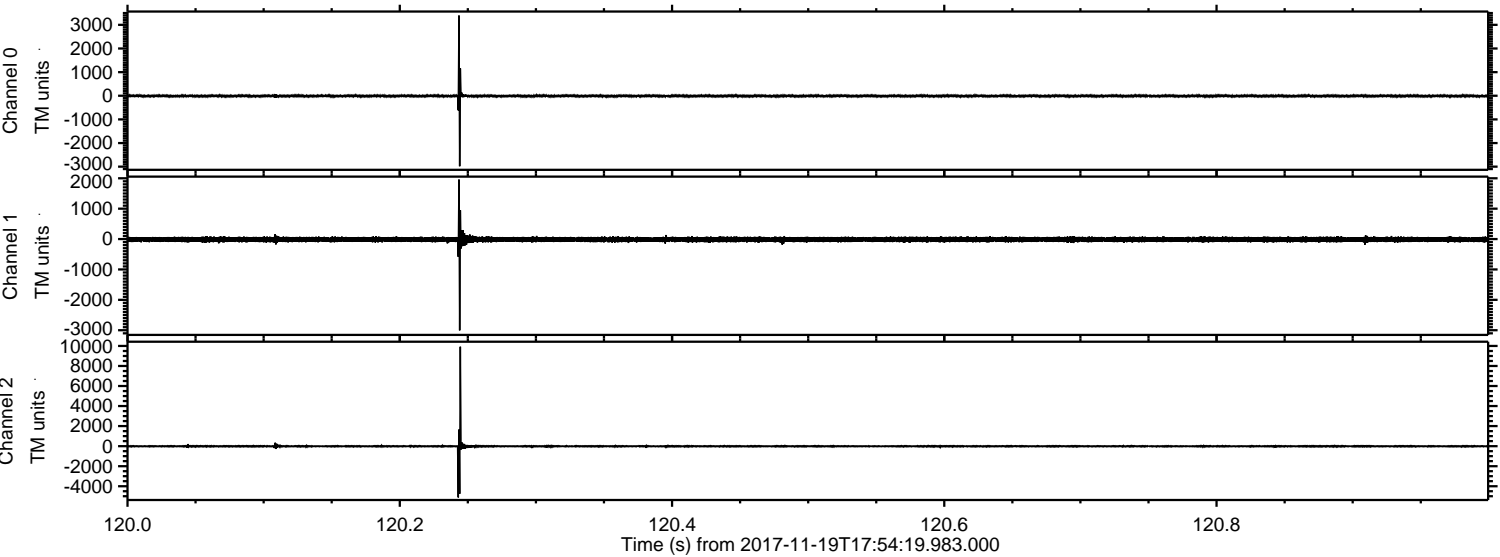
Channel 0
mn: -2984
mx: 3394
 μ : -8.9
 σ : 14.7

Channel 1
mn: -3003
mx: 2184
 μ : -14.2
 σ : 37.6

Channel 2
mn: -5120
mx: 9928
 μ : -18.3
 σ : 22.3

ELMAVAN 3D WAVEFORMS (Measured data sampled at 50 kHz) 51000 packets of 144 samples from 2017-11-19T17:54:19.983.000. Part 121/147

Processed Sun Nov 19 19:02:39 2017 by ELM ver.2012-10-06 from 001__elm20171119_175418__dat00.bin



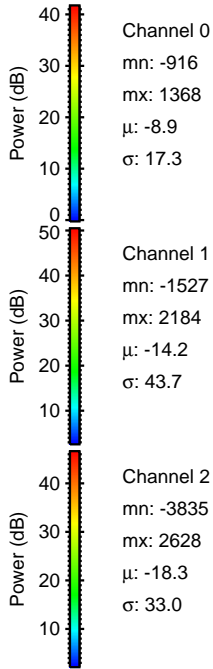
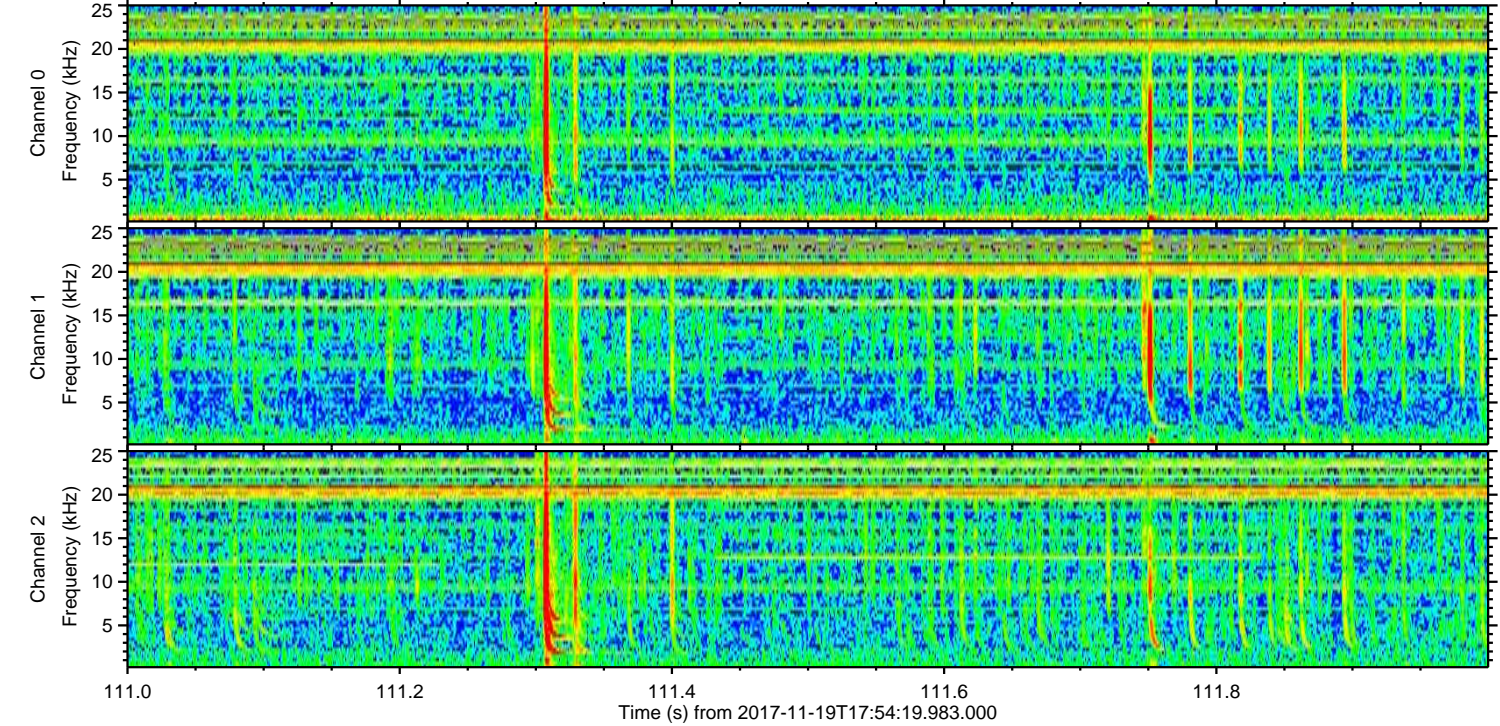
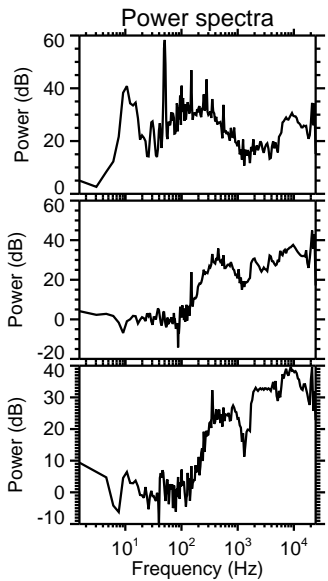
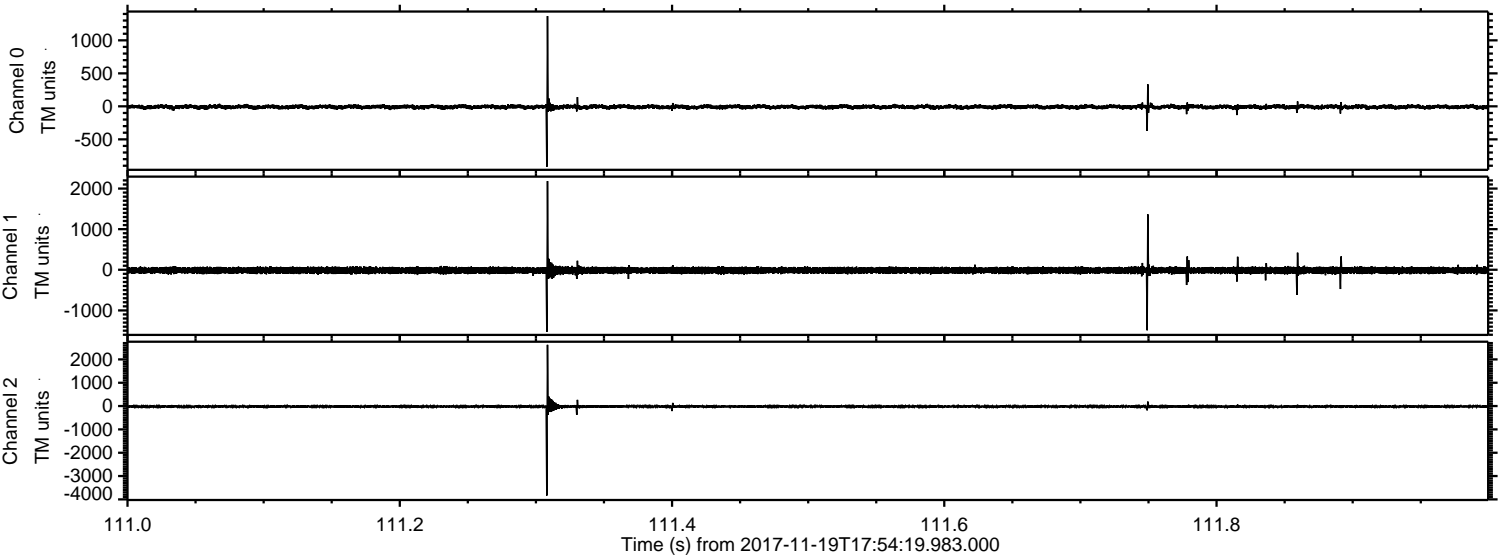
Channel 0
mn: -2984
mx: 3394
 μ : -8.9
 σ : 27.7

Channel 1
mn: -3003
mx: 1956
 μ : -14.2
 σ : 42.1

Channel 2
mn: -5120
mx: 9928
 μ : -18.4
 σ : 63.1

ELMAVAN 3D WAVEFORMS (Measured data sampled at 50 kHz) 51000 packets of 144 samples from 2017-11-19T17:54:19.983.000. Part 112/147

Processed Sun Nov 19 19:02:39 2017 by ELM ver.2012-10-06 from 001__elm20171119_175418__dat00.bin



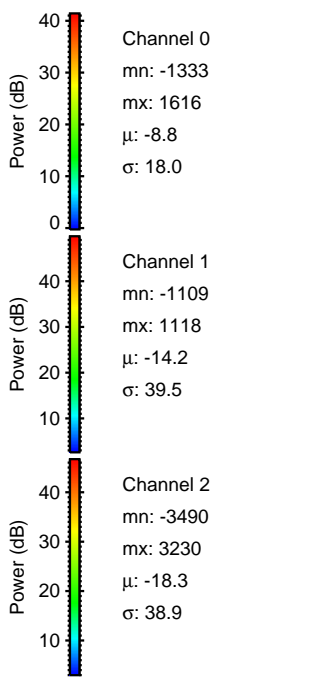
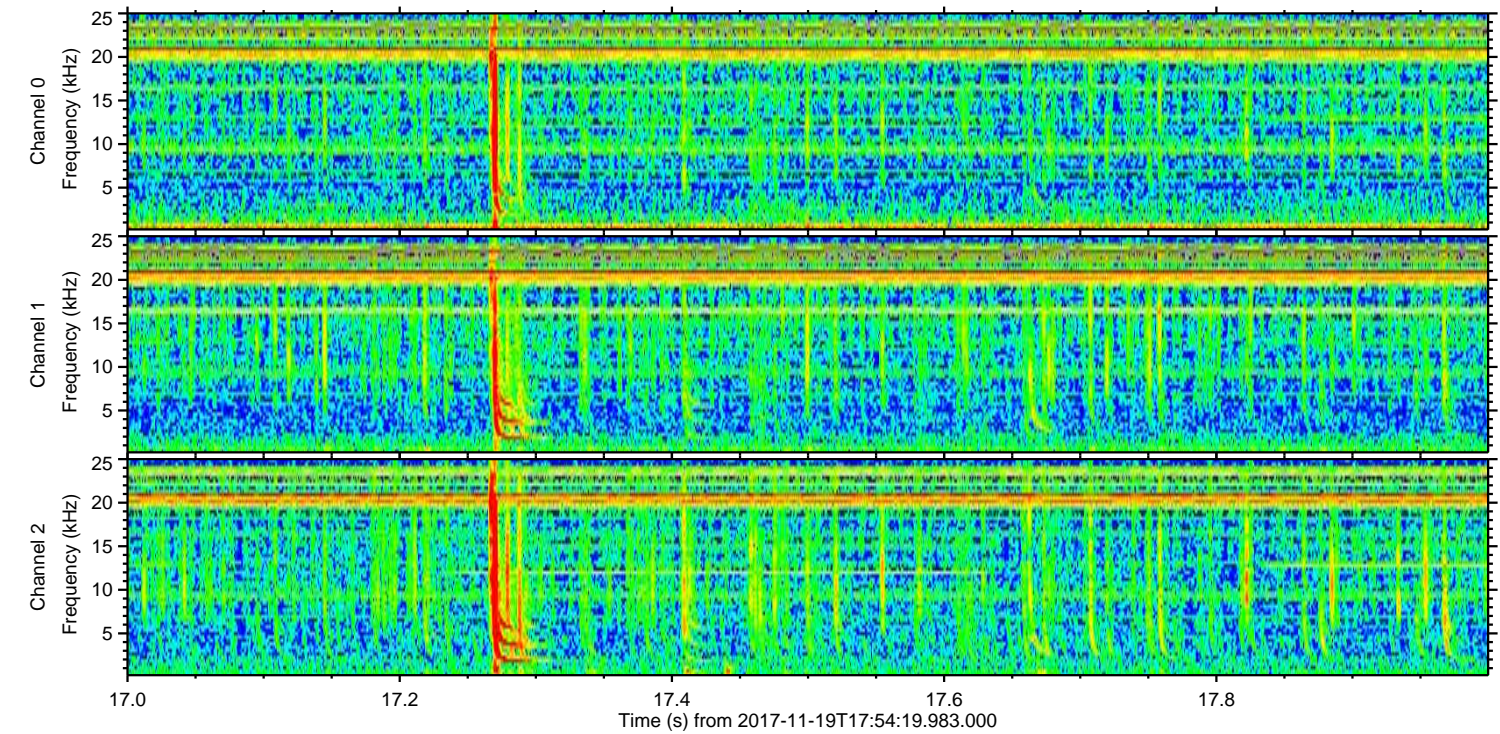
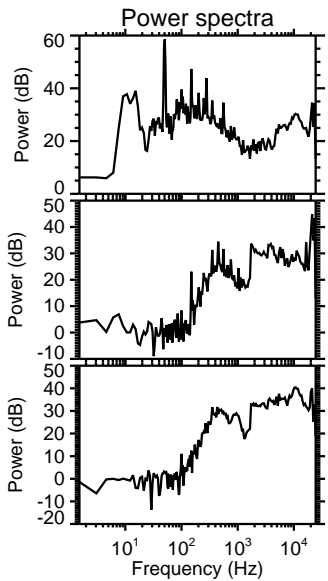
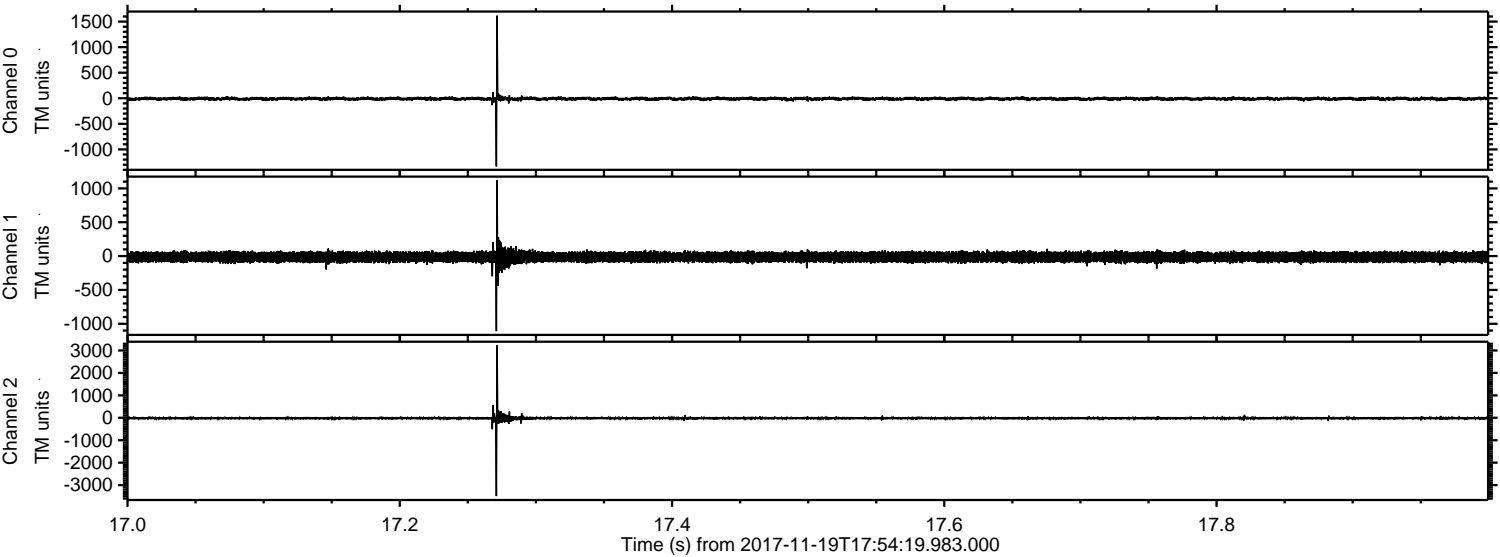
Channel 0
mn: -916
mx: 1368
 μ : -8.9
 σ : 17.3

Channel 1
mn: -1527
mx: 2184
 μ : -14.2
 σ : 43.7

Channel 2
mn: -3835
mx: 2628
 μ : -18.3
 σ : 33.0

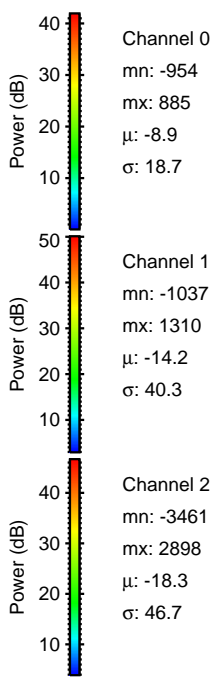
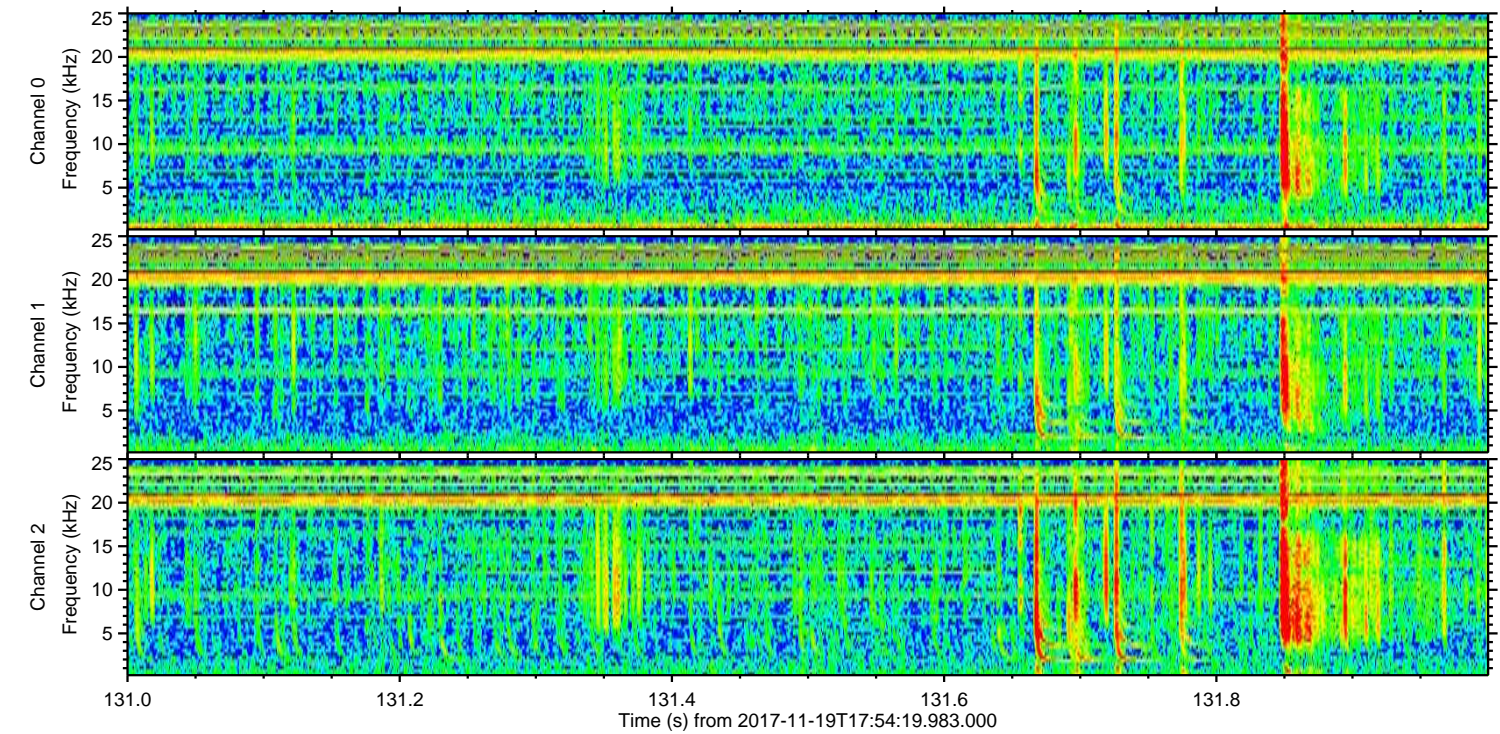
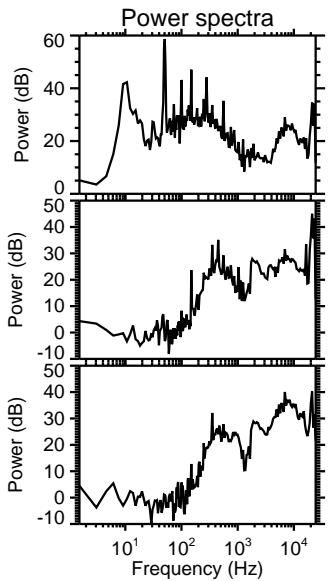
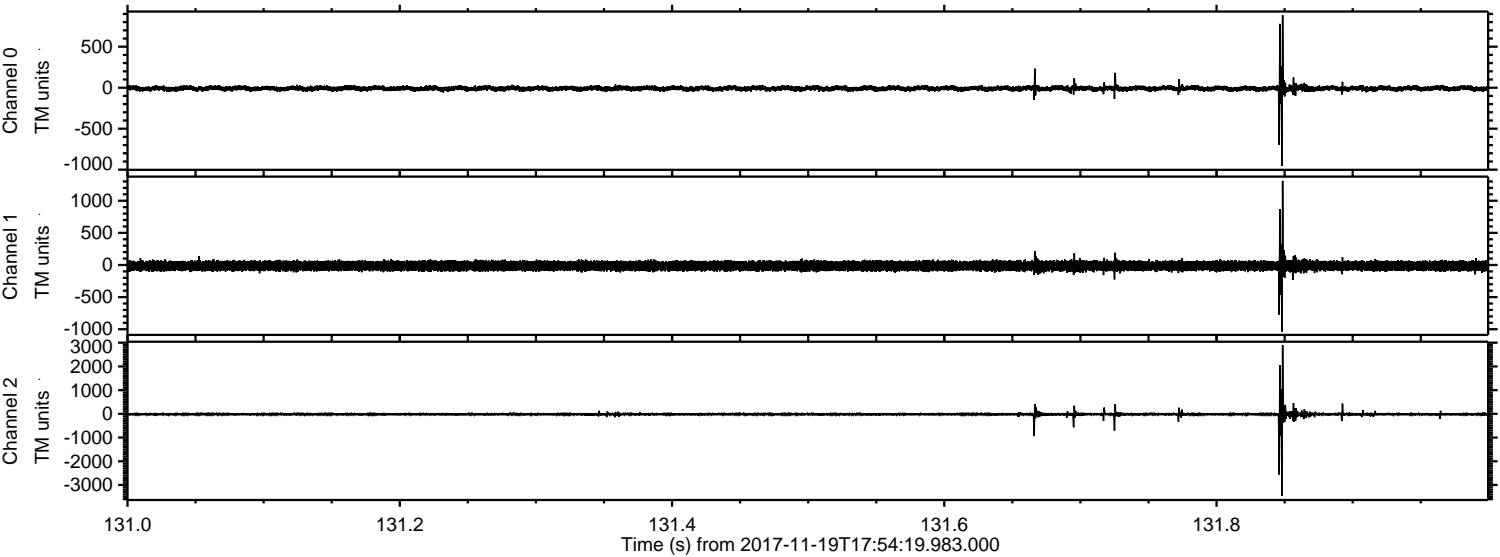
ELMAVAN 3D WAVEFORMS (Measured data sampled at 50 kHz) 51000 packets of 144 samples from 2017-11-19T17:54:19.983.000. Part 18/147

Processed Sun Nov 19 19:02:40 2017 by ELM ver.2012-10-06 from 001__elm20171119_175418__dat00.bin



ELMAVAN 3D WAVEFORMS (Measured data sampled at 50 kHz) 51000 packets of 144 samples from 2017-11-19T17:54:19.983.000. Part 132/147

Processed Sun Nov 19 19:02:41 2017 by ELM ver.2012-10-06 from 001__elm20171119_175418__dat00.bin

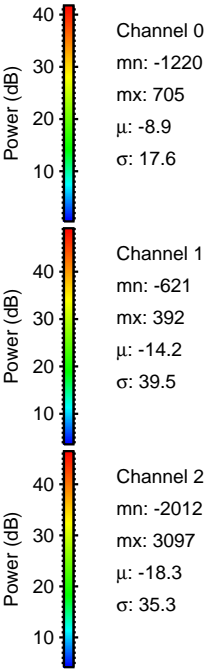
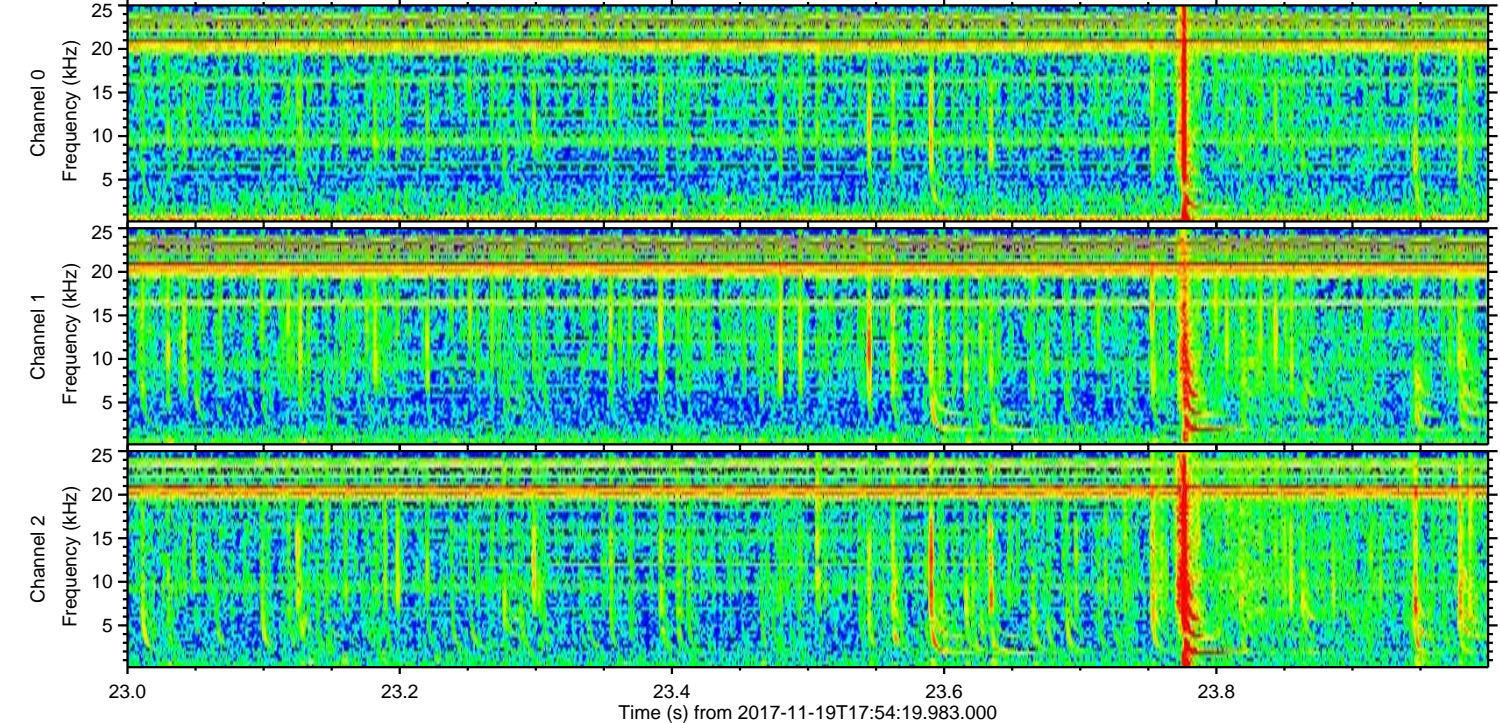
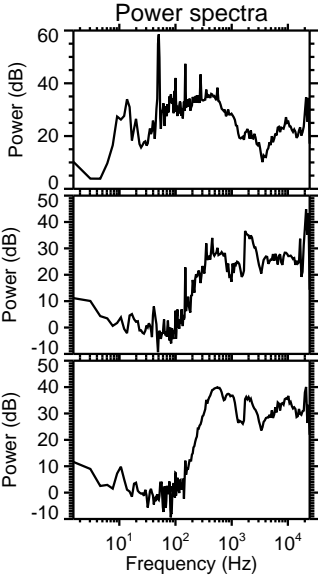
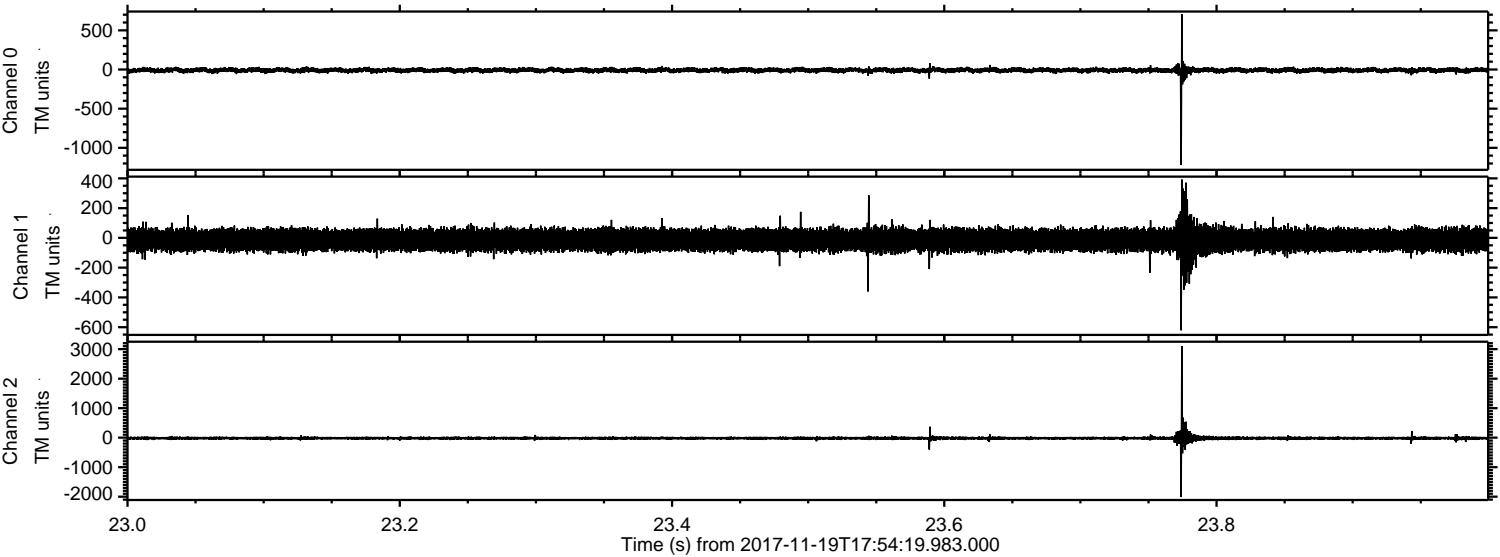


Channel 0
mn: -954
mx: 885
 μ : -8.9
 σ : 18.7

Channel 1
mn: -1037
mx: 1310
 μ : -14.2
 σ : 40.3

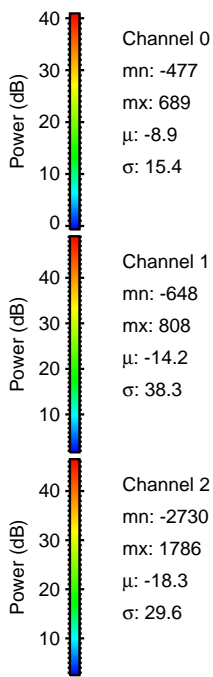
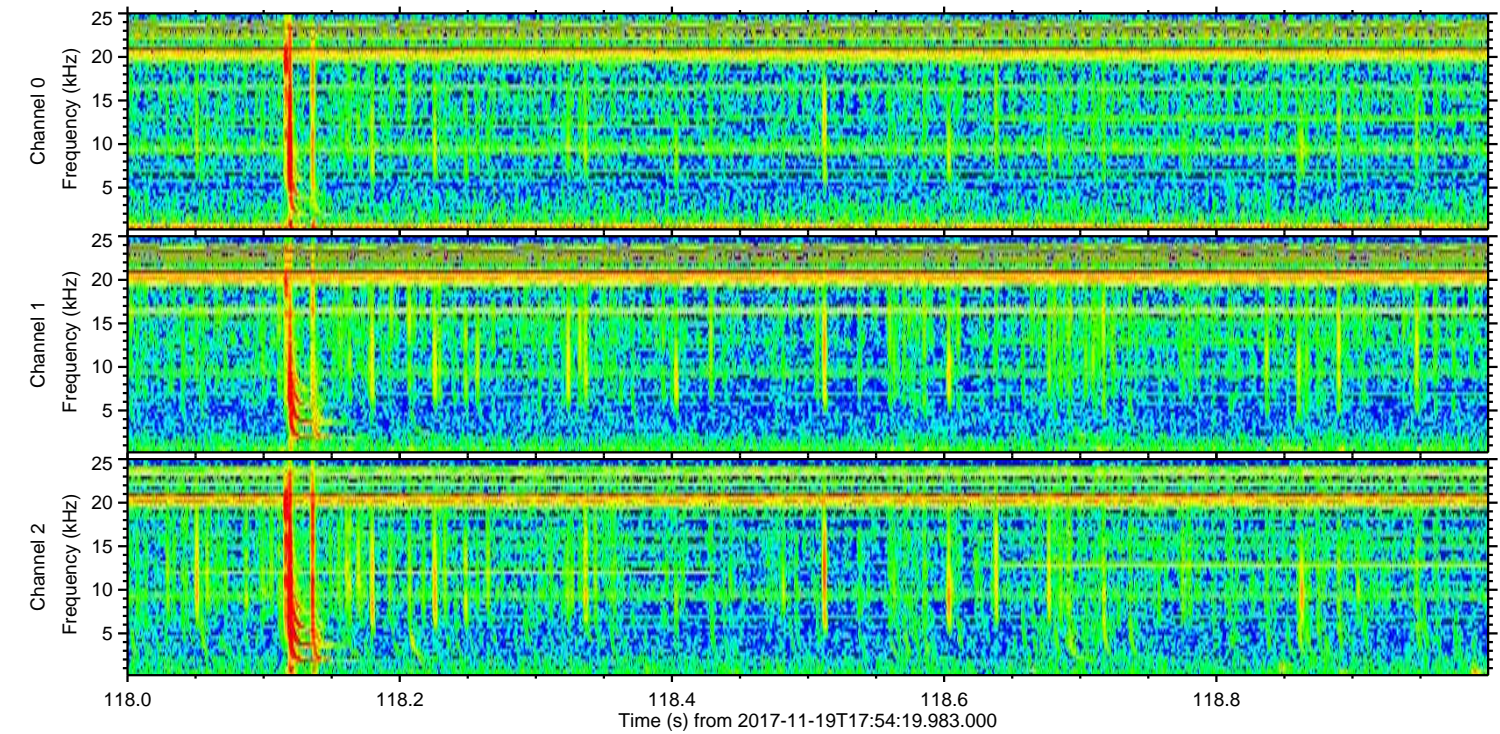
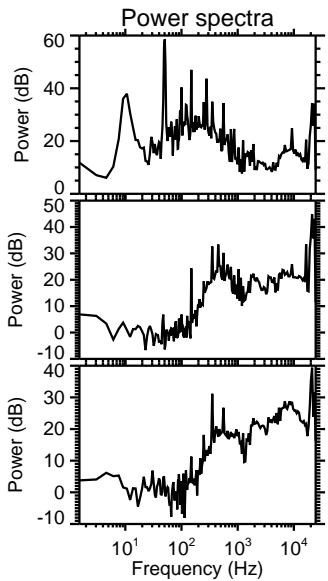
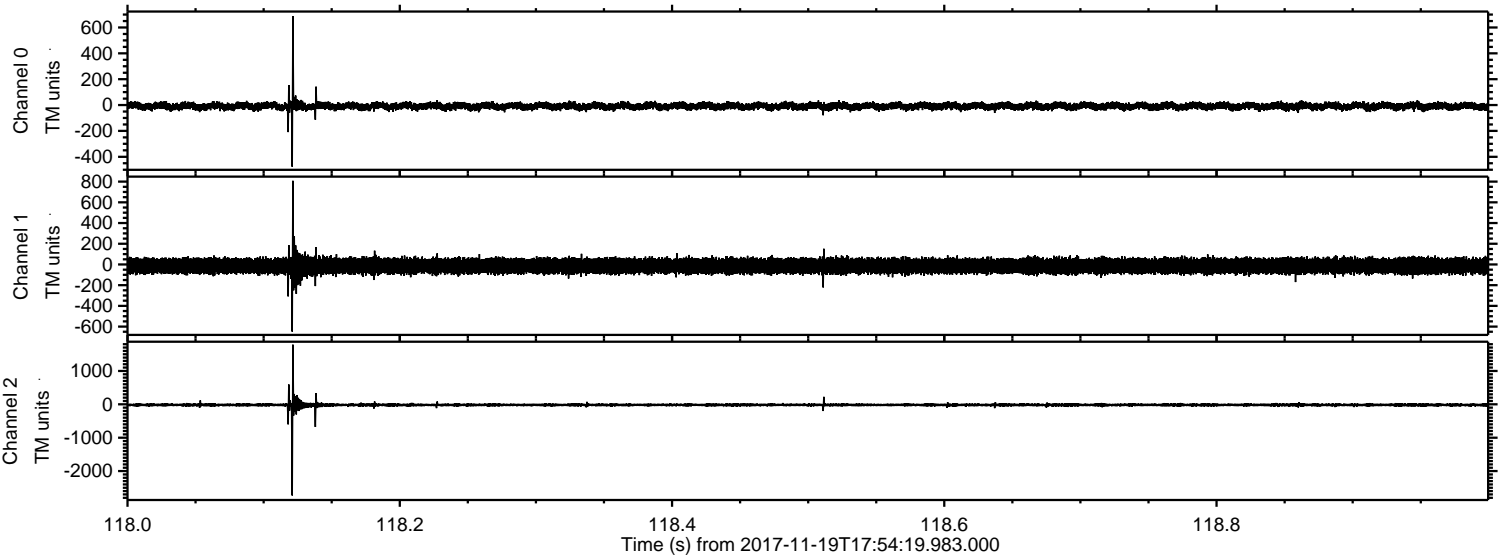
Channel 2
mn: -3461
mx: 2898
 μ : -18.3
 σ : 46.7

Processed Sun Nov 19 19:02:42 2017 by ELM ver.2012-10-06 from 001__elm20171119_175418__dat00.bin

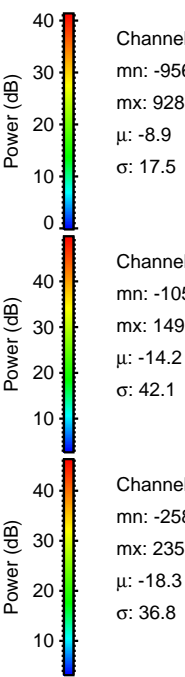
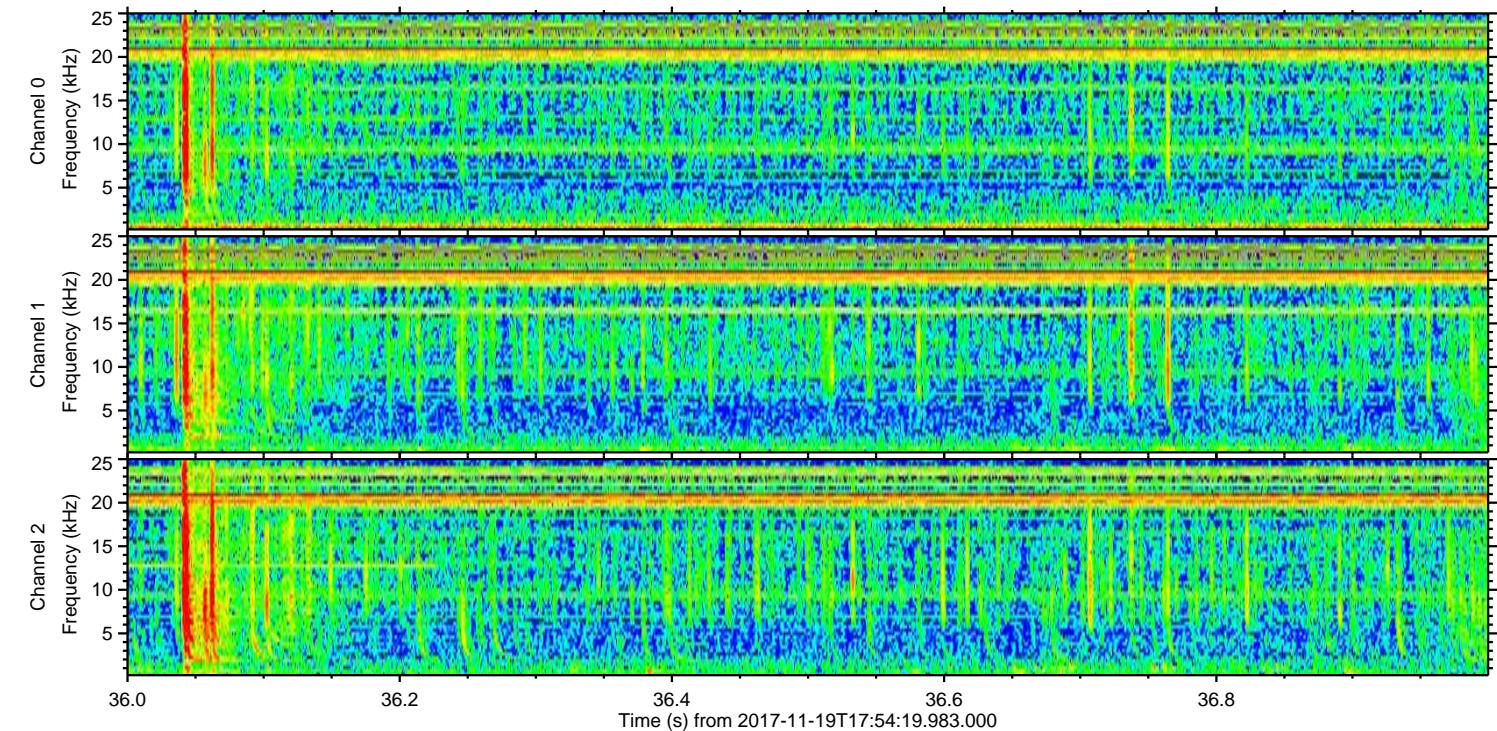
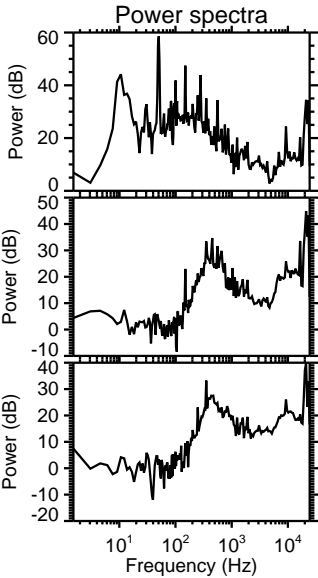
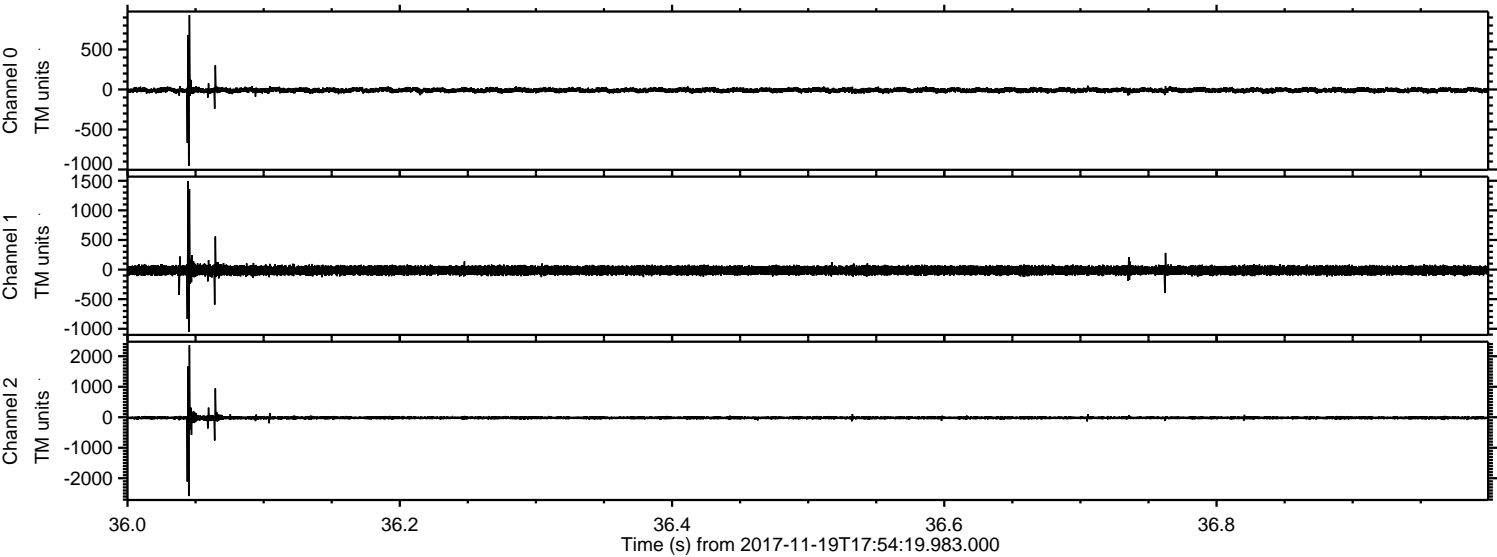


ELMAVAN 3D WAVEFORMS (Measured data sampled at 50 kHz) 51000 packets of 144 samples from 2017-11-19T17:54:19.983.000. Part 119/147

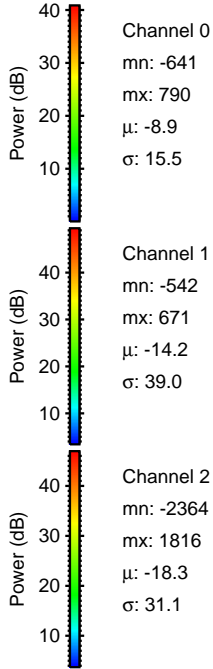
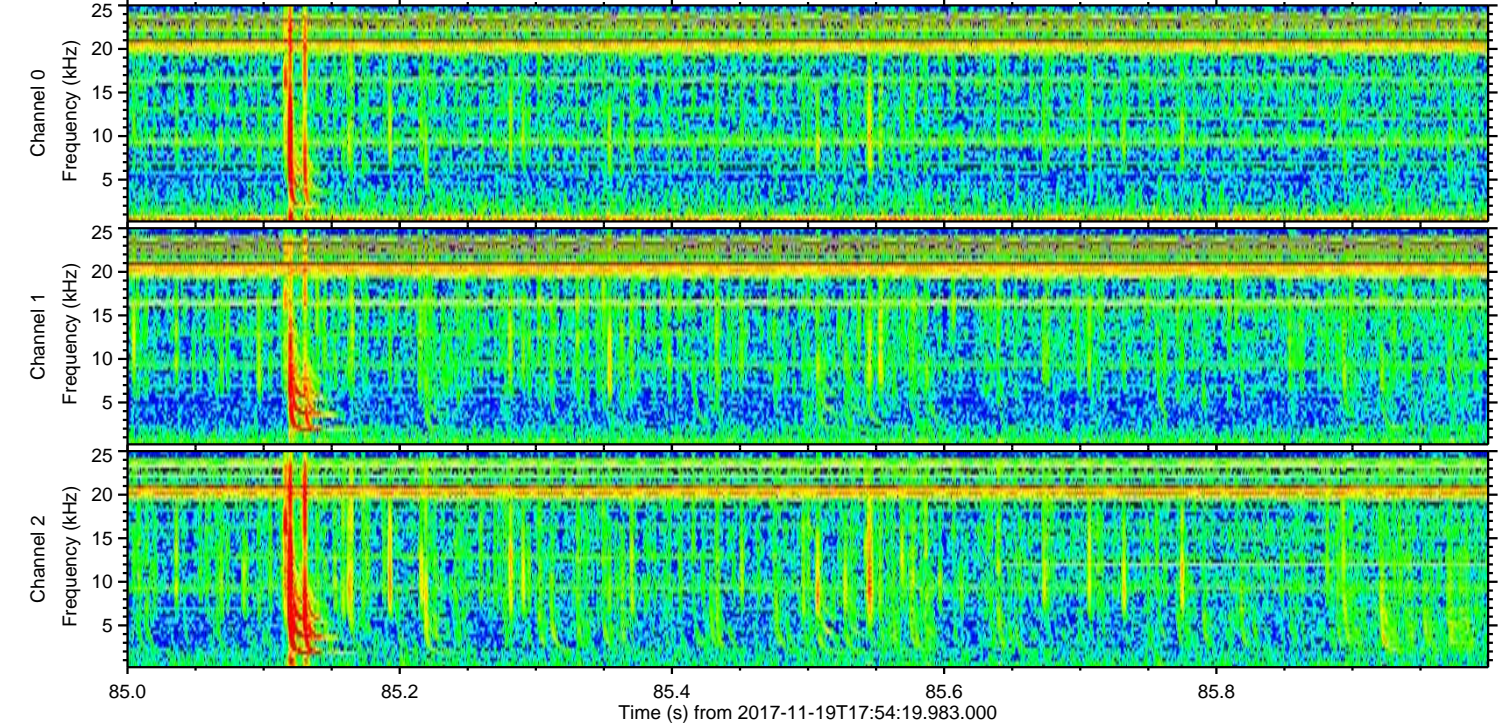
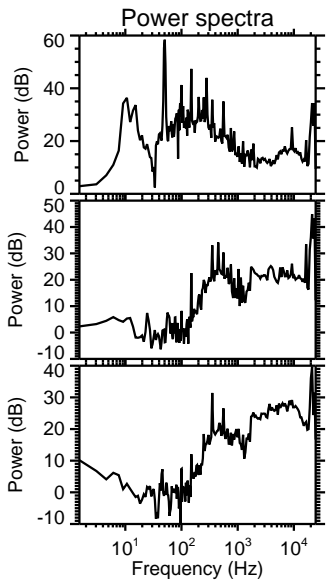
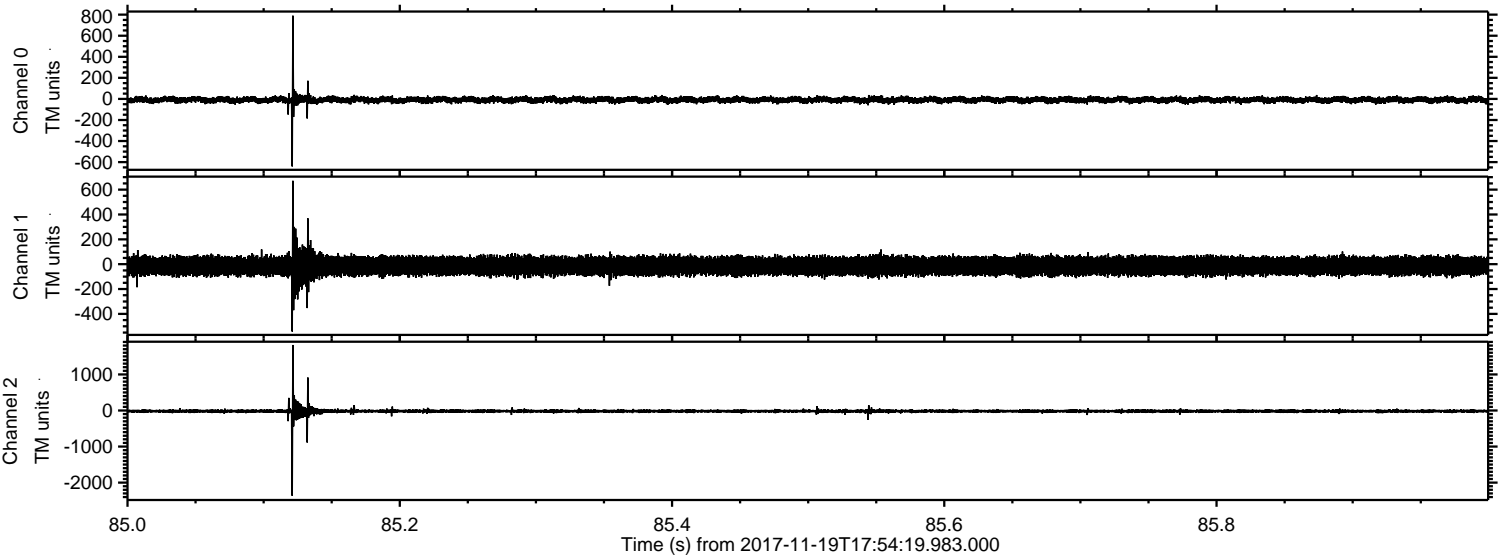
Processed Sun Nov 19 19:02:43 2017 by ELM ver.2012-10-06 from 001__elm20171119_175418__dat00.bin



Processed Sun Nov 19 19:02:44 2017 by ELM ver.2012-10-06 from 001__elm20171119_175418__dat00.bin

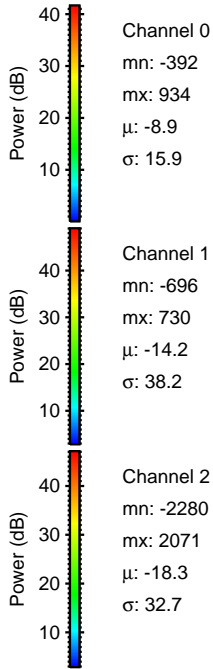
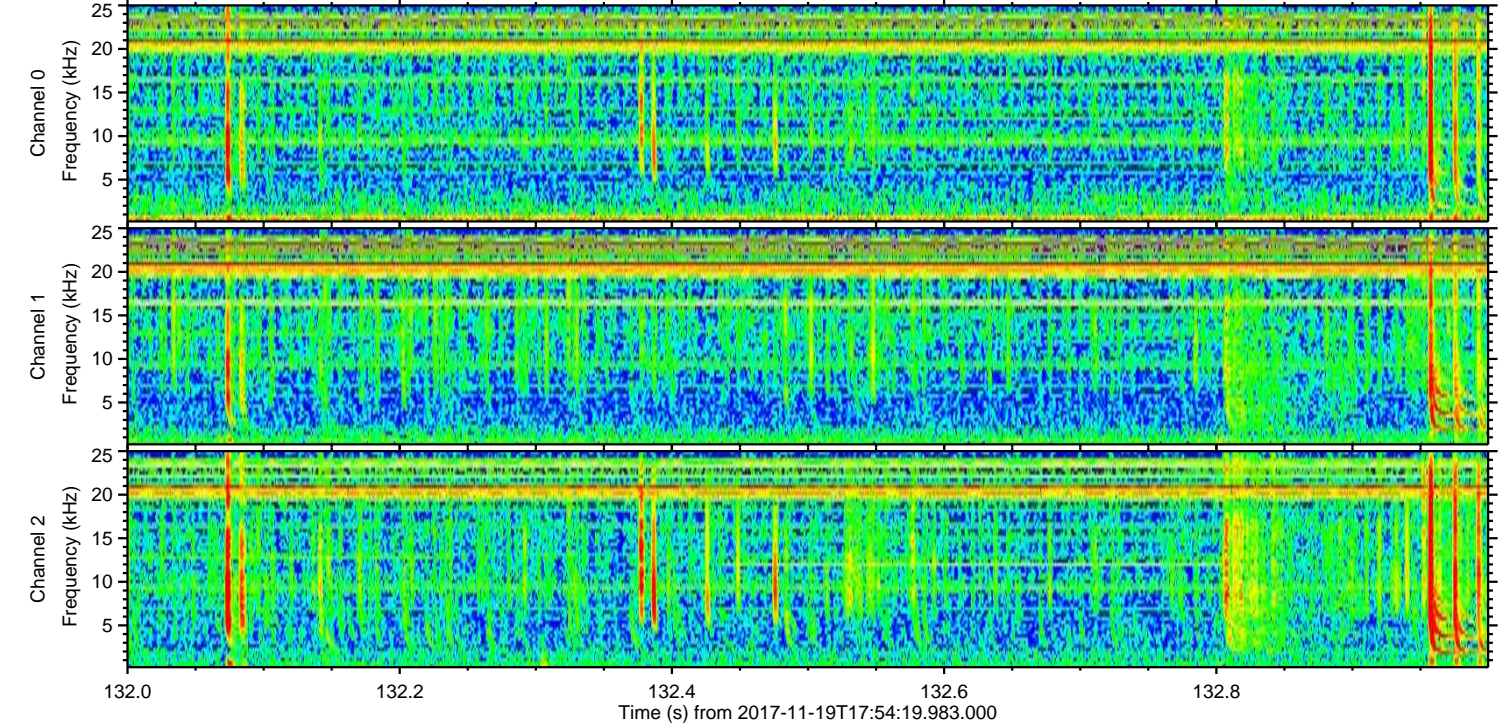
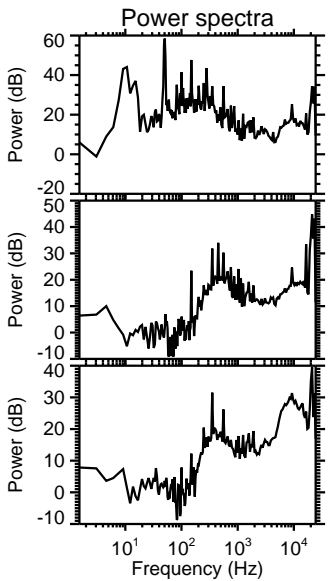
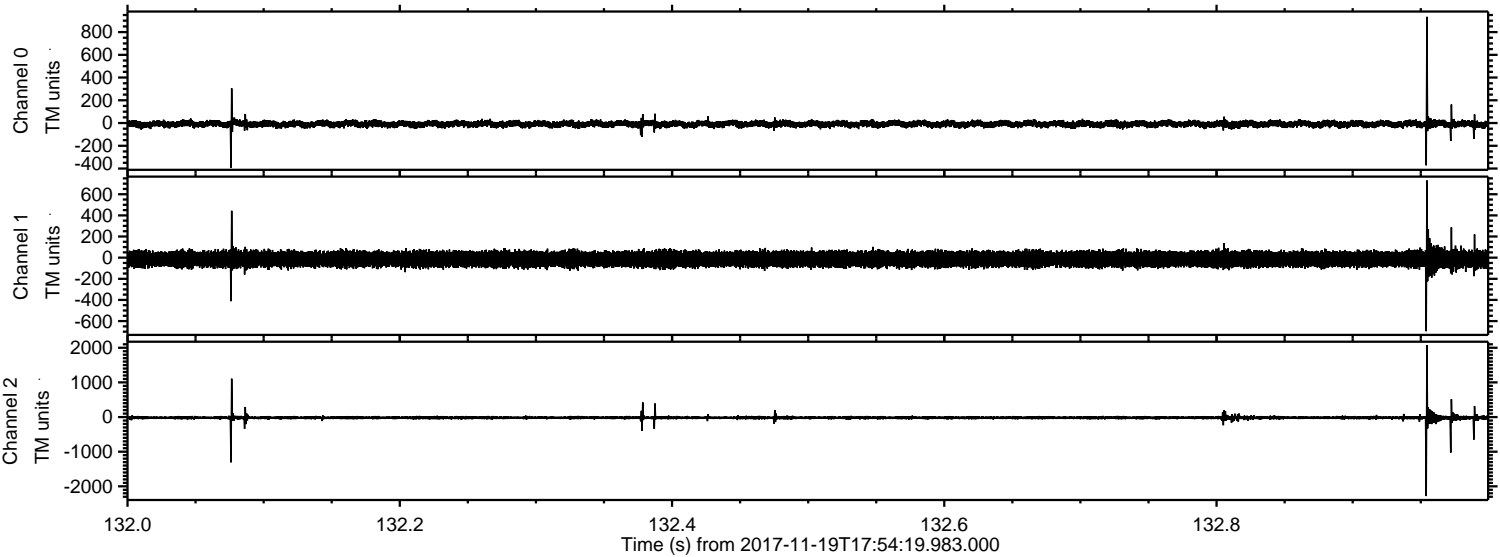


Processed Sun Nov 19 19:02:45 2017 by ELM ver.2012-10-06 from 001__elm20171119_175418__dat00.bin



ELMAVAN 3D WAVEFORMS (Measured data sampled at 50 kHz) 51000 packets of 144 samples from 2017-11-19T17:54:19.983.000. Part 133/147

Processed Sun Nov 19 19:02:45 2017 by ELM ver.2012-10-06 from 001__elm20171119_175418__dat00.bin



Processed Sun Nov 19 19:02:46 2017 by ELM ver.2012-10-06 from 001__elm20171119_175418__dat00.bin

