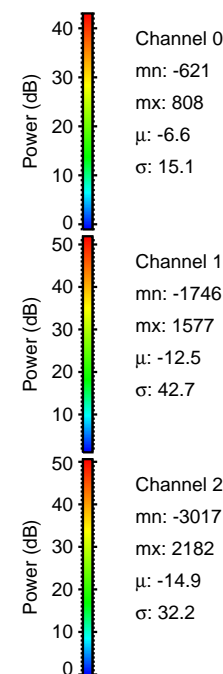
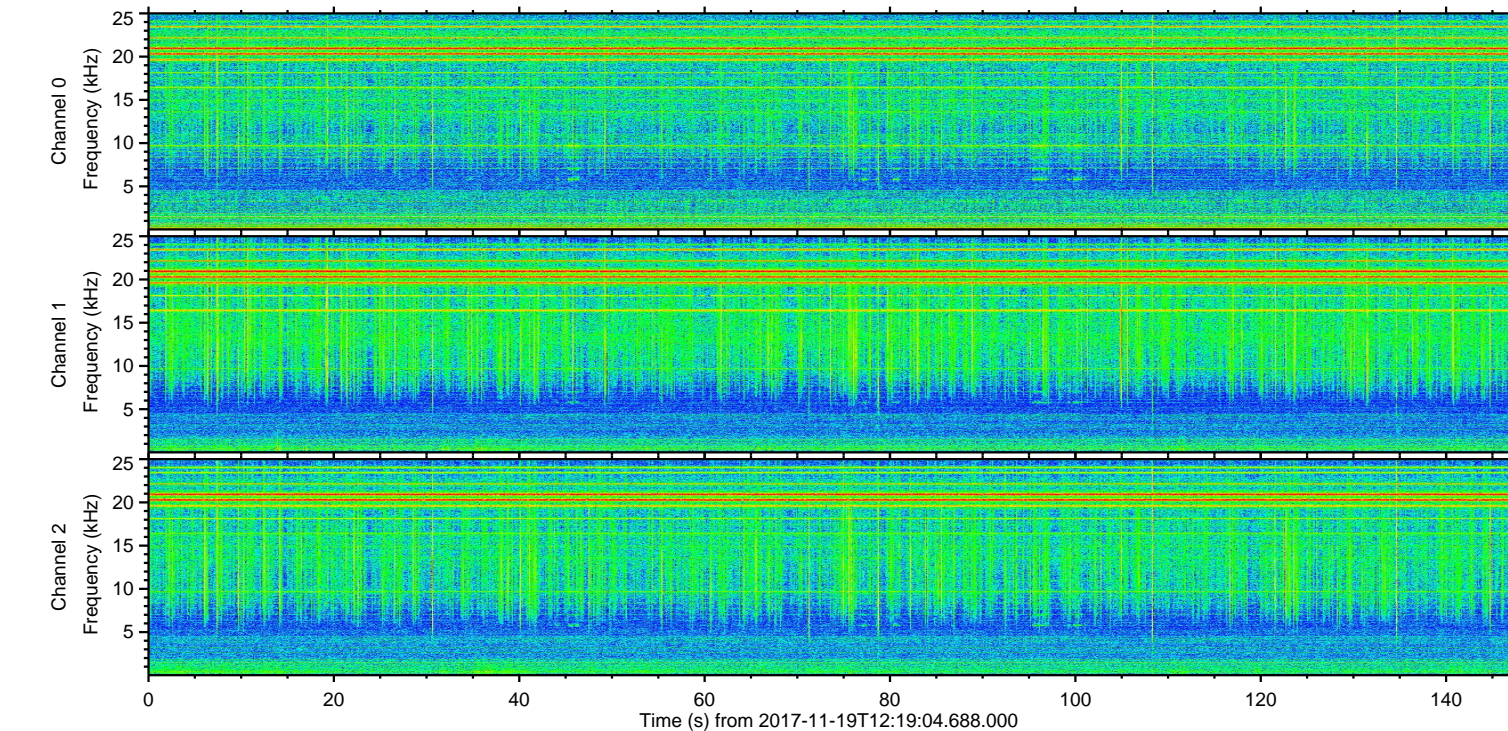
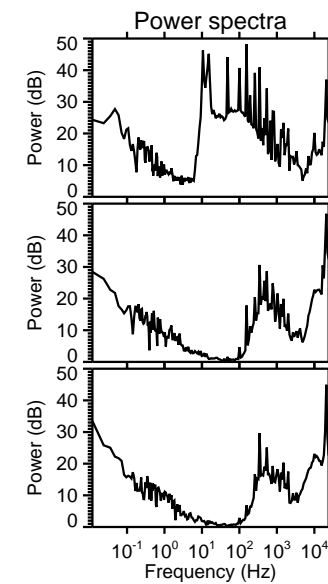
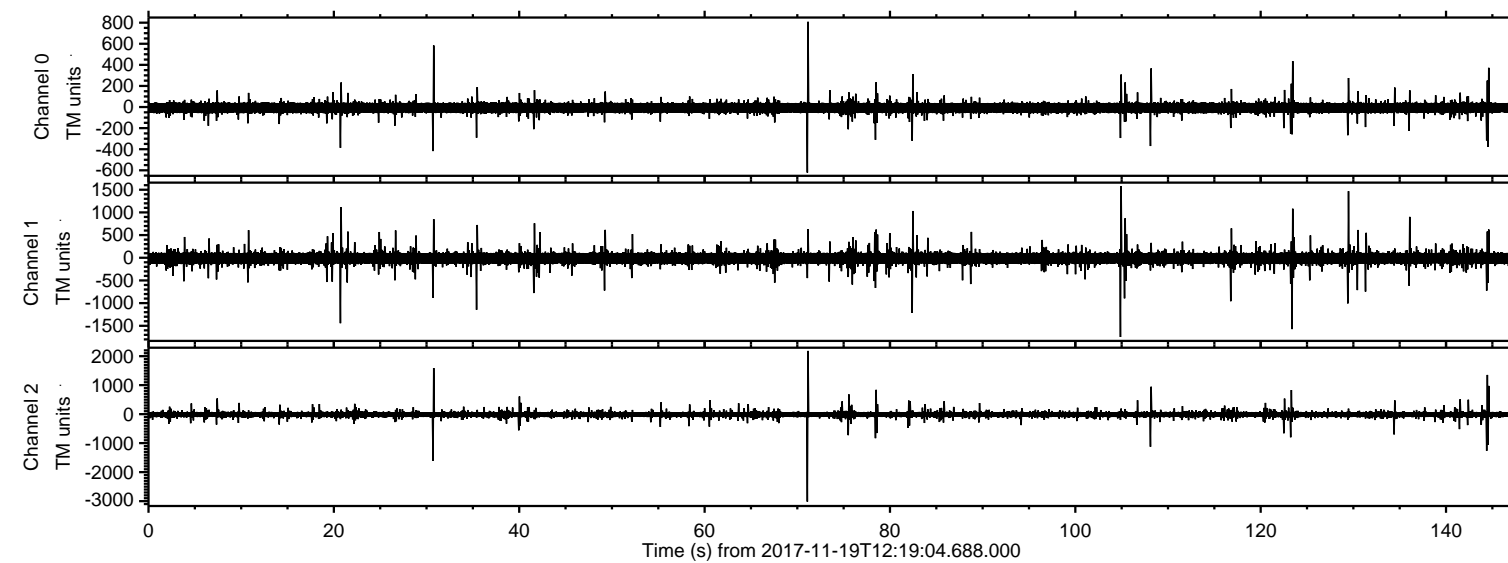
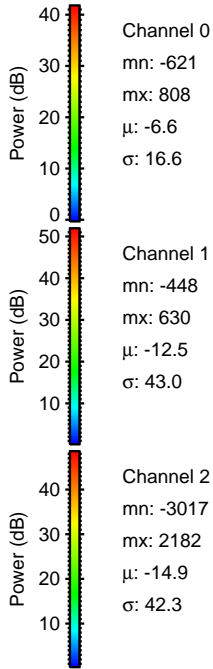
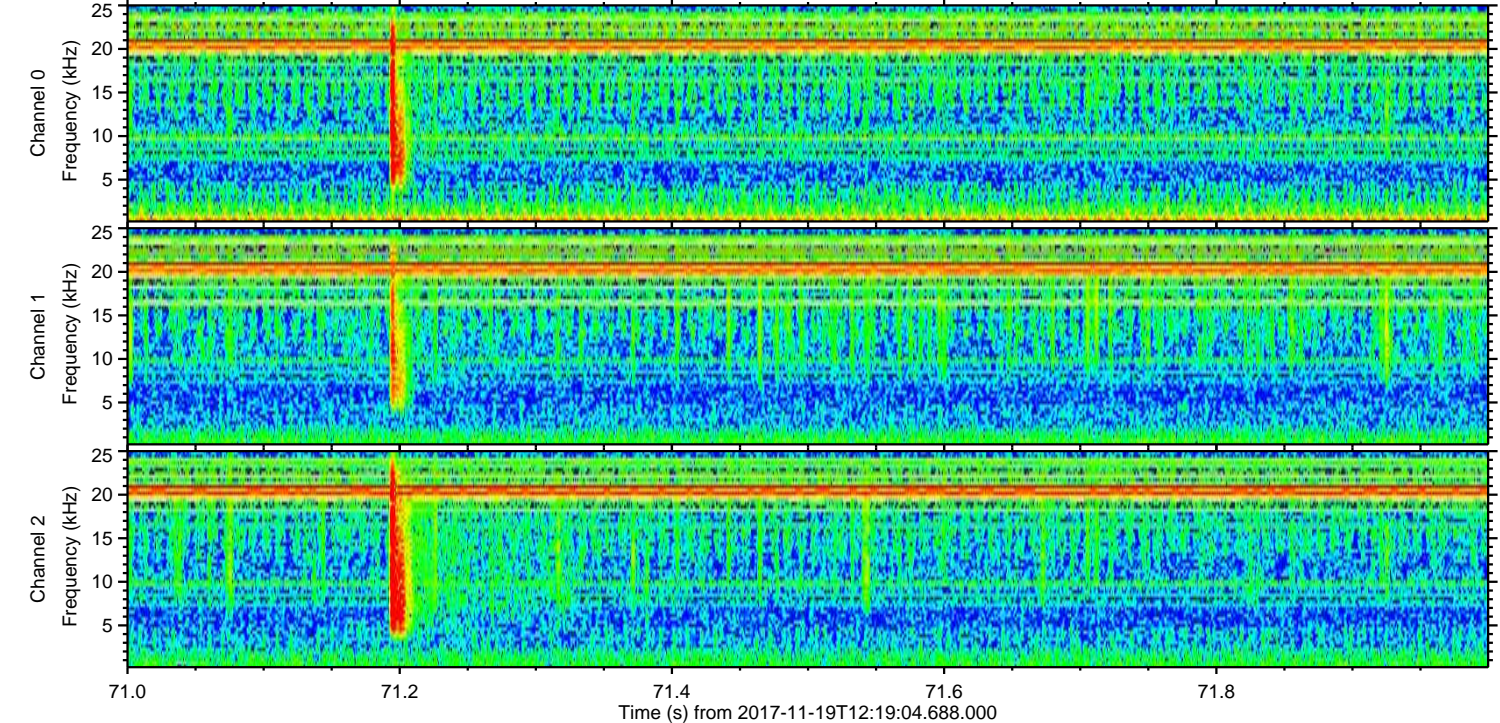
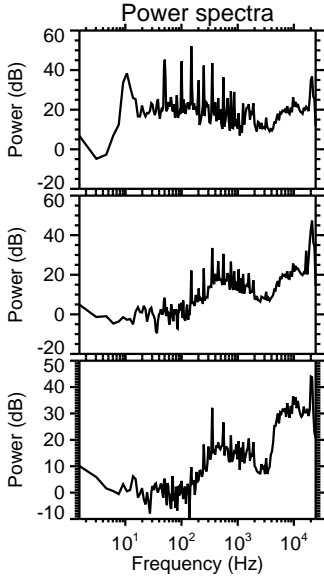
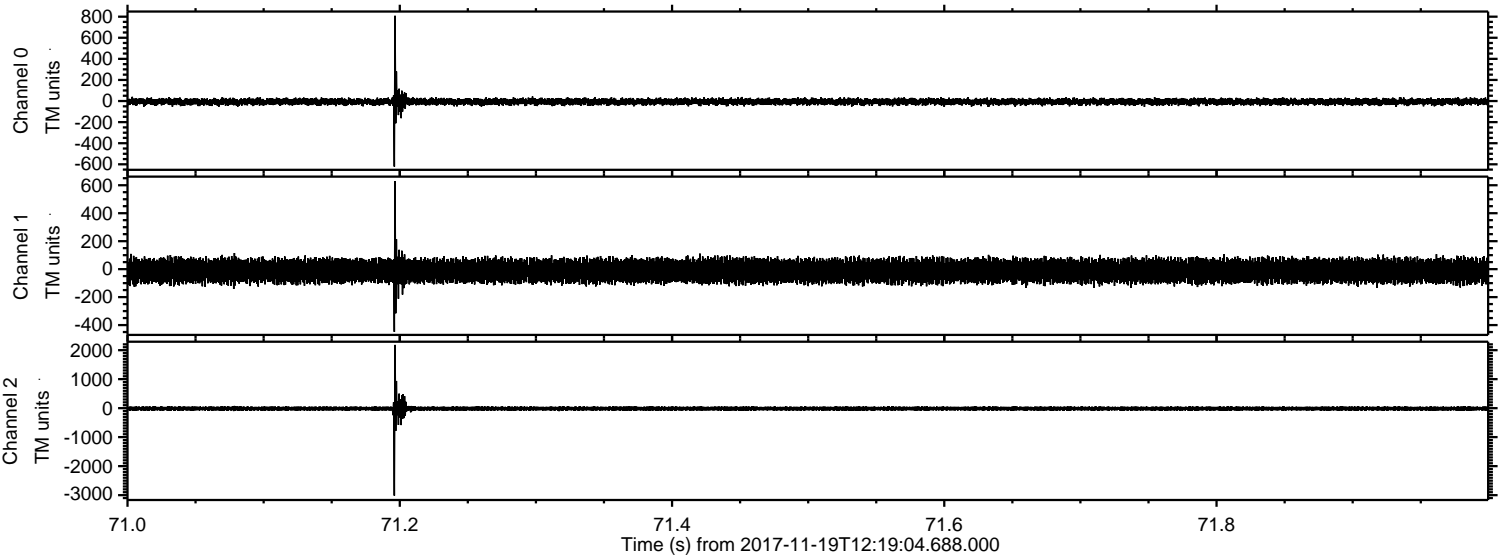


ELMAVAN 3D WAVEFORMS (Measured data sampled at 50 kHz) 51000 packets of 144 samples from 2017-11-19T12:19:04.688.000.

Processed Sun Nov 19 13:27:05 2017 by ELM ver.2012-10-06 from 001__elm20171119_121903__dat00.bin

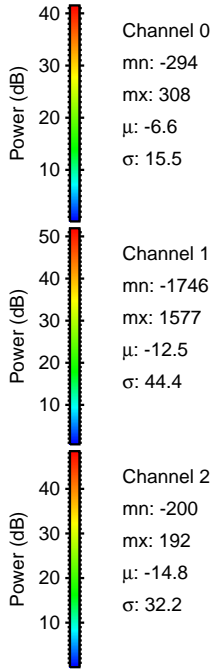
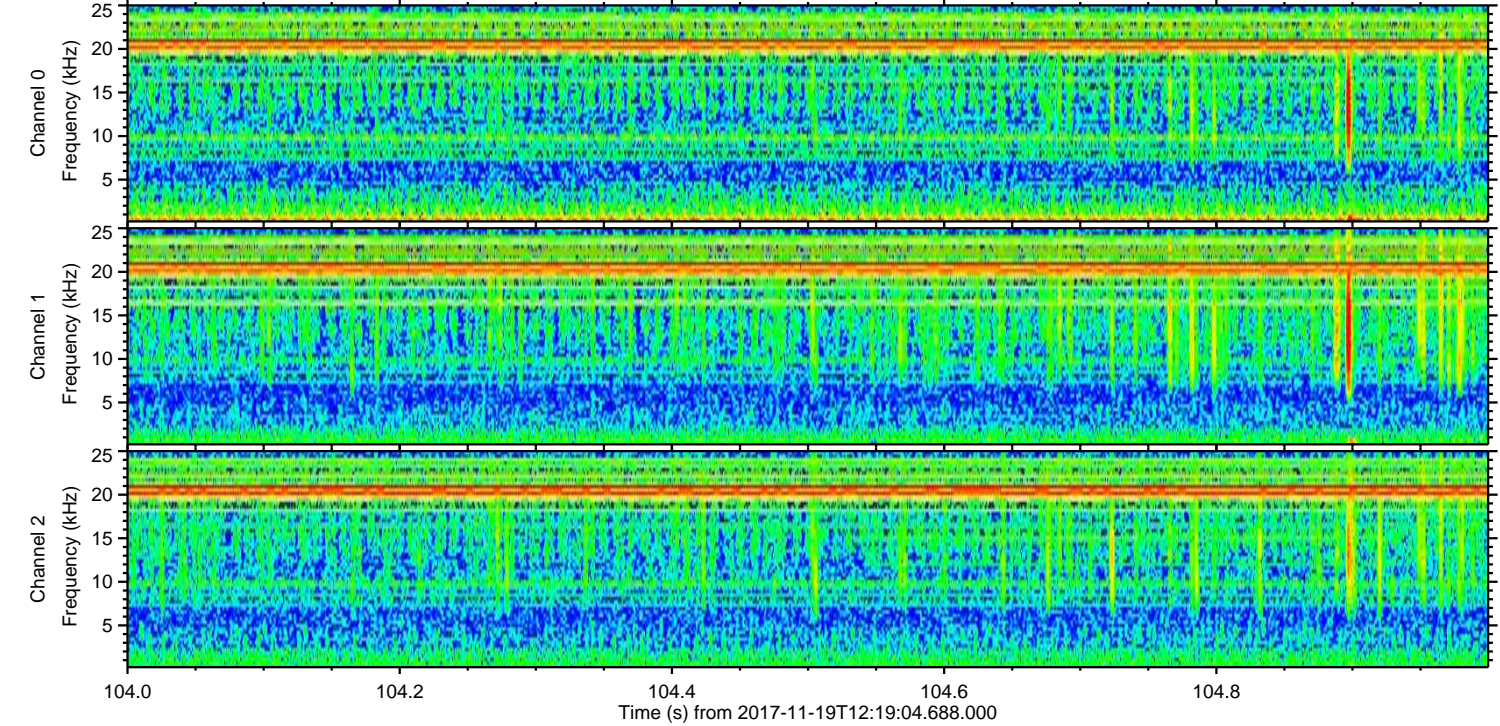
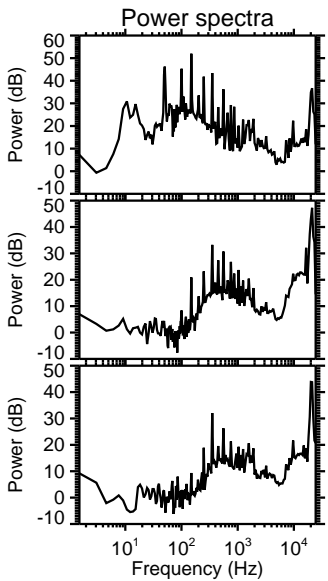
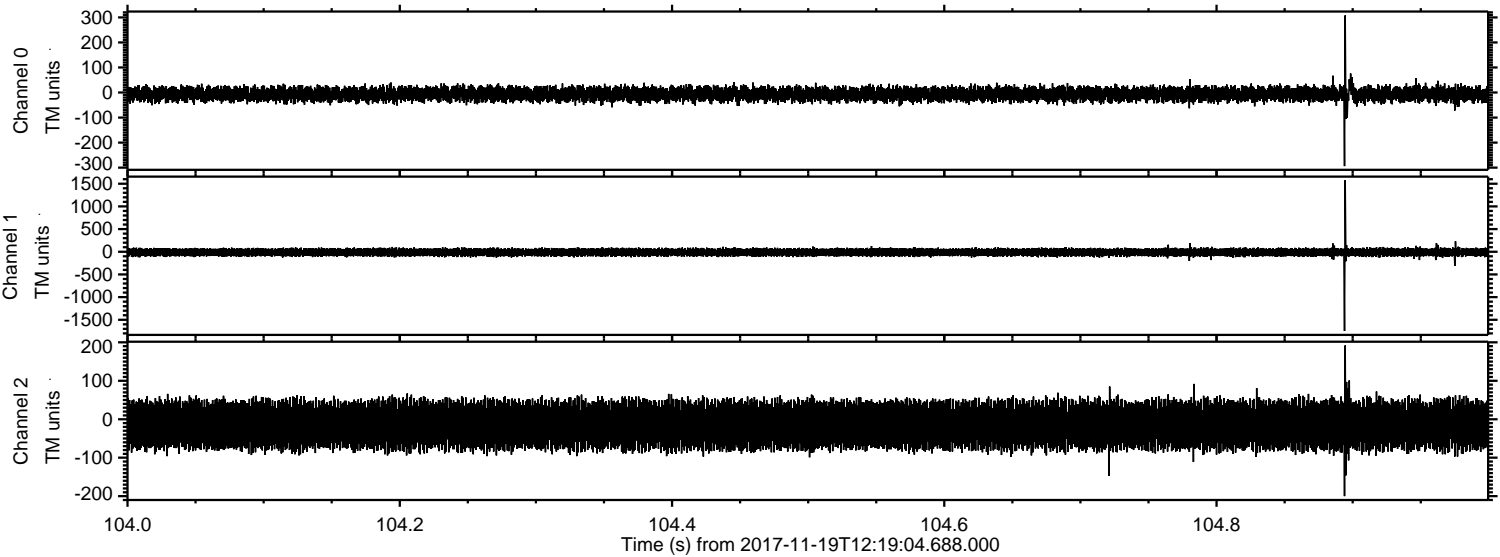


Processed Sun Nov 19 13:27:11 2017 by ELM ver.2012-10-06 from 001__elm20171119_121903__dat00.bin

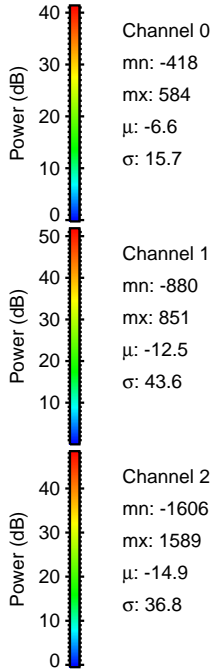
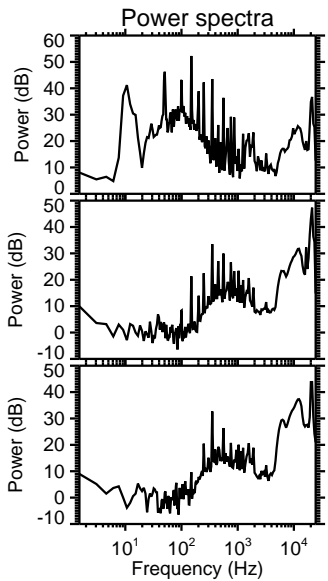
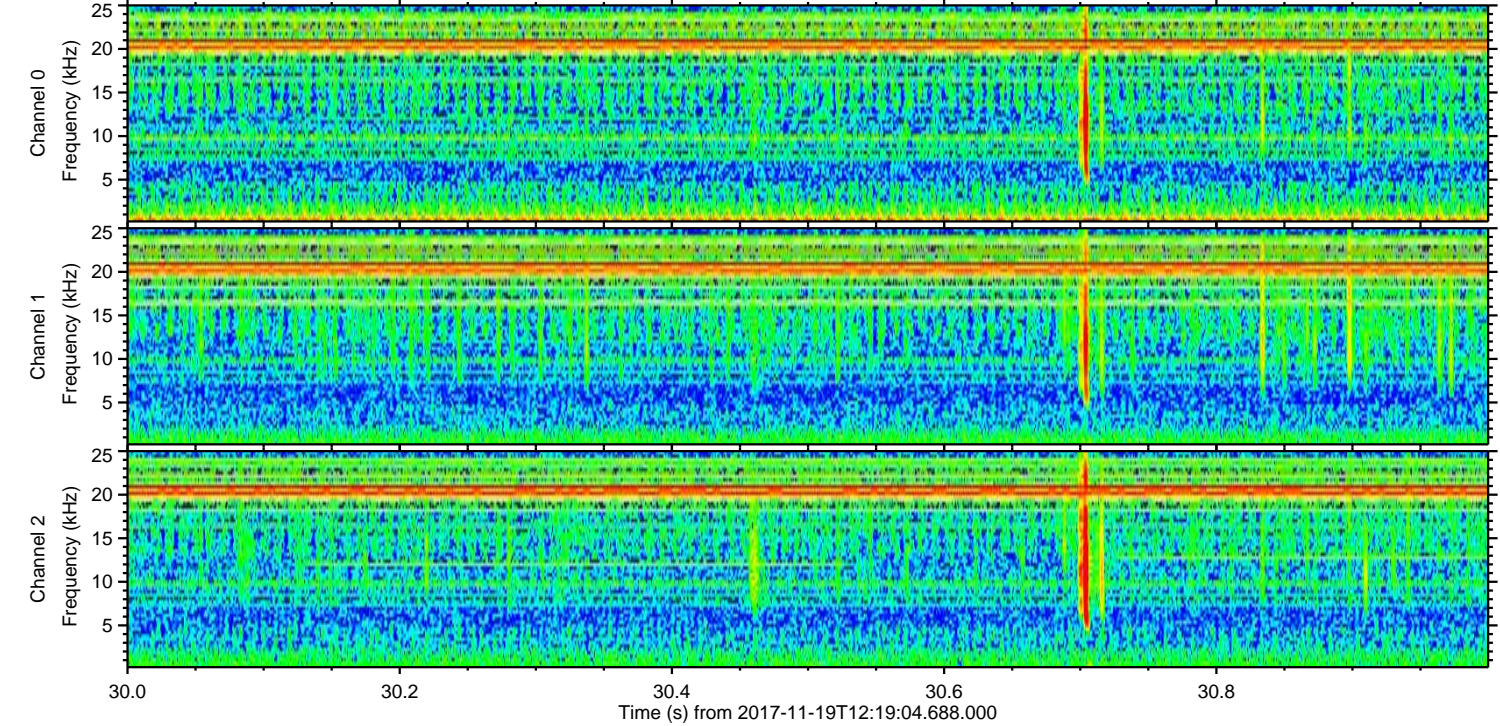
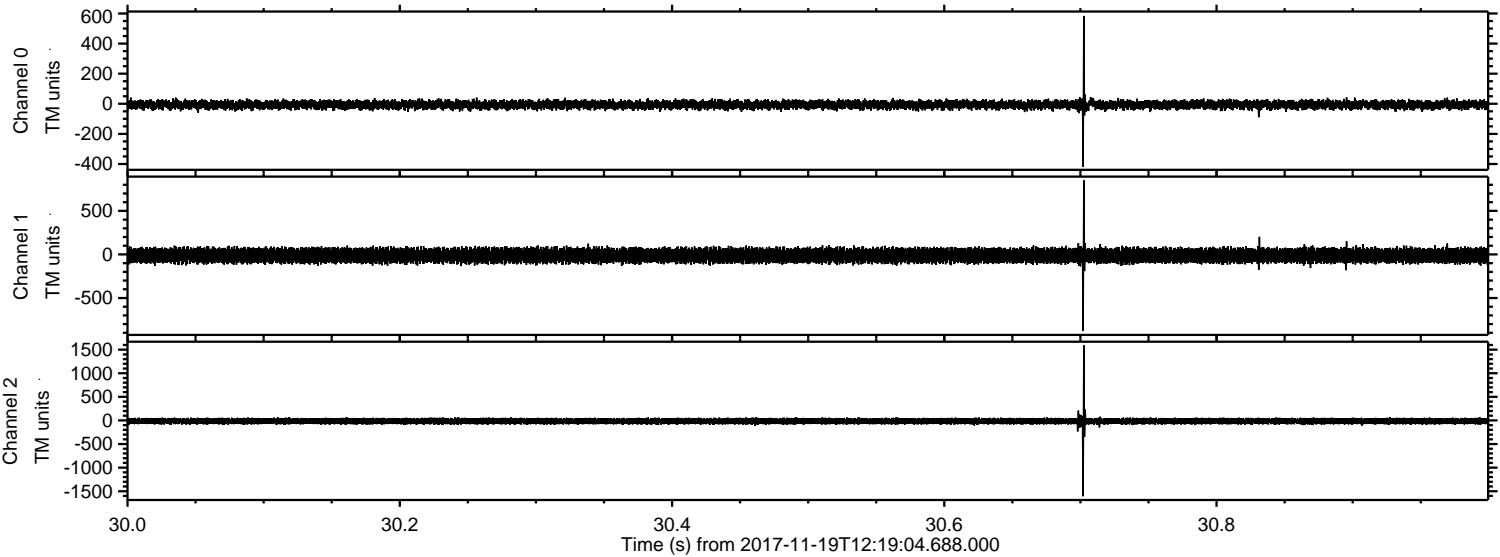


ELMAVAN 3D WAVEFORMS (Measured data sampled at 50 kHz) 51000 packets of 144 samples from 2017-11-19T12:19:04.688.000. Part 105/147

Processed Sun Nov 19 13:27:12 2017 by ELM ver.2012-10-06 from 001__elm20171119_121903__dat00.bin



Processed Sun Nov 19 13:27:13 2017 by ELM ver.2012-10-06 from 001__elm20171119_121903__dat00.bin



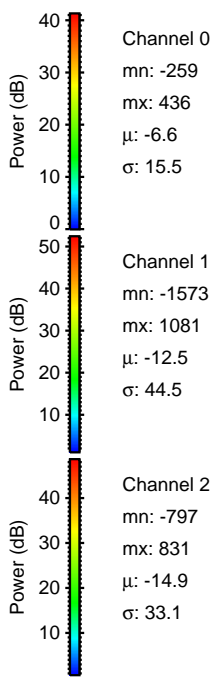
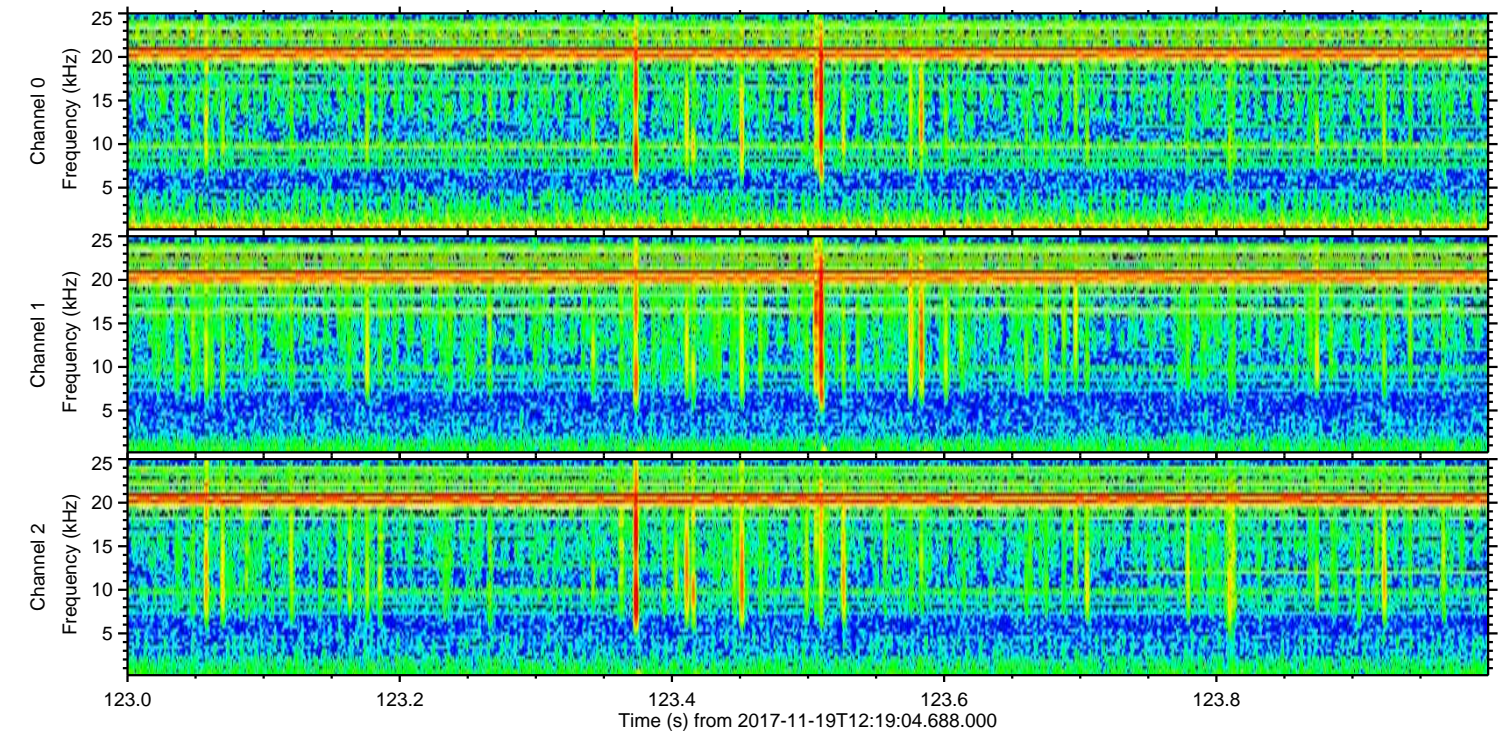
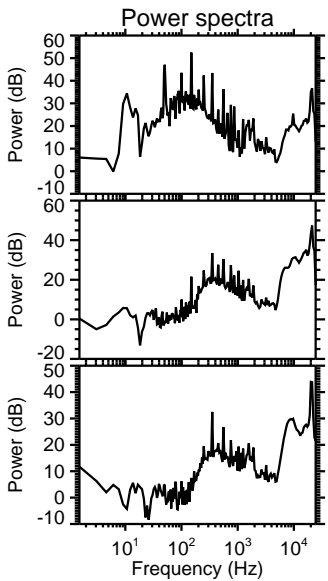
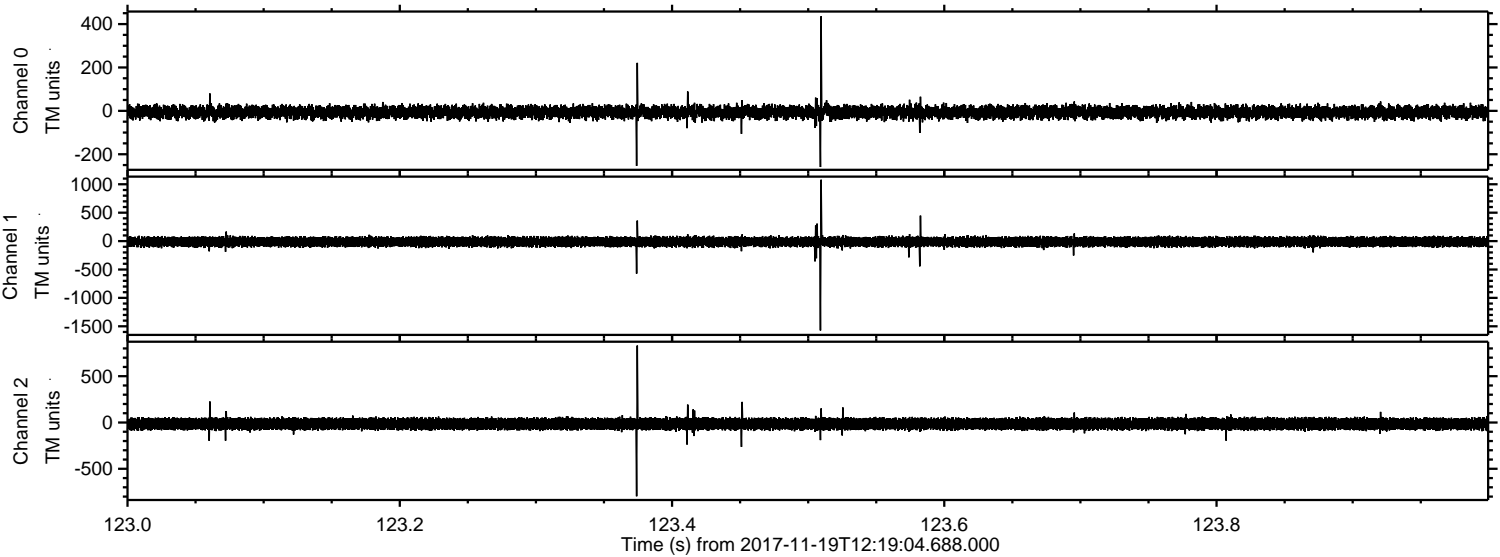
Channel 0
mn: -418
mx: 584
 μ : -6.6
 σ : 15.7

Channel 1
mn: -880
mx: 851
 μ : -12.5
 σ : 43.6

Channel 2
mn: -1606
mx: 1589
 μ : -14.9
 σ : 36.8

ELMAVAN 3D WAVEFORMS (Measured data sampled at 50 kHz) 51000 packets of 144 samples from 2017-11-19T12:19:04.688.000. Part 124/147

Processed Sun Nov 19 13:27:14 2017 by ELM ver.2012-10-06 from 001__elm20171119_121903__dat00.bin



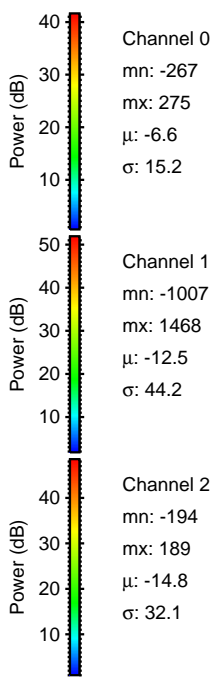
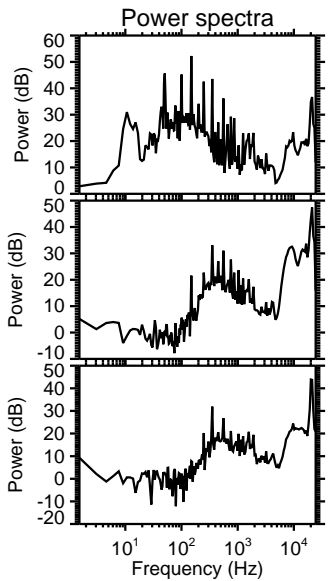
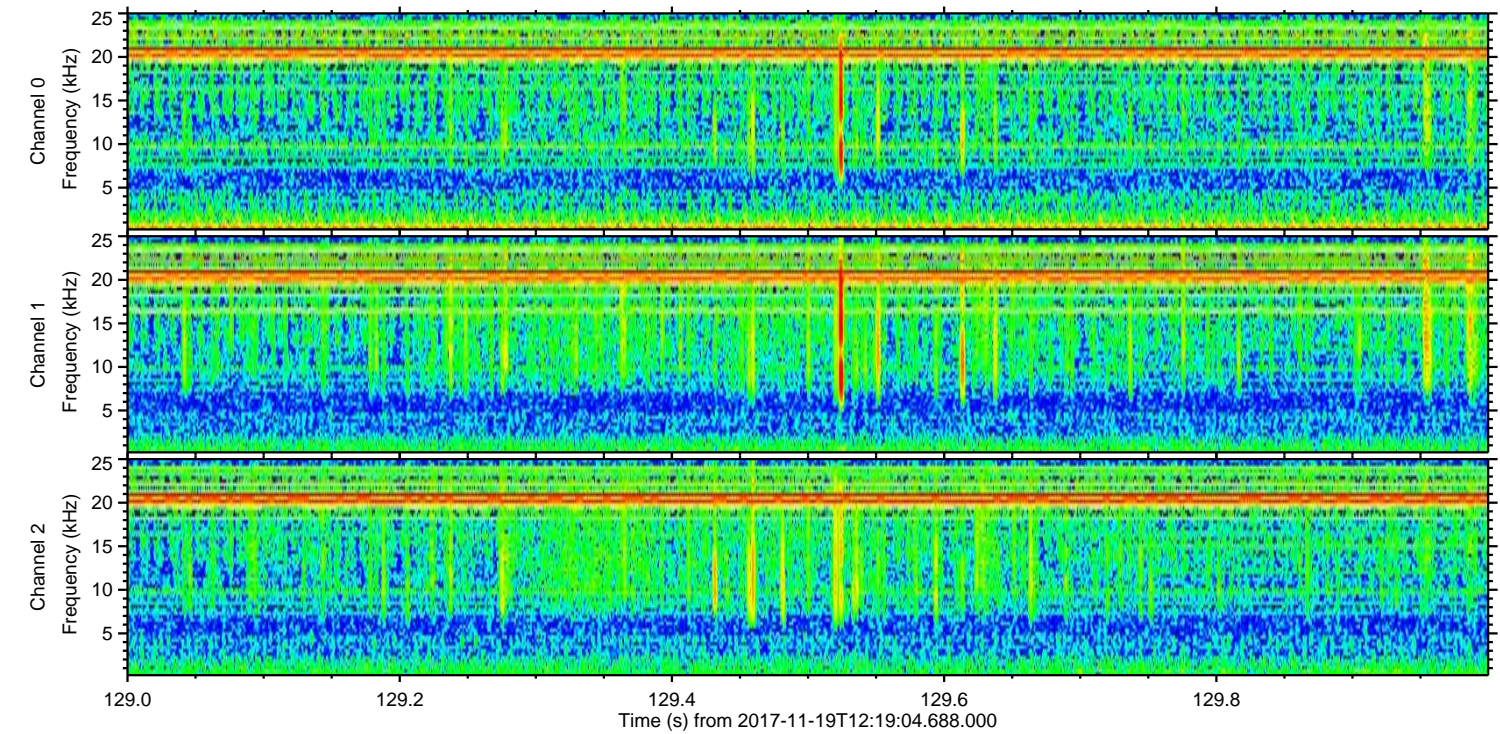
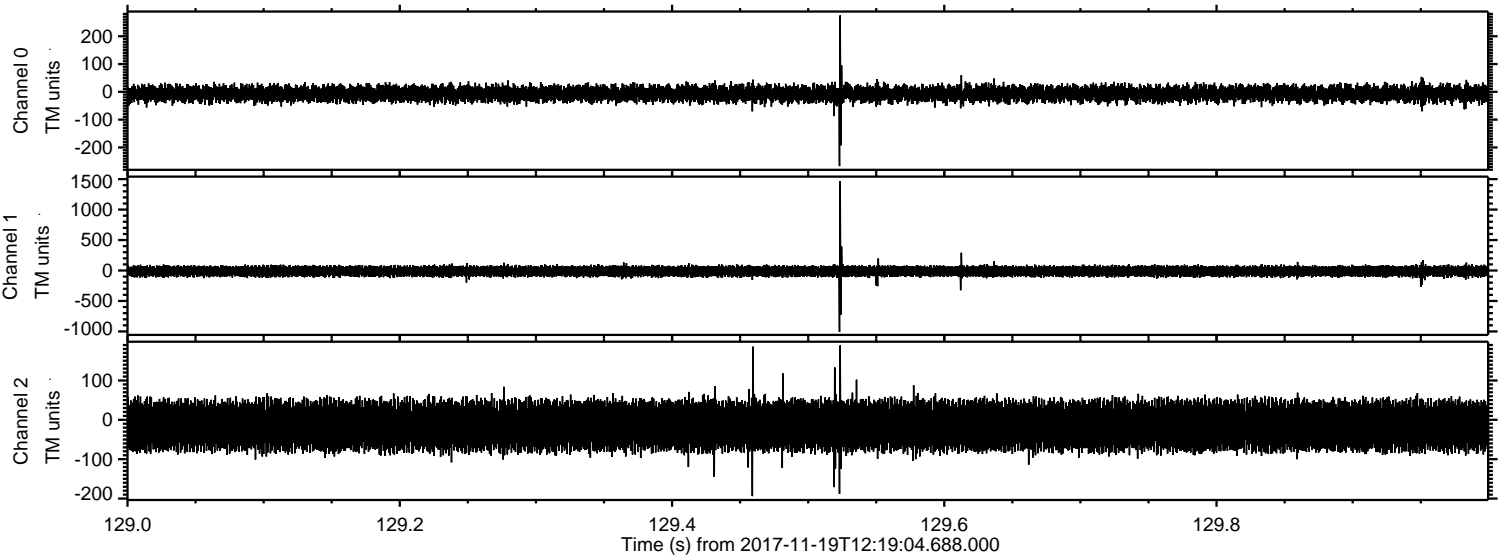
Channel 0
mn: -259
mx: 436
 μ : -6.6
 σ : 15.5

Channel 1
mn: -1573
mx: 1081
 μ : -12.5
 σ : 44.5

Channel 2
mn: -797
mx: 831
 μ : -14.9
 σ : 33.1

ELMAVAN 3D WAVEFORMS (Measured data sampled at 50 kHz) 51000 packets of 144 samples from 2017-11-19T12:19:04.688.000. Part 130/147

Processed Sun Nov 19 13:27:15 2017 by ELM ver.2012-10-06 from 001__elm20171119_121903__dat00.bin

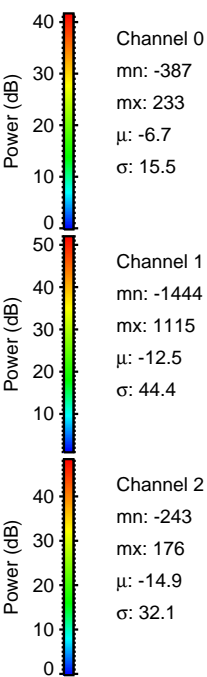
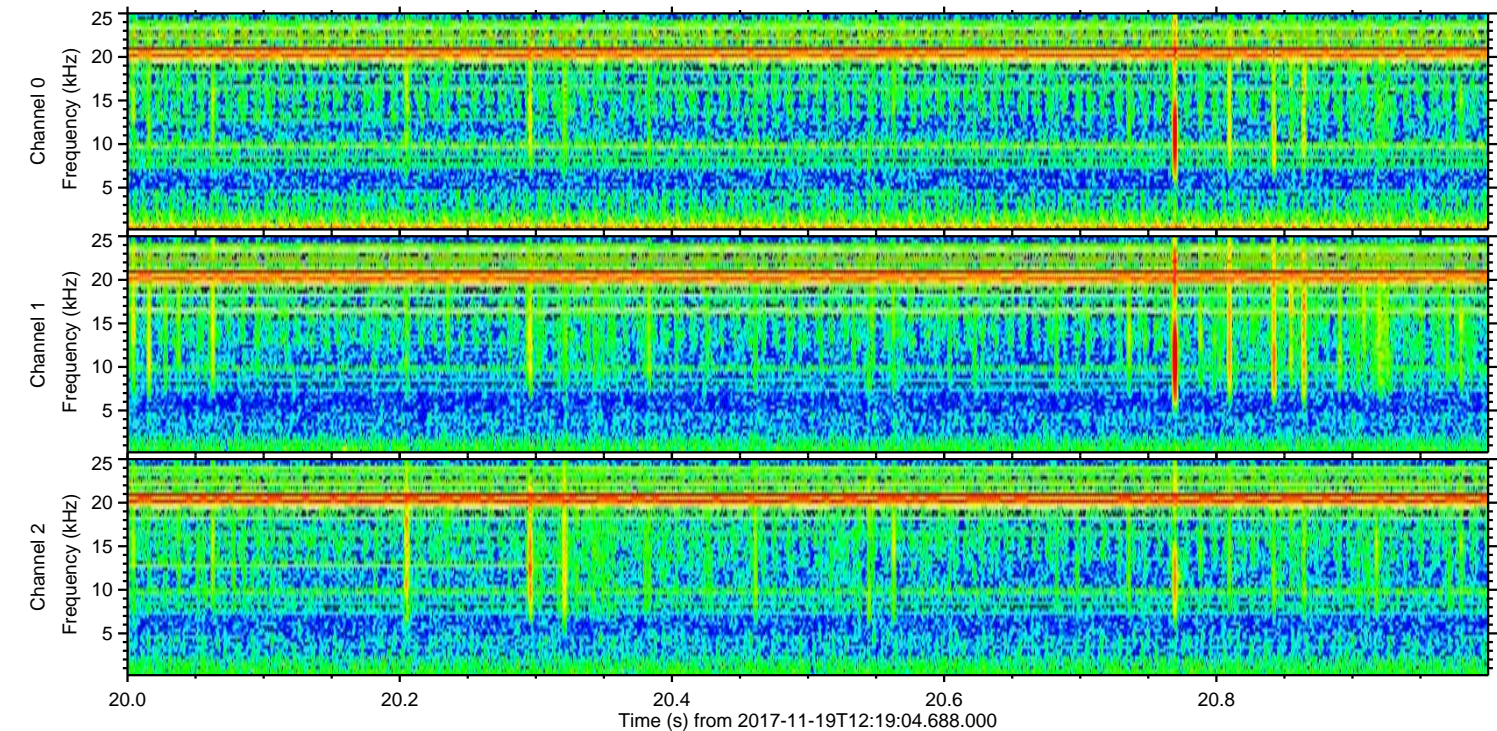
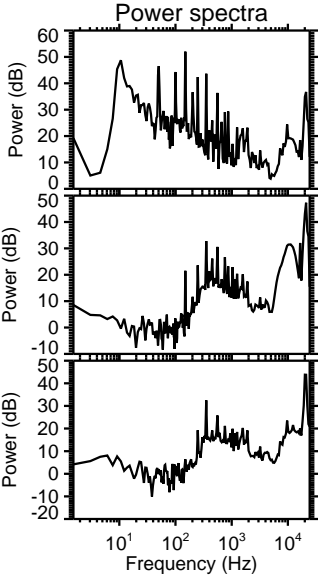
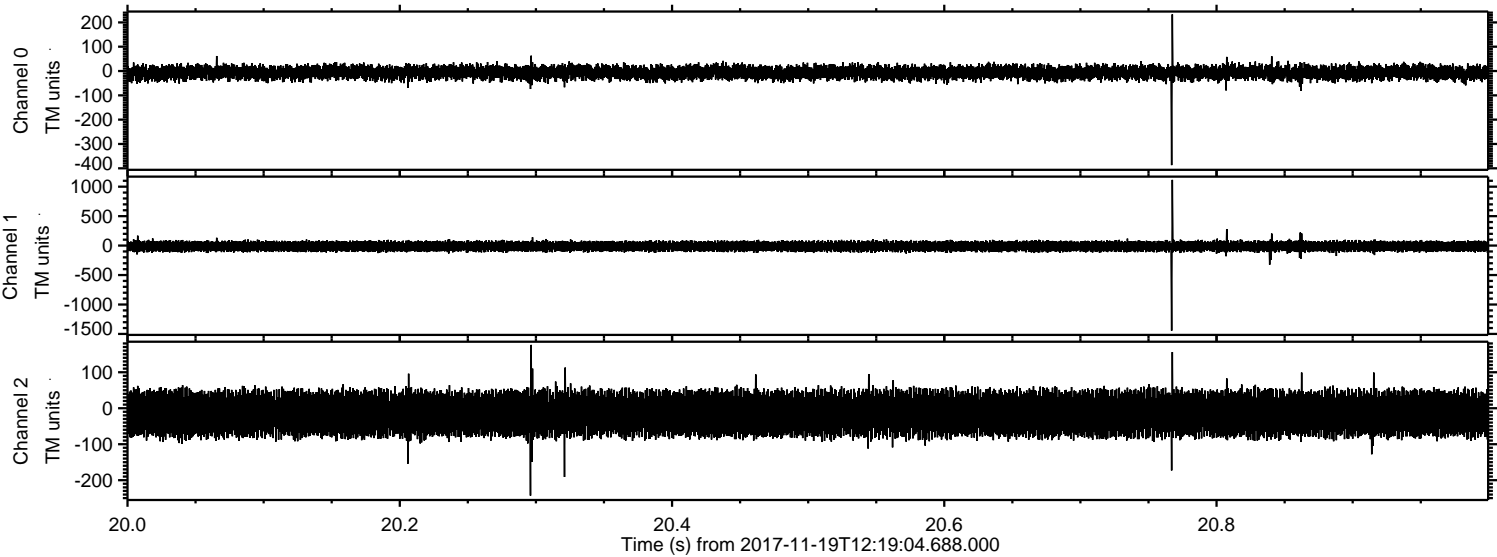


Channel 0
mn: -267
mx: 275
μ: -6.6
σ: 15.2

Channel 1
mn: -1007
mx: 1468
μ: -12.5
σ: 44.2

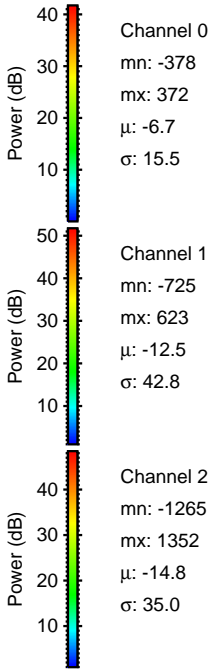
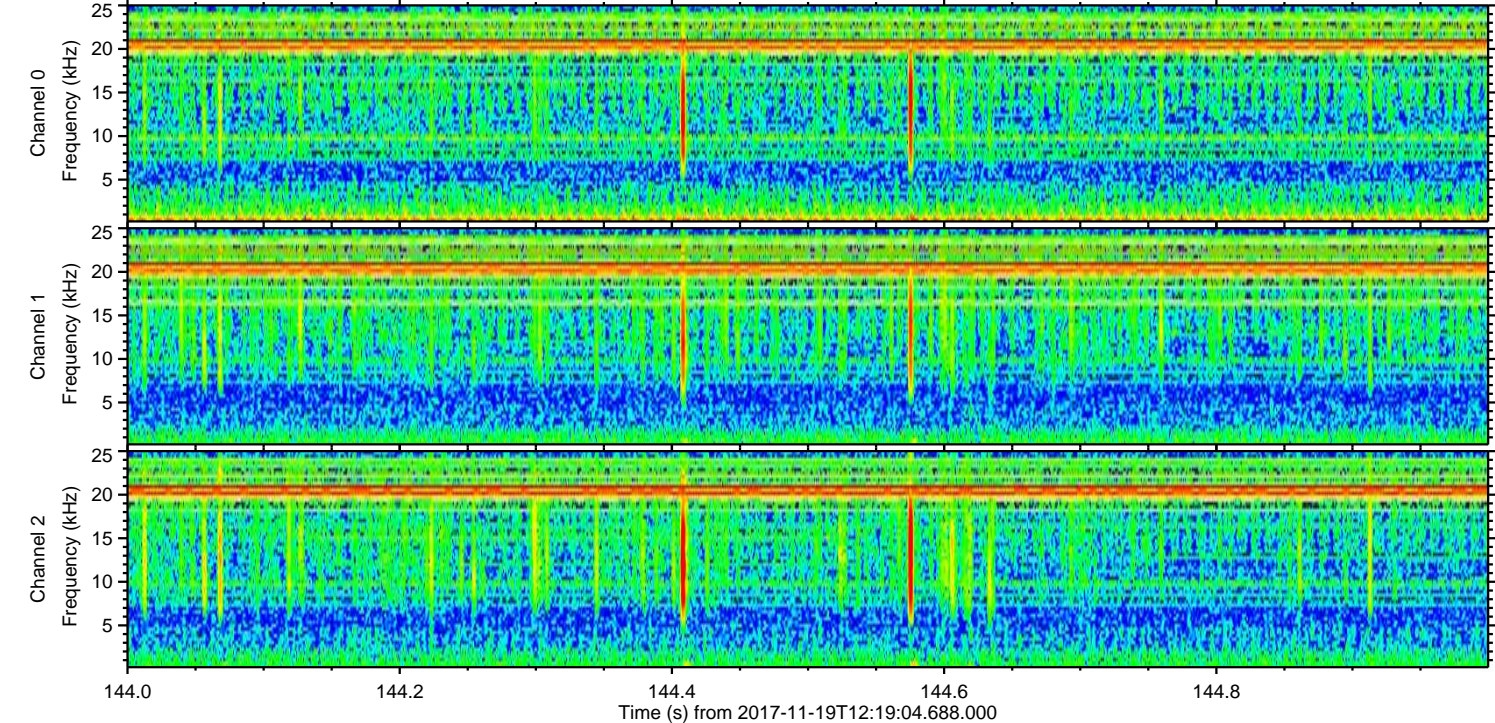
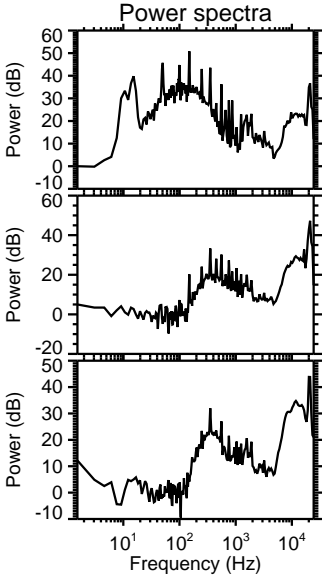
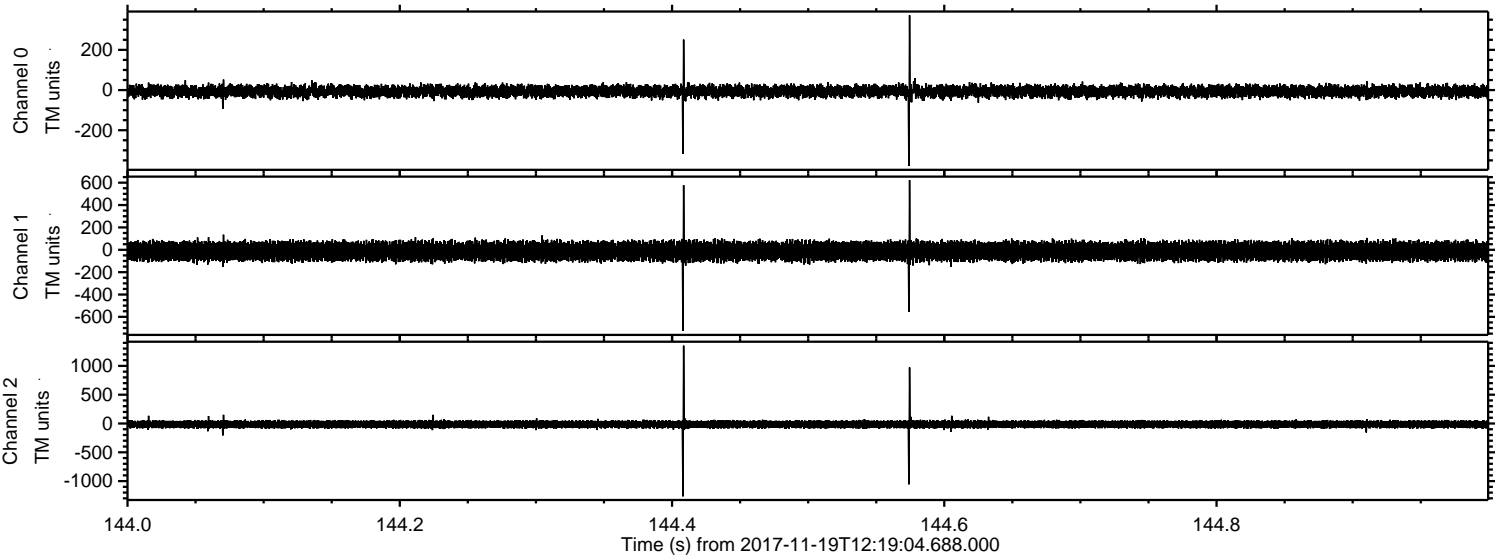
Channel 2
mn: -194
mx: 189
μ: -14.8
σ: 32.1

Processed Sun Nov 19 13:27:15 2017 by ELM ver.2012-10-06 from 001__elm20171119_121903__dat00.bin

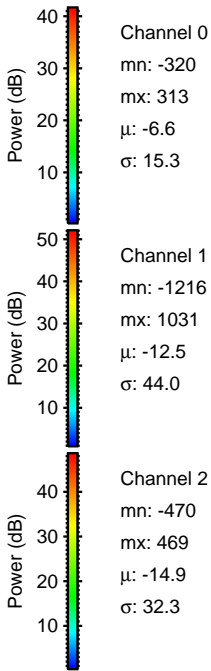
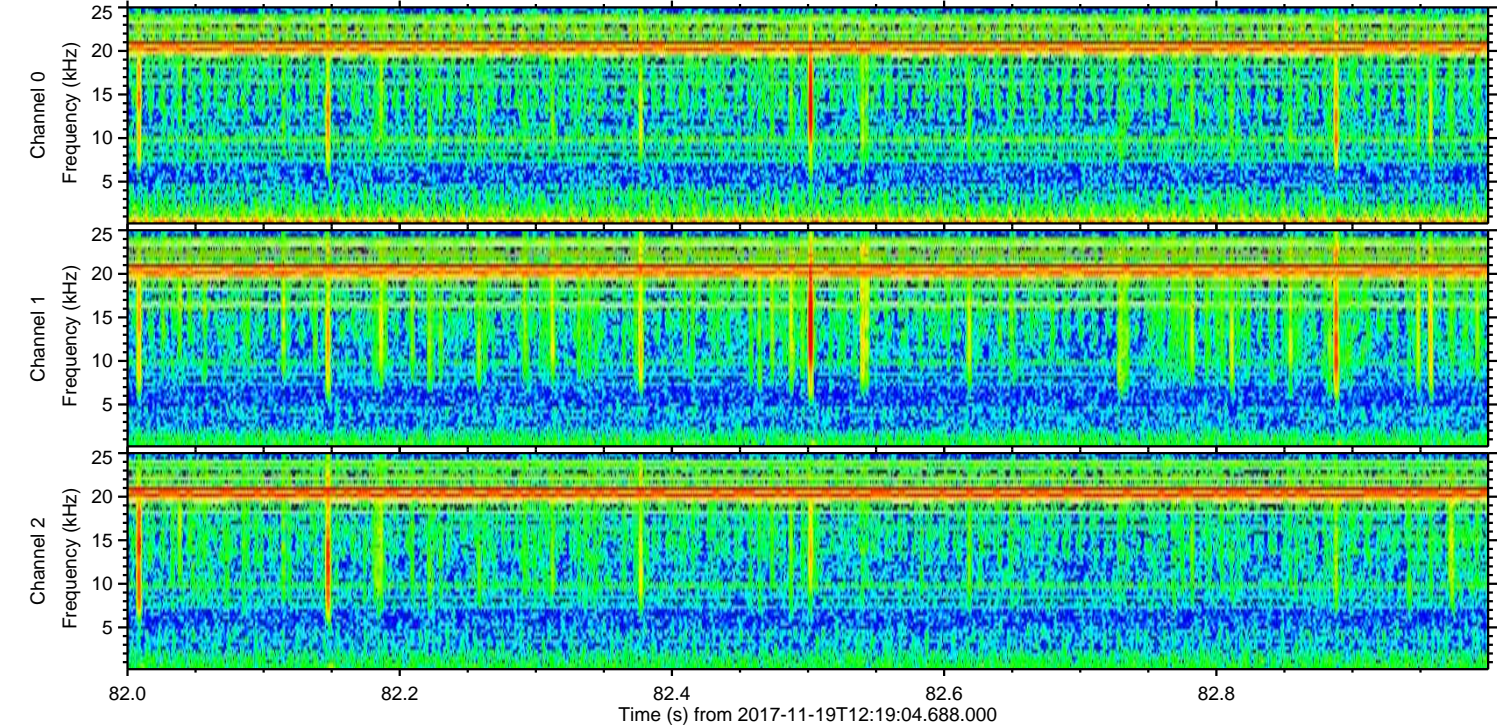
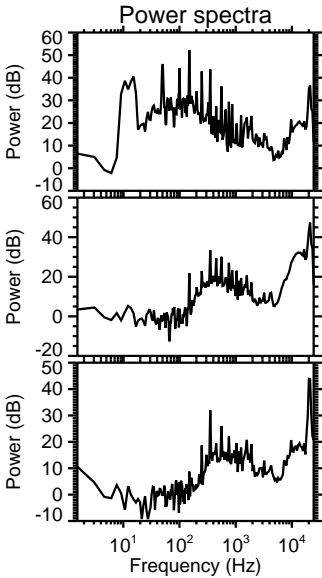
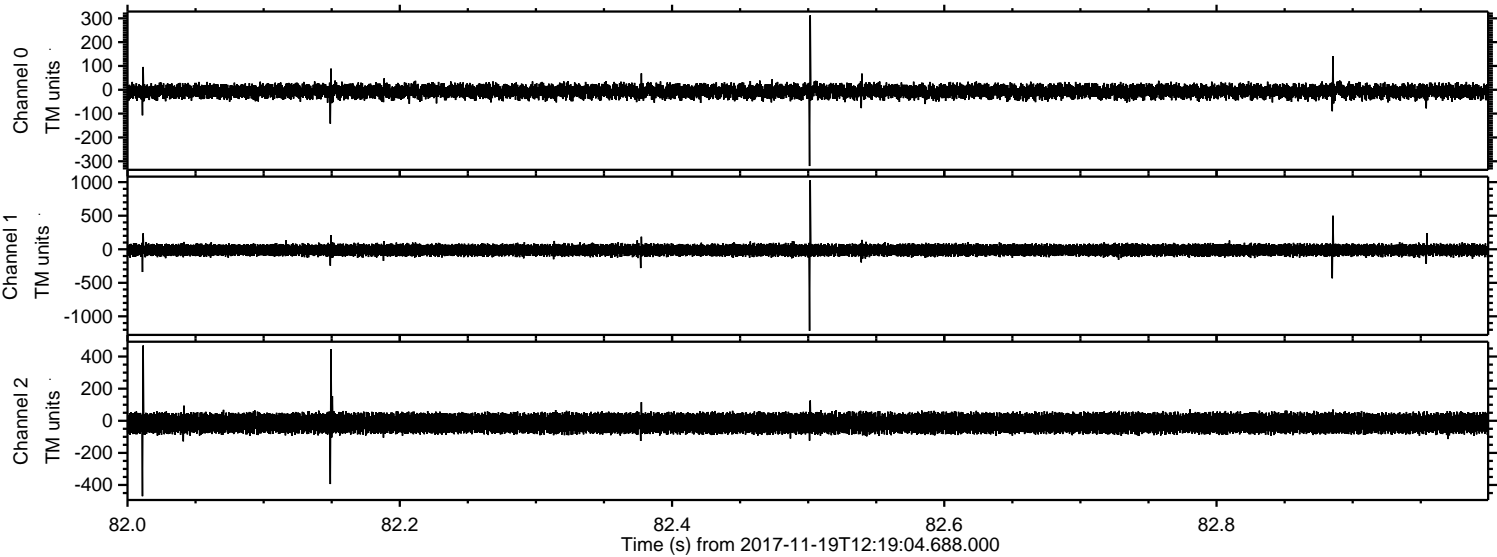


ELMAVAN 3D WAVEFORMS (Measured data sampled at 50 kHz) 51000 packets of 144 samples from 2017-11-19T12:19:04.688.000. Part 145/147

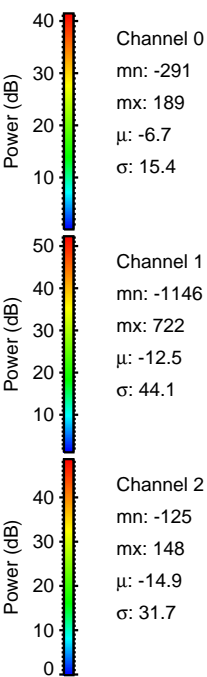
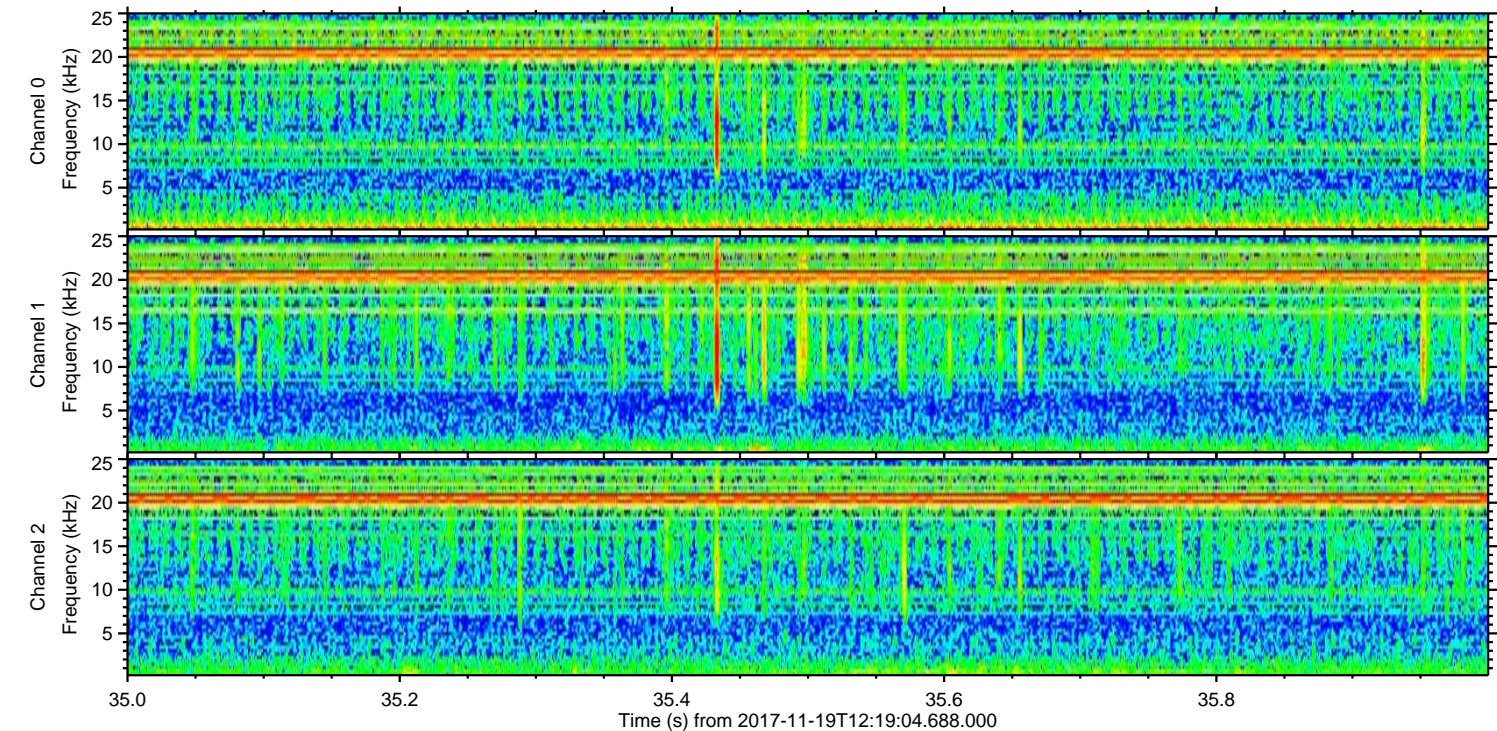
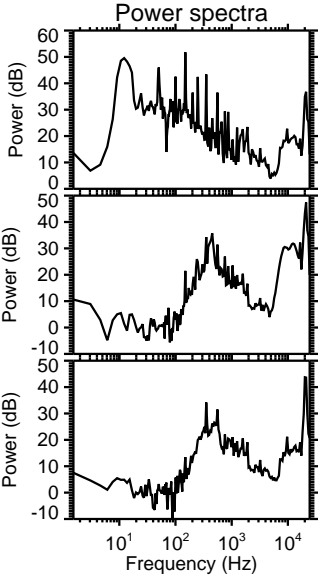
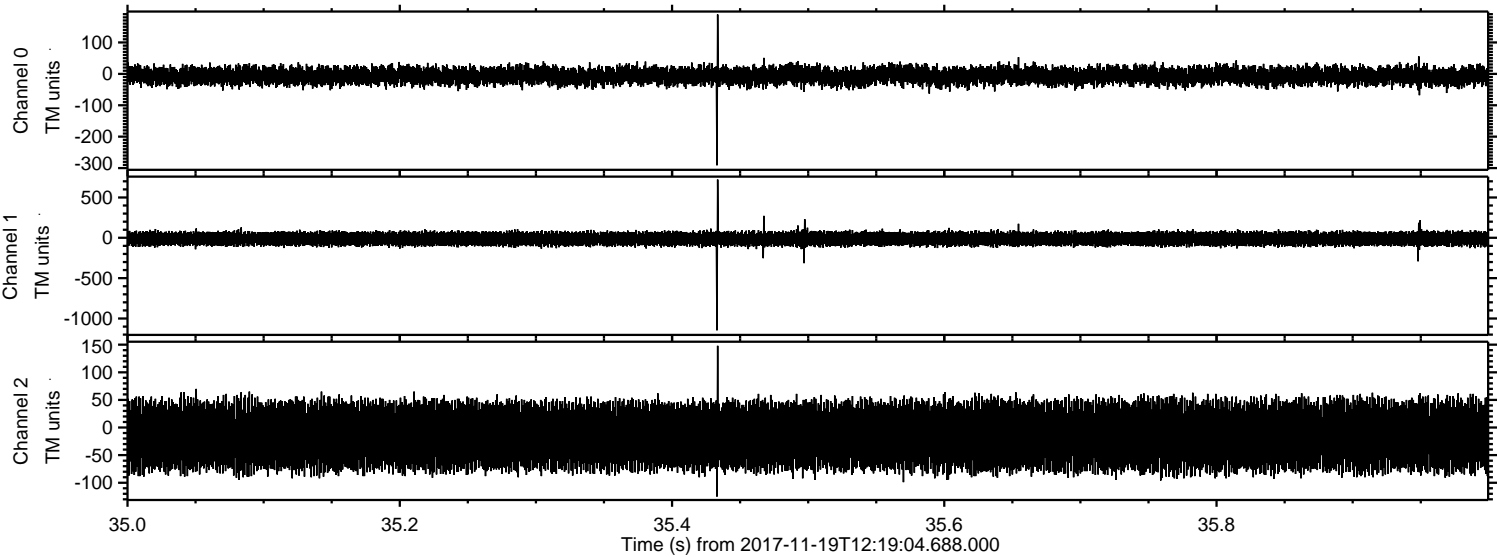
Processed Sun Nov 19 13:27:16 2017 by ELM ver.2012-10-06 from 001__elm20171119_121903__dat00.bin



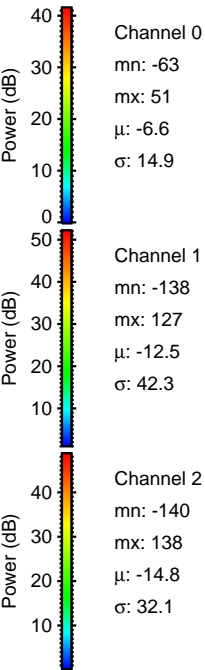
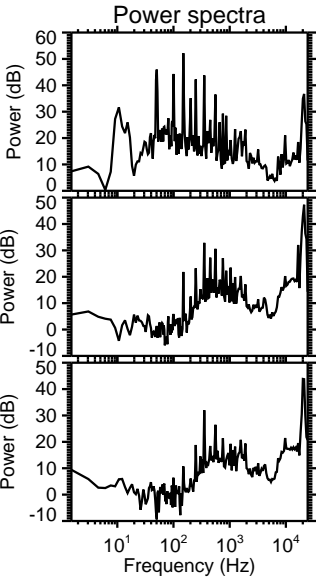
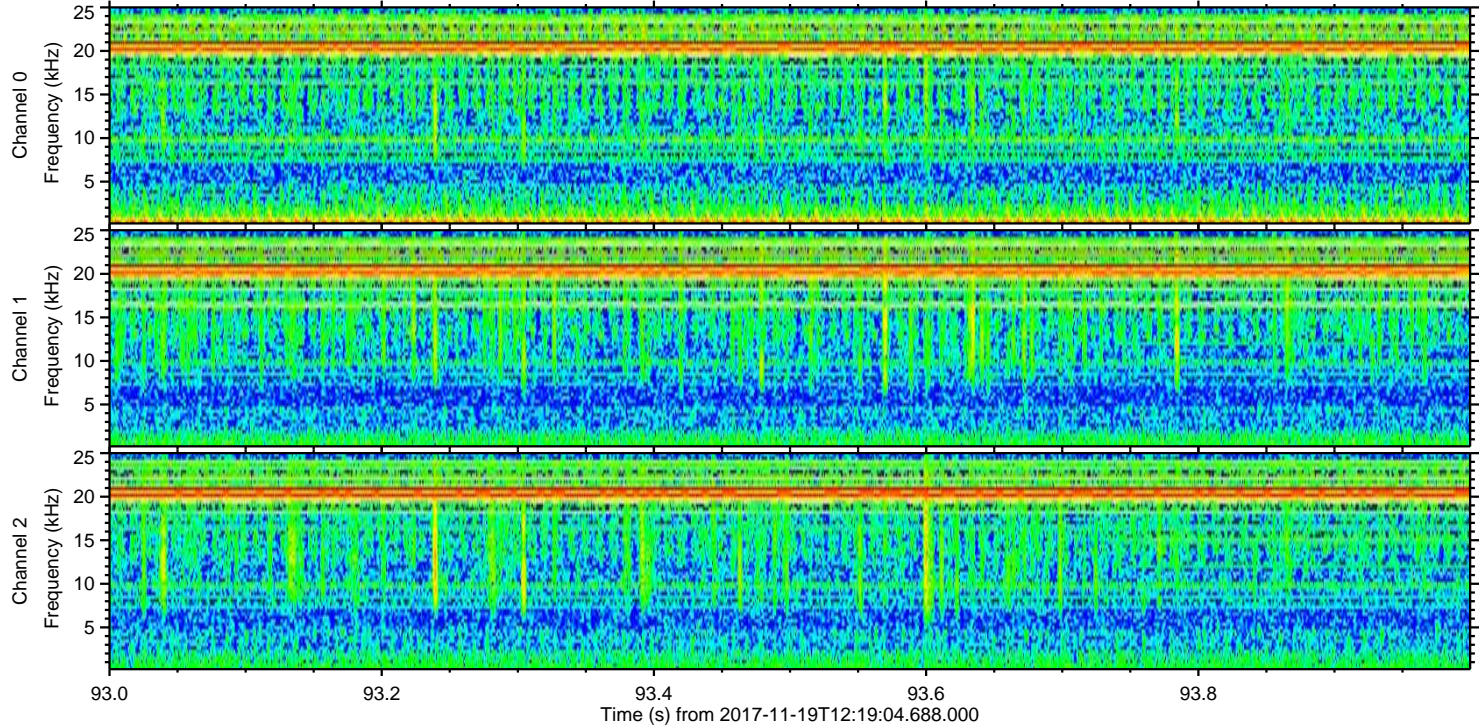
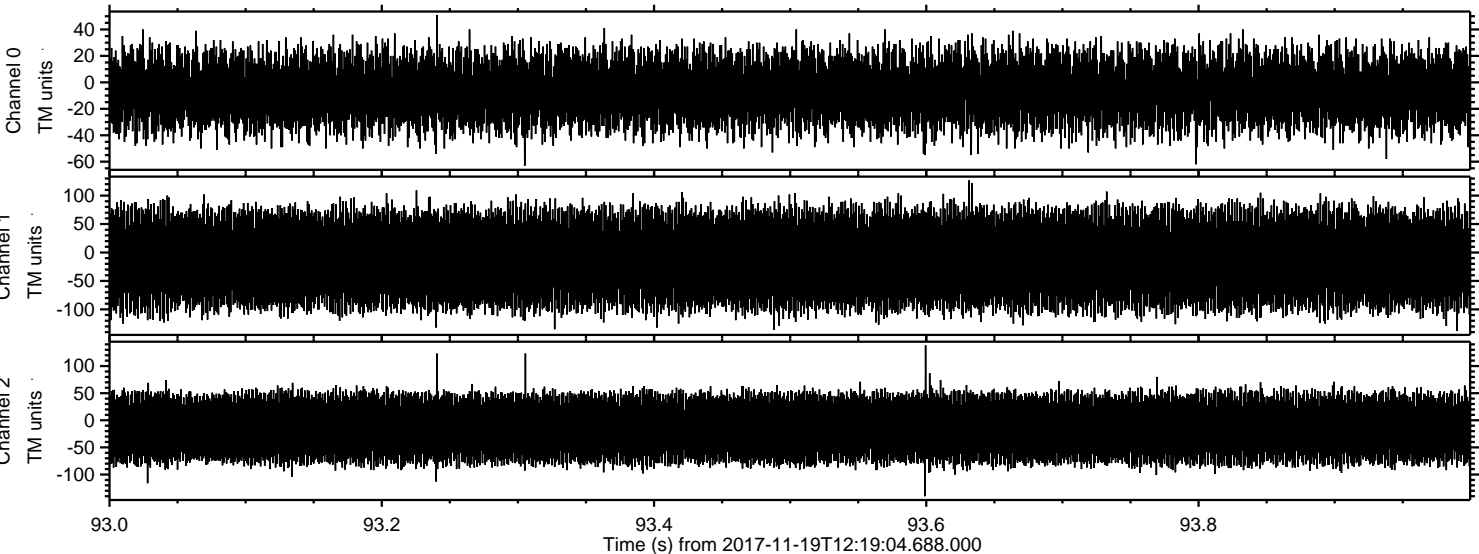
Processed Sun Nov 19 13:27:17 2017 by ELM ver.2012-10-06 from 001__elm20171119_121903__dat00.bin



Processed Sun Nov 19 13:27:17 2017 by ELM ver.2012-10-06 from 001__elm20171119_121903__dat00.bin



Processed Sun Nov 19 13:27:18 2017 by ELM ver.2012-10-06 from 001__elm20171119_121903__dat00.bin



Channel 0
mn: -63
mx: 51
 μ : -6.6
 σ : 14.9

Channel 1
mn: -138
mx: 127
 μ : -12.5
 σ : 42.3

Channel 2
mn: -140
mx: 138
 μ : -14.8
 σ : 32.1