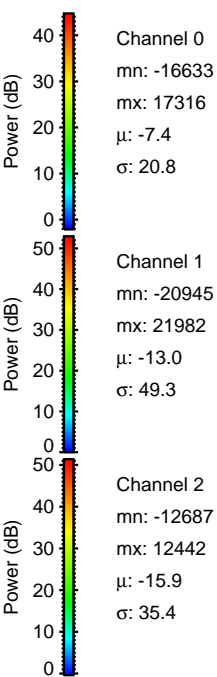
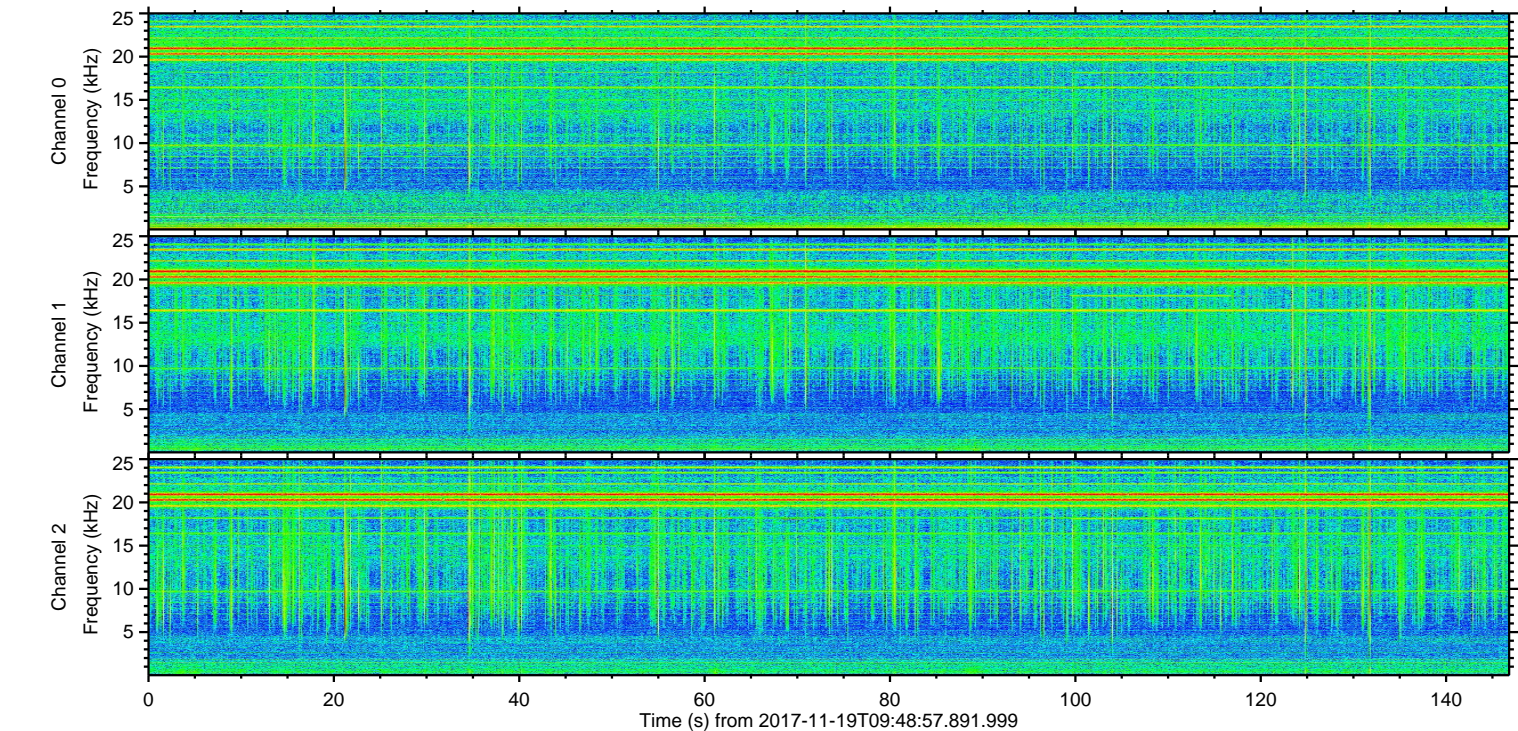
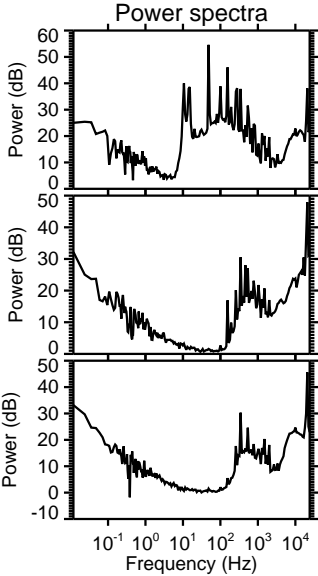
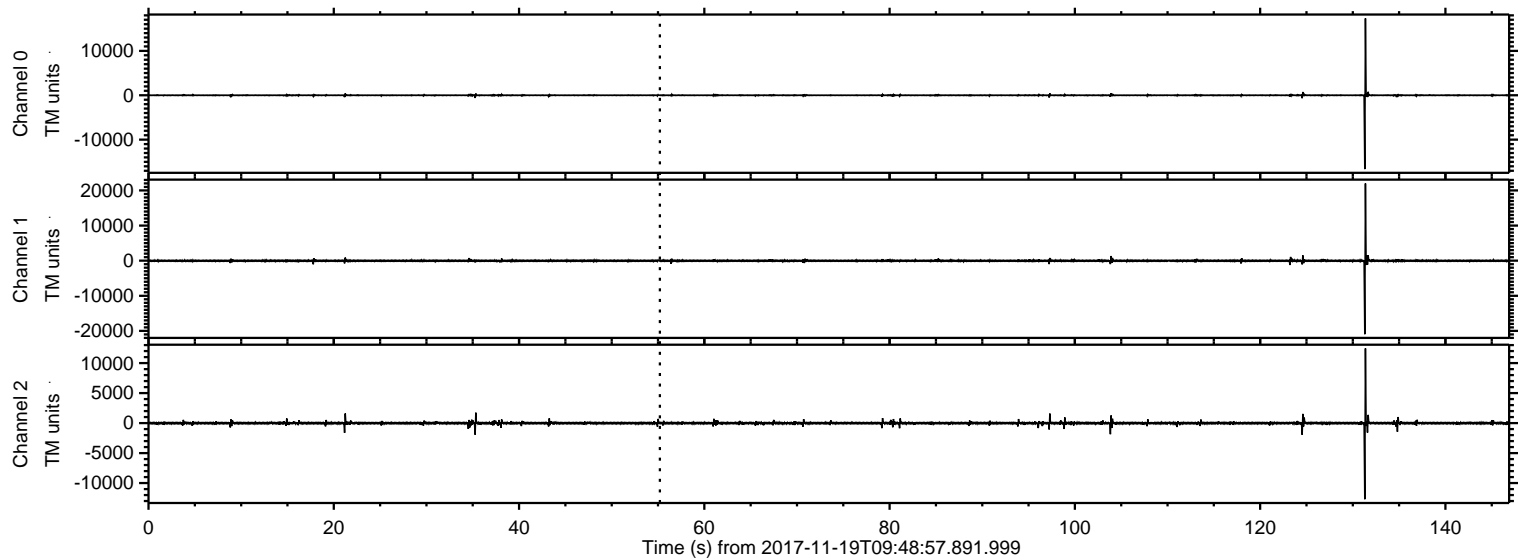


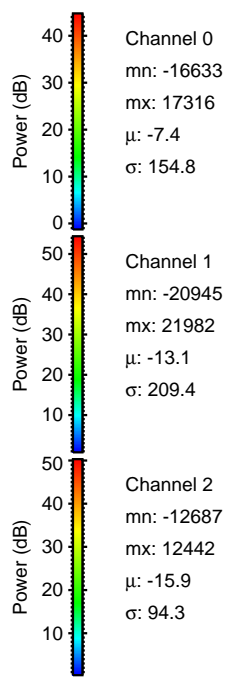
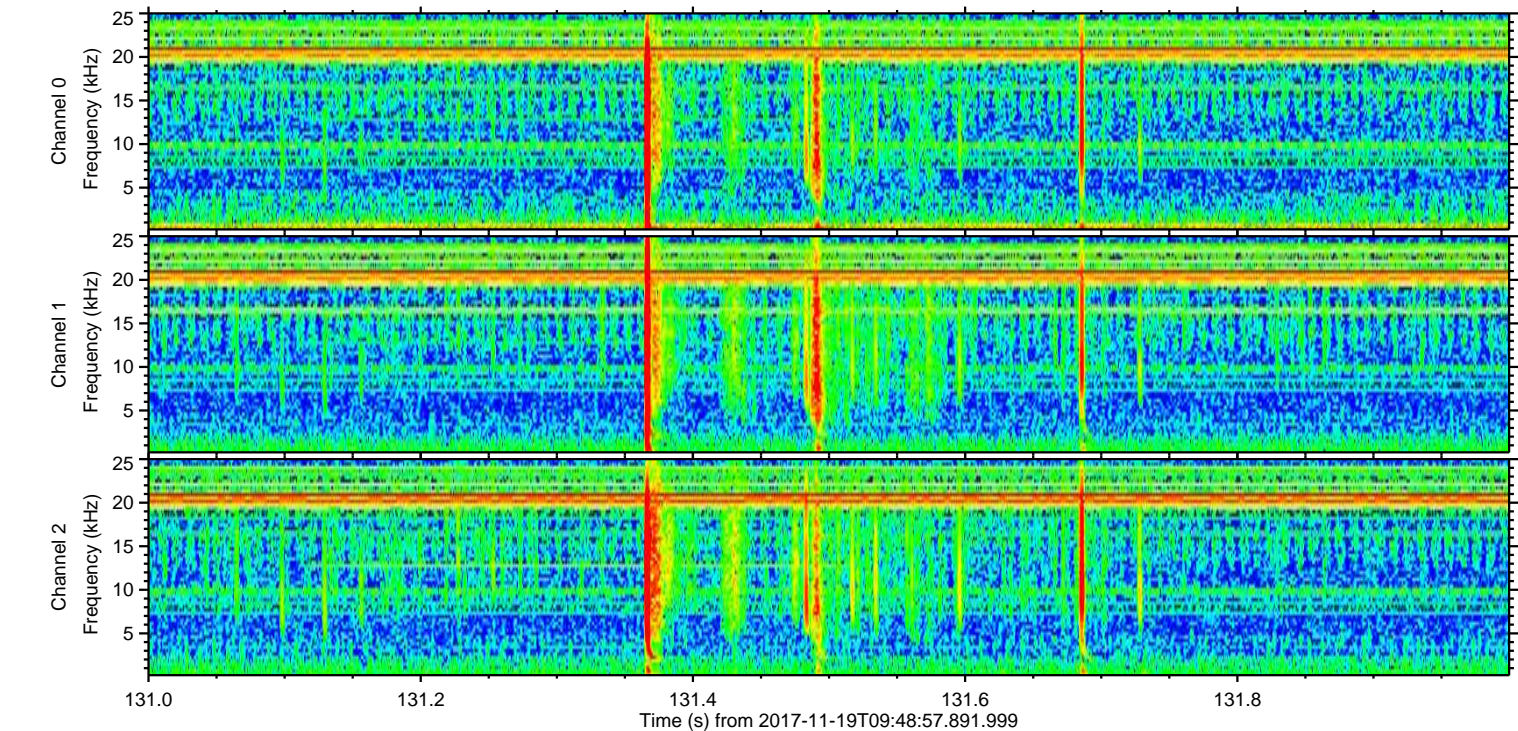
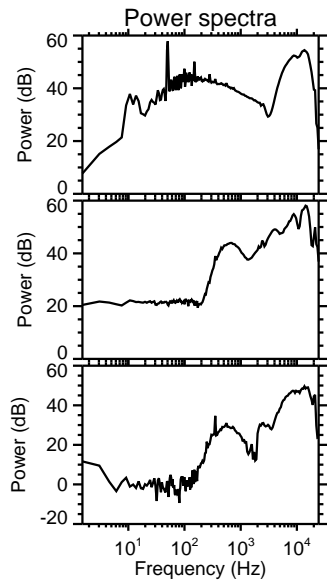
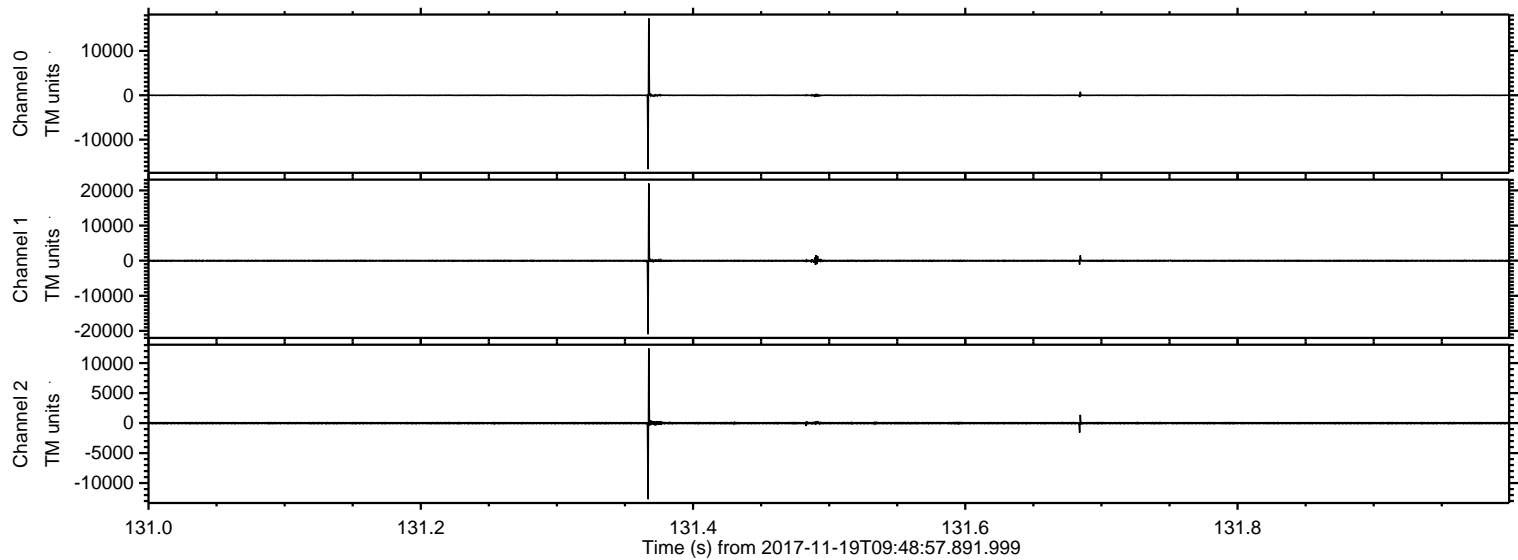
ELMAVAN 3D WAVEFORMS (Measured data sampled at 50 kHz) 50999 packets of 144 samples from 2017-11-19T09:48:57.891.999.

Processed Sun Nov 19 10:57:26 2017 by ELM ver.2012-10-06 from 001__elm20171119_094856__dat00.bin



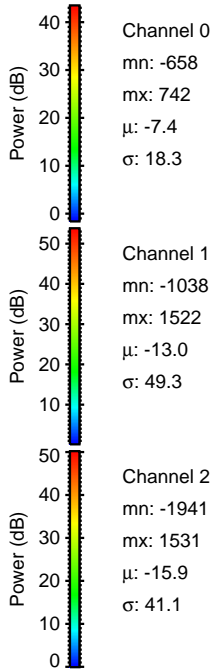
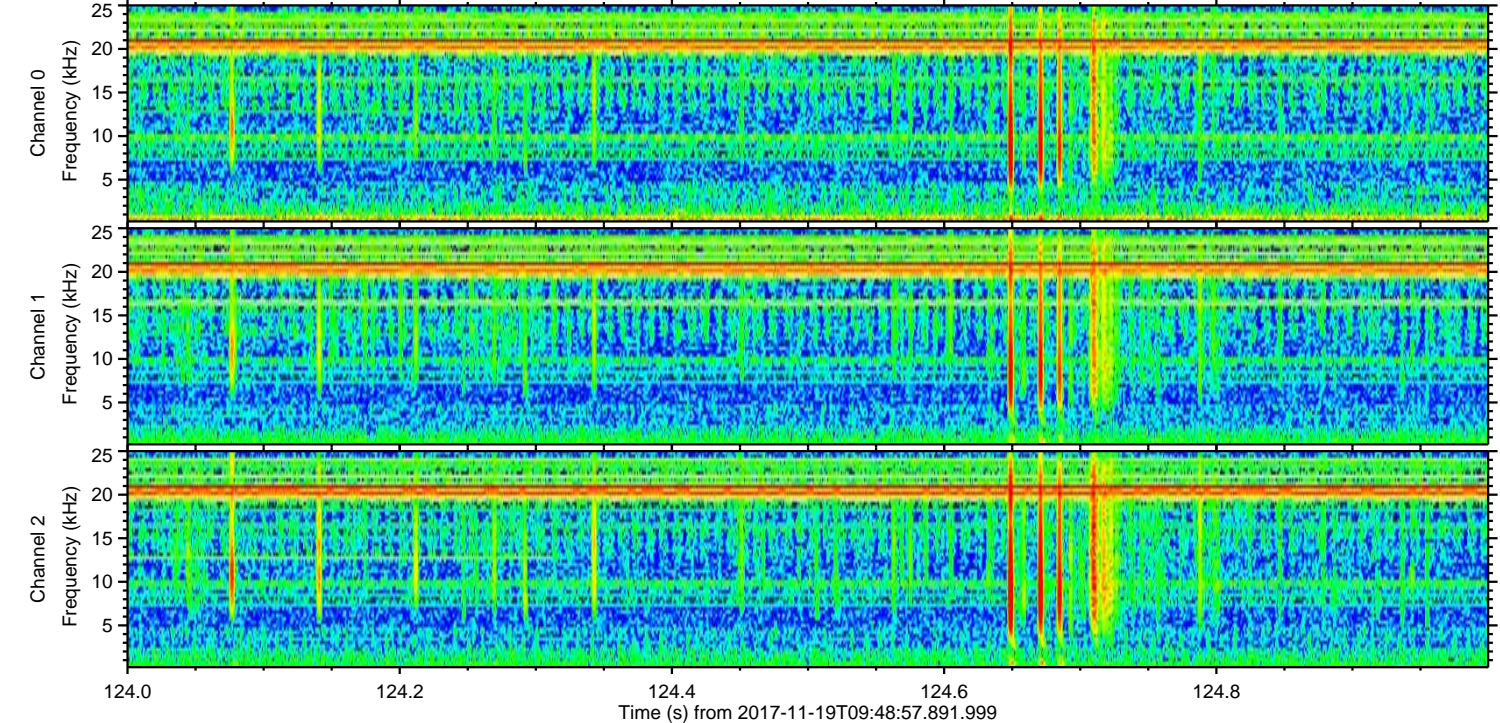
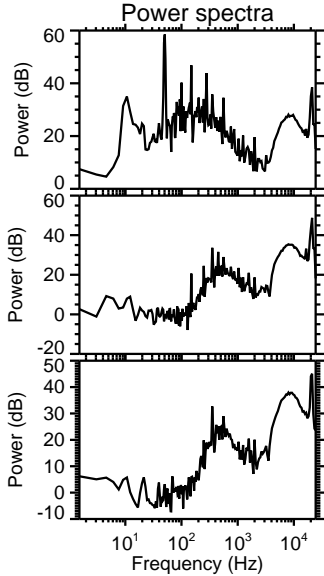
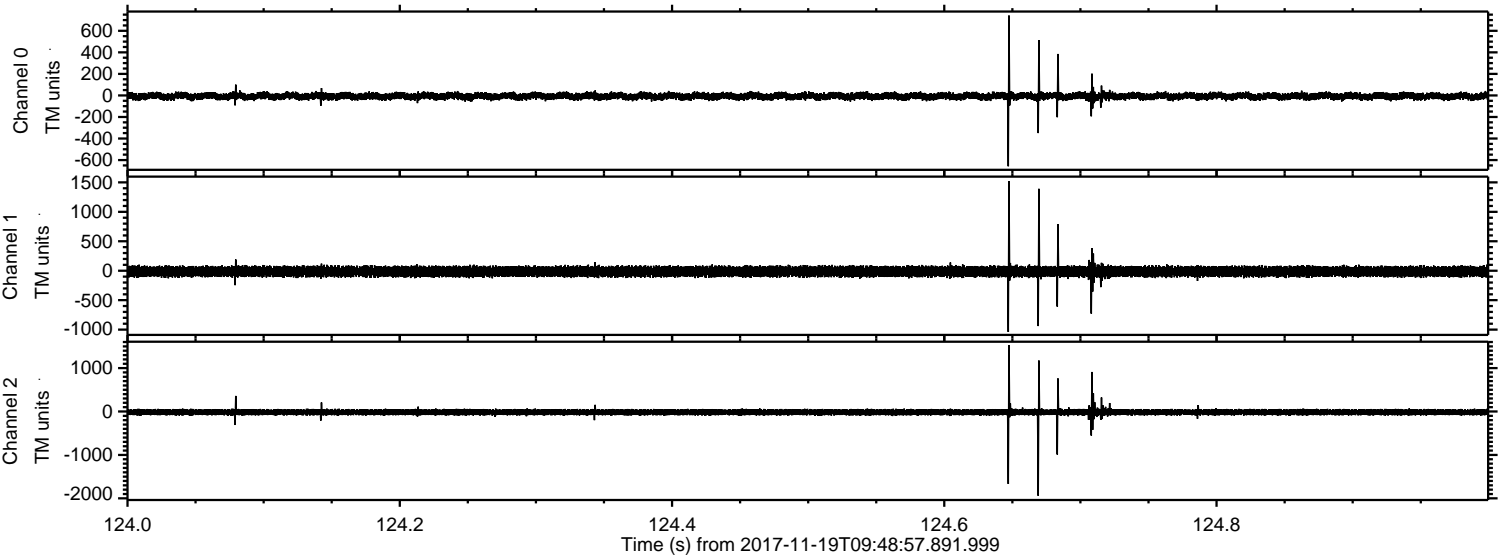
ELMAVAN 3D WAVEFORMS (Measured data sampled at 50 kHz) 50999 packets of 144 samples from 2017-11-19T09:48:57.891.999. Part 132/147

Processed Sun Nov 19 10:57:34 2017 by ELM ver.2012-10-06 from 001__elm20171119_094856__dat00.bin



ELMAVAN 3D WAVEFORMS (Measured data sampled at 50 kHz) 50999 packets of 144 samples from 2017-11-19T09:48:57.891.999. Part 125/147

Processed Sun Nov 19 10:57:35 2017 by ELM ver.2012-10-06 from 001__elm20171119_094856__dat00.bin

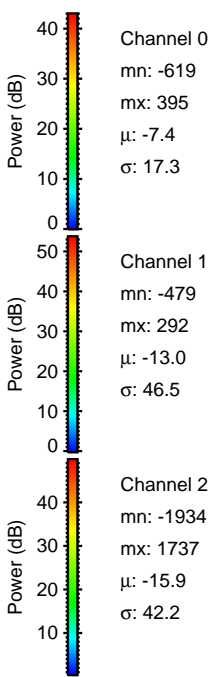
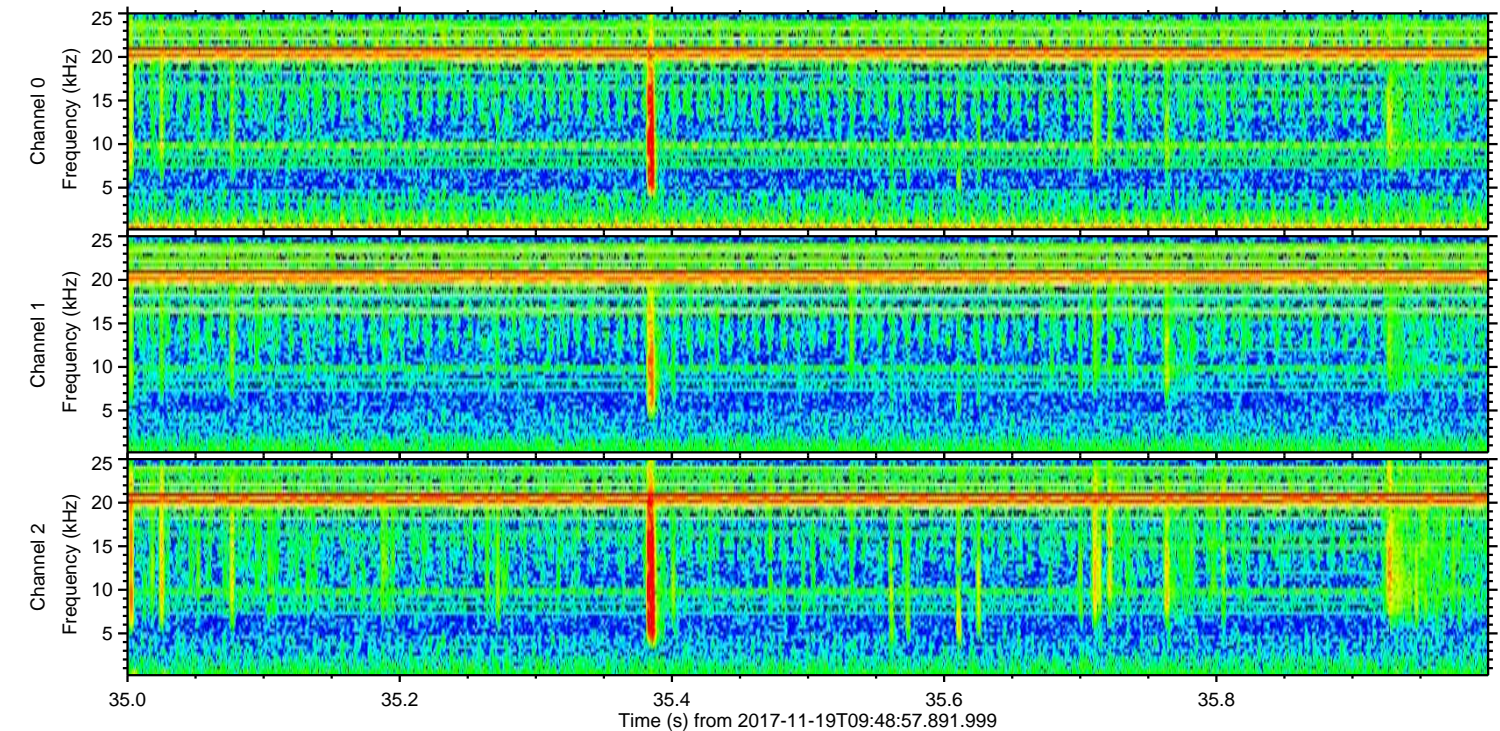
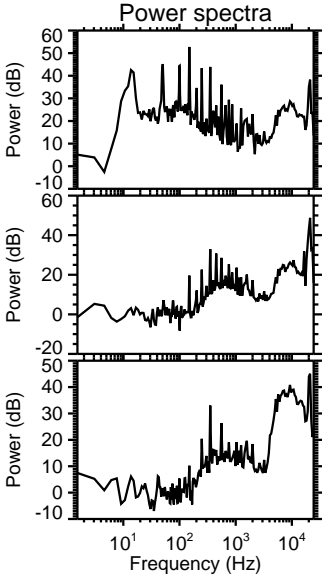
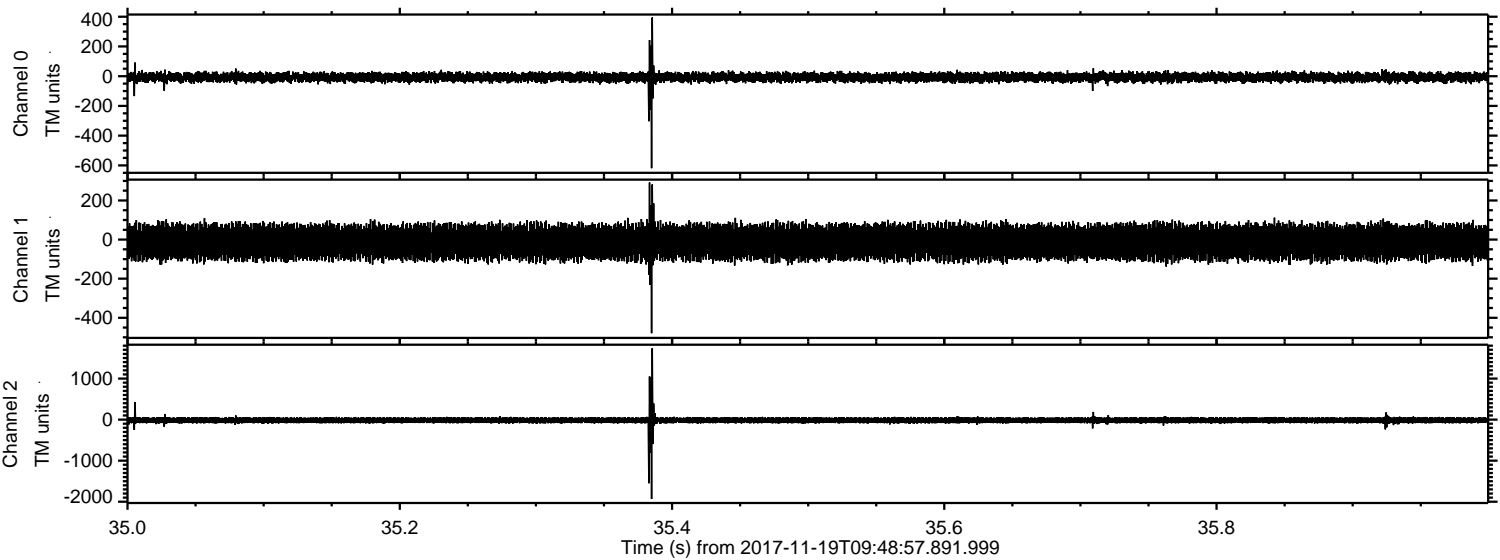


Channel 0
mn: -658
mx: 742
 μ : -7.4
 σ : 18.3

Channel 1
mn: -1038
mx: 1522
 μ : -13.0
 σ : 49.3

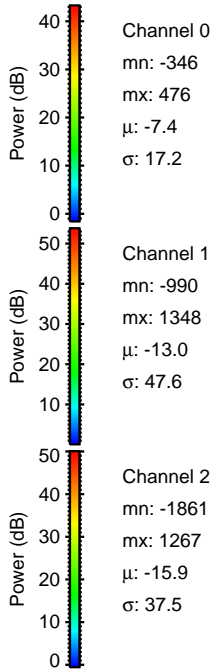
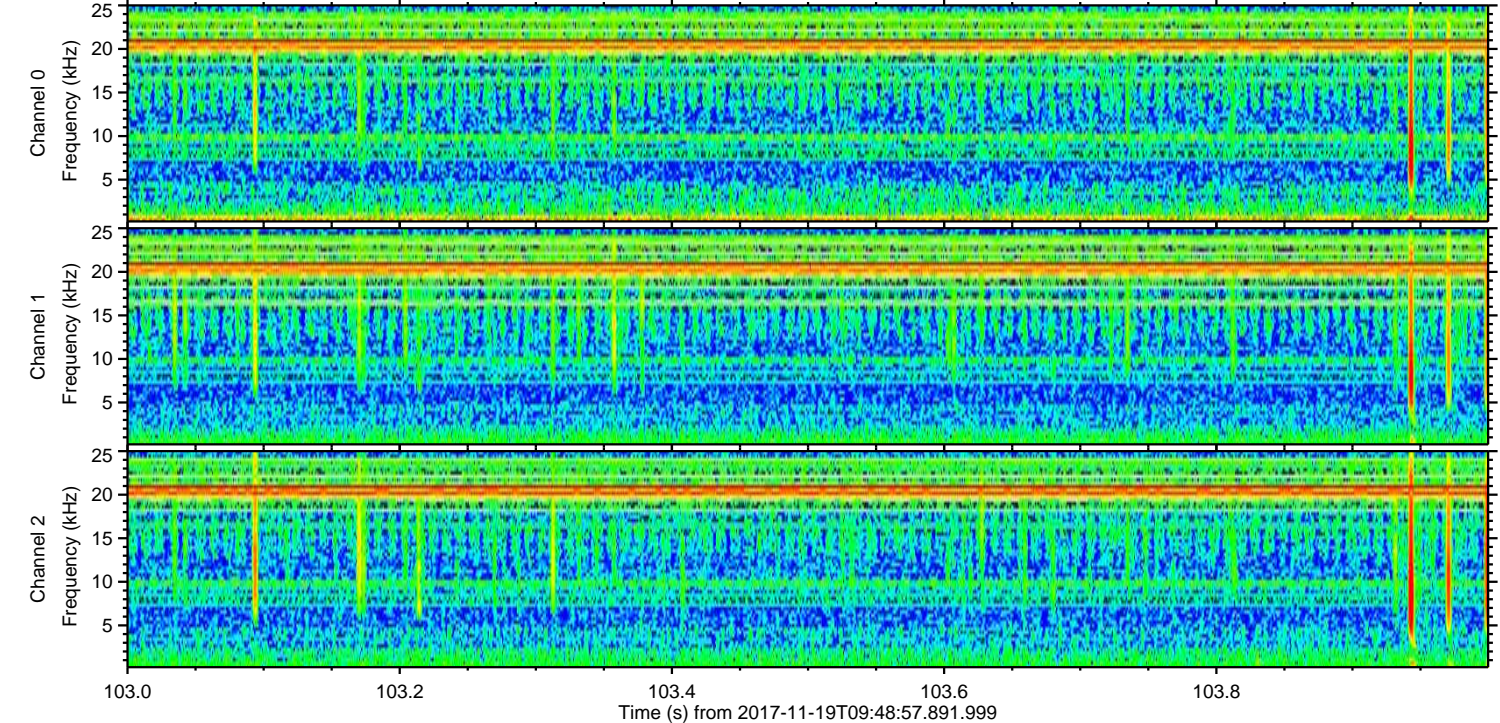
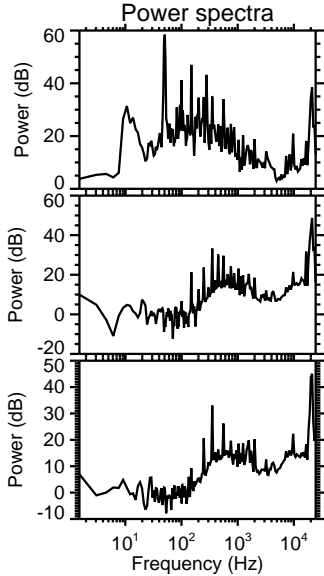
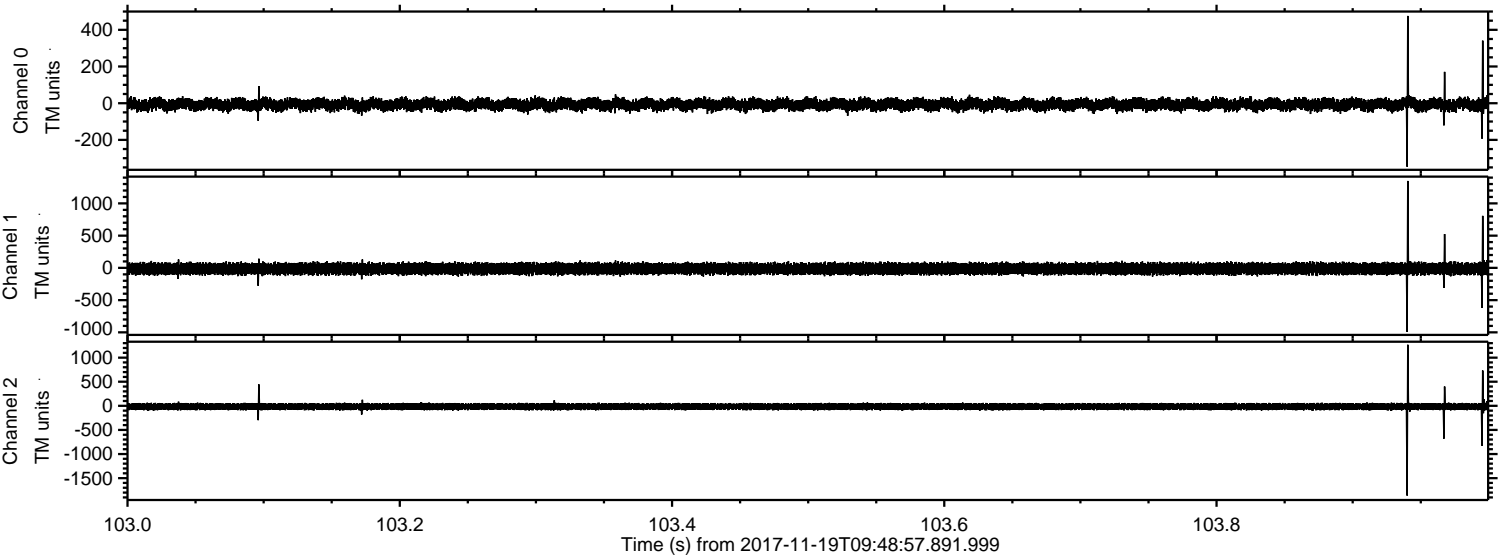
Channel 2
mn: -1941
mx: 1531
 μ : -15.9
 σ : 41.1

Processed Sun Nov 19 10:57:36 2017 by ELM ver.2012-10-06 from 001__elm20171119_094856__dat00.bin

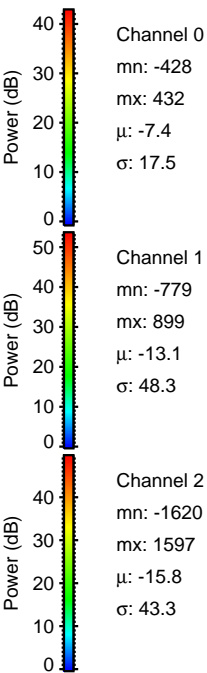
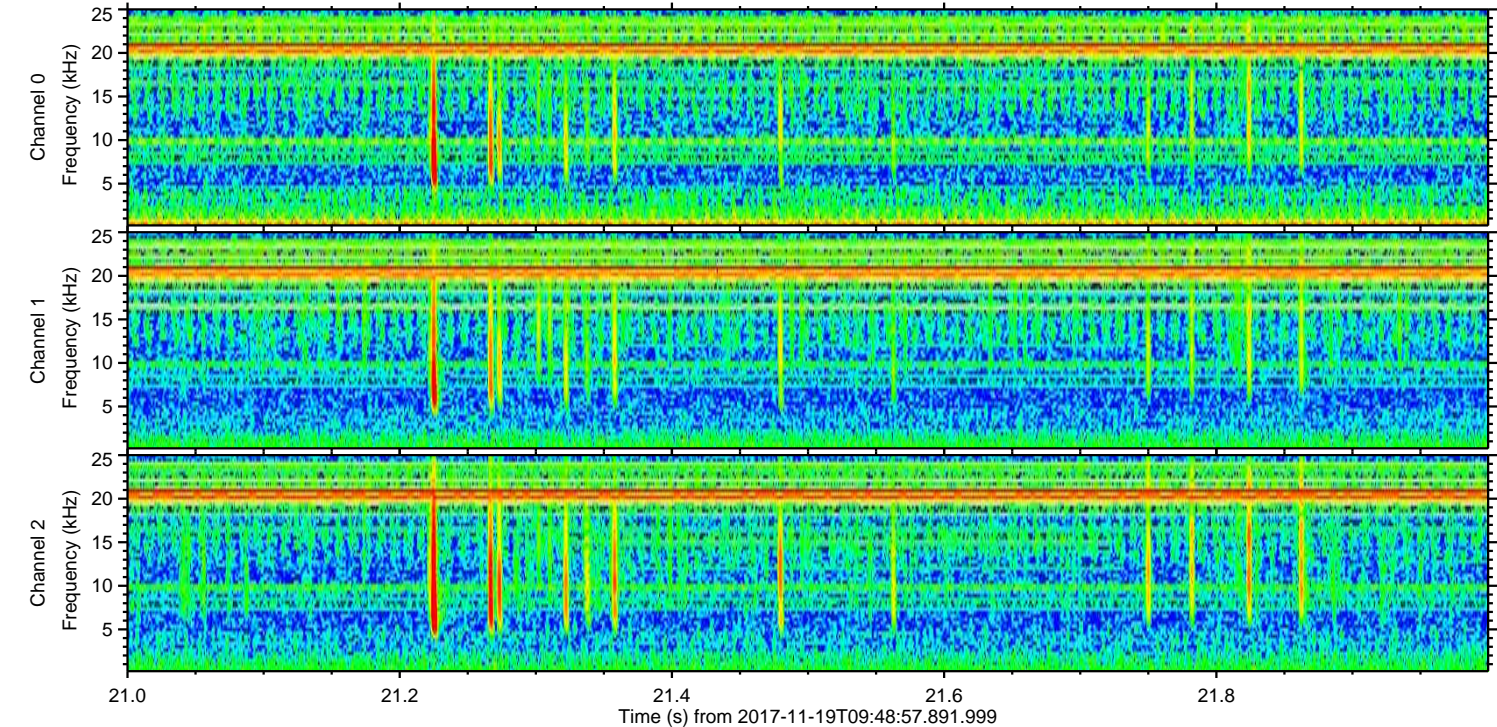
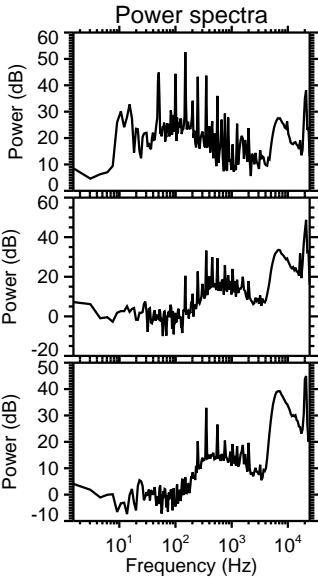
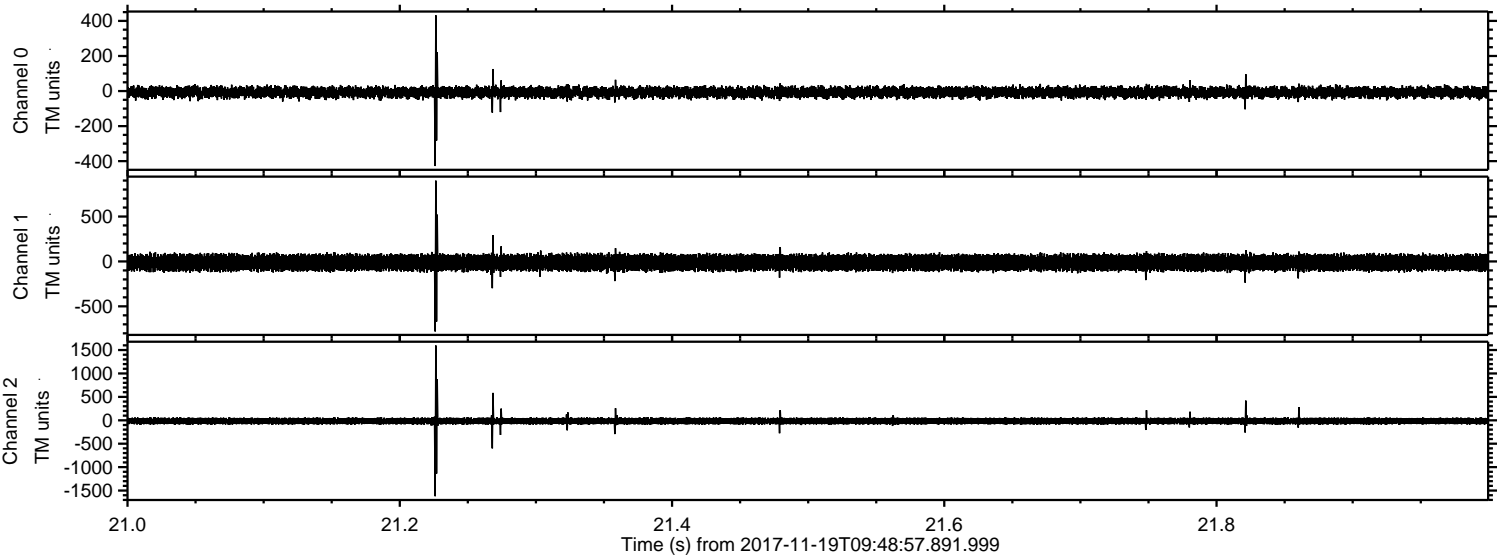


ELMAVAN 3D WAVEFORMS (Measured data sampled at 50 kHz) 50999 packets of 144 samples from 2017-11-19T09:48:57.891.999. Part 104/147

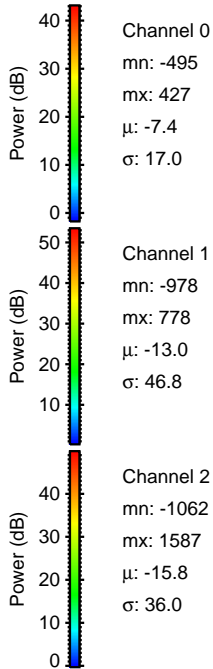
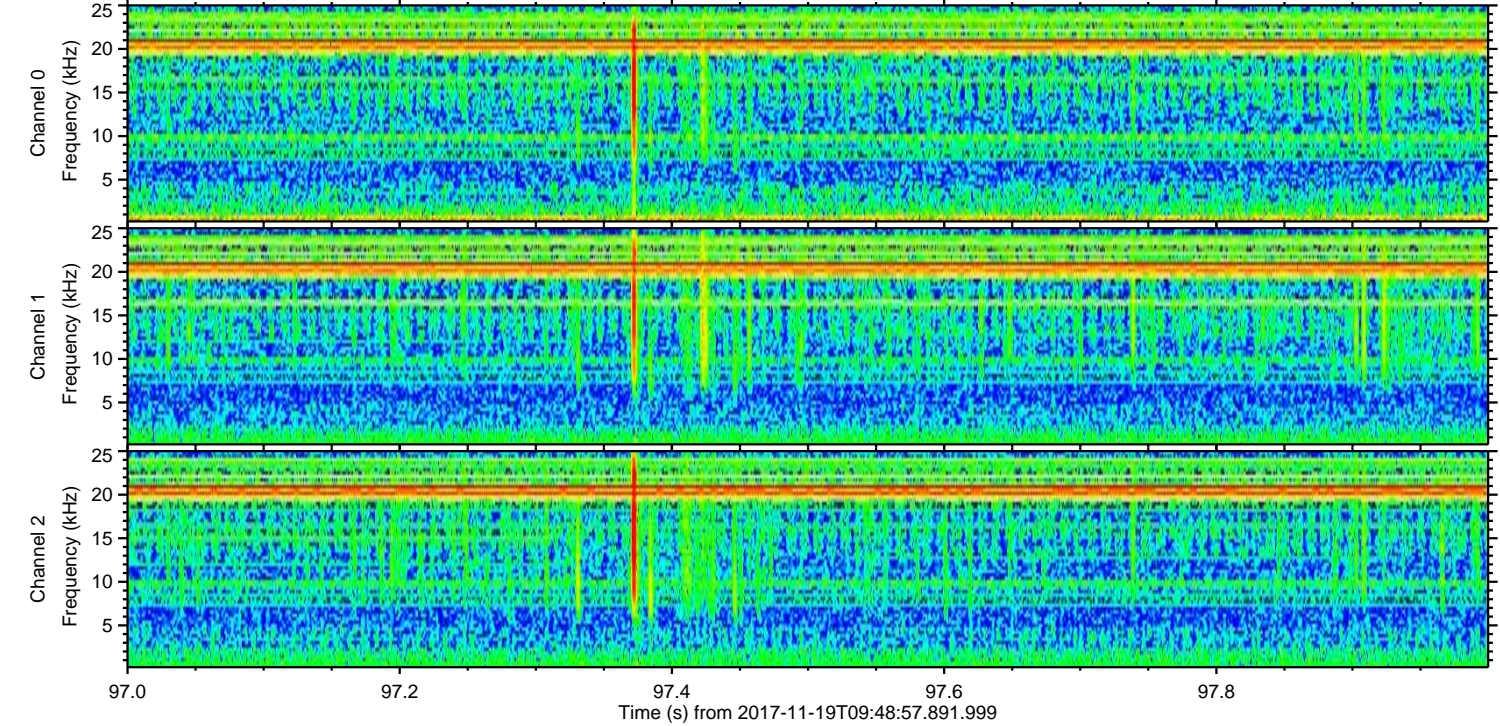
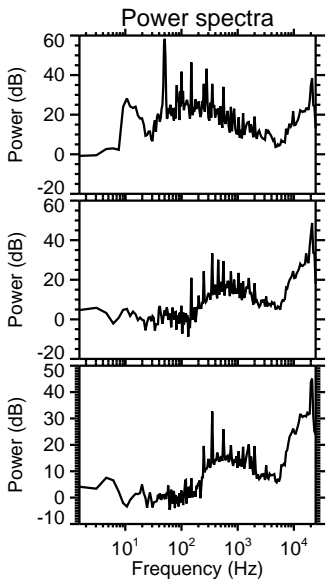
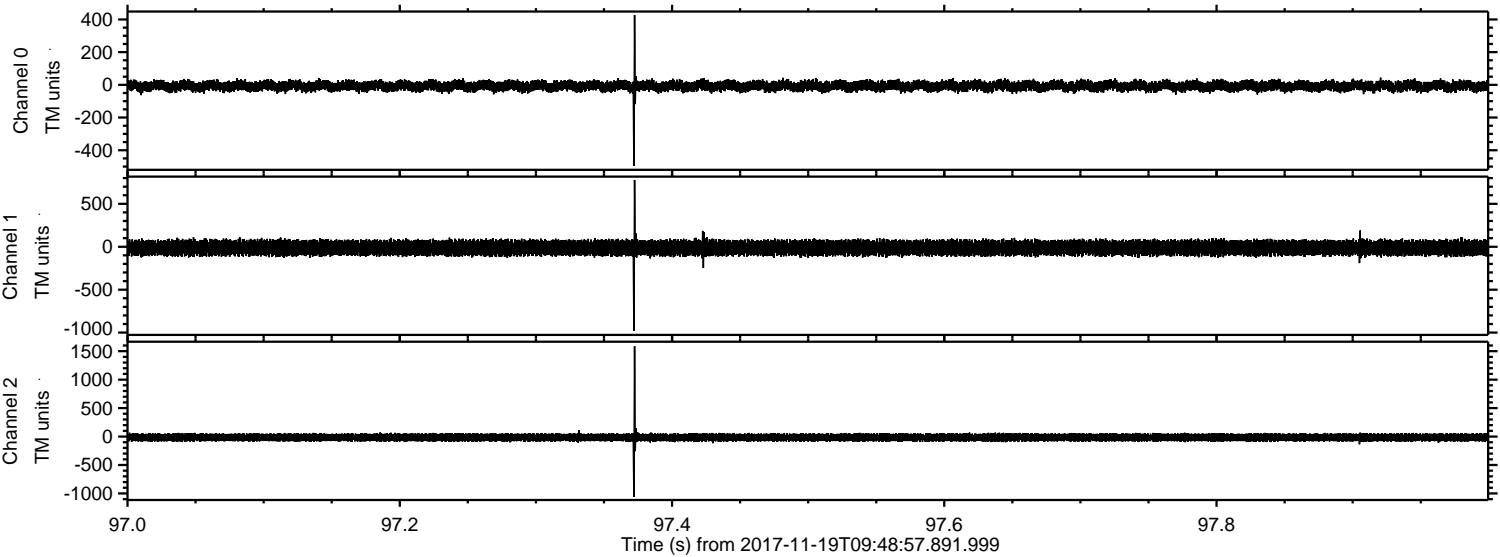
Processed Sun Nov 19 10:57:37 2017 by ELM ver.2012-10-06 from 001__elm20171119_094856__dat00.bin



Processed Sun Nov 19 10:57:38 2017 by ELM ver.2012-10-06 from 001__elm20171119_094856__dat00.bin

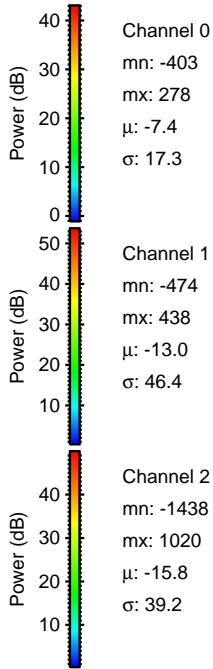
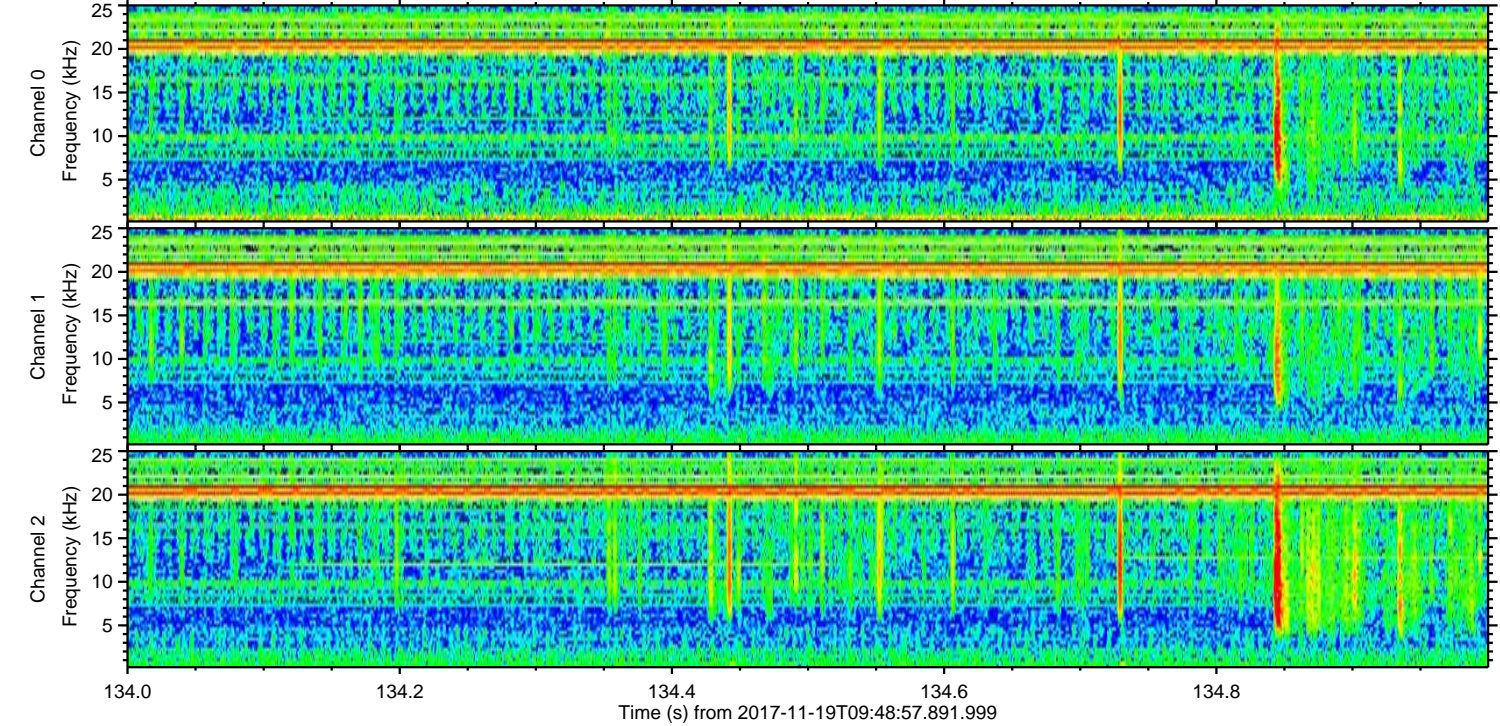
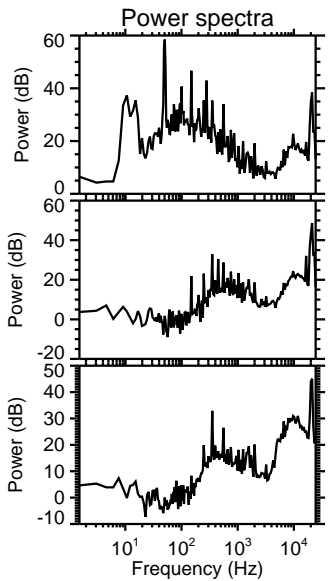
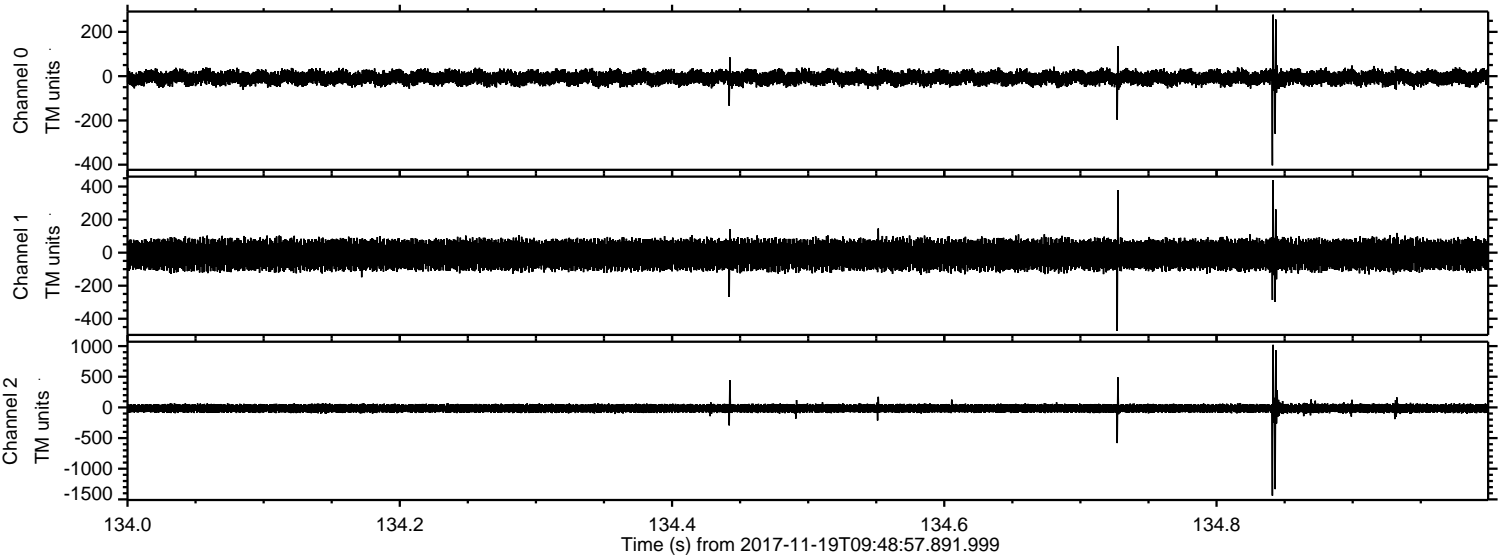


Processed Sun Nov 19 10:57:39 2017 by ELM ver.2012-10-06 from 001__elm20171119_094856__dat00.bin



ELMAVAN 3D WAVEFORMS (Measured data sampled at 50 kHz) 50999 packets of 144 samples from 2017-11-19T09:48:57.891.999. Part 135/147

Processed Sun Nov 19 10:57:39 2017 by ELM ver.2012-10-06 from 001__elm20171119_094856__dat00.bin



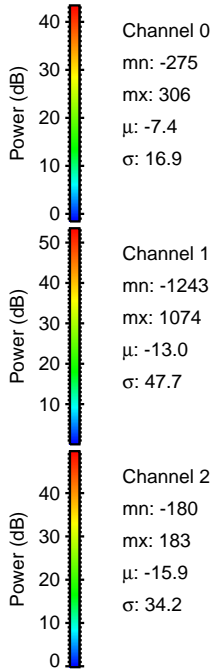
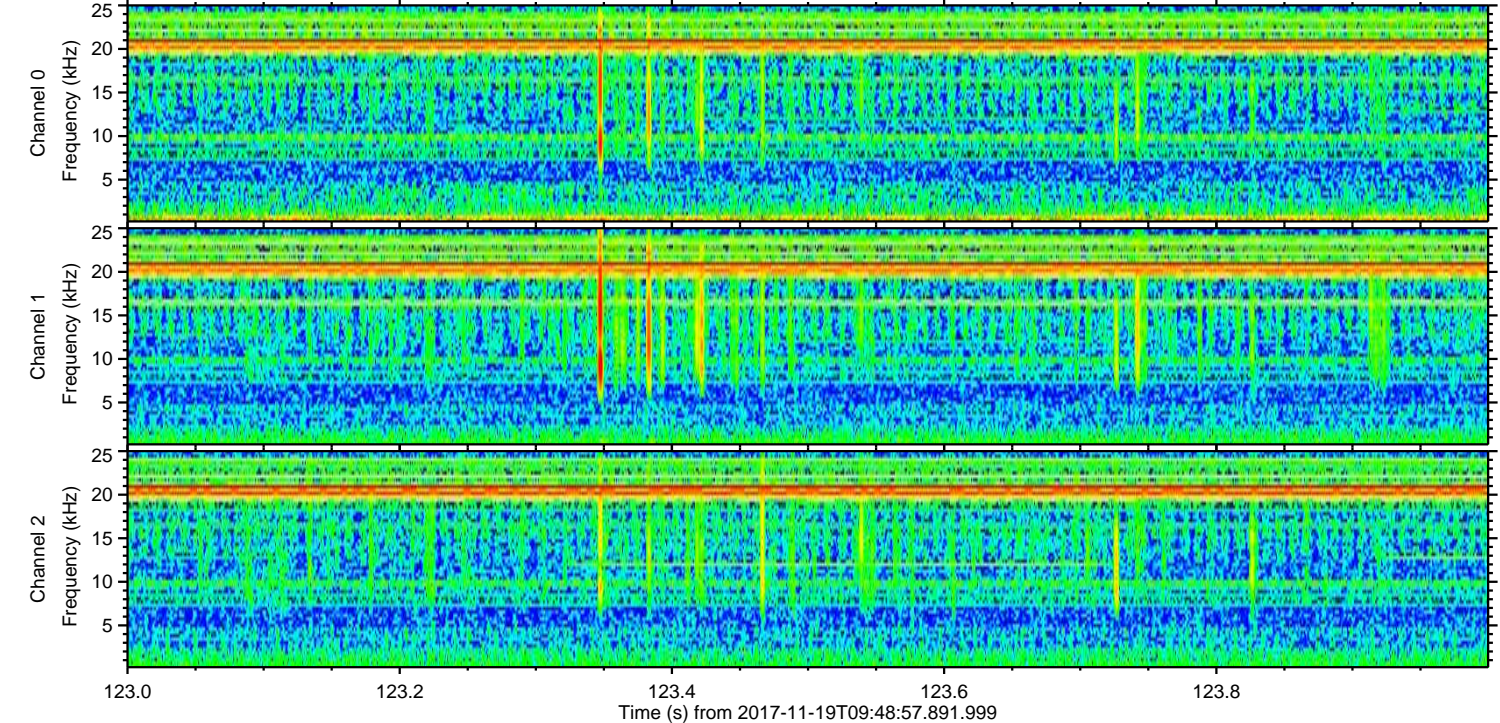
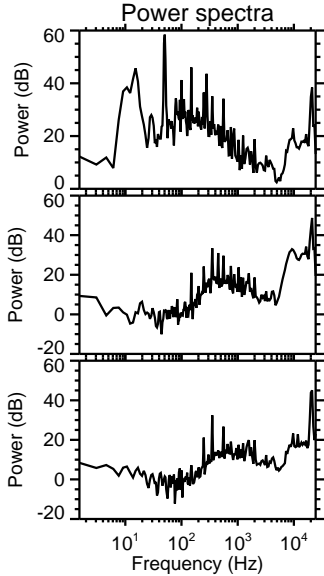
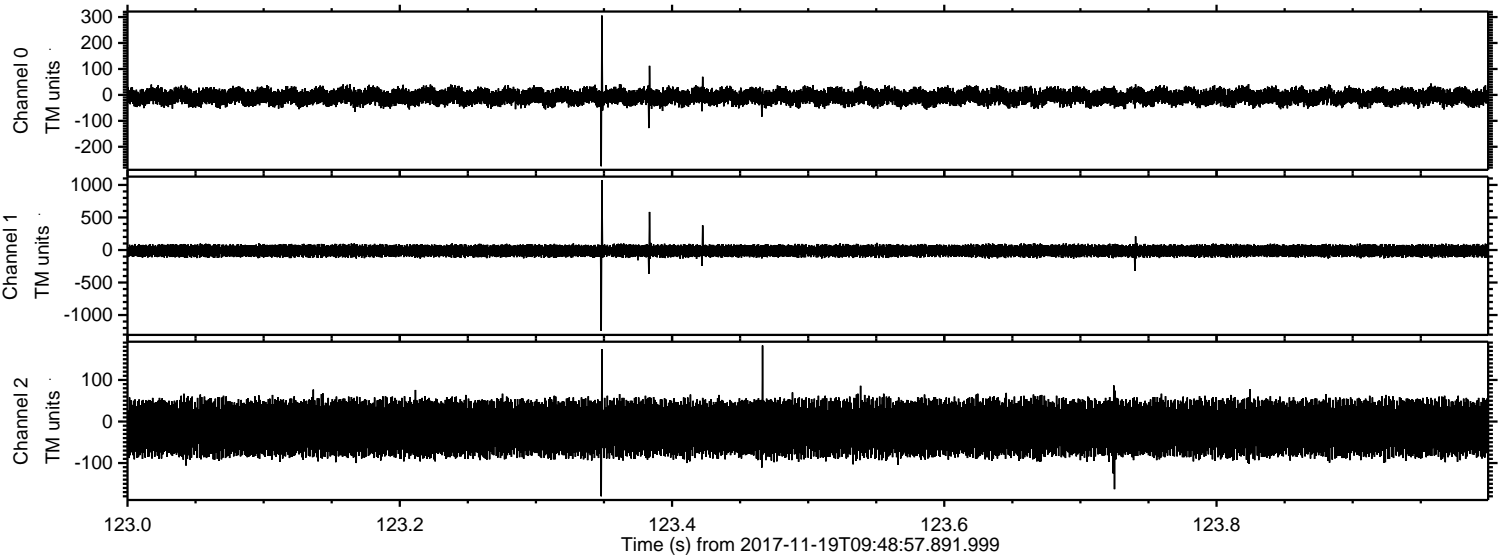
Channel 0
mn: -403
mx: 278
 μ : -7.4
 σ : 17.3

Channel 1
mn: -474
mx: 438
 μ : -13.0
 σ : 46.4

Channel 2
mn: -1438
mx: 1020
 μ : -15.8
 σ : 39.2

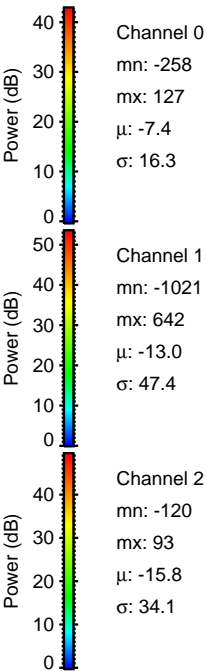
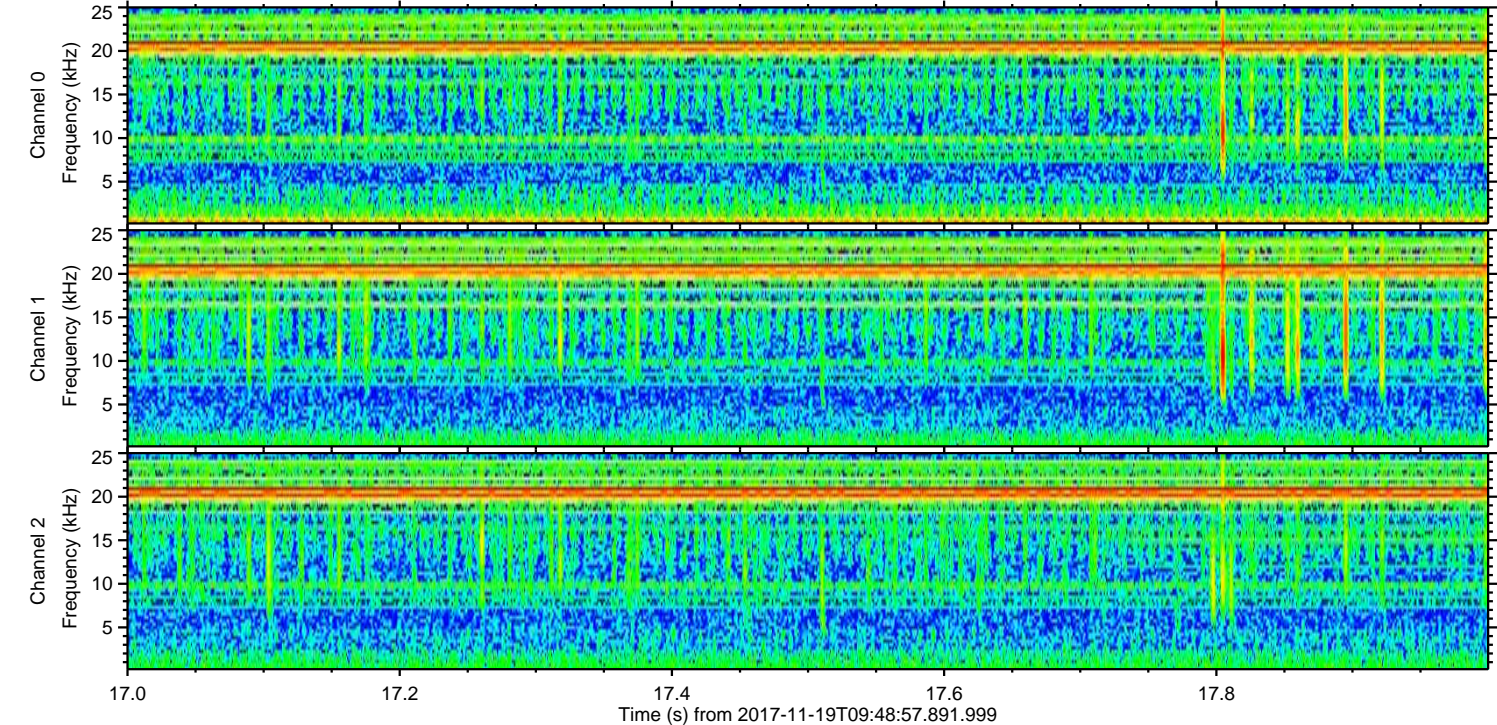
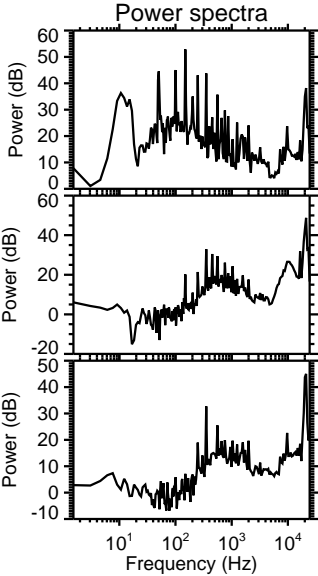
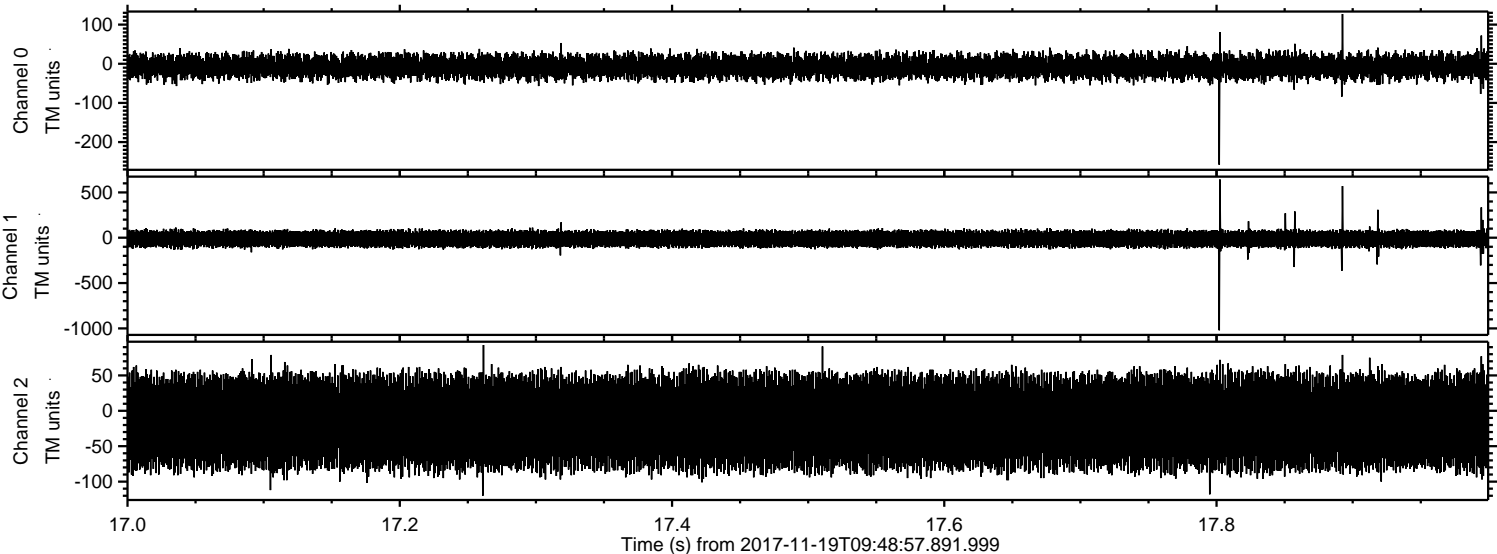
ELMAVAN 3D WAVEFORMS (Measured data sampled at 50 kHz) 50999 packets of 144 samples from 2017-11-19T09:48:57.891.999. Part 124/147

Processed Sun Nov 19 10:57:40 2017 by ELM ver.2012-10-06 from 001__elm20171119_094856__dat00.bin

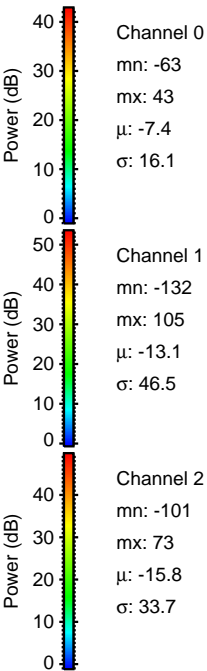
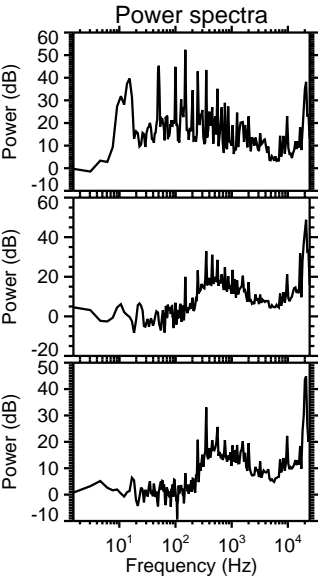
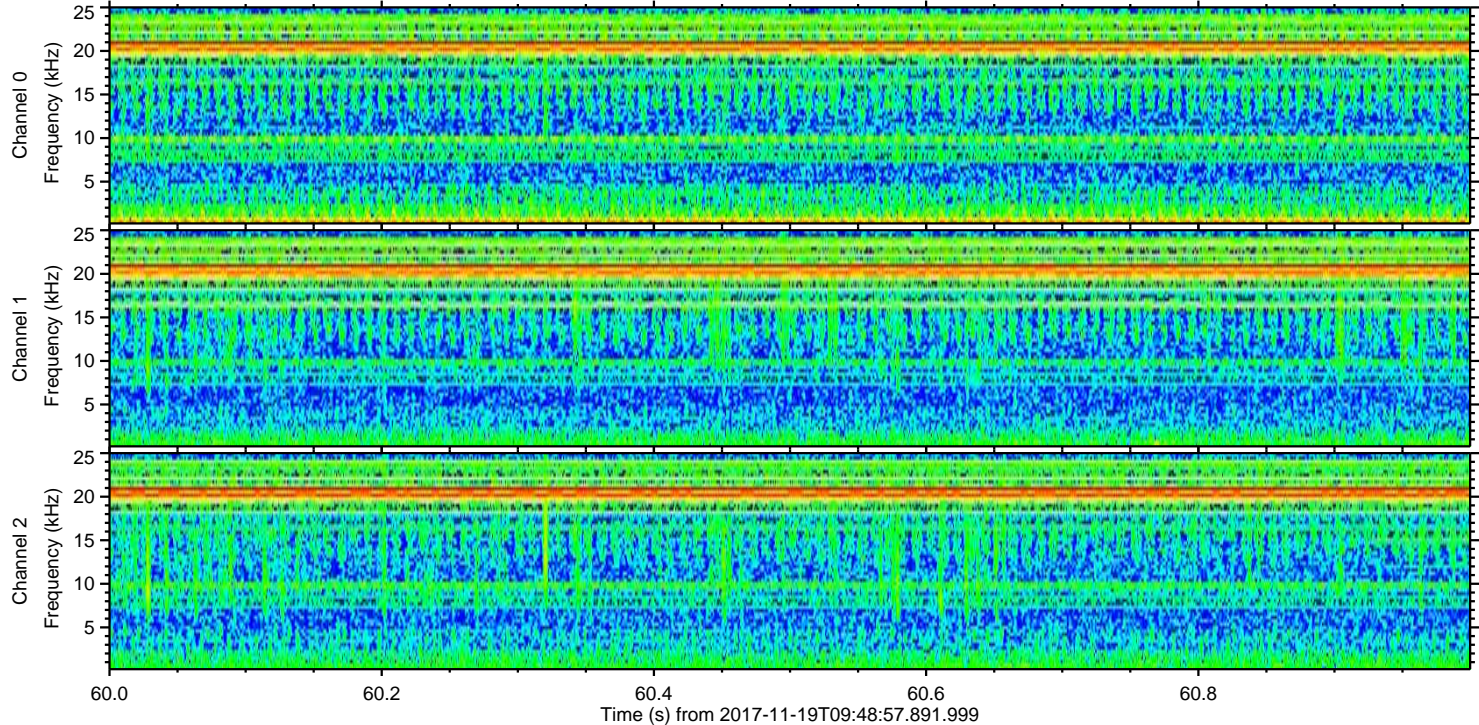
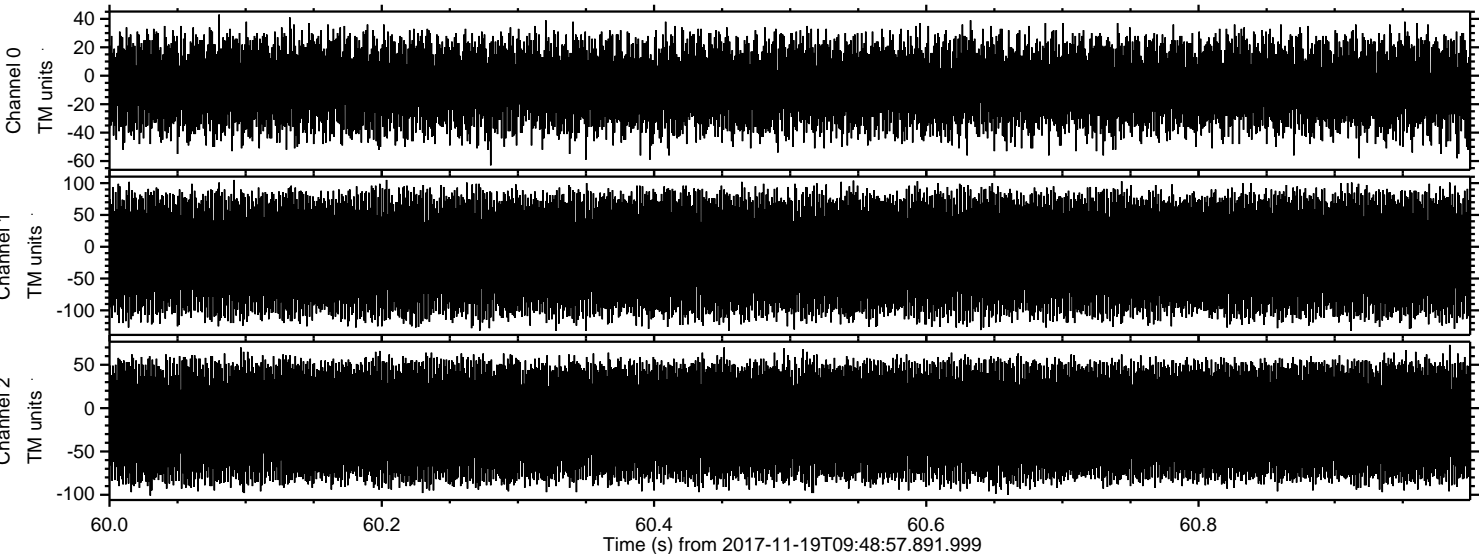


ELMAVAN 3D WAVEFORMS (Measured data sampled at 50 kHz) 50999 packets of 144 samples from 2017-11-19T09:48:57.891.999. Part 18/147

Processed Sun Nov 19 10:57:41 2017 by ELM ver.2012-10-06 from 001__elm20171119_094856__dat00.bin



Processed Sun Nov 19 10:57:42 2017 by ELM ver.2012-10-06 from 001__elm20171119_094856__dat00.bin



Channel 0
mn: -63
mx: 43
 μ : -7.4
 σ : 16.1

Channel 1
mn: -132
mx: 105
 μ : -13.1
 σ : 46.5

Channel 2
mn: -101
mx: 73
 μ : -15.8
 σ : 33.7