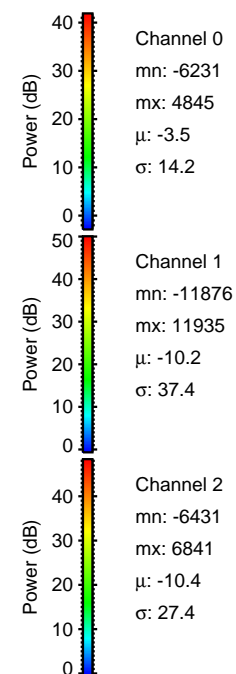
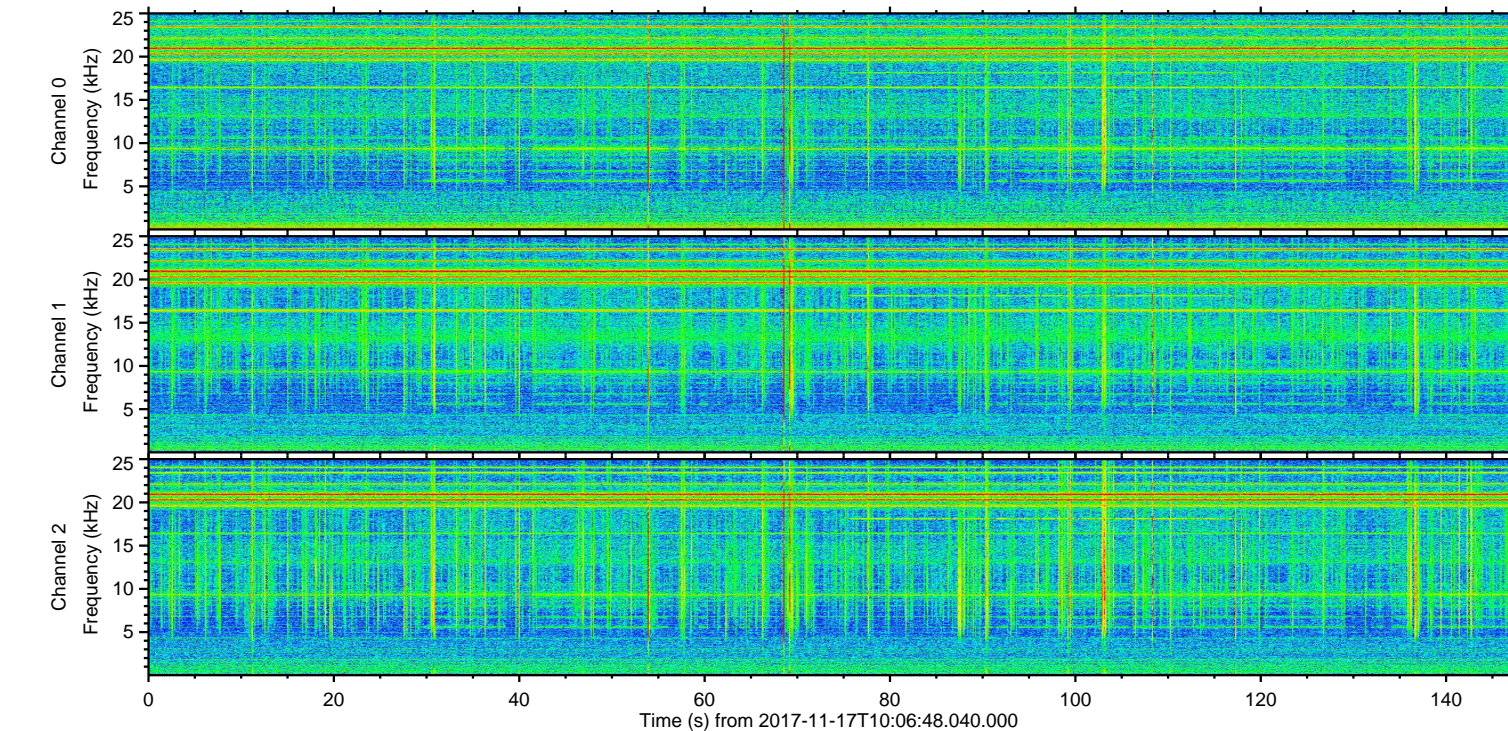
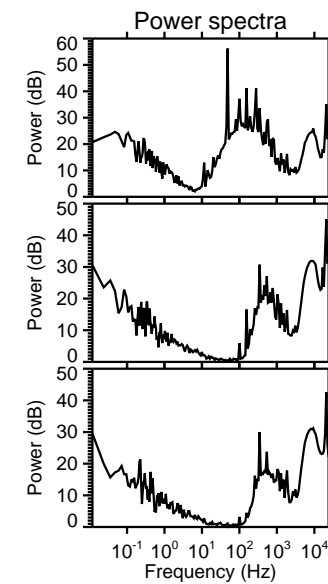
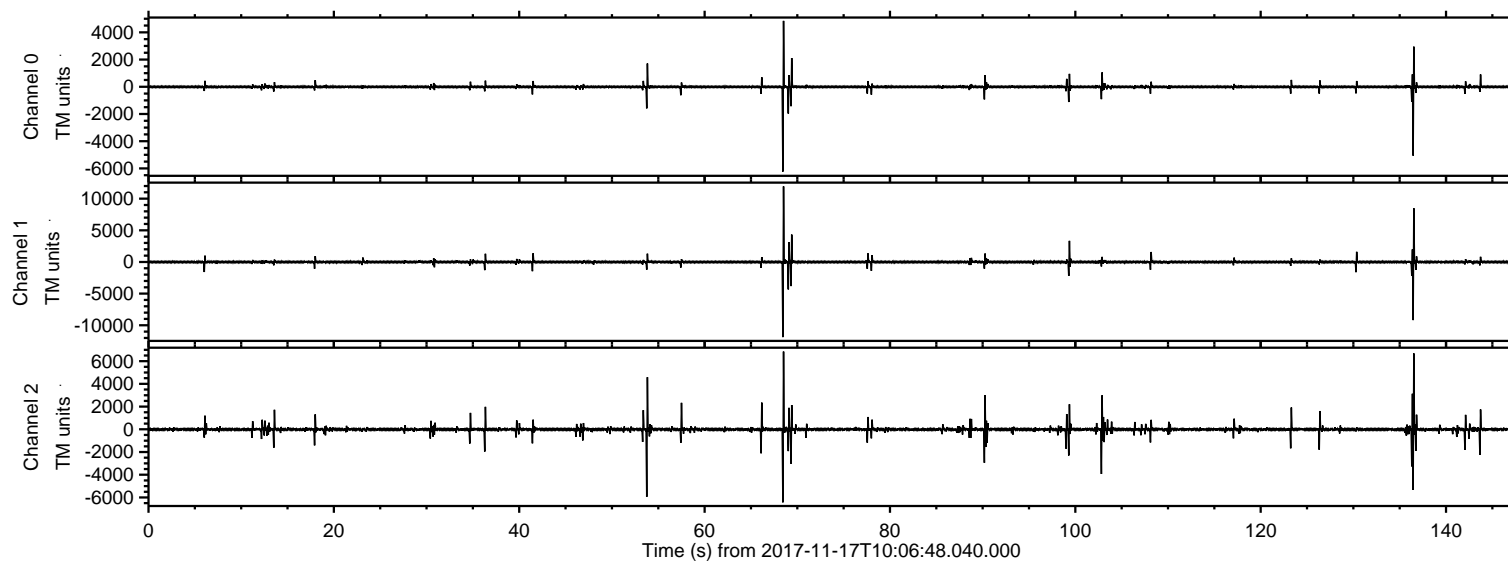
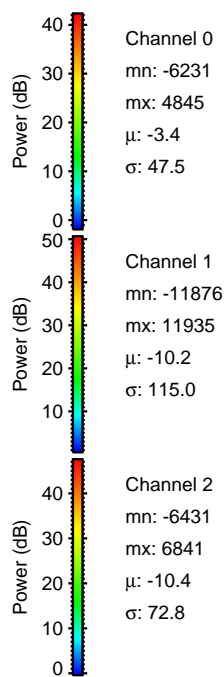
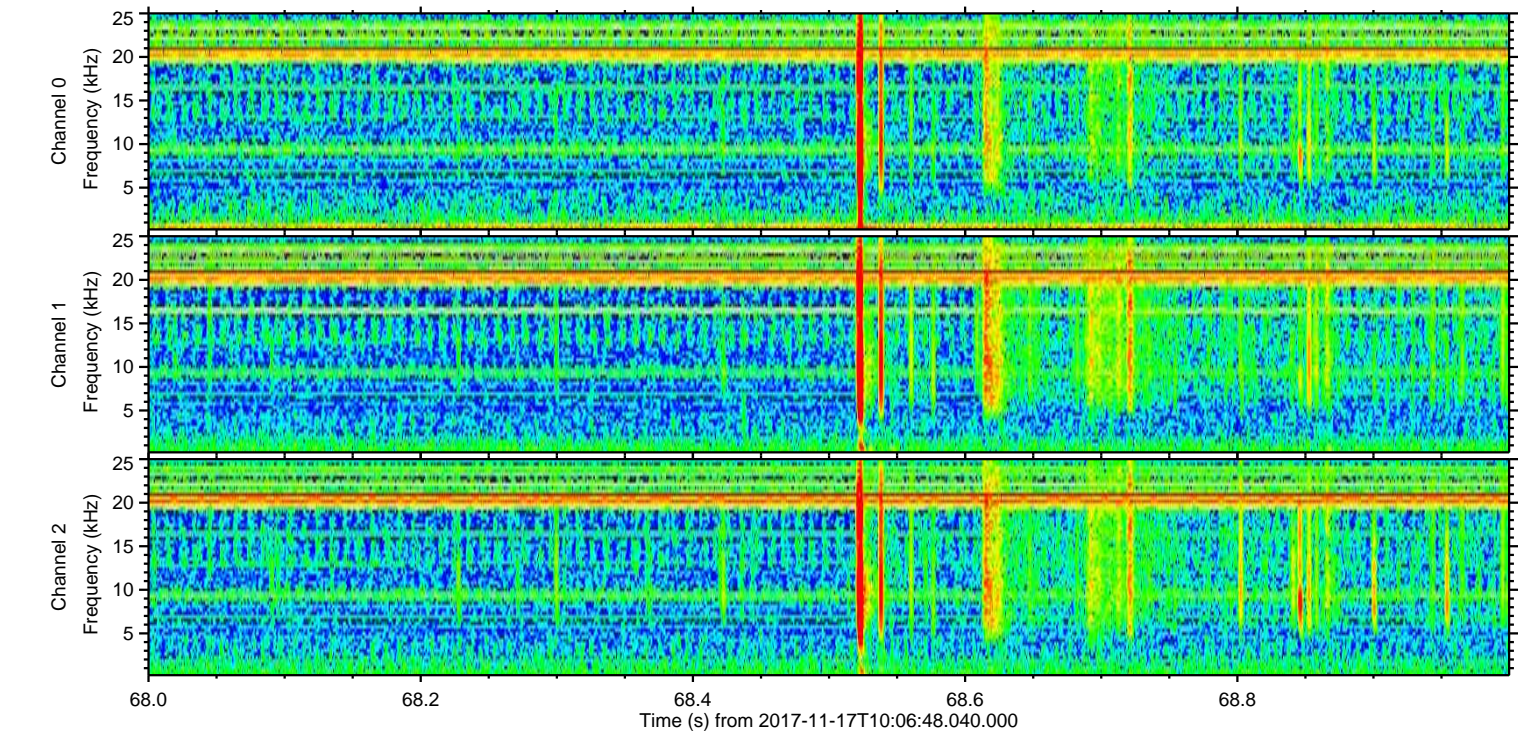
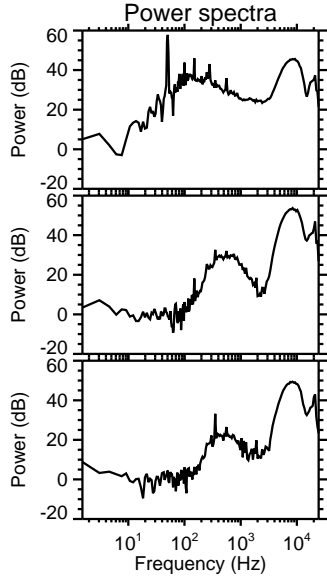
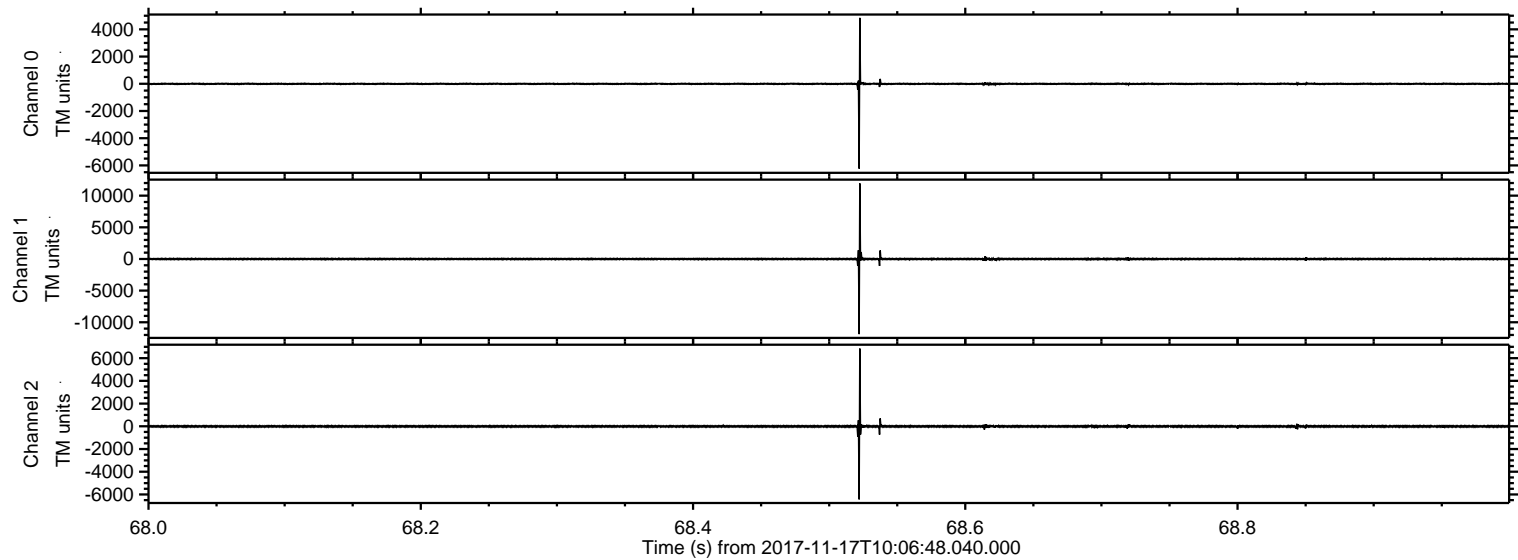


ELMAVAN 3D WAVEFORMS (Measured data sampled at 50 kHz) 51000 packets of 144 samples from 2017-11-17T10:06:48.040.000.

Processed Fri Nov 17 11:14:53 2017 by ELM ver.2012-10-06 from 001__elm20171117_100647__dat00.bin

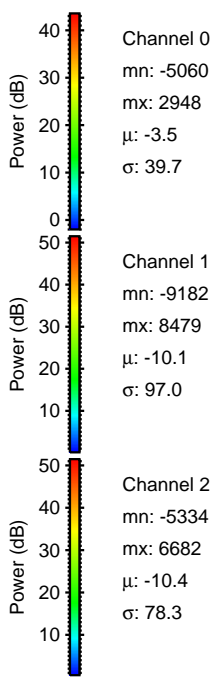
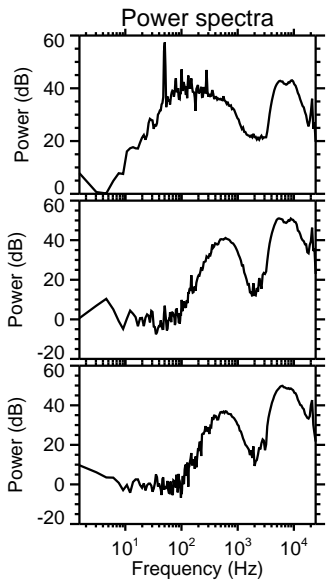
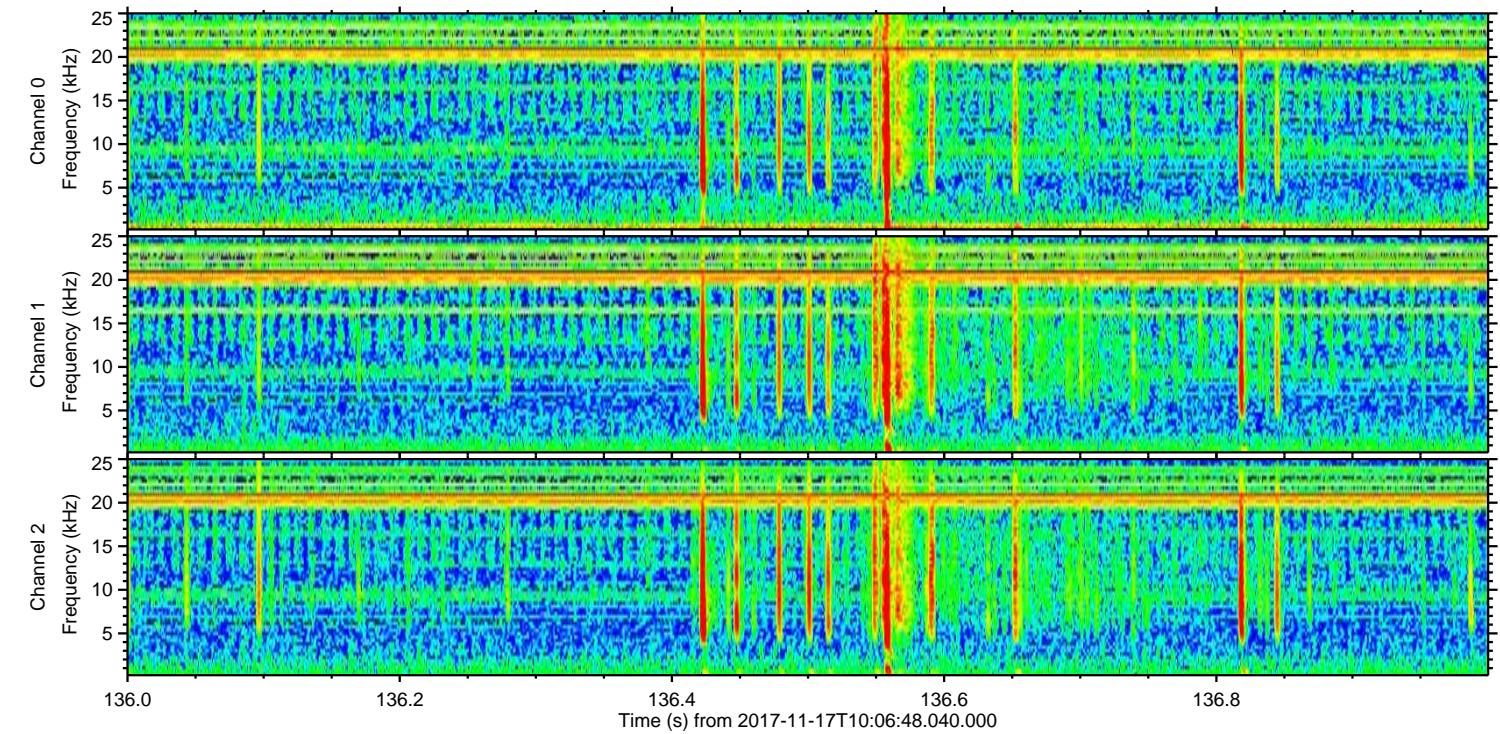
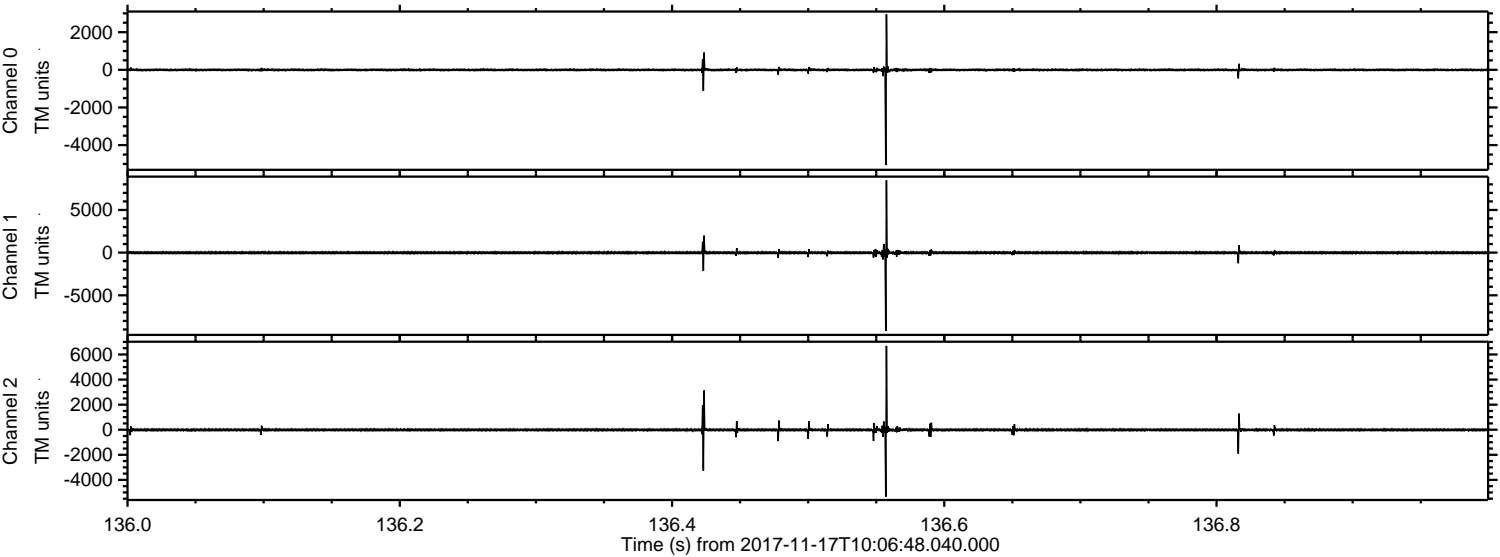


Processed Fri Nov 17 11:15:00 2017 by ELM ver.2012-10-06 from 001__elm20171117_100647__dat00.bin

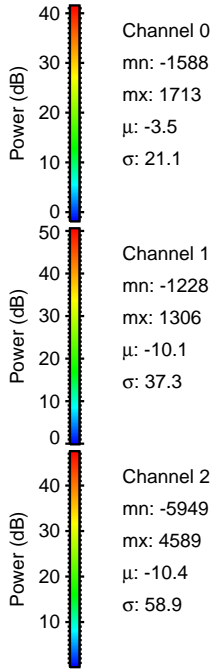
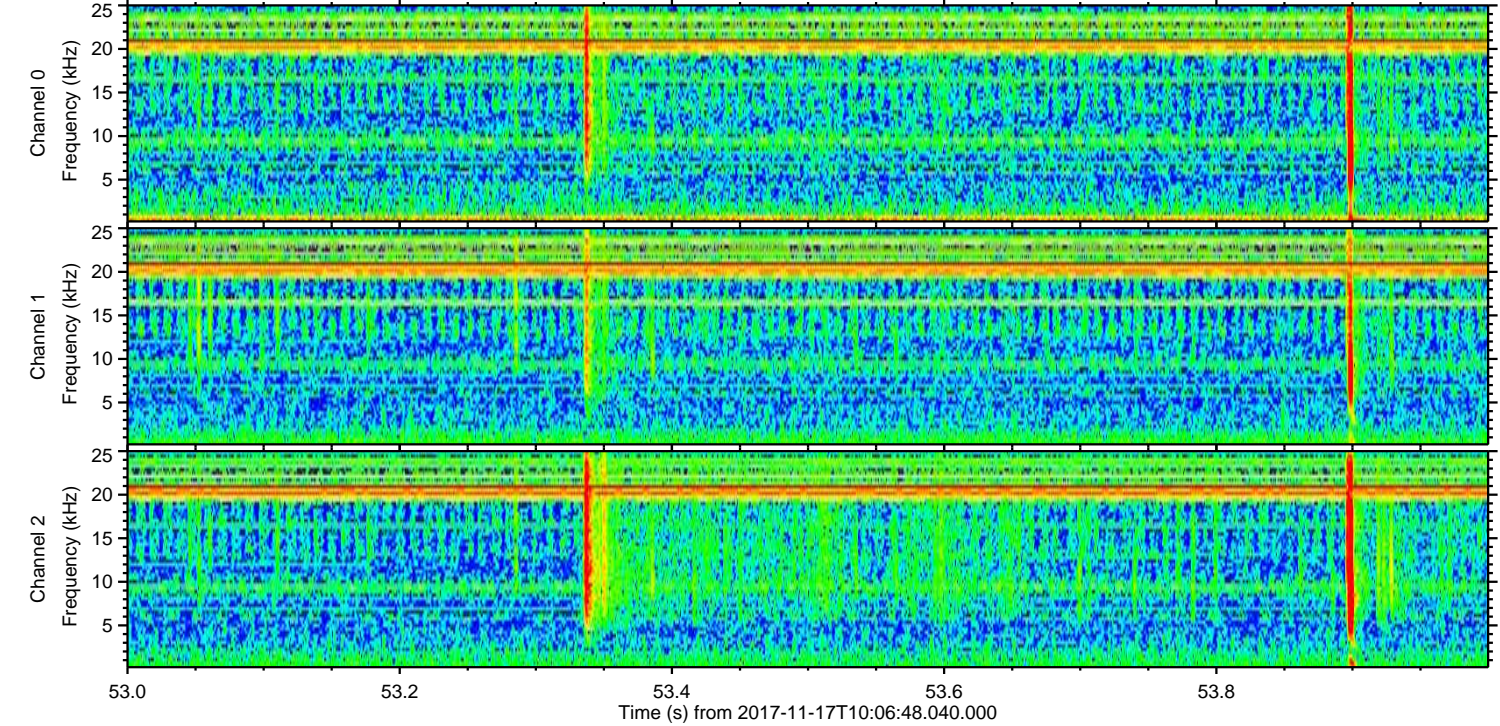
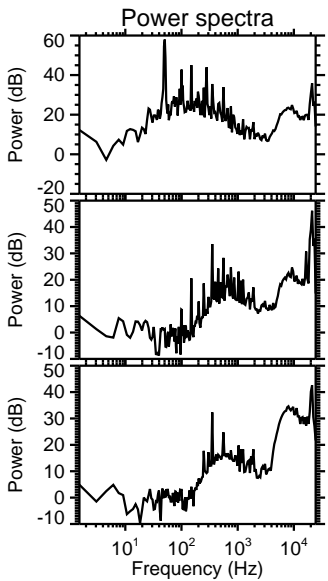
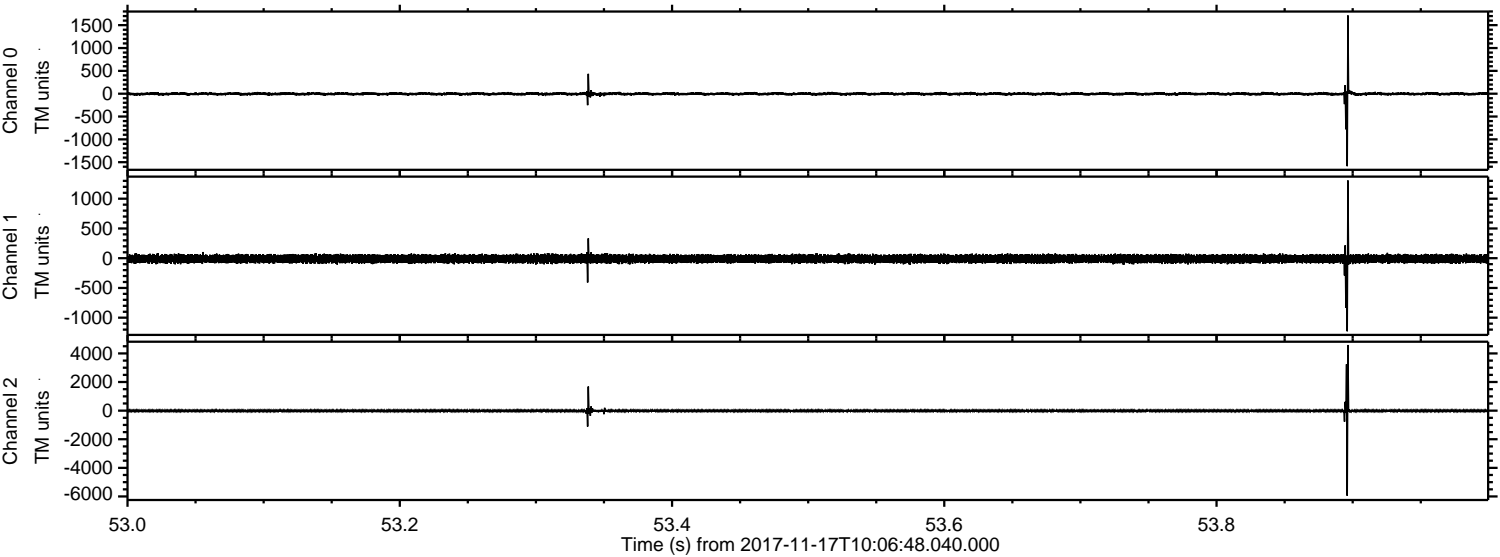


ELMAVAN 3D WAVEFORMS (Measured data sampled at 50 kHz) 51000 packets of 144 samples from 2017-11-17T10:06:48.040.000. Part 137/147

Processed Fri Nov 17 11:15:00 2017 by ELM ver.2012-10-06 from 001__elm20171117_100647__dat00.bin

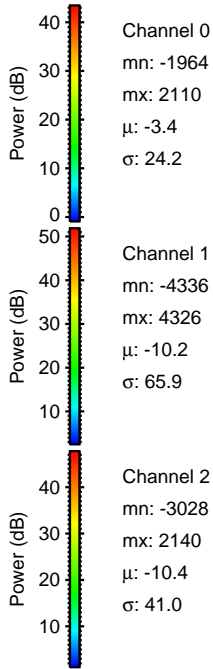
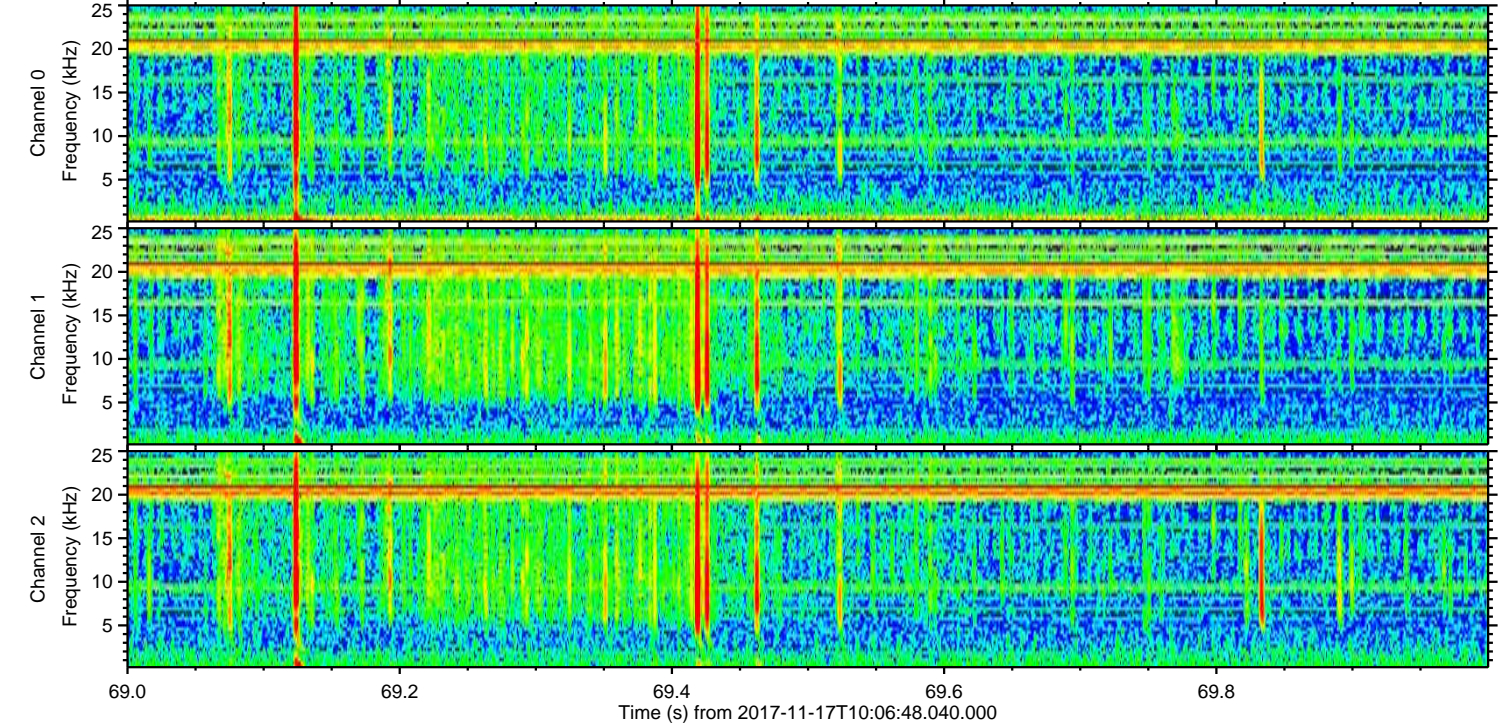
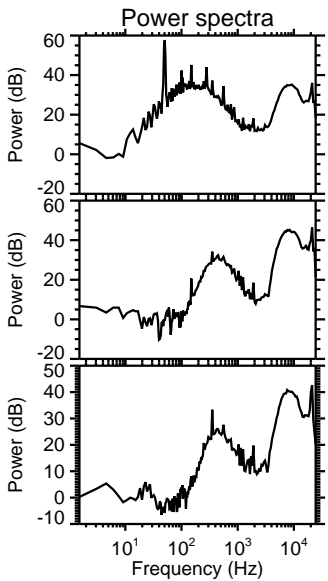
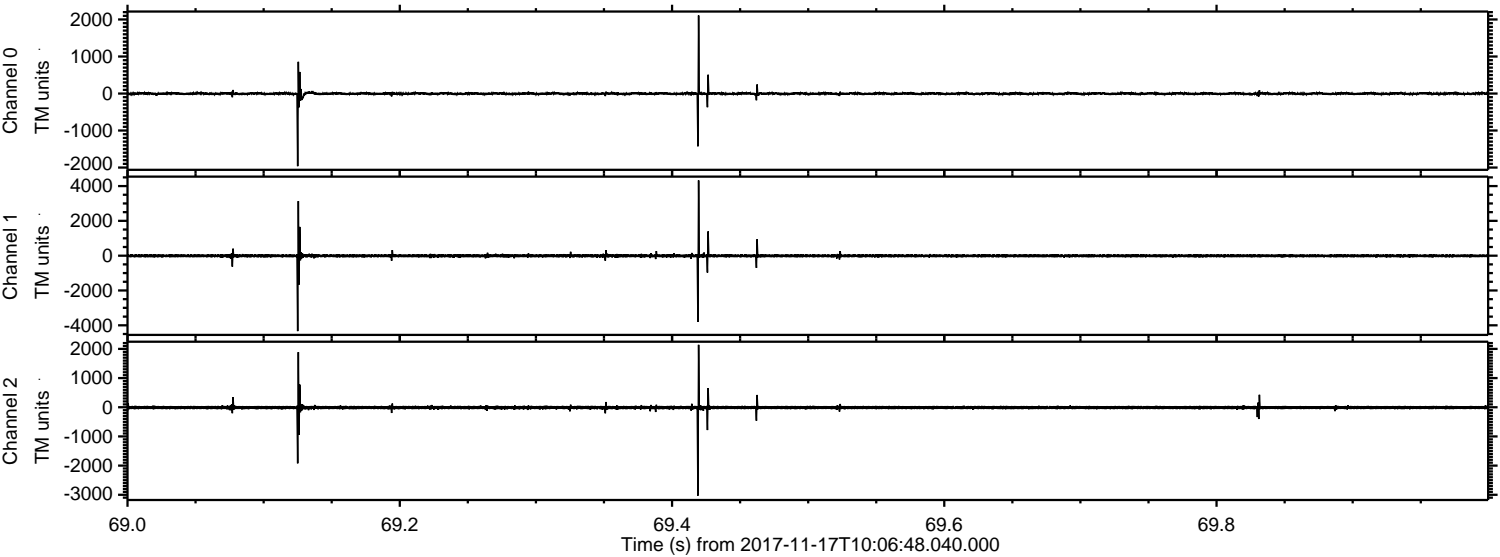


Processed Fri Nov 17 11:15:01 2017 by ELM ver.2012-10-06 from 001__elm20171117_100647__dat00.bin



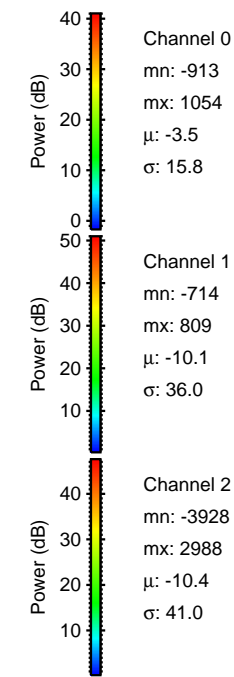
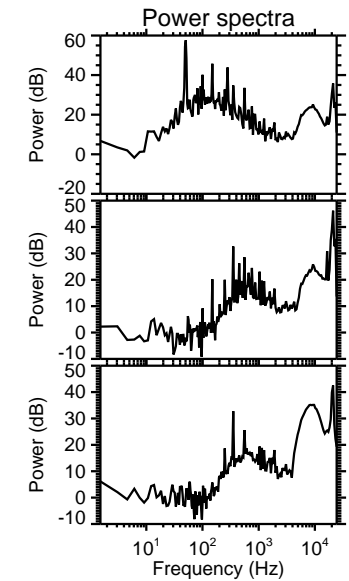
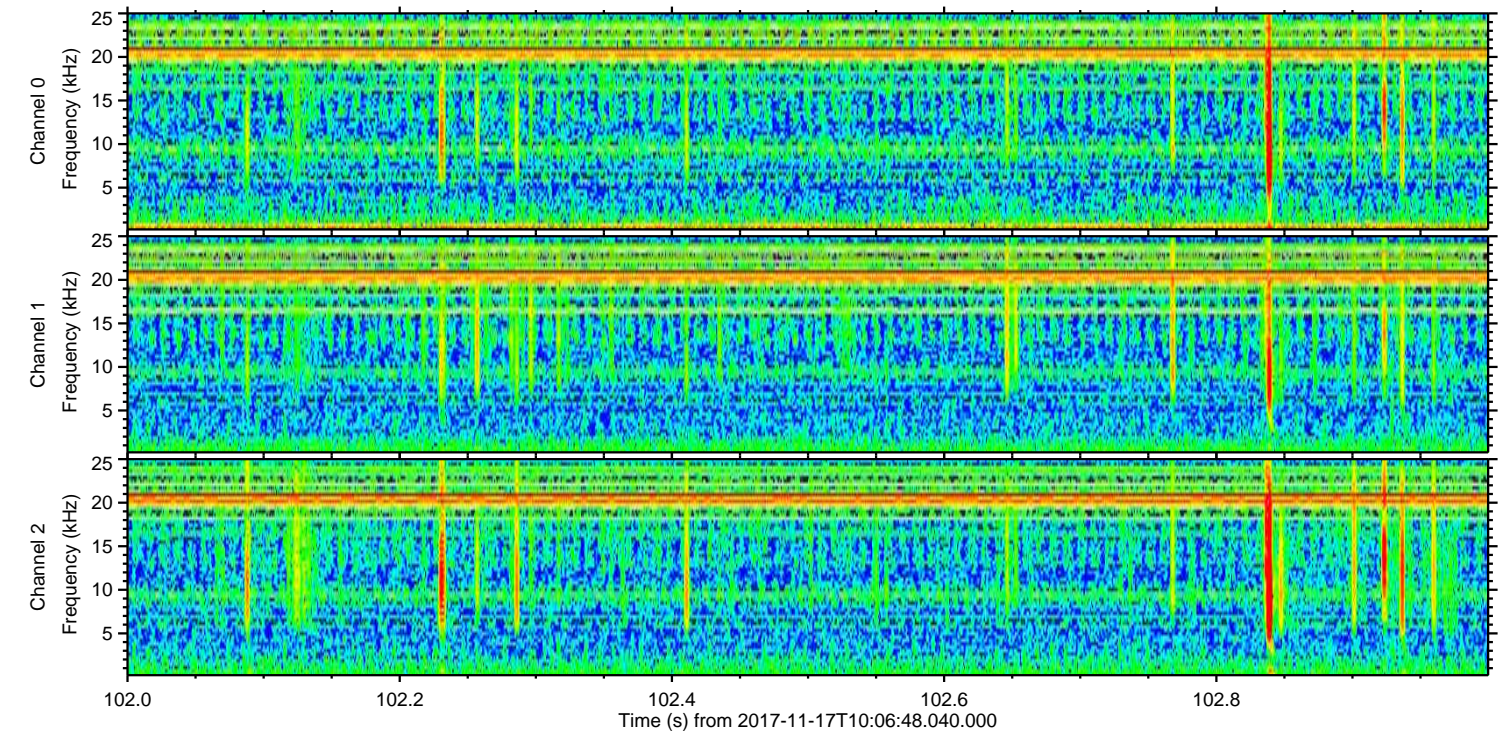
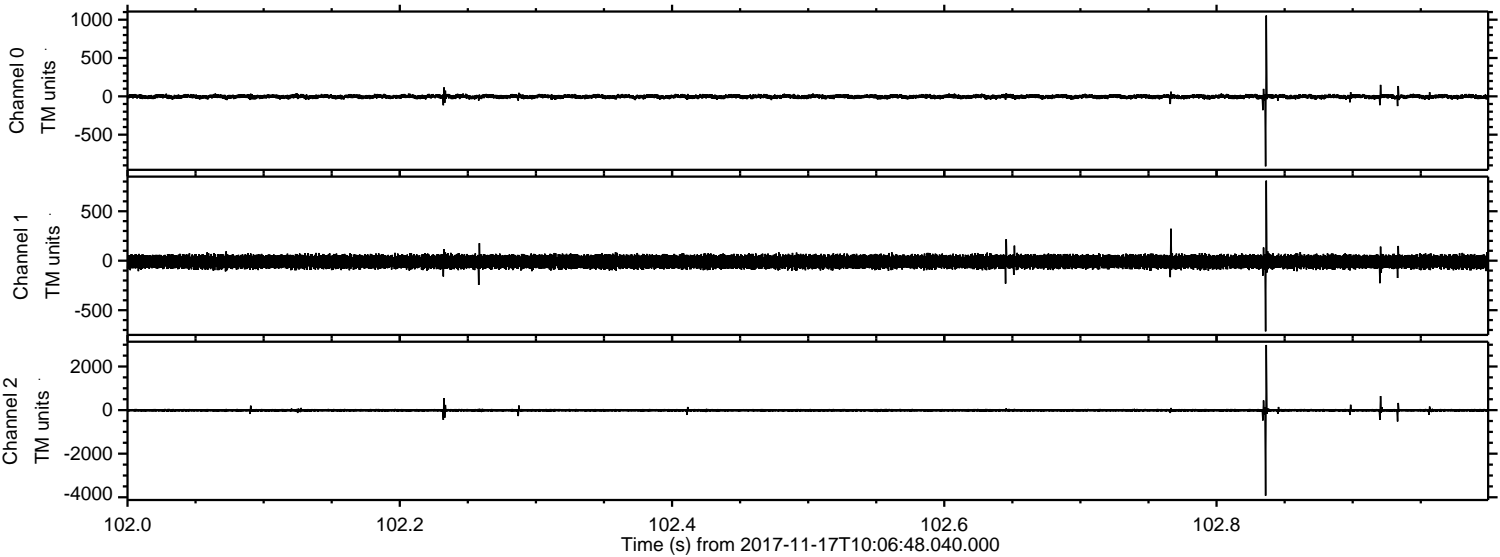
ELMAVAN 3D WAVEFORMS (Measured data sampled at 50 kHz) 51000 packets of 144 samples from 2017-11-17T10:06:48.040.000. Part 70/147

Processed Fri Nov 17 11:15:02 2017 by ELM ver.2012-10-06 from 001__elm20171117_100647__dat00.bin



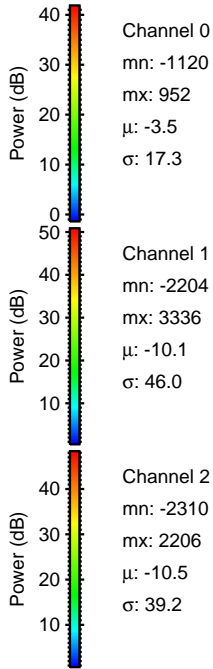
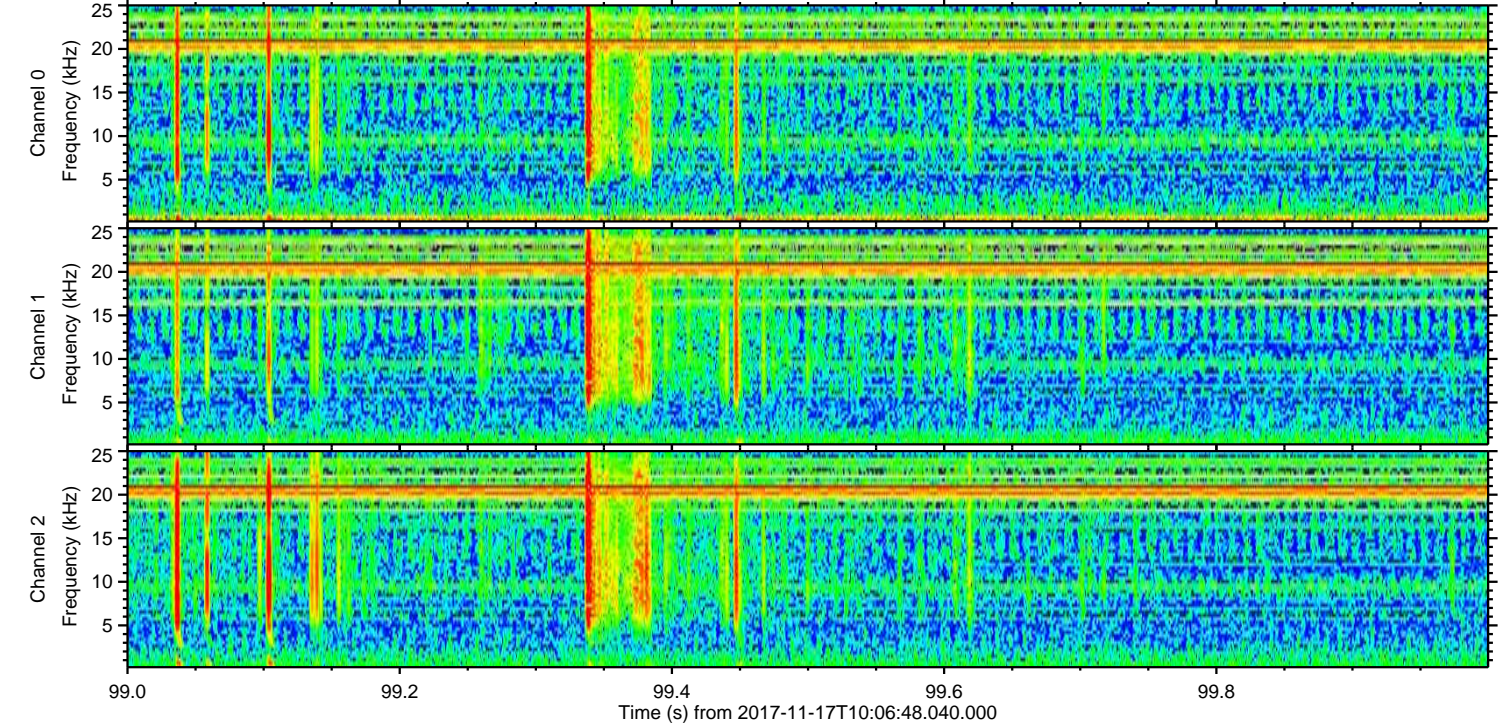
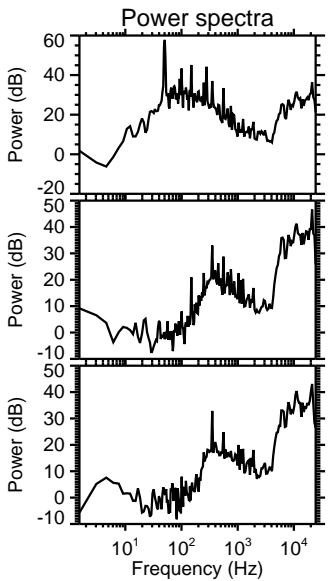
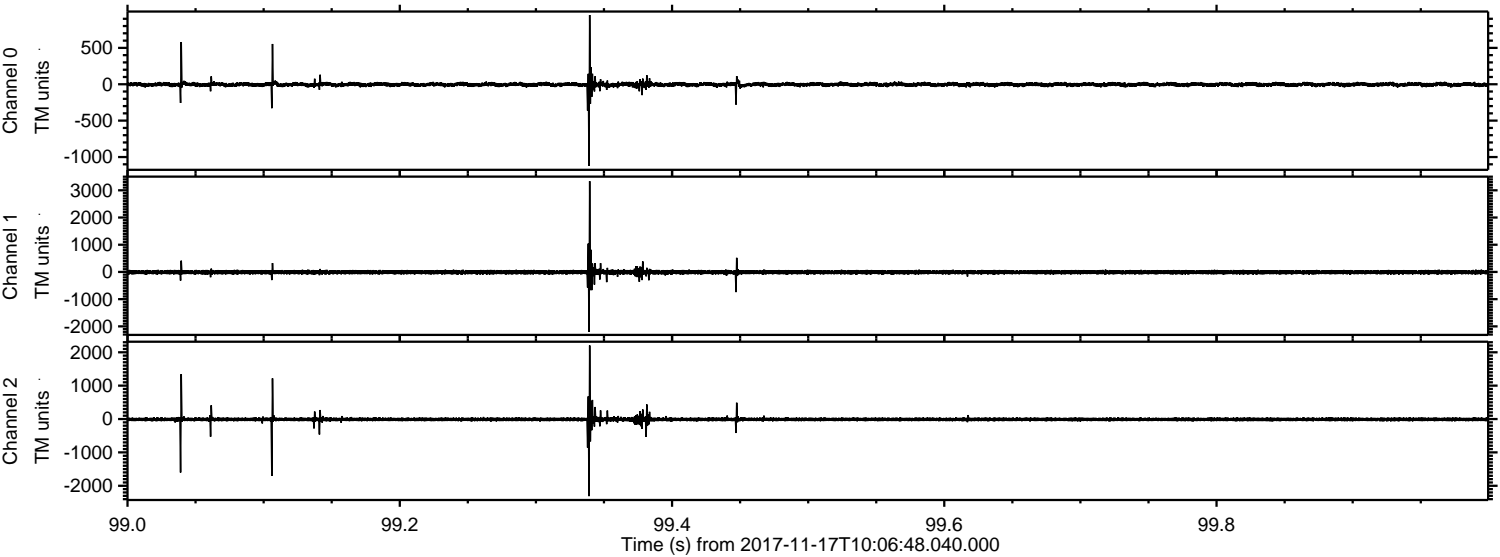
ELMAVAN 3D WAVEFORMS (Measured data sampled at 50 kHz) 51000 packets of 144 samples from 2017-11-17T10:06:48.040.000. Part 103/147

Processed Fri Nov 17 11:15:03 2017 by ELM ver.2012-10-06 from 001__elm20171117_100647__dat00.bin



ELMAVAN 3D WAVEFORMS (Measured data sampled at 50 kHz) 51000 packets of 144 samples from 2017-11-17T10:06:48.040.000. Part 100/147

Processed Fri Nov 17 11:15:03 2017 by ELM ver.2012-10-06 from 001__elm20171117_100647__dat00.bin

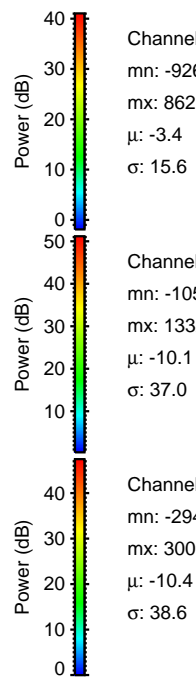
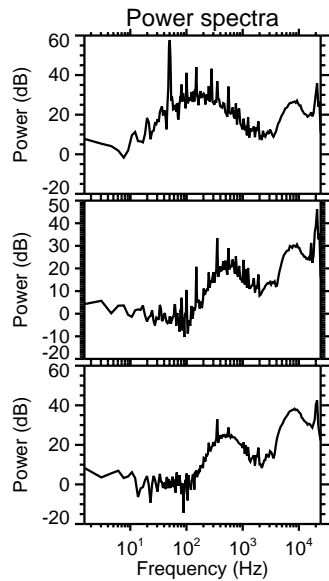
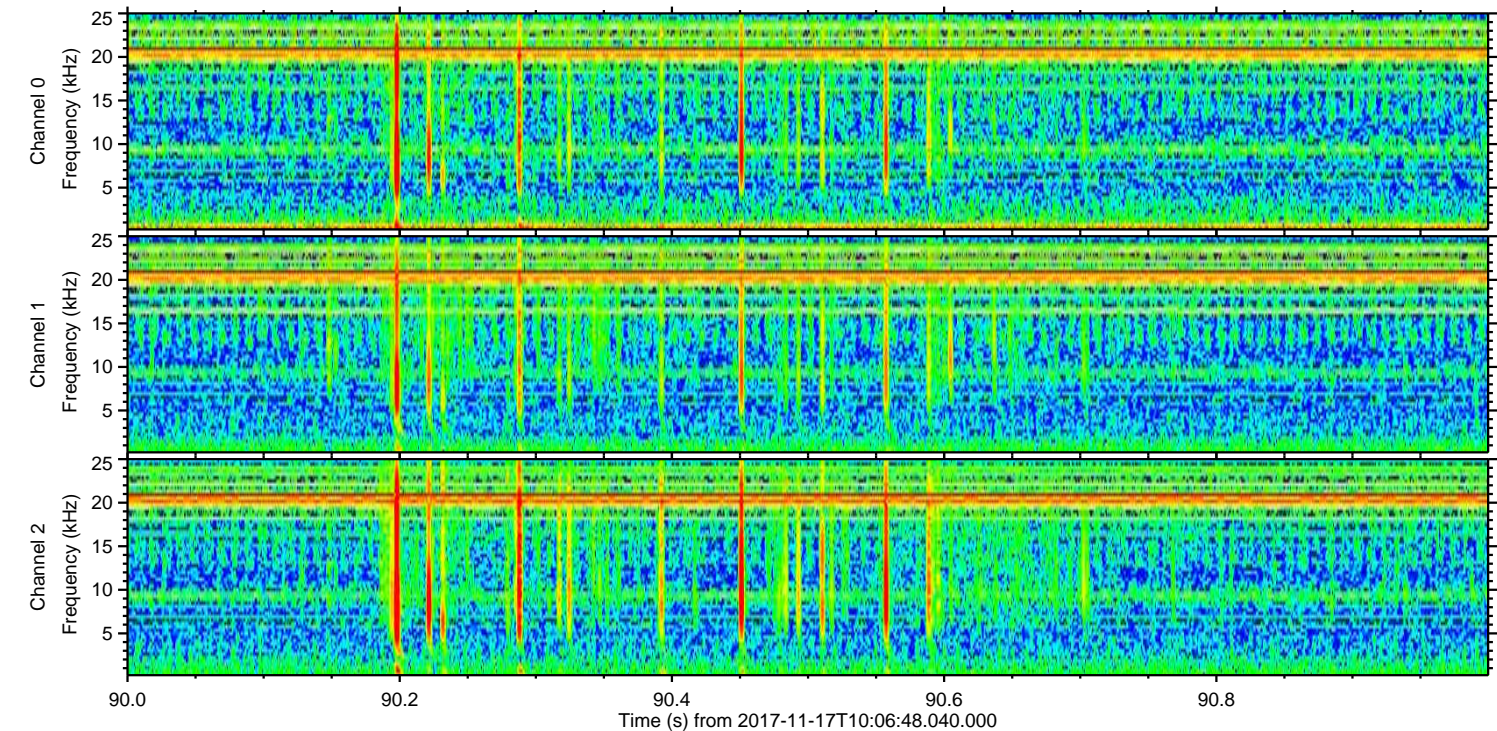
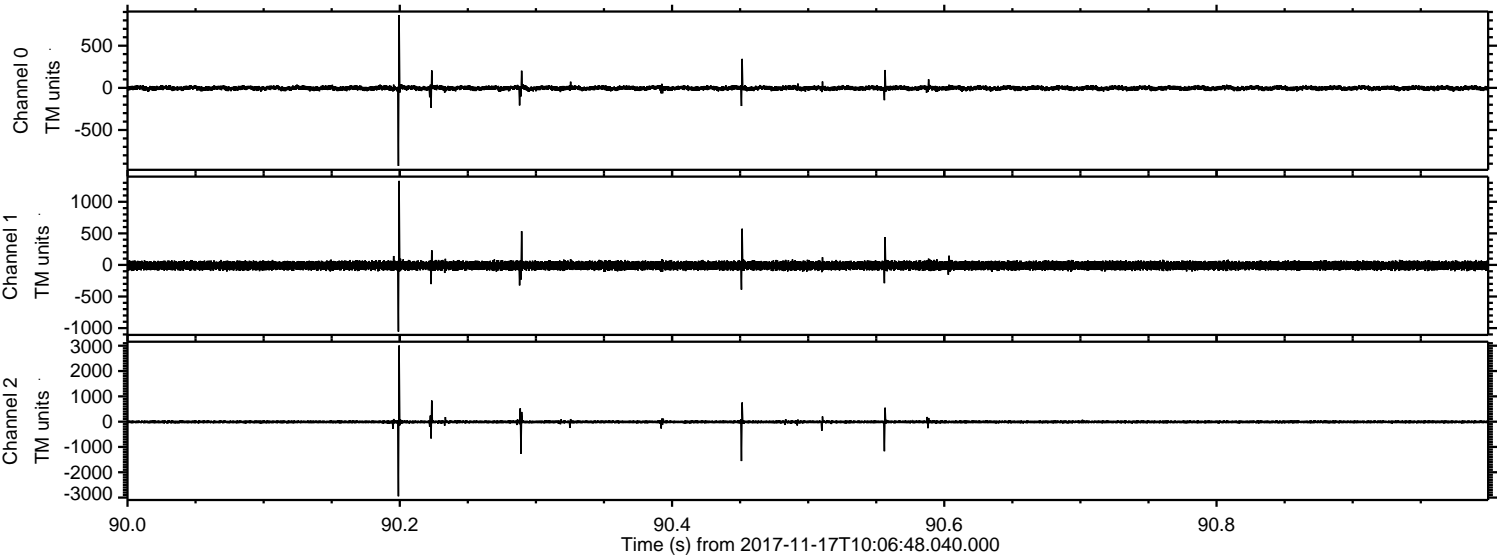


Channel 0
mn: -1120
mx: 952
 μ : -3.5
 σ : 17.3

Channel 1
mn: -2204
mx: 3336
 μ : -10.1
 σ : 46.0

Channel 2
mn: -2310
mx: 2206
 μ : -10.5
 σ : 39.2

Processed Fri Nov 17 11:15:04 2017 by ELM ver.2012-10-06 from 001__elm20171117_100647__dat00.bin

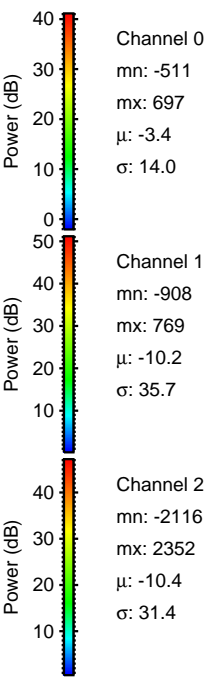
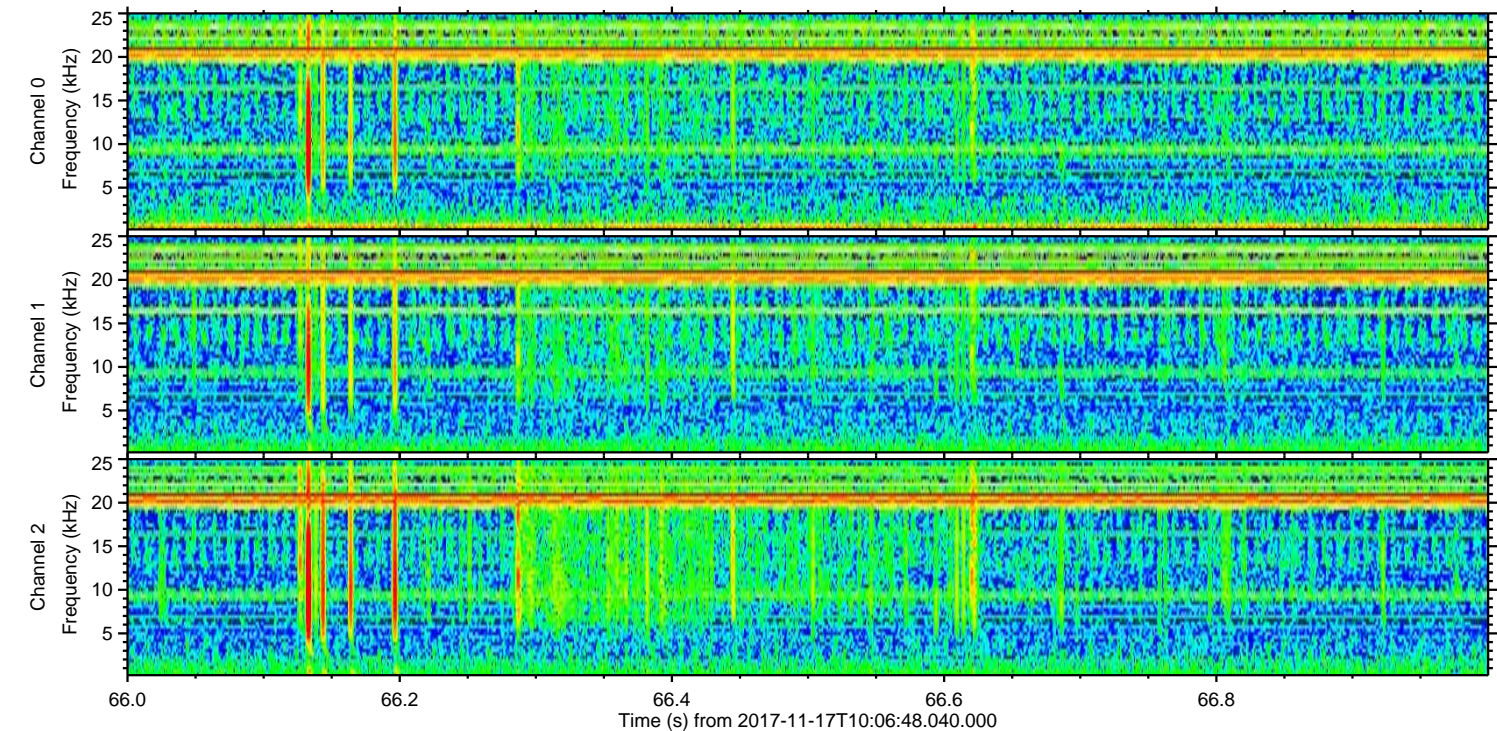
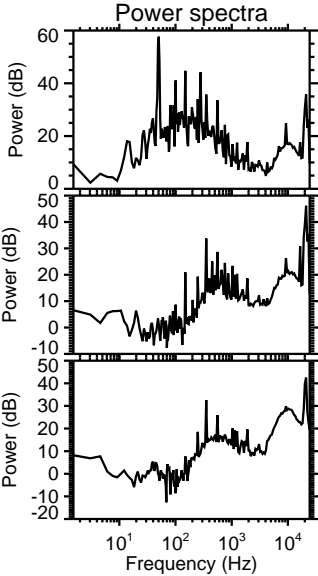
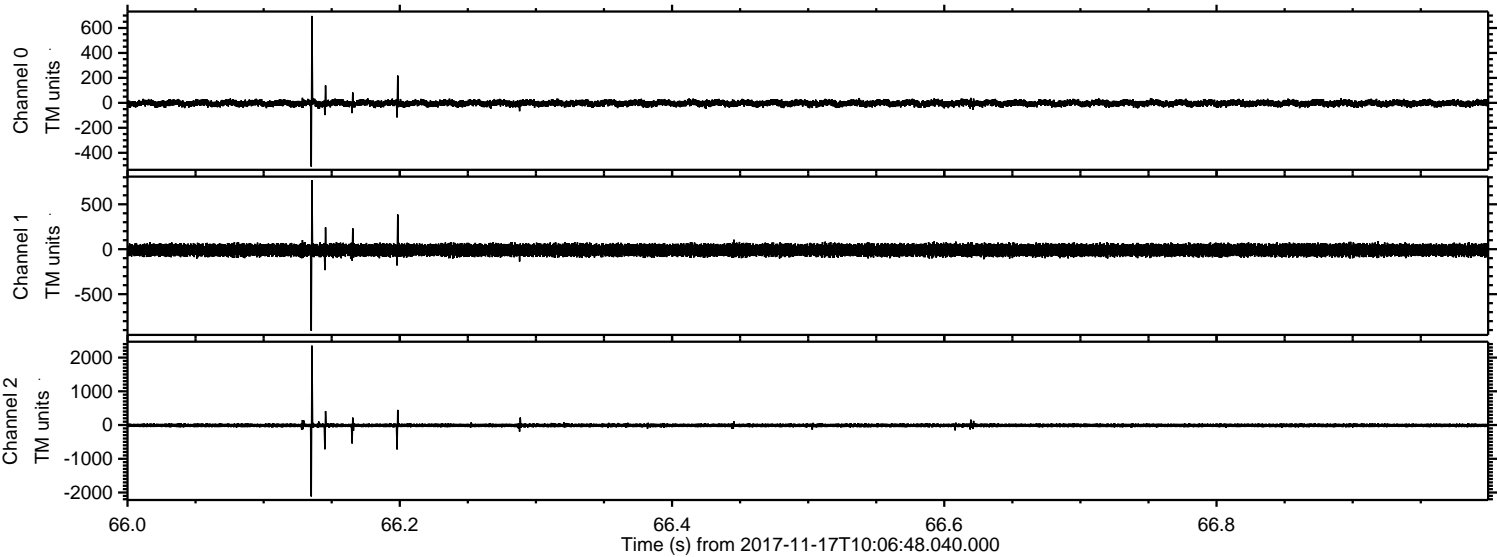


Channel 0
mn: -926
mx: 862
 μ : -3.4
 σ : 15.6

Channel 1
mn: -1055
mx: 1332
 μ : -10.1
 σ : 37.0

Channel 2
mn: -2949
mx: 3009
 μ : -10.4
 σ : 38.6

Processed Fri Nov 17 11:15:05 2017 by ELM ver.2012-10-06 from 001__elm20171117_100647__dat00.bin



Channel 0
mn: -511
mx: 697
 μ : -3.4
 σ : 14.0

Channel 1
mn: -908
mx: 769
 μ : -10.2
 σ : 35.7

Channel 2
mn: -2116
mx: 2352
 μ : -10.4
 σ : 31.4

Processed Fri Nov 17 11:15:05 2017 by ELM ver.2012-10-06 from 001__elm20171117_100647__dat00.bin

